

DEVELOPMENT PLANS  
FOR  
CONSTRUCTION OF  
ALLEY AT SAN MATEO  
AND HAINES NE

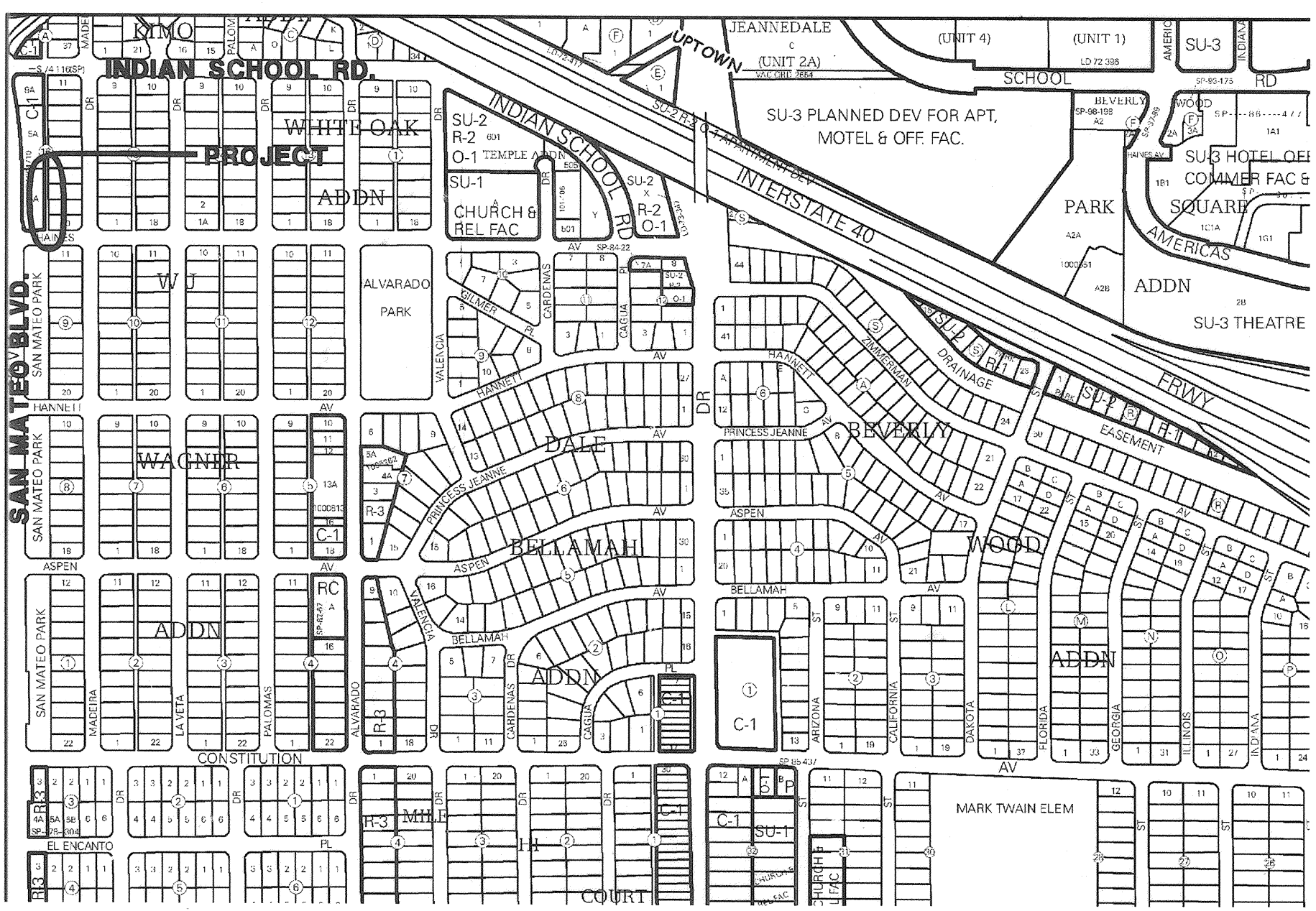
UTILITY COMPANY CONTACTS

BUSINESS	PHONE/E-MAIL	PERSON
ABCWUA P.O. Box 1293 Alb., NM 87102	Office phone: (505)768-2729 Office fax: (505)768-3629 nmusinski@cabq.gov	Nancy Musinski Sr. Engr., Utilities Dev.
AT&T 111 3rd Street NW Alb., NM 87103	Office phone: (505)842-2911 Office fax: (505)842-2890 dcrowel@att.com	David Crowell Resource Supervisor
Comcast 4611 Montbel NE Alb., NM 87107	Office phone: (505)761-6235 Office fax: (505)761-0599 rita_erickson@cable.comcast.com	Rita Erickson Planning and Design Supervisor
Xspedius Management Co. 505 Marquette NW, Suite 1605 Alb., NM 87102	Office phone: (505)998-2220 Office fax: (505)345-6559 steve.merrill@xspedius.com	Steve Merrill
BCG Assets 721 4th Street NW Alb., NM 871	Office phone: (505)243-2153 Office fax: (505)314-0900 john@bcgassets.com	John Brown Operations Manager
MCI Worldcom 6001 Midway Park NE Alb., NM 87109	Office phone: (505)346-4470 Office fax: (505)346-4481 andy.darnell@mci.com	Andy Darnell Operations Manager
McLeod USA 505 Marquette NW, Suite 1600 Alb., NM 87102	Office phone: (505)244-3161 Office fax: (505)244-0094 Cell Phone: (505)228-3329 rdmueller@mcleodusa.com	Rick Mueller Supervisor of Outside Techs.
New Mexico Utilities 4700 Irving NW, Suite 201 Alb., NM 87114	Office phone: (505)898-2661 Office fax: (505)898-6379 sbates@ecoresources.com	Steve Bates
PNM-Electric 4201 Edith NE MS-ES61 Alb., NM 87107	Office phone: (505)241-3581 Office fax: (505)241-0559 jhill@pnm.com	Jim Hill
PNM-Gas 4625 Edith NE Alb., NM 87107	Office phone: (505)241-7752 Office fax: (505)241-7740 kbouska@pnm.com	Kelly Bouska District Engineer
Time-Warner Telecom 3830 Singer NE, Suite 1000 Alb., NM 87109	Office phone: (505)938-7339 Office fax: (505)938-7380 Royal.Harrison@twtelcom.com	Royal Harrison Plant Manager
Qwest 400 Tijeras NW, Room 710 Alb., NM 87102	Office phone: (505)245-8352 Office fax: (505)245-6733 michael.velarde@qwest.com	Michael Velarde Manager Engineering
Qwest Long Distance 400 Tijeras NW, Suite 570 Alb., NM 87102	Office phone: (505)246-0501 Office fax: (505)246-0479 larry.kelly@qwest.com	Larry Kelly Senior Operations Tech.

GENERAL NOTES

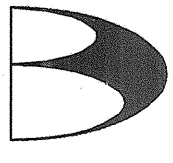
- All work detailed on these plans to be performed under this contract shall, except as otherwise stated or provided for herein, be constructed in accordance with the details and specifications of "City of Albuquerque Standard Specifications for Public Works Construction, 1986 Edition" as amended through update No. 7, including Addendum No. 1.
- Seven (7) working days prior to beginning utility construction, the Contractor shall submit to Construction Coordination Division a detailed construction schedule. Two (2) working days prior to the start of construction, the Contractor shall obtain a barricading permit from the City of Albuquerque and Contractor shall notify the Construction Coordination Engineer (924-3400) prior to occupying any intersection. Refer to Section 19 of the General Conditions of the Standard Specifications.
- An Excavation Permit and Grading and Paving Permit will be required before beginning any work within City of Albuquerque right-of-way.
- Two working days prior to any excavation, the Contractor shall contact the New Mexico One Call System, 260-1990, for location of existing lines.
- All street striping altered or destroyed shall be replaced with preformed thermoplastic reflectorized pavement markings by the Contractor. Striping shall be placed in the pre-construction location or as indicated by this plan set.
- Prior to construction, the Contractor shall excavate and verify the horizontal and vertical location of all obstructions including existing utilities. Should a conflict exist, the Contractor shall notify the Engineer or Surveyor so that the conflict can be resolved with a minimum amount of delay.
- Back fill compaction requirements shall be according to City of Albuquerque Standard Drawings.
- The Contractor shall assume responsibility for any damage to existing pavement, pavement markings, curb and gutter, driveways, wheel chair ramps and sidewalk during construction, apart from those sections indicated for removal on the plans; and shall repair or replace damaged items per City of Albuquerque Standards at the Contractor's own expense.
- Contractor shall record data on all utility lines and accessories as required by the City of Albuquerque Standards for the preparation of "As Constructed" drawings. Contractor shall not cover utility lines and accessories until all data has been recorded.
- All existing signs, markers, delineators, etc., within the construction limits shall be removed, stored and reset by the Contractor.
- The Contractor shall notify the Engineer: not less than seven (7) days prior to starting work in order that the Engineer may take necessary measures to insure the preservation of survey monuments. Contractor shall not disturb permanent survey monuments without the consent of the Engineer and shall notify the Engineer and bear the expense of replacing any that may be disturbed without permission. Replacement shall be done only by the City Surveyor.
- The Contractor will be responsible for disposing of all debris, including but not limited to hazardous waste at disposal sites approved by governmental agencies regulating the disposal of such materials.
- All excavation will be governed by Federal State and Local laws, rules and regulations concerning construction safety and health.
- All signs and coding will be in accordance with the "Manual of Uniform Traffic Control Devices" 2003 Edition.
- Contractor will make all water valves and manholes accessible to ABCWUA at all times.
- Contractor will confine his work, equipment, supplies and employee parking within the designated construction limits and/or public right-of-way.
- The Contractor agrees to take necessary safety precautions as required by Federal, State and Local Authorities to protect pedestrian and vehicular traffic in the construction area, which includes but is not limited to: maintaining adequate warning signs, barricades, lights, guard fences, walks and bridges.
- All excavating, trenching and shoring activities must be carried out in accordance with OSHA 29CFR 1926.650, Subpart P.
- The Contractor shall perform all work in accordance with the National Pollutant Discharge Elimination System (NPDES) and site specific Storm Water Pollution Prevention Plan (SWPPP) requirements.
- The Contractor shall be responsible for providing & maintaining all construction signing until the project has been accepted by the City of Albuquerque.


VICINITY MAP NO. J-18



SHEET INDEX

SHEET NO.	SHEET DESCRIPTION
1	COVER SHEET
2	PLAT
3	ALLEY PLAN & PROFILE

 **BORDENAVE DESIGNS**  
P.O. BOX 91194, ALBUQUERQUE, NM 87199  
(505) 823-1344 FAX (505) 821-9105

REV.	SHEETS	COUNTY	DATE	USER	DEPT.	DATE	USER	DEPT.	DATE
		APPROVAL	ENGINEER	DATE	APPROVED FOR CONSTRUCTION				
		DRC CHAIRMAN	<i>Bradley D. Bingham</i>	5-18-08	<i>Bradley D. Bingham</i> 5/18/08 ENGINEER DATE				
		TRANSPORTATION	<i>Mike</i>	4-29-08					
		HYDROLOGY	<i>Mike C. Chapman</i>	4-29-08					
		ABCWUA	<i>Sammy</i>	4-30-08					
		CONSTR. MNGMT.			SHEET 1 OF 3				
		CONSTR. COORD.							
CITY PROJECT NO. 551385									



LEGAL DESCRIPTION:

A CERTAIN TRACT OF LAND BEING A PUBLIC ROADWAY EASEMENT LOCATED WITHIN LOT NUMBERED FOUR-A-  
4A-4 IN BLOCK NUMBERED SIXTEEN 6163 OF THE AT  
AND SOUTHWEST QUARTER OF SECTION 34, TOWNSHIP 37N,  
RANGE 9E, COUNTY OF ALBUQUERQUE, BERNALILLO COUNTY,  
NEW MEXICO, HEREINAFTER REFERRED TO AS "THE SUBJECT  
PROPERTY," FILED IN THE OFFICE OF THE CLERK OF THE  
COUNTY CLERK OF BERNALILLO COUNTY, NEW MEXICO  
BOOK 00808, PAGE 0001, ON 08/21/2014, IS HEREBY  
SAID PUBLIC ROADWAY EASEMENT BEING MORE PARTICULARLY  
DESCRIBED AS FOLLOWS:

NORTHWEST CORNER OF THE HEREIN DESCRIBED PUBLIC ROADWAY EASEMENT, BEING COMMON  
WITH THE NORTHEAST CORNER OF SAID LOT 4-A, BEING  
THE SUBDIVISION POINT.

TENCE AS AN EASEMENT S. 05 deg 11' 03" E., ALONG  
THE NORTH LINE OF SAID LOT 4-A, A DISTANCE OF 11  
OF 23.577 FEET TO THE SOUTHEAST CORNER, BEING THE  
SOUTHEAST CORNER OF SAID LOT 4-A AND BEING A POINT  
ON THE NORTH LINE OF SAID LOT 4-A.

TENCE S. 89 deg 48' 57" W., ALONG THE NORTH LINE  
OF HAINES ACRES, A DISTANCE OF 120.00 FEET TO THE  
SOUTH CORNER.

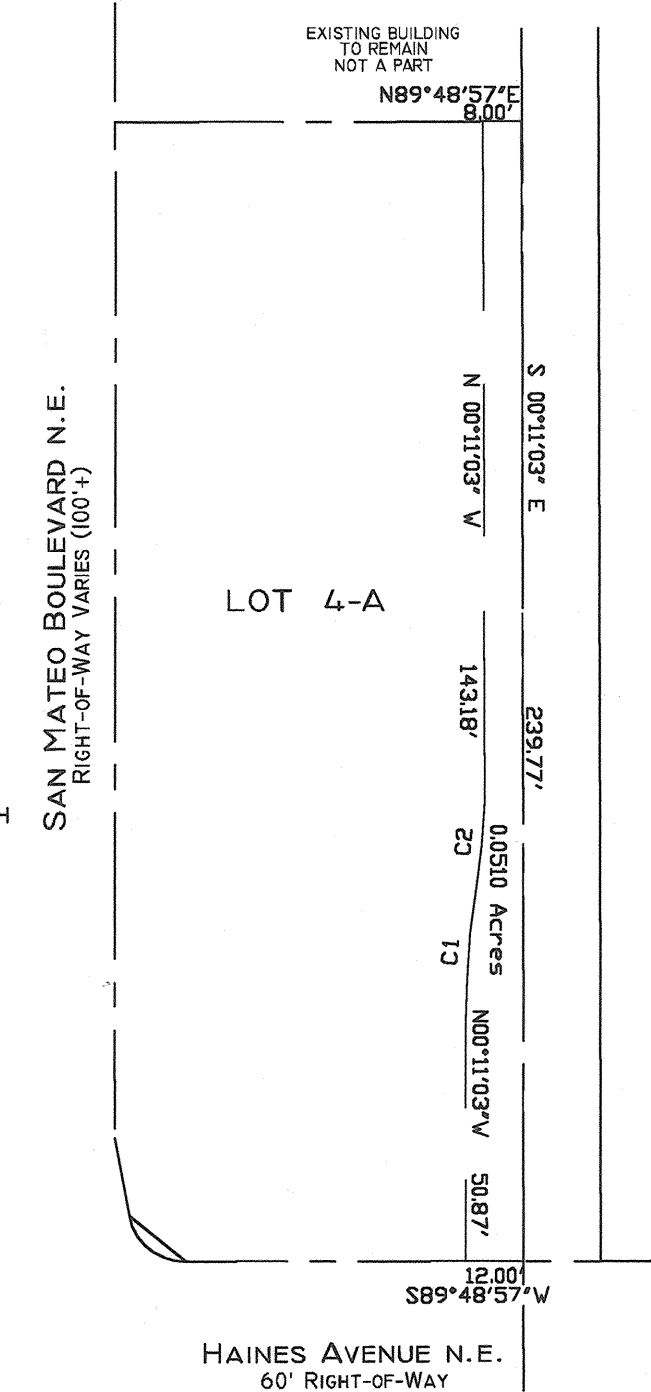
TENCE N. 05 deg 11' 03" W., A DISTANCE OF 50.87 FEET  
TO THE EAST CORNER.

TENCE 28.28 FEET ALONG THE ARC OF A CURVE TO THE  
RIGHT HAVING A RADIUS OF 17.00 FEET AND A CHORD  
OF 28.28 FEET, BEARING AN ANGLE OF 141° 01' E., 28.24  
FEET TO A POINT OF REVERSE CURVE.

TENCE 17.66 FEET ALONG THE ARC OF A CURVE TO THE  
LEFT HAVING A RADIUS OF 17.00 FEET, AN ANGLE OF 141° 01'  
BEARING AND DISTANCE OF N. 05 deg 16' 54" E., 17.65  
FEET TO A POINT OF TANGENT).

TENCE 17.65 FEET, BEARING A DISTANCE OF 143.18 FEET  
TO THE NORTHWEST CORNER, BEING THE NORTH LINE ON THE NORTH  
LINE OF SAID LOT 4-A.

TENCE N. 89 deg 48' 57" E., ALONG THE NORTH LINE OF  
SAID LOT 4-A, A DISTANCE OF 8.00 FEET TO THE NORTH-  
WEST CORNER, BEING THE PLACE OF BEGINNING CONTAINING 0.0310  
ACRES MORE OR LESS.



Scale: 1" = 40'  
Order No.: 08-0147  
Field Book: Page:

Anthony L. Harris, N.M.P.S.#11463 HARRIS SURVEYING, INC.  
2412-D Monroe Street, NE • Albuquerque, New Mexico 87110  
Telephone (505) 889-8056 • FAX (505) 889-8645

DOCUMENT NO. 2008022485  
FILED 02/29/2008

Professional Engineer Seal for Jean J. Bordenave, No. 5110, New Mexico.

REVISIONS	REMARKS
DESIGN	

[illegible]

RUE  
 TMENT  
 IP

MO/DAY/YEAR	MO/DAY/YEAR

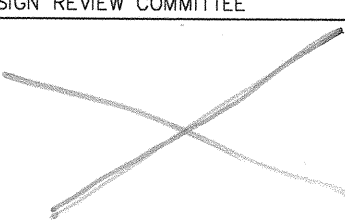
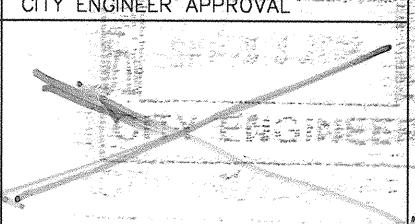
SHEET	OF
2	3

AS BUILT INFORMATION			
CONTRACTOR		WORK	
STAKED BY	INSPECTOR'S	DATE	DATE
ACCEPTANCE BY	DATE	DATE	DATE
VERIFICATION BY	DATE	DATE	DATE
OVERLAYMENTS	DATE	DATE	DATE
CORRECTED BY	DATE	DATE	DATE
MICRO-FILM INFORMATION			
RECORDED BY	DATE	DATE	DATE
NO.			

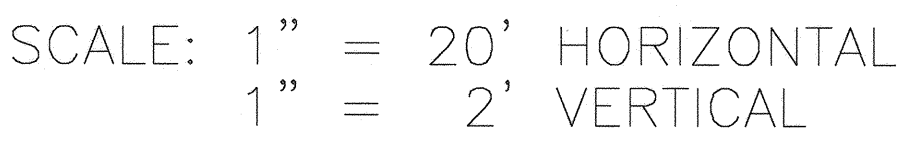
ACS 19--J18R	ELEV. 5227.995 (NGVD 29)
3 1/4" ALUMINUM DISK IN THE TOP OF CURB AT THE SOUTH SOUTHEAST CURB RETURN AT THE INTERSECTION OF HANNETT AVE AND SAN MATEO BLVD NE	


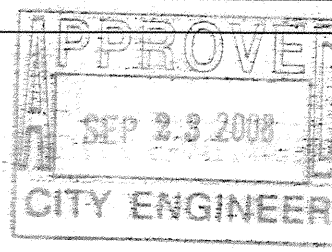
[illegible]

For Information only

<p align="center"><b>CITY OF ALBUQUERQUE PUBLIC WORKS DEPARTMENT ENGINEERING GROUP</b></p>			
<p>TITLE      <b>PLAT</b></p>			
<p>DESIGN REVIEW COMMITTEE</p> 		<p>CITY ENGINEER APPROVAL</p> 	
		<p>MO/DAY/YEAR</p>	
		<p>MO/DAY/YEAR</p>	
		<p>MO/DAY/YEAR</p>	
<p>CITY PROJECT NO.      <b>551385</b></p>		<p>ZONE MAP NO.      <b>JL-18</b></p>	
		<p>SHEET      <b>2</b>      OF      <b>3</b></p>	





CITY OF ALBUQUERQUE PUBLIC WORKS DEPARTMENT ENGINEERING GROUP													
TITLE ALLEY PLAN AND PROFILE													
DESIGN REVIEW COMMITTEE 													
DESIGN REVIEW COMMITTEE		<table><tr><th>MO/DAY/YEAR</th><th>MO/DAY/YEAR</th></tr><tr><td> </td><td> </td></tr><tr><td> </td><td> </td></tr><tr><td> </td><td> </td></tr><tr><td> </td><td> </td></tr></table>		MO/DAY/YEAR	MO/DAY/YEAR								
MO/DAY/YEAR	MO/DAY/YEAR												
CITY PROJECT NO. 551385		ZONE MAP NO. J-18											
SHEET 3		OF 3											