

CITY OF ALBUQUERQUE

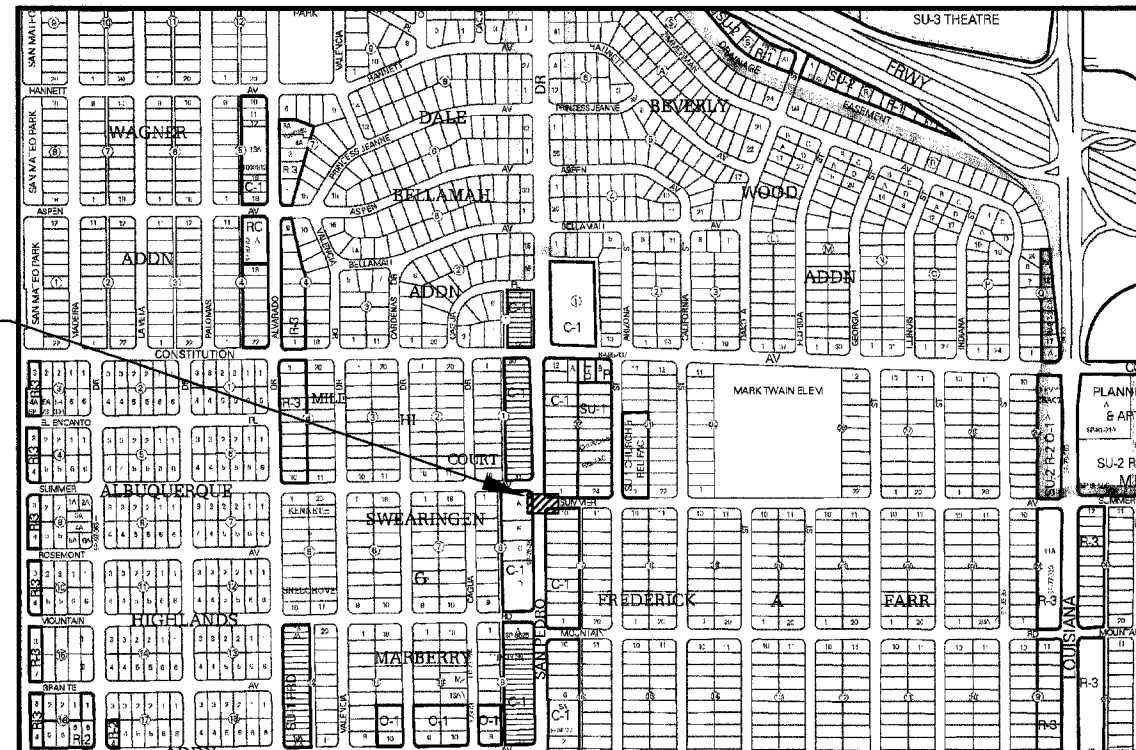
CONSTRUCTION PLANS

SUMMER AVE. STORM DRAIN IMPROVEMENTS

Summer Ave. at San Pedro Dr.

COA Project 5527.91

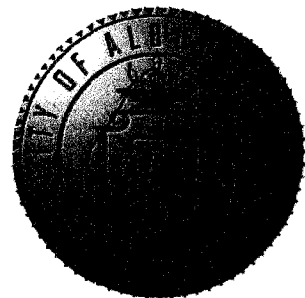
SITE OF CONSTRUCTION



Map Source: COA Zone Atlas J-18

SHEET INDEX

1 OF 13	COVER SHEET
2 OF 13	GENERAL NOTES
3 OF 13	SUMMER AVENUE PLAN & PROFILE
4 OF 13	STANDARD DETAILS - STORM INLET TYPE A
5 OF 13	STANDARD DETAILS - STORM INLET TYPE A
6 OF 13	STANDARD DETAILS - STORM INLET GUTTER TRANSITION
7 OF 13	STANDARD DETAILS - STORM INLET FRAME
8 OF 13	STANDARD DETAILS - STORM INLET GRATE
9 OF 13	STANDARD DETAILS - PAVING CUT FOR UTILITIES
10 OF 13	STANDARD DETAILS - CURB & GUTTER
11 OF 13	STANDARD DETAILS - SIDEWALK
12 OF 13	STANDARD DETAILS - VALLEY GUTTER
13 OF 13	STANDARD DETAILS - STREET SECTION



CITY OF ALBUQUERQUE
DEPARTMENT OF MUNICIPAL DEVELOPMENT

REV.	SHEETS	CITY ENGINEER	DATE	USER DEPARTMENT	DATE	USER DEPARTMENT	DATE
ENGINEERS STAMP & SIGNATURE		APPROVALS		ENGINEER	DATE	*****	
		DRC Chairman	<i>[Signature]</i>	5/19/08	APPROVED FOR CONSTRUCTION City Engineer Date 5-19-08		
		Transportation	<i>[Signature]</i>	5/19/08			
		Water/Wastewater	<i>[Signature]</i>	5-19-08			
		Hydrology	<i>[Signature]</i>	5/19/08			
		Parks	<i>[Signature]</i>	5/19/08			
Constr. Coord.							
Traffic Eng.	<i>[Signature]</i>	5-19-08					
PROJECT NO.		5527.91		SHEET		1 of 13	

1. ALL WORK DETAILED ON THESE PLANS IS TO BE PERFORMED UNDER CONTRACT NO. 1, EXCEPT AS OTHERWISE STATED OR PROVIDED HEREON, BE CONSTRUCTED IN ACCORDANCE WITH THE CITY OF ALBUQUERQUE STANDARD SPECIFICATIONS, 1986 EDITION, AS AMENDED THROUGH THE LATEST UPDATE.
2. THE CONTRACTOR SHALL PROVIDE INGRESS AND EGRESS TO LOCAL BUSINESSES AND RESIDENCES FOR THE DURATION OF THE PROJECT. THE CONTRACTOR SHALL ADVISE OF AND SCHEDULE ACCESS CLOSURES, AT LEAST 24 HOURS IN ADVANCE, WITH PROPERTY OWNERS AND THE CONSTRUCTION PROJECT MANAGER.
3. IF A PAVEMENT DROP-OFF IS CREATED DURING CONSTRUCTION, THE CONTRACTOR SHALL INITIATE PROTECTIVE ACTION IN ACCORDANCE WITH THE NMUSD'S CURRENT "DROP-OFF-GUIDELINE". THIS WORK SHALL BE CONSIDERED INCIDENTAL TO THE COMPLETION OF THE PROJECT AND NO SEPARATE MEASUREMENT OR PAYMENT WILL BE MADE THEREFOR.
4. SEVEN (7) WORKING DAYS PRIOR TO BEGINNING CONSTRUCTION THE CONTRACTOR SHALL SUBMIT TO THE CONSTRUCTION COORDINATION DIVISION A DETAILED CONSTRUCTION SCHEDULE. TWO (2) WORKING DAYS PRIOR TO CONSTRUCTION THE CONTRACTOR SHALL OBTAIN A BARRICADING PERMIT FROM THE CONSTRUCTION COORDINATION DIVISION. CONTRACTOR SHALL NOTIFY BARRICADE ENGINEER (924-3400) PRIOR TO OCCUPYING AN INTERSECTION.
5. TWO (2) WORKING DAYS PRIOR TO ANY EXCAVATION, CONTRACTOR MUST CONTACT N.M. ONE-CALL SYSTEM, 260-1990, FOR LOCATION OF EXISTING UTILITIES.
6. CONTRACTOR SHALL BE RESPONSIBLE FOR ACQUIRING, AT THEIR OWN EXPENSE, ALL PERMITS NECESSARY FOR CONSTRUCTION.
7. ALL WORK IMPACTING AN ARTERIAL ROADWAY WILL REQUIRE 24-HOUR CONSTRUCTION IN ACCORDANCE WITH THE CITY OF ALBUQUERQUE'S ORANGE BARREL POLICY.
8. CRITICAL INTERSECTION WORK SHALL NOT START UNTIL THE CONTRACTOR HAS ALL MATERIAL, EQUIPMENT, AND NECESSARY PERSONNEL ON-SITE. TRAFFIC CONTROL DEVICES SHALL NOT BE PLACED PREMATURELY.
9. OVERNIGHT PARKING OF CONSTRUCTION VEHICLES ON PRIVATE PROPERTY IS THE SOLE RESPONSIBILITY OF THE CONTRACTOR.
10. THE CONSTRUCTION CLEAR ZONE FOR THIS PROJECT IS 20 FEET FROM THE EDGE OF DRIVING LANE. THE CONTRACTOR SHALL NOT STORE EQUIPMENT OR MATERIAL WITHIN THE CONSTRUCTION CLEAR ZONE UNLESS THE EQUIPMENT OR MATERIAL IS PROPERLY SHIELDED UTILIZING CURRENT SAFETY DESIGN AND INSTALLATION METHODS. THE SAFETY DESIGN FOR SHIELDING SHALL BE PROVIDED BY THE CONTRACTOR AND MUST BE APPROVED BY THE PROJECT MANAGER BEFORE IMPLEMENTING. THIS WORK, INCLUDING DESIGN, INSTALLATION, AND REMOVAL OF THE SHIELDING, SHALL BE CONSIDERED INCIDENTAL TO THE COMPLETION OF THE PROJECT AND NO SEPARATE MEASUREMENT
11. THE CONTRACTOR SHALL NOTIFY THE ALBUQUERQUE TRAFFIC ENGINEERING DIVISION THREE (3) WORKING DAYS IN ADVANCE OF ANY WORK REQUIRED REGARDING ALL EXISTING REGULATORY SIGNS AND SIGNALS THAT NEED TO BE REMOVED, RELOCATED, OR REINSTALLED. CALL 877-8680, REFER TO SECTION 18.4.4 OF THE SPECIFICATIONS. THE CONTRACTOR SHALL MAINTAIN THE FUNCTION OF ALL SIGNS IN THE VICINITY OF THE WORK ZONE THAT ARE TO REMAIN DURING AND AFTER CONSTRUCTION ACTIVITIES.
12. THE CONTRACTOR WILL BE REQUIRED TO CONFINE THEIR WORK WITHIN THE CONSTRUCTION LIMITS AND/OR R.O.W. TO PRESERVE EXISTING VEGETATION AND PRIVATE PROPERTY. OVERNIGHT PARKING OF CONSTRUCTION EQUIPMENT SHALL NOT OBSTRUCT DRIVEWAY OPENINGS OR DESIGNATED TRAFFIC LANES.
13. IT SHALL BE THE CONTRACTOR'S RESPONSIBILITY TO ENSURE THAT BUILDING STRUCTURES ADJACENT TO THE PROJECT NOT BE DAMAGED DUE TO ANY CONSTRUCTION ACTIVITIES. DAMAGE CAUSED TO ANY BUILDING STRUCTURE WILL BE THE SOLE RESPONSIBILITY OF THE CONTRACTOR, INCLUDING ALL COSTS INCURRED IN RESTORING/REPAIRING SAID DAMAGE. SEE NOTE 1 ON SHEET 3 FOR ADDITIONAL REQUIREMENTS.
14. THE CONTRACTOR SHALL SUBMIT A PROPOSED WORK PLAN FOR PEDESTRIAN IMPROVEMENTS TO THE PROJECT MANAGER FOR REVIEW AND APPROVAL PRIOR TO INITIATING THIS WORK. THIS PLAN SHALL INCLUDE THE METHOD PROPOSED TO MAINTAIN PEDESTRIAN ACCESS TO BUSINESSES, SCHOOLS, POSTOFFICES, BUILDINGS ETC. THROUGHOUT THE PEDESTRIAN IMPROVEMENT CONSTRUCTION. IN PARTICULAR, THE CONTRACTOR, AT MINIMUM, SHALL MAINTAIN A 36" CLEAR PATH FOR PEDESTRIANS SO AS TO MEET ADA ACCESSIBILITY REQUIREMENTS.
15. THROUGHOUT THE LIFE OF THIS PROJECT, THE CONTRACTOR SHALL KEEP THE LOCAL NEWS MEDIA INFORMED OF CONSTRUCTION ACTIVITIES WHICH WILL IMPEDE THE NORMAL FLOW OF TRAFFIC.
16. THE CONTRACTOR SHALL MAINTAIN AN UP TO DATE SET OF AS-BUILT PLANS FOR THE PROJECT. THESE PLANS SHALL BE KEPT CURRENT, WITHIN TWO WEEKS, AT ALL TIMES AND SHALL BE SUBJECT TO REVIEW BY THE PROJECT MANAGER THROUGHOUT THE PROJECT AND WILL BE REVISED BY THE PROJECT MANAGER FOR ACCURACY AND COMPLETENESS AT LEAST ONCE EVERY 30 DAYS. THE FINAL AS-BUILT PLANS SHALL BE SUBMITTED TO THE PROJECT MANAGER PRIOR TO FINAL PAYMENT.
17. THE CONTRACTOR SHALL MAINTAIN A GRAFFITI FREE WORK SITE AND SHALL PROMPTLY REMOVE ANY AND ALL GRAFFITI FROM EQUIPMENT, WHETHER PERMANENT OR TEMPORARY.
18. THE CONTRACTOR SHALL BE RESTRICTED TO THE USE OF A 35 TON MAXIMUM NON-VIBRATORY ROLLER TO OBTAIN THE REQUIRED COMPACTION IN PAVEMENT STRUCTURE, ROADWAY BACKFILL, EMBANKMENT, AND SUBGRADES IN URBAN AREAS WHERE THE USE OF HEAVIER EQUIPMENT COULD DAMAGE UNDERGROUND UTILITIES OR OTHER PERMANENT STRUCTURES.
19. ALL NEW STREET PAVING, CURB AND GUTTER, SIDEWALKS OR DRIVE PADS SHALL MATCH THE ELEVATIONS OF ABUTTING EXISTING AREAS AS SHOWN IN THE PLANS OR AS DIRECTED BY THE PROJECT MANAGER.
20. MANHOLE RIM ELEVATIONS SHOWN ON THESE PLANS ARE APPROXIMATE AND WILL VARY WITH THE FINISHED PAVEMENT ELEVATIONS.
21. ALL RADIUS OF CURB RETURNS ARE SHOWN TO THE FACE OF CURB AND, UNLESS OTHERWISE NOTED, ALL OFFSETS AND DIMENSIONS ARE TO THE FACE OF CURB.
22. WHEN ABUTTING NEW PAVEMENT TO EXISTING, CONTRACTOR SHALL SAW CUT, TO FULL PAVEMENT DEPTH, THE EXISTING PAVEMENT TO A NEAT VERTICAL STRAIGHT LINE AS REQUIRED TO REMOVE ANY BROKEN OR CRACKED PAVEMENT AND MATCH NEW TO EXISTING. THIS WORK SHALL BE CONSIDERED INCIDENTAL AND NO ADDITIONAL PAYMENT WILL BE MADE THEREFOR.
23. THE CONTRACTOR SHALL ASSUME RESPONSIBILITY FOR ANY DAMAGE TO EXISTING PAVEMENTS, PAVEMENT MARKINGS, CURB AND GUTTER, DRIVEPADS, HANDICAP RAMPS, AND SIDEWALK DURING CONSTRUCTION APART FROM THOSE SECTIONS INDICATED FOR REMOVAL ON THE PLANS, AND SHALL REMOVE AND REPLACE AS PER COA STANDARDS AT THEIR OWN EXPENSE.
24. WHEN REMOVAL OF EXISTING CURB AND GUTTER OR SIDEWALK IS REQUIRED, REMOVE TO NEAREST JOINT.
25. ALL CONSTRUCTION DEBRIS, SPOIL AND NON-SALVAGEABLE ITEMS BECOME THE PROPERTY OF THE CONTRACTOR AND PROPER DISPOSAL OF THESE ITEMS IS THE RESPONSIBILITY OF THE CONTRACTOR. ANY HAUL COSTS ASSOCIATED WITH THIS WORK IS CONSIDERED INCIDENTAL TO THE PROJECT.
26. ALL TRENCH EXCAVATION BACKFILL WITHIN THE ROADWAY PRISM SHALL BE COMPACTED TO 98% OF THE MODIFIED PROCTOR PER ASTM D-698 OR D-1557 AS APPLICABLE.
27. ALL EXCAVATIONS FOR STORM DRAINS, AND OTHER EXCAVATIONS AS NECESSARY, SHALL BE GOVERNED BY THE CURRENT CONSTRUCTION SAFETY AND HEALTH STANDARDS.
28. EXCAVATION, TRENCHING AND SHORING ACTIVITIES MUST BE CARRIED OUT IN ACCORDANCE WITH OSHA 29 CFR 1926.650 SUBPART P. THE CONTRACTOR SHALL BE RESPONSIBLE FOR THEIR EMPLOYEES SAFETY.
29. GROUTING OF RCP: FOR STORM DRAIN CONSTRUCTION, RCP PIPE JOINTS SHALL NOT BE GROUTED PRIOR TO FINAL INSPECTION. FINAL INSPECTION SHALL DETERMINE JOINTS TO BE GROUTED FOR FINAL ACCEPTANCE OF THE CONSTRUCTION.
30. ALL EXISTING UTILITIES SHOWN HEREIN WERE TAKEN FROM RECORD DRAWINGS, FIELD SURVEYS, C.O.A. SYSTEMS UTILITIES MAPS AND INFORMATION PROVIDED BY THE UTILITY OWNERS AND ARE APPROXIMATE. IT WILL BE CONTRACTORS RESPONSIBILITY TO FIELD VERIFY HORIZONTAL AND VERTICAL LOCATIONS AND TYPE OF EXISTING UTILITIES TO BE ADJUSTED OR EXTENDED AND TO PROVIDE PROTECTION FOR ALL UTILITIES WITHIN THE CONSTRUCTION AREA.
31. CONTRACTOR IS TO EXERCISE DUE CARE TO AVOID DISTURBING ANY EXISTING UTILITIES. IT SHALL BE THE RESPONSIBILITY OF THE CONTRACTOR TO COORDINATE WITH THE UTILITY COMPANIES IN ORDER TO PREVENT ANY SERVICE DISRUPTION THAT MIGHT RESULT FROM PROTECTIVE CONSTRUCTION. IT SHALL BE THE RESPONSIBILITY OF THE CONTRACTOR TO PROTECT AND PRESERVE UTILITY EQUIPMENT AFFECTED BY PROJECT CONSTRUCTION. SHOULD THE CONTRACTOR BREAK AN EXISTING UTILITY LINE DURING CONSTRUCTION ACTIVITIES THE CONTRACTOR SHALL BE RESPONSIBLE FOR UTILITY REPAIR COSTS.

Musinski, Nancy	Office phone: (505) 788-2729 Office fax: (505) 768-3629	Water Authority Senior Engineer, Utility Engineering P.O. Box 1293 Albuquerque, NM 87103
Bouska, Kelly	Office phone: (505) 241-7752 Office fax: 241-0559	PNM - Gas Co. Mail Stop G586 4625 Edith Blvd. NE Albuquerque, NM 87107
Blaauwkamp, Roland	Office phone: (505) 241-3606 Office fax: (505) 241-3435	PNM- Electric Co. Mail Stop E581 4201 Edith Blvd. NE Albuquerque, NM 87107
Jaramillo, Rita	Office phone: (505) 245-8752 Office fax: (505) 245-8733	QWEST/US WEST Manager - Engineering 400 Tijeras NW, Room 710 Albuquerque, NM 87102
Mortus, Mike	Office phone: (505) 761-6235 Office fax: (505) 761-0599	Comcast Project Manager 4611 Montbel Place NE Albuquerque, NM 87107
Harrison, Royal	Office phone: (505) 938-7339 Office fax: (505) 938-7380	Time Warner Telecom Plant Manager 3830 Singer Blvd. NE Suite 1000 Albuquerque, NM 87109

32. CONTRACTOR SHALL RESPONSIBLE FOR PROVIDING AND MAINTAINING ALL CONSTRUCTION SIGNING UNTIL PROJECT HAS BEEN ACCEPTED BY THE C.O.A. H.B. 5/19/08

33. THE CONTRACTOR SHALL BE RESPONSIBLE FOR REPAIR AND/OR REPLACEMENT OF EXISTING PRIVATE SERVICES DISTURBED DURING CONSTRUCTION. HB 5/19/08

[illegible]



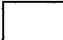


- GENERAL NOTES:
1. SEE DWG. 2202 FOR TYPE "A" INLET SECTIONS.
 2. FOR STORM INLET CUTTER TRANSITION, SEE DWG. 2207.
 3. OUTLET PIPE SIZE, PER DESIGN REQUIREMENT.
 4. FOR FRAME & GRATING, SEE DWG. 2216, 2220 & 2221.

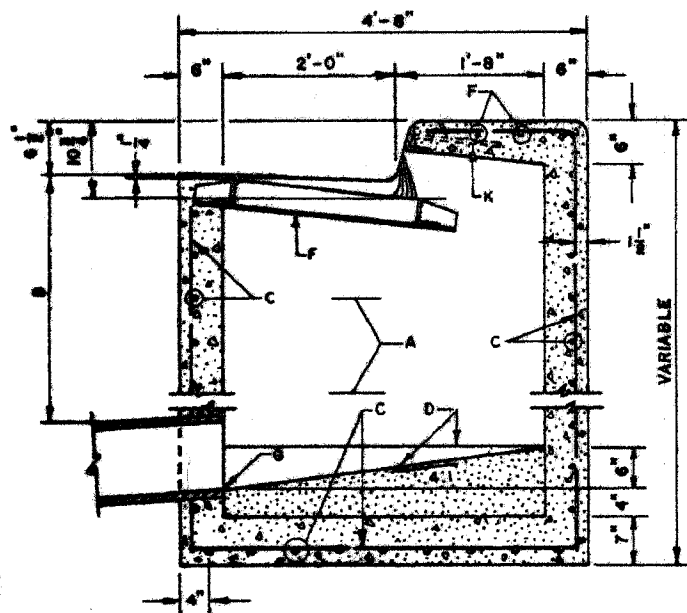
- CONSTRUCTION NOTES:
- A. FOR STORM INLET DEPTHS GREATER THAN 4', INSTALL STD. STEPS, SEE DWG. 2229. STEPS ARE TO BE INSTALLED ON DOWNSTREAM FACE OF INLET.
 - B. NO. 4 BARS AT 6" O.C. EACH WAY.
 - C. CONCRETE FILL, MINIMUM SLOPE SHOWN IN SECTION A-A.
 - D. GRATE.

REVISIONS
12-21-92

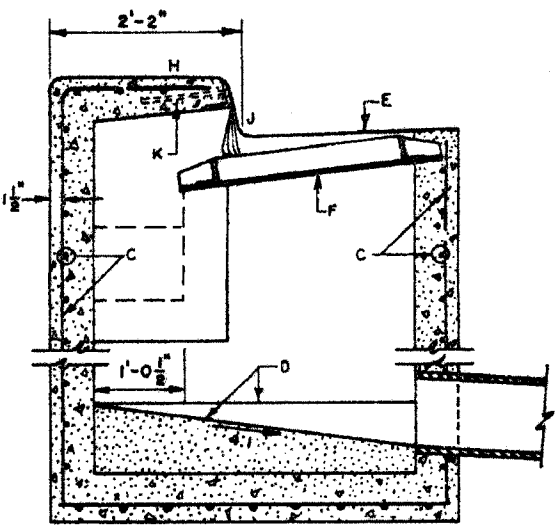
CITY OF ALBUQUERQUE
DRAINAGE
STORM INLET TYPE "A"
PLAN AND SECTION A-A
DWG. 2201
AUG. 1986

[illegible]

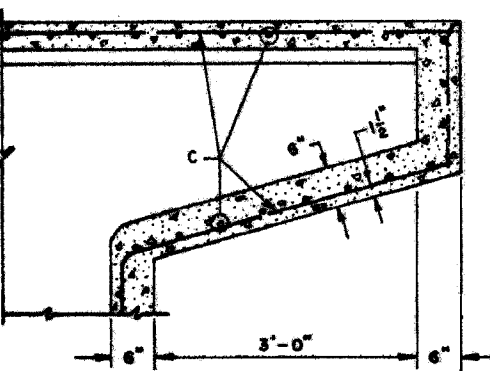
	PB Parsons Brinckerhoff		NO. DATE DESIGNED BY: DRAWN BY: CHECKED BY:
	CITY OF ALBUQUERQUE DEPARTMENT OF MUNICIPAL DEVELOPMENT TRANSPORTATION DIVISION		
	SUMMER AVE. STORM DRAIN IMPROVEMENTS		
	STANDARD DETAILS		
DESIGN REVIEW COMMITTEE 	CITY ENGINEER APPROVAL 	NO. DAY/WR _____ _____ _____ _____ _____	NO. DAY/WR _____ _____ _____ _____ _____
City Project No. 5527 91	Zone Map No. J-18	Sheet 4	Of 13



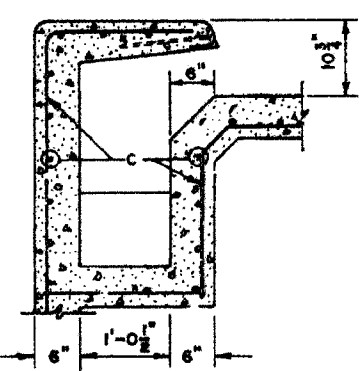
SECTION B-B



SECTION C-C



SECTION D-D



SECTION E-E

GENERAL NOTES:

1. SEE DWG 2201 FOR PLAN AND SECTION A-A.
2. GENERAL NOTES 2, 3 & 4 ON DWG 2201 ALSO APPLY TO THIS DWG.
3. FOR ANCHOR DETAIL, SEE DWG 2205

CONSTRUCTION NOTES:

- A. STORM INLET STEPS, SEE DWG 2229 FOR SPACING.
- B. 1"-10" MIN UNLESS OTHER WISE DIRECTED.
- C. NO. 4 BARS AT 6" O.C. EACH WAY.
- D. CONCRETE FILL, MINIMUM SLOPES SHOWN IN SECTIONS.
- E. NORMAL GUTTER.
- F. GRATE FRAME.
- G. INVERT ELEVATION PER DESIGN.
- H. TOP OF CURB.
- J. FLOWLINE.
- K. ANGLE ANCHOR.

REVISIONS

CITY OF ALBUQUERQUE
DRAINAGE
STORM INLET TYPE "A"
SECTIONS B-B, C-C, D-D & E-E
DWG. 2202
AUG. 1986

AS BUILT INFORMATION		BENCH MARKS		SURVEY INFORMATION		ENGINEER'S SEAL		REMARKS		DESIGN		DRAWN BY		CHECKED BY	
CONTRACTOR	DATE	ACR MONUMENT 2-JIS, BRASS DISC STAMPED	DATE	NO.	BY	DATE	DATE	NO.	DATE	DESIGNED BY	DATE	DE	DATE	409	DATE
WORK ORDER NO.	DATE	"2-JIS 1881" AT SOUTHEAST QUADRANT OF	DATE												
APPROVED BY	DATE	INTERSECTION OF CONSTITUTION AVE. &	DATE												
DESIGNED BY	DATE	SAN PEDRO BLVD.	DATE												
APPROVED BY	DATE	GEOGRAPHIC POSITION (NAD 83) IN FEET,	DATE												
DESIGNED BY	DATE	N = 1489914.026, E = 1542482.547	DATE												
APPROVED BY	DATE	ELEVATION = 5281.280 FEET	DATE												
DESIGNED BY	DATE		DATE												
APPROVED BY	DATE		DATE												

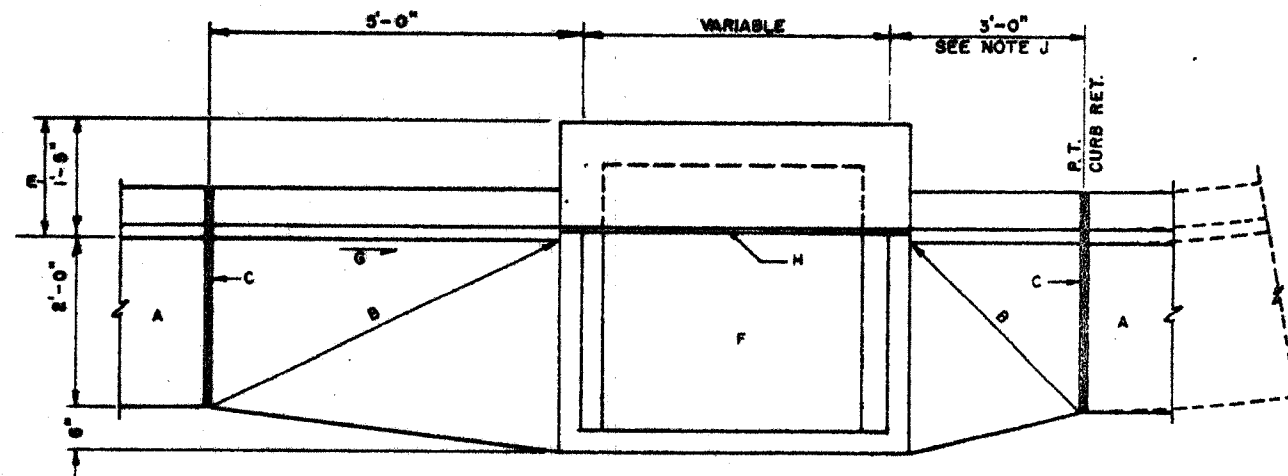


PB Parsons Brinckerhoff

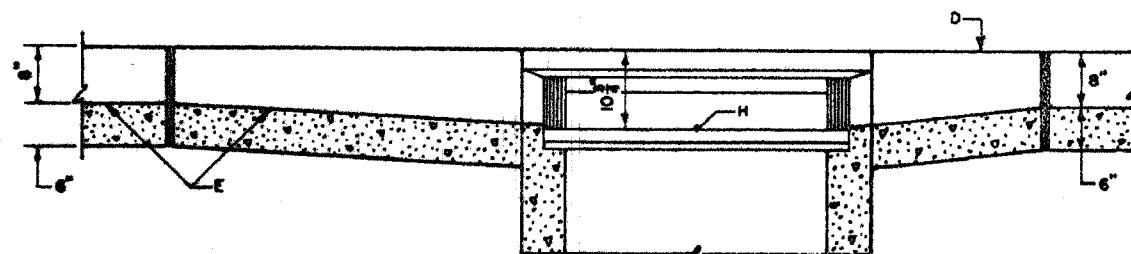
CITY OF ALBUQUERQUE
DEPARTMENT OF MUNICIPAL DEVELOPMENT
TRANSPORTATION DIVISION
SUMMER AVE. STORM DRAIN IMPROVEMENTS
STANDARD DETAILS

DESIGN REVIEW COMMITTEE	CITY ENGINEER APPROVAL	MS. DAY/YR.	MS. DAY/YR.

City Project No. 5527.91 Zone Map No. J-18 Sheet 5 Of 13



PLAN



LONGITUDINAL SECTION
ALONG FLOWLINE

GENERAL NOTES:

1. DETAILS FOR PLACING CATCH BASINS.
STANDARD CURB AND GUTTER.

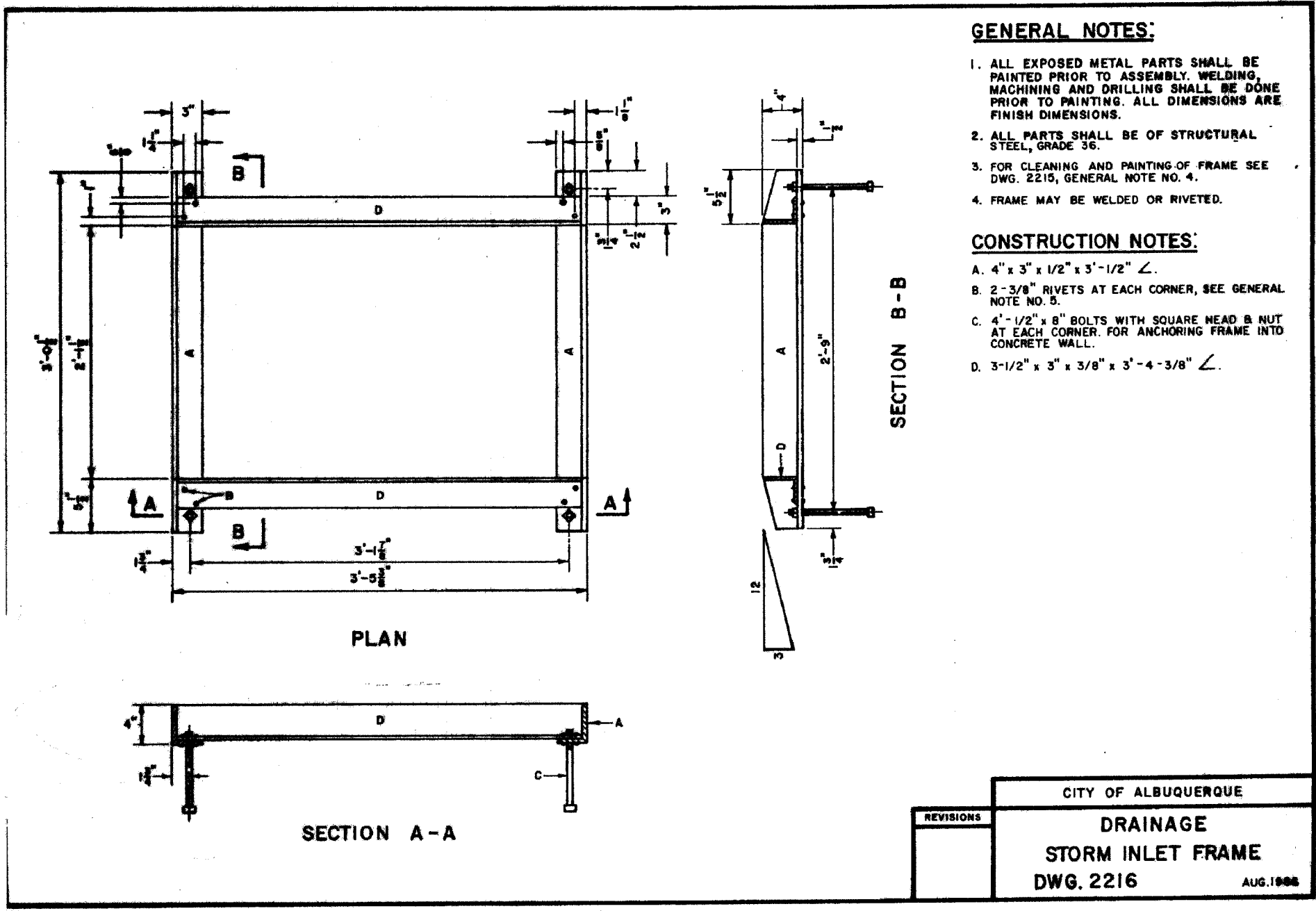
CONSTRUCTION NOTES:

- STANDARD CURB AND GUTTER.
- STRAIGHT GRADE.
- EXPANSION JOINT.
- TOP OF CURB.
- FLOWLINE.
- FOR FRAME & GRATE SEE DWG 2216, 2220 & 2221.
- DIRECTION OF FLOW.
- POINT OF MEASUREMENT FOR TOP OF GRATE ELEVATION.
- PROVIDE 5 FEET TRANSITION EACH SIDE OF CATCH BASIN, WHEN INSTALLING AT SAG POINT IN INSTALLATIONS OTHER THAN AT CURB RETURN.

CITY OF ALBUQUERQUE	
DRAINAGE STORM INLET GUTTER TRANSITION	
REVISIONS	DWG. 2207
	AUG. 1996

ENGINEER'S SEAL		SURVEY INFORMATION		BENCH MARKS		AS BUILT INFORMATION	
NO.	DATE	BY	DATE	NO.	DATE	CONTRACTOR	DATE
ACS MONUMENT 2-JB, BRASS DISC STAMPED "2-JB 1981" AT SOUTHEAST QUADRANT OF INTERSECTION OF CONSTITUTION AVE. & SAN PEDRO BLVD. GEOGRAPHIC POSITION (NAD 83) IN FEET, N = 1488814.028, E = 1542482.547 ELEVATION = 5881.280 FEET				MICRO-FILM INFORMATION NO. DATE			

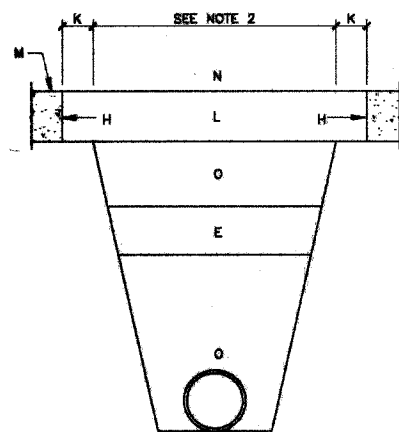
		CITY OF ALBUQUERQUE DEPARTMENT OF MUNICIPAL DEVELOPMENT TRANSPORTATION DIVISION SUMMER AVE. STORM DRAIN IMPROVEMENTS STANDARD DETAILS	
DESIGN REVIEW COMMITTEE	CITY ENGINEER APPROVAL	NO. DATE	NO. DATE
		DESIGNED BY: DE	DATE: 5/14/08
		DRAWN BY: DE	DATE: 5/14/08
		CHECKED BY: HDB	DATE: 5/14/08
City Project No.	Zone Map No.	Sheet	Of
5527.91	J-18	6	13



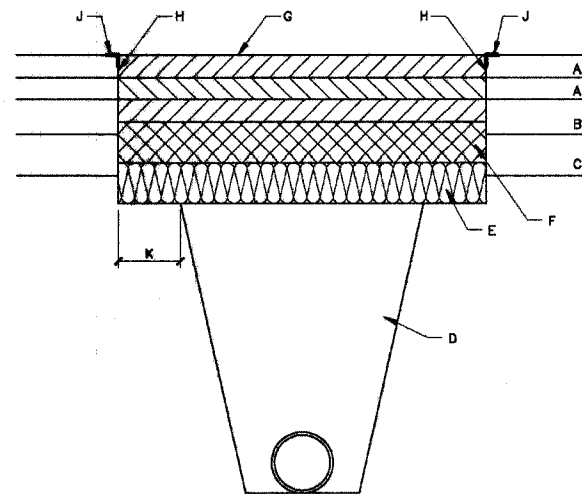
REVISIONS	CITY OF ALBUQUERQUE	
	DRAINAGE	
	STORM INLET FRAME	
DWG. 2216		AUG. 1988

CITY OF ALBUQUERQUE DEPARTMENT OF MUNICIPAL DEVELOPMENT TRANSPORTATION DIVISION SUMMER AVE. STORM DRAIN IMPROVEMENTS STANDARD DETAILS	
DESIGN REVIEW COMMITTEE	CITY ENGINEER APPROVAL
City Project No. 5527.91	Zone Map No. J-18
Sheet 7	Of 13

ENGINEER'S SEAL		SURVEY INFORMATION		BENCH MARKS		AS BUILT INFORMATION	
NO.		FIELD NOTES		CONTRACTOR		DATE	
BY		DATE		STARTED BY		DATE	
REMARKS		NO.		INTERSECTION OF CONSTITUTION AVE. & SAN PEDRO BLVD.		DATE	
DESIGN		BY		GEOGRAPHIC POSITION (NAD 83) IN FEET, N = 1489914.026, E = 1542482.547		DATE	
DATE 5/14/06		DATE 5/14/06		ELEVATION = 5081.290 FEET		DATE	
DRAWN BY: DE		CHECKED BY: HDB		MICRO-FILM INFORMATION		NO.	
DATE 5/14/06		DATE 5/14/06		RECORDED BY		DATE	



CONCRETE PAVEMENT



ASPHALT CONCRETE PAVEMENT

GENERAL NOTES:

1. COMPACTION AS DETERMINED BY ASTM D1557 MAX DENSITY.
2. TRENCH CUT WIDTHS SHALL BE MIN. WIDTH REQ'D FOR UTILITY INSTALLATION, ECONOMICAL BACKFILL, COMPACTION AND COMPLIANCE WITH CURRENT AND APPLICABLE SAFETY REGULATIONS.
3. ALL PAVEMENTS CUT EDGES WILL BE TRIMMED TO PRESENT AN EVEN LINE PRIOR TO REPLACEMENT OF PAVING MATERIAL. "STITCH" CUTTING OF PAVEMENT WILL NOT BE PERMITTED.
4. ADDITIONAL 2" THICKNESS OF ASPHALT CONC. REQ'D ON PAVEMENT CUTS LESS THAN 8' WIDE FOR ASPHALT CONC. PAVEMENT CUTS 8' OR MORE IN WIDTH AND LONGER THAN 100' SHALL BE PLACED WITH LAYDOWN MACHINE TO A DEPTH EQUAL TO THAT OF ASPHALT CONC. REMOVED.

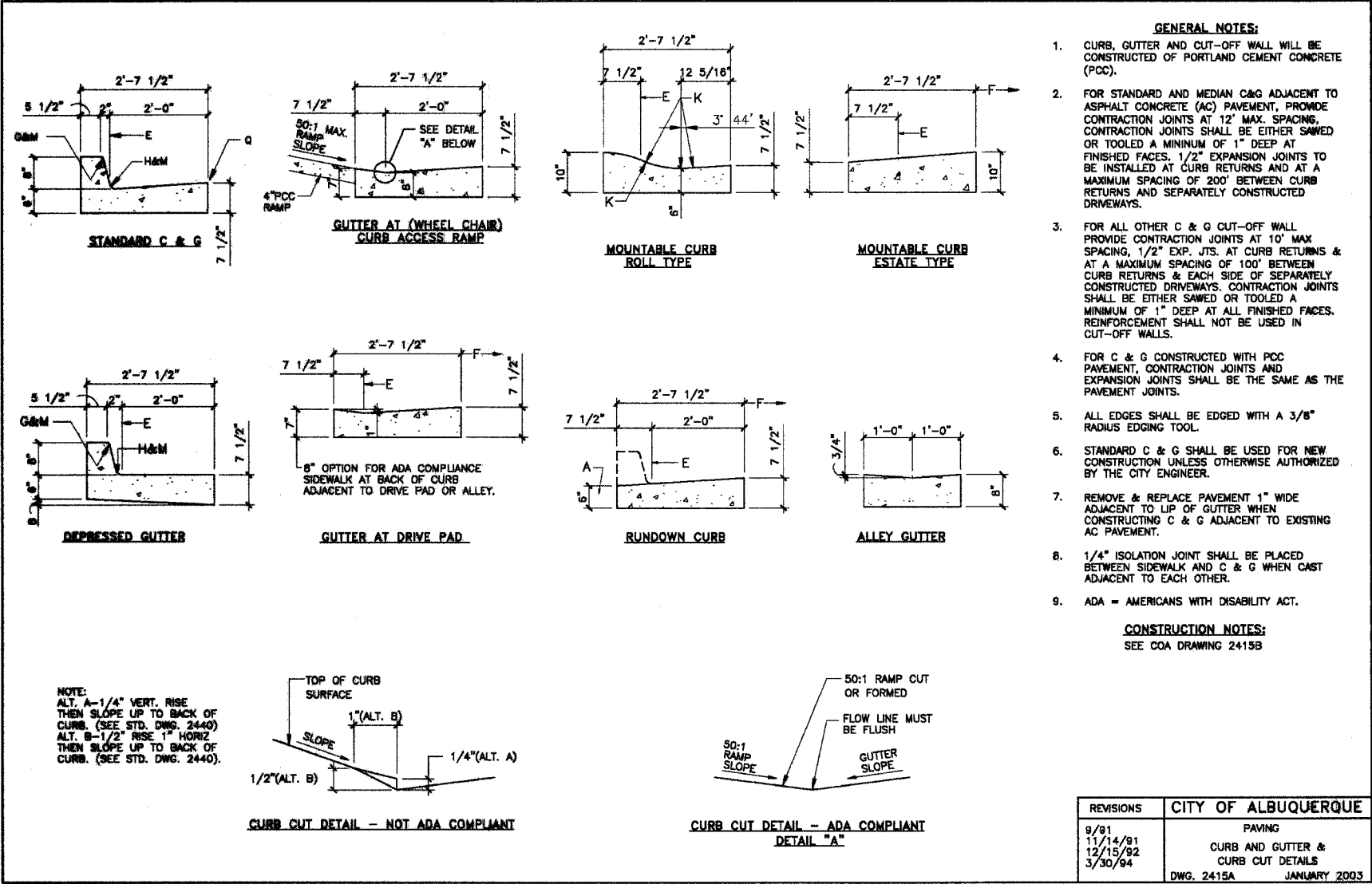
CONSTRUCTION NOTES:

- A. EXISTING ASPHALT PAVEMENT.
- B. EXISTING BASE MATERIAL (ABC, BTB, CTB).
- C. EXISTING SUBGRADE.
- D. COMPACTED FILL, 95% COMPACTION.
- E. COMPACTED SUBGRADE, 95% COMPACTION.
- F. SUBGRADE TO MEET OR EXCEED APPARENT R-VALUE OF ADJACENT SOIL, BY SOIL CLASSIFICATION (2 FEET MIN.).
- G. MATCH EXISTING BASE MATERIAL PLUS AN ADDITIONAL 2" OF THICKNESS - 95% COMPACTION.
- H. MATCH EXISTING ASPHALT CONCRETE SECTION PLUS AN ADDITIONAL 2" OF THICKNESS.
 - a) FOR RESIDENTIAL STREETS, SURFACE COURSE SHALL BE 1 1/2" THICK, TYPE C.
 - b) FOR MAJOR LOCAL STREETS, SURFACE COURSE SHALL BE 2" THICK, TYPE B.
 - c) FOR ALL OTHER STREETS, SURFACE COURSE SHALL BE 2" THICK, S-III.
- I. SAW CUT OR BLADE-CUT ASPHALT PAVEMENT. SAW CUT ONLY ONE THIRD CONC. DEPTH.
- J. TACK COAT.
- K. 12" CUT-BACK.
- L. MATCH EXISTING CONCRETE PAVEMENT THICKNESS, 6" MINIMUM, 4000 PSI.
- M. EXISTING CONCRETE PAVEMENT.
- N. JOINTS TO BE TOOLED & SEALED IN ACCORDANCE WITH ENGINEERS REQUIREMENTS.
- O. 8" CONC. TREATED BASE (C.T.B.).

REVISIONS	CITY OF ALBUQUERQUE
1/91	PAVING
12/15/92	CITYWIDE PAVEMENT CUTS FOR ALL UTILITIES
	DWG. 2465 JANUARY 2003

ENGINEER'S SEAL		SURVEY INFORMATION		BENCH MARKS		AS BUILT INFORMATION	
		NO.	BY	DATE	CONTRACTOR	DATE	
		NO.	BY	DATE	DATE	DATE	
REMARKS		FIELD NOTES		ACR MONUMENT 2-IN. BRASS DISC STAMPED "S-JOB 1801" AT SOUTHEAST QUADRANT OF INTERSECTION OF CONSTRUCTION AVE. & SAN PEDRO BLVD.		MICRO-FILM INFORMATION	
DESIGN				GEOGRAPHIC POSITION (NAD 83) IN FEET, N = 1400014.000, E = 1543402.547		RECORDED BY	
DESIGNED BY: DE						NO.	
DRAWN BY: DE							
CHECKED BY: NRB							

CITY OF ALBUQUERQUE DEPARTMENT OF MUNICIPAL DEVELOPMENT TRANSPORTATION DIVISION SUMMER AVE. STORM DRAIN IMPROVEMENTS STANDARD DETAILS			
DESIGN REVIEW COMMITTEE	CITY ENGINEER APPROVAL	DESIGNED BY	CHECKED BY
		DATE	DATE
		DATE	DATE
		DATE	DATE
City Project No. 5527.91		Zone Map No. J-18	Sheet 9 of 13

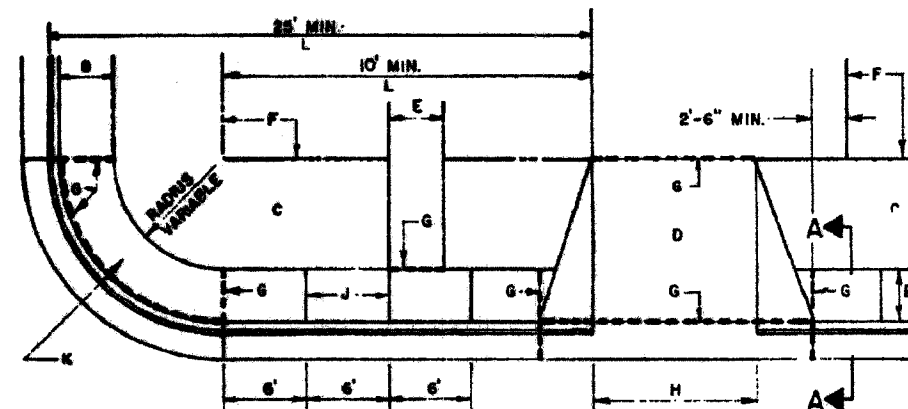


PB Parsons Brinckerhoff

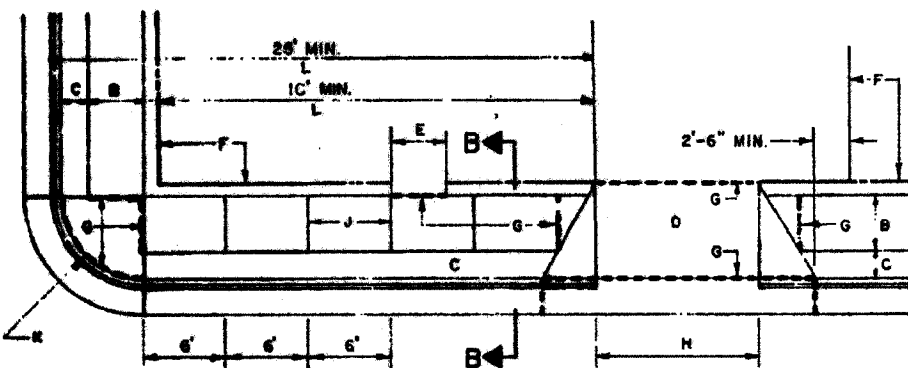
CITY OF ALBUQUERQUE
DEPARTMENT OF MUNICIPAL DEVELOPMENT
TRANSPORTATION DIVISION
SUMMER AVE. STORM DRAIN IMPROVEMENTS
STANDARD DETAILS

DESIGN REVIEW COMMITTEE	CITY ENGINEER APPROVAL	DESIGNED BY	CHECKED BY
		DE	DE
		DATE 5/14/08	DATE 5/14/08
		DESIGNED BY: DE	CHECKED BY: HSB
		DATE 5/14/08	DATE 5/14/08

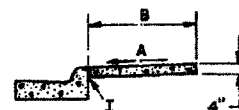
City Project No. 5527.91 Zone Map No. J-18 Sheet 10 of 13



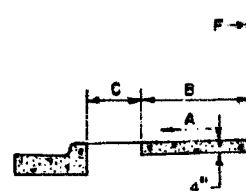
PLAN
CURB TYPE SIDEWALK



PLAN
OFFSET TYPE SIDEWALK



SECTION A-A



SECTION B-B

GENERAL NOTES

1. DEVIATIONS FROM THESE STANDARDS SHALL BE SUBMITTED TO THE CITY ENGINEER AND/OR CITY TRAFFIC ENGINEER FOR APPROVAL PRIOR TO CONSTRUCTION.
2. SUBGRADE UNDER SIDEWALKS AND DRIVEPADS SHALL BE COMPACTED IN ACCORDANCE WITH SECTION 301.

CONSTRUCTION NOTES

- A. SLOPE 1(VERTICAL) TO 30(HORIZONTAL).
- B. SIDEWALK WIDTHS SHALL BE IN ACCORDANCE WITH CHAPTER 23 OF THE DEVELOPMENT PROCESS MANUAL.
- C. SETBACK TO BE DETERMINED BY AVAILABLE RIGHT-OF-WAY. SEE CHAPTER 23 OF DEVELOPMENT PROCESS MANUAL.
- D. SEE DRIVEPAD DETAIL, DWG 2425.
- E. WALKWAY VARIABLE.
- F. PROPERTY LINE.
- G. "X" EXPANSION JOINTS WHERE SIDEWALK OR DRIVEPAD ABUTS BUILDINGS, FENCES, WALLS OR OTHER IMMOVABLE OBJECTS.
- H. 12 FT. MIN., 22 FT. MAX. - RESIDENTIAL.
12 FT. MIN., 25 FT. MAX. - LIGHT COMMERCIAL.
20 FT. MIN., 35 FT. MAX. - HEAVY COMMERCIAL.
- J. CONTRACTION JOINTS.
- K. FOR CURB ACCESS RAMPS, SEE DWGS 2440 & 2441.
- L. CHECK DIMENSION FROM BOTH PROPERTY LINE AND FLOW LINE. USE IN AREAS WHERE DRIVEPAD IS FARTHEST FROM INTERSECTION.

REVISIONS
11/14/01
4/12/94

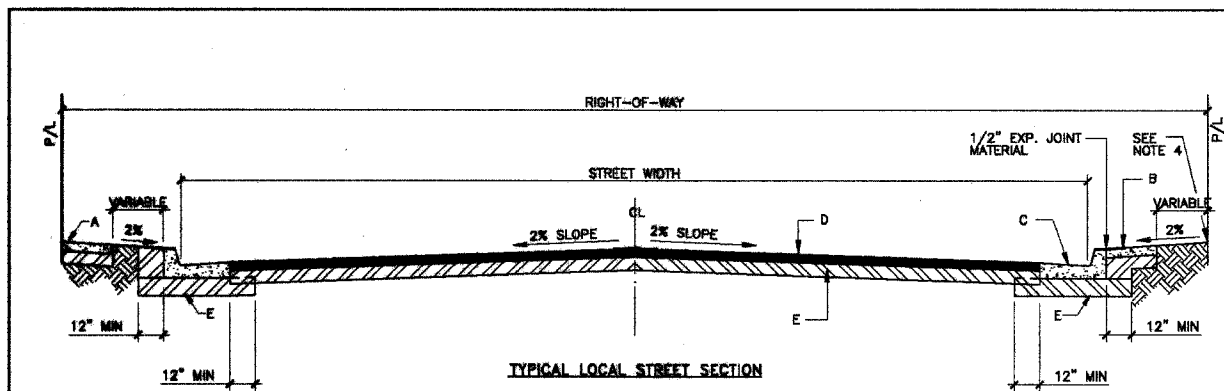
CITY OF ALBUQUERQUE
PAVING
SIDEWALK DETAILS
DWG. 2430

AUG. 1986

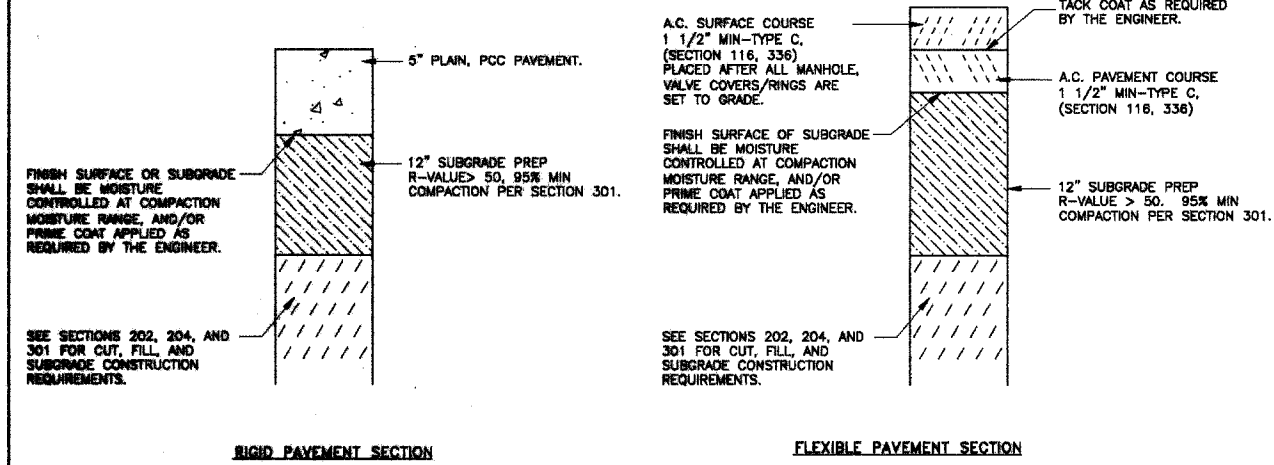
BENCH MARKS		AS BUILT INFORMATION	
CONTRACTOR	DATE	CONTRACTOR	DATE
STARTED BY	DATE	STARTED BY	DATE
FINISHED BY	DATE	FINISHED BY	DATE
INSPECTED BY	DATE	INSPECTED BY	DATE
RECEIVED BY	DATE	RECEIVED BY	DATE
ACCS MONUMENT 2-JOB, BRASS DISC STAMPED "S-JOB 100" AT SOUTHEAST QUADRANT OF INTERSECTION OF CONSTRUCTION AVE. & SAN PEDRO BLVD.		MICRO-FILM INFORMATION	
GEOGRAPHIC POSITION (NAD 83) IN FEET, N = 1488914.088, E = 1549492.547		MICRO-FILM INFORMATION	
ELEVATION = 5891.280 FEET		MICRO-FILM INFORMATION	
NO.		NO.	
BY		BY	
DATE		DATE	
REMARKS		REMARKS	
DESIGN		DESIGN	
DESIGNED BY: DE		DESIGNED BY: DE	
DRAWN BY: DE		DRAWN BY: DE	
CHECKED BY: HOB		CHECKED BY: HOB	
DATE 5/14/08		DATE 5/14/08	
DATE 5/14/08		DATE 5/14/08	
DATE 5/14/08		DATE 5/14/08	



CITY OF ALBUQUERQUE DEPARTMENT OF MUNICIPAL DEVELOPMENT TRANSPORTATION DIVISION SUMMER AVE. STORM DRAIN IMPROVEMENTS STANDARD DETAILS			
DESIGN REVIEW COMMITTEE	CITY ENGINEER APPROVAL	REVIEWER/DATE	REVIEWER/DATE
City Project No. 5527.91	Zone Map No. J-18	Sheet 11	Of 13



- GENERAL NOTES:**
- CROWN ON STREET SHALL BE AS FOLLOWS:
 a. 32' STREET = 4"
 b. 40' STREET = 5"
 c. LESS THAN 32' STREET, PAVEMENT SLOPE = 2%
 - ALL SUBGRADE COMPACTION FOR C & G SHALL EXTEND 12" MIN ON EITHER SIDE OF C & G OR CURB SECTION.
 - SUBGRADE PREPARATION UNDER SIDEWALK AND DRIVE PADS SHALL BE INCIDENTAL TO ITEM.
 - FINISH GRADE AT PROPERTY LINE SHALL BE BASED ON A MIN 2% SLOPE FROM TOP OF CURB.
 - ALL ASPHALT CONCRETE (AC) PAVEMENT SHALL COMPLY WITH SECTION 116.
 - ALL PORTLAND CEMENT CONCRETE (PCC) PAVEMENT SHALL COMPLY WITH SECTION 101.
 - IN ACCORDANCE WITH COA DPM THE FOLLOWING APPLIES UNLESS AUTHORIZED OTHERWISE BY THE CITY ENGINEER:
 * RESIDENTIAL STREETS SERVING 50 LOTS OR LESS SHALL BE DESIGNED AS LOCAL RESIDENTIAL STREETS.
 * RESIDENTIAL STREETS SERVING MORE THAN 50 LOTS WITH AN ANTICIPATED AWDT < 3000 SHALL BE DESIGNED AS MAJOR LOCAL STREETS.
 - FOR SUBGRADE R-VALUE < 50, PAVEMENT SECTION SHALL BE DESIGNED IN ACCORDANCE WITH DPM CH. 23
 - SUBGRADE PREPARATION SHALL BE PERFORMED AFTER ALL SUBSURFACE UTILITIES ARE CONSTRUCTED.



- CONSTRUCTION NOTES:**
- SIDEWALK AT STANDARD SETBACK.
 - SIDEWALK ADJACENT TO CURB. (NON-STANDARD, VARIANCE REQUIRED).
 - STANDARD CURB AND GUTTER.
 - ASPHALT CONCRETE (AC) OR PORTLAND CEMENT (PCC) PAVEMENT.
 - 12" COMPACTED SUBGRADE PREP, 95% COMPACTION.

REVISIONS	CITY OF ALBUQUERQUE
1/91	PAVING
12/15/92	LOCAL - RESIDENTIAL
8/28/94	STREET SECTION
	DWG. 2405A JANUARY 2003

AS BUILT INFORMATION		BENCH MARKS		SURVEY INFORMATION		ENGINEER'S SEAL	
CONTRACTOR	DATE	ACS MONUMENT 2-1/2" BRASS DISC STAMPED "2-JAN 1981" AT SOUTHEAST QUADRANT OF INTERSECTION OF CONSTITUTION AVE. & SAN PEDRO BLVD.	DATE	BY	NO.	BY	NO.
DESIGNED BY	DATE	SAN PEDRO BLVD.	DATE	BY	NO.	BY	NO.
DESIGNED BY	DATE	GEODERMAPHC POSITION (NAD 83) IN FEET. N = 1400914.02N, E = 1543092.147	DATE	BY	NO.	BY	NO.
DESIGNED BY	DATE	ELEVATION = 8001.800 FEET	DATE	BY	NO.	BY	NO.
DESIGNED BY	DATE		DATE	BY	NO.	BY	NO.

CITY OF ALBUQUERQUE
 DEPARTMENT OF MUNICIPAL DEVELOPMENT
 TRANSPORTATION DIVISION
 SUMMER AVE. STORM DRAIN IMPROVEMENTS

STANDARD DETAILS

DESIGN REVIEW COMMITTEE	CITY ENGINEER APPROVAL	DATE	DATE

City Project No. 5527.91 Zone Map No. J-18 Sheet 13 of 13