

CITY OF ALBUQUERQUE
FAMILY AND COMMUNITY SERVICES DEPARTMENT
**CRIME PREVENTION THROUGH
ENVIRONMENTAL DESIGN PROGRAM**
TRUMBULL NEIGHBORHOOD

DRAWING LIST

- 1 TITLE SHEET
- 2 GENERAL NOTES AND LEGEND
- 3 ZUNI RD INTERSECTION PLANS
- 4 BELL AVE INTERSECTION PLANS
- 5 TRUMBULL AVE INTERSECTION PLANS
- 6 SOUTHERN AVE INTERSECTION PLANS
- 7 BARRIER AND ISLAND DETAILS
- 8 TYPICAL TRAFFIC CONTROL & SIGNING EXAMPLES (REF. M.U.T.C.D.)
- 9 SIGNING AND CONSTRUCTION TRAFFIC CONTROL STANDARDS

FOR INFORMATION ONLY
APPROVAL OF RECORD-DRAWINGS
CHIEF CONSTRUCTION ENGINEER
Cathy Chang
DATE 2/15/05

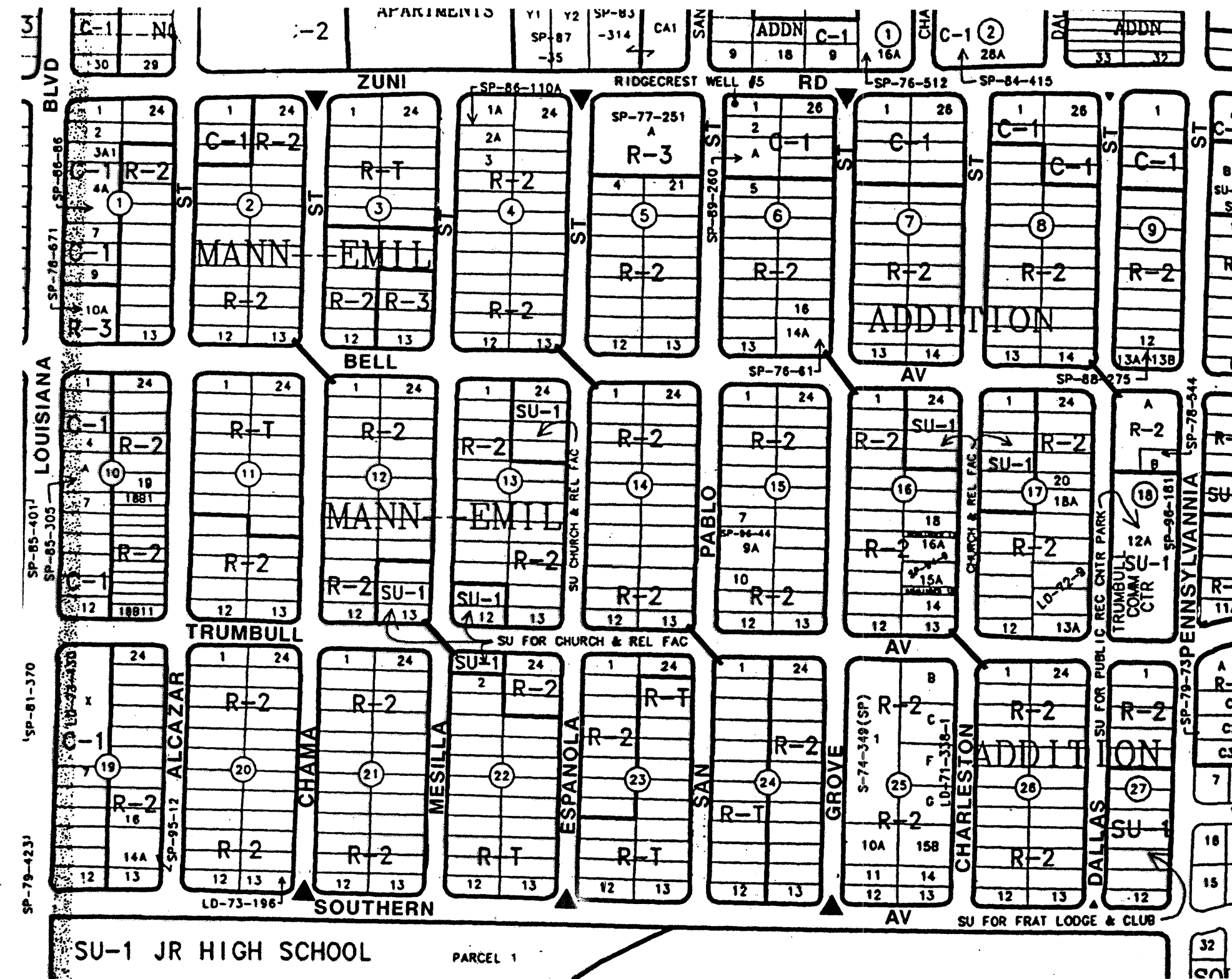
26 5588.12 0105

HN
Holmes & Narver
6501 AMERICAS PARKWAY, NE
SUITE 700 (505)889-4100
ALBUQUERQUE, NM 87110

REV.	SHEETS	CITY ENGINEER	DATE	USER DEPARTMENT	DATE	USER DEPARTMENT	DATE
ENGINEERS STAMP & SIGNATURE		APPROVALS		ENGINEER	DATE	***** APPROVED FOR CONSTRUCTION *****	
		DRC Chairman		<i>John R. Adams</i>	9-15-98	<i>John R. Adams</i> City Engineer Date 9/17/98	
		Transportation		<i>John R. Adams</i>	9-15-98		
		Water/Wastewater		<i>John R. Adams</i>	9-16-98		
		Hydrology		<i>John R. Adams</i>			
		Parks		<i>John R. Adams</i>			
Constr. Mngmt.		<i>John R. Adams</i>	9-17-98				
City Project No.		5588.12		Sheet 1 Of 9			

NOTICE TO CONTRACTORS

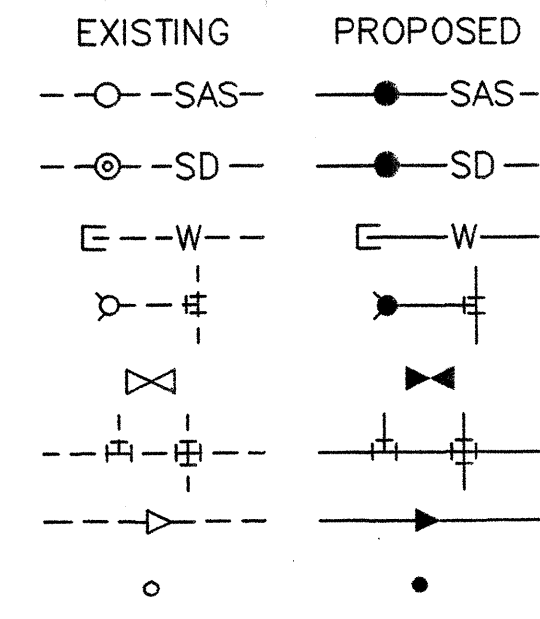
-




LOCATION PLAN

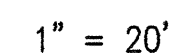
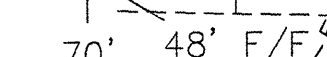
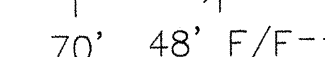
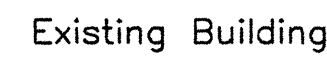
MAP NO. L-18

SANITARY SEWER
STORM DRAIN
WATER LINE W/CAP
FIRE HYDRANT
GATE VALVE
TEE & CROSS
REDUCER
POWER POLE



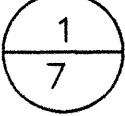
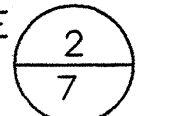
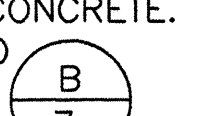
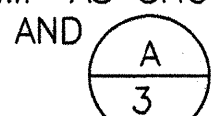
1	2	3	4	5	6	7	8	9	10	11	12	13	14	15
2	6		5	5	8	8	.	1	2		0	2	0	5

									D.					
CITY OF ALBUQUERQUE FAMILY AND COMMUNITY SERVICES DEPARTMENT CRIME PREVENTION THROUGH ENVIRONMENTAL DESIGN PROGRAM									NO.		DESIGNED	DRAWN BY	CHECKED	
TITLE:														
TRUMBULL NEIGHBORHOOD														
GENERAL NOTES AND LEGEND														
Design Review Committee			City Engineer Approval			Last Design Update	Mo./Day/Yr.		Mo./Day/Yr.					
City Project No. 5588.12				Zone Map No. L-19		Sheet		2		Of		9		



1) REMOVE EXISTING CONCRETE

- LE STAND



9-10-98



H&N
Holmes & Narver

TITLE:	TRUMBULL NEIGHBORHOOD
--------	-----------------------

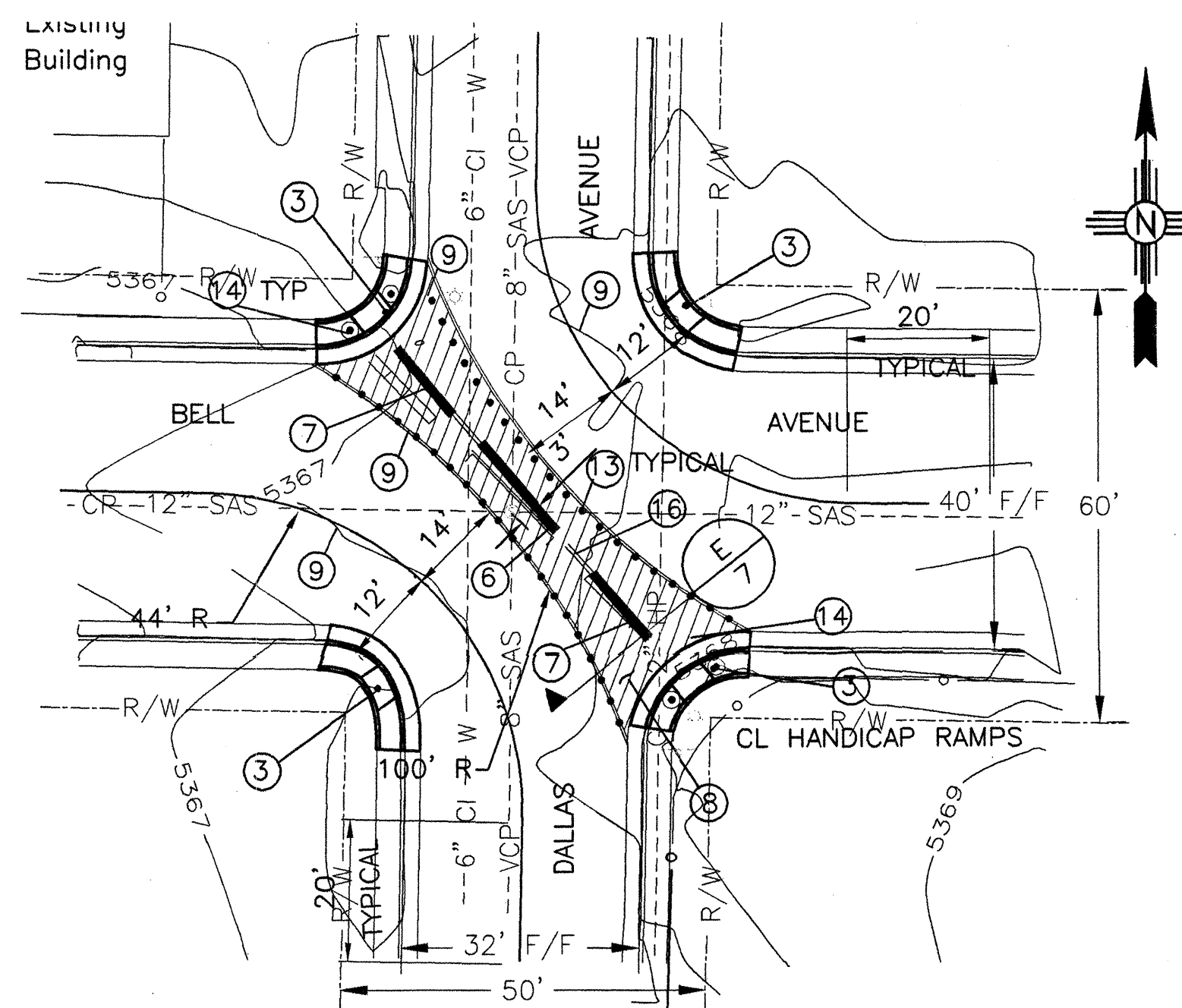
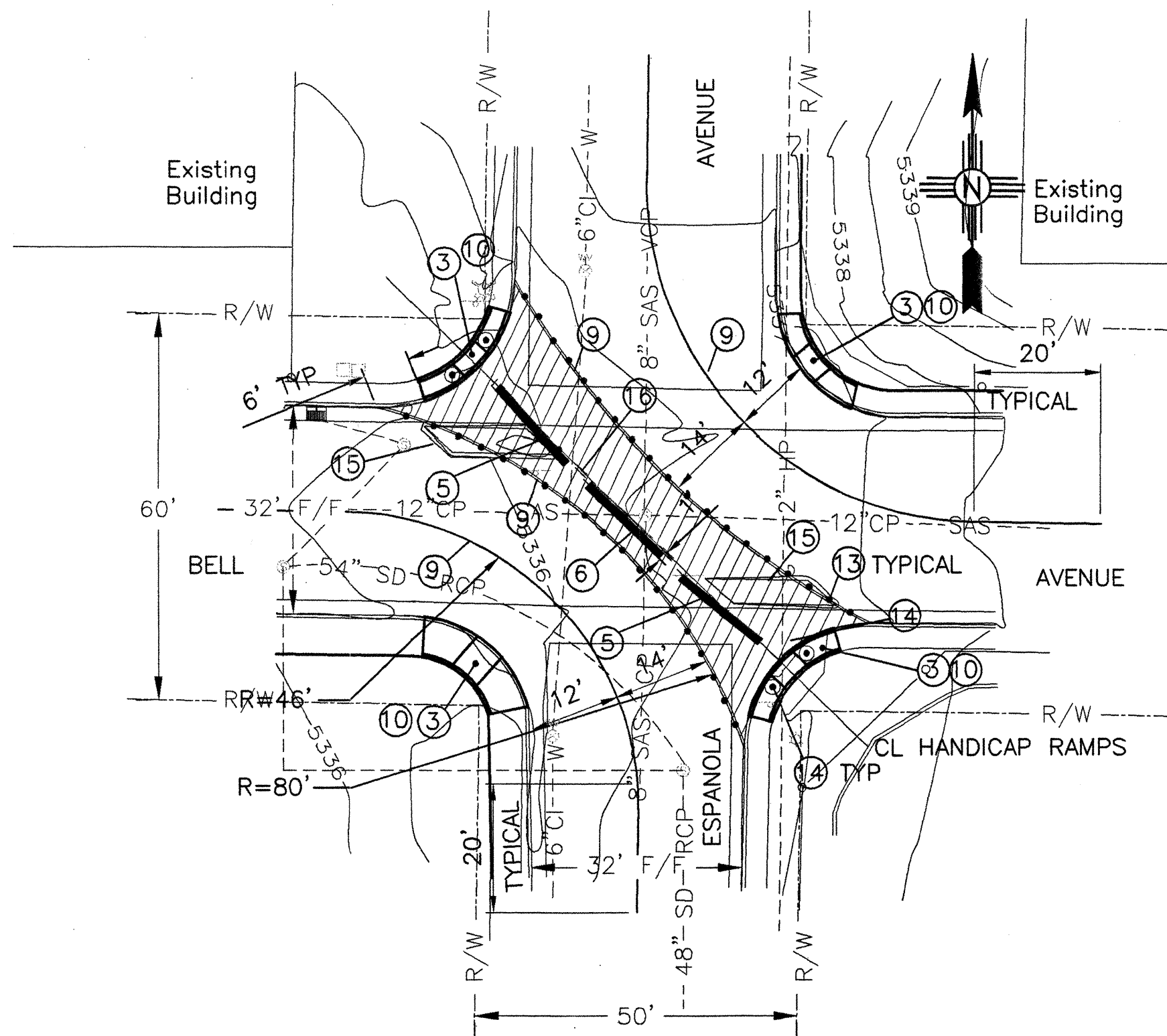
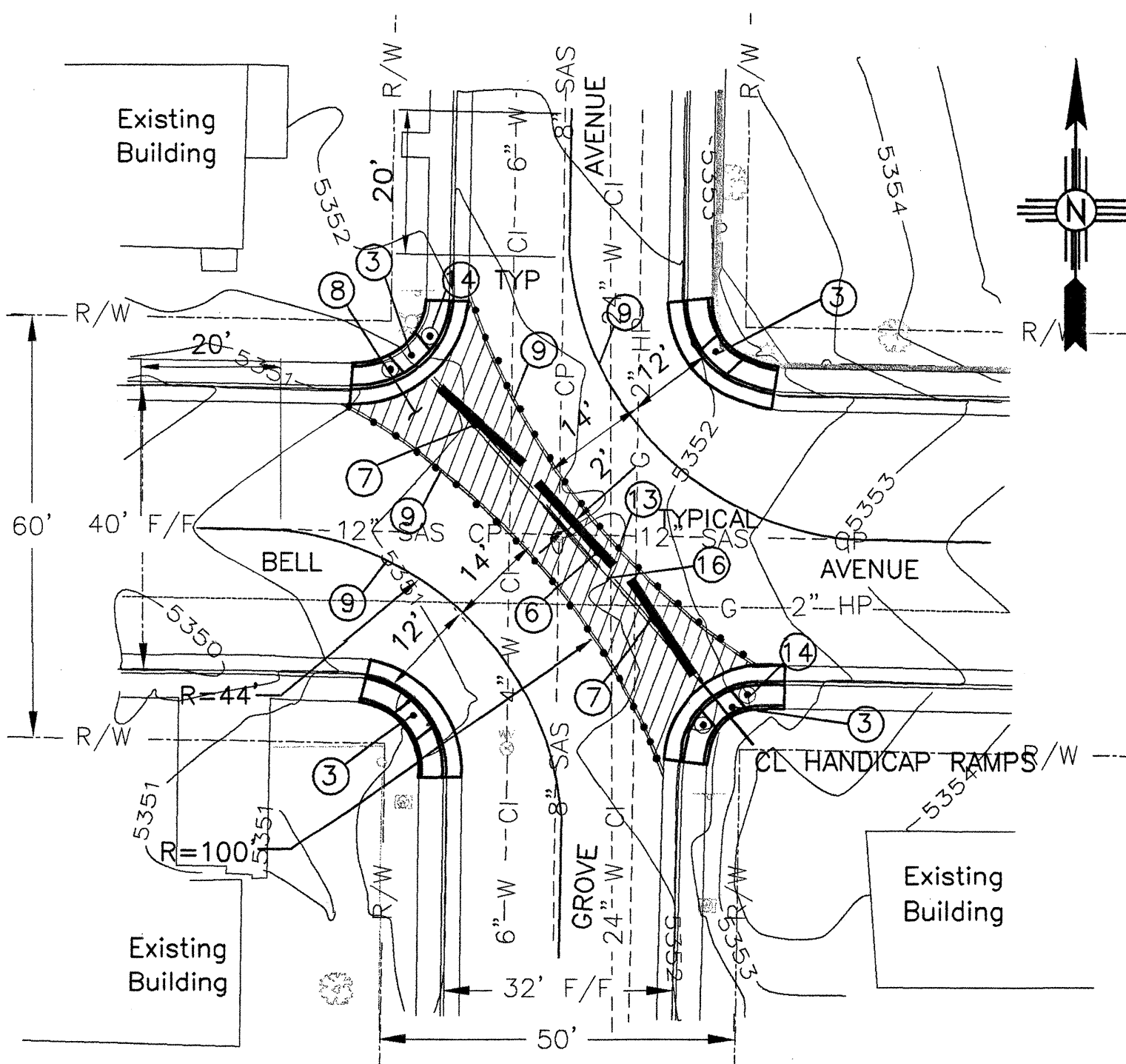
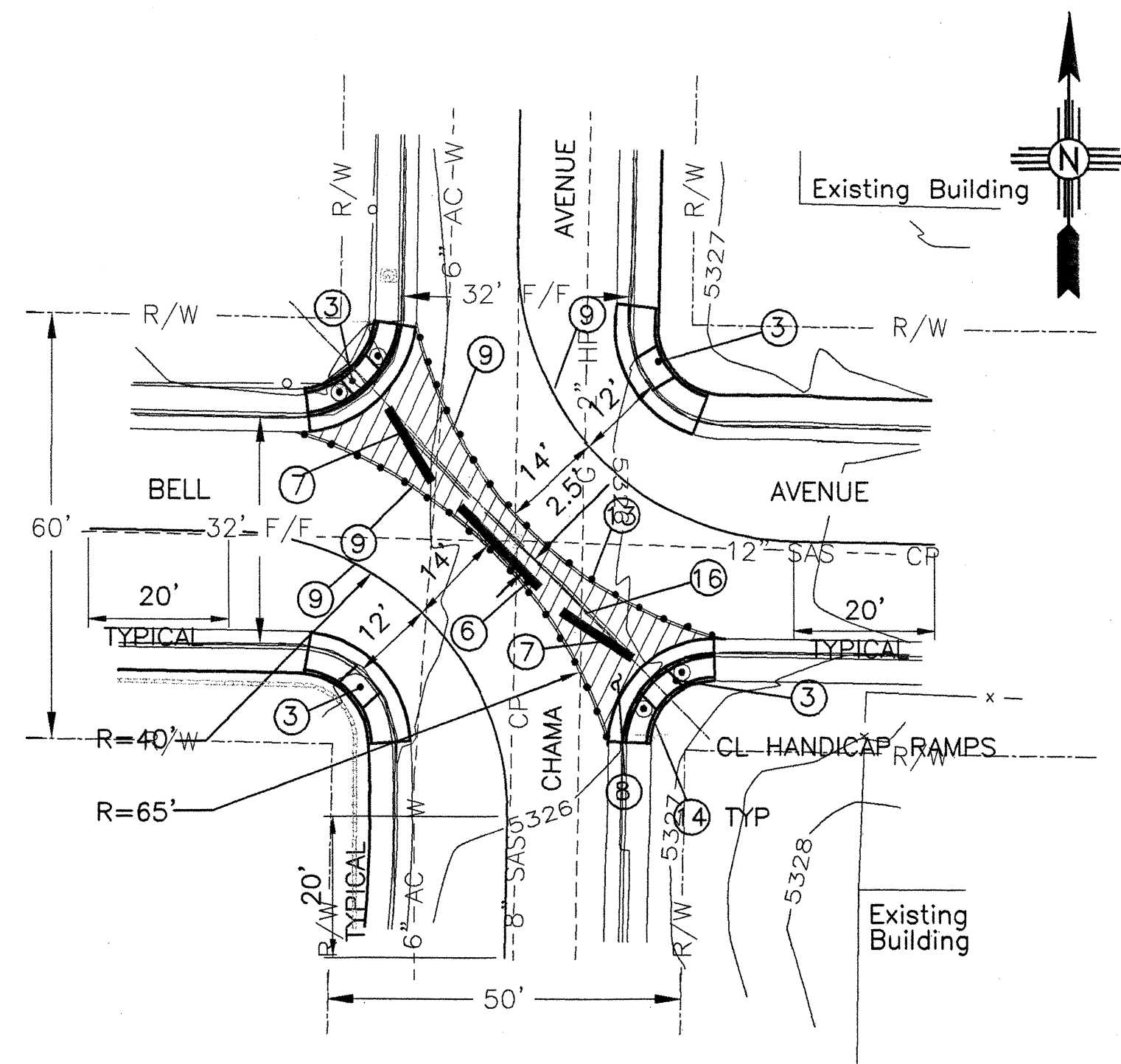
Committee	City Engineer Approval	date	Mo./Day
-----------	------------------------	------	---------

Design Review Committee	City Engineer Approval
-------------------------	------------------------

City Project No.

Zone Map No.

Sheet	Of
-------	----



26 5588.12 0465

1" = 20' SCALE

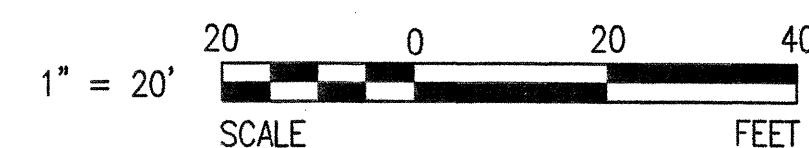
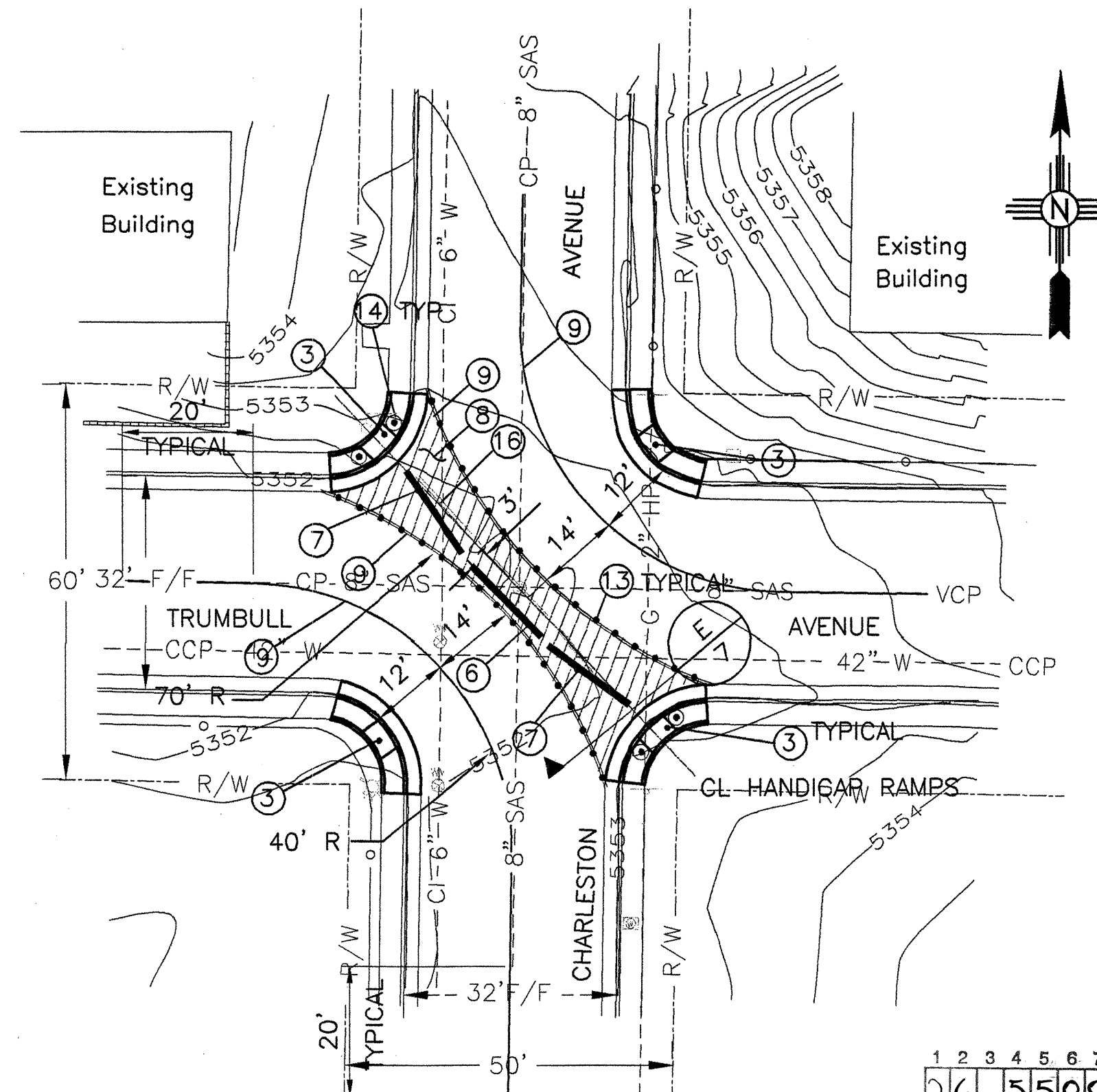
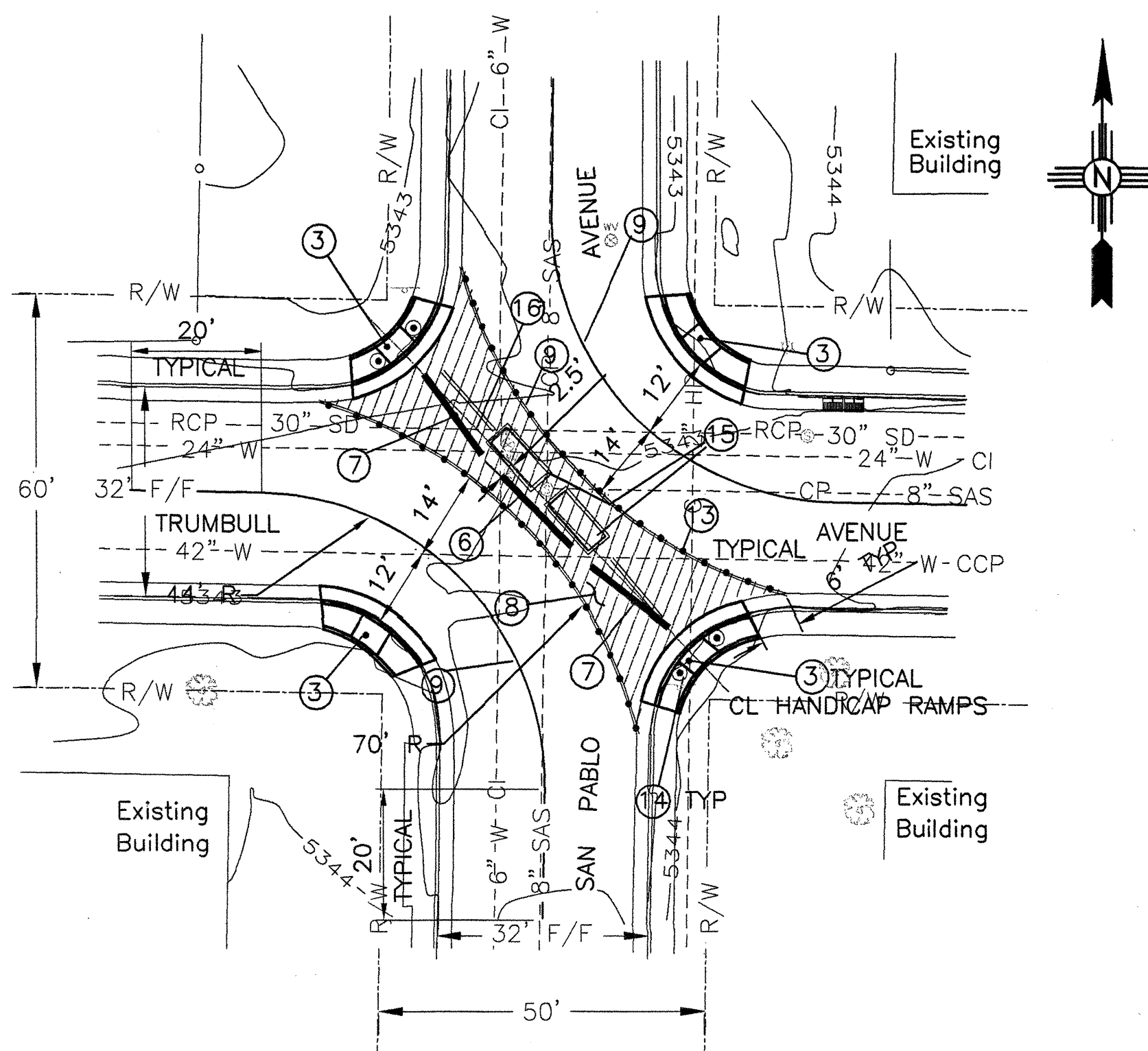
KEYED NOTES:

- 1 REMOVE EXISTING CONCRETE CURB ISLAND, AND PAVEMENT. SEE A/7; B/7 FOR LIMITS OF PAVEMENT REMOVAL.
- 2 INSTALL NEW TYPE 1 ISLAND WITH MEDIAN CURB & GUTTER AND BOMANITE TEXTURED CONCRETE. SEE STANDARD DRAWING 2415 & A 7
- 3 REMOVE EXISTING SIDEWALK AND CURB & GUTTER AS SHOWN. INSTALL NEW WHEEL CHAIR RAMP AS SHOWN. SEE STD. CURB 2441 AND A 3
- 4 INSTALL NEW TYPE 2 ISLAND AS SHOWN WITH MEDIAN CURB & GUTTER AND BOMANITE TEXTURED CONCRETE. SEE STD. DRWG. 2415 AND B 7
- 5 INSTALL TYPE 2 BARRIER, 16'-4", 4' MIN. BETWEEN END OF BARRIER AND FACE OF CURB, SEE 2 7
- 6 INSTALL TYPE 1 BARRIER, SEE 1 7
- 7 INSTALL TYPE 2 BARRIER, 12'-4", 4' MIN. BETWEEN END OF BARRIER AND FACE OF CURB, SEE 2 7
- 8 REMOVE EXISTING ASPHALT PAVEMENT AND REPLACE WITH 6" CONCRETE PAVEMENT WITH BOMANITE TREATMENT TO LIMITS SHOWN.
- 9 INSTALL 4" YELLOW SOLID PAINT STRIPE AS SHOWN.
- 10 SAW CUT CONCRETE CURB AT VALLEY GUTTER FOR NEW WHEEL CHAIR RAMP.
- 11 INSTALL REFLECTORIZED RIGHT 8' TURN ARROW.
- 12 INSTALL REFLECTORIZED 8' WORD "ONLY".
- 13 INSTALL REFLECTORIZED RAISED PAVEMENT MARKERS INSIDE THE 4" STRIPE WITH A 4" OFFSET AT 4' CENTERS. BEGIN AND END MARKERS AT CURB RETURNS.
- 14 INSTALL BOLLARDS ADJACENT TO BACK OF CURB AS SHOWN PER STANDARD DRAWING 2250.
- 15 REMOVE EXISTING ISLANDS.
- 16 REMOVE EXISTING WOODEN BARRIERS.
- 17 INSTALL NO LEFT TURN SIGN AS SHOWN.
- 18 WIDEN SIDEWALK AROUND FIRE HYDRANT PER STD. DWG. 2431.

HN
Holmes & Narver

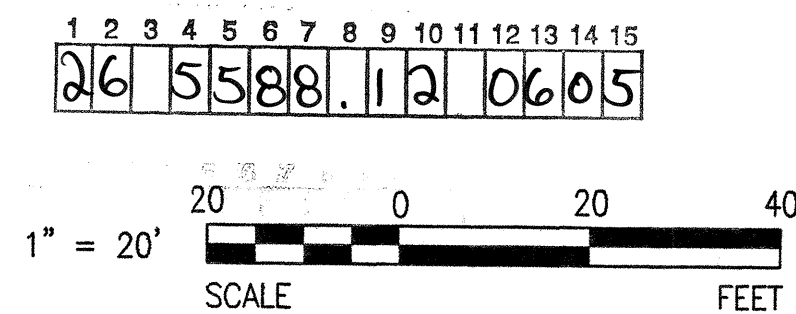
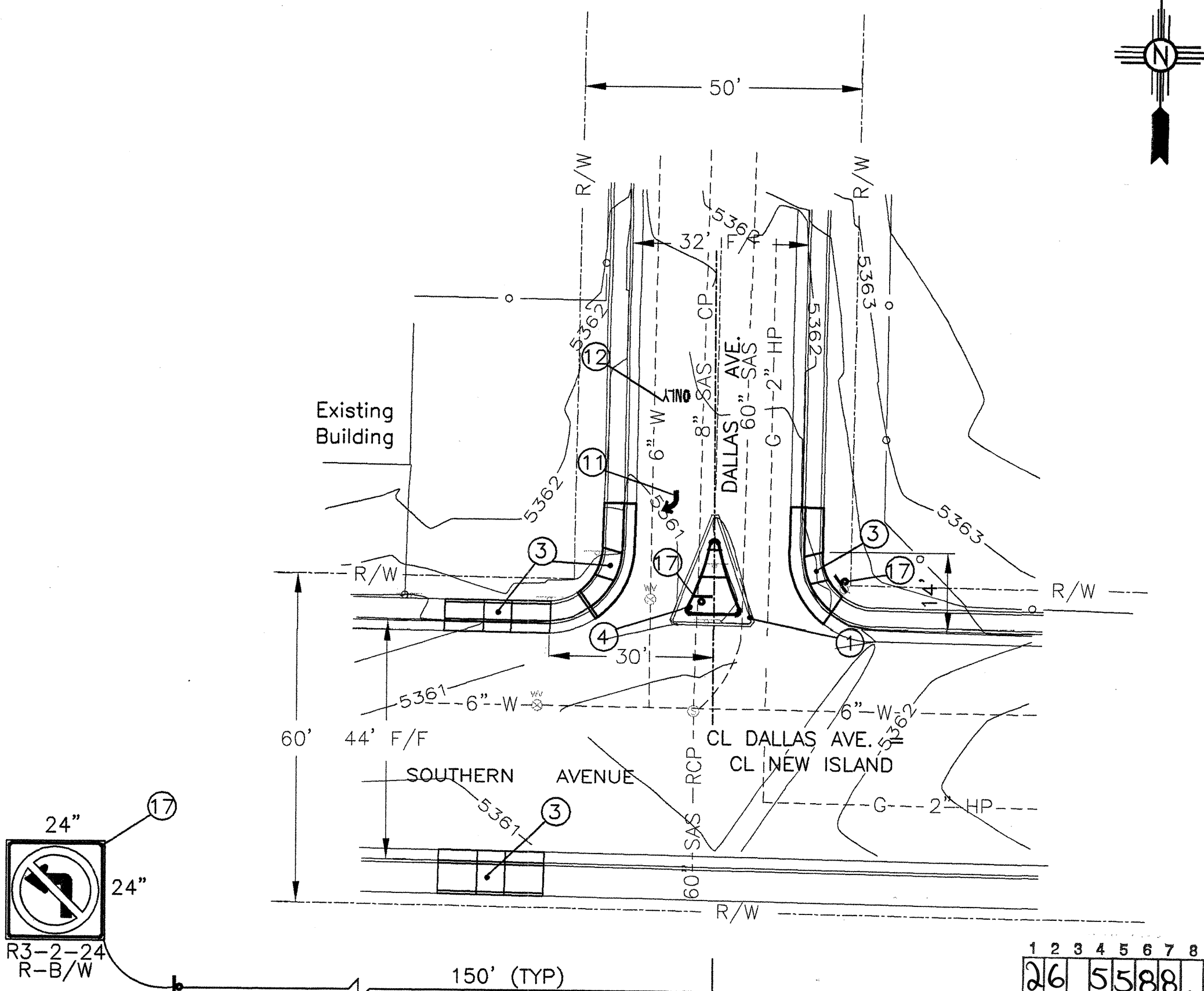
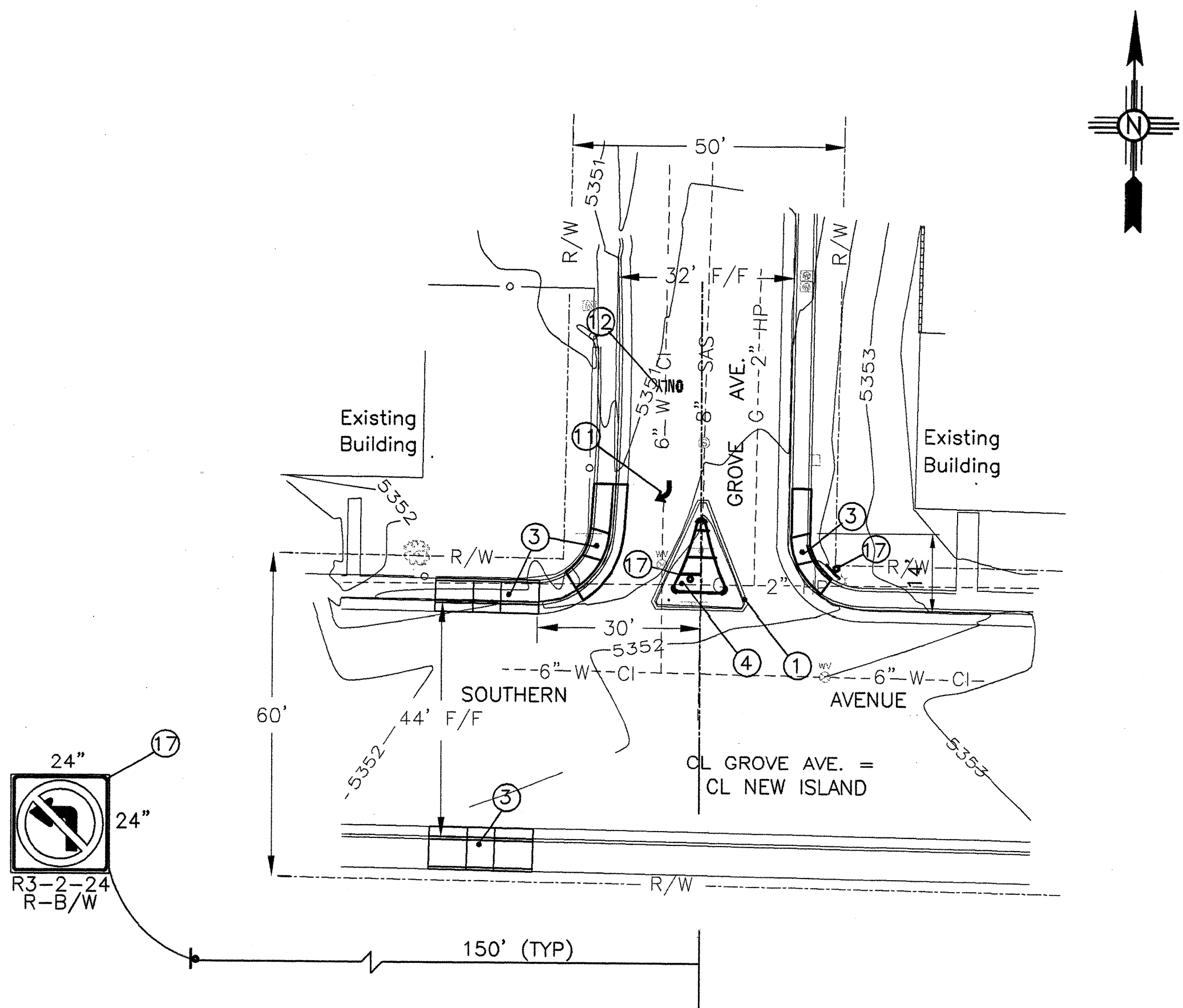
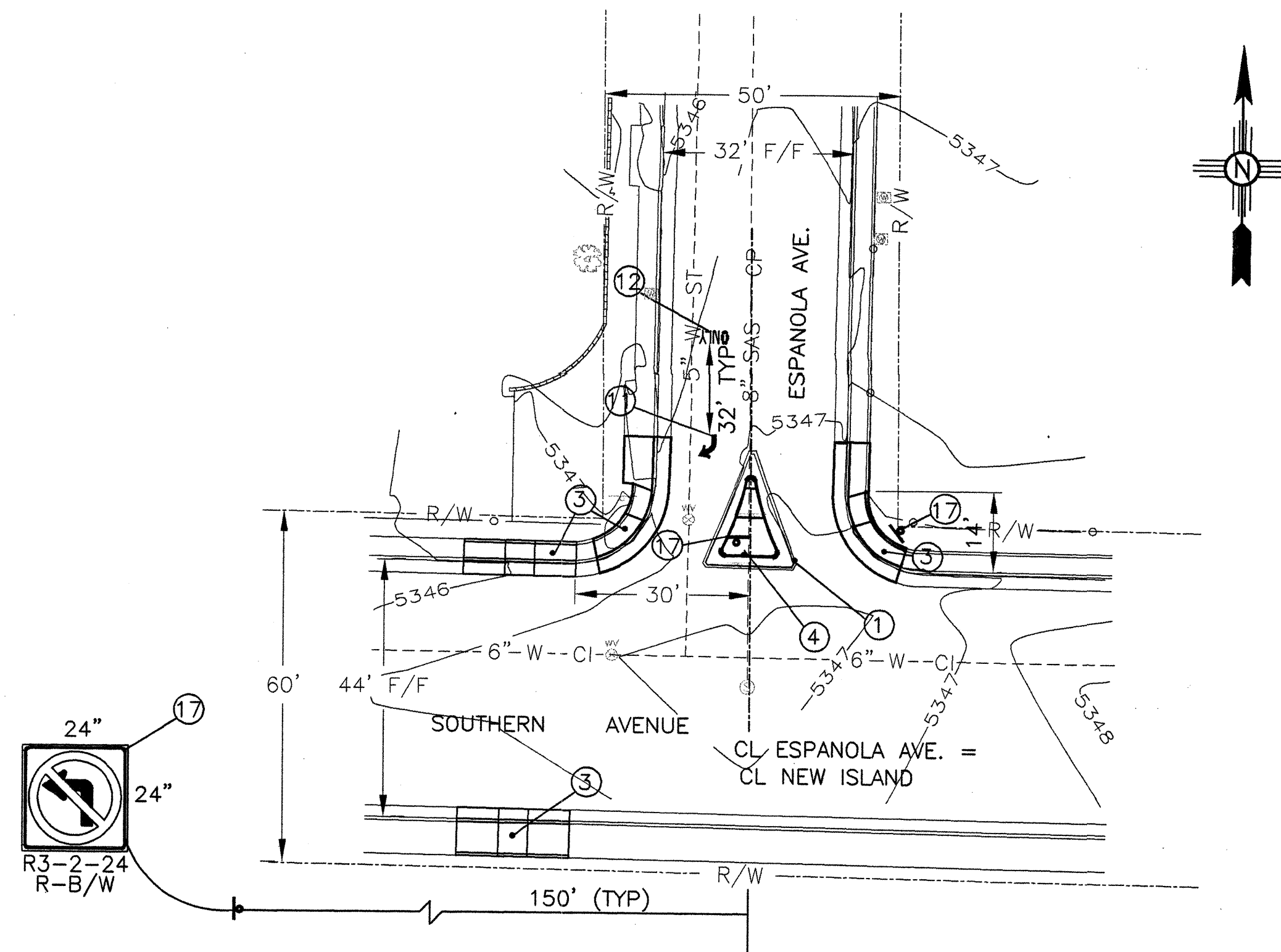
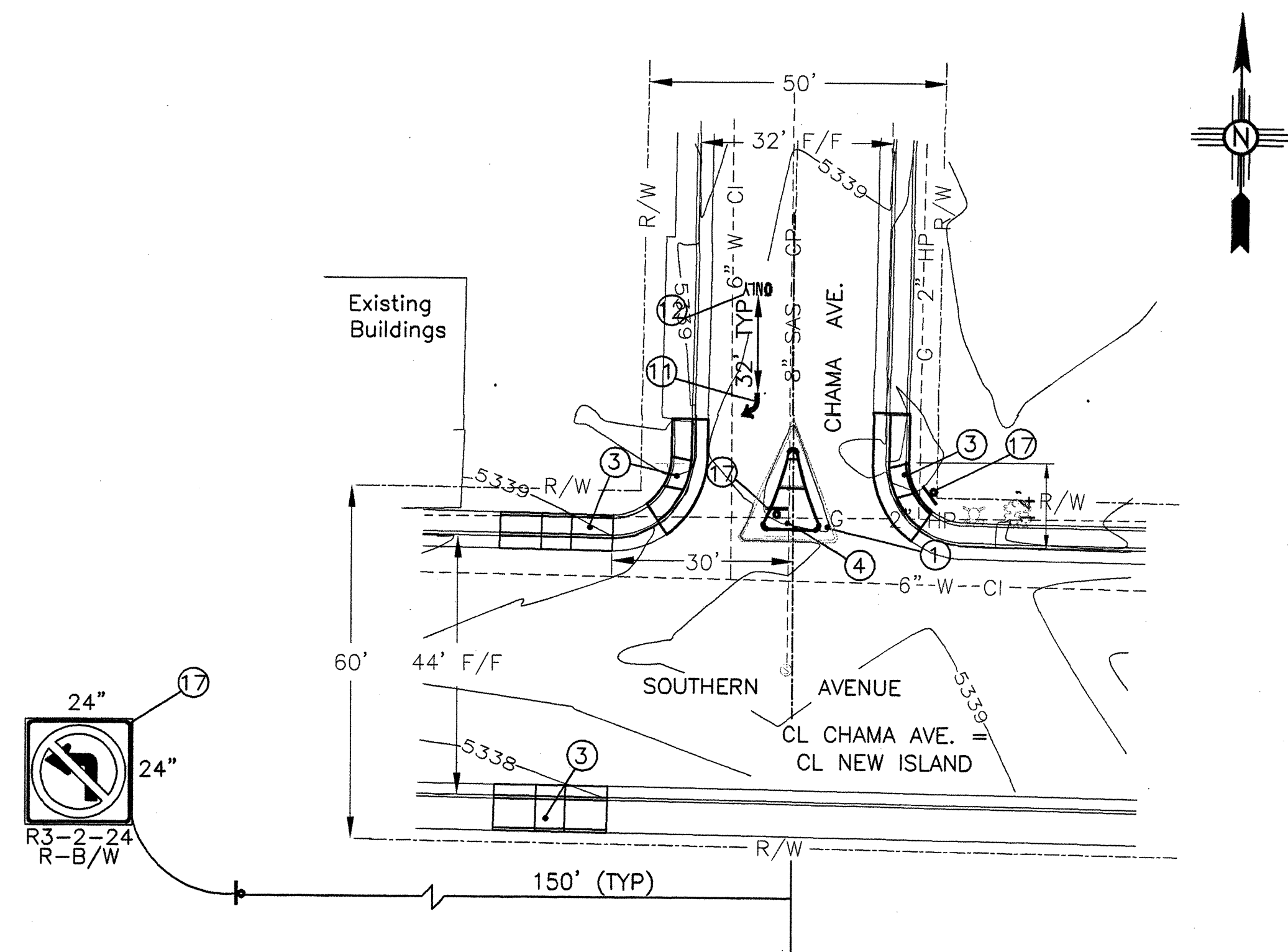
CITY OF ALBUQUERQUE
FAMILY AND COMMUNITY SERVICES DEPARTMENT
CRIME PREVENTION THROUGH ENVIRONMENTAL DESIGN PROGRAM
TITLE: TRUMBULL NEIGHBORHOOD

DESIGN REVIEW COMMITTEE		CITY ENGINEER APPROVAL		Mo./Day/Yr.		Mo./Day/Yr.	
Design Review Committee		City Engineer Approval		Mo./Day/Yr.		Mo./Day/Yr.	
Last Design Update		Last Design Update		Mo./Day/Yr.		Mo./Day/Yr.	
City Project No.		Zone Map No.		Sheet		Of	
5588.12		L-19		4		9	





9-10-91



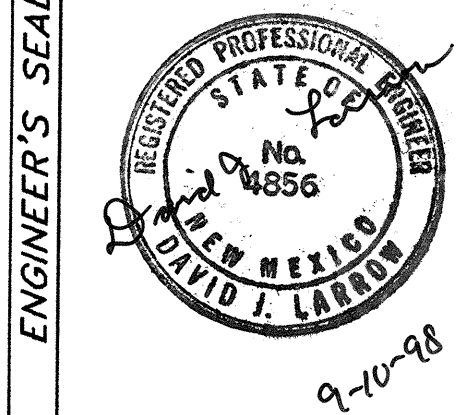
KEYED NOTES:

- 1 REMOVE EXISTING CONCRETE CURB ISLAND, AND PAVEMENT. SEE A/7; B/7 FOR LIMITS OF PAVEMENT REMOVAL.
- 2 INSTALL NEW TYPE 1 ISLAND WITH MEDIAN CURB & GUTTER AND BOMANITE TEXTURED CONCRETE. SEE STANDARD DRAWING 2415 AND $\frac{A}{7}$
- 3 REMOVE EXISTING SIDEWALK AND CURB & GUTTER AS SHOWN. INSTALL NEW WHEEL CHAIR RAMP AS SHOWN. SEE STD. CURB 2441 AND $\frac{A}{3}$
- 4 INSTALL NEW TYPE 2 ISLAND AS SHOWN WITH MEDIAN CURB & GUTTER AND BOMANITE TEXTURED CONCRETE. SEE STD. DRWG. 2415 AND $\frac{B}{7}$
- 5 INSTALL TYPE 2 BARRIER, 16'-4", 4' MIN. BETWEEN END OF BARRIER AND FACE OF CURB, SEE $\frac{2}{7}$
- 6 INSTALL TYPE 1 BARRIER, SEE $\frac{1}{7}$
- 7 INSTALL TYPE 2 BARRIER, 12'-4", 4' MIN. BETWEEN END OF BARRIER AND FACE OF CURB, SEE $\frac{2}{7}$
- 8 REMOVE EXISTING ASPHALT PAVEMENT AND REPLACE WITH 6" CONCRETE PAVEMENT WITH BOMANITE TREATMENT TO LIMITS SHOWN.
- 9 INSTALL 4" YELLOW SOLID PAINT STRIPE AS SHOWN.
- 10 SAW CUT CONCRETE CURB AT VALLEY GUTTER FOR NEW WHEEL CHAIR RAMP.
- 11 INSTALL REFLECTORIZED RIGHT 8' TURN ARROW.
- 12 INSTALL REFLECTORIZED 8' WORD "ONLY".
- 13 INSTALL REFLECTORIZED RAISED PAVEMENT MARKERS INSIDE THE 4" STRIPE WITH A 4" OFFSET AT 4' CENTERS. BEGIN AND END MARKERS AT CURB RETURNS.
- 14 INSTALL BOLLARDS ADJACENT TO BACK OF CURB AS SHOWN PER STANDARD DRAWING 2250.
- 15 REMOVE EXISTING ISLANDS.
- 16 REMOVE EXISTING WOODEN BARRIERS.
- 17 INSTALL NO LEFT TURN SIGN AS SHOWN.
- 18 WIDEN SIDEWALK AROUND FIRE HYDRANT PER STD. DWG. 2431.

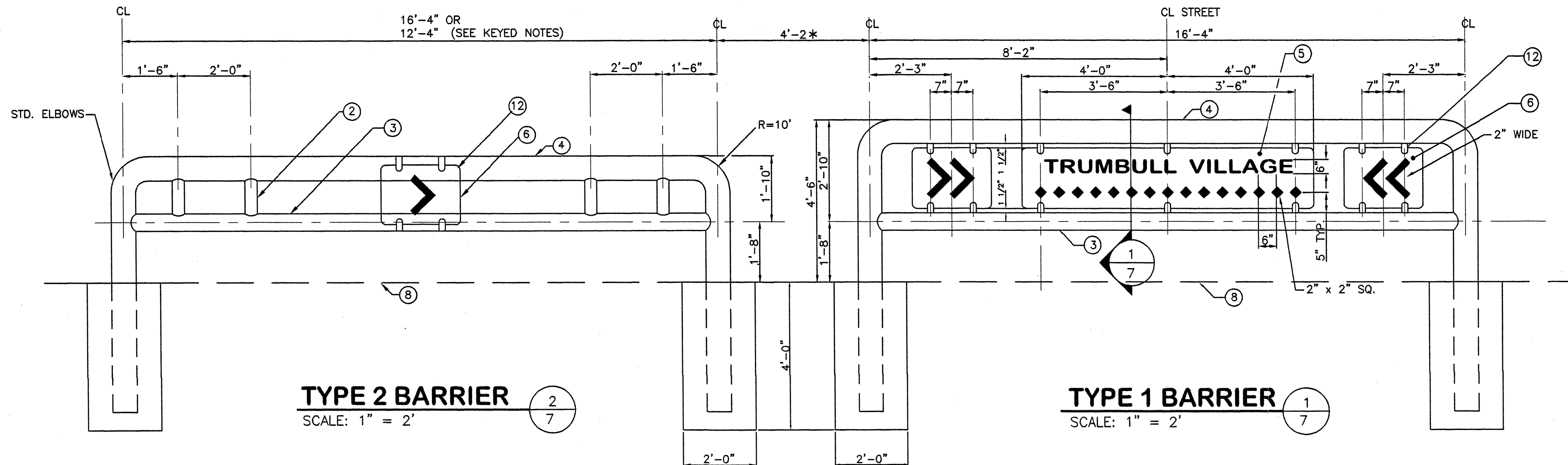


CITY OF ALBUQUERQUE
FAMILY AND COMMUNITY SERVICES DEPARTMENT
CRIME PREVENTION THROUGH ENVIRONMENTAL DESIGN PROGRAM
TITLE: TRUMBULL NEIGHBORHOOD

Design Review Committee		City Engineer Approval		Mo./Day/Yr.	
City Project No. 5588.12		Zone Map No. L-19		Sheet 6 Of 9	



REVISIONS		REMARKS		BY	
NO.		DATE		DESIGN	
DESIGNED BY: RLB		DATE: JULY 1998		BY	
DRAWN BY: MDA		DATE: JULY 1998		BY	
CHECKED BY: DJL		DATE: JULY 1998		BY	



TYPE 2 BARRIER

SCALE: 1" = 2'

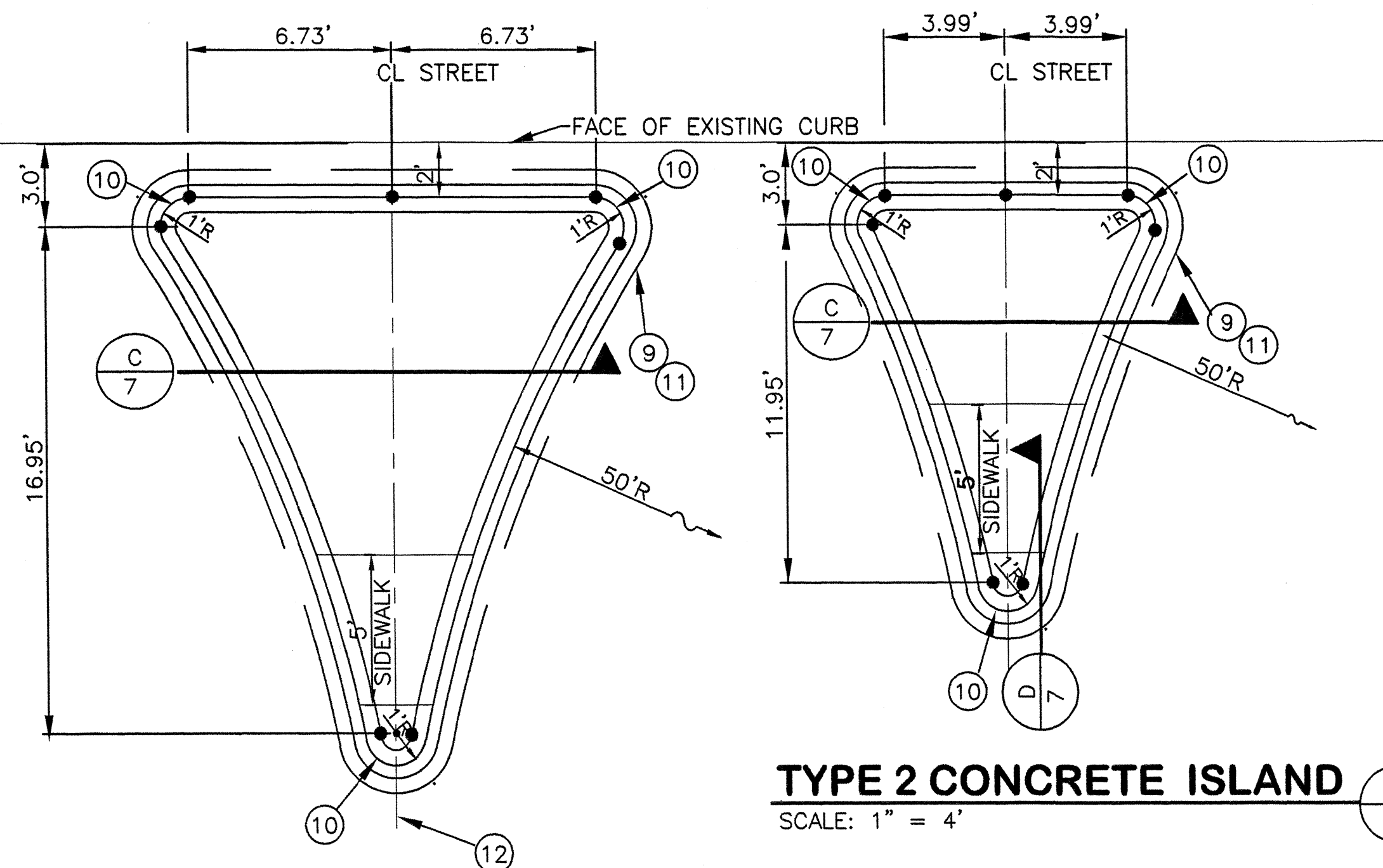
TYPE 1 BARRIER

SCALE: 1" = 2'

BOLLARD

SCALE: 1" = 2'

*CAN BE ADJUSTED TO
TO PROVIDE 4' CLEARANCE
BETWEEN BARRIER AND FACE
OF CURB.



TYPE 1 CONCRETE ISLAND

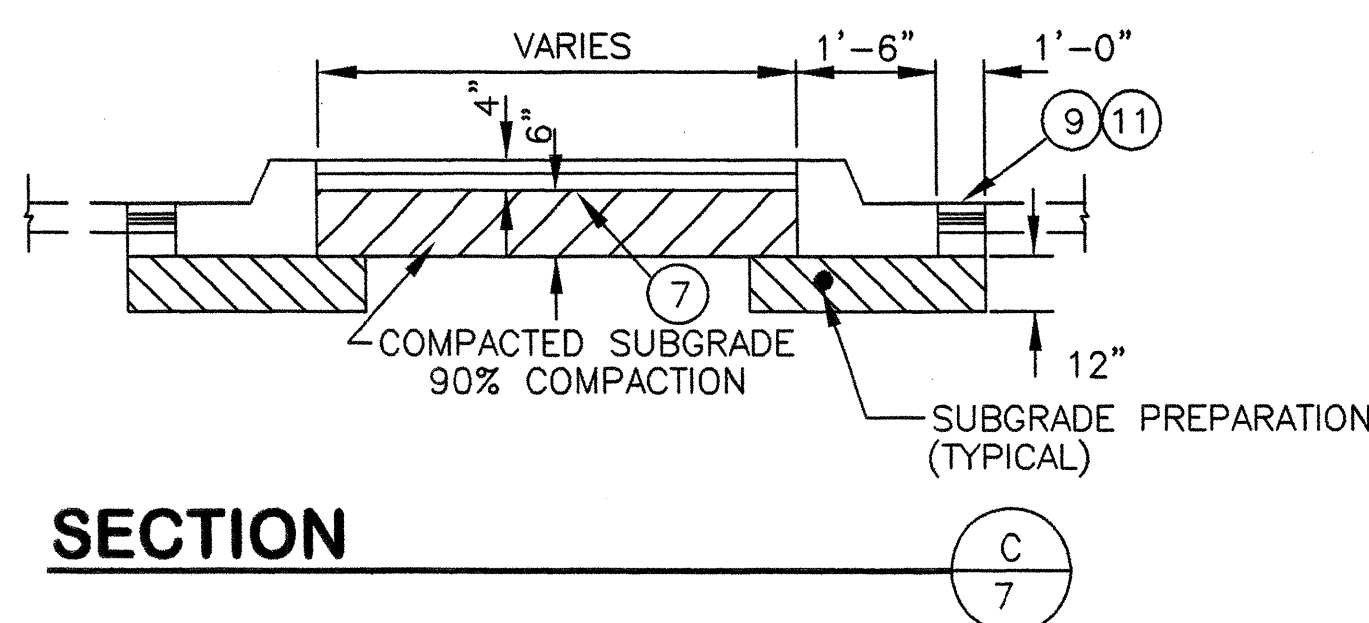
SCALE: 1" = 4'

TYPE 2 CONCRETE ISLAND

SCALE: 1" = 4'

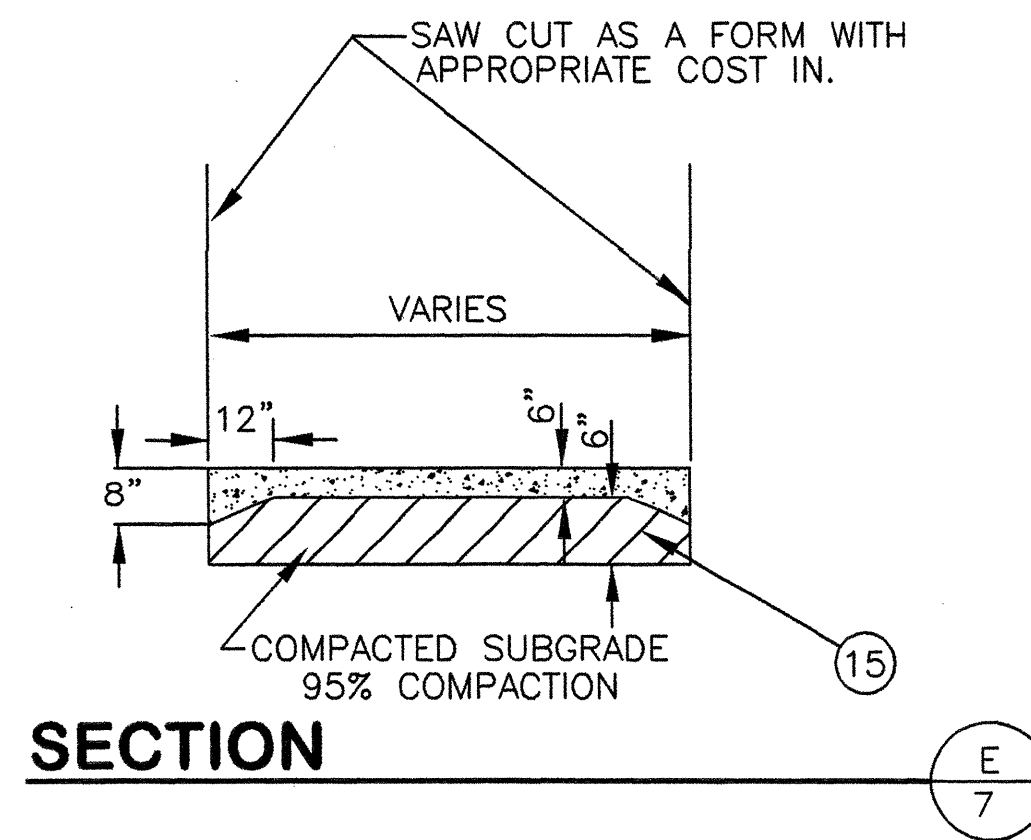
SECTION

SCALE: 1" = 2'



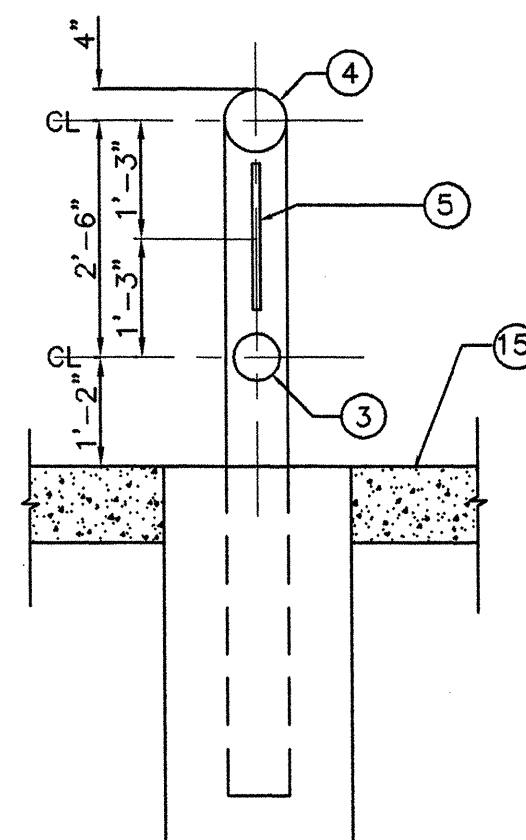
SECTION

C 7



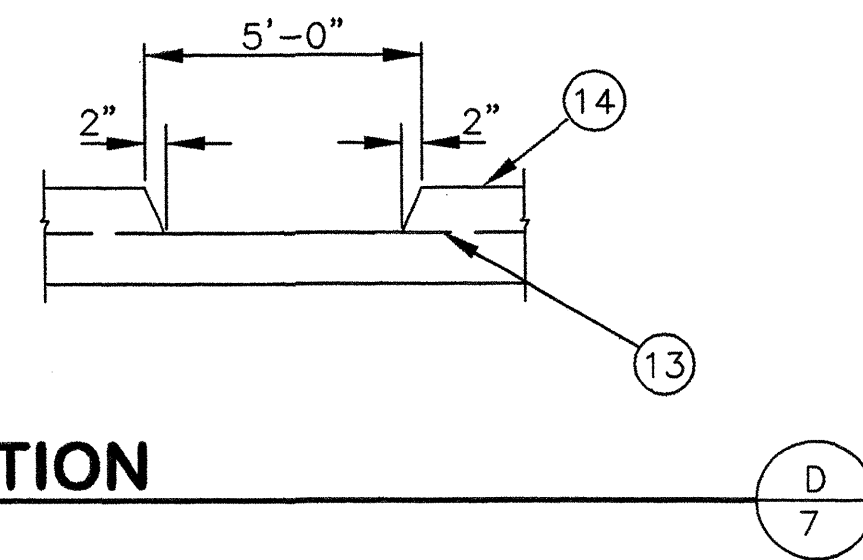
SECTION

E 7



SECTION

1 7



SECTION

D 7

SPECIFICATIONS

SIGN / SPECIFICATIONS

TYPE STYLE - PALATINO CAPS
TYPE MATERIAL - GERBER EDGE READY
ARROW MATERIAL - SUPER ENGINEERING GRADE SHEETING
AS APPROVED BY ENGINEER.
COLOR: BLUE SUPER ENGINEERING GRADE AS APPROVED
BY ENGINEER.

ACCENT MATERIAL - GERBER EDGE READY
SUPER ENGINEERING GRADE REFLECTIVE SHEETING
COLOR: GREEN (2" x 2" SQUARE-DIAMOND & CHEVRON)
SUPER ENGINEERING GRADE AS APPROVED BY ENGINEER.

BARRIERS/BOLLARD - SECU-RAL
POWDER COAT - SECURA POWDER COATING
SIGN, POST - BY SPRAYLAC CORPORATION 1-888-725-7250
BARS, BOLLARDS - RAY COLORS
POST, BARS, BOLLARDS: RAL 5023 - DISTANT BLUE
SIGN: RAL 6034 - PASTEL TURQUOISE

PAVEMENT SPECIFICATIONS

STAMPED TEXTURE - BOMACRON PATTERN; canyon stone
PAVEMENT COLOR - BOMANITE COLOR HARDENER
B-17 COCO PLUM

KEYED NOTES:

- NOT USED.
- 4" STEEL PIPE.
- 6" STEEL PIPE.
- 8" STEEL PIPE.
- 20" x 8" ALUMINUM PANEL - (0.25 INCH THICKNESS).
- 20" SQUARE ALUMINUM PANEL - (0.25 INCH THICKNESS).
- INSTALL 4" CONCRETE PAVEMENT WITH BOMANITE TREATMENT.
- EXISTING PAVEMENT SURFACE.
- LIMITS OF ASPHALT PAVEMENT REMOVAL ARE 1' BEYOND
NEW CURB AND GUTTER OR NEW PAVEMENT.
- PAINT CURB FACE W/YELLOW REFLECTORIZED PAINT AT
EACH CURB NOSE.
- REPAVE ADJACENT TO CURB AS SHOWN. MATCH
EXISTING PAVEMENT SECTION.
- FASTEN TO BARRIER WITH SCREWS, BOLTS, OR OTHER APPROVED METHODS.
- FLOWLINE AT MEDIAN CURB AND GUTTER.
- TOP OF MEDIAN CURB AND GUTTER.
- INSTALL 6" CONCRETE PAVEMENT WITH BOMANITE TREATMENT.

AS BUILT INFORMATION				BENCH MARKS				SURVEY INFORMATION				ENGINEER'S SEAL			
CONTRACTOR				DATE				FIELD NOTES				REMARKS			
NO.				BY				NO.				BY			
BM 6-L18				DATE				NO.				BY			
A SQUARE CHISELED ON TOP OF CURB				AT THE NW CURB RETURN AT THE				INTERSECTION OF LOUISIANA BLVD. AND				TRUMBULL ST., S.E.			
ELEVATION 5327.676															
RECORDED BY				DATE				DESIGNED BY: RLB				DATE: JULY 1998			
NO.								DRAWN BY: MDA				DATE: JULY 1998			
								CHECKED BY: DUL				DATE: JULY 1998			

DESIGN REVISIONS

NO.	DATE	REVISIONS
1		DESIGN

CITY OF ALBUQUERQUE
FAMILY AND COMMUNITY SERVICES DEPARTMENT
CRIME PREVENTION THROUGH ENVIRONMENTAL DESIGN PROGRAM

TITLE: TRUMBULL NEIGHBORHOOD

BARRIER AND ISLAND DETAILS

Design Review Committee	City Engineer Approval	Mo./Day/Yr.	Mo./Day/Yr.

City Project No. 5588.12 Zone Map No. L-19 Sheet 7 Of 9

CONSTRUCTION TRAFFIC CONTROL GENERAL NOTES

1. CONTRACTOR MUST OBTAIN FROM CONSTRUCTION COORDINATION AN EXCAVATION/BARRICADING PERMIT BEFORE ENGAGING IN ANY CONSTRUCTION, MAINTENANCE OR REPAIR WORK IN ANY OF THE CITY OF ALBUQUERQUE'S RIGHTS-OF-WAY. EMERGENCY WORK THAT WOULD PRESERVE LIFE OR PROPERTY IS EXCLUDED WITH THE UNDERSTANDING, THAT A PERMIT SHALL BE OBTAINED WITHIN 24 TO 48 HOURS.

2. CONTRACTOR SHALL AT THE TIME OF PERMIT REQUEST, SUBMIT FOR APPROVAL BY CONSTRUCTION COORDINATION, A TRAFFIC CONTROL PLAN DETAILING ALL EXISTING TOPOGRAPHY SUCH AS LANE WIDTHS, DRIVEWAYS, AND BUSINESS/RESIDENTIAL ACCESSES. THE TRAFFIC CONTROL PLAN SHALL INCLUDE ALL PHASES OF WORK AND SCHEDULES INVOLVED IN THE CONSTRUCTION PROJECT. ANY SEPARATE PHASES OF A CONSTRUCTION PROJECT SHALL BE GIVEN AN INDIVIDUAL PERMIT EACH. BLANKET PERMITS WILL NOT BE ISSUED.

3. THESE TYPICAL TRAFFIC CONTROL PLANS DO NOT REFLECT THE EXISTING TOPOGRAPHY SUCH AS DRIVEWAYS, LANE WIDTHS, AND BUSINESS/RESIDENTIAL ACCESSES. EVERY LOCATION THAT REQUIRES CONSTRUCTION TRAFFIC CONTROL SHALL HAVE A DETAILED TRAFFIC CONTROL PLAN SHOWING ALL EXISTING TOPOGRAPHY.

4. CONSTRUCTION SHALL NOT BEGIN UNLESS A TRAFFIC CONTROL PLAN HAS BEEN APPROVED AND VERIFIED BY CONSTRUCTION COORDINATION.

5. CONSTRUCTION COORDINATION SHALL BE NOTIFIED 48 HOURS PRIOR TO ANY TRAFFIC CONTROL CHANGES NEEDED BY CONTRACTOR, THAT WERE NOT PREVIOUSLY APPROVED. THESE TRAFFIC CONTROL CHANGES SHALL BE REQUESTED IN WRITING ACCOMPANIED WITH A TRAFFIC CONTROL PLAN REFLECTING SUCH CHANGES.

6. ALL CONSTRUCTION TRAFFIC CONTROL DEVICES SHALL COMPLY TO THE MANUAL ON UNIFORM TRAFFIC CONTROL DEVICES (MUTCD), LATEST EDITION. IT IS THE RESPONSIBILITY OF THE CONTRACTOR TO INSTALL, SERVICE AND MAINTAIN ALL TRAFFIC CONTROL DEVICES. TRAFFIC CONTROL DEVICES SHALL NOT BE REMOVED OR ALTERED IN ANY WAY WITHOUT THE APPROVAL OF CONSTRUCTION COORDINATION, PER SECTION 6A-4 OF THE MUTCD, LATEST EDITION.

7. THE CONSTRUCTION TRAFFIC CONTROL INITIAL SET-UP SHALL BE BY AN AMERICAN TRAFFIC SAFETY SERVICES ASSOCIATION (ATSSA) CERTIFIED WORKSITE TRAFFIC SUPERVISOR. THE MAINTENANCE AND SERVICING SHALL ALSO BE DONE BY AN ATSSA CERTIFIED WORKSITE TRAFFIC SUPERVISOR OR EQUIVALENT.

8. CONTRACTOR IS RESPONSIBLE TO MAINTAIN AND SERVICE ALL TRAFFIC CONTROL DEVICES 24 HOURS A DAY, 7 DAYS A WEEK THROUGHOUT LENGTH OF PROJECT. CONTRACTOR IS RESPONSIBLE THAT ALL TRAFFIC CONTROL DEVICES COMPLY WITH THE MUTCD, LATEST EDITION.

9. ALL ADVANCE WARNING SIGNS SHALL BE DOUBLE INDICATED WHENEVER THERE ARE MULTI-LANE TRAFFIC IN ANY ONE GIVEN DIRECTION AND THERE IS SUFFICIENT MEDIAN SPACE.

10. ALL BARRICADES IN ALL TAPERS AND TANGENTS SHALL BE PLACED APART, A DISTANCE MEASURED IN FEET, EQUAL TO THAT OF THE POSTED SPEED LIMIT. NO EXCEPTIONS UNLESS APPROVED BY CONSTRUCTION COORDINATION PER MUTCD SECTION 6A-4.

11. ALL WORK IN ARTERIAL ROADWAYS SHALL BE ON A CONTINUOUS 24 HOUR PER DAY BASIS UNTIL COMPLETED.

12. CONTRACTOR IS RESPONSIBLE TO PROVIDE CONSTRUCTION COORDINATION, A WEEKLY LOG OF DAILY INSPECTIONS OF BARRICADE AND MAINTENANCE SCHEDULES ON PROJECTS THAT ARE OVER ONE WEEK DURATION.

13. EQUIPMENT OR MATERIALS SHALL NOT BE STORED WITHIN 15 FEET OF A TRAVELLED TRAFFIC LANE DURING NON-WORKING HOURS WITHOUT THE APPROVAL OF CONSTRUCTION COORDINATION.

14. CONTRACTOR SHALL PROVIDE AND MAINTAIN A SAFE AND ADEQUATE MEANS OF CHANNELIZING PEDESTRIAN TRAFFIC AROUND AND THROUGH THE CONSTRUCTION AREA.

15. CONTRACTOR IS RESPONSIBLE FOR OBLITERATION OF ANY CONFLICTING STRIPING AND RESPONSIBLE FOR ALL TEMPORARY STRIPING.

16. CONTRACTOR SHALL MAINTAIN ACCESS TO ALL FACILITIES, BUSINESSES AND/OR RESIDENTS AT ALL TIMES.

17. CONTRACTOR SHALL PROVIDE ACCESS SIGNS FOR BUSINESSES LOCATED WITHIN THE CONSTRUCTION AREA UNDER THE SUPERVISION OF CONSTRUCTION COORDINATION. EACH ACCESS SIGN SHALL HAVE 5 INCH, WHITE OPAQUE LETTERING ON BLUE REFLECTORIZED BACKGROUND. ACCESS SIGNS SHALL BE CONSIDERED INCIDENTAL TO THE BID AND NOT PART OF THE CONTRACT UNLESS OTHERWISE STATED. NO MORE THAN 3 BUSINESSES SHALL BE LISTED ON A ACCESS SIGN. SHOPPING CENTERS AND MALLS SHALL BE LISTED AS SUCH.

18. ALL ADVANCE WARNING SIGNS SHALL MEET THE MINIMUM REFLECTIVE INTENSITY REQUIREMENTS SET FORTH BY THE CITY OF ALBUQUERQUE. CONSTRUCTION COORDINATION SHALL DETERMINE ALL REQUIREMENTS AND APPROVE OR DISAPPROVE ANY ADVANCE WARNING SIGN PER SECTION 6A-4 OF THE MUTCD, LATEST EDITION.

19. 48 HOURS PRIOR TO OCCUPYING OR CLOSING OF A RIGHT-OF-WAY, CONTRACTOR SHALL NOTIFY: POLICE, FIRE DEPARTMENT, SCHOOLS, HOSPITALS, TRANSIT AUTHORITY, BUSINESSES AND/OR RESIDENTS THAT WILL BE AFFECTED BY THE CONSTRUCTION.

20. ANY FIELD ADJUSTMENTS SHALL BE APPROVED BY CONSTRUCTION COORDINATION.

21. EXCAVATIONS SHALL BE PLATED, TEMPORARILY PATCHED OR RESURFACED PRIOR TO OPENING OF TRAFFIC. A MINIMUM OF 11 FEET SHALL BE PROVIDED FOR TRAFFIC IN ANY GIVEN DIRECTION. CONTRACTOR IS RESPONSIBLE FOR ANY WORK INVOLVED IN SATISFYING THESE REQUIREMENTS.

22. CONTRACTOR SHALL AT ALL TIMES COMPLY WITH THE FOLLOWING:
1. STANDARDS AND REQUIREMENTS SET FORTH IN THE MANUAL ON UNIFORM TRAFFIC CONTROL DEVICES, LATEST EDITION.
2. THE CITY OF ALBUQUERQUE TRAFFIC CODE, LATEST EDITION.
3. SECTION 19 OF THE CITY OF ALBUQUERQUE'S STANDARD SPECIFICATIONS FOR PUBLIC WORK CONSTRUCTION, AS WELL AS OTHER SECTIONS.

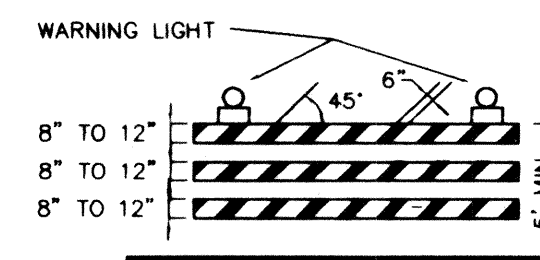
23. FAILURE TO COMPLY WITH ANY OF THE ABOVE MENTIONED, WILL BE ADEQUATE CAUSE TO CEASE ALL WORK ON ANY CONSTRUCTION PROJECT. WORK WILL NOT RESUME UNTIL ALL REQUIREMENTS ARE ADDRESSED AND APPROVED BY CONSTRUCTION COORDINATION.

24. ALL TRAFFIC CONTROL DEVICES SHALL BE KEPT IN NEW-CLEAN CONDITION. WASHING OF EQUIPMENT IS INCIDENTAL TO ITS PLACEMENT AND MAINTENANCE.

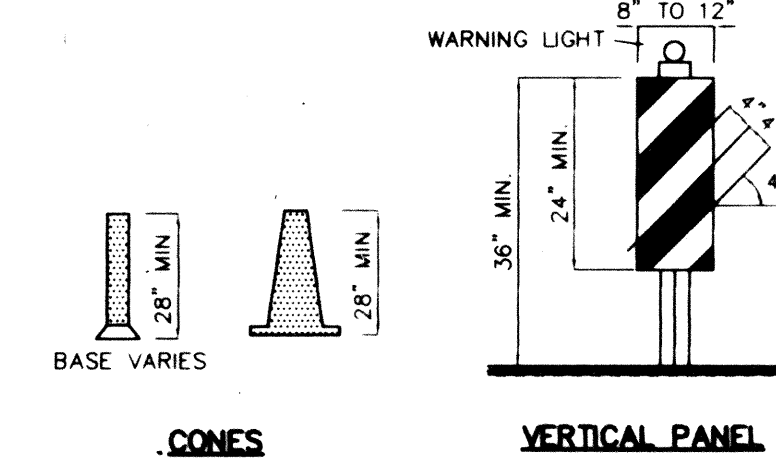
25. TRAFFIC CONTROL STANDARDS APPLY ONLY WHERE THE CONSTRUCTION TRAFFIC CONTROL PLANS ARE NOT SPECIFIC.

26. ADVANCE WARNING SIGNS SHALL BE 36"x36" MIN., WITH SUPER ENGINEERING GRADE SHEETING OR BETTER. MOUNTING HEIGHT AT TOP OF SIGN SHALL BE THE SAME AS FOR A 48" SIGN AS INDICATED IN THE M.U.T.C.D.

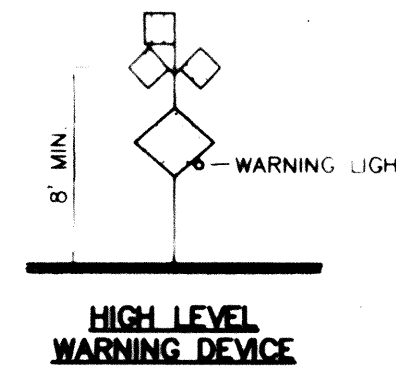
27. CONTRACTOR SHALL MAINTAIN A GRAFFITI-FREE WORKSITE. ALL GRAFFITI SHALL BE PROMPTLY REMOVED FROM ALL EQUIPMENT, BOTH PERMANENT AND TEMPORARY.



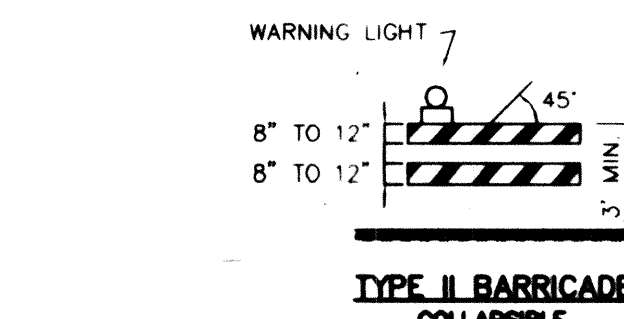
TYPE III BARRICADE



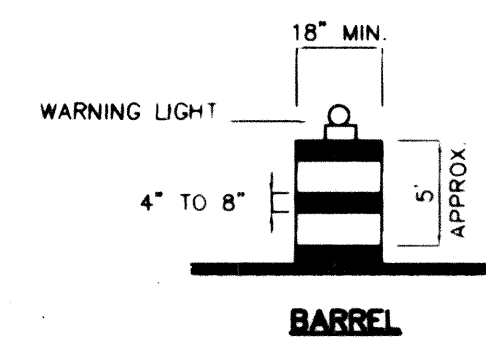
VERTICAL PANEL



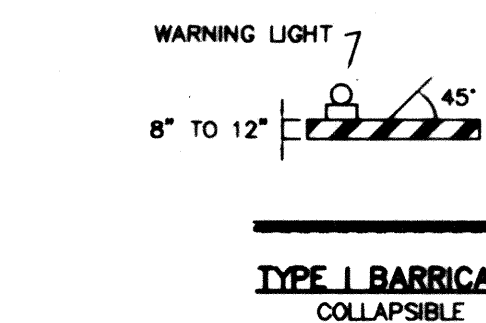
HIGH LEVEL WARNING DEVICE



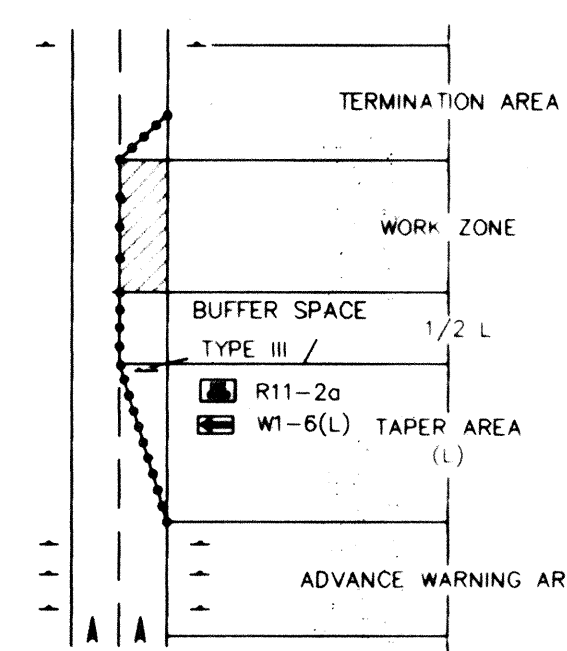
TYPE II BARRICADE COLLAPSIBLE



BARREL



TYPE I BARRICADE COLLAPSIBLE



TRAFFIC CONTROL ELEMENTS

LEGEND

WORK AREA

BARRICADE - TYPE I, TYPE II, OR BARREL

BARRICADE - TYPE III

VERTICAL PANEL

WARNING SIGN

DISTANCE BETWEEN SIGNS - A DISTANCE MEASURED IN FEET EQUAL TO A VALUE OF TEN TIMES THE SPEED LIMIT OF THE STREET

FLAGMAN POSITION

SPACING BETWEEN BARRICADES - A DISTANCE MEASURED IN FEET EQUAL TO THE SPEED LIMIT OF THE STREET

TAPER LENGTH - SEE CHART BELOW

THE TANGENT LENGTH IS EQUAL TO THE TAPER LENGTH FOR A GIVEN STREET

TAPER REQUIREMENTS

SPEED LIMIT (MPH)	TAPER LENGTH (L) (FEET)			MINIMUM NUMBER OF DEVICES FOR TAPER	MAXIMUM DEVICE SPACING IN FEET	
	10' LANE	11' LANE	12' LANE		ALONG TAPER	AFTER TAPER
20	70	75	80	5	20	20
25	105	115	125	6	25	25
30	150	165	180	7	30	30
35	205	225	245	8	35	35
40	270	295	320	9	40	40
45	450	495	540	13	45	45
50	500	550	600	13	50	50
55	550	605	660	13	55	55

RECOMMENDED SIGN SPACING(D) FOR ADVANCE WARNING SIGN SERIES

SPEED LIMIT (MPH)	MINIMUM DISTANCE IN FEET BETWEEN SIGNS	FROM LAST SIGN TO TAPER
0-20	10 X SPEED LIMIT	10 X SPEED LIMIT
25-30	10 X SPEED LIMIT	10 X SPEED LIMIT
30-35	10 X SPEED LIMIT	10 X SPEED LIMIT
40-45	10 X SPEED LIMIT	10 X SPEED LIMIT
50-60	10 X SPEED LIMIT	10 X SPEED LIMIT

TAPER CRITERIA

TYPE OF TAPER	TAPER LENGTH
UPSTREAM TAPER:	
MERGING TAPER	L MINIMUM
SHIFTING TAPER	1/2 L MINIMUM
SHOULDER TAPER	1/2 L MINIMUM
TWO-WAY TRAFFIC TAPER	100 FEET MAXIMUM
DOWNSTREAM TAPERS	100 FEET PER LANE

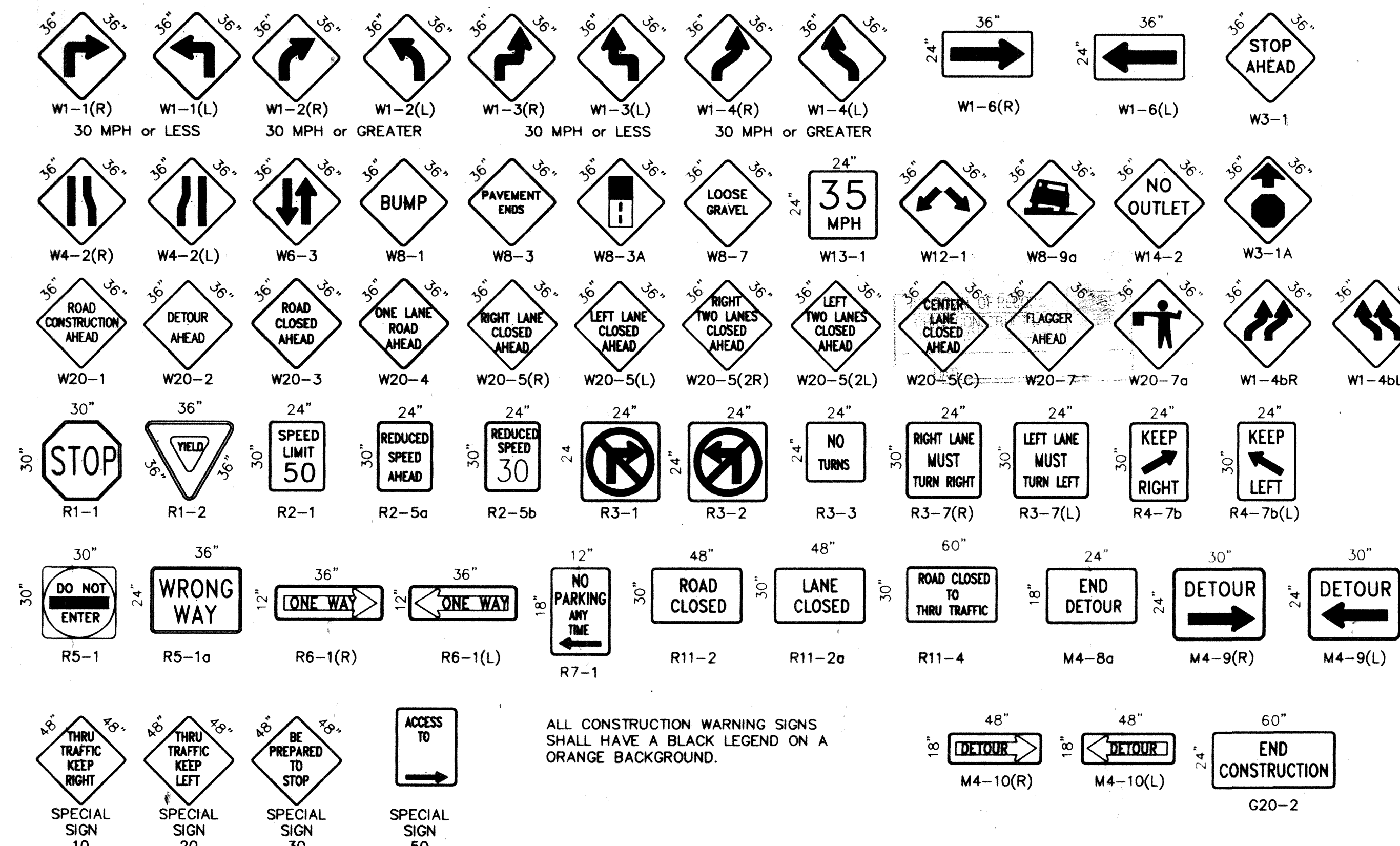
TAPER LENGTH COMPUTATION

SPEED LIMIT	
40 MPH OR LESS	$L = \frac{WS^2}{60}$
45 MPH OR GREATER	$L = W \times S$

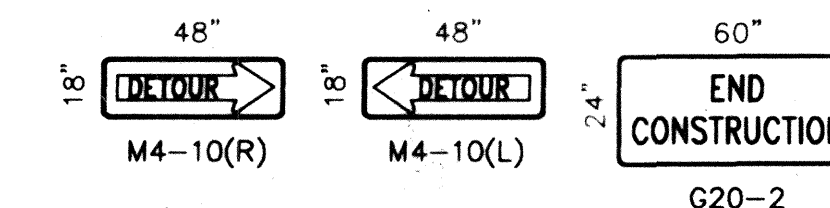
L = TAPER LENGTH
W = WIDTH OF OFFSET IN FEET
S = POSTED SPEED OR OFF-PEAK 85-PERCENTILE SPEED IN MPH

1 2 3 4 5 6 7 8 9 10 11 12 13 14 15
26 5588.12 6905

SIGN FACE DETAILS



ALL CONSTRUCTION WARNING SIGNS SHALL HAVE A BLACK LEGEND ON A ORANGE BACKGROUND.



G20-2

AS-BUILT INFORMATION		BENCH MARKS		SURVEY INFORMATION		ENGINEER'S SEAL	
CONTRACTOR	DATE	NO.	DATE	NO.	DATE	NO.	DATE
STANDARD BY	DATE	NO.	DATE	NO.	DATE	NO.	DATE
FIELD ADJUSTED BY	DATE	NO.	DATE	NO.	DATE	NO.	DATE
CHECKED BY	DATE	NO.	DATE	NO.	DATE	NO.	DATE
RECORDED BY	DATE	NO.	DATE	NO.	DATE	NO.	DATE
NO.		NO.		NO.		NO.	

CITY OF ALBUQUERQUE PUBLIC WORKS DEPARTMENT ENGINEERING DEVELOPMENT GROUP	
TITLE: SIGNING AND CONSTRUCTION TRAFFIC CONTROL STANDARDS	
DESIGN REVIEW COMMITTEE	CITY ENGINEER APPROVAL
LAST UPDATE	MO/DAY/YR
PROJECT NO.	MAP NO.
5588.12	L-19
SHEET	OF
9	9