

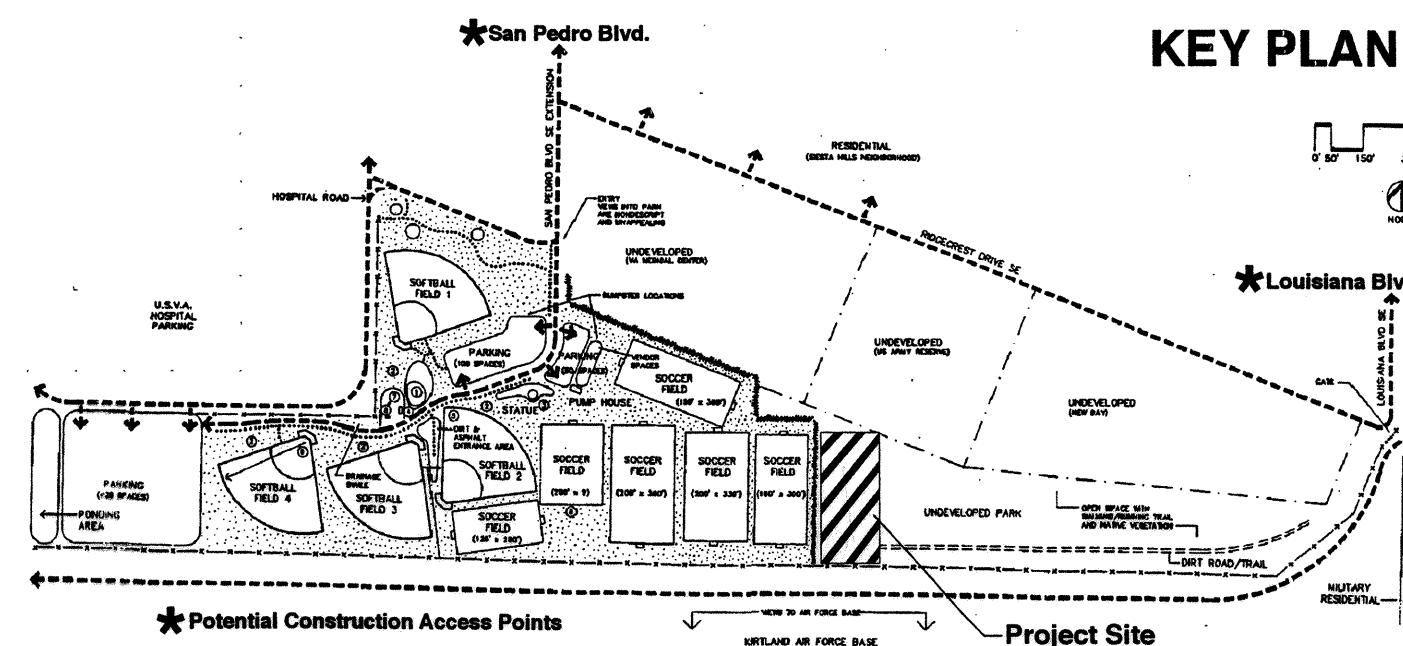
- LEGEND
- TRAVERSE POINT
 - IRON REBAR
 - SPRINKLER HEAD
 - MANHOLE
 - DRAIN INLET
 - ELECTRIC MANHOLE
 - TELEPHONE MANHOLE
 - ◆ TRAFFIC SIGNAL
 - ⊗ WATER VALVE
 - ⊗ GAS RISER
 - ⊗ WATER RISER
 - ⊗ ELECTRIC RISER
 - ⊗ TELEPHONE RISER
 - ⊗ POWER POLE WITH LIGHT
 - ⊗ POWER POLE
 - ⊗ FIRE HYDRANT
 - ⊗ SIGN POST
 - ⊗ DECIDUOUS TREE
 - ⊗ CONIFEROUS TREE
 - ✱ BUSH
 - X— CHAIN LINK FENCE
 - OH— OVER HEAD WIRE
 - DIRT BERM
 - BOUNDARY LINE
 - EASEMENT
 - PL --- PROPERTY LINE
 - TREE LINE --- TREE LINE

SURVEY INFORMATION

BASE INFORMATION ON EXISTING CONDITIONS INCLUDING, BUT NOT LIMITED TO, CONTOURS, ORIENTATION, UTILITY COVERS, STRUCTURES, BERMS, PROPERTY LINES, FENCES, AND EXISTING IRRIGATION HEADS, IS DERIVED FROM A CITY OF ALBUQUERQUE SURVEY:

BULLHEAD PARK
IN NORTH 1/2 SECTION 36
T 10 N, R 3 E, NMPM
ALBUQUERQUE, NEW MEXICO
MAY 24, 1991

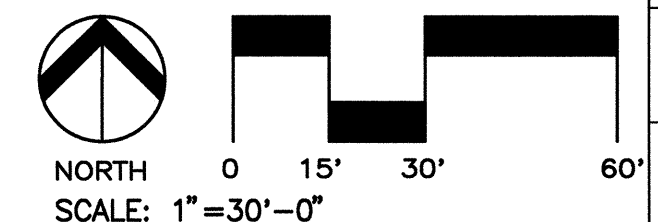
KEY PLAN



DESIGNWORKSHOP

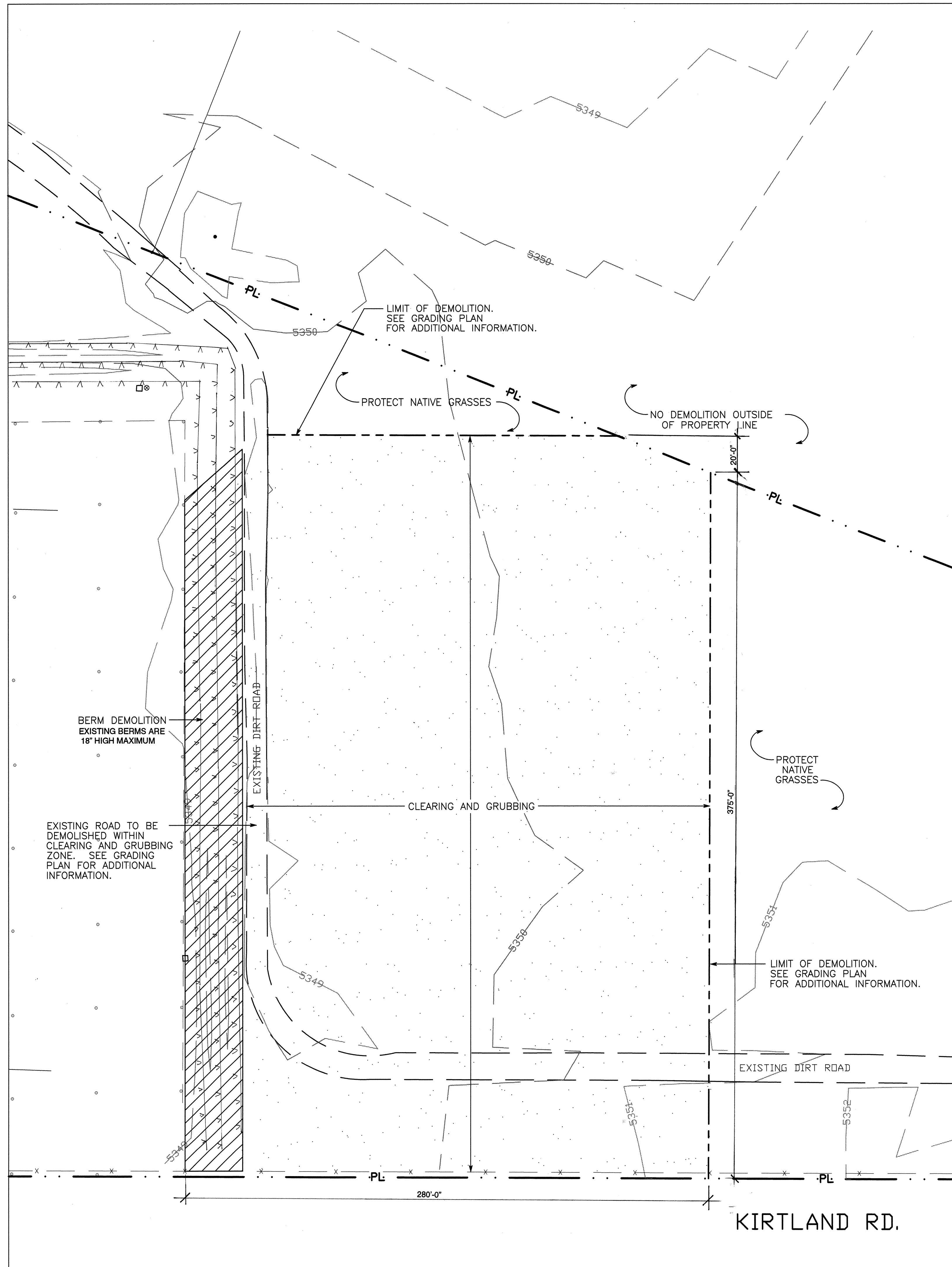
9621 4TH STREET NW
Albuquerque, NM
87114

(Tel.) 505.890.1815
(Fax) 505.890.1817



CITY OF ALBUQUERQUE CAPITAL IMPLEMENTATION PROGRAM DESIGN AND DEVELOPMENT	
TITLE: BULLHEAD PARK EXISTING CONDITIONS	
Design Review Committee APPROVED APR - 2 1997 DESIGN REVIEW COMMITTEE	City Engineer Approval
City Project No. 563091	Zone Map No. M-18-Z
Sheet 1	Of 6

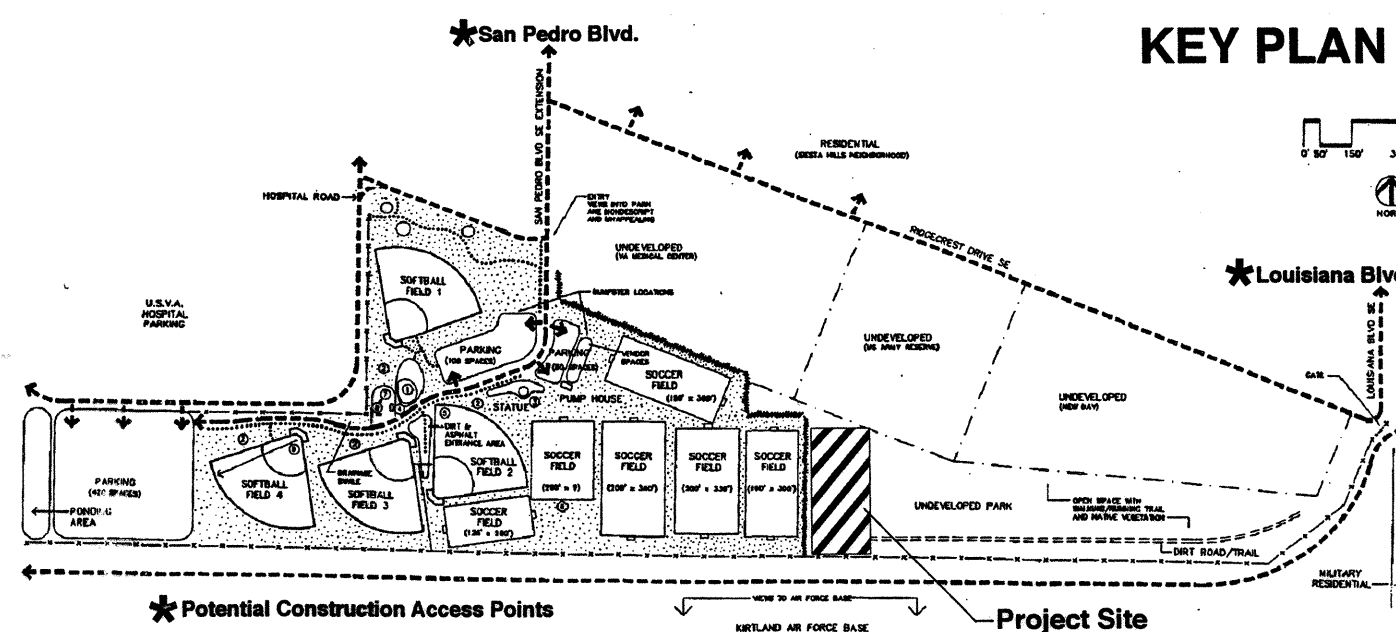
LANDSCAPE ARCHITECT'S SEAL				SURVEY INFORMATION		BENCH MARKS		AS-BUILT INFORMATION	



SURVEY INFORMATION

BASE INFORMATION ON EXISTING CONDITIONS INCLUDING, BUT NOT LIMITED TO, CONTOURS, ORIENTATION, UTILITY COVERS, STRUCTURES, BERMS, PROPERTY LINES, FENCES, AND EXISTING IRRIGATION HEADS, IS DERIVED FROM A CITY OF ALBUQUERQUE SURVEY:

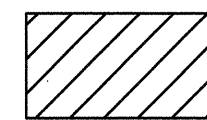
BULLHEAD PARK
IN NORTH 1/2 SECTION 36
T 10 N, R 3 E, NMPM
ALBUQUERQUE, NEW MEXICO
MAY 24, 1991



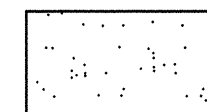
DEMOLITION NOTES

1. BERM DEMOLITION: GRADE, LEVEL AND FILL EXISTING BERM WHERE INDICATED ON PLANS. REFER TO GRADING PLAN FOR ADDITIONAL INFORMATION.
2. CLEAR AND GRUB WHERE NOTED ON PLANS. PROTECT EXISTING NATIVE GRASSES OUTSIDE OF DEMOLITION AND CLEARING AND GRUBBING AREA.
3. PROTECT ALL EXISTING IMPROVEMENTS DURING DEMOLITION, INCLUDING IRRIGATION SYSTEM AND FENCING.

DEMOLITION LEGEND



BERM DEMOLITION



CLEARING AND GRUBBING AREA

DESIGNWORKSHOP

9821 4TH STREET NW
Albuquerque, NM
87114

(Tel.) 505.890.1815
(Fax) 505.890.1817

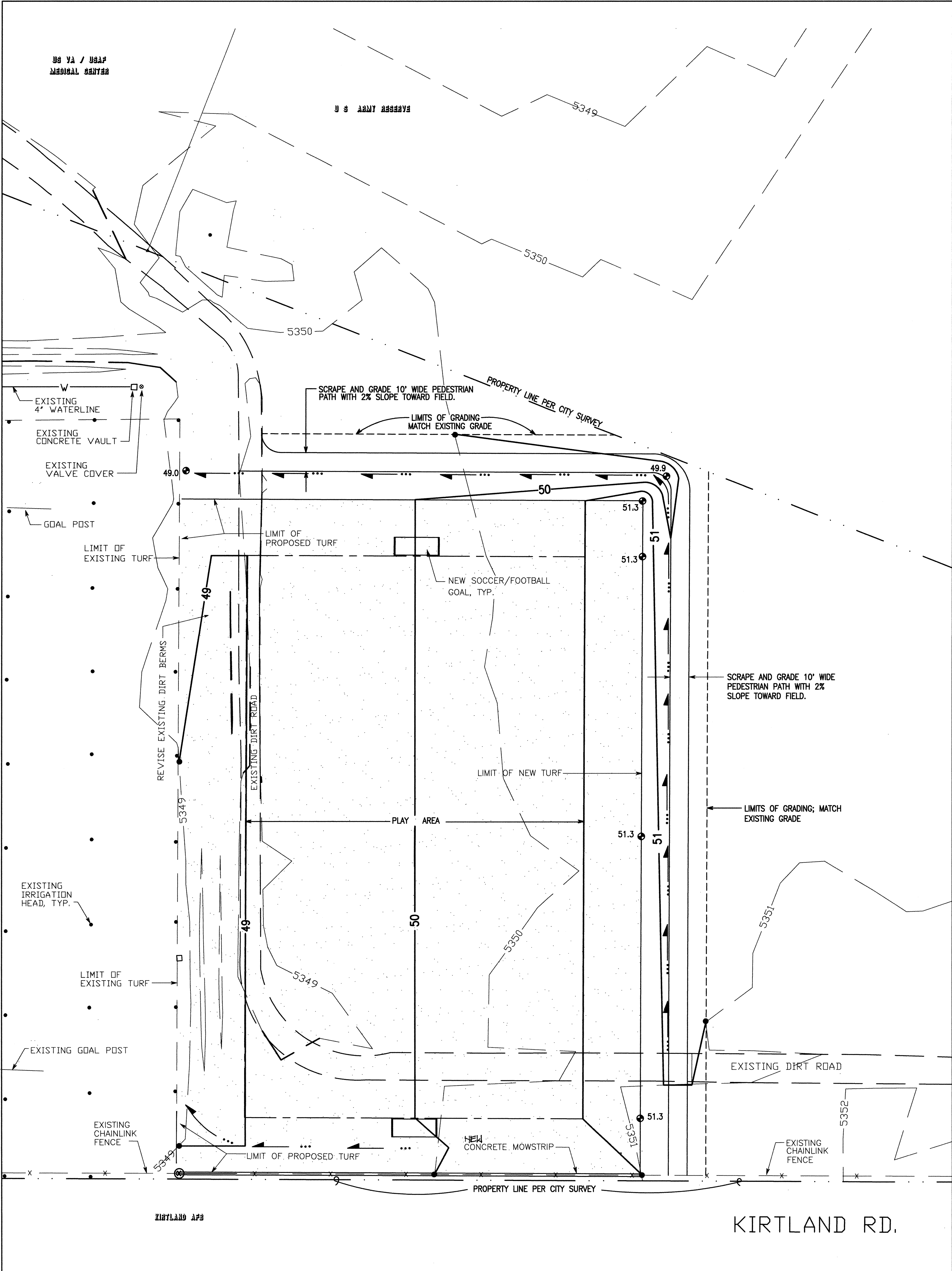


NORTH
SCALE: 1"=30'-0"



CITY OF ALBUQUERQUE CAPITAL IMPLEMENTATION PROGRAM DESIGN AND DEVELOPMENT			
TITLE: BULLHEAD PARK DEMOLITION PLAN			
Design Review Committee		City Engineer Approval	
APPROVED	APR - 2 1997	Mo./Day/Yr.	Mo./Day/Yr.
DESIGN REVIEW COMMITTEE	DESIGN	Mo./Day/Yr.	Mo./Day/Yr.
City Project No.	Zone Map No.	Sheet	Of
563091	M-18-Z	2	6

C:\DATA\ACAD\DWG\961401 Tue Jan 21 15:42:33 1997 -SGH



CALCULATIONS			
Site Characteristics			
1. Precipitation Zone =	2		
2. $P_{6,100} = P_{360} =$	2.35 in.		
3. Total Area (A_T) =	106,000 sf/2.43 ac		
4. Existing Land Treatment			
Treatment C	Area (sf/ac)	%	
	106,000/2.43	100	
5. Developed Land Treatment			
Treatment B	Area (sf/ac)	%	
	90,500/2.07	85.2	
Treatment C	15,500/0.36	14.8	

Existing Condition

- Volume
$$E_W = (E_{A_A} + E_{B_B} + E_{C_C} + E_{D_D}) / A_T$$
$$E_W = (1.13)(2.43) / 2.43 = 1.13 \text{ in.}$$
$$V_{100} = (E_W / 12) A_T$$
$$V_{100} = (1.13 / 12) 2.43 = 0.23 \text{ ac.ft.; } 9,970 \text{ cf}$$
- Peak Discharge
$$Q_p = Q_{PA_A} + Q_{PB_B} + Q_{PC_C} + Q_{PD_D}$$
$$Q_p = Q_{100} = (3.14)(2.43) = 7.63 \text{ cfs}$$

Developed Condition

- Volume
$$E_W = (E_{A_A} + E_{B_B} + E_{C_C} + E_{D_D}) / A_T$$
$$E_W = (0.78)(2.07) + (1.13)(0.36) / 2.43 = 0.83 \text{ in.}$$
$$V_{100} = (E_W / 12) A_T$$
$$V_{100} = (0.83 / 12) 2.43 = 0.17 \text{ ac.ft.; } 7,400 \text{ cf}$$
- Peak Discharge
$$Q_p = Q_{PA_A} + Q_{PB_B} + Q_{PC_C} + Q_{PD_D}$$
$$Q_p = Q_{100} = (2.28)(2.07) + (3.14)(0.36) = 5.85 \text{ cfs}$$

Comparison

- $\Delta V_{100} = 9,970 - 7,400 = 2,570 \text{ cf (decrease)}$
- $\Delta Q_{100} = 7.63 - 5.85 = 1.78 \text{ cfs (decrease)}$

DRAINAGE PLAN

The following items concerning the Bullhead Park Drainage Plan are contained herein:

- Vicinity Map
- Grading Plan
- Calculations

As shown by the Vicinity Map, the site is located within an existing City park site known as Bullhead Park. Generally, the site lies south of Ridgcrest Drive S.E., between San Pedro Boulevard S.E. and Louisiana Boulevard S.E. The site abuts Kirtland Air Force Base to the south.

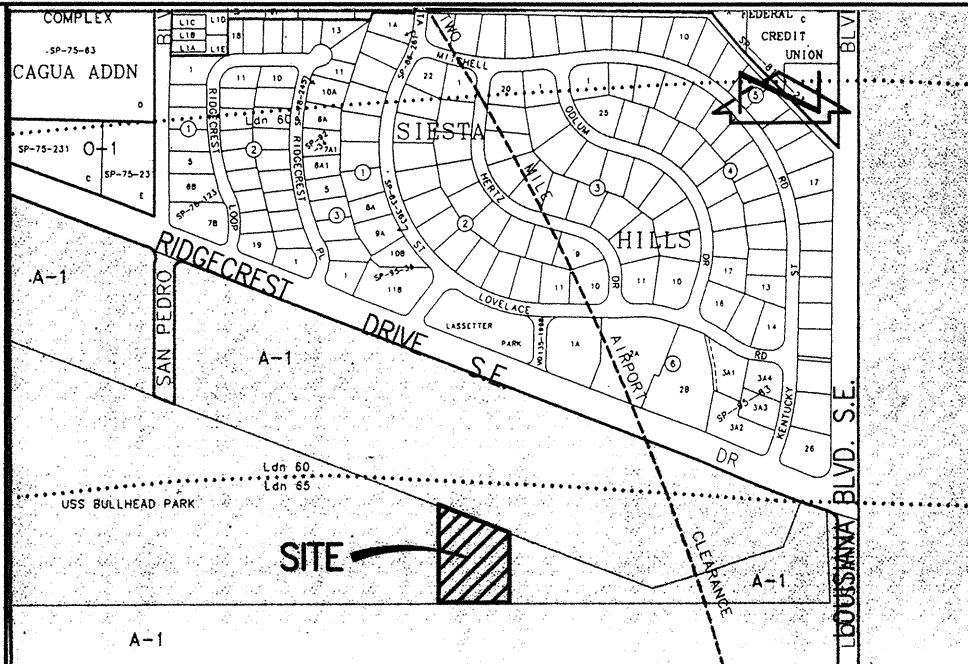
As shown by Panel 362 of 828 of the National Flood Insurance Program Flood Insurance Rate Maps published by F.E.M.A. for the County of Bernalillo, New Mexico dated September 20, 1996, this site does not lie within a designated flood hazard zone. Further review of this mapping indicates a downstream flood hazard zone (AO) within Gibson Boulevard S.E. at its intersection with San Pedro Drive S.E. Storm drain improvements have been constructed in this area by the City of Albuquerque to alleviate this flooding situation. The presence of those improvements are not reflected on the above referenced mapping. In recognition of the downstream improvements completed by the City, the continued free discharge of runoff from this site is appropriate.

The Grading Plan shows: 1) existing grades indicated by contours at 1'0" intervals, as provided by the City of Albuquerque Public Works Department Engineering Group Survey Section, 2) proposed grades indicated by spot elevations and contours at 1'0" intervals, 3) the limit and character of the existing improvements, 4) the limit and character of the proposed improvements, and 5) continuity between existing and proposed grades. As shown by this Plan, the proposed improvements consist of the construction of a turfed play area. The turfed play area will replace existing Land Treatment "C" with Land Treatment "B". In response, a decrease in developed runoff from this site is anticipated. This site is bordered on the west by existing Bullhead Park, on the north by undeveloped lands under Federal Government control. Those lands lie topographically lower than the site, hence do not contribute offsite flows. The site is bounded on the south by Kirtland Air Force Base. As shown by the survey provided by the City, Kirtland Road lies along the south boundary of the site. The topography does not indicate any offsite flows from the south. Furthermore, any flows which may originate to the south will be intercepted by Kirtland Road. Undeveloped portions of Bullhead Park lie to the east of the site running to Louisiana Boulevard S.E. which intercepts offsite flows from the east. The undeveloped portions of Bullhead Park are separated from the developed portions by an existing berm. That berm will be removed as part of this project and the new play area graded for sheet drainage from east to west. Any runoff generated by the new play area will drain via sheetflow onto the existing turf of the park. From this point, runoff will flow via sheetflow toward San Pedro Boulevard S.E. The unturfed "dirt" areas to the east and north of the new play area are graded for concentrated flow with a non-erosive gradient. Any sediment being carried by runoff reaching these flowlines will be trapped due to flat gradients. This will serve to control erosion from this site.

The Calculations which appear hereon analyze both the existing and developed conditions for the 100-year, 6-hour rainfall event. The Procedure for 40-acre and Smaller Basins, as set forth in the Revision of Section 22.2, Hydrology of the Development Process Manual, Volume 2, Design Criteria, dated January, 1993, has been used to quantify the peak rate of discharge and volume of runoff generated. As shown by these calculations, the proposed improvements will result in a decrease in developed runoff generated by this site. This is due to the fact that areas of Land Treatment "C" will be replaced by area of Land Treatment "B". As indicated above, the free discharge of runoff from this site is appropriate as it is consistent with the existing drainage patterns and due to the fact that downstream flooding conditions have been alleviated and a decrease in runoff is anticipated due to the proposed construction.



JEFF MORTENSEN & ASSOCIATES, INC.
6010-B MIDWAY PARK BLVD. N.E.
ALBUQUERQUE, N.M. 87109
ENGINEERS SURVEYORS (505) 345-4250



VICINITY MAP
SCALE: 1" = 750'

LEGAL DESCRIPTION

PORTION OF BULLHEAD PARK AS SHOWN ON SURVEY TITLED SAME PREPARED BY CITY OF ALBUQUERQUE PUBLIC WORKS DEPARTMENT, ENGINEERING GROUP, SURVEY SECTION, DATED MAY 24, 1991.

LEGEND

49	EXISTING CONTOUR
31.3	PROPOSED CONTOUR
	PROPOSED SPOT ELEVATION
	PROPERTY LINE
	EXISTING FENCE

CONSTRUCTION NOTES:

- Two (2) working days prior to any excavation, contractor must contact New Mexico One Call System 260-1990 (Albuquerque Area), 1-800-521-ALERT(2537) (Statewide), for location of existing utilities.
- Prior to construction, the contractor shall excavate and verify the horizontal and vertical location of all potential obstructions. Should a conflict exist, the contractor shall notify the engineer in writing so that the conflict can be resolved with a minimum amount of delay.
- All work on this project shall be performed in accordance with applicable federal, state and local laws, rules and regulations concerning construction safety and health.
- All construction within public right-of-way shall be performed in accordance with applicable City of Albuquerque Standards and Procedures.
- If any utility lines, pipelines, or underground utility lines are shown on these drawings, they are shown in an approximate manner only, and such lines may exist where none are shown. If any such existing lines are shown, the location is based upon information provided by the owner of said utility, and the information may be incomplete, or may be obsolete by the time construction commences. The engineer has conducted only preliminary investigation of the location, depth, size, or type of existing utility lines, pipelines, or underground utility lines. This investigation is not conclusive, and may not be complete, therefore, makes no representation pertaining thereto, and assumes no responsibility or liability therefor. The contractor shall inform itself of the location of any utility line, pipeline, or underground utility line in or near the area of the work in advance of and during excavation work. The contractor is fully responsible for any and all damage caused by its failure to locate, identify and preserve any and all existing utilities, pipelines, and underground utility lines. In planning and conducting excavation, the contractor shall comply with state statutes, municipal and local ordinances, rules and regulations, if any, pertaining to the location of these lines and facilities.

EROSION CONTROL MEASURES:

- The contractor shall ensure that no soil erodes from the site into public right-of-way or onto private property.
- The contractor shall promptly clean up any material excavated within the public right-of-way so that the excavated material is not susceptible to being washed down the street.
- The contractor shall secure "Topsail Disturbance Permit" prior to beginning construction.
- Any areas of excess disturbance (traffic access, storage yard excavated material, etc.) shall be re-seeded according to C.O.A. Specification 1012 "Native Grass Seeding". This will be considered incidental to construction, therefore, no separate payment will be made.

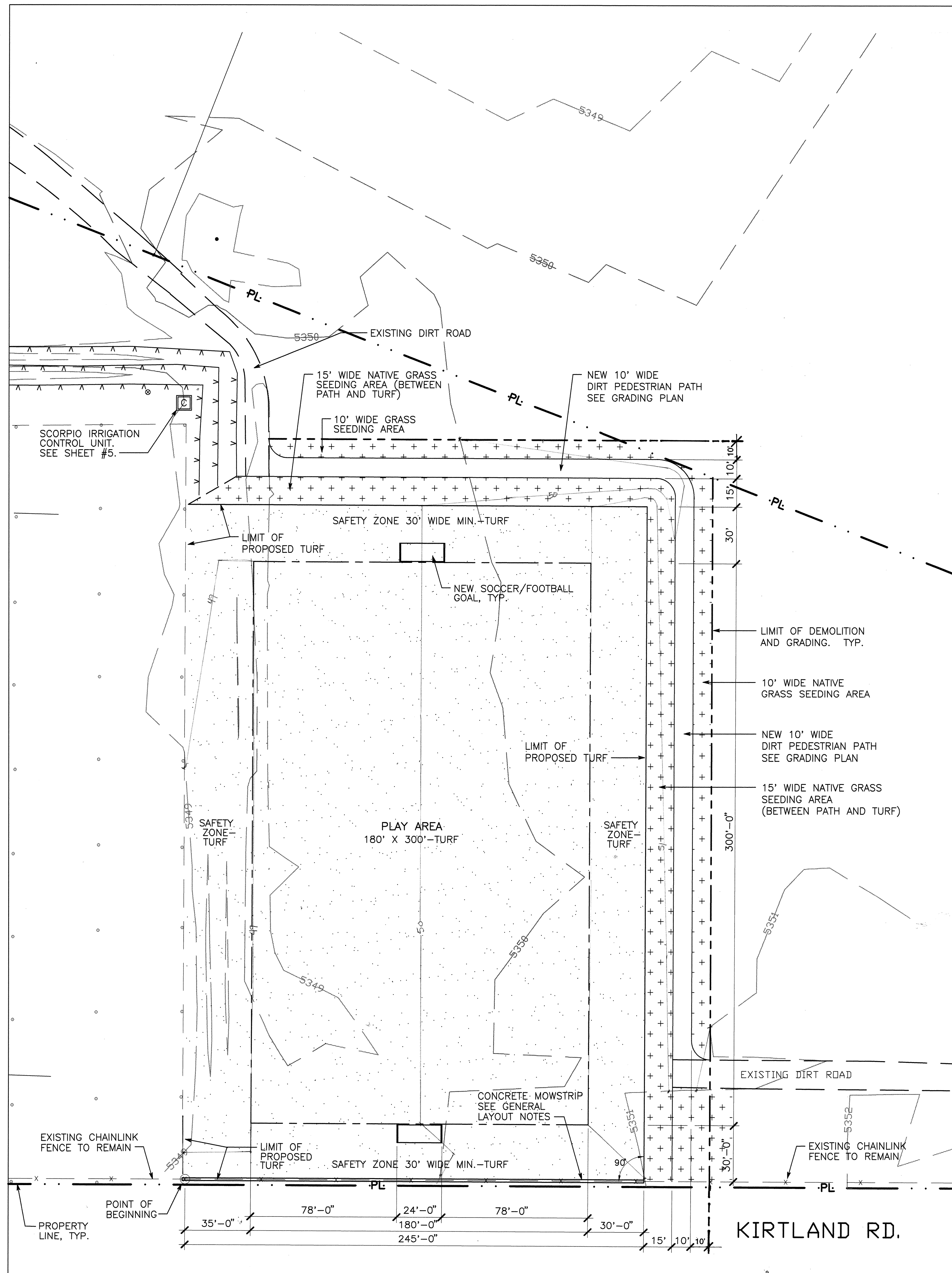
DESIGNWORKSHOP

9621 4TH STREET NW
Albuquerque, NM
87114
(Tel.) 505.890.1815
(Fax) 505.890.1817

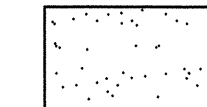


NORTH
SCALE: 1"=30'-0"

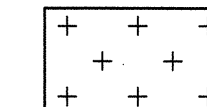
CITY OF ALBUQUERQUE CAPITAL IMPLEMENTATION PROGRAM DESIGN AND DEVELOPMENT			
TITLE: BULLHEAD PARK GRADING AND DRAINAGE PLAN			
Design Review Committee APPROVED	City Engineer Approval	Mo./Day/Yr.	Mo./Day/Yr.
City Project No. 503091	Zone Map No. M-18	Sheet 3	Of 6



PLANTING LEGEND



SEEDED TURF



NATIVE GRASS SEEDING

General Planting Notes

- All planting materials and installation methods shall comply with standard City of Albuquerque specifications.
- All new turf area is to be seeded with the standard City of Albuquerque blend for recreational fields.

General Layout Notes

- The Contractor shall start staking from the point-of-beginning indicated on the plans. The new playing field is oriented perpendicular to the existing chain link fence, and is not parallel to the existing field to the west.
- For water and electric supply information, see sheet #6, detail #1 and the Irrigation Plan.
- ~~Berm construction is to match the existing berms. The berms will be used to prevent vehicles from driving on the turf.~~
- Soccer/football Goals: The construction of soccer/football goals is the responsibility of Park Management, and is not included in this contract.
- Pedestrian Path: The intent of this path is to provide a route for pedestrians around the perimeter of the new playing field. The Contractor shall clear, scrape and rough grade an informal 10'-0" wide dirt path around the perimeter of the field as indicated on the plan.
- The Contractor shall install a concrete edger on the turf side of the existing chain link fence. Due to access restrictions, the Contractor may reference construction detail #4, sheet #6 instead of C.O.A. Std. Dwg. # 2725.

HOWEVER, IF ACCESS IS NOT RESTRICTED, CONTRACTOR SHALL REFERENCE C.O.A. STD DWG. # 2725 FOR CONCRETE EDGER CONSTRUCTION.

AS-BUILT INFORMATION	
CONTRACTOR	
INSPECTOR'S ACCEPTANCE BY	DATE
VERIFICATION BY	DATE
DRANNOED BY	DATE
RECORDED BY	DATE
MICRO-FILM INFORMATION	

BENCH MARKS	
Location: From 1.25 east on Gibson St. 1.1 miles to Ridgecrest Dr., turn right .8 miles to Dakota St and the station on the left.	
The station mark is a standard ACS 8" brass cap stamped "1-M18" set 0.21' below the ground.	
NM zone central X-403128.65, Y-1475207.62, Elevation-5537.349	

SURVEY INFORMATION	
FIELD NOTES	DATE
NO.	BY

LANDSCAPE ARCHITECT'S SEAL	

REVISIONS	
NO.	DATE
DESIGNED BY MB	DATE 1/97/2/97
DRAWN BY MB/MBT	DATE 1/97/2/97
CHECKED BY MSP/MB	DATE 12/96/2/97

DESIGNWORKSHOP

9621 4TH STREET NW
Albuquerque, NM
87114

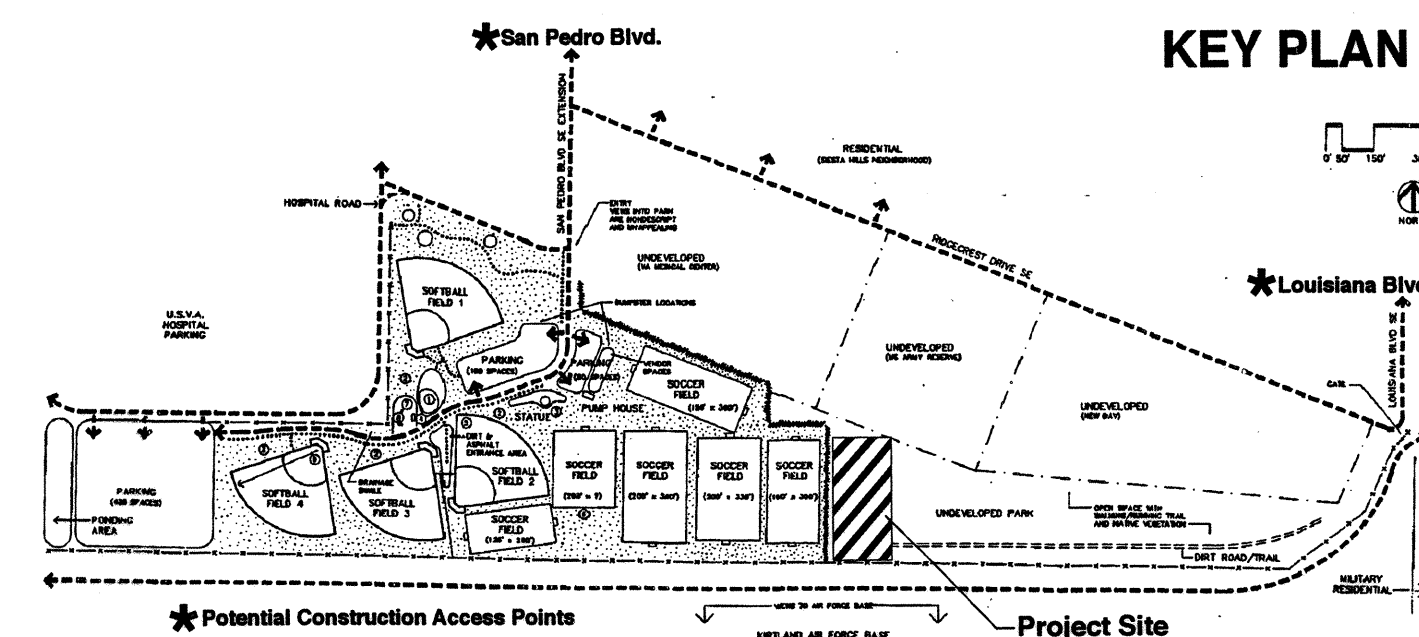
(Tel.) 505.890.1815
(Fax) 505.890.1817



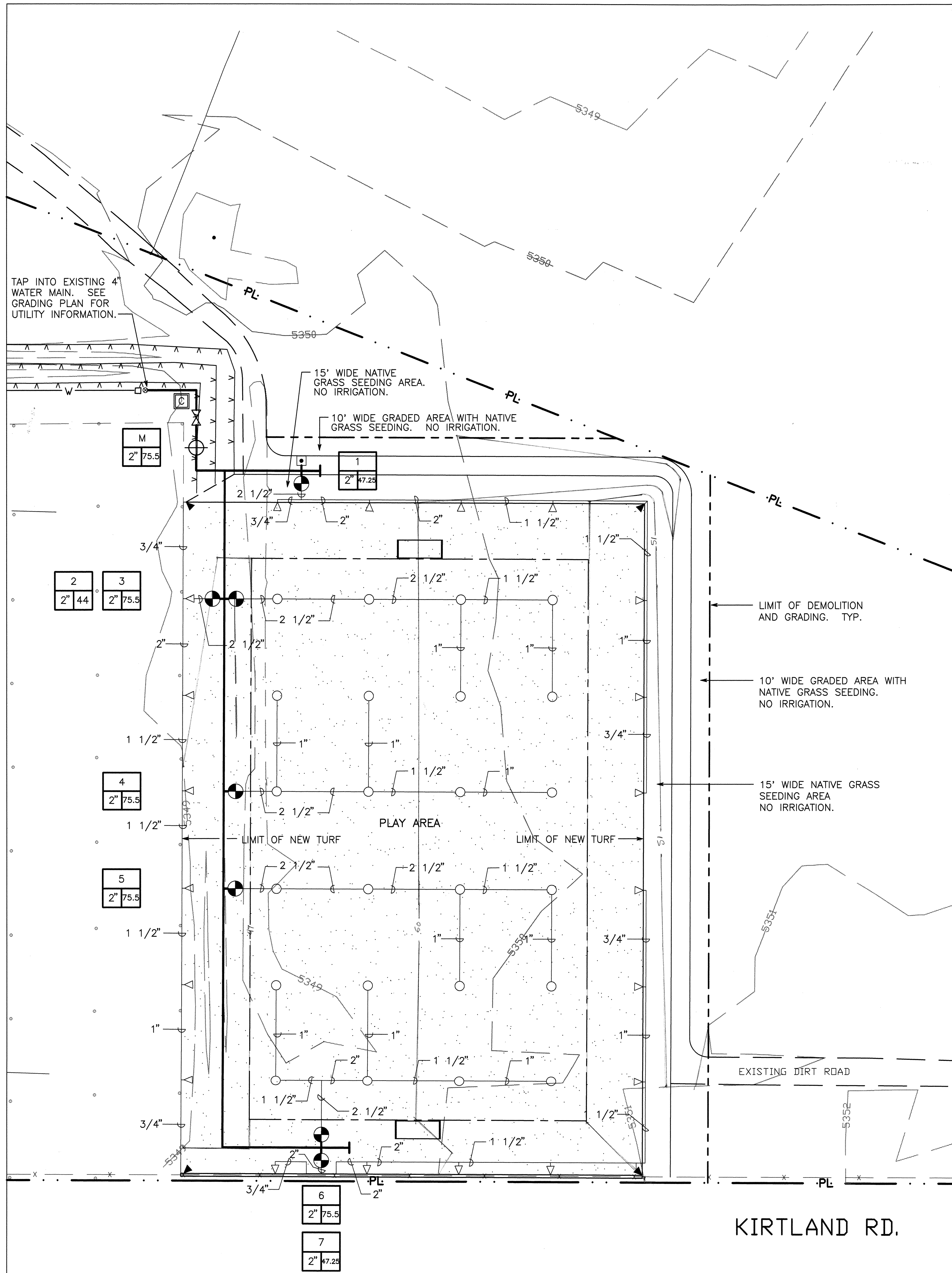
NORTH
SCALE: 1"=30'-0"



KEY PLAN



CITY OF ALBUQUERQUE CAPITAL IMPLEMENTATION PROGRAM DESIGN AND DEVELOPMENT	
TITLE: BULLHEAD PARK LAYOUT AND PLANTING PLAN	
City Project No. 563091	Zone Map No. M-18-Z
City Engineer Approval 	Sheet 4 Of 6
Design Review Committee 	



Irrigation Legend

SYMBOL	MANUFACTURER & MODEL	DESCRIPTION & NOTES	NOTES/DETAIL
—		MAINLINE - 4" CLASS 200	PER STD. C.O.A. SPECIFICATIONS
—		LATERAL LINE - SCHEDULE 40 PVC PIPE	SIZE VARIES. SEE PLAN.
⊗	SPEARS TRUE UNION BALL VALVE	4" GATE VALVE	STD. C.O.A. DWG. # 2706
⊕	VALVES RAINBIRD 200 PEB	2" PLASTIC ELECTRIC REMOTE CONTROL MASTER VALVE	ALL VALVES IN BOXES. STD. C.O.A. DWG. #2703
⊙	RAINBIRD 200 PEB-PRS-B	2" PLASTIC ELECTRIC REMOTE CONTROL ZONE VALVE WITH PRESSURE REGULATION	STD. C.O.A. DWG. #2703
▲	HUNTER I-40 GROUP ROTORS I-40-ADS-41	POP-UP SPRINKLERS 54" RADIUS - 3.15 GPM - .42 INCHES PER HOUR	STD. C.O.A. DWG. # 2709
△	I-40-ADS-41	54" RADIUS - 6.3 GPM - .42 INCHES PER HOUR	STD. C.O.A. DWG. # 2709
○	I-40-36S-41	54" RADIUS - 12.6 GPM - .42 INCHES PER HOUR	STD. C.O.A. DWG. # 2709
Ⓢ	SCORPIO FIELD UNIT (Part of Irinet System by Motorola)	REMOTE, RADIO-CONTROLLED IRRIGATION UNIT (TORO #MSS-IS-S-1 SCORPIO 8 STATION)	SHEET #6, DETAIL #2
Ⓢ	IC-10A-2" CRISPIN AIR RELIEF VALVE	AIR RELIEF VALVE	STD. C.O.A. DWG. # 2705
Ⓢ	VALVE LEGEND	A - VALVE #; B - VALVE SIZE; C - GPM	

Valve Schedule

Valve No.	Valve Size	Total GPM	Head Type	Precip. Rate	Run Time Minutes/Cycles	Inches/Month (July)
MV	2"	75.5 max.				
1	2"	47.25	Hunter I-40-ADS-41	0.42	30/2	7"
2	2"	44	Hunter I-40-ADS-41	0.42	30/2	7"
3	2"	75.5	Hunter I-40-36S-41	0.42	30/2	7"
4	2"	75.5	Hunter I-40-36S-41	0.42	30/2	7"
5	2"	75.5	Hunter I-40-36S-41	0.42	30/2	7"
6	2"	75.5	Hunter I-40-36S-41	0.42	30/2	7"
7	2"	47.25	Hunter I-40-ADS-41	0.42	30/2	7"

General Irrigation Notes

- The water source is an existing 4" line located northwest of the new field location. The Contractor is to extend the existing 4" water line to the locations shown on the plan.
- All irrigation work and materials are to conform to standard City of Albuquerque specifications.
- The water pressure at the tap location is estimated to be 80 PSI.
- The Contractor is responsible for extending power from the existing pump house to the new controller. See diagram - sheet # 6, detail # 1.
- Under this contract, the Contractor shall supply and install a Scorpio Field Unit and accessories where indicated on the plans. An Irinet Irrigation Field Unit and accessories will be installed by others at Bullhead Park prior to the Scorpio installation. See detail - sheet # 6, detail #2.
- All irrigation symbols are illustrative. The Contractor is to adjust locations in the field, as required for full and even coverage.
- Locate all valve boxes off of the new and existing playing areas.
- Lateral line testing shall be completed prior to the installation of any flex pipe assemblies. Lateral line testing shall be accomplished by installing a plug in the outlet of lateral line tees and ells.
- Controller Wiring: Use red colored wires for zone valves and white for common wires.
- Valve Schedule and Run Times: Run times and inches per month are based on the month of July when water requirements are typically at their peak. Assumptions: 38" of water per year; 7" in July; watering schedule of 2 cycles every 2 days.

DESIGNWORKSHOP

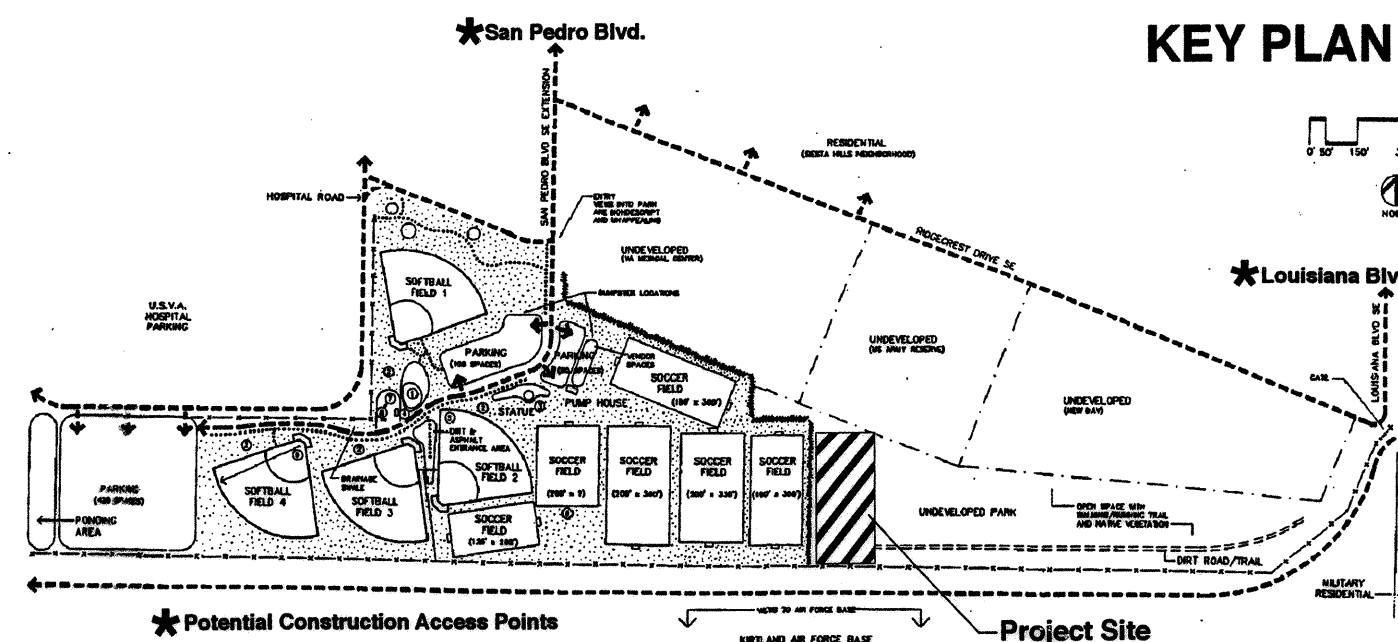
9821 4TH STREET NW
Albuquerque, NM
87114

(Tel.) 505.890.1815
(Fax) 505.890.1817

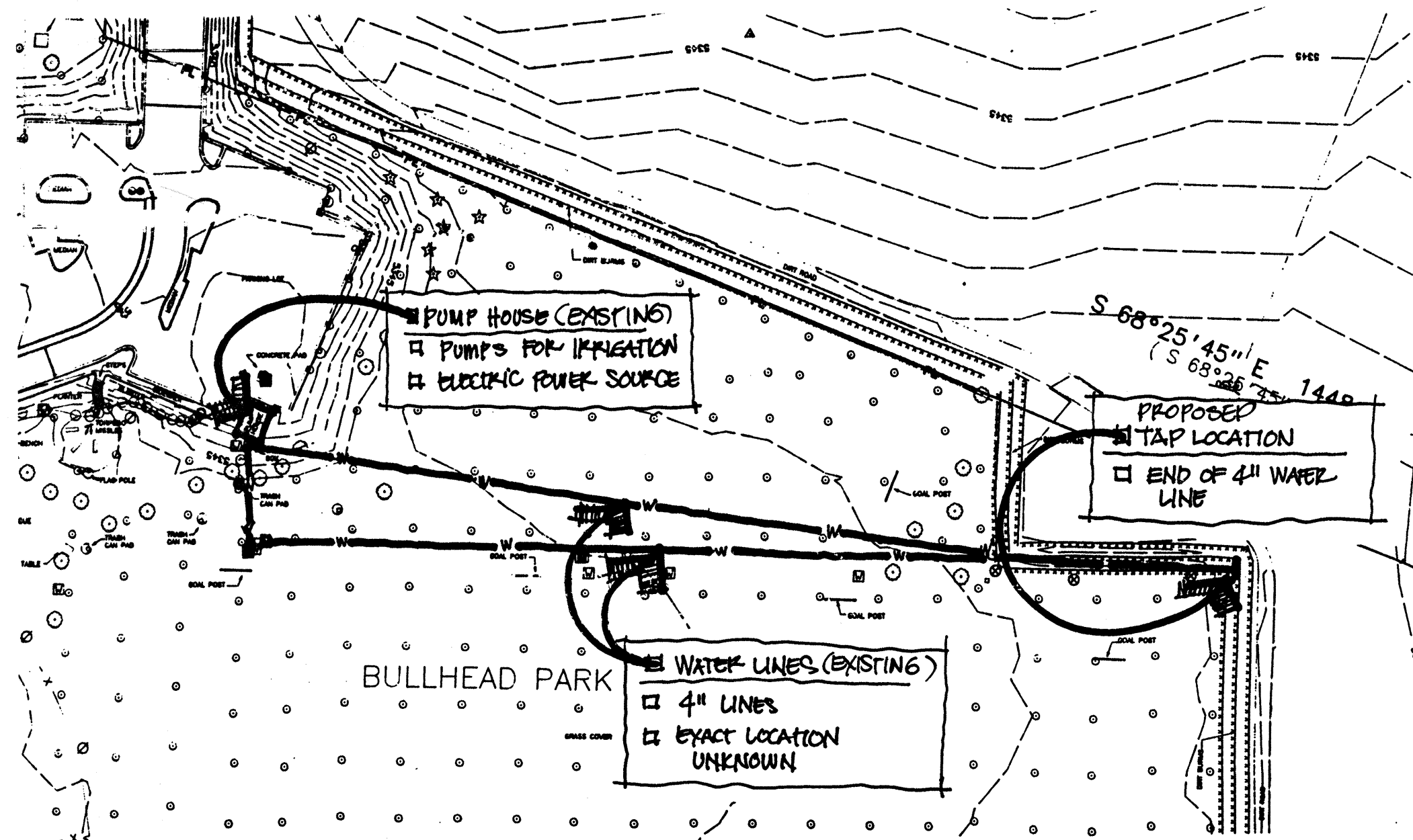


SCALE: 1"=30'-0"

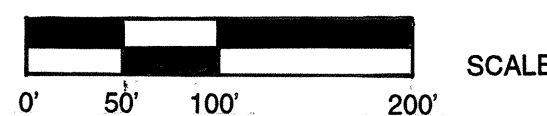
KEY PLAN



CITY OF ALBUQUERQUE CAPITAL IMPLEMENTATION PROGRAM DESIGN AND DEVELOPMENT	
TITLE: BULLHEAD PARK IRRIGATION PLAN	
DESIGNED BY MB	DATE 2/21/97
DRAWN BY MB/WET	DATE 2/21/97
CHECKED BY WSP/MIB	DATE 2/21/97
REVISIONS	NO. DATE
DESIGN	
APPROVE	City Engineer Approval
Mo./Day/Yr.	Mo./Day/Yr.
City Project No. 563091	Zone Map No. M-18-Z
Sheet 5	Of 6



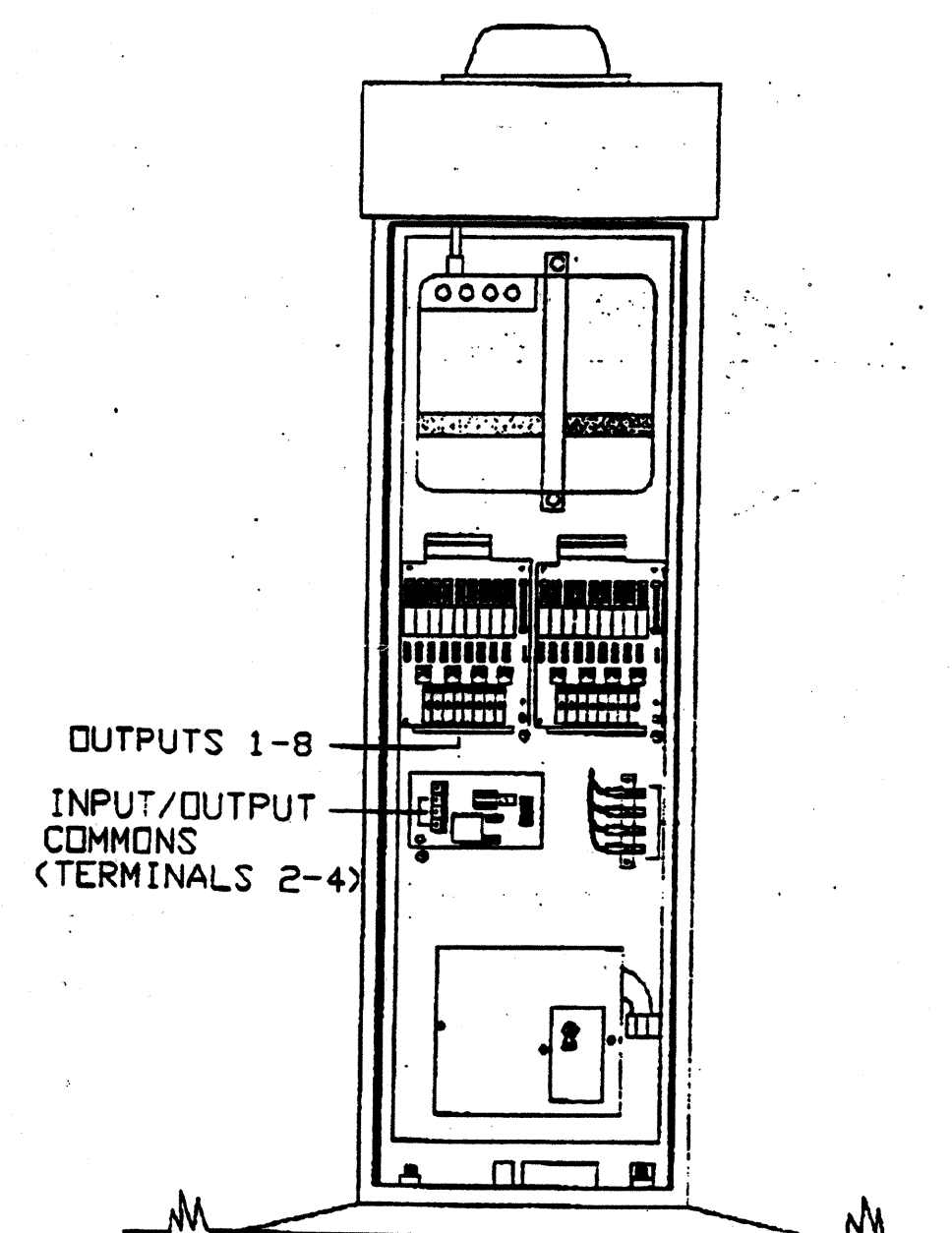
WATER AND ELECTRICAL DIAGRAM



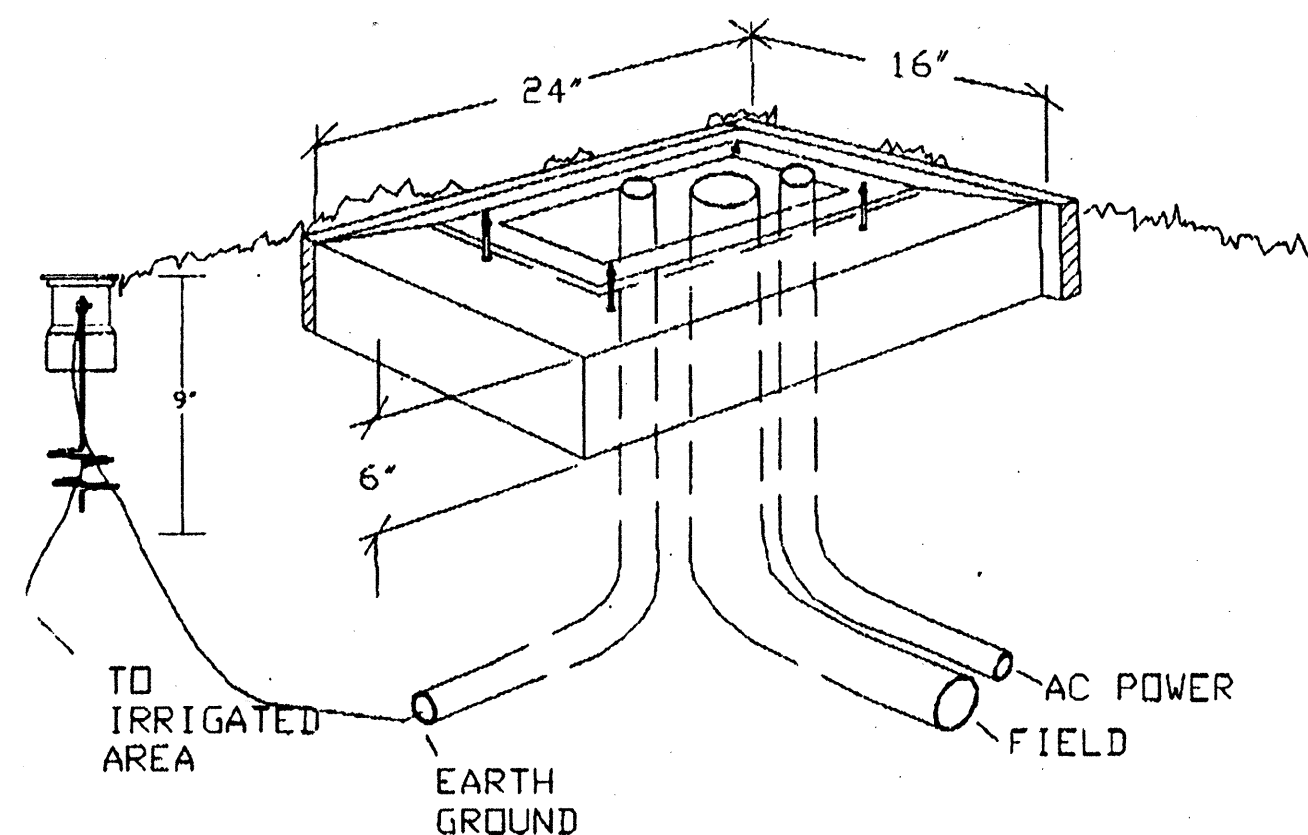
AS SHOWN

Notes

- Water Line Location** - The diagram indicates the likely locations of an existing 4" water line south and/or east of the pump house. This is the line that will provide water service to the new playing field.
- Water Tap Location** - Part of the existing 4" line ends at the northeast corner of the easternmost playing field. The Contractor will extend this line, as illustrated on the irrigation plan, to provide irrigation water for the new playing field.
- Water Pressure** - The estimated pressure at the tap location is 80 psi. The minimum head pressure on the new field will be approximately 70 psi.
- Irrigation Lines** - There is a network of existing irrigation mainlines and laterals throughout the park. The Contractor is responsible for protecting these irrigation lines. In the event that a line is damaged during construction, it is the Contractor's responsibility to repair and/or replace the line at no cost to the owner.
- Electrical** - The pump house is the closest source of power for the new controller. The Contractor will coordinate the extension of underground power from the pump house to the new controller, with a Park Management Representative.

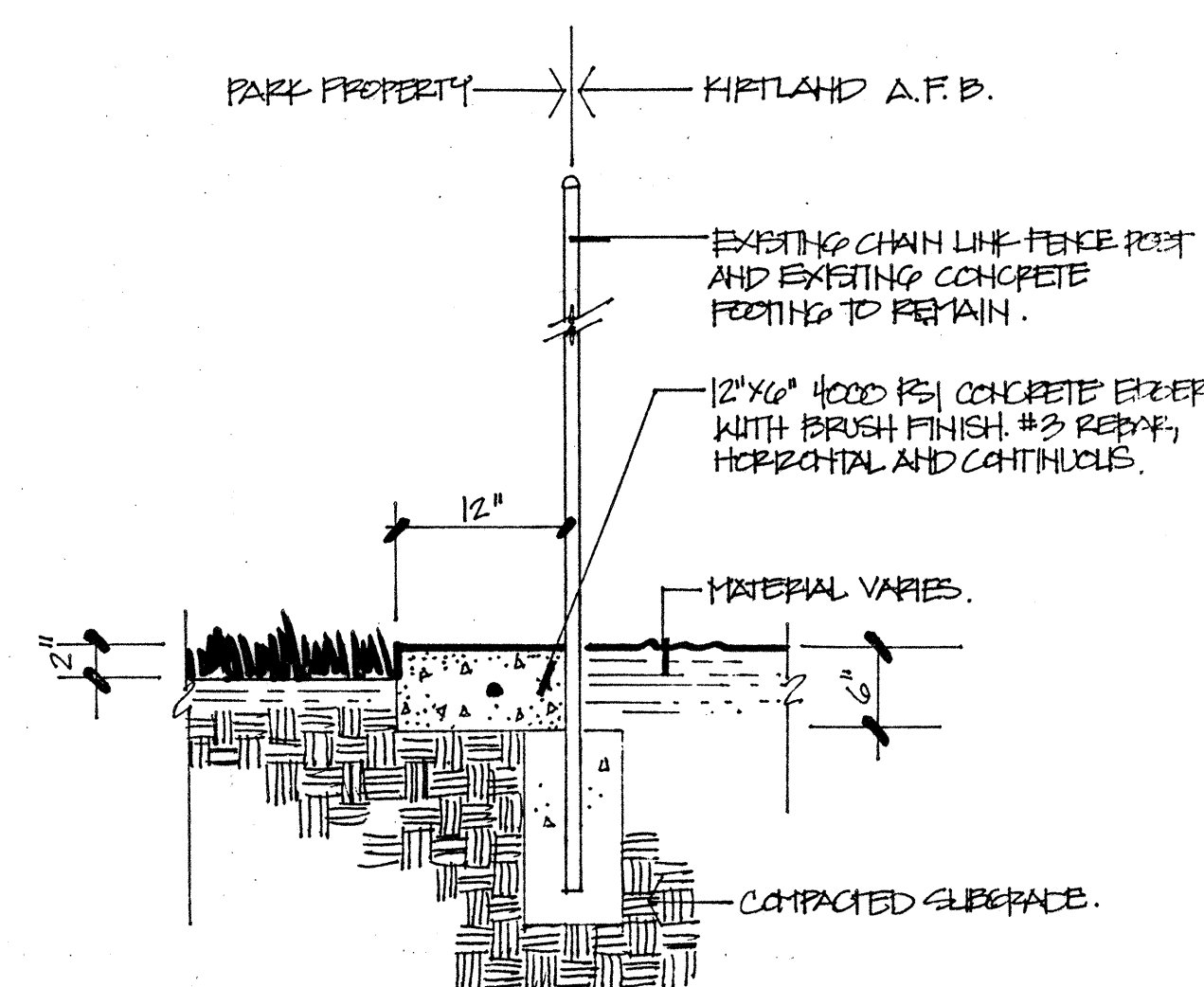


TORO M5S-1S-S-1 SCORPIO 8 STATION



- 1 #4 AWG BARE COPPER GROUND WIRE SHALL BE RUN 200' IN A TRENCH 9" DEEP AND SEPARATE FROM ANY OTHER WIRE TRENCH & INTO AN IRRIGATED AREA
- 2 TEMPLATE MUST BE PRESSED FLUSH INTO THE CONCRETE
- 3 BOLTS & SWEEP ELLS MUST EXTEND 1-1/2" FROM CONCRETE BASE
- 4 CONTRACTOR SHALL FAMILIARIZE HIMSELF WITH ALL MIR 5000 WIRING PROCEDURES FOR SENSORS, FLOWMETERS, INPUTS, & 120 VOLT WIRING
- 5 GROUND RESISTANCE MUST BE LESS THAN 10 OHMS

PEDESTAL DETAIL FOR MIR 5000 SCORPIO

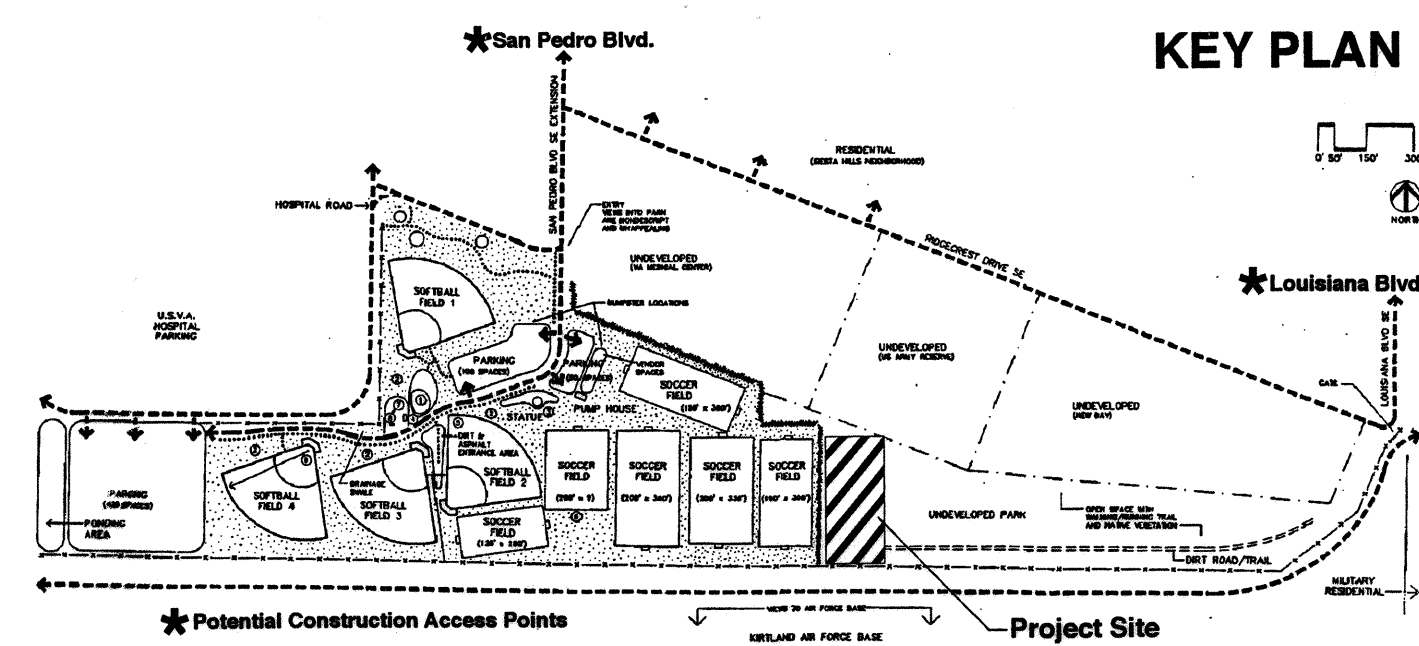


General Notes

1. A 12" wide concrete edger shall be installed on the turf side of the existing chain link fence.
2. Control joints shall be placed at 5'-0" o.c.
3. Expansion joints shall be placed at 20'-0" o.c., and where the mowstrip abuts another hard surface.

FENCE EDGER

NOT TO SCALE



KEY PLAN

DESIGNWORKSHOP
9621 4TH STREET NW
Albuquerque, NM 87114
(Tel.) 505.890.1815
(Fax) 505.890.1817

CITY OF ALBUQUERQUE CAPITAL IMPLEMENTATION PROGRAM DESIGN AND DEVELOPMENT		TITLE: BULLHEAD PARK DETAIL SHEET	
DESIGNED BY - MJB	DATE - 1/17/2007	REVISIONS	BY
DRAWN BY - MJB	DATE - 1/17/2007	NO.	DATE
CHECKED BY - WSP/MJB	DATE - 12/10/2007		
City Project No. 502091		Zone Map No. M-18-Z	Sheet 6 Of 6

AS-BUILT INFORMATION		BENCH MARKS		SURVEY INFORMATION		LANDSCAPE ARCHITECT'S SEAL	
CONTRACTOR	NO.	Location: From 125 east on Gibson 3.1 miles to Ridgecrest Dr., turn right .8 miles to Dakota St and the station on the left.	DATE	NO.	DATE	NO.	DATE
INSPECTOR'S ACCEPTANCE BY	DATE	The station mark is a standard ACS-8 brass cap-stamped "1-M18" set 0.2ft. below the ground.	DATE	BY	DATE	BY	DATE
VERIFICATION BY	DATE		DATE		DATE		DATE
DESIGNED BY	DATE		DATE		DATE		DATE
DRAWN BY	DATE		DATE		DATE		DATE
CHECKED BY	DATE		DATE		DATE		DATE
RECORDED BY	DATE		DATE		DATE		DATE
NO.							