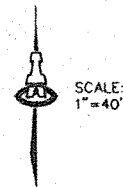
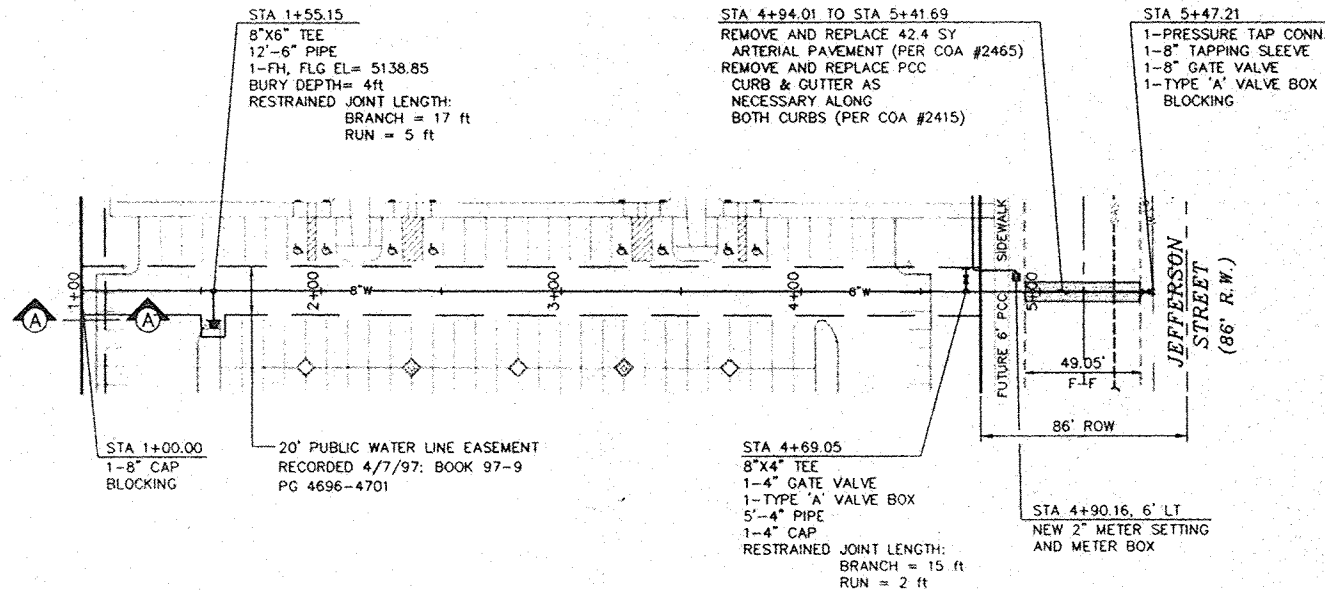


LEGEND

- PROPERTY LINE
- EXISTING WATERLINE
- EXISTING CURB AND GUTTER
- GATE VALVE W/ TYPE 'A' VALVE BOX
- FIRE HYDRANT
- WATER LINE W/ FITTING
- WATER METER SETTING & BOX
- EXISTING SANITARY SEWER LINE
- EXISTING WATERLINE

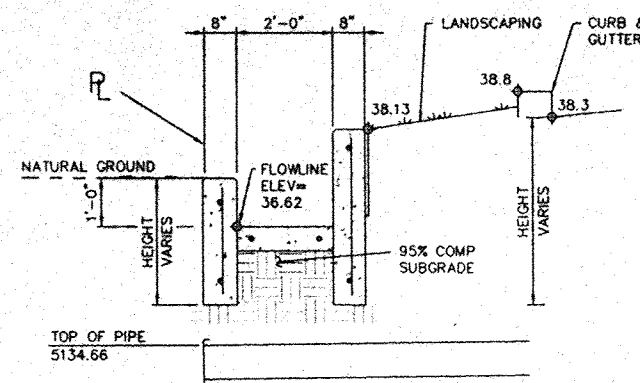


SCALE:
1"=40'



WATER LINE

SCALES:
1"=40' HOR.
1"=10' VERT.



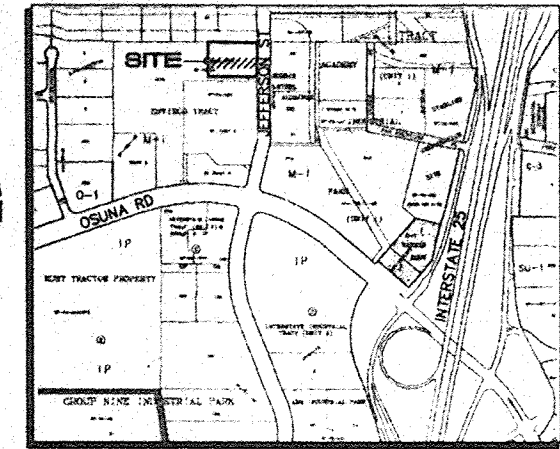
SECTION A

NTS

GENERAL NOTES

- All work detailed on these plans to be performed under contract shall, except as otherwise stated or provided for hereon, be constructed in accordance with the City of Albuquerque Standard Specifications for Public Works Construction 1986 Edition as amended with Update No. 6.
- All work on this project shall be performed in accordance with applicable federal, state, and local laws, rules, and regulations concerning construction safety and health.
- Prior to construction, the Contractor shall excavate & verify the horizontal and vertical locations of all obstructions. Should a conflict exist, the Contractor shall notify the Engineer so that the conflict can be resolved with minimum delay.
- Two (2) working days prior to any excavation, Contractor must contact Line Locating Service @ 260-1990 for location of existing utilities.
- Contractor shall conduct his operations in a manner which will minimize interference with local traffic. Contractor shall comply with all applicable laws, ordinances, rules, regulations, and orders of any public body having jurisdiction for the safety of persons or property, and to protect them from damage, injury, or loss. Contractor shall erect and maintain, as required by the conditions and progress of the work, all necessary safeguards for safety continuously and not limited to normal working hours, throughout the duration of the project. Contractor shall adhere to Section 19 of the General Conditions of the City of Albuquerque Standard Specifications for Public Works Construction, 1986, as amended with Update No. 6.
- The Contractor agrees that he shall assume the sole and complete responsibility for the job site conditions during the course of construction of this project, including safety of all persons and property; that this requirement shall apply continuously and not be limited to normal working hours; and that the Contractor shall defend, indemnify, and hold harmless the Owner & Engineer from any and all liability real or alleged, in connection with the performance of work on this project, excepting liability arising from the sole negligence of the Owner or Engineer.
- TRAFFIC CONTROL: Three (3) working days prior to beginning construction the Contractor shall submit to the Construction Coordination Division a detailed construction schedule. Two (2) working days prior to construction, the Contractor shall obtain a barricading permit from the Construction Coordination Division. Contractor shall notify Barricade Engineer (768-2551) prior to occupying an intersection. See section 19 of the specifications. All street striping altered or destroyed shall be replaced with plastic reflectorized pavement markings by Contractor to location as existing or as shown in this plan set at no additional cost to the Owner.
- When abutting existing pavement to new, sawcut existing pavement to a straight edge and at a right angle, or as approved by the field Engineer. Removal of broken or cracked pavement will also be required.
- Existing curb and gutter not to be removed under the contract which is damaged or displaced by the Contractor shall be removed and replaced by the Contractor at his expense.
- All final backfill for trenches shall be compacted to a minimum 90% maximum density per ASTM D-1557 and as directed by section 701.14.2 and standard drawing number 2315.
- The Contractor shall promptly clean up any material excavated within the public right-of-way or private roadway easements so that the excavated material is not susceptible to being washed down the street or into any public drainage facility.
- Proposed waterline materials shall be either PVC pipe meeting AWWA C900 requirements (6"-12") or ductile iron pipe, thickness class 50 (6"-16").
- All sanitary sewer line stationing refers to sanitary sewer centerline stationing.
- All fittings on waterlines shall have restrained joints as noted on the plans.
- Contractor shall support all existing, underground utility lines which become exposed during construction. Payment for supporting work shall be incidental to waterline and/or sewerline costs.
- Contractor shall assist the Engineer/Inspector in the recording of data on all utility lines and accessories as required by the City of Albuquerque for the preparation of record drawings. Contractor shall not cover utility lines and accessories until all data has been recorded.
- The Contractor is responsible for protecting and maintaining all existing monumentation controls. In the event of inadvertent destruction or alteration, the Contractor must immediately notify the City Chief Surveyor.
- PNM will provide at no cost to the City or the Contractor the required personnel for inspection or observation deemed necessary by PNM while the Contractor is exposing PNM's cables. However, the Contractor shall be charged the total cost associated with repairs to any damaged cables or for any cost associated with supporting or relocating the poles and cables during construction.
- WARNING--EXISTING UTILITY LINE LOCATIONS are shown in an approximate manner only, and such lines may exist where none are shown. The location of any such existing lines is based upon information provided by the utility company, the Owner, or by others, and the information may be incomplete or may be obsolete by the time construction commences.

The Engineer has undertaken no field verification of the location, depth, size, or type of existing underground utility lines, makes no representation pertaining thereto, and assumes no responsibility or liability therefor. The Contractor shall inform itself of the location of any utility line in or near the area of the work in advance of and during excavation work. The Contractor is fully responsible for any and all damage caused by its failure to locate, identify, and preserve any and all existing utilities. The Contractor shall comply with State statutes, municipal and local ordinances, rules and regulations pertaining to the location of these lines and facilities, in planning and conducting excavation, whether by calling or notifying the utilities, complying with "Blue Stakes" procedures, or otherwise.
- Any work occurring within an arterial roadway requires 24 hr. construction.



E-17

VICINITY MAP

1"=750'±

APPROVED CONSTRUCTION DRAWING ONLY
Completion not verified

James Becker 9-9-19

LEGAL DESCRIPTION: ENVIRCO-TRACT
LOT 1-A-1-B AND 1-A-1-A TRACT
D3

BENCH MARK:
ACS MONUMENT "8-DIA"
ELEVATION= 5145.55

JEFFERSON/OSUNA OFFICE BUILDING
PUBLIC WATERLINE

ISAACSON & ARFMAN, P.A.
Consulting Engineering Associates
128 Monroe Street N.E.
Albuquerque New Mexico
904UTL2.DWG.drv 5/1/97

--	--	--	--	--	--	--	--	--	--	--	--	--	--	--	--	--	--	--	--	--	--	--	--	--	--	--	--	--	--	--	--	--	--	--	--	--	--	--	--	--	--	--	--	--	--	--	--	--	--	--	--	--	--	--	--	--	--	--	--	--	--	--	--	--	--	--	--	--	--	--	--	--	--	--	--	--	--	--	--	--	--	--	--	--	--	--	--	--	--	--	--	--	--	--	--	--	--	--	--	--	--	--	--	--	--	--	--	--	--	--	--	--	--	--	--	--	--	--	--	--	--	--	--	--	--	--	--	--	--	--	--	--	--	--	--	--	--	--	--	--	--	--	--	--	--	--	--	--	--	--	--	--	--	--	--	--	--	--	--	--	--	--	--	--	--	--	--	--	--	--	--	--	--	--	--	--	--	--	--	--	--	--	--	--	--	--	--	--	--	--	--	--	--	--	--	--	--	--	--	--	--	--	--	--	--	--	--	--	--	--	--	--	--	--	--	--	--	--	--	--	--	--	--	--	--	--	--	--	--	--	--	--	--	--	--	--	--	--	--	--	--	--	--	--	--	--	--	--	--	--	--	--	--	--	--	--	--	--	--	--	--	--	--	--	--	--	--	--	--	--	--	--	--	--	--	--	--	--	--	--	--	--	--	--	--	--	--	--	--	--	--	--	--	--	--	--	--	--	--	--	--	--	--	--	--	--	--	--	--	--	--	--	--	--	--	--	--	--	--	--	--	--	--	--	--	--	--	--	--	--	--	--	--	--	--	--	--	--	--	--	--	--	--	--	--	--	--	--	--	--	--	--	--	--	--	--	--	--	--	--	--	--	--	--	--	--	--	--	--	--	--	--	--	--	--	--	--	--	--	--	--	--	--	--	--	--	--	--	--	--	--	--	--	--	--	--	--	--	--	--	--	--	--	--	--	--	--	--	--	--	--	--	--	--	--	--	--	--	--	--	--	--	--	--	--	--	--	--	--	--	--	--	--	--	--	--	--	--	--	--	--	--	--	--	--	--	--	--	--	--	--	--	--	--	--	--	--	--	--	--	--	--	--	--	--	--	--	--	--	--	--	--	--	--	--	--	--	--	--	--	--	--	--	--	--	--	--	--	--	--	--	--	--	--	--	--	--	--	--	--	--	--	--	--	--	--	--	--	--	--	--	--	--	--	--	--	--	--	--	--	--	--	--	--	--	--	--	--	--	--	--	--	--	--	--	--	--	--	--	--	--	--	--	--	--	--	--	--	--	--	--	--	--	--	--	--	--	--	--	--	--	--	--	--	--	--	--	--	--	--	--	--	--	--	--	--	--	--	--	--	--	--	--	--	--	--	--	--	--	--	--	--	--	--	--	--	--	--	--	--	--	--	--	--	--	--	--	--	--	--	--	--	--	--	--	--	--	--	--	--	--	--	--	--	--	--	--	--	--	--	--	--	--	--	--	--	--	--	--	--	--	--	--	--	--	--	--	--	--	--	--	--	--	--	--	--	--	--	--	--	--	--	--	--	--	--	--	--	--	--	--	--	--	--	--	--	--	--	--	--	--	--	--	--	--	--	--	--	--	--	--	--	--	--	--	--	--	--	--	--	--	--	--	--	--	--	--	--	--	--	--	--	--	--	--	--	--	--	--	--	--	--	--	--	--	--	--	--	--	--	--	--	--	--	--	--	--	--	--	--	--	--	--	--	--	--	--	--	--	--	--	--	--	--	--	--	--	--	--	--	--	--	--	--	--	--	--	--	--	--	--	--	--	--	--	--	--	--	--	--	--	--	--	--	--	--	--	--	--	--	--	--	--	--	--	--	--	--	--	--	--	--	--	--	--	--	--	--	--	--	--	--	--	--	--	--	--	--	--	--	--	--	--	--	--	--	--	--	--	--	--	--	--	--	--	--	--	--	--	--	--	--	--	--	--	--	--	--	--	--	--	--	--	--	--	--	--	--	--	--	--	--	--	--	--	--	--	--	--	--	--	--	--	--	--	--	--	--	--	--	--	--	--	--	--	--	--	--	--	--	--	--	--	--	--	--	--	--	--	--	--	--	--	--	--	--	--	--	--	--	--	--	--	--	--	--	--	--	--	--	--	--	--	--	--	--	--	--	--	--	--	--	--	--	--	--	--	--	--	--	--	--	--	--	--	--	--	--	--	--	--	--	--	--	--	--	--	--	--	--	--	--	--	--	--	--	--	--	--	--	--	--	--	--	--	--	--	--	--	--	--	--	--	--	--	--	--	--	--	--	--	--	--	--	--	--	--	--	--	--	--	--	--	--	--	--	--	--	--	--	--	--	--	--	--	--	--	--	--	--	--	--	--	--	--	--	--	--	--	--	--	--	--	--	--	--	--	--	--	--	--	--	--	--	--	--	--	--	--	--	--	--	--	--	--	--	--	--	--	--	--	--	--	--	--	--	--	--	--	--	--	--	--	--	--	--	--	--	--	--	--	--	--	--	--	--	--	--	--	--	--	--	--	--	--	--	--	--	--	--	--	--	--	--	--	--	--	--	--	--	--	--	--	--	--	--	--	--	--	--	--	--	--	--	--	--	--	--	--	--	--	--	--	--	--	--	--	--	--	--	--	--	--	--	--	--	--	--	--	--	--	--	--	--	--	--	--	--	--	--	--	--	--	--	--	--	--	--	--	--	--	--	--	--	--	--	--	--	--	--	--	--	--	--	--	--	--	--	--	--	--	--	--	--	--	--	--	--	--	--	--	--	--	--	--	--	--	--	--	--	--	--	--	--	--	--	--	--	--	--	--	--	--	--	--	--	--	--	--	--	--	--	--	--	--	--	--	--	--	--	--	--	--	--	--	--	--	--	--	--	--	--	--	--	--	--	--	--	--	--	--	--	--	--	--	--	--	--	--	--	--	--	--	--	--	--	--	--	--	--	--	--	--	--	--	--	--	--	--	--	--	--	--	--	--	--	--	--	--	--	--	--	--	--	--	--	--	--	--	--	--	--	--	--	--	--	--	--	--	--	--	--	--	--	--	--	--	--	--	--	--	--	--	--	--	--	--	--	--	--	--	--	--	--	--	--	--	--	--	--	--	--	--	--	--	--	--	--	--	--	--	--	--	--	--	--	--	--	--	--	--	--	--	--	--	--	--	--	--	--	--	--	--	--	--	--	--	--	--	--	--	--	--	--	--	--	--	--	--	--	--	--	--	--	--	--	--	--	--	--	--	--	--	--	--	--	--	--	--	--	--	--	--	--	--	--	--	--	--	--	--	--	--	--	--	--	--	--	--	--	--	--	--	--	--	--	--	--	--	--	--	--	--	--	--	--	--	--	--	--	--

5679.81