

DEMOLITION PLAN

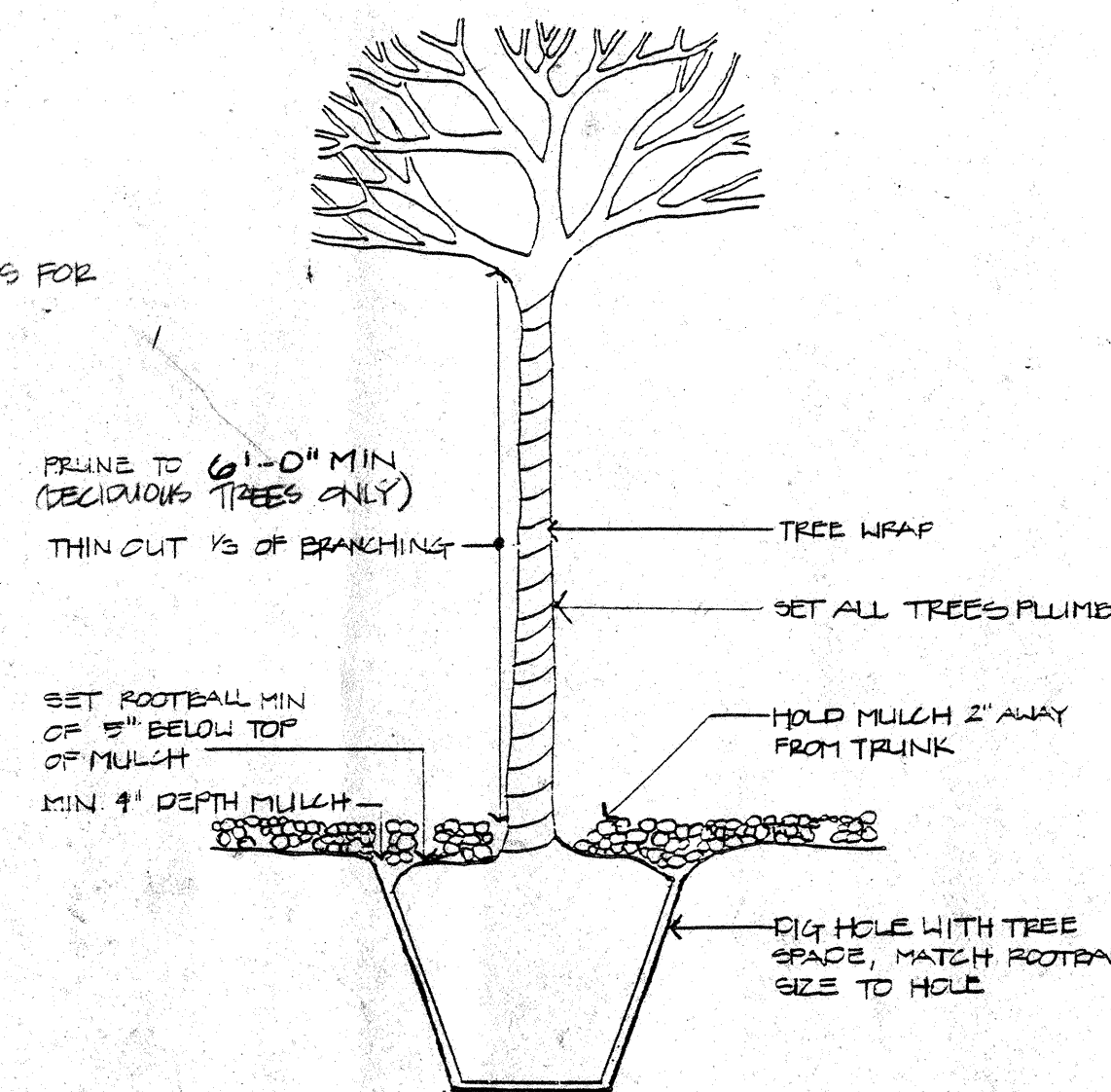
scale 1"=20'

DEMOLITION NOTES

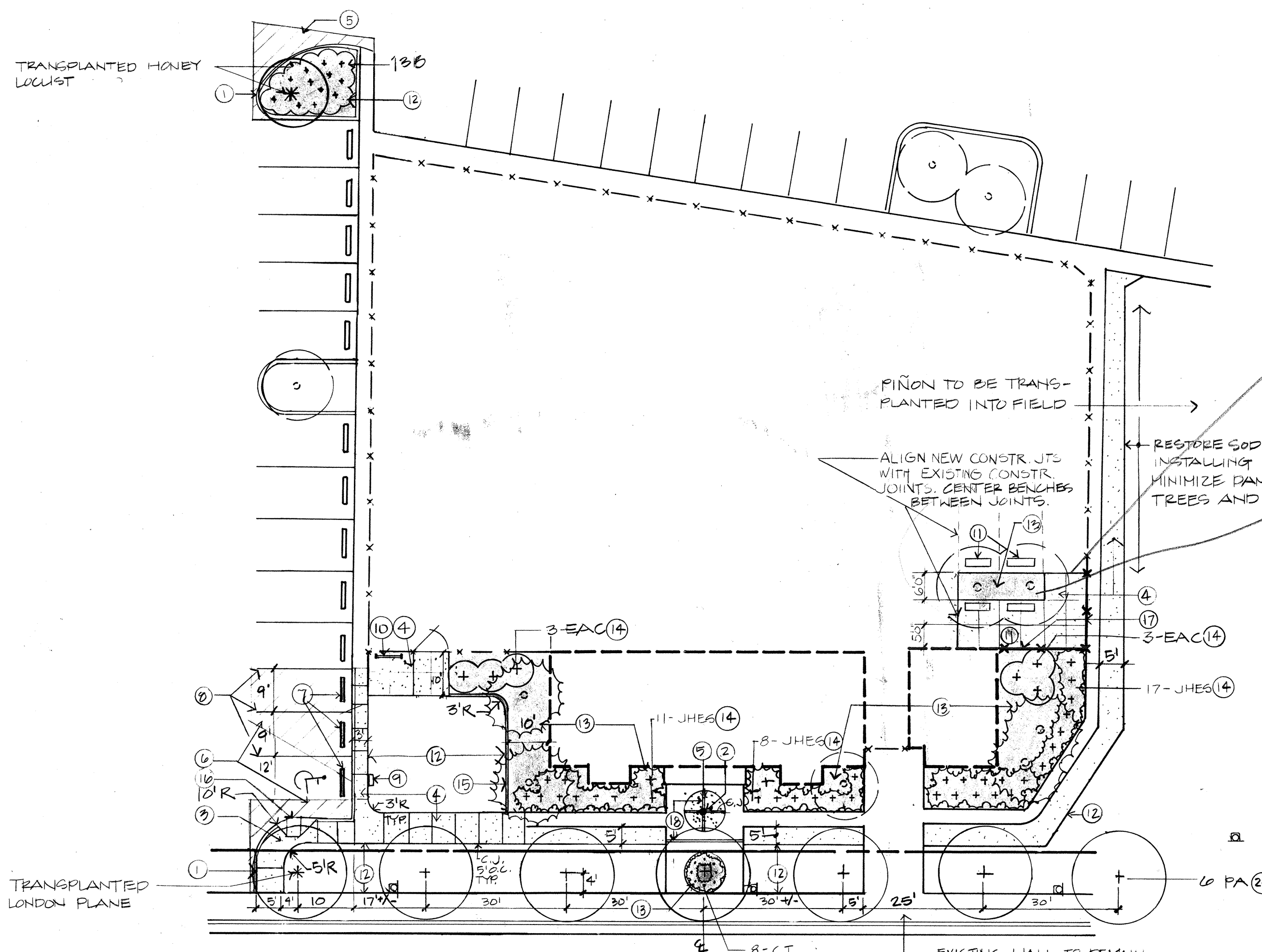
- R-1 REMOVE ABANDONED VALVES AND VALVE BOX.
- R-2 REMOVE SECTION OF FENCE, GRIND PIPE FLUSH W/ CONCRETE, FILL PIPE BELOW GRADE W/ NON-SHRINK GROUT.
- R-3 REMOVE MOW CURB
- R-4 REMOVE ASPHALT
- R-5 REMOVE CONCRETE CURBING
- R-6 REMOVE CONCRETE WALK AND PAVING
- R-7 REMOVE SHRUBS AND/OR TREE
- R-8 TRANSPLANT TREE TO LOCATION SHOWN ON PLANTING PLAN, SEE NOTES FOR TRANSPLANTING & TREE TRANSPLANTING DETAIL
- R-9 REMOVE POOL
- R-10 REMOVE REDWOOD HEADER

NOTES FOR TRANSPLANTING

- A. TRANSPLANT ONLY BETWEEN DECEMBER 1 AND MARCH 1.
- B. PRUNE OFF 1/3 OF PLANT WHERE PRACTICAL, SPRAY WITH ANTI-DESICANT AND WATER GROUND HEAVILY WHEN TEMPERATURES ARE ABOVE 35°F, FOR 5 DAYS PRIOR TO DIGGING.
- C. TREES SHALL BE TRANSPLANTED BY USE OF MECHANICAL TREE SPACE PROVIDING A 50' ROOTBALL.
- D. MATERIALS SHALL BE DUG AND TRANSPLANTED ON THE SAME DAY.
- E. PLANT TREES AND SHRUBS PER PLANTING DETAILS.



TREE TRANSPLANTING DETAIL



CONSTRUCTION & PLANTING PLAN

scale 1"=20'

CONSTRUCTION NOTES

1. INSTALL CITY OF ALBUQUERQUE STANDARD CURBS & GUTTER, HEADER TYPE CURBS, PER DRAWING 2415. TOP OF CURB TO BE 6" ABOVE EXISTING ASPHALT ELEVATIONS. NOSE CURB IN LAST 1'-0" NEW SOD TO BE FLUSH W/ TOP OF CURB.
2. INSTALL DRAIN PER 3/2
3. INSTALL 6" THICK CONCRETE PAVING W/ 6X6 W1.4 WIRE MESH, OVER COMPACTED SUBGRADE. INSTALL MESH IN VICINITY OF HANDICAP RAMP ONLY.
4. INSTALL 4" THICK CONCRETE SIDEWALK OVER COMPACTED SUBGRADE. ALIGN NEW JOINTS W/ EXISTING JOINTS. MEET ADJACENT CONCRETE ELEVATIONS. OTHER NEW EXPANSION AND CONTRACTION JOINTS TO BE PER C.O.A. STD. SPECIFICATIONS
5. INSTALL 4" THICK EXPOSED AGGREGATE SLAB. PROTECT ADJACENT PAVING FROM WASHOFF.
6. INSTALL CITY OF ALBUQUERQUE ASPHALT, PAVEMENT SECTION PER DRAWING 2405.
7. INSTALL 6' LONG FRECAST WHEELSTOPS, FIN DOWN W/ 2/14 REBAR PER WHEELSTOP.
8. INSTALL STRIPING, COLOR AND WIDTH TO MATCH OTHER ON SITE STRIPING.
9. INSTALL HANDICAPPED PARKING SYMBOL & SIGN PER 1/2 2
10. INSTALL PATTERSON-WILLIAMS 1003 OF SINGLE SIDELOAD BITE BACK USING ANCHOR BOLTS.
11. INSTALL BENCHES, 4 TOTAL, POLYURETHANE BENCH WITH BACK, SURFACE MOUNT AND 4 ANCHOR BOLTS.
12. SOD WHERE REQUIRED, REPLACE FOR GRADE TRANSITION OR OVER ANY DISTURBED AREA.
13. INSTALL BARK MULCH, 4" DEEP
14. INSTALL SHRUBS PER 4/2
15. INSTALL 6"X6" CONCRETE MOW CURB PER 6/2
16. INSTALL HANDICAP RAMP, SEE CITY OF ALBUQUERQUE DWG. 2441.
17. INSTALL NEW FENCE SEE C.O.A. DWG 2252 HEIGHT TO MATCH EXISTING. INSTALL NEW CONCRETE SLAB OVER POST FOOTINGS.

PLANT SCHEDULE

SYM.	QTY	BOTANICAL NAME	COMMON NAME	SIZE
PA	6	Platanus acerifolia	LONDON PLANE	2 1/2" cal. 5' H
JHES	36	Juniperus horizontalis 'Emerald Spreader'	EMERALD SPREADER	4' O.C. 5 gal.
EAC	14	Euonymus alatus 'compacta'	DWARF EUONYMUS	5' O.C. 5 gal.
CT	8	Cerastium tomentosum	SNOW-IN-SUMMER	2' O.C. 1 gal.
B	13	Barberry - species to match existing	BARBERRY	3' O.C. 5 gal.

- 18. INSTALL 2x4 REDWOOD HEADER IN JOINT
- 19. REPAINT LOWER 6' OF EXISTING FLAGPOLE TAN.
- 20. INSTALL TREES PER 5/2

PLANTING NOTES- SECTION 'C'

OVERSEED AREAS WHERE IRRIGATION TRENCHING HAS OCCURRED. MIX TALL-TURF TYPE FESCUE AND PERENNIAL RYE WITH 10-15% BLUE GRASS. SELECT FROM THE FOLLOWING CULTIVARS:

IN ALL CASES, WHEN MIXING SEEDS OF DIFFERENT SPECIES OR CULTIVARS OF THE SAME SPECIES, IT SHOULD BE EQUAL PARTS OF EACH OF THE COMPONENTS BY WEIGHT.

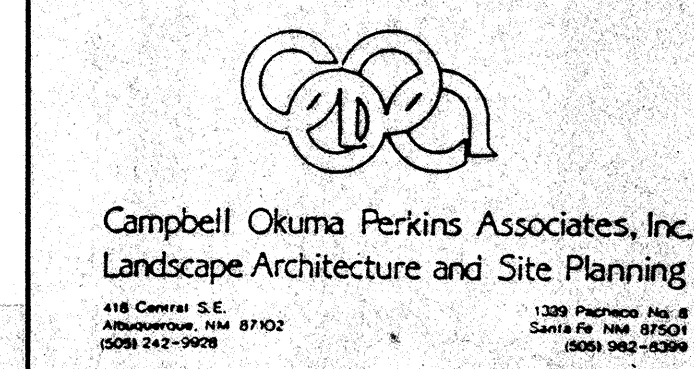
RECOMMENDED CULTIVARS

PERENNIAL RYE: PENNINE, MANHATTAN, PENNANT, BETSIE, SYMPHONY AND TRILOGY. THE LAST TWO ARE PERENNIAL RYE BLENDS.

TURF-TYPE TALL FESCUE: FALCON, HOUNDDOG, MUSTANG, MUSTANG II, AND REBEL.

KENTUCKY BLUEGRASS: GLADE, ADELPHI, TOUCHDOWN, BRUNSWICK, PARADE AND RUGBY.

POST STILL HERE
FENCE MUST BE
PUT UP
SUGGEST GATE OVER
TREES & REMOVE
BARK



CITY OF ALBUQUERQUE
PARKS AND RECREATION
DESIGN AND DEVELOPMENT

TITLE: MONTGOMERY PARK - POOL AREA - DEMOLITION
CONSTRUCTION & PLANTING PLAN

CLASS II CONSTRUCTION PROJECT BY PARK MANAGEMENT

APPROVALS	ENGINEER	DATE	APPROVALS	ENGINEER	DATE
D.R.C. Chair					
Trans. Dev.					
Utility Dev.					

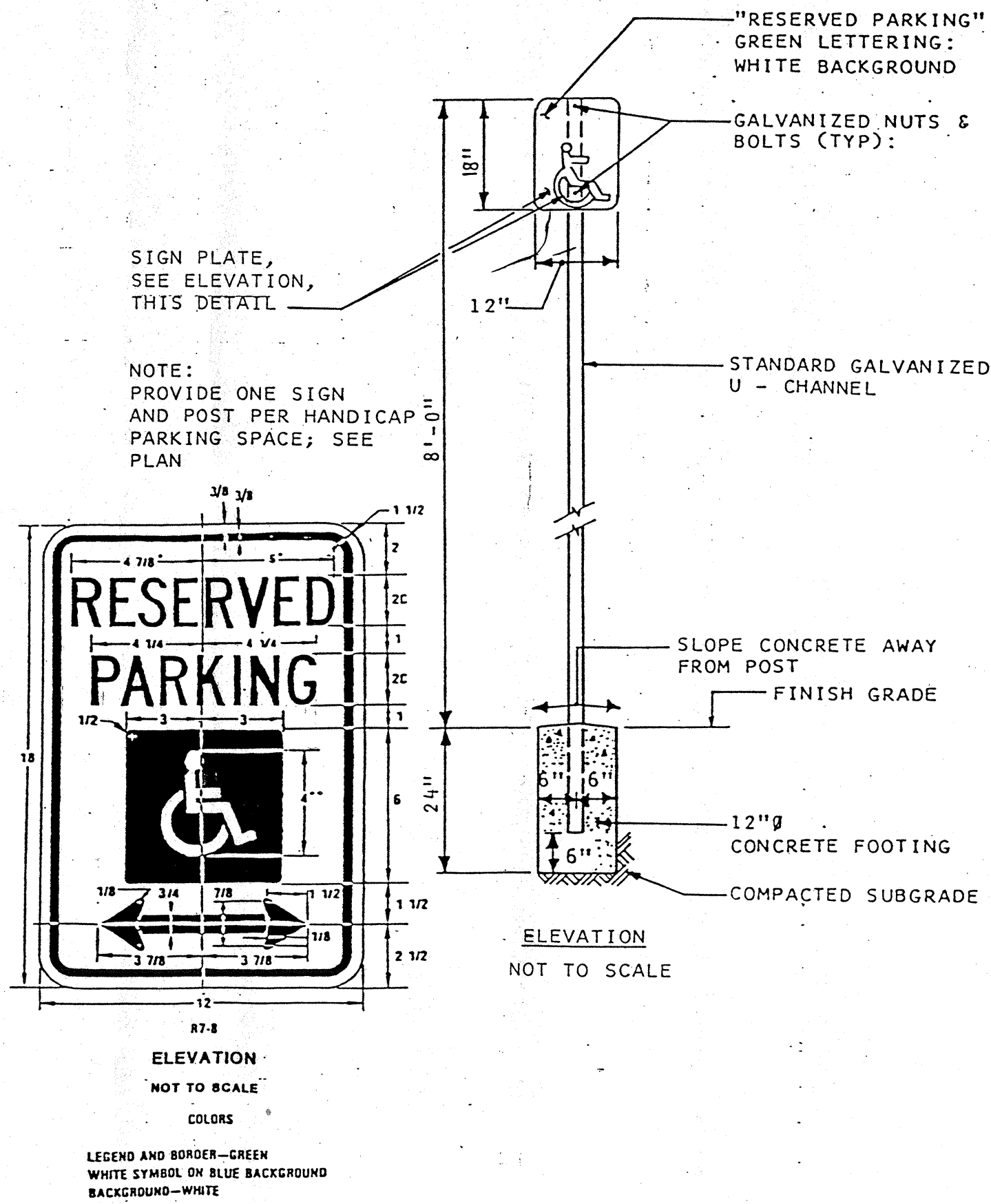
DRAWING NO. 9-18-2 MAP NO. SHEET 1 OF 4

CITY PROJECT #: 572404

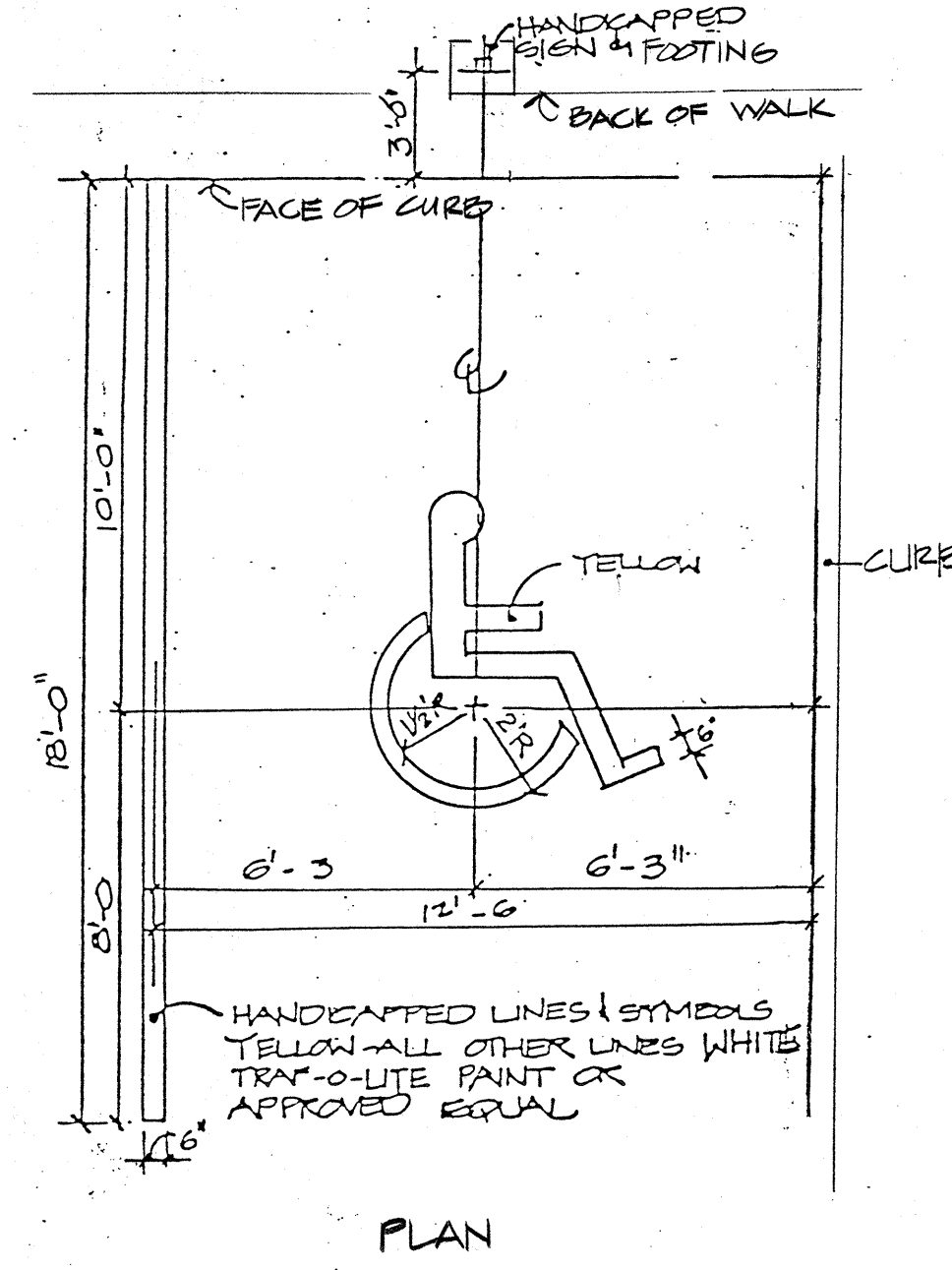
DATE: 1/10/89

FINAL FOR CONSTRUCTION

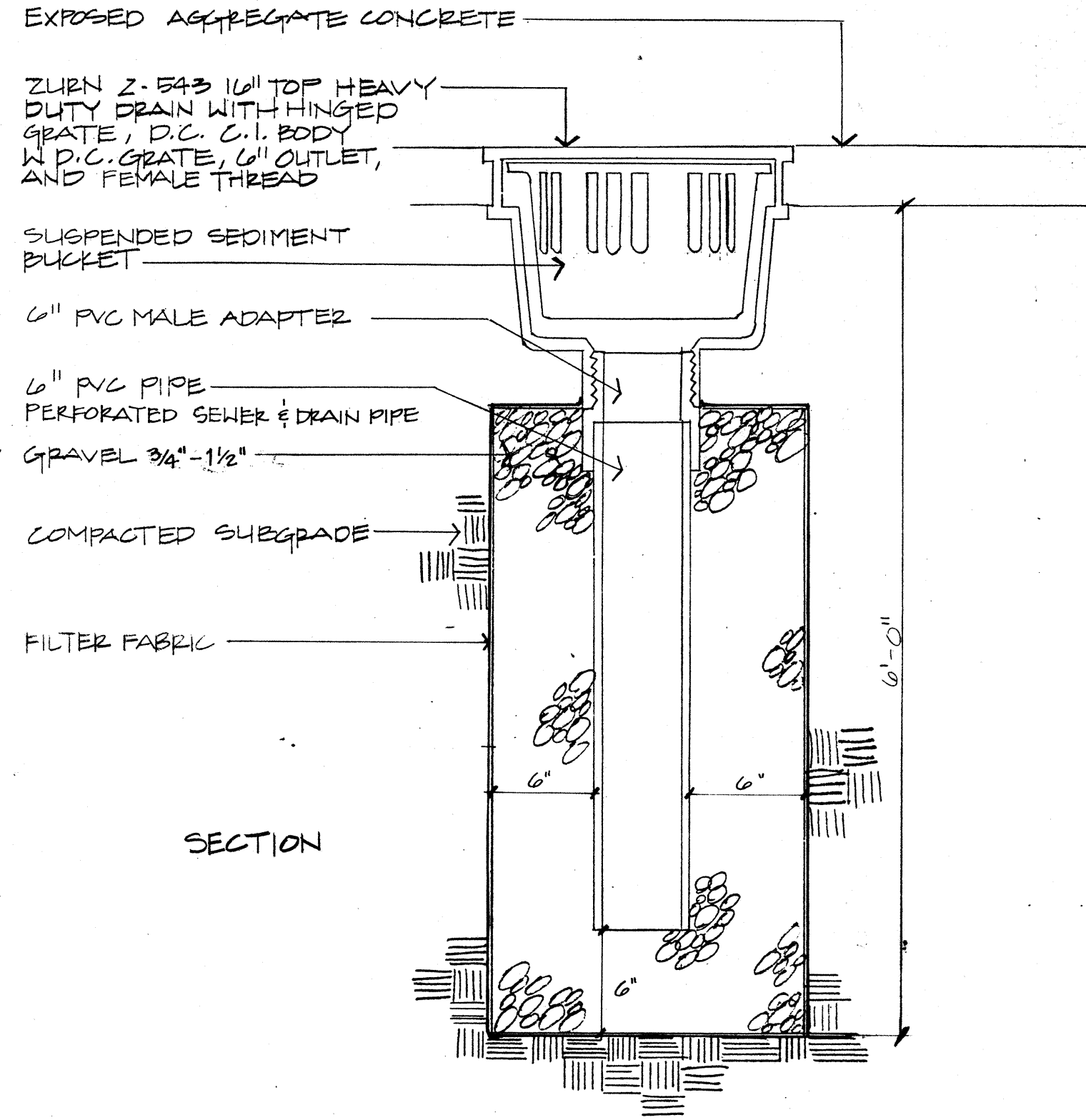
Montgomery Park Section C + Pool Area



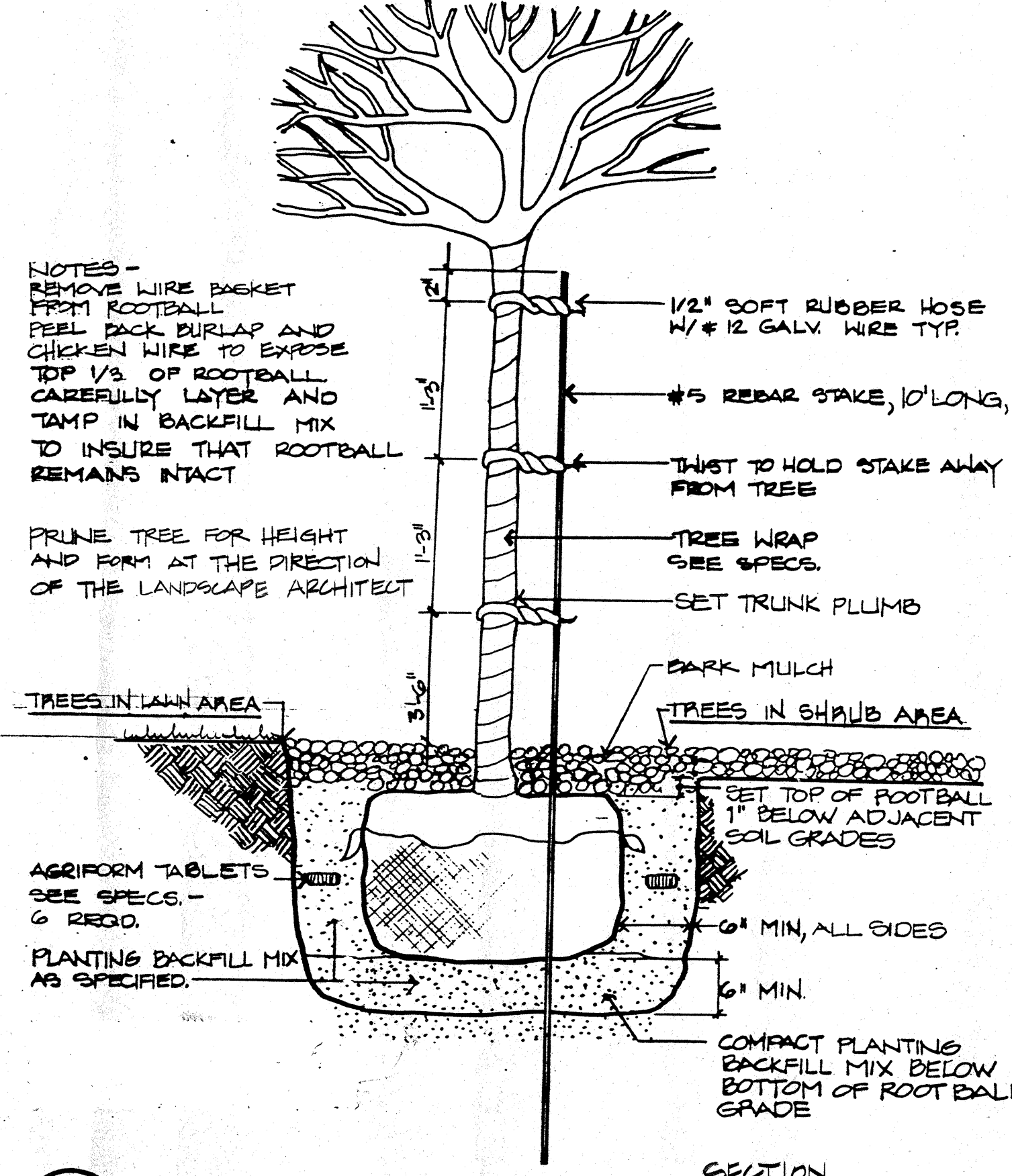
1 HANDICAPPED PARKING SIGN N.T.S.



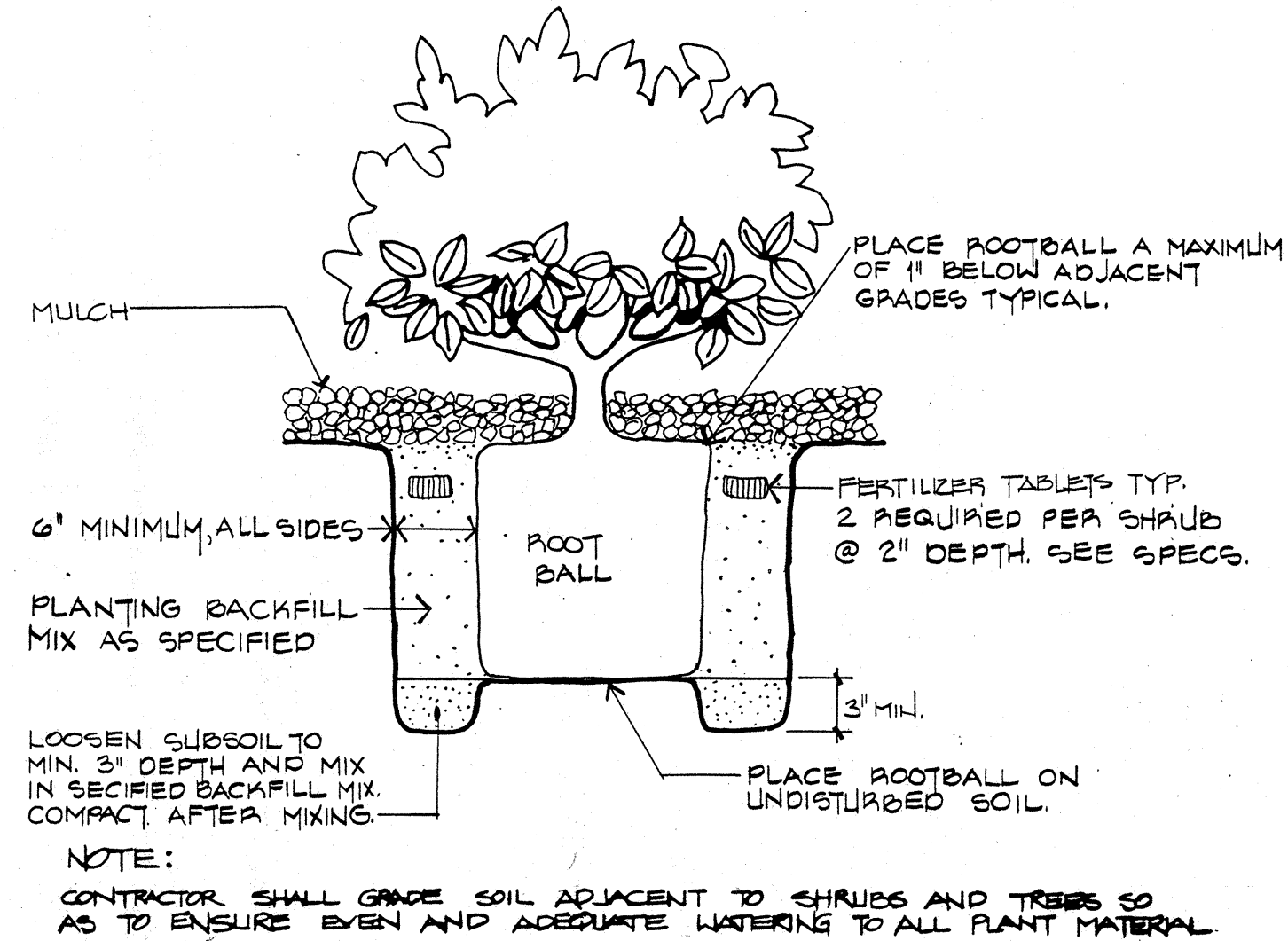
2 HANDICAPPED PARKING STRIPING DETAIL N.T.S.



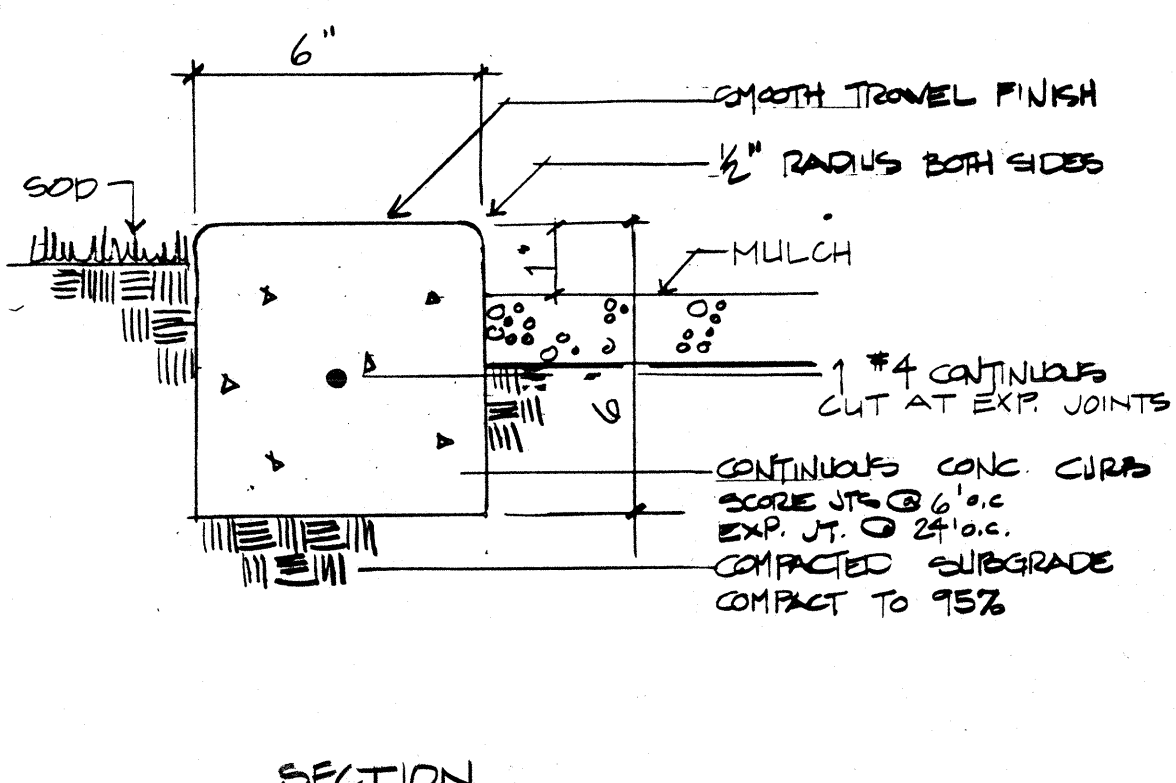
3 DRAIN DETAIL N.T.S.



4 TREE PLANTING DETAIL N.T.S.



5 SHRUB PLANTING DETAIL N.T.S.

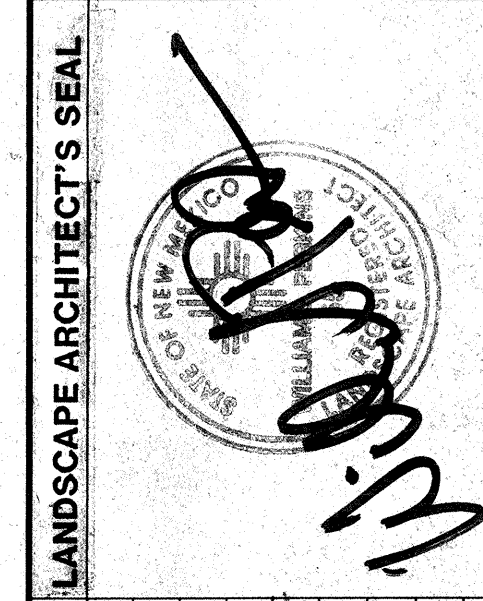


6 CONCRETE MOW CURB N.T.S.

AS BUILT INFORMATION			
CONTRACTOR	DATE	DATE	DATE
WORK	DATE	DATE	DATE
STAKE BY	DATE	DATE	DATE
ASPECT BY	DATE	DATE	DATE
FIELD	DATE	DATE	DATE
ADJUSTMENT BY	DATE	DATE	DATE
REVISIONS	DATE	DATE	DATE
CORRECTED BY	DATE	DATE	DATE
NO.	DATE	DATE	DATE

BENCH MARKS			
NO.	DATE	DATE	DATE
NO.	DATE	DATE	DATE
NO.	DATE	DATE	DATE
NO.	DATE	DATE	DATE

SURVEY INFORMATION			
FIELD NOTES	DATE	DATE	DATE
NO.	DATE	DATE	DATE
NO.	DATE	DATE	DATE
NO.	DATE	DATE	DATE

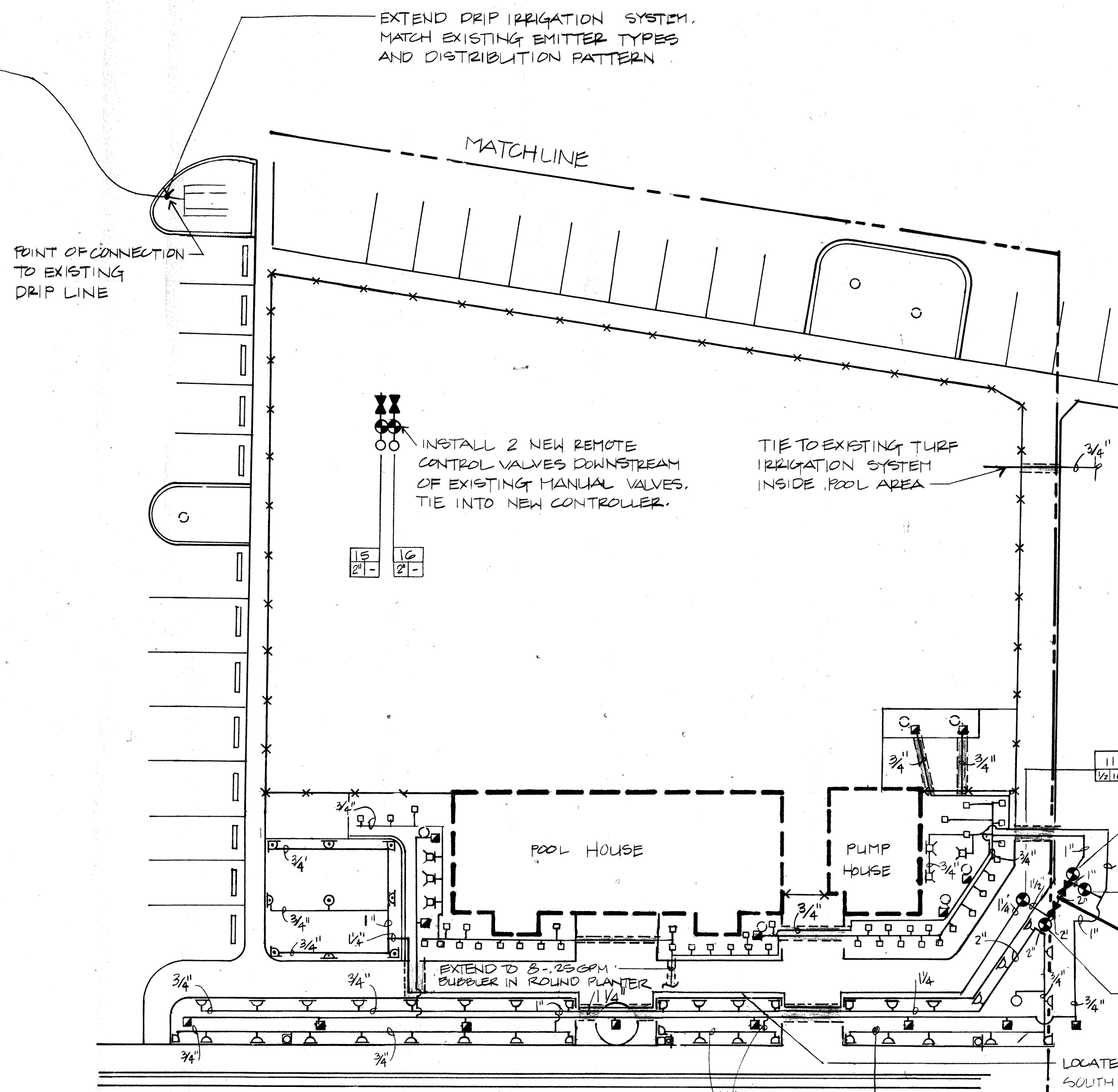


REVISIONS			
NO.	DATE	BY	DATE
NO.	DATE	BY	DATE
NO.	DATE	BY	DATE
NO.	DATE	BY	DATE

Campbell Okuma Perkins Associates, Inc.
Landscape Architecture and Site Planning
418 Central S.E.
Albuquerque, N.M. 87102
(505) 243-1000

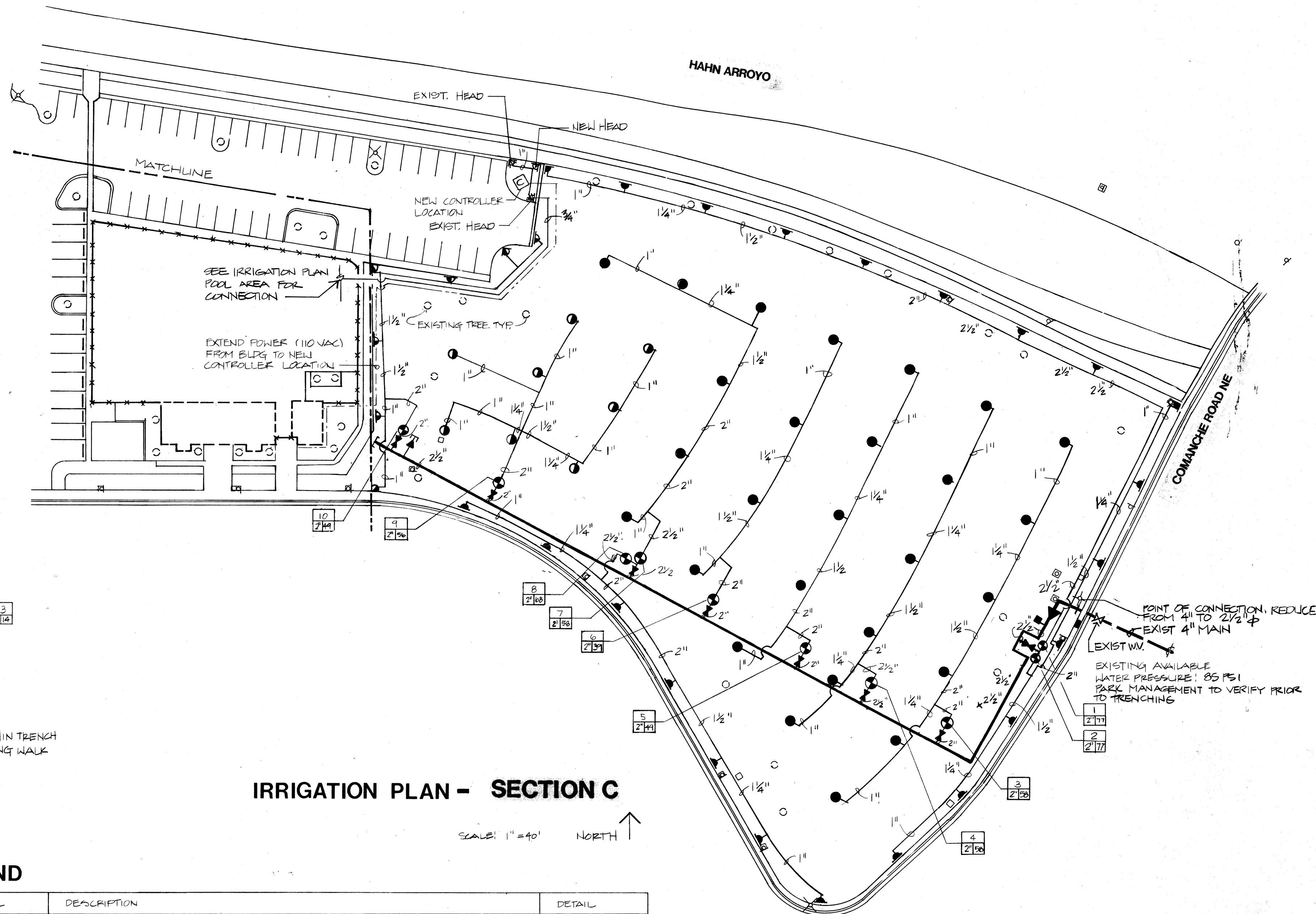
1339 Piedmont Ave. S.
Santa Fe, N.M. 87501
(505) 982-0000

CITY OF ALBUQUERQUE PARKS & RECREATION DESIGN & DEVELOPMENT					
TITLE: MONTGOMERY PARK					
SITE DETAILS					
CLASS II CONSTRUCTION PROJECT BY PARK MANAGEMENT					
APPROVALS	ENGINEER	DATE	APPROVALS	ENGINEER	DATE
DRC CHAIRMAN			LIQUID WASTE		
DESIGN			TRAFFIC		
HYDROLOGY			WATER		
PARKS & REC					
DRAWING NO.	MAP NO. G-18-Z	SHEET 2	OF 4		



IRRIGATION PLAN - POOL AREA

SCALE 1"=20' NORTH



IRRIGATION PLAN - SECTION C

SCALE 1"=40' NORTH

IRRIGATION NOTES

- LINE SIZES NOTED ABOVE ARE BASED ON THE FOLLOWING MINIMUM GALLONAGE/LINE SIZE RELATIONSHIPS:

GALLONAGE	LINE SIZE - DIAMETER
0 - 10 GPM	3/4"
11 - 15 GPM	1"
16 - 25 GPM	1-1/4"
26 - 40 GPM	1-1/2"
41 - 60 GPM	2"
60 - 100 GPM	2-1/2"
- POSITION IRRIGATION LINES TO MINIMIZE IMPACT ON ROOT SYSTEMS OF EXISTING TREES. 8" AWAY FROM TREE FOR EACH INCH OF CALIPER.
- PRECIPITATION RATE CALCULATIONS

HUNTER I-40-360-41: 33 INCHES/HR. @ 50 PSI

HUNTER I-40-180-41: RUN @ 1/2 THE TIME OF FULL CIRCLE HEADS FOR APPROXIMATE MATCHED PRECIPITATION RATE

RAINBIRD 1804-15: 1.58 INCHES/HR. @30 PSI

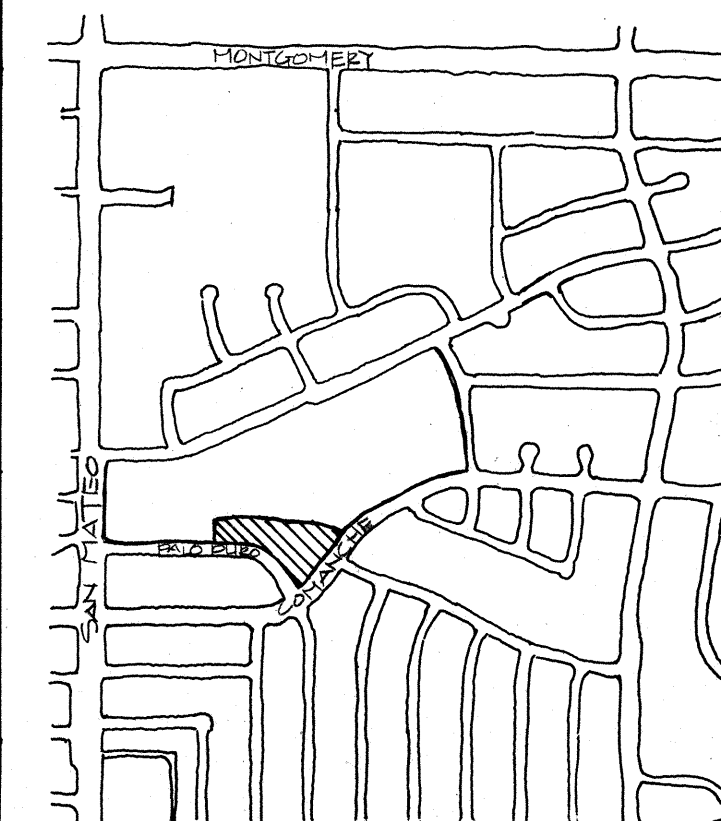
RAINBIRD 1804-10: 1.58 INCHES/HR. @30 PSI
- PRIOR TO THE START OF CONSTRUCTION, THE LOCATIONS OF ALL EXISTING UTILITY LINES SHALL BE MARKED. VERIFY LOCATIONS WITH THE CITY OF ALBUQUERQUE AND ALL PUBLIC UTILITIES.
- CONCRETE THRUST BLOCKS SHALL BE PROVIDED WHERE NECESSARY, AT DIRECTIONAL CHANGES AND SIZE CHANGES, VALVES, TERMINATIONS, OR AT ANY OTHER POINTS OF THE SYSTEM THAT WILL RESULT IN AN UNBALANCED THRUST. FOR EQUIPMENT 2-1/2" AND LARGER, THRUST BLOCKS SHALL BE POURED AGAINST UNDISTURBED EARTH. SEE DETAIL.
- CONTROL WIRES SHALL BE IDENTIFIED WITH E-2 CODER WDR SERIES TAPE AT VALVE AND CONTROLLER.
- THE SYSTEM IS DESIGNED FOR 77 GPM WITH 50 PSI NEEDED AT THE HEAD. PRESSURE AT THE POINT OF CONNECTION IS ESTIMATED TO BE 25 PSI. VERIFY PRESSURE PRIOR TO START OF MAINLINE TAP. POINT OF CONNECTION PSI INFORMATION PROVIDED BY JACK McDONOUGH, UTILITY DEVELOPMENT DIVISION.
- WHEN LOCATING HEADS IN THE FIELD, CARE SHALL BE TAKEN TO SPACE HEADS AS SHOWN ON THE PLAN. HOWEVER, MINOR ADJUSTMENTS IN THE HEAD LAYOUT MAY BE REQUIRED TO MEET MINOR VARIATIONS BETWEEN PLAN DIMENSIONS AND SITE DIMENSIONS.
- SPRINKLER HEADS SHALL BE ADJUSTED AS NECESSARY TO ACHIEVE HEAD TO HEAD COVERAGE. ADJUSTMENTS SHALL BE MADE TO PREVENT WATER HITTING FROM HEADS AND TO PREVENT OVERSPRAY ONTO ADJACENT STREETS.
- ALL PIPING INSTALLED UNDER SIDEWALKS, ROADS, ETC., SHALL BE SLEEVED IN SCHEDULE 40 PVC TWO SIZES LARGER THAN THE PIPE TO BE SLEEVED.
- ALL PRODUCTS SHALL BE SPECIFIED OR APPROVED SUBSTITUTION.
- VALVING LEGEND TO BE LAMINATED AND LOCATED INSIDE CONTROLLER OR CONCRETE IRRIGATION VAULT FOR FUTURE REFERENCE.
- WHERE IRRIGATION TRENCH PASSES IN CLOSE PROXIMITY TO EXISTING TREES AND WHERE IRRIGATION TRENCH PASSES BETWEEN EXISTING TREES, TRENCHES SHALL BE DUG OUT BY HAND TO MINIMIZE ROOT DAMAGE.
- OVER-SEED DAMAGED TURF AREAS WITH SEED MIX AS SPECIFIED ON PLANTING PLAN.
- PARK MANAGEMENT TO SALVAGE ALL EXISTING SPRINKLER HEADS, VALVES, CONTROLLER, ETC.
- ABANDON, IN PLACE WHERE POSSIBLE, ALL EXISTING IRRIGATION MAIN LINE AND LATERALS.
- REMOVE 10 EXISTING SIGNS, REPLACE IN SAME LOCATION WITH 8" x 8" x 12" CONCRETE BASE PAD. WHERE NEXT TO WALK, POUR CONCRETE FLOOR TO MEET WALK. SLOPE TOP AWAY FROM POST, FORM TOP SQUARE.

LEGEND

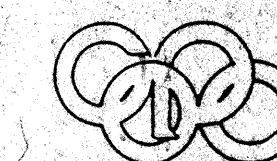
SYMBOL	DESCRIPTION	DETAIL
	RAINBIRD 1804-PRS - 15 Q, H, F R=151.93, 1.85, 3.70 GPM @ 30 PSI	(4)
	RAINBIRD 1804-PRS - 10 Q, H, F R=101.31, 1.77, 1.97 GPM @ 30 PSI	(4)
	RAINBIRD 1404 FLOOD BUBBLER, 1.25 GPM @ 45 PSI	(8)
	RAINBIRD FE SERIES ELECTRIC REMOTE CONTROL VALVE - SIZE AS NOTED	(3)
	RAINBIRD FE SERIES ELECTRIC MASTER VALVE AND PVB 2"	(1)
	PEQUEAR BRONZE GATE VALVE - SIZE TO MATCH LARGEST DOWNSTREAM VALVE	(2)
	MASTERLINE SCHEDULE 40 PVC - SIZE AS NOTED, DEPTH OF BURY 28"	(4)
	LATERAL LINE SCHEDULE 40 PVC - SIZE AS NOTED, DEPTH OF BURY 18"	(4)
	HUNTER I-40-360-41 GEAR DRIVEN ROTARY HEAD (9.7 GPM @ 50 PSI) R=53'	(4)
	HUNTER I-40-180-41 GEAR DRIVEN ROTARY HEAD (9.7 GPM @ 50 PSI) R=53'	(4)
	HUNTER I-40-90-41 GEAR DRIVEN ROTARY HEAD (9.7 GPM @ 50 PSI) R=53'	(4)
	HUNTER I-40-90, 180, AND 360-40 GEAR DRIVEN ROTARY HEAD (7.0 GPM @ 50 PSI) R=47' (50 PSI)	(4)
	RAINBIRD RC-16 CONTROLLER W/ CEI FREEZE SENSOR	(7)
	MANUAL DRAIN - SIZE TO MATCH MAINLINE	(4)
	VALVE NUMBER VALVE SIZE GALLONS PER MINUTE VALVE IDENTIFICATION LABEL	
	SCH. 40 PVC SLEEVE - SIZE TO BE 2 SIZES LARGER THAN PIPE OR WIRE BUNDLE SLEEVED	(6)
	RAINBIRD RB-2AV 2" AIR VENT VALVE	(2)
	RAINBIRD 1401 FLOOD BUBBLER, .25 GPM	(2)
	RAINBIRD 1502-SPH, .50 GPM (ADJUST LOCATIONS TO MATCH EXIST. PLANTING)	(4)

EXISTING FEATURES

- SIGN
- PAD FOR GARBAGE CAN
- ABOVE GROUND PIPING
- LIGHT POLE
- TREE



VICINITY MAP



Campbell Okuma Perkins Associates, Inc.
Landscape Architecture and Site Planning
418 Central S.E.
Albuquerque, NM 87102
(505) 242-3500

CITY OF ALBUQUERQUE
PARKS AND RECREATION
DESIGN AND DEVELOPMENT

TITLE: MONTGOMERY PARK - SECTION C & POOL AREA
IRRIGATION PLAN

CLASS II CONSTRUCTION PROJECT BY PARK MANAGEMENT

APPROVALS	ENGINEER	DATE	APPROVALS	ENGINEER	DATE
D.R.C. Chair					
Trans. Dev.					
Utility Dev.					

DRAWING NO.	MAP NO.	SHEET	OF
	G-18-Z	3	4

AS BUILT INFORMATION	CONTRACTOR	DATE
WORK BY		
INSPECTOR'S		
FIELD CHANGE BY		
VERIFICATION BY		
CORRECTED BY		
MICRO-FILM INFORMATION		
RECORDED BY		
NO.		

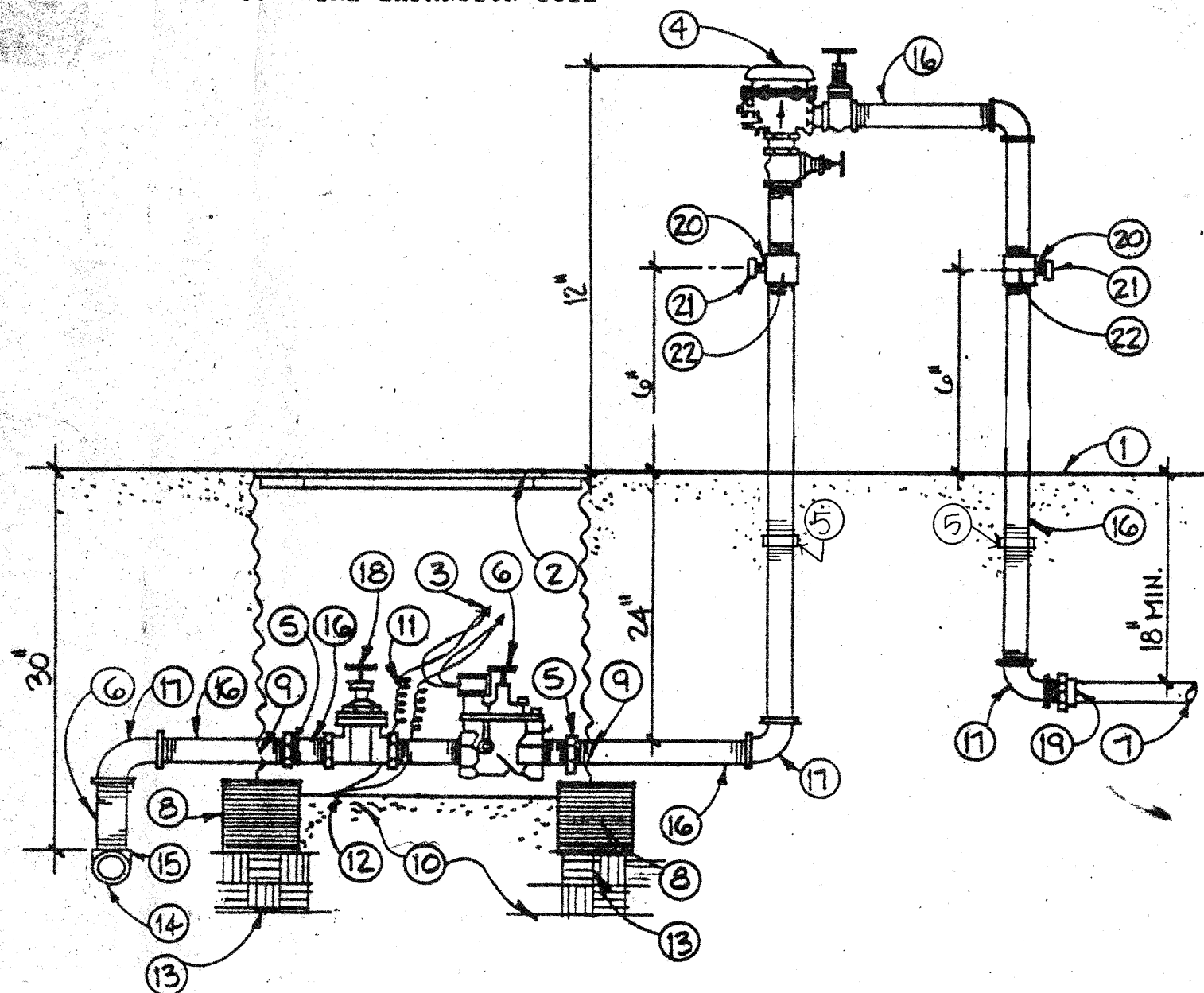
BENCH MARKS

SURVEY INFORMATION

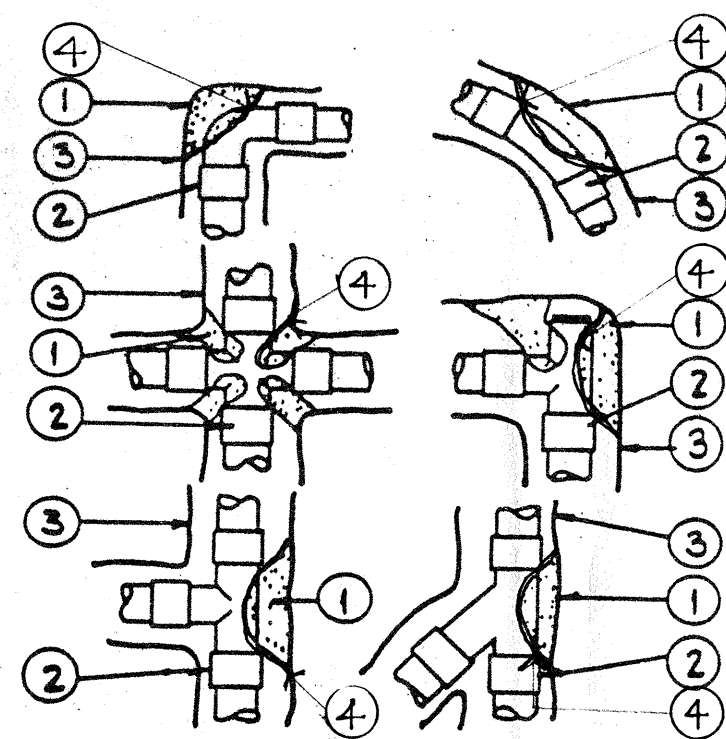
LANDSCAPE ARCHITECT'S SEAL

REMARKS	BY	DATE
DESIGN		
REVISIONS		
NO.		
DATE		
DESIGNED BY		
DRAWN BY		
CHECKED BY		

- 1 FINISH GRADE
- 2 CORRUGATED STEEL VALVE BOX
BASS & HAYS 55C
- 3 SPEARS DRI-SPLICE CONNECTORS
- 4 PRESSURE VACUUM BREAKER
- 5 GALV. UNION
- 6 AUTOMATIC VALVE
- 7 PVC MAIN LINE
- 8 8"x8"x16" SOLID CMU
- 9 CUT OUT FOR PIPE PROVIDE FILTER
FABRIC AT OPENING TO PROHIBIT
SOIL ENTRY INTO VALVE BOX
- 10 2 CUBIC FEET 1" DIAM. WASHED ROCK
- 11 36" WIRE EXPANSION COIL
- 12 WIRE BUNDLE
- 13 COMPACTED SUBGRADE TO 95%
- 14 CONSTANT PRESSURE MAIN LINE
- 15 MAINLINE ELL
- 16 GALV. NIPPLE
- 17 GALV. ELL
- 18 GATE VALVE
- 19 PVC MIP ADAPTER
- 20 GALV. BUSHING MIPxPIP
050 1/2"
- 21 BALL DRAIN CHAMPION DV
050 1/2"
- 22 GALV. TEE



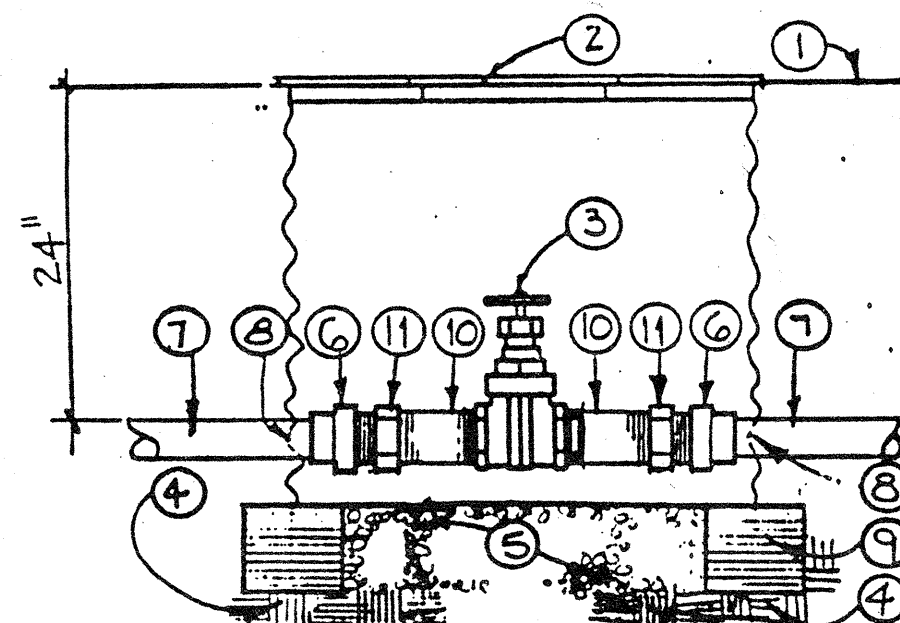
MASTERVALVE ASSEMBLY W/ PVB
NTS



KEYED NOTES:

- 1 CONCRETE THRUST BLOCKS SHALL BE 3000 PSI
PLACED AGAINST SOLID UNDISTURBED SOIL
- 2 FITTING
- 3 PIPE TRENCH
- 4 10 MIL PLASTIC

THRUST BLOCK DETAIL
NTS

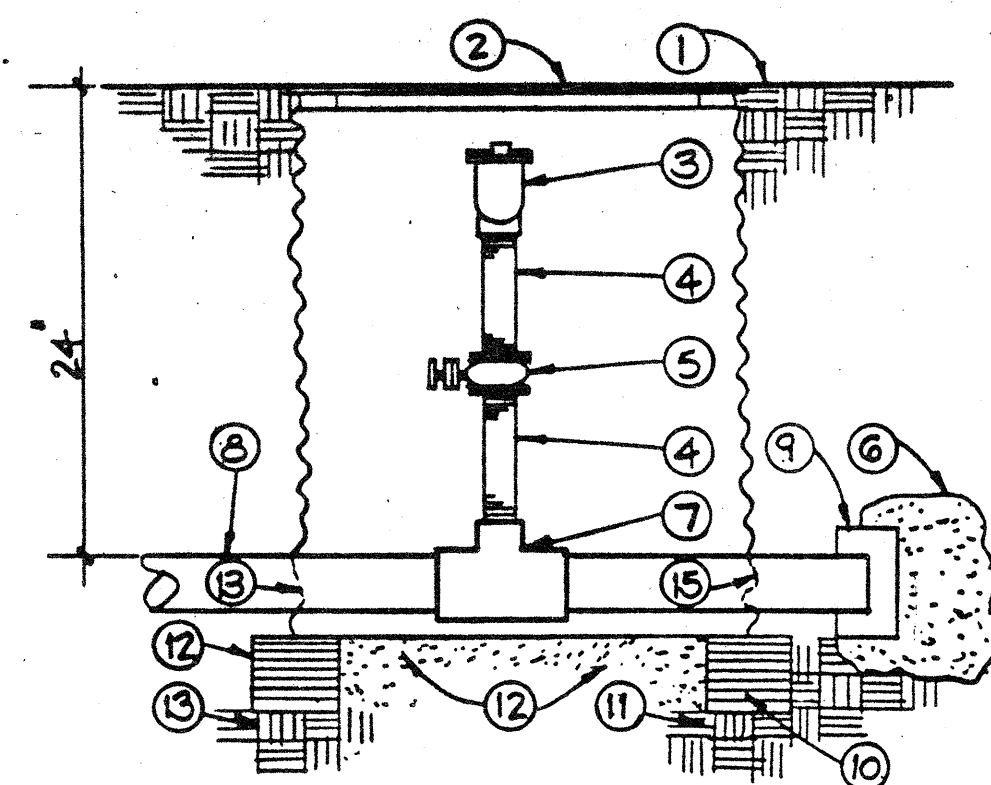


KEYED NOTES:

- 1 FINISH GRADE
- 2 CORRUGATED STEEL VALVE BOX
BASS & HAYS 34-D
- 3 THREADED GATE VALVE W/ CROSS HANDLE
- 4 SUBGRADE COMPACTED TO 95%
- 5 2 CUBIC FEET 1" GRAVEL
- 6 PVC MALE ADAPTER
- 7 DRINKING FOUNTAIN MAINLINE
- 8 CUT FOR MAINLINE
- 9 8"x8"x16" SOLID CMU
- 10 1 1/4"x3" GALV. NIPPLE
- 11 GALV. UNION

BRONZE GATE VALVE ASSEMBLY

NTS

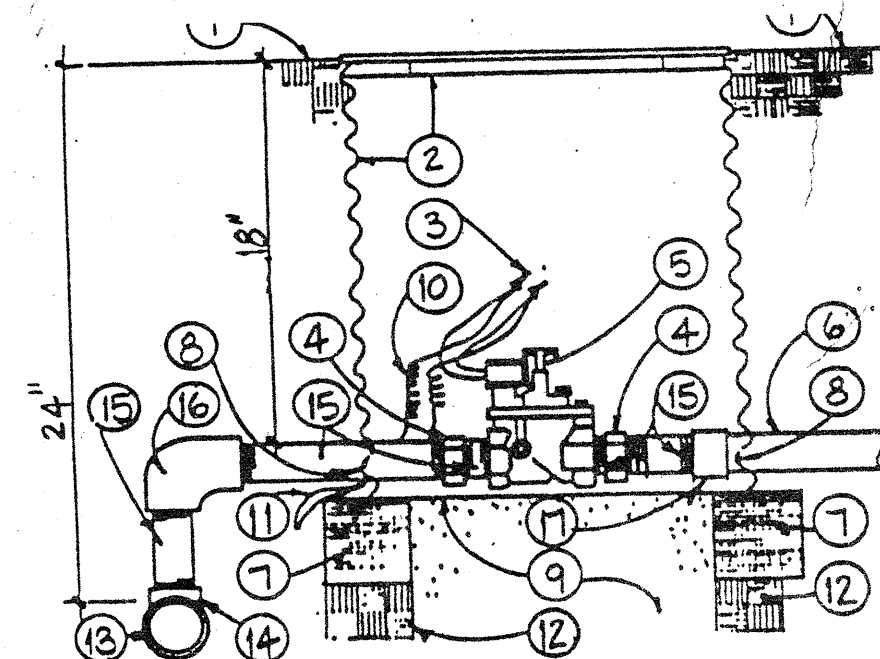


KEYED NOTES:

- 1 FINISH GRADE
- 2 BASS & HAYS 34-D
VALVE BOX
- 3 AIR RELIEF VALVE
- 4 GALVANIZED VALVE
- 5 GATE VALVE
- 6 THRUST BLOCK
- 7 GXGXPIP TEE
- 8 MAINLINE
- 9 END CAP
- 10 8"x8"x16" SOLID CMU
- 11 95% COMPACTED SUBGRADE
- 12 1 CUBIC FOOT 1" WASHED ROCK
- 13 CUT OUT FOR MAINLINE

AIR RELIEF VALVE

NTS

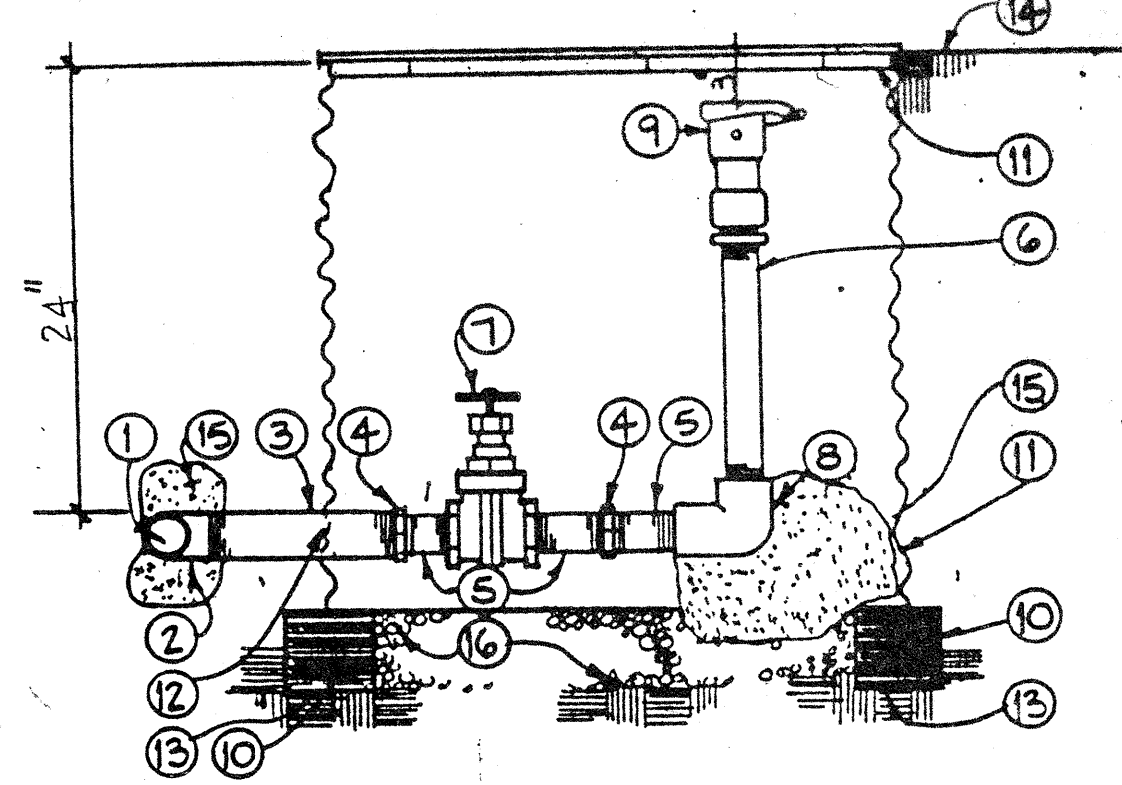


KEYED NOTES:

- 1 FINISH GRADE
- 2 STEEL VALVE BOX BASS &
HAYS 34-D
- 3 SPEARS DRI-SPLICE CONNECTORS
- 4 GALV. UNION
- 5 AUTOMATIC GLVE (SEE PLAN)
- 6 LATERAL PIPE
- 7 8"x8"x16" SOLID CMU
- 8 CUT OUT FOR LATERAL PIPE
- 9 2 CUBIC FEET 1" DIAM.
WASHED ROCK
- 10 36" WIRE EXPANSION COIL
- 11 WIRE BUNDLE
- 12 COMPACTED SUBGRADE TO 95%
- 13 MAINLINE
- 14 MAINLINE TEE
- 15 GALV. NIPPLE
- 16 MAINLINE ELL
- 17 SCH. 40 PVC. SXT COUPLING

AUTOMATIC VALVE ASSEMBLY

NTS

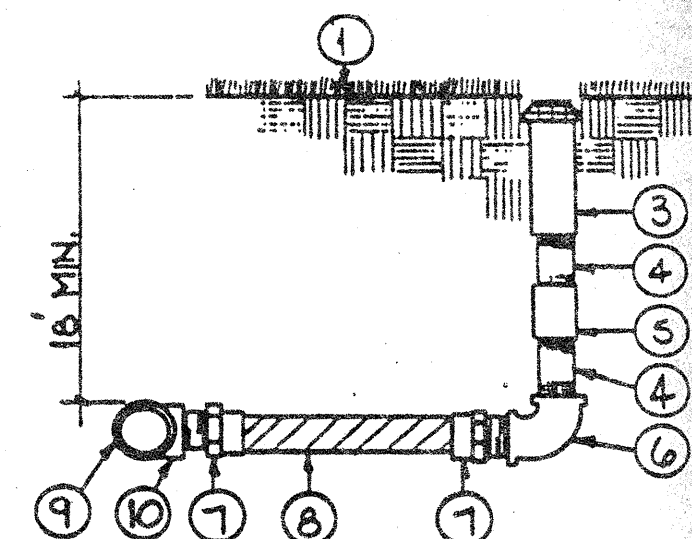


KEYED NOTES:

- 1 MAINLINE
- 2 2 1/2"x2 1/2"x1" FIP MAINLINE
TEE
- 3 1"x12" GALV. NIPPLE
- 4 GALVANIZED UNION
- 5 1"x4" GALV. NIPPLE
- 6 1"x24" SCH. 80 PVC MOLDED
W/ CROSS HANDLE
- 7 1" GALV. ELL
- 8 1" QUICK COUPLING VALVE
- 9 8"x8"x16" SOLID CMU
- 10 CORRUGATED STEEL VALVE
BOX 55-C
- 11 CUT OUT FOR LINE
- 12 COMPACT SUBGRADE TO 95%
- 13 FINISH GRADE
- 14 THRUST BLOCK
- 15 1 CUBIC FOOT 1" WASHED
ROCK

MAINLINE MANUAL DRAIN DETAIL

NTS



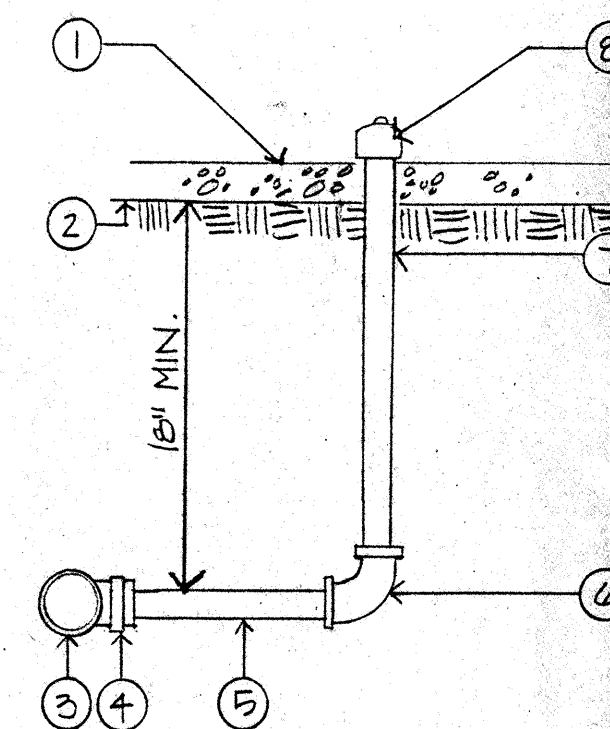
KEYED NOTES:

- 1 FINISH GRADE
- 2 RUBBER COVER
- 3 SPRINKLER HEAD
- 4 SCH. 80 PVC MOLDED
NIPPLE (5")
- 5 GALV. COUPLING
- 6 GALV. ELL
- 7 SCH. 40 PVC MIP ADAPTER
- 8 PVC FLEX HOSE (12")
- 9 LATERAL PIPE
- 10 SCH. 40 PVC SXSXT TEE

NOTE: FLEX CEMENT MUST BE USED AT FLEX HOSE & PVC CONNECTION

**SPRINKLER HEAD W/ FLEX HOSE
RISER ASSEMBLY**

NTS



- 1 MULCH
- 2 SUBGRADE
- 3 PVC LATERAL LINE
- 4 SXT TEE
- 5 SCH. 40 PVC PIPE
- 6 3/4" x 1/2" SXT PVC ELL
- 7 1/2" GALV. RISER
- 8 BUBBLER

BUBBLER DETAIL

NTS

Campbell Okuma Perkins Associates, Inc.
Landscape Architecture and Site Planning
1115 Central S.E.
Albuquerque, NM 87102
(505) 242-1000

CITY OF ALBUQUERQUE
PUBLIC WORKS DEPARTMENT
ENGINEERING GROUP

TITLE: MONTGOMERY PARK
IRRIGATION DETAILS
CLASS II CONSTRUCTION PROJECT BY PARK MANAGEMENT

APPROVALS	ENGINEER	DATE	APPROVALS	ENGINEER	DATE
DRC Chair					
Trans. Dev					
Utility Dev					

DRAWING NO. MAP NO. G-18-Z SHEET 4 OF 4

AS BUILT INFORMATION	DATE
CONSTRUCTION	
INSPECTION	
FIELD LAYOUT	
APPROVAL BY	
CORRECTED BY	
RECORDED BY	

BENCH MARKS

SURVEY INFORMATION	FIELD NOTES	DATE
NO.	BY	

LANDSCAPE ARCHITECT'S SEAL

[Signature]
11-10-87

REVISIONS	DATE	BY
NO.	DATE	
DESIGNED BY	DATE	
DRAWN BY	DATE	
CHECKED BY	DATE	