

File Number **2-86-66**

I certify that this area is zoned _____ and that this plat is consistent with the specific development plan approved by the EPA on _____ and that the findings in the official notice have been complied with.

SITE DEVELOPMENT PLAN

Traffic Engineer _____ Date _____

Parks and Recreation Department _____ Date _____

Water Utilities Department _____ Date _____

City Engineer, Engineering Division/AMAFCA _____ Date _____

APPROVAL AND CONDITIONAL ACCEPTANCE: as specified by the Development Process Manual.

City Planner, Albuquerque, New Mexico

WILSON & COMPANY
ENGINEERS & ARCHITECTS
ALBUQUERQUE NEW MEXICO

THE BEACH
ALBUQUERQUE
NEW MEXICO

REVISIONS

1. 2-18-87 Foundation Permit Submittal
2. 2/26/87 DRB Comments

DESIGN **FHM**

DRAWN **JEC**

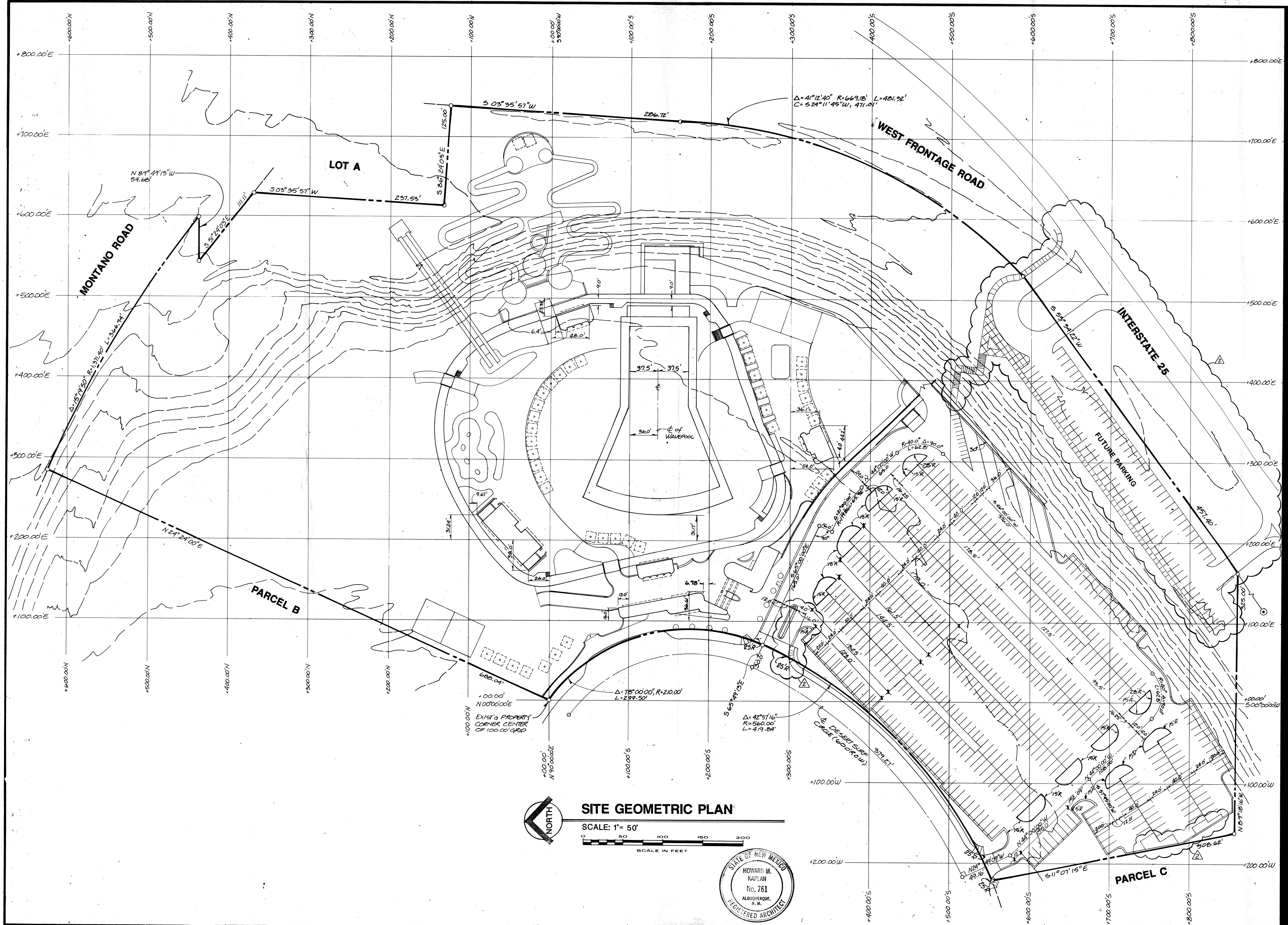
DATE **27 JAN 87**

FILE NO. **86-528**

SHEET NO. **C-1**

WILSON & COMPANY
ENGINEERS & ARCHITECTS

PARCEL C
CITY PROJECT#: 512405
DRB-86-788



WILSON & COMPANY
ENGINEERS & ARCHITECTS
ALBUQUERQUE NEW MEXICO

THE BEACH
ALBUQUERQUE
NEW MEXICO

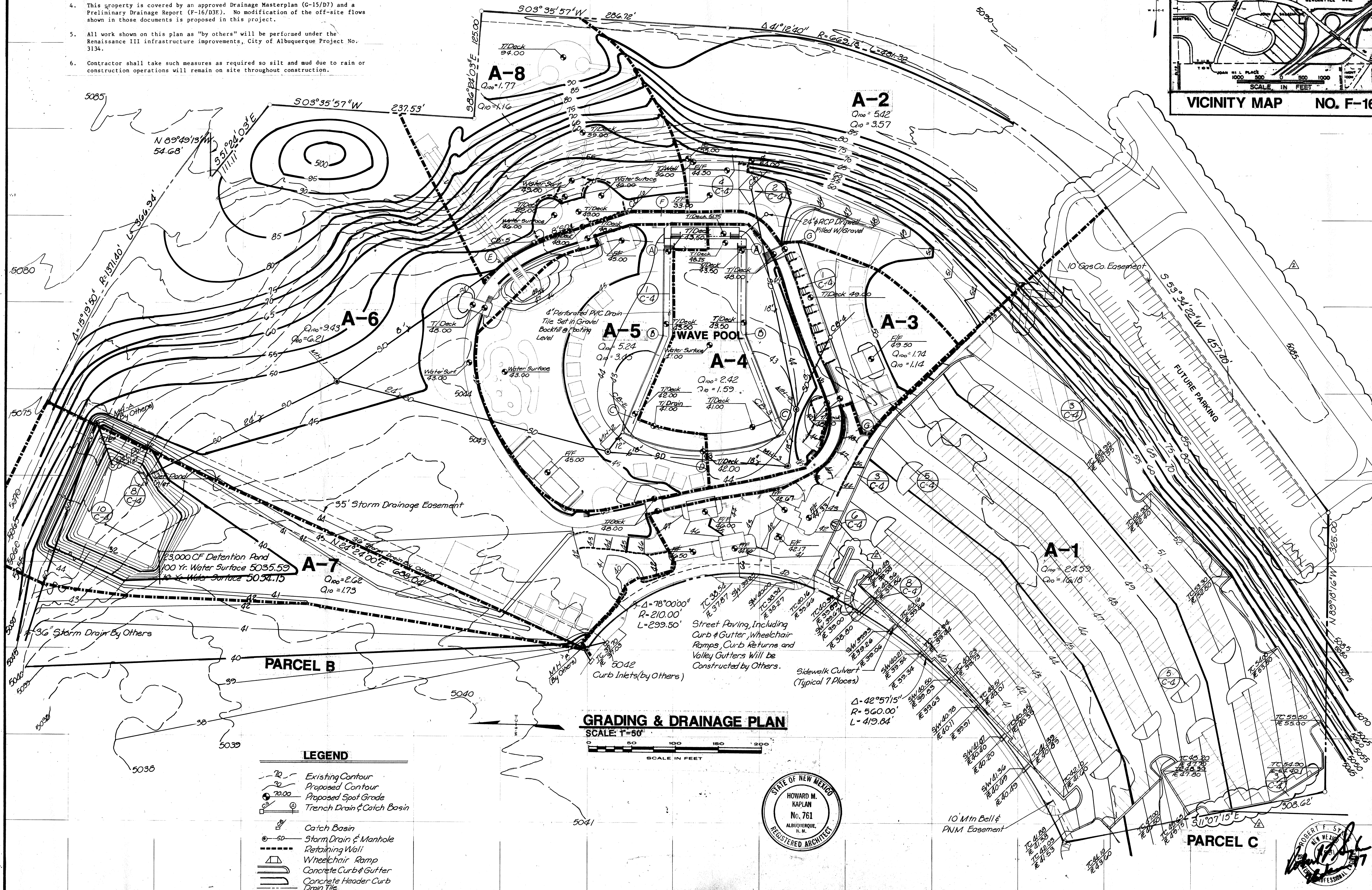
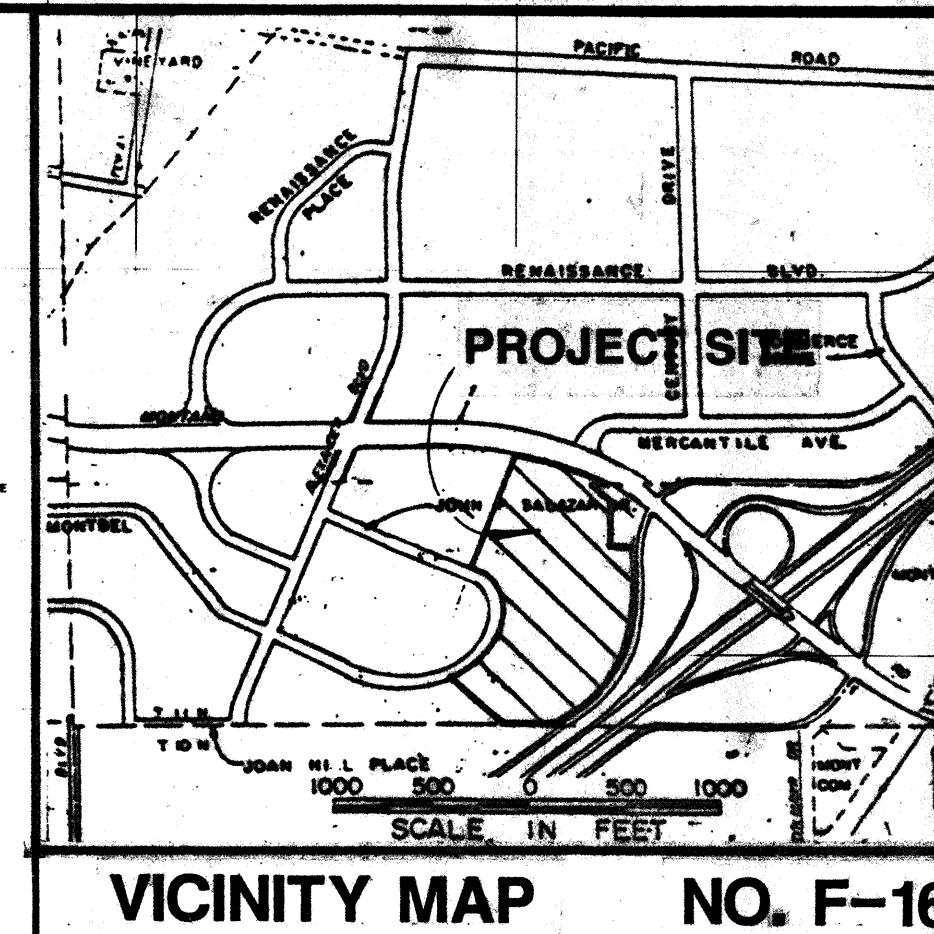
REVISIONS	
1.	2/18/87 Foundation Permit Submittal
2.	2/26/87 DRB Comments

DESIGN	FHM
DRAWN	JEC
DATE	27JAN87
FILE NO.	86-528
SHEET NO.	C-2

WILSON & COMPANY
ENGINEERS & ARCHITECTS

GENERAL NOTES

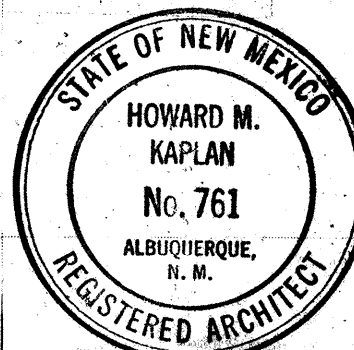
- Legal Description: Parcel C of Renaissance III, Replat of Lots 3 and 4, Block 4, and Tract 6-A of Sundt's Industrial Center.
- Site Bench Mark: ACS Sta. 2-F16, Elevation 5,062.08. Standard ACS Brass Tablet on top of concrete post projecting 0.2' above ground, located 0.4 mile west of I-25 in the median of Montano Road N.E.
- Topographic information shown hereon is based on a December 1986 survey by Andrews, Asbury & Robert, Inc., of the entire Renaissance III development.
- This property is covered by an approved Drainage Masterplan (G-15/D7) and a Preliminary Drainage Report (F-16/D3E). No modification of the off-site flows shown in those documents is proposed in this project.
- All work shown on this plan as "by others" will be performed under the Renaissance III infrastructure improvements, City of Albuquerque Project No. 3134.
- Contractor shall take such measures as required so silt and mud due to rain or construction operations will remain on site throughout construction.
- Unless otherwise noted, retaining walls with a fill height of 3.5 feet or less shall be Type AMF, per sheet C-8. Retaining walls with a fill height of 3.5 to 5.0 feet shall be Type AXC, Sheet C-8.



- ### LEGEND
- Existing Contour
 - Proposed Contour
 - Proposed Spot Grade
 - Trench Drain & Catch Basin
 - Catch Basin
 - Storm Drain & Manhole
 - Retaining Wall
 - Wheelchair Ramp
 - Concrete Curb & Gutter
 - Concrete Header Curb
 - Drain Tile

GRADING & DRAINAGE PLAN

SCALE: 1"=50'



WILSON & COMPANY
ENGINEERS & ARCHITECTS
ALBUQUERQUE
NEW MEXICO

THE BEACH
ALBUQUERQUE
NEW MEXICO

REVISIONS
1. 2/18/87 Foundation
Permit Submittal
2. 2/26/87 DBB
Comments

DESIGN
TEB
DRAWN
JEC
DATE
27 JAN 87
FILE NO.
86-528
SHEET NO.
C-3

WILSON
& COMPANY
ENGINEERS & ARCHITECTS

PLANT LEGEND

TREES (1/2" CAL MIN)

- SYCAMORE
PLATANUS (MIXED SPECIES)
- SILVERBUSH HONEY LOCUST
GLEDITSIA TRACANTHOS INERMIS
- MODESTO ASH
FRAXINUS VELUTINA 'MODESTO'
- FRUITLESS MULBERRY
MORUS ALBA
- DESERT WILLOW
CHILOPSIS LINEARIS
- AUSTRIAN PINE
PINUS NIGRA
- AFGHAN PINE
PINUS ELADURICA
- GROUND COVER
- LAWN AREA
- DESERT MIX

REFER TO ENLARGED DRAWING L-3
FOR PLANTING PLAN OF THIS AREA

REFER TO ENLARGED DRAWING L-2
FOR PLANTING PLAN OF THIS AREA

PLATANUS spp. SEE NOTE (25)

SYCAMORE (1/2" CAL)

NOTE:
PLANTS OF THE SOUTHWEST 'DESERT MIX' TO BE
PLANTED UNDER SYCAMORES AND 25' UP SLOPE.

GENERAL NOTES

- The Landscape Architect recommends that no chlorinated water be splashed on any plant material. Therefore, modifications to the planting scheme may be required as the design and layout of the park progresses.
- Tree and shrub masses, especially on the slope, shall remain intact. The layout of the slides is schematic at this time. As the layout becomes more definite, the slope plantings will be altered as required. Plant quantities shall be maintained, however the locations will be changed as directed by the Landscape Architect.
- There are 68 Trachycarpus fortunei overall. The sizes shall vary. The breakdown of sizes shall be as follows:

SIZE	QUANTITY
36" BOX	10 EA.
24" BOX	33 EA.
15 GALLON	25 EA.

The locations of the various sizes shall be as per the Landscape Architect's directions.
- There are 52 Platanus spp. overall. The sizes shall be as noted on the plans. The breakdown of various species shall be as follows:

SPECIES	QUANTITY
Platanus acerifolia	36 EA.
Platanus occidentalis	8 EA.
Platanus wrightii	8 EA.

The locations of the various species shall be as per the Landscape Architect's directions.
- A one inch wide, four inch deep, 1/2 inch crushed gravel bed shall be installed along all walls and fences adjoining lawn areas. 3/16 inch Ryerson steel edging shall be installed between all gravel and lawn areas.

MORUS ALBA (57)
FRUITLESS MULBERRY (1/2" CAL)
FRAXINUS VELUTINA 'MODESTO' (19)
MODESTO ASH (1/2" CAL)

NOTE:
CLOVER TO BE PLANTED IN PLANTING AREAS
UNDER MULBERRY TREES, SOD LAWN TO
BE PLANTED IN PLANTING AREAS UNDER
MODESTO ASHES.

PLANTING PLAN
SCALE: 1"=50'

WILSON & COMPANY
ENGINEERS & ARCHITECTS
ALBUQUERQUE NEW MEXICO

THE BEACH
ALBUQUERQUE
NEW MEXICO

REVISIONS
2. 2/26/87 DRB Comment

DESIGN

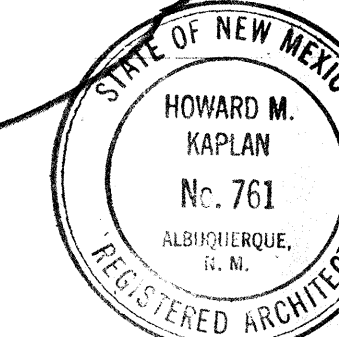
DRAWN

DATE
18FEB87

FILE NO.
86-528

SHEET NO.
L-1

WILSON & COMPANY
ENGINEERS & ARCHITECTS



KEY TO SLOPE PLANTINGS:

- AF = AMORPHA FRUTICOSA
INDIGO BUSH (5 GAL)
- AT = ARTEMISIA TRIDENTATA
BIG SAGE (5 GAL)
- CH = CHRYSOTHAMNUS NAUSEOSUS
RUBBER RABBIT BRUSH (5 GAL)
- FP = FALLUGIA PARADOXA
APACHE PLUME (5 GAL)
- RT = RHUS TRILOBATA
SKUNK BUSH (5 GAL)

CHILOPSIS LINEARIS (15)
DESERT WILLOW (5 GAL)

PLATANUS SPP. SEE NOTE (14)
SYCAMORE (1 1/2" CAL)

TRIFOLIUM FRAGIFERUM AND ESCHSCHOLZIA CALIFORNICA
PINK STRAWBERRY CLOVER AND CALIFORNIA POPPY

CHILOPSIS LINEARIS (10)
DESERT WILLOW (5 GAL)

LONICERA JAPONICA 'HALLIANA' (21)
HONEYSUCKLE (1 GAL @ 5'-0" O.C.)

FRAXINUS VELUTINA 'MODESTO' (5)
MODESTO ASH (1 1/2" CAL)

PLATANUS SPP. SEE NOTE (12)
SYCAMORE (1 1/2" CAL)

POPULUS FREMONTII (13)
FREMONT COTTONWOOD (1 1/2" CAL)

POPULUS FREMONTII (5)
FREMONT COTTONWOOD (1 1/2" CAL)

LONICERA JAPONICA 'HALLIANA' (10)
HONEYSUCKLE (1 GAL @ 5'-0" O.C.)

FRAXINUS VELUTINA 'MODESTO' (10)
MODESTO ASH (1 1/2" CAL)

TRACHYCARPUS FORTUNEI (3)
WINDMILL PALM (SEE NOTE)

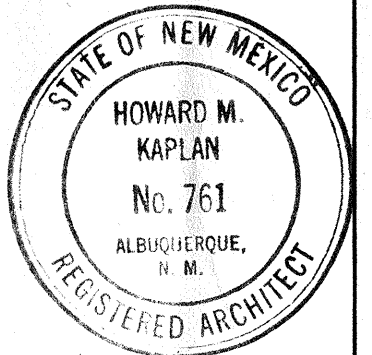
JUNIPERUS SABINA 'BROADMOOR' (20)
BROADMOOR JUNIPER (5 GAL)
PLANT @ 5'-0" O.C. IN CLEFTS IN
QUINTE ROCKWORK

JUNIPERUS SABINA 'BROADMOOR' (25)
BROADMOOR JUNIPER (5 GAL)
PLANT @ 5'-0" O.C. IN PLANTING AREAS
ADJACENT TO SHADE STRUCTURES

FRAXINUS VELUTINA 'MODESTO' (2)
MODESTO ASH (1 1/2" CAL)

AUBIZZIA JULIBRISIN (3)
SILK TREE (1 1/2" CAL)

AUBIZZIA JULIBRISIN (6)
SILK TREE (2" CAL)



PLANTING PLAN

RENAISSANCE BEACH
WATER PARK

ALBUQUERQUE, NEW MEXICO

FEBRUARY 1987

SHEET
1-3

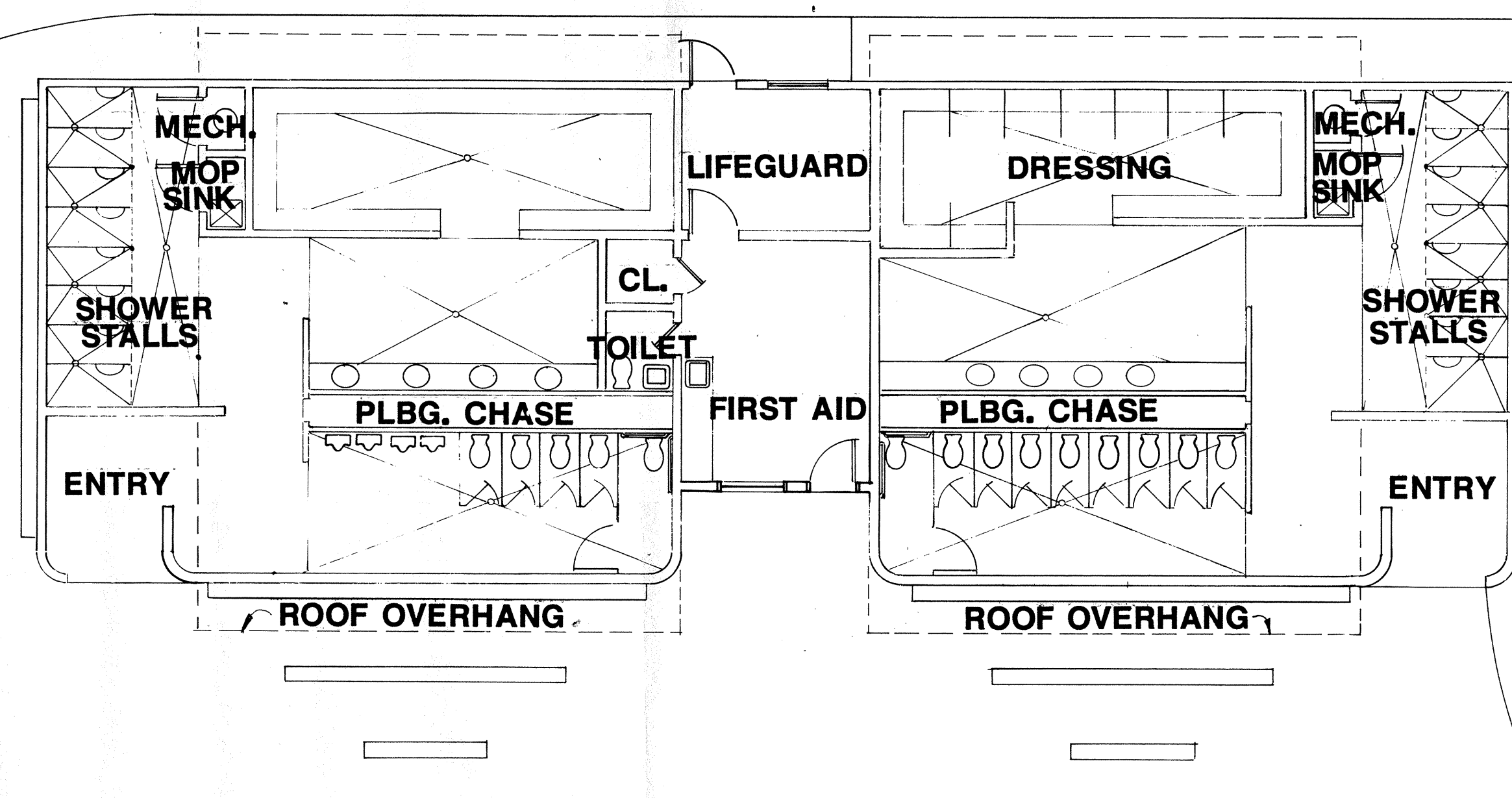
DRAWN BY:

CHECKED BY:

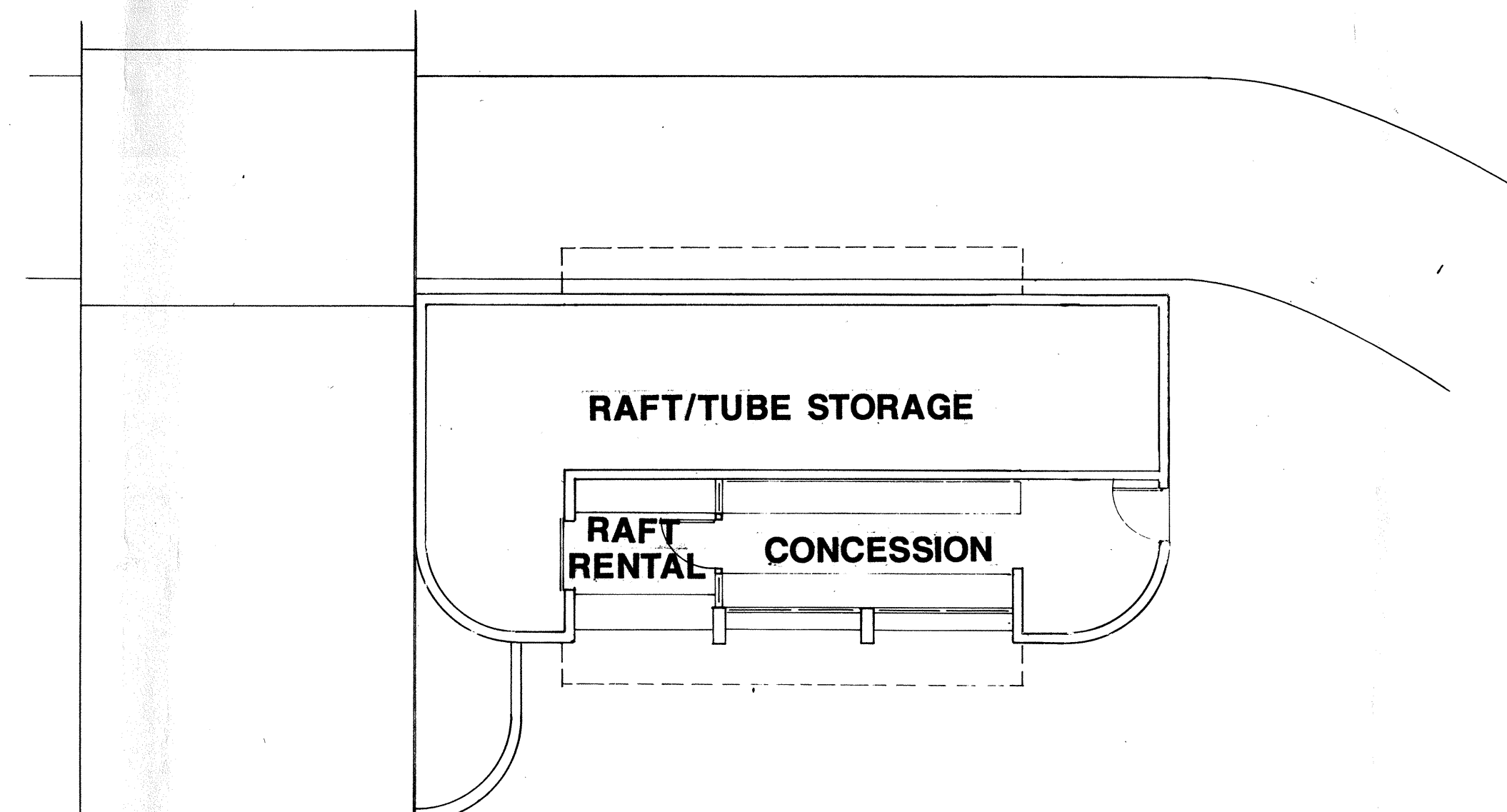
MORROW & COMPANY, LTD.
LANDSCAPE ARCHITECTS

210 La Veta Drive NE
Albuquerque, New Mexico 87108
505 268-2266

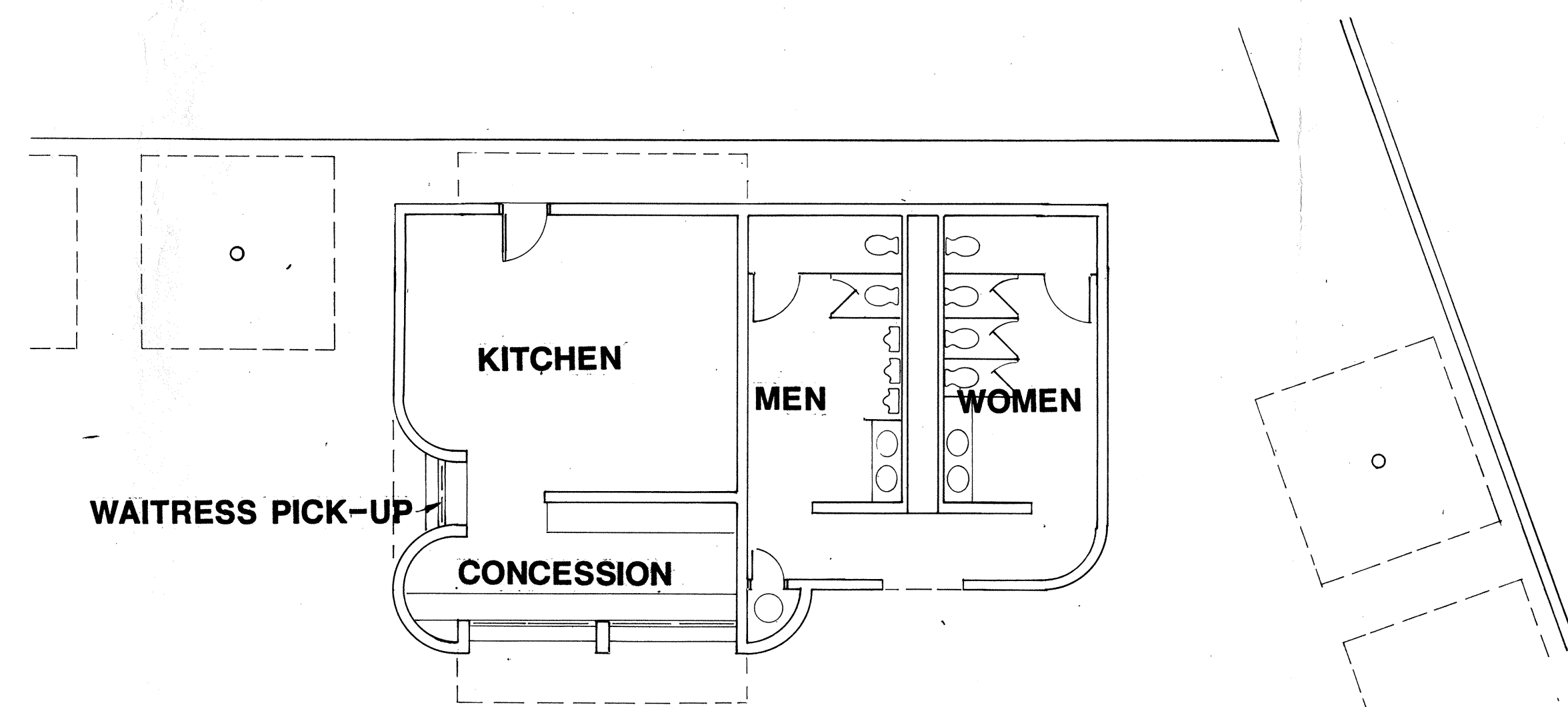




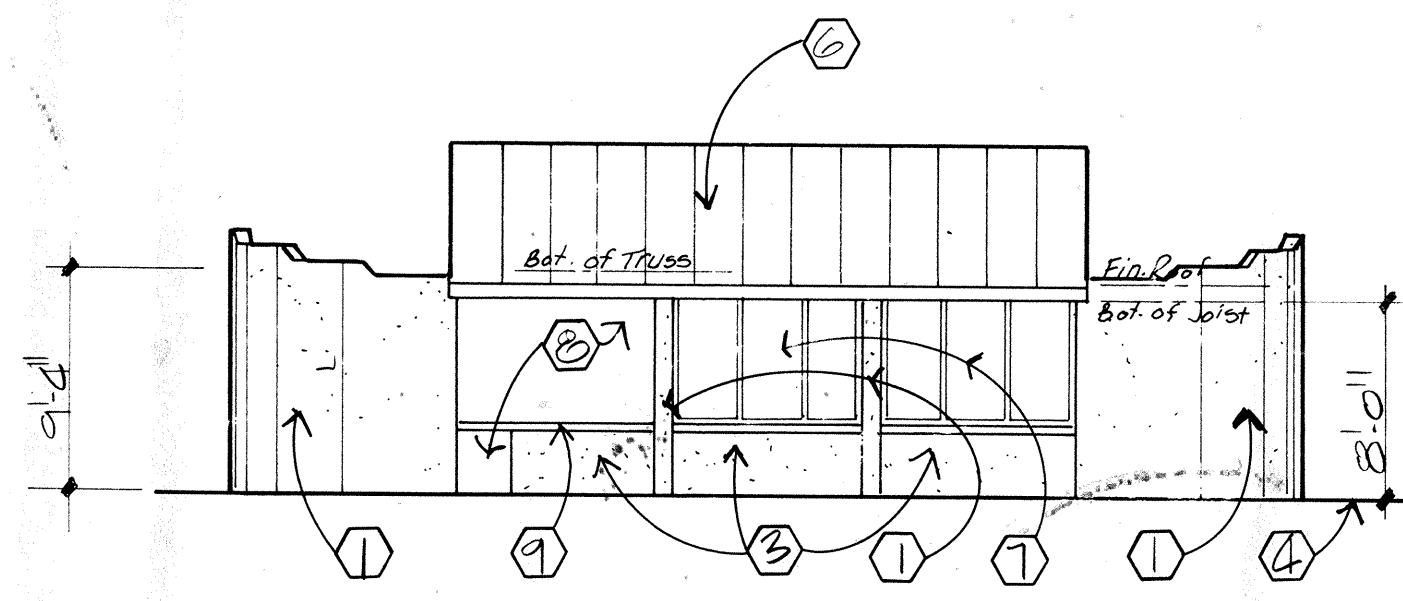
FLOOR PLAN: BATH HOUSE
SCALE: 1/8"=1'-0"



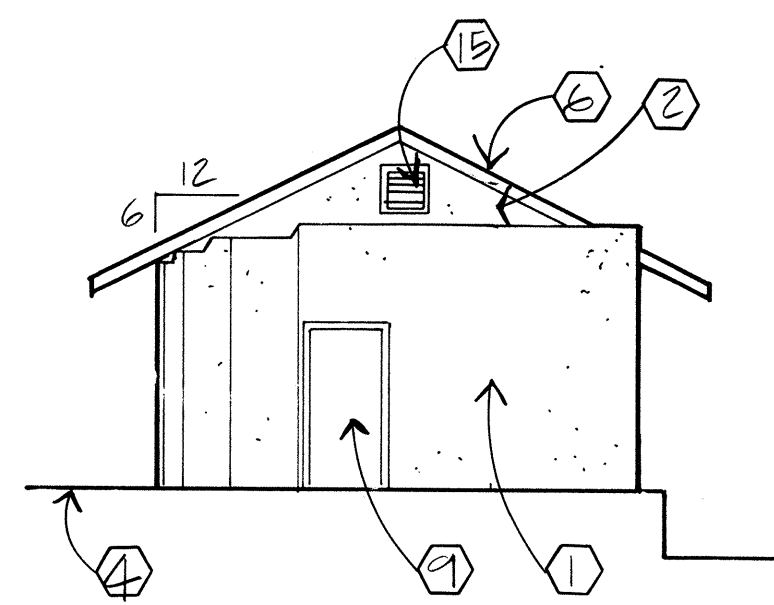
FLOOR PLAN: RAFT RENTAL/CONCESSION
SCALE: 1/8"=1'-0"



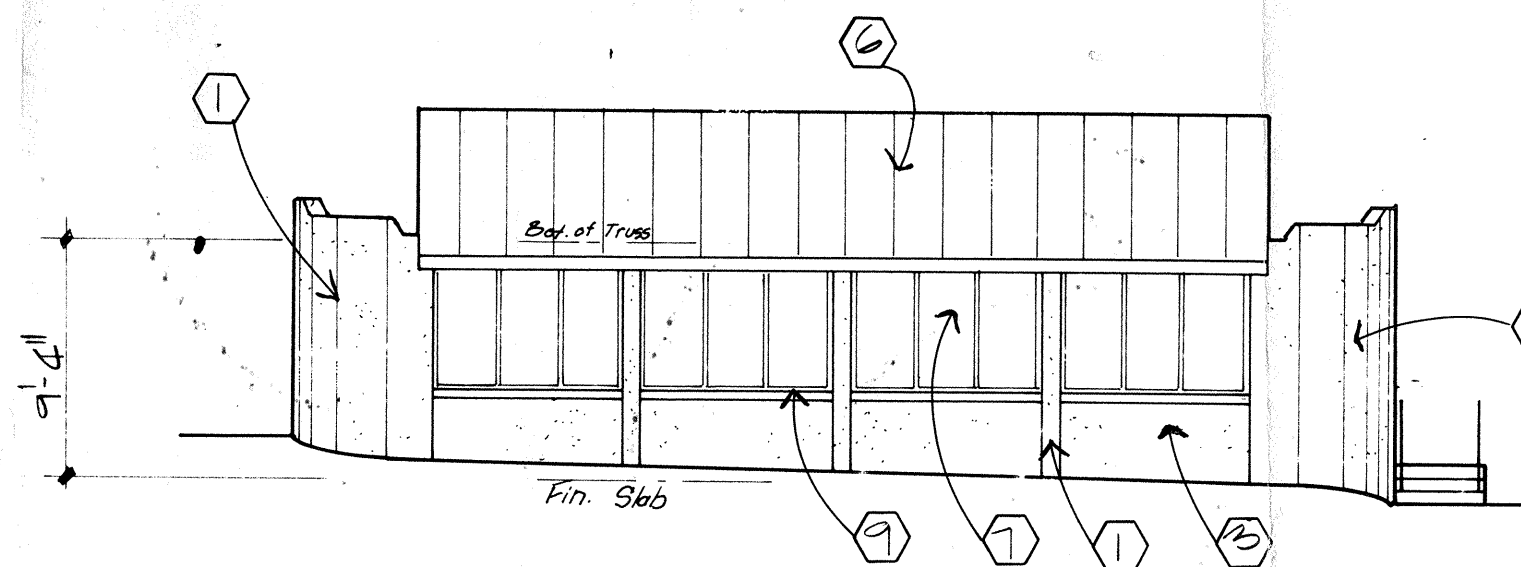
FLOOR PLAN: CONCESSION/COMFORT STATION
SCALE: 1/8"=1'-0"



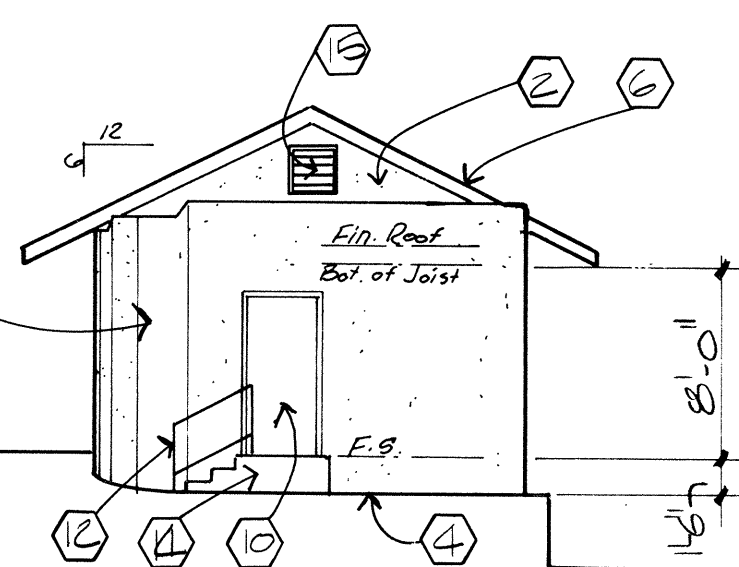
WEST ELEV.: RAFT RENTAL/CONCESSION
SCALE: 1/8"=1'-0"



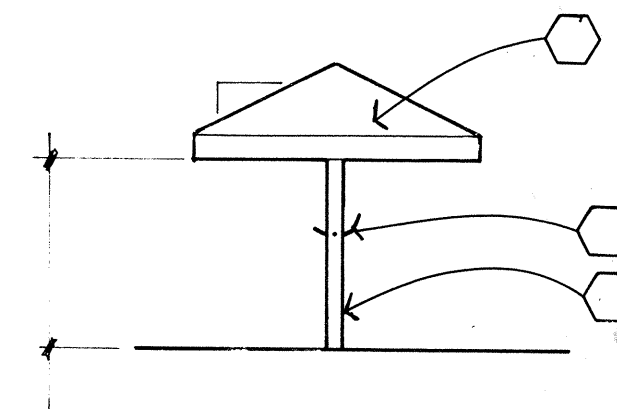
SOUTH ELEV.: RAFT RENTAL/CONCESSION
SCALE: 1/8"=1'-0"



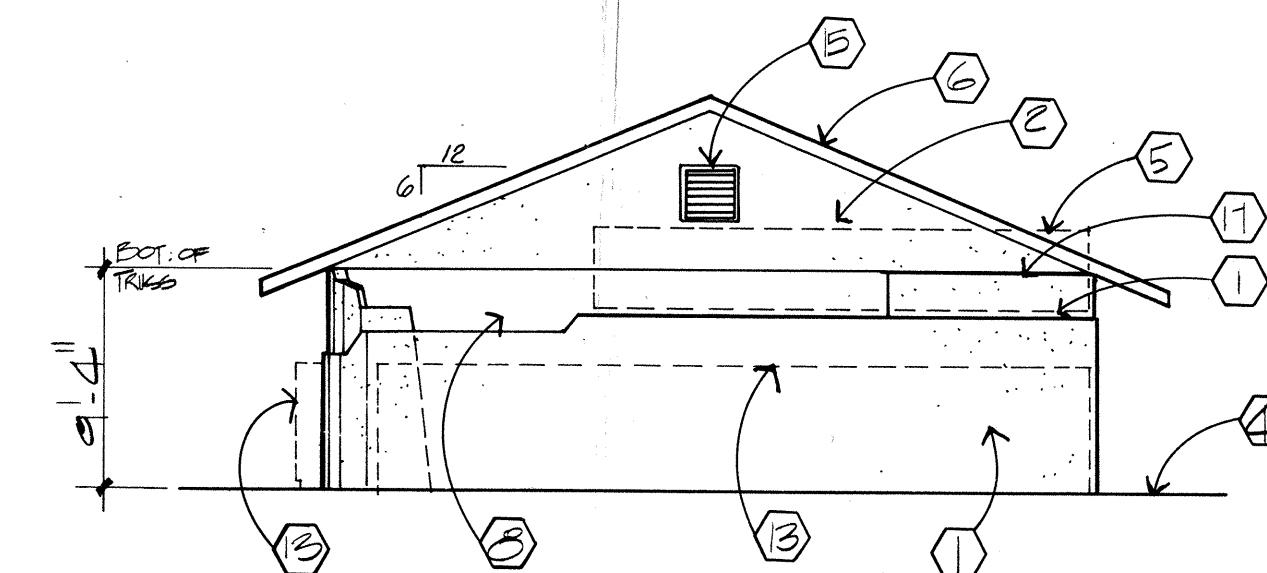
WEST ELEV.: CONCESSION
SCALE: 1/8"=1'-0"



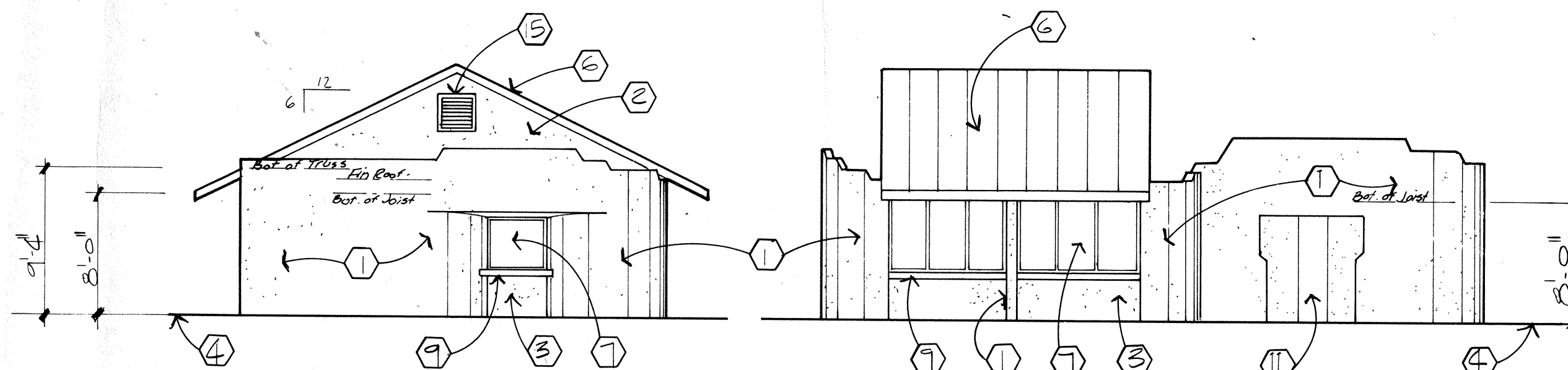
SOUTH ELEV.: CONCESSION
SCALE: 1/8"=1'-0"



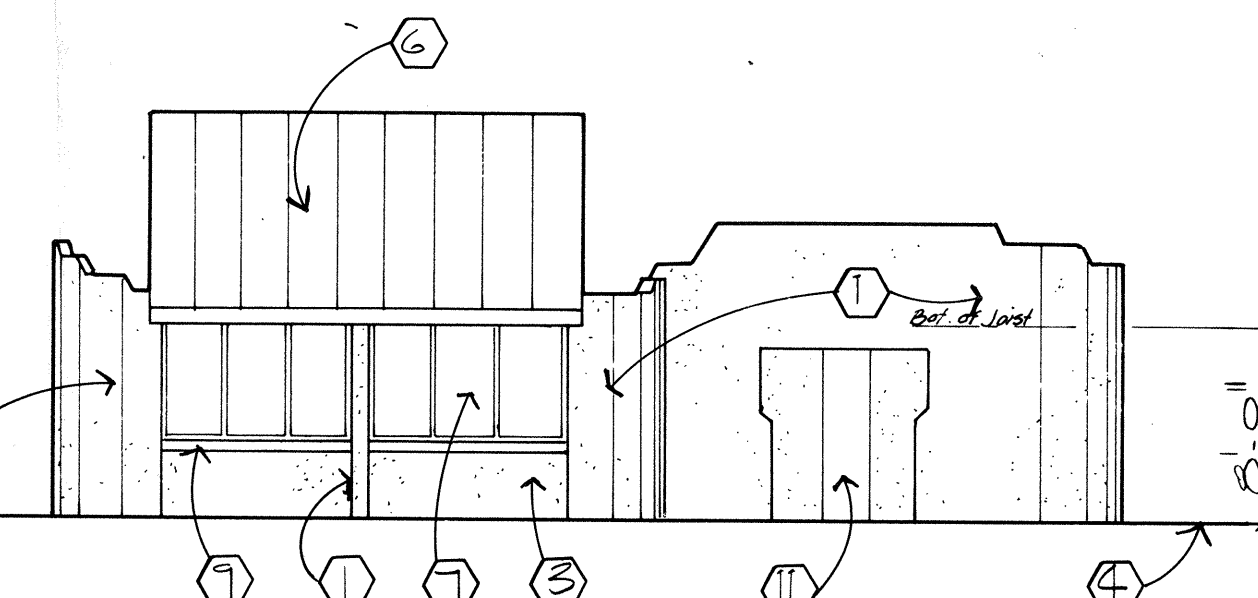
TYP. ELEV.: SHADE STRUCTURE
SCALE: 1/8"=1'-0"



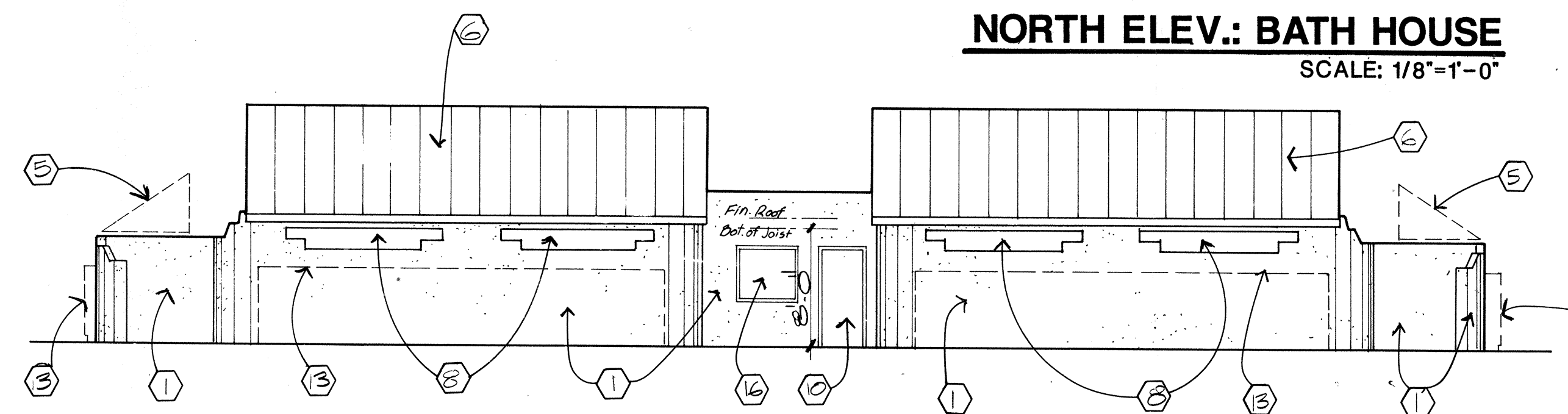
NORTH ELEV.: BATH HOUSE
SCALE: 1/8"=1'-0"



**EAST ELEV.: MAIN CONCESSION/
COMFORT STATION**
SCALE: 1/8"=1'-0"



**NORTH ELEV.: MAIN CONCESSION/
COMFORT STATION**
SCALE: 1/8"=1'-0"



EAST ELEV.: BATH HOUSE
SCALE: 1/8"=1'-0"

KEYED NOTES

1. Stucco over concrete masonry unit - Color "A"
2. Stucco over framing - Color "A"
3. Stucco over framing - Color "B"
4. Finish grade
5. Line of awning over metal frame
6. Metal roof
7. Insect screen in metal frame
8. Open
9. Plastic laminate counter top
10. Hollow metal door
11. Metal plumbing chase panel
12. Metal handrail
13. Line of metal lockers
14. Concrete stairs
15. Metal louver
16. Glazing
17. Stucco control joint

WILSON & COMPANY
ENGINEERS & ARCHITECTS
ALBUQUERQUE NEW MEXICO

THE BEACH
ALBUQUERQUE
NEW MEXICO

REVISIONS

DESIGN
FHM
DRAWN
JEC
DATE
27 JAN 87
FILE NO.
86-528
SHEET NO.

WILSON & COMPANY
ENGINEERS & ARCHITECTS