

LEGAL DESCRIPTION
 RIO GRANDE SWIM POOL PARK
 RIO GRANDE PARK

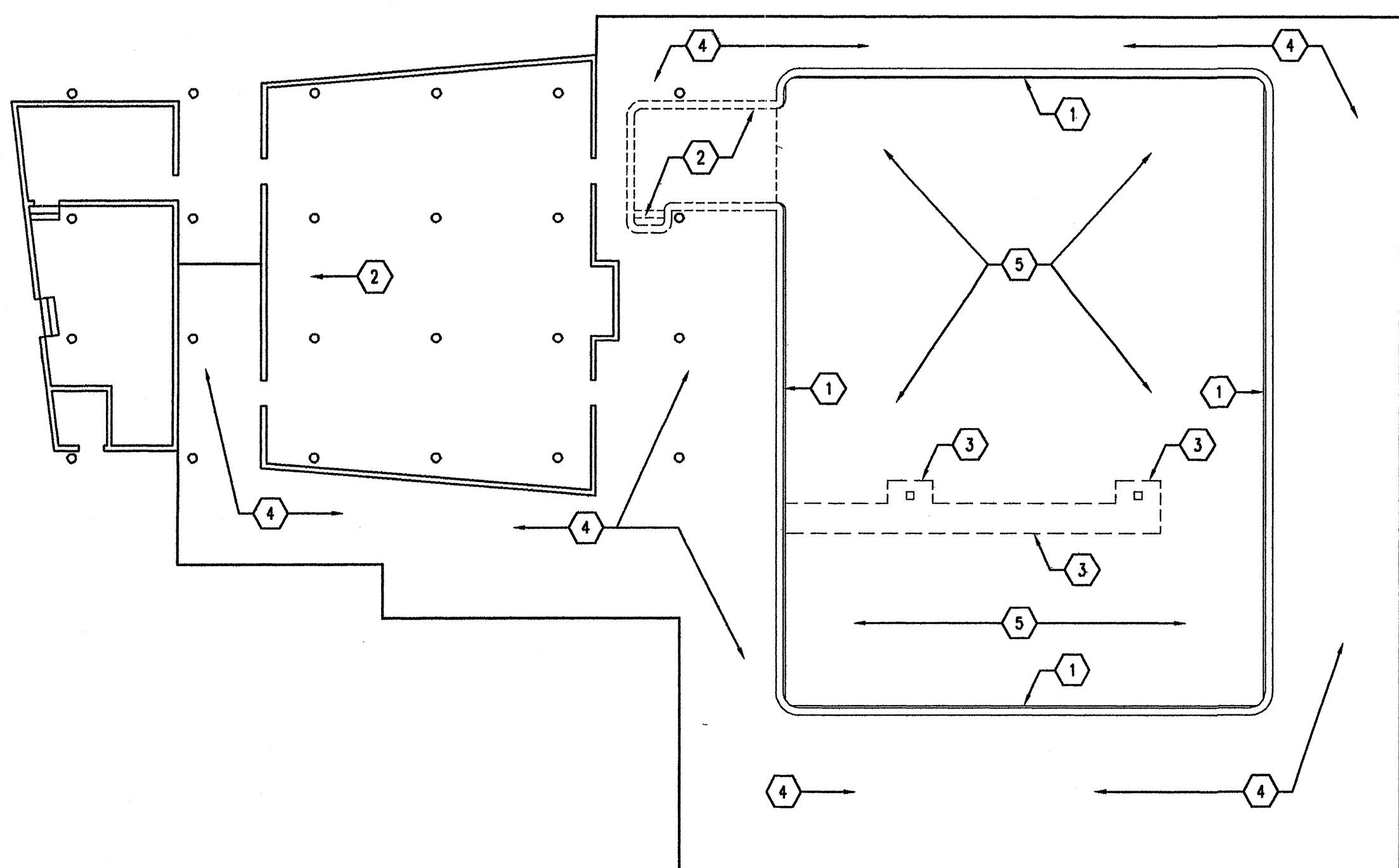
ADDRESS
 1410 IRON SW
 ALBUQUERQUE NM

ZONING
 SD-2

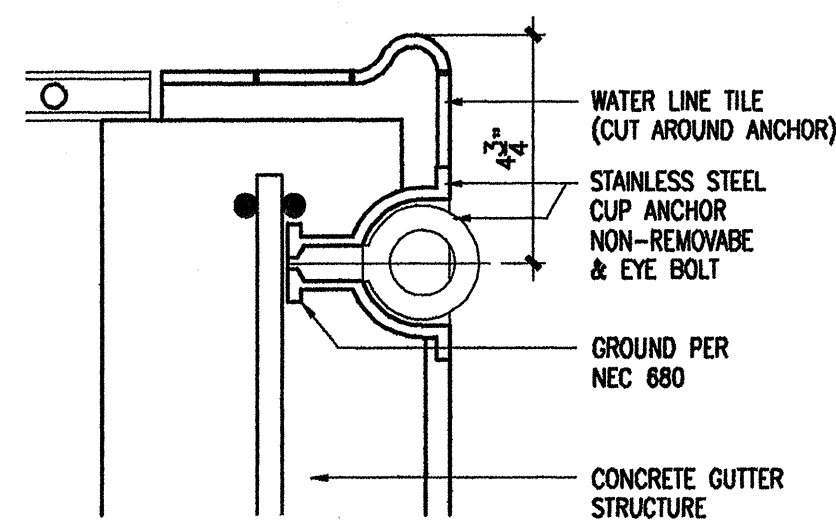
SITE AREA
 2.29 ACRES (approx.)

931-
 970

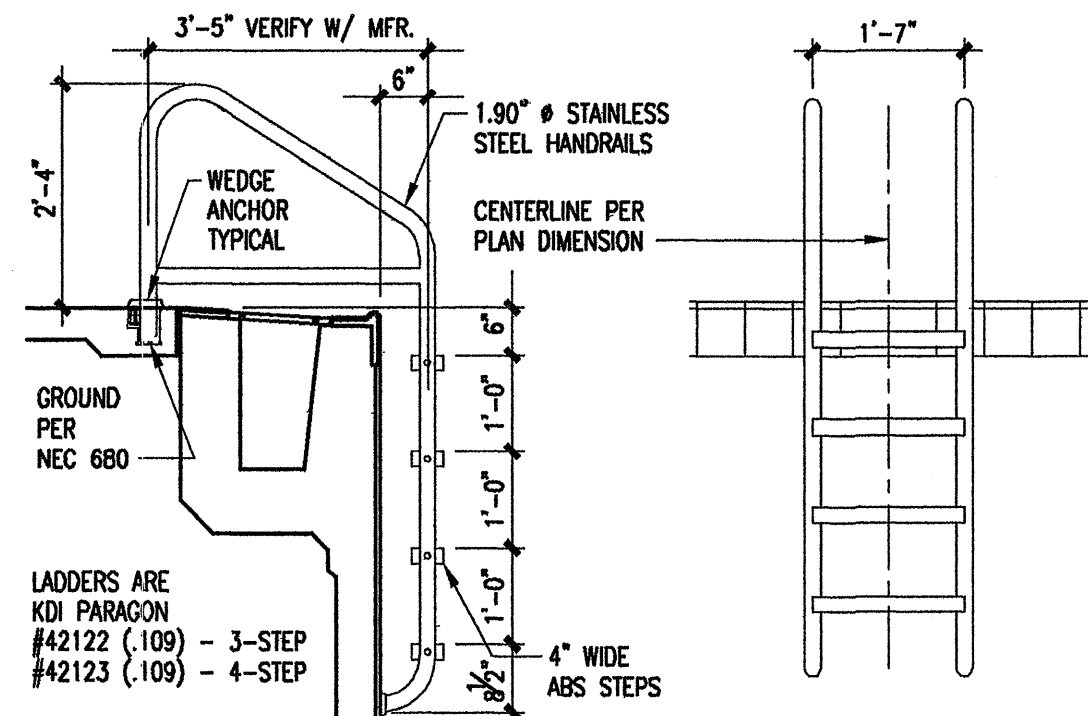
CITY PROJECT #: 572408



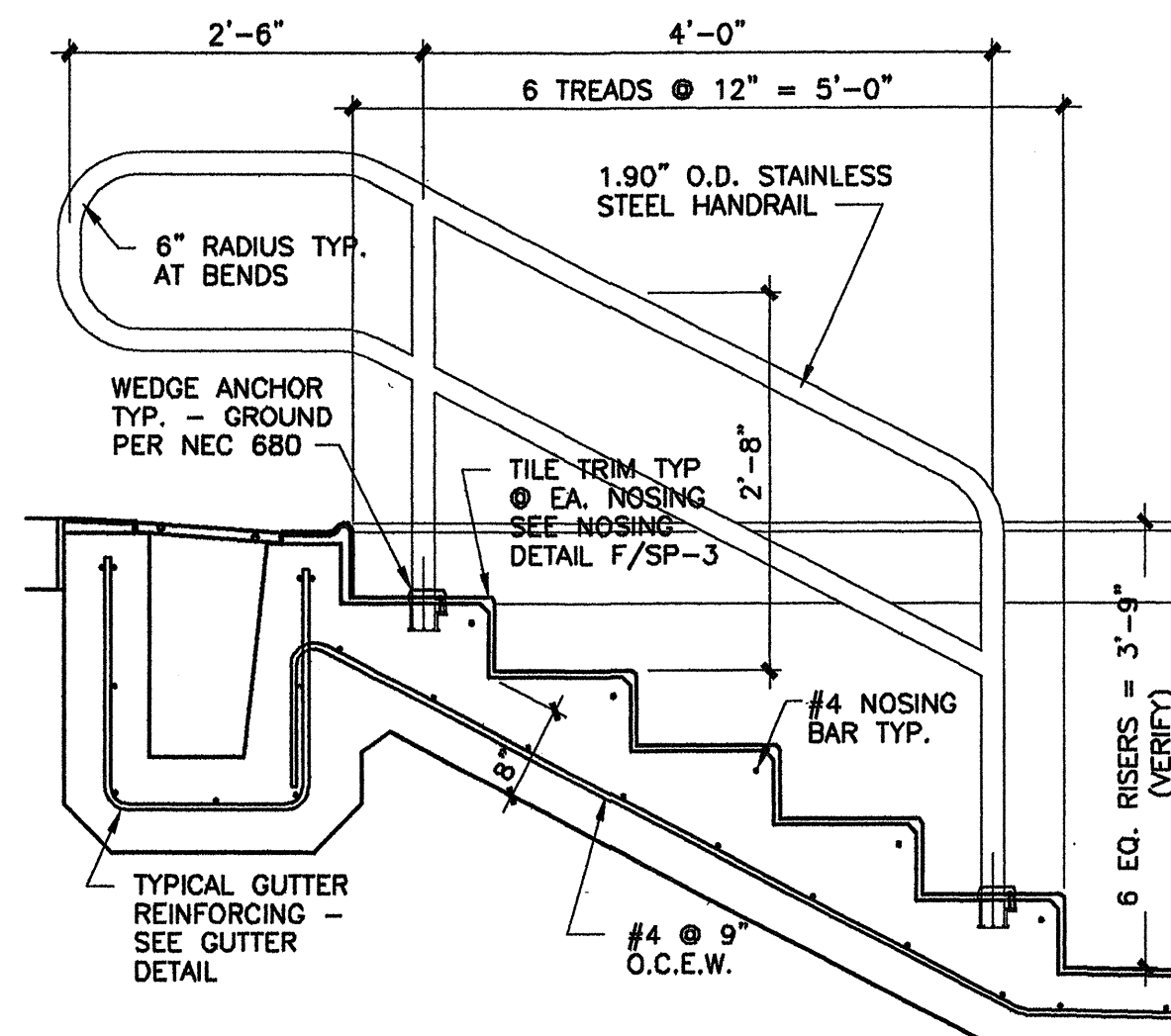
3 POOL DEMOLITION PLAN
SP-1 SCALE: 1/16" = 1'-0"



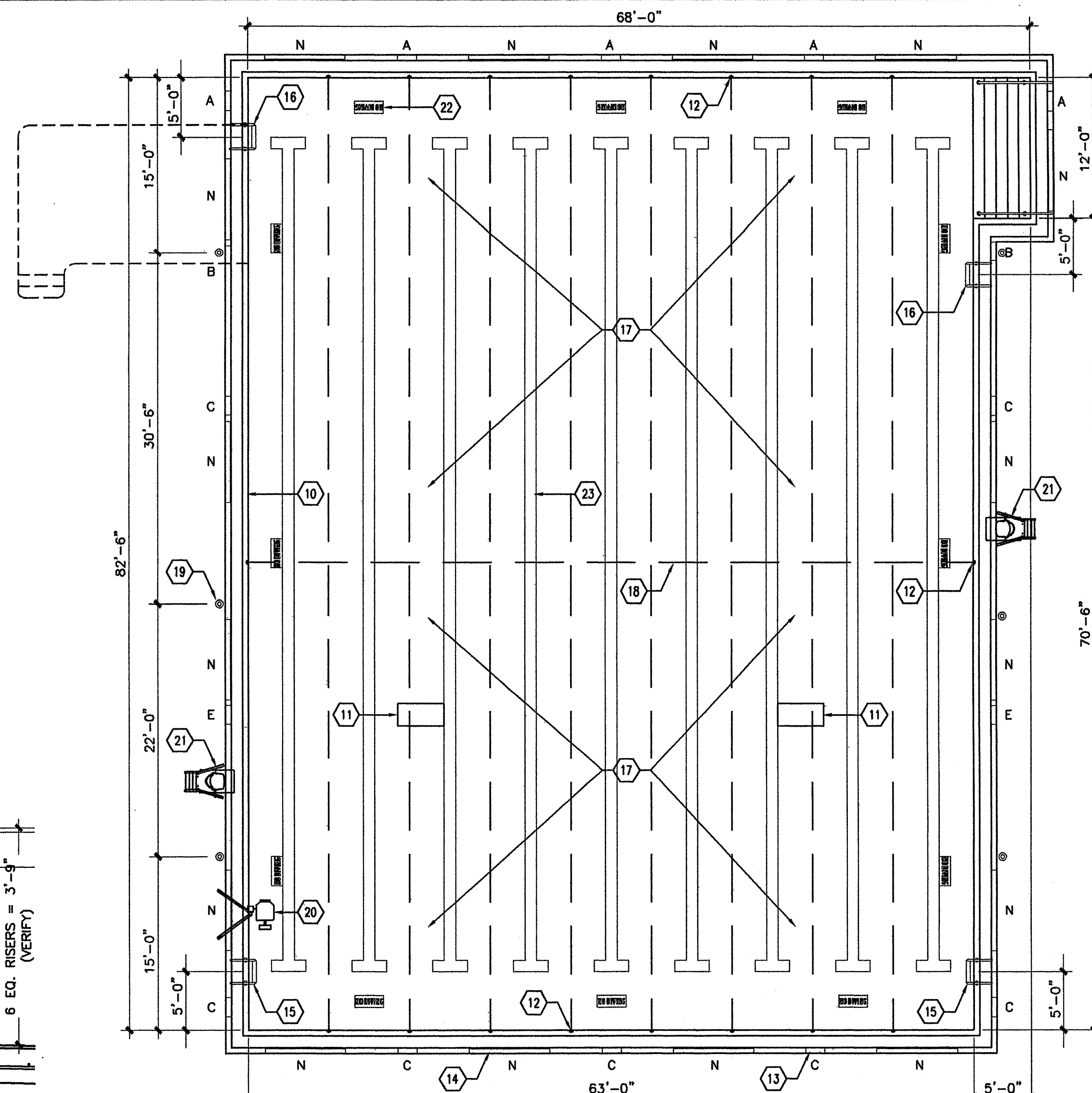
5 ROPE ANCHOR
SP-1 SCALE: 3" = 1'-0"



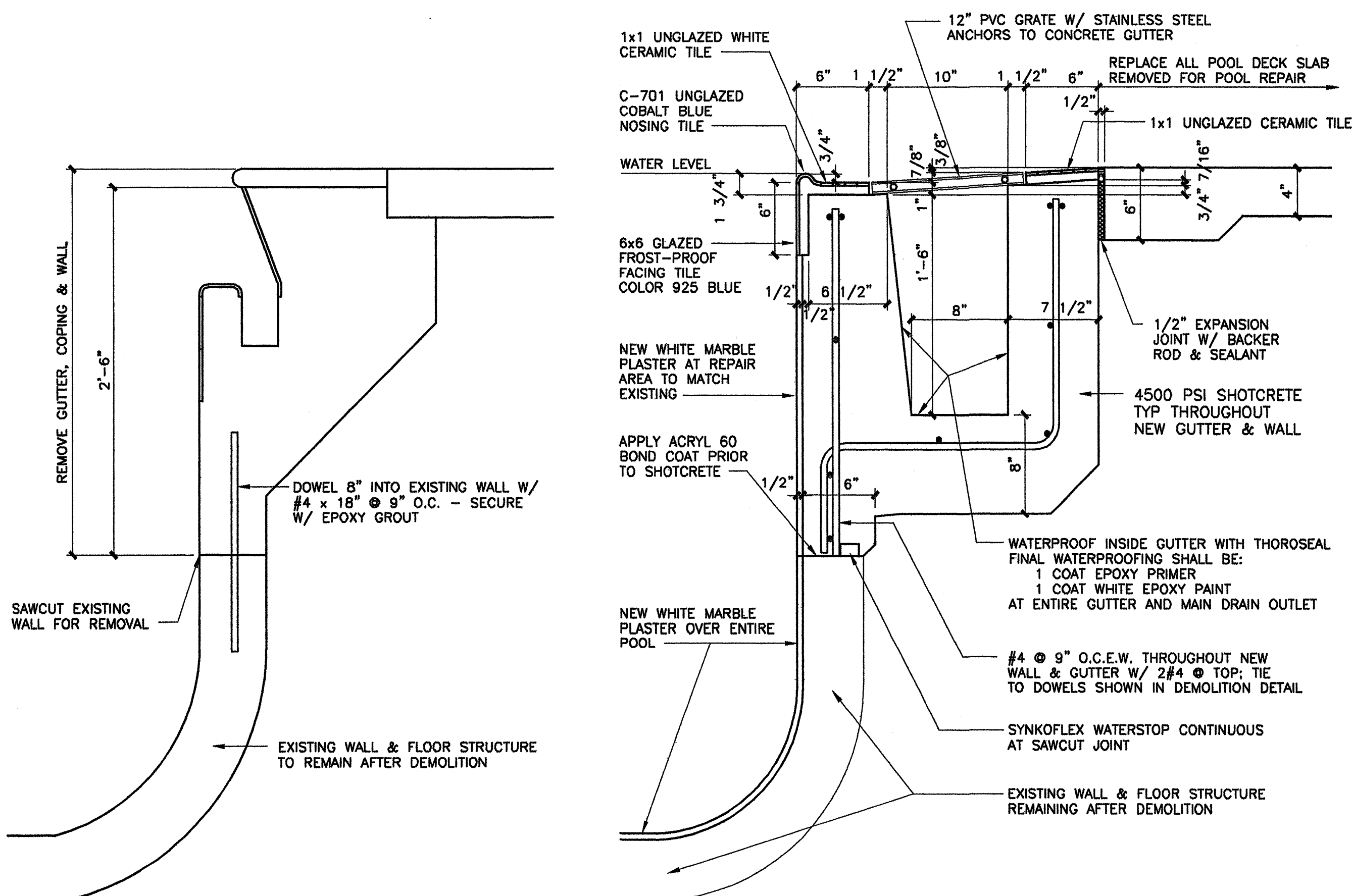
4 LADDER DETAIL
SP-1 SCALE: 1/2" = 1'-0"



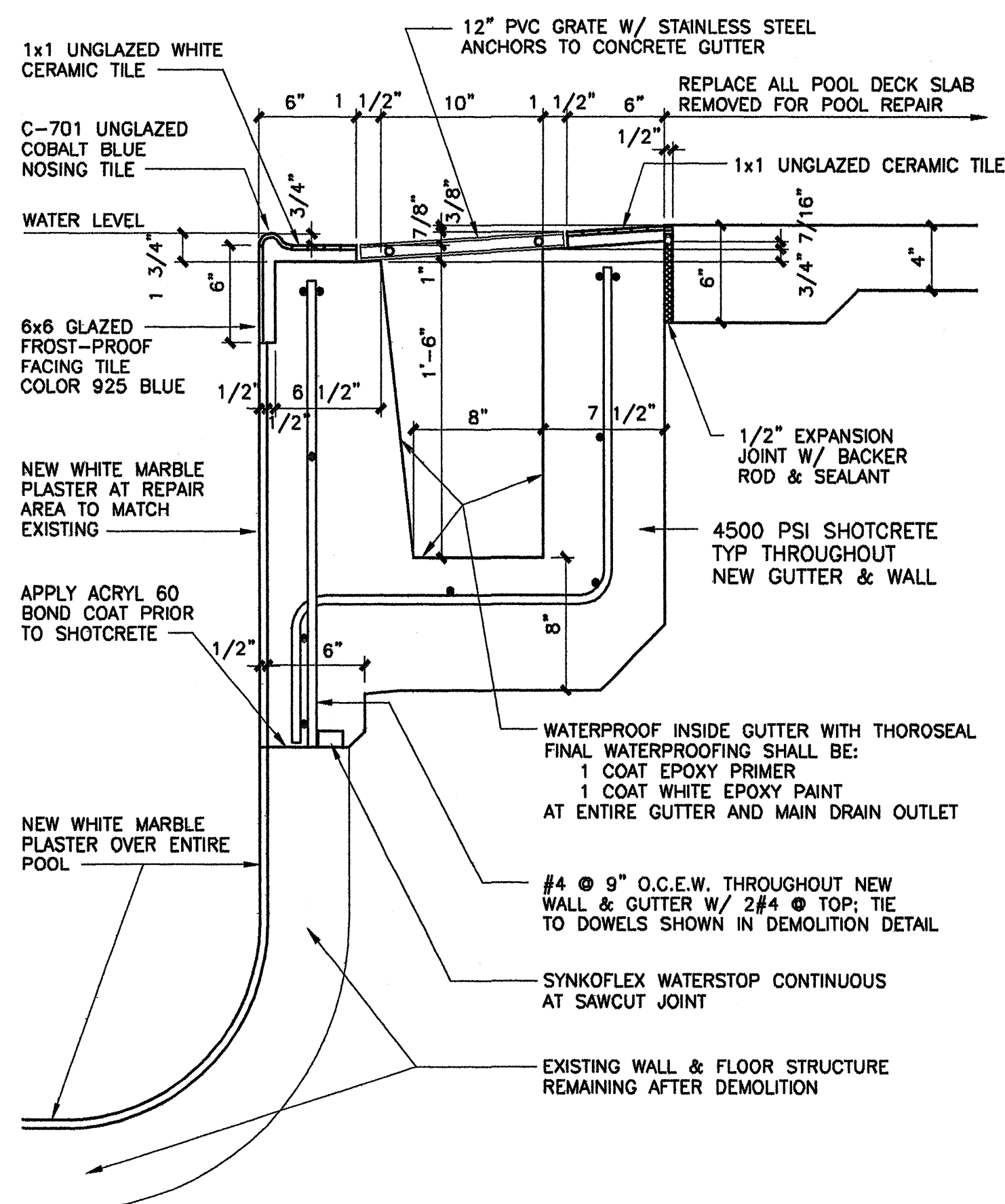
2 STEPS & HANDRAIL DETAIL
SP-1 SCALE: 1/2" = 1'-0"



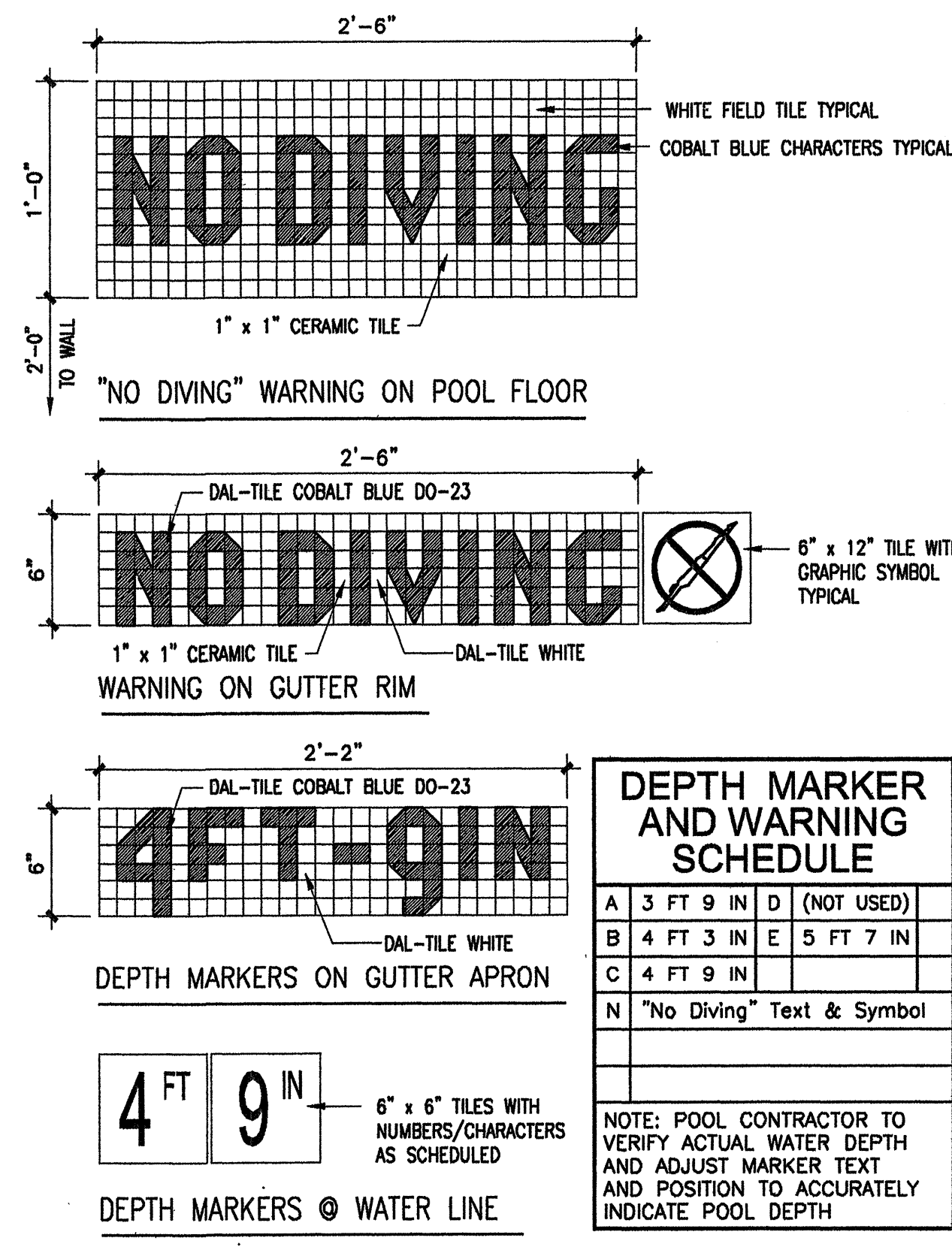
1 POOL RENOVATION PLAN
SP-1 SCALE: 1/8" = 1'-0"



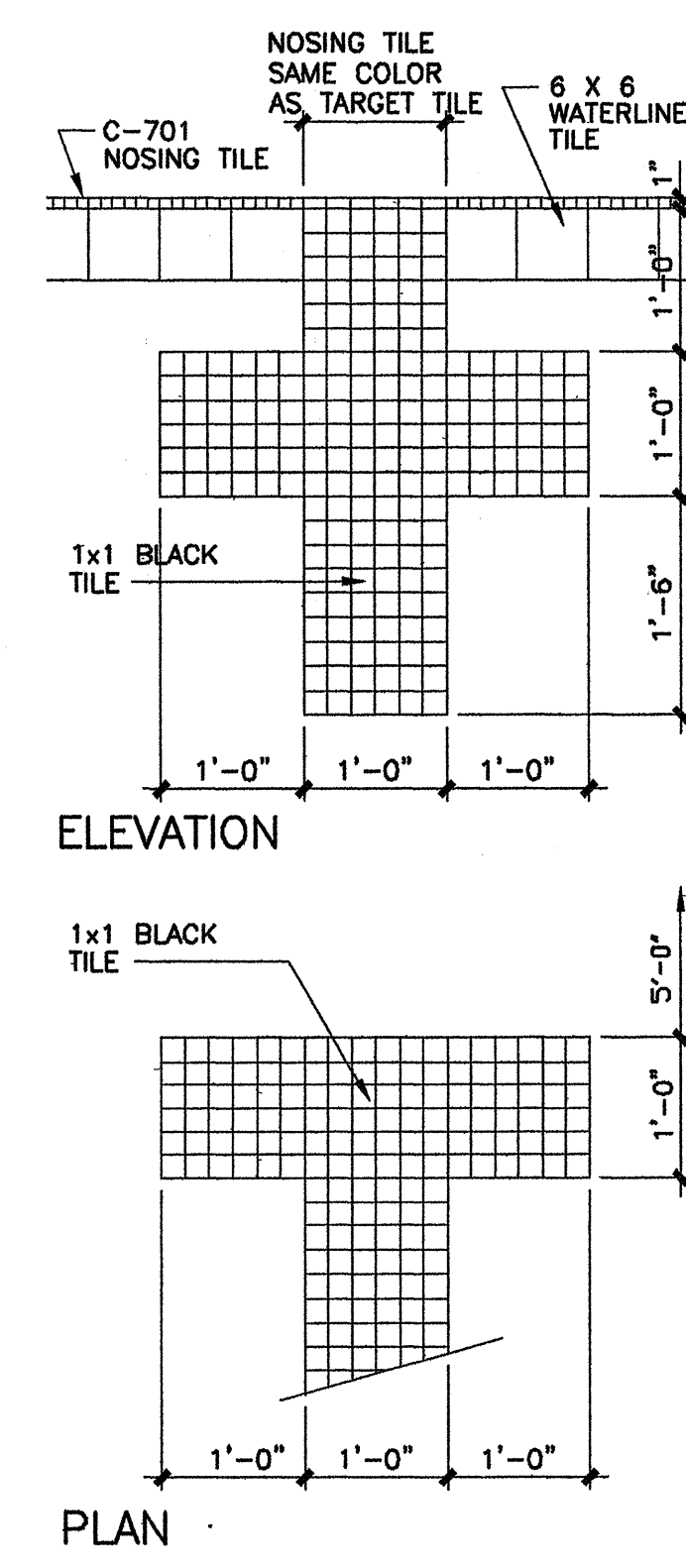
10 EXISTING GUTTER TO BE REMOVED
SP-1 SCALE: 1-1/2" = 1'-0"



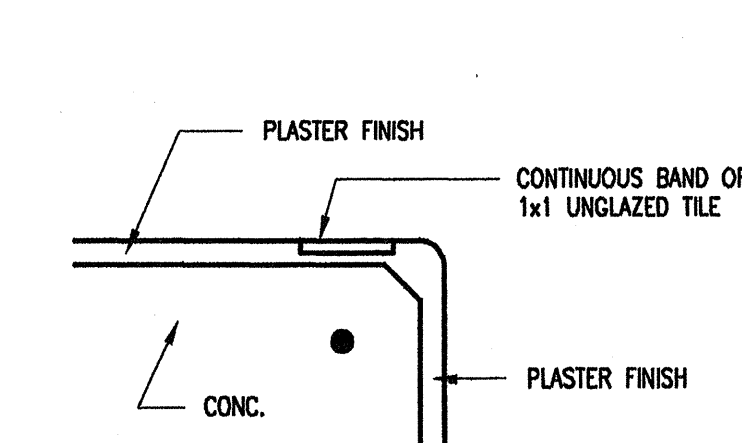
9 NEW GUTTER DETAIL
SP-1 SCALE: 1-1/2" = 1'-0"



8 TILE MARKERS & WARNINGS
SP-1 SCALE: 1-1/2" = 1'-0"



7 TILE LANE & TARGET
SP-1 SCALE: 3/4" = 1'-0"



6 STEP NOSING
SP-1 SCALE: 3" = 1'-0"

OPERATIONAL DATA	
SURFACE AREA (Sq. Ft.)	5,258
BATHING LOAD (Persons)	210
MAXIMUM LENGTH	82'-6"
MAXIMUM WIDTH	63'-0"
MAXIMUM DEPTH	5'-6"
CAPACITY GALLONS	188,331
DESIGN FLOW RATE (GPM)	800
PUMP PERFORMANCE (HP-GPM)	20 HP @ 65' TDH
TURNOVER (HOURS:MINUTES)	3:55
FILTER AREA (SQ FT)	49.5
FILTRATION RATE (GPM/SF)	16.16
BACKWASH RATE (GPM)	280
HYDRAULIC RATE (FT/SEC)	SUCTION - <6.0 DISCHARGE - <8.5
MAIN OUTLET RATE (GPM)	160
GUTTER OUTLET RATE (GPM)	640
FLOW PER INLET (GPM)	33.33

KEYED NOTES (○)

DEMOLITION

1. REMOVE GUTTER OF EXISTING POOL - TYPICAL.
2. REMOVE STEPS AND GUTTER AT INDICATED AREA. BACKFILL AND CONTINUE NEW GUTTER AND WALL ACROSS OPENING.
3. SAW CUT AND REMOVE POOL FLOOR FOR DRAIN LINE REPLACEMENT AND NEW DRAIN SUMP. TRENCH IS 18" WIDE.
4. REMOVE EXISTING DECK FOR POOL RENOVATION WORK. NOTE: REMOVE CONCRETE AS NECESSARY TO INSTALL NEW PIPING. RETAIN CHANNEL DRAIN IF POSSIBLE.
5. SANDBLAST EXISTING PLASTER; REMOVE EXISTING TILE

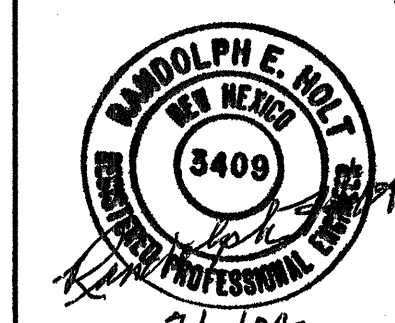
NEW WORK

10. NEW GUTTER STRUCTURE ALL AROUND POOL - SEE DETAIL.
11. NEW MAIN DRAIN SUMP WITH 24" x 48" OPEN FIBERGLASS GRATE - TYP. OF 2
12. STAINLESS STEEL ROPE ANCHOR - TYPICAL OF 18
13. DEPTH MARKER TILES @ GUTTER APRON AND WATER LINE TYP. WHERE SHOWN & SCHEDULED
14. "NO DIVING" TILE WARNING ON GUTTER APRON - TYP. WHERE SHOWN & SCHEDULED
15. NEW STAINLESS STEEL STEP LADDER - 4-STEP AT DEEP END
16. NEW STAINLESS STEEL STEP LADDER - 3-STEP AT SHALLOW END
17. NEW MARBLE PLASTER FINISH
18. NEW 3/4" SAFETY ROPE W/ 5" x 9" FLOATS
19. NEW STANCHION ANCHORS - TYP. OF 6 - SPACING SYMMETRICAL EACH SIDE
20. NEW DISABLED LIFT & WATER BOX HYDRANT - SEE DETAIL
21. NEW 6" HIGH MOVABLE GUARD CHAIR - TYP. OF 2
22. NEW TILE "NO DIVING" WARNING ON POOL FLOOR - TYP. OF 12 - SEE DETAIL
23. NEW TILE RACING LANES AND TARGETS - SEE DETAIL

WESCON CONSTRUCTION, INC
ALBUQUERQUE, NEW MEXICO

SWIMMING POOL REPAIRS FOR
ENVIRONMENTAL COMPLIANCE
RIO GRANDE PARK - CITY OF ALBUQUERQUE
1410 IRON SW

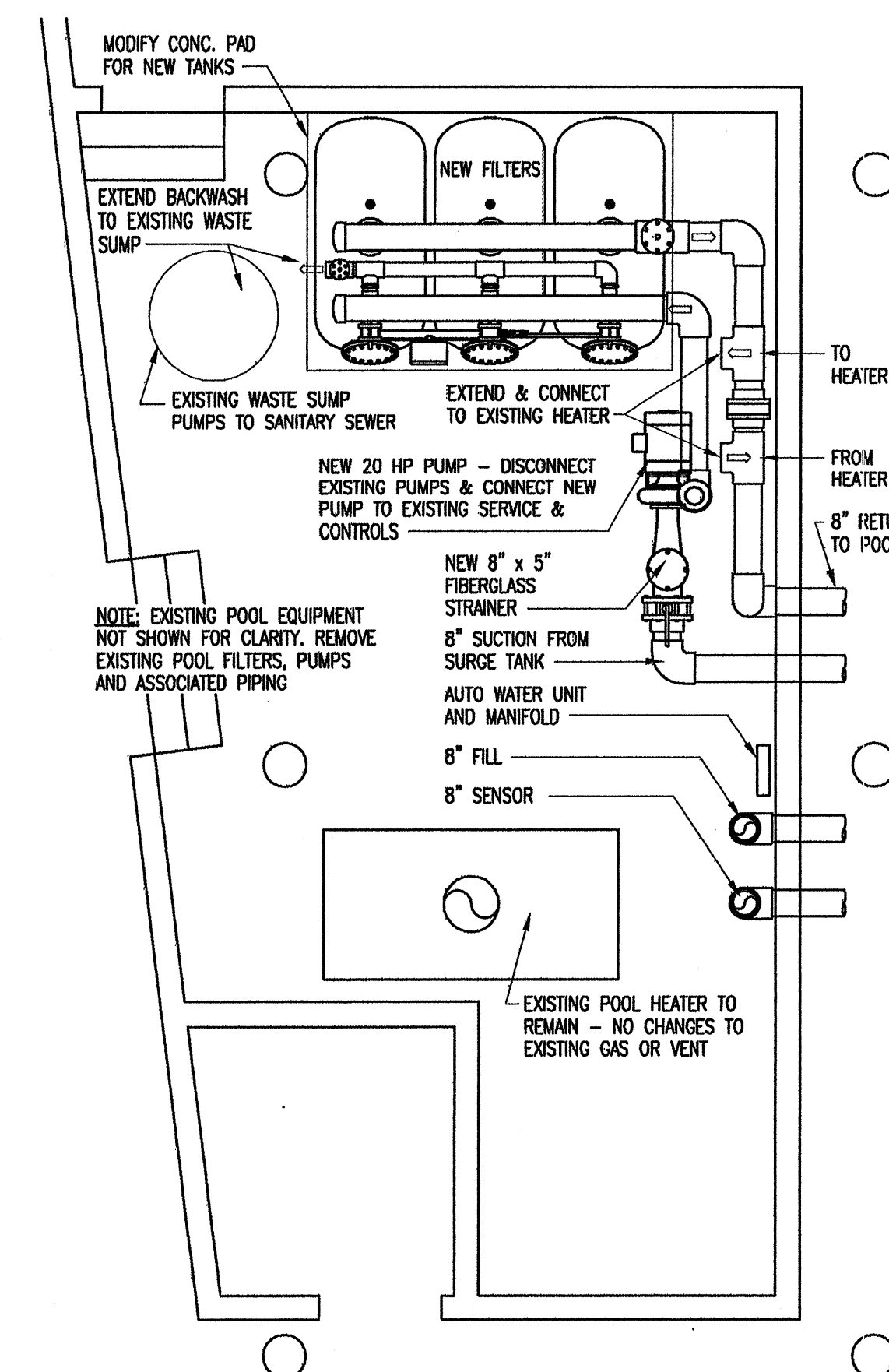
POOL PLUMBING



STRUCTURAL

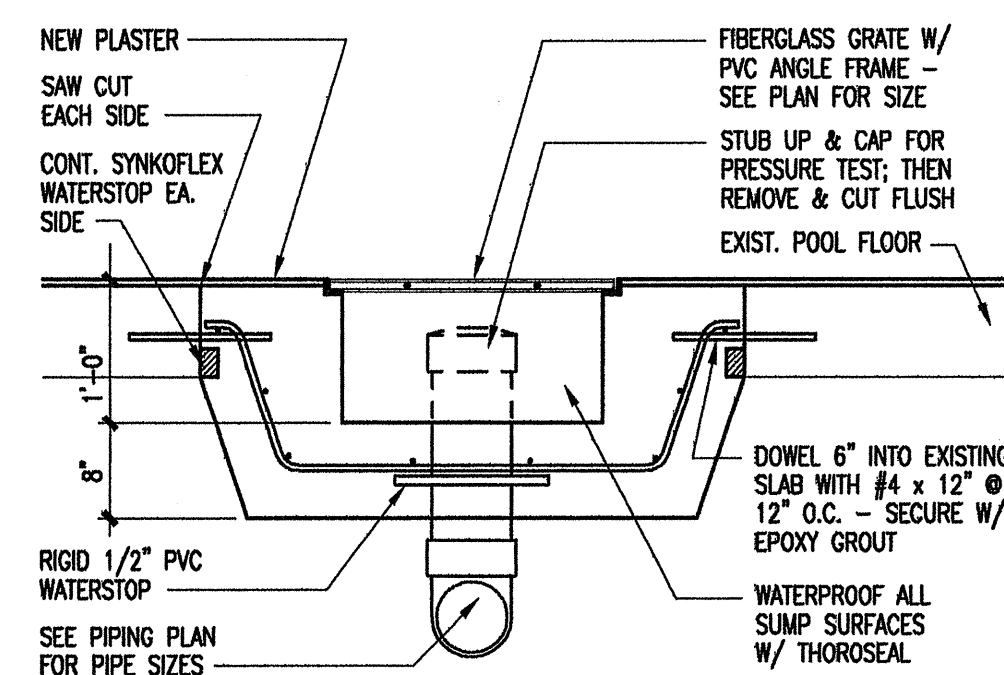
JUNE 2004

SP-1



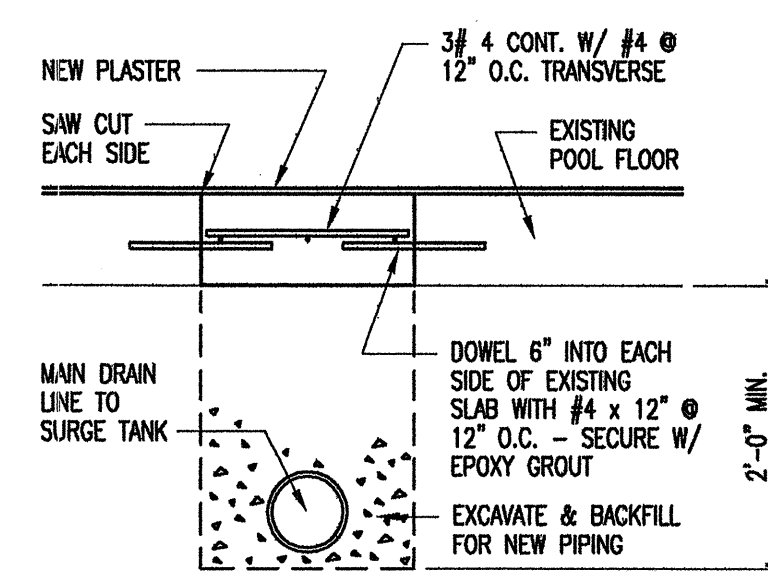
2 POOL MECHANICAL ROOM
SP-2 SCALE: 1/4" = 1'-0"

SP-2 SCALE: 1/4" = 1'-0"



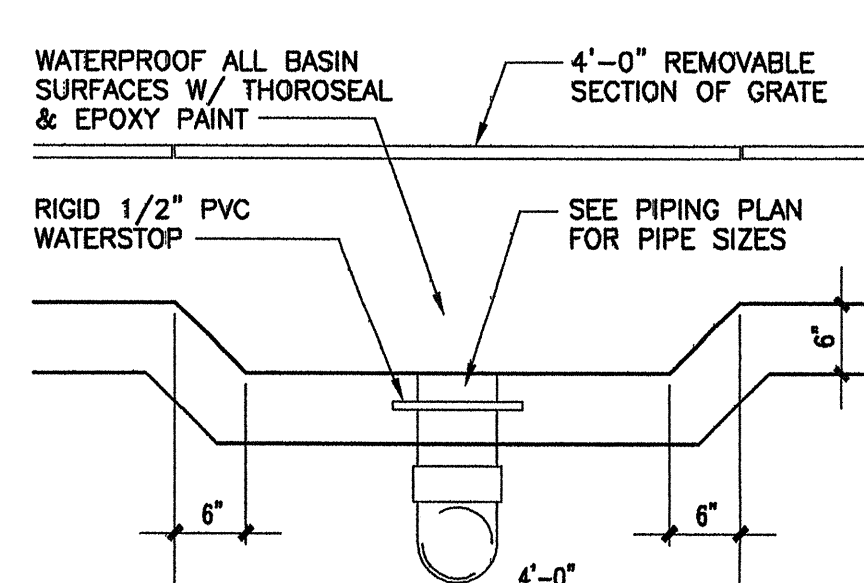
6 NEW MAIN DRAIN SUMP
SP-2 SCALE: 3/4" = 1'-0"

SP-2 SCALE: 3/4" = 1'-0'



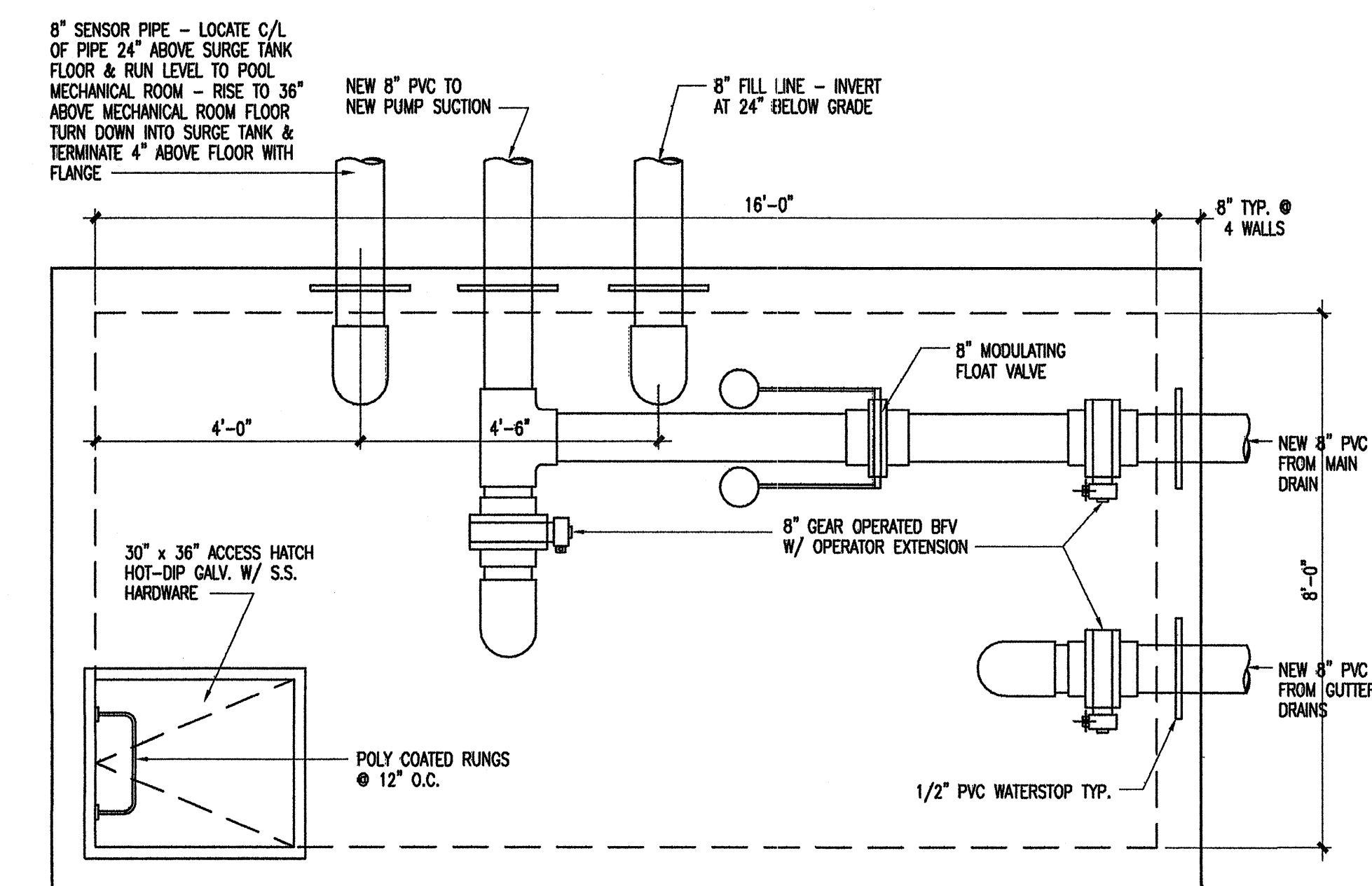
5 TRENCH FOR NEW DRAIN
SP-2 SCALE: 3/4" = 1'-0"

SP-2 SCALE: 3/4" = 1'-0"



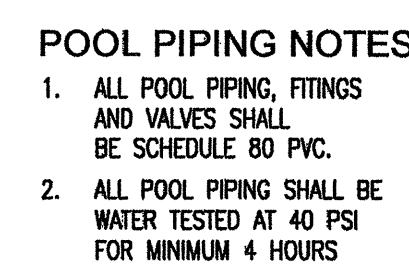
4 GUTTER OUTLET
SP-2 SCALE: 3/4" = 1'-0"

SCALE: 3/4" = 1'-0"

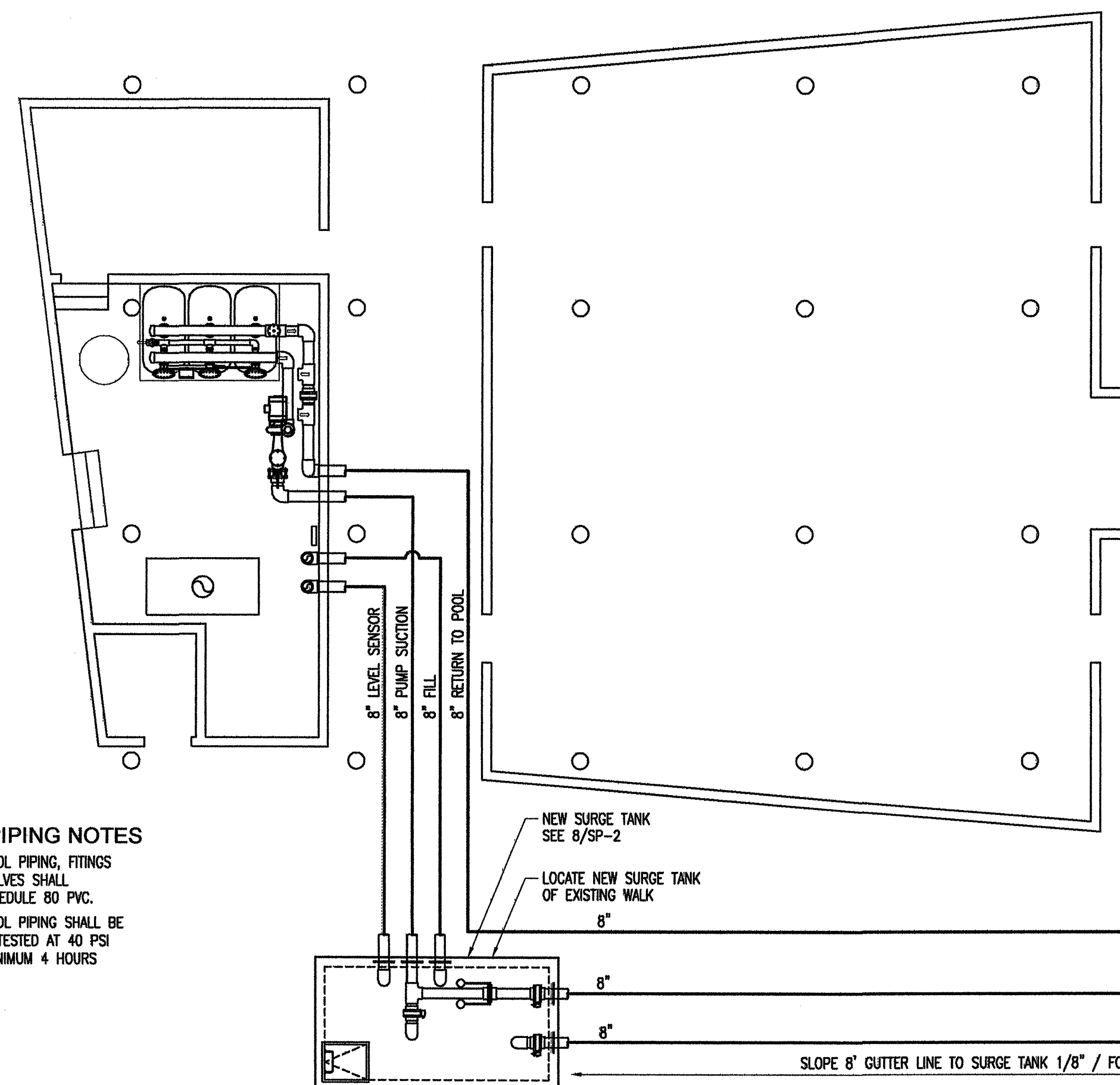


8 NEW SURGE TANK PLAN
SP-2 SCALE: 1/2" = 1'-0"

SP-2 SCALE: 1/2" = 1'-0"

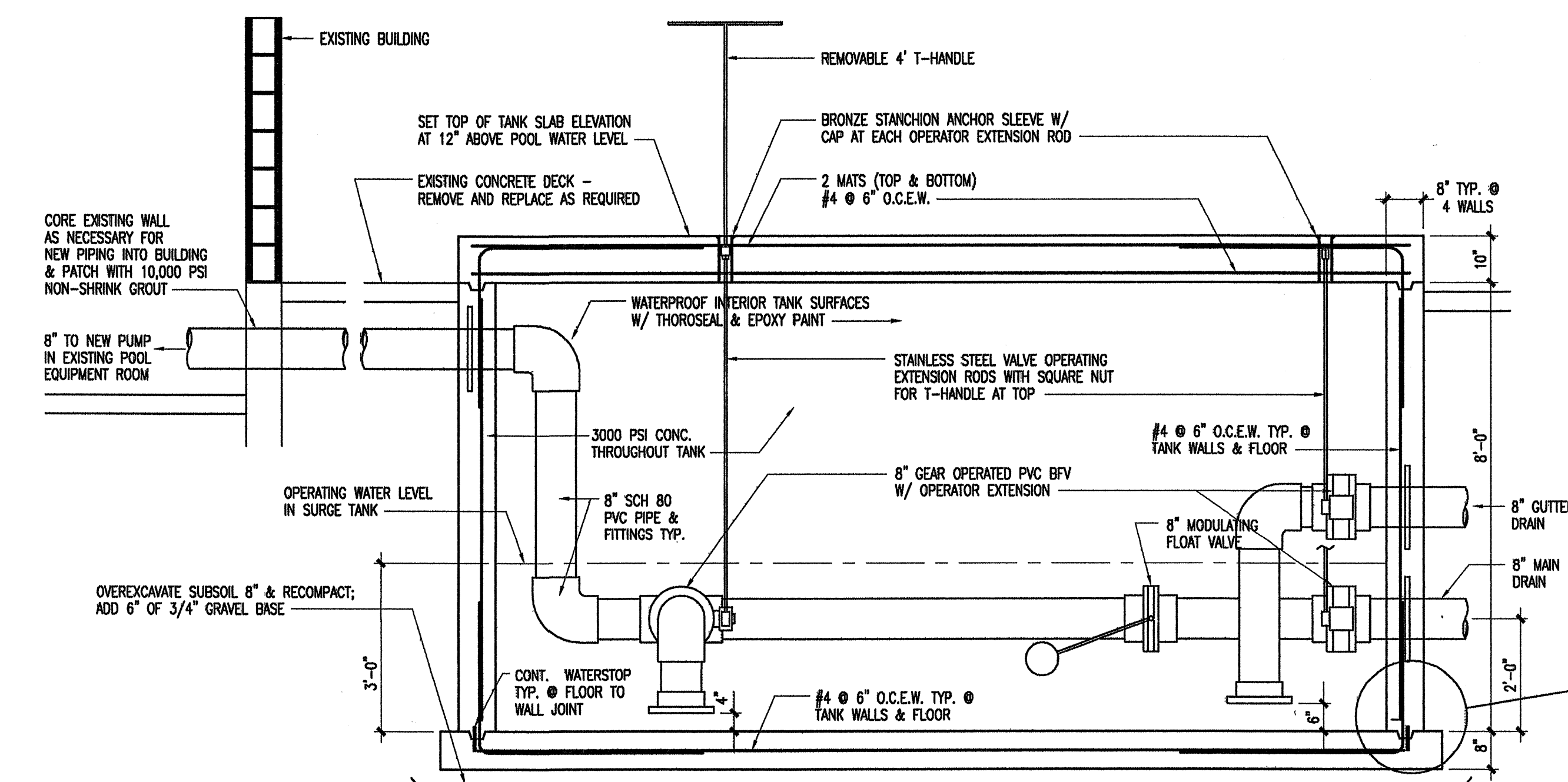


1. ALL POOL PIPING, FITTINGS AND VALVES SHALL BE SCHEDULE 80 PVC.
2. ALL POOL PIPING SHALL BE WATER TESTED AT 40 PSI FOR MINIMUM 4 HOURS



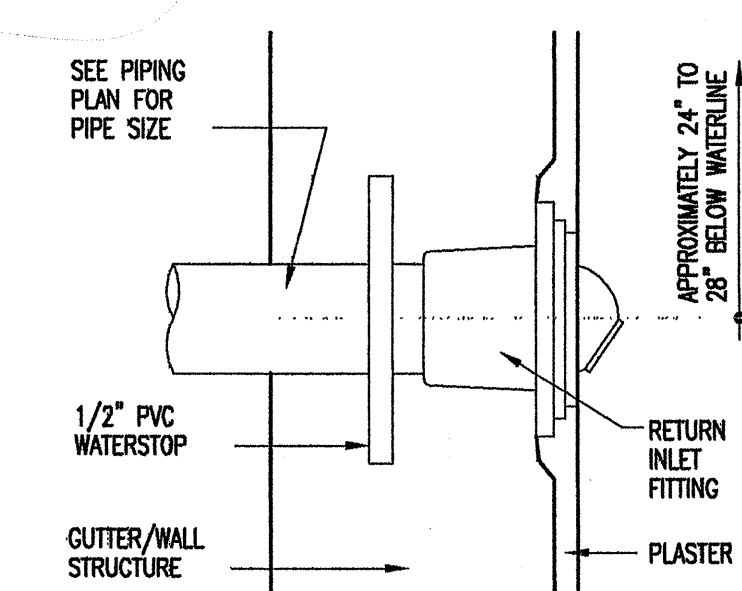
1 POOL PIPING PLAN
SP-2 SCALE: 1/8" = 1'-0"

SP-2 SCALE: 1/8" = 1'-0"



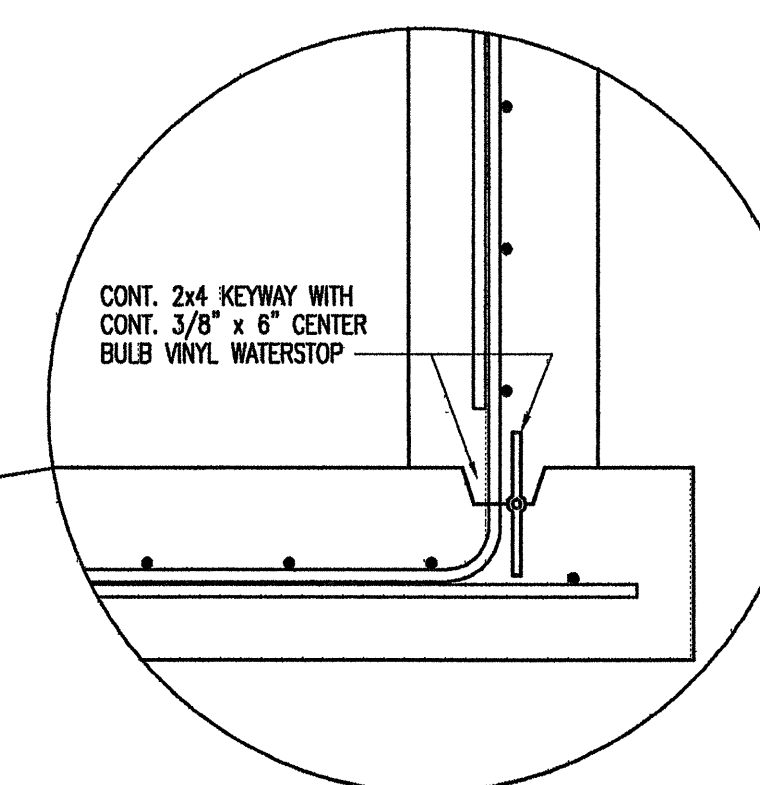
7 NEW SURGE TANK SECTION

NEW SOURCE	
SCALE 1/8" = 1'-0"	



3 WALL INLET
SP-2 SCALE: 3" = 1'-0"

SP-2 SCALE: 3" = 1'-0"



CONT. 2x4 KEYWAY WITH
CONT. 3/8" x 6" CENTER
BULB VINYL WATERSTOP

