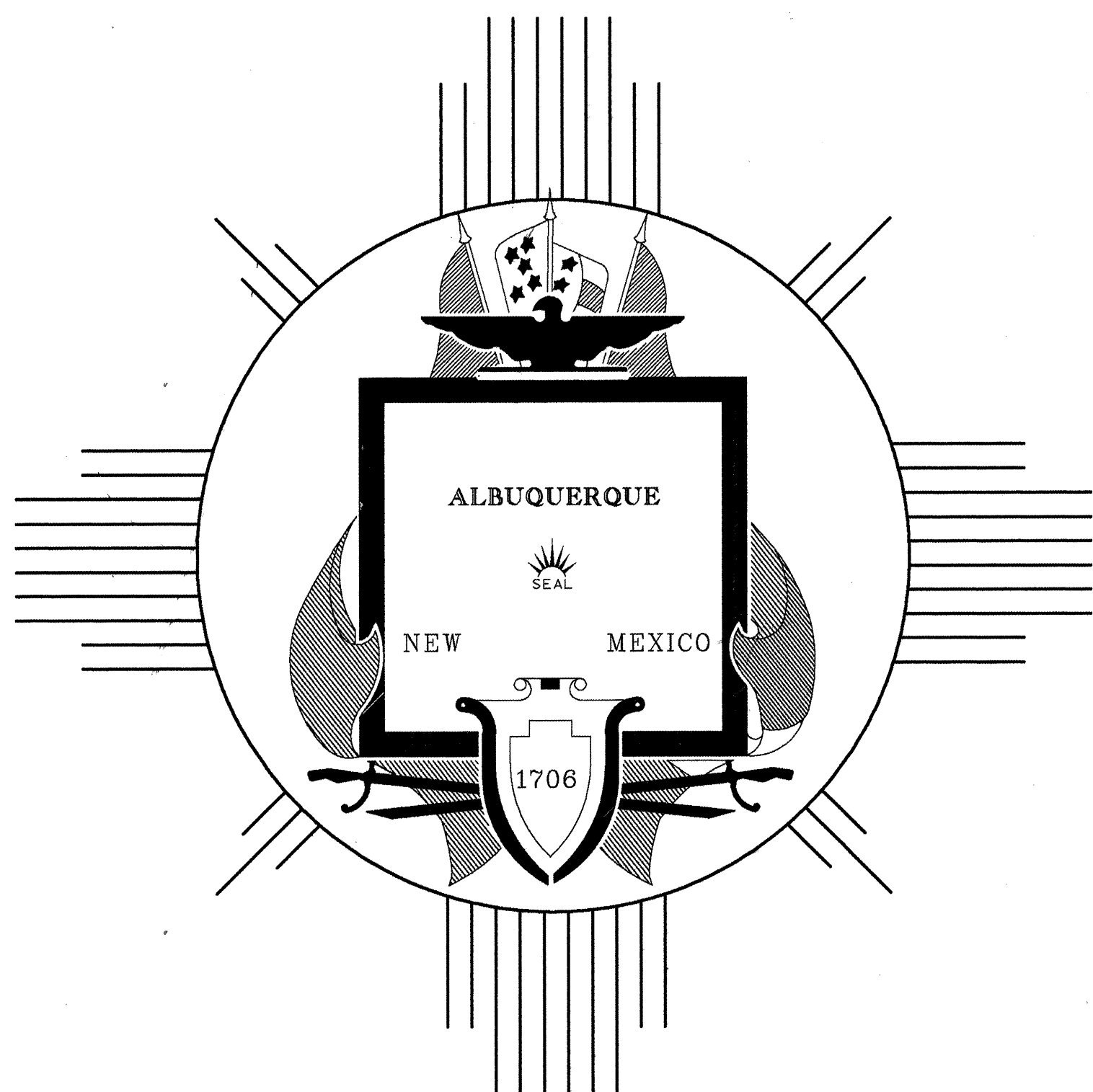


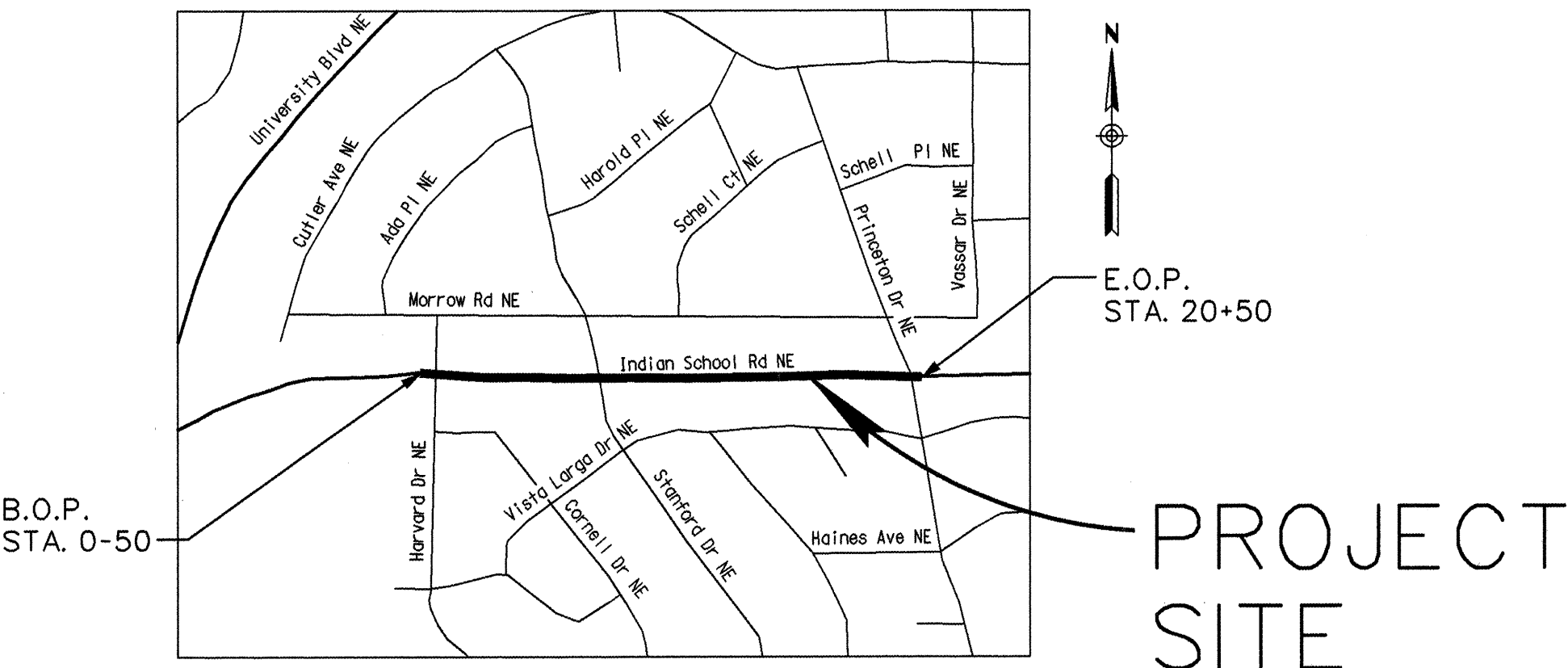
# INDIAN SCHOOL ROAD MEDIAN IMPROVEMENTS



DESCRIPTION	SHEET NO.
TITLE SHEET, INDEX & GENERAL NOTES . . . . .	1
DETAILS & TYPICAL SECTIONS . . . . .	2
INDIAN SCHOOL ROAD PLAN . . . . .	3
INTERSECTION DETAILS FOR WHEELCHAIR RAMPS. . . . .	4
IRRIGATION PLAN . . . . .	5
PLANTING PLAN . . . . .	6
DETAILS AND NOTES . . . . .	7
PLANT LIST, DETAILS AND PLANTING NOTES . . . . .	8
TRAFFIC CONTROL PLAN - SHEET 1 . . . . .	9
TRAFFIC CONTROL PLAN - SHEET 2 . . . . .	10

APPROVAL OF AS BUILT DRAWINGS  
CHIEF CONSTRUCTION ENGINEER  
*Chang*  
DATE 12-27-99

"AS RECORDED"  
From Information  
provided by the  
contractors  
Date 7/27/99



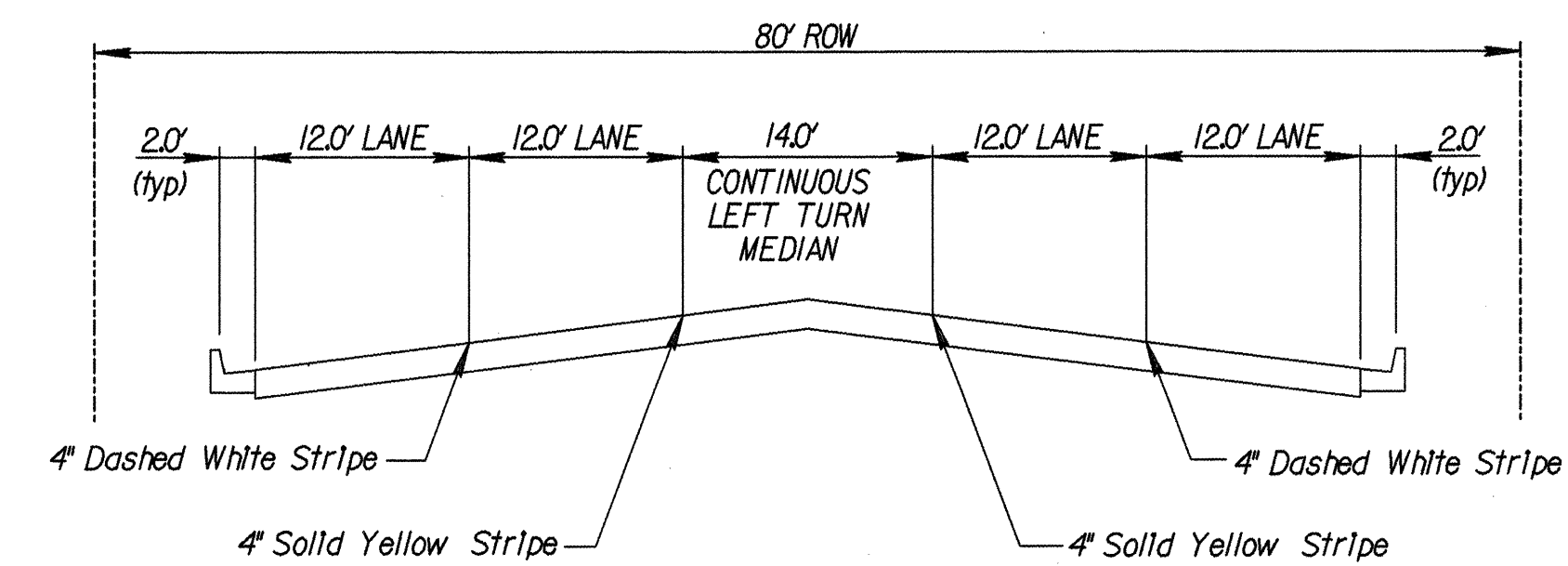
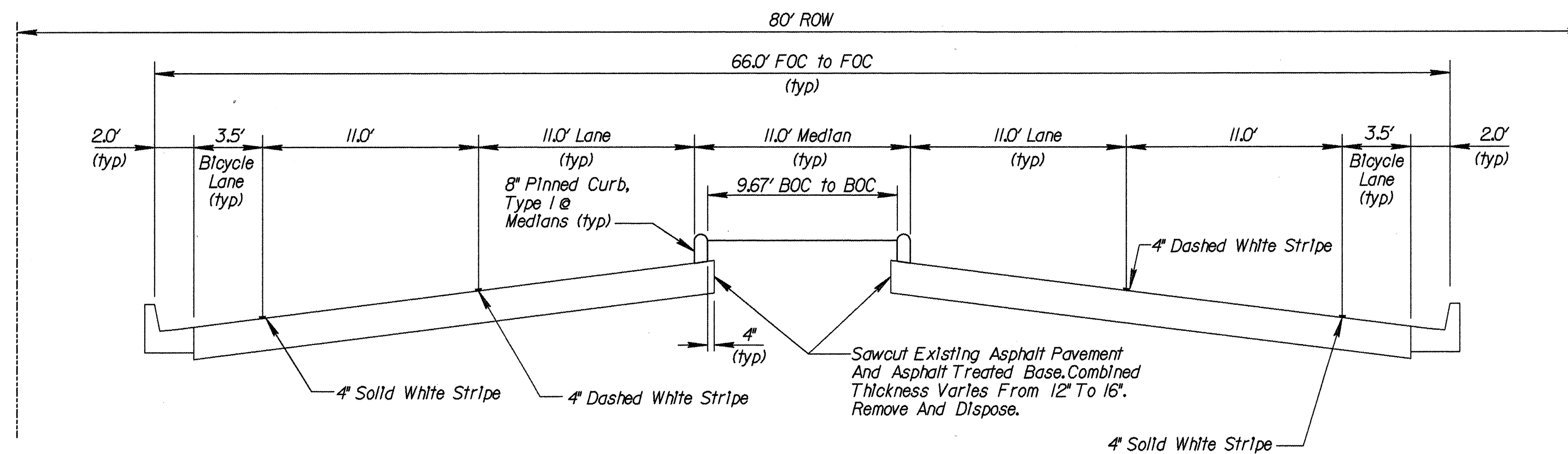
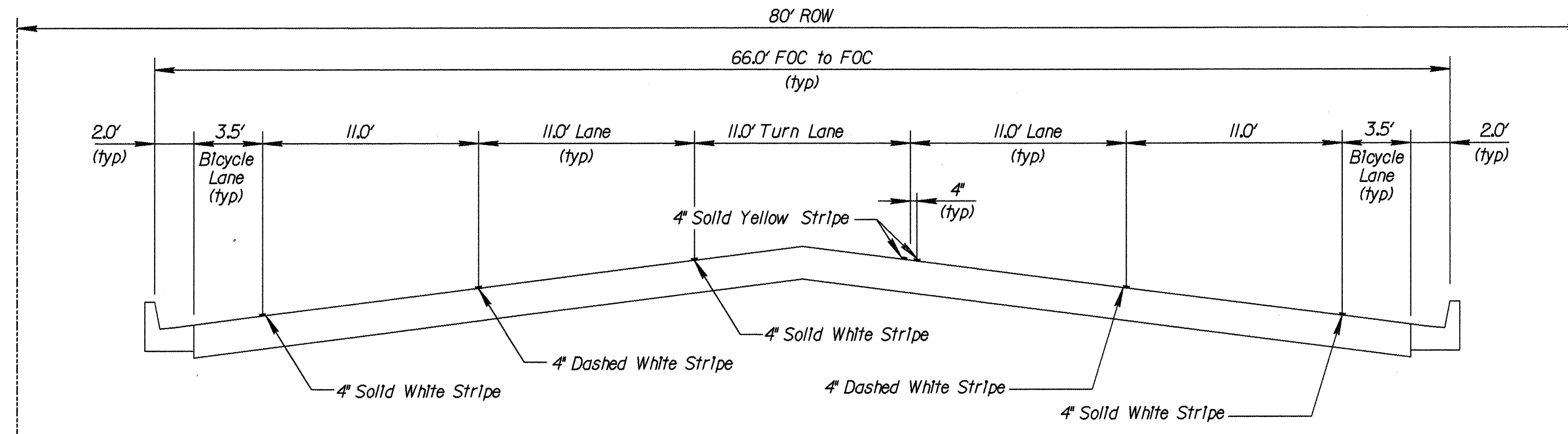
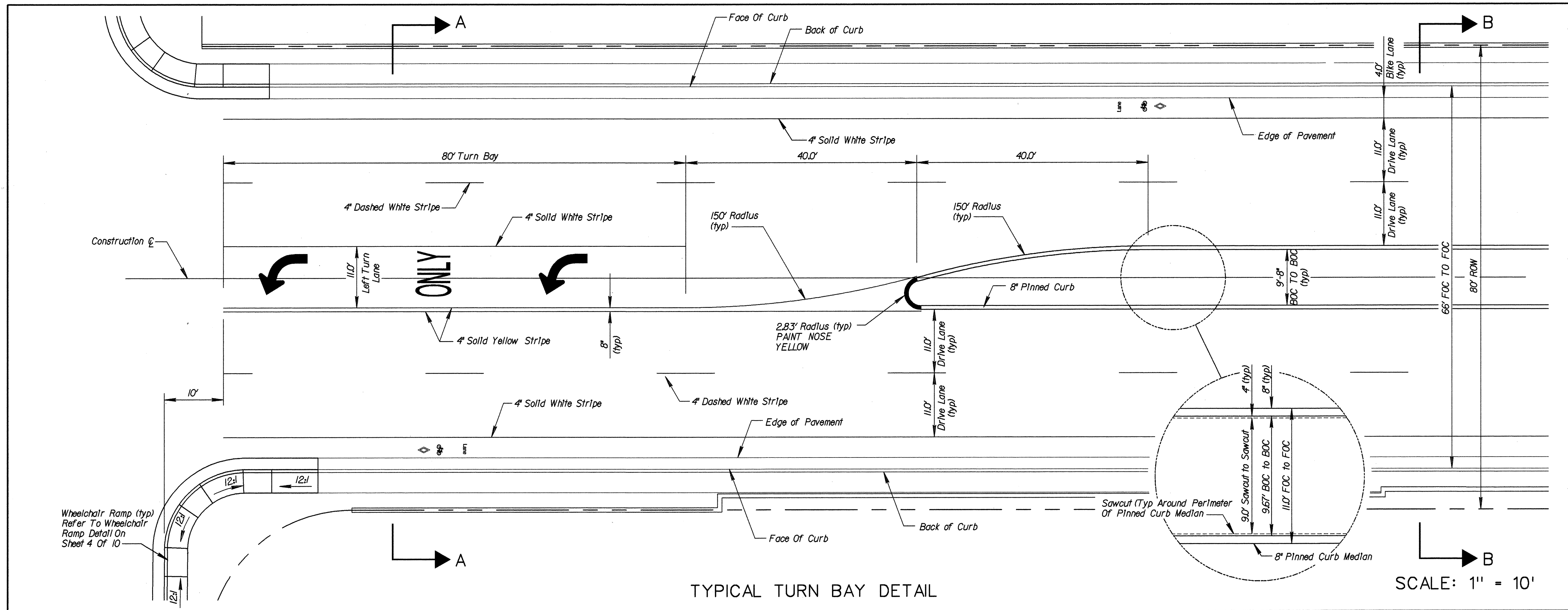
## INDIAN SCHOOL ROAD VICINITY MAP (NTS) GENERAL NOTES NOTICE TO CONTRACTOR

1. CITY OF ALBUQUERQUE SPECIFICATIONS FOR PUBLIC WORKS CONSTRUCTION, 1986 EDITION AS AMENDED THROUGH UPDATE 6, WILL BE REFERRED TO HEREIN AS THE "STANDARD SPECIFICATIONS".
2. TWO (2) WORKING DAYS PRIOR TO ANY EXCAVATION, CONTRACTOR MUST CONTACT NEW MEXICO ONE CALL SYSTEM (260-1990) AND DETERMINE LOCATION OF EXISTING UTILITIES.
3. PRIOR TO ANY CONSTRUCTION, THE CONTRACTOR SHALL EXCAVATE AND VERIFY THE HORIZONTAL AND VERTICAL LOCATIONS OF ALL OBSTRUCTIONS. SHOULD A CONFLICT EXIST, THE CONTRACTOR SHALL NOTIFY THE ENGINEER OR THE SURVEYOR SO THAT THE CONFLICT CAN BE RESOLVED WITHOUT DELAY.
4. ALL EXISTING SIGNS, MARKERS, DELINEATORS, ETC., WITHIN THE CONSTRUCTION LIMITS SHALL BE REMOVED, STORED AND RE-SET BY THE CONTRACTOR.
5. THE CONTRACTOR SHALL NOTIFY THE ENGINEER NOT LESS THAN SEVEN (7) WORKING DAYS PRIOR TO STARTING WORK IN ORDER THAT THE ENGINEER MAY TAKE NECESSARY MEASURES TO INSURE THE PRESERVATION OF SURVEY MONUMENTS. CONTRACTOR SHALL NOT DISTURB PERMANENT SURVEY MONUMENTS WITHOUT THE CONSENT OF THE ENGINEER AND SHALL NOTIFY THE ENGINEER AND BEAR THE EXPENSE OF REPLACING ANY THAT MAY BE DISTURBED WITHOUT PERMISSION. REPLACEMENT SHALL BE DONE ONLY BY THE CITY SURVEYOR. WHEN A CHANGE IS MADE IN THE FINISHED ELEVATIONS OF THE PAVEMENT OF ANY ROADWAY IN WHICH A PERMANENT SURVEY MONUMENT IS LOCATED, CONTRACTOR SHALL, AT HIS OWN EXPENSE, ADJUST THE MONUMENT COVER TO THE NEW GRADE UNLESS OTHERWISE SPECIFIED. REFER TO SECTION 4.4 OF THE GENERAL CONDITIONS OF THE STANDARD SPECIFICATIONS.
6. FIVE (5) WORKING DAYS PRIOR TO BEGINNING CONSTRUCTION THE CONTRACTOR SHALL SUBMIT TO THE CONSTRUCTION COORDINATION DIVISION A DETAILED CONSTRUCTION SCHEDULE. TWO (2) WORKING DAYS PRIOR TO CONSTRUCTION THE CONTRACTOR SHALL OBTAIN A BARRICADING PERMIT FROM THE CONSTRUCTION COORDINATION DIVISION. CONTRACTOR SHALL NOTIFY BARRICADE ENGINEER (768-2551) PRIOR TO OCCUPYING AN INTERSECTION.
7. CONTRACTOR SHALL MAINTAIN A GRAFFITI-FREE WORK SITE. CONTRACTOR SHALL PROMPTLY REMOVE ANY AND ALL GRAFFITI FROM EQUIPMENT, WHETHER PERMANENT OR TEMPORARY.
8. CONTRACTOR SHALL MAINTAIN TWO (2) LANES OF TRAFFIC FOR WESTBOUND DIRECTION FROM 6:00 AM TO 9:00 AM AND TWO (2) LANES OF TRAFFIC FOR EASTBOUND DIRECTION FROM 3:00 PM TO 6:00 PM AT ALL TIMES FOR THE PROJECT. A MINIMUM OF ONE LANE IN EACH DIRECTION ON INDIAN SCHOOL ROAD SHALL BE PROVIDED AT ALL TIMES WITH THE EXCEPTION OF THE TWO LANE REQUIREMENT. TRAFFIC SHALL REMAIN IN THEIR RESPECTIVE DIRECTIONS AND NO TRAFFIC SPLITS SHALL BE ALLOWED UNLESS APPROVED BY THE CONSTRUCTION COORDINATOR.
9. CONTRACTOR SHALL USE THE CITY OF ALBUQUERQUE'S STANDARDS FOR SIGNING AND CONSTRUCTION TRAFFIC CONTROL FOR TYPICAL LANE CLOSURES REQUIRED FOR THIS PROJECT. REFER TO SHEETS 9 AND 10.

**HDR**  
HDR Engineering, Inc.

--	--	--	--	--	--	--	--	--	--	--	--	--	--	--	--	--	--	--	--	--	--	--	--	--	--	--	--	--	--	--	--	--	--	--	--	--	--	--	--	--	--	--	--	--	--	--	--	--	--	--	--	--	--	--	--	--	--	--	--	--	--	--	--	--	--	--	--	--	--	--	--	--	--	--	--	--	--	--	--	--	--	--	--	--	--	--	--	--	--	--	--	--	--	--	--	--	--	--	--	--	--	--	--	--	--	--	--	--	--	--	--	--	--	--	--	--	--	--	--	--	--	--	--	--	--	--	--	--	--	--	--	--	--	--	--	--	--	--	--	--	--	--	--	--	--	--	--	--	--	--	--	--	--	--	--	--	--	--	--	--	--	--	--	--	--	--	--	--	--	--	--	--	--	--	--	--	--	--	--	--	--	--	--	--	--	--	--	--	--	--	--	--	--	--	--	--	--	--	--	--	--	--	--	--	--	--	--	--	--	--	--	--	--	--	--	--	--	--	--	--	--	--	--	--	--	--	--	--	--	--	--	--	--	--	--	--	--	--	--	--	--	--	--	--	--	--	--	--	--	--	--	--	--	--	--	--	--	--	--	--	--	--	--	--	--	--	--	--	--	--	--	--	--	--	--	--	--	--	--	--	--	--	--	--	--	--	--	--	--	--	--	--	--	--	--	--	--	--	--	--	--	--	--	--	--	--	--	--	--	--	--	--	--	--	--	--	--	--	--	--	--	--	--	--	--	--	--	--	--	--	--	--	--	--	--	--	--	--	--	--	--	--	--	--	--	--	--	--	--	--	--	--	--	--	--	--	--	--	--	--	--	--	--	--	--	--	--	--	--	--	--	--	--	--	--	--	--	--	--	--	--	--	--	--	--	--	--	--	--	--	--	--	--	--	--	--	--	--	--	--	--	--	--	--	--	--	--	--	--	--	--	--	--	--	--	--	--	--	--	--	--	--	--	--	--	--	--	--	--	--	--	--	--	--	--	--	--	--	--	--	--	--	--	--	--	--	--	--	--	--	--	--	--	--	--	--	--	--	--	--	--	--	--	--	--	--	--	--	--	--	--	--	--	--	--	--	--	--	--	--	--	--	--	--	--	--	--	--	--	--	--	--	--	--	--	--	--	--	--	--	--	--	--	--	--	--	--	--	--	--	--	--	--	--	--	--	--	--	--	--	--	--	--	--	--	--	--	--	--	--	--	--	--	--	--	--	--	--	--	--	--	--	--	--	--	--	--	--	--	--	--	--	--	--	--	--	--	--	--	--	--	--	--	--	--	--	--	--	--	--	--	--	--	--	--	--	--	--	--	--	--	--	--	--	--	--	--	--	--	--	--	--	--	--	--	--	--	--	--	--	--	--	--	--	--	--	--	--	--	--	--	--	--	--	--	--	--	--	--	--	--	--	--	--	--	--	--	--	--	--	--	--	--	--	--	--	--	--	--	--	--	--	--	--	--	--	--	--	--	--	--	--	--	--	--	--	--	--	--	--	--	--	--	--	--	--	--	--	--	--	--	--	--	--	--	--	--	--	--	--	--	--	--	--	--	--	--	--	--	--	--	--	--	--	--	--	--	--	--	--	--	--	--	--	--	--	--	--	--	--	--	--	--	--	--	--	--	--	--	--	--	--	--	--	--	--	--	--	--	--	--	--	--	--	--	--	--	--	--	--	--	--	--	--	--	--	--	--	--	--	--	--	--	--	--	--	--	--	--	--	--	--	--	--	--	--	--	--	--	--	--	--	--	--	--	--	--	--	--	--	--	--	--	--	--	--	--	--	--	--	--	--	--	--	--	--	--	--	--	--	--	--	--	--	--	--	--	--	--	--	--	--	--	--	--	--	--	--	--	--	--	--	--	--	--	--	--	--	--	--	--	--	--	--	--	--	--	--	--	--	--	--	--	--	--	--	--	--	--	--	--	--	--	--	--	--	--	--	--	--	--	--	--	--	--	--	--	--	--	--	--	--	--	--	--	--	--	--	--	--	--	--	--	--	--	--	--	--	--	--	--	--	--	--	--	--	--	--	--	--	--	--	--	--	--	--	--	--	--	--	--	--	--	--	--	--	--	--	--	--	--	--	--	--	--	--	--	--	--	--	--	--	--	--	--	--	--	--	--	--	--	--	--	--	--	--	--	--	--	--	--	--	--	--	--	--	--	--	--	--	--	--	--	--	--	--	--	--	--	--	--	--	--	--	--	--	--	--	--	--	--	--	--	--	--	--	--	--	--	--	--	--	--	--	--	--	--	--	--	--	--	--	--	--	--	--	--	--	--	--	--	--	--	--	--	--	--	--	--	--	--	--	--	--	--	--	--	--	--	--	--	--	--	--	--	--	--	--	--	--	--	--	--	--	--	--	--	--	--	--	--	--	--	--	--	--	--	--	--	--	--	--	--	--	--	--	--	--	--	--	--	--	--	--	--	--	--	--	--	--	--	--	--	--	--	--	--	--	--	--	--	--	--	--	--	--	--	--	--	--	--	--	--	--	--	--	--	--	--	--	--	--	--	--	--	--	--	--	--	--	--	--	--	--	--	--	--	--	--	--	--	--	--	--	--	--	--	--	--	--	--	--	--	--	--	--	--	--	--	--	--	--	--	--	--	--	--	--	--	--	--	--	--	--	--	--	--	--	--	--	--	--	--	--	--	--	--	--	--	--	--	--	--	--	--	--	--	--	--	--	--	--	--	--	--	--	--	--	--	--	--	--	--	--	--	--	--	--	--	--	--	--	--	--	--	--	--	--	--	--	--	--	--	--	--	--	--	--	--	--	--	--	--	--	--	--	--	--	--	--	--	--	--	--	--	--	--	--	--	--	--	--	--	--	--	--	--	--	--	--	--	--	--	--	--	--	--	--	--	--	--	--	--	--	--	--	--	--	--	--	--	--	--	--	--	--	--	--	--	--	--	--	--	--	--	--	--	--	--	--	--	--	--	--	--	--	--	--	--	--	--	--	--	--	--	--	--	--	--	--	--	--	--	--	--	--	--	--	--	--	--	--	--	--	--	--	--	--	--	--	--	--	--	--	--	--	--	--	--	--	--	--	--	--	--	--	--	--	--	--	--	--	--	--	--	--	--	--	--	--	--	--	--	--	--	--	--	--	--	--	--	--	--	--	--	--	--	--	--	--	--	--	--	--	--	--	--	--	--	--	--	--	--	--	--	--	--	--	--	--	--	--	--	--	--	--	--	--	--	--	--	--	--	--	--	--	--	--	--	--	--	--	--	--	--	--	--	--	--	--	--	--	--	--	--	--	--	--	--	--	--	--	--	--	--	--	--	--	--	--	--	--	--	--	--	--	--	--	--	--	--	--	--	--	--	--	--	--	--	--	--	--	--	--	--	--	--	--	--	--	--	--	--	--	--	--	--	--	--	--	--	--	--	--	--	--	--	--	--	--	--	--	--	--	--	--	--	--	--	--	--	--	--	--	--	--	--	--	--	--	--	--	--	--	--	--	--	--	--	--	--	--	--	--	--	--	--	--	--	--	--	--	--	--	--	--	--





# SEQUENCE OF CONSTRUCTION NOTES:

1. TAP INTO 6" WATER LINE AT STANFORD FOR 1" METERED WATER SERVICE INSTALLATION FOR LANDSCAPING IMPROVEMENTS PER STANDARD DETAILS 2362 & 2366. SAWCUTTING AND TRENCHING, BACKFILL AND PAVING PER STANDARD DRAWING 2465. BORE AT TWO LOCATIONS TO INSTALL 1" WATER SERVICE LINE TO MEDIAN ACROSS EB LANES OF INDIAN SCHOOL.
2. SAWCUT 4" FROM BACK OF PINNED CURBED MEDIAN PERIMETER AND REMOVE ASPHALT PAVEMENT AND ASPHALT TREATED BASE TO A DEPTH OF 16" AND DISPOSE.
3. BEGIN WHEELCHAIR RAMP AND SIDEWALK CONSTRUCTION.
4. INSTALL MEDIAN LINER. REFER TO DETAIL ON SHEET 8 OF 10.
5. INSTALL CLEAN FILL MATERIAL TO BOTTOM OF IRRIGATION SYSTEM.
6. INSTALL PINNED CURB TYPE 1 PER STANDARD DWG 2415.
7. INSTALL IRRIGATION SYSTEM PER SECTION 1001.
8. INSTALL REMAINDER 19" OF CLEAN FILL MATERIAL TO FINISH GRADE PER PLANS.
9. INSTALL LANDSCAPING IMPROVEMENTS.
10. COMPLETE WHEELCHAIR RAMP AND SIDEWALK CONSTRUCTION.
11. INSTALL STRIPING, MARKINGS AND SIGNAGE.

"AS RECORDED"

From information provided by the contractors

By: *[Signature]* Date: 7/27/99

**HDR**

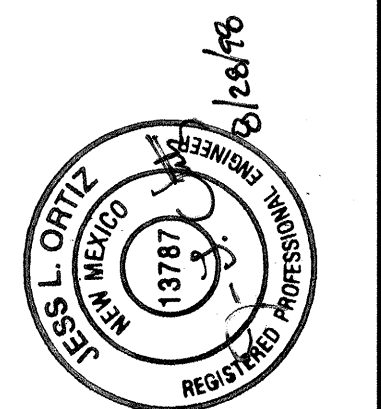
HDR Engineering, Inc.

CITY OF ALBUQUERQUE  
MUNICIPAL DEVELOPMENT DEPARTMENT  
ENGINEERING GROUP

TITLE: INDIAN SCHOOL ROAD MEDIAN IMPROVEMENTS  
HARVARD DRIVE N.E. TO PRINCETON DRIVE N.E.  
DETAILS AND TYPICAL SECTIONS

APPROVALS	ENGINEER	DATE	APPROVALS	ENGINEER	DATE
DRC Chairman	<i>[Signature]</i>	7/27/99	Hydrology	<i>[Signature]</i>	7/27/99
Transportation	<i>[Signature]</i>	7/27/99	Parks	<i>[Signature]</i>	7/27/99
Water/Wastewater	<i>[Signature]</i>	7/27/99	Constr. Mngmt.	<i>[Signature]</i>	7/27/99
PROJECT NO.	5769.91	NO. H-16Z	SHEET	2	10

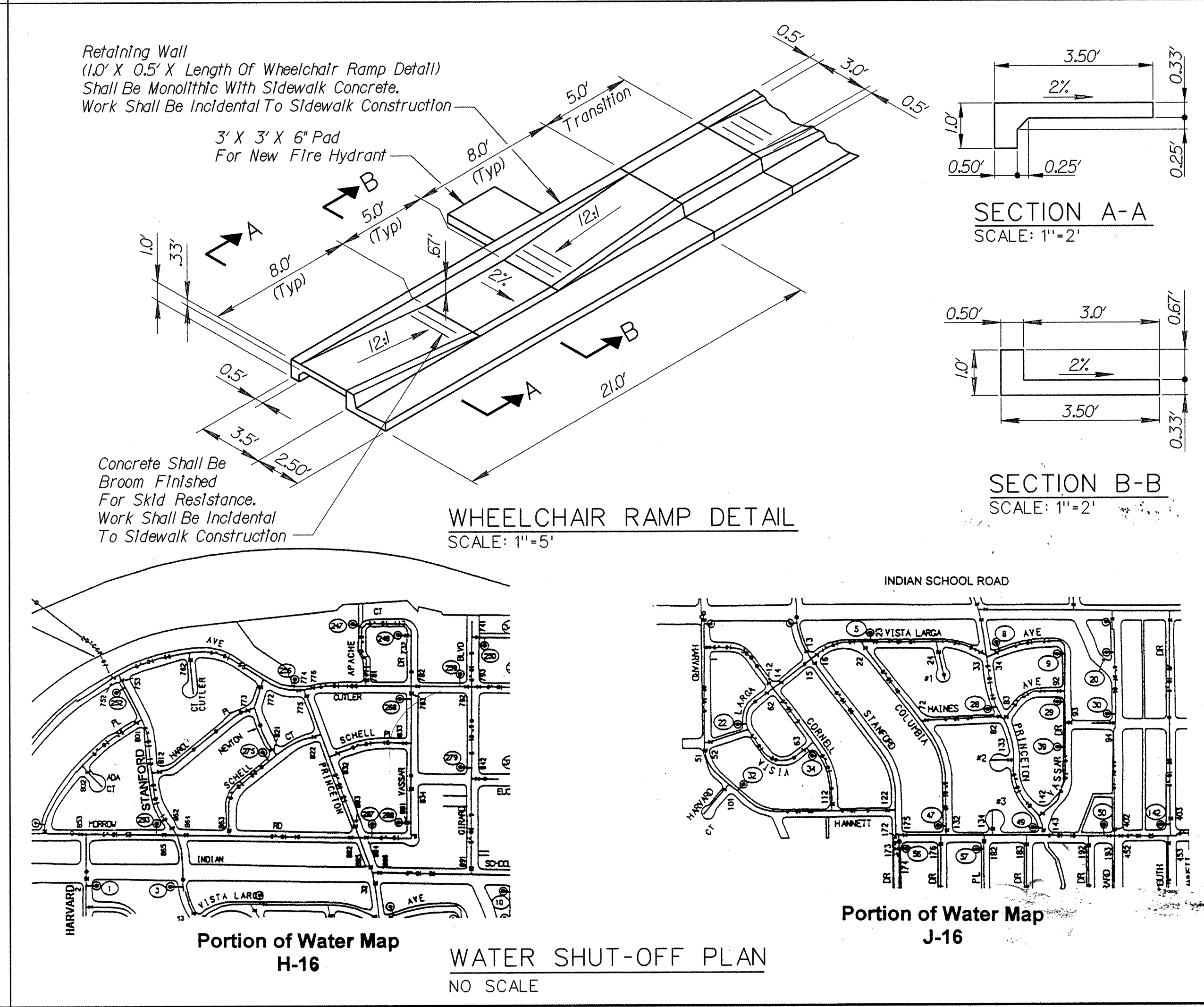
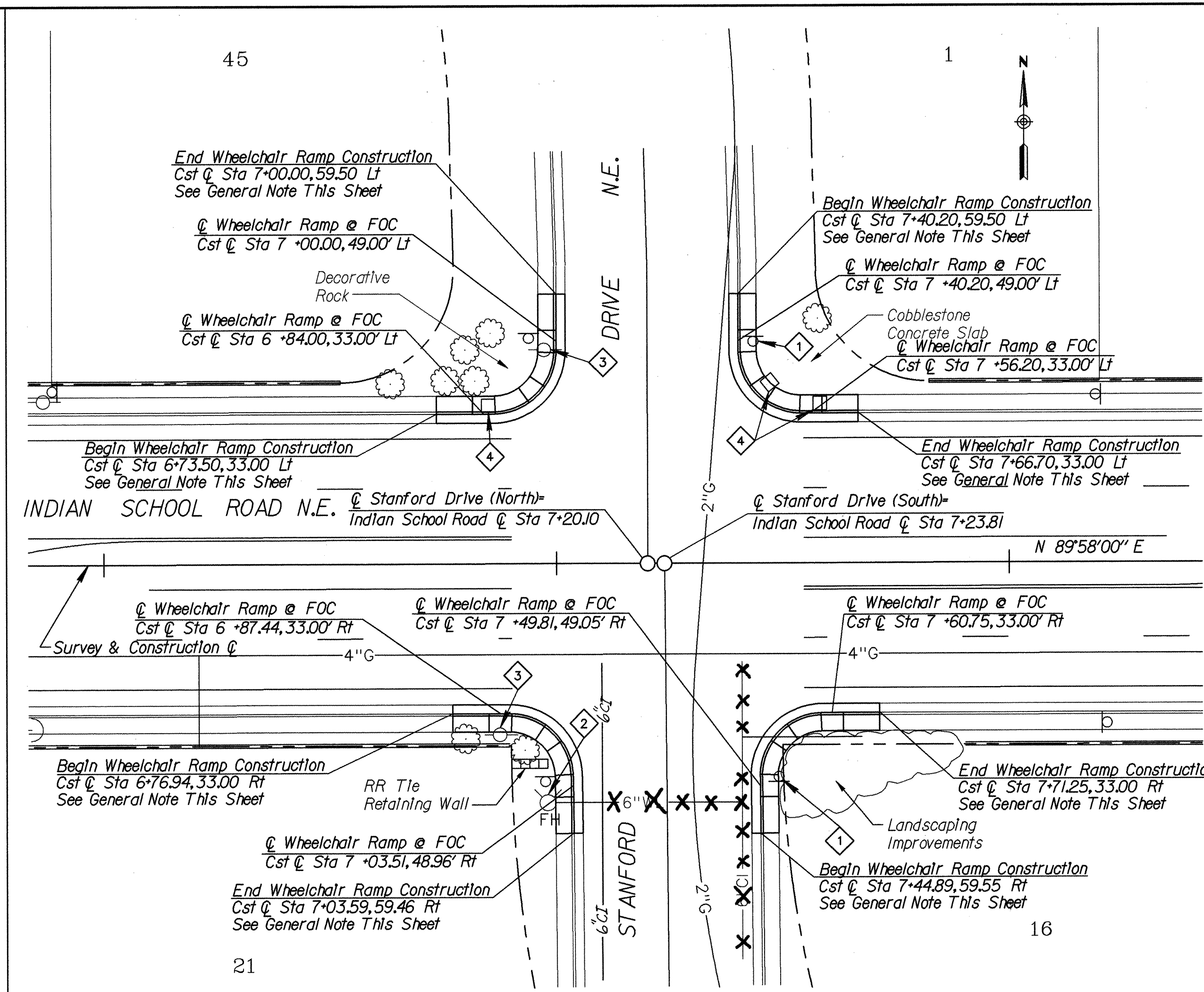
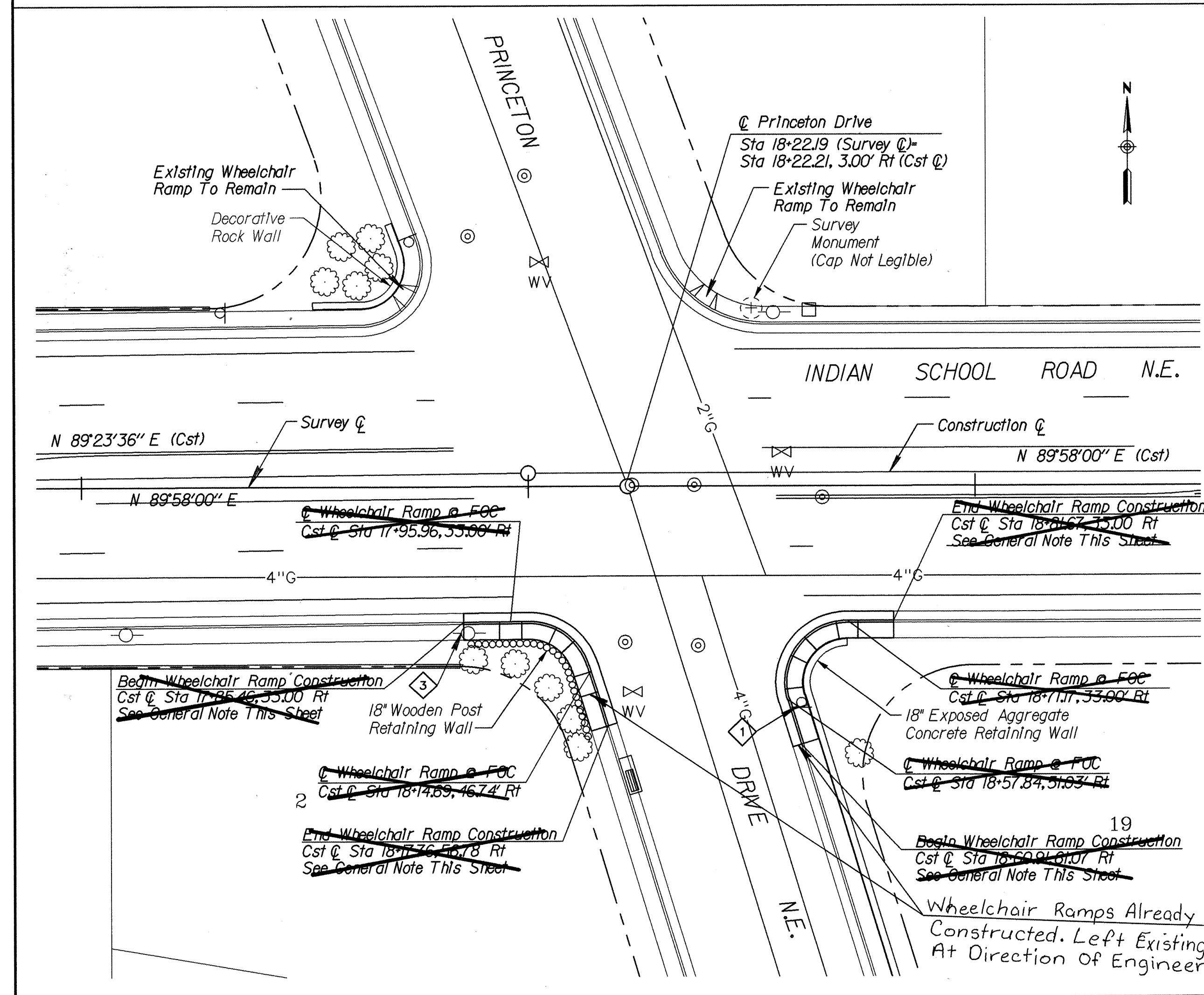
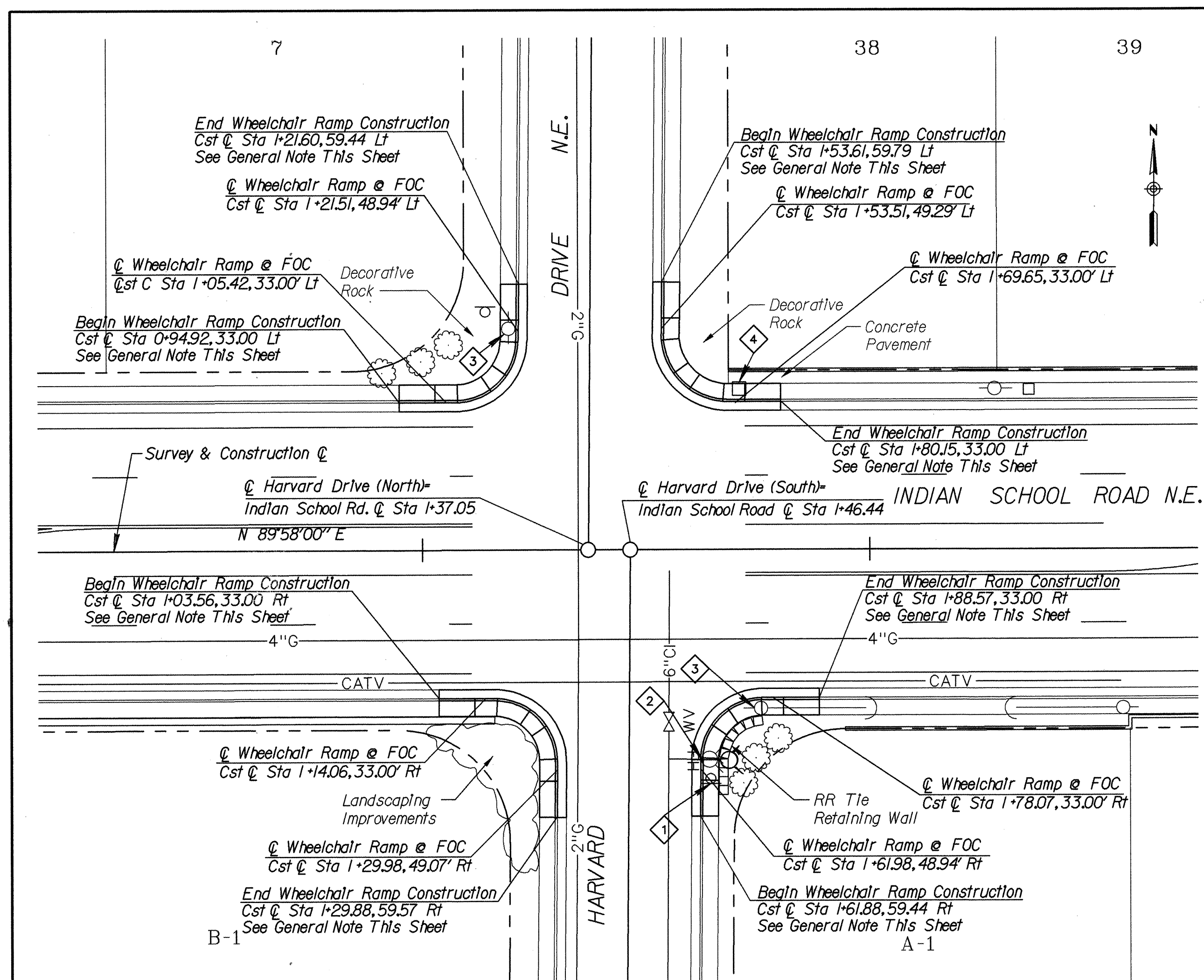
AS BUILT INFORMATION		BENCH MARKS		SURVEY INFORMATION	
CONTRACTOR	AUI	DATE	DATE	FIELD NOTES	DATE
WORK	AUI	DATE	DATE	NO.	BY
STARTED BY	AUI	DATE	DATE		
ACCEPTED BY	L. ROMERO	DATE	DATE		
FIELD	L. ROMERO	DATE	DATE		
DRAWINGS	L. ROMERO	DATE	DATE		
CORRECTED BY	HDR	DATE	DATE		
MICRO-FILM INFORMATION		DATE	DATE		
RECORDED BY		DATE	DATE		
NO.		DATE	DATE		











# PLAN

SCALE: 1"=20'

## RELOCATION NOTES:

- REMOVE AND RESET SIGNS AT THE DIRECTION OF THE ENGINEER.
- REMOVE AND REPLACE WITH NEW FIRE HYDRANT TO BACK OF SIDEWALK ON 3'X3'X6" PAD PER STD DWG 2340. REMOVE, DISPOSE AND REPLACE WATER LINE FROM FIRE HYDRANT TO 6" CAST IRON WATER LINE.
- POWER POLE TO BE RELOCATED BY PNM DIRECTLY ADJACENT TO SIDEWALK AT THE DIRECTION OF THE ENGINEER.
- REMOVE AND DISPOSE OF PULLBOXES. CAP EXISTING CONDUIT AND ABANDON.

## WATER SHUT-OFF PLAN NOTES:

RELOCATION OF FIRE HYDRANT (1) AT SE QUADRANT OF INDIAN SCHOOL AND HARVARD (REFER TO WATER MAP PAGE J-16 AND H-16). SHUT-OFF VALVE #2 AT INDIAN SCHOOL AND HARVARD AND VALVES #51 AND #52 AND VALVE #1 AT INTERSECTION OF HARVARD AND CORNELL.

RELOCATION OF FIRE HYDRANT (3) AT SW QUADRANT OF INDIAN SCHOOL AND STANFORD (REFER TO WATER MAP PAGE H-16 AND J-16). SHUT-OFF VALVES #13 AND #865, AND VALVES #862 AND #864 AT THE INTERSECTION OF MORROW AND STANFORD.

CONTACT WATER OPERATIONS (857-8200) TO SCHEDULE WATER SHUT-OFF AT LEAST 5 DAYS PRIOR TO DESIRED SHUT-OFF.

## GENERAL NOTE:

AT THE DIRECTION OF THE ENGINEER, BEGIN AND END WHEELCHAIR RAMP, SIDEWALK AND CURB AND GUTTER CONSTRUCTION AT THE NEAREST CURB AND GUTTER JOINT AT THE STATIONS IDENTIFIED AT EACH LOCATION ON THIS SHEET. SAWCUT, REMOVE AND DISPOSE SIDEWALK AND CURB AND GUTTER MATCH TO EXISTING CONDITIONS WITH NEW CONSTRUCTION. THE CONTRACTOR SHALL EXERCISE EXTREME CARE TO NOT DISTURB EXISTING LANDSCAPING IMPROVEMENTS DIRECTLY ADJACENT TO EXISTING SIDEWALK. EXISTING LANDSCAPING IMPROVEMENTS DISTURBED BY WHEELCHAIR RAMP AND SIDEWALK CONSTRUCTION SHALL BE RESTORED TO EQUAL OR BETTER CONDITION BY THE CONTRACTOR. NO SEPARATE PAYMENT WILL BE MADE FOR PRESERVING, MAINTAINING OR RESTORING LANDSCAPING IMPROVEMENTS.

## "AS RECORDED"

From Information provided by the contractors

By Date 7/27/98

# HDR

HDR Engineering, Inc.

## CITY OF ALBUQUERQUE

### MUNICIPAL DEVELOPMENT DEPARTMENT

#### ENGINEERING GROUP

TITLE: INDIAN SCHOOL ROAD MEDIAN IMPROVEMENTS  
HARVARD DRIVE N.E. TO PRINCETON DRIVE N.E.  
INTERSECTION DETAILS FOR WHEELCHAIR RAMP

APPROVALS

DRC Chairman

Transportation

Water/Wastewater

PROJECT NO. 5769.91

ENGINEER

DATE

APPROVED

SEP 18 1998

DESIGN REVIEW COMMITTEE

MAP NO. H-16Z

APPROVALS

Hydrology

Parks

Constr. Mngmt.

DESIGNED BY JLO

DRAWN BY LMR

CHECKED BY

ENGINEER

DATE

APPROVED

SEP 16 1998

CITY ENGINEER

NO. 4

NO. DATE

REMARKS

REVISIONS

DESIGN

NO. DATE

REMARKS

REVISIONS

DESIGN

DESIGNED BY JLO

DATE 7/20/98

DATE 7/20/98

DATE 7/20/98











1. VALVE BOXES SHALL BE INSTALLED A MINIMUM OF 12" FROM WALKS, MOW-STRIPS, DRIVE PADS, ETC.
2. ALL VALVE BOXES SHALL BE SUPPORTED BY CINDER BLOCKS, (MINIMUM 4 PER VALVE BOX). INSTALL BLOCKS IN A MANNER WHICH WILL PREVENT CONTACT WITH PIPING, WIRES, VALVES, ETC. ALL CMU BLOCKS SHALL BE SOLID.
3. MARK ALL 24-VOLT WIRE ENDS WITH 3M STD-09 WIRE MARKER TAPE AT THE VALVE BOX AND CONTROLLER LOCATIONS.
4. ALL 24-VOLT WIRE SHALL BE MARKED WITH A 6" WIDE RED MARKER TAPE AND MARKED "WARNING-ELECTRICAL". LAY MARKER TAPE HORIZONTALLY 6" ABOVE WIRE.
5. 24-VOLT WIRE SHALL BE IN COMMON TRENCH WITH MAIN LINE AND SHALL HAVE SEPARATE SLEEVE WHERE CROSSING ALL HARD CONSTRUCTION. ALL SLEEVE PIPING FOR 24-VOLT WIRE SHALL BE 2" CLASS 200 PVC.
6. WHERE PROPOSED PIPING CROSSES EXISTING ASPHALT AND/OR CONCRETE, THE CONTRACTOR SHALL SAW-CUT, REMOVE AND PROPERLY DISPOSE OF WASTE, EXCAVATE, INSTALL SLEEVE PIPING, MAINS AND LATERALS, BACKFILL AND COMPACT TO 95%. CONTRACTOR SHALL REPLACE ASPHALT AND/OR CONCRETE PER CITY STANDARD DETAILS TO MATCH EXISTING.
7. THE CONTRACTOR SHALL ADJUST ALL VALVES, EMITTERS FOR OPTIMUM COVERAGE.
8. CONTRACTOR SHALL TAPE CLOSED ALL SLEEVE PIPE OPENINGS USING DUCT TAPE TO PREVENT DEBRIS FROM ENTERING SLEEVES.
9. CONTRACTOR SHALL EXTEND 120-VOLT A.C. FROM EXISTING POWER TO PROPOSED CONTROLLER AND BACKFLOW PREVENTER LOCATIONS. ALL ELECTRICAL WORK SHALL BE PER LOCAL CODES AND N.E.C. STANDARDS. SEE DETAIL A/7 FOR POLE DROP.
10. ALL EXISTING WATER MAIN LINE LOCATIONS ARE SCHEMATIC. IT SHALL BE THE CONTRACTOR'S RESPONSIBILITY TO POT HOLE AND FIELD CHECK TO DETERMINE ACTUAL LOCATIONS AS AN INCIDENTAL REQUISITE TO THE CONSTRUCTION CONTRACT.
11. THE PROPOSED CONTROLLER LOCATION INDICATED ON THE PLANS IS APPROXIMATE. ACTUAL LOCATION OF THE CONTROLLER SHALL BE DETERMINED BY THE OWNER'S REPRESENTATIVE IN THE FIELD.
12. LOCATIONS OF ALL SLEEVE PIPING SHALL BE VERIFIED BY THE CONTRACTOR. EXCAVATION, POT-HOLING, ASSOCIATED WORK, MATERIALS, LABOR, ETC., SHALL BE THE RESPONSIBILITY OF CONTRACTOR. NO ADDITIONAL PAYMENT WILL BE MADE TO THE CONTRACTOR FOR LOCATING SLEEVES.
13. THE IRRIGATION SYSTEM WAS DESIGNED AT 50 PSI STATIC WATER PRESSURE AT THE HEAD AND 8 GPM. THE CONTRACTOR SHALL VERIFY THE ACTUAL STATIC WATER PRESSURE PRIOR TO CONSTRUCTION AND INFORM THE LANDSCAPE ARCHITECT IN WRITING OF THE RESULTS. A DETERMINATION WILL BE MADE BY THE LANDSCAPE ARCHITECT AS TO WHAT DESIGN MODIFICATIONS MAY NEED TO BE RESOLVED BEFORE ACTUAL CONSTRUCTION BEGINS.
14. HOTBOX ENCLOSURE SHALL BE BEIGE IN COLOR AS MANUFACTURED BY HOTBOX.
15. SLEEVES FOR WIRING SHALL BE LARGE ENOUGH TO PROVIDE MIN. 1/4" CLEARANCE AROUND WIRE BUNDLE. SIZE WILL VARY WITH NUMBER OF WIRES TO BE ACCOMMODATED. WIRE SLEEVES SHALL BE MIN. 2".
16. CONTRACTOR SHALL INSTALL THE DRIP TUBING WITH A 4" DEPTH OF COVER UNTIL THE PLANT IS REACHED. A MAXIMUM 4" LENGTH OF TUBING SHALL THEN BE EXPOSED ABOVE THE MULCH AS DIRECTED IN DETAIL C/7. NO EMITTER SHALL REST PAST THE ROOT BALL OF THE PLANT.
17. CONTRACTOR SHALL INSTALL A CRISPIN #UL-10 (OR EQUAL) 1" AIR RELEASE VALVE AT HIGH POINT OF MAINLINE PER C.O.A. DETAIL 2705. AIR RELEASE VALVE SHALL BE TEMPORARILY REMOVED WHEN IRRIGATION SYSTEM IS FLUSHED.
18. CONTRACTOR SHALL INSTALL FLO SERIES #KBK075T (OR EQUAL) 3/4" 1/2 POUND SPRING LOADED CHECK VALVE MIDWAY BETWEEN THE LOW POINT AND HIGH POINT OF LATERAL RUN TO REDUCE LOW HEAD DRAINAGE.
19. CONTRACTOR SHALL REMOVE EXISTING PAVEMENT SECTION PER SHEET 2 OF 10. ONCE REMOVAL HAS OCCURRED CONTRACTOR SHALL RIP THE EXPOSED SOIL LAYER TO A 6" DEPTH. CONTRACTOR SHALL FILL MEDIANS WITH CLEAN SOIL FREE OF ROCKS 1-1/2 INCHES OR MORE IN DIA., VEGETATION, DEBRIS, AND CONSTRUCTION RESIDUE PER DETAIL B/8. CONTRACTOR SHALL INSTALL THE SOIL IN 6" LIFTS WITH THE COMPACTION RATE OF 80% MODIFIED PROCTOR.
20. CONTRACTOR SHALL CALL BLUE STAKING (260-1990) PRIOR TO OPERATIONS. CONTRACTOR SHALL BORE FROM BEHIND BACK OF CURB ACROSS INDIAN SCHOOL TO THE MEDIAN LOCATIONS AS INDICATED ON SHEET 5 OF 10. ALL DEMOLITION WORK AND ASSOCIATED REPAIRS THAT OCCUR FROM BORING OPERATIONS SHALL BE INCIDENTAL TO THE WORK. CONTRACTOR SHALL TRENCH ACROSS STANFORD AS PER SHEET 4 OF 10.

**M** 1" PROPOSED WATER METER AND 1" TAP.....PER  
C.O.A. DETAILS 2362 & 2366

===== 24-VOLT WIRE SLEEVES, SIZE MIN 2". (SEE NOTE#15 THIS  
SHEET.)

== SLEEVE PIPING FOR LATERALS AND IRRIGATION MAIN LINE,  
CLASS 200 SDR-21, SOLVENT WELD PVC. SLEEVE SHALL BE  
TWO SIZES LARGER THAN PIPE TO BE SLEEVED. SLEEVE DEPTH  
FOR LATERALS SHALL BE 18". SLEEVE DEPTH FOR IRRIGATION  
MAIN LINE SHALL BE 24" @ PRESSURIZED MAIN; 18"  
DOWNSTREAM OF RP. PAVEMENT REPAIR AFTER  
INSTALLATION OF SLEEVING.....PER C.O.A.  
DETAIL 2465

== MANUAL VALVE ASSEMBLY MATCO 514 SERIES (OR EQUAL) BRASS  
GATE VALVE WITH CROSS HANDLE SIZE 1".....PER C.O.A.  
DETAIL 2707

▽  
☒ BACKFLOW PREVENTER ASSEMBLY, FEBCO 825-Y-BV-1" (OR  
EQUAL) REDUCED PRESSURE BACKFLOW PREVENTER IN HOT BOX  
#1 ENCLOSURE WITH TORO #216 SERIES (OR EQUAL) MASTER  
VALVE & MASTER FLOWMETER.....PER  
C.O.A. DETAIL 2701-A (SIMILAR-REPLACE BERMAD FLOW METER  
W/MASTER VALVE & MASTER FLOWMETER DOWNSTREAM OF MASTER  
VALVE.

☑ IRRIGATION CONTROLLER SCORPION #M5S-1S-S-S (OR EQUAL)  
8 STATION CONTROLLER IN TORO STAINLESS STEEL CABINET  
WITH 24-VOLT SURGE PROTECTION .....SEE DETAIL B/7

--- IRRIGATION MAINLINE SCH. 40 BELL END, SOLVENT WELD PVC,  
SIZE 1";24" DEPTH OF BURY UPSTREAM OF RP; 18" DEPTH OF BURY  
DOWNSTREAM OF RP.

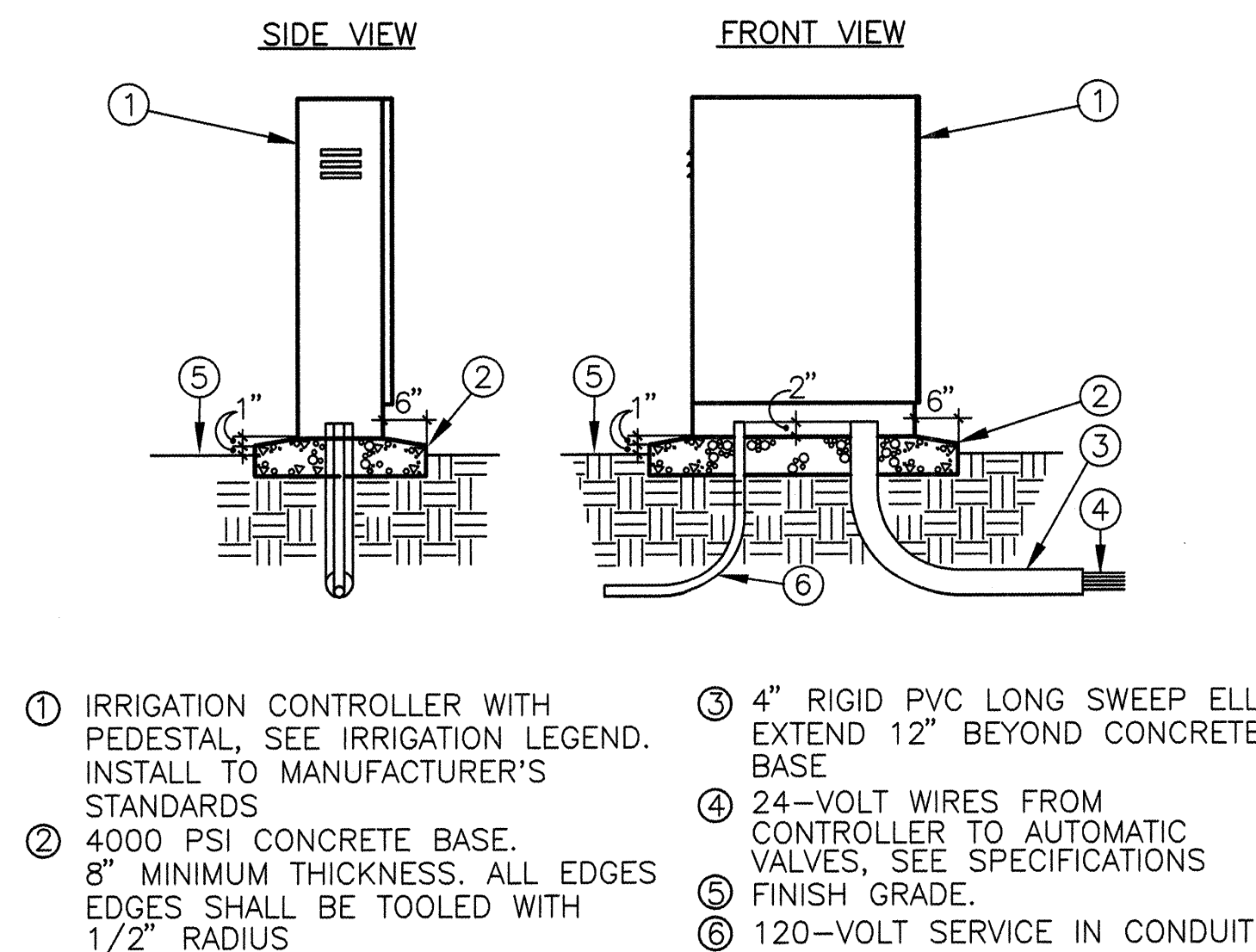
⊙ AUTOMATIC VALVE ASSEMBLY, WEATHERMATIC #11000CR SERIES  
(OR EQUAL) PLASTIC BODY AUTOMATIC VALVE ASSEMBLY WITH  
FLOW CONTROL AND MANUAL ACTIVATION, SIZE AS SHOWN ON  
PLAN.....PER C.O.A. DETAIL 2703

— LATERAL PIPING SCH. 40, BELL END, SOLVENT WELD PVC,  
18" DEPTH OF BURY. ALL LATERAL PIPING 3/4".

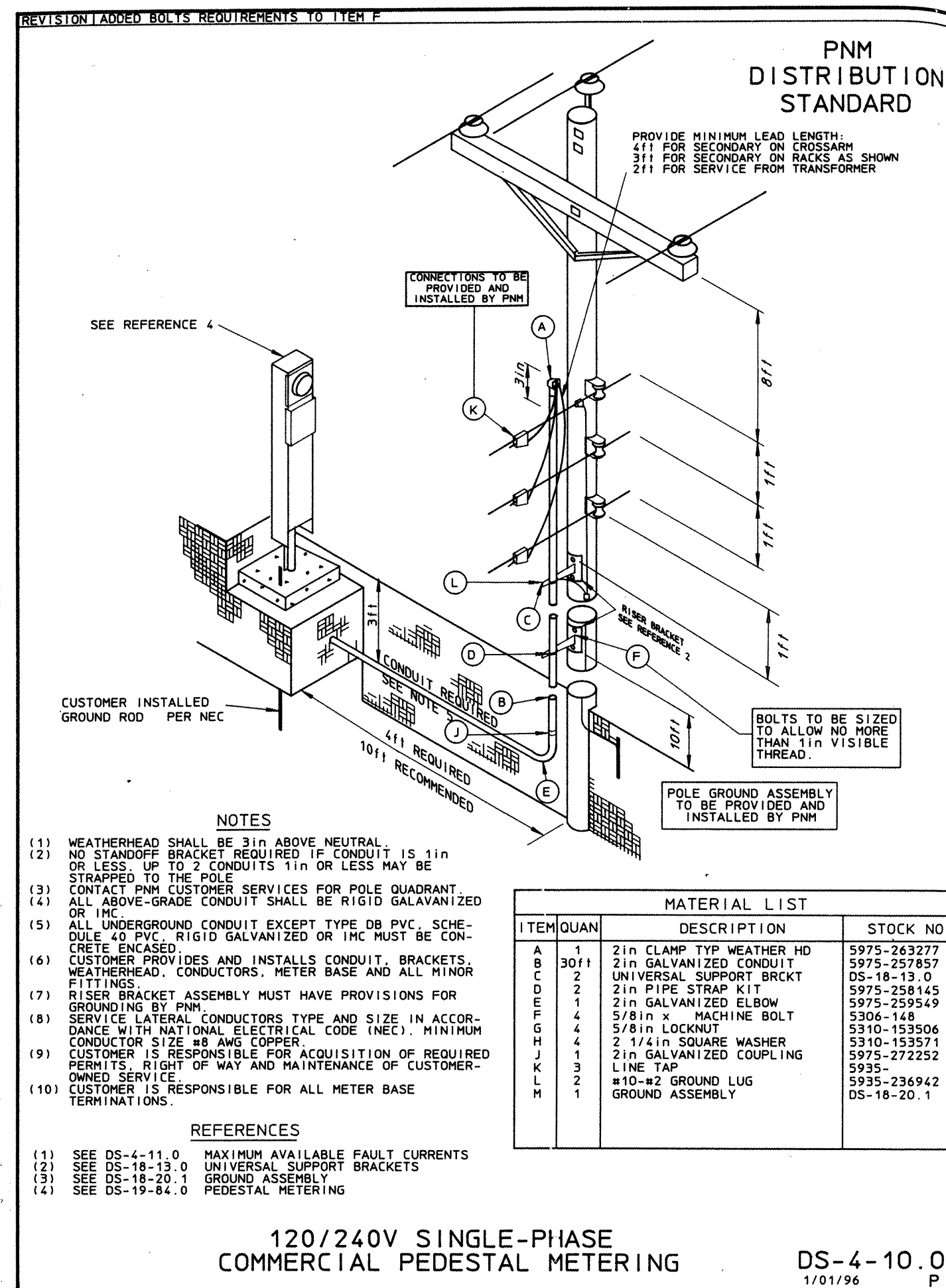
c SOLVENT WELD CAP, SCH. 40 PVC SIZE.

■ RAINBIRD #XBD-80 XERI-BIRD (OR EQUAL) 8 OUTLET  
EMISSION DEVICE WITH #XB-20 & #XB-10(OR EQUAL)  
EMITTERS SEE DETAIL C/7 AND EMITTER SCHEDULE THIS  
SHEET.

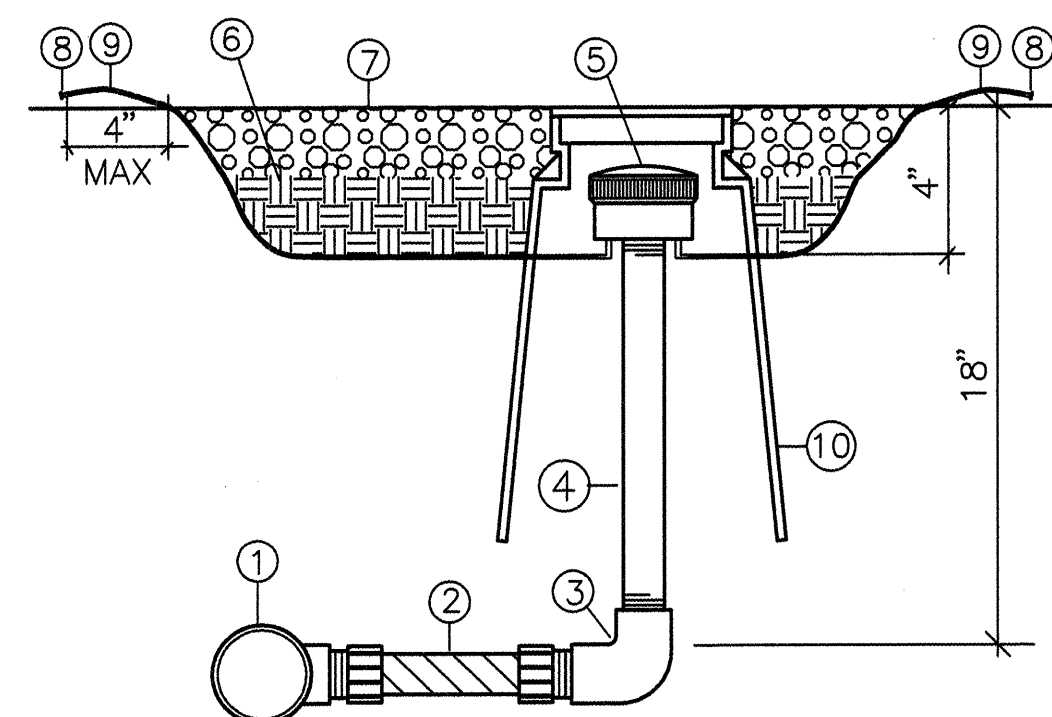
TREES: 4 EA. @ 2 GPH (XB-20)  
SHRUBS & GRASSES: 2 EA. @ 1 GPH (XB-10)  
PERENNIALS & GROUND COVER: 1 EA. @ 1 GPH (XB-10)



**B** IRRIGATION CONTROLLER AND PEDESTAL  
7 MCD-0165 110295 N.T.S.



POLE DROP AND METER



- ① PVC LATERAL PIPE FITTING.
- ② EXCALIBUR 506-MM (OR EQUAL)  
1/2" x 6" PVC FLEX NIPPLE.
- ③ 1/2" SCH. 40 PVC THREADED ELBOW.
- ④ 1/2" SCH. 80 PVC NIPPLE, LENGTH AS REQUIRED.
- ⑤ RAINBIRD XERI-BIRD-8 (OR EQUAL) 8 MULTI-OUTLET EMISSION DEVICE WITH #XB-20 & #XB-05 (OR EQUAL) PER EMITTER SCHEDULE THIS SHEET. SPACED EVENLY AROUND PLANT AT THE DRIP LINE OF THE PLANT. EMITTERS SHALL BE PLACED ABOVE MULCH WITH MAXIMUM 4" OF TUBING EXPOSED.
- ⑥ FINISH GRADE.
- ⑦ TOP OF GRAVEL MULCH.
- ⑧ RAINBIRD #RB DBC-025 (OR EQUAL) BUG DEFUSER CAP.
- ⑨ PEPKO 220V SERIES, (OR EQUAL) 1/4" VINYL TUBING, LENGTH AS REQUIRED BURIED 6" BELOW FINISH GRADE.
- ⑩ RAINBIRD SEB - 6X (OR EQUAL) 6" ROUND VALVE BOX.

**DRIP ASSEMBLY (8 PORTS)**

AS BUILT INFORMATION		BENCH MARKS		SURVEY INFORMATION		ENGINEER'S SEAL		FIELD NOTES	
CONTRACTOR: TRIAD		DATE 10/95		NO.		BY		DATE	
WORK: MALEY/WILSON		DATE 02/95		NO.		BY		DATE	
STAMPED BY: WILSON & CO.		DATE 11/95		NO.		BY		DATE	
FIELD LOCATION: WILSON & CO.		DATE 10/95		NO.		BY		DATE	
DRAWINGS: WILSON & CO.		DATE 10/95		NO.		BY		DATE	
CORRECTED BY: HIR ENGINEERING		DATE		NO.		BY		DATE	
MICRO-FILM INFORMATION		DATE		NO.		BY		DATE	
RECORDED BY:		DATE		NO.		BY		DATE	
NO.		DATE		NO.		BY		DATE	

DESIGNED BY: RM		DATE 8-26-98	
DRAWN BY: RM		DATE 8-26-98	
CHECKED BY: ECR		DATE 8-26-98	

**REVISIONS**

NO.	DATE	REMARKS	BY

**DESIGN**

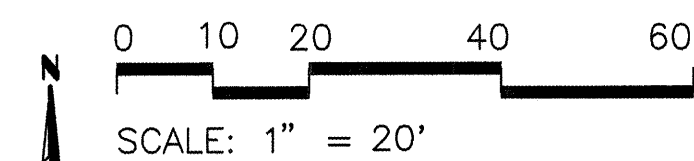
**APPROVE**

SEP 16 1998

CITY ENGINEER

SHEET 7

**RECORDED FROM INFORMATION  
PROVIDED BY THE CONTRACTOR  
7-30-99**



**MORROW & COMPANY, LTD.**  
**LANDSCAPE ARCHITECTS**  
 210 La Veta N.E.  
 Albuquerque, N.M. 87108  
 PH: 505 268-2266 FAX: 505 265-9637

# HDR

HDR Engineering, Inc

CITY OF ALBUQUERQUE

ENGINEERING GROUP

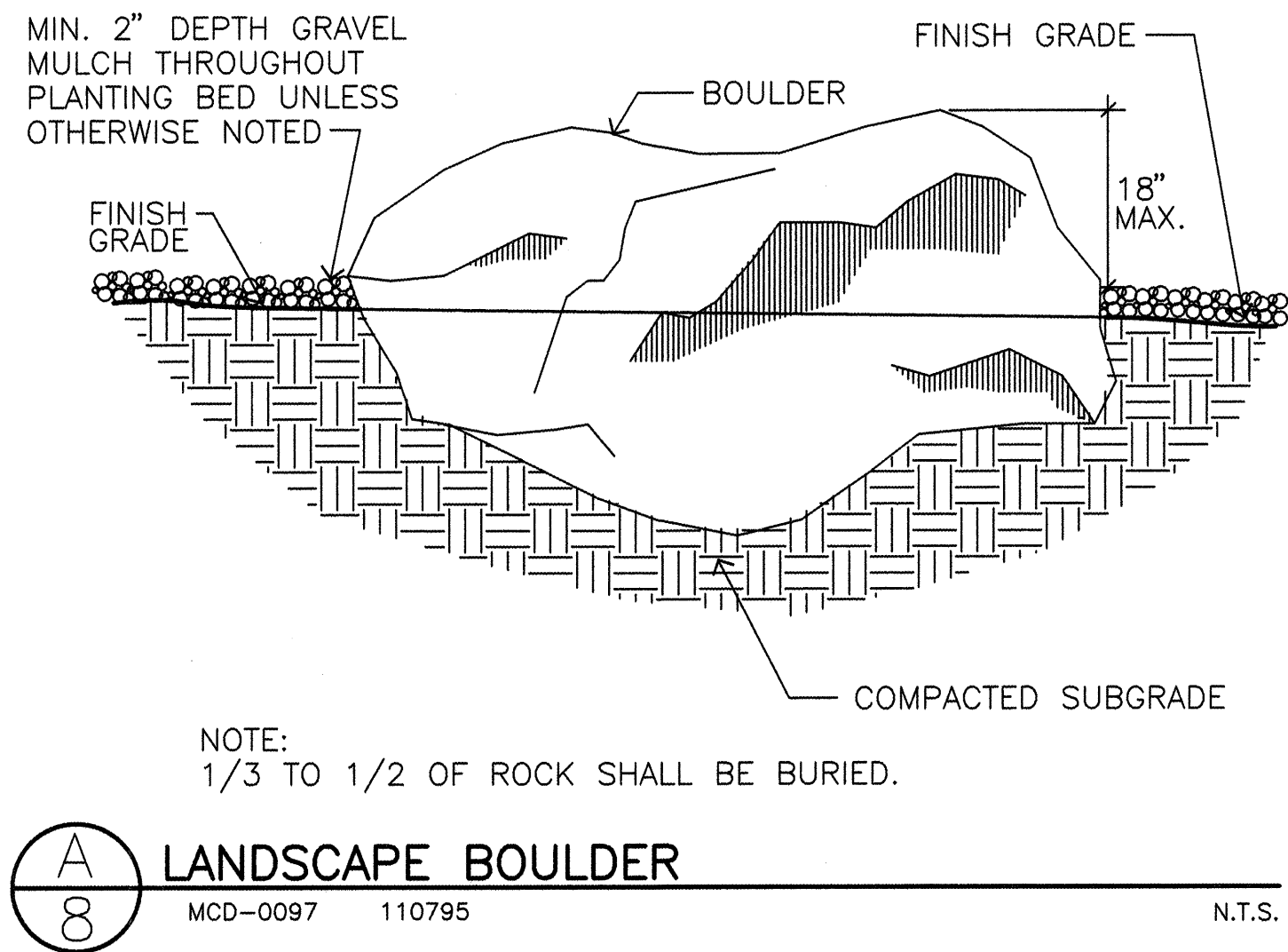
TITLE: INDIAN SCHOOL ROAD, MEDIAN IMPROVEMENTS  
HARVARD DRIVE N.E. TO PRINCETON DRIVE N.E.

### IRRIGATION DETAILS & NOTES

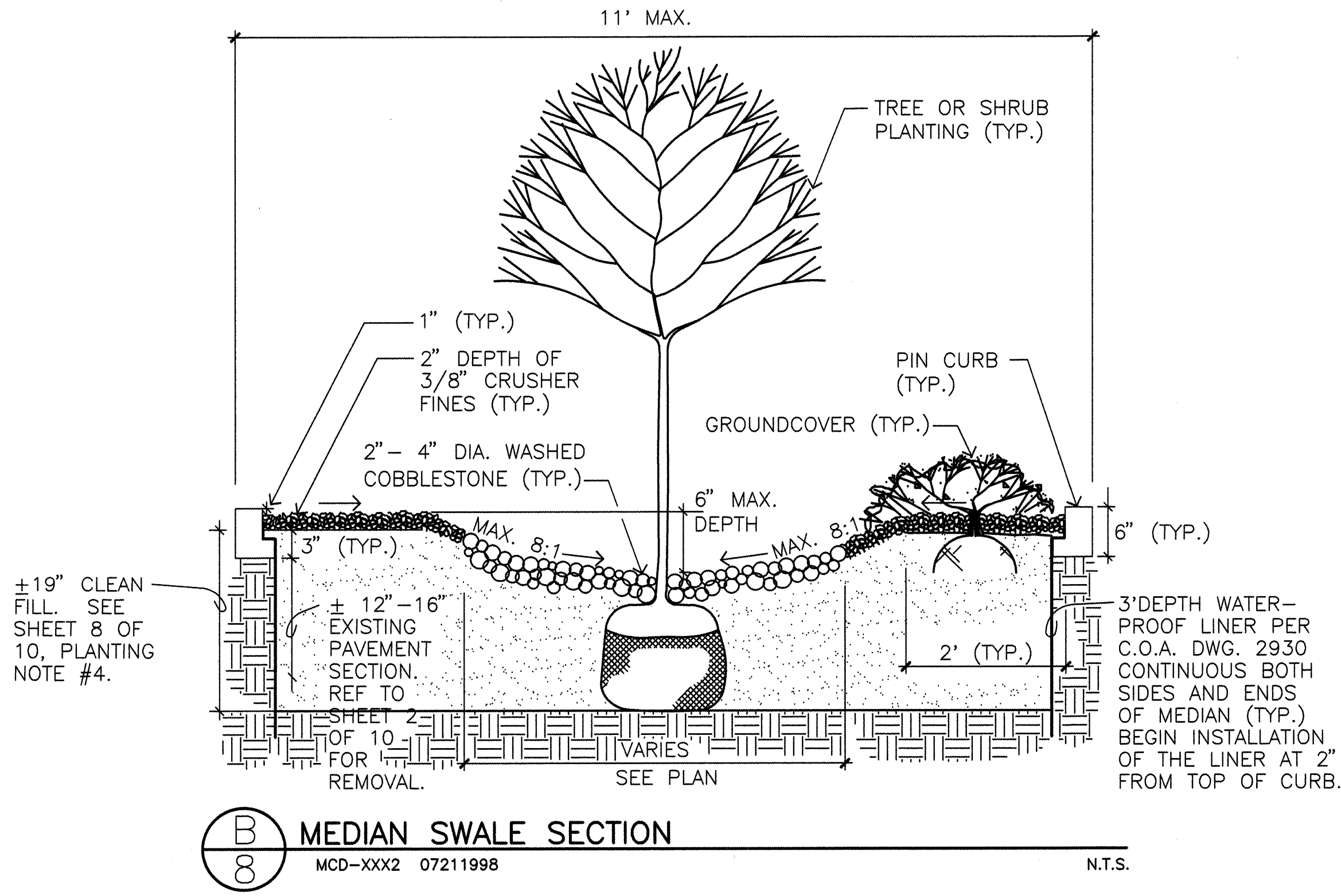
APPROVALS		ENGINEER	DATE	APPROVALS		ENGINEER	DATE
		APPROVED				APPROVED	
		SEP 16 1988				SEP 16 1988	
		DESIGN				CITY ENGINEER	
PROJECT NO.	5769.81	REVIEW COMMITTEE	MAP NO.	H-16-Z	SHEET	7	OF 10



PLANT LIST						
KEY	BOTANICAL NAME	COMMON NAME	QNTY.	SIZE	INSTALLED	MATURE
TREES						
NM	Forestiera neomexicana	New Mexico Olive	8	8'-10' ht.	15' ht. & spd.	24" box
SL	Tilia cordata 'Glenleven'	Glenleven Linden	4	2" cal.	40' ht., 35' spd.	30" box
SHRUBS						
DB	Lavandula angustifolia 'Hidcote'	Deep Blue Lavender	33	Min. 8" ht.	2' ht. & spd.	1 gal.
DW	Rosa 'Meidiland Alba'	Double White Shrub Rose	13	Min. 8" ht.	3' ht., 6' spd.	1 gal.
PM	Arctostaphylos pungens	Pointleaf Manzanita	28	Min. 12" spd.	3' ht., 7' spd.	5 gal.
TS	Artemisia abrotanum 'Tangerine'	Tangerine Southernwood	37	Min 12" ht.	3' ht., 4' spd.	1 gal.
PERENNIALS & GROUND COVER						
JB	Centranthus ruber	Jupiter's Beard	30	Min. 8" ht.	3' ht., 2' spd.	1 gal.
PI	Delosperma cooperi	Purple Iceplant	133	Min. 4" spd.	6" ht., 3' spd.	4" pots
SG	Liatris punctata	Spotted Gayfeather	37	Min. 6" spd.	2' ht. & spd.	1 gal.
WS	Echinacea purpurea 'White Swan'	White Swan Coneflower	50	Min. 6" spd.	2' ht. & spd.	1 gal.
YF	Linum flavum 'Compactum'	Yellow Flax	30	Min. 6" spd.	10" ht., 18" spd.	1 gal.
GRASSES						
BA	Helictotrichon sempervirens	Blue Avena	26	Min. 12" ht.	30" ht. & spd.	1 gal.



- PLANTING NOTES
1. PLANT COUNTS INDICATED ON PLANS ARE DIVIDED INTO GROUPS BY BEDS.
  2. IN CASE OF DISCREPANCY IN PLANT QUANTITIES SHOWN ON THE PLANT LIST AND THOSE SHOWN ON THE PLANTING PLANS, THE QUANTITIES SHOWN ON THE PLANTING PLANS SHALL GOVERN.
  3. QUANTITIES SHOWN ON THE PLANT LIST ARE ESTIMATES ONLY. CONTRACTOR SHALL VERIFY ALL QUANTITIES PRIOR TO BID AND INSTALLATION. NO ADDITIONAL PAYMENT WILL BE MADE FOR ANY DISCREPANCIES IN QUANTITIES BETWEEN THE PLANTING PLAN AND THE PLANT LIST.
  4. CONTRACTOR SHALL REMOVE EXISTING PAVEMENT SECTION PER SHEET 2 OF 10. ONCE REMOVAL HAS OCCURRED CONTRACTOR SHALL RIP THE EXPOSED SOIL LAYER TO A 6" DEPTH. CONTRACTOR SHALL FILL MEDIANS WITH CLEAN SOIL FREE OF ROCKS 1-1/2 INCHES OR MORE IN DIA., VEGETATION, DEBRIS, AND CONSTRUCTION RESIDUE PER DETAIL B/8. CONTRACTOR SHALL INSTALL THE SOIL IN 6" LIFTS WITH THE COMPACTION RATE OF 80% MODIFIED PROCTOR.
  5. A 2" DEPTH OF 1/4" MINUS SANTA ANA TAN CRUSHER FINES WITH FILTER FABRIC UNDER, SHALL BE INSTALLED IN AREAS INDICATED AS 'CRUSHER FINES' (WESTERN MOBILE 343-7800 OR EQUIVALENT). FILTER FABRIC SHALL BE MIN. 4 OZ. WOVEN NEEDLE PUNCHED POLYPROPYLENE (DEWITT OR EQUIVALENT). OVERLAP ENDS 3". TURN DOWN PERIMETER EDGES 6".
  6. A MIN. 2" DEPTH OF 2"-4" SANTA ANA TAN COBBLESTONE WITH FILTER FABRIC UNDER SHALL BE INSTALLED IN AREAS AS INDICATED (WESTERN MOBILE 343-7800 OR EQUIVALENT). FILTER FABRIC SHALL BE MIN. 4 OZ. WOVEN NEEDLE PUNCHED POLYPROPYLENE (DEWITT OR EQUIVALENT). OVERLAP ENDS 3". TURN DOWN PERIMETER EDGES 6".
  7. IF THERE IS A DISCREPANCY IN THE FIELD OR NURSERY PLANTS BETWEEN THE CONTAINER SIZE CALLED OUT UNDER "REMARKS" AND CALIPER AND HEIGHT CALLED OUT UNDER "SIZE", THE SPECIFIED PLANT MUST MEET CALIPER & HEIGHT REQUIREMENTS SPECIFIED UNDER "SIZE", EVEN IF THE LARGER CONTAINER SIZE IS REQUIRED TO MEET THESE SPECIFICATIONS, AT NO ADDITIONAL COST TO THE OWNER.
  8. TREES SHALL BE PLANTED IN ACCORDANCE WITH C.O.A. DRAWING 2715 (SIM: PROVIDE 19" CLEAN FILL PER B/8). SHRUBS, PERENNIALS, AND GRASSES SHALL BE PLANTED IN ACCORDANCE WITH C.O.A. DRAWING 2718 (SIM: PROVIDE 19" CLEAN FILL PER B/8).
  9. LANDSCAPE BOULDERS SHALL BE 12CF - 18CF 'MOSS ROCK', BURIED WITH 1/3 - 1/2 OF BULK BELOW FINISH GRADE PER DETAIL A/8.
  10. CONTRACTOR SHALL REPLACE EXISTING VEGETATION THAT HAS BEEN DAMAGED DUE TO CONSTRUCTION OPERATIONS. DAMAGED PLANTS SHALL BE REPLACED WITH PLANTS OF SAME SPECIES AND SIZE.



RECORDED FROM INFORMATION  
PROVIDED BY THE CONTRACTOR  
7-30-99

MORROW & COMPANY, LTD.  
LANDSCAPE ARCHITECTS  
210 La Veta N.E.  
Albuquerque, N.M. 87108  
PH: 800 866-2286 FAX: 505 265-0637

**HDR**  
HDR Engineering, Inc.

CITY OF ALBUQUERQUE					
ENGINEERING GROUP					
TITLE: INDIAN SCHOOL ROAD, MEDIAN IMPROVEMENTS					
HARVARD DRIVE N.E. TO PRINCETON DRIVE N.E.					
PLANT LIST, DETAILS AND PLANTING NOTES					
APPROVALS	ENGINEER	DATE	APPROVALS	ENGINEER	DATE
	APPROVED			APPROVED	
	SEP 16 1998			SEP 16 1998	
PROJECT NO. 5769.81		MAP NO. H.16.Z		SHEET CITY ENGINEER 8	
				10	







