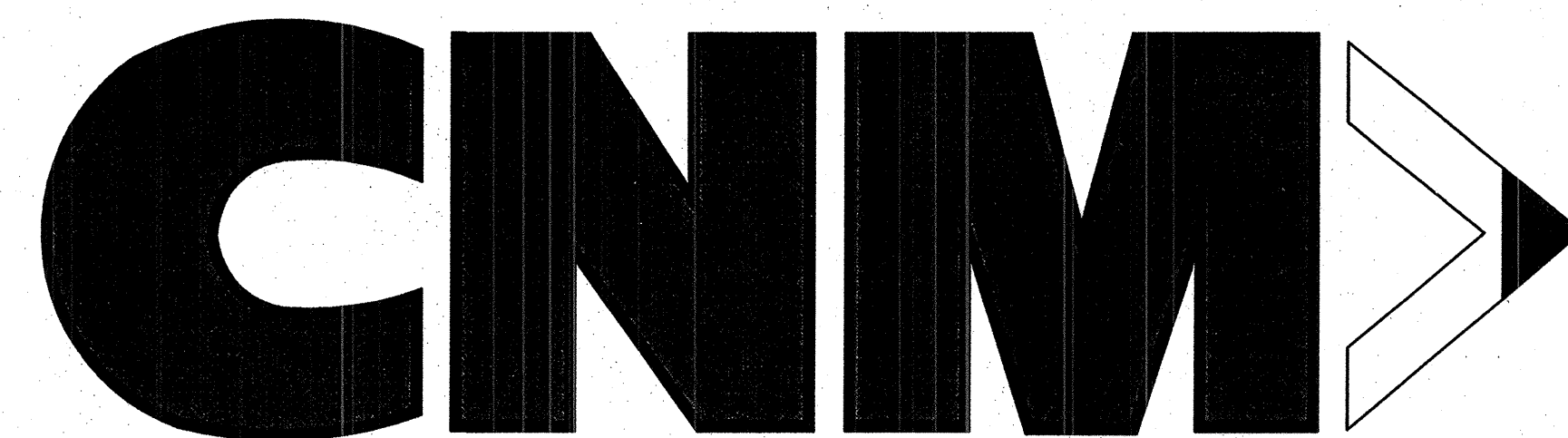


20-271918-01-2010



Central New Mexico
Community College

STUDENT RESOURCE CENTER MAIN CAMPUS

UTILITY COMPANY CONTACTS FEBRUARY 01, 2007

Name/Phones

Musinski, Nancy
Office phone: (505) 768-2729
Office fax: (505) 768-3629
nmusinski@cabq.gov

Blauwkamp, Roland (Rol)
Office phone: 241-3606
Cell phone: 401-7516
Office fax: (505) 241-0559
rblauwk@pnm.com

Bouska, Kelly
Office phone: (505) 241-7752

Office fax: (505) 241-7740
kbouska@pnm.com

Brown, John
Office phone: (505) 314-0890
Office fax: (505) 314-0900
john@bcgassets.com

Crowel, David
Office phone: (505) 842-2911
Office fax: 842-2890
dcrowel@att.com

Business

ABCWUA
Principal Engineer, Utility Engineering
P.O. Box 1293
Albuquerque, NM 87103

PNM Electric Co.
Mail Stop ES61
4201 Edith Blvd. NW
Albuquerque, NM 87107

PNM Gas Co
Mail Stop GS66
4625 Edith Blvd. NE
Albuquerque, NM 87107

BCG Assets
Operations Manager
505 Marquette Ave. NW
Suite LL-110A
Albuquerque, NM 87102

AT&T
Resource Supervisor
111 3rd Street NW
Albuquerque, NM 87103

Name/Phones

Darnell, Andy
Office phone: (505) 346-4470
Office fax: 348-8666
Andy.Darnell@mci.com

Harrison, Royal
Office phone: (505) 938-7339
Office fax: 938-7380
Royal.Harrison@twtelecom.com

Jarmill, Rita
Office phone: (505) 245-8352
Office fax: (505) 245-6733
Mobile: (505) 385-4472
Pager: (505) 380-3301
rjarami@qwest.com

Kelly, Larry
Office phone: (505) 246-0501
Office fax: (505) 246-0479
Larry.Kelley@qwest.com

Mortus, Mike
Office phone: (505) 761-6235
Office fax: (505) 761-0599
Mobile: (505) 269-4006
Mike_Mortus@cable.comcast.com

Mueller, Rick
Office phone: (505) 244-0094
Office fax: 244-0094
Mobile: 228-3329
rdmueller@mcleodusa.com

Business

MCI Worldcom
Operations Manager
6001 Midway Park, NE
Albuquerque, NM 87109

Time Warner Telecom
Plant Manager
3830 Singer Blvd. NE, Suite 1000
Albuquerque, NM 87109

Qwest
Manager Engineering
NM Engineering Planning
400 Tijeras NW, Room 710
Albuquerque, NM 87102

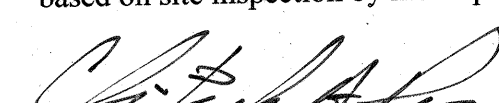
Qwest Long Distance
Sr. Operations Tech
400 Tijeras NW Suite 570
Albuquerque, NM 87102

Comcast
Project Manager
4611 Montbel Place NE
Albuquerque, NM 87107

McLeod USA
Supervisor of Outside Techs.
505 Marquette NW (Compass Bank)
Suite 1600
Albuquerque, NM 87102

CERTIFICATE OF SUBSTANTIAL COMPLIANCE OF PLANS

I, Christopher Perea of the firm Wilson & Company, a Registered Professional Engineer in the State of New Mexico, do hereby certify, to the best of my knowledge and belief, that the infrastructure installed as part of this project has been inspected by me or by a qualified person under my direct supervision and has been constructed in accordance with the plans and specifications. The original design intent of the approved plans has been met, except as noted by me on the as-built construction drawing. This certification is based on site inspection by me or personnel under my direction.


Christopher Perea, P.E. NM 13686

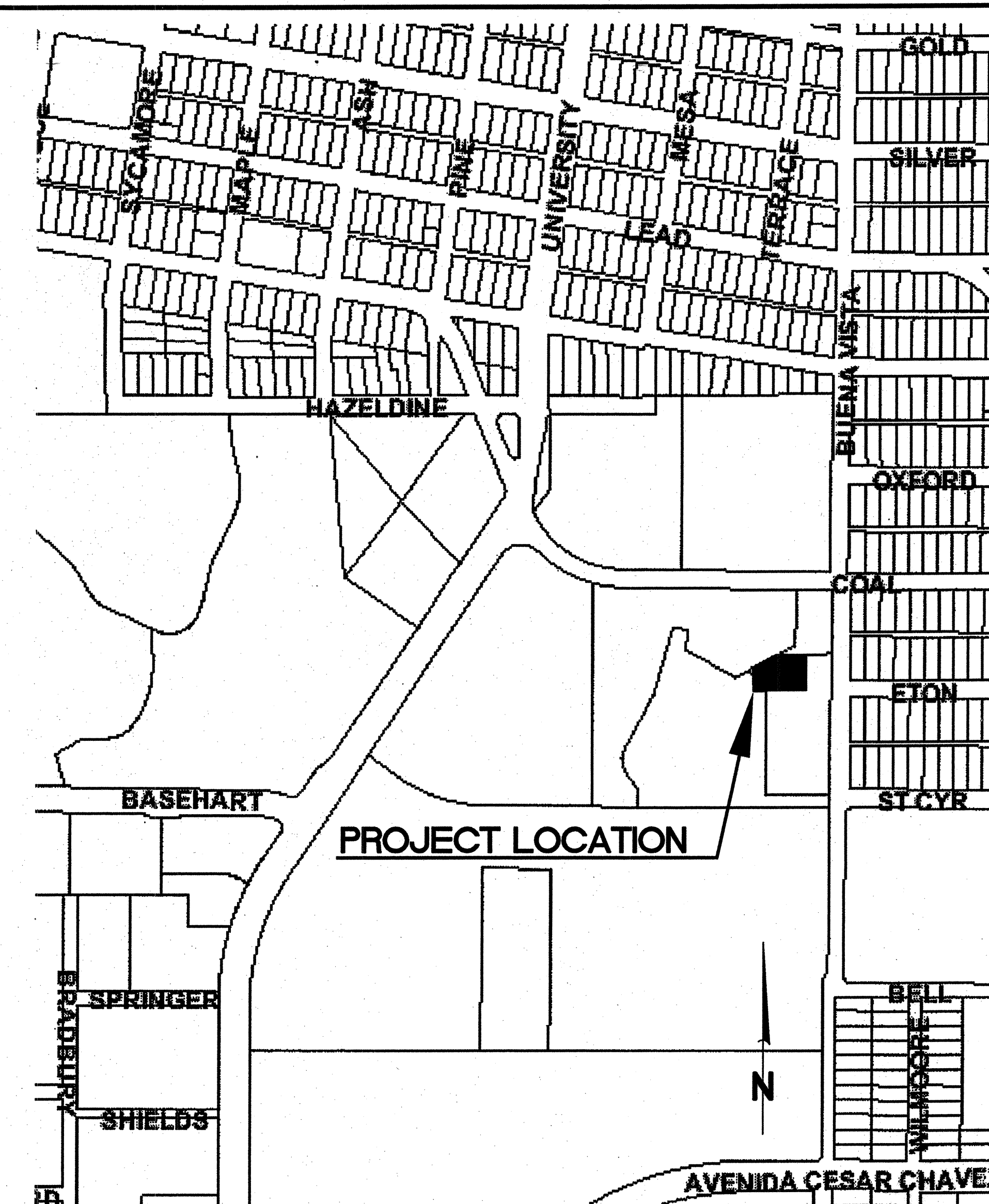
9-30-10
Date



Elevations are in NAVD 88

DMJM H&N AECOM

201 THIRD STREET NW, SUITE 600
ALBUQUERQUE, NEW MEXICO 87102




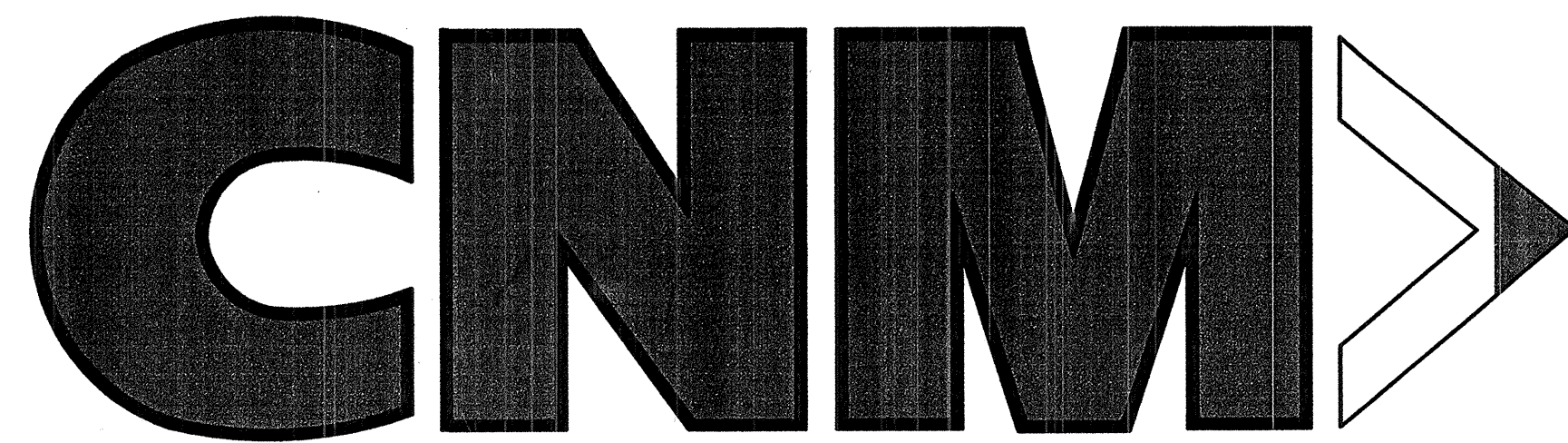
VICINITY MAP
MAP NO. K-15

DRAWING LIST

SHEET	DESCRIPTION
C01-00	TITLE SHEET
C01-01	GENERAL NOTES, DETAILS, AND LEGEND
C01-02	SITE UTILITY PLAN
C01-03	SANITARY SEWER PLAN AND PROFILE
C01-04	LARGE DIAMETER METER VAULT

RECORD DRAWING
DATE 9-9-10

REV.	SHEETS	CITY ENGINEER	DATE	USER DEPARTMENT	DATE	USER DEPARTMENT	DATE
ENGINEERS STAMP & SIGNATURE		APPROVALS		ENGINEER	DATE	*****	
		DRC Chairman				APPROVED FOR CONSTRUCTION	
		Transportation				City Engineer Date	
		Water/Wastewater					
		Hydrology					
		Transit					
Constr. Mngmt.						Sheet 1 of 5	
Constr. Coord.						C01-00	
City Project No.		5798.61					



Central New Mexico
Community College

STUDENT RESOURCE CENTER MAIN CAMPUS

UTILITY COMPANY CONTACTS FEBRUARY 01, 2007

Name/Phones

Musinski, Nancy
Office phone: (505) 768-2729
Office fax: (505) 768-3629
nmusinski@cabq.gov

Blauwkamp, Roland (Rol)
Office phone: 241-3606
Cell phone: 401-7516
Office fax: (505) 241-0000
rblauwk@pnm.com

Bouska, Kelly
Office phone: (505) 241-7752
Office fax: (505) 241-7740
kbouska@pnm.com

Brown, John
Office phone: (505) 314-0890
Office fax: (505) 314-0900
john@bcgassets.com

Crowel, David
Office phone: (505) 842-2911
Office fax: 842-2890
dcrowel@att.com

Business

ABCWUA
Principal Engineer, Utility Engineering
P.O. Box 1293
Albuquerque, NM 87103

PNM Electric Co.
Mail Stop ES61
4201 Edith Blvd. NW
Albuquerque, NM 87107

PNM Gas Co
Mail Stop GS66
4625 Edith Blvd. NE
Albuquerque, NM 87107

BCG Assets
Operations Manager
505 Marquette Ave. NW
Suite LL-110A
Albuquerque, NM 87102

Resource Supervisor
111 3rd Street NW
Albuquerque, NM 87103

Name/Phones

Darnell, Andy
Office phone: (505) 346-4470
Office fax: 348-8666
Andy.Darnell@mci.com

Harrison, Royal
Office phone: (505) 938-7339
Office fax: 938-7380
Royal.Harrison@twtelecom.com

Jarmill, Rita
Office phone: (505) 245-8352
Office fax: (505) 245-6733
Mobile: (505) 385-4472
Pager: (505) 380-3301
rjarami@qwest.com

Kelly, Larry
Office phone: (505) 246-0501
Office fax: (505) 246-0479
Larry.Kelley@qwest.com

Mortus, Mike
Office phone: (505) 761-6235
Office fax: (505) 761-0599
Mobile: (505) 269-4006
Mike_Mortus@cable.comcast.com

Mueller, Rick
Office phone: (505) 244-0094
Office fax: 244-0094
Mobile: 228-3329
rdmueller@mcleodusa.com

Business

MCI Worldcom
Operations Manager
6001 Midway Park, NE
Albuquerque, NM 87109

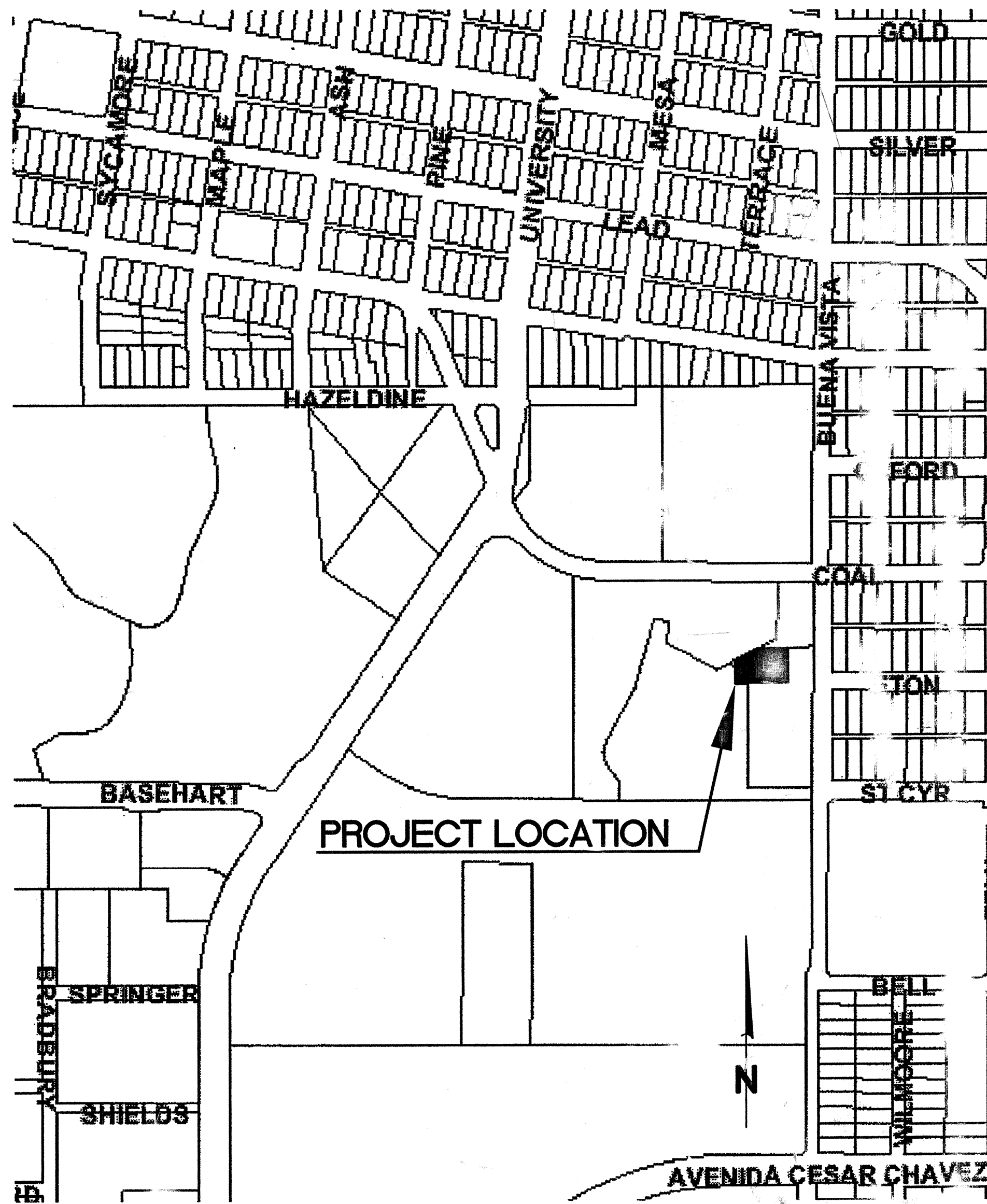
Time Warner Telecom
Plant Manager
3830 Singer Blvd. NE, Suite 1000
Albuquerque, NM 87109

Qwest
Manager Engineering
Engineering Planning
400 Tijeras NW, Room 710
Albuquerque, NM 87102

Qwest Long Distance
Sr. Operations Tech
400 Tijeras NW Suite 570
Albuquerque, NM 87102

Comcast
Project Manager
4611 Montbel Place NE
Albuquerque, NM 87107

McLeod USA
Supervisor of Outside Techs.
505 Marquette NW (Compass Bank)
Suite 1000
Albuquerque, NM 87102



VICINITY MAP
MAP NO. K-15

DRAWING LIST

SHEET	DESCRIPTION
C01-00	TITLE SHEET
C01-01	GENERAL NOTES, DETAILS, AND LEGEND
C01-02	SITE UTILITY PLAN
C01-03	SANITARY SEWER PLAN AND PROFILE
C01-04	LARGE DIAMETER METER VAULT

REV.	SHEETS	CITY ENGINEER	DATE	USER DEPARTMENT	DATE	USER DEPARTMENT	DATE
ENGINEERS STAMP & SIGNATURE		APPROVALS	ENGINEER	*****			
		DRC Chairman	<i>[Signature]</i>	12/4/06	APPROVED FOR CONSTRUCTION		
		Transportation	<i>[Signature]</i>	11/26/06			
		Water/Wastewater	<i>[Signature]</i>	12/4/06			
		Hydrology	<i>[Signature]</i>	11/24/06			
		Transit	<i>[Signature]</i>				
		Constr. Mngmt.					
		Constr. Coord.					
		City Project No.					
		5798.61					

Elevations are in NAVD 88

DMJM H&N AECOM
201 THIRD STREET NW, SUITE 600
ALBUQUERQUE, NEW MEXICO 87102

Sheet 1 of 5
C01-00

GENERAL NOTES:

1. ALL WORK DETAILED ON THESE DRAWINGS TO BE PERFORMED UNDER THIS CONTRACT SHALL, EXCEPT AS OTHERWISE STATED, BE CITY OF ALBUQUERQUE (C.O.A.) STANDARD SPECIFICATIONS FOR PUBLIC WORKS CONSTRUCTION, 1986, AS AMENDED THROUGH UPDATES NO. 7, INCLUDING AMENDMENT 1, HEREBY REFERRED TO AS THE SPECIFICATIONS. REFERENCES MADE TO STANDARD DRAWINGS IMPLY THAT SECTION OF THE SPECIFICATIONS, WHICH INCLUDES MISCELLANEOUS STANDARD DETAILS.
2. LOCATION OF UTILITIES ARE APPROXIMATE. IT IS THE CONTRACTOR'S RESPONSIBILITY TO LOCATE ALL PERMANENT UTILITIES IN THE FIELD. CONTACT NEW MEXICO ONE CALL SYSTEM, INC. AT 505-260-1990 TWO WORKING DAYS PRIOR TO ANY EXCAVATION WORK.
3. IT IS THE CONTRACTOR'S RESPONSIBILITY TO SUPPORT ALL UTILITIES EXPOSED DURING CONSTRUCTION. CONTRACTOR WILL BE RESPONSIBLE FOR DAMAGE TO ALL UTILITIES, INCLUDING SERVICE LINES.
4. PRIOR TO CONSTRUCTION, THE CONTRACTOR SHALL EXCAVATE AND VERIFY THE HORIZONTAL AND VERTICAL LOCATIONS OF ALL OBSTRUCTIONS. SHOULD A CONFLICT EXIST, THE CONTRACTOR SHALL NOTIFY THE ENGINEER SO THAT THE CONFLICT CAN BE RESOLVED WITH MINIMUM AMOUNT OF DELAY.
5. ALL STREET STRIPING ALTERED OR DESTROYED SHALL BE REPLACED WITH PLASTIC REFLECTORIZED PAVEMENT MARKING BY CONTRACTOR AS PER C.O.A. STANDARDS.
6. ALL PAVEMENT MARKINGS OR OTHER TRAFFIC CONTROL DEVICES INCLUDING TRAFFIC SIGNAL CONDUIT, ADVERSELY AFFECTED BY CONSTRUCTION SHALL BE REPLACED TO PRE-CONSTRUCTION CONDITION. THESE COSTS SHALL BE INCIDENTAL TO THE PROJECT UNLESS OTHERWISE INCLUDED IN BID ITEMS.
7. CONTRACTOR SHALL COORDINATE WITH PNM WHERE LIP OF TRENCH IS LESS THAN 5 FEET TO POWER POLE. COSTS ASSOCIATED WITH SUPPORT OF EXISTING POLES SHALL BE INCIDENTAL TO THE PROJECT.
8. CONTRACTOR SHALL BE CHARGED BY PNM FOR ANY DAMAGE TO PNM CABLES AND FOR SUPPORTING OR MINOR RELOCATIONS OF CABLES DURING CONSTRUCTION. THESE COSTS SHALL BE INCIDENTAL TO THE PROJECT.
9. CONTRACTOR SHALL NOTIFY THE CITY SURVEYOR NOT LESS THAN SEVEN (7) DAYS PRIOR TO STARTING WORK IN ORDER THAT THE CITY SURVEYOR MAY TAKE NECESSARY MEASURES TO ENSURE THE PRESERVATION OF SURVEY MONUMENTS. CONTRACTOR SHALL NOT DISTURB PERMANENT SURVEY MONUMENTS WITHOUT THE CONSENT OF THE CITY SURVEYOR AND SHALL NOTIFY THE CITY SURVEYOR AND BEAR THE EXPENSE OF REPLACING ANY THAT MAY BE DISTURBED WITHOUT PERMISSION. REPLACEMENT SHALL BE DONE ONLY BY THE CITY SURVEYOR SECTION. WHEN A CHANGE IS MADE IN THE FINISHED ELEVATION OF THE PAVEMENT OF ANY ROADWAY IN WHICH A PERMANENT SURVEY MONUMENT IS LOCATED, THE CONTRACTOR SHALL, AT HIS OWN EXPENSE, ADJUST THE MONUMENT COVER TO THE NEW GRADE UNLESS OTHERWISE SPECIFIED. REFER TO SECTION 4.4 OF THE GENERAL CONDITIONS.
10. ELECTRONIC MARKER SPHERE (EMS) SHALL BE INSTALLED ON ALL NEW WATER AND SEWER SYSTEMS IN ACCORDANCE WITH CITY OF ALBUQUERQUE STANDARD SPECIFICATION SECTION 170.
11. A MINIMUM SCHEDULE 40 PVC SHALL BE USED FOR SEWER SERVICES FROM THE MAIN TO THE BUILDING (4" AND SMALLER). SDR35 PIPE SHALL BE USED FOR ALL OTHER SANITARY SEWER INSTALLATIONS.
12. CONTRACTOR SHALL COORDINATE ALL UTILITY WORK WITH PNM GAS AND ELECTRIC.
13. ALL EXCAVATION, TRENCHING AND SHORING ACTIVITIES MUST BE CARRIED OUT IN ACCORDANCE WITH OSHA 29 CFR 1926.650 SUBPART P.
14. CONTRACTOR SHALL BE RESPONSIBLE FOR PROVIDING AND MAINTAINING ALL CONSTRUCTION SIGNING UNTIL PROJECT HAS BEEN ACCEPTED BY THE COA.
15. CONTRACTOR SHALL COMPLY WITH COA STANDARD DRAWING 2465 FOR ALL UTILITY INSTALLATIONS IN EXISTING PAVEMENTS.
16. TRAFFIC CONTROL: SEVEN (7) WORKING DAYS PRIOR TO BEGINNING CONSTRUCTION THE CONTRACTOR SHALL SUBMIT TO THE CONSTRUCTION COORDINATION DIVISION A DETAILED CONSTRUCTION SCHEDULE. TWO (2) WORKING DAYS PRIOR TO CONSTRUCTION, THE CONTRACTOR SHALL OBTAIN A BARRICADING PERMIT FROM THE CONSTRUCTION COORDINATION DIVISION. CONTRACTOR SHALL NOTIFY CONSTRUCTION COORDINATION ENGINEER (924-3400) PRIOR TO OCCUPYING AN INTERSECTION. SEE SECTION 19 OF THE SPECIFICATIONS.
17. WHEN ABUTTING EXISTING PAVEMENT TO NEW, SAWCUT EXISTING PAVEMENT TO A STRAIGHT EDGE AND AT A RIGHT ANGLE, OR AS APPROVED BY THE FIELD ENGINEER. REMOVAL OF BROKEN OR CRACKED PAVEMENT WILL ALSO BE REQUIRED.

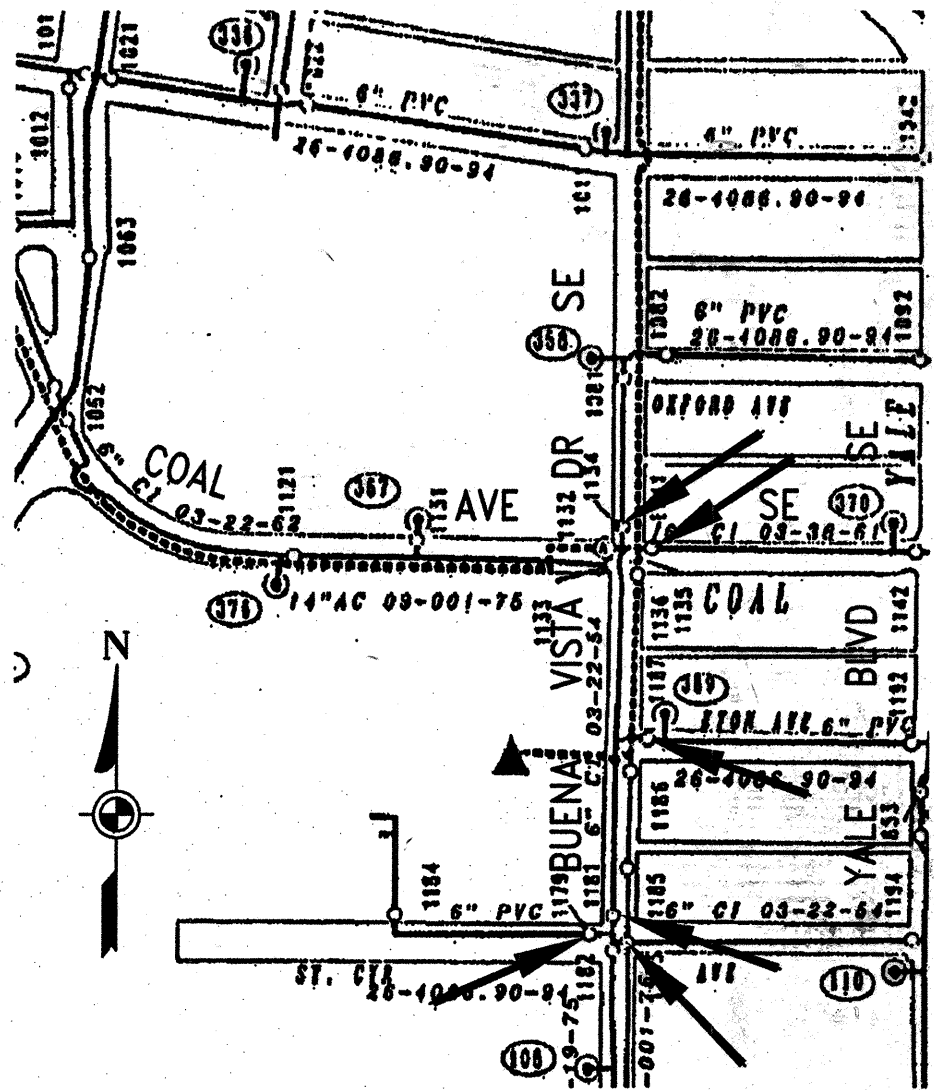
18. EXISTING CURB AND GUTTER NOT TO BE REMOVED UNDER THE CONTRACT WHICH IS DAMAGED OR DISPLACED BY THE CONTRACTOR SHALL BE REMOVED AND REPLACED BY THE CONTRACTOR AT HIS EXPENSE. CURB AND GUTTER WORK SHALL BE INSTALLED PER COA STANDARD DRAWING 2415A.
19. ALL FINAL BACKFILL FOR TRENCHES SHALL BE COMPACTED TO A MINIMUM 95% MAXIMUM DENSITY PER ASTM D-1557 AND AS DIRECTED BY SECTION 301.1 AND COA STANDARD DRAWING 2465.
20. ALL EXISTING SIDEWALK REMOVED AS A RESULT OF NEW UTILITY CONSTRUCTION SHALL BE REPLACED PER COA STANDARD DRAWING 2430.
21. THE CONTRACTOR SHALL PROMPTLY CLEAN UP ANY MATERIAL EXCAVATED WITHIN THE PUBLIC RIGHT-OF-WAY OR PRIVATE ROADWAY EASEMENTS SO THAT THE EXCAVATED MATERIAL IS NOT SUSCEPTIBLE TO BEING WASHED DOWN THE STREET OR INTO ANY PUBLIC DRAINAGE FACILITY.
22. PROPOSED WATERLINE MATERIALS SHALL BE EITHER PVC PIPE MEETING AWWA C900 DR18 REQUIREMENTS (6"-12") OR DUCTILE IRON PIPE, THICKNESS CLASS 50 (6"-16").
23. ALL FITTING ON WATERLINES SHALL HAVE RESTRAINED JOINTS AS NOTED ON THE PLANS.
24. CONTRACTOR SHALL BE RESPONSIBLE FOR COORDINATING THE EXECUTION OF THE WATER VALVE SHUT-OFF PLAN WITH ALBUQUERQUE/BERNALILLO COUNTY WATER UTILITY AUTHORITY (ABCWUA) AT 857-8200 TWENTY-FOUR (24) HOURS PRIOR TO WATERLINE CONSTRUCTION AND SEVEN (7) WORKING DAYS IN ADVANCE OF ANY WORK WHICH MAY AFFECT EXISTING PUBLIC WATER FACILITIES IN COMPLIANCE WITH SECTION 18 OF THE COA STANDARD SPECIFICATIONS.
25. ALL WATER VALVE BOXES AND MANHOLES IN THE STREET CONSTRUCTION ARE TO BE ADJUSTED TO FINISH GRADE.
26. ALL UTILITY WORK ITEMS WITHIN COA RIGHT-OF-WAY AND IDENTIFIED AS "PUBLIC" ARE INCLUDED IN THE CITY WORK ORDER. ALL ITEMS OUTSIDE THE PUBLIC RIGHT-OF-WAY AND IDENTIFIED BY "PRIVATE" ARE NOT PART OF THE COA WORK ORDER. THE DEFINITION OF "WORK ORDER" CAN BE FOUND IN THE COA'S DEVELOPMENT PROCESS MANUAL IN CHAPTER 5 - PUBLIC INFRASTRUCTURE IMPROVEMENTS.

LEGEND

PROPOSED	EXISTING	
	—	TRAFFIC SIGN
■	■	SIGNAL BOX
⊙	⊙	STORM MANHOLE
⊗	⊗	WATER VALVE
■	■	VAULT
■	■	ELECTRIC BOX
☆	☆	LIGHT POLE
■	■	CATCH BASIN
⊙	⊙	FIRE HYDRANT
⊗	⊗	WATER METER
⊙	⊙	SEWER MANHOLE
◀	◀	FLOOD LIGHT
■ TSL	■ TSL	TRAFFIC SIGNAL LIGHT
⊙	⊙	GAS METER
⊙	⊙	SATELITE DISH
■	■	PARKING CARD READER
▲	▲	CONTROL POINT
● PP	● PP	POWER POLE
— E —	— E —	OVERHEAD ELECTRIC LINE
⊙	⊙	WARNING ALERT POLE
⊙	⊙	TELEPHONE MANHOLE
←	←	GUY WIRE
■	■	SPRINKLER CONTROL BOX
⊙	⊙	TREE
⊙	⊙	CLEAN OUT
■	■	CURB INLET
⊙	⊙	BIKE RACK
●	●	BOLLARD
■	■	CONCRETE
—	—	BUSH
—	—	TRAFFIC SIGNAL W/MAST
—	—	CHAINLINK FENCE
■	■	TRANSFORMER PAD
— 6" FW —	— 6" FW —	FIRE PROTECTION LINE
— T —	— T —	TEE
— NG —	— 4" HP-NG —	GAS LINE
—	—	DOUBLE CHECK VALVE
— 3" DW —	— 3" DW —	DOMESTIC WATER LINE
□	□	REDUCER
— 6" SAS —	— 6" SAS —	SANITARY SEWER
■	■	BUILDING
---	---	PROPERTY BOUNDARY

LENGTH OF RESTRAINED PIPE

LENGTH (FT)							
DIAMETER (IN.)	90°	45°	22.5°	11.25°	TEE ALONG MAIN	TEE ALONG BRANCH	4" X 3" REDUCER
3	15	7	3	2	—	—	—
4	18	8	4	2	5	4	13
6	25	11	5	3	30	1	—



WATER SHUT-OFF NOTES:

CONTRACTOR SHALL BE RESPONSIBLE FOR TIMING AND COORDINATION OF THE WATER SHUT-OFF REQUIREMENTS IN CONJUNCTION WITH COMPLETION OF THIS PROJECT.

AT LEAST SEVEN (7) WORKING DAYS PRIOR TO CONSTRUCTION, CONTRACTOR SHALL CONTACT WATER AUTHORITY (857-8200) TO INITIATE IMPLEMENTATION OF THIS WATER SHUT-OFF PLAN. ONLY WATER AUTHORITY PERSONNEL SHALL OPERATE PUBLIC VALVES.

CONTACT THE FIRE MARSHALL PRIOR TO ANY FIRE HYDRANT SHUT-OFFS.

TO COMPLETE NON-PRESSURE CONNECTION SHOWN, THE EXISTING VALVES LISTED BELOW MARKED WITH AN ARROW () ON THE ABOVE MAP MUST BE CLOSED BY WATER AUTHORITY PERSONNEL ONLY.

MAP#	VALVE #	MAP#	VALVE #
K-15	1179	K-15	1187
K-15	1181	K-15	1183
K-15	1134	K-15	1141

RECORD DRAWING
DATE 9-9-10

DMJM H&N		AECOM	
201 THIRD STREET NW, SUITE 600 ALBUQUERQUE, NEW MEXICO 87102			
CITY OF ALBUQUERQUE			
STUDENT RESOURCE CENTER			
GENERAL NOTES, DETAILS, AND LEGEND			
DESIGN REVIEW COMMITTEE	CITY ENGINEER APPROVAL	MO. DAY/YR.	MO. DAY/YR.
CITY PROJECT NO.	ZONE MAP NO.	SHEET	2 OF 5
5798.61	K-15	C01-01	

GENERAL NOTES:

4. ALL WORK DETAILED ON THESE DRAWINGS TO BE PERFORMED UNDER THIS CONTRACT SHALL, EXCEPT AS OTHERWISE STATED, BE CITY OF ALBUQUERQUE (C.O.A.) STANDARD SPECIFICATIONS FOR PUBLIC WORKS CONSTRUCTION, 1986, AS AMENDED THROUGH UPDATES NO. 7, INCLUDING AMENDMENT 1, HEREBY REFERRED TO AS THE SPECIFICATIONS. REFERENCES MADE TO STANDARD DRAWINGS IMPLY THAT SECTION OF THE SPECIFICATIONS, WHICH INCLUDES MISCELLANEOUS STANDARD DETAILS.

2. LOCATION OF UTILITIES ARE APPROXIMATE. IT IS THE CONTRACTOR'S RESPONSIBILITY TO LOCATE ALL PERMANENT UTILITIES IN THE FIELD. CONTACT NEW MEXICO ONE CALL SYSTEM, INC. AT 505-260-1990 TWO WORKING DAYS PRIOR TO ANY EXCAVATION WORK.

3. IT IS THE CONTRACTOR'S RESPONSIBILITY TO SUPPORT ALL UTILITIES EXPOSED DURING CONSTRUCTION. CONTRACTOR WILL BE RESPONSIBLE FOR DAMAGE TO ALL UTILITIES, INCLUDING SERVICE LINES.

4. PRIOR TO CONSTRUCTION, THE CONTRACTOR SHALL EXCAVATE AND VERIFY THE HORIZONTAL AND VERTICAL LOCATIONS OF ALL OBSTRUCTIONS. SHOULD A CONFLICT EXIST, THE CONTRACTOR SHALL NOTIFY THE ENGINEER SO THAT THE CONFLICT CAN BE RESOLVED WITH MINIMUM AMOUNT OF DELAY.

5. ALL STREET STRIPING ALTERED OR DESTROYED SHALL BE REPLACED WITH PLASTIC REFLECTORIZED PAVEMENT MARKING BY CONTRACTOR AS PER C.O.A. STANDARDS.

6. ALL PAVEMENT MARKINGS OR OTHER TRAFFIC CONTROL DEVICES INCLUDING TRAFFIC SIGN CONDUIT, ADVERSELY AFFECTED BY CONSTRUCTION SHALL BE REPLACED TO PRE-CONSTRUCTION CONDITION. THESE COSTS SHALL BE INCIDENTAL TO THE PROJECT UNLESS OTHERWISE INCLUDED IN BID ITEMS.

7. CONTRACTOR SHALL COORDINATE WITH PNM WHERE LIP OF TRENCH IS LESS THAN 5 FEET TO POWER POLE. COSTS ASSOCIATED WITH SUPPORT OF EXISTING POLES SHALL BE INCIDENTAL TO THE PROJECT.

8. CONTRACTOR SHALL BE CHARGED BY PNM FOR ANY DAMAGE TO PNM CABLES AND FOR SUPPORTING OR MINOR RELOCATIONS OF CABLES DURING CONSTRUCTION. THESE COSTS SHALL BE INCIDENTAL TO THE PROJECT.

9. CONTRACTOR SHALL NOTIFY THE CITY SURVEYOR NOT LESS THAN SEVEN (7) DAYS PRIOR TO STARTING WORK IN ORDER THAT THE CITY SURVEYOR MAY TAKE NECESSARY MEASURES TO ENSURE THE PRESERVATION OF SURVEY MONUMENTS. CONTRACTOR SHALL NOT DISTURB PERMANENT SURVEY MONUMENTS WITHOUT THE CONSENT OF THE CITY SURVEYOR AND SHALL NOTIFY THE CITY SURVEYOR AND BEAR THE EXPENSE OF REPLACING ANY THAT MAY BE DISTURBED WITHOUT PERMISSION. REPLACEMENT SHALL BE DONE ONLY BY THE CITY SURVEYOR SECTION. WHEN A CHANGE IS MADE IN THE FINISHED ELEVATION OF THE PAVEMENT OF ANY ROADWAY IN WHICH A PERMANENT SURVEY MONUMENT IS LOCATED, THE CONTRACTOR SHALL, AT HIS OWN EXPENSE, ADJUST THE MONUMENT COVER TO THE NEW GRADE UNLESS OTHERWISE SPECIFIED. REFER TO SECTION 4.4 OF THE GENERAL CONDITIONS.

10. ELECTRONIC MARKER SPHERE (EMS) SHALL BE INSTALLED ON ALL NEW WATER AND SEWER SYSTEMS IN ACCORDANCE WITH CITY OF ALBUQUERQUE STANDARD SPECIFICATION SECTION 170.

11. A MINIMUM SCHEDULE 40 PVC SHALL BE USED FOR SEWER SERVICES FROM THE MAIN TO THE BUILDING (4" AND SMALLER). SDR35 PIPE SHALL BE USED FOR ALL OTHER SANITARY SEWER INSTALLATIONS.

12. CONTRACTOR SHALL COORDINATE ALL UTILITY WORK WITH PNM GAS AND ELECTRIC.

13. ALL EXCAVATION, TRENCHING AND SHORING ACTIVITIES MUST BE CARRIED OUT IN ACCORDANCE WITH OSHA 29 CFR 1926.650 SUBPART P.

14. CONTRACTOR SHALL BE RESPONSIBLE FOR PROVIDING AND MAINTAINING ALL CONSTRUCTION SIGNING UNTIL PROJECT HAS BEEN ACCEPTED BY THE COA.

15. CONTRACTOR SHALL COMPLY WITH COA STANDARD DRAWING 2465 FOR ALL UTILITY INSTALLATIONS IN EXISTING PAVEMENTS.

16. TRAFFIC CONTROL: SEVEN (7) WORKING DAYS PRIOR TO BEGINNING CONSTRUCTION THE CONTRACTOR SHALL SUBMIT TO THE CONSTRUCTION COORDINATION DIVISION A DETAILED CONSTRUCTION SCHEDULE. TWO (2) WORKING DAYS PRIOR TO CONSTRUCTION, THE CONTRACTOR SHALL OBTAIN A BARRICADING PERMIT FROM THE CONSTRUCTION COORDINATION DIVISION. CONTRACTOR SHALL NOTIFY CONSTRUCTION COORDINATION ENGINEER (924-3400) PRIOR TO OCCUPYING AN INTERSECTION. SEE SECTION 19 OF THE SPECIFICATIONS.

17. WHEN ABUTTING EXISTING PAVEMENT TO NEW, SAWCUT EXISTING PAVEMENT TO A STRAIGHT EDGE AND AT A RIGHT ANGLE, OR AS APPROVED BY THE FIELD ENGINEER. REMOVAL OF BROKEN OR CRACKED PAVEMENT WILL ALSO BE REQUIRED.
18. EXISTING CURB AND GUTTER NOT TO BE REMOVED UNDER THE CONTRACT WHICH IS DAMAGED OR DISPLACED BY THE CONTRACTOR SHALL BE REMOVED AND REPLACED BY THE CONTRACTOR AT HIS EXPENSE. CURB AND GUTTER WORK SHALL BE INSTALLED PER COA STANDARD DRAWING 2415A.

19. ALL FINAL BACKFILL FOR TRENCHES SHALL BE COMPACTED TO A MINIMUM 95% MAXIMUM DENSITY PER ASTM D-1557 AND AS DIRECTED BY SECTION 301.1 AND COA STANDARD DRAWING 2465.

20. ALL EXISTING SIDEWALK REMOVED AS A RESULT OF NEW UTILITY CONSTRUCTION SHALL BE REPLACED PER COA STANDARD DRAWING 2430.

21. THE CONTRACTOR SHALL PROMPTLY CLEAN UP ANY MATERIAL EXCAVATED WITHIN THE PUBLIC RIGHT-OF-WAY OR PRIVATE ROADWAY EASEMENTS SO THAT THE EXCAVATED MATERIAL IS NOT SUSCEPTIBLE TO BEING WASHED DOWN THE STREET OR INTO ANY PUBLIC DRAINAGE FACILITY.

22. PROPOSED WATERLINE MATERIALS SHALL BE EITHER PVC PIPE MEETING AWWA C900 DR18 REQUIREMENTS (6"-12") OR DUCTILE IRON PIPE, THICKNESS CLASS 50 (6"-16").

23. ALL FITTING ON WATERLINES SHALL HAVE RESTRAINED JOINTS AS NOTED ON THE PLANS.

24. CONTRACTOR SHALL BE RESPONSIBLE FOR COORDINATING THE EXECUTION OF THE WATER VALVE SHUT-OFF PLAN WITH ALBUQUERQUE/BERNALILLO COUNTY WATER UTILITY AUTHORITY (ABCWUA) AT 857-8200 TWENTY-FOUR (24) HOURS PRIOR TO WATERLINE CONSTRUCTION AND SEVEN (7) WORKING DAYS IN ADVANCE OF ANY WORK WHICH MAY AFFECT EXISTING PUBLIC WATER FACILITIES IN COMPLIANCE WITH SECTION 18 OF THE COA STANDARD SPECIFICATIONS.

25. ALL WATER VALVE BOXES AND MANHOLES IN THE STREET CONSTRUCTION ARE TO BE ADJUSTED TO FINISH GRADE.

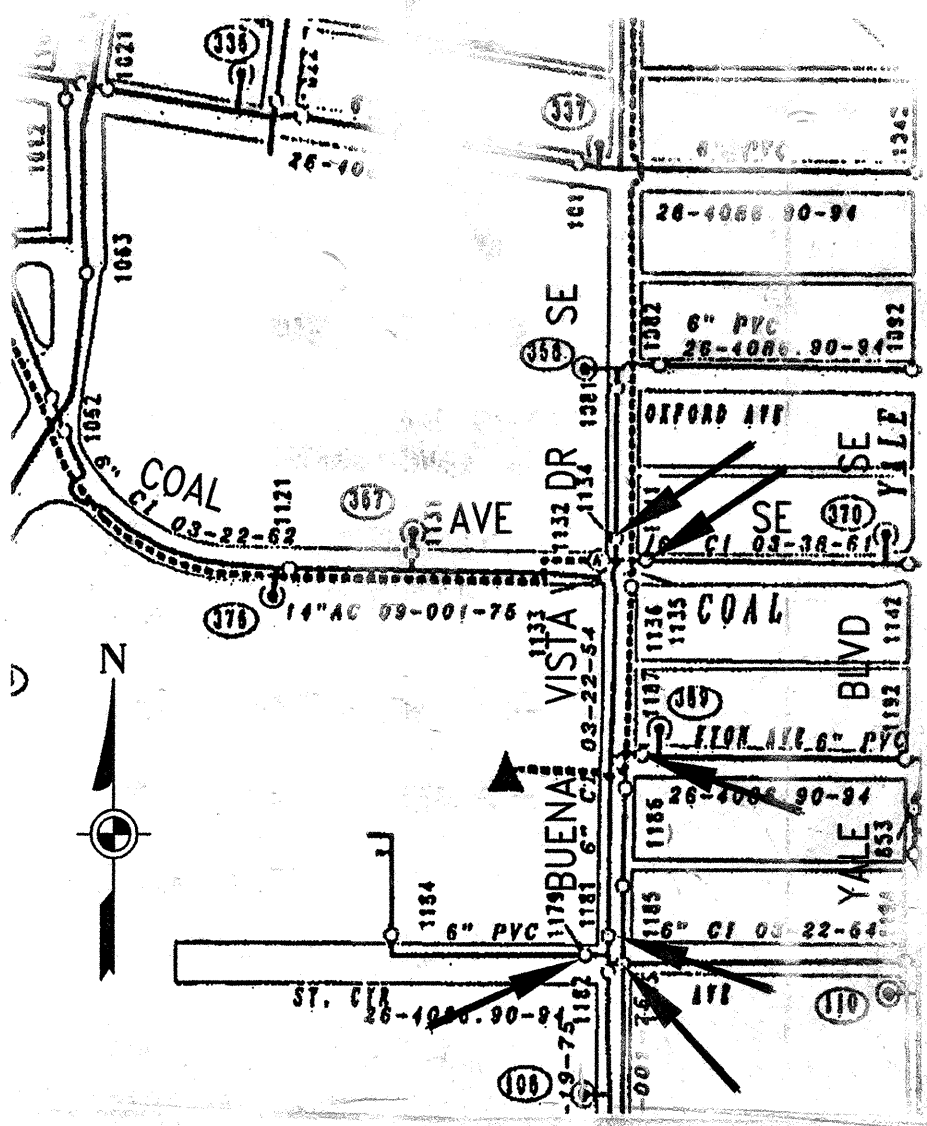
26. ALL UTILITY WORK ITEMS WITHIN COA RIGHT-OF-WAY AND IDENTIFIED AS "PUBLIC" ARE INCLUDED IN THE CITY WORK ORDER. ALL ITEMS OUTSIDE THE PUBLIC RIGHT-OF-WAY AND IDENTIFIED BY "PRIVATE" ARE NOT PART OF THE COA WORK ORDER. THE DEFINITION OF "WORK ORDER" CAN BE FOUND IN THE COA'S DEVELOPMENT PROCESS MANUAL IN CHAPTER 5 - PUBLIC INFRASTRUCTURE IMPROVEMENTS.

LEGEND

PROPOSED	EXISTING	
	+	TRAFFIC SIGN
	■	SIGNAL BOX
	⊙	FORM MANHOLE
⋈	⊙	WATER VALVE
	■	VAULT
	■	ELECTRIC BOX
	☆	LIGHT POLE
	⊞	CATCH BASIN
⊙	⊙	FIRE HYDRANT
⊙	⊙	WATER METER
⊙	⊙	SEWER MANHOLE
	◀	FLOOD LIGHT
	■ TSL	TRAFFIC SIGNAL LIGHT
⊙		GAS METER
⊙		SATELITE DISH
	■	PARKING CARD READER
	△	CONTROL POINT
	● PP	POWER POLE
—E—		OVERHEAD ELECTRIC LINE
	⊙	WARNING ALERT POLE
	⊙	TELEPHONE MANHOLE
←		GUY WIRE
	■	SPRINKLER CONTROL BOX
	⊙	TREE
	⊙	CLEAN OUT
	■	CURB INLET
	⊙	BIKE RACK
	•	BOLLARD
		CONCRETE
		BUSH
		TRAFFIC SIGNAL W/MAST
		CHAINLINK FENCE
	⊞	TRANSFORMER PAD
—6" FW—		FIRE PROTECTION LINE
⊞		TEE
—NG—	—4" HP-NG—	GAS LINE
—W—		DOUBLE CHECK VALVE
—3" DW—		DOMESTIC WATER LINE
⊞		REDUCER
—6" SAS—		SANITARY SEWER
		BUILDING
---		PROPERTY BOUNDARY

LENGTH OF RESTRAINED PIPE

LENGTH (FT)							
DIAMETER (IN.)	90'	45'	22.5'	11.25'	TEE ALONG MAIN	TEE ALONG BRANCH	4" X 3" REDUCER
3	15	7	3	2	—	—	—
4	18	8	4	2	5	4	13
6	25	11	5	3	30	1	—



WATER SHUT-OFF NOTES

CONTRACTOR SHALL BE RESPONSIBLE FOR TIMING AND COORDINATION OF THE WATER SHUT-OFF REQUIREMENTS IN CONJUNCTION WITH COMPLETION OF THIS PROJECT.

AT LEAST SEVEN (7) WORKING DAYS PRIOR TO CONSTRUCTION, CONTRACTOR SHALL CONTACT WATER AUTHORITY (857-8200) TO INITIATE IMPLEMENTATION OF WATER SHUT-OFF PLAN. ONLY WATER AUTHORITY PERSONNEL SHALL OPERATE PUBLIC VALVES.

CONTACT THE FIRE MARSHALL PRIOR TO ANY FIRE HYDRA SHUT-OFFS.

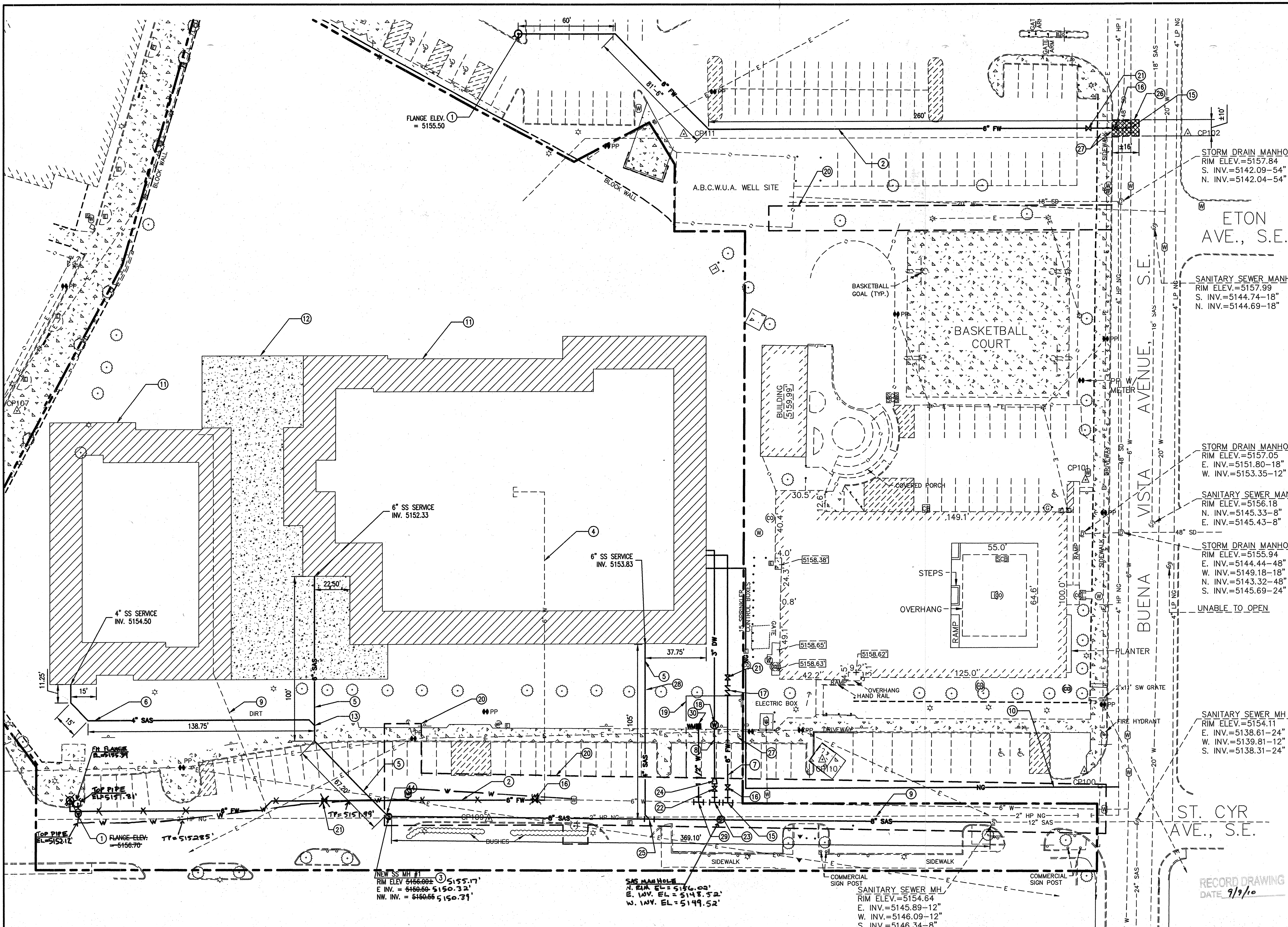
TO COMPLETE NON-PRESSURE CONNECTION SHOW THE EXISTING VALVES LISTED BELOW MARKED WITH AN ARROW () ON THE ABOVE MAP MUST BE CLOSED BY WATER AUTHORITY PERSONNEL ONLY.

MAP#	VALVE #	MAP#	VALVE #
K-15	1179	K-15	1187
K-15	1181	K-15	1183
K-15	1134	K-15	1141

DMJM H&N AECOM	
201 THIRD STREET NW, SUITE 600 ALBUQUERQUE, NEW MEXICO 87102	
CITY OF ALBUQUERQUE	
STUDENT RESOURCE CENTER	
GENERAL NOTES, DETAILS, AND LEGEND	
DESIGN REVIEW COMMITTEE APPROVED DEC 09 2008	CITY ENGINEER APPROVAL APPROVED JUL 23 2009 CITY ENGINEER
DESIGN REVIEW COMMITTEE	CITY ENGINEER
MO./DAY/YR.	MO./DAY/YR.
CITY PROJECT NO. 5798.61	ZONE MAP NO. K-15
SHEET 2 OF 5	

BENCH MARKS	
FIELD NOTES	
NO.	DATE
REMARKS	
REVISIONS	
DESIGN	
NO.	DATE
DESIGNED BY M. TARN	
DRAWN BY J.L. MOORE	
CHECKED BY D. LARR	
DATE MAY 2008	
DATE MAY 2008	
DATE MAY 2008	





SHEET KEYNOTES:

- ① INSTALL NEW (PRIVATE) FIRE HYDRANT PER-CITY OF ALBUQUERQUE STANDARD DRAWING 2340.
- ② INSTALL 6" (PRIVATE) FIRE WATER PIPE.
- ③ INSTALL NEW TYPE "C" SANITARY SEWER MANHOLE PER CITY OF ALBUQUERQUE STANDARD DRAWING 2101.
- ④ DEMOLISH AND REMOVE EXISTING WATER LINE BACK TO EXTENTS OF NEW CONSTRUCTIONS. CAP REMAINING PORTION OF LINE.
- ⑤ 6" (PRIVATE) SANITARY SEWER SERVICE TO BUILDING.
- ⑥ 4" (PRIVATE) SANITARY SEWER SERVICE TO BUILDING.
- ⑦ 6" FIRE SPRINKLER SERVICE.
- ⑧ 3" DOMESTIC WATER SERVICE.
- ⑨ EXISTING ABANDONED NATURAL GAS LINE (CONTRACTOR SHALL VERIFY). REMOVE AS NEEDED TO ACCOMMODATE NEW CONSTRUCTION. COORDINATE WITH PNM GAS FOR REMOVAL PROCEDURES.
- ⑩ INSTALL NATURAL GAS SERVICE. COORDINATE WITH PNM GAS FOR TIE-IN AND INSTALLATION.
- ⑪ PROPOSED BUILDING LIMITS.
- ⑫ PROPOSED CONCRETE AREA.
- ⑬ INSTALL (PRIVATE) 6" X 4" WYE.
- ⑭ CONNECT 6" (PRIVATE) SANITARY SEWER SERVICE TO MANHOLE. PER COA STANDARD DWG. 2118.
- ⑮ INSTALL 6" X 6" TEE. TIE TO EXISTING 6" WATER LINE PER COA STD. DWG. 2301.
- ⑯ INSTALL 6" (PUBLIC) GATE VALVE PER COA STANDARD DWGS. 2326 AND 2328.
- ⑰ INSTALL 6" DOUBLE CHECK VALVE ASSEMBLY PER COA STANDARD DWG. 2387.
- ⑱ INSTALL 3" WATER METER AND METER BOX, SEE SHEET C01-04 FOR DETAILS.
- ⑲ 35' PUBLIC UTILITY EASEMENT, RECORDED WITH THE CITY OF ALBUQUERQUE IN OCTOBER 2008, DOCUMENT NUMBER 2008114964. *DATE 10/22/2008*
- ⑳ EXISTING CITY OF ALBUQUERQUE UTILITY EASEMENT.
- ㉑ INSTALL 6" (PRIVATE) GATE VALVE PER COA STANDARD DWGS. 2326 AND 2328.
- ㉒ INSTALL 4" (PUBLIC) GATE VALVE PER COA STANDARD DWG. 2326 AND 2328.
- ㉓ INSTALL 6" X 4" TEE. TIE TO EXISTING 6" WATER LINE PER COA STD. DWG. 2301.
- ㉔ INSTALL 4" X 3" REDUCER.
- ㉕ INSTALL 8" X 4" TEE-WYE FITTING.
- ㉖ LIMITS OF PAVEMENT REMOVAL AND REPLACEMENT PER COA STD. DWG. 2465.
- ㉗ REMOVE AND REPLACE CURB & GUTTER AND SIDEWALK AS REQUIRED PER COA STD. DWGS. 2415A AND 2430.

ENGINEER'S SEAL		SURVEY INFORMATION		BENCH MARKS		AS-BUILT INFORMATION	
		FIELD NOTES		CITY OF ALBUQUERQUE SURVEY CONTROL		CONTRACTOR'S NAME	
		NO.	BY	DATE		WORKS STARTED	DATE 9/9/00
					3 1/2 INCH ALUMINUM DISC SET FLUSH IN	WORKS COMPLETED	DATE 9/9/00
					THE TOP OF THE CURB AND IS STAMPED	ACCEPTANCE BY	DATE 9/9/00
					"8-K15 1990" LOCATION IS ON	FIELD CATCHER	DATE 9/9/00
					CENTRAL AVE. AND TERRACE DRIVE ON	DRAWINGS	DATE 9/9/00
					THE NORTH SIDE OF THE INTERSECTION	CORRECTED BY	DATE 9/9/00
					ON A CURB. ELEVATION = 5156.727	MICRO-FILM INFORMATION	
					NAVD 1988	RECORDED BY	DATE
						NO.	DATE

REGISTERED PROFESSIONAL ENGINEER
STATE OF NEW MEXICO
NO. 14856
11-15-00
DAVID J. LARROW

REMARKS	BY	DATE
REVISIONS		
DESIGN		
DESIGNED BY M. TARIN	DATE MAY 2008	
DRAWN BY J.L. MOORE	DATE MAY 2008	

SHEET KEYNOTES:

- 29) HAND TRENCHING SHALL BE PERFORMED IN THIS AREA. THE TREES SHALL BE MONITORED DURING CONSTRUCTION FOR ROOT DAMAGE DUE TO THE PROXIMITY OF THE UTILITY. THE TREES HEALTH SHALL BE CONTINUALLY MONITORED AFTER CONSTRUCTION.
- 29) INSTALL A 1 1/2" METERED SERVICE LINE CONNECTION AND INSTALLATION. SEE C.O.A. DRAWINGS 2363 AND 2367.
- 30) IRRIGATION WATER METER. SEE LANDSCAPE DRAWINGS FOR CONTINUATION.

DMJM H&N | AECOM

201 THIRD STREET NW, SUITE 600
ALBUQUERQUE, NEW MEXICO 87102



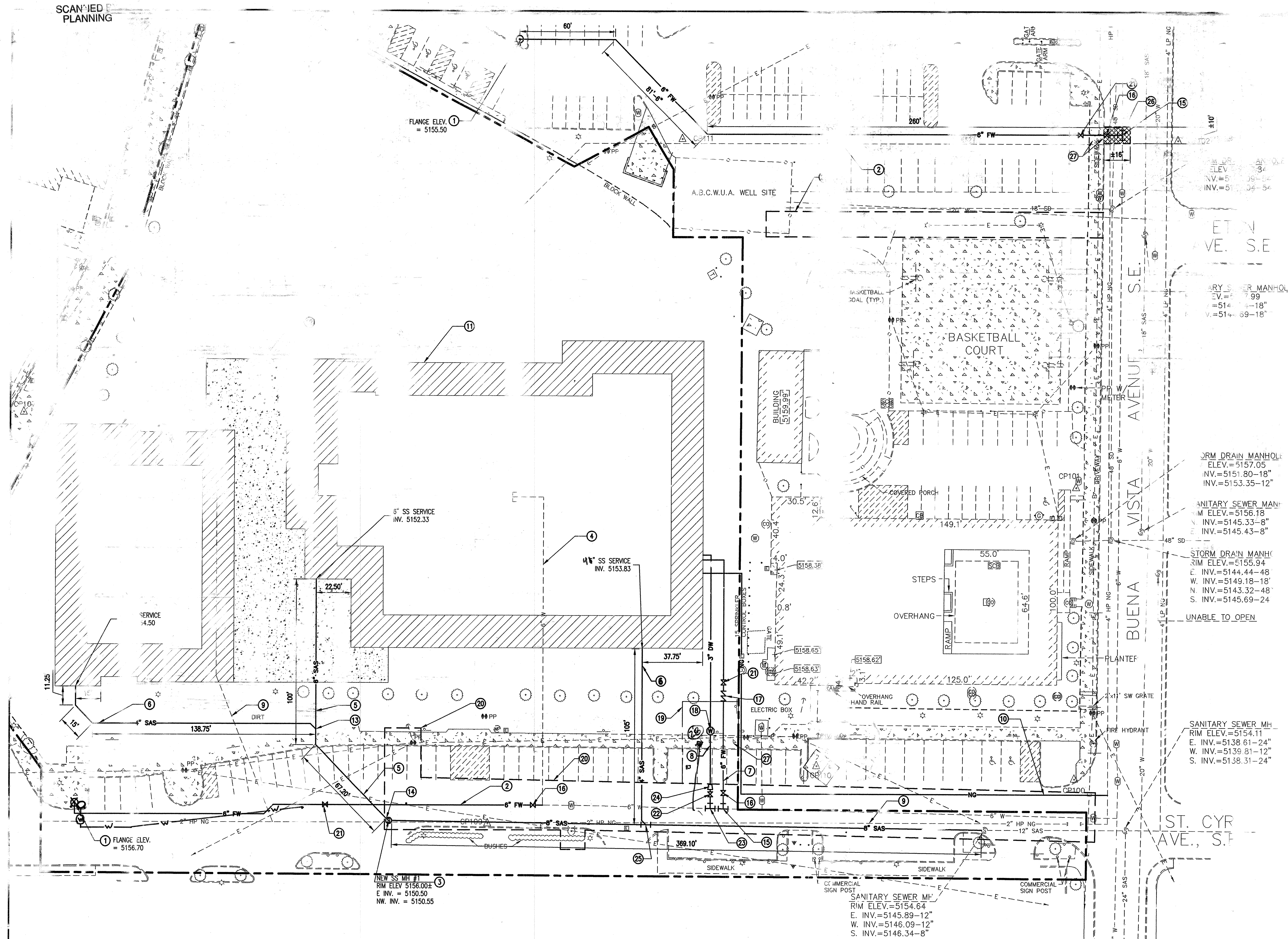
CITY OF ALBUQUERQUE



STUDENT RESOURCE CENTER

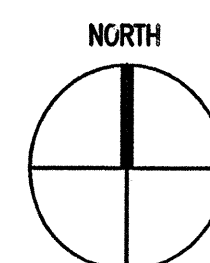
SITE UTILITY PLAN

Community College							
DESIGN REVIEW COMMITTEE		CITY ENGINEER APPROVAL		LAST DESIGN UPDATE	MO./DAY/YR.		MO./DAY/YR.
CITY PROJECT NO.		ZONE MAP NO.		SHEET		3 of 5	
5798.61		K-15		C01-02			



SITE UTILITY PLAN

SCALE: 1" = 30'



- 1) INSTALL ALBUC
- 2) INSTALL
- 3) INSTALL CITY OF
- 4) DEMOLIS EXISTENTS PORTION
- 5) 6" (PRIV
- 6) 4" (PRIV
- 7) 6" FIRE
- 8) DOM
- 9) STIN
- 10) OF
- 11) POSEL BUILDING LIMITS.
- 12) POSEL CONCRETE AREA.
- 13) ALL (PRIVATE) 6" X 4" ANY
- 14) INJECT 6" (PRIVATE) SANITARY HOLE. PER COA STANDARD
- 15) ALL 6" X 6" TEE. TIE COA STD. DWG. 2301
- 16) ALL 6" (PUBLIC) GATE VALVE PER COA STANDARD 2326 AND 2327
- 17) INSTALL 6" DOUBLE CHECK VALVE PER COA STANDARD DWG. 2387
- 18) INSTALL 3" WATER AND MET BOX SHEET 201-04 FOR DETAILS
- 19) 35' PUBLIC UTILITY EASEMENT, RECORD WITH THE CITY OF ALBUQUERQUE IN OCTOBER 2008. DOCUMENT NUMBER 2008114964. *Date 10/22/2008*
- 20) EXISTING
- 21) INSTALL 6" (PRIVATE) GATE VALVE PER COA STANDARD DWGS. 2326 AND 2328.
- 22) INSTALL 4" (PUBLIC) GATE VALVE PER COA STANDARD DWG. 2326 AND 2328.
- 23) INSTALL 6" X 4" TEE. TIE TO EXISTING 6" WATER LINE PER COA STD. DWG. 2301.
- 24) INSTALL 4" X 3" REDUCER.
- 25) INSTALL 8" X 4" TEE-WYE FITTING.
- 26) LIMITS OF PAVEMENT REMOVAL AND REPLACEMENT PER COA STD. DWG. 2465.
- 27) REMOVE AND REPLACE CURB & GUTTER AND SIDEWALK PER COA STD. DWGS. 2415A AND 2430
- 28) INSTALL 1-1/2 INCH WATER METER AND METER BOX AS PER STD DWGS 2363 & 2367 *OR 5-14-09*

DMJM H&N | AECOM

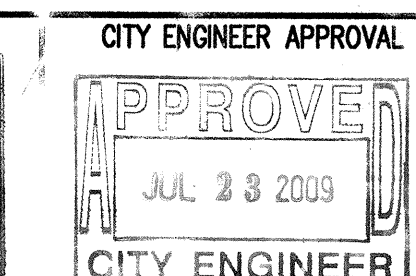
201 THIRD STREET NW, SUITE 600
ALBUQUERQUE, NEW MEXICO 87102

CITY OF ALBUQUERQUE



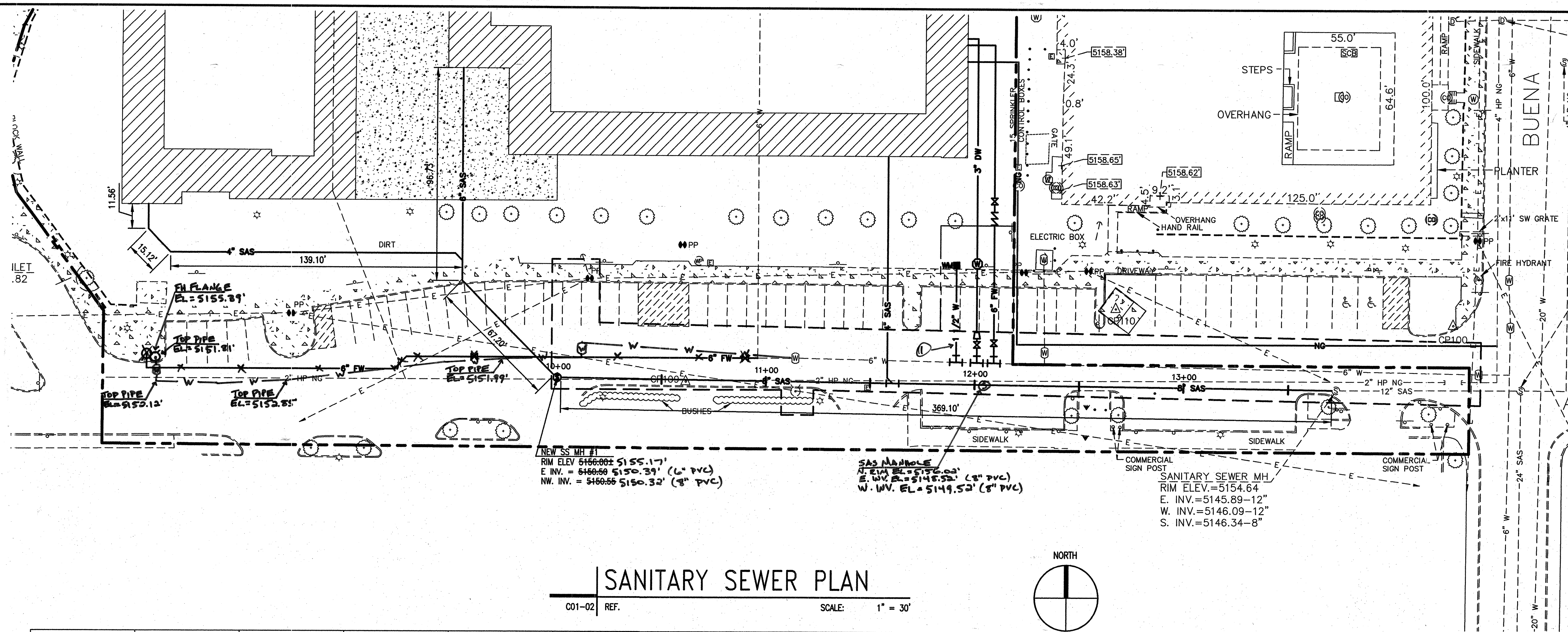
STUDENT RESOURCE SITE

SITE UTILITY PLAN

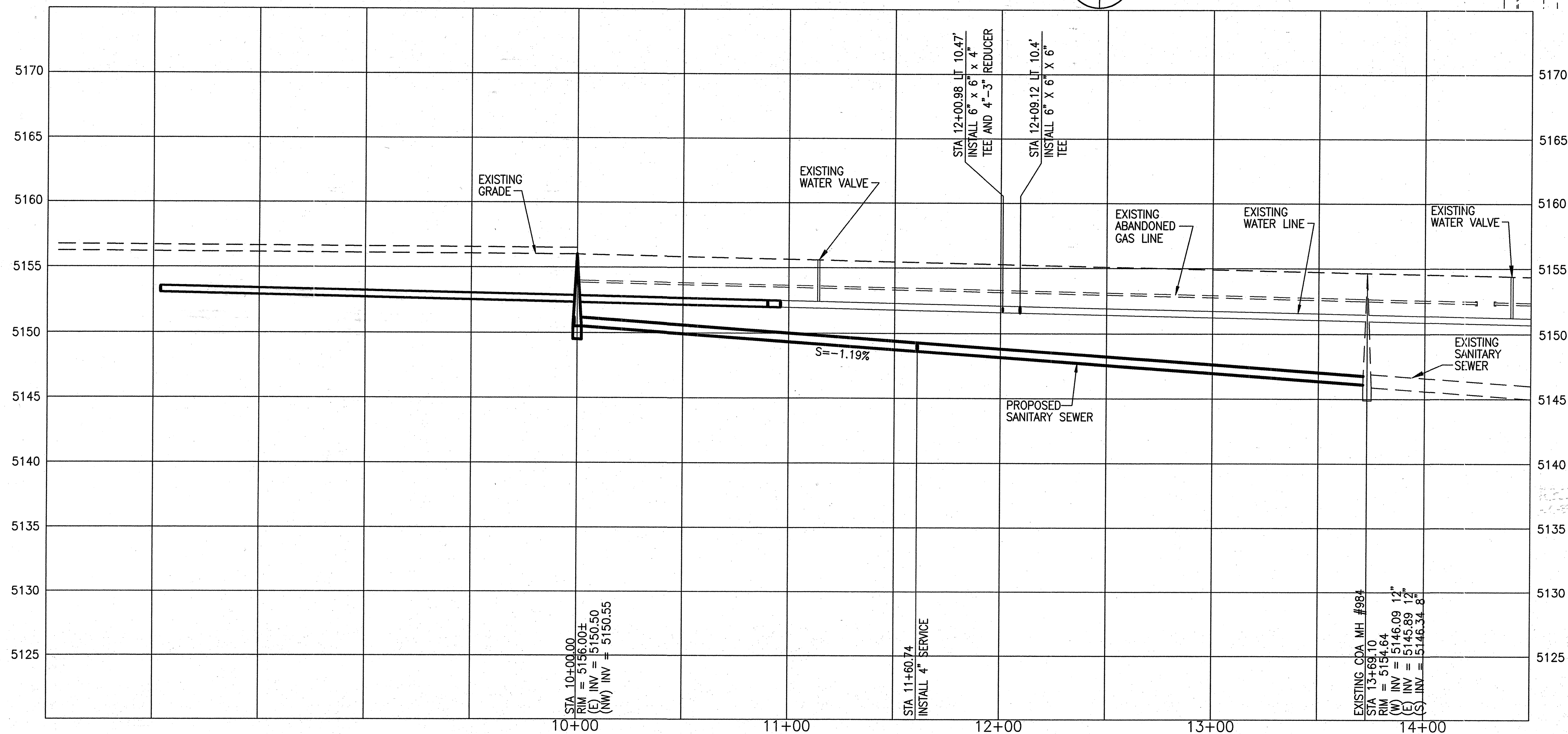


5798.61


ZONE



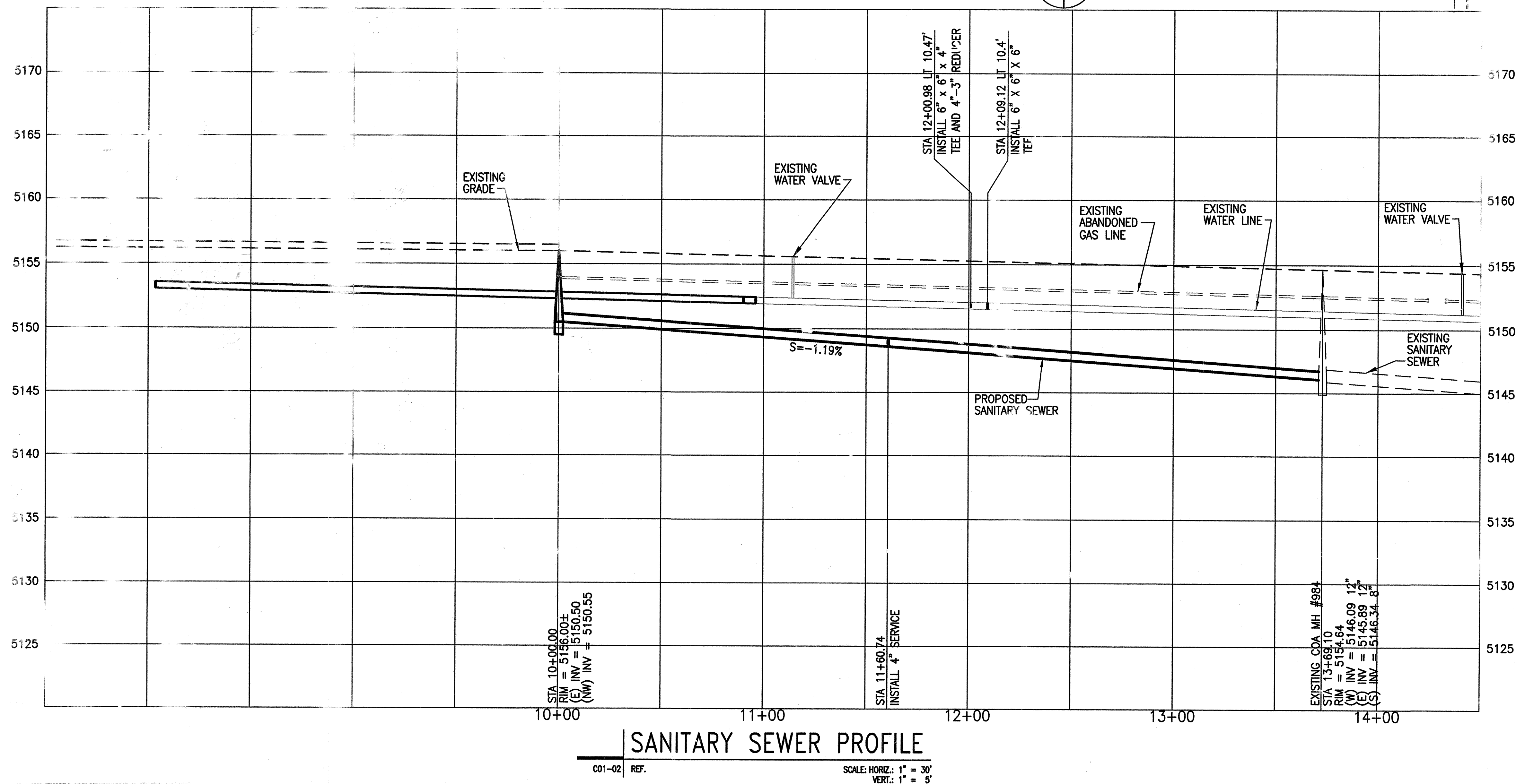
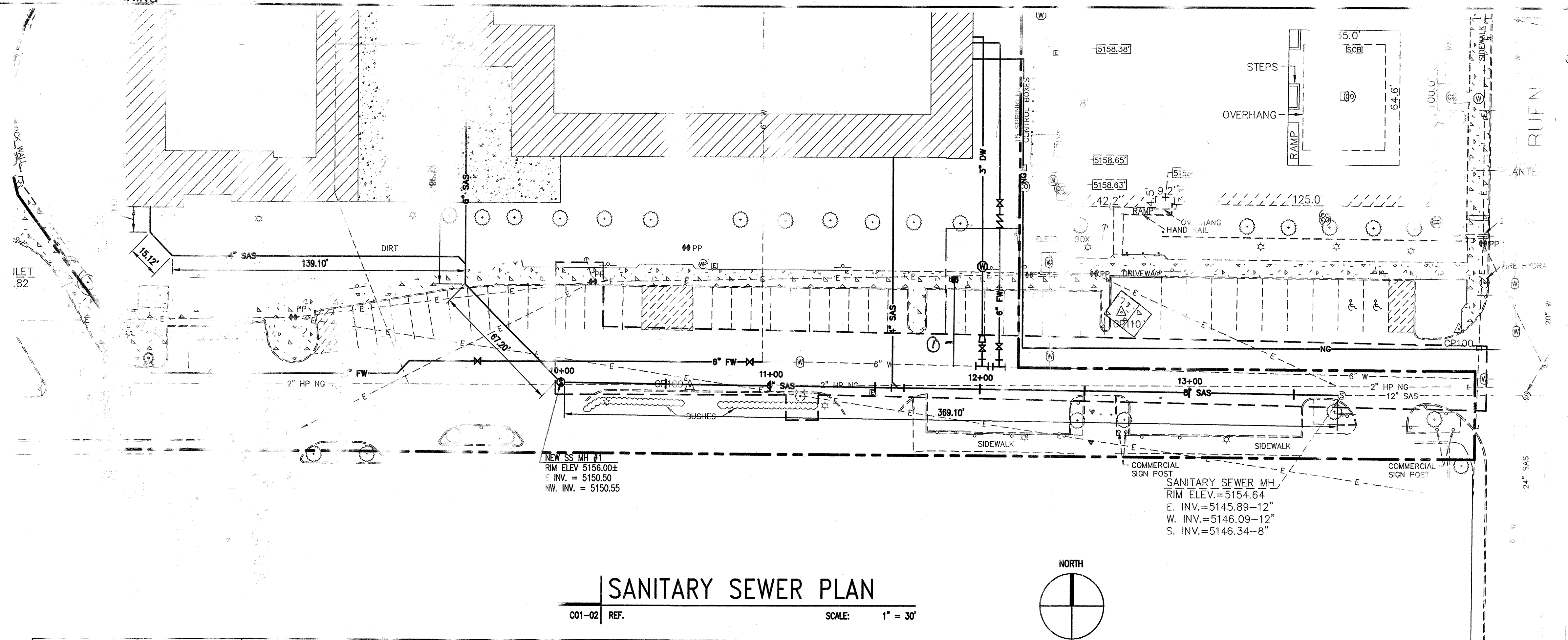
SCALE: 1" = 30'



SCALE: HORIZ.: 1" = 30'
VERT.: 1" = 5'




ENGINEER'S SEAL		BENCH MARKS		AS-BUILT INFORMATION	
		SURVEY INFORMATION		CONTRACTOR'S NAME: <u>ALBERTO GARCIA</u> DATE: <u>9/6/10</u>	
		FIELD NOTES		DATE: <u>9/6/10</u>	
		NO. BY		INSPECTOR'S NAME: <u>DAVID J. LARROW</u> DATE: <u>9/6/10</u>	
		NO. DATE		ACCEPTANCE BY: <u>DAVID J. LARROW</u> DATE: <u>9/6/10</u>	
REMARKS		CITY OF ALBUQUERQUE SURVEY CONTROL		DRAWINGS	
REVISIONS		3. 1 INCH ALUMINUM DISC SET FLUSH IN		CORRECTED BY: <u>DAVID J. LARROW</u> DATE: <u>9/6/10</u>	
DESIGN		THE TOP OF THE CURB AND IS STAMPED		MICRO-FILM INFORMATION	
DESIGNED BY M. TARIN		"B-K15 1990". LOCATION IS ON		RECORDED BY: <u>DAVID J. LARROW</u> DATE: <u>9/6/10</u>	
DRAWN BY J.L. MOORE		CENTRAL AVE. AND TERRACE DRIVE ON		NO. DATE	
CHECKED BY D. LARROW		THE NORTH SIDE OF THE INTERSECTION		NO. DATE	
		ON A CURB. ELEVATION = 5156.727			
		NAVD 1988			

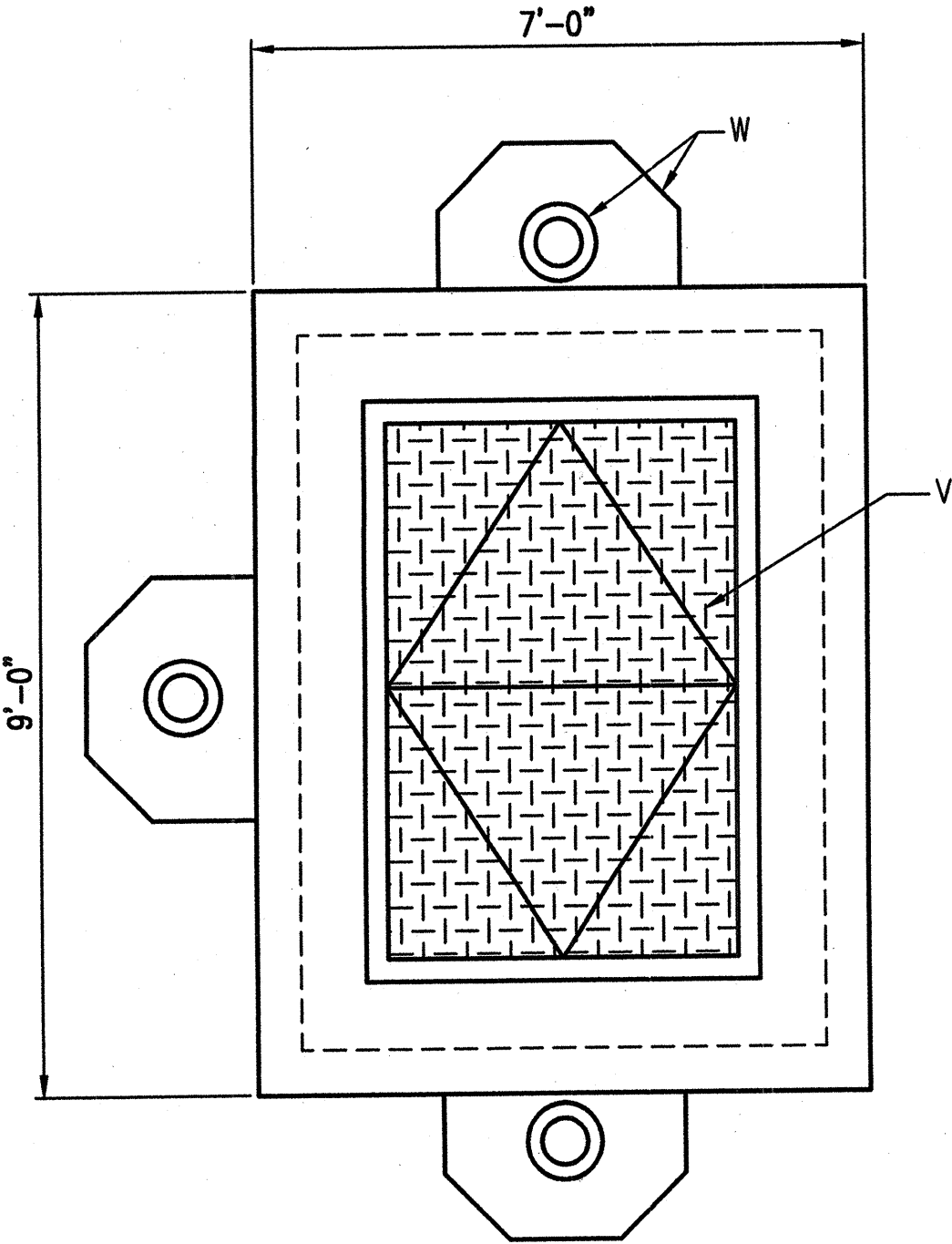
SHEET 4 OF 5
C01-03



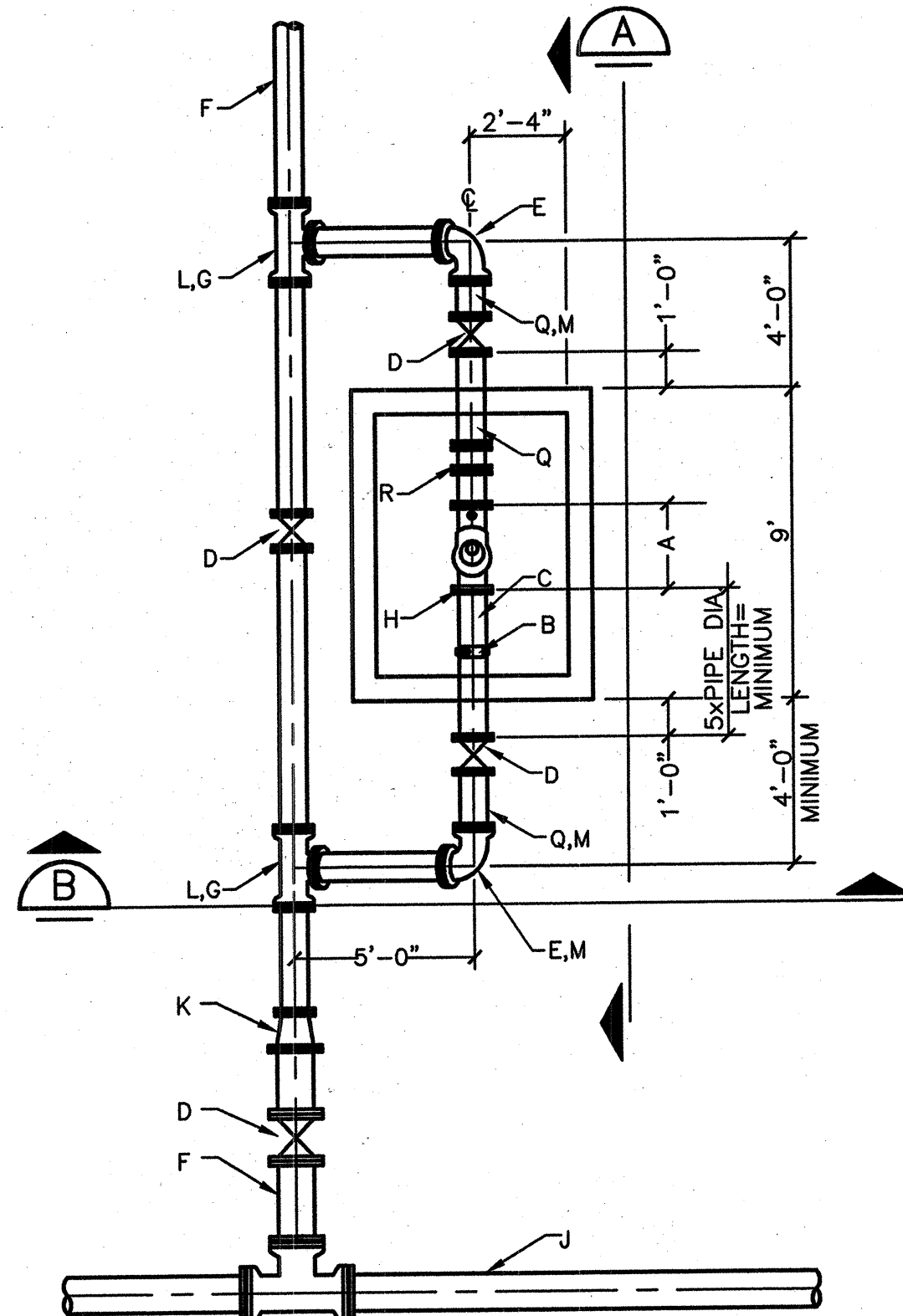
DESIGNED BY	M. TARIN	DATE	MAY 2008
DRAWN BY	JUL MOORE	DATE	
NO.	DATE	REMARKS	
		REVISIONS	
		DESIGN	
ENGINEER'S SEAL	SURVEYOR'S SEAL	FIELD NO.	

Handwritten: 11.12.08, *Signature:* [illegible], *Stamp:* PROF. ST.

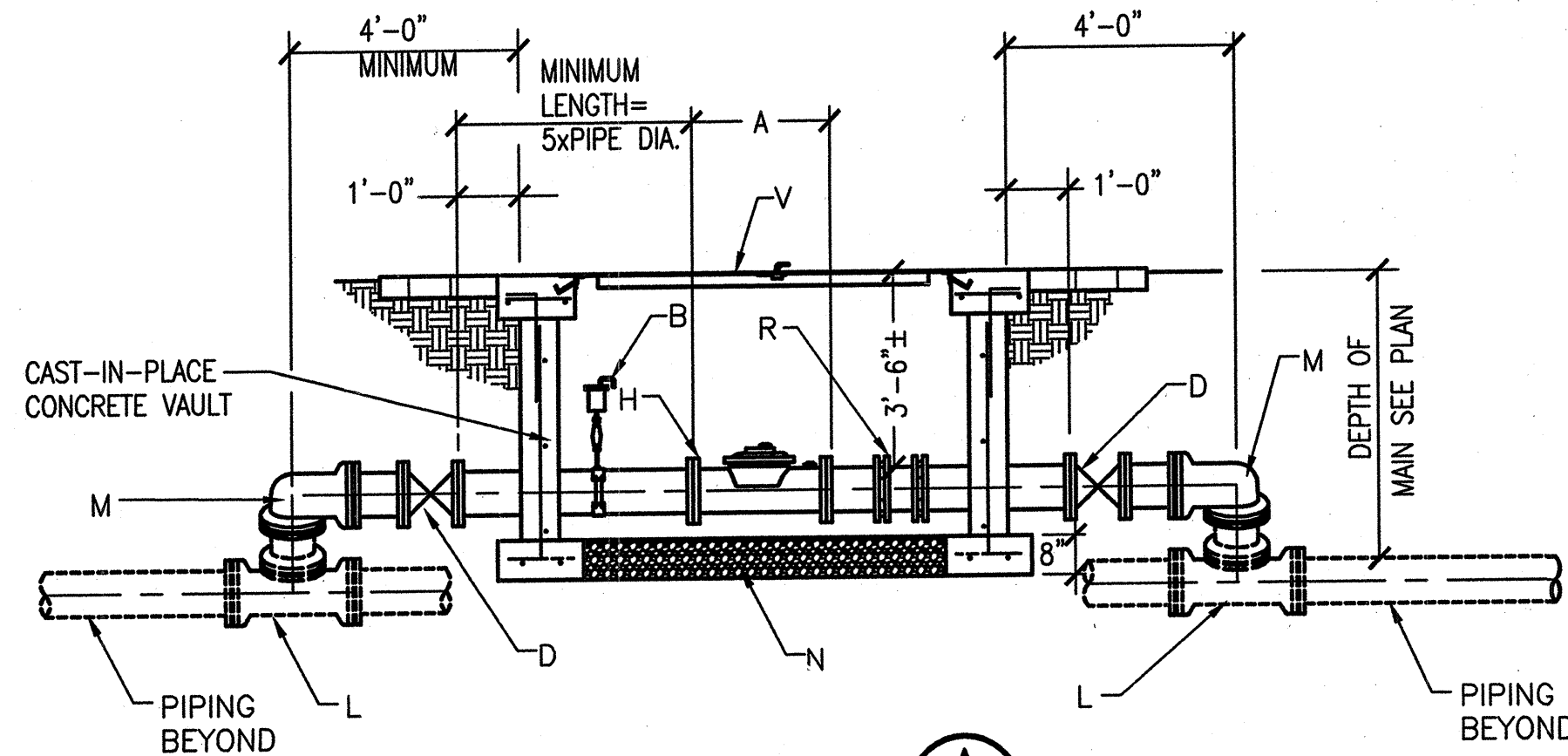
DMJM H&N AECOM		NO. DATE 11/10/10		DESIGNED BY M 11/10/10
201 THIRD STREET NW, SUITE 600 ALBUQUERQUE, NEW MEXICO 87102		CITY OF ALBUQUERQUE		
		CNM STUDENT RESOURCE CENTER Central New Mexico Community College SANITARY SEWER PLUMBING AND PIPELINES		
DESIGN REVIEW COMMITTEE 		CITY ENGINEER APPROVAL 		DATE 11/10/10
CITY PROJECT NO. 5798.61		ZONE 44P NO. 15		SHEET 4 OF 5



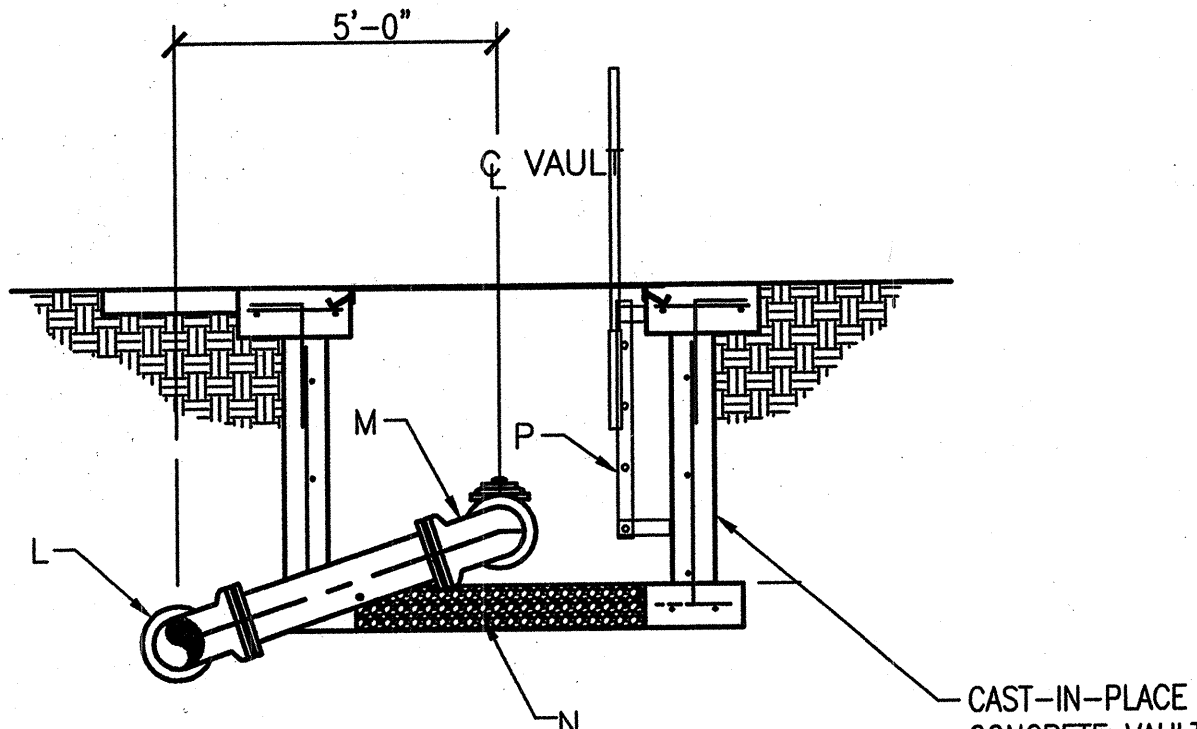
TOP PLAN



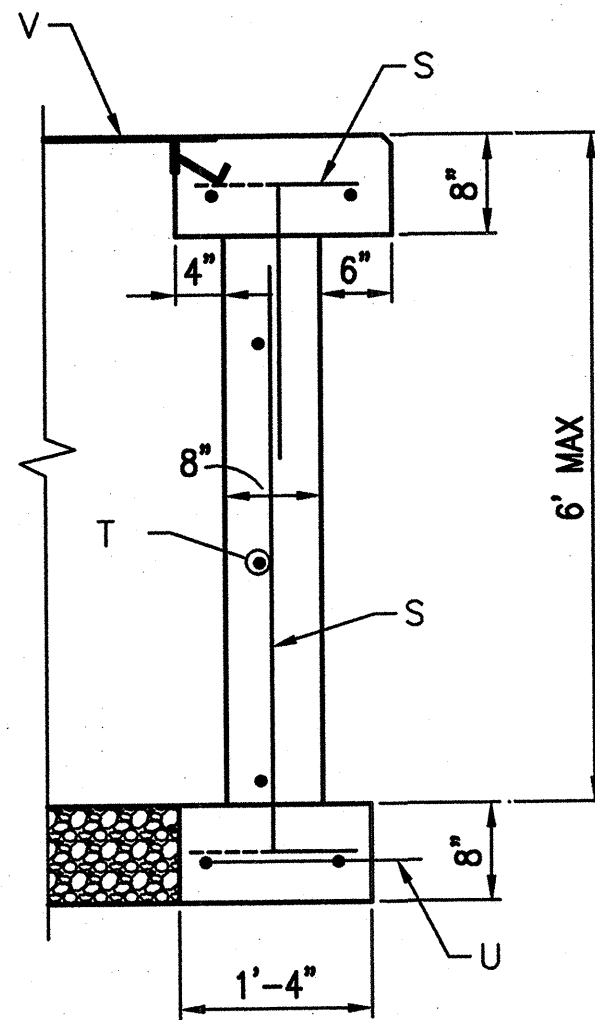
MECHANICAL PLAN



SECTION A



SECTION B



SECTION C

GENERAL NOTES:

1. COMPRESSIVE STRENGTH OF ALL CONCRETE SHALL BE 3500 PSI PER EXTERIOR CONC. SPEC SEC. 101.
2. COMPACT SUBGRADE UNDER AND 12" EITHER SIDE OF FOOTING TO 95% MAXIMUM DENSITY, PER ASTM D-1557 TO 6" MIN. DEPTH.
3. PRECAST CONCRETE VAULT MAY BE USED IN LIEU OF CAST-IN-PLACE CONSTRUCTION WITH WATER UTILITY DIVISION APPROVAL. SUBMIT DETAILS FOR REVIEW.
4. MINIMUM REINFORCING STEEL COVER SHALL BE 2".

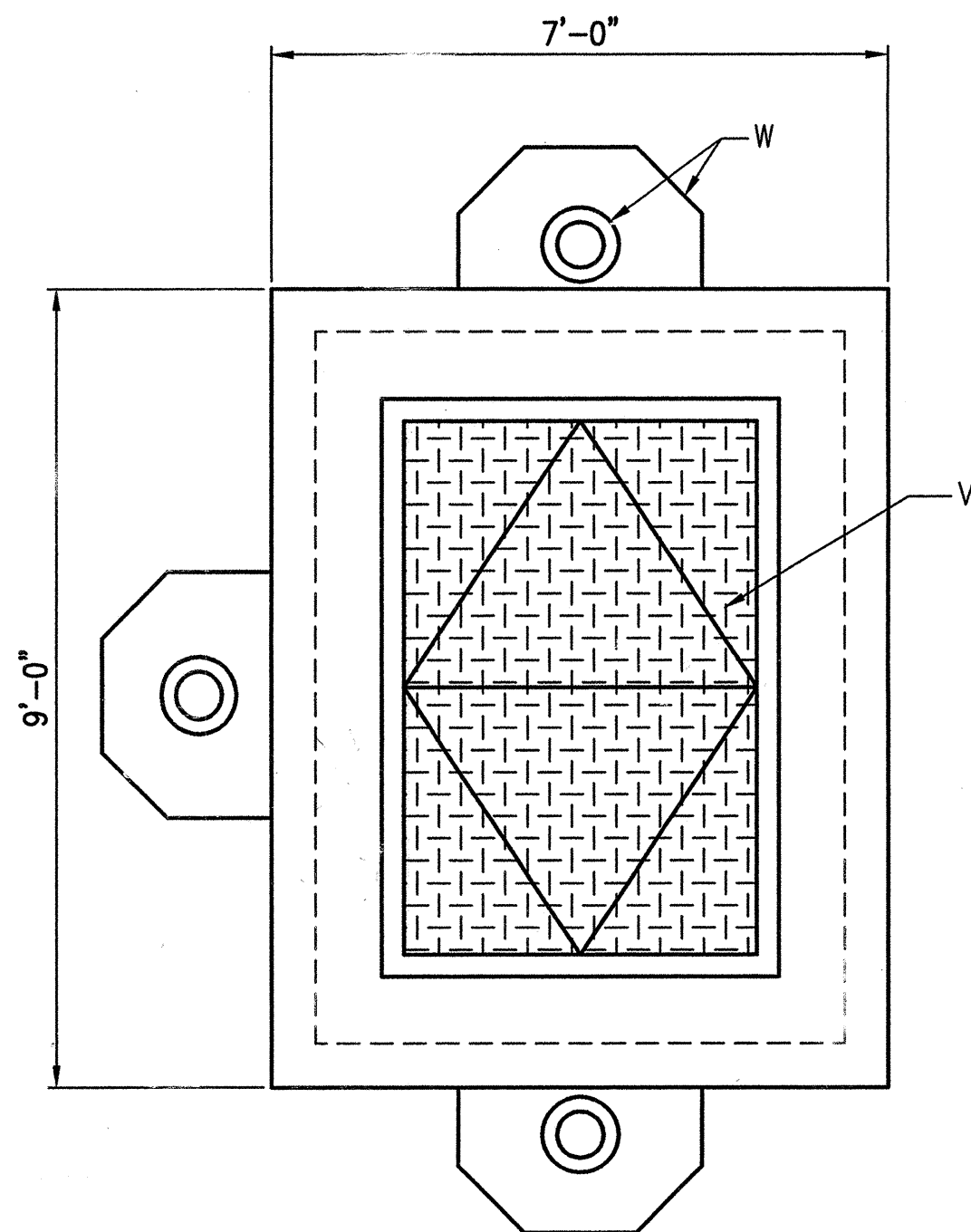
CONSTRUCTION NOTES:

- A LENGTH VARIES DEPENDING ON METER SIZE. COORDINATE WITH LAYING LENGTH REQUIRED. METER AND STRAINER TO BE PROVIDED AND INSTALLED BY ALBUQUERQUE BERNALILLO COUNTY WATER UTILITY AUTHORITY.
- B 1" SADDLE TAP, 1" GATE VALVE AND 1" AIR RELEASE VALVE. AIR RELEASE VALVE SHALL BE APCO MODEL NO. 200A OR APPROVED EQUAL.
- C D.I. SPOOL (FLANGExPE) LENGTH AS REQ'D. MINIMUM LENGTH SHALL BE 5 TIMES THE PIPE DIAMETER.
- D GATE VALVE (FLANGED).
- E 90° ELBOW (MJ) WITH MEGALUGS.
- F MAIN SERVICE LINE.
- G MJ TEE WITH MEGALUGS.
- H MEGA FLANGE-FLANGE ADAPTER, SERIES 2100 AS MANUFACTURED BY EBAA IRON SALES, OR APPROVED EQUAL.
- J MAIN DISTRIBUTION LINE.
- K 4"-3" REDUCER
- L ROLL TEE UP AS REQUIRED.
- M ROLL 90° ELBOW DOWN AS REQUIRED.
- N 3/4" GRAVEL FILL PER ASTM C33, NO. 57 GRAVEL, 8" DEPTH.
- P GALVANIZED VAULT ACCESS LADDER W/BILCO LU-1 "LADDER UP" SAFETY POST OR APPROVED EQUAL. INSTALL PER MANUFACTURER'S RECOMMENDATIONS
- Q D.I. PIPE (FLANGExPE) LENGTH AS REQUIRED.
- R FLANGE COUPLING ADAPTER, (FCA).
- S #4 DOWEL @ 16"O.C., ALT. HOOK
- T #4 CONTINUOUS @ 16"O.C.
- U 2 - #4 CONTINUOUS
- V 4'-0"x6'-0" DOUBLE LEAF ALUMINUM FLOOR DOOR, HINGED ON SHORT SIDE, HALLIDAY TYPE S2R WITH SLAM LOCK AND KEY, OR APPROVED EQUAL
- W VALVE BOX, VALVE BOX COVER, AND CONCRETE COLLAR PER C.O.A. STANDARD DRAWINGS 2326, 2328 AND 2461.

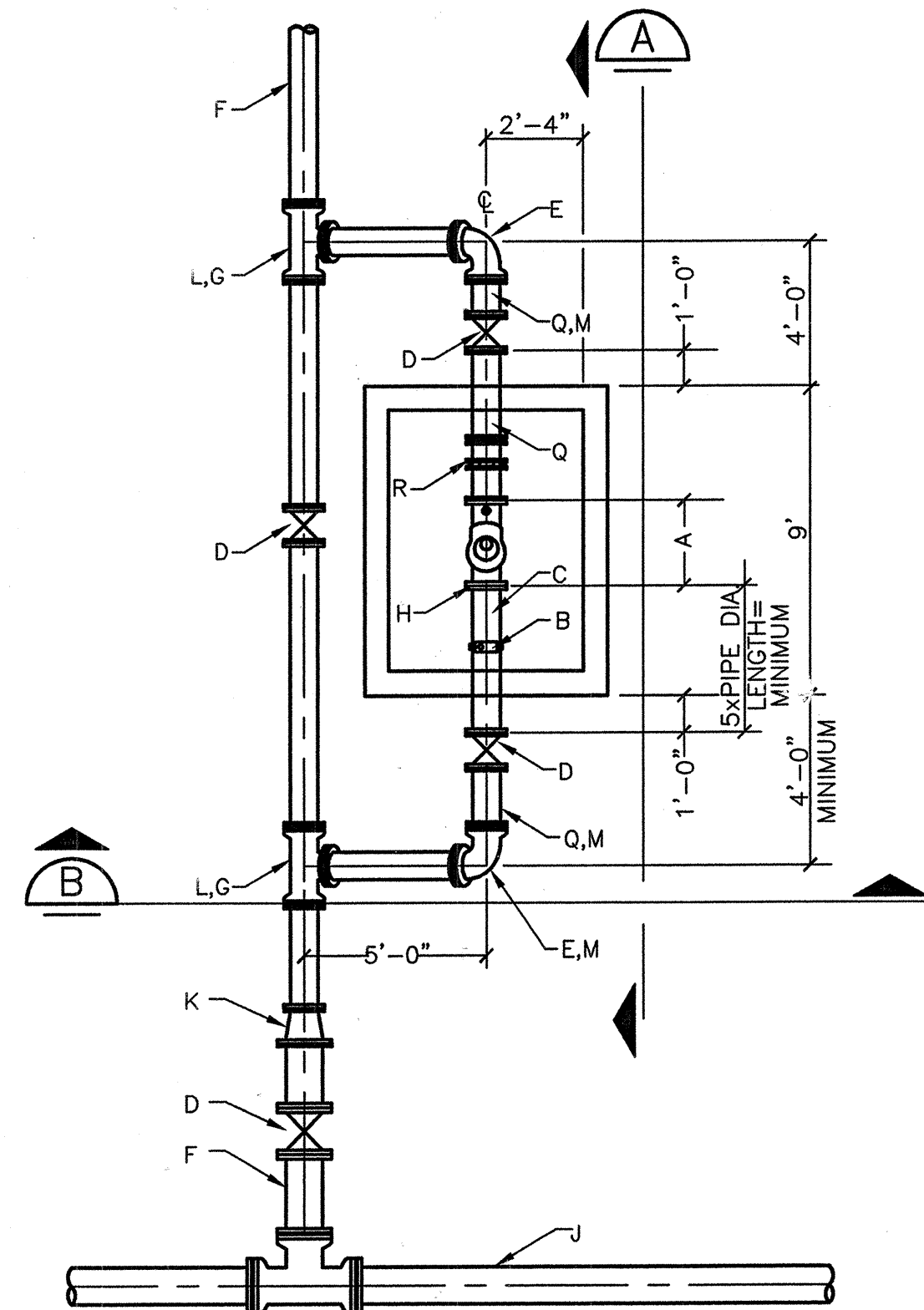
RECORD DRAWING
DATE 9-9-10

DMJM H&N AECOM	
201 THIRD STREET NW, SUITE 600 ALBUQUERQUE, NEW MEXICO 87102	
CITY OF ALBUQUERQUE	
STUDENT RESOURCE CENTER LARGE DIAMETER METER VAULT	
DESIGN REVIEW COMMITTEE	CITY ENGINEER APPROVAL
LAST DESIGN UPDATE	NO./DAY/YR. NO./DAY/YR.
CITY PROJECT NO.	ZONE MAP NO.
5798.61	K-15
SHEET	5 OF 5
C01-04	

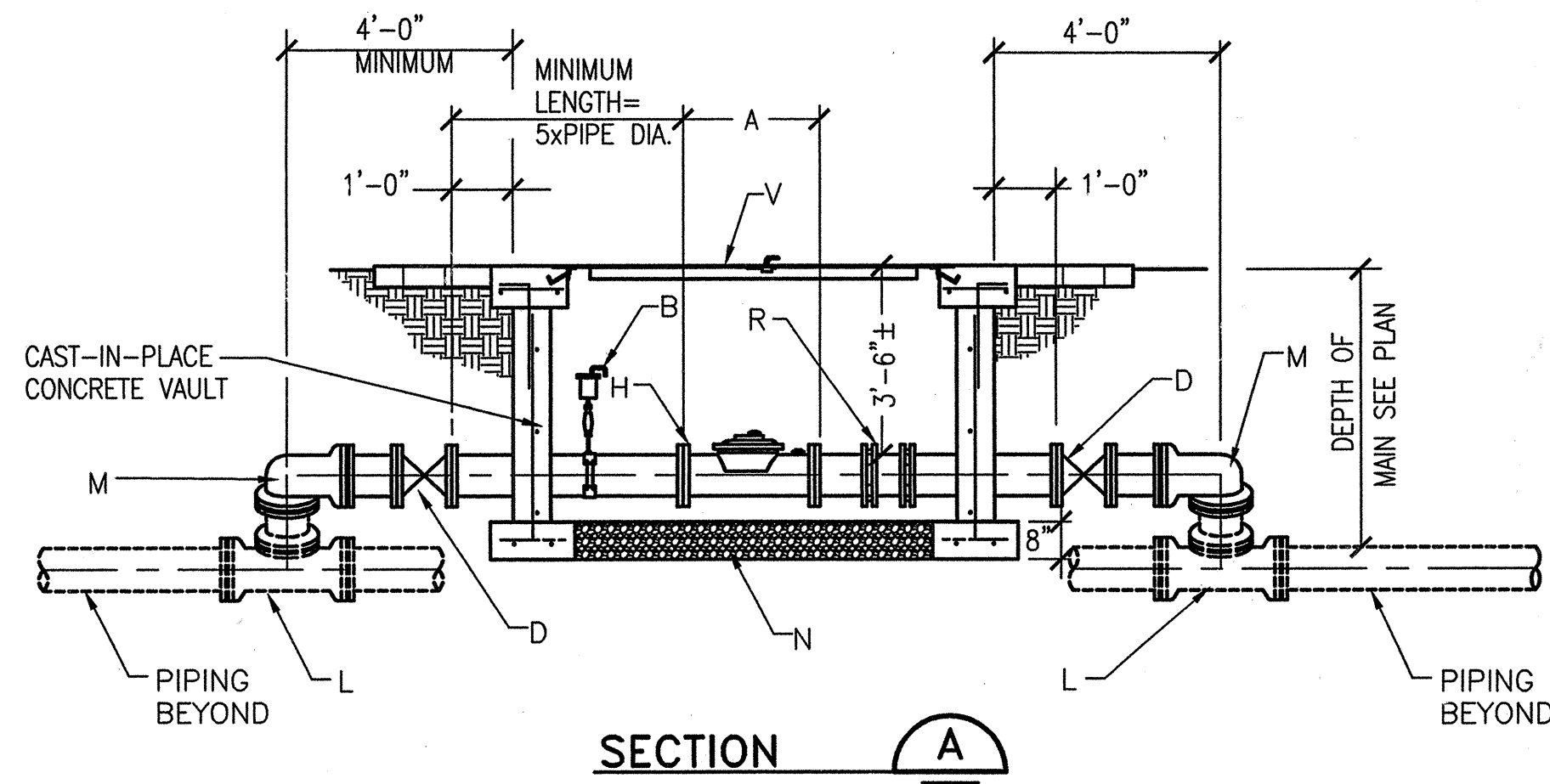
DESIGNED BY
PLANNING



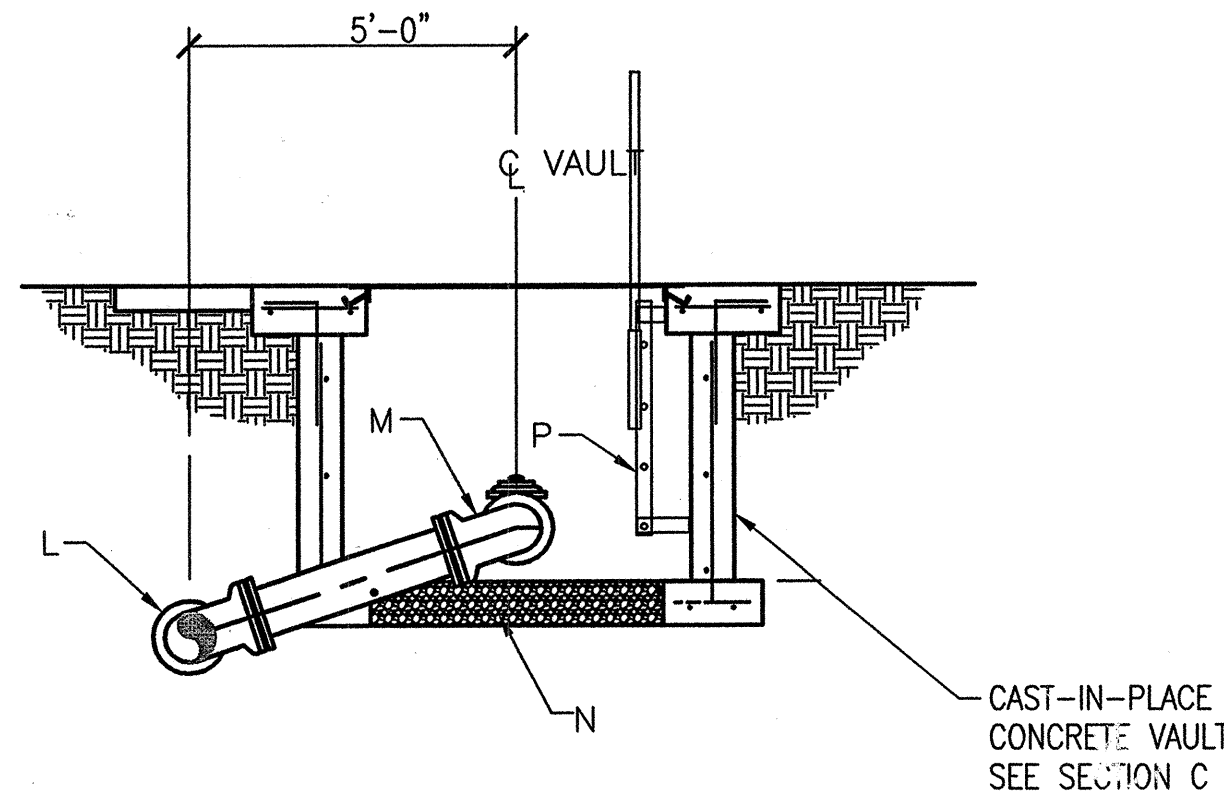
TOP PLAN



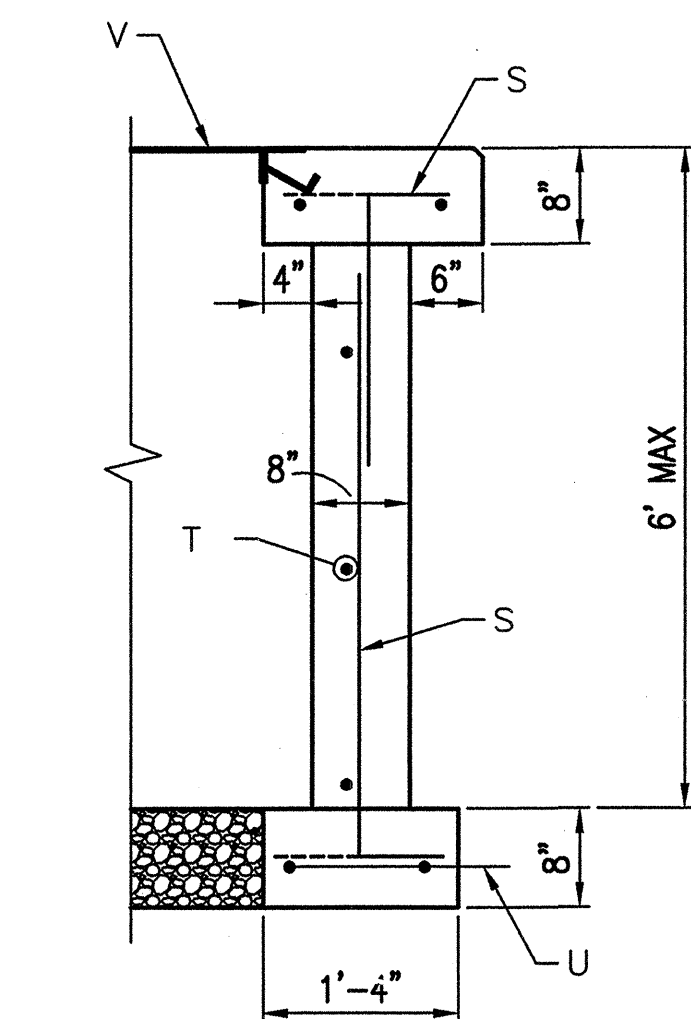
MECHANICAL PLAN



SECTION A



SECTION B



SECTION C

GENERAL NOTES:

1. COMPRESSIVE STRENGTH OF ALL CONCRETE SHALL BE 3500 PSI PER EXTERIOR CONC. SPEC SEC. 101.
2. COMPACT SUBGRADE UNDER AND 12" EITHER SIDE OF FOOTING TO 95% MAXIMUM DENSITY, PER ASTM D-1557 TO 6" MIN. DEPTH.
3. PRECAST CONCRETE VAULT MAY BE USED IN LIEU OF CAST-IN-PLACE CONSTRUCTION WITH WATER UTILITY DIVISION APPROVAL. SUBMIT DETAILS FOR REVIEW.
4. MINIMUM REINFORCING STEEL COVER SHALL BE 2".

CONSTRUCTION NOTES:

- A LENGTH VARIES DEPENDING ON METER SIZE. COORDINATE WITH LAYING LENGTH REQUIRED. METER AND STRAINER TO BE PROVIDED AND INSTALLED BY ALBUQUERQUE BERNALILLO COUNTY WATER UTILITY AUTHORITY.
- B 1" SADDLE TAP, 1" GATE VALVE AND 1" AIR RELEASE VALVE. AIR RELEASE VALVE SHALL BE APCO MODEL NO. 200A OR APPROVED EQUAL.
- C D.I. SPOOL (FLANGEXPE) LENGTH AS REQ'D. MINIMUM LENGTH SHALL BE 5 TIMES THE PIPE DIAMETER.
- D GATE VALVE (FLANGED).
- E 90° ELBOW (MJ) WITH MEGALUGS.
- F MAIN SERVICE LINE.
- G MJ TEE WITH MEGALUGS.
- H MEGA FLANGE-FLANGE ADAPTER, SERIES 2100 AS MANUFACTURED BY EBAA IRON SALES, OR APPROVED EQUAL.
- J MAIN DISTRIBUTION LINE.
- K 4"-3" REDUCER
- L ROLL TEE UP AS REQUIRED
- M ROLL 90° ELBOW DOWN AS REQUIRED.
- N 3/4" GRAVEL FILL PER ASTM C33, NO. 57 GRAVEL, 8" DEPTH
- P GALVANIZED VAULT ACCESS LADDER W/BILCO LU-1 "LADDER UP" SAFETY POST OR APPROVED EQUAL. INSTALL PER MANUFACTURER'S RECOMMENDATIONS
- Q D.I. PIPE (FLANGEXPE) LENGTH AS REQUIRED.
- R FLANGE COUPLING ADAPTER, (FCA).
- S #4 DOWEL @ 16"O.C., ALT. HOOK
- T #4 CONTINUOUS @ 16"O.C.
- U 2 - #4 CONTINUOUS
- V 4'-0"x6'-0" DOUBLE LEAF ALUMINUM FLOOR DOOR, HINGED ON SHORT SIDE, HALLIDAY TYPE S2R WITH SLAM LOCK AND KEY, OR APPROVED EQUAL
- W VALVE BOX, VALVE BOX COVER, AND CONCRETE COLLAR PER C.O.A. STANDARD DRAWINGS 2326, 2328 AND 2461.

AS-BUILT INFORMATION		BENCH MARKS		SURVEY INFORMATION		ENGINEER'S SEAL		REMARKS		DESIGN		CITY OF ALBUQUERQUE		STUDENT RESOURCE CENTER		CITY ENGINEER APPROVAL		LAST DESIGN UPDATE		CITY PROJECT NO.		ZONE MAP NO.		SHEET	
CONTRACTOR	DATE	NO.	DATE	NO.	DATE	NO.	DATE	NO.	DATE	NO.	DATE	NO.	DATE	NO.	DATE	NO.	DATE	NO.	DATE	NO.	DATE	NO.	DATE	NO.	DATE
WORKED BY	DATE	NO.	DATE	NO.	DATE	NO.	DATE	NO.	DATE	NO.	DATE	NO.	DATE	NO.	DATE	NO.	DATE	NO.	DATE	NO.	DATE	NO.	DATE	NO.	DATE
INSPECTED BY	DATE	NO.	DATE	NO.	DATE	NO.	DATE	NO.	DATE	NO.	DATE	NO.	DATE	NO.	DATE	NO.	DATE	NO.	DATE	NO.	DATE	NO.	DATE	NO.	DATE
ACCEPTANCE BY	DATE	NO.	DATE	NO.	DATE	NO.	DATE	NO.	DATE	NO.	DATE	NO.	DATE	NO.	DATE	NO.	DATE	NO.	DATE	NO.	DATE	NO.	DATE	NO.	DATE
FIELD LOCATION BY	DATE	NO.	DATE	NO.	DATE	NO.	DATE	NO.	DATE	NO.	DATE	NO.	DATE	NO.	DATE	NO.	DATE	NO.	DATE	NO.	DATE	NO.	DATE	NO.	DATE
DRAWINGS	DATE	NO.	DATE	NO.	DATE	NO.	DATE	NO.	DATE	NO.	DATE	NO.	DATE	NO.	DATE	NO.	DATE	NO.	DATE	NO.	DATE	NO.	DATE	NO.	DATE
CORRECTED BY	DATE	NO.	DATE	NO.	DATE	NO.	DATE	NO.	DATE	NO.	DATE	NO.	DATE	NO.	DATE	NO.	DATE	NO.	DATE	NO.	DATE	NO.	DATE	NO.	DATE
MICRO-FILM INFORMATION	DATE	NO.	DATE	NO.	DATE	NO.	DATE	NO.	DATE	NO.	DATE	NO.	DATE	NO.	DATE	NO.	DATE	NO.	DATE	NO.	DATE	NO.	DATE	NO.	DATE
RECORDED BY	DATE	NO.	DATE	NO.	DATE	NO.	DATE	NO.	DATE	NO.	DATE	NO.	DATE	NO.	DATE	NO.	DATE	NO.	DATE	NO.	DATE	NO.	DATE	NO.	DATE

DMJM H&N AECOM	
201 THIRD STREET NW, SUITE 600 ALBUQUERQUE, NEW MEXICO 87102	
CITY OF ALBUQUERQUE	
STUDENT RESOURCE CENTER LARGE DIAMETER METER VAULT	
DESIGN REVIEW COMMITTEE APPROVED DEC 09 2008 DESIGN REVIEW COMMITTEE	
CITY ENGINEER APPROVAL APPROVED JUL 23 2008 CITY ENGINEER	
MO./DAY/YR. MO./DAY/YR.	
LAST DESIGN UPDATE	
CITY PROJECT NO. 5798.61	
ZONE MAP NO. K-15	
SHEET 5 OF 5 C01--04	