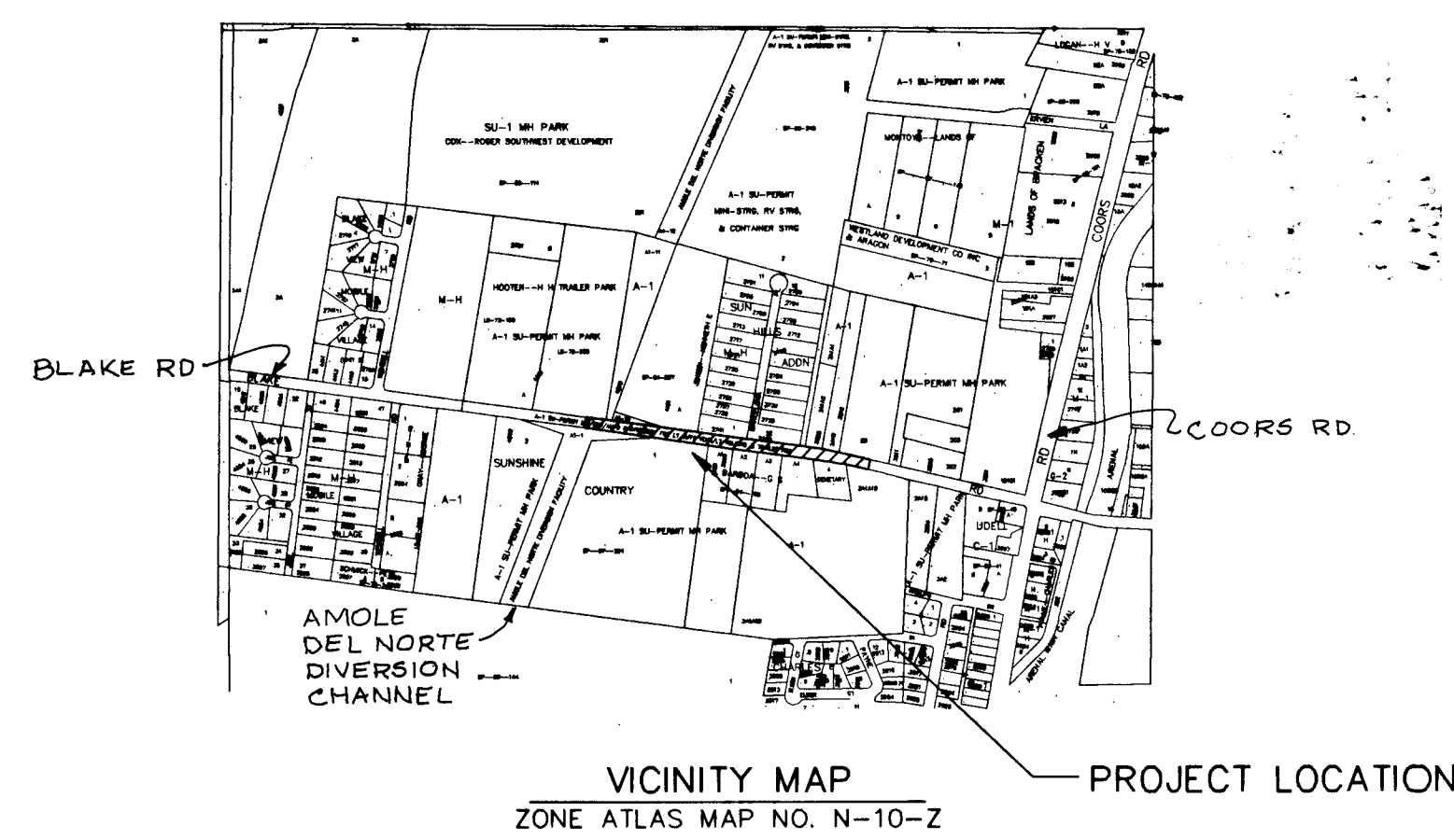


CONSTRUCTION PLANS FOR AN 8" WATERLINE SUNSHINE PLUMBING & HEATING, INC.



COA SPECIFICATIONS AND STANDARDS	GENERAL NOTES NOTICE TO CONTRACTORS
<p>ALL CONSTRUCTION SHALL BE IN ACCORDANCE WITH COA STANDARD SPECIFICATIONS, LATEST EDITION, INCLUDING BUT NOT LIMITED TO THE FOLLOWING TECHNICAL SPECIFICATIONS AND CONSTRUCTION STANDARD DETAIL DRAWINGS:</p> <p>STS 801, INSTALLATION OF WATER TRANSMISSION, COLLECTOR, AND DISTRIBUTION LINES.</p> <p>STS 701, TRENCHING, EXCAVATION, AND BACKFILL.</p> <p>DWG. 2301, WATERLINE CONNECTION DETAILS DWG. 2315, WATER PIPE TRENCH TERMINOLOGY DWG. 2325, WATER VALVE BOX TYPE "A" DWG. 2328, RING & COVER FOR VALVE BOX DWG. 2333, WATER VALVE ANCHORAGE DWG. 2340, FIRE HYDRANT INSTALLATION</p>	<p>1. CITY OF ALBUQUERQUE SPECIFICATIONS FOR PUBLIC WORKS CONSTRUCTION, 1986 EDITION AS AMENDED THROUGH UPDATE 6, WILL BE REFERRED TO HEREIN AS THE "STANDARD SPECIFICATIONS".</p> <p>2. TWO (2) WORKING DAYS PRIOR TO ANY EXCAVATION, CONTRACTOR MUST CONTACT NEW MEXICO ONE CALLS SYSTEM (260-1990) AND DETERMINE LOCATION OF EXISTING UTILITIES.</p> <p>3. PRIOR TO ANY CONSTRUCTION, THE CONTRACTOR SHALL EXCAVATE AND VERIFY THE HORIZONTAL AND VERTICAL LOCATIONS OF ALL OBSTRUCTIONS. SHOULD A CONFLICT EXIST, THE CONTRACTOR SHALL NOTIFY THE ENGINEER OR SURVEYOR IMMEDIATELY SO THAT THE CONFLICT CAN BE RESOLVED WITHOUT DELAY.</p> <p>4. ALL EXISTING SIGNS, MARKERS, DEFLECTORS, MAILBOXES, ETC., WITHIN THE CONSTRUCTION LIMITS SHALL BE REMOVED, STORED AND RESET BY THE CONTRACTOR.</p> <p>5. CONTRACTOR SHALL NOTIFY THE ENGINEER NOT LESS THAN SEVEN (7) DAYS PRIOR TO STARTING WORK IN ORDER THAT THE ENGINEER MAY TAKE NECESSARY MEASURES TO INSURE THE PRESERVATION OF SURVEY MONUMENTS. CONTRACTOR SHALL NOT DISTURB PERMANENT SURVEY MONUMENTS WITHOUT THE CONSENT OF THE ENGINEER AND SHALL NOTIFY THE ENGINEER AND BEAR THE EXPENSE OF REPLACING ANY THAT MAY BE DISTURBED WITHOUT PERMISSION. REPLACEMENT SHALL BE ONLY BY THE CITY SURVEYOR. WHEN A CHANGE IS MADE IN THE FINISHED ELEVATIONS OF THE PAVEMENT OF ANY ROADWAY IN WHICH A PERMANENT SURVEY MONUMENT IS LOCATED, CONTRACTOR SHALL, AT HIS EXPENSE, ADJUST THE MONUMENT COVER TO THE NEW GRADE UNLESS OTHERWISE SPECIFIED. REFER TO SECTION 4.4 OF THE GENERAL CONDITIONS OF THE STANDARD SPECIFICATIONS.</p> <p>6. FIVE (5) WORKING DAYS PRIOR TO BEGINNING CONSTRUCTION THE CONTRACTOR SHALL SUBMIT TO CONSTRUCTION COORDINATION DIVISION A DETAILED CONSTRUCTION SCHEDULE. TWO (2) WORKING DAYS PRIOR TO CONSTRUCTION THE CONTRACTOR SHALL OBTAIN A BARRICADING PERMIT FROM THE BERNALILLO COUNTY PUBLIC WORKS(848-1500).</p> <p>ALL STREET STRIPING ALTERED OR DESTROYED SHALL BE REPLACED WITH PLASTIC REFLECTORIZED PAVEMENT MARKINGS BY CONTRACTOR TO LOCATION AS EXISTING OR AS INDICATED BY THIS PLAN SET.</p> <p>7. ANY WORK AFFECTING AN ARTERIAL ROADWAY REQUIRES TWENTY-FOUR (24) HOUR CONSTRUCTION.</p> <p>8. THE CONTRACTOR SHALL BE RESPONSIBLE FOR TIMING AND COORDINATION OF WATER SHUTOFF. AT LEAST FIVE (5) WORKING DAYS PRIOR TO CONSTRUCTION, CONTRACTOR SHALL CONTACT THE WATER SYSTEMS DIVISION, 857-8200, TO INITIATE IMPLEMENTATION OF THE NON-PRESSURIZED CONNECTION PLAN. IN ORDER TO COMPLETE THIS CONNECTION THE FOLLOWING VALVES MUST BE CLOSED BY WATER SYSTEMS PERSONNEL.</p> <p>9. LIMIT OPEN TRENCH TO 200 FEET MAXIMUM.</p> <p>10. EXCAVATION, TRENCHING, AND SHORING ACTIVITIES MUST BE CARRIED OUT IN ACCORDANCE WITH OSHA 29CFR 1926.650, SUBPART P.</p> <p>11. THE CITY OF ALBUQUERQUE IS DEVELOPING NEW REQUIREMENTS FOR FILLING/FLUSHING NEW LINES. CONTRACTOR SHALL CONFORM TO LATEST REQUIREMENTS.</p> <p>12. ALL COMPACTION OF TRENCHES SHALL BE 95% OF MAXIMUM DENSITY INACCORDANCE WITH ASTM D 1557.</p> <p>13. PAVEMENT CUT AND PATCH FOR BLAKE ROAD SHALL BE IN ACCORDANCE W/BERNALILLO COUNTY STD. DWG. 2465.</p>

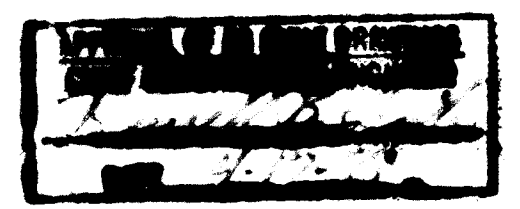
RECORD DRAWINGS
LARRY READ & ASSOCIATES
Civil Engineers
P.O. Box 90233
Albuquerque, New Mexico 87119-0233
(505) 836-3165

WILSON & COMPANY
4775 INDIAN SCHOOL ROAD N.E.
SUITE 200
ALBUQUERQUE, NEW MEXICO 87110
(505) 254-4000

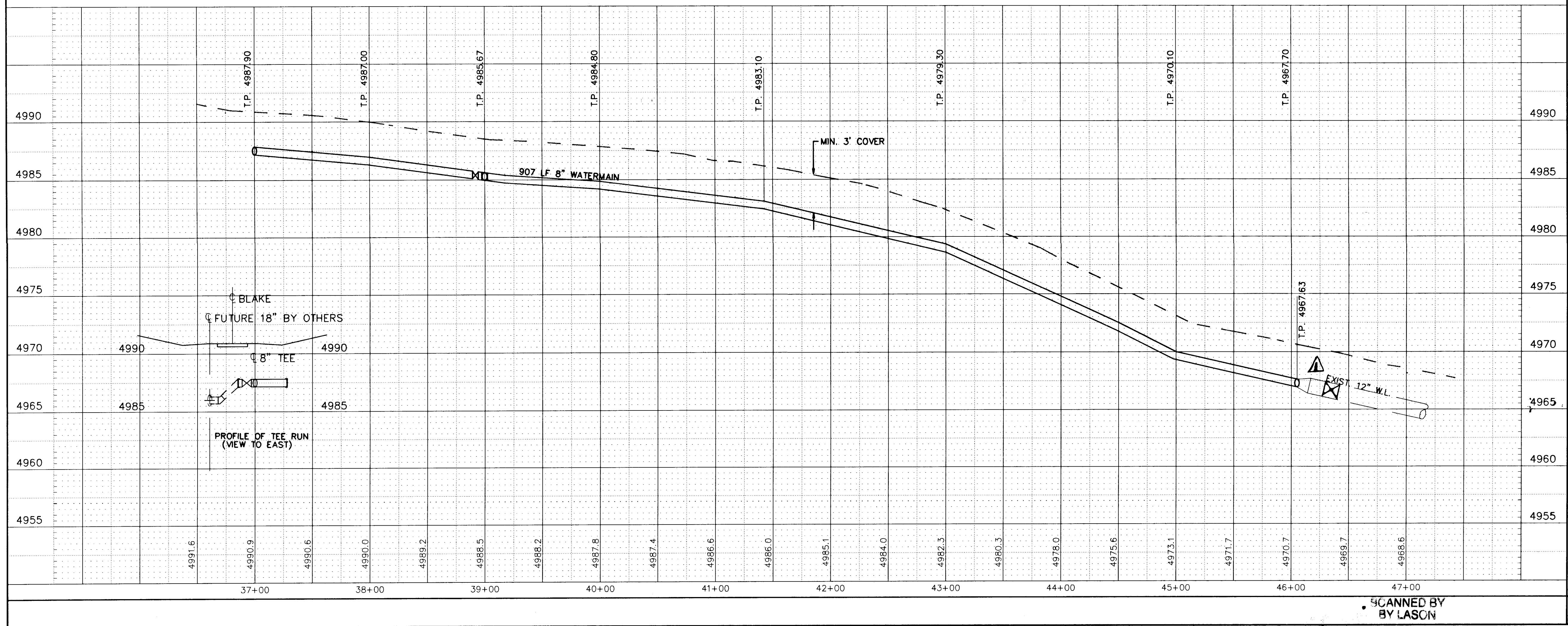
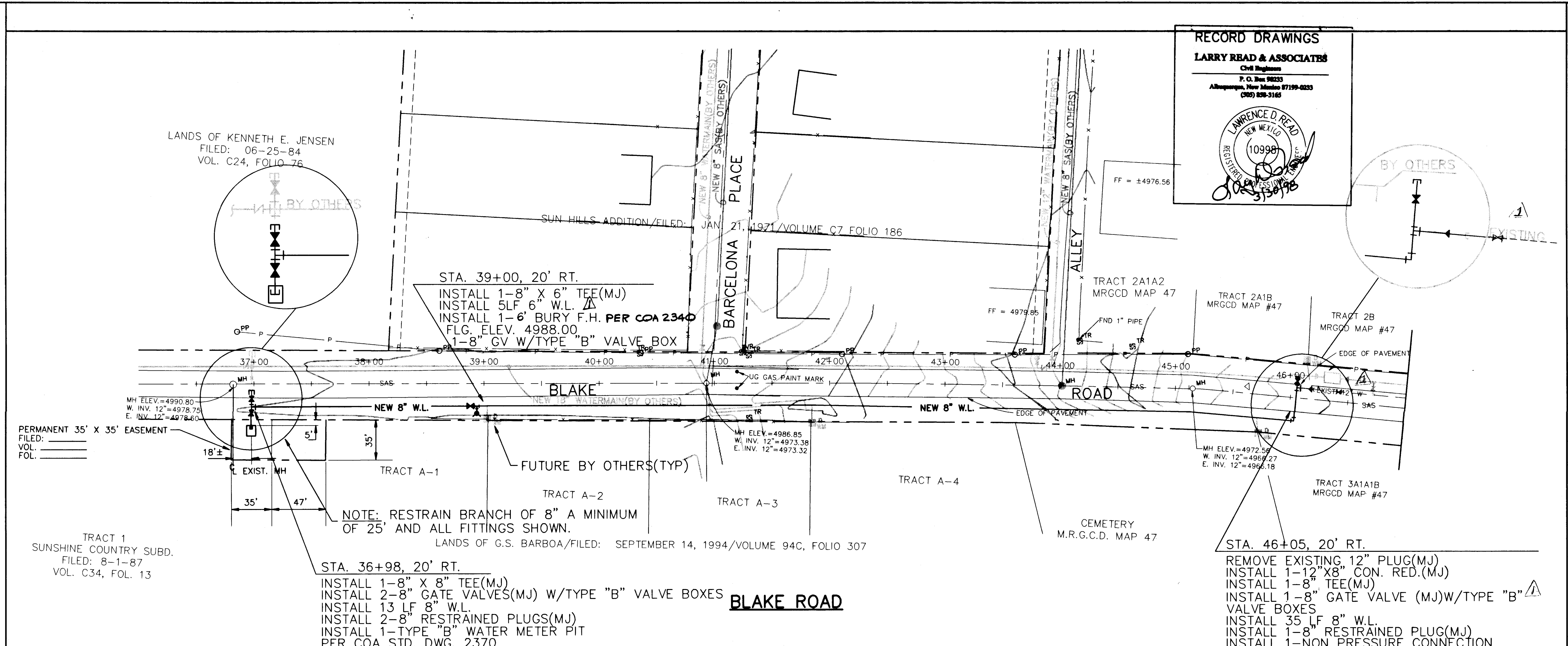
REV	SHEETS	CITY ENGINEER	DATE	USER DEPARTMENT	DATE	USER DEPARTMENT	DATE
ENGINEERS STAMP & SIGNATURE	APPROVALS	ENGINEER	DATE	*****			
	DRC Chairman	Billy G. Goolbsy	2-16-98				
	Transportation	N/A	1/13/98				
	Water/Wastewater	Gregory C. Lee	1/13/98				
	Hydrology	N/A	1-29-98				
	Constr. Mngmt.	James H. King	1/13/98				
Bernalillo Co. PW				City Engineer Date			
City Project No. 583681				Sheet 1 of 4			

SHEET INDEX

SHEET NO.	DESCRIPTION
1	COVER AND INDEX
2	PLAN & PROFILE BLAKE ROAD, S.W.
3	SIGNING & TRAFFIC CONTROL
4	CONSTRUCTION DETAILS



SCANNED BY
BY LASON



SUNSHINE PLUMBING & HEATING, INC.
 8" WATER LINE/BLAKE ROAD, S.W.

DESIGN REVIEW COMMITTEE
 City Engineer Approval

DESIGNED BY
 WILSON & COMPANY, ENGINEERS & ARCHITECTS

DRAWN BY
 RUP

CHECKED BY
 DLS

DATE
 JAN 1998

REVISIONS

NO.	DATE	REMARKS
1	9/24/97	RECORD DRAWING

City Project No.
 583681

Zone Map No.
 N-10-Z

Sheet
 2 of 4

WILSON & COMPANY

AS-BUILT INFORMATION

NO.	DATE	REMARKS
1	2/94	BENCHMARK USED IS A STANDARD ACS BRASS CAP STAMPED "ACS 45-7A, 1976" LOCATED 42.3' WEST OF THE INTERSECTION OF S. COORS RD. & BLAKE RD. SW ELEV. 4953.487. TBM IS A 5/8" BAR W/CAP STAMPED "PANEL PT. 21", SET ON THE EAST SIDE OF THE BARCELONA DR. & COORS RD. INTERSECTION. ELEV. 4941.12

ENGINEER'S SEAL

RECORD DRAWING

DATE
 9/24/97

BY
 WILSON & COMPANY, ENGINEERS & ARCHITECTS

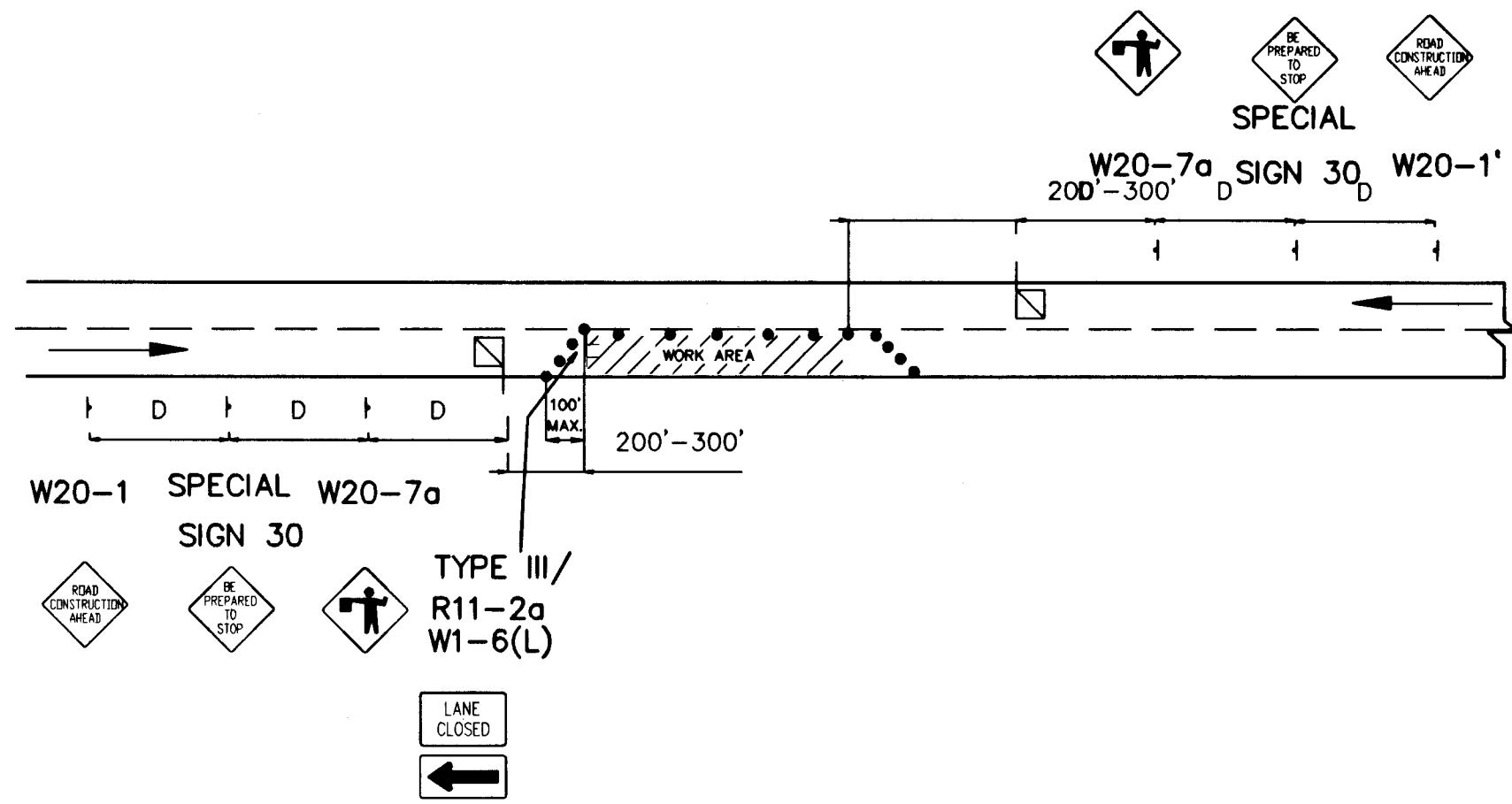
DATE
 JAN 1998

REVISIONS

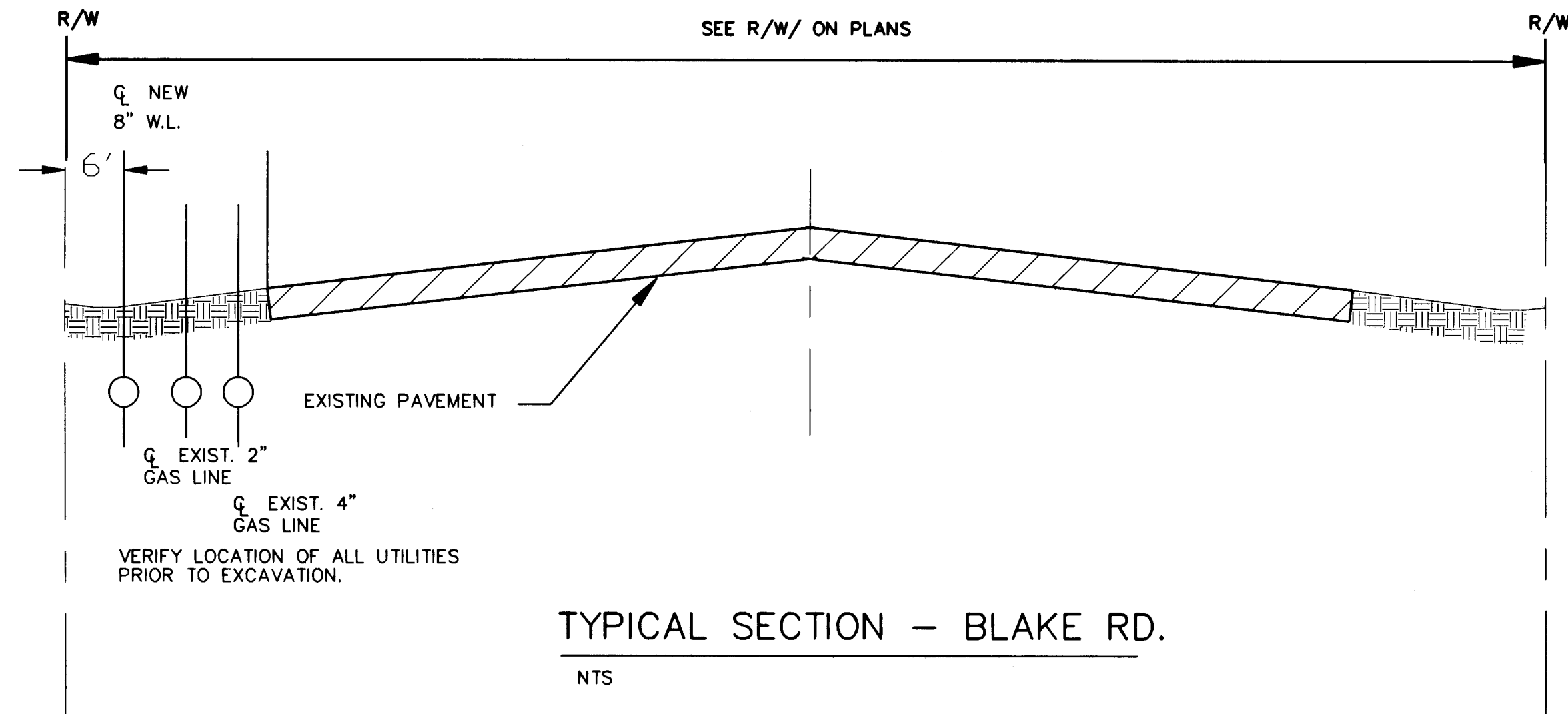
NO.
 1

DATE
 9/24/97

REMARKS
 RECORD DRAWING



TYPICAL FLAGGING OPERATION



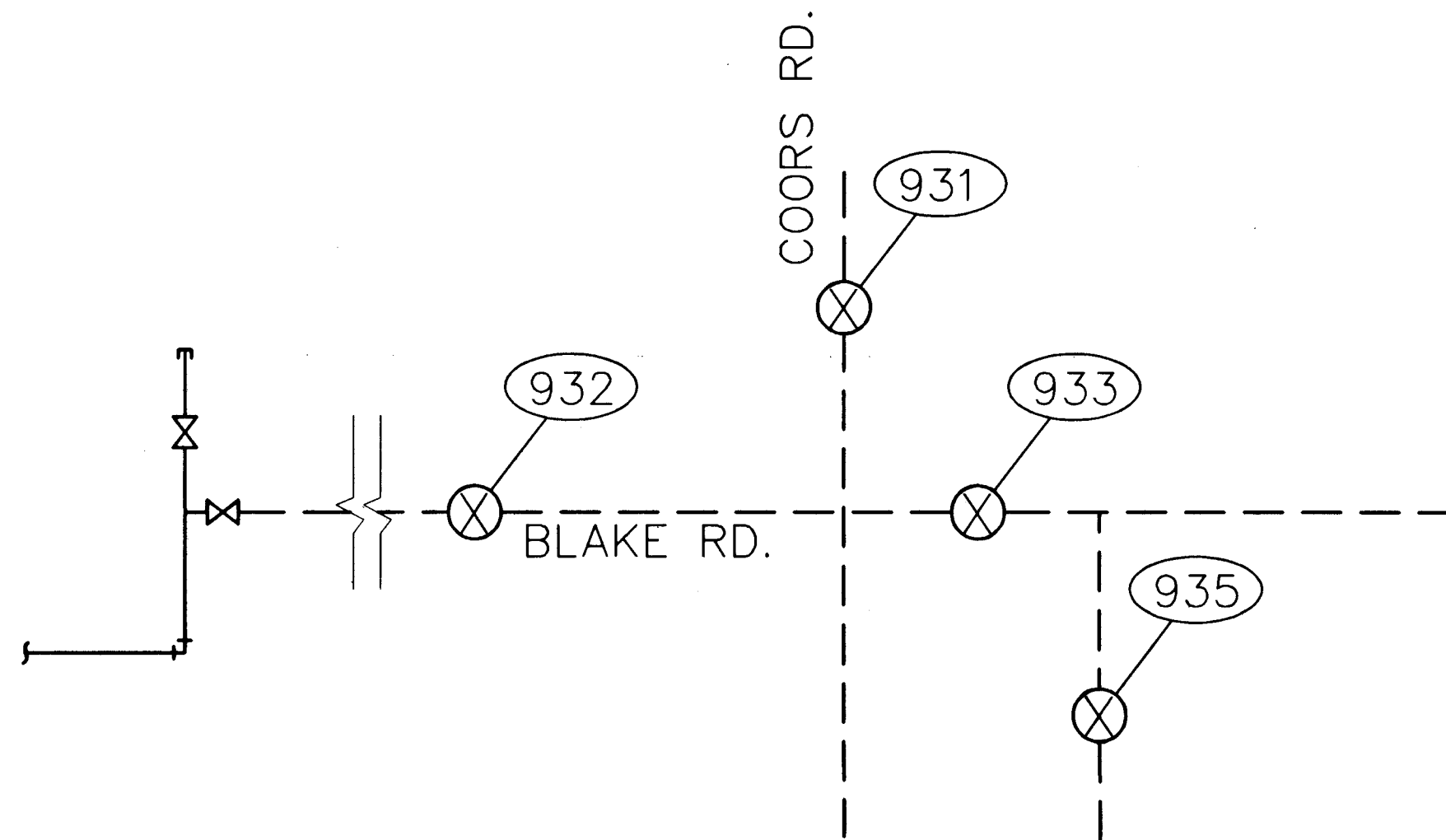
LENGTH OF RESTRAINED PIPE (feet)						
PIPE SIZE	90'	45'	22-1/2'	11 1/4'	RUN-OFF TEE *	MAT'L.
6"	27'	11'	5'	3'	3'	73' PVC
8"	35'	14'	7'	3'	25'	96' PVC
12"	48'	20'	10'	5'	63'	136' PVC

* Tee branch-each run pipe shall be min. 10' w/o joints(UNO)

DESIGN ASSUMPTIONS FOR RESTRAINED PIPE

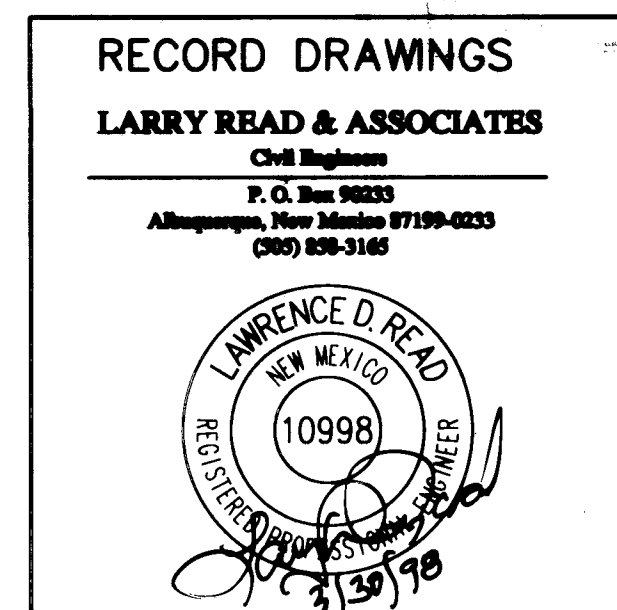
- TEST PRESSURE = 150 PSI
- SOUL TYPE = SM (ASTM D2487)
- TRENCH TYPE = TYPE 4 (ANSI/AWWA/A21.50)
- PIPE COVER = 3' MINIMUM ($\leq 12'$)
- SAFETY FACTOR = 2.00

SUBMIT CALCULATIONS FOR APPROVAL FOR THRUST RESTRAINT DESIGN FOR CONDITIONS NOT MEETING SIZE, TYPE, OR MATERIALS SHOWN IN THESE DETAILS.



NOTE: IN ORDER TO COMPLETE 8" W.L. CONNECTION, VALVE 932 MUST BE CLOSED BY WATER SYSTEM PERSONNEL.

NOTE: PRIOR TO SHUTOFF FOR CONNECTION, EXPOSE WEST END OF EXISTING 12" AND VERIFY EXISTING OR INSTALL NEW TAP FOR FLUSHING. FLUSH EXISTING 12" FOR MINIMUM 2 FULL VOLUMES OF PIPE PRIOR TO CONNECTION TO NEW CONSTRUCTION.



SUNSHINE PLUMBING & HEATING, INC.
CONSTRUCTION DETAILS
BLAKE ROAD, S.W.

Design/Review Committee	City Engineer Approval	Mo./Day/Yr.	Mo./Day/Yr.
DESIGNED BY	DESIGNED BY	DATE	DATE
DRAWN BY	DRAWN BY	DATE	DATE
CHECKED BY	CHECKED BY	DATE	DATE

City Project No. 583681 Zone Map No. N-10 Sheet 4 Of 4

WILSON
& COMPANY

X:\PUBLIC\PROJECTS\97127\SUNSH74.DWG