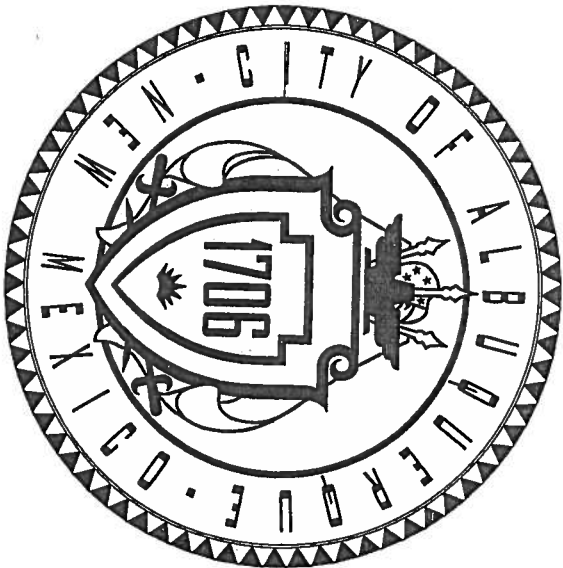


CITY OF ALBUQUERQUE NEW MEXICO



CONSTRUCTION PLANS FOR 4TH STREET/MONTANO BLVD INTERSECTION IMPROVEMENTS

INDEX

1. TITLE, LOCATION MAP & INDEX OF SHEETS
2. LEGEND, GENERAL NOTES, INCIDENTALS & UTILITY OWNERS
3. SUMMARY OF QUANTITIES
4. SURVEY CONTROL
5. SITE DEMOLITION PLAN
6. CURB & GUTTER - GRADING PLAN- MONTANO BLVD
7. CURB & GUTTER - GRADING PLAN- 4TH STREET
8. TRAFFIC SIGNAL RELOCATION
9. PERMANENT SIGNING & STRIPING GENERAL NOTES
10. PERMANENT STRIPING DETAILS
11. PERMANENT SIGNING & STRIPING PLAN

COA PROJECT
LOCATION



LOCATION MAP
ZONE ATLAS MAP F-14 NTS

HDR

2155 LOUISIANA BLVD., NE
SUITE 9500
ALBUQUERQUE, NM 87110
MAIN: (505) 884-5085
FAX: (505) 884-5989

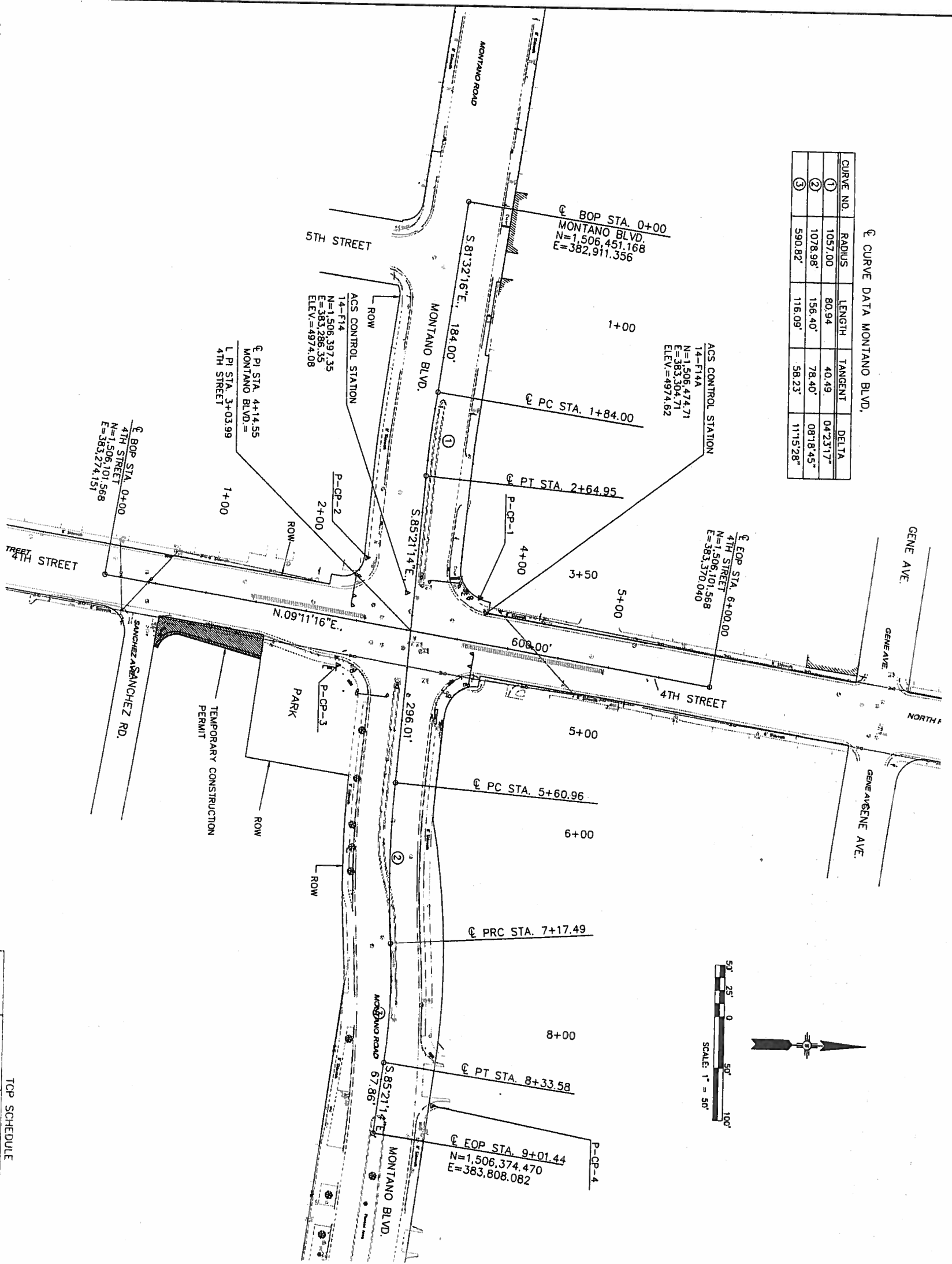
REV.	SHEETS	CITY ENGINEER	DATE	USER DEPARTMENT	DATE	USER DEPARTMENT	DATE
ENGINEERS STAMP & SIGNATURE				APPROVALS	ENGINEER	DATE	APPROVED FOR CONSTRUCTION
		ERC Chairman					
		Transportation					
		Water/Wastewater					
		Hydrology					
		Parks					
		Constr. Mngmt.					
		Constr. Coord.					

City Project No.
5900.92

Sheet 1 of 11

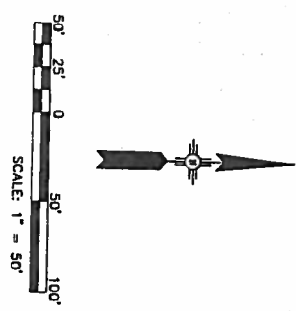
SUMMARY OF QUANTITIES

COA ITEM NO.	SHORT DESCRIPTION	UNIT	ROADWAY		CONSTRUCTION ENGINEERING		CONSTRUCTION SIGNING		PERMANENT SIGNING		SIGNALIZATION		LIGHTING		PROJECT TOTAL	
			ESTIMATE	FINAL	ESTIMATE	FINAL	ESTIMATE	FINAL	ESTIMATE	FINAL	ESTIMATE	FINAL	ESTIMATE	FINAL	ESTIMATE	FINAL
4.010	CONSTRUCTION STAKING BY THE CONTRACTOR, COMPL.	LS													1	
4.020	CONSTRUCTION SURVEYING BY THE CONTRACTOR, COMPL.	LS													4	
6.010	CONSTRUCTION PROJECT SIGN	EA			1											
6.050	CONSTRUCTION MOBILIZATION, COMPL.	LS					4									
19.010	CONSTRUCTION TRAFFIC CONTROL & BARRICADEING, COMPL.	LS													1	
301.020	SUBGRADE PREP. 12"	LS														
302.015	AGGREGATE BASE COURSE, CRUSHED, 4" @ 95% COMPACTION, CIP, SD 2408	SO YD	1902												1	
329.010	SEAL COAT, PLANT MIX 5/8" THICK, CIP, SD 2408	SO YD	3804												1	
336.010	BITUMINOUS MATERIAL FOR PRIME COAT, EMULSIFIED ASPHALT, CIP	SO YD	1902												3804	
336.035	ARTERIAL ASPHALT CONCRETE, TYPE A, 2.5" THICK, MACHINE LAYDOWN, CIP	SO YD	1902												1902	
336.120	PAV. COAT, CATIONIC EMULSIFIED ASPHALT, CIP	SO YD	5706												5706	
340.010	SIDEWALK, 4" PCC, INCLUDE SUBGRADE COMPACTION, CIP, SD 2430	SO YD	7608												7608	
340.020	DRIVEWAY, 6" PCC, INCLUDE SUBGRADE COMPACTION, CIP, SD 2435	SO YD	481												481	
340.050	CURB & GUTTER MEDIAN, PCC, CIP, SD 2408	LN FT	892												892	
340.060	CURB & GUTTER MEDIAN, PCC, CIP, SD 2408	LN FT	1416												1416	
343.000	EXISTING CURB & GUTTER, CONCRETE, REMOVE & DISPOSE, COMPL.	SO YD	203												203	
343.005	EXISTING CURB & GUTTER, CONCRETE, REMOVE & DISPOSE, COMPL.	LN FT	602												602	
346.100	TEXTURED MEDIAN PAVEMENT, 1" THICK, COLORED PCC, INCLUDE SUBGRADE COMPACTION, CIP, SD 2408	SO FT	1236												1236	
422.112	TR. SG. PP REMOVE AND RELOCATE	SO FT														
422.112	TR. SG. MA REMOVE AND RELOCATE	SO FT														
423.001	TRAFFIC SIGNAL, FOUNDATION FOR PEDESTRIAN POLE	EACH													3	
423.002	TRAFFIC SIGNAL, MASTARM FOUNDATION, REMOVE AND DISPOSE	EACH													3	
423.101	TRAFFIC SIGNAL, MASTARM FOUNDATION, REMOVE AND DISPOSE	EACH													1	
424.010	TRAFFIC SIGNAL, FOUNDATION FOR PEDESTAL POLE AND SPRUCE CABINET, REMOVE AND DISPOSE	EACH													1	
425.003	ELECTRICAL, CONDUIT, 3", INCLUDING TRENCHING, BACKFILL, PATCHING, PUSHING, BORING AND JACKING	LN FT													3	
425.101	EL. PB. REMOVE AND DISPOSE	LN FT													174	
425.101	EL. PB. REMOVE AND DISPOSE	LN FT													3	
426.014	MULTI CONDUCTOR CABLE, 750	LN FT													348	
441.001	REFLECTORIZED PLASTIC MARKING, 4"	LN FT													348	
441.003	REFLECTORIZED PLASTIC MARKING, 8"	LN FT													775	
441.004	REFLECTORIZED PLASTIC MARKING, 12"	LN FT													175	
441.005	REFLECTORIZED PLASTIC MARKING, 18"	LN FT													823	
441.006	REFLECTORIZED PLASTIC MARKING, 24"	LN FT													3	
441.007	REFLECTORIZED PLASTIC MARKING, 30"	LN FT													10	
441.008	REFLECTORIZED PLASTIC MARKING, 36"	LN FT													1	
441.009	REFLECTORIZED PLASTIC MARKING, 42"	LN FT													6	
441.010	REFLECTORIZED PLASTIC MARKING, 48"	LN FT													1	
441.011	REFLECTORIZED PLASTIC MARKING, 54"	LN FT													2640	
441.012	REFLECTORIZED PLASTIC MARKING, 60"	LN FT													20	
441.013	REFLECTORIZED PLASTIC MARKING, 66"	LN FT													63	
441.014	REFLECTORIZED PLASTIC MARKING, 72"	LN FT													153	
441.015	REFLECTORIZED PLASTIC MARKING, 78"	LN FT													23	
441.016	REFLECTORIZED PLASTIC MARKING, 84"	LN FT													23	
441.017	REFLECTORIZED PLASTIC MARKING, 90"	LN FT													2	
441.018	REFLECTORIZED PLASTIC MARKING, 96"	LN FT													2	
441.019	REFLECTORIZED PLASTIC MARKING, 102"	LN FT													2	
441.020	REFLECTORIZED PLASTIC MARKING, 108"	LN FT													2	
441.021	REFLECTORIZED PLASTIC MARKING, 114"	LN FT													1	
441.022	REFLECTORIZED PLASTIC MARKING, 120"	LN FT													1	
441.023	REFLECTORIZED PLASTIC MARKING, 126"	LN FT													1	
441.024	REFLECTORIZED PLASTIC MARKING, 132"	LN FT													1	
441.025	REFLECTORIZED PLASTIC MARKING, 138"	LN FT													1	
441.026	REFLECTORIZED PLASTIC MARKING, 144"	LN FT													1	
441.027	REFLECTORIZED PLASTIC MARKING, 150"	LN FT													1	
441.028	REFLECTORIZED PLASTIC MARKING, 156"	LN FT													1	
441.029	REFLECTORIZED PLASTIC MARKING, 162"	LN FT													1	
441.030	REFLECTORIZED PLASTIC MARKING, 168"	LN FT													1	
441.031	REFLECTORIZED PLASTIC MARKING, 174"	LN FT													1	
441.032	REFLECTORIZED PLASTIC MARKING, 180"	LN FT													1	
441.033	REFLECTORIZED PLASTIC MARKING, 186"	LN FT													1	
441.034	REFLECTORIZED PLASTIC MARKING, 192"	LN FT													1	
441.035	REFLECTORIZED PLASTIC MARKING, 198"	LN FT													1	
441.036	REFLECTORIZED PLASTIC MARKING, 204"	LN FT													1	
441.037	REFLECTORIZED PLASTIC MARKING, 210"	LN FT													1	
441.038	REFLECTORIZED PLASTIC MARKING, 216"	LN FT													1	
441.039	REFLECTORIZED PLASTIC MARKING, 222"	LN FT													1	
441.040	REFLECTORIZED PLASTIC MARKING, 228"	LN FT													1	
441.041	REFLECTORIZED PLASTIC MARKING, 234"	LN FT													1	
441.042	REFLECTORIZED PLASTIC MARKING, 240"	LN FT													1	
441.043	REFLECTORIZED PLASTIC MARKING, 246"	LN FT													1	
441.044	REFLECTORIZED PLASTIC MARKING, 252"	LN FT													1	
441.045	REFLECTORIZED PLASTIC MARKING, 258"	LN FT													1	
441.046	REFLECTORIZED PLASTIC MARKING, 264"	LN FT													1	
441.047	REFLECTORIZED PLASTIC MARKING, 270"	LN FT													1	
441.048	REFLECTORIZED PLASTIC MARKING, 276"	LN FT													1	
441.049	REFLECTORIZED PLASTIC MARKING, 282"	LN FT													1	
441.050	REFLECTORIZED PLASTIC MARKING, 288"	LN FT													1	
441.051	REFLECTORIZED PLASTIC MARKING, 294"	LN FT													1	
441.052	REFLECTORIZED PLASTIC MARKING, 300"	LN FT													1	
441.053	REFLECTORIZED PLASTIC MARKING, 306"	LN FT													1	
441.054	REFLECTORIZED PLASTIC MARKING, 312"	LN FT													1	
441.055	REFLECTORIZED PLASTIC MARKING, 318"	LN FT													1	
441.056	REFLECTORIZED PLASTIC MARKING, 324"	LN FT													1	
441.057	REFLECTORIZED PLASTIC MARKING, 330"	LN FT													1	
441.058	REFLECTORIZED PLASTIC MARKING, 336"	LN FT													1	
441.059	REFLECTORIZED PLASTIC MARKING, 342"	LN FT													1	
441.060	REFLECTORIZED PLASTIC MARKING, 348"	LN FT													1	
441.061	REFLECTORIZED PLASTIC MARKING, 354"	LN FT													1	
441.062	REFLECTORIZED PLASTIC MARKING, 360"	LN FT													1	
441.063	REFLECTORIZED PLASTIC MARKING, 366"	LN FT													1	
441.064	REFLECTORIZED PLASTIC MARKING, 372"	LN FT													1	
441.065	REFLECTORIZED PLASTIC MARKING, 378"	LN FT													1	
441.066	REFLECTORIZED PLASTIC MARKING, 384"	LN FT													1	
441.067	REFLECTORIZED PLASTIC MARKING, 390"	LN FT													1	
441.068	REFLECTORIZED PLASTIC MARKING, 396"	LN FT													1	
441.069	REFLECTORIZED PLASTIC MARKING, 402"	LN FT													1	
441.070	REFLECTORIZED PLASTIC MARKING, 408"	LN FT													1	
441.071	REFLECTORIZED PLASTIC MARKING, 414"	LN FT													1	
441.072	REFLECTORIZED PLASTIC MARKING, 420"	LN FT													1	
441.073	REFLECTORIZED PLASTIC MARKING, 426"	LN FT													1	
441.074	REFLECTORIZED PLASTIC MARKING, 432"	LN FT													1	
441.075	REFLECTORIZED PLASTIC MARKING, 438"	LN FT													1	
441.076	REFLECTORIZED PLASTIC MARKING, 444"	LN FT													1	
441.077	REFLECTORIZED PLASTIC MARKING, 450"	LN FT													1	
441.078	REFLECTORIZED PLASTIC MARKING, 456"	LN FT													1	
441.079	REFLECTORIZED PLASTIC MARKING, 462"	LN FT													1	
441.080	REFLECTORIZED PLASTIC MARKING, 468"	LN FT													1	
441.081	REFLECTORIZED PLASTIC MARKING, 474"	LN FT													1	
441.082	REFLECTORIZED PLASTIC MARKING, 480"	LN FT													1	
441.083	REFLECTORIZED PLASTIC MARKING, 486"	LN FT													1	
441.084	REFLECTORIZED PLASTIC MARKING, 492"	LN FT													1	
441.085	REFLECTORIZED PLASTIC MARKING, 498"	LN FT													1	
441.086	REFLECTORIZED PLASTIC MARKING, 504"	LN FT													1	
441.087	REFLECTORIZED PLASTIC MARKING, 510"	LN FT													1	
441.088	REFLECTORIZED PLASTIC MARKING, 516"	LN FT													1	
441.089	REFLECTORIZED PLASTIC MARKING, 522"	LN FT													1	
441.090	REFLECTORIZED PLASTIC MARKING, 528"	LN FT													1	
441.091	REFLECTORIZED PLASTIC MARKING, 534"	LN FT													1	
441.092	REFLECTORIZED PLASTIC MARKING, 540"	LN FT														



Curve Data MONTANO BLVD.

CURVE NO.	RADIUS	LENGTH	TANGENT	DELTA
1	1057.00	80.94	40.49	04°23'17"
2	1078.98	156.40	78.40	08°18'45"
3	590.82	116.09	58.23	11°15'28"



Notes:

- Coordinates are modified (surface) New Mexico State Plane Coordinates, Central Zone, NAD 27 and have been adjusted to the ACS control points 12-E14, and 14-F14. To obtain true state plane grid coordinates, multiply the coordinates herein by the project average combined ground to grid factor CF = .99967778. Elevations are referred to sea level, NGVD 29, and have been adjusted to the ACS benchmark 14-F-14A.
- Property lines and / or Right-of-way lines shown herein are included for reference purposes and are approximate only. The property lines and right-of-way lines were constructed using record plot information.

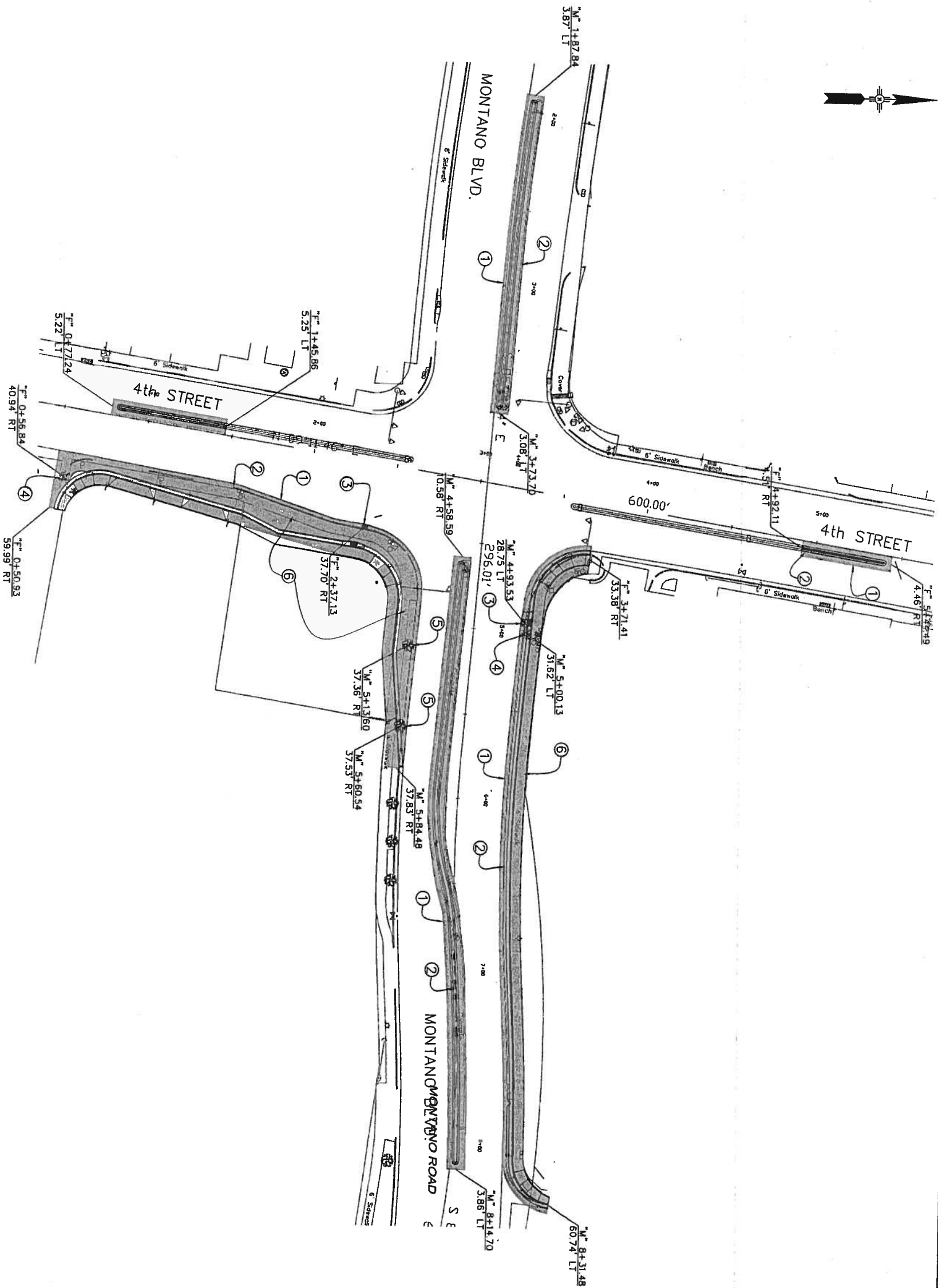
TCP SCHEDULE

TCP NO.	AREA (SF)	LOCATION
1		
2		
3		
4		

NOTE: CONTRACTOR SHALL OBTAIN ALL COPIES OF RECORDED PLATS & TCPS FOR CONSTRUCTION FROM THE CITY OF ALBUQUERQUE AT THEIR OWN EXPENSE.

- PROJECT CONTROL POINTS
- P-CP-1 No.5 RB STAMPED "PC 11599"
N=1,506,468.44
E=383,289.96
ELEV=4974.75
 - P-CP-2 No.5 RB STAMPED "PC 11599"
N=1,506,357.90
E=383,253.02
ELEV=4974.07
 - P-CP-3 No.5 RB STAMPED "PC 11599"
N=1,506,330.88
E=383,357.05
ELEV=4974.62
 - P-CP-4 604 SPIKE IN SIDEWALK
N=1,506,432.17
E=383,781.12
ELEV=4973.99

 2303 LUISIANA BLVD., NE ALBUQUERQUE, NM 87110 PHONE (505) 844-1000 FAX (505) 844-1005	CITY OF ALBUQUERQUE DEPARTMENT OF MUNICIPAL DEVELOPMENT TRANSPORTATION DIVISION TRANSPORTATION IMPROVEMENTS SURVEY CONTROL	Design Review Committee City Engineer Approval	Lost Design Update	City Project No. 4900.92	Zone Map No. F-14	Sheet 4 of 11	ENGINEER'S SEAL	SURVEY INFORMATION	BENCH MARKS	AS BUILT INFORMATION		
							NO. DATE	REMARKS	BY	FIELD NOTES	THE STA. MARK IS A STANDARD COA BRASS TABLET	CONTRACTOR DATE
							DESIGNED BY: COA DATE: 12/01/04			STAMPED "14-F14" SET IN TOP CONCRETE POST FLUSH	WORK STAMPED BY DATE	
							DRAWN BY: DAS DATE: 12/01/04			WITH THE SURFACE, THE STA. IS LOCATED 7' EAST OF THE	SUPERVISOR'S ACCEPTANCE BY DATE	
CHECKED BY: PJB DATE: 12/01/04			MEDIAN NOSE, IN THE MIDDLE OF THE EAST BOUND TO	VERIFICATION BY DATE								
			NORTH BOUND TURNLANE OF MONTANO BLVD. AND 4TH	DRAWINGS CORRECTED BY DATE								
			STREET, X=383162.85, Y=1505911.96, EL=4974.079, GRN	MICRO-FILM INFORMATION								
			TO GRID FACTOR .99967778 (2ND ORDER).	RECORDED BY DATE								
				NO.								



KEYED BUILD NOTES

- NOTE: "F" REPRESENTS FOURTH STREET ALIGNMENT. "M" REPRESENTS MONTANO BLVD. ALIGNMENT.
- 1 SAWCUT AND REMOVE EXISTING AC PAVEMENT.
 - 2 REMOVE EXISTING CURB & GUTTER.
 - 3 REMOVE & RELOCATE EXISTING DROP INLET.
 - 4 REMOVE & RELOCATE EXISTING FIRE HYDRATE.
 - 5 REMOVE EXISTING TREE.
 - 6 REMOVE EXISTING SIDEWALK.



NOTICE OF EXTENDED PAYMENT PROVISION
THIS CONTRACT ALLOWS THE OWNER TO
MAKE PAYMENT WITH IN 45 DAYS AFTER
SUBMISSION OF AN UNDISPUTED REQUEST
FOR PAYMENT.

HDR
200 LOCOMAX BLVD., NE
ALBUQUERQUE, NM 87102
(505) 261-4000
FAX: (505) 261-4001

CITY OF ALBUQUERQUE
DEPARTMENT OF MUNICIPAL DEVELOPMENT
TRANSPORTATION DEVELOPMENT DIVISION
TITLE: 4TH ST. & MONTANO BLVD. INTERSECTION IMPROVEMENTS
TRANSPORTATION IMPROVEMENTS
DEMOLITION & REMOVAL PLAN

Design Review Committee City Engineer Approval

Last Design Update

City Project No **5400.92** Zone Map No **F-14** Sheet **5** of **11**

NO.	DATE	REMARKS	BY
REVISIONS			
HDR INC.			
DESIGNED BY:	COA	DATE: 12/01/04	
DRAWN BY:	DAS	DATE: 12/01/04	
CHECKED BY:	PJB	DATE: 12/01/04	

ENGINEER'S SEAL

SURVEY INFORMATION

FIELD NOTES

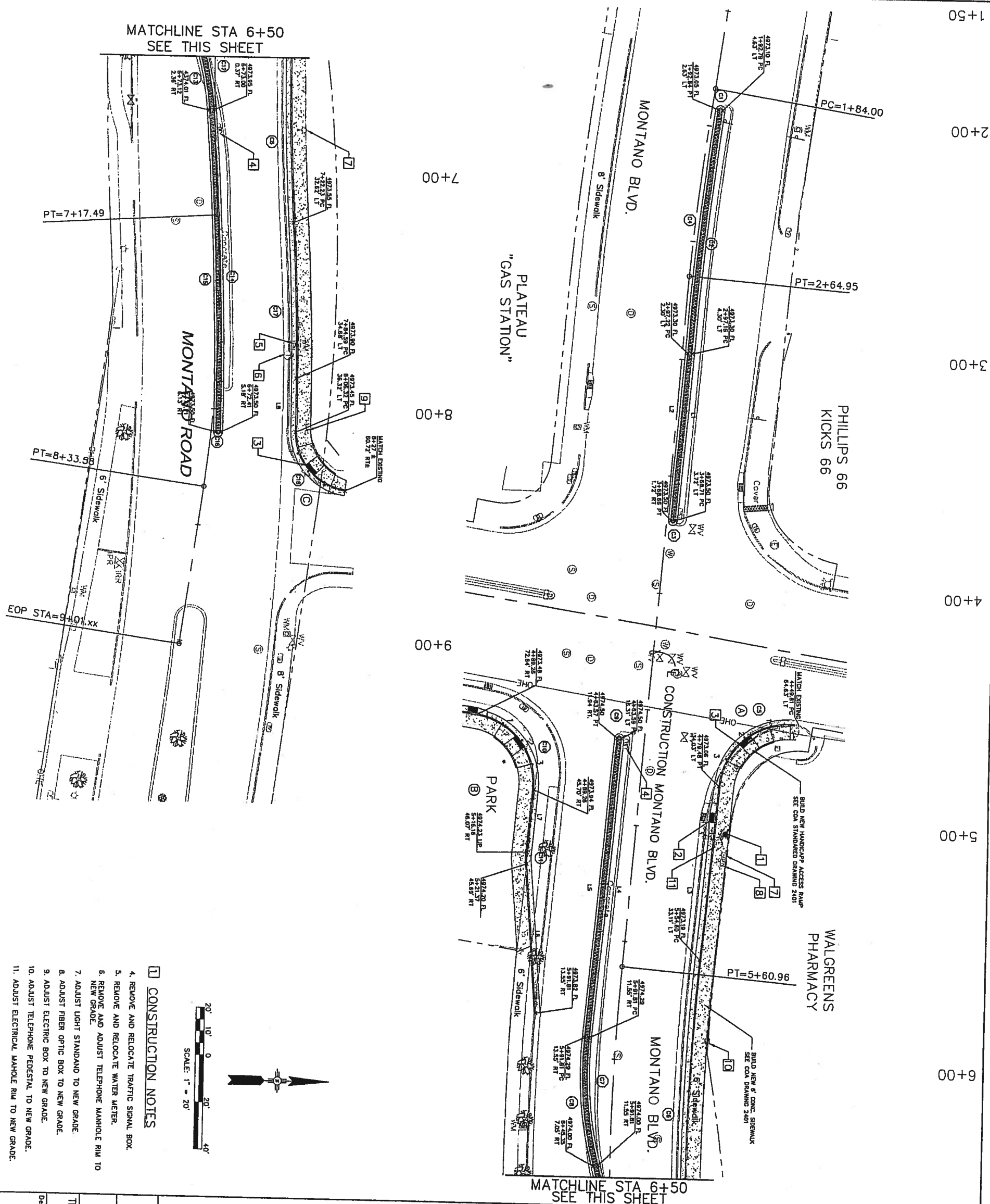
NO.	BY	DATE

BENCH MARKS

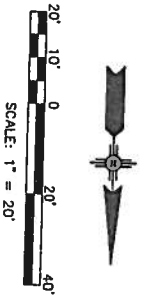
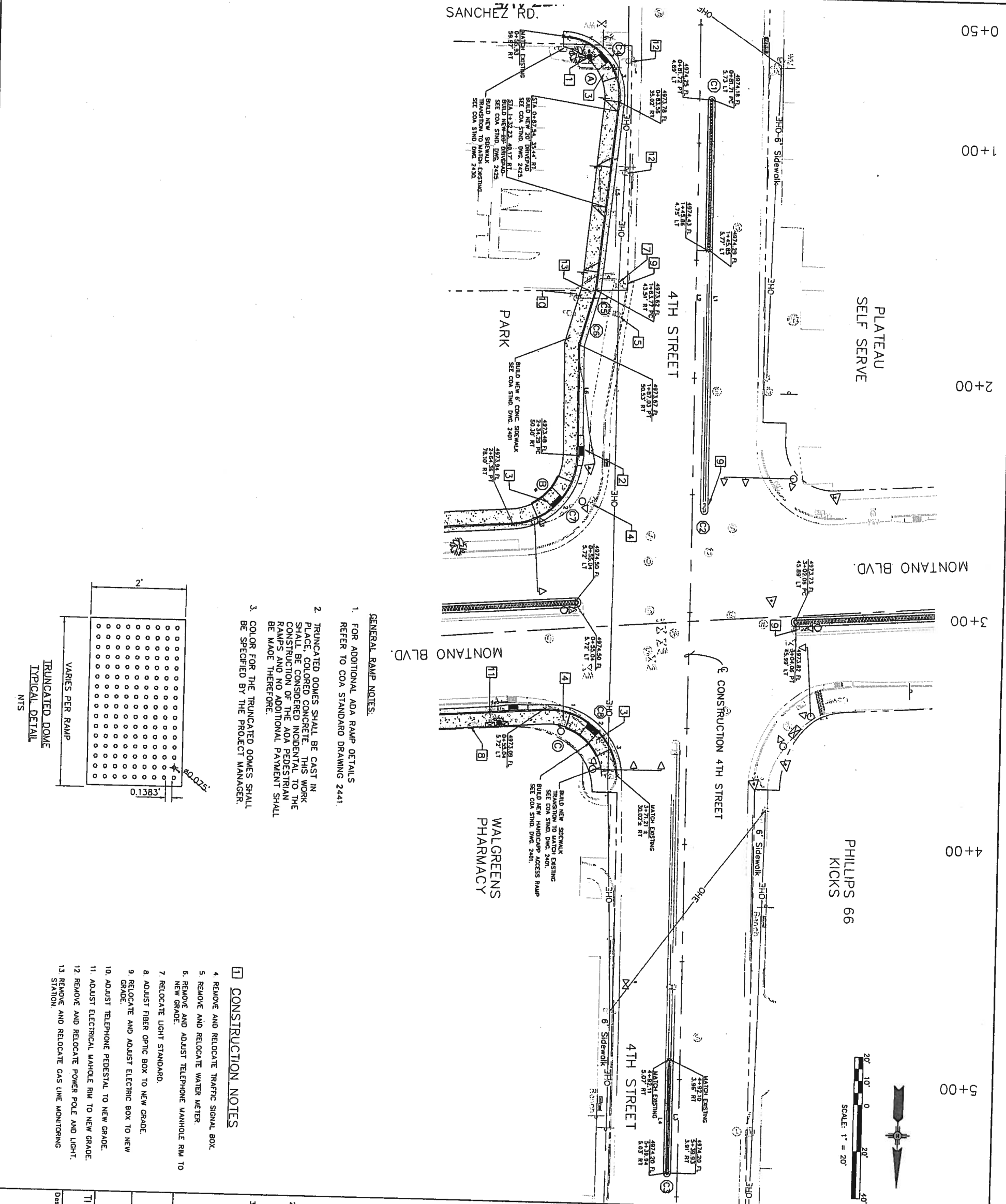
THE STA. MARK IS A STANDARD COA BRASS TABLET
STAMPED "14-F14" SET IN TOP CONCRETE POST FLUSH
WITH THE SURFACE. THE STA. IS LOCATED 7' EAST OF THE
MEDIAN NOSE, IN THE MIDDLE OF THE EAST BOUND TO
NORTH BOUND TURNLANE OF MONTANO BLVD. AND 4TH
STREET, X=383162.85, Y=1505911.96, EL=4974.079, GRN
TO GRID FACTOR .99967778 (2ND ORDER).

AS BUILT INFORMATION

CONTRACTOR	DATE
WORK STAKED BY	DATE
INSPECTOR'S ACCEPTANCE BY	DATE
FIELD VERIFICATION BY	DATE
DRAWINGS CORRECTED BY	DATE
MICRO-FILM INFORMATION	DATE
RECORDED BY	DATE



City Project No.	5900.92	Zone Map No.	F-14	Sheet	6	of	11
------------------	---------	--------------	------	-------	---	----	----



QUATER POINT INFORMATION

T/C	
1	74.33 73.86
2	74.37 73.70
3	74.41 73.74

T/C	
1	74.26 73.59
2	74.38 73.71
3	74.50 73.83

T/C	
1	73.90 73.23
2	74.04 73.37
3	74.18 73.51

NOTES:

- ALL STATION INFORMATION SHOWN ON THIS SHEET IS TAKEN FROM THE 4TH STREET CENTERLINE. SEE SURVEY SHEET 4 FOR MORE INFORMATION.
- ALL CURVE DATA SHOWN FOR STANDARD C&G AND FOR MEDIAN C&G IS TO THE LIP OF THE CURB.

CURB & GUTTER CURVE TABLE

STATION	DELTA	RADIUS	LENGTH	TANGENT
C1	180.00	0.50	1.59	-
C2	180.00	0.50	1.59	-
C3	180.00	0.50	1.76	-
C4	96.15	45.25	125.00	27.89
C5	24.58	49.12	10.00	3.34
C6	31.18	22.25	13.66	7.01
C7	86.30	42.25	45.30	28.23
C8	90.27	32.00	47.33	30.24

NOTE: CURVE DATA PROVIDED AT LIP OF C & G.

CURB & GUTTER LINE TABLE

1	N 08°09'50"E	175.07
2	N 09°09'50"E	175.07
3	N 09°08'27"E	47.83
4	N 09°08'27"E	47.83
5	N 15°14'40"E	80.65
6	N 08°55'07"E	47.26

NOTE: LINE DATA PROVIDED AT LIP OF C & G.

CONSTRUCTION NOTES

- REPLACE REMOVED AND SALVAGED FIRE HYDRANT AT STA. 00+70.59, 54.49' RT. PER COA STD/DWG 2340.
- INSTALL SINGLE TYPE "C" INLET AT STA. 2+32.29, 50.31' RT. PER COA STD. DWG 2205. INSTALL 12.00' LF OF 18" RCP S=2% FROM NEW DI TO EXISTING PIPE.
- BUILD NEW CONCRETE HANDICAP ACCESS RAMP DWGS 2440, 2441.

CONSTRUCTION NOTES

- REMOVE AND RELOCATE TRAFFIC SIGNAL BOX.
- REMOVE AND RELOCATE WATER METER.
- REMOVE AND ADJUST TELEPHONE MANHOLE RIM TO NEW GRADE.
- RELOCATE LIGHT STANDARD.
- ADJUST TELEPHONE PEDESTAL TO NEW GRADE.
- ADJUST ELECTRICAL MANHOLE RIM TO NEW GRADE.
- REMOVE AND RELOCATE POWER POLE AND LIGHT STATION.
- REMOVE AND RELOCATE GAS LINE MONITORING STATION.



CITY OF ALBUQUERQUE
DEPARTMENT OF MUNICIPAL DEVELOPMENT
TRANSPORTATION DEVELOPMENT DIVISION
TITLE: 4TH ST. & MONTANO BLVD. INTERSECTION IMPROVEMENTS
CURB & GUTTER AND GRADING PLAN

NO.	DATE	REMARKS	BY
DESIGNED BY:	COA	DATE: 12/01/04	
DRAWN BY:	DAS	DATE: 12/01/04	
CHECKED BY:	PJB	DATE: 12/01/04	

ENGINEER'S SEAL

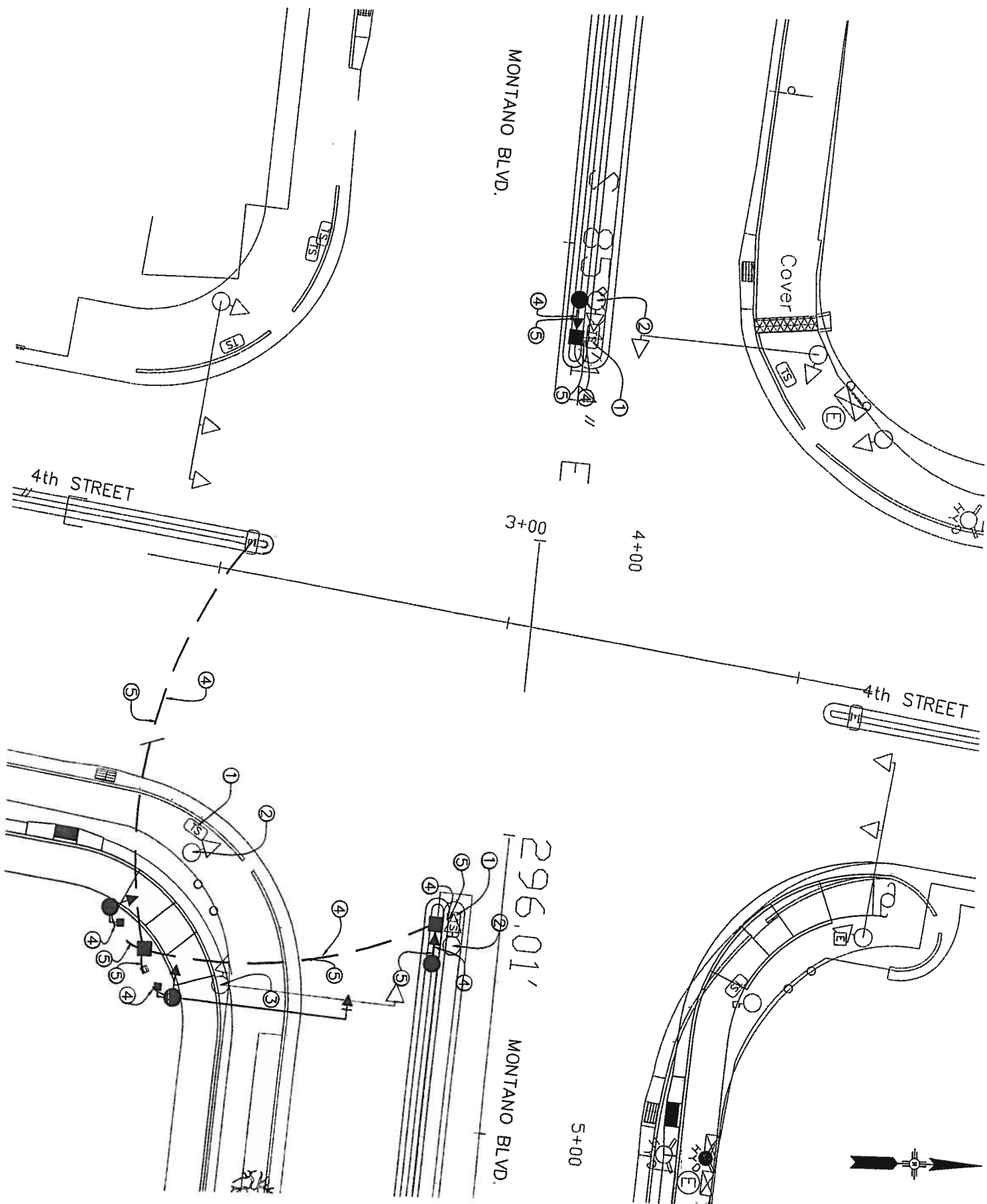
SURVEY INFORMATION

BENCH MARKS

AS BUILT INFORMATION

CONTRACTOR	DATE
STAKED BY	DATE
INSPECTOR'S ACCEPTANCE BY	DATE
FIELD VERIFICATION BY	DATE
DRAWINGS CORRECTED BY	DATE
MICRO-FILM INFORMATION	
RECORDED BY	DATE
NO	

City Project No.	Zone Map No.	Sheet	Of
5100092	F-14	7	11
Last Design Update			
Design Review Committee			
City Engineer Approval			



KEYED BUILD NOTES

NOTE: ALL STATIONS AND OFFSETS ARE BASED ON MONTANO BLVD. ALIGNMENT.

- REMOVE PULL BOX FROM STA. 4+65.41 7.90' RT. AND REPLACE AT 4+65.87 11.06' RT. PER COA STANDARD DRAINING 2350.
- REMOVE PULL BOX FROM STA. 5+54.57 53.53' RT. AND REPLACE AT STA. 4+75.06 60.15' RT. PER COA STANDARD DRAINING 2350.
- REMOVE PULL BOX FROM STA. 3+65.62 2.61' LT. PER COA STANDARD DRAINING 2350.
- REMOVE TYPE I POLE FROM STA. 3+59.27 5.52' LT. AND RELOCATE AT STA. 3+59.41 2.64' LT.
- REMOVE TYPE I POLE FROM STA. 4+58.52 53.74' RT. AND RELOCATE AT STA. 4+68.82 66.67' RT.
- REMOVE TYPE I POLE FROM STA. 4+69.10 6.01' RT. AND RELOCATE AT STA. 4+72.36 11.03' RT.
- REMOVE TYPE II POLE FROM STA. 4+79.84 46.60' RT. AND RELOCATE AT STA. 4+82.78 54.50' RT.
- PLACE 3" CONDUIT FROM STA. 4+65.41 7.90' RT. TO STA. 4+65.87 11.06' RT.
- PLACE 3" CONDUIT FROM STA. 4+65.87 11.06' RT. TO STA. 4+75.06 60.15' RT.
- PLACE 3" CONDUIT FROM STA. 4+65.87 11.06' RT. TO STA. 4+72.36 11.03' RT.
- PLACE 3" CONDUIT FROM STA. 4+75.06 60.15' RT. TO STA. 4+82.78 54.50' RT.
- PLACE 3" CONDUIT FROM STA. 4+75.06 60.15' RT. TO STA. 4+68.82 66.67' RT.
- PLACE 3" CONDUIT FROM STA. 4+75.06 60.15' RT. TO STA. 4+03.31 48.79' RT.
- PLACE 3" CONDUIT FROM STA. 3+65.26 5.39' LT. TO STA. 3+65.62 2.61' LT.
- PLACE 3" CONDUIT FROM STA. 3+59.41 2.64' LT. TO STA. 3+58.41 2.64' LT.
- PLACE MCC 5 AND MCC 20 CABLE FROM STA. 4+65.41 7.90' RT. TO STA. 4+65.87 11.06' RT.
- PLACE MCC 5 AND MCC 20 CABLE FROM STA. 4+65.87 11.06' RT. TO STA. 4+75.06 60.15' RT.
- PLACE MCC 5 AND MCC 20 CABLE FROM STA. 4+65.87 11.06' RT. TO STA. 4+72.36 11.03' RT.
- PLACE MCC 5 AND MCC 20 CABLE FROM STA. 4+75.06 60.15' RT. TO STA. 4+82.78 54.50' RT.
- PLACE MCC 5 AND MCC 20 CABLE FROM STA. 4+75.06 60.15' RT. TO STA. 4+68.82 66.67' RT.
- PLACE MCC 5 AND MCC 20 CABLE FROM STA. 4+75.06 60.15' RT. TO STA. 4+03.31 48.79' RT.
- PLACE MCC 5 AND MCC 20 CABLE FROM STA. 3+65.26 5.39' LT. TO STA. 3+65.62 2.61' LT.
- PLACE MCC 5 AND MCC 20 CABLE FROM STA. 3+65.62 2.61' LT. TO STA. 3+59.41 2.64' LT.



NOTICE OF EXTENDED PAYMENT PROVISION
THIS CONTRACT ALLOWING THE OWNER TO MAKE PAYMENT WITHIN 60 DAYS OF THE SUBMISSION OF AN UNDISPUTED REQUEST FOR PAYMENT.



CITY OF ALBUQUERQUE
DEPARTMENT OF MUNICIPAL DEVELOPMENT
TRANSPORTATION DEVELOPMENT DIVISION
TITLE: 4TH ST. & MONTANO BLVD. INTERSECTION IMPROVEMENTS
TRAFFIC SIGNAL RELOCATION PLAN

Design Review Committee City Engineer Approval

City Project No.

5900.02

Zone Map No

F-14

Sheet

8

of

11

GENERAL NOTES FOR PAVEMENT MARKINGS

1. ALL PAVEMENT MARKINGS SHALL CONFORM TO THE CITY OF ALBUQUERQUE STANDARDS.
2. THE PERMANENT PAVEMENT MARKINGS MAY BE MODIFIED AS DIRECTED BY THE PROJECT MANAGER.
3. THE CONTRACTOR MAY BE REQUIRED BY THE PROJECT MANAGER TO PREPARE AS-BUILT DRAWINGS OF THE EXISTING STRIPING AND PAVEMENT MARKINGS PRIOR TO CONSTRUCTION. THIS WORK SHALL BE CONSIDERED INCIDENTAL TO SIGNING AND STRIPING AND NO ADDITIONAL PAYMENT SHALL BE MADE THEREFOR.
4. THE DESIGN SPEED FOR THE ROAD IS: 40 MPH. THE DESIGN VEHICLE IS: WB-50. THE POSTED SPEED LIMIT IS: 35 MPH.
5. THE CONTRACTOR SHALL BE RESPONSIBLE FOR THE LAYOUT AND INSTALLATION OF PAVEMENT MARKINGS ON FINAL SURFACE COURSE FOLLOWING CONTROL POINTS THAT HAVE BEEN SET NO MORE THAN 50 FEET APART ALONG THE LINES TO BE STRIPED. THE LAYOUT OF ALL PAVEMENT MARKINGS SHALL BE APPROVED BY THE PROJECT MANAGER PRIOR TO THE APPLICATION OF MATERIALS.
6. ALL LANE DIMENSIONS ARE FROM CENTER OF LANE STRIPE, CENTER OF DOUBLE LANE STRIPE, FACE OF CURB, OR EDGE OF PAVEMENT UNLESS OTHERWISE NOTED.
7. THE FINAL LONGITUDINAL STRIPING SHALL BE 60 MIL (0.060") THICK HOT-SPRAYED PLASTIC RETROREFLECTORIZED STRIPING PLACED OVER THE TEMPORARY STRIPING WITHIN 14 TO 30 CALENDAR DAYS AFTER COMPLETION OF THE FINAL PAVEMENT STRIPING OR AS DIRECTED BY THE PROJECT MANAGER. ALL OTHER MARKINGS SHALL BE APPLIED AT THE SAME TIME. TEMPORARY STRIPING SHALL BE PAINT UNLESS NOTED OTHERWISE.
8. ALL FINAL TRANSVERSE MARKINGS SHALL BE HOT-SPRAYED 90 MIL (0.090") PLASTIC RETROREFLECTORIZED STRIPING. ALL PAVEMENT ARROWS AND LEGENDS SHALL BE A RETROREFLECTORIZED PREFORMED PLASTIC PAVEMENT MARKING.
9. IT IS THE CONTRACTOR'S RESPONSIBILITY TO ENSURE THAT THE FINAL SURFACE COURSE IS PLACED SO THAT THE STRIPING IS OFFSET ONE (1) FOOT CLEAR OF THE PAVEMENT CONSTRUCTION JOINT, UNLESS OTHERWISE DIRECTED BY THE PROJECT MANAGER.
10. THE CONTRACTOR SHALL CLEAN THE ROADWAY SURFACE TO THE SATISFACTION OF THE PROJECT MANAGER BY SWEEPING AND AIR-JET BLOWING IMMEDIATELY PRIOR TO THE PLACEMENT OF ALL PAVEMENT MARKINGS. THE TEMPERATURE SHALL NOT BE LESS THAN 50°F FOR THE PLACEMENT OF PLASTIC STRIPING.
11. THE PAVEMENT MARKING DRAWINGS ARE SCHEMATIC ONLY. THE CONTRACTOR SHALL FOLLOW ALL DIMENSIONS, DETAILS AND STANDARDS WHEN INSTALLING PAVEMENT, STRIPING, MARKINGS AND MARKERS.
12. STRIPING ERADICATION SHALL BE ACCOMPLISHED BY WATER BLASTING OR SURFACE PLANING OF THE ROADWAY TO A MAXIMUM DEPTH OF 0.25 INCHES AND FOR A WIDTH EQUAL TO TWO TIMES THE WIDTH OF THE STRIPE OR MARKING TO BE REMOVED. SEE STRIPING ERADICATION DETAIL ON SHEET 59.

GENERAL NOTES FOR PERMANENT SIGNS

1. ALL NEW SIGNS SHALL MEET THE MINIMUM REQUIREMENTS SPECIFIED IN THE MUTCD 2003.
2. ALL EXISTING SIGNS TO REMAIN, UNLESS DIRECTED BY THE PROJECT MANAGER FOR REMOVAL.
3. ANY SIGNS REQUIRED TO BE REMOVED AND RELOCATED SHALL BE CONSIDERED INCIDENTAL AND NO ADDITIONAL PAYMENT SHALL BE MADE THEREFOR.
4. ALL EXISTING SIGNS SHALL BE CLEANED AND FREE OF GRAFFITI, DIRT OR OTHER OBSTRUCTIONS. THIS WORK SHALL BE CONSIDERED INCIDENTAL AND NO ADDITIONAL PAYMENT SHALL BE MADE THEREFOR.
5. ANY EXISTING SIGNS CONFLICTING WITH THE INTERSECTION OPERATION OR OTHER SIGNS SHALL BE REMOVED AS DIRECTED BY THE PROJECT MANAGER.
6. CONTACT ALBERT ORTIZ AT 857-8000 EXT. 8601 FOR HANDLING ARRANGEMENTS OF EXISTING SIGNS THAT ARE INDICATED AS TO BE REMOVED AND SALVAGED.
7. UNLESS SPECIFIED OTHERWISE, ALL NEW SIGNS SHALL BE MOUNTED ON A SINGLE 12 GAUGE POST, AS MANUFACTURED BY TELESAR OR APPROVED EQUAL. POSTS SHALL BE SQUARE WITH DIMENSIONS AS FOLLOWS:
1 1/2" x 1 1/2" NO PARKING SIGNS, BIKE LANE SIGNS
2 1/4" x 2 1/4" ALL OTHER SIGNS
8. CONTRACTOR SHALL INSTALL A CORRESPONDINGLY SIZED 30 INCH LONG BASE POST WITH AN 18 INCH LONG BASE POST SLEEVE. SIGN POSTS SHOULD BE INSERTED 6 INCHES INTO THE BASE POST OR PER MANUFACTURER'S RECOMMENDATIONS.
9. ALL NEW SIGNS SHALL AT A MINIMUM, USE SUPER ENGINEERING GRADE REFLECTIVE SHEETING WITH GRAFFITI RESISTANT INKS OR COATING AS APPROVED BY THE TRAFFIC ENGINEER.

NOTICE OF EXTENDED PAYMENT PROVISION:
THIS CONTRACT ALLOWING THE OWNER TO
MAKE PAYMENT WITHIN 45 DAYS AFTER
SUBMISSION OF AN UNDISPUTED REQUEST
FOR PAYMENT



2115 LARAMIE BLVD., SE
ALBUQUERQUE, NM 87110
PHONE: (505) 261-4043
FAC: (505) 261-3893



CITY OF ALBUQUERQUE
DEPARTMENT OF MUNICIPAL DEVELOPMENT
TRANSPORTATION DEVELOPMENT DIVISION

TITLE: 4TH ST. & MONTANO BLVD. INTERSECTION IMPROVEMENTS

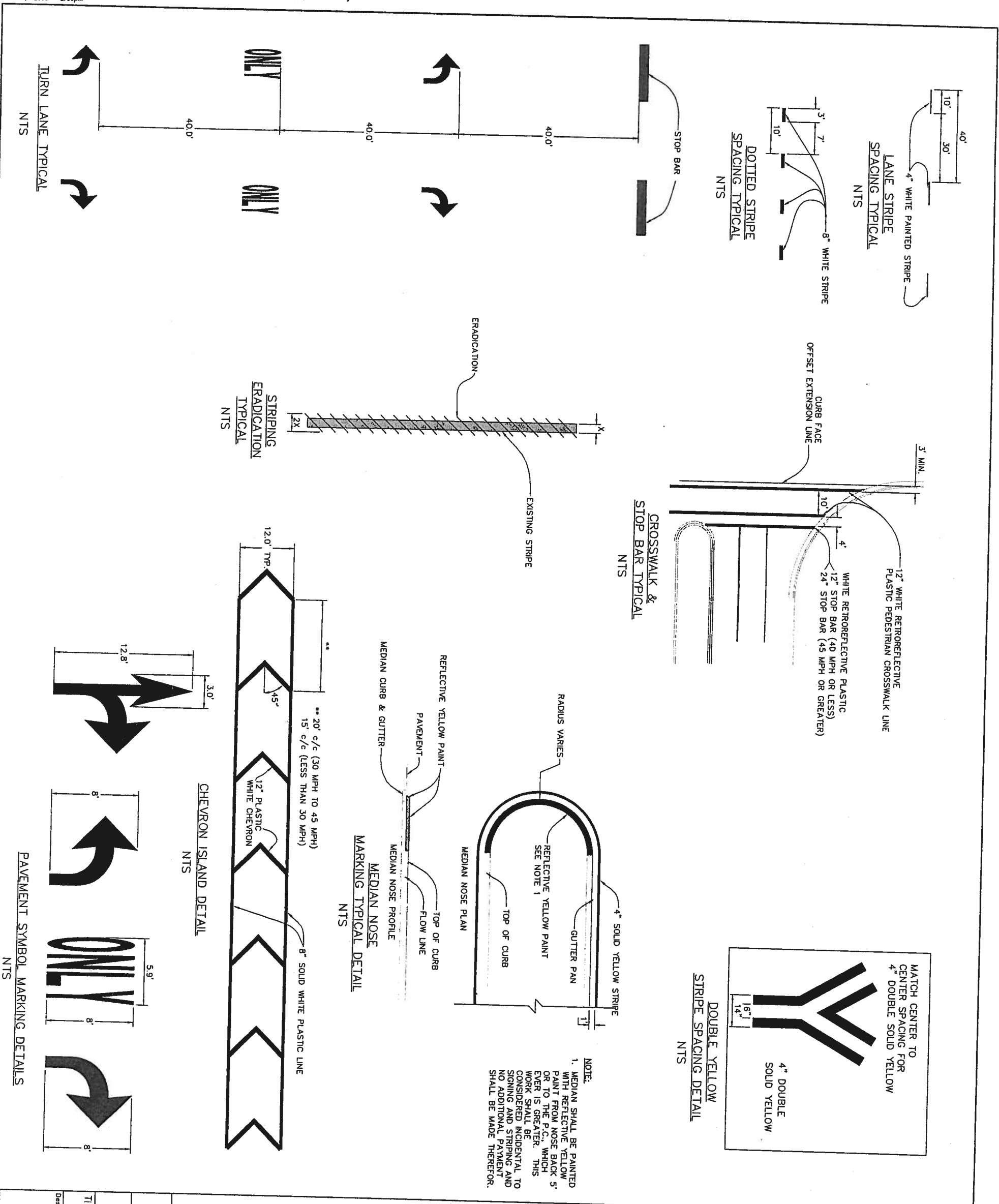
PERMANENT STRIPING & SIGNING GENERAL NOTES

Design Review Committee City Engineer Approval

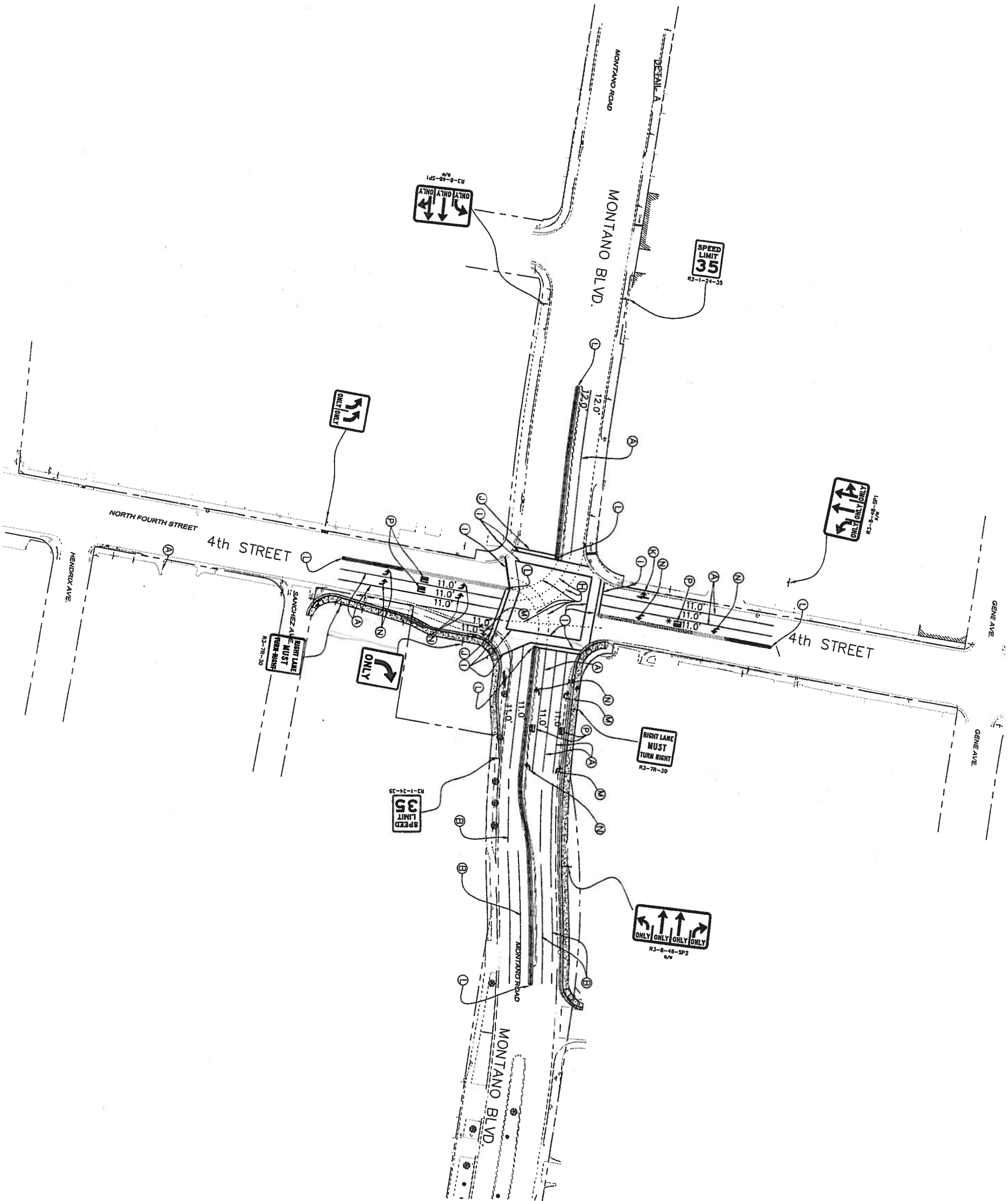
City Project No	590092	Zone Map No	F-14	Sheet	9	Of	11
-----------------	--------	-------------	------	-------	---	----	----

ENGINEER'S SEAL			SURVEY INFORMATION			BENCH MARKS		AS BUILT INFORMATION	
			FIELD NOTES			THE STA. MARK IS A STANDARD COA BRASS TABLET		CONTRACTOR	
			NO.	BY	DATE	STAMPED "14-F14" SET IN TOP CONCRETE POST FLUSH		WORK	DATE
						WITH THE SURFACE. THE STA. IS LOCATED 7' EAST OF THE		STARTED BY	DATE
						MEDIAN NOSE, IN THE MIDDLE OF THE EAST BOUND TO		INSPECTION	DATE
						NORTH BOUND TURNLANE OF MONTANO BLVD. AND 4TH		ACCEPTANCE BY	DATE
						STREET, X=383162.85, Y=1505911.96, EL=4974.079, GRN		FIELD	DATE
						TO GRID FACTOR .99967778 (2ND ORDER).		VERIFICATION BY	DATE
								DRAWINGS	DATE
								CORRECTED BY	DATE
								MICRO-FILM INFORMATION	
								RECORDED BY	DATE
								NO.	DATE

NO.		DATE	REMARKS	BY
			REVISIONS	
			HDR INC.	
DESIGNED BY: COA		DATE: 12/01/04		
DRAWN BY: DAS		DATE: 12/01/04		
CHECKED BY: PJB		DATE: 12/01/04		



NOTICE OF EXTENDED PAYMENT PROVISION THIS CONTRACT ALLSOWS THE OWNER TO MAKE PAYMENT WITHIN 45 DAYS AFTER SUBMISSION OF AN UNDISPUTED REQUEST FOR PAYMENT.		ENGINEER'S SEAL		SURVEY INFORMATION		BENCH MARKS		AS BUILT INFORMATION			
REMARKS		BY		FIELD NOTES		THE STA. MARK IS A STANDARD COA BRASS TABLET STAMPED "14-F14" SET IN TOP CONCRETE POST FLUSH WITH THE SURFACE. THE STA. IS LOCATED 7' EAST OF THE MEDIAN NOSE, IN THE MIDDLE OF THE EAST BOUND TO NORTH BOUND TURNLANE OF MONTANO BLVD. AND 4TH STREET, X=383162.85, Y=1505911.96, EL=4974.079, GRN TO GRID FACTOR .99967778 (2ND ORDER).		CONTRACTOR			
				NO.				DATE		DATE	
DESIGNED BY: COA		DATE: 12/01/04		DRAWN BY: DAS		DATE: 12/01/04		CHECKED BY: PJB		DATE: 12/01/04	
REVISIONS		NO.		DATE		REVISIONS		NO.		DATE	
DESIGNED BY: COA		DATE: 12/01/04		DRAWN BY: DAS		DATE: 12/01/04		CHECKED BY: PJB		DATE: 12/01/04	
DESIGNED BY: COA		DATE: 12/01/04		DRAWN BY: DAS		DATE: 12/01/04		CHECKED BY: PJB		DATE: 12/01/04	
DESIGNED BY: COA		DATE: 12/01/04		DRAWN BY: DAS		DATE: 12/01/04		CHECKED BY: PJB		DATE: 12/01/04	
DESIGNED BY: COA		DATE: 12/01/04		DRAWN BY: DAS		DATE: 12/01/04		CHECKED BY: PJB		DATE: 12/01/04	
DESIGNED BY: COA		DATE: 12/01/04		DRAWN BY: DAS		DATE: 12/01/04		CHECKED BY: PJB		DATE: 12/01/04	
DESIGNED BY: COA		DATE: 12/01/04		DRAWN BY: DAS		DATE: 12/01/04		CHECKED BY: PJB		DATE: 12/01/04	
DESIGNED BY: COA		DATE: 12/01/04		DRAWN BY: DAS		DATE: 12/01/04		CHECKED BY: PJB		DATE: 12/01/04	
DESIGNED BY: COA		DATE: 12/01/04		DRAWN BY: DAS		DATE: 12/01/04		CHECKED BY: PJB		DATE: 12/01/04	
DESIGNED BY: COA		DATE: 12/01/04		DRAWN BY: DAS		DATE: 12/01/04		CHECKED BY: PJB		DATE: 12/01/04	
DESIGNED BY: COA		DATE: 12/01/04		DRAWN BY: DAS		DATE: 12/01/04		CHECKED BY: PJB		DATE: 12/01/04	
DESIGNED BY: COA		DATE: 12/01/04		DRAWN BY: DAS		DATE: 12/01/04		CHECKED BY: PJB		DATE: 12/01/04	
DESIGNED BY: COA		DATE: 12/01/04		DRAWN BY: DAS		DATE: 12/01/04		CHECKED BY: PJB		DATE: 12/01/04	
DESIGNED BY: COA		DATE: 12/01/04		DRAWN BY: DAS		DATE: 12/01/04		CHECKED BY: PJB		DATE: 12/01/04	
DESIGNED BY: COA		DATE: 12/01/04		DRAWN BY: DAS		DATE: 12/01/04		CHECKED BY: PJB		DATE: 12/01/04	
DESIGNED BY: COA		DATE: 12/01/04		DRAWN BY: DAS		DATE: 12/01/04		CHECKED BY: PJB		DATE: 12/01/04	
DESIGNED BY: COA		DATE: 12/01/04		DRAWN BY: DAS		DATE: 12/01/04		CHECKED BY: PJB		DATE: 12/01/04	
DESIGNED BY: COA		DATE: 12/01/04		DRAWN BY: DAS		DATE: 12/01/04		CHECKED BY: PJB		DATE: 12/01/04	
DESIGNED BY: COA		DATE: 12/01/04		DRAWN BY: DAS		DATE: 12/01/04		CHECKED BY: PJB		DATE: 12/01/04	
DESIGNED BY: COA		DATE: 12/01/04		DRAWN BY: DAS		DATE: 12/01/04		CHECKED BY: PJB		DATE: 12/01/04	
DESIGNED BY: COA		DATE: 12/01/04		DRAWN BY: DAS		DATE: 12/01/04		CHECKED BY: PJB		DATE: 12/01/04	
DESIGNED BY: COA		DATE: 12/01/04		DRAWN BY: DAS		DATE: 12/01/04		CHECKED BY: PJB		DATE: 12/01/04	
DESIGNED BY: COA		DATE: 12/01/04		DRAWN BY: DAS		DATE: 12/01/04		CHECKED BY: PJB		DATE: 12/01/04	
DESIGNED BY: COA		DATE: 12/01/04		DRAWN BY: DAS		DATE: 12/01/04		CHECKED BY: PJB		DATE: 12/01/04	
DESIGNED BY: COA		DATE: 12/01/04		DRAWN BY: DAS		DATE: 12/01/04		CHECKED BY: PJB		DATE: 12/01/04	
DESIGNED BY: COA		DATE: 12/01/04		DRAWN BY: DAS		DATE: 12/01/04		CHECKED BY: PJB		DATE: 12/01/04	
DESIGNED BY: COA		DATE: 12/01/04		DRAWN BY: DAS		DATE: 12/01/04		CHECKED BY: PJB		DATE: 12/01/04	
DESIGNED BY: COA		DATE: 12/01/04		DRAWN BY: DAS		DATE: 12/01/04		CHECKED BY: PJB		DATE: 12/01/04	
DESIGNED BY: COA		DATE: 12/01/04		DRAWN BY: DAS		DATE: 12/01/04		CHECKED BY: PJB		DATE: 12/01/04	
DESIGNED BY: COA		DATE: 12/01/04		DRAWN BY: DAS		DATE: 12/01/04		CHECKED BY: PJB		DATE: 12/01/04	
DESIGNED BY: COA		DATE: 12/01/04		DRAWN BY: DAS		DATE: 12/01/04		CHECKED BY: PJB		DATE: 12/01/04	
DESIGNED BY: COA		DATE: 12/01/04		DRAWN BY: DAS		DATE: 12/01/04		CHECKED BY: PJB		DATE: 12/01/04	
DESIGNED BY: COA		DATE: 12/01/04		DRAWN BY: DAS		DATE: 12/01/04		CHECKED BY: PJB		DATE: 12/01/04	
DESIGNED BY: COA		DATE: 12/01/04		DRAWN BY: DAS		DATE: 12/01/04		CHECKED BY: PJB		DATE: 12/01/04	
DESIGNED BY: COA		DATE: 12/01/04		DRAWN BY: DAS		DATE: 12/01/04		CHECKED BY: PJB		DATE: 12/01/04	
DESIGNED BY: COA		DATE: 12/01/04		DRAWN BY: DAS		DATE: 12/01/04		CHECKED BY: PJB		DATE: 12/01/04	
DESIGNED BY: COA		DATE: 12/01/04		DRAWN BY: DAS		DATE: 12/01/04		CHECKED BY: PJB		DATE: 12/01/04	
DESIGNED BY: COA		DATE: 12/01/04		DRAWN BY: DAS		DATE: 12/01/04		CHECKED BY: PJB		DATE: 12/01/04	
DESIGNED BY: COA		DATE: 12/01/04		DRAWN BY: DAS		DATE: 12/01/04		CHECKED BY: PJB		DATE: 12/01/04	
DESIGNED BY: COA		DATE: 12/01/04		DRAWN BY: DAS		DATE: 12/01/04		CHECKED BY: PJB		DATE: 12/01/04	
DESIGNED BY: COA		DATE: 12/01/04		DRAWN BY: DAS		DATE: 12/01/04		CHECKED BY: PJB		DATE: 12/01/04	
DESIGNED BY: COA		DATE: 12/01/04		DRAWN BY: DAS		DATE: 12/01/04		CHECKED BY: PJB		DATE: 12/01/04	
DESIGNED BY: COA		DATE: 12/01/04		DRAWN BY: DAS		DATE: 12/01/04		CHECKED BY: PJB		DATE: 12/01/04	
DESIGNED BY: COA		DATE: 12/01/04		DRAWN BY: DAS		DATE: 12/01/04		CHECKED BY: PJB		DATE: 12/01/04	
DESIGNED BY: COA		DATE: 12/01/04		DRAWN BY: DAS		DATE: 12/01/04		CHECKED BY: PJB		DATE: 12/01/04	
DESIGNED BY: COA		DATE: 12/01/04		DRAWN BY: DAS		DATE: 12/01/04		CHECKED BY: PJB		DATE: 12/01/04	
DESIGNED BY: COA		DATE: 12/01/04		DRAWN BY: DAS		DATE: 12/01/04		CHECKED BY: PJB		DATE: 12/01/04	
DESIGNED BY: COA		DATE: 12/01/04		DRAWN BY: DAS		DATE: 12/01/04		CHECKED BY: PJB		DATE: 12/01/04	
DESIGNED BY: COA		DATE: 12/01/04		DRAWN BY: DAS		DATE: 12/01/04		CHECKED BY: PJB		DATE: 12/01/04	
DESIGNED BY: COA		DATE: 12/01/04		DRAWN BY: DAS		DATE: 12/01/04		CHECKED BY: PJB		DATE: 12/01/04	
DESIGNED BY: COA		DATE: 12/01/04		DRAWN BY: DAS		DATE: 12/01/04		CHECKED BY: PJB		DATE: 12/01/04	
DESIGNED BY: COA		DATE: 12/01/04		DRAWN BY: DAS		DATE: 12/01/04		CHECKED BY: PJB		DATE: 12/01/04	
DESIGNED BY: COA		DATE: 12/01/04		DRAWN BY: DAS		DATE: 12/01/04		CHECKED BY: PJB		DATE: 12/01/04	
DESIGNED BY: COA		DATE: 12/01/04		DRAWN BY: DAS		DATE: 12/01/04		CHECKED BY: PJB		DATE: 12/01/04	
DESIGNED BY: COA		DATE: 12/01/04		DRAWN BY: DAS		DATE: 12/01/04		CHECKED BY: PJB		DATE: 12/01/04	
DESIGNED BY: COA		DATE: 12/01/04		DRAWN BY: DAS		DATE: 12/01/04		CHECKED BY: PJB		DATE: 12/01/04	
DESIGNED BY: COA		DATE: 12/01/04		DRAWN BY: DAS		DATE: 12/01/04		CHECKED BY: PJB		DATE: 12/01/04	
DESIGNED BY: COA		DATE: 12/01/04		DRAWN BY: DAS		DATE: 12/01/04		CHECKED BY: PJB		DATE: 12/01/04	
DESIGNED BY: COA		DATE: 12/01/04		DRAWN BY: DAS		DATE: 12/01/04		CHECKED BY: PJB		DATE: 12/01/04	
DESIGNED BY: COA		DATE: 12/01/04		DRAWN BY: DAS		DATE: 12/01/04		CHECKED BY: PJB		DATE: 12/01/04	
DESIGNED BY: COA		DATE: 12/01/04		DRAWN BY: DAS		DATE: 12/01/04		CHECKED BY: PJB		DATE: 12/01/04	
DESIGNED BY: COA		DATE: 12/01/04		DRAWN BY: DAS		DATE: 12/01/04		CHECKED BY: PJB		DATE: 12/01/04	
DESIGNED BY: COA		DATE: 12/01/04		DRAWN BY: DAS		DATE: 12/01/04		CHECKED BY: PJB		DATE: 12/01/04	
DESIGNED BY: COA		DATE: 12/01/04		DRAWN BY: DAS		DATE: 12/01/04		CHECKED BY: PJB		DATE: 12/01/04	
DESIGNED BY: COA		DATE: 12/01/04		DRAWN BY: DAS		DATE: 12/01/04		CHECKED BY: PJB		DATE: 12/01/04	
DESIGNED BY: COA		DATE: 12/01/04		DRAWN BY: DAS		DATE: 12/01/04		CHECKED BY: PJB		DATE: 12/01/04	
DESIGNED BY: COA		DATE: 12/01/04		DRAWN BY: DAS		DATE: 12/01/04		CHECKED BY: PJB		DATE: 12/01/04	
DESIGNED BY: COA		DATE: 12/01/04		DRAWN BY: DAS		DATE: 12/01/04		CHECKED BY: PJB		DATE: 12/01/04	
DESIGNED BY: COA		DATE: 12/01/04		DRAWN BY: DAS		DATE: 12/01/04		CHECKED BY: PJB		DATE: 12/01/04	
DESIGNED BY: COA		DATE: 12/01/04		DRAWN BY: DAS		DATE: 12/01/04		CHECKED BY: PJB		DATE: 12/01/04	
DESIGNED BY: COA		DATE: 12/01/04		DRAWN BY: DAS		DATE: 12/01/04		CHECKED BY: PJB		DATE: 12/01/04	
DESIGNED BY: COA		DATE: 12/01/04		DRAWN BY: DAS		DATE: 12/01/04		CHECKED BY: PJB		DATE: 12/01/04	
DESIGNED BY: COA		DATE: 12/01/04		DRAWN BY: DAS		DATE: 12/01/04		CHECKED BY: PJB		DATE: 12/01/04	
DESIGNED BY: COA		DATE: 12/01/04		DRAWN BY: DAS		DATE: 12/01/04		CHECKED BY: PJB		DATE: 12/01/04	
DESIGNED BY: COA		DATE: 12/01/04		DRAWN BY: DAS		DATE: 12/01/04		CHECKED BY: PJB		DATE: 12/01/04	
DESIGNED BY: COA		DATE: 12/01/04		DRAWN BY: DAS		DATE: 12/01/04		CHECKED BY: PJB		DATE: 12/01/04	
DESIGNED BY: COA		DATE: 12/01/04		DRAWN BY: DAS		DATE: 12/01/04		CHECKED BY: PJB		DATE: 12/01/04	
DESIGNED BY: COA		DATE: 12/01/04		DRAWN BY: DAS		DATE: 12/01/04		CHECKED BY: PJB		DATE: 12/01/04	
DESIGNED BY: COA		DATE: 12/01/04		DRAWN BY: DAS		DATE: 12/01/04		CHECKED BY: PJB		DATE: 12/01/04	
DESIGNED BY: COA		DATE: 12/01/04		DRAWN BY: DAS		DATE: 12/01/04		CHECKED BY: PJB		DATE: 12/01/04	
DESIGNED BY: COA		DATE: 12/01/04		DRAWN BY: DAS		DATE: 12/01/04		CHECKED BY: PJB		DATE: 12/01/04	
DESIGNED BY: COA		DATE: 12/01/04		DRAWN BY: DAS		DATE: 12/01/04		CHECKED BY: PJB		DATE: 12/01/04	
DESIGNED BY: COA		DATE: 12/01/04		DRAWN BY: DAS		DATE: 12/01/04		CHECKED BY: PJB		DATE: 12/01/04	
DESIGNED BY: COA		DATE: 12/01/04		DRAWN BY: DAS		DATE: 12/01/04		CHECKED BY: PJB		DATE: 12/01/04	
DESIGNED BY: COA		DATE: 12/01/04		DRAWN BY: DAS		DATE: 12/01/04		CHECKED BY: PJB		DATE: 12/01/04	
DESIGNED BY: COA		DATE: 12/01/04		DRAWN BY: DAS		DATE: 12/01/04		CHECKED BY: PJB		DATE: 12/01/04	
DESIGNED BY: COA		DATE: 12/01/04		DRAWN BY: DAS		DATE: 12/01/04		CHECKED BY: PJB		DATE: 12/01/04	
DESIGNED BY: COA		DATE: 12/01/04		DRAWN BY: DAS		DATE:					



STRIPING LEGEND

- A 4" SOLID WHITE RETROREFLECTORIZED PAINTED STRIPE
- B 4" DASHED WHITE RETROREFLECTORIZED PAINTED STRIPE
- C 4" SOLID YELLOW RETROREFLECTORIZED PAINTED STRIPE
- D 4" DASHED YELLOW RETROREFLECTORIZED PAINTED STRIPE
- E 4" SOLID DOUBLE YELLOW RETROREFLECTORIZED PAINTED STRIPE
- F 4" SOLID & DASHED YELLOW RETROREFLECTORIZED PAINTED STRIPE
- G 8" SOLID WHITE RETROREFLECTORIZED PLASTIC STRIPE
- H 8" SOLID WHITE DOTTED RETROREFLECTORIZED PLASTIC STRIPE
- I 12" SOLID WHITE RETROREFLECTORIZED PLASTIC STRIPE
- J 24" SOLID WHITE RETROREFLECTORIZED PLASTIC STRIPE
- K RETROREFLECTORIZED PLASTIC COMBO (THRU & RT) ARROW
- L SOLID YELLOW RETROREFLECTORIZED PAINTED NOSE
- M RETROREFLECTORIZED PLASTIC RIGHT ARROW
- N RETROREFLECTORIZED PLASTIC LEFT ARROW
- P RETROREFLECTORIZED PLASTIC WORD (ONLY)

NOTES:

1. REFER TO SHEET 58 AND TO SIGNAL PLANS FOR STREET NAME SIGNS.



2101 LANSING AVE., NE
ALBUQUERQUE, NM 87110
PHONE: (505) 844-1100
FAX: (505) 844-1101



CITY OF ALBUQUERQUE
DEPARTMENT OF MUNICIPAL DEVELOPMENT
TRANSPORTATION DEVELOPMENT DIVISION

TITLE: 4TH ST. & MONTANO BLVD. INTERSECTION IMPROVEMENTS
PERMANENT SIGNING AND STRIPING PLAN

Design Review Committee City Engineer Approval

City Project No	590092	Zone Map No	F-14	Sheet	11	Of	11
-----------------	--------	-------------	------	-------	----	----	----

NO.	DATE	REMARKS	BY
REVISIONS			
HDR INC.			
DESIGNED BY:	COA	DATE:	12/01/04
DRAWN BY:	DAS	DATE:	12/01/04
CHECKED BY:	PJB	DATE:	12/01/04

ENGINEER'S SEAL

SURVEY INFORMATION

FIELD NOTES

NO.	BY	DATE

BENCH MARKS

THE STA. MARK IS A STANDARD COA BRASS TABLET
STAMPED "14-F14" SET IN TOP CONCRETE POST FLUSH
WITH THE SURFACE. THE STA. IS LOCATED 7' EAST OF THE
MEDIAN NOSE, IN THE MIDDLE OF THE EAST BOUND TO
NORTH BOUND TURNLANE OF MONTANO BLVD. AND 4TH
STREET, X=383162.85, Y=1505911.96, EL=4974.079, GRN
TO GRID FACTOR .99967778 (2ND ORDER).

AS BUILT INFORMATION

AS BUILT INFORMATION	
TRACTOR	DATE
ORK	
AKED BY	DATE
PECTOR'S	
CEPTANCE BY	DATE
LD	
IFICATION BY	DATE
AWINGS	
RECTED BY	DATE
MICRO-FILM INFORMATION	
CORDED BY	DATE
NO.	