

PUBLIC UTILITY IMPROVEMENT PLANS
FOR
L & C TRANSPORT OFFICE
108 94TH STREET NW
ALBUQUERQUE, NM

OCTOBER ~~2018~~ 2020

PREPARED FOR
L & C TRANSPORT
108 94TH STREET NW
ALBUQUERQUE, NM

PREPARED BY
SCOTT M McGEE
~~9700 TANOAN DRIVE NE~~
~~ALBUQUERQUE, NM 87111~~
9700 SAND VERBENA TRAIL
ALBUQUERQUE, NM 87122

INDEX TO DRAWINGS

SHEET NO.	TITLE
1	COVER SHEET
2	PLAT
3	GRADING PLAN
4	VOLCANO ROAD PLAN & PROFILE
5	94TH STREET PLAN & PROFILE
6	FIRE HYDRANTS PLAN, WATER VALVE SHUT-OFF PLAN, AND TABLES

RECORD DRAWING

I, REZA AFAGHPOUR, OF THE FIRM OF ASH ENGINEERING, A REGISTERED PROFESSIONAL ENGINEER IN THE STATE OF NEW MEXICO, DO HEREBY CERTIFY, TO THE BEST OF MY KNOWLEDGE AND BELIEF, THAT THE INFRASTRUCTURE INSTALLED AS PART OF THIS PROJECT HAS BEEN INSPECTED BY ME OR BY A QUALIFIED PERSON UNDER MY DIRECT SUPERVISION AND HAS BEEN CONSTRUCTED IN ACCORDANCE WITH THE PLANS AND SPECIFICATIONS APPROVED BY THE CITY ENGINEER AND THAT THE ORIGINAL DESIGN INTENT OF THE APPROVED PLANS HAS BEEN MET, EXCEPT AS NOTED BY ME ON THE AS-BUILT CONSTRUCTION DRAWINGS. THIS CERTIFICATION IS BASED ON SITE INSPECTIONS BY ME OR PERSONNEL UNDER MY DIRECTION AND SURVEY INFORMATION PROVIDED BY LEONARD MARTINEZ, PROFESSIONAL SURVEYOR, NMPS NUMBER 9801.

Reza Afaghpour
REZA AFAGHPOUR, PE
NMPE NO. 11814
DATE 04/19/2022
ASH ENGINEERING



SURVEYOR CERTIFICATION

I, LEONARD G. MARTINEZ, NEW MEXICO PROFESSIONAL SURVEYOR NUMBER 9801, HEREBY CERTIFY THAT THE AS-BUILT INFORMATION SHOWN HEREON IS THE RESULT OF AN ACTUAL FIELD SURVEY PERFORMED BY ME OR UNDER MY DIRECT SUPERVISION AND THAT THE SAME IS TRUE AND CORRECT TO THE BEST OF MY KNOWLEDGE AND BELIEF.

Leonard G. Martinez
LEONARD G. MARTINEZ
NMLS 9801
DATE 4/19/2022



RECORD DRAWING

APPROVED RECORD DRAWINGS	
City Inspector	Matt Garduno
Contractor	SBS Construction and Engineering
Construction Engineer	David Bishop
Date	2/15/2023

GENERAL NOTES

- ALL WORK DETAILED ON THESE PLANS, EXCEPT AS OTHERWISE STATED OR PROVIDED HEREON, SHALL BE CONSTRUCTED IN ACCORDANCE WITH CITY OF ALBUQUERQUE STANDARD SPECIFICATIONS FOR PUBLIC WORKS CONSTRUCTION, 1986 EDITION THROUGH UPDATE #9, AND WILL BE REFERRED TO HEREIN AS "STANDARD SPECIFICATIONS".
- ALL WORK ON THIS PROJECT SHALL BE PERFORMED IN ACCORDANCE WITH APPLICABLE FEDERAL, STATE, AND LOCAL LAWS, ORDINANCES, RULES, AND REGULATIONS CONCERNING CONSTRUCTION SAFETY AND HEALTH.
- CONTRACTOR SHALL ASSUME THE SOLE AND COMPLETE RESPONSIBILITY FOR THE JOB SITE CONDITIONS DURING THE COURSE OF CONSTRUCTION OF THIS PROJECT, INCLUDING SAFETY OF ALL PERSONS AND PROPERTY. THIS REQUIREMENT SHALL APPLY CONTINUOUSLY AND NOT BE LIMITED TO NORMAL WORKING HOURS. CONTRACTOR SHALL DEFEND, INDEMNIFY, AND HOLD HARMLESS THE OWNER AND ENGINEER FROM ANY AND ALL LIABILITY REAL OR ALLEGED, IN CONNECTION WITH THE PERFORMANCE OF WORK ON THIS PROJECT, EXCEPT LIABILITY ARISING FROM THE SOLE NEGLIGENCE OF THE OWNER OR ENGINEER.
- AN EXCAVATION/CONSTRUCTION PERMIT WILL BE REQUIRED BEFORE BEGINNING ANY WORK WITHIN CITY RIGHT-OF-WAY.
- CONTRACTOR SHALL NOTIFY THE CONSTRUCTION ENGINEER (OR PROJECT MANAGER) NOT LESS THAN SEVEN (7) DAYS PRIOR TO STARTING WORK IN ORDER THAT THE CITY SURVEYOR MAY TAKE NECESSARY MEASURES TO INSURE THE PRESERVATION OF SURVEY MONUMENTS. CONTRACTOR SHALL NOT DISTURB PERMANENT SURVEY MONUMENTS WITHOUT THE CONSENT OF THE CITY SURVEYOR AND SHALL NOTIFY THE CITY SURVEYOR AND BEAR THE EXPENSE OF REPLACING ANY THAT MAY BE DISTURBED WITHOUT PERMISSION. ONLY THE CITY SURVEYOR SHALL REPLACE SURVEY MONUMENTS. WHEN A CHANGE IS MADE IN THE FINISHED ELEVATIONS OF THE PAVEMENT OF ANY ROADWAY IN WHICH A PERMANENT SURVEY MONUMENT IS LOCATED, CONTRACTOR SHALL, AT HIS OWN EXPENSE, ADJUST THE MONUMENT COVER TO THE NEW GRADE UNLESS OTHERWISE SPECIFIED. REFER TO STANDARD SPECIFICATIONS SECTION 4.4.
- EXISTING UTILITY LINE LOCATIONS ARE SHOWN IN AN APPROXIMATE MANNER ONLY, AND LINES MAY EXIST WHERE NONE ARE SHOWN. TWO (2) WORKING DAYS PRIOR TO ANY EXCAVATION, CONTRACTOR SHALL CONTACT NEW MEXICO ONE CALL SYSTEM (260-1990) FOR LOCATION OF EXISTING UTILITIES. CONTRACTOR SHALL THEN EXCAVATE AND VERIFY THE HORIZONTAL AND VERTICAL LOCATIONS OF ALL PERTINENT EXISTING UTILITIES AND/OR OBSTRUCTIONS. SHOULD A CONFLICT EXIST, THE CONTRACTOR SHALL NOTIFY THE ENGINEER SO THE CONFLICT CAN BE RESOLVED WITH A MINIMUM AMOUNT OF DELAY. CONTRACTOR SHALL THEN COORDINATE RELOCATION OF UTILITY LINES WITH UTILITY COMPANIES AS REQUIRED. ANY DAMAGE CAUSED BY FAILURE TO LOCATE, IDENTIFY, AND PRESERVE ANY EXISTING UTILITIES IS THE FULL RESPONSIBILITY OF THE CONTRACTOR.
- CONTRACTOR SHALL ASSIST THE ENGINEER/INSPECTOR IN THE RECORDING OF DATA ON ALL UTILITY LINES AND ACCESSORIES AS REQUIRED BY THE CITY OF ALBUQUERQUE FOR THE PREPARATION OF "AS BUILT" DRAWINGS. CONTRACTOR SHALL NOT COVER UTILITY LINES AND ACCESSORIES UNTIL ALL DATA HAS BEEN RECORDED.
- CONTRACTOR SHALL ASSUME FINANCIAL RESPONSIBILITY FOR ANY DAMAGE TO EXISTING PAVEMENT, PAVEMENT MARKINGS, SIGNAGE, CURB AND GUTTER, HANDICAP RAMPS, AND SIDEWALK DURING CONSTRUCTION APART FROM THOSE SECTIONS INDICATED ON THE PLANS, AND SHALL REPAIR OR REPLACE, PER THE STANDARD SPECIFICATIONS, ANY SUCH DAMAGE.
- CONTRACTOR SHALL MAINTAIN A GRAFFITI-FREE WORK SITE. CONTRACTOR SHALL PROMPTLY REMOVE ANY AND ALL GRAFFITI FROM EQUIPMENT, WHETHER PERMANENT OR TEMPORARY.
- CONTRACTOR SHALL BE RESPONSIBLE TO PROVIDE AND MAINTAIN ALL CONSTRUCTION SIGNING UNTIL THE PROJECT HAS BEEN ACCEPTED BY THE CITY AND OTHER JURISDICTIONAL AUTHORITIES WHERE APPLICABLE.
- CONSTRUCTION ACTIVITY SHALL BE LIMITED TO THE PROPERTY AND/OR PROJECT LIMITS SHOWN. ANY DAMAGE TO ADJACENT PROPERTIES RESULTING FROM THE CONSTRUCTION PROCESS IS THE RESPONSIBILITY OF THE CONTRACTOR, INCLUDING ANY SUCH COSTS INCURRED.
- REMOVALS SHALL BE DISPOSED OF OFF-SITE AND SHALL BE THE RESPONSIBILITY OF THE CONTRACTOR.

WATER & SEWER

- ALL UTILITIES AND UTILITY SERVICE LINES SHALL BE INSTALLED PRIOR TO PAVING. EXISTING VALVES AND MANHOLES SHALL NOT BE BURIED OR PAVED OVER BUT RIMS SHALL BE ADJUSTED TO MATCH NEW GRADE PER COA STANDARD DRAWINGS 2460 AND 2461.
- MANHOLE RIMS, FIRE HYDRANT ELEVATIONS, AND FLANGE ELEVATIONS SHOWN ARE APPROXIMATE. CONTRACTOR SHALL FIELD VERIFY AND ADJUST TO FINAL PAVEMENT OR SURFACE GRADES.
- THE CONTRACTOR SHALL COORDINATE WITH THE WATER AUTHORITY SEVEN (7) DAYS IN ADVANCE OF PERFORMING WORK THAT WILL AFFECT THE PUBLIC WATER OR SANITARY SEWER INFRASTRUCTURE. WORK REQUIRING SHUTOFF OF FACILITIES DESIGNATED AS MASTER PLAN FACILITIES MUST BE COORDINATED WITH THE WATER AUTHORITY 14 DAYS IN ADVANCE OF PERFORMING SUCH WORK. ONLY WATER AUTHORITY CREWS ARE AUTHORIZED TO OPERATE PUBLIC VALVES. SHUTOFF REQUESTS MUST BE MADE ONLINE AT [HTTP://ABCWUA.ORG/WATER_SHUT_OFF_AND_TURN_ON_PROCESURES.ASPX](http://abcwua.org/water_shut_off_and_turn_on_procedures.aspx)
- PROPOSED WATERLINE MATERIALS SHALL BE PVC PIPE MEETING AWWA C-900: DR18 REQUIREMENTS (6" - 12") OR DUCTILE IRON PIPE MEETING AWWA C-150 REQUIREMENTS (6" - 48").
- ALL WATERLINE FITTINGS, VALVES, BENDS, TEES, CROSSES AND APPURTENANCES SHALL HAVE RESTRAINED JOINTS UNLESS OTHERWISE NOTED ON THE PLANS. THE JOINT RESTRAINT REQUIREMENTS SHOULD BE DELINEATED WITHIN A JOINT RESTRAINT TABLE.
- ALL SANITARY SEWER LINE STATIONING REFERS TO SANITARY SEWER CENTERLINE STATIONING. EXCEPT WHEN PROFILED WITHIN A PROPOSED OR EXISTING STREET, WHERE STREET STATIONING SHALL GOVERN.
- ALL FINAL BACKFILL FOR TRENCHES SHALL BE COMPACTED TO A MINIMUM OF 95% MAXIMUM DENSITY PER ASTM D-1557 AND AS DIRECTED BY STANDARD SPECIFICATIONS SECTION 701.14.2 AND STANDARD DRAWING NUMBER 2465.

- ELECTRONIC MARKER SPHERES (EMS) WILL BE PLACED ACCORDING TO THE CITY OF ALBUQUERQUE SPECIFICATIONS FOR PUBLIC WORKS CONSTRUCTION, 1986 EDITION AS REVISED THROUGH UPDATE #9. THE CONTRACTOR SHALL INSTALL A 4" X 4" X5' POST AND EMS AT THE END OF EACH SANITARY SEWER SERVICE.
- TRACER WIRE SHALL BE INCLUDED FOR ALL PUBLIC WATER AND SEWER MAINS AND FOR WATER SERVICES IN ACCORDANCE WITH WATER AUTHORITY DETAILS.
- CONTRACTOR SHALL PROVIDE THE PROPOSED HYDRO TESTING PLANS TO THE WUA INSPECTORS FOR APPROVAL PRIOR TO BEGINNING TESTING OPERATIONS.
- AT UTILITY CROSSINGS, WHERE LESS THAN 18" OF VERTICAL SEPARATION FROM STORM DRAIN PIPING OR STRUCTURES IS PROPOSED, LEAN FILL CONSTRUCTION (PER SECTION 207 OF THE STANDARD SPECIFICATIONS) SHALL BE USED TO PROTECT THE WATER OR SEWER LINE. LEAN FILL SHALL EXTEND A PERPENDICULAR DISTANCE OF 5 FEET ON EACH SIDE OF THE STORM PIPE OR STRUCTURE.
- ALL DESIGNS AND CONSTRUCTION OF ANY UNDERGROUND UTILITIES SHALL COMPLY WITH ADMINISTRATIVE INSTRUCTION NO. 9 FOR WORK NEARBY OR AFFECTING SAN JUAN CHAMA TRANSMISSION LINES AND APPURTENANCES. INFORMATION SHALL BE PROVIDED TO THE WATER AUTHORITY ONE (1) MONTH IN ADVANCE OF THE CONSTRUCTION START DATE. INFORMATION CAN BE FOUND AT [HTTP://WWW.ABCWUA.ORG/WATER_SHUT_OFF_AND_TURN_ON_PROCESURES.ASPX](http://www.abcwua.org/water_shut_off_and_turn_on_procedures.aspx)

TRANSPORTATION

- ANY STREET STRIPING ALTERED OR DESTROYED SHALL BE REPLACED WITH THERMO-PLASTIC DESIGNATED TRAFFIC LANES. THE CONTRACTOR SHALL NOT STORE ANY EQUIPMENT OR MATERIAL WITHIN THE PUBLIC RIGHT-OF-WAY.
- CURB AND GUTTER, SIDEWALKS, AND DRIVE PADS SHALL MATCH THE LINE AND GRADE OF ABUTTING EXISTING AREAS AS SHOWN ON THE PLANS OR AS DIRECTED BY THE PROJECT ENGINEER.
- THE SUBGRADE PREP SHALL EXTEND ONE FOOT BEYOND THE FREE EDGE OF NEW CURB AND GUTTER AND SIDEWALK.
- CONTRACTOR TO TEST SUBGRADE R-VALUE PRIOR TO CONSTRUCTION. IN THE EVENT THE R-VALUE IS LESS THAN 50, REMOVE 2 FEET OF SUBGRADE MATERIAL AND IMPORT MATERIAL WITH R-VALUE GREATER THAN 50 OR CONTACT THE ENGINEER IMMEDIATELY SO THE PAVEMENT SECTION CAN BE MODIFIED.
- AT ALL PAVEMENT REMOVAL AND REPLACEMENTS, SAW-CUT EDGES SHALL BE STRAIGHT AND CLEAN, AND LONGITUDINAL JOINTS SHALL NOT BE PLACED WITHIN WHEEL PATHS. PATCHES SHALL BE REGULAR AND SQUARE OR RECTANGULAR, WITH FOUR STRAIGHT SIDES. FINISHED PAVEMENT SURFACE SHALL BE FLUSH WITH EXISTING PAVEMENT SURFACE, WITH NO SPILLOVER OF ASPHALT OR TACK COAT. CARE MUST BE TAKEN TO AVOID DAMAGING THE INTEGRITY OR APPEARANCE OF SURROUNDING PAVEMENTS; IF DAMAGED, THE ENTIRE SURFACE PATCH MUST BE EXPANDED TO COVER DAMAGES.
- CONTRACTOR WILL ENSURE THE ASPHALT HAS A SMOOTH, UNIFORM EDGE WHEN REMOVING AND REPLACING CURB AND GUTTER. IF THE ASPHALT EDGE IS NOT SMOOTH AND UNIFORM, CONTRACTOR WILL SAW CUT AND REPLACE A ONE-FOOT STRIP OF ASPHALT ALONG THE FULL SECTION BEING REPLACED; REFER TO C.O.A. STANDARD DRAWING # 2465 WITH THE APPROPRIATE PAVING SECTION BASED ON ROADWAY CLASSIFICATION.

HYDROLOGY

- ALL STORM DRAINS SHALL BE RCP CLASS III UNLESS OTHERWISE NOTED ON THE PLANS.
- RCP SHALL BE INSTALLED SO THAT THE JOINT GAP AT THE HOME POSITION SHALL CONFORM TO THE APPROVED MANUFACTURER'S RECOMMENDATION. MANUFACTURER'S RECOMMENDED JOINT GAP TOLERANCES FOR EACH PIPE SIZE AND TYPE SHALL BE SUBMITTED TO THE ENGINEER FOR APPROVAL PRIOR TO PLACEMENT OF PIPE. RCP JOINTS SHALL NOT BE GROUTED UNLESS DIRECTED BY THE ENGINEER AND WITH CITY APPROVAL.



VICINITY MAP K-09

OTHER COMMON NOTES

- ALL EXCAVATION, TRENCHING, AND SHORING ACTIVITIES MUST BE ACCOMPLISHED IN ACCORDANCE WITH OSHA 29CFR 1926.650 SUBPART P.
- WHEN DISTURBING MORE THAN ¼ ACRES, CONTRACTOR SHALL SECURE A "TOPSOIL DISTURBANCE PERMIT" PRIOR TO BEGINNING CONSTRUCTION.
- IN ADVANCE OF CONSTRUCTION, CONTRACTOR SHALL DETERMINE IF OVERHEAD UTILITY LINES, SUPPORT STRUCTURES, POLES, GUYS, ETC. ARE AN OBSTRUCTION TO CONSTRUCTION. IF ANY OBSTRUCTION TO CONSTRUCTION OPERATIONS IS EVIDENT, CONTRACTOR SHALL BE RESPONSIBLE FOR COORDINATING WITH THE APPROPRIATE UTILITY OWNER TO REMOVE OR SUPPORT THE UTILITY OBSTRUCTION. ANY COST ASSOCIATED WITH THIS EFFORT SHALL BE THE RESPONSIBILITY OF CONTRACTOR.
- PMN WILL PROVIDE AT NO COST TO THE CITY OR THE CONTRACTOR THE REQUIRED PERSONNEL FOR INSPECTION OR OBSERVATION DEEMED NECESSARY BY PMN WHILE THE CONTRACTOR IS EXPOSING PMN'S CABLES. HOWEVER, THE CONTRACTOR SHALL BE CHARGED THE TOTAL COST ASSOCIATED WITH REPAIRS TO ANY DAMAGED CABLES OR FOR ANY COST ASSOCIATED WITH SUPPORTING OR RELOCATING THE POLES AND CABLES DURING CONSTRUCTION.
- CONTRACTOR SHALL SUPPORT AND PROTECT ALL EXISTING, UNDERGROUND UTILITY LINES WHICH BECOME EXPOSED DURING CONSTRUCTION. PAYMENT FOR SUPPORTING WORK SHALL BE INCIDENTAL TO WATERLINE AND/OR SEWER LINE COSTS.
- CONTRACTOR IS TO SUPPORT, PROTECT, AND MAINTAIN THE INTEGRITY OF ALL UNDERGROUND TELEPHONE, ELECTRIC CABLES AND CABLE TELEVISION UTILITIES AT NO ADDITIONAL COST TO THE OWNER. CABLE IS TO BE SUPPORTED AT A MAXIMUM SPACING OF FIFTEEN (15) FEET. CONTRACTOR SHALL COORDINATE WITH AND MAKE NECESSARY PAYMENT (IF ANY) TO UTILITY OWNER FOR DE-ENERGIZATION OF CABLES OR SUPPORT OF CABLES BY THE UTILITY OWNER.
- CONTRACTOR SHALL PROMPTLY CLEAN UP ANY MATERIAL EXCAVATED WITHIN THE PUBLIC RIGHT-OF-WAY OR PRIVATE ROADWAY EASEMENTS TO PREVENT ANY EXCAVATED MATERIAL BEING WASHED DOWN THE STREET OR INTO ANY PUBLIC DRAINAGE FACILITY.
- CONTRACTOR SHALL CONDUCT ALL WORK IN A MANNER WHICH WILL MINIMIZE INTERFERENCE WITH LOCAL TRAFFIC.
- ALL EXISTING SIGNS, MARKERS, DELINEATORS, ETC., WITHIN THE CONSTRUCTION LIMITS SHALL BE REMOVED, STORED AND RE-SET BY THE CONTRACTOR.
- DISPOSAL SITE FOR ALL EXCESS EXCAVATION MATERIAL AND UNSUITABLE MATERIAL SHALL BE ARRANGED BY THE CONTRACTOR IN COMPLIANCE WITH ALL APPLICABLE ENVIRONMENTAL REGULATIONS. NO SEPARATE MEASUREMENT OR PAYMENT WILL BE MADE FOR COSTS ASSOCIATED WITH OBTAINING A DISPOSAL SITE AND HAUL THERETO.
- IF CULTURAL RESOURCES, SUCH AS HISTORIC OR PREHISTORIC ARTIFACTS, OR HUMAN REMAINS ARE DISCOVERED DURING EXCAVATION OR CONSTRUCTION, WORK SHALL CEASE AND THE CONSTRUCTION ENGINEER SHALL NOTIFY THE COUNTY OFFICE OF THE MEDICAL EXAMINER AT (505) 272-3053. IF THE MEDICAL EXAMINER DETERMINES THAT HUMAN REMAINS ARE NOT PRESENT, THE CONSTRUCTION ENGINEER SHALL NOTIFY THE STATE HISTORIC PRESERVATION OFFICER (SHPO) AT 827-6320.

GENERAL NOTES USED SELECTIVELY, BASED ON SCOPE OF WORK:

- WORK AFFECTING ARTERIAL ROADWAYS MAY REQUIRE TWENTY-FOUR-HOUR CONSTRUCTION.
- TWO WEEKS PRIOR TO CONSTRUCTION, THE CONTRACTOR SHOULD NOTIFY THE TRANSIT DEPARTMENT OF ANY IMPACT THE PROPOSED PROJECT WILL HAVE ON THE TRANSIT SYSTEM SUCH AS CAUSING A DETOUR, OR CAUSE THE CLOSING OR RELOCATION OF A BUS STOP. THE CONTACT PERSON IS DOUGLAS GOFF, OFFICE PHONE 505-724-3137, CELL PHONE 505-206-0151, AND E-MAIL DGoff@CABQ.GOV.
- STREET NAME SIGNS, REGULATORY SIGNAGE, AND ANY NECESSARY STRIPING ON PRIVATE STREETS ARE THE DEVELOPER'S RESPONSIBILITY.
- IN ALL AREAS WHERE PUBLIC STREETS OR INFRASTRUCTURE ARE TO BE CONSTRUCTED OVER FILLS, THE GEOTECHNICAL ENGINEER SHALL CERTIFY THAT PLACEMENT, COMPACTION, AND ALL OTHER WORK HAS BEEN COMPLETED IN ACCORDANCE WITH COA SPECIFICATION SECTION 204. SAID CERTIFICATION, ALONG WITH SUPPORTING TESTING DOCUMENTATION, SHALL BE PROVIDED TO THE CONSTRUCTION ENGINEER PRIOR TO OR AT THE PRE-CONSTRUCTION CONFERENCE BEFORE WORK ORDER CONSTRUCTION.

																																																																																																																																																																																																																																																																																																																																																																																																																																																																																																																																																																																																																																																																																																																																																																																																																																																																																																																																																																																																																																																																																																																																																																																																																																																																																																																																																																																																																					</
--	--	--	--	--	--	--	--	--	--	--	--	--	--	--	--	--	--	--	--	--	--	--	--	--	--	--	--	--	--	--	--	--	--	--	--	--	--	--	--	--	--	--	--	--	--	--	--	--	--	--	--	--	--	--	--	--	--	--	--	--	--	--	--	--	--	--	--	--	--	--	--	--	--	--	--	--	--	--	--	--	--	--	--	--	--	--	--	--	--	--	--	--	--	--	--	--	--	--	--	--	--	--	--	--	--	--	--	--	--	--	--	--	--	--	--	--	--	--	--	--	--	--	--	--	--	--	--	--	--	--	--	--	--	--	--	--	--	--	--	--	--	--	--	--	--	--	--	--	--	--	--	--	--	--	--	--	--	--	--	--	--	--	--	--	--	--	--	--	--	--	--	--	--	--	--	--	--	--	--	--	--	--	--	--	--	--	--	--	--	--	--	--	--	--	--	--	--	--	--	--	--	--	--	--	--	--	--	--	--	--	--	--	--	--	--	--	--	--	--	--	--	--	--	--	--	--	--	--	--	--	--	--	--	--	--	--	--	--	--	--	--	--	--	--	--	--	--	--	--	--	--	--	--	--	--	--	--	--	--	--	--	--	--	--	--	--	--	--	--	--	--	--	--	--	--	--	--	--	--	--	--	--	--	--	--	--	--	--	--	--	--	--	--	--	--	--	--	--	--	--	--	--	--	--	--	--	--	--	--	--	--	--	--	--	--	--	--	--	--	--	--	--	--	--	--	--	--	--	--	--	--	--	--	--	--	--	--	--	--	--	--	--	--	--	--	--	--	--	--	--	--	--	--	--	--	--	--	--	--	--	--	--	--	--	--	--	--	--	--	--	--	--	--	--	--	--	--	--	--	--	--	--	--	--	--	--	--	--	--	--	--	--	--	--	--	--	--	--	--	--	--	--	--	--	--	--	--	--	--	--	--	--	--	--	--	--	--	--	--	--	--	--	--	--	--	--	--	--	--	--	--	--	--	--	--	--	--	--	--	--	--	--	--	--	--	--	--	--	--	--	--	--	--	--	--	--	--	--	--	--	--	--	--	--	--	--	--	--	--	--	--	--	--	--	--	--	--	--	--	--	--	--	--	--	--	--	--	--	--	--	--	--	--	--	--	--	--	--	--	--	--	--	--	--	--	--	--	--	--	--	--	--	--	--	--	--	--	--	--	--	--	--	--	--	--	--	--	--	--	--	--	--	--	--	--	--	--	--	--	--	--	--	--	--	--	--	--	--	--	--	--	--	--	--	--	--	--	--	--	--	--	--	--	--	--	--	--	--	--	--	--	--	--	--	--	--	--	--	--	--	--	--	--	--	--	--	--	--	--	--	--	--	--	--	--	--	--	--	--	--	--	--	--	--	--	--	--	--	--	--	--	--	--	--	--	--	--	--	--	--	--	--	--	--	--	--	--	--	--	--	--	--	--	--	--	--	--	--	--	--	--	--	--	--	--	--	--	--	--	--	--	--	--	--	--	--	--	--	--	--	--	--	--	--	--	--	--	--	--	--	--	--	--	--	--	--	--	--	--	--	--	--	--	--	--	--	--	--	--	--	--	--	--	--	--	--	--	--	--	--	--	--	--	--	--	--	--	--	--	--	--	--	--	--	--	--	--	--	--	--	--	--	--	--	--	--	--	--	--	--	--	--	--	--	--	--	--	--	--	--	--	--	--	--	--	--	--	--	--	--	--	--	--	--	--	--	--	--	--	--	--	--	--	--	--	--	--	--	--	--	--	--	--	--	--	--	--	--	--	--	--	--	--	--	--	--	--	--	--	--	--	--	--	--	--	--	--	--	--	--	--	--	--	--	--	--	--	--	--	--	--	--	--	--	--	--	--	--	--	--	--	--	--	--	--	--	--	--	--	--	--	--	--	--	--	--	--	--	--	--	--	--	--	--	--	--	--	--	--	--	--	--	--	--	--	--	--	--	--	--	--	--	--	--	--	--	--	--	--	--	--	--	--	--	--	--	--	--	--	--	--	--	--	--	--	--	--	--	--	--	--	--	--	--	--	--	--	--	--	--	--	--	--	--	--	--	--	--	--	--	--	--	--	--	--	--	--	--	--	--	--	--	--	--	--	--	--	--	--	--	--	--	--	--	--	--	--	--	--	--	--	--	--	--	--	--	--	--	--	--	--	--	--	--	--	--	--	--	--	--	--	--	--	--	--	--	--	--	--	--	--	--	--	--	--	--	--	--	--	--	--	--	--	--	--	--	--	--	--	--	--	--	--	--	--	--	--	--	--	--	--	--	--	--	--	--	--	--	--	--	--	--	--	--	--	--	--	--	--	--	--	--	--	--	--	--	--	--	--	--	--	--	--	--	--	--	--	--	--	--	--	--	--	--	--	--	--	--	--	--	--	--	--	--	--	--	--	--	--	--	--	--	--	--	--	--	--	--	--	--	--	--	--	--	--	--	--	--	--	--	--	--	--	--	--	--	--	--	--	--	--	--	--	--	--	--	--	--	--	--	--	--	--	--	--	--	--	--	--	--	--	--	--	--	--	--	--	--	--	--	--	--	--	--	--	--	--	--	--	--	--	--	--	--	--	--	--	--	--	--	--	--	--	--	--	--	--	--	--	--	--	--	--	--	--	--	--	--	--	--	--	--	--	--	--	--	--	--	--	--	--	--	--	--	--	--	--	--	--	--	--	--	--	--	--	--	--	--	--	--	--	--	--	--	--	--	--	--	--	--	--	--	--	--	--	--	--	--	--	--	--	--	--	--	--	--	--	--	--	--	--	--	--	--	--	--	--	--	--	--	--	--	--	--	--	--	--	--	--	--	--	--	--	--	--	--	--	--	--	--	--	--	--	--	--	--	--	--	--	--	--	--	--	--	--	--	--	--	--	--	--	--	--	--	--	--	--	--	--	--	--	--	--	--	--	--	--	--	--	--	--	--	--	--	--	--	--	--	--	--	--	--	--	--	--	--	--	--	--	--	--	--	--	--	--	--	--	--	--	--	--	--	--	--	--	--	--	--	--	--	--	--	--	--	--	--	--	--	--	--	--	--	--	--	--	--	--	--	--	--	--	--	--	--	--	--	--	--	--	--	--	--	--	--	----

DRB CASE NO. 1011638

68-116

76 42021

1:31 p

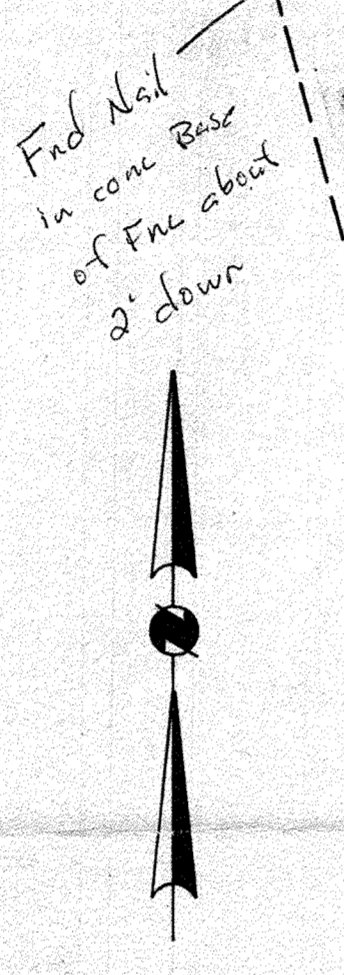
State of New Mexico
County of Bernalillo

This instrument was filed for record on
131 AUG 17 1976
At 9:40 a.m. P.m. Recorded Initial C/11
of records of said County Folio 89
James C. Rodriguez Clerk & Recorder
Deputy Clerk

At a Public Sale, Recorded Index. C 11
of records of said County Folio 89
James C. Rogers Clerk & Recorder
Deputy Clerk

James C. [Signature] Clerk & Recorder
Deputy Clerk

James C. [Signature] Clerk & Recorder
Deputy Clerk



OWNER
Van Barber
VAN BARBER

On this 13th day of August, 1976, before me, a Notary Public in and for said County, personally appeared Van Barber, and who executed the foregoing instrument as their own free act and deed.

Outstanding Pro Rate Charges for water and sewer installations are as of 8-11, 1976.

James Chan 8/7/26
Property Management Date

Dec 10/11 by Ray King
Planning Director, City of Albuquerque, N.M.

Subdivision No. SP-76-312

We, New Mexico Title Company, hereby certify that all taxes have been paid in full for the past ten years up to and including the 1st half of 19 1951 for the property included in the foregoing replat of Lot 22, Block 8, ORIGINAL TOWNSITE OF WESTLAND, Albuquerque, New Mexico.

I, Ronald E. Tyree, a duly qualified Land Surveyor, licensed under the laws of the State of New Mexico, do hereby certify that the foregoing replat of Lot 22, Block 8, ORIGINAL TOWNSITE OF WESTLAND, to the City of Albuquerque, New Mexico was prepared by me or under my supervision, shows all easements of record, meets the minimum requirements for monumentation and surveys of the Albuquerque Subdivision Ordinance, and is true and accurate to the best of my knowledge and belief.

File no. 211-89

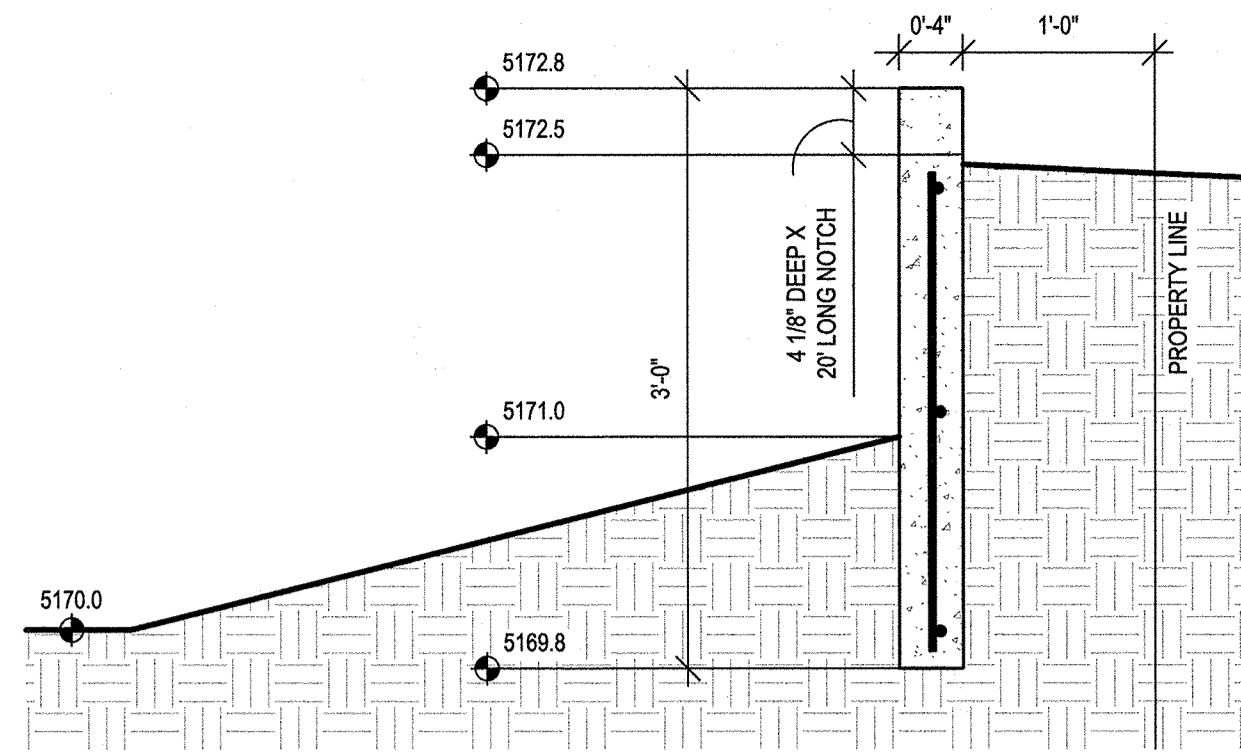
File # 211-89

NO.	DATE	REVISIONS/REMARKS	BY	SURVEY INFORMATION	BENCH MARK	AS BUILT INFORMATION
				FIELD NOTES	City of Albuquerque Station "NM 448-N10"	CONTRACTOR
				BY	A brass tablet set in top of concrete pad on east side of Coors Blvd	WORK STAKED BY
				ANTHONY L. HARRIS	190 ft south of Westside Drive NW: X=377788.84 Y=1524161.52	INSPECTOR'S APPROVAL
				DECEMBER, 2017	ELEV. = 5045.51 (1929)	FIELD VERIFICATION BY
						DRAWING CORRECTED BY
						DATE:
						MICRO-FILM INFORMATION
						RECORDED BY
						DATE:
						NO.
DESIGNED BY:	SM	DATE:	07/26/2018			
DRAWN BY:	CB	DATE:	07/26/2018			
CHECKED BY:	SM	DATE:	07/26/2018			

FOR INFORMATION ONLY

CITY OF ALBUQUERQUE PUBLIC WORKS DEPARTMENT ENGINEERING GROUP															
TITLE: L & C TRANSPORT OFFICE 108 94TH STREET NW ALBUQUERQUE, NEW MEXICO															
DESIGN REVIEW COMMITTEE	CITY ENGINEER APPROVAL	LAST DESIGN UPDATE	<table border="1" style="width: 100%; border-collapse: collapse;"> <thead> <tr> <th style="width: 50%; text-align: center;">H20 / DAY / YR.</th> <th style="width: 50%; text-align: center;">H20 / DAY / YR.</th> </tr> </thead> <tbody> <tr><td style="height: 20px;"></td><td></td></tr> <tr><td style="height: 20px;"></td><td></td></tr> <tr><td style="height: 20px;"></td><td></td></tr> <tr><td style="height: 20px;"></td><td></td></tr> <tr><td style="height: 20px;"></td><td></td></tr> </tbody> </table>	H20 / DAY / YR.	H20 / DAY / YR.										
H20 / DAY / YR.	H20 / DAY / YR.														
CITY PROJECT NO. 593085	ZONE MAP NO. K-09	SHEET: 2 OF 6													

RECORD DRAWING

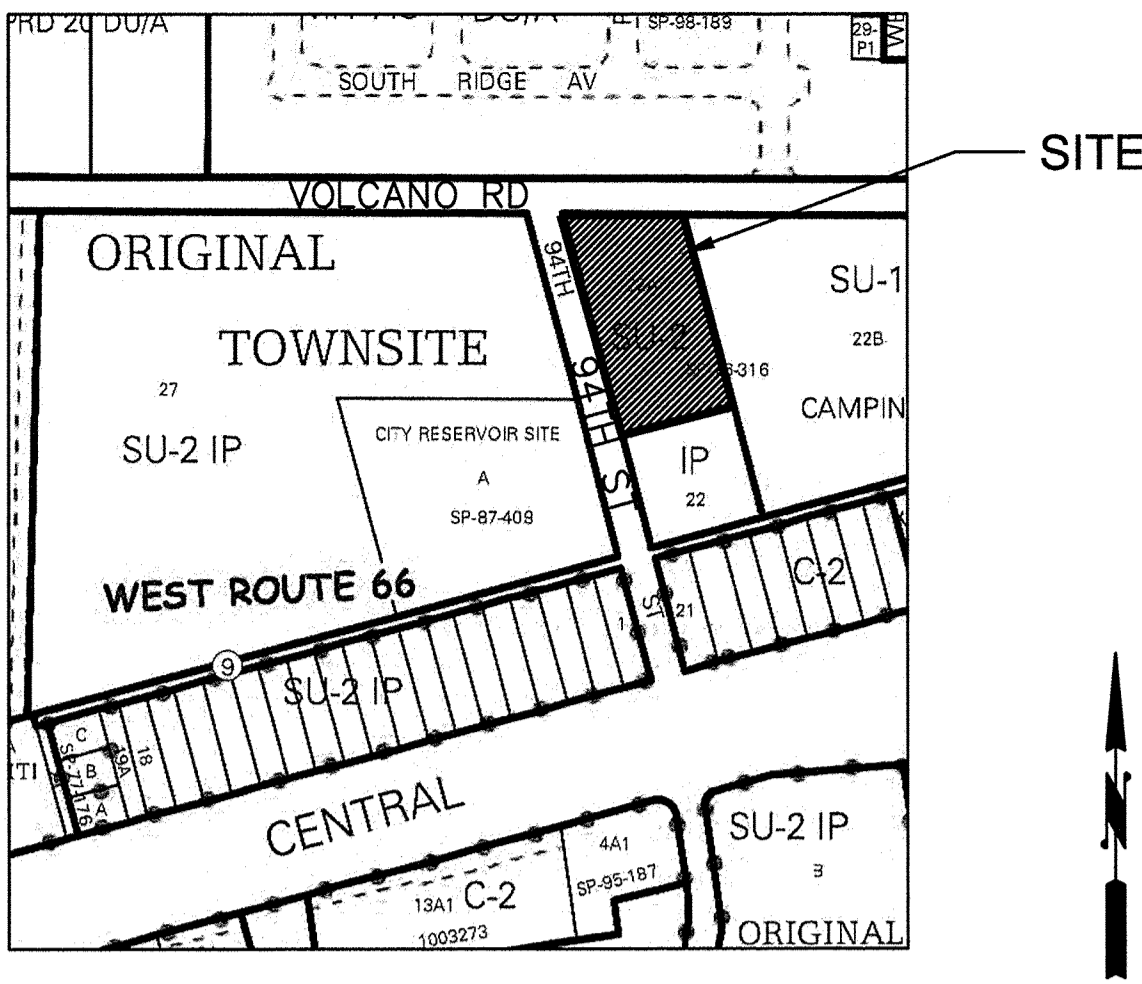


DETENTION POND CONCRETE CUT-OFF WALL

1" = 1'-0"

LEGEND

- EXISTING CONSTRUCTION
- NEW CONTOUR
- EXISTING BUILDING FINISH FLOOR ELEV
- FF=5176.0
- NEW SPOT ELEVATION
- NEW CONSTRUCTION
- RD ROOF DRAIN
- TC TOP OF CURB
- TW TOP OF WALL ELEVATION



VICINITY MAP

K09

DRAINAGE ANALYSIS

LEGAL: Lot 22-A, Block 8, Original Townsite of Westland

AREA: 1.6706 acres (72,770 SF)

BENCHMARK: ACS brass disk "12-K9"
ELEV= 5219.837 (NAVD 1988)

TBM: Top back of street curb opposite SW property corner of the site.
ELEV= 5174.71 (NAVD 1988)

SURVEYOR: The Survey Office dated December, 2017

FLOOD HAZARD: From FEMA Panel 35001C0328J (11/14/2016), this site is identified as being within Zone 'X' which is outside the 0.2% annual chance floodplain.

EXISTING CONDITIONS: The site is undeveloped and slopes down from the northwest to the southeast at 2%. It is bounded on the west by 94th Street, on the north by Volcano Road, on the east by a CMU wall, and on the south by a developed Century Link facility. The site discharges to the Century Link parcel.

FIRST FLUSH: $Q = (0.44 \cdot 0.10)(15,500)/12 = 439$ CF
This volume will be provided in the detention pond located at the SE corner of the site as the storage depth of 0.15' provides 600 CF storage volume.

OFFSITE FLOWS: A portion of the adjacent 94th Street R/W discharges to the site, but the proposed street curb will divert the offsite runoff to existing inlets on 94th Street located south of the site.

PROPOSED IMPROVEMENTS: The proposed development includes an office and shop buildings. A covered parking area, covered shade structure, and future residence are also included in the impervious area calculations.

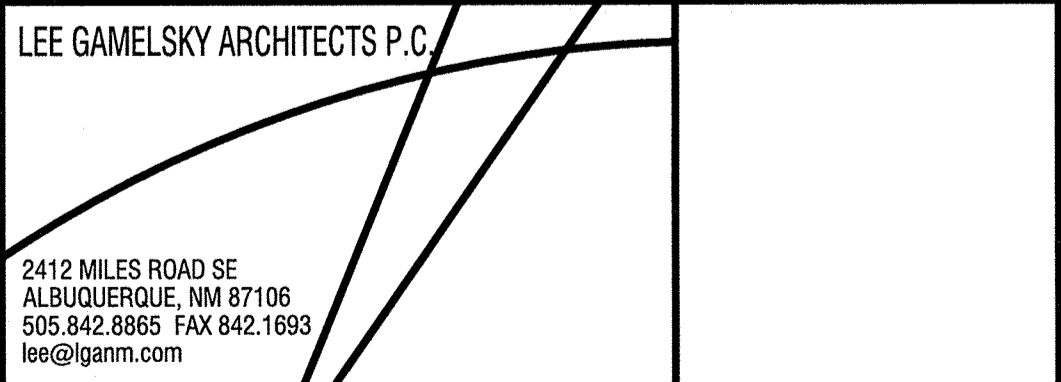
DRAINAGE APPROACH: The proposed drainage plan will follow historic flow paths. Building roof runoff will discharge to the east and south sides of the buildings. Site runoff will be carried overland to the SE corner. The proposed pond will contain the 10-day storage volume.

HYDROLOGY: For precipitation Zone 1 with 100% B land treatment
Existing $Q = (2.03)(1.67) = 3.4$ CFS

The proposed buildings and walks are 21% of the area with the balance of the site either base course or undeveloped considered as land treatment type 'C'.
Proposed $Q = (1.31)(2.87) + (0.36)(4.37) = 5.3$ CFS

The $V_{100} = (57,270)(.0825) + (15,500)(.1642) = 7,270$ CF
The $V_{10\text{-day}} = 7,270 + (15,500)(.1225) = 9,170$ CF

The retention pond volume provided is 9,200 CF at 2.1' depth



L&C TRANSPORT OFFICE AND SHOP
Albuquerque, New Mexico

PROJECT ARCHITECT:
LEE GAMESKY, AIA

Project #:
Date: 19 MARCH 2018

GRADING PLAN

By: WTB
GRADING & DRAINAGE PLAN

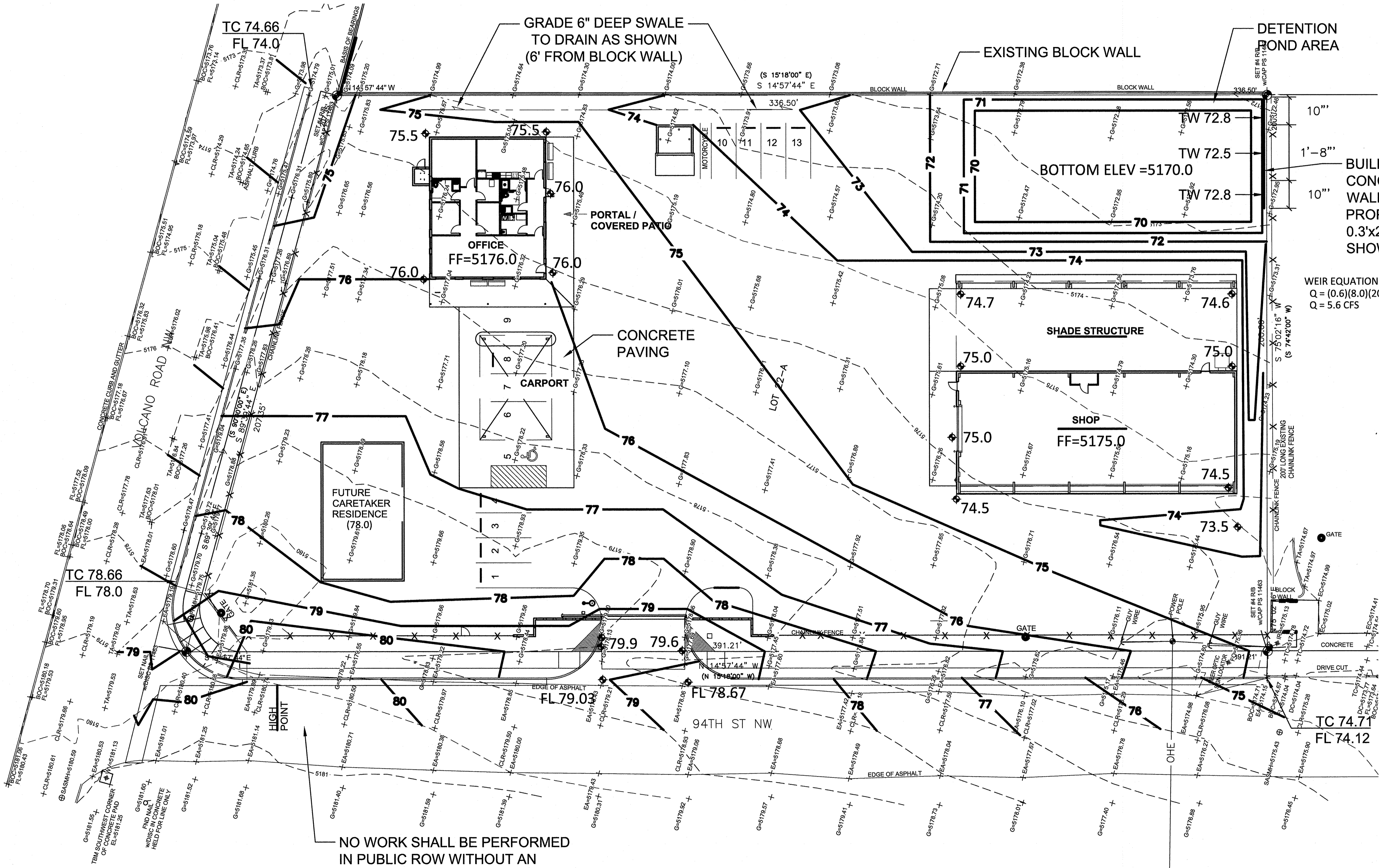
Sheet: Of
C-100

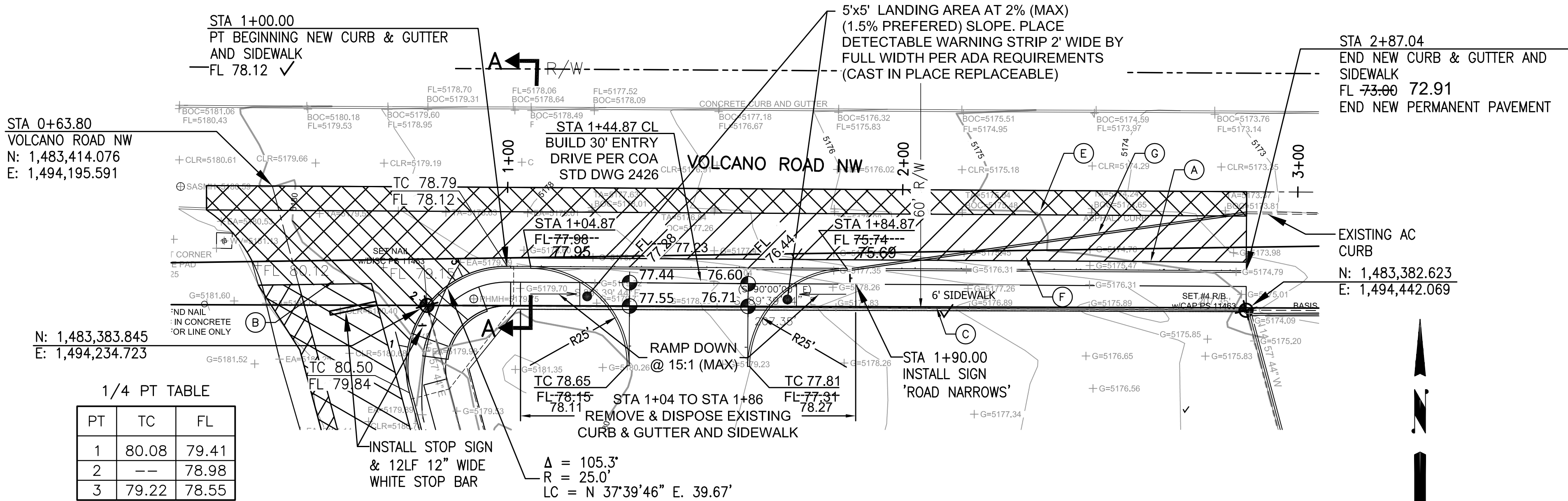
RECORD DRAWING

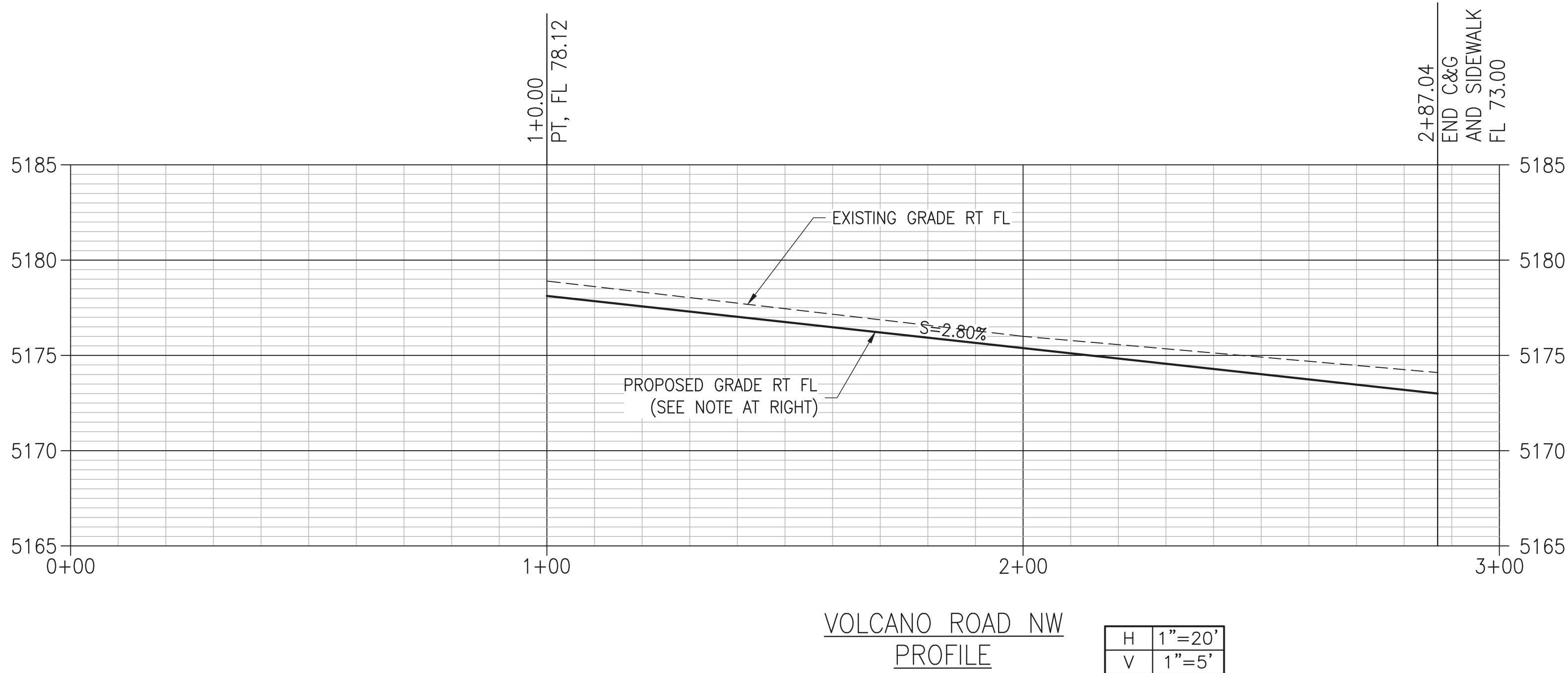
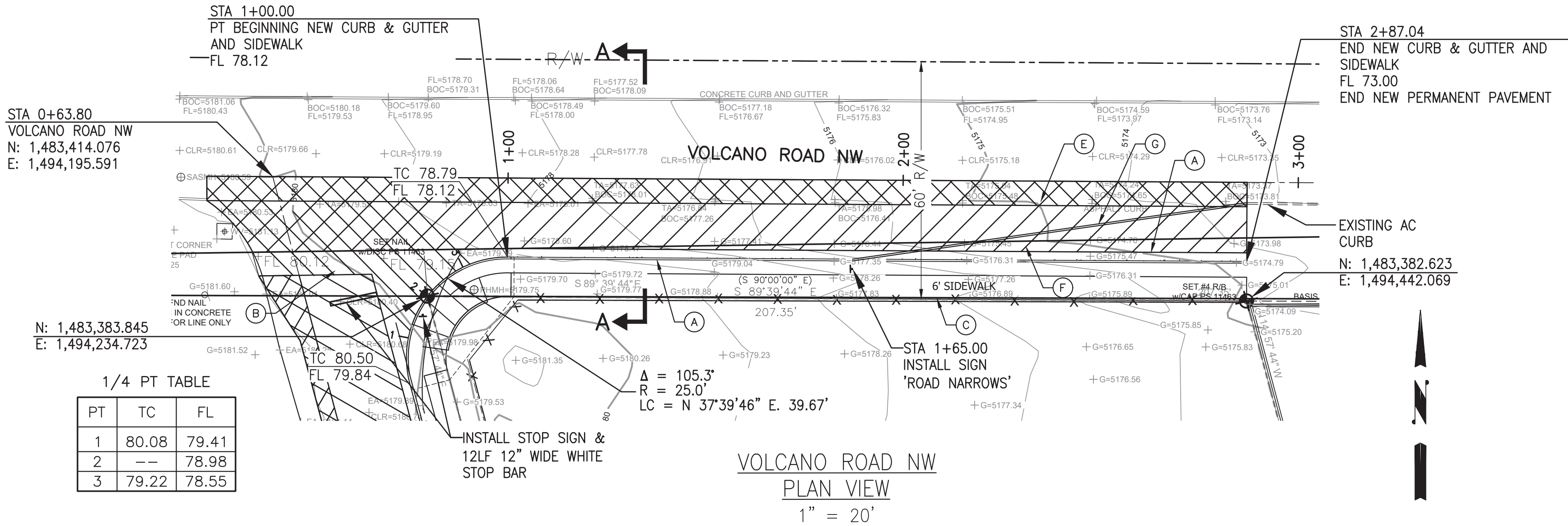
GRADING AND DRAINAGE PLAN

1" = 20'

0 20' 40'







NOTE: NEW SOUTH CURB GRADE SHALL BE ESTABLISHED BY EXTENDING PAVEMENT SECTION PER DETAIL. ROADWAY SECTION SHALL GOVERN AND PROFILE GRADES SHOWN FOR INFORMATION ONLY.

2" ASPHALT CONCRETE TYPICAL FINISH COURSE PLACED AFTER ALL MANHOLES, VALVES, COVERS/RINGS ARE SET TO GRADE. 1500 LBS. STABILITY TYPE B GRADATION.

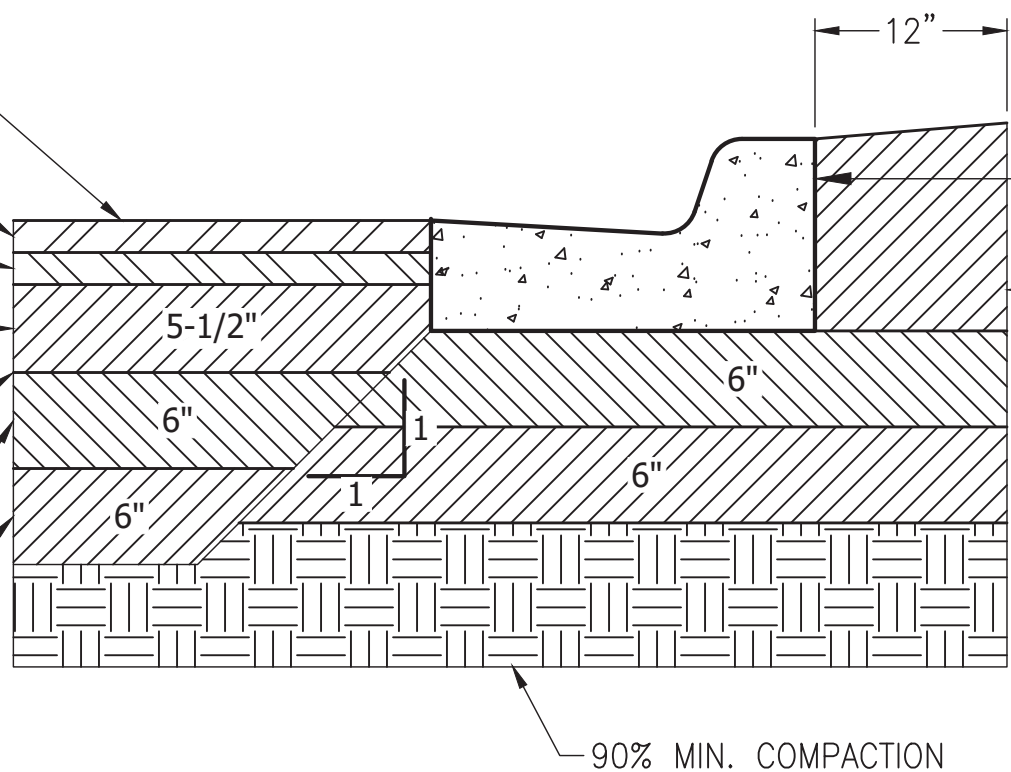
TACK COAT AS REQUIRED BY THE THE ENGINEER BETWEEN ALL ASPHALT/AGGREGATE MATERIAL LIFTS.

2" ASPHALT CONCRETE. 1500 LBS. STABILITY, TYPE B GRADATION.

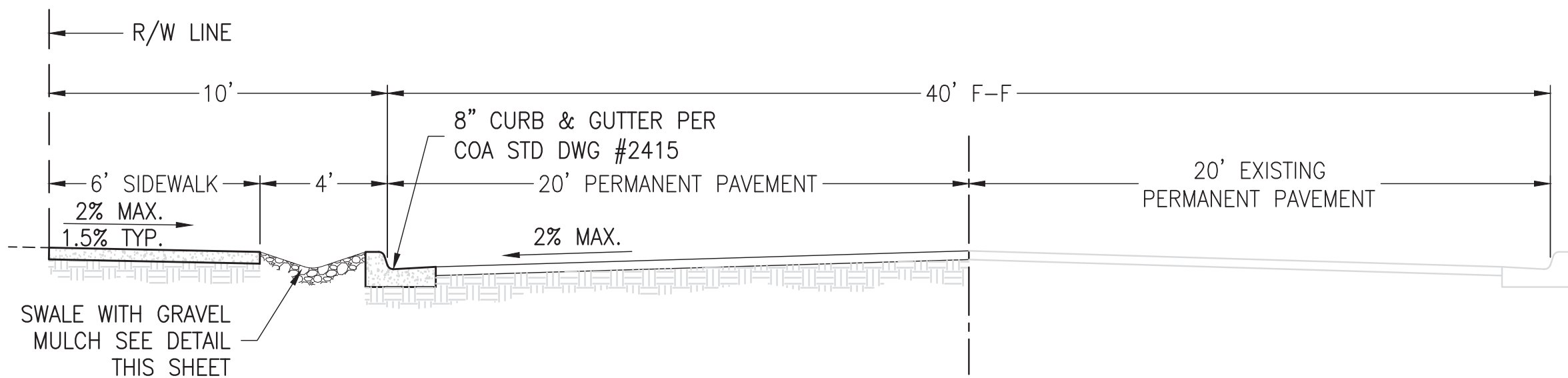
5-1/2" AGGREGATE BASE COURSE. R-VALUE>50. 95% MIN. COMPACTION ASTM D1557.

FINISH SURFACE OF SUBGRADE SHALL BE MOISTURE CONTROLLED AT COMPACTION MOISTURE RANGE, OR PRIME COAT APPLIED AS REQUIRED BY THE ENGINEER UNTIL NEXT/FINAL SURFACING IS COMPLETED. SUBGRADE PREPARATION SHALL BE PERFORMED AFTER ALL SUBSURFACE R/W UTILITIES CONSTRUCTION COMPLETED.

1' SUBGRADE SOIL. R-VALUE>50, PLACED IN (2)-6" COMPACTED LIFTS. 95% MIN. COMPACTION, AT OPT. MOISTURE ± 2.0%, ASTM D1557, OR OPT. MOISTURE, TO +4%, ASTM D698 FOR SOIL W/35% OR MORE MATERIAL PASSING THE NO. 200 SIEVE.



PERMANENT PAVING SECTION

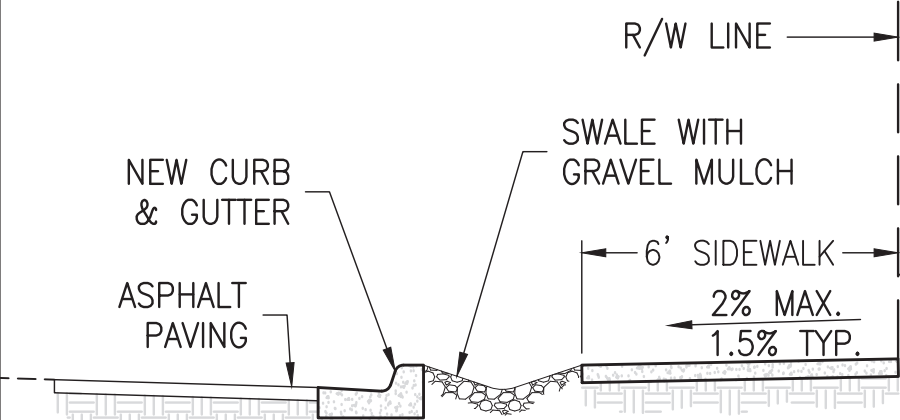


LEGEND

- REMOVE & DISPOSE ASPHALT CONCRETE PAVING
- NEW PERMANENT PAVEMENT

KEYED NOTES

- NEW CITY STANDARD CURB & GUTTER PER STD DWG NO. 2415A.
- NEW 6" VALLEY GUTTER AT INTERSECTION PER STD DWG NO. 2420.
- NEW 6" SIDEWALK PER STD DWG NO. 2430.
- NOT USED.
- REMOVE AND DISPOSE EXISTING ASPHALT CURB.
- REMOVE AND DISPOSE EXISTING PAVING AND REPLACE WITH NEW PERMANENT PAVING WHERE HATCHED.
- INSTALL 120LF ASPHALT CURB (TAPERED) AND 'ROAD NARROWS' SIGN.



NOTES:

- SWALE SHALL HAVE 5:1 SIDE SLOPES.
- FINAL GRADE EARTH SHALL BE 1-2" BELOW THE TOP OF CURB.
- SWALE SURFACE SHALL HAVE GRAVEL MULCH (3/4" MINIMUM). DO NOT FILL ENTIRE SWALE.

AS BUILT INFORMATION		BENCH MARK		SURVEY INFORMATION		REVISIONS/REMARKS		DESIGNED BY:		DATE:	
CONTRACTOR	SBS CONST.	DATE	4/19/22	BY	ANTHONY L. HARRIS	NO.		SM	ES	08/15/2018	08/15/2018
WORK STAKED BY	SBS CONST.	DATE	4/19/22	BY	ANTHONY L. HARRIS	NO.		SM	ES	08/15/2018	08/15/2018
INSPECTOR'S APPROVAL	ASH ENG	DATE	4/19/22	BY	ANTHONY L. HARRIS	NO.		SM	ES	08/15/2018	08/15/2018
FIELD VERIFICATION	SBS CONST.	DATE	4/19/22	BY	ANTHONY L. HARRIS	NO.		SM	ES	08/15/2018	08/15/2018
DRAWING CORRECTED BY	SBS CONST.	DATE	4/19/22	BY	ANTHONY L. HARRIS	NO.		SM	ES	08/15/2018	08/15/2018
MICRO-FILM INFORMATION		RECORDED BY		DATE:		NO.		DATE:		NO.	



CITY OF ALBUQUERQUE PUBLIC WORKS DEPARTMENT ENGINEERING GROUP			
TITLE: L & C TRANSPORT OFFICE 108 94TH STREET NW ALBUQUERQUE, NEW MEXICO			
DESIGN REVIEW COMMITTEE APPROVED Nov. 23, 2020 DESIGN REVIEW COMMITTEE	CITY ENGINEER APPROVAL APPROVED Nov. 23, 2020 CITY ENGINEER	LAST DESIGN UPDATE	NO. / DAY / YR.
CITY PROJECT No. 593085		ZONE MAP No. K-09	SHEET: 4 OF 6

RECORD DRAWING

5' WIDE LANDING AREA AT 2% MAX
(1.5% PREFERRED) SLOPE.
PLACE DETECTABLE WARNING STRIP 2' WIDE
BY FULL WIDTH PER ADA REQUIREMENTS

PT	TC	FL
1	80.08	79.41
2	--	78.98
3	79.22	78.55

STA 0+40.44
94TH STREET NW
N: 1,483,414.076
E: 1,494,195.591

STA 1+00.00
PC BEGIN NEW CURB & GUTTER
AND SIDEWALK
FL 79.39

INSTALL STOP SIGN &
12LF 12" WIDE WHITE
STOP BAR

4' TEMPORARY
PAVEMENT

STA 2+45.08
CL BUILD 30' ENTRY DRIVE
PER COA STD DWG 2426

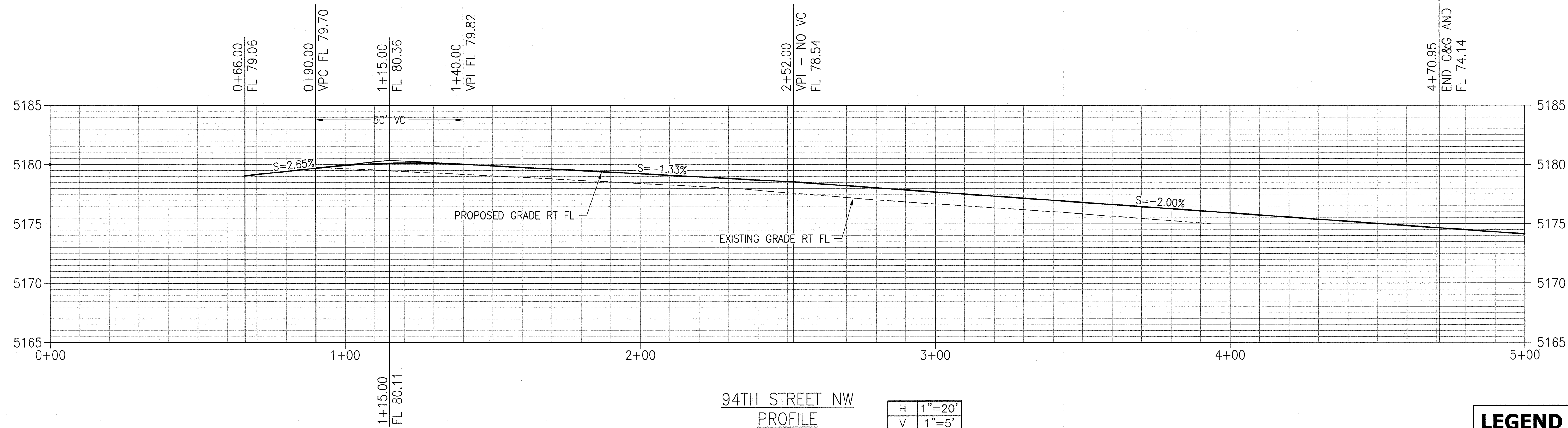
94TH STREET NW
PLAN VIEW
1" = 20'

5'X5' LANDING AREA AT 2% MAX
(1.5% PREFERRED) SLOPE.
PLACE DETECTABLE WARNING STRIP 2' WIDE
BY FULL WIDTH PER ADA REQUIREMENTS
(CAST IN PLACE REPLACEABLE)

NOTE:
REMOVE ALL PAVING ON 94TH STREET FROM
NEW VALLEY GUTTER (NORTH) TO 4+70.95

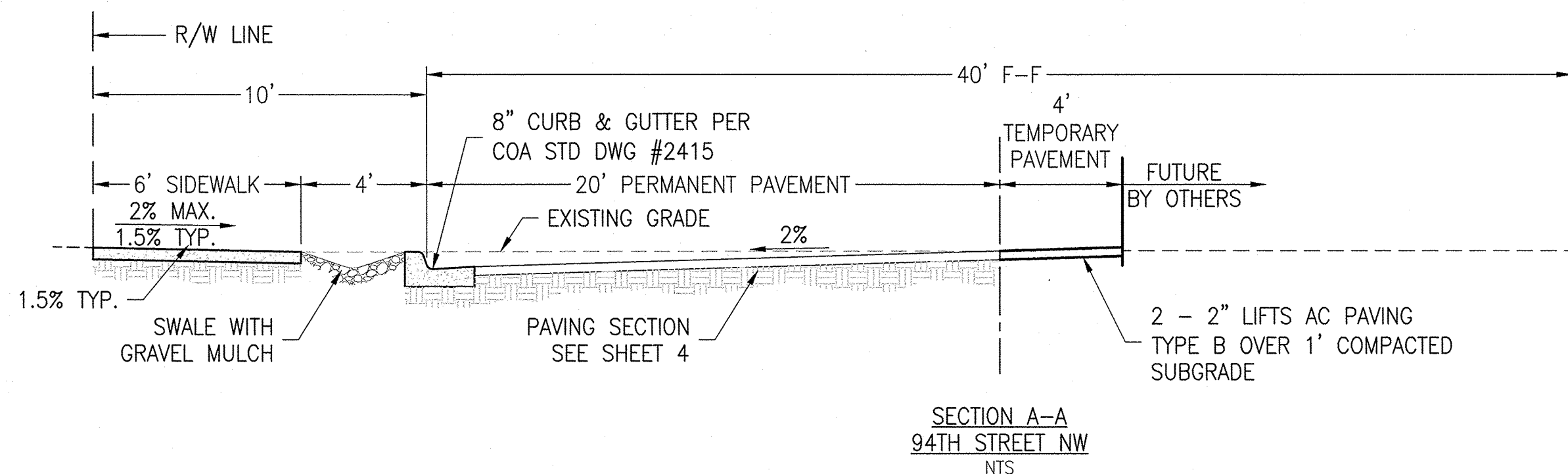
TRANSITION TO EXISTING
ASPHALT SECTION WITH PAVING
SECTION SHOWN ON SHEET 4

STA 4+70.95
END NEW CURB & GUTTER
AND SIDEWALK
FL 74.14-- 74.11
END NEW PERMANENT PAVEMENT



94TH STREET NW
PROFILE

H	1"=20'
V	1"=5'



SECTION A-A
94TH STREET NW
NTS

LEGEND

	4' TEMPORARY PAVEMENT
	NEW PERMANENT PAVEMENT

KEYED NOTES

- NEW CITY STANDARD CURB & GUTTER PER STD DWG NO. 2415A.
- NEW 6' VALLEY GUTTER AT INTERSECTION PER STD DWG NO. 2420.
- NEW 6' SIDEWALK PER STD DWG NO. 2430.
- NEW 30' DRIVEPAD PER STD DWG NO. 2425.
- NOT USED.
- REMOVE AND DISPOSE EXISTING PAVING AND REPLACE WITH NEW PERMANENT PAVING WHERE HATCHED.

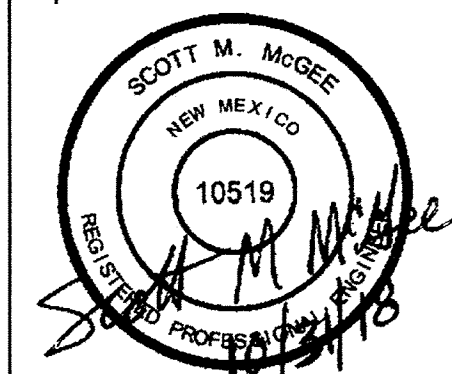
CITY OF ALBUQUERQUE
PUBLIC WORKS DEPARTMENT
ENGINEERING GROUP

TITLE: L & C TRANSPORT OFFICE
108 94TH STREET NW
ALBUQUERQUE, NEW MEXICO



NO.	DATE	REVISIONS/REMARKS	BY

CITY PROJECT NO.	593085	ZONE MAP NO.	K-09	SHEET	5	OF	6
------------------	--------	--------------	------	-------	---	----	---



NO.	DATE	REVISIONS/REMARKS	BY

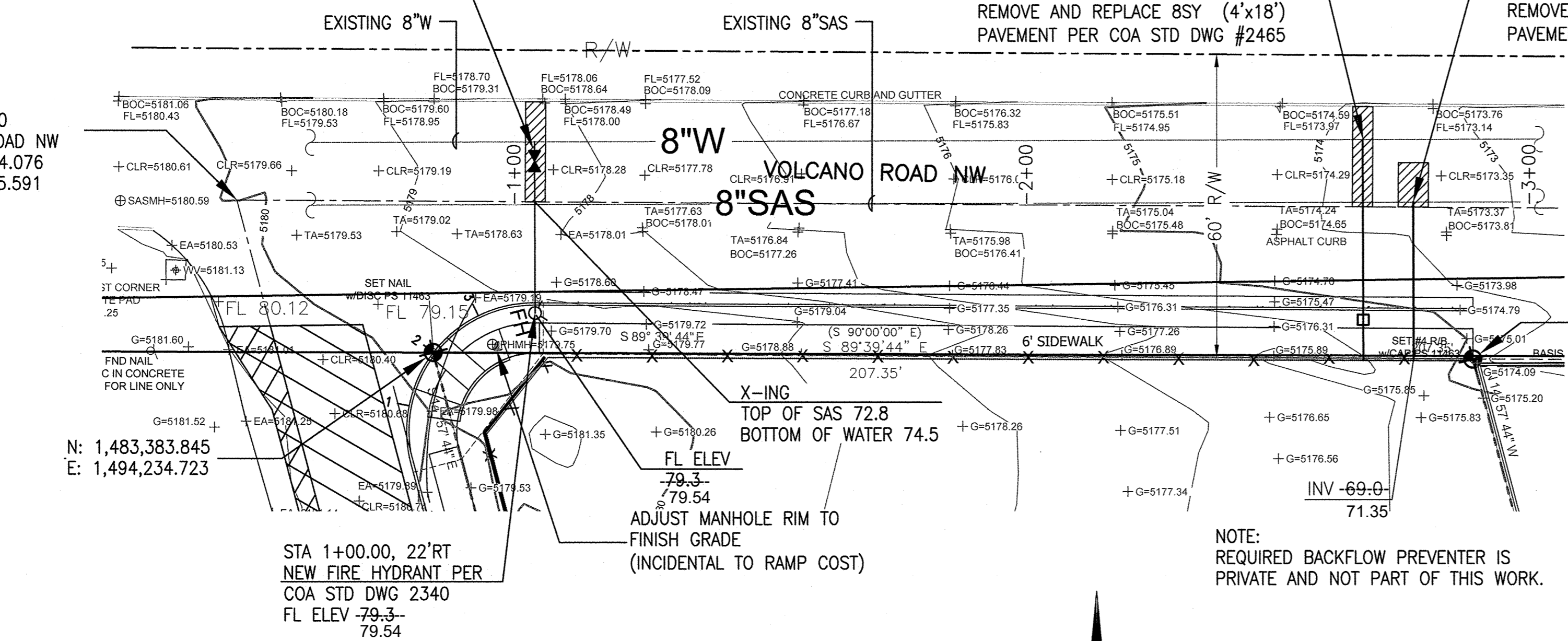
DESIGNED BY:	SM	DATE:	08/15/2018
DRAWN BY:	ES	DATE:	08/15/2018
CHECKED BY:	SM	DATE:	08/15/2018

AS BUILT INFORMATION	
CONTRACTOR SBS CONST.	DATE: 4/19/22
WORK STATED BY SBS CONST.	DATE: 4/19/22
INSPECTOR'S APPROVAL	DATE: 4/19/22
FIELD VERIFICATION BY SBS CONST.	DATE: 4/19/22
DRAWING CORRECTED BY:	SBS CONST. DATE: 4/19/22
MICRO-FILM INFORMATION	
RECORDED BY:	DATE:
NO.	

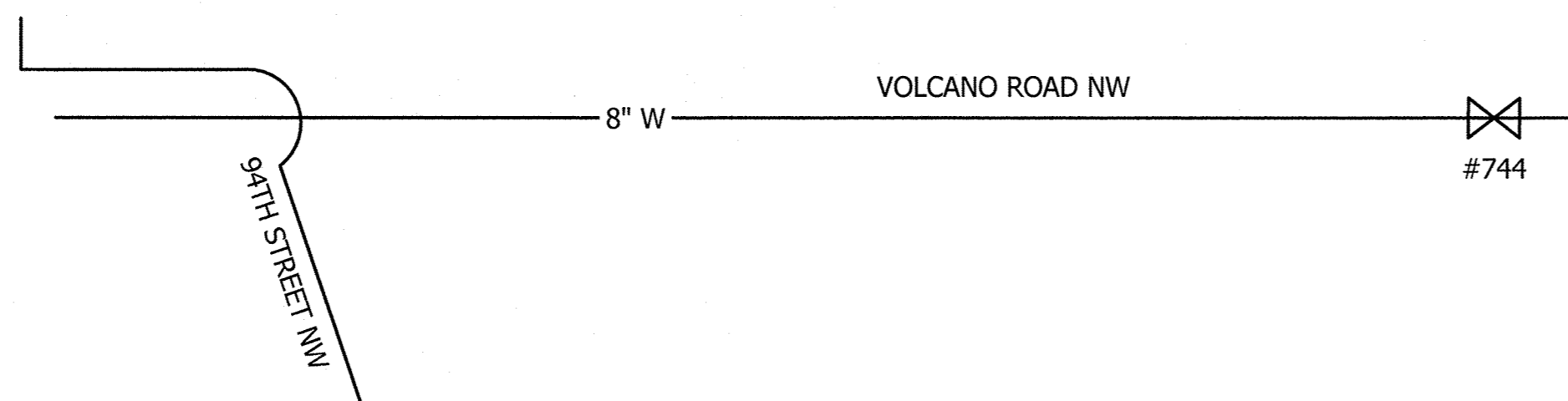
BENCH MARK	
City of Albuquerque Station "ACS BM 12 K9"	DATE: 4/19/22
A 1-3/4" disc exposed to top of concrete manhole at NW quadrant of 98th and Volcano NW	DATE: 4/19/22
ELEV. = 5219.837 (NAVD 1988)	DATE: 4/19/22
(NAD 1927)	DATE: 4/19/22

SURVEY INFORMATION	
FIELD NOTES	DATE: 4/19/22
BY	DATE: 4/19/22
ANTHONY L. HARRIS	DATE: 4/19/22
DECEMBER, 2017	DATE: 4/19/22

RECORD DRAWING



DESIGN			AS-BUILT		
ITEM	N:	E:	N:	E:	Z:
WV#1	1,483,423.26	1,494,254.83	1,483,423.42	1,494,250.81	5178.50
METER	1,483,390.54	1,494,417.05	1,483,393.80	1,494,420.79	5174.11
FH	1,483,391.67	1,494,254.85	1,483,394.25	1,494,250.46	5174.54

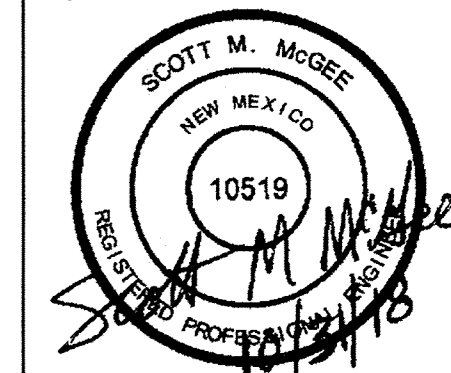


WATER SHUT-OFF PLAN

SHUT OFF WATER VALVE #744 (DEAD END TO WEST)

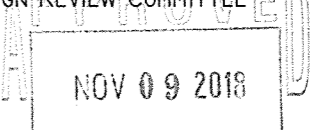
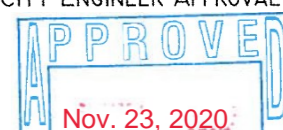
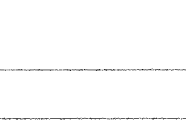
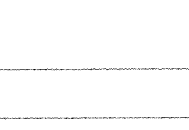
THE CONTRACTOR SHALL COORDINATE WITH THE WATER AUTHORITY SEVEN (7) DAYS IN ADVANCE OF PERFORMING WORK THAT WILL AFFECT THE PUBLIC WATER OR SANITARY SEWER INFRASTRUCTURE. WORK REQUIRING SHUTOFF OF FACILITIES DESIGNATED AS MASTER PLAN FACILITIES MUST BE COORDINATED WITH THE WATER AUTHORITY 14 DAYS IN ADVANCE OF PERFORMING SUCH WORK. ONLY WATER AUTHORITY CREWS ARE AUTHORIZED TO OPERATE PUBLIC VALVES. SHUTOFF REQUESTS MUST BE MADE ONLINE AT [HTTP://ABCWUA.ORG/WATER_SHUT_OFF_AND_TURN_ON_PROCEDURES.ASPX](http://abcwua.org/water_shut_off_and_turn_on_procedures.aspx)

NOTE:
REQUIRED BACKFLOW PREVENTER IS
PRIVATE AND NOT PART OF THIS WORK.

[illegible]

NO.	DATE	REVISIONS/REMARKS	BY
DESIGNED BY:	SM	DATE:	07/26/2018
DRAWN BY:	CB	DATE:	07/26/2018
CHECKED BY:	SM	DATE:	07/26/2018

RECORD DRAWING

CITY OF ALBUQUERQUE PUBLIC WORKS DEPARTMENT ENGINEERING GROUP			
TITLE:		L & C TRANSPORT OFFICE 108 94TH STREET NW ALBUQUERQUE, NEW MEXICO	
DESIGN REVIEW COMMITTEE 	CITY ENGINEER APPROVAL 	MO. / DAY / YR. 	MO. / DAY / YR. 
CITY PROJECT NO.		ZONE MAP NO.	SHEET:
593085		K-09	Of 6