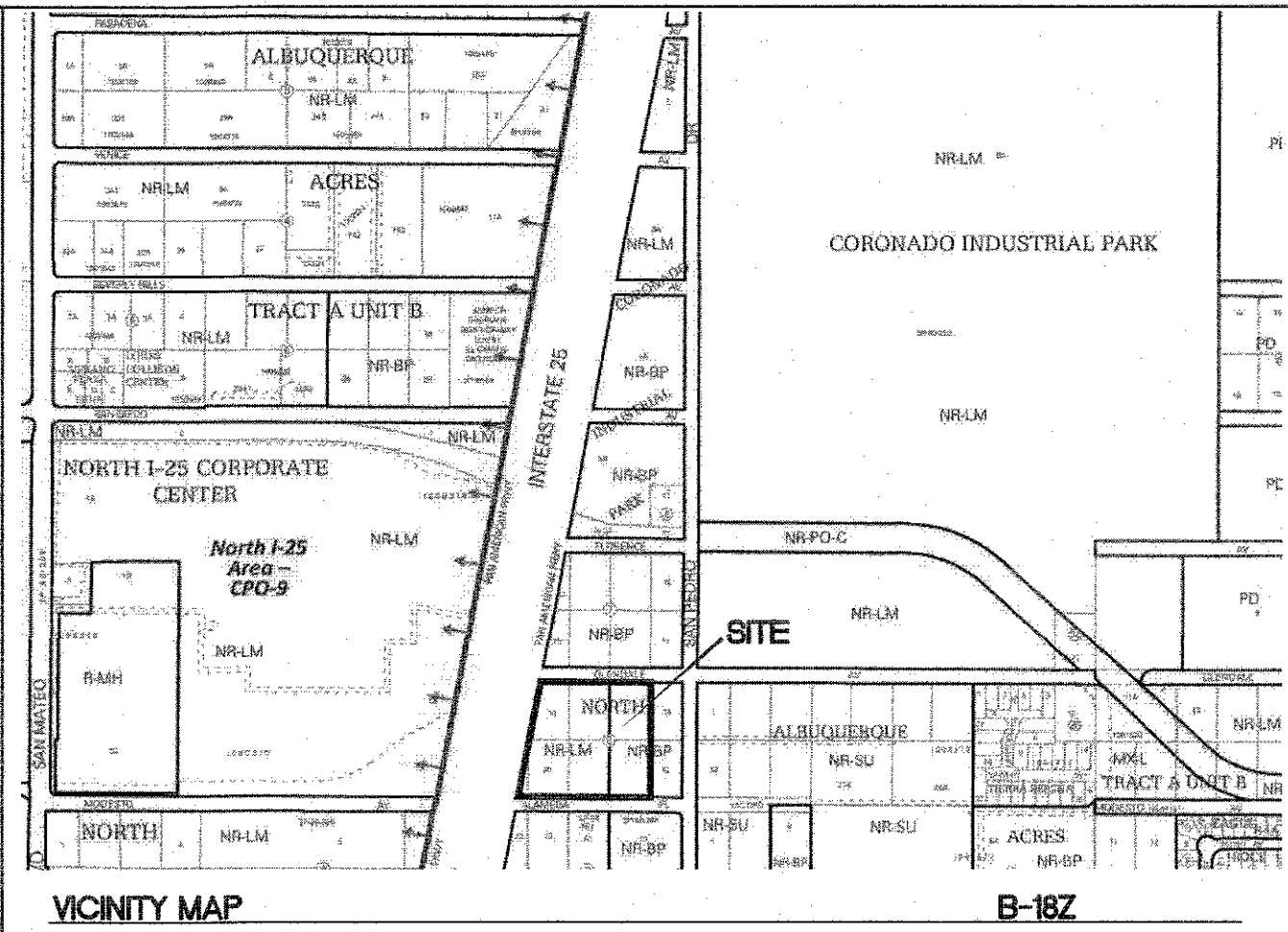


CONSTRUCTION PLANS FOR
AUTONATION USA, ALBUQUERQUE
9100 PAN AMERICAN FREEWAY
ALEMEDA PLACE &
GLENDALE AVE IMPROVEMENTS
BERNALILLO COUNTY, NEW MEXICO
NOVEMBER, 2021

FW



LEGAL DESCRIPTION:
PORTION OF LOT NUMBERED 13 LESS PART TO R/W, ALL OF LOTS 14, 15, 18, 19 AND
PORTIONS OF LOTS 20 AND 21 BLOCK 8 OF TRACT "A", UNIT "B"008 NORTH ALBUQ ACRES

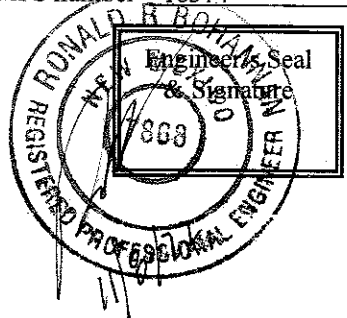
APPROVED RECORD DRAWINGS	
City Inspector	Tim Sims
Contractor	Franklin's Earthmoving, Inc.
Construction Engineer	David Bishop
Date	3/21/2023

INDEX TO DRAWINGS

1. TITLE SHEET
2. GENERAL NOTES
3. PLAT
4. GRADING PLAN - GR-1 (REFERENCE ONLY)
5. ALEMEDA PLACE N.E. IMPROVEMENTS
6. GLENDALE AVENUE N.E. IMPROVEMENTS
7. CONSTRUCTION DETAILS
8. NMDOT ROADWAY PLAN (FOR REFERENCE ONLY)
9. NMDOT ROADWAY PLAN (FOR REFERENCE ONLY)

CERTIFICATE OF SUBSTANTIAL COMPLIANCE ON PLANS

I, Ronald R. Bohannon, of the firm of Tierra West LLC, a Registered Professional Engineer in the State of New Mexico, do hereby certify, to the best of my knowledge and belief, that the infrastructure installed as part of this project has been inspected by me or by a qualified person under my direct supervision and has been constructed in accordance with the plans and specifications approved by the City Engineer and that the original design intent of the approved plans has been met, except as noted by me on the as-built construction drawings. This Certification is based on site inspections by me, or personnel under my direction with survey information provided by Brian Martinez, of Cartesian Surveys, Inc., NMPS number 18374.



SURVEYOR'S CERTIFICATION

I, BRIAN J. MARTINEZ, A DULY QUALIFIED, REGISTERED, PROFESSIONAL LAND SURVEYOR UNDER THE LAWS OF THE STATE OF NEW MEXICO, DO HEREBY CERTIFY THAT THE 'AS-BUILT' INFORMATION SHOWN ON THESE DRAWINGS WAS OBTAINED FROM FIELD CONSTRUCTION AND 'AS-BUILT' SURVEYS PERFORMED BY ME OR UNDER MY SUPERVISION, THAT THE 'AS-BUILT' INFORMATION SHOWN ON THESE DRAWINGS WAS ADDED BY ME OR UNDER MY SUPERVISION, AND THAT THIS 'AS-BUILT' INFORMATION IS TRUE AND CORRECT TO THE BEST OF MY KNOWLEDGE AND BELIEF. CARTESIAN SURVEYS IS NOT RESPONSIBLE FOR ANY OF THE DESIGN CONCEPTS, CALCULATIONS, ENGINEERING, OR INTENT OF THE RECORDED DRAWINGS.

Brian J. Martinez 9/28/22
BRIAN J. MARTINEZ, NMPS 18374



AVAILABILITY LETTER# 210414
DRB CASE# SI-2021-00760

TIERRA WEST, LLC
5571 MIDWAY PARK PLACE NE
ALBUQUERQUE, NEW MEXICO 87109
(505) 858-3100
www.tierrawestllc.com

--	--	--	--	--	--	--	--	--	--	--	--	--	--	--	--	--	--	--	--	--	--	--	--	--	--	--	--	--	--	--	--	--	--	--	--	--	--	--	--	--	--	--	--	--	--	--	--	--	--	--	--	--	--	--	--	--	--	--	--	--	--	--	--	--	--	--	--	--	--	--	--	--	--	--	--	--	--	--	--	--	--	--	--	--	--	--	--	--	--	--	--	--	--	--	--	--	--	--	--	--	--	--	--	--	--	--	--	--	--	--	--	--	--	--	--	--	--	--	--	--	--	--	--	--	--	--	--	--	--	--	--	--	--	--	--	--	--	--	--	--	--	--	--	--	--	--	--	--	--	--	--	--	--	--	--	--	--	--	--	--	--	--	--	--	--	--	--	--	--	--	--	--	--	--	--	--	--	--	--	--	--	--	--	--	--	--	--	--	--	--	--	--	--	--	--	--	--	--	--	--	--	--	--	--	--	--	--	--	--	--	--	--	--	--	--	--	--	--	--	--	--	--	--	--	--	--	--	--	--	--	--	--	--	--	--	--	--	--	--	--	--	--	--	--	--	--	--	--	--	--	--	--	--	--	--	--	--	--	--	--	--	--	--	--	--	--	--	--	--	--	--	--	--	--	--	--	--	--	--	--	--	--	--	--	--	--	--	--	--	--	--	--	--	--	--	--	--	--	--	--	--	--	--	--	--	--	--	--	--	--	--	--	--	--	--	--	--	--	--	--	--	--	--	--	--	--	--	--	--	--	--	--	--	--	--	--	--	--	--	--	--	--	--	--	--	--	--	--	--	--	--	--	--	--	--	--	--	--	--	--	--	--	--	--	--	--	--	--	--	--	--	--	--	--	--	--	--	--	--	--	--	--	--	--	--	--	--	--	--	--	--	--	--	--	--	--	--	--	--	--	--	--	--	--	--	--	--	--	--	--	--	--	--	--	--	--	--	--	--	--	--	--	--	--	--	--	--	--	--	--	--	--	--	--	--	--	--	--	--	--	--	--	--	--	--	--	--	--	--	--	--	--	--	--	--	--	--	--	--	--	--	--	--	--	--	--	--	--	--	--	--	--	--	--	--	--	--	--	--	--	--	--	--	--	--	--	--	--	--	--	--	--	--	--	--	--	--	--	--	--	--	--	--	--	--	--	--	--	--	--	--	--	--	--	--	--	--	--	--	--	--	--	--	--	--	--	--	--	--	--	--	--	--	--	--	--	--	--	--	--	--	--	--	--	--	--	--	--	--	--	--	--	--	--	--	--	--	--	--	--	--	--	--	--	--	--	--	--	--	--	--	--	--	--	--	--	--	--	--	--	--	--	--	--	--	--	--	--	--	--	--	--	--	--	--	--	--	--	--	--	--	--	--	--	--	--	--	--	--	--	--	--	--	--	--	--	--	--	--	--	--	--	--	--	--	--	--	--	--	--	--	--	--	--	--	--	--	--	--	--	--	--	--	--	--	--	--	--	--	--	--	--	--	--	--	--	--	--	--	--	--	--	--	--	--	--	--	--	--	--	--	--	--	--	--	--	--	--	--	--	--	--	--	--	--	--	--	--	--	--	--	--	--	--	--	--	--	--	--	--	--	--	--	--	--	--	--	--	--	--	--	--	--	--	--	--	--	--	--	--	--	--	--	--	--	--	--	--	--	--	--	--	--	--	--	--	--	--	--	--	--	--	--	--	--	--	--	--	--	--	--	--	--	--	--	--	--	--	--	--	--	--	--	--	--	--	--	--	--	--	--	--	--	--	--	--	--	--	--	--	--	--	--	--	--	--	--	--	--	--	--	--	--	--	--	--	--	--	--	--	--	--	--	--	--	--	--	--	--	--	--	--	--	--	--	--	--	--	--	--	--	--	--	--	--	--	--	--	--	--	--	--	--	--	--	--	--	--	--	--	--	--	--	--	--	--	--	--	--	--	--	--	--	--	--	--	--	--	--	--	--	--	--	--	--	--	--	--	--	--	--	--	--	--	--	--	--	--	--	--	--	--	--	--	--	--	--	--	--	--	--	--	--	--	--	--	--	--	--	--	--	--	--	--	--	--	--	--	--	--	--	--	--	--	--	--	--	--	--	--	--	--	--	--	--	--	--	--	--	--	--	--	--	--	--	--	--	--	--	--	--	--	--	--	--	--	--	--	--	--	--	--	--	--	--	--	--	--	--	--	--	--	--	--	--	--	--	--	--	--	--	--	--	--	--	--	--	--	--	--	--	--	--	--	--	--	--	--	--	--	--	--	--	--	--	--	--	--	--	--	--	--	--	--	--	--	--	--	--	--	--	--	--	--	--	--	--	--	--	--	--	--	--	--	--	--	--	--	--	--	--	--	--	--	--	--	--	--	--	--	--	--	--	--	--	--	--	--	--	--	--	--	--	--	--	--	--	--	--	--	--	--	--	--	--	--	--	--	--	--	--	--	--	--	--	--	--	--	--	--	--	--	--	--	--	--	--	--	--	--	--	--	--	--	--	--	--	--	--	--	--	--	--	--	--	--	--	--	--	--	--	--	--	--	--	--	--	--	--	--	--	--	--	--	--	--	--	--	--	--	--	--	--	--	--	--	--	--	--	--	--	--	--	--	--	--	--	--	--	--	--	--	--	--	--	--	--	--	--	--	--	--	--	--	--	--	--	--	--	--	--	--	--	--	--	--	--	--	--	--	--	--	--	--	--	--	--	--	--	--	--	--	--	--	--	--	--	--	--	--	--	--	--	--	--	--	--	--	--	--	--	--	--	--	--	--	--	--	--	--	--	--	--	--	--	--	--	--	--	--	--	--	--	--	--	--	--	--	--	--	--	--	--	--	--	--	--	--	--	--	--	--	--	--	--	--	--	--	--	--	--	--	--	--	--	--	--	--	--	--	--	--	--	--	--	--	--	--	--	--	--	--	--	--	--	--	--	--	--	--	--	--	--	--	--	--	--	--	--	--	--	--	--	--	--	--	--	--	--	--	--	--	--	--	--	--	--	--	--	--	--	--	--	--	--	--	--	--	--	--	--	--	--	--	--	--	--	--	--	--	--	--	--	--	--	--	--	--	--	--	--	--	--	--	--	--	--	--	--	--	--	--	--	--	--	--	--	--	--	--	--	--	--	--	--	--	--	--	--	--	--	--	--	--	--	--	--	--	--	--	--	--	--	--	--	--	--	--	--	--	--	--	--	--	--	--	--	--	--	--	--	--	--	--	--	--	--	--	--	--	--	--	--	--	--	--	--	--	--	--	--

THE INFRASTRUCTURE LIST FOR THIS PROJECT REQUIRES CERTAIN
NMDOT IMPROVEMENTS; THESE IMPROVEMENTS MUST BE
COMPLETED TO THE SATISFACTION OF NMDOT PRIOR TO
WORK-ORDER CLOSEOUT AND RELEASE OF ANY FINANCIAL GUARANTY

NMDOT SIGNATURE

GENERAL NOTES

1. ALL WORK DETAILED ON THESE PLANS, EXCEPT AS OTHERWISE STATED OR PROVIDED HEREON, SHALL BE CONSTRUCTED IN ACCORDANCE WITH CITY OF ALBUQUERQUE STANDARD SPECIFICATIONS FOR PUBLIC WORKS CONSTRUCTION, 2020 EDITION AND WILL BE REFERRED TO HEREIN AS "STANDARD SPECIFICATIONS".
2. ALL WORK ON THIS PROJECT SHALL BE PERFORMED IN ACCORDANCE WITH APPLICABLE FEDERAL, STATE, AND LOCAL LAWS, ORDINANCES, RULES, AND REGULATIONS CONCERNING CONSTRUCTION SAFETY AND HEALTH.
3. CONTRACTOR SHALL ASSUME THE SOLE AND COMPLETE RESPONSIBILITY FOR THE JOB SITE CONDITIONS DURING THE COURSE OF CONSTRUCTION OF THIS PROJECT, INCLUDING SAFETY OF ALL PERSONS AND PROPERTY. THIS REQUIREMENT SHALL APPLY CONTINUOUSLY AND NOT BE LIMITED TO NORMAL WORKING HOURS. CONTRACTOR SHALL DEFEND, INDEMNIFY, AND HOLD HARMLESS THE OWNER AND ENGINEER FROM ANY AND ALL LIABILITY REAL OR ALLEGED, IN CONNECTION WITH THE PERFORMANCE OF WORK ON THIS PROJECT, EXCEPT LIABILITY ARISING FROM THE SOLE NEGLIGENCE OF THE OWNER OR ENGINEER.
4. AN EXCAVATION/CONSTRUCTION PERMIT WILL BE REQUIRED BEFORE BEGINNING ANY WORK WITHIN CITY RIGHT-OF-WAY.
5. CONTRACTOR SHALL NOTIFY THE CONSTRUCTION ENGINEER (OR PROJECT MANAGER) NOT LESS THAN SEVEN (7) DAYS PRIOR TO STARTING WORK IN ORDER THAT THE CITY SURVEYOR MAY TAKE NECESSARY MEASURES TO INSURE THE PRESERVATION OF SURVEY MONUMENTS. CONTRACTOR SHALL NOT DISTURB PERMANENT SURVEY MONUMENTS WITHOUT THE CONSENT OF THE CITY SURVEYOR AND SHALL NOTIFY THE CITY SURVEYOR AND BEAR THE EXPENSE OF REPLACING ANY THAT MAY BE DISTURBED WITHOUT PERMISSION. ONLY THE CITY SURVEYOR SHALL REPLACE SURVEY MONUMENTS. WHEN A CHANGE IS MADE IN THE FINISHED ELEVATIONS OF THE PAVEMENT OF ANY ROADWAY IN WHICH A PERMANENT SURVEY MONUMENT IS LOCATED, CONTRACTOR SHALL, AT HIS OWN EXPENSE, ADJUST THE MONUMENT COVER TO THE NEW GRADE UNLESS OTHERWISE SPECIFIED. REFER TO STANDARD SPECIFICATIONS SECTION 4.4.
6. EXISTING UTILITY LINE LOCATIONS ARE SHOWN IN AN APPROXIMATE MANNER ONLY, AND LINES MAY EXIST WHERE NONE ARE SHOWN. TWO (2) WORKING DAYS PRIOR TO ANY EXCAVATION, CONTRACTOR SHALL CONTACT NEW MEXICO ONE CALL SYSTEM (260-1990) FOR LOCATION OF EXISTING UTILITIES. CONTRACTOR SHALL THEN EXCAVATE AND VERIFY THE HORIZONTAL AND VERTICAL LOCATIONS OF ALL PERTINENT EXISTING UTILITIES AND/OR OBSTRUCTIONS. SHOULD A CONFLICT EXIST, THE CONTRACTOR SHALL NOTIFY THE ENGINEER SO THE CONFLICT CAN BE RESOLVED WITH A MINIMUM AMOUNT OF DELAY. CONTRACTOR SHALL THEN COORDINATE RELOCATION OF UTILITY LINES WITH UTILITY COMPANIES AS REQUIRED. ANY DAMAGE CAUSED BY FAILURE TO LOCATE, IDENTIFY, AND PRESERVE ANY EXISTING UTILITIES IS THE FULL RESPONSIBILITY OF THE CONTRACTOR.
7. CONTRACTOR SHALL ASSIST THE ENGINEER/INSPECTOR IN THE RECORDING OF DATA ON ALL UTILITY LINES AND ACCESSORIES AS REQUIRED BY THE CITY OF ALBUQUERQUE FOR THE PREPARATION OF "AS BUILT" DRAWINGS. CONTRACTOR SHALL NOT COVER UTILITY LINES AND ACCESSORIES UNTIL ALL DATA HAS BEEN RECORDED.
8. CONTRACTOR SHALL ASSUME FINANCIAL RESPONSIBILITY FOR ANY DAMAGE TO EXISTING PAVEMENT, PAVEMENT MARKINGS, SIGNAGE, CURB, GUTTER, HANDICAP RAMPS, AND SIDEWALK DURING CONSTRUCTION APART FROM THOSE SECTIONS INDICATED ON THE PLANS, AND SHALL REPAIR OR REPLACE, PER THE STANDARD SPECIFICATIONS, ANY SUCH DAMAGE.
9. CONTRACTOR SHALL MAINTAIN A GRAFFITI-FREE WORK SITE. CONTRACTOR SHALL PROMPTLY REMOVE ANY AND ALL GRAFFITI FROM EQUIPMENT, WHETHER PERMANENT OR TEMPORARY.
10. CONTRACTOR SHALL BE RESPONSIBLE TO PROVIDE AND MAINTAIN ALL CONSTRUCTION SIGNING UNTIL THE PROJECT HAS BEEN ACCEPTED BY THE CITY AND OTHER JURISDICTIONAL AUTHORITIES WHERE APPLICABLE.
11. CONSTRUCTION ACTIVITY SHALL BE LIMITED TO THE PROPERTY AND/OR PROJECT LIMITS SHOWN. ANY DAMAGE TO ADJACENT PROPERTIES RESULTING FROM THE CONSTRUCTION PROCESS IS THE RESPONSIBILITY OF THE CONTRACTOR, INCLUDING ANY SUCH COSTS INCURRED.
12. REMOVALS SHALL BE DISPOSED OF OFF-SITE AND SHALL BE THE RESPONSIBILITY OF THE CONTRACTOR.
- TRANSPORTATION
1. ANY STREET STRIPING ALTERED OR DESTROYED SHALL BE REPLACED WITH THERMO-PLASTIC REFLECTORIZED PAVEMENT MARKING BY CONTRACTOR TO THE SAME LOCATION AS EXISTING OR AS INDICATED BY THIS PLAN SET.
2. REMOVAL OF EXISTING CURB & GUTTER AND SIDEWALKS SHALL BE TO THE NEAREST JOINT.
3. OVERNIGHT PARKING OF CONSTRUCTION EQUIPMENT SHALL NOT OBSTRUCT DRIVEWAYS OR DESIGNATED TRAFFIC LANES. THE CONTRACTOR SHALL NOT STORE ANY EQUIPMENT OR MATERIAL WITHIN THE PUBLIC RIGHT-OF-WAY.
4. CURB AND GUTTER, SIDEWALKS, AND DRIVE PADS SHALL MATCH THE LINE AND GRADE OF ADJUTING EXISTING AREAS AS SHOWN ON THE PLANS OR AS DIRECTED BY THE PROJECT ENGINEER.
5. THE SUBGRADE PREP SHALL EXTEND ONE FOOT BEYOND THE FREE EDGE OF NEW CURB AND GUTTER AND SIDEWALK.
6. CONTRACTOR TO TEST SUBGRADE R-VALUE PRIOR TO CONSTRUCTION. IN THE EVENT THE R-VALUE IS LESS THAN 50, REMOVE 2 FEET OF SUBGRADE MATERIAL AND IMPORT MATERIAL WITH R-VALUE GREATER THAN 50 OR CONTACT THE ENGINEER IMMEDIATELY SO THE PAVEMENT SECTION CAN BE MODIFIED.
7. AT ALL PAVEMENT REMOVAL AND REPLACEMENTS, SAW-CUT EDGES SHALL BE STRAIGHT AND CLEAN, AND LONGITUDINAL JOINTS SHALL NOT BE PLACED WITHIN WHEEL PATHS. PATCHES SHALL BE REGULAR AND SQUARE OR RECTANGULAR, WITH FOUR STRAIGHT SIDES. FINISHED PAVEMENT SURFACE SHALL BE FLUSH WITH EXISTING PAVEMENT SURFACE, WITH NO SPILLOVER OF ASPHALT OR TACK COAT. CARE MUST BE TAKEN TO AVOID DAMAGING THE INTEGRITY OR APPEARANCE OF SURROUNDING PAVEMENTS; IF DAMAGED, THE ENTIRE SURFACE PATCH MUST BE EXPANDED TO COVER DAMAGES.
8. CONTRACTOR WILL ENSURE THE ASPHALT HAS A SMOOTH, UNIFORM EDGE WHEN REMOVING AND REPLACING CURB AND GUTTER. IF THE ASPHALT EDGE IS NOT SMOOTH AND UNIFORM, CONTRACTOR WILL SAW CUT AND REPLACE A ONE-FOOT STRIP OF ASPHALT ALONG THE FULL SECTION BEING REPLACED; REFER TO C.O.A. STANDARD DRAWING # 2465 WITH THE APPROPRIATE PAVING SECTION BASED ON ROADWAY CLASSIFICATION.

HYDROLOGY

1. ALL STORM DRAINS SHALL BE RCP CLASS III UNLESS OTHERWISE NOTED ON THE PLANS.
2. RCP SHALL BE INSTALLED SO THAT THE JOINT GAP AT THE HOME POSITION SHALL CONFORM TO THE APPROVED MANUFACTURER'S RECOMMENDATION. MANUFACTURER'S RECOMMENDED JOINT GAP TOLERANCES FOR EACH PIPE SIZE AND TYPE SHALL BE SUBMITTED TO THE ENGINEER FOR APPROVAL PRIOR TO PLACEMENT OF PIPE. RCP JOINTS SHALL NOT BE GROUTED UNLESS DIRECTED BY THE ENGINEER AND WITH CITY APPROVAL.

WATER & SEWER

1. ALL UTILITIES AND UTILITY SERVICE LINES SHALL BE INSTALLED PRIOR TO PAVING. EXISTING VALVES AND MANHOLES SHALL NOT BE BURIED OR PAVED OVER BUT RIMS SHALL BE ADJUSTED TO MATCH NEW GRADE PER COA STANDARD DRAWINGS 2460 AND 2461.
2. MANHOLE RIMS, FIRE HYDRANT ELEVATIONS, AND FLANGE ELEVATIONS SHOWN ARE APPROXIMATE. CONTRACTOR SHALL FIELD VERIFY AND ADJUST TO FINAL PAVEMENT OR SURFACE GRADES.
3. THE CONTRACTOR SHALL COORDINATE WITH THE WATER AUTHORITY SEVEN (7) DAYS IN ADVANCE OF PERFORMING WORK THAT WILL AFFECT THE PUBLIC WATER OR SANITARY SEWER INFRASTRUCTURE. WORK REQUIRING SHUTOFF OF FACILITIES DESIGNATED AS MASTER PLAN FACILITIES MUST BE COORDINATED WITH THE WATER AUTHORITY 14 DAYS IN ADVANCE OF PERFORMING SUCH WORK. ONLY WATER AUTHORITY CREWS ARE AUTHORIZED TO OPERATE PUBLIC VALVES. SHUTOFF REQUESTS MUST BE MADE ONLINE AT [HTTP://ABCWUA.ORG/WATER SHUT OFF AND TURN ON PROCEDURES.ASPX](http://abcwua.org/water-shut-off-and-turn-on-procedures.aspx)
4. PROPOSED WATERLINE MATERIALS SHALL BE PVC PIPE MEETING AWWA C-900: DR18 REQUIREMENTS (6" - 12") OR DUCTILE IRON PIPE MEETING AWWA C-150 REQUIREMENTS (6" - 48").
5. ALL WATERLINE FITTINGS, VALVES, BENDS, TEES, CROSSES AND APPURTENANCES SHALL HAVE RESTRAINED JOINTS UNLESS OTHERWISE NOTED ON THE PLANS. THE JOINT RESTRAINT REQUIREMENTS SHOULD BE DELINEATED WITHIN A JOINT RESTRAINT TABLE.
6. ALL SANITARY SEWER LINE STATIONING REFERS TO SANITARY SEWER CENTERLINE STATIONING. EXCEPT WHEN PROFILED WITHIN A PROPOSED OR EXISTING STREET, WHERE STREET STATIONING SHALL GOVERN.
7. ALL FINAL BACKFILL FOR TRENCHES SHALL BE COMPACTED TO A MINIMUM OF 95% MAXIMUM DENSITY PER ASTM D-1557 AND AS DIRECTED BY STANDARD SPECIFICATIONS SECTION 701.14.2 AND STANDARD DRAWING NUMBER 2465.
8. ELECTRONIC MARKER SPHERES (EMS) WILL BE PLACED ACCORDING TO THE CITY OF ALBUQUERQUE SPECIFICATIONS FOR PUBLIC WORKS CONSTRUCTION, 1986 EDITION AS REVISED THROUGH UPDATE #9. THE CONTRACTOR SHALL INSTALL A 4" X 4" X5" POST AND EMS AT THE END OF EACH SANITARY SEWER SERVICE.
9. TRACER WIRE SHALL BE INCLUDED FOR ALL PUBLIC WATER AND SEWER MAINS AND FOR WATER SERVICES IN ACCORDANCE WITH WATER AUTHORITY DETAILS.
10. CONTRACTOR SHALL PROVIDE THE PROPOSED HYDRO TESTING PLANS TO THE WUA INSPECTORS FOR APPROVAL PRIOR TO BEGINNING TESTING OPERATIONS.
11. AT UTILITY CROSSINGS, WHERE LESS THAN 18" OF VERTICAL SEPARATION FROM STORM DRAIN PIPING OR STRUCTURES IS PROPOSED, LEAN FILL CONSTRUCTION (PER SECTION 207 OF THE STANDARD SPECIFICATIONS) SHALL BE USED TO PROTECT THE WATER OR SEWER LINE. LEAN FILL SHALL EXTEND A PERPENDICULAR DISTANCE OF 5 FEET ON EACH SIDE OF THE STORM PIPE OR STRUCTURE.

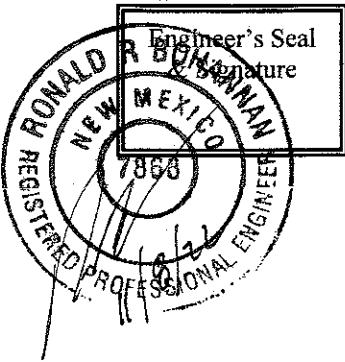
ALL DESIGNS AND CONSTRUCTION OF ANY UNDERGROUND UTILITIES SHALL COMPLY WITH ADMINISTRATIVE INSTRUCTION NO. 9 FOR WORK NEARBY OR AFFECTING SAN JUAN CHAMA TRANSMISSION LINES AND APPURTENANCES. INFORMATION SHALL BE PROVIDED TO THE WATER AUTHORITY ONE (1) MONTH IN ADVANCE OF THE CONSTRUCTION START DATE. INFORMATION CAN BE FOUND AT [HTTP://WWW.ABCWUA.ORG/WATER SHUT OFF AND TURN ON PROCEDURES.ASPX](http://www.abcwua.org/water-shut-off-and-turn-on-procedures.aspx)

OTHER COMMON NOTES

1. ALL EXCAVATION, TRENCHING, AND SHORING ACTIVITIES MUST BE ACCOMPLISHED IN ACCORDANCE WITH OSHA 29CFR 1926.650 SUBPART P.
2. WHEN DISTURBING MORE THAN ¼ ACRES, CONTRACTOR SHALL SECURE A "TOPSOIL DISTURBANCE PERMIT" PRIOR TO BEGINNING CONSTRUCTION.
3. IN ADVANCE OF CONSTRUCTION, CONTRACTOR SHALL DETERMINE IF OVERHEAD UTILITY LINES, SUPPORT STRUCTURES, POLES, GUYS, ETC. ARE AN OBSTRUCTION TO CONSTRUCTION OPERATIONS. IF ANY OBSTRUCTION TO CONSTRUCTION OPERATIONS IS EVIDENT, CONTRACTOR SHALL BE RESPONSIBLE FOR COORDINATING WITH THE APPROPRIATE UTILITY OWNER TO REMOVE OR SUPPORT THE UTILITY OBSTRUCTION. ANY COST ASSOCIATED WITH THIS EFFORT SHALL BE THE RESPONSIBILITY OF CONTRACTOR.
4. PNM WILL PROVIDE AT NO COST TO THE CITY OR THE CONTRACTOR THE REQUIRED PERSONNEL FOR INSPECTION OR OBSERVATION DEEMED NECESSARY BY PNM WHILE THE CONTRACTOR IS EXPOSING PNM'S CABLES. HOWEVER, THE CONTRACTOR SHALL BE CHARGED THE TOTAL COST ASSOCIATED WITH REPAIRS TO ANY DAMAGED CABLES OR FOR ANY COST ASSOCIATED WITH SUPPORTING OR RELOCATING THE POLES AND CABLES DURING CONSTRUCTION.
5. CONTRACTOR SHALL SUPPORT AND PROTECT ALL EXISTING UNDERGROUND UTILITY LINES WHICH BECOME EXPOSED DURING CONSTRUCTION. PAYMENT FOR SUPPORTING WORK SHALL BE INCIDENTAL TO WATERLINE AND/OR SEWER LINE COSTS.
6. CONTRACTOR IS TO SUPPORT, PROTECT, AND MAINTAIN THE INTEGRITY OF ALL UNDERGROUND TELEPHONE, ELECTRIC CABLES AND CABLE TELEVISION UTILITIES AT NO ADDITIONAL COST TO THE OWNER. CABLE IS TO BE SUPPORTED AT A MAXIMUM SPACING OF FIFTEEN (15) FEET. CONTRACTOR SHALL COORDINATE WITH AND MAKE NECESSARY PAYMENT (IF ANY) TO UTILITY OWNER FOR DE-ENERGIZATION OF CABLES OR SUPPORT OF CABLES BY THE UTILITY OWNER.
7. CONTRACTOR SHALL PROMPTLY CLEAN UP ANY MATERIAL EXCAVATED WITHIN THE PUBLIC RIGHT-OF-WAY OR PRIVATE ROADWAY EASEMENTS TO PREVENT ANY EXCAVATED MATERIAL BEING WASHED DOWN THE STREET OR INTO ANY PUBLIC DRAINAGE FACILITY.
8. CONTRACTOR SHALL CONDUCT ALL WORK IN A MANNER WHICH WILL MINIMIZE INTERFERENCE WITH LOCAL TRAFFIC.
9. ALL EXISTING SIGNS, MARKERS, DELINEATORS, ETC., WITHIN THE CONSTRUCTION LIMITS SHALL BE REMOVED, STORED AND RE-SET BY THE CONTRACTOR.
10. DISPOSAL SITE FOR ALL EXCESS EXCAVATION MATERIAL AND UNSUITABLE MATERIAL SHALL BE ARRANGED BY THE CONTRACTOR IN COMPLIANCE WITH ALL APPLICABLE ENVIRONMENTAL REGULATIONS. NO SEPARATE MEASUREMENT OR PAYMENT WILL BE MADE FOR COSTS ASSOCIATED WITH OBTAINING A DISPOSAL SITE AND HAUL THERETO.
11. IF CULTURAL RESOURCES, SUCH AS HISTORIC OR PREHISTORIC ARTIFACTS, OR HUMAN REMAINS ARE DISCOVERED DURING EXCAVATION OR CONSTRUCTION, WORK SHALL CEASE AND THE CONSTRUCTION ENGINEER SHALL NOTIFY THE COUNTY OFFICE OF THE MEDICAL EXAMINER AT (505) 272-3053. IF THE MEDICAL EXAMINER DETERMINES THAT HUMAN REMAINS ARE NOT PRESENT, THE CONSTRUCTION ENGINEER SHALL NOTIFY THE STATE HISTORIC PRESERVATION OFFICER (SHPO) AT 827-6320.
12. FINAL STABILIZATION MUST COMPLY WITH NOTE #1 ON THE INFRASTRUCTURE LIST: NATIVE GRASS SEED WITH MULCH OR EQUAL (MUST SATISFY THE "FINAL STABILIZATION CRITERIA" (GP2.2.146))

CERTIFICATE OF SUBSTANTIAL COMPLIANCE ON PLANS

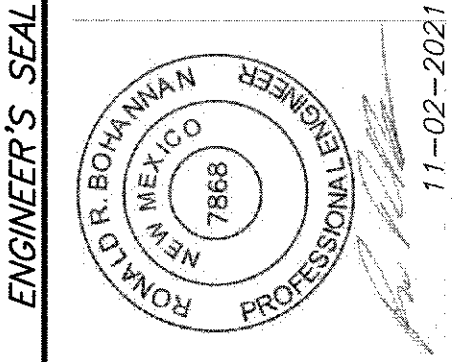
I, Ronald R. Bohannon, of the firm of Tierra West LLC, a Registered Professional Engineer in the State of New Mexico, do hereby certify, to the best of my knowledge and belief, that the infrastructure installed as part of this project has been inspected by me or by a qualified person under my direct supervision and has been constructed in accordance with the plans and specifications approved by the City Engineer and that the original design intent of the approved plans has been met, except as noted by me on the as-built construction drawings. This Certification is based on site inspections by me, or personnel under my direction with survey information provided by Brian Martinez, of Cartesian Surveys, Inc., NMPs number 18374



TIERRA WEST, LLC
5571 MIDWAY PARK PLACE NE
ALBUQUERQUE, NEW MEXICO 87109
(505) 858-3100
www.tierrawestllc.com

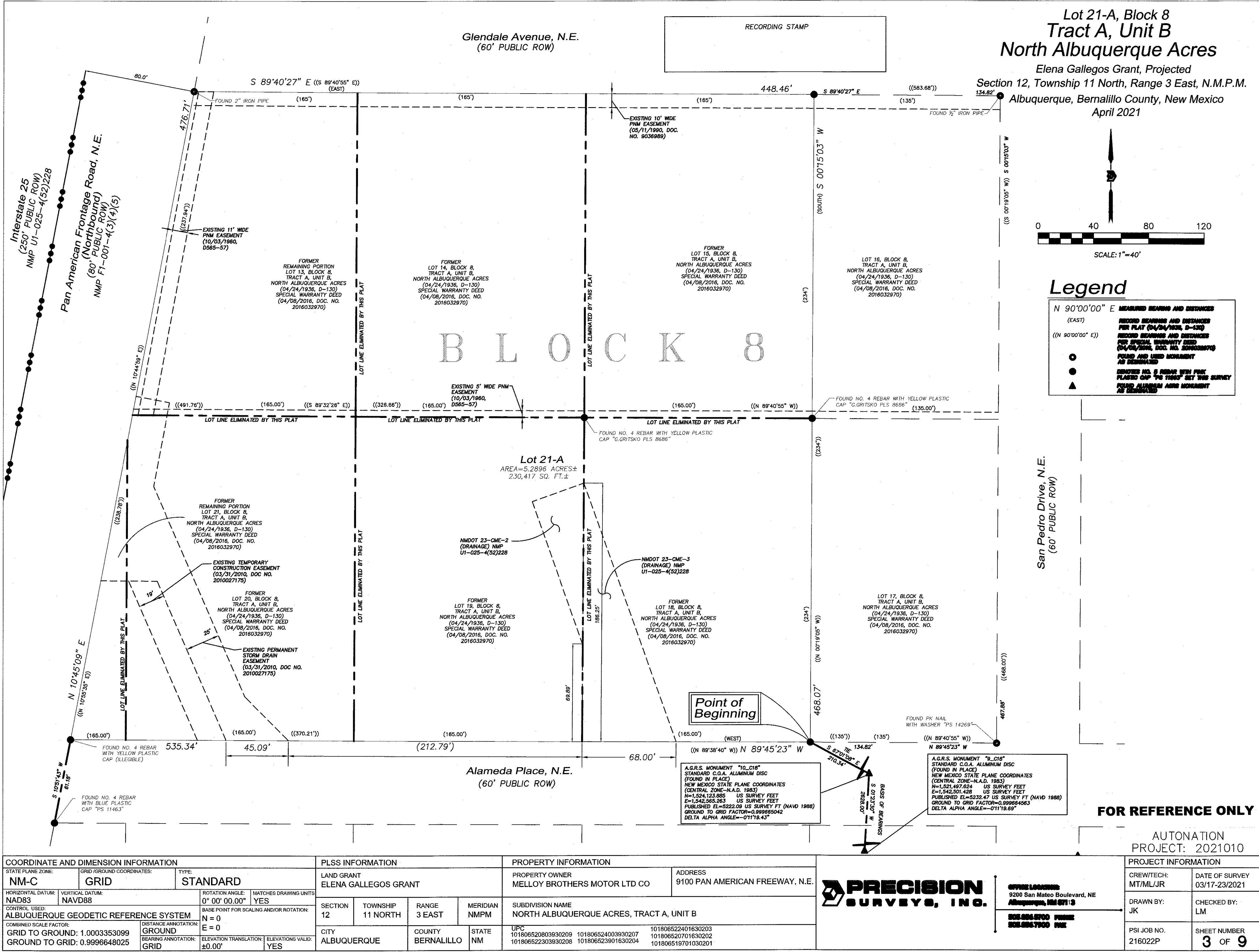
CITY OF ALBUQUERQUE
PUBLIC WORKS DEPARTMENT
ENGINEERING GROUP

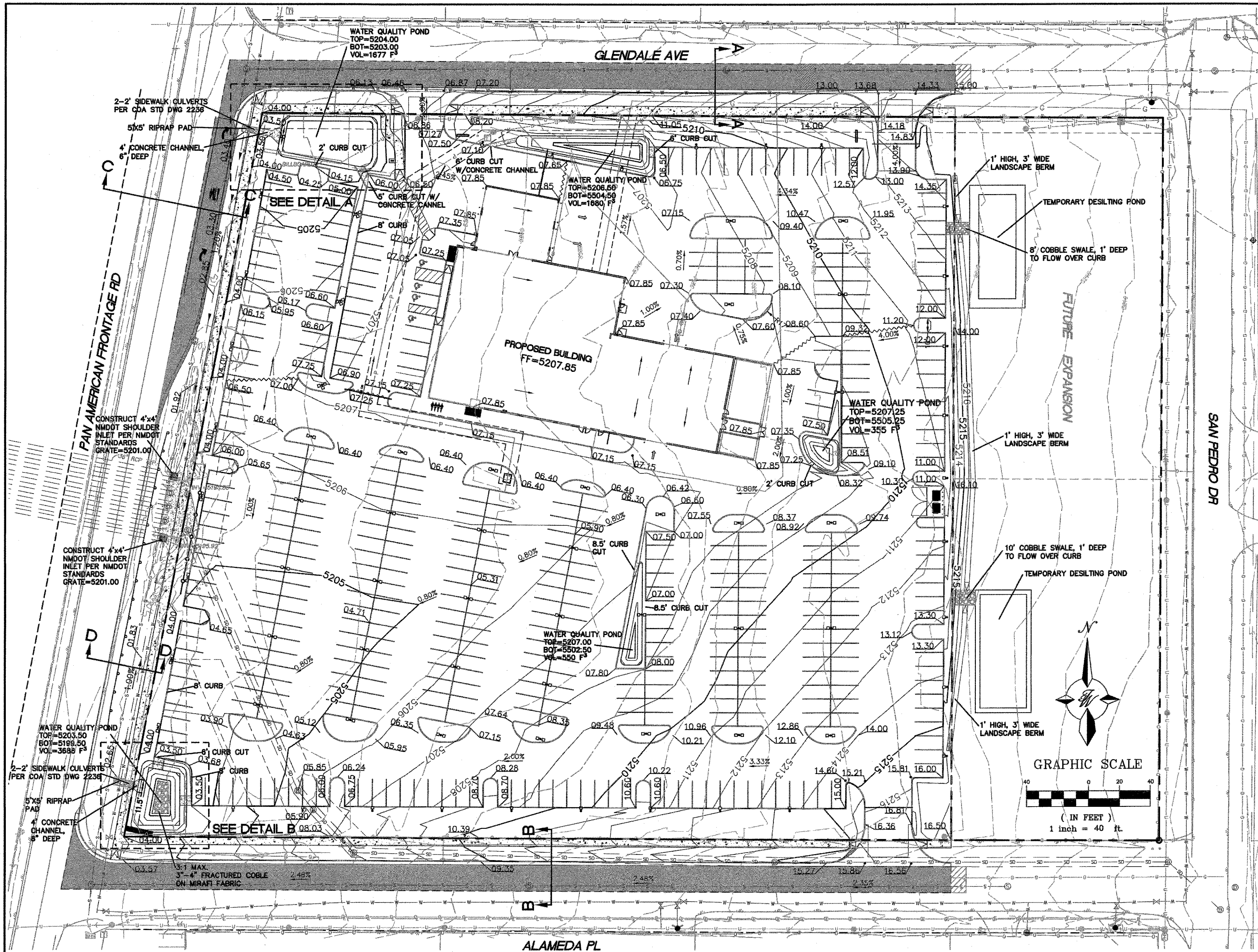
TITLE: AUTONATION GENERAL NOTES				
DESIGN REVIEW COMMITTEE APPROVED Nov. 16, 2021 DESIGN REVIEW COMMITTEE	CITY ENGINEER APPROVAL APPROVED April 18, 2022 CITY ENGINEER	LAST DESIGN UPDATE	MO./DAY/YR.	MO./DAY/YR.
CITY PROJECT NO. 596282		ZONE MAP NO. B-18-A	SHEET 2	OF 9



REMARKS REVISIONS	BY
DESIGN	
DESIGNED BY: JN	DATE: November, 2021
DRAWN BY: AS	DATE: November, 2021
DRAWN NAME:	JOB NO.: 2021010
CHECKED BY: RRB	DATE: November, 2021

RECORD DRAWINGS



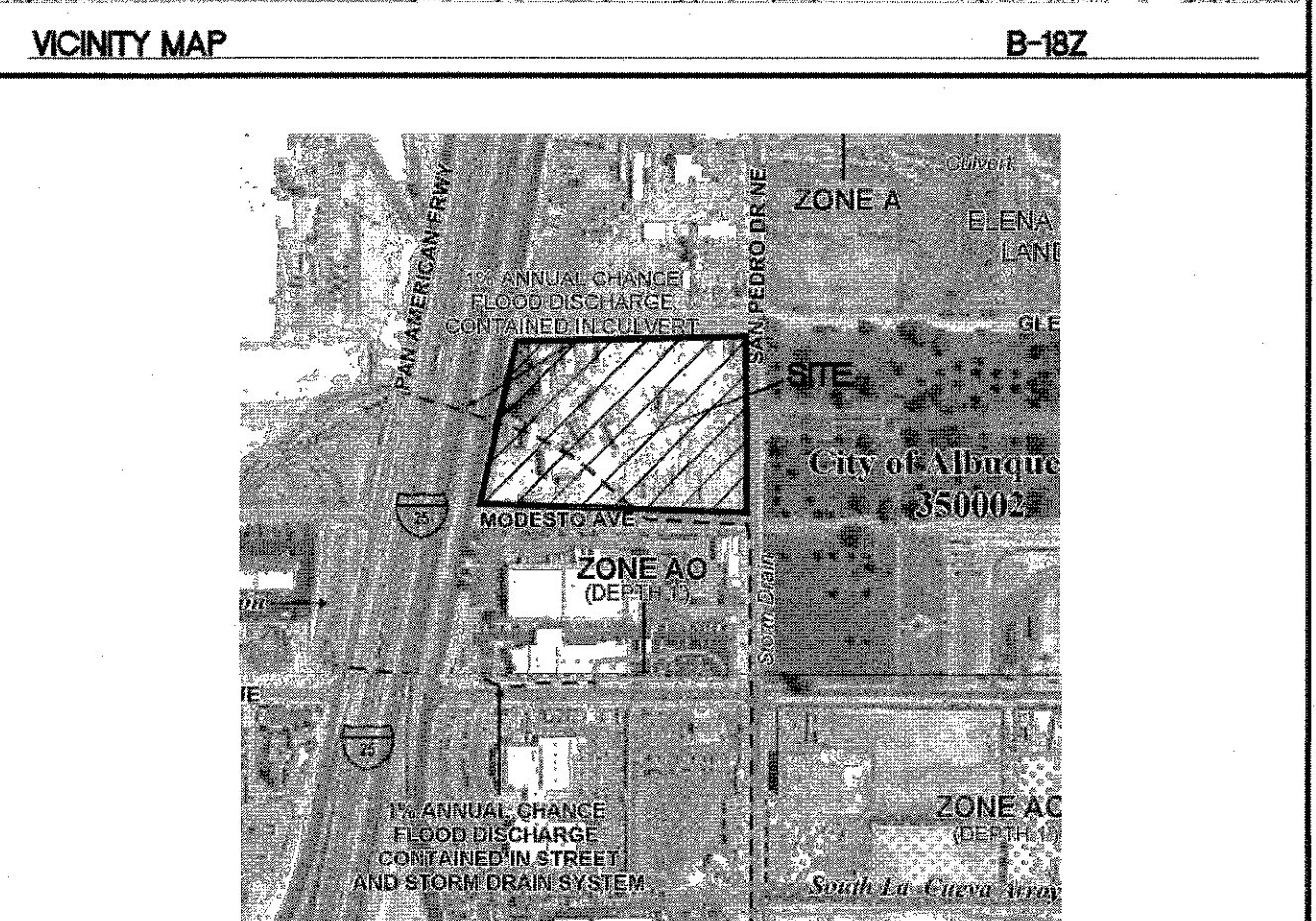
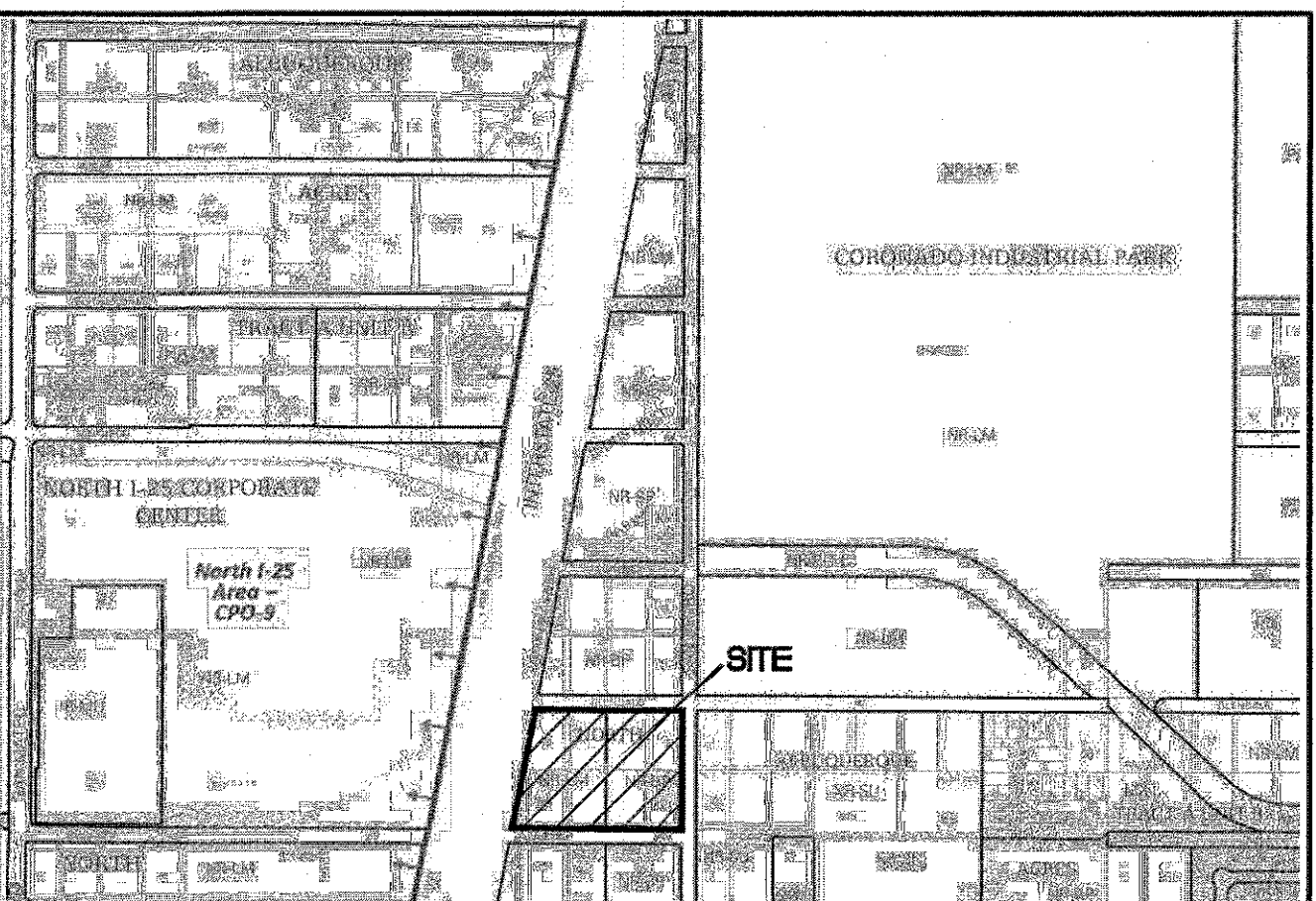


LEGEND

---	CURB & GUTTER
---	BOUNDARY LINE
---	EASEMENT
---	RIGHT-OF-WAY
---	BUILDING
---	SIDEWALK
---	CONTOUR MAJOR
---	CONTOUR MINOR
---	FLOW ARROW
---	EXISTING CURB & GUTTER
---	EXISTING BOUNDARY LINE
---	EXISTING CONTOUR MAJOR
---	EXISTING CONTOUR MINOR
---	EXISTING SPOT ELEVATION
---	EXISTING LIGHT STANDARD
---	SAWCUT LINE

- NOTICE TO CONTRACTORS**
1. AN EXCAVATION/CONSTRUCTION PERMIT WILL BE REQUIRED BEFORE BEGINNING ANY WORK WITHIN CITY RIGHT-OF-WAY.
 2. ALL WORK DETAILED ON THESE PLANS TO BE PERFORMED, EXCEPT AS OTHERWISE STATED OR PROVIDED HEREON, SHALL BE CONSTRUCTED IN ACCORDANCE WITH CITY OF ALBUQUERQUE INTERIM STANDARD SPECIFICATIONS FOR PUBLIC WORKS CONSTRUCTION, 1985.
 3. TWO WORKING DAYS PRIOR TO ANY EXCAVATION, CONTRACTOR MUST CONTACT LINE LOCATING SERVICE, 765-1234, FOR LOCATION OF EXISTING UTILITIES.
 4. PRIOR TO CONSTRUCTION, THE CONTRACTOR SHALL EXCAVATE AND VERIFY THE HORIZONTAL AND VERTICAL LOCATIONS OF ALL CONNECTIONS. SHOULD A CONFLICT EXIST, THE CONTRACTOR SHALL NOTIFY THE ENGINEER SO THAT THE CONFLICT CAN BE RESOLVED WITH A MINIMUM AMOUNT OF DELAY.
 5. BACKFILL COMPACTION SHALL BE ACCORDING TO TRAFFIC/STREET USE.
 6. MAINTENANCE OF THESE FACILITIES SHALL BE THE RESPONSIBILITY OF THE OWNER OF THE PROPERTY SERVED.
 7. WORK ON ARTERIAL STREETS SHALL BE PERFORMED ON A 24-HOUR BASIS.

- EROSION CONTROL NOTES:**
1. CONTRACTOR IS RESPONSIBLE FOR OBTAINING A TOPSOIL DISTURBANCE PERMIT PRIOR TO BEGINNING WORK.
 2. CONTRACTOR IS RESPONSIBLE FOR MAINTAINING RUN-OFF ON SITE DURING CONSTRUCTION.
 3. CONTRACTOR IS RESPONSIBLE FOR CLEANING ALL SEDIMENT THAT GETS INTO EXISTING RIGHT-OF-WAY.
 4. REPAIR OF DAMAGED FACILITIES AND CLEANUP OF SEDIMENT ACCUMULATIONS ON ADJACENT PROPERTIES AND IN PUBLIC FACILITIES IS THE RESPONSIBILITY OF THE CONTRACTOR.
 5. ALL EXPOSED EARTH SURFACES MUST BE PROTECTED FROM WIND AND WATER EROSION PRIOR TO FINAL (CITY) ACCEPTANCE OF ANY PROJECT.
 6. ALL SLOPES NOT STABILIZED AT THE END OF THE PROJECT SHALL BE STABILIZED IN ACCORDANCE WITH COA SPECS OR 3" GRAVEL.



- PRIVATE DRAINAGE FACILITIES WITHIN CITY RIGHT-OF-WAY**
- NOTICE TO CONTRACTOR**
- (SPECIAL ORDER 19-80-19)**
1. BUILD SIDEWALK CULVERT PER COA STD DWG 2236.
 2. CONTACT STORM DRAIN MAINTENANCE AT (505) 857-8033 TO SCHEDULE A MEETING PRIOR TO FORMING.
 3. AN EXCAVATION PERMIT WILL BE REQUIRED BEFORE BEGINNING ANY WORK WITHIN CITY RIGHT-OF-WAY.
 4. ALL WORK ON THIS PROJECT SHALL BE PERFORMED IN ACCORDANCE WITH APPLICABLE FEDERAL, STATE AND LOCAL LAWS, RULES AND REGULATIONS CONCERNING CONSTRUCTION SAFETY AND HEALTH.
 5. TWO WORKING DAYS PRIOR TO ANY EXCAVATION, THE CONTRACTOR MUST CONTACT NEW MEXICO ONE CALL, DIAL '811' [OR (505) 260-1990] FOR THE LOCATION OF EXISTING UTILITIES.
 6. PRIOR TO CONSTRUCTION, THE CONTRACTOR SHALL EXCAVATE AND VERIFY THE LOCATIONS OF ALL OBSTRUCTIONS. SHOULD A CONFLICT EXIST, THE CONTRACTOR SHALL NOTIFY THE ENGINEER SO THAT THE CONFLICT CAN BE RESOLVED WITH A MINIMUM AMOUNT OF DELAY.
 7. BACKFILL COMPACTION SHALL BE ACCORDING TO TRAFFIC/STREET USE.
 8. MAINTENANCE OF THE FACILITY SHALL BE THE RESPONSIBILITY OF THE OWNER OF THE PROPERTY BEING SERVED.
 9. WORK ON ARTERIAL STREETS MAY BE REQUIRED ON A 24-HOUR BASIS.
 10. CONTRACTOR MUST CONTACT STORM DRAIN MAINTENANCE AT (505) 857-8033 TO SCHEDULE A CONSTRUCTION INSPECTION. FOR EXCAVATING AND BARRICADING INSPECTIONS, CONTACT CONSTRUCTION COORDINATION AT (505) 924-3416.



EXISTING DRAINAGE:

THIS SITE IS CURRENTLY VACANT AND IS LOCATED ON THE WEST SIDE OF SAN PEDRO BETWEEN GLENDALE AVENUE AND ALAMEDA PLACE. THE SITE IS BOUNDED BY ROADS ON ALL FOUR SIDES AND CONTAINS APPROXIMATELY 5.29 ACRES. THE SITE DRAINS FROM EAST TO WEST AND INTO A DRAINAGE SWALE ALONG THE EAST SIDE OF PAN AMERICAN FREEWAY. THE SWALE THEN DRAINS TO TWO EXISTING 36" ROP PIPES THAT DRAIN TO THE WEST UNDER INTERSTATE 25 AND INTO AN ARROYO. ACCORDING TO AN APPROVED DRAINAGE PLAN FOR THE SAN PEDRO STORM DRAIN PROJECT (CITY PROJECT NO. 5304.91) COMPLETED BY THOMPSON ENGINEERING IN JANUARY OF 2010, THIS SITE IS CONTAINED WITHIN BASIN 116.21. THAT BASIN ALSO INCLUDES 2 LOTS TO THE EAST OF THIS PROJECT THAT ARE OWNED BY THIS SAME LAND OWNER. THAT BASIN WAS DESIGNED TO DRAIN 30.0 CFS TO THE SAN PEDRO STORM SEWER. THE SITE IS NOT LOCATED WITHIN A FLOOD PLAIN AS SHOWN ON THE FIRM MAP. THIS PROJECT DOES RECEIVE OFFSITE FLOW FROM THE 2 LOTS TO THE EAST ALONG SAN PEDRO.

NOTE

POND SIDE SLOPES NEED TO BE STABILIZED WITH NATIVE GRASS SEED WITH AGGREGATE MULCH OR EQUAL (MUST SATISFY THE FINAL STABILIZATION CRITERIA CGP 2.2.14.B.)

PROPOSED DRAINAGE:

THE SITE WILL CONTINUE TO DRAIN FROM EAST TO WEST INTO THE EXISTING DRAINAGE SWALE ALONG PAN AMERICAN FREEWAY AND IS DIVIDED INTO THREE BASINS. THE OFFSITE LOTS TO THE EAST WILL CONTINUE TO DRAIN THROUGH THIS SITE VIA TEMPORARY DESILTING PONDS LOCATED ALONG THE PROPERTY LINE. BASIN OF-1 WILL DRAIN A 100YR, 6-HR FLOW OF 1.67 CFS TO BASIN "B" WHILE BASIN OF-2 WILL DRAIN A 100YR, 6-HR FLOW OF 4.10 CFS TO BASIN "C".

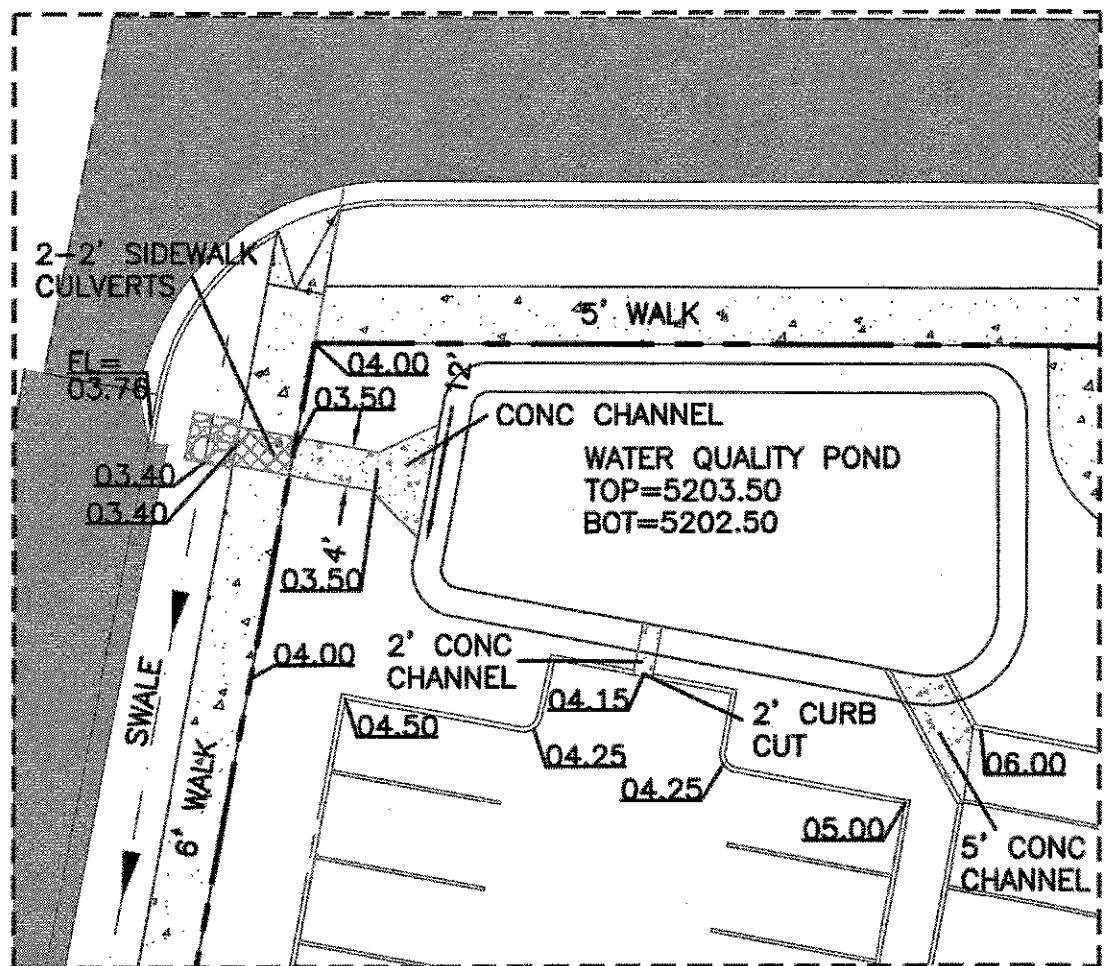
BASIN "B" WILL GENERATE A 100YR, 6-HR FLOW OF 4.47 CFS WHICH WILL BE DIRECTED TO A WATER QUALITY POND. BASIN "B" WILL PASS THROUGH THE OFFSITE FLOWS FROM BASIN OF-1. THE POND WILL CONTAIN THE REQUIRED WATER QUALITY VOLUME AND THEN OVERFLOW TO BASIN "A".

BASIN "A" WILL GENERATE A 100YR, 6-HR FLOW OF 2.36 CFS WHICH WILL BE DIRECTED TO A WATER QUALITY POND IN THE NORTHWEST CORNER OF THE PROJECT. BASIN "A" WILL PASS THROUGH THE FLOWS FROM BASIN "B" AND BASIN OF-1. THE POND WILL CONTAIN THE REQUIRED WATER QUALITY VOLUME AND THEN BE ALLOWED TO OVERFLOW INTO THE EXISTING DRAINAGE SWALE ALONG PAN AMERICAN FREEWAY AS IT DOES IN THE EXISTING CONDITION.

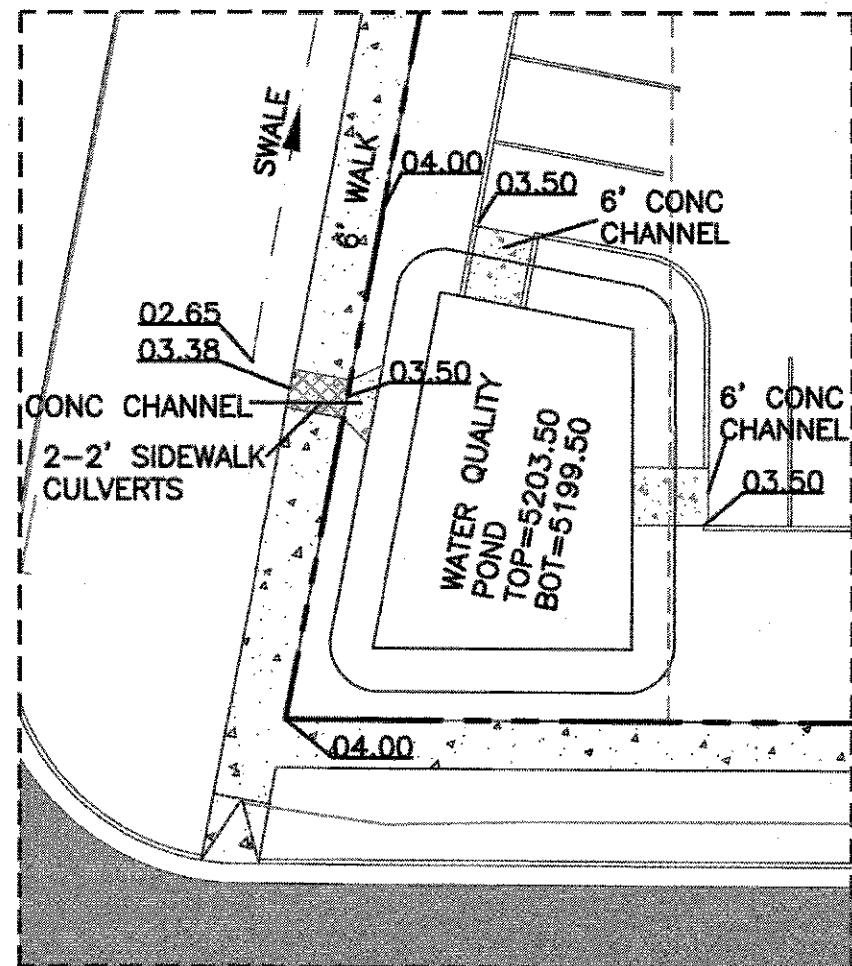
BASIN "C" WILL GENERATE A 100YR, 6-HR FLOW OF 14.26 CFS WHICH WILL BE DIRECTED TO TWO WATER QUALITY PONDS. BASIN "C" WILL PASS THROUGH THE FLOWS FROM BASIN OF-2. THE COMBINED VOLUME OF THE PONDS CONTAIN THE REQUIRED WATER QUALITY VOLUME. ALL FLOWS EVENTUALLY WILL PASS THROUGH THE WATER QUALITY POND LOCATED IN THE SOUTHWEST CORNER OF THE PROPERTY AND OVERFLOW INTO THE EXISTING DRAINAGE SWALE ALONG PAN AMERICAN FREEWAY AS IT DOES IN THE EXISTING CONDITION.

THE EXISTING DRAINAGE SWALE ALONG PAN AMERICAN FREEWAY WILL BE CLEANED AND LINED WITH COBBLE TO PREVENT EROSION. THE TOTAL DISCHARGE TO THE SWALE IS 26.86 CFS WHICH IS WELL BELOW THE 30.0 CFS ALLOWED PER THE APPROVED DRAINAGE ANALYSIS.

SEE SHEET GR-3 FOR ROAD CROSS SECTIONS





DETAIL A

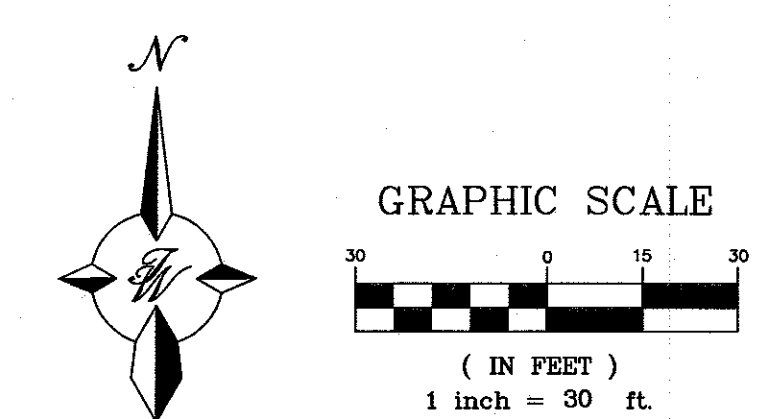
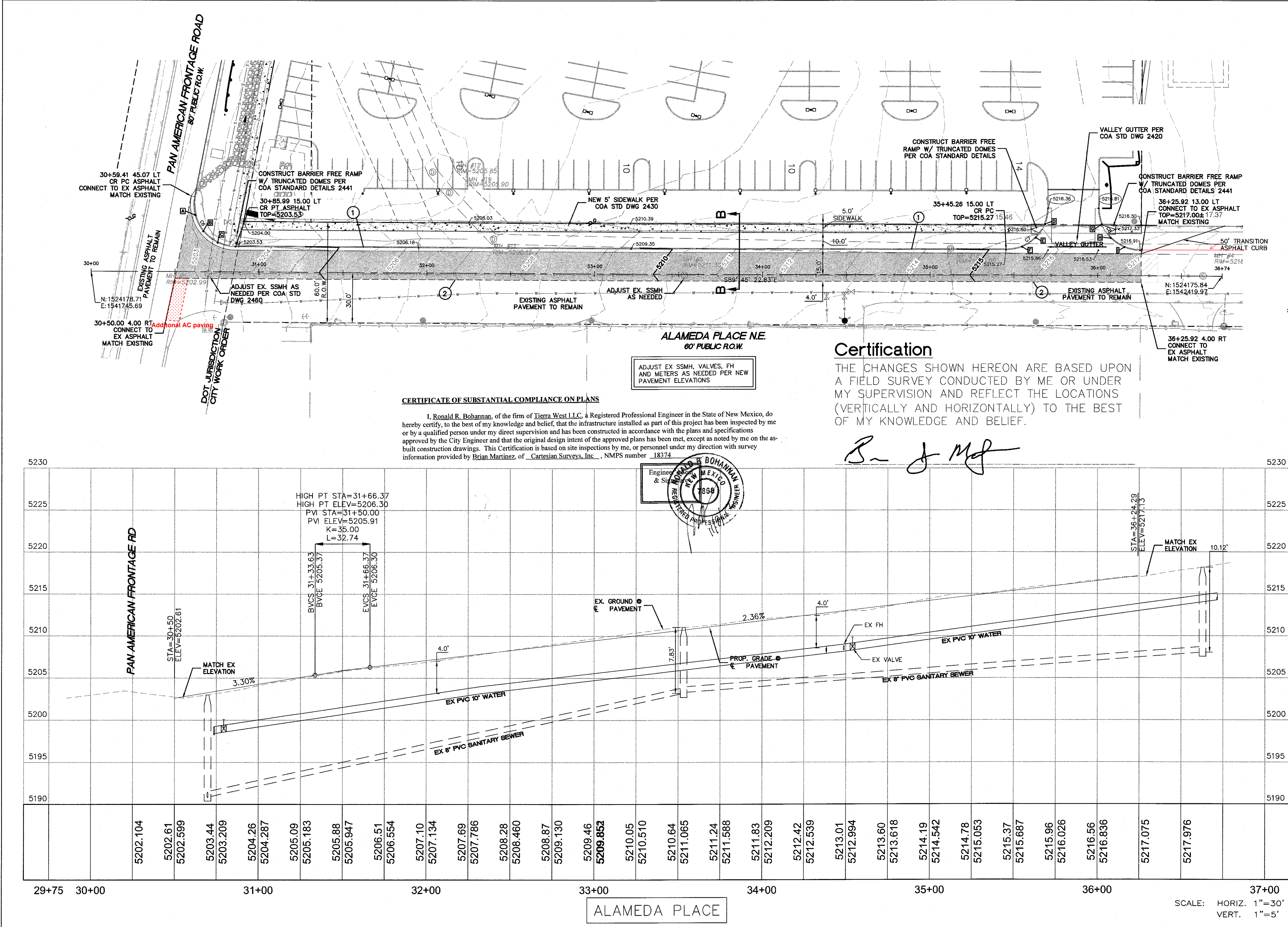


DETAIL B

CAUTION

ALL EXISTING UTILITIES SHOWN WERE OBTAINED FROM RESEARCH, AS-BUILTS, SURVEYS OR INFORMATION PROVIDED BY OTHERS. IT SHALL BE THE SOLE RESPONSIBILITY OF THE CONTRACTOR TO CONDUCT ALL NECESSARY FIELD INVESTIGATIONS PRIOR TO AND INCLUDING ANY EXCAVATION, TO DETERMINE THE ACTUAL LOCATION OF UTILITIES AND OTHER IMPROVEMENTS, PRIOR TO STARTING THE WORK. ANY CHANGES FROM THIS PLAN SHALL BE COORDINATED WITH AND APPROVED BY THE ENGINEER.

ENGINEER'S SEAL	AUTO NATION ALBUQUERQUE, NM	DRAWN BY pm
 7-29-21		DATE 7-29-21
	GRADING AND DRAINAGE PLAN	DRAWING 2021010-GR
	 TIERRA WEST, LLC 5571 MIDWAY PARK PL NE ALBUQUERQUE, NEW MEXICO 87109 (505) 858-3100 www.tierrawestllc.com	SHEET # GR-1
RONALD R. BOHANNAN P.E. #7868		JOB # 2021010



QUARTER POINTS

C6	FL	ELEV.	C7	FL	ELEV.
A	5202.99	02.57	D	5216.10	16.17
B	5203.18	02.83	E	5215.90	16.00
C	5203.36	03.22	F	5215.54	15.80

CURVE TABLE

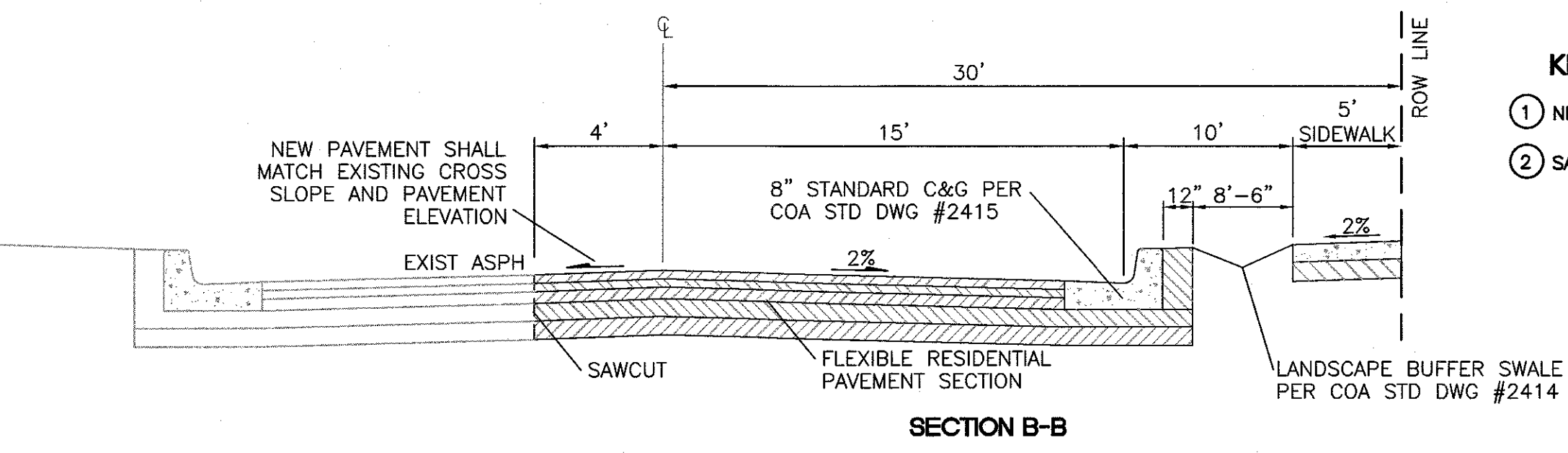
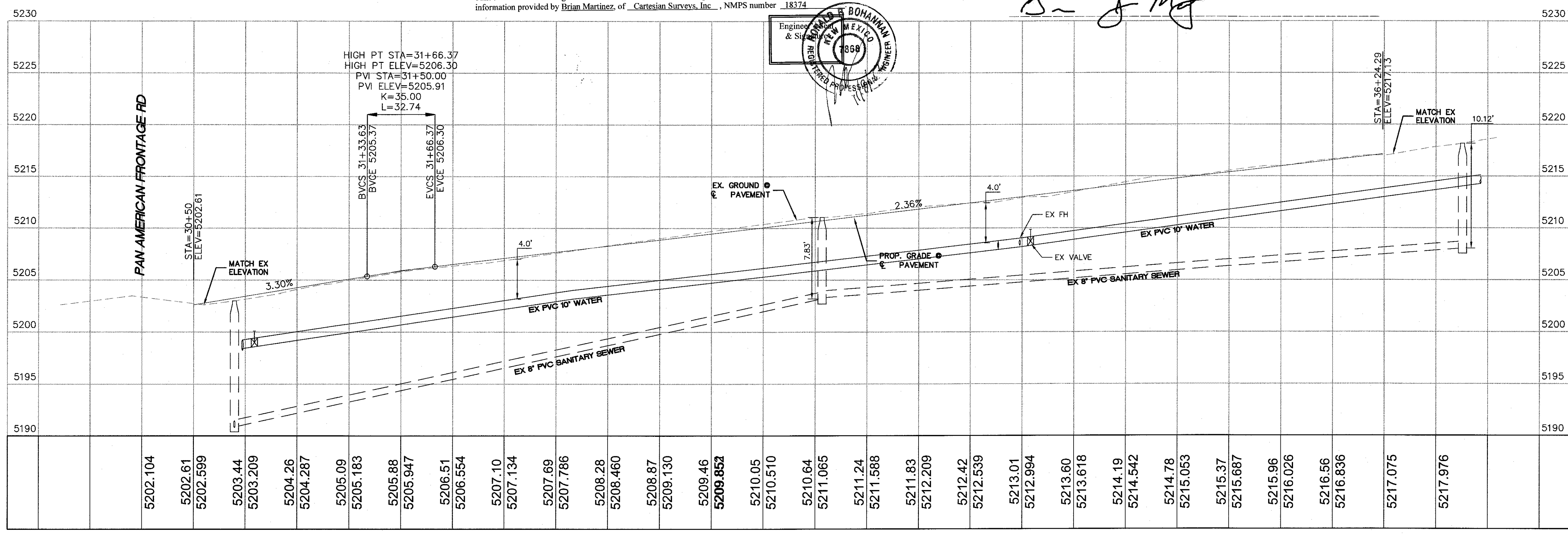
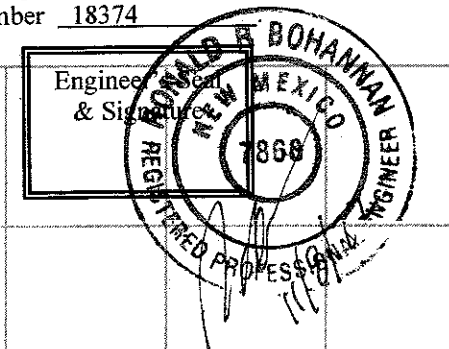
CURVE	DELTA	RADIUS	LENGTH
C8	90°00'00"	25.00	39.27

- LEGEND
- ROW LINE
 - EXISTING CURB & GUTTER
 - EXISTING ASPHALT CURB
 - EXISTING SAS MANHOLE
 - EX. 8" SAS --- EXISTING SANITARY SEWER LINE
 - EX. WL --- EXISTING WATER LINE
 - SAWCUT
 - NEW PAVEMENT
 - NEW CURB & GUTTER

Certification
THE CHANGES SHOWN HEREON ARE BASED UPON A FIELD SURVEY CONDUCTED BY ME OR UNDER MY SUPERVISION AND REFLECT THE LOCATIONS (VERTICALLY AND HORIZONTALLY) TO THE BEST OF MY KNOWLEDGE AND BELIEF.

R. J. M.

CERTIFICATE OF SUBSTANTIAL COMPLIANCE ON PLANS
I, Ronald R. Bohannon, of the firm of Tierra West LLC, a Registered Professional Engineer in the State of New Mexico, do hereby certify, to the best of my knowledge and belief, that the infrastructure installed as part of this project has been inspected by me or by a qualified person under my direct supervision and has been constructed in accordance with the plans and specifications approved by the City Engineer and that the original design intent of the approved plans has been met, except as noted by me on the as-built construction drawings. This Certification is based on site inspections by me, or personnel under my direction with survey information provided by Brian Martinez, of Cartesian Surveys, Inc., NMPS number 18374.



- KEYED NOTES**
- 1 NEW 8" STANDARD CURB AND GUTTER PER COA STD DWG
 - 2 SAWCUT 1' MIN FROM EXISTING ASPHALT CURB

NOTE
CONTRACTOR SHALL POTHOLE TO DETERMINE LOCATION OF EXISTING IRRIGATION CONDUIT, AND RELOCATE SAME IF IN CONFLICT WITH PROPOSED WORK

CAUTION
ALL EXISTING UTILITIES SHOWN WERE OBTAINED FROM RESEARCH, AS-BUILTS, SURVEYS OR INFORMATION PROVIDED BY OTHERS. IT SHALL BE THE SOLE RESPONSIBILITY OF THE CONTRACTOR TO CONDUCT ALL NECESSARY FIELD INVESTIGATIONS PRIOR TO AND INCLUDING ANY EXCAVATION, TO DETERMINE THE ACTUAL LOCATION OF UTILITIES AND OTHER IMPROVEMENTS, PRIOR TO STARTING THE WORK. ANY CHANGES FROM THIS PLAN SHALL BE COORDINATED WITH AND APPROVED BY THE ENGINEER.

TIERRA WEST, LLC
5571 MIDWAY PARK PLACE NE
ALBUQUERQUE, NEW MEXICO 87109
(505) 858-3100
www.tierrawestllc.com

CITY OF ALBUQUERQUE
PUBLIC WORKS DEPARTMENT
ENGINEERING GROUP

TITLE:
AUTONATION
ALEMEDA PLACE ROADWAY & FRONTAGE IMPROVEMENTS

DESIGN REVIEW COMMITTEE	CITY ENGINEER APPROVAL	MO./DAY/YR.	MO./DAY/YR.
APPROVED Nov. 16, 2021	APPROVED April 18, 2022		

DESIGNED BY: JN	DRAWN BY: AS	CHECKED BY: RRB
DATE: November, 2021	DATE: November, 2021	DATE: November, 2021
JOB NO: 2021010		

CITY PROJECT NO. 596282

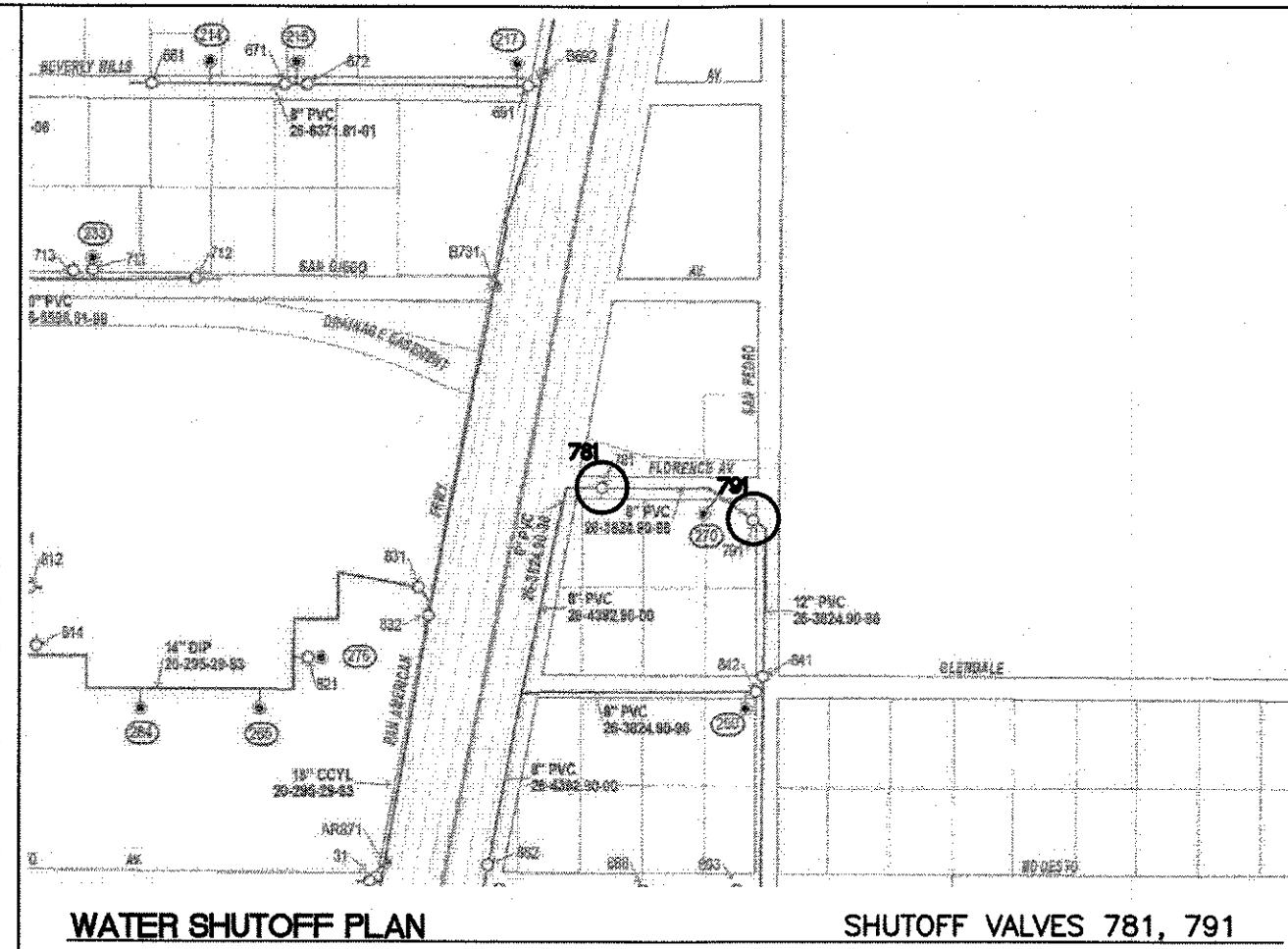
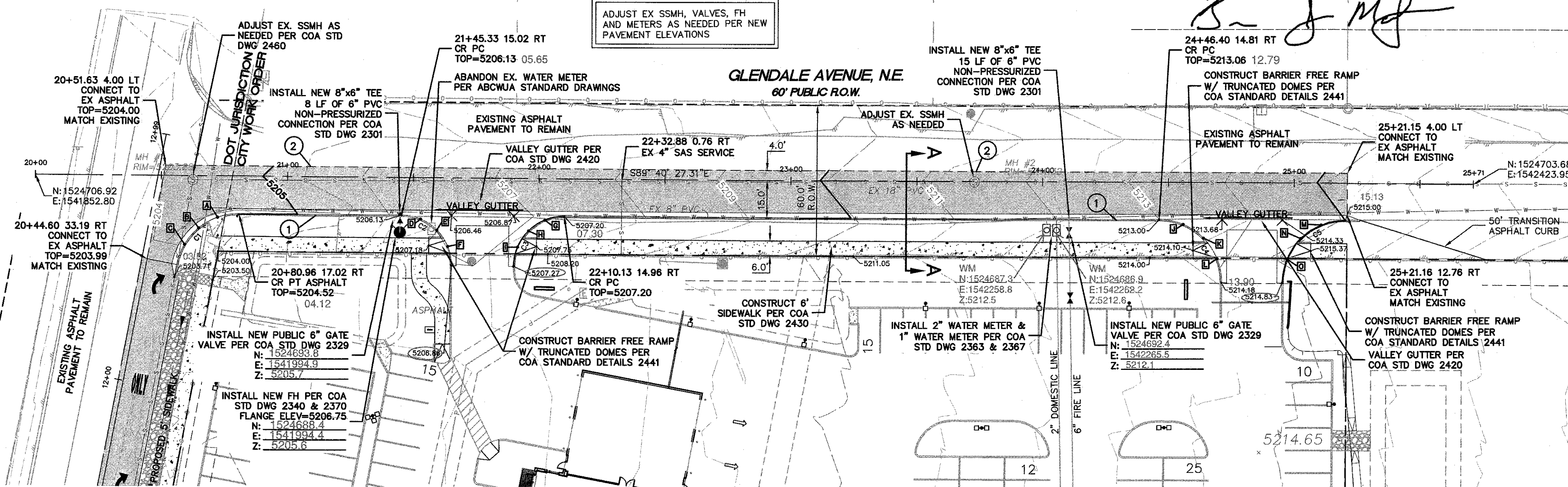
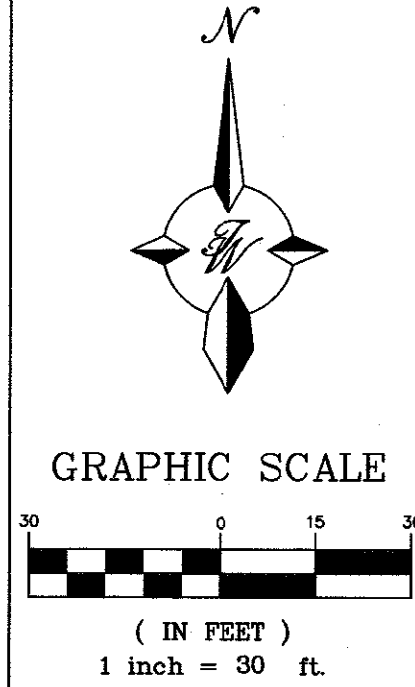
ZONE MAP NO. B-18-A

SHEET 5 OF 9

Certification

THE CHANGES SHOWN HEREON ARE BASED UPON A FIELD SURVEY CONDUCTED BY ME OR UNDER MY SUPERVISION AND REFLECT THE LOCATIONS (VERTICALLY AND HORIZONTALLY) TO THE BEST OF MY KNOWLEDGE AND BELIEF.

B. J. M.



THE CONTRACTOR SHALL COORDINATE WITH THE WATER AUTHORITY SEVEN (7) DAYS IN ADVANCE OF PERFORMING WORK THAT WILL AFFECT THE PUBLIC WATER OR SANITARY SEWER INFRASTRUCTURE. WORK REQUIRING SHUTOFF OF FACILITIES DESIGNATED AS MASTER PLAN FACILITIES MUST BE COORDINATED WITH THE WATER AUTHORITY 14 DAYS IN ADVANCE OF PERFORMING SUCH WORK. ONLY WATER AUTHORITY CREWS ARE AUTHORIZED TO OPERATE PUBLIC VALVES. SHUTOFF REQUESTS MUST BE MADE ONLINE AT [HTTP://ABCWJA.ORG/CONTENT/VIEW/FULL/1729/](http://abcwja.org/content/view/full/1729/)

LEGEND

- ROW LINE
- EXISTING CURB & GUTTER
- EXISTING ASPHALT CURB
- EXISTING SAS MANHOLE
- EXISTING SANITARY SEWER LINE
- EXISTING WATER LINE
- SANITARY SEWER LINE
- WATERLINE
- PROPOSED HYDRANT
- NEW WATER METER
- EXISTING SAS MH
- EXISTING GATE VALVE
- SAWCUT
- NEW PAVEMENT
- NEW CURB & GUTTER

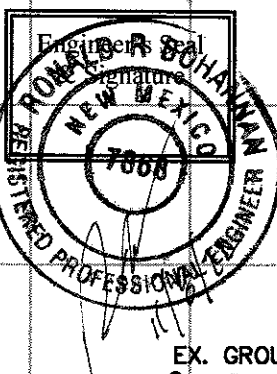
QUARTER POINTS

C1	FL	ELEV.	C2	FL	ELEV.
	A	5204.35		D	5206.31
	B	5204.17		E	5206.54
C3	G	5207.12	C4	FL	ELEV.
	H	5207.03		J	5213.29
	I	5207.13		K	5213.64
C5	M	5214.77		L	5213.84
	N	5214.54			
	O	5214.64			

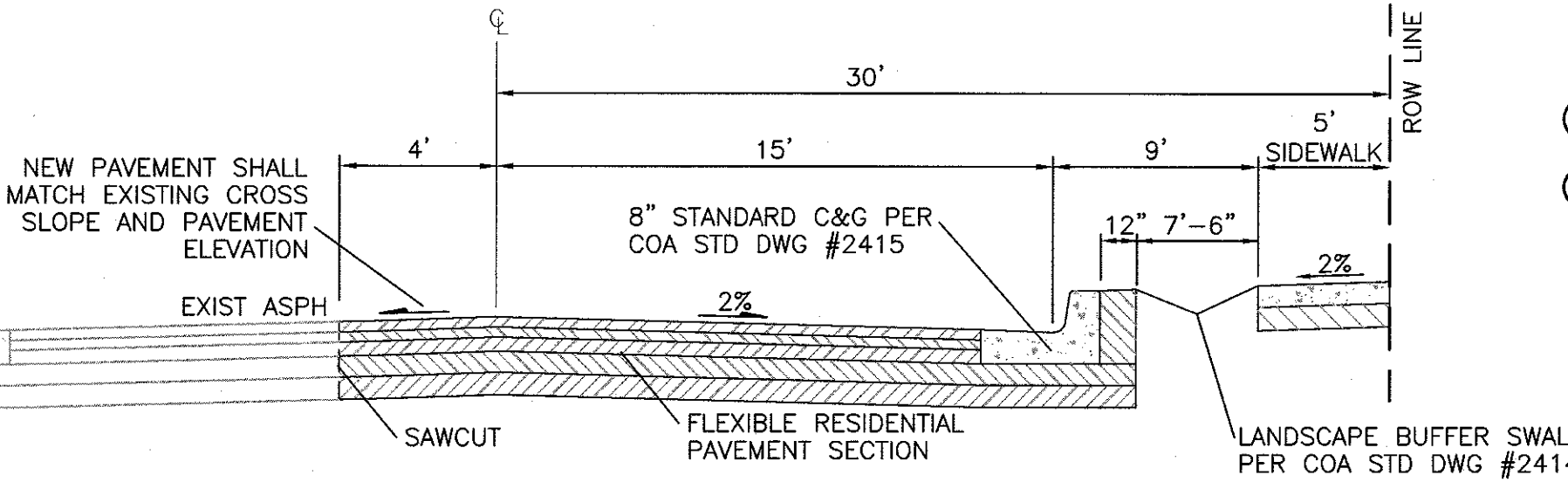
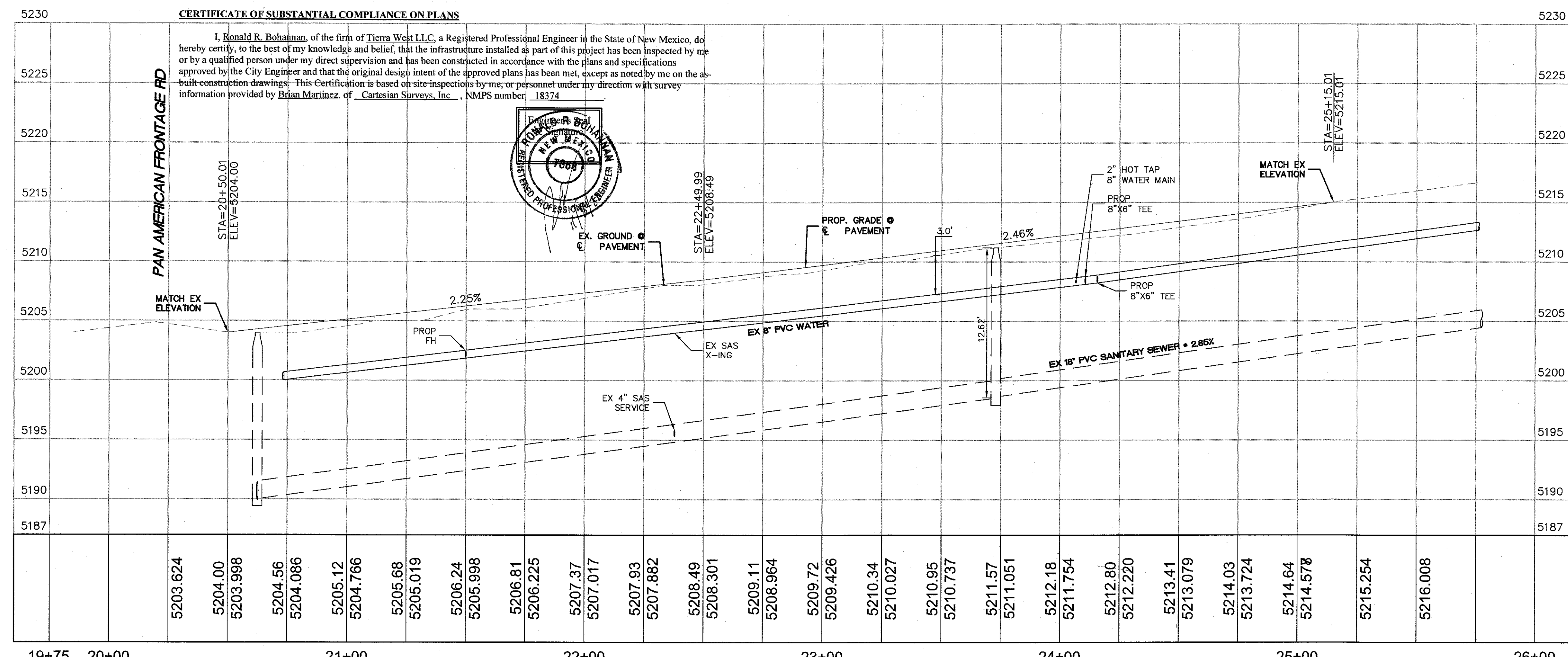
CURVE TABLE			
CURVE	DELTA	RADIUS	LENGTH
C2	89°42'38"	20.00	31.31

CERTIFICATE OF SUBSTANTIAL COMPLIANCE ON PLANS

I, Ronald R. Bohannon, of the firm of Tierra West LLC, a Registered Professional Engineer in the State of New Mexico, do hereby certify, to the best of my knowledge and belief, that the infrastructure installed as part of this project has been inspected by me or by a qualified person under my direct supervision and has been constructed in accordance with the plans and specifications approved by the City Engineer and that the original design intent of the approved plans has been met, except as noted by me on the as-built construction drawings. This Certification is based on site inspections by me, or personnel under my direction with survey information provided by Brian Martinez, of Cartesian Surveys, Inc., NMPS number 18374.



PAN AMERICAN FRONTAGE RD



KEYED NOTES

- NEW 8" STANDARD CURB AND GUTTER PER COA STD DWG 2415B
- SAWCUT 1' MIN FROM EXISTING ASPHALT CURB

NOTE

CONTRACTOR SHALL POT HOLE TO DETERMINE LOCATION OF EXISTING IRRIGATION CONDUIT, AND RELOCATE SAME IF IN CONFLICT WITH PROPOSED WORK

CAUTION

ALL EXISTING UTILITIES SHOWN WERE OBTAINED FROM RESEARCH, AS-BUILTS, SURVEYS OR INFORMATION PROVIDED BY OTHERS. IT SHALL BE THE SOLE RESPONSIBILITY OF THE CONTRACTOR TO CONDUCT ALL NECESSARY FIELD INVESTIGATIONS PRIOR TO AND INCLUDING ANY EXCAVATION, TO DETERMINE THE ACTUAL LOCATION OF UTILITIES AND OTHER IMPROVEMENTS, PRIOR TO STARTING THE WORK. ANY CHANGES FROM THIS PLAN SHALL BE COORDINATED WITH AND APPROVED BY THE ENGINEER.

TIERRA WEST, LLC
5571 MIDWAY PARK PLACE NE
ALBUQUERQUE, NEW MEXICO 87109
(505) 858-3100
www.tierrawestllc.com

CITY OF ALBUQUERQUE
PUBLIC WORKS DEPARTMENT
ENGINEERING GROUP

TITLE:
AUTONATION
GLENDALE AVE ROADWAY & FRONTAGE IMPROVEMENTS

DESIGN REVIEW COMMITTEE	CITY ENGINEER APPROVAL	NO.	DATE	REMARKS	BY
APPROVED Nov. 16, 2021 DESIGN REVIEW COMMITTEE	APPROVED April 18, 2022 CITY ENGINEER				

CITY PROJECT NO. 596282

ZONE MAP NO. B-18-A

SHEET 6 OF 9

GENERAL NOTES

1. DESIGN ELEVATIONS TO BE GIVEN AT EACH END OF THE CURB RETURN (TOP OF CURBELEV.) AND AT INTERSECTIONS OF PROJECTED FLOWLINES (FLOWLINE ELEV.).
2. ON UPSTREAM AND DOWNSTREAM ENDS OF THE INTERSECTION, VALLEY GUTTER CONSTRUCTION SHALL EXTEND TO THE END OF RETURNS.
3. THE VALLEY GUTTER TO BE REINFORCED WITH 6" X 6" X NO. 6 GA. WIRE MESH.
4. INVERT OF VALLEY GUTTER TO EXTEND FROM FLOWLINE OF UPSTREAM CURB RETURN TO FLOWLINE OF DOWNSTREAM CURB RETURN.
5. CURB FLOWLINE AND TOP OF CURB ELEV. SHOWN IN THE BOX CORRESPOND TO QUARTERPOINTS INDICATED ON THE CURB RETURN IN THE CLOCKWISE DIRECTION.
6. DENOTES 1/2" EXPANSION JOINT.
7. FOR NEW CONSTRUCTION, VALLEY GUTTER SHALL BE CONSTRUCTED PRIOR TO ADJACENT PAVEMENT. ASPHALT CONC. SHALL BE INSTALLED MONOLITHICALLY TO MEET NEW VALLEY GUTTER.
8. PRIOR TO CONSTRUCTION OF NEW VALLEY GUTTER ON EXISTING ACCEPTED STREETS, PAVEMENT SHALL BE REMOVED AS SHOWN ON PLANS.
9. ENSURE MINIMUM 4' WIDE ADA PATHWAY ACROSS INTERSECTION.

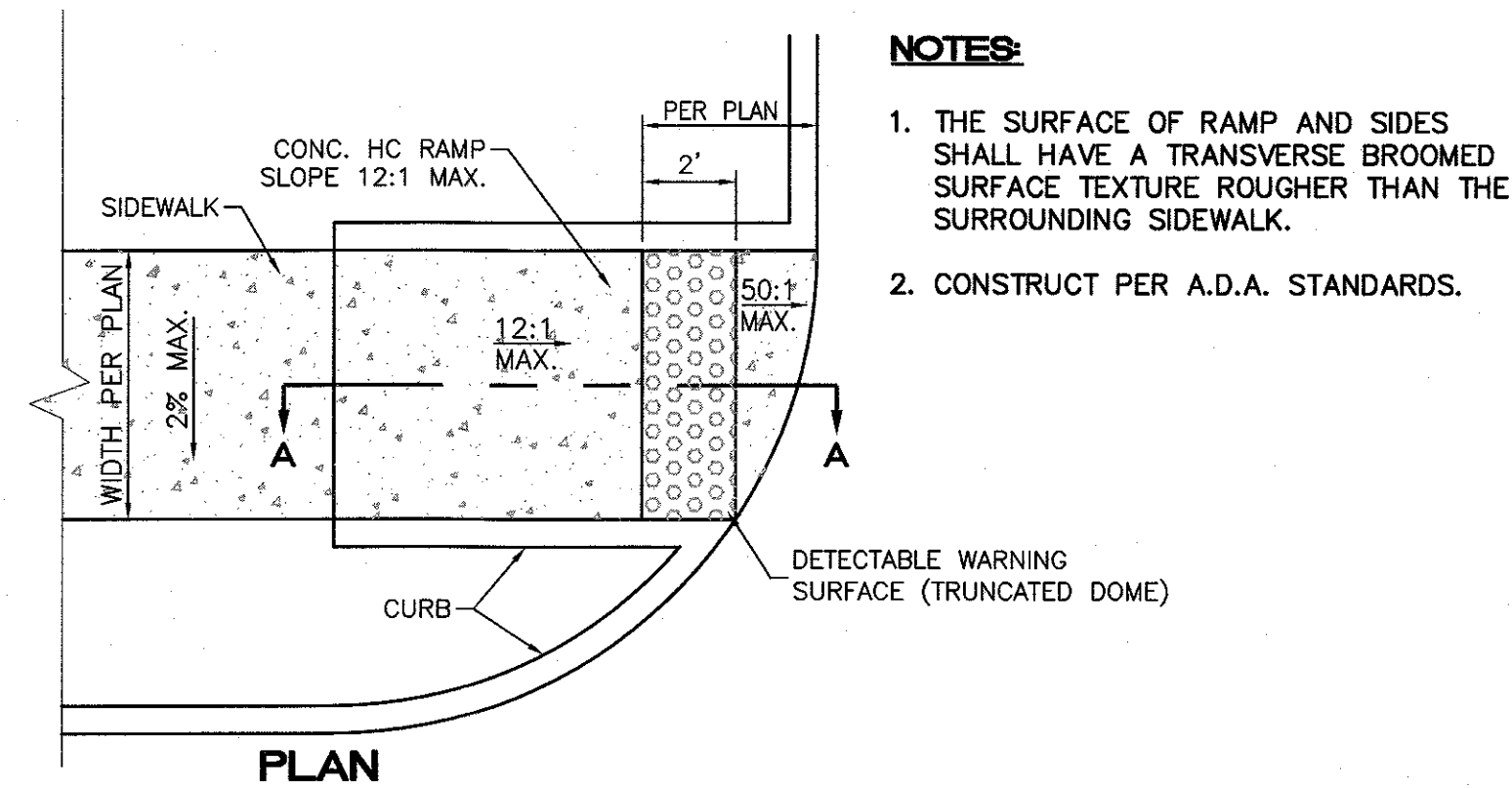
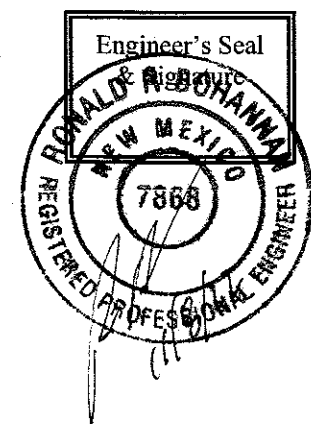
CONSTRUCTION NOTES

- A. END OF CURB RETURN, SEE NOTE 1.
- B. FOR RAMP DETAILS, SEE DWGS. 2418, 2440, 2441
- C. INTERSECTION OF FLOWLINES, SEE NOTE 1.
- D. SURFACE AND CURB TO BE MONOTONIC.
- E. DIRECTION OF FLOW.
- F. FLOWLINE.
- G. PROJECTED FLOWLINE OF $1\frac{1}{2}''$ INVERT, SEE NOTE 2.
- H. BEGIN GROWN RAMP TO STRAIGHT SECTION WHERE L. BEGIN RAMP TO STRAIGHT SECTION WHERE SPECIFIED ON PLANS, OR INDICATED BY THE ENGR.
- K. NO. 4 BARS $3'-0''$ LONG AT $16''$ O.C.
- L. ALTERNATE A, WITH FILLET AS PER PLANS.
- M. ALTERNATE B, NO FILLET AS PER PLANS.
- N. THE $1\frac{1}{2}''$ INVERT DEPTH MAY BE REDUCED TO IMPROVE RIDEABILITY WITH APPROVAL OF ENGINEER.

REVISIONS	CITY OF ALBUQUERQUE
	PAVING MEDIAN CUT AND ISLAND ACCESS RAMPS
DWG. 2420	JUNE 2019

CERTIFICATE OF SUBSTANTIAL COMPLIANCE ON PLANS

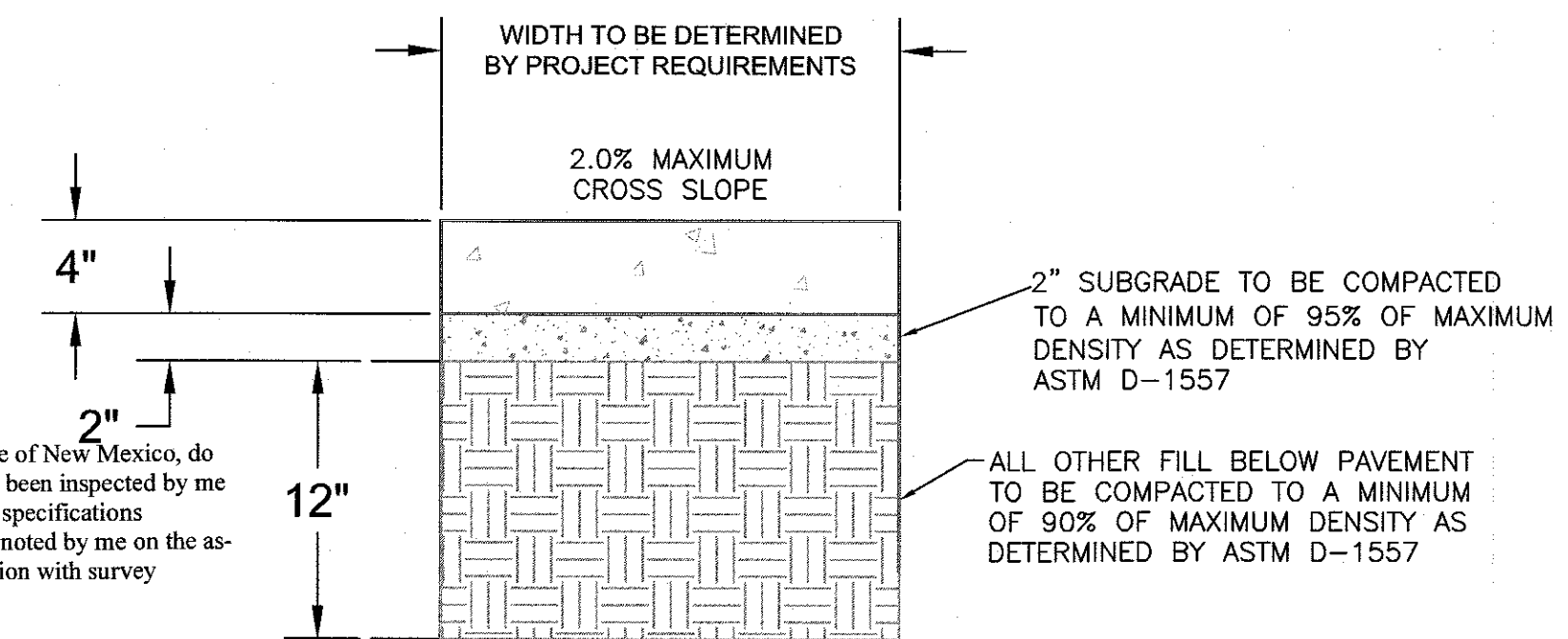
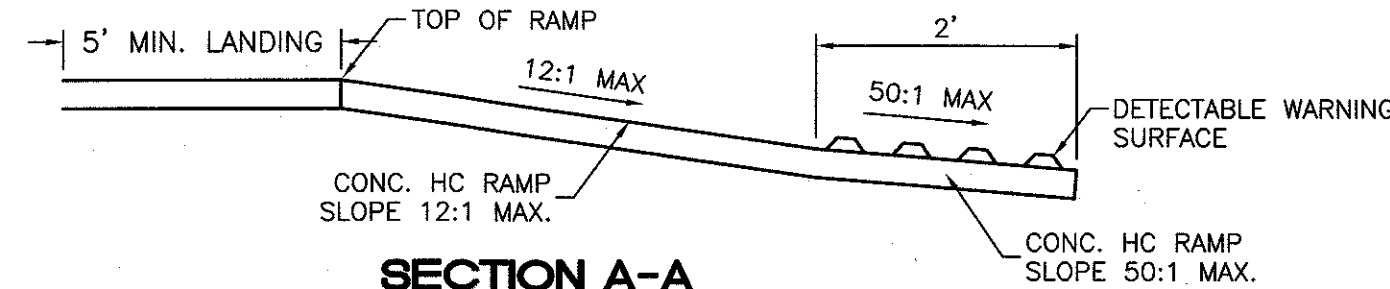
I, Ronald R. Bohannon, of the firm of Tierra Verde LLC, a Registered Professional Engineer in the State of New Mexico, do hereby certify, to the best of my knowledge and belief, that the infrastructure installed as part of this project has been inspected by me or by a qualified person under my direct supervision and has been constructed in accordance with the plans and specifications approved by the City Engineer and that the original design intent of the approved plans has been met, except as noted by me on the as built construction drawings. This Certification is based on site inspections by me, or personnel under my direction with survey information provided by Brian Martinez, of Cartesian Surveys, Inc., NMPS number 18374.



SECTION A-A

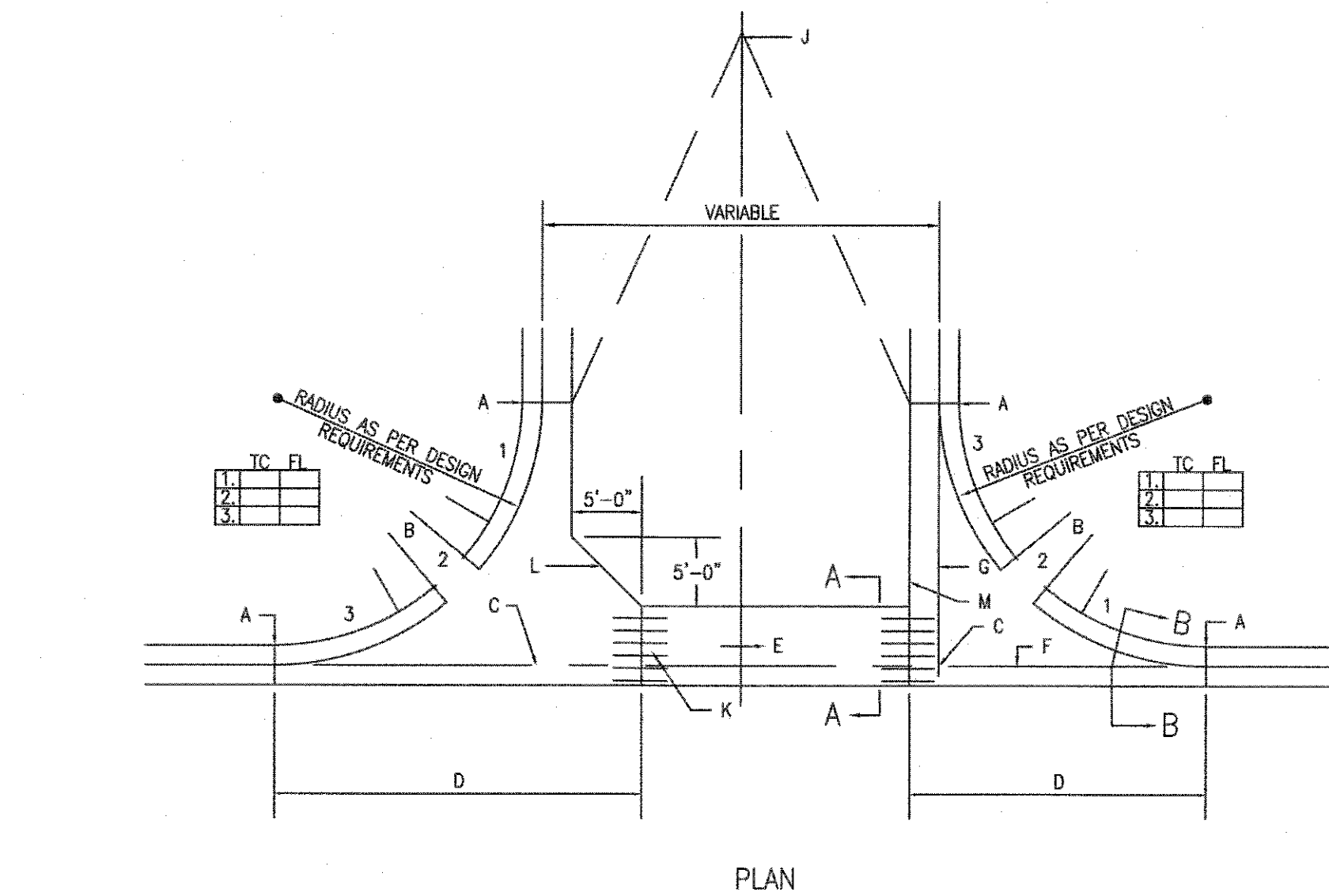
UNIDIRECTIONAL HC RAMP

NOT TO SCALE

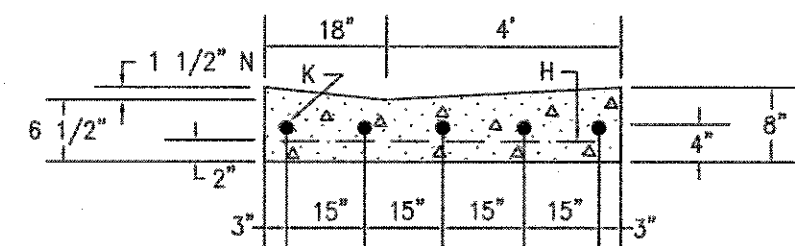


CONCRETE SIDEWALK SECTION

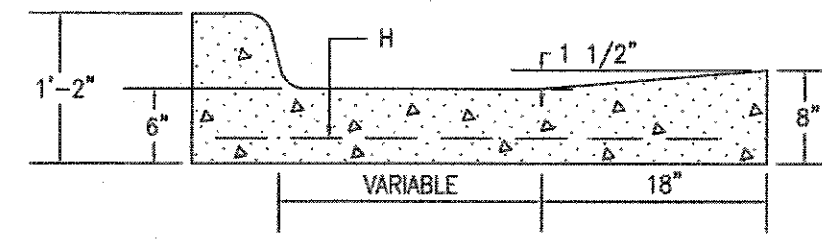
PER COA STD DWG 2430



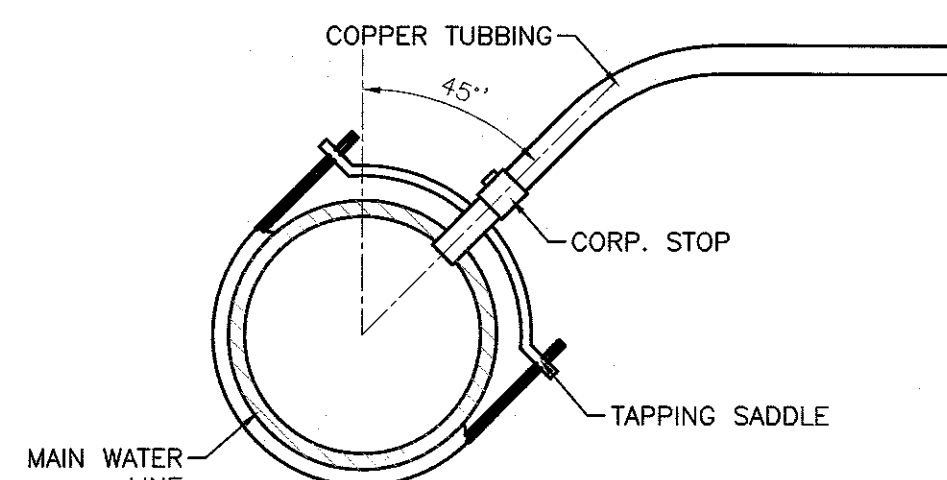
PLAN



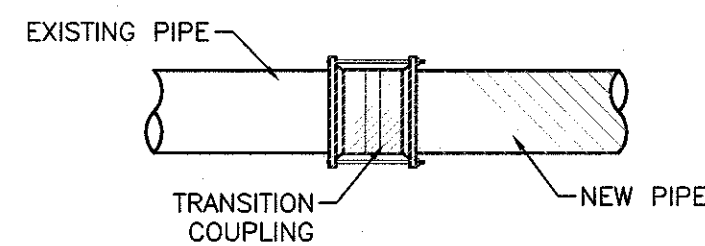
SECTION A-A



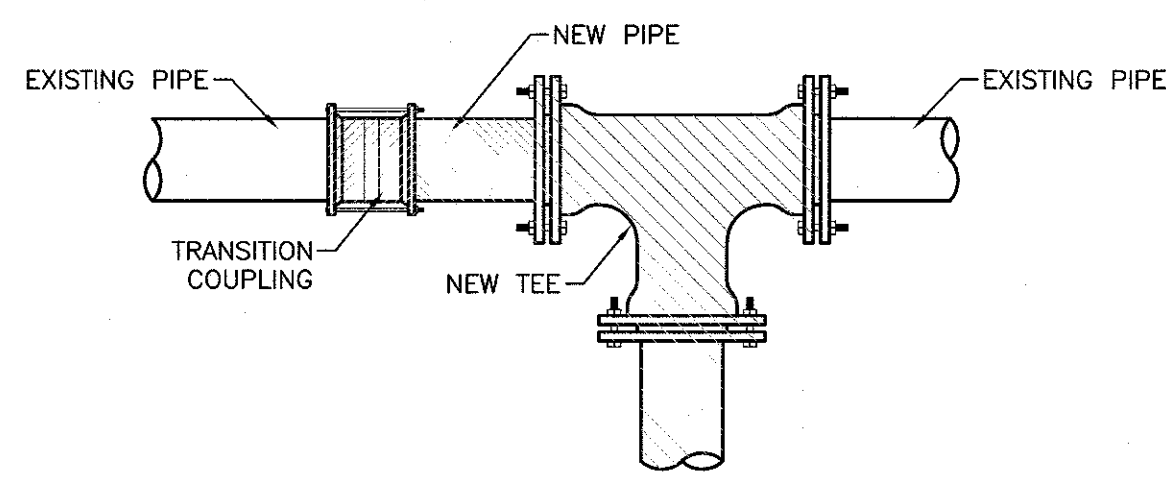
SECTION B-B



SERVICE TAP CONNECTION



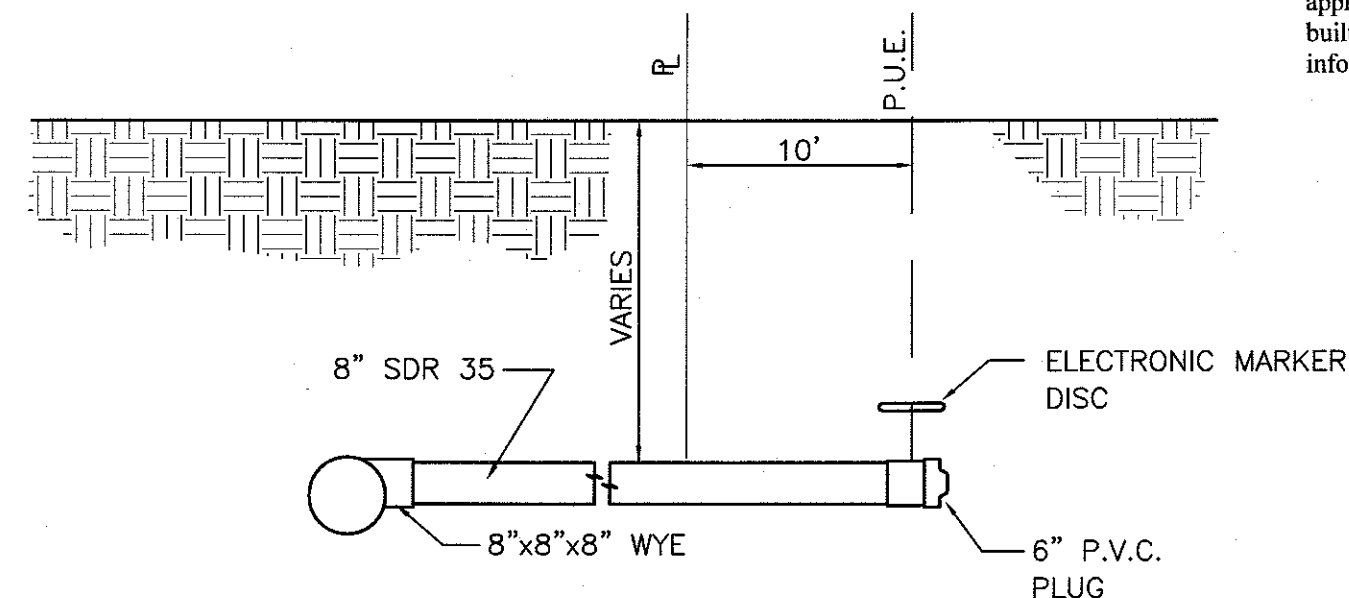
TRANSITION COUPLING



TEE INSERTION

WATER CONNECTION DETAILS

NTS

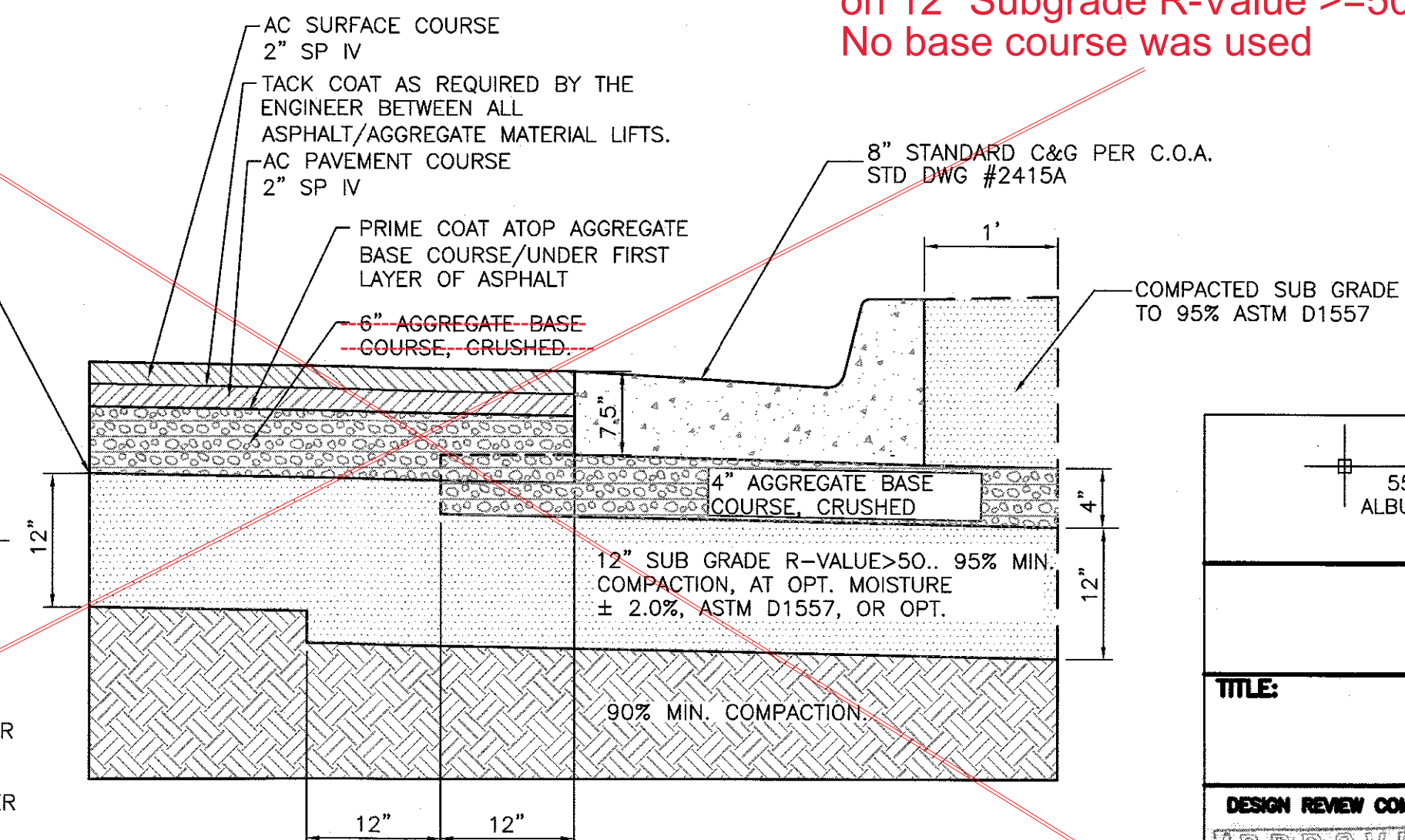


**WYE FITTING SANITARY
SEWER CONNECTION**

NTS

FINISH SURFACE OF SUB GRADE SHALL BE
MOISTURE CONTROLLED AT COMPACTION
MOISTURE RANGE, OR PRIME COAT APPLIED
AS REQUIRED BY THE ENGINEER UNTIL
NEXT/FINAL SURFACE IS COMPLETED.
SUB GRADE PREPARATION SHALL BE
PERFORMED AFTER ALL SUBSURFACE R/W
UTILITIES CONSTRUCTION IS COMPLETED.

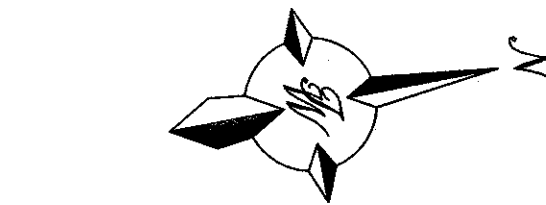
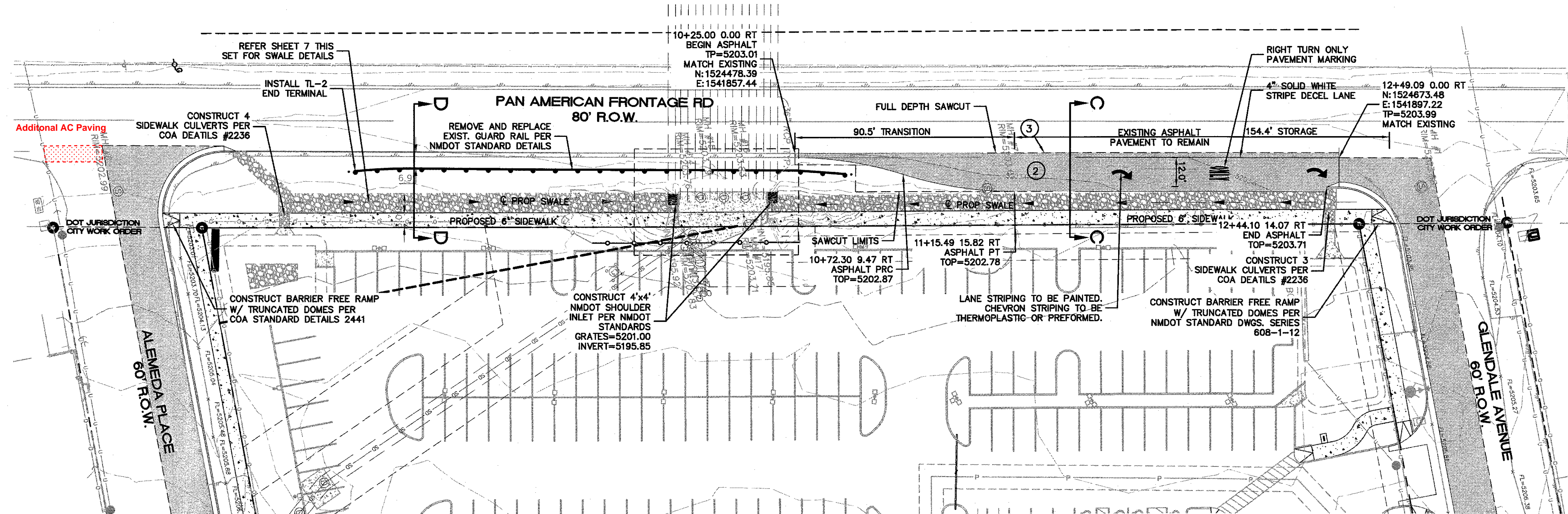
1' SURGED SOIL, R-VALUE>50.
PLACED IN 2-6" COMPACTED LIFTS. _____
95% MIN. COMPACTION, AT OPT.
MOISTURE, ± 2.0%, OF D155, OR
OPT. MOISTURE, TO +4%, ASTM D698
FOR SOIL W/ 35% OR MORE MATERIAL
PASSING THE NO. 200 SIEVE.
SOIL NOT HAVING THE MIN. R-VALUE OF
50, SHALL BE REMOVED TO A DEPTH OF
2 FEET AND REPLACED BY THE CONTRACTOR
WITH SUITABLE MATERIAL OR A PAVEMENT
SHALL BE DESIGNED BY TIERRA WEST, LLC
ACCOMMODATING THE EXISTING R-VALUE PER
C.O.A. STANDARD SPECIFICATIONS.



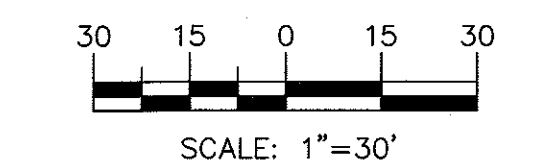
TYPICAL PAVING SECTION (LOMAS BLVD)

NOTE: OR MATCH EXISTING PAVEMENT SECTION IF GREATER

[illegible]



GRAPHIC SCALE

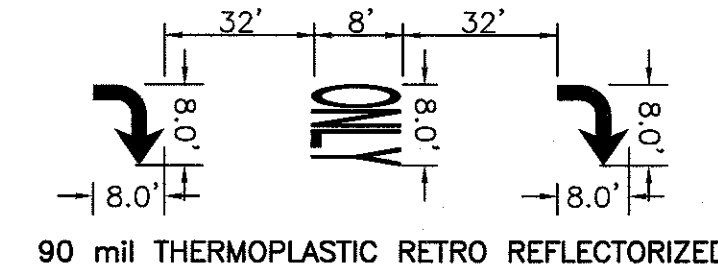


LEGEND

- ROW LINE
- EXISTING CURB & GUTTER
- EXISTING ASPHALT CURB
- EXISTING SAS MANHOLE
- EX. 8\"/>

GENERAL NOTES:

- ALL CONFLICTING STRIPING SHALL BE ERADICATED BY WATER BLASTING AND APPLY FOG SEAL.
- ALL SIGNS SHALL BE MADE IN ACCORDANCE WITH THE M.U.T.C.D. (CURRENT EDITION) SPECIFICATIONS AND COA STANDARDS.
- ALL STRIPING AND PAVEMENT MARKINGS SHALL BE IN ACCORDANCE WITH THE M.U.T.C.D. (CURRENT EDITION) SPECIFICATIONS AND COA STANDARDS (THERMOPLASTIC).
- CONTRACTOR SHALL REFRESH ALL EXISTING CROSSWALKS, SYMBOLS AND HOLDING BAY STRIPES IN THE WORK AREA. ALL PERMANENT MARKINGS SHALL BE THERMOPLASTIC.
- ALL CONSTRUCTION PERFORMED IN NMDOT RIGHT OF WAY SHALL CONFORM TO NMDOT STANDARDS & SPECIFICATIONS.



ARROW DETAILS
NTS

KEYED NOTES

- NEW PAVING, MATCH EXISTING PAVEMENT SECTION
- SAWCUT 1' MIN FROM EXISTING ASPHALT CURB

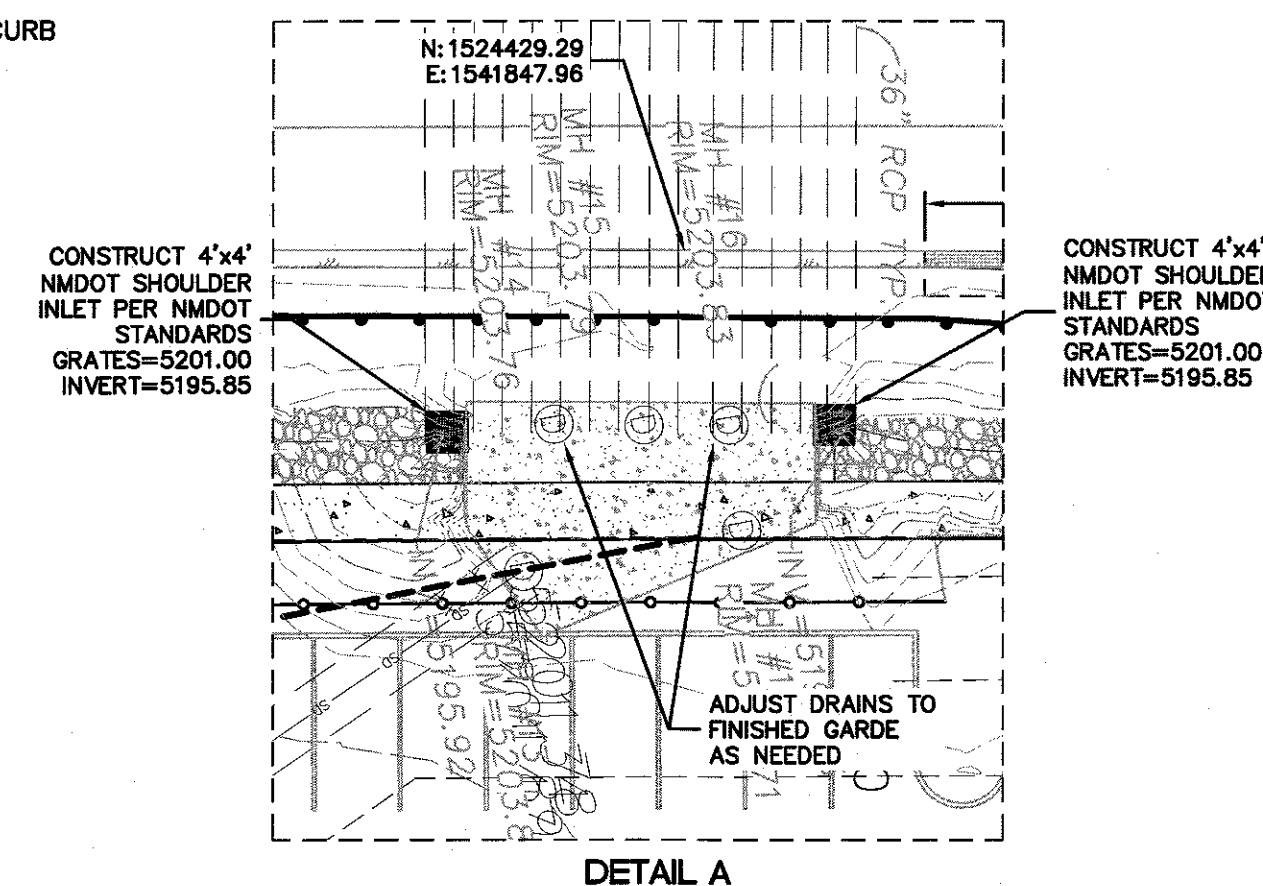
LIST OF INCIDENTALS
(NO ADDITIONAL PAYMENT ASSOCIATED)

LIST OF INCIDENTALS FOR PERMANENT STRIPING AND SIGNING	
A	ALL SIGNING HARDWARE, INCLUDING, BUT NOT LIMITED TO BRACKETS, BANDING, BUCKLES, FASTENERS, SCREWS WASHERS ETC.
B	PAVEMENT MARKING LAYOUT
C	SEAL APPLIED TO PAVEMENT AFTER STRIPE REMOVAL

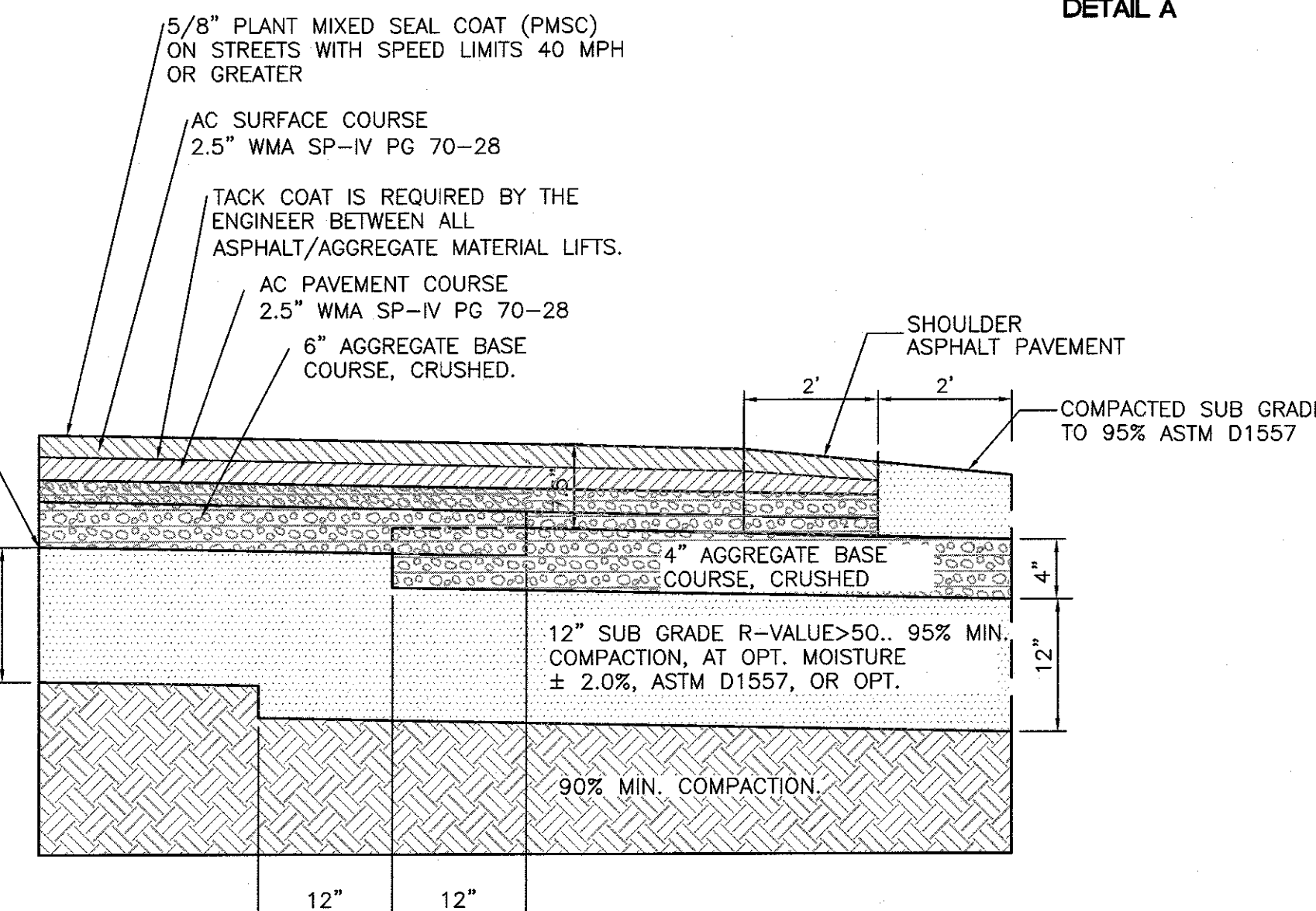
NOTE
PRIOR TO FINAL STRIPE PROJECT LIMIT SHALL BE FOG SEALED AS TO REMOVE ALL ASPHALT SCARS FROM WATER BLASTING OPERATIONS

FINISH SURFACE OF SUB GRADE SHALL BE MOISTURE CONTROLLED AT COMPACTION MOISTURE RANGE, AND PRIME COAT APPLIED AS REQUIRED BY THE ENGINEER UNTIL NEXT/FINAL SURFACE IS COMPLETED. SUB GRADE PREPARATION SHALL BE PERFORMED AFTER ALL SUBSURFACE R/W UTILITIES CONSTRUCTION IS COMPLETED.

1' SURGED SOIL, R-VALUE>50. PLACED IN 2-6\"/>



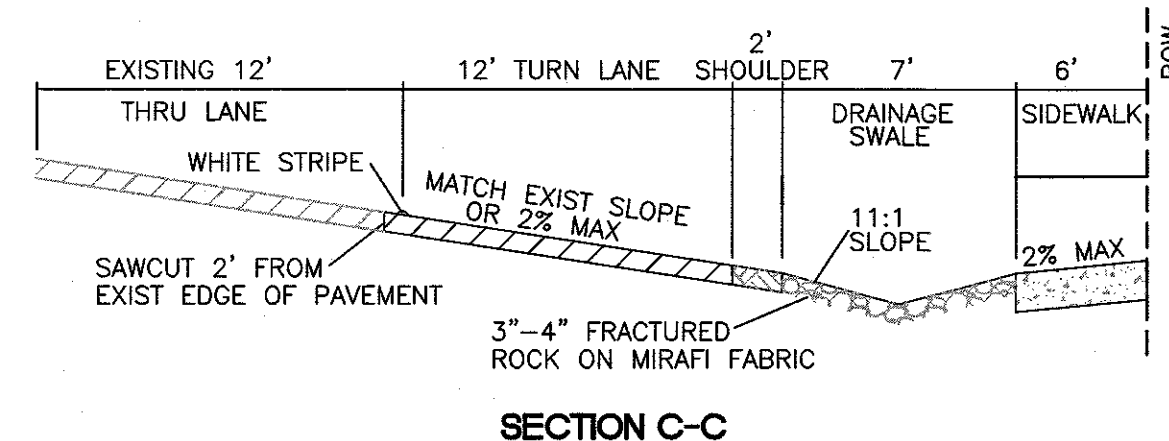
DETAIL A



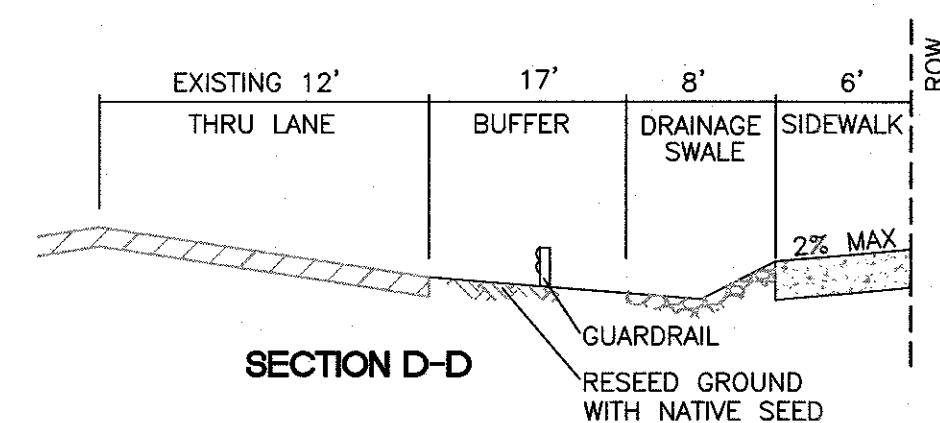
NO MORE THAN 15% RAP ALLOWED

TYPICAL PAVING SECTION (RT TURN LANE)

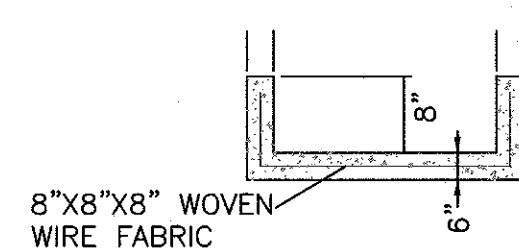
NTS



SECTION C-C



SECTION D-D



CONCRETE CHANNEL

CAUTION

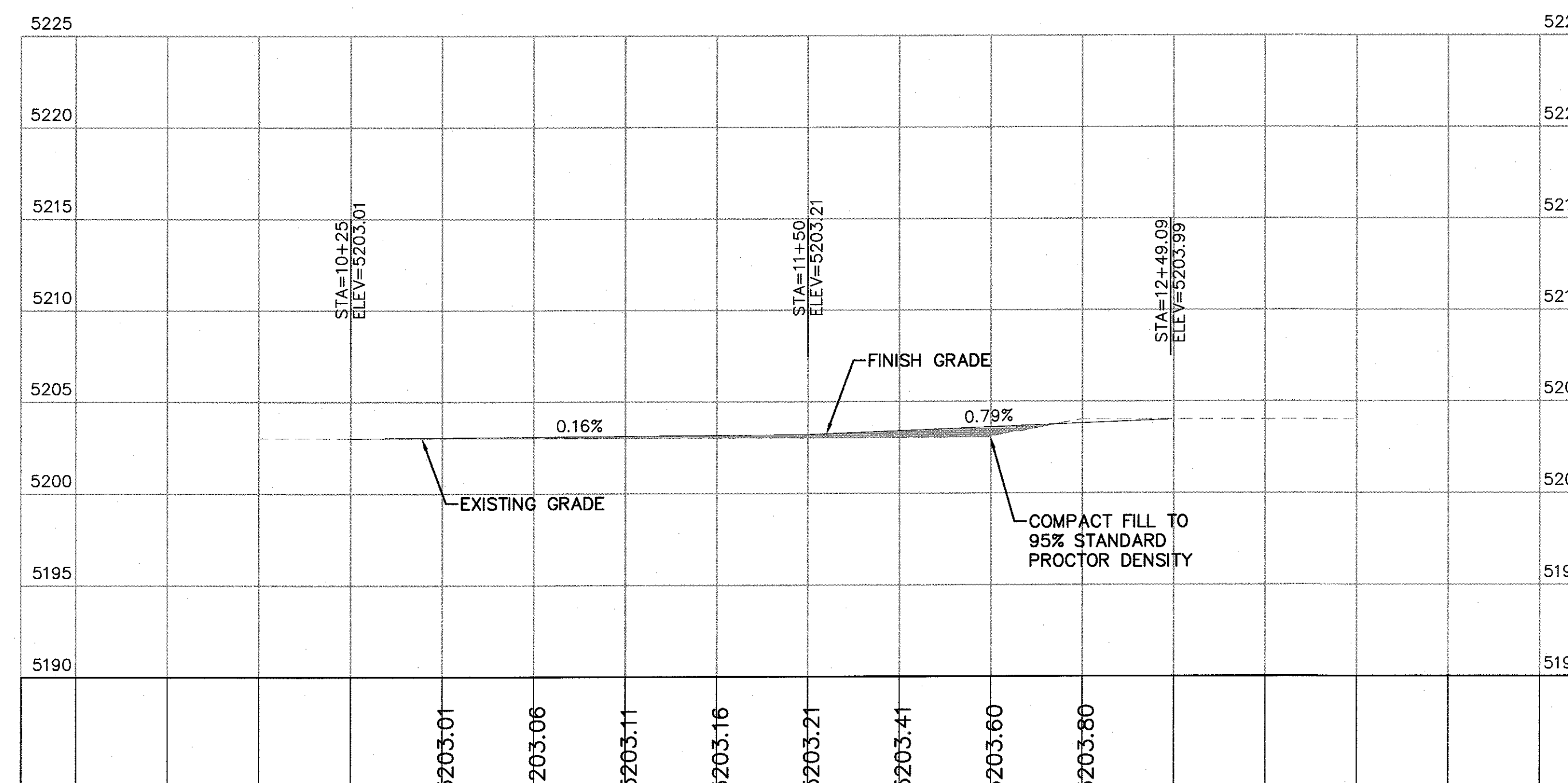
ALL EXISTING UTILITIES SHOWN WERE OBTAINED FROM RESEARCH, AS-BUILTS, SURVEYS OR INFORMATION PROVIDED BY OTHERS. IT SHALL BE THE SOLE RESPONSIBILITY OF THE CONTRACTOR TO CONDUCT ALL NECESSARY FIELD INVESTIGATIONS PRIOR TO AND INCLUDING ANY EXCAVATION, TO DETERMINE THE ACTUAL LOCATION OF UTILITIES AND OTHER IMPROVEMENTS, PRIOR TO STARTING THE WORK. ANY CHANGES FROM THIS PLAN SHALL BE COORDINATED WITH AND APPROVED BY THE ENGINEER.

AS BUILT INFORMATION		BENCH MARKS		SURVEY INFORMATION		ENGINEER'S SEAL		REVISIONS		DESIGN		FOR REFERENCE ONLY	
CONTRACTOR	DATE	MARK	DESCRIPTION	DATE	BY	NO.	DATE	NO.	DATE	NO.	DATE	NO.	DATE
TIERRA WEST, LLC	09/15/2021	1	STANDARD COA BRASS DISC (FOUND IN PLACE)										
		2	NEW MEXICO STATE PLANE COORDINATES										
		3	(CENTRAL ZONE-N.A.D. 1983)										
		4	N=1,524,123.855 US SURVEY FEET										
		5	E=1,542,565.933 US SURVEY FEET										
		6	PUBLISHED EL=5222.08 (NAVD 1988)										
		7	GROUND TO GRID FACTOR=0.99965042										
		8	DELTA ALPHA ANGLE=-0.1119.43"										

FOR REFERENCE ONLY

TIERRA WEST, LLC
5571 MIDWAY PARK PLACE NE
ALBUQUERQUE, NEW MEXICO 87109
(505) 858-3100
www.tierrawestllc.com

CITY OF ALBUQUERQUE PUBLIC WORKS DEPARTMENT ENGINEERING GROUP			
TITLE: AUTONATION I-25 FRONTAGE RD IMPROVEMENTS NE RIGHT TURN LANE			
DESIGN REVIEW COMMITTEE	CITY ENGINEER APPROVAL	MO./DAY/YR.	MO./DAY/YR.
NOT PART OF CITY WORK ORDER			
CITY PROJECT NO.	ZONE MAP NO.	SHEET	OF
596282	B-18-A	4	29



SCALE: HORIZ. 1"=30'
VERT. 1"=5'

ALL EXISTING UTILITIES SHOWN WERE OBTAINED FROM RESEARCH, AS-BUILTS, SURVEYS OR INFORMATION PROVIDED BY OTHERS. IT SHALL BE THE SOLE RESPONSIBILITY OF THE CONTRACTOR TO CONDUCT ALL NECESSARY FIELD INVESTIGATIONS PRIOR TO AND INCLUDING ANY EXCAVATION, TO DETERMINE THE ACTUAL LOCATION OF UTILITIES AND OTHER IMPROVEMENTS, PRIOR TO STARTING THE WORK. ANY CHANGES FROM THIS PLAN SHALL BE COORDINATED WITH AND APPROVED BY THE ENGINEER.

TIERRA WEST, LLC
5571 MIDWAY PARK PLACE NE
ALBUQUERQUE, NEW MEXICO 87105
(505) 858-3100
www.tierrawestllc.com

CITY OF ALBUQUERQUE
PUBLIC WORKS DEPARTMENT
ENGINEERING GROUP

TITLE: AUTONATION
I-25 FRONTAGE RD IMPROVEMENTS NE RIGHT TURN LANE

DESIGN REVIEW COMMITTEE	CITY ENGINEER APPROVAL	NOON UPDATE	MO./DAY/YR.	MO./DAY/YR.
NOT PART OF CITY WORK ORDER				

[illegible]

CITY PROJECT NO. 596282	ZONE MAP NO. B-18-A	SHEET 5	OF 29
----------------------------	------------------------	------------	----------

[illegible]