

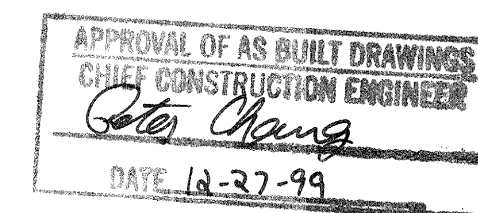
VICINITY MAP

GENERAL NOTES

1. ALL WORK DETAILED ON THESE PLANS TO BE PERFORMED UNDER THIS CONTRACT SHALL, EXCEPT AS OTHERWISE STATED OR PROVIDED FROM HEREON, BE CONSTRUCTED IN ACCORDANCE WITH THE CITY OF ALBUQUERQUE STANDARD SPECIFICATIONS FOR PUBLIC WORKS CONSTRUCTION, 1986 EDITION AS AMENDED THRU UPDATE NO. 6.
2. CONTRACTOR SHALL NOTIFY THE PROJECT ENGINEER NOT LESS THAN SEVEN (7) DAYS PRIOR TO STARTING WORK IN ORDER THAT THE ENGINEER MAY TAKE NECESSARY MEASURES TO INSURE THE PRESERVATION OF SURVEY MONUMENTS. CONTRACTOR SHALL NOT DISTURB PERMANENT SURVEY MONUMENTS WITHOUT THE CONSENT OF THE ENGINEER, AND SHALL BEAR THE EXPENSE OF REPLACING ANY THAT MAY BE DISTURBED WITHOUT PERMISSION. REPLACEMENT SHALL BE DONE ONLY BY THE CITY SURVEY SECTION. WHEN A CHANGE IS MADE IN ANY ROADWAY IN WHICH A PERMANENT SURVEY MONUMENT IS LOCATED, CONTRACTOR SHALL, AT HIS OWN EXPENSE, ADJUST THE MONUMENT COVER TO THE NEW GRADE UNLESS OTHERWISE SPECIFIED. REFER TO SECTION 4.4 OF GENERAL CONDITIONS OF THE CITY OF ALBUQUERQUE STANDARD SPECIFICATIONS FOR PUBLIC WORKS CONSTRUCTION.
3. FIVE (5) WORKING DAYS PRIOR TO BEGINNING CONSTRUCTION, THE CONTRACTOR SHALL SUBMIT TO THE CONSTRUCTION COORDINATION DIVISION A DETAILED CONSTRUCTION SCHEDULE. TWO (2) WORKING DAYS PRIOR TO CONSTRUCTION, THE CONTRACTOR SHALL OBTAIN A BARRICADING PERMIT FROM THE CONSTRUCTION COORDINATION DIVISION. CONTRACTOR SHALL NOTIFY BARRICADE ENGINEER (788-2551) PRIOR TO OCCUPYING AN INTERSECTION. SEE SECTION 19 OF THE SPECIFICATIONS.
4. TWO (2) WORKING DAYS PRIOR TO ANY EXCAVATION, CONTRACTOR MUST CONTACT LINE LOCATING SERVICE, (260-1990) FOR LOCATION OF EXISTING UTILITIES.
5. PRIOR TO CONSTRUCTION, THE CONTRACTOR SHALL EXCAVATE AND VERIFY THE HORIZONTAL AND VERTICAL LOCATIONS OF ALL OBSTRUCTIONS AND EXISTING PAVEMENT. IF A CONFLICT EXISTS, THE CONTRACTOR SHALL NOTIFY THE ENGINEER OR SURVEYOR SO THAT THE CONFLICT CAN BE RESOLVED WITH MINIMUM AMOUNT OF DELAY.
6. THE CONTRACTOR SHALL CONTACT WATER SYSTEMS DIVISION (857-8200) FIVE (5) WORKING DAYS PRIOR TO NEEDING SHUT-OFF OR TURN-ON OF VALVES. ONLY CITY WATER SYSTEMS PERSONNEL ARE AUTHORIZED TO OPERATE VALVES.
7. RESTRAINED JOINTS ARE REQUIRED AT ALL WATER LINE BENDS, TEES, CAPS AND GATE VALVES. RESTRAINED JOINTS SHALL BE CONSIDERED INCIDENTAL TO OTHER ITEMS AND NO SEPARATE MEASUREMENT OR PAYMENT SHALL BE MADE.
8. THE PUBLIC WATER LINE MUST BE A MINIMUM OF 18" ABOVE THE SEWER LINE AT ALL CROSSINGS.
9. THE CONTRACTOR SHALL FURNISH EMD'S ON ALL WATER AND SEWER SERVICE STUBS, CAPS AND PLUGS.
10. ALL UTILITIES AND UTILITY SERVICE LINES SHALL BE INSTALLED PRIOR TO PAVING.
11. BACKFILL COMPACTION SHALL BE ACCORDING TO SPECIFIED STREET USE.
12. TACK COAT REQUIREMENTS SHALL BE DETERMINED BY THE CITY ENGINEER.
13. SIDEWALKS AND WHEELCHAIR RAMPS WITHIN THE CURB RETURNS SHALL BE CONSTRUCTED WHEREVER A NEW CURB RETURN IS CONSTRUCTED.
14. IF CURB IS DEPRESSED FOR A DRIVEPAD OR A HANDICAP RAMP, THE DRIVEPAD OR RAMP SHALL BE CONSTRUCTED PRIOR TO ACCEPTANCE OF THE CURB AND GUTTER.
15. ALL STREET STRIPING ALTERED OR DESTROYED SHALL BE REPLACED BY CONTRACTOR WITH PLASTIC REFLECTORIZED PAVEMENT MARKINGS IN EXISTING STRIPING LOCATIONS UNLESS OTHERWISE INDICATED BY THIS PLAN SET.
16. ANY WORK AFFECTING AN ARTERIAL ROADWAY REQUIRES 24 HOUR CONSTRUCTION.
17. THE CONTRACTOR SHALL BE RESPONSIBLE FOR REPAIR, OR REMOVAL AND REPLACEMENT OF ANY PAVEMENT, PAVEMENT MARKINGS, CURB AND GUTTER, DRIVEPADS, SIDEWALK, WHEELCHAIR RAMP OR ANY OTHER EXISTING IMPROVEMENTS DAMAGED BY THE CONTRACTORS OPERATIONS.

INDEX TO DRAWINGS

<u>SHEET No.</u>	<u>DESCRIPTION</u>
1 OF 3	COVER SHEET
2 OF 3	GRADING & DRAINAGE PLAN
3 OF 3	DECELERATION LANE AND FIRE LINE MODIFICATION



UTILITY COMPANY CONTACTS

CITY OF ALBUQUERQUE
(Water & Sanitary Sewer)
Greg Olson
PWD/Utility Development
P.O. Box 1293
Albuquerque, New Mexico 87103
(505) 768-2718

PNM ELECTRIC
Jim Vann
4201 Edith Blvd. NE
Albuquerque, New Mexico 87107
(505) 848-3426

PNM GAS
Debbie O'Callaghan
4625 Edith Blvd., NE
Albuquerque, New Mexico 87107
(505) 761-7705

US WEST COMMUNICATIONS
Norma Carrillo
201 Third Street
P.O. Box 1355, Sta. 952
Albuquerque, New Mexico 87103
(505) 245-8706

AT&T
Ishmael Pantoja
111 Third ST., NW
Albuquerque, New Mexico 87103
(505) 842-2806

JONES INTERCABLE
Karen Shore
4611 Montbel Pl., NE
P.O. Box 27138
Albuquerque, NM 87125-7138
(505) 761-6220

WARNING

THE ENGINEER HAS UNDERTAKEN LIMITED FIELD VERIFICATION OF THE LOCATION, DEPTH, SIZE, OR TYPE OF EXISTING UNDERGROUND UTILITY LINES, MAKES NO REPRESENTATION PERTAINING THERETO AND ASSUMES NO RESPONSIBILITY OR LIABILITY THEREFOR. THE CONTRACTOR SHALL BE RESPONSIBLE FOR ITSELF OF THE LOCATION OF ANY UTILITY LINE IN OR NEAR THE AREA OF THE WORK IN ADVANCE OF AND DURING EXECUTION OF THE WORK. CONTRACTOR SHALL BE RESPONSIBLE FOR ANY AND ALL DAMAGE CAUSED BY ITS FAILURE TO LOCATE, IDENTIFY, AND PRESERVE ANY AND ALL EXISTING UTILITIES. THE CONTRACTOR SHALL COMPLY WITH STATE STATUTES, MUNICIPAL ORDINANCES, AND ANY OTHER APPLICABLE LAWS PERTAINING TO THE LOCATION OF THESE LINES AND FACILITIES IN PLANNING AND CONDUCTING EXCAVATION, WHETHER BY CALLING OR BY OTHER MEANS, AND BY COMPLYING WITH "BLUE STAKES" PROCEDURES, OR OTHERWISE.

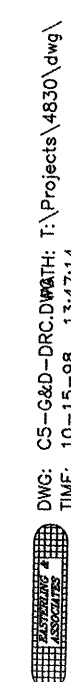
WARNING

THESE DRAWINGS DO NOT INCLUDE NECESSARY COMPONENTS
FOR CONSTRUCTION SAFETY WHICH SHALL REMAIN THE
RESPONSIBILITY OF THE CONTRACTOR.

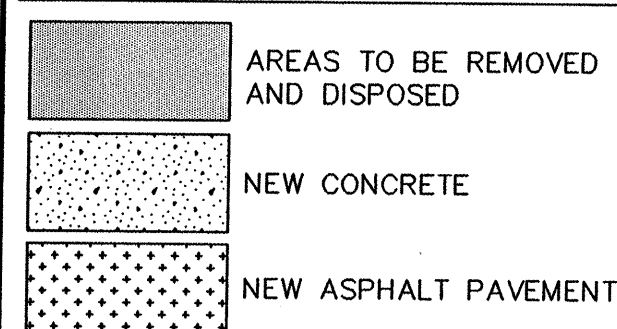
WARNING

THIS DOCUMENT, AND THE IDEAS AND DESIGNS INCORPORATED HEREIN, ARE INTENDED FOR USE ON THIS PROJECT AND IS NOT TO BE USED, IN WHOLE OR IN PART, FOR ANY OTHER PROJECT WITHOUT THE WRITTEN AUTHORIZATION OF EASTERLING & ASSOCIATES, INC. IN THE EVENT OF UNAUTHORIZED USE, THE USER ASSUMES ALL RESPONSIBILITY AND LIABILITY WHICH RESULTS.

REV.	SHEETS	CITY ENGINEER	DATE	USER DEPARTMENT	DATE	USER DEPARTMENT	DATE				
ENGINEERS STAMP & SIGNATURE						*****					
						APPROVED FOR CONSTRUCTION					
						DRC CHAIR		<i>Billy Hookley</i>	<i>M-2-98</i>		
						TRANSPORTATION		<i>R.W. Kane</i>	<i>11-7-98</i>		
						WATER/WASTEWATER		<i>R.W. Kane</i>	<i>11-2-98</i>		
						HYDROLOGY		<i>J.P. Ponce</i>	<i>11/2/98</i>		
						C.I.P.					
						CONSTR. MNGMT.					
CONSTR. COORD.		<i>J.L. Lopez</i>	<i>10-22-98</i>								
						<i>[Signature]</i> <i>3/16/99</i> CITY ENGINEER DATE					
Easterling & Associates, Inc.						SHEET OF					
CONSULTING ENGINEERS 2600 The American Rd., SE, Suite 100 Rio Rancho, New Mexico 87124 (505) 898-5021 FAX (505) 898-8501 E-Mail: ee_eng@earthcom.com						599581					
						1 3					



LEGEND



10' WIDE CROSSWALK STRIPING IN LIEU OF STAMPED CONCRETE. SEE DETAIL THIS SHEET.

REMOVE 25' SIDEWALK, CURB & GUTTER, AND ACCESS RAMP. INSTALL NEW ACCESS RAMP.

REMOVE 4 SIDEWALK PANELS FROM PC (24'±) INSTALL NEW SIDEWALK.

INSTALL NEW 10" VALVE AT ESMT. LINE. RESTRAIN VALVE BETWEEN NEW 8" TO 10" REDUCERS. TOP OF PIPE ELEV. = 75.00

CONNECT TO EXIST. 8" WATER LINE WITH 10" TO 8" REDUCER

EXIST. 8" WATER

EXIST. FIRE LINE TO EXIST. BLDG.

EXIST. P.I.V.

SEE SHEET 2 OF 3 FOR ON-SITE INFORMATION

INSTALL CURB ACCESS RAMP PER C.O.A. DWG. 2426, 7' OF ROW CASE

NEW LOCATION OF POWER POLE. (BY OTHERS - PNM)

RELOCATED PUBLIC FIRE HYDRANT. INSTALL PER COA DWG. 2340

20'X 35' PUBLIC WATERLINE EASEMENT

INSTALL NEW 10"X6" TEE, 6" WATER LINE AND 6" VALVE. RESTRAIN FULL LENGTH OF BRANCH FROM MAIN TO HYDRANT

PT = N 1501284.0718 E 420792.6979

PROPOSED ON-SITE CONCRETE CURB

NEW R-O-W LINE

NEW OVERHEAD POWERLINES (ANGLE = 2'5"20" BETWEEN NEW & EXIST.)

(S89°57'10"E, 110.24')

110.24'

MATCH EXISTING SIDEWALK GRADE

REMOVE EXIST. CURB & GUTTER AND SIDEWALK

NEW SIDEWALK PER C.O.A. DWG. 2430

REMOVE EXIST. CURB & GUTTER AND SIDEWALK

NEW SIDEWALK PER C.O.A. DWG. 2430

REMOVE EXIST. CURB & GUTTER AND SIDEWALK

NEW SIDEWALK PER C.O.A. DWG. 2430

REMOVE EXIST. CURB & GUTTER AND SIDEWALK

NEW SIDEWALK PER C.O.A. DWG. 2430

REMOVE EXIST. CURB & GUTTER AND SIDEWALK

NEW SIDEWALK PER C.O.A. DWG. 2430

REMOVE EXIST. CURB & GUTTER AND SIDEWALK

NEW SIDEWALK PER C.O.A. DWG. 2430

REMOVE EXIST. CURB & GUTTER AND SIDEWALK

NEW SIDEWALK PER C.O.A. DWG. 2430

REMOVE EXIST. CURB & GUTTER AND SIDEWALK

NEW SIDEWALK PER C.O.A. DWG. 2430

REMOVE EXIST. CURB & GUTTER AND SIDEWALK

NEW SIDEWALK PER C.O.A. DWG. 2430

REMOVE EXIST. CURB & GUTTER AND SIDEWALK

NEW SIDEWALK PER C.O.A. DWG. 2430

REMOVE EXIST. CURB & GUTTER AND SIDEWALK

NEW SIDEWALK PER C.O.A. DWG. 2430

REMOVE EXIST. CURB & GUTTER AND SIDEWALK

NEW SIDEWALK PER C.O.A. DWG. 2430

REMOVE EXIST. CURB & GUTTER AND SIDEWALK

NEW SIDEWALK PER C.O.A. DWG. 2430

REMOVE EXIST. CURB & GUTTER AND SIDEWALK

NEW SIDEWALK PER C.O.A. DWG. 2430

JUAN

TABO

BOULEVARD

N.E.

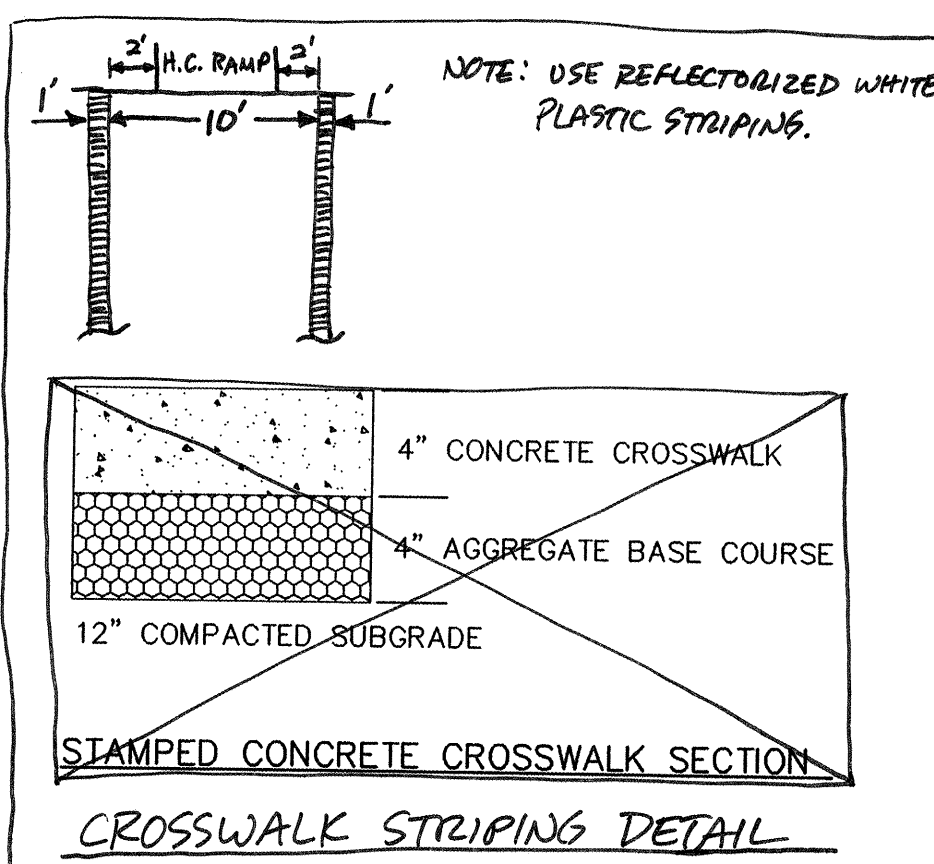
OFF-SITE PLAN

1" = 20'

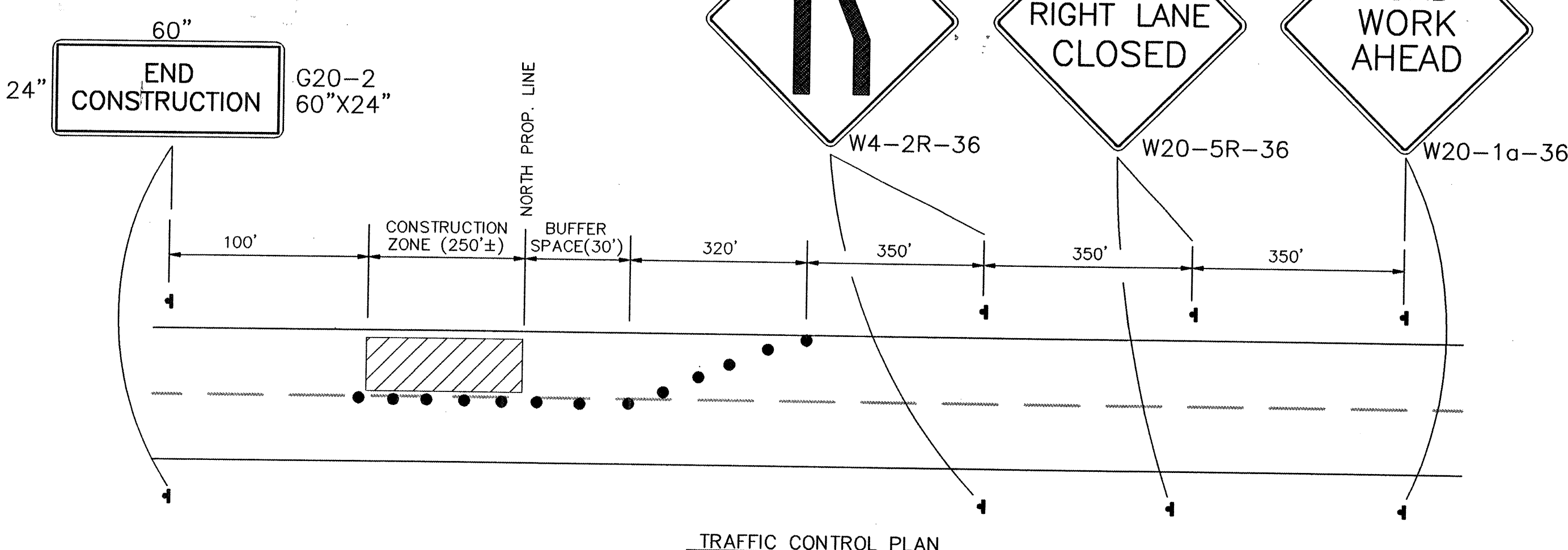
NOTE: CONSTRUCT PAVEMENT SECTION IN ACCORDANCE WITH COA DWG. 2407 AND SECTION 116 OF THE COA "STANDARD SPECIFICATIONS FOR PUBLIC WORKS CONSTRUCTION".

1 1/2" TYPE C ASPHALT CONCRETE, 1800 LB STAB.
2 1/2" TYPE A ASPHALT CONCRETE, 1800 LB STAB.
4" AGGREGATE BASE COURSE, 95% ASTM D-1557.
12" COMPACTED SUBGRADE, 95% ASTM D-1557.

DECELERATION LANE PAVEMENT SECTION



NOTE: TRAFFIC CONTROL DEVICES SHALL BE POSITIONED TO ALLOW ACCESS TO BUSINESSES, DRIVEWAYS, AND MEDIAN CUTS.



NOTE: CONTRACTOR IS REFERRED TO THE FOLLOWING COA STANDARD DETAILS FOR CONSTRUCTION:

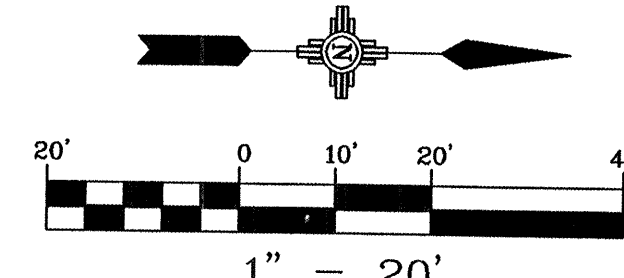
DWG. 2430-SIDEWALK DETAILS
DWG. 2426-PRIVATE ENTRANCE DETAILS
DWG. 2340-FIRE HYDRANT INSTALLATION
DWG. 2315-PIPE TRENCH TERMINOLOGY
DWG. 2465-CITY WIDE PAVEMENT CUTS FOR ALL UTILITIES
DWG. 2415-CURB AND GUTTER
DWG. 2407-ART./COLL. ST. SECTIONS WITHOUT MEDIAN
DWG. 2466-BUS BAY

WATER SHUT OFF PLAN

1. CLOSE VALVE #593 PRIOR TO EXCAVATION FOR INSTALLATION OF NEW WATER ITEMS. VALVE #593 IS LOCATED IN THE GUTTER AT THE JUAN TABO ENTRANCE TO THE SITE.
2. THE PROPOSED WORK IS ON A DEAD END LINE AND THUS A SINGLE VALVE (#593) WILL ISOLATE THE SYSTEM BEING MODIFIED.
3. EXCAVATE AND BACKFILL TRENCH IN ACCORDANCE WITH COA STD. DWG. 2315.
4. THE CONTRACTOR SHALL CONTACT THE CITY WATER SERVICE DIVISION (857-8200) FIVE (5) WORKING DAYS PRIOR TO NEEDING SHUT-OFF OR TURN-ON OF VALVES. ONLY CITY WATER SYSTEM PERSONNEL ARE AUTHORIZED TO OPERATE CITY WATER VALVES.

TRAFFIC CONTROL NOTES:

1. CITY OF ALBUQUERQUE SPECIFICATIONS FOR PUBLIC WORKS CONSTRUCTION, 1986 EDITION AS AMENDED, WILL BE REFERRED TO HEREIN AS THE "STANDARD SPECIFICATIONS".
2. TWO (2) WORKING DAYS PRIOR TO ANY EXCAVATION, CONTRACTOR MUST CONTACT NEW MEXICO ONE CALL SYSTEM (260-1990) AND DETERMINE LOCATION OF EXISTING UTILITIES.
3. PRIOR TO ANY CONSTRUCTION, CONTRACTOR SHALL EXCAVATE AND VERIFY THE HORIZONTAL AND VERTICAL LOCATIONS OF ALL OBSTRUCTIONS. SHOULD A CONFLICT EXIST, THE CONTRACTOR SHALL NOTIFY THE ENGINEER OR SURVEYOR SO THAT THE CONFLICT CAN BE RESOLVED.
4. ALL EXISTING SIGNS, MARKERS, DELINEATORS, ETC., WITHIN THE CONSTRUCTION LIMITS SHALL BE REMOVED, STORED, AND RESET BY THE CONTRACTOR.
5. THE CONTRACTOR SHALL NOTIFY THE ENGINEER NOT LESS THAN SEVEN (7) DAYS PRIOR TO STARTING WORK IN ORDER THAT THE ENGINEER MAY TAKE NECESSARY MEASURES TO INSURE THE PRESERVATION OF SURVEY MONUMENTS. CONTRACTOR SHALL NOT DISTURB PERMANENT SURVEY MONUMENTS WITHOUT THE CONSENT OF THE ENGINEER AND BEAR THE EXPENSE OF REPLACING ANY THAT MAY BE DISTURBED WITHOUT PERMISSION. REPLACEMENT SHALL BE DONE ONLY BY THE CITY SURVEYOR. WHEN A CHANGE IS MADE IN THE FINISH ELEVATIONS OF THE PAVEMENT OF ANY ROADWAY IN WHICH A PERMANENT SURVEY MONUMENT IS LOCATED, CONTRACTOR SHALL, AT HIS OWN EXPENSE, ADJUST THE MONUMENT COVER TO THE NEW GRADE UNLESS OTHERWISE SPECIFIED. REFER TO SECTION 4.4 OF THE GENERAL CONDITIONS OF THE STANDARD SPECS.
6. FIVE (5) WORKING DAYS PRIOR TO BEGINNING CONSTRUCTION THE CONTRACTOR SHALL SUBMIT TO THE CONSTRUCTION COORDINATION DIVISION A DETAILED CONSTRUCTION SCHEDULE. TWO (2) WORKING DAYS PRIOR TO CONSTRUCTION THE CONTRACTOR SHALL OBTAIN A BARRICADING PERMIT FROM THE CONSTRUCTION COORDINATION DIVISION. CONTRACTOR SHALL NOTIFY BARRICADING ENGINEER (768-2551) PRIOR TO OCCUPYING AN INTERSECTION.
7. IF LANES OF TRAFFIC CAN BE REOPENED AT THE END OF THE WORK SHIFT, CONTRACTOR MAY WORK FROM 9am TO 3pm. IF NOT, CONTRACTOR MUST WORK 24 HOUR CONSTRUCTION.
8. ALL STREET STRIPING ALTERED OR DESTROYED SHALL BE REPLACED WITH PLASTIC REFLECTORIZED PAVEMENT MARKINGS TO EXISTING LOCATION OR AS SHOWN ON THESE DRAWINGS.



Easterling & Associates, Inc.
CONSULTING ENGINEERS
2600 The American Rd., SE, Suite 100
Rio Rancho, New Mexico 87124
(505) 898-8021 FAX (505) 898-8501
E-Mail: eol_engr@swcp.com

CITY OF ALBUQUERQUE
PUBLIC WORKS DEPARTMENT
ENGINEERING DEVELOPMENT GROUP

SANDIA LAB FEDERAL CREDIT UNION
DECELERATION LANE AND FIRE LINE MODIFICATION

DESIGN REVIEW COMMITTEE	CITY ENGINEER APPROVAL	Mo./DAY/YR.	Mo./DAY/YR.
APPROVED			
DESIGN REVIEW COMMITTEE			

CITY PROJECT No. 599581 ZONE MAP No. G-21 SHEET 3 OF 3