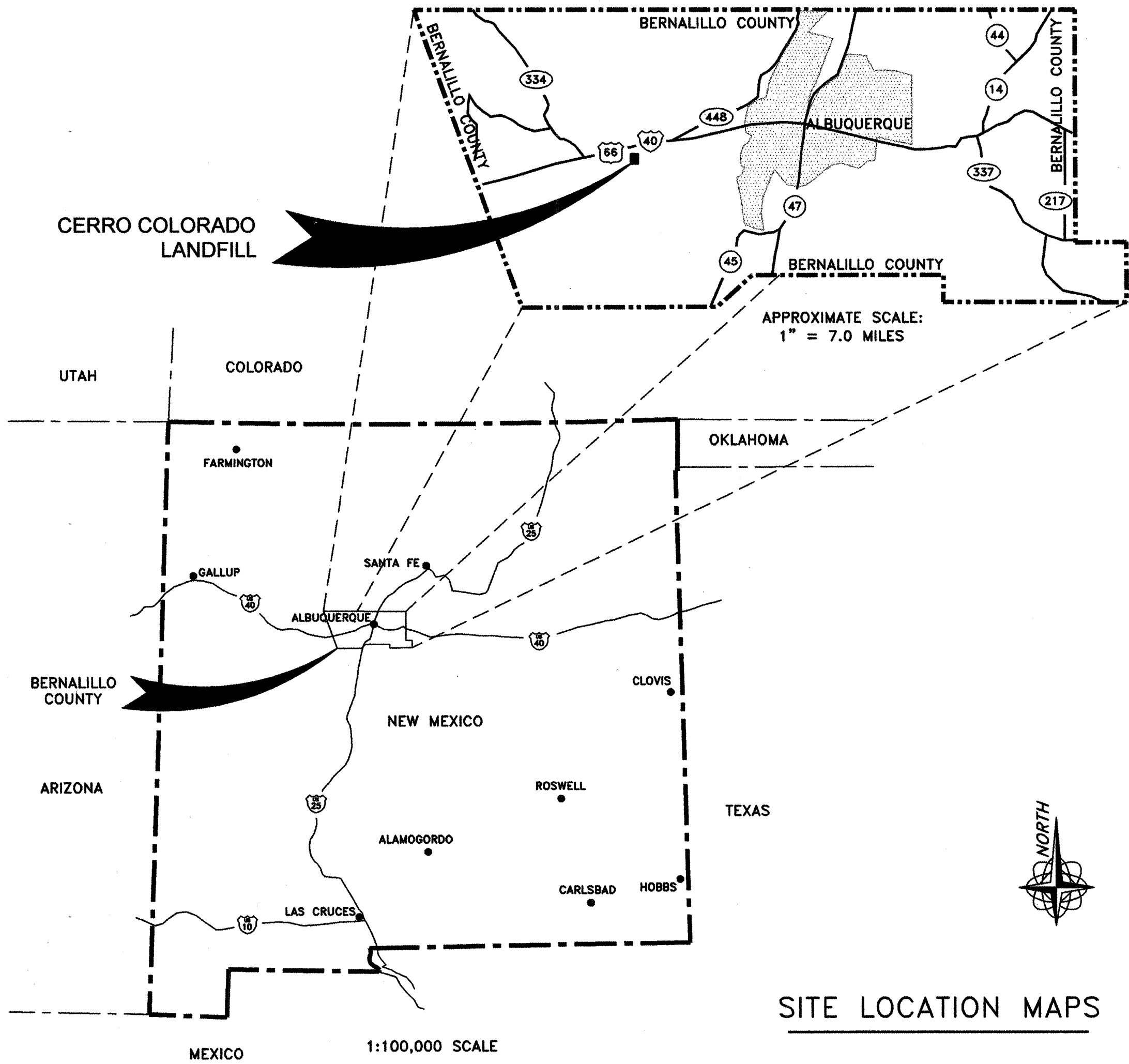


ENGINEERING PLANS FOR THE CERRO COLORADO LANDFILL

CELL 6 CONSTRUCTION

SOLID WASTE MANAGEMENT DEPARTMENT CITY OF ALBUQUERQUE, NEW MEXICO



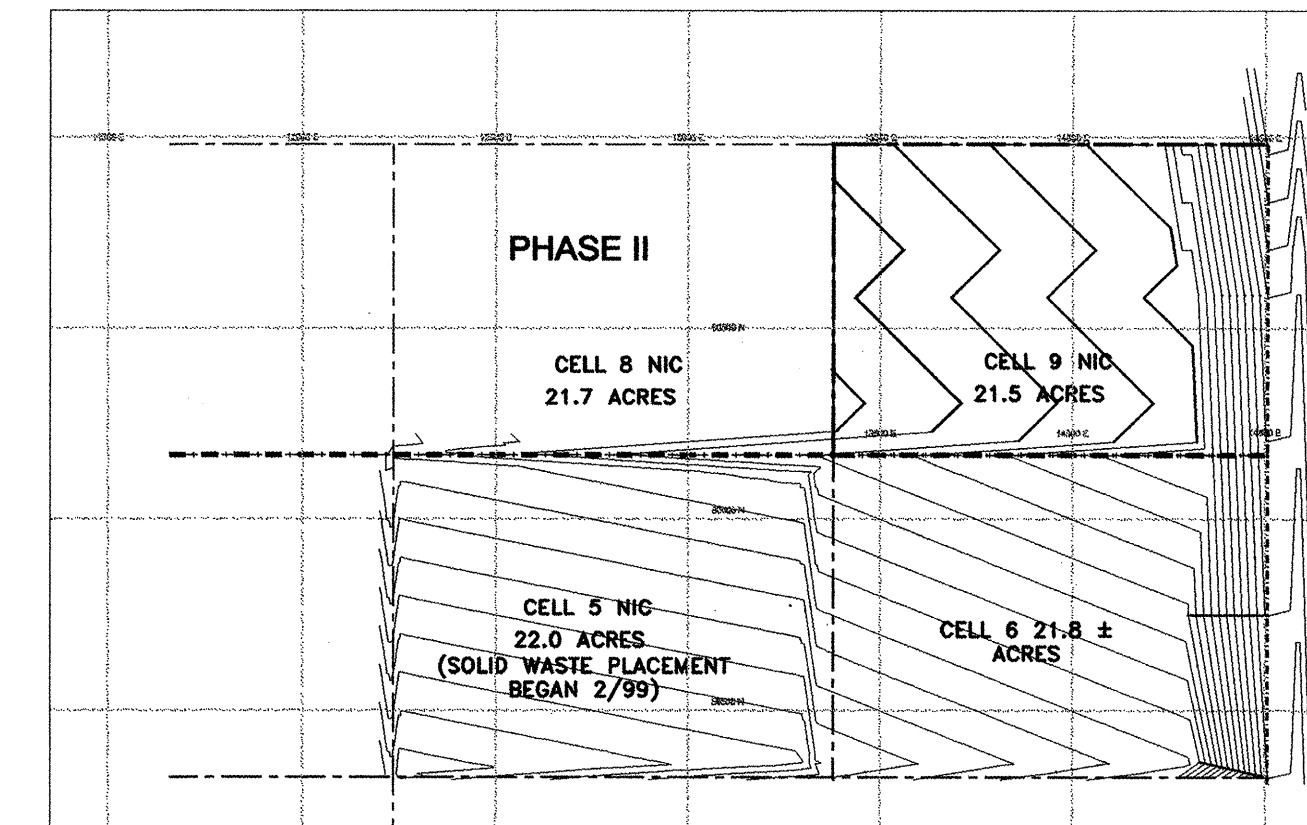
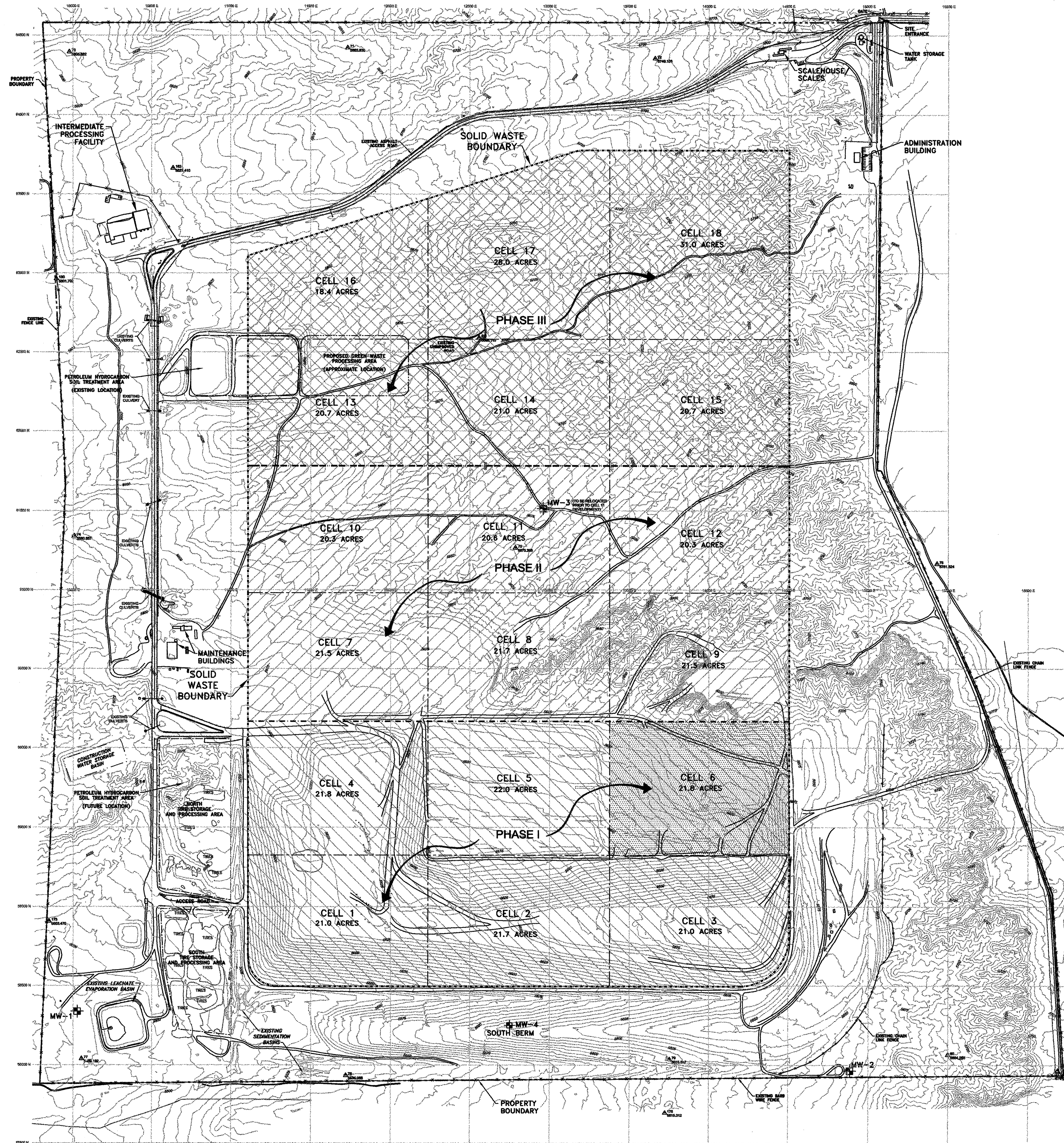
DRAWING	TITLE
CC6-1.DWG	1 COVER SHEET AND DRAWING INDEX
CC6-2.DWG	2 OVERALL SITE PLAN
CC6-3.DWG	3 CELL 6 BASE GRADING PLAN
CC6-4.DWG	4 LANDFILL LINER AND LEACHATE COLLECTION SYSTEM DETAILS
CC6-5.DWG	5 CELL 6 LINER DETAILS
CC6-6.DWG	6 OPERATIONAL CROSS-SECTIONS

FOR INFORMATION ONLY

PLAN SET No. _____

FOR INFORMATION ONLY

REVISION	SHEETS	CITY ENGINEER	DATE	USER DEPARTMENT	DATE	USER DEPARTMENT	DATE
ENGINEER'S STAMP & SIGNATURE				APPROVALS	ENGINEER	DATE	APPROVED FOR CONSTRUCTION
 Weaver Boos & Gordon, Inc. I certify that this work was performed by me or under my supervision. Signature: <i>I. Keith Gordon</i> I. Keith Gordon, P.E. New Mexico Professional Engineer No. 10984				DRC Chairman	<i>[Signature]</i>	8/24/01	<i>[Signature]</i> 8/24/01 City Engineer Date
				Transportation	N/A	P	
				Water/Wastewater	N/A	O	
				Hydrology	N/A	B	
				Parts	N/A	G	
Constr. Mngmt.	N/A	OS					
City Project No.				599691		Sheet 1 of 6	



OVERALL BASEGRADING PLAN
CELLS 5, 6, AND 9
SCALE 1" = 500'

LEGEND

- EXISTING ELEVATION CONTOUR (25' INTERVAL)
- EXISTING ELEVATION CONTOUR (5' INTERVAL)
- EXISTING ASPHALT ACCESS ROAD
- EXISTING GRAVEL ROAD
- FENCE
- OVERHEAD ELECTRIC/POWER POLE
- SURVEY PANEL POINT/ELEVATION

- PROPERTY BOUNDARY
- SOLID WASTE BOUNDARY
- PHASE 1 BOUNDARY
- PHASE 2 BOUNDARY
- CELL DIVIDE

MW-1 MONITORING WELL LOCATION

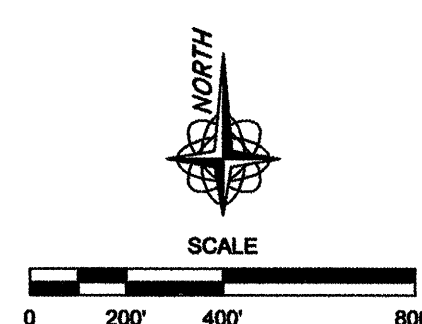
TO CORRELATE COORDINATE SYSTEM AS SHOWN TO:
AERIAL TOPOGRAPHY DATED JANUARY 5, 1999, BOHANNAN HUSTON, INC.
- NORTH COORDINATE, ADD 1,400,000
1. - EAST COORDINATE, ADD 300,000
- ELEVATION, SAME

ORIGINAL PERMITTED DRAWINGS BY CAMP DRESSER & MCKEE, INC., 1989
- NORTH COORDINATE, ADD 1,400,495.96
2. - EAST COORDINATE, ADD 300,106.81
- ELEVATION, SAME

NOTE THAT THE CORRELATION DIFFERENCE IS A CONVERSION BETWEEN THE STATE PLANE AND THE MODIFIED STATE PLANE COORDINATE SYSTEM.

FOR INFORMATION ONLY

REV. NO.	REV. DATE	DESCRIPTION
1	08/22/01	REVISION BY: JWG REVISION DATE: 08/22/01 CHECKED BY: JWG



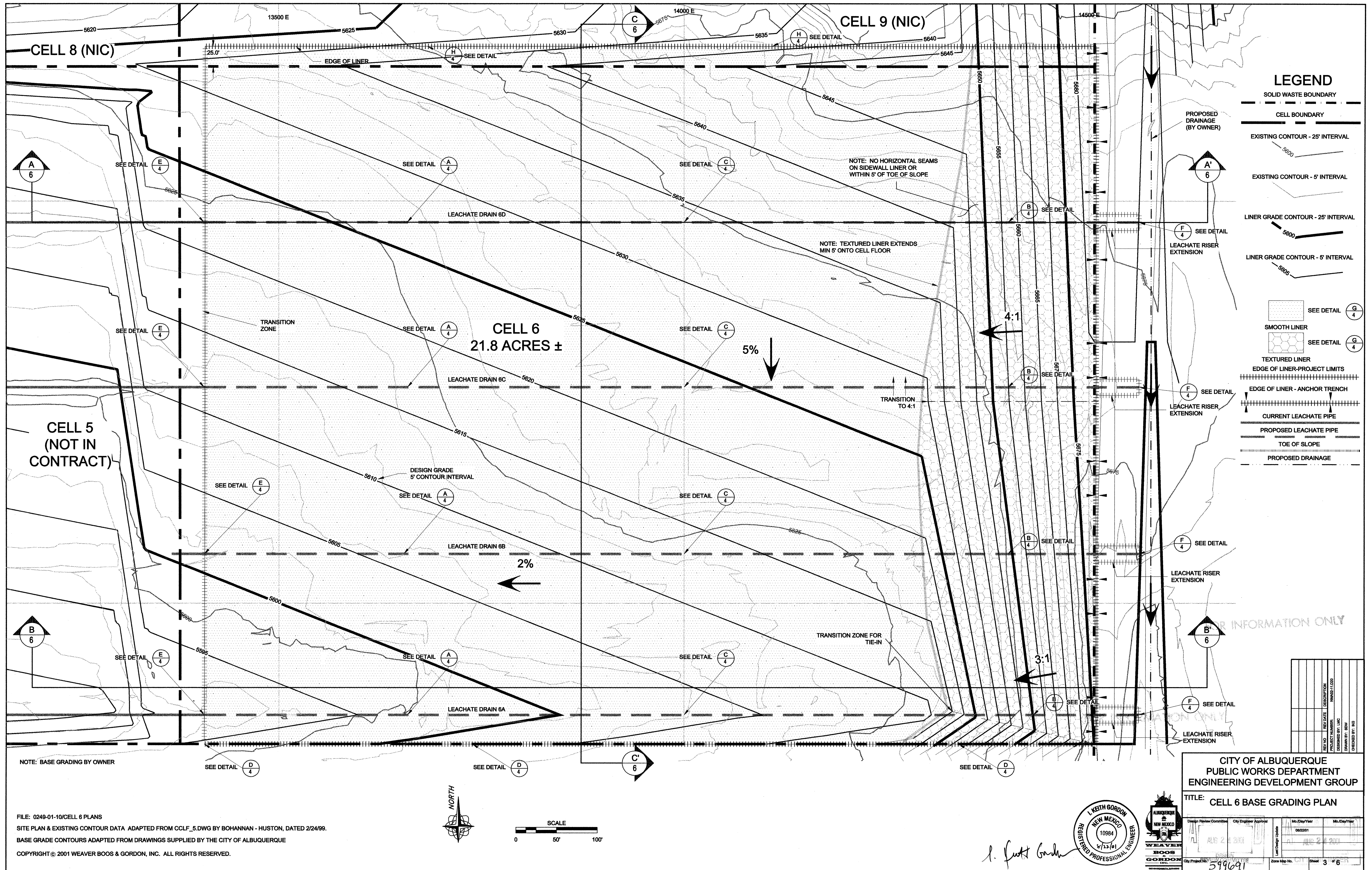
FILE: 0248-01-10/CELL 6 PLANS
SITE PLAN AND TOPOGRAPHY ADAPTED FROM GOLF & BOWMAN
HUSTON, INC. DATE OF PHOTOGRAPHY, JANUARY 5, 1999
COPYRIGHT © 2001 WEAVER BOOB & GORDON, INC. ALL RIGHTS RESERVED.

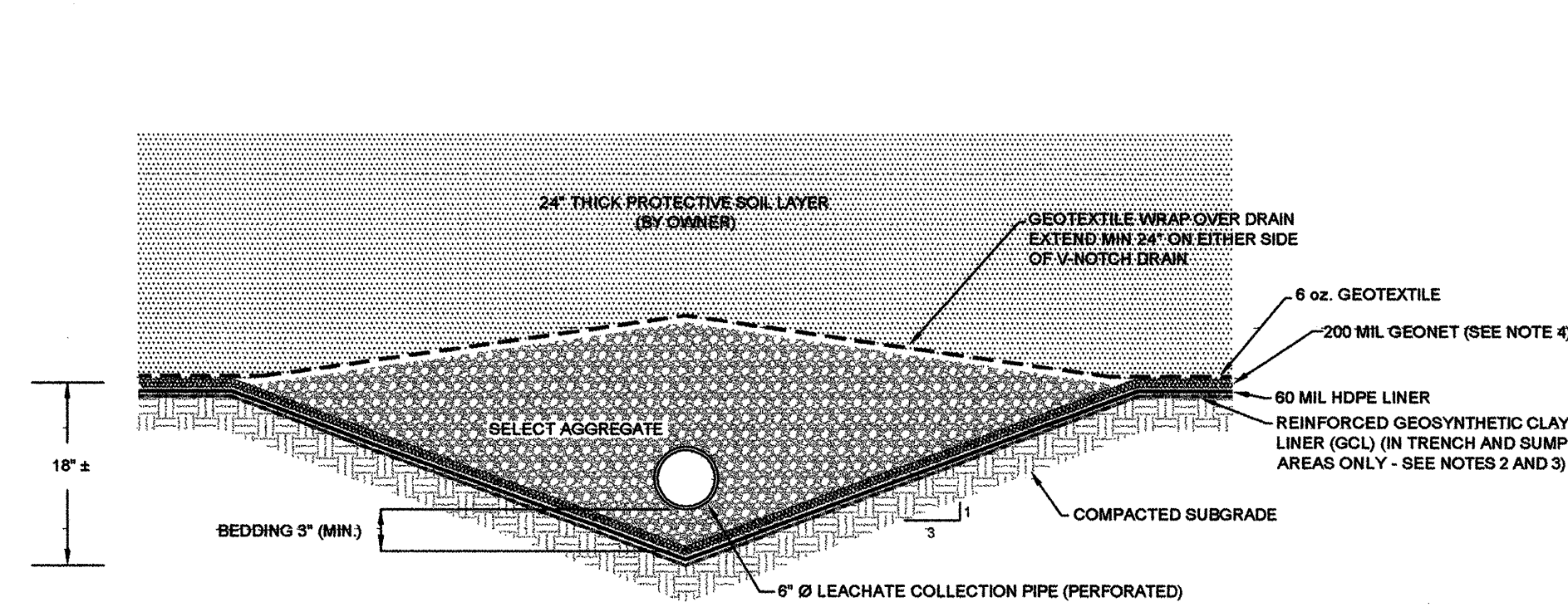
CITY OF ALBUQUERQUE
PUBLIC WORKS DEPARTMENT
ENGINEERING DEVELOPMENT GROUP

TITLE: OVERALL SITE PLAN

Design	Review	Corrections	City Engineer Approval	Mo./Day/Year	Mo./Day/Year
08/22/01				08/22/01	
DESIGN				08/22/01	
City Project No. 594691				Zone Map No.	Sheet 2 of 6

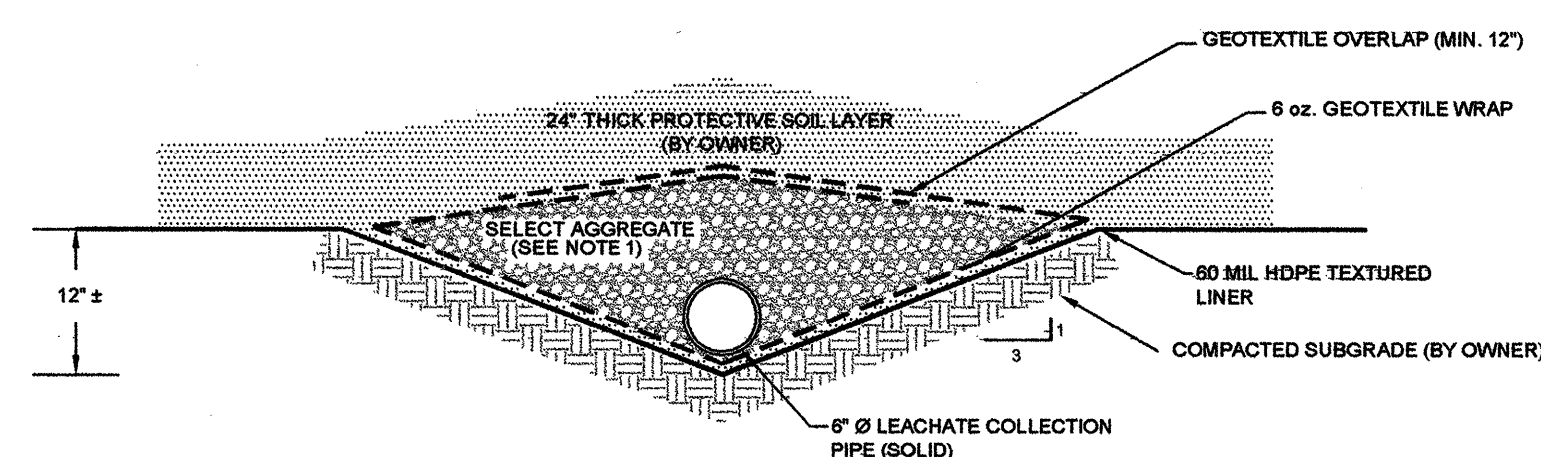






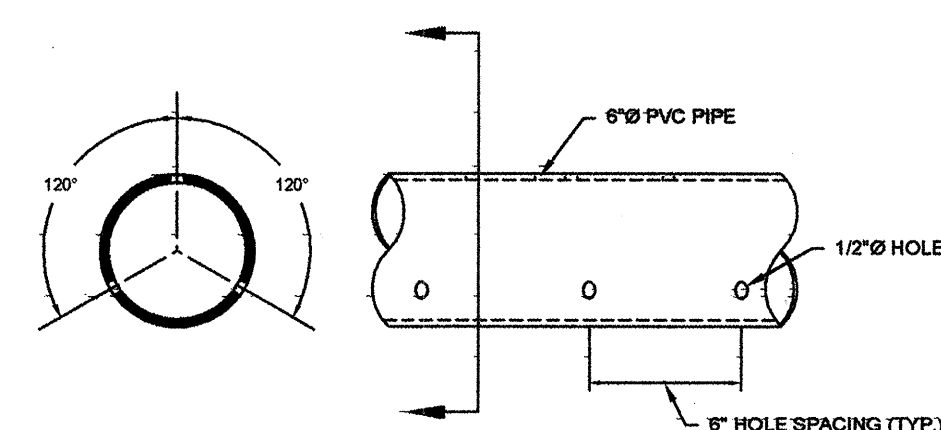
A LEACHATE COLLECTION PIPE AND TRENCH - FLOOR
SECTION VIEW NOT TO SCALE

- NOTES:
1. SELECT AGGREGATE SHALL BE ROUNDED AND SHALL HAVE PARTICLE SIZES THAT RANGE FROM 5/8" TO 1.5" DIAMETER. NO CRUSHED AGGREGATE OR ANGULAR MATERIAL MAY BE USED.
 2. LEACHATE TRENCHES 8B, 8C, AND 8D SHALL HAVE REINFORCED GCL STRIPS MINIMUM 1'-4" WIDE PLACED BENEATH THE HDPE LINER FOR THE ENTIRE LENGTH OF PERFORATED PIPE. REINFORCED GCL SHALL BE CONTINUOUS UNDER PIPE AND TERMINATE MINIMUM 5' ABOVE THE TOE OF THE SLOPE.
 3. LEACHATE TRENCH 8A SHALL BE UNDERLAIN WITH TWO PARALLEL GCL STRIPS AS DESCRIBED ABOVE. MINIMUM OVERLAP 12".
 4. THE UPSLOPE END OF THE GEONET SHALL EXTEND MIN 5' BEYOND TOE OF SLOPE AND BE SEALED OR WRAPPED WITH GEOTEXTILE TO PREVENT INFILTRATION OF SOIL FINES.

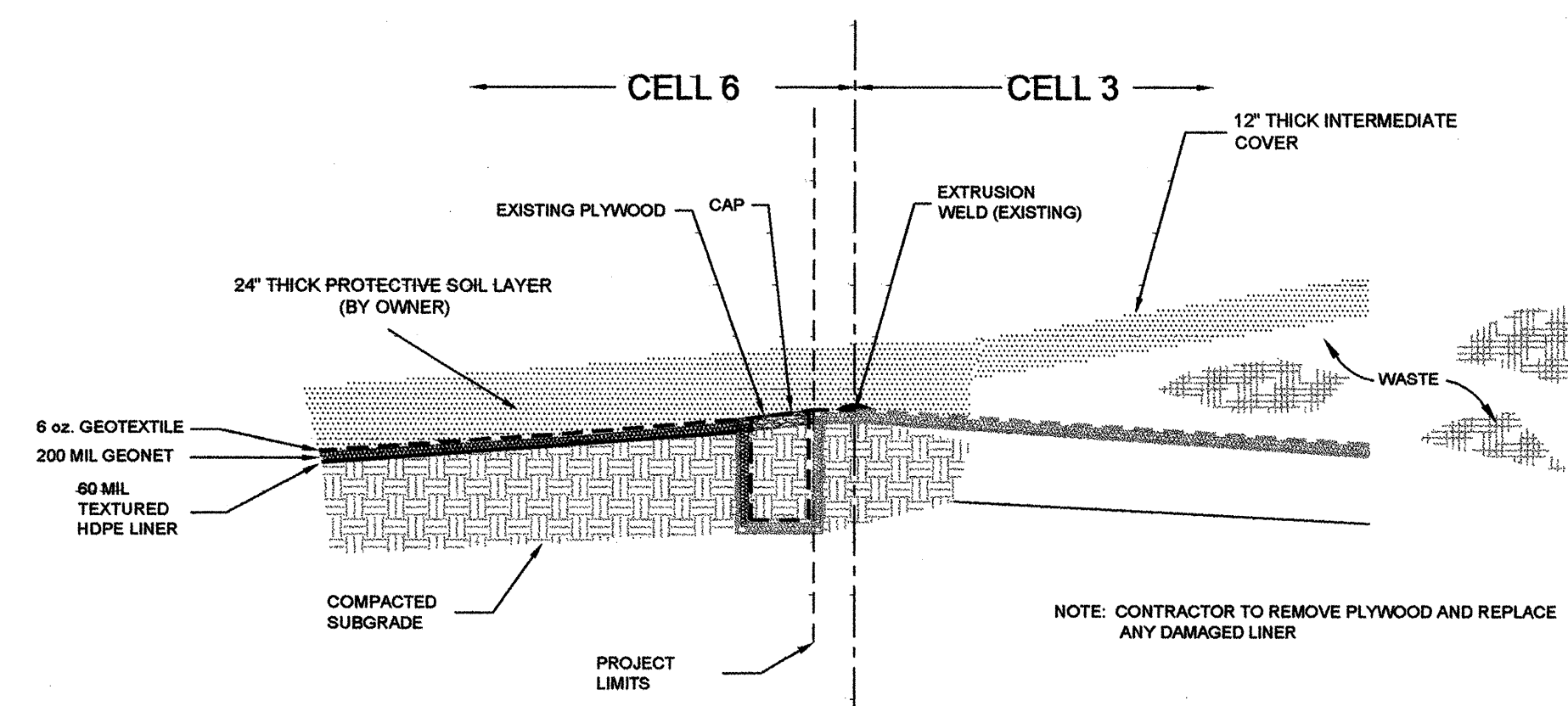


B LEACHATE COLLECTION PIPE RISER TRENCH - SIDEWALL
SECTION VIEW NOT TO SCALE

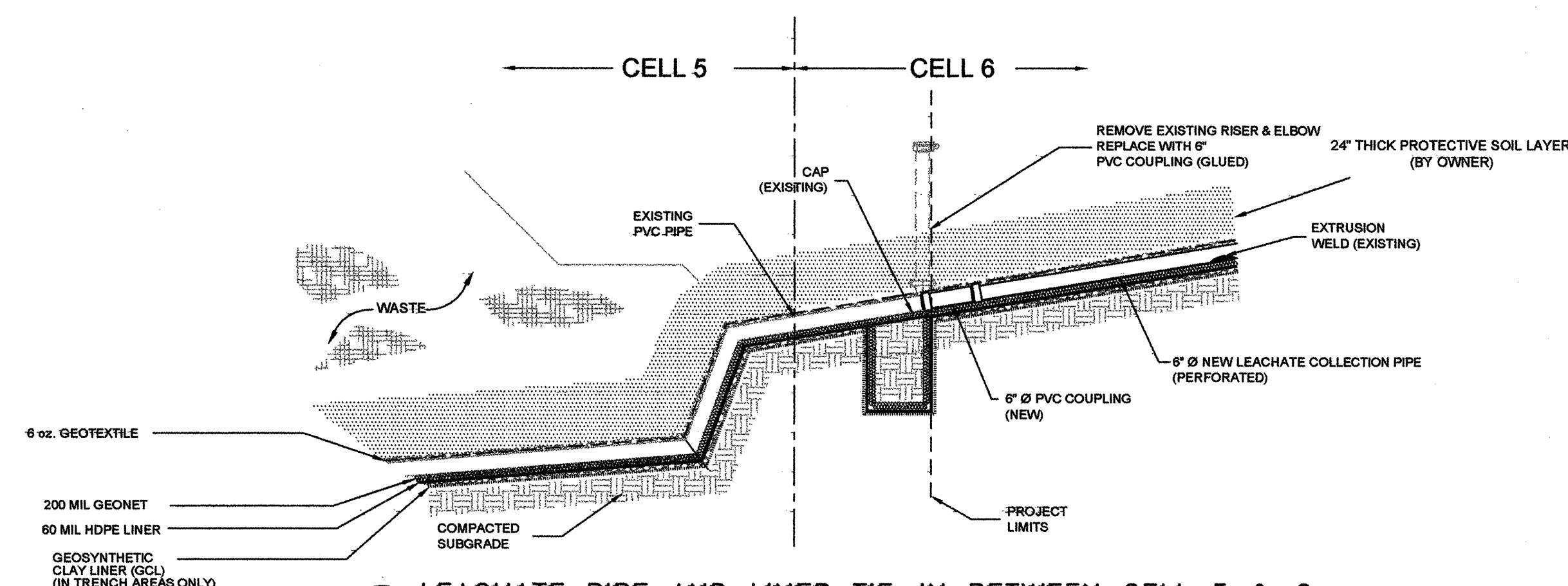
- NOTE: 1. SELECT AGGREGATE SHALL BE ROUNDED AND SHALL HAVE PARTICLE SIZES THAT RANGE FROM 5/8" TO 1.5" DIAMETER. NO CRUSHED AGGREGATE OR ANGULAR MATERIAL MAY BE USED.



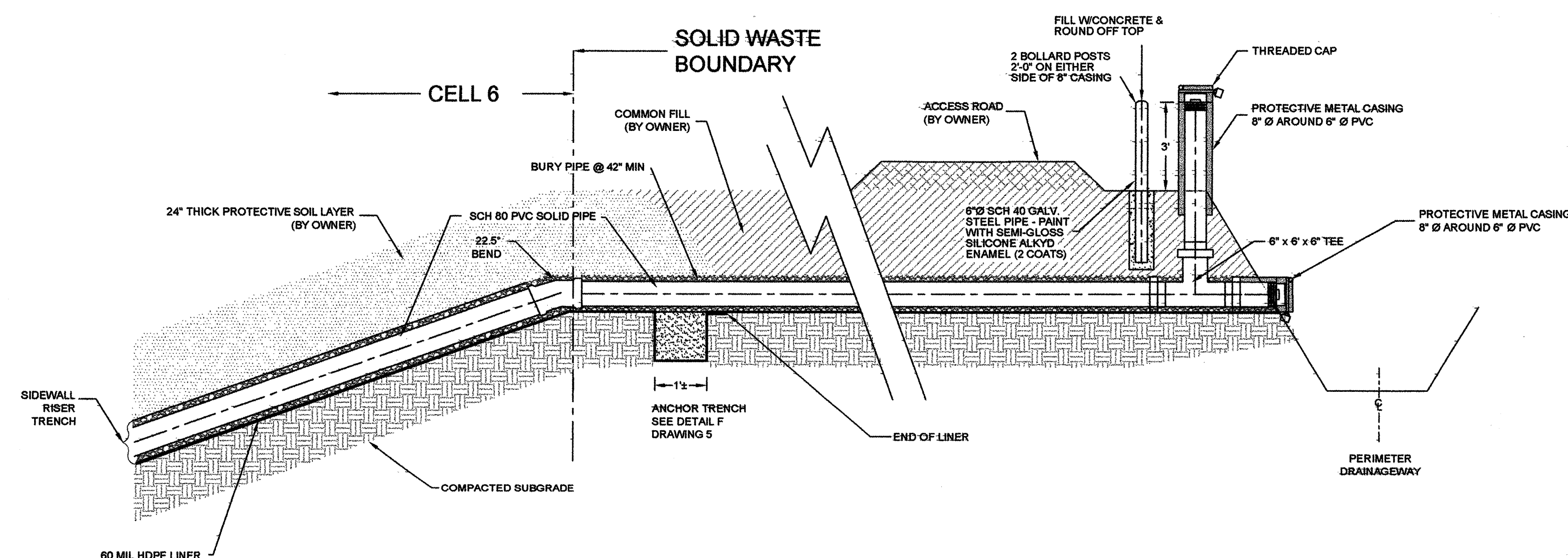
C LEACHATE COLLECTION PIPE - PERFORATED
MULTI-VIEW NOT TO SCALE



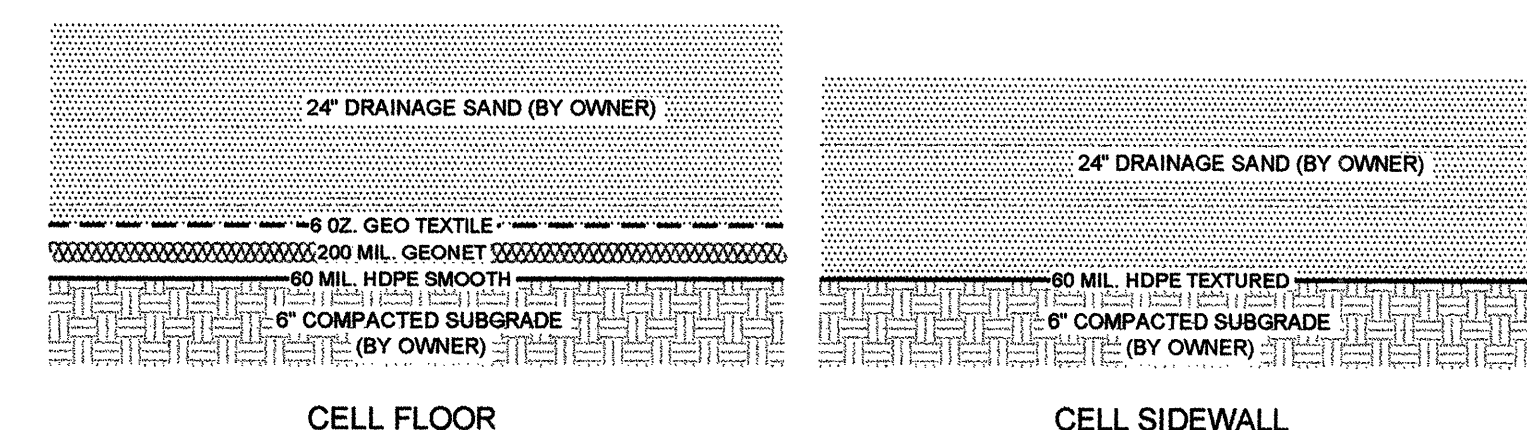
D LINER TIE-IN BETWEEN CELLS 3 & 6
SECTION VIEW NOT TO SCALE



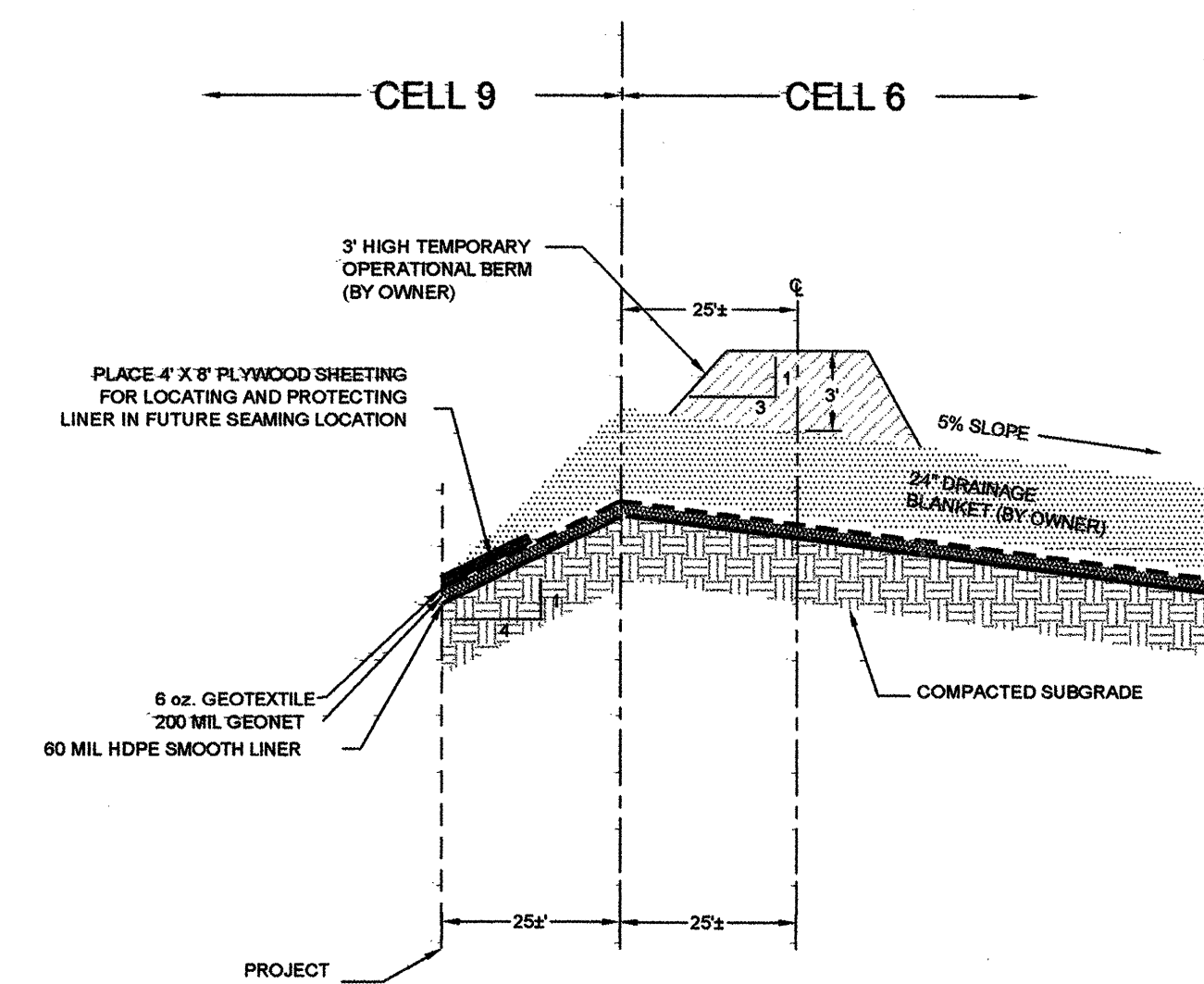
E LEACHATE PIPE AND LINER TIE-IN BETWEEN CELL 5 & 6
SECTION VIEW NOT TO SCALE



F LEACHATE COLLECTION PIPE CLEANOUT RISER AND EXTENSION
SECTION VIEW NOT TO SCALE



G LINER SYSTEM DETAIL
SECTION VIEW NOT TO SCALE

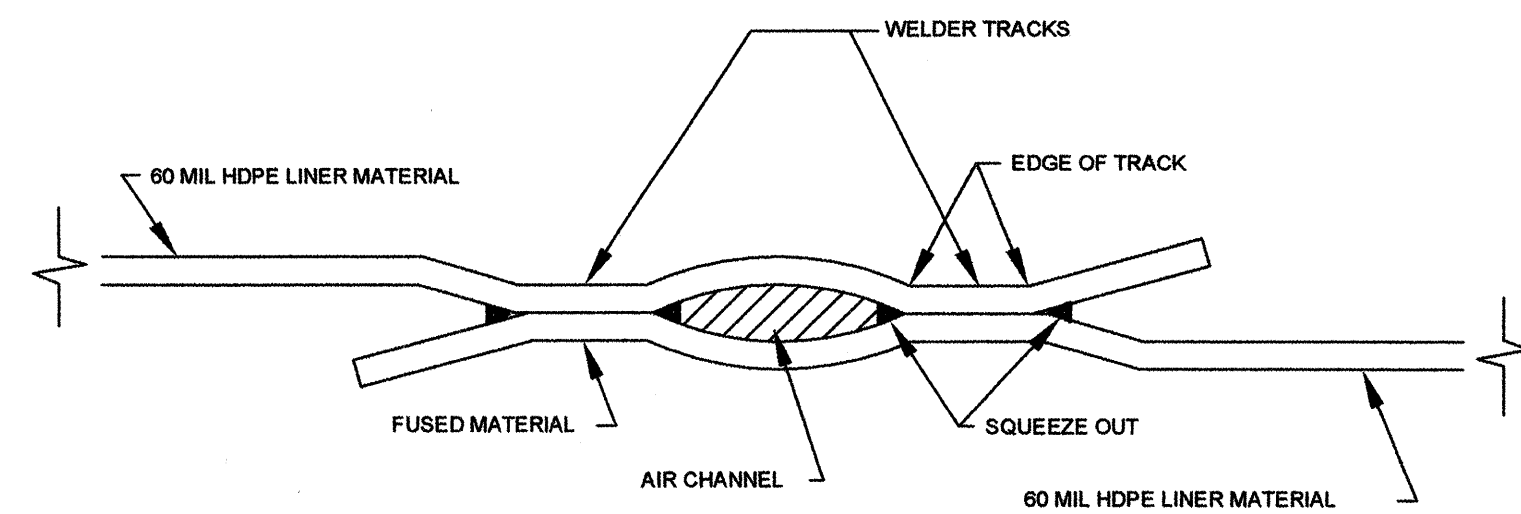


H LINER TERMINATION AT CELL 6/CELL 9 BOUNDARY
SECTION VIEW NOT TO SCALE

FOR INFORMATION ONLY

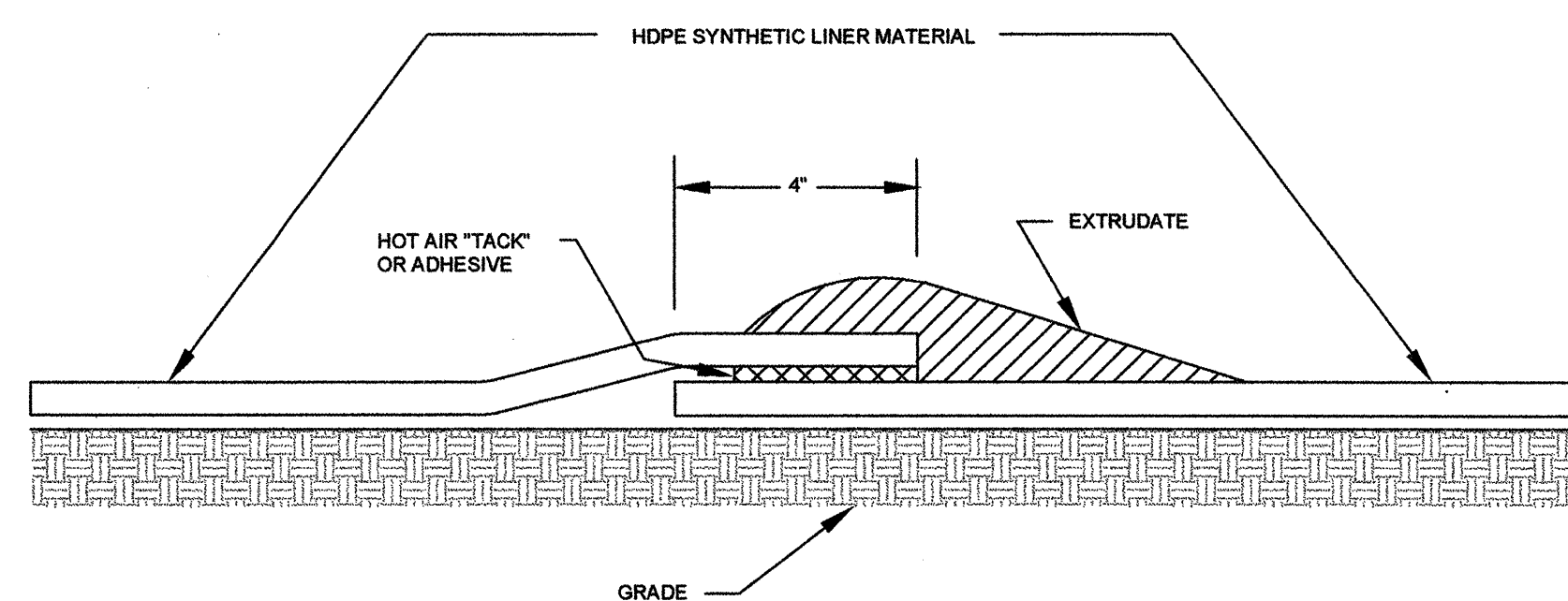


CITY OF ALBUQUERQUE PUBLIC WORKS DEPARTMENT ENGINEERING DEVELOPMENT GROUP			
TITLE: LANDFILL LINER AND LEACHATE COLLECTION SYSTEM DETAILS			
City Project No.	599691	Zone Map No.	
Sheet	4	of	6



- NOTES:
1. BOTH AREAS OF FUSED MATERIAL SHOULD BE VOID OF ANY SEAM LINES.
 2. EDGE OF TRACKS NOT TO CUT THE LINER.
 3. AIR CHANNEL SHOULD BE CLEAR.
 4. BOTH WELDER TRACKS SHALL BE EQUAL WIDTHS.
 5. SQUEEZE OUT SHOULD BE JUST BARELY VISIBLE IN ALL 4 LOCATIONS WHEN VIEWED IN THE TEST CROSS-SECTION.

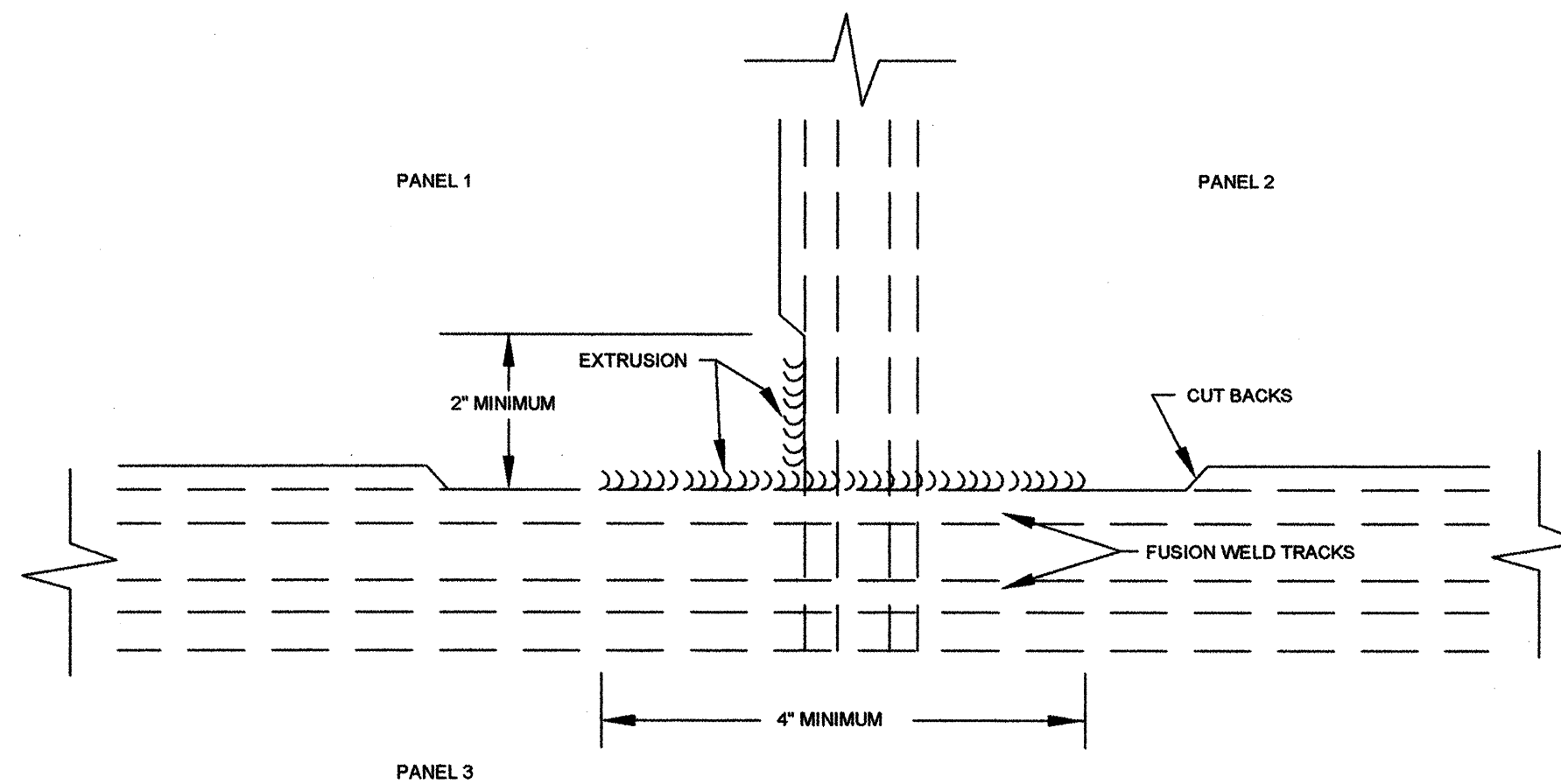
A
TYPICAL FUSION WELD
SECTION VIEW NOT TO SCALE



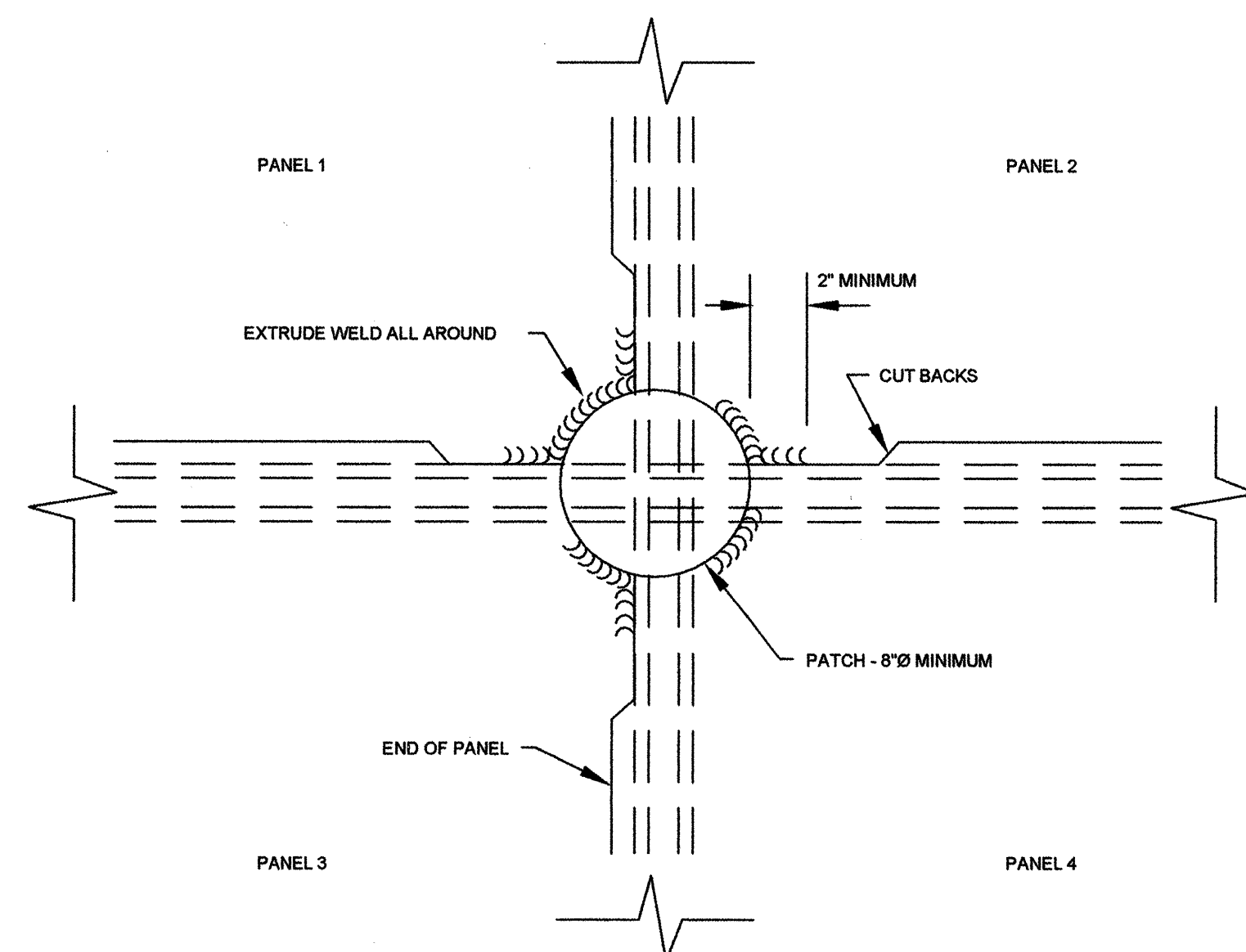
D
TYPICAL EXTRUSION WELD
SECTION VIEW NOT TO SCALE

FML LAYOUT NOTES:

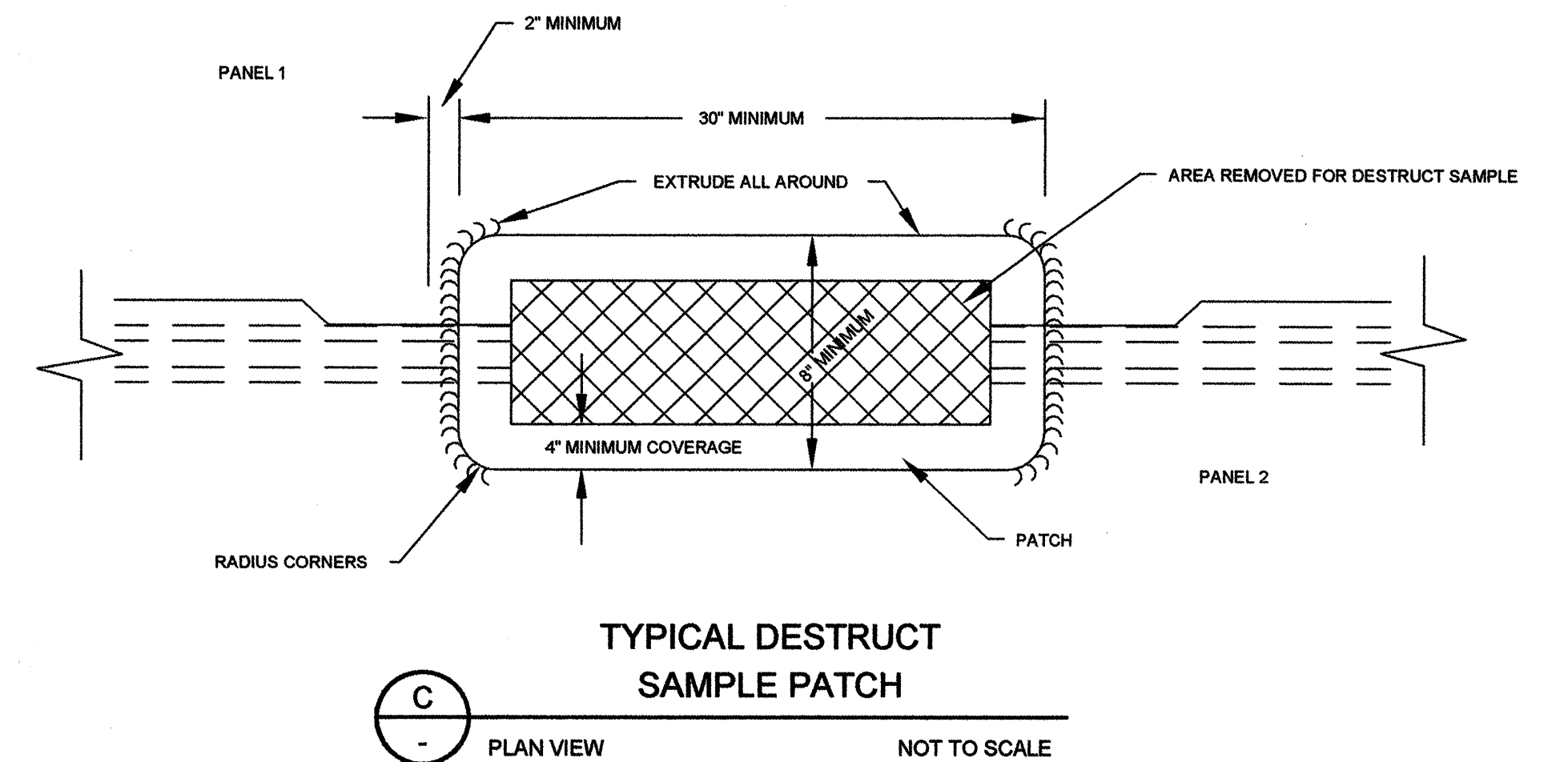
1. TEXTURED FML SHALL BE USED ON ALL SLOPES STEEPER THAN 10:1 (H:V) WITH A VERTICAL RISE GREATER THAN 10 FT., SMOOTH FML SHALL BE USED ON ALL SLOPES LESS THAN OR EQUAL TO 10:1 (H:V).
2. LINER PANEL DOUBLE FUSION WELD SEAMS SHALL NOT BE LOCATED CLOSER THAN 5 FT. TO ANY LEACHATE LATERAL IN A PARALLEL DIRECTION.
3. A MAXIMUM 6" OVERLAP IS REQUIRED AT EACH DOUBLE FUSION WELD SEAM. TYPICAL PANEL DIMENSION NOT INCLUDING OVERLAP IS 22.5 FT. (LENGTH VARIES).
4. THE NUMBER OF SEAMS ORIENTED PERPENDICULAR TO THE DIRECTION OF MAXIMUM SLOPE SHALL BE MINIMIZED.
5. LINER TRENCH ANCHORS ARE LOCATED APPROXIMATELY 2 FEET OUTSIDE OF THE TOP OF THE LINER SIDESLOPE.
6. NO HORIZONTAL SEAMS SHALL BE LOCATED WITHIN 5' OF TOE OF SLOPE.



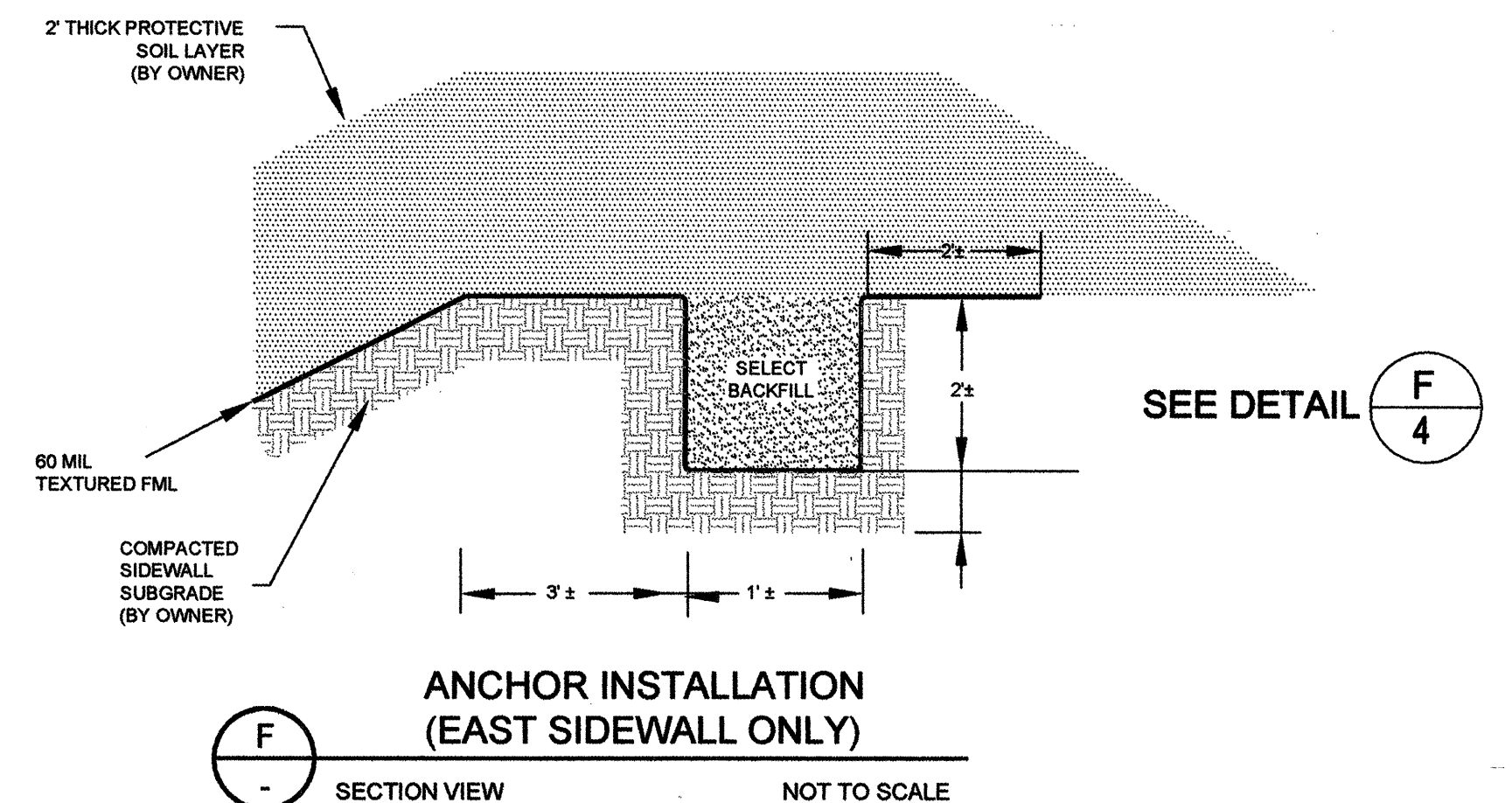
B
TYPICAL "T" AT BUTT SEAM
PLAN VIEW NOT TO SCALE



E
TYPICAL PATCH AT PANEL END
PLAN VIEW NOT TO SCALE



C
TYPICAL DESTRUCT SAMPLE PATCH
PLAN VIEW NOT TO SCALE



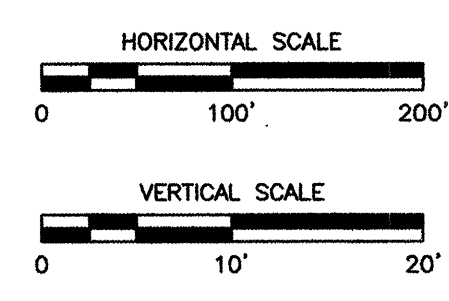
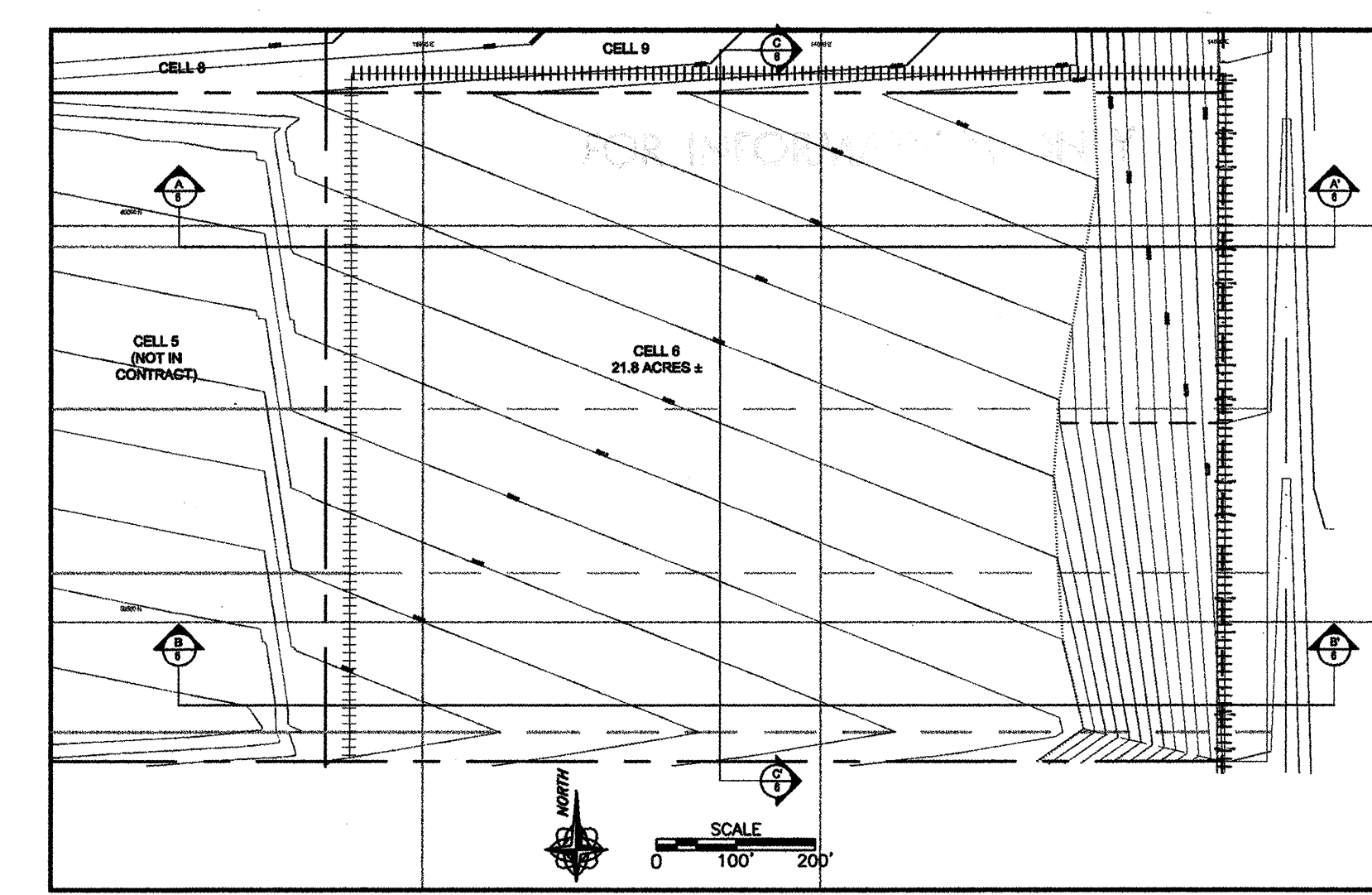
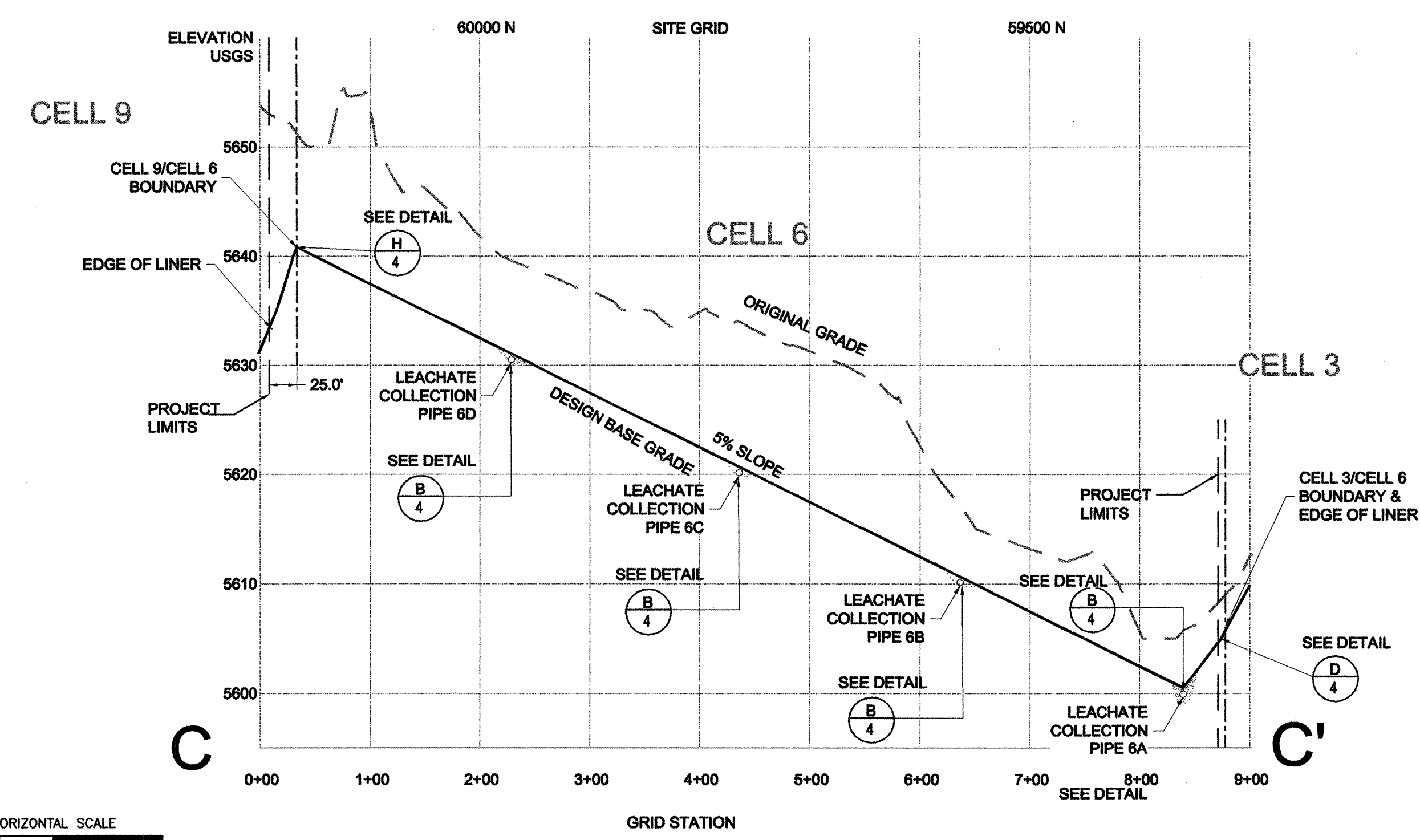
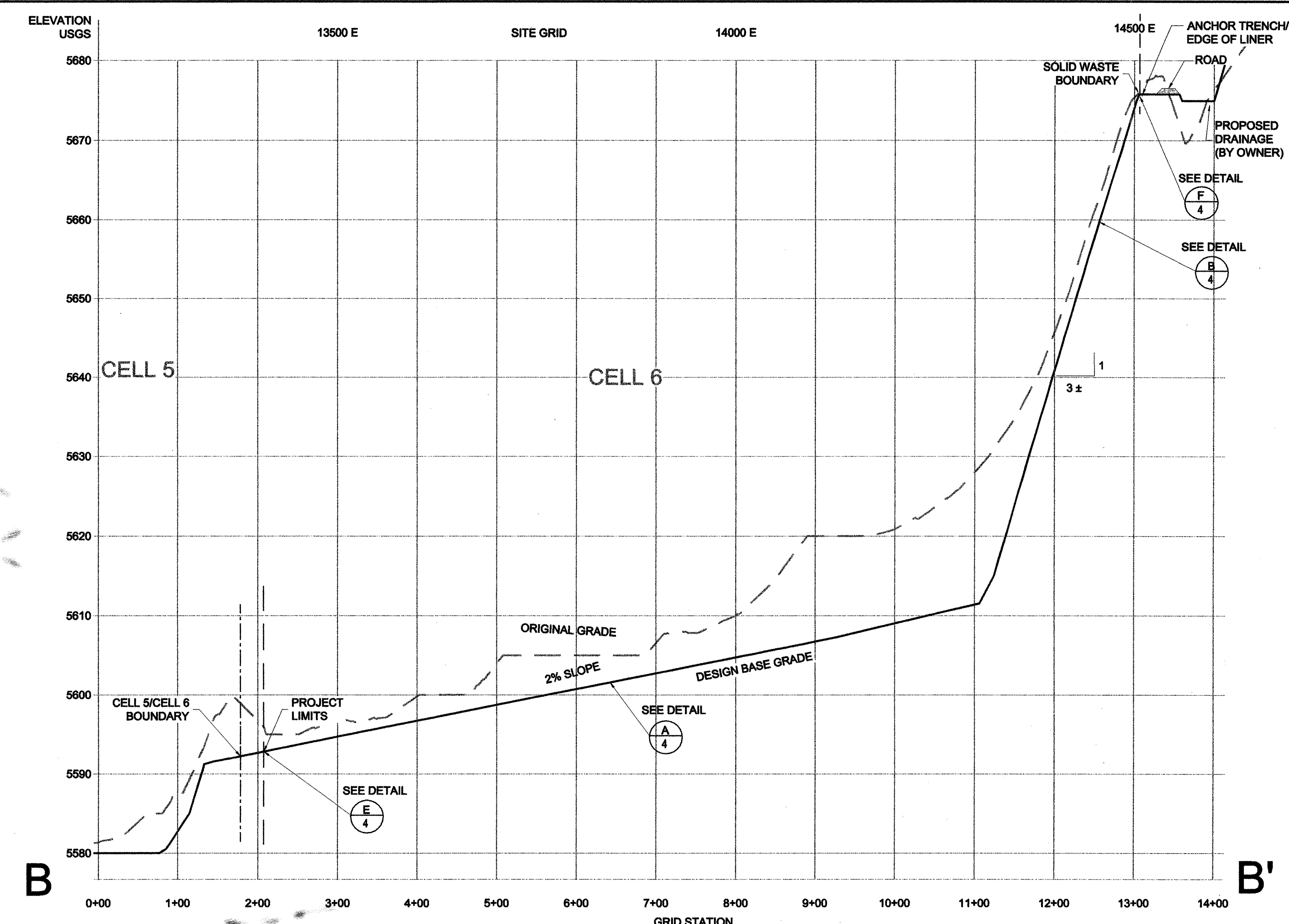
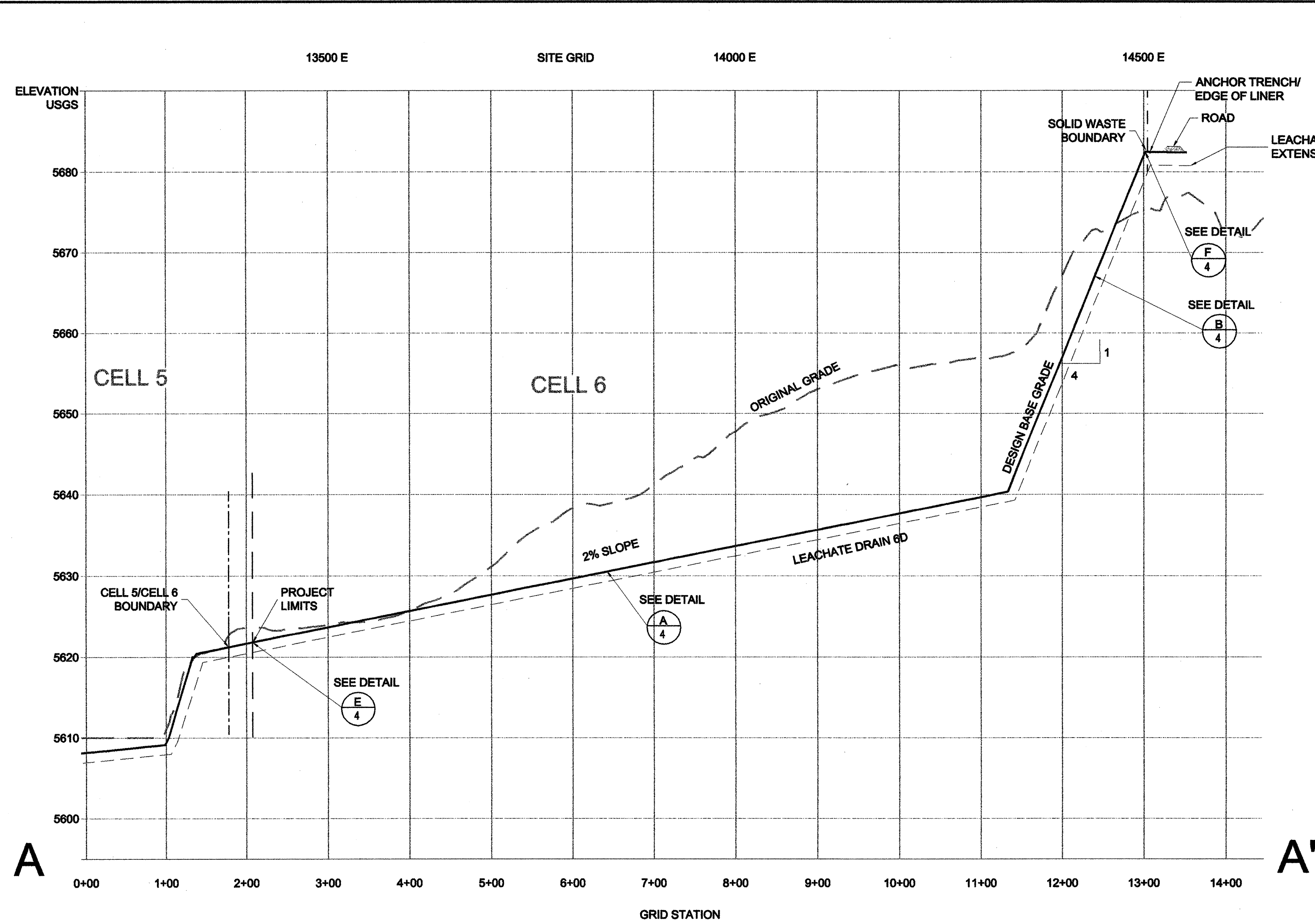
F
ANCHOR INSTALLATION (EAST SIDEWALL ONLY)
SECTION VIEW NOT TO SCALE

FOR INFORMATION ONLY

FOR INFORMATION ONLY



CITY OF ALBUQUERQUE PUBLIC WORKS DEPARTMENT ENGINEERING DEVELOPMENT GROUP			
TITLE: CELL 6 LINER DETAILS			
Design Review/Construct	City Engineer Approval	Mo./Day/Year	Mo./Day/Year
AUG 2 1 2001	AUG 2 1 2001	08/22/01	08/22/01
City Project No.	Zone Map No.	Sheet	5 of 6
599691			



FILE: 0249-01-10/CELL 6 PLANS
 COPYRIGHT © 2001 WEAVER BOOS & GORDON, INC. ALL RIGHTS RESERVED.

FOR INFORMATION ONLY

1. Keith Gordon
 REGISTERED PROFESSIONAL ENGINEER
 NEW MEXICO
 5/22/01

CITY OF ALBUQUERQUE PUBLIC WORKS DEPARTMENT ENGINEERING DEVELOPMENT GROUP	
TITLE: OPERATIONAL CROSS-SECTIONS	
DESIGNER: LAG DRAWN BY: BOW CHECKED BY: ING	PROJECT NUMBER: NM02-1.020 DATE: 8/24/2001 SHEET: 6 OF 6