

CITY OF ALBUQUERQUE

MAYOR, HARRY KINNEY
CITY COUNCIL

DIST. 1 - PAT. BACH, DIST. 2 - JOE ABNEY, DIST. 3 - JACK KOLBERT (PRESIDENT)
DIST. 4 - THOMAS HOOVER, DIST. 5 - SONDRAL CONN, DIST. 6 - JIM DELLENEY, DIST. 7 - ALLEN KRUMM, DIST. 8 - ALAN REED, DIST. 9 - MARION COTTELL. JANUARY, 1976

FIRE STATION NO. 17

TUCSON ROAD AT YUCCA DRIVE, NW

FIRE CHIEF, ARTHUR MARTINEZ

JOHN REED • ARCHITECT 5905 MARBLE, NE 265-8505

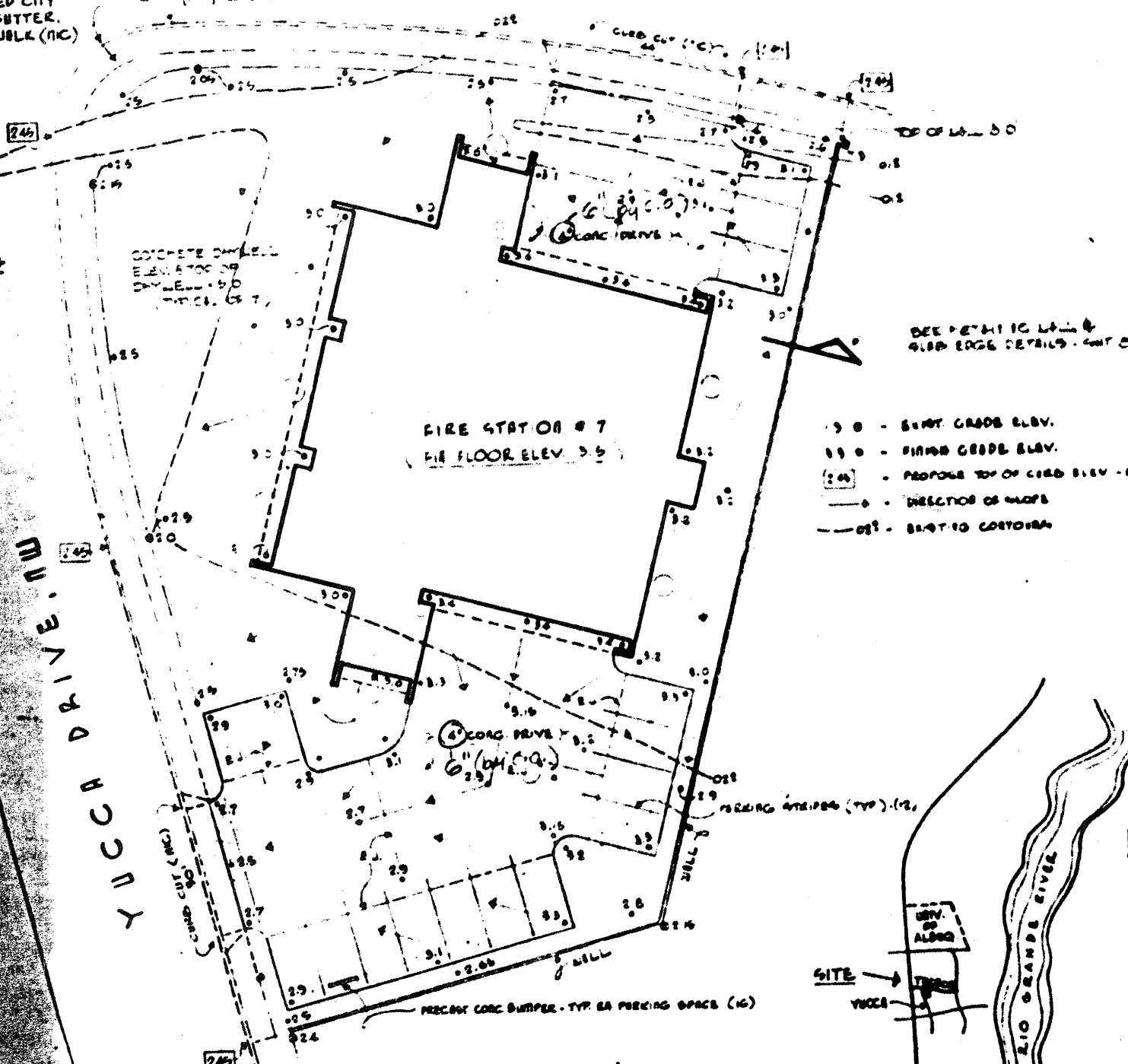
SHEET
1
OF 15
SITE PLAN
GRADING & DRAINAGE
AND LOCATION MAP

AS-BUILT PLANS
2/7/77

TUCSON ROAD, NW

PROPOSED CITY
CURB, GUTTER,
& SIDEWALK (10')

PROPOSED CITY CURB ELEV. (TYP.)

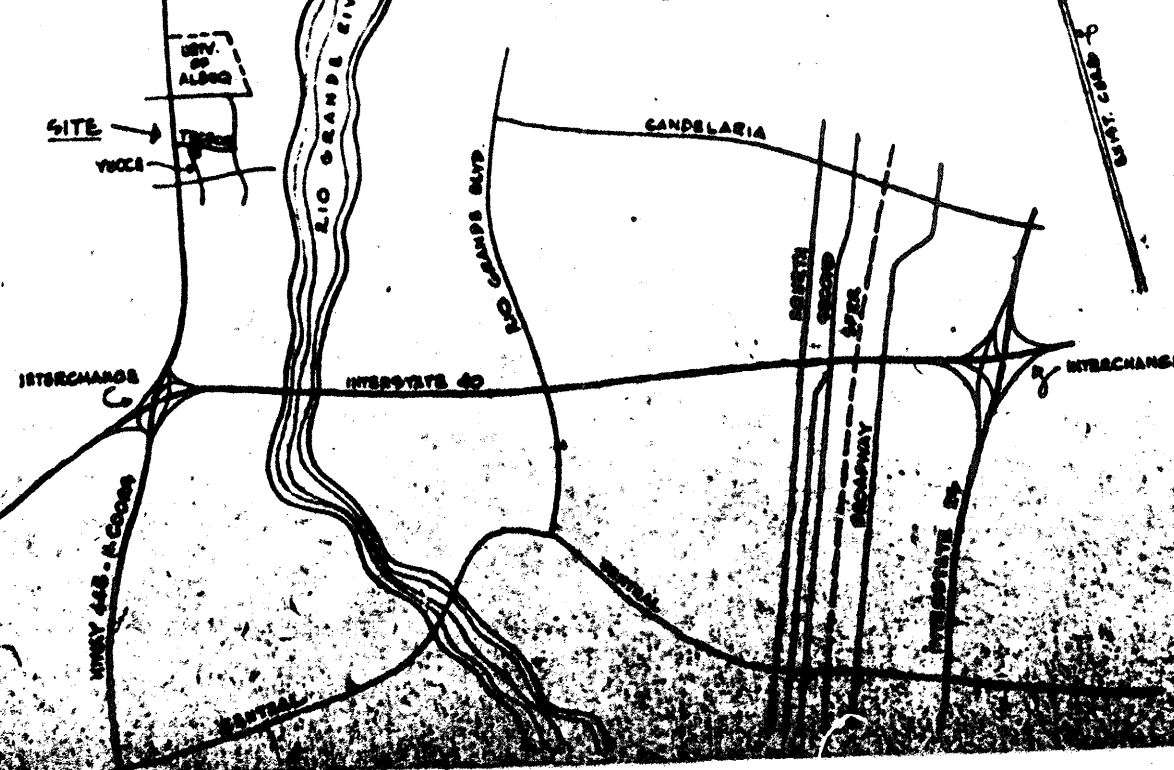


SITE - GRADING & DRAINAGE

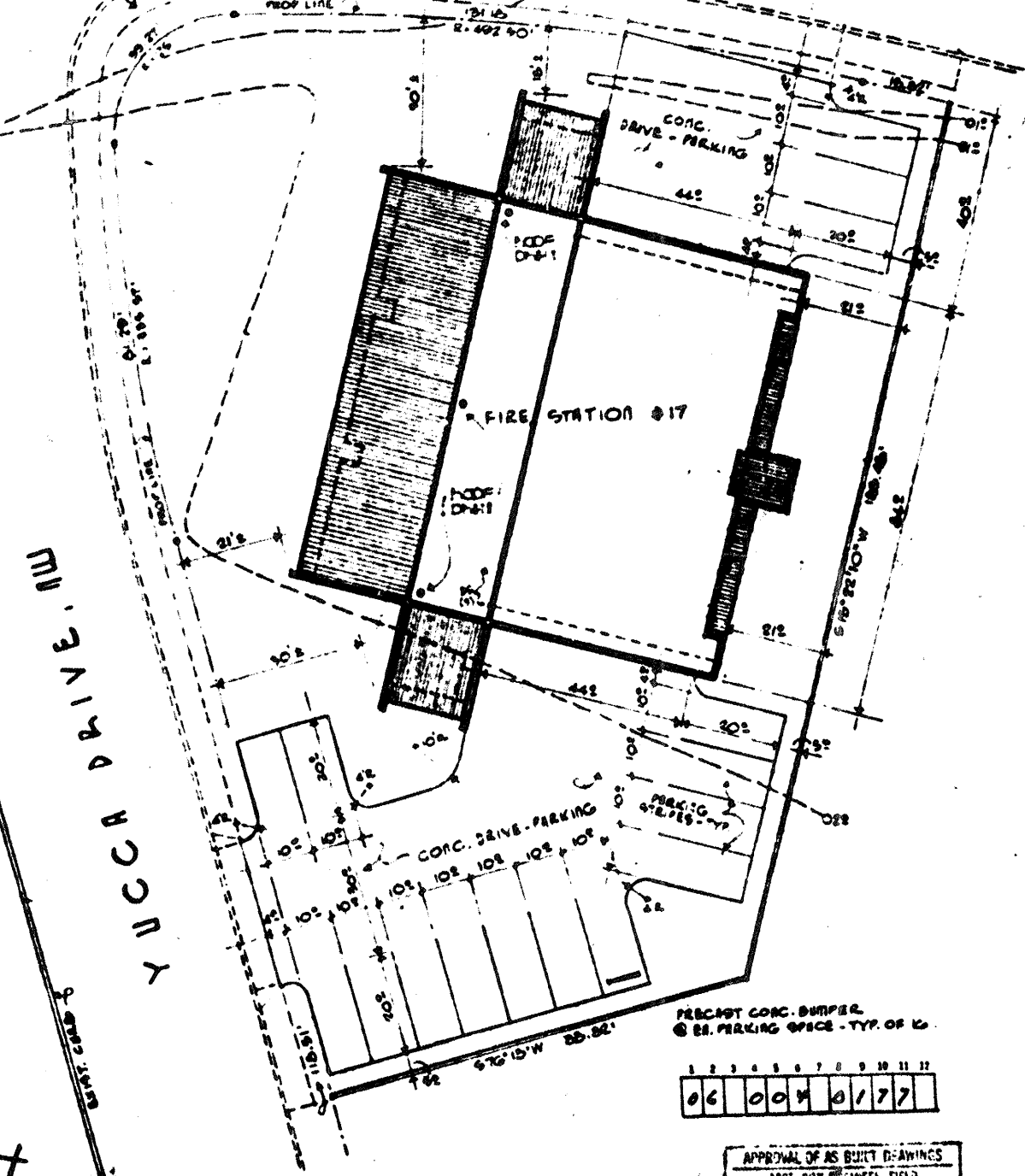
1" = 20'

LOCATION MAP

10 ACRES



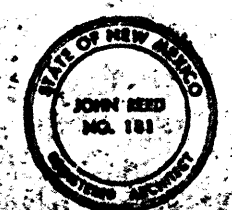
PROPOSED CITY
CURB, GUTTER,
& SIDEWALK (10')

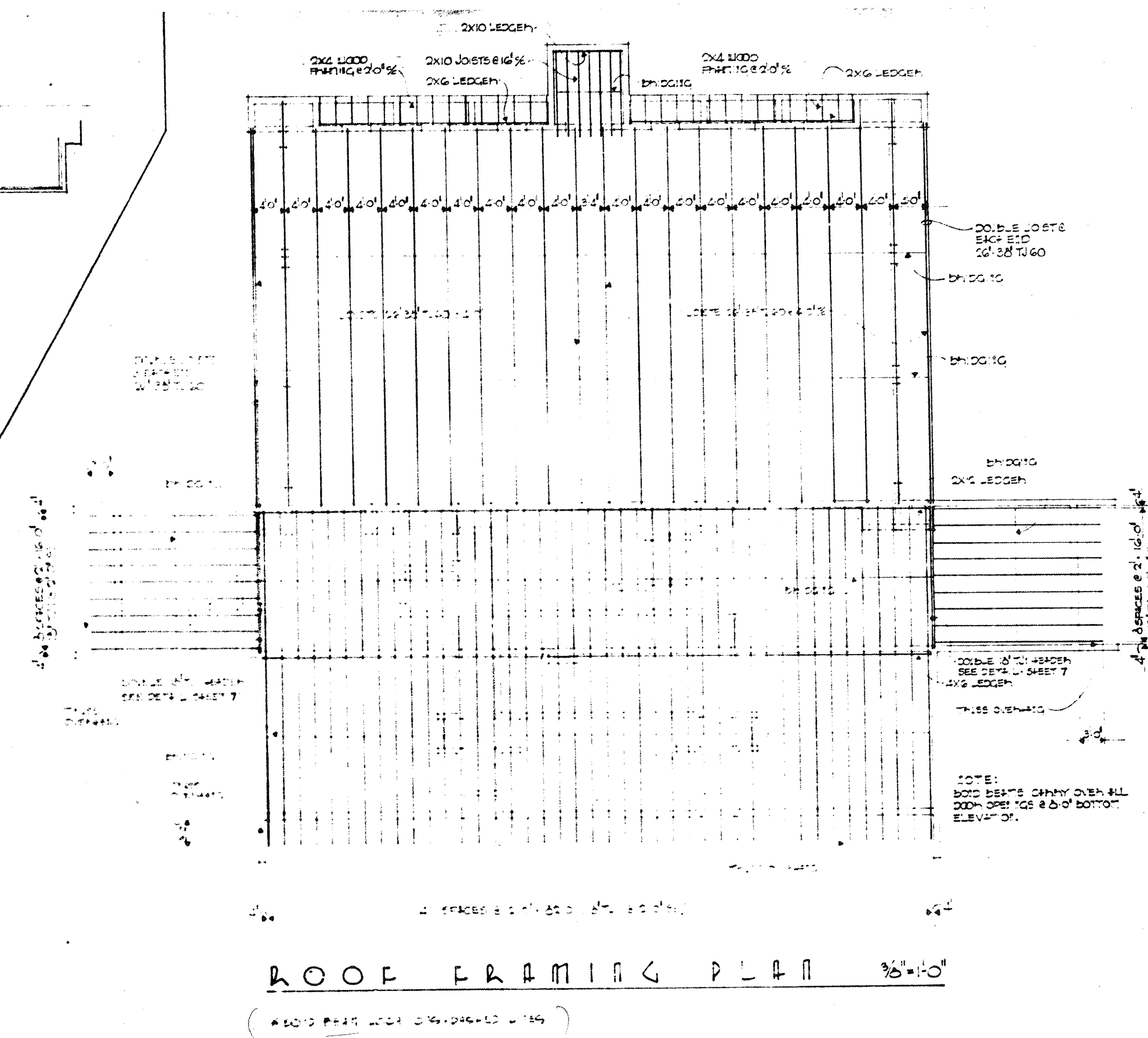
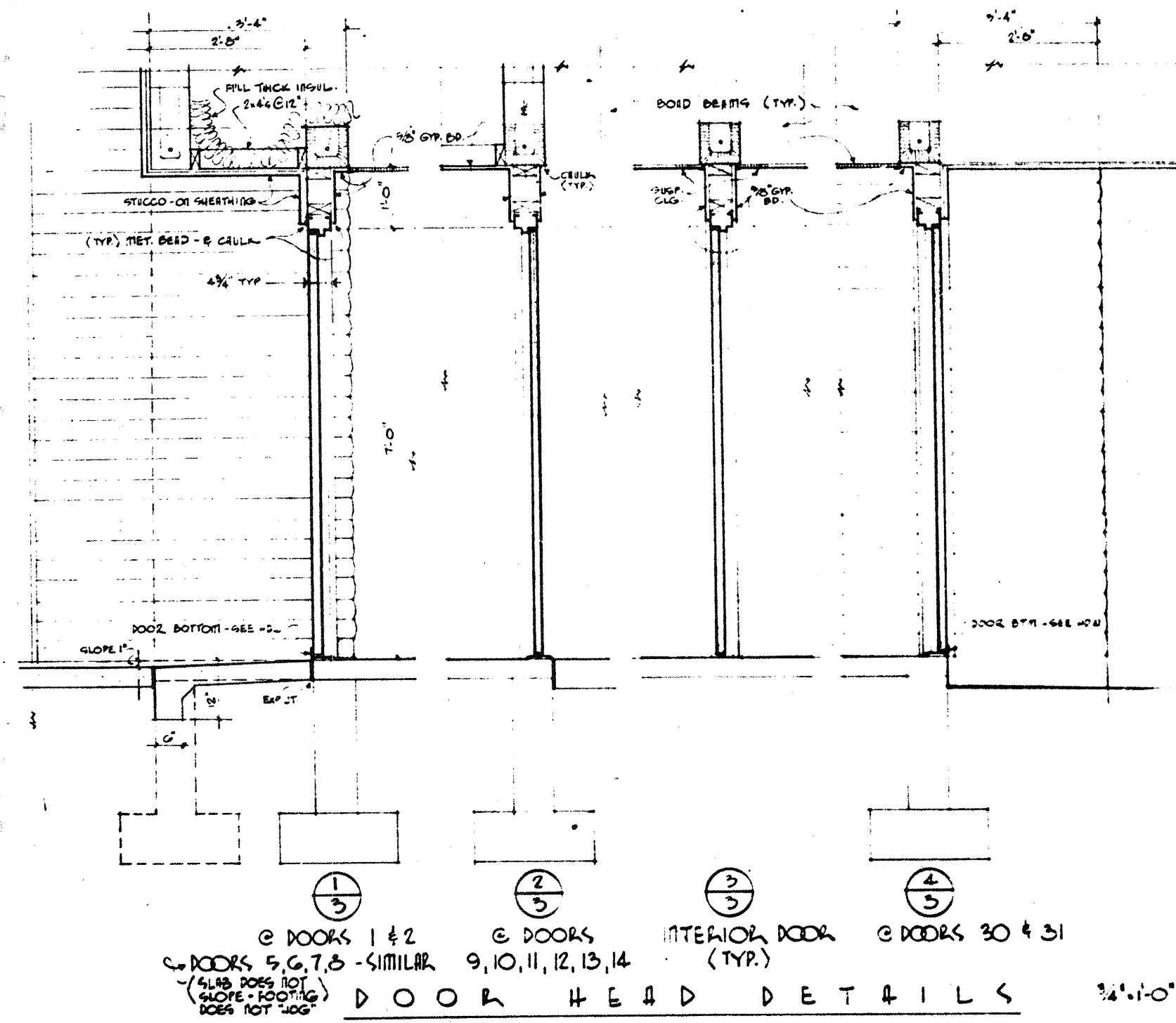


SITE PLAN 1" = 20'

BUILDING DESIGN DATA

FIRE ZONE	5
DESIGN ZONE	2
TYPE OF CONSTRUCTION	IV
BUILDING AREA	7450 SQ. FT.
CONCRETE AREA	100
CEILING AREA	2100 SQ. FT.
FLOOR AREA	2100 SQ. FT.
ROOF AREA	1100 SQ. FT.

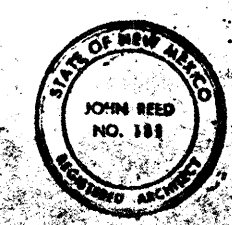




SHEET
3
OF 15

JOHN REED ARCHITECT
CITY OF ALBUQUERQUE, NEW MEXICO

17. TICSON ROAD AT YICOT DRIVE, N.J.
FIRE STATION #17

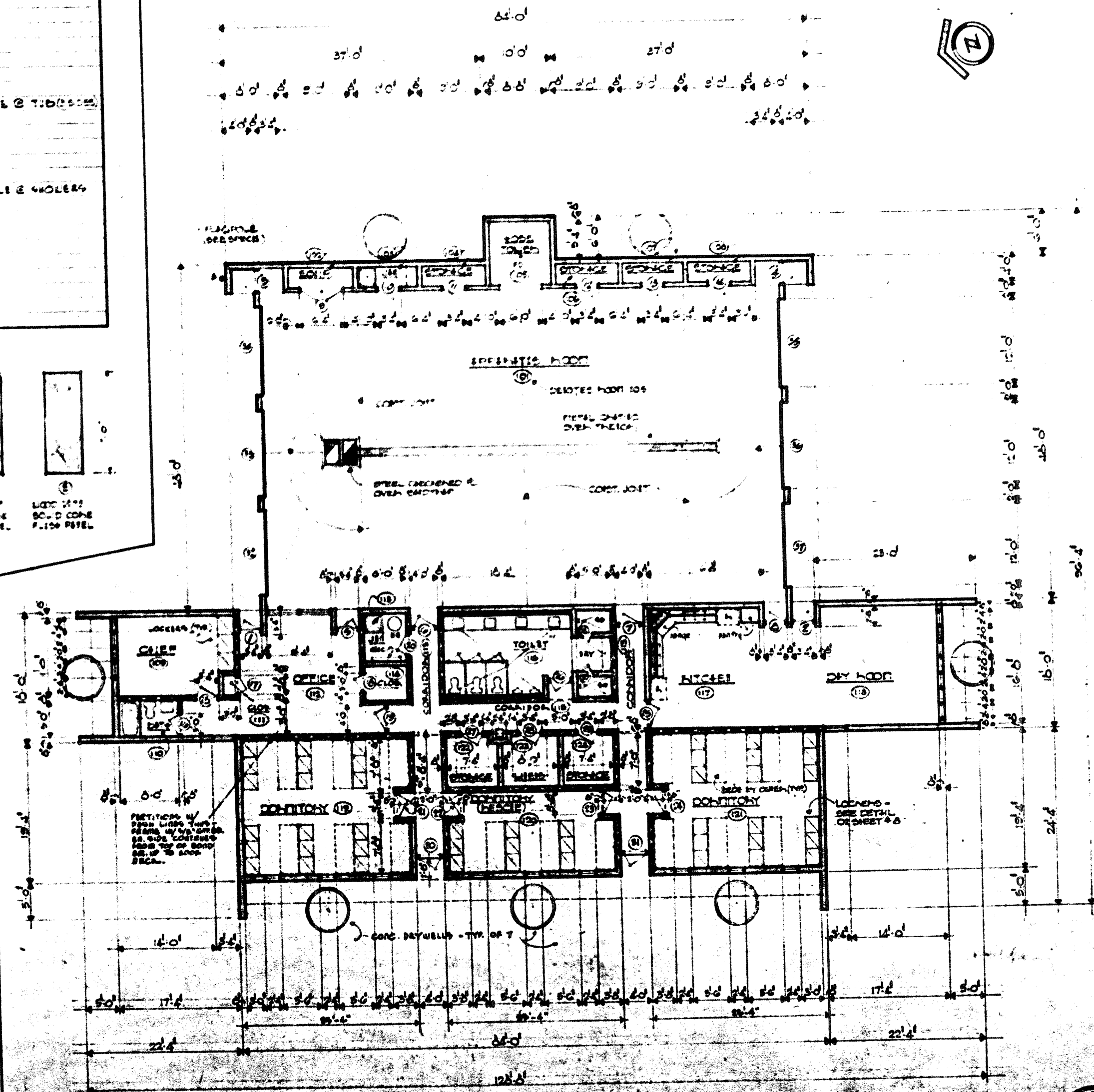
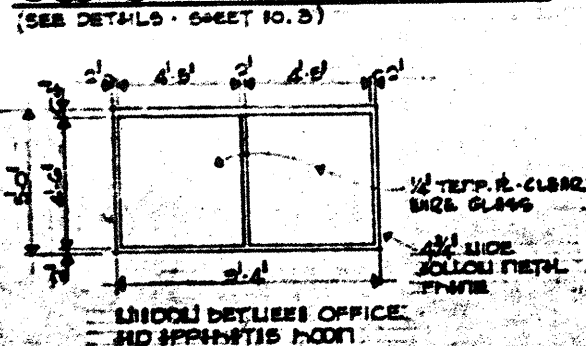


06 004 0377

ROOM FINISH SCHEDULE					
NO.	ROOM NAME	FLOOR BASE	WALLS	CEILING	HEATHING
101	APPROXIMATE ROOM	EXP. CONC. TO BASE	EXPOSED GUMBLE BLOCK	EXP. STRUCT. TILE	
102	EQUIPMENT	EXP. CONC. TO BASE	•	CYP. BD. ON 2x4 FRAME	
103	LABORATORY	•	•	"	
104	STORAGE	•	•	"	
105	ROSE TOWEL	•	•	CYP. BD. ON 2x10 JOINTS	
106	STORAGE	•	•	CYP. BD. ON 2x4 FRAME	
107	STORAGE	•	•	"	
108	STORAGE	•	•	"	
109	CHIEF	EXP. CONC. TO BASE	•	EXP. CONC. TILE	2" x 6" @ 12" O.C.
110	DRY	V. TILE VINYL BASE	•	CYP. BD. ON 2x6 JOINTS	
111	CLOSET	•	•	CYP. BD. ON 2x4 FRAME	
112	OFFICE	•	•	EXP. CONC. TILE	
113	LABORATORY	•	•	CYP. BD. ON 2x6 JOINTS	
114	CLOSET	•	•	"	
115	CONC. CON.	V. TILE VINYL BASE	EXPOSED GUMBLE BLOCK	EXP. CONC. TILE	
116	TOILET	CERAMIC TILE ON G.C.	CYP. BD. ON 2x4 JOINTS	CYP. BD. ON 2x10 JOINTS	• 2" x 6" @ 12" O.C.
117	KITCHEN	V. TILE VINYL BASE	EXPOSED GUMBLE BLOCK	EXP. CONC. TILE	
118	PHYSICIAN	•	•	"	
119	CONC. CON.	•	•	"	
120	CONC. CON.	•	•	"	
121	CONC. CON.	•	•	"	
122	STORAGE	•	•	CYP. BD. ON 2x4 JOINTS	
123	DRY	•	•	"	
124	STORAGE	V. TILE VINYL BASE	EXPOSED GUMBLE BLOCK	"	

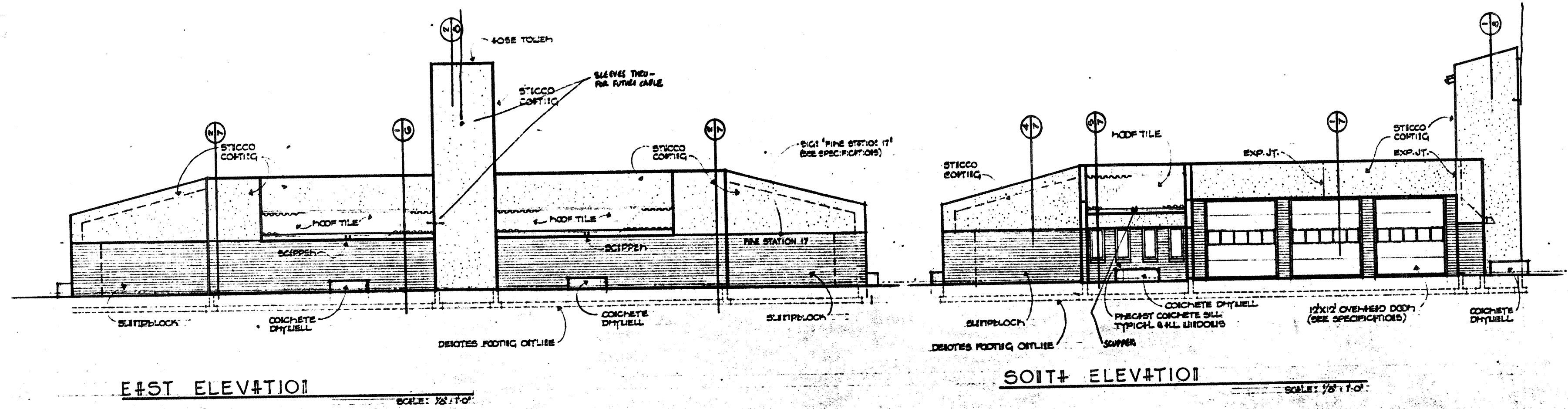
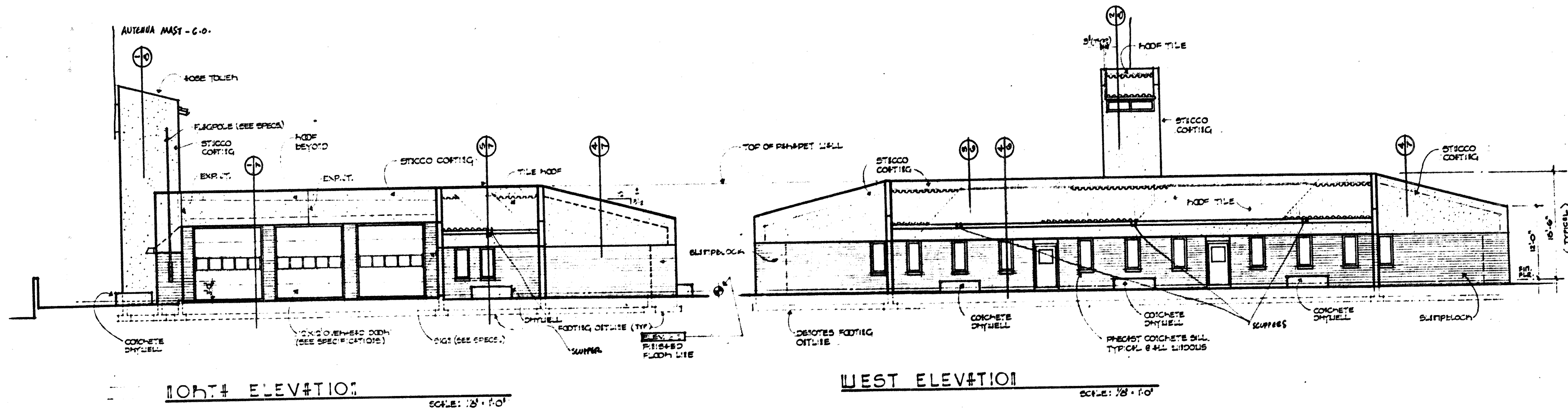
NO.	TYPE	SIZE	QTY	REMARKS
1	C	30x70x1/2"	1	
2	C	30x70x1/2"	1	
3	C	30x70x1/2"	1	
4	C	30x70x1/2"	1	
5	AF	30x70x1/2"	4	HALL DOOR
6	AF	30x70x1/2"	4	" "
7	AF	30x70x1/2"	4	" "
8	AF	30x70x1/2"	4	" "
9	C	30x70x1/2"	15	TRIM OF 3 DOORS
10	C	30x70x1/2"	3	
11	C	30x70x1/2"	3	
12	C	30x70x1/2"	3	
13	C	30x70x1/2"	3	
14	C	30x70x1/2"	3	
15	D	30x70x1/2"	6	
16	E	30x70x1/2"	5	
17	F	30x70x1/2"	7	
18	C	30x70x1/2"	10	Closer Added
19	A	30x70x1/2"	5	
20	E	30x70x1/2"	6	
21	C	30x70x1/2"	11	
22	C	30x70x1/2"	11	
23	C	30x70x1/2"	11	
24	C	30x70x1/2"	11	
25	A	30x70x1/2"	10	
26	D	30x70x1/2"	12	
27	C	30x70x1/2"	5	Closer Added
28	C	30x70x1/2"	5	" "
29	C	30x70x1/2"	5	" "
30	b	30x70x1/2"	2	
31	b	30x70x1/2"	2	
32	G	12x12	1	SEE SPECS.
33	G	12x12	1	SEE SPECS.
34	G	12x12	1	SEE SPECS.
35	G	12x12	1	SEE SPECS.
36	G	12x12	1	SEE SPECS.
37	G	12x12	1	SEE SPECS.
38	C	30x70x1/2"	1	SHOWER DOOR

poohs



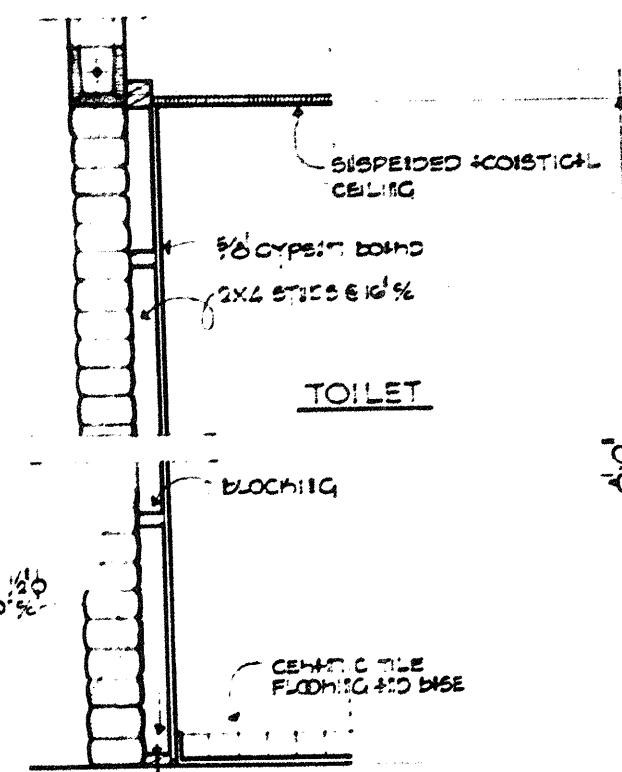
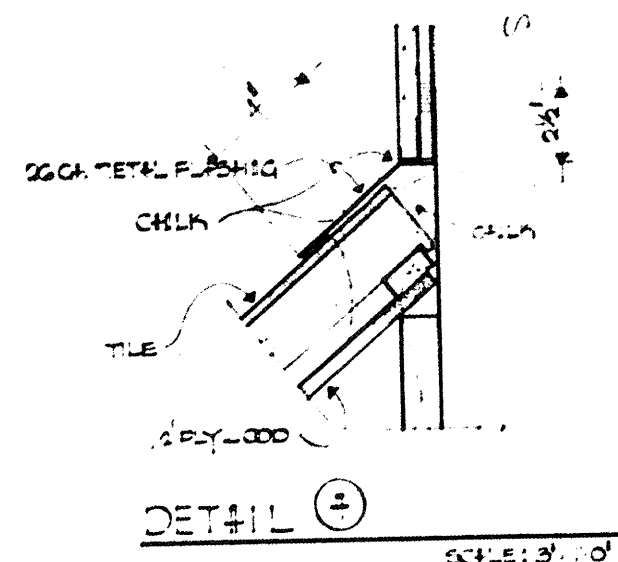
FLOOR PLAN 1/8" = 1'-0"

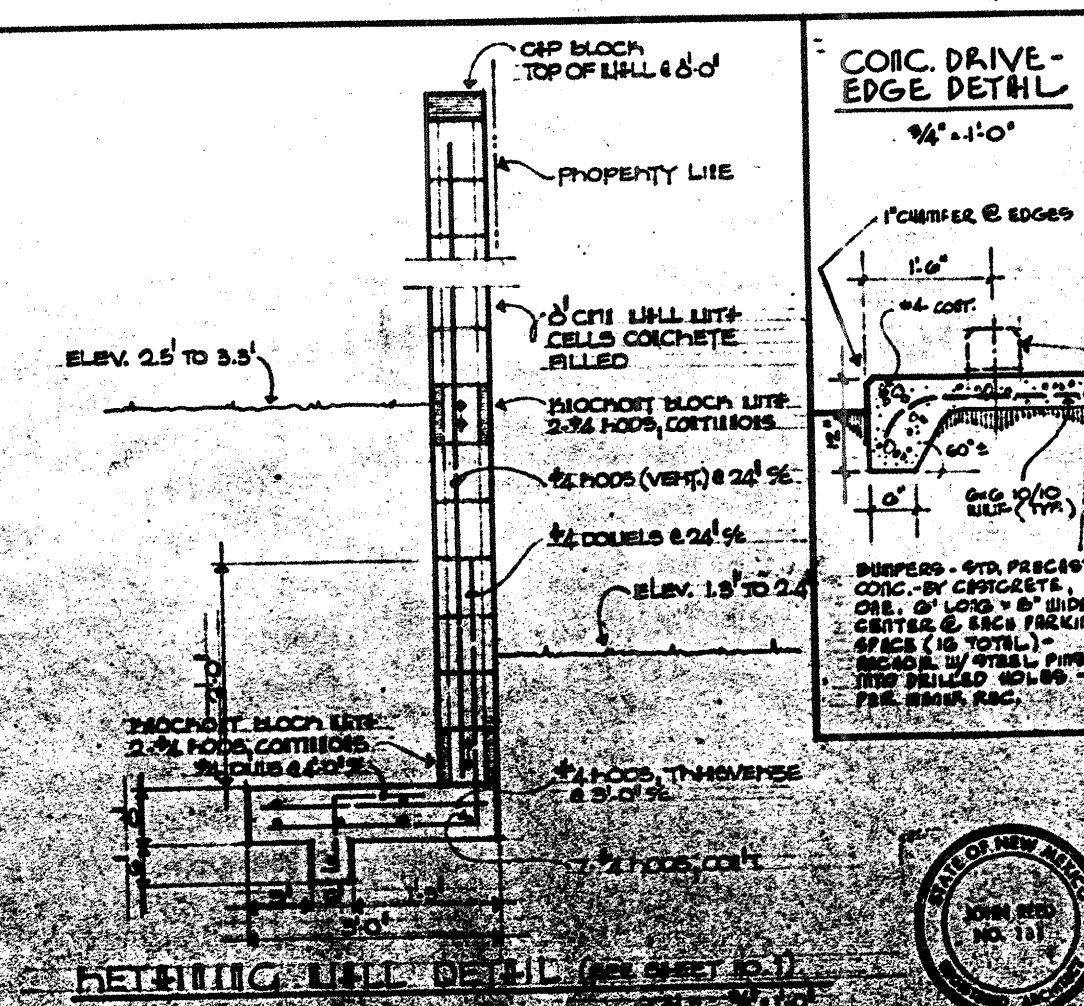
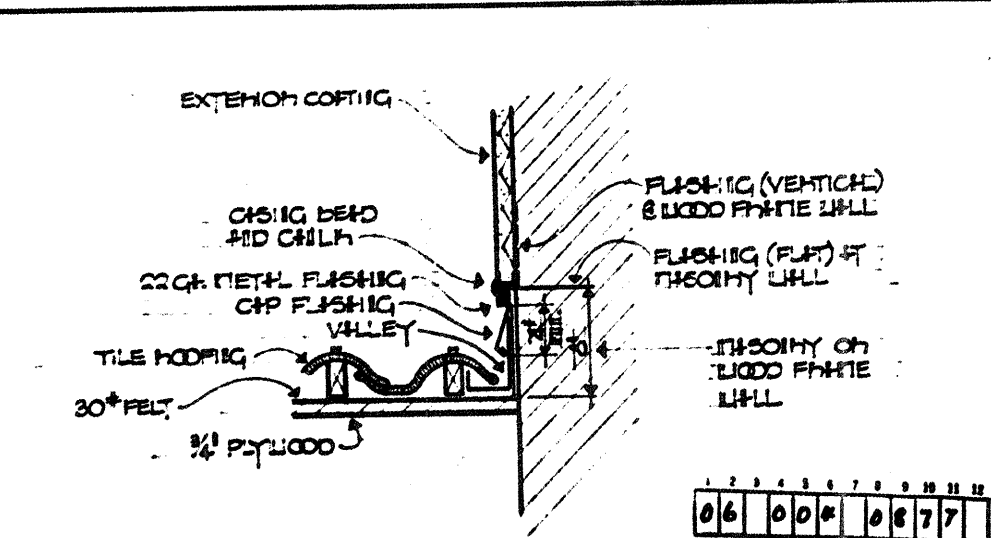
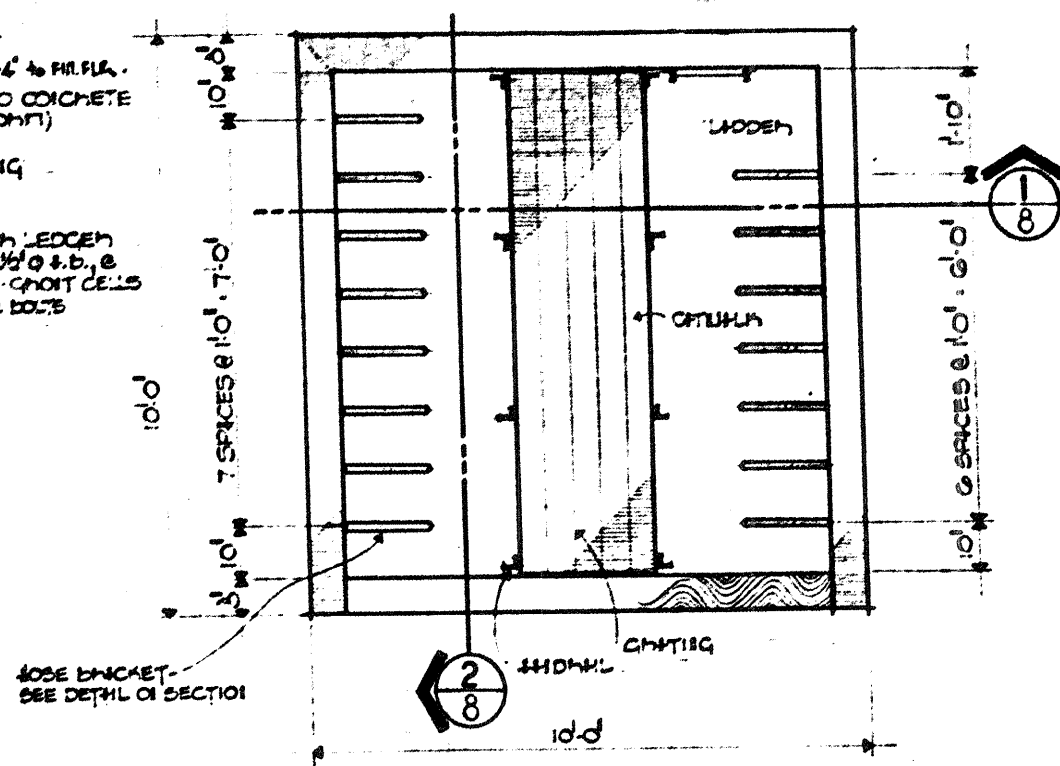
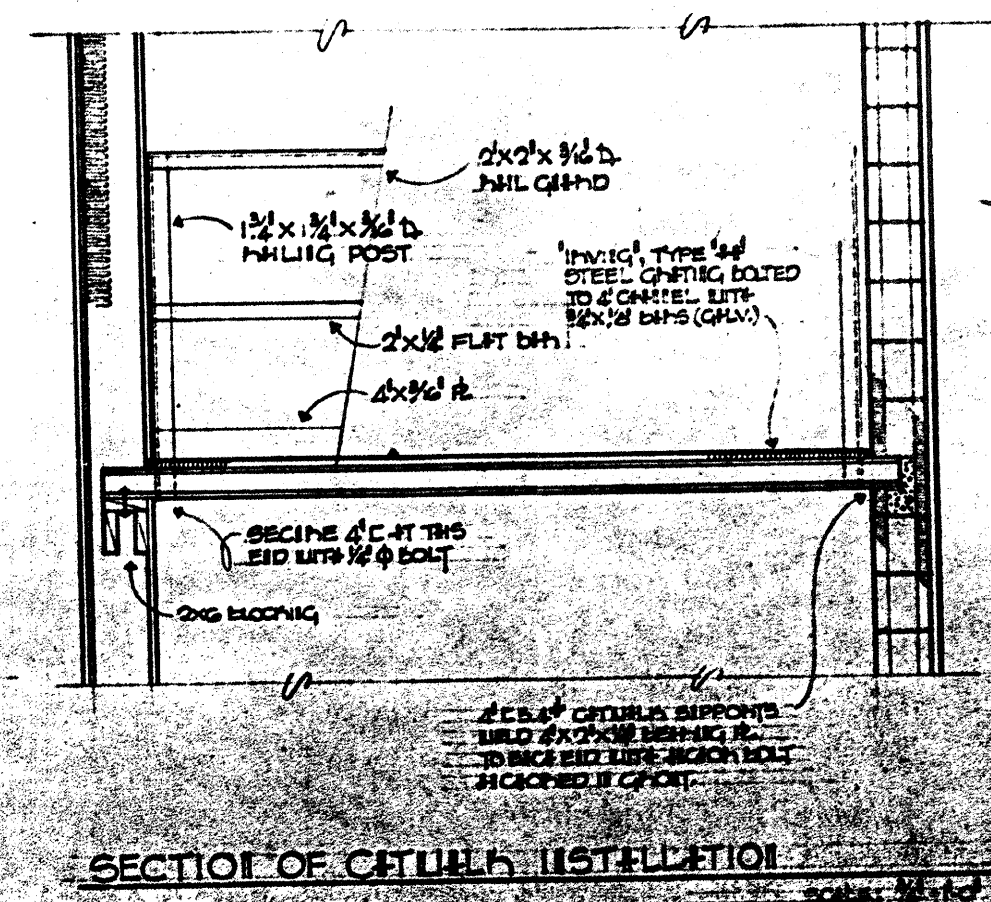
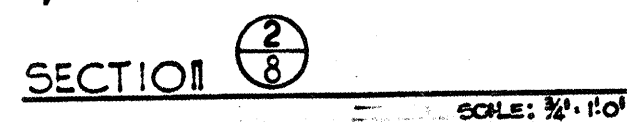
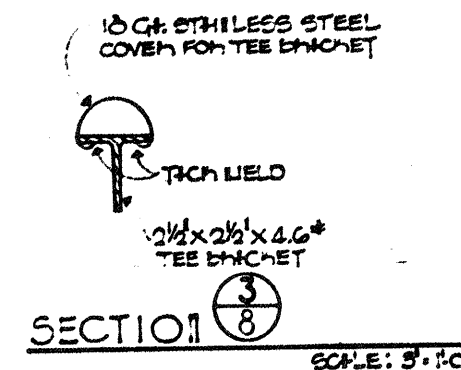
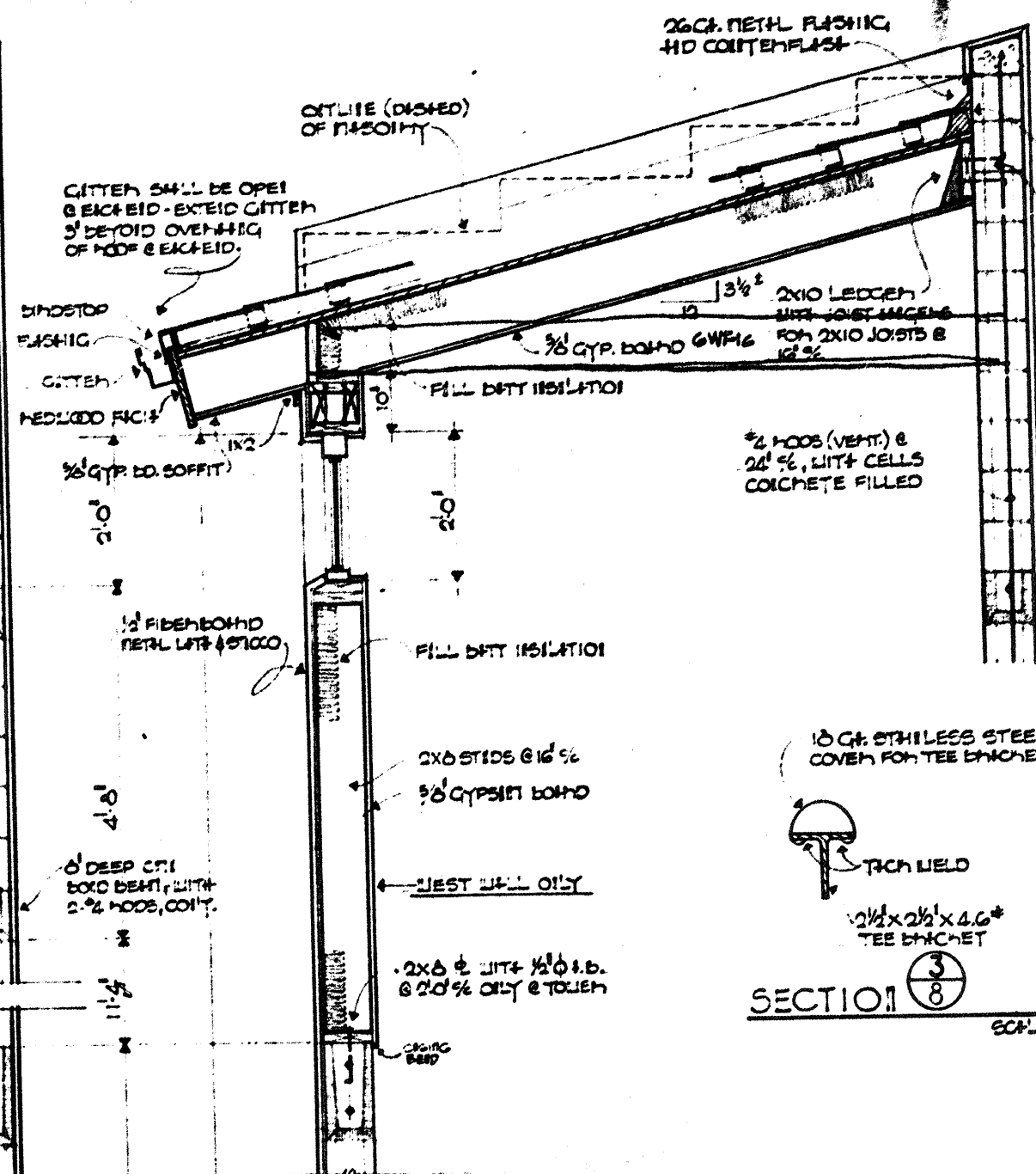
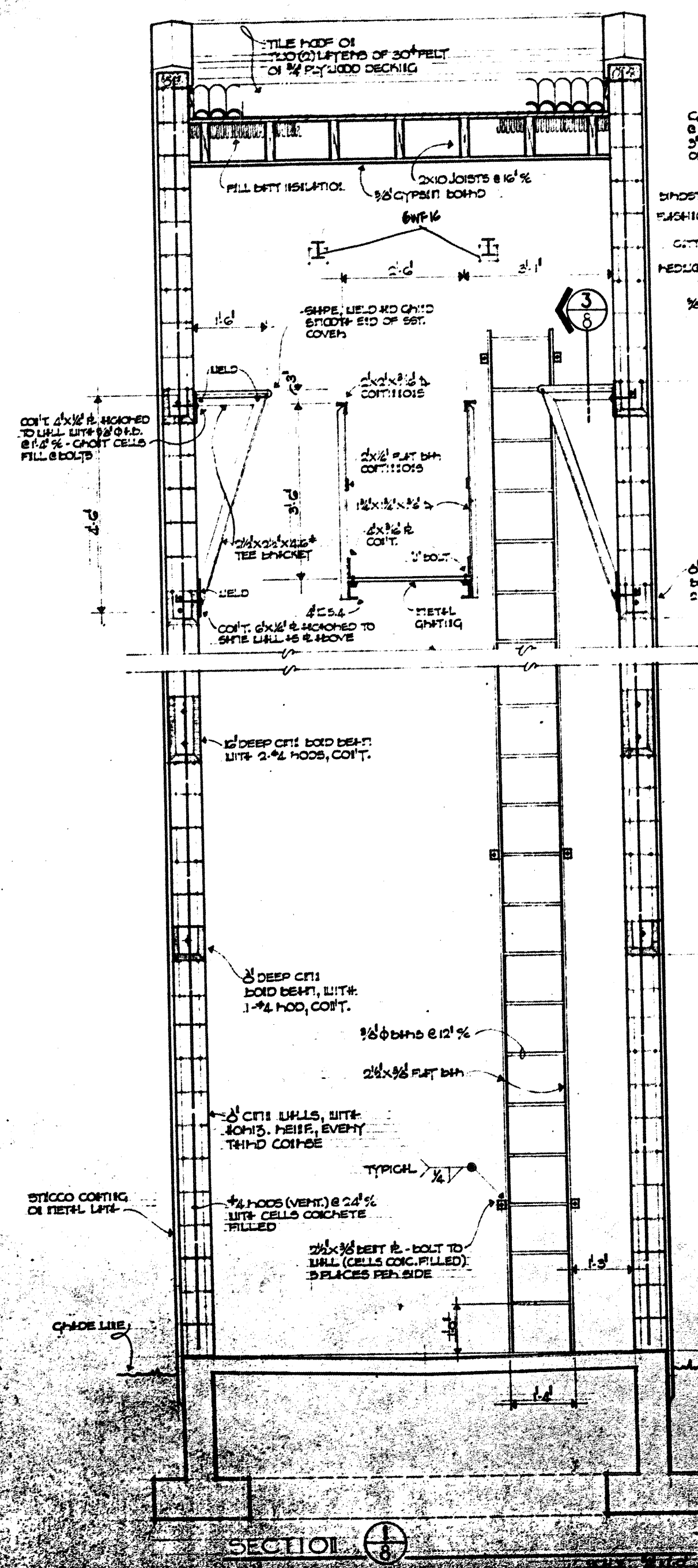


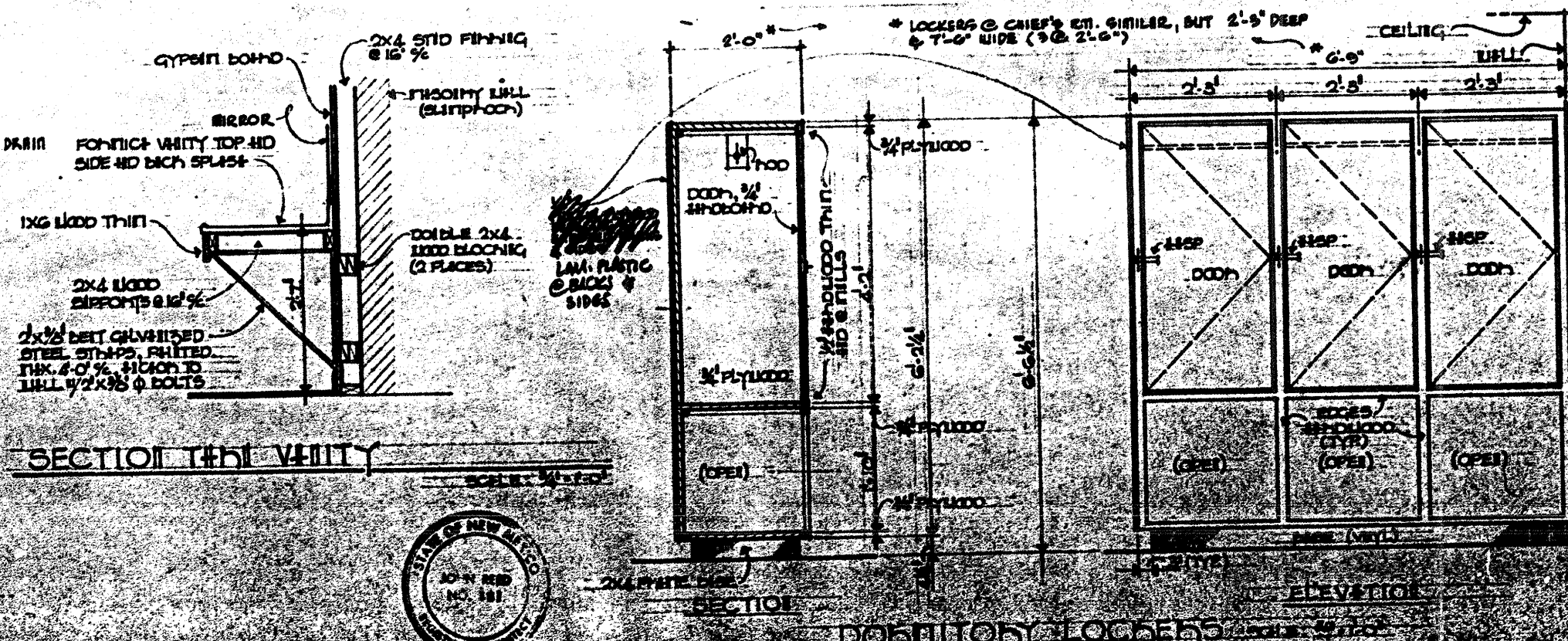
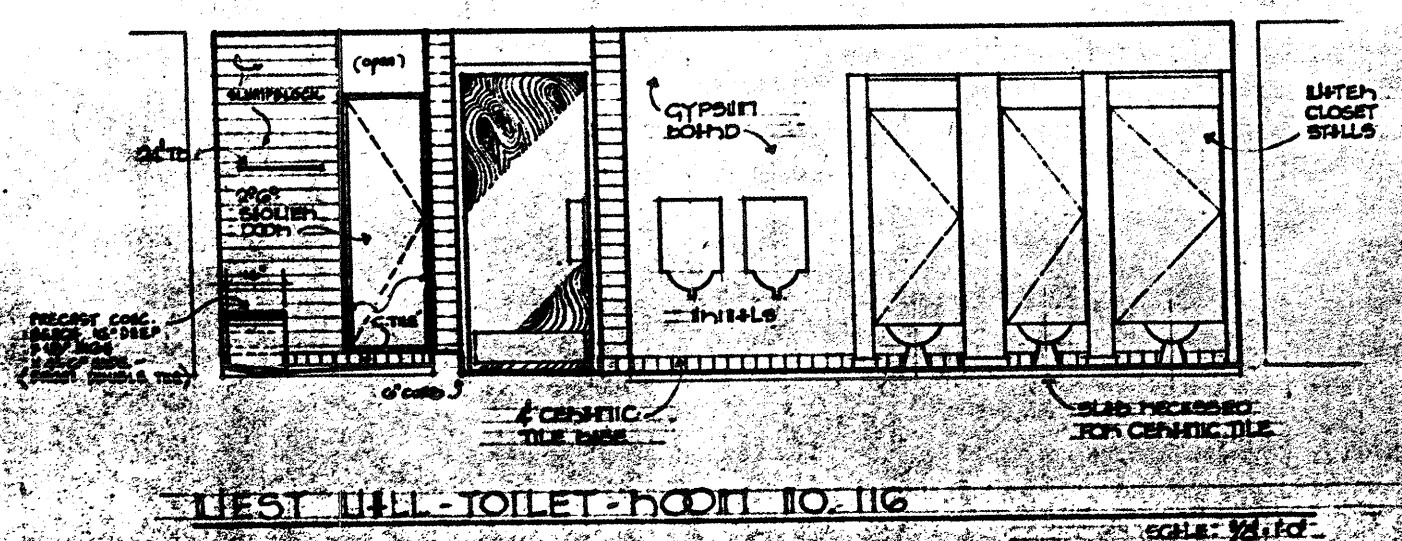
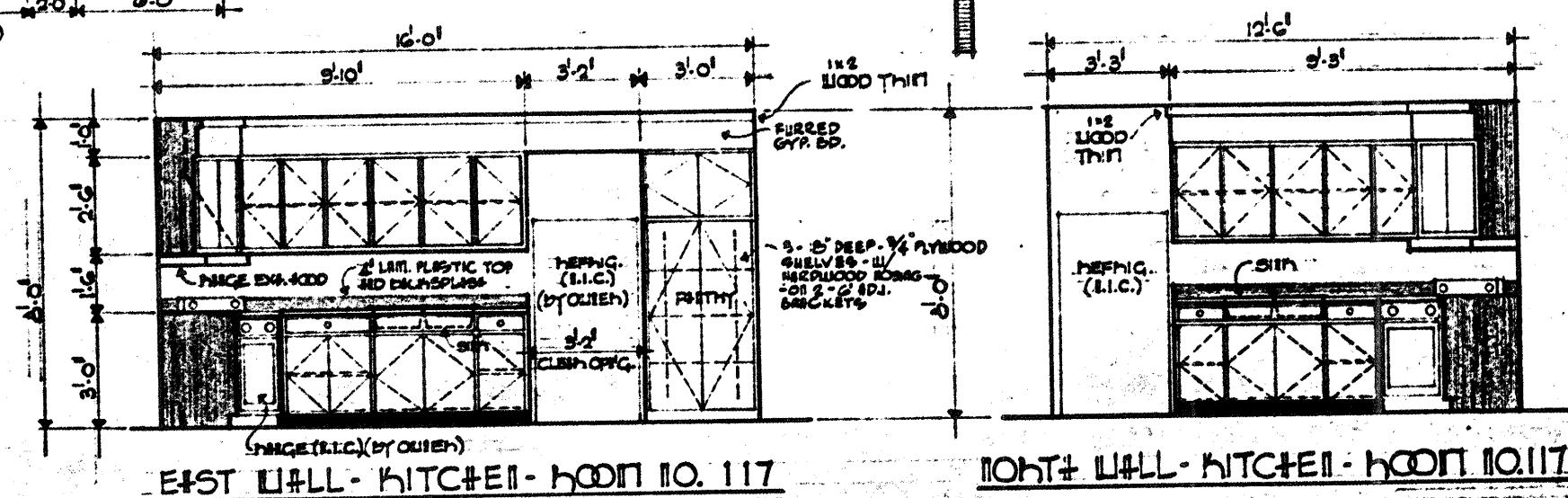
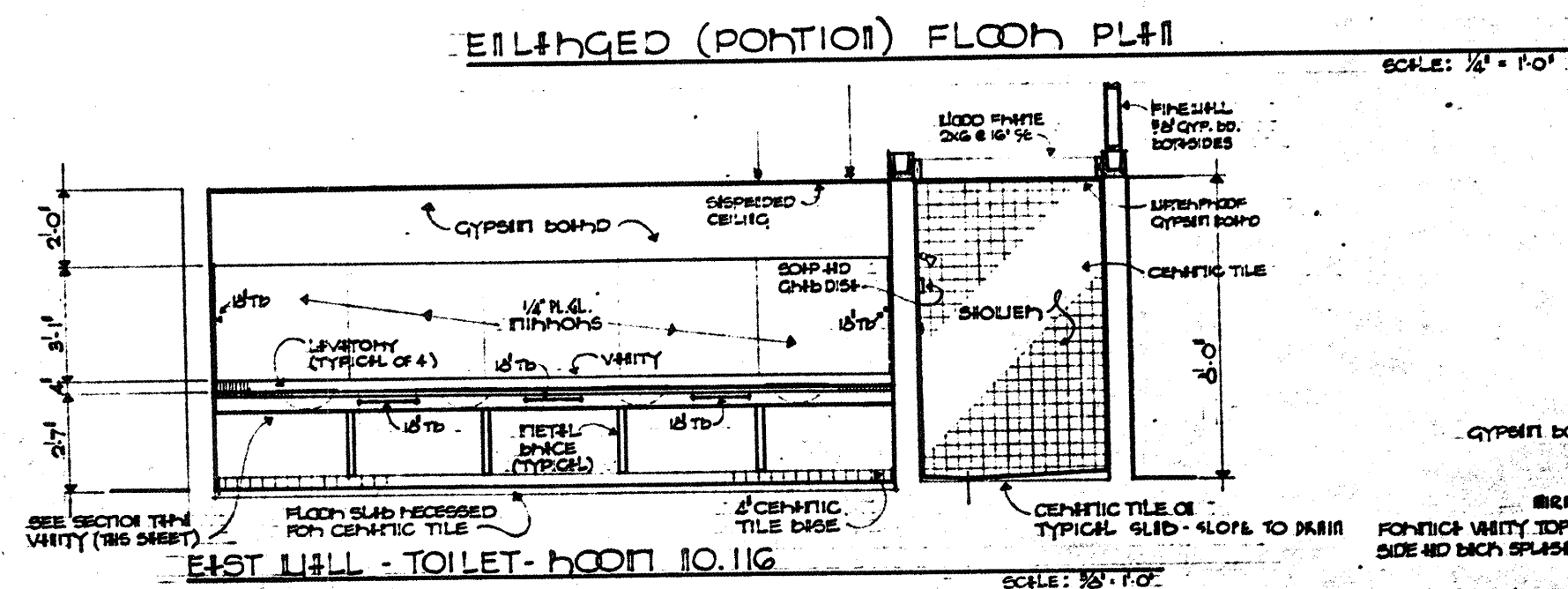
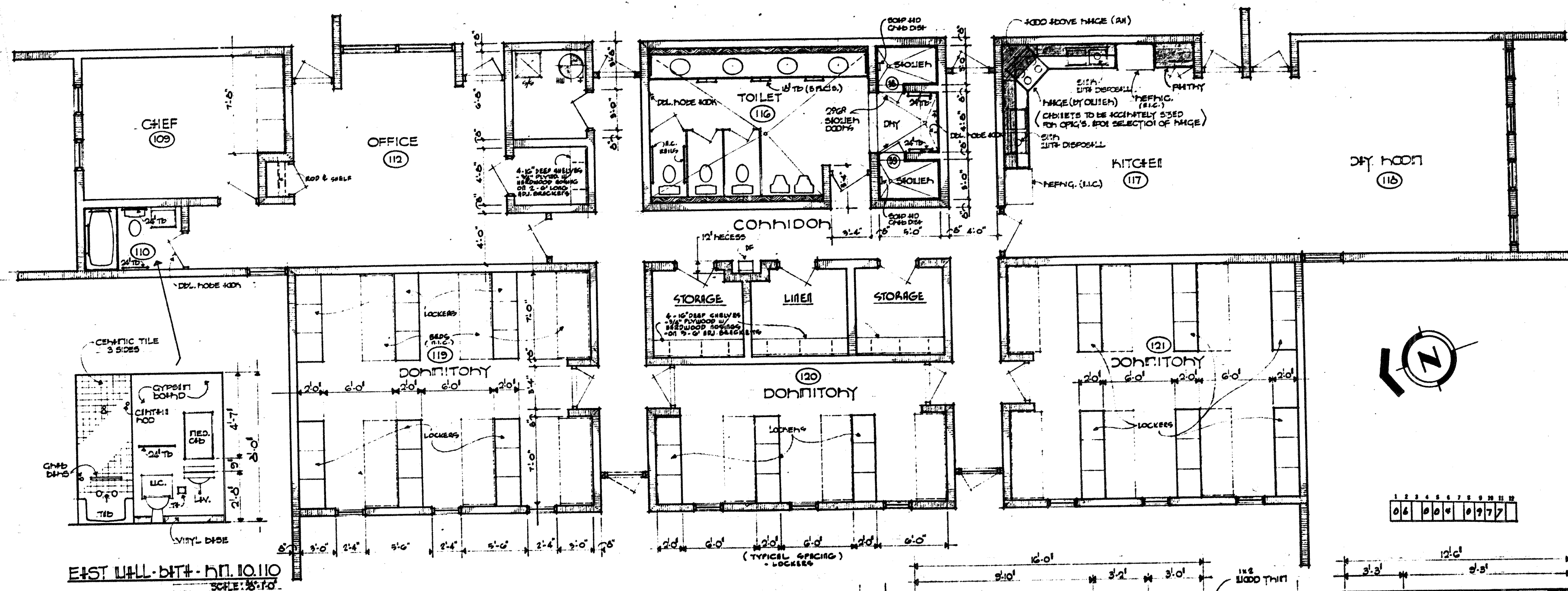


1 2 3 4 5 6 7 8 9 10 11 12 13 14 15 16 17 18 19 20 21 22 23 24 25 26 27 28 29 30 31 32 33 34 35 36 37 38 39 40 41 42 43 44 45 46 47 48 49 50 51 52 53 54 55 56 57 58 59 60 61 62 63 64 65 66 67 68 69 70 71 72 73 74 75 76 77 78 79 80 81 82 83 84 85 86 87 88 89 90 91 92 93 94 95 96 97 98 99 100









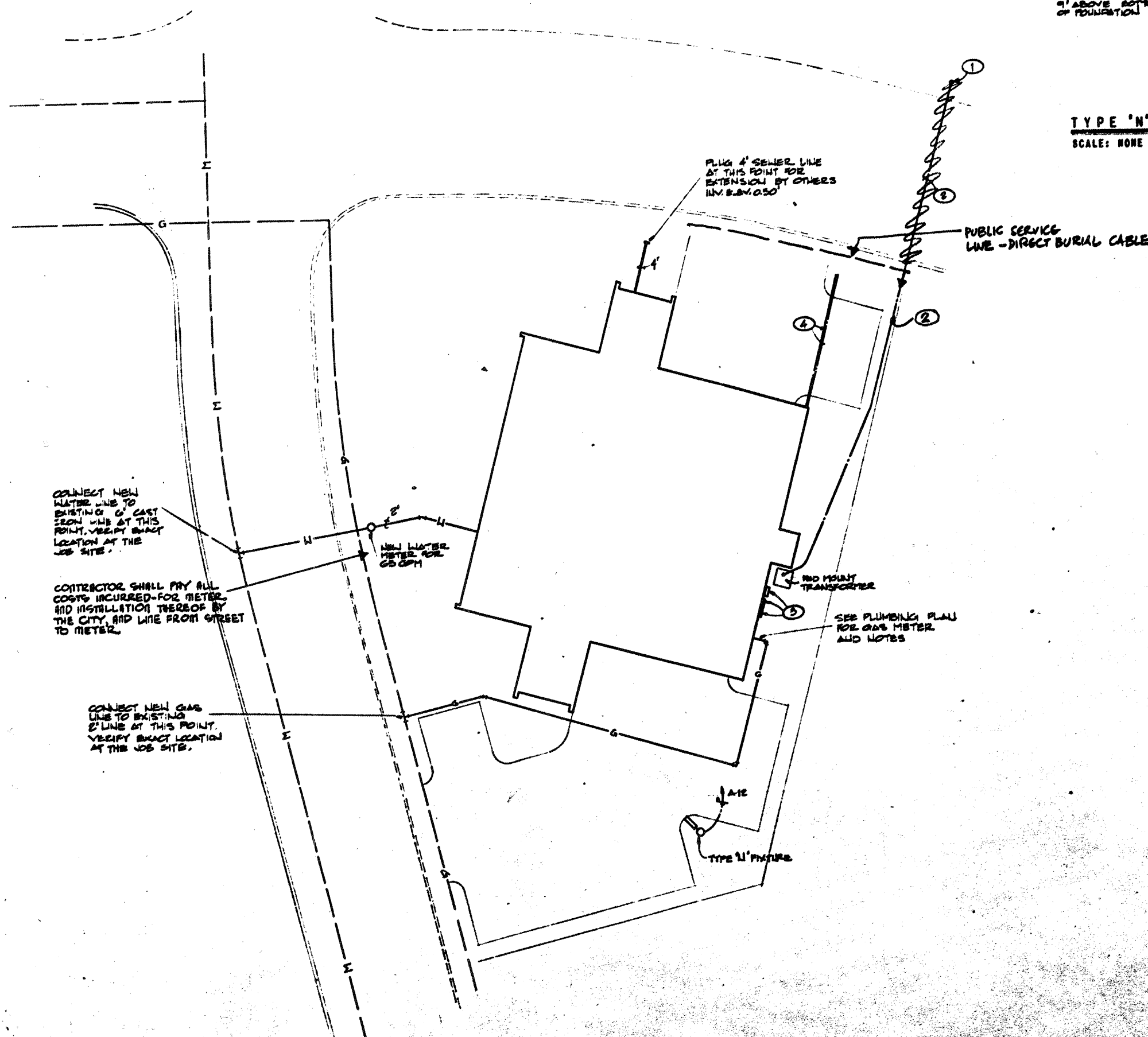


- ① APPROXIMATE LOCATION OF POWER RISER POLE. (POLE IS NOT INSTALLED AND THIS IS AN APPROXIMATE LOCATION ONLY FOR PURPOSES OF BIDDING). THIS CONTRACTOR SHALL BASE HIS BID ON POLE LOCATION SHOWN.
- ② 8" RIGID CONDUIT UNDERGROUND, SEE POWER RISER DIAGRAM FOR DETAILS.
- ③ SERVICE ENTRANCE EQUIPMENT, SEE POWER RISER DIAGRAM FOR DETAILS.
- ④ 2-4" CONDUITS UNDERGROUND TO PROPERTY LINE, CAP UNDERGROUND AND LEAVE FOR CONNECTION OF ALARM AND TELEPHONE SYSTEMS.

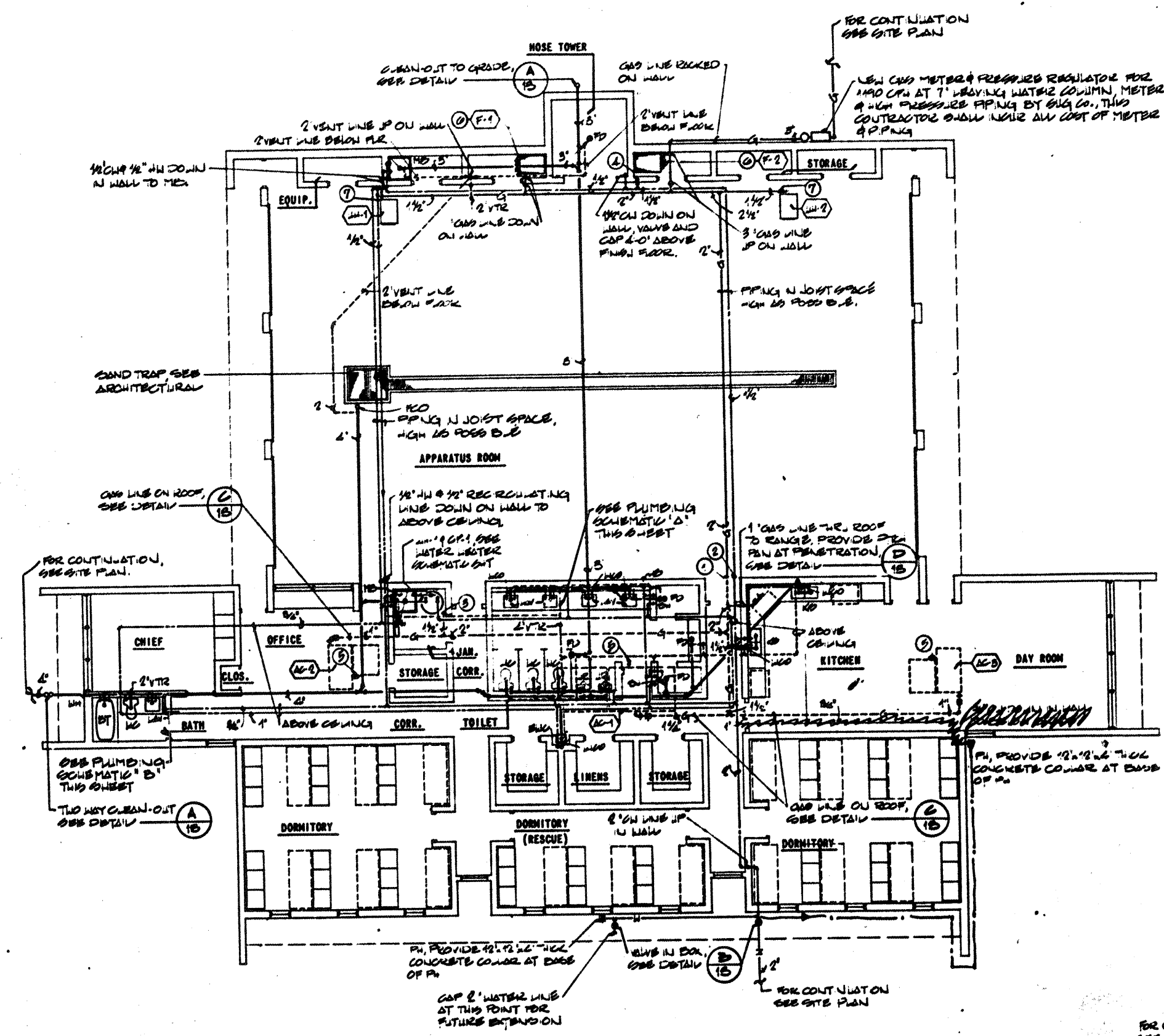
STREET LIGHTS OF MEXICO

JOINTS

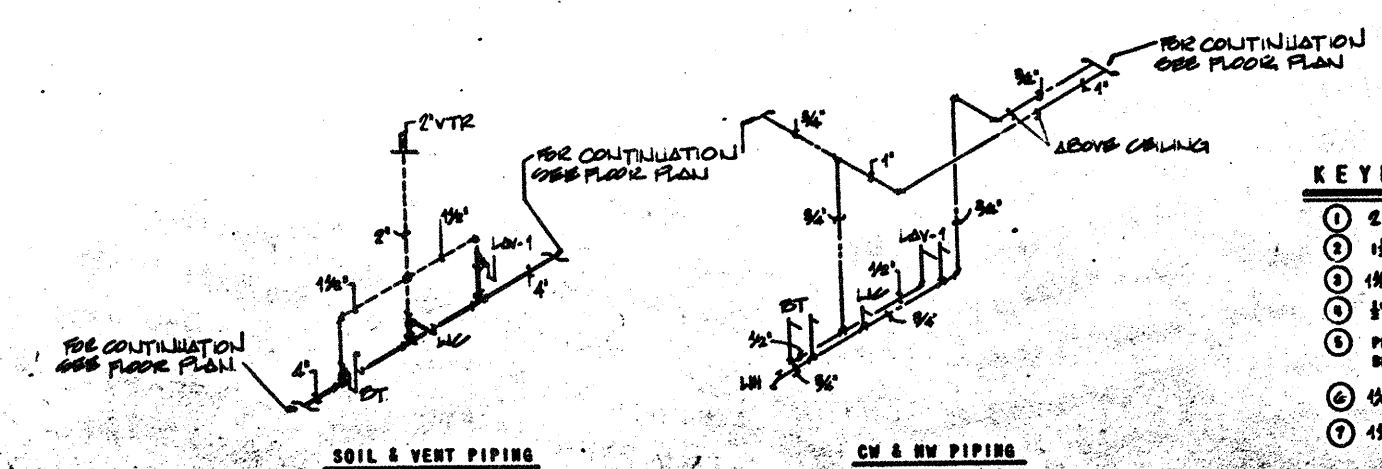
1	2	3	4	5	6	7	8	9	10	11	12
06		00	4			1	0	7	7		



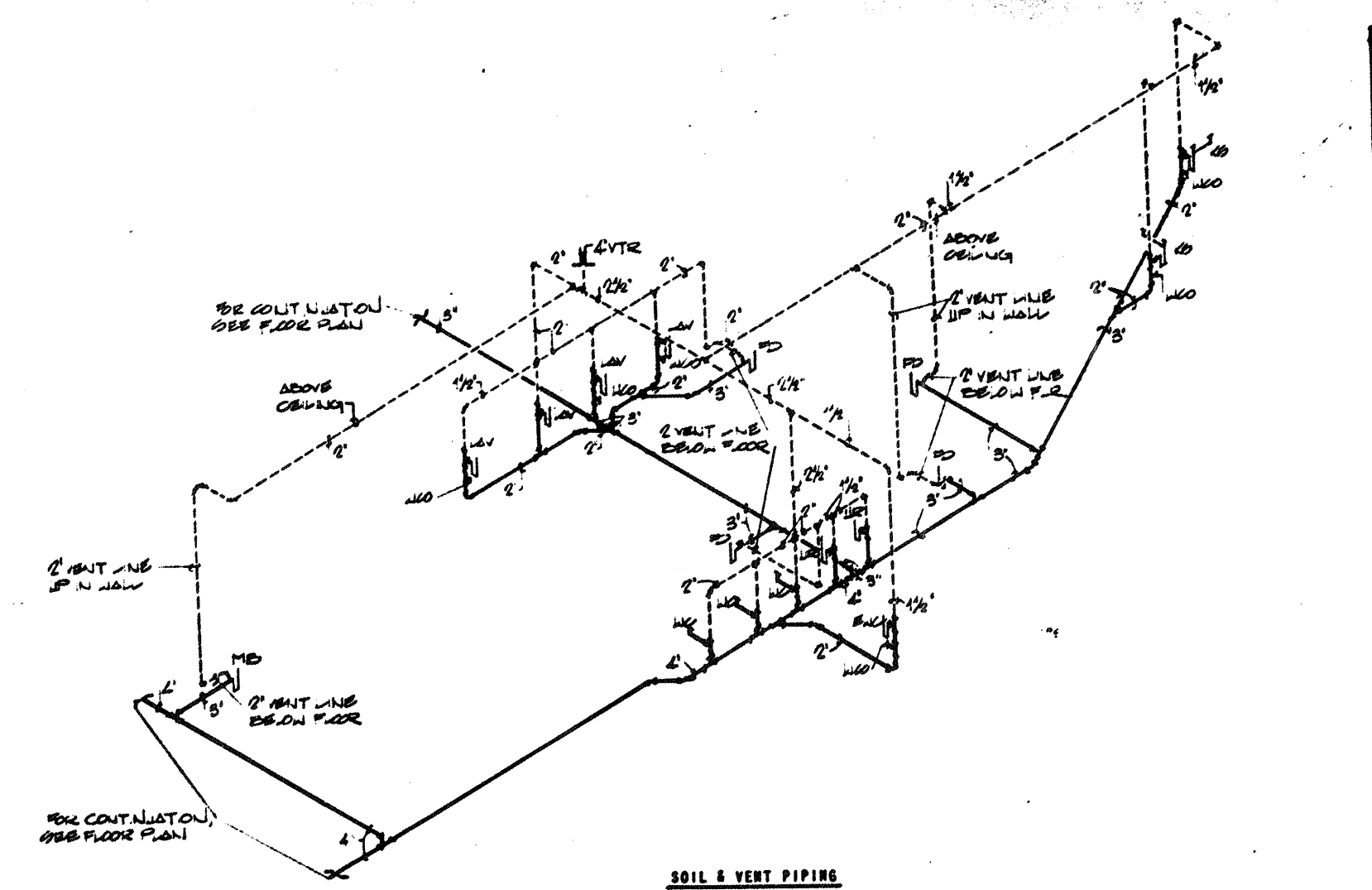
UTILITIES PLAN
SCALE: 1" 20'-0"



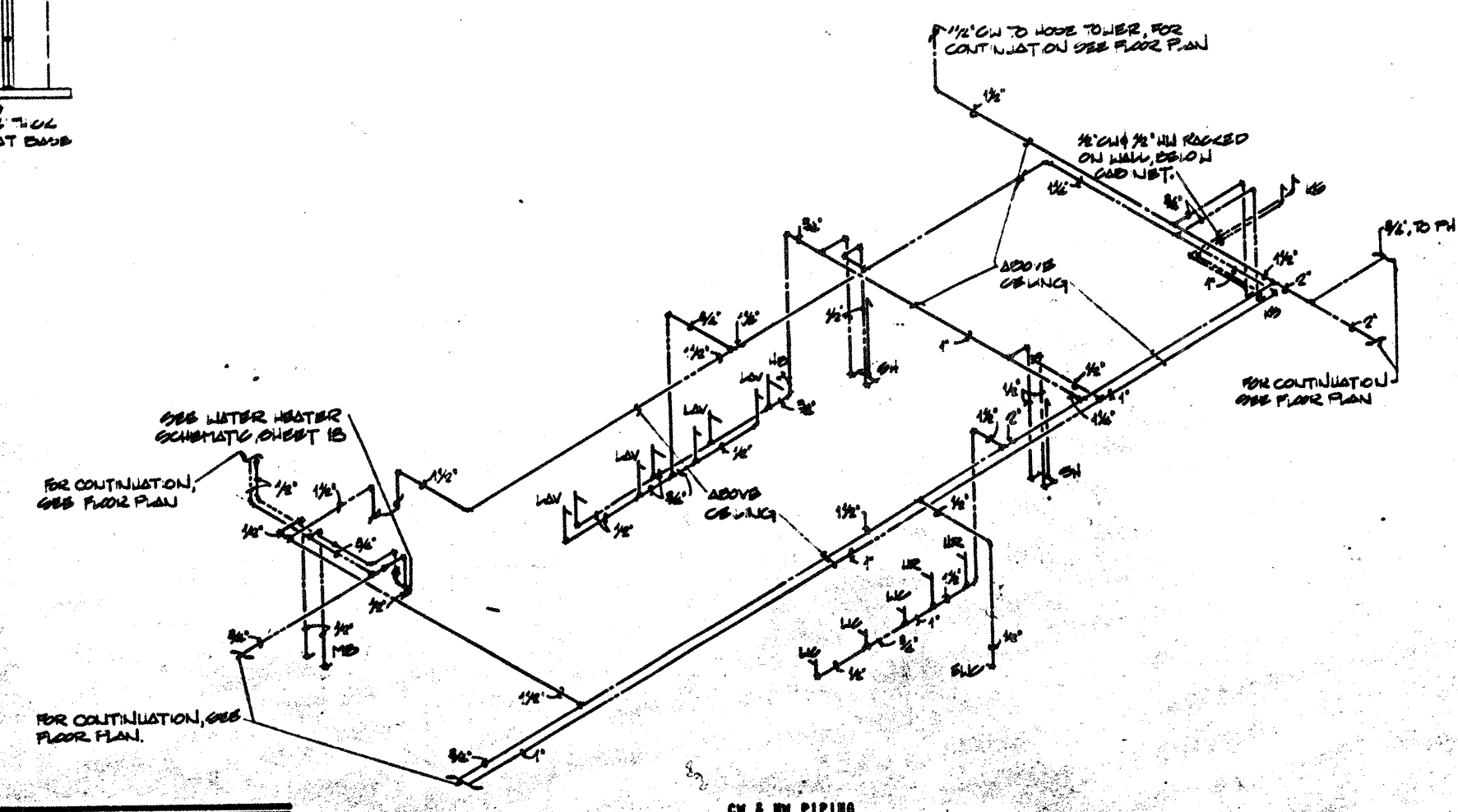
PLUMBING FLOOR PLAN
SCALE: 1/8"=1'-0"



PLUMBING SCHEMATIC "B"
SCALE: NONE



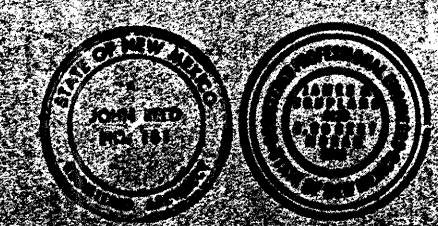
SOIL & VENT PIPING



PLUMBING SCHEMATIC "A"
SCALE: NONE

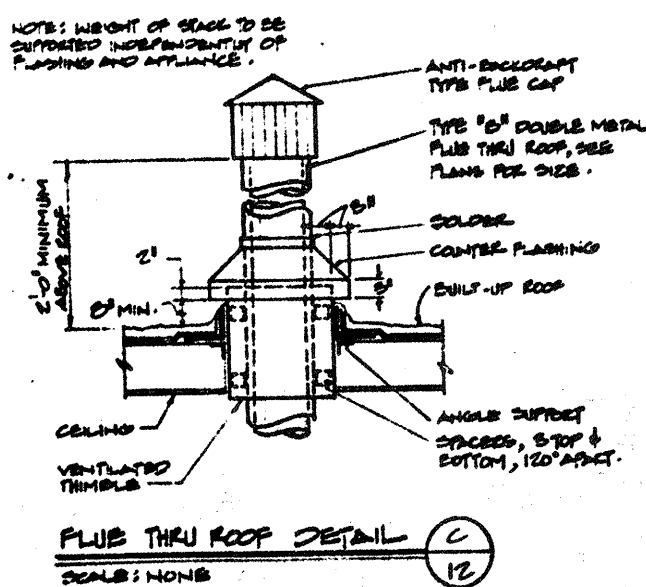
- KEYED NOTES**
- 2" GAS LINE DOWN ON WALL AND TURN WALL TO LOWER ROOF.
 - 1 1/2" CW TURN WALL FROM CEILING SPACE, UP ON WALL TO JOIST SPACE.
 - 1 1/2" GAS LINE THRU ROOF TO HW-1, PROVIDE PITCH PAN AT PENETRATION. SEE DETAIL (P 16).
 - 3" CW LINE DOWN ON WALL TO H.O.
 - PROVIDE 18" DEEP CONDENSATE TRAP ON DRAIN LINE OF A/C UNIT. DRAIN LINE SHALL BE SIZED AS REQUIRED ON UNIT.
 - 1/4" CW LINE TO FIREALARM.
 - 1 1/2" CW LINE TO WATER HEATER, PROVIDE ONE VALVE & LEAK AT CONNECTION.

06 01 01 07 07



KEYED NOTES

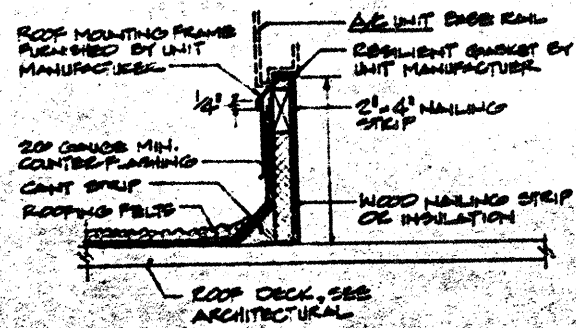
- 20"x12" SUPPLY DUCT THRU ROOF BETWEEN ROOF JOISTS, TRANSITION FROM 20"x22" OPENING IN SUPPLY PLENUM OF (AC-1) ON ROOF, TURN OUT INTO CEILING SPACE WITH 1" DEEP ELBOW WITH TURNING VANES.
- 21"x21" R.A. DUCT THRU ROOF INTO BOTTOM OF R.A. PLENUM OF (AC-1) ON ROOF, INSTALL TURNING VANES IN ELBOW.
- 16"x12" SUPPLY DUCT THRU ROOF FROM SUPPLY PLENUM OF (AC-2), TURN OUT EACH WAY IN CEILING SPACE, INSTALL TURNING VANES IN ELBOWS.
- 16"x12" R.A. DUCT THRU ROOF INTO BOTTOM OF R.A. PLENUM OF (AC-2) ON ROOF, INSTALL TURNING VANES IN ELBOW.
- 16"x12" SUPPLY DUCT THRU ROOF FROM SUPPLY PLENUM OF (AC-3) WITH 2 EQUAL SPLIT ELBOWS WITH TURNING VANES.
- 16"x12" R.A. DUCT THRU ROOF INTO BOTTOM OF R.A. PLENUM OF (AC-3) ON ROOF, INSTALL TURNING VANES IN ELBOW.
- 7"x8" FLUE THRU ROOF TO GOOSENECK, FORMED WITH 2 EACH 90° ELBOWS WITH BIRDSCREEN OVER OPENING.
- INSTALL A/C UNIT ON ROOF MOUNTING FRAME, SEE DETAIL (B-12).
- EQUAL SPLIT ELBOWS WITH TURNING VANES.
- 6"x8" FLUE UP ON WALL, OFFSET IN JOIST SPACE AND EXTEND THRU ROOF, SEE DETAIL (C-12).
- 10"x10" COMBUSTION AIR DUCT THRU ROOF FROM GOOSENECK INTO JANITOR CLOSET TIGHT TO BOTTOM OF CEILING.
- 10"x10" COMBUSTION AIR DUCT THRU THE ROOF FROM GOOSENECK, DROP DUCT ON WALL OF JANITOR CLOSET TO 6" ABOVE FIB. FLOOR.
- 7"x8" FLUE THRU ROOF TO GOOSENECK, FORMED WITH 2 EACH 90° ELBOWS WITH BIRDSCREEN OVER OPENING.
- INSTALL A/C UNIT ON ROOF MOUNTING FRAME, SEE DETAIL (B-12).
- INSTALLATION OF (F-2) SIMILAR TO (F-1).
- (E-2) 6"x8", 70 CFM.



FLUE THRU ROOF DETAIL (C-12)

SCALE: NONE

NOTE: IT IS THE RESPONSIBILITY OF THE MECHANICAL CONTRACTOR TO INSURE THE A/C UNIT ENTERS LEVEL ON THE MOUNTING FRAME.



APPROVED DUCT CONNECTION (A-12)

SCALE: NONE

SCALE: NONE

SCALE: NONE

SCALE: NONE

SCALE: NONE

SCALE: NONE

SCALE: NONE

SCALE: NONE

SCALE: NONE

SCALE: NONE

SCALE: NONE

SCALE: NONE

SCALE: NONE

SCALE: NONE

SCALE: NONE

SCALE: NONE

SCALE: NONE

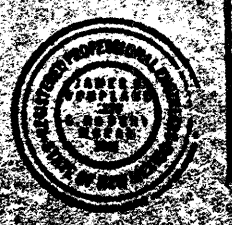
SCALE: NONE

EQUIPMENT SCHEDULE

SYMBOL	DESCRIPTION	UNIT & MODEL NO.	CFM	EXT. S.P. IN H ₂ O	HP	TOTAL CAP. # EVAP.	HEATING SECTION INPUT MBH @ 5500' S.L.	HEATING SECTION OUTPUT MBH @ 5500' S.L.	ELECTRICAL UNIT FLA	MAX. VOLTS	PHASE
AC-1	A/C UNIT: ROOFTOP SINGLE ZONE UNIT, CONSISTING OF WEATHERPROOF CABINET, REFRIGERATION SYSTEM, ROOF MOUNTING CURB, HEATING SYSTEM, FILTERS, ALL OPERATING AND SAFETY CONTROLS, COMPLETELY FACTORY ASSEMBLED, WIRED, AND TESTED, THE CABINET SHALL BE ALL STEEL CONSTRUCTION, WITH ACCESS PANELS TO ALL SECTIONS, WITH A FACTORY APPLIED BAKED ENAMEL FINISH. ALL SECTIONS IN CONTACT WITH THE AIR STREAMING SHALL BE INSULATED WITH FIBERGLASS. THE COMPRESSOR SHALL BE HERMETIC, WITH INTERNAL VIBRATION ISOLATORS, CRANKCASE HEATER, HIGH AND LOW PRESSURE CUTOUTS, AND COMPLETE MOTOR PROTECTION. THE CONDENSER COIL SHALL BE CONSTRUCTED OF SEAMLESS COPPER TUBING MECHANICALLY SOLDERED TO HEAVY DUTY ALUMINUM FINS. CONDENSER FANS SHALL BE DIRECT DRIVE, UP FLOW PROPELLER TYPE, WITH ALL EXPOSED SURFACES WEATHERPROOFED, WITH PERMANENTLY LUBRICATED MOTOR AND FAN BEARINGS. FULLY ISOLATED FROM THE CABINET. EVAPORATOR COIL SHALL BE CONSTRUCTED OF SEAMLESS COPPER TUBING MECHANICALLY SOLDERED TO HEAVY DUTY ALUMINUM FINS. COMPLETE WITH EXPANSION VALVES. UNIT SHALL HAVE SEPARATE DRAIN PANS FOR EVAPORATOR AND CONDENSER SECTION, WITH EVAPORATOR PAN INTERNALLY SEALED AND INSULATED. EVAPORATOR PANS SHALL BE FORWARDED CURVED CENTRIFUGAL WITH PERMANENTLY LUBRICATED BALL BEARINGS, FULLY ISOLATED FROM CABINET. THE HEATING SECTION SHALL INCLUDE A STAINLESS STEEL HEAT EXCHANGER, FORCED CONVECTION VENTING, AUTOMATIC SPARE SUITABLE FOR NATURAL GAS OPERATION. UNIT SHALL BE FURNISHED COMPLETE WITH SPACE THERMOSTAT, ECONOMIZER CYCLE CONTROL PACKAGE WITH RELIEF DAMPER, FILTERS, 5 YEAR WARRANTY ON THE COMPRESSOR, CONTROL TRANSFORMER, AND DISCONNECT SWITCH AS AN INTEGRAL PART OF THE UNIT. CAPACITY AT EVAPORATOR WITH 105°F ON ENT. CONDENSER, 70°F ON 62°F ON EXT. EVAPORATOR, 50°F ON L.V. EVAPORATOR.	TRANE SFRA 753	2950	3"	1 1/2	71,000	125	72.0	44.4	208	3
AC-2		TRANE SFRA 703	1000	3"	1/2	31,000	75	44	16.7	208	3
AC-3		TRANE SFRA 903	1200	3"	1/2	31,000	75	44	15.7	208	3

F-1	FURNACE: NATURAL GAS FIRED, CERTIFIED BY THE AMERICAN GAS ASSOCIATION, ALL STEEL CONSTRUCTION WITH AN ALUMINUM HEAT EXCHANGER, DIRECT DRIVE CENTRIFUGAL BLOWER WHEEL, WITH ALL MOVING PARTS CUSHIONED IN RUBBER, FURNISH UNIT COMPLETE WITH INSULATED HEAT EXCHANGER COMPARTMENT, THROUWAY FILTERS, ACCESS PANELS, CONTROL TRANSFORMER, HEATING RELAY, AUTOMATIC GAS VALVE, PILOT SWITCH, AND LIMIT CONTROLS, UNIT SHALL BE FACTORY WIRING AND ASSEMBLED. BRYANT MODEL: 308D-000125, 125,000 BTUH INPUT @ S.L., 70,000 BTUH OUTPUT @ 5500' ELEVATION, 1020 CFM @ 1/2" S.P., 1/5 HP, 120 VOLT, 1 PHASE.	F-2	EXHAUSTER: NATURAL GAS FIRED, CERTIFIED BY THE AMERICAN GAS ASSOCIATION, INC. ALL STEEL CONSTRUCTION WITH AN ALUMINIZED STEEL HEAT EXCHANGER, COMPLETE WITH ADJUSTABLE FRONT LOUVERS, RESILIENT MOUNTED PROPELLER TYPE FAN AND MOTOR ASSEMBLY, LOW VOLTAGE DIAPHRAGM GAS VALVE, INCINERATOR TYPE PILOT, BUILT-IN LIMIT SWITCH, TIME DELAY FAN SWITCH, LOW VOLTAGE CONTROL CIRCUIT FOR MANUAL OR AUTOMATIC OPERATION OF THE FAN FROM THE THERMOSTAT DURING BOTH SUMMER AND WINTER, CONTROL TRANSFORMER, AND SPACE THERMOSTAT. UNIT SHALL BE FACTORY WIRING AND ASSEMBLED. BRYANT MODEL: 308D-000125, 125,000 BTUH INPUT @ S.L., 70,000 BTUH OUTPUT @ 5500' ELEVATION, 1020 CFM @ 1/2" S.P., 1/5 HP, 120 VOLT, 1 PHASE.	EH-1	EXHAUSTER: CENTRIFUGAL ROOF EXHAUSTER, BELT DRIVE, COMPLETE WITH A SPUN ALUMINUM HOUSING, ALUMINUM CURB CAP, STAINLESS STEEL FASTENINGS, BALL BEARING DRIVE UNITS, VIBRATION ISOLATORS, NON-OVERLOADING ALL ALUMINUM BLOWER WHEEL AND HUB DYNAMICALLY AND STATISTICALLY BALANCED, BACKDRAFT DAMPER, BIRDSCREEN AND EXTERNAL WIRING POST, FACTORY ASSEMBLED AND WIRED TO JUNCTION BOX. JEAN AIR 182 SCFE 725 CFM AT 4" W.G., 1/5 HP, 120 VOLT, 1 PHASE, 5" X MAX. SONES, WITH PREFABRICATED ROOF CURB.	EH-2	EXHAUSTER: CENTRIFUGAL ROOF EXHAUSTER, BELT DRIVE, COMPLETE WITH A SPUN ALUMINUM HOUSING, ALUMINUM CURB CAP, STAINLESS STEEL FASTENINGS, BALL BEARING DRIVE UNITS, VIBRATION ISOLATORS, NON-OVERLOADING ALL ALUMINUM BLOWER WHEEL AND HUB DYNAMICALLY AND STATISTICALLY BALANCED, BACKDRAFT DAMPER, BIRDSCREEN AND EXTERNAL WIRING POST, FACTORY ASSEMBLED AND WIRED TO JUNCTION BOX. JEAN AIR 184 SCFE 2600 CFM AT 4" W.G., 3/4 HP, 120 VOLT, 1 PHASE, WITH PREFABRICATED ROOF CURB.	DN-1	DUCT HEATER: CHRONALOX TYPE DN FUTURE AIR DUCT HEATERS LABELED BY UNDERWRITERS' LABORATORIES, INC., FOR ZERO CLEARANCE TO COMBUSTIBLE MATERIALS, AND FOR SIDE OR BOTTOM ENTRY INTO DUCT, WITH ALL FRAME MEMBERS, CONTROL BOX AND COVER, AND ALL ASSOCIATED SHEET METAL PARTS CONSTRUCTED OF HEAVY GAUGE, DIE-FORMED, ALUMINIZED, CORROSION-RESISTANT STEEL, COMPLETE WITH SHOCK-PROOF STEEL SHEATH ENCLOSED HEATING ELEMENTS HAVING AND ALLOY COILED RESISTOR CENTERED WITHIN THE SHEATH AND EMBEDDED IN COMPACTED ELECTRICAL INSULATING AND HEAT CONDUCTING REFRACTORY MATERIAL, WITH STEEL FLANGES AND FINS FURNACE BRAZED TO THE SHEATH, AND CONTINUOUSLY COATED WITH CERAMIC. ALL HEATERS SHALL BE FACTORY ASSEMBLED AND WIRED, COMPLETE WITH AUTOMATIC RESET AND MANUAL RESET SNAP-ACTION THERMAL CUTOUTS, STAGING CONTACTORS, SAFETY CONTACTORS, OVERCURRENT PROTECTIVE FUSES, CONTROL VOLTAGE TRANSFORMER, TERMINAL BLOCKS, FLOW SWITCH, AND SPACE THERMOSTAT, 4" WIDE X 6" DEEP, 1.5 KW, 5150 BTUH, 120 VOLT, 1 PHASE.	DB-1	BAROMETRIC DAMPER: CHRONALOX MODEL DB-10-01 CAPABLE OF 1000 WATTS WITH 120 VOLT, 1 PHASE POWER SUPPLY, COMPLETE WITH INTEGRAL THERMOSTAT, END CAPS, AND ALL ACCESSORIES REQUIRED FOR A COMPLETE OPERATING UNIT.	D-1	DIFFUSER: BRUNER SERIES 1100, ALL STEEL CONSTRUCTION WITH A PERFORATED FACE AND A FRAME STYLE COMPATIBLE WITH THE TYPE CEILING USED. SURFACE MOUNTED DIFFUSERS SHALL HAVE CURVED BORDER WITH GASKETS TO PREVENT LEAKAGE, AND A REMOVABLE FACE PLATE WITH CONCEALED NIPPLES AND LATCHES. THE CORE SHALL HAVE CURVED ADJUSTABLE BLADES AND SHALL BE CAPABLE OF DELIVERING 1-HAY, 2-HAY, 3-HAY OR 4-HAY HORIZONTAL CEILING PATTERN AND BE ADJUSTABLE TO OBTAIN A DOWN-AIR PATTERN. THE DIFFUSER SHALL HAVE HIGH ANTI-SHEDDING CHARACTERISTICS WITH CENTER ASPIRATION, AN OPPOSED BLADE DAMPER FASTENED TO THE DEFLECTION COIL WITH THE DAMPER AND CORE REMOVABLE AS A UNIT THROUGH THE FACE, AND A FACTORY APPLIED WHITE BAKED ENAMEL FINISH.	RA-1	RETURN AIR GRILLE: BRUNER SERIES 1100, ALL STEEL CONSTRUCTION WITH A PERFORATED FACE AND A FRAME STYLE COMPATIBLE WITH TYPE CEILING USED. SURFACE MOUNTED GRILLES SHALL HAVE A CURVED BORDER AND A REMOVABLE FACE PLATE WITH CONCEALED LATCHES. THE RETURN AIR GRILLE SHALL HAVE HATCH BRUNER SERIES 1100 DIFFUSER, AND HAVE A FACTORY APPLIED WHITE BAKED ENAMEL FINISH.	ER-1	EXHAUST REGISTER: BRUNER SERIES 3000 ODD ALL STEEL CONSTRUCTION WITH HORIZONTAL FINS SPACED 8" ON CENTER AND AT A 30° ANGLE, WITH A VERTICAL OPPOSED BLADE DAMPER ADJUSTABLE THRU THE FACE, AND A FACTORY APPLIED GREY BAKED PRIME COAT.	BD-1	BAROMETRIC DAMPER: BRUNER SERIES 3000 ODD ALL STEEL CONSTRUCTION WITH HORIZONTAL FINS SPACED 8" ON CENTER AND AT A 30° ANGLE, WITH A VERTICAL OPPOSED BLADE DAMPER ADJUSTABLE THRU THE FACE, AND A FACTORY APPLIED GREY BAKED PRIME COAT.	L-1	LOUVER: BRUNER L2-2 WITH LOUVER BLADES CONSTRUCTED OF EXTRUDED ALUMINUM, OF WEATHERPROOF DESIGN, COMPLETE WITH ALUMINUM BIRDSCREEN, 91 FLANGE FRAME, AND A FACTORY APPLIED FINISH.	DL-1	DOOR LOUVER: BRUNER SERIES 3000, ALL STEEL CONSTRUCTION WITH CORE, FRAME AND AUXILIARY FRAME, CORE SHALL HAVE 1" SHAPED FINS SPACED 8" ON CENTERS, WITH FACTORY APPLIED BAKED ENAMEL FINISH.	TS-1	TRANSFER GRILLE: BRUNER SERIES 3000, ALL STEEL CONSTRUCTION WITH HORIZONTAL FINS SPACED 8" ON CENTERS AND AT A 30° ANGLE.	EH-2	EXHAUSTER: CHRONALOX MODEL V 230 FOR 14-IN-WALL INSTALLATION CAPABLE OF 180 CFM, COMPLETE WITH WALL CAP, WALL SLEEVE, AND BACKDRAFT DAMPER TO OPERATE ON 120 VOLT, 1 PHASE POWER SUPPLY.
-----	--------------------------------------------------------------------------------------------------------------------------------------------------------------------------------------------------------------------------------------------------------------------------------------------------------------------------------------------------------------------------------------------------------------------------------------------------------------------------------------------------------------------------------------------------------------------------------------------------------	-----	-----------------------------------------------------------------------------------------------------------------------------------------------------------------------------------------------------------------------------------------------------------------------------------------------------------------------------------------------------------------------------------------------------------------------------------------------------------------------------------------------------------------------------------------------------------------------------------------------------------------------------------------------------------------------------------------------------------------------	------	-------------------------------------------------------------------------------------------------------------------------------------------------------------------------------------------------------------------------------------------------------------------------------------------------------------------------------------------------------------------------------------------------------------------------------------------------------------------------------------------------------	------	---------------------------------------------------------------------------------------------------------------------------------------------------------------------------------------------------------------------------------------------------------------------------------------------------------------------------------------------------------------------------------------------------------------------------------------------------------------------------------------	------	--------------------------------------------------------------------------------------------------------------------------------------------------------------------------------------------------------------------------------------------------------------------------------------------------------------------------------------------------------------------------------------------------------------------------------------------------------------------------------------------------------------------------------------------------------------------------------------------------------------------------------------------------------------------------------------------------------------------------------------------------------------------------------------------------------------------------------------------------------------------------------------------------------------------------------------------------------------------------------------------------------------------------------	------	-----------------------------------------------------------------------------------------------------------------------------------------------------------------------------------------------------------------	-----	--------------------------------------------------------------------------------------------------------------------------------------------------------------------------------------------------------------------------------------------------------------------------------------------------------------------------------------------------------------------------------------------------------------------------------------------------------------------------------------------------------------------------------------------------------------------------------------------------------------------------------------------------------------------------------------------------------------------------------------------	------	---------------------------------------------------------------------------------------------------------------------------------------------------------------------------------------------------------------------------------------------------------------------------------------------------------------------------------------------------------------------------	------	------------------------------------------------------------------------------------------------------------------------------------------------------------------------------------------------------------------------------------------	------	-------------------------------------------------------------------------------------------------------------------------------------------------------------------------------------------------------------------------------------------	-----	------------------------------------------------------------------------------------------------------------------------------------------------------------------------------------	------	----------------------------------------------------------------------------------------------------------------------------------------------------------------------------------------------	------	---------------------------------------------------------------------------------------------------------------------------	------	------------------------------------------------------------------------------------------------------------------------------------------------------------------------------------------

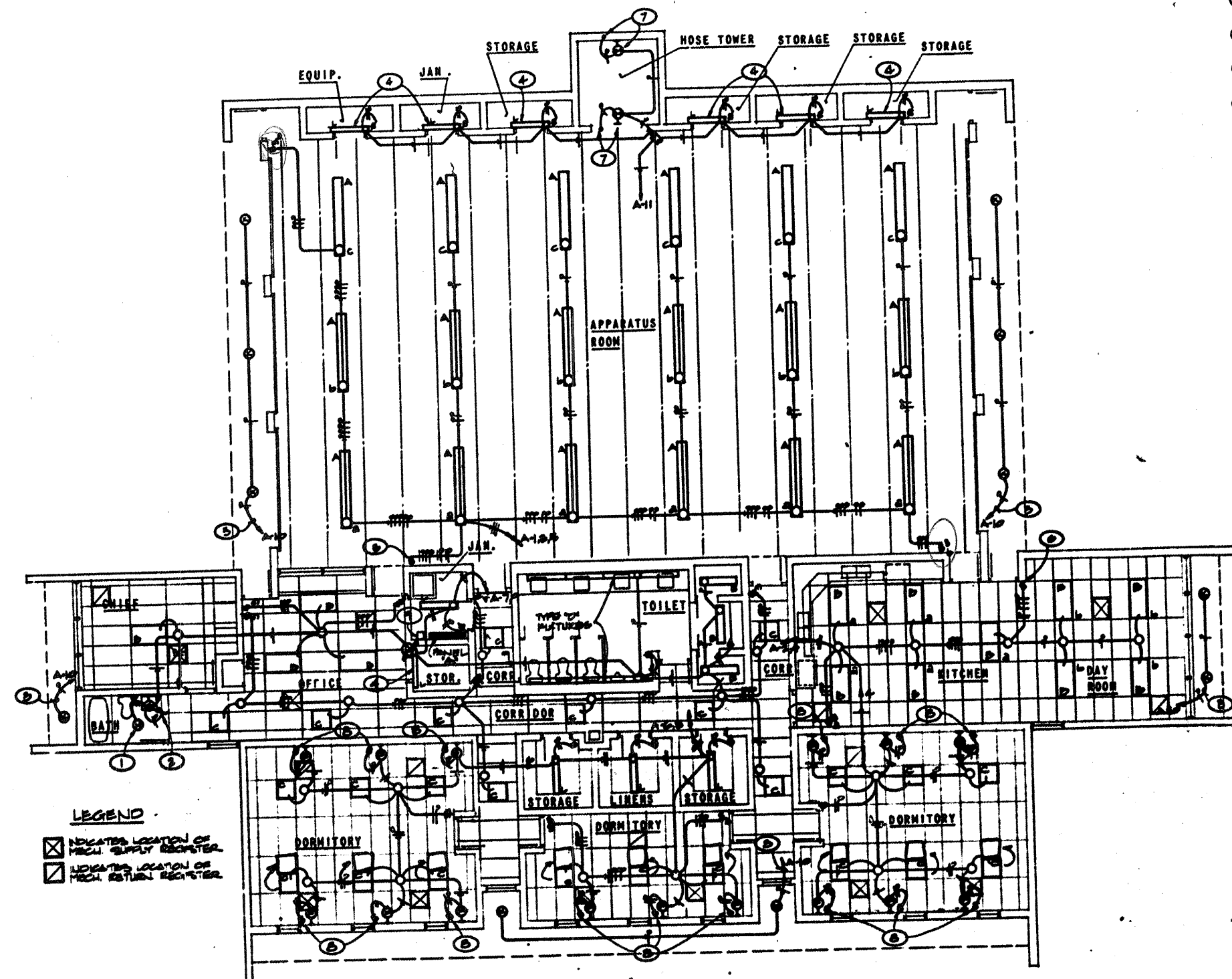
1 2 3 4 5 6 7 8 9 10 11 12





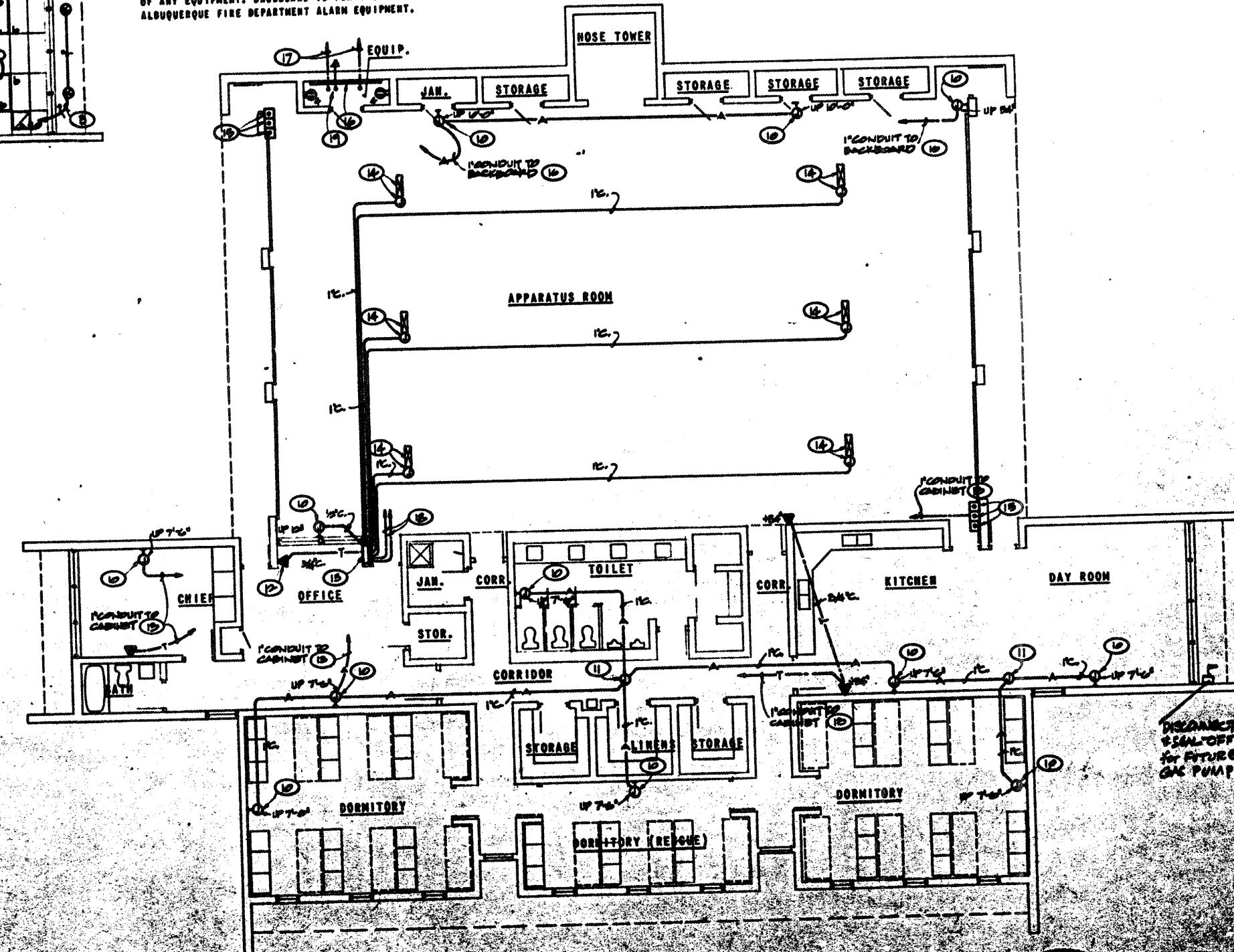
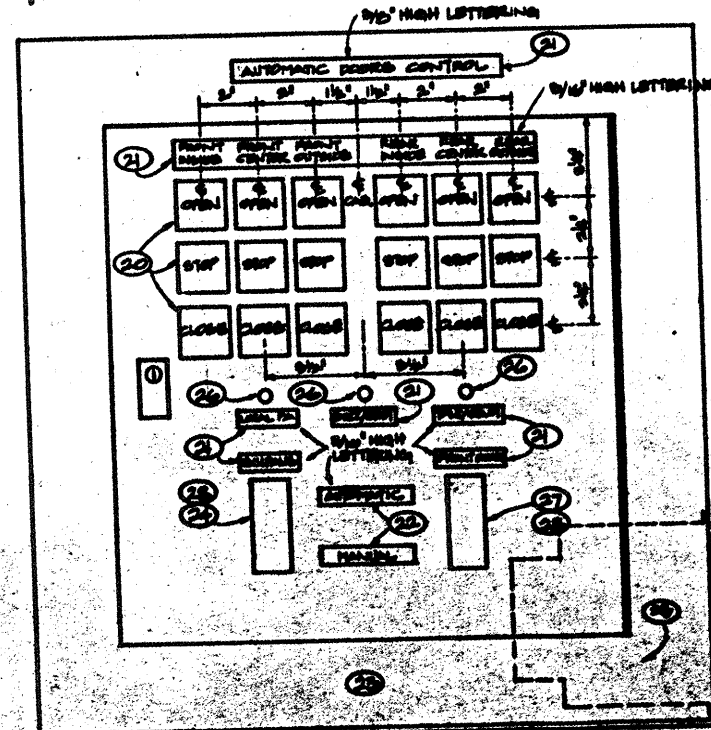
SYMBOL LEGEND			
SYMBOL	DESCRIPTION	SYMBOL	DESCRIPTION
---	COLD WATER LINE	RA	RETURN AIR
---	HOT WATER LINE	PC	FLEXIBLE CONNECTION
---	CIRCULATING HOT WATER	TV	TURBIDITY VANES
---	VENT PIPING	ODD	ODOR LOWER
○	SOIL LINE	GV	GATE VALVE
○	GAS LINE	CV	CHECK VALVE
○	GAS LINE (EXISTING)	PL	BALANCING OR PLUG COCK
○	WATER LINE (EXISTING)	RL	RELIEF VALVE
○	WATER LINE (EXISTING)	ST	STRAINER
○	DRAIN	WH	WHEIR
OD	BALANCING DAMPER	RD	REDUCER
VTE	VENT TUBE ROOF	VS	VALVE IS BISE
FA	FRESH AIR	ET	ELECTRIC THERMOSTAT
---	RIGID DUCTWORK		
---	FLEXIBLE DUCTWORK		

THE UNIVERSITY OF CHICAGO



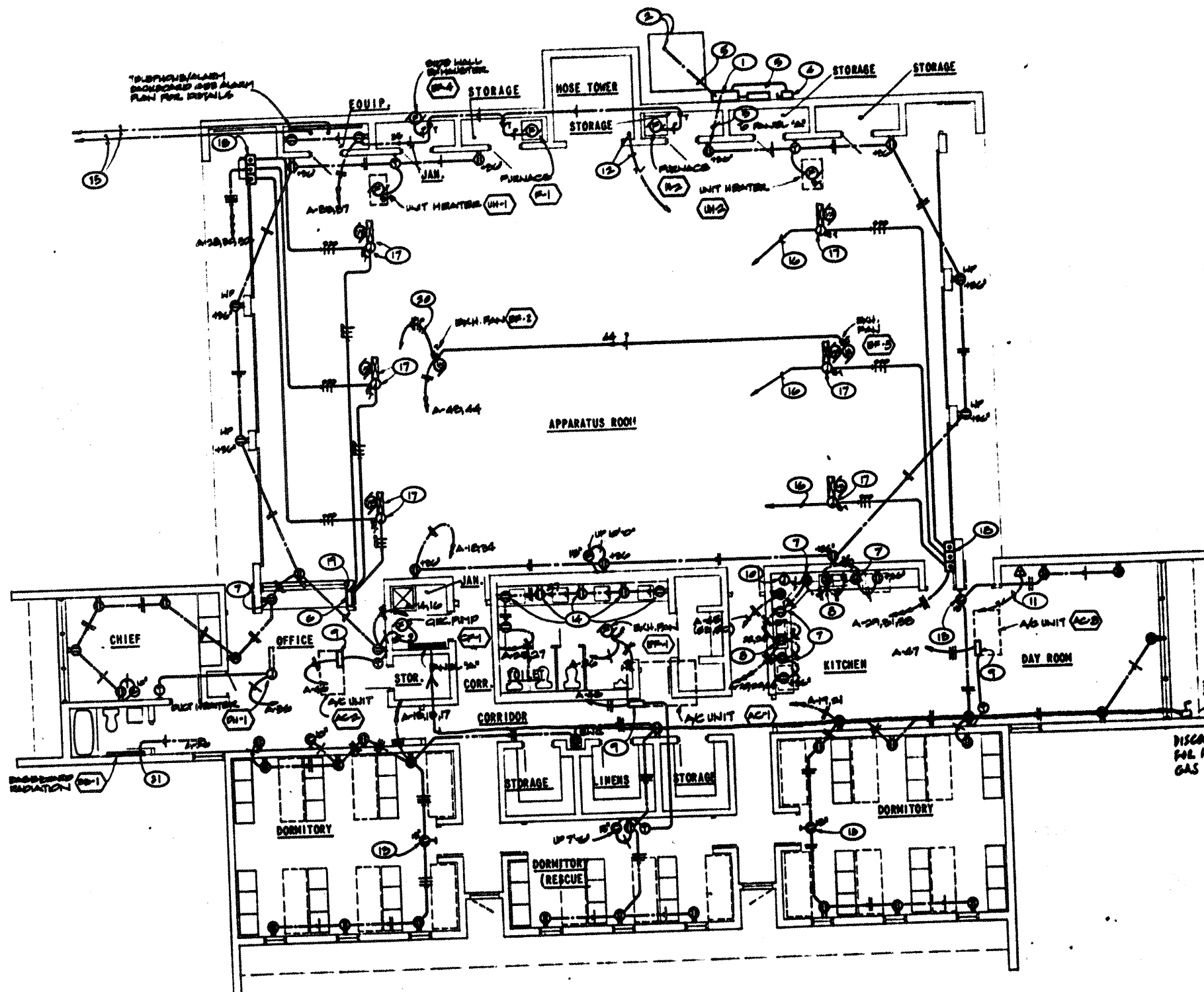
LIGHTING PLAN
SCALE: 1/8"=1'-0"

FIXTURE SCHEDULE			
TYPE	DESCRIPTION	LAMPS	MOUNTING
A	COLUMBIA 501-80-2105-N17 WITH ALL REQUIRED ACCESSORIES	2/FOOT12/CH/NO	STEN, BOTTOM OF FIXTURE EVEN WITH BOTTOM OF JOIST
B	COLUMBIA 50126-52-246	4/F40/CH	RECESSED
C	COLUMBIA 50126-56-2220	2/600/CH	RECESSED
D	ALCO 56240/BLACK	2/F40/CH PER 6"	ON WALL AT CEILING/WALL INTERSECTION
E	COLUMBIA 50716-52-742	2/F40/CH	SURFACE
F	PRERCOLITE 50051 WITH 50347 SHIELD	1/100W/400 FLOOD	BRACKET, UP 5'-6" CENTERED ON BED
G	ARTHETAL 50000	2/75W/1F	DRY, OVER MIRROR
H	CHRONALOX-PYRE 50005-1	1/250W/INFRA RED HEAT LAMP & 1/150 W/240	RECESSED
I	PRERCOLITE 50051-71	1/100W/400 O.C. BLK. SH.	RECESSED
L	UTILITY STRIP	2/F40/CH	SURFACE
M	RECRE-STORGE 500-200 WITH 5000C-10 GLOBE	1/250W/1F	7
N	PRERCOLITE 50051-71	1/100W/400 O.C. BLK. SH.	RECESSED

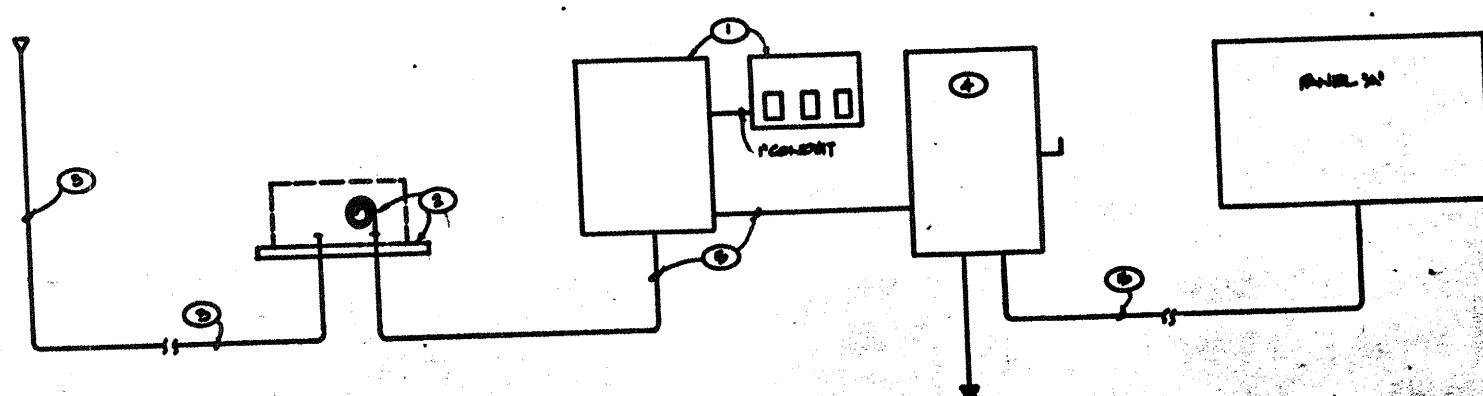


KEYED NOTES

- 1 SWITCH INFRA-RED LAMP SEPARATELY FROM INCANDESCENT LAMP, INCANDESCENT LAMP SHALL BE ON SAME SWITCH AS TYPE "G" FIXTURE, WIRE FAR TO OPERATE ON SAME SWITCH CONTROL AS TYPE "G" FIXTURE.
- 2 TWO SWITCHES, ONE FOR CONTROL OF HEAT LAMP AND ONE FOR CONTROL OF INCANDESCENT LAMP.
- 3 EXTEND TO CIRCUIT INDICATED THRU LIGHTING CONTROL CENTER NEXT TO PANEL "A".
- 4 INSTALL FIXTURE ON WALL 12" ABOVE DOOR HEAD, FURNISH FIXTURE WITH WIRE GUARD.
- 5 FURNISH AND INSTALL 3 SWITCHES UNDER OR DEVICE PLATE (S₁, S₂, S₃).
- 6 TWO SWITCHES UNDER ONE DEVICE PLATE (S₁, S₂).
- 7 EXTEND UP TO NEXT TYPE "H" FIXTURE ON SAME WALL, FIXTURES ON WEST WALL SHALL BE INSTALLED AT 10'-0" AND 31'-0" ABOVE FINISH FLOOR WITH FIXTURES ON EAST WALL INSTALLED AT 10'-0" AND 31'-0" ABOVE FINISH FLOOR.
- 8 FURNISH LEVITON 50553-2, 20 AMP, 120/277V AC RATED PUSHBUTTON SWITCH, MOUNT SWITCH UP 30" ABOVE FINISH FLOOR AND AT EDGE OF DUNN FURNISHED REP. VERIFY EXACT HEIGHT AND LOCATION WITH ARCHITECT PRIOR TO ANY ROUGH-IN.
- 9 FURNISH AND INSTALL TONE PT-802L-E LIGHTING CONTROL CENTER ALONG WITH APPROPRIATE PHOTO-CELL, INSTALL TYPE "A" FIXTURES ON CIRCUIT "B" (OR BY PHOTO-CELL, OFF BY PHOTO-CELL). INSTALL FIXTURE TYPE "A" OR CIRCUIT "A" (OR BY PHOTO-CELL, OFF BY PHOTO-CELL, OFF AT MID-NITE BY TIMED CONTROL), INSTALL PHOTO-CELL CONTROLLER ON COMBIT STUBBED 12" ABOVE ROOF DIRECTLY ABOVE LIGHTING CONTROL CENTER, FACE PHOTO-CELL WINDOW ROOF.
- 10 FLUSH MOUNTED FOUR SQUARE JUNCTION BOX AT HEIGHT AS NOTED WITH MOUNTING STRAPS AND BUSHED DEVICE PLATE.
- 11 INSTALL JUNCTION BOX ABOVE CEILING SECURED TO STRUCTURE.
- 12 INSTALL OUTLET 6" ABOVE COUNTERTOP BACKPLASH.
- 13 FLUSH MOUNTED 24"X24"X4" CABINET WITH 8" PLYWOOD BACKBOARD, CABINET TO BE FURNISHED WITH LATCH AND LOCKABLE HANDLE FLUSH WITH DOOR, CABINET SHALL BE MODIFIED AS SHOWN IN "FRONT DOOR CABINET DETAIL" THIS SHEET.
- 14 MOTOR CONTROLLER ASSEMBLY WITH FACTORY PRE-WIRED RELAYS, MOTOR CONTROLLER, ETC. AS FURNISHED AND INSTALLED BY OVERHEAD DOOR SUPPLIER, INSTALL SURFACE MOUNTED JUNCTION BOX ON ASSEMBLY AND EXTEND 1" CONDUIT WITH PULLWIRE TO CABINET (1), EXTEND CONTROL WIRING AS REQUIRED BY DOOR MANUFACTURER'S APPROVED SHOP DRAWINGS TO RESPECTIVE PUSHBUTTON CONTROLS AS FURNISHED AND INSTALLED BY OVERHEAD DOOR SUPPLIER.
- 15 LOCATION OF PUSHBUTTON CONTROLS FOR OVERHEAD DOORS.
- 16 8'-0"X8'-0" PLYWOOD BACKBOARD, INSTALL BACKBOARD ON WALL AND PAINT WITH 3 COATS OF PAINT TO MATCH WALL COLOR PRIOR TO INSTALLATION OF ANY EQUIPMENT, BACKBOARD IS FOR INSTALLATION OF TELEPHONE AND ALBUQUERQUE FIRE DEPARTMENT ALARM EQUIPMENT.
- 17 2" CONDUITS, WITH PULL WIRE UNDERGROUND TO PROPERTY LINE, SEE UTILITY PLAN FOR ROUTING AND DETAILS.
- 18 2" CONDUITS INTER-CONNECTING CABINET (1) AND BACKBOARD (16).
- 19 ALL CONDUITS TERMINATING AT BACKBOARD SHALL BE STUBBED TO TOP OF BACKBOARD OR STUBBED 6" ABOVE FINISH FLOOR AT BACKBOARD, ALL CONDUITS TERMINATED AT BACKBOARD SHALL BE STUBBED 150 GAGE SOFT DRAWN COPPER GROUND AT BACKBOARD AND RUN AT BOTTOM OF BACKBOARD FOR ITS ENTIRE LENGTH.
- 20 FURNISH AND INSTALL CUTLER-HAMMER ESDAA SERIES MOMENTARY CONTACT PUSHBUTTONS, FURNISH 6 EACH OF THE FOLLOWING (TOTAL OF 18 PUSHBUTTONS):
(a) #42201 (STOP)
(b) #42201 (STOP)
(c) #42201 (STOP)
(d) #42201 (STOP)
(e) #42201 (STOP)
(f) #42201 (STOP)
FOR EACH PUSHBUTTON LOCATION DRILL A 1 1/2" DIA HOLE WITH A 1/2" DIA COLLAR, FURNISH ASSEMBLY COMPLETE WITH OPERATOR, COLOR AS NOTED PUSHBUTTON, COLLAR, ETC. FOR A COMPLETE AND WORKABLE SWITCH.
- 21 FURNISH AND INSTALL ENGRAVED NICARTY NAMEPLATE WITH LETTERING AS INDICATED AND IN SIZE AS NOTED, NAMEPLATE SHALL HAVE WHITE LETTERING ENGRAVED IN A POWDER BLUE BACKGROUND.
- 22 NAMEPLATE IDENTICAL TO THESE AS NOTED BY (21) WITH EXCEPTION OF WHITE LETTERING IN RED BACKGROUND.
- 23 ALL WORK ACCOMPLISHED WITHIN CABINET SHALL BE INSTALLED IN A NEAT AND WORKMANLIKE MANNER WITH ALL CABLES AND CONDUITS LACED AND BUNDLED AND SO INSTALLED TO ALLOW OPENING OF DOOR TO ITS FULLEST POSITION AND WITHOUT CONFLICTING WITH ANY OF THE COMPONENTS IN CABINET.
- 24 FURNISH AND INSTALL A 3 POSITION MAINTAINED SWITCH CONTROL "AUTO-OFF-MANUAL" FOR CONTROL OF EXHAUST FAN, EACH POSITION OF SWITCH SHALL BE CAPABLE OF CONTROLLING (2) 1/2 HP, 18 MOTORS SIMULTANEOUSLY, SWITCH(ES) SHALL BE SIMILAR TO CUTLER-HAMMER TYPE "B", THREE ELEMENT, WITH RECTANGULAR EXTENDED BUTTONS AND INSTALLED WITH BUTTONS FLUSH IN DOOR/ALARM CABINET AND ESCUTCHEON PLATE.
- 25 DELAY TIMER INSTALLED WITHIN CABINET FOR EXHAUST FAN #2 & #3, TIMER SHALL BE CONNECTED TO "AUTO" SIDE OF SWITCH (24) FOR DELAYED "OFF" CONTROL OF FANS, CONNECT FAN "ON" CONTROL "AUTO" POSITION OF SWITCH TO OPERATE FANS WHEN ONE OR ANY COMBINATION OF ALL THE FRONT DOORS ARE IN ANY POSITION OF THE "OPEN" POSITION.
- 26 DRILL 1/2" DIA HOLE IN CABINET FOR PUSHBUTTONS FURNISHED AND INSTALLED BY ALBUQUERQUE FIRE DEPARTMENT.
- 27 SWITCH ASSEMBLY SHALL BE FURNISHED BY ALBUQUERQUE FIRE DEPARTMENT AND INSTALLED BY THIS CONTRACTOR, AFD SHALL CONNECT SWITCH.
- 28 ESCUTCHEON PLATES FOR ITEMS SHOWN SHALL BE PAINTED AS DIRECTED IN COLOR AS CALLED FOR BY ARCHITECT IN THE FIELD.



POWER PLAN
SCALE: 1/8"=1'-0"



POWER RISER DIAGRAM

KEYED NOTES

- 1 FURNISH AND INSTALL C.T. AND METERING ENCLOSURES PER PUBLIC SERVICE CO. OF D.M.S. RESPECTIVE DRAWINGS PDS-19-22.0 AND PDS-19-23.0.
- 2 INSTALL CONCRETE PAD FOR PAD MOUNT TRANSFORMER PER PUBLIC SERVICE CO. OF D.M.S. DRAWING PDS-7-10.0. COIL 0'-5" OF EXCESS CONDUCTORS AT PAD FOR CONNECTION OF PUBLIC SERVICE CO. OF D.M.S. PERSONNEL.
- 3 4" RIGID STEEL OR CONCRETE ENCASED DUCT UNDERGROUND TO POWER RISER POLE. THEN UP POLE PER PUBLIC SERVICE CO. OF D.M.S. DRAWING PDS-7-15.0.
- 4 FURNISH AND INSTALL 300 AMP, 3 POLE-4W, 250 VOLT, NEMA 3B FUSIBLE DISCONNECT SWITCH. FUSE SWITCH WITH 30 AMP FUSETUBES.
- 5 400/0 TWO COPPER CONDUCTORS IN 2" CONDUIT OR 4-350MCM-TON ALUMINUM CONDUCTORS IN 2 1/2" CONDUIT.
- 6 ALARM SYSTEM/FRONT DOOR OPERATED CABINET, SEE ALARM PLAN, SHEET E-1 FOR DETAILS.
- 7 INSTALL RECEPTACLE 6" ABOVE COUNTERTOP BACKSPLASH. VERIFY EXACT HEIGHT WITH ARCHITECTURAL ELEVATIONS PRIOR TO ANY ROUGH-IN.
- 8 INSTALL RECEPTACLE UNDER COUNTERTOP AND CONTROL HALF OF RECEPTACLE WITH WALL MOUNTED SWITCH FOR CONTROL OF DISPOSAL. OTHER HALF OF RECEPTACLE SHALL REMAIN HOT.
- 9 ELECTRICAL TERMINAL CABINET INTEGRAL WITH A/C UNIT. TERMINATE POWER CONDUCTORS ON LINE SIDE OF DISCONNECT SWITCH FURNISHED WITH UNIT IN COMPARTMENT. TERMINATE CONTROL CONDUCTORS FROM THERMOSTAT ON APPROPRIATE TERMINAL LUGS IN COMPARTMENT.
- 10 FLOOD MOUNTED JUNCTION BOX INSTALLED UNDER UPPER CABINET SPACE FOR CONNECTION OF RANGE HOOD FAN AND LIGHT. THIS CONTRACTOR SHALL EXTEND POWER SOURCE TO FAN AND LIGHT AND CONNECT. VERIFY EXACT LOCATION AND HEIGHT WITH ARCHITECTURAL CASEWORK ELEVATIONS AND FINISHES IN ACCORDANCE.
- 11 EXTEND CONDUIT TO LOCATION SHOWN AT EAST SIDE OF APPARATUS ROOM FOR INSTALLATION OF FUTURE TV SYSTEM ANTENNA SYSTEM.
- 12 EXTEND 1" CONDUIT UP INSIDE HOSE TOWER TO ROOF OF TOWER AND STUD 6"-8" ABOVE ROOF. CAP CONDUIT ABOVE ROOF AND LEAVE FOR FUTURE TV ANTENNA. SECURE CONDUIT TO INSIDE OF HOSE TOWER AT 2'-0" O.C. INTERVALS FOR THE FIRST 10'-0" BELOW TOWER ROOF WITH FIRST SUPPORT 1'-0" BELOW ROOF.
- 13 CENTER CLOCK BETWEEN TOP OF DOOR FRAME AND CEILING.
- 14 INSTALL RECEPTACLES HORIZONTAL IN WALL WITH THE BOTTOM OF THE DEVICE PLATE FINISHING DIRECTLY ON TOP OF THE COUNTERTOP BACKSPLASH. VERIFY EXACT HEIGHT WITH ARCHITECTURAL CASEWORK ELEVATIONS.
- 15 2-2" RIGID STEEL CONDUITS (ONE FOR ALARM AND ONE FOR INCOMING TELEPHONE SERVICE) UNDERGROUND TO PROPERTY LINE, SEE SITE PLAN, SHEET FOR ROUTING AND DETAILS.
- 16 1" CONDUIT WITH PULL WIRE TO ALARM CABINET.
- 17 AUTOMATIC DOOR CONTROL/POWER CABINET WITH ALL NECESSARY RELAYS, MOTOR SUPPLIER, ETC. THIS CONTRACTOR SHALL EXTEND POWER AND CONTROL CONDUCTORS IN APPROPRIATE SIZED CONDUIT AND CONNECT PER APPROVED DOOR MANUFACTURER'S SHOP DRAWINGS. INSTALL JUNCTION BOX AND DISCONNECT SWITCH TO DISCONNECT ALL POWER CONDUCTORS TO DOOR OPERATOR.
- 18 AUTOMATIC DOOR OPERATOR CONTROL STATIONS AS FURNISHED AND INSTALLED BY DOOR MANUFACTURER. CONNECT POWER AND CONTROL CONDUCTORS PER APPROVED DOOR MANUFACTURER'S SHOP DRAWINGS.
- 19 FURNISH AND INSTALL A TIME DELAY TIMER IN ALARM CABINET. TIMER SHALL BE CAPABLE OF EXTENDING EXH. FANS (EF-2) & (EF-3) OPERATIONS FOR PRE-SET TIME AFTER ANY COMBINATION OF THE FRONT DOORS HAVE BEEN CLOSED. EXH. FANS SHALL BE CONNECTED INTO FRONT DOOR OPERATION CONTROLS SO THAT FANS ARE ACTIVATED WHEN ANY ONE OR ALL OF THE DOORS ARE OPENED. THE FANS SHALL BE DE-ACTIVATED BY TIMER AT PRE-SET TIME DELAY AFTER CLOSURE OF ALL THE FRONT DOORS. THE TIME DELAY TIMER SHALL BE RATED AT 120 VOLTS, 10, 60 CYCLE, SURFACE MOUNTED WITH FRONT FACING TERMINALS, 6 SECONDS TO 5 MINUTE RANGE AND CAPABLE OF CONTROLLING OPERATION OF (2) SHP FANS. TERMINALS, 6 SECONDS TO 5 MINUTE RANGE AND CAPABLE OF CONTROLLING OPERATION OF (2) SHP FANS. THE TIME DELAY SHALL RESET ITSELF AUTOMATICALLY FOR NEXT COMPLETE OPERATION. TIMER SHALL BE AS MANUFACTURED BY AUTOMATIC TIMING AND CONTROLS INC. THIS CONTRACTOR SHALL FURNISH AND INSTALL ALL NECESSARY RELAYS, ETC. TO ACCOMPLISH THE CONTROL OF EXHAUST FANS AS OUTLINED ABOVE.
- 20 EXTEND FANS (EF-2) & (EF-3) CONTROL CIRCUITS THRU FRONT DOOR OPERATION CONTROL AND TIME DELAY TIMER AS CALLED FOR IN NOTE (19).
- 21 EXTEND BRANCH CIRCUIT FEEDER UP INTO BOTTOM OF BASEBOARD RADIATION AND CONNECT CONTROLS, ETC. FOR A WORKABLE UNIT.

SYMBOL LEGEND

SYMBOL	DESCRIPTION
	CEILING OUTLET AND FIXTURE, INCANDESCENT, TYPE AS INDICATED.
	BRACKET OUTLET AND FIXTURE, INCANDESCENT, TYPE AS INDICATED.
	FLUORESCENT OUTLET AND FIXTURE, TYPE AS INDICATED.
	SINGLE POLE WALL SWITCH
	THREE WAY WALL SWITCH
	FOUR WAY WALL SWITCH
	PILOT SWITCH
	THERMAL SWITCH, WEATHERPROOF IF INSTALLED OUTSIDE.
	JUNCTION BOX FLUSH IN WALL - HEIGHT AS NOTED OR REQUIRED WITH CONNECTION TO EQUIPMENT.
	DUPLEX GROUNDING TYPE CONVENIENCE OUTLET UP 24" (INSIDE CASE OF ENEC)
	DUPLEX CONVENIENCE OUTLET, UP 12" OR AS NOTED.
	50 AMP, 250 VOLT, 3 WIRE RANGE TYPE OUTLET FLUSH, UP 36" OR AS NOTED.
	WEATHERPROOF DUPLEX CONVENIENCE OUTLET, UP 12" OR AS NOTED. COVER TO BE HUSSELL 10206 OR EQUAL.
	THERMOSTAT, UP 5'-0".
	PUSHBUTTON STATION, UP 52" OR AS NOTED.
	TELEPHONE OUTLET, UP 12" OR AS NOTED.
	CLOCK FLUSH MOUNTED AT HEIGHT AS NOTED. NUMBER INDICATES DIAMETER OF DIAL FACE. CLOCKS SHALL BE CINCINNATI APOLLO 4 SERIES WITH BLACK DIAL AND CASE FINISH WITH WHITE HANDS.
	SPECIAL CABINET, TELEPHONE TYPE OR AS NOTED.
	ELECTRIC PANEL - SEE SCHEDULE.
	MOTOR CONNECTION WITH N.P. INDICATED.
	MOTOR CONTROLLER, SIZE AND POLES FOR MOTOR FURNISHED.
	SAFETY SWITCH. SWITCH TO HAVE POLES AND RATING REQUIRED. SWITCH TO BE NEMA 3B IF INSTALLED OUTDOORS.
	MOTOR CONNECTION FOR FRACTIONAL H.P. MOTOR (LESS THAN 1/2 H.P.). PROVIDE THERMAL O.L. SWITCH ADJACENT TO ALL MOTORS UNLESS SWITCH IS SHOWN ELSEWHERE ON PLAN.
	BRANCH CIRCUIT IN WALLS OR CEILING WITH CONDUCTORS INDICATED.
	BRANCH CIRCUIT IN WALLS OR UNDER FLOOR WITH CONDUCTORS INDICATED.
	HOME RUN TO PANEL WITH BRANCH CIRCUIT NUMBERS INDICATED.
	TELEPHONE CONDUIT, MINIMUM 2" WITH PULL WIRE.
	1" CONDUIT WITH PULL WIRE TO TELEPHONE TERMINAL BOARD.
	ALARM SYSTEM CONDUIT WITH PULL WIRE AND SIZE AS INDICATED.
	TELEVISION SYSTEM CONDUIT 1" WITH PULL WIRE OR CABLE AS NOTED.

PANEL SCHEDULE

PANEL "A", 120/200 VOLT, 30, 4 WIRE, 250 AMP NLD, SURFACE MOUNTED, BOTTOM FEED - TWO SECTION, FULLY RATED.				
CIRCUIT NO.	WIRE SIZE	CCT. DER.	LOAD	
1 THRU 37	#12	20A/1P	LIGHTING, RECEPTACLES AND MISC.	
38 THRU 42	---	20A/1P	SPARES	
43, 44	#12	20A/1P	EXH. FANS EF-2 & EF-3	
45	#6	50A/3P	KITCHEN RANGE	
46, 47	#10	50A/3P	A/C UNITS AC-2 & AC-3	
48	#6	50A/3P	A/C UNIT AC-1	
49 THRU 55	---	1 POLE	SPARES	

BRANCH CIRCUITS #26 AND #27 SHALL BE GROUND FAULT INTERRUPTER BREAKERS.

SHEET

15

OF 15

POWER PLAN

JOHN REED ARCHT.

1111 W. VERDE BLVD. MEXICO

STATION 1111 W. VERDE BLVD. MEXICO DRIVE

06 00 00 00 00 00