

2 3 4 5 6 7 8 9 10 11 12 13 14 15
26-6061.81-2011

SCANNED BY
PLANNING

CITY OF ALBUQUERQUE PUBLIC WORKS DEPARTMENT PLANS FOR CONSTRUCTION

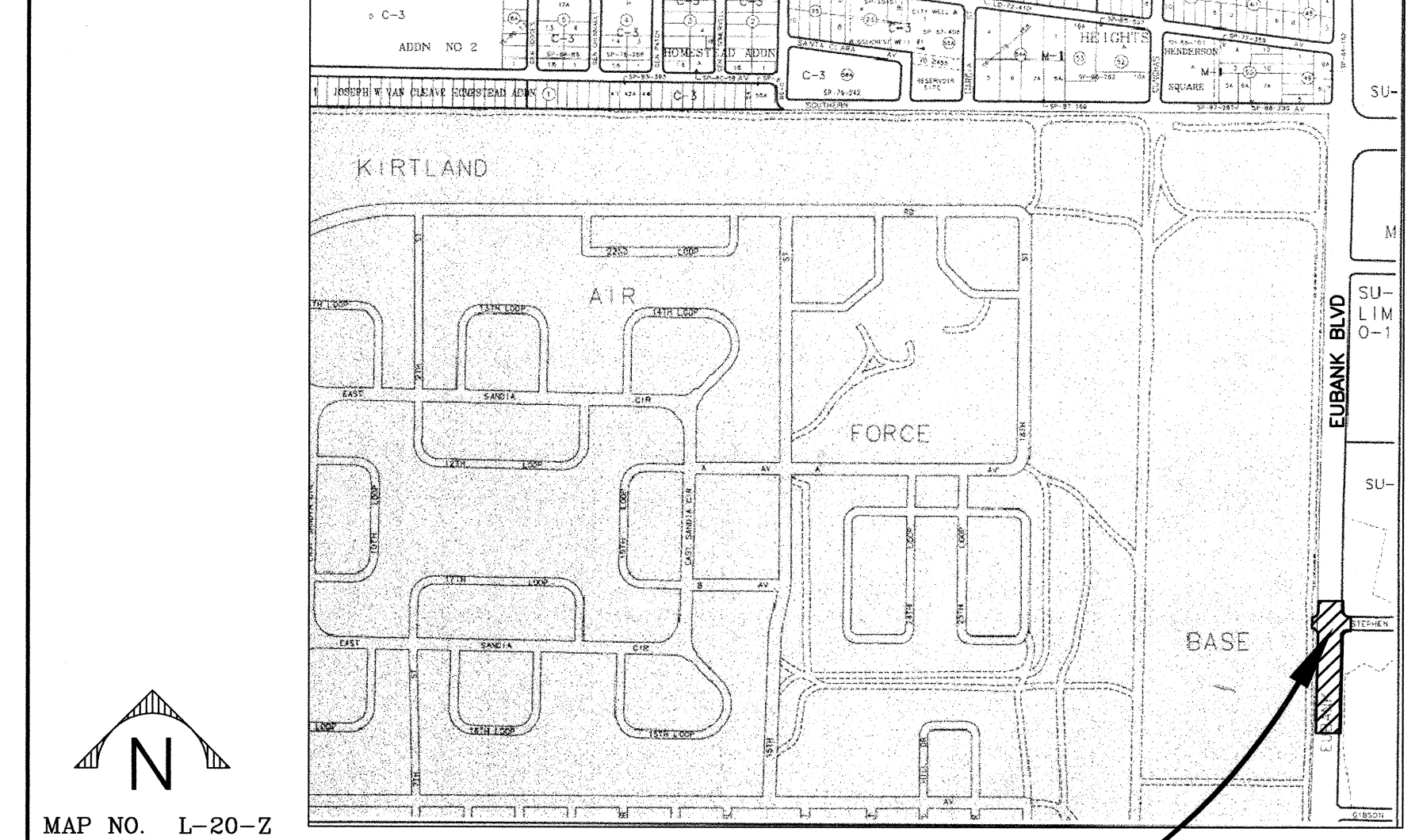


CINT EUBANK ENTRANCE IMPROVEMENTS

INDEX TO DRAWINGS

SHEET NO.	TITLE
1	TITLE SHEET, VICINITY MAP, SHEET INDEX
2	GENERAL NOTES AND LEGEND
3	INTERSECTION IMPROVEMENT PLAN

VICINITY MAP



PROJECT LOCATION

UTILITY COMPANY CONTACTS

PNM-ELECTRIC

MARK A. BOUCHARD
Planning Engineer
4201 Edith Blvd., NE MS-CS61
Albuquerque, NM 87107
(505) 241-3402

AT&T

DAVID CROWL
Resource Supervisor
111 Third St., NW
Albuquerque, NM 87103
(505) 842-2911

QWEST/US WEST

DAVID MULLER
Capacity Provisioning Specialist
400 Tijeras Ave. NW, Suite 710
Albuquerque, NM 87102
(505) 245-8706

XSPEDIUS MANAGEMENT CO.

STEVE BENJAMIN
Operations Support Manager
505 Marquette NE, Suite 1605
Albuquerque, NM 87102
(505) 998-2220

MCI WORLDCOM

ANDY DARNELL
Operations Manager
6001 Midway Park NE
Albuquerque, NM 87109
(505) 346-4470

TIME WARNER TELECOM

ROYAL HARRISON
Plant Manager
3830 Singer Blvd. NE, Suite 1000
Albuquerque, NM 87109
(505) 938-7339

PNM-GAS CO. OF NM

JOE DUNLAP
Operations Representative
4625 Edith Blvd., NE MS-CS66
Albuquerque, NM 87107
(505) 241-7771

COMCAST CABLE

RITA ERICKSON
PLANNING AND DESIGN SUPERVISOR
4611 Montbel Pl., NE
Albuquerque, NM 87107
(505) 761-6235

CITY OF ALBUQUERQUE UTILITY DEVELOPMENT

BILL BALSCH
UTILITY ENGINEER
P.O. Box 1293
Albuquerque, NM 87103
(505) 768-2729

McLeod USA

RICK MUELLER
Supervisor of Outside Techs.
505 Marquette NE, Suite 1600
Albuquerque, NM 87102
(505) 244-3161

UNIVERSAL ACCESS

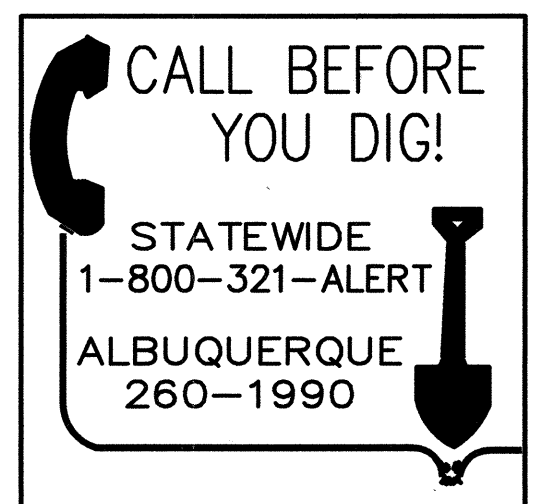
JAMIE MARTINEZ
Consultant
505 MARQUETTE AVE NW #119A
Albuquerque, New Mexico 87102
(505) 328-2675

QWEST LONG DISTANCE

LARRY KELLY
SR OPERATIONS TECH
400 TIJERAS NW STE. 710
ALBUQUERQUE, NM 87102
(505) 244-4062

NEW MEXICO UTILITIES

STIEVE BATES
OPERATIONS SUPERINTENDENT
4700 IRVING BLVD. NW SUITE 201
Albuquerque, NM 87114
(505) 898-2661



HDR
HDR Engineering, Inc.
HDR PROJECT NO.: 11951-003-035

For Information Only

REV.	SHEETS	CITY ENGINEER	DATE	USER DEPARTMENT	DATE	USER DEPARTMENT	DATE
ENGINEERS STAMP & SIGNATURE	APPROVED	ENGINEER	DATE	APPROVED FOR CONSTRUCTION			
	DRC Chairman	<i>[Signature]</i>	6-21-05	<i>[Signature]</i>	6-21-05	CITY ENGINEER	DATE
	Transportation	<i>[Signature]</i>	6-21-05				
	Water/Wastewater	<i>[Signature]</i>	6-20-05				
	Hydrology	<i>[Signature]</i>	6-20-05				
	CIP	<i>[Signature]</i>	6-20-05				
Constr. Coord.	<i>[Signature]</i>	6-21-05					
Parks	<i>[Signature]</i>	6-21-05					
PROJECT NUMBER 6061.81				SHEET 1 OF 3			

SCANNED BY
PLANNING

- 1 THE SPECIFICATIONS USED FOR THIS PROJECT ARE THE CITY OF ALBUQUERQUE STANDARD SPECIFICATIONS FOR PUBLIC WORKS CONSTRUCTION, 1986 EDITION, UPDATE, THROUGH UPDATE NO.7.
- 2 FIVE (5) WORKING DAYS PRIOR TO BEGINNING CONSTRUCTION, THE CONTRACTOR WILL SUBMIT A DETAILED CONSTRUCTION SCHEDULE TO THE CITY CONSTRUCTION COORDINATION DIVISION. TWO (2) DAYS PRIOR TO CONSTRUCTION, THE CONTRACTOR WILL OBTAIN A BARRICADING PERMIT FROM THE CONSTRUCTION COORDINATION DIVISION. CONTRACTOR SHALL NOTIFY BARRICADE ENGINEER (768-2551) PRIOR TO OCCUPYING AN INTERSECTION. REFER TO SECTION 19 OF STANDARD SPECIFICATIONS FOR PUBLIC WORKS.
- 3 THE CONTRACTOR WILL NOTIFY THE FIELD ENGINEER NOT LESS THAN SEVEN (7) DAYS PRIOR TO STARTING WORK, IN ORDER THAT THE CITY SURVEYOR MAY TAKE NECESSARY MEASURES TO INSURE THE PRESERVATION OF SURVEY MONUMENTS. THE CONTRACTOR WILL NOTIFY THE ENGINEER IF A MONUMENT IS DISTURBED. REPLACEMENT WILL BE DONE ONLY BY THE CITY SURVEY SECTION. WHEN A CHANGE IS MADE IN THE FINISHED ELEVATION OF THE PAVEMENT OF ANY ROADWAY IN WHICH A PERMANENT SURVEY MONUMENT IS LOCATED, CONTRACTOR WILL, AT HIS OWN EXPENSE, ADJUST THE MONUMENT COVER TO THE NEW GRADE UNLESS OTHERWISE SPECIFIED. REFER TO SECTION 4 OF STANDARD SPECIFICATIONS FOR PUBLIC WORKS.
- 4 ALL NEW MANHOLES SHALL BE TYPE "E" (COA DWG. 2102) UNLESS OTHERWISE NOTED ON THE PLANS.
- 5 THE CONTRACTOR WILL BE RESPONSIBLE FOR DISPOSING OF ALL DEBRIS, INCLUDING, BUT NOT LIMITED TO HAZARDOUS WASTE AT DISPOSAL SITES APPROVED BY GOVERNMENTAL AGENCIES REGULATING THE DISPOSAL OF SUCH MATERIALS.
- 6 ALL WATER VALVE BOXES AND MANHOLES IN THE STREET CONSTRUCTION ARE TO BE ADJUSTED TO FINISH GRADE AND WILL BE MEASURED AND PAID PER EACH.
- 7 SUBGRADE PREPARATION UNDER SIDEWALKS AND DRIVE PADS, AND SUBGRADE AND SUBBASE PREPARATION UNDER CURB AND GUTTER IS CONSIDERED INCIDENTAL TO THE CONSTRUCTION OF SUCH, AND NO DIRECT PAYMENT SHALL BE MADE FOR THOSE ITEMS OF WORK.
- 8 THE WATER SYSTEMS DIVISION (857-8200) WILL BE NOTIFIED BY THE CONTRACTOR SEVEN (7) WORKING DAYS IN ADVANCE OF ANY WORK WHICH MAY AFFECT THE EXISTING PUBLIC WATER FACILITIES. REFER TO SECTION 18 OF STANDARD SPECIFICATIONS.
- 9 ALL EXCAVATION WILL BE GOVERNED BY FEDERAL, STATE AND LOCAL LAWS, RULES, AND REGULATIONS CONCERNING CONSTRUCTION SAFETY AND HEALTH.
- 10 ALL SIGNS AND CODING WILL BE IN ACCORDANCE WITH THE "MANUAL OF UNIFORM TRAFFIC CONTROL DEVICES FOR STREETS AND HIGHWAYS" CURRENT EDITION PUBLISHED BY THE U.S. DEPARTMENT OF TRANSPORTATION.
- 11 THE CONTRACTOR IS TO EXERCISE CARE TO AVOID DISTURBING ANY EXISTING UNDERGROUND UTILITIES. IT WILL BE HIS OF HER RESPONSIBILITY TO COORDINATE WITH THE UTILITY COMPANIES IN ORDER TO PREVENT ANY SERVICE DISRUPTION. SEE SECTION 18 "UTILITIES", CITY OF ALBUQUERQUE, STANDARD SPECIFICATIONS FOR CONTRACTOR REQUIREMENTS.
- 12 WHEN ABUTTING NEW PAVEMENT TO EXISTING INTERSECTING STREETS, SAW CUT EXISTING PAVEMENT TO A STRAIGHT LINE AND AT RIGHT ANGLES AND REMOVE ANY BROKEN OR CRACKED PAVEMENT. NO DIRECT PAYMENT WILL BE MADE FOR SAW CUTTING.
- 13 ALL GAS VALVES, GAS MANHOLES, ELECTRICAL MANHOLES, TELEPHONE MANHOLES, AND UTILITY POLES WILL BE ADJUSTED TO GRADE BY EACH UTILITY COMPANY.
- 14 WHEN REMOVAL OF EXISTING CURB AND GUTTER OR SIDEWALK IS REQUIRED, REMOVE BACK TO NEAREST SUITABLE JOINT UNLESS OTHERWISE DIRECTED BY THE CITY FIELD ENGINEER.
- 15 THE CONTRACTOR WILL NOTIFY NEW MEXICO ONE CALL SYSTEM 260-1990 TWO (2) WORKING DAYS PRIOR TO COMMENCING ANY EXCAVATION
- 16 CONTRACTOR WILL MAKE ALL WATER VALVES AND MANHOLES ACCESSIBLE TO THE CITY AT ALL TIMES.
- 17 CONTRACTOR WILL PLACE BITUMINOUS MATERIAL WITH THE USE OF A LAYDOWN MACHINE WHERE PAVEMENT IS 8 FEET IN WIDTH OR WIDER.
- 18 ALL SUBGRADE AND SUBBASE MATERIAL ENCOUNTERED IN PAVEMENT REMOVAL AND REPLACEMENT THAT IS DETERMINED BY THE FIELD ENGINEER TO MEET THE SPECIFICATIONS, CAN BE REUSED. HOWEVER, THE MATERIAL WILL BE PROCESSED AND COMPACTED TO MEET MOISTURE CONTENT AND PERCENT COMPACTION REQUIRED BY THE SPECIFICATIONS.
- 19 CONTRACTOR WILL NOT PAVE OVER ANY SURFACE FEATURE, I.E., GAS VALVE, MANHOLE COVER, ETC. WITHOUT PRIOR APPROVAL FROM THE CITY FIELD ENGINEER.
- 20 CONTRACTOR WILL CONFINE HIS OR HER WORK WITHIN THE CONSTRUCTION EASEMENT LIMITS AND/OR RIGHT-OF-WAY, OR PROVIDE COPIES OF AGREEMENTS WITH ADJACENT LANDOWNERS TO THE CITY OF ALBUQUERQUE.

- 21 ALL WATER VALVES AND FIRE HYDRANTS REMOVED WILL BE SALVAGED AND RETURNED TO THE C.O.A.
- 22 MINIMUM BOTTOM WIDTH OF TRENCHES FOR RIGID PIPE SHALL BE EQUAL TO THE OUTSIDE DIAMETER PLUS 16 INCHES. BEDDING MATERIAL SHALL BE CLASS II, III, OR UNLESS OTHERWISE SPECIFICALLY NOTED ON THE PLANS.
- 23 MINIMUM BOTTOM WIDTH OF TRENCHES FOR NON-RIGID PIPE SHALL BE EQUAL TO THE OUTSIDE DIA. PLUS 12 INCHES. BEDDING MATERIAL SHALL BE CLASS I, II, OR III.
- 24 THE CONTRACTOR AGREES TO TAKE NECESSARY SAFETY PRECAUTIONS AS REQUIRED BY FEDERAL, STATE AND LOCAL AUTHORITIES TO PROTECT PEDESTRIAN AND VEHICULAR TRAFFIC IN THE CONSTRUCTION AREA, WHICH INCLUDE BUT ARE NOT LIMITED TO: MAINTAINING ADEQUATE WARNING SIGNS, BARRICADES, LIGHTS, GUARD FENCES, WALKS AND BRIDGES.
- 25 ALL STRUCTURAL CONCRETE TO BE 4000 PSI UNLESS OTHERWISE NOTED ON PLANS.
- 26 ALL REINFORCING STEEL TO BE GRADE 60.
- 27 ALL EXPOSED EDGES ON CAST-IN-PLACE CONCRETE STRUCTURES WILL HAVE A 1" CHAMFER UNLESS OTHERWISE NOTED.
- 28 ALL SPLICES IN REINFORCING STEEL WILL BE 2-FOOT 6-INCH MINIMUM UNLESS OTHERWISE NOTED.
- 29 PRIOR TO CONSTRUCTION, THE CONTRACTOR WILL EXCAVATE AND VERIFY THE HORIZONTAL AND VERTICAL LOCATIONS OF ALL POTENTIAL CONFLICTING UTILITIES. SHOULD A CONFLICT EXIST BETWEEN THE FIELD INFORMATION AND THE PLANS, THE CONTRACTOR WILL NOTIFY THE CITY FIELD ENGINEER SO THE CONFLICT CAN BE RESOLVED WITH MINIMUM AMOUNT OF DELAY.
- 30 THE REPLACEMENT OF THE EXISTING UTILITIES AND THE INSTALLATION OF NEW UTILITY LINES WILL BE COMPLETED IN ADVANCE OF STARTING THE PAVEMENT WORK. TEMPORARY PAVEMENT WILL BE PLACED IN ALL TRENCHES REQUIRED FOR THE UTILITY REPLACEMENTS IN THOSE AREAS THAT MUST MAINTAIN TRAFFIC UNTIL THE FINAL PAVEMENT WORK STARTS IN EACH AREA. TEMPORARY STRIPING SHALL BE THE CONTRACTOR'S RESPONSIBILITY. MAINTENANCE OF THE TEMPORARY PAVING AND STRIPING WILL BE AT THE CONTRACTOR'S EXPENSE.
- 31 TACK COAT FOR SURFACE COURSE REQUIREMENTS WILL BE DETERMINED BY THE CITY FIELD ENGINEER.
- 32 THE CONTRACTOR WILL CONTACT THE CITY OF ALBUQUERQUE TRAFFIC DIVISION 764-1599, ONE (1) WEEK IN ADVANCE OF ANY CHANGES REQUIRED IN THE TRAFFIC SIGNALIZATION OF THIS PROJECT. ALL WORK ASSOCIATED WITH NEW TRAFFIC SIGNALIZATION SHALL BE THE RESPONSIBILITY OF THE CONTRACTOR.
- 33 ALL NEW STREET PAVING, DRIVEWAYS, SIDEWALKS, AND CURB AND GUTTERS, ABUTTING EXISTING AREAS SHALL MATCH THE ELEVATION OF THOSE AREAS.
- 34 PERMANENT PREFORMED PLASTIC PAVEMENT STRIPING AND MARKINGS WILL BE PLACED BY THE CONTRACTOR. ROAD SHALL NOT BE OPENED TO TRAFFIC UNTIL IT IS STRIPED. ALL STRIPING, PAVEMENT MARKINGS INCLUDING CROSSWALKS, ARROWS AND LINE MARKINGS ARE TO BE CONSTRUCTED OF HOT PLASTIC OR COLD PLASTIC IN ACCORDANCE WITH THE MANUAL OF UNIFORM TRAFFIC CONTROL DEVICES.
- 35 ALL EXCAVATED MATERIAL THAT IS NOT REQUIRED TO BE REUSED MUST BE REMOVED FROM THE PROJECT AREA WITHIN FOUR DAYS OF EXCAVATION. SPOIL PILES WILL BE ALLOWED ONLY AS DIRECTED BY THE CITY FIELD ENGINEER.
- 36 THE CONTRACTOR WILL COORDINATE THE CONSTRUCTION ACTIVITIES WITH ALL OTHER CONTRACTORS AND UTILITY COMPANIES WORKING IN THE SAME AREA. THE CONTRACTOR MAY BE REQUIRED TO RESCHEDULE THEIR ACTIVITIES TO ALLOW UTILITY CREWS TO PERFORM THEIR REQUIRED WORK. NO ADDITIONAL COMPENSATION WILL BE ALLOWED FOR DELAYS OR INCONVENIENCE CAUSED BY UTILITY COMPANY WORK CREWS. THE CONTRACTOR MAY BE ALLOWED AN EXTENSION OF THE CONTRACT TIME, DUE TO DELAYS, AS DELINEATED IN THE CITY OF ALBUQUERQUE STANDARD SPECIFICATIONS, SECTION 12.
- 37 ALL CONSTRUCTION EASEMENTS ON PRIVATE PROPERTY WILL BE OBTAINED BY THE CONTRACTOR PRIOR TO THE BEGINNING OF CONSTRUCTION.
- 38 EXISTING MEDIAN CURB AND GUTTER AND STANDARD CURB AND GUTTER, NOT DISTURBED BY CONTRACTOR, BUT OUT OF ALIGNMENT, DISPLACED VERTICALLY, BADLY BROKEN AND/OR DETERIORATED, WILL BE REPLACED AS DIRECTED BY THE CITY FIELD ENGINEER AND PAID FOR AT CONTRACT UNIT PRICES.
- 39 ALL TRAFFIC CONTROL DEVICES REQUIRED FOR DRIVEWAY CLOSURES, UTILITY CONSTRUCTION OR FOR OTHER REASONS AND NOT SHOWN ON THE SIGNING PLANS WILL BE FURNISHED BY THE CONTRACTOR AND WILL BE PAID AS SPECIFIED IN THE TECHNICAL SPECIFICATIONS AND BID PROPOSAL. PRIOR TO PLACING THE TRAFFIC CONTROL DEVICES, THE CONTRACTOR WILL NOTIFY THE AFFECTED OWNERS IN ACCORDANCE WITH THE SPECIFICATIONS. CONTRACTOR MUST MAKE PROVISIONS TO PROVIDE ACCESS TO PROPERTIES. REFER TO SECTION 19 OF THE STANDARD SPECIFICATIONS.

- 40 ALL UTILITY LINES WHICH ARE NOT SPECIFICALLY DESIGNATED TO BE REMOVED AND REPLACED ON THE PLANS, WILL BE MAINTAINED IN SERVICE. SHORING, SHEETING AND OTHER MEANS OF SUPPORT SHALL BE EMPLOYED BY THE CONTRACTOR TO PREVENT DAMAGE OR LOSS OF THESE EXISTING UTILITIES. BEAM AND CABLE OR OTHER ADEQUATE SUPPORTS WILL BE USED FOR TEMPORARY SUPPORT OF ALL UTILITY LINES WHICH CROSS THE TRENCH. ANY DAMAGE TO EXISTING UTILITIES WILL PROMPTLY BE REPAIRED AT THE CONTRACTOR'S EXPENSE. THE CONTRACTOR WILL NOTIFY THE ENGINEER IMMEDIATELY OF ANY SIGNIFICANT DEVIATION OF EXPOSED UTILITIES FROM THE LOCATIONS SHOWN ON THE PLANS SO THAT CONFLICTS CAN BE RESOLVED IN A TIMELY MANNER.
- 41 THE CONTRACTOR WILL ASSUME RESPONSIBILITY FOR ANY DAMAGE TO EXISTING COA INFRASTRUCTURE (C & G, PAVING, ETC.) DURING CONSTRUCTION, APART FROM THOSE SECTIONS INDICATED FOR REMOVAL ON THE PLANS, AND WILL REPAIR OR REPLACE SAME AT HIS OR HER OWN EXPENSE. HE/SHE WILL SUITABLY PROTECT THE CURB AND GUTTER FROM INCIDENTAL SPLASHING DURING THE TACK COAT APPLICATION AND WILL BE RESPONSIBLE FOR CLEANING SAME AT HIS OWN COST SHOULD SPLASHING OCCUR.
- 42 ALL INTERFERING PORTIONS OF ABANDONED UTILITY LINES WHICH ARE EXPOSED AS A RESULT OF CONSTRUCTION WILL BE REMOVED AND DISPOSED OF BY THE CONTRACTOR.
- 43 STATIONS OF STORM DRAIN INLETS ARE TO THE CENTER OF GRATE. ALL STORM DRAIN INLETS WILL BE TYPE "A" UNLESS OTHERWISE NOTED ON THE PLANS.
- 44 SHORING COSTS WILL BE CONSIDERED INCIDENTAL TO THE TRENCH AND BACKFILL COSTS.
- 45 THE CONTRACTOR WILL BE RESPONSIBLE FOR SECURING NPDES PERMITS REQUIRED BY APPLICABLE CITY, STATE, AND FEDERAL REGULATIONS.
- 46 ALL STORM DRAIN AND CONNECTOR PIPE WILL BE CLASS IV REINFORCED CONCRETE PIPE UNLESS OTHERWISE NOTED ON THE PLANS.
- 47 THE TERM "REMOVE" USED IN THIS PLAN SET INCLUDES THE DISPOSAL OF SAID MATERIAL IN ACCORDANCE WITH CITY OF ALBUQUERQUE STANDARD SPECIFICATIONS, LATEST EDITION.
- 48 CONTRACTOR WILL SURVEY AND LOG EXISTING ELEVATIONS OF CURB-AND-GUTTER, SIDEWALK, AND PAVEMENT WHICH WILL BE REMOVED FOR CONSTRUCTION OF IMPROVEMENTS. CONTRACTOR WILL REPLACE REMOVED CURB-AND-GUTTER, SIDEWALK, DRIVE PADS, AND PAVEMENT TO ELEVATIONS PRIOR TO REMOVAL UNLESS OTHERWISE INDICATED ON THE PLANS.
- 49 CONTRACTOR WILL CONSTRUCT TEMPORARY ASPHALT PAVEMENT AS DIRECTED BY THE COA ENGINEER TO PROVIDE ACCESS TO LOCAL BUSINESS, ETC. TEMPORARY PAVEMENT SHALL BE REMOVED AND DISPOSED OF PRIOR TO PLACEMENT OF FULL WIDTH PAVEMENT SECTION. TEMPORARY PAVING SHALL BE PER COA STD. DWG. 2415 AND PAID FOR PER COA STD. SPECIFICATIONS.
- 50 ALL CLASSES OF SEEDING SHALL BE DRY LAND MIX PLACED AT 1.5 LBS/1000 S.F. WITH FERTILIZER 21-12-12 PLACED AT 5 LBS/1000 S.F.
- 51 PRE-WETTING OF THE EMBANKMENT FOUNDATION AND KEY TRENCH SHALL BE CONSIDERED INCIDENTAL TO THE CONSTRUCTION OF THE EMBANKMENT. NO ADDITIONAL PAYMENT WILL BE MADE FOR THIS WORK.
- 52 ALL ASPHALTIC CONCRETE SHALL BE MINIMUM 1800 LB. STABILITY AND COMPACTED TO 95% MODIFIED MARSHALL DENSITY UNLESS OTHERWISE NOTED ON THE PLANS.
- 53 ALL RIP-RAP MATERIAL USED ON THIS PROJECT SHALL BE A NATURAL ROCK MATERIAL CONFORMING TO THE SIZE AND MATERIAL PROPERTY REQUIREMENTS SET FORTH IN THE COA STANDARD SPECIFICATIONS. NO BROKEN CONCRETE OR RUBBLE WILL BE ACCEPTED.
- 54 CONTRACTOR SHALL MAINTAIN A GRAFFITI-FREE SITE. CONTRACTOR SHALL PROMPTLY REMOVE ANY AND ALL GRAFFITI FROM EQUIPMENT, WHETHER PERMANENT OR TEMPORARY.
- 55 ALL STRIPING ON C.O.A. STREETS REMOVED OR DAMAGED MUST BE REPLACED WITH PLASTIC. STRIPING ERADICATION SHALL BE ACCOMPLISHED BY WATER BLASTING OR SURFACE PLANING OF THE ROADWAY TO A MAXIMUM DEPTH OF 0.25 INCHES (MAXIMUM) AND FOR A WIDTH EQUAL TO TWO TIMES THE WIDTH OF THE STRIPE OR MARKING TO BE REMOVED.
- 56 ALL EXCAVATION, TRENCHING, AND SHORING ACTIVITIES MUST BE CARRIED OUT IN ACCORDANCE WITH OSHA 29 CFR 1926.650 SUBPART P.
- 57 CONTRACTOR TO MAINTAIN AS MUCH OF THE EXISTING LANDSCAPING AS FEASIBLE.

EXISTING FEATURES LEGEND:

	EXISTING CHAIN-LINK FENCE
	EXISTING GAS LINE W/ VALVE
	EXISTING WATERLINE W/ VALVE
	EXISTING WATERLINE METER
	EXISTING FIRE HYDRANT
	EXISTING SANITARY SEWER LINE W/ MANHOLE
	EXISTING TRAFFIC SIGNAL POLE
	EXISTING 1' CONTOUR
	EXISTING 5' CONTOUR
	EXISTING CURB & GUTTER
	EXISTING CONCRETE
	EXISTING BUILDING LINE
	EXISTING EASEMENT LINE
	EXISTING OVERHEAD ELECTRIC LINE W/ POWER POLE
	EXISTING RIGHT-OF-WAY
	EXISTING TRAFFIC SIGNAL BOX
	EXISTING SPRINKLER CONTROL BOX

NEW FEATURES LEGEND:

	CONSTRUCTION CENTERLINE
	NEW CHAIN-LINK FENCE
	NEW GAS LINE W/ VALVE
	NEW WATERLINE W/ VALVE
	NEW WATERLINE METER
	NEW FIRE HYDRANT
	NEW SANITARY SEWER LINE W/ MANHOLE
	NEW UTILITY POLE
	NEW 1' CONTOUR
	NEW 5' CONTOUR
	NEW CURB & GUTTER
	NEW CONCRETE
	NEW EASEMENT LINE
	BORE HOLE / PAVEMENT CORE WITH NUMBER
	UTILITY POTHOLE WITH NUMBER
	NEW TEMPORARY CONSTRUCTION EASEMENT
	NEW SIDEWALK EASEMENT

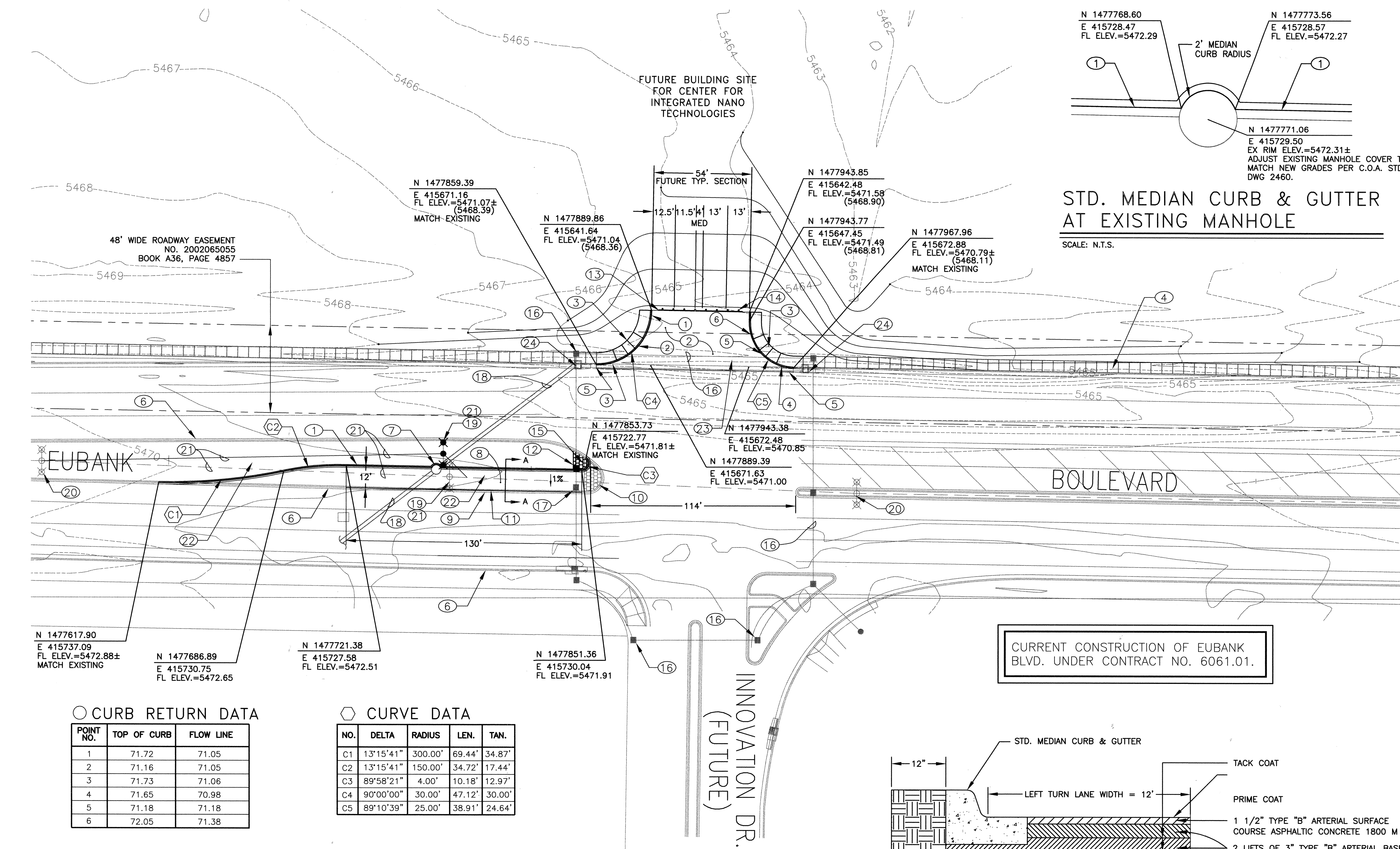
HDR PROJECT No.: 11951-003-035

HDR
HDR Engineering, Inc.

2155 LOUISIANA BLVD., NE
SUITE 900
ALBUQUERQUE, NM 87110
MAIN: (505) 884-6065
FAX: (505) 884-5969

CITY OF ALBUQUERQUE PUBLIC WORKS DEPARTMENT ENGINEERING DEVELOPMENT GROUP			
TITLE: CINT EUBANK ENTRANCE IMPROVEMENTS GENERAL NOTES AND LEGEND			
Design Review Committee APPROVE JUN 21 2005 DESIGN REVIEW COMMITTEE		City Engineer Approval APPROVE SEP 13 2005 CITY ENGINEER	
City Project No. 6061.81		Zone Map No. L-20-Z	
Sheet 2		Of 3	

For Information Only

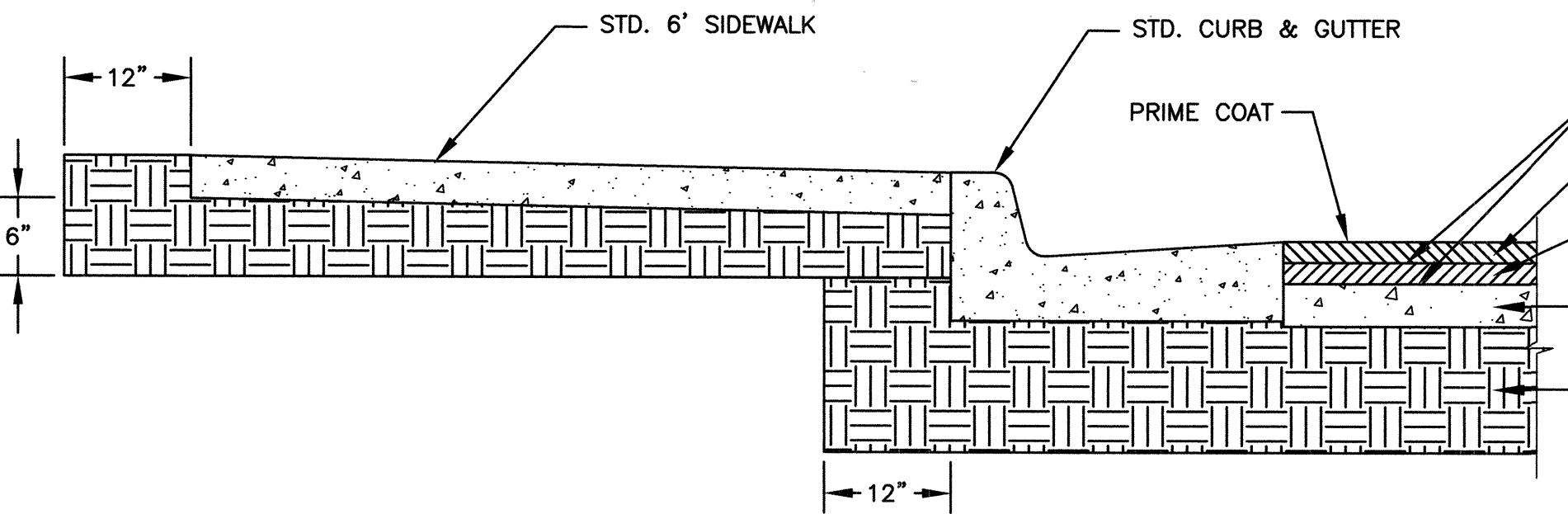


○ CURB RETURN DATA

POINT NO.	TOP OF CURB	FLOW LINE
1	71.72	71.05
2	71.16	71.05
3	71.73	71.06
4	71.65	70.98
5	71.18	71.18
6	72.05	71.38

△ CURVE DATA

NO.	DELTA	RADIUS	LEN.	TAN.
C1	13°15'41"	300.00'	69.44'	34.87'
C2	13°15'41"	150.00'	34.72'	17.44'
C3	89°58'21"	4.00'	10.18'	12.97'
C4	90°00'00"	30.00'	47.12'	30.00'
C5	89°10'39"	25.00'	38.91'	24.64'

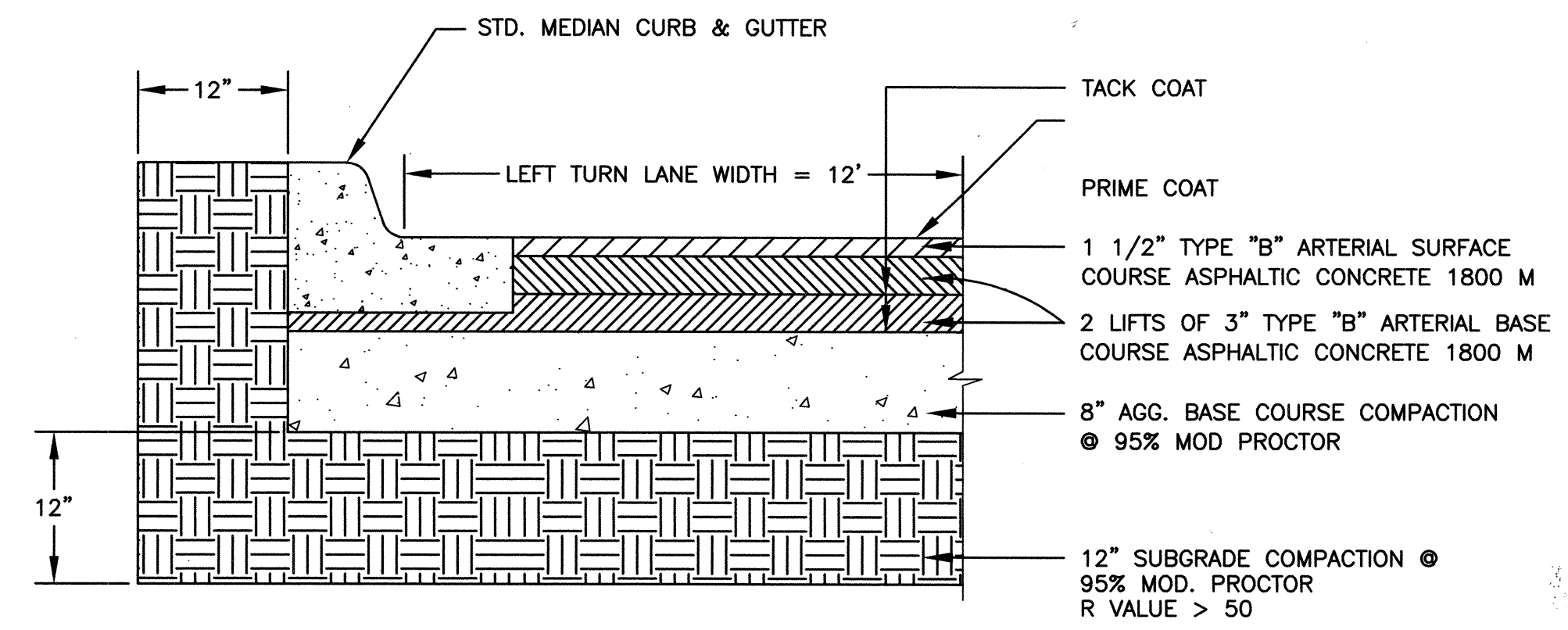


TYPICAL DRIVEPAD PAVEMENT SECTION

SCALE: N.T.S.

Elevations are in INTERIM NAVD 88 DATUM. To convert from INTERIM NAVD 88 to NGVD 29 subtract 2.68 feet. All Elevations in () are NGVD 29.

EXISTING ELEVATIONS TO BE VERIFIED PRIOR TO CONSTRUCTION. IF DIFFERENCES ARE FOUND, THE ENGINEER SHALL BE NOTIFIED TO PROVIDE NEW CONSTRUCTION ELEVATIONS.



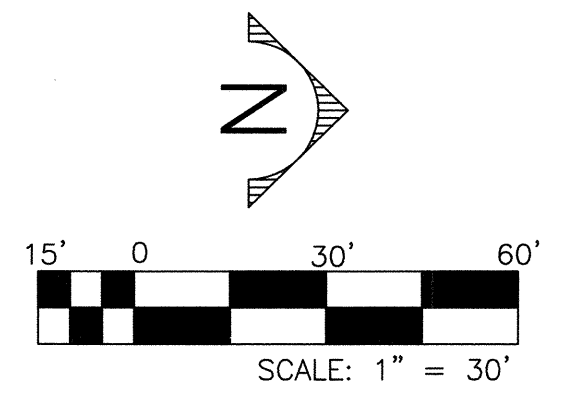
A-A TYPICAL TURN BAY PAVEMENT SECTION

SCALE: N.T.S.

For Information Only

○ KEYED NOTES:

- MEDIAN CURB AND GUTTER PER COA STD DWG 2415.
- PLACE 249 S.Y. OF NEW DRIVEPAD PAVEMENT SECTION PER THIS SHEET.
- WHEELCHAIR RAMP PER COA STD DWG 2441, CASE I.
- FUTURE 6' SIDEWALK TO BE CONSTRUCTED WITH BUILDING IMPROVEMENTS.
- NEW DRIVEPAD TO MATCH GRADES WITH INLET CONSTRUCTION.
- CURRENT CONSTRUCTION OF EUBANK BLVD. UNDER CONTRACT NO. 6061.01.
- NEW STD. MEDIAN CURB AND GUTTER TO BE CONSTRUCTED AROUND EXISTING ABOVE GROUND UTILITIES. SEE DETAIL ON THIS SHEET.
- PLACE 289 S.Y. OF NEW ASPHALT TURN BAY PAVEMENT SECTION PER DETAIL ON THIS SHEET.
- REMOVE AND DISPOSE OF 256 L.F. OF MEDIAN CURB AND GUTTER.
- REMOVE AND DISPOSE OF 14 S.Y. OF MEDIAN CONCRETE PAVING.
- INSTALL 130 L.F. OF 4" SOLID WHITE LANE REFLECTORIZED PLASTIC PAVEMENT MARKINGS.
- LOCATION OF RELOCATED PULL BOX. SEE NOTE 17.
- 2' DEEP CUTOFF WALL PER COA STD DWG 2415. CUTOFF WALL NOT TO BE CONSTRUCTED IF CINT ENTRANCE PAVING IS CONSTRUCTED CONCURRENTLY.
- PLACE TYPE III BARRICADE ALONG EDGE OF PROPOSED PAVEMENT.
- INSTALL 6.5 S.Y. OF MEDIAN PAVEMENT PER COA STD DWG 2502, KEYNOTE 3.
- FUTURE PULLBOXES AND CONDUIT TO BE INSTALLED BY CONTRACT NO. 6061.01.
- RELOCATE EXISTING PULLBOX TO A LOCATION BEHIND NEW STD. MEDIAN CURB AND GUTTER. SEE KEYED NOTE 12. SPLICE EXISTING CONDUIT, RECONNECT, AND EXTEND CONDUIT APPROX. 14 LF TO RELOCATED PULLBOX.
- EXISTING 24" RCP TO REMAIN UNDISTURBED.
- EXISTING LIGHT POLE TO BE RELOCATED TO BEHIND NEW STD. MEDIAN CURB AND GUTTER. CONTRACTOR TO COORDINATE WITH PNM AT LEAST SEVEN DAYS PRIOR TO CONSTRUCTION.
- EXISTING LIGHT POLE TO REMAIN UNDISTURBED.
- REMOVE AND DISPOSE OF APPROX. 235 L.F. OF EXISTING CONDUIT AND INSTALL 240 L.F. OF NEW RIGID ELECTRICAL CONDUIT 2" AND TWO (2) NEW LIGHTING WIRES, #2 AWG COPPER IN NEW CONDUIT.
- EXISTING IRRIGATION SYSTEM IN MEDIAN SHALL BE REMOVED AND REPLACED WITHIN LIMITS OF NEW MEDIAN.
- EXISTING IRRIGATION SYSTEM BEHIND WESTERN CURB SHALL BE CUT AND CAPPED WITHIN LIMITS OF NEW DRIVEPAD.
- EXISTING STORM DRAIN CATCH BASINS TO REMAIN UNDISTURBED.



HDR PROJECT No.: 11951-003-035



CITY OF ALBUQUERQUE
PUBLIC WORKS DEPARTMENT
ENGINEERING DEVELOPMENT GROUP

TITLE: CINT EUBANK ENTRANCE IMPROVEMENTS
INTERSECTION IMPROVEMENT PLAN

Design Review Committee
APPROVED
JUN 21 2005
DESIGN REVIEW COMMITTEE

City Engineer Approval
APPROVED
SEP 13 2005
CITY ENGINEER

Last Design Update

No. / Day / Yr.

No. / Day / Yr.