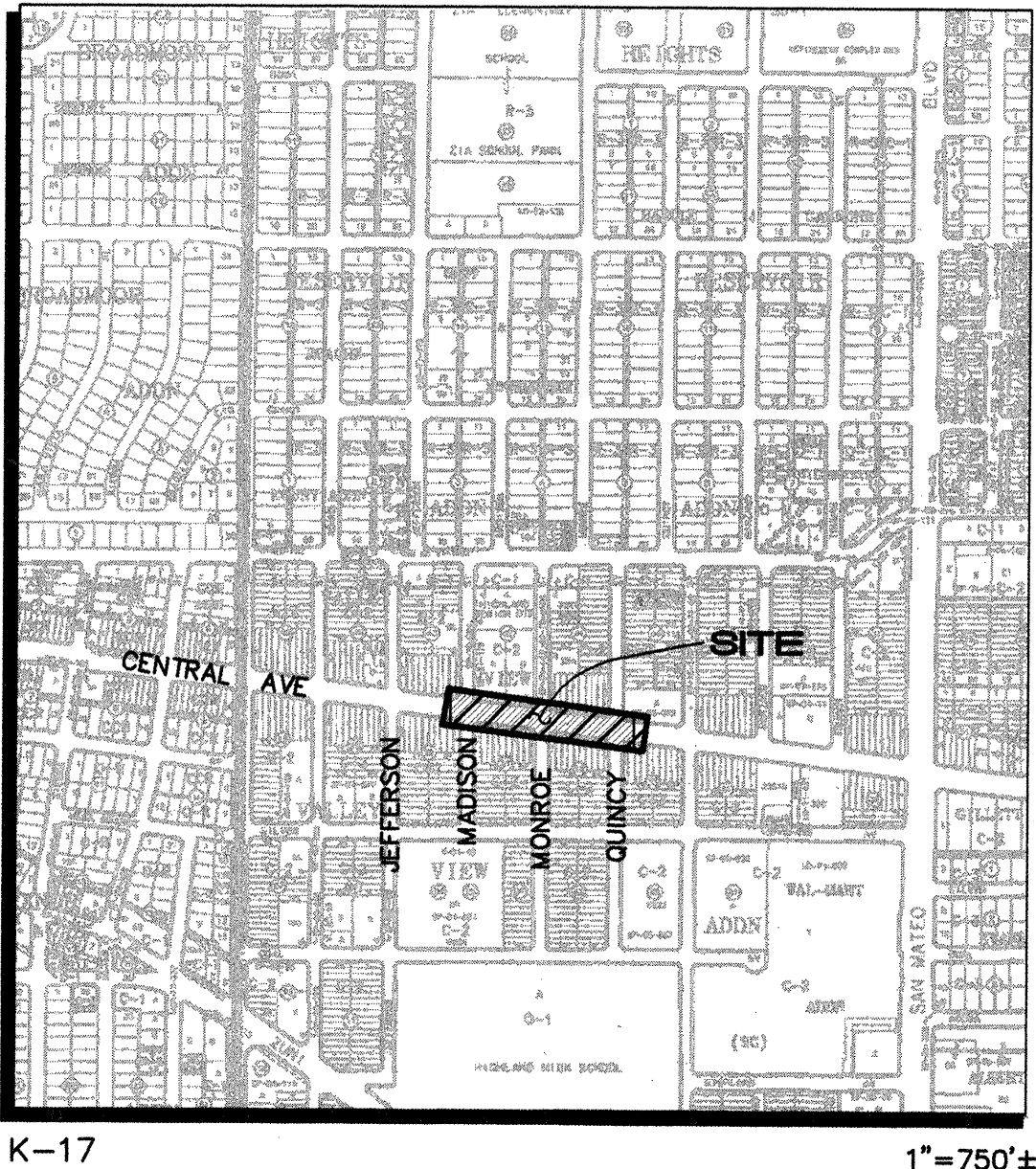


CONSTRUCTION PLANS
FOR
MONROE NODE IMPROVEMENTS
PUBLIC WORKS DEPARTMENT
CITY OF ALBUQUERQUE
JUNE 1999



K-17
VICINITY MAP
1"=750'±

INDEX TO DRAWINGS

SHEET NO.	TITLE
1	COVER SHEET
2	SURVEY / EXISTING CONDITIONS
3	DEMOLITION PLAN
4	CENTRAL AVE. PAVING PLAN MADISON ST. TO MONROE ST.
5	CENTRAL AVE. PAVING DETAILS MADISON ST. TO MONROE ST.
6	CENTRAL AVE. PAVING PLAN MONROE ST. TO QUINCY ST.
7	CENTRAL AVE. PAVING DETAILS MONROE ST. TO QUINCY ST.
8	SIGNING AND CONSTRUCTION TRAFFIC CONTROL STANDARDS
9	TYPICAL TRAFFIC CONTROL AND SIGNING EXAMPLES
10	CENTRAL AVE. STRIPING PLAN MADISON ST. TO MONROE ST.
11	CENTRAL AVE. STRIPING PLAN MONROE ST. TO QUINCY ST.

GENERAL NOTES

- ALL WORK DETAILED ON THESE PLANS TO BE PERFORMED UNDER CONTRACT SHALL, EXCEPT AS OTHERWISE STATED OR PROVIDED FOR HEREON, BE CONSTRUCTED IN ACCORDANCE WITH THE CITY OF ALBUQUERQUE STANDARD SPECIFICATIONS FOR PUBLIC WORKS CONSTRUCTION 1986 EDITION AS AMENDED WITH UPDATE NO. 6.
- ALL WORK ON THIS PROJECT SHALL BE PERFORMED IN ACCORDANCE WITH APPLICABLE FEDERAL, STATE, AND LOCAL LAWS, RULES, AND REGULATIONS CONCERNING CONSTRUCTION SAFETY AND HEALTH.
- PRIOR TO CONSTRUCTION, THE CONTRACTOR SHALL EXCAVATE & VERIFY THE HORIZONTAL AND VERTICAL LOCATIONS OF ALL OBSTRUCTIONS. SHOULD A CONFLICT EXIST, THE CONTRACTOR SHALL NOTIFY THE ENGINEER SO THAT THE CONFLICT CAN BE RESOLVED WITH MINIMUM DELAY.
- TWO (2) WORKING DAYS PRIOR TO ANY EXCAVATION, CONTRACTOR MUST CONTACT LINE LOCATING SERVICE @ 260-1990 FOR LOCATION OF EXISTING UTILITIES.
- CONTRACTOR SHALL CONDUCT HIS OPERATIONS IN A MANNER WHICH WILL MINIMIZE INTERFERENCE WITH LOCAL TRAFFIC. CONTRACTOR SHALL COMPLY WITH ALL APPLICABLE LAWS, ORDINANCES, RULES, REGULATIONS, AND ORDERS OF ANY PUBLIC BODY HAVING JURISDICTION FOR THE SAFETY OF PERSONS OR PROPERTY, AND TO PROTECT THEM FROM DAMAGE, INJURY, OR LOSS. CONTRACTOR SHALL ERECT AND MAINTAIN, AS REQUIRED BY THE CONDITIONS AND PROGRESS OF THE WORK, ALL NECESSARY SAFEGUARDS FOR SAFETY CONTINUOUSLY AND NOT LIMITED TO NORMAL WORKING HOURS, THROUGHOUT THE DURATION OF THE PROJECT. CONTRACTOR SHALL ADHERE TO SECTION 19 OF THE GENERAL CONDITIONS OF THE CITY OF ALBUQUERQUE STANDARD SPECIFICATIONS FOR PUBLIC WORKS CONSTRUCTION, 1986, AS AMENDED WITH UPDATE NO. 6.
- THE CONTRACTOR AGREES THAT HE SHALL ASSUME THE SOLE AND COMPLETE RESPONSIBILITY FOR THE JOB SITE CONDITIONS DURING THE COURSE OF CONSTRUCTION OF THIS PROJECT, INCLUDING SAFETY OF ALL PERSONS AND PROPERTY; THAT THIS REQUIREMENT SHALL APPLY CONTINUOUSLY AND NOT BE LIMITED TO NORMAL WORKING HOURS; AND THAT THE CONTRACTOR SHALL DEFEND, INDEMNIFY, AND HOLD HARMLESS THE OWNER & ENGINEER FROM ANY AND ALL LIABILITY REAL OR ALLEGED, IN CONNECTION WITH THE PERFORMANCE OF WORK ON THIS PROJECT, EXCEPTING LIABILITY ARISING FROM THE SOLE NEGLIGENCE OF THE OWNER OR ENGINEER.
- TRAFFIC CONTROL: FIVE (5) WORKING DAYS PRIOR TO BEGINNING CONSTRUCTION THE CONTRACTOR SHALL SUBMIT TO THE CONSTRUCTION COORDINATION DIVISION A DETAILED CONSTRUCTION SCHEDULE. TWO (2) WORKING DAYS PRIOR TO CONSTRUCTION, THE CONTRACTOR SHALL OBTAIN A BARRICADING PERMIT FROM THE CONSTRUCTION COORDINATION DIVISION. CONTRACTOR SHALL NOTIFY BARRICADE ENGINEER (768-2551) PRIOR TO OCCUPYING AN INTERSECTION. SEE SECTION 19 OF THE SPECIFICATIONS. ALL STREET STRIPING ALTERED OR DESTROYED SHALL BE REPLACED WITH PLASTIC REFLECTORIZED PAVEMENT MARKINGS BY CONTRACTOR TO LOCATION AS EXISTING OR AS SHOWN IN THIS PLAN SET.
- WHEN ABUTTING EXISTING PAVEMENT TO NEW, SAWCUT EXISTING PAVEMENT TO A STRAIGHT EDGE AND AT A RIGHT ANGLE, OR AS APPROVED BY THE FIELD ENGINEER. REMOVAL OF BROKEN OR CRACKED PAVEMENT WILL ALSO BE REQUIRED.
- EXISTING CURB AND GUTTER NOT TO BE REMOVED UNDER THE CONTRACT WHICH IS DAMAGED OR DISPLACED BY THE CONTRACTOR SHALL BE REMOVED AND REPLACED BY THE CONTRACTOR AT HIS EXPENSE.
- THE CONTRACTOR SHALL PROMPTLY CLEAN UP ANY MATERIAL EXCAVATED WITHIN THE PUBLIC RIGHT-OF-WAY OR PRIVATE ROADWAY EASEMENTS SO THAT THE EXCAVATED MATERIAL IS NOT SUSCEPTIBLE TO BEING WASHED DOWN THE STREET OR INTO ANY PUBLIC DRAINAGE FACILITY.
- CONTRACTOR SHALL ASSIST THE ENGINEER/INSPECTOR IN THE RECORDING OF DATA ON ALL UTILITY LINES AND ACCESSORIES AS REQUIRED BY THE CITY OF ALBUQUERQUE FOR THE PREPARATION OF RECORD DRAWINGS. CONTRACTOR SHALL NOT COVER UTILITY LINES AND ACCESSORIES UNTIL ALL DATA HAS BEEN RECORDED.
- WARNING--EXISTING UTILITY LINE LOCATIONS ARE SHOWN IN AN APPROXIMATE MANNER ONLY, AND SUCH LINES MAY EXIST WHERE NONE ARE SHOWN. THE LOCATION OF ANY SUCH EXISTING LINES IS BASED UPON INFORMATION PROVIDED BY THE UTILITY COMPANY, THE OWNER, OR BY OTHERS, AND THE INFORMATION MAY BE INCOMPLETE OR MAY BE OBSOLETE BY THE TIME CONSTRUCTION COMMENCES.

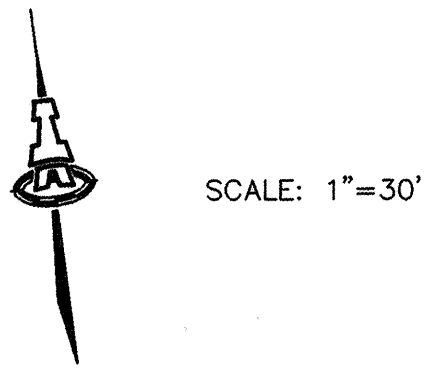
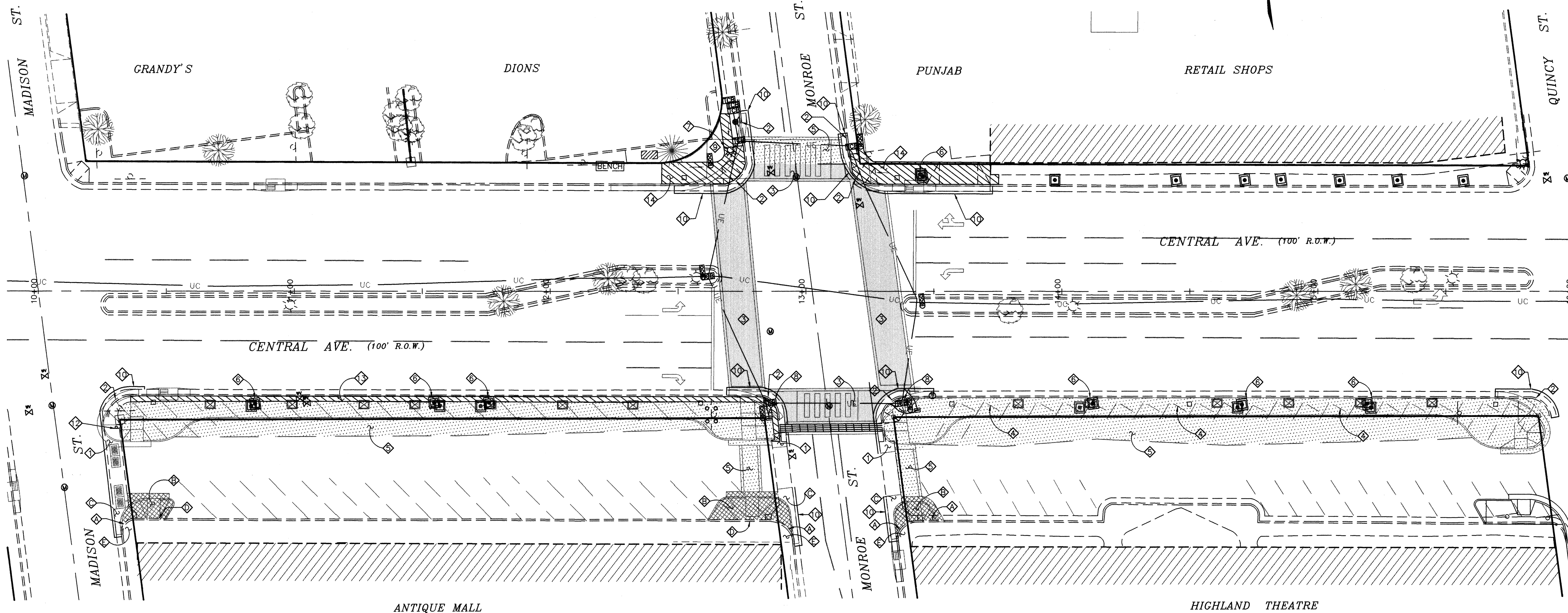
THE ENGINEER HAS UNDERTAKEN NO FIELD VERIFICATION OF THE LOCATION, DEPTH, SIZE, OR TYPE OF EXISTING UNDERGROUND UTILITY LINES, MAKES NO REPRESENTATION PERTAINING THERETO, AND ASSUMES NO RESPONSIBILITY OR LIABILITY THEREFOR. THE CONTRACTOR SHALL INFORM ITSELF OF THE LOCATION OF ANY UTILITY LINE IN OR NEAR THE AREA OF THE WORK IN ADVANCE OF AND DURING EXCAVATION WORK. THE CONTRACTOR IS FULLY RESPONSIBLE FOR ANY AND ALL DAMAGE CAUSED BY ITS FAILURE TO LOCATE, IDENTIFY, AND PRESERVE ANY AND ALL EXISTING UTILITIES. THE CONTRACTOR SHALL COMPLY WITH STATE STATUTES, MUNICIPAL AND LOCAL ORDINANCES, RULES AND REGULATIONS PERTAINING TO THE LOCATION OF THESE LINES AND FACILITIES, IN PLANNING AND CONDUCTING EXCAVATION, WHETHER BY CALLING OR NOTIFYING THE UTILITIES, COMPLYING WITH "BLUE STAKES" PROCEDURES, OR OTHERWISE.
- ALL STREET STRIPING ALTERED OR DESTROYED SHALL BE REPLACED BY THE CONTRACTOR TO EXISTING PATTERNS. REPLACEMENT SHALL BE WITH PLASTIC REFLECTORIZED PAVEMENT MARKINGS. ANY SUCH STRIPING SHALL BE CONSIDERED INCIDENTAL TO PAVEMENT CONSTRUCTION AND NO SEPARATE PAYMENT SHALL BE MADE THEREFOR.
- GRADED ACCESS FOR RESIDENTS ACROSS THE CONSTRUCTION ZONE SHALL BE MAINTAINED DURING CONSTRUCTION. ON RESIDENTIAL STREETS, ONE LANE OF TRAFFIC MUST BE MAINTAINED AT ALL TIMES.
- THE CONTRACTOR SHALL BE RESPONSIBLE FOR NOTIFYING UTILITIES FOR ANY ADJUSTMENT OR RELOCATION OF EXISTING UTILITIES REQUIRED BY CONSTRUCTION. THE CONTRACTOR MAY BE REQUIRED TO RESCHEDULE HIS ACTIVITIES TO ALLOW UTILITY CREWS TO PERFORM THEIR WORK. NO ADDITIONAL COSTS WILL BE ALLOWED FOR DELAYS OR INCONVENIENCE CAUSED BY UTILITY COMPANY CREWS.
- THE CONTRACTOR SHALL CONFINE HIS WORK WITHIN THE STREET RIGHT-OF-WAY. OVERNIGHT PARKING OF THE CONTRACTOR'S EQUIPMENT SHALL NOT OBSTRUCT ACCESS ROADS OR TRAFFIC LANES.
- THE REMOVAL AND REPLACEMENT OF ALL SIGNS, POSTS, FENCES, MAIL BOXES AND ROAD MARKINGS SHALL BE CONSIDERED INCIDENTAL TO STORM DRAIN LINE CONSTRUCTION.
- ALL EXCAVATION, TRENCHING AND SHORING ACTIVITIES MUST BE ACCOMPLISHED IN ACCORDANCE WITH OSHA 29CFR 1926.650 SUBPART P.
- CONTRACTOR SHALL MAINTAIN A GRAFFITI-FREE WORK SITE. CONTRACTOR SHALL PROMPTLY REMOVE ANY AND ALL GRAFFITI FROM EQUIPMENT, WHETHER PERMANENT OR TEMPORARY.
- ORANGE BARREL POLICY (#PW-021). CERTAIN PORTIONS OF THE WORK COVERED BY THESE DRAWINGS MAY BE AFFECTED BY THE CITY ORANGE BARREL POLICY FOR CIP PROJECTS AS DETERMINED BY THE PUBLIC WORKS DEPARTMENT DURING THE WORK ORDER PHASE AND IN CONJUNCTION WITH SECURING A BARRICADING PERMIT FOR THE WORK.
- ADJUSTMENTS TO VALVE BOX COVERS AND MANHOLE COVERS TO GRADE SHALL BE MADE AT THE TIME OF CONSTRUCTION IF ADJUSTMENTS ARE NECESSARY.
- THE CONTRACTOR SHALL NOTIFY THE ENGINEER NOT LESS THAN SEVEN (7) DAYS PRIOR TO STARTING WORK IN ORDER THAT THE ENGINEER MAY TAKE NECESSARY MEASURES TO INSURE THE PRESERVATION OF SURVEY MONUMENTS. CONTRACTOR SHALL NOT DISTURB PERMANENT SURVEY MONUMENTS WITHOUT THE CONSENT OF THE ENGINEER AND SHALL NOTIFY THE ENGINEER AND BEAR THE EXPENSE OF REPLACING ANY THAT MAY BE DISTURBED WITHOUT PERMISSION. REPLACEMENT SHALL BE DONE ONLY BY THE CITY SURVEYOR. WHEN A CHANGE IS MADE IN THE FINISHED ELEVATIONS OF THE PAVEMENT OF ANY ROADWAY IN WHICH A PERMANENT SURVEY MONUMENT IS LOCATED, CONTRACTOR SHALL, AT HIS OWN EXPENSE, ADJUST THE MONUMENT COVER TO THE NEW GRADE UNLESS OTHERWISE SPECIFIED. REFER TO SECTION 4.4 OF THE GENERAL CONDITIONS OF THE STANDARD SPECIFICATIONS.

FOR INFORMATION ONLY

ISAACSON & ARFMAN, P.A.
Consulting Engineering Associates
128 Monroe Street N.E.
Albuquerque New Mexico
93418CVR.DWGems 06/23/99



REV.	SHEETS	CITY ENGINEER	DATE	USER DEPARTMENT	DATE	USER DEPARTMENT	DATE
ENGINEERS STAMP & SIGNATURE		APPROVALS		ENGINEER	DATE	*****	
		DRC Chairman		<i>Silvia J. Roldan</i>	7-1-99	APPROVED FOR CONSTRUCTION	
		Transportation		<i>R.W. Kane</i>	7-01-99		
		Water/Wastewater		<i>R.W. Kane</i>	7-1-99		
		Hydrology		<i>Paul Mills</i>	7/1/99		
		CIP		<i>Paul Mills</i>	7/1/99		
		Constr. Mngmt.		<i>Paul Mills</i>	7/1/99	City Engineer <i>Paul Mills</i> 7/1/99	
		Constr. Coord.		<i>Paul Mills</i>	7/1/99	Date	
		City Project No.		6139.91		Sheet 1 of 11	



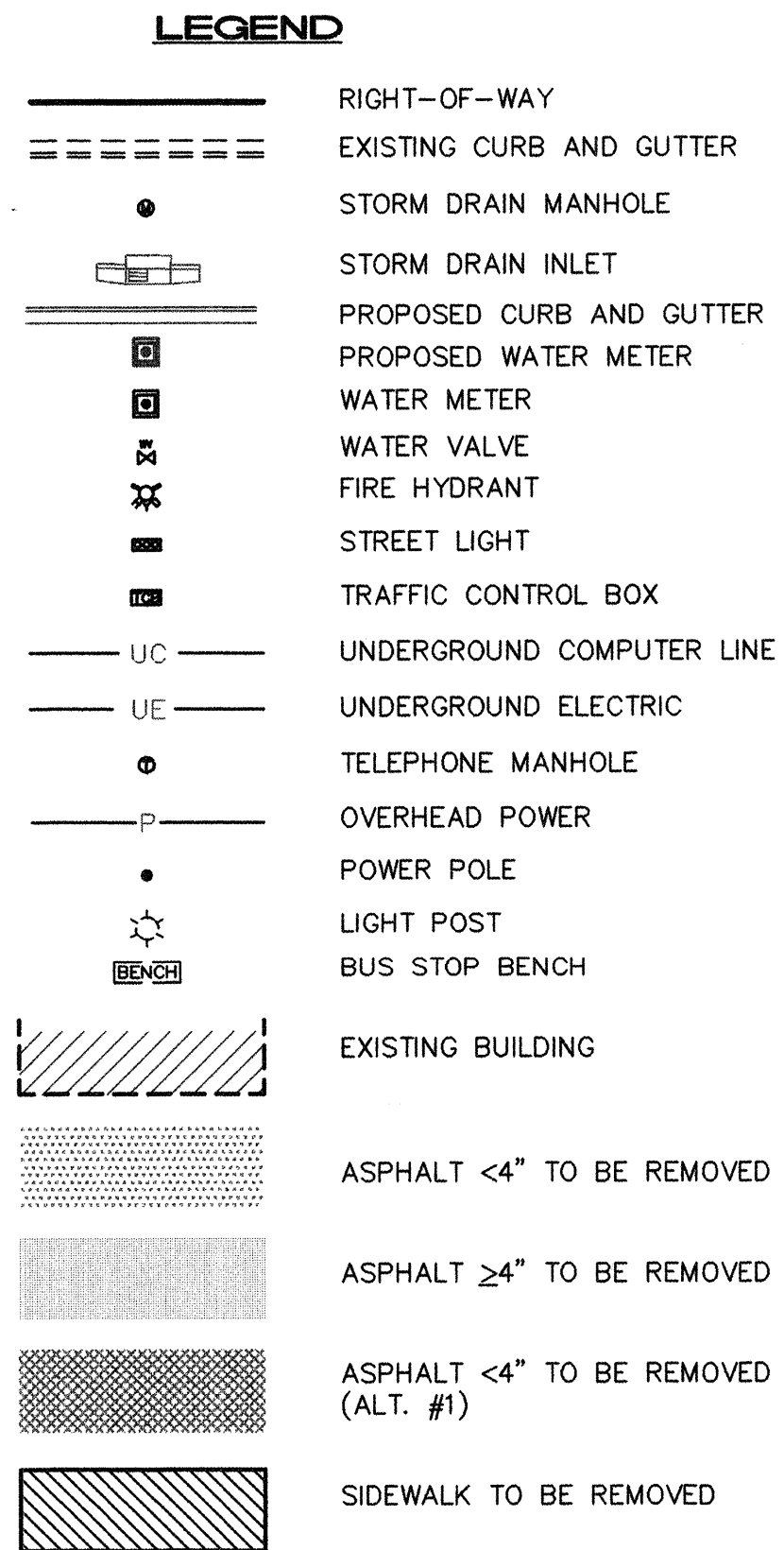
FOR LIMITS OF DEMOLITION
SEE STATIONS ON SHEETS #4 & #6.

DEMOLITION NOTES

1. SAW CUT, REMOVE & DISPOSE PCC VALLEY GUTTER.
2. SAW CUT, REMOVE & DISPOSE PCC STANDARD CURB AND GUTTER.
3. SAW CUT, REMOVE & DISPOSE 332 SY ASPHALT PAVING $\geq 4"$
4. REMOVE & DISPOSE 6' WIDE PCC WHEEL STOPS.
5. SAW CUT, REMOVE & DISPOSE 963 SY ASPHALT PAVING $< 4"$.
6. REMOVE & RELOCATE WATER METER BOXES PER COA STD DWG #2361.
7. REMOVE AND RELOCATE FIRE HYDRANT.
8. REMOVE AND DISPOSE OF TRAFFIC PULL BOXES.
9. REMOVE LANDSCAPING AS NECESSARY.
10. REMOVE AND REPLACE 12" WIDE STRIP OF PAVING AT NEW CURB RETURN CONSTRUCTION PER COA STD DWG #2465.
12. REMOVE & RELOCATE STOP SIGN AS SHOWN.
13. REMOVE 2' WIDE PCC SIDEWALK.
14. SAW CUT, REMOVE & DISPOSE PCC SIDEWALK.

ALTERNATE No. 1

- A. SAW CUT, REMOVE & DISPOSE PCC STANDARD CURB AND GUTTER.
- B. SAW CUT, REMOVE & DISPOSE OF 72 SY OF ASPHALT PAVING $< 4"$.
- C. SAW CUT, REMOVE & DISPOSE PCC VALLEY GUTTER.
- D. SAW CUT, REMOVE & DISPOSE MEDIAN CURB & GUTTER.
- E. SAW CUT, REMOVE & DISPOSE EXISTING PCC SIDEWALK.



FOR INFORMATION ONLY

ISAACSON & ARFMAN, P.A.
Consulting Engineering Associates
128 Monroe Street N.E.
Albuquerque, New Mexico 87102
93418DPL.DWGems 06/23/99

CITY OF ALBUQUERQUE
PUBLIC WORKS DEPARTMENT
ENGINEERING GROUP

TITLE: **MONROE NODE IMPROVEMENTS
CENTRAL AVENUE
DEMOLITION PLAN**

Design-Review Committee: [Signature] City Engineer-Approval: [Signature]
[Stamp: JUL - 1 1999] [Stamp: JUL - 1 1999]
CITY ENGINEER

City Project No. **6139.91** Zone Map No. **K-17** Sheet **3** Of **11**

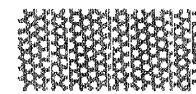
SURVEY INFORMATION		BENCH MARKS		AS-BUILT INFORMATION	
FIELD NOTES	REMARKS	NO.	DATE	CONTRACTOR	DATE
				STANDARD BY	DATE
				INSPECTOR'S BY	DATE
				FIELD VERIFICATION BY	DATE
				CORRECTED BY	DATE
				MICRO-FILM INFORMATION	
				RECORDED BY	DATE
				NO.	

CITY OF ALBUQUERQUE STATION 1-L21 RESET LOCATED ON CENTRAL AVENUE MEDIAN STRIP, 81' WEST OF JUAN TABO CENTERLINE. ELEVATION = 5534.63

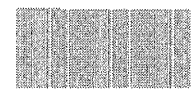
FRED C. ARFMAN
STATE OF NEW MEXICO
Professional Engineer
7321
06-22-99

REVISIONS
DESIGN
DATE 1/99
DRAWN BY ANW
CHECKED BY FCA
DATE 1/99

LEGEND



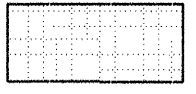
EXPOSED AGGREGATE IN CONCRETE; QC CONSTRUCTION PRODUCTS COLORCRETE "SALSA RED" OR ENGINEERS APPROVED EQUIVALENT.



SOLID COLORED CONCRETE; QC CONSTRUCTION PRODUCTS COLORCRETE "WESTERN WHEAT," OR ENGINEERS APPROVED EQUIVALENT.



STANDARD CONCRETE



CONCRETE SQUARE PAVERS; QC CONSTRUCTION PRODUCTS COLORCRETE (RED; COLOR TO BE EQUIVALENT TO A "SALSA RED")

LIMITS OF CONSTRUCTION

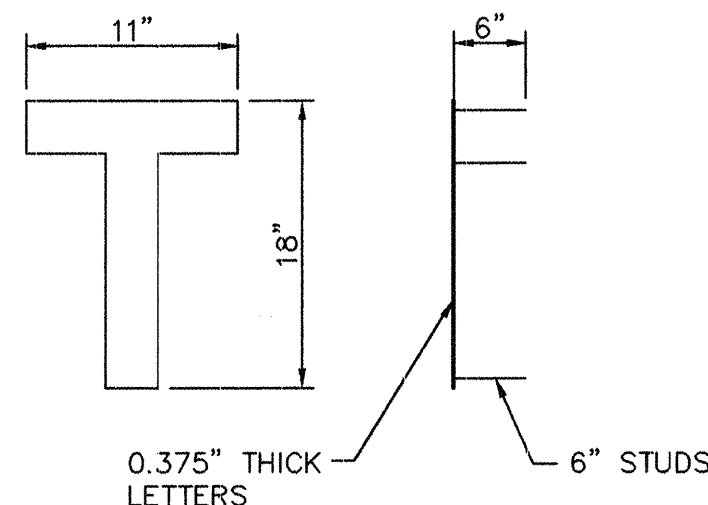


SCALE:
1"=20'

MONROE / CENTRAL AVE (N.W.)
FACE OF CURB CURVE TABLE

○	R	Δ	T	L
N	25'	97°30'12"	28.51'	42.54'

LETTER DETAILS



**ALTERNATE No. 1
KEYED CONSTRUCTION NOTES**

- A1. CONSTRUCT 4" PCC SIDEWALK PER COA STD DWG #2430. SEE CONSTRUCTION / EXPANSION JOINT PATTERN THIS SHEET.
- A2. CONSTRUCT STANDARD CURB & GUTTER PER COA STD DWG #2415.
- A3. CONSTRUCT WHEEL CHAIR RAMP PER COA STD DWG #2441, CASE II.
- A4. REPLACE CONCRETE VALLEY GUTTER PER COA STD DWG #2415.
- A5. CONSTRUCT MEDIAN CURB & GUTTER PER COA STD DWG #2415.
- A6. TRANSITION FROM STANDARD CURB & GUTTER TO MEDIAN CURB & GUTTER THROUGH THE WHEEL CHAIR RAMP PER COA STD DWG #2418.
- A7. 18" BLOCK STAINLESS STEEL LETTERS (0.375" THICK) WITH CONC. 6" J-BOLT ANCHORS. SINK FLUSH TO FACE IN WET CONC. SHOP DRAWINGS MUST BE PROVIDED. SEE DETAIL SHEET #4.

MONROE NODE

KEYED CONSTRUCTION NOTES

1. CONSTRUCT WHEEL CHAIR RAMP PER COA STD DWG #2441, CASE II.
2. REPLACE CONCRETE VALLEY GUTTER PER COA STD DWG #2415.
3. CONSTRUCT WHEELCHAIR RAMP PER DETAILS ON SHEETS #5 & #7.
4. CONSTRUCT 4" PCC SIDEWALK PER COA STD DWG #2430. SEE CONSTRUCTION / EXPANSION JOINT PATTERNS THIS SHEET.
5. 20" WIDE, 4" THICK COLORED CONCRETE BAND WITH EXPOSED AGGREGATE COLOR CONCRETE, AND CONTROL JOINTS AT 4'-0" O.C., PLACE AT A 2% MAX SLOPE. MATCH TO EXISTING SIDEWALK GRADES. SEE LEGEND FOR COLOR SPECIFICATIONS.
6. CONSTRUCT STANDARD CURB & GUTTER PER COA STD DWG #2415.
7. CONSTRUCT MEDIAN CURB & GUTTER PER COA STD DWG #2415.
8. CONCRETE SQUARE PAVERS (12") PER COA STD DWG #2412. SEE LEGEND FOR COLOR SPECIFICATIONS.
9. 12" WIDE CONCRETE PAVING CONTAINMENT WALL PER COA STD DWG #2412.
10. LOWER EXISTING TELEPHONE MANHOLE TO FINAL GRADE.
11. NEW TRAFFIC CONTROL BOX. PROVIDE LONG SWEEP RADIUS FOR CONDUIT EXTENSION.
12. RELOCATE FIRE HYDRANT. INCLUDES REQUIRED FITTING, RESTRAINTS AND PIPING.
13. IRRIGATION STUBOUT FOR FUTURE STREET TREES/GRATES. CONCRETE SIDEWALK TO MATCH ADJACENT SIDEWALK AND TO BE BORDERED WITH 1/2" EXPANSION JOINT MATERIAL.
14. 6" PCC FILLET PER COA STD DWG #2420, SEE SECTION A-A, MODIFIED DIMENSIONING PER SHEET #5.
15. 20" WIDE, 4" THICK COLORED CONCRETE BAND WITH EXPOSED AGGREGATE COLOR CONCRETE, AND CONTROL JOINTS AT 4'-0" O.C., PLACE AT A 2% MAX SLOPE. SEE LEGEND FOR COLOR SPECIFICATIONS.
16. 4" SOLID COLORED CONCRETE PER COA DWGS. SEE LEGEND FOR COLOR SPECIFICATIONS.
17. SIGN TO BE RELOCATED TO LOCATION AS DESIGNATED BY OWNER OF ANTIQUE MALL.
18. NOT USED.
19. TRANSITION FROM STANDARD CURB & GUTTER TO MEDIAN CURB & GUTTER THROUGH THE WHEEL CHAIR RAMP PER COA STD DWG #2418.
20. EXISTING STANDARD CURB & GUTTER.
21. 20" SQUARE PCC BLOCKOUT (TO MATCH) AND 2" ELECTRICAL CONDUIT FOR FUTURE STREET LIGHTING LOCATED 26" BEHIND FACE OF CURB ALONG ENTIRE LENGTH OF SIDEWALK AND ACROSS MONROE STREET INTERSECTIONS.
22. NOT USED.
23. PROVIDE SMOOTH TRANSITION TO MATCH EXISTING SIDEWALK.
24. ADD NEW ASPHALT PAVING AS NECESSARY TO PROVIDE A SMOOTH TRANSITION AT NEW CURB RETURN CONSTRUCTION.
25. EXISTING PCC SIDEWALK.
26. REMOVE & DISPOSE OF 1 SY CRACKED SIDEWALK. REPLACE W/PCC SIDEWALK PER COA STD DWG #2430.
27. RECONSTRUCT TYPE 'A' INLET AS REQUIRED.
28. NOT USED.
29. 3/4" IRRIGATION PIPE SHALL BE PLACED CONTINUOUSLY 2 1/2' BEHIND FACE OF CURB ALONG ENTIRE LENGTH OF SIDEWALK AND ACROSS MONROE STREET INTERSECTION.
30. ADJUST WATER VALVE LID & RIM AS NECESSARY.
31. 38" OF 1" PVC IRRIGATION CONDUIT TO BE PLACED FROM EXISTING IRRIGATION WATERLINE TO 2 1/2' BEHIND FACE OF CURB.
32. ALTERNATE WATER METER BOX (VACANT) TO BE RESERVED FOR STREETSCAPING IRRIGATION PURPOSES.
33. SAWCUT.
34. TRANSITION FROM 2' GUTTER TO MEDIAN GUTTER OVER 5 FEET.

ISAACSON & ARFMAN, P.A.
Consulting Engineering Associates
128 Monroe Street N.E.
Albuquerque, New Mexico 87102
93418PVI.DWGems 2/24/00

CITY OF ALBUQUERQUE
PUBLIC WORKS DEPARTMENT
ENGINEERING GROUP

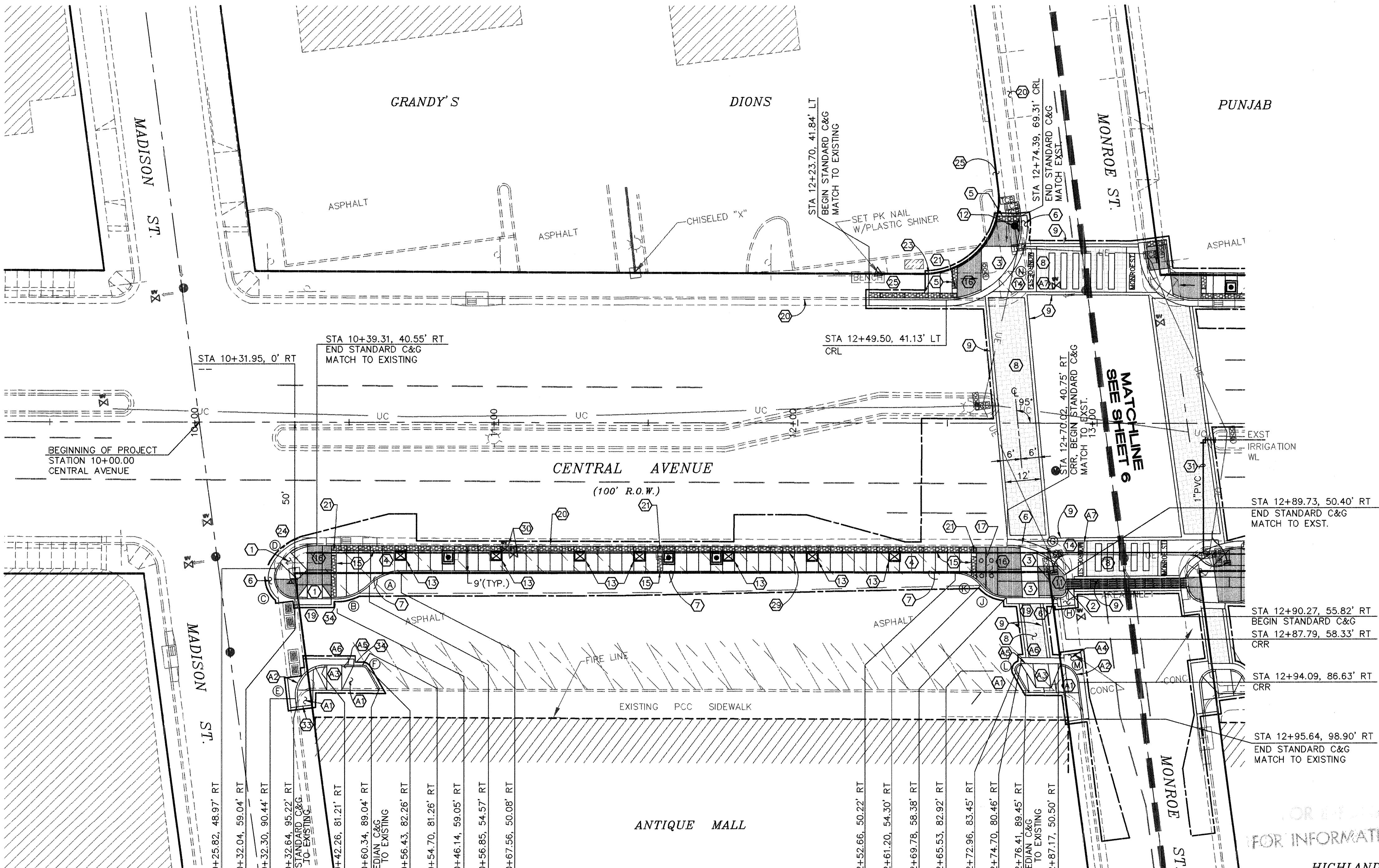
TITLE: **MONROE NODE IMPROVEMENTS
CENTRAL AVENUE PAVING PLAN
MADISON ST. TO MONROE ST.**

Design Review Committee
APPROVED
APR 28 2000
DESIGN REVIEW COMMITTEE

City Engineer
APPROVED
APR 28 2000
CITY ENGINEER

Mo./Day/Yr.
4-28-00
Mo./Day/Yr.
Last Design Update

City Project No. **6139.91** Zone Map No. **K-17** Sheet **4** Of **11**



MADISON ST/CENTRAL AVE (S.E.)
FACE OF CURB CURVE TABLE

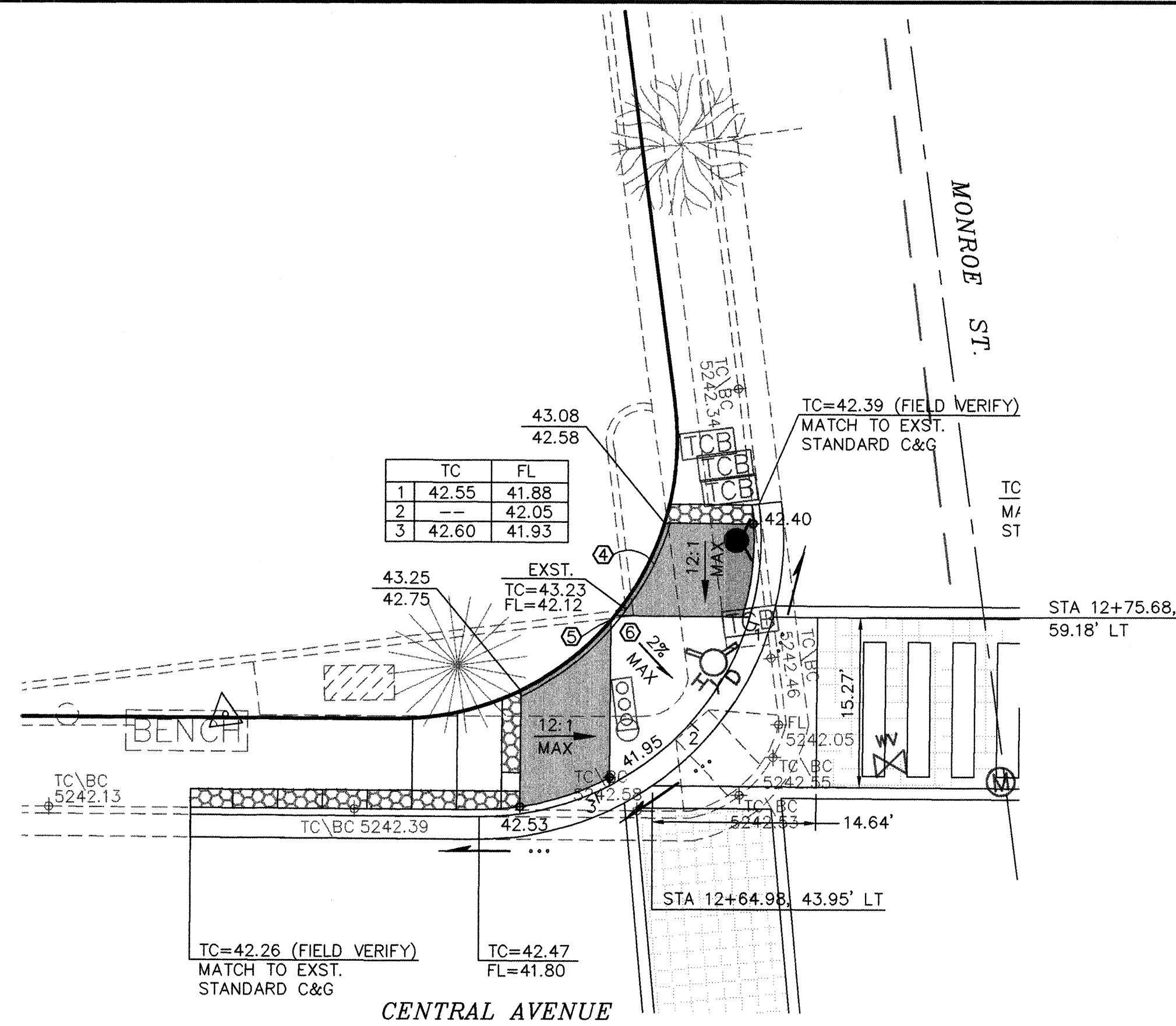
○	R	Δ	T	L
A	15'	45°31'33"	6.29'	11.92'
B	15'	45°32'07"	6.30'	11.92'
C	7'	115°23'17"	11.07'	14.10'
D	15'	64°03'04"	9.38'	16.77'
E	10'	97°16'30"	11.36'	16.98'
F	2'	59°50'29"	1.15'	2.09'

MONROE ST/CENTRAL AVE (S.W.)
FACE OF CURB CURVE TABLE

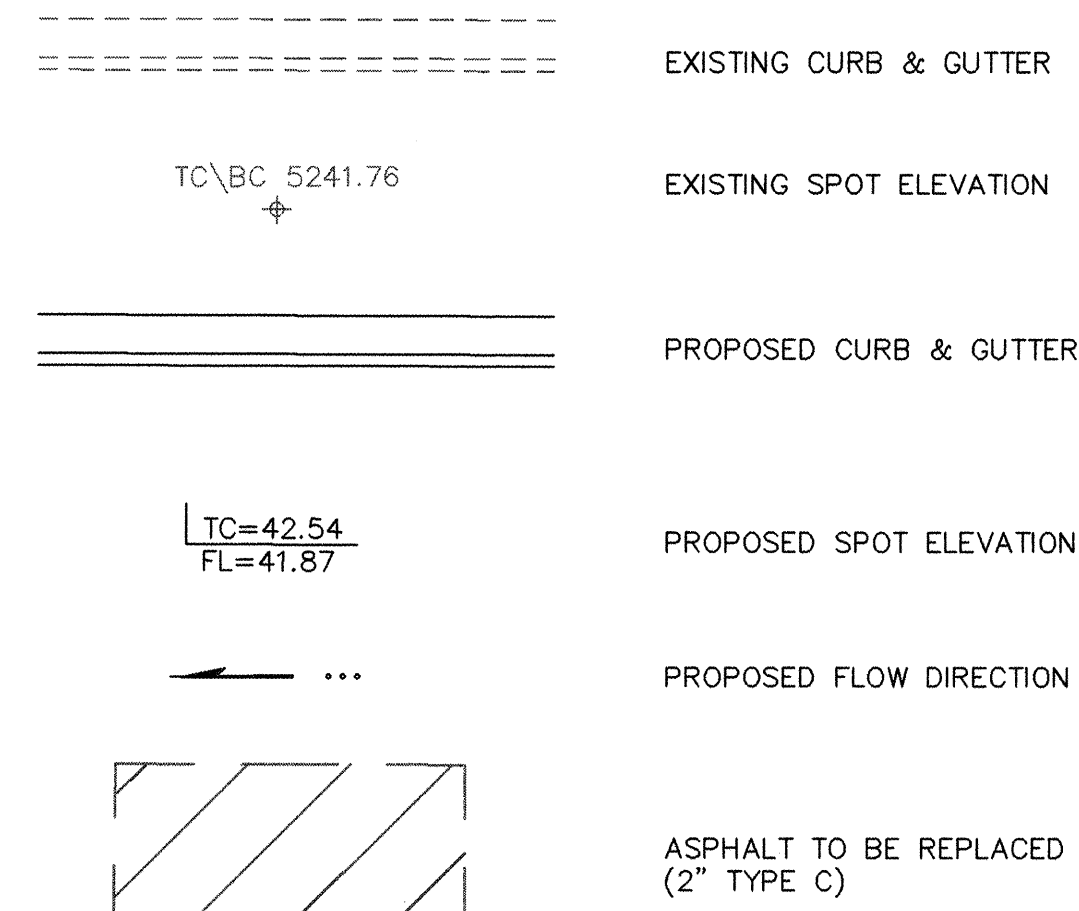
○	R	Δ	T	L
G	25'	52°04'27"	12.21'	22.72'
H	2.5'	95°36'16"	2.76'	4.17'
J	11'	51°10'34"	5.27'	9.83'
K	11'	50°58'01"	5.24'	9.78'
L	2'	120°09'31"	3.48'	4.19'
M	7'	82°38'24"	6.15'	10.10'



SCALE: 1" = 10'



LEGEND



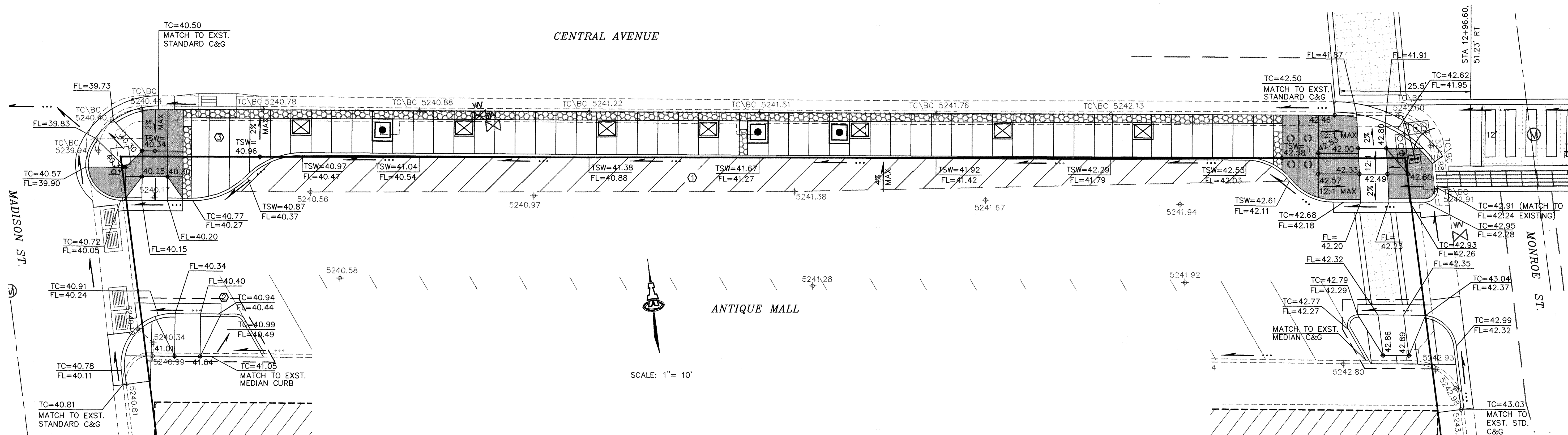
MONROE NODE

KEYED CONSTRUCTION NOTES

1. REPLACE 228 SY EXISTING ASPHALT. MATCH TO EXISTING PAVING ELEVATIONS. MAXIMUM SLOPE OF REPLACEMENT PAVING TO EQUAL 4%.
2. REMOVE EXISTING ASPHALT AS NECESSARY TO PROVIDE A POSITIVE SLOPE AND SMOOTH TRANSITION TO THE EXISTING CATCH BASINS.
3. TRANSITION SIDEWALK CROSS SLOPE.
4. PCC HEADER CURB PER COA STD DWG #2415.
5. PCC HEADER CURB TO MATCH EXISTING PARKING CURB ELEVATION. ADJUST HEADER CURB HEIGHT AS REQUIRED.
6. REMOVE & DISPOSE OF XX LF OF PARKING CURB. REPLACE WITH HEADER CURB AS SHOWN.

GENERAL NOTES

1. CONTRACTOR SHALL PROVIDE A SMOOTH TRANSITION BETWEEN EXISTING CURB, FLOWLINE AND ASPHALT ELEVATION AND NEW GRADES.
2. CONTRACTOR SHALL ADJUST (WHEN NECESSARY) NEW ELEVATIONS AS SHOWN TO PROVIDE A CONTINUOUS FLOW SLOPE IN THE DIRECTION AS SHOWN ON THE PLAN.
3. FOR STATIONING & OFFSETS SEE SHEET #4.



SCALE: 1" = 10'

FOR INFORMATION ONLY

FOR INFORMATION ONLY

ISAACSON & ARFMAN, P.A.
Consulting Engineering Associates
128 Monroe Street, N.E.
Albuquerque, New Mexico 87102
93418PV2.DWGems 4/28/00

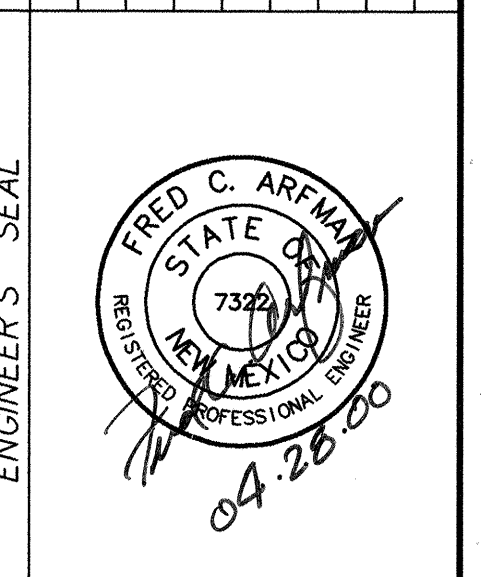
CITY OF ALBUQUERQUE
PUBLIC WORKS DEPARTMENT
ENGINEERING GROUP

TITLE: **MONROE NODE IMPROVEMENTS**
CENTRAL AVENUE GRADING DETAILS
MADISON ST. TO MONROE ST.

Design Review Committee	City Engineer Approval	Mo./Day/Yr.	Mo./Day/Yr.
APPROVED APR 28 2000	APPROVED APR 28 2000	4/28/00	
DESIGN	CITY ENGINEER		

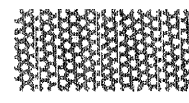
City Project No. 6139.91 Zone Map No. K-17 Sheet 5 Of 11

AS-BUILT INFORMATION	BENCH MARKS	SURVEY INFORMATION	FIELD NOTES
CONTRACTOR			
WORK STARTED BY			
DATE			
APPROVED BY			
DATE			
FIELD LOCATION BY			
DATE			
DRAWINGS CORRECTED BY			
DATE			
MICRO-FILM INFORMATION			
RECORDED BY			
DATE			
NO.			



REVISIONS	REMARKS	BY	DATE
1	DESIGN	FCA	1/99
2	ANW	1/99	
3	FCA	1/99	

LEGEND



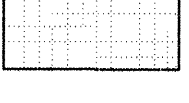
EXPOSED AGGREGATE IN CONCRETE; QC CONSTRUCTION PRODUCTS COLOCRETE "SALSA RED" OR ENGINEERS APPROVED EQUIVALENT.



SOLID COLORED CONCRETE; QC CONSTRUCTION PRODUCTS COLOCRETE "WESTERN WHEAT," OR ENGINEERS APPROVED EQUIVALENT.



STANDARD CONCRETE



CONCRETE SQUARE PAVERS; QC CONSTRUCTION PRODUCTS COLOCRETE (RED; COLOR TO BE EQUIVALENT TO A "SALSA RED")

LIMITS OF CONSTRUCTION



SCALE:
1"=20'

MONROE / CENTRAL AVE (N.W.) FACE OF CURB CURVE TABLE

○	R	Δ	I	L
P	18'	82°39'03"	15.83'	25.97'

RETAIL SHOPS

CENTRAL AVENUE (100' R.O.W.)

HIGHLAND THEATRE

MONROE ST/CENTRAL AVE (S.E.) FACE OF CURB CURVE TABLE

○	R	Δ	I	L
A	11'	59°20'16"	6.27'	11.39'
B	11'	60°54'38"	6.47'	11.69'
C	6'	81°29'17"	5.17'	8.53'
D	6'	31°32'50"	1.69'	3.30'
E	25'	45°26'31"	10.47'	19.83'
F	5'	97°07'03"	5.66'	8.48'
G	5'	60°14'28"	2.90'	5.26'

ALTERNATE No. 1 KEYED CONSTRUCTION NOTES

- CONSTRUCT 4" PCC SIDEWALK PER COA STD DWG #2430. SEE CONSTRUCTION / EXPANSION JOINT PATTERN THIS SHEET.
- CONSTRUCT STANDARD CURB & GUTTER PER COA STD DWG #2415.
- CONSTRUCT WHEEL CHAIR RAMP PER COA STD DWG #2441, CASE II.
- REPLACE CONCRETE VALLEY GUTTER PER COA STD DWG #2415.
- CONSTRUCT MEDIAN CURB & GUTTER PER COA STD DWG #2415.
- TRANSITION FROM STANDARD CURB & GUTTER TO MEDIAN CURB & GUTTER THROUGH THE WHEEL CHAIR RAMP PER COA STD DWG #2418.
- 18" BLOCK STAINLESS STEEL LETTERS (0.375" THICK) WITH CONC. 6" J-BOLT ANCHORS. SINK FLUSH TO FACE IN WET CONC. SHOP DRAWINGS MUST BE PROVIDED. SEE DETAIL SHEET #4.

MONROE NODE

KEYED CONSTRUCTION NOTES

- CONSTRUCT WHEEL CHAIR RAMP PER COA STD DWG #2441, CASE II.
- REPLACE CONCRETE VALLEY GUTTER PER COA STD DWG #2415.
- CONSTRUCT WHEELCHAIR RAMP PER DETAILS ON SHEETS #5 & #7.
- CONSTRUCT 4" PCC SIDEWALK PER COA STD DWG #2430. SEE CONSTRUCTION / EXPANSION JOINT PATTERNS THIS SHEET.
- 20" WIDE, 4" THICK COLORED CONCRETE BAND WITH EXPOSED AGGREGATE COLOR CONCRETE, AND CONTROL JOINTS AT 4'-0" O.C., PLACE AT A 2% MAX SLOPE. MATCH TO EXISTING SIDEWALK GRADES. SEE LEGEND FOR COLOR SPECIFICATIONS.
- CONSTRUCT STANDARD CURB & GUTTER PER COA STD DWG #2415.
- CONSTRUCT MEDIAN CURB & GUTTER PER COA STD DWG #2415.
- CONCRETE SQUARE PAVERS (12") PER COA STD DWG #2412. SEE LEGEND FOR COLOR SPECIFICATIONS.
- 12" WIDE CONCRETE PAVING CONTAINMENT WALL PER COA STD DWG #2412.
- LOWER EXISTING TELEPHONE MANHOLE TO FINAL GRADE.
- NEW TRAFFIC CONTROL BOX. PROVIDE LONG SWEEP RADIUS FOR CONDUIT EXTENSION.
- RELOCATE FIRE HYDRANT. INCLUDES REQUIRED FITTING, RESTRAINTS AND PIPING.
- IRRIGATION STUBOUT FOR FUTURE STREET TREES/GRATES. CONCRETE SIDEWALK TO MATCH ADJACENT SIDEWALK AND TO BE BORDERED WITH 1/2" EXPANSION JOINT MATERIAL.
- 6" PCC FILLET PER COA STD DWG #2420. SEE SECTION A-A, MODIFIED DIMENSIONING PER SHEET #5.
- 20" WIDE, 4" THICK COLORED CONCRETE BAND WITH EXPOSED AGGREGATE COLOR CONCRETE, AND CONTROL JOINTS AT 4'-0" O.C., PLACE AT A 2% MAX SLOPE. SEE LEGEND FOR COLOR SPECIFICATIONS.
- 4" SOLID COLORED CONCRETE PER COA DWGS. SEE LEGEND FOR COLOR SPECIFICATIONS.
- SIGN TO BE RELOCATED TO LOCATION AS DESIGNATED BY OWNER OF ANTIQUE MALL.
- NOT USED.
- TRANSITION FROM STANDARD CURB & GUTTER TO MEDIAN CURB & GUTTER THROUGH THE WHEEL CHAIR RAMP PER COA STD DWG #2418.
- EXISTING STANDARD CURB & GUTTER.
- 20" SQUARE PCC BLOCKOUT (TO MATCH) AND 2" ELECTRICAL CONDUIT FOR FUTURE STREET LIGHTING LOCATED 26" BEHIND FACE OF CURB ALONG ENTIRE LENGTH OF SIDEWALK AND ACROSS MONROE STREET INTERSECTIONS.
- NOT USED.
- PROVIDE SMOOTH TRANSITION TO MATCH EXISTING SIDEWALK.
- ADD NEW ASPHALT PAVING AS NECESSARY TO PROVIDE A SMOOTH TRANSITION AT NEW CURB RETURN CONSTRUCTION.
- EXISTING PCC SIDEWALK.
- REMOVE & DISPOSE OF 1 SY CRACKED SIDEWALK. REPLACE W/PCC SIDEWALK PER COA STD DWG #2430.
- RECONSTRUCT TYPE 'A' INLET AS REQUIRED.
- NOT USED.
- 3/4" IRRIGATION PIPE SHALL BE PLACED CONTINUOUSLY 2 1/2" BEHIND FACE OF CURB ALONG ENTIRE LENGTH OF SIDEWALK AND ACROSS MONROE STREET INTERSECTION.
- ADJUST WATER VALVE LID & RIM AS NECESSARY.
- 38" OF 1" PVC IRRIGATION CONDUIT TO BE PLACED FROM EXISTING IRRIGATION WATERLINE TO 2 1/2" BEHIND FACE OF CURB.
- ALTERNATE WATER METER BOX (VACANT) TO BE RESERVED FOR STREETSCAPING IRRIGATION PURPOSES.
- SAWCUT.
- TRANSITION FROM 2' GUTTER TO MEDIAN GUTTER OVER 5 FEET.

AS-BUILT INFORMATION		BENCH MARKS		SURVEY INFORMATION		ENGINEER'S SEAL	
CONTRACTOR	DATE	INSPECTOR	DATE	FIELD NOTES	REMARKS	NO.	DATE

AS-BUILT INFORMATION		BENCH MARKS		SURVEY INFORMATION		ENGINEER'S SEAL	
CONTRACTOR	DATE	INSPECTOR	DATE	FIELD NOTES	REMARKS	NO.	DATE

AS-BUILT INFORMATION		BENCH MARKS		SURVEY INFORMATION		ENGINEER'S SEAL	
CONTRACTOR	DATE	INSPECTOR	DATE	FIELD NOTES	REMARKS	NO.	DATE

AS-BUILT INFORMATION		BENCH MARKS		SURVEY INFORMATION		ENGINEER'S SEAL	
CONTRACTOR	DATE	INSPECTOR	DATE	FIELD NOTES	REMARKS	NO.	DATE

AS-BUILT INFORMATION		BENCH MARKS		SURVEY INFORMATION		ENGINEER'S SEAL	
CONTRACTOR	DATE	INSPECTOR	DATE	FIELD NOTES	REMARKS	NO.	DATE

AS-BUILT INFORMATION		BENCH MARKS		SURVEY INFORMATION		ENGINEER'S SEAL	
CONTRACTOR	DATE	INSPECTOR	DATE	FIELD NOTES	REMARKS	NO.	DATE

AS-BUILT INFORMATION		BENCH MARKS		SURVEY INFORMATION		ENGINEER'S SEAL	
CONTRACTOR	DATE	INSPECTOR	DATE	FIELD NOTES	REMARKS	NO.	DATE

AS-BUILT INFORMATION		BENCH MARKS		SURVEY INFORMATION		ENGINEER'S SEAL	
CONTRACTOR	DATE	INSPECTOR	DATE	FIELD NOTES	REMARKS	NO.	DATE

AS-BUILT INFORMATION		BENCH MARKS		SURVEY INFORMATION		ENGINEER'S SEAL	
CONTRACTOR	DATE	INSPECTOR	DATE	FIELD NOTES	REMARKS	NO.	DATE

AS-BUILT INFORMATION		BENCH MARKS		SURVEY INFORMATION		ENGINEER'S SEAL	
CONTRACTOR	DATE	INSPECTOR	DATE	FIELD NOTES	REMARKS	NO.	DATE

AS-BUILT INFORMATION		BENCH MARKS		SURVEY INFORMATION		ENGINEER'S SEAL	
CONTRACTOR	DATE	INSPECTOR	DATE	FIELD NOTES	REMARKS	NO.	DATE

AS-BUILT INFORMATION		BENCH MARKS		SURVEY INFORMATION		ENGINEER'S SEAL	
CONTRACTOR	DATE	INSPECTOR	DATE	FIELD NOTES	REMARKS	NO.	DATE

ISAACSON & ARFMAN, P.A.
Consulting Engineering Associates
188 Monroe Street N.E.
Albuquerque, New Mexico 87102
93418P.V1.DWGems 06/23/99

CITY OF ALBUQUERQUE
PUBLIC WORKS DEPARTMENT
ENGINEERING GROUP

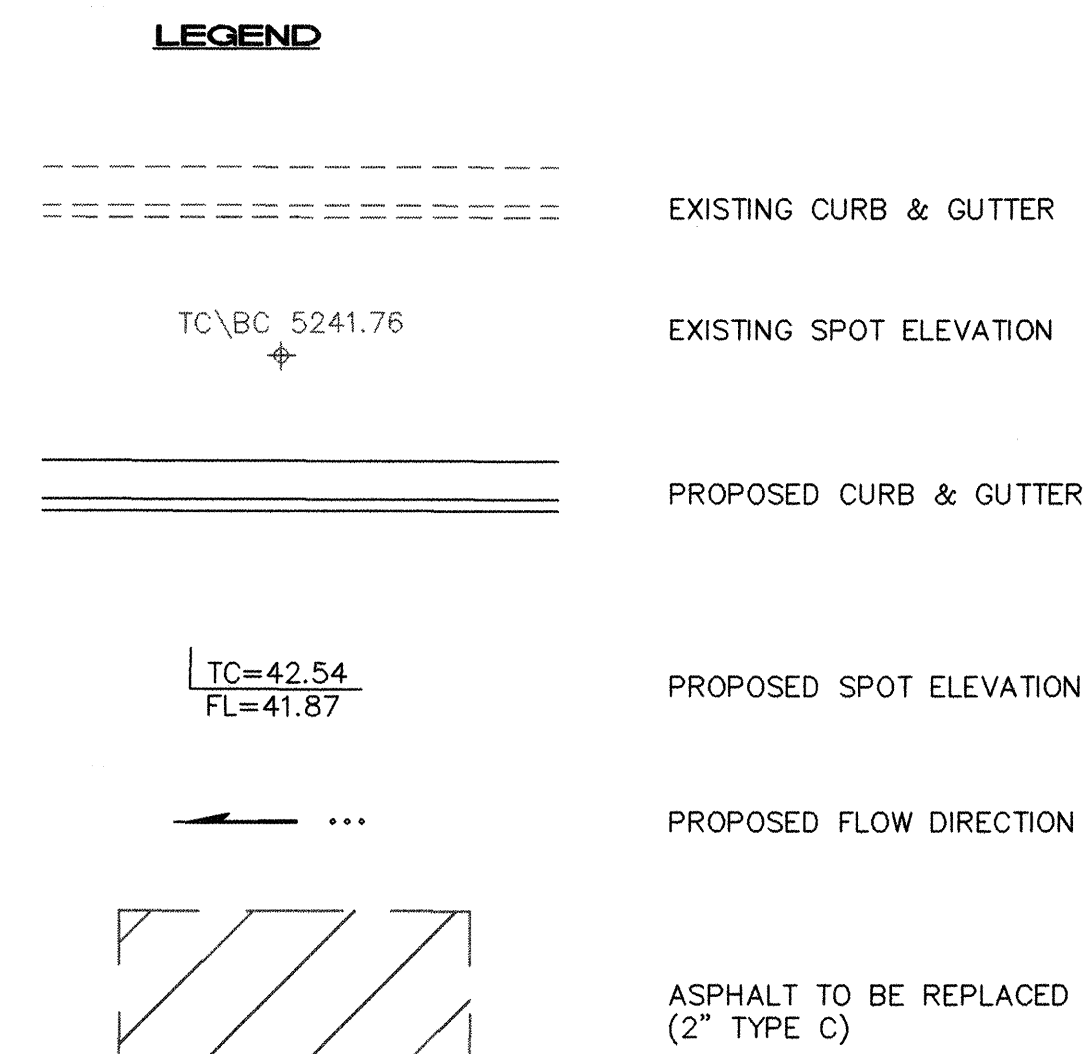
TITLE: MONROE NODE IMPROVEMENTS
CENTRAL AVENUE PAVING PLAN
MONROE ST. TO QUINCY ST.

Design Review Committee City Engineer Approval
APPROVED APR 28 2000
DESIGN CITY ENGINEER

City Project No. 6139.91 Zone Map No. K-17

Sheet 6 Of 11

DESIGNED BY FCA DATE 1/99
DRAWN BY ANW DATE 1/99
CHECKED BY FCA




KEYED CONSTRUCTION NOTES 

1. REPLACE 228 SY EXISTING ASPHALT. MATCH TO EXISTING PAVING ELEVATIONS. MAXIMUM SLOPE OF REPLACEMENT PAVING TO EQUAL 4%.
2. REMOVE & REPLACE EXISTING ASPHALT PAVEMENT AS NECESSARY TO PROVIDE A SMOOTH TRANSITION BETWEEN NEW CONSTRUCTION AND EXISTING PAVEMENT.
3. PCC HEADER CURB PER COA STD DWG #2415.

GENERAL NOTES

1. CONTRACTOR SHALL PROVIDE A SMOOTH TRANSITION BETWEEN EXISTING CURB, FLOWLINE AND ASPHALT ELEVATION AND NEW GRADES.
2. CONTRACTOR SHALL ADJUST (WHEN NECESSARY) NEW ELEVATIONS AS SHOWN TO PROVIDE A CONTINUOUS FLOW SLOPE IN THE DIRECTION AS SHOWN ON THE PLAN.
3. FOR STATIONING & OFFSETS SEE SHEET #6.



ISAACSON & ARFMAN, P.A.
Consulting Engineering Associates
 128 Monroe Street N.E.
 Albuquerque New Mexico
 93418PV2.DWGems 4/28/00

CITY OF ALBUQUERQUE
PUBLIC WORKS DEPARTMENT
ENGINEERING GROUP

TITLE: MONROE NODE IMPROVEMENTS
CENTRAL AVENUE GRADING DETAILS
MONROE ST. TO QUINCY ST.

Design Review Committee

City Engineer Approval

	Mo./Day/Yr.
--	-------------

Mo./Day/Yr.

APPROVE
APR 28 2000
DESIGN
REVIEW COMMITTEE

APPROVE
APR 28 2000
CITY ENGINEER

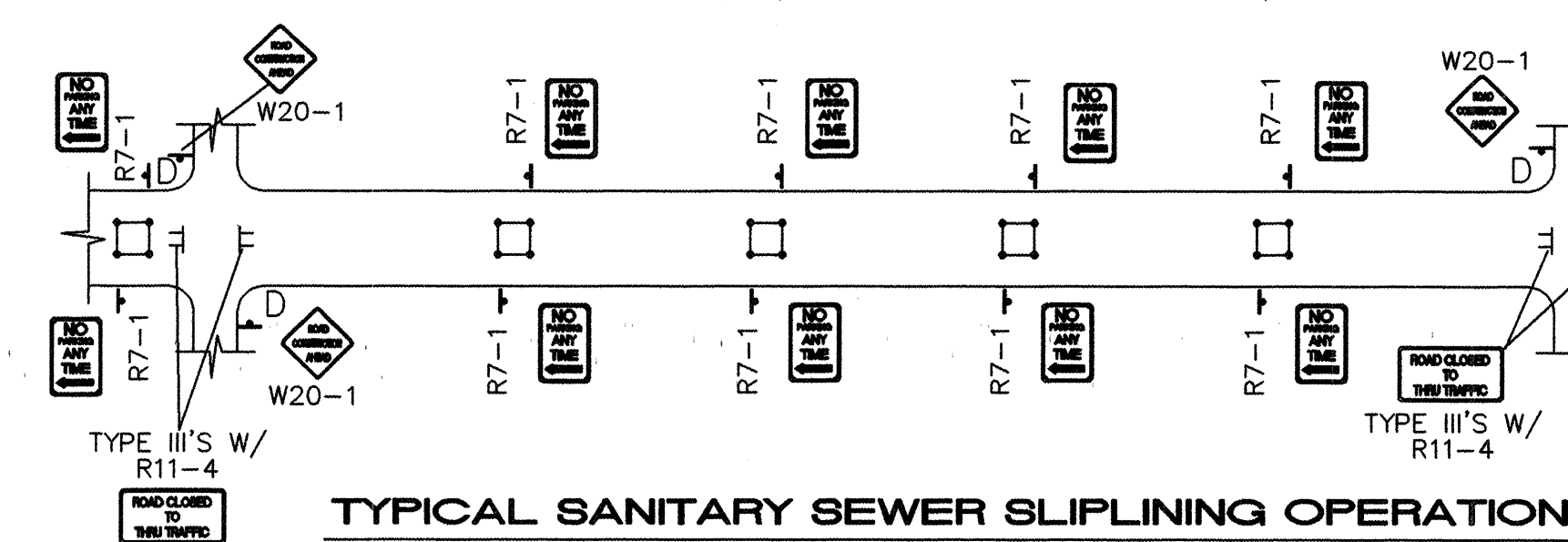
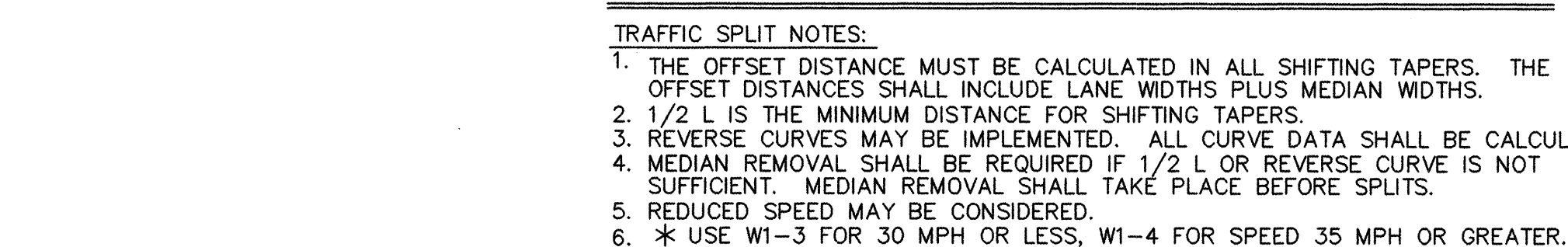
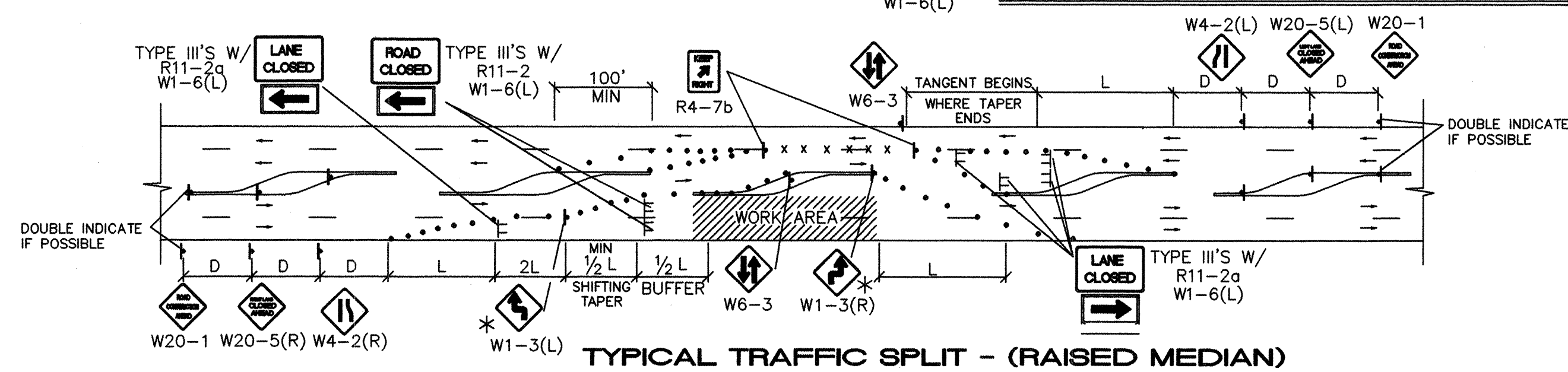
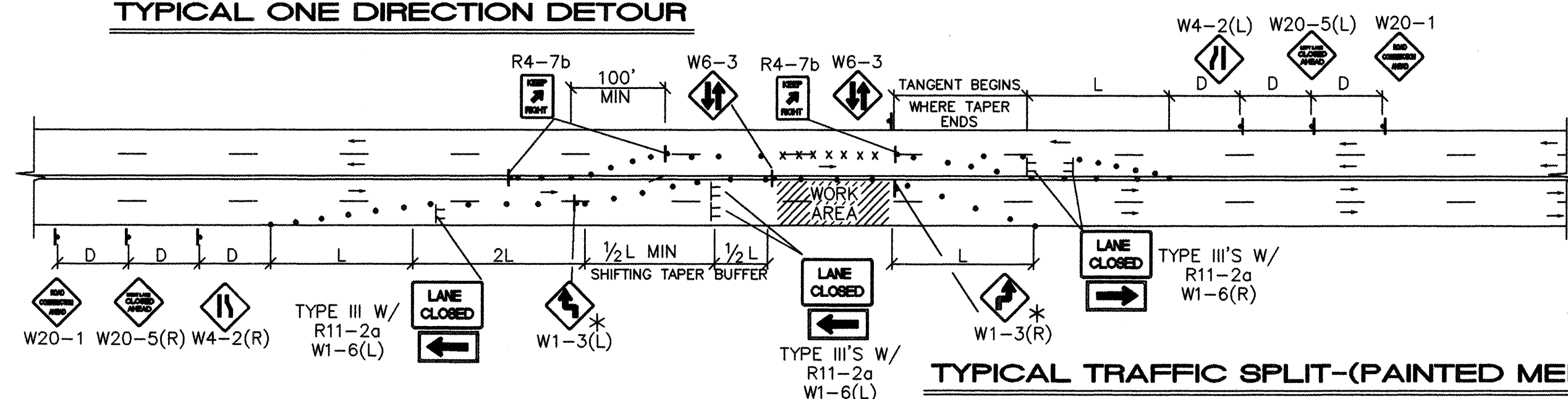
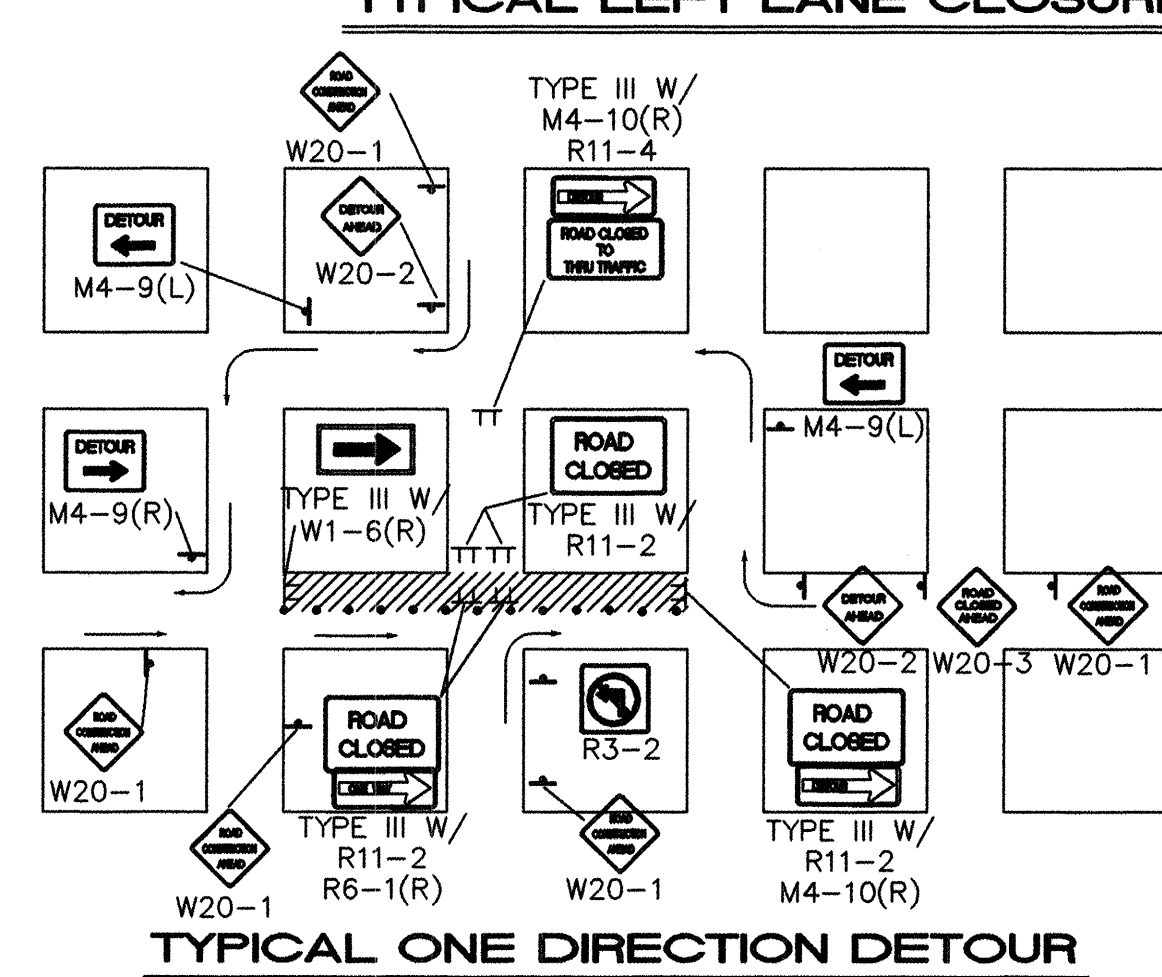
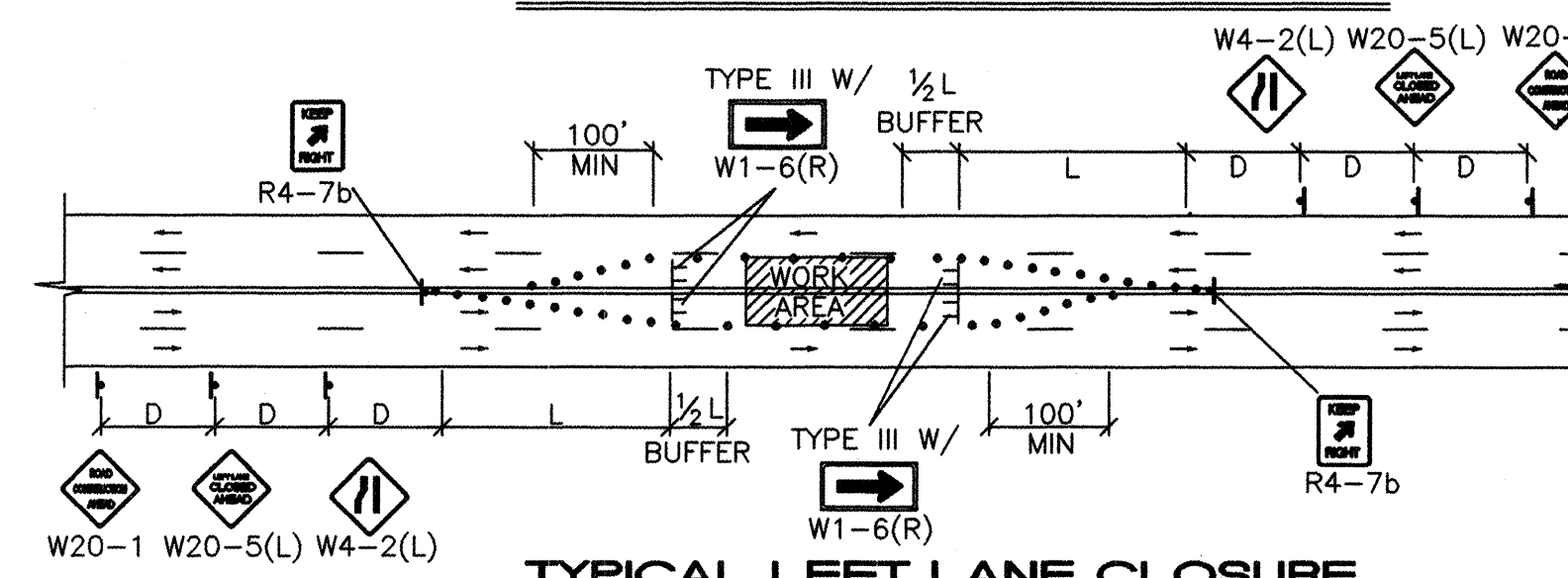
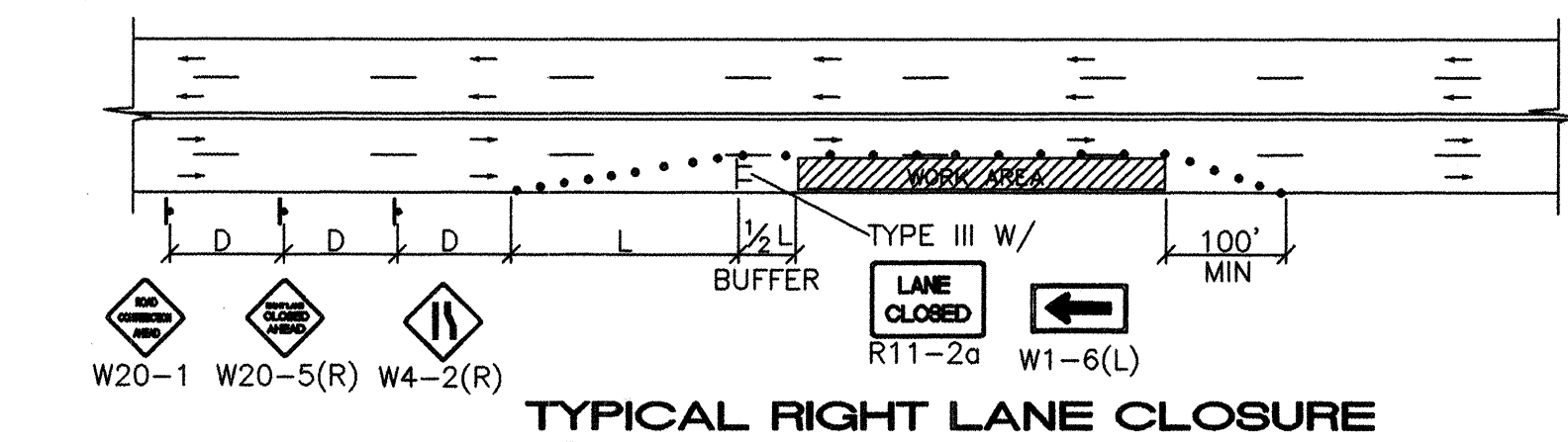
4-28-00

City Project No.

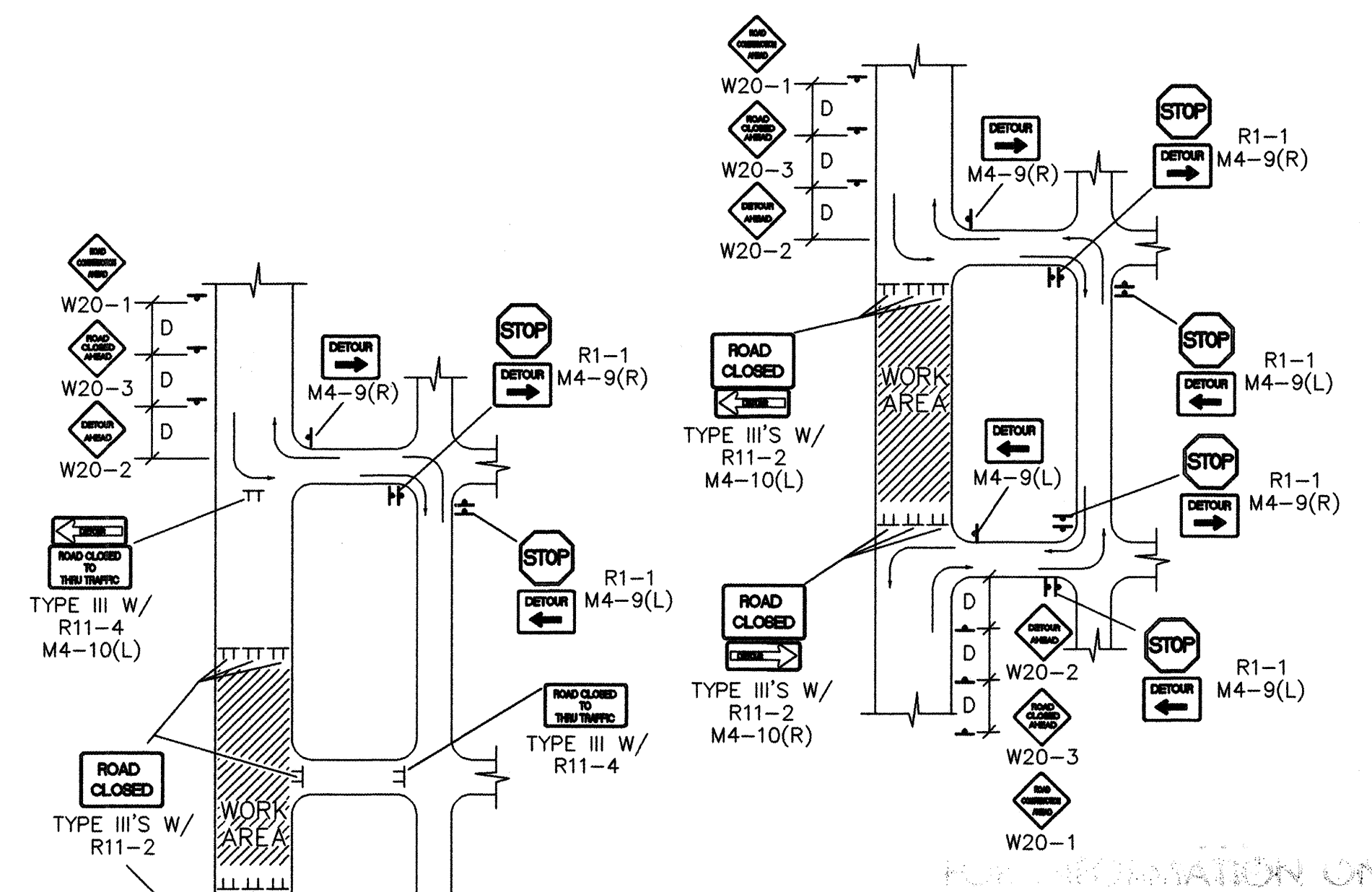
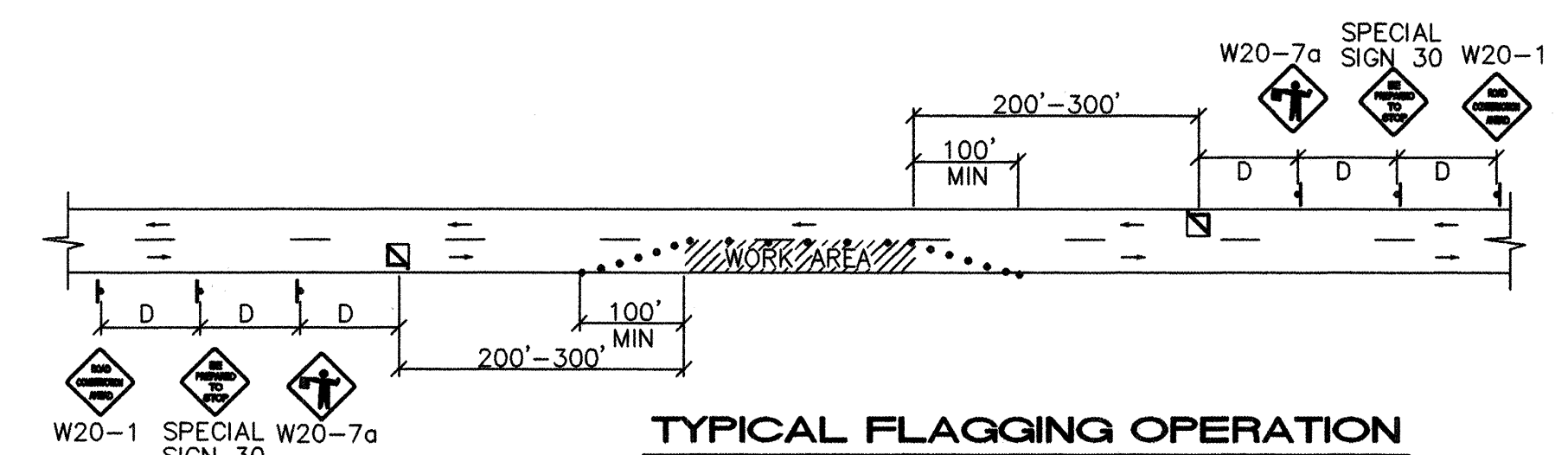
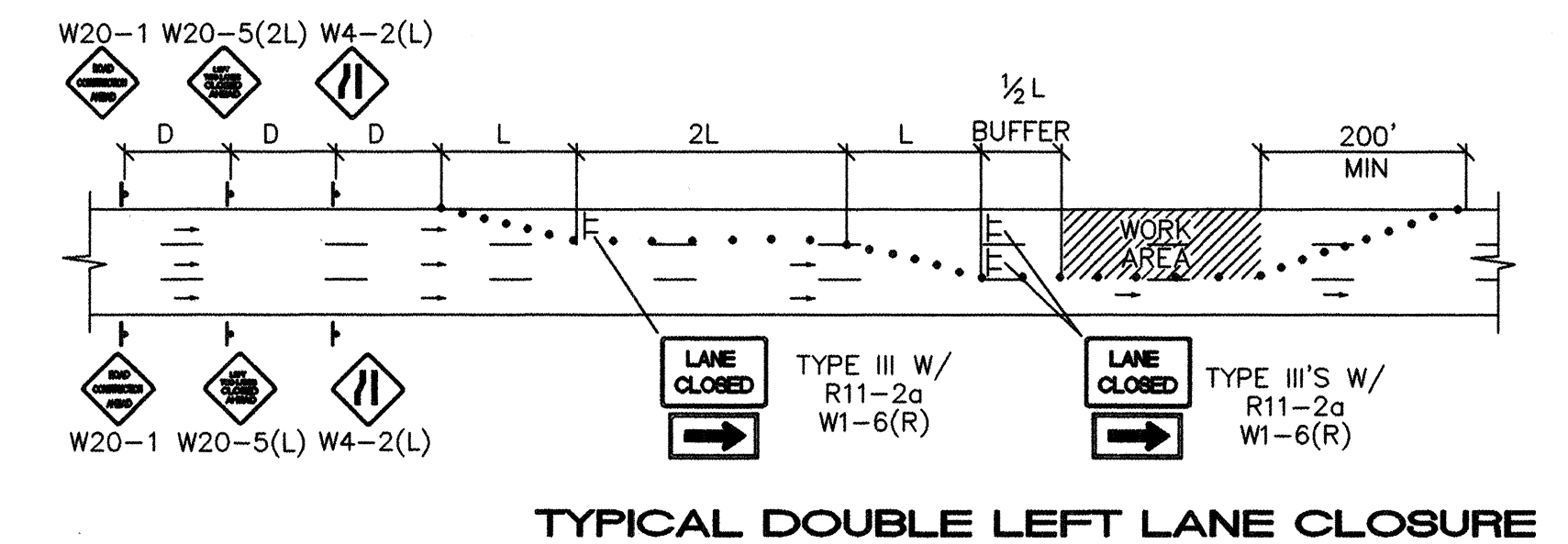
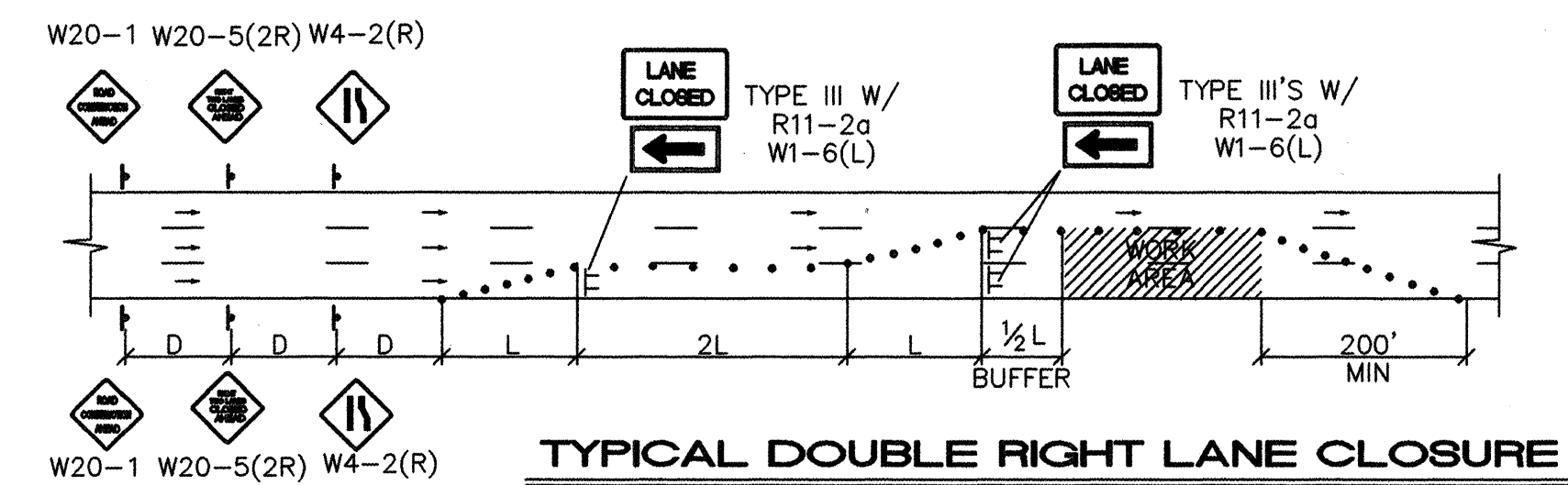
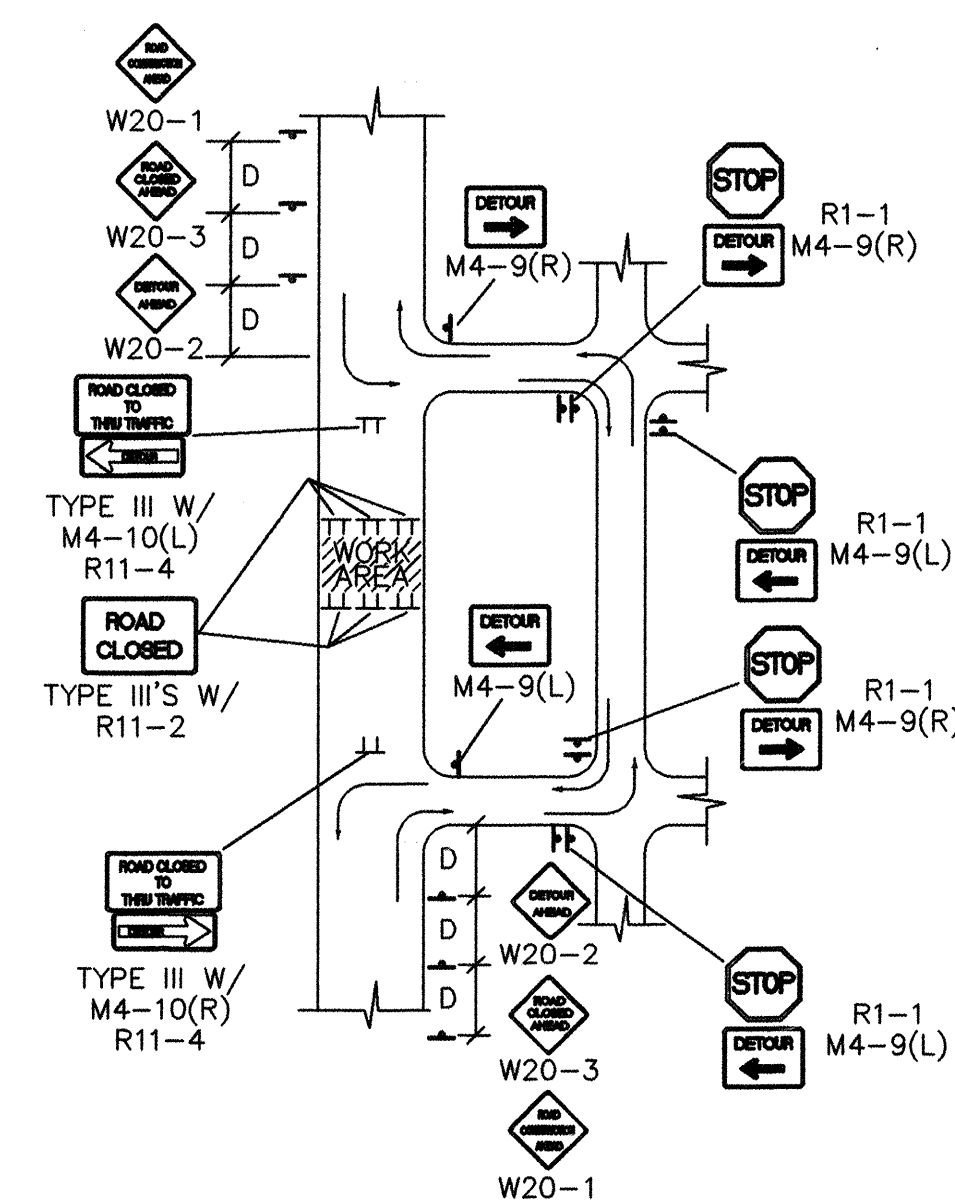
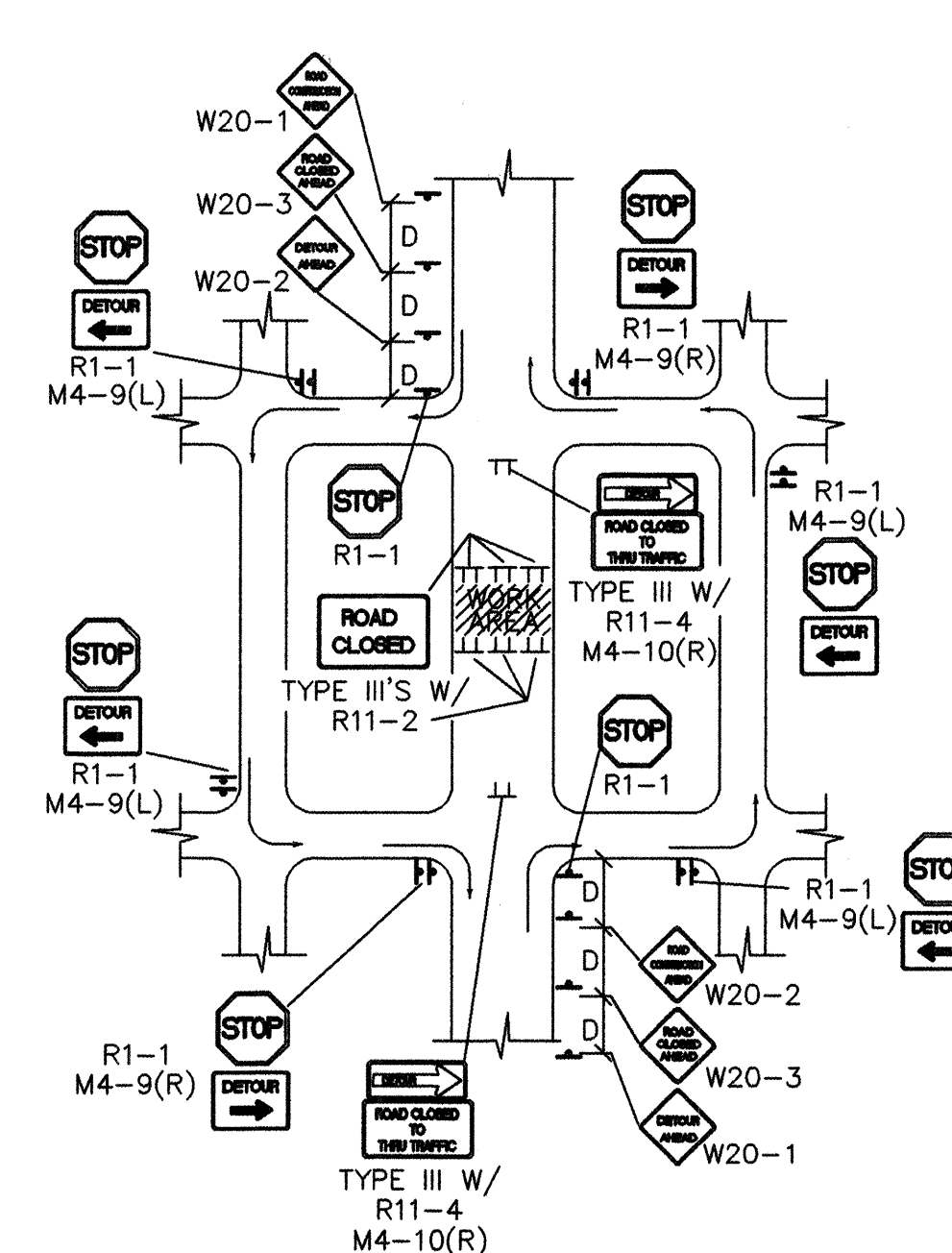
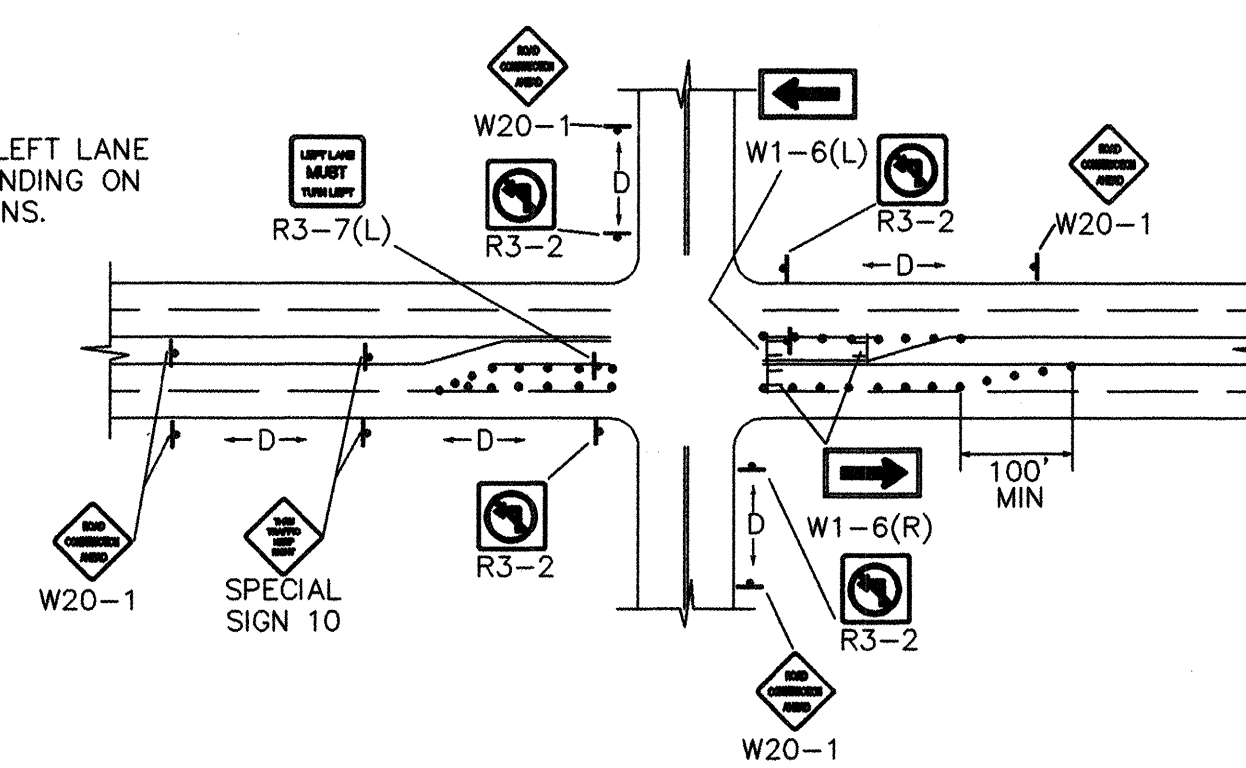
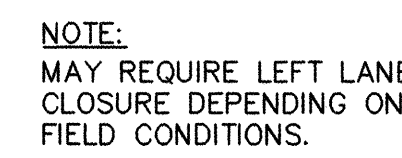
Zone Map No.

Sheet


Of



- ALL PITS TO HAVE TYPE-A FLASHING LIGHTS
- ALL PITS TO HAVE FLAGLINE



TYPICAL STREET CLOSURE
NOTE: (R1-1) BASED ON FIELD CONDITIONS.

 **ISAACSON & ARFMAN, P.A.**
Consulting Engineering Associates
128 Monroe Street N.E.
Albuquerque *New Mexico*
93418TR2.DWGems 06/23/99

CITY OF ALBUQUERQUE
PUBLIC WORKS DEPARTMENT
ENGINEERING GROUP

TITLE: MONROE NODE IMPROVEMENTS
TRAFFIC CONTROL
TRAFFIC CONTROL & SIGNING EXAMPLES

Design Review Committee	City Engineer Approval	Mo./Day/Yr.
-------------------------	------------------------	-------------

APPROVED	APPROVED	edat	
----------	----------	------	--

[illegible]

JUL - 1 - 1999 JUL - 1 - 1999 design

[illegible]

						T		<div style="text-align: center;"> MENTS NOL EXAMPLES </div>							
Mo./Day/Yr.								Mo./Day/Yr.							
Sheet						9		Of							
								11							

