

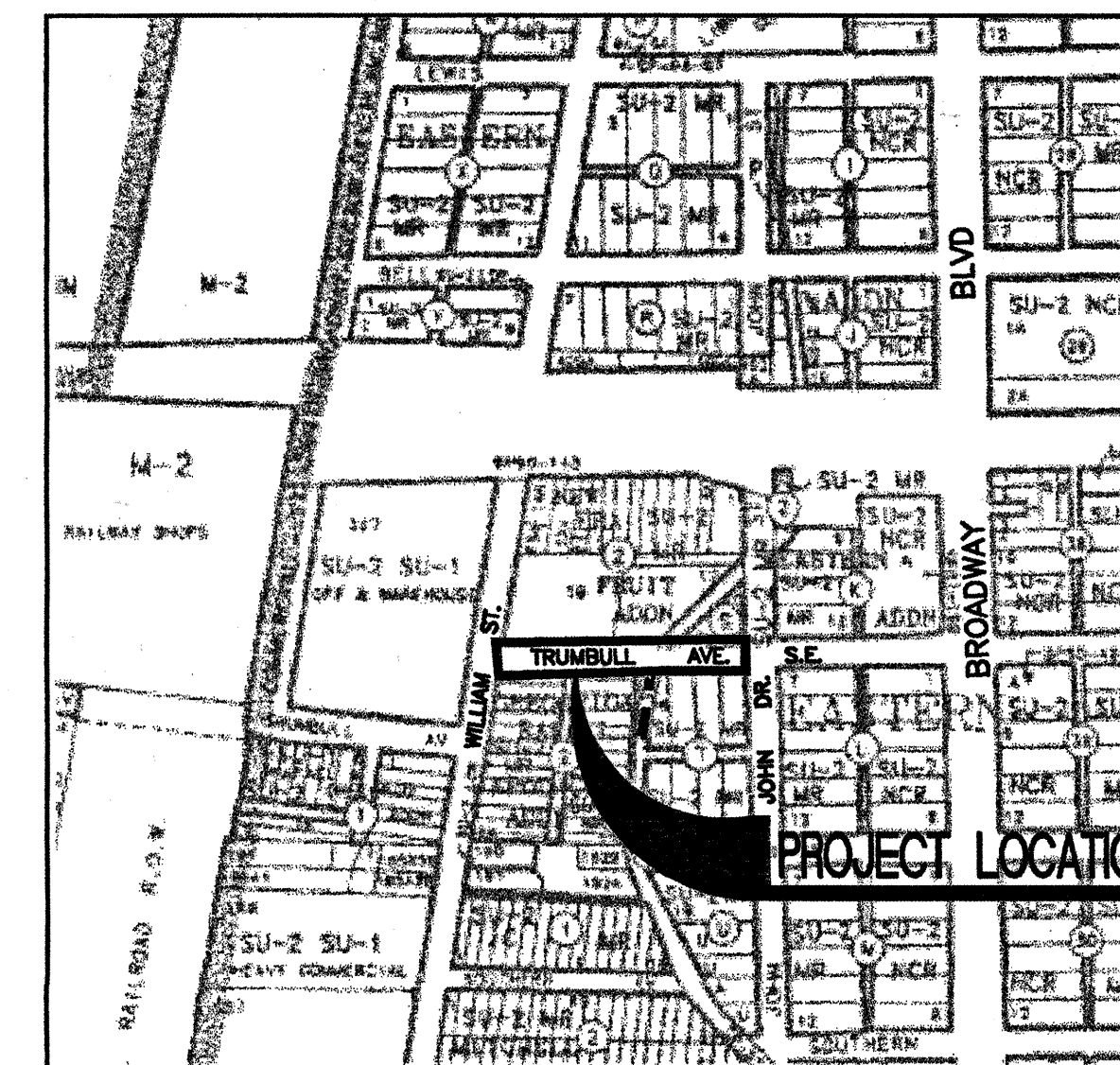


CITY OF ALBUQUERQUE
PUBLIC WORKS DEPARTMENT

TRUMBULL AVE. AND WILLIAM ST.
SEWER IMPROVEMENTS

DRAWING LIST

- 1 TITLE SHEET
- 2 GENERAL NOTES, LEGEND AND DETAILS
- 3 PLAN AND PROFILE
- 4 SIGNING AND CONSTRUCTION TRAFFIC CONTROL STANDARDS
- 5 TYPICAL TRAFFIC CONTROL AND SIGNING EXAMPLES (REF. M.U.T.C.D.)



VICINITY MAP
MAP NO. L-14

APPROVAL OF RECORD DRAWINGS
CHIEF CONSTRUCTION ENGINEER
Chang
DATE 2/4/02

HN
Holmes & Narver
6501 AMERICAS PARKWAY, NE
SUITE 700 (505)889-4100
ALBUQUERQUE, NM 87110

--	--	--	--	--	--	--	--	--	--	--	--	--	--	--	--	--	--	--	--	--	--	--	--	--	--	--	--	--	--	--	--	--	--	--	--	--	--	--	--	--	--	--	--	--	--	--	--	--	--	--	--	--	--	--	--	--	--	--	--	--	--	--	--	--	--	--	--	--	--	--	--	--	--	--	--	--	--	--	--	--	--	--	--	--	--	--	--	--	--	--	--	--	--	--	--	--	--	--	--	--	--	--	--	--	--	--	--	--	--	--	--	--	--	--	--	--	--	--	--	--	--	--	--	--	--	--	--	--	--	--	--	--	--	--	--	--	--	--	--	--	--	--	--	--	--	--	--	--	--	--	--	--	--	--	--	--	--	--	--	--	--	--	--	--	--	--	--	--	--	--	--	--	--	--	--	--	--	--	--	--	--	--	--	--	--	--	--	--	--	--	--	--	--	--	--	--	--	--	--	--	--	--	--	--	--	--	--	--	--	--	--	--	--	--	--	--	--	--	--	--	--	--	--	--	--	--	--	--	--	--	--	--	--	--	--	--	--	--	--	--	--	--	--	--	--	--	--	--	--	--	--	--	--	--	--	--	--	--	--	--	--	--	--	--	--	--	--	--	--	--	--	--	--	--	--	--	--	--	--	--	--	--	--	--	--	--	--	--	--	--	--	--	--	--	--	--	--	--	--	--	--	--	--	--	--	--	--	--	--	--	--	--	--	--	--	--	--	--	--	--	--	--	--	--	--	--	--	--	--	--	--	--	--	--	--	--	--	--	--	--	--	--	--	--	--	--	--	--	--	--	--	--	--	--	--	--	--	--	--	--	--	--	--	--	--	--	--	--	--	--	--	--	--	--	--	--	--	--	--	--	--	--	--	--	--	--	--	--	--	--	--	--	--	--	--	--	--	--	--	--	--	--	--	--	--	--	--	--	--	--	--	--	--	--	--	--	--	--	--	--	--	--	--	--	--	--	--	--	--	--	--	--	--	--	--	--	--	--	--	--	--	--	--	--	--	--	--	--	--	--	--	--	--	--	--	--	--	--	--	--	--	--	--	--	--	--	--	--	--	--	--	--	--	--	--	--	--	--	--	--	--	--	--	--	--	--	--	--	--	--	--	--	--	--	--	--	--	--	--	--	--	--	--	--	--	--	--	--	--	--	--	--	--	--	--	--	--	--	--	--	--	--	--	--	--	--	--	--	--	--	--	--	--	--	--	--	--	--	--	--	--	--	--	--	--	--	--	--	--	--	--	--	--	--	--	--	--	--	--	--	--	--	--	--	--	--	--	--	--	--	--	--	--	--	--	--	--	--	--	--	--	--	--	--	--	--	--	--	--	--	--	--	--	--	--	--	--	--	--	--	--	--	--	--	--	--	--	--	--	--	--	--	--	--	--	--	--	--	--	--	--	--	--	--	--	--	--	--	--	--	--	--	--	--	--	--	--	--	--	--	--	--	--	--	--	--	--	--	--	--	--	--	--	--	--	--	--	--	--	--	--	--	--	--	--	--	--	--	--	--	--	--	--	--	--	--	--	--	--	--	--	--	--	--	--	--	--	--	--	--	--	--	--	--	--	--	--	--	--	--	--	--	--	--	--	--	--	--	--	--	--	--	--	--	--	--	--	--	--	--	--	--	--	--	--	--	--	--	--	--	--	--	--	--	--	--	--	--	--	--	--	--	--	--	--	--	--	--	--	--	--	--	--	--	--	--	--	--	--	--	--	--	--	--	--	--	--	--	--	--	--	--	--	--	--	--	--	--	--	--	--	--	--	--	--	--	--	--	--	--	--	--	--	--	--	--	--	--	--	--	--	--	--	--	--	--	--	--	--	--	--	--	--	--	--	--	--	--	--	--	--	--	--	--	--	--	--	--	--	--	--	--	--	--	--	--	--	--	--	--	--	--	--	--	--	--	--	--	--	--	--	--	--	--	--	--	--	--	--	--	--	--	--	--	--	--	--	--	--	--	--	--	--	--	--	--	--	--	--	--	--	--	--	--	--	--	--	--	--	--	--	--	--	--	--	--	--	--	--	--	--	--	--	--	--	--	--	--	--	--	--	--	--	--	--	--	--	--	--	--	--	--	--	--	--	--	--	--	--	--	--	--	--	--	--	--	--	--	--	--	--	--	--	--	--	--	--	--	--	--	--	--	--	--	--	--	--	--	--	--	--	--	--	--	--	--	--	--	--	--	--	--	--	--	--	--	--	--	--	--	--	--	--	--	--	--	--	--	--	--	--	--	--	--	--	--	--	--	--	--	--	--	--	--	--	--	--	--	--	--	--	--	--	--	--	--	--	--	--	--	--	--	--	--	--	--	--	--	--	--	--	--	--	--	--	--	--	--	--	--	--	--	--	--	--	--	--	--	--	--	--	--	--	--	--	--	--	--	--	--	--	--	--	--	--	--	--	--	--	--	--	--	--	--	--	--	--	--	--	--	--	--	--	--	--	--	--	--	--	--	--	--	--	--	--	--	--	--	--	--	--	--	--	--	--	--	--	--	--	--	--	--	--	--	--	--	--	--	--	--	--	--	--	--	--	--	--	--	--	--	--	--	--	--	--	--	--	--	--	--	--	--	--	--	--	--	--	--	--	--	--	--	--	--	--	--	--	--	--	--	--	--	--	--	--	--	--	--	--	--	--	--	--	--	--	--	--	--	--	--	--	--	--	--	--	--	--	--	--	--	--	--	--	--	--	--	--	--	--	--	--	--	--	--	--	--	--	--	--	--	--	--	--	--	--	--	--	--	--	--	--	--	--	--	--	--	--	--	--	--	--	--	--	--	--	--	--	--	--	--	--	--	--	--	--	--	--	--	--	--	--	--	--	--	--	--	--	--	--	--	--	--	--	--	--	--	--	--	--	--	--	--	--	--	--	--	--	--	--	--	--	--	--	--	--	--	--	--	--	--	--	--	--	--	--	--	--	--	--	--	--	--	--	--	--	--	--	--	--	--	--	--	--	--	--	--	--	--	--	--	--	--	--	--	--	--	--	--	--	--	--	--	--	--	--	--	--	--	--	--	--	--	--	--	--	--	--	--	--	--	--	--	--	--	--	--	--	--	--	--	--	--	--	--	--	--	--	--	--	--	--	--	--	--	--	--	--	--	--	--	--	--	--	--	--	--	--	--	--	--	--	--	--	--	--	--	--	--	--	--	--	--	--	--	--	--	--	--	--	--	--	--	--	--	--	--	--	--	--	--	--	--	--	--	--	--	--	--	--	--	--	--	--	--	--	--	--	--	--	--	--	--	--	--	--	--	--	--	--	--	--	--	--	--	--	--	--	--	--	--	--	--	--	--	--	--	--	--	--	--	--	--	--	--	--	--	--	--	--	--	--	--	--	--	--	--	--	--	--	--	--	--	--	--	--	--	--	--	--	--	--	--	--	--	--	--	--	--	--	--	--	--	--	--	--	--	--	--	--	--	--	--	--	--	--	--	--	--	--	--	--	--	--	--	--	--	--	--	--	--	--	--	--	--	--	--	--	--	--	--	--	--	--	--	--	--	--	--	--	--	--	--	--	--	--	--	--	--	--	--	--	--	--	--	--	--	--	--	--	--	--	--	--	--	--	--	--	--	--	--	--	--	--	--	--	--	--	--	--	--	--	--	--	--	--	--	--	--	--	--	--	--	--	--	--	--	--	--	--	--	--	--	--	--	--	--	--	--	--	--	--	--	--	--	--	--	--	--	--	--	--	--	--	--	--	--	--	--	--	--	--	--	--	--	--	--	--	--	--	--	--	--	--	--	--	--	--	--	--	--	--	--	--	--	--	--	--	--	--	--	--	--	--	--	--	--	--	--	--	--	--	--	--	--	--	--	--	--	--	--	--	--	--	--	--	--	--	--	--	--	--	--	--	--	--	--	--	--	--	--	--	--	--	--	--	--	--	--	--	--	--	--	--	--	--	--	--	--	--	--	--	--	--	--	--	--	--	--	--	--	--	--	--	--	--	--	--	--	--	--	--	--	--	--	--	--	--	--	--	--	--	--	--	--	--	--	--	--	--	--	--	--	--	--	--	--	--	--	--	--	--	--	--	--	--	--	--	--	--	--	--	--	--	--	--	--	--	--	--	--	--	--	--	--	--	--	--	--	--	--	--	--	--	--	--	--	--	--	--	--	--	--	--	--	--	--	--	--	--	--	--	--	--	--	--	--	--	--	--	--	--	--	--	--	--	--	--	--	--	--	--	--	--	--	--	--	--	--	--	--	--	--	--	--	--	--	--	--

1 2 3 4 5 6 7 8 9 10 11 12 13 14 15
26 6163.91 0102

SCANNED BY
MESA REPRO



1. ALL WORK DETAILED ON THESE DRAWINGS TO BE PERFORMED UNDER THIS CONTRACT SHALL, EXCEPT AS OTHERWISE STATED, BE CONSTRUCTED IN ACCORDANCE WITH THE CITY OF ALBUQUERQUE STANDARD SPECIFICATIONS FOR PUBLIC WORKS CONSTRUCTION, 1986 AS AMENDED THROUGH UPDATE NO. 6, HEREBY REFERRED TO AS THE SPECIFICATIONS. REFERENCES MADE TO STANDARD DRAWINGS IMPLY THAT SECTION OF THE SPECIFICATIONS, WHICH INCLUDES MISCELLANEOUS STANDARD DETAILS.
2. LOCATION OF UTILITIES ARE APPROXIMATE. IT IS THE CONTRACTOR'S RESPONSIBILITY TO LOCATE ALL PERTINENT UTILITIES IN THE FIELD. CALL ONE CALL SYSTEM, INC. AT 260-1990 TWO WORKING DAYS BEFORE ANY EXCAVATION.
3. IT IS THE CONTRACTOR'S RESPONSIBILITY TO SUPPORT ALL UTILITIES EXPOSED DURING CONSTRUCTION. CONTRACTOR WILL BE RESPONSIBLE FOR DAMAGE TO ALL UTILITIES, INCLUDING SERVICE LINES.
4. PRIOR TO CONSTRUCTION, THE CONTRACTOR SHALL EXCAVATE AND VERIFY THE HORIZONTAL AND VERTICAL LOCATIONS OF ALL OBSTRUCTIONS. SHOULD A CONFLICT EXIST, THE CONTRACTOR SHALL NOTIFY THE PUBLIC WORKS DEPARTMENT SO THAT THE CONFLICT CAN BE RESOLVED WITH MINIMUM AMOUNT OF DELAY.
5. FIVE (5) WORKING DAYS PRIOR TO BEGINNING CONSTRUCTION, THE CONTRACTOR SHALL SUBMIT TO THE CONSTRUCTION COORDINATION DIVISION A DETAILED CONSTRUCTION SCHEDULE. TWO (2) WORKING DAYS PRIOR TO CONSTRUCTION, THE CONTRACTOR SHALL OBTAIN A BARRICADE PERMIT FROM THE CONSTRUCTION COORDINATION DIVISION. CONTRACTOR SHALL NOTIFY BARRICADE ENGINEER (768-2551) PRIOR TO OCCUPYING AN INTERSECTION. SEE SECTION 19 OF THE SPECIFICATIONS.
6. REMOVE AND REPLACE ALL BROKEN OR DAMAGED CURB AND GUTTER AND SIDEWALK ALONG TRUMBULL.
7. REPLACE ALL CURB RETURNS WITH ADA COMPLIANT WHEELCHAIR RAMPS WHERE NONE EXIST.
8. ALL PAVEMENT MARKINGS OR OTHER TRAFFIC CONTROL DEVICES INCLUDING TRAFFIC SIGNAL CONDUIT, ADVERSELY AFFECTED BY CONSTRUCTION SHALL BE REPLACED IN PRECONSTRUCTION CONDITION. THESE COSTS SHALL BE INCIDENTAL TO THE PROJECT. PAVEMENT MARKINGS SHALL BE REPLACED WITH PLASTIC.
9. CONTRACTOR SHALL COORDINATE WITH PNM (JIM VANN - 848-3426) WHERE LIP OF TRENCH IS LESS THAN 5' TO POWER POLE. COSTS ASSOCIATED WITH SUPPORT OF EXISTING POLES SHALL BE INCIDENTAL TO THE PROJECT.
10. CONTRACTOR SHALL BE CHARGED BY PNM FOR ANY DAMAGE TO PNM CABLES AND FOR SUPPORTING OF MINOR RELOCATIONS OF CABLES DURING CONSTRUCTION. THESE COSTS SHALL BE INCIDENTAL TO THE PROJECT.
11. ALL UTILITIES AND UTILITY SERVICE LINES SHALL BE INSTALLED PRIOR TO PAVING.
12. STATIONING IS BASED ON CENTERLINE OF SANITARY SEWER, CENTERLINE MANHOLE TO CENTERLINE MANHOLE, UNLESS NOTED OTHERWISE.
13. THE CONTRACTOR SHALL NOTIFY THE ENGINEER OF ANY DEFECTIVE OR DETERIORATED CONDITION UPON VISUAL INSPECTION OF EXISTING SERVICE LINES.
14. ON EXISTING SEWER MANHOLES THAT ARE TO BE ABANDONED IN PLACE, REMOVE AND RETURN THE EXISTING RING AND COVER AND ABANDON THE MANHOLE AS PER SECTION 920.6.
15. IT IS THE CONTRACTOR'S RESPONSIBILITY TO LOCATE AND RECONNECT ALL EXISTING SEWER SERVICE CONNECTIONS.
16. SANITARY SEWER SERVICE RECONNECTIONS AND TRANSFERS SHALL BE PAID FOR IN ACCORDANCE TO THE UNIT PRICE LISTED ON THE BID PROPOSAL. HOWEVER, THOSE CONNECTIONS DAMAGED WHILE PERFORMING THE WORK UNDER THIS PROJECT SHOULD BE REPLACED, AT NO ADDITIONAL COST TO THE CITY.
17. ALL SANITARY SEWER MANHOLES SHALL BE BUILT IN ACCORDANCE WITH THE CITY OF ALBUQUERQUE STANDARD DRAWINGS 2101 AND 2102. ALL SANITARY SEWER MANHOLES SHALL BE 4 FEET IN DIAMETER UNLESS OTHERWISE NOTED.
18. ELECTRONIC MARKER DISCS SHALL BE INSTALLED PER SECTION 170 OF THE TECHNICAL SPECIFICATIONS.
19. CONTRACTOR SHALL EXERCISE CAUTION WHEN REMOVING OR WORKING AROUND EXISTING STEEL LINES TO AVOID ELECTRICAL SHOCK. ELECTRICAL BONDS OR JUMPERS ARE RECOMMENDED TO BE USED PRIOR TO SEPARATING STEEL LINES.
20. CONTRACTOR SHALL COORDINATE WITH THE GAS COMPANY OF NEW MEXICO (761-7752) TWO WEEKS PRIOR TO NEEDING A GAS LINE SEGMENT RELOCATED.
21. PARALLEL WATER AND SEWER LINES SHALL BE LAID AT LEAST 10 FEET APART HORIZONTALLY AND THE WATERLINE SHOULD BE AT A HIGHER ELEVATION THAN THE SEWER.
22. WHEN WATERLINE AND SEWER LINES CROSS EACH OTHER, THE WATERLINE SHALL BE AT LEAST EIGHTEEN (18) INCHES ABOVE THE SEWER. THE CROSSING SHALL BE ARRANGED SO THAT THE SEWER JOINTS WILL BE EQUIDISTANT AND AS FAR AS POSSIBLE FROM THE WATERLINE JOINTS. ALL SEWER PIPE SHALL BE PRESSURE PIPE OR ENCASED IN CONCRETE 10 FT EACH WAY FROM CROSSING.
23. CONTRACTOR SHALL NOTIFY THE ENGINEER NOT LESS THAN SEVEN (7) DAYS PRIOR TO STARTING WORK IN ORDER THAT THE ENGINEER MAY TAKE NECESSARY MEASURES TO INSURE THE PRESERVATION OF SURVEY MONUMENTS. CONTRACTOR SHALL NOT DISTURB PERMANENT SURVEY MONUMENTS WITHOUT THE CONSENT OF THE ENGINEER AND SHALL NOTIFY THE ENGINEER AND BEAR THE EXPENSE OF REPLACING ANY THAT MAY BE DISTURBED WITHOUT PERMISSION. REPLACEMENT SHALL BE DONE ONLY BY THE CITY SURVEY SECTION. WHEN A CHANGE IS MADE IN THE FINISHED ELEVATION OF THE PAVEMENT OF ANY ROADWAY IN WHICH A PERMANENT SURVEY MONUMENT IS LOCATED, CONTRACTOR SHALL, AT HIS OWN EXPENSE, ADJUST THE MONUMENT COVER TO THE NEW GRADE UNLESS OTHERWISE SPECIFIED. REFER TO SECTION 4.4 OF THE GENERAL CONDITIONS.
24. ALL EXISTING SANITARY SERVICES SHALL BE RECONNECTED TO THE NEW SEWER MAIN AS PER CITY OF ALBUQUERQUE STANDARD DRAWING 2125.
25. EXISTING MANHOLE FLOORS SHALL BE REHABILITATED AS PER CITY OF ALBUQUERQUE STANDARD DRAWINGS 2101 AND 2102.
26. PRIOR TO THE START OF CONSTRUCTION, ALL ADJACENT PROPERTY OWNERS SHALL BE GIVEN NOTIFICATION BY THE CONTRACTOR OF THE FORTHCOMING CONSTRUCTION IN ACCORDANCE WITH SECTION 701 OF THE STANDARD SPECIFICATIONS. THIS NOTIFICATION WILL INCLUDE THE DETERMINATION OF THE LOCATION OF NEW SANITARY SERVICE CONNECTIONS OR THE CONDITION OF AN EXISTING SANITARY SERVICE LINE TO BE RECONNECTED TO THE NEW SEWER MAIN.
27. THE CONTRACTOR SHALL BE RESPONSIBLE FOR MAINTAINING ACCESS TO ALL ADJACENT PROPERTIES.
28. ALL EXCAVATION, TRENCHING, AND SHORING ACTIVITIES MUST BE CARRIED OUT IN ACCORDANCE WITH OSHA 29CFR 1926.650 SUBPART F.
29. CONTRACTOR IS ADVISED TO VISIT THE PROJECT SITE PRIOR TO BIDDING AND FAMILIARIZE THEMSELVES WITH FIELD CONDITIONS INCLUDING THE LOCATION OF UTILITIES SHOWN ON THE PLANS AND OTHER UTILITIES/OBSTACLES CLEARLY VISIBLE IN THE FIELD. IT IS THE RESPONSIBILITY OF THE CONTRACTOR TO PLAN THEIR CONSTRUCTION METHODS TO ADEQUATELY SUPPORT AND/OR AVOID ALL UTILITIES SHOWN ON THE PLANS AND ALL UTILITIES/OBSTACLES CLEARLY VISIBLE IN THE FIELD. ANY RELOCATION OF UTILITIES/OBSTACLES SHOWN ON THE PLANS OR VISIBLE IN THE FIELD. ANY RELOCATION OF UTILITIES/OBSTACLES SHOWN ON THE PLANS OR VISIBLE IN THE FIELD, IN ORDER TO COMPLETE THE REQUIRED WORK, WILL BE CONSIDERED TO BE CONTRACTOR CONVENIENCE AND BE THE RESPONSIBILITY OF THE CONTRACTOR, UNLESS THE UTILITY/OBSTACLE IS IDENTIFIED ON THE PLANS AS BEING RELOCATABLE AS PART OF THE PROJECT. IT WILL BE THE RESPONSIBILITY OF THE CONTRACTOR TO COORDINATE ALL REQUIRED RELOCATIONS WITH APPROPRIATE UTILITIES/INDIVIDUALS.

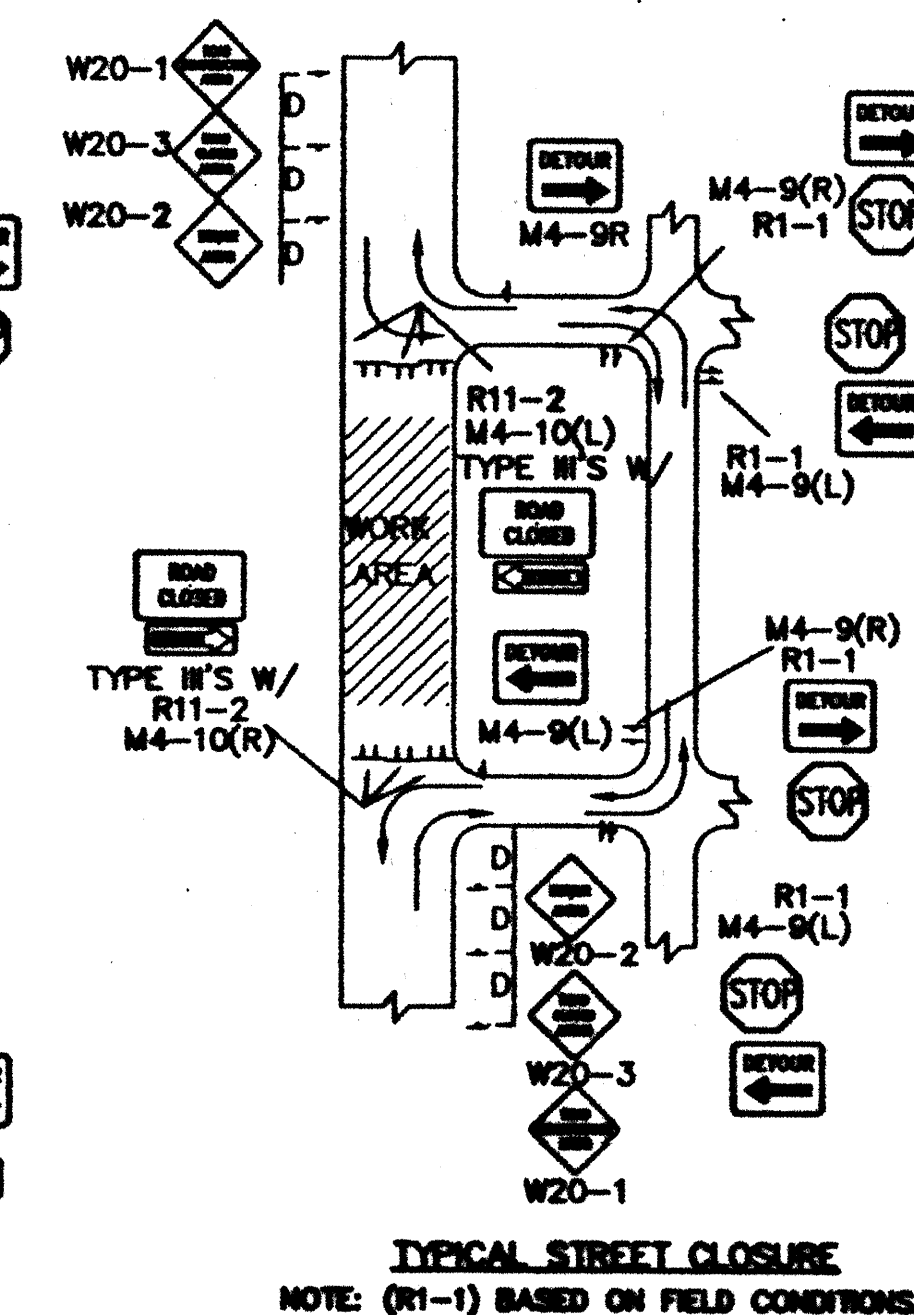
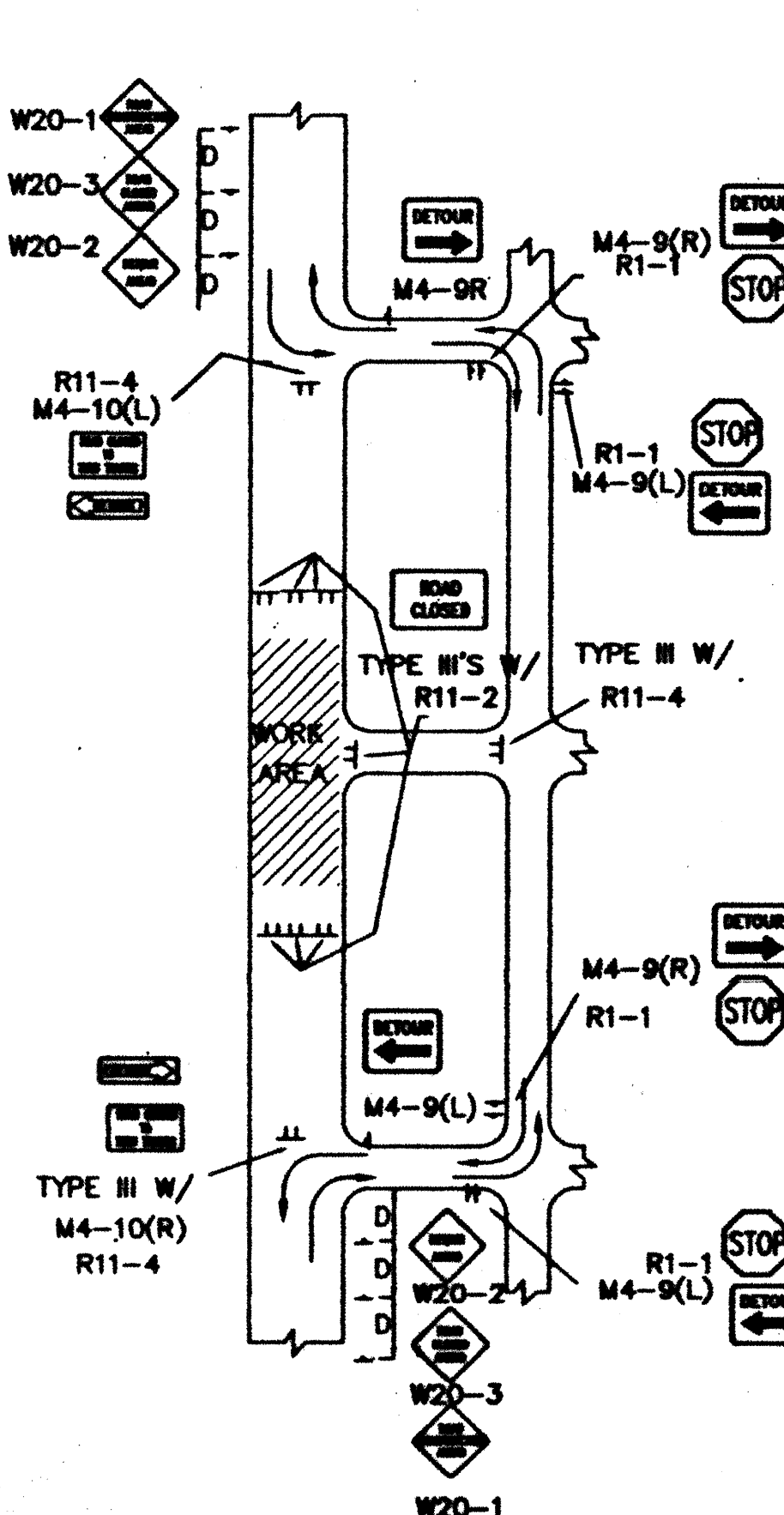
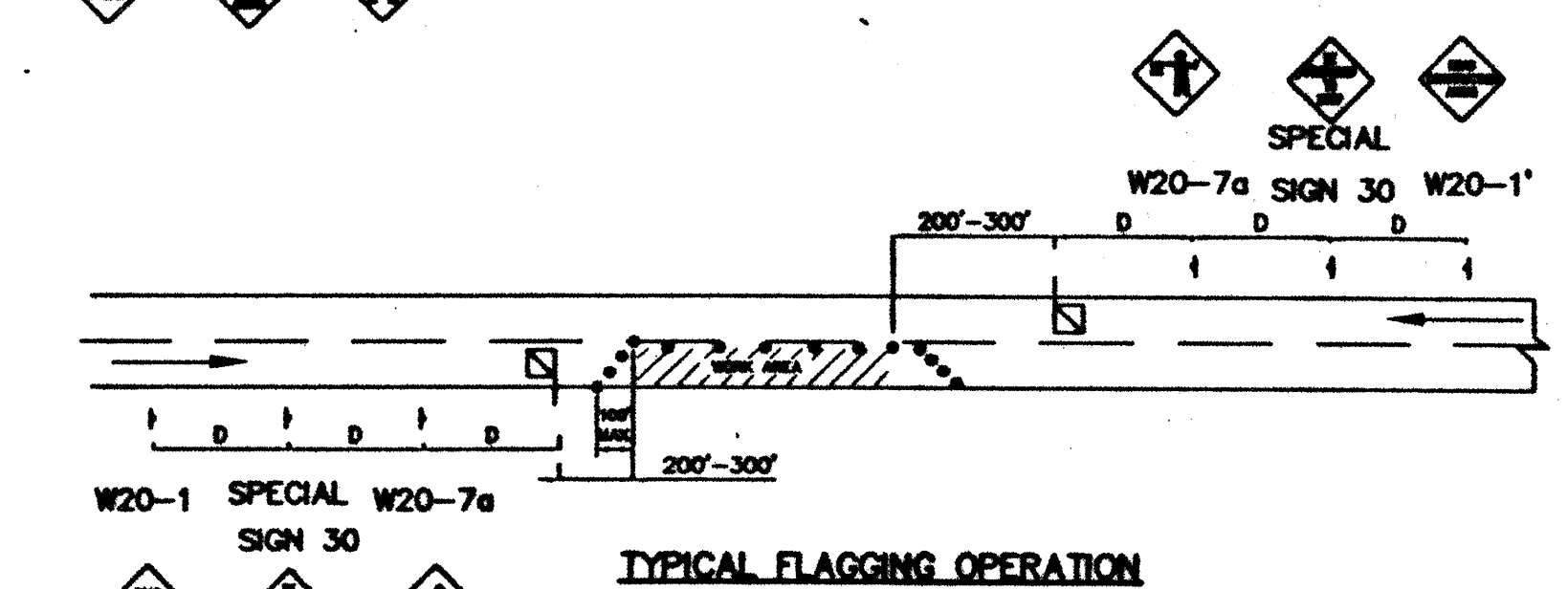
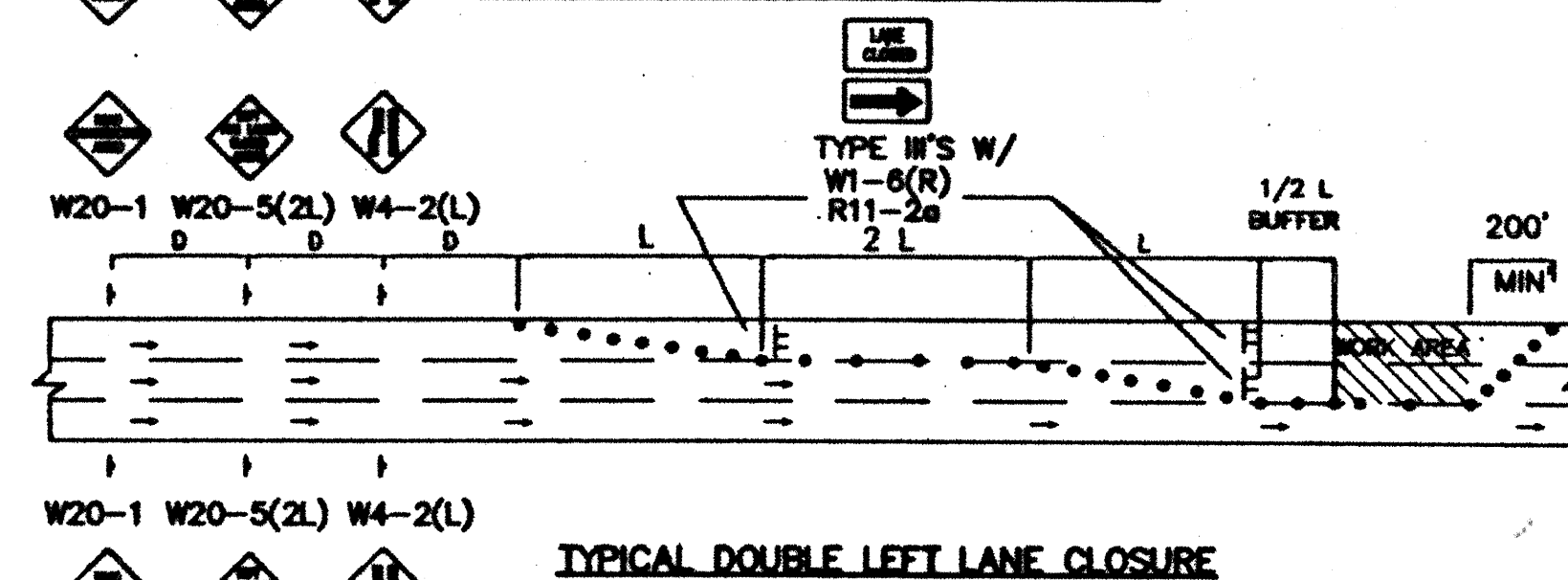
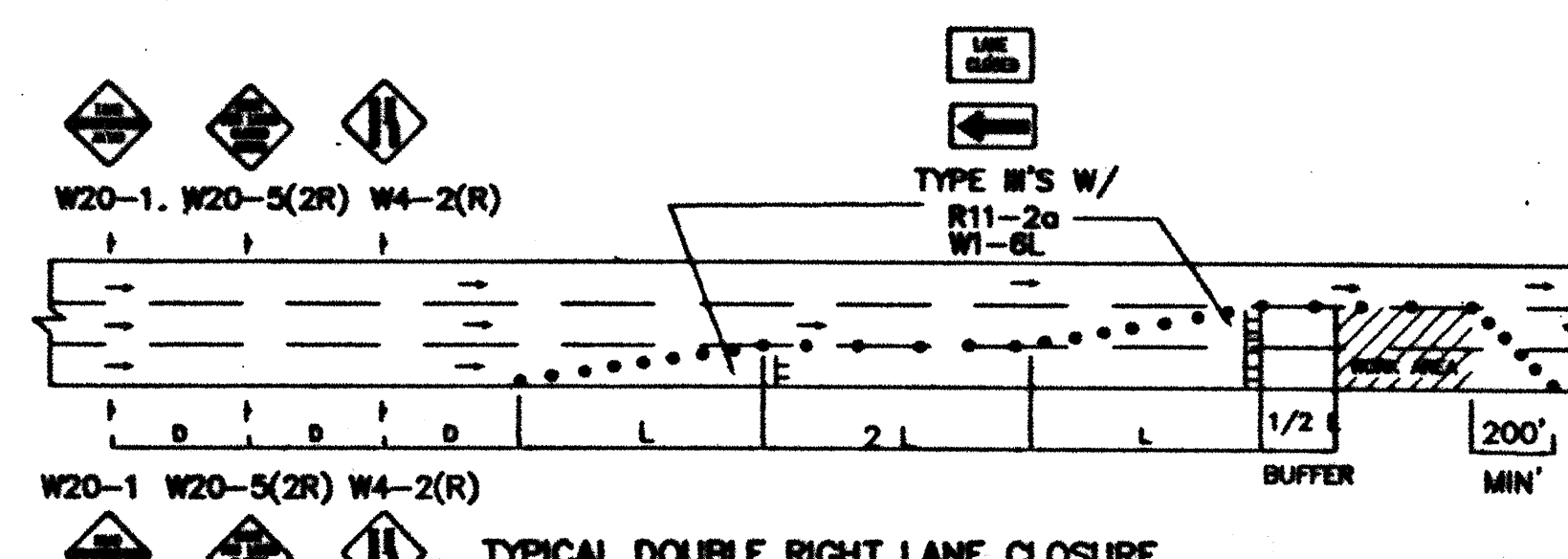
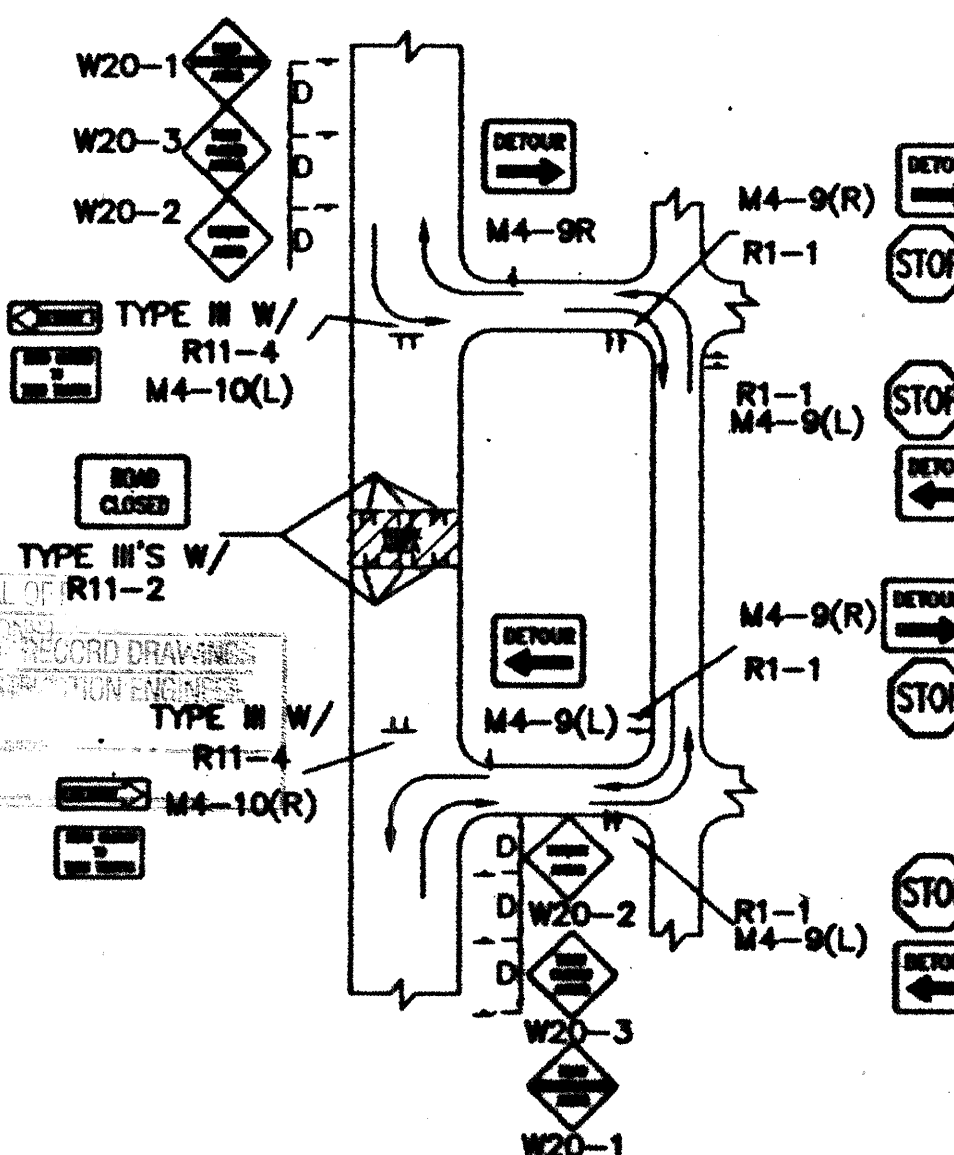
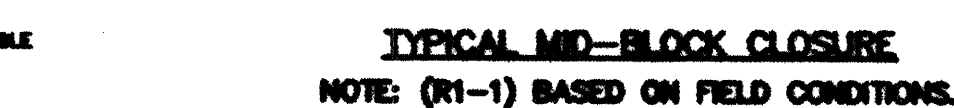
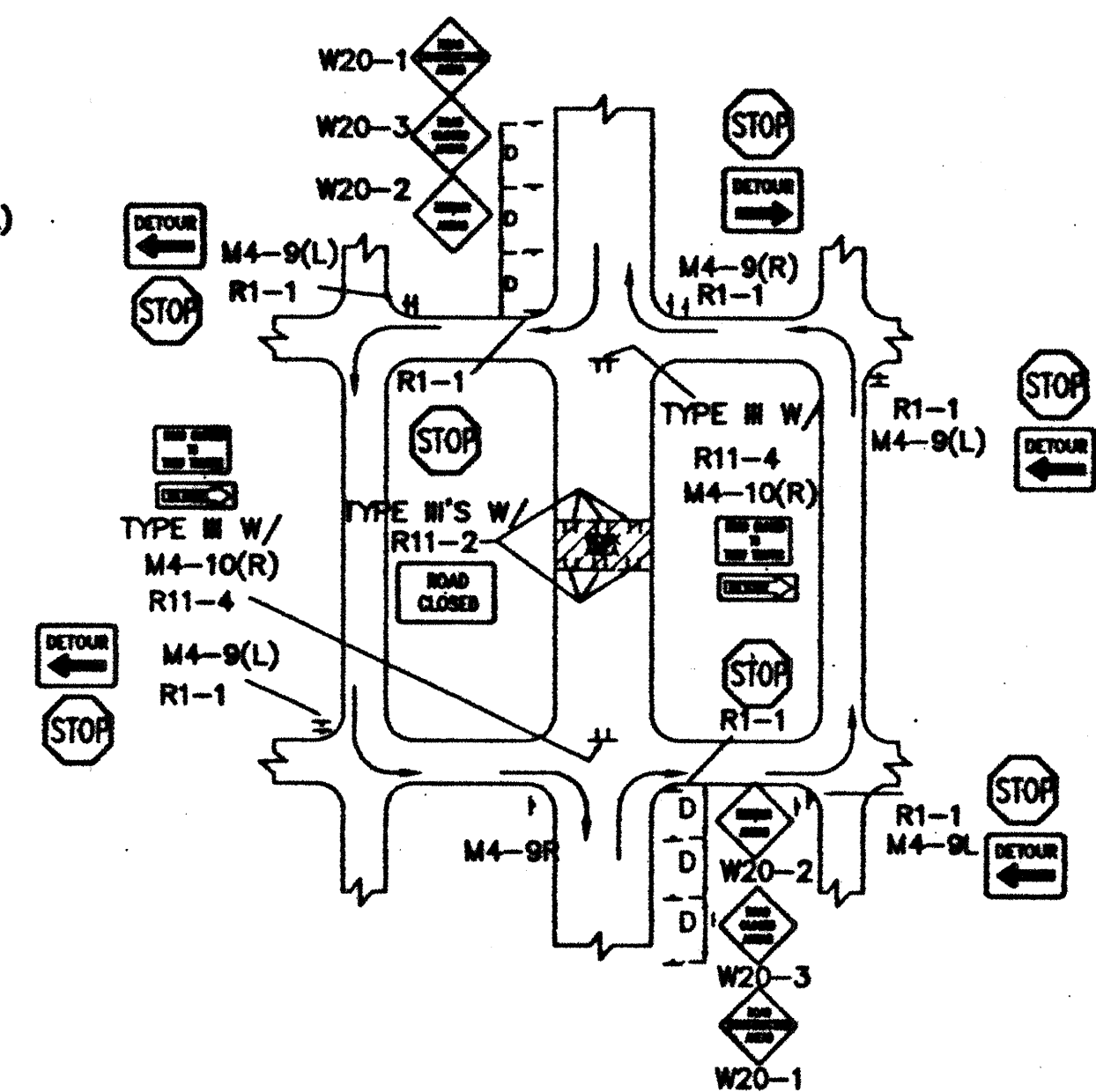
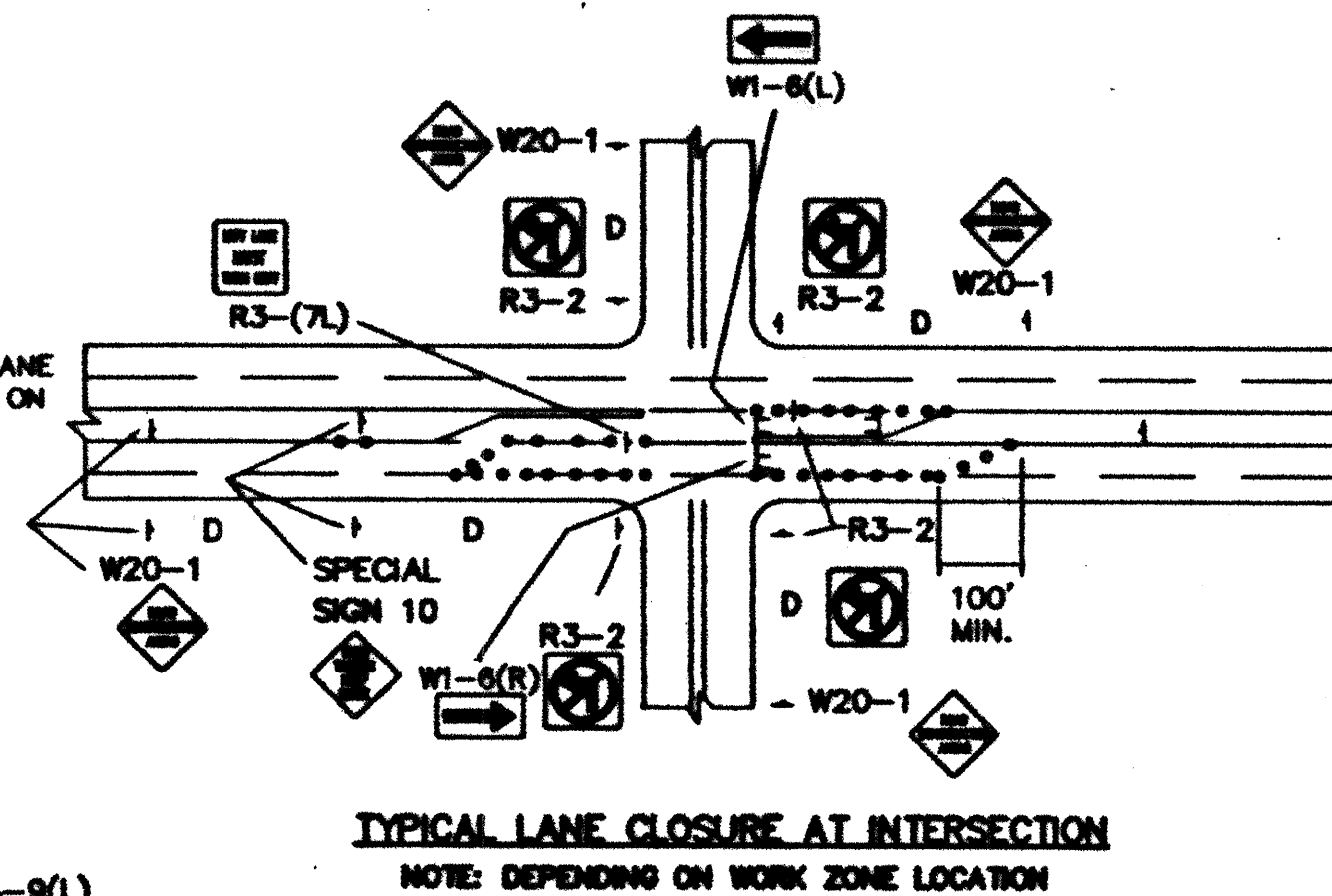
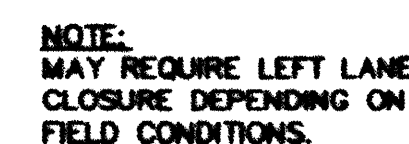
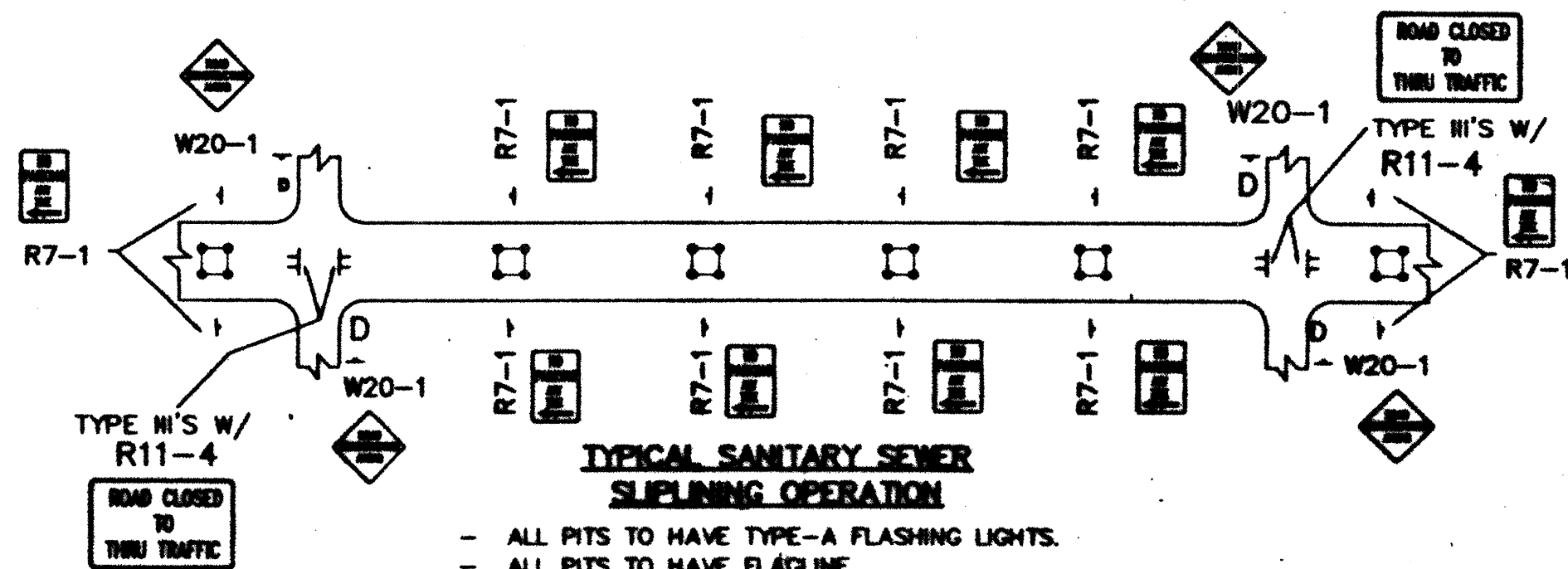
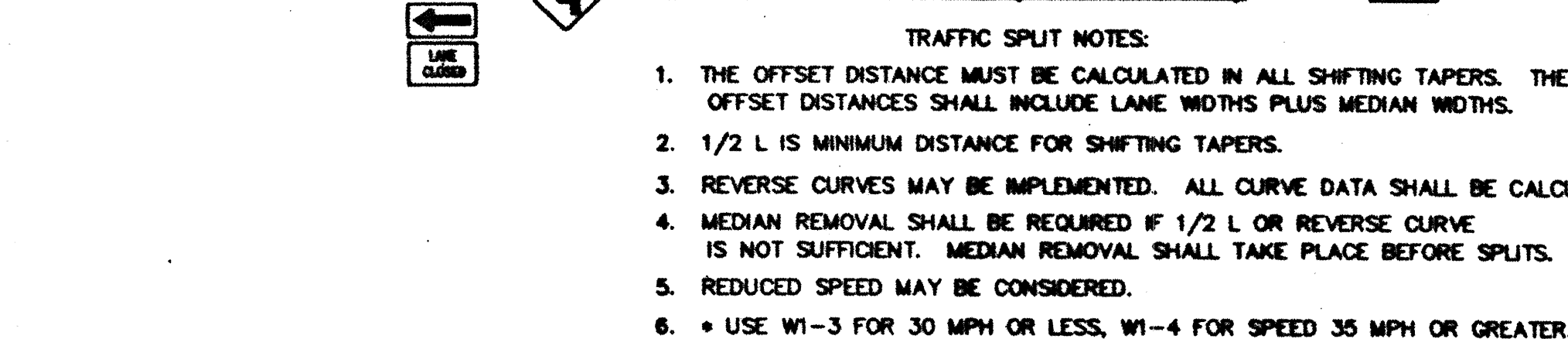
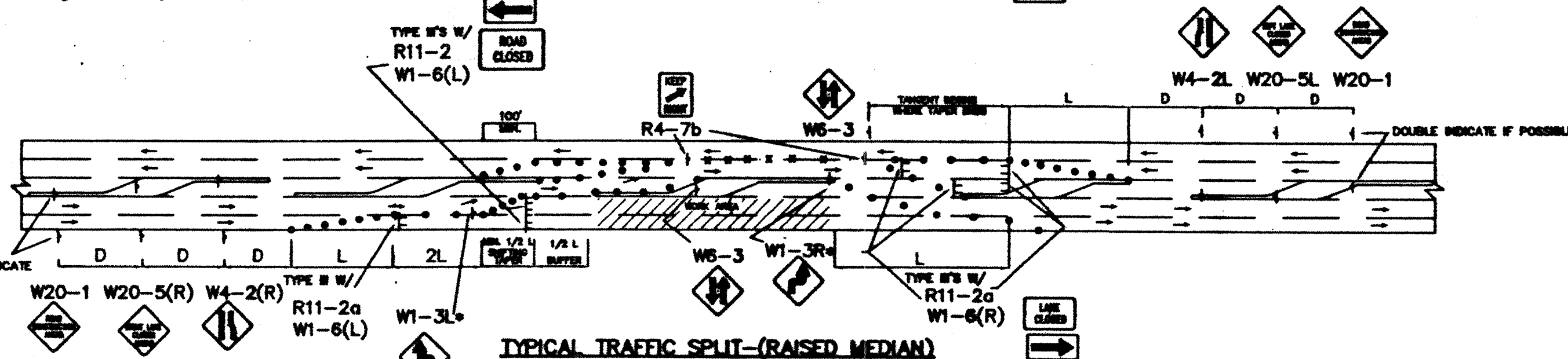
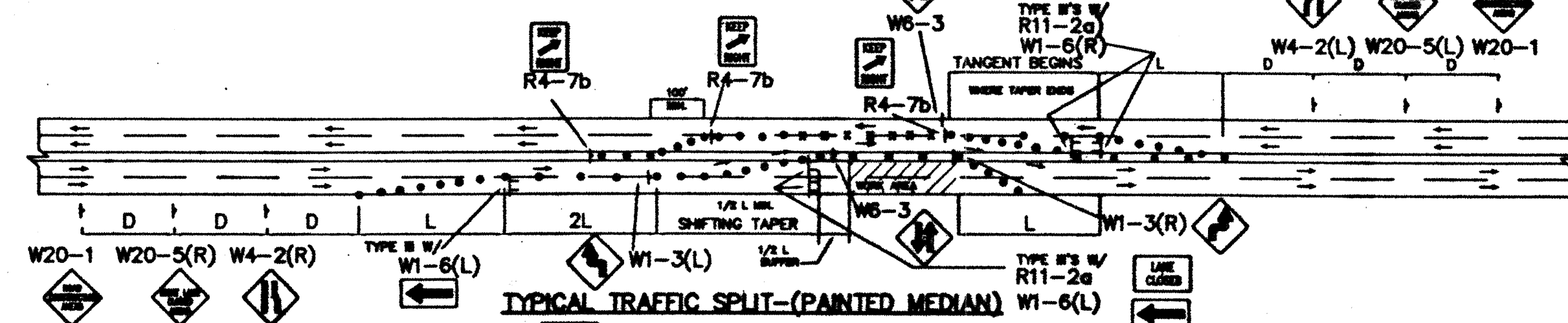
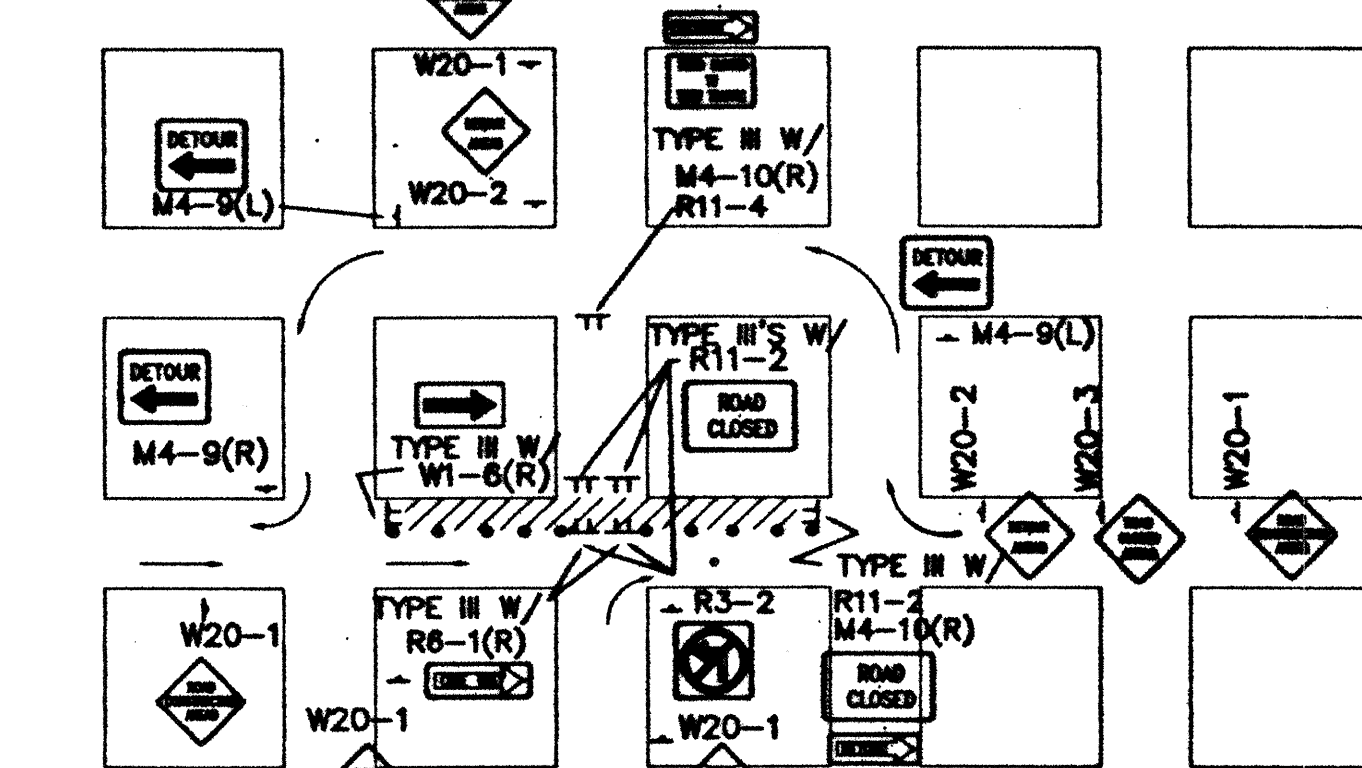
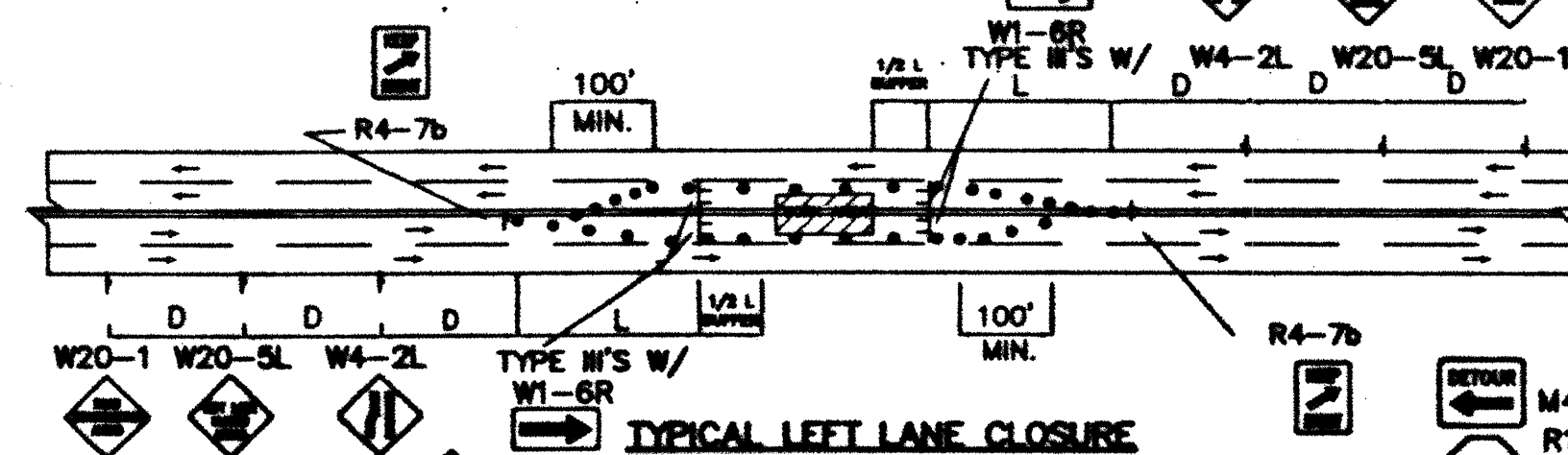


									No.	D	A						
										DESIGNED						DRAWN BY	
CITY OF ALBUQUERQUE PUBLIC WORKS DEPARTMENT																	
TITLE: TRUMBULL AVE. AND WILLIAM ST. SEWER IMPROVEMENTS GENERAL NOTES, LEGEND AND DETAILS																	
Design Review Committee			City Engineer Approval			Update		Mo./Day/Yr.		Mo./Day/Yr.							
DESIGN REVIEW COMMITTEE									CITY ENGINEER								
City Project No.						Zone Map		No.		Sheet		Of					
6163-91						L-14				2		5					

SCANNED BY
MESA REPRO

- 1998, 1999, 2000, 2001, 2002, 2003, 2004, 2005, 2006, 2007, 2008, 2009, 2010, 2011, 2012, 2013, 2014, 2015, 2016, 2017, 2018, 2019, 2020, 2021, 2022, 2023, 2024, 2025, 2026, 2027, 2028, 2029, 2030, 2031, 2032, 2033, 2034, 2035, 2036, 2037, 2038, 2039, 2040, 2041, 2042, 2043, 2044, 2045, 2046, 2047, 2048, 2049, 2050, 2051, 2052, 2053, 2054, 2055, 2056, 2057, 2058, 2059, 2060, 2061, 2062, 2063, 2064, 2065, 2066, 2067, 2068, 2069, 2070, 2071, 2072, 2073, 2074, 2075, 2076, 2077, 2078, 2079, 2080, 2081, 2082, 2083, 2084, 2085, 2086, 2087, 2088, 2089, 2090, 2091, 2092, 2093, 2094, 2095, 2096, 2097, 2098, 2099, 2100, 2101, 2102, 2103, 2104, 2105, 2106, 2107, 2108, 2109, 2110, 2111, 2112, 2113, 2114, 2115, 2116, 2117, 2118, 2119, 2120, 2121, 2122, 2123, 2124, 2125, 2126, 2127, 2128, 2129, 2130, 2131, 2132, 2133, 2134, 2135, 2136, 2137, 2138, 2139, 2140, 2141, 2142, 2143, 2144, 2145, 2146, 2147, 2148, 2149, 2150, 2151, 2152, 2153, 2154, 2155, 2156, 2157, 2158, 2159, 2160, 2161, 2162, 2163, 2164, 2165, 2166, 2167, 2168, 2169, 2170, 2171, 2172, 2173, 2174, 2175, 2176, 2177, 2178, 2179, 2180, 2181, 2182, 2183, 2184, 2185, 2186, 2187, 2188, 2189, 2190, 2191, 2192, 2193, 2194, 2195, 2196, 2197, 2198, 2199, 2200, 2201, 2202, 2203, 2204, 2205, 2206, 2207, 2208, 2209, 2210, 2211, 2212, 2213, 2214, 2215, 2216, 2217, 2218, 2219, 2220, 2221, 2222, 2223, 2224, 2225, 2226, 2227, 2228, 2229, 2230, 2231, 2232, 2233, 2234, 2235, 2236, 2237, 2238, 2239, 2240, 2241, 2242, 2243, 2244, 2245, 2246, 2247, 2248, 2249, 2250, 2251, 2252, 2253, 2254, 2255, 2256, 2257, 2258, 2259, 2260, 2261, 2262, 2263, 2264, 2265, 2266, 2267, 2268, 2269, 2270, 2271, 2272, 2273, 2274, 2275, 2276, 2277, 2278, 2279, 2280, 2281, 2282, 2283, 2284, 2285, 2286, 2287, 2288, 2289, 2290, 2291, 2292, 2293, 2294, 2295, 2296, 2297, 2298, 2299, 2300, 2301, 2302, 2303, 2304, 2305, 2306, 2307, 2308, 2309, 2310, 2311, 2312, 2313, 2314, 2315, 2316, 2317, 2318, 2319, 2320, 2321, 2322, 2323, 2324, 2325, 2326, 2327, 2328, 2329, 2330, 2331, 2332, 2333, 2334, 2335, 2336, 2337, 2338, 2339, 2340, 2341, 2342, 2343, 2344, 2345, 2346, 2347, 2348, 2349, 2350, 2351, 2352, 2353, 2354, 2355, 2356, 2357, 2358, 2359, 2360, 2361, 2362, 2363, 2364, 2365, 2366, 2367, 2368, 2369, 2370, 2371, 2372, 2373, 2374, 2375, 2376, 2377, 2378, 2379, 2380, 2381, 2382, 2383, 2384, 2385, 2386, 2387, 2388, 2389, 2390, 2391, 2392, 2393, 2394, 2395, 2396, 2397, 2398, 2399, 2400, 2401, 2402, 2403, 2404, 2405, 2406, 2407, 2408, 2409, 2410, 2411, 2412, 2413, 2414, 2415, 2416, 2417, 2418, 2419, 2420, 2421, 2422, 2423, 2424, 2425, 2426, 2427, 2428, 2429, 2430, 2431, 2432, 2433, 2434, 2435, 2436, 2437, 2438, 2439, 2440, 2441, 2442, 2443, 2444, 2445, 2446, 2447, 2448, 2449, 2450, 2451, 2452, 2453, 2454, 2455, 2456, 2457, 2458, 2459, 2460, 2461, 2462, 2463, 2464, 2465, 2466, 2467, 2468, 2469, 2470, 2471, 2472, 2473, 2474, 2475, 2476, 2477, 2478, 2479, 2480, 2481, 2482, 2483, 2484, 2485, 2486, 2487, 2488, 2489, 2490, 2491, 2492, 2493, 2494, 2495, 2496, 2497, 2498, 2499, 2500, 2501, 2502, 2503, 2504, 2505, 2506, 2507, 2508, 2509, 2510, 2511, 2512, 2513, 2514, 2515, 2516, 2517, 2518, 2519, 2520, 2521, 2522, 2523, 2524, 2525, 2526, 2527, 2528, 2529, 2530, 2531, 2532, 2533, 2534, 2535, 2536, 2537, 2538, 2539, 2540, 2541, 2542, 2543, 2544, 2545, 2546, 2547, 2548, 2549, 2550, 2551, 2552, 2553, 2554, 2555, 2556, 2557, 2558, 2559, 2560, 2561, 2562, 2563, 2564, 2565, 2566, 2567, 2568, 2569, 2570, 2571, 2572, 2573, 2574, 2575, 2576, 2577, 2578, 2579, 2580, 2581, 2582, 2583, 2584, 2585, 2586, 2587, 2588, 2589, 2590, 2591, 2592, 2593, 2594, 2595, 2596, 2597, 2598, 2599, 2600, 2601, 2602, 2603, 2604, 2605, 2606, 2607, 2608, 2609, 2610, 2611, 2612, 2613, 2614, 2615, 2616, 2617, 2618, 2619, 2620, 2621, 2622, 2623, 2624, 2625, 2626, 2627, 2628, 2629, 2630, 2631, 2632, 2633, 2634, 2635, 2636, 2637, 2638, 2639, 2640, 2641, 2642, 2643, 2644, 2645, 2646, 2647, 2648, 2649, 2650, 2651, 2652, 2653, 2654, 2655, 2656, 2657, 2658, 2659, 2660, 2661, 2662, 2663, 2664, 2665, 2666, 2667, 2668, 2669, 2670, 2671, 2672, 2673, 2674, 2675, 2676, 2677, 2678, 2679, 26


CITY OF ALBUQUERQUE PUBLIC WORKS DEPARTMENT ENGINEERING DEVELOPMENT GROUP															
TITLE: TRUMBULL AVE. AND WILLIAM ST. SEWER IMPROVEMENTS SIGNING AND CONSTRUCTION TRAFFIC CONTROL STANDARDS															
DESIGN REVIEW COMMITTEE	CITY ENGINEER APPROVAL	<table border="1" style="width: 100%; border-collapse: collapse;"> <tr> <td style="width: 50%; padding: 5px;">MO./DAY/YR.</td> <td style="width: 50%; padding: 5px;">MO./DAY/YR.</td> </tr> <tr><td style="height: 20px;"></td><td></td></tr> <tr><td style="height: 20px;"></td><td></td></tr> <tr><td style="height: 20px;"></td><td></td></tr> <tr><td style="height: 20px;"></td><td></td></tr> <tr><td style="height: 20px;"></td><td></td></tr> </table>		MO./DAY/YR.	MO./DAY/YR.										
MO./DAY/YR.	MO./DAY/YR.														
		<table border="1" style="width: 100%; border-collapse: collapse;"> <tr> <td style="width: 50%; padding: 5px;">LAST UPDATE</td> <td style="width: 50%;"></td> </tr> <tr><td style="height: 20px;"></td><td></td></tr> <tr><td style="height: 20px;"></td><td></td></tr> <tr><td style="height: 20px;"></td><td></td></tr> <tr><td style="height: 20px;"></td><td></td></tr> <tr><td style="height: 20px;"></td><td></td></tr> </table>		LAST UPDATE											
LAST UPDATE															
PROJECT NO.	MAP NO.	SHEET 4 OF 5													



GENERAL NOTE:

ALL CONSTRUCTION WARNING SIGNS SHALL HAVE A BLACK LEGEND ON A ORANGE BACKGROUND.

ALL ADVANCE WARNING SIGNS SHALL BE A MINIMUM OF 36" THIRTY SIX INCHES BY 36" THIRTY SIX INCHES IN SIZE AND SHALL HAVE ONE WARNING LIGHT.

[illegible]