

CONSTRUCTION PLANS FOR  
CITY WIDE ON-CALL  
BUS STOP IMPROVEMENTS  
2011D

ALBUQUERQUE, NEW MEXICO  
COA PROJECT NO. 6239.00



INDEX

SHEET NUMBER	DRAWING NUMBER	DESCRIPTION
1	G101	COVER SHEET
2	C101	CIVIL LAYOUT
3	C102	CIVIL LAYOUT
4	S101	STRUCTURAL FRAMING & FOUNDATION PLAN
5	S102	STRUCTURAL ELEVATIONS
6	S103	STRUCTURAL DETAILS
7	E101	ELECTRICAL DETAILS



NOTICE TO CONTRACTORS

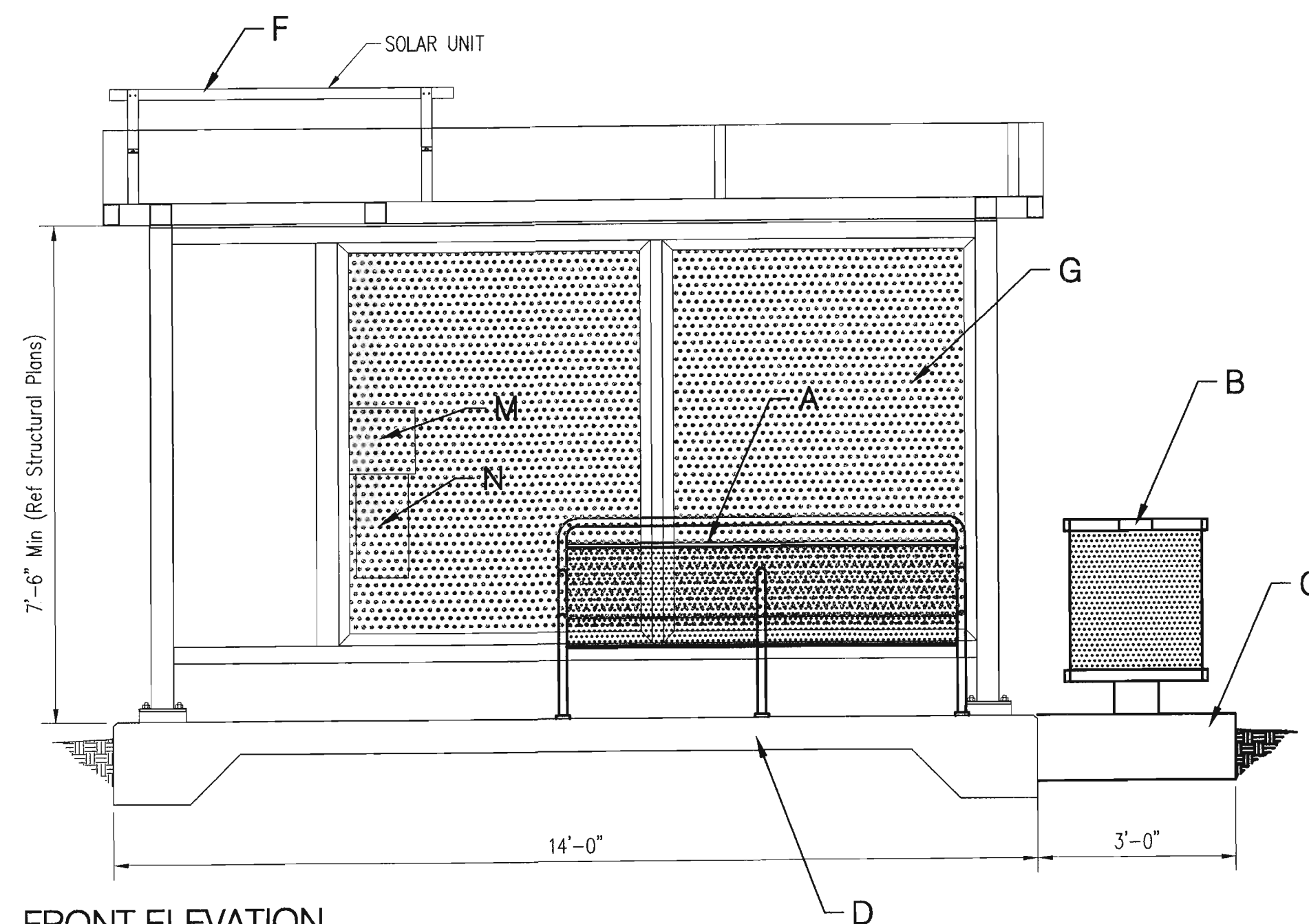
1. AN EXCAVATION/CONSTRUCTION PERMIT WILL BE REQUIRED BEFORE BEGINNING ANY WORK WITHIN THE PROJECT LIMITS.
2. ALL WORK DETAILED ON THESE PLANS TO BE PERFORMED UNDER CONTRACT SHALL, EXCEPT AS OTHERWISE STATED OR PROVIDED FOR HEREON, BE CONSTRUCTED IN ACCORDANCE WITH THE CITY OF ALBUQUERQUE STANDARD SPECIFICATIONS FOR PUBLIC WORKS CONSTRUCTION, 1986 EDITION AS REVISED THROUGH UPDATE #7, INCLUDING AMENDMENT #1.
3. TWO WORKING DAYS PRIOR TO ANY EXCAVATION, THE CONTRACTOR MUST CONTACT NEW MEXICO ONE CALL SYSTEM (260-1990) FOR LOCATION OF EXISTING UTILITIES.
4. PRIOR TO CONSTRUCTION, THE CONTRACTOR SHALL EXCAVATE AND VERIFY THE HORIZONTAL AND VERTICAL LOCATIONS OF ALL OBSTRUCTIONS, SHOULD A CONFLICT EXIST. THE CONTRACTOR SHALL NOTIFY THE ENGINEER IMMEDIATELY SO THAT THE CONFLICT CAN BE RESOLVED WITH A MINIMUM AMOUNT OF DELAY.
5. SEVEN (7) WORKING DAYS PRIOR TO BEGINNING CONSTRUCTION, THE CONTRACTOR SHALL SUBMIT TO CONSTRUCTION COORDINATION DIVISION A DETAILED CONSTRUCTION SCHEDULE. TWO (2) WORKING DAYS PRIOR TO THE START OF CONSTRUCTION, THE CONTRACTOR SHALL OBTAIN A BARRICADING PERMIT FROM THE CONSTRUCTION COORDINATION DIVISION. CONTRACTOR SHALL NOTIFY THE CONSTRUCTION COORDINATION ENGINEER (924-3400) PRIOR TO OCCUPYING AN INTERSECTION. REFER TO SECTION 19 OF THE GENERAL CONDITIONS OF THE STANDARD SPECIFICATIONS.
6. ALL WORK AFFECTING ARTERIAL ROADWAYS REQUIRES TWENTY-FOUR HOUR CONSTRUCTION.
7. ALL STREET STRIPING ALTERED OR DESTROYED SHALL BE REPLACED WITH PLASTIC REFLECTORIZED PAVEMENT MARKING BY CONTRACTOR TO THE SAME LOCATION AS WAS EXISTING, OR AS INDICATED BY THIS PLAN SET.
8. CONTRACTOR SHALL NOTIFY THE ENGINEER NOT LESS THAN SEVEN (7) DAYS PRIOR TO STARTING WORK IN ORDER THAT THE CITY SURVEYOR MAY TAKE NECESSARY MEASURES TO INSURE THE PRESERVATION OF SURVEY MONUMENTS. CONTRACTOR SHALL NOT DISTURB PERMANENT SURVEY MONUMENTS WITHOUT THE CONSENT OF THE CITY SURVEYOR AND SHALL NOTIFY THE CITY SURVEYOR AND BEAR THE EXPENSE OF REPLACING ANY THAT MAY BE DISTURBED WITHOUT PERMISSION. REPLACEMENT SHALL BE DONE ONLY BY THE CITY SURVEYOR. WHEN A CHANGE IS MADE IN THE FINISHED ELEVATIONS OF THE PAVEMENT OF ANY ROADWAY IN WHICH A PERMANENT SURVEY MONUMENT IS LOCATED, CONTRACTOR SHALL, AT HIS OWN EXPENSE, ADJUST THE MONUMENT COVER TO THE NEW GRADE UNLESS OTHERWISE SPECIFIED. REFER TO SECTION 4.4 OF THE GENERAL CONDITIONS OF THE STANDARD SPECIFICATIONS.
9. CONTRACTOR SHALL RECORD DATA ON ALL UTILITY LINES AND ACCESSORIES AS REQUIRED BY THE CITY OF ALBUQUERQUE FOR THE PREPARATION OF "AS CONSTRUCTED" DRAWINGS. CONTRACTOR SHALL NOT COVER UTILITY LINES AND ACCESSORIES UNTIL ALL DATA HAS BEEN RECORDED.
10. CONTRACTOR SHALL MAINTAIN A GRAFFITI-FREE WORK SITE. CONTRACTOR SHALL PROMPTLY REMOVE ANY GRAFFITI FROM ALL EQUIPMENT, WHETHER PERMANENT OR TEMPORARY.
11. CONTRACTOR SHALL COORDINATE WITH THE WATER UTILITY AUTHORITY (857-8200) SEVEN (7) WORKING DAYS IN ADVANCE OF ANY WORK THAT MAY AFFECT EXISTING PUBLIC WATER OR SEWER UTILITIES. EXISTING VALVES TO BE OPERATED BY WATER UTILITY AUTHORITY PERSONNEL ONLY. CONTRACTOR SHALL CONTACT THE WATER SYSTEMS DIVISION SEVEN (7) WORKING DAYS PRIOR TO NEEDING VALVES TURNED ON OR OFF.
12. CONTRACTOR SHALL BE RESPONSIBLE FOR PROVIDING AND MAINTAINING ALL CONSTRUCTION SIGNING UNTIL PROJECT HAS BEEN ACCEPTED BY THE CITY AND NMDOT.

THE FOLLOWING NOTES ALSO APPLY WHEN CHECKED

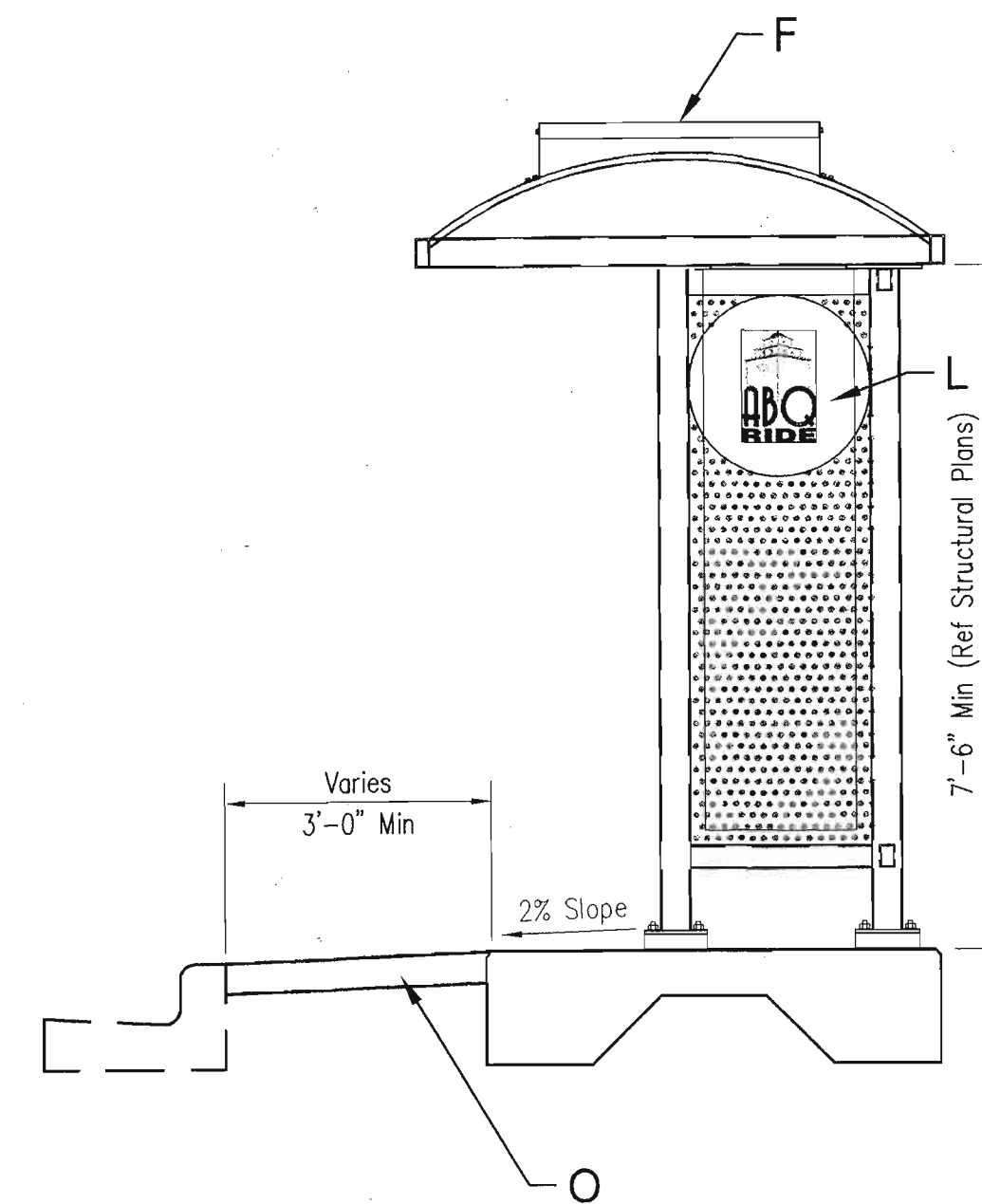
- ☒ ALL UTILITIES AND UTILITY SERVICE LINES SHALL BE INSTALLED PRIOR TO PAVING.
- ☒ BACKFILL COMPACTION SHALL BE ACCORDING TO SPECIFIED STREET USE.
- ☒ TACK COAT REQUIREMENTS SHALL BE DETERMINED BY THE ENGINEER.
- ☒ SIDEWALKS AND WHEELCHAIR RAMPS WITHIN THE CURB RETURNS SHALL BE CONSTRUCTED WHEREVER A NEW CURB IS CONSTRUCTED.
- ☒ IF CURB IS DEPRESSIONED FOR A DRIVEPAD, THE DRIVEPAD SHALL BE CONSTRUCTED PRIOR TO ACCEPTANCE OF CURB AND GUTTER.
- ☒ ALL STORM DRAINAGE FACILITIES SHALL BE COMPLETED PRIOR TO FINAL ACCEPTANCE.
- ☒ THE REQUESTOR OR DEVELOPER SHALL BE RESPONSIBLE FOR REPAIR OR REPLACEMENT OF ALL CURB AND GUTTER OR SIDEWALK DAMAGED AFTER APPROVAL BY THE CITY ENGINEER OF WORK COMPLETED BY THE CONTRACTOR.

REV.		SHEETS		CITY ENGINEER		DATE		USER DEPARTMENT		DATE		USER DEPARTMENT		DATE	
ENGINEERS STAMP & SIGNATURE		APPROVALS		ENGINEER		DATE		*****		*****		*****		*****	
		DRC Chairman		11/9/11		11/9/11		APPROVED FOR CONSTRUCTION		APPROVED FOR CONSTRUCTION		APPROVED FOR CONSTRUCTION		APPROVED FOR CONSTRUCTION	
		Transportation		11/9/11		11/9/11		APPROVED FOR CONSTRUCTION		APPROVED FOR CONSTRUCTION		APPROVED FOR CONSTRUCTION		APPROVED FOR CONSTRUCTION	
		Water/Wastewater		11/9/11		11/9/11		APPROVED FOR CONSTRUCTION		APPROVED FOR CONSTRUCTION		APPROVED FOR CONSTRUCTION		APPROVED FOR CONSTRUCTION	
		Hydrology		11/9/11		11/9/11		APPROVED FOR CONSTRUCTION		APPROVED FOR CONSTRUCTION		APPROVED FOR CONSTRUCTION		APPROVED FOR CONSTRUCTION	
		Parks		11/9/11		11/9/11		APPROVED FOR CONSTRUCTION		APPROVED FOR CONSTRUCTION		APPROVED FOR CONSTRUCTION		APPROVED FOR CONSTRUCTION	
Const. Mngmt.		11/9/11		11/9/11		11/9/11		APPROVED FOR CONSTRUCTION		APPROVED FOR CONSTRUCTION		APPROVED FOR CONSTRUCTION		APPROVED FOR CONSTRUCTION	
Envir. Health		11/9/11		11/9/11		11/9/11		APPROVED FOR CONSTRUCTION		APPROVED FOR CONSTRUCTION		APPROVED FOR CONSTRUCTION		APPROVED FOR CONSTRUCTION	
City Project No.		6239.00		6239.00		6239.00		6239.00		6239.00		6239.00		6239.00	
Sheet		G101		1		7		Sheet		G101		1		7	

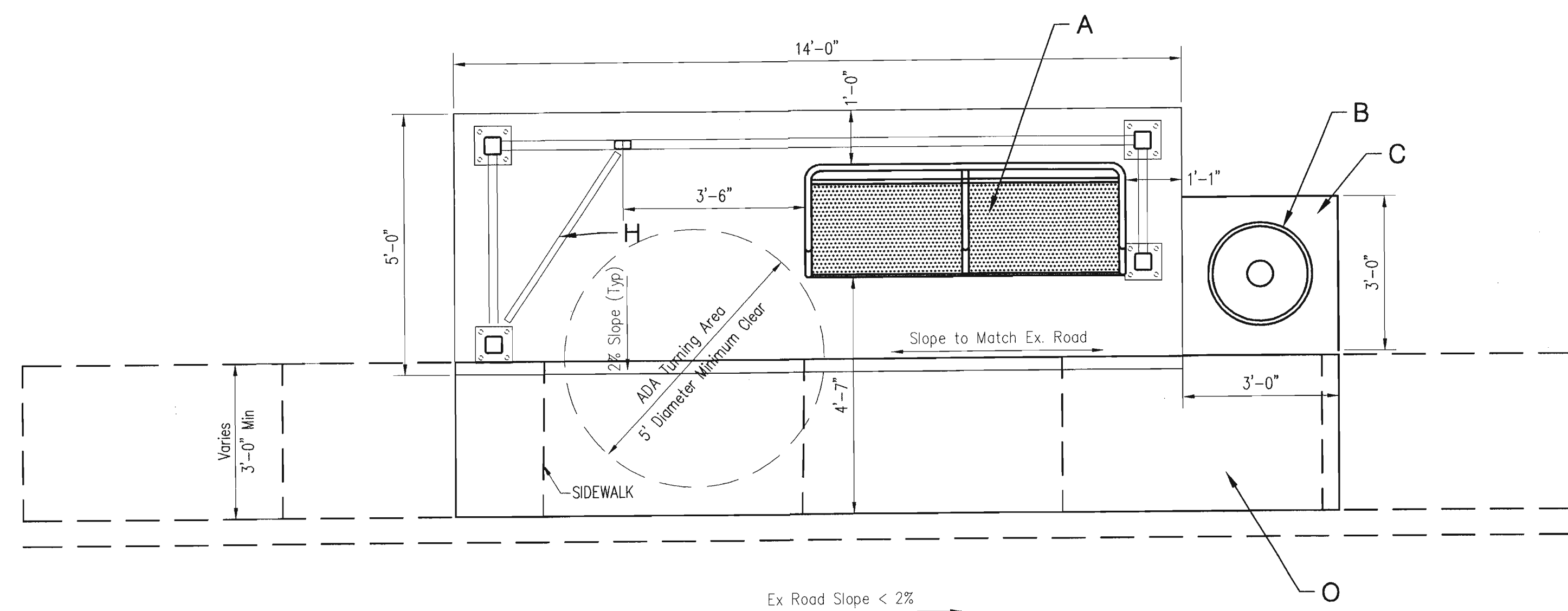




Scale: 1/2" = 1'-0"



SIDE ELEVATION



PLAN VIEW

GENERAL NOTES

1. CONTRACTOR SHALL VISIT ALL SELECTED BUS SHELTER SITES AND VERIFY THAT THE PROPOSED DIMENSIONS COORDINATE WITH ACTUAL FIELD CONDITIONS. ANY DISCREPANCIES SHALL BE BROUGHT TO THE OWNER'S ATTENTION IMMEDIATELY.
2. THE SLOPE ALONG THE ADJACENT ROADWAY AND SIDEWALK SHALL NOT EXCEED 2%. IN THE EVENT THE SLOPE DOES EXCEED 2%, NOTIFY THE OWNER'S REPRESENTATIVE IMMEDIATELY, SO THAT A SITE SPECIFIC DESIGN CAN BE PREPARED.
3. CONTRACTOR SHALL FURNISH SHOP DRAWINGS FOR REVIEW AND APPROVAL PRIOR TO ANY FABRICATION BEING STARTED. SHOP DRAWINGS SHALL BE PROVIDED FOR ALL FABRICATED ITEMS INCLUDING SIGNAGE, PRECAST ITEMS, LIGHTING FIXTURES, METAL WINDSCREENS, ADVERTISING PANELS, TRASH CAN (AS REQUIRED), AND BENCHES.
4. ALL COLORED FINISHED SURFACES SHALL BE PRIMER COATED AND TREATED WITH AN ANTI-GRAFFITI COATING PER MANUFACTURER'S RECOMMENDATION.
5. COLORS FOR GRAPHICS AND FINISHES SHALL BE SELECTED FROM MANUFACTURER'S STANDARD COLOR SELECTION AND SUBMITTED ON A 12" BY 12" SQUARE SAMPLE TO THE OWNER FOR APPROVAL.

CONSTRUCTION NOTES

FIELD NOTES		BENCH MARKS	AS-BUILT INFORMATION
NO.	BY DATE		
			CONTRACTOR
			WORKED BY
			STARTED BY
			DATE
			ACCEPTANCE BY
			DATE
			TESTIFICATION BY
			DATE
			DRAWINGS
			CORRECTED BY
			DATE
			MICRO-FILM INFORMATION
			RECORDED BY
			DATE
			NO.
			DATE

ENGINEER'S SEAL



[illegible]**Bohannon  Huston INC.**

Courtyard I 7500 Jefferson St. NE Albuquerque, NM 87109-4335  
ENGINEERING • SPATIAL DATA • ADVANCED TECHNOLOGIES



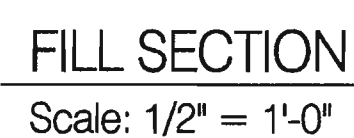
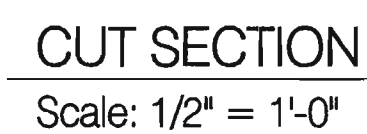
**CITY OF ALBUQUERQUE**  
**DEPARTMENT OF**  
**MUNICIPAL DEVELOPMENT**

ARRA BUS SHELTERS  
SHELTER SITE PLAN & ELEVATIONS

DESIGN REVIEW COMMITTEE	CITY ENGINEER APPROVAL		MO./DAY/YR.	MO./DAY/YR.
		LAST DESIGN UPDATE		

CITY PROJECT NO.	6239.00	ZONE MAP NO.	SHEET	OF	
			C101	2	7





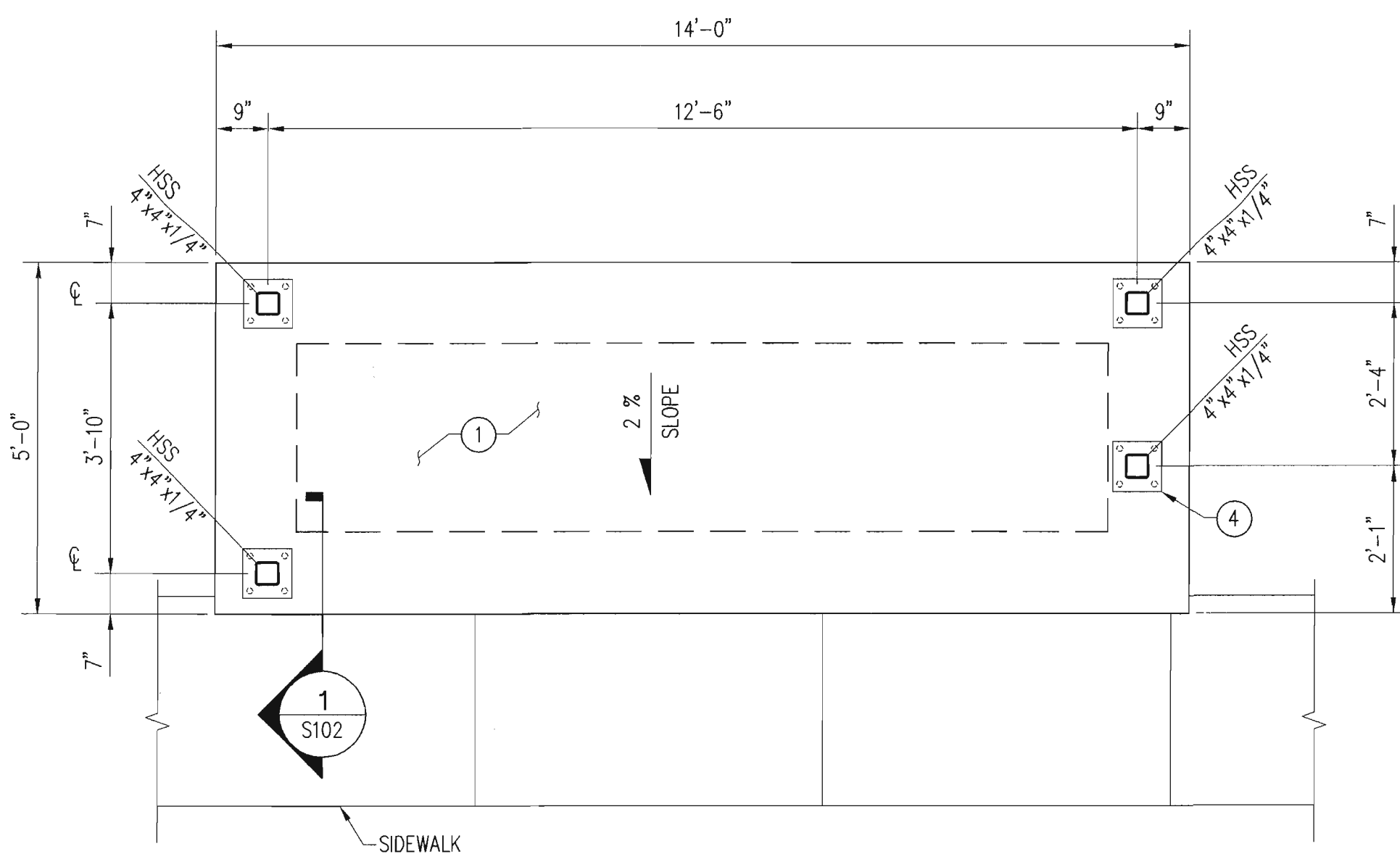
### 6' BUS SHELTER BENCH

Scale: 1/2" = 1'-0"

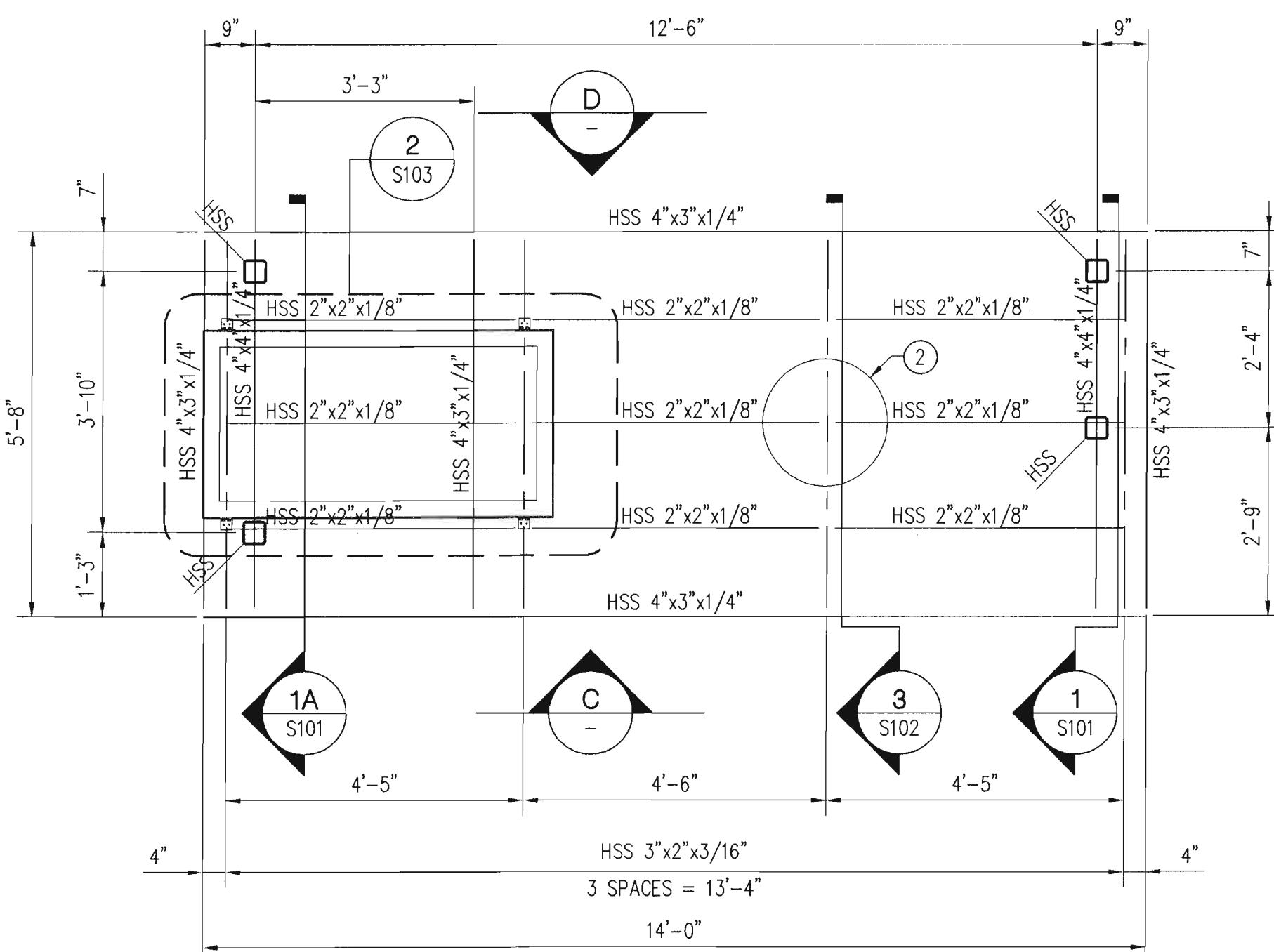
- NOTE: ALL POWDER COATED FINISHES SHALL BE TREATED WITH AN ANTI GRAFFITI COATING PER MANUFACTURER'S RECOMMENDATIONS.

[illegible]

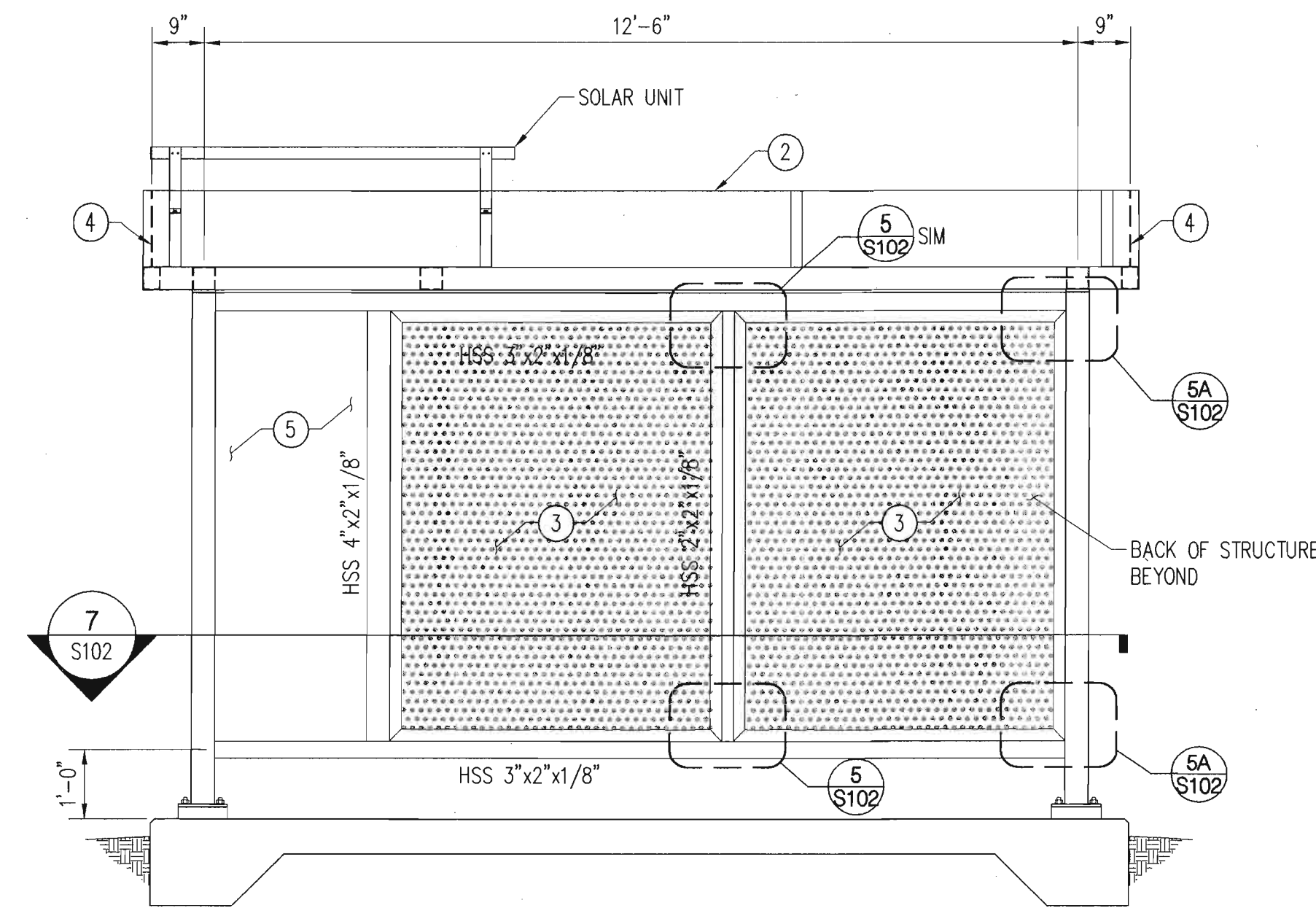




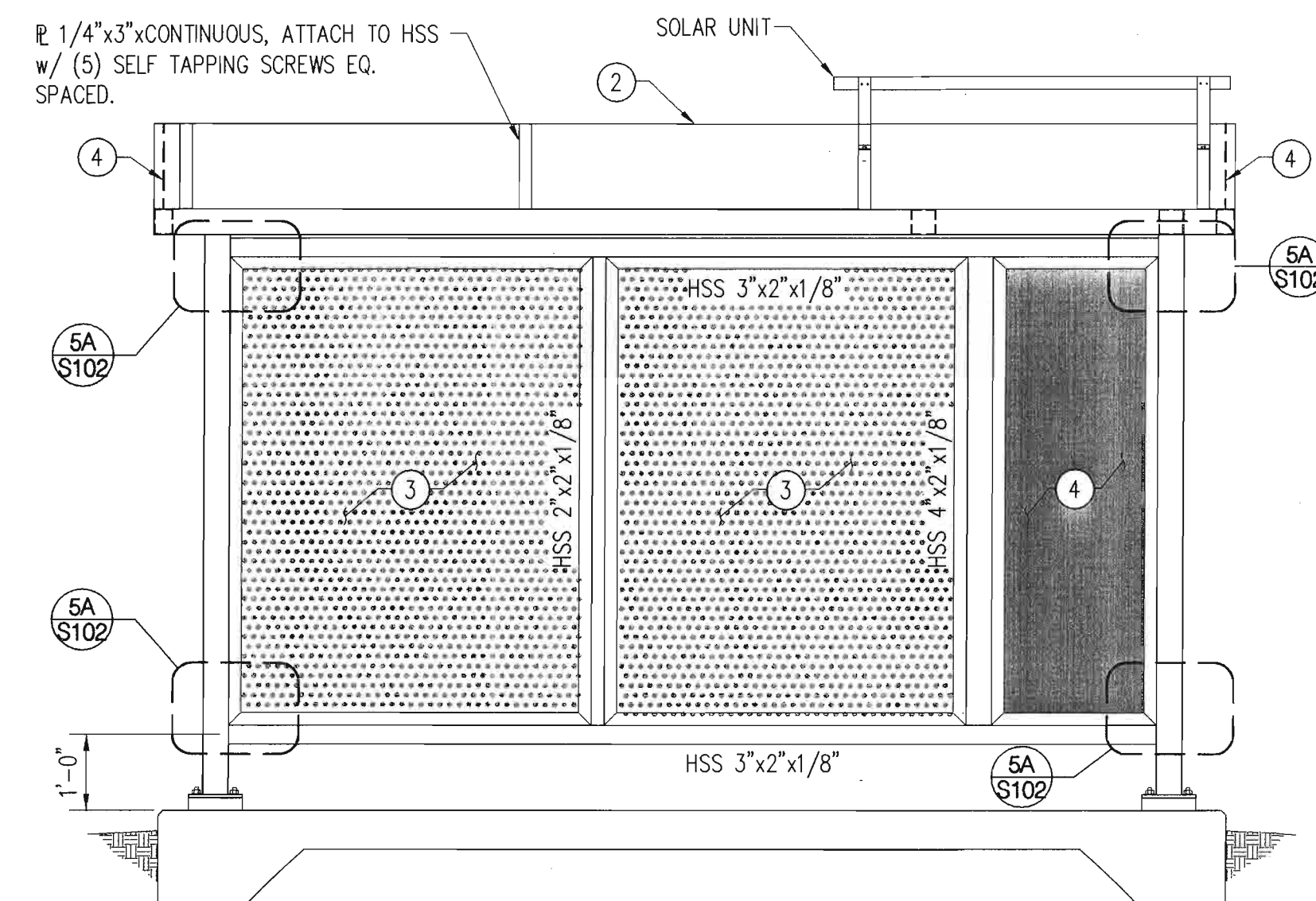
**A FOUNDATION PLAN**  
SCALE: 1/2" = 1'-0"



**B FRAMING PLAN**  
SCALE: 1/2" = 1'-0"



**C FRONT ELEVATION**  
SCALE: 1/2" = 1'-0"



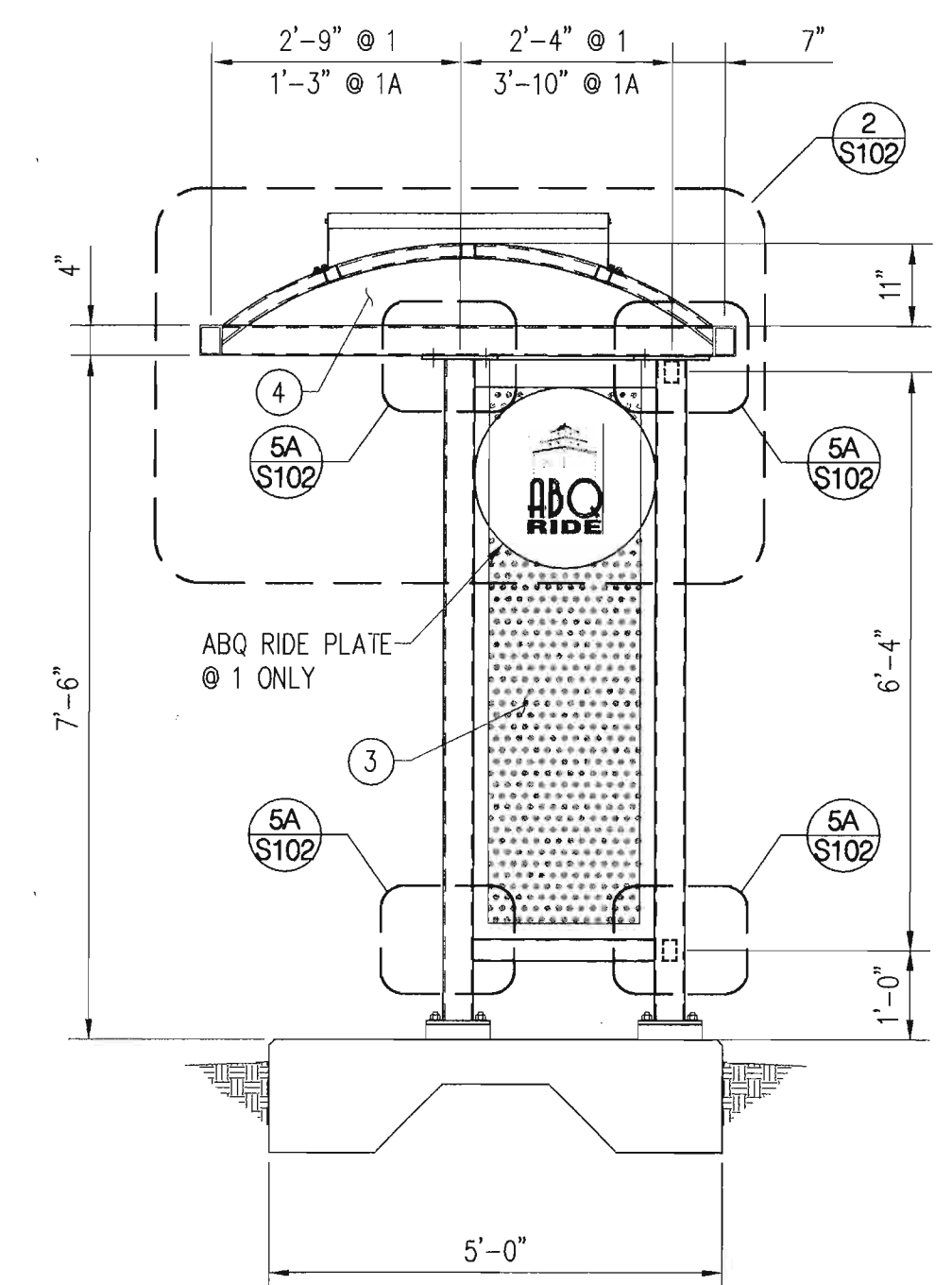
**D BACK ELEVATION**  
SCALE: 1/2" = 1'-0"

**KEYED NOTES**

- 6" SLAB ON GRADE w/ #4 @ 18" O.C. EACH WAY.
- 11 ga. SHEET METAL, GRADE 36.
- 16 GA. PERFORATED STEEL PLATE w/ R 1/4"x2" CONT. AROUND PERIMETER.
- 1/4" STEEL PLATE.
- 48" AD POSTER, SEE 1/S103.

**GENERAL SHEET NOTES**

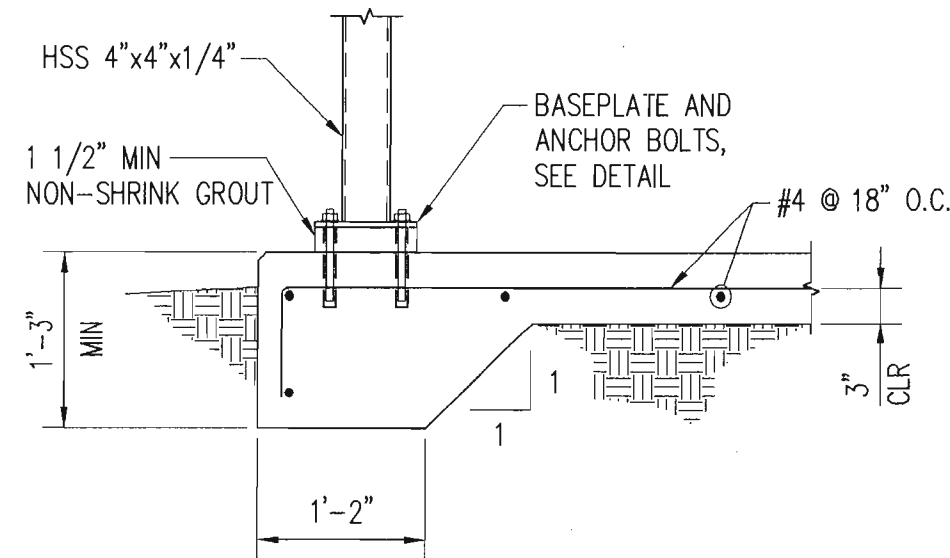
- ALL HSS SHALL BE ASTM A300 GRADE B.
- ALL SHEET METAL SHALL BE ASTM A36.
- ALL BOLTS SHALL BE STAINLESS STEEL.



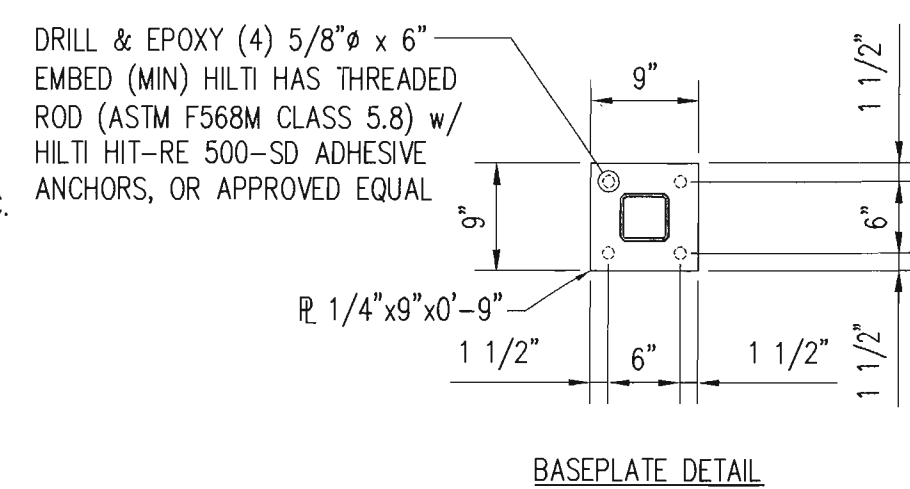
**SECTION**  
SCALE: 1/2" = 1'-0"

<b>Bohannon &amp; Huston</b> Courtyard 1 7800 Jefferson St. NE Albuquerque, NM 87109-4335 ENGINEERING • SPATIAL DATA • ADVANCED TECHNOLOGIES		<b>CITY OF ALBUQUERQUE</b> DEPARTMENT OF MUNICIPAL DEVELOPMENT	
ARRA BUS SHELTERS FRAMING & FOUNDATION PLAN			
DESIGN REVIEW COMMITTEE APPROVED NOV 09 2011 DESIGN REVIEW COMMITTEE	CITY ENGINEER APPROVAL APPROVED NOV 09 2011 CITY ENGINEER	MO./DAY/YR. MO./DAY/YR.	LAST DESIGN UPDATE
CITY PROJECT NO.	6239.00	ZONE MAP NO.	SHEET 101 OF 4
DESIGNED BY: JAW		DATE: _____	
DRAWN BY: DKS		DATE: _____	
CHECKED BY: SMW		DATE: _____	

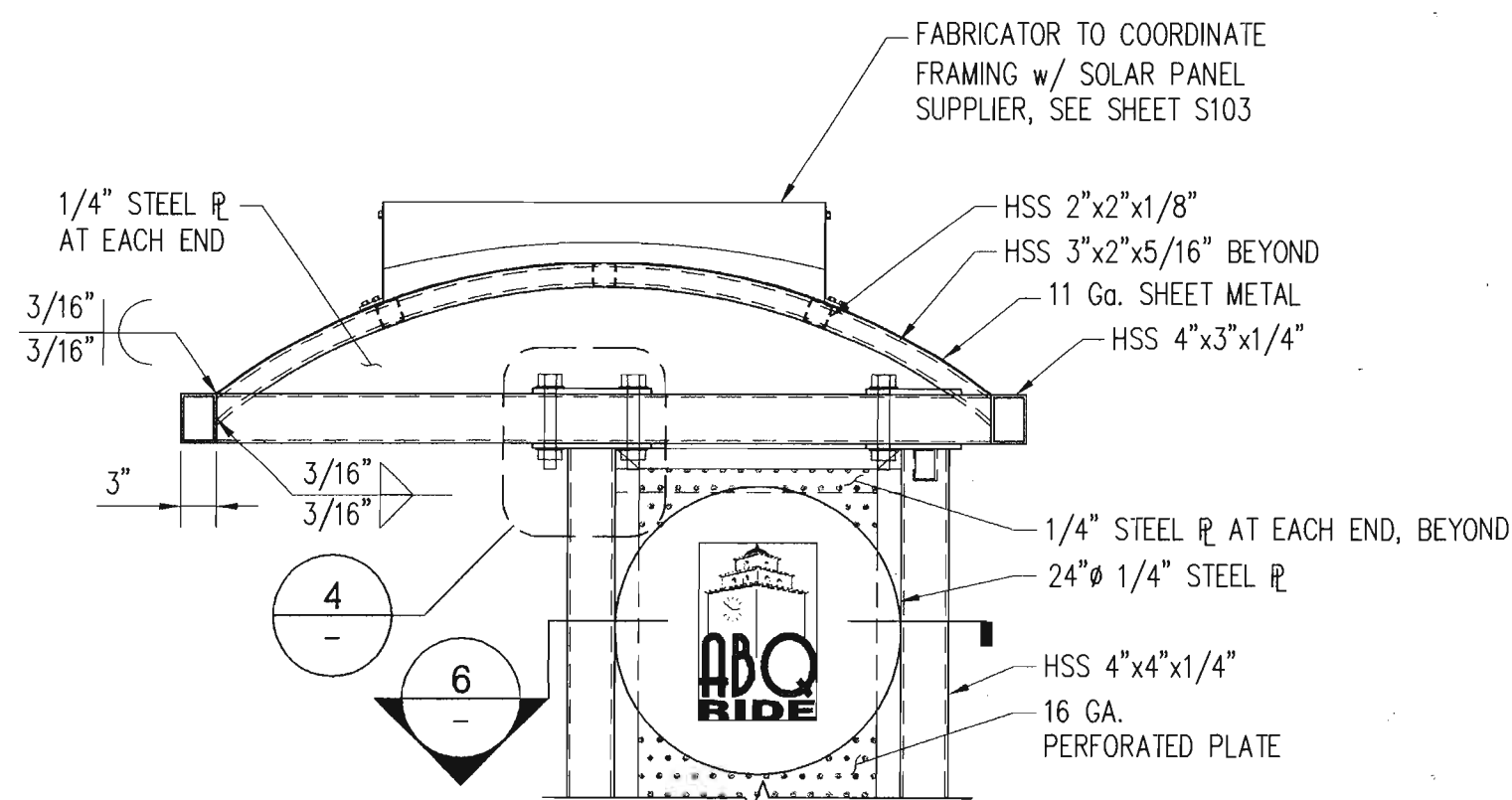




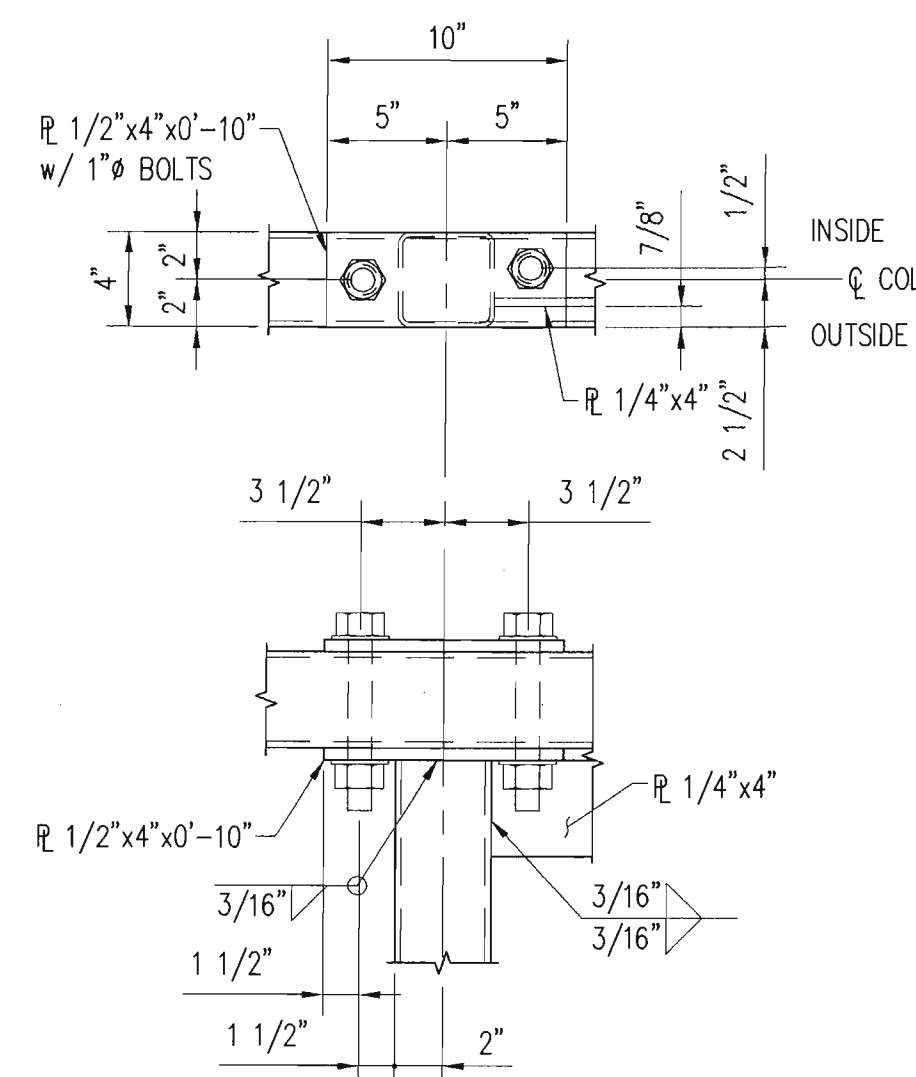
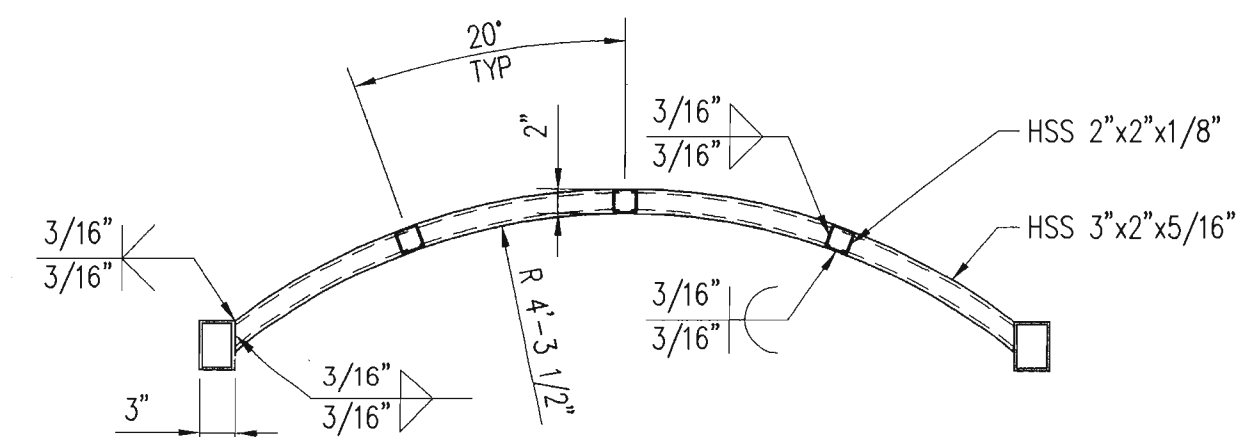
SECTION 1 S102



SECTION 2 S102

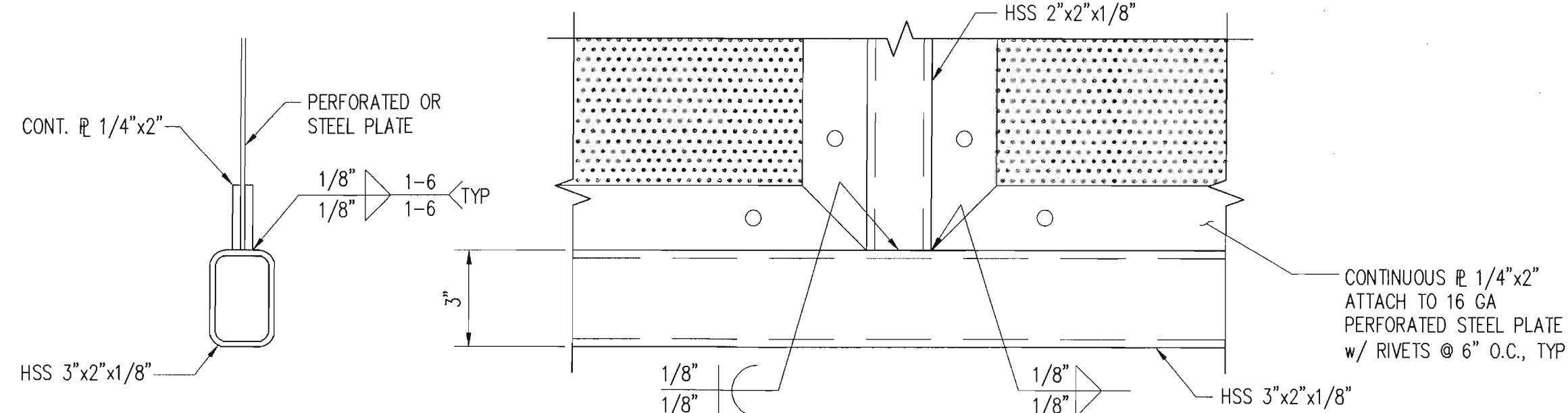


SECTION 3 S102

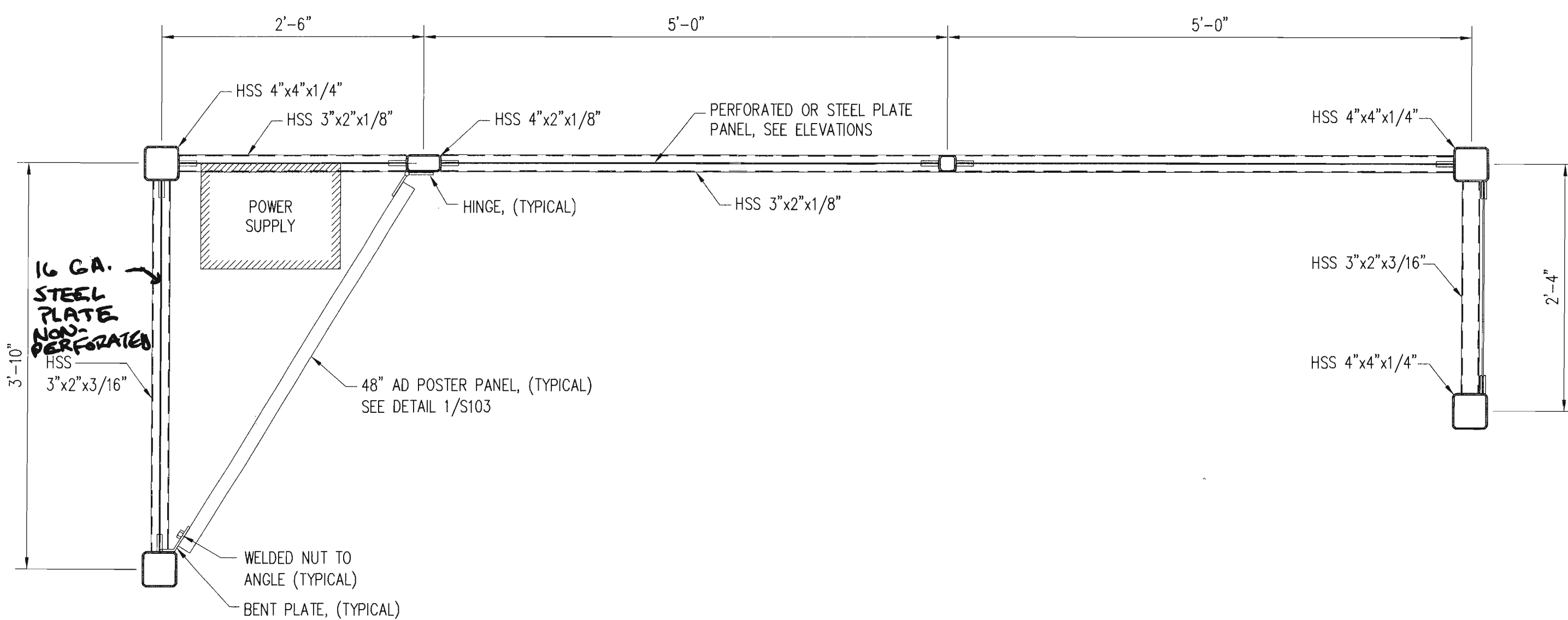
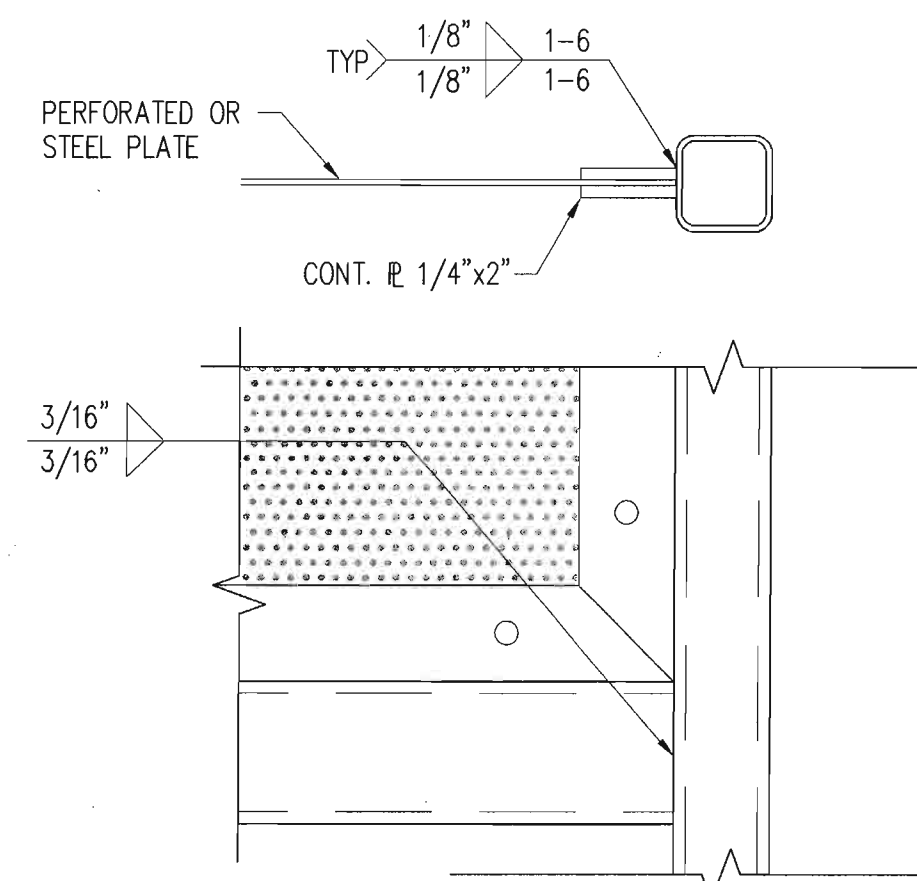


DETAIL 4 S102

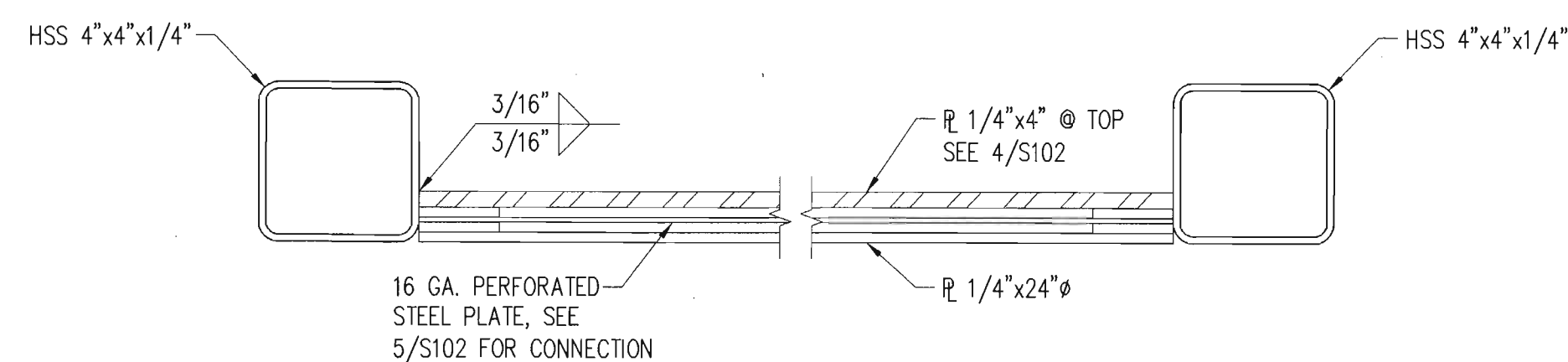
TYPICAL PERFORATED STEEL CONNECTION DETAIL 5 S102



TYPICAL PERFORATED STEEL CONNECTION DETAIL 6A S102



DETAIL 7 S102



SECTION 6 S102

Bohannon & Huston

Courtyard I 7600 Jefferson St. NE Albuquerque, NM 87109-4335

ENGINEERING • SPATIAL DATA • ADVANCED TECHNOLOGIES

CITY OF ALBUQUERQUE

DEPARTMENT OF MUNICIPAL DEVELOPMENT

ARRA BUS SHELTERS

SECTIONS AND DETAILS

DESIGN REVIEW COMMITTEE

APPROVED

NOV 09 2011

DESIGN REVIEW COMMITTEE

CITY ENGINEER APPROVAL

APPROVED

NOV 09 2011

CITY ENGINEER

DESIGNED BY: AJW

DRAWN BY: DKS

CHECKED BY: SMW

NO. DATE

REVISIONS

DESIGN

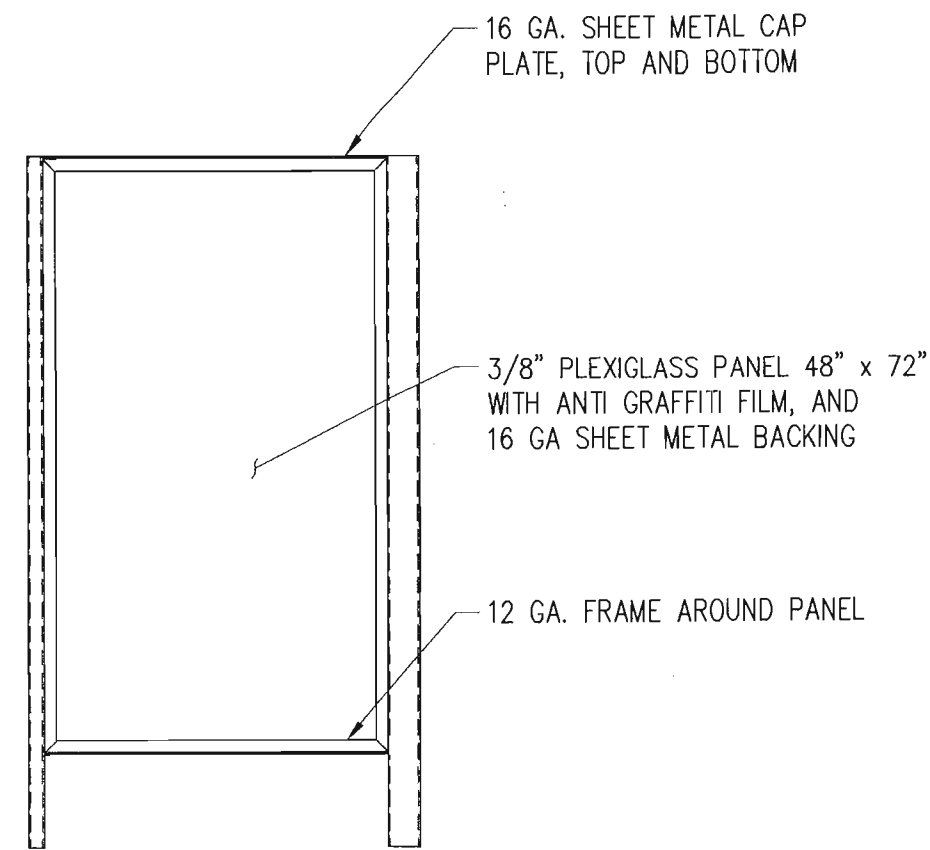
MO./DAY/YR.

MO./DAY/YR.

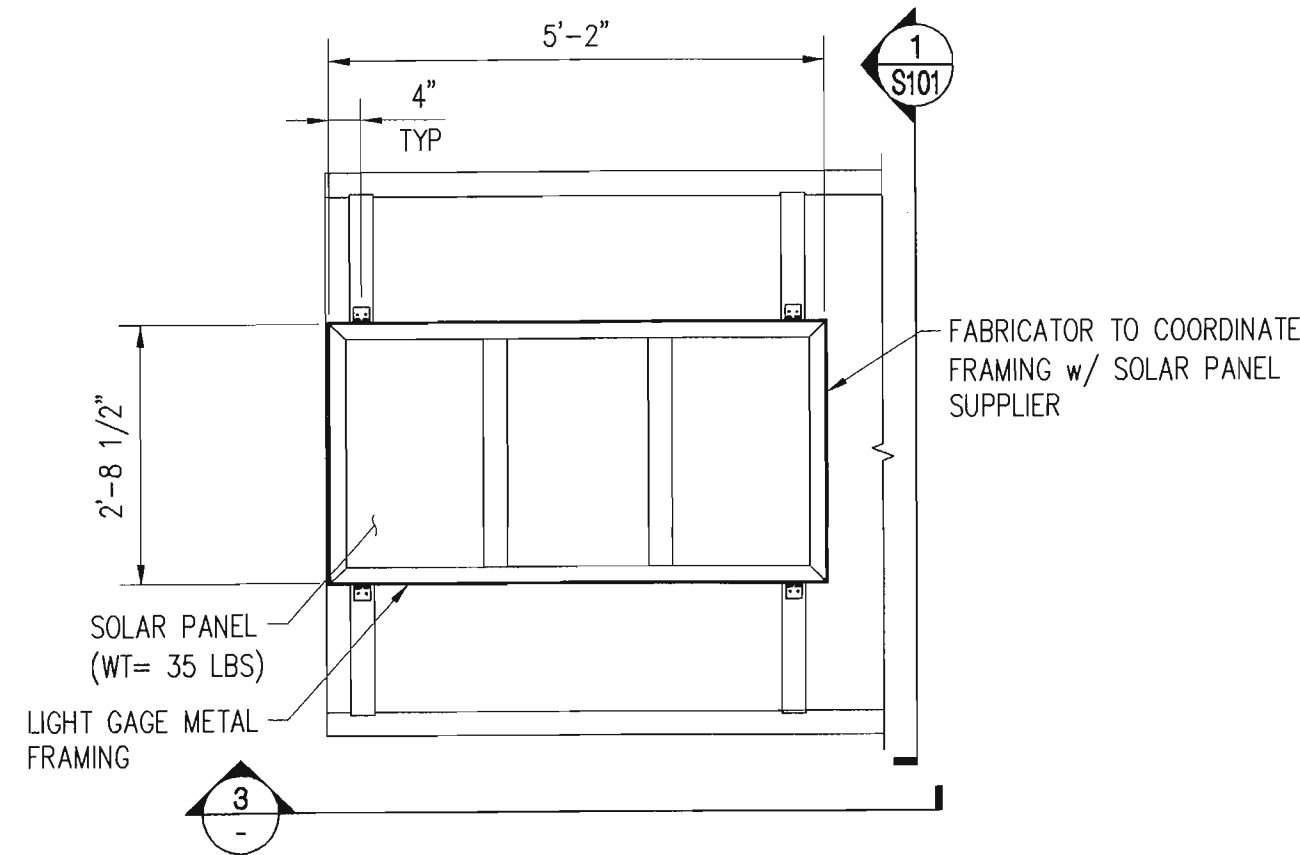
CITY PROJECT NO. 6239.00

ZONE MAP NO.

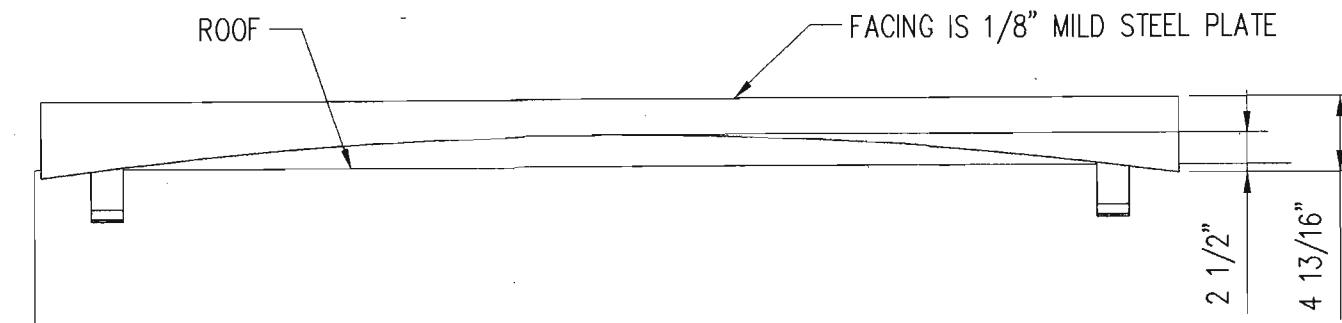
SHEET 5 OF 7



1 AD PANEL DETAIL

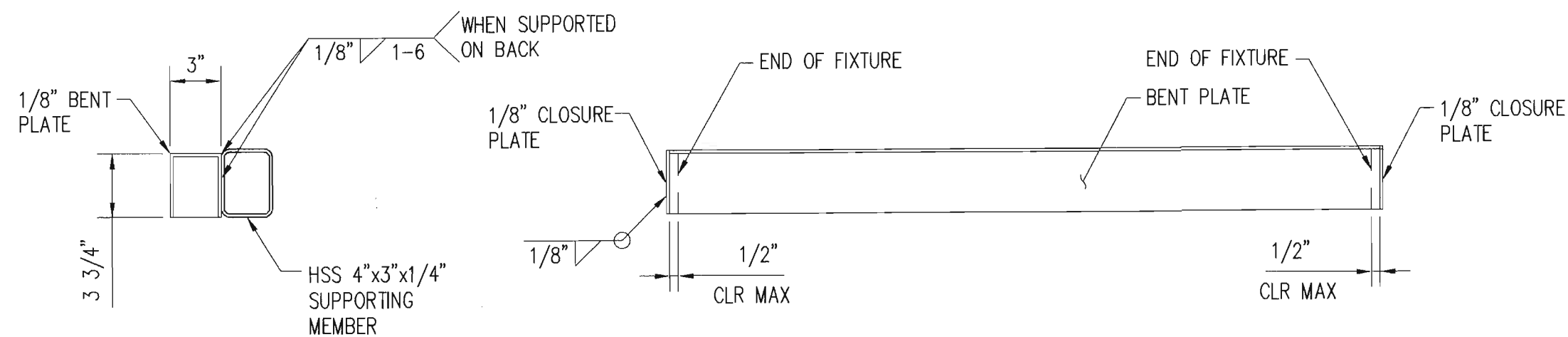


2 DETAIL



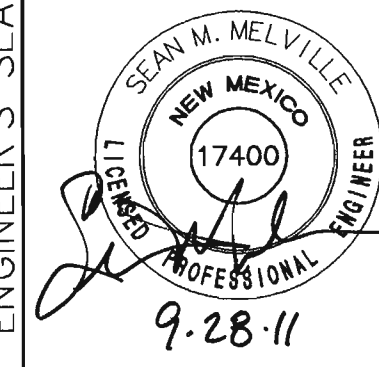
NOTE:  
SOLAR PANEL FRAME IS MOUNTED TO HSS 3x2x1/4  
CURVED SECTIONS WITH (8) 1/4" x 1" SELF TAPPING  
TAMPER-PROOF SCREWS (2 SCREWS PER BRACKET)

3 DETAIL



4 LIGHT FIXTURE DETAIL

AS-BUILT INFORMATION		BENCH MARKS		SURVEY INFORMATION		ENGINEER'S SEAL		REVISIONS		DESIGN		DATE	
CONTRACTOR	DATE	NO.	DATE	NO.	DATE	NO.	DATE	NO.	DATE	NO.	DATE	NO.	DATE
STAKED BY	DATE												
INSPECTOR'S	DATE												
FIELD	DATE												
VERIFICATION BY	DATE												
CORRECTED BY	DATE												
MICRO-FILM INFORMATION													
RECORDED BY	DATE												
NO.	DATE												



**Bohannon & Huston**  
 Courtyard I 7500 Jefferson St. NE Albuquerque, NM 87109-4335  
 ENGINEERING • SPATIAL DATA • ADVANCED TECHNOLOGIES

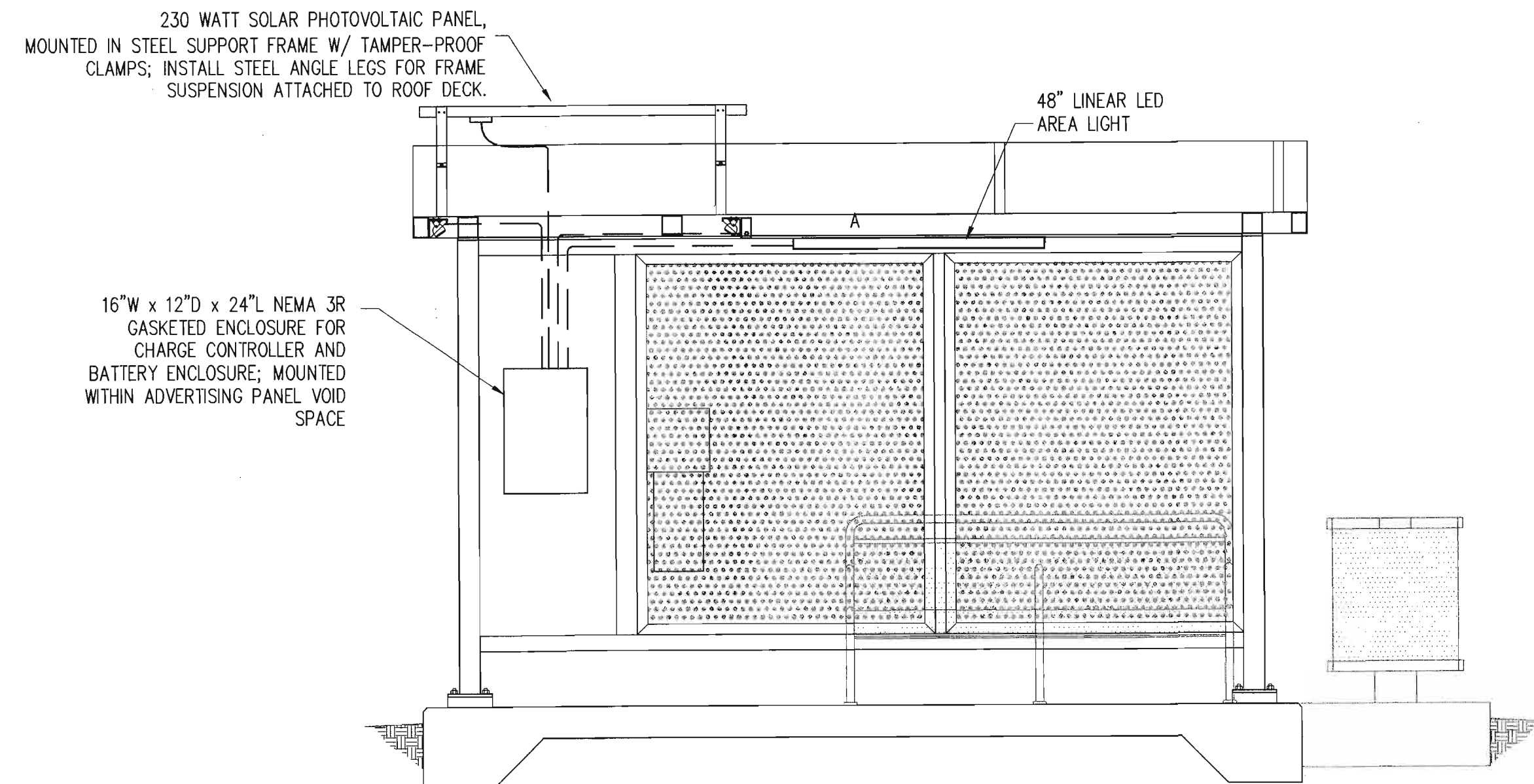
**CITY OF ALBUQUERQUE**  
 DEPARTMENT OF  
 MUNICIPAL DEVELOPMENT

ARR A BUS SHELTERS  
 SECTIONS AND DETAILS

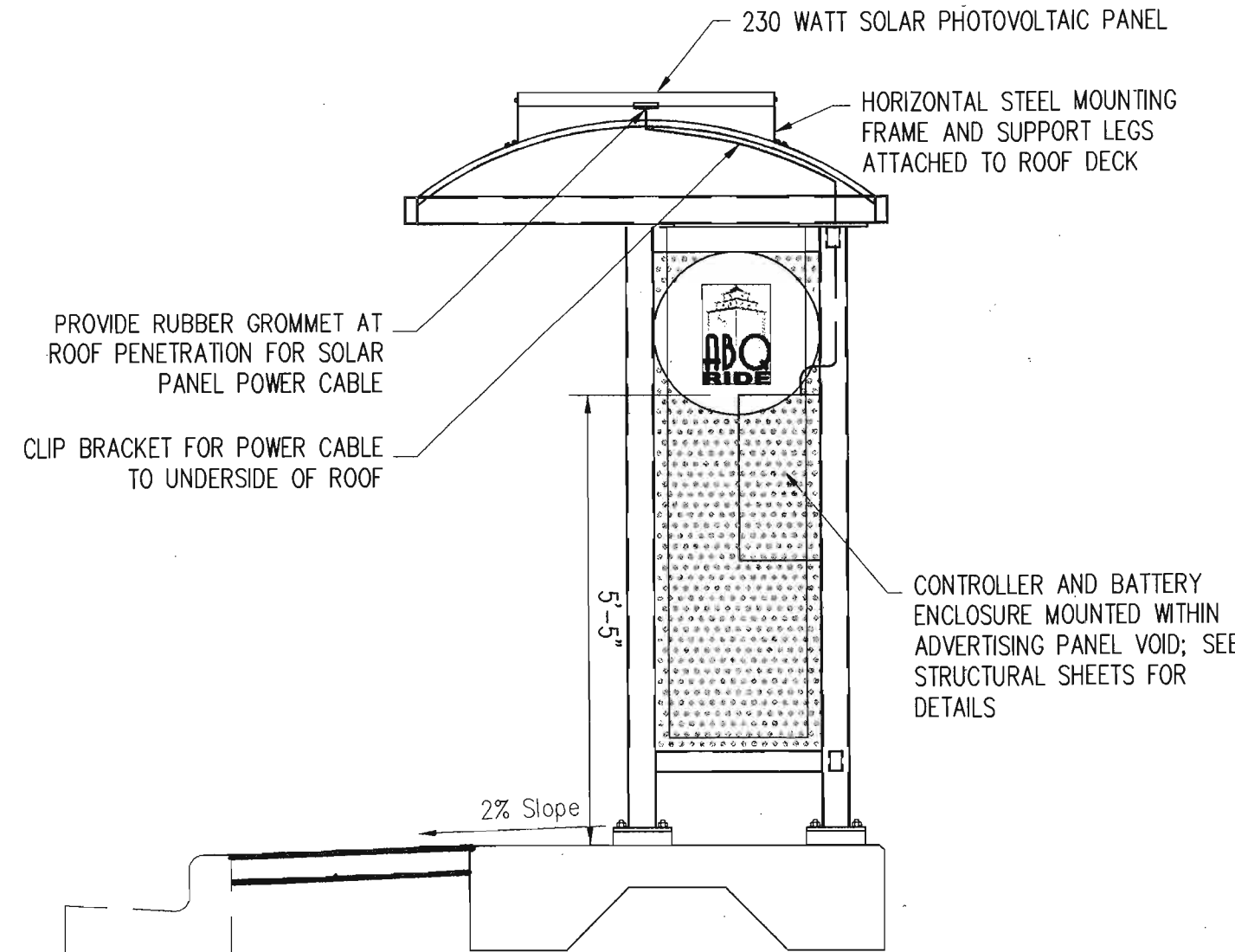
DESIGN REVIEW COMMITTEE	CITY ENGINEER APPROVAL	MO./DAY/YR.	MO./DAY/YR.
APPROVED NOV 09 2011 DESIGN REVIEW COMMITTEE	APPROVED NOV 09 2011 CITY ENGINEER		

CITY PROJECT NO. 6239.00  
 ZONE MAP NO.  
 SHEET S103 6 OF 7

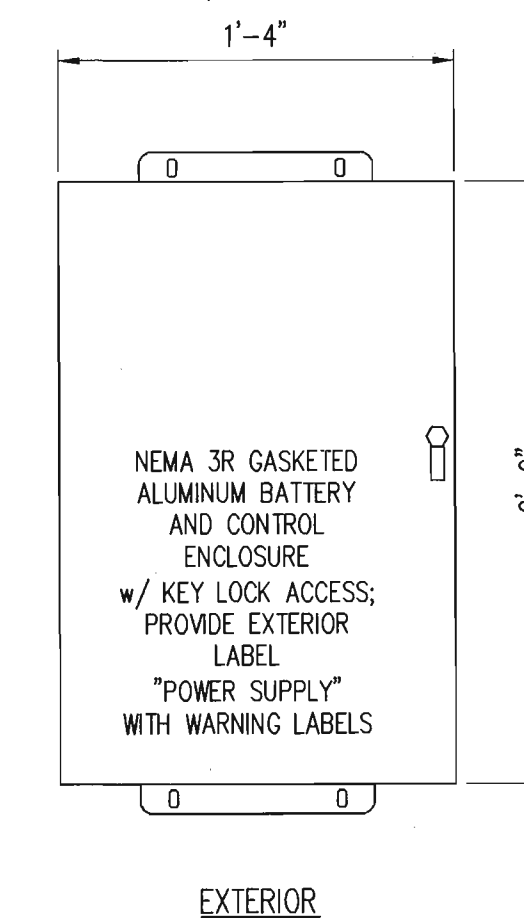




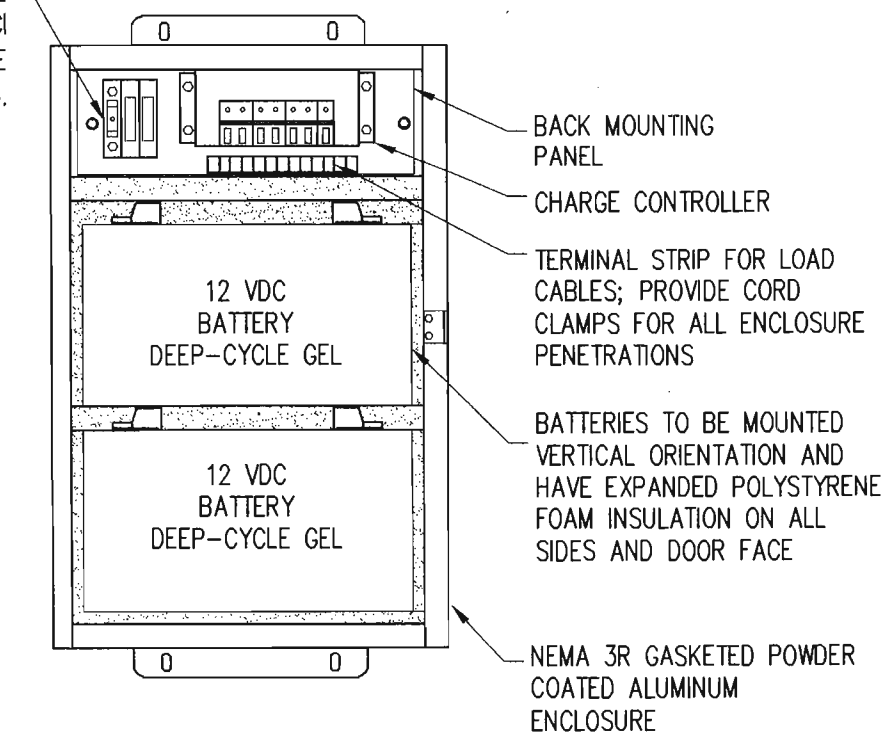
1 PLAN  
SCALE: 1/2" = 1'-0"



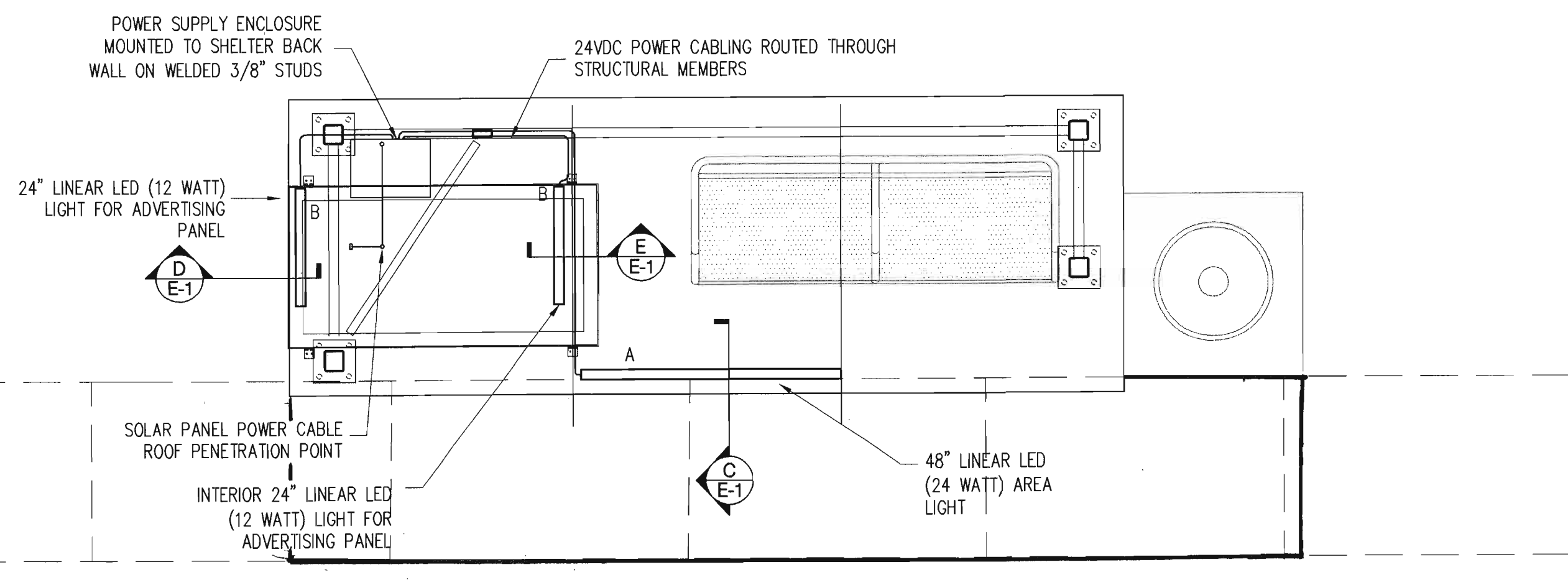
B SIDE ELEVATION  
SCALE: 1/2" = 1'-0"



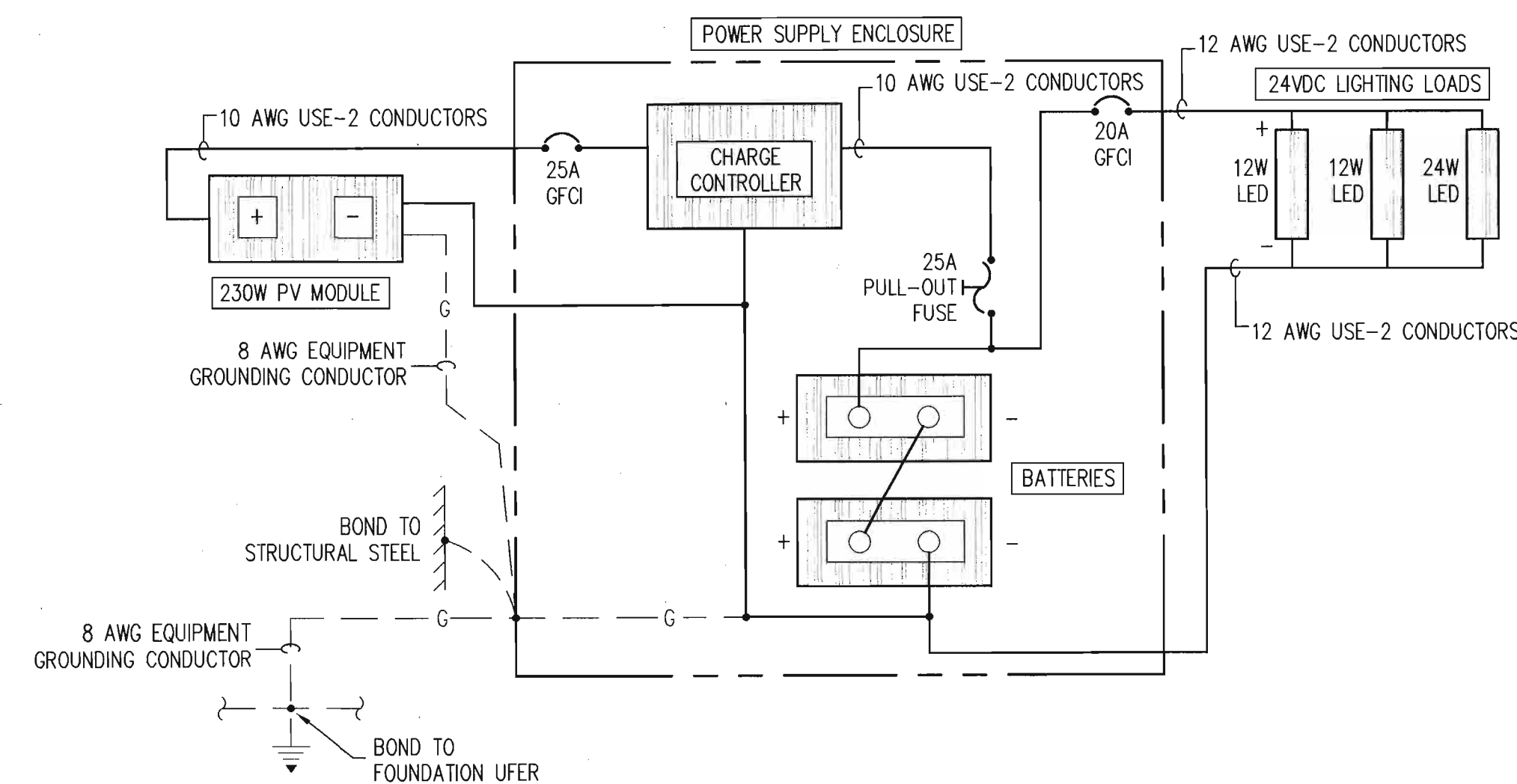
DIN-RAIL MOUNTED 25A FUSE HOLDER AND TWO GFCI CIRCUIT BREAKERS. (PROVIDE INTERNAL WARNING LABEL).



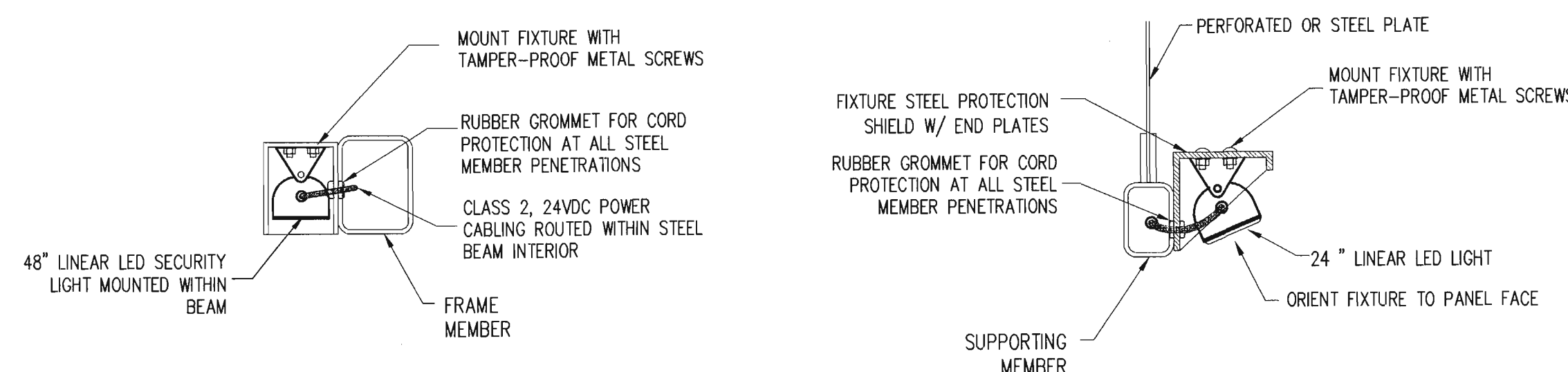
2 POWER SUPPLY ENCLOSURE DETAILS  
SCALE: 1-1/2" = 1'-0"



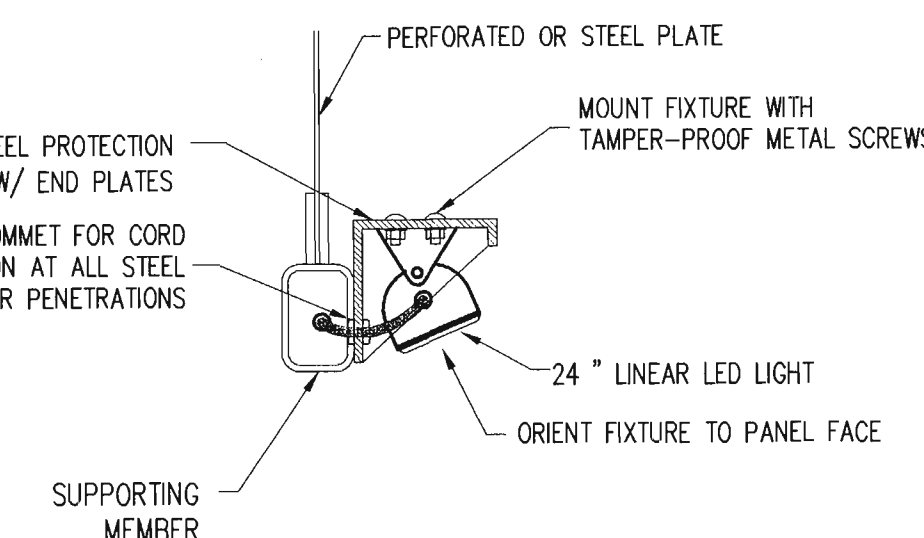
A FRONT ELEVATION  
SCALE: 1/2" = 1'-0"



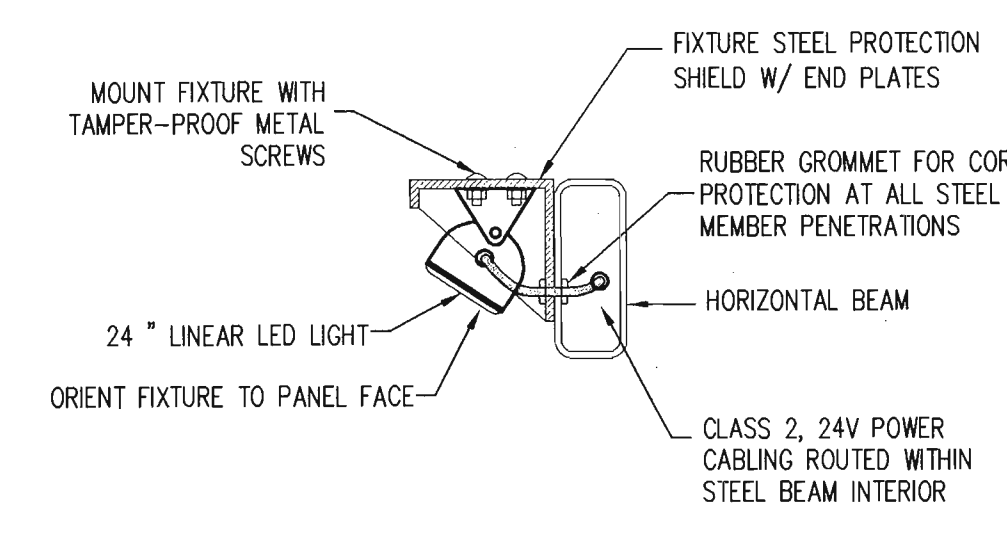
3 WIRING DIAGRAM  
NOT TO SCALE



C AREA LIGHT MOUNTING DETAIL  
NOT TO SCALE



D EXTERIOR PANEL FIXTURE MOUNTING DETAIL  
NOT TO SCALE



E ADVERTISING PANEL FIXTURE MOUNTING DETAIL  
NOT TO SCALE

FIXTURE SCHEDULE			
TYPE	DESCRIPTION	LAMPS	MOUNTING
A	DAMP LOCATION LUMINAIRE WITH ONE PIECE SEALED TAMPER PROOF LENS; INSIGHT TRO #TE6-55K-100-CES-4'-24VDC-SF/	LED'S 24 WATT TOTAL	RECESSED WITH GUARD
B	DAMP LOCATION LUMINAIRE WITH ONE PIECE SEALED TAMPER PROOF LENS; INSIGHT TRO #TE6-55K-GRAZER-CES-2'-24VDC-SF/	LED'S 12 WATT TOTAL	RECESSED WITH GUARD

**Bohannon & Huston**  
 Courtyard | 7800 Jefferson St. NE Albuquerque, NM 87109-4395  
 ENGINEERING • SPATIAL DATA • ADVANCED TECHNOLOGIES

**CITY OF ALBUQUERQUE**  
 DEPARTMENT OF  
 MUNICIPAL DEVELOPMENT

ARRA BUS SHELTERS  
 ELECTRICAL PLANS & DETAILS

DESIGN REVIEW COMMITTEE	CITY ENGINEER APPROVAL	MO./DAY/YR.	MO./DAY/YR.
APPROVE NOV 09 2011 DESIGN REVIEW COMMITTEE	APPROVE NOV 09 2011 CITY ENGINEER		
LAST DESIGN UPDATE			

CITY PROJECT NO. 6239.00 ZONE MAP NO. SHEET E101 7 OF 7