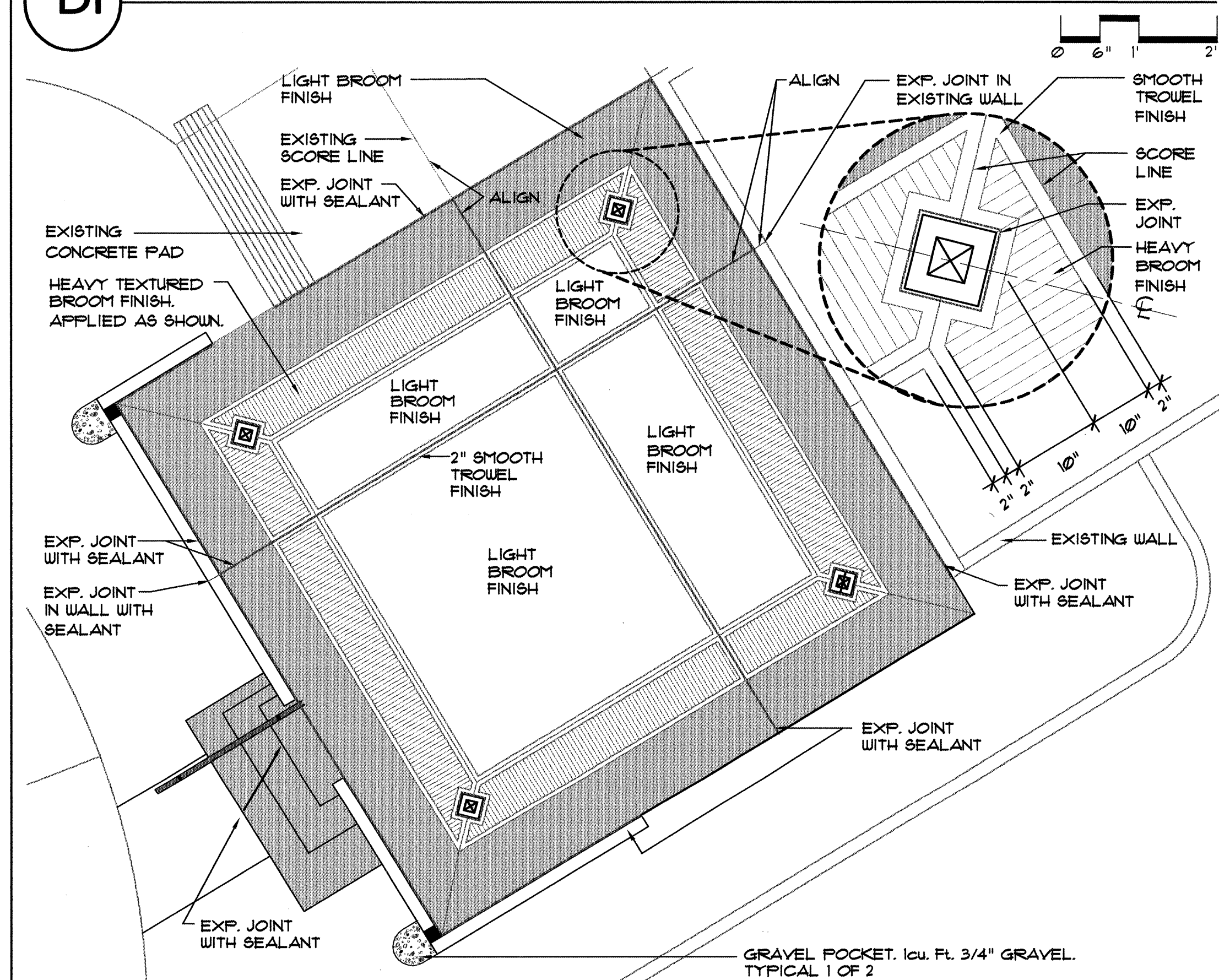
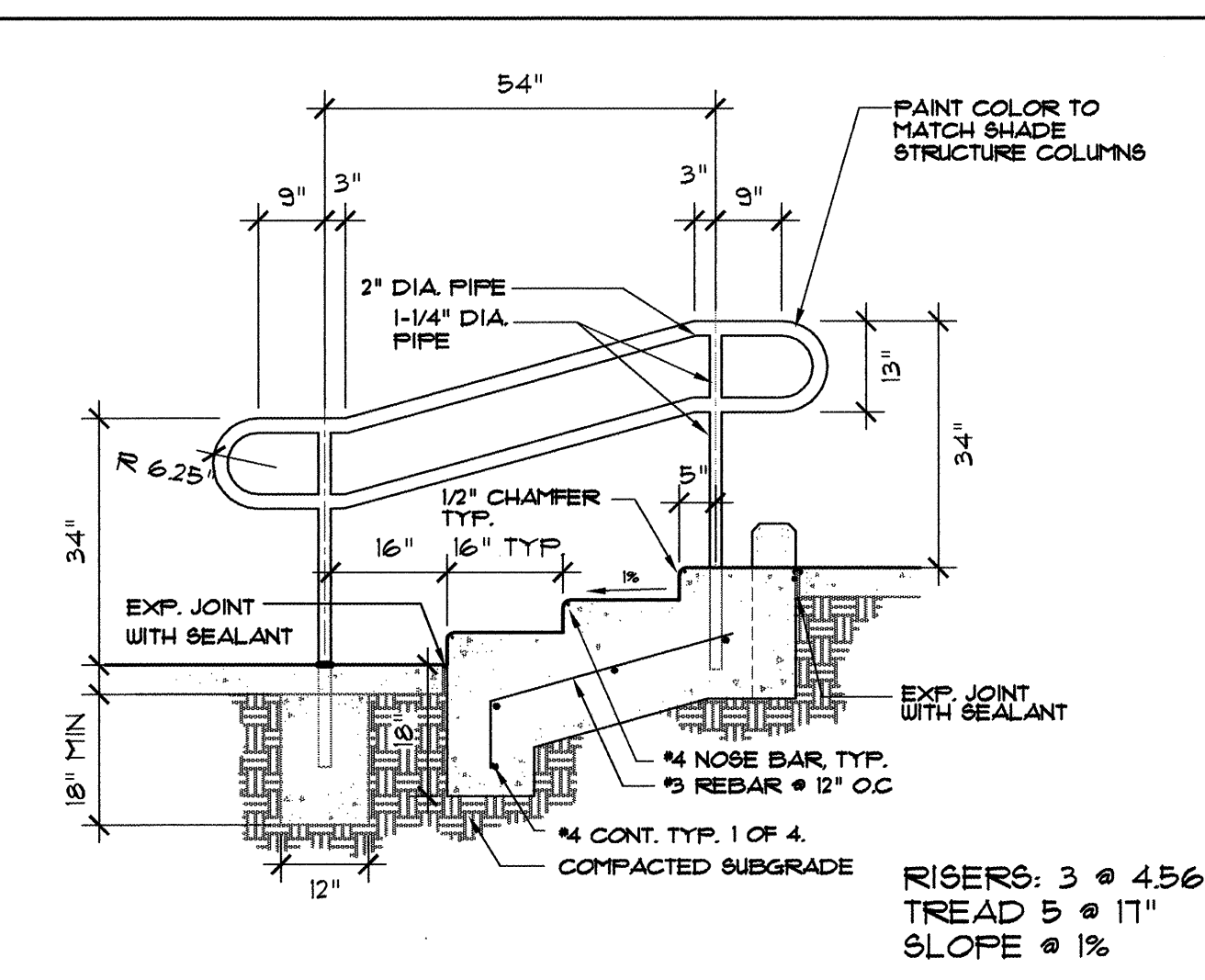


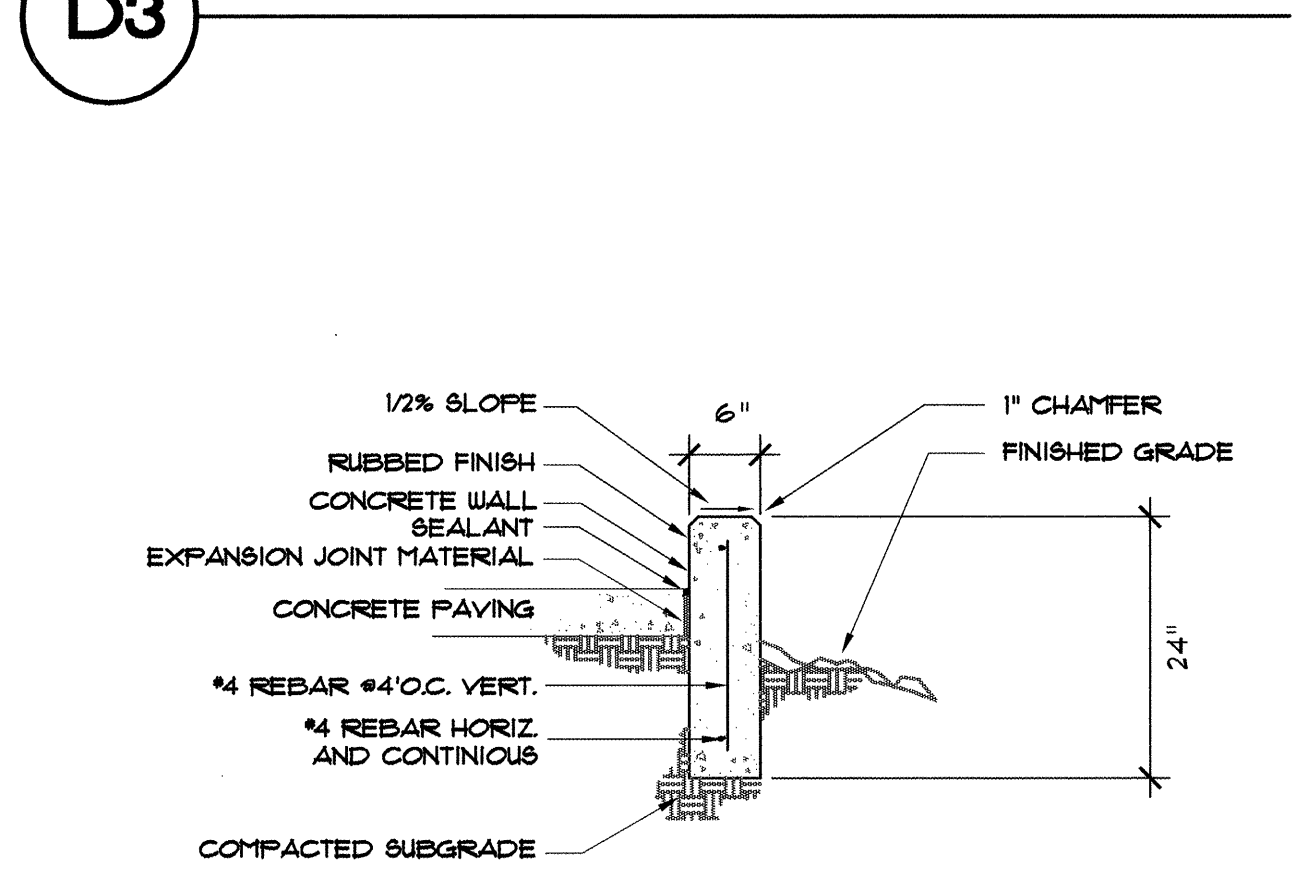
**D1 STEP LAYOUT** SCALE: 3/4"=1'



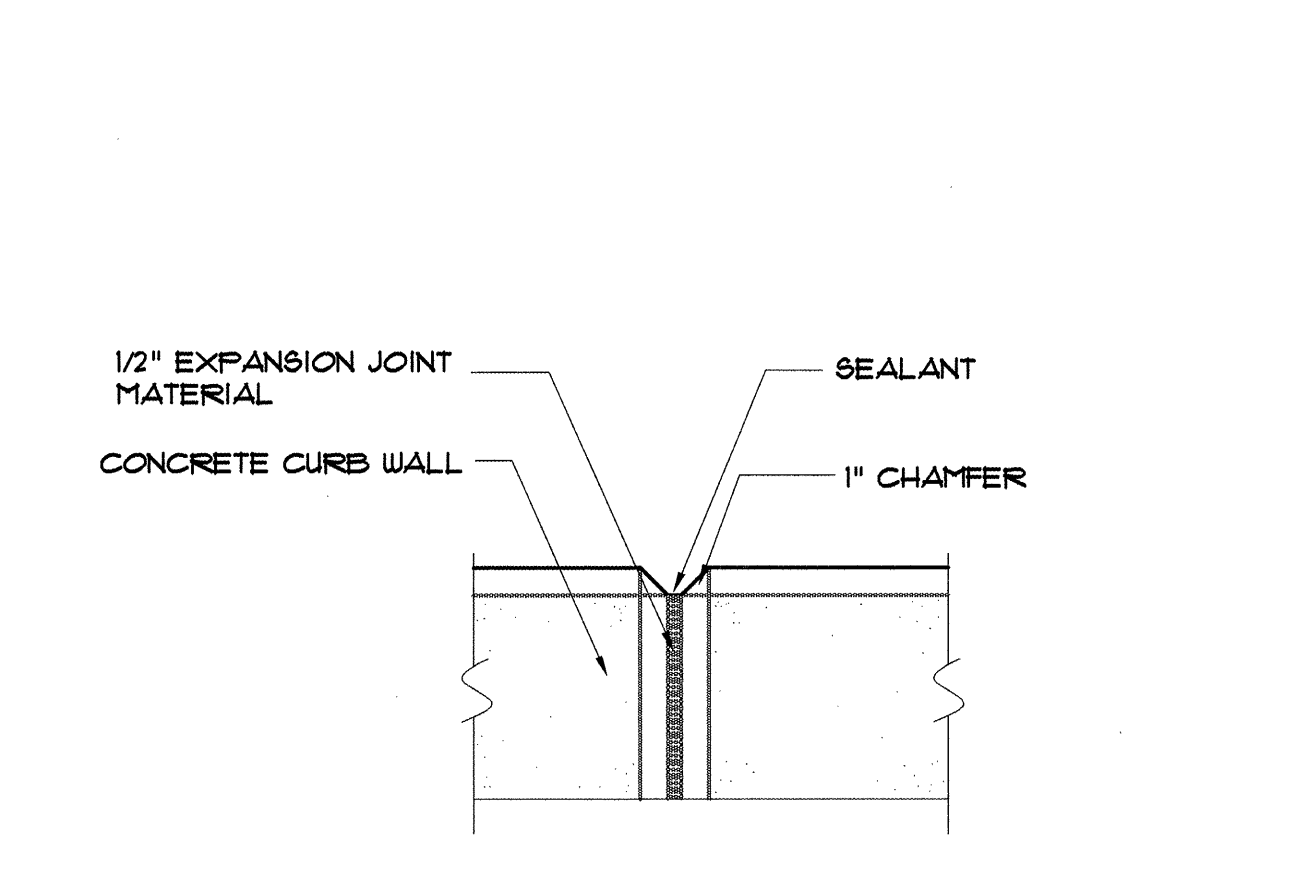
**D2 SURFACE TREATMENT/EXP.JOINTS/SCORELINES** SCALE: 1/4"=1'



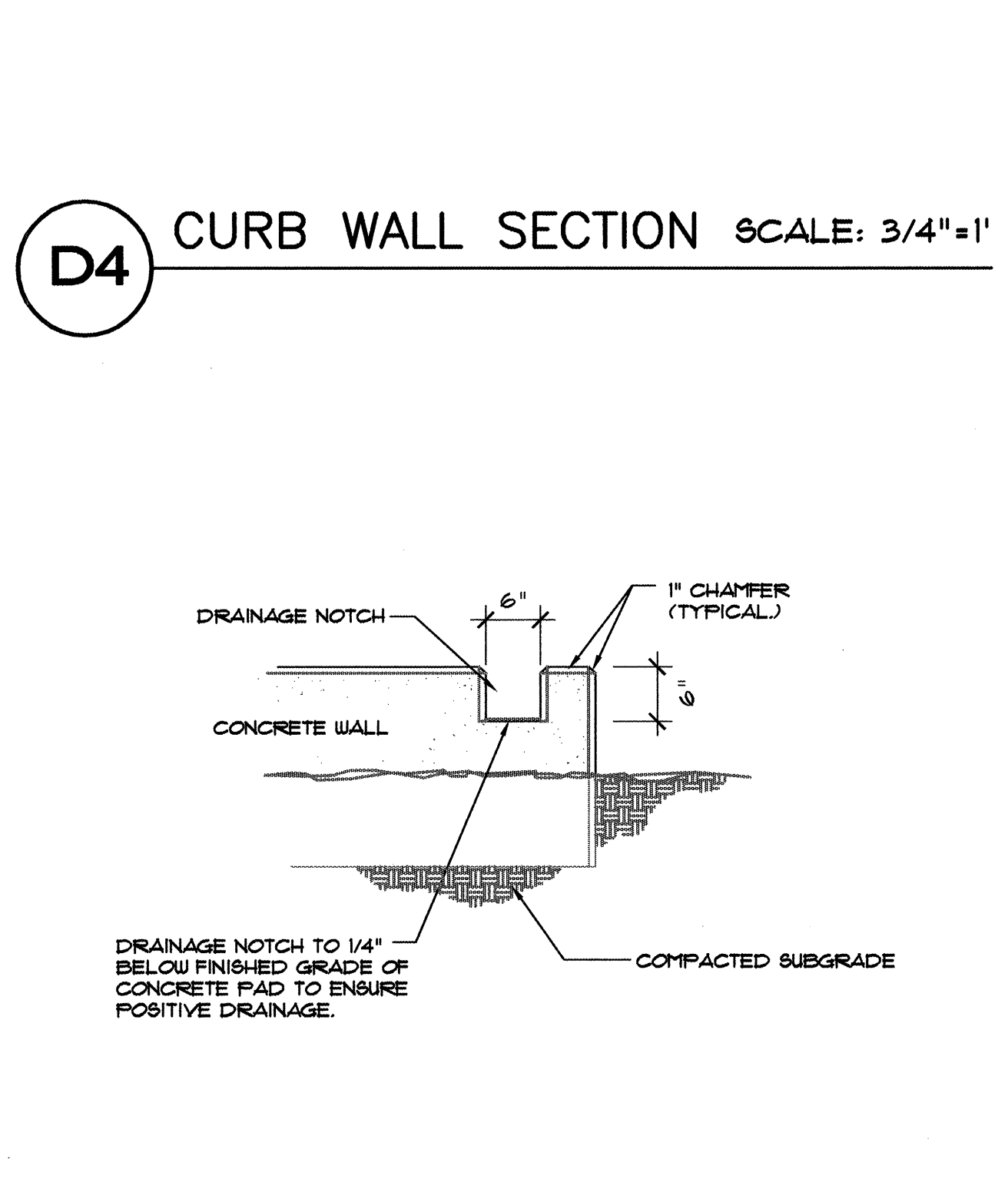
**D3 STEP SECTION** SCALE: 1/2"=1'-0"



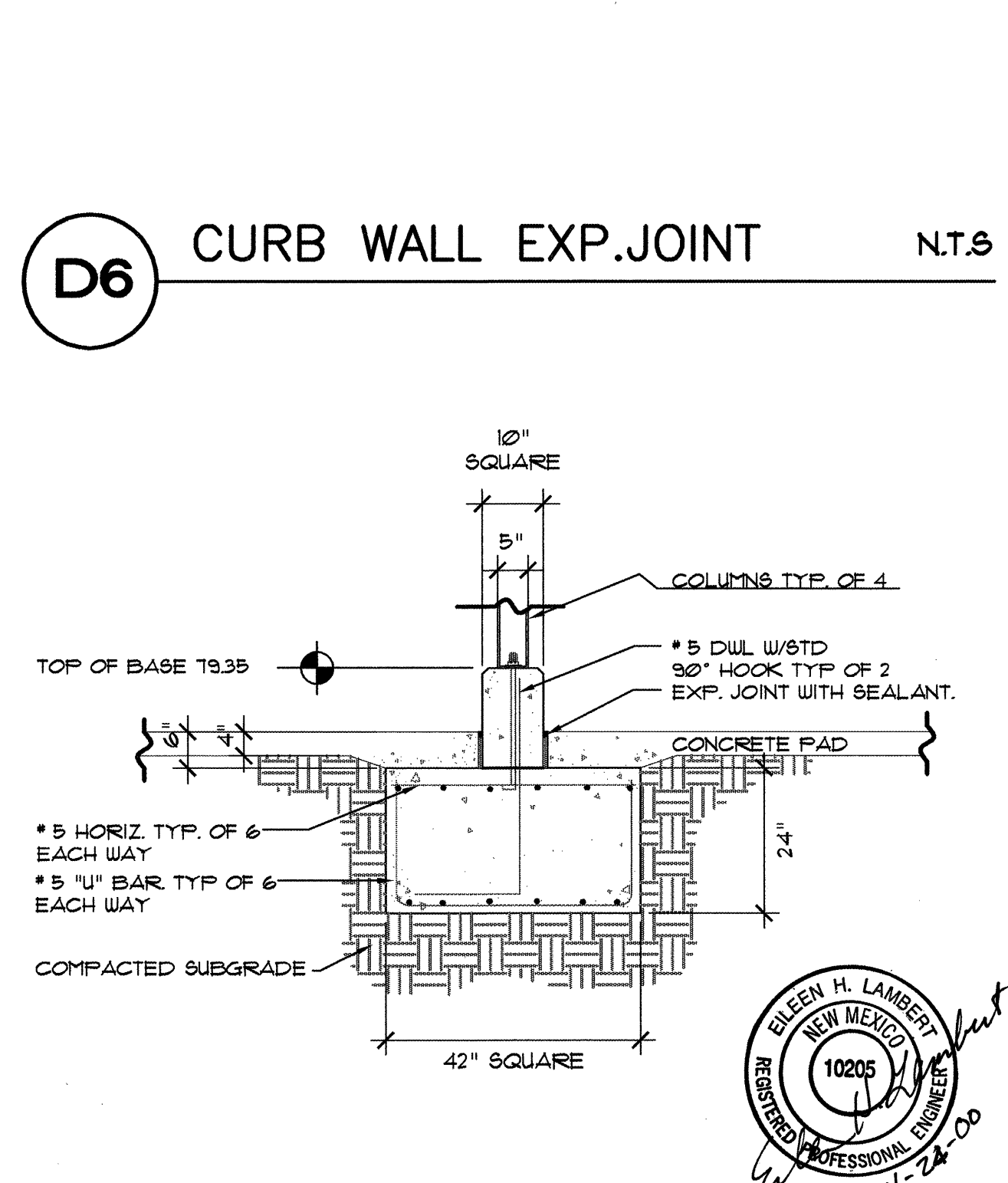
**D4 CURB WALL SECTION** SCALE: 3/4"=1'



**D6 CURB WALL EXP.JOINT** N.T.S.



**D5 DRAINAGE NOTCH** SCALE: 3/4"=1'



**D7 FOOTING DETAIL** SCALE: 1/2"=1'

AS-BUILT INFORMATION		BENCH MARKS		SURVEY INFORMATION		LANDSCAPE ARCHITECT'S SEAL	
CONTRACTOR	DATE	NO.	BY	NO.	BY	NO.	BY
CONTRACTOR: COA CLASS II CONST	DATE: 07/00	NO.	BY	NO.	BY	NO.	BY
DESIGNED BY: COA CLASS II CONST	DATE: 07/00	NO.	BY	NO.	BY	NO.	BY
INSPECTED BY: DESIGN WORKSHOP	DATE: 07/00	NO.	BY	NO.	BY	NO.	BY
FIELD VERIFICATION BY: PICK TRUST	DATE: 07/00	NO.	BY	NO.	BY	NO.	BY
CORRECTED BY: SM DESIGNWORKSHOP	DATE: 09/00	NO.	BY	NO.	BY	NO.	BY
MICRO-FILM INFORMATION	DATE	NO.	BY	NO.	BY	NO.	BY
RECORDED BY	DATE	NO.	BY	NO.	BY	NO.	BY

FOR INFORMATION ONLY

**DESIGNWORKSHOP**  
 901 Rio Grande Blvd NW  
 Suite E130  
 Albuquerque, NM 87104  
 (Tel.) 505.243.8333  
 (Fax) 505.243.8337

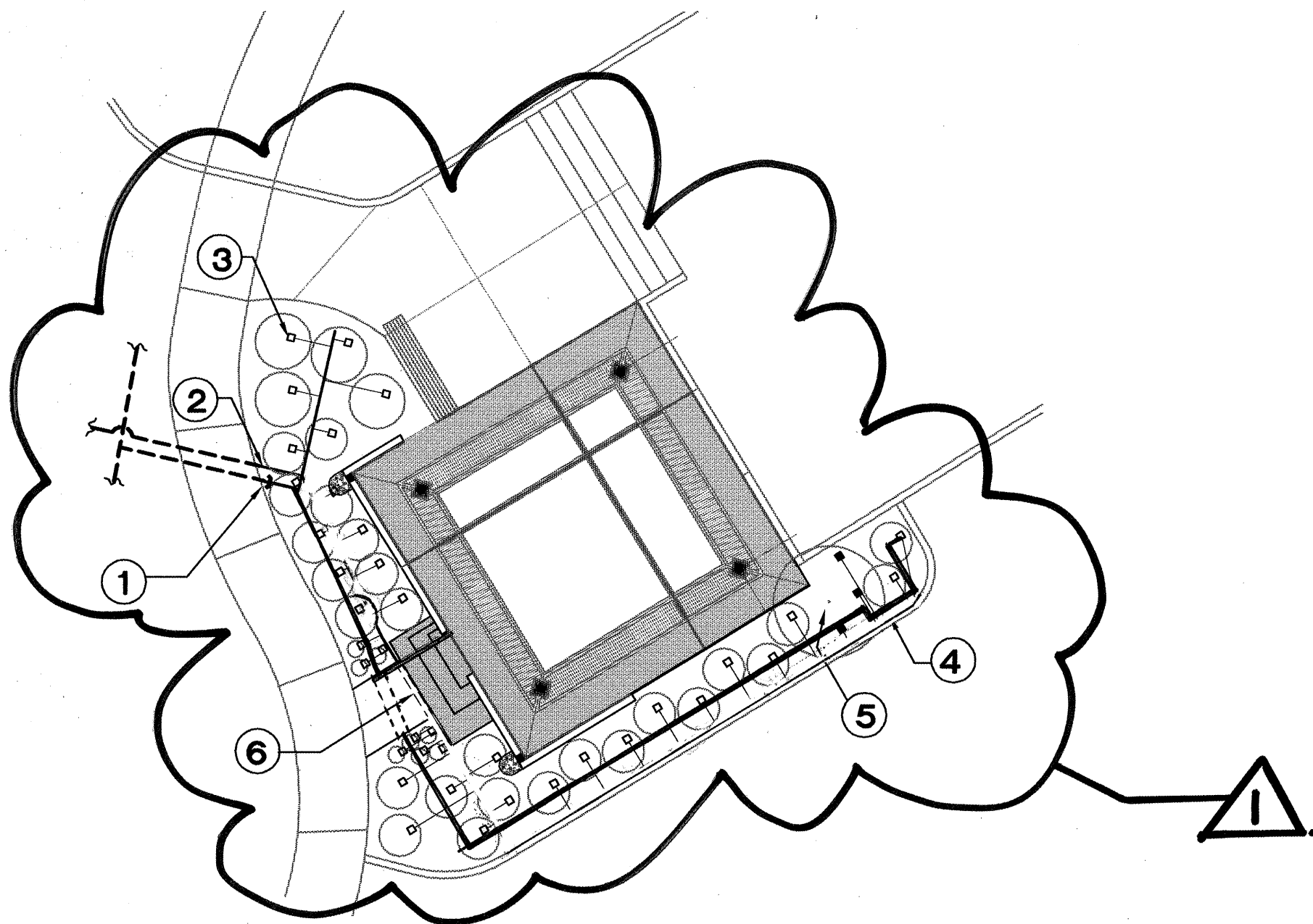
**CITY OF ALBUQUERQUE**  
 PUBLIC WORKS DEPARTMENT  
 ENGINEERING DEVELOPMENT GROUP

TITLE: SUNSET CANYON PARK SHADE STRUCTURE DETAILS

Design Review Committee: APPROVED FEB 17 2000  
 City Engineer Approval: APPROVED FEB 17 2000  
 Last Design Update: Mo./Day/Yr.

City Project No. 629291 Zone Map No. F 23-Z Sheet 3 Of 4





**P1** IRRIGATION PLAN  
SCALE: 1"=10'

### IRRIGATION SCHEDULE (REFER TO P1)

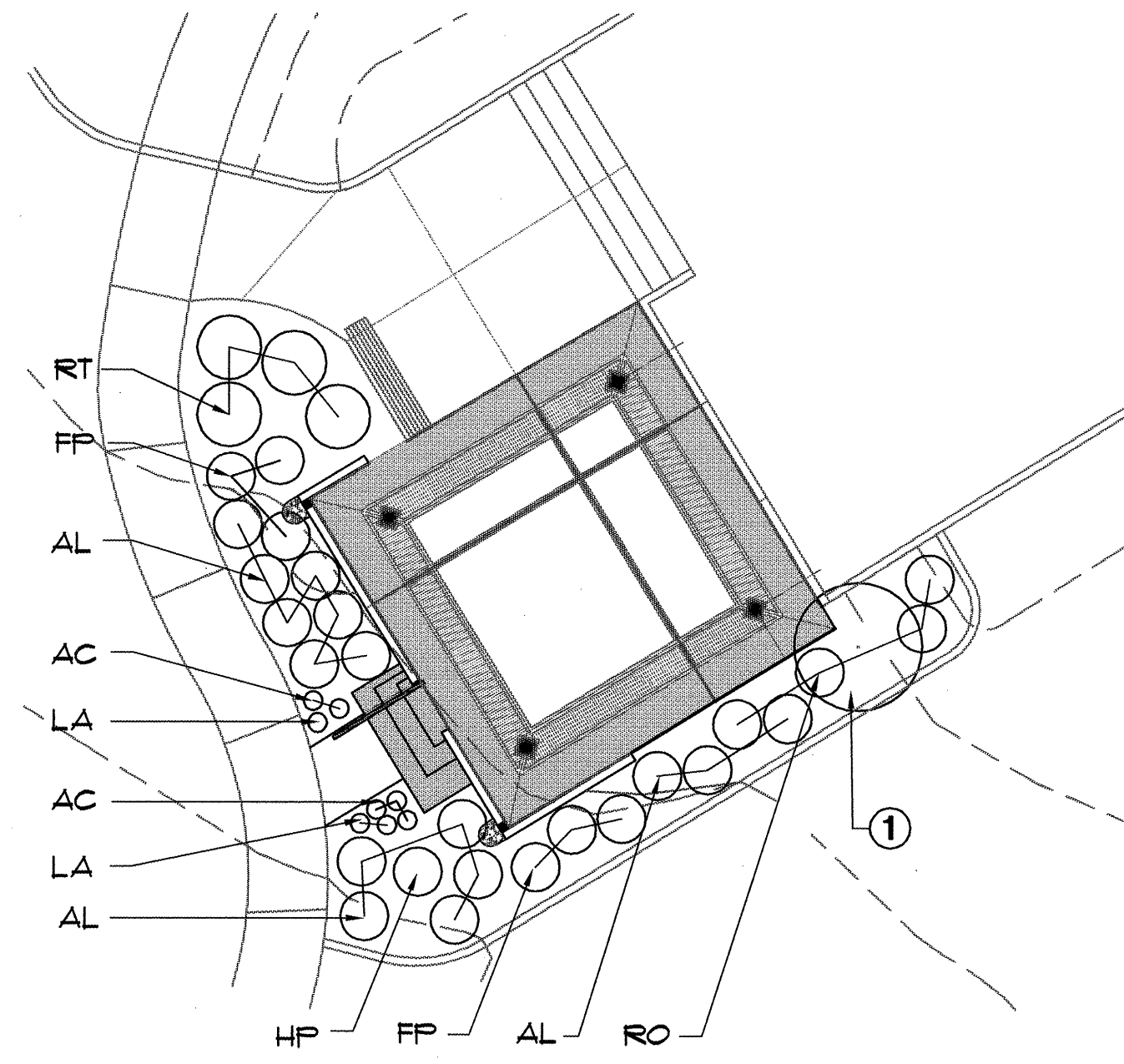
SYMBOL	TYPE	MODEL	MANUFACTURER	DESCRIPTION
□	BUBBLER SHRUBS	1401	RAINBIRD	PRESSURE COMPENSATING FULL CIRCLE BUBBLER, 25 P.G.M.
■	BUBBLER TREES	1402	RAINBIRD	PRESSURE COMPENSATING FULL CIRCLE BUBBLER, 50 P.G.M.
—	LATERAL LINE	SCHEDULE 40 PVC, 3/4" DIAMETER	----	18" BURY DEPTH
----	SLEEVE	----	----	----
---	EXISTING LATERAL	----	----	PRESERVE AND PROTECT. MODIFY AS REQUIRED TO PRESERVE EXISTING IRRIGATION THAT IS TO REMAIN.

### KEYED NOTES (REFER TO P1)

- 1 CAP EXISTING LINE.
- 2 CONNECT NEW LATERAL IRRIGATION LINE TO EXISTING LATERAL LINE. (SEE REMOVALS PLAN.)
- 3 PROVIDE AND INSTALL RAINBIRD MODEL 1401 BUBBLER HEADS, ONE PER SHRUB/PERENNIAL, AND THREE HEADS PER TREE. INSTALL PER STANDARD COA DETAIL 2711 OR 2710 AS APPLICABLE.
- 4 PROVIDE AND INSTALL 3/4" DIAMETER SCHEDULE 40 PVC LATERAL IRRIGATION LINES TO CONNECT ALL BUBBLER HEADS. INSTALL TO STANDARD SPECIFICATIONS OF THE CITY OF ALBUQUERQUE.
- 5 HAND DIG IRRIGATION LINE AROUND EXISTING BECHTEL CRABAPPLE.
- 6 INSTALL IRRIGATION LINE UNDER WALK THROUGH A PIPE TWO SIZES LARGER THAN THE PIPE BEING SLEEVED.

### GENERAL IRRIGATION NOTES

PROVIDE AND INSTALL BUBBLER HEADS ON THE HIGH SIDE OF SHRUBS LOCATED AS SHOWN ON THE PLANTING PLAN. HEAD LOCATIONS ON THE PLAN ARE DIAGRAMATIC ONLY.



**P2** PLANTING PLAN  
SCALE: 1"=10'

### PLANTING SCHEDULE (REFER TO P2)

SYM.	QTY.	BOTANICAL NAME	COMMON NAME	SIZE	CONDITION
AC	5.	Achillea filipendulina	Moonshine Yarrow	1 Gal.	Container
AL	15.	Artemisia ludoviciana	Prairie Sage	1 Gal.	Container
FP	6.	Falugia paradoxa	Apache Plume	1 Gal.	Container
HP	1.	Hesperaloe parviflora	Red Yucca	1 Gal.	Container
LA	3.	Lavandula angustifolia	Munstead Lavender	1 Gal.	Container
RT	3.	Rhus trilobata	Three Leaf Sumac	1 Gal.	Container
RO	4.	Rosmarinus officinalis (var. Ingrandii)	Collingwood Rosemary	1 Gal.	Container

### KEYED NOTES (REFER TO P2)

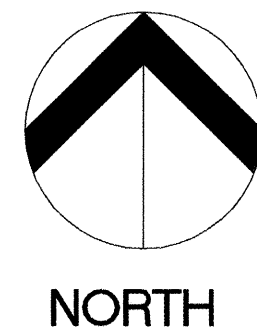
- 1 PRESERVE AND PROTECT EXISTING BECHTEL CRABAPPLE. NO TILLING AROUND ROOT ZONE.

### GENERAL PLANTING NOTES:

ALL SHRUB AND TREE PLANTING AREAS ARE TO RECEIVE SHREDDED WOOD BARK MULCH PLACED 4 INCHES DEEP ON THE SOIL SURFACE.

ALL SHRUBS AND PERENNIALS ARE TO BE PLANTED AS PER COA STANDARD DETAIL 2711.

### FOR INFORMATION ONLY



**DESIGNWORKSHOP**  
901 Rio Grande Blvd NW  
Suite E130  
Albuquerque, NM 87104  
(Tel.) 505.243.8333  
(Fax) 505.243.8337

CITY OF ALBUQUERQUE PUBLIC WORKS DEPARTMENT ENGINEERING DEVELOPMENT GROUP	
TITLE: SUNSET CANYON PARK SHADE STRUCTURE PLANTING AND IRRIGATION PLANS	
Design Review Committee APPROVED FEB 17 2000 DESIGN REVIEW COMMITTEE	City Engineer Approval APPROVED FEB 17 2000 CITY ENGINEER
City Project No. 629291	Zone Map No. F 23-Z
Sheet 4	Of 4

AS-BUILT INFORMATION		BENCH MARKS		SURVEY INFORMATION		LANDSCAPE ARCHITECT'S SEAL	
CONTRACTOR: Co. A CLASS II CONST.		DATE: 07/00		FIELD NOTES		DATE: 07/00	
INSPECTOR'S: Design Workshop		DATE: 07/00		BY: [Signature]		DATE: 07/00	
REVISION: 1		DATE: 07/00		NO. 1		DATE: 07/00	
CORRECTED BY: SM/DESIGNWORKSHOP		DATE: 08/00		NO. 2		DATE: 08/00	
MICRO-FILM INFORMATION		RECORDED BY: [Signature]		NO. 3		DATE: 08/00	
DATE: 08/00		NO. 4		DATE: 08/00		NO. 5	