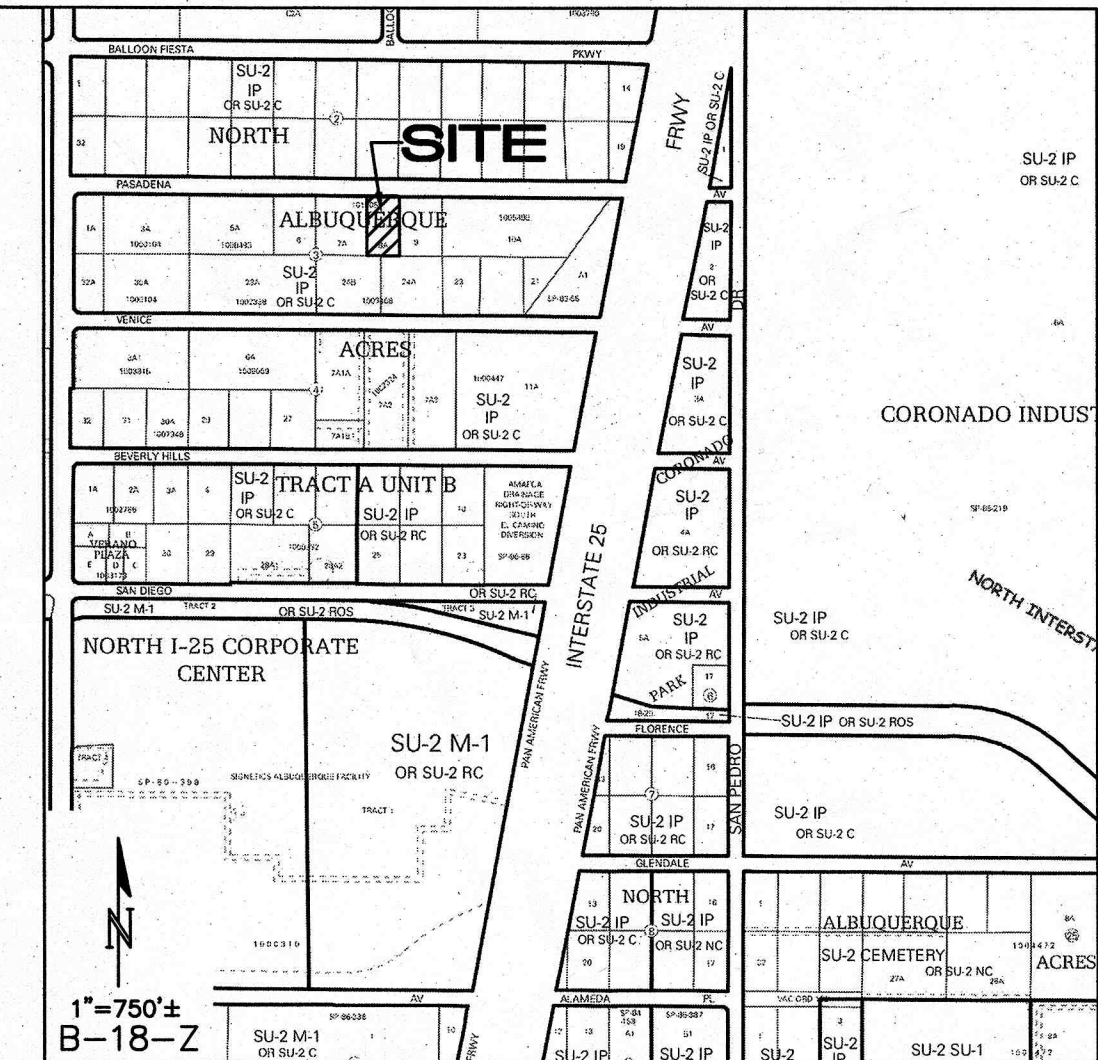
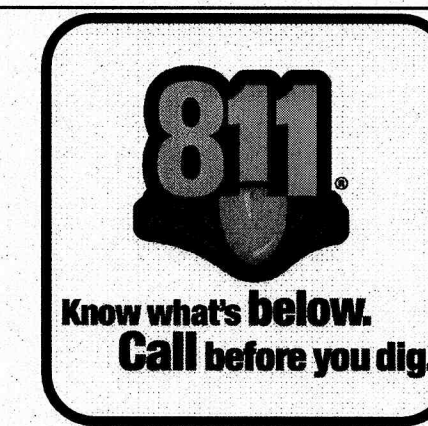


PUBLIC IMPROVEMENT PLANS
FOR
LOT 8-A PASADENA AVENUE NE
ALBUQUERQUE, NEW MEXICO

JANUARY 2017

PREPARED FOR:
MECHENBIER CONSTRUCTION, INC.
8500 WASHINGTON ST NE STE. A-6
ALBUQUERQUE, NM 87113

PREPARED BY:
ISAACSON & ARFMAN, P.A.
128 MONROE ST. NE
ALBUQUERQUE, NM 87108



APPROVED RECORD DRAWINGS	
City Inspector	Henry Blair
Contractor	Universal Constructors
Construction Engineer	Muhammed Adeb
Date	12/4/2019

GENERAL NOTES

- ALL WORK DETAILED ON THESE PLANS TO BE PERFORMED UNDER CONTRACT SHALL, EXCEPT AS OTHERWISE STATED OR PROVIDED FOR HEREON, BE CONSTRUCTED IN ACCORDANCE WITH THE CITY OF ALBUQUERQUE STANDARD SPECIFICATIONS FOR PUBLIC WORKS, CONSTRUCTION 1986 EDITION AS AMENDED WITH UPDATE #9.
- ALL WORK ON THIS PROJECT SHALL BE PERFORMED IN ACCORDANCE WITH APPLICABLE FEDERAL, STATE, AND LOCAL LAWS, RULES, AND REGULATIONS CONCERNING CONSTRUCTION SAFETY AND HEALTH.
- PRIOR TO CONSTRUCTION, THE CONTRACTOR SHALL EXCAVATE & VERIFY THE HORIZONTAL AND VERTICAL LOCATIONS OF ALL OBSTRUCTIONS. SHOULD A CONFLICT EXIST, THE CONTRACTOR SHALL NOTIFY THE ENGINEER SO THAT THE CONFLICT CAN BE RESOLVED WITH MINIMUM DELAY.
- TWO (2) WORKING DAYS PRIOR TO ANY EXCAVATION, CONTRACTOR MUST CONTACT LINE LOCATING SERVICE, NM 811, FOR LOCATION OF EXISTING UTILITIES.
- CONTRACTOR SHALL CONDUCT HIS OPERATIONS IN A MANNER WHICH WILL MINIMIZE INTERFERENCE WITH LOCAL TRAFFIC. CONTRACTOR SHALL COMPLY WITH ALL APPLICABLE LAWS, ORDINANCES, RULES, REGULATIONS, AND ORDERS OF ANY PUBLIC BODY HAVING JURISDICTION FOR THE SAFETY OF PERSONS OR PROPERTY, AND TO PROTECT THEM FROM DAMAGE, INJURY, OR LOSS. CONTRACTOR SHALL ERECT AND MAINTAIN, AS REQUIRED BY THE CONDITIONS AND PROGRESS OF THE WORK, ALL NECESSARY SAFEGUARDS FOR SAFETY CONTINUOUSLY AND NOT LIMITED TO NORMAL WORKING HOURS, THROUGHOUT THE DURATION OF THE PROJECT. CONTRACTOR SHALL ADHERE TO SECTION 19 OF THE GENERAL CONDITIONS OF THE CITY OF ALBUQUERQUE STANDARD SPECIFICATIONS FOR PUBLIC WORKS, CONSTRUCTION, 1986, AS AMENDED WITH UPDATE #9.
- THE CONTRACTOR AGREES THAT HE SHALL ASSUME THE SOLE AND COMPLETE RESPONSIBILITY FOR THE JOB SITE CONDITIONS DURING THE COURSE OF CONSTRUCTION OF THIS PROJECT, INCLUDING SAFETY OF ALL PERSONS AND PROPERTY; THAT THIS REQUIREMENT SHALL APPLY CONTINUOUSLY AND NOT LIMITED TO NORMAL WORKING HOURS; AND THAT THE CONTRACTOR SHALL DEFEND, INDEMNIFY, AND HOLD HARMLESS THE OWNER & ENGINEER FROM ANY AND ALL LIABILITY REAL OR ALLEGED, IN CONNECTION WITH THE PERFORMANCE OF WORK ON THIS PROJECT, EXCEPTING LIABILITY ARISING FROM THE SOLE NEGLIGENCE OF THE OWNER OR ENGINEER.
- TRAFFIC CONTROL: SEVEN (7) WORKING DAYS PRIOR TO BEGINNING CONSTRUCTION THE CONTRACTOR SHALL SUBMIT TO THE CONSTRUCTION COORDINATION DIVISION A DETAILED CONSTRUCTION SCHEDULE. TWO (2) WORKING DAYS PRIOR TO CONSTRUCTION, THE CONTRACTOR SHALL OBTAIN A BARRICADE PERMIT FROM THE CONSTRUCTION COORDINATION DIVISION. CONTRACTOR SHALL NOTIFY CONSTRUCTION COORDINATION ENGINEER (924-3400) PRIOR TO OCCUPYING AN INTERSECTION. SEE SECTION 19 OF THE SPECIFICATIONS. ALL STREET STRIPING ALTERED OR DESTROYED SHALL BE REPLACED WITH PRE-FORMED THERMOPLASTIC REFLECTORIZED PAVEMENT MARKINGS BY CONTRACTOR TO LOCATION AS EXISTING OR AS SHOWN IN THIS PLAN SET.
- WHEN ABUTTING EXISTING PAVEMENT TO NEW, SAWCUT EXISTING PAVEMENT TO A STRAIGHT EDGE AND AT A RIGHT ANGLE, OR AS APPROVED BY THE FIELD ENGINEER. REMOVAL OF BROKEN OR CRACKED PAVEMENT WILL ALSO BE REQUIRED.
- EXISTING CURB AND GUTTER NOT TO BE REMOVED UNDER THE CONTRACT WHICH IS DAMAGED OR DISPLACED BY THE CONTRACTOR SHALL BE REMOVED AND REPLACED BY THE CONTRACTOR AT HIS EXPENSE PER COA STD DWG #2415A
- SUPPLEMENTAL SPECIFICATION: ALL BACKFILL FOR WATER LINE AND SANITARY SEWER LINE TRENCHES SHALL BE COMPACTED TO A MINIMUM 95% MAXIMUM DENSITY PER ASTM D-1557.
- THE CONTRACTOR SHALL PROMPTLY CLEAN UP ANY MATERIAL EXCAVATED WITHIN THE PUBLIC RIGHT-OF-WAY OR PRIVATE ROADWAY EASEMENTS SO THAT THE EXCAVATED MATERIAL IS NOT SUSCEPTIBLE TO BEING WASHED DOWN THE STREET OR INTO ANY PUBLIC DRAINAGE FACILITY.
- PROPOSED WATERLINE MATERIALS SHALL BE EITHER PVC PIPE MEETING AWWA C900 DR-18 REQUIREMENTS (6"-12") OR DUCTILE IRON PIPE, THICKNESS CLASS 50 (6"-16").
- ALL SANITARY SEWER LINE MATERIALS SHALL BE PVC SDR-35 PIPE.
- ALL FITTINGS ON WATERLINES SHALL HAVE RESTRAINED JOINTS AS NOTED ON PLANS.
- THE CONTRACTOR SHALL NOTIFY THE ENGINEER NOT LESS THAN SEVEN (7) DAYS PRIOR TO STARTING WORK IN ORDER THAT THE CITY SURVEYOR MAY TAKE NECESSARY MEASURES TO ENSURE THE PRESERVATION OF SURVEY MONUMENTS. CONTRACTOR SHALL NOT DISTURB PERMANENT SURVEY MONUMENTS WITHOUT THE CONSENT OF THE CITY SURVEYOR AND SHALL NOTIFY THE CITY SURVEYOR AND BEAR THE EXPENSE OF REPLACING ANY THAT MAY BE DISTURBED WITHOUT PERMISSION. REPLACEMENT SHALL BE DONE ONLY BY THE CITY SURVEYOR. WHEN A CHANGE IS MADE IN THE FINISHED ELEVATIONS OF THE PAVEMENT OF ANY ROADWAY IN WHICH A PERMANENT SURVEY MONUMENT IS LOCATED, CONTRACTOR SHALL, AT HIS OWN EXPENSE, ADJUST THE MONUMENT COVER TO THE NEW GRADE UNLESS OTHERWISE SPECIFIED. REFER TO SECTION 4.4 OF THE GENERAL CONDITIONS OF THE STANDARD SPECIFICATIONS UPDATE #9.
- PNM WILL PROVIDE AT NO COST TO THE CITY OR THE CONTRACTOR THE REQUIRED PERSONNEL FOR INSPECTION OR OBSERVATION DEEMED NECESSARY BY PNM WHILE THE CONTRACTOR IS EXPOSING PNM'S CABLES. HOWEVER, THE CONTRACTOR SHALL BE CHARGED THE TOTAL COST ASSOCIATED WITH REPAIRS TO ANY DAMAGED CABLES OR FOR ANY COST ASSOCIATED WITH SUPPORTING OR RELOCATING THE POLES AND CABLES DURING CONSTRUCTION.
- WARNING--EXISTING UTILITY LINE LOCATIONS ARE SHOWN IN AN APPROXIMATE MANNER ONLY, AND SUCH LINES MAY EXIST WHERE NONE ARE SHOWN. THE LOCATION OF ANY SUCH EXISTING LINES IS BASED UPON INFORMATION PROVIDED BY THE UTILITY COMPANY, THE OWNER, OR BY OTHERS, AND THE INFORMATION MAY BE INCOMPLETE OR MAY BE OBSOLETE BY THE TIME CONSTRUCTION COMMENCES. THE ENGINEER HAS UNDERTAKEN NO FIELD VERIFICATION OF THE LOCATION, DEPTH, SIZE, OR TYPE OF EXISTING UNDERGROUND UTILITY LINES, MAKES NO REPRESENTATION PERTAINING THERETO, AND ASSUMES NO RESPONSIBILITY OR LIABILITY THEREFOR. THE CONTRACTOR SHALL INFORM ITSELF OF THE LOCATION OF ANY UTILITY LINE IN OR NEAR THE AREA OF THE WORK IN ADVANCE OF AND DURING EXCAVATION WORK. THE CONTRACTOR IS FULLY RESPONSIBLE FOR ANY AND ALL DAMAGE CAUSED BY ITS FAILURE TO LOCATE, IDENTIFY, AND PRESERVE ANY AND ALL EXISTING UTILITIES. THE CONTRACTOR SHALL COMPLY WITH STATE STATUTES, MUNICIPAL AND LOCAL ORDINANCES, RULES, AND REGULATIONS PERTAINING TO THE LOCATION OF THESE LINES AND FACILITIES, IN PLANNING AND CONDUCTING EXCAVATION, WHETHER BY CALLING OR NOTIFYING THE UTILITIES, COMPLYING WITH "BLUE STAKES" PROCEDURES, OR OTHERWISE.
- ANY WORK OCCURRING WITHIN A FULLY DEVELOPED ARTERIAL ROADWAY REQUIRES 24 HR. CONSTRUCTION - AS ALLOWED BY THE CITY.
- ALL EXCAVATION, TRENCHING AND SHORING ACTIVITIES MUST BE ACCOMPLISHED IN ACCORDANCE WITH OSHA 29CFR 1926.650 SUBPART
- CONTRACTOR SHALL MAINTAIN A GRAFFITI-FREE WORK SITE. CONTRACTOR SHALL PROMPTLY REMOVE ANY AND ALL GRAFFITI FROM EQUIPMENT, WHETHER PERMANENT OR TEMPORARY
- THE CONTRACTOR WILL BE RESPONSIBLE FOR DISPOSING OF ALL DEBRIS, INCLUDING, BUT NOT LIMITED TO HAZARDOUS WASTE AT DISPOSAL SITES APPROVED BY GOVERNMENTAL AGENCIES REGULATING THE DISPOSAL OF SUCH MATERIALS.
- TACK COAT FOR SURFACE COURSE REQUIREMENTS WILL BE DETERMINED BY THE ENGINEER.
- PERMANENT PAVEMENT STRIPING AND MARKINGS WILL BE PLACED BY THE CONTRACTOR. THE ROAD SHALL NOT BE OPENED TO THE TRAFFIC UNTIL IT IS STRIPED. ALL STRIPING, PAVEMENT MARKINGS INCLUDING CROSSWALKS, ARROWS AND LINE MARKINGS ARE TO BE CONSTRUCTED OF PREFORMED THERMO-PLASTIC IN ACCORDANCE WITH THE MANUAL ON UNIFORM TRAFFIC CONTROL DEVICES.
- ELECTRONIC MARKING SPHERES (EMS) WILL BE PLACED ACCORDING TO SECTION 170 OF THE CITY OF ALBUQUERQUE SPECIFICATIONS FOR PUBLIC WORKS CONSTRUCTION, 1986 EDITION AS REVISED THROUGH UPDATE #9.
- ALL WATER VALVE BOXES AND MANHOLES IN THE STREET CONSTRUCTION ARE TO BE ADJUSTED TO FINISH GRADE AND WILL BE MEASURED AND PAID PER EACH.
- THE CONTRACTOR SHALL COORDINATE WITH THE WATER AUTHORITY SEVEN (7) DAYS IN ADVANCE OF PERFORMING WORK THAT WILL AFFECT THE PUBLIC WATER OR SANITARY SEWER INFRASTRUCTURE. WORK REQUIRING SHUTOFF OF FACILITIES DESIGNATED AS MASTER PLAN FACILITIES MUST BE COORDINATED WITH THE WATER AUTHORITY 14 DAYS IN ADVANCE OF PERFORMING SUCH WORK. ONLY WATER AUTHORITY CREWS ARE AUTHORIZED TO OPERATE PUBLIC VALVES. SHUTOFF REQUESTS MUST BE MADE ONLINE AT http://www.abcwua.org/Water_Shut_off_and_Turn_on_Procedures.aspx.
- CONTRACTOR SHALL SUPPORT ALL EXISTING UNDERGROUND UTILITY LINES WHICH BECOME EXPOSED DURING CONSTRUCTION. PAYMENT FOR SUPPORTING WORK SHALL BE INCIDENTAL TO WATERLINE AND/OR SEWER LINE COSTS.
- CONTRACTOR SHALL ASSIST THE ENGINEER/INSPECTOR IN THE RECORDING OF DATA ON ALL UTILITY LINES AND ACCESSORIES AS REQUIRED BY THE CITY OF ALBUQUERQUE FOR THE PREPARATION OF RECORD DRAWINGS. CONTRACTOR SHALL NOT COVER UTILITY LINES AND ACCESSORIES UNTIL ALL DATA HAS BEEN RECORDED.
- CONTRACTOR SHALL BE RESPONSIBLE FOR PROVIDING AND MAINTAINING ALL CONSTRUCTION SIGNING UNTIL PROJECT HAS BEEN ACCEPTED BY THE CITY.
- THE CONTRACTOR SHALL NOTIFY THE ALBUQUERQUE TRAFFIC ENGINEERING DIVISION THRU DRC CHAIR THREE (3) WORKING DAYS IN ADVANCE OF ANY WORK THAT REMOVES, RELOCATES, OR REINSTALLS ANY EXISTING REGULATORY SIGNS.
- RCP PIPE JOINTS SHALL BE INSTALLED SO THAT THE JOINT GAP AT THE HOME POSITION SHALL CONFORM TO THE APPROVED MANUFACTURER'S RECOMMENDATIONS. MANUFACTURER'S RECOMMENDED JOINT GAP TOLERANCES FOR EACH PIPE SIZE AND TYPE SHALL BE SUBMITTED TO THE ENGINEER FOR APPROVAL PRIOR TO PLACEMENT OF PIPE. RCP JOINTS SHALL NOT BE GROUTED UNLESS DIRECTED BY THE ENGINEER AFTER CITY APPROVAL.

- IF A PAVEMENT DROP-OFF IS CREATED DURING CONSTRUCTION, THE CONTRACTOR SHALL INITIATE PROTECTIVE MEASURES TO PREVENT ABRUPT PAVEMENT CHANGES. THIS WORK SHALL BE CONSIDERED INCIDENTAL TO CONSTRUCTION.
- CONTRACTOR SHALL REPLACE IN KIND ANY EXISTING STRIPING OR ANY OTHER PAVEMENT MARKINGS IMPACTED BY THE WORK. THIS WORK SHALL BE CONSIDERED INCIDENTAL TO CONSTRUCTION.
- THE CONTRACTOR SHALL MAINTAIN EXISTING PEDESTRIAN AND ADA PATHWAYS DURING CONSTRUCTION OR PROVIDE AN ALTERNATE ROUTE OR PROVIDE "SIDEWALK CLOSED" SIGNAGE.
- CONTRACTOR SHALL REPAIR OR REPLACE DISTURBED UTILITIES IMMEDIATELY AND WITHOUT DELAY.
- TWO WEEKS PRIOR TO CONSTRUCTION, THE CONTRACTOR SHOULD NOTIFY THE TRANSIT DEPARTMENT OF ANY IMPACT THE PROPOSED PROJECT WILL HAVE ON THE TRANSIT SYSTEM SUCH AS CAUSING A DETOUR, OR CAUSE THE CLOSING OR RELOCATION OF A BUS STOP. THE CONTACT PERSON IS DOUGLAS GOFF, OFFICE PHONE 505-724-3137, CELL PHONE 505-206-0151, AND EMAIL DGOFF@CABQ.GOV.

CERTIFICATE OF SUBSTANTIAL COMPLIANCE ON PLANS

I, Fred C. Arfman, PE No. 7322 of the firm of Isaacson & Arfman, P.A., a Registered Professional Engineer in the State of New Mexico, do hereby certify, to the best of my knowledge and belief, that the infrastructure installed as part of this project has been inspected by me or by a qualified person under my direct supervision and has been constructed in accordance with the plans and specifications approved by the City Engineer and that the original design intent of the approved plans has been met, except as noted by me on the as-built construction drawings. This Certification is based on site inspections by me or personnel under my direction and survey information provided by Fred C. Arfman, PE #7322

Fred C. Arfman
Fred C. Arfman
NMPE No. 7322



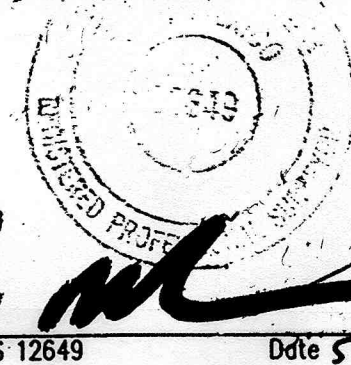
INDEX TO DRAWINGS

Sheet Number	Sheet Title
1	COVER SHEET
2	PLAT
3	TRACT 8A GRADING & DRAINAGE PLAN
4	PASADENA AVENUE PAVING PLAN & PROFILE
5	PASADENA AVENUE UTILITY PLAN & PROFILE

SURVEYOR'S CERTIFICATE

I, Andrew S. Medina, a duly qualified Licensed Professional Surveyor under the laws of the State of New Mexico, do hereby certify, that the "as-built" information shown on these drawings was obtained from field construction and "as-built" surveys performed by me or under my supervision that the "as built" information shown on these drawings was added by me or under my supervision, and that this "as-built" information is true and correct to the best of my knowledge and belief. I am not responsible for any of the design concepts, calculations, engineering, or intent of the record drawings.

Andrew S. Medina, NMPS 12649
Date 5-15-2017

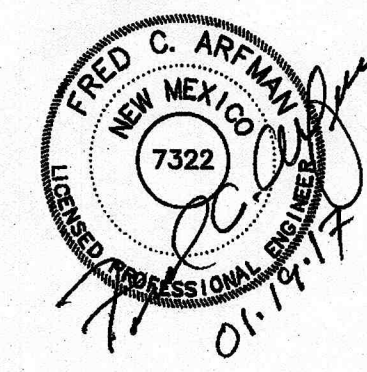


AS BUILT DRAWING

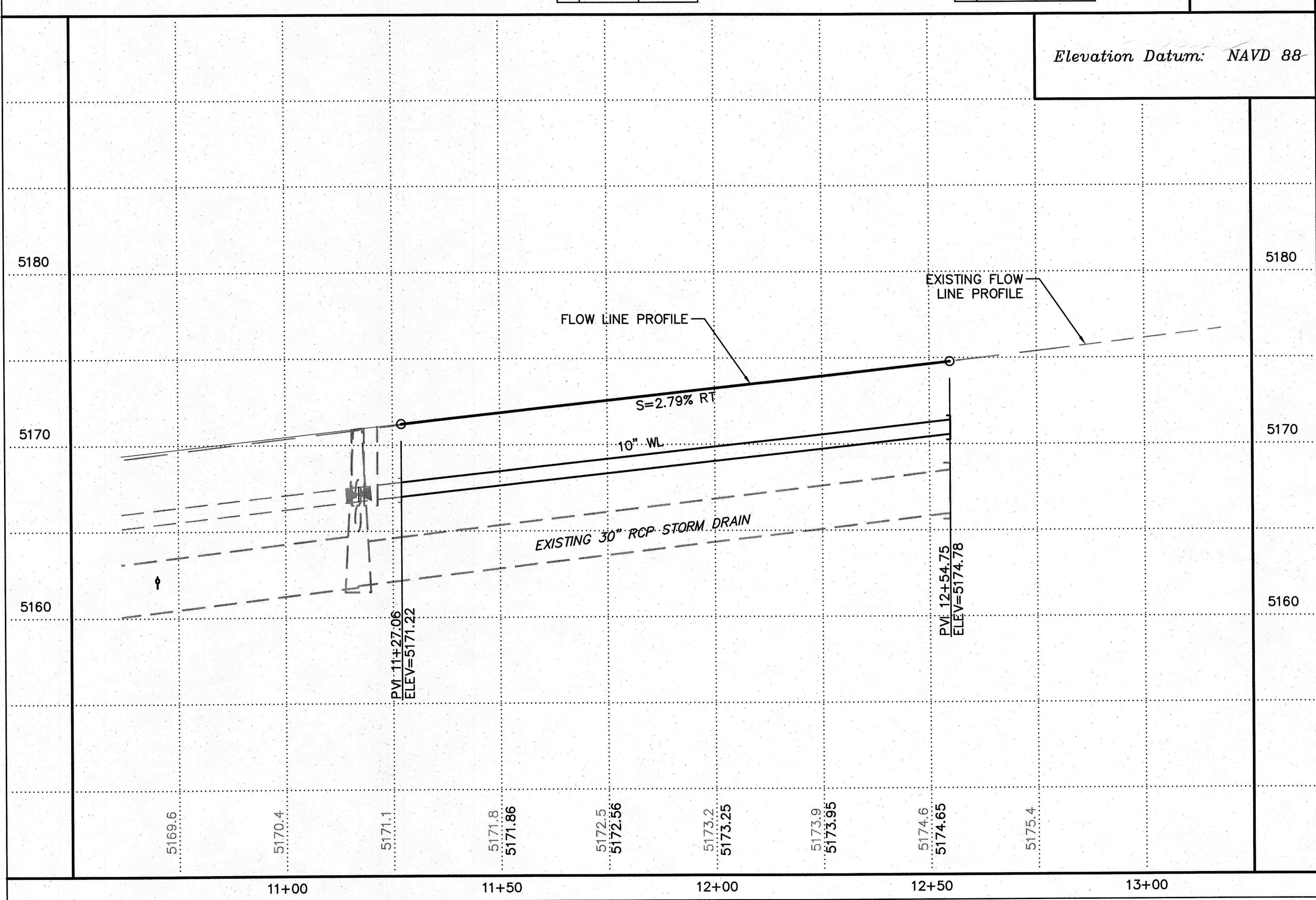
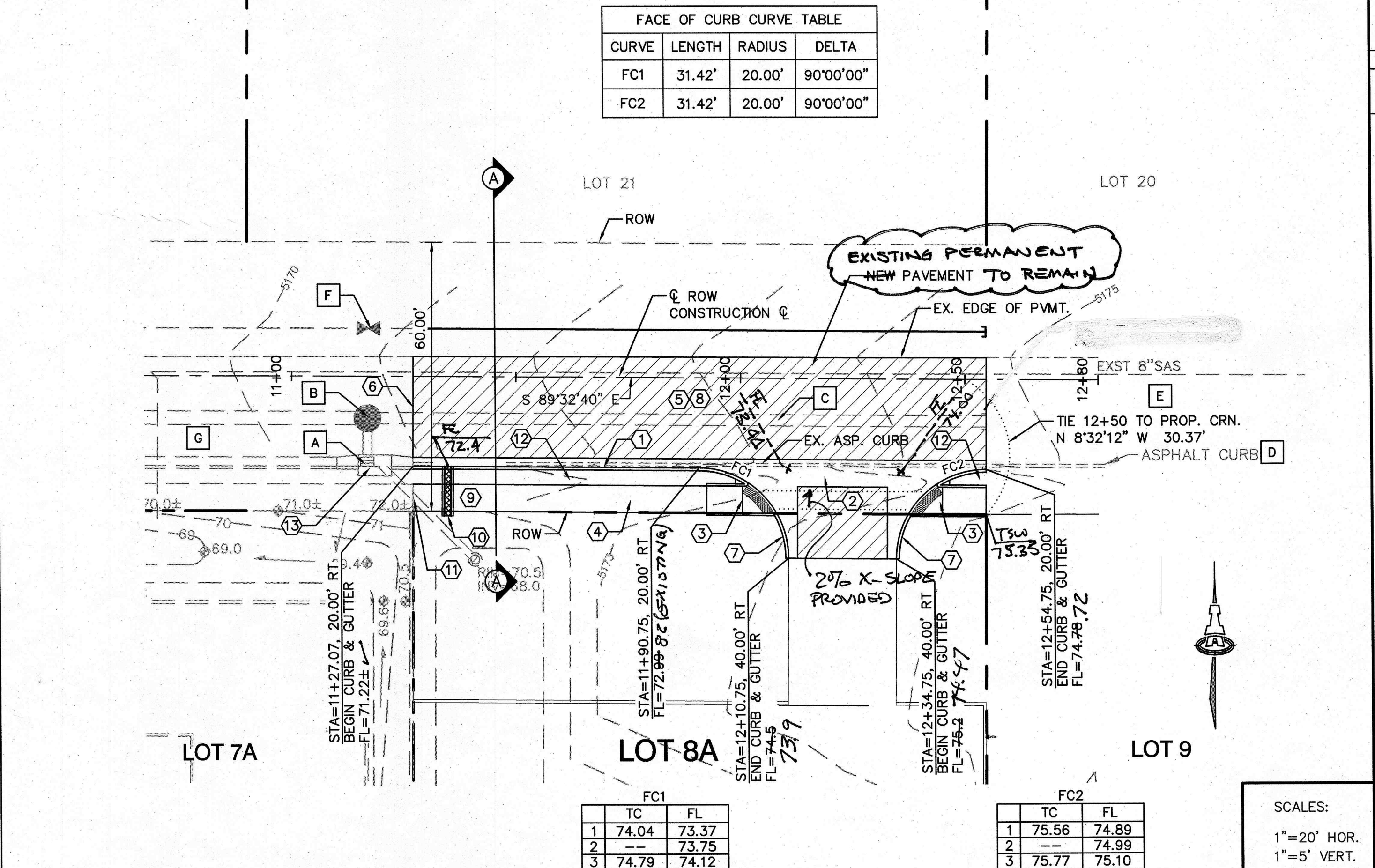
REV.	SHEETS	CITY ENGINEER	DATE	USER DEPARTMENT	DATE	USER DEPARTMENT	DATE
ENGINEERS STAMP & SIGNATURE		APPROVALS	ENGINEER	DATE	APPROVED FOR CONSTRUCTION		
		DRC Chairman	11/31/17				
		Transportation	11/31/17				
		Water/Wastewater	11/31/17				
		Hydrology	11/31/17				
		Constr. Mngmt.					
		Constr. Coord.					
City Project No.				630984	City Engineer Date 4/12/17		
					Sheet 1 Of 5		

DRB NO. NA

ISAACSON & ARFMAN, P.A.
Consulting Engineering Associates
128 Monroe Street N.E.
Albuquerque, New Mexico 87108
Ph. 505-268-8828 www.iacivil.com
2203 CC-001.dwg Jan 19, 2017







EXISTING IMPROVEMENTS

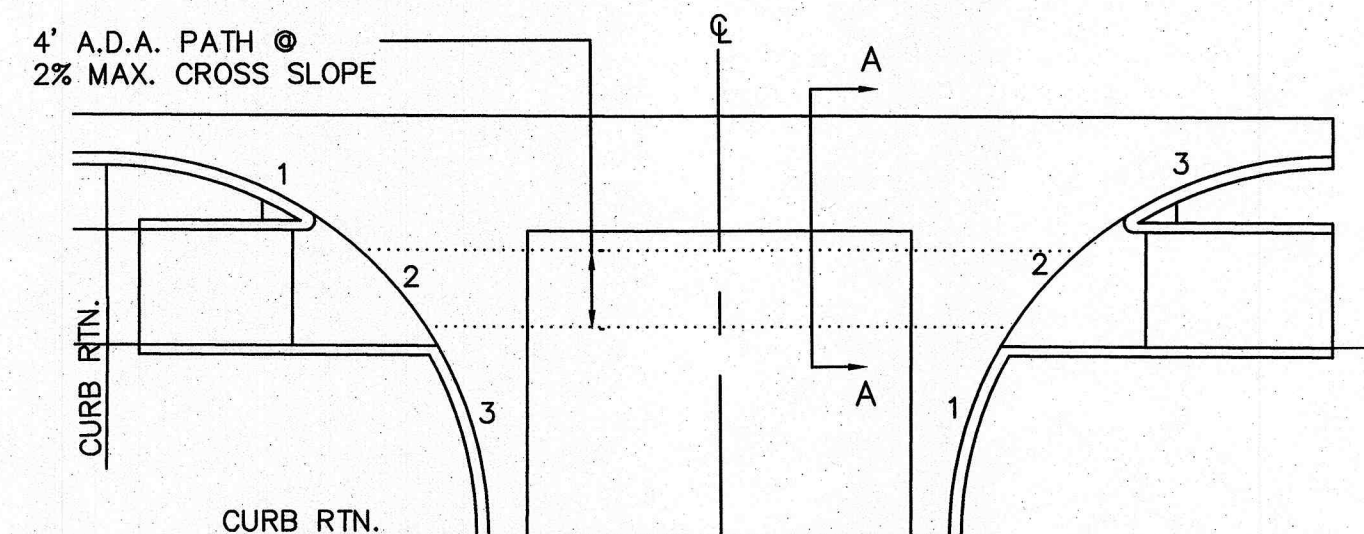
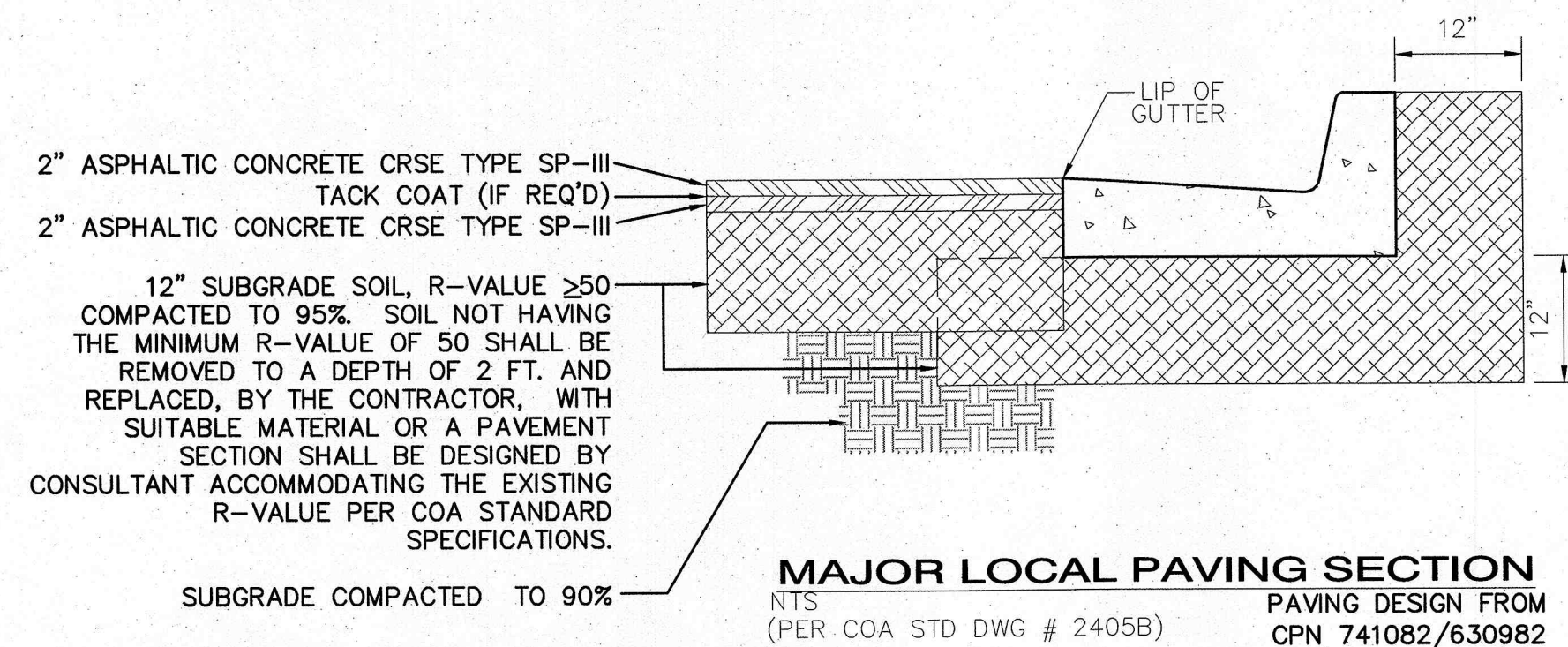
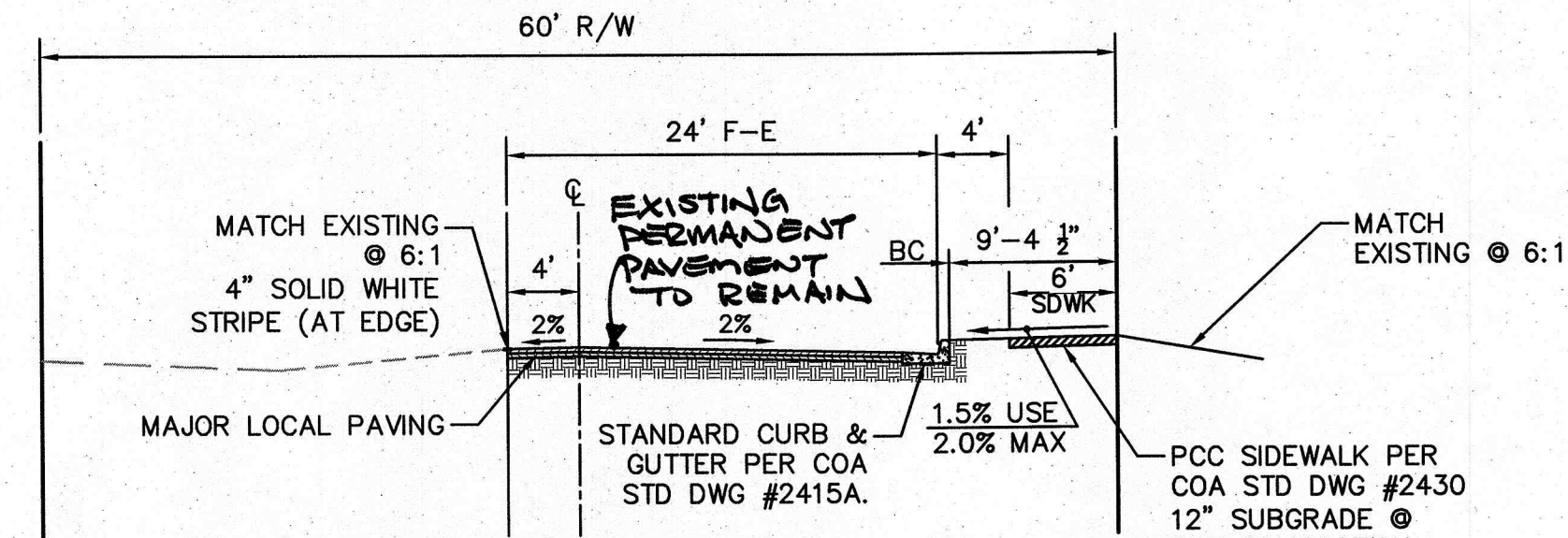
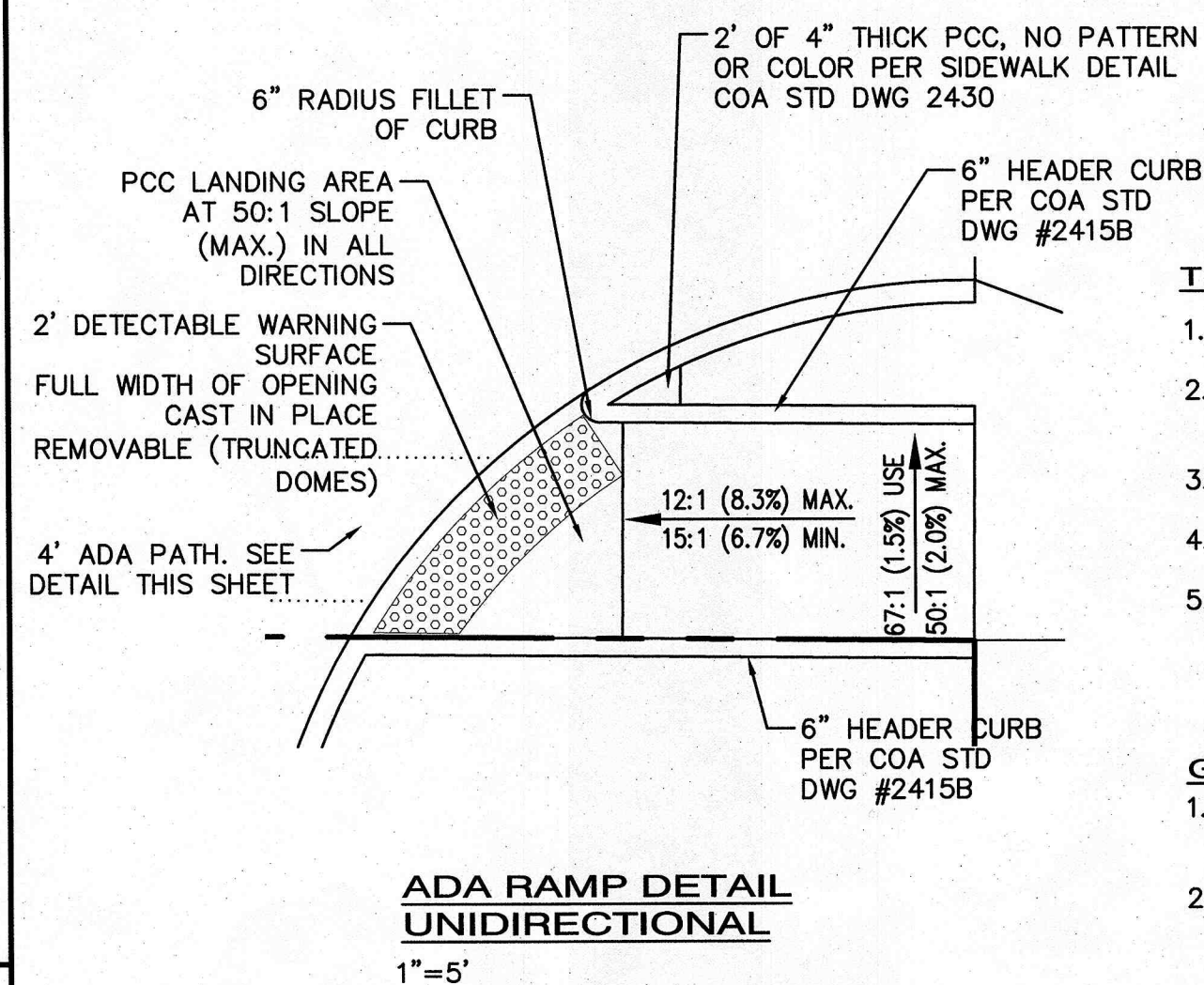
- TYPE "A" STORM DRAIN INLETS.
- STORM DRAIN MANHOLE.
- 30" RCP STORM DRAIN.
- EXISTING ASPHALT CURB.
- TEMPORARY ASPHALT PAVING.
- 10" GATE VALVE WITH BOX.
- PERMANENT ARTERIAL PAVEMENT.

KEYED CONSTRUCTION NOTES

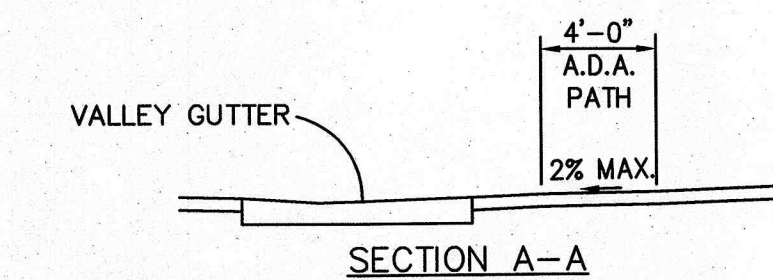
- CONSTRUCT NEW STD. CURB & GUTTER PER COA STD DWG 2415A.
- CONSTRUCT NEW VALLEY GUTTER PER COA STD DWG 2420.
- CONSTRUCT NEW WHEELCHAIR RAMP PER COA STD DWG 2426 AND DETAIL BELOW.
- CONSTRUCT NEW 6" WIDE SIDEWALK PER COA STD DWG 2430 & 2431.
- REMOVE AND DISPOSE EXISTING PAVEMENT AND ASPHALT CURB (REMOVED).
- CONNECT NEW PAVEMENT TO EXISTING WITH SMOOTH RIDING TRANSITION.
- INSTALL 6" CURB HEIGHT IN VALLEY GUTTER SOUTH OF RAMPS.
- INSTALL NEW PAVEMENT PER SECTION THIS SHEET.
- REMOVE EXISTING ASPHALT RUNDOWN.
- INSTALL SIDEWALK CULVERT PER COA STD DWG 2236. EXTEND 1 FOOT BEYOND EDGE OF SIDEWALK. TACK WELD STEEL PLATE BOLTS.
- PROVIDE SMOOTH FLUSH TRANSITION FROM EXISTING SIDEWALK TO NEW SIDEWALK.
- AREA BETWEEN BACK OF CURB AND SIDEWALK TO BE GRAVEL LANDSCAPING OR APPROVED EQUAL.
- INSTALL RUNOFF PROTECTION (WATTLES) AT DROP INLET DURING ROAD CONSTRUCTION. REMOVE AFTER ROAD CONSTRUCTION IS COMPLETE.

TRANSPORTATION GENERAL NOTES

- REMOVAL OF EXISTING CURB AND GUTTER AND SIDEWALKS SHALL BE TO THE NEAREST JOINT.
- ANY DAMAGE TO THE EXISTING CURB AND GUTTER, PAVEMENT, SIDEWALKS, STRIPING, AND SIGNAGE DURING CONSTRUCTION SHALL BE REPLACED.
- OVERNIGHT PARKING OF CONSTRUCTION EQUIPMENT SHALL NOT OBSTRUCT DRIVEWAYS OR DESIGNATED TRAFFIC LANES. THE CONTRACTOR SHALL NOT STORE ANY EQUIPMENT OR MATERIAL WITHIN THE PUBLIC RIGHT-OF-WAY.
- CURB AND GUTTER, SIDEWALKS, AND DRIVE PADS SHALL MATCH THE ELEVATIONS OF ADJUTING EXISTING AREAS AS SHOWN ON THE PLANS OR AS DIRECTED BY THE PROJECT ENGINEER.
- CONTRACTOR TO TEST SUBGRADE R-VALUE PRIOR TO CONSTRUCTION. IN THE EVENT THE R-VALUE IS LESS THAN 50, REMOVE 2 FEET OF SUBGRADE MATERIAL AND IMPORT MATERIAL WITH R-VALUE GREATER THAN 50 OR CONTACT THE ENGINEER IMMEDIATELY SO THE PAVEMENT SECTION CAN BE MODIFIED.



NOTE:
QUARTER POINT GRADES ARE REFERENCED AS 1, 2 & 3 ALONG THE FACE OF CURB IN A CLOCKWISE DIRECTION.



QUARTER POINT & ADA PATH DETAIL

NTS

TRUNCATED DOMES NOTES

- DESIGN PER ADA ACCESSIBILITY GUIDELINES (ADAAG).
- PAYMENT FOR TRUNCATED DOMES IS INCIDENTAL TO HANDICAP RAMP PAYMENT ITEM.
- SUBMIT TO SPECS TO CONSTRUCTION ENGINEER FOR EVALUATION PRIOR TO CONSTRUCTION.
- DETECTABLE WARNING SURFACE TO BE A PRODUCT THAT IS CAST-IN-PLACE AND REPLACEABLE.
- SEGMENTED DETECTABLE WARNING SURFACE AT BACK OF CURB TO BE CUT AND FIT PER MANUFACTURER'S INSTRUCTIONS. THE DETECTABLE WARNING SURFACE SHALL BE NO MORE THAN 5" FROM BACK OF CURB.

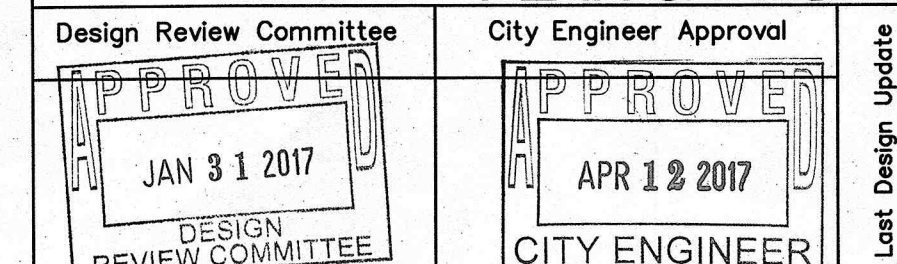
GENERAL NOTES

- SEE COA STD DWG #2426 FOR CONSTRUCTION NOTES.
- CONTRACTOR SHALL NOTIFY ENGINEER FOR INSPECTION OF FORM-WORK 24 HOURS PRIOR TO PLACEMENT OF CONCRETE FOR HANDICAP RAMPS.



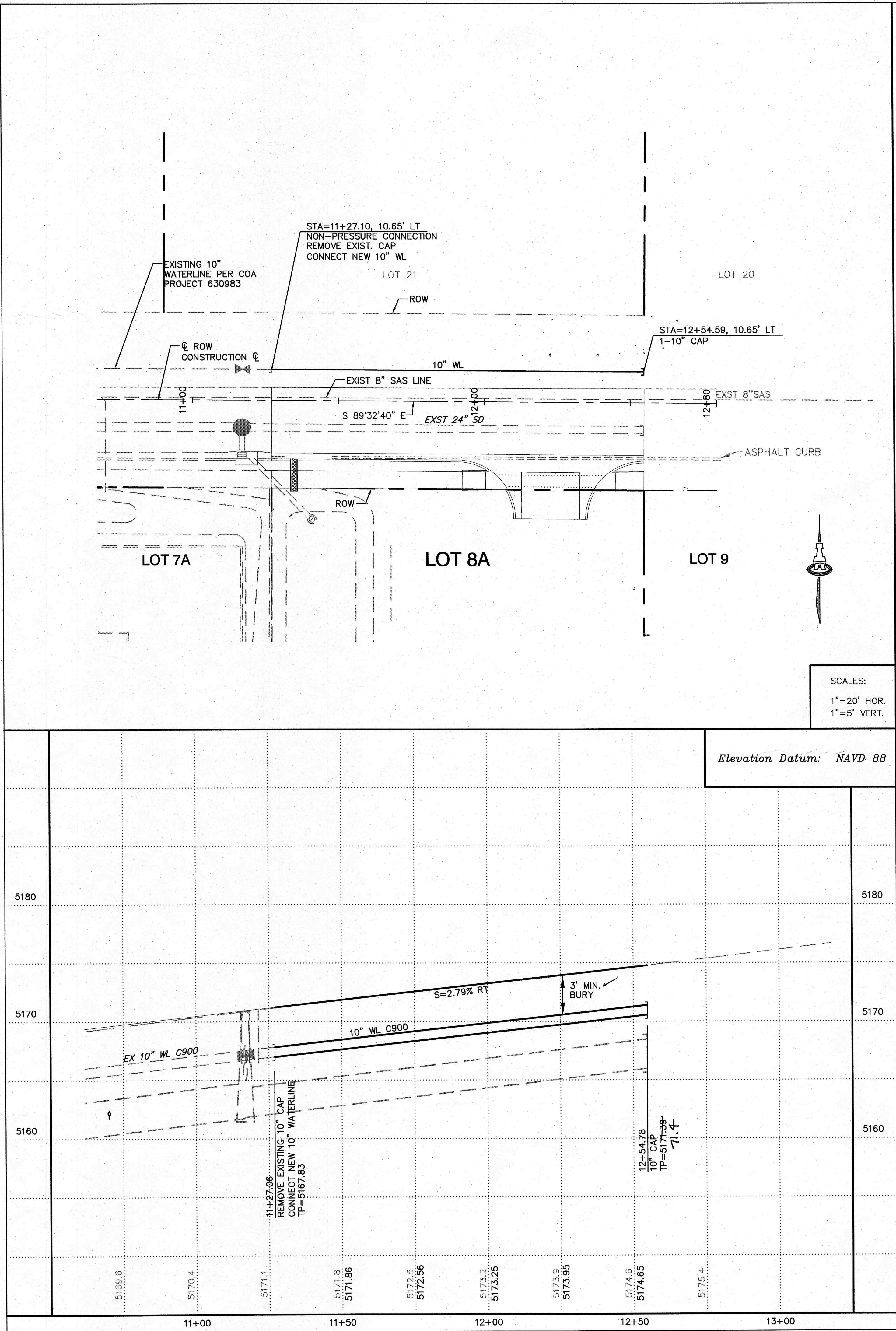
CITY OF ALBUQUERQUE
PUBLIC WORKS DEPARTMENT
ENGINEERING GROUP

TITLE: LOT 8-A PASADENA AVENUE NE
PASADENA AVENUE PAVING
PLAN & PROFILE



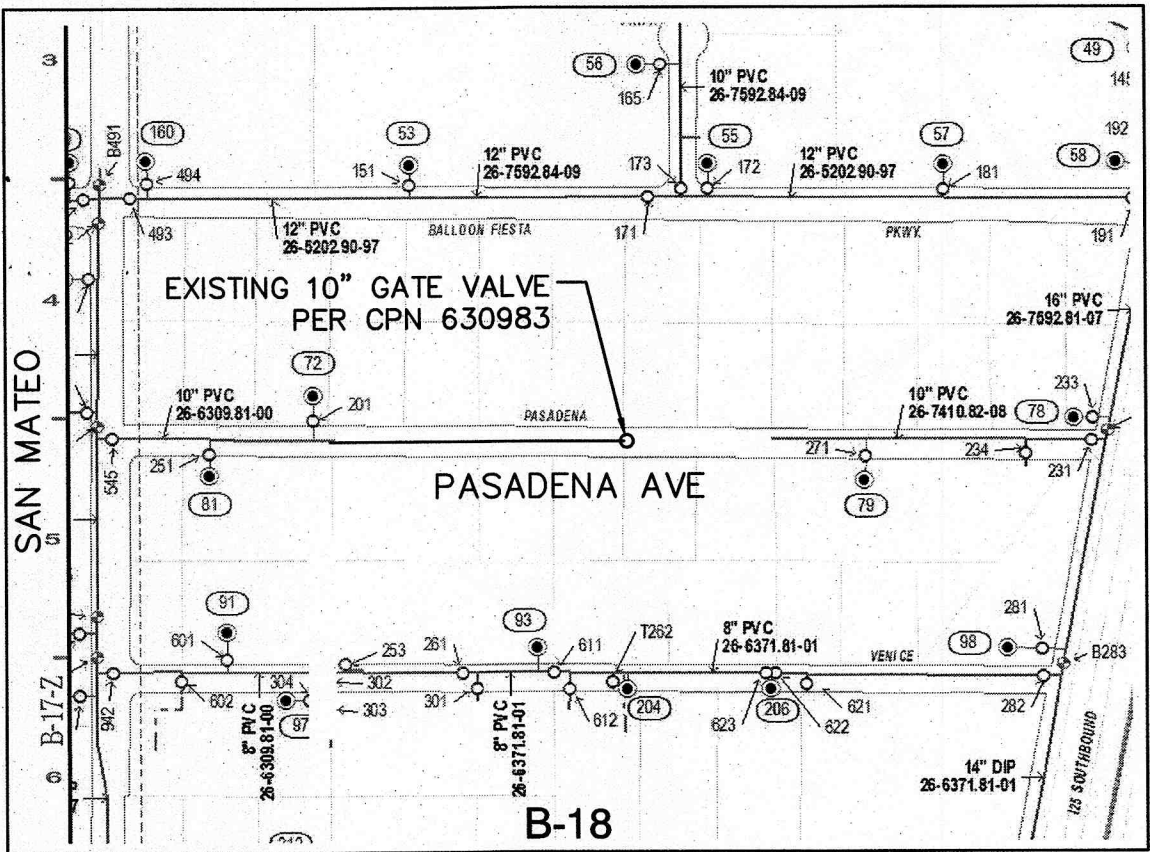
Zone Map No. B-18

AS-BUILT INFORMATION				BENCH MARKS				SURVEY INFORMATION				ENGINEER'S SEAL			
CONTRACTOR	PHILIP CANTRELL	USGLO BRASS TABLET	MONUMENT "CC-EG-17-12-11N-3E" (NAD 88)	FIELD NOTES				FIELD NOTES				FIELD NOTES			
WORK STATED BY	Carla Land Survey	DATE	5/17	ACCEPTANCE BY				DATE				DATE			
FIELD DRAWING	DATE	5/17		DATE				DATE				DATE			
REVISIONS															
NO.	DATE	REVISIONS	DESIGN	NO.	DATE	REVISIONS	DESIGN	NO.	DATE	REVISIONS	DESIGN	NO.	DATE	REVISIONS	DESIGN
DESIGNED BY	FAC	1/17		DATE				DATE				DATE			
DRAWN BY	thor	1/17		DATE				DATE				DATE			
CHECKED BY	FAC	1/17		DATE				DATE				DATE			



GENERAL NOTES

- EXISTING UTILITY LINES ARE SHOWN IN AN APPROXIMATE MANNER ONLY AND MAY BE INCOMPLETE OR OBSOLETE. SUCH LINES MAY OR MAY NOT EXIST WHERE SHOWN OR NOT SHOWN. ALL UTILITIES SHOULD BE FIELD VERIFIED AND LOCATED BY THE CONTRACTOR PRIOR TO COMMENCEMENT OF ANY CONSTRUCTION. THE CONTRACTOR IS FULLY RESPONSIBLE FOR ANY AND ALL DAMAGE CAUSED BY ITS FAILURE TO LOCATE, IDENTIFY AND PRESERVE ANY AND ALL EXISTING UTILITIES, PIPELINES, AND UNDERGROUND UTILITY LINES.
- CONTRACTOR SHALL NOT USE VIBRATORY COMPACTION EQUIPMENT OR HEAVY VEHICLES OVER EXISTING UTILITIES.
- CENTERLINES OF CONSTRUCTION IS ALONG CENTERLINE OF ROW.
- SEE THIS SHEET FOR WATER SHUT-OFF PLAN.
- SEE THIS SHEET FOR RESTRAINED JOINT LENGTHS FOR WATER LINE FITTINGS.



WATER SHUT-OFF PLAN

SHUT-OFF EXISTING VALVE AS INDICATED ABOVE TO PROVIDE NON-PRESSURE CONNECTION. WORK REQUIRING SHUTOFF OF FACILITIES DESIGNATED AS MASTER PLAN FACILITIES MUST BE COORDINATED WITH THE WATER AUTHORITY 14 DAYS IN ADVANCE OF PERFORMING SUCH WORK. ONLY WATER AUTHORITY CREWS ARE AUTHORIZED TO OPERATE PUBLIC VALVES. SHUTOFF REQUESTS MUST BE MADE ONLINE AT:
http://www.abcwua.org/Water_Shut_off_and_Turn_on_Procedures.aspx

RESTRAINED JOINT LENGTHS, L _r , FOR HORIZONTAL BENDS, VALVES, AND DEAD ENDS, (FT.)						
SIZE	HORZ. BENDS				VALVES & DEAD ENDS	
	90°	45°	22 1/2°	11 1/4°		
12	37	15	8	4	102	
10	31	13	7	4	87	
8	27	11	6	3	72	
6	20	9	4	2	55	
4	15	6	3	2	39	

RESTRAINED JOINT LENGTHS, L _r , FOR REDUCERS, (FT.) MINIMUM UNOBSTRUCTED, STRAIGHT-RUN LENGTH: RESTRAIN EITHER LARGE PIPE, OR SMALL PIPE.				
SIZE	LARGE SIDE	SIZE	LARGE SIDE	
12x10	30	10x6	53	
12x8	54	10x4	71	
12x6	74	8x6	31	
12x4	89	8x4	52	
10x8	29	6x4	29	

THESE TABLES ARE BASED UPON THE FOLLOWING CRITERIA:

DEPTH OF BURY: 3.0 FT. MINIMUM
FACTOR OF SAFETY: 1.50
MATERIAL: PVC
SOIL TYPE: GM/SM - SILTY GRAVELS AND SILTY SANDS, GRAVEL-SAND-SILT MIXTURES.
TEST PRESSURE: 150 PSI
PIPE BEDDED IN SAND, GRAVEL, OR CRUSHED STONE TO DEPTH OF 1/8 PIPE DIAMETER, 4 INCH MINIMUM; BACKFILL COMPACTED TO TOP OF PIPE.

DIFFERENT CRITERIA, E.G., GREATER DEPTH OF BURY, ETC., WILL REQUIRE DIFFERENT RESTRAINED LENGTHS. THESE MUST BE CALCULATED BY A QUALIFIED PROFESSIONAL ENGINEER AND APPROVED BY ABCWUA.

RESTRAINED JOINT LENGTHS
FOR WATERLINE FITTINGS

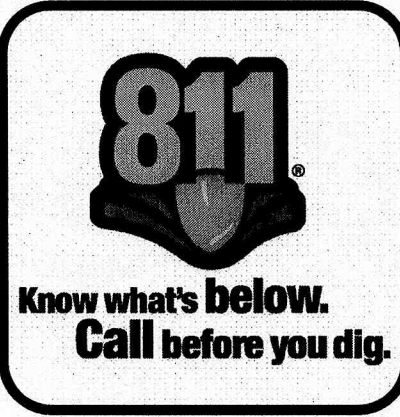
NOTES:

- ALL MECHANICAL JOINTS SHALL BE RESTRAINED AT THE FITTING.
- THE CONTRACTOR SHALL PROVIDE A MINIMUM PIPE LENGTH OF 20 LF FROM ALL MECHANICAL JOINTS. ALL PIPE JOINTS WITHIN 20 LF OF A MECHANICAL JOINT SHALL BE RESTRAINED AT THE CONTRACTOR'S EXPENSE.
- THE CONTRACTOR SHALL RESTRAIN ALL PIPE JOINTS IN THE SPECIFIED DISTANCE LISTED IN THE TABLE ON THIS SHEET.
- THE CONTRACTOR SHALL RESTRAIN ALL FIRE HYDRANT JOINTS FROM THE TEE ON THE MAIN TO THE FIRE HYDRANT FLANGE.

LEGEND

10" WL - EXISTING WATERLINE
8" SAS - EXISTING SANITARY SEWER
6" WL - NEW PUBLIC WATERLINE

AS BUILT DRAWING



ISAACSON & ARFMAN, P.A.
Consulting Engineering Associates
128 Monroe Street N.E.
Albuquerque, New Mexico 87108
Ph. 505-268-8828 www.iacivil.com
2203 CU-301.dwg Jan 19, 2017

CITY OF ALBUQUERQUE
PUBLIC WORKS DEPARTMENT
ENGINEERING GROUP

TITLE: LOT 8-A PASADENA AVENUE NE
PASADENA AVENUE UTILITY
PLAN & PROFILE

Design Review Committee	City Engineer Approval	Mo./Day/Yr.	Mo./Day/Yr.
APPROVED JAN 31 2017 DESIGN REVIEW COMMITTEE	APPROVED APR 12 2017 CITY ENGINEER		
City Project No.	Zone Map No.	Sheet	Of
630984	B-18	5	5

AS-BUILT INFORMATION		BENCH MARKS		SURVEY INFORMATION		ENGINEER'S SEAL	
CONTRACTOR	UTM Construction Company	USGLD BRASS TABLET	MONUMENT "CC-EG-11-12-11N-3E" (NAD 88)	FIELD NOTES			
INSPECTOR'S NAME	BY J. J. A.	N= 1,528,564.019	E= 1,539,912.248				
FIELD DATE	DATE 11/17	DELTA ALPHA = -0011'37"	G-G = 0.99967				
VERIFICATION BY	DATE 11/17						
CORRECTED BY	DATE 11/17						
MICRO-FILM INFORMATION		RECORDS BY		REVISIONS		DESIGN	
		NO.		NO.		DATE	