

ABBREVIATIONS

A	=	AIR LINE
AD	=	AREA DRAIN
AIP	=	ABANDONED IN PLACE
BLDG	=	BUILDING
BM	=	BENCHMARK
CATV	=	CABLE TELEVISION LINE
CIP	=	CAST IRON PIPE
CMP	=	CORRUGATED METAL PIPE
CMPA	=	CORRUGATED METAL PIPE ARCH
CO	=	CLEANOUT
COA	=	CITY OF ALBUQUERQUE
CONC	=	CONCRETE
CL	=	CENTERLINE
DIA	=	DIAMETER
DIP	=	DUCTILE IRON PIPE
DTL	=	DETAIL
DWG	=	DRAWING
DWS	=	WATER
EG	=	EXISTING GRADE
ELEC.	=	ELECTRIC
ELEV	=	ELEVATION
EX	=	EXISTING
FF	=	FINISHED FLOOR ELEVATION
FG	=	FINISHED GRADE
FH	=	FIRE HYDRANT
FL	=	FLOW LINE
GM	=	GAS METER
GV	=	GATE VALVE
HI PT	=	HIGH POINT
INV	=	INVERT ELEVATION
LF	=	LINEAL FEET
LP	=	LIGHT POLE
L/S	=	LANDSCAPING
MH	=	MANHOLE
MG	=	MEDIUM PRESSURE GAS PIPE
NG	=	NATURAL GROUND
OE	=	OVERHEAD ELECTRIC LINE
OT	=	OVERHEAD TELEPHONE LINE
PB	=	ELECTRICAL PULL BOX
PCC	=	PORTLAND CEMENT CONCRETE
PP	=	POWER POLE
PROP	=	PROPOSED
PVC	=	POLYVINYL CHLORIDE PIPE
RCP	=	REINFORCED CONCRETE PIPE
R/W	=	RIGHT-OF-WAY
S	=	SLOPE
SAS	=	SANITARY SEWER
SD	=	STORM DRAIN
STA	=	STATION
STD	=	STANDARD
SW	=	SIDEWALK
T	=	TELEPHONE
TA	=	TOP OF ASPHALT PAVEMENT
TAC	=	TOP OF ASPHALT CURB
TC	=	TOP OF CONCRETE SLAB (PAVEMENT)
TCC	=	TOP OF CONCRETE CURB
TS	=	TOP OF SIDEWALK
TW	=	TOP OF WALL
TYP	=	TYPICAL
UE	=	UNDERGROUND ELECTRIC
UT	=	UNDERGROUND TELEPHONE
WM	=	WATER METER
WR	=	WATER RECLAIMED
WV	=	WATER VALVE

SAWMILL MARKET

CITY OF ALBUQUERQUE, IMPROVEMENTS FOR
STRIPING AND SIGNAGE, ON BELLAMAH AVENUE NW,
BETWEEN RIO GRANDE BOULEVARD NW AND
19TH STREET NW

INDEX TO DRAWINGS

SHEET NO.	DESCRIPTION
1	COVER SHEET AND INDEX TO DRAWINGS
2	STRIPING AND SIGNAGE PLAN
3	TCL (APPROVED UNDER BUILDING PERMIT) FOR REFERENCE ONLY

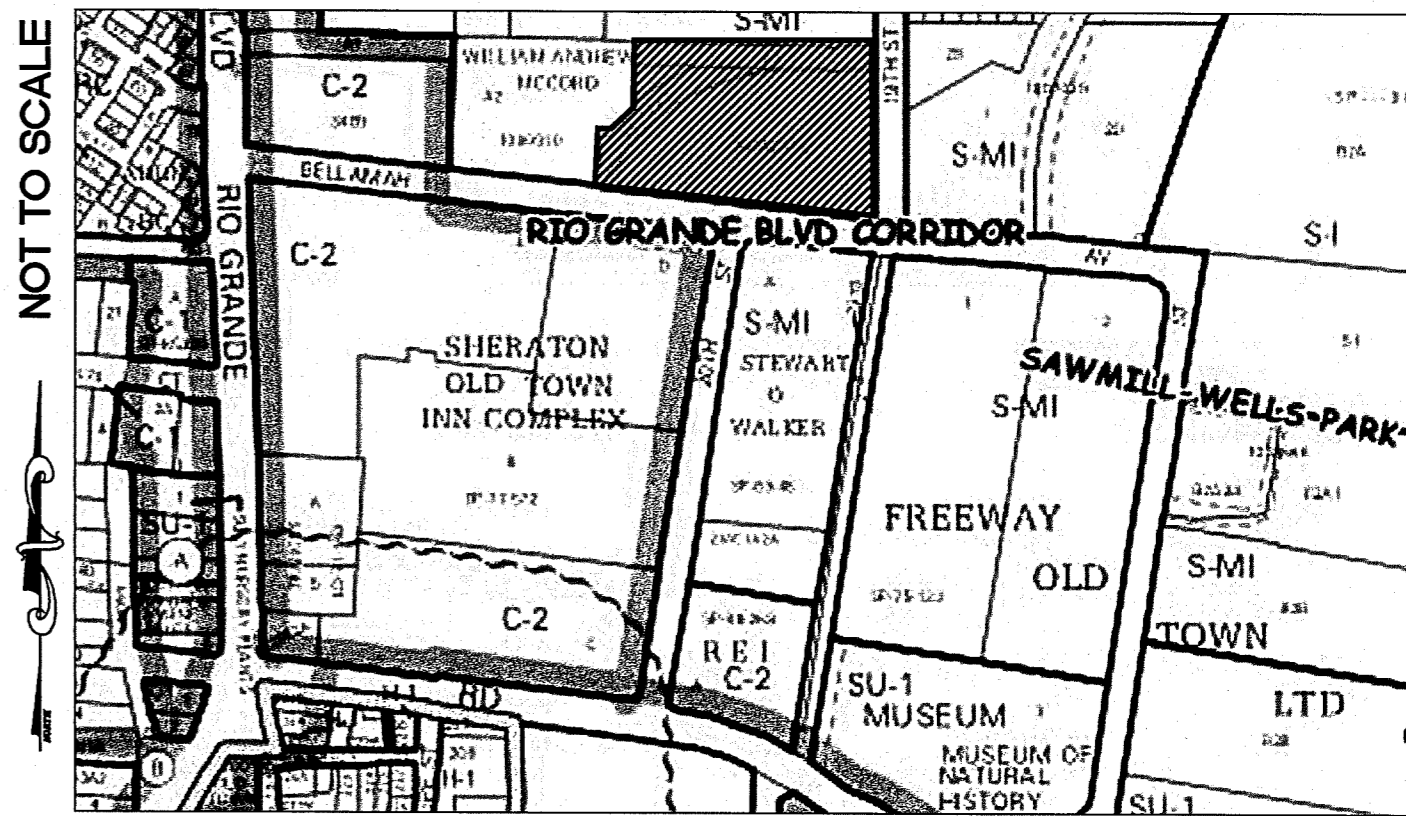
LEGEND

	NEW CURB AND GUTTER & SIDEWALK
	EX CURB AND GUTTER & SIDEWALK
	PROP FIRE HYDRANT
	PROP WATER VALVE
	PROPERTY LINE
	EX SAS MANHOLE
	PROP SAS MANHOLE
	PROP WATER METER

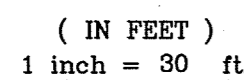
(S 83°39'25" W) RECORD BEARING AND DISTANCES

GENERAL NOTES

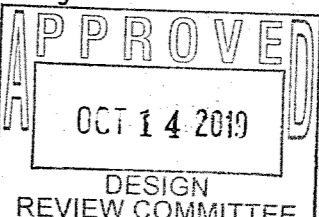
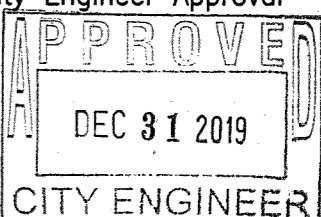
- ALL WORK DETAILED ON THESE PLANS TO BE PERFORMED, EXCEPT AS OTHERWISE STATED OR PROVIDED HEREON, SHALL BE CONSTRUCTED IN ACCORDANCE WITH CITY OF ALBUQUERQUE STANDARD SPECIFICATIONS FOR PUBLIC WORKS CONSTRUCTION, 1986 EDITION THROUGH MOST RECENT UPDATE (#9) AND WILL BE REFERRED TO HEREIN AS "STANDARD SPECIFICATIONS".
- ALL CONSTRUCTION WITHIN CITY RIGHT-OF-WAY OR EASEMENTS MUST BE DONE FROM APPROVED WORK ORDER DOCUMENTS FROM THE CITY.
- ALL WORK ON THIS PROJECT SHALL BE PERFORMED IN ACCORDANCE WITH APPLICABLE FEDERAL, STATE, AND LOCAL LAWS, ORDINANCES, RULES, AND REGULATIONS CONCERNING CONSTRUCTION SAFETY AND HEALTH.
- CONTRACTOR AGREES THAT HE SHALL ASSUME THE SOLE AND COMPLETE RESPONSIBILITY FOR THE JOB SITE CONDITIONS DURING THE COURSE OF CONSTRUCTION OF THIS PROJECT, INCLUDING SAFETY OF ALL PERSONS AND PROPERTY. THIS REQUIREMENT SHALL APPLY CONTINUOUSLY AND NOT BE LIMITED TO NORMAL WORKING HOURS. CONTRACTOR SHALL DEFEND, INDEMNIFY, AND HOLD HARMLESS THE OWNER AND ENGINEER FROM ANY AND ALL LIABILITY REAL OR ALLEGED, IN CONNECTION WITH THE PERFORMANCE OF WORK ON THIS PROJECT, EXCEPT LIABILITY ARISING FROM THE SOLE NEGLIGENCE OF THE OWNER OR ENGINEER.
- ALL EXCAVATION, TRENCHING, AND SHORING ACTIVITIES MUST BE ACCOMPLISHED IN ACCORDANCE WITH OSHA 29CFR 1926.650 SUBPART P.
- AN EXCAVATION/CONSTRUCTION PERMIT WILL BE REQUIRED BEFORE BEGINNING ANY WORK WITHIN CITY RIGHT-OF-WAY.
- CONTRACTOR SHALL SECURE A "TOPSOIL DISTURBANCE PERMIT" PRIOR TO BEGINNING CONSTRUCTION (IF REQUIRED BY CITY OF ALBUQUERQUE PUBLIC WORKS).
- PERMIT REQUESTS MAY BE DENIED OR DELAYED DUE TO CONFLICTS WITH OTHER PROJECTS IN THE AREA.
- CONTRACTOR SHALL NOTIFY THE ENGINEER NOT LESS THAN SEVEN (7) DAYS PRIOR TO STARTING WORK IN ORDER THAT THE CITY SURVEYOR MAY TAKE NECESSARY MEASURES TO INSURE THE PRESERVATION OF SURVEY MONUMENTS. CONTRACTOR SHALL NOT DISTURB PERMANENT SURVEY MONUMENTS WITHOUT THE CONSENT OF THE CITY SURVEYOR AND SHALL NOTIFY THE CITY SURVEYOR AND BEAR THE EXPENSE OF REPLACING ANY THAT MAY BE DISTURBED WITHOUT PERMISSION. ONLY THE CITY SURVEYOR SHALL REPLACE SURVEY MONUMENTS. WHEN A CHANGE IS MADE IN THE FINISHED ELEVATIONS OF THE PAVEMENT OF ANY ROADWAY IN WHICH A PERMANENT SURVEY MONUMENT IS LOCATED, CONTRACTOR SHALL, AT HIS OWN EXPENSE, ADJUST THE MONUMENT COVER TO THE NEW GRADE UNLESS OTHERWISE SPECIFIED. REFER TO STANDARD SPECIFICATIONS SECTION 4.4.
- THE CONTRACTOR SHALL COORDINATE WITH THE WATER AUTHORITY SEVEN (7) DAYS IN ADVANCE OF PERFORMING WORK THAT WILL AFFECT THE PUBLIC WATER OR SANITARY SEWER INFRASTRUCTURE. WORK REQUIRING SHUTOFF OF FACILITIES DESIGNED AS MASTER PLAN FACILITIES MUST BE COORDINATED WITH THE WATER AUTHORITY FOURTEEN (14) DAYS IN ADVANCE OF PERFORMING SUCH WORK. ONLY WATER AUTHORITY CREWS ARE AUTHORIZED TO OPERATE PUBLIC VALVES. SHUTOFF REQUESTS MUST BE MADE ONLINE AT http://www.abcwua.org/Water_Shut_off_and_Turn_on_Procedures.aspx.
- SEVEN (7) WORKING DAYS PRIOR TO BEGINNING CONSTRUCTION, CONTRACTOR SHALL SUBMIT TO CONSTRUCTION COORDINATION DIVISION A DETAILED CONSTRUCTION SCHEDULE. TWO (2) WORKING DAYS PRIOR TO CONSTRUCTION, CONTRACTOR SHALL OBTAIN A BARRICADING PERMIT FROM THE CONSTRUCTION COORDINATION DIVISION. CONTRACTOR SHALL NOTIFY BARRICADE ENGINEER (924-3400) PRIOR TO OCCUPYING AN INTERSECTION. REFER TO SECTION 19 OF STANDARD SPECIFICATIONS.
- CONTRACTOR SHALL DETERMINE IN ADVANCE OF HIS CONSTRUCTION IF OVERHEAD UTILITY LINES, SUPPORT STRUCTURES, POLES, GUYS, ETC. ARE AN OBSTRUCTION TO CONSTRUCTION OPERATIONS. IF ANY OBSTRUCTION TO CONSTRUCTION OPERATIONS IS EVIDENT, CONTRACTOR SHALL BE RESPONSIBLE FOR COORDINATING WITH THE APPROPRIATE UTILITY OWNER TO REMOVE OR SUPPORT THE UTILITY OBSTRUCTION. ANY COST ASSOCIATED WITH THIS EFFORT SHALL BE THE RESPONSIBILITY OF CONTRACTOR.
- PNM WILL PROVIDE AT NO COST TO THE CITY OR THE CONTRACTOR THE REQUIRED PERSONNEL FOR INSPECTION OR OBSERVATION DEEMED NECESSARY BY PNM WHILE THE CONTRACTOR IS EXPOSING PNM'S CABLES. HOWEVER, THE CONTRACTOR SHALL BE CHARGED THE TOTAL COST ASSOCIATED WITH REPAIRS TO ANY DAMAGED CABLES OR FOR ANY COST ASSOCIATED WITH SUPPORTING OR RELOCATING THE POLES AND CABLES DURING CONSTRUCTION.
- TWO (2) WORKING DAYS PRIOR TO ANY EXCAVATION, CONTRACTOR MUST CONTACT NEW MEXICO ONE CALL SYSTEM (260-1990) FOR LOCATION OF EXISTING UTILITIES.
- PRIOR TO CONSTRUCTION, CONTRACTOR SHALL EXCAVATE AND VERIFY THE HORIZONTAL AND VERTICAL LOCATIONS OF ALL PERTINENT EXISTING UTILITIES AND/OR OBSTRUCTIONS. SHOULD A CONFLICT EXIST, THE CONTRACTOR SHALL NOTIFY THE ENGINEER SO THE CONFLICT CAN BE RESOLVED WITH A MINIMUM AMOUNT OF DELAY.
- EXISTING UTILITY LINE LOCATION ARE SHOWN IN AN APPROXIMATE MANNER ONLY AND SUCH LINES MAY EXIST WHERE NONE ARE SHOWN. THE LOCATION OF ANY SUCH EXISTING LINES IS BASED UPON INFORMATION PROVIDED BY THE UTILITY COMPANY, THE OWNER, OR BY OTHERS, AND THE INFORMATION MAY BE INCOMPLETE OR MAY BE OBSOLETE BY THE TIME CONSTRUCTION COMMENCES.
- THE ENGINEER HAS UNDERTAKEN NO FIELD VERIFICATION OF THE LOCATION, DEPTH, SIZE, OR TYPE OF EXISTING UNDERGROUND UTILITY LINES, MAKES NO REPRESENTATION PERTAINING THERETO, AND ASSUMES NO RESPONSIBILITY OR LIABILITY THEREFOR. CONTRACTOR SHALL INFORM ITSELF OF THE LOCATION OF ANY UTILITY LINE IN OR NEAR THE AREA OF THE WORK IN ADVANCE OF AND DURING EXCAVATION WORK. CONTRACTOR IS FULLY RESPONSIBLE FOR ANY AND ALL DAMAGE CAUSED BY ITS FAILURE TO LOCATE, IDENTIFY, AND PRESERVE ANY AND ALL EXISTING UTILITIES.
- CONTRACTOR SHALL SUPPORT ALL EXISTING, UNDERGROUND UTILITY LINES WHICH, BECOME EXPOSED DURING CONSTRUCTION. PAYMENT FOR SUPPORTING WORK SHALL BE INCIDENTAL TO WATERLINE AND/OR SEWER LINE COSTS.
- CONTRACTOR IS TO SUPPORT AND MAINTAIN THE INTEGRITY OF ALL UNDERGROUND TELEPHONE, ELECTRIC CABLES AND CABLE TELEVISION UTILITIES AT NO ADDITIONAL COST TO THE OWNER. CABLE IS TO BE SUPPORTED AT A MAXIMUM OF EVERY FIFTEEN (15) FEET. CONTRACTOR SHALL COORDINATE WITH AND MAKE NECESSARY PAYMENT (IF ANY) TO UTILITY OWNER FOR DE-ENERGIZATION OF CABLES OR SUPPORT OF CABLES BY THE UTILITY OWNER.
- CONTRACTOR SHALL ASSIST THE ENGINEER/INSPECTOR IN THE RECORDING OF DATA ON ALL UTILITY LINES AND ACCESSORIES AS REQUIRED BY THE CITY OF ALBUQUERQUE FOR THE PREPARATION OF "AS CONSTRUCTED" DRAWINGS. CONTRACTOR SHALL NOT COVER UTILITY LINES AND ACCESSORIES UNTIL ALL DATA HAS BEEN RECORDED.
- ALL UTILITIES AND UTILITY SERVICE LINES SHALL BE INSTALLED PRIOR TO PAVING.
- ALL BACKFILL FOR TRENCHES SHALL BE COMPACTED TO A MINIMUM OF 95% MAXIMUM DENSITY PER ASTM D-1557 AND AS DIRECTED BY STANDARD SPECIFICATIONS SECTION 301.4 AND STANDARD DRAWING NUMBER 2465.
- CONTRACTOR SHALL PROMPTLY CLEAN UP ANY MATERIAL EXCAVATED WITHIN THE PUBLIC RIGHT-OF-WAY OR PRIVATE ROADWAY EASEMENTS SO THAT THE EXCAVATED MATERIAL IS NOT SUSCEPTIBLE TO BEING WASHED DOWN THE STREET OR INTO ANY PUBLIC DRAINAGE FACILITY.
- REMOVALS SHALL BE DISPOSED OF OFF-SITE AND SHALL BE THE RESPONSIBILITY OF THE CONTRACTOR.
- CONTRACTOR SHALL DISPOSE OF ALL UNSUITABLE MATERIAL IN AN ENVIRONMENTALLY ACCEPTABLE MANNER AT A LOCATION ACCEPTABLE TO THE PROJECT MANAGER. THERE WILL BE NO DIRECT COMPENSATION FOR THIS WORK.
- CONTRACTOR SHALL CONDUCT HIS OPERATIONS IN A MANNER WHICH WILL MINIMIZE INTERFERENCE WITH LOCAL TRAFFIC.
- ANY WORK AFFECTING AN ARTERIAL ROADWAY MAY REQUIRE TWENTY-FOUR (24) HOURS OF CONSTRUCTION.
- ALL EXISTING SIGNS, MARKERS, DELINEATORS, ETC., WITHIN THE CONSTRUCTION LIMITS SHALL BE REMOVED, STORED AND RE-SET BY THE CONTRACTOR.
- WHEN ABUTTING EXISTING PAVEMENT TO NEW, SAW CUT EXISTING PAVEMENT TO A STRAIGHT EDGE AND AT A RIGHT ANGLE, OR AS APPROVED BY THE FIELD ENGINEER. REMOVAL OF BROKEN OR CRACKED PAVEMENT WILL ALSO BE REQUIRED.
- REMOVAL OF EXISTING CURB AND GUTTER OR SIDEWALK SHALL BE TO THE NEAREST JOINT.
- AT HIS OWN EXPENSE, CONTRACTOR SHALL ASSUME RESPONSIBILITY FOR ANY DAMAGE TO EXISTING PAVEMENT, PAVEMENT MARKINGS, CURB AND GUTTER, SIGNAGE, HANDICAP RAMPS, AND SIDEWALK DURING CONSTRUCTION APART FROM THOSE SECTIONS INDICATED FOR REMOVAL ON THE PLANS AND SHALL REPAIR OR REPLACE, PER STANDARD SPECIFICATIONS.
- ALL STREET STRIPING, ALTERED OR DESTROYED, SHALL BE REPLACED WITH PLASTIC REFLECTORIZED PAVEMENT MARKINGS BY CONTRACTOR TO SAME LOCATION AS EXISTING, OR AS INDICATED BY THIS PLAN SET.
- CONTRACTOR SHALL MAINTAIN A GRAFFITI-FREE WORK SITE. CONTRACTOR SHALL PROMPTLY REMOVE ANY AND ALL GRAFFITI FROM EQUIPMENT, WHETHER PERMANENT OR TEMPORARY.
- ELECTRONIC MARKER SPHERES (EMS) WILL BE PLACED ACCORDING TO SECTION 170 OF THE CITY OF ALBUQUERQUE STANDARD SPECIFICATIONS FOR PUBLIC WORKS CONSTRUCTION, 1986 EDITION AS REVISED THROUGH UPDATE #9.
- THE CONTRACTOR WILL BE RESPONSIBLE FOR DISPOSING OF ALL DEBRIS, INCLUDING, NOT LIMITED TO HAZARDOUS WASTE AT DISPOSAL SITES APPROVED BY GOVERNMENTAL AGENCIES REGULATING THE DISPOSAL OF SUCH MATERIALS.
- CONTRACTOR SHALL BE RESPONSIBLE FOR PROVIDING AND MAINTAINING ALL CONSTRUCTION SIGNING UNTIL PROJECT HAS BEEN ACCEPTED BY THE CITY AND ABCWA.
- THE CONTRACTOR IS RESPONSIBLE FOR PROTECTING THE EXISTING UTILITY LINES WITHIN THE CONSTRUCTION AREA. ANY DAMAGE TO EXISTING FACILITIES CAUSED BY CONSTRUCTION ACTIVITY SHALL BE REPAIRED OR REPLACED BY THE CONTRACTOR IMMEDIATELY AND WITHOUT DELAY AT THE CONTRACTOR'S EXPENSE AND APPROVED BY THE CONSTRUCTION OBSERVER.
- MAINTAIN EXISTING ACCESS FOR ALL BUSINESSES AND PRIVATE PROPERTY DURING THE COURSE OF CONSTRUCTION, FOR BOTH VEHICLES AND PEDESTRIANS, INCLUDING ADA ACCESS.
- CONTRACTOR TO TEST SUBGRADE R-VALUE PRIOR TO CONSTRUCTION. IN THE EVENT THE R-VALUE IS LESS THAN 50, REMOVE 2 FEET OF SUBGRADE MATERIAL AND IMPORT MATERIAL WITH R-VALUE GREATER THAN 50 OR CONTACT THE ENGINEER IMMEDIATELY SO THE PAVEMENT SECTION CAN BE MODIFIED.

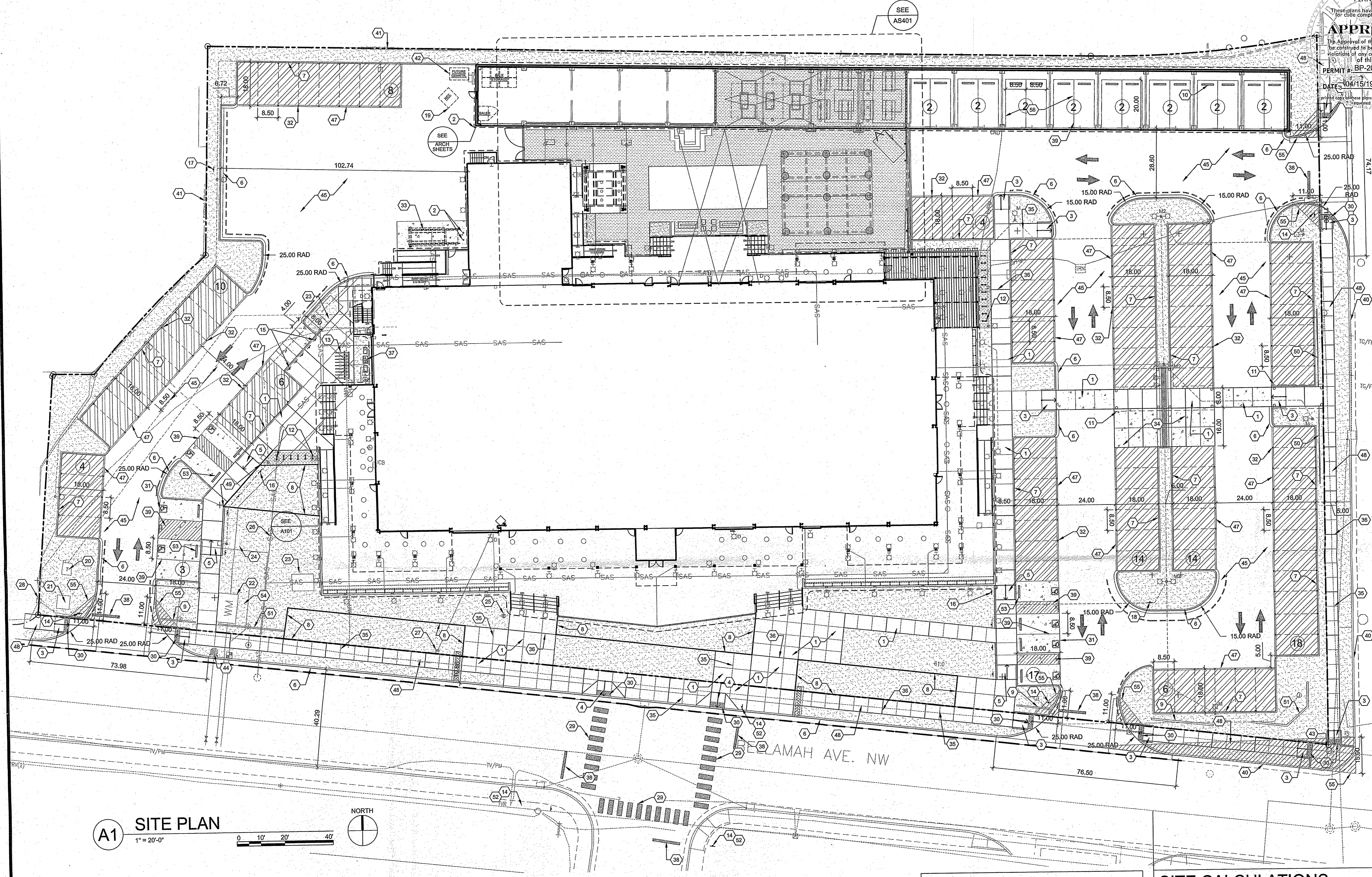
VICINITY MAP
ZONE ATLAS J-13-ZCOA/PNM STREET LIGHT COORDINATION
CONTACT:
MARTIN CARRASCO
COA TRAFFIC ENGINEERING DIVISION
(505) 857-8688THE HARTMAN + MAJEWSKI
dg DESIGN GROUP
120 VASSAR DRIVE SE SUITE 100
ALBUQUERQUE, NEW MEXICO 87106
PHONE: 505.242.8810 FAX: 505.242.8811

REV.	SHEETS	CITY ENGINEER	DATE	USER DEPT.	DATE	USER DEPT.	DATE
ENGINEER'S SEAL		APPROVALS	ENGINEER	DATE	APPROVED FOR CONSTRUCTION		
		DRC CHAIRMAN	<i>[Signature]</i>	10/19/19	<i>[Signature]</i> 12/31/19 CITY ENGINEER DATE		
		TRANSPORTATION	<i>[Signature]</i>	10/9/19			
		WATER/WASTEWATER	N/A				
		HYDROLOGY	<i>[Signature]</i>	10/8/19			
		PARKS					
		CONSTR. MANAGER					
		PROJECT NO. 631565			SHEET 1 OF 3		



1. ALL NEW STRIPING TO BE THERMOPLASTIC.

CITY OF ALBUQUERQUE PUBLIC WORKS DEPARTMENT ENGINEERING GROUP				
TITLE: SAWMILL MARKET STRIPING AND SIGNAGE PLAN				
Design Review Committee 		City Engineer Approval 		Last Design Update
				Mo./Day/Yr.
				Mo./Day/Yr.
City Project No. 631565		Zone Map J-13-Z		Sheet 2
				Of 3

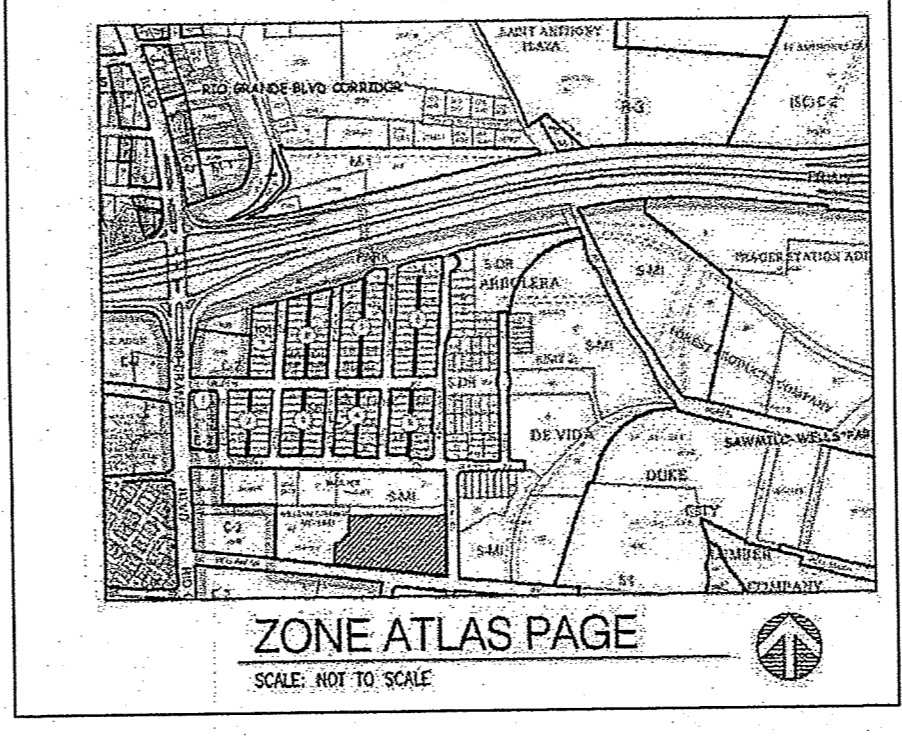


A1 SITE PLAN
1" = 20'-0"

TRAFFIC CIRCULATION LAYOUT
APPROVED
audrey
Date: 10/17/18

TRAFFIC CIRCULATION LAYOUT
APPROVED
Date: _____

ALL WHEELCHAIR RAMPS LOCATED
WITHIN THE PUBLIC RIGHT OF WAY
MUST HAVE TRUNCATED DOMES.



SITE CALCULATIONS

REQUIRED PARKING FOR NEW BUILDING (8 STALLS/1000SF)
REQUIRED PARKING FOR OUTDOOR DINING AREAS (5 STALLS/1,000 SF)
TOTAL REQUIRED PARKING STALLS: 369
TOTAL PARKING STALLS PROVIDED: 120
TOTAL SHARED PARKING STALLS PROVIDED: 249

MOTORCYCLE PARKING STALLS REQUIRED: 5
MOTORCYCLE STALLS PROVIDED: 5
ACCESSIBLE PARKING STALLS REQUIRED: 8 (2 VAN)
ACCESSIBLE PARKING STALLS PROVIDED: 8 (2 VAN)

BICYCLE PARKING STALLS REQUIRED: 32
BICYCLE PARKING STALLS PROVIDED: 32

THE REMAINDER OF THE PARKING REQUIREMENT (249 SPACES, 67 % OF REQUIREMENT) SHALL BE MET BY A SHARED PARKING AGREEMENT WITH HOTEL CHACO/HOTEL ALBUQUERQUE, WHICH ARE UNDER THE SAME OWNERSHIP AS SAWMILL MARKET AND ARE LOCATED DIRECTLY ACROSS BELLAMAH AVENUE. PER PREVIOUSLY APPROVED DRB SUBMITTALS, HOTEL ALBUQUERQUE / HOTEL CHACO HAVE A SURPLUS OF 306 SPACES. AFTER ALLOCATING 249 SPACES FOR SAWMILL MARKET AND 31 FOR THE PREVIOUSLY APPROVED ART BARN (ARTECHOUSE), HOTEL ALBUQUERQUE / HOTEL CHACO HAVE A REMAINING SURPLUS OF 28 SPACES.

LEGEND

- PROPERTY LINE
- FIRE LANE STRIPING, SEE D1/AS501
- 3" DEPTH OF STABILIZED CRUSHER FINES, COLOR SMOKE, SEE B1/AS501
- LANDSCAPE AREA, SEE LANDSCAPE SHEETS
- IRRIGATED TURF, SEE LANDSCAPE SHEETS
- HEAVY DUTY CONCRETE, SEE CIVIL SHEETS
- PERVIOUS PAVING, SEE CIVIL SHEETS
- PAINTED PAVEMENT MARKING, SEE E5/AS501

CITY OF ALBUQUERQUE
PLANNING DEPARTMENT
APPROVED FOR THE CITY OF ALBUQUERQUE
DATE: 10/15/18
PERMIT: BP-2018-14628
THESE PLANS HAVE BEEN SUBMITTED TO THE CITY OF ALBUQUERQUE FOR GRADING, DRAINAGE, AND UTILITY REVIEW. THE APPROVAL OF THESE PLANS DOES NOT CONSTITUTE A GUARANTEE OF THE ACCURACY OF THE INFORMATION PROVIDED HEREON. THE APPLICANT SHALL BE RESPONSIBLE FOR VERIFYING THE EXISTING UTILITY LOCATIONS AND FOR OBTAINING ANY NECESSARY PERMITS FROM THE APPROPRIATE AGENCIES. THE APPLICANT SHALL BE RESPONSIBLE FOR OBTAINING ANY NECESSARY PERMITS FROM THE APPROPRIATE AGENCIES. THE APPLICANT SHALL BE RESPONSIBLE FOR OBTAINING ANY NECESSARY PERMITS FROM THE APPROPRIATE AGENCIES.

PROJECT DATA

ADDRESS: 1909 BELLAMAH AVE. NW, ALBUQUERQUE, NM 87104
LEGAL DESCRIPTION: TRS 340A2A1A2B, 340A2A2B & 340A2A1C MRGCD MAP 35 CONT 3.0136 AC M/L
ZONE ATLAS PAGE: H-13
SITE AREA: 3.0136 AC
ZONING: NR-LM
BUILDING FOOTPRINT AND OUTDOOR DINING SPACES:
TOTAL BUILDING: 26,381 SF
MEZZANINE: 7,220 SF
TERRACE: 12,945 SF
YARD: 7,032 SF
LANDSCAPING: REFER TO SHEET LP101 FOR LANDSCAPE PLAN AND CALCULATIONS

SHEET KEYED NOTES

- | CODE | DESCRIPTION |
|------|---------------------------------------------------------------------------------------------------------------------|
| 1 | CONCRETE PAVING WITH SALT FINISH, SEE A1/AS501 AND SPECIFICATIONS |
| 2 | PIPE BOLLARD, SEE E3/AS501 |
| 3 | CONCRETE ACCESSIBLE RAMP TYPE A, SEE A3/AS501 |
| 4 | CONCRETE RAMP TYPE B, SEE A4/AS501 |
| 5 | CONCRETE ACCESSIBLE RAMP TYPE C, SEE A5/AS501 |
| 6 | CONCRETE CURB AND GUTTER, SEE CIVIL |
| 7 | CONCRETE HEADER CURB, SEE CIVIL |
| 8 | STEEL PLANTERS, SEE DETAIL B8/AS501 AND SPECIFICATIONS |
| 9 | 3'-0" CMU WALL WITH STUCCO AND BRICK CAP, SEE B2/AS501 AND SPECIFICATIONS |
| 10 | WOOD PARKING BUMPER, SEE C3/AS501 AND SPECIFICATIONS |
| 11 | FUTURE STEEL TRELLIS, TO BE DESIGNED BY OWNER, NOT IN CONTRACT |
| 12 | BIKE RACKS, SEE C2/AS501 AND SPECIFICATIONS |
| 13 | PAGE BIKE SHARE PROVIDED BY OWNER |
| 14 | STOP SIGN, SEE D5/AS501 |
| 15 | MOTORCYCLE PARKING SIGN, SEE D5/AS501 |
| 16 | ACCESSIBLE PARKING SIGN, SEE D5/AS501 |
| 17 | NO PARKING SIGN, SEE D5/AS501 |
| 18 | VALET PARKING SIGN, SEE D5/AS501 |
| 19 | 6 YD. RECYCLING BIN, PROVIDED BY OWNER |
| 20 | TRANSFORMER, SEE ELECTRICAL |
| 21 | SWITCHGEAR, SEE ELECTRICAL |
| 22 | UNDERGROUND WATER METER, SEE CIVIL |
| 23 | GREASE TRAP, SEE CIVIL |
| 24 | BACKFLOW PREVENTOR, SEE CIVIL |
| 25 | POST INDICATOR VALVE, SEE CIVIL |
| 26 | SANITARY SEWER LINE, SEE CIVIL |
| 27 | POST TYPE FIRE DEPARTMENT CONNECTION, SEE CIVIL |
| 28 | COMMUNICATIONS PEDESTAL, SEE ELECTRICAL |
| 29 | PAINTED CROSSWALK, SEE D3/AS501 |
| 30 | DETECTABLE WARNING SURFACE, SEE B3/AS501 |
| 31 | ADA PAVEMENT MARKING, SEE D4/AS501 |
| 32 | LOW PROFILE PARKING SPACE DEMARCATION MARKER 100 MM, FINISH: BRONZE, SOURCE: URBANFINISH OR APPROVED EQUAL BY OWNER |
| 33 | COMPACTOR, 30 CU. YD. CAPACITY WITH ANGLE IRON WHEEL STOPS, PROVIDED BY OWNER |
| 34 | CONCRETE VALET DRIVE, SEE CIVIL, SALT FINISH |
| 35 | CONCRETE CONTROL JOINT, SEE A6/AS501 |
| 36 | CONCRETE EXPANSION JOINT, SEE A6/AS501 |
| 37 | IRRIGATION BACKFLOW PREVENTER, SEE L1101 |
| 38 | STOP LINE PAVEMENT STRIPING, SEE D2/AS501 |
| 39 | PARKING STRIPING, SEE B4/AS501 |
| 40 | EXISTING CURB TO REMAIN |
| 41 | EXISTING FENCE TO REMAIN |
| 42 | FUTURE GENERATOR, SEE ELECTRICAL |
| 43 | EXISTING FIRE HYDRANT TO REMAIN |
| 44 | NEW FIRE HYDRANT, SEE CIVIL |
| 45 | ASPHALT PAVING, SEE CIVIL |
| 46 | CONCRETE FLUSH CURB, SEE CIVIL |
| 47 | CONCRETE SIDEWALK WITH SALT FINISH PER COA DPM STD. 2450 |
| 48 | 6" TALL STEEL EDGING, SEE B5/AS501 AND SPECIFICATIONS |
| 49 | 3'-0" TALL TRELLIS, SEE DETAIL E1/AS501 AND SPECIFICATIONS |
| 50 | MONUMENT SIGN, BY OTHERS |
| 51 | PEDESTRIAN CROSSING SIGN, SEE D5/AS501 |
| 52 | CONCRETE PARKING BUMPER, SEE C4/AS501 |
| 53 | EXISTING ASPHALT PAVING TO REMAIN, SEE CIVIL |
| 54 | CLEAR SIGHT TRIANGLE |

HERITAGE
HOTELS & RESORTS, INC.

ERIC HASKINS,
ARCHITECT

201 THIRD
STREET NW
SUITE 1140
ALBUQUERQUE,
NM 87102
505.212.9148

CONSULTANT

STAMP

SAWMILL MARKET, PHASE 1
SITE, SHELL, COMMON AREAS
1909 BELLAMAH AVENUE NW
ALBUQUERQUE, NEW MEXICO

DATE: 10.9.2018

DRAWN BY: LI

CHECKED BY: MB

SCALE: 1"=20'

SHEET TITLE: TCL SITE PLAN

JOB NUMBER: 18-0041

SHEET NUMBER: TCL