

# CONSTRUCTION DOCUMENTS

## CLASS II CONSTRUCTION

### CITY OF ALBUQUERQUE

# LOWELL DRIVE MEDIAN IMPROVEMENTS

AT LOWELL DRIVE BETWEEN SPAIN AND ACADEMY  
WATER METER ADDRESS: 6201 1/2 LOWELL

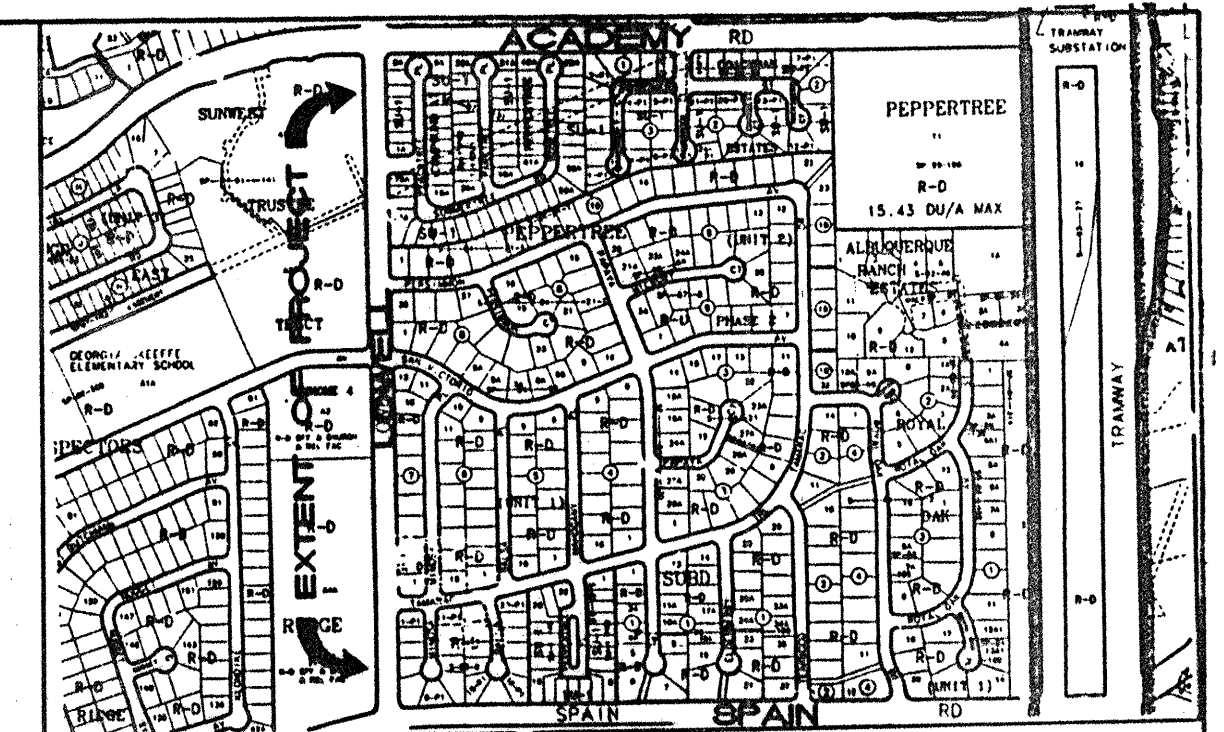
AUGUST 14, 2000

## INDEX OF DRAWINGS

TITLE	SHEET NO.
-------	-----------

COVER SHEET	1 OF 11
SURVEY	2 OF 11
SURVEY	3 OF 11
CONSTRUCTION PLAN	4 OF 11
CONSTRUCTION PLAN	5 OF 11
IRRIGATION PLAN	6 OF 11
IRRIGATION PLAN	7 OF 11
PLANTING PLAN	8 OF 11
PLANTING PLAN	9 OF 11
TYPICAL TRAFFIC CONTROL AND SIGNING EXAMPLES	10 OF 11
SIGNING AND CONSTRUCTION TRAFFIC CONTROL STANDARDS	11 OF 11

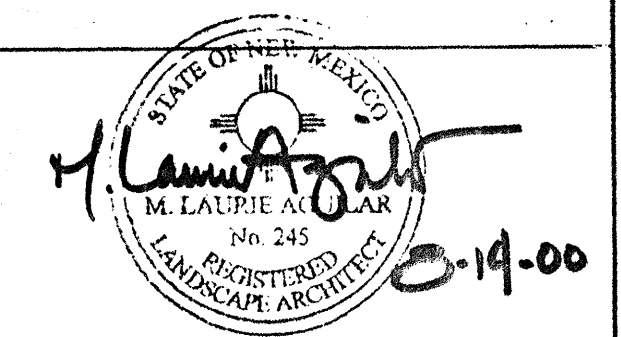
## SHEET NO.



VICINITY MAP ZONE ATLAS NO. E-22

### NOTICE TO CONTRACTORS

- CITY OF ALBUQUERQUE SPECIFICATIONS FOR PUBLIC WORKS CONSTRUCTION, 1986 EDITION AS AMENDED THROUGH UPDATE 6, WILL BE REFERRED TO HEREIN AS THE "STANDARD SPECIFICATIONS".
- TWO WORKING DAYS PRIOR TO ANY EXCAVATION, CONTRACTOR MUST CONTACT NEW MEXICO ONE CALL SYSTEM (260-1990) AND DETERMINE LOCATION OF EXISTING UTILITIES.
- PRIOR TO ANY CONSTRUCTION, THE CONTRACTOR SHALL EXCAVATE AND VERIFY THE HORIZONTAL AND VERTICAL LOCATIONS OF ALL OBSTRUCTIONS. SHOULD A CONFLICT EXIST, THE CONTRACTOR SHALL NOTIFY THE ENGINEER OR THE SURVEYOR SO THAT THE CONFLICT CAN BE RESOLVED WITHOUT DELAY.
- ALL EXISTING SIGNS, MARKERS, DELINEATORS, ETC., WITHIN THE CONSTRUCTION LIMITS SHALL BE REMOVED, STORED AND RESET BY THE CONTRACTOR.
- THE CONTRACTOR SHALL NOTIFY THE ENGINEER NOT LESS THAN SEVEN (7) DAYS PRIOR TO STARTING WORK IN ORDER THAT THE ENGINEER MAY TAKE NECESSARY MEASURES TO INSURE THE PRESERVATION OF SURVEY MONUMENTS. CONTRACTOR SHALL NOT DISTURB PERMANENT SURVEY MONUMENTS WITHOUT THE CONSENT OF THE ENGINEER AND SHALL NOTIFY THE ENGINEER AND BEAR THE EXPENSE OF REPLACING ANY THAT MAY BE DISTURBED WITHOUT PERMISSION. REPLACEMENT SHALL BE DONE ONLY BY THE CITY SURVEYOR. WHEN A CHANGE IS MADE IN THE FINISHED ELEVATIONS OF THE PAVEMENT OF ANY ROADWAY IN WHICH A PERMANENT SURVEY MONUMENT IS LOCATED, CONTRACTOR SHALL, AT HIS OWN EXPENSE, ADJUST THE MONUMENT COVER TO THE NEW GRADE UNLESS OTHERWISE SPECIFIED. REFER TO SECTION 4.4 OF THE GENERAL CONDITIONS OF THE STANDARD SPECIFICATIONS.
- FIVE (5) WORKING DAYS PRIOR TO BEGINNING CONSTRUCTION THE CONTRACTOR SHALL SUBMIT TO THE CONSTRUCTION COORDINATION DIVISION A DETAILED CONSTRUCTION SCHEDULE. TWO (2) WORKING DAYS PRIOR TO CONSTRUCTION THE CONTRACTOR SHALL OBTAIN A BARRICADING PERMIT FROM THE CONSTRUCTION COORDINATION DIVISION. CONTRACTOR SHALL NOTIFY BARRICADE ENGINEER (768-2551) PRIOR TO OCCUPYING AN INTERSECTION.
- ANY WORK OCCURRING WITHIN AN ARTERIAL ROADWAY REQUIRES 24 HOURS CONSTRUCTION.
- SIDEWALKS AND WHEELCHAIR RAMPS WITHIN THE CURB RETURNS SHALL BE CONSTRUCTED WHEREVER A NEW CURB RETURN IS CONSTRUCTED.

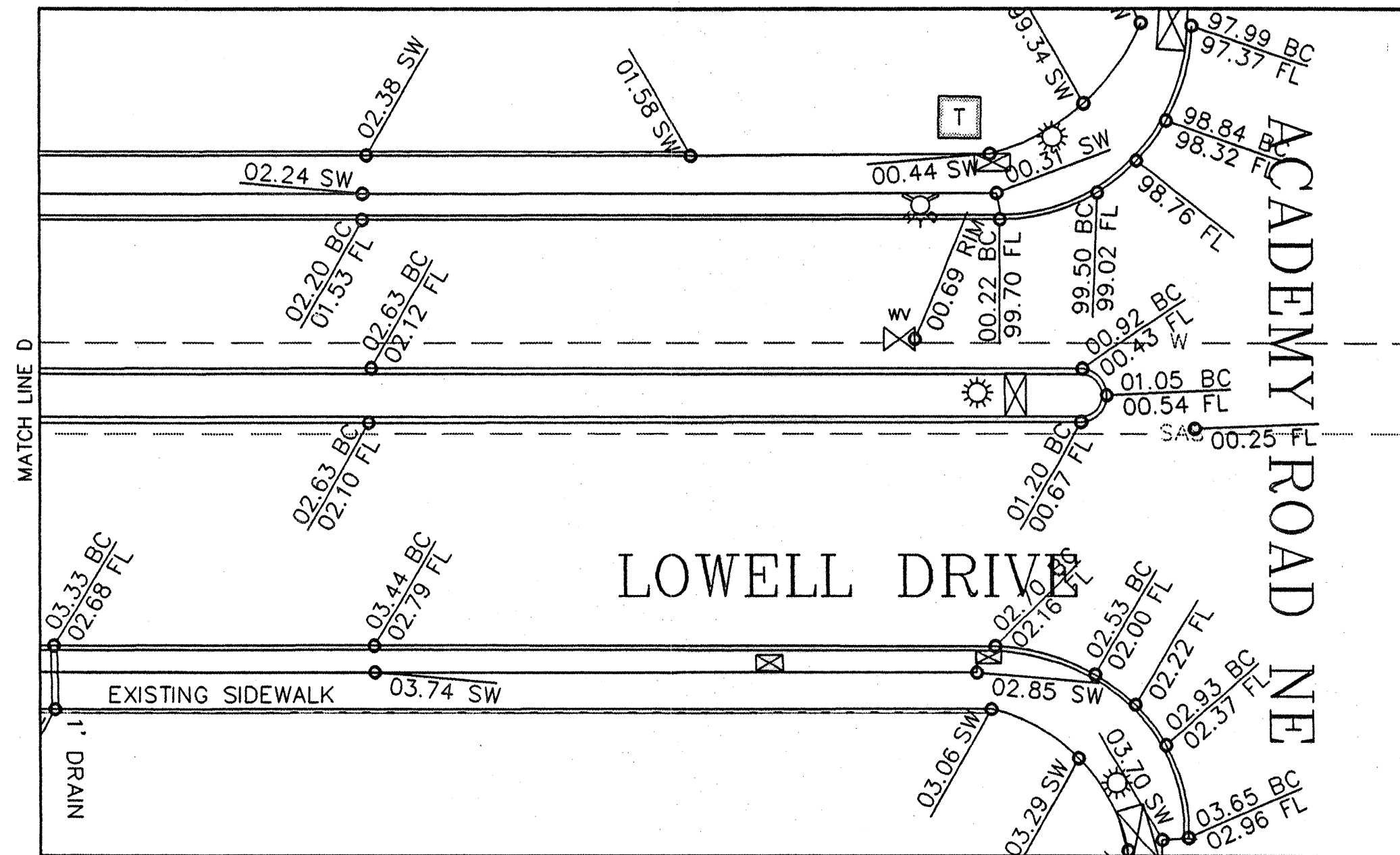
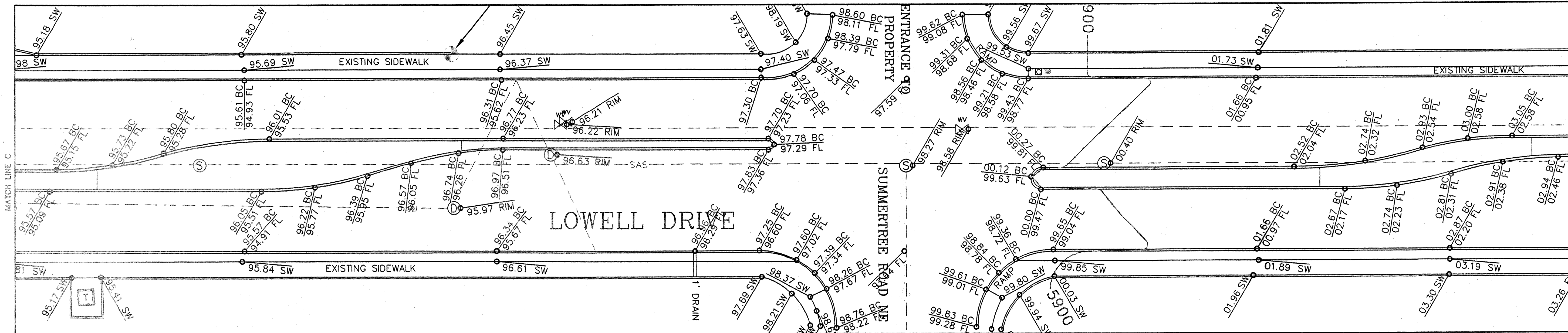
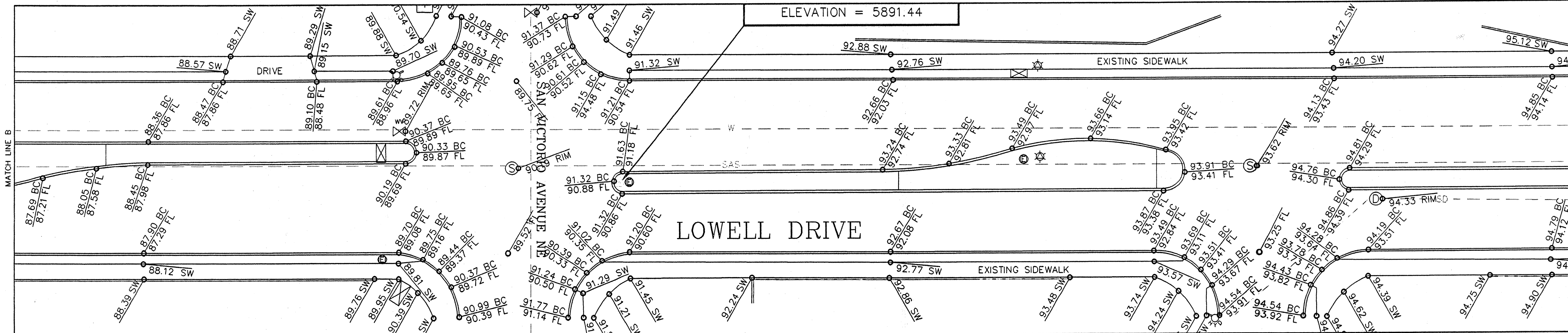


REV.	SHEETS	CITY ENGINEER	DATE	USER	DEPARTMENT	DATE	USER	DEPARTMENT	DATE
ENGINEERS STAMP & SIGNATURE		APPROVALS		ENGINEER	DATE	APPROVED FOR CONSTRUCTION			
		DRC Chairman		<i>Ken B...</i>	12-10-00	<i>John Aguirre</i> 10/10/00 City Engineer Date			
		Transportation		<i>John Aguirre</i>	10-10-00				
		Water/Wastewater		<i>John Aguirre</i>	10/10/00				
		Hydrology		<i>John Aguirre</i>	10/10/00				
		CIP		<i>John Aguirre</i>	10/10/00				
Constr. Mngmt.									
Constr. Coord.									
City Project No.									
				633191		Sheet 1 of 11			





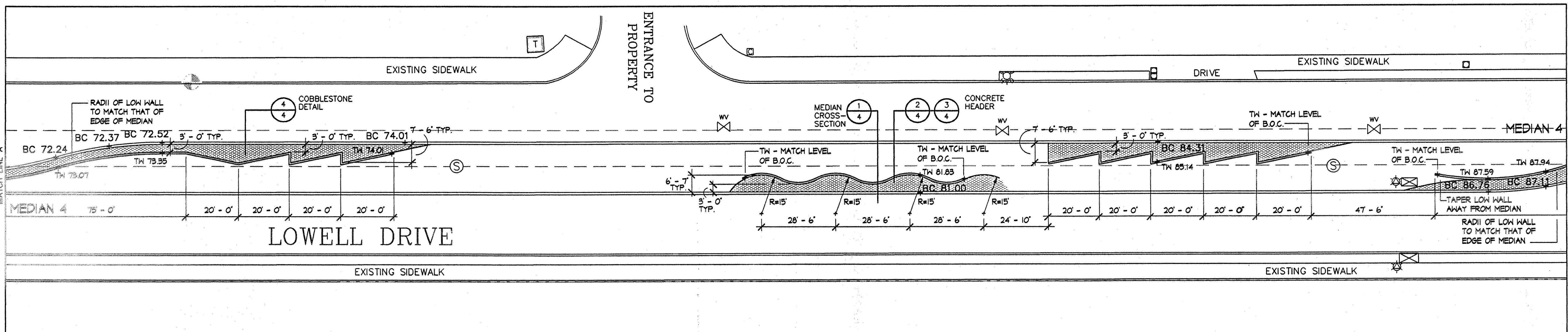
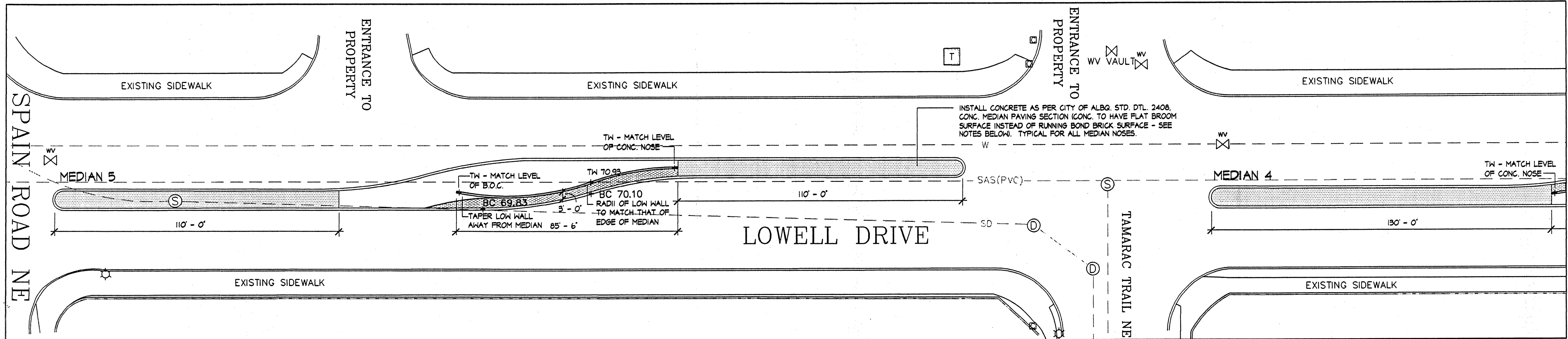




CITY OF ALBUQUERQUE CAPITAL IMPLEMENTATION PROGRAM DESIGN & DEVELOPMENT	
TITLE: <b>LOWELL DRIVE MEDIAN IMPROVEMENTS SURVEY</b>	
Design Review Committee	City Engineer Approval
REVIEW COMMITTEE	CITY ENGINEER
City Project No. <b>633191</b>	Zone Map No. <b>E-22-Z</b>
Sheet <b>3</b> Of <b>11</b>	

AS-BUILT INFORMATION		BENCH MARKS		SURVEY INFORMATION		ENGINEER'S SEAL	
CONTRACTOR	DATE	THE BASIS OF ELEVATIONS FOR THIS SURVEY WAS DERIVED FROM ACS	FIELD NOTES	NO.	DATE	REMARKS	BY
STATIONED BY	DATE	BENCHMARKS 3-E22A, 10-E22, AND 18-E22. THE PUBLISHED ELEVATION OF WHICH ARE 5891.443, 5893.515, AND 5893.514, RESPECTIVELY, AS SHOWN HEREON.				DESIGNED BY SWS	DATE 07-18-00
FIELD ASSISTANT	DATE	THE BASIS OF BEARINGS FOR THIS SURVEY WAS DERIVED FROM ACS CONTROL STATIONS 10-E22 & 18-E22.				DRAWN BY SWS	DATE 07-18-00
RECORDED BY	DATE					CHECKED BY SWS	DATE 07-18-00
RECORDED BY	DATE						





#### SURVEY SYMBOLS LEGEND

- ☒ = CONTROLLER CABINET
- = TRAFFIC SIGNAL
- ☆ = LIGHT POLE
- ★ = SCHOOL SIGNAL
- ⊙ = SEWER MANHOLE
- ⊕ = DRAINAGE MANHOLE
- ⊖ = WATER METER
- ⊗ = WATER VALVE
- ⊠ = TRANSFORMER
- = TELEPHONE RISER
- ⬢ = ELECTRIC SERVICE BOX
- ⬢ = CABLE TV RISER
- ⊕ = FIRE HYDRANT
- = BLOCK WALL

#### SPOT ELEVATION LEGEND

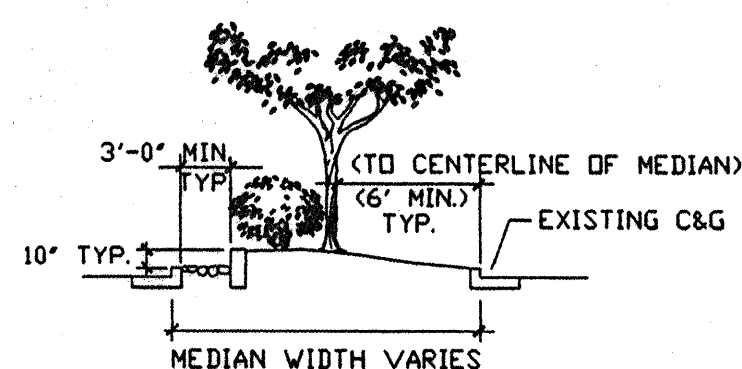
- 100.02 SW = ELEVATION AT TOP OF SIDEWALK
- 100.12 BC = ELEVATION AT BACK OF CURB
- 100.20 TW = ELEVATION AT FLOWLINE OF CURB
- 100.18 RM = ELEVATION AT RIM OF MANHOLE OR VALVE

#### MONUMENT LEGEND

- △ = FOUND ACS CONTROL STATION AS NOTED
- ⊕ = SET TEMPORARY BENCH MARK AS NOTED

#### CONSTRUCTION NOTES

- IT IS THE CONTRACTOR'S RESPONSIBILITY TO DETERMINE THE LOCATION OF AND AVOID DAMAGE TO ALL UNDERGROUND UTILITIES. THE CONTRACTOR IS RESPONSIBLE FOR ALL REPAIRS AND PENALTIES ON DAMAGED UTILITIES.
- THE CONTRACTOR IS NOT TO INSTALL IMPROVEMENTS AS SHOWN ON PLANS IF EVIDENT THAT FIELD CONDITIONS EXIST THAT WERE NOT CONSIDERED IN THE DESIGN. SUCH CONDITIONS ARE TO BE BROUGHT TO THE ATTENTION OF THE LANDSCAPE ARCHITECT. CONTRACTOR WILL ASSUME FULL RESPONSIBILITY FOR ALL REVISIONS DUE TO FAILURE TO GIVE SUCH NOTIFICATION.
- MEDIAN NOSE PAVING TO BE FLAT BROOM SURFACE (INSTEAD OF RUNNING BOND BRICK PATTERN). ALL CONCRETE TO BE INTEGRALLY COLORED PLUM, 2 LBS. #1395, DAVIS COLORS 800-356-4848.

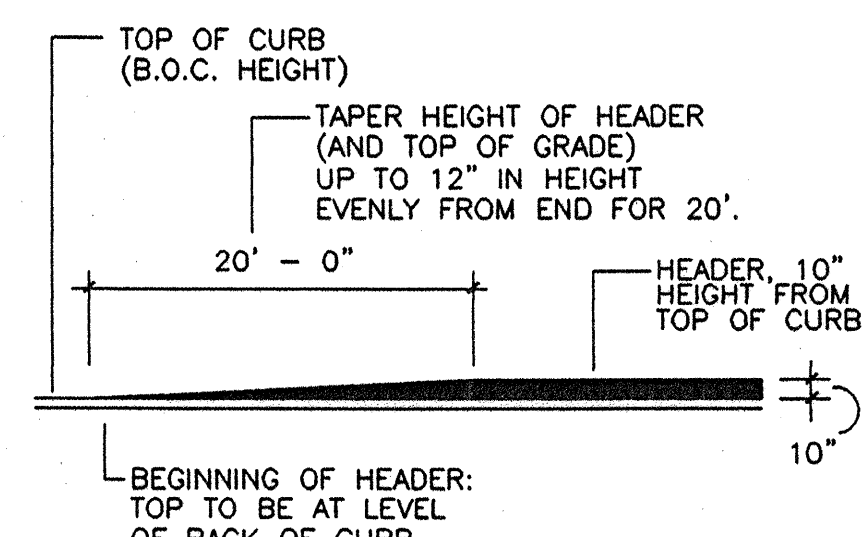


MEDIAN CROSS-SECTION

SCALE 1" = 10'-0"

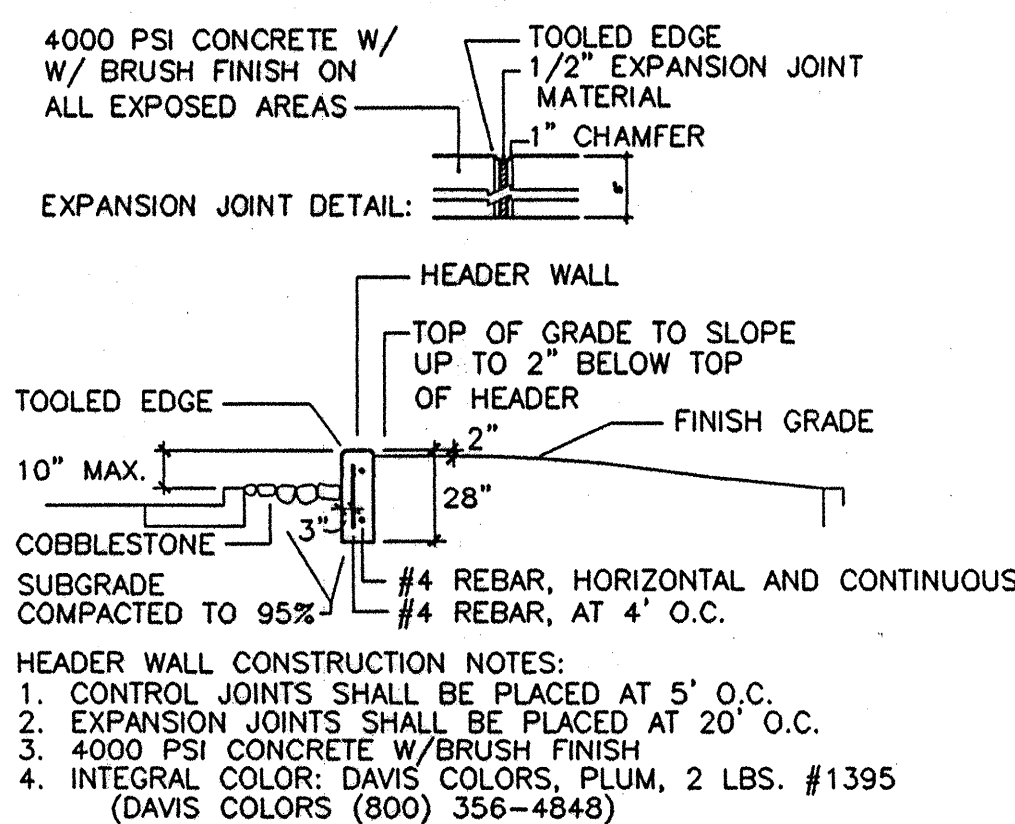
#### LEGEND

- + BC 81.00 — EXISTING BACK OF CURB ELEVATION
- + TW 81.83 — PROPOSED TOP OF CONCRETE HEADER WALL ELEVATION



CONCRETE HEADER DETAIL

N.T.S.



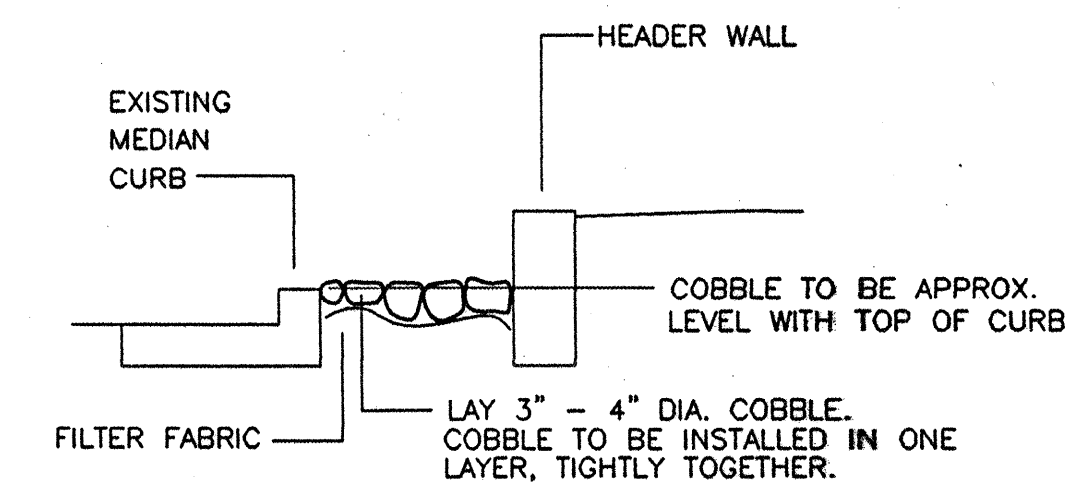
CONCRETE HEADER CONST.

N.T.S.

#### CONSTRUCTION PHASING PLAN

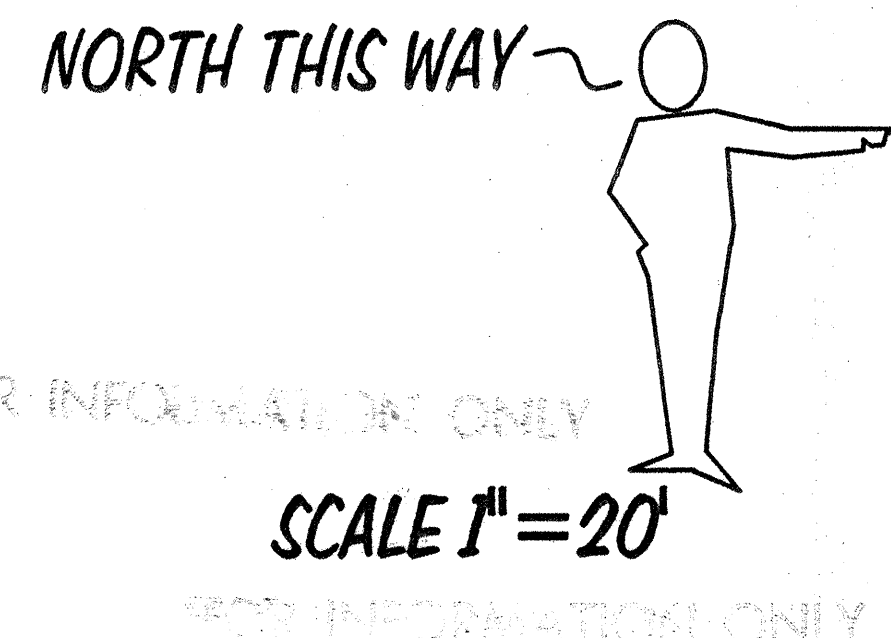
PHASE I: INTENT OF PHASE I IS TO COMPLETE ALL LANDSCAPE IMPROVEMENTS TO MEDIANS 4 & 5. THEREFORE, INSTALL IRRIGATION TAP, METER SERVICE, P.V.B. MASTER VALVE, AIR RELIEF VALVE AND MAIN LINE ON MEDIAN 1. EXTEND SLEEVES AND MAINLINE THROUGH PAVEMENT CUTS TO AND THROUGH EACH MEDIAN IN ORDER TO PROVIDE IRRIGATION SERVICE TO MEDIANS 4 & 5. INSTALL FULL IRRIGATION AND PLANTING IMPROVEMENTS TO MEDIANS 4 & 5. IRRIGATION SYSTEM SERVING MEDIANS 4 & 5 TO BE FULLY OPERATIONAL.

PHASE II: INTENT OF PHASE II IS TO COMPLETE THE PROJECT. INSTALL REMAINDER OF IRRIGATION SYSTEM (ZONE VALVES, LATERALS, HEADS, AND POLY PIPING) TO MEDIANS 1, 2 & 3. INSTALL ALL HARDSCAPE AND PLANTING IMPROVEMENTS TO MEDIANS 1, 2 & 3.



COBBLESTONE DETAIL

N.T.S.



**Roddick & Dunbar Ltd.**  
LANDSCAPE ARCHITECTURE  
P.O. BOX 1502, CEDAR CREST, N.M. 87008  
(505) 288-0000 VOICE (505) 288-1610 FAX

CITY OF ALBUQUERQUE  
CAPITAL IMPLEMENTATION PROGRAM  
DESIGN & DEVELOPMENT

TITLE: **LOWELL DRIVE MEDIAN IMPROVEMENTS  
CONSTRUCTION DOCUMENTS  
CONSTRUCTION PLAN**

Design Review Committee	City Engineer Approval	Ms./Day/Yr.	Ms./Day/Yr.
APPROVED DATE: 10-0-2000 BY: [Signature]	APPROVED DATE: 10-0-2000 BY: [Signature]		

City Project No. **633191** Zone Map No. **E-22-Z**

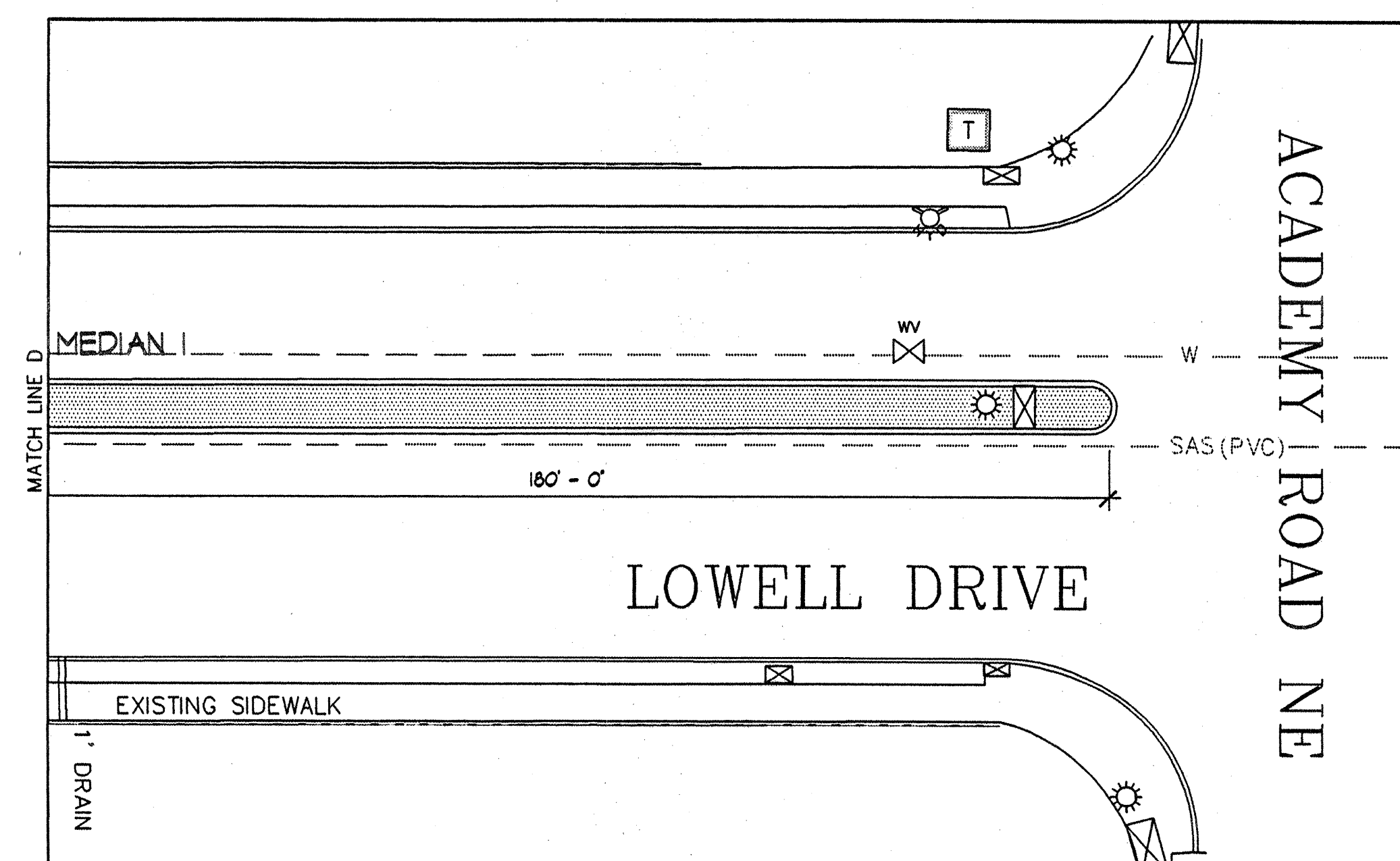
Sheet **4** Of **11**


AS-BUILT INFORMATION	BENCH MARKS	SURVEY INFORMATION	FIELD NOTES
CONTRACTOR: [Blank] STANDARD: [Blank] DATE: [Blank] BY: [Blank] CHECKED BY: [Blank] DATE: [Blank]	THE BASIS OF ELEVATIONS FOR THIS SURVEY WAS DERIVED FROM ACS BENCHMARKS 3-E22A, 10-E22, AND 10-E22. THE PUBLISHED ELEVATION OF WHICH ARE 5891.443, 5903.515, AND 5893.514, RESPECTIVELY. AS SHOWN HEREON.	THE BASIS OF BEARINGS FOR THIS SURVEY WAS DERIVED FROM ACS CONTROL STATIONS 10-E22 & 10-E22.	[Blank]

ENGINEER'S SEAL	REVISIONS	DESIGN	DATE	BY
[Signature] M. LAURIE AGUIAR No. 245 REGISTERED LANDSCAPE ARCHITECT				

REVISIONS	DATE	BY	DATE	BY





**NORTH THIS WAY** ~ 



**SCALE 1" = 20'**

**Roddick & Dunbar Ltd.**  
LANDSCAPE ARCHITECTURE

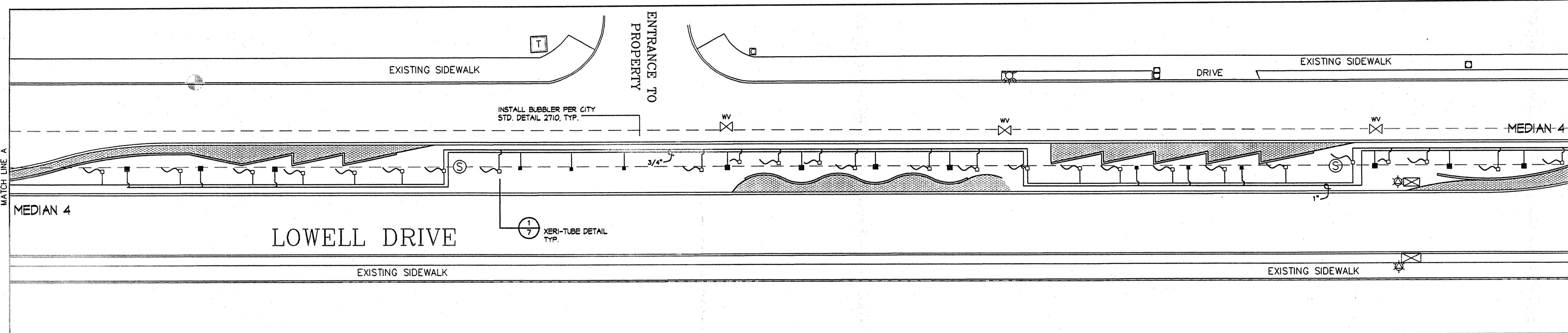
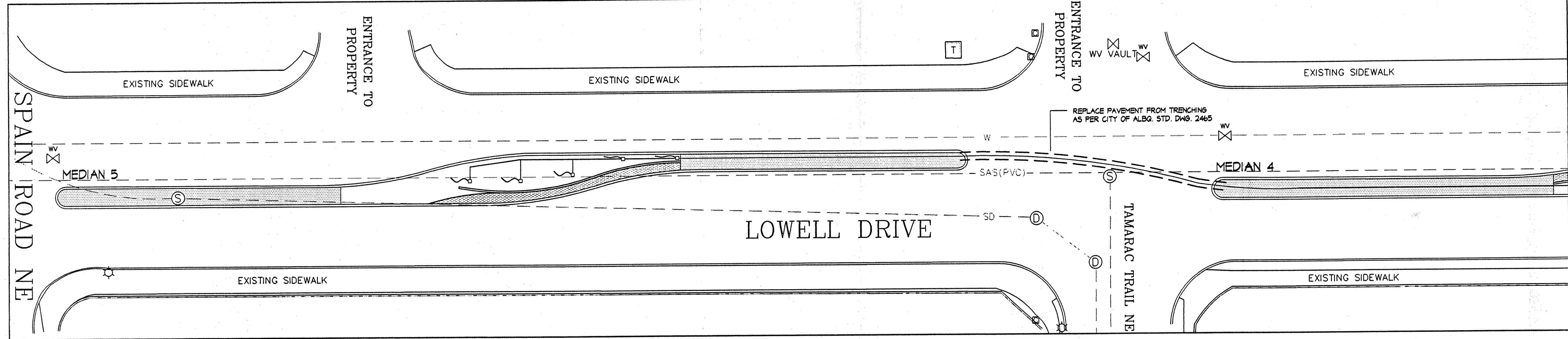
PO BOX 1502 CEDAR CREST NM 87008  
(505) 286-0000 VOICE (505) 286-1610 FAX

CITY OF ALBUQUERQUE  
CAPITAL IMPLEMENTATION PROGRAM  
DESIGN & DEVELOPMENT

TITLE: **LOWELL DRIVE MEDIAN IMPROVEMENTS  
CONSTRUCTION DOCUMENTS  
CONSTRUCTION PLAN**

Design Review Committee 		City Engineer Approval 		Last Design Update	Mo./Day/Yr.      	Mo./Day/Yr.      
City Project No. 633191		Zone Map No. E-22-Z			Sheet 5	of 11





#### SURVEY SYMBOLS LEGEND

- ☒ = CONTROLLER CABINET
- = TRAFFIC SIGNAL
- ☆ = LIGHT POLE
- ★ = SCHOOL SIGNAL
- ⊙ = SEWER MANHOLE
- ⊕ = DRAINAGE MANHOLE
- ⊖ = WATER METER
- ⊗ = WATER VALVE
- ⊠ = TRANSFORMER
- = TELEPHONE RISER
- = ELECTRIC SERVICE BOX
- ▣ = CABLE TV RISER
- ⊕ = FIRE HYDRANT
- = BLOCK WALL

#### SPOT ELEVATION LEGEND

- 100.02' SW = ELEVATION AT TOP OF SIDEWALK
- 100.11' BC = ELEVATION AT BACK OF CURB
- 100.20' FL = ELEVATION AT FLOWLINE OF CURB
- 100.18' RM = ELEVATION AT RIM OF MANHOLE OR VALVE

#### MONUMENT LEGEND

- △ = FOUND ACS CONTROL STATION AS NOTED
- ⊕ = SET TEMPORARY BENCH MARK AS NOTED

#### IRRIGATION NOTES

- IT IS THE CONTRACTOR'S RESPONSIBILITY TO DETERMINE THE LOCATION OF AND AVOID DAMAGE TO ALL UNDERGROUND UTILITIES. THE CONTRACTOR IS RESPONSIBLE FOR ALL REPAIRS AND PENALTIES ON DAMAGED UTILITIES.
- THE CONTRACTOR IS NOT TO INSTALL IRRIGATION SYSTEM AS SHOWN ON PLANS IF EVIDENT THAT FIELD CONDITIONS EXIST THAT WERE NOT CONSIDERED IN THE DESIGN. SUCH CONDITIONS ARE TO BE BROUGHT TO THE ATTENTION OF THE LANDSCAPE ARCHITECT. CONTRACTOR WILL ASSUME FULL RESPONSIBILITY FOR ALL REVISIONS DUE TO FAILURE TO GIVE SUCH NOTIFICATION.
- ACTUAL FIELD CONDITIONS MAY NECESSITATE MAKING ADJUSTMENTS IN SPACING OF HEADS TO INSURE UNIFORM COVERAGE AND DISTRIBUTION.
- ALL CONTROL WIRE TO BE SOLID COPPER UL APPROVED INSTALLED PER LOCAL CODE. RUNS LESS THAN 500 FEET SHALL BE #14 GAUGE. RUNS GREATER THAN 500 FEET SHALL BE #12 GAUGE. PROVIDE A 24 TO 36 INCH LOOP AT EACH WIRE SPLICE OR POINT OF CONNECTION. SNAKE LINE IN TRENCHES. ALL WIRE SHALL BE MARKED WITH A 4" WIDE YELLOW MARKER TAPE AND MARKED "WARNING-ELECTRICAL". LAY MARKED TAPE HORIZONTALLY 6" ABOVE WIRE.
- CONTRACTOR TO INSTALL A LAMINATED VALVE LEGEND INSIDE OF CONTROLLER.
- TREE IRRIGATION HEAD AS SHOWN ON PLAN REPRESENTS CENTER OF TREE. IRRIGATION HEAD TO BE LOCATED IN FIELD ON UPHILL SIDE OF TREE.
- SEE SPECS FOR COMPLETE INFORMATION REGARDING PRESSURE TESTING OF ALL IRRIGATION LINES. PROVIDE 24 HOURS NOTICE TO LANDSCAPE ARCHITECT PRIOR TO PRESSURE TEST OBSERVATION.
- IRRIGATION SYSTEM IS DESIGNED TO AN OPERATING PRESSURE OF 20-50 PSI WITH A MAXIMUM DEMAND OF 8 GPM. PRIOR TO INSTALLATION OF IRRIGATION SYSTEM, CONTRACTOR TO TEST PRESSURE AND GPM AT P.O.C. AND IF INSUFFICIENT TO SERVICE THE ABOVE REQUIREMENTS, REPORT RESULTS TO LANDSCAPE ARCHITECT IN WRITING.
- WORK INCLUDED WITHIN THE BID PRICE SHALL INCLUDE ALL WORK NECESSARY TO COMPLETE THE LANDSCAPE IMPROVEMENTS SHOWN ON THESE PLANS, CONSISTING OF SHEETS 1, 2, 3, 4, 5, 6, 7, 8, 9, 10, 11, AND SPECIFICATIONS, AND ALL REVISIONS.

#### VALVE SCHEDULE

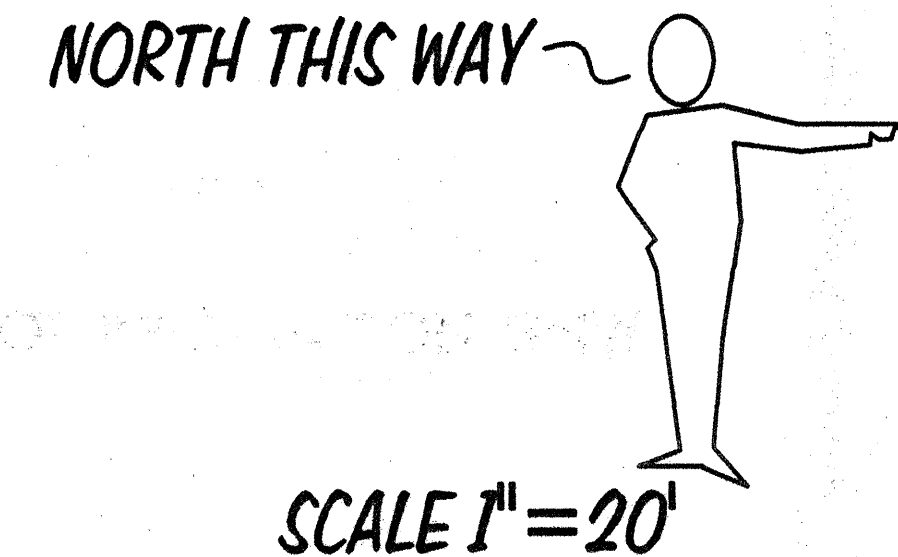
VALVE #	VALVE SIZE	TOTAL GPM	HEAD TYPE	MAX GPM/HEAD
MV	1"	8	BUBBLERS	0.5
1	3/4"	1	XERI-TUBE W/ RISER	0.5
2	1"	2	BUBBLERS	0.5
3	3/4"	1	XERI-TUBE W/ RISER	0.5
4	1"	1	BUBBLERS	1.0
5	3/4"	1	XERI-TUBE W/ RISER	0.5
6	3/4"	5	XERI-TUBE W/ RISER	0.5
7	1"	8	BUBBLERS	1.0

#### IRRIGATION SCHEDULE

SYMBOL	PRODUCT DESCRIPTION	SEE DETAIL	SYMBOL	PRODUCT DESCRIPTION
⊠	NEW WATER METER, SIZE 1"		---	EXISTING WATER LINE
⊠	SOLATROL IRRIGATION CONTROLLER: LEIT 8000 CH-12 WITH MOUNTING COLUMN, LEVA 1521-4 ACTUATORS FOR RAINBIRD PEB VALVES (ONE PER VALVE), AND SOLATROL LEIT PROGRAMMING KEY	COA STD. DWG. 2702	---	IRRIGATION MAINLINE SCHEDULE 40 PVC, SEE PLAN FOR SIZE (DEPTH OF BURY 24")
⊠	SPEARS TRUE UNION SCHEDULE 80 PVC BALL VALVE (IN BOX W/MASTERVALVE)	COA STD. DWG. 2702	---	LATERAL LINE SCHEDULE 40 PVC, SEE PLAN FOR SIZE (DEPTH OF BURY 18")
⊠	MASTER VALVE ASSEMBLY W/RAINBIRD PEB AUTOMATIC VALVE AND FEBCO 765 PVB 3/4" PRESSURE VACUUM BREAKER BACKFLOW PREVENTOR	COA STD. DWG. 2703	211	VALVE NUMBER
⊠	RAINBIRD PEB SERIES AUTOMATIC VALVE SIZED PER PLAN W/MANUAL VALVE & BROOKS VALVE BOX	COA STD. DWG. 2705	1"	GALLONS PER MINUTE PER VALVE
⊠	RAINBIRD XCZ-075 DRIP CONTROL VALVE KIT W/BROOKS VALVE BOX	COA STD. DWG. 2705		VALVE SIZE
⊠	RAINBIRD 2AV AIR RELIEF VALVE	COA STD. DWG. 2710		
⊠	RAINBIRD FLOOD BUBBLER 1402 (GPM 0.5)	1/7		
⊠	RAINBIRD FLOOD BUBBLER 1404 (GPM 1.0)			
⊠	RAINBIRD PVC RISER W/ 1/2" COMPRESSION FITTING 700-CF-3 IN RAINBIRD SUBTERANEAN EMITTER BOX SEB 6-X, INSTALL XERI-TUBE 700 IN 20'-30' LENGTH, EXTEND 1/4" DIST. TUBING W/ XB-10 TO EACH PLANT, BURY XERI-TUBE 5" DEPTH			

#### CONSTRUCTION PHASING PLAN

- PHASE I: INTENT OF PHASE I IS TO COMPLETE ALL LANDSCAPE IMPROVEMENTS TO MEDIANS 4 & 5. THEREFORE INSTALL IRRIGATION TAP, METER SERVICE, PVB, MASTER VALVE, AIR RELIEF VALVE AND MAIN LINE ON MEDIAN 1. EXTEND SLEEVES AND MAINLINE THROUGH PAVEMENT CUTS TO AND THROUGH EACH MEDIAN IN ORDER TO PROVIDE IRRIGATION SERVICE TO MEDIANS 4 & 5. INSTALL FULL IRRIGATION AND PLANTING IMPROVEMENTS TO MEDIANS 4 & 5. IRRIGATION SYSTEM SERVING MEDIANS 4 & 5 TO BE FULLY OPERATIONAL.
- PHASE II: INTENT OF PHASE II IS TO COMPLETE THE PROJECT. INSTALL REMAINDER OF IRRIGATION SYSTEM (ZONE VALVES, LATERALS, HEADS, AND POLY PIPING) TO MEDIANS 1, 2 & 3. INSTALL ALL HARDSCAPE AND PLANTING IMPROVEMENTS TO MEDIANS 1, 2 & 3.



**Roddick & Dunbar Ltd.**  
LANDSCAPE ARCHITECTURE  
P.O. BOX 1502 CEDAR CREST NM 87008  
(505) 286-0000 VOICE

CITY OF ALBUQUERQUE  
CAPITAL IMPLEMENTATION PROGRAM  
DESIGN & DEVELOPMENT

TITLE: **LOWELL DRIVE MEDIAN IMPROVEMENTS CONSTRUCTION DOCUMENTS IRRIGATION PLAN**

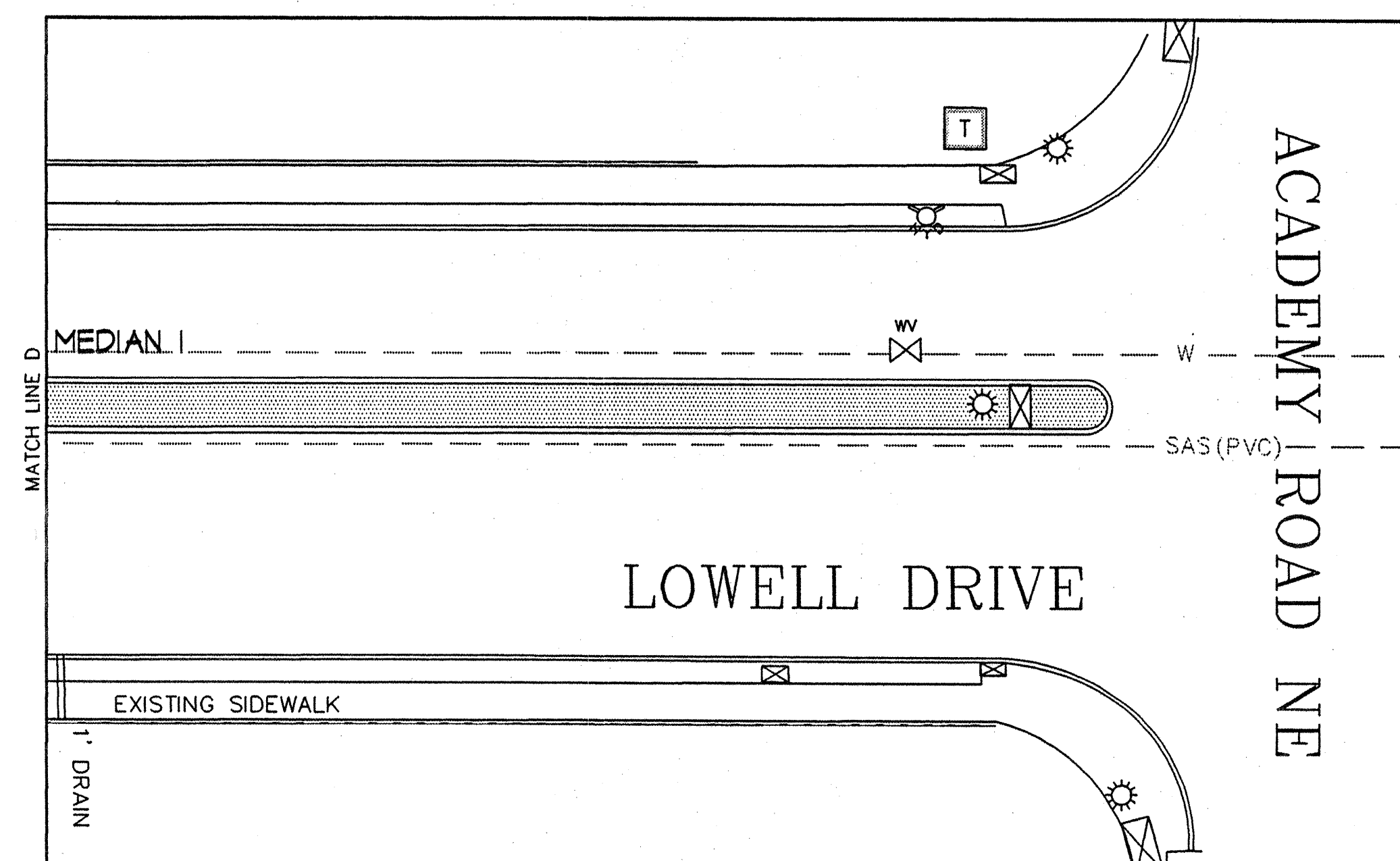
Design Review Committee: **APPROVED** OCT 10 2000  
City Engineer Approval: **APPROVED** OCT 10 2000  
CITY ENGINEER

City Project No. **633191** Zone Map No. **E-22-Z**

Sheet **6** Of **11**

SURVEY INFORMATION				BENCH MARKS				AS-BUILT INFORMATION			
FIELD NOTES				THE BASIS OF ELEVATIONS FOR THIS SURVEY WAS DERIVED FROM ACS BENCHMARKS 3-F22A, 10-F22, AND 18-F22. THE PUBLISHED ELEVATION OF WHICH ARE 5891.443, 5903.515, AND 5889.514, RESPECTIVELY, AS SHOWN HEREON.				CONTRACTOR			
				THE BASIS OF BEARINGS FOR THIS SURVEY WAS DERIVED FROM ACS CONTROL STATIONS 10-F22 & 18-F22.				WORK BY	DATE	WORK BY	DATE
								APPROVED BY	DATE	APPROVED BY	DATE
								FIELD ELEVATION BY	DATE	FIELD ELEVATION BY	DATE
								DRAWINGS CORRECTED BY	DATE	DRAWINGS CORRECTED BY	DATE
				MICRO-FILM INFORMATION				RECORDED BY	DATE	RECORDED BY	DATE
				NO.							





SINGLE-OUTLET EMITTER (SEE PLANTING SCHEDULE:  
XB-05 FOR 1 GAL., XB-10 FOR 5 GAL.)

1/4 INCH TUBING STAKE

1/4 INCH VINYL DISTRIBUTION TUBING

FINISH GRADE

RAINBIRD SEB-10  
EMITTER BOX

1/2" COMPRESSION  
FITTING, RAINBIRD  
700-CF-3

PVC RISER

PVC SCH 80  
CLOSE NIPPLE


LATERAL LINE

3" MIN. DEPTH 3/4" WASHED GRAVEL  
PVC SCH 40 TEE OR ELL

RAINBIRD  
XERI-TUBE 700  
EXTEND FOR  
20"-30"  
AND CAP END  
BURY NO LESS  
THAN 3" BELOW  
SOIL GRADE.

XERI-TUBE INSTALLATION DETAIL



NTS

**NORTH THIS WAY** 

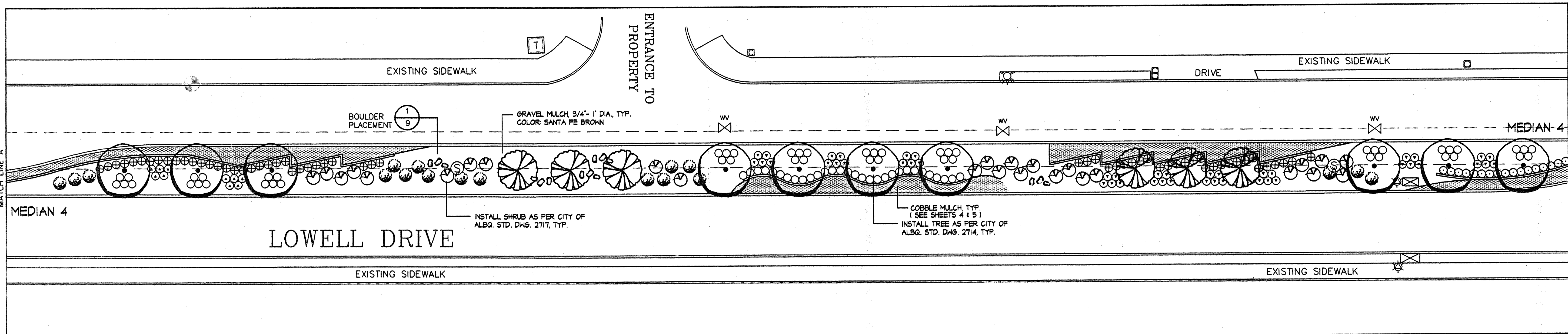
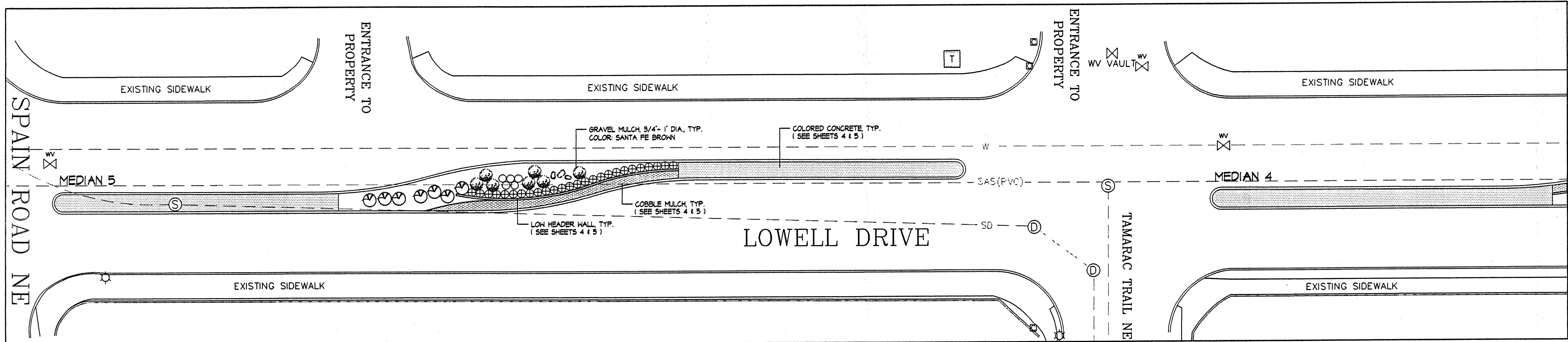
**SCALE 1" = 20'**

*Roddick & Dunbar Ltd.*  
LANDSCAPE ARCHITECTURE  
PO BOX 1502 CEDAR CREST NM 87008  
(505) 286-0000 VOICE (505) 286-1610 FAX

CITY OF ALBUQUERQUE CAPITAL IMPLEMENTATION PROGRAM DESIGN & DEVELOPMENT	
TITLE:	<b>LOWELL DRIVE MEDIAN IMPROVEMENTS CONSTRUCTION DOCUMENTS IRRIGATION PLAN</b>

Design: Review Committee 		City Engineer: Approval 		Last Design Update	Mo./Day/Yr.      		Mo./Day/Yr.      	
City Project No.		Zone Map No.			Sheet		Of	
633191		E-22-Z			7		11	





#### SURVEY SYMBOLS LEGEND

- ☒ = CONTROLLER CABINET
- = TRAFFIC SIGNAL
- ☆ = LIGHT POLE
- ★ = SCHOOL SIGNAL
- ⊙ = SEWER MANHOLE
- ⊕ = DRAINAGE MANHOLE
- ⊞ = WATER METER
- ⊡ = WATER VALVE
- ⊞ = TRANSFORMER
- ⊞ = TELEPHONE RISER
- ⊞ = ELECTRIC SERVICE BOX
- ⊞ = CABLE TV RISER
- ⊞ = FIRE HYDRANT
- = BLOCK WALL

#### SPOT ELEVATION LEGEND

- 100.82' = ELEVATION AT TOP OF SIDEWALK
- 100.72' = ELEVATION AT BACK OF CURB
- 100.50' = ELEVATION AT FLOWLINE OF CURB
- 100.18' = ELEVATION AT RIM OF MANHOLE OR VALVE

#### MONUMENT LEGEND

- △ = FOUND ACS CONTROL STATION AS NOTED
- ⊙ = SET TEMPORARY BENCH MARK AS NOTED

#### TREE SCHEDULE

SYMBOL	COMMON NAME	BOTANICAL NAME	SIZE	QUANTITY	APPROX. HEIGHT X WIDTH
	DESERT WILLOW	CHILOPSIS LINEARIS	2 1/2" CAL.	11	25' X 25'
	HONEY LOCUST	GLEDTISIA TRIACANTHOS 'INERMIS'	2 1/2" CAL.	12	35' X 35'

NOTE: CONTRACTOR TO MAKE OWN TAKE-OFF OF ALL PLANTS FROM PLAN

#### PERENNIAL & SHRUB SCHEDULE

SYMBOL	COMMON NAME	BOTANICAL NAME	SIZE	QUANTITY	APPROX. HEIGHT X WIDTH
⊕	ENGLISH LAVENDER	LAVANDULA ANGUSTIFOLIA 'HUSTEAD'	1 GAL.	125	18" X 24"
⊙	MOONSHINE YARROW	ACHILLEA FILIPENDULINA 'MOONSHINE'	1 GAL.	65	18" X 24"
⊙	RED VALERIAN	CENTRANTHUS RUBER	1 GAL.	130	24" X 30"
⊙	RUSSIAN SAGE	PEROVSKIA ATRIPLICIFOLIA	5 GAL.	28	36" X 36"
⊙	CHAMISA	CHRYSOTHAMNUS NAUSEOSUS	5 GAL.	39	36" X 48"
⊙	GIANT CATMINT	NEPETA X 'SIX HILLS GIANT'	1 GAL.	29	36" X 30"
⊙	GRANITE BOULDER		SEE DTL. 1/9	24	

NOTE: CONTRACTOR TO MAKE OWN TAKE-OFF OF ALL PLANTS AND BOULDERS FROM PLAN

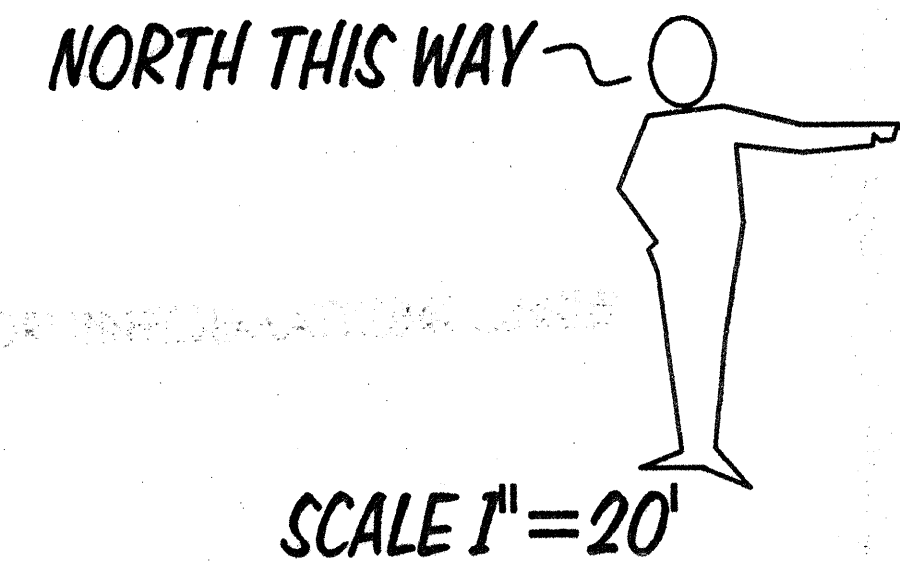
#### CONSTRUCTION PHASING PLAN

PHASE I: INTENT OF PHASE I IS TO COMPLETE ALL LANDSCAPE IMPROVEMENTS TO MEDIANS 4 & 5. THEREFORE, INSTALL IRRIGATION TAP, METER SERVICE, PVB, MASTER VALVE, AIR RELIEF VALVE AND MAIN LINE ON MEDIAN 1. EXTEND SLEEVES AND MAINLINE THROUGH PAVEMENT CUTS TO AND THROUGH EACH MEDIAN IN ORDER TO PROVIDE IRRIGATION SERVICE TO MEDIANS 4 & 5. INSTALL FULL IRRIGATION AND PLANTING IMPROVEMENTS TO MEDIANS 4 & 5. IRRIGATION SYSTEM SERVING MEDIANS 4 & 5 TO BE FULLY OPERATIONAL.

PHASE II: INTENT OF PHASE II IS TO COMPLETE THE PROJECT. INSTALL REMAINDER OF IRRIGATION SYSTEM (ZONE VALVES, LATERALS, HEADS, AND POLY PIPING) TO MEDIANS 1, 2 & 3. INSTALL ALL HARDSCAPE AND PLANTING IMPROVEMENTS TO MEDIANS 1, 2 & 3.

#### PLANTING NOTES

- IT IS THE CONTRACTOR'S RESPONSIBILITY TO DETERMINE THE LOCATION OF AND AVOID DAMAGE TO ALL UNDERGROUND UTILITIES.
- ANY PLANT SUBSTITUTIONS MUST BE APPROVED BY THE LANDSCAPE ARCHITECT PRIOR TO INSTALLATION.
- THE CONTRACTOR IS NOT TO INSTALL PLANT MATERIAL AS SHOWN ON PLANS IF EVIDENT THAT FIELD CONDITIONS EXIST THAT WERE NOT CONSIDERED IN THE DESIGN. SUCH CONDITIONS ARE TO BE BROUGHT TO THE ATTENTION OF THE LANDSCAPE ARCHITECT. CONTRACTOR WILL ASSUME FULL RESPONSIBILITY FOR ALL REVISIONS DUE TO FAILURE TO GIVE SUCH NOTIFICATION.
- PLANT MATERIAL TO BE PLANTED AS SOON AS POSSIBLE FOLLOWING DELIVERY TO THE SITE. BACKFILL ALL PLANTS WITH CLEAN NATIVE SOIL, UNLESS NOTED IN THE PLANT SCHEDULE. REMOVE ALL STONE OVER 1" DIAMETER FROM BACKFILL SOIL.
- LANDSCAPE ARCHITECT TO TAG TREES AT NURSERY PRIOR TO INSTALLATION. LANDSCAPE ARCHITECT WILL REJECT ANY PLANT MATERIAL THAT IS NOT OF ADEQUATE SIZE AND VIGOR. LANDSCAPE ARCHITECT TO SPOT ALL TREE AND PLANT LOCATIONS ON SITE, PRIOR TO INSTALLATION. (HAVE ALL PLANTS PLACED IN THEIR LOCATIONS, BUT NOT YET PLANTED, PRIOR TO LANDSCAPE ARCHITECT'S OBSERVATION) PROVIDE 48 HOUR NOTICE TO LANDSCAPE ARCHITECT (286-0000).
- PLANTING AREAS ARE NOT TO STAND BARE FOR LONGER THAN NEEDED FOR REMOVALS AND CONSTRUCTION.
- MULCH ALL PLANTER AREAS WITH MULCH TYPE AND COLOR AS IDENTIFIED ON PLAN. ALL MULCH TO BE INSTALLED 3" DEEP. GRAVEL MULCH TO BE FROM LAFARGE (828-2448) OR APPROVED EQUAL. PROVIDE SAMPLE TO LANDSCAPE ARCHITECT OF ALL MULCHES PRIOR TO INSTALLATION. FILTER FABRIC TO BE INSTALLED BENEATH ALL STONE AND COBBLE MULCH IN ALL AREAS.
- ALL BOULDERS TO BE INSTALLED WITH LARGEST FACE UP, HIGHEST POINT OF BOULDER AT 18" ABOVE FINISH GRADE.
- ALL TREES TO BE INSTALLED IN CENTERLINE OF MEDIAN, 6'-0" MIN. FROM F.O.C. (SEE DETAIL 1/4). CENTER OF SHRUBS TO BE NO CLOSER TO HARD SURFACE THAN 4'-0".
- ALL DESERT WILLOWS TO BE MULTI-TRUNKED TREES.



**Roddick & Dunbar Ltd.**  
LANDSCAPE ARCHITECTURE  
P.O. BOX 1502, CEDAR CREST, N.W. 87008  
(505) 286-0000 VOICE (505) 286-1810 FAX

CITY OF ALBUQUERQUE  
CAPITAL IMPLEMENTATION PROGRAM  
DESIGN & DEVELOPMENT

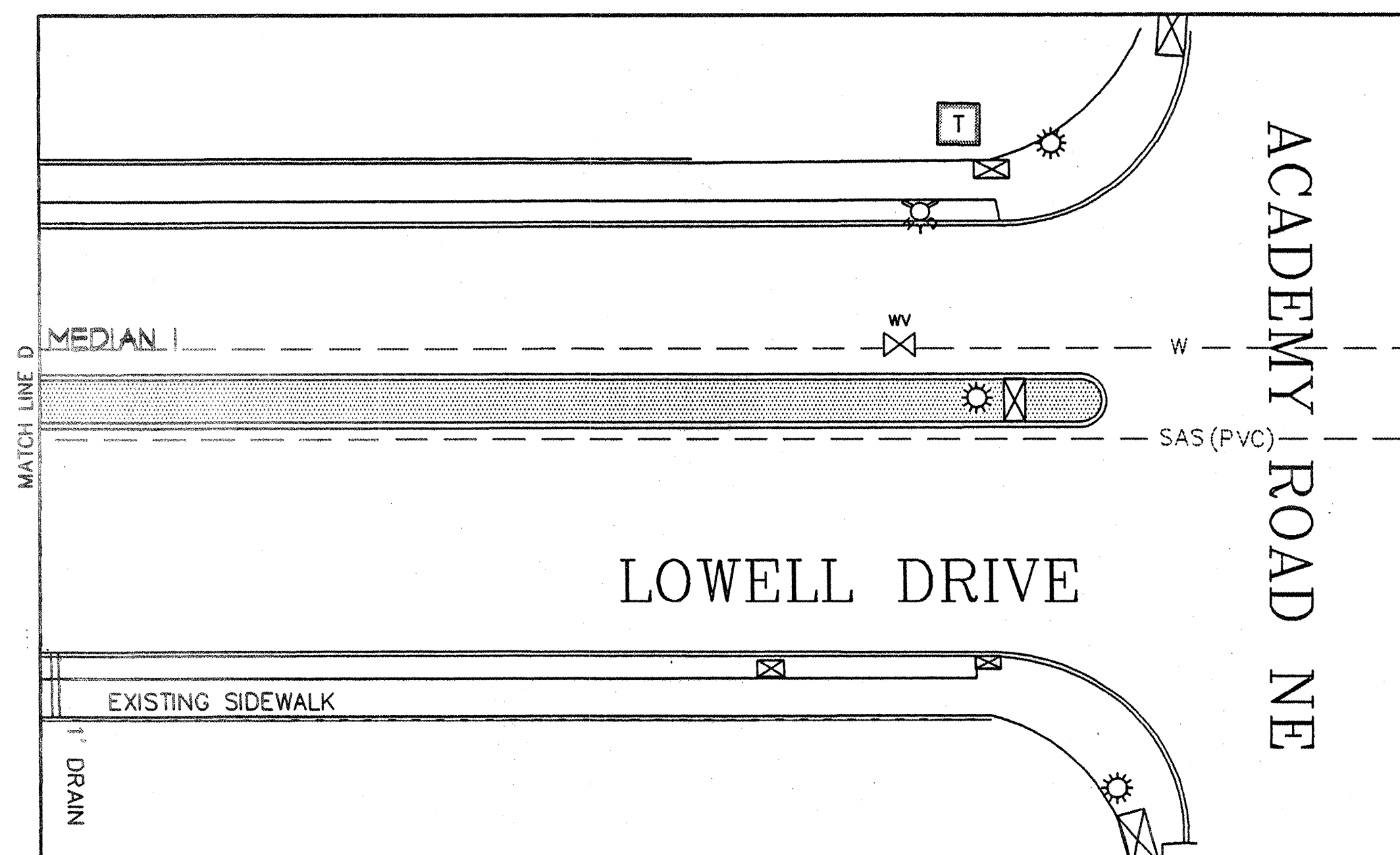
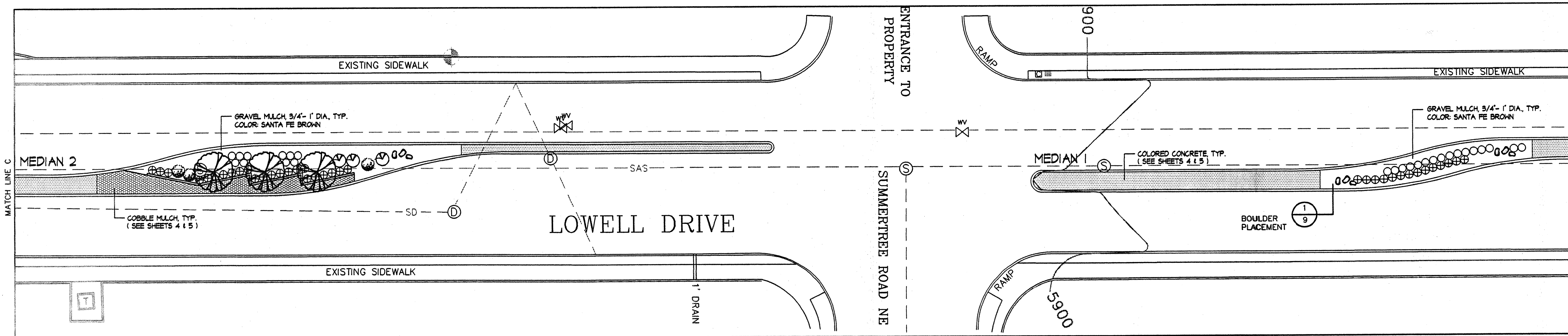
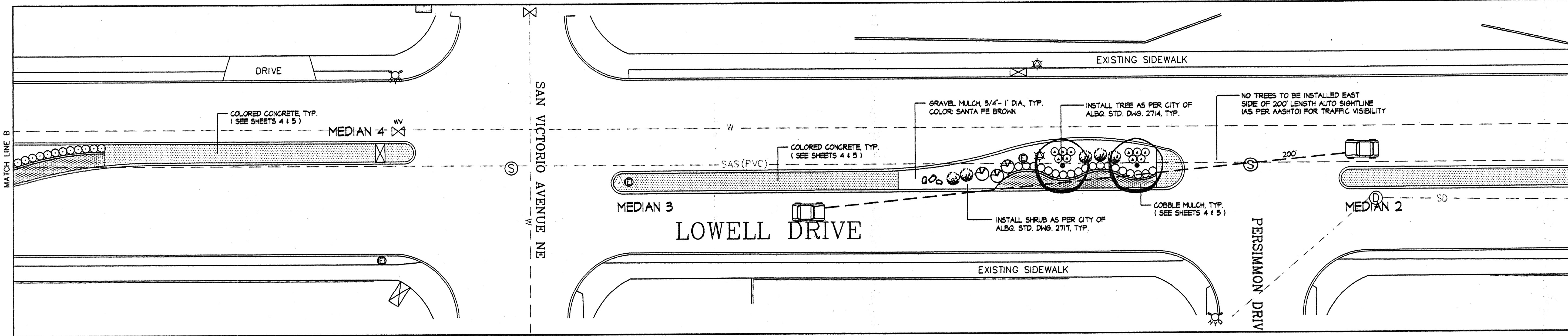
TITLE: **LOWELL DRIVE MEDIAN IMPROVEMENTS  
CONSTRUCTION DOCUMENTS  
PLANTING PLAN**

Design Review Committee	City Engineer Approval	Ms./Day/Yr.	Ms./Day/Yr.
APPROVED	APPROVED		
DESIGN REVIEW COMMITTEE	CITY ENGINEER		

City Project No. **633191** Zone Map No. **E-22-Z** Sheet **8** Of **11**

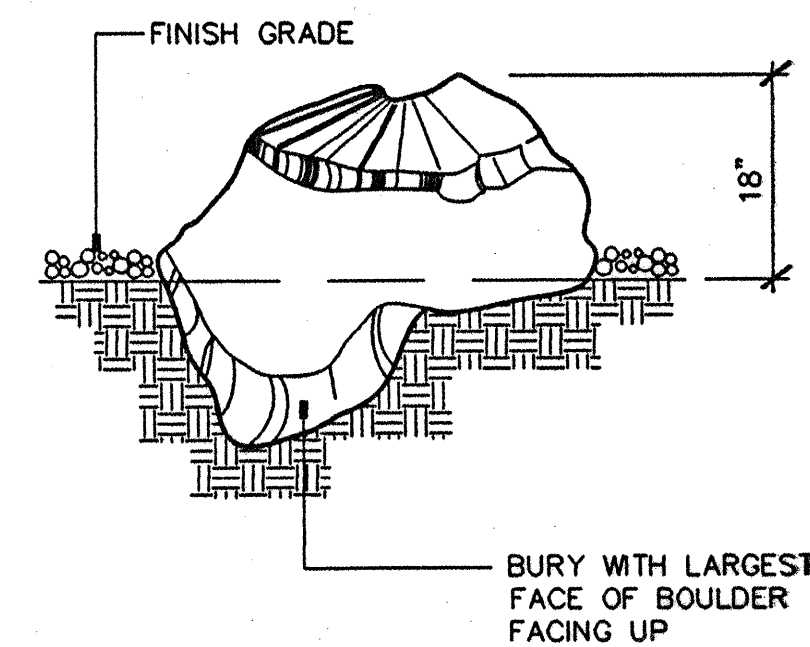
AS-BUILT INFORMATION		BENCH MARKS		SURVEY INFORMATION		ENGINEER'S SEAL	
CONTRACTOR	DATE	THE BASIS OF ELEVATIONS FOR THIS SURVEY WAS DERIVED FROM ACS	FIELD NOTES	ENGINEER'S SEAL	REVISIONS	DESIGN	REVISIONS
WORK BY	DATE	BENCHMARKS 3-222A, 10-222, AND 18-222. THE PUBLISHED ELEVATION OF WHICH ARE 4380.443, 5803.515, AND 5889.514, RESPECTIVELY AS SHOWN HEREON.			NO.	DATE	DATE
ACCEPTANCE BY	DATE	THE BASIS OF BEARINGS FOR THIS SURVEY WAS DERIVED FROM ACS CONTROL STATIONS 10-222 & 19-222.			DESIGNED BY	DATE	DATE
VERIFICATION BY	DATE				DRAWN BY	DATE	DATE
DESIGNED BY	DATE				CHECKED BY	DATE	DATE
RECORDED BY	DATE						





NOTE: SEE SHEET 8 FOR PLANTING SCHEDULES, NOTES, AND CONSTRUCTION PHASING PLAN

NOTE: ALL BOULDERS TO BE A MINIMUM OF 12 CUBIC FEET AND MUST BE APPROVED BY THE LANDSCAPE ARCHITECT PRIOR TO INSTALLATION. LAND. ARCH. TO BE PRESENT DURING BOULDER PLACEMENT.



BOULDER PLACEMENT DETAIL  
N.T.S.

NORTH THIS WAY ~  
SCALE 1"=20'

**Roddick & Dunbar Ltd.**  
LANDSCAPE ARCHITECTURE  
P.O. BOX 1502 CEDAR CREST NW 87008  
(505) 288-0000 VOICE (505) 288-1819 FAX

CITY OF ALBUQUERQUE  
CAPITAL IMPLEMENTATION PROGRAM  
DESIGN & DEVELOPMENT  
TITLE: **LOWELL DRIVE MEDIAN IMPROVEMENTS  
CONSTRUCTION DOCUMENTS  
PLANTING PLAN**

Design Review Committee  
CITY ENGINEER APPROVAL  
CITY ENGINEER  
Last Design Update

City Project No. **633191** Zone Map No. **E-22-Z**

Sheet **9** Of **11**

AS-BUILT INFORMATION			
CONTRACTOR	DATE	BY	DATE
INSPECTOR	DATE	BY	DATE
ACCEPTANCE BY	DATE	BY	DATE
SHOWN HEREON	DATE	BY	DATE
MICRO-FILM INFORMATION			
RECORDED BY	DATE	BY	DATE
NO.			

BENCH MARKS		SURVEY INFORMATION	
THE BASIS OF ELEVATIONS FOR THIS SURVEY WAS DERIVED FROM ACS BENCHMARKS 3-E22A, 10-E22, AND 18-E22. THE PUBLISHED ELEVATION OF WHICH ARE 5681.443, 5903.515, AND 5689.514, RESPECTIVELY, AS SHOWN HEREON.		FIELD NOTES	
THE BASIS OF ELEVATIONS FOR THIS SURVEY WAS DERIVED FROM ACS CONTROL STATIONS 10-E22 & 18-E22.			

ENGINEER'S SEAL  
M. LAURIE AGUILAR  
No. 245  
REGISTERED LANDSCAPE ARCHITECT  
014-00

NO.	DATE	REVISIONS	BY
DESIGNED BY	LRA	DATE	08-14-00
DRAWN BY	R&D	DATE	08-14-00
CHECKED BY	LRA	DATE	08-14-00


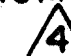




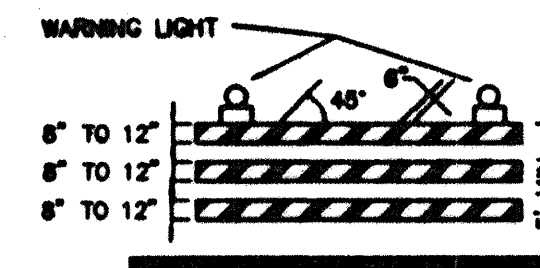


## CONSTRUCTION TRAFFIC CONTROL GENERAL NOTES

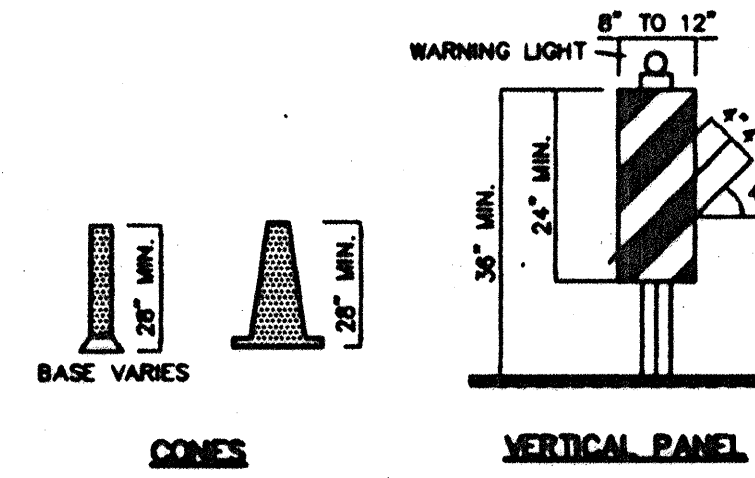
1. CONTRACTOR MUST OBTAIN FROM CONSTRUCTION COORDINATION AN EXCAVATION/BARRICADING PERMIT BEFORE ENGAGING IN ANY CONSTRUCTION, MAINTENANCE OR REPAIR WORK IN ANY OF THE CITY OF ALBUQUERQUE'S RIGHTS-OF-WAY. EMERGENCY WORK THAT WOULD PRESERVE LIFE OR PROPERTY IS EXCLUDED WITH THE UNDERSTANDING, THAT A PERMIT SHALL BE OBTAINED WITHIN 24 TO 48 HOURS.
2. CONTRACTOR SHALL AT THE TIME OF PERMIT REQUEST, SUBMIT FOR APPROVAL BY CONSTRUCTION COORDINATION, A TRAFFIC CONTROL PLAN DETAILING ALL EXISTING TOPOGRAPHY SUCH AS LANE WIDTHS, DRIVEWAYS, AND BUSINESS/RESIDENTIAL ACCESSES. THE TRAFFIC CONTROL PLAN SHALL INCLUDE ALL PHASES OF WORK AND SCHEDULES INVOLVED IN THE CONSTRUCTION PROJECT. ANY SEPARATE PHASES OF A CONSTRUCTION PROJECT SHALL BE GIVEN AN INDIVIDUAL PERMIT EACH. BLANKET PERMITS WILL NOT BE ISSUED.
3. THESE TYPICAL TRAFFIC CONTROL PLANS DO NOT REFLECT THE EXISTING TOPOGRAPHY SUCH AS DRIVEWAYS, LANE WIDTHS, AND BUSINESS/RESIDENTIAL ACCESSES. EVERY LOCATION THAT REQUIRES CONSTRUCTION TRAFFIC CONTROL SHALL HAVE A DETAILED TRAFFIC CONTROL PLAN SHOWING ALL EXISTING TOPOGRAPHY.
4. CONSTRUCTION SHALL NOT BEGIN UNLESS A TRAFFIC CONTROL PLAN HAS BEEN APPROVED AND VERIFIED BY CONSTRUCTION COORDINATION.
5. CONSTRUCTION COORDINATION SHALL BE NOTIFIED 48 HOURS PRIOR TO ANY TRAFFIC CONTROL CHANGES NEEDED BY CONTRACTOR, THAT WERE NOT PREVIOUSLY APPROVED. THESE TRAFFIC CONTROL CHANGES SHALL BE REQUESTED IN WRITING ACCOMPANIED WITH A TRAFFIC CONTROL PLAN REFLECTING SUCH CHANGES.
6. ALL CONSTRUCTION TRAFFIC CONTROL DEVICES SHALL COMPLY TO THE MANUAL ON UNIFORM TRAFFIC CONTROL DEVICES (MUTCD), LATEST EDITION. IT IS THE RESPONSIBILITY OF THE CONTRACTOR TO INSTALL, SERVICE AND MAINTAIN ALL TRAFFIC CONTROL DEVICES. TRAFFIC CONTROL DEVICES SHALL NOT BE REMOVED OR ALTERED IN ANY WAY WITHOUT THE APPROVAL OF CONSTRUCTION COORDINATION, PER SECTION 6A-4 OF THE MUTCD, LATEST EDITION.
7. THE CONSTRUCTION TRAFFIC CONTROL INITIAL SET-UP SHALL BE BY AN AMERICAN TRAFFIC SAFETY SERVICES ASSOCIATION (ATSSA) CERTIFIED WORKSITE TRAFFIC SUPERVISOR. THE MAINTENANCE AND SERVICING SHALL ALSO BE DONE BY AN ATSSA CERTIFIED WORKSITE TRAFFIC SUPERVISOR OR EQUIVALENT.
8. CONTRACTOR IS RESPONSIBLE TO MAINTAIN AND SERVICE ALL TRAFFIC CONTROL DEVICES 24 HOURS A DAY, 7 DAYS A WEEK THROUGHOUT LENGTH OF PROJECT. CONTRACTOR IS RESPONSIBLE THAT ALL TRAFFIC CONTROL DEVICES COMPLY WITH THE MUTCD, LATEST EDITION.
9. ALL ADVANCE WARNING SIGNS SHALL BE DOUBLE INDICATED WHENEVER THERE ARE MULTI-LANE TRAFFIC IN ANY ONE GIVEN DIRECTION AND THERE IS SUFFICIENT MEDIAN SPACE.
10. ALL BARRICADES IN ALL TAPERS AND TANGENTS SHALL BE PLACED APART, A DISTANCE MEASURED IN FEET, EQUAL TO THAT OF THE POSTED SPEED LIMIT. NO EXCEPTIONS UNLESS APPROVED BY CONSTRUCTION COORDINATION PER MUTCD SECTION 6A-4.
11. ALL WORK IN ARTERIAL ROADWAYS SHALL BE ON A CONTINUOUS 24 HOUR PER DAY BASIS UNTIL COMPLETED.
12. CONTRACTOR IS RESPONSIBLE TO PROVIDE CONSTRUCTION COORDINATION, A WEEKLY LOG OF DAILY INSPECTIONS OF BARRICADE AND MAINTENANCE SCHEDULES ON PROJECTS THAT ARE OVER ONE WEEK DURATION.
13. EQUIPMENT OR MATERIALS SHALL NOT BE STORED WITHIN 15 FEET OF A TRAVELLED TRAFFIC LANE DURING NON-WORKING HOURS WITHOUT THE APPROVAL OF CONSTRUCTION COORDINATION.
14. CONTRACTOR SHALL PROVIDE AND MAINTAIN A SAFE AND ADEQUATE MEANS OF CHANNELIZING PEDESTRIAN TRAFFIC AROUND AND THROUGH THE CONSTRUCTION AREA.
15. CONTRACTOR IS RESPONSIBLE FOR OBLITERATION OF ANY CONFLICTING STRIPING AND RESPONSIBLE FOR ALL TEMPORARY STRIPING.
16. CONTRACTOR SHALL MAINTAIN ACCESS TO ALL FACILITIES, BUSINESSES AND/OR RESIDENTS AT ALL TIMES.
17. CONTRACTOR SHALL PROVIDE ACCESS SIGNS FOR BUSINESSES LOCATED WITHIN THE CONSTRUCTION AREA UNDER THE SUPERVISION OF CONSTRUCTION COORDINATION. EACH ACCESS SIGN SHALL HAVE 5 INCH, WHITE OPAQUE LETTERING ON BLUE REFLECTORIZED BACKGROUND. ACCESS SIGNS SHALL BE CONSIDERED INCIDENTAL TO THE BID AND NOT PART OF THE CONTRACT UNLESS OTHERWISE STATED. NO MORE THAN 3 BUSINESSES SHALL BE LISTED ON A ACCESS SIGN. SHOPPING CENTERS AND MALLS SHALL BE LISTED AS SUCH.
18. ALL ADVANCE WARNING SIGNS SHALL MEET THE MINIMUM REFLECTIVE INTENSITY REQUIREMENTS SET FORTH BY THE CITY OF ALBUQUERQUE. CONSTRUCTION COORDINATION SHALL DETERMINE ALL REQUIREMENTS AND APPROVE OR DISAPPROVE ANY ADVANCE WARNING SIGN PER SECTION 6A-4 OF THE MUTCD, LATEST EDITION.
19. 48 HOURS PRIOR TO OCCUPANCY OR CLOSING OF A RIGHT-OF-WAY, CONTRACTOR SHALL NOTIFY: POLICE, FIRE DEPARTMENT, SCHOOLS, HOSPITALS, TRANSIT AUTHORITY, BUSINESSES AND/OR RESIDENTS THAT WILL BE AFFECTED BY THE CONSTRUCTION.
20. ANY FIELD ADJUSTMENTS SHALL BE APPROVED BY CONSTRUCTION COORDINATION.

21. EXCAVATIONS SHALL BE PLATED, TEMPORARILY PATCHED OR RESURFACED PRIOR TO OPENING OF TRAFFIC. A MINIMUM OF 11 FEET SHALL BE PROVIDED FOR TRAFFIC IN ANY GIVEN DIRECTION. CONTRACTOR IS RESPONSIBLE FOR ANY WORK INVOLVED IN SATISFYING THESE REQUIREMENTS.
22. CONTRACTOR SHALL AT ALL TIMES COMPLY WITH THE FOLLOWING:
  1. STANDARDS AND REQUIREMENTS SET FORTH IN THE MANUAL ON UNIFORM TRAFFIC CONTROL DEVICES, LATEST EDITION.
  2. THE CITY OF ALBUQUERQUE TRAFFIC CODE, LATEST EDITION.
  3. SECTION 19 OF THE CITY OF ALBUQUERQUE'S STANDARD SPECIFICATIONS FOR PUBLIC WORK CONSTRUCTION, AS WELL AS OTHER SECTIONS.
23. FAILURE TO COMPLY WITH ANY OF THE ABOVE MENTIONED, WILL BE ADEQUATE CAUSE TO CEASE ALL WORK ON ANY CONSTRUCTION PROJECT. WORK WILL NOT RESUME UNTIL ALL REQUIREMENTS ARE ADDRESSED AND APPROVED BY CONSTRUCTION COORDINATION.
24. ALL TRAFFIC CONTROL DEVICES SHALL BE KEPT IN NEW-CLEAN CONDITION. WASHING OF EQUIPMENT IS INCIDENTAL TO ITS PLACEMENT AND MAINTENANCE.
25. TRAFFIC CONTROL STANDARDS APPLY ONLY WHERE THE CONSTRUCTION TRAFFIC CONTROL PLANS ARE NOT SPECIFIC.
26. ADVANCE WARNING SIGNS SHALL BE 36"x36" MIN. WITH SUPER ENGINEERING GRADE SHEETING OR BETTER. MOUNTING HEIGHT AT TOP OF SIGN SHALL BE THE SAME AS FOR A 48" SIGN AS INDICATED IN THE M.U.T.C.D. 
27. CONTRACTOR SHALL MAINTAIN A GRAFFITI-FREE WORKSITE. ALL GRAFFITI SHALL BE PROMPTLY REMOVED FROM ALL EQUIPMENT, BOTH PERMANENT AND TEMPORARY. 

**SPECIAL TRAFFIC NOTE:**  
CONTRACTOR IS REQUIRED TO MAINTAIN TWO-WAY TRAFFIC AT ALL TIMES.



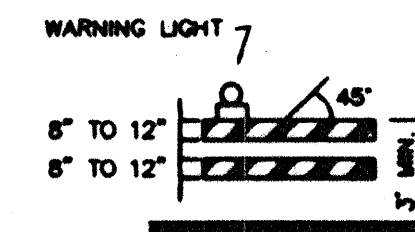
TYPE II BARRICADE



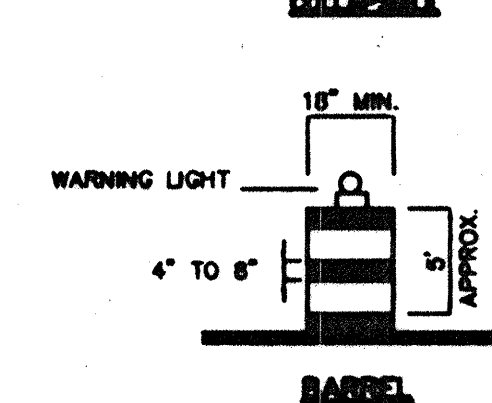
CONES

VERTICAL PANEL

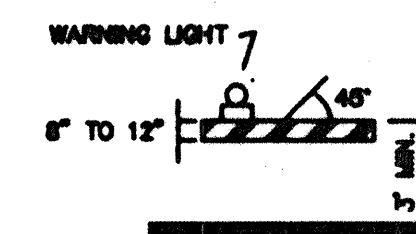
HIGH LEVEL WARNING DEVICE



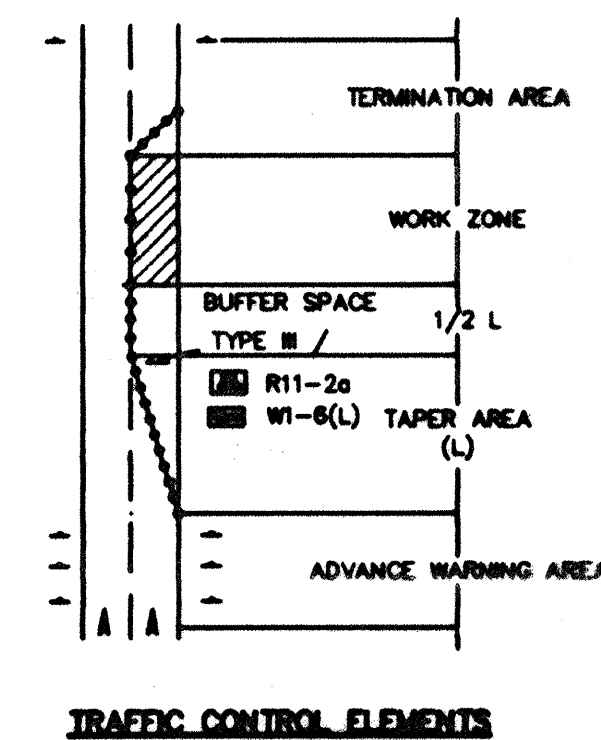
TYPE I BARRICADE



BARREL



TYPE I BARRICADE



TRAFFIC CONTROL ELEMENTS

## LEGEND

- WORK AREA  
BARRICADE - TYPE I, TYPE II, OR BARREL  
BARRICADE - TYPE III  
VERTICAL PANEL  
WARNING SIGN  
DISTANCE BETWEEN SIGNS - A DISTANCE MEASURED IN FEET EQUAL TO A VALUE OF TEN TIMES THE SPEED LIMIT OF THE STREET  
FLAGMAN POSITION  
SPACING BETWEEN BARRICADES - A DISTANCE MEASURED IN FEET EQUAL TO THE SPEED LIMIT OF THE STREET  
TAPER LENGTH - SEE CHART BELOW  
THE TANGENT LENGTH IS EQUAL TO THE TAPER LENGTH FOR A GIVEN STREET.

## TAPER REQUIREMENTS

SPEED LIMIT (MPH)	TAPER LENGTH (L) (FEET)			MINIMUM NUMBER OF DEVICES FOR TAPER	MAXIMUM DEVICE SPACING IN FEET	
	10' LANE	11' LANE	12' LANE		ALONG TAPER	AFTER TAPER
20	70	75	80	5	20	20
25	105	115	125	6	25	25
30	150	165	180	7	30	30
35	205	225	245	8	35	35
40	270	295	320	9	40	40
45	450	495	540	13	45	45
50	500	550	600	13	50	50
55	550	605	660	13	55	55

## RECOMMENDED SIGN SPACING(D) FOR ADVANCE WARNING SIGN SERIES

SPEED LIMIT (MPH)	MINIMUM DISTANCE IN FEET	
	BETWEEN SIGNS	FROM LAST SIGN TO TAPER
0-20	10 X SPEED LIMIT	10 X SPEED LIMIT
25-30	10 X SPEED LIMIT	10 X SPEED LIMIT
30-35	10 X SPEED LIMIT	10 X SPEED LIMIT
40-45	10 X SPEED LIMIT	10 X SPEED LIMIT
50-60	10 X SPEED LIMIT	10 X SPEED LIMIT

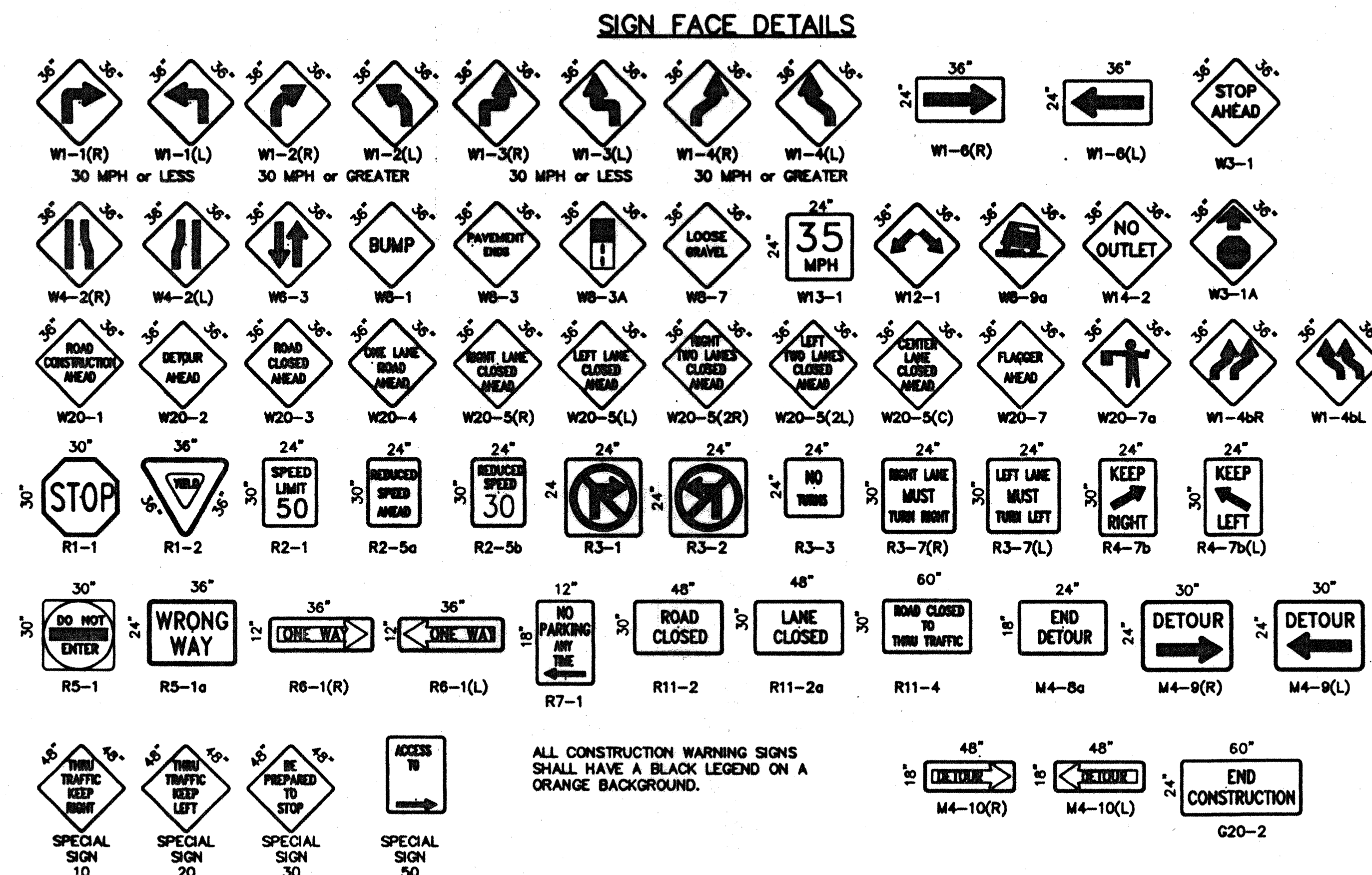
## TAPER CRITERIA

TYPE OF TAPER	TAPER LENGTH
UPSTREAM TAPER:	
MERGING TAPER	L MINIMUM
SHIFTING TAPER	1/2 L MINIMUM
SHOULDER TAPER	1/2 L MINIMUM
TWO-WAY TRAFFIC TAPER	100 FEET MAXIMUM
DOWNSTREAM TAPERS	100 FEET PER LANE

## TAPER LENGTH COMPUTATION

SPEED LIMIT	L =
40 MPH OR LESS	$L = \frac{WS^2}{60}$
45 MPH OR GREATER	$L = W \times S$

L = TAPER LENGTH  
W = WIDTH OF OFFSET IN FEET  
S = POSTED SPEED OR OFF-PEAK 85-PERCENTILE SPEED IN MPH



ALL CONSTRUCTION WARNING SIGNS SHALL HAVE A BLACK LEGEND ON A ORANGE BACKGROUND.

CITY OF ALBUQUERQUE PUBLIC WORKS DEPARTMENT ENGINEERING DEVELOPMENT GROUP	
TITLE: <b>SIGNING AND CONSTRUCTION TRAFFIC CONTROL STANDARDS</b>	
DESIGN REVIEW COMMITTEE	CITY ENGINEER APPROVAL
PROJECT NO. 633191	MAP NO. 22-Z
SHEET 11 OF 11	