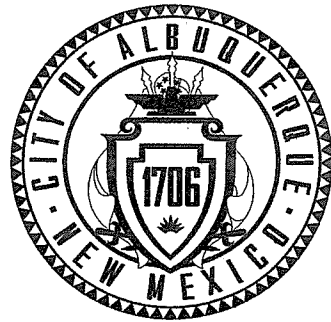


CONSTRUCTION PLANS FOR ARRA BUS SHELTER PHASE 1

ALBUQUERQUE, NEW MEXICO
COA PROJECT NO. 6360.91



INDEX SHEET NUMBER DESCRIPTION

G101	COVER SHEET
C101	SHELTER SITE PLAN & ELEVATIONS
C102	CUT/FILL SECTIONS AND 8' BUS SHELTER BENCH
S101	STRUCTURAL FRAMING & FOUNDATION PLAN
S102	STRUCTURAL ELEVATIONS
S103	STRUCTURAL DETAILS
E100	ELECTRICAL DETAILS

NOTICE TO CONTRACTORS

1. AN EXCAVATION/CONSTRUCTION PERMIT WILL BE REQUIRED BEFORE BEGINNING ANY WORK WITHIN THE PROJECT LIMITS.
2. ALL WORK DETAILED ON THESE PLANS TO BE PERFORMED UNDER CONTRACT SHALL, EXCEPT AS OTHERWISE STATED OR PROVIDED FOR HEREON, BE CONSTRUCTED IN ACCORDANCE WITH THE CITY OF ALBUQUERQUE STANDARD SPECIFICATIONS FOR PUBLIC WORKS CONSTRUCTION, 1986 EDITION AS REVISED THROUGH UPDATE #7, INCLUDING AMENDMENT #1.
3. TWO WORKING DAYS PRIOR TO ANY EXCAVATION, THE CONTRACTOR MUST CONTACT NEW MEXICO ONE CALL SYSTEM (280-1990) FOR LOCATION OF EXISTING UTILITIES.
4. PRIOR TO CONSTRUCTION, THE CONTRACTOR SHALL EXCAVATE AND VERIFY THE HORIZONTAL AND VERTICAL LOCATIONS OF ALL OBSTRUCTIONS, SHOULD A CONFLICT EXIST. THE CONTRACTOR SHALL NOTIFY THE ENGINEER IMMEDIATELY SO THAT THE CONFLICT CAN BE RESOLVED WITH A MINIMUM AMOUNT OF DELAY.
5. SEVEN (7) WORKING DAYS PRIOR TO BEGINNING CONSTRUCTION, THE CONTRACTOR SHALL SUBMIT TO CONSTRUCTION COORDINATION DIVISION A DETAILED CONSTRUCTION SCHEDULED. TWO (2) WORKING DAYS PRIOR TO THE START OF CONSTRUCTION, THE CONTRACTOR SHALL OBTAIN A BARRICADING PERMIT FROM THE CONSTRUCTION COORDINATION DIVISION. CONTRACTOR SHALL NOTIFY THE CONSTRUCTION COORDINATION ENGINEER (924-3400) PRIOR TO OCCUPYING AN INTERSECTION. REFER TO SECTION 19 OF THE GENERAL CONDITIONS OF THE STANDARD SPECIFICATIONS.
6. ALL WORK AFFECTING ARTERIAL ROADWAYS REQUIRES TWENTY-FOUR HOUR CONSTRUCTION.
7. ALL STREET STRIPING ALTERED OR DESTROYED SHALL BE REPLACED WITH PLASTIC REFLECTORIZED PAVEMENT MARKING BY CONTRACTOR TO THE SAME LOCATION AS WAS EXISTING, OR AS INDICATED BY THIS PLAN SET.
8. CONTRACTOR SHALL NOTIFY THE ENGINEER NOT LESS THAN SEVEN (7) DAYS PRIOR TO STARTING WORK IN ORDER THAT THE CITY SURVEYOR MAY TAKE NECESSARY MEASURES TO INSURE THE PRESERVATION OF SURVEY MONUMENTS. CONTRACTOR SHALL NOT DISTURB PERMANENT SURVEY MONUMENTS WITHOUT THE CONSENT OF THE CITY SURVEYOR AND SHALL NOTIFY THE CITY SURVEYOR AND BEAR THE EXPENSE OF REPLACING ANY THAT MAY BE DISTURBED WITHOUT PERMISSION. REPLACEMENT SHALL BE DONE ONLY BY THE CITY SURVEYOR. WHEN A CHANGE IS MADE IN THE FINISHED ELEVATIONS OF THE PAVEMENT OF ANY ROADWAY IN WHICH A PERMANENT SURVEY MONUMENT IS LOCATED, CONTRACTOR SHALL, AT HIS OWN EXPENSE, ADJUST THE MONUMENT COVER TO THE NEW GRADE UNLESS OTHERWISE SPECIFIED. REFER TO SECTION 4.4 OF THE GENERAL CONDITIONS OF THE STANDARD SPECIFICATIONS.
9. CONTRACTOR SHALL RECORD DATA ON ALL UTILITY LINES AND ACCESSORIES AS REQUIRED BY THE CITY OF ALBUQUERQUE FOR THE PREPARATION OF "AS CONSTRUCTED" DRAWINGS. CONTRACTOR SHALL NOT COVER UTILITY LINES AND ACCESSORIES UNTIL ALL DATA HAS BEEN RECORDED.
10. CONTRACTOR SHALL MAINTAIN A GRAFFITI-FREE WORK SITE. CONTRACTOR SHALL PROMPTLY REMOVE ANY GRAFFITI FROM ALL EQUIPMENT, WHETHER PERMANENT OR TEMPORARY.
11. CONTRACTOR SHALL COORDINATE WITH THE WATER UTILITY AUTHORITY (857-8200) SEVEN (7) WORKING DAYS IN ADVANCE OF ANY WORK THAT MAY AFFECT EXISTING PUBLIC WATER OR SEWER UTILITIES. EXISTING VALVES TO BE OPERATED BY WATER UTILITY AUTHORITY PERSONNEL ONLY. CONTRACTOR SHALL CONTACT THE WATER SYSTEMS DIVISION SEVEN (7) WORKING DAYS PRIOR TO NEEDING VALVES TURNED ON OR OFF.
12. CONTRACTOR SHALL BE RESPONSIBLE FOR PROVIDING AND MAINTAINING ALL CONSTRUCTION SIGNING UNTIL PROJECT HAS BEEN ACCEPTED BY THE CITY AND NMDOT.

THE FOLLOWING NOTES ALSO APPLY WHEN CHECKED

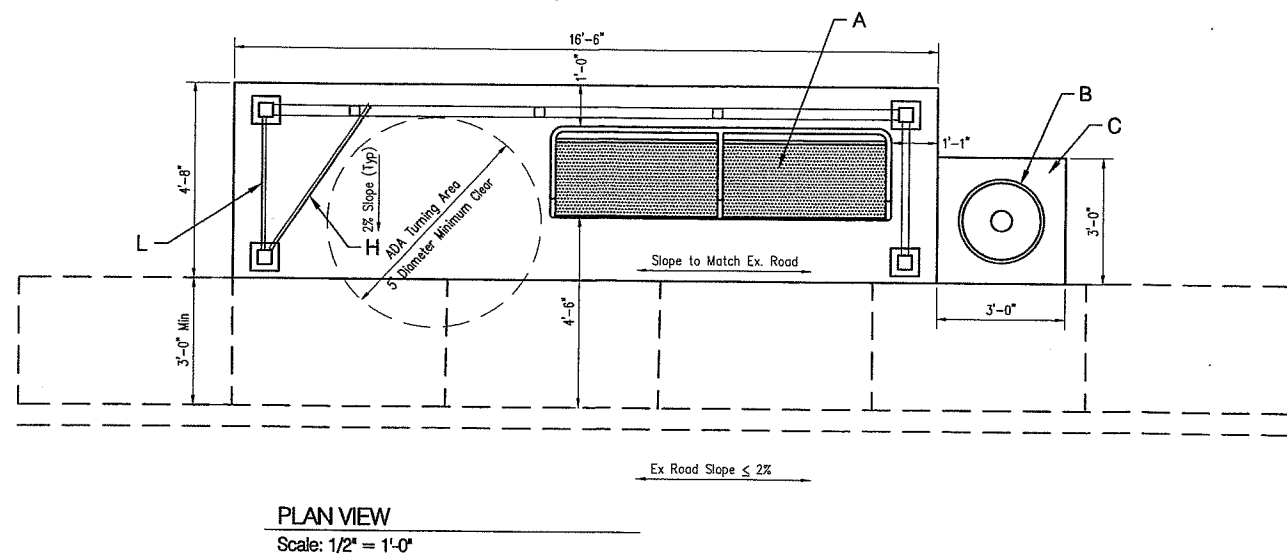
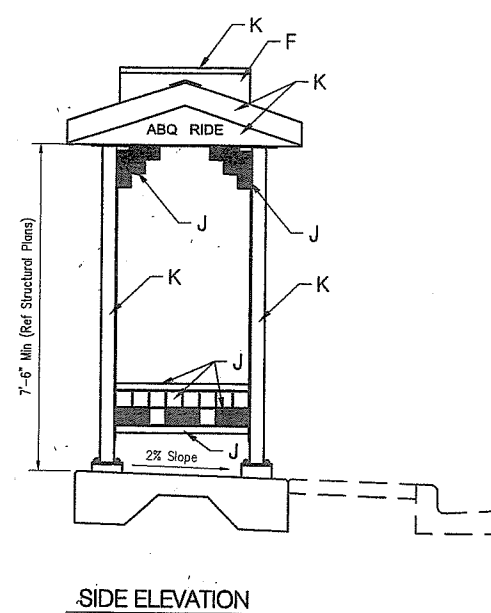
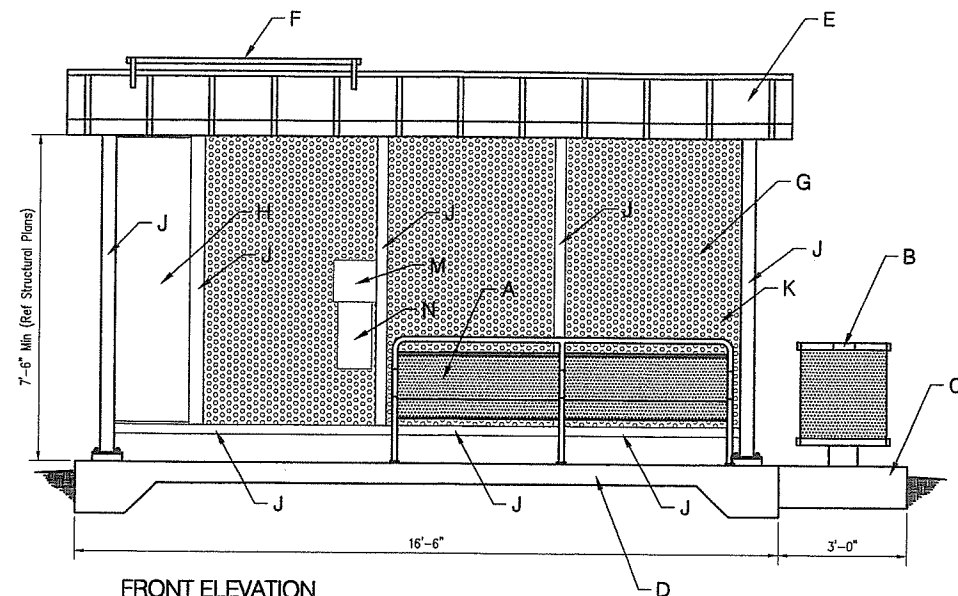
- ☒ ALL UTILITIES AND UTILITY SERVICE LINES SHALL BE INSTALLED PRIOR TO PAVING.
- ☒ BACKFILL COMPACTION SHALL BE ACCORDING TO SPECIFIED STREET USE.
- ☒ TACK COAT REQUIREMENTS SHALL BE DETERMINED BY THE ENGINEER.
- ☒ SIDEWALKS AND WHEELCHAIR RAMPS WITHIN THE CURB RETURNS SHALL BE CONSTRUCTED WHEREVER A NEW CURB IS CONSTRUCTED.
- ☒ IF CURB IS DERESSED FOR A DRIVEPAD, THE DRIVEPAD SHALL BE CONSTRUCTED PRIOR TO ACCEPTANCE OF CURB AND GUTTER.
- ☒ ALL STORM DRAINAGE FACILITIES SHALL BE COMPLETED PRIOR TO FINAL ACCEPTANCE.
- ☒ THE REQUESTOR OR DEVELOPER SHALL BE RESPONSIBLE FOR REPAIR OR REPLACEMENT OF ALL CURB AND GUTTER OR SIDEWALK DAMAGED AFTER APPROVAL BY THE CITY ENGINEER OF WORK COMPLETED BY THE CONTRACTOR.



Transit Dept.
6/17/09



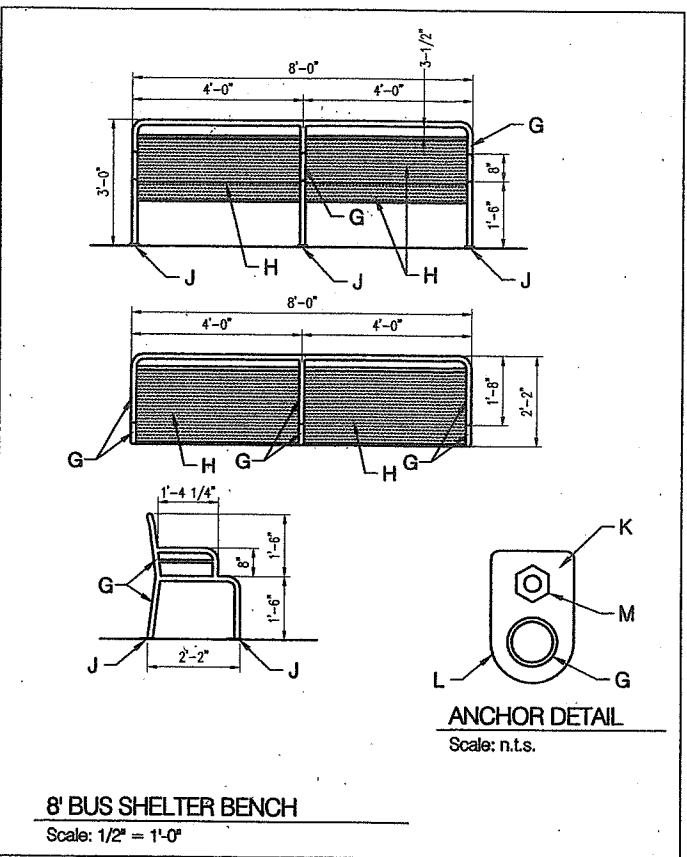
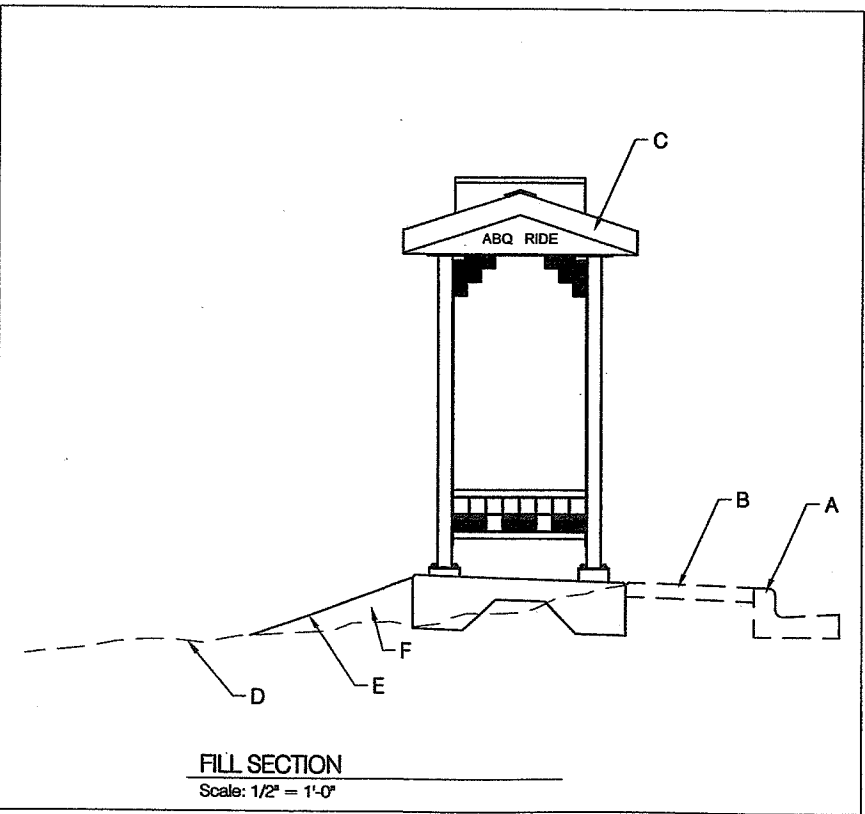
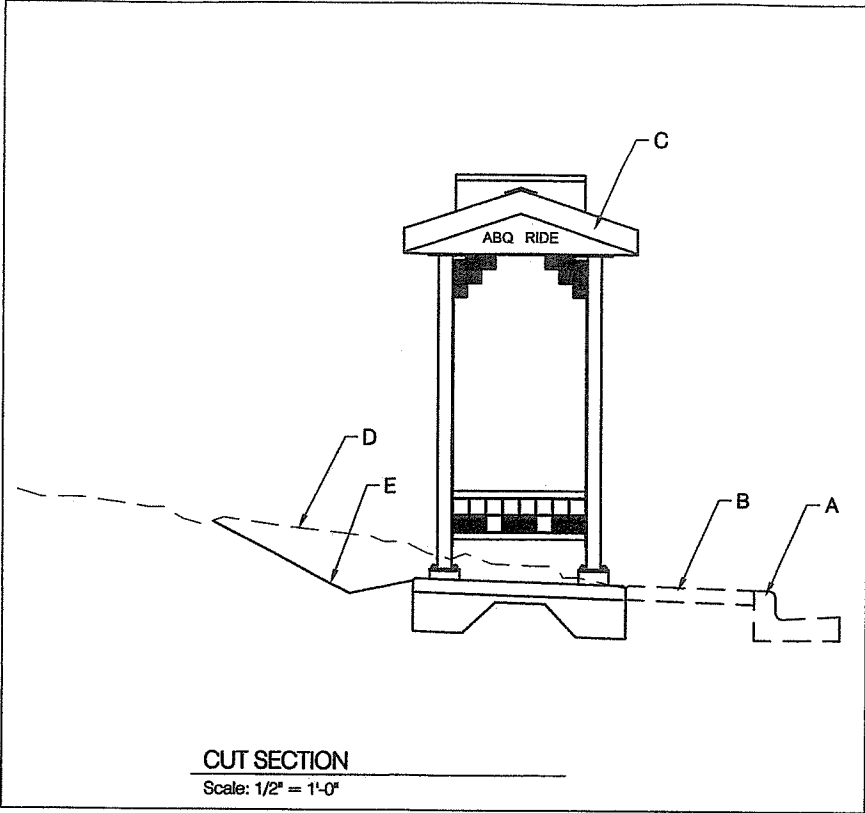
REV.	SHEETS	CITY ENGINEER	DATE	USER DEPARTMENT	DATE	USER DEPARTMENT	DATE
ENGINEERS STAMP & SIGNATURE		APPROVALS		ENGINEER	DATE	*****	
		DRC Chairman			6-17-09	APPROVED FOR CONSTRUCTION	
		Transportation					
		Water/Wastewater					
		Hydrology					
		Parks					
		Const. Mngmt.					
		Envir. Health					
		City Project No.	6360.9100			Sheet	Of
						G101	1 7



- ### GENERAL NOTES
1. CONTRACTOR SHALL VISIT ALL SELECTED BUS SHELTER SITES AND VERIFY THAT THE PROPOSED DIMENSIONS COORDINATE WITH ACTUAL FIELD CONDITIONS. ANY DISCREPANCIES SHALL BE BROUGHT TO THE OWNER'S ATTENTION IMMEDIATELY.
 2. THE SLOPE ALONG THE ADJACENT ROADWAY AND SIDEWALK SHALL NOT EXCEED 2% IN THE EVENT THE SLOPE DOES EXCEED 2%, NOTIFY THE OWNER'S REPRESENTATIVE IMMEDIATELY, SO THAT A SITE SPECIFIC DESIGN CAN BE PREPARED.
 3. CONTRACTOR SHALL FURNISH SHOP DRAWINGS FOR REVIEW AND APPROVAL PRIOR TO ANY FABRICATION BEING STARTED. SHOP DRAWINGS SHALL BE PROVIDED FOR ALL FABRICATED ITEMS INCLUDING SIGNAGE, PRECAST ITEMS, LIGHTING FIXTURES, METAL WINDSCREENS, ADVERTISING PANELS, TRASH CAN (AS REQUIRED), AND BENCHES.
 4. ALL COLORED AND FINISHED SURFACES SHALL BE POWDER COATED AND TREATED WITH AN ANT-GRAFFITI COATING PER MANUFACTURER'S RECOMMENDATION.
 5. COLORS FOR GRASSES AND FINISHES SHALL BE SELECTED FROM MANUFACTURER'S STANDARD COLOR SELECTION.

- ### CONSTRUCTION NOTES
- A. 8' LONG BUS SHELTER BENCH. MODIFIED VERSION OF COA STD DWG 2535.09. SEE SHEET C-2 FOR DETAIL (WATER BLUE)
 - B. OPTIONAL TRASH RECEPTACLE PER COA STD DWG 2535.10. (NUT BROWN)
 - C. OPTIONAL CONCRETE SLAB FOR TRASH RECEPTACLE PER COA STD DWG 2535.10.
 - D. CONCRETE SLAB. REF. STRUCTURAL DRAWINGS.
 - E. SILVER CORRUGATED METAL ROOF. REF. STRUCTURAL DRAWINGS.
 - F. ROOF MOUNTED SOLAR PANELS FOR LIGHTING SYSTEM. REF. ELECTRICAL DRAWINGS.
 - G. STEEL WIND SCREEN. REF. STRUCTURAL DRAWINGS.
 - H. 48" ADVERTISING PANEL. REF. STRUCTURAL DRAWINGS.
 - J. POWDER COAT COLOR: RAL 5021 (WATER BLUE).
 - K. POWDER COAT COLOR: RAL 8011 (NUT BROWN).
 - L. 36" ADVERTISING PANEL. REF. STRUCTURAL DRAWINGS.
 - M. INSTALL LIGHT GAUGE STEEL PLATE WITH PROJECT DETAIL S-1.
 - N. INSTALL BUS STOP SCHEDULE HOLDER PART # RCH-17 TRANSIT INFORMATION PRODUCTS.

[illegible]



- CONSTRUCTION NOTES**
- A. EXISTING CURB/GUTTER
 - B. EXISTING SIDEWALK
 - C. NEW BUS SHELTER PER ATTACHED PLANS.
 - D. EXISTING GRADE
 - E. PROPOSED FINISHED GRADE. MAXIMUM 4:1 SLOPE.
 - F. ALL FILL MATERIAL SHALL BE COMPACTED TO MINIMUM 95% MODIFIED PROCTOR DENSITY.
 - G. BENCH FRAME: 1-1/2" O.D. COPED, WELDED PIPE CHASSIS, POWDER COATED FINISH (WATER BLUE)
 - H. 10 GA. PERFORATED STEEL AND WELD PIPE, POWDER COATED FINISH (WATER BLUE)
 - J. WELDED 3/8" STEEL FOOTING PLATES WITH HOLES FOR 1/2" DIAMETER ANCHOR BOLTS. POWDER COATED FINISH (WATER BLUE)
 - K. 1/4" THICK STEEL BASE PLATE, POWDER COATED FINISH (WATER BLUE)
 - L. 1-1/4" RADIUS
 - M. 1/2" DIA. X 3-1/2" RED HEAD BOLTS
- NOTE: ALL POWDER COATED FINISHES SHALL BE TREATED WITH AN ANTI GRAFFITI COATING PER MANUFACTURER'S RECOMMENDATIONS.

Bohannon & Huston

Consulting Engineers & Architects
1700 Jefferson St. NE Albuquerque, NM 87106-4306
ENGINEERING - SPATIAL DATA - ADVANCED TECHNOLOGIES

CITY OF ALBUQUERQUE
DEPARTMENT OF
MUNICIPAL DEVELOPMENT

ARRA BUS SHELTERS
CUT/FILL SECTIONS AND 8' BUS SHELTER BENCH

DESIGN REVIEW COMMITTEE

APPROVED

DESIGN REVIEW COMMITTEE

CITY ENGINEER APPROVAL

APPROVED

CITY ENGINEER

NO. / DAY / YR.

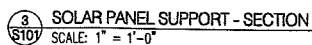
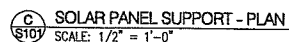
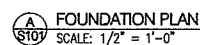
NO. / DAY / YR.

CITY PROJECT NO. 6360.00




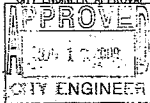
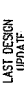

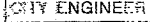

ZONE MAP NO.

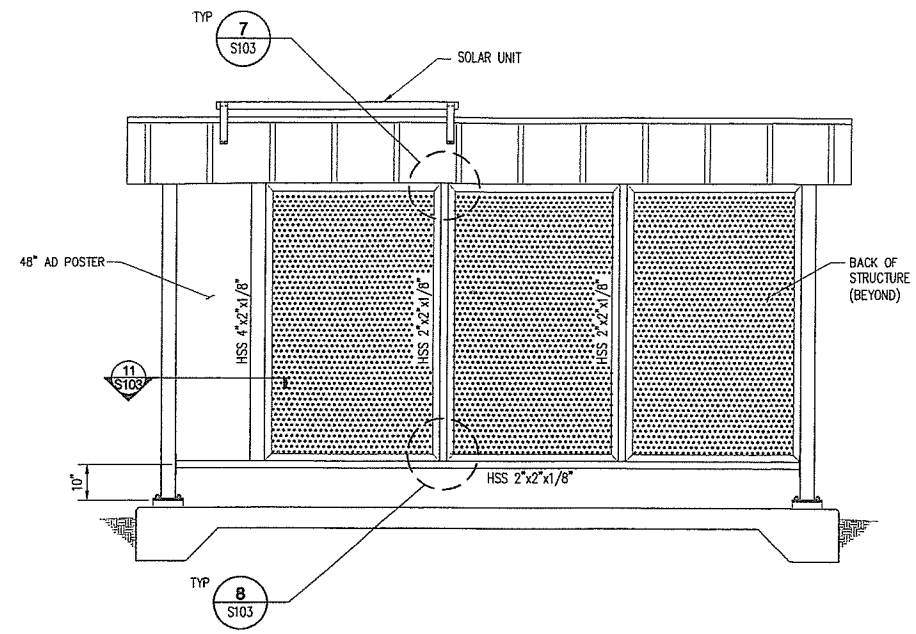
SHEET C102 OF 7

--	--	--	--	--	--	--	--	--	--	--	--	--	--	--	--	--	--	--	--	--	--	--	--	--	--	--	--	--	--	--	--	--	--	--	--	--	--	--	--	--	--	--	--	--	--	--	--	--	--	--	--	--	--	--	--	--	--	--	--	--	--	--	--	--	--	--	--	--	--	--	--	--	--	--	--	--	--	--	--	--	--	--	--	--	--	--	--	--	--	--	--	--	--	--	--	--	--	--	--	--	--	--	--	--	--	--	--	--	--	--	--	--	--	--	--	--	--	--	--	--	--	--	--	--	--	--	--	--	--	--	--	--	--	--	--	--	--	--	--	--	--	--	--	--	--	--	--	--	--	--	--	--	--	--	--	--	--	--	--	--	--	--	--	--	--	--	--	--	--	--	--	--	--	--	--	--	--	--	--	--	--	--	--	--	--	--	--	--	--	--	--	--	--	--	--	--	--	--	--	--	--	--	--	--	--	--	--	--	--	--	--	--	--	--	--	--	--	--	--	--	--	--	--	--	--	--	--	--	--	--	--	--	--	--	--	--	--	--	--	--	--	--	--	--	--	--	--	--	--	--	--	--	--	--	--	--	--	--	--	--	--	--	--	--	--	--	--	--	--	--	--	--	--	--	--	--	--	--	--	--	--	--	--	--	--	--	--	--	--	--	--	--	--	--	--	--	--	--	--	--	--	--	--	--	--	--	--	--	--	--	--	--	--	--	--	--	--	--	--	--	--	--	--	--	--	--	--	--	--	--	--	--	--	--	--	--	--	--	--	--	--	--	--	--	--	--	--	--	--	--	--	--	--	--	--	--	--	--	--	--	--	--	--	--	--	--	--	--	--	--	--	--	--	--	--	--	--	--	--	--	--	--	--	--	--	--	--	--	--	--	--	--	--	--	--	--	--	--	--	--	--	--	--	--	--	--	--	--	--	--	--	--	--	--	--	--	--	--	--	--	--	--	--	--	--	--	--	--	--	--	--	--	--	--	--	--	--	--	--	--	--	--	--	--	--	--	--	--	--	--	--	--	--	--	--	--	--	--	--	--	--	--	--	--	--	--	--	--	--	--	--	--	--	--	--	--	--	--	--	--	--	--	--	--	--	--	--	--	--	--	--	--	--	--	--	--	--	--	--	--	--	--	--	--	--	--	--	--	--	--	--	--	--	--	--	--	--	--	--	--	--	--	--	--	--	--	--	--	--	--	--	--	--	--	--	--	--	--	--	--	--	--	--	--	--	--	--	--	--	--	--	--	--	--	--	--	--	--	--	--	--	--	--	--	--	--	--	--	--	--	--	--	--	--	--	--	--	--	--	--	--	--	--	--	--	--	--	--	--	--	--	--	--	--	--	--	--	--	--	--	--	--	--	--	--	--	--	--	--	--	--	--	--	--	--	--	--	--	--	--	--	--	--	--	--	--	--	--	--	--	--	--	--	--	--	--	--	--	--	--	--	--	--	--	--	--	--	--	--	--	--	--	--	--	--	--	--	--	--	--	--	--	--	--	--	--	--	--	--	--	--	--	--	--	--	--	--	--	--	--	--	--	--	--	--	--	--	--	--	--	--	--	--	--	--	--	--	--	--	--	--	--	--	--	--	--	--	--	--	--	--	--	--	--	--	--	--	--	--	--	--	--	--	--	--	--	--	--	--	--	--	--	--	--	--	--	--	--	--	--	--	--	--	--	--	--	--	--	--	--	--	--	--	--	--	--	--	--	--	--	--	--	--	--	--	--	--	--	--	--	--	--	--	--	--	--	--	--	--	--	--	--	--	--	--	--	--	--	--	--	--	--	--	--	--	--	--	--	--	--	--	--	--	--	--	--	--	--	--	--	--	--	--	--	--	--	--	--	--	--	--	--	--	--	--	--	--	--	--	--	--	--	--	--	--	--	--	--	--	--	--	--	--	--	--	--	--	--	--	--	--	--	--	--	--	--	--	--	--	--	--	--	--	--	--	--	--	--	--	--	--	--	--	--	--	--	--	--	--	--	--	--	--	--	--	--	--	--	--	--	--	--	--	--	--	--	--	--	--	--	--	--	--	--	--	--	--	--	--	--	--	--	--	--	--	--	--	--	--	--	--	--	--	--	--	--	--	--	--	--	--	--	--	--	--	--	--	--	--	--	--	--	--	--	--	--	--	--	--	--	--	--	--	--	--	--	--	--	--	--	--	--	--	--	--	--	--	--	--	--	--	--	--	--	--	--	--	--	--	--	--	--	--	--	--	--	--	--	--	--	--	--	--	--	--	--	--	--	--	--	--	--	--	--	--	--	--	--	--	--	--	--	--	--	--	--	--	--	--	--	--	--	--	--	--	--	--	--	--	--	--	--	--	--	--	--	--	--	--	--	--	--	--	--	--	--	--	--	--	--	--	--	--	--	--	--	--	--	--	--	--	--	--	--	--	--	--	--	--	--	--	--	--	--	--	--	--	--	--	--	--	--	--	--	--	--	--	--	--	--	--	--	--	--	--	--	--	--	--	--	--	--	--	--	--	--	--	--	--	--	--	--	--	--	--	--	--	--	--	--	--	--	--	--	--	--	--	--	--	--	--	--	--	--	--	--	--	--	--	--	--	--	--	--	--	--	--	--	--	--	--	--	--	--	--	--	--	--	--	--	--	--	--	--	--	--	--	--	--	--	--	--	--	--	--	--	--	--	--	--	--	--	--	--	--	--	--	--	--	--	--	--	--	--	--	--	--	--	--	--	--	--	--	--	--	--	--	--	--	--	--	--	--	--	--	--	--	--	--	--	--	--	--	--	--	--	--	--	--	--	--	--	--	--	--	--	--	--	--	--	--	--	--	--	--	--	--	--	--	--	--	--	--	--	--	--	--	--	--	--	--	--	--	--	--	--	--	--	--	--	--	--	--	--	--	--	--	--	--	--	--	--	--	--	--	--	--	--	--	--	--	--	--	--	--	--	--	--	--	--	--	--	--	--	--	--	--	--	--	--	--	--	--	--	--	--	--	--	--

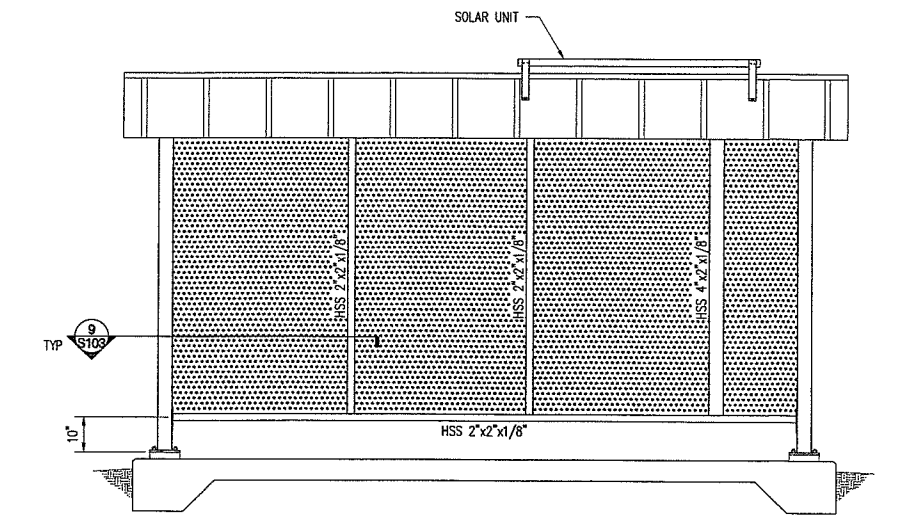


1. METAL ROOFING SYSTEM ON 1 1/2" TYPE "B", 22 GA METAL DECK. DECK SHALL BE CONTINUOUS OVER A MINIMUM OF 1 SPAN. ATTACH DECK TO SUPPORTS WITH A MINIMUM OF (6) 5/8"Ø DUPLICATE WELDS PER TRUSS.
2. 1 1/2" STANDING SEAM METAL DECK. ATTACH TO STRUCTURAL DECKING PER MANUFACTURER'S REQUIREMENTS.
3. ALL HSS SHALL BE ASTM A300 GRADE B.
4. ALL PLATES SHALL BE ASTM A36.
5. ALL BOLTS SHALL BE STEELLESS STEEL.
6. 6" SLAB ON GRADE w/ #4 @ 18" O.C. EACH WAY.

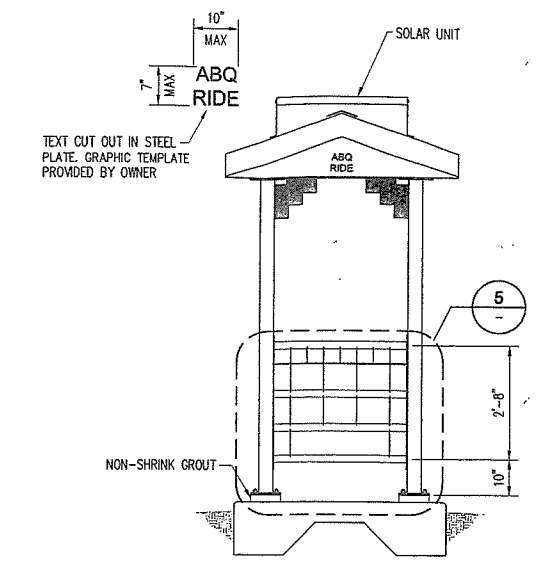
		DESIGNED BY: JC DRAWN BY: ML CHECKED BY:	
Courtyard 7000 Jefferson St NE Albuquerque, NM 87100-6335 ENGINEERING ▴ SPATIAL DATA ▴ ADVANCED TECHNOLOGIES		NO. DATE 	
<div style="display: flex; justify-content: space-between; align-items: center;">  <div style="text-align: center;"> CITY OF ALBUQUERQUE DEPARTMENT OF MUNICIPAL DEVELOPMENT </div> </div>			
ARRA BUS SHELTERS			
FRAMING & FOUNDATION PLAN			
DESIGN REVIEW COMMITTEE 	CITY ENGINEER APPROVAL 	LAST DESIGN UPDATE 	MD./DAY/YR.
DESIGN REVIEW COMMITTEE 	CITY ENGINEER 	LAST DESIGN UPDATE 	MD./DAY/YR.
CITY PROJECT NO. 6360.00		ZONE MAP NO.	SHEET OF S101 7



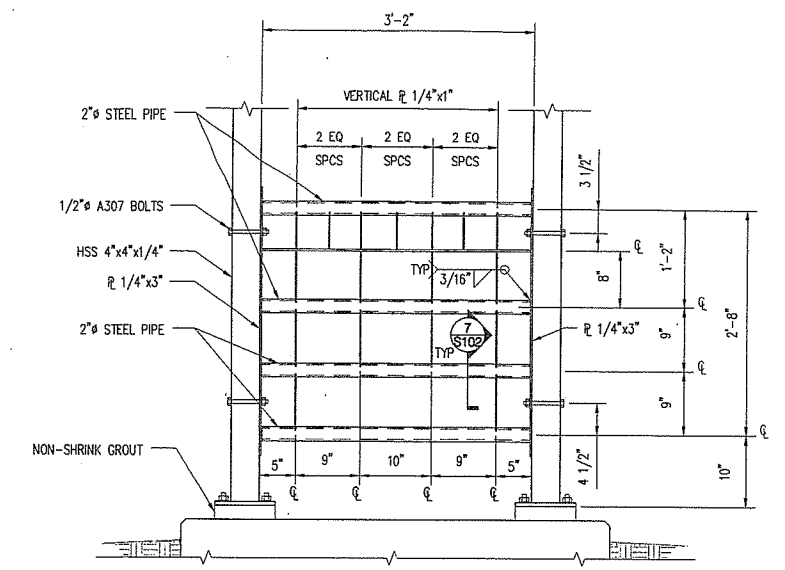
1 FRONT ELEVATION



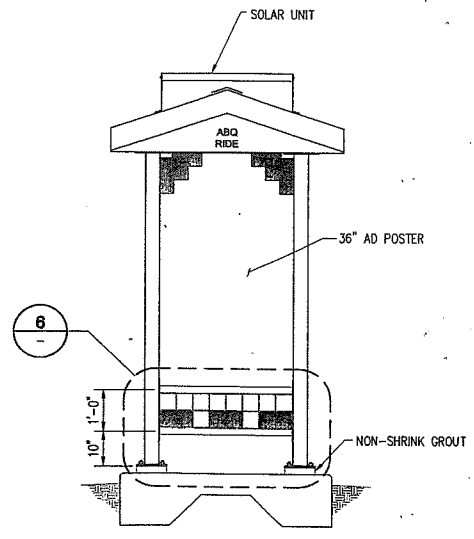
2 BACK ELEVATION



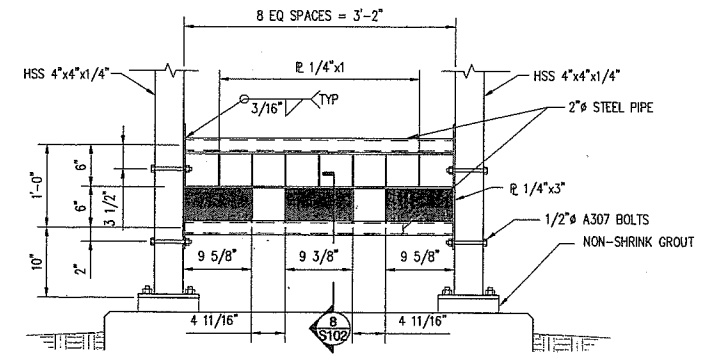
3 SIDE ELEVATION



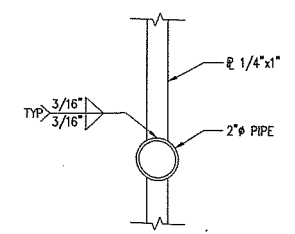
5 DETAIL



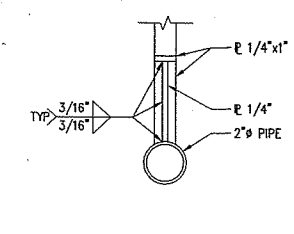
4 SIDE ELEVATION



6 DETAIL



7 SECTION



8 SECTION

AS-BUILT INFORMATION		BENCH MARKS		SURVEY INFORMATION		ENGINEER'S SEAL		REMARKS		DESIGN		CITY OF ALBUQUERQUE		ARRA BUS SHELTERS		ELEVATIONS		CITY PROJECT NO.		ZONE MAP NO.		SHEET		OF		7	
CONTRACTOR	DATE	NO.	BY	NO.	DATE	NO.	DATE	NO.	DATE	NO.	DATE	NO.	DATE	NO.	DATE	NO.	DATE	NO.	DATE	NO.	DATE	NO.	DATE	NO.	DATE	NO.	DATE
DESIGNED BY: JC	DATE: 5/21/2009	NO.	DATE	NO.	DATE	NO.	DATE	NO.	DATE	NO.	DATE	NO.	DATE	NO.	DATE	NO.	DATE	NO.	DATE	NO.	DATE	NO.	DATE	NO.	DATE	NO.	DATE
DRAWN BY: WL	DATE: 5/21/2009	NO.	DATE	NO.	DATE	NO.	DATE	NO.	DATE	NO.	DATE	NO.	DATE	NO.	DATE	NO.	DATE	NO.	DATE	NO.	DATE	NO.	DATE	NO.	DATE	NO.	DATE
CHECKED BY: SNM	DATE: 5/21/2009	NO.	DATE	NO.	DATE	NO.	DATE	NO.	DATE	NO.	DATE	NO.	DATE	NO.	DATE	NO.	DATE	NO.	DATE	NO.	DATE	NO.	DATE	NO.	DATE	NO.	DATE

Bohannon & Huston

Courtyard 1 7500 Jefferson St. NE Albuquerque, NM 87109-4335

ENGINEERING • SPATIAL DATA • ADVANCED TECHNOLOGIES

CITY OF ALBUQUERQUE

DEPARTMENT OF MUNICIPAL DEVELOPMENT

ARRA BUS SHELTERS

ELEVATIONS

DESIGN REVIEW COMMITTEE

APPROVE

DESIGN REVIEW COMMITTEE

CITY ENGINEER APPROVAL

APPROVE

CITY ENGINEER

MO./DAY/YR

MO./DAY/YR

LAST DESIGN UPDATE

DATE

CITY PROJECT NO.

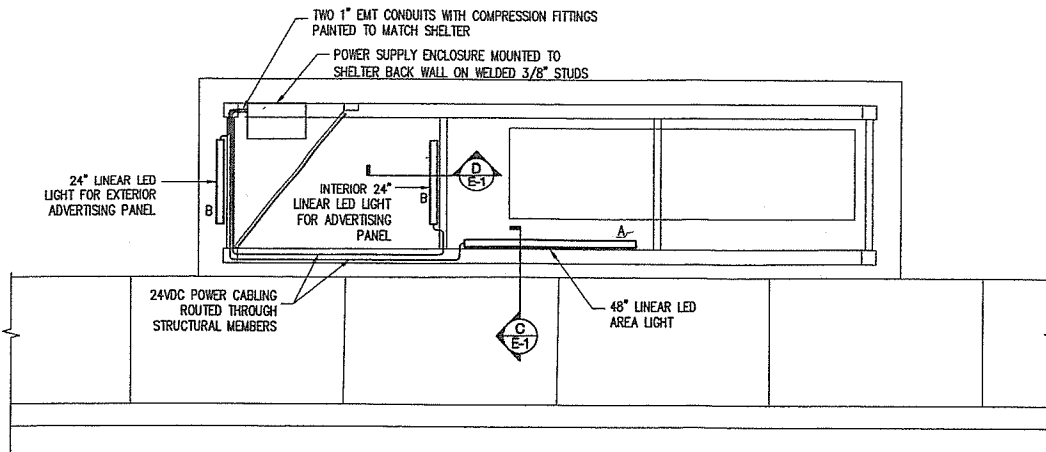
6360.00

ZONE MAP NO.

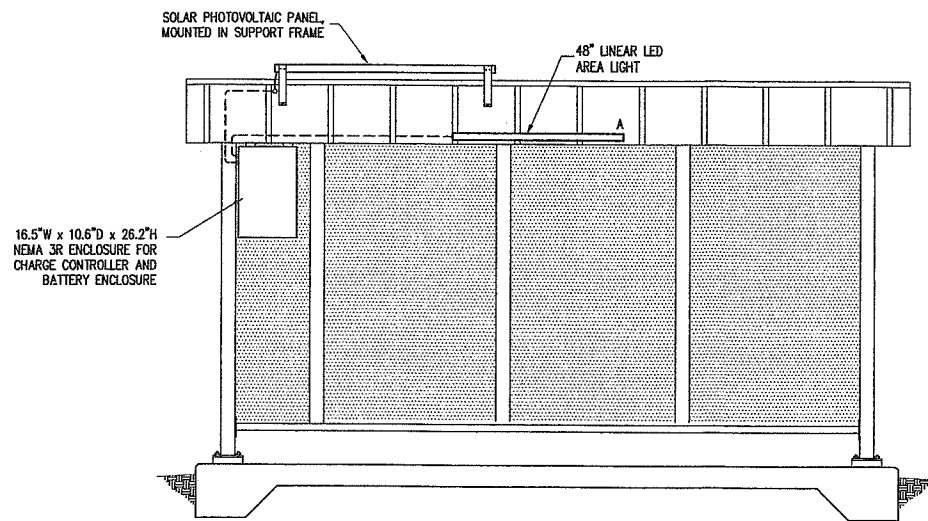
S102

SHEET

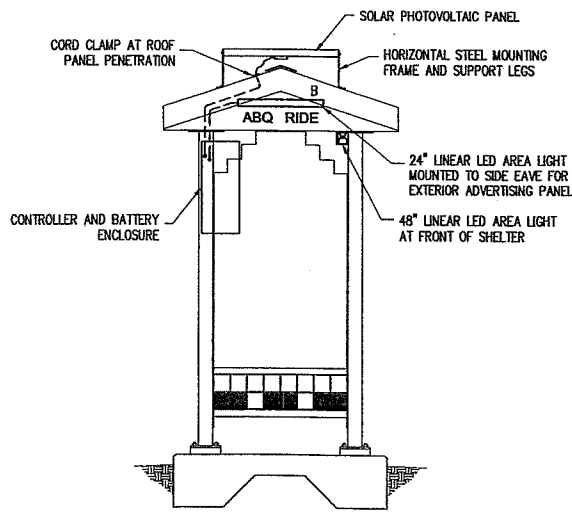
7



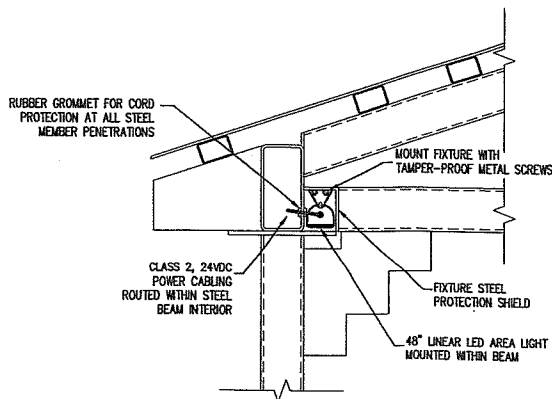
1 PLAN
SCALE: 1/2" = 1'-0"



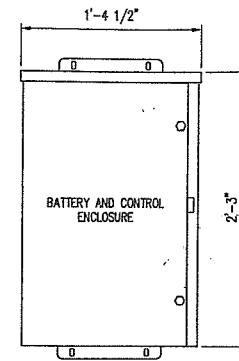
A FRONT ELEVATION
SCALE: 1/2" = 1'-0"



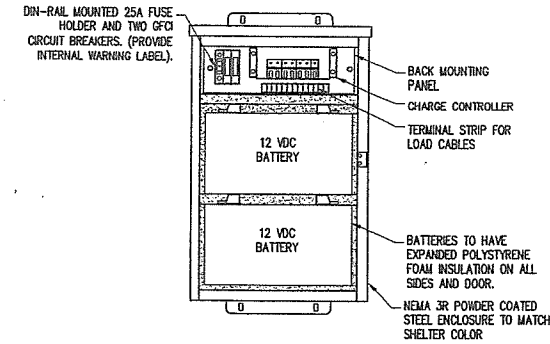
B SIDE ELEVATION
SCALE: 1/2" = 1'-0"



C AREA LIGHT MOUNTING DETAIL
NOT TO SCALE

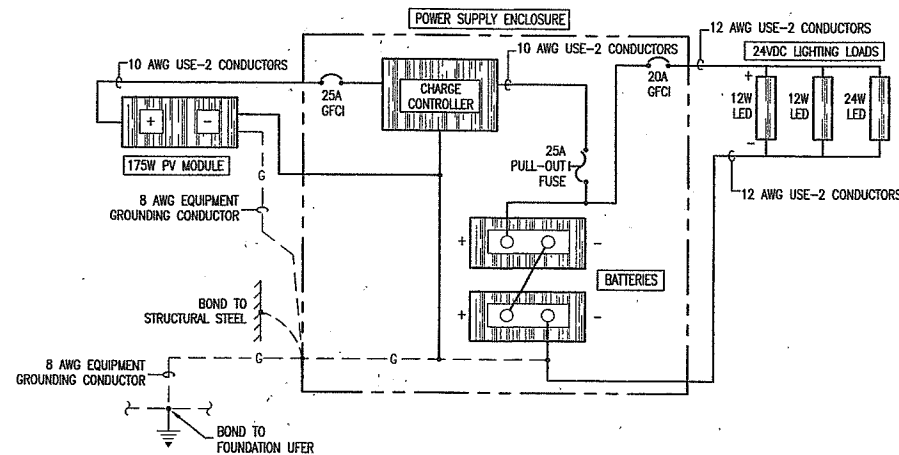


EXTERIOR



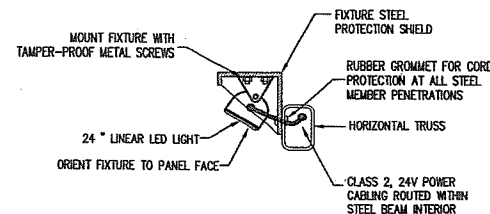
INTERIOR

2 POWER SUPPLY ENCLOSURE DETAILS
SCALE: 1-1/2" = 1'-0"



3 WIRING DIAGRAM
NOT TO SCALE

FIXTURE SCHEDULE			
TYPE	DESCRIPTION	LAMPS	MOUNTING
A	BUS SHELTER INTERIOR LUMINAIRE WITH ONE PIECE SEALED EXTRUDED LENS #TE6-55K-100-CES-4'-24VDC-SF	LED'S	RECESSED TOP FRONT BUS SHELTER BEAM.
B	BUS SHELTER ADVERTISEMENT SIGN LUMINAIRE #TE6-55K-GRAZER-CES-2'-24VDC-SF	LED'S	RECESSED TOP OF BUS SHELTER EVE.



D FRONT LED BEAM DETAIL
NOT TO SCALE

Bohannon & Huston
 Courtyard I 7500 Jefferson St. NE Albuquerque, NM 87109-4335
 ENGINEERING • SPATIAL DATA • ADVANCED TECHNOLOGIES

CITY OF ALBUQUERQUE
 DEPARTMENT OF MUNICIPAL DEVELOPMENT

ARRA BUS SHELTERS
 ELECTRICAL PLAN AND DETAILS

DESIGN REVIEW COMMITTEE APPROVED JUN 17 2009
 CITY ENGINEER APPROVAL JUN 17 2009
 DESIGN REVIEW COMMITTEE CITY ENGINEER

CITY PROJECT NO. 6360.00 ZONE MAP NO. SHEET E100 OF 7

DESIGNED BY: MRT DATE: 05/07/2009
 DRAWN BY: LLM DATE: 05/07/2009
 CHECKED BY: MRT DATE: 05/07/2009