

INDEX OF DRAWINGS

TITLE	SHEET NO.	SEQUENCE
COVER SHEET	01	1 OF 5
SURVEY	02	2 OF 5
REMOVAL PLAN	03	3 OF 5
LAYOUT PLAN	04	4 OF 5
WALK LAYOUT & SITE DETAILS	05	5 OF 5

DESIGNWORKSHOP

901 Rio Grande Blvd. NW
Suite E130
Albuquerque, NM
87104
(Tel.) 505.243.8333
(Fax) 505.243.8337

REV.	SHEETS	CITY ENGINEER	DATE	USER DEPARTMENT	DATE	USER DEPARTMENT	DATE	
LANDSCAPE ARCHITECT'S SEAL						APPROVED FOR CONSTRUCTION		
		DRC CHAIRMAN	Xubert	4-6-00				
		TRANSPORTATION	Xubert	4-6-00				
		WATER/WASTEWATER	Xubert	4-6-00				
		HYDROLOGY	(Signature)	4-6-00				
		C.I.P.						
		CONSTR. MNGMT.						
		CONSTR. COORD.	Xubert	4-6-00				
City Project Number						Sheet 1 of 5		

STATE OF NEW MEXICO
XUBERT B. RODRIGUEZ
REGISTERED LANDSCAPE ARCHITECT NO. 8943

636591

LEGAL DESCRIPTION

THAT CERTAIN PARCEL OF LAND SITUATED WITHIN THE TOWN OF ATRISCO GRANT, WITHIN SECTION 14 (PROJECTED), TOWNSHIP 9 NORTH, RANGE 2 EAST, NEW MEXICO PRINCIPAL MERIDIAN, ALBUQUERQUE, BERNALILLO COUNTY, NEW MEXICO, BEING IDENTIFIED AS VALLEY GARDENS PARK, VALLEY GARDENS SOUTH SUBDIVISION, UNIT ONE, AS SHOWN AND DESIGNATED ON THE PLAT FILED IN THE OFFICE OF THE COUNTY CLERK, BERNALILLO COUNTY, NEW MEXICO, ON MAY 23, 1963, IN VOLUME C5, FOLIO 163.

TOPOGRAPHIC, DESIGN AND BOUNDARY SURVEY
VALLEY GARDENS PARK
VALLEY GARDENS SOUTH, UNIT ONE
ALBUQUERQUE, BERNALILLO COUNTY, NEW MEXICO
DECEMBER 1999

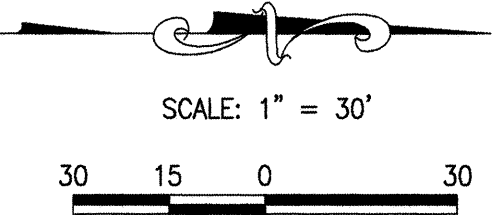
CONTROL POINT TABLE			
C.P. #	NORTH	EAST	ELEVATION
6	1,458,620.78	363,087.25	4919.29
7	1,458,625.51	363,466.16	4919.31
8	1,459,125.31	363,262.83	4919.39
9	1,458,871.08	363,543.73	4919.14

NOTES:

- BEARINGS ARE GRID BASED ON NM STATE PLANE COORDINATE SYSTEM, CENTRAL ZONE. DISTANCES ARE GROUND.
- COORDINATES ARE GROUND BASED ON NEW MEXICO STATE PLANE COORDINATE SYSTEM, CENTRAL ZONE, NAD 27. USE GROUND-TO-GRID FACTOR = 0.99968 TO OBTAIN GRID COORDINATES.
- ELEVATIONS ARE SLD29 DATUM VALUES BASED ON ACS BENCH MARK '9-Q11', ELEV. = 4921.50.
- LOCATION OF UNDERGROUND UTILITIES IS APPROXIMATE ONLY AND MUST BE FIELD VERIFIED BEFORE ANY CONSTRUCTION OR EXCAVATION. OTHER UTILITIES MAY EXIST THAT ARE NOT SHOWN ON THIS SURVEY.
- UNLESS SHOWN OTHERWISE ALL PROPERTY CORNERS ARE MARKED WITH 1/2" REBAR AND CAP STAMPED "PS 10464".

LEGEND

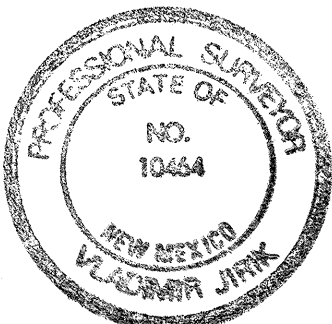
- DECIDUOUS TREE W/ TRUNK DIAM. (INCHES)
- EVERGREEN TREE W/ TRUNK DIAM. (INCHES)
- MANHOLE, SANITARY SEWER
- CABLE TELEVISION RISER
- TELEPHONE RISER
- ANCHOR
- POWER POLE W/ LIGHT
- LIGHT
- AREA LIGHT
- WATER METER
- WATER FOUNTAIN
- WATER VALVE
- FIRE HYDRANT
- SPRINKLER CONTROL VALVE
- MONITORING WELLS
- VACUUM BREAKER
- TRAFFIC (STOP) SIGN
- GUARD/GATE POST
- ELEVATION ON NATURAL GROUND
- ELEVATION ON HARD SURFACE
- CONTROL POINT
- OVERHEAD POWER LINE
- CHAIN LINK FENCE
- CONC. PAD W/8"x8" WOOD POSTS



CURVE	LENGTH'	DELTA	RADIUS'	CHORD BRNG.	CHORD'
C1	445.21	46°39'20"	546.75	S 23°00'59" W	433.02
C2	39.27	90°00'00"	25.00	S 44°41'19" W	35.36
C3	39.27	90°00'00"	25.00	N 45°18'41" W	35.36
C4	105.00	11°34'10"	520.00	N 05°28'24" E	104.82
C5	216.47	46°25'10"	267.19	N 34°28'04" E	210.60

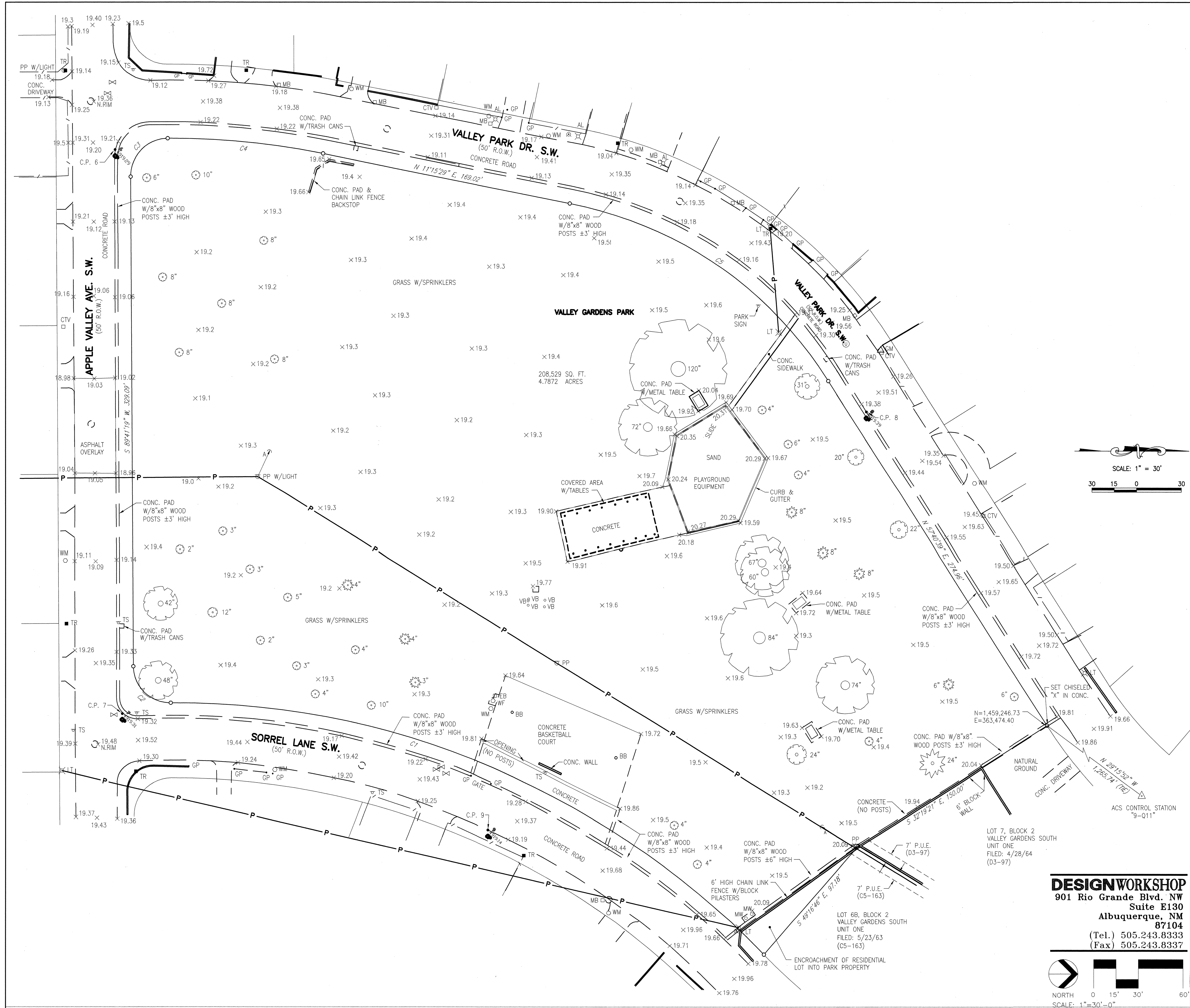
SURVEYOR'S CERTIFICATION

I, VLADIMIR JIRIK, A DULY QUALIFIED PROFESSIONAL SURVEYOR REGISTERED UNDER THE LAWS OF THE STATE OF NEW MEXICO, DO HEREBY CERTIFY THAT THIS PLAT WAS PREPARED BY ME OR UNDER MY DIRECT SUPERVISION, THAT THE SURVEY MEETS THE MINIMUM STANDARDS FOR LAND SURVEYING IN THE STATE OF NEW MEXICO, AND THAT THE SAME ARE TRUE AND CORRECT TO THE BEST OF MY KNOWLEDGE AND BELIEF.



Vladimir Jirik
VLADIMIR JIRIK, NMPS NO.10464

DEC 23 1999
DATE



LEGEND

- DECIDUOUS TREE W/ TRUNK DIAM. (INCHES)
- EVERGREEN TREE W/ TRUNK DIAM. (INCHES)
- MANHOLE, SANITARY SEWER
- CTV CABLE TELEVISION RISER
- TR TELEPHONE RISER
- ANCHOR
- PP POWER POLE W/ LIGHT
- LT LIGHT
- AL AREA LIGHT
- WM WATER METER
- WF WATER FOUNTAIN
- WATER VALVE
- FIRE HYDRANT
- SCV SPRINKLER CONTROL VALVE
- MW MONITORING WELLS
- VB VACUUM BREAKER
- TS TRAFFIC (STOP) SIGN
- GP GUARD/GATE POST
- ELEVATION ON NATURAL GROUND
- ELEVATION ON HARD SURFACE
- C.P. 7 CONTROL POINT
- OVERHEAD POWER LINE
- CHAIN LINK FENCE
- CONC. PAD W/8"x8" WOOD POSTS

AS-BUILT INFORMATION

CONTRACTOR	DATE

BENCH MARKS

BEARINGS ARE GRID BASED ON NM STATE PLANE COORDINATE SYSTEM. CENTRAL ZONE, DISTANCES ARE GROUND. COORDINATES ARE BASED ON NM STATE PLANE COORD. SYSTEM, CENTRAL ZONE, NAD 27. USE GROUND-TO-GRID FACTOR = 0.99988 TO OBTAIN GRID ACS BENCHMARK 9-Q11

SURVEY INFORMATION

FIELD	NOTES
NO. 1	DATE 12-23-99 BY ASCI

LANDSCAPE ARCHITECT'S SEAL

NO.	DATE	REMARKS	BY
		DESIGN	
		REVISIONS	

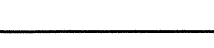

DESIGNED BY	DATE

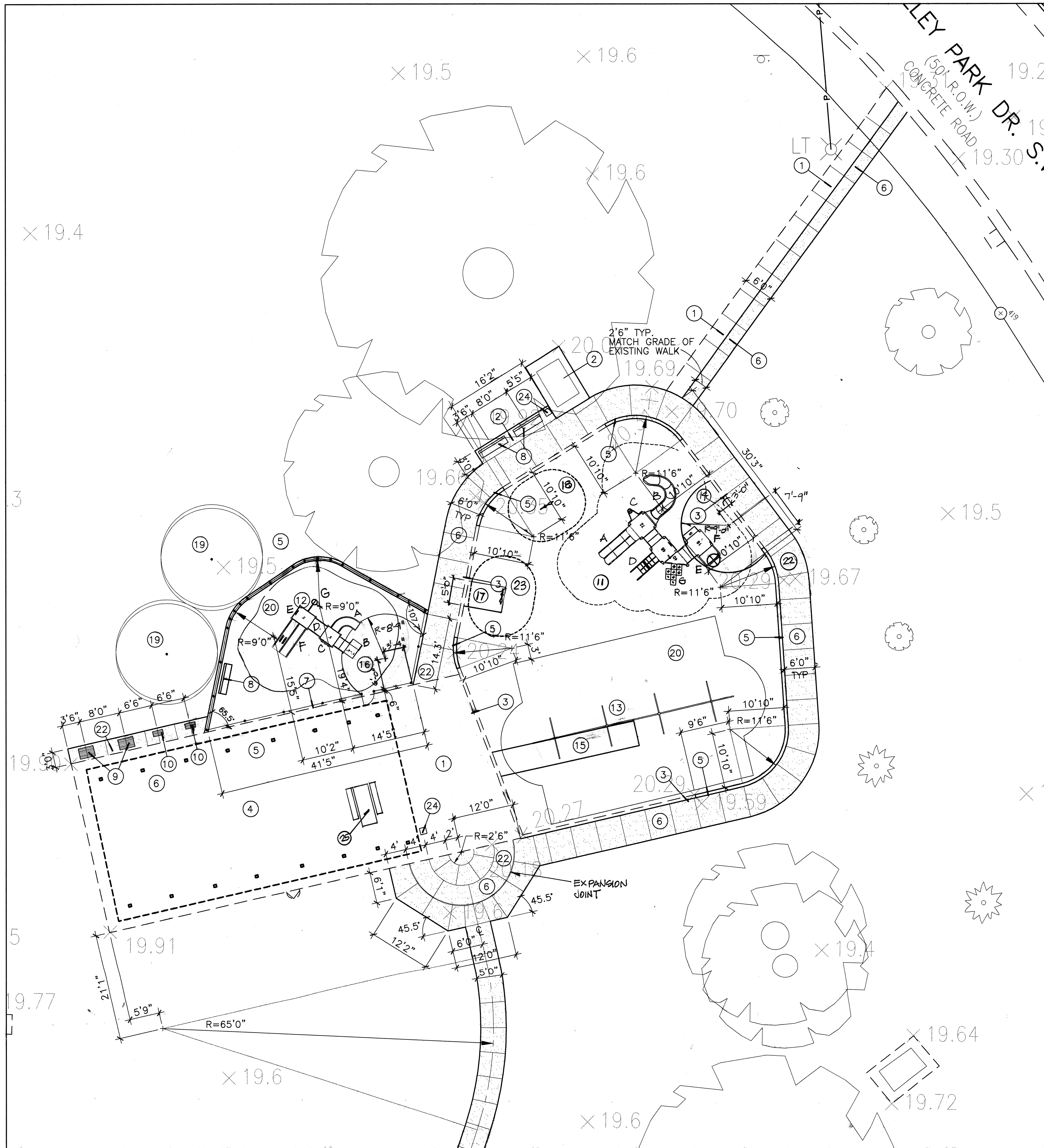
DRAWN BY	DATE

CHECKED BY	DATE

DESIGNWORKSHOP
901 Rio Grande Blvd. NW Suite E130
Albuquerque, NM 87104
(Tel.) 505.243.8333
(Fax) 505.243.8337

CITY OF ALBUQUERQUE
PUBLIC WORKS DEPARTMENT
ENGINEERING DEVELOPMENT GROUP
TITLE: **VALLEY GARDENS PARK SURVEY**
APPROVED: APR 6 2000
CITY ENGINEER
City Project No. **020591**
Zone Map No. **Q-11-Z**
Sheet **2** Of **5**

CITY OF ALBUQUERQUE PUBLIC WORKS DEPARTMENT ENGINEERING DEVELOPMENT GROUP													
TITLE:		VALLEY GARDENS PARK PLAYGROUND IMPROVEMENTS—REMOVAL PLAN											
Design Review Committee <div style="border: 1px solid black; padding: 10px; text-align: center;"> APPROVE  APR 6 2000 DESIGN REVIEW COMMITTEE </div>	City Engineer Approval <div style="border: 1px solid black; padding: 10px; text-align: center;"> APPROVE  APR 6 2000 CITY ENGINEER </div>	Last Design Update	<table border="1" style="width: 100%; border-collapse: collapse;"> <tr> <td style="width: 50%; padding: 5px;">Mo./Day/Yr.</td> <td style="width: 50%; padding: 5px;">Mo./Day/Yr.</td> </tr> <tr><td style="height: 30px;"></td><td></td></tr> <tr><td style="height: 30px;"></td><td></td></tr> <tr><td style="height: 30px;"></td><td></td></tr> <tr><td style="height: 30px;"></td><td></td></tr> </table>	Mo./Day/Yr.	Mo./Day/Yr.								
Mo./Day/Yr.	Mo./Day/Yr.												
City Project No. 0366591		Zone Map No. Q-11-Z	Sheet 3 Of 5										



KEYED NOTES:

- EXISTING CONCRETE TO REMAIN. PRESERVE AND PROTECT.
 - POUR NEW CONCRETE SLAB FLUSH TO NEW WALK ON TOP OF EXISTING CONCRETE PAD. REINSTALL PICNIC TABLE.
 - EXISTING CURB AND GUTTER TO REMAIN. PRESERVE AND PROTECT.
 - EXISTING SHADE STRUCTURE. PRESERVE AND PROTECT.
 - EDGER WALL AT SAND PLAY AREA. INSTALL PER C.O.A. STD. DWG. #2729. MATCH TOP OF WALL HEIGHTS TO EXISTING TOP OF CURB.
 - CONCRETE WALK. INSTALL PER C.O.A. STD. DWG. #2720. INSTALL WALK FLUSH WITH ADJACENT CURB OR WALK AND SLOPE AT 1% TOWARD GRASS.
 - 42" TUBULAR STEEL FENCE WITH GATE BY AMERISTAR STYLE: AEGIS II, MAJESTIC-2 RAIL-PAINTE COLOR:
 - 6' RECYCLED PLASTIC BENCH WITH ARM REST MODEL NUMBER 88 BY DUMOR. COLOR: DEEP RED FINISH/CEDAR PLASTIC. AVAILABLE FROM EXERPLAY (505) 281-0151. INSTALL PER DETAIL 6 SHEET L-5.
 - BARBEQUE GRILL-DUMOR DUAL LEVEL GRILL 24 MODEL #24-00. AVAILABLE FROM: EXERPLAY OR APPROVED EQUAL (281-0151).
 - BARBEQUE GRILL-DUMOR DUAL LEVEL GRILL 21 MODEL #21-00. AVAILABLE FROM: EXERPLAY OR APPROVED EQUAL (281-0151).
 - PLAYSTRUCTURE BY LANDSCAPE STRUCTURES: AVAILABLE FROM EXERPLAY (505) 281-0151 POST COLOR: RED W/ PURPLE CLAMP
A. DOUBLE SWOOSH POLY SLIDE-72" DECK, COLOR: BLUE
B. SLIDEWINDER-72" DECK, COLOR: GREEN
C. CORKSCREW, COLOR: YELLOW
D. WAVY WEB CLIMBER, COLOR: PURPLE
E. SWING OUT, COLOR: PURPLE
F. TRANSFER PLATFORM, COLOR: N/A
G. BLOCK CLIMBER, COLOR: RED/YELLOW
 - TOT PLAYSTRUCTURE BY GAMETIME: AVAILABLE FROM CONTINENTAL LEISURE (323-5849). POST COLOR: VIOLET
A. 3'-90" SLIDE, COLOR: BLUE
B. TRANSFER PLATFORM, COLOR: YELLOW
C. ANIMAL PANEL, COLOR: YELLOW
D. ARCH BRIDGE, COLOR: RED
E. BARRIER ENCLOSURE WITH STEERING WHEEL, COLOR: GREEN
F. RUMBLE & ROLL SLIDE, COLOR: RED
G. CORKSCREW, COLOR: ORANGE
 - 3-LEG H.D. TRADITIONAL SWING 8' HT. BY GAMETIME. COLOR: VIOLET-INSTALL PER MANUFACTURER INSTRUCTIONS.
A. 2684 ENCLOSED TOT SEAT 2 3/8" Od.
B. 2954 BELT SEAT 2 3/8" Od.
 - POURED-IN-PLACE RESILIENT SURFACING. COLOR: 50% BLACK 25% TAN 25% PURPLE
SEE SHT. 5, FOR DETAIL.
 - POURED-IN-PLACE RESILIENT SURFACING. COLOR: 50% BLACK 25% TAN 25% GREEN
SEE SHT. 5, FOR DETAIL.
 - POURED-IN-PLACE RESILIENT SURFACING. COLOR: 20% BLACK 15% TAN 35% BLUE
SEE SHT. 5, FOR DETAIL.
 - POURED-IN-PLACE RESILIENT SURFACING. COLOR: 30% BLACK 15% TAN 35% RED
SEE SHT. 5, FOR DETAIL.
 - MOTORCYCLE SPRING TOY. AVAILABLE FROM EXERPLAY INSTALL PER MANUFACTURER INSTRUCTIONS.
 - 3" CALIPER RIO GRANDE VALLEY COTTONWOOD/POPULAS FREMONTII 'WISLIZENI'. INSTALL PER C.O.A. STD. DWG. 2713.
 - 12" DEPTH CLEAN MASONRY SAND.
 - RESOD ALL DAMAGED GRASS PER COA STANDARD SPECIFICATIONS
 - INSTALL NEW CONCRETE AT SAME ELEVATION AS ADJACENT CONCRETE. MATCH SLOPE OF EXISTING CONCRETE.
 - RHINO DINO SPRING TOY, AVAILABLE FROM EXERPLAY, INSTALL PER MANUFACTURER SPECIFICATIONS.
 - TRASH RECEPTACLE-RINCONADA WITH SOUTHWEST BAND-BUFF AVAILABLE FROM MATERIALS INC. 867-9035.
 - 8' PVC COATED PICNIC TABLE-ADA ACCESSIBLE MODEL #1870, COLOR: BROWN TOP, SEAT AND FRAME. BY GAMETIME, AVAILABLE FROM CONTINENTAL LEISURE 323-5849.
- GENERAL NOTE: INSTALL ALL PLAY EQUIPMENT PER MANUFACTURER'S INSTRUCTIONS

DESIGNWORKSHOP
901 Rio Grande Blvd. NW
Suite E130
Albuquerque, NM 87104
(Tel.) 505.243.8333
(Fax) 505.243.8337

NORTH
SCALE: 1"=10'-0"

CITY OF ALBUQUERQUE
PUBLIC WORKS DEPARTMENT
ENGINEERING DEVELOPMENT GROUP

TITLE: VALLEY GARDENS PARK
PLAYGROUND IMPROVEMENTS-LAYOUT PLAN

DESIGN REVIEW COMMITTEE
APPROVED
APRIL 6, 2000

CITY ENGINEER
APPROVED
APRIL 6, 2000

City Project No. 636591
Zone Map No. Q-11-Z

DESIGNED BY AM DATE 2-23-2000
DRAWN BY WBT DATE 2-23-2000
CHECKED BY WSP DATE 2-23-2000

REVISIONS
NO. DATE BY

Sheet 4 Of 5

