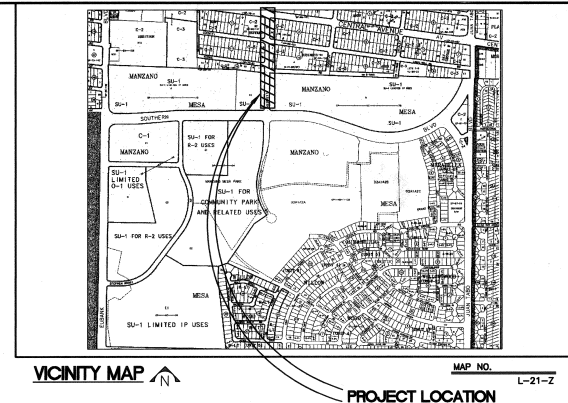




CITY OF ALBUQUERQUE PUBLIC WORKS DEPARTMENT PLANS FOR CONSTRUCTION SOUTH EUBANK STORM DRAIN OUTFALL - PHASE 3

INDEX TO DRAWINGS

SHEET NO.	TITLE	SHEET NO.	TITLE
1	TITLE SHEET, VICINITY MAP, SHEET INDEX	11	CATTLE GUARD PROFILES
2	GENERAL NOTES AND LEGEND	12	CONNECTOR PIPE PROFILES
3	SHEET LOCATION MAP AND SURVEY INFORMATION	13	TRAFFIC CONTROL LOCATION PLAN
4	UTILITY PLAN & PROFILE: ELIZABETH STREET: STA 29+00 TO 33+50	14	PHASE 1 TRAFFIC CONTROL ON CENTRAL AVE.
5	UTILITY PLAN & PROFILE: ELIZABETH STREET: STA 33+50 TO 38+00	15	PHASE 2 TRAFFIC CONTROL ON CENTRAL AVE.
6	UTILITY PLAN & PROFILE: ELIZABETH STREET: STA 38+00 TO 42+00	16	PHASE 3 TRAFFIC CONTROL ON CENTRAL AVE.
7	UTILITY PLAN & PROFILE: ELIZABETH STREET: STA 42+00 TO 46+00	17	PHASE 4 TRAFFIC CONTROL ON ELIZABETH AVE.
8	DETAILS AND EMERGENCY WATER SHUT-OFF PLAN	18	SIGNING AND CONSTRUCTION TRAFFIC CONTROL STANDARDS
9	MISCELLANEOUS DETAILS	19	TYPICAL TRAFFIC CONTROL AND SIGNING
10	CATTLE GUARD DETAILS		



CITY OF ALBUQUERQUE
MAPS & RECORDS

UTILITY COMPANY CONTACTS

PNM
JIM VANN
4201 Edith Blvd., NE
Albuquerque, New Mexico 87107
(505) 848-3426

AT&T
DAVID CROWEL
111 Third St., NW
Albuquerque, New Mexico 87103
(505) 842-2890

US WEST COMMUNICATIONS
JAMIE VIGAS
(505) 245-6013
201 Third Street NW
Suite 700
Albuquerque, New Mexico 87102

E-SPIRE (ACS)
STEVE BENJAMIN
505 Marquette NE
Suite 1605
Albuquerque, New Mexico 87102
(505) 842-2806

BROOKS/WORLD-COM/MCI
MCWorldCom
CALVIN VANWAGNER
2250 Lakeside Blvd.
Richardson, TX 75082
Attn: Investigations
Dept. 2855 / 642
(972) 658-4574

GAS CO.
KELLY BOUSKA
4625 Edith Blvd., NE
Albuquerque, New Mexico 87107
(505) 241-7752

COMCAST CABLE
ROBERT MARTINEZ
4611 Montbel Pl., NE
P.O. Box 27138
Albuquerque, New Mexico 87107
(505) 761-0560

**CITY OF ALBUQUERQUE
(WATER & SEWER)**
GREG OLSEN
PWD/Utility Development
P.O. Box 1293
Albuquerque, New Mexico 87103
(505) 768-2719

**GST NEW MEXICO
LIGHTWAVE INC.**
ROYAL HARRISON
3830 Singer Blvd. NE
Suite 1000
Albuquerque, New Mexico 87109
(505) 938-7339



RECORD DRAWINGS

REV.	SHEETS	CITY ENGINEER	DATE	USER DEPARTMENT	DATE	USER DEPARTMENT	DATE
ENGINEERS STAMP & SIGNATURE		APPROVED	ENGINEER	DATE	APPROVED FOR CONSTRUCTION		
		DRG Chairman	<i>[Signature]</i>	2/9/01	<i>[Signature]</i> 2/9/01 CITY ENGINEER DATE		
		Transportation	<i>[Signature]</i>	2/9/01			
		Water/Wastewater	<i>[Signature]</i>	2/9/01			
		Hydrology	<i>[Signature]</i>	2/9/01			
		CIP	<i>[Signature]</i>	2/9/01			
		Correct	<i>[Signature]</i>	2/9/01			
PROJECT NUMBER				6366.92	SHEET 1 OF 19		

- 1 FIVE (5) WORKING DAYS PRIOR TO BEGINNING CONSTRUCTION, THE CONTRACTOR WILL SUBMIT A DETAILED CONSTRUCTION SCHEDULE TO THE CITY CONSTRUCTION COORDINATION DIVISION. TWO (2) DAYS PRIOR TO CONSTRUCTION, THE CONTRACTOR WILL OBTAIN A BARRICADING PERMIT FROM THE CONSTRUCTION COORDINATION DIVISION. CONTRACTOR SHALL NOTIFY BARRICADE ENGINEER (768-2551) PRIOR TO OCCUPYING AN INTERSECTION. REFER TO SECTION 19 OF SPECIFICATIONS.
- 2 THE CONTRACTOR WILL NOTIFY THE FIELD ENGINEER NOT LESS THAN SEVEN (7) DAYS PRIOR TO STARTING WORK, IN ORDER THAT THE CITY SURVEY SECTION MAY TAKE NECESSARY MEASURES TO INSURE THE PRESERVATION OF SURVEY MONUMENTS. THE CONTRACTOR WILL NOTIFY THE ENGINEER IF A MONUMENT IS DISTURBED. REPLACEMENT WILL BE DONE ONLY BY THE CITY OF ALBUQUERQUE SURVEY SECTION AT THE CONTRACTOR'S EXPENSE. WHEN A CHANGE IS MADE IN THE FINISHED ELEV. OF THE PAVEMENT OF ANY ROADWAY IN WHICH A PERMANENT SURVEY MONUMENT IS LOCATED, CONTRACTOR WILL, AT HIS OWN EXPENSE, HAVE THE CITY SURVEY SECTION ADJUST THE MONUMENT COVER TO THE NEW GRADE UNLESS OTHERWISE SPECIFIED. REFER TO SECTION 4 OF SPECIFICATIONS.
- 3 THE SPECIFICATIONS USED FOR THIS PROJECT ARE THE CITY OF ALBUQUERQUE STANDARD SPECIFICATIONS FOR PUBLIC WORKS CONSTRUCTION, 1994 EDITION, UPDATE NO.6.
- 4 ALL NEW MANHOLES SHALL BE TYPE "E" (CDA DWG. 2102) UNLESS OTHERWISE NOTED ON THE PLANS.
- 5 THE CONTRACTOR WILL BE RESPONSIBLE FOR DISPOSING OF ALL DEBRIS, INCLUDING, BUT NOT LIMITED TO HAZARDOUS WASTE AT DISPOSAL SITES APPROVED BY GOVERNMENTAL AGENCIES REGULATING THE DISPOSAL OF SUCH MATERIALS.
- 6 ALL WATER VALVE BOXES AND MANHOLES IN THE STREET CONSTRUCTION ARE TO BE ADJUSTED TO FINISH GRADE AND WILL BE MEASURED AND PAID PER EACH.
- 7 SUBGRADE PREPARATION UNDER SIDEWALKS AND DRIVE PADS, AND SUBGRADE AND SUBBASE PREPARATION UNDER CURB AND GUTTER IS CONSIDERED INCIDENTAL TO THE CONSTRUCTION OF SUCH, AND NO DIRECT PAYMENT SHALL BE MADE FOR THOSE ITEMS OF WORK.
- 8 THE CONTRACTOR WILL REPLACE ANY STRIPING THAT HAS BEEN RUINED OR REMOVED IN THE COURSE OF CONSTRUCTION.
- 9 ALL EXCAVATION WILL BE GOVERNED BY FEDERAL, STATE AND LOCAL LAWS, RULES, AND REGULATIONS CONCERNING CONSTRUCTION SAFETY AND HEALTH.
- 10 ALL SIGNS AND CODING WILL BE IN ACCORDANCE WITH THE "MANUAL OF UNIFORM TRAFFIC CONTROL DEVICES FOR STREETS AND HIGHWAYS" CURRENT EDITION PUBLISHED BY THE U.S. DEPARTMENT OF TRANSPORTATION.
- 11 THE CONTRACTOR IS TO EXERCISE CARE TO AVOID DISTURBING ANY EXISTING UNDERGROUND UTILITIES. IT WILL BE HIS RESPONSIBILITY TO COORDINATE WITH THE UTILITY COMPANIES IN ORDER TO PREVENT ANY SERVICE DISRUPTION. SEE SECTION 18 "UTILITIES", CITY OF ALBUQUERQUE, STANDARD SPECIFICATIONS FOR CONTRACTOR REQUIREMENTS.
- 12 WHEN ABUTTING NEW PAVEMENT TO EXISTING INTERSECTING STREETS, SAW CUT EXISTING PAVEMENT TO A STRAIGHT LINE AND AT RIGHT ANGLES AND REMOVE ANY BROKEN OR CRACKED PAVEMENT. NO DIRECT PAYMENT WILL BE MADE FOR SAW CUTTING.
- 13 ALL GAS VALVES, GAS MANHOLES, ELECTRICAL MANHOLES, TELEPHONE MANHOLES, AND UTILITY POLES WILL BE ADJUSTED TO GRADE BY EACH UTILITY COMPANY. CONTRACTOR WILL COORDINATE THROUGH CITY UTILITY COORDINATOR.
- 14 WHEN REMOVAL OF EXISTING CURB AND GUTTER OR SIDEWALK IS REQUIRED, REMOVE BACK TO NEAREST SUITABLE JOINT UNLESS OTHERWISE DIRECTED BY THE CITY FIELD ENGINEER.
- 15 THE CONTRACTOR WILL NOTIFY THE UTILITY COMPANIES BY CALLING NEW MEXICO ONE CALL SYSTEM 280-1990 TWO (2) WORKING DAYS PRIOR TO COMMENCING WORK IN NEW AREAS.
- 16 CONTRACTOR WILL MAKE ALL WATER VALVES AND MANHOLES ACCESSIBLE TO THE CITY AT ALL TIMES.
- 17 CONTRACTOR WILL PLACE BITUMINOUS MATERIAL WITH THE USE OF A LAYDOWN MACHINE WHERE PAVEMENT IS 8 FEET IN WIDTH OR WIDER.
- 18 ALL SUBGRADE AND SUBBASE MATERIAL ENCOUNTERED IN PAVEMENT REMOVAL AND REPLACEMENT THAT IS DETERMINED BY THE FIELD ENGINEER TO MEET THE SPECIFICATIONS, CAN BE REUSED. HOWEVER, THE MATERIAL WILL BE PROCESSED AND COMPACTED TO MEET MOISTURE CONTENT AND PERCENT COMPACTION REQUIRED BY THE SPECIFICATIONS.
- 19 CONTRACTOR WILL NOT PAVE OVER ANY SURFACE FEATURE, I.E., GAS VALVE, MANHOLE COVER, ETC. WITHOUT PRIOR APPROVAL FROM THE CITY FIELD ENGINEER.
- 20 CONTRACTOR WILL CONFINE HIS WORK WITHIN THE CONSTRUCTION EASEMENT LIMITS AND/OR RIGHT-OF-WAY, OR PROVIDE COPIES OF AGREEMENTS WITH ADJACENT LANDOWNERS TO THE CITY OF ALBUQUERQUE.
- 21 ALL WATER VALVES AND FIRE HYDRANTS REMOVED TO BE SALVAGED AND RETURNED TO THE C.O.A.
- 22 MINIMUM BOTTOM WIDTH OF TRENCHES FOR RIGID PIPE SHALL BE EQUAL TO THE OUTSIDE DIAMETER PLUS 16 INCHES. BEDDING MATERIAL SHALL BE CLASS II, III, OR IV UNLESS OTHERWISE SPECIFICALLY NOTED ON THE PLANS.
- 23 MINIMUM BOTTOM WIDTH OF TRENCHES FOR NON-RIGID PIPE SHALL BE EQUAL TO THE OUTSIDE DIAMETER PLUS 12 INCHES. BEDDING MATERIAL SHALL BE CLASS I, II, OR III.
- 24 THE CONTRACTOR AGREES TO TAKE NECESSARY SAFETY PRECAUTIONS AS REQUIRED BY FEDERAL, STATE AND LOCAL AUTHORITIES TO PROTECT PEDESTRIAN AND VEHICULAR TRAFFIC IN THE CONSTRUCTION AREA, WHICH INCLUDE BUT ARE NOT LIMITED TO: MAINTAINING ADEQUATE WARNING SIGNS, BARRICADES, LIGHTS, GUARD FENCES, WALKS AND BRIDGES.
- 25 ALL STRUCTURAL CONCRETE WILL BE 4000 PSI UNLESS OTHERWISE NOTED ON PLANS.
- 26 ALL REINFORCING STEEL WILL BE GRADE 60.
- 27 ALL EXPOSED EDGES ON CAST-IN-PLACE CONCRETE STRUCTURES WILL HAVE A 1" CHAMFER UNLESS OTHERWISE NOTED.
- 28 ALL SPLICES IN REINFORCING STEEL TO BE 2-FOOT 6-INCH MINIMUM UNLESS OTHERWISE NOTED.

- 29 PRIOR TO CONSTRUCTION, THE CONTRACTOR WILL EXCAVATE AND VERIFY THE HORIZONTAL AND VERTICAL LOCATIONS OF ALL POTENTIAL CONFLICTING UTILITIES. SHOULD A CONFLICT EXIST BETWEEN THE FIELD INFORMATION AND THE PLANS, THE CONTRACTOR WILL NOTIFY THE CITY FIELD ENGINEER SO THE CONFLICT CAN BE RESOLVED WITH MINIMUM AMOUNT OF DELAY.
- 30 THE REPLACEMENT OF THE EXISTING UTILITIES AND THE INSTALLATION OF NEW UTILITY LINES WILL BE COMPLETED IN ADVANCE OF STARTING THE PAVEMENT WORK. TEMPORARY PAVEMENT WILL BE PLACED IN ALL TRENCHES REQUIRED FOR THE UTILITY REPLACEMENTS IN THOSE AREAS THAT MUST MAINTAIN TRAFFIC UNTIL THE FINAL PAVEMENT WORK STARTS IN EACH AREA. TEMPORARY STRIPING SHALL BE THE CONTRACTOR'S RESPONSIBILITY. MAINTENANCE OF THE TEMPORARY PAVING AND STRIPING WILL BE AT THE CONTRACTOR'S EXPENSE.
- 31 TACK COAT FOR SURFACE COURSE REQUIREMENTS WILL BE DETERMINED BY THE CITY FIELD ENGINEER.
- 32 THE CONTRACTOR WILL CONTACT THE CITY OF ALBUQUERQUE TRAFFIC DIVISION 857-8025, ONE (1) WEEK IN ADVANCE OF ANY CHANGES REQUIRED IN THE TRAFFIC SIGNALIZATION OF THIS PROJECT. ALL WORK ASSOCIATED WITH NEW TRAFFIC SIGNALIZATION SHALL BE THE RESPONSIBILITY OF THE CONTRACTOR.
- 33 ALL NEW STREET PAVING, DRIVEWAYS, SIDEWALKS, AND CURB AND GUTTERS, ABUTTING EXISTING AREAS SHALL MATCH THE ELEVATION OF THOSE AREAS.
- 34 PERMANENT PAVEMENT STRIPING AND MARKINGS WILL BE PLACED BY THE CONTRACTOR. ROAD SHALL NOT BE OPENED TO TRAFFIC UNTIL IT IS STRIPED. ALL STRIPING, PAVEMENT MARKINGS INCLUDING CROSSWALKS, ARROWS AND LINE MARKINGS ARE TO BE CONSTRUCTED OF HOT PLASTIC OR COLD PLASTIC IN ACCORDANCE WITH THE MANUAL OF UNIFORM TRAFFIC CONTROL DEVICES.
- 35 ALL EXCAVATED MATERIAL THAT IS NOT REQUIRED TO BE REUSED MUST BE REMOVED FROM THE PROJECT AREA WITHIN FOUR DAYS OF EXCAVATION. SPOIL PILES WILL BE ALLOWED ONLY AS DIRECTED BY THE CITY FIELD ENGINEER.
- 36 THE CONTRACTOR WILL COORDINATE THE CONSTRUCTION ACTIVITIES WITH ALL OTHER CONTRACTORS AND UTILITY COMPANIES WORKING IN THE SAME AREA. THE CONTRACTOR MAY BE REQUIRED TO RESCHEDULE THEIR ACTIVITIES TO ALLOW UTILITY CREWS TO PERFORM THEIR REQUIRED WORK. NO ADDITIONAL COMPENSATION WILL BE ALLOWED FOR DELAYS OR INCONVENIENCE CAUSED BY UTILITY COMPANY WORK CREWS. A CONTRACT EXTENSION MAY BE ALLOWED AS Delineated IN CITY OF ALBUQUERQUE STANDARD SPECIFICATIONS.
- 37 ALL CONSTRUCTION EASEMENTS ON PRIVATE PROPERTY WILL BE OBTAINED BY THE CITY OF ALBUQUERQUE PRIOR TO THE BEGINNING OF CONSTRUCTION.
- 38 EXISTING MEDIAN CURB AND GUTTER AND STANDARD CURB AND GUTTER, NOT DISTURBED BY CONTRACTOR, BUT OUT OF ALIGNMENT, DISPLACED VERTICALLY, BADLY BROKEN AND/OR DETERIORATED, WILL BE REPLACED AS DIRECTED BY THE CITY FIELD ENGINEER AND PAID FOR AT CONTRACT UNIT PRICES.
- 39 ALL TRAFFIC CONTROL DEVICES REQUIRED FOR DRIVEWAY CLOSURES, UTILITY CONSTRUCTION OR FOR OTHER REASONS AND NOT SHOWN ON THE SIGNING PLANS WILL BE FURNISHED BY THE CONTRACTOR AND WILL BE PAID AS SPECIFIED IN THE TECHNICAL SPECIFICATIONS AND BID PROPOSAL. PRIOR TO PLACING THE TRAFFIC CONTROL DEVICES, THE CONTRACTOR WILL NOTIFY THE AFFECTED OWNERS IN ACCORDANCE WITH THE SPECIFICATIONS. CONTRACTOR MUST MAKE PROVISIONS TO PROVIDE ACCESS TO PROPERTIES. REFER TO SECTION 19 OF THE SPECIFICATIONS.
- 40 ALL UTILITY LINES WHICH ARE NOT SPECIFICALLY DESIGNATED TO BE REMOVED AND REPLACED ON THE PLANS, WILL BE MAINTAINED IN SERVICE. SHORING, SHEETING AND OTHER MEANS OF SUPPORT SHALL BE EMPLOYED BY THE CONTRACTOR TO PREVENT DAMAGE OR LOSS OF THESE EXISTING UTILITIES AND THESE SHORING, SHEETING, AND SUPPORTS ARE CONSIDERED INCIDENTAL TO THIS PROJECT. BEAM AND CABLE OR OTHER ADEQUATE SUPPORTS WILL BE USED FOR TEMPORARY SUPPORT OF ALL UTILITY LINES WHICH CROSS THE TRENCH. ANY DAMAGE TO EXISTING UTILITIES WILL PROMPTLY BE REPAIRED AT THE CONTRACTOR'S EXPENSE. THE CONTRACTOR WILL NOTIFY THE ENGINEER IMMEDIATELY OF ANY SIGNIFICANT DEVIATION OF EXPOSED UTILITIES FROM THE LOCATIONS SHOWN ON THE PLANS SO THAT CONFLICTS CAN BE RESOLVED IN A TIMELY MANNER.
- 41 THE CONTRACTOR WILL ASSUME RESPONSIBILITY FOR ANY DAMAGE TO EXISTING COA INFRASTRUCTURE (C & G, PAVING, ETC.) DURING CONSTRUCTION, APART FROM THOSE SECTIONS INDICATED FOR REMOVAL ON THE PLANS, AND WILL REPAIR OR REPLACE SAME AT HIS OWN EXPENSE. HE WILL SUITABLY PROTECT THE CURB AND GUTTER FROM INCIDENTAL SPLASHING DURING THE TACK COAT APPLICATION AND WILL BE RESPONSIBLE FOR CLEANING SAME AT HIS OWN COST SHOULD SPLASHING OCCUR.
- 42 ALL INTERFERING PORTIONS OF ABANDONED UTILITY LINES WHICH ARE EXPOSED AS A RESULT OF CONSTRUCTION WILL BE REMOVED AND DISPOSED OF BY THE CONTRACTOR.
- 43 STATIONS OF STORM DRAIN INLETS ARE TO THE CENTER OF GRATE. ALL STORM DRAIN INLETS WILL BE TYPE "A" UNLESS OTHERWISE NOTED ON THE PLANS.
- 44 SHORING COSTS WILL BE CONSIDERED INCIDENTAL TO THE TRENCH AND BACKFILL COSTS.
- 45 THE CONTRACTOR WILL BE RESPONSIBLE FOR SECURING NPDES PERMITS REQUIRED BY APPLICABLE CITY, STATE, AND FEDERAL REGULATIONS.
- 46 ALL STORM DRAIN AND CONNECTOR PIPE WILL BE CLASS IV REINFORCED CONCRETE PIPE UNLESS OTHERWISE NOTED ON THE PLANS.
- 47 THE TERM REMOVE USED IN THIS PLAN SET INCLUDES THE DISPOSAL OF SAID MATERIAL IN ACCORDANCE WITH CITY OF ALBUQUERQUE SPECIFICATIONS, LATEST EDITION.
- 48 CONTRACTOR WILL SURVEY AND LOG EXISTING ELEVATIONS OF CURB-AND-GUTTER, SIDEWALK, AND PAVEMENT WHICH WILL BE REMOVED FOR CONSTRUCTION OF IMPROVEMENTS. CONTRACTOR WILL REPLACE REMOVED CURB-AND-GUTTER, SIDEWALK, DRIVE PADS, AND PAVEMENT TO ELEVATIONS PRIOR TO REMOVAL UNLESS OTHERWISE INDICATED ON THE PLANS.
- 49 CONTRACTOR WILL CONSTRUCT TEMPORARY ASPHALT PAVEMENT AS DIRECTED BY THE COA ENGINEER TO PROVIDE ACCESS TO LOCAL BUSINESS, ETC. TEMPORARY PAVEMENT SHALL BE REMOVED AND DISPOSED OF PRIOR TO PLACEMENT OF FULL WIDTH PAVEMENT SECTION. TEMPORARY PAVING SHALL BE PER COA STD. DWG. 2415 AND PAID FOR PER COA STD. SPECIFICATIONS.

EXISTING FEATURES LEGEND:

- 0 - - - - - EXISTING WOOD POST FENCE
- X - - - - - EXISTING CHAIN-LINK FENCE
- - - - - EXISTING GAS LINE W/ VALVE
- - - - - EXISTING WATERLINE W/ VALVE
- - - - - EXISTING WATERLINE METER
- - - - - EXISTING FIRE HYDRANT
- - - - - EXISTING SANITARY SEWER LINE W/ MANHOLE
- - - - - EXISTING STORM DRAIN
- - - - - EXISTING OVERHEAD ELECTRIC W/POLE
- - - - - EXISTING UNDERGROUND ELECTRIC
- - - - - EXISTING 1" CONTOUR
- - - - - EXISTING 5' CONTOUR
- - - - - EXISTING CURB & GUTTER
- - - - - EXISTING CONCRETE
- - - - - EXISTING BUILDING LINE
- - - - - EXISTING EASEMENT LINE
- - - - - EXISTING SPRINKLER HEAD

NEW FEATURES LEGEND:

- - - - - CONSTRUCTION CENTERLINE
- X - - - - - NEW CHAIN-LINK FENCE
- - - - - NEW GAS LINE W/ VALVE
- - - - - NEW WATERLINE W/ VALVE
- - - - - NEW WATERLINE METER
- - - - - NEW FIRE HYDRANT
- - - - - NEW SANITARY SEWER LINE W/ MANHOLE
- - - - - NEW STORM DRAIN
- - - - - NEW UTILITY POLE
- - - - - NEW 1" CONTOUR
- - - - - NEW 5' CONTOUR
- - - - - NEW CURB & GUTTER
- - - - - NEW CONCRETE
- - - - - NEW EASEMENT LINE
- - - - - POT HOLE LOCATION W/ NO.
- - - - - NEW EDGE OF PAVEMENT



CITY OF ALBUQUERQUE
PUBLIC WORKS DEPARTMENT
ENGINEERING DEVELOPMENT GROUP

TITLE: SOUTH EUBANK STORM DRAIN OUTFALL - PHASE 3

GENERAL NOTES AND LEGEND

Design Review Committee	City Engineer Approval	Rev. / Day / Yr.	Rev. / Day / Yr.
DATE: FEB - 9 200	CITY ENGINEER		
DATE: FEB - 9 200			
DATE: FEB - 9 200			
DATE: FEB - 9 200			
DATE: FEB - 9 200			

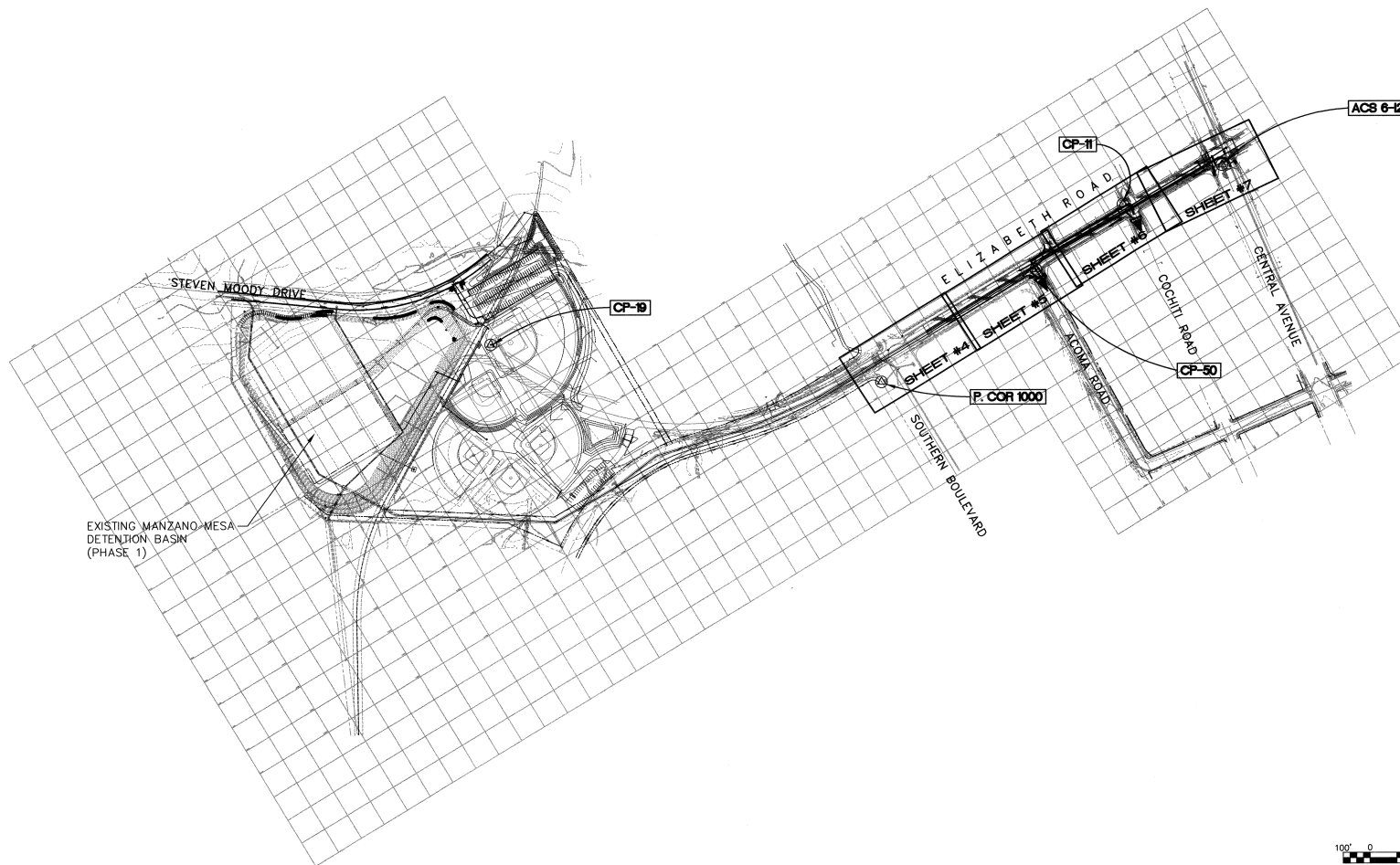
City Project No. 636692 Zone Map No. L-21 Sheet 2 Of 19

RECORD DRAWINGS

NO.	DATE	BY	REMARKS	DESIGNED BY	DRAWN BY	CHECKED BY
1	11/98	STEPHEN JAMES	AT THE INTERSECTION OF CENTRAL AND ELIZABETH ON THE MEDIAN			
2	04/98	STEPHEN JAMES	ELEVATION = 5500.869			
3	04/98	STEPHEN JAMES	TOLER. FROM SURVEYING CONTROL INC.			
4						
5						
6						
7						
8						
9						
10						
11						
12						
13						
14						
15						
16						
17						
18						
19						
20						
21						
22						
23						
24						
25						
26						
27						
28						
29						
30						
31						
32						
33						
34						
35						
36						
37						
38						
39						
40						
41						
42						
43						
44						
45						
46						
47						
48						
49						



AS BUILT INFORMATION
CONTRACT NO. 195106 P3
DATE: 11/98
DRAWN BY: Stephen James
CHECKED BY: Stephen James
DATE: 11/98
RECORDED BY: Stephen James
DATE: 11/98
NO. COA Tractor 1
LEON, BARRY D. JOURNAL



EXISTING MANZANO MESA
DETENTION BASIN
(PHASE 1)

CONSTRUCTION CENTERLINE DESCRIPTION

STATION	NORTHING	EASTING	BEARING	DISTANCE	DESCRIPTION
32+25.75	1480486.92	418082.07	N 00°17'52" E	412.03'	BEGINNING OF PROJECT (B.O.P.)
36+37.78	1480898.90	418094.05	N 09°45'37" W	93.21'	POINT OF INTERSECTION
37+30.99	1480990.75	418078.25	N 01°23'44" E	869.01'	POINT OF INTERSECTION
46+00.00	1481859.51	418099.41	--	--	END OF PROJECT (E.O.P.)

CONTROL INFORMATION

PNT #	NORTHING	EASTING	ELEVATION
ACS 6-L21	1481746.33	418023.51	5500.67
CP-11	1481354.36	418058.08	5501.07
CP-19	1479067.90	417276.36	5490.45
CP-50	1480950.81	418095.73	5502.06
P. COR 1000	1480242.33	418153.75	5502.10

100' 0' 200' 400'
SCALE: 1" = 200'

Job #: 195106 P3
Smith Engineering Company
1 Full Service Engineering Company
4801 Wynnton Boulevard, S.E. Suite 900 Albuquerque, New Mexico 87105

CITY OF ALBUQUERQUE PUBLIC WORKS DEPARTMENT ENGINEERING DEVELOPMENT GROUP	
TITLE: SOUTH EUBANK STORM DRAIN OUTFALL - PHASE 3 SHEET LOCATION MAP AND SURVEY INFORMATION	
Design Review Committee FEB - 9 2001 DESIGN REVIEW COMMITTEE	City Engineer Approval FEB - 9 2001 CITY ENGINEER
City Project No. 6366.92	Zone Map No. L-21
Sheet 3	Of 19

RECORD DRAWINGS

ENGINEER'S SEAL 	
NO. DATE 11589 1/24/01	REMARKS REVISIONS DESIGN
DESIGNED BY PJC	DATE 4/00
DRAWN BY PJC	DATE 4/00
CHECKED BY PJC	DATE 4/00

CONTRACTOR CONSTRUCTION	DATE 6/01
REVISIONS REVISIONS BY CONSTRUCTION DATE 6/01 REVISIONS BY CONSTRUCTION DATE 6/01 REVISIONS BY CONSTRUCTION DATE 6/01	DATE 6/01
REVISIONS REVISIONS BY CONSTRUCTION DATE 6/01 REVISIONS BY CONSTRUCTION DATE 6/01 REVISIONS BY CONSTRUCTION DATE 6/01	DATE 6/01
REVISIONS REVISIONS BY CONSTRUCTION DATE 6/01 REVISIONS BY CONSTRUCTION DATE 6/01 REVISIONS BY CONSTRUCTION DATE 6/01	DATE 6/01

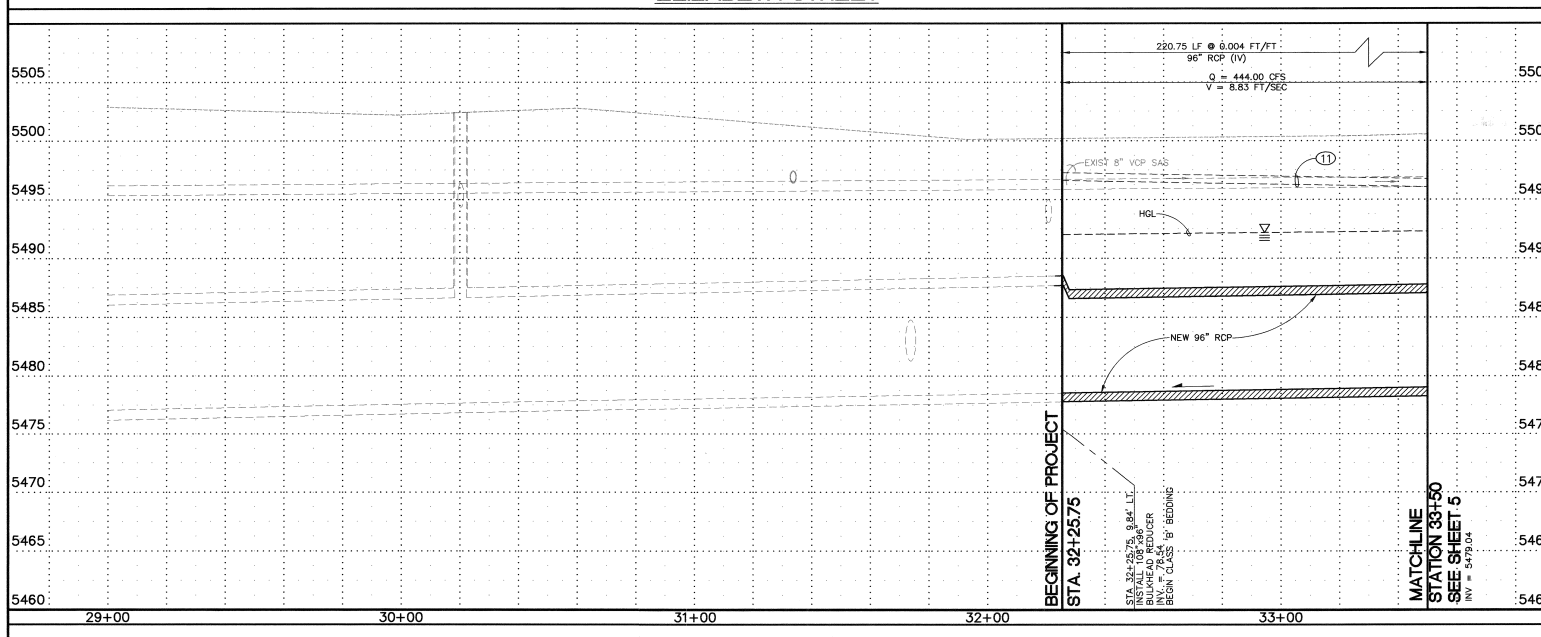
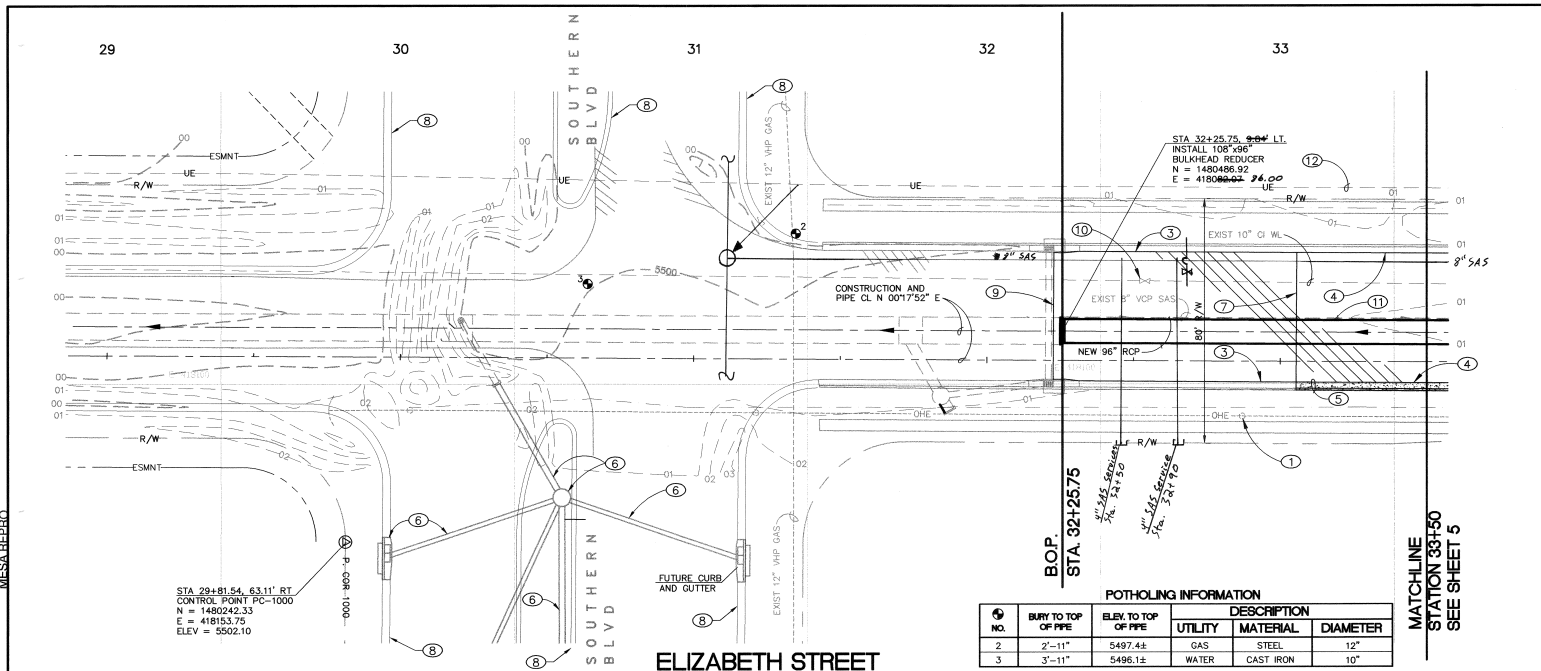
NO. DATE 11589 1/24/01	REMARKS REVISIONS DESIGN
DESIGNED BY PJC	DATE 4/00
DRAWN BY PJC	DATE 4/00
CHECKED BY PJC	DATE 4/00

CONTRACTOR CONSTRUCTION	DATE 6/01
REVISIONS REVISIONS BY CONSTRUCTION DATE 6/01 REVISIONS BY CONSTRUCTION DATE 6/01 REVISIONS BY CONSTRUCTION DATE 6/01	DATE 6/01
REVISIONS REVISIONS BY CONSTRUCTION DATE 6/01 REVISIONS BY CONSTRUCTION DATE 6/01 REVISIONS BY CONSTRUCTION DATE 6/01	DATE 6/01
REVISIONS REVISIONS BY CONSTRUCTION DATE 6/01 REVISIONS BY CONSTRUCTION DATE 6/01 REVISIONS BY CONSTRUCTION DATE 6/01	DATE 6/01

CONTRACTOR CONSTRUCTION	DATE 6/01
REVISIONS REVISIONS BY CONSTRUCTION DATE 6/01 REVISIONS BY CONSTRUCTION DATE 6/01 REVISIONS BY CONSTRUCTION DATE 6/01	DATE 6/01
REVISIONS REVISIONS BY CONSTRUCTION DATE 6/01 REVISIONS BY CONSTRUCTION DATE 6/01 REVISIONS BY CONSTRUCTION DATE 6/01	DATE 6/01
REVISIONS REVISIONS BY CONSTRUCTION DATE 6/01 REVISIONS BY CONSTRUCTION DATE 6/01 REVISIONS BY CONSTRUCTION DATE 6/01	DATE 6/01

CONTRACTOR CONSTRUCTION	DATE 6/01
REVISIONS REVISIONS BY CONSTRUCTION DATE 6/01 REVISIONS BY CONSTRUCTION DATE 6/01 REVISIONS BY CONSTRUCTION DATE 6/01	DATE 6/01
REVISIONS REVISIONS BY CONSTRUCTION DATE 6/01 REVISIONS BY CONSTRUCTION DATE 6/01 REVISIONS BY CONSTRUCTION DATE 6/01	DATE 6/01
REVISIONS REVISIONS BY CONSTRUCTION DATE 6/01 REVISIONS BY CONSTRUCTION DATE 6/01 REVISIONS BY CONSTRUCTION DATE 6/01	DATE 6/01

SCANNED BY
MESA/BERGO

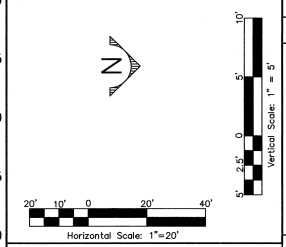


KEYED NOTES:

- COORDINATE WITH PNM ELECTRIC FOR RELOCATION OR SUPPORT OF EXISTING POLE DURING CONSTRUCTION.
- REMOVE AND DISPOSE OF ASPHALT PAVEMENT.
- CONSTRUCT NEW PAVEMENT SECTION PER SECTION 1 ON SHEET 8. MATCH EXISTING GRADES.
- REMOVE EXISTING ASPHALT PAVEMENT FROM LIP OF CURB TO LIP OF CURB. CONSTRUCT NEW PAVEMENT SECTION PER SECTION 1 ON SHEET 8. MATCH EXISTING GRADES.
- REMOVE AND REPLACE 472 LF OF STANDARD CURB AND GUTTER PER C.O.A. STD. DWG. 2415. SEE CONTINUATION ON SHEET 5. SEE SHEET 14 FOR LAYOUT.
- FUTURE STORM DRAIN SYSTEM TO BE DONE BY OTHERS. NOT INCLUDED IN THIS CONTRACT.
- EDGE OF EXISTING PAVEMENT.
- FUTURE ELIZABETH STREET LOCATIONS AND GRADES PROVIDED BY PARSONS BRINKERHOFF INC. AND BOHANNON-HUSTON INC. AS OF APRIL 3, 2000.
- LIMIT OF NEW PAVEMENT.
- APPROXIMATE LOCATION OF VALVE INSTALLED DURING PHASE 2 OF THIS PROJECT.
- REMOVE AND DISPOSE OF 817 LF OF EXISTING 8" VCP SAS AND 3-4" MANHOLES. SEE SHEET 5 & 6 FOR CONTINUATION OF REMOVALS.
- EXISTING UNDERGROUND ELECTRICAL CONDUIT CONTRACTOR SHALL COORDINATE WITH PNM ELECTRIC (WILLIE TORREZ 341-3318) AT LEAST TWO WEEKS IN ADVANCE OF ANY CONSTRUCTION UTILITY CONFLICTS.

POTHOLING INFORMATION		DESCRIPTION		
NO.	BURY TO TOP OF PIPE	ELEV. TO TOP OF PIPE	UTILITY	MATERIAL
2	2'-11"	5497.4±	GAS	STEEL
3	3'-11"	5496.1±	WATER	CAST IRON

RECORD DRAWING



Job #: 195106 P3
Smith Engineering Company
1000 Wayne Road, S.E., Suite 100, Marietta, GA 30067

CITY OF ALBUQUERQUE
PUBLIC WORKS DEPARTMENT
ENGINEERING DEVELOPMENT GROUP

TITLE: SOUTH EUBANK STORM DRAIN OUTFALL - PHASE 3
UTILITY P & P, ELIZABETH STREET: STA 29+00 TO 33+50

Design Review Committee: FEB - 9 2000
City Engineer Approval: FEB - 9 2000
Last Design Update: FEB - 9 2000

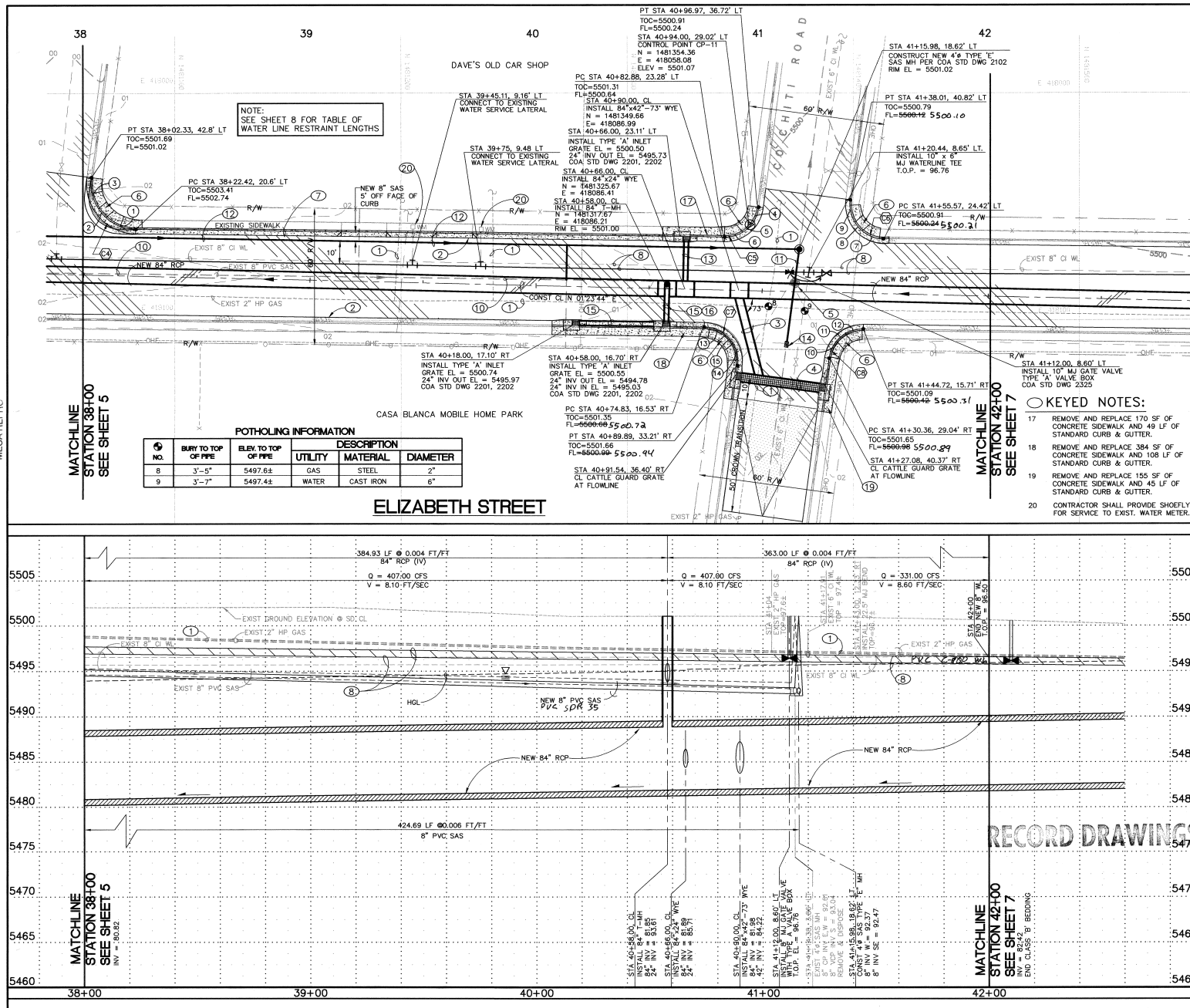
City Project No. 636692
Zone Map No. L-21
Sheet 4 of 19

AS BUILT INFORMATION		BENCH MARKS		SURVEY INFORMATION		ENGINEERS SEAL	
CONTRACTOR	DATE	C.O.A. BENCHMARK	DATE	NO.	FIELD NOTES	NO.	DATE
BY: [Signature]	DATE	AT THE INTERSECTION OF CENTRAL AND ELIZABETH	DATE	11599	BY: STEPHEN JAMES	DATE	DATE
BY: [Signature]	DATE	ON THE MEDIAN	DATE		TOLER FROM SURVEYING CONTROL	DATE	DATE
BY: [Signature]	DATE	ELEVATION = 5500.669'	DATE		INC.	DATE	DATE
BY: [Signature]	DATE	GROUND COORDINATES: NORTING = 1,481,746.33	DATE			DATE	DATE
BY: [Signature]	DATE	EASTING = 418,123.51	DATE			DATE	DATE
BY: [Signature]	DATE	GRID COORDINATES: NORTING = 1,481,220.09	DATE			DATE	DATE
BY: [Signature]	DATE	EASTING = 417,975.01	DATE			DATE	DATE
BY: [Signature]	DATE	GROUND TO GRID FACTOR: 0.9994485	DATE			DATE	DATE



City Project No. 6366.92	Zone Map No. L-21	Sheet 5 of 19
--------------------------	-------------------	---------------

[illegible]



POTHOLING INFORMATION

NO.	BURY TO TOP OF PIPE	ELEV. TO TOP OF PIPE	UTILITY	MATERIAL	DIAMETER
8	3'-5"	5497.64	GAS	STEEL	2"
9	3'-7"	5497.44	WATER	CAST IRON	6"

- KEYED NOTES:**
- COORDINATE WITH PNM-GAS FOR RELOCATION OR SUPPORT OF EXISTING 2-INCH HP GAS AND SERVICE LINES.
 - REMOVE EXISTING ASPHALT FROM LIP-OF-CURB TO LIP-OF-CURB. CONSTRUCT NEW PAVEMENT SECTION PER SECTION 1 ON SHEET 8. MATCH EXISTING GRADES. EXISTING CURB AND GUTTER UNLESS OTHERWISE NOTED ON THE PLANS.
 - INSTALL 40 LF OF NEW 42-INCH RCP CONNECTOR PIPE. SEE PROFILE ON SHEET 11.
 - CONSTRUCT CATTLE GUARD. SEE DETAILS ON SHEETS 10 & 11.
 - REMOVE AND DISPOSE EXISTING 4" DIAMETER SAS MANHOLE.
 - CONSTRUCT TYPE 1 WHEEL CHAIR RAMP PER COA STD DWG 2441.
 - REMOVE AND REPLACE 260 LF OF STD CURB AND GUTTER SEE COA STD DWG 2415. MATCH EXISTING FLOW LINE ELEVATIONS.
 - REMOVE AND REPLACE 830 LF OF EXIST. 8" CAST IRON WATERLINE WITH A 10" PVC WATERLINE. SEE SHEET 5 & 7 FOR CONTINUATION.
 - NOT USED.
 - REMOVE AND DISPOSE OF 817 LF OF EXIST. 8-INCH VCP SANITARY LINE. SEE SHEET 10 FOR CONTINUATION.
 - REMOVE AND REPLACE 45 LINEAR FEET OF 6-INCH SANITARY LINE. INSTALL 6-INCH PVC. USE TRANSITION COUPLING FOR CONNECTION TO EXISTING SAS.
 - INSTALL 424 LF NEW 8-INCH PVC SANITARY LINE. SEE SHEET 10 FOR CONTINUATION.
 - INSTALL 21 LF OF NEW 24-INCH CONNECTOR PIPE - SEE PROFILE ON SHEET 12.
 - CONNECT NEW 6-INCH SAS TO EXISTING 6-INCH SAS WITH COUPLING.
 - INSTALL 54 LF OF NEW 24-INCH CONNECTOR PIPE - SEE PROFILE ON SHEET 12.
 - INSTALL 24-INCH RCP (IV) INTO MANHOLE RISER. CONTRACTOR SHALL ADJUST INVERT AS DIRECTED BY ENGINEER.
- KEYED NOTES:**
- REMOVE AND REPLACE 170 SF OF CONCRETE SIDEWALK AND 49 LF OF STANDARD CURB & GUTTER.
 - REMOVE AND REPLACE 384 SF OF CONCRETE SIDEWALK AND 108 LF OF STANDARD CURB & GUTTER.
 - REMOVE AND REPLACE 155 SF OF CONCRETE SIDEWALK AND 45 LF OF STANDARD CURB & GUTTER.
 - CONTRACTOR SHALL PROVIDE SHOEFY FOR SERVICE TO EXIST. WATER METER.

CURVE DATA

NUMBER	DELTA	RADIUS	TANGENT	ARC LENGTH
C4	96°47'02"	20.00	22.52	33.78
C5	83°10'15"	15.00	13.31	21.77
C6	106°25'51"	15.00	20.06	27.86
C7	97°00'44"	15.00	16.96	25.40
C8	83°03'30"	15.00	13.28	21.74

CURB RETURN DATA

POINT NO.	TOP OF CURB	FLOW LINE
1	5502.12	5501.45
2	5501.88	5501.88
3	5502.98	5502.31
4	5501.04	5500.37
5	5500.47	5500.47
6	5501.25	5500.58
7	5500.96	5500.29
8	5500.30	5500.30
9	5500.91	5500.24
10	5501.42	5500.75
11	5500.61	5500.61
12	5501.09	5500.42
13	5501.35	5500.68
14	5500.75	5500.75
15	5501.52	5500.85

RECORD DRAWINGS

Job #: 195106 P3
Smith Engineering Company
 4000 North 15th Avenue, Suite 100, Aurora, CO 80010

CITY OF ALBUQUERQUE
 PUBLIC WORKS DEPARTMENT
 ENGINEERING DEVELOPMENT GROUP

TITLE: SOUTH EUBANK STORM DRAIN OUTFALL - PHASE 3
UTILITY P & P, ELIZABETH STREET: STA 38+00 TO 42+00

City Project No. **636692** Zone Map No. **L-21** Sheet **6** of **19**

AS BUILT INFORMATION

CONTRACTOR	DATE	BY	DATE	BY
SMITH ENGINEERING COMPANY	11/28/01	STEPHEN JAMES	11/28/01	STEPHEN JAMES

SURVEY INFORMATION

FIELD NOTES	DATE	BY	DATE	BY
AT THE INTERSECTION OF CENTRAL AND ELIZABETH ON THE MEDIAN	11/28/01	STEPHEN JAMES	11/28/01	STEPHEN JAMES

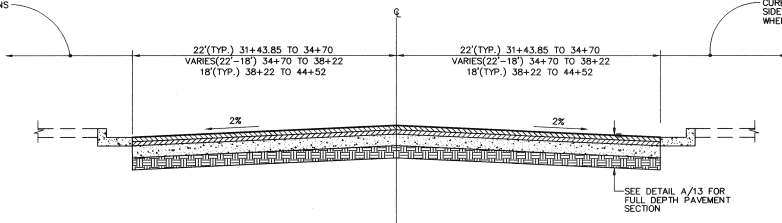
ENGINEERS SEAL

NO. DATE REMARKS

NO.	DATE	REMARKS
1	11/28/01	DESIGN

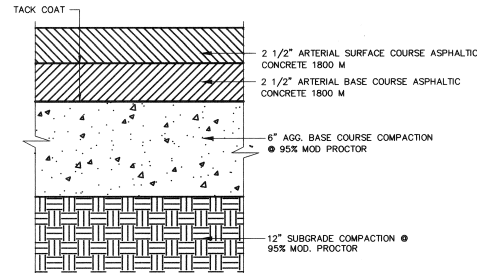
DESIGNED BY PJC **DATE 4/00**
DRAWN BY PJC **DATE 4/00**
CHECKED BY PJC **DATE 4/00**

CURB-AND-GUTTER AND
SIDEWALK TO REMAIN EXCEPT
WHERE NOTED ON PLANS

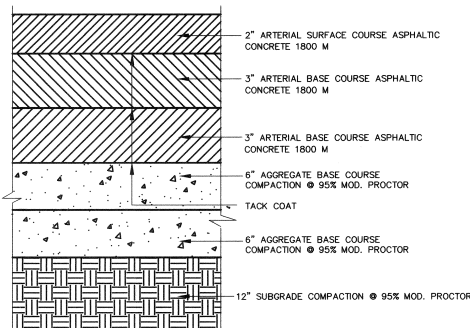


PAVEMENT SECTION: ELIZABETH ST - STA 31+43.85 TO STA 44+52 ①
SCALE: N.T.S.

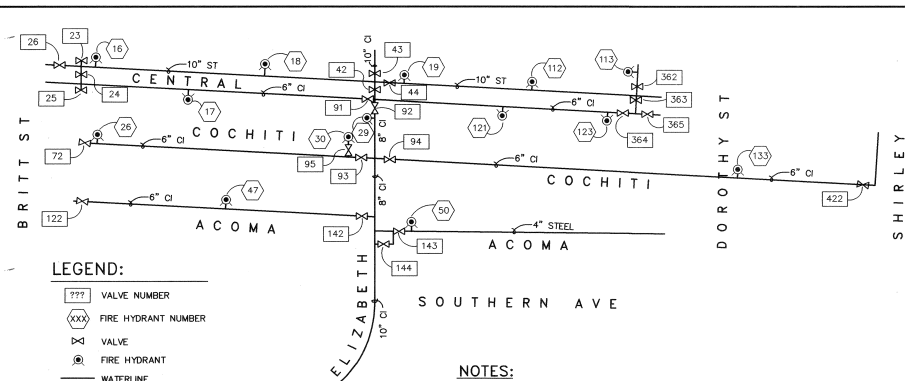
CURB-AND-GUTTER AND
SIDEWALK TO REMAIN EXCEPT
WHERE NOTED ON PLANS



**TYPICAL PAVEMENT SECTION FOR
SOUTHERN AVE & ELIZABETH ST** ①
SCALE: N.T.S.

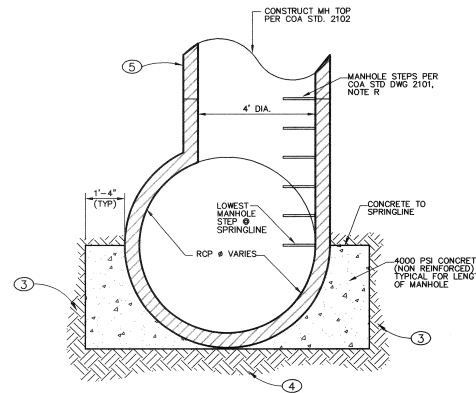


**TYPICAL PAVEMENT SECTION
FOR CENTRAL AVE** ②
SCALE: N.T.S.



NOTES:
FOR 10" WATERLINE REPLACEMENT ON ELIZABETH FROM STA. 36+25.72 TO STA. 44+25.8
INSTALL AND CLOSE NEW VALVE (KEYED NOTE 10, SHEET 4), CLOSE EXISTING VALVES NUMBERED 92, 94, 143, 142, 93, AND 144. INSTALL AND CLOSE NEW VALVE (KEYED NOTE 25, SHEET 7).
FOR 10" WATERLINE ON ELIZABETH STREET FROM STA. 44+25.8 TO STA. 45+27.76 INSTALL AND CLOSE NEW VALVE (KEYED NOTE 25, SHEET 7) AND CLOSE EXISTING VALVES NUMBERED 43 AND 44. INSTALL AND CLOSE BOTH VALVES AT THE END OF THE NEW 6" WATERLINE IN CENTRAL (KEYED NOTE 25, SHEET 7).

EMERGENCY WATER SHUT-OFF PLAN
NOT TO SCALE



**PRECAST MANHOLE
SUPPORT SADDLE** ③
SCALE: 1/2"=1'-0"

KEYED NOTES:

- NOT USED
- SUBGRADE PREPARATION FOR CURB-AND-GUTTER PER STD DWG 2415.
- BACKFILL COMPACTED PER COA STD SPECIFICATIONS.
- 24" SUBGRADE COMPACTED TO 95% ASTM D-1557. COMPACT IN LIFTS NOT EXCEEDING 8" LOOSE.
- 4" DIA. MANHOLE RISERS AS REQUIRED.

**WATER LINE
RESTRAINT LENGTHS**

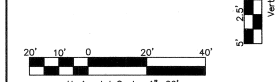
LENGTH OF RESTRAINT FOR TEES (FT)	
BRANCH SIZE	10"x10"xBRANCH*
4"	AT FITTING
6"	AT FITTING
8"	AT FITTING
10"	AT FITTING

LENGTH OF RESTRAINED PIPE (FEET) FOR HORIZONTAL BENDS	
PIPE SIZE	90° 45° 22-1/2° 11-1/4° VALVE
4"	20' 20' 20' 20' 40'
6"	20' 20' 20' 20' 60'
8"	40' 20' 20' 20' 80'
10"	40' 20' 20' 20' 80'

NOTE: RESTRAINING GLANDS SHALL BE USED AT ALL FITTINGS AND THE CONNECTIONS SHALL BE RESTRAINED WITH HARNESSES PER TABLE

LENGTH OF RESTRAINED PIPE (FEET) FOR REDUCERS	
PIPE SIZE	PIPE SIZE SMALL SIDE LARGE SIDE
8"	6" 40' 40'

RECORD DRAWING



Smith Engineering Company
Job #: 195106 P3
A Full Service Engineering Company
1000 North Central Ave. Suite 1000, Albuquerque, New Mexico 87102

**CITY OF ALBUQUERQUE
PUBLIC WORKS DEPARTMENT
ENGINEERING DEVELOPMENT GROUP**

**TITLE: SOUTH EUBANK STORM DRAIN OUTFALL - PHASE 3
DETAILS AND EMERGENCY WATER SHUT-OFF PLAN**

Design Review Committee	City Engineer Approval	City Engineer Signature	City Engineer Title
DESIGNED BY: PJC	DRAWN BY: PJC	CHECKED BY: PJC	DATE: 4/00
City Project No. 636692		Zone Map No. L-21	Sheet 8 of 19



⬡ CURVE DATA

Diagram illustrating the cross-section of a Class II or III pipe installation. The diagram shows a central pipe surrounded by a gravel embedment, which is then covered by a final backfill layer. The layers are labeled as follows:

- FINAL BACKFILL**: The top layer of the installation.
- PIPE ZONE**: The area immediately surrounding the pipe.
- GRAVEL EMBEDMENT**: The layer below the pipe zone.
- CLASS II OR III MATERIAL, COMPACT TO 90%**: The material surrounding the pipe zone and gravel embedment.

The dimensions shown are:

- PIPE O.D. + 2'-0"**: The total width of the installation.
- 1'-0"**: The total height of the installation.
- 1/2 PIPE**: The height of the pipe zone.
- 1/2 PIPE**: The height of the gravel embedment.


The diagram is labeled with a circled number 2, indicating it is the second part of a series.

NOTE: CLASS "B" BEDDING SHALL BE PLACED
FROM STA. 10+85 TO STA. 42+00

CLASS "B" BEDDING



1. SAWCUT EXISTING RCP AT SPECIFIED STATION TO CONSTRUCT COLLAR.
2. 12" SUBGRADE COMPACTED TO 95% ASTM D-1557.
3. AFTER CONSTRUCTION OF COLLAR, FILL 3" GAP W/ 6000 PSI EPOXY GROUT FINISH SMOOTH TO MATCH INTERIOR FINISH OF PIPE.
4. GAP NOT TO EXCEED 3".
5. CONTRACTOR SHALL INSTALL 152 SF OF 4000 PSI CONCRETE TO EXTEND EXISTING WHEELCHAIR RAMP. ALL CONSTRUCTION MUST CONFORM TO THE STANDARDS AND SPECIFICATIONS OF ALBUQUERQUE SPECIFICATIONS AND STANDARD DRAWINGS 2440 & 2441.

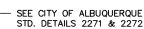
ENGINEERS SEAL				SURVEY INFORMATION				BENCH MARKS				AS-BUILT INFORMATION			
				RELATES TO	DATE	BY	DATE	LOCUS	DATE	BY	DATE	LOCUS	DATE	BY	DATE
1	NO.	DATE	REMARKS	11599	STEPHEN JAMES	04/98	AT THE INTERSECTION OF CENTRAL AND ELIZABETH	ELEVATION = 5000.668'	1	NO.	DATE	REMARKS	1	NO.	DATE
2	NO.	DATE	REMARKS		TOLER FROM		GROUND COORDINATES :	EASTING = 1,481,746.33	2	NO.	DATE	REMARKS	2	NO.	DATE
3	NO.	DATE	REMARKS		SURVEYING CONTROL		NORTHING = 4,191,152.31	3	NO.	DATE	REMARKS	3	NO.	DATE	LOCUS
4	NO.	DATE	REMARKS		INC.		GRID COORDINATES :	NORTHING = 1,481,220.09	4	NO.	DATE	REMARKS	4	NO.	DATE
5	NO.	DATE	REMARKS				EASTING = 417,979.01	5	NO.	DATE	REMARKS	5	NO.	DATE	LOCUS
6	NO.	DATE	REMARKS					6	NO.	DATE	REMARKS	6	NO.	DATE	LOCUS
7	NO.	DATE	REMARKS					7	NO.	DATE	REMARKS	7	NO.	DATE	LOCUS
8	NO.	DATE	REMARKS					8	NO.	DATE	REMARKS	8	NO.	DATE	LOCUS
9	NO.	DATE	REMARKS					9	NO.	DATE	REMARKS	9	NO.	DATE	LOCUS
10	NO.	DATE	REMARKS					10	NO.	DATE	REMARKS	10	NO.	DATE	LOCUS
11	NO.	DATE	REMARKS					11	NO.	DATE	REMARKS	11	NO.	DATE	LOCUS
12	NO.	DATE	REMARKS					12	NO.	DATE	REMARKS	12	NO.	DATE	LOCUS
13	NO.	DATE	REMARKS					13	NO.	DATE	REMARKS	13	NO.	DATE	LOCUS
14	NO.	DATE	REMARKS					14	NO.	DATE	REMARKS	14	NO.	DATE	LOCUS
15	NO.	DATE	REMARKS					15	NO.	DATE	REMARKS	15	NO.	DATE	LOCUS
16	NO.	DATE	REMARKS					16	NO.	DATE	REMARKS	16	NO.	DATE	LOCUS
17	NO.	DATE	REMARKS					17	NO.	DATE	REMARKS	17	NO.	DATE	LOCUS
18	NO.	DATE	REMARKS					18	NO.	DATE	REMARKS	18	NO.	DATE	LOCUS
19	NO.	DATE	REMARKS					19	NO.	DATE	REMARKS	19	NO.	DATE	LOCUS
20	NO.	DATE	REMARKS					20	NO.	DATE	REMARKS	20	NO.	DATE	LOCUS
21	NO.	DATE	REMARKS					21	NO.	DATE	REMARKS	21	NO.	DATE	LOCUS
22	NO.	DATE	REMARKS					22	NO.	DATE	REMARKS	22	NO.	DATE	LOCUS
23	NO.	DATE	REMARKS					23	NO.	DATE	REMARKS	23	NO.	DATE	LOCUS
24	NO.	DATE	REMARKS					24	NO.	DATE	REMARKS	24	NO.	DATE	LOCUS
25	NO.	DATE	REMARKS					25	NO.	DATE	REMARKS	25	NO.	DATE	LOCUS
26	NO.	DATE	REMARKS					26	NO.	DATE	REMARKS	26	NO.	DATE	LOCUS
27	NO.	DATE	REMARKS					27	NO.	DATE	REMARKS	27	NO.	DATE	LOCUS
28	NO.	DATE	REMARKS					28	NO.	DATE	REMARKS	28	NO.	DATE	LOCUS
29	NO.	DATE	REMARKS					29	NO.	DATE	REMARKS	29	NO.	DATE	LOCUS
30	NO.	DATE	REMARKS					30	NO.	DATE	REMARKS	30	NO.	DATE	LOCUS
31	NO.	DATE	REMARKS					31	NO.	DATE	REMARKS	31	NO.	DATE	LOCUS
32	NO.	DATE	REMARKS					32							

RECORD DRAWINGS

 <p>Smith Engineering Company A Full Service Engineering Company 4000 Western Boulevard, S.E. Suite 200 • Albuquerque, New Mexico 87105</p>	Job #: 195106 P3	NO. DATE	DESIGNED BY DRAWN BY
	CITY OF ALBUQUERQUE PUBLIC WORKS DEPARTMENT ENGINEERING DEVELOPMENT GROUP		
TITLE: SOUTH EUBANK STORM DRAIN OUTFALL - PHASE 3			
<h1 style="text-align: center;">MISCELLANEOUS DETAILS</h1>			
Design Review Committee 	City Engineer Approval 	No. / Rev. / C.	No. / Rev. / C.
DESIGN INVOICE COMPANY	CITY ENGINEER	Last Design Update	
City Project No. 636692	Zone Map No. 21	Sheet 9 of 19	

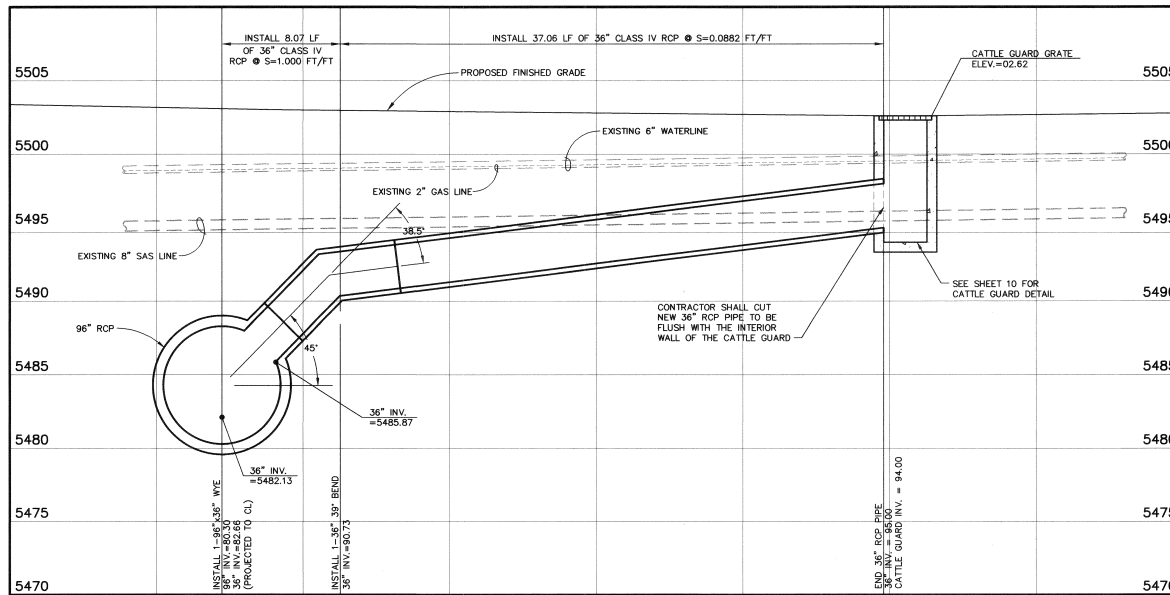


ACOMA ROAD CATTLE GUARD SECTION - LOOKING WEST



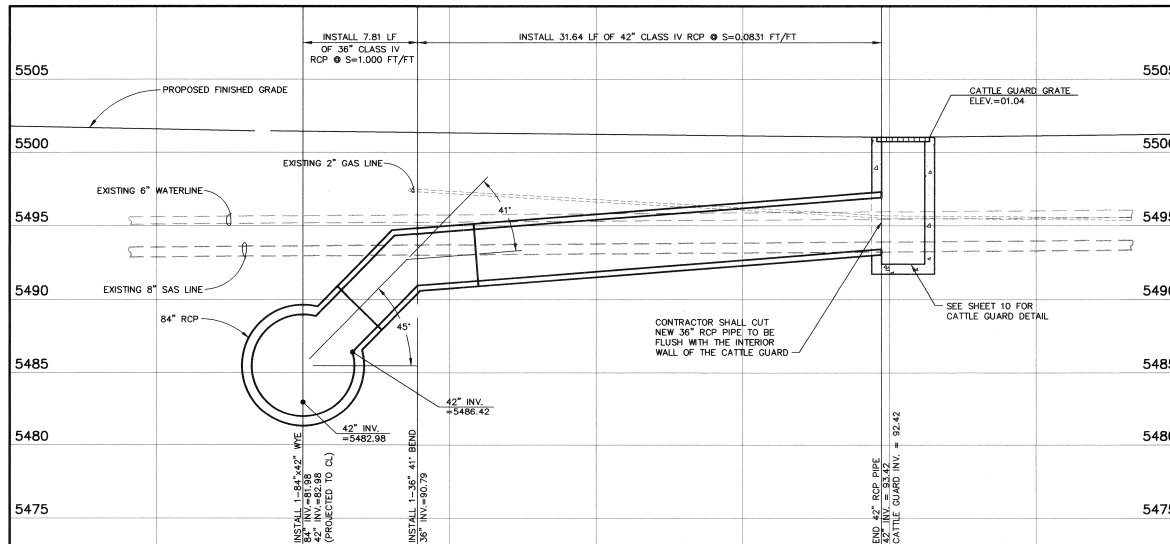
COCHITI ROAD CATTLE GUARD SECTION - LOOKING WEST
SCALE: 1" = 2'-0"

ENGINEERS SEAL				SURVEY INFORMATION		BENCH MARKS		AS BUILT INFORMATION	
NO.		DATE		FIELD NOTES		CONTRACTOR			
11999		STEPHEN JAMES TOLER, FROM SUPPORTING CONTROL INC.,		DATE 04/96		C.O.A. BENCHMARK "6-121" AT THE INTERSECTION OF CENTRAL AND ELIZABETH ON THE MEDIAN. ELEVATION = 5500.669'		CONTRACTOR APPROVED BY DATE RECORDED BY DATE	
REMARKS		BY		DESIGN		NORTHING = 1 481 746.33 EASTING = 1 481 220.09		AS BUILT INFORMATION	
DESIGNED BY P/C		DATE 4/00		DRAWN BY P/C		GRID COORDINATES :		RECORDED BY DATE	
CHECKED BY P/C		DATE 4/00		DESIGNED BY P/C		GROUND TO GRID FACTOR: 0.99984465			



ACOMA ROAD STORM DRAIN PROFILE

SCALE: 1" = 4'-0" VERT
SCALE: 1" = 4'-0" HORIZ



COCHITI ROAD STORM DRAIN PROFILE

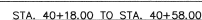
SCALE: 1" = 4'-0" VERT
SCALE: 1" = 4'-0" HORIZ

RECORD DRAWINGS

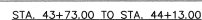
		Job #: 195106 P3 Smith Engineering Company A Full Service Engineering Company <small>4000 Camino Real, Suite 200, San Diego, CA 92108</small>	
CITY OF ALBUQUERQUE PUBLIC WORKS DEPARTMENT ENGINEERING DEVELOPMENT GROUP			
TITLE: SOUTH EUBANK STORM DRAIN OUTFALL - PHASE 3 CATTLE GUARD PROFILES			
Design Review Committee FEB - 8 2000 DESIGN REVIEW COMMITTEE	City Engineer Approval FEB - 9 2000 CITY ENGINEER	Last Design Update No. / Date / To	No. / Date / To
City Project No. 6366.92	Zone Map No. L-21	Sheet 11 of 19	

SURVEY INFORMATION		FIELD NOTES		ENGINEERS SEAL	
NO.	BY	DATE	DATE		REMARKS REVISIONS DESIGN
11569	STEPHEN JAMES TOLTER	04/26	04/26		
	FROM SURVEYING CONTROL INC.				
C.O.A. BENCHMARK "26-121" AT THE INTERSECTION OF CENTRAL AND ELIZABETH ON THE MEDIAN. ELEVATION = 5500.667		GROUND COORDINATES: NORTHING = 1,481,746.33 EASTING = 418,123.51			
GROUND COORDINATES: NORTHING = 1,481,746.33 EASTING = 418,123.51		GROUND TO GRID FACTOR: 0.99984485			

Handwritten signature and date: 4/26/00



1"=10'-0" VERT
1"=10'-0" HORZ
SEE KEYED NOTE 15 ON SHEET 11



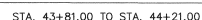
SCALE: 1" = 10'-0" VERT
SCALE: 1" = 10'-0" HORZ
SEE KEYED NOTE 4 ON SHEET 12



SCALE: 1" = 10'-0" VERT
SCALE: 1" = 10'-0" HORZ
SEE KEYED NOTE 11 ON SHEET 12



SCALE: 1" = 10'-0" VERT
SCALE: 1" = 10'-0" HORZ
SEE KEYED NOTE 13 ON SHEET 11





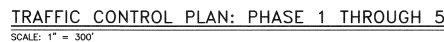
SCALE: 1" = 10'-0" VERT
SCALE: 1" = 10'-0" HORZ
SEE KEYED NOTE 4 ON SHEET 12



SCALE: 1" = 10'-0" VERT
SCALE: 1" = 10'-0" HORZ
SEE KEYED NOTE 5 ON SHEET 12

RECORD DRAWINGS

	Job #: 195106 P3				<div style="writing-mode: vertical-rl; transform: rotate(180deg); font-weight: bold;">NO. DATE</div>		<div style="writing-mode: vertical-rl; transform: rotate(180deg); font-weight: bold;">DESIGNED BY DRAWN BY</div>
Smith Engineering Company <small>A Full Service Engineering Corporation</small> <small>1900 Highway 100 East, Suite 100 • Minneapolis, MN 55425</small>							
CITY OF ALBUQUERQUE PUBLIC WORKS DEPARTMENT ENGINEERING DEVELOPMENT GROUP							
TITLE:	SOUTH EUBANK STORM DRAIN OUTFALL - PHASE 3						
CONNECTOR PIPE PROFILES							
Design Review Committee		City Engineer Approval		Last Design Update: 		Rev # _____ By / Date ____	Rev # _____ By / Date ____
 FEB - 9 2014		 FEB - 9 2014					
City Project No.		Engineer's License Number		Sheet		Of	
6366.92		ZDME 100-271		12		19	



SCALE: 1" = 300'

PHASE I: CLOSE SOUTH THREE LANES ON CENTRAL AVENUE AT ELIZABETH STREET FOR INSTALLATION OF 60" DIA. RCP

PHASE II: CLOSE NORTH FOUR LANES ON CENTRAL AVENUE AT ELIZABETH STREET FOR INSTALLATION OF 60" DIA. RCP AND MANHOLE.

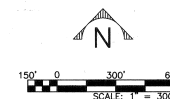
PHASE III: SINGLE RIGHT LANE CLOSURES ON CENTRAL AVENUE AT ELIZABETH STREET FOR INSTALLATION OF DOUBLE "A" STORM INLETS.










PHASE IV: BLOCK TO BLOCK CLOSURES ON ELIZABETH STREET FROM CENTRAL AVENUE SOUTH TO SOUTHERN BLVD. FOR INSTALLATION OF RCP, INLETS, AND MANHOLES.

NOTE: ABOVE LISTED PHASING IS NOT NECESSARY LISTED IN SEQUENCE. PHASES I THRU III SHALL NOT RUN CONCURRENTLY WITH PHASE IV. IT IS ANTICIPATED THAT TRAFFIC WILL USE SOUTHERN BLVD. WHILE THE CENTRAL AVENUE PHASES ARE CONSTRUCTED

NOTE: ABOVE LISTED PHASING IS NOT NECESSARY LISTED IN SEQUENCE. PHASES I THRU III SHALL NOT RUN CONCURRENTLY WITH PHASE IV. IT IS ANTICIPATED THAT TRAFFIC WILL USE SOUTHERN BLVD. WHILE THE CENTRAL AVENUE PHASES ARE CONSTRUCTED

RECORD DRAWINGS






	TRAFFIC FLOW
	TRAFFIC CONTROL WARNING SIGN
	TRAFFIC CONTROL BARREL
	TRAFFIC CONTROL TYPE III BARRICADE
	EXISTING CURB-AND-GUTTER
	EXISTING STRIPING
	ONSITE CONSTRUCTION ZONE
	VERTICAL PANEL SIGN W/ SUPPORT
	ARROW BOARD

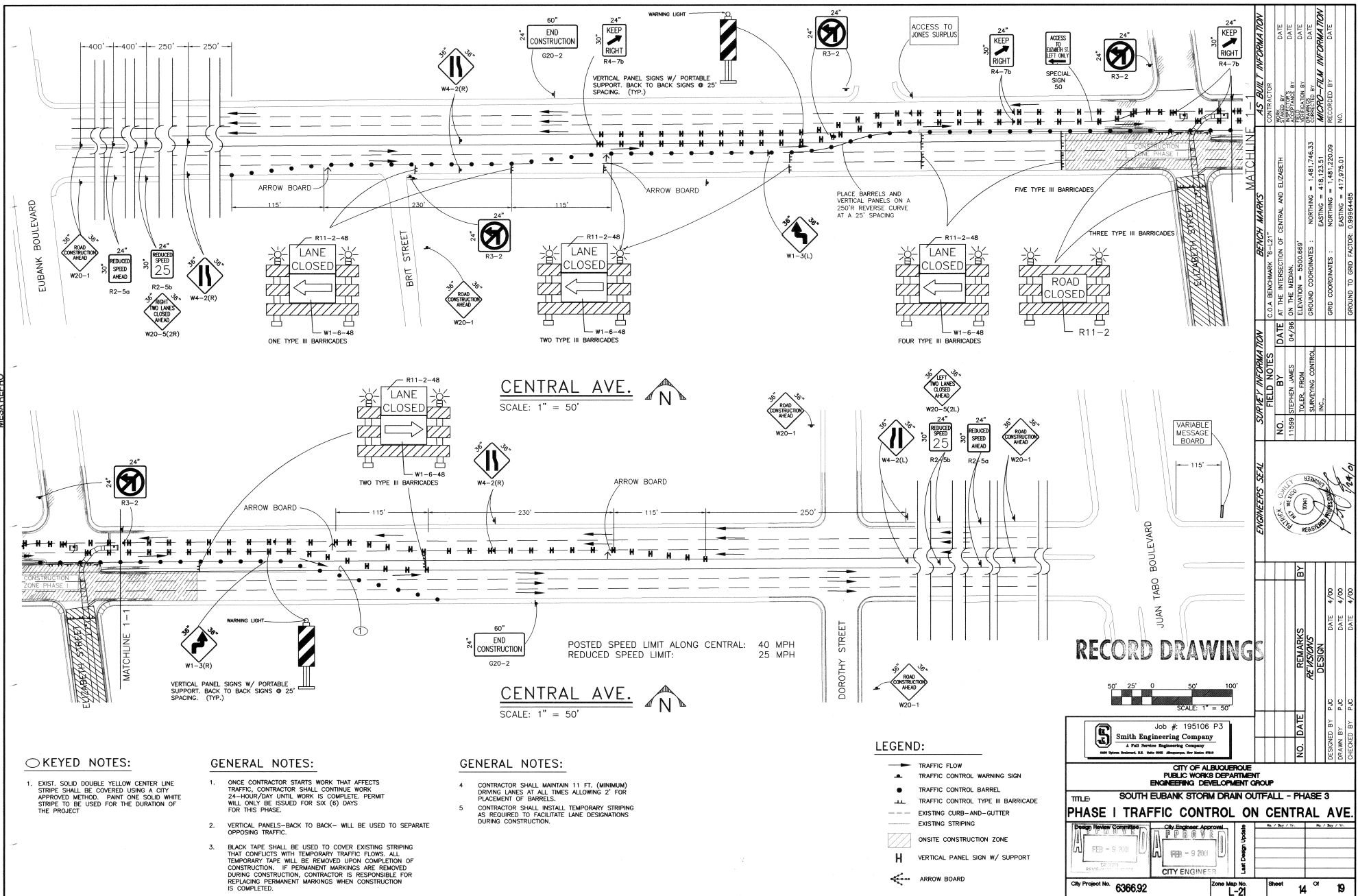
 Job #: 195106 P3
Smith Engineering Company
A Full Service Engineering Company
6400 Uptown Boulevard, S.E. Suite 6000, Albuquerque, New Mexico 87110

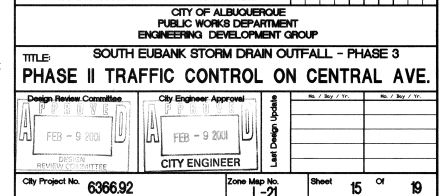
CITY OF ALBUQUERQUE
PUBLIC WORKS DEPARTMENT
ENGINEERING DEVELOPMENT GROUP

TITLE: SOUTH EUBANK STORM DRAIN OUTFALL - PHASE 3
TRAFFIC CONTROL LOCATION PLAN

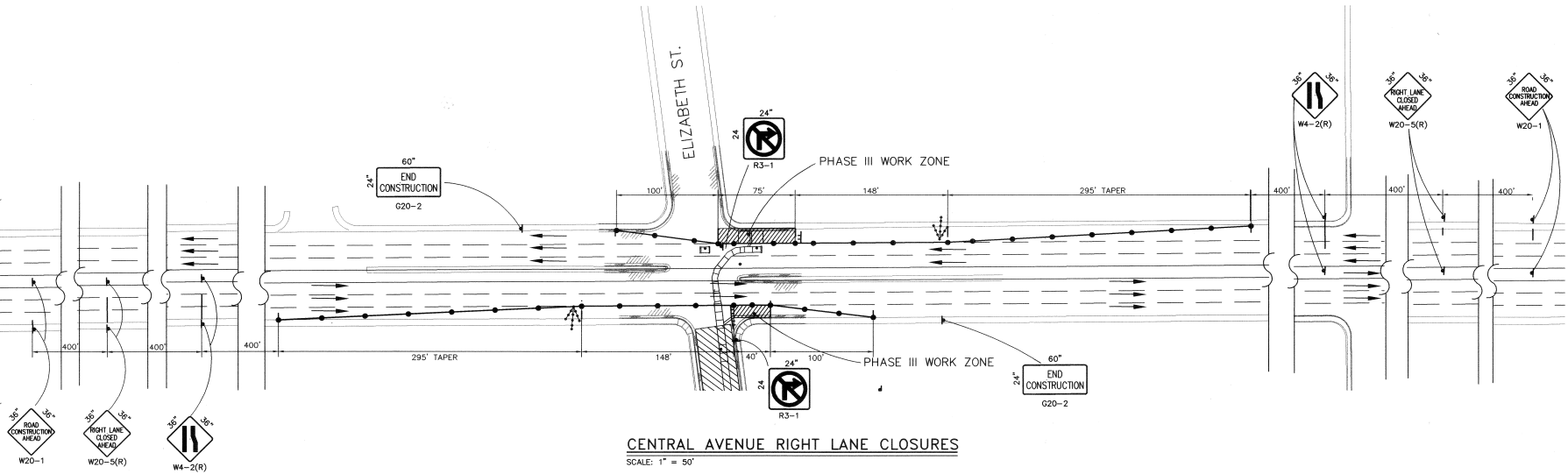
Design Review Committee  FEB - 9 2011 DESIGN REVIEW COMMITTEE	City Engineer Approval  FEB - 9 2011 CITY ENGINEER	Last Design Update 	Date / Day / Yr. 	Date / Day / Yr.
--	---	--	--	--

City Project No.	6366.92	Zone Map No.	1-21	Sheet	13	Of	19
------------------	---------	--------------	------	-------	----	----	----



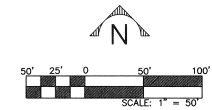


ENGINEERS SEAL		SURVEY INFORMATION		BENCH MARKS		AS BUILT INFORMATION	
		FIELD NOTES		C.O.A. BENCHMARK "6-121"		CONTRACTOR	
NO.		BY		DATE		AS BUILT BY	
11998		STEPHEN JAMES		04/96		DATE	
TOLER.		FROM		ON THE MEDIAN		DATE	
SURVEYING CONTROL		INC.		ELEVATION = 4500.869'		DATE	
GROUND COORDINATES :		NORTHING = 1,481,746.33		EASTING = 418,123.51		DATE	
GRID COORDINATES :		NORTHING = 1,481,220.09		EASTING = 417,978.01		DATE	
GROUND TO GRID FACTOR		0.999844485					



CENTRAL AVENUE RIGHT LANE CLOSURES
SCALE: 1" = 50'

RECORD DRAWINGS



LEGEND:

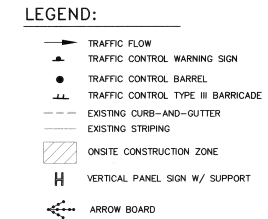
- TRAFFIC FLOW
- ▲ TRAFFIC CONTROL WARNING SIGN
- TRAFFIC CONTROL BARREL
- +— TRAFFIC CONTROL TYPE III BARRICADE
- +— EXISTING CURB-AND-GUTTER
- +— EXISTING STRIPING
- ▨ ONSITE CONSTRUCTION ZONE
- H VERTICAL PANEL SIGN W/ SUPPORT
- ↔ ARROW BOARD



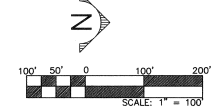
CITY OF ALBUQUERQUE PUBLIC WORKS DEPARTMENT ENGINEERING DEVELOPMENT GROUP	
TITLE: SOUTH EUBANK STORM DRAIN OUTFALL - PHASE 3 PHASE III TRAFFIC CONTROL ON CENTRAL AVE.	
DESIGN REVIEW COMMITTEE FEB - 9 2004 SPECIAL REVIEW COMMITTEE	DESIGN REVIEW APPROVED FEB - 9 2004 CITY ENGINEER
City Project No. 6366.92	Zone Map No. L-21
Sheet 16 of 19	Last Design Update

ENGINEERS SEAL		SURVEY INFORMATION		BENCH MARKS		AS BUILT INFORMATION	
	REMARKS REVISIONS DESIGN	NO.	DATE	CONTRACTOR	CONTRACTOR	NO.	DATE
		11969	04/06	AT THE INTERSECTION OF CENTRAL AND ELIZABETH	AT THE INTERSECTION OF CENTRAL AND ELIZABETH	NO.	DATE
				TOLER, JAMES	TOLER, JAMES	NO.	DATE
				SURVEYING CONTROL INC.	SURVEYING CONTROL INC.	NO.	DATE
DESIGNED BY	PJC	DATE	4/00	GROUND COORDINATES : NORTHING = 1,481,746.33	GROUND COORDINATES : NORTHING = 1,481,746.33	NO.	DATE
DRAWN BY	PJC	DATE	4/00	GROUND COORDINATES : EASTING = 418,123.51	GROUND COORDINATES : EASTING = 418,123.51	NO.	DATE
CHECKED BY	PJC	DATE	4/00	GROUND TO GRID FACTOR: 0.99964485	GROUND TO GRID FACTOR: 0.99964485	NO.	DATE

1/24/01






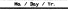
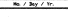
RECORD DRAWINGS

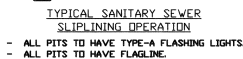



 Job #: 195106 P3
Smith Engineering Company
 A Full Service Engineering Company
 9400 Options Boulevard, N.E. Suite 6000 Albuquerque, New Mexico 87119

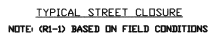
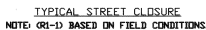
CITY OF ALBUQUERQUE
PUBLIC WORKS DEPARTMENT
ENGINEERING DEVELOPMENT GROUP

TITLE: SOUTH EUBANK STORM DRAIN OUTFALL - PHASE 3
PHASE IV TRAFFIC CONTROL ON ELIZABETH AVE.

Design/Revision Comments:  FEB - 9 2019 DESIGN REVISIONS/COMMENTS	City Engineer/Address:  FEB - 9 2019 CITY ENGINEER	Last Design Update: 	No. of Days / Yr. 	No. of Days / Yr. 
City Project No. 6366.92	Zone Map No. L-21	Sheet 17 Of 19		



ALL ADVANCE WARNING SIGNS SHALL BE A MINIMUM OF FORTY EIGHT (48) INCHES BY FORTY EIGHT (48) INCHES IN SIZE AND SHALL HAVE ONE WARNING LIGHT.



SHEET NO. 19 OF 19 PROJECT NO. 19		DATE 19/01/19		DRAWN BY PJC CHECKED BY PJC		DESIGNED BY PJC DATE 1/00		REMARKS DESIGN		NO. DATE 11599 04/98		FIELD NOTES BY DATE STEPHEN JAMES 04/98 TOLER FROM ON THE MEDIAN ELEVATION = 5500.689 SUPPORTING CONTROL INC., GROUND COORDINATES : NORTHING = 1481.748.33 EASTING = 418.123.51 GRID COORDINATES : NORTHING = 1481.220.09 EASTING = 417.975.01 GROUND TO GRID FACTOR: 0.99984485		BENCH MARKS C.O.B. BENCHMARK "6-L21" AT THE INTERSECTION OF CENTRAL AND ELIZABETH		AS-BUILT INFORMATION CONTRACTOR DRAWS BY POSTED BY DATE REVISION BY DATE MICRO-FILM INFORMATION RECORDED BY DATE NO.	
--------------------------------------	--	---------------	--	--------------------------------	--	------------------------------	--	-------------------	--	-------------------------	--	--	--	---	--	--	--