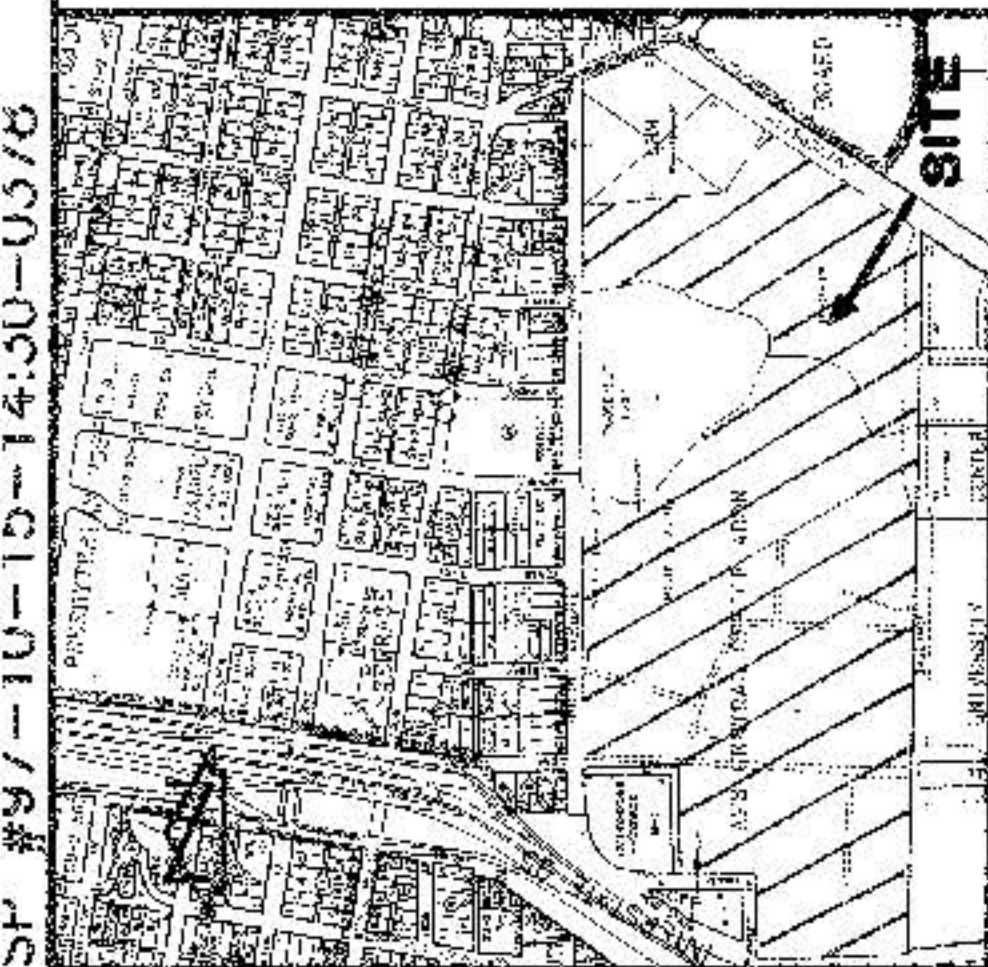


File Path: C:\NWD\40053	Pick Order:	05-09-2006
File Name: 98073CV.DWG	Pick Time:	10:43 AM



K-15

DEDICATION AND ERE: CONSENT

The subdivision herein is with the free consent and in accordance with the public street, rights-of-way and grant the easements as shown including the rights of ingress and egress and the right to farm interfering trees.

Michael J. Vigil, Chief Business Officer,
Albuquerque Public Schools

2/27/99

ACKNOWLEDGEMENT

STATE OF NEW MEXICO)
COUNTY OF BERNALILLO) SS

I, *Michael J. Vigil*, being duly sworn, depose and say that the foregoing is a true and correct copy of the original as the same appears in the records of the County of Bernalillo, State of New Mexico.

Michael J. Vigil
Notary Public

Public Utility easements shown on this plat are ten (10) feet wide and are granted for the common and joint use of:

1. The PNM Electric Services for the installation, maintenance, and service of overhead and underground electrical lines, transformers, poles and other structures and related facilities, including easements necessary to provide electrical service.
2. The PNM Gas Services for installation, maintenance, and service of natural gas lines, valves and other equipment and facilities reasonably necessary to provide natural gas.
3. U.S. Mail for the installation, maintenance, and service of all lines and aerial communication lines and other related equipment and facilities reasonably necessary to provide communication services including, but not limited to, above ground pedestals and closures.
4. Jones Interlocal for the installation, maintenance, and service of such lines, cables, and other related equipment and facilities reasonably necessary to provide Cable TV service.

Inclosed, is the right to build, rebuild, construct, reconstruct, locate, relocate, change, remove, modify, renew, operate, and maintain facilities for the purposes described above, together with free access to, from, and over said easements, including easements for the installation, maintenance, and service of all lines and aerial communication lines and other related equipment and facilities reasonably necessary to provide communication services including, but not limited to, above ground pedestals and closures.

Property owner's shall be solely responsible for correcting any violations of the National Electric Safety Code caused by construction of poles, decking, or any structures adjacent to within or near easements shown on this plat.

NOTES:

1. A boundary survey was performed on September, 1997. Properly corners were found at set as indicated.
2. All distances are ground distances.
3. Site located within projected Section 21, Township 10 North, Range 3 East, N.M.P.M. (Town of Albuquerque (Grant)).
4. Bearings shown herein are New Mexico State Plane Grid Bearings, Central Zone.
5. Street inlayage created by this plat = 0.5 miles (full-width) and 0.03 mile (half-width).
6. Record bearings and distances are shown in parentheses.
7. The purpose of this plat is to:
 - a. Dedicate public street, rights-of-way as shown.
 - b. Grant the necessary easements as shown.
 - c. Create Tracts B-1 and C-1, from Tracts B and C, A.P.S. Central Office Addition.
 - d. Instruct the easement created by this plat = 0.5 miles (full-width) and 0.03 mile (half-width).
8. Public Street Right-of-Way described = 1.4775 acres ±.
9. Tracts A, B, and C-1 show a cross of private drainage easement for the purpose of conveying water runoff, granted by Plat 900-118, in the event Grantor constructs any improvements within the easements on Tracts B-1 and C-1, A.P.S. Central Office Addition, the City has the right to enter upon Grantor's property at any time and perform whatever installation, maintenance, repair, modification or removal ("work") it deems appropriate without liability to the City. If the work affects the easement, the City will be responsible for the cost of the work or repairing of improvements of easements. If in the opinion of the City, the work to be performed by the City could endanger the structural integrity of or otherwise damage the improvements of easements, the Grantor shall, at its own expense, take whatever protective measures are required to safeguard the improvements or easements.

RECORD DRAWING

EASEMENT TABLES

LINE	CURVE	RADIUS	CHORD	CHORD BEARING	CHORD DISTANCE	CHORD BEARING	CHORD DISTANCE
1	C1	300.00'	135.30'	S 77°59'45" W	775.38'	S 77°59'45" W	775.38'
2	C2	177.01'	94.73'	S 11°34'39" W	307.59'49"	S 11°34'39" W	307.59'49"
3	C3	425.52'	43.94'	S 10°23'22" E	807.35'91"	S 10°23'22" E	807.35'91"
4	C4	240.71'	53.78'	S 37°36'35" E	367.40'40"	S 37°36'35" E	367.40'40"
5	C5	177.01'	94.73'	S 11°34'39" W	307.59'49"	S 11°34'39" W	307.59'49"
6	C6	425.52'	43.94'	S 10°23'22" E	807.35'91"	S 10°23'22" E	807.35'91"
7	C7	177.01'	94.73'	S 11°34'39" W	307.59'49"	S 11°34'39" W	307.59'49"
8	C8	135.30'	135.30'	S 77°59'45" W	775.38'	S 77°59'45" W	775.38'
9	C9	300.00'	135.30'	S 77°59'45" W	775.38'	S 77°59'45" W	775.38'
10	C10	300.00'	135.30'	S 77°59'45" W	775.38'	S 77°59'45" W	775.38'
11	C11	300.00'	135.30'	S 77°59'45" W	775.38'	S 77°59'45" W	775.38'
12	C12	300.00'	135.30'	S 77°59'45" W	775.38'	S 77°59'45" W	775.38'
13	C13	300.00'	135.30'	S 77°59'45" W	775.38'	S 77°59'45" W	775.38'
14	C14	300.00'	135.30'	S 77°59'45" W	775.38'	S 77°59'45" W	775.38'
15	C15	300.00'	135.30'	S 77°59'45" W	775.38'	S 77°59'45" W	775.38'
16	C16	300.00'	135.30'	S 77°59'45" W	775.38'	S 77°59'45" W	775.38'
17	C17	300.00'	135.30'	S 77°59'45" W	775.38'	S 77°59'45" W	775.38'
18	C18	300.00'	135.30'	S 77°59'45" W	775.38'	S 77°59'45" W	775.38'
19	C19	300.00'	135.30'	S 77°59'45" W	775.38'	S 77°59'45" W	775.38'
20	C20	300.00'	135.30'	S 77°59'45" W	775.38'	S 77°59'45" W	775.38'

TRACTS B-1 AND C-1,
A.P.S. CENTRAL OFFICE ADDITION
ALBUQUERQUE, NEW MEXICO
SEPTEMBER, 1999

10-50-110-11

A certain tract of land located within the Corporate Limits of the City of Albuquerque, New Mexico, comprising Tracts B and C, A.P.S. Central Office Addition, as the same is shown and designated on the plat filed in the Office of the County Clerk of Bernalillo County, New Mexico on April 20, 1998, Book 401, Page 118.

APPROVALS:

CITY ENGINEER

CITY ENGINEER

CITY ENGINEER

CITY ENGINEER

CITY ENGINEER

CITY ENGINEER

CITY ENGINEER

CITY ENGINEER

CITY ENGINEER

CITY ENGINEER

CITY ENGINEER

CITY ENGINEER

CITY ENGINEER

CITY ENGINEER

CITY ENGINEER

CITY ENGINEER

CITY ENGINEER

CITY ENGINEER

CITY ENGINEER

CITY ENGINEER

CITY ENGINEER

CITY ENGINEER

CITY ENGINEER

CITY ENGINEER

CITY ENGINEER

CITY ENGINEER

CITY ENGINEER

CITY ENGINEER

CITY ENGINEER

CITY ENGINEER

CITY ENGINEER

CITY ENGINEER

CITY ENGINEER

CITY ENGINEER

CITY ENGINEER

CITY ENGINEER

CITY ENGINEER

CITY ENGINEER

CITY ENGINEER

CITY ENGINEER

CITY ENGINEER

CITY ENGINEER

CITY ENGINEER

CITY ENGINEER

CITY ENGINEER

CITY ENGINEER

CITY ENGINEER

CITY ENGINEER

CITY ENGINEER

CITY ENGINEER

CITY ENGINEER

CITY ENGINEER

CITY ENGINEER

CITY ENGINEER

CITY ENGINEER

CITY ENGINEER

CITY ENGINEER

CITY ENGINEER

CITY ENGINEER

CITY ENGINEER

CITY ENGINEER

CITY ENGINEER

CITY ENGINEER

CITY ENGINEER

CITY ENGINEER

CITY ENGINEER

CITY ENGINEER

CITY ENGINEER

CITY ENGINEER

CITY ENGINEER

CITY ENGINEER

CITY ENGINEER

CITY ENGINEER

CITY ENGINEER

CITY ENGINEER

CITY ENGINEER

CITY ENGINEER

CITY ENGINEER

CITY ENGINEER

CITY ENGINEER

CITY ENGINEER

CITY ENGINEER

CITY ENGINEER

CITY ENGINEER

CITY ENGINEER

CITY ENGINEER

CITY ENGINEER

CITY ENGINEER

CITY ENGINEER

CITY ENGINEER

CITY ENGINEER

CITY ENGINEER

CITY ENGINEER

CITY ENGINEER

CITY ENGINEER

CITY ENGINEER

CITY ENGINEER

CITY ENGINEER

CITY ENGINEER

CITY ENGINEER

CITY ENGINEER

CITY ENGINEER

CITY ENGINEER

CITY ENGINEER

CITY ENGINEER

CITY ENGINEER

CITY ENGINEER

CITY ENGINEER

CITY ENGINEER

CITY ENGINEER

CITY ENGINEER

CITY ENGINEER

CITY ENGINEER

CITY ENGINEER

CITY ENGINEER

CITY ENGINEER

CITY ENGINEER

CITY ENGINEER

CITY ENGINEER

CITY ENGINEER

CITY ENGINEER

CITY ENGINEER

CITY ENGINEER

CITY ENGINEER

CITY ENGINEER

CITY ENGINEER

CITY ENGINEER

CITY ENGINEER

CITY ENGINEER

CITY ENGINEER

CITY ENGINEER

CITY ENGINEER

CITY ENGINEER

CITY ENGINEER

CITY ENGINEER

CITY ENGINEER

CITY ENGINEER

CITY ENGINEER

CITY ENGINEER

CITY ENGINEER

CITY ENGINEER

CITY ENGINEER

CITY ENGINEER

CITY ENGINEER

CITY ENGINEER

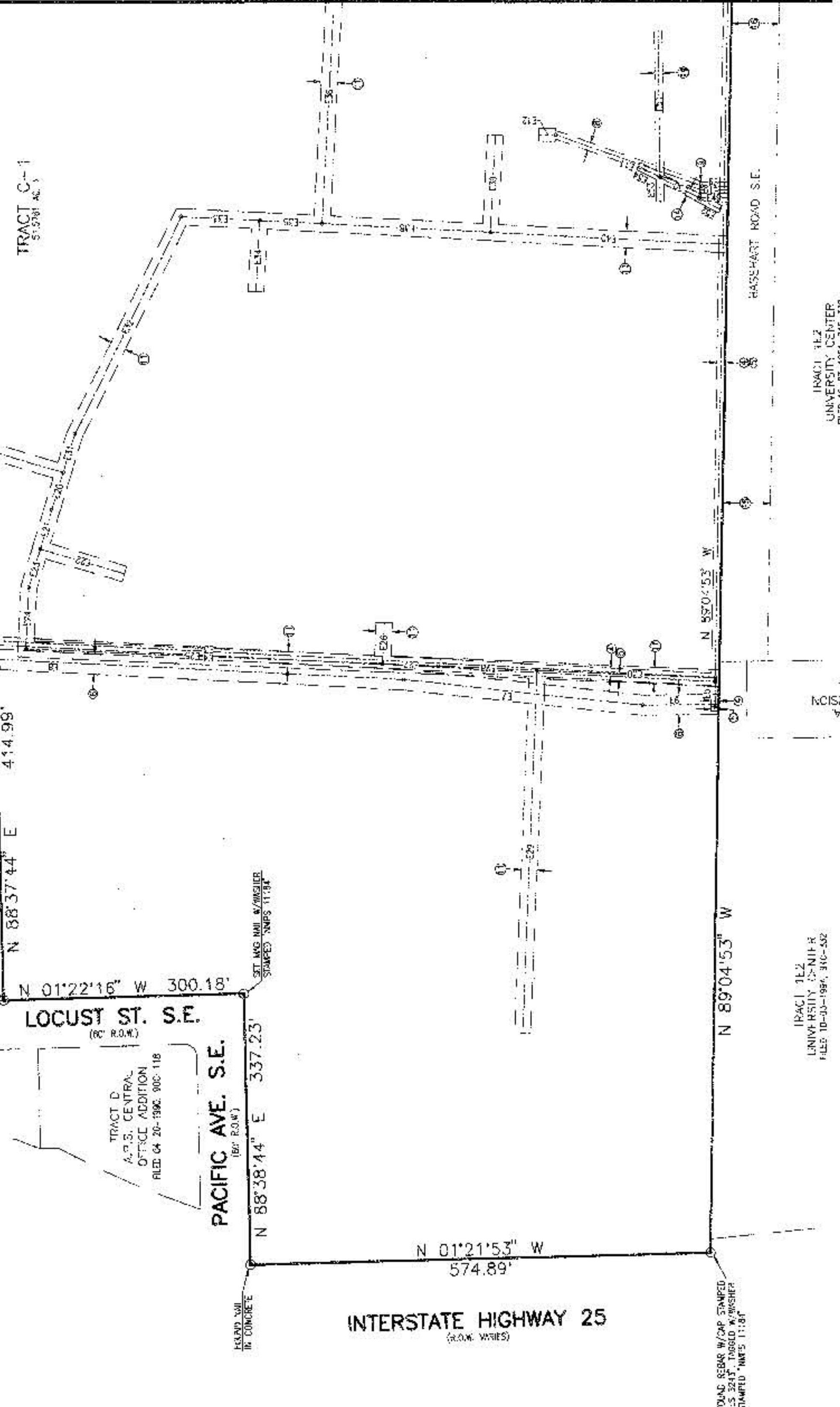
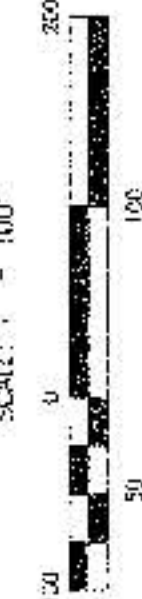
CITY ENGINEER

CITY ENGINEER

CITY ENGINEER

PLAT OF
**TRACTS B-1 AND C-1,
A.P.S. CENTRAL
OFFICE ADDITION**

ALBUQUERQUE, NEW MEXICO
SEPTEMBER, 1999



TRACT 1E2
UNIVERSITY CENTER
FILED 10-25-1984, INC-339

TRACT 1E2
UNIVERSITY CENTER
FILED 10-25-1984, INC-339

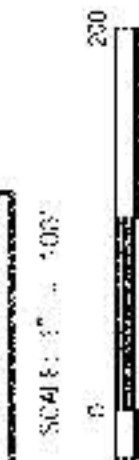
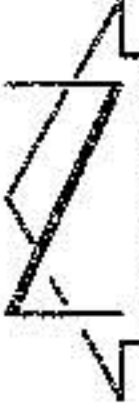
TRACT 1E2
UNIVERSITY CENTER
FILED 10-25-1984, INC-339

TRACT 1E2
UNIVERSITY CENTER
FILED 10-25-1984, INC-339

TRACT 1E2
UNIVERSITY CENTER
FILED 10-25-1984, INC-339

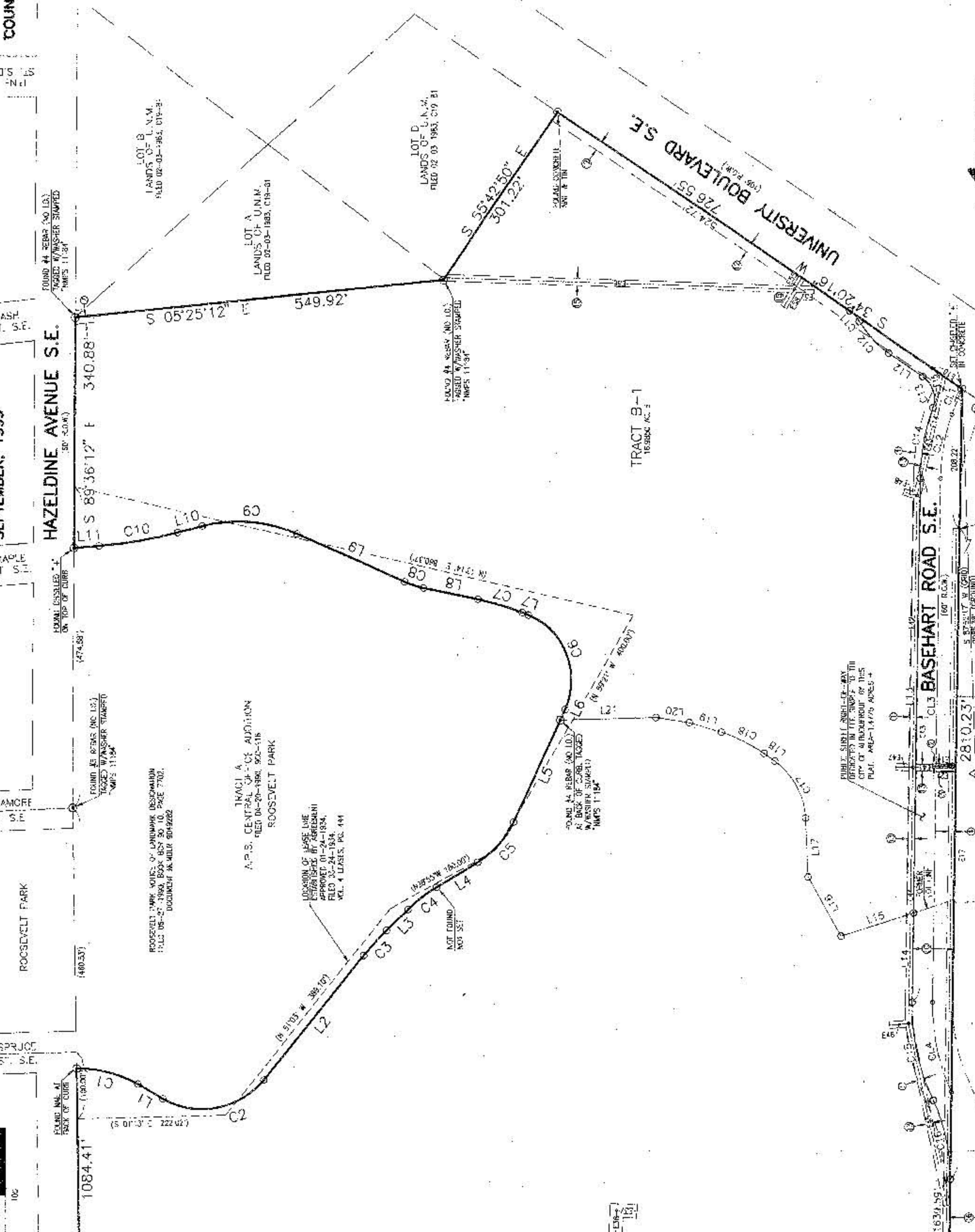


JEFF MCPHERSON & ASSOCIATES, INC.
SURVEYORS
10000 ALBUQUERQUE BLVD., N.W.
ALBUQUERQUE, N.M. 87113
PHONE (505) 261-1111
FAX (505) 261-1112
E-MAIL: JMC@JMAI.COM
WWW.JMAI.COM



PLAT OF
**TRACTS B-1 AND C-1, ADDITION
A.P.S. CENTRAL OFFICE ADDITION**

ALBUQUERQUE, NEW MEXICO
SEPTEMBER, 1999



TRACT 1E2
UNIVERSITY CENTER
FILED 10-25-1984, INC-339

TRACT 1E2
UNIVERSITY CENTER
FILED 10-25-1984, INC-339

TRACT 1E2
UNIVERSITY CENTER
FILED 10-25-1984, INC-339

TRACT 1E2
UNIVERSITY CENTER
FILED 10-25-1984, INC-339

TRACT 1E2
UNIVERSITY CENTER
FILED 10-25-1984, INC-339



JEFF MCPHERSON & ASSOCIATES, INC.
SURVEYORS
10000 ALBUQUERQUE BLVD., N.W.
ALBUQUERQUE, N.M. 87113
PHONE (505) 261-1111
FAX (505) 261-1112
E-MAIL: JMC@JMAI.COM
WWW.JMAI.COM

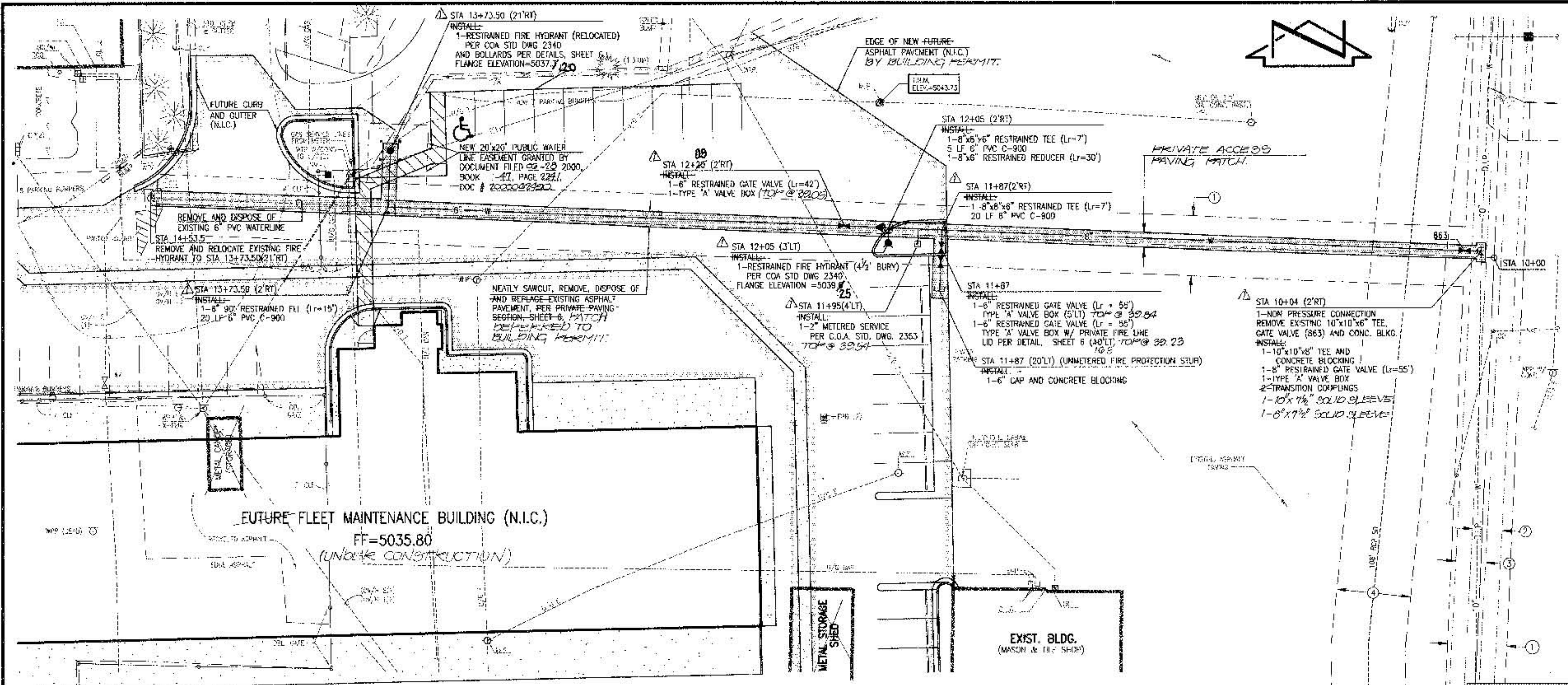
RECORD DRAWING

MATCH LINE - FOR
CONTINUATION SEE SHEET 3



JEFF MCPHERSON & ASSOCIATES, INC.
SURVEYORS
10000 ALBUQUERQUE BLVD., N.W.
ALBUQUERQUE, N.M. 87113
PHONE (505) 261-1111
FAX (505) 261-1112
E-MAIL: JMC@JMAI.COM
WWW.JMAI.COM

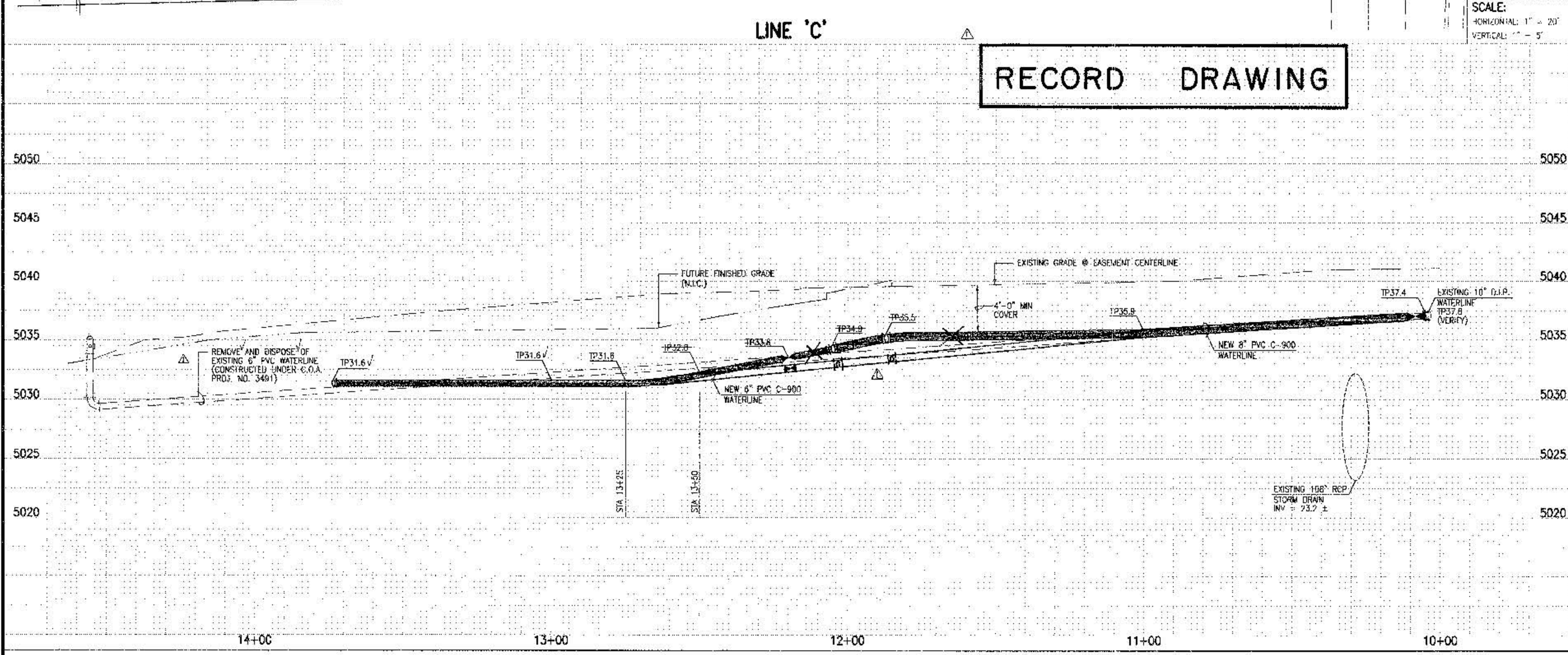
File Path: P:\DWG\DWG\17 et Date: 05-09-2000
File Name: 980709.DWG
Plot Time: 10:55 am



LINE 'C'

RECORD DRAWING

SCALE:
HORIZONTAL: 1" = 20'
VERTICAL: 1" = 5'



- ### WATERLINE CONSTRUCTION NOTES:
- ALL STATIONING IS BASED ON EASEMENT CENTERLINE UNLESS INDICATED OTHERWISE.
 - FOR ALL LINES 12" AND SMALLER, WATER MAIN SHALL BE PVC C-900 PIPE OR AS APPROVED BY THE CITY OF ALBUQUERQUE CITY ENGINEER. DUCTILE IRON IS AN ACCEPTABLE PIPE MATERIAL IN LIEU OF PVC.
 - FOR ALL LINES 14" AND LARGER, WATER MAIN SHALL BE DUCTILE IRON OR PVC C905 OR AS APPROVED BY THE CITY OF ALBUQUERQUE CITY ENGINEER. CONCRETE CULVERT IS AN ACCEPTABLE PIPE MATERIAL IN LIEU OF DUCTILE IRON.
 - WATERLINE SHALL HAVE A MINIMUM COVER OF 4'0" (FINISHED GRADE TO TOP OF PIPE). EXTRA DEPTH TRENCHING, IF REQUIRED BY THESE PLANS, SHALL BE CONSIDERED INCIDENTAL TO CONSTRUCTION, THEREFORE, NO SEPARATE PAYMENT WILL BE MADE.
 - ELECTRONIC MARKER DISCS (FMD) SHALL BE INSTALLED IN ACCORDANCE WITH THE STANDARD SPECIFICATION.
 - IN ACCORDANCE WITH SECTION 801 OF THE "STANDARD SPECIFICATIONS", METALLIZED DETECTABLE WARNING TAPE SHALL BE INSTALLED 18" ABOVE ALL PVC PIPE INSTALLED ON THIS PROJECT.
 - VALVE STEM AND FIRE HYDRANT EXTENSIONS SHALL BE PROVIDED IN ACCORDANCE WITH THE STANDARD SPECIFICATIONS. THE COST OF EACH EXTENSION SHALL BE CONSIDERED INCIDENTAL TO CONSTRUCTION, THEREFORE, NO SEPARATE PAYMENT WILL BE MADE.
 - JOINT RESTRAINT SHALL BE CONSIDERED INCIDENTAL TO WATERLINE CONSTRUCTION, THEREFORE, NO SEPARATE PAYMENT WILL BE MADE.
 - JOINT RESTRAINT SHALL BE PROVIDED ON ALL JOINS OF FIRE HYDRANT TAPS FROM THE TO FIRE HYDRANT INCLUDING THE TEE AND FIRE HYDRANT.
 - FOR THE PURPOSES OF THIS PROJECT, ALL RESTRAINED JOINTS AND JOINT RESTRAINT SHALL BE MECHANICALLY RESTRAINED. JOINT RESTRAINT LENGTHS SPECIFIED HEREON ARE THE LENGTHS TO BE 4-6 INCHES EACH SIDE OF THE FITTING.
 - THE CONTRACTOR SHALL BE RESPONSIBLE FOR SELECTING APPROPRIATE MEANS AND METHODS TO EXCAVATE AND REINCH AND INSTALL PIPE SO AS TO NOT EXCEED RIGHT-OF-WAY OR EASEMENT LIMITS, AND SO AS NOT TO INTERFERE WITH OTHER UTILITIES. THIS SHALL BE CONSIDERED INCIDENTAL TO TRENCHING, THEREFORE, NO SEPARATE PAYMENT WILL BE MADE.
 - THE CONTRACTOR SHALL BE RESPONSIBLE FOR PROTECTING, SUPPORTING AND REPLACING, IF DAMAGED, ALL OTHER UTILITIES ENCOUNTERED DURING CONSTRUCTION. THIS SHALL BE CONSIDERED INCIDENTAL TO TRENCHING, THEREFORE, NO SEPARATE PAYMENT WILL BE MADE.
 - WHERE WATER AND SANITARY SEWER LINES CROSS, THE SANITARY SEWER LINE SHALL BE INSTALLED AS PRESSURE PIPE BETWEEN MAXIMUMS OF 8 INCHES OF VERTICAL SEPARATION DOES NOT EXIST.
 - ALL FIRE HYDRANTS SHALL BE SECURELY WRAPPED IN BLACK PLASTIC UNTIL SUCH TIME AS THE NEW WATERLINE IS PUT INTO SERVICE BY WATER SYSTEM DIVISION PERSONNEL.

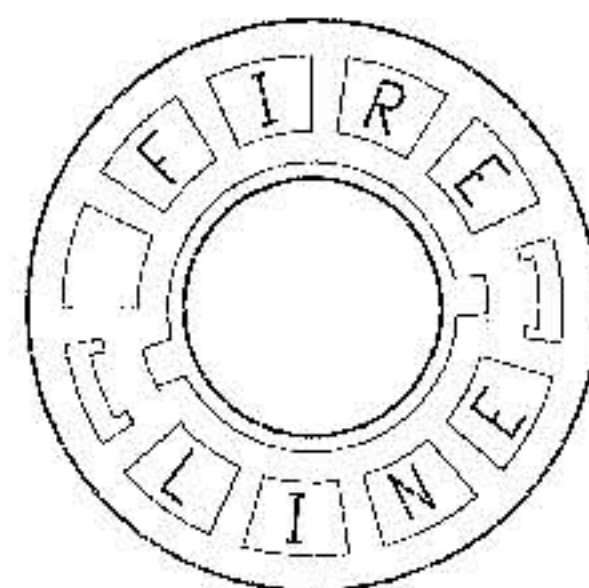
T.B.M.
A "V" CUT IN TOP OF CONCRETE LIGHT BASE LOCATED AT STA 12+11 (43' RT.)
ELEVATION = 5043.73 FT. (M.S.L.D.)

- ### KEYED NOTES
- EXISTING 20" PUBLIC WATERLINE EASEMENT GRANTED BY DOCUMENT FILED 07-28-1988, BK. MISC. 641A, PGS. 887-889, DOC. #8881959
 - EXISTING 10" PNM AND MSTAT EASEMENT (UNRECORDED - DATED 02-19-1974)
 - EXISTING 10" PNM AND MSTAT EASEMENT (UNRECORDED - DATED 01-21-1974)
 - EXISTING 25" UNDERGROUND STORM SEWER EASEMENT GRANTED BY DOCUMENT FILED 05-17-1972, 34, MISC. 260, PGS. 610-612, DOC. #87117

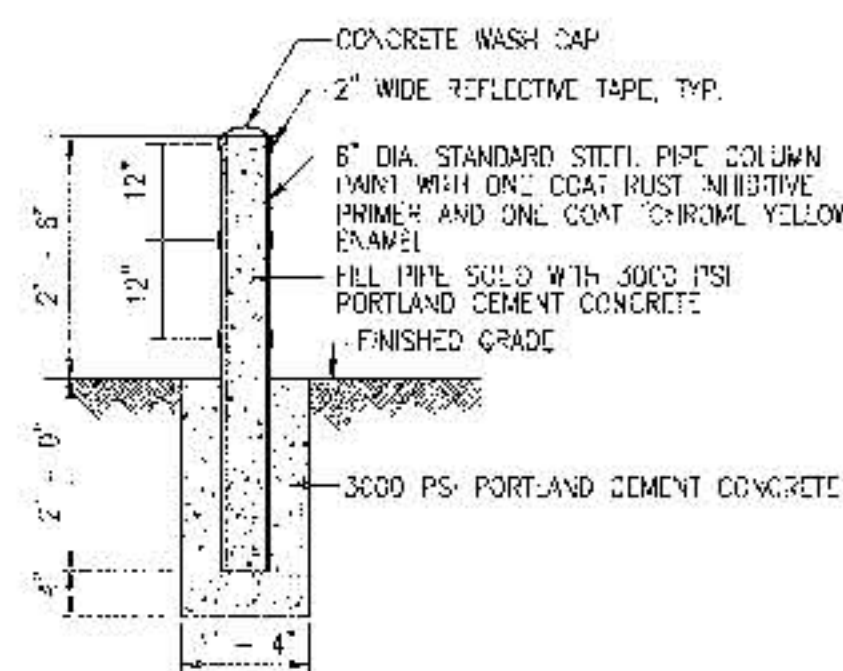
RECORD DRAWING
I, Jeffrey G. Mortensen, Registered Professional Engineer in the State of New Mexico, do hereby certify that this "as-built" information was obtained by me or under my supervision and represents the "as-built" conditions of this project, and is true and correct to the best of my knowledge and belief. All vertical and horizontal dimensions should be field checked prior to use on future projects.
Jeffrey G. Mortensen, P.E.
Stamp No. 8547
98-07-2000

CITY OF ALBUQUERQUE PUBLIC WORKS DEPARTMENT ENGINEERING DEVELOPMENT GROUP	
TITLE: FLEET MAINTENANCE FACILITY/APS M & O COMPLEX FIRE HYDRANT INSTALLATIONS WATERLINE REPLACEMENT PLAN AND PROFILE	
Design/Review/Committee:	City Engineer
City Project No. 640481	Zone Map No. K-15
Sheet 5	Of 8

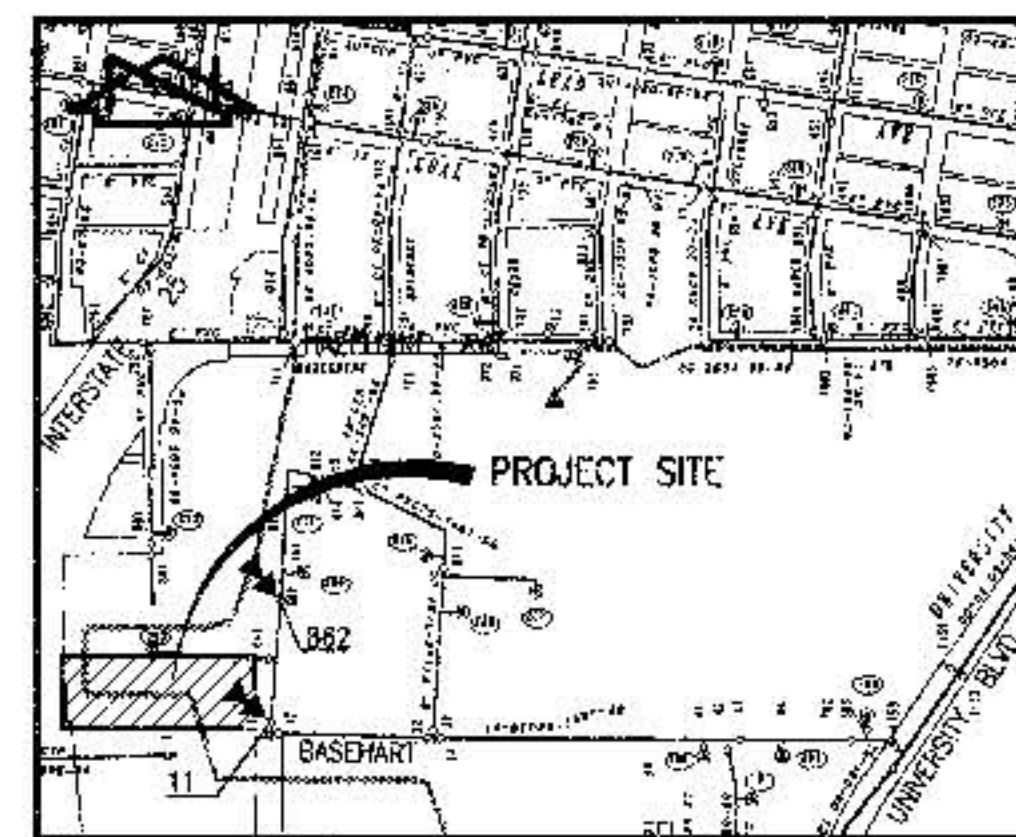
AS-BUILT INFORMATION		BENCH MARKS		SURVEY INFORMATION		ENGINEER'S SEAL	
CUSTOMER: Sun State Mch.	DATE: 05-09-2000	STATION: STA 13+73.50 (21'RT)	DATE: 11/98	NO. 391804	DATE: JMA		05-09-2000
DESIGNED BY: M.B.G.	DATE: 02/00	STATION: STA 12+05 (3'LT)	DATE: JMA	NO. 391804	DATE: JMA		
MICRO-FILM INFORMATION		FIELD NOTES		REMARKS		DESIGN	
DATE: 02/00	DATE: 02/00	NO. 391804		NO. 391804		DESIGN	



FIRELINE PRIVATE VALVE BOX LID
NO SCALE



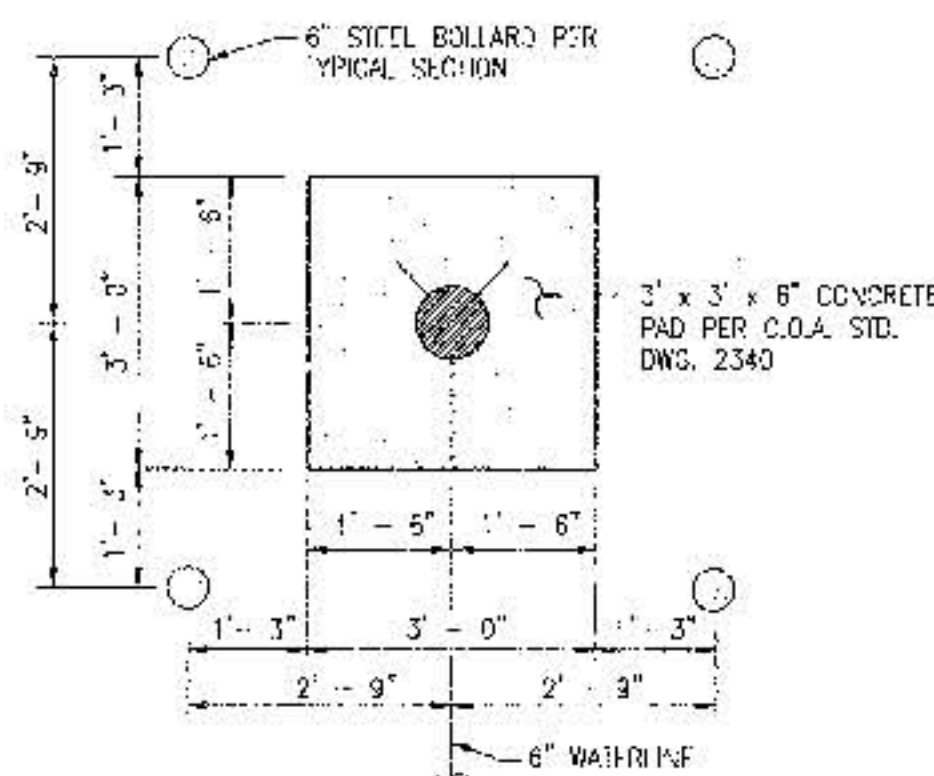
TYPICAL BOLLARD SECTION
SCALE: 1" = 2'-0"



WATER VALVE SHUTOFF PLAN
SCALE: 1" = 60'

WATER VALVE SHUTOFF PLAN NOTES:

1. AS A MINIMUM, THE FOLLOWING VALVES SHALL BE CROSS-ED TO FACILITATE THE CONNECTION TO EXISTING LINE 11, 862.
2. THE CONTRACTOR SHALL NOTIFY WATER SYSTEMS FIVE (5) WORKING DAYS IN ADVANCE OF ANY WORK THAT MAY AFFECT EXISTING WATERLINE. ALL SHUTOFFS SHALL BE PERFORMED BY THE WATER SYSTEM DIVISION PERSONNEL (857-8200).
3. THE CONTRACTOR SHALL PROVIDE ALL RESTRAINTS AND THRUST BLOCKS NECESSARY TO EFFECT THE NECESSARY SHUTOFFS AND CONNECTIONS.
4. EXISTING WATER VALVE AND WATERLINE INFORMATION OBTAINED FROM THE CITY OF ALBUQUERQUE AUTOMATED WATER DISTRIBUTION SYSTEM SECTIONAL MAPS, PLATE K-15.



FIRE HYDRANT BOLLARD DETAIL
SCALE: 1" = 2'-0"

WATERLINE CONSTRUCTION NOTES:

1. ALL STATIONING IS BASED ON EASEMENT CENTERLINE UNLESS INDICATED OTHERWISE.
2. FOR ALL LINES 12" AND SMALLER, WATER MAIN SHALL BE PVC C-900 PIPE OR AS APPROVED BY THE CITY OF ALBUQUERQUE CITY ENGINEER. DUCTILE IRON IS AN ACCEPTABLE PIPE MATERIAL IN LIEU OF PVC.
3. FOR ALL LINES 14" AND LARGER, WATER MAIN SHALL BE PVC DUCTILE IRON OR AS APPROVED BY THE CITY OF ALBUQUERQUE CITY ENGINEER. CONCRETE CULVERT IS AN ACCEPTABLE PIPE MATERIAL IN LIEU OF DUCTILE IRON.
4. WATERLINE SHALL HAVE A MINIMUM COVER OF 4'0" (FINISHED GRADE TO TOP OF PIPE). "EXTRA DEPTH" (FINISHING, IF REQUIRED), SHALL BE CONSIDERED INCIDENTAL TO CONSTRUCTION. THEREFORE, NO SEPARATE PAYMENT WILL BE MADE.
5. ELECTRONIC MARKER DISCS (EMD) SHALL BE INSTALLED IN ACCORDANCE WITH THE STANDARD SPECIFICATION.
6. IN ACCORDANCE WITH SECTION 801 OF THE "STANDARD SPECIFICATIONS", MEALIZED DECEIVABLE WARNING TAPE SHALL BE INSTALLED 18" ABOVE ALL PVC PIPE INSTALLED ON THIS PROJECT.
7. VALVE STEM AND FIRE HYDRANT EXTENSIONS SHALL BE PROVIDED IN ACCORDANCE WITH THE STANDARD SPECIFICATIONS. THE COST OF EACH EXTENSION SHALL BE CONSIDERED INCIDENTAL TO CONSTRUCTION THEREFORE NO SEPARATE PAYMENT WILL BE MADE.
8. JOINT RESTRAINT SHALL BE CONSIDERED INCIDENTAL TO WATERLINE CONSTRUCTION THEREFORE NO SEPARATE PAYMENT WILL BE MADE.
9. JOINT RESTRAINT SHALL BE PROVIDED ON ALL JOINTS OF FIRE HYDRANT LEGS FROM ICE TO FIRE HYDRANT INCLUDING THE TEE AND FIRE HYDRANT.
10. FOR THE PURPOSES OF THIS PROJECT, ALL RESTRAINED JOINTS AND JOINT RESTRAINT SHALL BE MECHANICALLY RESTRAINED. JOINT RESTRAINT LENGTHS SPECIFIED HEREON ARE THE LENGTHS TO BE RESTRAINED EACH SIDE OF THE FITTING.
11. THE CONTRACTOR SHALL BE RESPONSIBLE FOR SCHEDULING APPROPRIATE MEANS AND METHODS TO EXCAVATE AND TRENCH AND INSTALL PIPE SO AS TO NOT EXCEED RIGHT-OF-WAY OR EASEMENT LIMITS, AND SO AS NOT TO INTERFERE WITH OTHER UTILITIES. THIS SHALL BE CONSIDERED INCIDENTAL TO TRENCHING, THEREFORE, NO SEPARATE PAYMENT WILL BE MADE.
12. THE CONTRACTOR SHALL BE RESPONSIBLE FOR PROTECTING, SUPPORTING AND REPAIRING, IF DAMAGED, ALL OTHER UTILITIES ENCOUNTERED DURING CONSTRUCTION. THIS SHALL BE CONSIDERED INCIDENTAL TO TRENCHING, THEREFORE, NO SEPARATE PAYMENT WILL BE MADE.
13. WHERE WATER AND SANITARY SEWER LINES CROSS, THE SANITARY SEWER LINE SHALL BE INSTALLED AS PRESSURE PIPE BETWEEN MANHOLES IF 18 INCHES OF VERTICAL SEPARATION DOES NOT EXIST.
14. ALL FIRE HYDRANTS SHALL BE SECURELY WRAPPED IN BLACK PLASTIC UNTIL SUCH TIME AS THE NEW WATERLINE IS PUT INTO SERVICE BY WATER SYSTEM DIVISION PERSONNEL.

RECORD DRAWING

I, Jeffrey G. Mortensen, Registered Professional Engineer in the State of New Mexico, do hereby certify that this "as-built" information was obtained by me or under my supervision and represents the "as-built" conditions of this project, and is true and correct to the best of my knowledge and belief. All vertical and horizontal dimensions should be field verified prior to use on future projects.

Jeffrey G. Mortensen, Registered Professional Engineer
NEW MEXICO
8547
2000

98.079.3

CITY OF ALBUQUERQUE
PUBLIC WORKS DEPARTMENT
ENGINEERING DEVELOPMENT GROUP

TITLE: FLEET MAINTENANCE FACILITY/APS M & O COMPLEX
FIRE HYDRANT INSTALLATIONS
SECTIONS AND DETAILS; WATER VALVE SHUTOFF PLAN

Design/Review/Completion	City Engineer Approval	City Engineer
MSR 2.2.2000	MSR 2.2.2000	CITY ENGINEER

City Project No. 640481 Zone Map No. K-15 Sheet 6 of 8

AS-BUILT INFORMATION		BENCH MARKS		SURVEY INFORMATION	
CONTRACTOR	Ston. State Mech.	STATION	IS 5 STANDARD ANGLE IRON TABLET, STAFFED	DATE	11/99
DATE	03/00	STATION	STA. 11+25.29" SET IN TOP OF A CONCRETE POST PLUS WITH	BY	JMA
DATE	03/00	STATION	THE GROUND. STATION IS LOCATED AT THE SOUTHEAST CORNER	NO.	391804
DATE	03/00	STATION	OF THE 1-25 BRIDGE CROSSING STADIUM BLVD. S.E.		
DATE	03/00	STATION	ELEVATION = 5031.42 FEET (M.S.L.)		

ENGINEER'S SEAL		REVISIONS	
DATE	05-27-00	REVISIONS	DESIGN
DATE	05-27-00	REVISIONS	DESIGN
DATE	05-27-00	REVISIONS	DESIGN

City Project No.	640481	Zone Map No.	K-15	Sheet	6	of	8
------------------	--------	--------------	------	-------	---	----	---

CONSTRUCTION TRAFFIC CONTROL GENERAL NOTES

1. CONTRACTOR MUST OBTAIN FROM CONSTRUCTION COORDINATION AN EXCAVATION/BARRICADING PERMIT BEFORE ENGAGING IN ANY CONSTRUCTION, MAINTENANCE OR REPAIR WORK IN ANY OF THE CITY OF ALBUQUERQUE'S RIGHTS-OF-WAY. EMERGENCY WORK THAT WOULD PRESERVE LIFE OR PROPERTY IS EXCLUDED WITH THE UNDERSTANDING THAT A PERMIT SHALL BE OBTAINED WITHIN 24 TO 48 HOURS.

2. CONTRACTOR SHALL AT THE TIME OF PERMIT REQUEST, SUBMIT FOR APPROVAL BY CONSTRUCTION COORDINATION, A TRAFFIC CONTROL PLAN DETAILING ALL EXISTING TOPOGRAPHY SUCH AS LANE WIDTHS, DRIVEWAYS, AND BUSINESS/RESIDENTIAL ACCESSES. THE TRAFFIC CONTROL PLAN SHALL INCLUDE ALL PHASES OF WORK AND SCHEDULES INVOLVED IN THE CONSTRUCTION PROJECT. ANY SEPARATE PHASES OF A CONSTRUCTION PROJECT SHALL BE GIVEN AN INDIVIDUAL PERMIT EACH. BLANKET PERMITS WILL NOT BE ISSUED.

3. THESE TYPICAL TRAFFIC CONTROL PLANS DO NOT REFLECT THE EXISTING TOPOGRAPHY SUCH AS DRIVEWAYS, LANE WIDTHS, AND BUSINESS/RESIDENTIAL ACCESSES. EVERY LOCATION THAT REQUIRES CONSTRUCTION TRAFFIC CONTROL SHALL HAVE A DETAILED TRAFFIC CONTROL PLAN SHOWING ALL EXISTING TOPOGRAPHY.

4. CONSTRUCTION SHALL NOT BEGIN UNLESS A TRAFFIC CONTROL PLAN HAS BEEN APPROVED AND VERIFIED BY CONSTRUCTION COORDINATION.

5. CONSTRUCTION COORDINATION SHALL BE NOTIFIED 48 HOURS PRIOR TO ANY TRAFFIC CONTROL CHANGES NEEDED BY CONTRACTOR, THAT WERE NOT PREVIOUSLY APPROVED. THESE TRAFFIC CONTROL CHANGES SHALL BE REQUESTED IN WRITING ACCOMPANIED WITH A TRAFFIC CONTROL PLAN REFLECTING SUCH CHANGES.

6. ALL CONSTRUCTION TRAFFIC CONTROL DEVICES SHALL COMPLY TO THE MANUAL ON UNIFORM TRAFFIC CONTROL DEVICES (M.U.T.C.D.) LATEST EDITION. IT IS THE RESPONSIBILITY OF THE CONTRACTOR TO INSURE ALL SERVICE AND MAINTAIN ALL TRAFFIC CONTROL DEVICES. TRAFFIC CONTROL DEVICES SHALL NOT BE REMOVED OR ALTERED IN ANY WAY WITHOUT THE APPROVAL OF CONSTRUCTION COORDINATION, PER SECTION 6A.4 OF THE MUTCD, LATEST EDITION.

7. THE CONSTRUCTION TRAFFIC CONTROL INITIAL SET UP SHALL BE BY AN AMERICAN TRAFFIC SAFETY SERVICES ASSOCIATION (ATSSA) CERTIFIED WORKSITE TRAFFIC SUPERVISOR. THE MAINTENANCE AND SERVICING SHALL ALSO BE DONE BY AN ATSSA CERTIFIED WORKSITE TRAFFIC SUPERVISOR OR EQUIVALENT.

8. CONTRACTOR IS RESPONSIBLE TO MAINTAIN AND SERVICE ALL TRAFFIC CONTROL DEVICES 24 HOURS A DAY, 7 DAYS A WEEK THROUGHOUT LENGTH OF PROJECT. CONTRACTOR IS RESPONSIBLE THAT ALL TRAFFIC CONTROL DEVICES COMPLY WITH THE MUTCD, LATEST EDITION.

9. ALL ADVANCE WARNING SIGNS SHALL BE DOUBLE INDICATED WHENEVER THERE ARE MULTI-LANE TRAFFIC IN ANY ONE GIVEN DIRECTION AND THERE IS SUFFICIENT MEDIAN SPACE.

10. ALL BARRICADES IN ALL TAPERS AND TANGENTS SHALL BE PLACED APART, A DISTANCE MEASURED IN FEET, EQUAL TO 1/2 OF THE POSTED SPEED LIMIT. NO EXCEPTIONS UNLESS APPROVED BY CONSTRUCTION COORDINATION, PER MUTCD SECTION 6A-4.

11. ALL WORK IN ARTERIAL ROADWAYS SHALL BE ON A CONTINUOUS 24 HOUR PER DAY BASIS UNTIL COMPLETED.

12. CONTRACTOR IS RESPONSIBLE TO PROVIDE CONSTRUCTION COORDINATION, A WEEKLY LOG OF DAILY INSPECTIONS OF BARRICADE AND MAINTENANCE SCHEDULES ON PROJECTS THAT ARE OVER ONE WEEK DURATION.

13. EQUIPMENT OR MATERIALS SHALL NOT BE STORED WITHIN 15 FEET OF A TRAVELING TRAFFIC LANE DURING NON-WORKING HOURS WITHOUT THE APPROVAL OF CONSTRUCTION COORDINATION.

14. CONTRACTOR SHALL PROVIDE AND MAINTAIN A SAFE AND ADEQUATE MEANS OF CHANNELIZING PEDESTRIAN TRAFFIC AROUND AND THROUGH THE CONSTRUCTION AREA.

15. CONTRACTOR IS RESPONSIBLE FOR OBLITERATION OF ANY CONFLICTING STRIPING AND RESPONSIBLE FOR ALL TEMPORARY STRIPING.

16. CONTRACTOR SHALL MAINTAIN ACCESS TO ALL FACILITIES, BUSINESSES AND/OR RESIDENTS AT ALL TIMES.

17. CONTRACTOR SHALL PROVIDE ACCESS SIGNS FOR BUSINESSES LOCATED WITHIN THE CONSTRUCTION AREA UNDER THE SUPERVISION OF CONSTRUCTION COORDINATION. EACH ACCESS SIGN SHALL HAVE 5 INCH, WHITE OPAQUE LETTERING ON BLUE REFLECTORIZED BACKGROUND. ACCESS SIGNS SHALL BE CONSIDERED INCIDENTAL TO THE BID AND NOT PART OF THE CONTRACT UNLESS OTHERWISE STATED. NO MORE THAN 3 BUSINESSES SHALL BE LISTED ON A ACCESS SIGN. SHOPPING CENTERS AND MALLS SHALL BE LISTED AS SUCH.

18. ALL ADVANCE WARNING SIGNS SHALL MEET THE MINIMUM REFLECTIVE INTENSITY REQUIREMENTS SET FORTH BY THE CITY OF ALBUQUERQUE CONSTRUCTION COORDINATION SHALL DETERMINE ALL REQUIREMENTS AND APPROVE OR DISAPPROVE ANY ADVANCE WARNING SIGN PER SECTION 6A-4 OF THE MUTCD, LATEST EDITION.

19. 48 HOURS PRIOR TO OCCUPYING OR CLOSING OF A RIGHT-OF-WAY, CONTRACTOR SHALL NOTIFY: POLICE, FIRE DEPARTMENT, SCHOOLS, HOSPITAL, TRANSIT AUTHORITY, BUSINESSES AND/OR RESIDENTS THAT WILL BE AFFECTED BY THE CONSTRUCTION.

20. ANY FIELD ADJUSTMENTS SHALL BE APPROVED BY CONSTRUCTION COORDINATION.

21. EXCAVATIONS SHALL BE PLATED, TEMPORARILY PATCHES OR RESURFACED PRIOR TO OPENING OF TRAFFIC. A MINIMUM OF 11 FEET SHALL BE PROVIDED FOR TRAFFIC IN ANY GIVEN DIRECTION. CONTRACTOR IS RESPONSIBLE FOR ANY WORK INVOLVED IN SATISFYING THESE REQUIREMENTS.

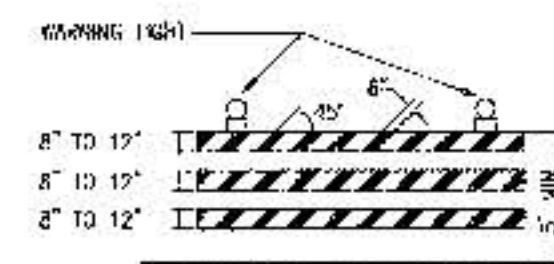
22. CONTRACTOR SHALL AT ALL TIMES COMPLY WITH THE FOLLOWING:
1. STANDARDS AND REQUIREMENTS SET FORTH IN THE MANUAL ON UNIFORM TRAFFIC CONTROL DEVICES, LATEST EDITION.
2. THE CITY OF ALBUQUERQUE TRAFFIC CODE, LATEST EDITION.
3. SECTION 19 OF THE CITY OF ALBUQUERQUE'S STANDARD SPECIFICATIONS FOR PUBLIC WORK CONSTRUCTION, AS WELL AS OTHER SECTIONS.

23. FAILURE TO COMPLY WITH ANY OF THE ABOVE MENTIONED, WILL BE ADEQUATE CAUSE TO CEASE ALL WORK ON ANY CONSTRUCTION PROJECT. WORK WILL NOT RESUME UNTIL ALL REQUIREMENTS ARE ADDRESSED AND APPROVED BY CONSTRUCTION COORDINATION.

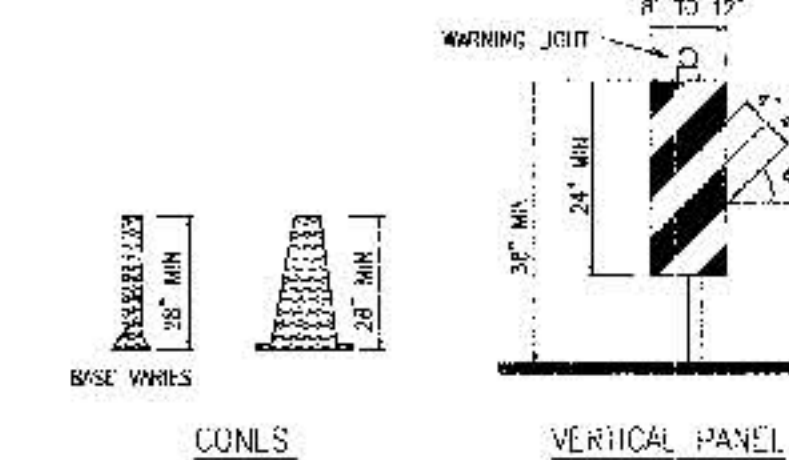
24. ALL TRAFFIC CONTROL DEVICES SHALL BE KEPT IN NEW-CLEAN CONDITION. WASHING OF EQUIPMENT IS INCIDENTAL TO ITS PLACEMENT AND MAINTENANCE.

25. ADVANCE WARNING SIGNS SHALL BE 36"x36" MIN. WITH SUPER ENGINEERING GRADE SHEETING OR BETTER. MOUNTING HEIGHT AT TOP OF SIGN SHALL BE THE SAME AS FOR A 48" SIGN AS INDICATED IN THE M.U.T.C.D.

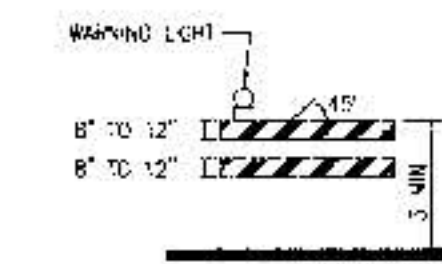
27. CONTRACTOR SHALL MAINTAIN A CRACK-FREE WORKSITE. ALL CRACKS SHALL BE PROMPTLY REMOVED FROM ALL EQUIPMENT, BOTH PERMANENT AND TEMPORARY.



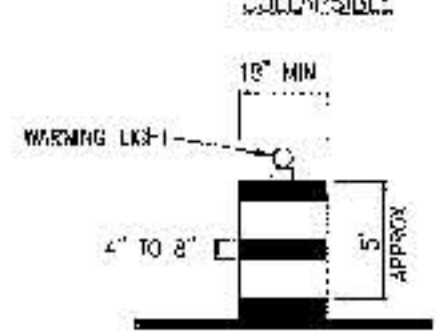
TYPE III BARRICADE



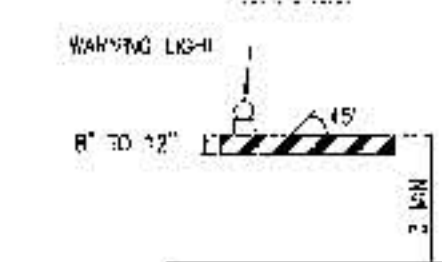
CONES VERTICAL PANEL HIGH-LEVEL WARNING DEVICE



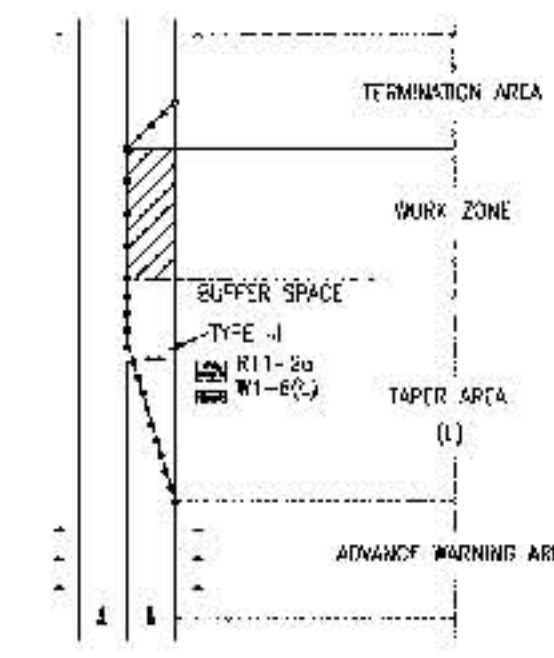
TYPE II BARRICADE



TYPE I BARRICADE



TYPE I BARRICADE



TRAFFIC CONTROL ELEMENTS

LEGEND

- WORK AREA
- BARRICADE - TYPE I, TYPE II OR BARREL
- BARRICADE - TYPE III
- VERTICAL PANEL
- WARNING SIGN
- DISTANCE BETWEEN SIGNS - A DISTANCE MEASURED IN FEET EQUAL TO A VALUE OF TEN TIMES THE SPEED LIMIT OF THE STREET
- FLAGMAN POSITION
- SPACING BETWEEN BARRICADES - A DISTANCE MEASURED IN FEET EQUAL TO THE SPEED LIMIT OF THE STREET
- TAPER LENGTH - SEE CHART BELOW

THE TANGENT LENGTH IS EQUAL TO THE TAPER LENGTH FOR A GIVEN STREET

TAPER REQUIREMENTS

SPEED LIMIT (MPH)	TAPER LENGTH (L)		MINIMUM NUMBER OF DEVICES FOR TAPER	MAXIMUM DEVICE SPACING IN FEET	
	10' LANE	12' LANE		ALONG TAPER	AFTER TAPER
20	70	75	5	20	20
25	105	115	6	25	25
30	150	165	7	30	30
35	205	225	8	35	35
40	270	295	9	40	40
45	450	495	13	45	45
50	500	550	13	50	50
55	550	605	13	55	55

RECOMMENDED SIGN SPACING(D) FOR ADVANCE WARNING SIGN SERIES

SPEED LIMIT (MPH)	MINIMUM DISTANCE IN FEET BETWEEN SIGNS	FROM LAST SIGN TO TAPER
0-20	10 x SPEED LIMIT	10 x SPEED LIMIT
25-30	10 x SPEED LIMIT	10 x SPEED LIMIT
30-35	10 x SPEED LIMIT	10 x SPEED LIMIT
40-45	10 x SPEED LIMIT	10 x SPEED LIMIT
50-60	10 x SPEED LIMIT	10 x SPEED LIMIT

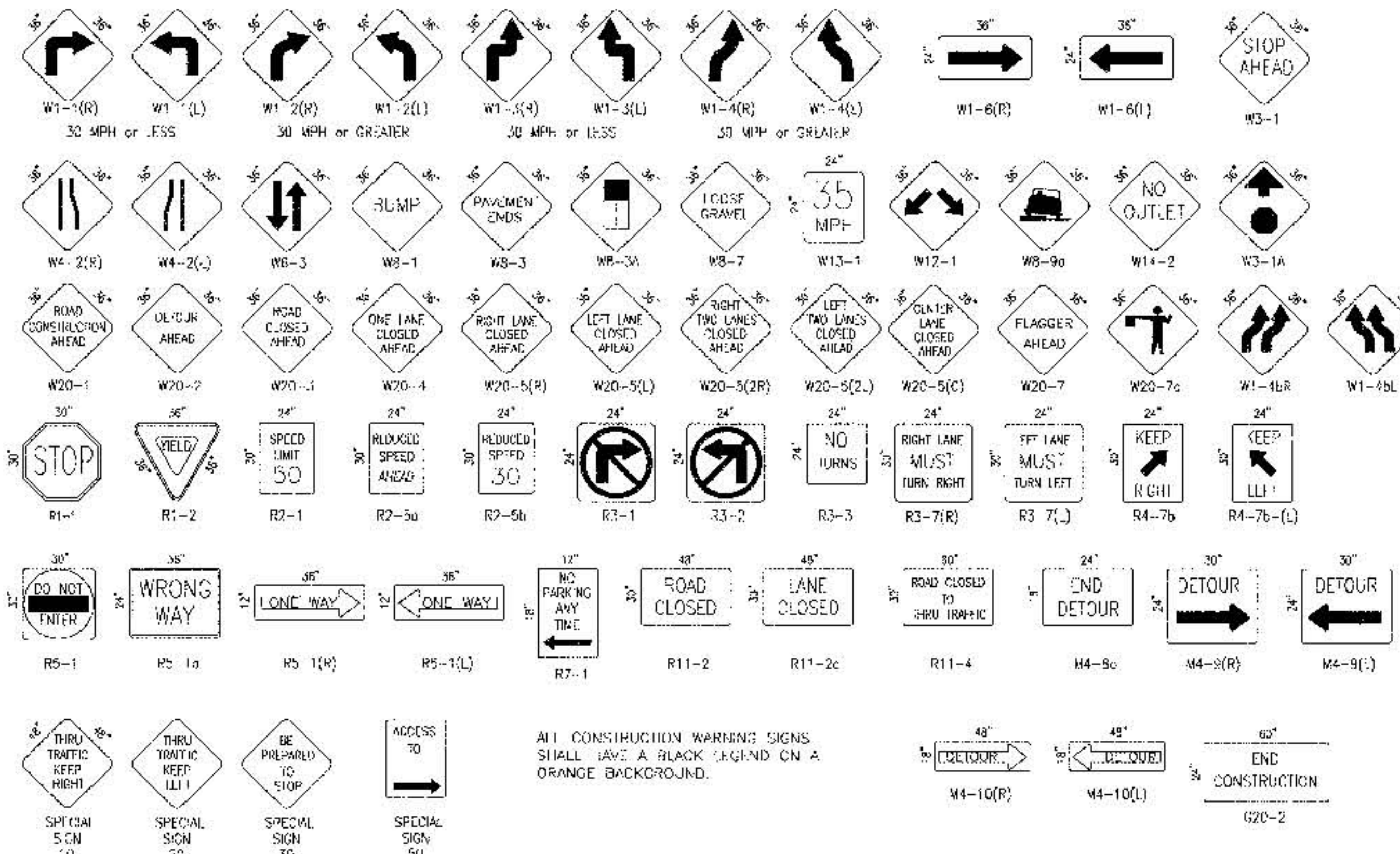
TAPER CRITERIA

TYPE OF TAPER	TAPER LENGTH
UPSTREAM TAPER	1 MINIMUM
MERGING TAPER	1/2 L MINIMUM
SHOULDER TAPER	1/2 L MINIMUM
TWO-WAY TRAFFIC TAPER	100 FEET MAXIMUM
DOWNSIDE TAPERS	100 FEET PER LANE

TAPER LENGTH COMPUTATION

SPEED LIMIT	W ² / 60
40 MPH OR LESS	W ² / 60
45 MPH OR GREATER	L = W x S
L = TAPER LENGTH	
W = WIDTH OF OFFSET IN FEET	
S = POSTED SPEED OR OFF-PEAK 85 PERCENTILE SPEED IN MPH	

SIGN FACE DETAILS



ALL CONSTRUCTION WARNING SIGNS SHALL HAVE A BLACK LEGEND ON AN ORANGE BACKGROUND.

RECORD DRAWING

98.079.3

CITY OF ALBUQUERQUE PUBLIC WORKS DEPARTMENT ENGINEERING DEVELOPMENT GROUP	
TITLE: FLEET MAINTENANCE FACILITY / APS M & O COMPLEX FIRE HYDRANT INSTALLATIONS SIGNING AND CONSTRUCTION TRAFFIC CONTROL STANDARDS	
Design Review Committee	City Engineer Approval
C.O.A.	STD.
City Project No. 640481	Zone Map No. K-5
Sheet 7	of 8

