

2 3 4 5 6 7 8 9 10 11 12 13 14 15
26-6448.81-2011

SCANNED BY
PLANNING

PARADISE BOULEVARD

ALBUQUERQUE, NEW MEXICO

DRIVEWAY IMPROVEMENTS

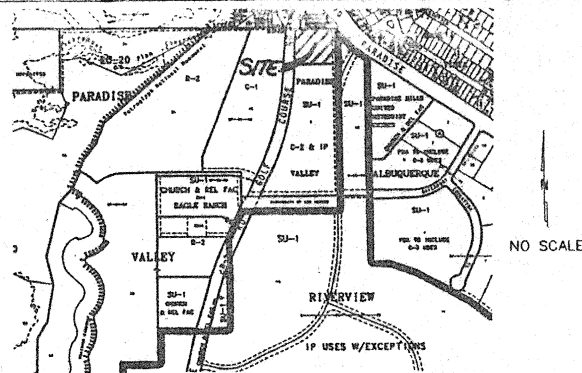
INDEX OF DRAWINGS

SHEET NO.	DESCRIPTION
1	TITLE SHEET
2	DRIVEWAY IMPROVEMENTS PLAN
3	TYPICAL TRAFFIC CONTROL & SIGNING EXAMPLES (REF. M.U.T.C.D.)
4	SIGNING AND CONSTRUCTION TRAFFIC CONTROL STANDARDS

For Information Only

APPROVED AS RECORD DRAWINGS
DESIGN REVIEW SECTION
CITY CONSTRUCTION ENGINEER
Paul O. J.
DATE: 2-10-2011

* Field Verified
NOT AS-BUILT drawings



VICINITY MAP
ZONE ATLAS MAP C-12

GENERAL NOTES

- ALL WORK DETAILED ON THESE PLANS TO BE PERFORMED UNDER CONTRACT SHALL, EXCEPT AS OTHERWISE STATED OR PROVIDED FOR HEREON, BE CONSTRUCTED IN ACCORDANCE WITH THE CITY OF ALBUQUERQUE STANDARD SPECIFICATIONS FOR PUBLIC WORKS CONSTRUCTION 1986 EDITION AS AMENDED WITH UPDATE NO. 6.
- PRIOR TO CONSTRUCTION, THE CONTRACTOR SHALL EXCAVATE AND VERIFY THE HORIZONTAL AND VERTICAL LOCATIONS OF ALL OBSTRUCTIONS. SHOULD A CONFLICT EXIST, THE CONTRACTOR SHALL NOTIFY THE ENGINEER SO THAT THE CONFLICT CAN BE RESOLVED WITH MINIMUM DELAY.
- TWO (2) WORKING DAYS PRIOR TO ANY EXCAVATION, CONTRACTOR MUST CONTACT LINE LOCATING SERVICE @ 260-1990 FOR LOCATION OF EXISTING UTILITIES.
- A. WARNING - EXISTING UTILITY LINE LOCATIONS ARE SHOWN IN AN APPROXIMATE MANNER ONLY, AND SUCH LINES MAY EXIST WHERE NONE ARE SHOWN. THE LOCATION OF ANY SUCH EXISTING LINES IS BASED UPON INFORMATION PROVIDED BY THE UTILITY COMPANY, THE OWNER, OR BY OTHERS, AND THE INFORMATION MAY BE INCOMPLETE OR MAY BE OBSOLETE BY THE TIME CONSTRUCTION COMMENCES.

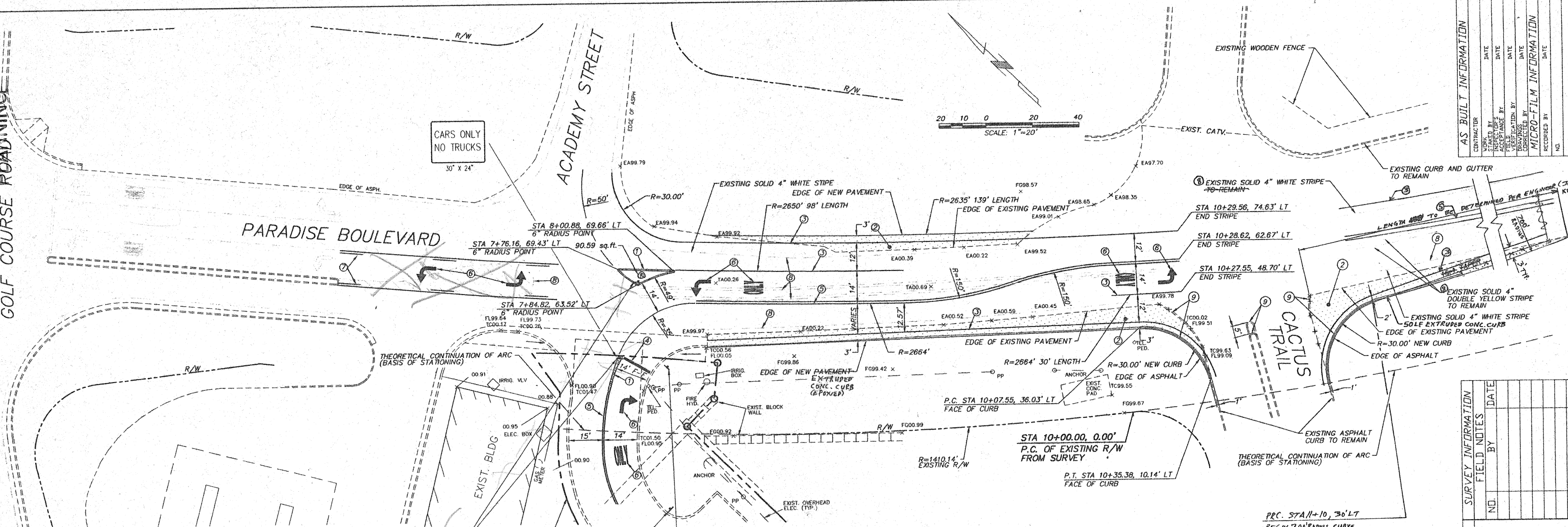
B. THERE ARE EXISTING HIGH VOLTAGE LINES WITHIN THE PNM EASEMENT ADJACENT TO LADERA DRIVE. THESE LINES MUST REMAIN ENERGIZED AT ALL TIMES. CONTRACTOR SHALL COORDINATE WITH PNM PRIOR TO START OF CONSTRUCTION. CONTRACTOR IS ADVISED THAT OSHA REQUIRES A MINIMUM CLEARANCE OF 15' IN ALL DIRECTIONS FROM THE POWERLINE.
- THE ENGINEER HAS UNDERTAKEN NO FIELD VERIFICATION OF THE LOCATION, DEPTH, SIZE OR TYPE OF EXISTING UNDERGROUND UTILITY LINES. MAKES NO REPRESENTATION PERTAINING THEREFORE. THE CONTRACTOR SHALL INFORM ITSELF OF THE LOCATION OF ANY UTILITY LINE IN OR NEAR THE AREA OF WORK IN ADVANCE OF AND DURING EXCAVATION WORK. THE CONTRACTOR IS FULLY RESPONSIBLE FOR ANY AND ALL DAMAGE CAUSED BY ITS FAILURE TO LOCATE, IDENTIFY AND PRESERVE ANY AND ALL EXISTING UTILITIES. THE CONTRACTOR SHALL COMPLY WITH STATE STATUTES, MUNICIPAL AND LOCAL ORDINANCES, RULES AND REGULATIONS PERTAINING TO THE LOCATION OF THESE LINES AND FACILITIES, IN PLANNING AND CONDUCTING EXCAVATION, WHETHER BY CALLING OR NOTIFYING THE UTILITIES, COMPLYING WITH "BLUE STAKES" PROCEDURES, OR OTHERWISE.
- TRAFFIC CONTROL: FIVE (5) WORKING DAYS PRIOR TO BEGINNING CONSTRUCTION THE CONTRACTOR SHALL SUBMIT TO THE CONSTRUCTION COORDINATION DIVISION A DETAILED CONSTRUCTION SCHEDULE. TWO (2) WORKING DAYS PRIOR TO CONSTRUCTION THE CONTRACTOR SHALL OBTAIN A BARRICADE PERMIT FROM THE CONSTRUCTION COORDINATION DIVISION. CONTRACTOR SHALL NOTIFY BARRICADE ENGINEER (768-2551) PRIOR TO OCCUPYING AN INTERSECTION. SEE SECTION 19 OF THE SPECIFICATIONS. ALL STREET STRIPING ALTERED OR DESTROYED SHALL BE REPLACED BY CONTRACTOR TO LOCATION AND IN KIND AS EXISTING AT NO ADDITIONAL COST TO THE OWNER.
- THE CONTRACTOR SHALL PROMPTLY CLEAN UP ANY MATERIAL EXCAVATED WITHIN THE PUBLIC RIGHT-OF-WAY SO THAT THE EXCAVATED MATERIAL IS NOT SUSCEPTIBLE TO BEING WASHED DOWN THE STREET.
- THE CONTRACTOR IS RESPONSIBLE FOR PROTECTING AND MAINTAINING ALL EXISTING MONUMENTATION CONTROLS. IN THE EVENT OF INADVERTENT DESTRUCTION OR ALTERATION THE CONTRACTOR MUST IMMEDIATELY NOTIFY THE CITY CHIEF SURVEYOR.
- ANY WORK OCCURRING WITHIN AN ARTERIAL ROADWAY REQUIRES TWENTY-FOUR HOUR CONSTRUCTION.
- NOTIFY CITY OF ALBUQUERQUE WATER DEPARTMENT A MINIMUM OF 5 WORKING DAYS PRIOR TO MAKING CONNECTIONS TO EXISTING WATER LINES.
- ALL WHEELCHAIR RAMPS SHALL ADHERE TO CURRENT ADA REQUIREMENTS.

CINFRAN/HUITT-ZOLLARS
333 RIO RANCHO DR. N.E., STE. 101
RIO RANCHO, N.M. 87124
(505) 892-5141

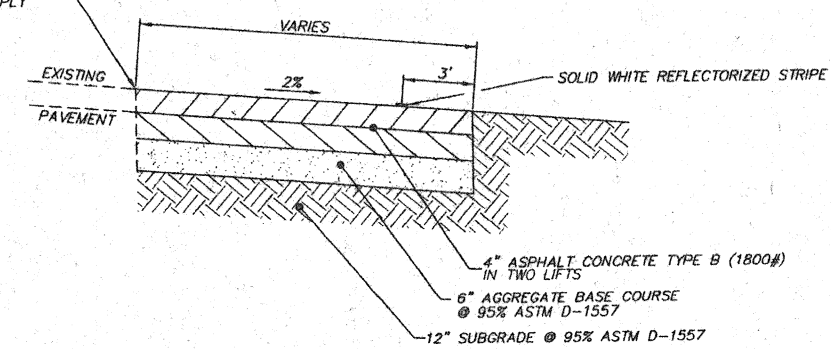
LAND PLANNING / ENGINEERING / ENVIRONMENT / SUBDIVISION DEVELOPMENT / SURVEYING

--	--	--	--	--	--	--	--	--	--	--	--	--	--	--	--	--	--	--	--	--	--	--	--	--	--	--	--	--	--	--	--	--	--	--	--	--	--	--	--	--	--	--	--	--	--	--	--	--	--	--	--	--	--	--	--	--	--	--	--	--	--	--	--	--	--	--	--	--	--	--	--	--	--	--	--	--	--	--	--	--	--	--	--	--	--	--	--	--	--	--	--	--	--	--	--	--	--	--	--	--	--	--	--	--	--	--	--	--	--	--	--	--	--	--	--	--	--	--	--	--	--	--	--	--	--	--	--	--	--	--	--	--	--	--	--	--	--	--	--	--	--	--	--	--	--	--	--	--	--	--	--	--	--	--	--	--	--	--	--	--	--	--	--	--	--	--	--	--	--	--	--	--	--	--	--	--	--	--	--	--	--	--	--	--	--	--	--	--	--	--	--	--	--	--	--	--	--	--	--	--	--	--	--	--	--	--	--	--	--	--	--	--	--	--	--	--	--	--	--	--	--	--	--	--	--	--	--	--	--	--	--	--	--	--	--	--	--	--	--	--	--	--	--	--	--	--	--	--	--	--	--	--	--	--	--	--	--	--	--	--	--	--	--	--	--	--	--	--	--	--	--	--	--	--	--	--	--	--	--	--	--	--	--	--	--	--	--	--	--	--	--	--	--	--	--	--	--	--	--	--	--	--	--	--	--	--	--	--	--	--	--	--	--	--	--	--	--	--	--	--	--	--	--	--	--	--	--	--	--	--	--	--	--	--	--	--	--	--	--	--	--	--	--	--	--	--	--	--	--	--	--	--	--	--	--	--	--	--	--	--	--	--	--	--	--	--	--	--	--	--	--	--	--	--	--	--	--	--	--	--	--	--	--	--	--	--	--	--	--	--	--	--	--	--	--	--	--	--	--	--	--	--	--	--	--	--	--	--	--	--	--	--	--	--	--	--	--	--	--	--	--	--	--	--	--	--	--	--	--	--	--	--	--	--	--	--	--	--	--	--	--	--	--	--	--	--	--	--	--	--	--	--	--	--	--	--	--	--	--	--	--	--	--	--	--	--	--	--	--	--	--	--	--	--	--	--	--	--	--	--	--	--	--	--	--	--	--	--	--	--	--	--	--	--	--	--	--	--	--	--	--	--	--	--	--	--	--	--	--	--	--	--	--	--	--	--	--	--	--	--	--	--	--	--	--	--	--	--	--	--	--	--	--	--	--	--	--	--	--	--	--	--	--	--	--	--	--	--	--	--	--	--	--	--	--	--	--	--	--	--	--	--	--	--	--	--	--	--	--	--	--	--	--	--	--	--	--	--	--	--	--	--	--	--	--	--	--	--	--	--	--	--	--	--	--	--	--	--	--	--	--	--	--	--	--	--	--	--	--	--	--	--	--	--	--	--	--	--	--	--	--	--	--	--	--	--	--	--	--	--	--	--	--	--	--	--	--	--	--	--	--	--	--	--	--	--	--	--	--	--	--	--	--	--	--	--	--	--	--	--	--	--	--	--	--	--	--	--	--	--	--	--	--	--	--	--	--	--	--	--	--	--	--	--	--	--	--	--	--	--	--	--	--	--	--	--	--	--	--	--	--	--	--	--	--	--	--	--	--	--	--	--	--	--	--	--	--	--	--	--	--	--	--	--	--	--	--	--	--	--	--	--	--	--	--	--	--	--	--	--	--	--	--	--	--	--	--	--	--	--	--	--	--	--	--	--	--	--	--	--	--	--	--	--	--	--	--	--	--	--	--	--	--	--	--	--	--	--	--	--	--	--	--	--	--	--	--	--	--	--	--	--	--	--	--	--	--	--	--	--	--	--	--	--	--	--	--	--	--	--	--	--	--	--	--	--	--	--	--	--	--	--	--	--	--	--	--	--	--	--	--	--	--	--	--	--	--	--	--	--	--	--	--	--	--	--	--	--	--	--	--	--	--	--	--	--	--	--	--	--	--	--	--	--	--	--	--	--	--	--	--	--	--	--	--	--	--	--	--	--	--	--	--	--	--	--	--	--	--	--	--	--	--	--	--	--	--	--	--	--	--	--	--	--	--	--	--	--	--	--	--	--	--	--	--	--	--	--	--	--	--	--	--	--	--	--	--	--	--	--	--	--	--	--	--	--	--	--	--	--	--	--	--	--	--	--	--	--	--	--	--	--	--	--	--	--	--	--	--	--	--	--	--	--	--	--	--	--	--	--	--	--	--	--	--	--	--	--	--	--	--	--	--	--	--	--	--	--	--	--	--	--	--	--	--	--	--	--	--	--	--	--	--	--	--	--	--	--	--	--	--	--	--	--	--	--	--	--	--	--	--	--	--	--	--	--	--	--	--	--	--	--	--	--	--	--	--	--	--	--	--	--	--	--	--	--	--	--	--	--	--	--	--	--	--	--	--	--	--	--	--	--	--	--	--	--	--	--	--	--	--	--	--	--	--	--	--	--	--	--	--	--	--	--	--	--	--	--	--	--	--	--	--	--	--	--	--	--	--	--	--	--	--	--	--	--	--	--	--	--	--	--	--	--	--	--	--	--	--	--	--	--	--	--	--	--	--	--	--	--	--	--	--	--	--	--	--	--	--	--	--	--	--	--	--	--	--	--	--	--	--	--	--	--	--	--	--	--	--	--	--	--	--	--	--	--	--	--	--	--	--	--	--	--	--	--	--	--	--	--	--	--	--	--	--	--	--	--	--	--	--	--	--	--	--	--	--	--	--	--	--	--	--	--	--	--	--	--	--	--	--	--	--	--	--	--	--	--	--	--	--	--	--	--	--	--	--	--	--	--	--	--	--	--	--	--	--	--	--	--	--	--	--	--	--	--	--	--	--	--	--	--	--	--	--	--	--	--	--	--	--	--	--	--	--	--	--	--	--	--	--	--	--	--	--	--	--	--	--	--	--	--	--	--	--	--	--	--	--	--	--	--	--	--	--	--	--	--	--	--	--	--	--	--	--	--	--	--	--	--	--	--	--	--	--	--	--	--	--	--	--	--	--	--	--	--	--	--	--	--	--	--	--	--	--	--	--	--	--	--	--	--	--	--	--	--	--	--	--	--	--	--	--	--	--	--	--	--	--	--	--	--	--	--	--	--	--	--	--	--	--	--	--	--	--	--	--	--	--	--	--	--	--	--	--	--	--	--	--	--	--	--	--	--	--	--	--	--	--	--	--	--	--	--	--	--	--	--	--	--	--	--	--	--	--	--	--	--	--	--	--	--	--	--	--	--	--	--	--	--	--	--	--	--	--	--	--	--	--	--	--	--	--	--	--	--	--	--	--	--	--	--	--	--	--	--	--	--	--	--	--	--	--	--	--	--	--	--	--	--	--	--	--	--	--	--	--	--	--	--	--	--	--	--	--	--	--	--	--	--	--	--	--	--	--	--	--	--	--	--	--	--	--	--	--	--	--	--	--	--	--	--	--	--	--	--	--	--	--	--	--

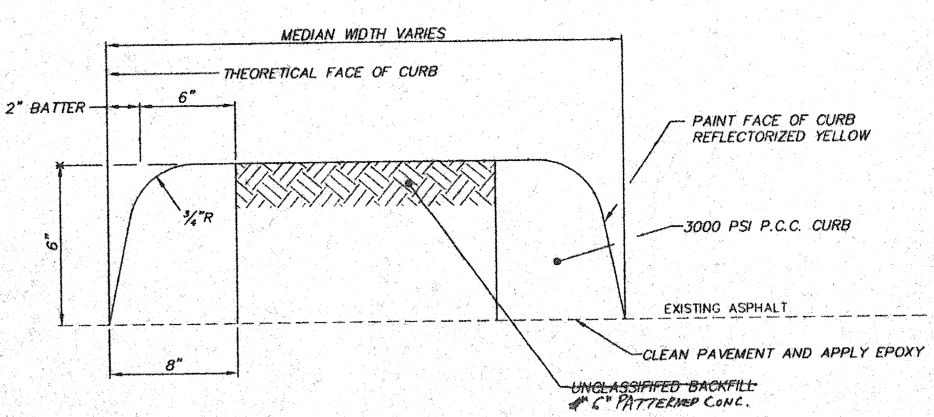
DRB Case#
N/A



REMOVE ANY BROKEN OR CRACKED PAVEMENT FROM EDGE AND THOROUGHLY CLEAN EDGE. APPLY TACK COAT TO EDGE.



DETAIL A
N.T.S.



DETAIL B
N.T.S.

GENERAL NOTES

1. ALL NON CONFORMING SIGNAGE AND STRIPING SHALL BE REMOVED.

KEYED NOTES

1. INSTALL CURB PER DETAIL B
2. INSTALL ASPHALT PAVING WITH BASE COURSE PER DETAIL A
3. SOLID 4" WHITE REFLECTORIZED STRIPE
4. 12" SOLID WHITE PLASTIC REFLECTORIZED STRIPE
5. SOLID DOUBLE 4" YELLOW REFLECTORIZED STRIPES
6. WHITE PLASTIC REFLECTORIZED PAVEMENT MARKINGS (ARROW OR "ONLY")
7. 4" YELLOW REFLECTORIZED STRIPE - SOLID YELLOW, WITH DASH (10' DASH W/30' SPACE)
8. OBLITERATE NON-CONFORMING STRIPING
9. REMOVE EXISTING CURB AND INSTALL NEW ASPHALT CURB PER COA. STD. DWG. 2415
10. PATTERNED CONC. IN REPAIR

NOTICE TO CONTRACTOR WORKING IN C.O.A. RIGHT-OF-WAY

1. AN EXCAVATION/CONSTRUCTION PERMIT WILL BE REQUIRED BEFORE BEGINNING ANY WORK WITHIN CITY RIGHT-OF-WAY. AN APPROVED COPY OF THESE PLANS MUST BE SUBMITTED AT THE TIME OF APPLICATION FOR THIS PERMIT.
2. ALL WORK DETAILED ON THESE PLANS TO BE PERFORMED UNDER CONTRACT SHALL, EXCEPT AS OTHERWISE STATED OR PROVIDED FOR HEREON, BE CONSTRUCTED IN ACCORDANCE WITH C.O.A. STD. SPECIFICATIONS FOR PUBLIC WORKS CONSTRUCTION 1986, INCLUDING ALL UPDATES. REFERENCES MADE TO DWGS. REFER TO C.O.A. STD. DWGS.
3. TWO (2) WORKING DAYS PRIOR TO ANY EXCAVATION, THE CONTRACTOR MUST CONTACT LINE LOCATING SERVICE (Ph. 260-1990), FOR LOCATION OF EXISTING UTILITIES.
4. PRIOR TO CONSTRUCTION, THE CONTRACTOR SHALL EXCAVATE AND VERIFY THE HORIZONTAL AND VERTICAL LOCATION OF ALL OBSTRUCTIONS. SHOULD A CONFLICT EXIST, THE CONTRACTOR SHALL NOTIFY THE ENGINEER OR SURVEYOR SO THAT THE CONFLICT CAN BE RESOLVED WITH MINIMUM DELAY.
5. FIVE (5) WORKING DAYS PRIOR TO BEGINNING CONSTRUCTION THE CONTRACTOR SHALL SUBMIT TO THE CONSTRUCTION COORDINATION DIVISION, A DETAILED CONSTRUCTION SCHEDULE. TWO (2) WORKING DAYS PRIOR TO THE CONSTRUCTION, THE CONTRACTOR SHALL OBTAIN A BARRICADING PERMIT FROM THE CONSTRUCTION COORDINATION DIVISION. THE CONTRACTOR SHALL NOTIFY THE BARRICADE ENGINEER (Ph. 768-2551) PRIOR TO OCCUPYING AN INTERSECTION. ALL STREET STRIPING ALTERED OR DESTROYED SHALL BE REPLACED IN THE LOCATION AND KIND AS EXISTING OR AS INDICATED BY THIS PLAN SET.
6. MAINTENANCE OF THESE FACILITIES SHALL BE THE RESPONSIBILITY OF THE OWNER OF THE PROPERTY SERVED.

THE FOLLOWING NOTES ALSO APPLY WHEN CHECKED

- ALL UTILITIES AND UTILITY SERVICE LINES SHALL BE INSTALLED PRIOR TO PAVING.
- BACKFILL COMPACTION SHALL BE ACCORDING TO ARTERIAL STREET USE.
- TACK COAT REQUIREMENTS SHALL BE DETERMINED BY THE CITY ENGINEER.
- SIDEWALKS AND WHEELCHAIR RAMPS WITHIN THE CURB RETURNS SHALL BE CONSTRUCTED WHEREVER A NEW CURB RETURN IS CONSTRUCTED.
- IF THE CURB IS DEPRESSED FOR A DRIVEPAD OR A HANDICAP RAMP, THE DRIVEPAD OR RAMP SHALL BE CONSTRUCTED PRIOR TO ACCEPTANCE OF THE CURB AND GUTTER.
- ALL STORM DRAINAGE FACILITIES SHALL BE COMPLETED PRIOR TO FINAL ACCEPTANCE.

P.C. STA 11+10, 30' LT
BEGIN 701' RADIUS CURVE
@ PAVEMENT EDGE

concrete temp

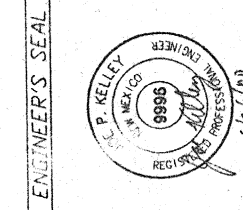
Striping and
Signage diff

CINFRAN/HUITT-ZOLLARS
333 RIO RANCHO DR. N.E., STE. 101
RIO RANCHO, N.M. 87124
(505) 892-8141

CITY OF ALBUQUERQUE PUBLIC WORKS DEPARTMENT ENGINEERING DEVELOPMENT GROUP			
TITLE: WALGREENS PARADISE BLVD. DRIVEWAY IMPROVEMENTS			
Design/Review Committee	City Engineer Approval	City Engineer	City Engineer
JUL - 6 2000	SP 14 2000		
City Project No. 644881	Zone Map No. C-12	Sheet 2	Of 4

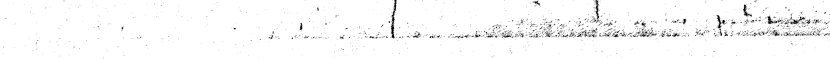
AS BUILT INFORMATION	
CONTRACTOR	DATE
ENGINEER	DATE
INSPECTOR	DATE
APPROVED BY	DATE
REVISIONS	DATE
MICRO-FILM INFORMATION	
RECORDED BY	DATE
NO.	

SURVEY INFORMATION	
FIELD NOTES	DATE
NO.	



ENGINEER'S SEAL	
NO.	DATE
REVISIONS	DATE
DESIGN	DATE
CHECKED BY	DATE

05-12-92
CTCSTD2.DWG



TYPICAL STREET CLOSURE
NOTE: (R1-1) BASED ON FIELD CONDITION

TYPICAL STREET CLOSURE

CITY OF ALBUQUERQUE PUBLIC WORKS DEPARTMENT ENGINEERING GROUP					
TITLE: PARADISE BLVD. DRIVEWAY IMPROVEMENTS TYPICAL TRAFFIC CONTROL & SIGNING EXAMPLES (REF. M.U.T.C.D.)					
APPROVALS	ENGINEER	DATE	APPROVALS	ENGINEER	DATE
DRC CHAIRMAN			WATER		
TRANSPORTATION			WASTE WATER		
HYDROLOGY					
PROJECT NO.		MAP NO.		SHEET OF	
644881		C-12		3 4	

SCANNED BY
PLAINING

-

- ALL ADVANCE WARNING SIGNS SHALL BE A MINIMUM OF FORTY EIGHT (48) INCHES BY FORTY EIGHT (48) INCHES IN SIZE AND SHALL HAVE ONE WARNING LIGHT.



L = TAPER LENGTH
W = WIDTH OF OFFSET IN FEET
S = POSTED SPEED OR OFF-PEAK
85-PERCENTILE SPEED IN MPH

08-11-92
PROSINI PAGE (1-17)