



CITY OF ALBUQUERQUE
PARKS AND RECREATION DEPARTMENT
CONSTRUCTION PLANS
FOR

CASA GRANDE LINEAR PARK FOOTBRIDGE

AUGUST 2002

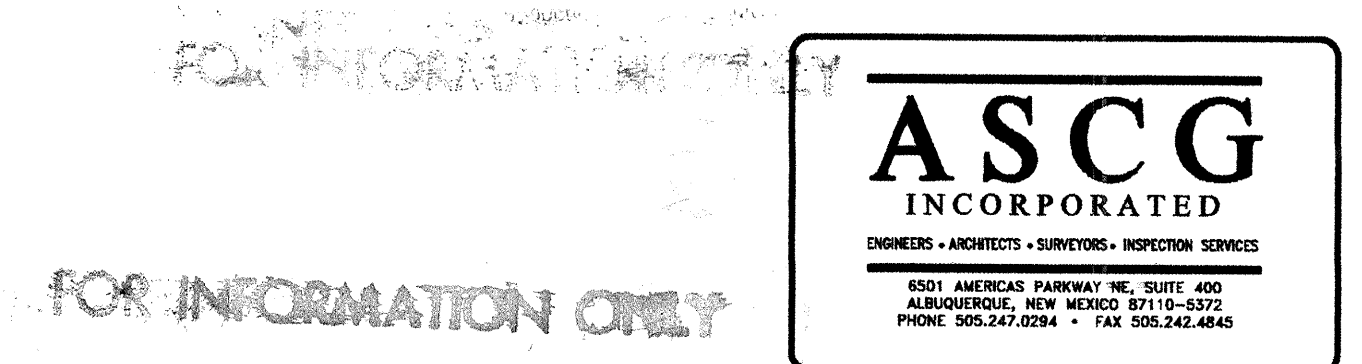
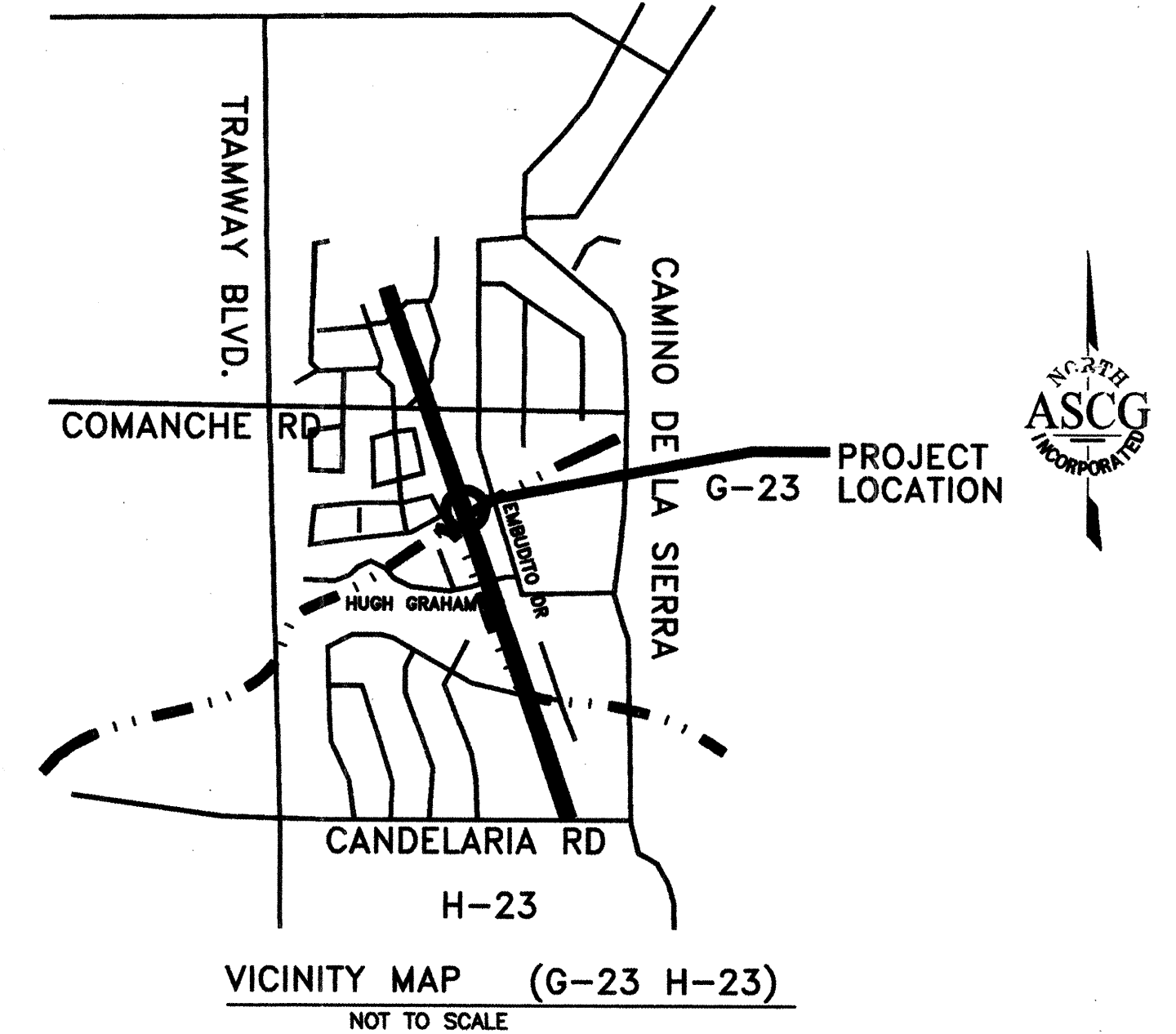
INDEX OF DRAWINGS

- 1 COVER, VICINITY MAP, INDEX OF DRAWINGS
- 2 GENERAL NOTES, ABBREVIATIONS AND LEGEND
- 3 PLAN AND DETAILS
- 4 STRUCTURAL PLAN AND ELEVATION
- 5 STRUCTURAL DETAILS

RECORD DRAWING

Date 6/23/03
These drawings have been revised based on the construction records of the owner. While the information submitted by the Owner will be assumed to be reliable, the Engineer will not be responsible for the accuracy of this information nor for errors or omissions which may appear in the record document as a result thereof.

REDRAWN FOR RECORD PURPOSES



9. (CIVIL) CIVIL/UPPER (UNPAVED) CIVIL/LOWER (PAVED) CIVIL/UPPER (PAVED) CIVIL									
--	--	--	--	--	--	--	--	--	--

CASA GRANDE LINEAR PARK FOOTBRIDGE

(SEE PLANS FOR ITEMS WITHIN THIS PROJECT)

LEGEND

PROPOSED	EXISTING	DESCRIPTION	PROPOSED	EXISTING	DESCRIPTION
		SANITARY SEWER MANHOLE			STORM DRAIN MANHOLE
		WATER MANHOLE			TELEPHONE MANHOLE
		SANITARY SEWER LINE WITH SIZE AND TYPE			STORM DRAIN LINE WITH SIZE AND TYPE
		WATER LINE WITH SIZE AND TYPE			OVERHEAD ELECTRICAL LINE
		UNDERGROUND ELECTRICAL/TRAFFIC CONTROL			UNDERGROUND TELEPHONE
		GAS LINE WITH SIZE AND TYPE			CABLE TELEVISION LINE
		ENCASEMENT			CATCH BASIN
		GATE VALVE			BUTTERFLY VALVE
		FIRE HYDRANT			REDUCER
		SANITARY SEWER SERVICE CONNECTION			WATER SERVICE CONNECTION
		TEE			CROSS
		BEND			CAP AND PLUG
		WATER METER			DOUBLE WATER METER
		VALVE BOX			POWER POLE
		LIGHT POLE			TRAFFIC LIGHT
		TRAFFIC CONTROL BOX			PULL BOX
		TELEPHONE BOOTH			

ABBREVIATIONS

AB	ANCHOR BOLT	DWG	DRAWING	MH	MANHOLE	SD	STORM DRAIN
AC	ASPHALTIC CONCRETE	E	EAST	MIN	MINIMUM	SF	SQUARE FEET
AHD	AHEAD	EA	EACH	MISC	MISCELLANEOUS	SIM	SIMILAR
APPROX	APPROXIMATELY	EF	EACH FACE	MO	MASONRY OPENING	SM	SUCTION MANIFOLD
BK	BACK	EG	EXISTING GRADE	MOV	MOTOR OPERATED VALVE	SQ	SQUARE
BLOG	BUILDING	EJ	EXPANSION JOINT	N	NORTH	STA	STATION
BLK	BLOCK	EL	ELEVATION	NIC	NOT IN CONTRACT	STD DWG	STANDARD DRAWING
BM	BEAM/BENCH MARK	ELEC	ELECTRICAL	NO	NUMBER	SY	SQUARE YARDS
BOP	BOTTOM OF PIPE	EP	EDGE OF PAVEMENT	NTS	NOT TO SCALE	SYM	SYMMETRICAL
BOT	BOTTOM	EW	ELECTRIC WATER COOLER	OD	OUTSIDE DIAMETER	TA	TOP OF ASPHALT
BRG	BEARING	EXIST	EXISTING	OPP	OPPOSITE	TAN	TANGENT
CATV	CABLE TELEVISION	FD	FLOOR DRAIN	PC	POINT OF CURVE	TC	TOP OF CONCRETE
CB	STORM CATCH BASIN/INLET	F-F	FACE-TO-FACE	PED	PEDESTAL	TG	TOP OF GRAVEL
CCY	CONCRETE CYLINDER PIPE	FF	FINISH FLOOR	PI	POINT OF INTERSECTION	THC	TOP OF HEADER CURB
CFM	CUBIC FEET PER MINUTE	FG	FINISH GRADE	PL/8	PLATE	THK	THICK/THICKNESS
CFS	CUBIC FEET PER SECOND	FL	FLOW LINE ELEVATION/FLANGE	POL	POINT ON LINE	TOC	TOP OF CURB
CI	CAST IRON	FOC	FACE OF CURB	ROW	RIGHT OF WAY	T.O.P.	TOP OF PIPE
CJ	CONSTRUCTION JOINT	FPS	FEET PER SECOND	PRC	POINT REVERSE CURVE	TOS	TOP OF STEEL
CL or CL	CENTERLINE	FT	FOOT/FEET	PRV	PRESSURE REDUCING VALVE	TOW	TOP OF WALL
CL CONST	CENTERLINE OF CONSTRUCTION	GA	GAGE	PSF	POUNDS PER SQUARE FOOT	TP	TOP OF PAVEMENT
CLG	CLEAR	CPM	GALLONS PER MINUTE	PSI	POUNDS PER SQUARE INCH	TYP	TYPICAL
CLR	CLEAR	HB	HOSE BIB	PT	POINT OF TANGENT	T&B	TOP AND BOTTOM
CMU	CONCRETE MASONRY UNIT	HC	HOLLOW CORE	PVC	POLY VINYL CHLORIDE	TW	TOP OF WALL
CO	CLEANOUT	HGL	HYDRAULIC GRADE LINE	Q	FLOW RATE	UE	UNDERGROUND ELECTRICAL
COA	CITY OF ALBUQUERQUE	HORIZ	HORIZONTAL	QTY	QUANTITY	V	VELOCITY
COL	COLUMN	HP	HIGH PRESSURE	R	RADIUS	VERT	VERTICAL
CONC	CONCRETE	IN	INCH	RCP	REINFORCED CONCRETE PIPE	VRT	VENT THROUGH ROOF
CONST	CONSTRUCTION	INV	INVERT	ROD	RESERVOIR OVERFLOW DRAIN	W	WEST
CP	CONTROL POINT	LB	POUND	RT	ROOF DRAIN	WC	WELL COLLECTOR
CY	CUBIC YARDS	LLH	LONG LEG HORIZONTAL	S	SOUTH	WL	WATER LINE
DET	DETAIL	LLV	LONG LEG VERTICAL	SAS	SANITARY SEWER		
DI	DUCTILE IRON	LT	LIGHT/LEFT				
DIA	DIAMETER	MAX	MAXIMUM				
DM	DISCHARGE MANIFOLD	MFR	MANUFACTURER				
DN	DOWN						

GENERAL NOTES

- ALL WORK DETAILED ON THESE PLANS TO BE PERFORMED UNDER THIS CONTRACT SHALL, EXCEPT AS OTHERWISE STATED OR PROVIDED FOR HEREON, BE CONSTRUCTED IN ACCORDANCE WITH THE CITY OF ALBUQUERQUE STANDARD SPECIFICATIONS FOR PUBLIC WORKS CONSTRUCTION - 1986 EDITION (REFERRED TO HEREFTER AS THE STANDARD SPECIFICATIONS AS UPDATED THROUGH UPDATE NO. 6.)
- FIVE (5) WORKING DAYS PRIOR TO ANY EXCAVATION, CONTACT NEW MEXICO ONE-CALL SYSTEM, PH. 260-1990, FOR LOCATION OF EXISTING UTILITIES.
- PRIOR TO CONSTRUCTION, EXCAVATE AND VERIFY THE HORIZONTAL AND VERTICAL LOCATIONS OF ALL OBSTRUCTIONS. SHOULD A CONFLICT EXIST, NOTIFY THE ENGINEER SO THAT THE CONFLICT CAN BE RESOLVED WITH A MINIMUM AMOUNT OF DELAY.
- COORDINATE CONSTRUCTION ACTIVITIES WITH OTHER CONTRACTORS AND UTILITY COMPANIES WORKING IN THE SAME AREA.
- ALL PERMANENT R.O.W. AND CONSTRUCTION EASEMENTS ON PRIVATE PROPERTY WILL BE OBTAINED BY THE CITY OF ALBUQUERQUE PRIOR TO THE BEGINNING OF CONSTRUCTION, AS APPLICABLE.
- WHEN ABUTTING NEW PAVEMENT TO EXISTING, SAWCUT EXISTING PAVEMENT TO A STRAIGHT LINE, AS REQUIRED, TO REMOVE ANY BROKEN OR CRACKED PAVEMENT AND MATCH NEW TO EXISTING.
- EXERCISE DUE CARE TO AVOID DISTURBING EXISTING UNDERGROUND UTILITIES. COORDINATE WITH THE UTILITY COMPANIES IN ORDER TO PREVENT ANY SERVICE DISRUPTION.
- FIVE (5) WORKING DAYS PRIOR TO CONSTRUCTION, OBTAIN A BARRICADING PERMIT FROM THE CONSTRUCTION COORDINATION DIVISION. NOTIFY BARRICADE ENGINEER (768-2551) PRIOR TO OCCUPYING STREET.
- REPLACE ALL STREET STRIPING ALTERED OR DESTROYED WITH PLASTIC REFLECTORIZED PAVEMENT MARKINGS TO EXISTING LOCATION OR AS INDICATED BY THIS PLAN SET.
- NOTIFY THE ENGINEER NOT LESS THAN SEVEN (7) CALENDAR DAYS PRIOR TO STARTING WORK SO THAT THE ENGINEER MAY TAKE NECESSARY MEASUREMENTS TO INSURE PRESERVATION OF SURVEY MONUMENTS. DO NOT DISTURB PERMANENT SURVEY MONUMENTS WITHOUT THE CONSENT OF THE ENGINEER. NOTIFY THE ENGINEER AND BEAR THE EXPENSE OF REPLACING ANY SURVEY MONUMENTS THAT MAY BE DISTURBED WITHOUT PERMISSION. REPLACEMENT WILL BE DONE ONLY BY THE CITY SURVEYOR. WHEN A CHANGE IS MADE IN THE FINISHED ELEVATIONS OF THE PAVEMENT OF ANY ROADWAY IN WHICH A PERMANENT SURVEY MONUMENT IS LOCATED, ADJUST, AT THE CONTRACTOR'S EXPENSE, THE MONUMENT COVER TO THE NEW GRADE UNLESS OTHERWISE SPECIFIED. REFER TO SECTION 4.4 OF THE GENERAL CONDITIONS OF THE STANDARD SPECIFICATIONS.
- PLACE EXCAVATED MATERIALS AS APPROVED BY THE ENGINEER.
- THE REMOVAL AND REPLACEMENT OF PRIVATE SIGNS AND OBSTRUCTIONS SHALL BE PERFORMED BY THE RESPECTIVE PROPERTY OWNERS UNLESS OTHERWISE NOTED. COORDINATION SHALL BE THE RESPONSIBILITY OF THE ENGINEER.
- WHERE TRENCHING EXPOSES EXISTING UTILITY LINES, THE CONTRACTOR IS RESPONSIBLE FOR SUPPORTING THE LINE DURING CONSTRUCTION AND ASSURE THAT IT IS BACKFILLED AND COMPACTED IN ACCORDANCE WITH THE STANDARD SPECIFICATIONS.
- CITY RIGHT-OF-WAY. AN APPROVED COPY OF THESE PLANS MUST BE SUBMITTED AT THE TIME OF APPLICATION FOR THIS PERMIT. THE COST OF THE PERMIT IS INCIDENTAL TO THE WORK.
- BACKFILL AND COMPACT IN ACCORDANCE WITH THE STANDARD SPECIFICATIONS AND SUPPLEMENTAL TECHNICAL SPECIFICATIONS.
- ANY AREA NOT PAVED OR LANDSCAPED WHICH IS DISTURBED DURING CONSTRUCTION SHALL BE SEEDED WITH NATIVE GRASS PER SPECIFICATIONS. THE COST OF SEEDING SHALL BE CONSIDERED INCIDENTAL TO THE WORK.
- ALL EXISTING REGULATORY SIGNS THAT NEED TO BE REMOVED, RELOCATED OR REINSTALLED WILL BE PERFORMED BY THE CITY OF ALBUQUERQUE PUBLIC WORKS DEPARTMENT CONSTRUCTION COORDINATOR. NOTIFY THE CITY CONSTRUCTION COORDINATOR THREE (3) WORKING DAYS IN ADVANCE OF ANY REQUIRED WORK.
- REPLACE ALL TRAFFIC SIGNS REMOVED IN KIND TO ORIGINAL LOCATIONS OR AS INDICATED BY THIS PLAN SET. THE CONTRACTOR SHALL NOTIFY THE CITY CONSTRUCTION COORDINATOR THREE (3) WORKING DAYS IN ADVANCE OF ANY REQUIRED WORK.
- COORDINATE WITH THE WATER UTILITY DIVISION (857-8200) SEVEN (7) WORKING DAYS PRIOR TO ANY WORK NEEDING THE EXECUTION OF THE WATER VALVE SHUT-OFF AND TO OBTAIN A WATER SHUT-OFF PERMIT.
- CONTRACTOR IS RESPONSIBLE FOR ANY DAMAGE TO EXISTING FACILITIES, PAVEMENTS, PAVEMENT MARKINGS, CURB AND GUTTER, DRIVEPADS, WHEELCHAIR RAMPS, SIDEWALK, GATES FENCING, ANY OTHER IMPROVEMENTS DURING CONSTRUCTION EXCEPT FROM THOSE SECTIONS INDICATED FOR REMOVAL ON THE PLANS. REPAIR OR REPLACE DAMAGED IMPROVEMENTS PER COA STANDARDS AT CONTRACTOR'S EXPENSE. PROTECT CURB AND GUTTER FROM INCIDENTAL SPLASHING DURING THE TACK COAT APPLICATION AND CLEAN SAME AT CONTRACTOR'S EXPENSE SHOULD SPLASHING OCCUR.
- MAINTAIN A GRAFFITI-FREE WORK SITE. PROMPTLY REMOVE ANY AND ALL GRAFFITI FROM EQUIPMENT, WHETHER PERMANENT OR TEMPORARY.
- PERFORM ALL EXCAVATION, TRENCHING AND SHORING ACTIVITIES IN ACCORDANCE WITH OSHA 29CFR1926.650 SUBPART P.
- PRIOR TO THE REMOVAL OF ANY PAVEMENT, CURB AND GUTTER, AND OTHER IMPROVEMENTS, SURVEY TO ENSURE RESTORATION OF PROPER GRADES, CROWN AND ELEVATIONS. REMOVE AND REPLACE SHORT (LESS THAN 6') EXISTING SECTIONS OF PAVEMENT AND CURB AND GUTTER REMAINING AFTER PRIMARY REMOVALS ARE COMPLETED.
- MINOR ADJUSTMENTS TO HORIZONTAL AND VERTICAL LOCATIONS OF IMPROVEMENTS AND RELATED COMPONENTS IS CONSIDERED INCIDENTAL TO THE WORK.
- BOULDERS MAY BE ENCOUNTERED DURING CONSTRUCTION ACTIVITIES. REMOVAL AND DISPOSAL OF BOULDERS DURING EXCAVATION ACTIVITIES IS CONSIDERED INCIDENTAL TO THE WORK AND NO ADDITIONAL PAYMENT WILL BE MADE.
- CONTACT PNM PRIOR TO CONSTRUCTION (FORBES BLAKE - 241-2973).

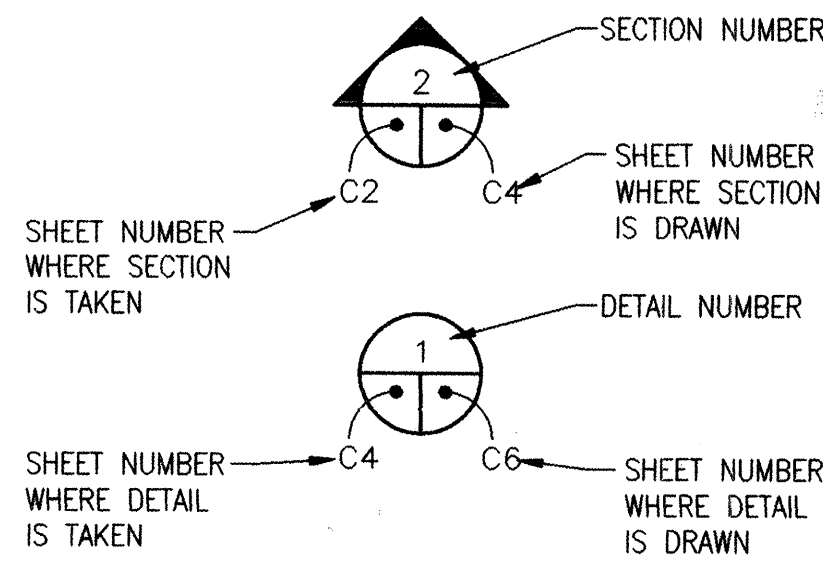
REDRAWN FOR RECORD PURPOSES

RECORD DRAWING

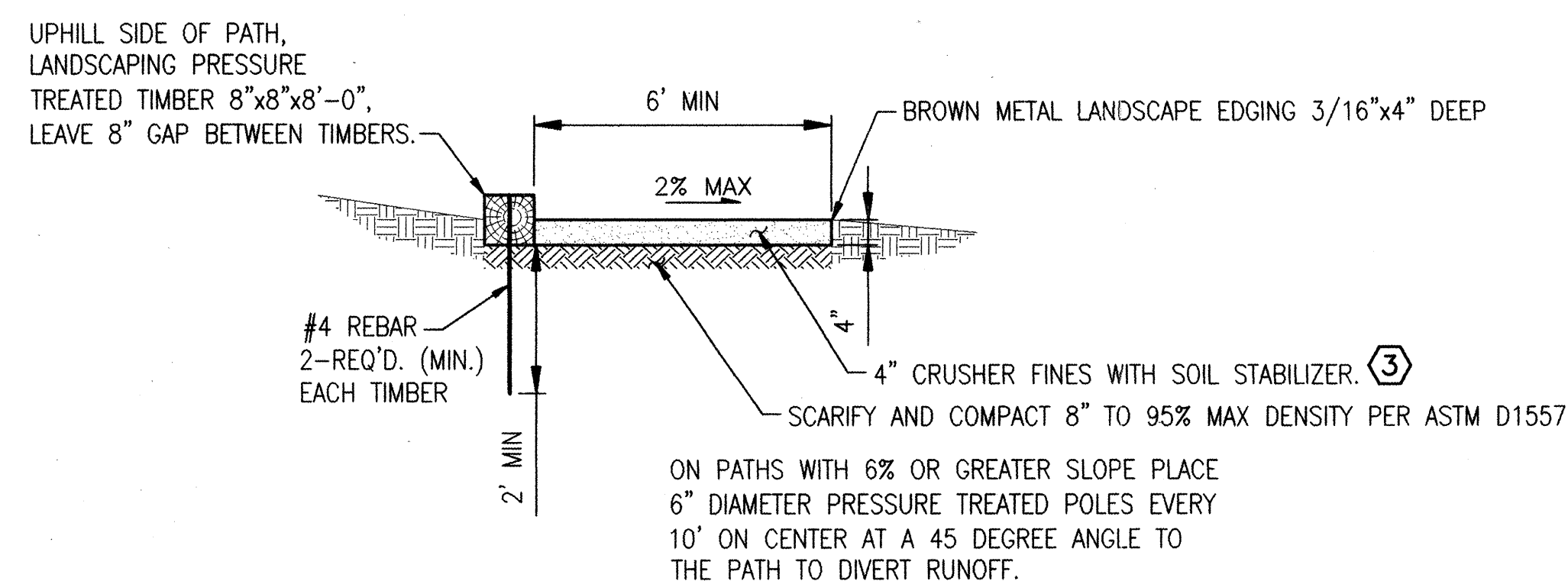
Date 6/23/03
These drawings have been revised based on the construction records of the owner. While the information submitted by the Owner will be assumed to be reliable, the Engineer will not be responsible for the accuracy of this information nor for errors or omissions which may appear in the record, document as a result thereof.

FOR INFORMATION ONLY

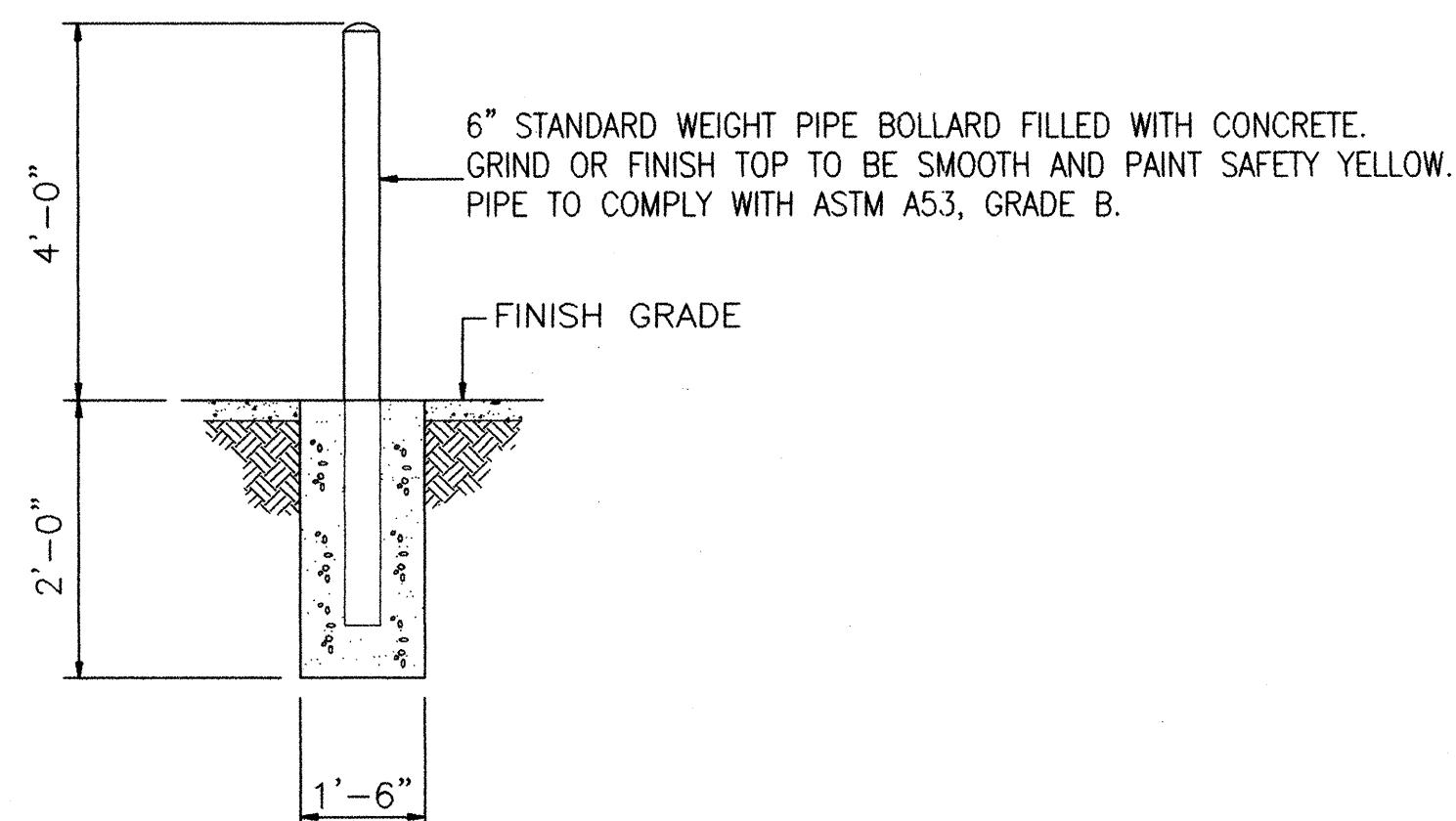
SYMBOLS



CITY OF ALBUQUERQUE PARKS AND RECREATION DEPARTMENT	
TITLE: CASA GRANDE LINEAR PARK FOOTBRIDGE GENERAL NOTES, ABBREVIATIONS AND LEGEND	
Design Review Committee	City Engineer Approval
Ms./Day/Yr.	Ms./Day/Yr.
City Project No. 6478.01	Zone Map No. G23
Sheet 2	Of 5



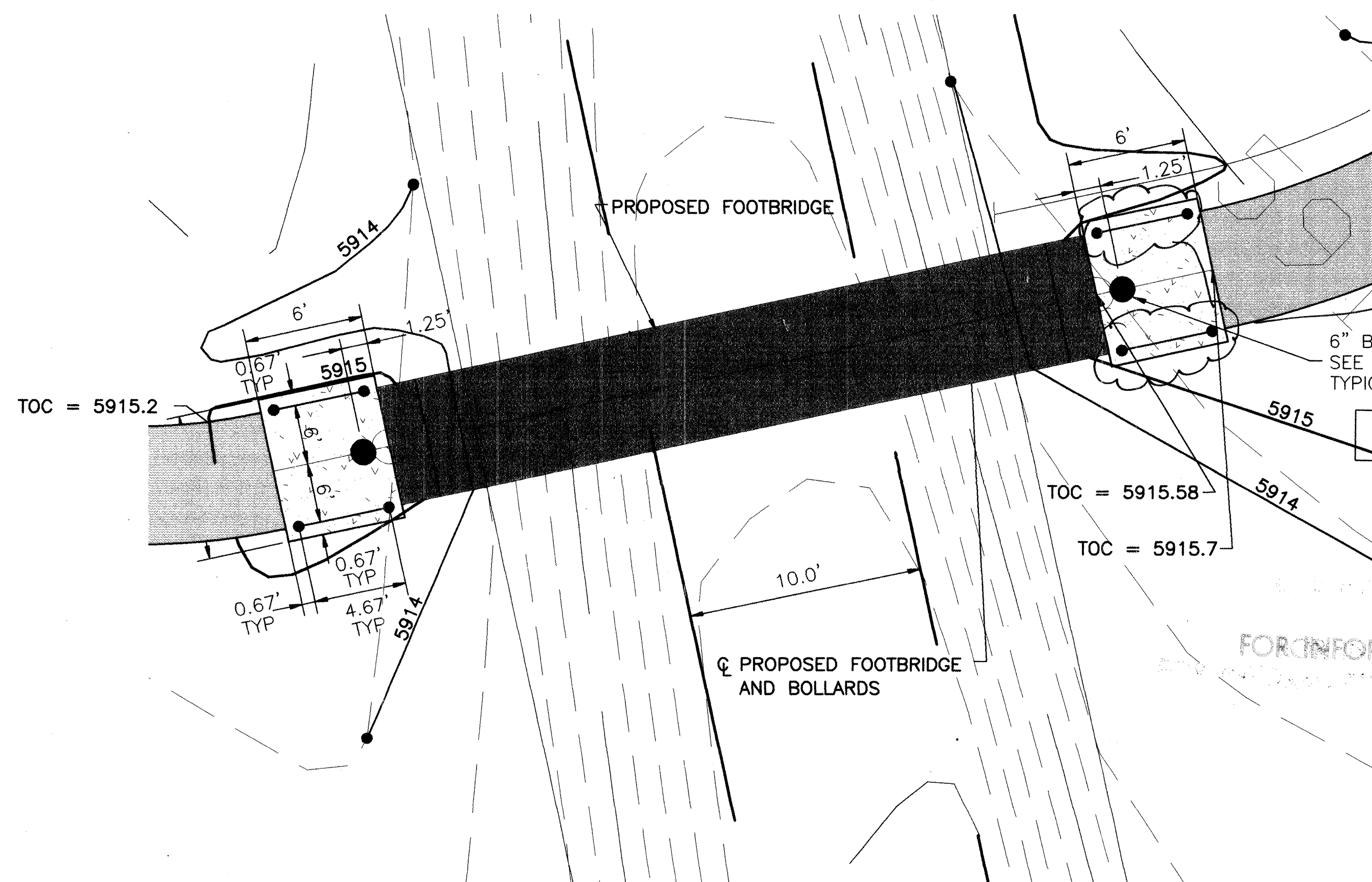
SCALE: 1/2"=1'-0"



SCALE: NONE

1

SCALE: 1"=20'



4

SCALE: 1"=5'

- 1 GRADE SWALE TO DRAIN.
LINE w/ 4"-6" COBBLE TO
REDUCE RIVULET EROSION.
- 2 REVEGETATE DISTURBED AREAS
w/ CITY STANDARD MIX PER
SPECIFICATION SECTION 1012.
- 3 UTILIZE EXCESS EXCAVATED
MATERIAL FOR PROPOSED TRAIL.
MIX WITH TERRA FIRMA STOCKOSORB
AGRO SOIL STABILIZER OR EQUAL,
PER MANUFACTURERS DIRECTIONS.
COMPACT TO 95% PER ASTM D1557.

- A ENTIRE WIDTH OF PARK LOCATED WITHIN PNM EASEMENT
PNM CONTACT: FORBES BLAKE
241-2973
- B CONTRACTOR IS RESPONSIBLE FOR REPAIR OF ANY DAMAGE TO EXISTING CHANNEL.
- C CITY OF ALBUQUERQUE PARKS AND RECREATION MANAGEMENT WILL MAINTAIN THE BRIDGE AND PATH.

RECORD DRAWING
Date 6/23/03

These drawings have been revised based on the construction records of the owner. While the information submitted by the Owner will be assumed to be reliable, the Engineer will not be responsible for the accuracy of this information nor for errors or omissions which may appear in the record document as a result thereof.

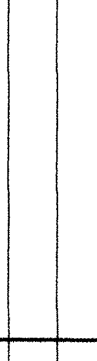
4. HANDRAIL ALIGNMENT
ADJUSTED TO ALLOW
CLEAR WIDTH FOR
HANDICAP ACCESS
(BOTH SIDES)

REDRAWN FOR RECORD PURPOSES

[illegible]

CITY OF ALBUQUERQUE PARKS AND RECREATION DEPARTMENT				
TITLE: CASA GRANDE LINEAR PARK FOOTBRIDGE				
PLAN AND DETAILS				
Design Review Committee	City Engineer Approval	Last Design Update	Mo./Day/Yr.	Mo./Day/Yr.
City Project No.	Zone Map No.	Sheet	Of	
6478.01	G23, H23	3	5	



ENGINEERS SEAL		SURVEY INFORMATION		BENCH MARKS		AS BUILT INFORMATION	
		FIELD NOTES					
		NO.	DATE				
REMARKS		DATE					
NO.		DATE					
REVISIONS							
DESIGN							
DESIGNED BY RES		DATE	07-02				
DRAWN BY HAS		DATE	07-02				
CHECKED BY HAS		DATE	07-02				
APPROVED BY HAS		DATE	07-02				
CONTRACTOR							
WORK STACKED BY							
INSPECTOR'S							
FIELD VERIFICATION BY							
DRAWINGS							
CONSIDERED BY							
MICRO-FILM INFORMATION							
RECORDED BY							
DATE							
NO.							

