

# CITY OF ALBUQUERQUE

## DEPARTMENT OF MUNICIPAL DEVELOPMENT



### APPROVAL FOR RECORD DRAWINGS

ABCWUA ENGINEER

DATE

# PLANS FOR CONSTRUCTION

## BARELAS STORM DRAIN

MAY 18, 2011

CITY OF ALBUQUERQUE PROJECT NO. 648291

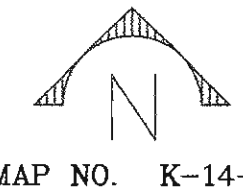
### SHEET INDEX:

DWG NO.	SHEET TITLE
1	TITLE SHEET & VICINITY MAP
2	GENERAL NOTES
3	LOCAL SURVEY CONTROL INFORMATION
4	REMOVALS
5	STORM DRAIN PLAN AND PROFILE
6	STORM DRAIN PLAN AND PROFILE
7	SUGGESTED WATER SHUT OFF PLAN
8	SUGGESTED TRAFFIC CONTROL PLAN (FOR INFORMATION ONLY)



VICINITY MAP  
N.T.S.

ZONE ATLAS MAP



### UTILITY COMPANY CONTACTS

#### ALBUQUERQUE BERNALILLO COUNTY WATER UTILITY AUTHORITY (WATER & SEWER)

ANTHONY MONTOYA JR.  
Sr. Engineer/Utility Design  
P.O. Box 1293  
Albuquerque, New Mexico 87103  
(505) 768-2729

#### PNM-ELECTRIC

ANTHONY KOZLOWSKI  
Engineering Representative  
4201 Edith Blvd., NE MS-ES61  
Albuquerque, New Mexico 87107  
(505) 241-3637

#### NEW MEXICO GAS COMPANY

EARL HOSKINS  
Project Engineer  
4625 Edith Blvd., NE  
Albuquerque, New Mexico 87107  
(505) 697-3156

#### QWEST/US WEST

RITA JARAMILLO  
NM Engineering/Planning  
400 Tijeras Ave. NW, Suite 570  
Albuquerque, New Mexico 87102  
(505) 245-8352

#### QWEST LONG DISTANCE

LARRY KELLY  
Senior Operations Tech  
400 Tijeras Ave. NW, Suite 570  
Albuquerque, New Mexico 87102  
(505) 246-0501

#### AT&T

JOHN UZCATEGUI  
Resource Supervisor  
111 Third St., NW  
Albuquerque, New Mexico 87103  
(505) 842-2911

#### COMCAST CABLE

MIKE MORTUS  
Planning and Design Supervisor  
4611 Montbel Pl. NE  
Albuquerque, New Mexico 87107  
(505) 761-6252

#### BCG ASSETS

JOHN BROWN  
505 Marquette Ave. NW, Suite LL-110 A  
Albuquerque, New Mexico 87102  
(505) 450-2338

#### TIME WARNER TELECOM

ROYAL HARRISON  
Plant Manager  
5411 Jefferson St. NE, Suite 200  
Albuquerque, New Mexico 87109  
(505)-938-7339

#### PAETEC COMMUNICATIONS

RICK MUELLER  
Supervisor of Outside Techs.  
505 Marquette Ave. NW, Suite 1600  
Albuquerque, New Mexico 87102  
(505) 217-0038

#### LEVEL 3 COMMUNICATIONS, LLC

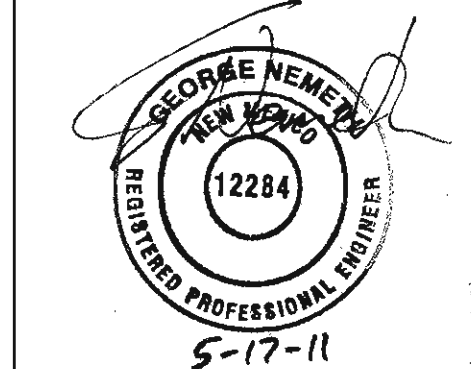
STEVE GILMAN  
Resource Supervisor  
1025 Eldorado Blvd.  
Broomfield, Colorado 80021  
(720) 888-5920

#### MCI WORLDCOM

ANDY DARNELL  
Operation Manager  
6001 Midway Park NE  
Albuquerque, New Mexico 87109  
(505) 346-4470



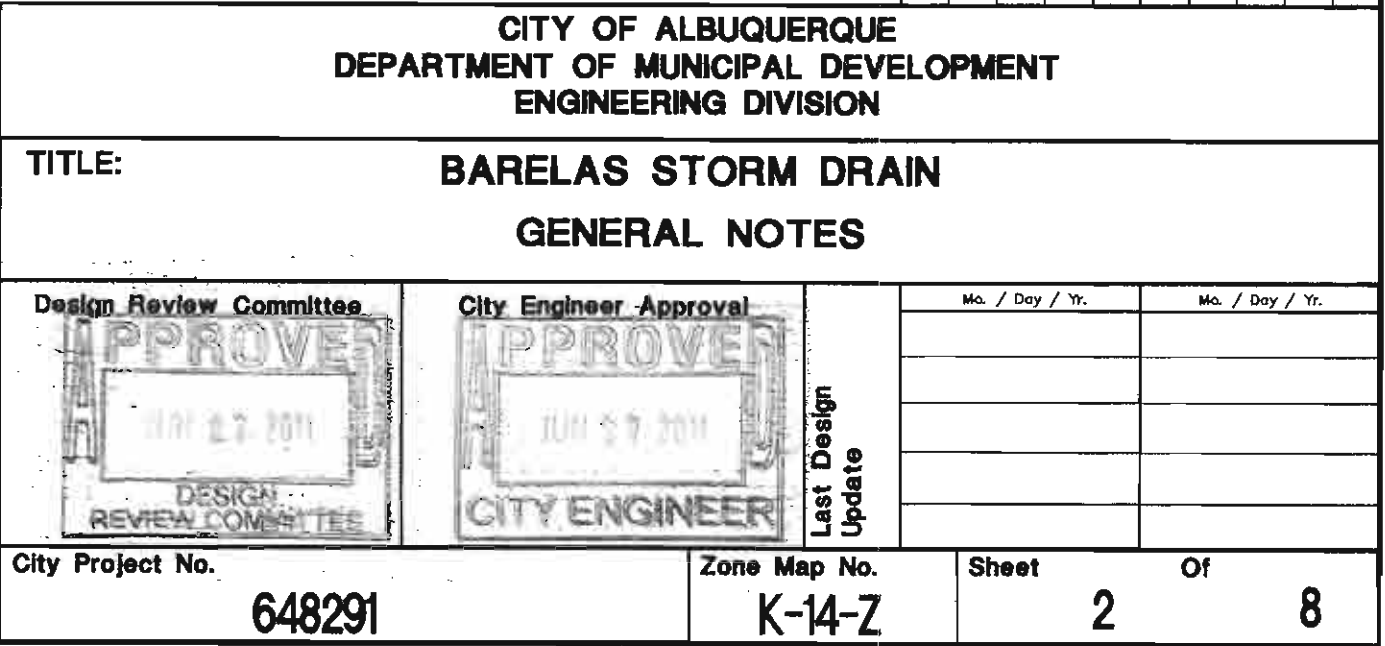
SEC JOB # 110109F



REV.	SHEETS	CITY ENGINEER	DATE	USER DEPARTMENT	DATE	USER DEPARTMENT	DATE
ENGINEERS STAMP & SIGNATURE		APPROVED	ENGINEER	DATE	APPROVED FOR CONSTRUCTION		
		DRC Chairman		6/28/11			
		Transportation		6/17/11			
		Water/Wastewater		6-2-11			
		Hydrology		6-20-11			
		C.I.P.					
		Constr. Mngmt.			CITY ENGINEER DATE		
		Constr. Coord.					
City Project No.		Zone Map No.		Sheet		Of	
648291		K-14-Z		1		8	

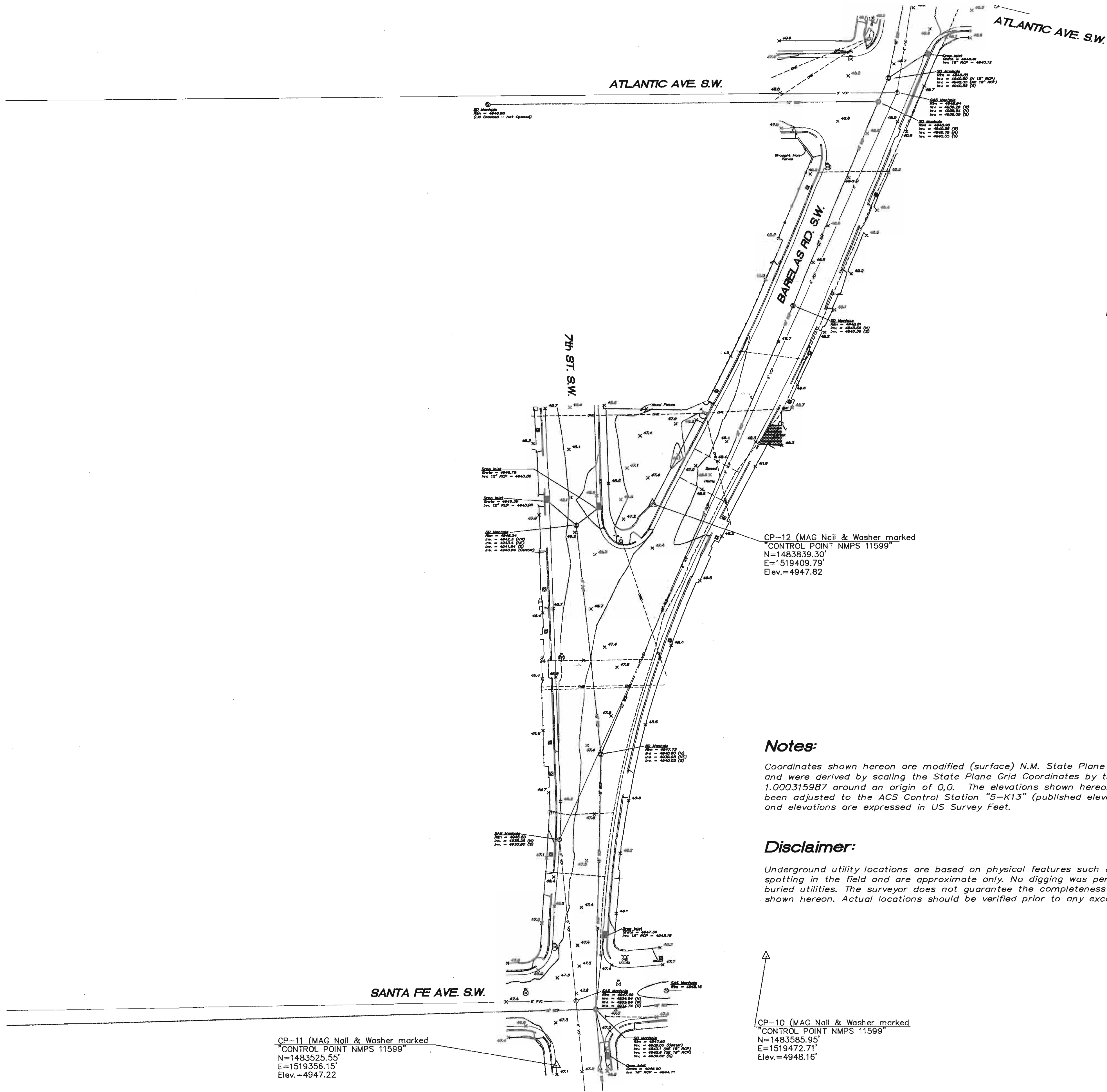
- THE REPLACEMENT OF THE EXISTING UTILITIES AND THE INSTALLATION OF NEW UTILITY LINES WILL BE COMPLETED IN ADVANCE OF STARTING THE PAVEMENT WORK. TEMPORARY PAVEMENT WILL BE PLACED IN ALL TRENCHES REQUIRED FOR THE UTILITY REPLACEMENTS IN THOSE AREAS THAT MUST MAINTAIN TRAFFIC UNTIL THE FINAL PAVEMENT WORK STARTS IN EACH AREA. TEMPORARY STRIPING SHALL BE THE CONTRACTOR'S RESPONSIBILITY. MAINTENANCE OF THE TEMPORARY PAVING AND STRIPING WILL BE AT THE CONTRACTOR'S EXPENSE.
- 24 TACK COAT FOR SURFACE COURSE REQUIREMENTS WILL BE DETERMINED BY THE CONSTRUCTION ENGINEER.
- 25 BACKFILL COMPACTION SHALL BE ACCORDING TO SPECIFIED STREET USE.
- 26 ALL NEW STREET PAVING, DRIVEWAYS, SIDEWALKS, AND CURB AND GUTTERS, ABUTTING EXISTING AREAS SHALL MATCH THE ELEVATION OF THOSE AREAS.
- 27 ALL PERMANENT PAVEMENT STRIPING AND MARKINGS WILL BE PLACED BY THE CONTRACTOR. ROAD SHALL NOT BE OPENED TO TRAFFIC UNTIL IT IS STRIPED. ALL STRIPING, PAVEMENT MARKINGS INCLUDING CROSSWALKS, ARROWS AND LINE MARKINGS ARE TO BE CONSTRUCTED OF HOT PLASTIC OR COLD (PREFORM THERMO) PLASTIC IN ACCORDANCE WITH THE MANUAL ON UNIFORM TRAFFIC CONTROL DEVICES.
- 28 ALL EXCAVATED MATERIAL THAT IS NOT REQUIRED TO BE REUSED MUST BE REMOVED FROM THE PROJECT AREA WITHIN FOUR DAYS OF EXCAVATION. SPOIL PILES WILL BE ALLOWED ONLY AS DIRECTED BY THE ENGINEER.
- 29 THE CONTRACTOR WILL COORDINATE THE CONSTRUCTION ACTIVITIES WITH ALL OTHER CONTRACTORS AND UTILITY COMPANIES WORKING IN THE SAME AREA. THE CONTRACTOR MAY BE REQUIRED TO RESCHEDULE THEIR ACTIVITIES TO ALLOW UTILITY CREWS TO PERFORM THEIR REQUIRED WORK. NO ADDITIONAL COMPENSATION WILL BE ALLOWED FOR DELAYS OR INCONVENIENCE CAUSED BY UTILITY COMPANY WORK CREWS. A CONTRACT EXTENSION MAY BE ALLOWED AS DELINEATED IN CITY OF ALBUQUERQUE STANDARD SPECIFICATIONS.
- 30 EXISTING MEDIAN CURB AND GUTTER AND STANDARD CURB AND GUTTER, NOT DISTURBED BY CONTRACTOR, BUT OUT OF ALIGNMENT, DISPLACED VERTICALLY, BADLY BROKEN AND/OR DETERIORATED, WILL BE REPLACED AS DIRECTED BY THE FIELD ENGINEER AND PAID FOR AT CONTRACT UNIT PRICES.
- 31 ALL TRAFFIC CONTROL DEVICES REQUIRED FOR DRIVEWAY CLOSURES, UTILITY CONSTRUCTION OR FOR OTHER REASONS AND NOT SHOWN ON THE SIGNING PLANS WILL BE FURNISHED BY THE CONTRACTOR. PRIOR TO PLACING THE TRAFFIC CONTROL DEVICES, THE CONTRACTOR WILL NOTIFY THE AFFECTED OWNERS IN ACCORDANCE WITH THE SPECIFICATIONS. CONTRACTOR MUST MAKE PROVISIONS TO PROVIDE ACCESS TO PROPERTIES. REFER TO SECTION 19 OF THE SPECIFICATIONS.
- 32 THE CONTRACTOR SHALL SUPPORT EXPOSED UTILITIES SUSPENDED ACROSS AND/OR PARALLEL TO THE TRENCH EXCAVATION(S). STRUCTURAL SUPPORTING ELEMENTS SHALL INCLUDE, BUT NOT NECESSARILY BE LIMITED TO, SUPPORTS ON EACH END OF THE EXCAVATION WITH ANY AND ALL EXPOSED PIPE JOINTS, TEES, AND FITTINGS ALSO SUPPORTED ON BOTH SIDES OF THE UNION. MAXIMUM VERTICAL SAG SHALL NOT EXCEED ONE (1) INCH PER 100 FEET OF EXPOSED PIPE AS DETERMINED BY STRING-LINE MEASUREMENTS FROM EACH END OF THE EXPOSED PIPE.
- 33 THE WATER AUTHORITY MAKES NO GUARANTEE AS TO THE DEPTH AND ALIGNMENT OF ANY BURIED INFRASTRUCTURE. DESIGN ENGINEERS AND CONTRACTORS ARE RESPONSIBLE FOR POTHOLES AND DETERMINING ALL LINE LOCATIONS PRIOR PROCEEDING WITH ANY LINE PROTECTION ACTIVITIES MAY IMPACT THE EXISTING INFRASTRUCTURE.
- 34 THE CONTRACTOR SHALL BE RESPONSIBLE FOR ANY LEAKS AND/OR FAILURES OF WATER AND/OR SANITARY SEWER FACILITIES DUE TO INADEQUATE SUPPORT ASSOCIATED WITH THE CONSTRUCTION ACTIVITIES. ANY FAILURE ASSOCIATED WITH IMPROPER UTILITY SUPPORT RESULTING IN AN UNSCHEDULED OUTAGE SHALL BE IMMEDIATELY REPAIRED AT THE CONTRACTOR'S EXPENSE. ANY AND ALL LEAKS, FAILURES, OR DEFICIENT CONDITIONS DISCOVERED DURING THE INITIAL EXCAVATION PROCESS MUST BE BROUGHT TO THE ATTENTION OF THE WATER AUTHORITY IMMEDIATELY AND BEFORE FURTHER EXCAVATION CONTINUES SO AS TO MAKE A DETERMINATION OF ANY NECESSARY REMEDIATION.
- 35 FOR NON-EMERGENCY (PLANNED) PROJECTS REQUIRING THE SUPPORT OF INFRASTRUCTURE IN EXCESS OF 20 FEET IN LENGTH, SUPPORT DESIGNS, INCLUDING STRUCTURAL CALCULATIONS, MUST BE PROVIDED TO THE WATER AUTHORITY PRIOR TO PLAN APPROVAL. DESIGNS MUST BE BY A PROFESSIONAL ENGINEER LICENSED AND REGISTERED IN THE STATE OF NEW MEXICO. IN ORDER TO ENSURE ADEQUATE SUPPORT AT ALL TIMES WHEN THE PIPE IS EXPOSED, DESIGN LOADING CALCULATIONS SHALL BE BASED ON THE ASSUMPTION THAT THE ENTIRE PIPE VOLUME IS FILLED WITH FLUID REGARDLESS OF OBSERVED FLOWS. THE DESIGN AND IMPLEMENTATION OF THE SUPPORT PLAN SHALL BE CONSIDERED INCIDENTAL TO THE COST OF EXCAVATION & BACKFILLING.
- 36 THE CONTRACTOR WILL ASSUME RESPONSIBILITY FOR ANY DAMAGE TO EXISTING COA INFRASTRUCTURE (C & G, PAVING, PAVEMENT MARKINGS, ETC.) DURING CONSTRUCTION, APART FROM THOSE SECTIONS INDICATED FOR REMOVAL ON THE PLANS, AND WILL REPAIR OR REPLACE SAME AT HIS OWN EXPENSE. HE WILL SUITABLY PROTECT THE CURB AND GUTTER FROM INCIDENTAL SPLASHING DURING THE TACK COAT APPLICATION AND WILL BE RESPONSIBLE FOR CLEANING SAME AT HIS OWN COST SHOULD SPLASHING OCCUR.
- 37 ALL INTERFERING PORTIONS OF ABANDONED UTILITY LINES WHICH ARE EXPOSED AS A RESULT OF CONSTRUCTION WILL BE REMOVED AND DISPOSED OF BY THE CONTRACTOR. THIS WORK SHALL BE CONSIDERED INCIDENTAL TO CONSTRUCTION.
- 38 SHORING COSTS WILL BE CONSIDERED INCIDENTAL TO THE TRENCH AND BACKFILL COSTS.
- 39 THE CONTRACTOR WILL BE RESPONSIBLE FOR SECURING NPDES PERMITS REQUIRED BY APPLICABLE CITY, STATE, AND FEDERAL REGULATIONS.
- 40 THE TERM "REMOVE" USED IN THIS PLAN SET INCLUDES THE DISPOSAL OF SAID MATERIAL IN ACCORDANCE WITH CITY OF ALBUQUERQUE SPECIFICATIONS, LATEST EDITION.
- 41 THE CONTRACTOR SHALL BE RESPONSIBLE FOR PROVIDING AND MAINTAINING ALL CONSTRUCTION SIGNING UNTIL PROJECT HAS BEEN ACCEPTED BY THE CITY OF ALBUQUERQUE.
- 42 ALL REINFORCING STEEL TO BE GRADE 60 UNLESS OTHERWISE NOTED ON PLANS.

- SEC JOB # 110109F





Q:\SEC-PROJECTS\2010 Projects\110109 COA ON-CALL STORM DRAINAGE\PROJECTS\110109F Barelas Storm Drain 7th Street\CAOD\DESIGN\EXISTING SITE SURVEY.dwg



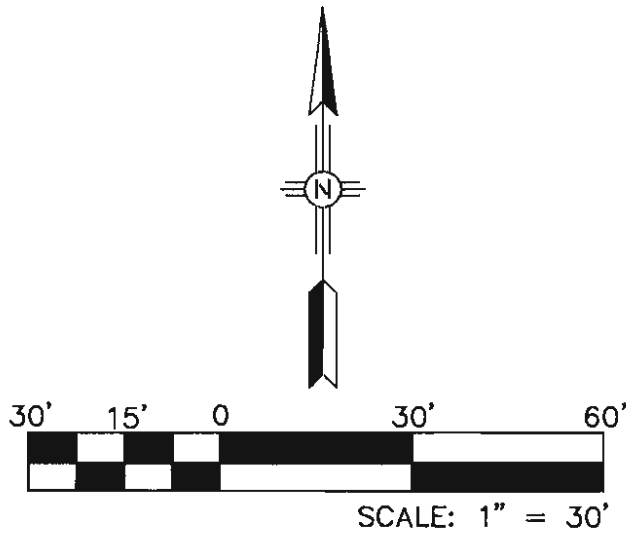
- Legend:**
- ⊙ = Sanitary Sewer Manhole
  - ⊕ = Storm Drain Manhole
  - = Drop Inlet
  - ☆ = Light Pole
  - ⊕ = Power Pole
  - ⋈ = Guy Anchor
  - TV = CATV Pedestal
  - ⊗ = Gas Valve
  - ⊗ = Water Meter
  - ⊗ = Water Valve
  - ⊗ = Fire Hydrant
  - = Single Post Sign
  - = Chain Link Fence
  - OHE--- = Overhead Electric Lines
  - = Buried Gasline Spotting
  - X 91.7 = Spot Elevation

**Notes:**

Coordinates shown hereon are modified (surface) N.M. State Plane Coordinates—NAD 83, Central Zone—and were derived by scaling the State Plane Grid Coordinates by the project average combined factor of 1.000315987 around an origin of 0,0. The elevations shown hereon are referred to NAVD 88 and have been adjusted to the ACS Control Station "5-K13" (published elevation = 4956.896'). The coordinates and elevations are expressed in US Survey Feet.

**Disclaimer:**

Underground utility locations are based on physical features such as manholes, valves, pedestals and spotting in the field and are approximate only. No digging was performed to locate the actual locations of buried utilities. The surveyor does not guarantee the completeness or accuracy of the buried utility data shown hereon. Actual locations should be verified prior to any excavating.



SEC JOB # 110109F

**SMITH**  
ENGINEERING  
Company

SOLUTIONS FOR TODAY...  
VISION FOR TOMORROW

2201 San Pedro Dr. NE  
Building 4, Suite 200  
Albuquerque, NM 87110  
Phone: (505) 864-0700  
Fax: (505) 864-2378

COLORADO NEW MEXICO TEXAS

CITY OF ALBUQUERQUE DEPARTMENT OF MUNICIPAL DEVELOPMENT ENGINEERING DIVISION			
TITLE: <b>BARELAS STORM DRAIN LOCAL SURVEY CONTROL INFORMATION</b>			
Design Review Committee 	City Engineer Approval 	Mo. / Day / Yr.	
City Project No. <b>648291</b>	Zone Map No. <b>G-18-Z</b>	Sheet <b>3</b>	Of <b>8</b>

SURVEY INFORMATION		BENCH MARKS		AS BUILT INFORMATION	
FIELD NOTES		Coordinates shown hereon are modified (surface)		CONTRACTOR	
NO.	DATE	BY	DATE	WORK	DATE
11599	Surveying Control	Incl 11/2010		STAKED BY	DATE
				ACCEPTANCE BY	DATE
				FIELD VERIFICATION BY	DATE
				RECORDED BY	DATE
				NO.	

**ENGINEERS SEAL**

REMARKS	BY
REVISIONS	
DESIGN	
DATE	05/2011
DRAWN BY	DATE
SURVEY CONTROL	05/2011
CHECKED BY	DATE
	05/2011



0 15 30 60  
feet

Scale: 1" = 60'

As-Built:  
Rim=4945.91  
Inv.=4940.58 24"RCP

4" VU+  
STA:13+07.53 OFF:-57.56LT  
RIM:4945.24  
INV OUT:4941.84 24" RCP  
INV IN:(NW)4942.3  
INV IN:(NE)4943.4

125.67 L.F.  
12" CLASS II RCP PIPE SD @ 0.25%

Atlantic Ave. SW

As-Built:  
Rim=4948.97  
Inv.Out(S)=4940.74 24"RCP

4" VU+  
STA:15+43.05 OFF:0.00  
RIM:4948.95  
INV OUT:(S)4941.56 24" RCP  
INV IN:(N)4940.75  
INV IN:(W)4940.95

125.43 L.F.  
12" CLASS II RCP PIPE SD @ 0.25%

As-Built:  
Rim=4948.74  
Inv.=4940.47 24"RCP

4" VU+  
STA:14+59.82 OFF:0.00  
RIM:4948.81  
INV IN:4941.28 24" RCP  
INV OUT:4941.18 24" RCP

7th St. SW

STA:13+07.53 57.56LT  
S=+4945.27  
S=+4943.57

Barelas Rd. SW

As-Built:  
Rim=4946.90  
Inv.=4940.11 24"RCP

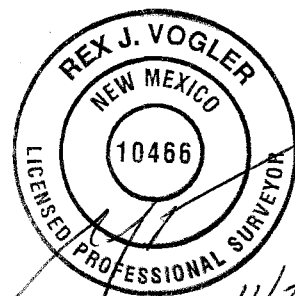
4" VU+  
STA:11+57.00 OFF:0.00  
RIM:4947.03  
INV IN:4940.34 24" RCP  
INV IN:4940.83 24" RCP  
INV OUT:4940.24 24" RCP

127.48 L.F.  
12" CLASS II RCP PIPE SD @ 0.25%

As-Built:  
Rim=4947.69  
Inv.In(N)=4939.72 24"RCP

4" VU+  
STA:10+50.00 OFF:0.00  
RIM:4947.00  
INV IN:(N)4939.72 24" RCP  
INV IN:(NE)4943.1 18" RCP  
INV IN:(SE)4942.6 18" RCP  
INV OUT:(S)4939.62 24" RCP

Santa Fe Ave. SW



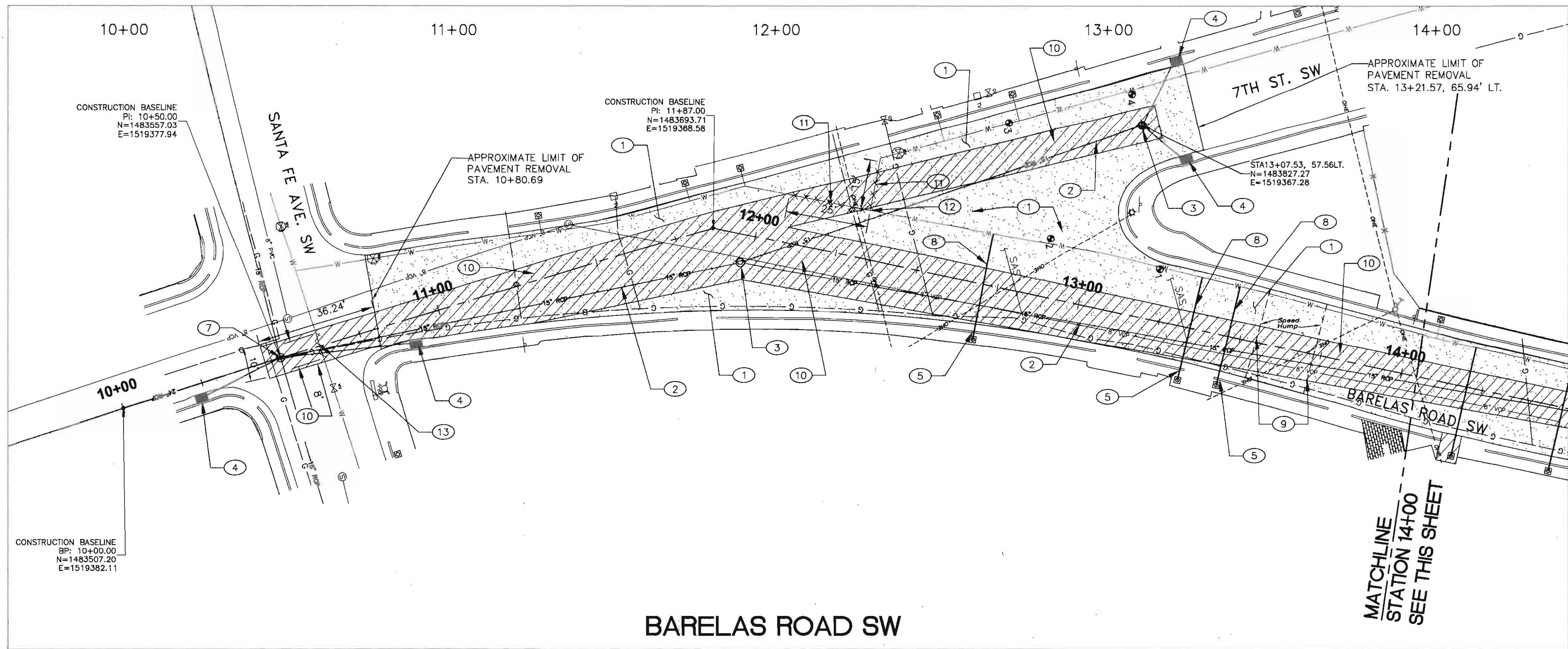
As-Built Elevations of  
**BARELAS STORM DRAIN**  
C.O.A. Project No. 648291

Contractor: TLC Plumbing & Utilities, Inc.

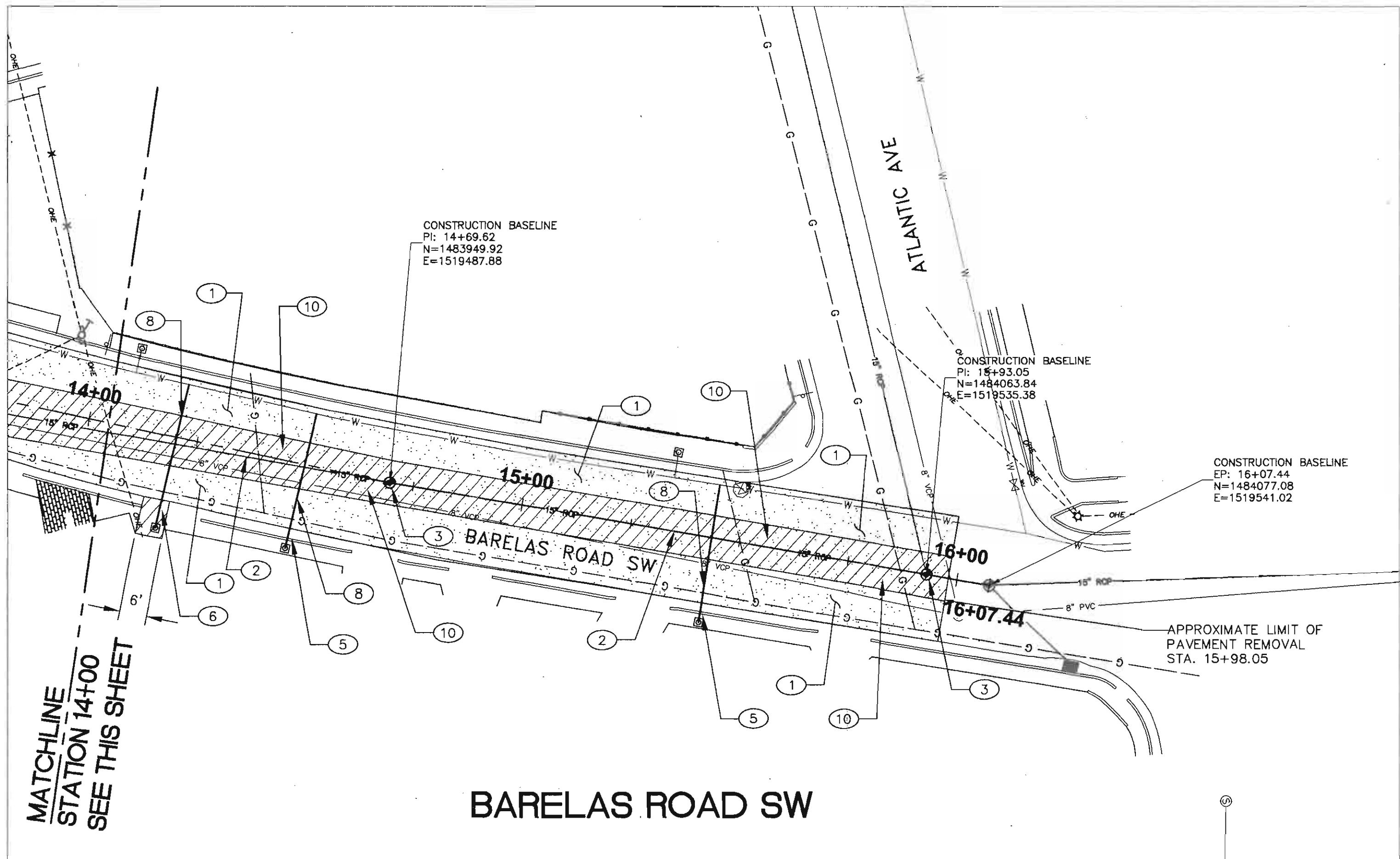
Surveyor: Rex J. Vogler, NMPS #10466

November 21, 2011

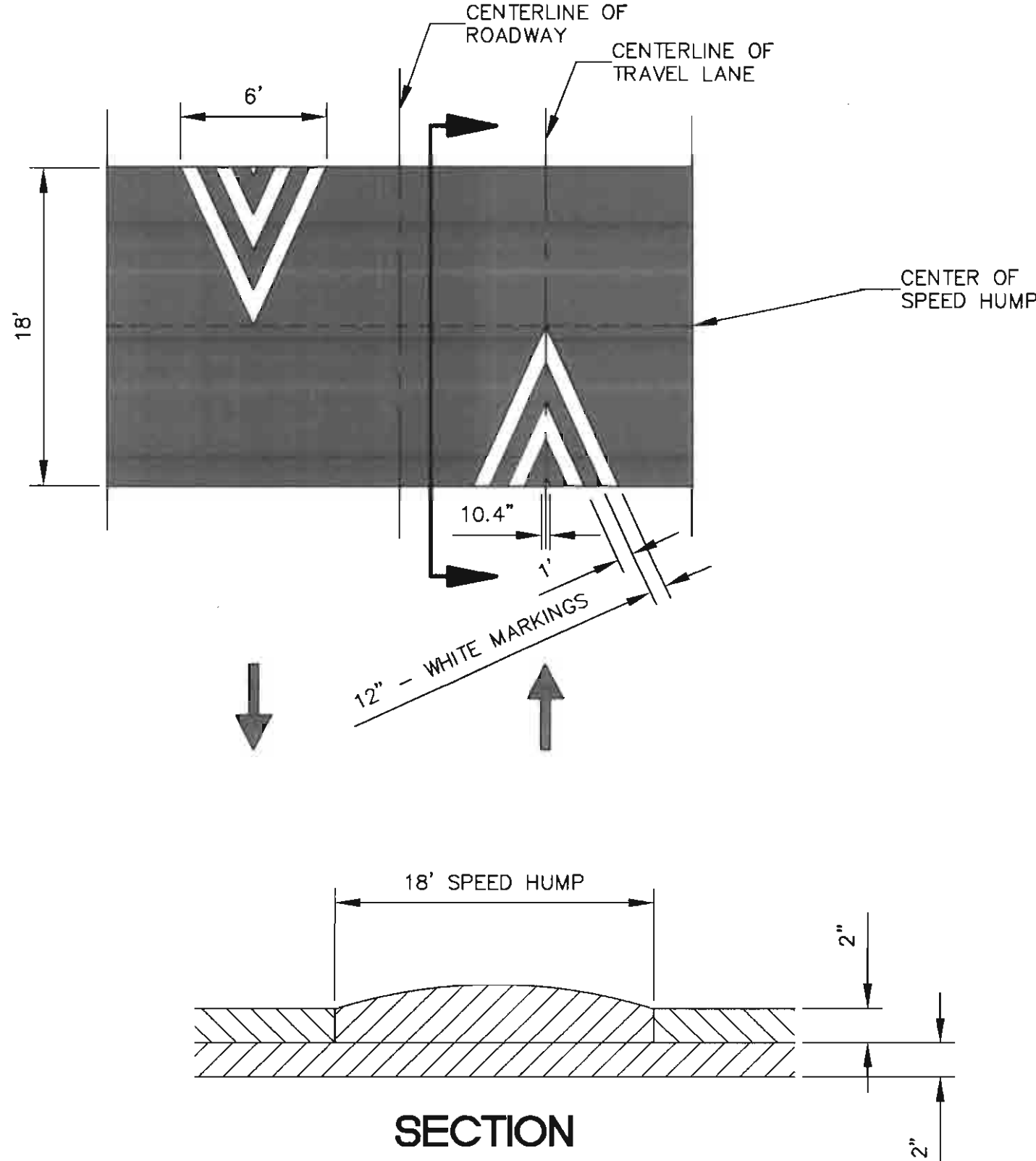
Q:\SEC\---PROJECTS\2010 Projects\110109 COA ON-CALL STORM DRAINAGE\PROJECTS\110109 Barelas Storm Drain 7th Street\CAD\DESIGN\BARELAS REMOVALS.dwg



BARELAS ROAD SW



BARELAS ROAD SW

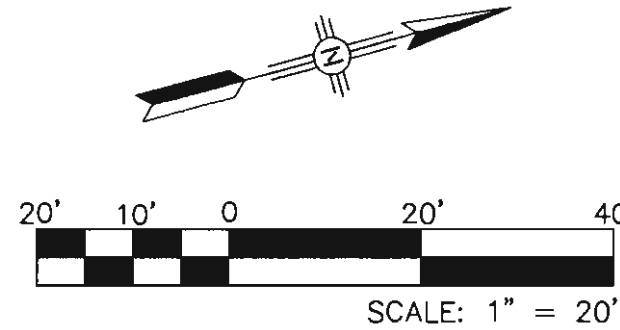


SPEED HUMP DETAIL

NOT TO SCALE

KEYED NOTES:

- 1 REMOVE 2" OF ASPHALT PAVEMENT BY MILLING. PROVIDE TACK COAT AND 2" SP-B ASPHALT OVERLAY.
- 2 REMOVE AND DISPOSE OF 15" RCP STORM DRAIN PIPE. COORDINATE WITH COA, EHD FOR PROPER DISPOSAL OF PIPE DOWNSTREAM FROM SANITARY SEWER CROSS-CONNECTION.
- 3 REMOVE AND DISPOSE OF EXISTING STORM DRAIN MANHOLE.
- 4 EXISTING STORM DRAIN INLET AND LATERAL PIPE TO REMAIN.
- 5 REMOVE AND DISPOSE OF SIDEWALK AND CURB AND GUTTER NEEDED TO INSTALL NEW WATER SERVICE LINE.
- 6 REMOVE AND DISPOSE A PORTION OF THE DRIVEPAD NEEDED TO INSTALL NEW WATER SERVICE LINE.
- 7 EXISTING STORM DRAIN MANHOLE TO REMAIN. SEE KEYED NOTE 9 ON SHEET 5 FOR REQUIRED MANHOLE MODIFICATION.
- 8 REMOVE AND DISPOSE OF EXISTING WATER SERVICE LINE. SEE KEYNOTE 3 ON SHEET 5 FOR RE-INSTALLATION OF NEW SERVICE LINE.
- 9 REMOVE, DISPOSE AND RECONSTRUCT NEW SPEED HUMPS. MATCH EXISTING SPEED HUMP SIZE AND GRADES. PAINT/TAPE NEW SPEED HUMPS. SEE DETAIL THIS SHEET.
- 10 SAWCUT, REMOVE AND REPLACE 10' OF EXISTING ASPHALT IN ACCORDANCE WITH COA STD DWG 2465 (MAJOR LOCAL).
- 11 REMOVE AND DISPOSE APPROXIMATELY 40 LF OF EXISTING 8" WATER LINE. SEE SHEET 7 FOR WATER SHUT OFF PLAN.
- 12 REMOVE AND DISPOSE OF EXISTING 8"x6" TEE.
- 13 REMOVE AND DISPOSE OF APPROXIMATELY 8 LF OF EXISTING 6" WATER LINE. SEE SHEET 7 FOR WATER SHUT OFF PLAN.



CITY OF ALBUQUERQUE  
DEPARTMENT OF MUNICIPAL DEVELOPMENT  
ENGINEERING DIVISION

TITLE: BARELAS STORM DRAIN  
REMOVALS



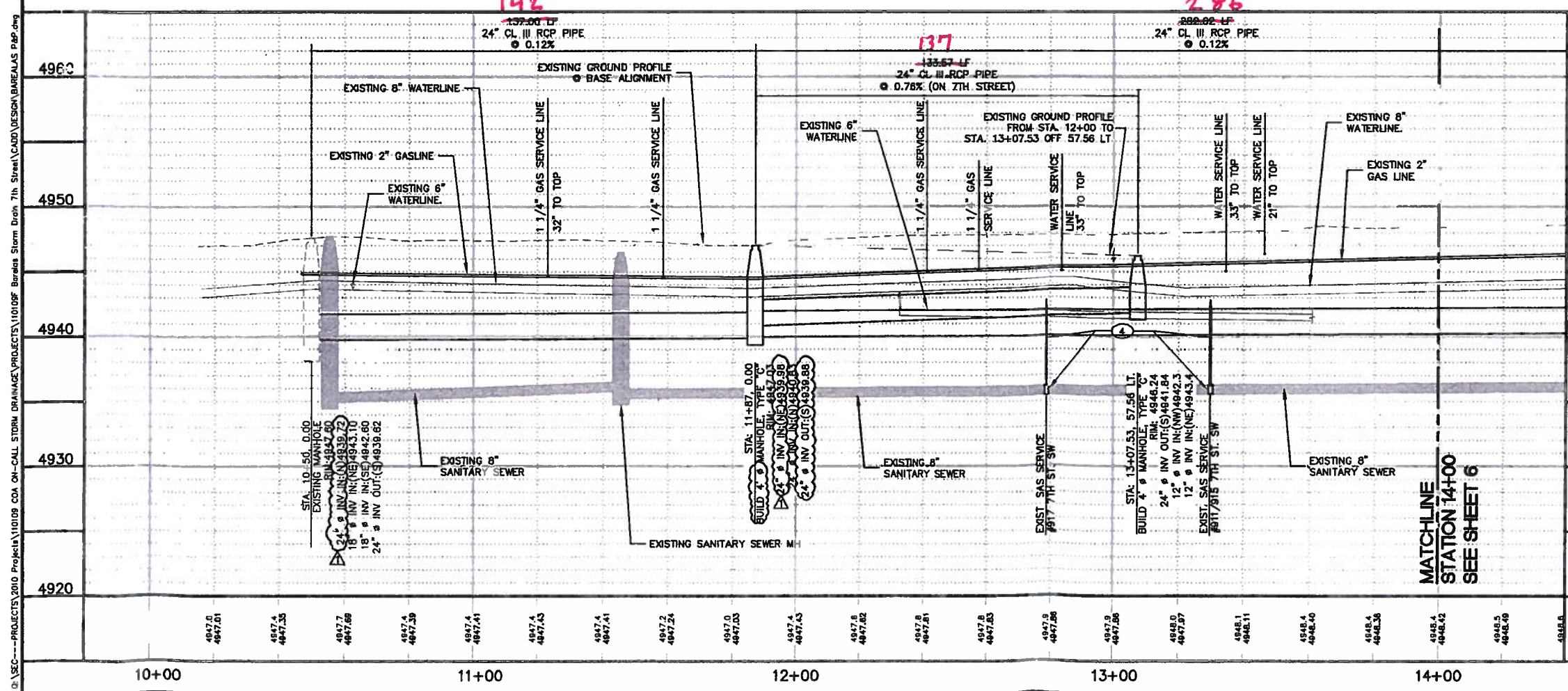
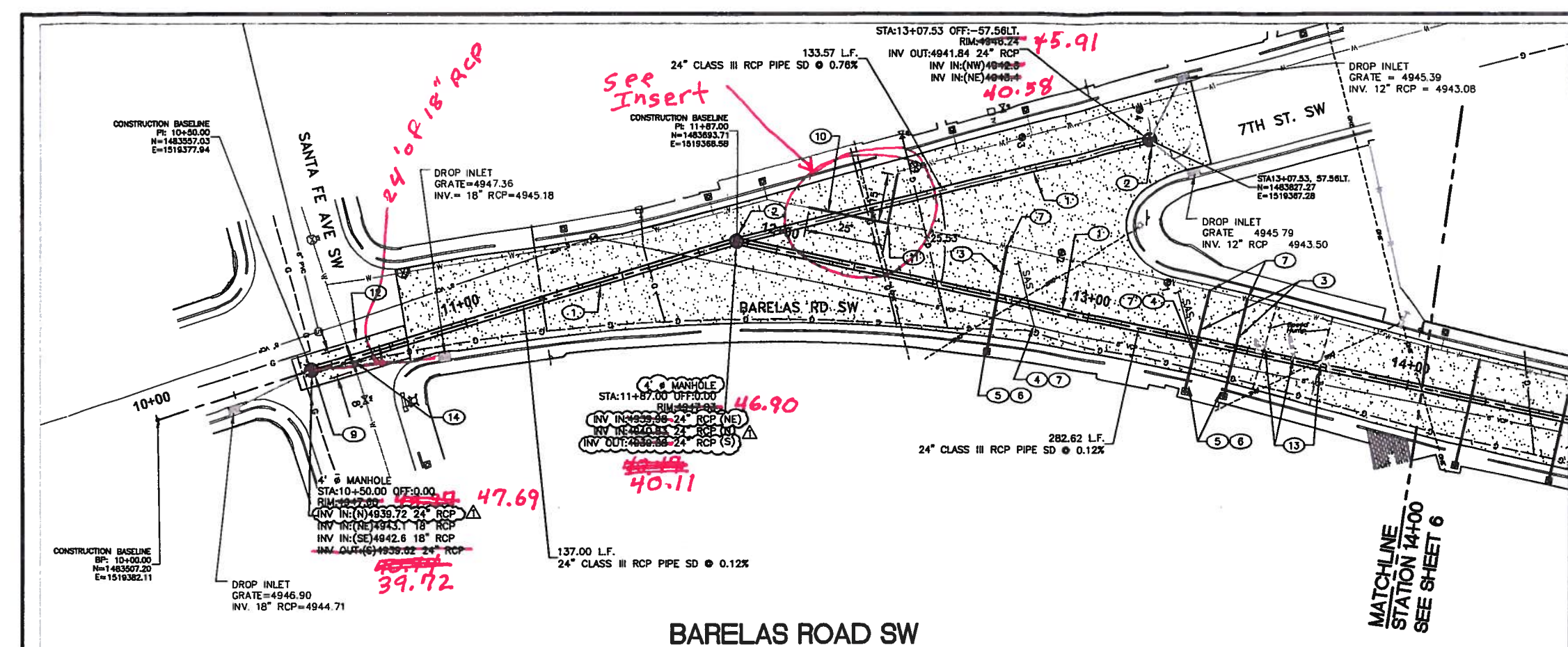
City Project No. 648291

Zone Map No. K-14-Z

Sheet 4 Of 8

AS BUILT INFORMATION		BENCH MARKS		SURVEY INFORMATION		ENGINEERS SEAL	
CONTRACTOR	DATE	Coordinates shown herein are modified (surface)	DATE	NO.	BY		REVISIONS
WORKED BY	DATE	N.M. State Plane Coordinates - Central Zone, NAD 83 and were derived by scaling State Plane grid coordinates by the project average combined factor of CF = 1.000315987 around an origin of 0.0. Elevations are NAVD 88, and are adjusted to the ACS Control Station "S-K13, 1985" (published elevation = 4956.896'). The coordinates and elevations are US Survey Feet.	DATE	11599	Surveying Control Inc 11/2010		
INSPECTOR'S ACCEPTANCE BY	DATE						
VERIFICATION BY	DATE						
DRAWINGS CORRECTED BY	DATE						
MACRO-FILM INFORMATION	DATE						
RECORDED BY	DATE						
NO.							



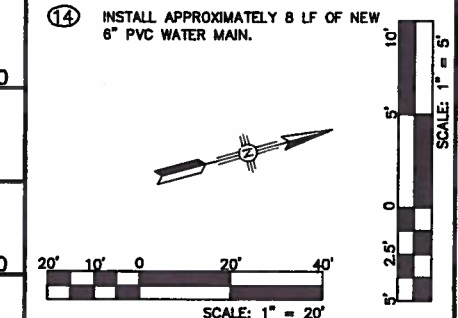


GENERAL NOTES:

- SEE SHEET 6 OF 8 FOR POTHOLE INFORMATION. UTILITY LINE LOCATIONS AND DEPTHS NOT INDICATED WITH THE SYMBOL ARE APPROXIMATE LOCATIONS, DETERMINED WITHOUT POTHOLING.

KEYED NOTES:

- BUILD NEW 24" RCP CL III PIPE, SEE PROFILE.
- NEW STORM DRAIN MANHOLE PER COA STD DWG. 2101.
- INSTALL NEW WATER SERVICE LINE FROM CORP STOP AT MAIN TO WATER METER PER COA STD DRAWING 2362.
- DISCONNECT EXISTING SANITARY SEWER SERVICE LATERALS FROM EXISTING STORM DRAIN. RECONNECT SEWER SERVICE LATERALS TO EXISTING SANITARY SEWER IN ACCORDANCE WITH COA STD DWG. 2125 AND 2134 AND AS SHOWN IN SEWER SERVICE REPLACEMENT DETAIL ON SHEET 6 OF 8. USE "GENECO" SEWER PIPE SADDLE.
- BUILD NEW SIDEWALK PER COA STD DRAWING 2430.
- BUILD NEW CURB AND GUTTER PER COA STD DRAWING 2415A.
- PROVIDE NEW EMD AT ALL NEW WATER SERVICE AND SANITARY SEWER TAPS AT THE COLLECTOR LINE.
- NOT USED.
- MODIFY EXISTING MANHOLE. ENLARGE EXISTING 15" PIPE PENETRATION (N) TO ACCOMMODATE NEW 24" PIPE. SEAL NEW 24" PIPE IN PLACE WITH NON-SHRINK GROUT.
- INSTALL APPROXIMATELY 40 LF OF NEW 8" PVC WATER MAIN.
- INSTALL NEW 8"x6" TEE.
- INSTALL NEW PAVEMENT PER SHEET 4, KEYNOTE 10.
- MATCH EXISTING SPEED HUMP GRADES. SEE SHEET 6 OF 8 FOR ENLARGED DETAIL OF THIS AREA.
- INSTALL APPROXIMATELY 8 LF OF NEW 6" PVC WATER MAIN.



CITY OF ALBUQUERQUE DEPARTMENT OF MUNICIPAL DEVELOPMENT ENGINEERING DIVISION	
TITLE: BARELAS STORM DRAIN PLAN AND PROFILE - STA. 10+00 TO STA. 14+00	
Design Review Committee	City Engineer Approval
City Project No. 648291	Zone Map No. K-14-Z
Sheet 5	Of 8





Lic. # 51429  
**CONSTRUCTION SERVICES**  
5000 Edith Blvd. NE  
Albuquerque, NM 87107  
761-9696 • www.ticplumbing.com

Project: Borelas Storm  
Servando Medina JCS #: 502-124  
By: \_\_\_\_\_ Date: 10-5-11

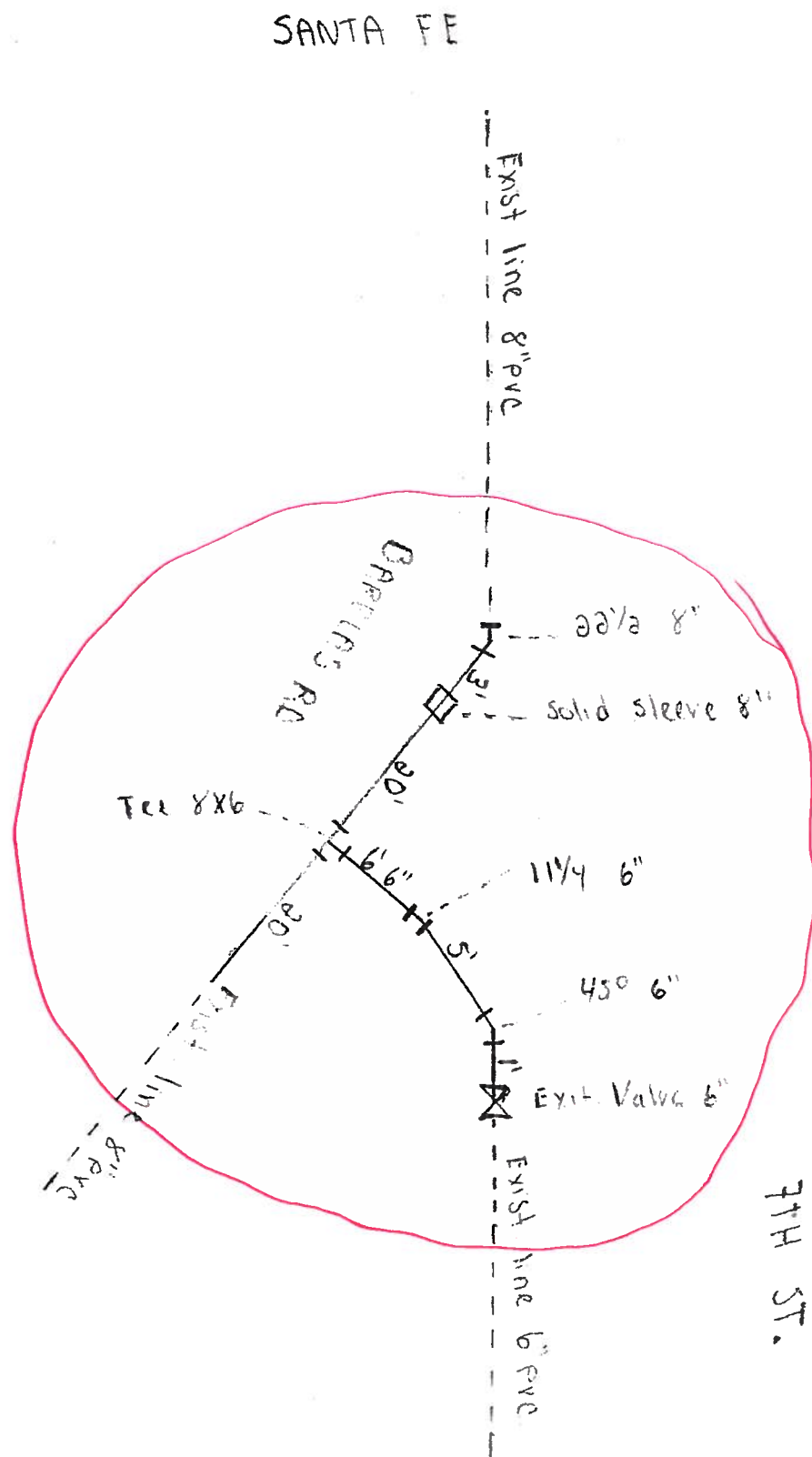
Earthwork • Utilities: Sewer, Water, Storm, Gas, Pipe Bursting • Concrete • Paving • Treatment Plants • Plumbing & HVAC

## PART

2 NON Pressure  
43' pipe 8"  
1 22 1/2 8"  
1 solid sleeve 8"  
1 Tee 8x6  
2 cap 8"

13' pipe 6"  
1 45° 6"  
1 1 1/4 6"  
1 cap 6"  
8 Regulators 8"  
7 Regulators 6"

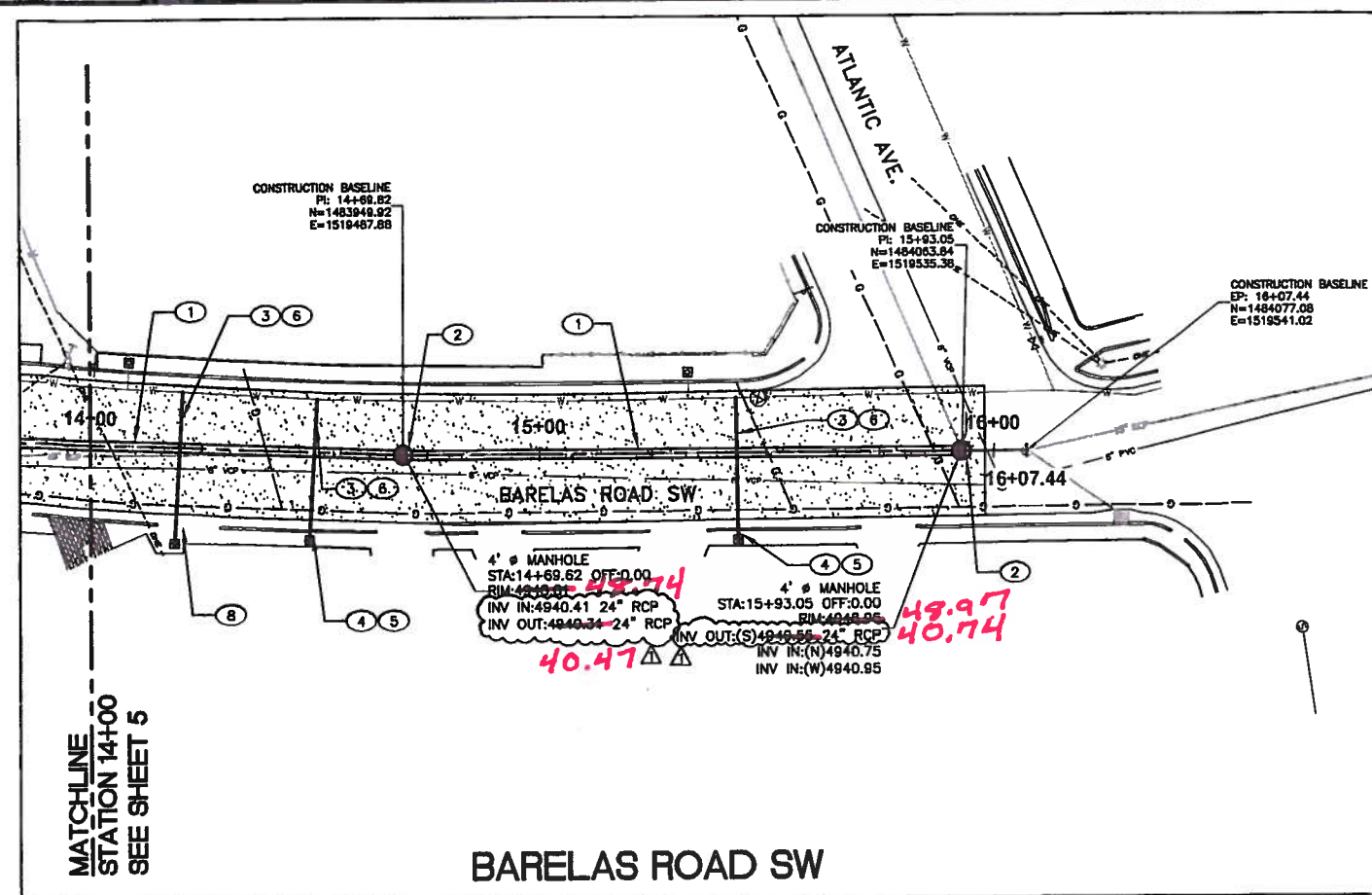
Take out 589' of old pipe  
6 new service 3/4  
197' copper 3/4





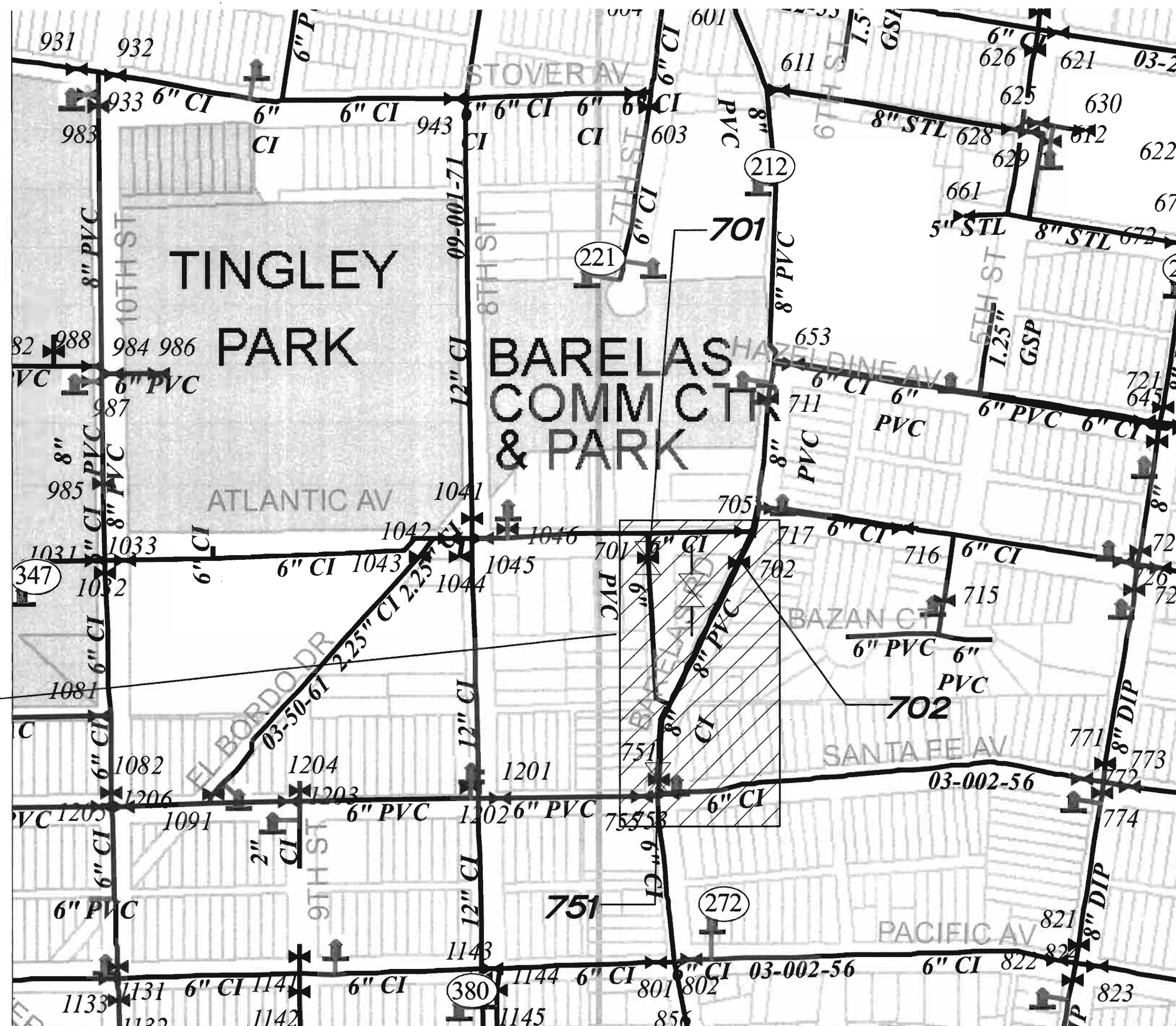






POTHOLES INFORMATION					
NO.	BURY TO TOP OF FFE	ELEV. TO TOP OF FFE	DESCRIPTION		
			UTILITY	MATERIAL	DIAMETER
1	3.30'	4943.85	WATER	PVC	8"
2	2.64'	4944.58	WATER	PVC	8"
3	3.82'	4942.02	WATER	PVC	6"
4	3.86'	41.91	WATER	PVC	6"




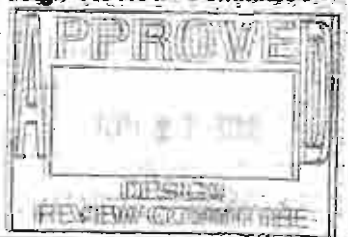
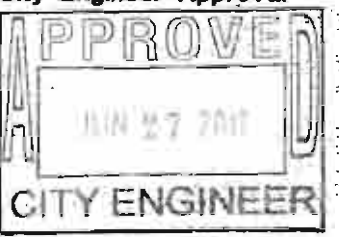
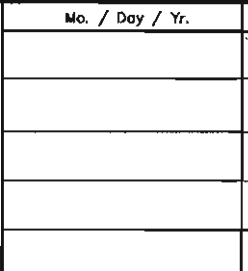
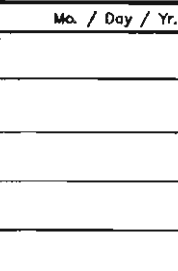


NOTE:  
CITY OF ALBUQUERQUE MAPS  
K-14

## SUGGESTED WATER SHUT OFF PLAN

NOT TO SCALE



SEC JOB # 110109F 		SOLUTIONS FOR TODAY... VISION FOR TOMORROW 2201 San Pedro Dr. NE Building 4, Suite 200 Albuquerque, NM 87110 Phone: (505) 864-0770 Fax: (505) 864-2376 COLORADO NEW MEXICO TEXAS		NO. DATE		SEC DESIGNED BY
CITY OF ALBUQUERQUE DEPARTMENT OF MUNICIPAL DEVELOPMENT ENGINEERING DIVISION						
TITLE: BARELAS STORM DRAIN SUGGESTED WATER SHUT OFF PLAN						
Design Review Committee 		City Engineer Approval 		Mo. / Day / Yr. 		Mo. / Day / Yr. 
City Project No. 648291		Zone Map No. K-14-7		Sheet 7		Of 8



