

CITY OF ALBUQUERQUE

DEPARTMENT OF MUNICIPAL DEVELOPMENT

Construction Project Information

City Inspector: Lemuel Baca
City Project Coordinator: Not Applicable
Urban Program Supervisor: Adam Bergstrasser
Construction Engineer: Bryan Wolfe
Contractor: Albuquerque Asphalt Inc.
Contractor Project Manager: Dan Fisher
Surveyor: Rex Vogler
City Project Manager: John Curtin
Letter of Acceptance Date: January 24, 2013



APPROVAL FOR RECORD DRAWINGS

ABCWUA ENGINEER

PROJECT AREA



VICINITY MAP

N.T.S.

ZONE ATLAS MAP

MAP NO. K-14-Z

UTILITY COMPANY CONTACTS

ALBUQUERQUE BERNALILLO COUNTY WATER UTILITY AUTHORITY (WATER & SEWER)

PETER CHANG
Sr. Engineer/Utility Design
P.O. Box 1293
Albuquerque, New Mexico 87103
(505) 768-2713

PNM-ELECTRIC

ARTHUR CHAVEZ
Engineering Representative
4201 Edith Blvd., NE MS-ES61
Albuquerque, New Mexico 87107
(505) 241-4038

NEW MEXICO GAS COMPANY

ZACHARY TRUJILLO
Project Engineer
4625 Edith Blvd., NE
Albuquerque, New Mexico 87107
(505) 697-3122

CENTURY LINK

ROSARITO KNIFFIN
NM Engineering/Planning
400 Tijeras Ave. NW, Suite 570
Albuquerque, New Mexico 87102
(505) 245-6374

CENTURY LINK

LARRY KELLY
Senior Operations Tech
400 Tijeras Ave. NW, Suite 570
Albuquerque, New Mexico 87102
(505) 246-0501

AT&T

JOHN UZCATEGUI
Resource Supervisor
111 Third St., NW
Albuquerque, New Mexico 87103
(505) 842-2911

COMCAST CABLE

MIKE MORTUS
Planning and Design Supervisor
4611 Montbel Pl. NE
Albuquerque, New Mexico 87107
(505) 761-6252

BCG ASSETS

ROYAL HARRISON
V.P. of Operations
505 Marquette Ave. NW, Suite LL-110 A
Albuquerque, New Mexico 87102
(505) 938-6322

TIME WARNER TELECOM

MARK BARONAK
Outside Plant Engineer
5411 Jefferson St. NE, Suite 200
Albuquerque, New Mexico 87109
(505)-938-7326

PAETEC COMMUNICATIONS

RICK MUELLER
Supervisor of Outside Techs.
505 Marquette Ave. NW, Suite 1600
Albuquerque, New Mexico 87102
(505) 217-0038

LEVEL 3 COMMUNICATIONS, LLC

STEVE GILMAN
Resource Supervisor
1025 Eldorado Blvd.
Broomfield, Colorado 80021
(720) 888-5920

MCI WORLDWIDE

ANDY DARNELL
Operation Manager
6001 Midway Park NE
Albuquerque, New Mexico 87109
(505) 346-4470

PLANS FOR CONSTRUCTION

BARELAS STORM DRAIN - PHASE 2

OCTOBER 3, 2012

CITY OF ALBUQUERQUE PROJECT NO. 648292

NOTE: THE CONTRACTOR SHALL BE RESPONSIBLE FOR PROVIDING AND MAINTAINING ALL CONSTRUCTION SIGNING UNTIL PROJECT HAS BEEN ACCEPTED BY THE CITY OF ALBUQUERQUE.

CONTRACTOR SHALL COORDINATE WITH WATER AUTHORITY SEVEN (7) DAYS IN ADVANCE OF PERFORMING WORK THAT WILL AFFECT THE PUBLIC WATER OR SANITARY SEWER INFRASTRUCTURE. WORK REQUIRING SHUTOFF OF FACILITIES DESIGNATED AS MASTER PLAN FACILITIES MUST BE COORDINATED WITH THE WATER AUTHORITY 14 DAYS IN ADVANCE OF PERFORMING SUCH WORK. ONLY WATER AUTHORITY CREWS ARE AUTHORIZED TO OPERATE PUBLIC VALVES. SHUTOFF REQUEST MUST BE MADE ONLINE AT [HTTP://ABCWUA.ORG/CONTENT/VIEW/463/729](http://ABCWUA.ORG/CONTENT/VIEW/463/729).

SHEET INDEX:

DWG NO.	SHEET TITLE
1	TITLE SHEET & VICINITY MAP
2	EXISTING SITE SURVEY
3	BARELAS ROAD REMOVAL PLAN
4	BARELAS ROAD PLAN AND PROFILE

SEC JOB # 110112



REV.	SHEETS	CITY ENGINEER	DATE	USER DEPARTMENT	DATE	USER DEPARTMENT	DATE
1	1	George Nemech	10/3/12	Engineering	10/3/12	Engineering	10/3/12
2	2	George Nemech	10/3/12	Engineering	10/3/12	Engineering	10/3/12
3	3	George Nemech	10/3/12	Engineering	10/3/12	Engineering	10/3/12
4	4	George Nemech	10/3/12	Engineering	10/3/12	Engineering	10/3/12
5	5	George Nemech	10/3/12	Engineering	10/3/12	Engineering	10/3/12
6	6	George Nemech	10/3/12	Engineering	10/3/12	Engineering	10/3/12
7	7	George Nemech	10/3/12	Engineering	10/3/12	Engineering	10/3/12
8	8	George Nemech	10/3/12	Engineering	10/3/12	Engineering	10/3/12
9	9	George Nemech	10/3/12	Engineering	10/3/12	Engineering	10/3/12
10	10	George Nemech	10/3/12	Engineering	10/3/12	Engineering	10/3/12
11	11	George Nemech	10/3/12	Engineering	10/3/12	Engineering	10/3/12
12	12	George Nemech	10/3/12	Engineering	10/3/12	Engineering	10/3/12
13	13	George Nemech	10/3/12	Engineering	10/3/12	Engineering	10/3/12
14	14	George Nemech	10/3/12	Engineering	10/3/12	Engineering	10/3/12
15	15	George Nemech	10/3/12	Engineering	10/3/12	Engineering	10/3/12
16	16	George Nemech	10/3/12	Engineering	10/3/12	Engineering	10/3/12
17	17	George Nemech	10/3/12	Engineering	10/3/12	Engineering	10/3/12
18	18	George Nemech	10/3/12	Engineering	10/3/12	Engineering	10/3/12
19	19	George Nemech	10/3/12	Engineering	10/3/12	Engineering	10/3/12
20	20	George Nemech	10/3/12	Engineering	10/3/12	Engineering	10/3/12
21	21	George Nemech	10/3/12	Engineering	10/3/12	Engineering	10/3/12
22	22	George Nemech	10/3/12	Engineering	10/3/12	Engineering	10/3/12
23	23	George Nemech	10/3/12	Engineering	10/3/12	Engineering	10/3/12
24	24	George Nemech	10/3/12	Engineering	10/3/12	Engineering	10/3/12
25	25	George Nemech	10/3/12	Engineering	10/3/12	Engineering	10/3/12
26	26	George Nemech	10/3/12	Engineering	10/3/12	Engineering	10/3/12
27	27	George Nemech	10/3/12	Engineering	10/3/12	Engineering	10/3/12
28	28	George Nemech	10/3/12	Engineering	10/3/12	Engineering	10/3/12
29	29	George Nemech	10/3/12	Engineering	10/3/12	Engineering	10/3/12
30	30	George Nemech	10/3/12	Engineering	10/3/12	Engineering	10/3/12
31	31	George Nemech	10/3/12	Engineering	10/3/12	Engineering	10/3/12
32	32	George Nemech	10/3/12	Engineering	10/3/12	Engineering	10/3/12
33	33	George Nemech	10/3/12	Engineering	10/3/12	Engineering	10/3/12
34	34	George Nemech	10/3/12	Engineering	10/3/12	Engineering	10/3/12
35	35	George Nemech	10/3/12	Engineering	10/3/12	Engineering	10/3/12
36	36	George Nemech	10/3/12	Engineering	10/3/12	Engineering	10/3/12
37	37	George Nemech	10/3/12	Engineering	10/3/12	Engineering	10/3/12
38	38	George Nemech	10/3/12	Engineering	10/3/12	Engineering	10/3/12
39	39	George Nemech	10/3/12	Engineering	10/3/12	Engineering	10/3/12
40	40	George Nemech	10/3/12	Engineering	10/3/12	Engineering	10/3/12
41	41	George Nemech	10/3/12	Engineering	10/3/12	Engineering	10/3/12
42	42	George Nemech	10/3/12	Engineering	10/3/12	Engineering	10/3/12
43	43	George Nemech	10/3/12	Engineering	10/3/12	Engineering	10/3/12
44	44	George Nemech	10/3/12	Engineering	10/3/12	Engineering	10/3/12
45	45	George Nemech	10/3/12	Engineering	10/3/12	Engineering	10/3/12
46	46	George Nemech	10/3/12	Engineering	10/3/12	Engineering	10/3/12
47	47	George Nemech	10/3/12	Engineering	10/3/12	Engineering	10/3/12
48	48	George Nemech	10/3/12	Engineering	10/3/12	Engineering	10/3/12
49	49	George Nemech	10/3/12	Engineering	10/3/12	Engineering	10/3/12
50	50	George Nemech	10/3/12	Engineering	10/3/12	Engineering	10/3/12
51	51	George Nemech	10/3/12	Engineering	10/3/12	Engineering	10/3/12
52	52	George Nemech	10/3/12	Engineering	10/3/12	Engineering	10/3/12
53	53	George Nemech	10/3/12	Engineering	10/3/12	Engineering	10/3/12
54	54	George Nemech	10/3/12	Engineering	10/3/12	Engineering	10/3/12
55	55	George Nemech	10/3/12	Engineering	10/3/12	Engineering	10/3/12
56	56	George Nemech	10/3/12	Engineering	10/3/12	Engineering	10/3/12
57	57	George Nemech	10/3/12	Engineering	10/3/12	Engineering	10/3/12
58	58	George Nemech	10/3/12	Engineering	10/3/12	Engineering	10/3/12
59	59	George Nemech	10/3/12	Engineering	10/3/12	Engineering	10/3/12
60	60	George Nemech	10/3/12	Engineering	10/3/12	Engineering	10/3/12
61	61	George Nemech	10/3/12	Engineering	10/3/12	Engineering	10/3/12
62	62	George Nemech	10/3/12	Engineering	10/3/12	Engineering	10/3/12
63	63	George Nemech	10/3/12	Engineering	10/3/12	Engineering	10/3/12
64	64	George Nemech	10/3/12	Engineering	10/3/12	Engineering	10/3/12
65	65	George Nemech	10/3/12	Engineering	10/3/12	Engineering	10/3/12
66	66	George Nemech	10/3/12	Engineering	10/3/12	Engineering	10/3/12
67	67	George Nemech	10/3/12	Engineering	10/3/12	Engineering	10/3/12
68	68	George Nemech	10/3/12	Engineering	10/3/12	Engineering	10/3/12
69	69	George Nemech	10/3/12	Engineering	10/3/12	Engineering	10/3/12
70	70	George Nemech	10/3/12	Engineering	10/3/12	Engineering	10/3/12
71	71	George Nemech	10/3/12	Engineering	10/3/12	Engineering	10/3/12
72	72	George Nemech	10/3/12	Engineering	10/3/12	Engineering	10/3/12
73	73	George Nemech	10/3/12	Engineering	10/3/12	Engineering	10/3/12
74	74	George Nemech	10/3/12	Engineering	10/3/12	Engineering	10/3/12
75	75	George Nemech	10/3/12	Engineering	10/3/12	Engineering	10/3/12
76	76	George Nemech	10/3/12	Engineering	10/3/12	Engineering	10/3/12
77	77	George Nemech	10/3/12	Engineering	10/3/12	Engineering	10/3/12
78	78	George Nemech	10/3/12	Engineering	10/3/12	Engineering	10/3/12
79	79	George Nemech	10/3/12	Engineering	10/3/12	Engineering	10/3/12
80	80	George Nemech	10/3/12	Engineering	10/3/12	Engineering	10/3/12
81	81	George Nemech	10/3/12	Engineering	10/3/12	Engineering	10/3/12
82	82	George Nemech	10/3/12	Engineering	10/3/12	Engineering	10/3/12
83	83	George Nemech	10/3/12	Engineering	10/3/12	Engineering	10/3/12
84	84	George Nemech	10/3/12	Engineering	10/3/12	Engineering	10/3/12
85	85	George Nemech	10/3/12	Engineering	10/3/12	Engineering	10/3/12
86	86	George Nemech	10/3/12	Engineering	10/3/12	Engineering	10/3/12
87	87	George Nemech	10/3/12	Engineering	10/3/12	Engineering	10/3/12
88	88	George Nemech	10/3/12	Engineering	10/3/12	Engineering	10/3/12
89	89	George Nemech	10/3/12	Engineering	10/3/12	Engineering	10/3/12
90	90	George Nemech	10/3/12	Engineering	10/3/12	Engineering	10/3/12
91	91	George Nemech	10/3/12	Engineering	10/3/12	Engineering	10/3/12
92	92	George Nemech	10/3/12	Engineering	10/3/12	Engineering	10/3/12
93	93	George Nemech	10/3/12	Engineering	10/3/12	Engineering	10/3/12
94	94	George Nemech	10/3/12	Engineering	10/3/12	Engineering	10/3/12
95	95	George Nemech	10/3/12	Engineering	10/3/12	Engineering	10/3/12
96	96	George Nemech	10/3/12	Engineering	10/3/12	Engineering	10/3/12
97	97	George Nemech	10/3/12	Engineering	10/3/12	Engineering	10/3/12
98	98	George Nemech	10/3/12	Engineering	10/3/12	Engineering	10/3/12
99	99	George Nemech	10/3/12	Engineering	10/3/12	Engineering	10/3/12
100	100	George Nemech	10/3/12	Engineering	10/3/12	Engineering	10/3/12

CITY OF ALBUQUERQUE

DEPARTMENT OF MUNICIPAL DEVELOPMENT



APPROVAL FOR RECORD DRAWINGS

ABCWUA ENGINEER

PROJECT AREA



VICINITY MAP
N.T.S.

ZONE ATLAS MAP
N.T.S.



PLANS FOR CONSTRUCTION

BARELAS STORM DRAIN - PHASE 2

OCTOBER 3, 2012

CITY OF ALBUQUERQUE PROJECT NO. 648292

NOTE: THE CONTRACTOR SHALL BE RESPONSIBLE FOR PROVIDING AND MAINTAINING ALL CONSTRUCTION SIGNING UNTIL PROJECT HAS BEEN ACCEPTED BY THE CITY OF ALBUQUERQUE.

CONTRACTOR SHALL COORDINATE WITH WATER AUTHORITY SEVEN (7) DAYS IN ADVANCE OF PERFORMING WORK THAT WILL AFFECT THE PUBLIC WATER OR SANITARY SEWER INFRASTRUCTURE. WORK ~~10-5-12~~ 10-8-12 REQUIRING SHUTOFF OF FACILITIES DESIGNATED AS MASTER PLAN FACILITIES MUST BE COORDINATED WITH THE WATER AUTHORITY 14 DAYS IN ADVANCE OF PERFORMING SUCH WORK. ONLY WATER AUTHORITY CREWS ARE AUTHORIZED TO OPERATE PUBLIC VALVES. SHUTOFF REQUEST MUST BE MADE ONLINE AT [HTTP://ABCWUA.ORG/CONTENT/VIEW/463/729](http://abcwua.org/content/view/463/729).

SHEET INDEX:

DWG NO.	SHEET TITLE
1	TITLE SHEET & VICINITY MAP
2	EXISTING SITE SURVEY
3	BARELAS ROAD REMOVAL PLAN
4	BARELAS ROAD PLAN AND PROFILE

As Built by:



02/14/2013

SEC JOB # 110112



UTILITY COMPANY CONTACTS

ALBUQUERQUE BERNALILLO COUNTY WATER UTILITY AUTHORITY (WATER & SEWER)

PETER CHANG
Sr. Engineer/Utility Design
P.O. Box 1293
Albuquerque, New Mexico 87103
(505) 768-2713

PNM-ELECTRIC

ARTHUR CHAVEZ
Engineering Representative
4201 Edith Blvd., NE MS-ES61
Albuquerque, New Mexico 87107
(505) 241-4038

NEW MEXICO GAS COMPANY

ZACHARY TRUJILLO
Project Engineer
4625 Edith Blvd., NE
Albuquerque, New Mexico 87107
(505) 697-3122

CENTURY LINK

ROSARITO KNIFFIN
NM Engineering/Planning
400 Tijeras Ave. NW, Suite 570
Albuquerque, New Mexico 87102
(505) 245-6374

CENTURY LINK

LARRY KELLY
Senior Operations Tech
400 Tijeras Ave. NW, Suite 570
Albuquerque, New Mexico 87102
(505) 246-0501

AT&T

JOHN UZCATEGUI
Resource Supervisor
111 Third St. NW
Albuquerque, New Mexico 87103
(505) 842-2911

COMCAST CABLE

MIKE MORTUS
Planning and Design Supervisor
4611 Montbel Pl. NE
Albuquerque, New Mexico 87107
(505) 761-6252

BCG ASSETS

ROYAL HARRISON
V.P. of Operations
505 Marquette Ave. NW, Suite LL-110 A
Albuquerque, New Mexico 87102
(505) 938-6322

TIME WARNER TELECOM

MARK BARONAK
Outside Plant Engineer
5411 Jefferson St. NE, Suite 200
Albuquerque, New Mexico 87109
(505)-938-7326

PAETEC COMMUNICATIONS

RICK MUELLER
Supervisor of Outside Techs.
505 Marquette Ave. NW, Suite 1600
Albuquerque, New Mexico 87102
(505) 217-0038

LEVEL 3 COMMUNICATIONS, LLC

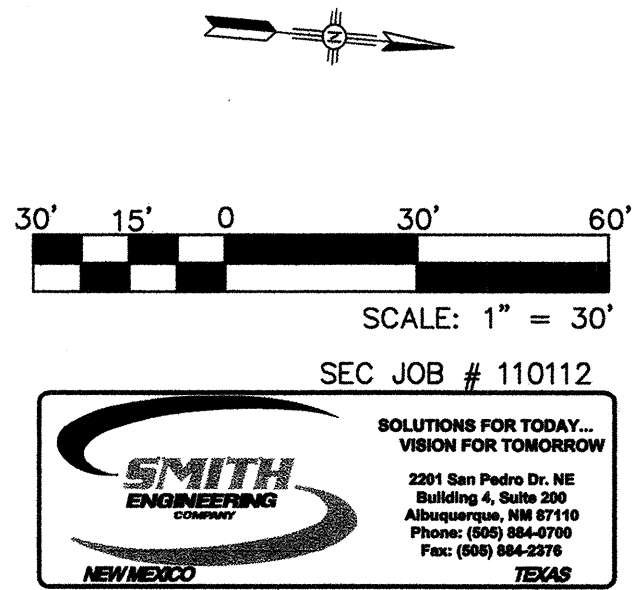
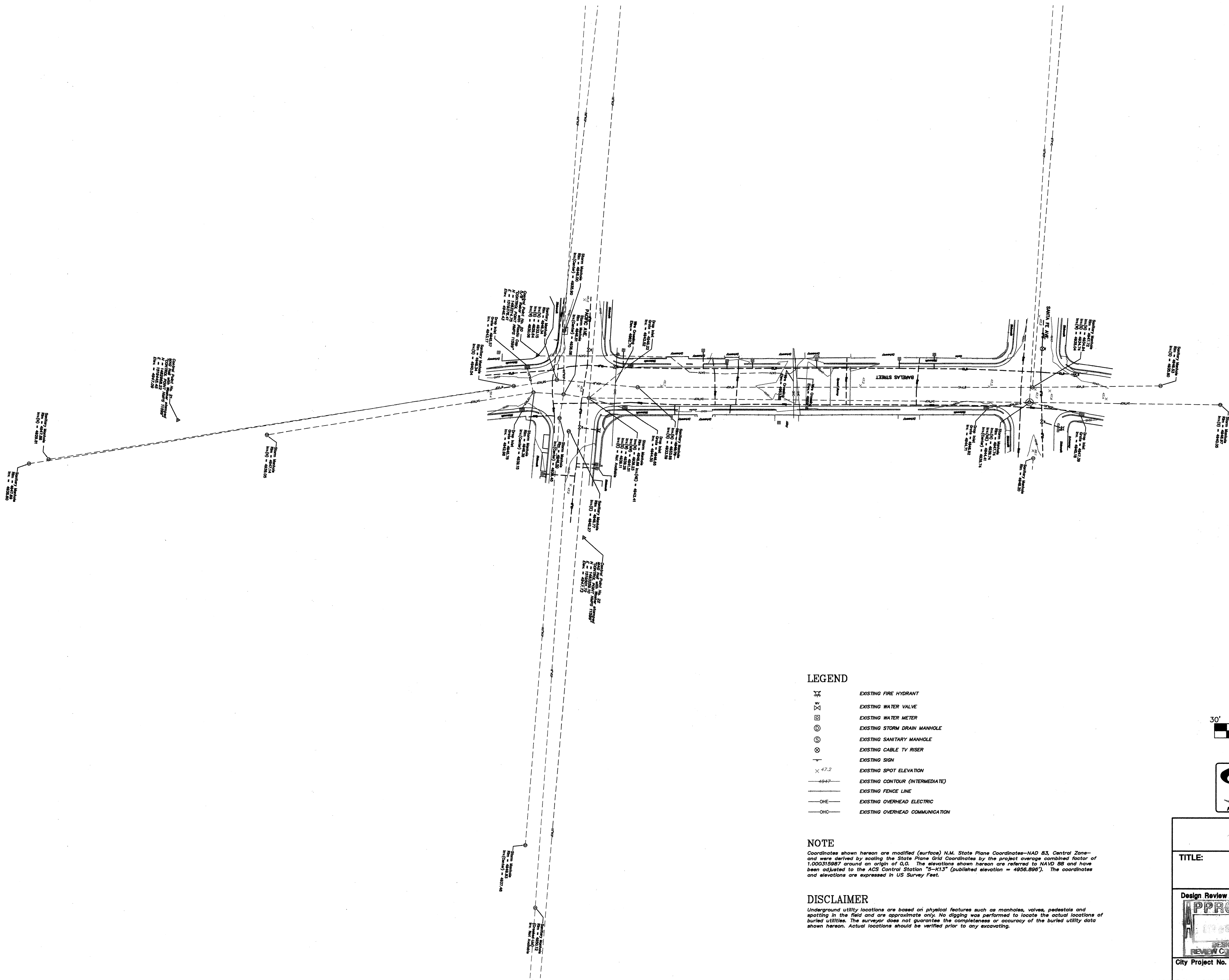
STEVE GILMAN
Resource Supervisor
1025 Eldorado Blvd.
Broomfield, Colorado 80021
(720) 898-5920

MCI WORLDCOM

ANDY DARNELL
Operation Manager
6001 Midway Park NE
Albuquerque, New Mexico 87109
(505) 346-4470

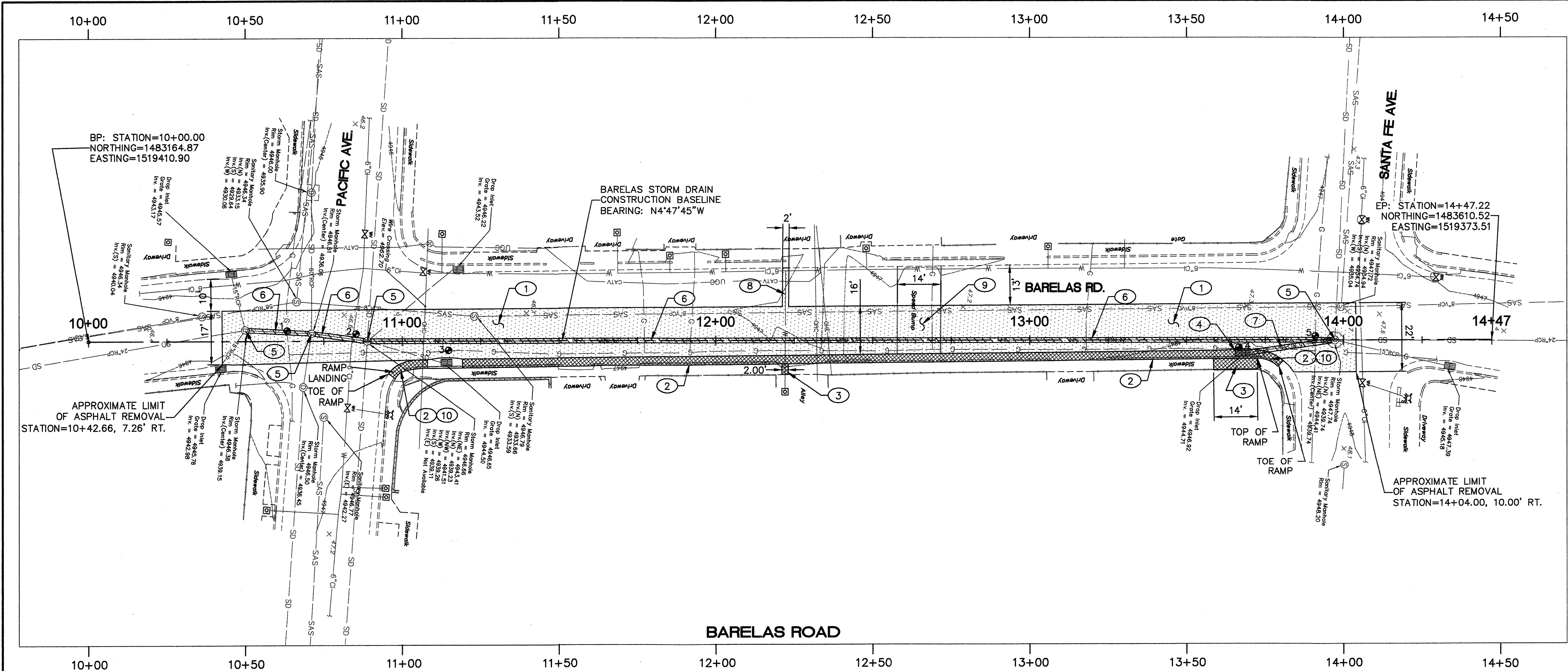
REV.	SHEETS	CITY ENGINEER	DATE	USER DEPARTMENT	DATE	USER DEPARTMENT	DATE
ENGINEERS STAMP & SIGNATURE		APPROVED	ENGINEER	DATE	APPROVED FOR CONSTRUCTION		
		DRC Chairman		10/8/12			
		Transportation		10/8/12			
		Water/Wastewater		10/8/12			
		Hydrology		10/8/12			
		CIP					
		Constr. Mgmt.					
		Constr. Coord.					
City Project No.		Zone Map No.		Sheet		Of	
648292		K-14-Z		01		04	

Q:\SEC\PROJECTS\2010 Projects\110112 COA MID VALLEY DMP\Team A1 First Supp Agreement\Barelas SD - Mid-Valley DMP Additional Work\02 SURVEY.dwg Oct 01, 2012 - 5:17pm Saved By: mitchellw

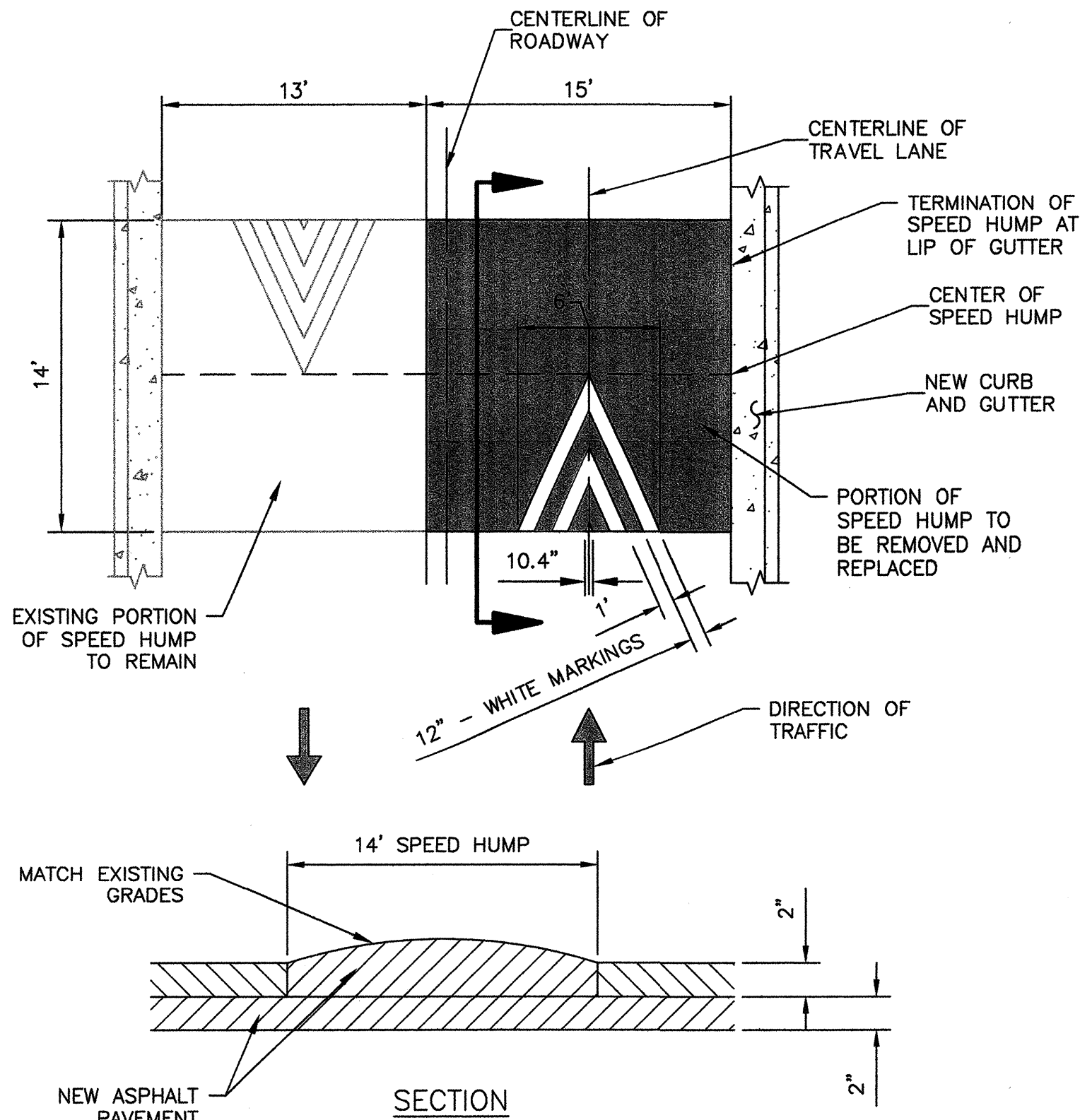
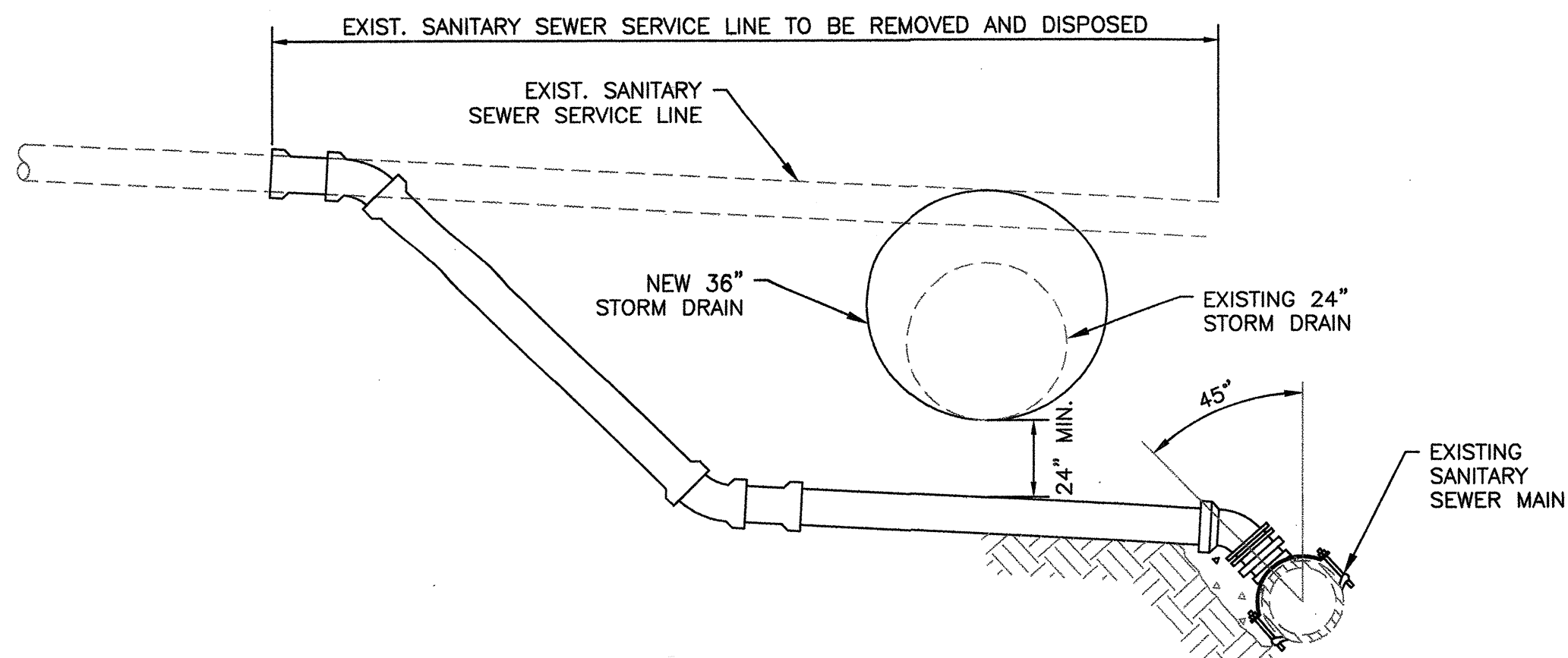


ENGINEERS SEAL			SURVEY INFORMATION		BENCH MARKS		AS BUILT INFORMATION	
			FIELD NOTES		C.O.A. CONTROL STATION "5-K13"		CONTRACTOR	
			NO.	BY	DATE	(PUBLISHED ELEV. = 4956.896') NAVD 88.	STARTED BY	DATE
			11599	SURVEYING CONTROL	07/12	COORDINATES ARE MODIFIED (SURFACE)	INSPECTOR'S ACCEPTANCE BY	DATE
						NM STATE PLANE COORDINATES	VERIFICATION BY	DATE
						CENTRAL ZONE, NAD 83.	DRAWINGS CHECKED BY	DATE
							MICRO-FILM INFORMATION	
							RECORDED BY	DATE
							NO.	

CITY OF ALBUQUERQUE DEPARTMENT OF MUNICIPAL DEVELOPMENT ENGINEERING DIVISION			
TITLE: BARELAS STORM DRAIN - PHASE 2 EXISTING SITE SURVEY			
Design Review Committee 	City Engineer Approval 	Mo. / Day / Yr.	
City Project No. 648292		Zone Map No. K-14-Z	
Sheet 02		Of 04	



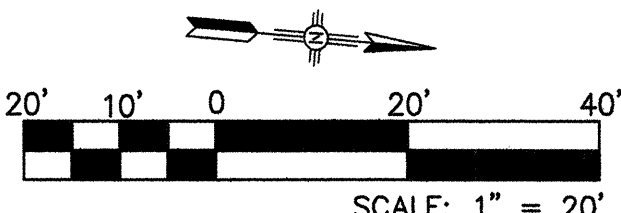
BARELAS ROAD TEST HOLE DATA									
TEST HOLE	UTILITY FOUND	UTILITY SIZE (IN FEET)	MATERIAL	REFERENCE MARKER	ELEVATION AT TOP OF REF. MARKER	ELEVATION AT TOP OF UTILITY	DEPTH TO TOP OF UTILITY	ASPHALT THICKNESS	LINE DIRECTION
1	GAS	0.20'	COATED STEEL	PK NAIL/DISC	4946.40'	4944.17'	2.23'	0.40'	E-W
2	WATER	0.50'	CAST IRON	PK NAIL/DISC	4947.46'	4943.34'	4.12'	0.40'	E-W
3	GAS	0.20'	COATED STEEL	PK NAIL/DISC	4946.80'	4943.80'	3.00'	0.30'	N-S
4	GAS	0.20'	COATED STEEL	PK NAIL/DISC	4946.92'	4943.64'	3.28'	0.30'	N-S
5	GAS	0.20'	COATED STEEL	PK NAIL/DISC	4947.65'	4944.33'	3.32'	0.30'	E-W



- GENERAL NOTES**
1. REMOVE SIDEWALK AND CURB AND GUTTER TO THE NEAREST JOINT.
 2. PROVIDE ACCESS TO RESIDENT DRIVEWAYS DURING CONSTRUCTION.
 3. SHORE OR SUPPORT EXISTING UTILITIES WITHIN THE TRENCH PRISM.
 4. IF SEWER SERVICE LINE CONNECTIONS TO EXISTING STORM DRAINS ARE ENCOUNTERED, DISCONNECT FROM STORM DRAIN AND CONNECT SERVICE LINE TO SANITARY SEWER PER SEWER SERVICE REPLACEMENT DETAIL ON THIS SHEET.

- KEYED NOTES**
- 1 REMOVE AND DISPOSE OF EXISTING ASPHALT PAVEMENT. ALL EDGES SHALL BE SAWCUT.
 - 2 REMOVE AND DISPOSE OF EXISTING CURB AND GUTTER.
 - 3 REMOVE AND DISPOSE OF EXISTING SIDEWALK. PROTECT EXISTING CHAIN LINK FENCE.
 - 4 REMOVE AND DISPOSE OF EXISTING DROP INLET.
 - 5 REMOVE AND DISPOSE OF EXISTING STORM MANHOLE.
 - 6 REMOVE AND DISPOSE OF EXISTING 24" RCP STORM DRAIN.
 - 7 REMOVE AND DISPOSE OF EXISTING 15" RCP STORM DRAIN.
 - 8 REMOVE AND DISPOSE OF EXISTING WATER SERVICE LINE IN ACCORDANCE WITH COA STD. SPECIFICATIONS.
 - 9 SAWCUT, REMOVE AND DISPOSE OF EXISTING ASPHALT SPEED HUMP. SEE DETAIL THIS SHEET FOR REPLACEMENT.
 - 10 EXISTING ADA RAMP TO REMAIN.

- LEGEND**
- 5 TEST HOLE NUMBER
 - ASPHALT REMOVAL
 - STORM DRAIN REMOVAL
 - CONCRETE REMOVAL
 - SAS EXIST. SANITARY SEWER
 - G EXIST. GAS LINE
 - W EXIST. WATER LINE
 - SD EXIST. STORM DRAIN
 - G EXIST. GAS LINE
 - OHE EXIST. OVERHEAD ELECTRIC
 - OHC EXIST. OVERHEAD COMMUNICATIONS
 - EXIST. CURB
 - EXIST. SIDEWALK
 - EXIST. CONTOUR
 - CATV EXIST. UNDERGROUND CABLE



CITY OF ALBUQUERQUE
DEPARTMENT OF MUNICIPAL DEVELOPMENT
ENGINEERING DIVISION

TITLE: **BARELAS STORM DRAIN - PHASE 2
BARELAS ROAD REMOVALS**

Design Review Committee
APPROVED
OCT 6 2012
DESIGN REVIEW COMMITTEE

City Engineer Approval
APPROVED
OCT 09 2012
CITY ENGINEER

Me. / Day / Yr.
Mo. / Day / Yr.

City Project No.
648292

Zone Map No.
K-14-Z

Sheet
03

Of
04

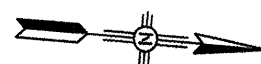
AS BUILT INFORMATION			
CONTRACTOR	WORK STARTED BY	DATE	
INSPECTOR'S	INSPECTOR'S	DATE	
FIELD	FIELD	DATE	
VERIFICATION BY	VERIFICATION BY	DATE	
COMMENTS BY	COMMENTS BY	DATE	
MICRO-FILM INFORMATION			
RECORDED BY	NO.	DATE	
BENCH MARKS			
C.O.A. CONTROL STATION "5-K13"	(PUBLISHED ELEV. = 4956.896') NAVD 88.	COORDINATES ARE MODIFIED (SURFACE)	
NO.	DATE	NO. STATE PLANE COORDINATES	
11599	07/12	CENTRAL ZONE, NAD 83.	
SURVEY INFORMATION			
FIELD NOTES	BY	DATE	
NO.	11599	SURVEYING CONTROL	
ENGINEER'S SEAL			
REMARKS	BY	DATE	
DESIGN		10-2012	
REVISIONS		10-2012	
NO.	DATE	DESIGNED BY	SEC
		DRAWN BY	SEC
		CHECKED BY	GN



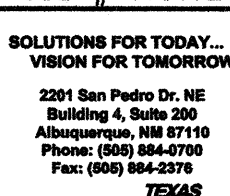
- ## KEYED NOTES

- ## LEGEND

TEST HOLE NUMBER

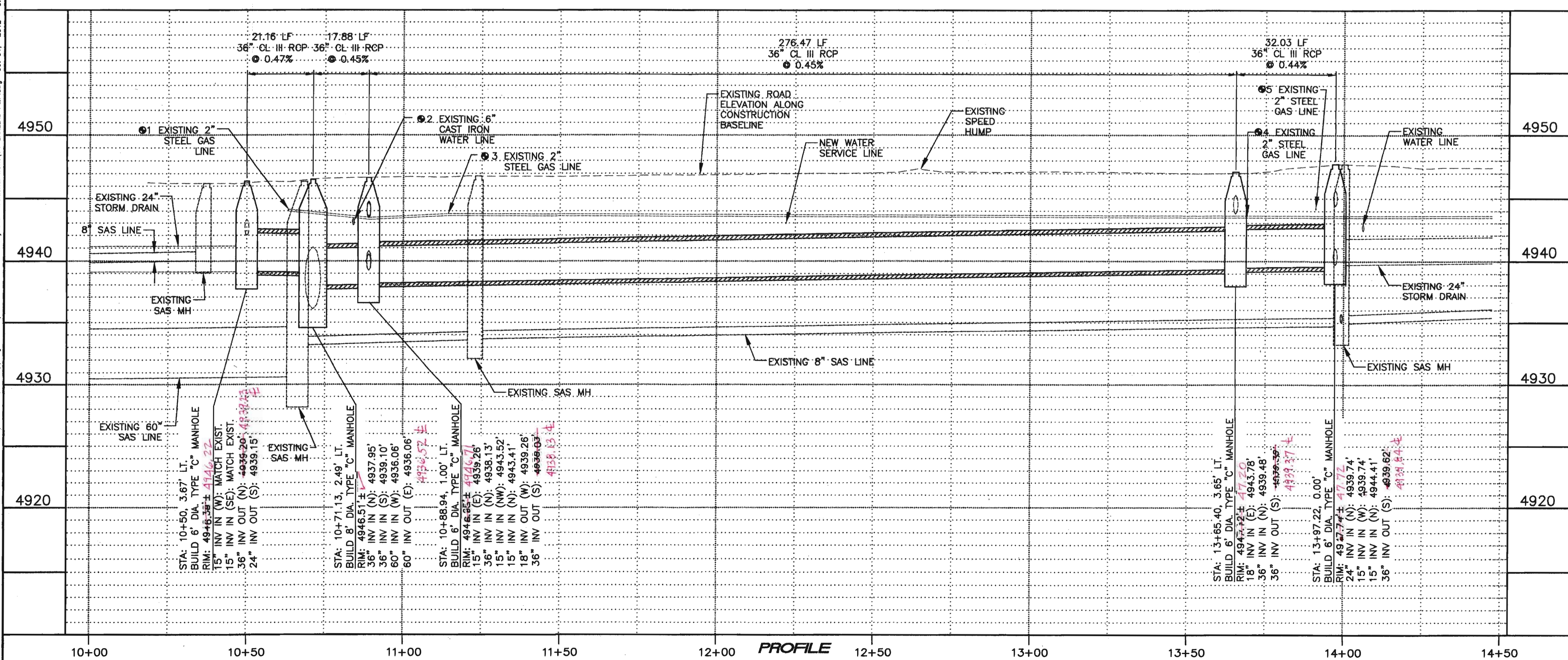
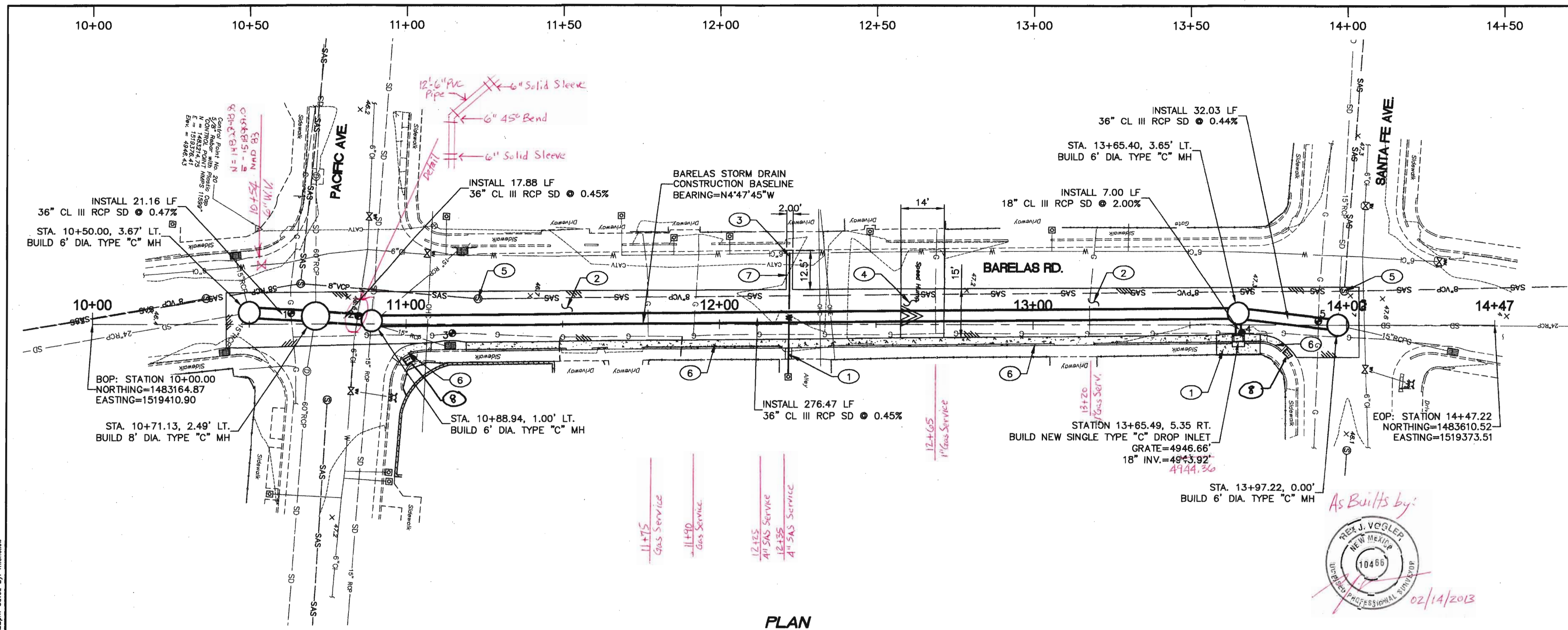



SEC JOB # 110112






City Engineer Approval
APPROVED
OCT 09 2012
CITY ENGINEER

Sheet **04** Of **04**



- ## GENERAL NOTES
1. SANITARY SEWER SERVICE LINES SHALL BE REPLACED AS NECESSARY PER COA STD. DWG. 2134 AND COA STD. SPECIFICATIONS.
 2. TYPE "C" STORM DRAIN MANHOLES SHALL BE BUILT PER COA STD. DWG. 2101. STATION/OFFSETS PROVIDED FOR MANHOLES ARE TO THE CENTER OF MANHOLE.
 3. TYPE "C" DROP INLETS SHALL BE BUILT PER COA. STD. DWG. 2205. GRATES SHALL BE PROVIDED PER COA STD. DWG. 2220. STATION/OFFSET FOR TYPE "C" INLETS ARE TO CENTER OF GRATE AT FLOWLINE.
 4. SEE SHEET 03 OF 04 FOR TEST HOLE INFORMATION. UTILITY LINE LOCATIONS AND DEPTHS NOT INDICATED WITH THE SYMBOL  ARE APPROXIMATE LOCATIONS DETERMINED WITHOUT TEST HOLES.
 5. IF SANITARY SEWER SERVICE LINE CONFLICTS WITH THE PROPOSED STORM DRAIN ALIGNMENT OCCUR, REPLACE SEWER SERVICE LINE PER SEWER SERVICE REPLACEMENT DETAIL ON SHEET 03 OF 04.

- ## KEYED NOTES
- 1 BUILD NEW PORTLAND CEMENT CONCRETE SIDEWALK PER COA STD. DWG. 2430. MATCH EXISTING SIDEWALK WIDTH.
 - 2 BUILD NEW ASPHALT PAVEMENT PER COA STD. DWG. 2405B. USE 2-2" LIFTS TYPE SP-III ASPHALT.
 - 3 INSTALL NEW WATER SERVICE LINE PER COA STD. DWG. 2362 AND COA STD. SPECIFICATIONS. SERVICE LINE TO BE NEW TYPE "K" COPPER FROM CORPORATION STOP TO METER WITHOUT SPLICES.
 - 4 INSTALL NEW ASPHALT SPEED HUMP SEGMENT. SEE DETAIL ON SHEET 03 OF 04. MATCH EXISTING GRADES AND PAVEMENT MARKINGS.
 - 5 BUILD NEW CONCRETE COLLAR PER COA STD. DWG. 2461. MATCH EXISTING GRADES.
 - 6 BUILD NEW STANDARD CURB AND GUTTER PER COA STD. DWG. 2415A. MATCH EXISTING GRADES AT FLOWLINE AND TOP BACK OF CURB.
 - 7 REPLACE ASPHALT PER COA STD. DWG. 2465, **MAJOR LOCAL. (6) 10'-8-12**
 - 8 **INSTALL TRUNCATED DOME DETECTABLE WARNING SURFACE.**

- | LEGEND | |
|---|---|
|  | LIMITS OF ASPHALT
PAVEMENT REPLACEMENT |
|  | NEW CONCRETE |
|  | TEST HOLE NUMBER |


CITY OF ALBUQUERQUE
DEPARTMENT OF MUNICIPAL DEVELOPMENT
ENGINEERING DIVISION

**TITLE: BARELAS STORM DRAIN -
BARELAS ROAD PLAN AND**

Design Review Committee	City Engineer Approval	
-------------------------	------------------------	--

City Project No.	648292	Zone Map No.	K-14-7
------------------	--------	--------------	--------

SCALE: 1" = 5'		ENGINEERS SEAL		SURVEY INFORMATION		BENCH MARKS		AS BUILT INFORMATION	
				FIELD NOTES		C.O.A. CONTROL STATION "5-K13"		CONTRACTOR	
				NO. BY DATE		(PUBLISHED ELEV. = 4956.896') NAVD 88.		WORK ORDER BY DATE	
				11599 SURVEYING CONTROL 07/12		COORDINATES ARE MODIFIED (SURFACE)		INSPECTOR'S ACCEPTANCE BY DATE	
				BY		NM STATE PLANE COORDINATES		VERIFICATION BY DATE	
				REMARKS		CENTRAL ZONE, NAD 83.		DRAWINGS CORRECTED BY DATE	
				DESIGNED BY SEC		MICRO-FILM INFORMATION		RECORDED BY DATE	
				DRAWN BY SEC		NO.		NO.	
				CHECKED BY		DATE		DATE	
				DATE		DATE		DATE	



10-3-12

PHASE 2 PROFILE

Mo. / Day / Yr.		Mo. / Day / Yr.	

Sheet **04**
of **04**