

SCANNED BY
PLANNING

DESERT FISH RESTAURANT

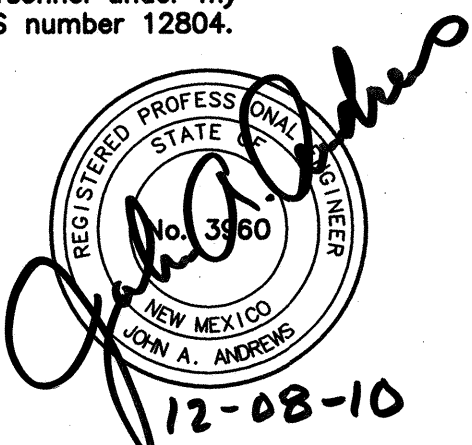
SEWER & FIRE LINE CONNECTIONS

INDEX OF SHEETS

DESCRIPTION	SHEET NO.
TITLE SHEET, INDEX, VICINITY MAP AND GENERAL NOTES	1
PLAN & PROFILE, WATER SHUTOFF PLAN	2

CERTIFICATE OF SUBSTANTIAL COMPLIANCE

I, John A. Andrews, P.E., of the firm of Larkin Group NM, Inc., a Registered Professional Engineer in the State of New Mexico, do hereby certify, to the best of my knowledge and belief, that the infrastructure installed as part of this project has been inspected by me or by a qualified person under my direct supervision and has been constructed in accordance with the plans and specifications approved by the City Engineer and that the original design intent of the approved plans has been met, except as noted by me on the as-built construction drawings. This Certification is based on site inspections by me or personnel under my direction and survey information provided by Gregory L. Steiner, NMPS number 12804.



CITY OF ALBUQUERQUE

NEW MEXICO



SET NUMBER

RECORD DRAWING
NOVEMBER 2010
John A. Andrews
11-30-10

LARKIN GROUP NM, INC.
CONSULTING ENGINEERS AND SURVEYORS
8500 MENAUL BLVD. NE A-440
ALBUQUERQUE, NEW MEXICO 87112
(505) 275-7500 FAX (505) 275-0748
ENGINEER'S FILE #2010-0011

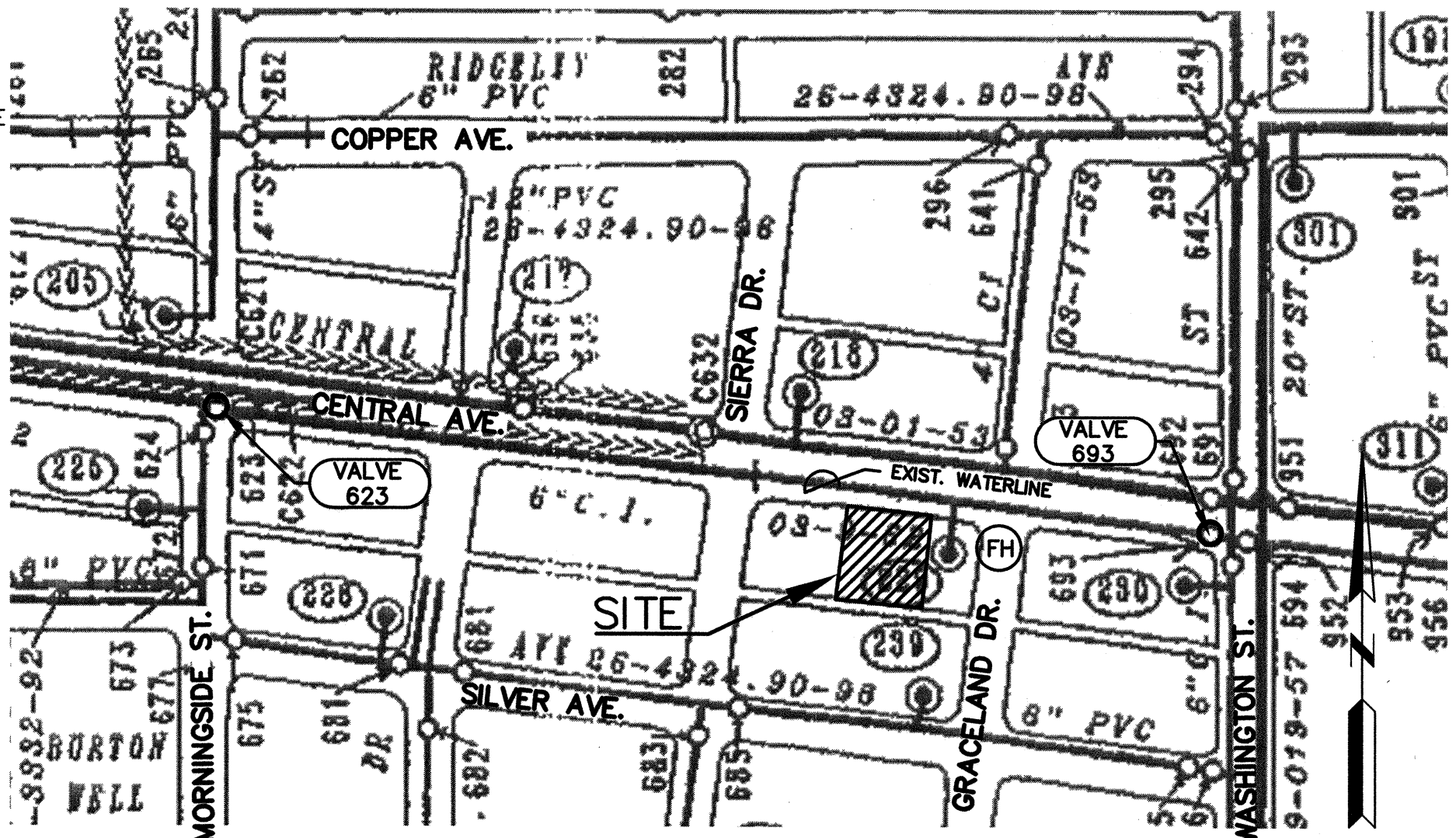
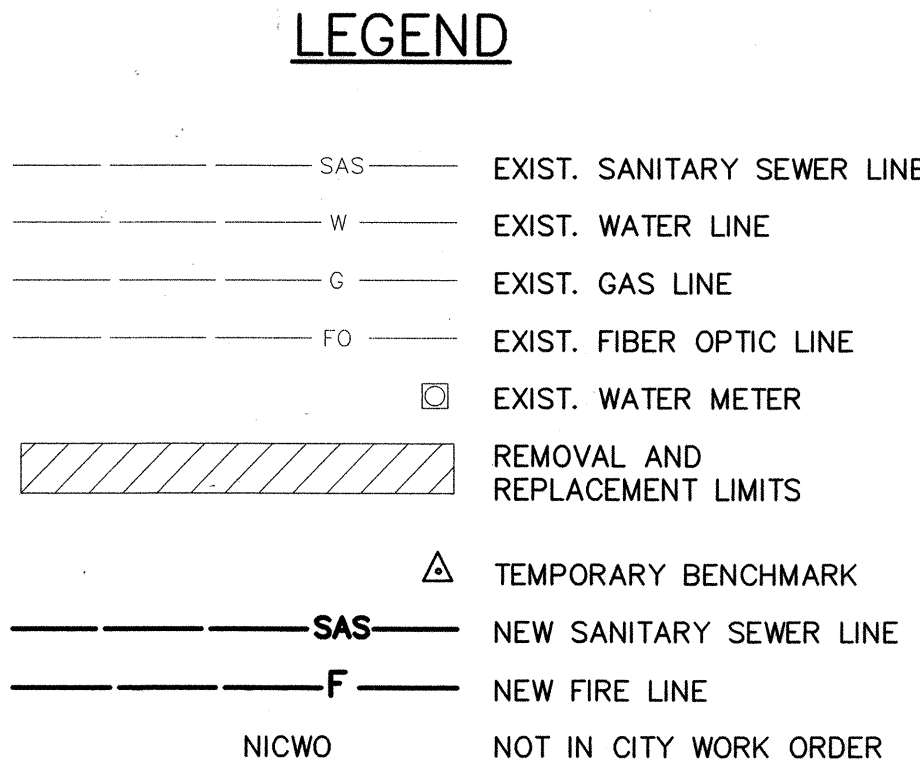
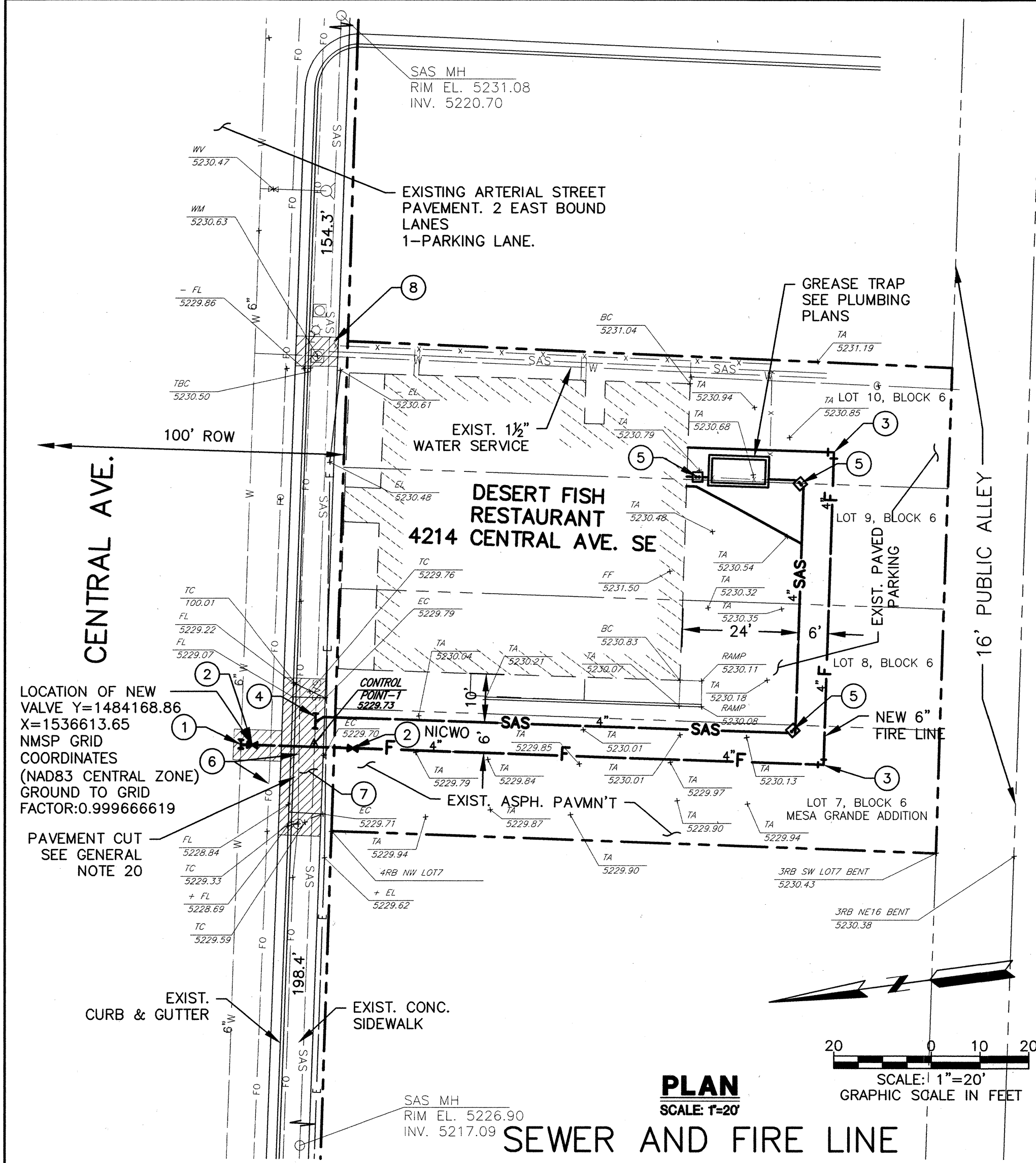


VICINITY MAP
ZONE ATLAS MAP K-17
SCALE: 1"=500'±

GENERAL NOTES

- ALL WORK SHOWN ON THESE PLANS TO BE PERFORMED UNDER THIS CONTRACT, SHALL BE CONSTRUCTED IN ACCORDANCE WITH CITY OF ALBUQUERQUE STANDARD SPECIFICATIONS FOR PUBLIC WORKS CONSTRUCTION, 1986 EDITION, AS AMENDED THROUGH UPDATE NO. 7, INCLUDING ALL AMENDMENTS.
- REFERENCES MADE TO STANDARD DRAWINGS REFER TO CITY OF ALBUQUERQUE STANDARD DRAWINGS.
- TWO WORKING DAYS PRIOR TO ANY EXCAVATION, CONTRACTOR MUST CONTACT NEW MEXICO ONE CALL SYSTEM (260-1990), FOR LOCATION OF EXISTING UTILITIES.
- PRIOR TO CONSTRUCTION, THE CONTRACTOR SHALL EXCAVATE AND VERIFY THE HORIZONTAL AND VERTICAL LOCATIONS OF ALL OBSTRUCTIONS. SHOULD A CONFLICT EXIST, THE CONTRACTOR WILL NOTIFY THE ENGINEER OR SURVEYOR SO THAT THE CONFLICT CAN BE RESOLVED WITH A MINIMUM AMOUNT OF DELAY.
- CONTRACTOR IS RESPONSIBLE TO PROVIDE CONSTRUCTION COORDINATION WITH CITY, UTILITIES, PROPERTY OWNERS, ETC.
- WHERE REMOVAL OF EXISTING CURB & GUTTER OR SIDEWALK IS REQUIRED, SUCH REMOVAL SHALL BE MADE BACK TO THE NEAREST JOINT BEYOND THE REMOVAL REQUIRED.
- THE CONTRACTOR SHALL ASSUME RESPONSIBILITY FOR ANY DAMAGE TO EXISTING PAVEMENTS, PAVEMENT MARKINGS, CURB & GUTTER, DRIVE PADS, WHEELCHAIR RAMPS, AND SIDEWALKS DURING CONSTRUCTION.
- BACK-FILL COMPACTION SHALL BE ACCORDING TO SPECIFIED STREET USE. ALL UTILITY BACKFILL SHALL BE COMPACTED TO 95% OF MAXIMUM DENSITY AS DETERMINED BY ASTM D1557.
- WHEN ABUTTING NEW PAVEMENT TO EXISTING, CUT BACK EXISTING PAVEMENT TO A NEAT STRAIGHT LINE AS REQUIRED TO REMOVE ANY BROKEN OR CRACKED PAVEMENT, AND MATCH NEW TO EXISTING.
- ALL WATER VALVE BOXES AND SEWER MANHOLES IN THE CONSTRUCTION AREA ARE TO BE ADJUSTED TO FINISH GRADE UNDER THE CONTRACT.
- ALL TRAFFIC CONTROL DEVICES SHALL COMPLY TO THE MANUAL ON UNIFORM TRAFFIC CONTROL DEVICES (MUTCD), LATEST EDITION.
- THE CONTRACTOR SHALL SUBMIT A TRAFFIC CONTROL PLAN TO THE CONSTRUCTION COORDINATION DIVISION FOR APPROVAL AT LEAST SEVEN (7) WORKING DAYS PRIOR TO THE START OF CONSTRUCTION. THE TRAFFIC CONTROL PLAN SHALL BE PREPARED IN ACCORDANCE WITH THE "MANUAL ON UNIFORM TRAFFIC CONTROL DEVICES", CURRENT EDITION, PUBLISHED BY THE U.S. DEPARTMENT OF TRANSPORTATION REQUIREMENTS, BY A CERTIFIED TCS OR TCI. THE PLAN SHALL INCLUDE COMPLETE SIGNING, BARRICADING AND DETOURING PLANS WITH ALL PHASES OF WORK AND SCHEDULES INVOLVED IN THE CONSTRUCTION PROJECT. WORK SHALL NOT BEGIN UNTIL THE TRAFFIC CONTROL PLAN HAS BEEN APPROVED.
- CONTRACTOR SHALL PROVIDE AND MAINTAIN ALL CONSTRUCTION SIGNING UNTIL PROJECT HAS BEEN ACCEPTED BY THE CITY OF ALBUQUERQUE.
- ALL EXCAVATIONS TRENCHING AND SHORING SHALL BE GOVERNED BY FEDERAL, STATE AND LOCAL LAWS, RULES AND REGULATIONS CONCERNING CONSTRUCTION SAFETY AND HEALTH, OSHA 29 CFR 1926.650. ALL EXCAVATION, TRENCHING, AND SHORING ACTIVITIES MUST BE CARRIED OUT IN ACCORDANCE WITH OSHA 29 CFR 1926.650 SUBPART F.
- CONTRACTOR SHALL PROVIDE AND MAINTAIN A SAFE AND ADEQUATE MEANS OF CHANNELIZING PEDESTRIAN TRAFFIC AROUND AND THROUGH THE CONSTRUCTION AREA. PEDESTRIAN CHANNELIZATION SHALL MEET THE ADA REQUIREMENTS.
- CONTRACTOR SHALL PROVIDE REASONABLE ACCESS TO PROPERTIES WITHIN THE PROJECT AREA DURING CONSTRUCTION. CONTRACTOR SHALL NOTIFY ALL OWNERS OF BUSINESSES IMPACTED BY CONSTRUCTION OF CHANGES IN ACCESS.
- ELECTRONIC MARKER SPHERES (EMS) WILL BE PLACED ACCORDING TO SECTION 170 OF THE CITY OF ALBUQUERQUE STANDARD SPECIFICATION FOR PUBLIC WORKS CONSTRUCTION, 1986 EDITION AS REVISED THROUGH UPDATE #7, AND INCLUDING ALL AMENDMENTS.
- FIRE LINE SHALL BE DUCTILE IRON OR AWWA C-900 PIPE
- SANITARY SEWER SERVICE LINE SHALL BE CAST IRON SOIL PIPE OR SERVICE WEIGHT PVC SCHEDULE 40 PIPE.
- PAVEMENT CUTS AND PAVEMENT REPLACEMENT SHALL BE MADE IN CONFORMANCE WITH CITY STD DWG. 2465, FOR ARTERIAL PAVEMENT CITY WIDE PAVEMENT CUTS FOR ALL UTILITIES. PAVEMENT IN CENTRAL AVENUE SHALL BE SAW-CUT.

REV.	SHEETS	CITY ENGINEER	DATE	USER DEPARTMENT	DATE	USER DEPARTMENT	DATE
ENGINEER'S STAMP & SIGNATURE	APPROVALS	ENGINEER	DATE	*****			
	DRC Chairman	Woodhull	9-21-10	APPROVED FOR CONSTRUCTION			
	Transportation	Thompson	9-10-10				
	Water/Wastewater	Thompson	9-10-10				
	Hydrology	Curry to Chew	9-12-10				
	Parks						
City Project No.		6510 81		Sheet 1		Of 2	



NOTE:

CLOSE VALVE NO. 623 AND VALVE NO. 693 IN CENTRAL AVE. TO SHUT-OFF WATERLINE PRIOR TO CONNECTION OF FIRE LINE TO EXISTING WATERLINE.

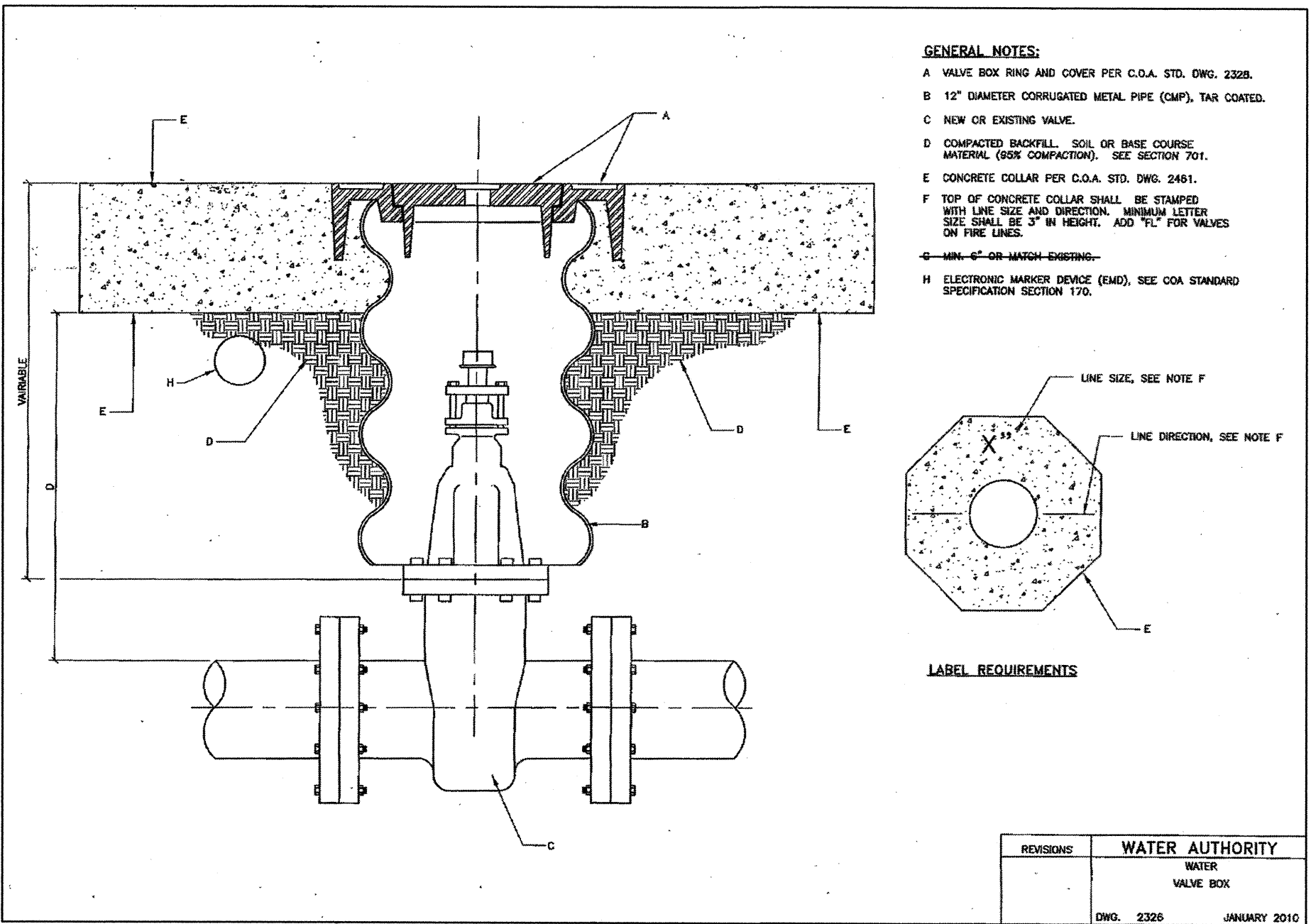
RESTRAINED JOINT LENGTHS FOR TEES		
SIZE	MINIMUM RUN	MINIMUM BRANCH
6X6X4	2	26

RESTRAINED JOINT LENGTHS FOR BENDS & VALVES				
SIZE	90°	45°	22-1/2°	VALVES & DEAD ENDS
4"	18'	8'	4'	39'

NOTE FOR RESTRAINED JOINT TABLES:

THESE TABLES ARE BASED UPON THE FOLLOWING CRITERIA:

DEPTH OF COVER 3.0 FT. MINIMUM
FACTOR OF SAFETY 1.5:1
MATERIAL PVC PIPE
SOIL TYPE SM-SILTY SANDS, SANDS, IP MIXTURES
TEST PRESSURE 150 PSI
TRENCH TYPE 4
PIPE BEDDED IN SAND, GRAVEL, OR CRUSHED STONE TO DEPTH OF 1/8 PIPE DIAMETER, 4 INCH MINIMUM; BACKFILL COMPACTED TO TOP OF PIPE.



WATER VALVE BOX DETAIL

NTS

KEYED NOTES

- CONNECT NEW FIRE LINE TO EXISTING CITY WATER LINE PER COA STD DWG. 2301 BY A NON-PRESSURIZED CONNECTION. FURNISH AND INSTALL 1-6"x6"x4" TEE ALL M.J., 2-6" COUPLINGS, 2-6" PIPE P.C.'S, 1- CONC. THRUST BLOCK, JOINT RESTRAINTS.
- FURNISH AND INSTALL 1-4" GATE VALVE ALL M.J. WITH JOINT RESTRAINTS, 1- VALVE BOX WITH COVER, PER WATER AUTHORITY STD DWG. 2326 DATED JANUARY 2010 SHOWN HEREON AND COA STD DWG 2328.
- 4"x4"-90° ELL WITH JOINT RESTRAINTS. (NICWO).
- CONNECT NEW SEWER SERVICE LINE TO EXISTING 8" SANITARY SEWER PER COA STD DWG. 2125 & 2134. 1-8"x4" TAPPING SADDLE, 1-4" 45° BEND.
- FURNISH AND INSTALL 2-WAY CLEANOUT PER DETAILS SHOWN ON PLUMBING PLANS. (NICWO).
- CONTRACTOR SHALL EXPOSE EXISTING FIBER OPTIC LINES PRIOR TO STARTING THE FIRE LINE AND SANITARY SEWER CONNECTION CONSTRUCTION. SHOULD THE FIBER OPTICS LINE LOCATION INDICATE A CONFLICT, ADJUSTMENTS IN THE FIRE LINE AND SEWER SERVICE LOCATION OR ELEVATION SHALL BE MADE AS APPROVED BY THE ENGINEER.
- EXISTING DRIVEPAD AND DRIVEWAY GUTTER TO BE REMOVED AND REPLACED WITH NEW STANDARD CURB & GUTTER AND NEW SIDEWALK PER COA STD DWG 2415A AND 2430 MATCH EXISTING GRADES. ALSO SEE ARCHITECT SITE PLAN. REMOVAL LIMITS SHOWN CROSS HATCHED.
- EXISTING SANITARY SEWER SERVICE LINE TO BE PLUGGED AND ABANDONED THIS CONTRACT. CONTRACTOR SHALL EXCAVATE AND EXPOSE EXISTING SERVICE AT THE MAIN SEWER. REMOVE PIECE OF EXISTING PIPE AND PLUG BOTH ENDS OF ABANDONED LINE WITH CONCRETE.

NOTES

- FOR CONTRACTOR INFORMATION, CITY RECORDS SHOW THE 8" SANITARY SEWER IN CENTRAL AVE. AS CONCRETE PIPE AND THE 6" WATERLINE AS CAST IRON PIPE, PLACED IN 1962.
- CONTRACTOR SHALL EXCAVATE AND CONFIRM EXISTING PIPE LOCATION AND MATERIAL. CONTRACTOR SHALL MAKE CONNECTIONS TO EXISTING WATER AND SEWER LINES PRIOR TO CONSTRUCTION OF ON-SITE FIRE LINE AND SANITARY SEWER SERVICE.
- SEE PLUMBING PLANS FOR LOCATION OF PIV AND FIRE DEPARTMENT PUMPER CONNECTION.

AS BUILT NOTE:
THIS SHEET HAS BEEN REVISED.
THIS SHEET DOES NOT REFLECT
AS BUILT CONDITIONS.
SEE RECORD DRAWING.

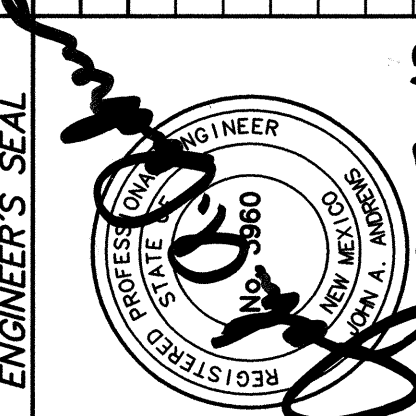
LARKIN GROUP NM, INC.
CONSULTING ENGINEERS AND SURVEYORS
8500 MENAUL BLVD. NE. SUITE A-440
ALBUQUERQUE, NEW MEXICO 87112
505-275-7500, FAX 505-275-0748

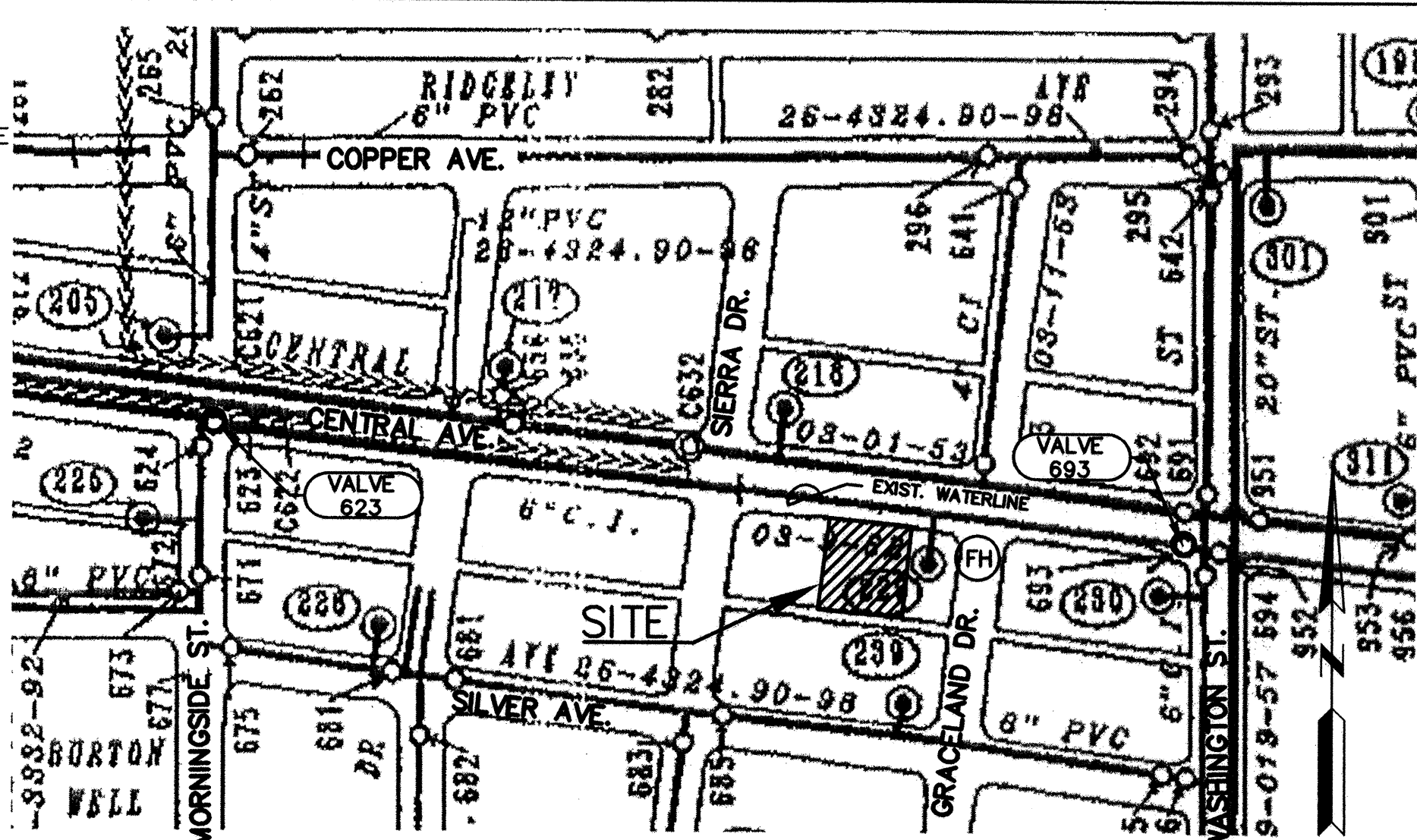
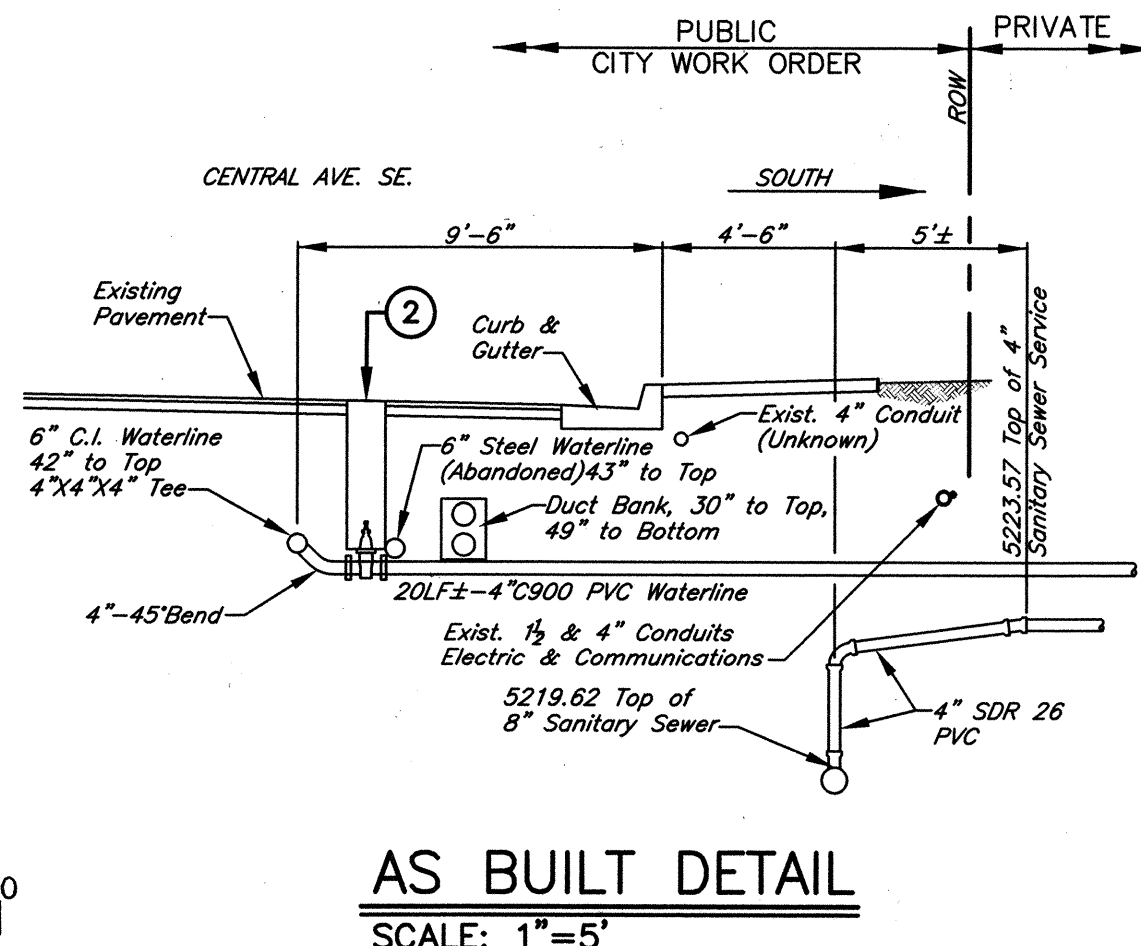
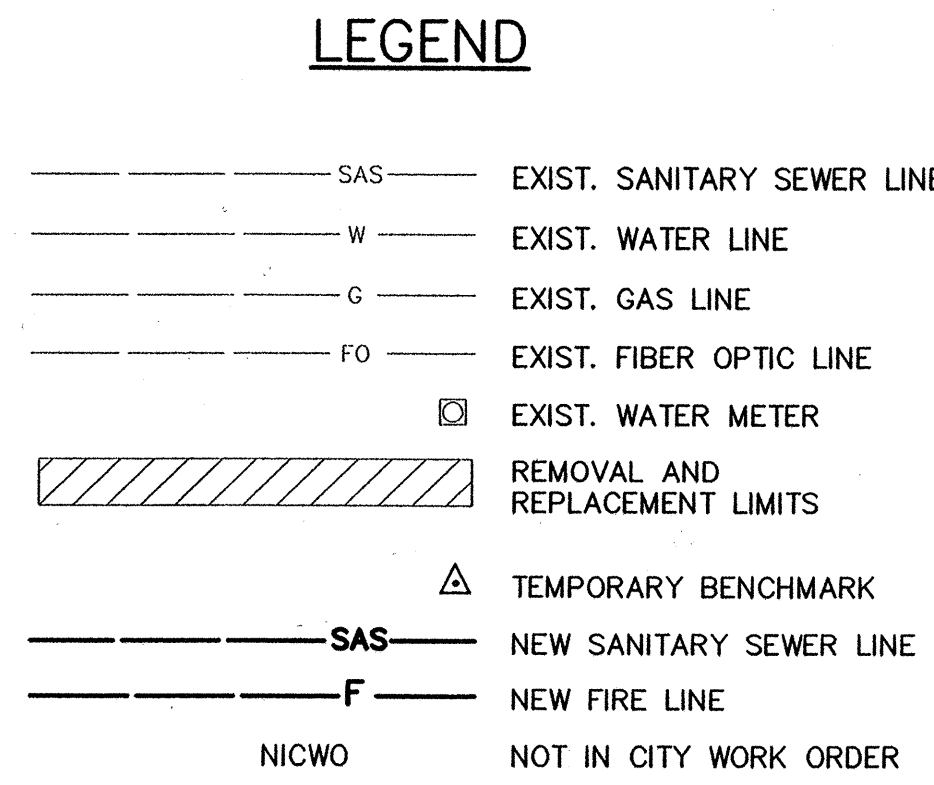
CITY OF ALBUQUERQUE
DEPARTMENT OF MUNICIPAL DEVELOPMENT
ENGINEERING DIVISION

TITLE: **DESERT FISH RESTAURANT
SEWER & FIRE LINE CONNECTIONS
PLAN & PROFILE, WATER SHUT OFF PLAN**

Design Review Committee	City Engineer Approval	Mo./Day/Yr.	Mo./Day/Yr.
APPROVED SEP 31 2010	APPROVED OCT 01 2010 CITY ENGINEER		
DESIGN REVIEW COMMITTEE			

Project No. 651081 Zone Map No. K-17 Sheet 2 of 2





WATER SHUT OFF PLAN

SCALE: 1"=200'±

NOTE:

CLOSE VALVE NO. 623 AND VALVE NO. 693 IN CENTRAL AVE. TO SHUT-OFF WATERLINE PRIOR TO CONNECTION OF FIRE LINE TO EXISTING WATERLINE.

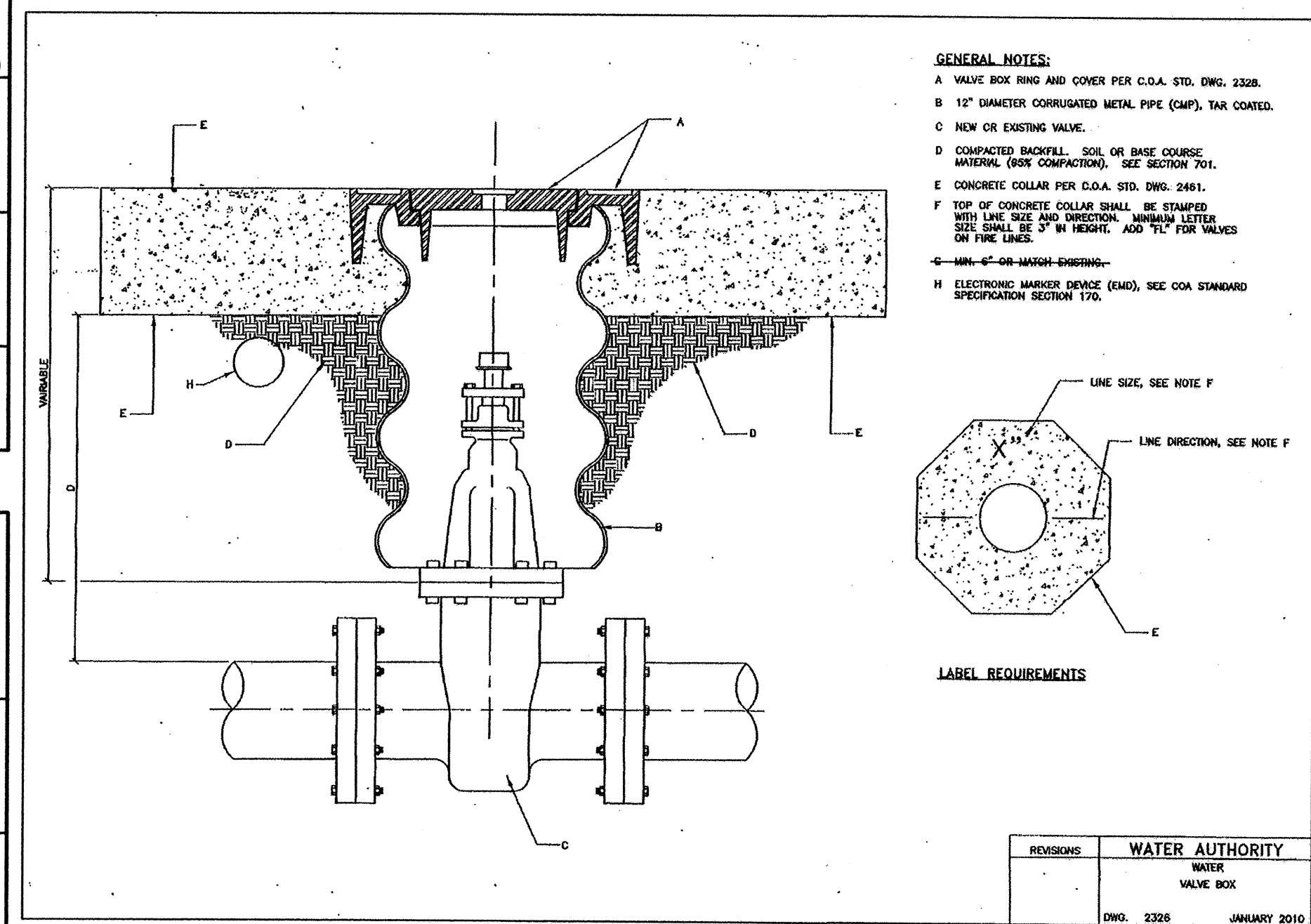
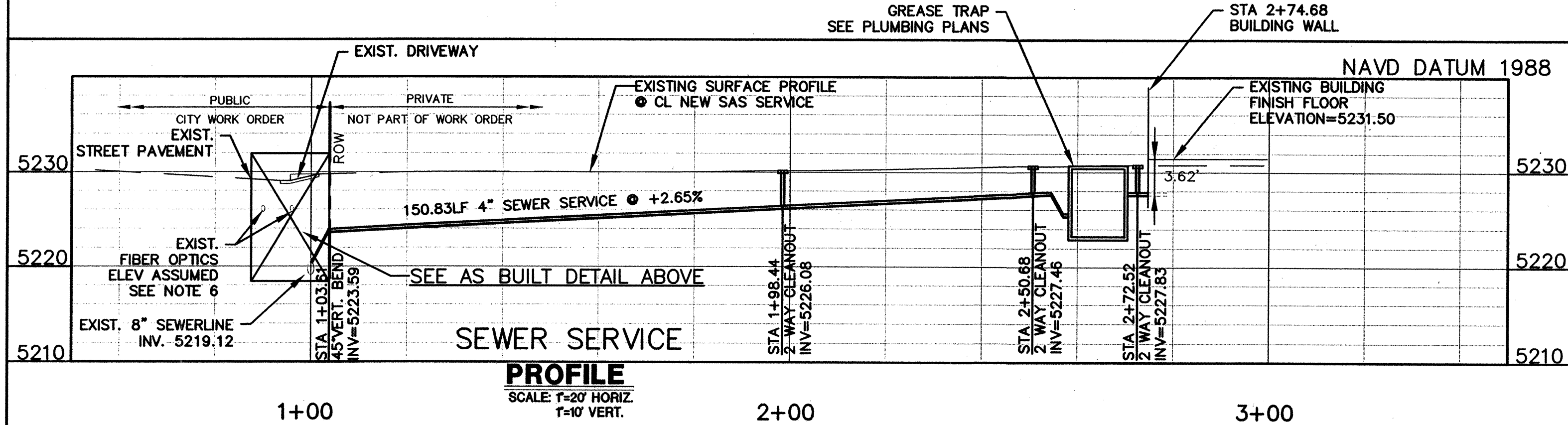
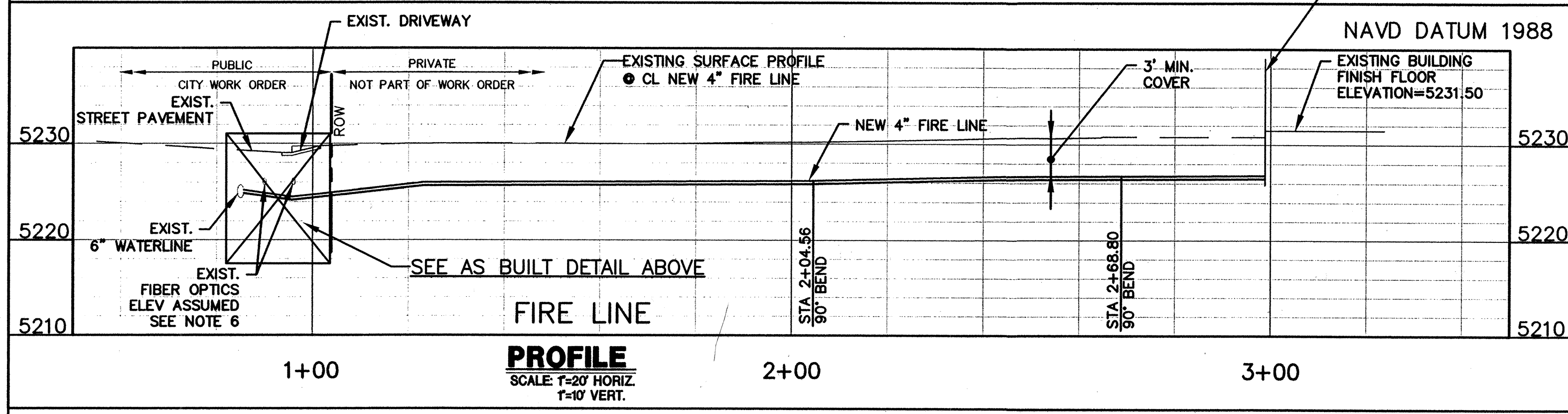
RESTRAINED JOINT LENGTHS FOR TEES		
	MINIMUM LENGTH	
SIZE	RUN	BRANCH
6X6X4	2	26

RESTRAINED JOINT LENGTHS FOR BENDS & VALVES				
		HORIZONTAL BENDS		VALVES & DEAD ENDS
SIZE	90°	45°	22-1/2°	
4"	18'	8'	4'	39'

NOTE FOR RESTRAINED JOINT TABLES:

THESE TABLES ARE BASED UPON THE FOLLOWING CRITERIA:

DEPTH OF COVER	3.0 FT. MINIMUM
FACTOR OF SAFETY	1.5:1
MATERIAL	PVC PIPE
SOIL TYPE	SM-SILTY SANDS, SANDS, IP MIXTURES
TEST PRESSURE	150 PSI
TRENCH TYPE 4	PIPE BEDDED IN SAND, GRAVEL, OR CRUSHED STONE TO DEPTH OF 1/8 PIPE DIAMETER, 4 INCH MINIMUM; BACKFILL COMPACTED TO TOP OF PIPE.



WATER VALVE BOX DETAIL

NTS

KEYED NOTES

- 1 CONNECT NEW FIRE LINE TO EXISTING CITY WATER LINE PER COA STD DWG. 2301 BY A NON-PRESSURIZED CONNECTION. FURNISH AND INSTALL 1"-6"x4" TEE ALL MJ, 2"-6" COUPLINGS, 2"-6" PIPE P.C.'S. 1- CONC. THRUST BLOCK, JOINT RESTRAINTS. 1'-0" 45° BEND
- 2 FURNISH AND INSTALL 1"-4" GATE VALVE ALL MJ WITH JOINT RESTRAINTS, 1- VALVE BOX WITH COVER, PER WATER AUTHORITY STD DWG. 2326 DATED JANUARY 2010 SHOWN HEREON AND COA STD DWG 2328.
- 3 4"x4"-90° ELL WITH JOINT RESTRAINTS. (NICWO).
- 4 CONNECT NEW SERVICE SERVICE LINE TO EXISTING 8" SANITARY SEWER PER COA STD DWG. 2125 & 2134. 1-8"x4" TAPPING SADDLE, 1-4" 45° BEND.
- 5 FURNISH AND INSTALL 2-WAY CLEANOUT PER DETAILS SHOWN ON PLUMBING PERITS. (NICWO).
- 6 CONTRACTOR SHALL EXPOSE EXISTING FIBER OPTIC LINES PRIOR TO STARTING THE FIRE LINE AND SANITARY SEWER CONNECTION CONSTRUCTION. SHOULD THE FIBER OPTIC LINE LOCATION INDICATE A CONFLICT, ADJUSTMENTS IN THE FIRE LINE AND SEWER SERVICE LOCATIONS OR ELEVATION SHALL BE MADE AS APPROVED BY THE ENGINEER.
- 7 EXISTING DRIVEPAD AND DRIVEWAY GUTTER TO BE REMOVED AND REPLACED WITH NEW STANDARD CURB AND GUTTER PER NEW SIDEWALK PER COA STD DWG 2415A AND 2420 MATCH EXISTING GRADES. ALSO SEE ARCHITECT SITE PLAN. REMOVAL LIMITS SHOWN CROSS HATCHED.
- 8 EXISTING SANITARY SEWER SERVICE LINE TO BE PLUGGED AND ABANDONED THIS CONTRACT. CONTRACTOR SHALL EXCAVATE AND REMOVE EXISTING SERVICE LINE TO MAIN SEWER.REMOVE PIECE OF EXISTING PIPE AND PLUG BOTH ENDS OF ABANDONED LINE WITH CONCRETE.

NOTES

1. FOR CONTRACTOR INFORMATION, CITY RECORDS SHOW THE 8" SANITARY SEWER IN CENTRAL AVE. AS CONCRETE PIPE AND THE 6" WATERLINE AS CAST IRON PIPE, PLACED IN 1962.
 2. CONTRACTOR SHALL EXCAVATE AND CONFIRM EXISTING PIPE LOCATION AND MATERIAL. CONTRACTOR SHALL MAKE CONNECTIONS TO EXISTING WATER AND SEWER LINES PRIOR TO CONSTRUCTION OF ON-SITE FIRE LINE AND SANITARY SEWER SERVICE.
 3. SEE PLUMBING PLANS FOR LOCATION OF PIV AND FIRE DEPARTMENT PUMPER CONNECTION.
- SEE (9)

AS BUILT NOTE:
PLEASE BE ADVISED THAT THIS SHEET IS
PREPARED TO SHOW AS BUILT INFORMATION
FOR THE PUBLIC INFRASTRUCTURE ONLY.
NO ATTEMPT HAS BEEN MADE TO SHOW AS
BUILT INFORMATION FOR THE PRIVATE
(ON-SITE) INFRASTRUCTURE.

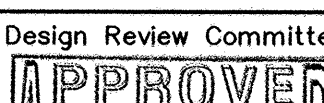

RECORD DRAWING
NOVEMBER 2010
John A. Andrews
11-30-10

Engineer's File #2010-0011

 **LARKIN GROUP** NM, INC.
CONSULTING ENGINEERS AND SURVEYORS
8500 MENAUL BLVD. NE, SUITE A-440
ALBUQUERQUE, NEW MEXICO 87112
505-275-7500, FAX 505-275-0748

 CITY OF ALBUQUERQUE
DEPARTMENT OF MUNICIPAL DEVELOPMENT
ENGINEERING DIVISION

TITLE: DESERT FISH RESTAURANT
SEWER & FIRE LINE CONNECTIONS
PLAN & PROFILE, WATER SHUT OFF PLAN

Design Review Committee 		City Engineer Approved 		Mo./Day/Yr.	
Project No.		Zone Map No.		Sheet of	
651081		K-17		2 of 2	

REDRAWN FOR RECORD PURPOSES