

February 12, 2001
CONSTRUCTION DOCUMENTS

KIRTLAND PARK
RENOVATION – Phase I

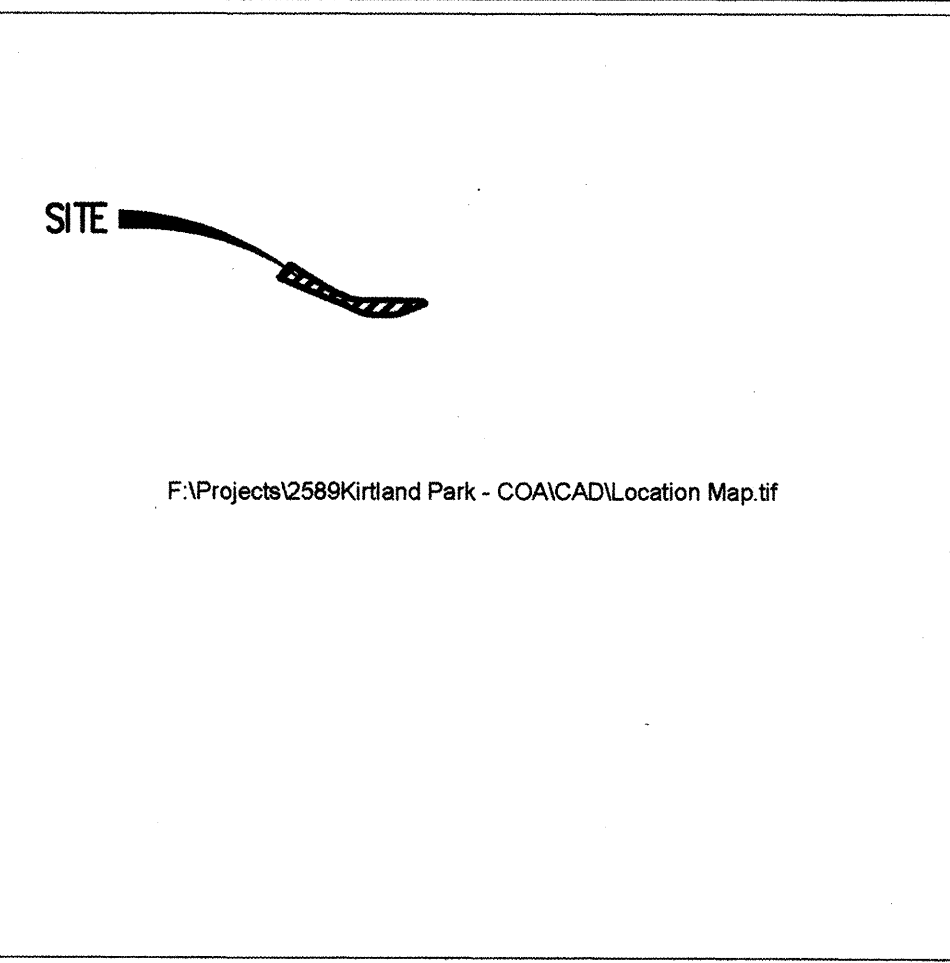
PARKS AND RECREATION DEPARTMENT
CITY OF ALBUQUERQUE

INDEX OF DRAWINGS

TITLE	SHEET NO.
COVER SHEET	C-1.0 OF 11
DEMOLITION PLAN	L-1.0 OF 11
GRADING AND DRAINAGE PLAN	L-2.0 OF 11
LAYOUT PLAN-WEST	L-3.0 OF 11
LAYOUT PLAN-EAST	L-3.1 OF 11
IRRIGATION PLAN-WEST	L-4.0 OF 11
IRRIGATION PLAN-EAST	L-4.1 OF 11
PLANTING PLAN	L-5.0 OF 11
DETAILS	L-6.0 OF 11
SIGNING AND CONSTRUCTION TRAFFIC CONTROL STANDARDS	L-7.0 OF 11
TYPICAL TRAFFIC CONTROL AND SIGNING EXAMPLES	L-7.1 OF 11

RECORD DRAWING
THIS RECORD DRAWING HAS BEEN PREPARED IN PART, BASED UPON INFORMATION FURNISHED BY OTHERS. WHILE THE INFORMATION IS BELIEVED TO BE RELIABLE, THE DESIGN PROFESSIONAL CANNOT ASSURE ITS ACCURACY AND THUS IS NOT RESPONSIBLE FOR THE ACCURACY OF THIS RECORD DRAWING FOR ANY ERRORS OR OMISSIONS WHICH MAY HAVE BEEN INCORPORATED INTO IT AS A RESULT. THOSE RELYING ON THIS RECORD DOCUMENT ARE ADVISED TO OBTAIN INDEPENDENT VERIFICATION OF ITS ACCURACY BEFORE APPLYING IT FOR ANY PURPOSE.
JANUARY 25, 2002

DESIGNWORKSHOP
508 Agua Fria
Santa Fe, NM 87501
(Tel.) 505.982.8399
(Fax) 505.986.1396



SCALE: NTS

VICINITY MAP M-15-Z

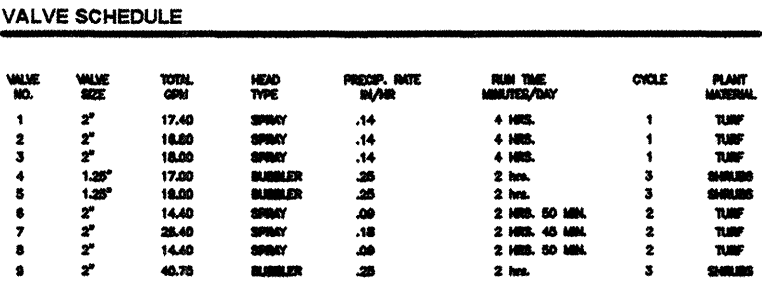
GENERAL NOTES

- AN EXCAVATION/CONSTRUCTION PERMIT WILL BE REQUIRED BEFORE BEGINNING ANY WORK WITHIN CITY RIGHT-OF-WAY.
- ALL WORK DETAILED ON THESE PLANS TO BE PERFORMED UNDER CONTRACT SHALL, EXCEPT AS OTHERWISE STATED OR PROVIDED, FOR HEREON, BE CONSTRUCTED IN ACCORDANCE WITH THE CITY OF ALBUQUERQUE STANDARD SPECIFICATIONS FOR PUBLIC WORKS CONSTRUCTION, 1986 ED. AND SHALL INCLUDE UPDATE NO.6
- TWO WORKING DAYS PRIOR TO ANY EXCAVATION, THE CONSTRUCTOR MUST CONTACT NEW MEXICO ONE CALL SYSTEM (260-1990) FOR LOCATION OF EXISTING UTILITIES.
- PRIOR TO CONSTRUCTION, THE CONTRACTOR SHALL EXCAVATE AND VERIFY THE HORIZONTAL AND VERTICAL LOCATIONS OF ALL OBSTRUCTIONS. SHOULD A CONFLICT EXIST, THE CONTRACTOR SHALL NOTIFY THE ENGINEER OR SURVEYOR IMMEDIATELY SO THAT THE CONFLICT CAN BE RESOLVED WITH A MINIMUM AMOUNT OF DELAY.
- FIVE (5) WORKING DAYS PRIOR TO BEGINNING CONSTRUCTION, THE CONTRACTOR SHALL SUBMIT TO CONSTRUCTION COORDINATION DIVISION A DETAILED CONSTRUCTION SCHEDULE. TWO (2) WORKING DAYS PRIOR TO CONSTRUCTION, THE CONTRACTOR SHALL OBTAIN A BARRICADING PERMIT FROM THE CONST. COORDINATION DIVISION. CONTRACTOR SHALL NOTIFY BARRICADE ENGINEER (768-2551) PRIOR TO OCCUPYING AN INTERSECTION. REFER TO SECTION 19 OF THE GENERAL CONDITIONS OF THE STANDARD SPECIFICATIONS.
- ALL STREET STRIPING ALTERED OR DESTROYED SHALL BE REPLACED WITH PLASTIC REFLECTORIZED PAVEMENT MARKING BY CONTRACTOR TO LOCATION AS EXISTING OR AS INDICATED BY THIS PLAN SET.
- CONTRACTOR SHALL COORDINATE WITH WATER SYSTEMS DIVISION (857-8200) FIVE WORKING DAYS IN ADVANCE OF ANY WORK THAT MAY AFFECT EXISTING PUBLIC WATER OR SEWER UTILITIES. EXISTING VALVES TO BE OPERATED BY CITY PERSONNEL ONLY. CONTRACTOR SHALL CONTACT THE WATER SYSTEMS DIVISION THREE DAYS PRIOR TO NEEDING VALVES TURNED ON OR OFF.
- CONTRACTOR SHALL RECORD DATA ON ALL UTILITY LINES AND ACCESSORIES AS REQUIRED BY THE CITY OF ALBUQUERQUE FOR THE PREPARATION OF "AS CONSTRUCTED" DRAWINGS. CONTRACTOR SHALL NOT COVER UTILITY LINES AND ACCESSORIES UNTIL ALL DATA HAS BEEN RECORDED.
- CONTRACTOR SHALL NOTIFY THE ENGINEER NOT LESS THAN SEVEN (7) DAYS PRIOR TO STARTING WORK, IN ORDER THAT THE ENGINEER MAY TAKE NECESSARY MEASURES TO INSURE THE PRESERVATION OF SURVEY MONUMENTS. CONTRACTOR SHALL NOT DISTURB PERMANENT SURVEY MONUMENTS WITHOUT THE CONSENT OF THE ENGINEER AND SHALL NOTIFY THE ENGINEER AND BEAR THE EXPENSE OF REPLACING ANY THAT MAY BE DISTURBED WITHOUT PERMISSION. REPLACEMENT SHALL BE DONE ONLY BY THE CITY OF ALBUQUERQUE SURVEY SECTION. WHEN A CHANGE IS MADE IN THE FINISH ELEVATION OF THE PAVEMENT OF ANY ROADWAY IN WHICH A PERMANENT SURVEY MONUMENT IS LOCATED, CONTRACTOR SHALL, AT HIS OWN EXPENSE, ADJUST THE MONUMENT COVER TO NEW GRADE, UNLESS OTHERWISE SPECIFIED.
- ALL WATER LINES TO BE 10900 PVC, AND ALL SEWER LINES TO BE SDR35 PVC.

FOR INFORMATION ONLY

SET NUMBER: _____

REV.	SHEETS	CITY ENGINEER	DATE	USER DEPARTMENT	DATE	USER DEPARTMENT	DATE
LANDSCAPE ARCHITECT'S SEAL		APPROVALS	ENGINEER	DATE	*****		
		DRC CHAIRMAN			APPROVED FOR CONSTRUCTION		
		TRANSPORTATION					
		WATER/WASTEWATER					
		HYDROLOGY					
		C.I.P.					
		CONSTR. MNGMT.			City Engineer _____ Date _____		
		N.M. UTILITIES					
		City Project Number				Sheet _____ of _____	
		6459.02				C-1.0 9	



AS BUILT INFORMATION	
CONTRACTOR	DATE:
WORK STAKED BY	DATE:
INSPECTOR'S APPROVAL	DATE:
FIELD VERIFICATION BY	DATE:
DRAWING CORRECTED BY	DATE:
MICRO-FILM INFORMATION	
RECORDED BY	DATE:
NO.	

BENCHMARK

AN A.C.S. 1 3/4" ALUMINUM DISK STAMPED "ACS BM, 3-19".

DISK IS SET IN THE NORTH WEST END OF A CONCRETE

CULVERT PIPE LOCATED ON THE NORTH SIDE OF WESTBOUND

4-40. 0.13' +/- MILES OF THE CENTERLINE OF UNSER BLVD. N.W.

ELEVATION=5187.56 FEET (M.S.L.D.)

[illegible]SEAL _____[illegible]

BY	REVISIONS /	DATE	NO.

DESIGNED BY:	-	DATE:
DRAWN BY:	ML	DATE:
CHECKED BY:	KB	DATE:

DESIGNED BY:	-	DATE:
DRAWN BY:	ML	DATE:
CHECKED BY:	KB	DATE:

1. Items shall remain unless designated for removal. Remove designated items shown on the plan to the full depth of their construction unless otherwise noted.
2. Verify the location of items to be removed prior to commencement of the work.
3. Items encountered below grade and not shown on the drawings shall be brought to the attention of the landscape architect.
4. Remove demolished materials from site and dispose of off site per COA requirements. Disposal by burning and/or burying is prohibited.
5. Contact the local underground service update for utility location and identification prior to demolition.
6. The location of existing utilities as shown on the plans may vary in relation to actual existing conditions; additional utilities not shown on the drawings may exist. Verify in the field the data shown, and call to the attention of the Landscape Architect or Site Representative, any discrepancies before starting work.
7. Perform excavation in the vicinity of existing utilities by hand where applicable. The Contractor is responsible for damage to existing utilities caused by any person, vehicle, equipment, or tool related to the execution of the Contract.
8. Base information was provided by the City of Albuquerque and is assumed to be accurate. Contact City immediately if any discrepancies are found.

PROTECTIVE FENCING

All trees to be preserved in Tree Preservation Areas shall be protected by 48" fencing (orange plastic web) or approved equal supported by metal stakes. The fence shall be located as shown on the plan. The fence shall be firmly anchored into the ground and shall remain upright and intact until all construction activity is complete. Construction activities or storage shall not occur within these protected areas. The Contractor shall stake the protective fencing location. The location of the protective fencing shall be approved onsite by the City or Landscape Architect prior to the start of any site work.

When excavation near a tree to be protected must be carried out, damage can be limited by root pruning. Root pruning shall be completed before grading is started and shall occur just inside the protective fencing as shown on the plan.

Root pruning shall be performed, when required, with a trencher such as a telephone cable puller or a "Ditch Witch" prior to adjacent excavation. The trenching shall be to a minimum depth of 24" or the depth of excavation. The contractor shall stake the limit of root pruning as per the plan. Limits of trenching shall be indicated by a flag or flagging. No trenching shall be allowed if trenching for irrigation or electrical falls within drip lines of existing trees, only hand trenching will be allowed. Note: No irrigation or electrical is allowed within 8' of tree trunks as per COA standards. Coordinate all trenching required for utility work with the landscape plans.

The best method to avoid soil compaction is to **KEEP OFF**. This includes restricting all traffic both vehicular and pedestrian from crossing over the root zones, and restricting even temporary material storage under trees.

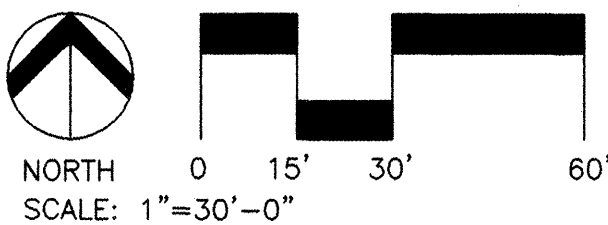
	PICNIC TABLE
	TRASH CAN WITH CONCRETE BASE
	MANHOLE
	WATER VALVE
	WATER METER
	POWER POLE WITH LIGHT
	POWER POLE (NO LIGHT)
	FIRE HYDRANT
	WOODEN BOLLARDS
	SIGN (SIZE VARIES)
— UT —	UNDERGROUND TELEPHONE
— SAS —	SANITARY SEWER
— OH —	OVERHEAD LINE
— W —	UNDERGROUND WATER LINE
	CHAIN LINK FENCE
	BLOCK WALL
— PL —	APPROXIMATE PROPERTY LINE
	LARGE PINE TREE
	CONIFEROUS TREE
	DECIDUOUS TREE
	TREE PRESERVATION FENCING (PROPOSED)
	ROOT PRUNING

- 1 Salvage BBQ Grill & turn over to COA Parks & Rec. Remove concrete base to its full depth of construction.
- 2 Salvage picnic tables & turn over to COA Parks & Rec. Remove concrete base to its full depth of construction.
- 3 Salvage trash can & turn over to COA Parks & Rec. Remove concrete base to its full depth of construction.
- 4 Remove existing bollards, handicap ramp and concrete.
- 5 Preserve and protect existing wooden bridge and concrete approaches.

THIS RECORD DRAWING HAS BEEN PREPARED IN PART, BASED UPON INFORMATION FURNISHED BY OTHERS. WHILE THE INFORMATION IS BELIEVED TO BE RELIABLE, THE DESIGN PROFESSIONAL CANNOT ASSURE ITS ACCURACY AND THIS IS NOT RESPONSIBLE FOR THE ACCURACY OF THIS RECORD DRAWING FOR ANY ERRORS OR OMISSIONS WHICH MAY HAVE BEEN INCORPORATED INTO IT AS A RESULT. THOSE RELYING ON THIS RECORD DOCUMENT ARE ADVISED TO OBTAIN INDEPENDENT VERIFICATION OF ITS ACCURACY BEFORE APPLYING IT FOR ANY PURPOSE.

JANUARY 25, 2002

FOR INFORMATION ONLY



DESIGNWORKSHOP
506 Agua Fria
Santa Fe, NM
87501
(Tel.) 505.982.8399
(Fax) 505.986.1396

CITY OF ALBUQUERQUE
CAPITAL IMPLEMENTATION PROGRAM

TITLE: KIRTLAND PARK RENOVATION
DEMOLITION PLAN

February 12, 2001

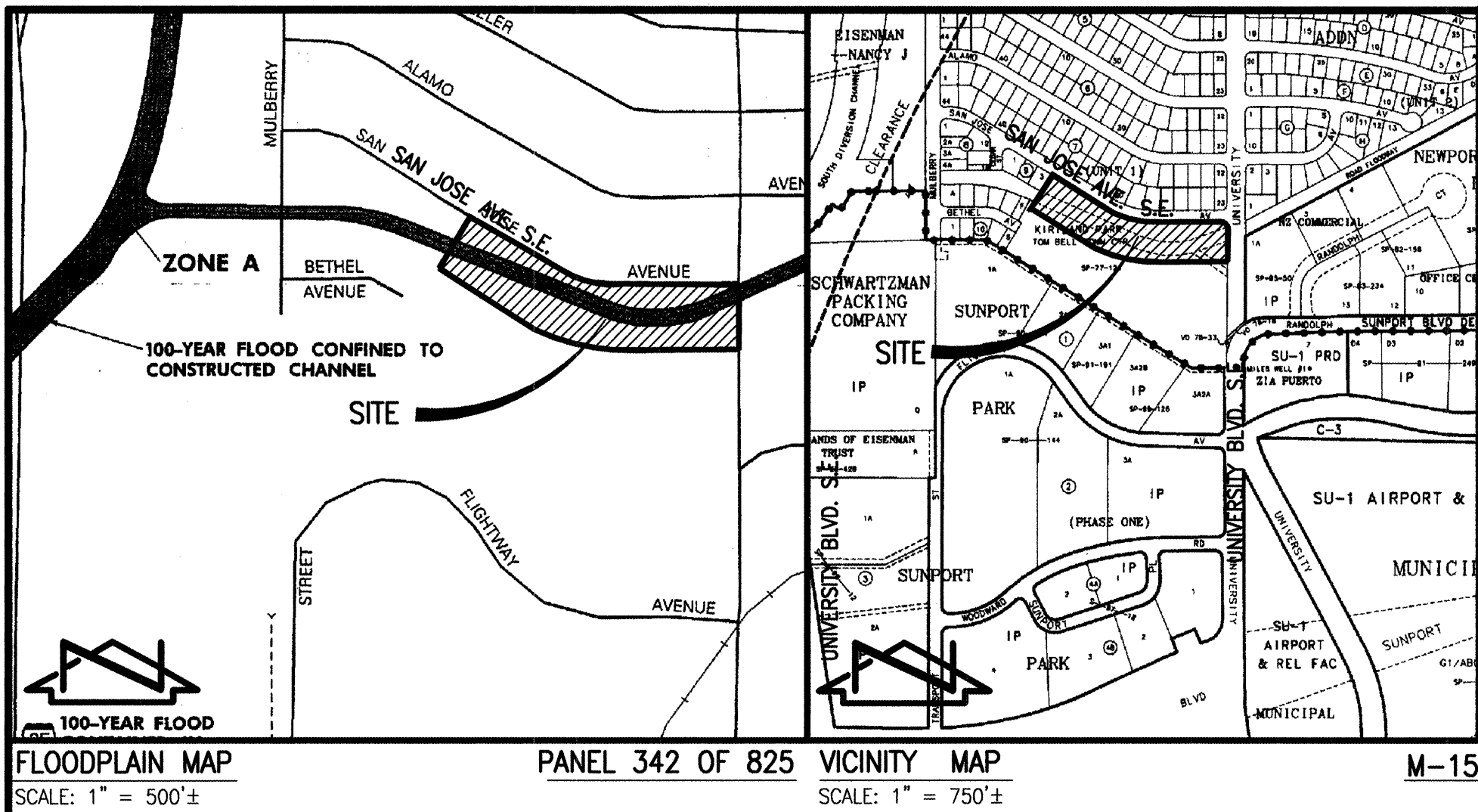
Design Review Committee	City Engineer Approval
-------------------------	------------------------

Date	MO./DAY/YR.	MO./DAY/YR.

City Project No
6549.02

Zone Map No.
M-15-Z

Sheet 1.0 Of



FLOODPLAIN MAP SCALE: 1" = 500'±

PANEL 342 OF 825 VICINITY MAP SCALE: 1" = 750'±

M-15

RECORD DRAWING

THIS RECORD DRAWING HAS BEEN PREPARED IN PART, BASED UPON INFORMATION FURNISHED BY OTHERS. WHILE THE INFORMATION IS BELIEVED TO BE RELIABLE, THE DESIGN PROFESSIONAL CANNOT ASSURE ITS ACCURACY AND THIS IS NOT RESPONSIBLE FOR THE ACCURACY OF THIS RECORD DRAWING FOR ANY ERRORS OR OMISSIONS WHICH MAY HAVE BEEN INCORPORATED INTO IT AS A RESULT. THOSE RELYING ON THIS RECORD DOCUMENT ARE ADVISED TO OBTAIN INDEPENDENT VERIFICATION OF ITS ACCURACY BEFORE APPLYING IT FOR ANY PURPOSE.

JANUARY 25, 2002

SCALE: 1" = 40'

40 0 20 40 80

20 40 80

20 40 80

20 40 80

20 40 80

20 40 80

20 40 80

20 40 80

20 40 80

20 40 80

20 40 80

20 40 80

20 40 80

20 40 80

20 40 80

20 40 80

20 40 80

20 40 80

20 40 80

20 40 80

20 40 80

20 40 80

20 40 80

20 40 80

20 40 80

20 40 80

20 40 80

20 40 80

20 40 80

20 40 80

20 40 80

20 40 80

20 40 80

20 40 80

20 40 80

20 40 80

20 40 80

20 40 80

20 40 80

20 40 80

20 40 80

20 40 80

20 40 80

20 40 80

20 40 80

20 40 80

20 40 80

20 40 80

20 40 80

20 40 80

20 40 80

20 40 80

20 40 80

20 40 80

20 40 80

20 40 80

20 40 80

20 40 80

20 40 80

20 40 80

20 40 80

20 40 80

20 40 80

20 40 80

20 40 80

20 40 80

20 40 80

20 40 80

20 40 80

20 40 80

20 40 80

20 40 80

20 40 80

20 40 80

20 40 80

20 40 80

20 40 80

20 40 80

20 40 80

20 40 80

20 40 80

20 40 80

20 40 80

20 40 80

20 40 80

20 40 80

20 40 80

20 40 80

20 40 80

20 40 80

20 40 80

20 40 80

20 40 80

20 40 80

20 40 80

20 40 80

20 40 80

20 40 80

20 40 80

20 40 80

20 40 80

20 40 80

20 40 80

20 40 80

20 40 80

20 40 80

20 40 80

20 40 80

20 40 80

20 40 80

20 40 80

20 40 80

20 40 80

20 40 80

20 40 80

20 40 80

20 40 80

20 40 80

20 40 80

20 40 80

20 40 80

20 40 80

20 40 80

20 40 80

20 40 80

20 40 80

20 40 80

20 40 80

20 40 80

20 40 80

20 40 80

20 40 80

20 40 80

20 40 80

20 40 80

20 40 80

20 40 80

20 40 80

20 40 80

20 40 80

20 40 80

20 40 80

20 40 80

20 40 80

20 40 80

20 40 80

20 40 80

20 40 80

20 40 80

20 40 80

20 40 80

20 40 80

20 40 80

20 40 80

20 40 80

20 40 80

20 40 80

20 40 80

20 40 80

20 40 80

20 40 80

20 40 80

20 40 80

20 40 80

20 40 80

20 40 80

20 40 80

20 40 80

20 40 80

20 40 80

20 40 80

20 40 80

20 40 80

20 40 80

20 40 80

20 40 80

20 40 80

20 40 80

20 40 80

20 40 80

20 40 80

20 40 80

20 40 80

20 40 80

20 40 80

20 40 80

20 40 80

20 40 80

20 40 80

20 40 80

20 40 80

20 40 80

20 40 80

20 40 80

20 40 80

20 40 80

20 40 80

20 40 80

20 40 80

20 40 80

20 40 80

20 40 80

20 40 80

20 40 80

20 40 80

20 40 80

20 40 80

20 40 80

20 40 80

20 40 80

20 40 80

20 40 80

20 40 80

20 40 80

20 40 80

20 40 80

20 40 80

20 40 80

20 40 80

20 40 80

20 40 80

20 40 80

20 40 80

20 40 80

20 40 80

20 40 80

20 40 80

20 40 80

20 40 80

20 40 80

20 40 80

20 40 80

20 40 80

20 40 80

20 40 80

20 40 80

20 40 80

20 40 80

20 40 80

20 40 80

20 40 80

20 40 80

20 40 80

20 40 80

20 40 80

20 40 80

20 40 80

20 40 80

20 40 80

20 40 80

20 40 80

20 40 80

20 40 80

20 40 80

20 40 80

20 40 80

20 40 80

20 40 80

20 40 80

20 40 80

20 40 80

20 40 80

20 40 80

20 40 80

20 40 80

20 40 80

20 40 80

20 40 80

20 40 80

20 40 80

20 40 80

20 40 80

20 40 80

20 40 80

20 40 80

20 40 80

20 40 80

20 40 80

20 40 80

20 40 80

20 40 80

20 40 80

20 40 80

20 40 80

20 40 80

20 40 80

20 40 80

20 40 80

20 40 80

20 40 80

20 40 80

20 40 80

20 40 80

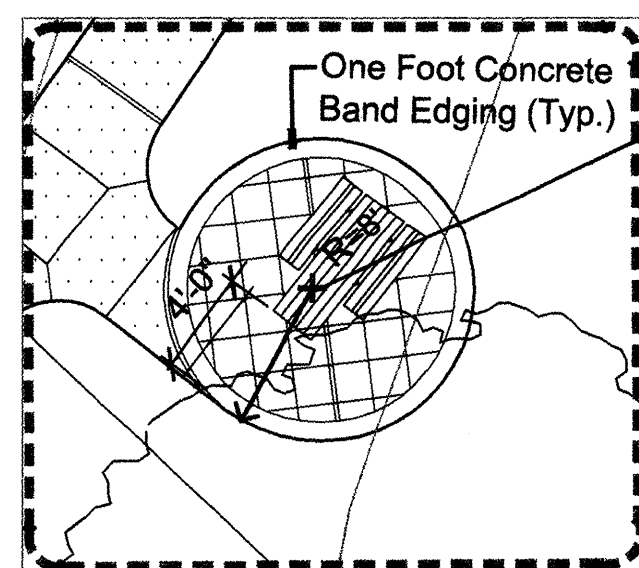
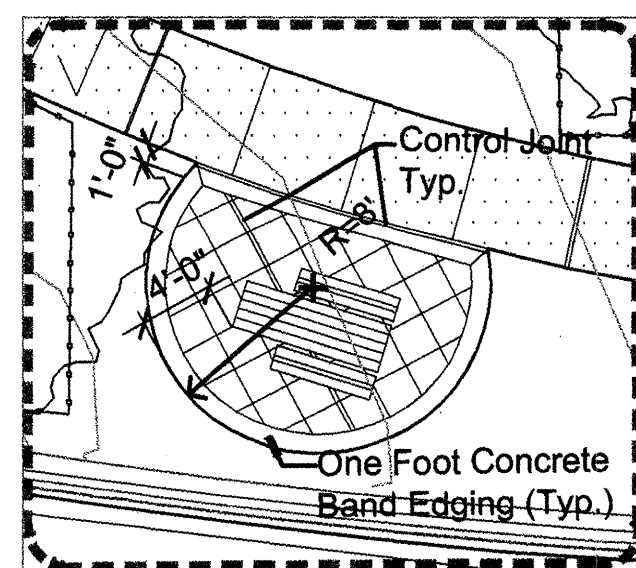
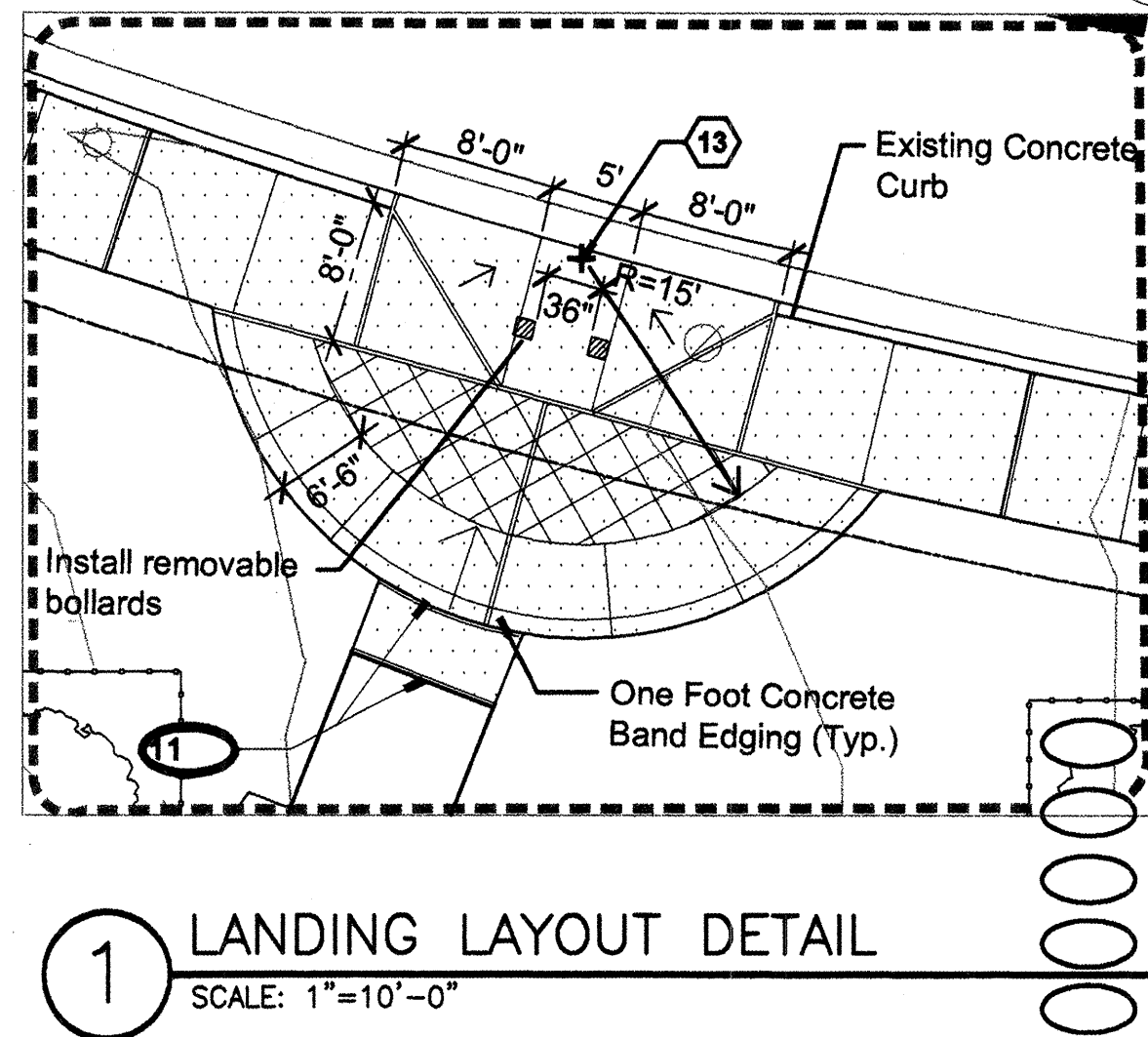
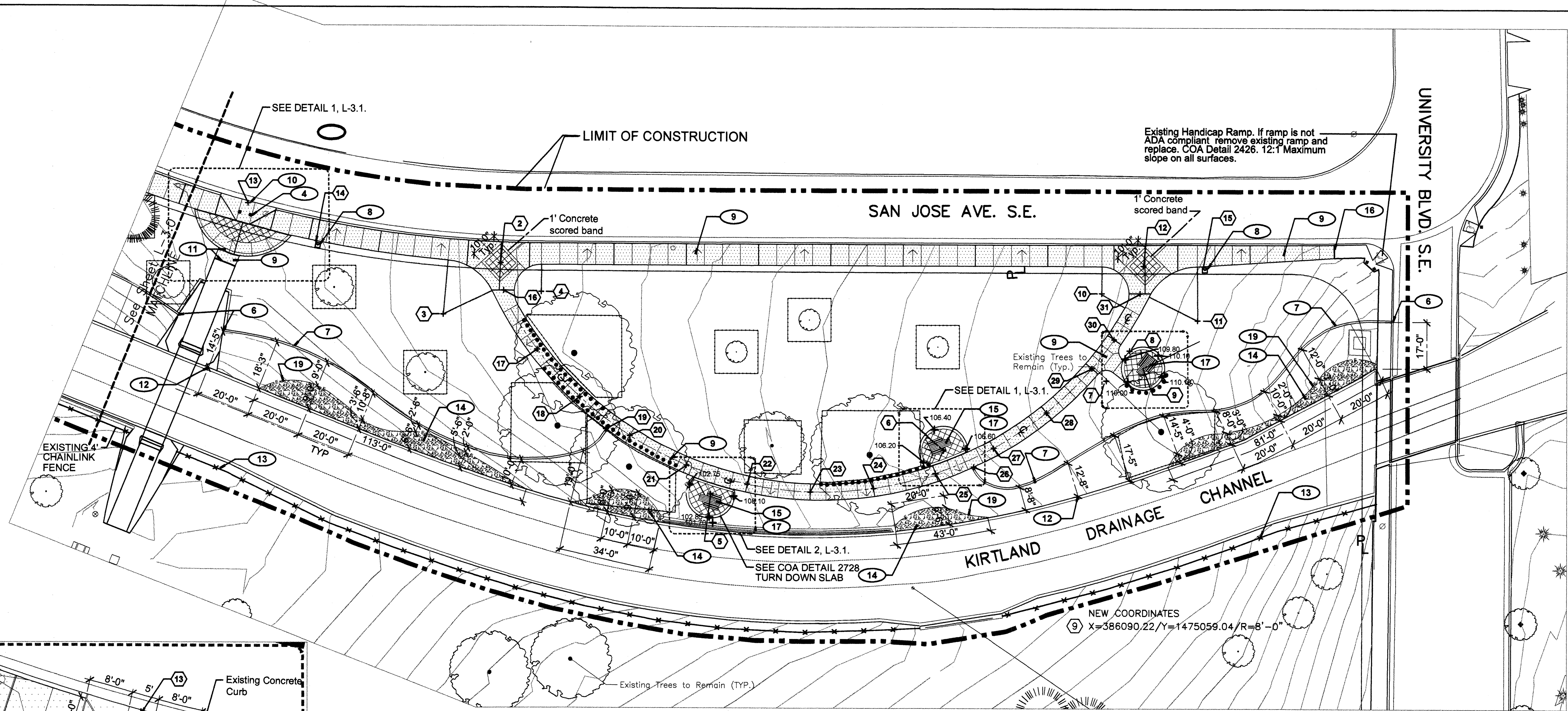
20 40 80

20 40 80

20 40 80

20 40 80

Design Review Committee	City Engineer Approval	Last Design Update	MO./DAY/YR.	MO./DAY/YR.
City Project No. 6549.02		Zone Map No. M-15-Z	Sheet L-3.0	Of 9



LEGEND

- EXISTING DECIDUOUS TREE TO REMAIN
- EXISTING EVERGREEN TREE TO REMAIN
- TREE PRESERVATION FENCING
- ROOT PRUNING
- PROPOSED CONCRETE WALKS
- TRASH RECEPTACLE
- PICNIC TABLE
- COBBLESTONE
- PROPOSED STEEL EDGING

NOTE: See Sheet L-3.0 for Layout Notes, General Notes and Keyed Notes.

See sheet L-2.0 for grading and drainage plan.

KEYED NOTES

- Existing bollards to remain. Preserve and protect existing bollards.
- Preserve and protect existing wooden bridge and concrete approaches.
- Point of beginning for east and west mowstrips.
- Concrete mowstrip. See keyed note #2 sht. L-3.0. Provide expansion and control joints per C.O.A. Standards.
- Install trash receptacle per manufactures specifications.
- Proposed concrete walk. See layout note #1 sht. L-3.0.
- See detail 1 sheet L-3.1 for landing and handicap ramp layout. 12:1 Maximum on all surfaces.
- New section of concrete walk to be flush with existing concrete walk and with new concrete landing.
- Layout dimensions for mowcub to be laid out at 90° from edge of concrete channel. (Typ.).
- 4' ht. Fencing along West side adjacent to concrete edge of arroyo. See layout note #8 sht. L-3.0.
- Cobblestone 2"-4" in diameter. See detail 3 sht. L-6.0.
- See detail 2 sheet L-3.1 for Picnic Pad layout.
- New concrete walk to be flush with existing concrete walk.
- See Detail 1 Sheet L-6.0 for installation of Picnic table.
- See Detail 2 Sheet L-6.0 for steel edging.

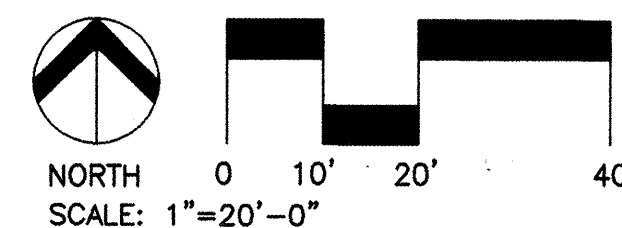
RECORD DRAWING

THIS RECORD DRAWING HAS BEEN PREPARED IN PART, BASED UPON INFORMATION FURNISHED BY OTHERS. WHILE THE INFORMATION IS BELIEVED TO BE RELIABLE, THE DESIGN PROFESSIONAL CANNOT ASSURE ITS ACCURACY AND THUS IS NOT RESPONSIBLE FOR THE ACCURACY OF THIS RECORD DRAWING FOR ANY ERRORS OR OMISSIONS WHICH MAY HAVE BEEN INCORPORATED INTO IT AS A RESULT. THOSE RELYING ON THIS RECORD DOCUMENT ARE ADVISED TO OBTAIN INDEPENDENT VERIFICATION OF ITS ACCURACY BEFORE APPLYING IT FOR ANY PURPOSE.

JANUARY 25, 2002

COORDINATE SCHEDULE

- | | | | |
|----|-----------------------------------|----|--------------------------------|
| 28 | X=385852.47/Y=1475097.24/Point | 28 | X=386054.51/Y=1475042.55/POINT |
| 3 | X=385831.29/Y=1475078.27/R=20'-0" | 29 | X=386071.25/Y=1475058.92/POINT |
| 4 | X=385867.52/Y=1475086.60/R=10'-0" | 30 | X=386079.46/Y=1475069.51/POINT |
| 5 | X=385930.22/Y=1475012.26/R=9'-0" | 31 | X=386089.07/Y=1475086.55/POINT |
| 6 | X=386016.35/Y=1475028.51/R=9'-0" | | |
| 7 | X=386076.60/Y=1475054.30/R=4'-0" | | |
| 8 | X=386085.20/Y=1475065.40/R=4'-0" | | |
| 9 | X=386090.22/Y=1475059.04/R=8'-0" | | |
| 10 | X=386074.87/Y=1475086.54/R=10'-0" | | |
| 11 | X=386110.30/Y=1475076.55/R=20'-0" | | |
| 12 | X=386090.25/Y=1475096.74/R=6'-6" | | |
| 13 | X=385759.09/Y=1475119.37/R=20'-0" | | |
| 14 | X=385784.20/Y=1475104.11/POINT | | |
| 15 | X=386113.52/Y=1475095.36/POINT | | |
| 16 | X=385853.69/Y=1475087.08/POINT | | |
| 17 | X=385866.03/Y=1475065.36/POINT | | |
| 18 | X=385881.83/Y=1475047.95/POINT | | |
| 19 | X=385891.54/Y=1475036.08/POINT | | |
| 20 | X=385900.36/Y=1475033.69/POINT | | |
| 21 | X=385921.25/Y=1475022.90/POINT | | |
| 22 | X=385943.80/Y=1475015.95/POINT | | |
| 23 | X=385967.09/Y=1475013.15/POINT | | |
| 24 | X=385990.56/Y=1475014.50/POINT | | |
| 25 | X=386013.45/Y=1475020.01/POINT | | |
| 26 | X=386027.19/Y=1475022.44/POINT | | |
| 27 | X=386034.95/Y=1475029.49/POINT | | |

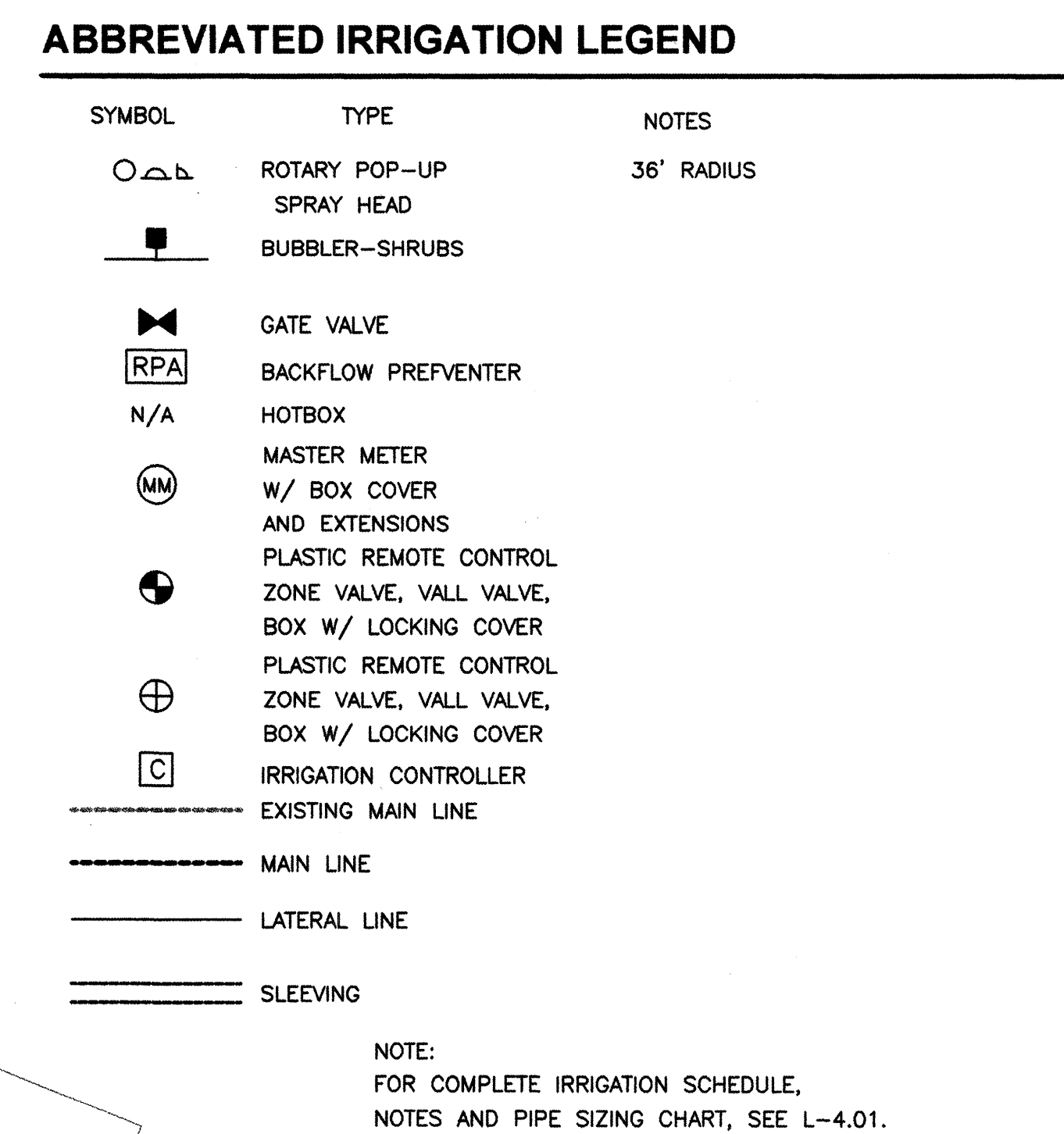


DESIGNWORKSHOP
506 Agua Fria
Santa Fe, NM
87501
(Tel.) 505.982.8399
(Fax) 505.986.1396

CITY OF ALBUQUERQUE CAPITAL IMPLEMENTATION PROGRAM

TITLE: KIRTLAND PARK RENOVATION LAYOUT PLAN-EAST		FEBRUARY 12, 2001	
Design Review Committee	City Engineer Approval	MO./DAY/YR.	MO./DAY/YR.
City Project No. 6459.02		Zone Map No. M-15-Z	Sheet L-3.1 of 9

SURVEY INFORMATION		BENCHMARK		AS BUILT INFORMATION	
FIELD NOTES	NO.	AN A.C.S. 1 3/4" ALUMINUM DISK STAMPED "ACS BM 3-18"	DATE	CONTRACTOR	DATE
BY	DATE	DISK IS SET IN THE NORTH WEST TOP END OF A CONCRETE CULVERT PIPE LOCATED ON THE NORTH SIDE OF WESTBOUND I-40, 0.13 +/- MILES OF THE CENTERLINE OF UNTER BLVD. N.W.	DATE	WORK STAKED BY	DATE
		ELEVATION=5187.56 FEET (M.S.L.D.)	DATE	INSPECTOR'S APPROVAL	DATE
			DATE	FIELD VERIFICATION BY	DATE
			DATE	DRAWING CORRECTED BY	DATE
			DATE	MICRO-FILM INFORMATION	DATE
			DATE	RECORDED BY	NO.



The diagram illustrates the relationship between four variables: C6, C7, C8, and C9. Each variable is represented by a box containing its name and a value. C6 is 2 inches, C7 is 2 inches, C8 is 2 inches, and C9 is 40.75. A circular inset shows a cross-section of a pipe with a central hole, labeled C6, C7, C8, and C9.

NORTH
SCALE: 1"=20'-0"

Sheet 4.09 of 9

CITY OF ALBUQUERQUE										
CAPITAL IMPLEMENTATION PROGRAM										
TITLE: <i>KIRTLAND PARK RENOVATION</i>					FEBRUARY 12, 2001					
<i>IRRIGATION PLAN-EAST</i>										
Design Review Committee			City Engineer Approval			Last Design Update	MO./DAY/YR.		MO./DAY/YR.	
City Project No. 6459.02				Zone Map No. M-15-Z				Sheet L-4.1		
								Of 9		

