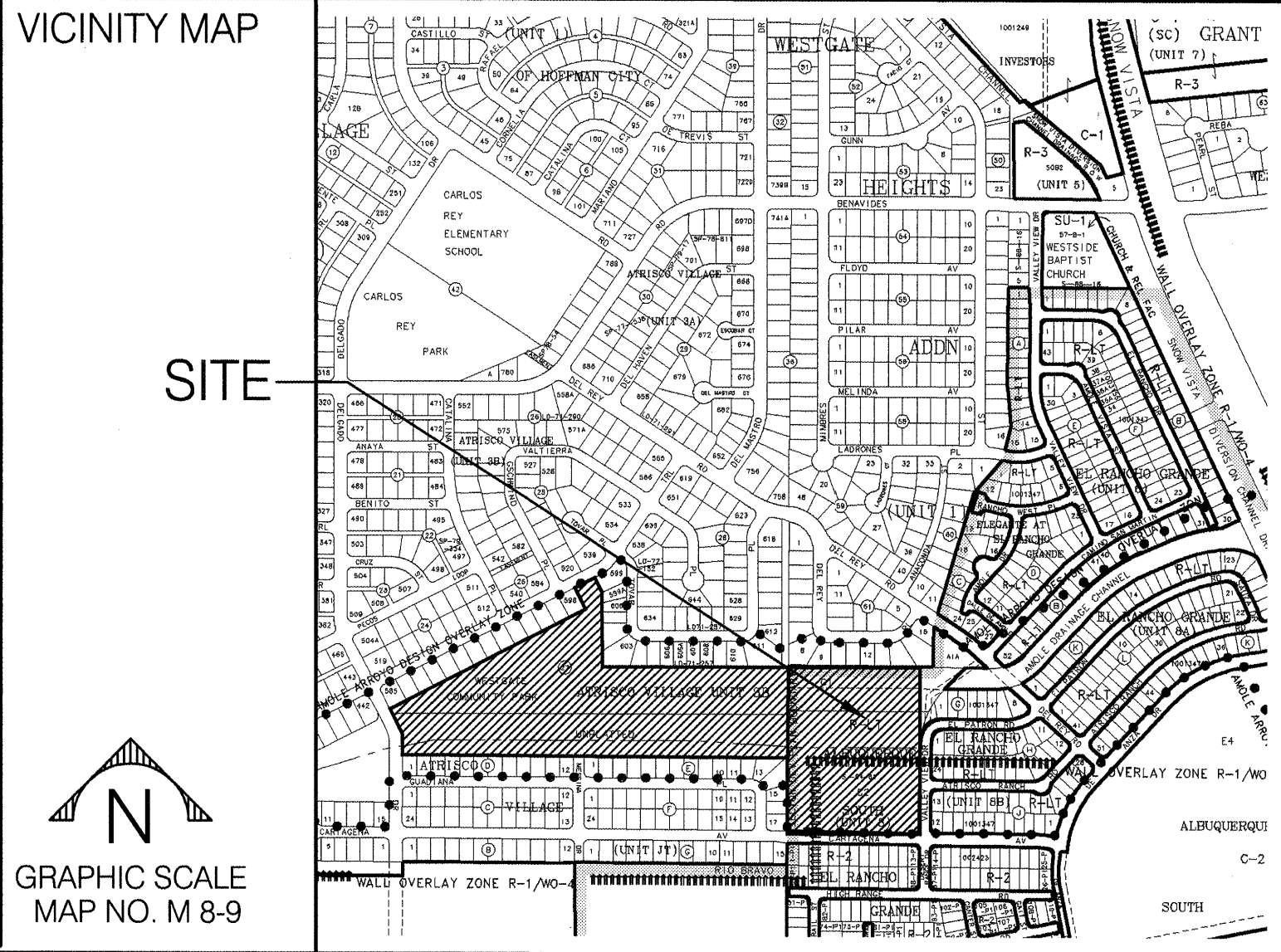


WESTGATE PARK - CARTAGENA HALF STREET SECTION



City of Albuquerque
Department of Municipal Development - Managing Department
Park Design and Construction Division
Albuquerque, New Mexico
September, 2005
Parks and Recreation Department - Owner



CONSensus PLANNING, INC.

PLANNING / LANDSCAPE ARCHITECTURE
302 EIGHTH STREET NW ALBUQUERQUE, NM 87102 (505) 764-9801

Property Information

Legal Description: Westgate Community Park
Meter Address: 10500 Rio Puerco Trail S.W.
Zoning: R-LT
Total Site Area Phase 2: 10.4 acres
Total Landscape Area: 346,862 sf (7.8 acres)
Total Turf Area: 229,778 (5.3 acres)
Total Dog Park Area: 79,411 sf (1.9 acres)
Parking Provided: 131 Standard, 10 HC

Consultants

Civil Engineering
Smith Engineering Company
2201 San Pedro NE, Building 4, Suite 200
Albuquerque, NM 87110

Electrical Engineering
The Response Group, Inc.
11930 Menaul NE, Suite 214
Albuquerque, NM 87112

Index of Drawings

- General
- 1 Cover Sheet
 - 2 General Notes
 - 3 Removal Plan - Cartagena Ave.
 - 4 Paving Plan & Profile: Cartagena Ave.
 - 5 Roadway Typical Section - Cartagena Ave.

UTILITY COMPANY CONTACTS

PNM-ELECTRIC
4201 Edith Boulevard NE
Albuquerque, New Mexico 87107
(505) 241-0525

PNM-GAS
4625 Edith Boulevard NE
Albuquerque, New Mexico 87107
(505) 241-7745

QWEST
201 Third Street NW, Suite 700
Albuquerque, New Mexico 87103
(505) 245-8706

COMCAST
4611 Montbel Place NE
Albuquerque, NM 87107
(505) 761-6235



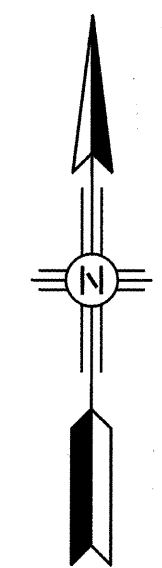
FOR INFORMATION ONLY

**CITY OF ALBUQUERQUE
UTILITY DEVELOPMENT**
P.O. Box 1293
Albuquerque, New Mexico 87103
(505) 768-2729

CONSensus PLANNING, INC.
Planning / Landscape Architecture
302 Eighth Street NW
Albuquerque, NM 87102
(505) 764-9801 Fax 842-5495
e-mail: cp@consensusplanning.com

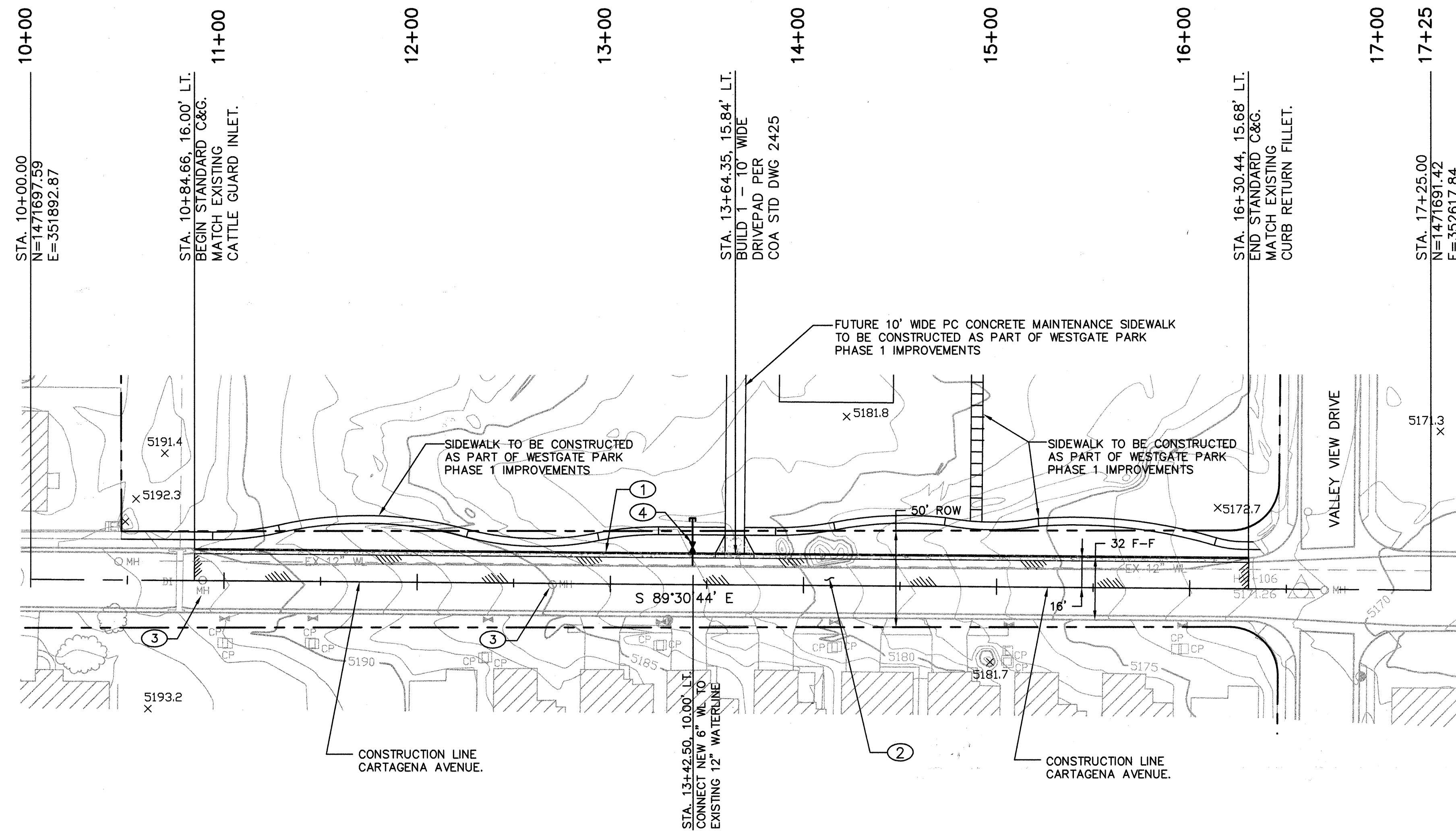
REV.	SHEETS	CITY ENGINEER		DATE	USER DEPARTMENT		DATE	USER DEPARTMENT	
ENGINEERS STAMP & SIGNATURE		APPROVED		ENGINEER		DATE		APPROVED FOR CONSTRUCTION	
 9-13-05		DRC Chairman		KLS		9/21/05			
		Transportation		MJP		9/21/05			
		Water/Wastewater		William J. Balach		9-21-05			
		Hydrology		Bradley L. Bylunas		9-21-05			
		C I P							
		Constr. Mngmt.						 10-06-05	
		Constr. Coord.		KALS		9/22/05			
		PROJECT NUMBER		656302		SHEET 1 OF 5			

NEW FEATURES LEGEND:

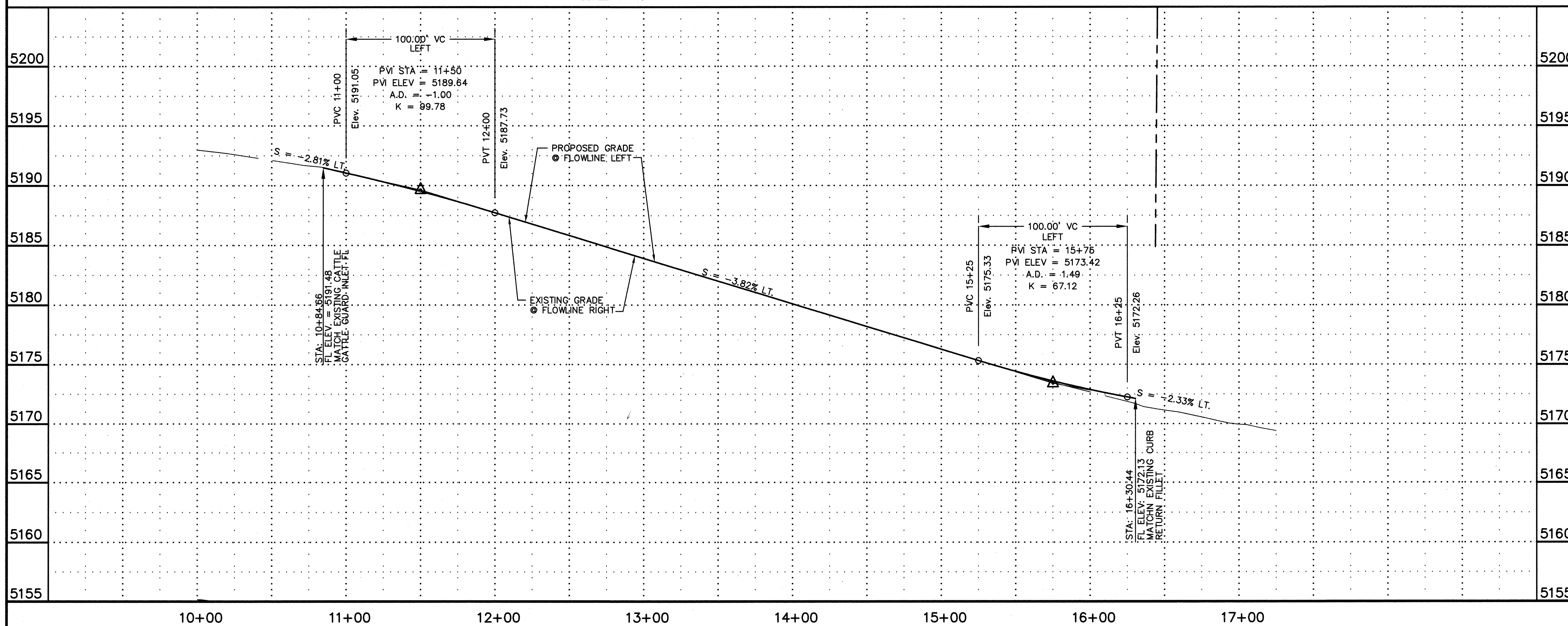


- ① REMOVE AND DISPOSE OF ASPHALT PAVEMENT TO LIMITS SHOWN. SAW CUT EXISTING ASPHALT PAVEMENT ADJACENT TO ASPHALT PAVEMENT TO REMAIN.
- ② EXISTING ASPHALT PAVEMENT TO REMAIN IN PLACE DURING CONSTRUCTION.

E VELOPMENT DIVISION	
NA HALF STREET SECTION	
GENA AVE.	
Mo. / Day / Yr.	Mo. / Day / Yr.
D. Sheet	Of 3 5



CARTAGENA AVE.
SCALE: 1"=40'



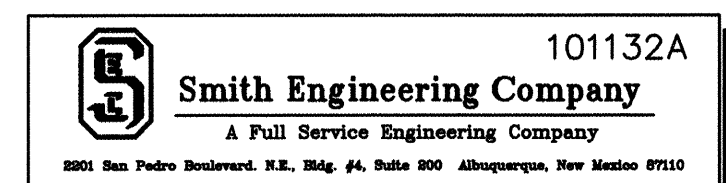
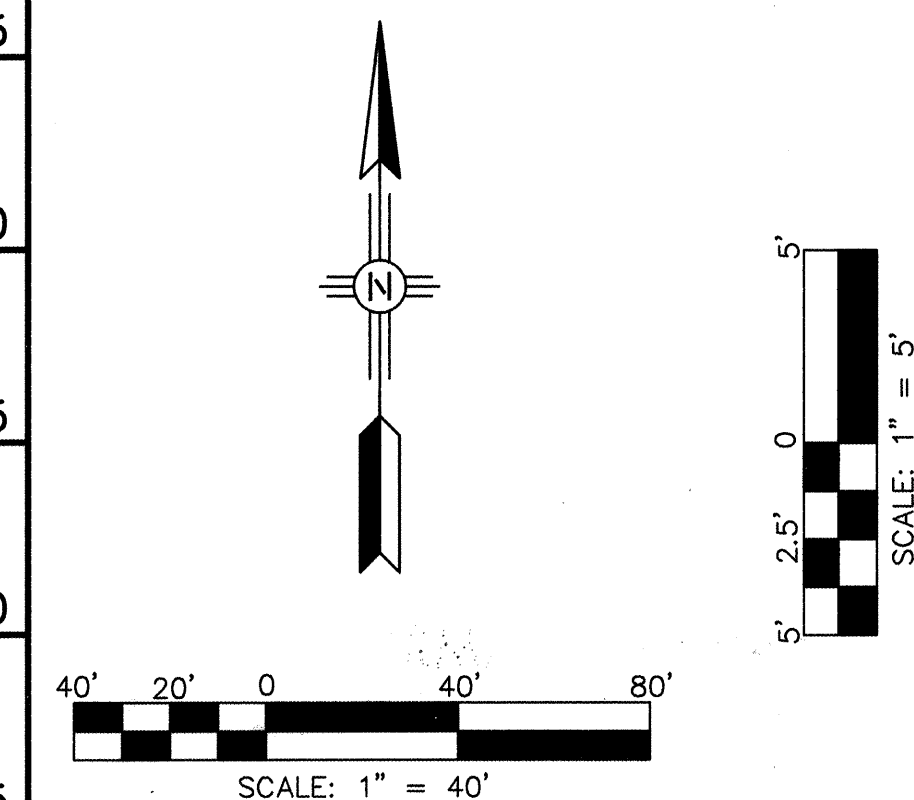
GENERAL NOTES:

1. ALL OFFSETS SHOWN ON THIS SHEET ARE TO FLOWLINE OF CURB AND GUTTER.

KEYED NOTES: ○

1. INSTALL STANDARD CURB AND GUTTER PER COA STD DWG 2415A.
2. INSTALL NEW PAVEMENT PER SECTION SHOWN ON SHEET 5.
3. ADJUST EXISTING MANHOLE TO PROPOSED GRADE AS REQUIRED.
4. INSTALL 28.5LF OF 6" WATERLINE. INSTALL 6" MJMJ CAP. TOP OF PIPE = 5178.00. INSTALL 6" GATE VALVE. INSTALL VALVE BOX PER C.O.A. STD. DWG. 2326.

FOR INFORMATION ONLY



CITY OF ALBUQUERQUE
DEPARTMENT OF MUNICIPAL DEVELOPMENT
PARK AND MEDICAL DESIGN DIVISION
TITLE: WESTGATE COMMUNITY PARK -CARTAGENA HALF STREET' SECTION
PAVING PLAN & PROFILE: CARTAGENA AVENUE

DESIGN REVIEW COMMITTEE	CITY ENGINEER APPROVAL	DESIGN REVIEW COMMITTEE	CITY ENGINEER
APPROVED SEP 21 2005	APPROVED OCT - 6 2005	DESIGN REVIEW COMMITTEE	CITY ENGINEER

City Project No. **656302** Zone Map No. **M-8,9** Sheet **4** Of **5**

AS BUILT INFORMATION		BENCH MARKS		SURVEY INFORMATION		ENGINEER'S SEAL	
CONTRACTOR	DATE	ACS BRASS TABLET STAMPED "TRANS"	DATE	FIELD NOTES	DATE	ENGINEER'S SEAL	DATE
WORK STARTED BY	DATE	Geographic Position (NAD 1927)	DATE	NO.	BY	Seal of Douglas A. Andrews	DATE
WORK STOPPED BY	DATE	N.M. State Plane Coordinates (Central Zone)	DATE				
FIELD SUPERVISOR	DATE	X = 354,899.45 Y = 1,471,822.67	DATE				
DESIGNED BY	DATE	Ground-to-Grid Factor = 0.99967921	DATE				
DRAWN BY	DATE	SLD 1929 Elevation = 5118.43	DATE				
CHECKED BY	DATE		DATE				
RECORDED BY	DATE		DATE				
NO.							

