

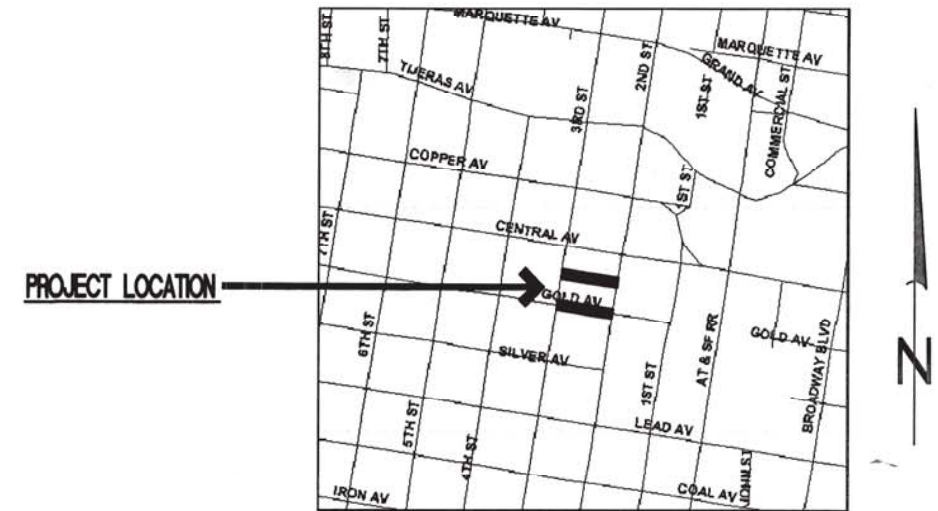


CITY OF ALBUQUERQUE
PUBLIC WORKS DEPARTMENT

GOLD AVE., S.W. AND NORTH ALLEY (2ND-3RD)
STORM DRAIN, WATERLINE AND SEWER REPLACEMENT

DRAWING LIST

- 1 TITLE SHEET
- 2 GENERAL NOTES, LEGEND
- 3 GOLD AVENUE PLAN AND PROFILE
- 4 ALLEY PLAN AND PROFILE
- 5 TRAFFIC CONTROL SIGNING AND CONSTRUCTION TRAFFIC CONTROL STANDARDS
- 6 TYPICAL TRAFFIC CONTROL AND & SIGNING EXAMPLES (REF MUTCD)



VICINITY MAP
MAP NO. K14

UTILITY COMPANY CONTACTS

NAME	PHONES	BUSINESS
Arthur, Warren	Office phone: (505) 241-3490 Office fax: (505) 241-3620 Cell phone: 934-8818 Warthur@pnm.com	PNM - Electric Engineering Representative III 4201 Edith Blvd. NE Albuquerque, NM 87107
Bouska, Kelly	Office phone: (505) 241-7752 Office fax: (505) 241-7753 Cell phone: 790-5575 Kbouska@pnm.com	PNM - Gas/Co. of NM District Engineer 4625 Edith Blvd. NE Albuquerque, NM 87107
Crowel, David	Office phone: (505) 842-2911 Office fax: (505) 842-2890 Dcrowel@att.com	A1&I Resource Supervisor 111 3rd Street NW Albuquerque, NM 87103
Darnell, Andy	Office phone: (505) 346-4476 Office fax: (505) 346-4481 Andy.darnell@wcom.com	MCI Worldcom Operations Manager 3700 Singer NE, Suite A Albuquerque, NM 87109
Erickson, Rita	Office phone: (505) 761-6235 Office fax: (505) 761-6599 Rita_erickson@cable.comcast.com	Comcast Planning and Design Supervisor 4611 Montibel Place NE Albuquerque, NM 87107
Harrison, Roybal	Office phone: (505) 938-7339 Office fax: (505) 938-7380 Royal.harrison@twtelecom.com	Time Warner Telecom Plant Manager 3830 Singer Blvd. NE, Suite 1000 Albuquerque, NM 87109
Mares, John	Office phone: (505) 998-2274 Office fax: (505) 998-9161 John.mares@espire.net	E.Spire 505 Marquette NW, Suite 1605 Albuquerque, NM 87102
Mueller, Rick	Office phone: (505) 244-3161 Office fax: (505) 244-0094 Cell phone: 228-3329 Rdmuller@mcclodusa.com	McLeodUSA Supervisor of Outside Techs. 505 Marquette NW, (Compass Bank), Suite 1600 Albuquerque, NM 87102
Muller, David	Office phone: (505) 245-8706 Office fax: (505) 245-6831 or 245-6733 dmuller@uswest.com	QWEST/US WEST Capacity Provisioning Specialist 201 3rd Street NW (Bank of Albuquerque), Suite 700 Albuquerque, NM 87102
Paulsen, Dennis	Office phone: (972) 791-3277 Office fax: (972) 791-3178 Cell phone: (214) 912-3412 Dennis.paulsen@genuity.com	GENUITY Manager OSP Engineering 5221 North O'Connor MC-HQL11A22 Irving, Texas 75039

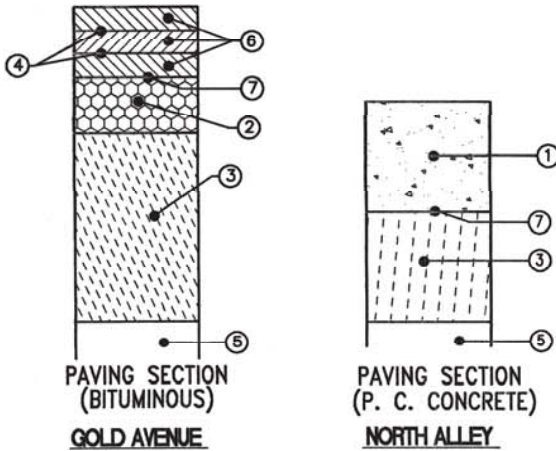
REV.	SHEETS	CITY ENGINEER	DATE	USER DEPARTMENT	DATE	USER DEPARTMENT	DATE
ENGINEERS STAMP & SIGNATURE		APPROVALS		ENGINEER	DATE	***** APPROVED FOR CONSTRUCTION	
		DRC Chairman			10-5-01	City Engineer Date 10/5/01	
		Transportation			10-4-01		
		Water/Wastewater			10-2-01		
		Hydrology			10-2-01		
		Parks			10-2-01		
Constr. Mngmt.							
Constr. Coord.							
City Project No.		667691		Sheet 1 Of 6			

H&N
Holmes & Narver, Inc.
6501 AMERICAS PARKWAY, NE
SUITE 700 (505)889-4100
ALBUQUERQUE, NM 87110

GENERAL NOTES

- ALL WORK DETAILED ON THESE DRAWINGS TO BE PERFORMED UNDER THIS CONTRACT SHALL, EXCEPT AS OTHERWISE STATED, BE CONSTRUCTED IN ACCORDANCE WITH THE CITY OF ALBUQUERQUE STANDARD SPECIFICATIONS FOR PUBLIC WORKS CONSTRUCTION, 1986 AS AMENDED THROUGH UPDATE NO. 6, HEREBY REFERRED TO AS THE SPECIFICATIONS. REFERENCES MADE TO STANDARD DRAWINGS IMPLY THAT SECTION OF THE SPECIFICATIONS, WHICH INCLUDES MISCELLANEOUS STANDARD DETAILS.
- LOCATION OF UTILITIES ARE APPROXIMATE. IT IS THE CONTRACTOR'S RESPONSIBILITY TO LOCATE ALL PERTINENT UTILITIES IN THE FIELD. CALL ONE CALL SYSTEM, INC. AT 260-1990 TWO WORKING DAYS BEFORE ANY EXCAVATION.
- IT IS THE CONTRACTOR'S RESPONSIBILITY TO SUPPORT ALL UTILITIES EXPOSED DURING CONSTRUCTION. CONTRACTOR WILL BE RESPONSIBLE FOR DAMAGE TO ALL UTILITIES, INCLUDING SERVICE LINES.
- PRIOR TO CONSTRUCTION, THE CONTRACTOR SHALL EXCAVATE AND VERIFY THE HORIZONTAL AND VERTICAL LOCATIONS OF ALL OBSTRUCTIONS. SHOULD A CONFLICT EXIST, THE CONTRACTOR SHALL NOTIFY THE PUBLIC WORKS DEPARTMENT SO THAT THE CONFLICT CAN BE RESOLVED WITH MINIMUM AMOUNT OF DELAY.
- FIVE (5) WORKING DAYS PRIOR TO BEGINNING CONSTRUCTION, THE CONTRACTOR SHALL SUBMIT TO THE CONSTRUCTION COORDINATION DIVISION A DETAILED CONSTRUCTION SCHEDULE. TWO (2) WORKING DAYS PRIOR TO CONSTRUCTION, THE CONTRACTOR SHALL OBTAIN A BARRICADE PERMIT FROM THE CONSTRUCTION COORDINATION DIVISION. CONTRACTOR SHALL NOTIFY BARRICADE ENGINEER (768-2551) PRIOR TO OCCUPYING AN INTERSECTION. SEE SECTION 19 OF THE SPECIFICATIONS.
- ALL PAVEMENT MARKINGS OR OTHER TRAFFIC CONTROL DEVICES INCLUDING TRAFFIC SIGNAL CONDUIT, ADVERSELY AFFECTED BY CONSTRUCTION SHALL BE REPLACED IN PRECONSTRUCTION CONDITION. THESE COSTS SHALL BE INCIDENTAL TO THE PROJECT. PAVEMENT MARKINGS SHALL BE REPLACED WITH PLASTIC.
- CONTRACTOR SHALL COORDINATE WITH PNM WHERE LIP OF TRENCH IS LESS THAN 5' TO POWER POLE. COSTS ASSOCIATED WITH SUPPORT OF EXISTING POLES SHALL BE INCIDENTAL TO THE PROJECT. SEE SHEET 1 FOR UTILITY COMPANY CONTACTS.
- CONTRACTOR SHALL BE CHARGED BY PNM FOR ANY DAMAGE TO PNM CABLES AND FOR SUPPORTING OF MINOR RELOCATIONS OF CABLES DURING CONSTRUCTION. THESE COSTS SHALL BE INCIDENTAL TO THE PROJECT.
- ALL UTILITIES AND UTILITY SERVICE LINES SHALL BE INSTALLED PRIOR TO PAVING.
- THE CONTRACTOR SHALL NOTIFY THE ENGINEER OF ANY DEFECTIVE OR DETERIORATED CONDITION UPON VISUAL INSPECTION OF EXISTING SERVICE LINES.
- IT IS THE CONTRACTOR'S RESPONSIBILITY TO LOCATE AND RECONNECT ALL EXISTING SEWER SERVICE CONNECTIONS.
- SANITARY SEWER SERVICE RECONNECTIONS AND TRANSFERS SHALL BE PAID FOR IN ACCORDANCE TO THE UNIT PRICE LISTED ON THE BID PROPOSAL. HOWEVER, THOSE CONNECTIONS DAMAGED WHILE PERFORMING THE WORK UNDER THIS PROJECT SHOULD BE REPLACED, AT NO ADDITIONAL COST TO THE CITY.
- ALL SANITARY SEWER MANHOLES SHALL BE BUILT IN ACCORDANCE WITH THE CITY OF ALBUQUERQUE STANDARD DRAWINGS 2101 AND 2102. ALL SANITARY SEWER MANHOLES SHALL BE 4 FEET IN DIAMETER UNLESS OTHERWISE NOTED.
- ELECTRONIC MARKER DISCS SHALL BE INSTALLED PER SECTION 170 OF THE TECHNICAL SPECIFICATIONS.
- CONTRACTOR SHALL EXERCISE CAUTION WHEN REMOVING OR WORKING AROUND EXISTING STEEL LINES TO AVOID ELECTRICAL SHOCK. ELECTRICAL BONDS OR JUMPERS ARE RECOMMENDED TO BE USED PRIOR TO SEPARATING STEEL LINES.
- CONTRACTOR SHALL COORDINATE WITH THE GAS COMPANY OF NEW MEXICO TWO WEEKS PRIOR TO NEEDING A GAS LINE SEGMENT RELOCATED. SEE SHEET 1 FOR UTILITY COMPANY CONTACTS.
- PARALLEL WATER AND SEWER LINES SHALL BE LAID AT LEAST 10 FEET APART HORIZONTALLY AND THE WATERLINE SHOULD BE AT A HIGHER ELEVATION THAN THE SEWER.
- WHEN WATERLINE AND SEWER LINES CROSS EACH OTHER, THE WATERLINE SHALL BE AT LEAST EIGHTEEN (18) INCHES ABOVE THE SEWER. THE CROSSING SHALL BE ARRANGED SO THAT THE SEWER JOINTS WILL BE EQUIDISTANT AND AS FAR AS POSSIBLE FROM THE WATERLINE JOINTS. ALL SEWER PIPE SHALL BE PRESSURE PIPE OR ENCASED IN CONCRETE 10 FT EACH WAY FROM CROSSING.

- CONTRACTOR SHALL NOTIFY THE ENGINEER NOT LESS THAN SEVEN (7) DAYS PRIOR TO STARTING WORK IN ORDER THAT THE ENGINEER MAY TAKE NECESSARY MEASURES TO INSURE THE PRESERVATION OF SURVEY MONUMENTS. CONTRACTOR SHALL NOT DISTURB PERMANENT SURVEY MONUMENTS WITHOUT THE CONSENT OF THE ENGINEER AND SHALL NOTIFY THE ENGINEER AND BEAR THE EXPENSE OF REPLACING ANY THAT MAY BE DISTURBED WITHOUT PERMISSION. REPLACEMENT SHALL BE DONE ONLY BY THE CITY SURVEY SECTION. WHEN A CHANGE IS MADE IN THE FINISHED ELEVATION OF THE PAVEMENT OF ANY ROADWAY IN WHICH A PERMANENT SURVEY MONUMENT IS LOCATED, CONTRACTOR SHALL, AT HIS OWN EXPENSE, ADJUST THE MONUMENT COVER TO THE NEW GRADE UNLESS OTHERWISE SPECIFIED. REFER TO SECTION 4.4 OF THE GENERAL CONDITIONS.
- ALL EXISTING SANITARY SERVICES SHALL BE RECONNECTED TO THE NEW SEWER MAIN AS PER CITY OF ALBUQUERQUE STANDARD DRAWING 2125.
- EXISTING MANHOLE FLOORS SHALL BE REHABILITATED AS PER CITY OF ALBUQUERQUE STANDARD DRAWINGS 2101 AND 2102.
- PRIOR TO THE START OF CONSTRUCTION, ALL ADJACENT PROPERTY OWNERS SHALL BE GIVEN NOTIFICATION BY THE CONTRACTOR OF THE FORTHCOMING CONSTRUCTION IN ACCORDANCE WITH SECTION 701 OF THE STANDARD SPECIFICATIONS. THIS NOTIFICATION WILL INCLUDE THE DETERMINATION OF THE LOCATION OF NEW SANITARY SERVICE CONNECTIONS OR THE CONDITION OF AN EXISTING SANITARY SERVICE LINE TO BE RECONNECTED TO THE NEW SEWER MAIN.
- THE CONTRACTOR SHALL BE RESPONSIBLE FOR MAINTAINING ACCESS TO ALL ADJACENT PROPERTIES. HANDICAP ACCESS TO BUSINESS ENTRANCES MUST BE INCLUDED.
- ALL EXCAVATION, TRENCHING, AND SHORING ACTIVITIES MUST BE CARRIED OUT IN ACCORDANCE WITH OSHA 29CFR 1926.650 SUBPART P.
- CONTRACTOR IS ADVISED TO VISIT THE PROJECT SITE PRIOR TO BIDDING AND FAMILIARIZE THEMSELVES WITH FIELD CONDITIONS INCLUDING THE LOCATION OF UTILITIES SHOWN ON THE PLANS AND OTHER UTILITIES/OBSTACLES CLEARLY VISIBLE IN THE FIELD. IT IS THE RESPONSIBILITY OF THE CONTRACTOR TO PLAN THEIR CONSTRUCTION METHODS TO ADEQUATELY SUPPORT AND/OR AVOID ALL UTILITIES SHOWN ON THE PLANS AND ALL UTILITIES/OBSTACLES CLEARLY VISIBLE IN THE FIELD. ANY RELOCATION OF UTILITIES/OBSTACLES SHOWN ON THE PLANS OR VISIBLE IN THE FIELD, IN ORDER TO COMPLETE THE REQUIRED WORK, WILL BE CONSIDERED TO BE CONTRACTOR CONVENIENCE AND BE THE RESPONSIBILITY OF THE CONTRACTOR, UNLESS THE UTILITY/OBSTACLES IS IDENTIFIED ON THE PLANS AS BEING RELOCATABLE AS PART OF THE PROJECT. IT WILL BE THE RESPONSIBILITY OF THE CONTRACTOR TO COORDINATE ALL REQUIRED RELOCATIONS WITH APPROPRIATE UTILITIES/INDIVIDUALS.
- FOR STORM DRAIN CONSTRUCTION, RCP PIPE JOINTS SHALL NOT BE GROUTED PRIOR TO FINAL INSPECTION. FINAL INSPECTION WILL DETERMINE JOINTS TO BE GROUTED FOR FINAL ACCEPTANCE OF THE CONSTRUCTION.
- CONTRACTOR SHALL MAINTAIN A GRAFFITI-FREE WORK SITE. CONTRACTOR SHALL PROMPTLY REMOVE ANY AND ALL GRAFFITI FROM EQUIPMENT, WHETHER PERMANENT OR TEMPORARY.
- THE CONTRACTOR SHALL COORDINATE HIS WORK WITH PNM GAS SERVICES REGARDING THE EXISTING GAS LINE REPLACEMENT IN THE ALLEY. PNM INTENDS TO REPLACE THIS LINE AT APPROXIMATELY THE SAME TIME AS THE WORK OF THIS PROJECT WILL TAKE PLACE.
- CONTRACTOR SHALL COORDINATE WITH THE CITY OF ALBUQUERQUE WATER SYSTEMS DIVISION (857-8200) FIVE (5) WORKING DAYS IN ADVANCE OF ANY WORK THAT MAY AFFECT EXISTING PUBLIC WATER OR SEWER UTILITIES. EXISTING VALVES TO BE OPERATED BY CITY PERSONNEL ONLY. CONTRACTOR SHALL CONTACT THE WATER SYSTEMS DIVISION THREE (3) WORKING DAYS PRIOR TO NEEDING VALVES TURNED ON OR OFF.
- THE CONTRACTOR SHALL CONTROL DUST CREATED DURING CONSTRUCTION OPERATIONS. ALL DUST MUST BE REMOVED PROMPTLY.



DETAIL

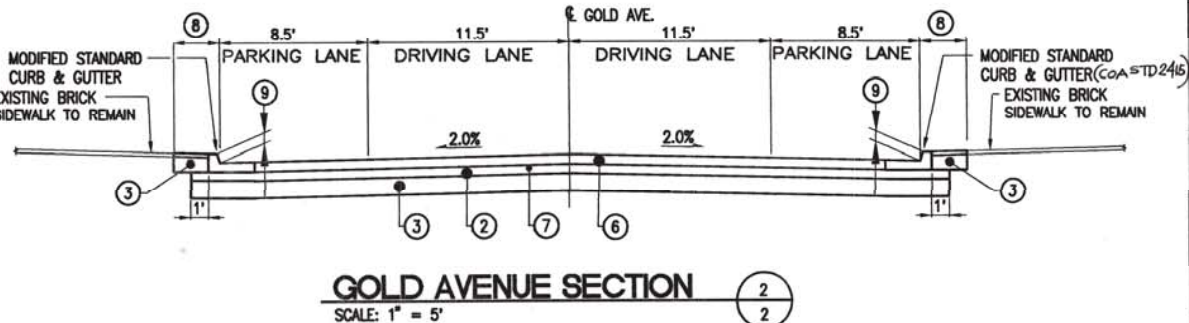
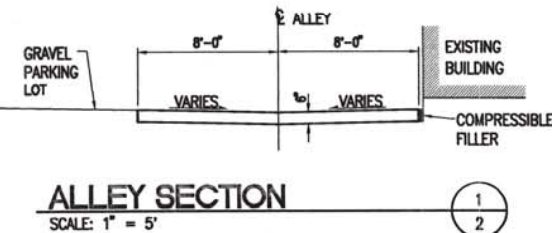
SCALE: NONE

DETAIL

SCALE: NONE

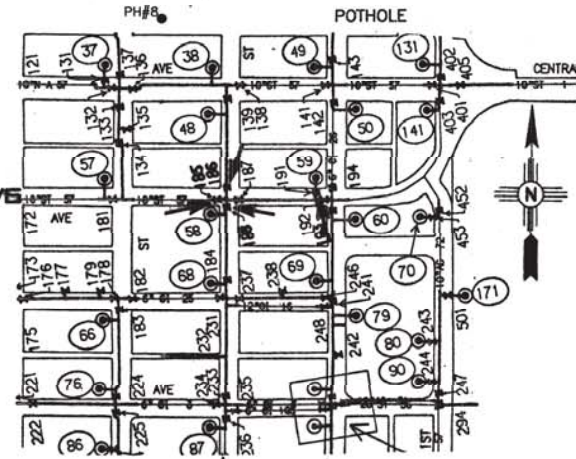
PAVING NOTES:

- 6" PORTLAND CEMENT CONCRETE W/4 @ 12" O.C. EACH WAY.
- 6" AGGREGATE BASE COURSE.
- 12" SCARIFIED AND COMPACTED SUBGRADE 95% MINIMUM COMPACTION, AT OPT MOISTURE $\pm 2.0\%$, ASTM D1557, OR OPT MOISTURE TO $+4\%$, ASTM D698 FOR SOIL W/35% OR MORE MATERIAL PASSING THE NO. 200 SIEVE.
- TACK COAT AS REQUIRED BY THE ENGINEER BETWEEN ALL ASPHALT/AGGREGATE MATERIAL LIFTS. FINISH SURFACE OF SUBGRADE, AGGREGATE BASE COURSE, AND/OR CEMENT TREATED BASE SHALL BE MOISTURE-CONTROLLED AT COMPACTION MOISTURE RANGE, OR PRIME COAT AS REQUIRED BY THE ENGINEER UNTIL NEXT/FINAL SURFACING. COMPLETED SUBGRADE PREPARATION SHALL BE PERFORMED AFTER ALL SUBSURFACE R/W UTILITIES CONSTRUCTION IS COMPLETED.
- NOT USED
- 7 1/2" ASPHALT CONCRETE SURFACE COURSE (1800 # STABILITY)
1 @ 2 1/2" TOP LIFT GRADATION "B"
2 @ 2 1/2" BOTTOM LIFT GRADATION "A"
- PRIME COAT.
- REMOVE AND REPLACE BRICK SIDEWALK AS NECESSARY TO INSTALL CURB AND GUTTER.
- ADJUST HEIGHT OF CURB TO MATCH PROFILES SHOWN ON SHEET 3.
- PAVEMENT DESIGN IS BASED ON A R-VALUE OF 35.



LEGEND

- | | | |
|---------|---------|------------------------|
| 6"-CI | 10"-W | WATER VALVE |
| 21"-SD | 18"-SD | WATER LINE |
| 24"-SAS | | STORM DRAIN |
| | | SANITARY SEWER |
| | | SANITARY SEWER MANHOLE |
| | | STORM SEWER MANHOLE |
| 51.87 | 4951.30 | SPOT ELEVATION |
| | | TRASH CAN |
| | | PLANTER |
| | | PARKING METER |
| | | WATER METER |
| | | BIKE RACK |
| | | LIGHT POLE |
| | | TRAFFIC SIGNAL LIGHT |
| | | TRAFFIC SIGNAL BOX |
| | | FIRE HYDRANT |
| | | CLEAN OUT |
| | | GAS VALVE |
| | | GAS METER |
| | | DROP INLET |
| | | TREE (DECIDUOUS) |
| | | TREE (EVERGREEN) |
| | | BUSINESS ADDRESS |
| | | PROPERTY LINE |
| | | POTHOLE |

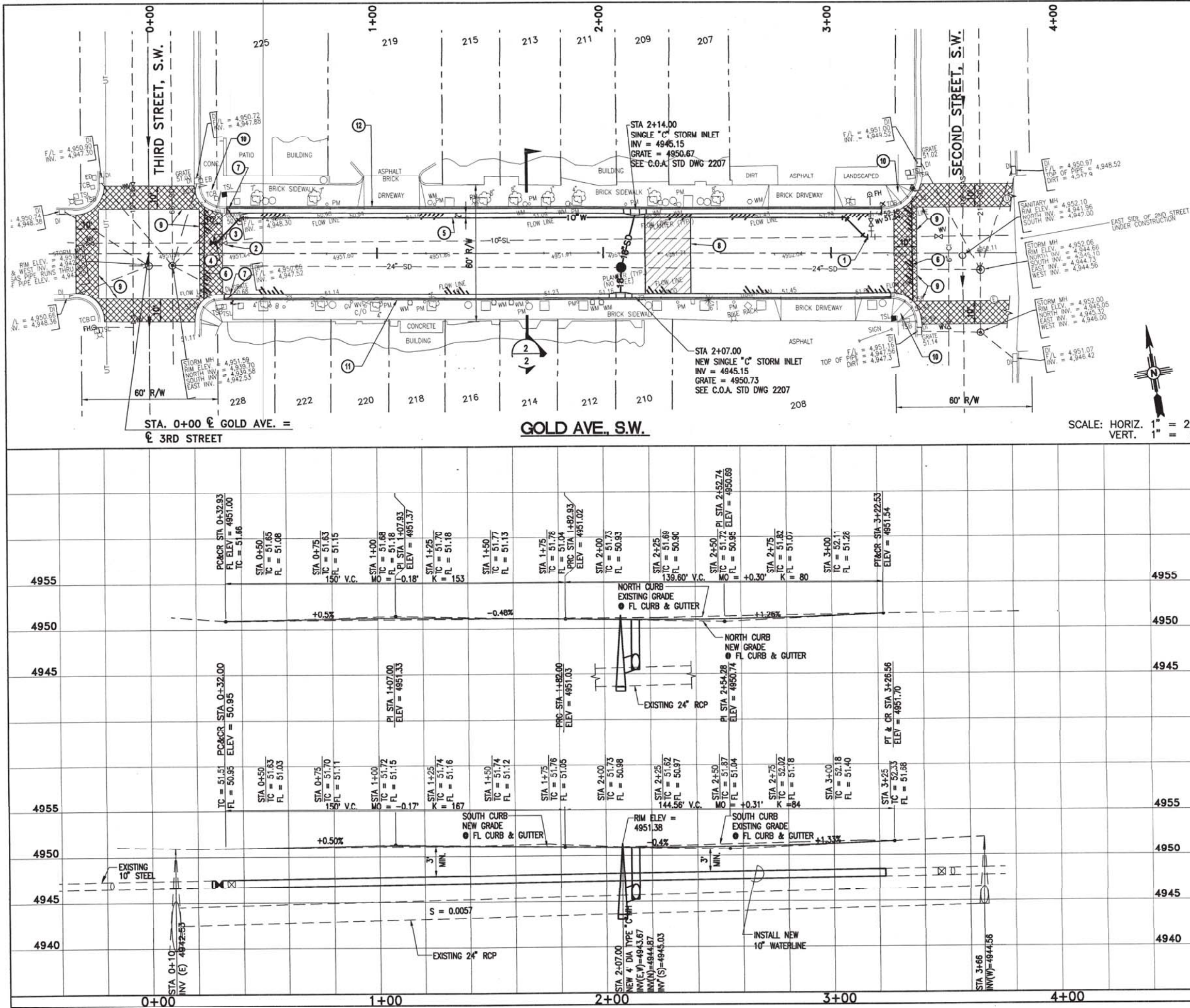


MAP #	VALVE #
K-14	185
K-14	186
K-14	188
K-14	192



CITY OF ALBUQUERQUE PUBLIC WORKS DEPARTMENT ENGINEERING DEVELOPMENT GROUP			
TITLE: GOLD AVE., S.W. AND NORTH ALLEY (2ND-3RD) STORM DRAIN, WATERLINE AND SEWER REPLACEMENT			
GENERAL NOTES, LEGEND AND DETAILS			
Design Review Committee	City Engineer Approval	Mo./Day/Yr.	Mo./Day/Yr.
Oct - 5 2001	Oct - 5 2001		
City Project No.	Zone Map No.	Sheet	Of
667691	K14	2	6

AS BUILT INFORMATION		BENCH MARKS		SURVEY INFORMATION		ENGINEER'S SEAL	
DATE	BY	DATE	BY	DATE	BY	NO.	REMARKS
				DESIGN			
				REVISIONS			
				DATE			
				DESIGNED BY: R.L.B.			
				DRAWN BY: J.L.M.			
				CHECKED BY: D.J.L.			
				DATE: JULY 2001			
				DATE: JULY 2001			
				DATE: JULY 2001			



GENERAL NOTES:

- STA. 3+18.00 CONNECT NEW 10" WATERLINE TO EXISTING 10"x6" TEE.
- REMOVE EXISTING GATE VALVE AND BOX.
- INSTALL NEW 10" GATE VALVE W/ TYPE A VALVE BOX.
- STA. 0+26.00 CONNECT NEW 10" WATERLINE TO EXISTING 10" STEEL LINE.
- NEW 10" WATERLINE. PLACE 2 FEET SOUTH OF CURB & GUTTER. ABANDON AND GROUT FILL EXISTING 10" WATERLINE.
- STA. 0+25.00 TO STA. 3+35.00 LIMITS OF PAVEMENT REMOVAL.
- EXISTING STORM INLETS AND CURB & GUTTER TRANSITIONS TO REMAIN.
- STA. 2+18 TO STA. 2+38 REMOVE AND DISPOSE OF UNSUITABLE MATERIAL 8" DEPTH. REPLACE WITH SUITABLE MATERIAL.
- FUTURE BOMANITE CROSSWALKS TO BE CONSTRUCTED UNDER CPN 6323.
- HANDICAP RAMPS TO BE CONSTRUCTED UNDER CPN 6323.
- SOUTH CURB STA. 0+32.00 TO STA. 0+26.56 REMOVE AND REPLACE EXISTING CURB AND GUTTER. SEE NOTE 7. SEE SECTION 2 ON SHEET 2.
- NORTH CURB STA. 0+32.93 TO STA. 3+22.53. REMOVE AND REPLACE EXISTING CURB & GUTTER. SEE NOTE 7. SEE SECTION 2 ON SHEET 2.

TRANSFER AND INSTALL NEW WATER SERVICE LINES AS LISTED BELOW.

NO.	STREET	LOC.	SIZE
WATER SERVICES NORTH SIDE OF GOLD AVE			
N	207 GOLD AVE, SW	F5	3/4"
N	209 GOLD AVE, SW	F5	3/4"
N	211 GOLD AVE, SW	F1	3/4"
N	213 GOLD AVE, SW	F5	3/4"
N	219 GOLD AVE, SW	F1	1"
WATER SERVICES SOUTH SIDE OF GOLD AVE			
S	208 GOLD AVE, SW	F5	3/4" NO METER
S	210 GOLD AVE, SW	F5	3/4"
S	212 GOLD AVE, SW	F5	3/4"
S	214 GOLD AVE, SW	F5	3/4"
S	216 GOLD AVE, SW	F5	3/4"
S	218 GOLD AVE, SW	F5	3/4"
S	220 GOLD AVE, SW	F5	3/4"

LENGTH OF RESTRAINED PIPE (FEET)					
PIPE SIZE	90°	45°	22-1/2°	11-1/4°	TEE VALVE
4"	21'	9'	5'	3'	52'
6"	28'	11'	6'	3'	74'
8"	31'	13'	7'	4'	97'
10"	34'	15'	7'	4'	107'
12"	52'	23'	11'	5'	120'
16"	52'	21'	10'	5'	94'
20"	55'	23'	11'	5'	133'
24"	71'	30'	14'	7'	140'
30"	75'	31'	15'	7'	210'
36"	78'	32'	16'	8'	107'

(1) TEE BRANCH-EACH RUN PIPE SHALL BE MINIMUM 10' W/O JOINTS.
(2) DISTANCE SHOWN IS EACH DIRECTION FOR VALVES AND BENDS.
(3) ALL DEAD END CAPS SHALL BE CONCRETE BLOCKED.

CITY OF ALBUQUERQUE
PUBLIC WORKS DEPARTMENT
ENGINEERING DEVELOPMENT GROUP

TITLE: GOLD AVE., S.W. AND NORTH ALLEY (2ND-3RD) STORM DRAIN, WATERLINE AND SEWER REPLACEMENT
GOLD AVENUE PLAN AND PROFILE

Design Review Committee	City Engineer Approval	Mo./Day/Yr.	Mo./Day/Yr.
OCT - 5 2001	OCT - 5 2001		

City Project No.	Zone Map No.	Sheet	Of
667691	K14	3	6

AS BUILT INFORMATION

DATE	BY	DATE	BY	DATE	BY

BENCH MARKS

ELV	4953.497 (SLD-28)
WCS&GS	3 1/2" BRASS CAP STAMPED "M-26, 1933" IN THE TOP OF THE MARBLE STEP AT THE SOUTH ENTRANCE OF ADDRESS 421 GOLD AVE, S.W.

SURVEY INFORMATION

FIELD NOTES	DATE	BY

ENGINEER'S SEAL

REGISTERED PROFESSIONAL ENGINEER
LUIS D. DUFFY
No. 10000

NO.	DATE	REVISIONS	BY
		DESIGN	

DESIGNED BY: R.L.B. DATE: JULY 2001
DRAWN BY: J.L.M. DATE: JULY 2001
CHECKED BY: D.J.L. DATE: JULY 2001

CONSTRUCTION TRAFFIC CONTROL GENERAL NOTES

1. CONTRACTOR MUST OBTAIN FROM CONSTRUCTION COORDINATION AN EXCAVATION/BARRICADING PERMIT BEFORE ENGAGING IN ANY CONSTRUCTION, MAINTENANCE OR REPAIR WORK IN ANY OF THE CITY OF ALBUQUERQUE'S RIGHTS-OF-WAY. EMERGENCY WORK THAT WOULD PRESERVE LIFE OR PROPERTY IS EXCLUDED WITH THE UNDERSTANDING, THAT A PERMIT SHALL BE OBTAINED WITHIN 24 TO 48 HOURS.

2. CONTRACTOR SHALL AT THE TIME OF PERMIT REQUEST, SUBMIT FOR APPROVAL BY CONSTRUCTION COORDINATION, A TRAFFIC CONTROL PLAN DETAILING ALL EXISTING TOPOGRAPHY SUCH AS LANE WIDTHS, DRIVEWAYS, AND BUSINESS/RESIDENTIAL ACCESSES. THE TRAFFIC CONTROL PLAN SHALL INCLUDE ALL PHASES OF WORK AND SCHEDULES INVOLVED IN THE CONSTRUCTION PROJECT. ANY SEPARATE PHASES OF A CONSTRUCTION PROJECT SHALL BE GIVEN AN INDIVIDUAL PERMIT EACH. BLANKET PERMITS WILL NOT BE ISSUED.

3. THESE TYPICAL TRAFFIC CONTROL PLANS DO NOT REFLECT THE EXISTING TOPOGRAPHY SUCH AS DRIVEWAYS, LANE WIDTHS, AND BUSINESS/RESIDENTIAL ACCESSES. EVERY LOCATION THAT REQUIRES CONSTRUCTION TRAFFIC CONTROL SHALL HAVE A DETAILED TRAFFIC CONTROL PLAN SHOWING ALL EXISTING TOPOGRAPHY.

4. CONSTRUCTION SHALL NOT BEGIN UNLESS A TRAFFIC CONTROL PLAN HAS BEEN APPROVED AND VERIFIED BY CONSTRUCTION COORDINATION.

5. CONSTRUCTION COORDINATION SHALL BE NOTIFIED 48 HOURS PRIOR TO ANY TRAFFIC CONTROL CHANGES NEEDED BY CONTRACTOR, THAT WERE NOT PREVIOUSLY APPROVED. THESE TRAFFIC CONTROL CHANGES SHALL BE REQUESTED IN WRITING ACCOMPANIED WITH A TRAFFIC CONTROL PLAN REFLECTING SUCH CHANGES.

6. ALL CONSTRUCTION TRAFFIC CONTROL DEVICES SHALL COMPLY TO THE MANUAL ON UNIFORM TRAFFIC CONTROL DEVICES (MUTCD), LATEST EDITION. IT IS THE RESPONSIBILITY OF THE CONTRACTOR TO INSTALL, SERVICE AND MAINTAIN ALL TRAFFIC CONTROL DEVICES. TRAFFIC CONTROL DEVICES SHALL NOT BE REMOVED OR ALTERED IN ANY WAY WITHOUT THE APPROVAL OF CONSTRUCTION COORDINATION, PER SECTION 6A-4 OF THE MUTCD, LATEST EDITION.

7. THE CONSTRUCTION TRAFFIC CONTROL INITIAL SET-UP SHALL BE BY AN AMERICAN TRAFFIC SAFETY SERVICES ASSOCIATION (ATSSA) CERTIFIED WORKSITE TRAFFIC SUPERVISOR. THE MAINTENANCE AND SERVICING SHALL ALSO BE DONE BY AN ATSSA CERTIFIED WORKSITE TRAFFIC SUPERVISOR OR EQUIVALENT.

8. CONTRACTOR IS RESPONSIBLE TO MAINTAIN AND SERVICE ALL TRAFFIC CONTROL DEVICES 24 HOURS A DAY, 7 DAYS A WEEK THROUGHOUT LENGTH OF PROJECT. CONTRACTOR IS RESPONSIBLE THAT ALL TRAFFIC CONTROL DEVICES COMPLY WITH THE MUTCD, LATEST EDITION.

9. ALL ADVANCE WARNING SIGNS SHALL BE DOUBLE INDICATED WHENEVER THERE ARE MULTI-LANE TRAFFIC IN ANY ONE GIVEN DIRECTION AND THERE IS SUFFICIENT MEDIAN SPACE.

10. ALL BARRICADES IN ALL TAPERS AND TANGENTS SHALL BE PLACED APART, A DISTANCE MEASURED IN FEET, EQUAL TO THAT OF THE POSTED SPEED LIMIT. NO EXCEPTIONS UNLESS APPROVED BY CONSTRUCTION COORDINATION PER MUTCD SECTION 6A-4.

11. ALL WORK IN ARTERIAL ROADWAYS SHALL BE ON A CONTINUOUS 24 HOUR PER DAY BASIS UNTIL COMPLETED.

12. CONTRACTOR IS RESPONSIBLE TO PROVIDE CONSTRUCTION COORDINATION, A WEEKLY LOG OF DAILY INSPECTIONS OF BARRICADE AND MAINTENANCE SCHEDULES ON PROJECTS THAT ARE OVER ONE WEEK DURATION.

13. EQUIPMENT OR MATERIALS SHALL NOT BE STORED WITHIN 15 FEET OF A TRAVELED TRAFFIC LANE DURING NON-WORKING HOURS WITHOUT THE APPROVAL OF CONSTRUCTION COORDINATION.

14. CONTRACTOR SHALL PROVIDE AND MAINTAIN A SAFE AND ADEQUATE MEANS OF CHANNELIZING PEDESTRIAN TRAFFIC AROUND AND THROUGH THE CONSTRUCTION AREA.

15. CONTRACTOR IS RESPONSIBLE FOR OBLITERATION OF ANY CONFLICTING STRIPING AND RESPONSIBLE FOR ALL TEMPORARY STRIPING.

16. CONTRACTOR SHALL MAINTAIN ACCESS TO ALL FACILITIES, BUSINESSES AND/OR RESIDENTS AT ALL TIMES.

17. CONTRACTOR SHALL PROVIDE ACCESS SIGNS FOR BUSINESSES LOCATED WITHIN THE CONSTRUCTION AREA UNDER THE SUPERVISION OF CONSTRUCTION COORDINATION. EACH ACCESS SIGN SHALL HAVE 5 INCH, WHITE OPAQUE LETTERING ON BLUE REFLECTORIZED BACKGROUND. ACCESS SIGNS SHALL BE CONSIDERED INCIDENTAL TO THE BID AND NOT PART OF THE CONTRACT UNLESS OTHERWISE STATED. NO MORE THAN 3 BUSINESSES SHALL BE LISTED ON A ACCESS SIGN. SHOPPING CENTERS AND MALLS SHALL BE LISTED AS SUCH.

18. ALL ADVANCE WARNING SIGNS SHALL MEET THE MINIMUM REFLECTIVE INTENSITY REQUIREMENTS SET FORTH BY THE CITY OF ALBUQUERQUE. CONSTRUCTION COORDINATION SHALL DETERMINE ALL REQUIREMENTS AND APPROVE OR DISAPPROVE ANY ADVANCE WARNING SIGN PER SECTION 6A-4 OF THE MUTCD, LATEST EDITION.

19. 48 HOURS PRIOR TO OCCUPANCY OR CLOSING OF A RIGHT-OF-WAY, CONTRACTOR SHALL NOTIFY: POLICE, FIRE DEPARTMENT, SCHOOLS, HOSPITALS, TRANSIT AUTHORITY, BUSINESSES AND/OR RESIDENTS THAT WILL BE AFFECTED BY THE CONSTRUCTION.

20. ANY FIELD ADJUSTMENTS SHALL BE APPROVED BY CONSTRUCTION COORDINATION.

21. EXCAVATIONS SHALL BE PLATED, TEMPORARILY PATCHED OR RESURFACED PRIOR TO OPENING OF TRAFFIC. A MINIMUM OF 11 FEET SHALL BE PROVIDED FOR TRAFFIC IN ANY GIVEN DIRECTION. CONTRACTOR IS RESPONSIBLE FOR ANY WORK INVOLVED IN SATISFYING THESE REQUIREMENTS.

22. CONTRACTOR SHALL AT ALL TIMES COMPLY WITH THE FOLLOWING:
1. STANDARDS AND REQUIREMENTS SET FORTH IN THE MANUAL ON UNIFORM TRAFFIC CONTROL DEVICES, LATEST EDITION.
2. THE CITY OF ALBUQUERQUE TRAFFIC CODE, LATEST EDITION.
3. SECTION 19 OF THE CITY OF ALBUQUERQUE'S STANDARD SPECIFICATIONS FOR PUBLIC WORK CONSTRUCTION, AS WELL AS OTHER SECTIONS.

23. FAILURE TO COMPLY WITH ANY OF THE ABOVE MENTIONED, WILL BE ADEQUATE CAUSE TO CEASE ALL WORK ON ANY CONSTRUCTION PROJECT. WORK WILL NOT RESUME UNTIL ALL REQUIREMENTS ARE ADDRESSED AND APPROVED BY CONSTRUCTION COORDINATION.

24. ALL TRAFFIC CONTROL DEVICES SHALL BE KEPT IN NEW-CLEAN CONDITION, WASHING OF EQUIPMENT IS INCIDENTAL TO ITS PLACEMENT AND MAINTENANCE.

25. TRAFFIC CONTROL STANDARDS APPLY ONLY WHERE THE CONSTRUCTION TRAFFIC CONTROL PLANS ARE NOT SPECIFIC.

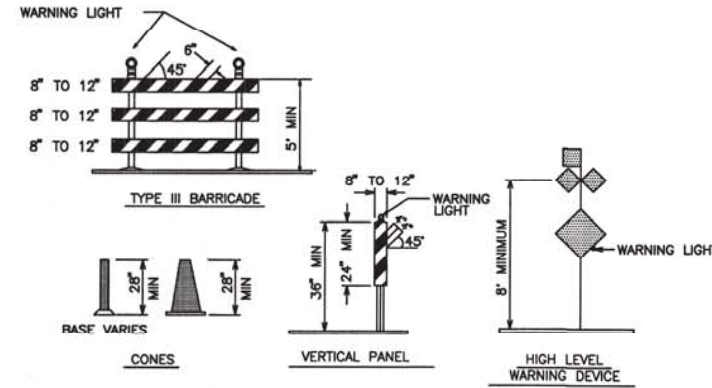
26. ADVANCE WARNING SIGNS SHALL BE 36"x36" MIN. WITH SUPER ENGINEERING GRADE SHEETING OR BETTER. MOUNTING HEIGHT AT TOP OF SIGN SHALL BE THE SAME AS FOR A 48" SIGN AS INDICATED IN THE M.U.T.C.D.

27. CONTRACTOR SHALL MAINTAIN A GRAFFITI-FREE WORKSITE. ALL GRAFFITI SHALL BE PROMPTLY REMOVED FROM ALL EQUIPMENT, BOTH PERMANENT AND TEMPORARY.

28. CONTRACTOR SHALL MAINTAIN AT LEAST ONE LANE EASTBOUND ON GOLD AVENUE AT ALL TIMES, EXCEPT DURING CONSTRUCTION OF THE STORM DRAIN LATERAL ON SOUTH SIDE OF GOLD AVENUE AND DURING PAVING OPERATIONS WHEN GOLD AVENUE IS CLOSED. CONTRACTOR SHALL DETOUR TRAFFIC AS SHOWN ON SHEET 6.

29. CONTRACTOR SHALL MAINTAIN ACCESS TO ALL PARKING LOTS FACING ALLEY NORTH OF GOLD AVENUE AT ALL TIMES.

30. CONTRACTOR SHALL MAINTAIN AT LEAST ONE LANE OPEN ON NORTHBOUND 2ND STREET AT ALL TIMES, INCLUDING UTILITY TIE-INS.



LEGEND

WORK AREA
BARRICADE - TYPE I, TYPE II, OR BARREL
BARRICADE - TYPE III
VERTICAL PANEL
WARNING SIGN
DISTANCE BETWEEN SIGNS - A DISTANCE MEASURED IN FEET EQUAL TO A VALUE OF TEN TIMES THE SPEED LIMIT OF THE STREET
FLAGMAN POSITION
SPACING BETWEEN BARRICADES - A DISTANCE MEASURED IN FEET EQUAL TO THE STREET LIMIT OF THE STREET
TAPER LENGTH - SEE CHART BELOW
THE TANGENT LENGTH IS EQUAL TO THE TAPER LENGTH FOR A GIVEN STREET.

TAPER REQUIREMENT

SPEED LIMIT (MPH)	TAPER LENGTH (L) (FEET)			MINIMUM NUMBER OF DEVICES FOR TAPER	MAXIMUM DEVICE SPACING IN FEET	
	10' LANE	11' LANE	12' LANE		ALONG TAPER	AFTER TAPER
20	70	75	80	5	20	20
25	105	115	125	6	25	25
30	150	165	180	7	30	30
35	205	225	245	8	35	35
40	270	295	320	9	40	40
45	450	495	540	13	45	45
50	500	550	600	13	50	50
55	550	605	660	13	55	55

RECOMMENDED SIGN SPACING (D) FOR ADVANCE WARNING SIGN SERIES

SPEED MILES PER HOUR	MINIMUM DISTANCE IN FEET BETWEEN SIGNS		FROM LAST SIGN TO TAPER
	10 X SPEED LIMIT	10 X SPEED LIMIT	
0-20	10 X SPEED LIMIT	10 X SPEED LIMIT	
25-30	10 X SPEED LIMIT	10 X SPEED LIMIT	
30-35	10 X SPEED LIMIT	10 X SPEED LIMIT	
40-45	10 X SPEED LIMIT	10 X SPEED LIMIT	
50-60	10 X SPEED LIMIT	10 X SPEED LIMIT	

TAPER CRITERIA

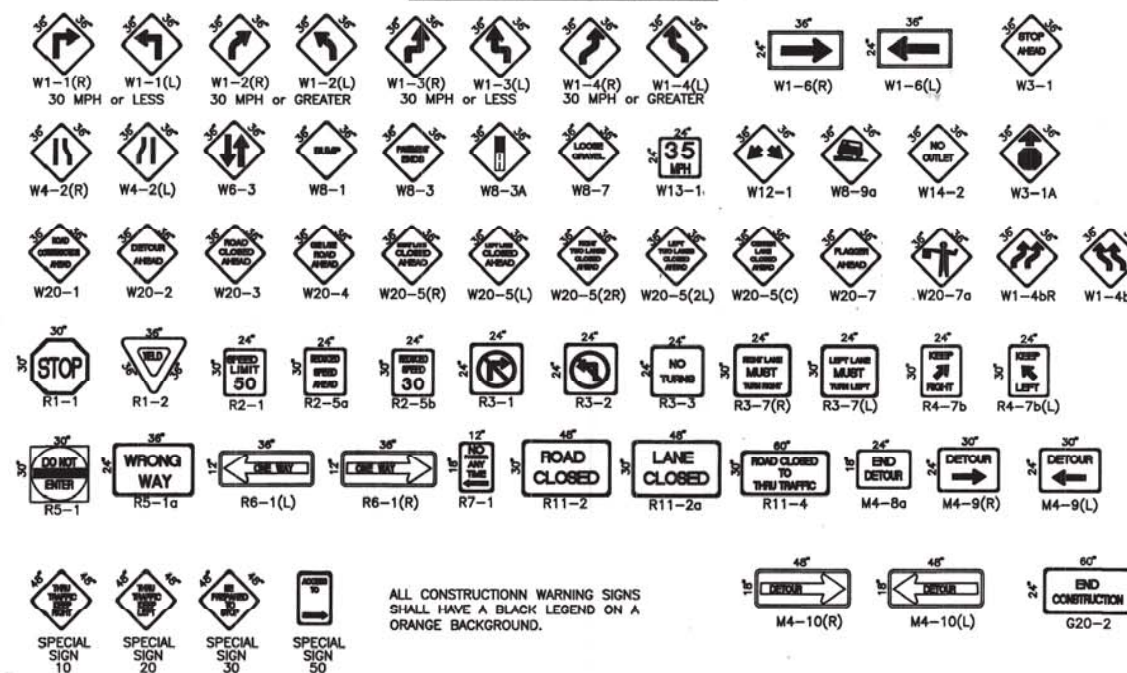
TYPE OF TAPER	TAPER LENGTH
UPSTREAM TAPER:	
MERGING TAPER	L MINIMUM
SHIFTING TAPER	1/2 L MINIMUM
SHOULDER TAPER	1/2 L MINIMUM
TWO-WAY TRAFFIC TAPER	100 FEET MAXIMUM
DOWNSTREAM TAPERS	100 FEET PER LANE

TAPER LENGTH COMPUTATION

SPEED LIMIT	
40 MPH OR LESS	$L = \frac{WS^2}{60}$
40 MPH OR GREATER	$L = W \times S$

L = TAPER LENGTH
W = WIDTH OF OFFSET IN FEET
S = POSTED SPEED OR OFF-PEAK 85-PERCENTILE SPEED IN MPH

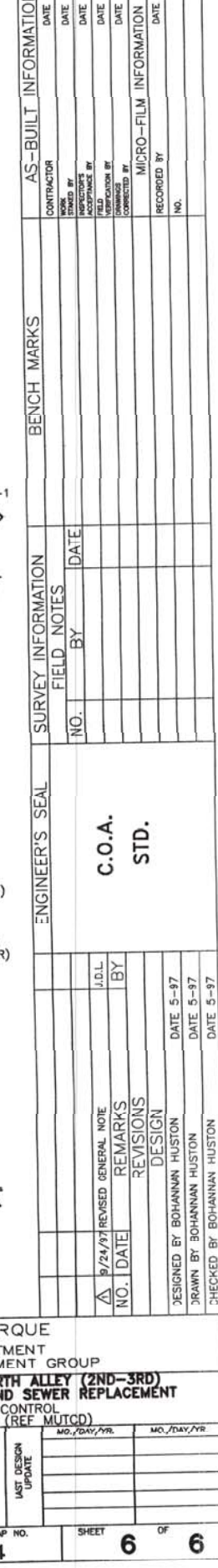
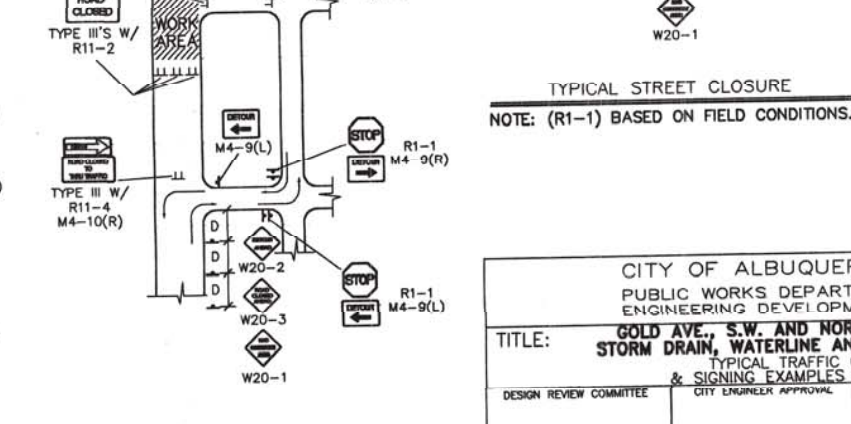
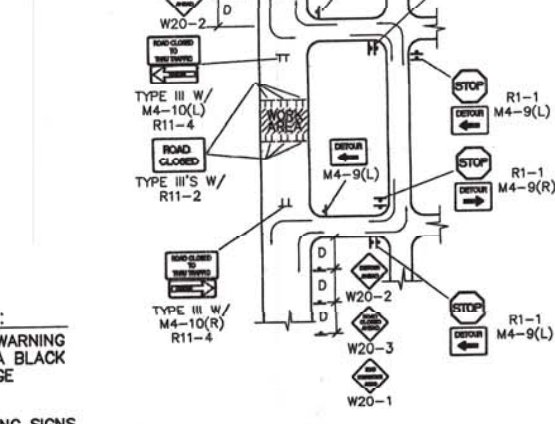
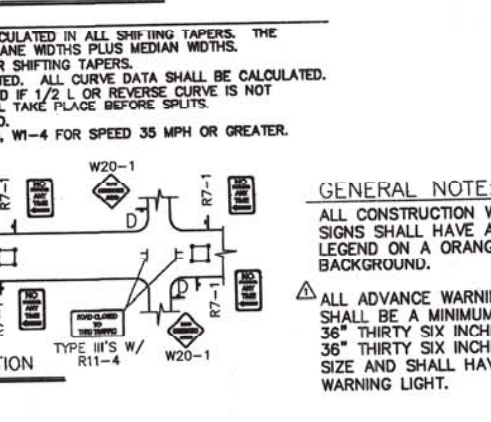
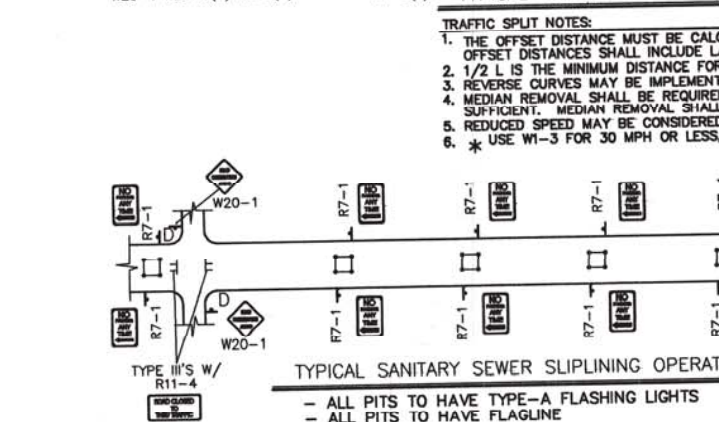
SIGN FACE DETAILS



ALL CONSTRUCTION WARNING SIGNS SHALL HAVE A BLACK LEGEND ON AN ORANGE BACKGROUND.

AS-BUILT INFORMATION			
CONTRACTOR	DATE	REVISION	DATE
DATE	DATE	DATE	DATE
MICRO-FILM INFORMATION			
RECORDED BY	DATE	NO.	
ENGINEER'S SEAL			
C.O.A. STD.			
J.D.L.	J.D.L.	J.D.L.	J.D.L.
9/23/97 ADD NOTE NO. 27	9/24/97 REVISED NOTE NO. 28	9/24/97 REVISED NOTE NO. 19	9/24/97 REVISED NOTE NO. 11
REMARKS			
DESIGN			
DESIGNED BY BOHANNAN HUSTON			
DRAWN BY BOHANNAN HUSTON			
CHECKED BY BOHANNAN HUSTON			
DATE 5-97			
DATE 5-97			
DATE 5-97			

CITY OF ALBUQUERQUE PUBLIC WORKS DEPARTMENT ENGINEERING DEVELOPMENT GROUP			
TITLE: GOLD AVE., S.W. AND NORTH ALLEY (2ND-3RD) STORM DRAIN, WATERLINE AND SEWER REPLACEMENT TRAFFIC CONTROL SIGNING AND CONSTRUCTION TRAFFIC CONTROL STANDARDS			
DESIGN REVIEW COMMITTEE	CITY ENGINEER APPROVAL	MO./DAY/YR.	MO./DAY/YR.
C.O.A.	STD.		
CITY PROJECT NO.	ZONE MAP NO.	SHEET	OF
667691	K14	5	6



GENERAL NOTE:
ALL CONSTRUCTION WARNING SIGNS SHALL HAVE A BLACK LEGEND ON A ORANGE BACKGROUND.

△ ALL ADVANCE WARNING SIGNS SHALL BE A MINIMUM OF 36" THIRTY SIX INCHES BY 36" THIRTY SIX INCHES IN SIZE AND SHALL HAVE ONE WARNING LIGHT.