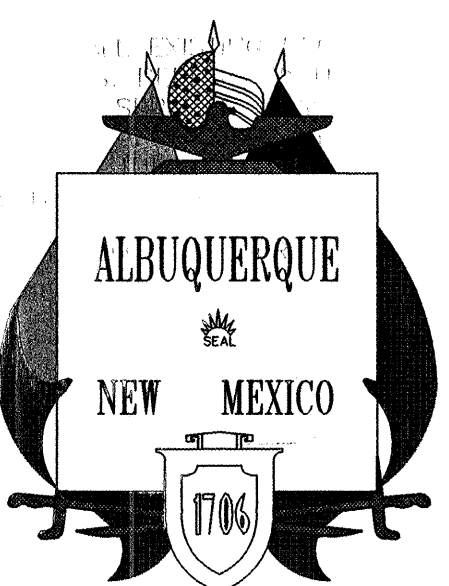
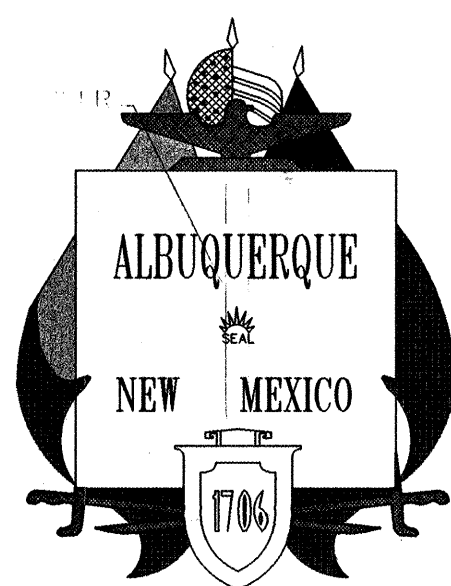


CITY OF ALBUQUERQUE, NEW MEXICO
PUBLIC WORKS DEPARTMENT



CONSTRUCTION PLANS
FOR

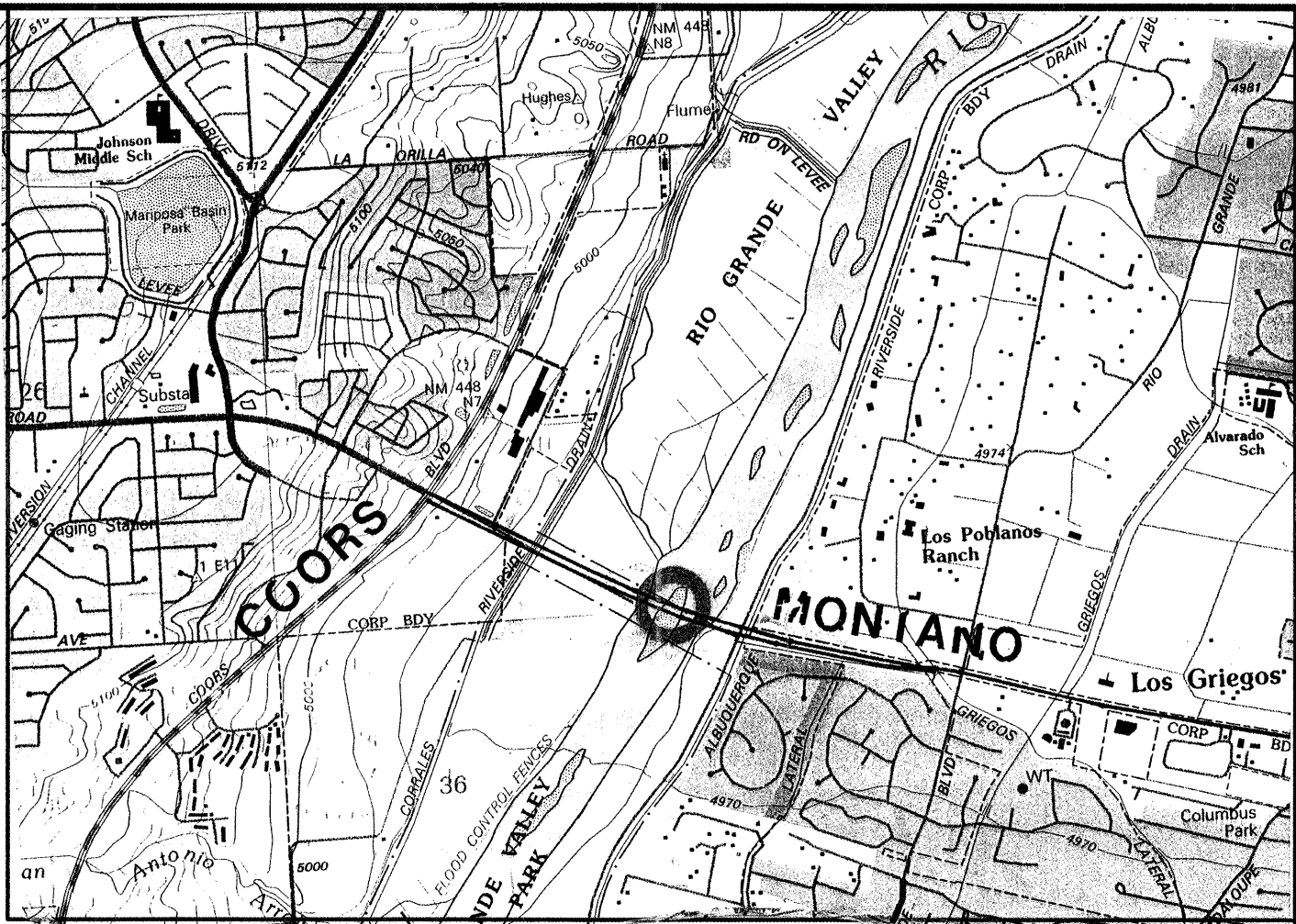
MONTANO BRIDGE OVERLOOKS
PHASE II

AUGUST 2001

DRAWING INDEX

SEQUENCE NO.	DRAWING NO.	DESCRIPTION
GENERAL		
1	G1.0	COVER SHEET
STRUCTURAL		

2	S1	CONSTRUCTION DETAILS
3	S2	EAST 'BOSQUE' OVERLOOK
4	S3	WEST 'RIO' OVERLOOK
5		Typical Traffic Control & Signing Examples
6		Signing and Construction Traffic Control Standards



PLAN NORTH
VICINITY MAP E-12/F-12

ARCHITECTS + ENGINEERS

ARCHITECT

ALIANZA ARQUITECTOS
ONE LOOP ONE NW
ALBUQUERQUE, NEW MEXICO 87120
505.899.0454

CONSULTANTS

AXIOM ENGINEERING SERVICES
ALBUQUERQUE, NEW MEXICO

DIRECT ALL QUESTIONS REGARDING
THESE DOCUMENTS TO:

ROBERT PETERS
ONE LOOP ONE NW
ALBUQUERQUE, NEW MEXICO 87120
505.899.0454

ALIANZA

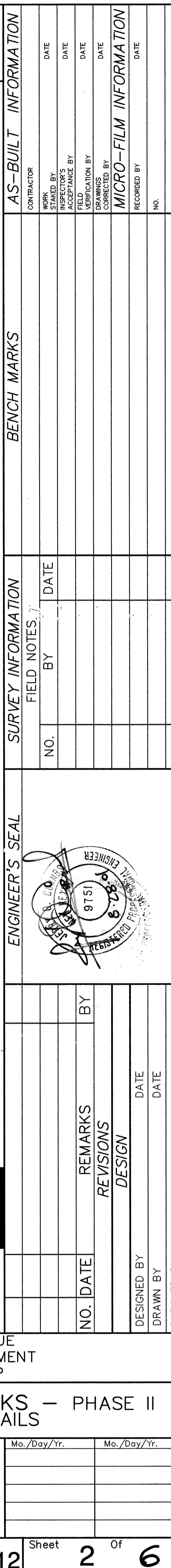
ONE LOOP ONE NW ALBUQUERQUE NM 87120 505.899.0454

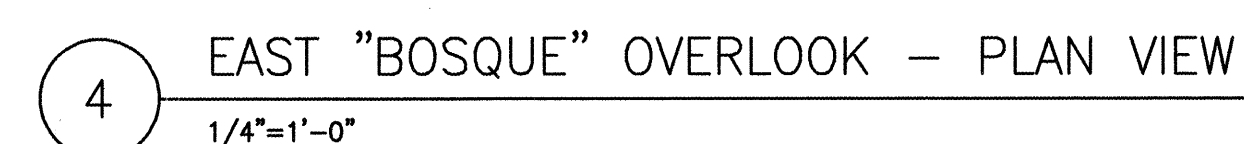
ARQUITECTOS

G1.0

AXIOM ENGINEERING SERVICES
STRUCTURAL ENGINEERS

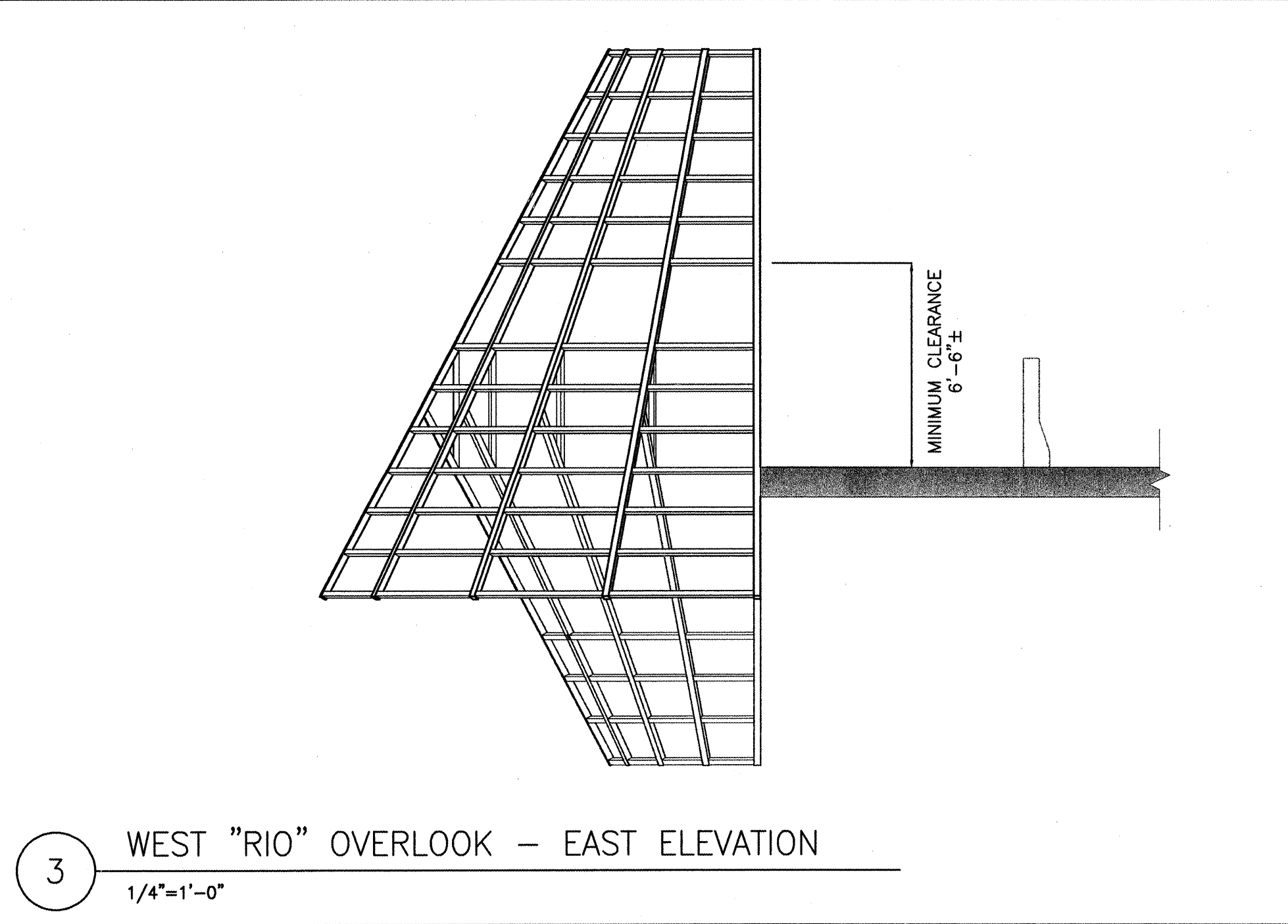
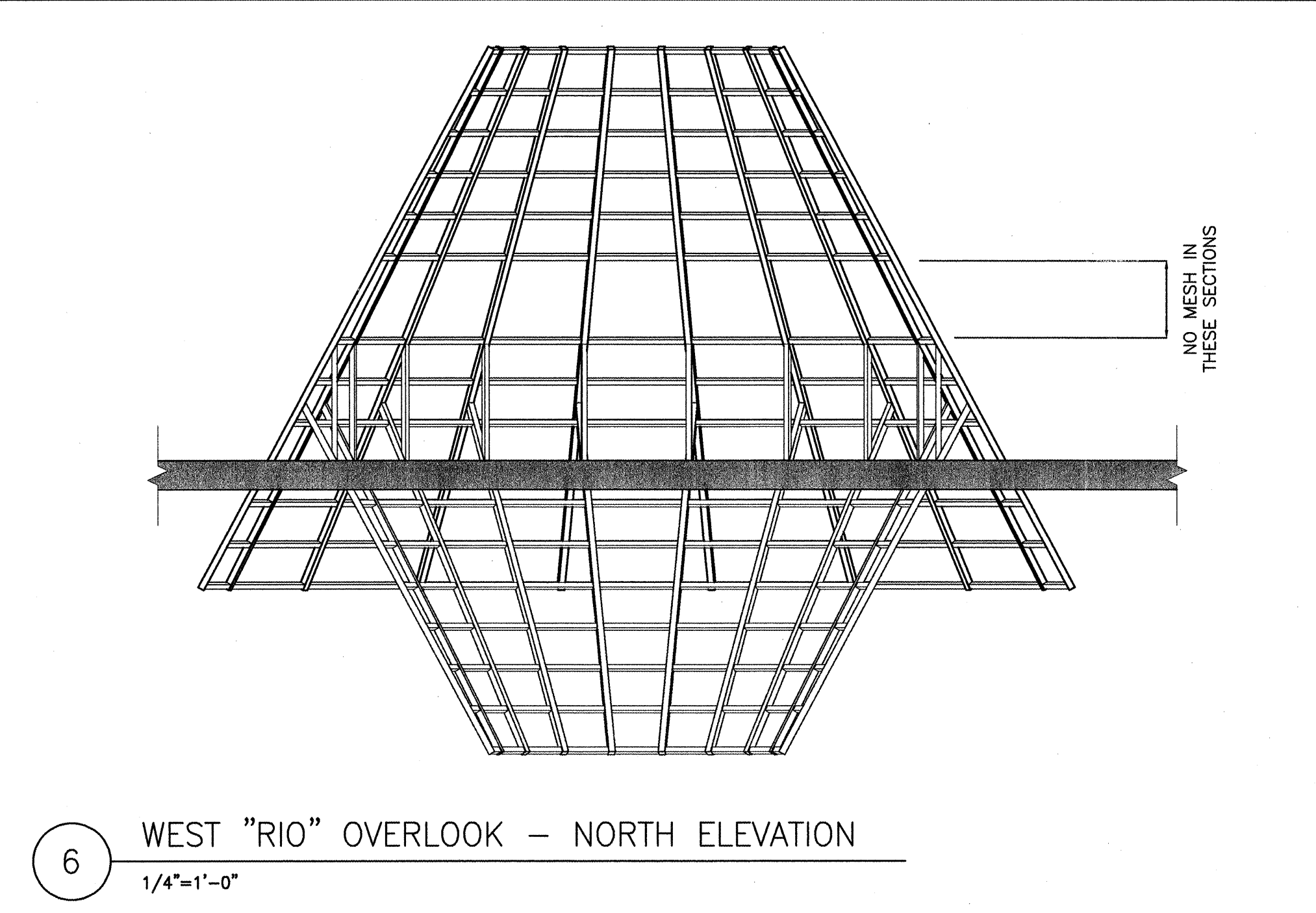
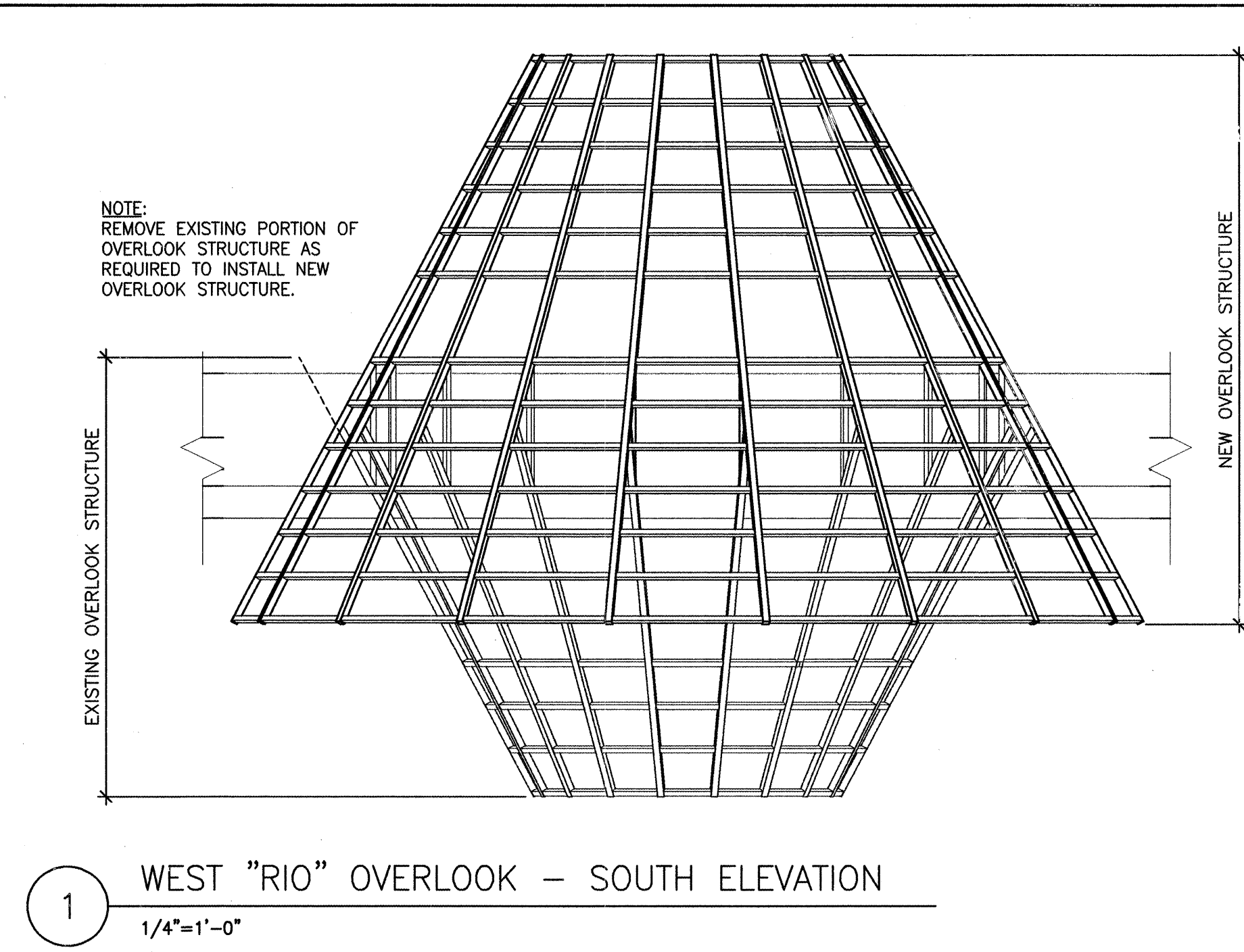
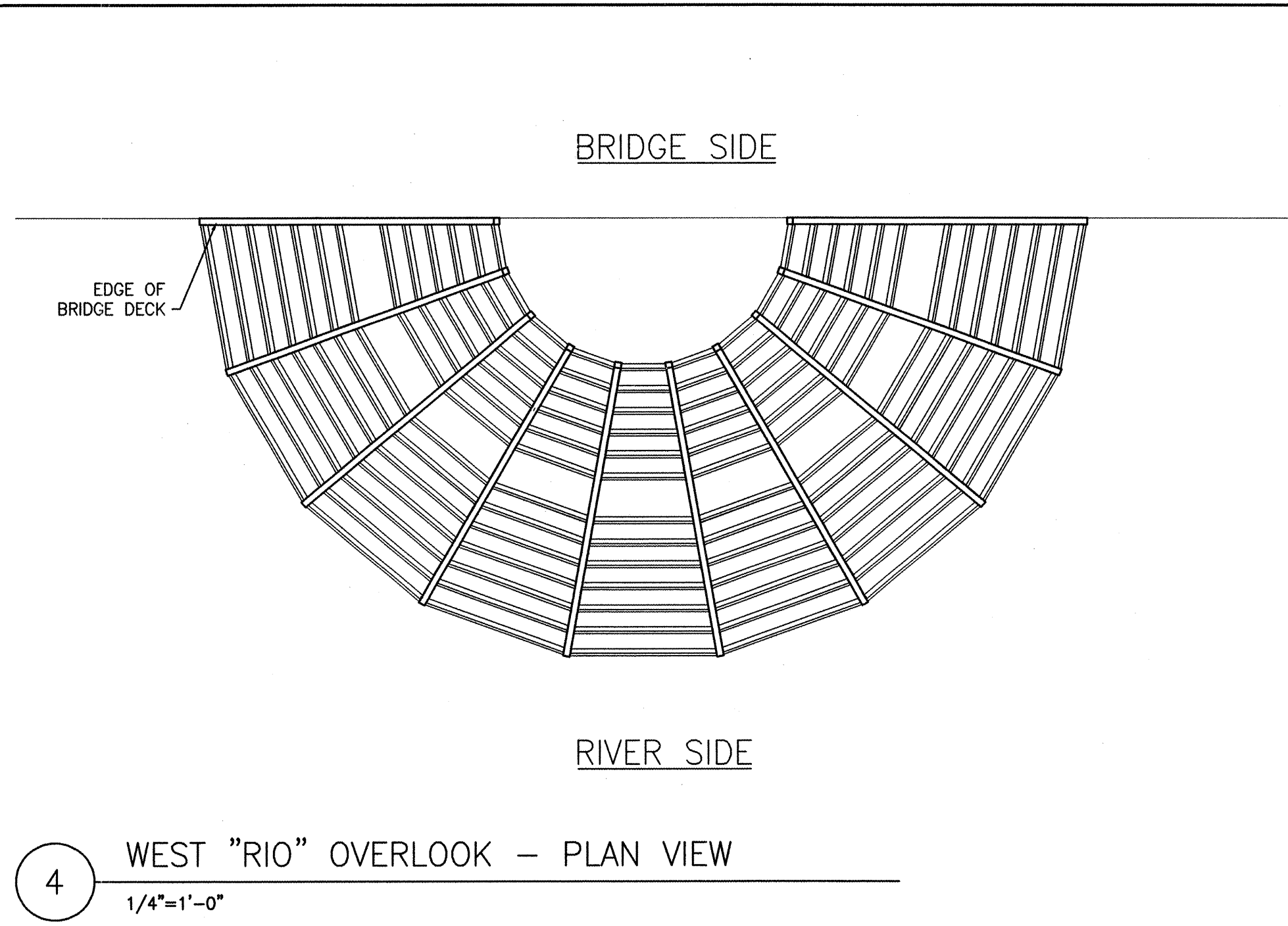
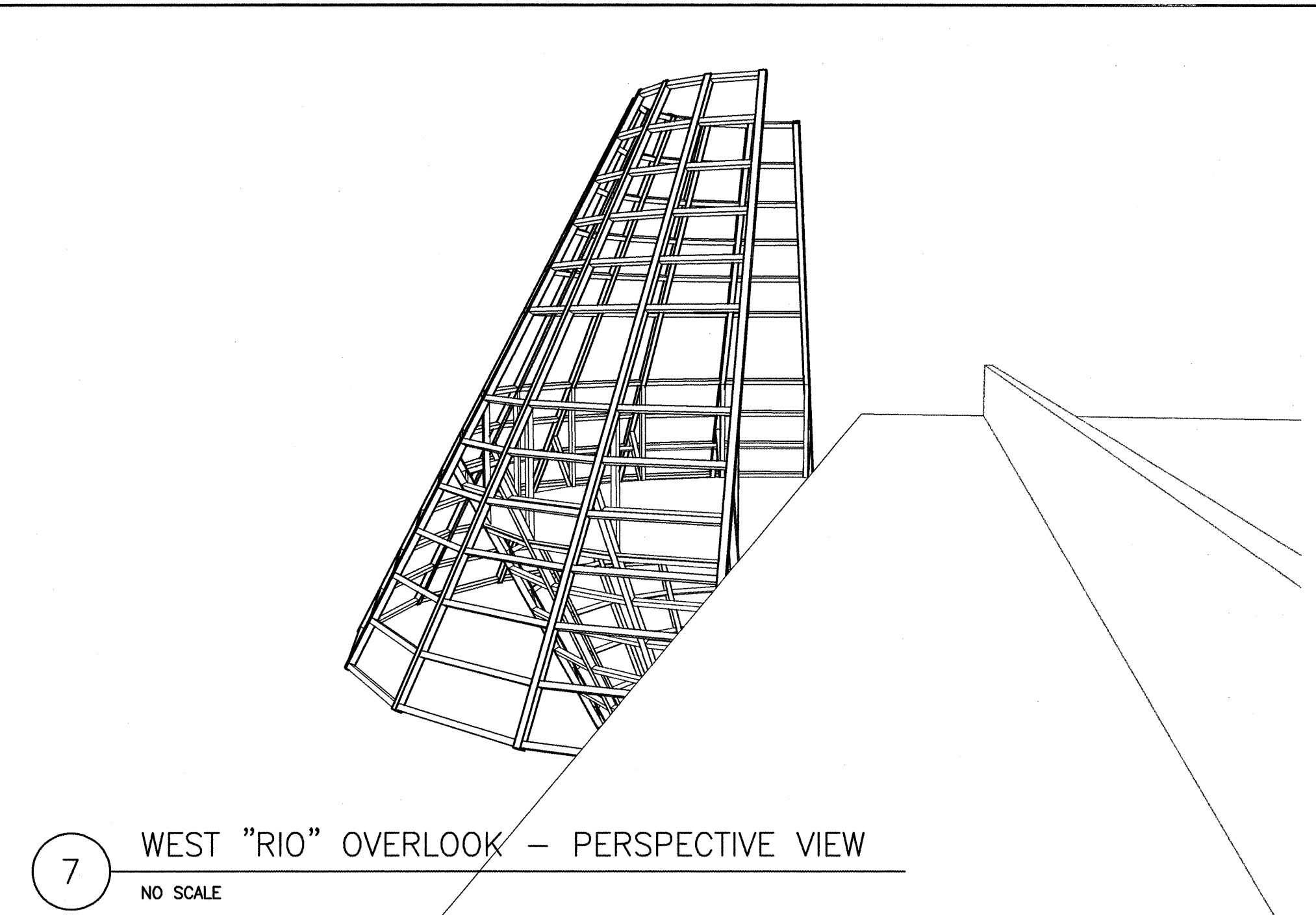
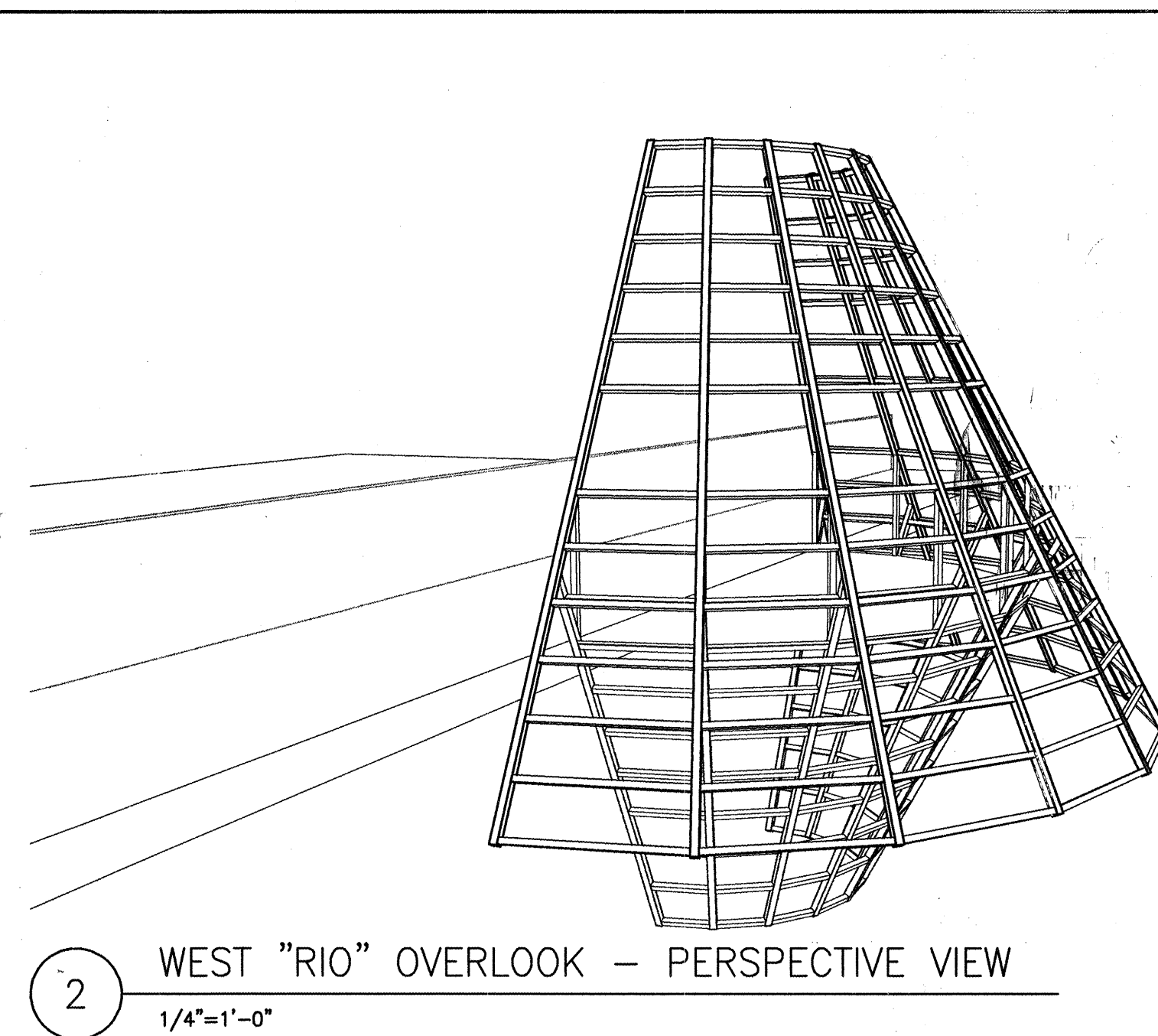
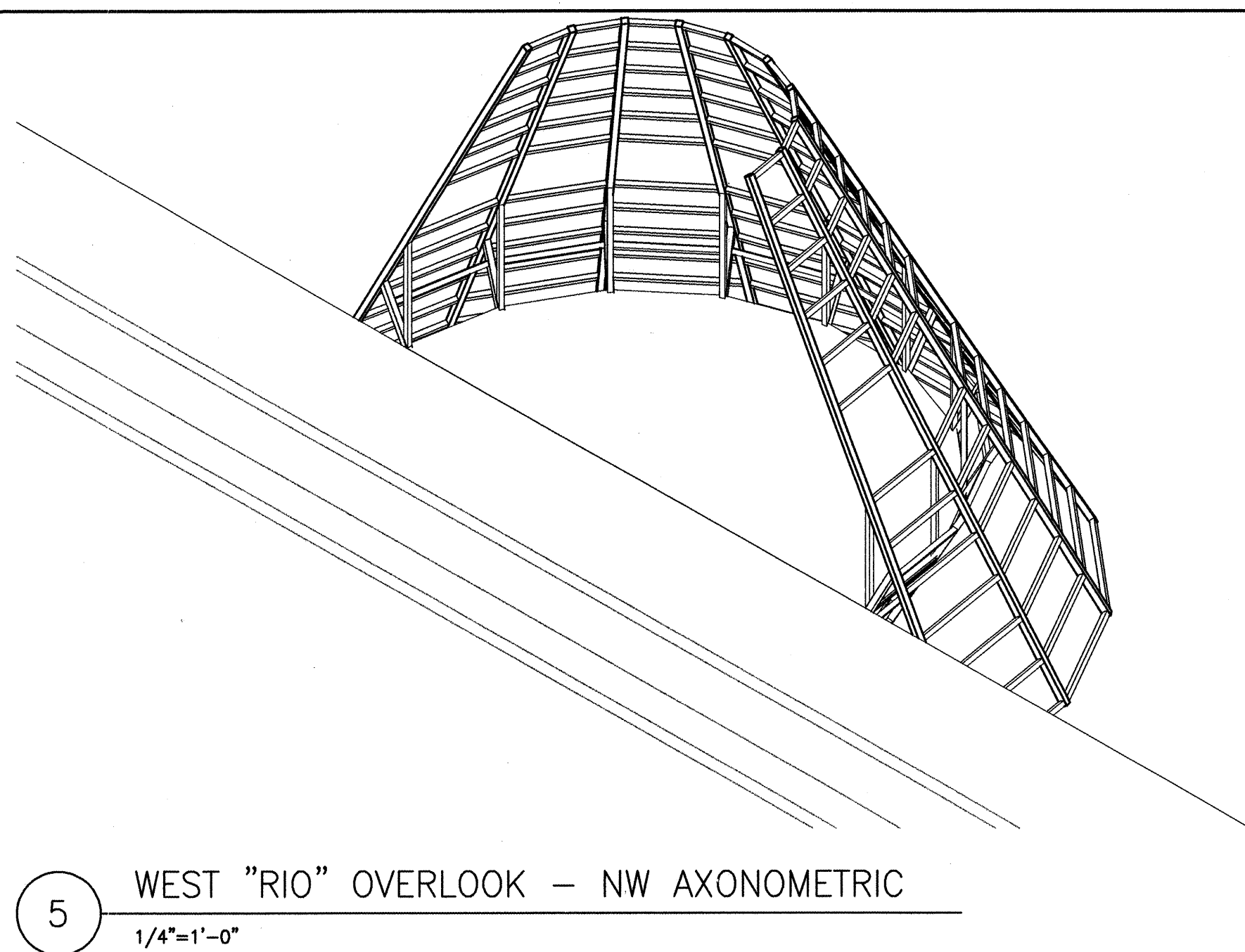
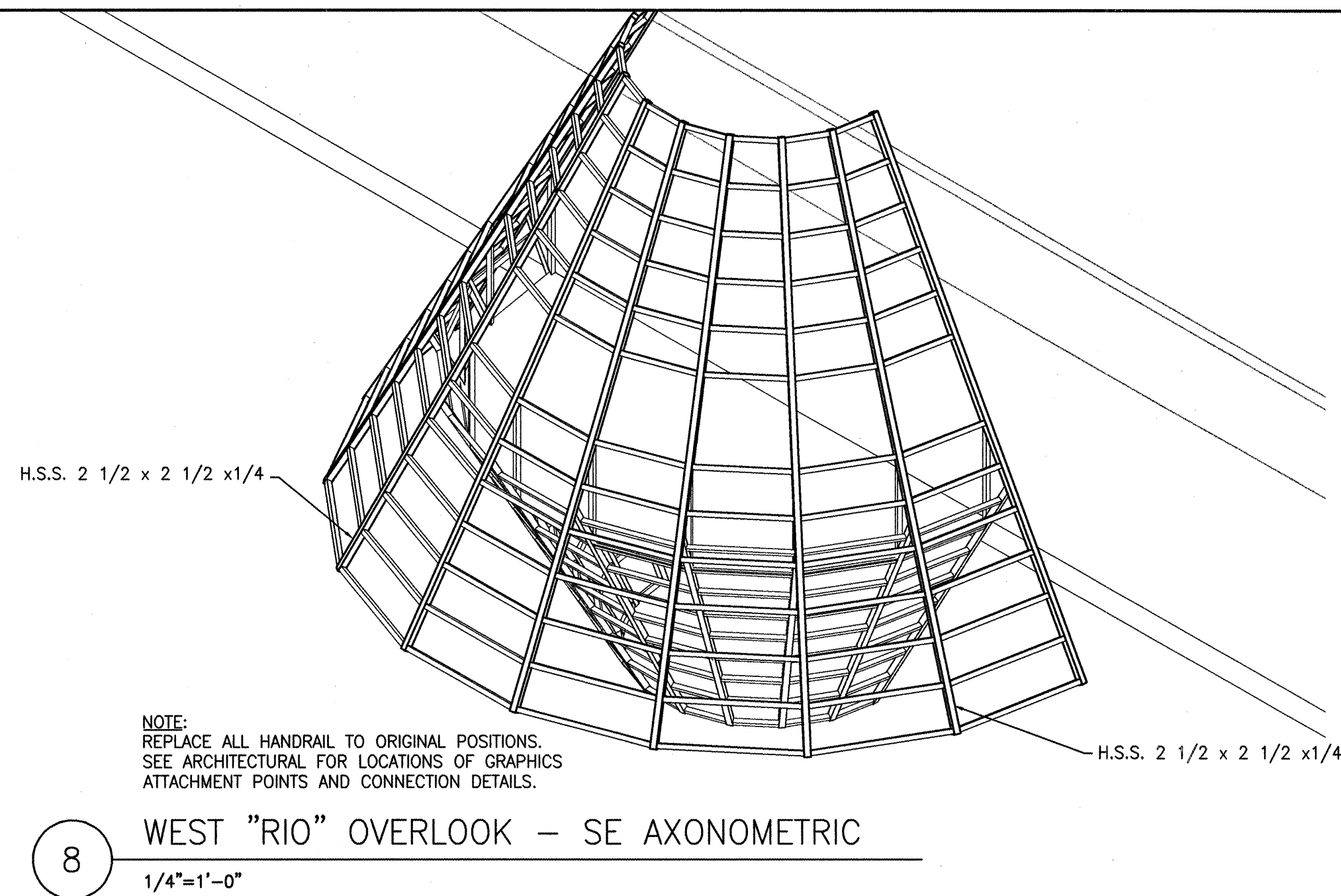
REV	SHEETS	CITY ENGINEER	DATE	USER DEPARTMENT	DATE	USER DEPARTMENT	DATE
ENGINEERS STAMP & SIGNATURE		APPROVALS		ENGINEER		DATE	
		DRC Chairman		[Signature]		9-5-01	
		Transportation		N/A		9-5-01	
		Water/Wastewater		N/A		9-5-01	
		Hydrology		[Signature]		9-5-01	
		CIP		[Signature]		9-5-01	
		Constr. Mngmt.		[Signature]		9-5-01	
City Project No.		670391		APPROVED FOR CONSTRUCTION		N/A	
City Engineer		[Signature]		City Architect		Date	
City Engineer		[Signature]		City Engineer		Date	
Sheet		1		Of		6	





NOTE:
WOVEN FABRIC OMITTED FOR CLARITY
ON ALL DETAILS. SEE SHEET S1 FOR
DETAILS.

ALIANZA ONE LOOP ONE NW ALBUQUERQUE NM 87120 505.899.0451 ARQUITECTOS						REVISED	DRAWN BY	CHECKED BY	
S2	AXIOM ENGINEERING SERVICES STRUCTURAL ENGINEERS					NO.	DATE		
CITY OF ALBUQUERQUE PUBLIC WORKS DEPARTMENT ENGINEERING GROUP									
MONTANO BRIDGE OVERLOOKS — PHASE II EAST "BOSQUE" OVERLOOK									
Design Review Committee		City Engineer Approval			Last Design Update	Mo./Day/Yr.		Mo./Day/Yr.	
City Project No. 670391		Zone Map No. E-12/F-12		Sheet 3		Of 6			



NOTE:
WOVEN FABRIC OMITTED FOR CLARITY
ON ALL DETAILS. SEE SHEET S1 FOR
DETAILS.

AS-BUILT INFORMATION		BENCH MARKS		SURVEY INFORMATION		ENGINEER'S SEAL	
CONTRACTOR	DATE	NO.	BY	NO.	BY	REMARKS	REVISIONS
WORK	DATE	NO.	BY	NO.	BY	DESIGNED BY	DATE
DESIGNED BY	DATE	NO.	BY	NO.	BY	DRAWN BY	DATE
ACCEPTANCE BY	DATE	NO.	BY	NO.	BY	CHECKED BY	DATE
DESIGNED BY	DATE	NO.	BY	NO.	BY	DESIGNED BY	DATE
ACCEPTANCE BY	DATE	NO.	BY	NO.	BY	DRAWN BY	DATE
DESIGNED BY	DATE	NO.	BY	NO.	BY	CHECKED BY	DATE
ACCEPTANCE BY	DATE	NO.	BY	NO.	BY	DESIGNED BY	DATE
DESIGNED BY	DATE	NO.	BY	NO.	BY	DRAWN BY	DATE
ACCEPTANCE BY	DATE	NO.	BY	NO.	BY	CHECKED BY	DATE

ALIANZA
ONE LOOP ONE NW ALBUQUERQUE NM 87120 505.899.0454
ARQUITECTOS

S3 **AXIOM ENGINEERING SERVICES**
STRUCTURAL ENGINEERS

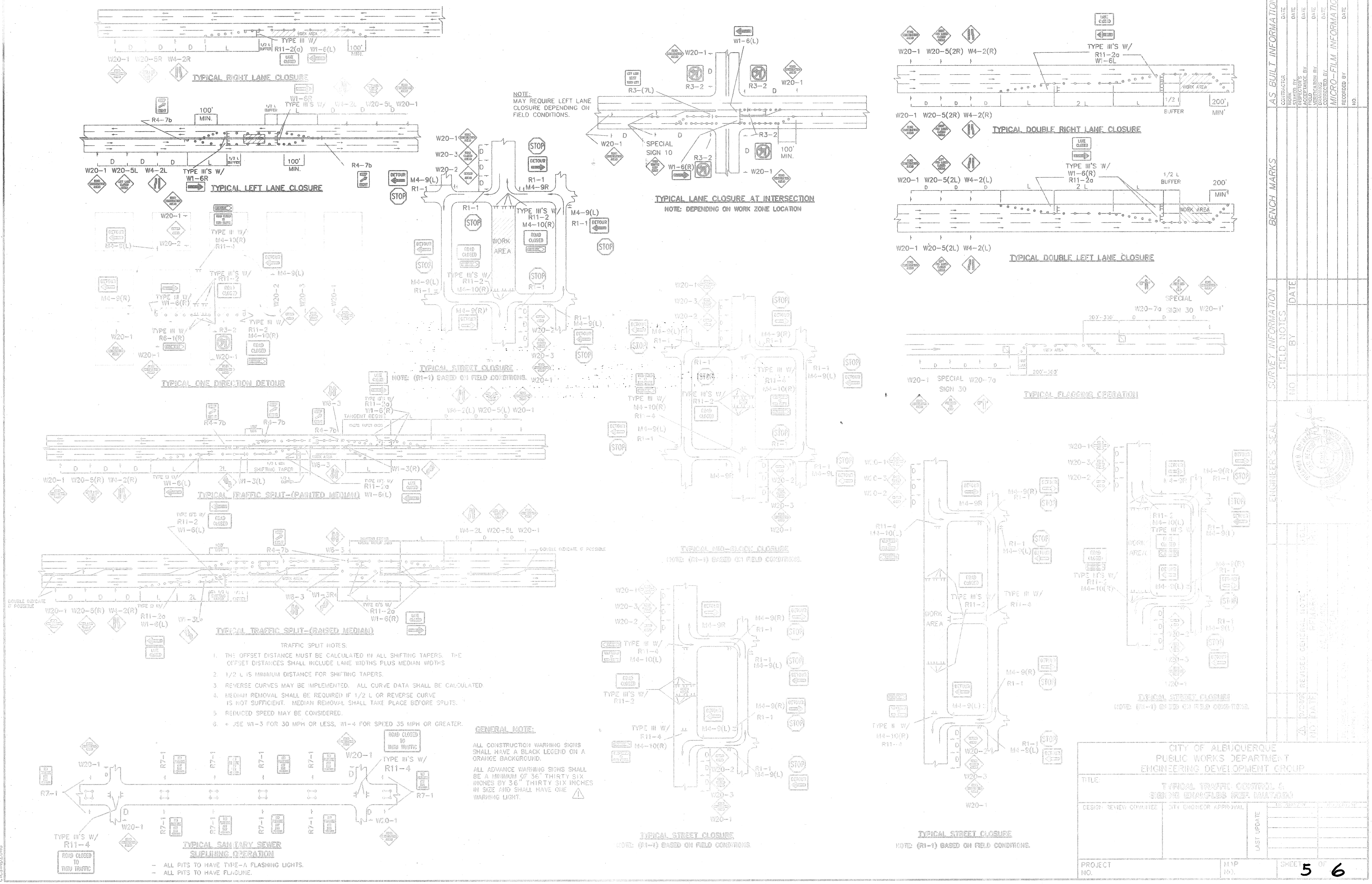
CITY OF ALBUQUERQUE
PUBLIC WORKS DEPARTMENT
ENGINEERING GROUP

MONTANO BRIDGE OVERLOOKS - PHASE II
WEST "RIO" OVERLOOK

Design Review Committee	City Engineer Approval	Mo./Day/Yr.	Mo./Day/Yr.

City Project No. **670391** Zone Map No. **E-12/F-12** Sheet **4** Of **6**

CTCSND.LONG



CONSTRUCTION TRAFFIC CONTROL GENERAL NOTES

1. CONTRACTOR MUST OBTAIN FROM CONSTRUCTION COORDINATION AN EXCAVATION/BARRICADING PERMIT BEFORE ENGAGING IN ANY CONSTRUCTION, MAINTENANCE OR REPAIR WORK IN ANY OF THE CITY OF ALBUQUERQUE'S RIGHTS-OF-WAY. EMERGENCY WORK THAT WOULD PRESERVE LIFE OR PROPERTY IS EXCLUDED WITH THE UNDERSTANDING, THAT A PERMIT SHALL BE OBTAINED WITHIN 24 TO 48 HOURS.

2. CONTRACTOR SHALL AT THE TIME OF PERMIT REQUEST, SUBMIT FOR APPROVAL BY CONSTRUCTION COORDINATION, A TRAFFIC CONTROL PLAN DETAILING ALL EXISTING TOPOGRAPHY SUCH AS LANE WIDTHS, DRIVEWAYS, AND BUSINESS/RESIDENTIAL ACCESSES. THE TRAFFIC CONTROL PLAN SHALL INCLUDE ALL PHASES OF WORK AND SCHEDULES INVOLVED IN THE CONSTRUCTION PROJECT. ANY SEPARATE PHASES OF A CONSTRUCTION PROJECT SHALL BE GIVEN AN INDIVIDUAL PERMIT EACH. BLANKET PERMITS WILL NOT BE ISSUED.

3. THESE TYPICAL TRAFFIC CONTROL PLANS DO NOT REFLECT THE EXISTING TOPOGRAPHY SUCH AS DRIVEWAYS, LANE WIDTHS, AND BUSINESS/RESIDENTIAL ACCESSES. EVERY LOCATION THAT REQUIRES CONSTRUCTION TRAFFIC CONTROL SHALL HAVE A DETAILED TRAFFIC CONTROL PLAN SHOWING ALL EXISTING TOPOGRAPHY.

4. CONSTRUCTION SHALL NOT BEGIN UNLESS A TRAFFIC CONTROL PLAN HAS BEEN APPROVED AND VERIFIED BY CONSTRUCTION COORDINATION.

5. CONSTRUCTION COORDINATION SHALL BE NOTIFIED 48 HOURS PRIOR TO ANY TRAFFIC CONTROL CHANGES NEEDED BY CONTRACTOR, THAT WERE NOT PREVIOUSLY APPROVED. THESE TRAFFIC CONTROL CHANGES SHALL BE REQUESTED IN WRITING ACCOMPANIED WITH A TRAFFIC CONTROL PLAN REFLECTING SUCH CHANGES.

6. ALL CONSTRUCTION TRAFFIC CONTROL DEVICES SHALL COMPLY TO THE MANUAL ON UNIFORM TRAFFIC CONTROL DEVICES (MUTCD), LATEST EDITION. IT IS THE RESPONSIBILITY OF THE CONTRACTOR TO INSTALL, SERVICE AND MAINTAIN ALL TRAFFIC CONTROL DEVICES. TRAFFIC CONTROL DEVICES SHALL NOT BE REMOVED OR ALTERED IN ANY WAY WITHOUT THE APPROVAL OF CONSTRUCTION COORDINATION, PER SECTION 6A-4 OF THE MUTCD, LATEST EDITION.

7. THE CONSTRUCTION TRAFFIC CONTROL INITIAL SET-UP SHALL BE BY AN AMERICAN TRAFFIC SAFETY SERVICES ASSOCIATION (ATSSA) CERTIFIED WORKSITE TRAFFIC SUPERVISOR. THE MAINTENANCE AND SERVICING SHALL ALSO BE DONE BY AN ATSSA CERTIFIED WORKSITE TRAFFIC SUPERVISOR OR EQUIVALENT.

8. CONTRACTOR IS RESPONSIBLE TO MAINTAIN AND SERVICE ALL TRAFFIC CONTROL DEVICES 24 HOURS A DAY 7 DAYS A WEEK THROUGHOUT LENGTH OF PROJECT. CONTRACTOR IS RESPONSIBLE THAT ALL TRAFFIC CONTROL DEVICES COMPLY WITH THE MUTCD, LATEST EDITION.

9. ALL ADVANCE WARNING SIGNS SHALL BE DOUBLE INDICATED WHENEVER THERE ARE MULTI-LANE TRAFFIC IN ANY ONE GIVEN DIRECTION AND THERE IS SUFFICIENT MEDIAN SPACE.

10. ALL BARRICADES IN ALL TAPERS AND TANGENTS SHALL BE PLACED APART, A DISTANCE MEASURED IN FEET, EQUAL TO THAT OF THE POSTED SPEED LIMIT. NO EXCEPTIONS UNLESS APPROVED BY CONSTRUCTION COORDINATION PER MUTCD SECTION 6A-4.

11. ALL WORK IN ARTERIAL ROADWAYS SHALL BE ON A CONTINUOUS 24 HOUR PER DAY BASIS UNTIL COMPLETED.

12. CONTRACTOR IS RESPONSIBLE TO PROVIDE CONSTRUCTION COORDINATION A WEEKLY LOG OF DAILY INSPECTIONS OF BARRICADE AND MAINTENANCE SCHEDULES ON PROJECTS THAT ARE OVER ONE WEEK DURATION.

13. EQUIPMENT OR MATERIALS SHALL NOT BE STORED WITHIN 15 FEET OF A TRAVELLED TRAFFIC LANE DURING NON-WORKING HOURS WITHOUT THE APPROVAL OF CONSTRUCTION COORDINATION.

14. CONTRACTOR SHALL PROVIDE AND MAINTAIN A SAFE AND ADEQUATE MEANS OF CHANNELIZING PEDESTRIAN TRAFFIC AROUND AND THROUGH THE CONSTRUCTION AREA.

15. CONTRACTOR IS RESPONSIBLE FOR OBLITERATION OF ANY CONFLICTING STRIPING AND RESPONSIBLE FOR ALL TEMPORARY STRIPING.

16. CONTRACTOR SHALL MAINTAIN ACCESS TO ALL FACILITIES, BUSINESSES AND/OR RESIDENTS AT ALL TIMES.

17. CONTRACTOR SHALL PROVIDE ACCESS SIGNS FOR BUSINESSES LOCATED WITHIN THE CONSTRUCTION AREA UNDER THE SUPERVISION OF CONSTRUCTION COORDINATION. EACH ACCESS SIGN SHALL HAVE 5 INCH, WHITE OPAQUE LETTERING ON BLUE REFLECTORIZED BACKGROUND. ACCESS SIGNS SHALL BE CONSIDERED INCIDENTAL TO THE BID AND NOT PART OF THE CONTRACT UNLESS OTHERWISE STATED. NO MORE THAN 3 BUSINESSES SHALL BE LISTED ON A ACCESS SIGN. SHOPPING CENTERS AND MALLS SHALL BE LISTED AS SUCH.

18. ALL ADVANCE WARNING SIGNS SHALL MEET THE MINIMUM REFLECTIVE INTENSITY REQUIREMENTS SET FORTH BY THE CITY OF ALBUQUERQUE. CONSTRUCTION COORDINATION SHALL DETERMINE ALL REQUIREMENTS AND APPROVE OR DISAPPROVE ANY ADVANCE WARNING SIGN PER SECTION 6A-4 OF THE MUTCD, LATEST EDITION.

19. 48 HOURS PRIOR TO OCCUPYING OR CLOSING OF A RIGHT-OF-WAY, CONTRACTOR SHALL NOTIFY: POLICE, FIRE DEPARTMENT, SCHOOLS, HOSPITALS, TRANSIT AUTHORITY, BUSINESSES AND/OR RESIDENTS THAT WILL BE AFFECTED BY THE CONSTRUCTION.

20. ANY FIELD ADJUSTMENTS SHALL BE APPROVED BY CONSTRUCTION COORDINATION.

21. EXCAVATIONS SHALL BE PLATED, TEMPORARILY PATCHED OR RESURFACED PRIOR TO OPENING OF TRAFFIC. A MINIMUM OF 11 FEET SHALL BE PROVIDED FOR TRAFFIC IN ANY GIVEN DIRECTION. CONTRACTOR IS RESPONSIBLE FOR ANY WORK INVOLVED IN SATISFYING THESE REQUIREMENTS.

22. CONTRACTOR SHALL AT ALL TIMES COMPLY WITH THE FOLLOWING:
1. STANDARDS AND REQUIREMENTS SET FORTH IN THE MANUAL ON UNIFORM TRAFFIC CONTROL DEVICES, LATEST EDITION.
2. THE CITY OF ALBUQUERQUE TRAFFIC CODE, LATEST EDITION.
3. SECTION 19 OF THE CITY OF ALBUQUERQUE'S STANDARD SPECIFICATIONS FOR PUBLIC WORK CONSTRUCTION, AS WELL AS OTHER SECTIONS.

23. FAILURE TO COMPLY WITH ANY OF THE ABOVE MENTIONED, WILL BE ADEQUATE CAUSE TO CEASE ALL WORK ON ANY CONSTRUCTION PROJECT. WORK WILL NOT RESUME UNTIL ALL REQUIREMENTS ARE ADDRESSED AND APPROVED BY CONSTRUCTION COORDINATION.

24. ALL TRAFFIC CONTROL DEVICES SHALL BE KEPT IN NEW-CLEAN CONDITION. WASHING OF EQUIPMENT IS INCIDENTAL TO IT'S PLACEMENT AND MAINTENANCE.

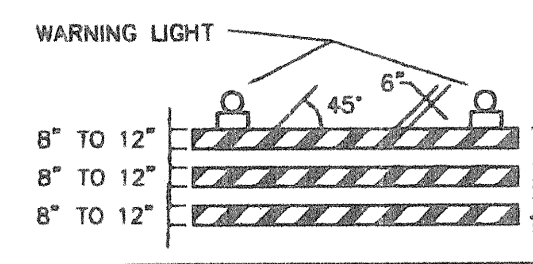
25. TRAFFIC CONTROL STANDARDS APPLY ONLY WHERE THE CONSTRUCTION TRAFFIC CONTROL PLANS ARE NOT SPECIFIC.

26. ADVANCE WARNING SIGNS SHALL BE 36"x36" MIN. WITH SUPER ENGINEERING GRADE SHEETING OR BETTER. MOUNTING HEIGHT AT TOP OF SIGN SHALL BE THE SAME AS FOR A 48" SIGN AS INDICATED IN THE M.U.T.C.D.

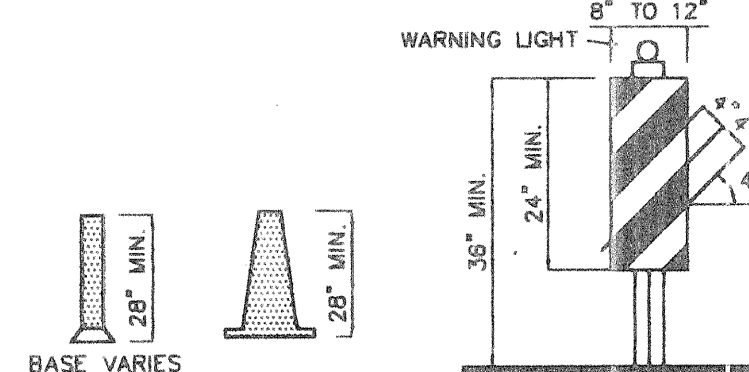
27. CONTRACTOR SHALL MAINTAIN A GRAFFITI-FREE WORKSITE. ALL GRAFFITI SHALL BE PROMPTLY REMOVED FROM ALL EQUIPMENT, BOTH PERMANENT AND TEMPORARY.

SPECIAL PROJECT TRAFFIC CONTROL NOTES

- ONE LANE IN EACH DIRECTION SHALL BE MAINTAINED ON MONTANO ROAD AT ALL TIMES.
- CONTRACTOR SHALL MAINTAIN AT LEAST A FOUR-FOOT WIDE BIKE LANE AT ALL TIMES, INCLUDING "SHARE THE ROAD" SIGNS (IF NEEDED).
- CONTRACTOR SHALL PROVIDE AN ADEQUATELY PROTECTED SPACE FOR PEDESTRIANS AT ALL TIMES.

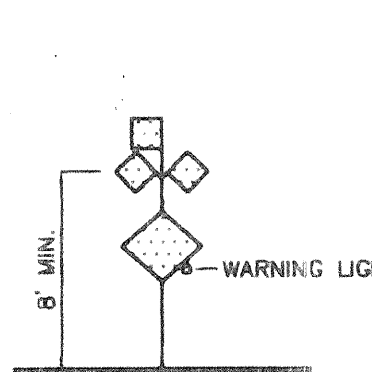


TYPE II BARRICADE

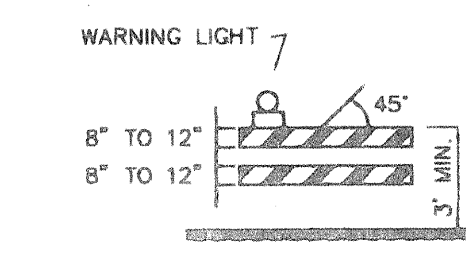


VERTICAL PANEL

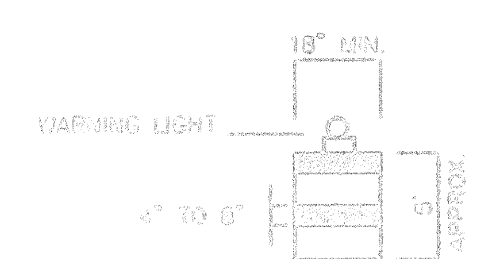
CONES



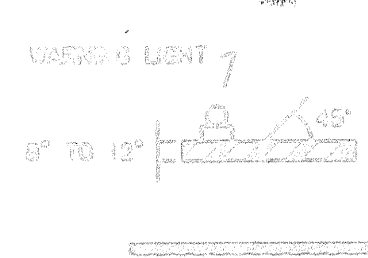
HIGH LEVEL WARNING DEVICE



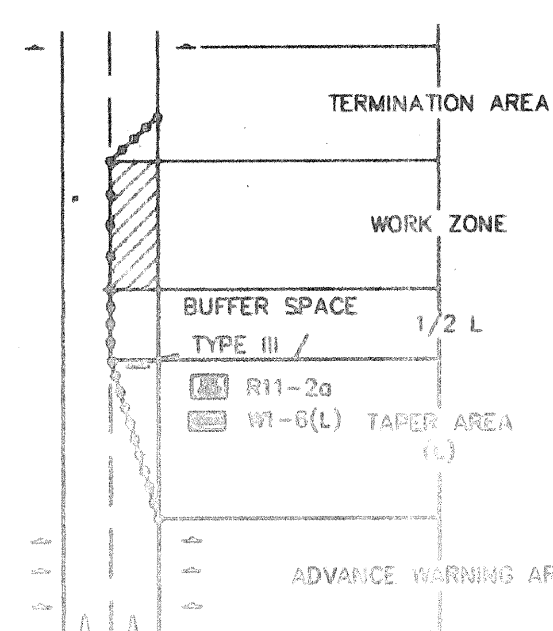
TYPE II BARRICADE



TYPE II BARRICADE

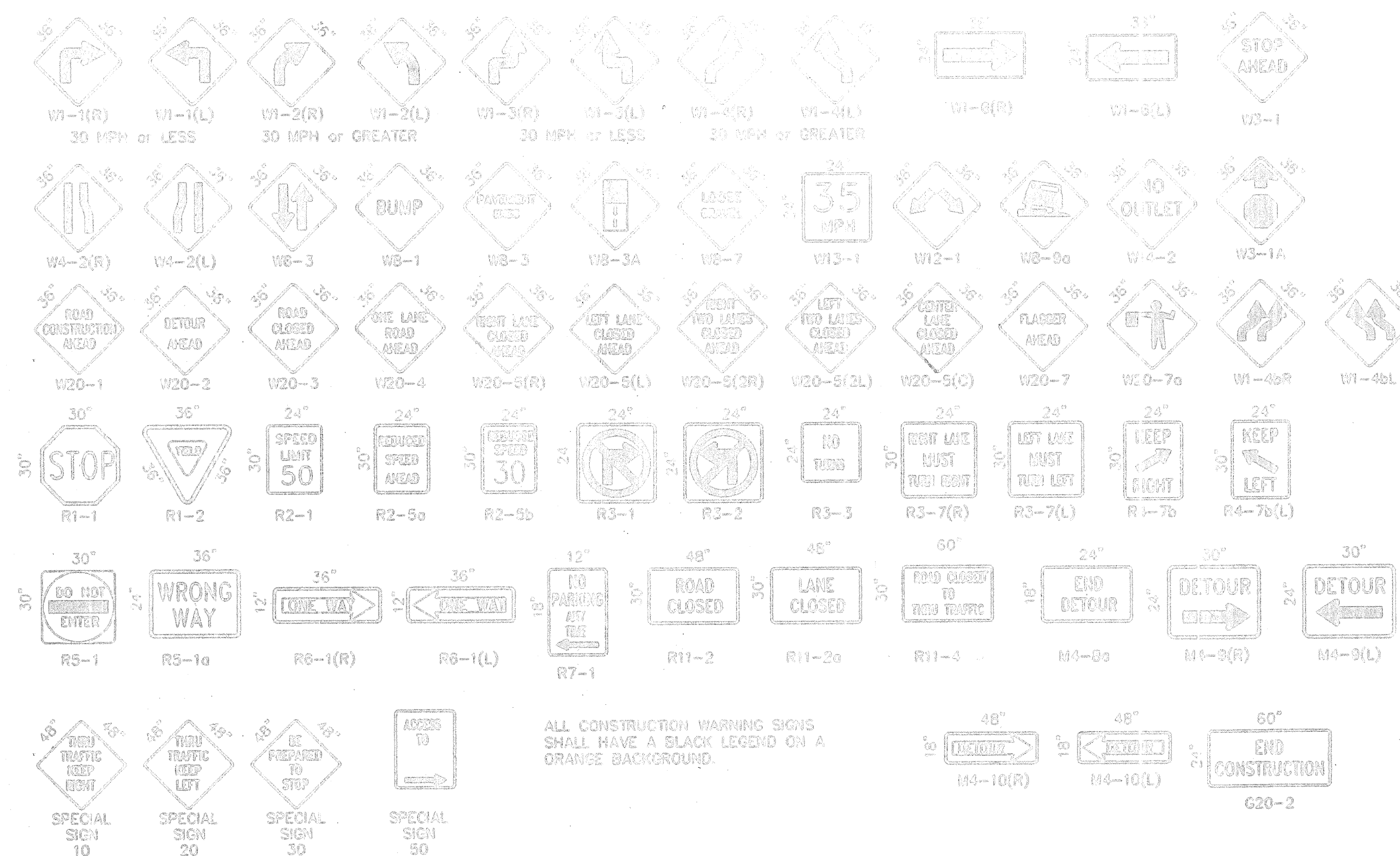


TYPE II BARRICADE

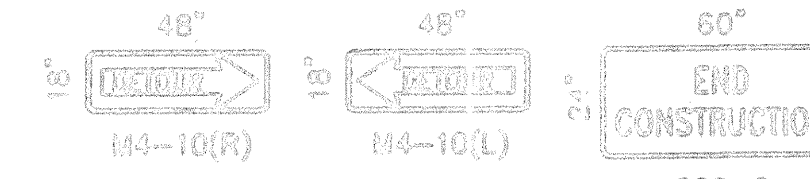


TRAFFIC CONTROL ELEMENT

SIGN FACE DETAILS



ALL CONSTRUCTION WARNING SIGNS SHALL HAVE A BLACK LEGEND ON A ORANGE BACKGROUND.



END CONSTRUCTION

LEGEND

- WORK AREA
BARRICADE - TYPE I, TYPE II, OR BARREL
BARRICADE - TYPE III
VERTICAL PANEL
WARNING SIGN
DISTANCE BETWEEN SIGNS - A DISTANCE MEASURED IN FEET EQUAL TO A VALUE OF TEN TIMES THE SPEED LIMIT OF THE STREET
FLAGMAN POSITION
SPACING BETWEEN BARRICADES - A DISTANCE MEASURED IN FEET EQUAL TO THE SPEED LIMIT OF THE STREET
TAPER LENGTH - SEE CHART BELOW
THE TANGENT LENGTH IS EQUAL TO THE TAPER LENGTH FOR A GIVEN STREET.

TAPER REQUIREMENTS

SPEED LIMIT (MPH)	TAPER LENGTH (L) (FEET)			MINIMUM NUMBER OF DEVICES FOR TAPER	MAXIMUM DEVICE SPACING IN FEET	
	10' LANE	11' LANE	12' LANE		ALONG TAPER	AFTER TAPER
20	70	75	80	5	20	20
25	105	115	125	6	25	25
30	150	165	180	7	30	30
35	205	225	245	8	35	35
40	270	295	320	9	40	40
45	450	495	540	13	45	45
50	500	550	600	13	50	50
55	550	605	660	13	55	55

RECOMMENDED SIGN SPACING (OLEF)

ADVANCE WARNING SIGN SERIES

SPEED LIMIT (MPH)	MINIMUM DISTANCE IN FEET FROM LAST SIGN TO TAPER
0-20	10 x SPEED LIMIT
25-30	10 x SPEED LIMIT
30-35	10 x SPEED LIMIT
40-45	10 x SPEED LIMIT
50-60	10 x SPEED LIMIT

LOCAL ELEMENT

TYPE OF TAPER	PER LENGTH
UPSTREAM TAPER	1' PER FEET
MERCING TAPER	1' PER FEET
SHIFTER TAPER	1' PER FEET
SHOULDER TAPER	1' PER FEET
TRUCK-TRAILER TAPER	1' PER FEET
DOWNSTREAM TAPER	1' PER FEET

TAPER LENGTH CALCULATION

SPEED LIMIT	W	S
40 MPH OR LESS	W = 100	S = 80
45 MPH OR GREATER	W = 100	S = 80

L = TAPER LENGTH
W = WIDTH OF OFFSET IN FEET
S = POSTED SPEED OR OFF-PEAK 85-PERCENTILE SPEED IN MPH

CITY OF ALBUQUERQUE PUBLIC WORKS DEPARTMENT ENGINEERING DEVELOPMENT GROUP	
TITLE: SPEED AND CONSTRUCTION TRAFFIC CONTROL STANDARDS	
DESIGN REVIEW COMMITTEE	CITY ENGINEER APPROVAL
PROJECT NO.	SHEET 6 OF 6