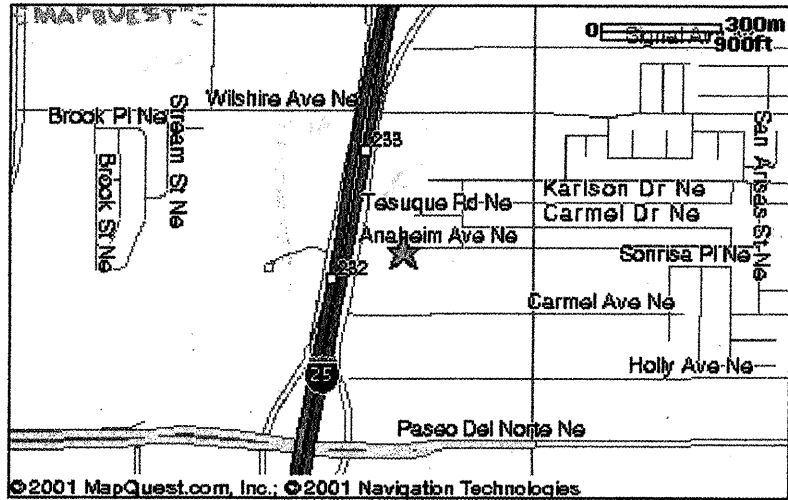


CITY OF ALBUQUERQUE
PUBLIC FIRE HYDRANT INSTALLATION

5900 ANAHEIM AVE NE, ALBUQUERQUE, NM, 87113-1708, US



VICINITY MAP

LEGAL DESCRIPTION OF PROPERTY AND ADDRESS:

LOTS 12,13,14,15 BLOCK 16, TRACT A, UNIT B

NORTH ALBUQUERQUE ACRES

5900 ANAHEIM NE.

NOTICE TO CONTRACTORS

1. An excavation/barricade permit will be required before beginning any work within City, County, or Village right-of-way. An approved copy of these plans must be submitted at the time of application for these permits.
2. All work detailed on these plans to be done, except as otherwise stated or provided hereon, will be constructed in accordance with "City of Albuquerque Interim Standard Specification for Public Works Construction, 1986," latest revision.
3. Two working days prior to any excavation, the contractor must contact Line Locating Service, 260-1990, for location of existing utilities.
4. Prior to construction, the contractor will excavate and verify the horizontal and vertical locations of all construction. Should a conflict exist, the contractor will notify the Construction Engineer so that the conflict can be resolved with a minimum amount of delay.
5. The contractor will be responsible for coordinating the water shutoff with the Water Division seven working days prior to construction.

APPROVALS FOR	NAME	DATE	TITLE OF PROJECT:
DESIGN: UTILITY DEVELOPMENT	Danny Dusingi	9/24/2001	CARMEL ENTERPRISE FIRE HYDRANT
CONSTRUCTION: CONSTRUCTION ENGINEER	FYI [Signature]	11/15/06	
ACCEPTANCE: CONSTRUCTION INSPECTOR	By JESSE Carlin	11/14/06	
PROJECT NO. 673881 ZONE ATLAS			SHEET 1 OF 4 C-18

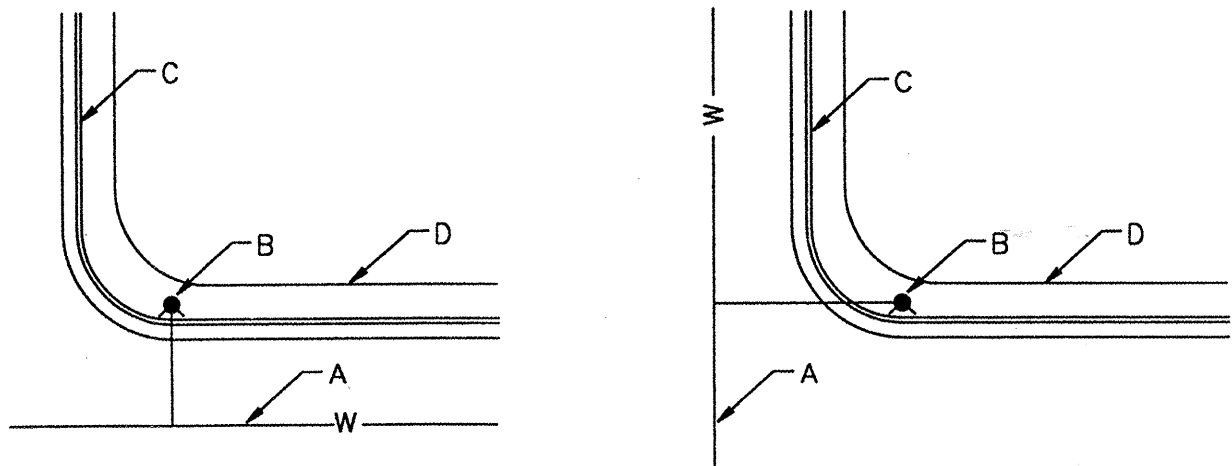
CITY OF ALBUQUERQUE
PUBLIC FIRE HYDRANT INSTRUCTIONS
STANDARD DRAWING 2437-A (AUG 1998)

GENERAL NOTES

1. Normally, fire hydrants are located at end of curb return; hydrants will not be located within the curb return area. Fire hydrants to be located within the block length will be installed at a property line (Case 4).
2. A minimum clearance of 5' will be provided between a fire hydrant and a permanent obstruction (utility pole, light standard, traffic signal, etc.).
3. For installation of fire hydrant, see dwg 2340-A.
4. See dwg 2431 for sidewalk configuration when fire hydrant is located in sidewalk.

CONSTRUCTION NOTES

- A. Water main
- B. Fire hydrant
- C. Curb and gutter
- D. Right-of-way line
- E. Property line



CASE 1

CASE 2

CASE 3

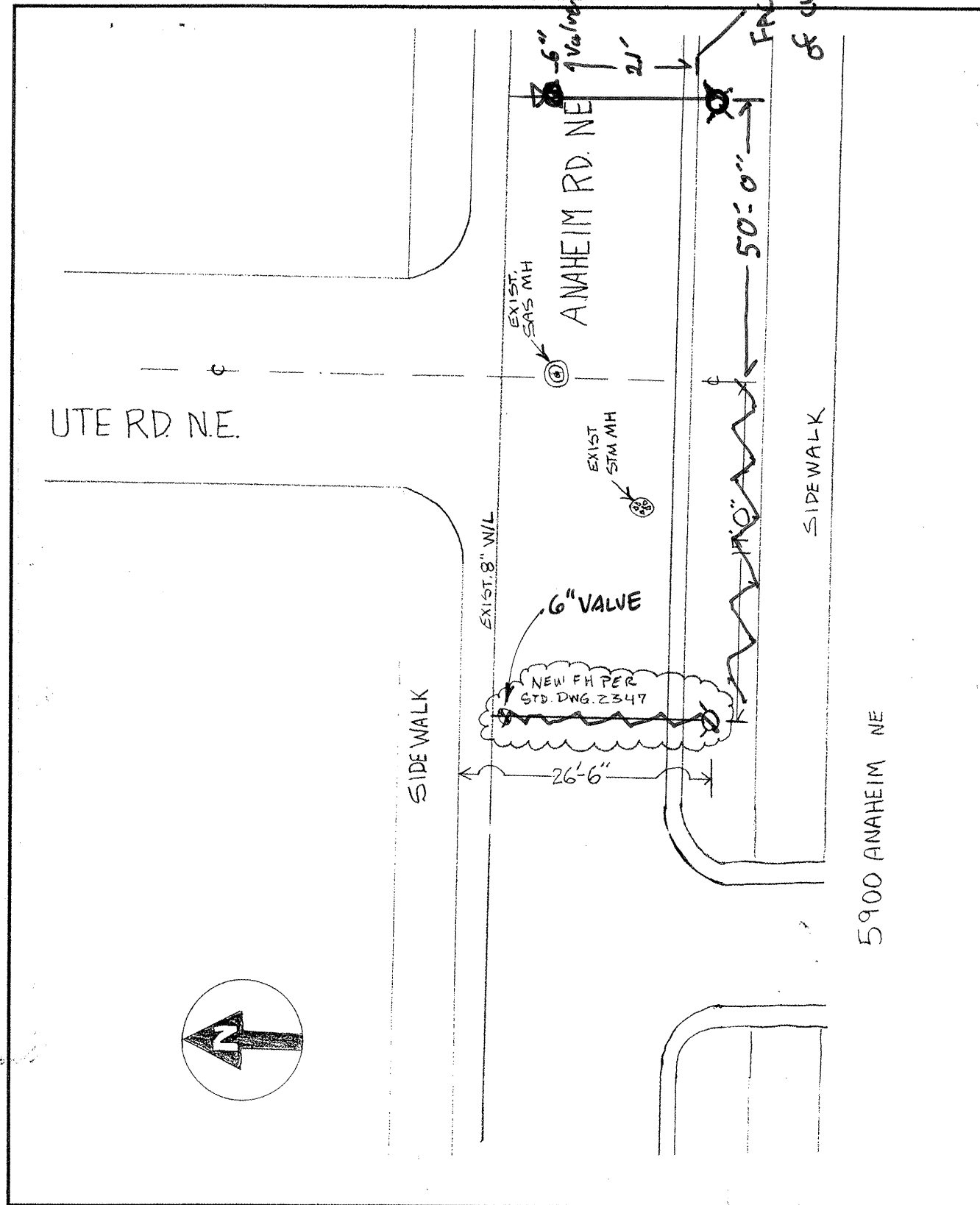
CASE 4

TYPICAL LOCATIONS

PROJECT NO. 673881	ZONE ATLAS	TITLE:
SHEET 3 OF 4	C-18	CARMEL ENTERPRISE FIRE HYDRANT

SCANNED BY
PLANNING

CITY OF ALBUQUERQUE
PUBLIC FIRE HYDRANT INSTRUCTIONS
SITE DETAIL



PROJECT NO. 673881 ZONE ATLAS TITLE:

CARMEL ENTERPRISES
FIRE HYDRANT

SHEET 2 OF 4

C-18

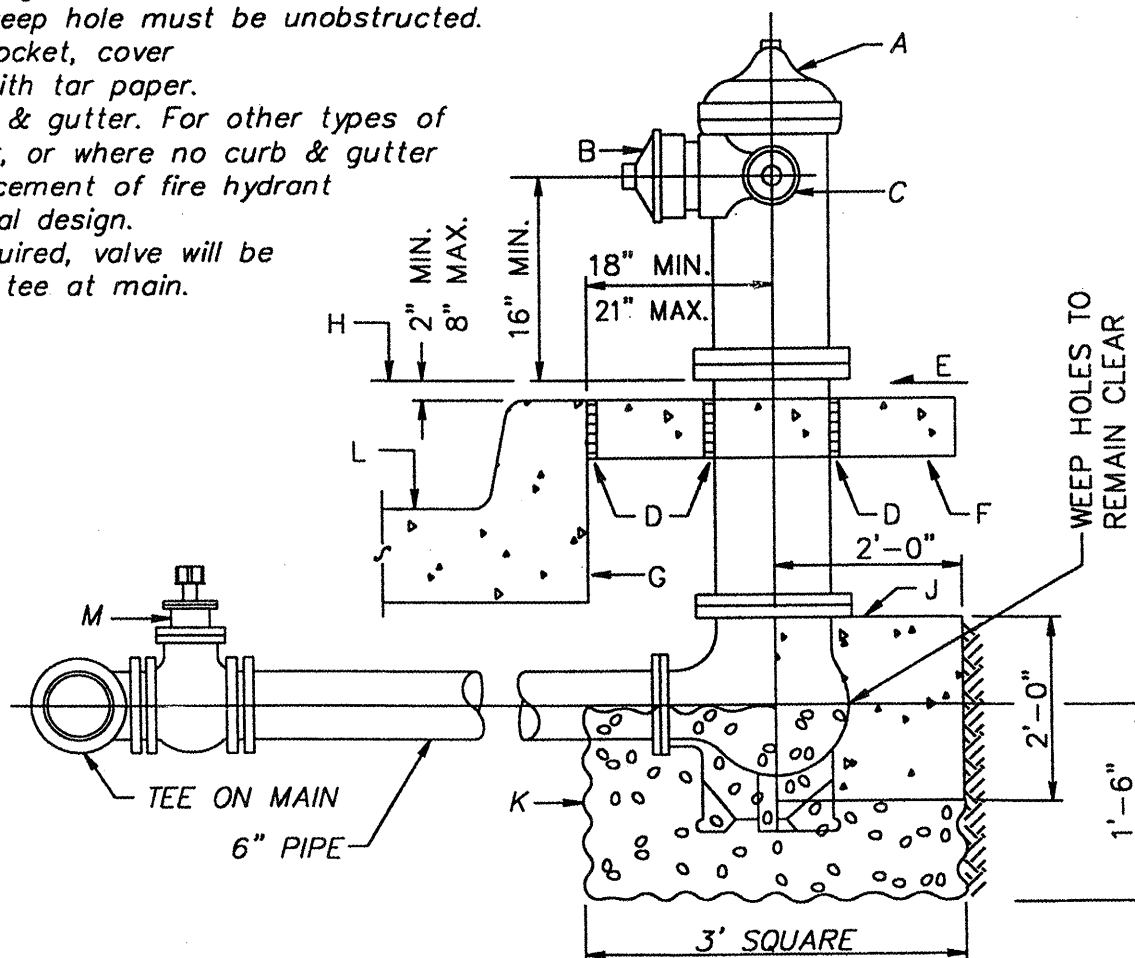
CITY OF ALBUQUERQUE
PUBLIC FIRE HYDRANT INSTRUCTIONS
STANDARD DRAWING 2430-A (AUG 1998)

GENERAL NOTES

1. No obstruction will be permitted within 5 feet of fire hydrant.
2. Hydrant leg shall be valved in accordance with Chapter 25 of the D.P.M.
3. Contractor shall be responsible for setting top flange of fire hydrant to the dimensions shown.
4. Fire hydrant shall be located at the beginning of curb return or at the property line common to adjoining lots, unless otherwise shown on plans. See dwg. 2347.
5. When new or existing sidewalk abuts curb, reconstruct sidewalk as per dwg. 2430, 2431.
6. Pumper nozzle to be set facing the traveled way, unless otherwise noted on plans.

CONSTRUCTION NOTES

- A. Fire hydrant per specifications
- B. Pumper nozzle 4 1/2"
- C. Hose nozzle 2 1/2"
- D. 1/2" expansion joint material
- E. Slope 1/4" per foot
- F. 3' x 3' x 6" concrete square pad, to be constructed around fire hydrant's centerline when not located within sidewalk or concrete area.
- G. Back of curb
- H. Controlled elevation line, level in all directions.
- J. Concrete thrust block, approximately 2' x 2' x 3' to be poured against undisturbed earth, fire hydrant weep hole must be unobstructed.
- K. Gravel drain pocket, cover top surface with tar paper.
- L. Standard curb & gutter. For other types of curb & gutter, or where no curb & gutter exist, the placement of fire hydrant requires special design.
- M. If valve is required, valve will be connected to tee at main.



DETAIL OF FIRE HYDRANT SETTING WITH BLOCKING

PROJECT NO. 673881	ZONE ATLAS	TITLE:
SHEET 4 OF 4	C-18	CARMEL ENTERPRISE FIRE HYDRANT