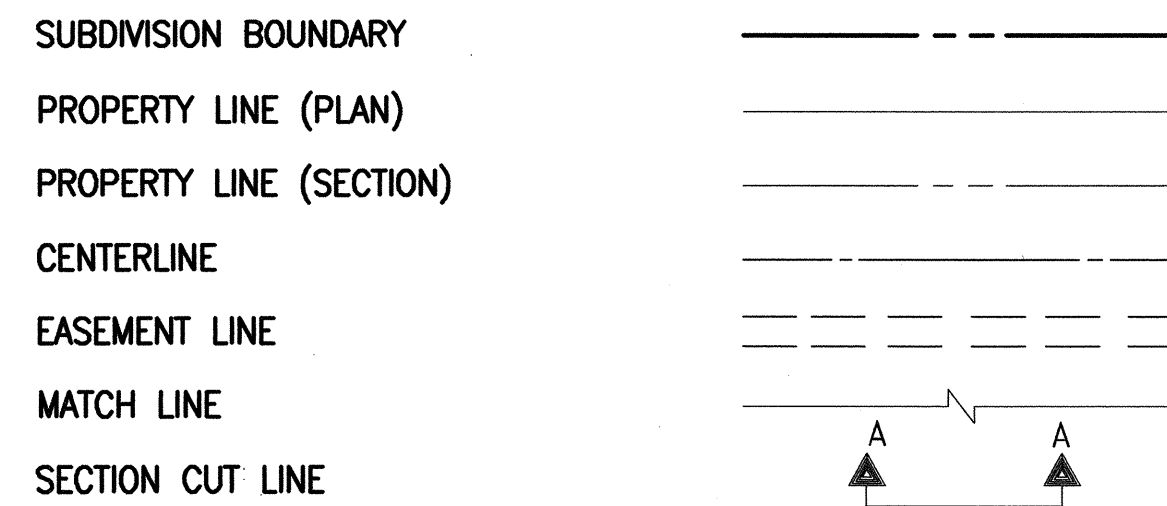


# LEGEND

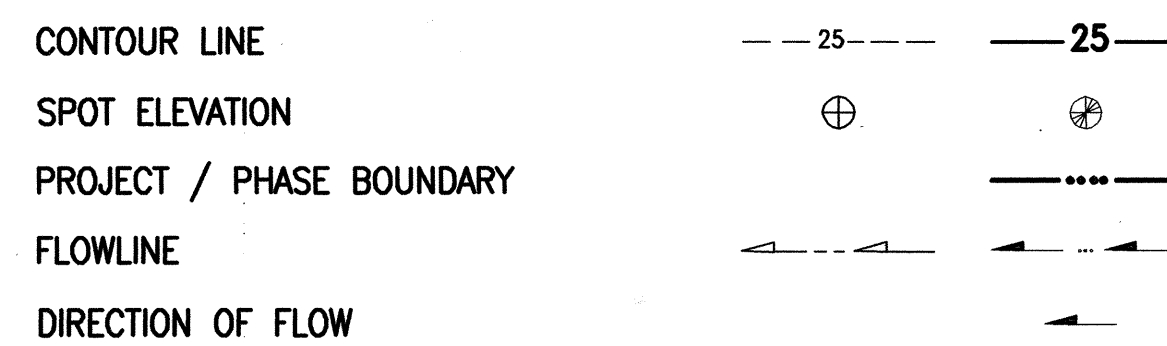
## MATERIALS



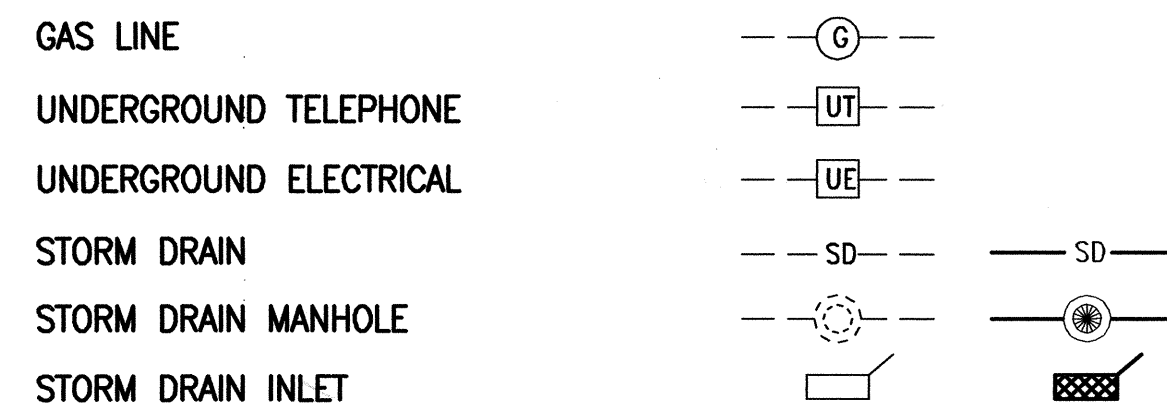
## LINES



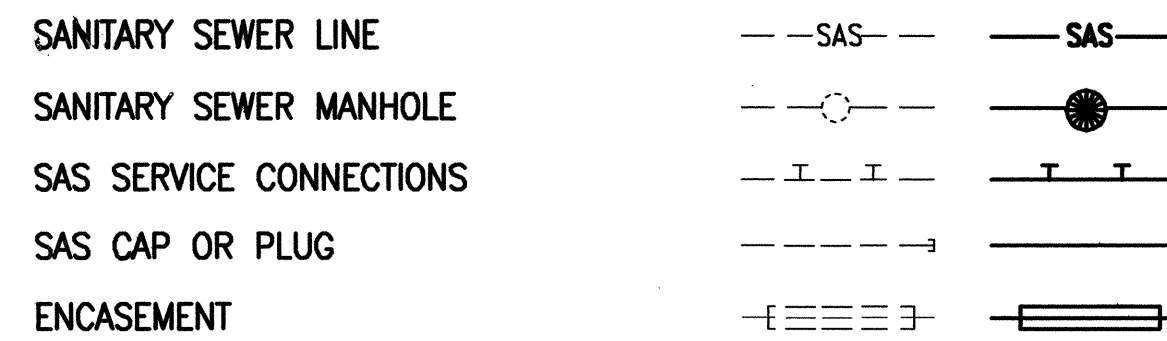
## EARTHWORK



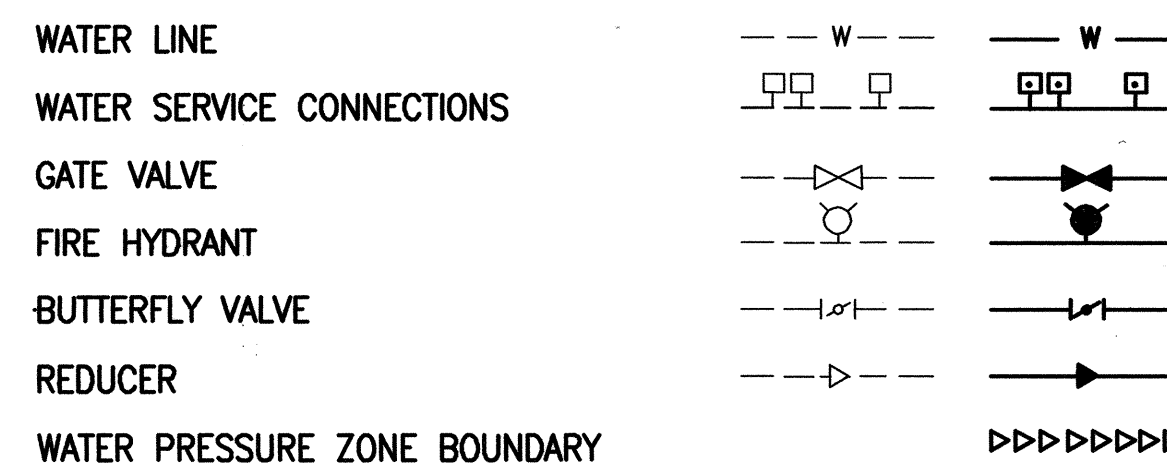
## MISCELLANEOUS UTILITIES



## SANITARY SEWER



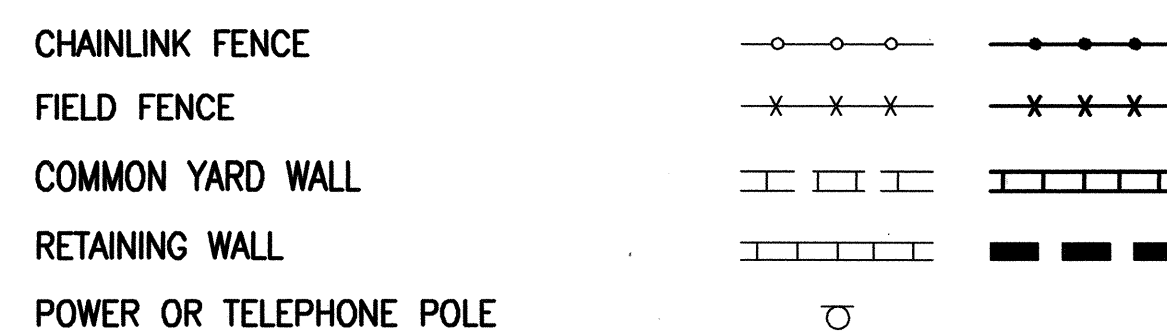
## WATER



## WATER FITTINGS



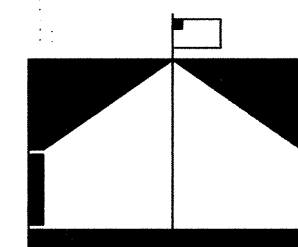
## MISCELLANEOUS



# CONSTRUCTION PLANS for SEVEN BAR ELEMENTARY SCHOOL FLASHING SCHOOL BEACON ALBUQUERQUE, NEW MEXICO

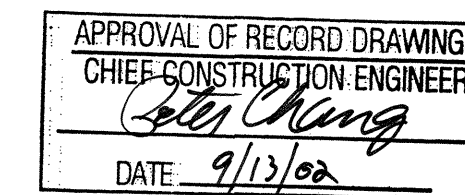
DECEMBER, 2001

## RECORD DRAWING

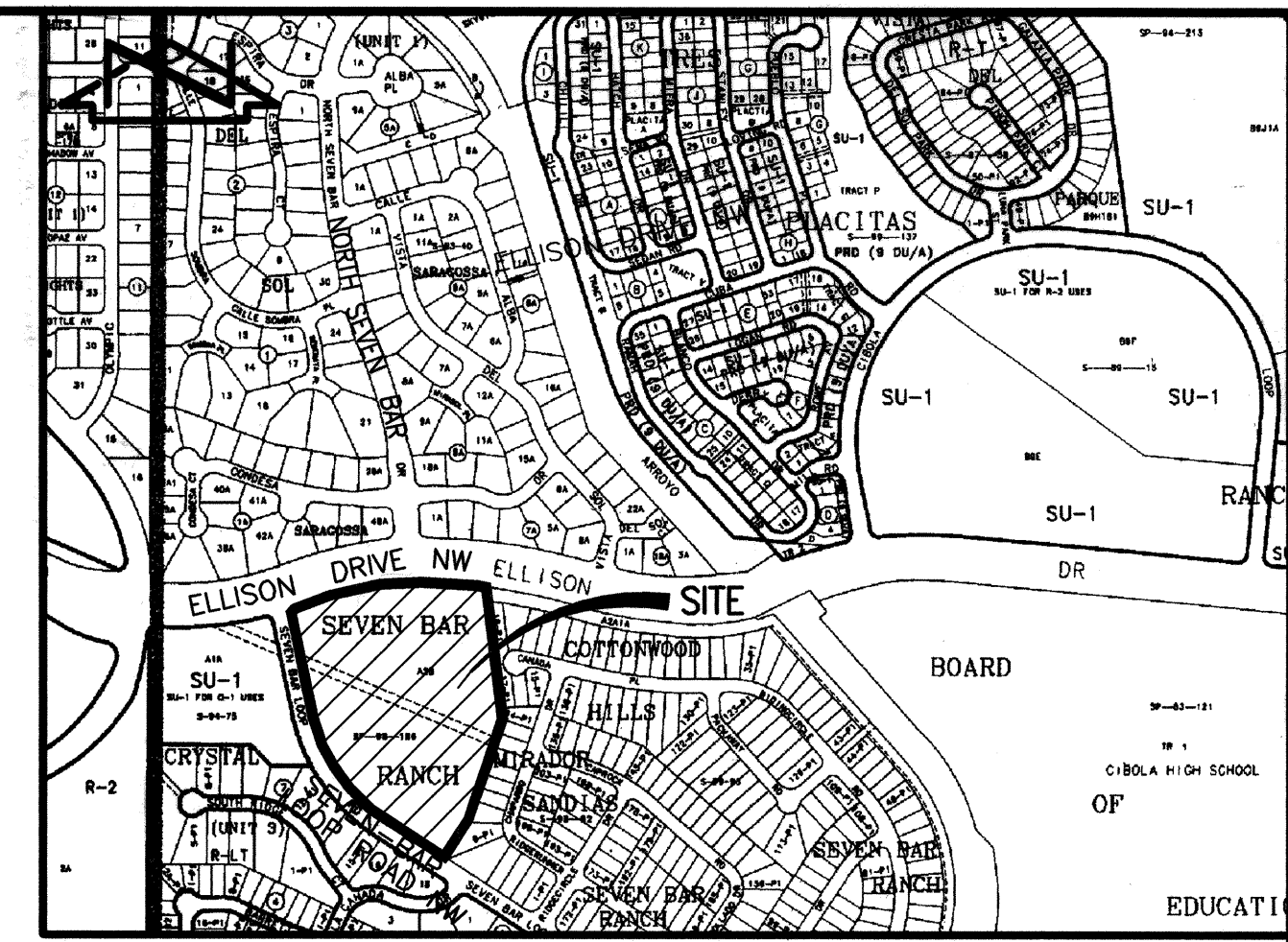


## INDEX OF DRAWINGS

SHEET	DESCRIPTION
1	COVER SHEET, VICINITY MAP, GENERAL NOTES, LEGEND AND INDEX OF DRAWINGS
2,3	PLAT (FOR REFERENCE)
4	GRADING PLAN (FOR REFERENCE)
5	TRAFFIC NOTES, LEGEND, EQUIPMENT REQUIREMENTS AND INCIDENTAL ITEMS
6	SITE PLAN
7	FLASHING BEACON DETAILS (MASTARM)
8	FLASHING BEACON DETAILS (PEDESTAL)
9	TRAFFIC SIGNAL MASTARM DETAILS, TYPE II STANDARD
10	FOUNDATION DETAILS, TYPE II AND TYPE III STANDARDS
11	TRAFFIC SIGNAL PULL BOX AND SCHOOL SIGN DETAILS
12	METER PEDESTAL DETAILS
13	SIGNING AND CONSTRUCTION TRAFFIC CONTROL STANDARDS
14	TYPICAL TRAFFIC CONTROL & SIGNING EXAMPLES

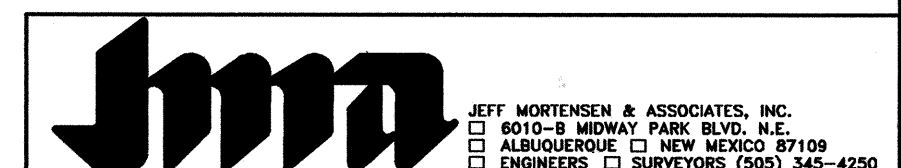


**RECORD DRAWING**  
I, Jeffrey G. Mortensen, Registered Professional Engineer in the State of New Mexico, do hereby certify that this Record Information was obtained by me or under my supervision and represents the record conditions of this project, and is true and correct to the best of my knowledge and belief. All vertical and horizontal dimensions should be field verified prior to use on future projects.



VICINITY MAP  
SCALE: 1" = 750' ±

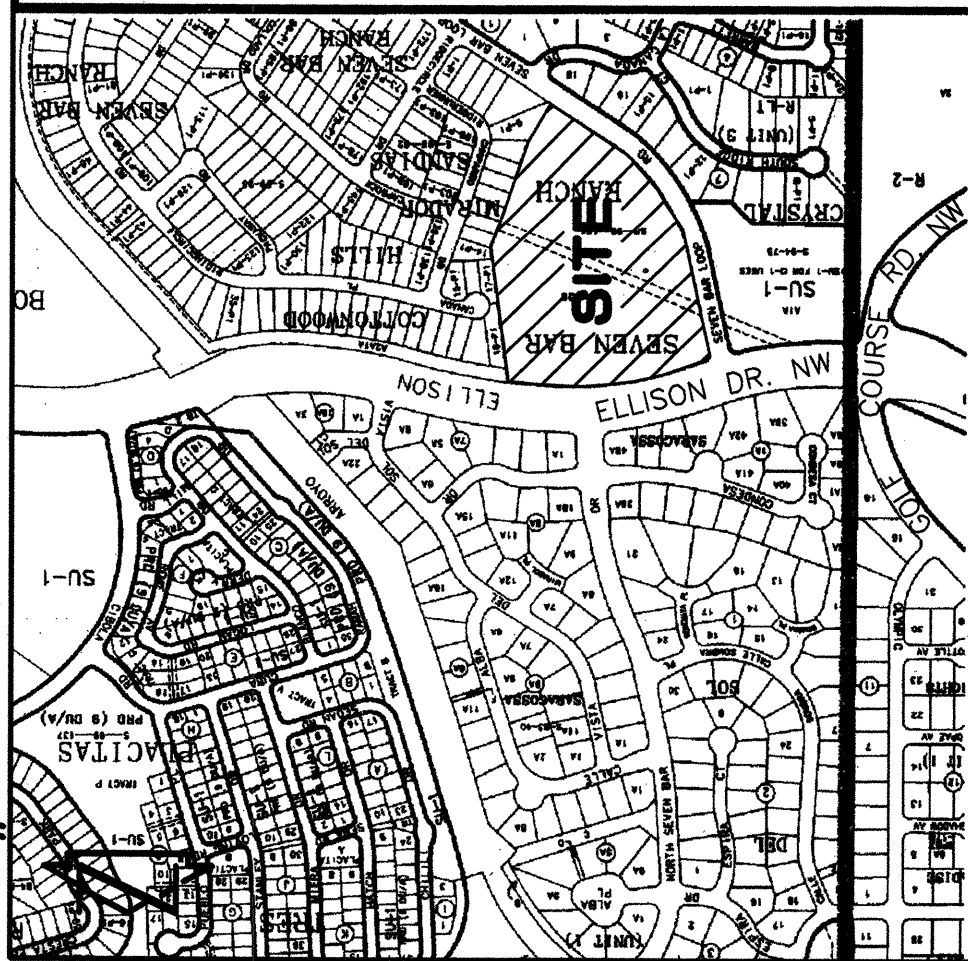
- ALL WORK DETAILED ON THESE PLANS TO BE PERFORMED UNDER CONTRACT SHALL, EXCEPT AS OTHERWISE STATED OR PROVIDED FOR HEREON, BE CONSTRUCTED IN ACCORDANCE WITH THE CITY OF ALBUQUERQUE STANDARD SPECIFICATIONS-PUBLIC WORKS CONSTRUCTION-1986 - UPDATE NO. 6.
- TWO (2) WORKING DAYS PRIOR TO ANY EXCAVATION, CONTRACTOR MUST CONTACT NEW MEXICO ONE CALL SYSTEM, 260-1990, (ALBUQUERQUE AREA) 1-800-321-ALERT (2537) (STATEWIDE) FOR LOCATION OF EXISTING PUBLIC UTILITIES, AND APS MAINTENANCE & OPERATIONS (765-5950) FOR LOCATION OF EXISTING PRIVATE UTILITIES.
- IF ANY UTILITY LINES, PIPELINES, OR UNDERGROUND UTILITY LINES ARE SHOWN ON THESE DRAWINGS, THEY ARE SHOWN IN AN APPROXIMATE MANNER ONLY, AND SUCH LINES MAY EXIST WHERE NONE ARE SHOWN. IF ANY SUCH EXISTING LINES ARE SHOWN, THE LOCATION IS BASED UPON INFORMATION PROVIDED BY THE OWNER OF SAID UTILITY, AND THE INFORMATION MAY BE INCOMPLETE, OR MAY BE OBSOLETE BY THE TIME CONSTRUCTION COMMENCES. THE ENGINEER HAS CONDUCTED ONLY PRELIMINARY INVESTIGATION OF THE LOCATION, DEPTH, SIZE, OR TYPE OF EXISTING UTILITY LINES, PIPELINES, OR UNDERGROUND UTILITY LINES. THIS INVESTIGATION MAY NOT BE CONCLUSIVE, AND MAY NOT BE COMPLETE, THEREFORE, MAKES NO REPRESENTATION PERTAINING THERETO, AND ASSUMES NO RESPONSIBILITY OR LIABILITY THEREFOR. THE CONTRACTOR SHALL INFORM ITSELF OF THE LOCATION OF ANY UTILITY LINE, PIPELINE, OR UNDERGROUND UTILITY LINE IN OR NEAR THE AREA OF THE WORK IN ADVANCE OF AND DURING EXCAVATION WORK. THE CONTRACTOR IS FULLY RESPONSIBLE FOR ANY AND ALL DAMAGE CAUSED BY ITS FAILURE TO LOCATE, IDENTIFY AND PRESERVE ANY AND ALL EXISTING UTILITIES, PIPELINES, AND UNDERGROUND UTILITY LINES. IN PLANNING AND CONDUCTING EXCAVATION, THE CONTRACTOR SHALL COMPLY WITH STATE STATUTES, MUNICIPAL AND LOCAL ORDINANCES, RULES AND REGULATIONS, IF ANY, PERTAINING TO THE LOCATION OF THESE LINES AND FACILITIES.
- SHOULD A CONFLICT EXIST BETWEEN THESE PLANS AND ACTUAL FIELD CONDITIONS, THE CONTRACTOR SHALL PROMPTLY NOTIFY THE ENGINEER IN WRITING SO THAT THE CONFLICT CAN BE RESOLVED WITH A MINIMUM AMOUNT OF DELAY FOR ALL PARTIES.
- THE CONTRACTOR SHALL MAINTAIN ACCESS TO ADJACENT PROPERTIES DURING CONSTRUCTION.
- ALL WORK ON THIS PROJECT SHALL BE PERFORMED IN ACCORDANCE WITH APPLICABLE FEDERAL, STATE AND LOCAL LAWS, RULES AND REGULATIONS CONCERNING SAFETY AND HEALTH.
- ALL UTILITIES AND UTILITY SERVICE LINES SHALL BE INSTALLED PRIOR TO PAVING.
- CONTRACTOR SHALL RECORD DATA ON ALL UTILITY LINE AND ACCESSORIES AS REQUIRED BY THE NEW MEXICO UTILITIES, INC. (NMUI) FOR THE PREPARATION OF "AS CONSTRUCTED" DRAWINGS. CONTRACTOR SHALL NOT COVER UTILITY LINES AND ACCESSORIES UNTIL ALL DATA HAS BEEN RECORDED.
- BACKFILL COMPACTION SHALL BE ACCORDING TO SPECIFIED STREET USE.
- TACK COAT REQUIREMENTS SHALL BE DETERMINED DURING CONSTRUCTION BY THE PROJECT ENGINEER.
- SIDEWALKS AND WHEELCHAIR RAMPS WITHIN THE CURB RETURNS SHALL BE CONSTRUCTED WHEREVER A NEW CURB RETURN IS CONSTRUCTED.
- IF CURB IS DEPRESSED FOR A DRIVEPAD OR A HANDICAP RAMP, THE DRIVEPAD OR RAMP SHALL BE CONSTRUCTED PRIOR TO ACCEPTANCE OF THE CURB AND GUTTER.
- ALL STORM DRAINAGE FACILITIES SHALL BE COMPLETED PRIOR TO FINAL ACCEPTANCE.
- CONTRACTOR SHALL NOTIFY THE CITY SURVEYOR NOT LESS THAN SEVEN (7) DAYS PRIOR TO STARTING WORK IN ORDER THAT THE CITY SURVEYOR MAY TAKE NECESSARY MEASURES TO INSURE THE PRESERVATION OF SURVEY MONUMENTS. CONTRACTOR SHALL NOT DISTURB PERMANENT SURVEY MONUMENTS WITHOUT THE CONSENT OF THE CITY SURVEYOR AND SHALL NOTIFY THE CITY SURVEYOR AND BEAR THE EXPENSE OF REPLACING ANY THAT MAY BE DISTURBED WITHOUT PERMISSION. REPLACEMENT SHALL BE DONE ONLY BY THE CITY SURVEYOR. WHEN A CHANGE IS MADE IN THE FINISHED ELEVATION OF THE PAVEMENT OF ANY ROADWAY IN WHICH A PERMANENT SURVEY MONUMENT IS LOCATED, CONTRACTOR SHALL, AT HIS OWN EXPENSE, ADJUST THE MONUMENT COVER TO THE NEW GRADE UNLESS OTHERWISE SPECIFIED. REFER TO SECTION 4.4 OF THE SPECIFICATIONS.
- FIVE (5) WORKING DAYS PRIOR TO BEGINNING CONSTRUCTION THE CONTRACTOR SHALL SUBMIT TO THE CONSTRUCTION CO-ORDINATION DIVISION A DETAILED CONSTRUCTION SCHEDULE. TWO (2) WORKING DAYS PRIOR TO CONSTRUCTION THE CONTRACTOR SHALL OBTAIN A BARRICADING PERMIT FROM THE CONSTRUCTION CO-ORDINATION DIVISION. CONTRACTOR SHALL NOTIFY BARRICADE ENGINEER (768-2551) PRIOR TO OCCUPYING AN INTERSECTION. CONTRACTOR MUST REFER TO SECTION 19 OF THE STANDARD SPECIFICATION FOR TRAFFIC CONTROL.
- ALL STREET STRIPING ALTERED OR DESTROYED SHALL BE REPLACED WITH PLASTIC REFLECTORIZED STRIPING BY CONTRACTOR TO EXISTING LOCATION OR AS INDICATED BY THIS PLAN SET.
- CAUTION: THESE DRAWINGS DO NOT INCLUDE NECESSARY COMPONENTS FOR CONSTRUCTION SAFETY WHICH SHALL REMAIN THE RESPONSIBILITY OF THE CONTRACTOR.
- ANY WORK OCCURRING WITHIN AN ARTERIAL ROADWAY REQUIRES TWENTY-FOUR HOUR CONSTRUCTION.
- CONTRACTOR SHALL MAINTAIN A GRAFFITI-FREE WORK SITE. CONTRACTOR SHALL PROMPTLY REMOVE ANY AND ALL GRAFFITI FROM EQUIPMENT, WHETHER PERMANENT OR TEMPORARY.



2001.181.9

REV.	SHEETS	CITY ENGINEER	DATE	USER DEPARTMENT	DATE	USER DEPARTMENT	DATE
1-14			08/02				
ENGINEERS STAMP & SIGNATURE				APPROVALS			
DRC Chairman				1-9-02			
Transportation				1/9/02			
Water/Wastewater				N/A			
Hydrology				1/09/2002			
C.I.P.				N/A			
Const. Mngmt.				1-8-02			
Const. Coord.				1-9-2002			
City Project No.				677681			
SHEET				OF			
1				14			





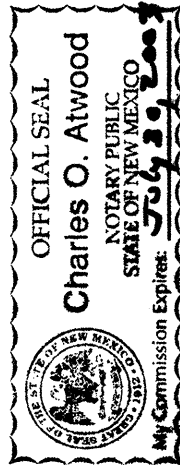
VICINITY MAP  
SCALE: 1" = 750'

DEDICATION AND FREE CONSENT  
The subdivision herein is with the free consent and in accordance with the desires of the undersigned owner and does hereby grant to the public the use, including the rights of ingress and egress and the right to trim interfering trees.

*Michael J. Vigil*  
Michael J. Vigil, Chief Business Officer,  
Albuquerque Public Schools

ACKNOWLEDGEMENT  
STATE OF NEW MEXICO )  
COUNTY OF BERNALILLO ) SS

This instrument was acknowledged before me on this 10th day of May, 2001, by Michael J. Vigil, Chief Business Officer, Albuquerque Public Schools.  
*Charles O. Atwood*  
Notary Public



BOUNDARY TABLES

LINE	DIRECTION	DISTANCE	CHORD BEARING	CHORD	DELTA
L1	S 0727'36" E	459.93'	N 3426'57" W	478.38'	4541'50"
(L1)	BEARING BASE	460.00'	N 3001'37" E	33.21'	831'50"
L2	S 1852'24" W	378.00'	N 8704'39" E	406.08'	2053'06"
(L2)	S 1852'18" W	377.95'	N 8704'39" E	406.08'	2053'06"
L3	S 3242'08" W	149.38'	N 5717'52" W	232.26'	0437'20"
L4	N 5717'52" W	232.26'	N 1136'02" W	327.73'	0437'20"
L5	N 1136'02" W	327.73'	N 713'30" E	89.44'	0437'20"
(L5)	N 713'30" E	89.44'	N 3426'57" W	478.38'	4541'50"

- Notes:
- A boundary survey was performed in September, 2000. Property corners were found or set as indicated.
  - All distances are ground distances.
  - Site located within projected Sections 6 and 7, Township 11 North, Range 3 East, N.M.P.M. (Town of Alameda Grant).
  - Bearings shown hereon are based upon the northeast property line of Tract A-2B, Seven-Bar Ranch, per the plat filed 01-05-1995, Book 95C, Page 2. The property surveyed hereon is subject to restrictions recorded on Plat C40-21 and 95C-2.
  - Record bearings and distances are shown in parenthesis.
  - No public street mileage was created by this plat.
  - The purpose of this plat is to:
    - Grant the necessary easements as shown.
    - Vacate the Southern Union Gas Company and Mountain States Telephone & Telegraph easements as shown.

Prior to development, City of Albuquerque Water and Sanitary Sewer Service to Tract A, Seven-Bar Elementary School must be verified and coordinated with the Public Works Department, City of Albuquerque, via a request for a water and sanitary sewer availability statement.

The following documents and instruments were used for the performance and preparation of this survey:

- Plat of Seven-Bar Ranch, filed 01-05-1995, Book 95C, Page 2, Records of Bernalillo County, New Mexico.
- Plat of Seven-Bar Ranch, filed 10-17-1989, Book C40, Page 21, Records of Bernalillo County, New Mexico.
- Plat of Sorogossio, filed 04-12-1989, Book C39, Page 1, Records of Bernalillo County, New Mexico.
- Plat of Crystal Ridge Subdivision, Unit III, filed 10-13-1998, Book 98C, Page 307, Records of Bernalillo County, New Mexico.
- Plat of Survey of Tract A-2B, prepared by Bohannon-Huston, Inc. dated 01-09-1995 (unrecorded).
- Warranty Deed filed 01-18-1995, Book 95-2, Page 1153, Doc. #95005222, Records of Bernalillo County, New Mexico.
- Policy Number OP 32 0022 60 5333 prepared by Rio Grande Title Company, Inc. dated 01-18-1995.
- Plat of Cottonwood Hills, filed 07-01-1999, Book 99C, Page 169, Records of Bernalillo County, New Mexico.
- Plat of Mirador Sandias, filed 07-01-1999, Book 99C, Page 170, Records of Bernalillo County, New Mexico.

The property surveyed hereon is subject to a drainage covenant filed 11-23-1994, Book BCR 94-34, Page 9770.

The property surveyed hereon is subject to restrictions recorded on Plat C40-21 and 95C-2.

The property surveyed hereon contains 11.4931 acres.

PNM ELECTRIC & GAS SERVICES EASEMENT RELEASE APPROVAL

PNM Electric Services and/or PNM Gas Services, hereby release, waive, quitclaim and discharge its right, title, and interest in the easements (granted by prior plat, replat or document) shown to be vacated on this plat.

PNM ELECTRIC SERVICES  
By: *Michael J. Vigil*  
PNM GAS SERVICES )  
STATE OF NEW MEXICO ) SS  
COUNTY OF BERNALILLO )

This instrument was acknowledged before me on this 5th day of July, 2001, by Michael J. Vigil, Chief Business Officer, Albuquerque Public Schools, of the PNM Electric Services and/or PNM Gas Services, both being New Mexico corporations, on behalf of said corporations.

*Charles O. Atwood*  
Notary Public  
My Commission Expires: 8-9-01

JMA No. 2001.181.9  
CITY PRJ. NO. 677681

SP #2001-170739

SP #2001-170739

SP #2001-170739

SP #2001-170739

SP #2001-170739

SP #2001-170739

SP #2001-170739

SP #2001-170739

SP #2001-170739

SP #2001-170739

TRACT A, SEVEN-BAR  
ELEMENTARY SCHOOL  
ALBUQUERQUE, NEW MEXICO  
APRIL, 2001

DESCRIPTION  
Tract A-2B, Seven-Bar Ranch, Albuquerque, New Mexico, as the same is shown and designated on the plat filed in the Office of the County Clerk of Bernalillo County, New Mexico on January 05, 1995, Book 95C, Page 2.

PLAT OF

TRACT A, SEVEN-BAR  
ELEMENTARY SCHOOL  
ALBUQUERQUE, NEW MEXICO  
APRIL, 2001

DESCRIPTION

Tract A-2B, Seven-Bar Ranch, Albuquerque, New Mexico, as the same is shown and designated on the plat filed in the Office of the County Clerk of Bernalillo County, New Mexico on January 05, 1995, Book 95C, Page 2.

PLAT OF

TRACT A, SEVEN-BAR  
ELEMENTARY SCHOOL  
ALBUQUERQUE, NEW MEXICO  
APRIL, 2001

DESCRIPTION

Tract A-2B, Seven-Bar Ranch, Albuquerque, New Mexico, as the same is shown and designated on the plat filed in the Office of the County Clerk of Bernalillo County, New Mexico on January 05, 1995, Book 95C, Page 2.

PLAT OF

TRACT A, SEVEN-BAR  
ELEMENTARY SCHOOL  
ALBUQUERQUE, NEW MEXICO  
APRIL, 2001

DESCRIPTION

Tract A-2B, Seven-Bar Ranch, Albuquerque, New Mexico, as the same is shown and designated on the plat filed in the Office of the County Clerk of Bernalillo County, New Mexico on January 05, 1995, Book 95C, Page 2.

PLAT OF

TRACT A, SEVEN-BAR  
ELEMENTARY SCHOOL  
ALBUQUERQUE, NEW MEXICO  
APRIL, 2001

DESCRIPTION

Tract A-2B, Seven-Bar Ranch, Albuquerque, New Mexico, as the same is shown and designated on the plat filed in the Office of the County Clerk of Bernalillo County, New Mexico on January 05, 1995, Book 95C, Page 2.

PLAT OF

TRACT A, SEVEN-BAR  
ELEMENTARY SCHOOL  
ALBUQUERQUE, NEW MEXICO  
APRIL, 2001

DESCRIPTION

Tract A-2B, Seven-Bar Ranch, Albuquerque, New Mexico, as the same is shown and designated on the plat filed in the Office of the County Clerk of Bernalillo County, New Mexico on January 05, 1995, Book 95C, Page 2.

PLAT OF

TRACT A, SEVEN-BAR  
ELEMENTARY SCHOOL  
ALBUQUERQUE, NEW MEXICO  
APRIL, 2001

DESCRIPTION

Tract A-2B, Seven-Bar Ranch, Albuquerque, New Mexico, as the same is shown and designated on the plat filed in the Office of the County Clerk of Bernalillo County, New Mexico on January 05, 1995, Book 95C, Page 2.

PLAT OF

TRACT A, SEVEN-BAR  
ELEMENTARY SCHOOL  
ALBUQUERQUE, NEW MEXICO  
APRIL, 2001

DESCRIPTION

Tract A-2B, Seven-Bar Ranch, Albuquerque, New Mexico, as the same is shown and designated on the plat filed in the Office of the County Clerk of Bernalillo County, New Mexico on January 05, 1995, Book 95C, Page 2.

PLAT OF

TRACT A, SEVEN-BAR  
ELEMENTARY SCHOOL  
ALBUQUERQUE, NEW MEXICO  
APRIL, 2001

DESCRIPTION

Tract A-2B, Seven-Bar Ranch, Albuquerque, New Mexico, as the same is shown and designated on the plat filed in the Office of the County Clerk of Bernalillo County, New Mexico on January 05, 1995, Book 95C, Page 2.

PLAT OF

TRACT A, SEVEN-BAR  
ELEMENTARY SCHOOL  
ALBUQUERQUE, NEW MEXICO  
APRIL, 2001

DESCRIPTION

Tract A-2B, Seven-Bar Ranch, Albuquerque, New Mexico, as the same is shown and designated on the plat filed in the Office of the County Clerk of Bernalillo County, New Mexico on January 05, 1995, Book 95C, Page 2.

PLAT OF

TRACT A, SEVEN-BAR  
ELEMENTARY SCHOOL  
ALBUQUERQUE, NEW MEXICO  
APRIL, 2001

DESCRIPTION

Tract A-2B, Seven-Bar Ranch, Albuquerque, New Mexico, as the same is shown and designated on the plat filed in the Office of the County Clerk of Bernalillo County, New Mexico on January 05, 1995, Book 95C, Page 2.

PLAT OF

TRACT A, SEVEN-BAR  
ELEMENTARY SCHOOL  
ALBUQUERQUE, NEW MEXICO  
APRIL, 2001

DESCRIPTION

Tract A-2B, Seven-Bar Ranch, Albuquerque, New Mexico, as the same is shown and designated on the plat filed in the Office of the County Clerk of Bernalillo County, New Mexico on January 05, 1995, Book 95C, Page 2.

PLAT OF

TRACT A, SEVEN-BAR  
ELEMENTARY SCHOOL  
ALBUQUERQUE, NEW MEXICO  
APRIL, 2001

DESCRIPTION

Tract A-2B, Seven-Bar Ranch, Albuquerque, New Mexico, as the same is shown and designated on the plat filed in the Office of the County Clerk of Bernalillo County, New Mexico on January 05, 1995, Book 95C, Page 2.

PLAT OF

TRACT A, SEVEN-BAR  
ELEMENTARY SCHOOL  
ALBUQUERQUE, NEW MEXICO  
APRIL, 2001

DESCRIPTION

Tract A-2B, Seven-Bar Ranch, Albuquerque, New Mexico, as the same is shown and designated on the plat filed in the Office of the County Clerk of Bernalillo County, New Mexico on January 05, 1995, Book 95C, Page 2.

PLAT OF

TRACT A, SEVEN-BAR  
ELEMENTARY SCHOOL  
ALBUQUERQUE, NEW MEXICO  
APRIL, 2001

DESCRIPTION

Tract A-2B, Seven-Bar Ranch, Albuquerque, New Mexico, as the same is shown and designated on the plat filed in the Office of the County Clerk of Bernalillo County, New Mexico on January 05, 1995, Book 95C, Page 2.

PLAT OF

TRACT A, SEVEN-BAR  
ELEMENTARY SCHOOL  
ALBUQUERQUE, NEW MEXICO  
APRIL, 2001

DESCRIPTION

Tract A-2B, Seven-Bar Ranch, Albuquerque, New Mexico, as the same is shown and designated on the plat filed in the Office of the County Clerk of Bernalillo County, New Mexico on January 05, 1995, Book 95C, Page 2.

PLAT OF

TRACT A, SEVEN-BAR  
ELEMENTARY SCHOOL  
ALBUQUERQUE, NEW MEXICO  
APRIL, 2001

DESCRIPTION

Tract A-2B, Seven-Bar Ranch, Albuquerque, New Mexico, as the same is shown and designated on the plat filed in the Office of the County Clerk of Bernalillo County, New Mexico on January 05, 1995, Book 95C, Page 2.

PLAT OF

TRACT A, SEVEN-BAR  
ELEMENTARY SCHOOL  
ALBUQUERQUE, NEW MEXICO  
APRIL, 2001

DESCRIPTION

Tract A-2B, Seven-Bar Ranch, Albuquerque, New Mexico, as the same is shown and designated on the plat filed in the Office of the County Clerk of Bernalillo County, New Mexico on January 05, 1995, Book 95C, Page 2.

PLAT OF

TRACT A, SEVEN-BAR  
ELEMENTARY SCHOOL  
ALBUQUERQUE, NEW MEXICO  
APRIL, 2001

DESCRIPTION

Tract A-2B, Seven-Bar Ranch, Albuquerque, New Mexico, as the same is shown and designated on the plat filed in the Office of the County Clerk of Bernalillo County, New Mexico on January 05, 1995, Book 95C, Page 2.

PLAT OF

TRACT A, SEVEN-BAR  
ELEMENTARY SCHOOL  
ALBUQUERQUE, NEW MEXICO  
APRIL, 2001

DESCRIPTION

Tract A-2B, Seven-Bar Ranch, Albuquerque, New Mexico, as the same is shown and designated on the plat filed in the Office of the County Clerk of Bernalillo County, New Mexico on January 05, 1995, Book 95C, Page 2.

PLAT OF

TRACT A, SEVEN-BAR  
ELEMENTARY SCHOOL  
ALBUQUERQUE, NEW MEXICO  
APRIL, 2001

DESCRIPTION

Tract A-2B, Seven-Bar Ranch, Albuquerque, New Mexico, as the same is shown and designated on the plat filed in the Office of the County Clerk of Bernalillo County, New Mexico on January 05, 1995, Book 95C, Page 2.

PLAT OF

TRACT A, SEVEN-BAR  
ELEMENTARY SCHOOL  
ALBUQUERQUE, NEW MEXICO  
APRIL, 2001

DESCRIPTION

Tract A-2B, Seven-Bar Ranch, Albuquerque, New Mexico, as the same is shown and designated on the plat filed in the Office of the County Clerk of Bernalillo County, New Mexico on January 05, 1995, Book 95C, Page 2.

PLAT OF

TRACT A, SEVEN-BAR  
ELEMENTARY SCHOOL  
ALBUQUERQUE, NEW MEXICO  
APRIL, 2001

DESCRIPTION

Tract A-2B, Seven-Bar Ranch, Albuquerque, New Mexico, as the same is shown and designated on the plat filed in the Office of the County Clerk of Bernalillo County, New Mexico on January 05, 1995, Book 95C, Page 2.

PLAT OF

TRACT A, SEVEN-BAR  
ELEMENTARY SCHOOL  
ALBUQUERQUE, NEW MEXICO  
APRIL, 2001

DESCRIPTION

Tract A-2B, Seven-Bar Ranch, Albuquerque, New Mexico, as the same is shown and designated on the plat filed in the Office of the County Clerk of Bernalillo County, New Mexico on January 05, 1995, Book 95C, Page 2.

PLAT OF

TRACT A, SEVEN-BAR  
ELEMENTARY SCHOOL  
ALBUQUERQUE, NEW MEXICO  
APRIL, 2001

DESCRIPTION

Tract A-2B, Seven-Bar Ranch, Albuquerque, New Mexico, as the same is shown and designated on the plat filed in the Office of the County Clerk of Bernalillo County, New Mexico on January 05, 1995, Book 95C, Page 2.

PLAT OF

TRACT A, SEVEN-BAR  
ELEMENTARY SCHOOL  
ALBUQUERQUE, NEW MEXICO  
APRIL, 2001

DESCRIPTION

Tract A-2B, Seven-Bar Ranch, Albuquerque, New Mexico, as the same is shown and designated on the plat filed in the Office of the County Clerk of Bernalillo County, New Mexico on January 05, 1995, Book 95C, Page 2.

PLAT OF

TRACT A, SEVEN-BAR  
ELEMENTARY SCHOOL  
ALBUQUERQUE, NEW MEXICO  
APRIL, 2001

DESCRIPTION

Tract A-2B, Seven-Bar Ranch, Albuquerque, New Mexico, as the same is shown and designated on the plat filed in the Office of the County Clerk of Bernalillo County, New Mexico on January 05, 1995, Book 95C, Page 2.

PLAT OF

TRACT A, SEVEN-BAR  
ELEMENTARY SCHOOL  
ALBUQUERQUE, NEW MEXICO  
APRIL, 2001

DESCRIPTION

Tract A-2B, Seven-Bar Ranch, Albuquerque, New Mexico, as the same is shown and designated on the plat filed in the Office of the County Clerk of Bernalillo County, New Mexico on January 05, 1995, Book 95C, Page 2.

PLAT OF

TRACT A, SEVEN-BAR  
ELEMENTARY SCHOOL  
ALBUQUERQUE, NEW MEXICO  
APRIL, 2001

DESCRIPTION

Tract A-2B, Seven-Bar Ranch, Albuquerque, New Mexico, as the same is shown and designated on the plat filed in the Office of the County Clerk of Bernalillo County, New Mexico on January 05, 1995, Book 95C, Page 2.

PLAT OF

TRACT A, SEVEN-BAR  
ELEMENTARY SCHOOL  
ALBUQUERQUE, NEW MEXICO  
APRIL, 2001

DESCRIPTION

Tract A-2B, Seven-Bar Ranch, Albuquerque, New Mexico, as the same is shown and designated on the plat filed in the Office of the County Clerk of Bernalillo County, New Mexico on January 05, 1995, Book 95C, Page 2.

PLAT OF

TRACT A, SEVEN-BAR  
ELEMENTARY SCHOOL  
ALBUQUERQUE, NEW MEXICO  
APRIL, 2001

DESCRIPTION

Tract A-2B, Seven-Bar Ranch, Albuquerque, New Mexico, as the same is shown and designated on the plat filed in the Office of the County Clerk of Bernalillo County, New Mexico on January 05, 1995, Book 95C, Page 2.

PLAT OF

TRACT A, SEVEN-BAR  
ELEMENTARY SCHOOL  
ALBUQUERQUE, NEW MEXICO  
APRIL, 2001

DESCRIPTION

Tract A-2B, Seven-Bar Ranch, Albuquerque, New Mexico, as the same is shown and designated on the plat filed in the Office of the County Clerk of Bernalillo County, New Mexico on January 05, 1995, Book 95C, Page 2.

PLAT OF

TRACT A, SEVEN-BAR  
ELEMENTARY SCHOOL  
ALBUQUERQUE, NEW MEXICO  
APRIL, 2001

DESCRIPTION

Tract A-2B, Seven-Bar Ranch, Albuquerque, New Mexico, as the same is shown and designated on the plat filed in the Office of the County Clerk of Bernalillo County, New Mexico on January 05, 1995, Book 95C, Page 2.

PLAT OF

TRACT A, SEVEN-BAR  
ELEMENTARY SCHOOL  
ALBUQUERQUE, NEW MEXICO  
APRIL, 2001

DESCRIPTION

Tract A-2B, Seven-Bar Ranch, Albuquerque, New Mexico, as the same is shown and designated on the plat filed in the Office of the County Clerk of Bernalillo County, New Mexico on January 05, 1995, Book 95C, Page 2.

PLAT OF

TRACT A, SEVEN-BAR  
ELEMENTARY SCHOOL  
ALBUQUERQUE, NEW MEXICO  
APRIL, 2001

DESCRIPTION

Tract A-2B, Seven-Bar Ranch, Albuquerque, New Mexico, as the same is shown and designated on the plat filed in the Office of the County Clerk of Bernalillo County, New Mexico on January 05, 1995, Book 95C, Page 2.

PLAT OF

TRACT A, SEVEN-BAR  
ELEMENTARY SCHOOL  
ALBUQUERQUE, NEW MEXICO  
APRIL, 2001

DESCRIPTION

Tract A-2B, Seven-Bar Ranch, Albuquerque, New Mexico, as the same is shown and designated on the plat filed in the Office of the County Clerk of Bernalillo County, New Mexico on January 05, 1995, Book 95C, Page 2.

PLAT OF

TRACT A, SEVEN-BAR  
ELEMENTARY SCHOOL  
ALBUQUERQUE, NEW MEXICO  
APRIL, 2001

DESCRIPTION

Tract A-2B, Seven-Bar Ranch, Albuquerque, New Mexico, as the same is shown and designated on the plat filed in the Office of the County Clerk of Bernalillo County, New Mexico on January 05, 1995, Book 95C, Page 2.

PLAT OF

TRACT A, SEVEN-BAR  
ELEMENTARY SCHOOL  
ALBUQUERQUE, NEW MEXICO  
APRIL, 2001

DESCRIPTION

Tract A-2B, Seven-Bar Ranch, Albuquerque, New Mexico, as the same is shown and designated on the plat filed in the Office of the County Clerk of Bernalillo County, New Mexico on January 05, 1995, Book 95C, Page 2.

PLAT OF

TRACT A, SEVEN-BAR  
ELEMENTARY SCHOOL  
ALBUQUERQUE, NEW MEXICO  
APRIL, 2001

DESCRIPTION

Tract A-2B, Seven-Bar Ranch, Albuquerque, New Mexico, as the same is shown and designated on the plat filed in the Office of the County Clerk of Bernalillo County, New Mexico on January 05, 1995, Book 95C, Page 2.

PLAT OF

TRACT A, SEVEN-BAR  
ELEMENTARY SCHOOL  
ALBUQUERQUE, NEW MEXICO  
APRIL, 2001

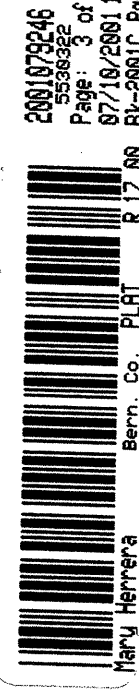
DESCRIPTION

Tract A-2B, Seven-Bar Ranch, Albuquerque, New Mexico, as the same is shown and designated on the plat filed in the Office of the County Clerk of Bernalillo County, New Mexico on January 05, 1995, Book 95C, Page 2.

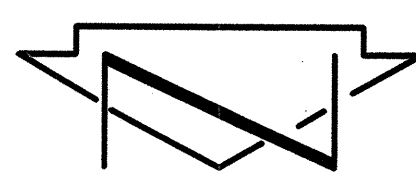
PLAT OF



PLAT OF  
**TRACT A, SEVEN-BAR ELEMENTARY SCHOOL**  
ALBUQUERQUE, NEW MEXICO  
APRIL, 2001

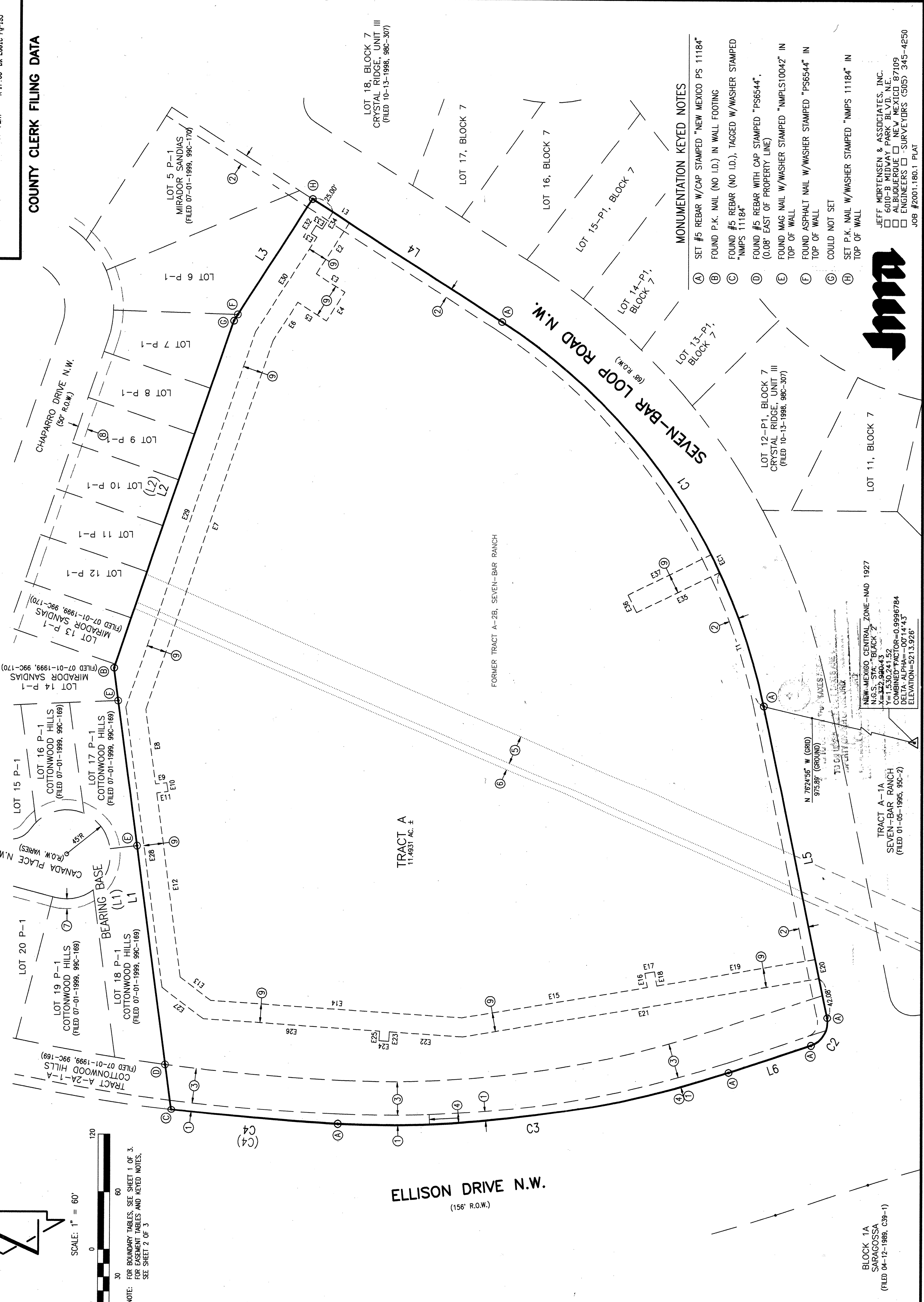


COUNTY CLERK FILING DATA



SCALE: 1" = 60'

NOTE: FOR BOUNDARY TABLES SEE SHEET 1 OF 3.  
FOR ELEVATION TABLES AND KEYED NOTES, SEE SHEET 2 OF 3.



- MONUMENTATION KEYED NOTES**
- (A) SET #5 REBAR W/CAP STAMPED "NEW MEXICO PS 11184"
  - (B) FOUND P.K. NAIL (NO I.D.) IN WALL FOOTING
  - (C) FOUND #5 REBAR (NO I.D.), TAGGED W/WASHER STAMPED "NMP5 11184"
  - (D) FOUND #5 REBAR WITH CAP STAMPED "PS6544", (0.08' EAST OF PROPERTY LINE)
  - (E) FOUND WAG NAIL W/WASHER STAMPED "NMP1510042" IN TOP OF WALL
  - (F) FOUND ASPHALT NAIL W/WASHER STAMPED "PS6544" IN TOP OF WALL
  - (G) COULD NOT SET
  - (H) SET P.K. NAIL W/WASHER STAMPED "NMP5 11184" IN TOP OF WALL



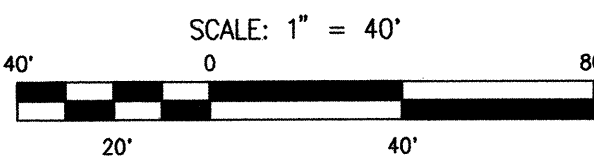
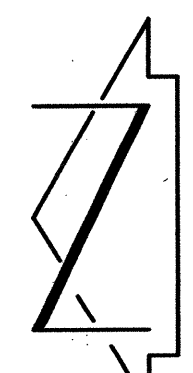
JEFF MORTENSEN & ASSOCIATES, INC.  
600-B MIDWAY PARK BLVD., N.E.  
ALBUQUERQUE, NEW MEXICO 87109  
ENGINEERS SURVEYORS (505) 345-4250  
JOB #2001.180.1 PLAT

SHEET 3 OF 3

**RECORD DRAWING**



Block 1A  
SARAGOSSA  
(FILED 04-12-1989, C39-1)



BOUNDARY CURVE TABLE					
CURVE	RADIUS	LENGTH	CHORD BEARING	CHORD	DELTA
C1	616.00'	491.30'	N 34°26'57" W	478.38'	45°41'50"
C2	25.00'	36.33'	N 30°01'32" E	33.21'	83°15'08"
C3	1122.00'	408.33'	N 82°04'39" E	406.08'	20°51'06"
C4	2132.70'	172.16'	S 85°10'35" E	172.11'	04°37'30"

BOUNDARY LINE TABLE		
LINE	DIRECTION	DISTANCE
L1	S 07°27'36" E	459.93'
L2	S 18°52'24" W	378.00'
L3	S 32°42'08" W	149.38'
L4	N 57°17'52" W	232.26'
L5	N 11°36'02" W	327.73'
L6	N 71°39'06" E	89.44'

## RECORD DRAWING

NOTE:  
THIS IS NOT A BOUNDARY SURVEY. BOUNDARY DATA SHOWN HEREON WAS TAKEN FROM A SURVEY PERFORMED BY JEFF MORTENSEN AND ASSOCIATES INC. AND IS SHOWN FOR ORIENTATION ONLY.

TREE WELL TOP OF CURB ELEVATIONS:	
PLANTER	TC
A	75.85
B	75.85
C	75.85
D	75.50
E	75.50
F	75.50
G	76.65
H	76.35
I	76.15
J	76.20
K	76.25
L	76.30
M	77.00
N	77.00
O	77.50
P	78.20
Q	78.20
R	77.50
S	77.00
T	76.90
U	76.70
V	76.10
W	76.30
X	76.45
Y	76.10
Z	76.00

### CONSTRUCTION KEYED NOTES

- CONSTRUCT 18" SIDEWALK CULVERT
- CONSTRUCT SINGLE 'D' PRIVATE STORM INLET PER C.O.A. STD. DWG. 2206 W/1" SEDIMENT TRAP
- INSTALL 24" HDPE PRIVATE STORM DRAIN PIPE @ S=0.0025
- INSTALL 24" HDPE PRIVATE STORM DRAIN PIPE @ S=0.0130
- REMOVE AND DISPOSE OF EXISTING 24" CAP; CONNECT NEW 24" HDPE PIPE TO EXISTING 24" HDPE PRIVATE STORM DRAIN.
- CREATE 8" WIDE (MIN) x 8" HIGH OPENING IN BASE OF WALL FOR POSITIVE DRAINAGE (EMERGENCY OVERFLOW)
- CONSTRUCT 4" DIA. TYPE 'E' PRIVATE STORM DRAIN MANHOLE PER C.O.A. STD. DWG. 2102.  
INV. IN = 72.50  
INV. OUT = 72.45  
RIM = 78.50
- INSTALL TYPE 'L' RIP-RAP, 3'x3' TO A DEPTH OF 12"

2000.052.3 2001.181.9

**JMA** JEFF MORTENSEN & ASSOCIATES, INC.  
6800 S. MIDWAY PARK BLVD. NE  
ALBUQUERQUE, NM 87109  
PHONE: 505-345-4254 FAX: 505-345-4254  
E-MAIL: jmort@compuserve.com

C-4

LEGEND	
CMU	CONCRETE MASONRY UNIT
CONC	CONCRETE
DWS	DASHED WHITE STRIPE
ECF	EROSION CONTROL FENCE
EXC	EXTRUDED CONCRETE CURB
FL	FLOWLINE
I.D.	IDENTIFICATION
INV	INVERT
MH	MANHOLE
PXW	PEDESTRIAN CROSSWALK
R.O.W.	RIGHT-OF-WAY
SAS	SANITARY SEWER
STD	STANDARD CURB AND GUTTER
SW	SIDEWALK
SWS	SOLID WHITE STRIPE
TA	TOP OF ASPHALT
TC	TOP OF CURB
TCB	TELEPHONE CABINET
TCO	TOP OF CONCRETE
TMB	TRAFFIC MAST ARM BASE
TOF	TOP OF FOOTING
TS	TRAFFIC SIGN
TSG	TRAFFIC SIGNAL
TSPB	TRAFFIC SIGNAL PULLBOX
TW	TOP OF WALL
VG	VALLEY GUTTER
WHPG	VERY HIGH PRESSURE GAS LINE
W	WATER
WCR	WHEEL CHAIR RAMP
WS	WOOD SIGN
WVB	WATER VALVE BOX
PC	PROPERTY CORNER
MANHOLE	MANHOLE
WATER VALVE BOX	WATER VALVE BOX
TRAFFIC SIGN	TRAFFIC SIGN
TRAFFIC SIGNAL	TRAFFIC SIGNAL
TRAFFIC SIGNAL PULLBOX	TRAFFIC SIGNAL PULLBOX
TELEPHONE CABINET	TELEPHONE CABINET
UTILITY PAINT MARK	UTILITY PAINT MARK
CONTOUR LINE	CONTOUR LINE
EASEMENT LINE	EASEMENT LINE
ADJOINER LINE	ADJOINER LINE
PROPERTY LINE	PROPERTY LINE
PROPOSED RETAINING WALL	PROPOSED RETAINING WALL
PROPOSED CONTOUR	PROPOSED CONTOUR
EXISTING SPOT ELEVATION	EXISTING SPOT ELEVATION
PROPOSED SPOT ELEVATION	PROPOSED SPOT ELEVATION
PROPOSED FLOWLINE	PROPOSED FLOWLINE
PROPOSED CONCRETE	PROPOSED CONCRETE
PROPOSED ASPHALT	PROPOSED ASPHALT
PROPOSED GARDEN WALL	PROPOSED GARDEN WALL

### PROJECT BENCHMARK

USGS BRASS TABLE STAMPED "BLACK-2 1977", SET FLUSH WITH GROUND, NEAR THE SOUTHWEST CORNER OF THE INTERSECTION OF GOLF COURSE ROAD N.W. WITH McMAHON BOULEVARD N.W.  
ELEVATION = 5213.93 FEET (M.S.L.D.)

### T.B.M. #1

CHISELED "I" ON TOP OF EAST CURB ON SEVEN-BAR LOOP ROAD N.W. NEAR NORTHWEST PROPERTY CORNER  
ELEVATION = 5187.14 FEET (M.S.L.D.)

### T.B.M. #2

CHISELED "I" ON TOP OF NORTH CURB ON SEVEN-BAR LOOP ROAD N.W. NEAR SOUTHERN MOST PROPERTY CORNER  
ELEVATION = 5168.07 FEET (M.S.L.D.)

### LEGAL DESCRIPTION

TRACT A-2B, SEVEN-BAR RANCH, ALBUQUERQUE, NEW MEXICO, AS THE SAME IS SHOWN AND DESIGNATED ON THE PLAT FILED IN THE OFFICE OF THE COUNTY CLERK OF BERNILLO COUNTY, NEW MEXICO ON JANUARY 05, 1995, BOOK 95C, PAGE 2.

### KEYED EASEMENT AND MONUMENTATION NOTES

- 10' PUBLIC UTILITY EASEMENT GRANTED BY PLAT C40-21
- 10' PUBLIC UTILITY EASEMENT GRANTED BY PLAT 95C-2
- 36" GAS COMPANY OF NEW MEXICO RIGHT OF WAY AND EASEMENT GRANTED BY DOCUMENT EXECUTED ON 07-12-1995 (UNRECORDED)
- 10' NEW MEXICO UTILITY, INC. WATER LINE EASEMENT GRANTED BY DOCUMENT FILED 09-01-1995, BOOK 95-21, PAGE 3880, DOC. #95089330
- 30' SOUTHERN UNION GAS COMPANY RIGHT-OF-WAY EASEMENT GRANTED BY DOCUMENT FILED 01-14-1946, BOOK 220, PAGE 547, AND AMENDED BY SUPPLEMENTAL RIGHT-OF-WAY GRANT FILED 03-07-1981, BOOK 0585, PAGE 409, DOC. #10263, AS MODIFIED BY RELEASE OF CONVEYANCE FILED 01-12-1989, BOOK MISC. 702-A, PAGE 863, DOC. #892675
- 7' M.S.T.&T. RIGHT-OF-WAY EASEMENT GRANTED BY DOCUMENT FILED 04-21-1965, BOOK R/W 143, PAGE 329, DOC. #50547
- 10' PUBLIC UTILITY EASEMENT GRANTED BY PLAT 99C-169 (OFFSITE)
- 10' PUBLIC UTILITY EASEMENT GRANTED BY PLAT 99C-170 (OFFSITE)
- VACATED PORTION OF 30' SOUTHERN UNION GAS COMPANY AND 7' M.S.T.&T. RIGHT-OF-WAY EASEMENT BY V-98-71 (OFFSITE)
- #5 REBAR W/CAP STAMPED "NEW MEXICO PS 11184"
- P.K. NAIL (NO I.D.) IN WALL FOOTING
- #5 REBAR (NO I.D.), W/WASHER STAMPED "NMPS 11184"
- #5 REBAR WITH CAP STAMPED "PS6544", NOT HONORED (0.08' EAST OF PROPERTY LINE)
- MAG NAIL W/WASHER STAMPED "NMPLS10042" IN TOP OF WALL
- ASPHALT NAIL W/WASHER STAMPED "PS6544" IN TOP OF WALL
- P.K. NAIL W/WASHER STAMPED "NMPS 11184" IN TOP OF WALL

## GRADING PLAN

NEW WESTSIDE ELEMENTARY SCHOOL  
PHASE I - CORE FACILITY  
4501 SEVEN BAR LOOP NW  
ALBUQUERQUE, NEW MEXICO  
MAY 2001

MAHLMAN & MILES  
ARCHITECTS  
414-1/2 CENTRAL S.E. #4  
ALBUQUERQUE, NEW MEXICO 87102 / 505-243-0101

REVISIONS		
NO.	DATE	REMARKS
1	9/01	SITE PLAN REVISION



SIGNAL, STRIPING, AND SIGNAGE NOTES

1. ALL WORK ON THESE PLANS TO BE PERFORMED UNDER THIS CONTRACT SHALL CONFORM TO THE CURRENT NATIONAL ELECTRIC CODE, THE STANDARDS OF THE NATIONAL BOARD OF FIRE UNDERWRITERS FOR ELECTRICAL WIRING AND APPARATUS, AND THE CITY'S TRAFFIC ENGINEERING OPERATIONS THIRD DRAFT SPECIFICATIONS (JUNE 1994).

2. LOCATIONS OF CONDUITS, FOUNDATIONS, CONTROL CABINETS, POLES, PULL BOXES, MANHOLES, AND SPLICE CABINETS SHOWN ON THE PLANS ARE SCHEMATIC AND SHALL BE ADJUSTED IN THE FIELD TO MAXIMIZE CLEAR SPACE AVAILABLE FOR PEDESTRIANS AND WHEELCHAIRS TO COMPLY WITH THE AMERICANS WITH DISABILITIES ACT. THE CONTRACTOR SHALL MEET WITH THE CITY'S TRAFFIC ENGINEERING OPERATIONS PERSONNEL IN THE FIELD AT ALL LOCATIONS TO SPOT EQUIPMENT BEFORE BEGINNING THE WORK. ALL SUCH EQUIPMENT SHALL BE INSTALLED WITHIN THE RIGHT-OF-WAY.

3. THE CONTRACTOR IS WARNED THAT EXISTING CONDUITS MAY CONTAIN AC POWER AND CAUTION SHALL BE EXERCISED IN INTERCEPTING OR INSTALLING CABLE IN EXISTING CONDUIT.

4. THE CONTRACTOR SHALL BORE, DRILL, OR PUSH WHEN CROSSING EXISTING PAVEMENTS AND ANY DRIVEWAYS FOR SIDE STREET CROSSINGS. BEFORE CONDUIT CAN BE BORED, DRILLED, OR PUSHED THE CONTRACTOR SHALL LOCATE ALL EXISTING UTILITIES. THE CONTRACTOR SHALL LOCATE AND EXPOSE GAS LINES WHICH CROSS ANY PROPOSED BORES. THESE EXCAVATIONS SHALL REMAIN OPEN UNTIL AFTER THE BORE IS COMPLETE. CONTRACTOR SHALL REMOVE AND REPLACE IN KIND ANY SIDEWALK OR PAVEMENT REQUIRED TO EXPOSE SUCH LINES. THE CONTRACTOR MAY CUT, TRENCH, AND REPLACE EXISTING PAVEMENT ONLY WHEN APPROVED BY THE PROJECT MANAGER.

5. SPLICING OF COMMUNICATIONS CABLE WILL NOT BE PERMITTED IN PULL BOXES. SPLICING OF COMMUNICATIONS CABLE (CONNECTIONS) WILL BE PERMITTED ONLY AT SPLICE CABINETS OR CONTROLLER CABINETS WITH SPLICE BARS. SPLICING OF TRAFFIC SIGNALS MCC WILL BE PERMITTED IN LARGE PULL BOXES INCLUDING LARGE MEDIAN PULL BOXES. SPLICING OF VIDEO DETECTION COAXIAL CABLE WILL NOT BE PERMITTED FROM THE MASTARM BASE TO THE CONTROLLER CABINET. SPLICING OF OPTICAL DETECTOR CABLE WILL NOT BE PERMITTED FROM THE DETECTOR TO THE CONTROLLER CABINET.

6. ALL LOOP LEAD-IN CABLES SHALL BE TAGGED AT THE CONTROL CABINET TO IDENTIFY EACH CABLE BY PHASE AND LOOP NUMBER. ALL VIDEO DETECTION COAXIAL AND POWER CABLES SHALL BE TAGGED AT THE CONTROL CABINET TO IDENTIFY EACH CABLE BY CAMERA NUMBER AND LOCATION. ALL OPTICAL DETECTOR CABLE SHALL BE TAGGED AT THE CONTROL CABINET TO IDENTIFY EACH BY DIRECTION AND LOCATION.

7. ALL PULL BOXES SHALL BE REINFORCED POLYMER MORTAR HEAVY DUTY TYPE WITH REINFORCED POLYMER MORTAR HEAVY DUTY COVERS. CONCRETE COVERS, STEEL COVERS, AND CONCRETE PULL BOXES WILL NOT BE ACCEPTABLE.

8. THE CONTRACTOR SHALL NOTIFY THE CITY OF ALBUQUERQUE TRAFFIC ENGINEERING OPERATIONS(857-8000) THREE WORKING DAYS IN ADVANCE OF ANY ANTICIPATED WORK ON SIGNALS, LIGHTING, AND POWER SERVICES. TRAFFIC ENGINEERING OPERATIONS PERSONNEL WILL ASSIST THE CONTRACTOR IN FIELD LOCATION OF EQUIPMENT, COLOR CODING OF WIRING, AND MUST BE PRESENT WHEN SIGNALS AND LIGHTING ARE SHUT-OFF OR TURNED ON. THE CONTRACTOR SHALL ALSO NOTIFY THE CITY OF ALBUQUERQUE TRAFFIC ENGINEERING OPERATIONS EACH TIME A TRAFFIC SIGNAL CONTROL DOOR IS OPENED.

9. THE CONTRACTOR SHALL NOTIFY PUBLIC SERVICE COMPANY 30 DAYS IN ADVANCE OF ANTICIPATED POWER SERVICE CONNECTIONS. THE CONTRACTOR SHALL COORDINATE WITH PUBLIC SERVICE COMPANY TO ESTABLISH ELECTRICAL SERVICE IN THE CITY'S NAME. THE CONTRACTOR SHALL PAY THE LOCAL POWER COMPANY ALL COSTS TO PROVIDE ELECTRICAL SERVICE. THIS WORK WILL BE CONSIDERED INCIDENTAL TO CONSTRUCTION.

10. THE CONTRACTOR SHALL REMOVE ALL CONFLICTING SIGNING AND DELIVER TO THE CITY TRAFFIC ENGINEERING YARDS WHEN TRAFFIC SIGNALS ARE PUT INTO OPERATION.

11. LIVE UNUSED CONDUCTORS WILL NOT BE ALLOWED AT MASTARM POLES AND PEDESTAL POLES. ALL SUCH UNUSED CONDUCTORS SHALL BE DISCONNECTED AT THE LARGE PULL BOX ADJACENT TO THE POLE.

12. IF TRENCH WIDTHS LESS THAN 12" ARE PROPOSED BY THE CONTRACTOR, APPROVED COMPACTION METHODS SHALL BE USED DURING BACKFILL TO PREVENT LATENT TRENCH FAILURES. THE CONTRACTOR SHALL USE GROUT OR LEAN FILL AS APPROVED BY THE PROJECT MANAGER IN LIEU OF EARTH BACKFILL.

13. FOR CONDUITS CONTAINING ONLY LOW VOLTAGE COMMUNICATIONS CABLES, THE REQUIREMENTS FOR A SINGLE CONDUCTOR BARE COPPER #8 AWG MAY BE WAIVED WHERE PERMITTED BY THE NATIONAL ELECTRIC CODE.

14. THE CITY OF ALBUQUERQUE TRAFFIC ENGINEERING OPERATIONS PERSONNEL WILL PROVIDE TRAFFIC SIGNAL TIMING PLANS AND WILL PROGRAM TRAFFIC SIGNAL CONTROLLERS.

15. EXISTING CONDUITS TO BE REMOVED OR ABANDONED SHALL HAVE ALL WIRING REMOVED.

16. EXISTING CONDUITS SHALL BE REPAIRED, ADJUSTED, OR REPLACED AS DIRECTED BY THE PROJECT MANAGER WHERE ELECTRICAL PULL BOXES OR TRAFFIC MANHOLES ARE INSTALLED OR REPLACED.

17. CONTRACTOR SHALL COIL EXCESS INTERCONNECT CABLE AT ALL NEW OR EXISTING TRAFFIC MANHOLES BETWEEN SPLICE CABINET OR CONTROL CABINETS WITH SPLICE BARS. IF MORE THAN ONE MANHOLE EXISTS BETWEEN SPLICE CABINETS OR CONTROL CABINETS WITH SPLICE BARS, THEN COILING IS ONLY REQUIRED AT ONE OF THE MANHOLES. THE FOLLOWING QUANTITIES OF COMMUNICATION CABLE SHALL BE COILED:

12 PAIR - 50 FT.

25 PAIR - 50 FT.

50 PAIR - 25 FT.

75 PAIR - 25 FT.

18. THE CONTRACTOR SHALL PROVIDE OFF-DUTY POLICE OFFICERS TO DIRECT TRAFFIC WHEN SIGNALS ARE TURNED OFF.

19. ALL DATA SHOWN HEREIN CONCERNING EXISTING UTILITIES HAS BEEN OBTAINED FROM "AS-BUILT" DRAWINGS AND FROM FIELD OBSERVATIONS WHICH MAY OR MAY NOT BE ACCURATE. THE CONTRACTOR WILL BE RESPONSIBLE FOR EXPLORATORY TRENCHING. IF NECESSARY, TO MORE SPECIFICALLY LOCATE UTILITY LINES, COST OF LOCATING UTILITY LINES INCLUDING EXPLORATORY TRENCHING WILL BE CONSIDERED INCIDENTAL TO CONSTRUCTION.

20. THE CONTRACTOR SHALL VIDEO TAPE THE EXISTING TRAFFIC SIGNAL EQUIPMENT IN VHS FORMAT AND REVIEW THE TAPE WITH CITY OF ALBUQUERQUE TRAFFIC ENGINEERING OPERATIONS PERSONNEL PRIOR TO BEGINNING ANY REMOVALS OF SIGNAL EQUIPMENT. THE TAPE SHALL BECOME THE PROPERTY OF THE CITY AND MAY BE USED TO RESOLVE ANY QUESTIONS RELATED TO THE ORIGINAL CONDITION AND QUALITY OF EXISTING EQUIPMENT. THE EXISTING TRAFFIC SIGNAL EQUIPMENT INCLUDING POLES, CONTROLLER CABINETS, CONFLICT MONITORS, AND DETECTORS SHALL BE DELIVERED TO THE CITY OF ALBUQUERQUE TRAFFIC ENGINEERING YARD ON PINO ROAD NE.

21. STRIPING BY CONTRACTOR WILL BE REQUIRED PRIOR TO THE FINAL ACCEPTANCE.

22. STRIPING ERADICATION, IF REQUIRED, SHALL BE ACCOMPLISHED BY WATER BLASTING OR SURFACE PLANING OF THE ROADWAY TO A MAXIMUM DEPTH OF 0.25 INCHES AND FOR A WIDTH EQUAL TO TWO TIMES THE WIDTH OF THE STRIPE OR MARKING TO BE REMOVED.

23. CONTRACTOR SHALL CONTACT EDWARD TOLEDO, CITY TRAFFIC ENGINEERING OPERATIONS, PRIOR TO STRIPING AND SIGN INSTALLATION (857-8000).

24. ALL SIGNAGE SHALL COMPLY WITH THE M.U.T.C.D. (LATEST EDITION).

INCIDENTAL ITEMS \*

1. REMOVAL OF EXISTING PULL BOXES, CONDUITS, OR OTHER SIGNAL EQUIPMENT FOR INSTALLATION OF NEW SIGNAL EQUIPMENT.

2. CABLE TESTING AND DIAGRAMS.

3. BORING, DRILLING, PUSHING, AND TRENCHING, INCLUDING REMOVAL AND REPLACEMENT OF PAVEMENT, SIDEWALKS, DRIVE PADS, VALLEY GUTTERS, WHEELCHAIR RAMPS, CURB & GUTTER, AND LANDSCAPING (INCLUDING SPRINKLERS). FOR INSTALLATION OF PULL BOXES, CONDUITS, AND SIGNAL FOUNDATIONS, EXCEPT AS NOTED ON THE PLANS.

4. LOCATION OF UTILITY LINES INCLUDING EXPLORATORY TRENCHING AND EXPOSING OF GAS LINES WHEN BORING.

5. DESIGN, MATERIALS, INSTALLATION AND REMOVAL OF SAFETY BARRIER FOR SHIELDING EQUIPMENT OR MATERIAL.

6. APPRISING PUBLIC THROUGH THE LOCAL NEWS MEDIA.

7. HAULING OF MATERIAL TO BE DISPOSED TO CITY LANDFILL.

8. REMOVAL, SALVAGE, AND TRANSPORTATION OF EXISTING SIGNAL EQUIPMENT TO THE TRAFFIC ENGINEERING OPERATIONS YARD.

9. LEAN FILL FOR CONDUIT TRENCHES.

10. PULL BOX ADJUSTMENT TO GRADE.

11. OFF-DUTY POLICE OFFICER FOR TRAFFIC CONTROL.

12. REMOVAL AND REPLACEMENT IN KIND OR BETTER OF LANDSCAPING INCLUDING SPRINKLERS, FOR INSTALLATION OF PULL BOXES, CONDUITS AND SIGNAL FOUNDATIONS.

13. COST FOR PUBLIC SERVICE COMPANY TO PROVIDE ELECTRICAL SERVICE.
- ITEMS LISTED ARE ONLY A GENERAL DESCRIPTION OF THE REQUIRED WORK AND MATERIALS, AND MAY NOT BE COMPLETE. THIS LIST DOES NOT INCLUDE ANY INCIDENTAL WORK OR MATERIALS REQUIRED BY THE SPECIAL PROVISIONS SERIALS (STANDARD DETAILS), SUPPLEMENTAL SPECIFICATIONS, OR THE STANDARD SPECIFICATIONS.
14. NO. 8 AWG COPPER CONDUCTOR (BARE) INSTALLED IN CONNECTION WITH NON METALLIC CONDUIT (SEE SEC 424.3.2 OF STANDARD SPECIFICATIONS).

\*TRAFFIC SIGNAL EQUIPMENT REQUIREMENTS

1. THIS PROJECT IS AN EXTENSION OF AN EXISTING SIGNAL SYSTEM. THEREFORE THE CONTRACTOR SHALL FURNISH AND INSTALL THE FOLLOWING:

A. ALL CONTROLLERS SUPPLIED FOR THIS PROJECT SHALL BE MANUFACTURED BY ECONOLITE.

B. ALL TRAFFIC PULL BOXES USED ON THIS PROJECT SHALL BE LARGE SIZE.

2. ALL SIGNAL ASSEMBLIES, PEDESTRIAN SIGNALS, CABINETS AND FITTINGS SHALL COMPLY WITH THE CITY OF ALBUQUERQUE TYPE AND COLOR REQUIREMENTS.

3. CONTRACTOR SHALL SUBMIT TO THE ENGINEER FOR APPROVAL A MATERIAL SUBMITTAL FOR THE FLASHING BEACON CONTROLLER PRIOR TO THE SUBMISSION OF THE WORK ORDER PACKAGE TO THE CITY OF ALBUQUERQUE.

TRAFFIC SIGNAL LEGEND

NEW	EXISTING	ITEM
		PULL BOX
		SERVICE POLE
		METER PEDESTAL
		CONTROLLER CABINET
		CONDUIT RUN (SIGNALS)
		CONDUIT RUN (INTERCONNECT)
		LOOP DETECTOR
		TRAFFIC SIGNAL PEDESTAL POLE
		CONDUIT RUN NUMBER (FLASHING BEACON)
		CONDUIT RUN NUMBER (POWER SERVICE)
		CONDUIT RUN NUMBER (INTERCONNECT)
		TYPE II STANDARD WITH MASTARM, TRAFFIC SIGNAL, BACK PLATE, AND OPTICAL DETECTOR
		TRAFFIC SIGNAL, BACK PLATE, OPTICAL DETECTOR, LUMINAIRE, AND VIDEO CAMERA
		PEDESTRIAN PUSH BUTTON (MOUNTED TO SIDE OF POLE WHERE INDICATED)
		PEDESTRIAN SIGNALS (MOUNTED TO SIDE OF POLE WHERE INDICATED)
		SPLICE CABINET
		TRAFFIC MANHOLE
		VIDEO CAMERA

DEFINITIONS

1. "ENGINEER" - FOR THE PURPOSES OF THIS PROJECT, THE TERM "ENGINEER" IS SYNONYMOUS WITH THE TERM "PROJECT MANAGER".



RECORD DRAWING

2001.181.9

CITY OF ALBUQUERQUE  
PUBLIC WORKS DEPARTMENT  
ENGINEERING DEVELOPMENT GROUP

TITLE: SEVEN BAR ELEMENTARY SCHOOL  
FLASHING SCHOOL BEACON  
TRAFFIC NOTES, LEGEND, EQUIPMENT REQUIREMENTS AND INCIDENTAL ITEMS

Design Review Committee  
APPROVED  
JAN - 9 2001  
DESIGN REVIEW COMMITTEE

City Engineer Approval  
APPROVED  
MAY 10 2002  
CITY ENGINEER

Last Design Update

City Project No. 677681

Zone Map No. A-13

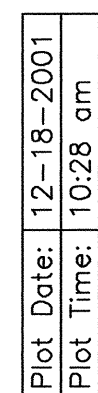
Sheet 5 of 14

AS BUILT INFORMATION		BENCH MARKS		SURVEY INFORMATION		ENGINEER'S SEAL		REVISIONS		DESIGN	
CONTRACTOR	Be Mor Electric, Inc.	USGS BRASS TABLET STAMPED "BLACK-2 1977" SET FLUSH WITH GROUND, NEAR SOUTHWEST CORNER OF THE INTERSECTION OF GOLF COURSE ROAD N.W. AND MONAHAN BOULEVARD N.W. ELEVATION = 5213.93 FEET (M.S.L.D. - 1929)	DATE	BY	NO.	DATE	NO.	DATE	NO.	DATE	DATE
WORK STARTED BY	J.M.A.		10-2000	JMA	99184						
FIELD ACCEPTANCE BY	M.D.S.										
DESIGNED BY	J.M.A.										
CHECKED BY											
RECORDED BY											
DATE											
C.O.A. Insp. - G. SHERMS											





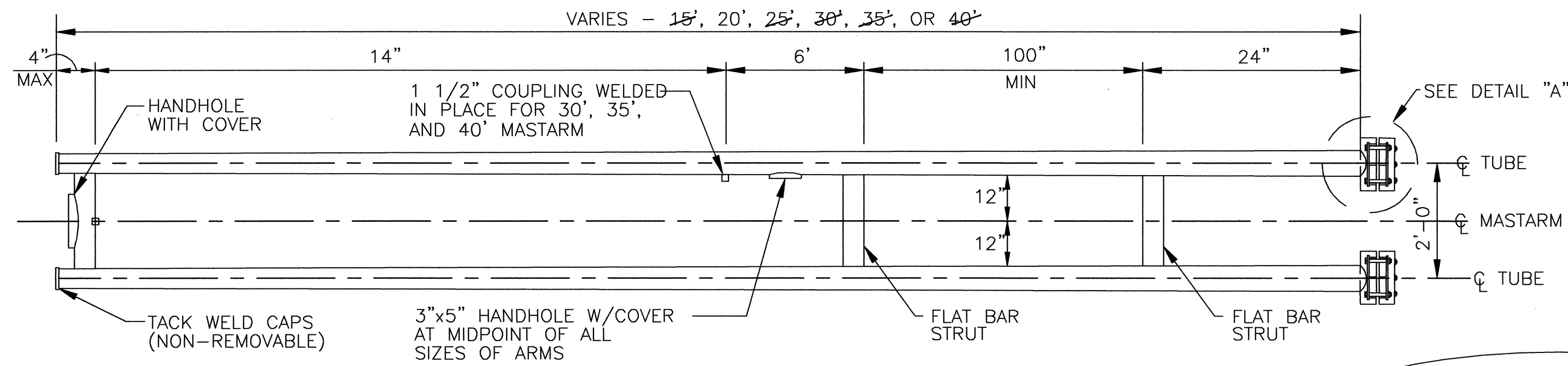




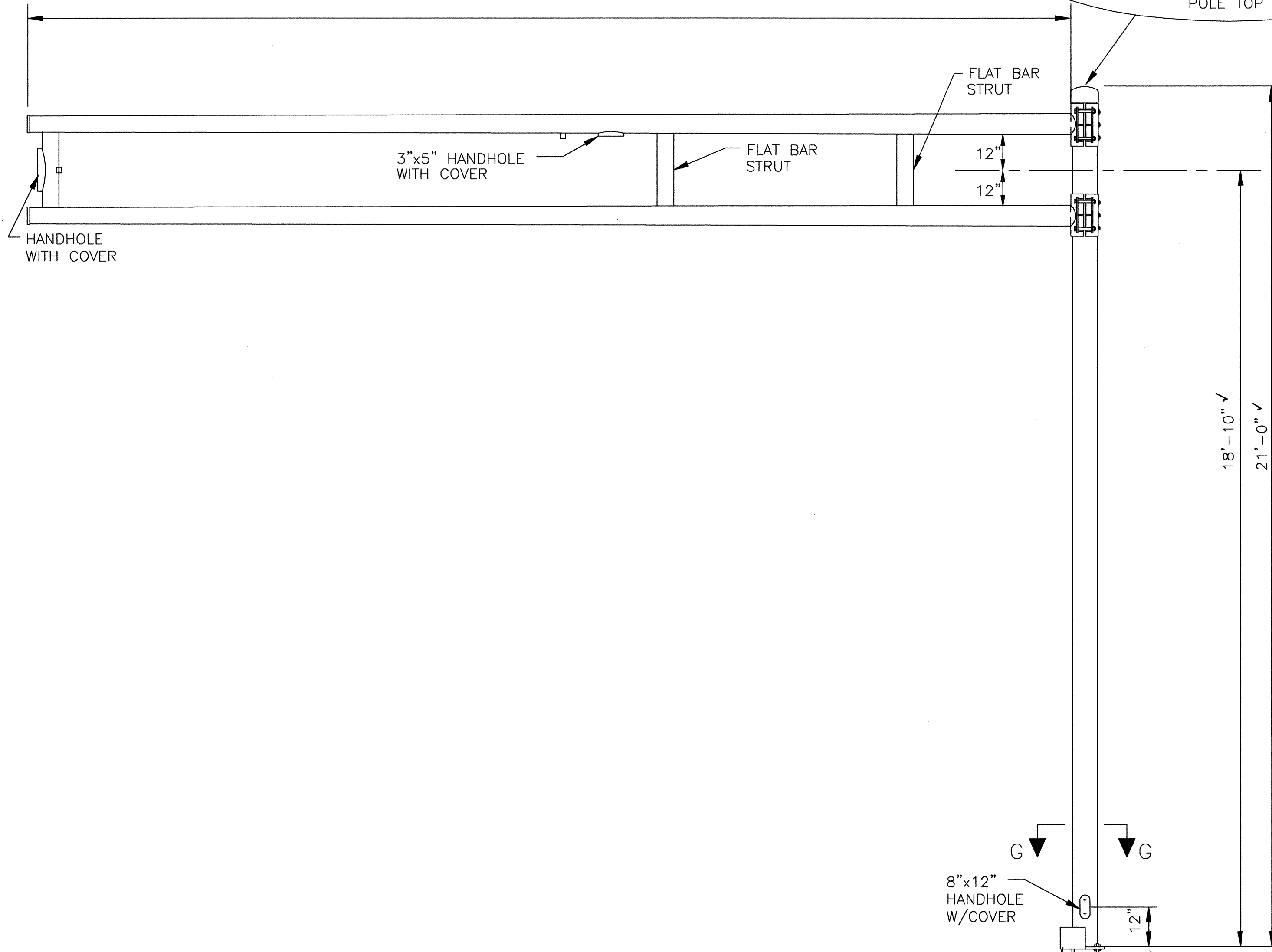




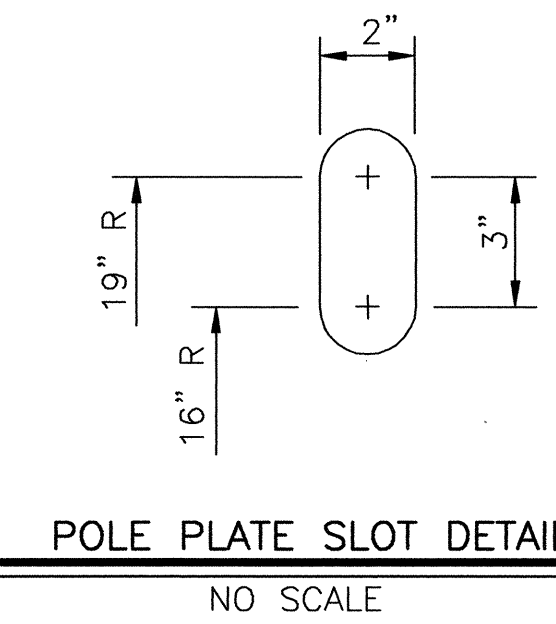
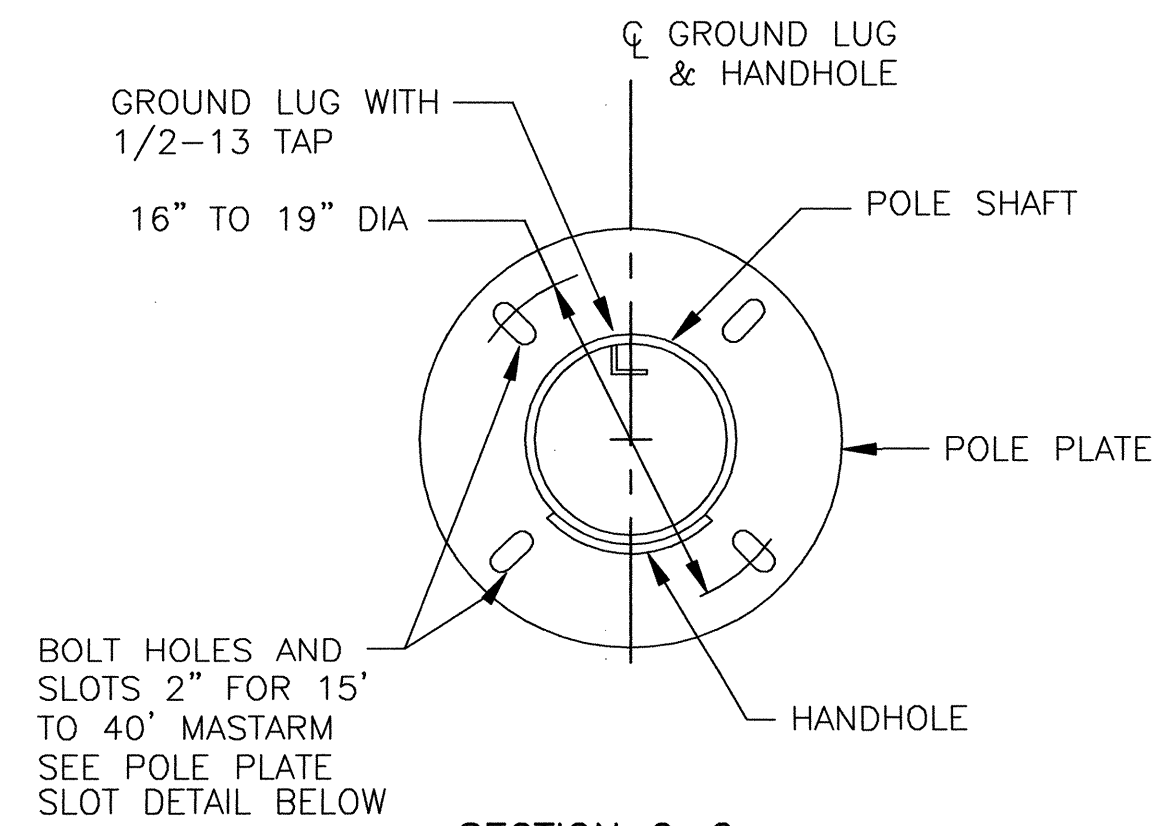
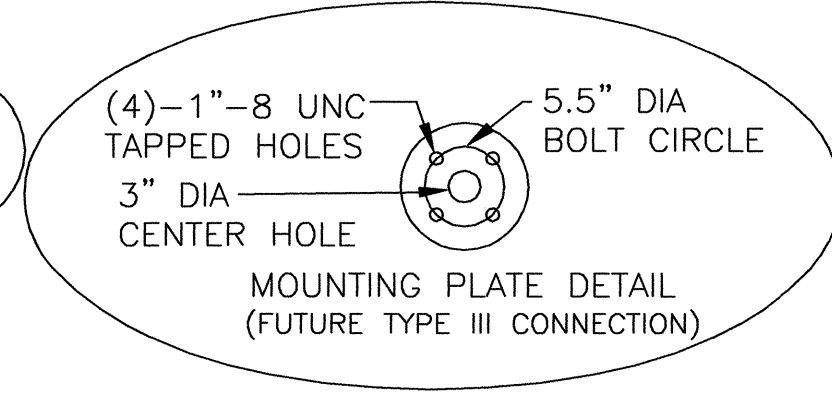
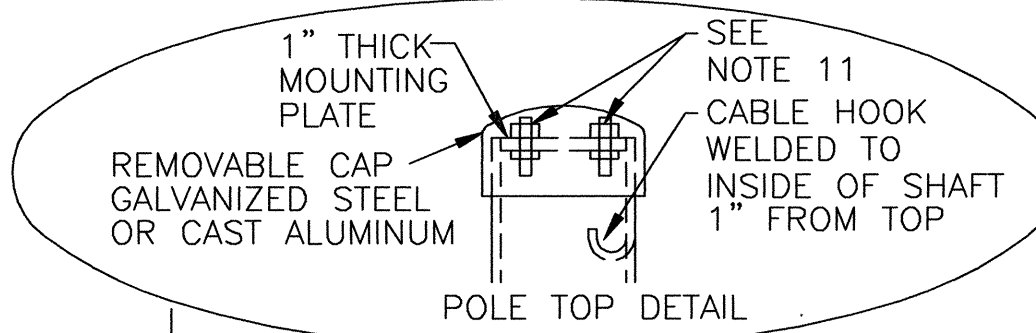




**TYPICAL MASTARM DETAIL**  
NO SCALE

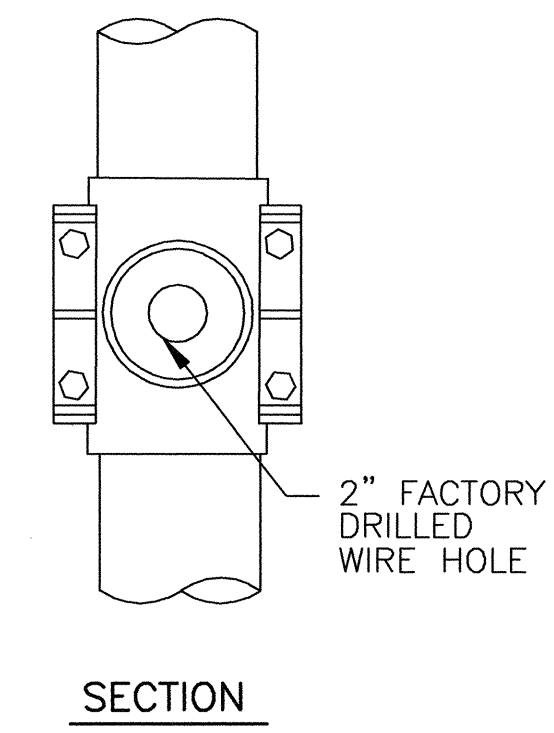
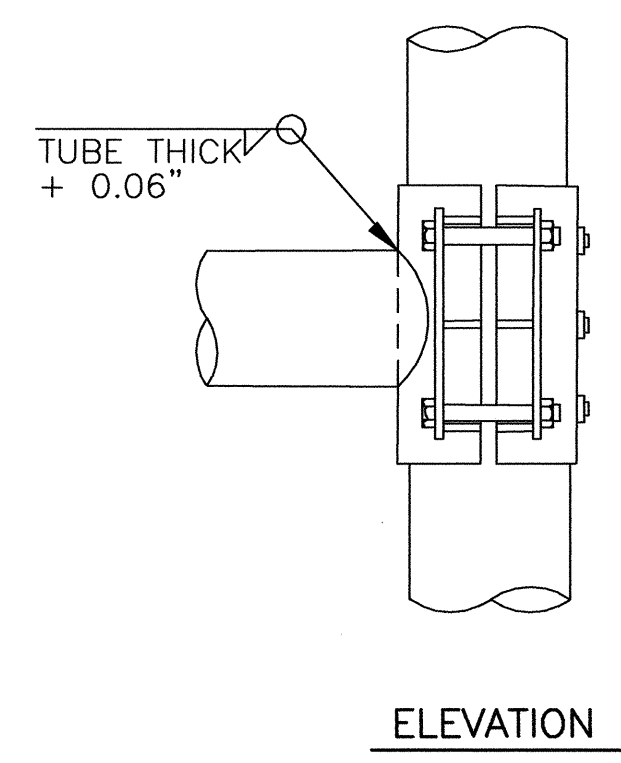
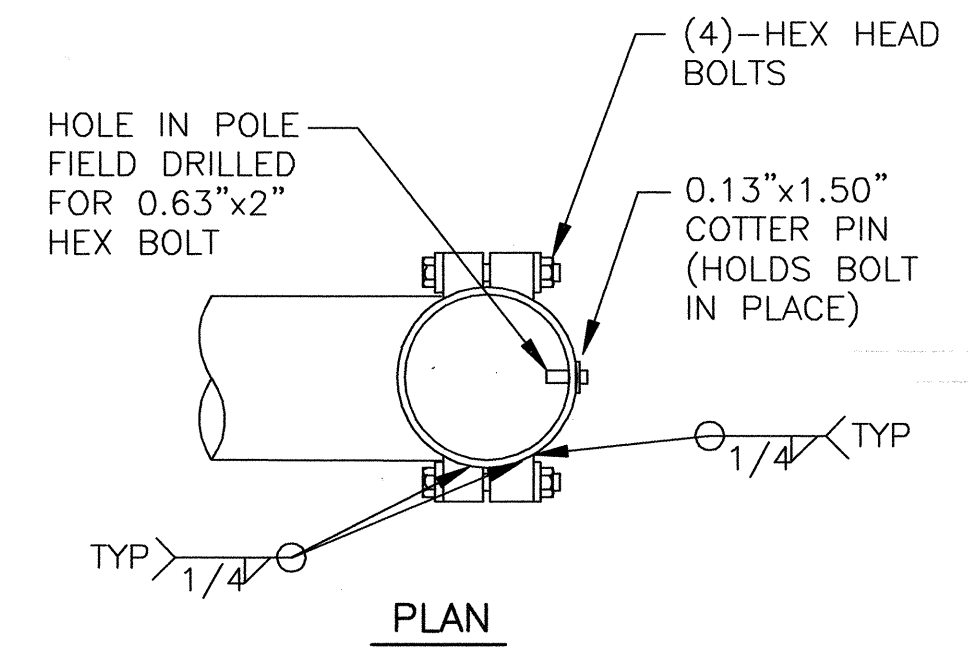


**MASTARM AND POLE**  
NO SCALE



**TRAFFIC SIGNAL MASTARM NOTES:**

1. DESIGN IN ACCORDANCE WITH 1985 AASHTO SPECIFICATIONS FOR STRUCTURAL SUPPORTS FOR HIGHWAY SIGNS, LUMINAIRES, AND TRAFFIC SIGNALS FOR AN 80 MPH WIND ZONE.
2. POLES AND MASTARMS SHAFTS SHALL CONFORM TO ASTM A-595 GRADE A (MIN YIELD 55 KSI)
3. BASE PLATE AND SIGNAL ARM CLAMP SHALL BE ASTM A-36 (MIN YIELD 36 KSI).
4. ANCHOR BOLTS SHALL BE ASTM A-36 MOD 55 (MIN YIELD 55 KSI)
5. SIGNAL ARM CONNECTING BOLTS SHALL BE ASTM A-325.
6. WELDING SHALL CONFORM TO THE REQUIREMENTS OF THE AMERICAN WELDING SOCIETY SPECIFICATIONS AWS D1.1. LATEST EDITION. ALL WELDS SHALL BE FREE FROM CRACKS, EXCESSIVE UNDERCUT, AND POROSITY. ANY WELD DEFECTS SHALL BE REPAIRED BY REMOVING THE DEFECTIVE MATERIAL AND REPLACING IT WITH SOUND WELD MATERIAL.
7. ALL HOLES SHALL BE DRILLED AND DEBURRED.
8. ALL POLES, MASTARMS, AND BOLTS SHALL BE GALVANIZED TO ASTM A-123 & A-153.
9. MASTARM SHALL BE MARKED TO DESCRIBE WHICH IS TOP AND WHICH IS BOTTOM. POLE PLATE COVER SHALL BE MARKED IN MATED PAIRS. POLE SHAFTS SHALL BE MARKED "ALB" "15-25" OR "30-40", AND DATE OF FABRICATION (MONTH/YEAR).
10. DETAILS SHOWN ARE FOR STEEL POLES. ALUMINIUM POLES MAY BE USED ONLY WHEN PRE-APPROVED BY THE CITY OF ALBUQUERQUE TRAFFIC ENGINEERING OPERATIONS DIVISION.
11. BOLTS FOR TYPE III EXTENSIONS SHALL BE FURNISHED BY THE MANUFACTURER FOR ALL POLES INCLUDING TYPE II STANDARDS WITH NO EXTENSIONS.



**DETAIL A**

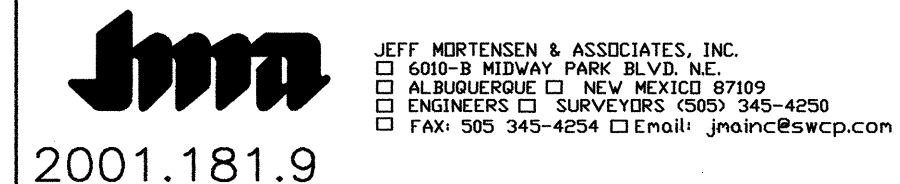
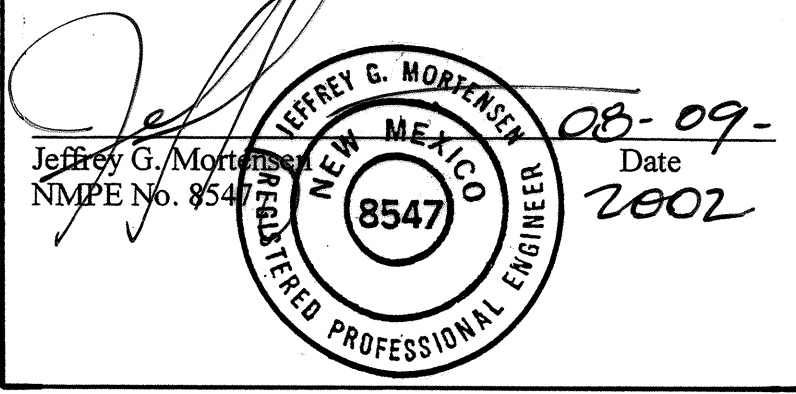
NOTE:  
ONE SIZE ARM CLAMP FOR 15' TO 25' MASTARMS AND ONE SIZE FOR 30' TO 40' MASTARMS WILL BE ALLOWED

**FINISH:**

- ☒ GALVANIZED
- ☐ POWDER COATED
- COLOR \_\_\_\_\_

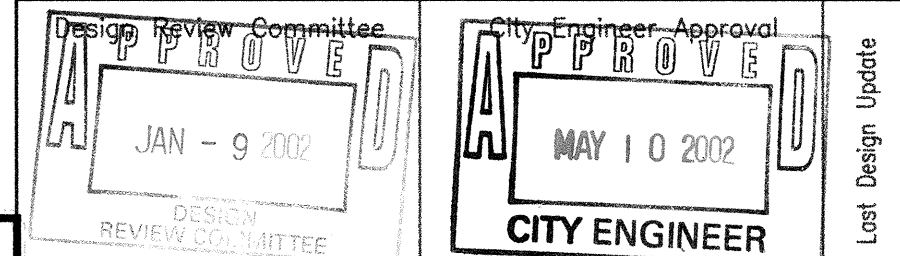
**RECORD DRAWING**

I, Jeffrey G. Mortensen, Registered Professional Engineer in the State of New Mexico, do hereby certify that this Record Information was obtained by me or under my supervision and represents the record conditions of this project, and is true and correct to the best of my knowledge and belief. All vertical and horizontal dimensions should be field verified prior to use on future projects.

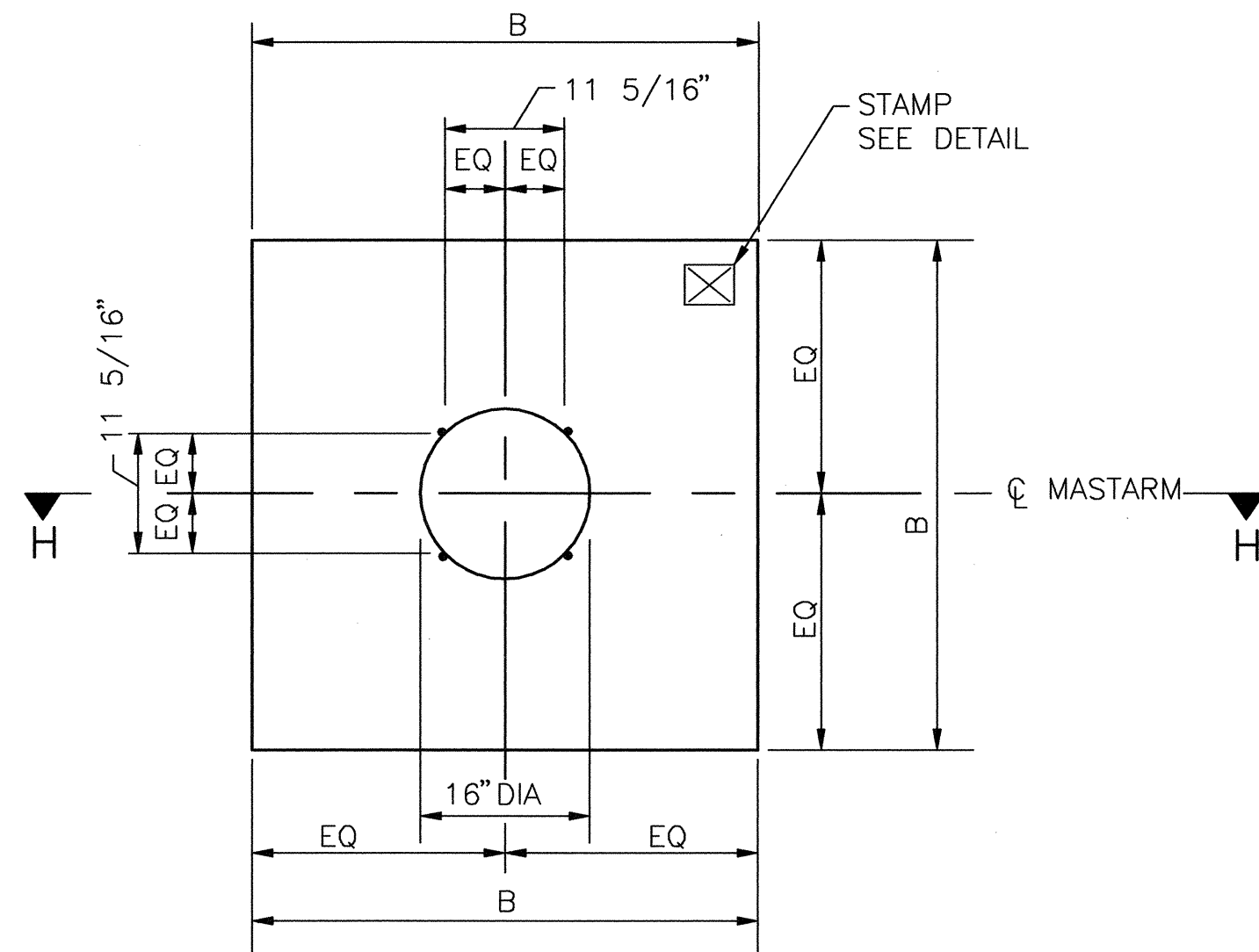


CITY OF ALBUQUERQUE  
PUBLIC WORKS DEPARTMENT  
ENGINEERING DEVELOPMENT GROUP

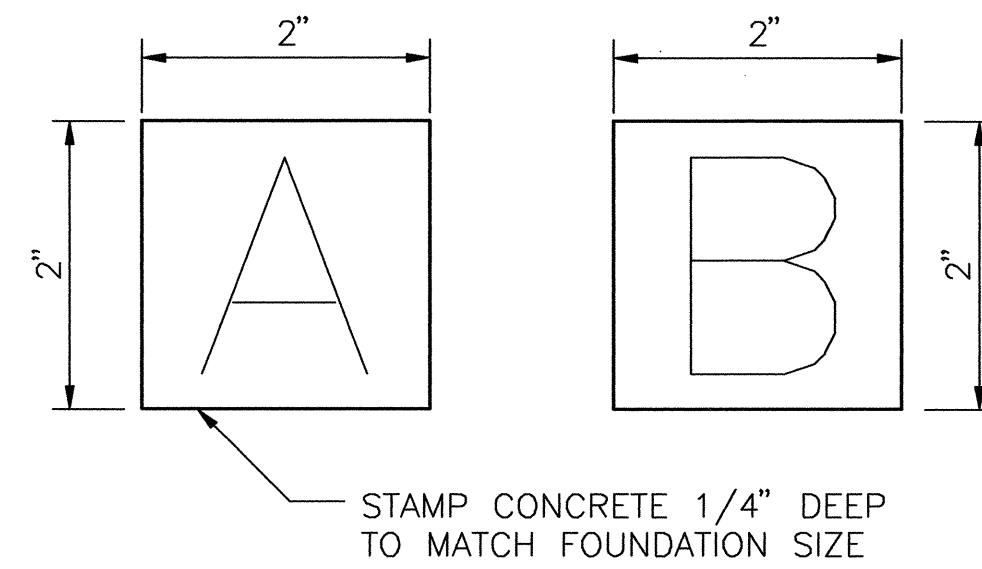
TITLE: **SEVEN BAR ELEMENTARY SCHOOL FLASHING SCHOOL BEACON TRAFFIC SIGNAL MASTARM DETAILS, TYPE II STANDARD**



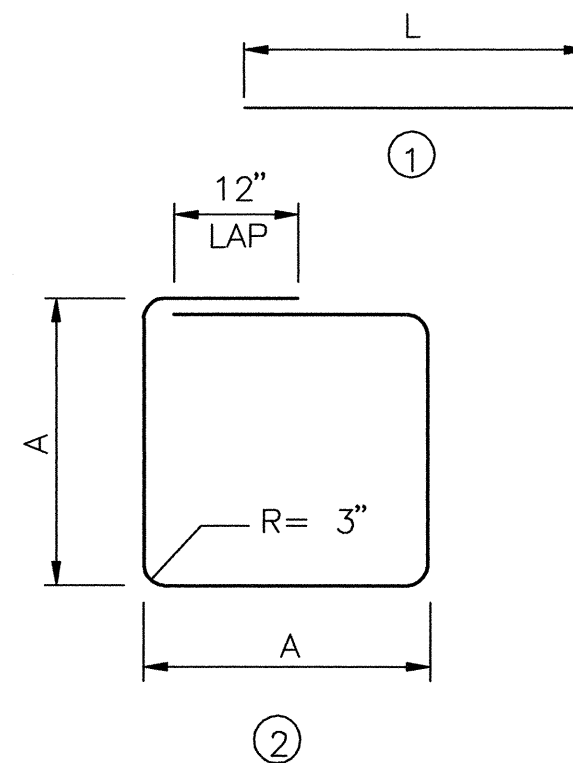




PLAN VIEW (SQUARE)  
NO SCALE



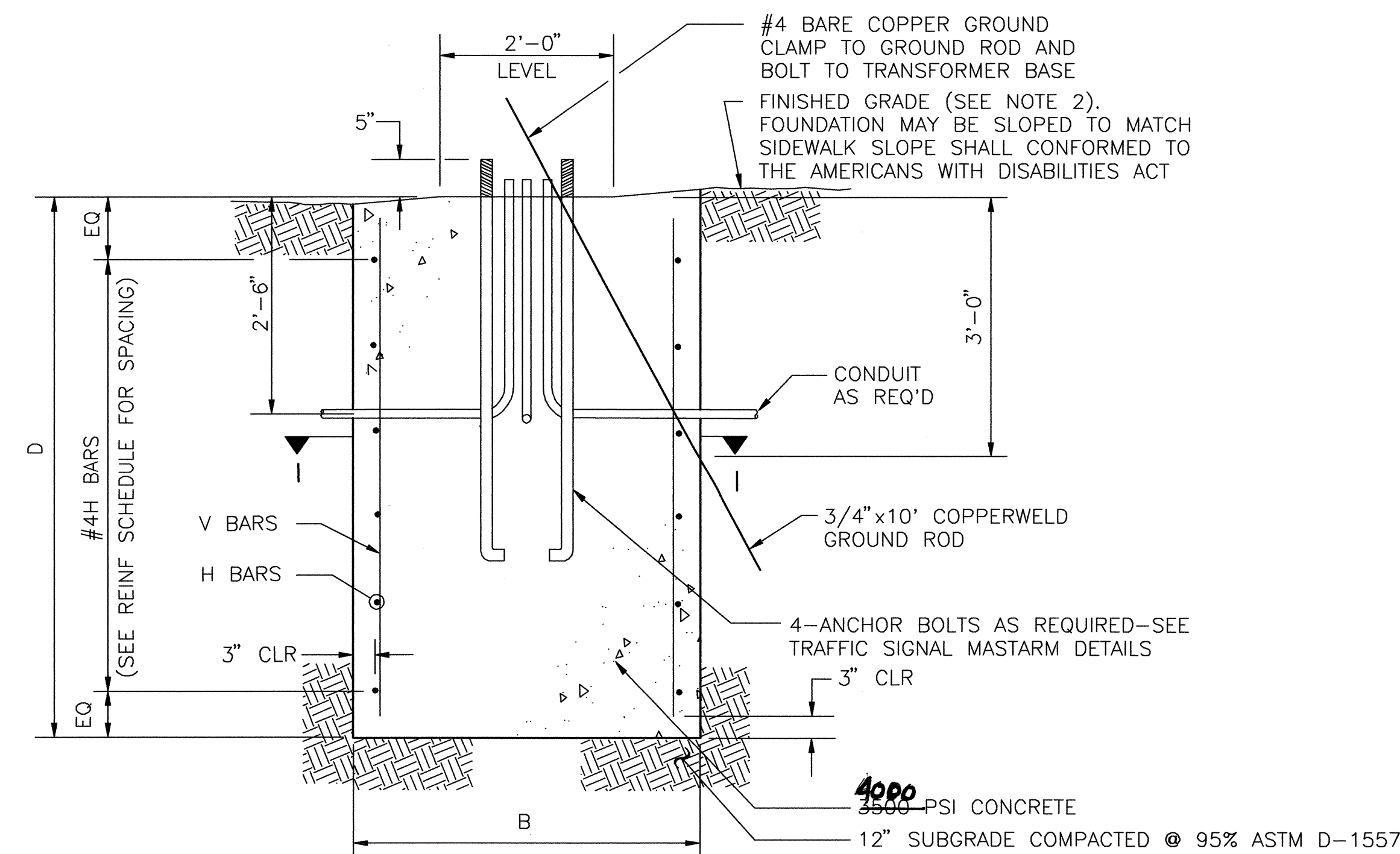
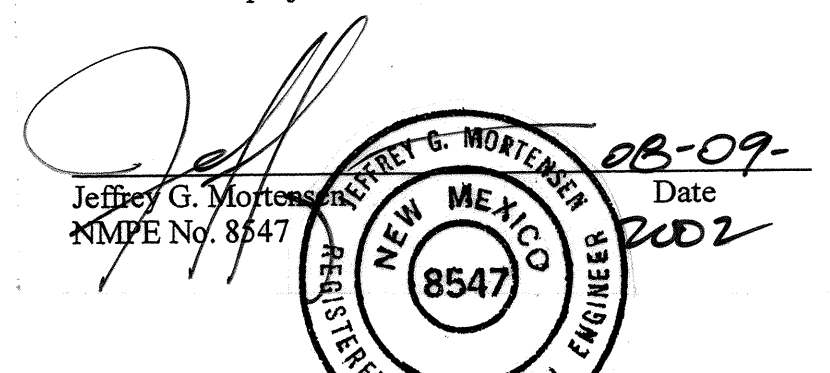
STAMP DETAIL  
NO SCALE



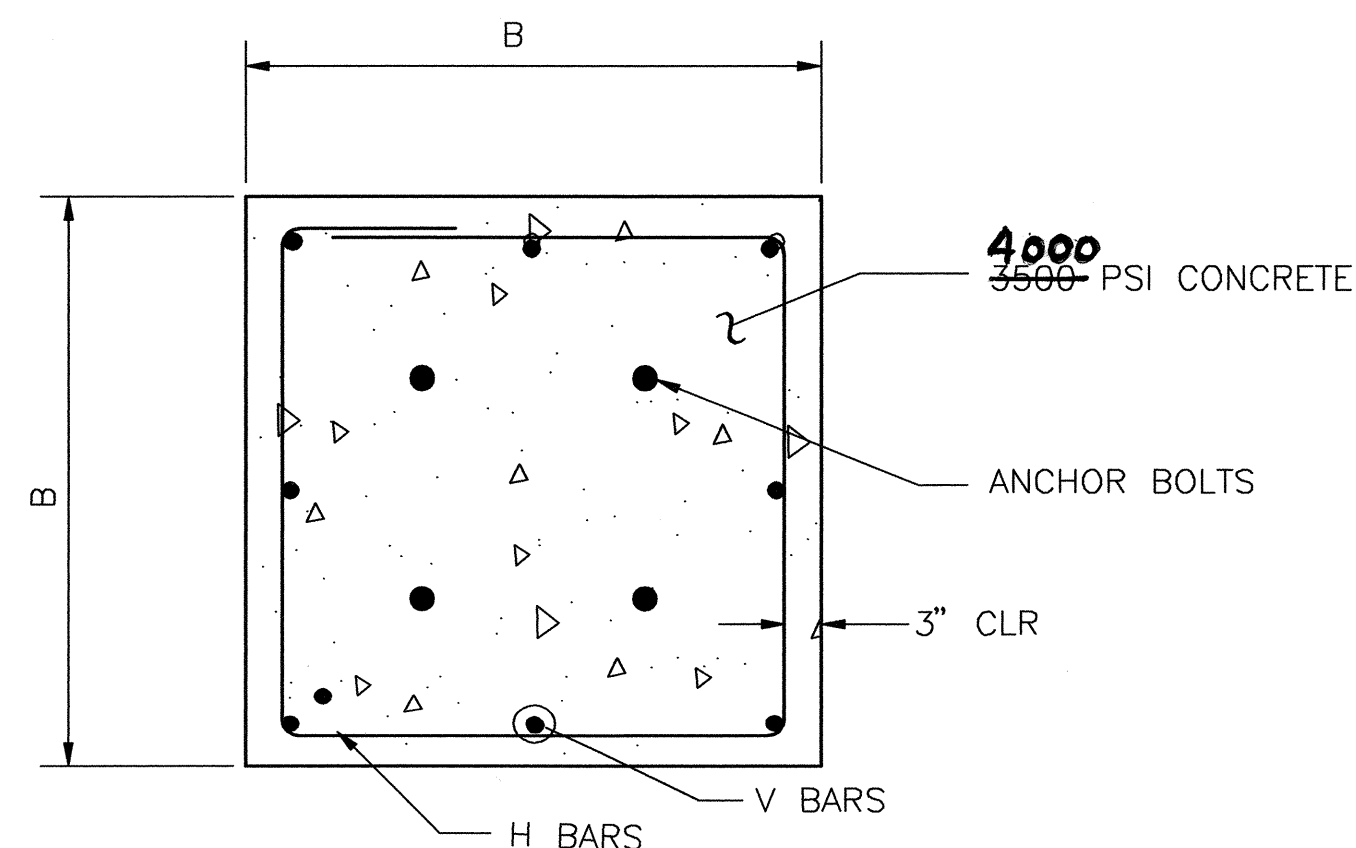
BAR BENDING DIAGRAM

#### RECORD DRAWING

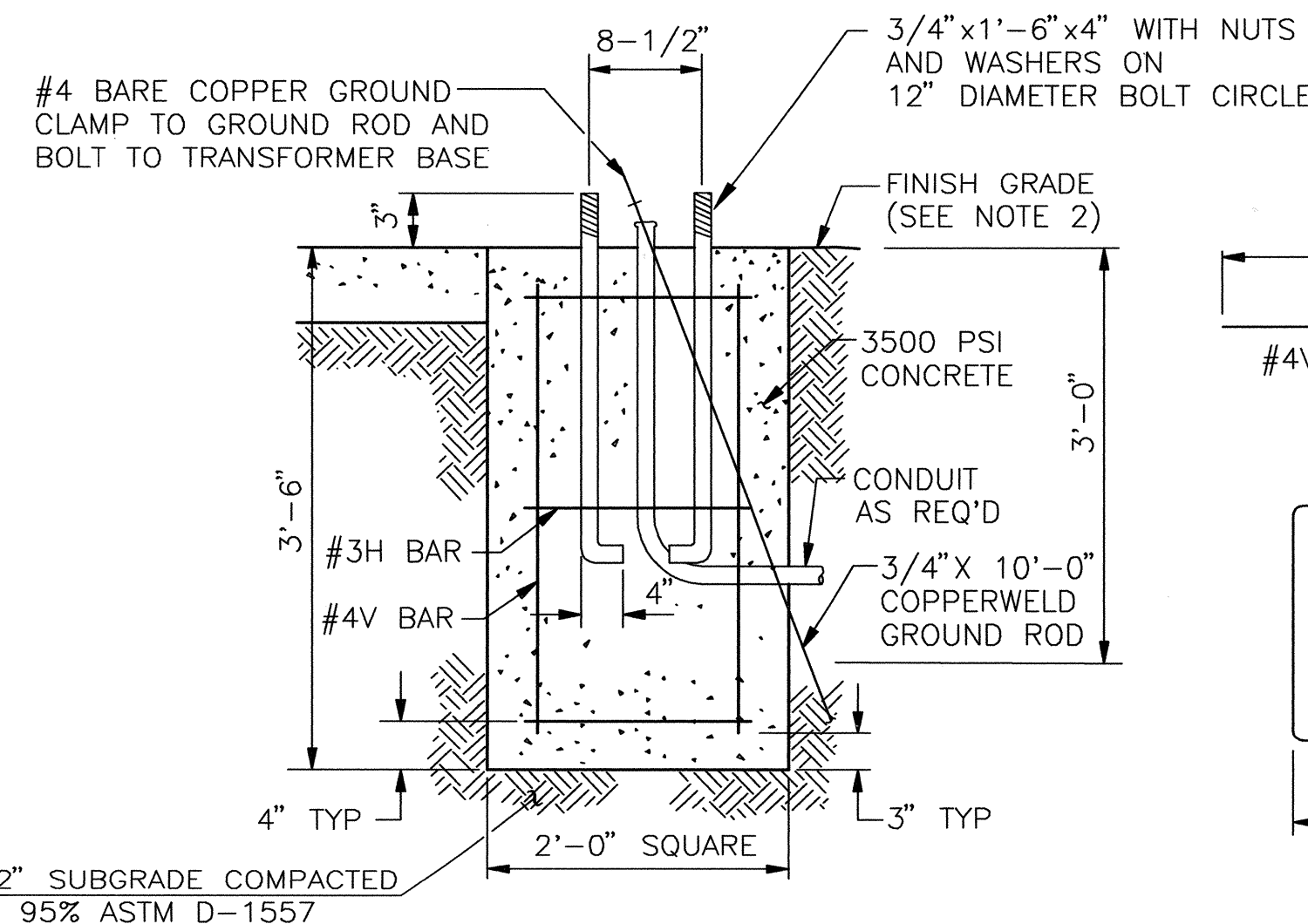
I, Jeffrey G. Mortensen, Registered Professional Engineer in the State of New Mexico, do hereby certify that this Record Information was obtained by me or under my supervision and represents the record conditions of this project, and is true and correct to the best of my knowledge and belief. All vertical and horizontal dimensions should be field verified prior to use on future projects.



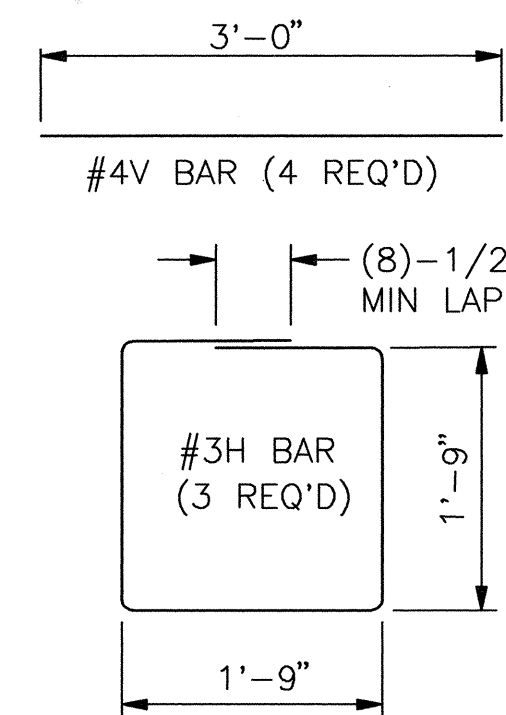
SECTION H-H (ROUND OR SQUARE)  
NO SCALE



SECTION I-I (SQUARE)  
NO SCALE



PEDESTAL POLE FOUNDATION DETAIL  
NO SCALE



REINFORCING STEEL

### FOUNDATION DIMENSIONS AND QUANTITIES

FOUNDATION TYPE	SIGNAL ARM SPAN(FT)	DIMENSION		REINFORCING		REBAR POUNDS	3500 PSI CONCRETE CUBIC YARDS	NOTES
		B (WIDTH)	D (DEPTH)	V BARS MARK	H BARS MARK			
TYPE A (SQUARE)	15	3'-6"	5'-0"	#4V2	#3H2	49.1	2.27	
	20	"	"	"	"	"	"	
	25	"	"	"	"	"	"	
TYPE B (SQUARE)	30	4'-0"	6'-3"	#5V1	#3H1	82.6	3.70	
	35	"	"	"	"	"	"	
	40	"	"	"	"	"	"	
PEDESTAL	-	2'-0"	3'-6"	#4V	#3H	17	0.52	

### REINFORCING SCHEDULE (GRADE 60 BARS)

MARK	QUANT	TYPE	SIZE	LENGTH	COMMENTS
#5V1	8	1	5	5'-9"	
#4V2	8	1	4	4'-6"	
#7V3	6	1	7	11'-3"	
#6V4	6	1	6	8'-0"	
#3H1	6	2	3	15'-4"	A = 42", TIES AT 14" OC
#3H2	5	2	3	13'-4"	A = 36", TIES AT 12" OC
#3H3	12	3	3	9'-3"	DIA = 30", TIES AT 12" OC
#3H4	9	3	3	7'-8"	DIA = 24", TIES AT 12" OC

#### TRAFFIC SIGNAL FOUNDATION NOTES

- REFER TO THE PLANS FOR LOCATIONS OF TRAFFIC SIGNAL FOUNDATIONS.
- FINISHED GRADE FOR THE FOUNDATIONS SHALL BE ESTABLISHED IN THE FIELD BY THE PROJECT MANAGER.
- THE FOUNDATIONS SHOWN HERE SHALL BE CONSTRUCTED IN ACCORDANCE WITH THE CITY OF ALBUQUERQUE STANDARD SPECIFICATIONS FOR PUBLIC WORKS CONSTRUCTION, CURRENT REVISION.
- CONCRETE SHALL BE 3500 PSI FOR EXTERIOR STRUCTURES. REFER TO TABLE 101.C OF THE SPECIFICATIONS.
- REINFORCING STEEL SHALL CONFORM TO ASTM A-615 GRADE 60.
- THE TOP 6 INCHES OF THE FOUNDATION PEDESTAL SHALL BE FORMED TO THE DIMENSIONS SHOWN ON THIS SHEET TO FORM NEAT LINES. CONCRETE BELOW 6 INCHES MAY BE CAST AGAINST THE EARTH.
- THE CONCRETE SHALL GAIN 80% OF THE DESIGN STRENGTH PRIOR TO INSTALLING THE TRAFFIC SIGNAL MASTARM OR PEDESTAL POLE.
- ALL FOUNDATIONS SHALL INCLUDE COPPERWELD GROUND RODS. ALL GROUND RODS SHALL BE 3/4" DIA X 10'-0" AND WILL BE CONSIDERED INCIDENTAL TO THE FOUNDATIONS BID ITEMS.
- ALL FOUNDATIONS SHALL BE STAMPED EITHER "A" OR "B" TO SHOW TYPE CONSTRUCTED (SEE STAMP DETAIL).

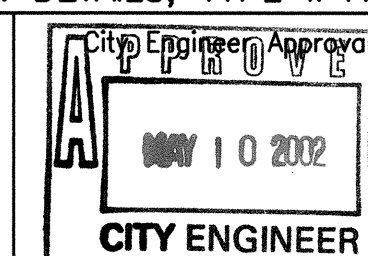
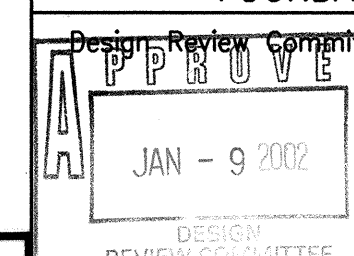


2001.181.9

JEFF MORTENSEN & ASSOCIATES, INC.  
6010-B MIDWAY PARK BLVD. N.E.  
ALBUQUERQUE, N.M. 87109  
ENGINEERS & SURVEYORS (505) 345-4250  
FAX: 505 345-4254 E-mail: jma@jma-inc.com

CITY OF ALBUQUERQUE  
PUBLIC WORKS DEPARTMENT  
ENGINEERING DEVELOPMENT GROUP

TITLE: SEVEN BAR ELEMENTARY SCHOOL  
FLASHING SCHOOL BEACON  
FOUNDATION DETAILS, TYPE II AND TYPE III STANDARDS



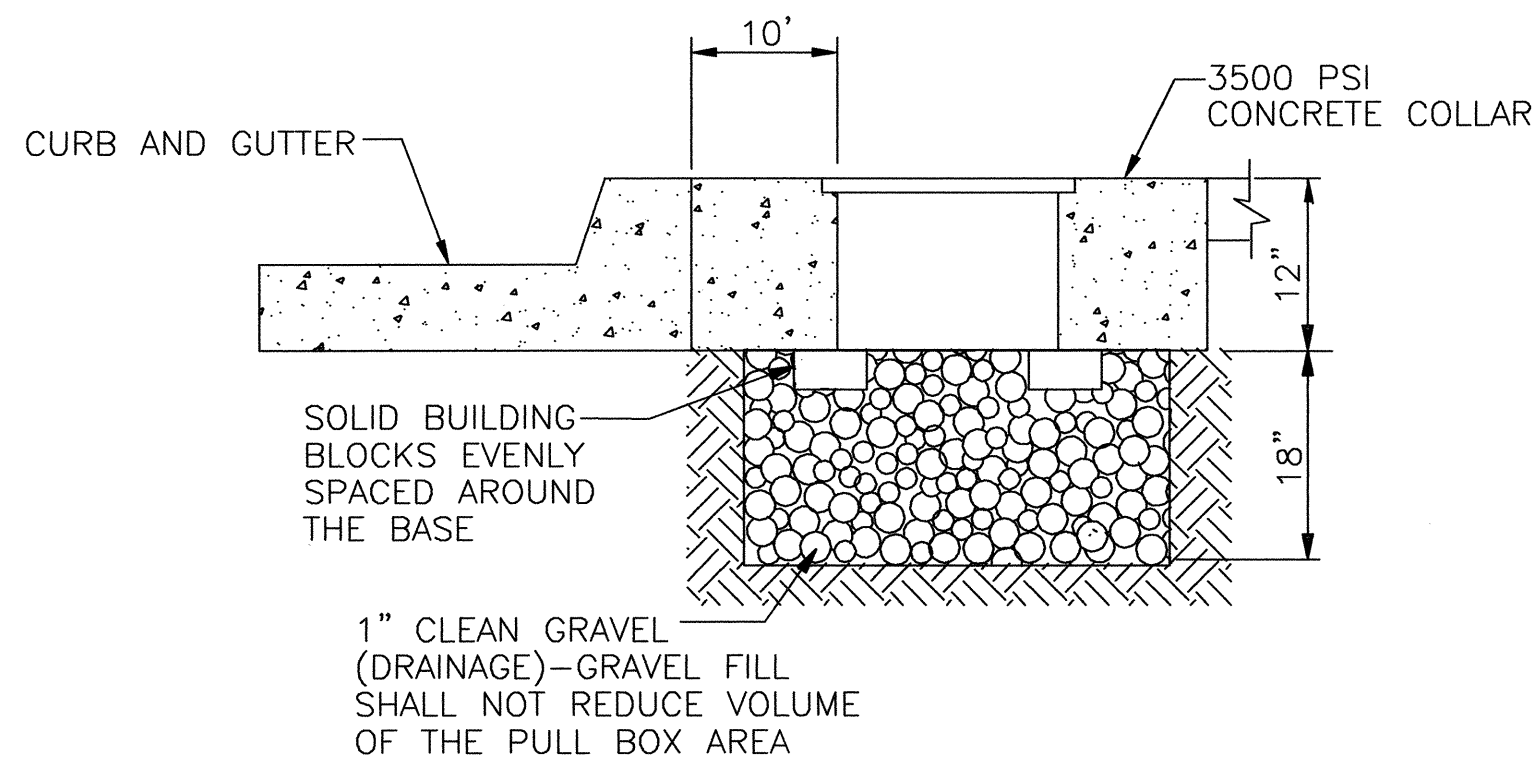
City Project No.

677681

Zone Map No.  
A-13

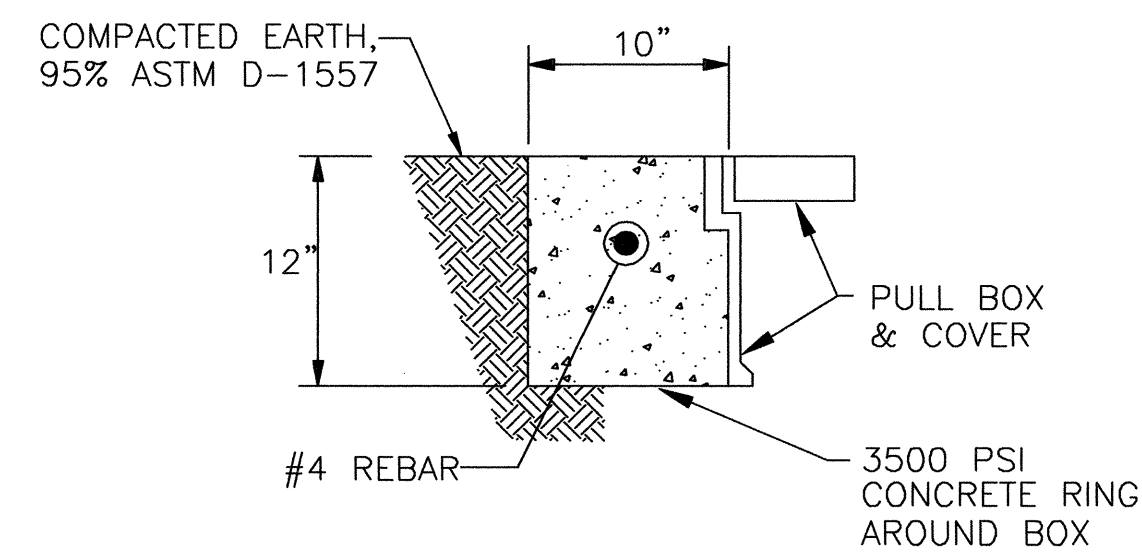
Sheet 10 of 14



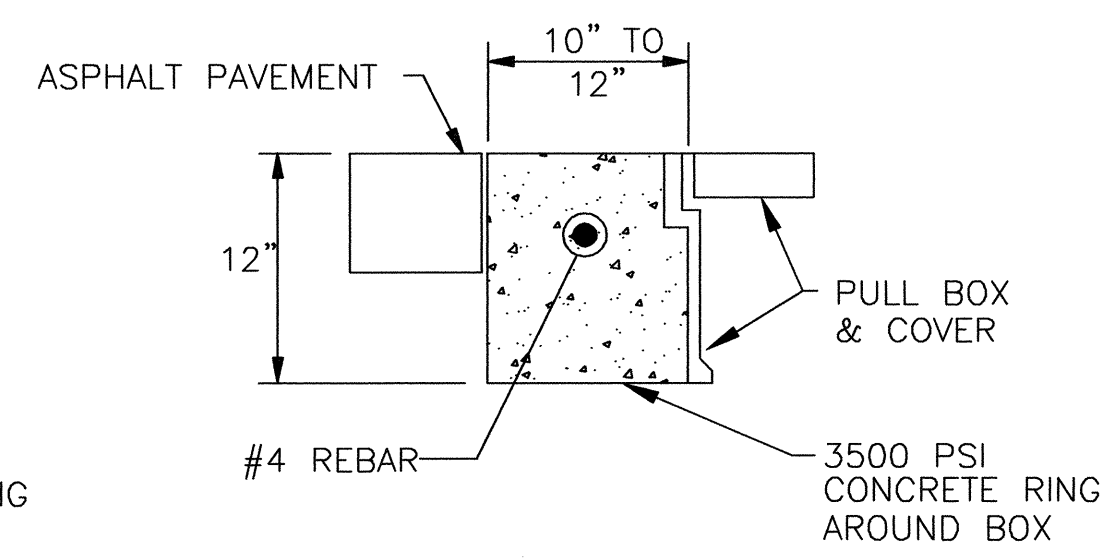


TYPICAL PULL BOX INSTALLATION

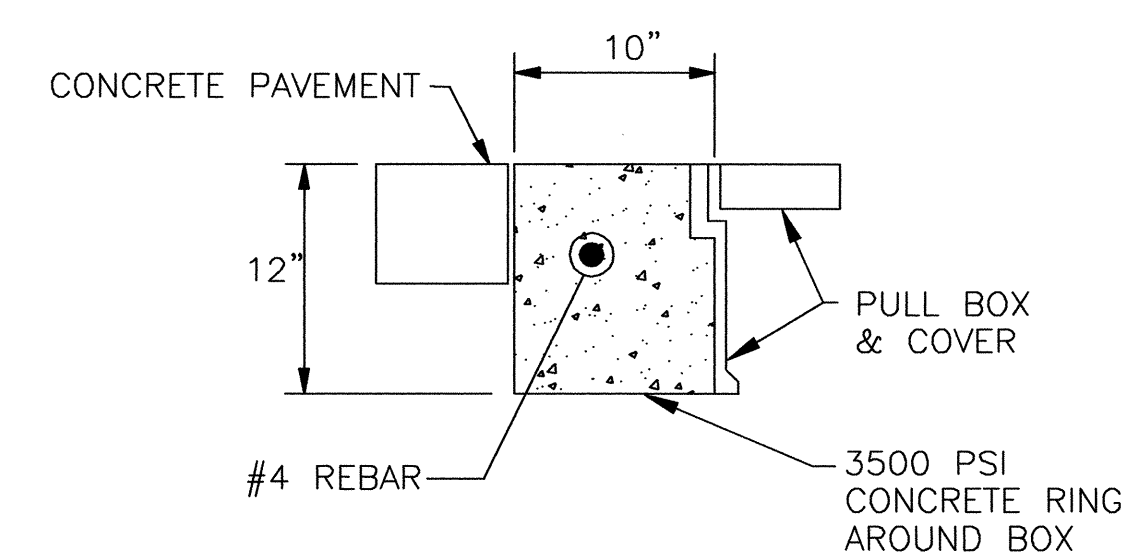
NOTE: SEE "CONCRETE COLLAR DETAIL" AT RIGHT



IN COMPACTED EARTH



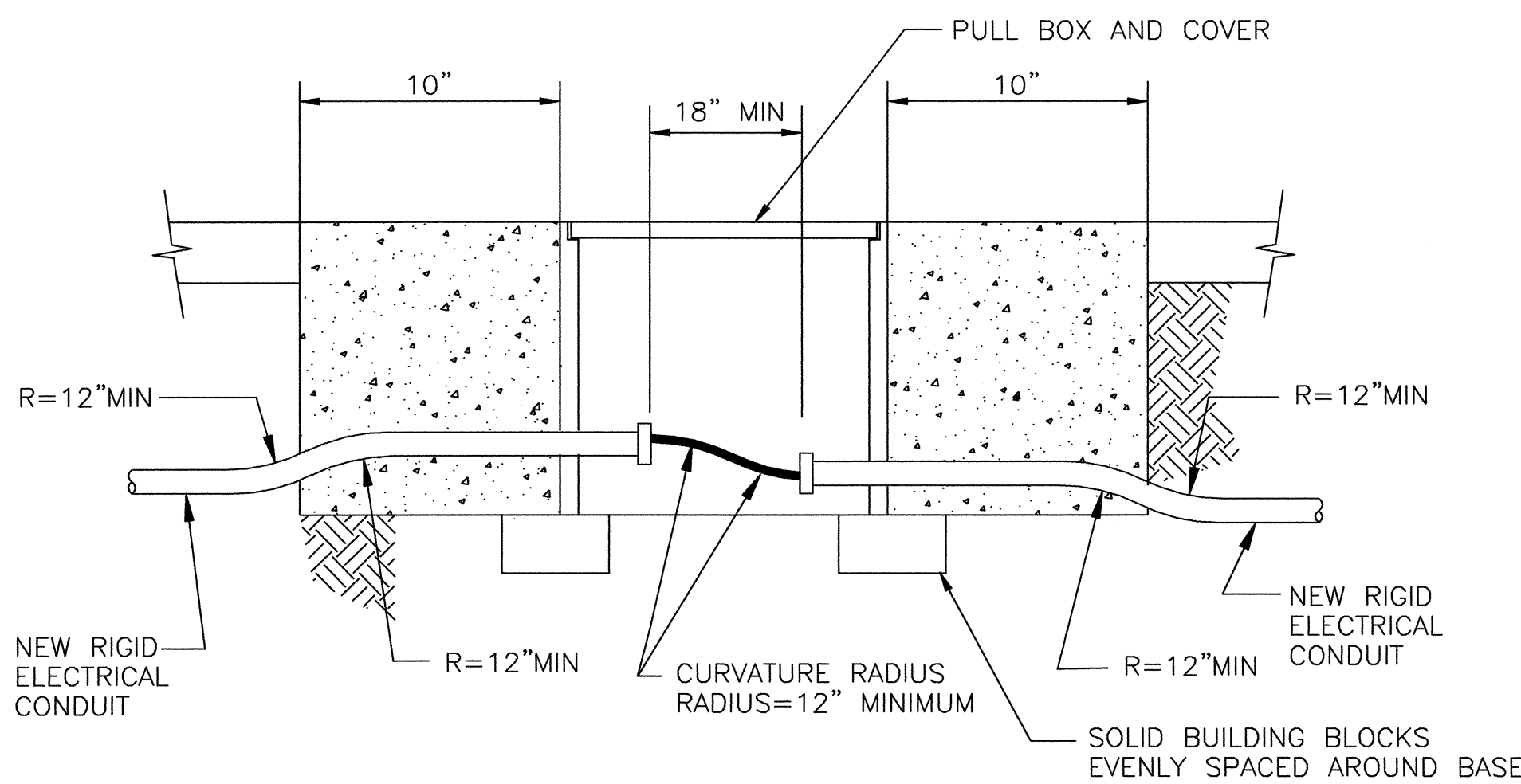
IN ASPHALT PAVEMENTS



IN CONCRETE PAVEMENTS

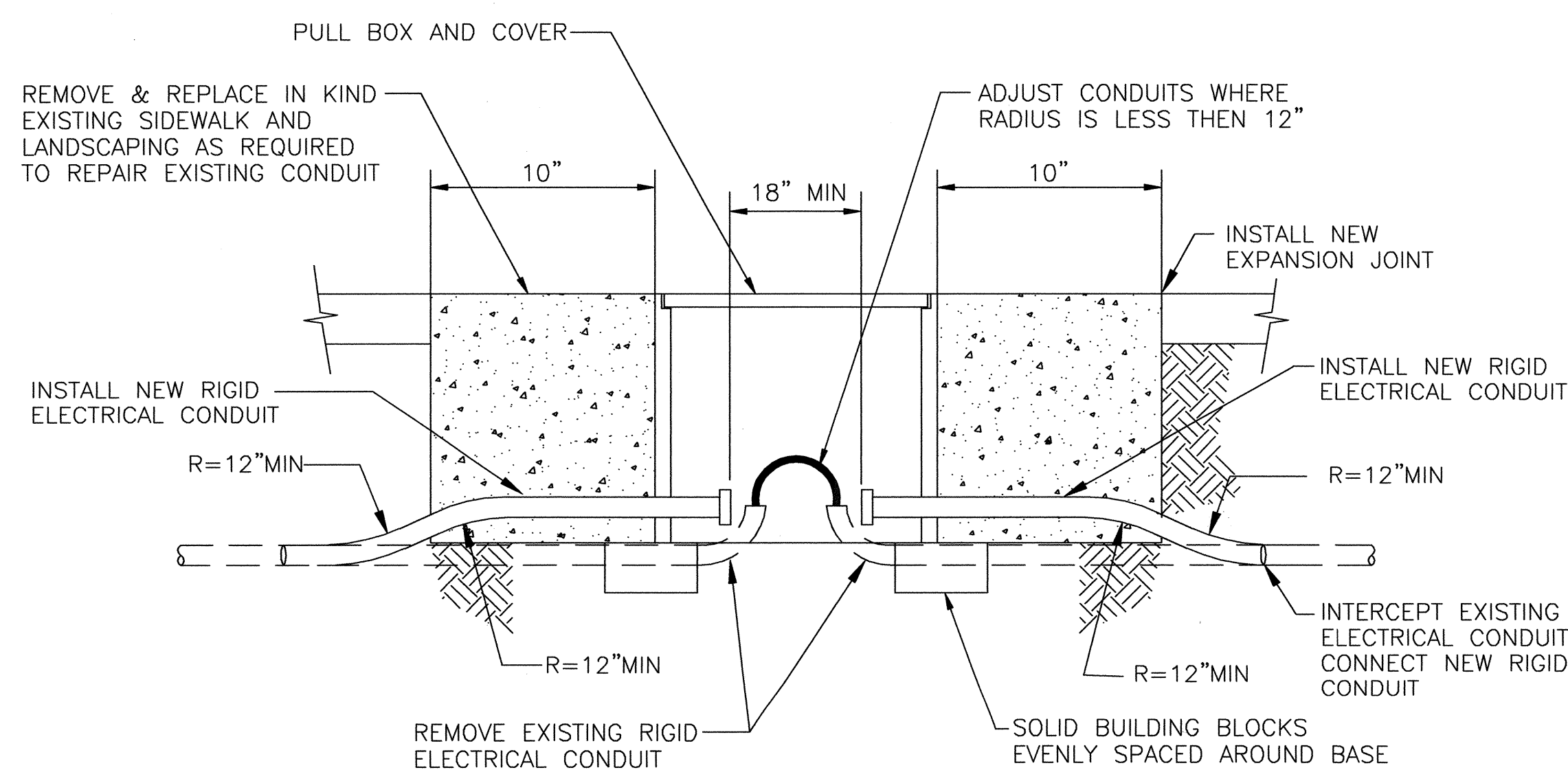
CONCRETE COLLAR DETAILS

NOTE: THE CONCRETE COLLAR FOR THE PULL BOXES WILL BE CONSIDERED INCIDENTAL TO THE PULL BOX BID ITEMS



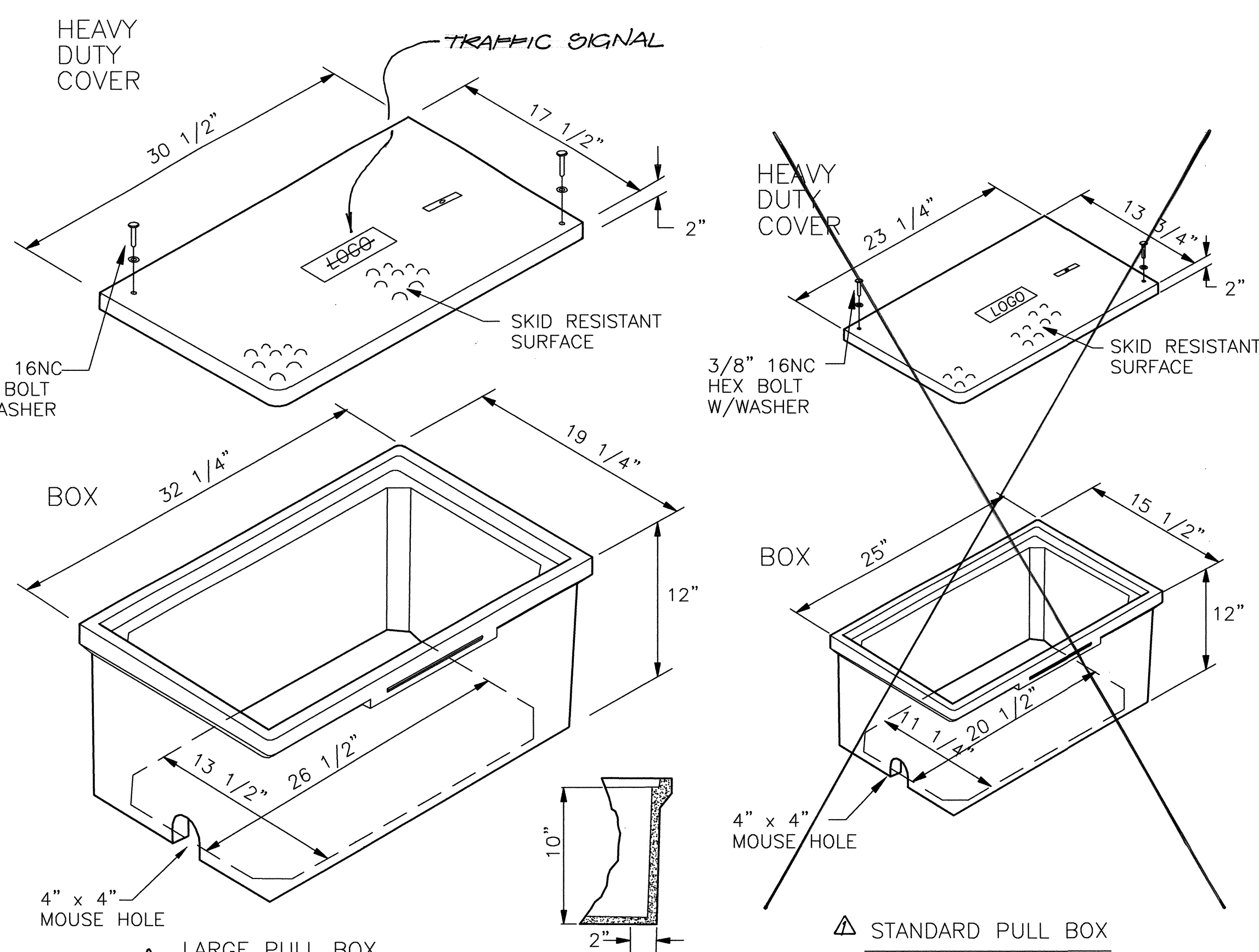
TRAFFIC SIGNAL PULL BOX (TYPICAL)

NEW CONDUIT INSTALLATION



TRAFFIC SIGNAL PULL BOX (TYPICAL)

RETROFIT INSTALLATION



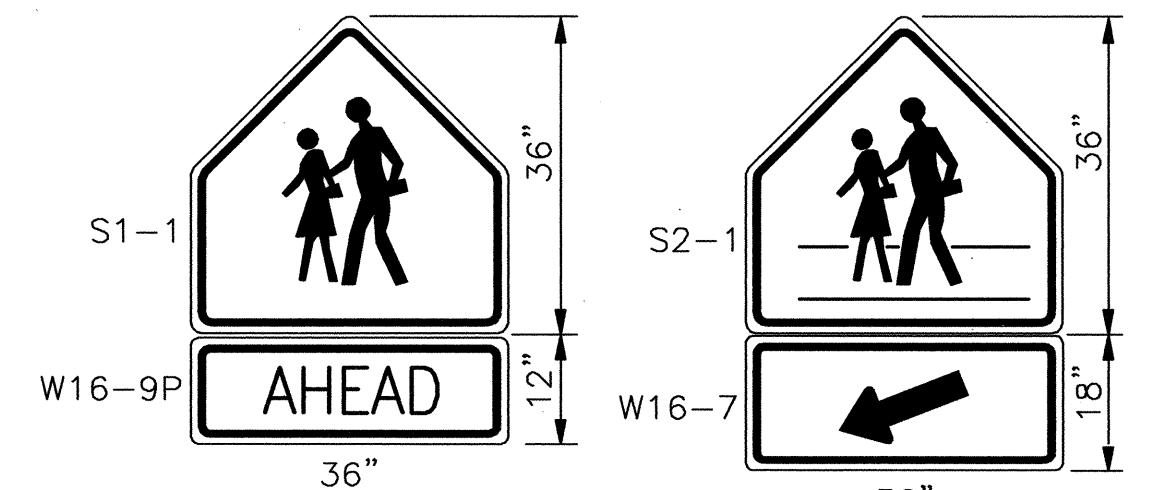
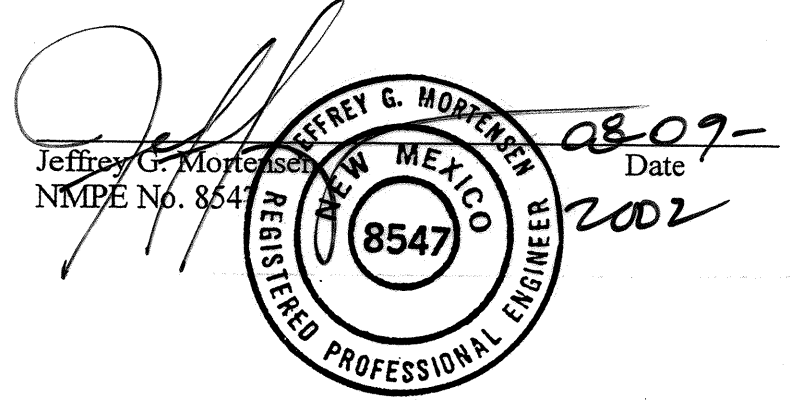
PULL BOX DETAILS

NOTES FOR HEAVY DUTY REINFORCED POLYMER MORTAR PULL BOX AND COVERS

1. MATERIAL TO BE AN AGGREGATE CONSISTING OF SAND AND GRAVEL BOUND TOGETHER WITH A POLYMER AND REINFORCED WITH HEAVY - WEAVE FIBERGLASS. THE MATERIAL MUST HAVE THE FOLLOWING MECHANICAL PROPERTIES: COMPRESSIVE STRENGTH - 11,000 PSI, TENSILE STRENGTH - 1,700 PSI, FLEXURAL STRENGTH - 7,500 PSI.
2. ALL PULL BOX COVERS SHALL BE HEAVY DUTY REINFORCED POLYMER MORTAR, HAVING A SERVICE LOAD OF 22,568 LBS OVER 10" SQUARE (225 PSI).
3. PULL BOX TYPE AND LOGO SHALL BE APPROVED BY THE PROJECT MANAGER.
4. THE DIMENSIONS OF THE PULL BOXES SHOWN ARE NOMINAL DIMENSIONS AND MAY VARY AS TO THE MANUFACTURER'S RECOMMENDATIONS. ALL DIMENSIONS SHALL BE VERIFIED BY THE PROJECT MANAGER.
5. ELECTRICAL PULL BOX (STANDARD) SHALL BE A HEAVY DUTY REINFORCED POLYMER MORTAR PULL BOX AND COVER MEASURING 13 3/4" x 23 1/4" x 2".

RECORD DRAWING

I, Jeffrey G. Mortensen, Registered Professional Engineer in the State of New Mexico, do hereby certify that this Record Information was obtained by me or under my supervision and represents the record conditions of this project, and is true and correct to the best of my knowledge and belief. All vertical and horizontal dimensions should be field verified prior to use on future projects.



COLORS

LEGEND: BLACK (NON-REFLECTIVE)

TOP PANEL: FLORESCENT YELLOW GREEN / VISUAL IMPACT (VIP)

BOTTOM PANEL: FLORESCENT YELLOW GREEN / VIP

OUTSIDE BORDER: SAME AS PANEL BACKGROUND

INSIDE BORDER: BLACK

SCHOOL SIGN DETAILS

RECORD DRAWING

**Jma** JEFF MORTENSEN & ASSOCIATES, INC.  
 5010-3 MIDWAY PARK BLVD. NE.  
 ALBUQUERQUE, NM 87109  
 ENGINEERS & SURVEYORS (505) 345-4250  
 FAX (505) 345-4254 E-MAIL: jma@jma-inc.com

2001.181.9

CITY OF ALBUQUERQUE  
 PUBLIC WORKS DEPARTMENT  
 ENGINEERING DEVELOPMENT GROUP

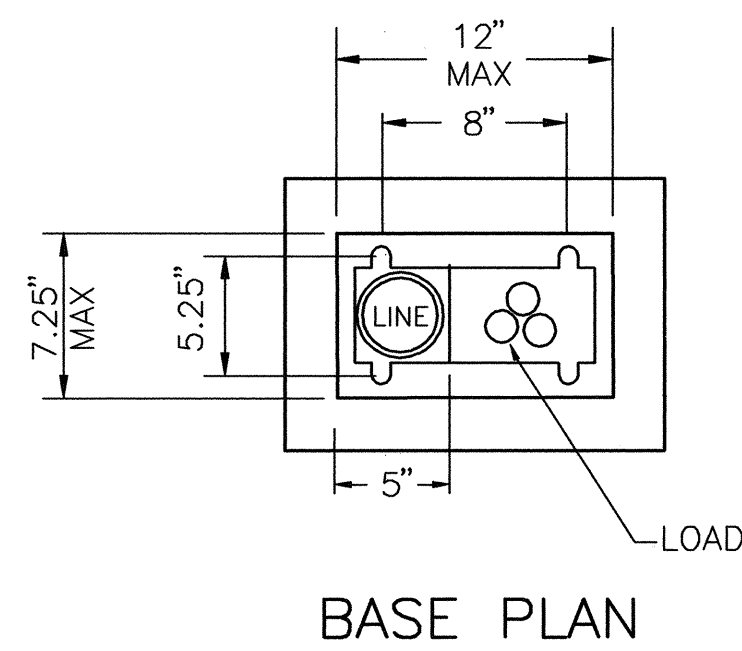
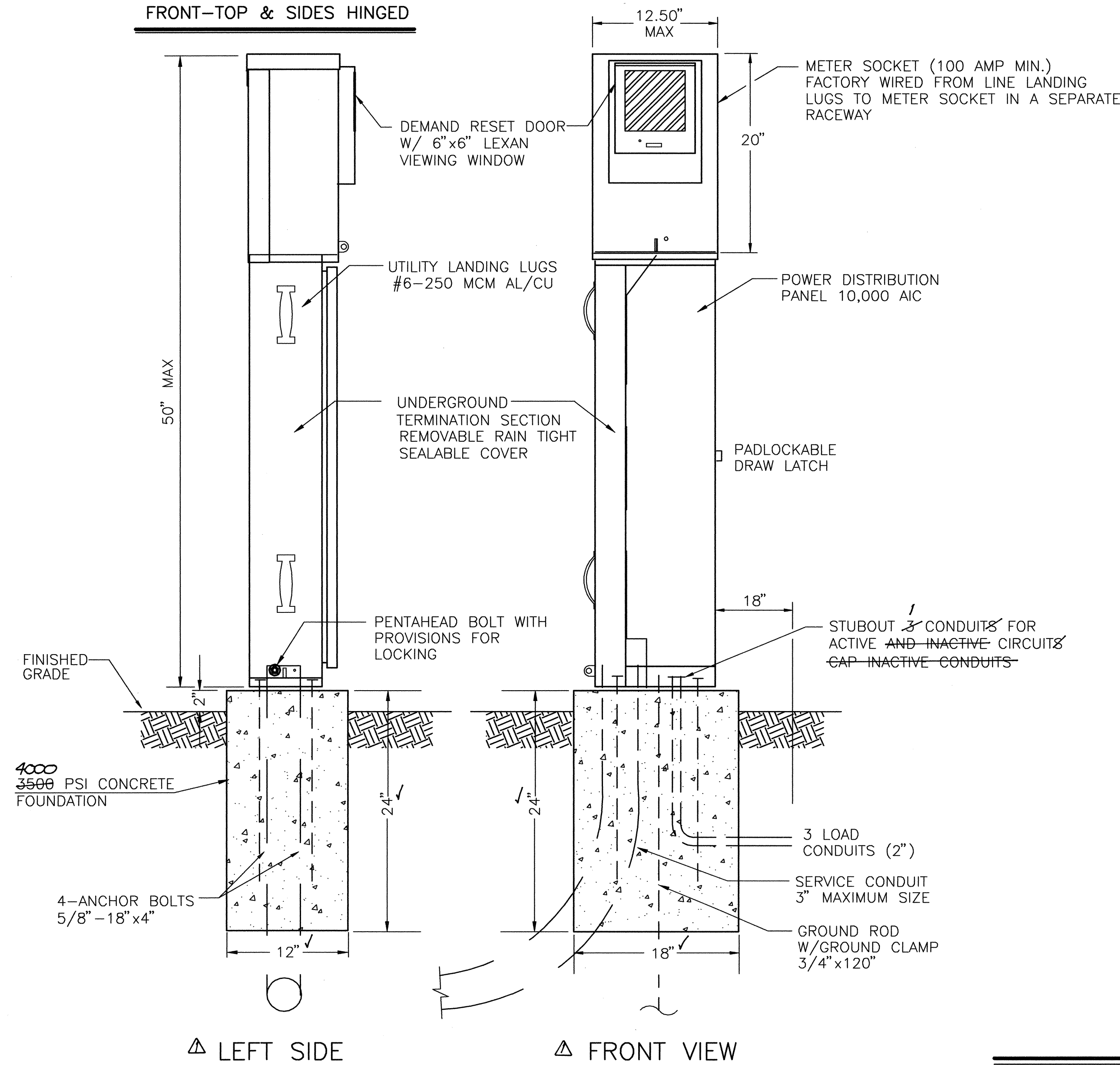
TITLE: SEVEN BAR ELEMENTARY SCHOOL  
 FLASHING SCHOOL BEACON  
 TRAFFIC SIGNAL PULL BOX AND SCHOOL SIGN DETAILS

DESIGN REVIEW COMMITTEE	CITY ENGINEER
JAN - 9 2002	MAY 10 2002
DESIGN REVIEW COMMITTEE	CITY ENGINEER

City Project No. 677681 Zone Map No. A-13 Sheet 11 of 14



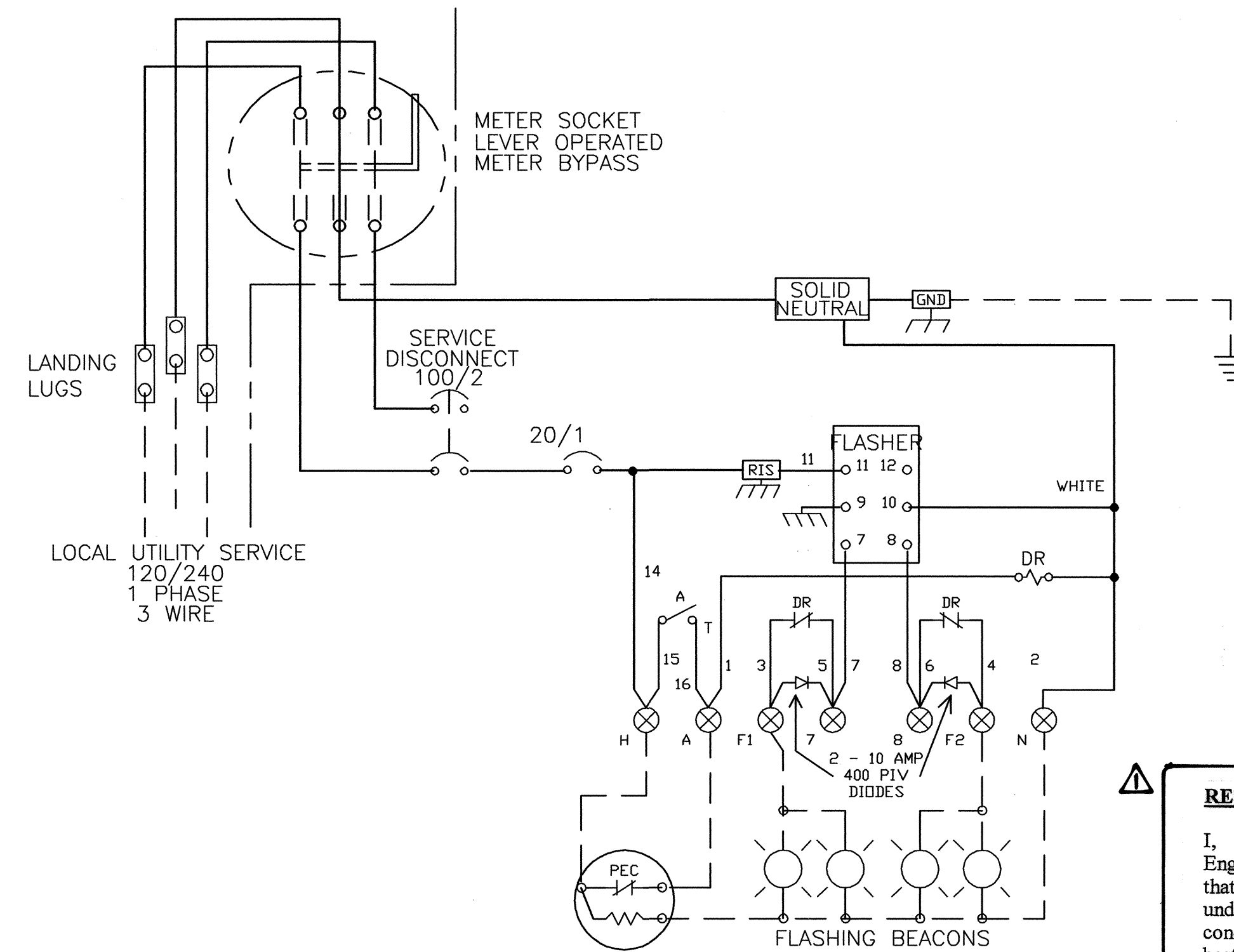
# METERING SECTION HOOD FRONT-TOP & SIDES HINGED



BASE PLAN

## METER PEDESTAL DETAILS

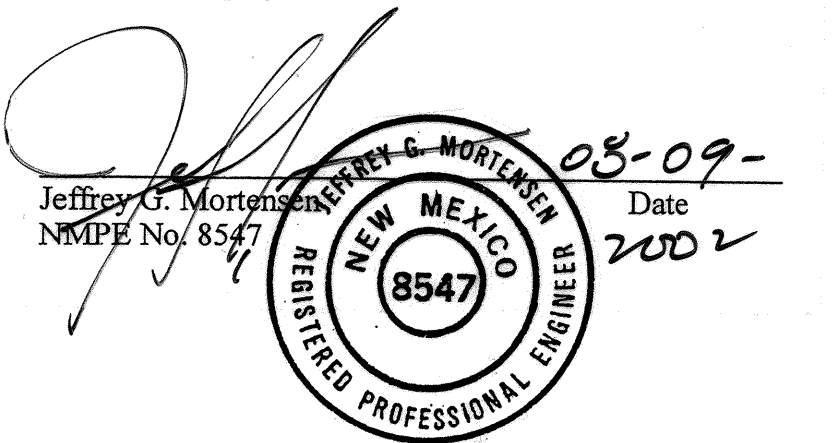
NO SCALE



SERVICE EQUIPMENT  
WIRING DIAGRAM "WB-M"

## RECORD DRAWING

I, Jeffrey G. Mortensen, Registered Professional Engineer in the State of New Mexico, do hereby certify that this Record Information was obtained by me or under my supervision and represents the record conditions of this project, and is true and correct to the best of my knowledge and belief. All vertical and horizontal dimensions should be field verified prior to use on future projects.



## CONSTRUCTION MATERIALS AND FINISH

<input type="checkbox"/>	12 GA HD GALVANIZED SHEET STEEL
<input type="checkbox"/>	POWDER COATED
<input checked="" type="checkbox"/>	14 GA #304D STAINLESS STEEL SHEET
<input checked="" type="checkbox"/>	POWDER COATED COLOR:
<input type="checkbox"/>	NATURAL
<input type="checkbox"/>	0.125" ALUMINUM SHEET
<input type="checkbox"/>	POWDER COATED COLOR:
<input type="checkbox"/>	ANODIZED

## POWDER COAT COLORS

<input checked="" type="checkbox"/>	WHITE	<input type="checkbox"/>	RANCH GREEN
<input type="checkbox"/>	MINT GREEN	<input type="checkbox"/>	OTHER
<input type="checkbox"/>	CAMEL		

## METER PEDESTAL CONSTRUCTION NOTES

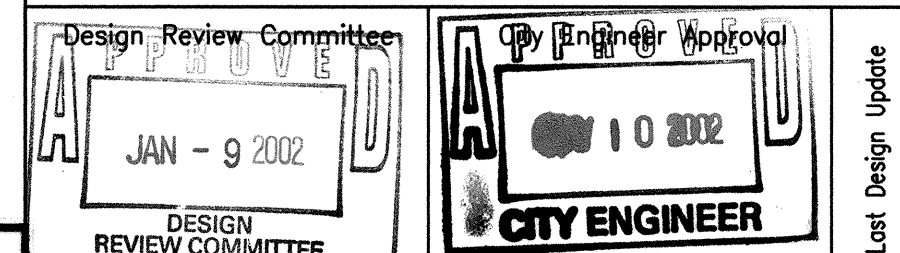
- METER PEDESTAL SHALL BE UL LISTED "INDUSTRIAL CONTROL PANEL" PER UL 508.
- METER PEDESTAL SHALL MEET THE ELECTRIC UTILITY SERVICE EQUIPMENT REQUIREMENTS COMMITTEE (EUSERC) GUIDELINES.
- METER PEDESTAL CONSTRUCTION SHALL BE NEMA 3R AND 12, RAIN TIGHT AND DUST TIGHT. ELECTRICALLY WELDED AND REINFORCED WHERE REQUIRED.
- ALL NUTS, BOLTS, SCREWS AND HINGES SHALL BE STAINLESS STEEL.
- NUTS, BOLTS, AND SCREWS SHALL NOT BE VISIBLE FROM OUTSIDE OF METER PEDESTAL.
- PHENOLIC NAME PLATES SHALL BE PROVIDED AS REQUIRED.
- CIRCUIT BREAKERS SHALL BE CABLE IN-CABLE OUT WITH LINE ON TOP & LOAD ON THE BOTTOM. HANDLE POSITION UP="ON", MIDDLE="TRIPPED", DOWN="OFF".
- A PLASTIC COVERED WIRING DIAGRAM SHALL BE ATTACHED TO THE INSIDE OF THE FRONT DOOR.
- METER PEDESTAL SHALL BE FACTORY WIRED AND CONFORM TO REQUIRED NEMA STANDARDS.
- ALL POWDER COATED METER PEDESTALS SHALL HAVE A CORROSION RESISTANT COATING WHICH INCLUDES A FIVE STEP DIP TANK METAL PREPARATION PROCESS:
  - ALKALINE CLEANER 160° F.
  - CLEAR WATER RINSE.
  - IRON PHOSPHATE APPLICATION 150°.
  - CLEAR WATER RINSE.
  - INHIBITIVE RINSE TO SEAL PHOSPHATED SURFACES 120°.
 FINISHED WITH AN ELECTROSTATICALLY APPLIED DRY POLYESTER POWDER COATING THEN BAKED @ 380° TO CURE.
- CONCRETE FOUNDATIONS INCLUDING EXCAVATION, BACKFILL COMPACTED @ 95% ASTM D-1557, CONCRETE, AND ANCHOR BOLTS, COMPLETE-IN PLACE, SHALL BE CONSIDERED INCIDENTAL TO THE METER PEDESTAL.

RECORD DRAWING

**jma**  
2001.181.9

CITY OF ALBUQUERQUE  
PUBLIC WORKS DEPARTMENT  
ENGINEERING DEVELOPMENT GROUP

TITLE: SEVEN BAR ELEMENTARY SCHOOL  
FLASHING SCHOOL BEACON  
METER PEDESTAL DETAILS



City Project No. 677681 Zone Map No. A-13 Sheet 12 of 14

AS BUILT INFORMATION				BENCH MARKS				SURVEY INFORMATION				ENGINEER'S SEAL			
CONTRACTOR	DATE	BY	NO.	USGS BRASS TABLE STAMPED "BLACK-2 1977" SET FLUSH WITH GROUND, NEAR SOUTHWEST CORNER OF THE INTERSECTION OF GOLF COURSE ROAD N.W. AND MCMAHON BOULEVARD N.W.	DATE	BY	NO.	NO.	DATE	BY	NO.	NO.	DATE	BY	NO.
De Mar Electric, Inc.	08/02	J.M.A.	99184	ELEVATION = 5213.93 FEET (M.S.L.D. - 1929)	10-2000	JMA	99184								
INSPECTOR	DATE	BY	NO.												
MDG	08/02	J.M.A.													
FIELD VERIFICATION	DATE	BY	NO.												
MDG	08/02	J.M.A.													
CORRECTED BY	DATE	BY	NO.												
J.M.A.	08/02														
RECORDED BY	DATE	BY	NO.												







