

ISABEL ROAD

CITY OF RIO RANCHO SANDOVAL COUNTY, NEW MEXICO

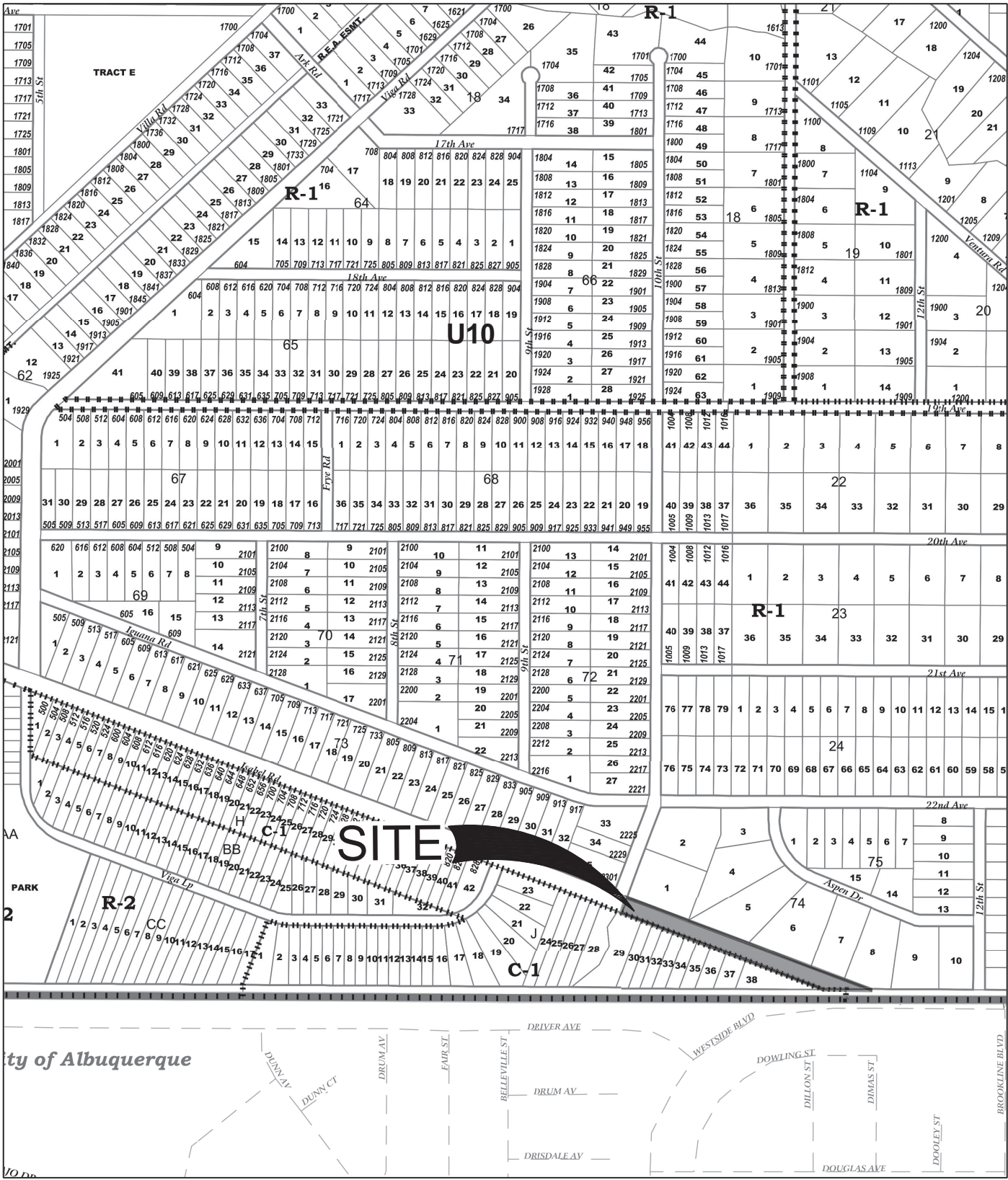
GRADING, WATER, SANITARY SEWER AND PAVING PLANS

DEVELOPER: FNA LLC DATE: 04/25/2023

CITY OF RIO RANCHO: David Serrano
DEPARTMENT OF DEVELOPMENT SERVICES
ENGINEERING DIVISION DATE: 2/1/2023

CITY OF ALBUQUERQUE: ALBUQUERQUE CITY ENGINEER, DEVELOPMENT SERVICES, PLANNING DEPARTMENT

SHEET LIST TABLE	
SHEET NUMBER	SHEET TITLE
GENERAL	
G-100	COVER
G-101	GENERAL NOTES
CIVIL	
C-100	ISABEL ROAD PLAN AND PROFILE
C-101	BLACK ARROYO ROAD PLAN
C-102	ISABEL ROAD UTILITY PLAN AND PROFILE
C-103	ISABEL ROAD STRIPING PLAN
DETAILS	
C-500	CORR STD DRAWINGS



VICINITY MAP



City of Rio Rancho

NO.	DESCRIPTION	DATE	BY
7			
6			
5			
4			
3			
2			
1			



RESPEC

5971 JEFFERSON STREET SUITE 101
ALBUQUERQUE, NEW MEXICO 87109
WATER & NATURAL RESOURCES
WWW.RESPEC.COM PHONE: (505)253-9718

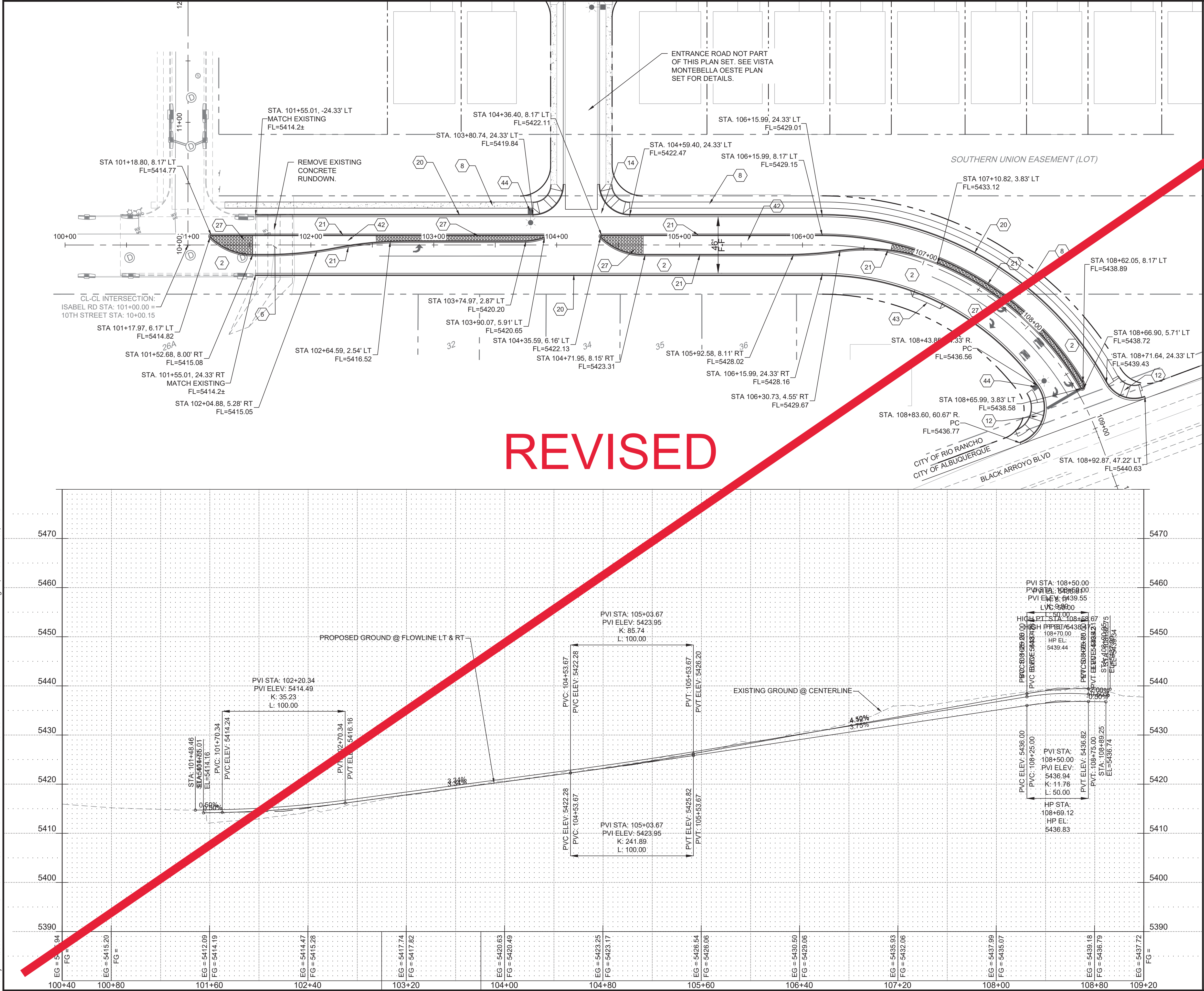
ISABEL ROAD

COVER



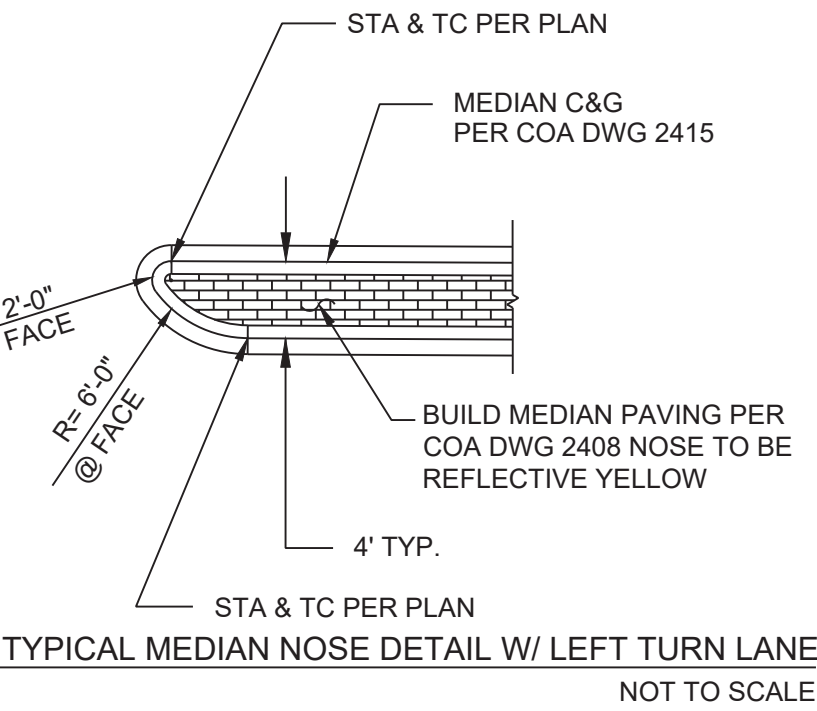
SHELDON E. GREER
NEW MEXICO
1715A
Professional Engineer

PROJECT NO.	03597
DESIGNED BY:	RESPEC
DRAWN BY:	RESPEC
CHECKED BY:	SEG
DATE:	12/2022
DPI CHK:	
SHEET:	G-100



PAVING CONSTRUCTION NOTES

I.D.#	DESCRIPTION
2	BUILD COLLECTOR ASPHALT PAVEMENT PER TYPICAL SECTION CORR STD DWG TS-02 & PS-01 AS AMENDED ON SHEET C-501
6	REMOVE AND DISPOSE EXISTING ASPHALT AND ASPHALT CURB, CONTRACTOR TO FIELD VERIFY
8	BUILD 5' PCC SIDEWALK, PER CORR STD DRAWING DW-01
12	BUILD PCC WHEELCHAIR RAMP, PER CORR STD DRAWING ADA-005 (NMDOT STD DWG 608-001-4)
17	BUILD PCC VALLEY GUTTER, PER CORR STD DRAWING VG-01
20	BUILD PCC STD. 8" CURB AND GUTTER, PER CORR STD DRAWING CG-01
21	BUILD PCC MEDIAN CURB AND GUTTER, PER NM APWA STD. DTL. 2415
27	BUILD TEXTURED CONCRETE MEDIAN PAVEMENT, PER NM APWA STD. DTL. 2408
42	MEDIAN LANDSCAPING PER CITY OF RIO RANCHO DRAWING NO. TS-02
43	BUILD PCC DRIVEPAD PER CITY OF RIO RANCHO STANDARD DRAWING DW-02
44	INSTALL STREET LIGHT PER CITY OF RIO RANCHO DPM SPECIFICATION 3.6.5.1 LIGHTING

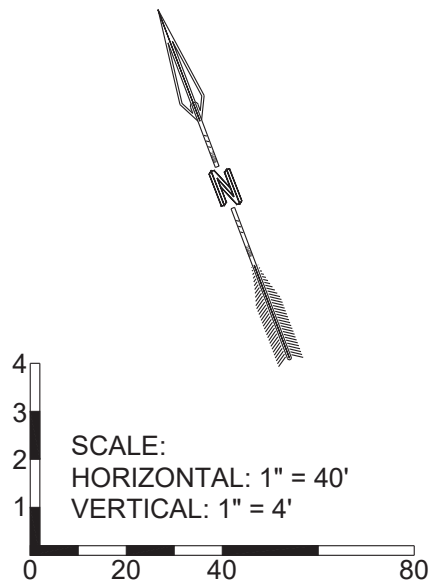


GENERAL NOTES

- ALL CURB RETURNS HAVE 25' RADIUS AT THEORETICAL FACE OF CURB (FLOWLINE), UNLESS OTHER-WISE INDICATED
- ALL STATIONS AND OFFSETS ARE TO THEORETICAL FACE OF CURB (FLOWLINE), UNLESS OTHER-WISE INDICATED
- ALL CURB LAYOUT DATA IS AT THEORETICAL FACE OF CURB (FLOWLINE), UNLESS OTHERWISE INDICATED. CURB LAYOUT THAT IS A DIRECT OFFSET OF PLATTED BASELINE IS NOT SHOWN.

LEGEND

TC	TOP OF STANDARD TYPE CURB
FL	FLOW LINE
TRC	TOP OF ROLL TYPE CURB
39.85'	TOP OF ROLL TYPE CURB ELEVATION AT WHEEL CHAIR RAMP TRANSITION.
• 39.85	FLOWLINE ELEVATION AT INTERSECTION OF PROJECTED FACE OF CURB.
////	MATCHLINE OF NEW TO EXISTING ASPHALT PAVEMENT.
	TRANSITION CROWN PER NM APWA STD DWG 2401



City of Rio Rancho

REVISIONS (OR CHANGE NOTICES)	
NO.	DESCRIPTION
7	
6	
5	
4	
3	
2	
1	

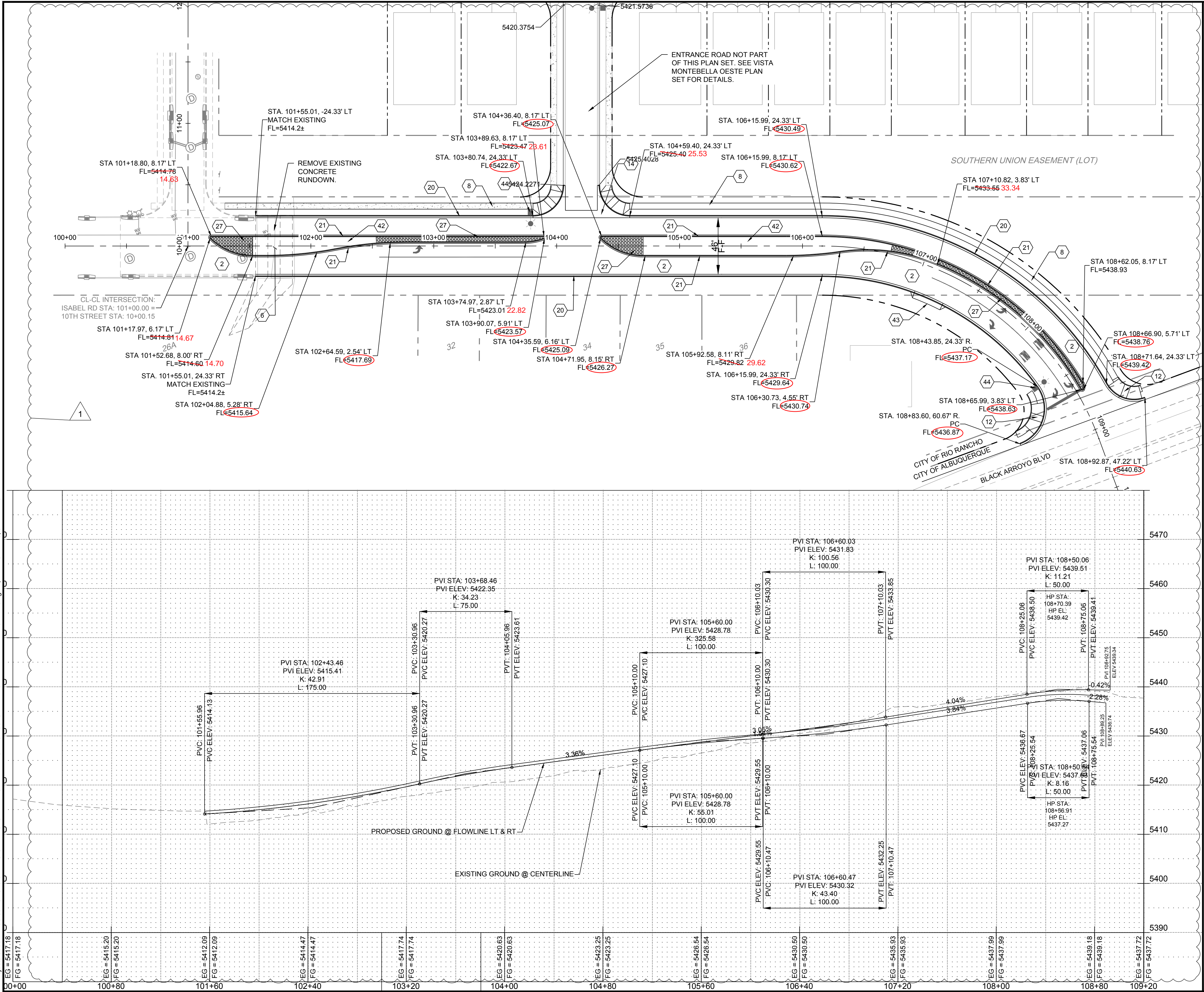
RESPEC

7770 JEFFERSON STREET, SUITE 200
ALBUQUERQUE, NEW MEXICO 87109
WATER & NATURAL RESOURCES
WWW.RESPEC.COM PHONE: (505)253-9718

ISABEL ROAD

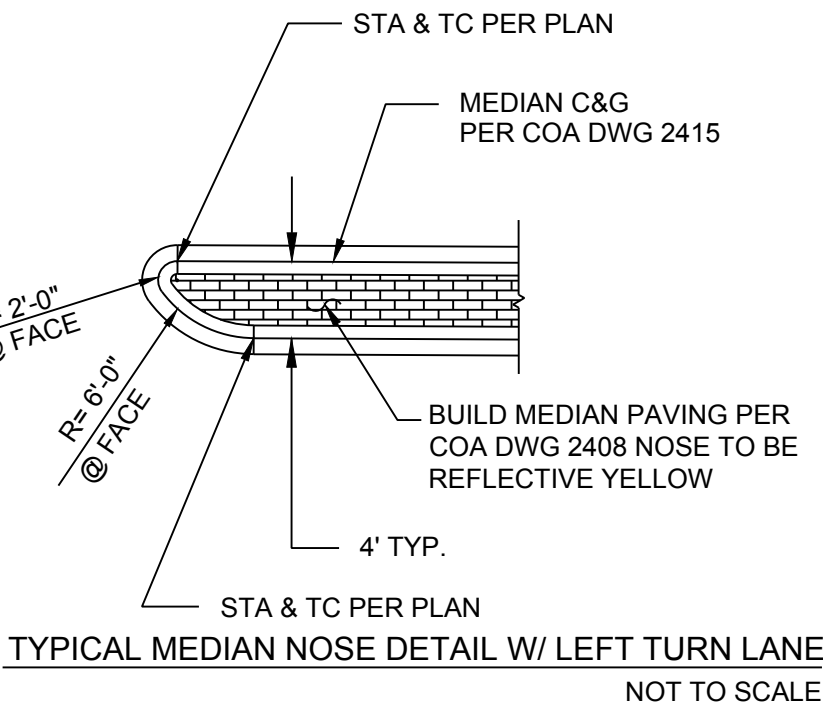
ISABEL ROAD PLAN AND PROFILE

PROJECT NO.	03597
DESIGNED BY:	RESPEC
DRAWN BY:	RESPEC
CHECKED BY:	SEG
DATE:	12/2022
DPI CHK:	
SHEET:	C-100



PAVING CONSTRUCTION NOTES

I.D.#	DESCRIPTION
2	BUILD COLLECTOR ASPHALT PAVING, PER TYPICAL SECTION CORR STD DRAWING TS-02 & PS-01 AS AMENDED ON SHEET C-501
6	REMOVE AND DISPOSE EXISTING ASPHALT AND ASPHALT CURB, CONTRACTOR TO FIELD VERIFY
8	BUILD 5" PCC SIDEWALK, PER CORR STD DRAWING DW-01
12	BUILD PCC WHEELCHAIR RAMP, PER CORR STD DRAWING ADA-005 (NMDOT STD DWG 608-001-4)
14	BUILD PCC VALLEY GUTTER, PER CORR STD DRAWING VG-01
20	BUILD PCC STD. 8" CURB AND GUTTER, PER CORR STD DRAWING CG-01
21	BUILD PCC MEDIAN CURB AND GUTTER, PER NM APWA STD. DTL. 2415
27	BUILD TEXTURED CONCRETE MEDIAN PAVEMENT, PER NM APWA STD. DTL. 2408
42	MEDIAN LANDSCAPING PER CITY OF RIO RANCHO DRAWING NO. TS-02.
43	BUILD PCC DRIVEPAD PER CITY OF RIO RANCHO STANDARD DRAWING DW-02.
44	INSTALL STREET LIGHT PER CITY OF RIO RANCHO DPM SPECIFICATION 3.6.5.1 LIGHTING

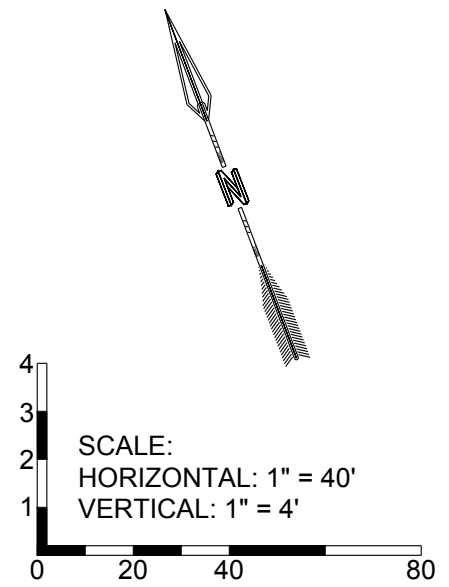


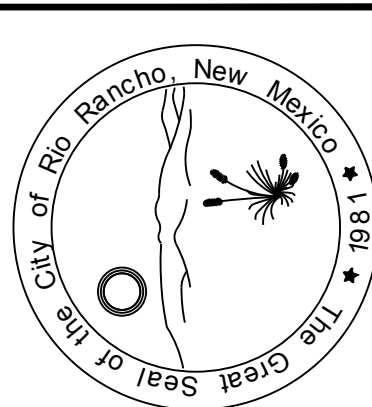
GENERAL NOTES

- ALL CURB RETURNS HAVE 25' RADIUS AT THEORETICAL FACE OF CURB (FLOWLINE), UNLESS OTHER-WISE INDICATED
- ALL STATIONS AND OFFSETS ARE TO THEORETICAL FACE OF CURB (FLOWLINE), UNLESS OTHER-WISE INDICATED
- ALL CURB LAYOUT DATA IS AT THEORETICAL FACE OF CURB (FLOWLINE), UNLESS OTHERWISE INDICATED. CURB LAYOUT THAT IS A DIRECT OFFSET OF PLATTED BASELINE IS NOT SHOWN.

LEGEND


TC	TOP OF STANDARD TYPE CURB
FL	FLOW LINE
TRC	TOP OF ROLL TYPE CURB
39.85'	TOP OF ROLL TYPE CURB ELEVATION AT WHEEL CHAIR RAMP TRANSITION.
• 39.85	FLOWLINE ELEVATION AT INTERSECTION OF PROJECTED FACE OF CURB.
////	MATCHLINE OF NEW TO EXISTING ASPHALT PAVEMENT.
▨	TRANSITION CROWN PER NM APWA STD DWG 2401





City of Rio Rancho


NO.	DESCRIPTION	DATE	BY	SEG
1	REVISE ROAD & GRADES OVER NM GAS LINES	03/01/23		



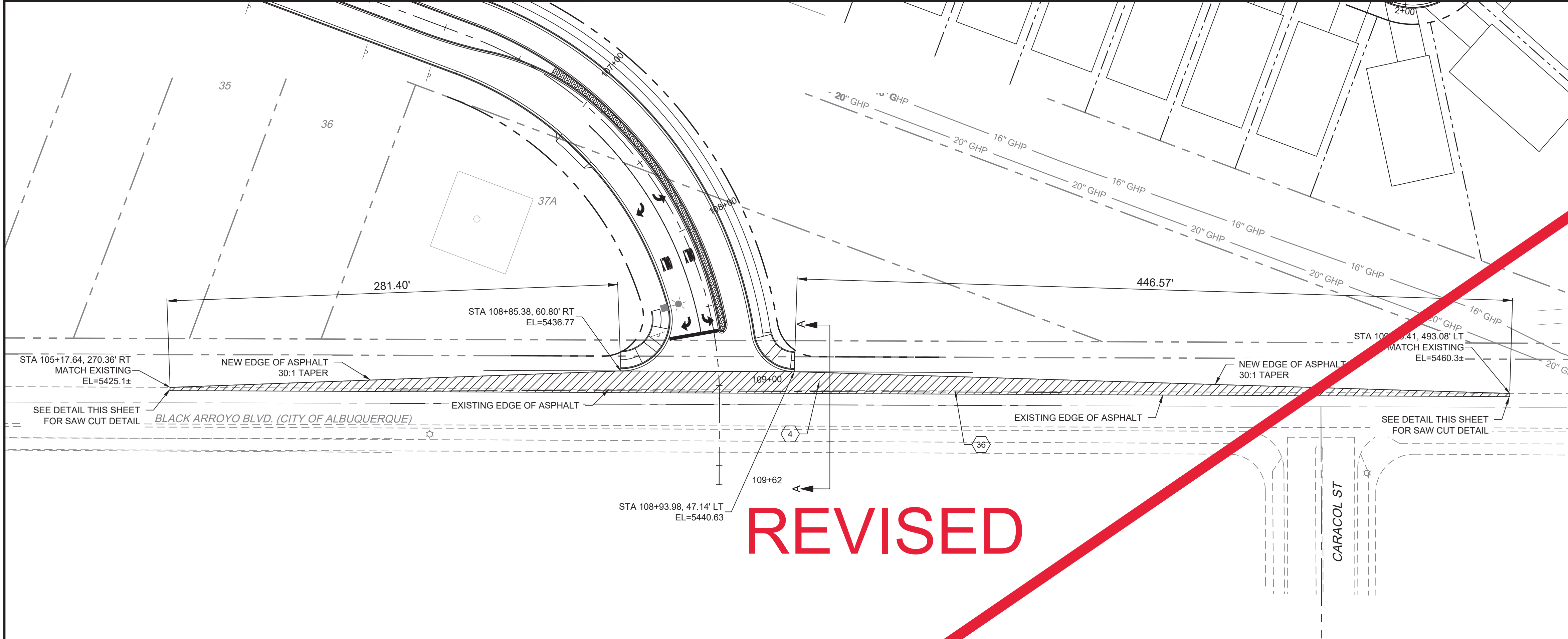
7770 JEFFERSON STREET NE, SUITE 200
ALBUQUERQUE, NEW MEXICO 87119
WATER & NATURAL RESOURCES
WWW.RESPEC.COM PHONE: (505) 253-9718

ISABEL ROAD

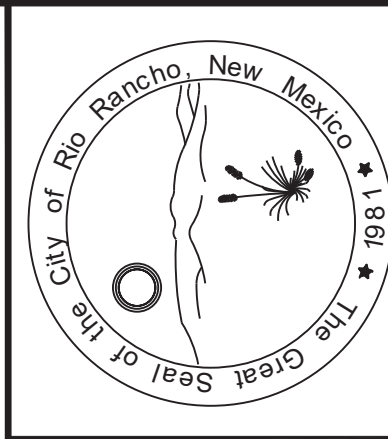
ISABEL ROAD PLAN AND PROFILE



PROJECT NO. 03597
DESIGNED BY: RESPEC
DRAWN BY: RESPEC
CHECKED BY: SEG
DATE: 04/2023
DPI CHK:
SHEET: C-100R



PAVING CONSTRUCTION NOTES	
I.D.#	DESCRIPTION
4	BUILD COLLECTOR PAVING PER CITY OF ALBUQUERQUE STANDARD DETAIL 2407 AS AMENDED. SEE DETAIL THIS SHEET.
36	NEATLY SAWCUT END OF EXISTING PAVEMENT TO ENSURE CLEAN CONNECTION OF NEW PAVEMENT



City of Rio Rancho

REVISIONS (OR CHANGE NOTICES)	
NO.	DESCRIPTION
7	
6	
5	
4	
3	
2	
1	



RESPEC
5971 JEFFERSON STREET SUITE 101
ALBUQUERQUE, NEW MEXICO 87109
TEL: (505) 253-9718
WWW.RESPEC.COM PHONE: (505) 253-9718

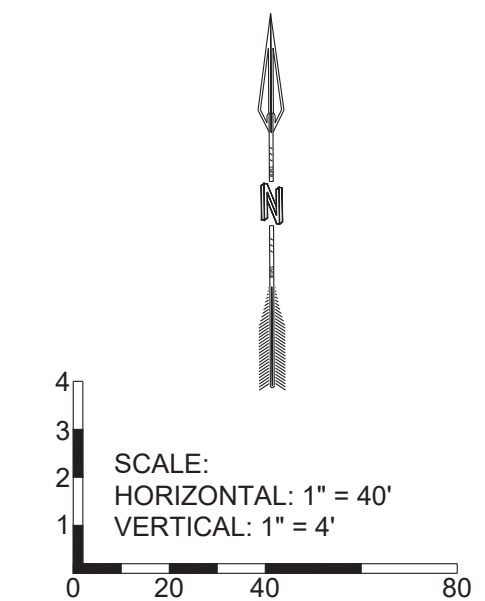
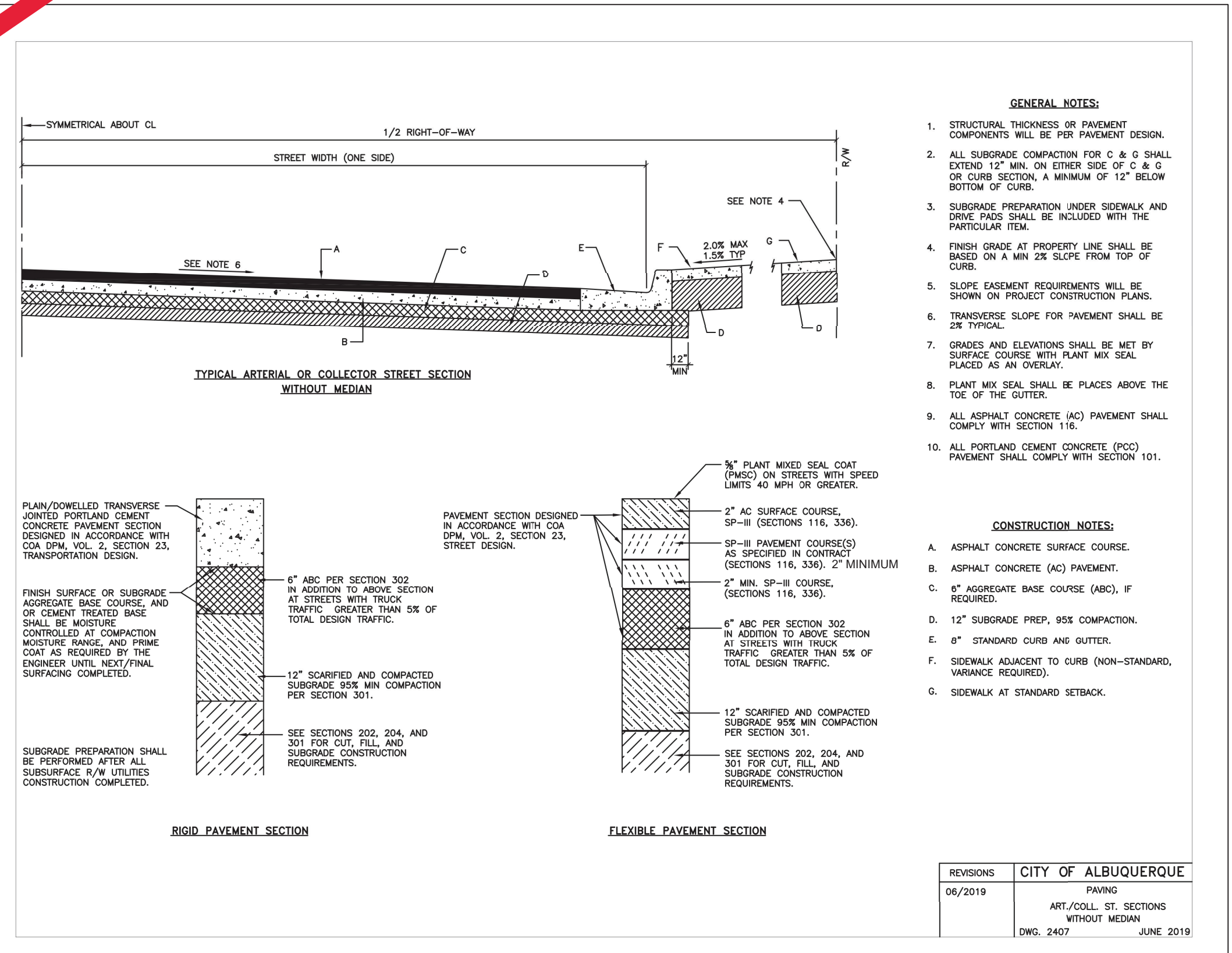
ISABEL ROAD

BLACK ARROYO ROAD PLAN

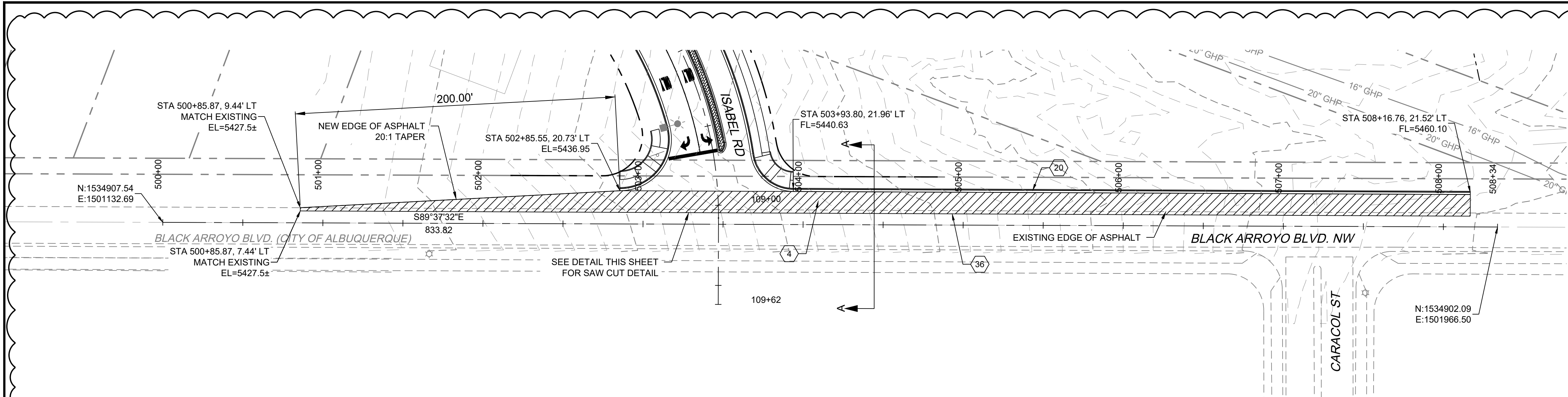


SHELDON E. GREER
NEW MEXICO
1715A
PROFESSIONAL ENGINEER

PROJECT NO.	03597
DESIGNED BY:	RESPEC
DRAWN BY:	RESPEC
CHECKED BY:	SEG
DATE:	12/2022
DPI CHK:	
SHEET:	C-101



N:\Projects\03597 Anderson Unit 103, DWG\SHEET\ISABEL ROAD PLAN SET-C-101 BLACK ARROYO ROAD PLAN.dwg Tue, 6/27/23 - 0942, JAMIE VIGIL



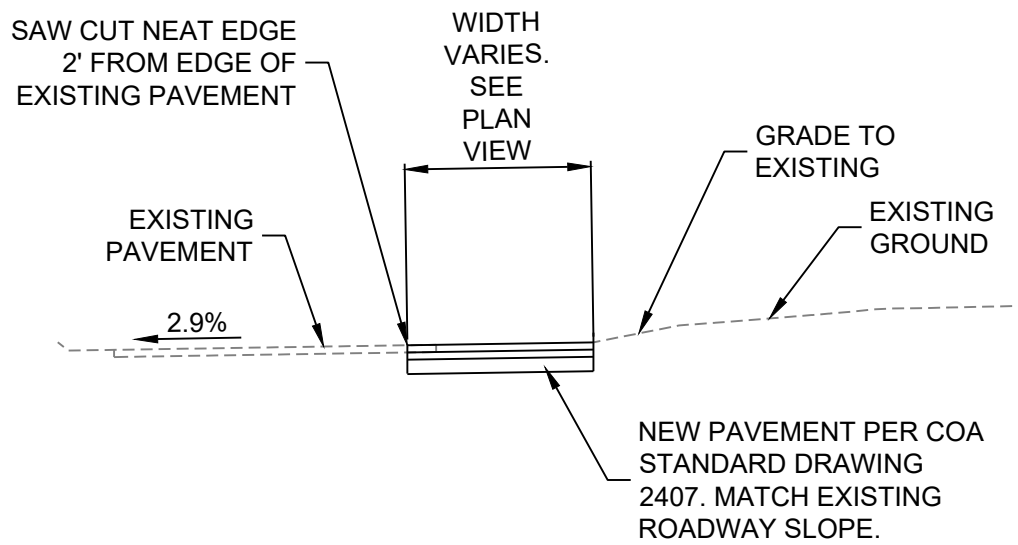
PAVING CONSTRUCTION NOTES	
I.D.#	DESCRIPTION
4	BUILD COLLECTOR PAVING PER CITY OF ALBUQUERQUE STANDARD DETAIL 2407 AS AMENDED. SEE DETAIL THIS SHEET.
20	BUILD PCC STANDARD CURB AND GUTTER PER CITY OF ALBUQUERQUE STANDARD DETAIL 2415
36	NEATLY SAWCUT END OF EXISTING PAVEMENT TO ENSURE CLEAN CONNECTION OF NEW PAVEMENT

GENERAL NOTES

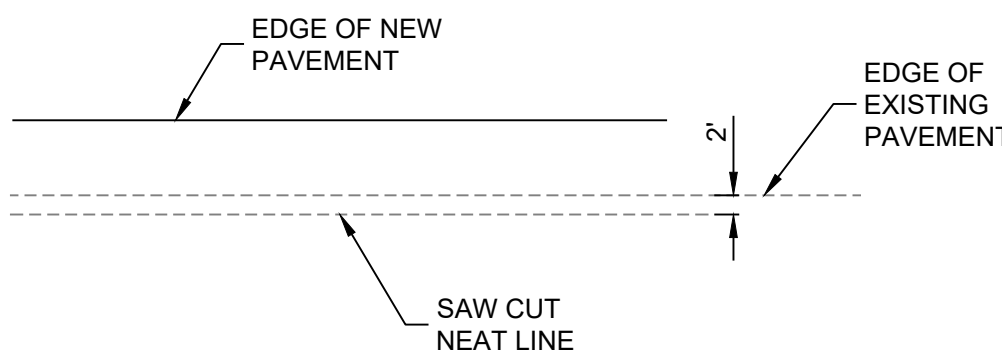
- ALL CURB RETURNS HAVE 25' RADIUS AT THEORETICAL FACE OF CURB (FLOWLINE), UNLESS OTHERWISE INDICATED
- ALL STATIONS AND OFFSETS ARE TO THEORETICAL FACE OF CURB (FLOWLINE), UNLESS OTHERWISE INDICATED
- ALL CURB LAYOUT DATA IS AT THEORETICAL FACE OF CURB (FLOWLINE), UNLESS OTHERWISE INDICATED. CURB LAYOUT THAT IS A DIRECT OFFSET OF PLATTED BASELINE IS NOT SHOWN.

LEGEND

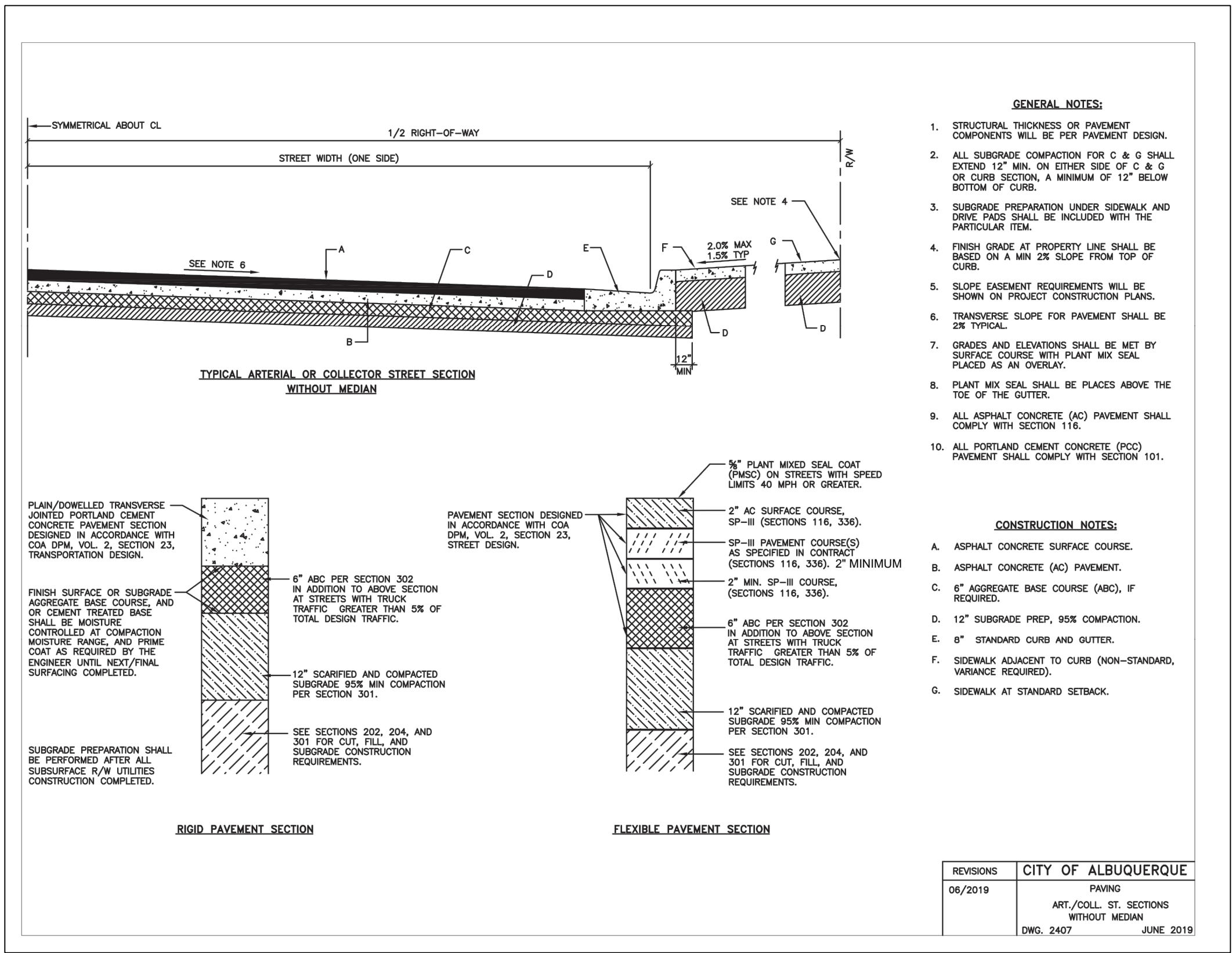
- EL TOP OF ASPHALT
- FL FLOW LINE
- NEW ASPHALT PAVEMENT



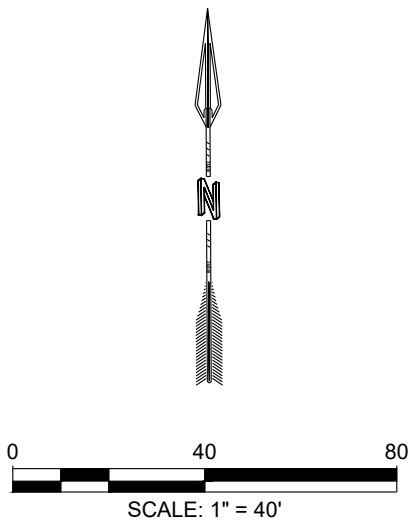
BLACK ARROYO BLVD TYPICAL SECTION A-A
NTS



SAW CUT AND TACK ON DETAIL
NTS



REVISIONS	
06/2019	CITY OF ALBUQUERQUE PAVING ART./COLL. ST. SECTIONS WITHOUT MEDIAN DWG. 2407 JUNE 2019



PROJECT NO.	03597
DESIGNED BY:	RESPEC
DRAWN BY:	RESPEC
CHECKED BY:	SEG
DATE:	06/2023
DPI CHK:	
SHEET:	C-101



5971 JEFFERSON STREET SUITE 101
ALBUQUERQUE, NEW MEXICO 87109
WATER & NATURAL RESOURCES
WWW.RESPEC.COM PHONE: (505)253-9718

ISABEL ROAD

BLACK ARROYO
ROAD PLAN

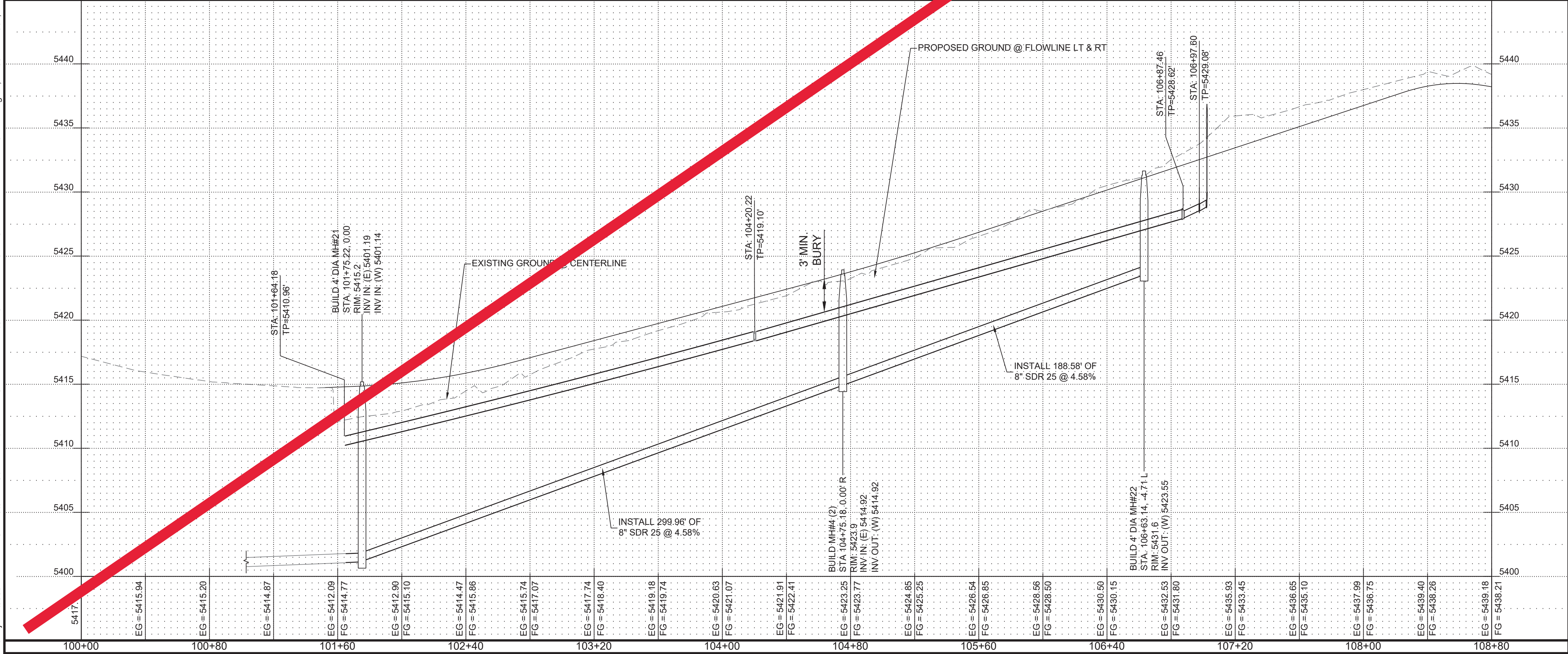
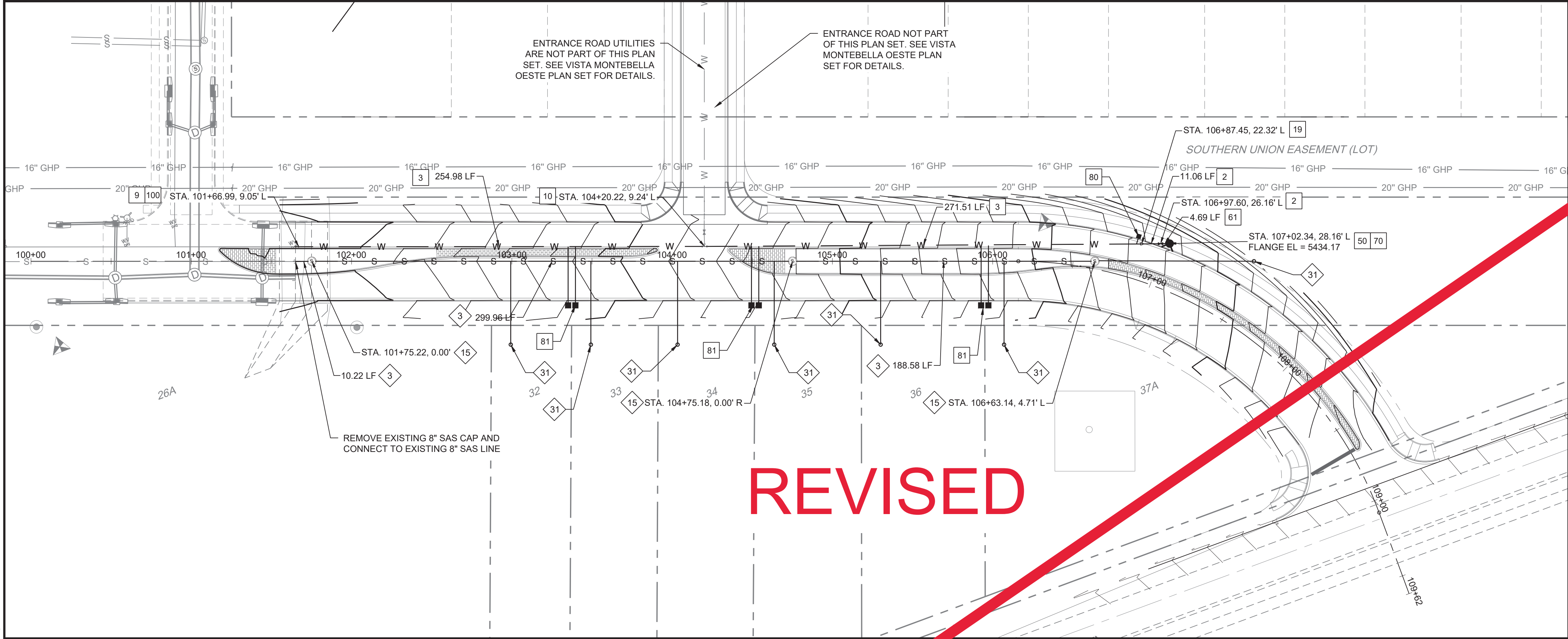
City of Rio Rancho

REVISIONS (OR CHANGE NOTICES)

NO. DESCRIPTION DATE BY

1 REVISION TO BLACK ARROYO ROAD SECTION 6/1/23

JDV



N:\Projects\03597 Anderson Unit 103, DWG\SHEET\ISABEL ROAD PLAN SET\C-102 ISABEL ROAD UTILITY PLAN AND PROFILE.dwg Fri, 12/09/22 - 1804, SID GARISS

SEWER CONSTRUCTION NOTES	
I.D.#	DESCRIPTION
3	INSTALL 8" SEWER PIPE PER STANDARD SPECIFICATION SECTION 901
19	INSTALL 4" DIAMETER MANHOLE PER CORR STD. DWG. W-05
31	INSTALL 6" SEWER SERVICE PER CORR STD. DETAIL

WATER CONSTRUCTION NOTES

I.D.#	DESCRIPTION
2	INSTALL 6" WATERLINE PER STD. SPEC. SEC. 801
3	INSTALL 8" WATERLINE PER STD. SPEC. SEC. 801
9	CONNECT NEW WATERLINE TO EXISTING WATERLINE (NON-PRESSURE CONNECTION)
10	INSTALL 8" TEE
12	INSTALL 6" 45° BEND
15	INSTALL 8" CAP
19	INSTALL 8" X 6" REDUCER
50	"MEG A LUG" ALL FITTINGS AND JOINTS FROM TEE TO FIRE HYDRANT
61	INSTALL 6" GATE VALVE AND VALVE BOX PER CORR STD. DWG. W-05
62	INSTALL 8" GATE VALVE AND VALVE BOX PER CORR STD. DWG. W-05
70	INSTALL FIRE HYDRANT PER CORR STD. DRAWING W-15
80	INSTALL 5/8" SINGLE WATER SERVICE PER CORR STD. DRAWING W-06
81	INSTALL 5/8" DOUBLE WATER SERVICE PER CORR STD. DRAWING W-06
100	REMOVE WATER LINE 8" CAP.

SAS Point Table			
Lot #	Station	Offset	Invert
32	102+99.30	52.00', R	5413.27
33	103+49.30	52.00', R	5415.01
34	104+03.42	52.00', R	5416.42
35	104+63.71	52.00', R	5418.08
36	105+30.09	52.00', R	5420.59
37 b	106+07.09	52.00', R	5431.88

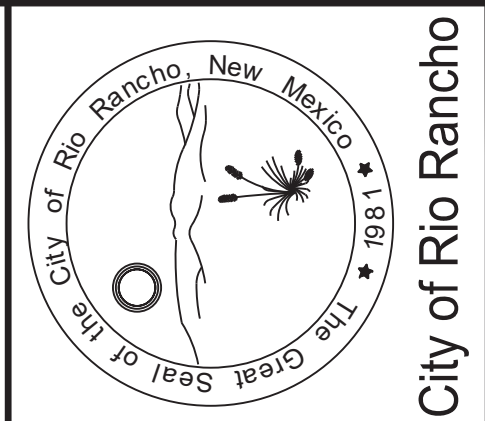
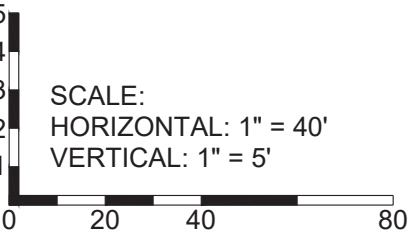
Water Line Point Table				
Meter #	Station	Offset	Top of Box Elevation	Meter Type
32/33	103+37.38	25.00', R	5419.104	DBL
34/35	104+51.80	25.00', R	5422.924	DBL
36/37a	105+95.07	25.00', R	5428.424	DBL
37b	105+95.07	25.00', R	5432.792	DBL

GENERAL NOTES

- ALL STATIONS AND OFFSETS ARE TO THEORETICAL FACE OF CURB (FLOWLINE) PER COA STD DWG 2415, UNLESS OTHERWISE INDICATED.
- SEE SHEET ## FOR SEWER SERVICE INVERT TABLES.

LEGEND

WATERLINE	— W —
SANITARY SEWER LINE	— S —
STORMDRAIN LINE	— SD —
8" GATE VALVE	— G —
REDUCER	— R —
FIRE HYDRANT	— F —
5/8" SINGLE WATER SERVICE, U.N.O.	— S —
5/8" DOUBLE WATER SERVICE, U.N.O.	— D —
SAS MANHOLE	— S —
SANITARY SEWER SERVICE	— S —



City of Rio Rancho

REVISIONS (OR CHANGE NOTICES)	
NO.	DESCRIPTION
7	
6	
5	
4	
3	
2	
1	

RESPEC

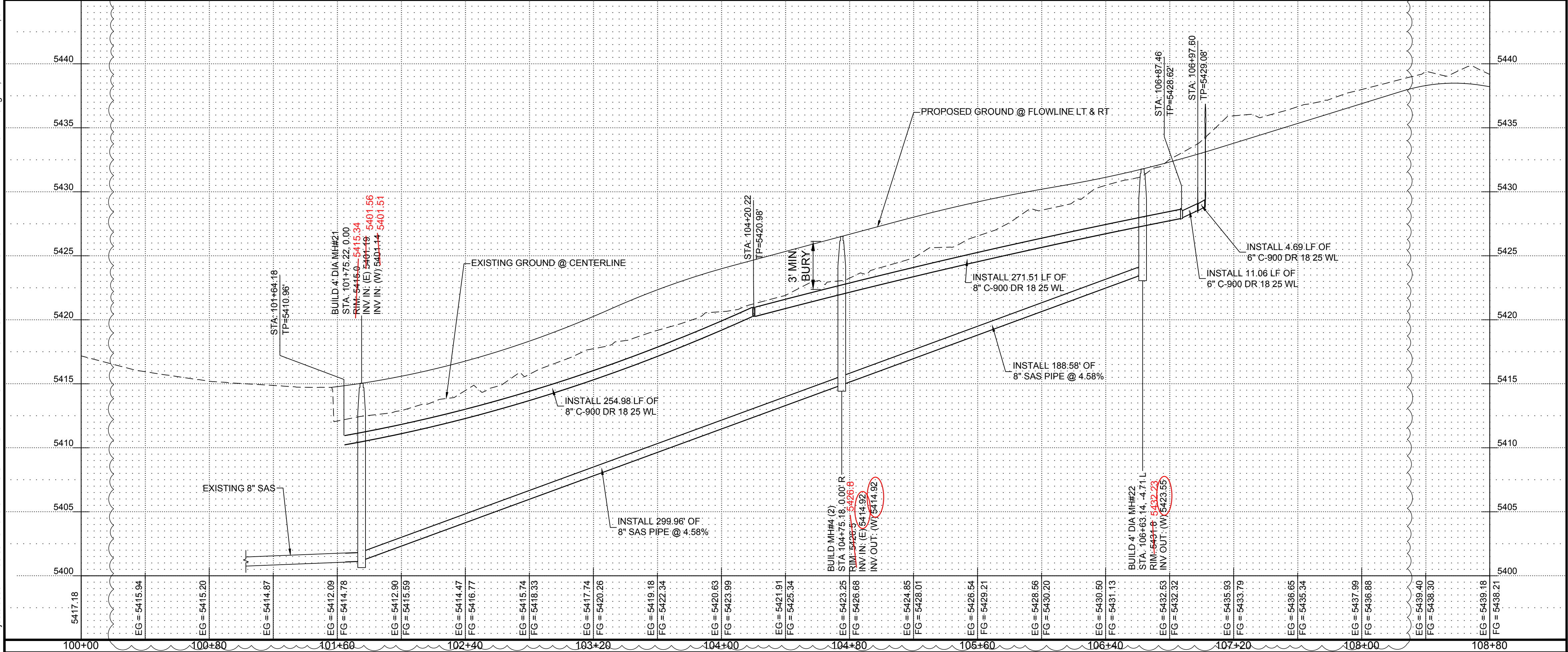
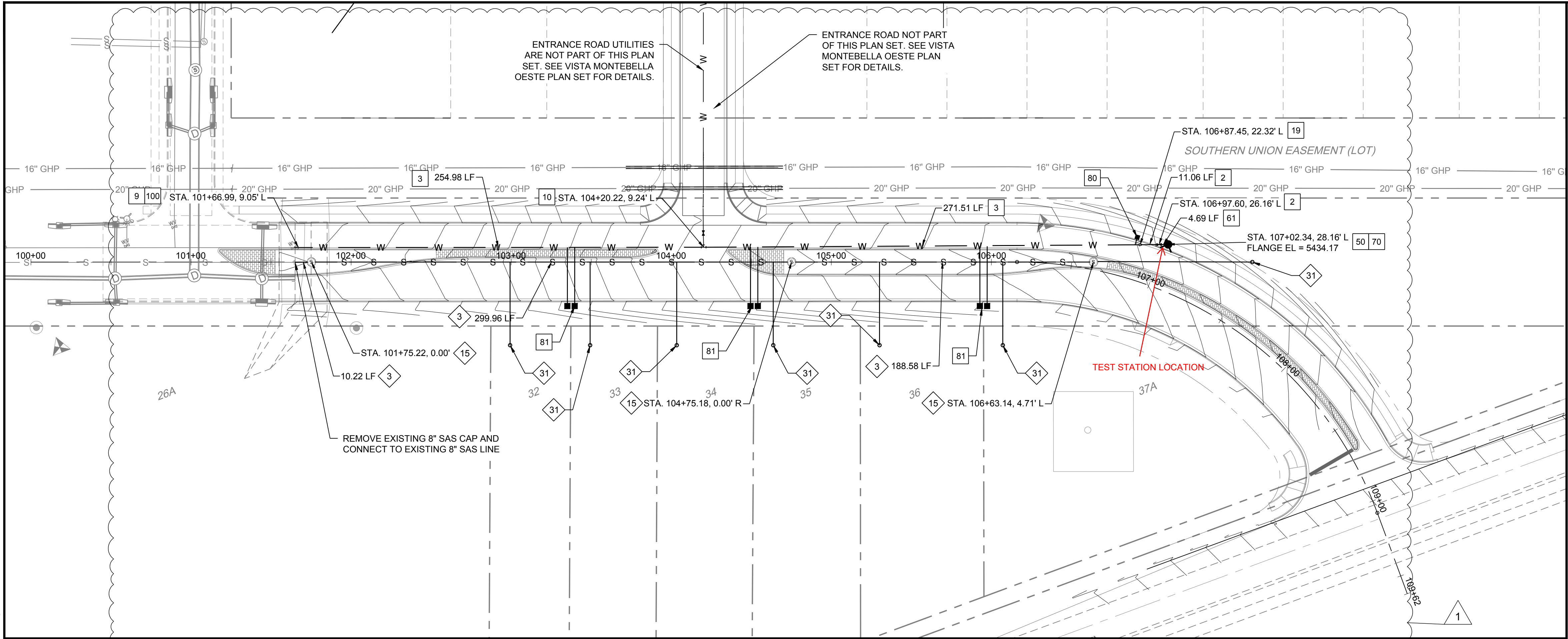
7770 JEFFERSON STREET, SUITE 200
ALBUQUERQUE, NEW MEXICO 87109
WATER & NATURAL RESOURCES
WWW.RESPEC.COM PHONE: (505) 253-9718

ISABEL ROAD

ISABEL ROAD UTILITY
PLAN AND PROFILE

SHELDON E. GREER
NEW MEXICO
17154
07/26/2022
PROFESSIONAL ENGINEER

PROJECT NO. 03597
DESIGNED BY: RESPEC
DRAWN BY: RESPEC
CHECKED BY: SEG
DATE: 12/2022
DPI CHK:
SHEET: C-102



N:\Projects\03597 Anderson Unit 103, DWG\SHEET\ISABEL ROAD PLAN SET\C-102 ISABEL ROAD UTILITY PLAN AND PROFILE.dwg Fri, 4/21/23 11:24, JAMIE VIGIL

SEWER CONSTRUCTION NOTES

I.D.#	DESCRIPTION
3	INSTALL 8" SEWER PIPE PER STANDARD SPECIFICATION SECTION 901
19	INSTALL 4" DIAMETER MANHOLE PER CORR STANDARD DRAWING S-03-01
31	INSTALL 6" SEWER SERVICE PER CORR STD. DETAIL

WATER CONSTRUCTION NOTES

I.D.#	DESCRIPTION
2	INSTALL 6" WATERLINE PER STD. SPEC. SEC. 801
3	INSTALL 8" WATERLINE PER NM APWA STANDARD SPECIFICATION SECTION 801
9	CONNECT NEW WATERLINE TO EXISTING WATERLINE (NON-PRESSURE CONNECTION)
10	INSTALL 8" TEE
12	INSTALL 8" 45° BEND
15	INSTALL 8" CAP
19	INSTALL 8" X 6" REDUCER
50	"MEG A LUG" ALL FITTINGS AND JOINTS FROM TEE TO FIRE HYDRANT
61	INSTALL 6" GATE VALVE AND VALVE BOX PER CORR STD. DWG. W-05
62	INSTALL 8" GATE VALVE AND VALVE BOX PER CORR STD. DWG. W-05
70	INSTALL FIRE HYDRANT PER CORR STD. DRAWING W-15
80	INSTALL 5/8" SINGLE WATER SERVICE PER CORR STD. DRAWING W-06
81	INSTALL 5/8" DOUBLE WATER SERVICE PER CORR STD. DRAWING W-06
100	REMOVE WATER LINE 8" CAP.

SAS Point Table			
Lot #	Station	Offset	Invert
32	102+99.30	52.00', R	5413.27
33	103+49.30	52.00', R	5415.01
34	104+03.42	52.00', R	5416.42
35	104+63.71	52.00', R	5418.08
36	105+30.09	52.00', R	5420.59
37 b	106+07.09	52.00', R	5431.88

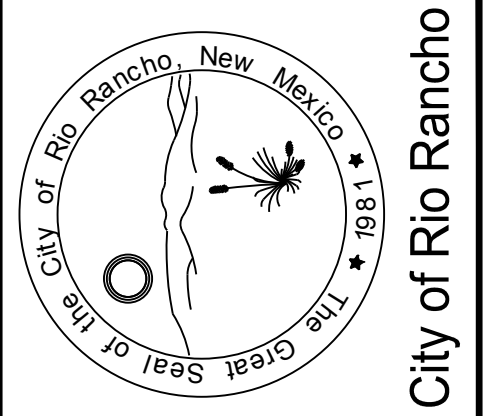
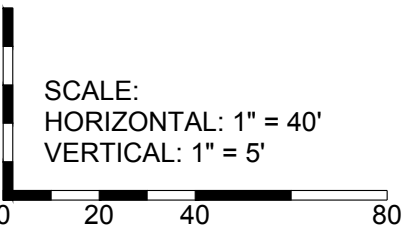
Water Line Point Table				
Meter #	Station	Offset	Top of Box Elevation	Meter Type
32/33	103+37.38	25.00', R	5419.104	DBL
34/35	104+51.80	25.00', R	5422.924	DBL
36/37a	105+95.07	25.00', R	5428.424	DBL
37b	105+95.07	25.00', R	5432.792	DBL

GENERAL NOTES

- ALL STATIONS AND OFFSETS ARE TO THEORETICAL FACE OF CURB (FLOWLINE) PER COA STD DWG 2415, UNLESS OTHER-WISE INDICATED.
- SEE SHEET ## FOR SEWER SERVICE INVERT TABLES.

LEGEND

WATERLINE	— W —
SANITARY SEWER LINE	— S —
STORMDRAIN LINE	— SD —
8" GATE VALVE	
REDUCER	
FIRE HYDRANT	
5/8" SINGLE WATER SERVICE, U.N.O.	
5/8" DOUBLE WATER SERVICE, U.N.O.	
SAS MANHOLE	
SANITARY SEWER SERVICE	



City of Rio Rancho

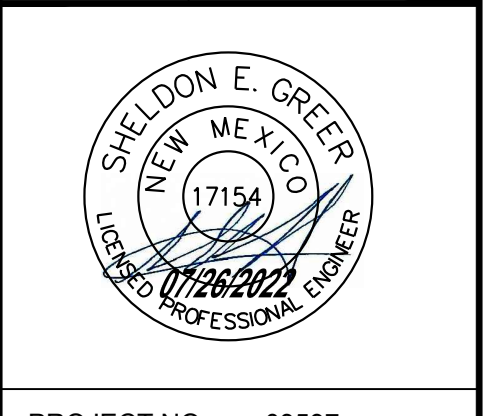
NO.	DESCRIPTION	DATE	BY	REVISIONS (OR CHANGE NOTICES)
7				
6				
5				
4				
3				
2	REVISE UTILITIES VERTICALLY ALONG ISABEL ROAD	03/01/23		
1				

RESPEC

7770 JEFFERSON STREET NE, SUITE 200
ALBUQUERQUE, NEW MEXICO 87119
WATER & NATURAL RESOURCES
WWW.RESPEC.COM PHONE (505)253-9718

ISABEL ROAD

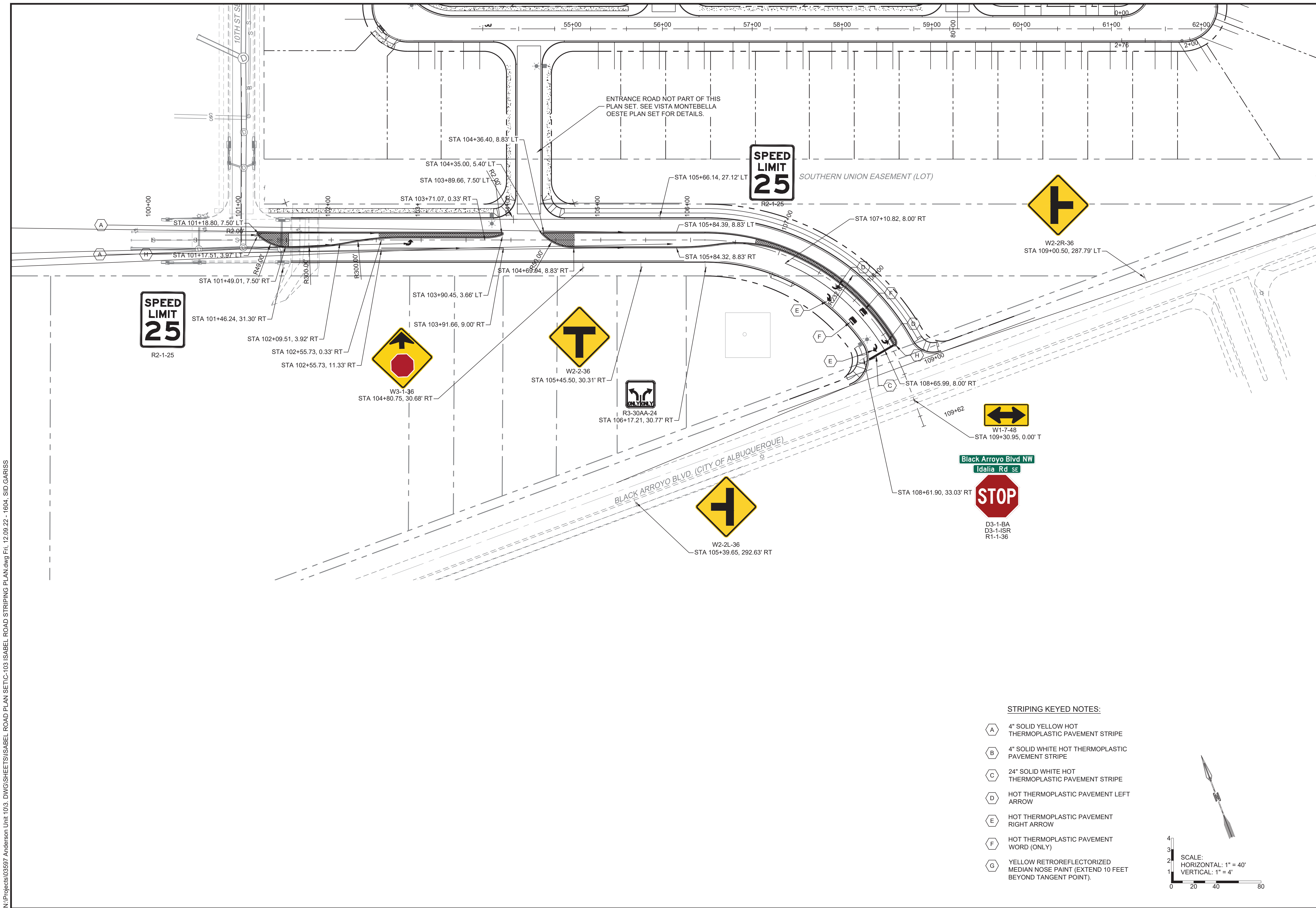
ISABEL ROAD UTILITY
PLAN AND PROFILE



PROJECT NO.	03597
DESIGNED BY:	RESPEC
DRAWN BY:	RESPEC
CHECKED BY:	SEG
DATE:	04/2023
DPI CHK:	
SHEET:	C-102R

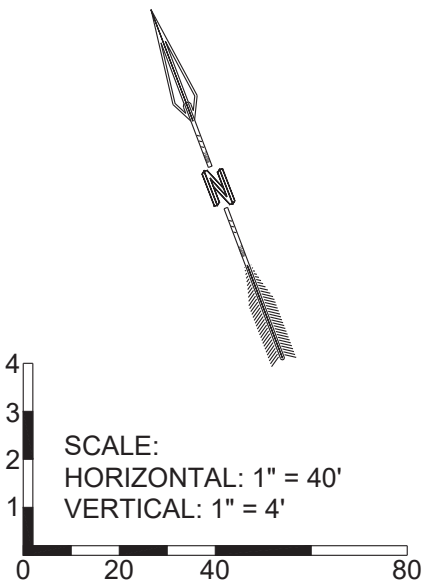
REVISIONS
DE 04/24/2023


N:\Projects\03597 Anderson Unit 103, DWG\SHEET\ISABEL ROAD PLAN SET\C-103 ISABEL ROAD STRIPING PLAN.dwg Fri, 12/09/22 - 1604, SID GARISS



STRIPING KEYED NOTES:


- (A) 4" SOLID YELLOW HOT THERMOPLASTIC PAVEMENT STRIPE
- (B) 4" SOLID WHITE HOT THERMOPLASTIC PAVEMENT STRIPE
- (C) 24" SOLID WHITE HOT THERMOPLASTIC PAVEMENT STRIPE
- (D) HOT THERMOPLASTIC PAVEMENT LEFT ARROW
- (E) HOT THERMOPLASTIC PAVEMENT RIGHT ARROW
- (F) HOT THERMOPLASTIC PAVEMENT WORD (ONLY)
- (G) YELLOW RETROREFLECTORIZED MEDIAN NOSE PAINT (EXTEND 10 FEET BEYOND TANGENT POINT).





City of Rio Rancho

REVISIONS (OR CHANGE NOTICES)	
NO.	DESCRIPTION
7	
6	
5	
4	
3	
2	
1	




RESPEC

5971 JEFFERSON STREET SUITE 101
ALBUQUERQUE, NEW MEXICO 87109
WATER & NATURAL RESOURCES
WWW.RESPEC.COM PHONE (505)253-9718

DATE	BY

ISABEL ROAD

ISABEL ROAD STRIPING PLAN



PROJECT NO. 03597
DESIGNED BY: RESPEC
DRAWN BY: RESPEC
CHECKED BY: SEG
DATE: 12/2022
DPI CHK:
SHEET: C-103



City of Rio Rancho

REVISIONS (OR CHANGE NOTICES)	
NO.	DESCRIPTION
7	
6	
5	
4	
3	
2	
1	
DATE	BY

5871 JEFFERSON STREET SUITE 101
ALBUQUERQUE, NEW MEXICO 87109
WATER & NATURAL RESOURCES
WWW.RESPEC.COM PHONE: (505)253-9718

ISABEL ROAD

CORR STD DRAWINGS

PROJECT NO.	03597
DESIGNED BY:	RESPEC
DRAWN BY:	RESPEC
CHECKED BY:	SEG
DATE:	12/2022
DPI CHK:	
SHEET:	C-500

STANDARD CURB AND GUTTER

MEDIAN CURB AND GUTTER

SPILL CURB AND GUTTER

8" CURB AND GUTTER
FOR COLLECTOR AND ARTERIAL STREETS ONLY.
SEE NOTE 7.

ROUND-ABOUT CURB

CUTOFF WALL
USE FOR TRANSITION TO
UNPAVED ROAD. SEE NOTE 7.

GENERAL NOTES:

- ANY DEVIATIONS FROM THESE STANDARDS SHALL BE SUBMITTED TO THE CITY FOR PRIOR APPROVAL.
- ALL WORK IN PUBLIC RIGHT-OF-WAY SHALL BE CONSTRUCTED BY A LICENSED CONTRACTOR AND REQUIRES PERMIT AND APPROVAL BY THE CITY.
- SUBGRADE SHALL BE COMPACTED TO 95% ASTM D 1557, MIN.
- CURB AND GUTTER SHALL BE IN ACCORDANCE WITH SECTION 510 AND 609 OF THE NMDOT STANDARD SPECIFICATIONS FOR HIGHWAY AND BRIDGE CONSTRUCTION, CURRENT EDITION. A VALID NMDOT MIX DESIGN CONFORMING TO THE REQUIREMENTS OF SECTION 509 OF THE NMDOT SPECIFICATIONS SHALL BE SUBMITTED TO THE CITY AND APPROVED PRIOR TO PLACEMENT OF CURB AND GUTTER. THE CITY MAY APPROVE A MIX DESIGN FOLLOWING MNAPWA SPECIFICATIONS.
- FOR CONCRETE CURB AND GUTTER CONSTRUCT TRANSVERSE JOINTS AS FOLLOWS:
 - TOOLED CONSTRUCTION JOINTS AT 5' INTERVALS
 - 1/2" PRE-MOLDED BITUMINOUS EXPANSION JOINTS AT 30' INTERVALS UNLESS DIRECTLY ABUTTING THE SIDEWALK THEN 15' INTERVALS ARE REQUIRED.
- DIMENSIONS AT ROUNDED CORNERS MEASURED TO THE CENTER OF INTERSECTION OF STRAIGHT LINES.
- 8" CURB AND GUTTER AND CUTOFF WALL IS NOT FOR USE IN NEW RESIDENTIAL DEVELOPMENT. USE MUST BE PREAPPROVED BY THE CITY.
- ASPHALT PLACEMENT SHALL BE EVEN WITH THE LIP OF GUTTER, BUT IN NO CASE SHALL IT EXCEED 1/4". ASPHALT PLACED LOWER THAN LIP OF GUTTER SHALL BE CORRECTED AT CONTRACTOR'S EXPENSE.

CURB AND GUTTER

DATE MODIFIED: AUG 8, 2019

DWG. NO. CG-01 OCT 2, 2008

12th st SE

Aspen Dr NE

No Hanging Characters - Typical Letter Height and Spacing

A	B	C	D	E	F	G**	H***	K***	L
VAR	6	.5	1	4D	3D	3D	3	2	.75
VAR	9	.5	1.5	6D	4D	4.5D	4.5	2.5	1.5

**See Standard Note 5.
***See Standard Note 7.

Hanging Characters - Typical Letter Height and Spacing

A	B	C	D	E	F	G**	H***	K***	L
VAR	6	.5	1	4D	2.7D	3D	3	2	.75
VAR	9	.5	1.5	6D	4.2D	4.5D	4.5	2.5	1.5

**See Standard Note 2.
***See Standard Note 6.
***See Standard Note 7.

Word Message Abbreviation

Avenue	Ave
Circle	Cir
Court	Ct
Drive	Dr
Expressway	Expwy
Freeway	Fwy
Highway	Hwy
Parkway	Pkwy
Place	Pl
Road	Rd
Street	St
Terrace	Ter
Trail	Tr
Turnpike	Tpk
Loop	Loop
Lane	Lane
Meadows	Mdws***
Mountain	Mtn
South East	SE
South West	SW
North East	NE
North West	NW
Way	Way

***Use only when blank size will otherwise exceeds 30"

Standard Notes

- The sign lettering for streets and highways shall be composed of a combination of lower case letters with initial upper case letters.
- When hanging characters exist such as "J" or "g", lower case letters shall be center justified to the adjacent capital characters based on the center of their loop height.
- Only standard abbreviations shall be used. The words "Loop" and "Lane" shall not be abbreviated
- Street name signs shall be a minimum of 18" in length and are not to exceed 42" in length.
- Signs shall use standard letter types C and D as shown in the "Standard Highway Signs and Markings" book. Letter type D shall be used as space permits.
- For signs that would otherwise exceed 24" length the following shall be applied as needed to accommodate longer street names.
 - Reducing and stacking street and postal quad abbreviations
 - 2.3" letter height for 6" signs and
 - 3.5" letter height for 9" signs
 - For signs that would otherwise exceed 36" length the following shall be applied as needed in the order shown below to accommodate longer street names.
 - Use of letter type C
 - Reducing letter spacing to 50%
 - Reduce dimension H to 1" minimum for 6" signs and 1.5" minimum for 9" signs.
 - Reduce dimension K to 1" minimum for 6" signs and 1.5" minimum for 9" signs.
 - Reduce letter spacing to 10%
- For signs that would otherwise exceed 24" length the following shall be applied as needed in the order shown below to accommodate longer street names.
 - Use of letter type C
 - Reducing letter spacing to 50%
 - Reduce dimension H to 1" minimum for 6" signs and 1.5" minimum for 9" signs.
 - Reduce dimension K to 1" minimum for 6" signs and 1.5" minimum for 9" signs.
 - Reduce letter spacing to 10%

Letter Height and Applications for Street Name Signs

Capital Letter Size	Plate Blank Height	Mounting Type	Roadway Clarification
4 in	6 in	Post	Residential
6 in	9 in	Post	Collector or Arterial

DATE MODIFIED: AUGUST 02, 2021

DWG. NO. TCSS-01 JULY 26, 2021

WATER VALVES PLAN

SECTION A

LID DETAIL

WATER VALVES UP TO 12" ELEVATION

WATER VALVES LARGER THAN 12" ELEVATION

GENERAL CONSTRUCTION NOTES:

- ALL MECHANICAL JOINT FITTINGS SHALL USE RESTRAINING GLANDS SUITABLE FOR PIPE MATERIAL USED IN MAIN LINE.
- VALVES IN PAVEMENT SHALL HAVE A 6" THICK CIRCULAR CONCRETE COLLAR.
- VALVES IN UNIMPROVED ROADS OR EASEMENTS SHALL HAVE A 12" THICK CIRCULAR CONCRETE COLLAR.
- A MECHANICAL RESTRAINT SYSTEM SHALL BE UTILIZED ON FITTINGS AND PIPING FOR THRUST RESTRAINT. CONCRETE THRUST BLOCKING SHALL BE USED ONLY FOR SPECIAL CONDITIONS, SUCH AS, CAPS WHERE THE MAIN WILL BE EXTENDED IN THE FUTURE, OR AS SPECIFICALLY APPROVED BY CITY OF RIO RANCHO. THE DESIGN ENGINEER SHALL BE RESPONSIBLE FOR SIZING ALL CONCRETE THRUST BLOCKING.
- LIDS SHALL CONFORM TO AMERICAN SOCIETY FOR TESTING AND MATERIALS STANDARD A48, AND BE GRAY IRON CL35B, HEAVY DUTY DESIGN LOAD RATING, WITH ASPHALT DIPPED COATING.
- VALVES TO BE OPERATED BY CITY UTILITY OPERATIONS STAFF ONLY.
- VALVE BOXES SHALL BE ADJUSTED TO THE FINISHED GRADE BEFORE PLACING OF ASPHALT CONCRETE SURFACE COURSE.

City of Rio Rancho Department of Public Works

POTABLE WATER VALVE BOX ASSEMBLY

DATE MODIFIED: OCTOBER 2017

DWG. NO. W-05 APRIL 22, 2016

FIRE HYDRANT ASSEMBLY

GENERAL CONSTRUCTION NOTES:

- GATE VALVE WITH BOX, COVER, AND CIRCULAR COLLARS SHALL BE INSTALLED ON NEW AND EXISTING WATER MAINS.
- FIRE HYDRANTS SHALL HAVE 5 1/4" VALVE OPENING, BE DRY BARREL/ DRY TOP, TRAFFIC MODEL, WITH ONE 4 1/2" PUMPER NOZZLE, TWO 2 1/2" HOSE NOZZLES, NS THREAD, PENTAGON OPERATING NUT (1 1/2" POINT TO FLAT) WITH 1" SIDES, WHICH SHALL OPEN LEFT (COUNTER-CLOCKWISE), WITH MECHANICAL JOINT CONNECTION TO 6" DUCTILE IRON OUTSIDE DIAMETER PIPE WITH 4' MIN. COVER.
- ALL FIRE HYDRANTS SHALL BE PAINTED WITH TWO COATS OF CHROME YELLOW.
- ALL FIRE HYDRANTS SHALL MEET THE REQUIREMENTS OF AMERICAN WATER WORKS ASSOCIATION STANDARD C502.
- WRAP ALL AREAS WITH 10MIL PLASTIC BEFORE INSTALLATION OF CONCRETE THRUST BLOCKS.
- A FIRE HYDRANT ASSEMBLY MUST BE LOCATED 10 FEET FROM THE END OF ANY DEAD END WATERLINE.
- IN PAVED OR UNPAVED RIGHT-OF-WAY WITHOUT SIDEWALK, POUR A 3'X4.5'X6" CONCRETE COLLAR CENTERED ON FIRE HYDRANT. CONCRETE SHALL HAVE AN $f_c = 3,000$ psi.
- FIRE HYDRANT COLLARS SHALL BE INSTALLED AT 2" TO 6" ABOVE FINISHED OR EXISTING ROAD GRADE ON ALL UNPAVED ROADS.
- FIRE PROTECTION FIRE HYDRANT'S ON PRIVATE PROPERTY TO FOLLOW STANDARD DRAWING CITY OF RIO RANCHO.
- A MECHANICAL RESTRAINT SYSTEM SHALL BE UTILIZED ON FITTINGS AND PIPING FOR THRUST RESTRAINT. CONCRETE THRUST BLOCKING TO BE USED ONLY FOR SPECIAL CONDITIONS (SUCH AS, CAPS WHERE MAIN WILL BE EXTENDED IN THE FUTURE) OR AS SPECIFICALLY APPROVED BY CITY OF RIO RANCHO. DESIGN ENGINEER SHALL BE RESPONSIBLE FOR SIZING ALL CONCRETE THRUST BLOCKING AND RESTRAINT LENGTHS.
- 3/4" CRUSHED STONE OR GRAVEL SHALL BE PLACED AROUND THE BOTTOM OF THE HYDRANT FOR A RADIUS OF AT LEAST 12" AND EXTEND AT LEAST 12" ABOVE THE OUTLET. DO NOT BLOCK WEEP HOLES. WRAP GRAVEL IN FILTER FABRIC.
- IN PAVED RIGHT-OF-WAY WITH SIDEWALK, THE CONCRETE PAD AROUND THE FIRE HYDRANT SHALL HAVE THE FOLLOWING DIMENSIONS: 3' WIDE X 6" THICK X THE BUFFER LENGTH. CONCRETE SHALL HAVE AN $f_c = 3,000$ psi.

City of Rio Rancho Department of Public Works

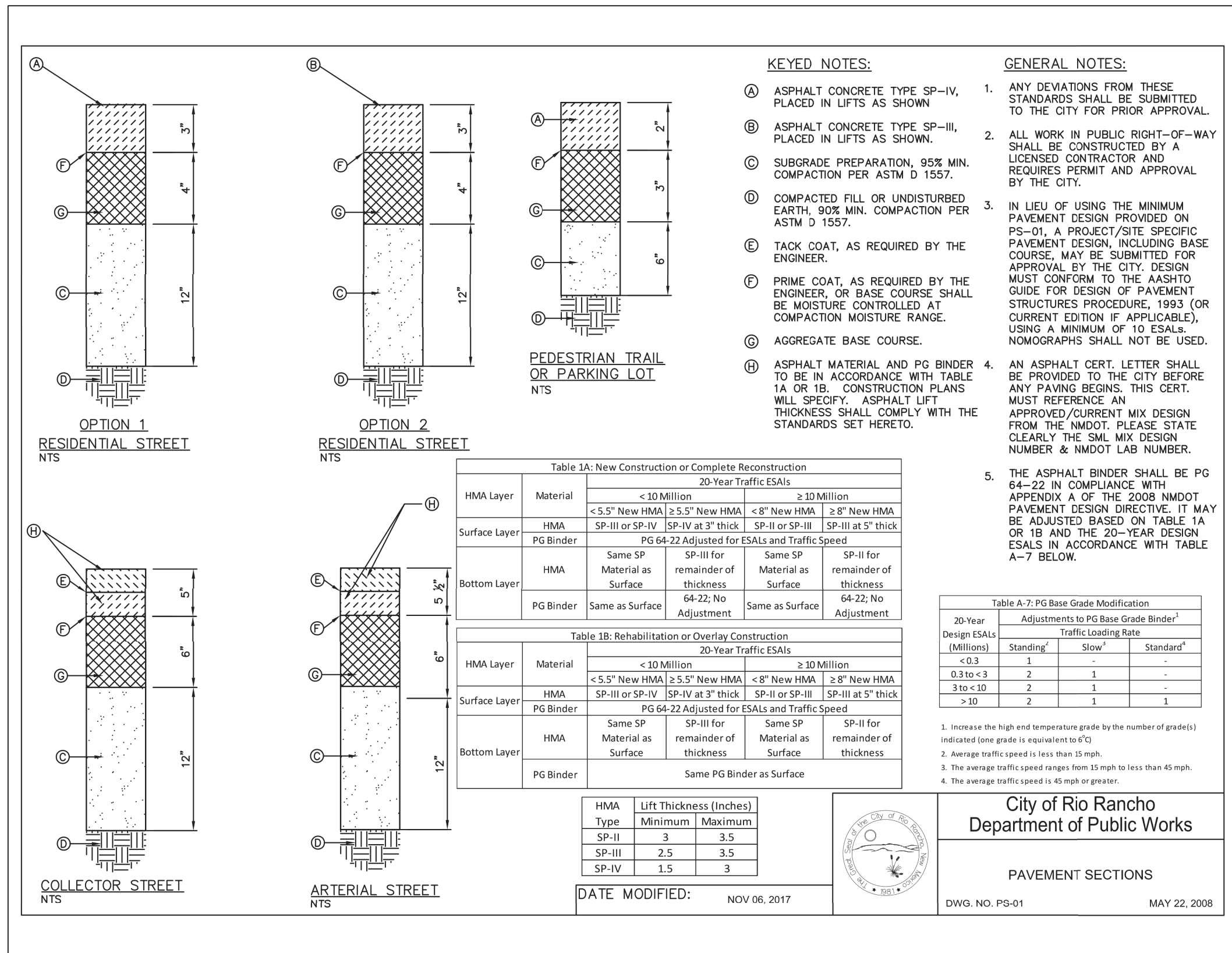
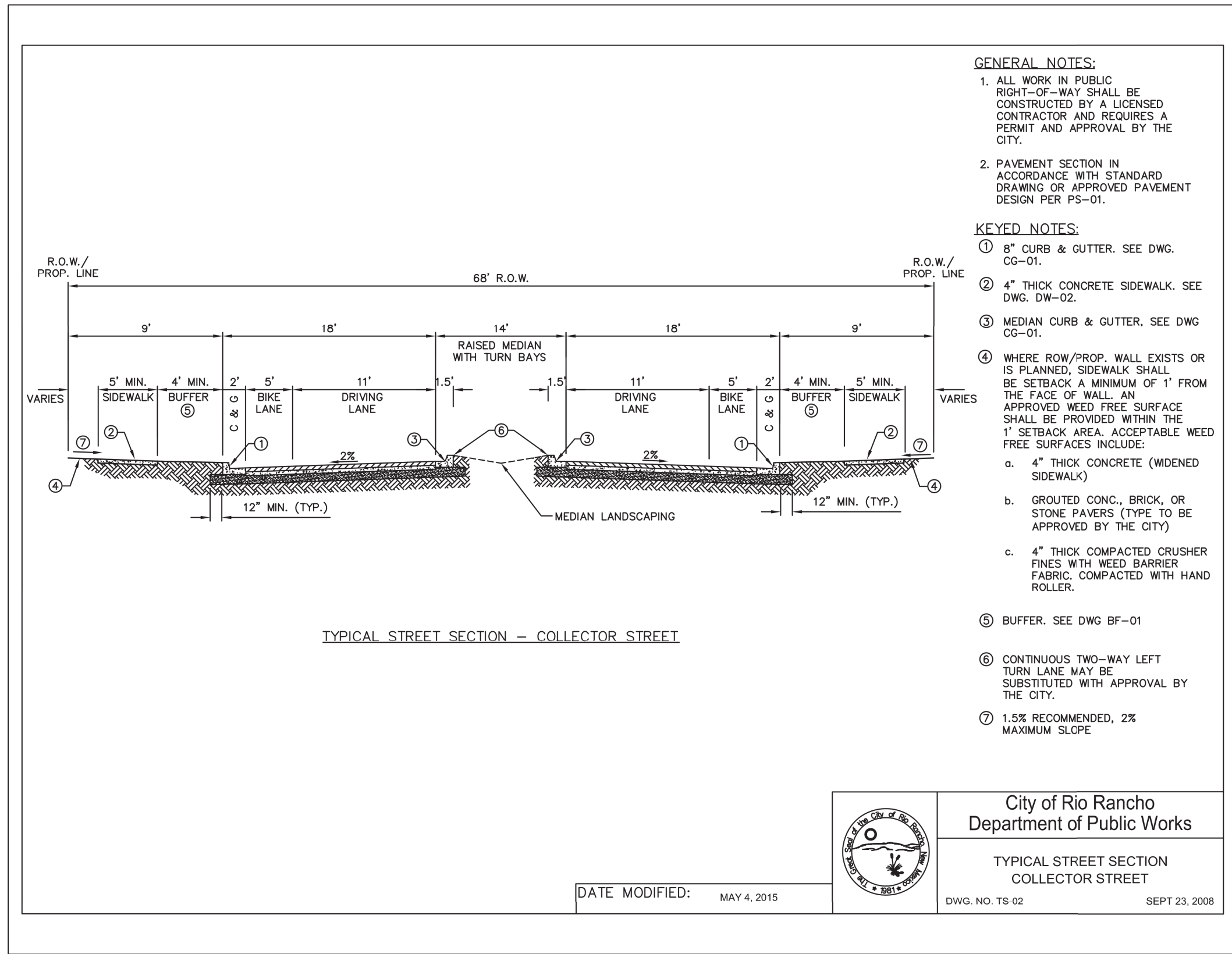
FIRE HYDRANT ASSEMBLY

DATE MODIFIED: MARCH 2019

DWG. NO. W-15 APRIL 22, 2016

N:\Projects\03597 Anderson Unit 103, DWG\SHEET\ISABEL ROAD PLAN SET\C-500 CORR STD DRAWINGS.dwg Fri, 12/09/22 - 1604, SID, GARSS

N:\Projects\03597 Anderson Unit 103, DWG\SHEET\ISABEL ROAD PLAN SET\IC-500 CORR STD DRAWINGS.dwg Fri, 12/09/22 - 1604, SID.GARSS



PS-01 AMENDMENT

1. ISABEL ROAD TO BE BUILT PER CITY OF RIO RANCHO STANDARD DRAWING TS-02 & PS-01, COLLECTOR STREET SECTION, TABLE 1A, SP III WITH PG 64-22, 2 - 2½" LIFTS, BASE COURSE AND SUBGRADE PREPARATION TO REMAIN AS SHOWN.



City of Rio Rancho

NO.	DESCRIPTION	DATE	BY
7			
6			
5			
4			
3			
2			
1			

REVISIONS (OR CHANGE NOTICES)



5971 JEFFERSON STREET SUITE 101
ALBUQUERQUE, NM 87113-4509
WATER & NATURAL RESOURCES
WWW.RESPEC.COM PHONE: (505)253-9718

ISABEL ROAD

CORR STD DRAWINGS

PROJECT NO.	03597
DESIGNED BY:	RESPEC
DRAWN BY:	RESPEC
CHECKED BY:	SEG
DATE:	12/2022
DPI CHK:	
SHEET:	C-501