

CITY OF ALBUQUERQUE  
DEPARTMENT OF MUNICIPAL DEVELOPMENT  
CONSTRUCTION PLANS FOR



CENTRAL AVENUE PUMP STATION IMPROVEMENTS  
STORM WATER PUMP STATION NO. 27 IMPROVEMENTS AND FORCEMAIN - PHASE II  
NO. 38

PROJECT NO. 691882

INDEX TO DRAWINGS

SEQUENCE	SHEET	DESCRIPTION
1	G-001	TITLE SHEET/INDEX TO DRAWINGS
2	G-002	ABBREVIATIONS AND ACRONYMS
3	S-101	NEW VALVE VAULT STRUCTURAL PLAN VIEW
4	S-301	NEW VALVE VAULT STRUCTURAL SECTIONS AND DETAILS
5	S-302	REHABILITATION OF TOP OF EXISTING SOUTH WALL
6	W-101	DEMOLITION - PLAN AND SECTION
7	W-102	NEW VALVE VAULT, EQUIPMENT AND PIPING PLAN, SECTION AND KEYED NOTES
8	W-501	MISCELLANEOUS DETAILS I
9	W-701	STORM WATER FORCEMAIN PLAN AND PROFILE
10	E-101	ELECTRICAL SITE PLAN
11	ESP-101	ELECTRICAL SITE PLAN CITY PUMP STATION (BY OTHERS)
12	E-102	ELECTRICAL ENLARGED PLANS
13	E-103	PUMP STATION MODIFICATION PLAN AND SECTION
14	E-501	ELECTRICAL DETAILS I
15	E-502	ELECTRICAL DETAILS II
16	E-601	ELECTRICAL ONE-LINE DIAGRAM
17	E-602	ELECTRICAL POWER DISTRIBUTION
18	E-603	CONTROL POWER FOR STARTERS
19	E-604	ELECTRICAL CONTROL SYSTEM WIRING DIAGRAM 1
20	E-605	ELECTRICAL CONTROL SYSTEM WIRING DIAGRAM 2



JANUARY 2017

RECORD DRAWING	
DATE: 04/17/19	DRAWN BY: MOLZEN CORBIN
THESE RECORD DRAWINGS HAVE BEEN PREPARED, IN PART, ON THE BASIS OF INFORMATION COMPILED AND FURNISHED BY OTHERS. MOLZEN-CORBIN AND ASSOCIATES WILL NOT BE RESPONSIBLE FOR ANY ERRORS OR OMISSIONS WHICH HAVE BEEN INCORPORATED INTO THIS DOCUMENT AS A RESULT.	

MOLZENCORBIN  
ENGINEERS | ARCHITECTS | PLANNERS

2701 Miles Road SE, Albuquerque, New Mexico 87106 505 242 5700 office 505 242 0673 fax

REV.	SHEETS	CITY ENGINEER	DATE	USER DEPARTMENT	DATE	USER DEPARTMENT	DATE
ENGINEER'S STAMP & SIGNATURE		APPROVED	ENGINEER	DATE	APPROVED FOR CONSTRUCTION		
		DRC Chairman			CITY ENGINEER _____ DATE _____		
		Transportation					
		ABCWUA					
		Hydrology					
		CIP					
AMAFC							
Constr. Coord.							
PROJECT NUMBER		ZONE ATLAS NO.		DRAWING NO. 1 OF 20			
691882		K-14					

REDRAWN FOR RECORD PURPOSES

MOLZEN CORBIN PROJECT #: ABQ131-13

LAST MODIFIED: Jan 09, 2020 - 11:53am BY: USER: dmorales  
DWG NAME: 691882-001.dwg



ABBREVIATIONS AND ACRONYMS:

ABCWUA	ALBUQUERQUE BERNALILLO CO. WATER UTILITY AUTHORITY	FM	FORCE MAIN	OERE	OR ENGINEER REVIEWED EQUIVALENT
ADJ	ADJUSTABLE	FNPT	FEMALE NATIONAL PIPE THREAD	PE	PLAIN END
AFF	ABOVE FINISHED FLOOR	FT	FEET	PG	PRESSURE GAUGE
AFG	ABOVE FINISHED GRADE	GA	GAUGE	PI	PRESSURE INDICATOR
AISC	AMERICAN INSTITUTE OF STEEL CONSTRUCTION	GI	GALVANIZED IRON	PNM	PUBLIC SERVICE COMPANY OF NEW MEXICO
ANSI	AMERICAN NATIONAL STANDARDS INSTITUTE	HDG	HOT DIPPED GALVANIZED	PS	PRESSURE SWITCH
ASTM	AMERICAN SOCIETY FOR TESTING AND MATERIALS	HGT	HEIGHT	PS	PUMP STATION
AWS	AMERICAN WELDING SOCIETY	HP	HORSEPOWER	PTFE	TEFLON
AWWA	AMERICAN WATER WORKS ASSOCIATION	INV	INVERT	PV	PLUG VALVE
BFG	BELOW FINISHED GRADE	JT	JOINT	PVC	POLYVINYL CHLORIDE
BRKT	BRACKET	L	ANGLE	RED	REDUCER
CABQ	CITY OF ALBUQUERQUE	LBS	POUNDS	REQD	REQUIRED
CI	CAST IRON	LG	LONG	SCH	SCHEDULE
CL	CENTER LINE	LOC	LOCATION	SD	STORM DRAIN
CLR	CLEAR	LS	LIFT STATION	SF	SQUARE FEET
COA	CITY OF ALBUQUERQUE	LTS	LENGTH TO SUIT	SQ	SQUARE
CP	CONTROL PANEL	MAX	MAXIMUM	SS	STAINLESS STEEL
CY	CUBIC YARDS	MFR	MANUFACTURER	STL	STEEL
DIP	DUCTILE IRON PIPE	MIN	MINIMUM	THD	THREADED
DWG	DRAWING	MJ	MECHANICAL JOINT	THK	THICK
E	EASTING	MNPT	MALE NATIONAL PIPE THREAD	TOS	TOP OF SLAB
EA	EACH	N	NORTHING	TOW	TOP OF WALL
ECC	ECCENTRIC	NAD83	NORTH AMERICAN DATUM OF 1983	TYP	TYPICAL
EF	EACH FACE	NAVD88	NORTH AMERICAN VERTICAL DATUM OF 1988	UG	UNDERGROUND
EL	ELEVATION	NC	NORMALLY CLOSED	UGE	UNDERGROUND ELECTRIC
ELL	ELBOW	NEC	NATIONAL ELECTRICAL CODE	UNO	UNLESS NOTED OTHERWISE
EQ	EQUAL	NEMA	NATIONAL ELECTRICAL MANUFACTURERS ASSOCIATION	VFD	VARIABLE FREQUENCY DRIVE
EW	EACH WAY	NFPA	NATIONAL FIRE PROTECTION ASSOCIATION	W	WATER
FD	FLOOR DRAIN	NMECC	NEW MEXICO ENERGY CONSERVATION CODE	W	WIDE FLANGE
FFE	FINISHED FLOOR ELEVATION	NO	NORMALLY OPEN	WOG	WATER OIL GAS
FIN	FINISHED	NPT	NATONAL PIPE THREAD	WT	WEIGHT
FL	FLANGE	NTS	NOT TO SCALE	WUA	WATER UTILITY AUTHORITY
FLR	FLOOR	OC	ON CENTER	YD	YARD

RECORD DRAWING

DATE: 04/17/19DRAWN BY: MOLZEN CORBIN

THESE RECORD DRAWINGS HAVE BEEN PREPARED, IN PART, ON THE BASIS OF INFORMATION COMPILED AND FURNISHED BY OTHERS. MOLZEN-CORBIN AND ASSOCIATES WILL NOT BE RESPONSIBLE FOR ANY ERRORS OR OMISSIONS WHICH HAVE BEEN INCORPORATED INTO THIS DOCUMENT AS A RESULT.

MOLZENCORBIN

2701 Miles Road SE Albuquerque, New Mexico 87106

CITY OF ALBUQUERQUE DEPARTMENT OF MUNICIPAL DEVELOPMENT ENGINEERING DIVISION			
TITLE: CENTRAL AVENUE PUMP STATION IMPROVEMENTS STORM WATER PUMP STATION NO. 27 IMPROVEMENTS AND FORCEMAIN - PHASE II NO. 38			
ABBREVIATIONS AND ACRONYMS			
Design Review Committee	City Engineer Approval	Last Design Update	
		Mo./Day/Yr.	Mo./Day/Yr.
City Project No. 691882		Zone Map No. K-14	Sheet G-002 Of

ENGINEER'S SEAL		SURVEY INFORMATION		BENCH MARKS		AS BUILT INFORMATION	
		FIELD NOTES		COA SURVEY MONUMENT 18 K14 1986		CONTRACTOR	
NO.		BY		DATE		DATE	
REMARKS						ACCEPTANCE BY	
REVISONS						FIELD MONITOR BY	
MC PROJECT NUMBER: ABQ131-13						DRAWINGS	
DESIGNED BY		DATE				CORRECTED BY	
DRAWN BY		DATE				MICRO-FILM INFORMATION	
DIB		JAN 2017				RECORDED BY	
CHECKED BY		DATE				NO.	
						DATE	





1. ALL REINFORCED CONCRETE SHALL HAVE AN EARLY COMPRESSION STRENGTH OF 4,000 psi AT 7 DAYS IN ACCORDANCE WITH COA STANDARD SPECIFICATION SECTION 101 - PORTLAND CEMENT CONCRETE.
2. REINFORCING STEEL SHALL BE GRADE 60.
3. ALL STEEL PLATES SHALL HAVE A YIELD STRENGTH  $F_y = 36$  KSI.
4. ALL STEEL BEAMS SHALL HAVE A YIELD STRENGTH  $F_y = 50$  KSI.
5. STEEL PLATE BRACKETS, ANGLES AND BEAMS SHALL BE HOT DIP GALVANIZED AFTER FABRICATION.
6. ALL ANCHOR BOLTS SHALL BE  $\frac{3}{4}$ "  $\varnothing$  F1554 GR. 36 GALVANIZED UNLESS NOTED OTHERWISE.
7. THICKNESS OF EXISTING RETAINING WALL SOUTH OF THE PUMP STATION AND EXTERIOR WALLS OF THE EXISTING WET WELL AND DRY PIT SHALL BE FIELD VERIFIED TO BE 12" MINIMUM. ENGINEER SHALL BE NOTIFIED IN CASE THIS THICKNESS IS LESS THAN 12".
8. EARTHWORK AND MOISTURE PROTECTION PROVISIONS OUTLINED IN THE GEOTECHNICAL REPORT SHALL BE FOLLOWED.
9. FOLLOW GEOTECHNICAL REPORT GUIDELINES FOR STRUCTURAL FILL CRITERIA.
10. CONTRACTOR SHALL COORDINATE PROVISION OF THE COVER WITH THE ACCESS HATCH MANUFACTURER.
11. CONTRACTOR SHALL LOCATE CORE DRILLED HOLES AT A MINIMUM OF 12" BELOW FINISHED TOP OF WALL ELEVATION.
12. STEEL GRATING TO BE 15-W-2 STEEL GRATING WITH 1"H x  $\frac{3}{8}$ " THICK BEARING BARS, LOAD BANDING AND WELDED LUGS. HOT DIP GALVANIZED AFTER FABRICATION. BEARING BARS ORIENTED IN THE N-S DIRECTION.

IN ACCEPTING AND UTILIZING ANY DRAWINGS OR OTHER DATA ON ANY FORM OF ELECTRONIC MEDIA GENERATED AND PROVIDED BY QPEC, THE CLIENT COVENANTS AND AGREES THAT ALL SUCH DRAWINGS AND DATA ARE INSTRUMENTS OF SERVICE OF QPEC, WHO SHALL BE DEEMED THE AUTHOR OF THE DRAWINGS AND DATA, AND SHALL RETAIN ALL COMMON LAW, STATUTORY LAW AND OTHER RIGHTS, INCLUDING COPYRIGHTS.

THE USE OF THESE DRAWINGS AND DATA, IN WHOLE OR IN PART, FOR ANY PURPOSE OR PROJECT OTHER THAN THE TITLED PROJECT IS PROHIBITED. ANY UNAUTHORIZED CHANGES OR REUSE OF THE DRAWINGS AND DATA FOR ANY OTHER PROJECT BY ANYONE OTHER THAN QPEC WILL RELIEVE QPEC OF ANY AND ALL LIABILITY AND ALL ASSOCIATED COSTS.

UNDER NO CIRCUMSTANCES SHALL TRANSFER OF THE DRAWINGS AND OTHER INSTRUMENTS OF SERVICE ON ELECTRONIC MEDIA FOR USE BY ANY PARTY BE DEEMED A SALE BY QPEC, AND QPEC MAKES NO WARRANTIES, EITHER EXPRESS OR IMPLIED, OF MERCHANTABILITY AND FITNESS FOR ANY PARTICULAR PURPOSE.

**MOLZENCORBIN**  
2701 Miles Road SE Albuquerque, New Mexico 87106

[illegible]

CITY OF ALBUQUERQUE  
 DEPARTMENT OF MUNICIPAL DEVELOPMENT  
 ENGINEERING DIVISION

TITLE: CENTRAL AVENUE PUMP STATION IMPROVEMENTS  
 STORM WATER PUMP STATION NO. 27 IMPROVEMENTS AND FORCEMAIN - PHASE II  
 NO. 38

NEW VALVE VAULT STRUCTURAL PLAN VIEW

Design Review Committee	City Engineer Approval	Last Design Update	Mo./Day/Yr.	Mo./Day/Yr.
City Project No.	Zone Map No.	Sheet	Of	
691882	K-14	S-101		

RECORD DRAWING  
JUNE 2020

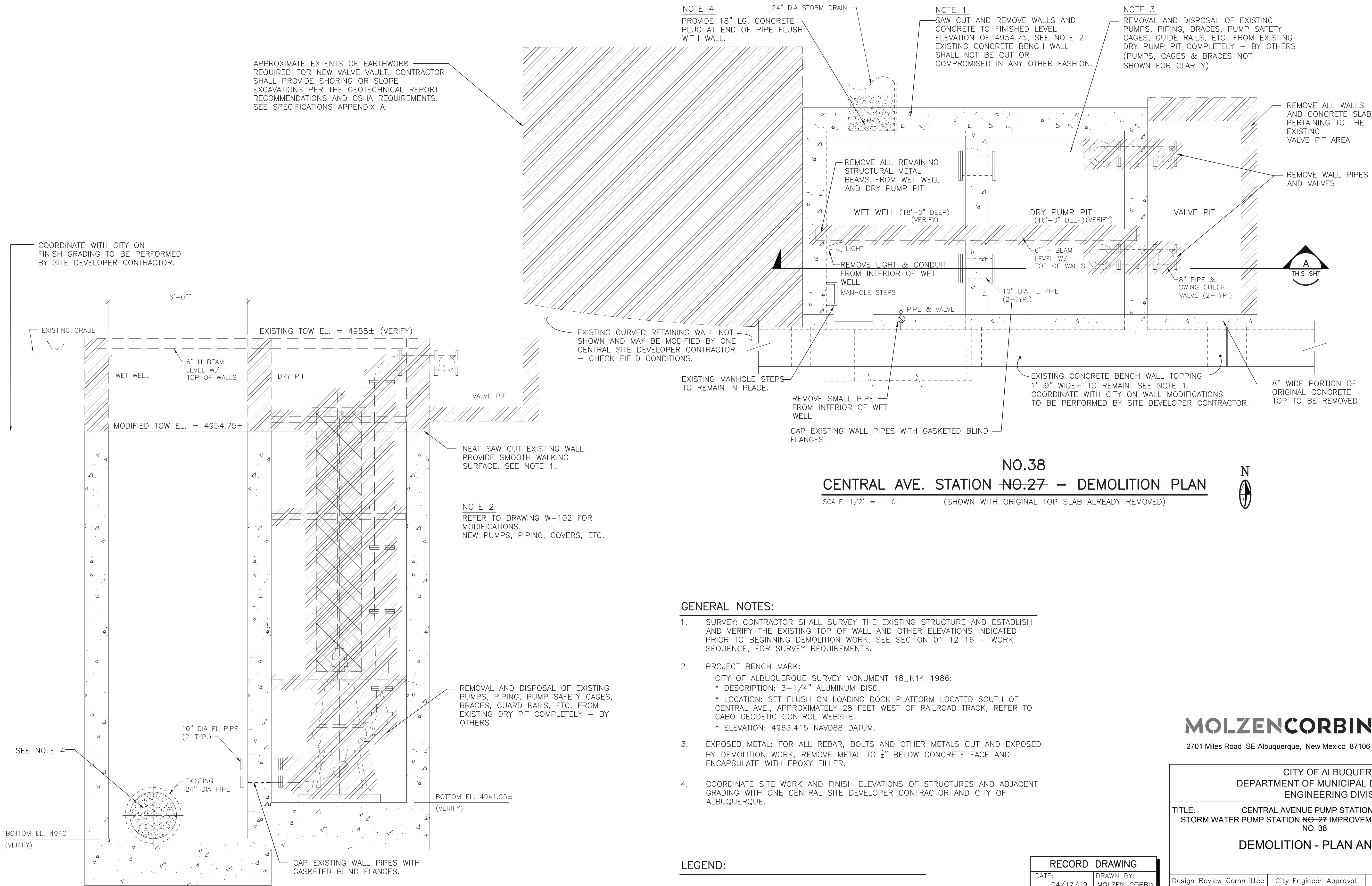












NO.38  
CENTRAL AVE. STATION NO-27 - DEMOLITION PLAN  
SCALE: 1/2" = 1'-0" (SHOWN WITH ORIGINAL TOP SLAB ALREADY REMOVED)

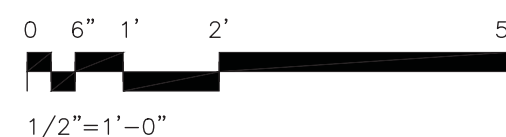


GENERAL NOTES:

- SURVEY: CONTRACTOR SHALL SURVEY THE EXISTING STRUCTURE AND ESTABLISH AND VERIFY THE EXISTING TOP OF WALL AND OTHER ELEVATIONS INDICATED PRIOR TO BEGINNING DEMOLITION WORK. SEE SECTION 01 12 16 - WORK SEQUENCE, FOR SURVEY REQUIREMENTS.
- PROJECT BENCH MARK:  
CITY OF ALBUQUERQUE SURVEY MONUMENT 18\_K14 1986:  
\* DESCRIPTION: 3-1/4" ALUMINUM DISC.  
\* LOCATION: SET FLUSH ON LOADING DOCK PLATFORM LOCATED SOUTH OF CENTRAL AVE., APPROXIMATELY 28 FEET WEST OF RAILROAD TRACK, REFER TO CABQ GEODETIC CONTROL WEBSITE.  
\* ELEVATION: 4963.415 NAVD88 DATUM.
- EXPOSED METAL: FOR ALL REBAR, BOLTS AND OTHER METALS CUT AND EXPOSED BY DEMOLITION WORK, REMOVE METAL TO 1/4" BELOW CONCRETE FACE AND ENCAPSULATE WITH EPOXY FILLER.
- COORDINATE SITE WORK AND FINISH ELEVATIONS OF STRUCTURES AND ADJACENT GRADING WITH ONE CENTRAL SITE DEVELOPER CONTRACTOR AND CITY OF ALBUQUERQUE.

LEGEND:

REMOVE AND DISPOSE



RECORD DRAWING	
DATE:	DRAWN BY:
04/17/19	MOLZEN CORBIN
THESE RECORD DRAWINGS HAVE BEEN PREPARED, IN PART, ON THE BASIS OF INFORMATION COMPILED AND FURNISHED BY OTHERS. MOLZEN-CORBIN AND ASSOCIATES WILL NOT BE RESPONSIBLE FOR ANY ERRORS OR OMISSIONS WHICH HAVE BEEN INCORPORATED INTO THIS DOCUMENT AS A RESULT.	

**MOLZENCORBIN**  
2701 Miles Road SE Albuquerque, New Mexico 87106

CITY OF ALBUQUERQUE DEPARTMENT OF MUNICIPAL DEVELOPMENT ENGINEERING DIVISION			
TITLE: CENTRAL AVENUE PUMP STATION IMPROVEMENTS STORM WATER PUMP STATION NO-27 IMPROVEMENTS AND FORCEMAIN - PHASE II NO. 38			
DEMOLITION - PLAN AND SECTION			
Design Review Committee	City Engineer Approval	Last Design Update	
		Mo./Day/Yr.	Mo./Day/Yr.
City Project No. 691882		Zone Map No. K-14	Sheet W-101 Of

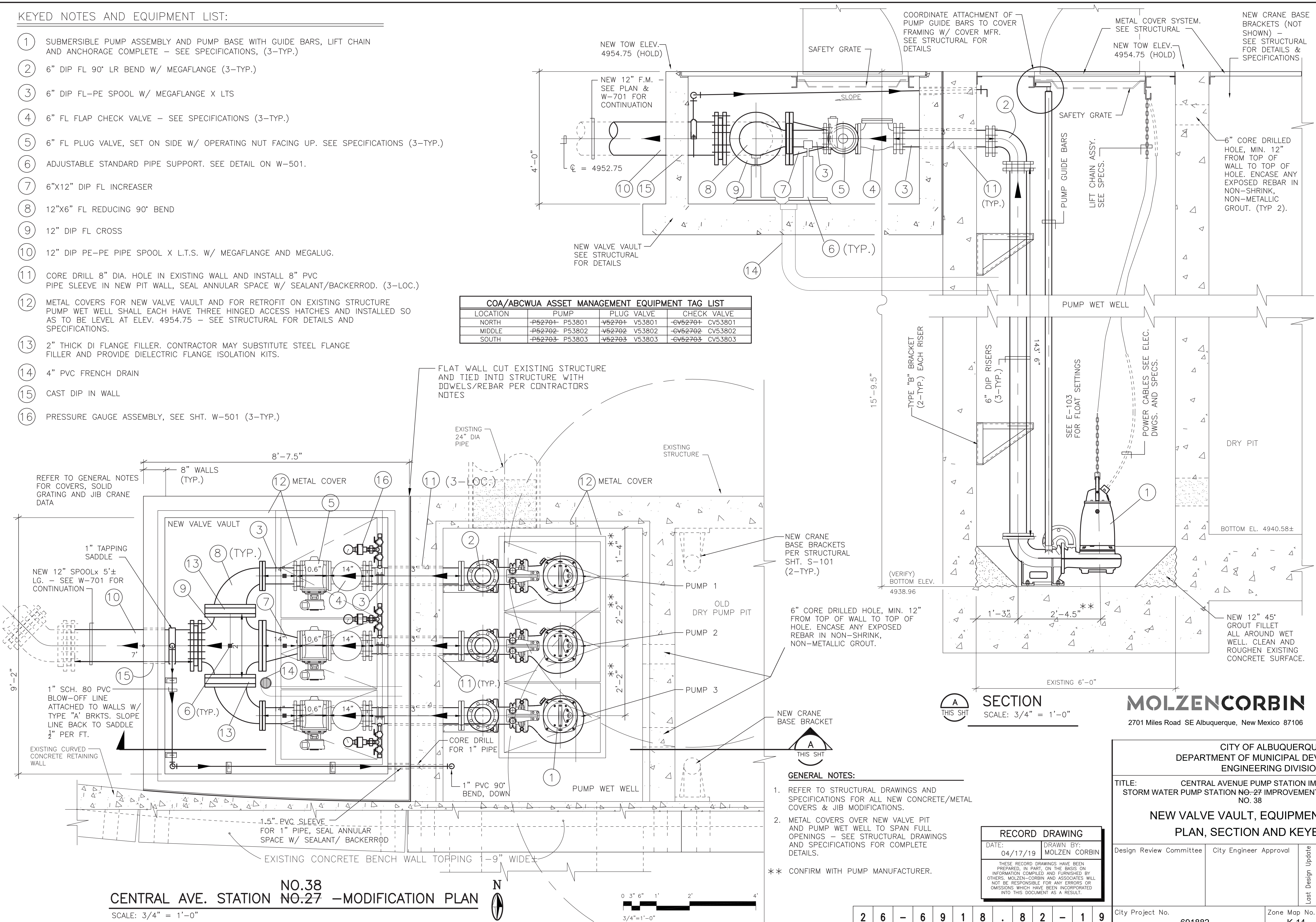
AS BUILT INFORMATION				BENCH MARKS				SURVEY INFORMATION				ENGINEER'S SEAL			
CONTRACTOR	DATE	STAKED BY	DATE	COA SURVEY MONUMENT 18_K14 1986	NO.	BY	DATE	NO.	BY	DATE	NO.				
INSPECTED BY	DATE	ACCEPTANCE BY	DATE												
FIELD VERIFICATION BY	DATE	DRAWINGS CORRECTED BY	DATE									NO.	DATE	REVISIONS	BY
MICRO-FILM INFORMATION															
RECORDED BY	DATE														
NO.															



KEYED NOTES AND EQUIPMENT LIST:

- 1 SUBMERSIBLE PUMP ASSEMBLY AND PUMP BASE WITH GUIDE BARS, LIFT CHAIN AND ANCHORAGE COMPLETE - SEE SPECIFICATIONS, (3-TYP.)
- 2 6" DIP FL 90° LR BEND W/ MEGAFLANGE (3-TYP.)
- 3 6" DIP FL-PE SPOOL W/ MEGAFLANGE X LTS
- 4 6" FL FLAP CHECK VALVE - SEE SPECIFICATIONS (3-TYP.)
- 5 6" FL PLUG VALVE, SET ON SIDE W/ OPERATING NUT FACING UP. SEE SPECIFICATIONS (3-TYP.)
- 6 ADJUSTABLE STANDARD PIPE SUPPORT. SEE DETAIL ON W-501.
- 7 6"x12" DIP FL INCREASER
- 8 12"x6" FL REDUCING 90° BEND
- 9 12" DIP FL CROSS
- 10 12" DIP PE-PE PIPE SPOOL X L.T.S. W/ MEGAFLANGE AND MEGALUG.
- 11 CORE DRILL 8" DIA. HOLE IN EXISTING WALL AND INSTALL 8" PVC PIPE SLEEVE IN NEW PIT WALL, SEAL ANNULAR SPACE W/ SEALANT/BACKERROD. (3-LOC.)
- 12 METAL COVERS FOR NEW VALVE VAULT AND FOR RETROFIT ON EXISTING STRUCTURE PUMP WET WELL SHALL EACH HAVE THREE HINGED ACCESS HATCHES AND INSTALLED SO AS TO BE LEVEL AT ELEV. 4954.75 - SEE STRUCTURAL FOR DETAILS AND SPECIFICATIONS.
- 13 2" THICK DI FLANGE FILLER. CONTRACTOR MAY SUBSTITUTE STEEL FLANGE FILLER AND PROVIDE DIELECTRIC FLANGE ISOLATION KITS.
- 14 4" PVC FRENCH DRAIN
- 15 CAST DIP IN WALL
- 16 PRESSURE GAUGE ASSEMBLY, SEE SHT. W-501 (3-TYP.)

COA/ABCWUA ASSET MANAGEMENT EQUIPMENT TAG LIST					
LOCATION	PUMP	PLUG VALVE	CHECK VALVE		
NORTH	P52701- P53801	V52701- V53801	CV52701- CV53801		
MIDDLE	P52702- P53802	V52702- V53802	CV52702- CV53802		
SOUTH	P52703- P53803	V52703- V53803	CV52703- CV53803		



AS BUILT INFORMATION				BENCH MARKS				SURVEY INFORMATION				ENGINEER'S SEAL				REVISIONS			
CONTRACTOR	DATE	DATE	DATE	CONTRACTOR	DATE	DATE	DATE	NO.	DATE	DATE	DATE	NO.	DATE	DATE	DATE	NO.	DATE	DATE	DATE
COA SURVEY MONUMENT 18-K14 1986																			
STAKED BY	DATE	DATE	DATE	STAKED BY	DATE	DATE	DATE												
ACCEPTANCE BY	DATE	DATE	DATE	ACCEPTANCE BY	DATE	DATE	DATE												
FIELD DRAWING BY	DATE	DATE	DATE	FIELD DRAWING BY	DATE	DATE	DATE												
CORRECTED BY	DATE	DATE	DATE	CORRECTED BY	DATE	DATE	DATE												
MICRO-FILM INFORMATION				MICRO-FILM INFORMATION															
RECORDED BY	DATE	DATE	DATE	RECORDED BY	DATE	DATE	DATE												
NO.				NO.															

REMARKS

NO. DATE

DESIGNED BY: DIB/ACC/CJS DATE: 20/2016

DRAWN BY: CJS/DJB DATE: 11/2016

CHECKED BY: KRM DATE: 12/2016

MC PROJECT NUMBER: ABQ131-13

REVISIONS

2701 Miles Road SE Albuquerque, New Mexico 87106

CITY OF ALBUQUERQUE  
DEPARTMENT OF MUNICIPAL DEVELOPMENT  
ENGINEERING DIVISION

TITLE: CENTRAL AVENUE PUMP STATION IMPROVEMENTS  
STORM WATER PUMP STATION NO.27 IMPROVEMENTS AND FORCEMAIN - PHASE II  
NO. 38

NEW VALVE VAULT, EQUIPMENT AND PIPING  
PLAN, SECTION AND KEYED NOTES

Design Review Committee City Engineer Approval

Last Design Update

Mo./Day/Yr. Mo./Day/Yr.

City Project No. 691882

Zone Map No. K-14

Sheet W-102 Of

Redrawn for Record Purposes



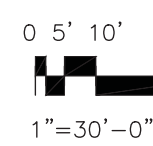


CITY OF ALBUQUERQUE DEPARTMENT OF MUNICIPAL DEVELOPMENT ENGINEERING DIVISION			
TITLE: CENTRAL AVENUE PUMP STATION IMPROVEMENTS STORM WATER PUMP STATION NO.-27 IMPROVEMENTS AND FORCEMAIN - PHASE II NO. 38			
<h2 style="margin: 0;">MISCELLANEOUS DETAILS I</h2>			
Design Review Committee		City Engineer Approval	
		Last Design Update	Mo./Day/Yr.
City Project No.		Zone Map No.	Sheet Of
691882		K-14	W-501









1. COORDINATE WITH PNM; SCHEDULE CONSTRUCTION OF THEIR PORTION OF THE ELECTRICAL SERVICE.
2. COMPLY WITH PNM MATERIAL AND CONSTRUCTION REQUIREMENTS FOR PORTIONS OF THE ELECTRICAL SERVICE THAT PNM DESIGNATES AS OWNER'S RESPONSIBILITY.
3. DETAILS FOR CONDUIT AND CONDUCTORS SHOWN IN CONDUIT SCHEDULES.
4. CONDUIT RUNS ILLUSTRATE CONNECTIONS. SHOW INSTALLED ROUTE ON AS-BUILT DRAWINGS.
5. INSTALL NEC 500/501 CONDUIT SEAL FITTING ON CONDUITS BETWEEN THE WET WELL AND THE CABLE TERMINAL BOX, CTB. THESE FITTINGS ARE TO PREVENT ENTRY OF CORROSIVE GASSES INTO CTB, SO FILL FITTINGS WITH REMOVABLE FIRE RETARDANT SILICON FOAM TO FACILITATE CABLE REMOVAL FOR FUTURE MAINTENANCE OR REPAIR.
6. INSTALL A 200# TEST PULL STRING IN ALL SPARE CONDUITS AND CAP BOTH ENDS OF SPARE CONDUITS.
7. TRANSMIT RADIO PANEL, TRP, RECEIVE RADIO PANEL, RRP, AND LIFT STATION INTERIM CONTROLLER, LSIC, ARE TEMPORARY CONTROLS. THE FUNCTIONS OF THESE PANELS SHALL BE TRANSFERRED TO THE LIFT STATION CONTROL PANEL WHEN IT IS INSTALLED.

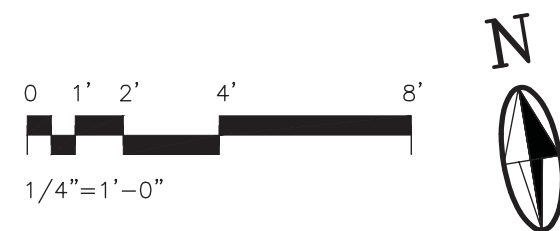
A circular seal with concentric circles. The outer ring contains the text "DANIEL GONZALES" at the top and "PROFESSIONAL" at the bottom. The inner ring contains "NEW MEXICO". The center contains the year "19969". To the right of the seal, there is a vertical stamp that reads: "I, DANIEL GONZALES, CERTIFY THAT THIS ELECTRONIC VERSION IS IDENTICAL TO THE ORIGINAL REPRODUCIBLE RECORD DRAWING SIGNED BY ME ON 04/2019".

2701 Miles Road SE Albuquerque, New Mexico 87106


CITY OF ALBUQUERQUE DEPARTMENT OF MUNICIPAL DEVELOPMENT ENGINEERING DIVISION													
TITLE: CENTRAL AVENUE PUMP STATION IMPROVEMENTS STORM WATER PUMP STATION NO.-27 IMPROVEMENTS AND FORCEMAIN - PHASE II NO. 38													
<b>ELECTRICAL SITE PLAN</b>													
Design Review Committee	City Engineer Approval	Last Design Update	<table border="1" style="width: 100%; border-collapse: collapse;"> <tr> <td style="width: 50%; padding: 5px;">Mo./Day/Yr.</td> <td style="width: 50%; padding: 5px;">Mo./Day/Yr.</td> </tr> <tr><td style="height: 30px;"></td><td></td></tr> <tr><td style="height: 30px;"></td><td></td></tr> <tr><td style="height: 30px;"></td><td></td></tr> <tr><td style="height: 30px;"></td><td></td></tr> </table>	Mo./Day/Yr.	Mo./Day/Yr.								
Mo./Day/Yr.	Mo./Day/Yr.												
City Project No.	Zone Map No.	Sheet	Of										
691882	K-14	E-101											

RECORD DRAWING	
DATE: 04/17/19	DRAWN BY: MOLZEN CORBIN
<p>THESE RECORD DRAWINGS HAVE BEEN PREPARED, IN PART, ON THE BASIS ON INFORMATION COMPILED AND FURNISHED BY OTHERS. MOLZEN-CORBIN AND ASSOCIATES WILL NOT BE RESPONSIBLE FOR ANY ERRORS OR OMISSIONS WHICH HAVE BEEN INCORPORATED INTO THIS DOCUMENT AS A RESULT.</p>	





- MOLZENCORBIN**  
2701 Miles Road SE Albuquerque, New Mexico 87106

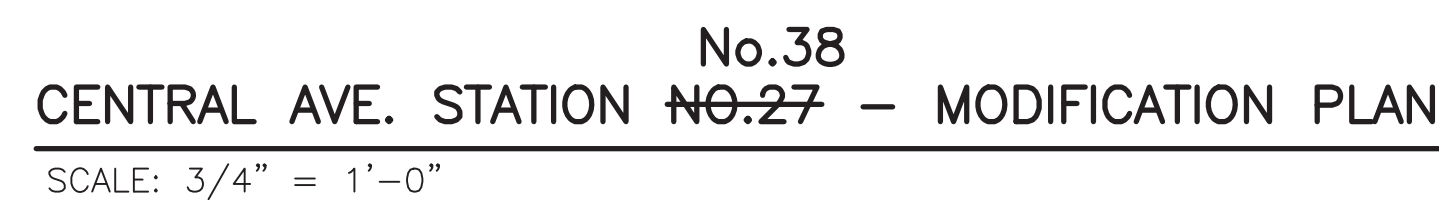
ENGINEER'S SEAL		SURVEY INFORMATION		BENCH MARKS		AS BUILT INFORMATION	
		FIELD NOTES					
		NO.	BY	DATE			
NO.	DATE	REMARKS	BY				
<div style="display: flex; justify-content: space-between;"> <div>  <p>1. DANIEL SONZALES CERTIFY THAT THIS IS A TRUE AND CORRECT REPRESENTATION OF THE ORIGINAL REPRODUCIBLE RECORD DRAWING SIGNED BY ME ON 04/22/2012</p> </div> <div> <p>MC PROJECT NUMBER: ABQ131-13</p> </div> </div>							
DESIGNED BY	HH	DATE	10/2016				
DRAWN BY	DJ	DATE	10/2016				
CHECKED BY	HH	DATE	10/2016				
				CONTRACTOR STARTED BY INSPECTORS ACCEPTANCE BY FIELD VERIFICATION BY CORRECTIONS CORRECTED BY DATE <b>MICRO-FILM INFORMATION</b> RECORDED BY DATE NO.			

RECORD DRAWING	
DATE: 04/17/19	DRAWN BY: MOLZEN CORBIN
<p>THESE RECORD DRAWINGS HAVE BEEN PREPARED, IN PART, ON THE BASIS ON INFORMATION COMPILED AND FURNISHED BY OTHERS. MOLZEN-CORBIN AND ASSOCIATES WILL NOT BE RESPONSIBLE FOR ANY ERRORS OR OMISSIONS WHICH HAVE BEEN INCORPORATED INTO THIS DOCUMENT AS A RESULT.</p>	



1. INTERIOR OF WET WELL IS CLASS I, DIVISION 1 HAZARDOUS AREA. THE 10' SPACE SURROUNDING THE WET WELL OPENINGS IS CONSIDERED A CLASS I DIVISION 2 HAZARDOUS AREA.
2. LOCATE RECEPTACLES IN WET WELL WITHIN ARMS REACH FROM LIFT STATION HATCH.

1. MOUNT RECEPTACLE FOR PUMP MOTOR CABLE ON WALL OF WET WELL. RECEPTACLE EQUIPPED WITH TERMINALS FOR MOTOR POWER, GROUND AND THERMAL/LEVEL SENSOR CONDUCTORS.
2. RUN TWO 3/4" CONDUITS FROM EACH RECEPTACLE BACK BOX TO LIFT STATION CONTROL PANEL, LSCP. PULL POWER CONDUCTORS IN ONE CONDUIT AND 2 #14 AND #14 GROUND IN THE OTHER.
3. SUSPEND LEVEL SWITCHES FROM J-HOOKS IN AREA INDICATED, TYPICAL OF 4.
4. INSTALL RECEPTACLE FOR EACH LEVEL SWITCH. INSTALL PLUG ON LEVEL SWITCH CABLE. CONNECT.
5. RUN 3/4" CONDUIT WITH 2 #14 AND #14 GROUND FROM EACH LEVEL SWITCH RECEPTACLE TO LSCP.
6. INSTALL MAGNETIC LIMIT SWITCH ON WET WELL COVER; INSTALL MAGNET ON HATCH. TYPICAL PER HATCH.
7. INSTALL J-BOX BENEATH WET WELL COVER FOR CONNECTION OF LIMIT SWITCH CABLE. CONNECT HATCH LIMIT SWITCHES IN SERIES FOR SINGLE INPUT AT LSCP. SHOWN HERE FOR DRAFTING PURPOSES. COORDINATE LOCATION OF J-BOXES IN FIELD.
8. RUN 3/4" CONDUIT WITH 2 #14 AND #14 GROUND FROM INTRUSION SWITCH J-BOX TO LSCP.
9. LEVEL FLOAT SWITCH, TYPICAL. SEE SCHEDULE IN SECTION 44 42 56.18 - SUBMERSIBLE SEWAGE PUMPS.



**MOLZENCORBIN**  
2701 Miles Road SE Albuquerque, New Mexico 87106

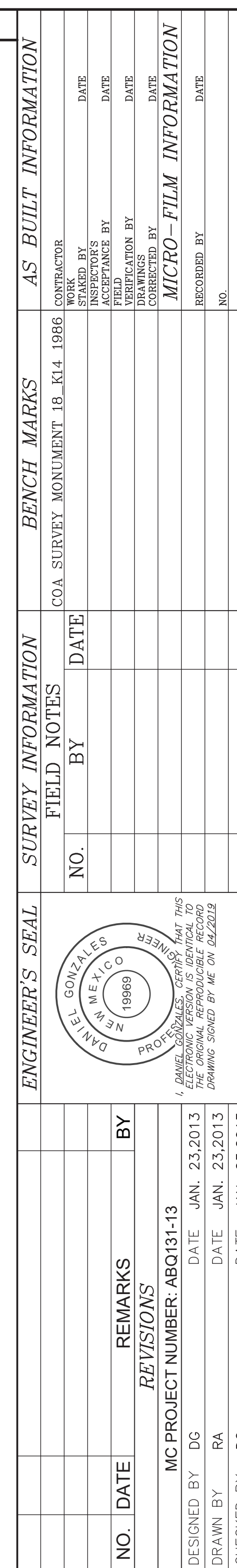
ENGINEER'S SEAL		SURVEY INFORMATION		BENCH MARKS		AS BUILT INFORMATION	
		FIELD NOTES					
		NO.	BY				
						CONTRACTOR	
						WORK ORDERED BY	
						INSPECTOR'S	DATE
						STATIONED BY	DATE
						VERIFICATION BY	DATE
						FIELD	DATE
						CORRECTED BY	DATE
				<i>MICRO - FILM INFORMATION</i>			
						RECORDED BY	DATE
						NO.	

<p align="center"><b>CITY OF ALBUQUERQUE</b>  <b>DEPARTMENT OF MUNICIPAL DEVELOPMENT</b>  <b>ENGINEERING DIVISION</b></p>				
<p><b>TITLE:                      CENTRAL AVENUE PUMP STATION IMPROVEMENTS</b>  <b>STORM WATER PUMP STATION NO.-27 IMPROVEMENTS AND FORCEMAIN - PHASE II</b>  <b>NO. 38</b></p>				
<p align="center"><b>PUMP STATION MODIFICATION</b></p>				
<p align="center"><b>PLAN AND SECTION</b></p>				
<p>Design Review Committee</p>		<p>City Engineer Approval</p>		<p align="center">Last Design Update</p>
				<p align="center">Mo./Day/Yr.                      Mo./Day/Yr.</p>
<p>City Project No.</p>		<p>Zone Map No.</p>		<p>Sheet                      Of</p>
<p align="center"><b>691882</b></p>		<p align="center"><b>K-14</b></p>		<p align="center"><b>E-103</b></p>





1. MOUNT CONDUIT AND 316 SS J-HOOKS FOR PVC MOUNTING SO THEY ARE VISIBLE WHEN WET WELL HATCH COVER IS OPENED. NOT TO OBSTRUCT PATH FOR PUMP REMOVAL. 1 HOOK FOR EACH CABLE.
2. CONTROL PANEL IN NEMA 4X ENCLOSURE.
3. COAXIAL CABLE FROM RADIO. INSTALL POLY PHYPHASER ON CABLE MINIMUM 6' (COAXIAL CABLE LENGTH) FROM RADIO WITHIN THE CONTROL PANEL.
4. CONSTRUCT 24" WIDE CONCRETE EQUIPMENT PAD.
5. INSTALL 316 SS FRAMING CHANNEL FOR MOUNTING OF J-HOOKS AND PIPE HANGERS. PROVIDE HOOKS FOR EACH FLOAT. ANCHOR TO WET WELL AS NEEDED.
6. 1/2" SCH 80 PVC. PROVIDE PVC SLOT FOR CABLE ENTRY AND MOUNTING ON J-HOOK. PVC CONDUITS TO BE COUPLED BY THREADING OF PVC ONLY. NO GLUE ALLOWED. 5' SECTIONS MAX.
7. PROVIDE GROUND ROD ACCESS BOX WITH TRAFFIC RATED COVER WITH "GROUND" CAST ON THE COVER. (TYPICAL 2).
8. PROVIDE MINIMUM OF 10' OF LOOPED CABLE ON HOOKS, TYPICAL.
9. 316 SS INSTRUMENT NAMEPLATE, TYPICAL FOR FLOAT SWITCHES. 316 SS TAG AND MINIMUM 1/8" SS CABLE.
10. 316 SS PIN/ROD TYPE BASKET CABLE GRIP, CABLE GRIP MESH WRAPS AROUND OUTSIDE OF PUMP CABLE AND PIN/ROD IS USED TO INTERWEAVE THE LEFT AND RIGHT HAND MESH SIDES TOGETHER.
11. INSTALL #2 BARE COPPER GROUNDING ELECTRODE AT 30" BFG.
12. HEAVY DUTY EXOTHERMIC WELD PROCESS CONNECTIONS, TYPICAL.
13. PUMP CONTROL PANEL IDENTIFICATION SIGN, SEE E-502.
14. NO TRESPASSING SIGN, SEE E-502.
15. #4 BC BOND TO REINFORCING.



2701 Miles Road SE Albuquerque, New Mexico 87106

CITY OF ALBUQUERQUE DEPARTMENT OF MUNICIPAL DEVELOPMENT ENGINEERING DIVISION													
TITLE:                      CENTRAL AVENUE PUMP STATION IMPROVEMENTS STORM WATER PUMP STATION NO.-27 IMPROVEMENTS AND FORCEMAIN - PHASE I NO. 38													
<h2 style="margin: 0;">ELECTRICAL</h2> <h2 style="margin: 0;">DETAILS 1</h2>													
Design Review Committee	City Engineer Approval	Last Design Update	<table border="1" style="width: 100%; border-collapse: collapse;"> <tr> <td style="width: 50%; padding: 2px;">Mo./Day/Yr.</td> <td style="width: 50%; padding: 2px;">Mo./Day/Yr.</td> </tr> <tr><td style="height: 20px;"></td><td></td></tr> <tr><td style="height: 20px;"></td><td></td></tr> <tr><td style="height: 20px;"></td><td></td></tr> <tr><td style="height: 20px;"></td><td></td></tr> </table>	Mo./Day/Yr.	Mo./Day/Yr.								
Mo./Day/Yr.	Mo./Day/Yr.												
City Project No.                      691882		Zone Map No.                      K-14	Sheet                      Of <b>E-501</b>										



LEGEND  
Y: CONDUIT TYPE ALLOWED  
Y \*: ALL UNDERGROUND CONDUIT ENCASED IN RED-DYED CONCRETE AND REBAR CAGE.

\* Includes all networked protocols (Ex: Ethernet, DeviceNet, Profibus...etc)



SCALE: NONE

MOUNT ON PANEL AS SHOWN ON E-501.



SCALE: NONE

MOUNT ON PANEL AS SHOWN ON E-501.



SCALE: NONE

1. 30" X 24" ALUMINUM PANEL IDENTIFICATION SIGN. 0.125" MINIMUM PANEL THICKNESS 6061-T6 OR 5052-H38 ALUMINUM ALLOY IN ACCORDANCE TO WUA STANDARD SPECIFICATION. USE SUPER ENGINEERING GRADE REFLECTIVE SHEETING WITH GRAFFITI RESISTANCE INKS OR COATING AS APPROVED BY PROJECT ENGINEER.
2. RED LETTERING AND STRIPING ON WHITE BACKGROUND.
3. 18" X 12" 0.080 GAUGE ALUMINUM PANEL NO TRESPASSING SIGN WITH 3M GRADE HIGH INTENSITY PRISMATIC REFLECTIVE SHEETING. 1/8" DIAMETER HOLES IN EACH CORNER FOR FASTENING.
4. WHITE BACKGROUND, BLACK LETTERS, 1/2" WIDE RED BORDER.
5. QUANTITY: ONE (1). MOUNT ON PANEL AS SHOWN ON E-501.
6. ACCEPTABLE MANUFACTURERS OF NO TRESPASSING SIGNS:

P&M SIGNS, INC.  
202 EAST BROADWAY STREET  
BOX 567  
MOUNTAINAIR, NM 87036  
847-2850

OR ENGINEER REVIEWED EQUIVALENT.

PVC	BELOW FINISH GRADE
FGV	POLYVINYL CHLORIDE
BC	BARE COPPER
PED	PEDESTAL
MCC	MOTOR CONTROL CENTER
PPA	PANEL
MDP	PANEL
CT	CURRENT TRANSFORMER
RTU	REMOTE TERMINAL UNIT
UGE	UNDERGROUND ELECTRIC
FO	FIBER OPTIC
W	WATER
DIA	DIAMETER
ELEV.	ELEVATION
SS	STAINLESS STEEL
ASSY	ASSEMBLY
NEC	NATIONAL ELECTRICAL CODE
RMC	RIGID METALLIC CONDUIT
3P	3 POLE
kWh	KILOWATT HOUR
MDP	MAIN DISTRIBUTION PANEL
480V	480 VOLTS
GFCI	GROUND FAULT CIRCUIT INTERRUPTER
FVNR	FULL VOLTAGE NON-REVERSING
KVA	KILO VOLT AMPERE
100A	100 AMPERE
KAIC	KILO-AMPERE INTERRUPTING CAPACITY
G	GROUND
HOA	HAND-OFF-AUTO
LSCP	LIFT STATION CONTROL PANEL

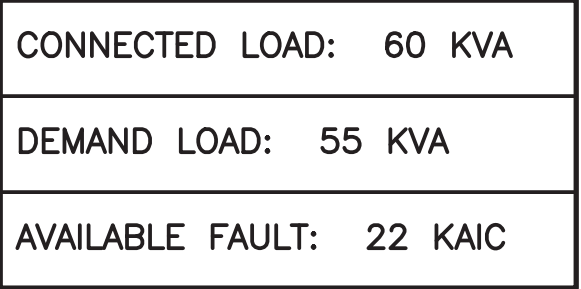
RECORD DRAWING	
DATE: 04/17/19	DRAWN BY: MOLZEN CORBIN
THESE RECORD DRAWINGS HAVE BEEN PREPARED, IN PART, ON THE BASIS ON INFORMATION COMPILED AND FURNISHED BY OTHERS. MOLZEN-CORBIN AND ASSOCIATES WILL NOT BE RESPONSIBLE FOR ANY ERRORS OR OMISSIONS WHICH HAVE BEEN INCORPORATED INTO THIS DOCUMENT AS A RESULT.	

**MOLZENCORBIN**  
2701 Miles Road SE Albuquerque, New Mexico 87106

<p align="center"><b>CITY OF ALBUQUERQUE</b>  <b>DEPARTMENT OF MUNICIPAL DEVELOPMENT</b>  <b>ENGINEERING DIVISION</b></p>			
<p><b>TITLE: CENTRAL AVENUE PUMP STATION IMPROVEMENTS</b>  <b>STORM WATER PUMP STATION NO. 27 IMPROVEMENTS AND FORCEMAIN - PHASE II</b>  <b>NO. 38</b></p>			
<p align="center"><b>ELECTRICAL</b>  <b>DETAILS 2</b></p>			
Design Review Committee	City Engineer Approval	Last Design Update	Mo./Day/Yr.
City Project No. 691882		Zone Map No. K-14	Sheet Of E-502

[illegible]





## GENERAL NOTES

1. COORDINATE FOR PNM TO SCHEDULE AND CONSTRUCT THEIR PORTIONS OF THE SERVICE EXTENSION.
2. LABEL ELECTRICAL GEAR WITH ARC FLASH RATING FOR PE WHEN WORKING AROUND THE SWITCHGEAR.

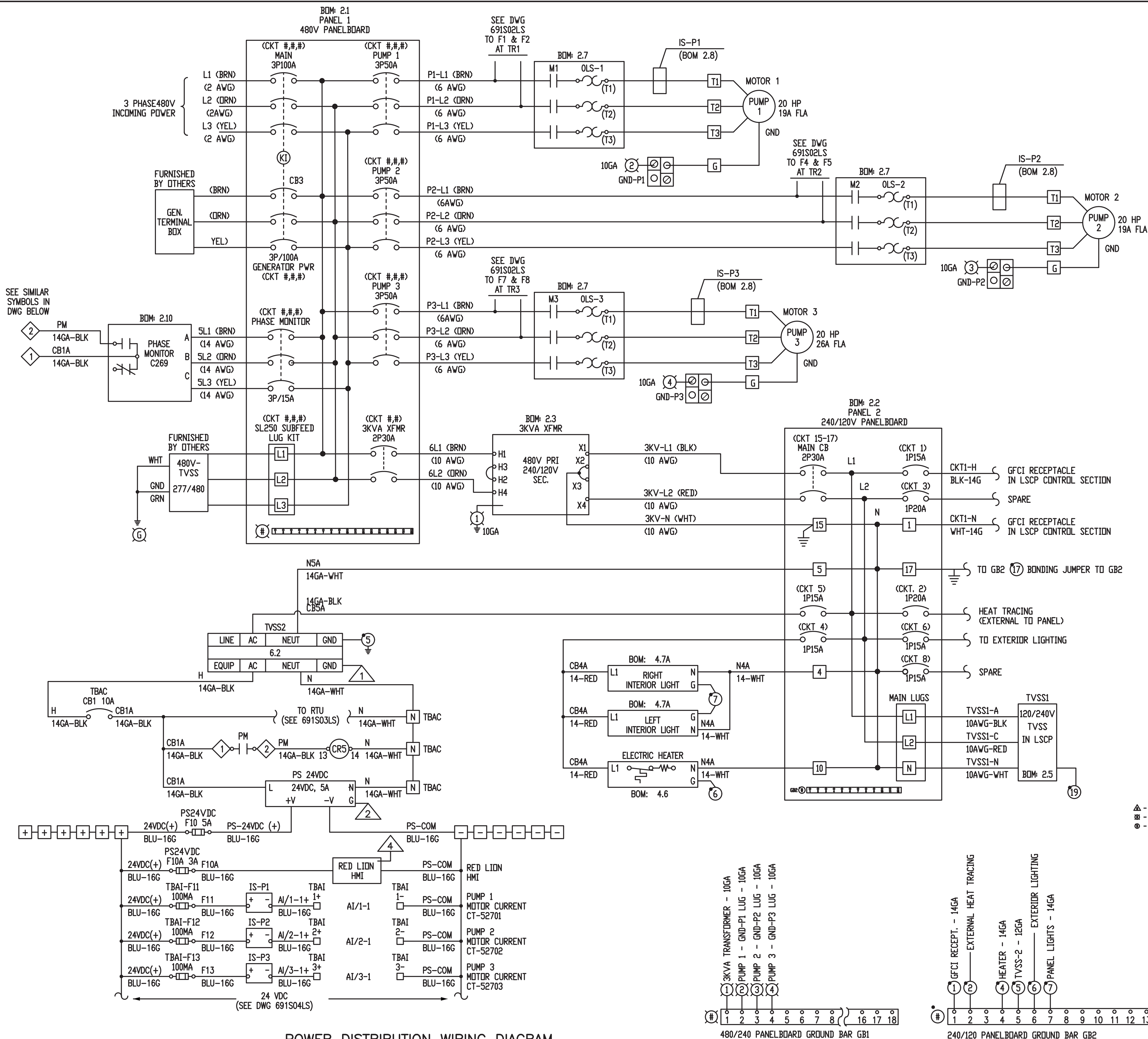
KEYED NOTES 

1. INTERLOCK GENERATOR TERMINAL BOX WITH MAIN CIRCUIT BREAKER.
2. INSTALL GFCI RECEPTACLE IN LSCP.
3. 1.5" CONDUIT WITH 3 #2, #2N, AND #6G.
4. 1 1/4" CONDUIT WITH 3 #6 CONDUCTORS.
5. LIFT STATION CONTROL PANEL, LSCP.
6. PROVIDE AND INSTALL DRY TYPE TRANSFORMER.
7. MOUNT NEMA 4X SS ENCLOSURE WITH SURGE PROTECTIVE DEVICE, SPD, ADJACENT TO LSCP. COORDINATE LOCATION TO PROVIDE SHORTEST CONDUCTORS WITH MINIMUM BENDS TO CONNECT.
8. GROUND BETWEEN SERVICE AND METAL PIPES IN VALVE PIT WITH #6 BARE COPPER CONDUCTORS.
9. 1" CONDUIT WITH 3 #10 THWN POWER, 1 #10 GROUND.
10. INSTALL MOTOR DISCONNECT RECEPTACLE FOR PUMP POWER.
11. INSTALL PLUG ON PUMP POWER CABLE; CONNECT.
12. EQUIP LSCP WITH TERMINAL BLOCKS FOR CONNECTION OF SPD.
13. 100A, 3 POLE, NEMA 4X FUSED DISCONNECT, LISTED AND LABELED FOR USE AS SERVICE ENTRANCE EQUIPMENT. MINIMUM 65 KAIC RATING.
14. INSTALL 480V, 3 POLE, 100A, WP RECEPTACLE FOR EXTERNAL GENERATOR CONNECTION. COORDINATE WITH COA REPRESENTATIVE NOT LATER THAN 10 DAYS AFTER NOTICE TO PROCEED TO DETERMINE RECEPTACLE THAT MATCHES GENERATOR PLUG CONFIGURATION.

**MOLZENCORBIN**  
2701 Miles Road SE Albuquerque, New Mexico 87106

RECORD DRAWING	
DATE: 04/17/19	DRAWN BY: MOLZEN CORBIN
THESE RECORD DRAWINGS HAVE BEEN PREPARED, IN PART, ON THE BASIS ON INFORMATION COMPILED AND FURNISHED BY OTHERS. MOLZEN-CORBIN AND ASSOCIATES WILL NOT BE RESPONSIBLE FOR ANY ERRORS OR OMISSIONS WHICH HAVE BEEN INCORPORATED INTO THIS DOCUMENT AS A RESULT.	





POWER DISTRIBUTION WIRING DIAGRAM  
N.T.S.

GENERAL NOTES

1. THIS DIAGRAM IS SHOWN AS IT WAS SUBMITTED BY LIFT STATION CONTROL PANEL (LSCP) MANUFACTURER.
2. REFER TO MANUFACTURER SUBMITTAL FOR DETAIL INFORMATION ON USED MATERIALS.

RECORD DRAWING

DATE: 04/17/19 DRAWN BY: MOLZEN CORBIN

THESE RECORD DRAWINGS HAVE BEEN PREPARED, IN PART, ON THE BASIS OF INFORMATION COMPILED AND FURNISHED BY OTHERS. MOLZEN-CORBIN AND ASSOCIATES WILL NOT BE RESPONSIBLE FOR ANY ERRORS OR OMISSIONS WHICH HAVE BEEN INCORPORATED INTO THIS DOCUMENT AS A RESULT.

**MOLZENCORBIN**  
2701 Miles Road SE Albuquerque, New Mexico 87106

CITY OF ALBUQUERQUE DEPARTMENT OF MUNICIPAL DEVELOPMENT ENGINEERING DIVISION			
TITLE: CENTRAL AVENUE PUMP STATION IMPROVEMENTS STORM WATER PUMP STATION NO-27 IMPROVEMENTS AND FORCEMAIN - PHASE II NO. 38			
ELECTRICAL POWER DISTRIBUTION			
Design Review Committee	City Engineer Approval	Last Design Update	
City Project No. 691882		Zone Map No. K-14	Sheet Of E-602

AS BUILT INFORMATION	
CONTRACTOR	DATE
STATED BY	DATE
ACCEPTANCE BY	DATE
FIELD	DATE
REVISION BY	DATE
CORRECTED BY	DATE
MICRO-FILM INFORMATION	
RECORDED BY	DATE
NO.	

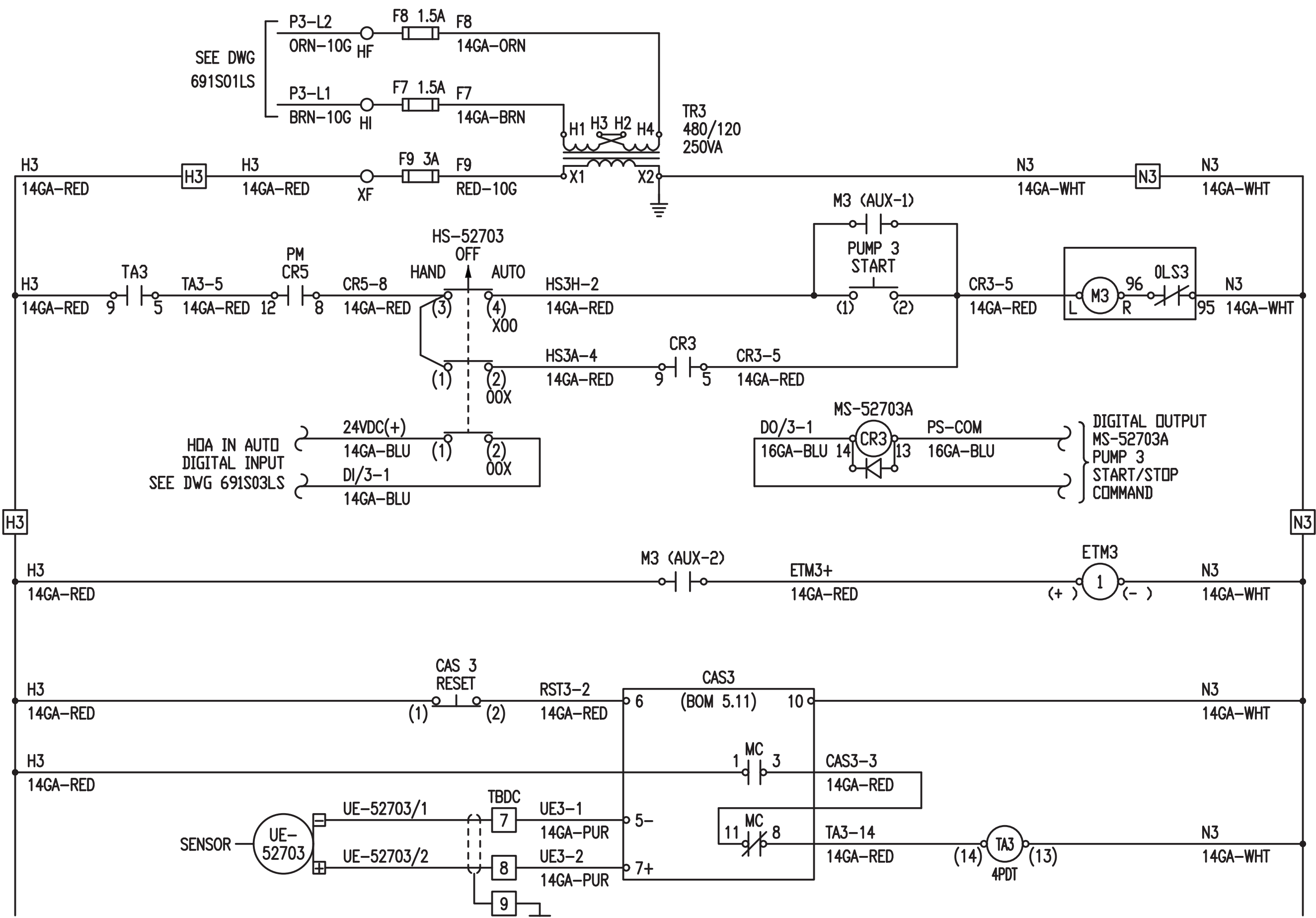
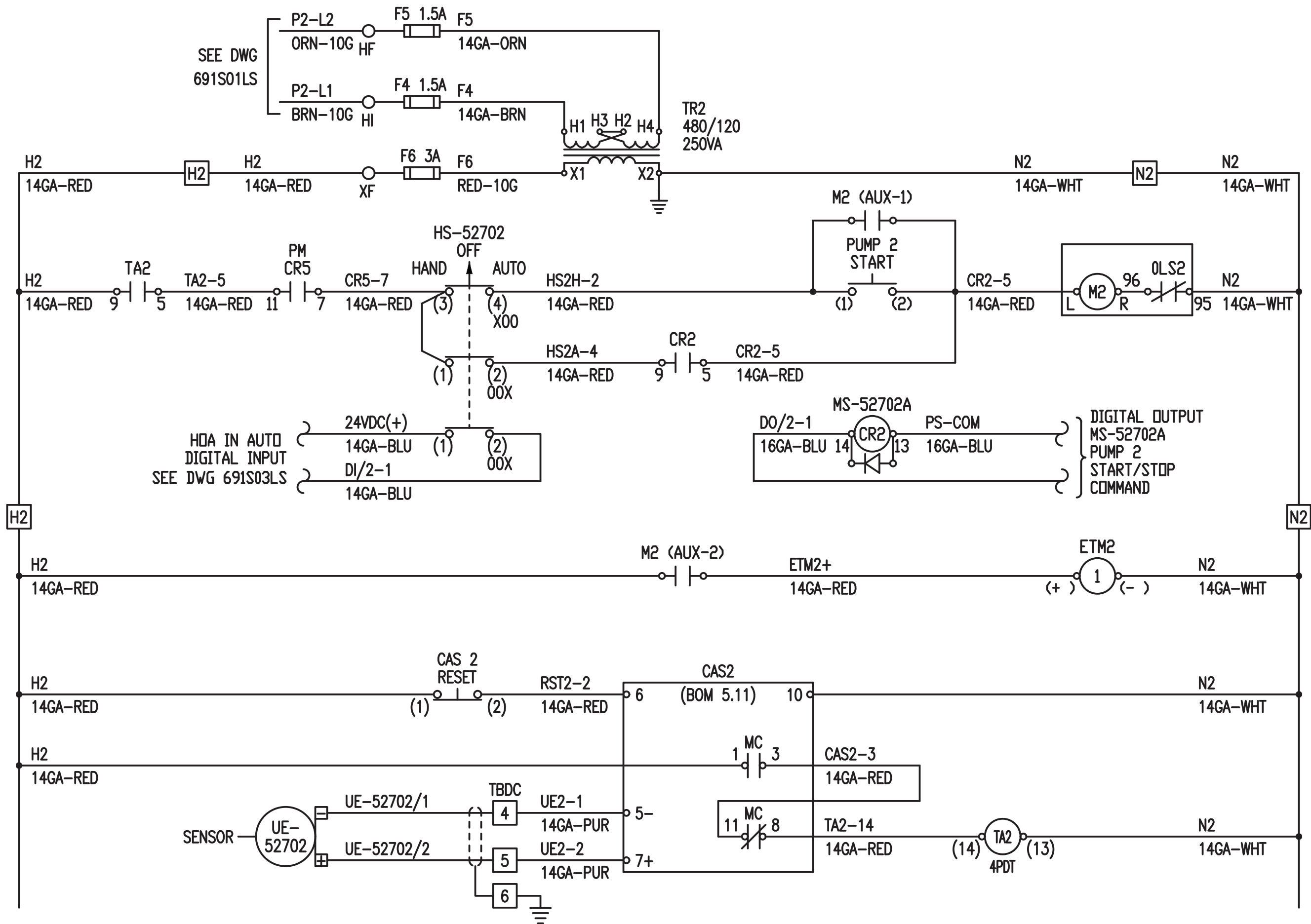
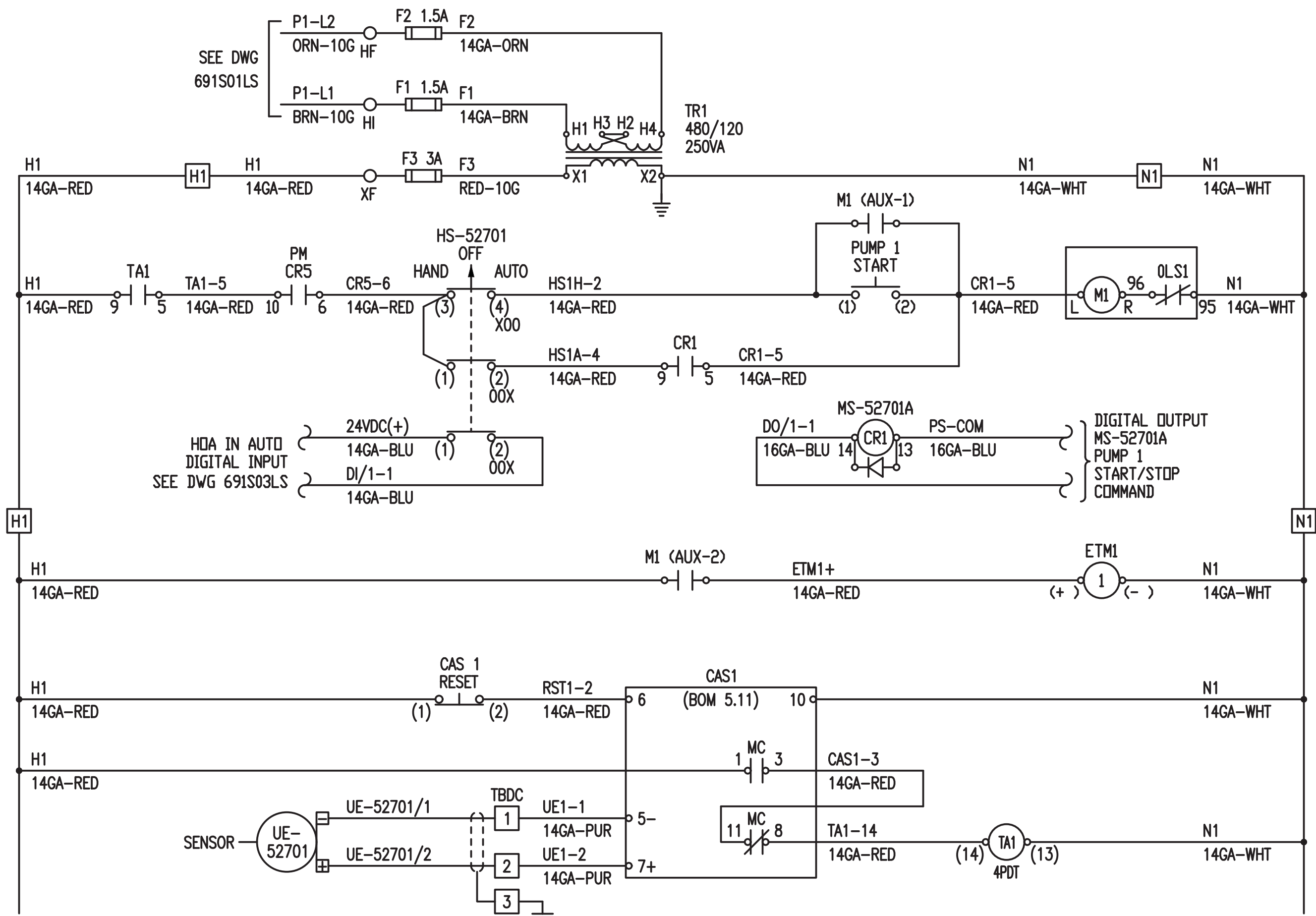
BENCH MARKS	
COA SURVEY MONUMENT 18-K14	1986

SURVEY INFORMATION	
FIELD NOTES	DATE
NO.	

ENGINEER'S SEAL	
DANIEL CORBIN, CERTIFIED PROFESSIONAL ENGINEER NEW MEXICO 1986	

REVISIONS	
NO.	DATE
MC PROJECT NUMBER: ABQ131-13	
DESIGNED BY	DATE
DRAWN BY	DATE
CHECKED BY	DATE



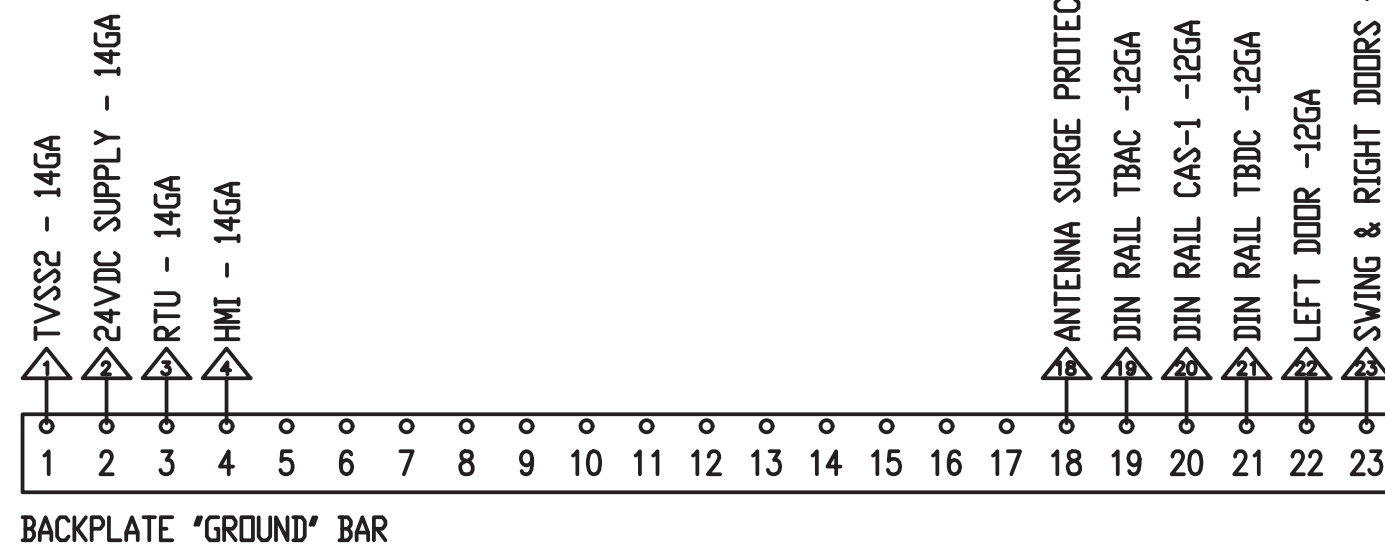


### GENERAL NOTES

- THIS DIAGRAM IS SHOWN AS IT WAS SUBMITTED BY LIFT STATION CONTROL PANEL (LSCP) MANUFACTURER.
- REFER TO MANUFACTURER SUBMITTAL FOR DETAIL INFORMATION ON USED MATERIALS.

RECORD DRAWING	
DATE:	DRAWN BY:
04/17/19	MOLZEN CORBIN
THESE RECORD DRAWINGS HAVE BEEN PREPARED, IN PART, ON THE BASIS OF INFORMATION COMPILED AND FURNISHED BY OTHERS. MOLZEN-CORBIN AND ASSOCIATES WILL NOT BE RESPONSIBLE FOR ANY ERRORS OR OMISSIONS WHICH HAVE BEEN INCORPORATED INTO THIS DOCUMENT AS A RESULT.	

**MOLZENCORBIN**  
2701 Miles Road SE Albuquerque, New Mexico 87106

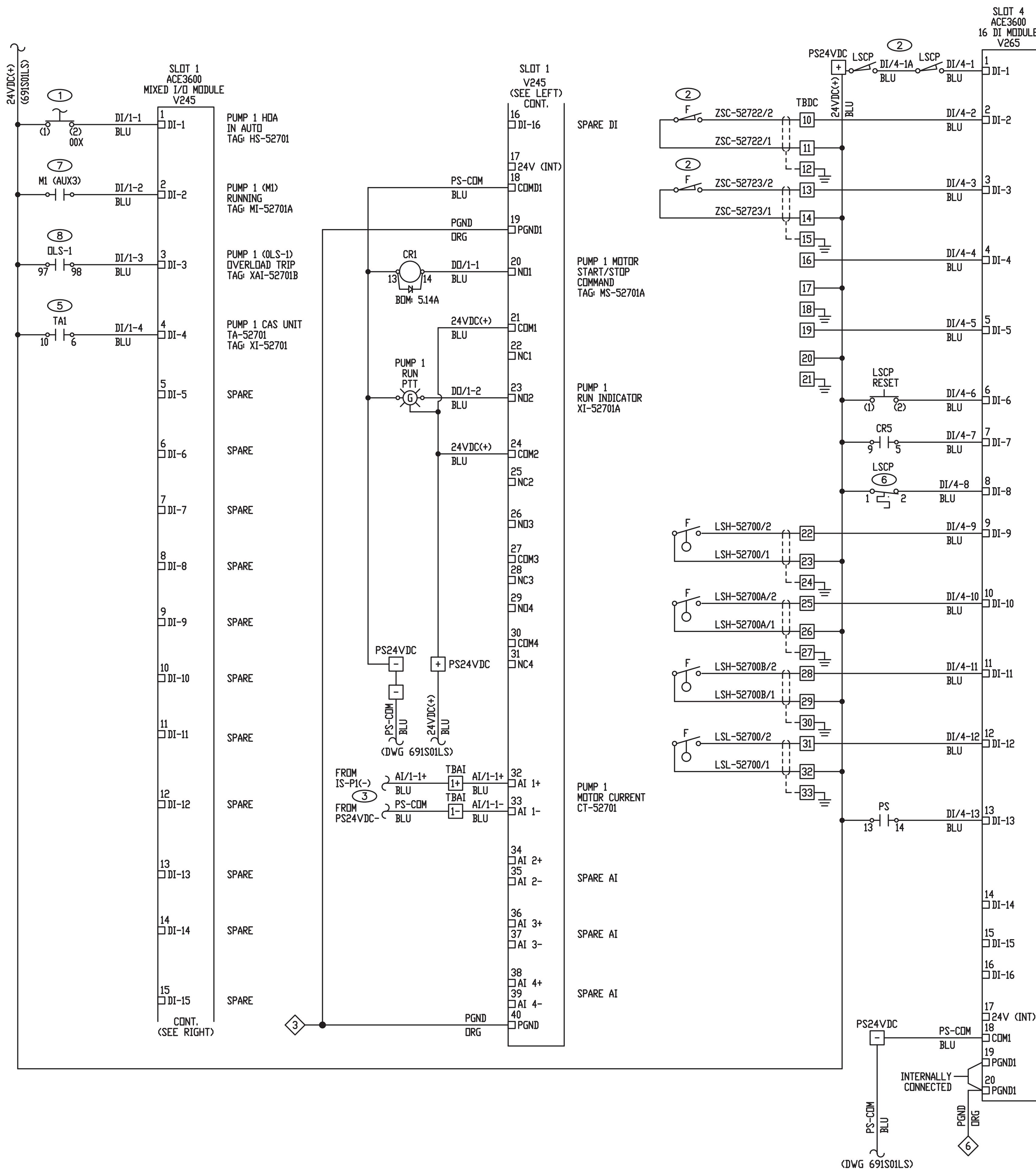


### CONTROL POWER FOR THE STARTERS

N.T.S.

2	6	-	6	9	1	8	.	8	2	-	1	9
City Project No. 691882												
Zone Map No. K-14												
Sheet Of E-603												





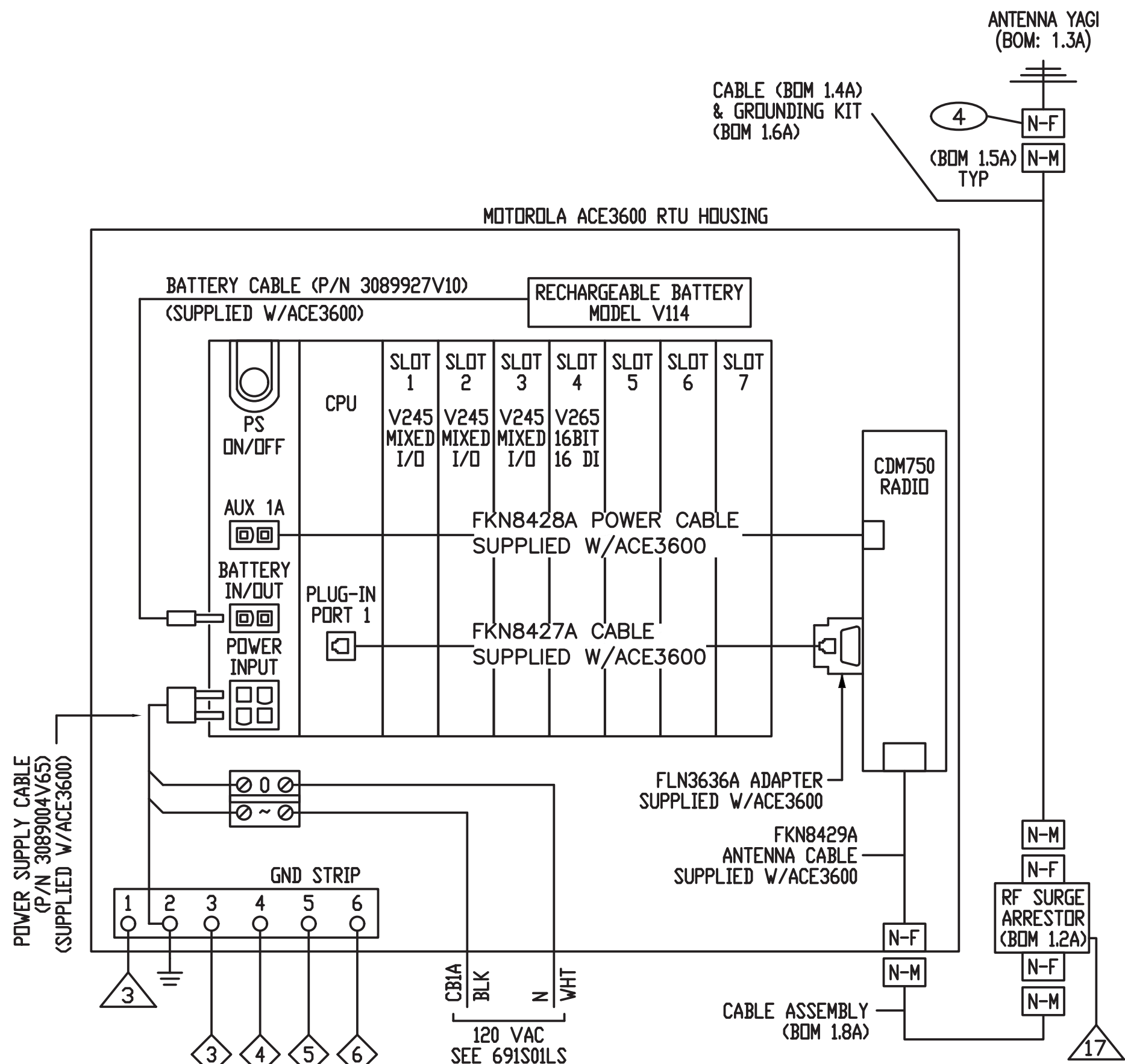
CONTROL SYSTEM WIRING DIAGRAM  
N.T.S.

GENERAL NOTES

1. THIS DIAGRAM IS SHOWN AS IT WAS SUBMITTED BY LIFT STATION CONTROL PANEL (LSCP) MANUFACTURER.
2. REFER TO MANUFACTURER SUBMITTAL FOR DETAIL INFORMATION ON USED MATERIALS.

KEYED NOTES (#)

1. INPUT FROM SELECTOR SWITCH
2. INTRUSION SWITCHES CONNECTED IN SERIES. TYPICAL FOR VALVE VAULT, WET WELL AND ON EXTERIOR DOOR OF PANEL LSCP. SWITCH OPENS WHEN DOOR OR HATCH IS OPEN.
3. MOTOR RUNNING CURRENT FROM CURRENT TRANSMITTER.
4. THE N-F CONNECTOR - INTEGRAL TO ANTENNA.
5. CONTACT OUTPUT OF CAS AUXILIARY RELAY.
6. NC TEMPERATURE SWITCH.
7. STARTER AUXILIARY CONTACT. (AUX3)
8. STARTER AUXILIARY CONTACT AT OVERLOAD RELAY.



**MOLZENCORBIN**  
2701 Miles Road SE Albuquerque, New Mexico 87106

RECORD DRAWING  
DATE: 04/17/19  
DRAWN BY: MOLZEN CORBIN  
THESE RECORD DRAWINGS HAVE BEEN PREPARED, IN PART, ON THE BASIS OF INFORMATION COMPILED AND FURNISHED BY OTHERS. MOLZEN-CORBIN AND ASSOCIATES WILL NOT BE RESPONSIBLE FOR ANY ERRORS OR OMISSIONS WHICH HAVE BEEN INCORPORATED INTO THIS DOCUMENT AS A RESULT.

CITY OF ALBUQUERQUE DEPARTMENT OF MUNICIPAL DEVELOPMENT ENGINEERING DIVISION			
TITLE: CENTRAL AVENUE PUMP STATION IMPROVEMENTS STORM WATER PUMP STATION NO. 27 IMPROVEMENTS AND FORCEMAIN - PHASE II NO. 38			
ELECTRICAL CONTROL SYSTEM WIRING DIAGRAM 1			
Design Review Committee	City Engineer Approval	Last Design Update	
City Project No. 691882		Zone Map No. K-14	Sheet Of E-604



