

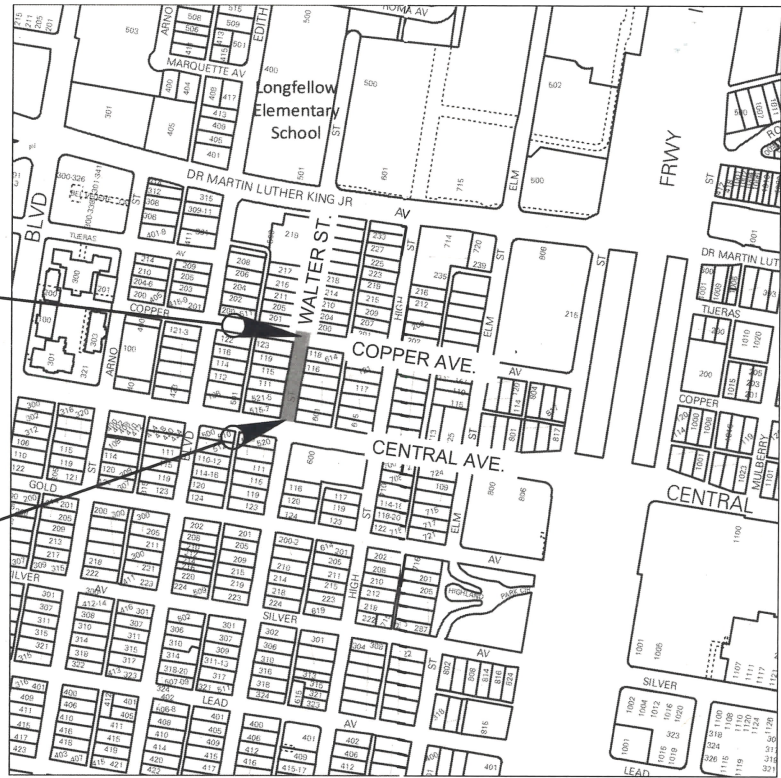
CITY OF ALBUQUERQUE
DEPARTMENT OF MUNICIPAL DEVELOPMENT
CONSTRUCTION PLANS
WALTER STREET DRAINAGE IMPROVEMENTS - PHASE II
FROM CENTRAL AVE. TO COPPER AVE.
COA Project 691898



INDEX OF SHEETS	
SHEET NO.	DESCRIPTION
1-1	COVER SHEET
1-2	GENERAL NOTES
1-3	SUMMARY OF QUANTITIES
1-4	REMOVALS
1-5	PROPOSED TYPICAL SECTION
SUBTOTAL = 5	
3-1	HORIZONTAL LAYOUT PLAN
3-2	ROADWAY PLAN
3-3	CURB RAMP LAYOUT PLAN
SUBTOTAL = 3	
5-1	PERMANENT PAVEMENT MARKINGS NOTES AND QUANTITIES
5-2	PERMANENT PAVEMENT MARKINGS STRIPING PLANS
SUBTOTAL = 2	
6-1	DRAINAGE PLAN AND PROFILE
6-2	CBC PENETRATION DETAILS
6-3	ORIFICE PLATE DETAILS
SUBTOTAL = 3	
PROJECT TOTAL = 13	

END OF CONSTRUCTION
(WALTER STREET)
STA. 15+92.24

BEGINNING OF CONSTRUCTION
(WALTER STREET)
STA. 12+39.85



VICINITY MAP

SCALE: 1:500
COA ZONE ATLAS MAP: K14, K15
LENGTH OF PROJECT: 570.00 FT

PURPOSE OF PROJECT:

DRAINAGE IMPROVEMENTS FROM CENTRAL AVENUE ALONG WALTER STREET AND UP TO COPPER AVE. IMPROVEMENTS INCLUDE; NEW STORM DRAIN, CURB RAMPS AT COPPER AVE., PAVEMENT REPLACEMENT, WATER LINE RELOCATION (BY OTHERS), PAVEMENT STRIPING, AND OTHER ASSOCIATED WORK.

RECORD DRAWING

AS-BUILT DATA PROVIDED BY REX VOLGER - RIO GRANDE SURVEYING
(PLS # 10466)
RECORD DRAWINGS PREPARED BY WSP

ABCWUA ACCEPTANCE OF RECORD DRAWINGS

CONSTRUCTION ENGINEER

PRINT NAME _____

DATE _____



REV.	CITY ENGINEER	DATE	USER DEPARTMENT	DATE	USER DEPARTMENT	DATE
ENGINEERS STAMP & SIGNATURE APPROVALS ENGINEER DATE *****						
DRC Chairman			12-2-19			
Transportation			11-17-19			
Water/Wastewater			12-2-19			
Hydrology			11-18-19			
Parks						
Constr. Coord.						
Traffic Eng.						
AMAFCA						
PROJECT NO.			COA 691898			
SHEET			1-1			

ITEM NO.	LONG DESCRIPTION	UNIT	QUANTITY
CONSTRUCTION ITEMS			
4.01X	CONSTRUCTION STAKING AND SURVEYING, COMPL.	LS	1
6.050	CONSTRUCTION MOBILIZATION, COMPL	LS	1
19.010	CONSTRUCTION TRAFFIC CONTROL & BARRICADING, COMPL	LS	1
REMOVALS			
343.02	EXISTING PAVEMENT, ASPHALT CONCRETE, SAWCUT REMOVE AND DISPOSE, 6" OR LESS IN THICKNESS, COMPL	SY	1,215
343.08	EXISTING CURB AND GUTTER OR VALLEY GUTTER, PORTLAND CEMENT CONCRETE REMOVE AND DISPOSE, COMPL	LF	120
343.09	EXISTING SIDEWALK AND/OR DRIVEPAD, SAWCUT, REMOVE AND DISPOSE COMPL	SY	120
ROADWAY			
116.012	ARTERIAL ASPHALT CONCRETE, SP-III, MATERIAL COMP.	TON	215
116.02B	PLACEMENT ATERIAL ASPHALT CONCRETE 2" THICK, WITH MACHINE LAYDOWN, FOR QTY > 200 SY, CIP.	SY	635
116.022B	PLACEMENT ATERIAL ASPHALT CONCRETE 1-1/2" THICK, WITH MACHINE LAYDOWN, FOR QTY > 200 SY, CIP.	SY	1,790
301.020	SUBGRADE PREP. 12" AT 95% COMPACTION, CIP.	SY	1,215
336.010	PRIME COAT, EMULSIFIED ASPHALT, CIP.	SY	1,215
336.120	TACT COAT, CATIONIC EMULSIFIED ASPHALT, CIP.	SY	1,215
340.023	WHEELCHAIR ACCESS RAMP, 4" PCC, STD. CURB., CIP. SD 2418	SY	120
340.029	DETECTABLE WARNING SURFACES FOR ADA RAMPS	SF	100
340.010B	SIDEWALK 4" THICK PCC, INCL. SUBGRADE COMPACTION, FOR QTY OF 35-225 SY, CIP.	SY	20
340.050A	CURB AND GUTTER STD, PORTLAND CEMT CONC., INCL. SUBGRADE PREP, PER L.F., QTY. < 300 LF CIP STD 2415A	LF	120
DRAINAGE			
701.100	TRENCHING, BACKFILLING, & COMPACTION, FOR 18" TO 36" SEWER PIPE, UP TO 8' IN DEPTH, PIPE NOT INCL., COMPL	LF	330
901.X1	CONNECT NEW 36" DIA. DUCTILE IRON STORM DRAIN TO EX 4'X4' CBC ON COPPER	EA	1
910.X2	FURNISH AND INSTALL ORIFICE PLATE AT MANHOLE	EA	1
910.X3	36" DUCTILE IRON PIPE, FURNISH AND PLACE IN OPEN TRENCH	LF	39
910.017	36" REINFORCED CONCRETE PIPE, CLASS III, FURNISH & PLACE IN OPEN TRENCH, CIP.	LF	291
920.140	MANHOLE, 6' DIA., TYPE "C" OR "E", 6'-10' DEEP, CIP. SD 2101 & 2102	EA	1
SIGNING AND STRIPING			
441.001	REFLECTORIZED PLASTIC PAVEMENT MARKINGS, 4" WIDTH, CIP.	LF	325
441.005	REFLECTORIZED PLASTIC PAVEMENT MARKINGS, 24" WIDTH, CIP.	LF	350
441.040	REFLECTORIZED PLASTIC PAVEMENT MARKINGS; ARROW, SYMBOL, OR WORD, CIP.	EA	2
ABCWUA ITEMS			
910.X	(1) 22", (2) 16", AND (1) 12" STEEL/DUCTILE IRON WATERLINE REMOVAL, CAP EA. END W/ WELDED STEEL PLATE OR MECHANICAL JOINT CAP, INCLUDES TRENCHING, BACKFILLING, & COMPACTION	LS	1



RECORD DRAWING

CITY OF ALBUQUERQUE
DEPARTMENT OF MUNICIPAL DEVELOPMENT
ENGINEERING DIVISION
WALTER STORM DRAIN – PHASE II

SUMMARY OF QUANTITIES

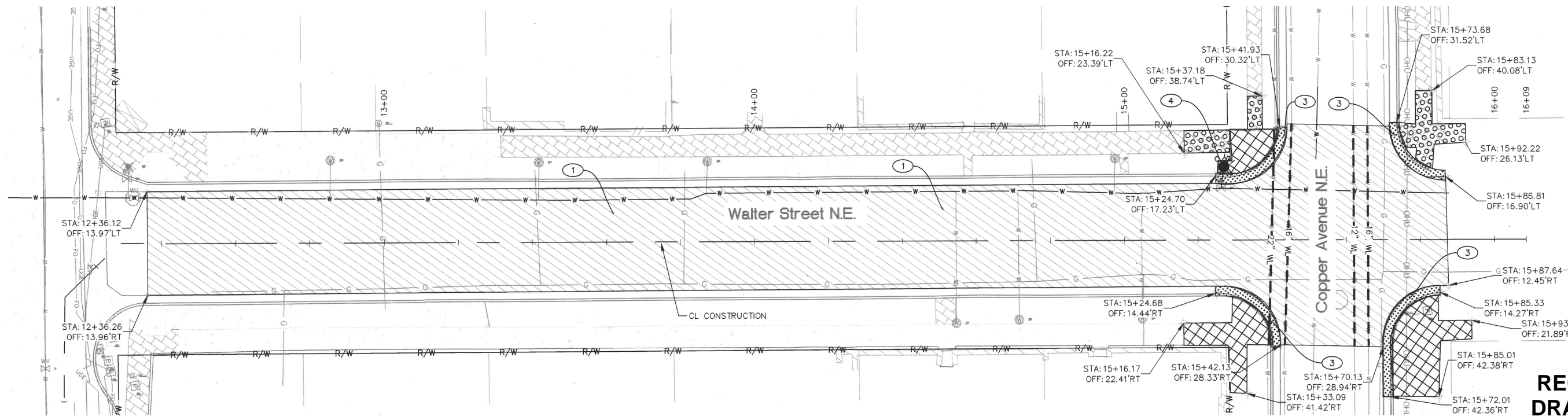
DESIGN REVIEW COMMITTEE	CITY ENGINEER APPROVAL	MO./DAY/YR.	MO./DAY/YR.

City Project No.
COA 691898

Zone Map No.
K14

Sheet
1–3

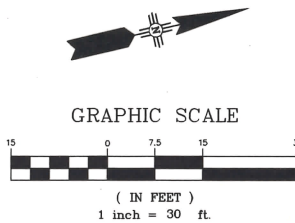
AS BUILT INFORMATION		BENCH MARKS		SURVEY INFORMATION		ENGINEER'S SEAL		REVISIONS		REMARKS		DESIGN	
CONTRACTOR	DATE	WORK STARTED BY	DATE	NO.	BY	DATE	NO.	DATE	BY	NO.	DATE	DESIGNED BY:	DATE
INSPECTOR'S	DATE	INSPECTOR'S	DATE									DRAWN BY:	DATE
ACCEPTANCE BY	DATE	ACCEPTANCE BY	DATE									CHECKED BY:	DATE
VERIFICATION BY	DATE	VERIFICATION BY	DATE										
DRAWINGS	DATE	DRAWINGS	DATE										
CONTROLLED BY	DATE	CONTROLLED BY	DATE										
MICRO-FILM INFORMATION	DATE	MICRO-FILM INFORMATION	DATE										
RECORDED BY	DATE	RECORDED BY	DATE										
NO.		NO.											



- GENERAL NOTES:**
1. ALL TIE POINTS SHALL TIE TO EXISTING CURB & GUTTER OR SIDEWALK.
 2. EXISTING CURB & GUTTER SHALL BE PROTECTED IN PLACE DURING CONSTRUCTION.
 3. STATION AND OFFSET PROVIDED REFERENCE THE CL CONSTRUCTION.
 4. REFER TO CURB RAMP LAYOUT PLAN FOR ADDITIONAL DETAILS.
- KEY NOTES:**
1. REMOVE AND DISPOSE OF EXISTING ASPHALT PAVING.
 2. REMOVE AND DISPOSE OF EXISTING PCCP.
 3. REMOVE AND DISPOSE OF EXISTING CURB AND GUTTER TO THE NEAREST JOINT.
 4. FIRE HYDRANT RELOCATED BY OTHERS.
- LEGEND:**
- EXISTING ASPHALT PAVEMENT TO BE REMOVED.
 - EXISTING PCCP SIDEWALK TO BE REMOVED.
 - EXISTING BRICK PAVERS TO BE REMOVED. (PAID FOR UNDER REMOVAL OF PCCP SIDEWALK)
 - EXISTING CURB AND GUTTER TO BE REMOVED.
 - R/W APPARENT ROW
 - ABANDONED STEEL/DI WATERLINE REMOVE 60 L.F. OF EACH PIPE AS SHOWN REQUIRED FOR INSTALLATION OF NEW STORM DRAIN CAP EACH END W/ WELDED STEEL PLATE OR MECHANICAL JOINT CAP

APPROVED
DEC 03 2019
DESIGN REVIEW COMMITTEE

APPROVED
DEC 02 2019
CITY ENGINEER




RECORD DRAWING

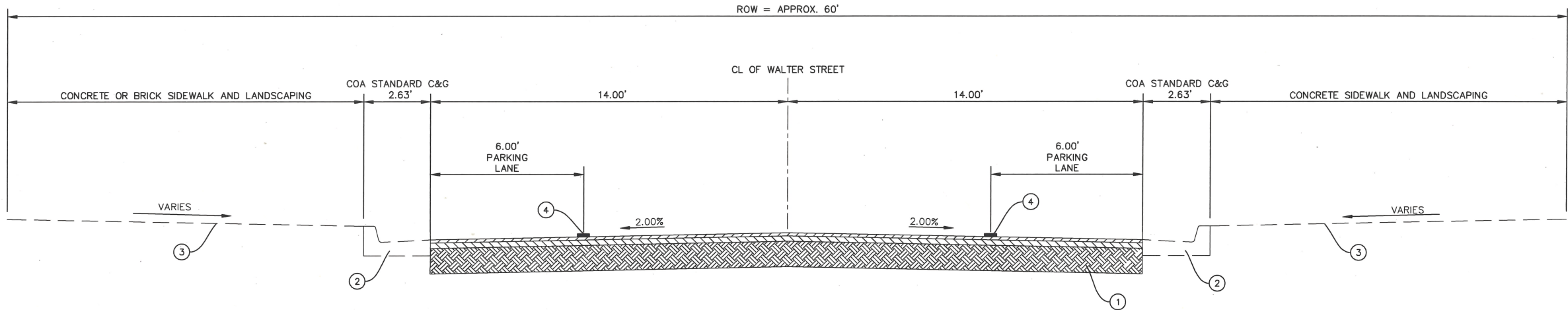
CITY OF ALBUQUERQUE
DEPARTMENT OF MUNICIPAL DEVELOPMENT
ENGINEERING DIVISION
WALTER STORM DRAIN - PHASE II

REMOVALS

DESIGN REVIEW COMMITTEE	CITY ENGINEER APPROVAL	MO./DAY/YR.	MO./DAY/YR.

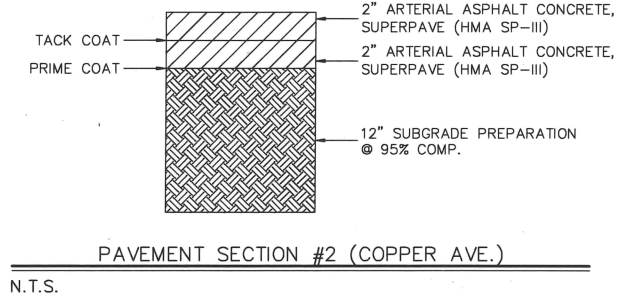
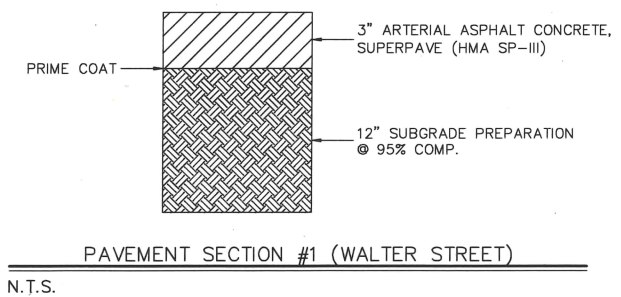
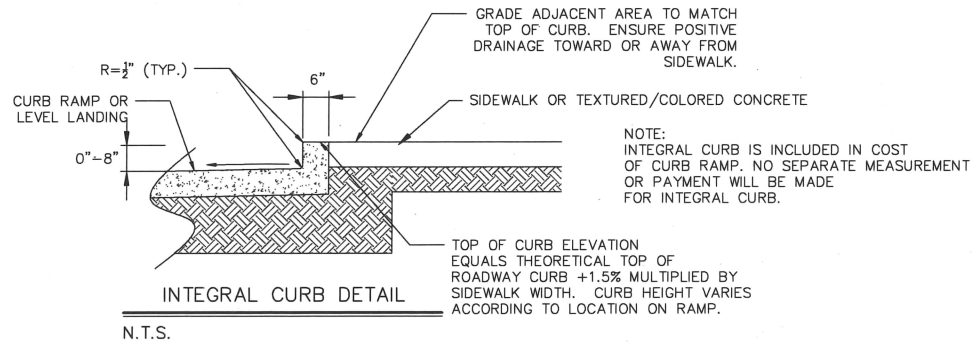
City Project No. COA 691898 Zone Map No. K14 Sheet 1-4

ENGINEER'S SEAL		SURVEY INFORMATION		BENCH MARKS		AS BUILT INFORMATION	
 11/25/19		FIELD NOTES					
		NO.	DATE			CONTRACTOR	DATE
						WORKMAN	DATE
						INSPECTOR'S	DATE
						ACCEPTANCE BY	DATE
						FIELD	DATE
						VERIFICATION BY	DATE
REMARKS						DRAWINGS	
						CORRECTED BY	
						DATE	
						MICRO-FILM INFORMATION	
						RECORDED BY	
						DATE	
						NO.	

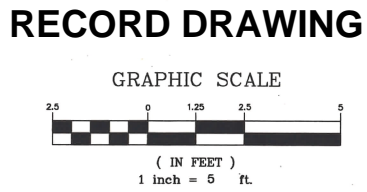


WALTER STREET PROPOSED TYPICAL SECTION
STA. 12+36 TO 15+25.17
SEE SHEET 3-3 FOR WALTER ST./COPPER AVE. GEOMETRY LAYOUT

APPROVED
DEC 03 2019
DESIGN REVIEW COMMITTEE
APPROVED
DEC 02 2019
CITY ENGINEER

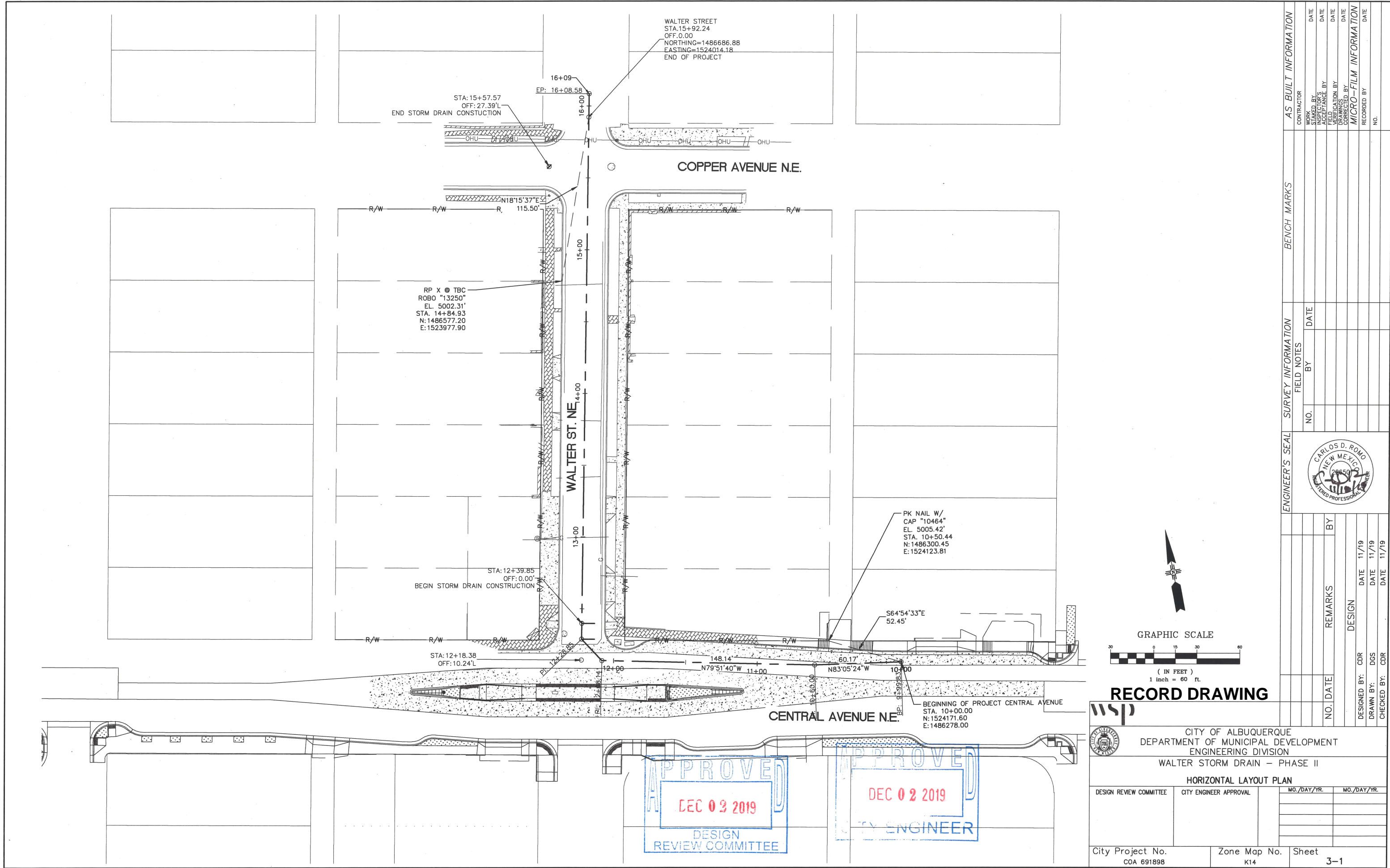



- KEYED NOTES
- 1. PAVEMENT SECTION #1. SEE DETAIL THIS SHEET.
 - 2. EXISTING CITY OF ALBUQUERQUE STANDARD CONCRETE CURB AND GUTTER TO REMAIN IN PLACE.
 - 3. EXISTING BRICK OR CONCRETE SIDEWALK. PROTECT-IN-PLACE.
 - 4. 4" WHITE REFLECTORIZED PAVEMENT MARKING.
 - 5. PAVEMENT SECTION 2. SEE DETAIL THIS SHEET.
 - 6. REMOVE AND REPLACE SEE CURB RAMP LAYOUT PLAN FOR DETAILS.





wsp		CITY OF ALBUQUERQUE DEPARTMENT OF MUNICIPAL DEVELOPMENT ENGINEERING DIVISION WALTER STORM DRAIN - PHASE II	
DESIGN REVIEW COMMITTEE		CITY ENGINEER APPROVAL	
City Project No. COA 691898		Zone Map No. K14	
Sheet		1-5	

AS BUILT INFORMATION		BENCH MARKS		SURVEY INFORMATION		ENGINEER'S SEAL		REVISIONS		REMARKS		DESIGN	
CONTRACTOR	DATE	NO.	DATE	NO.	DATE	NO.	DATE	NO.	DATE	NO.	DATE	NO.	DATE
WORK STARTED BY	DATE	BY	DATE	BY	DATE	BY	DATE	BY	DATE	BY	DATE	BY	DATE
FIELD ACCEPTANCE BY	DATE												
FIELD VERIFICATION BY	DATE												
DRAWINGS CORRECTED BY	DATE												
MICRO-FILM INFORMATION	DATE												
RECORDED BY	DATE												
NO.													



ENGINEER'S SEAL		FIELD NOTES		SURVEY INFORMATION		BENCH MARKS		AS BUILT INFORMATION		
<div></div>		NO.	BY	DATE						
PHASE II		NO.	DATE	REMARKS	BY					
AN		DESIGN								
		DESIGNED BY:	CDR	DATE	11/19					
		DRAWN BY:	DGS	DATE	11/19					
		CHECKED BY:	CDR	DATE	11/19					
MICRO-FILM INFORMATION										
Sheet										
		3-1								

**RECORD DRAWING**



CITY OF ALBUQUERQUE
DEPARTMENT OF MUNICIPAL DEVELOPMENT
ENGINEERING DIVISION
WALTER STORM DRAIN - PHASE II
HORIZONTAL LAYOUT PLAN

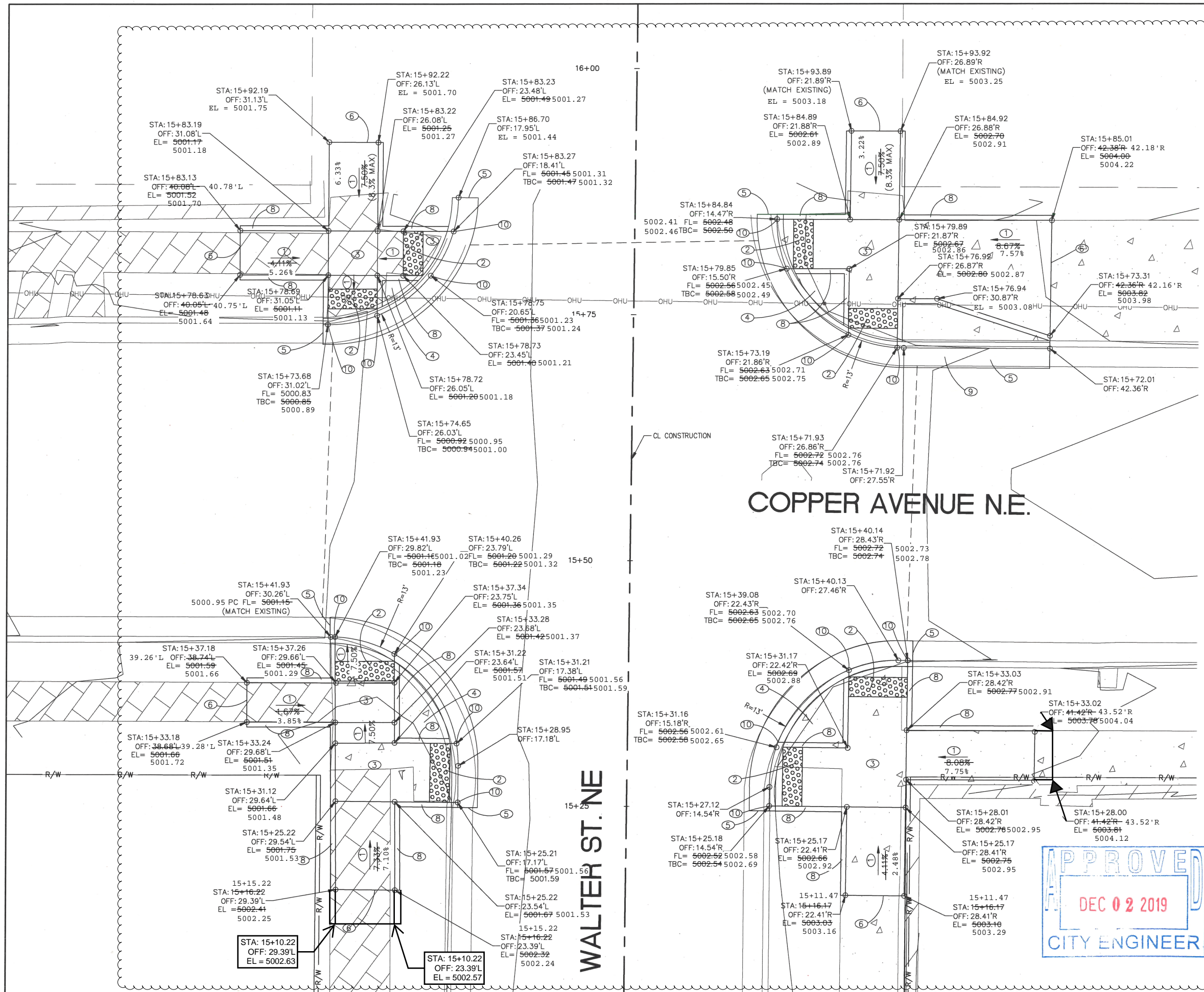
DESIGN REVIEW COMMITTEE	CITY ENGINEER APPROVAL	MO./DAY/YR.	MO./DAY/YR.

City Project No.
COA 691898

Zone Map No.
K14

Sheet
3-1

J:\33747 COA OnCall Engineering Svcs 7703.10\03 Task Orders\Task 19 - Walter Street Drainage\04 Engineering - PCN\Plans - Phase 2\3_Sheets\33747.T19_GEOMETRY LAYOUT.dwg Nov 13, 2019 - 6:41am Saved By: romocd

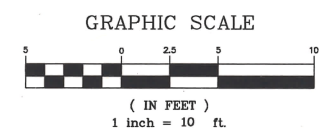


GENERAL NOTES

- STATIONS, OFFSETS, CURVE DATA, AND ELEVATIONS FOR CURB & GUTTER ARE GIVEN TO FLOWLINE UNLESS OTHERWISE NOTED.
- STATIONS, OFFSETS, AND ELEVATIONS FOR BACK OF CURB RAMP ARE GIVEN TO FRONT FACE OF INTEGRAL CURB, UNLESS OTHERWISE NOTED.
- CURB RAMP SHALL BE CONSTRUCTED WITH 4" THICK CONCRETE.
- SEE NMDOT STANDARD DRAWINGS 608-001-1 TO 608-001-12 FOR CURB RAMP, SIDEWALKS, DRIVEWAYS, AND DETECTABLE WARNING SURFACE DETAILS. DETECTABLE WARNING SURFACE TO BE "CAST IN PLACE AND REPLACEABLE" AT ALL NEW RAMP.
- STATIONS AND OFFSETS REFERENCE CL CONSTRUCTION ALIGNMENT UNLESS OTHERWISE NOTED.

KEYED NOTES

- RAMP SLOPE, RUNNING SLOPES OF CURB RAMP SHALL BE 8.30% MAX. CROSS SLOPES SHALL BE 1.50% TYP. (2.00% MAX.)
- INSTALL 2' WIDE DETECTABLE WARNING SURFACE. SEE DETAIL SHEET 1-5.
- LANDING. CROSS SLOPES AND RUNNING SLOPES OF LANDINGS SHALL BE 1.50% TYP. (2.00% MAX.)
- BUILD CONCRETE SIDEWALK, SEE COA STD. DWG. 2430.
- MATCH EXISTING CURB AT NEAREST JOINT LOCATION.
- MATCH EXISTING SIDEWALK/BRICK PATH AT NEAREST JOINT LOCATION.
- SAW CUT LINE, MATCH EXISTING ASPHALT.
- BUILD INTEGRAL CURB, SEE DETAIL SHEET 1-5.
- BUILD STANDARD CURB AND GUTTER, SEE COA STD. DWG. 2415A.
- CONCRETE EDGE TO BE ROUNDED WITH 6" RADIUS



RECORD DRAWING

wsp

CITY OF ALBUQUERQUE DEPARTMENT OF MUNICIPAL DEVELOPMENT ENGINEERING DIVISION WALTER STORM DRAIN - PHASE II	
CURB RAMP LAYOUT PLAN	
DESIGN REVIEW COMMITTEE	CITY ENGINEER APPROVAL
City Project No. COA 691898	Zone Map No. K14
Sheet 3-3	

ALL STRIPING LAYOUTS TO BE VERIFIED BY PROJECT MANAGER PRIOR TO CONSTRUCTION.

ALL PAVEMENT MARKINGS SHALL CONFORM TO THE CITY OF ALBUQUERQUE STANDARD SPECIFICATIONS, STANDARD DETAILS (SECTION 2900) AND THE CURRENT EDITION OF THE MUTCD (WITH REVISIONS).

ALL REMOVAL OF EXISTING PAVEMENT MARKINGS SHALL BE ACCOMPLISHED IN ACCORDANCE WITH SECTION 443 OF THE COA STANDARD SPECIFICATIONS FOR PUBLIC WORKS CONSTRUCTION, CURRENT EDITION. PAINTING OVER EXISTING DOES NOT CONSTITUTE APPROVED REMOVAL OR OBLITERATION. ALL PAVEMENT MARKINGS WITHIN THE PROJECT LIMITS SHALL BE REMOVED, UNLESS OTHERWISE NOTED IN PLANS.

THE PERMANENT PAVEMENT MARKINGS MAY BE MODIFIED AS DIRECTED BY THE PROJECT MANAGER.

THE CONTRACTOR MAY BE REQUIRED BY THE PROJECT MANAGER TO PREPARE AS-BUILT DRAWINGS OF THE EXISTING STRIPING AND PAVEMENT MARKINGS PRIOR TO CONSTRUCTION. THIS WORK WILL BE CONSIDERED INCIDENTAL TO SIGNING AND STRIPING AND NO ADDITIONAL PAYMENT SHALL BE MADE THEREFOR.

THE CONTRACTOR SHALL BE RESPONSIBLE FOR THE LAYOUT AND INSTALLATION OF THE PAVEMENT MARKINGS ON FINAL SURFACE COURSE FOLLOWING CONTROL POINTS THAT HAVE BEEN SET NO MORE THAN 50 FEET APART ALONG THE LINES TO BE STRIPED. THE LAYOUT OF ALL PAVEMENT MARKINGS SHALL BE APPROVED BY THE PROJECT MANAGER PRIOR TO THE APPLICATION OF MATERIALS.

ALL LANE DIMENSIONS ARE FROM CENTER OF LANE STRIPE, CENTER OF DOUBLE LANE STRIPE, FACE OF CURB, OR EDGE OF PAVEMENT UNLESS OTHERWISE NOTED.

THE FINAL LONGITUDINAL STRIPING SHALL BE 120 MIL. (0.120") THICK PLASTIC RETROREFLECTORIZED STRIPING PLACED OVER THE TEMPORARY STRIPING WITHIN 14 TO 30 CALENDAR DAYS AFTER COMPLETION OF THE FINAL PAVEMENT SURFACE, OR AS DIRECTED BY THE PROJECT MANAGER. ALL OTHER MARKINGS SHALL BE APPLIED AT THE SAME TIME. TEMPORARY STRIPING SHALL BE PAINT UNLESS OTHERWISE NOTED.

ALL FINAL TRANSVERSE MARKINGS SHALL BE 120 MIL (0.120") PLASTIC RETROREFLECTORIZED STRIPING. ALL PAVEMENT ARROWS AND LEGENDS SHALL BE A RETROREFLECTORIZED PREFORMED PLASTIC PAVEMENT MARKING.

IT IS THE CONTRACTOR'S RESPONSIBILITY TO ENSURE THAT THE FINAL SURFACE COURSE IS PLACED SO THAT THE STRIPING IS OFFSET ONE (1) FOOT CLEAR OF THE PAVEMENT CONSTRUCTION JOINT, UNLESS OTHERWISE DIRECTED BY THE CONSTRUCTION ENGINEER.

THE CONTRACTOR SHALL CLEAN THE ROADWAY SURFACE TO THE SATISFACTION OF THE PROJECT MANAGER BY SWEEPING AND AIR-JET BLOWING IMMEDIATELY PRIOR TO THE PLACEMENT OF ALL PAVEMENT MARKINGS. THE TEMPERATURE SHALL NOT BE LESS THAN 50°F FOR THE PLACEMENT OF THERMOPLASTIC STRIPING, AND 40°F FOR THE PLACEMENT OF RAISED PAVEMENT MARKERS (RPM'S).

THE PAVEMENT MARKING DRAWINGS ARE SCHEMATIC ONLY. THE CONTRACTOR SHALL FOLLOW ALL DIMENSIONS, DETAILS AND STANDARDS WHEN INSTALLING STRIPING, PAVEMENT MARKINGS AND MARKERS.

STRIPING ERADICATION SHALL BE ACCOMPLISHED BY WATER BLASTING OR SURFACE PLANING OF THE ROADWAY TO A MAXIMUM DEPTH OF 0.25 INCHES AND FOR A WIDTH EQUAL TO TWO (2) TIMES THE WIDTH OF THE STRIPE OR MARKING TO BE REMOVED.

ALL VERTICAL CURBS AT RAMPS SHALL BE PAINTED YELLOW WITH RETROREFLECTIVE GLASS BEADS. THIS WORK SHALL BE CONSIDERED INCIDENTAL AND NO ADDITIONAL PAYMENT SHALL BE MADE THEREFOR.

	SIGNING AND STRIPING		
441.001	REFLECTORIZED PLASTIC PAVEMENT MARKINGS, 4" WIDTH, CIP.	LF	325
441.005	REFLECTORIZED PLASTIC PAVEMENT MARKINGS, 24" WIDTH, CIP.	LF	350
441.040	REFLECTORIZED PLASTIC PAVEMENT MARKINGS; ARROW, SYMBOL, OR WORD, CIP.	EA	2

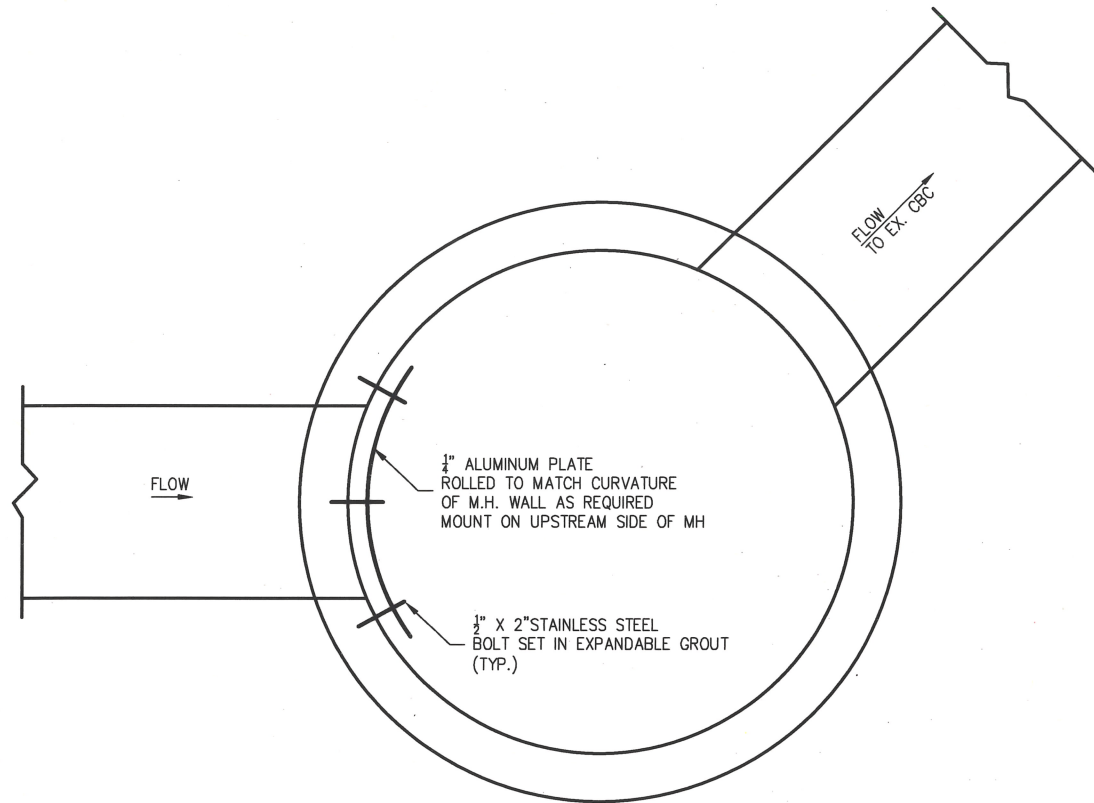


1. SAW-CUT 1-INCH DEEP X PIPE OD + 8" SQUARE SCORE LINE ON VERTICAL FACE OF WALL. SAW-CUT 1-INCH DEEP X PIPE OD + 12" SQUARE SCORE LINE ON HORIZONTAL FACE OF WALL. (VERIFY DEPTH OF CUT TO CLEAR REINFORCING).
2. CHIP TO REMOVE THE CONCRETE WITHIN THE SCORE LINE, WHILE PRESERVING THE EXISTING WALL REINFORCING.
3. CUT EXISTING REINFORCING AT CENTER OF OPENING AND BEND TO CLEAR PIPE.
4. GRIND CONCRETE, $1\frac{1}{2}$ " DEEP, TO SMOOTH SURFACE ALL AROUND THE OPENING OF WALL. CLEAN SURFACES AND BOND CONTINUOUS HYDROPHILIC WATERSTOP IN PLACE.
5. INSTALL 36" DIAMETER DI PIPE THROUGH THE OPENING.
6. SOAK CONCRETE SURFACES WITHIN 15-MINUTES OF CAST CONCRETE CLOSURE.

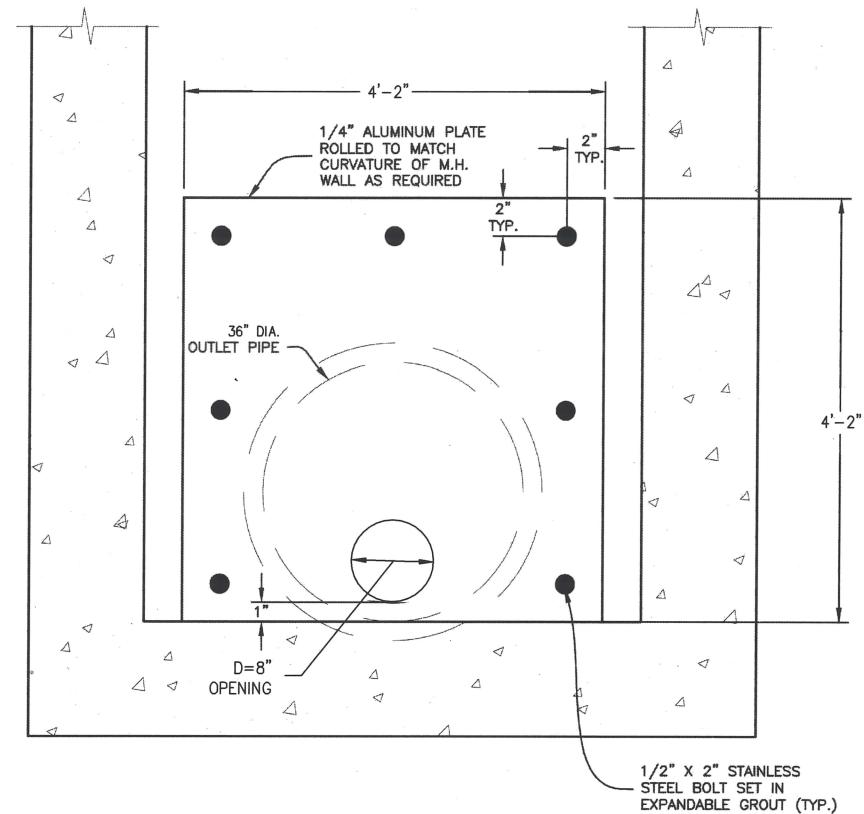
APPROVED
DEC 02 2019
CITY ENGINEER

City Project No. COA 691898	Zone Map No. K14	Sheet 6-2
--------------------------------	---------------------	---------------------

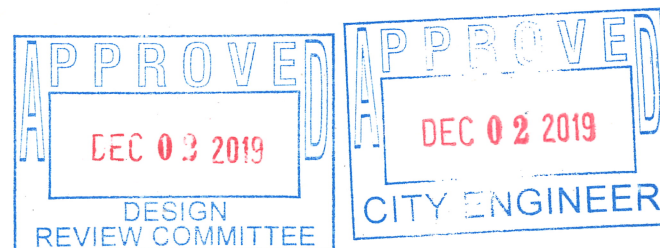
[illegible]




MANHOLE AND ORIFICE PLATE PLAN
NTS




OUTLET CONTROL ORIFICE PLATE
NTS



RECORD DRAWING

 CITY OF ALBUQUERQUE DEPARTMENT OF MUNICIPAL DEVELOPMENT ENGINEERING DIVISION WALTER STORM DRAIN - PHASE II			
ORIFICE PLATE DETAIL			
DESIGN REVIEW COMMITTEE	CITY ENGINEER APPROVAL	MO./DAY/YR.	MO./DAY/YR.
City Project No. COA 691898		Zone Map No. K14	Sheet 6-3

ENGINEER'S SEAL		SURVEY INFORMATION		BENCH MARKS		AS BUILT INFORMATION	
		FIELD NOTES					
		NO.	BY	DATE		CONTRACTOR	
						WORK STARTED BY	DATE
						INSPECTOR'S FIELD VERIFICATION BY	DATE
						DESIGNED BY	DATE
						DRAWN BY	DATE
						CHECKED BY	DATE
						RECORDED BY	DATE
						NO.	