

1 2 3 4 5 6 7 8 9 10 11 12 13 14 15
20-01135-82-091

PUBLIC FIRE HYDRANT AND PRIVATE FIRE LINE

TRACT 4, LAS LOMITAS BUSINESS PARK 7911 LAS LOMITAS DRIVE, NE

INDEX

SHEET 1 TITLE SHEET**SHEET 2 FIRE HYDRANT AND
FIRE LINE PLAN****SHEET 3 PLAT**

THE UTILITY COMPANY CONTACTS LIST IS PROVIDED BY THE CITY OF ALBUQUERQUE FOR INFORMATION AND USE AS REQUIRED BY THE DEVELOPER AND CONTRACTOR. DIRECT CONTACT WITH THE UTILITY COMPANY OR COMPANIES DOES NOT NEGATE THE LEGAL REQUIREMENT TO CONTACT NEW MEXICO ONE-CALL BEFORE ANY EXCAVATION. SEE NOTICE TO CONTRACTOR PARAGRAPH 2.

UTILITY COMPANY CONTACTS

February 1, 2007

Name	Phones	Business			
Musinski, Nancy	Office phone: (505) 768-2729 Office fax: 768-3629 nmusinski@cabq.gov	City of Albuquerque, Water Utility Senior Engineer, Utility Engineering P.O. Box 1293 Albuquerque, NM 87103	Harrison, Royal	Office phone: (505) 938-7339 Office fax: 938-7380 Royal.Harrison@twtelecom.com	Time Warner Telecom Plant Manager 3830 Singer Blvd. NE Suite 1000 Albuquerque, NM 87109
Blauwkamp, Roland (Rol)	Office phone: 241-3606 Cell Phone: 401-7516 Office fax: (505) 241-0559 rblauwk@pnm.com	PNM Electric Co. Mail Stop ES61 4201 Edith Blvd. NW Albuquerque, NM 87107	Jaramillo, Rita	Office phone: (505) 245-8252 Office fax: (505) 245-6733 Mobile: (505) 385-4472 Pager: (505) 380-3301 rjarami@qwest.com	Qwest Manager, Engineering NM Engineering/Planning 400 Tijeras NW, Room 710 Albuquerque, NM 87102
Bates, Steve	Office phone: (505) 898-2661 ext. 48 Office fax: 898-6379 sbates@ecoresources.com	New Mexico Utilities 4700 Irving Blvd. NW Suite 201 Albuquerque, NM 87114	Kelly, Larry	Office Phone: (505) 246-0501 Office Fax: (505) 246-0479 Cell: 505-270-3442 Larry.Kelly@qwest.com	Qwest Long Distance Sr. Operations Tech 400 Tijeras Ave NW Suite 570 Albuquerque, NM 87102
Bouska, Kelly	Office phone: (505) 241-7752 Office fax: (505) 241-7753 kbouska@pnm.com	PNM Gas Co. Mail Stop GS66 4625 Edith Blvd. NE Albuquerque, NM 87107	Mortus, Mike	Office Phone: (505) 761-6235 Office Fax: (505) 761-0599 Mobile: (505) 269-4006 Mike.Mortus@comcast.com	Comcast Project Manager 4611 Montebello Place NE Albuquerque, NM
Brown, John	Office phone: (505) 314-0890 Office fax: (505) 314-0891 john@bcgassets.com	BCG Assets 505 Marquette Ave NW Suite LL-110A Albuquerque, NM 87102	Mueller, Rick	Office phone: (505) 244-3161 Office fax: 244-0094 Mobile: 228-3329 rdueller@mcleodusa.com	McLeod USA Supervisor of Outside Techs. 505 Marquette NW (Compass Bank) Suite 1600 Albuquerque, NM 87102
Crowel, David	Office phone: (505) 842-2911 Office fax: 842-2890 dcrowel@att.com	AT&T Resource Supervisor 111 3rd Street NW Albuquerque, NM 87103			
Darnell, Andy	Office phone: (505) 346-4470 Office fax: 348-8666 Andy.Darnell@mci.com	MCI Worldcom Operations Manager 6001 Midway Park NE Albuquerque, NM 87109			

CERTIFICATE OF SUBSTANTIAL COMPLIANCE

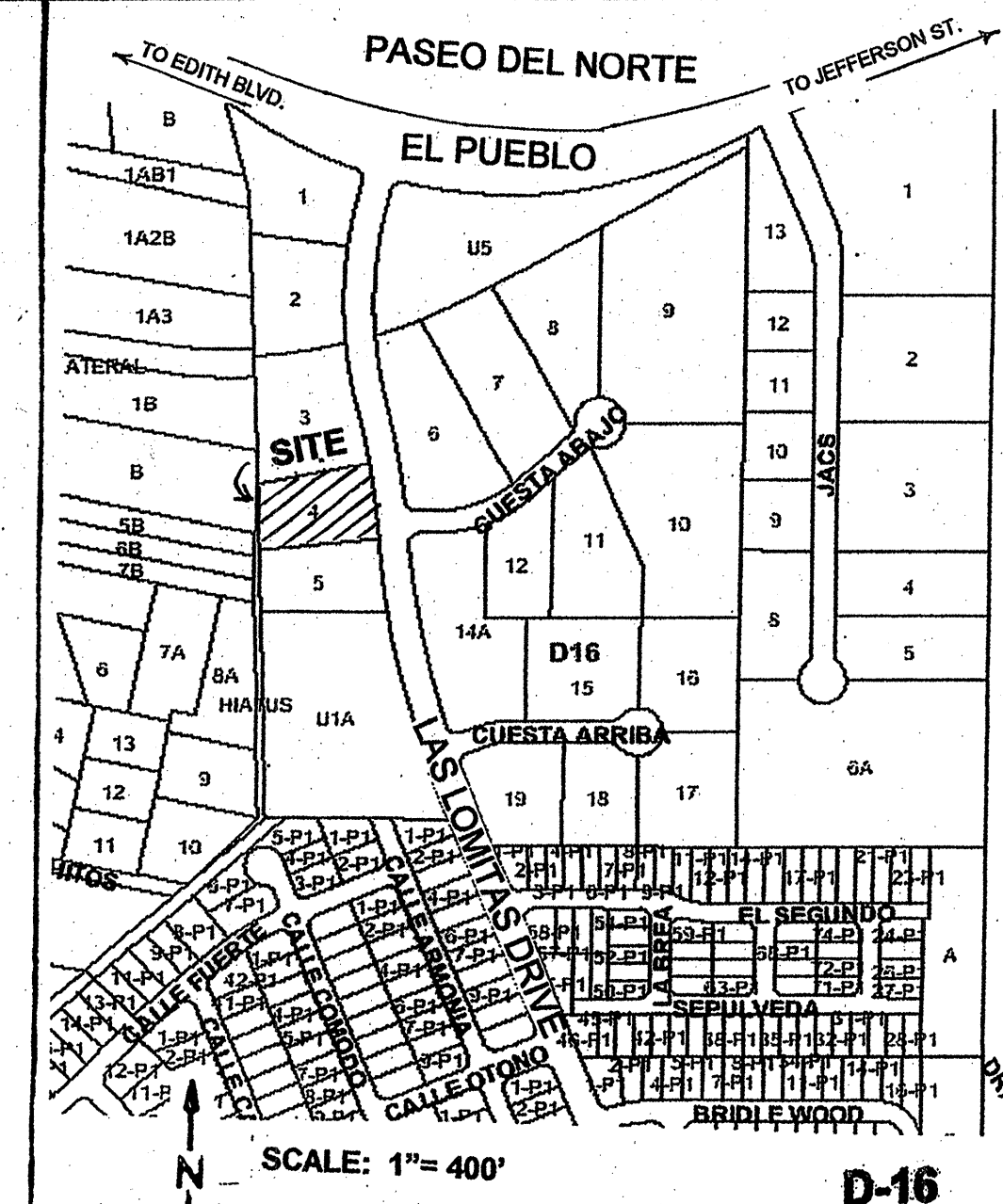
I CERTIFY THAT THE CONSTRUCTION AS SHOWN ON SHEET 2 OF 3
OF THIS RECORD COPY IS COMPLETE

MARVIN R KORTUM NMPE 6519 OCTOBER 30, 2008



APPROVED AS RECORD DRAWINGS
DESIGN REVIEW SECTION
CITY CONSTRUCTION ENGINEER
DATE: 02/23/09

MARVIN R. KORTUM, P.E.
Civil Engineer
NM PE 6519
1605 Speakman Drive, S.E.
Albuquerque, New Mexico 87123
(505) 299-0774

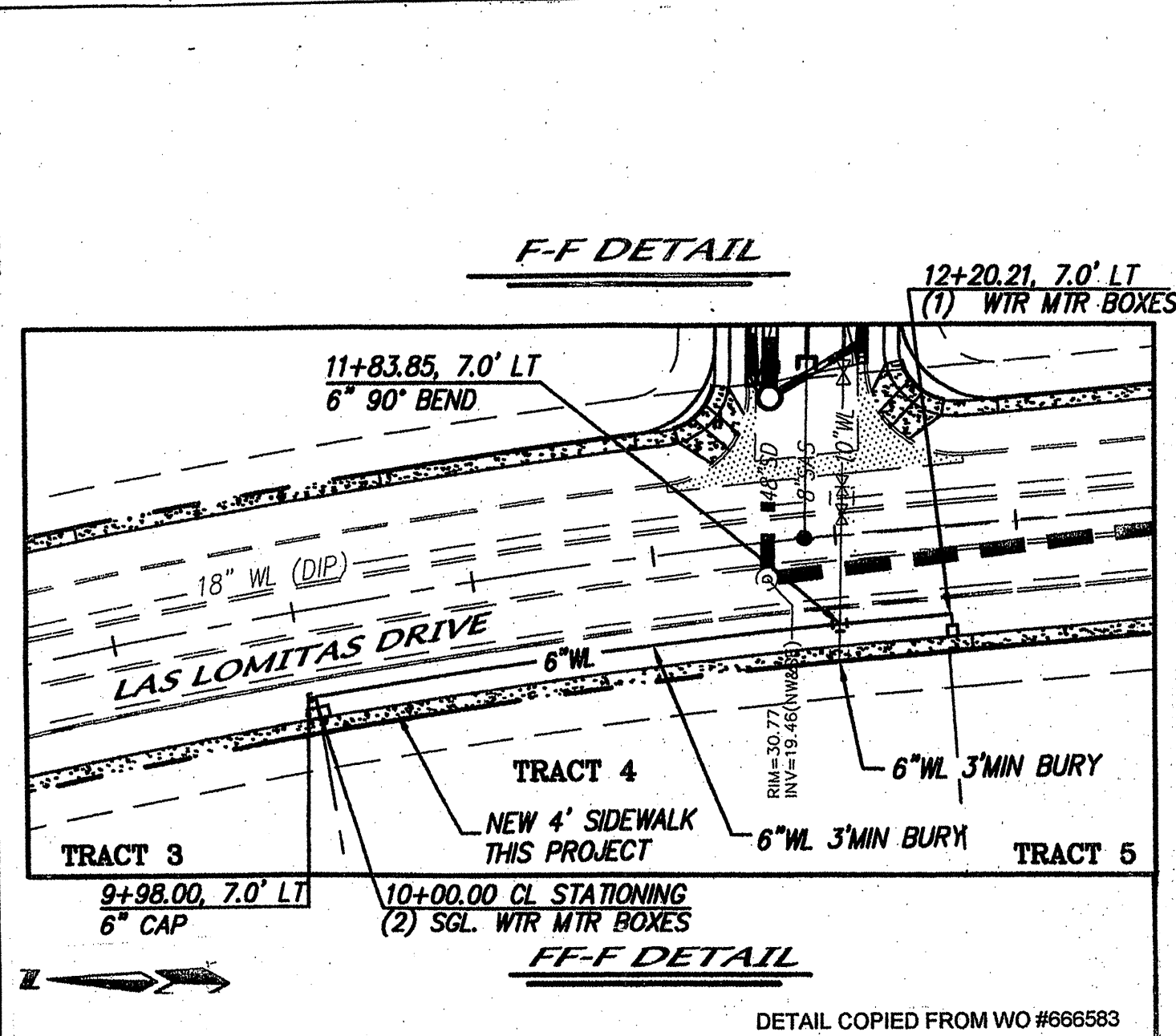
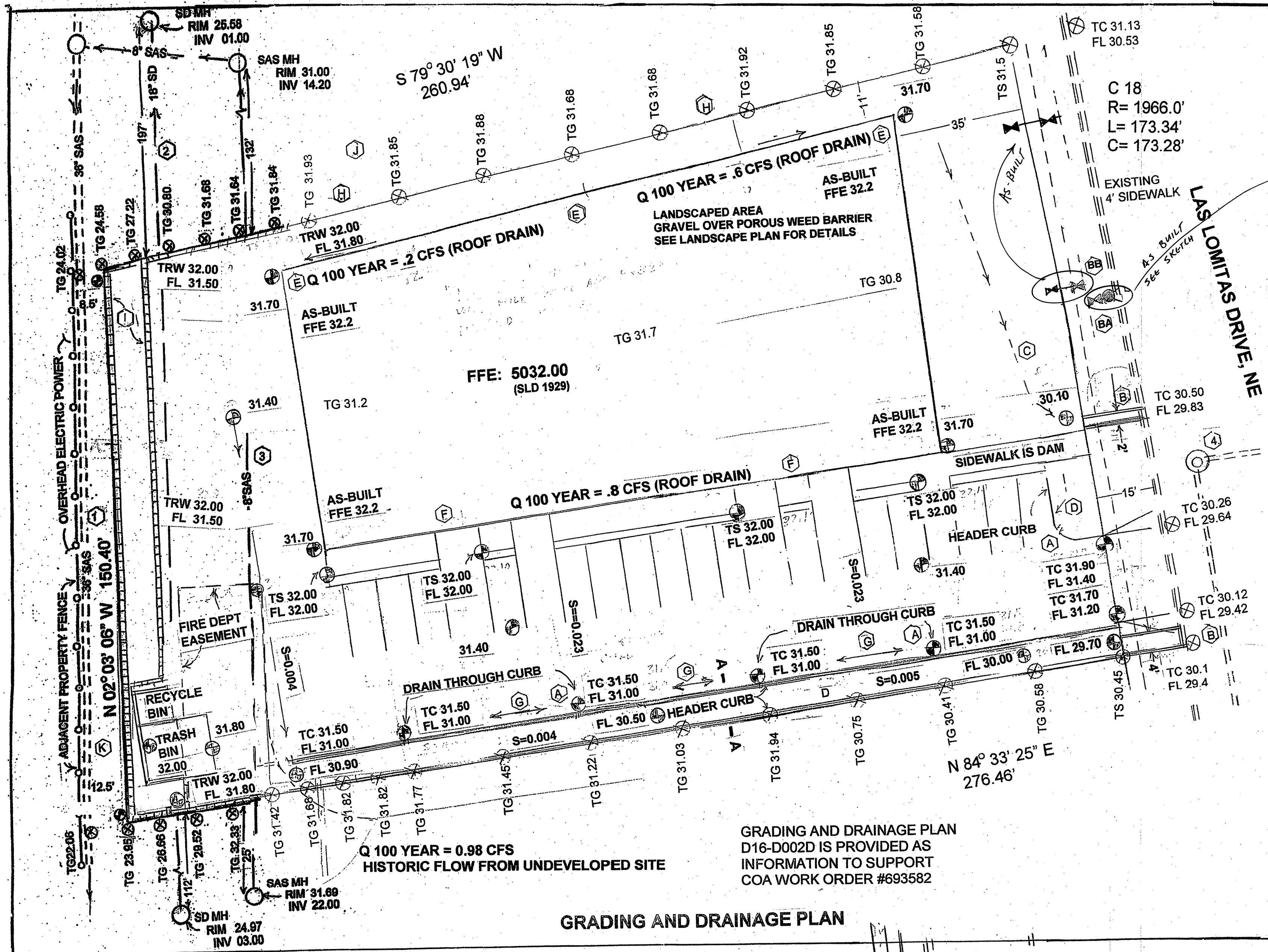
**NOTICE TO CONTRACTORS**

- ALL WORK DETAILED ON THESE PLANS TO BE PERFORMED UNDER CONTRACT SHALL, EXCEPT AS OTHERWISE STATED OR PROVIDED FOR HEREIN, BE CONSTRUCTED IN ACCORDANCE WITH THE CITY OF ALBUQUERQUE STANDARD SPECIFICATIONS FOR PUBLIC WORKS CONSTRUCTION, 1988 EDITION, AMENDED THROUGH UPDATE 7, INCLUDING AMENDMENT 1.
- TWO (2) WORKING DAYS PRIOR TO ANY EXCAVATION, THE CONTRACTOR MUST CONTACT NEW MEXICO ONE-CALL SYSTEMS, 260-1990, FOR LOCATION OF EXISTING UTILITIES AT THE CONSTRUCTION SITE.
- PRIOR TO CONSTRUCTION, THE CONTRACTOR SHALL EXCAVATE AND VERIFY THE HORIZONTAL AND VERTICAL LOCATIONS OF ALL OBSTRUCTION. SHOULD A CONFLICT EXIST, THE CONTRACTOR SHALL NOTIFY THE ENGINEER OR SURVEYOR TO RESOLVE THE CONFLICT WITH A MINIMUM AMOUNT OF DELAY.
- CONTRACTOR SHALL NOTIFY THE ENGINEER NOT LESS THAN SEVEN (7) DAYS PRIOR TO STARTING WORK IN ORDER THAT THE ENGINEER MAY TAKE NECESSARY MEASURES TO INSURE THE PRESERVATION OF SURVEY MONUMENTS. CONTRACTOR SHALL NOT DISTURB PERMANENT SURVEY MONUMENTS WITHOUT THE CONSENT OF THE ENGINEER AND SHALL NOTIFY THE ENGINEER AND BEAR THE EXPENSE OF REPLACING ANY THAT MAY BE DISTURBED WITHOUT PERMISSION. REPLACEMENT SHALL BE DONE ONLY BY THE CITY SURVEY SECTION. WHEN A CHANGE IS MADE IN THE FINISHED ELEVATION OF THE PAVEMENT OF ANY ROADWAY IN WHICH A PERMANENT SURVEY MONUMENT IS LOCATED, CONTRACTOR SHALL AT HIS OWN EXPENSE, ADJUST THE MONUMENT COVER TO THE NEW GRADE UNLESS OTHERWISE SPECIFIED. REFER TO SECTION 4.4 OF THE GENERAL CONDITIONS OF THE STANDARD SPECIFICATIONS.
- SEVEN (7) WORKING DAYS PRIOR TO CONSTRUCTION, CONTRACTOR SHALL SUBMIT TO THE CONSTRUCTION COORDINATING DIVISION, A DETAILED CONSTRUCTION SCHEDULE. TWO (2) DAYS PRIOR TO CONSTRUCTION THE CONTRACTOR SHALL OBTAIN A BARRICADING PERMIT FROM THE CONSTRUCTION COORDINATING DIVISION. CONTRACTOR SHALL NOTIFY THE BARRICADING ENGINEER (924-3400) PRIOR TO OCCUPYING AN INTERSECTION. SEE SECTION 19 OF THE STANDARD SPECIFICATION.
- ALL STREET STRIPING ALTERED OR DESTROYED SHALL BE REPLACED WITH PREFORMED THERMO PLASTIC PAVEMENT MARKINGS BY THE CONTRACTOR TO LOCATION AS EXISTED OR INDICATED BY THIS PLAN SET. CONTRACTOR SHALL BE RESPONSIBLE FOR PROVIDING AND MAINTAINING ALL CONSTRUCTION SIGNING UNTIL THE PROJECT HAS BEEN ACCEPTED BY THE CITY OF ALBUQUERQUE.

- ☒ ALL UTILITIES AND UTILITY SERVICE LINES SHALL BE INSTALLED PRIOR TO PAVING.
- ☒ BACKFILL COMPACTION SHALL BE ACCORDING TO SPECIFIED STREET USE.
- ☒ TACK COAT REQUIREMENTS SHALL BE DETERMINED BY THE ENGINEER.
- ☐ SIDEWALKS AND WHEEL CHAIR RAMPS WITHIN THE CURB RETURNS SHALL BE CONSTRUCTED WHEREVER A NEW CURB RETURN IS CONSTRUCTED.
- ☐ IF CURB IS DEEPENED FOR A DRIVEPAD OR A HANDICAP RAMP, THE DRIVEPAD OR RAMP SHALL BE CONSTRUCTED PRIOR TO ACCEPTANCE OF THE CURB AND GUTTER.
- ☒ ALL STORM DRAINAGE FACILITIES SHALL BE COMPLETED PRIOR TO FINAL ACCEPTANCE.

LEGAL DESCRIPTION: LOT 4, LAS LOMITAS BUSINESS PARK, FILED OCT. 27, 2005, BOOK 2005C, PAGE 367

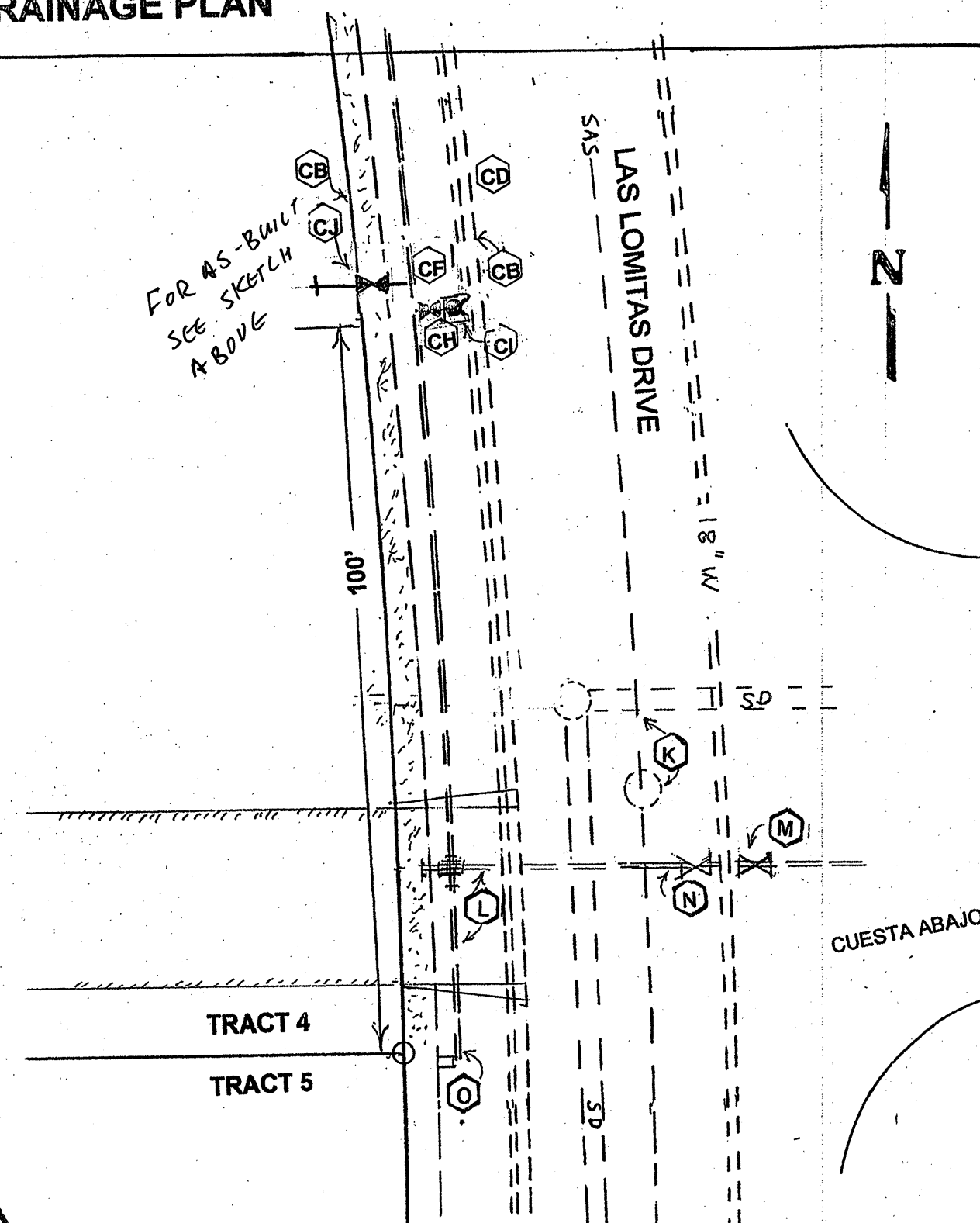
REV.	SHEETS	CITY ENGINEER	DATE	USER DEPARTMENT	DATE	USER DEPARTMENT	DATE
ENGINEERS STAMP, SIGNATURE	APPROVALS	ENGINEER	DATE	APPROVED FOR CONSTRUCTION			
	DRG Chairman	8/29/08	APPROVED FOR CONSTRUCTION				
	Transportation	8/29/08					
	Water/Wastewater	8/29/08					
	Hydrology	8/29/08					
	Parks	8/29/08					
Const. Mngmnt.							
CONST. COORD.							
City Project No.	693582	Sheet	1	Of	3		



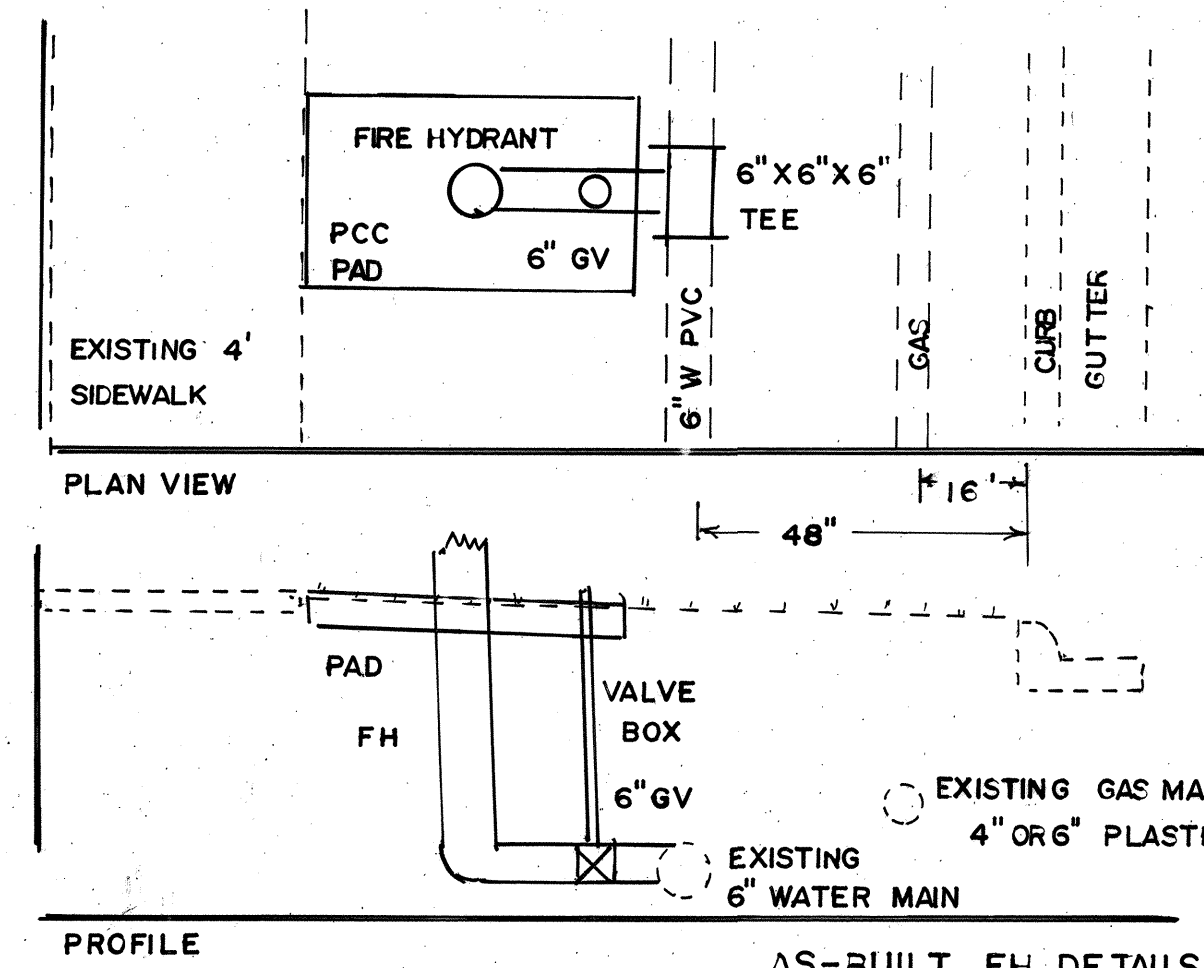
CERTIFICATE OF SUBSTANTIAL COMPLIANCE
THIS SHEET 2 OF 3 IS A RECORD COPY OF THE FIRE HYDRANT
AND PRIVATE FIRE LINE, WO 693582.

I CERTIFY THAT THE CONSTRUCTION IS COMPLETED AS SHOWN ON THIS SHEET 2 OF 3.

MARVIN R KORTUM NMPE 6519 OCTOBER 30, 2008



FIRE HYDRANT INSTALLATION DETAIL
SEE STD DWG 2340 DETAIL SCALE: 1"=2'



NOTES:

A. EXISTING STANDARD CURB AND GUTTER

B. EXISTING ASPHALT SURFACED STREET, MAJOR LOCAL

C. EXISTING PORTLAND CEMENT SIDEWALK, 4' WIDE

D. EXISTING SUBSURFACE STORM DRAIN PIPE

E. EXISTING STORM DRAIN MANHOLE, 4' DIAMETER

F. EXISTING UNDERGROUND POWER CABLES

G. EXISTING UNDERGROUND COMMUNICATIONS CABLES

H. EXISTING UNDERGROUND GAS LINES

I. VACANT

J. 6" BLACK PLASTIC GAS MAIN PLACED IN FEB. 2008

K. EXISTING SAS MANHOLE AND SAS MAIN

L. EXISTING 6" WATER MAIN

M. EXISTING 10" WATER MAIN AND GATE VALVE

N. EXISTING 6" GATE VALVE, VALVE A

O. EXISTING WATER METER BOX

AS-BUILT FH DE TAILS

SCALE: H 1" = 3'

V 1" = 3'

BA. NEW FIRE HYDRANT AND GATE VALVE
BB. NEW 6" TEE AND GATE VALVE FOR PRIVATE AUTOMATIC FIRE SUPRESION SYSTEM

REFER TO THE FOLLOWING STANDARDS AS STATED
IN THE CITY OF ALBUQUERQUE SPECIFICATIONS
FOR PUBLIC WORKS

WATER
2315 PIPE TRENCH TERMINOLOGY
2326 WATER VALVE BOX
2328 RING AND COVER FOR VALVE BOX
2340 FIRE HYDRANT INSTALLATION

PAVEMENT

2415A	CURB AND GUTTER DETAILS, STD CURB (2415A)
2430	SIDEWALK DETAILS
2465	PAVEMENT CUTS FOR UTILITIES, MAJOR LOCAL STREET

TEMPORARY TRAFFIC CONTROL	
2801	GENERAL NOTES
2802	TRAFFIC CONTROL SIGNING
2803	CONSTRUCTION TRAFFIC CONTROL
2804	SIGNING EXAMPLES
2805	SIGNING EXAMPLES
2806	SIGNING EXAMPLES
2807	SIGNING EXAMPLES
2808	SIGNING EXAMPLES

CONSTRUCTION NOTES:

CA LOCATE EXISTING UTILITIES LINES AND ADJUST NEW CONSTRUCTION TO AVOID CONFLICT AND DAMAGE. CONTACT ONE-CALL FOR LOCATION SPOTTING, AND CALL ENGINEER WHEN TRENCH IS OPENED.

CB REMOVE EXISTING CURB STONES AND SIDEWALK TO NEAREST WHOLE SECTION AS NEEDED TO DO TRENCHING AND PIPE INSTALLATION WITHOUT UNDERCUTTING REMAINING SECTIONS OF THE PAVEMENT, CURB AND GUTTER, AND SIDEWALK. NO CURBS WILL HAVE TO BE REMOVED IF THE 6" WATER MAIN IS LOCATED AWAY FROM THE CURB. PLACE NEW CURBS AND SIDEWALKS WHEN BACKFILL IS COMPLETED.

CC SAW CUT EXISTING ASPHALT SURFACE AS NECESSARY TO DO TRENCHING AND BACKFILL. CUTS MUST MATCH REMOVED CURB STONES. REPLACE ASPHALT WHEN BACKFILL IS FINISHED.

CD PLACE TRAFFIC CONTROL SIGNS AND BARRIERS.

CE IF RAIN IS POSSIBLE DURING CONSTRUCTION, PREPARE RUNOFF BYPASS TO PREVENT SATURATION OF THE SOIL IN THE TRENCH WITHIN THE CURB AND PAVEMENT AREA.

CF TWO NEW 6" TEES, NON-PRESSURE CONNECTION TO EXISTING 6" WATER MAIN (MATERIAL UNKNOWN). ONE TEE IS FOR FIRE HYDRANT, ONE TEE IS FOR PRIVATE FIRE LINE.

CG WATER SHUT-OFF IS TO CLOSE VALVE N. REQUEST THE ABC WATER AUTHORITY TO OPERATE VALVE A OR OBTAIN THEIR APPROVAL. NO CUSTOMER NOTIFICATION IS REQUIRED. VALVE N WILL BE RE-OPENED AND EXISTING 6" WATER MAIN AND NEW FIRE HYDRANT ACTIVATED WITHIN SEVEN CALENDER DAYS FROM INITIAL OPENING.

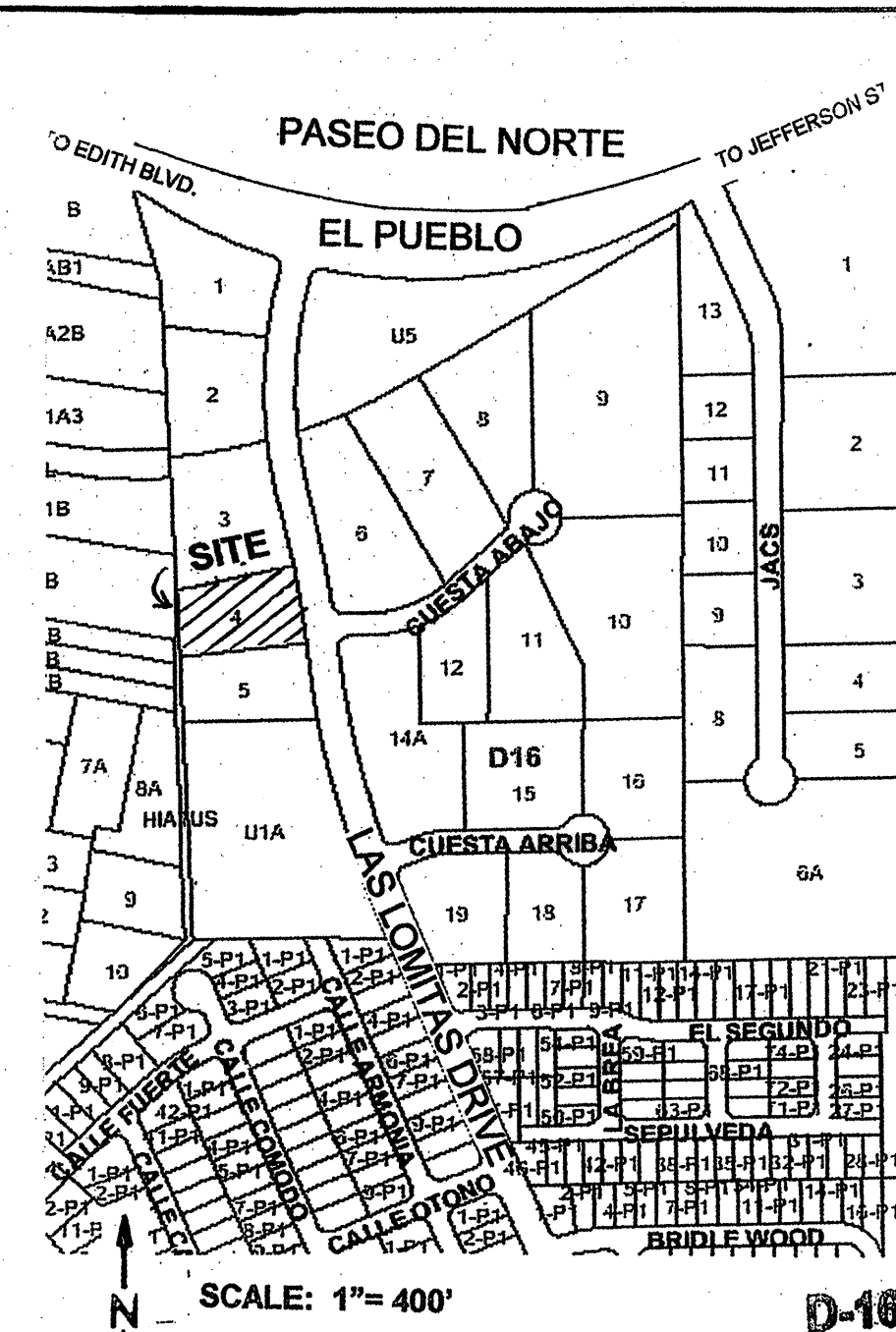
CH NEW 6" WATER MAIN, 6" GATE VALVE AND VALVE BOX FROM NEW TEE TO NEW FIRE HYDRANT. 6" PIPE TO BE PVC OR DIP, ALL JOINTS RESTRAINED.

















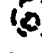

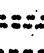
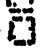
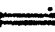



CI NEW FIRE HYDRANT AND CONCRETE PAD. 3' BURY, OR MATCH TO EXISTING 6" WATER MAIN AND ADJUSTMENTS TO NOT INTERFERE WITH EXISTING UTILITIES LINES. PLACE FLANGE ELEVATION 4' ABOVE THE TOP OF THE ADJACENT CURB.

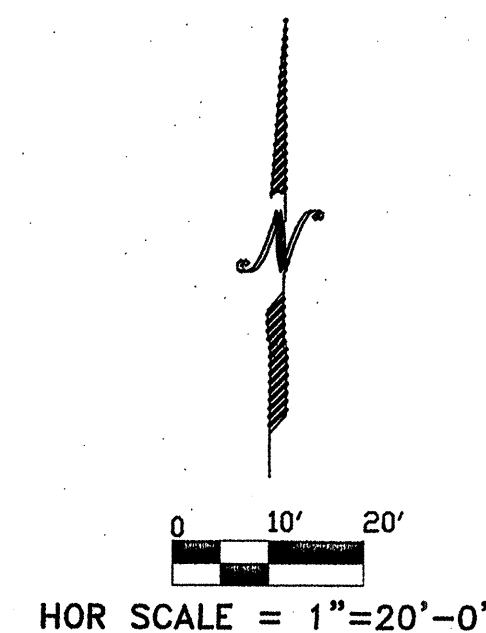
CJ NEW 6" GATE VALVE AND VALVE BOX FOR PRIVATE FIRE LINE. EXTEND 6" LINE TO 3' INSIDE PRIVATE PROPERTY

CK GIVE TO THE ENGINEER A CONSTRUCTION SCHEDULE 3 DAYS OR MORE BEFORE CONSTRUCTION SO THAT INSPECTIONS CAN BE MADE. GEOTESTING OF BACKFILL AND COMPACTION IS REQUIRED FOR THE ENGINEER'S APPROVAL BEFORE PLACING NEW ASPHALT, SIDEWALK, AND CURB AND GUTTER.


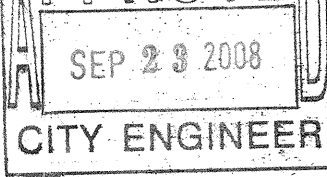
ALL EXCAVATION, TRENCHING AND SHORING ACTIVITIES MUST BE CARRIED OUT IN ACCORDANCE WITH OSHA 29 CFR 1926.650 SUBPART P.

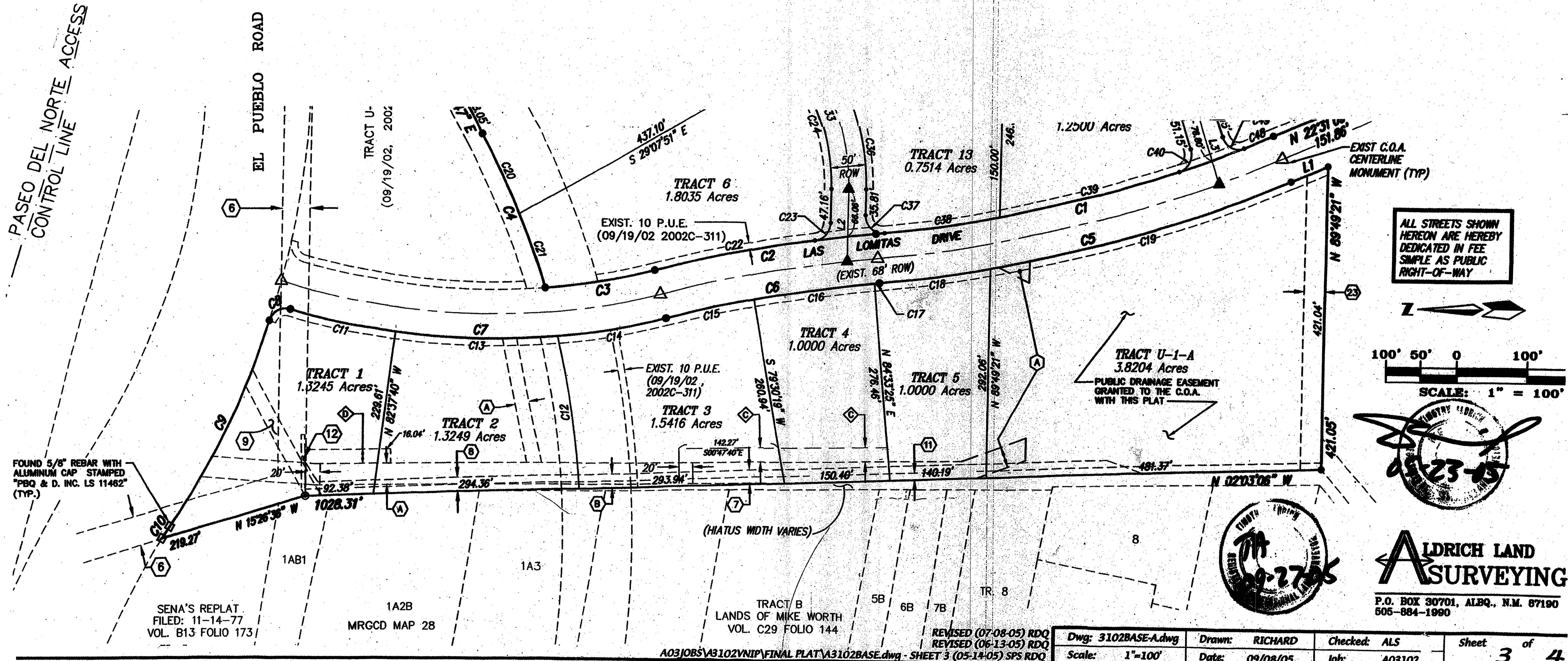


LEGEND	EXISTING	PROPOSED (THIS PROJECT)
SPOT ELEVATIONS	X	
TOP OF SIDEWALK	TS	TS
TOP OF WALL	TW	TW
TOP OF CURB	TC	TC
FLOW LINE INVERT	FL	FL
FINISHED FLOOR ELEVATIONS	FFE	FFE
CONTOUR LINE	---5'11" 6'70"	---10'
STRUCTURE, MAJOR (HOUSE, ETC)	-----	-----
STRUCTURE, MINOR (SIDEWALK, ETC)	-----	-----
FENCE	-X-X- -O-O-	-X-X- -O-O-
BLOCK WALL	  	  
RETAINING WALL	  	 
PROPERTY LINE		 
LOT NUMBER		
SAS MANHOLE		
STORM DRAIN MANHOLE		
WATER METER BOX, DOUBLE SINGLE	 	 DS  SS
SAS SERVICE STUB OUT		



MARVIN R. KORTUM, P.E.
Civil Engineer
NM PE 6519
1605 Speakman Drive, S.E.
Albuquerque, New Mexico 87123
(505) 299-0774

<p align="center">CITY OF ALBUQUERQUE PUBLIC WORKS DEPARTMENT ENGINEERING DEVELOPMENT GROUP</p>														
<p>TITLE: FIRE HYDRANT AND PRIVATE FIRE LINE FOR ROB BOYLES CO. TRACT 4, LAS LOMITAS BUSINESS PARK 1911 LAS LOMITAS DRIVE NE, ALBUQUERQUE NM 87109</p>														
<p>Design Review Committee</p> <div align="center">  <p>APPROVED AUG 29 2008 DESIGN REVIEW COMMITTEE</p> </div>		<p>City Engineer Approval</p> <div align="center">  <p>APPROVED SEP 29 2008 CITY ENGINEER</p> </div>		<p>Last Design Update</p> <table border="1"> <thead> <tr> <th>Mo./Day/Yr.</th> <th>Mo./Day/Yr.</th> </tr> </thead> <tbody> <tr><td> </td><td> </td></tr> <tr><td> </td><td> </td></tr> <tr><td> </td><td> </td></tr> <tr><td> </td><td> </td></tr> </tbody> </table>	Mo./Day/Yr.	Mo./Day/Yr.								
Mo./Day/Yr.	Mo./Day/Yr.													
<p>City Project No.</p> <p align="center">693582</p>		<p>Zone Map N</p> <p align="center">D-16</p>		<p>SHEET</p> <p align="center">2 OF 3</p>										



- 1) EXISTING PUBLIC EASEMENT
(09-19-02, 2002C-311)
- 2) EXISTING PUBLIC SANITARY SEWER
EASEMENT (09-19-02, 2002C-311)
- 3) EXIST. 10 P.U.E.
(09/19/02 2002C-311)
- 4) EXISTING 30' PNM GAS PIPELINE & COMMUNICATION
EASEMENT (06-08-98, BK. 9810, PG. 885)
- 5) 40' GAS LINE RIGHT-OF-WAY AND EASEMENT
10/10/55 BK. D-329, PG. 539-540
- 6) SANITARY SEWER EASEMENT 9/27/68, BK.
MISC. 116, PG. 648-651, PARCEL NO. 4.
- 7) SANITARY SEWER EASEMENT 9/27/68, BK.
MISC. 116, PG. 648-651, PARCEL NO. 5.
- 8) 20' SEWER LINE & PUBLIC UTILITY EASEMENT
11/25/69 BK. MISC. 157, PG. 17-19.
- 9) EXISTING 10' PNM TRANSMISSION LINE
EASEMENT (03-16-99, 99C-57)

C 20' PRIVATE SANITARY SEWER EASEMENT GRANTED FOR THE BENEFIT OF AND TO BE MAINTAINED BY THE OWNER'S OF TRACTS 3, 4, AND 5

D 20' PRIVATE SANITARY SEWER EASEMENT GRANTED FOR THE BENEFIT OF AND TO BE MAINTAINED BY THE OWNER'S OF TRACTS 1 AND 2

E PUBLIC WATERLINE AND SANITARY SEWER EASEMENT GRANTED TO THE A.B.C.W.U.A. AND PUBLIC DRAINAGE EASEMENT GRANTED TO THE C.O.A. WITH THIS PLAT.

**COPIED FROM THE PLAT OF LAS LOMITAS BUSINESS
PARK ALDRIDGE LAND SURVEYING MAY 2005 1"=100'**

MARVIN R. KORTUM, P.E.
Civil Engineer
NM PE 6519
1605 Speakman Drive, S.E.
Albuquerque, New Mexico 87123
(505) 299-0774

**GRADING AND DRAINAGE PLAN
D16-D002D IS PROVIDED AS
INFORMATION TO SUPPORT
COA WORK ORDER #693582**

**TITLE: OFFICE/ WAREHOUSE BUILDING, ROB BOYLES CO.
LOT 4, LAS LOMITAS BUSINESS PARK
7911 LAS LOMITAS DRIVE NE, ALBUQUERQUE NM 87109**

For Information Only

City Project No.	D16-D002D	Zone Map No.	D-16	SHEET	3	OF	3
------------------	-----------	--------------	------	-------	---	----	---