

SCANNED BY
PLANNING

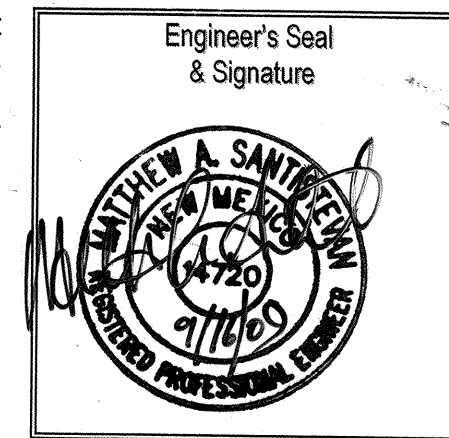
CONSTRUCTION PLANS FOR PRESBYTERIAN RIO RANCHO MEDICAL CENTER TRIBUTARY 'E' STORM DRAIN ALBUQUERQUE, NEW MEXICO

INDEX

SHEET NUMBER	DESCRIPTION
1	COVER SHEET
2 R	STORM DRAIN PLAN AND PROFILE SHEET
3	CHANNEL GRADING PLAN
4	OUTLET STRUCTURE DETAILS

CERTIFICATE OF SUBSTANTIAL COMPLIANCE ON PLANS

I, Matthew A. Santistevan of the firm of Bohannon Huston, Inc., a Registered Professional Engineer in the State of New Mexico, do hereby certify, to the best of my knowledge and belief, that the infrastructure installed as shown on these drawings (Construction Plans for Presbyterian Rio Rancho Medical Center Tributary 'E' Storm Drain) has been inspected by me or by a qualified person under my direct supervision and has been constructed in accordance with the plans and specifications and that the original design intent of the approved plans has been met, except as noted by me on the as-built construction drawings. This Certification is based on site inspections by me or personnel under my direction and survey information provided by the contractor, Sals Brothers Construction, Inc. and their surveyor, Russ P. Hugg, NMPS No. 9750.



RECORD DRAWING

CONSTRUCTION NOTES:

1. THE CONTRACTOR SHALL ABIDE BY ALL LOCAL, STATE, AND FEDERAL LAWS, RULES AND REGULATIONS WHICH APPLY TO THE CONSTRUCTION OF THESE IMPROVEMENTS.
2. PRIOR TO CONSTRUCTION, CONTRACTOR SHALL EXCAVATE AND VERIFY THE HORIZONTAL AND VERTICAL LOCATIONS OF ALL POTENTIAL OBSTRUCTIONS. SHOULD A CONFLICT EXIST, THE CONTRACTOR SHALL NOTIFY THE ENGINEER OR CONSTRUCTION OBSERVER SO THAT THE CONFLICT CAN BE RESOLVED WITH A MINIMUM AMOUNT OF DELAY.
3. ALL ELECTRICAL, TELEPHONE, CABLE TV, GAS AND OTHER UTILITY LINES, CABLES AND APPURTENANCES ENCOUNTERED DURING CONSTRUCTION THAT REQUIRE RELOCATION, SHALL BE COORDINATED WITH THAT UTILITY. THE CONTRACTOR SHALL BE RESPONSIBLE FOR COORDINATION OF ALL NECESSARY UTILITY ADJUSTMENTS. NO ADDITIONAL COMPENSATION WILL BE ALLOWED FOR DELAYS OR INCONVENIENCES CAUSED BY UTILITY COMPANY WORK CREWS. THE CONTRACTOR MAY BE REQUIRED TO RESCHEDULE HIS ACTIVITIES TO ALLOW UTILITY CREWS TO PERFORM THEIR REQUIRED WORK.
4. DISPOSAL SITE FOR ALL EXCESS EXCAVATION MATERIAL, AND UNSUITABLE MATERIAL SHALL BE OBTAINED BY THE CONTRACTOR IN COMPLIANCE WITH APPLICABLE ENVIRONMENTAL REGULATIONS AND APPROVED BY THE CONSTRUCTION OBSERVER. ALL COSTS INCURRED IN OBTAINING A DISPOSAL SITE AND HAUL THERE TO SHALL BE CONSIDERED INCIDENTAL TO THE PROJECT AND NO SEPARATE MEASUREMENT OR PAYMENT SHALL BE MADE.

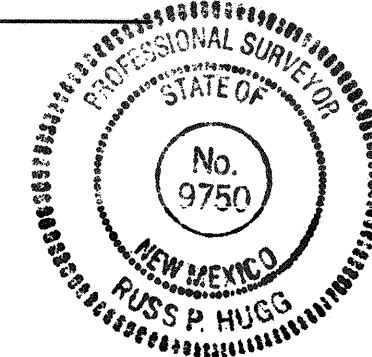
5. THE CONTRACTOR IS RESPONSIBLE FOR PROTECTING THE EXISTING UTILITY LINES WITHIN THE CONSTRUCTION AREA. ANY DAMAGE TO EXISTING FACILITIES CAUSED BY CONSTRUCTION ACTIVITY SHALL BE REPAIRED OR REPLACED AT THE CONTRACTOR'S EXPENSE AND APPROVED BY THE CONSTRUCTION OBSERVER.
6. CONSTRUCTION ACTIVITY SHALL BE LIMITED TO THE PROPERTY AND/OR PROJECT LIMITS. ANY DAMAGE TO ADJACENT PROPERTIES RESULTING FROM THE CONSTRUCTION PROCESS IS THE RESPONSIBILITY OF THE CONTRACTOR. ANY COSTS INCURRED FOR REPAIRS SHALL BE THE COST OF THE CONTRACTOR.
7. OVERNIGHT PARKING OF CONSTRUCTION EQUIPMENT SHALL NOT OBSTRUCT DRIVEWAYS OR DESIGNATED TRAFFIC LANES. THE CONTRACTOR SHALL NOT STORE ANY EQUIPMENT OR MATERIAL WITHIN THE PUBLIC RIGHT-OF-WAY.
8. THE CONTRACTOR SHALL OBTAIN ALL THE NECESSARY PERMITS FOR THE PROJECT PRIOR TO COMMENCING CONSTRUCTION (I.E. BARRICADING, SURFACE DISTURBANCE)
9. THE CONTRACTOR SHALL BE RESPONSIBLE TO REPLACE AT HIS EXPENSE ANY AND ALL PROPERTY CORNERS DESTROYED DURING CONSTRUCTION. ALL PROPERTY CORNERS MUST BE RESET BY A REGISTERED LAND SURVEYOR.
10. ALL PERMANENT PAVEMENT MARKING AND TRAFFIC SIGNING SHALL BE FURNISHED BY THE CONTRACTOR PER PLAN.

11. THE CONTRACTOR SHALL FOLLOW THE CONSTRUCTION TRAFFIC CONTROL AND SIGNING PLAN PROVIDED HEREIN. THE CONTRACTOR SHALL COORDINATE WITH THE CITY OF ALBUQUERQUE, TRAFFIC ENGINEERING DEPARTMENT, PRIOR TO BEGINNING ANY CONSTRUCTION WORK ON OR ADJACENT TO EXISTING STREETS.
12. ALL BARRICADES AND CONSTRUCTION SIGNING SHALL CONFORM TO APPLICABLE SECTIONS OF THE "MANUAL OF UNIFORM TRAFFIC CONTROL DEVICES" (MUTCD), U.S. DEPARTMENT OF TRANSPORTATION, LATEST EDITION.
13. THE CONTRACTOR SHALL MAINTAIN ALL CONSTRUCTION BARRICADES AND SIGNING AT ALL TIMES. THE CONTRACTOR SHALL VERIFY THE PROPER LOCATION OF ALL BARRICADING AT THE END AND BEGINNING OF EACH DAY.
14. FOR STORM DRAIN CONSTRUCTION, RCP PIPE JOINTS SHALL NOT BE GROUTED PRIOR TO FINAL INSPECTION. FINAL INSPECTION WILL DETERMINE JOINTS TO BE GROUTED FOR FINAL ACCEPTANCE OF THE CONSTRUCTION.
15. ALL EXCAVATION, TRENCHING, AND SHORING ACTIVITIES MUST BE CARRIED-OUT IN ACCORDANCE WITH OSHA 29 CFR 1926.650 SUBPART P.
16. CONTRACTOR SHALL PROVIDE AND MAINTAIN ALL CONSTRUCTION SIGNAGE UNTIL THE PROJECT HAS BEEN ACCEPTED BY THE CITY OF ALBUQUERQUE.
17. CONTRACTOR SHALL SUPPORT ALL EXISTING UNDERGROUND UTILITY LINES WHICH BECOME EXPOSED DURING CONSTRUCTION.

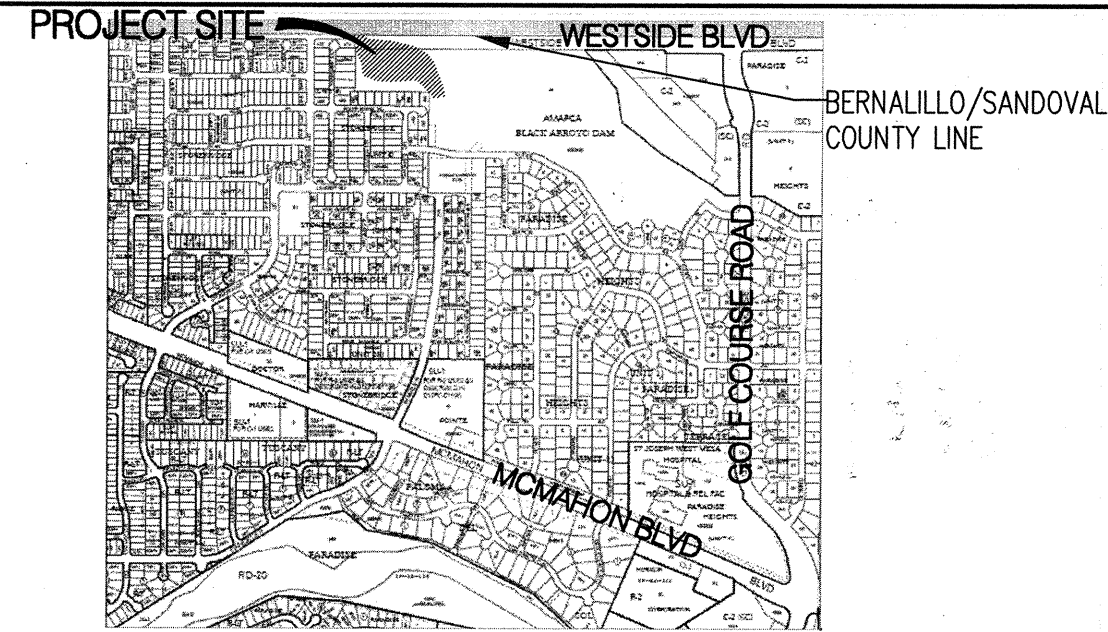
SURVEYORS CERTIFICATION

I, Russ P. Hugg, New Mexico Professional Surveyor Number 9750, hereby certify that the as-built information shown hereon is the result of an actual field survey performed by me or under my direct supervision and that the same is true and correct to the best of my knowledge and belief;

Russ P. Hugg
NMPS No. 9750
August 27, 2009



APPROVED AS RECORD DRAWINGS
DESIGN REVIEW SECTION
CITY CONSTRUCTION ENGINEER
Paul J. ...
DATE: 10-27-2009



VICINITY MAP ZONE MAP NO. A12

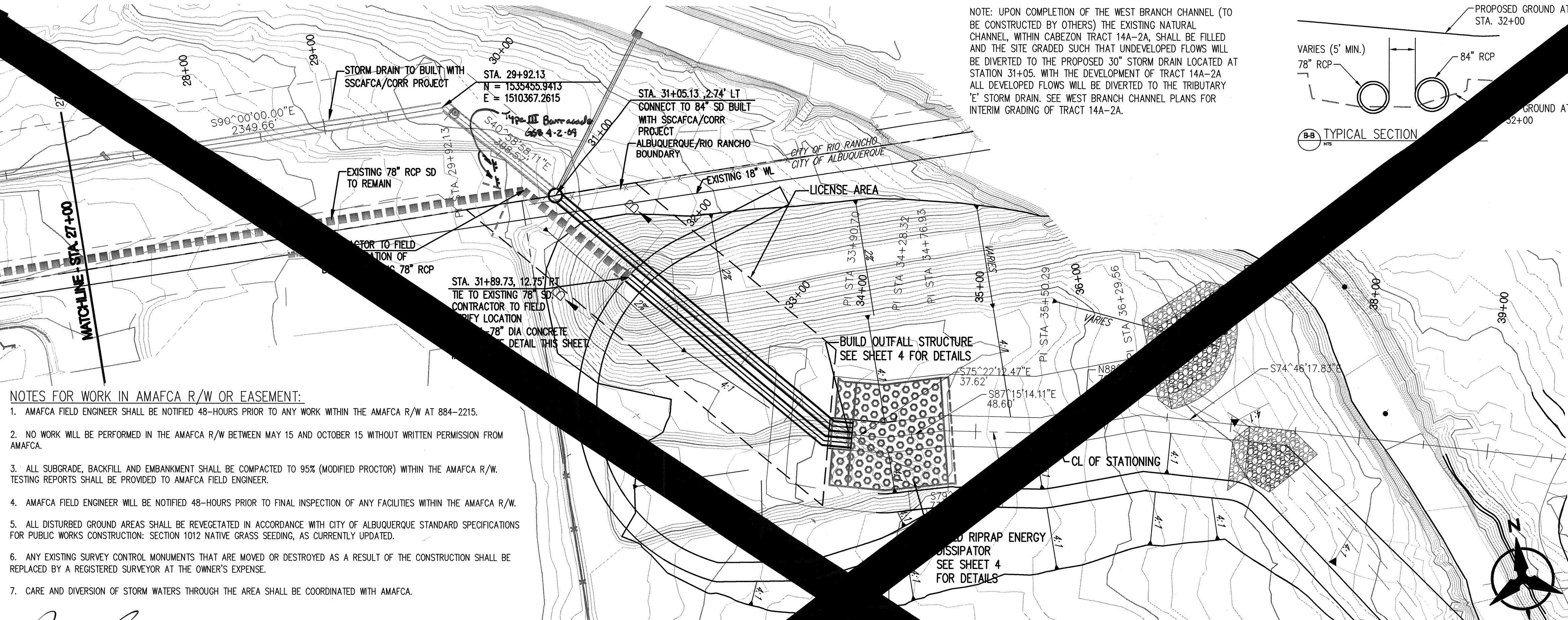
NOTICE TO CONTRACTORS

1. AN EXCAVATION/CONSTRUCTION PERMIT WILL BE REQUIRED BEFORE BEGINNING ANY WORK WITHIN THE CITY RIGHT-OF-WAY.
2. ALL WORK DETAILED ON THESE PLANS TO BE PERFORMED UNDER CONTRACT SHALL, EXCEPT AS OTHERWISE STATED OR PROVIDED FOR HEREON, BE CONSTRUCTED IN ACCORDANCE WITH THE CITY OF ALBUQUERQUE STANDARD SPECIFICATIONS FOR PUBLIC WORKS CONSTRUCTION, 1986 EDITION AS REVISED THROUGH UPDATE NO. 7, INCLUDING AMENDMENT NO. 1.
3. TWO WORKING DAYS PRIOR TO ANY EXCAVATION, THE CONTRACTOR MUST CONTACT NEW MEXICO ONE CALL SYSTEM (260-1990) FOR LOCATION OF EXISTING UTILITIES.
4. PRIOR TO CONSTRUCTION, THE CONTRACTOR SHALL EXCAVATE AND VERIFY THE HORIZONTAL AND VERTICAL LOCATIONS OF ALL OBSTRUCTIONS. SHOULD A CONFLICT EXIST, THE CONTRACTOR SHALL NOTIFY THE ENGINEER OR SURVEYOR IMMEDIATELY SO THAT THE CONFLICT CAN BE RESOLVED WITH A MINIMUM AMOUNT OF DELAY.
5. SEVEN (7) WORKING DAYS PRIOR TO BEGINNING CONSTRUCTION, THE CONTRACTOR SHALL SUBMIT, TO THE CONSTRUCTION COORDINATION DIVISION, A DETAILED CONSTRUCTION SCHEDULE. TWO (2) WORKING DAYS PRIOR TO CONSTRUCTION, THE CONTRACTOR SHALL OBTAIN A BARRICADING PERMIT FROM THE CONST. COORDINATION DIVISION. CONTRACTOR SHALL NOTIFY CONSTRUCTION COORDINATION ENGINEER (768-2551) PRIOR TO OCCUPYING AN INTERSECTION. REFER TO SECTION 19 OF THE GENERAL CONDITIONS OF THE STANDARD SPECIFICATIONS.
6. ALL WORK AFFECTING ARTERIAL ROADWAYS REQUIRES TWENTY-FOUR HOUR CONSTRUCTION.
7. ALL STREET STRIPING ALTERED OR DESTROYED SHALL BE REPLACED W/ PLASTIC REFLECTORIZED PAVEMENT MARKING BY CONTRACTOR TO THE SAME LOCATION AS EXISTING, OR AS INDICATED BY THIS PLAN SET.
8. CONTRACTOR SHALL NOTIFY THE ENGINEER NOT LESS THAN SEVEN (7) DAYS PRIOR TO STARTING WORK IN ORDER THAT THE CITY SURVEYOR MAY TAKE NECESSARY MEASURES TO ENSURE THE PRESERVATION OF SURVEY MONUMENTS. CONTRACTOR SHALL NOT DISTURB PERMANENT SURVEY MONUMENTS WITHOUT THE CONSENT OF THE CITY SURVEYOR AND SHALL NOTIFY THE CITY SURVEYOR AND BEAR THE EXPENSE OF REPLACING ANY THAT MAY BE DISTURBED WITHOUT PERMISSION. REPLACEMENT SHALL BE DONE ONLY BY THE CITY SURVEYOR. WHEN A CHANGE IS MADE IN THE FINISHED ELEVATIONS OF THE PAVEMENT OF ANY ROADWAY IN WHICH A PERMANENT SURVEY MONUMENT IS LOCATED, CONTRACTOR SHALL, AT HIS OWN EXPENSE, ADJUST THE MONUMENT COVER TO THE NEW GRADE UNLESS OTHERWISE SPECIFIED. REFER TO SECTION 4.4 OF THE GENERAL CONDITIONS OF THE STANDARD SPECIFICATIONS.
9. CONTRACTOR SHALL RECORD DATA ON ALL UTILITY LINES AND ACCESSORIES AS REQUIRED BY THE CITY OF ALBUQUERQUE FOR THE PREPARATION OF "AS CONSTRUCTED" DRAWINGS. CONTRACTOR SHALL NOT COVER UTILITY LINES AND ACCESSORIES UNTIL ALL DATA HAS BEEN RECORDED.
10. CONTRACTOR SHALL MAINTAIN A GRAFFITI-FREE WORK SITE. CONTRACTOR SHALL PROMPTLY REMOVE ANY GRAFFITI FROM ALL EQUIPMENT, WHETHER PERMANENT OR TEMPORARY.
11. CONTRACTOR SHALL COORDINATE WITH NEW MEXICO UTILITIES INC (898-2661) FIVE WORKING DAYS IN ADVANCE OF ANY WORK THAT MAY AFFECT EXISTING PUBLIC WATER OR SEWER UTILITIES. EXISTING VALVES TO BE OPERATED BY NMUI PERSONNEL ONLY. CONTRACTOR SHALL CONTACT NMUI THREE (3) DAYS PRIOR TO NEEDING VALVES TURNED ON OR OFF.

THE FOLLOWING NOTES ALSO APPLY WHEN CHECKED

- ☐ ALL UTILITIES AND UTILITY SERVICE LINES SHALL BE INSTALLED PRIOR TO PAVING.
- ☐ BACKFILL COMPACTION SHALL BE ACCORDING TO SPECIFIED STREET USE.
- ☐ TACK COAT REQUIREMENTS SHALL BE DETERMINED BY THE ENGINEER.
- ☐ SIDEWALKS AND WHEELCHAIR RAMP WITHIN THE CURB RETURNS SHALL BE CONSTRUCTED WHEREVER A NEW CURB RETURN IS CONSTRUCTED.
- ☐ IF CURB IS DEPRESSED FOR A DRIVEPAV, THE DRIVEPAV SHALL BE CONSTRUCTED PRIOR TO ACCEPTANCE OF CURB AND GUTTER.
- ☒ ALL STORM DRAINAGE FACILITIES SHALL BE COMPLETED PRIOR TO FINAL ACCEPTANCE.
- ☐ THE REQUESTOR OR DEVELOPER SHALL BE RESPONSIBLE FOR REPAIR OR REPLACEMENT OF ALL CURB AND GUTTER OR SIDEWALK DAMAGED AFTER APPROVAL BY THE CITY ENGINEER OF WORK COMPLETED BY THE CONTRACTOR.

																																																																																																																																																																																																																																																																																																																																																																																																																																																																																																																																																																																																																																																																																																																																																																																																																																																																																																																																																																																																																																																																																																																																																																																																																																																																																																																																																																																																																																																																																																																																																																																																																																																																																																																																																																														</
--	--	--	--	--	--	--	--	--	--	--	--	--	--	--	--	--	--	--	--	--	--	--	--	--	--	--	--	--	--	--	--	--	--	--	--	--	--	--	--	--	--	--	--	--	--	--	--	--	--	--	--	--	--	--	--	--	--	--	--	--	--	--	--	--	--	--	--	--	--	--	--	--	--	--	--	--	--	--	--	--	--	--	--	--	--	--	--	--	--	--	--	--	--	--	--	--	--	--	--	--	--	--	--	--	--	--	--	--	--	--	--	--	--	--	--	--	--	--	--	--	--	--	--	--	--	--	--	--	--	--	--	--	--	--	--	--	--	--	--	--	--	--	--	--	--	--	--	--	--	--	--	--	--	--	--	--	--	--	--	--	--	--	--	--	--	--	--	--	--	--	--	--	--	--	--	--	--	--	--	--	--	--	--	--	--	--	--	--	--	--	--	--	--	--	--	--	--	--	--	--	--	--	--	--	--	--	--	--	--	--	--	--	--	--	--	--	--	--	--	--	--	--	--	--	--	--	--	--	--	--	--	--	--	--	--	--	--	--	--	--	--	--	--	--	--	--	--	--	--	--	--	--	--	--	--	--	--	--	--	--	--	--	--	--	--	--	--	--	--	--	--	--	--	--	--	--	--	--	--	--	--	--	--	--	--	--	--	--	--	--	--	--	--	--	--	--	--	--	--	--	--	--	--	--	--	--	--	--	--	--	--	--	--	--	--	--	--	--	--	--	--	--	--	--	--	--	--	--	--	--	--	--	--	--	--	--	--	--	--	--	--	--	--	--	--	--	--	--	--	--	--	--	--	--	--	--	--	--	--	--	--	--	--	--	--	--	--	--	--	--	--	--	--	--	--	--	--	--	--	--	--	--	--	--	--	--	--	--	--	--	--	--	--	--	--	--	--	--	--	--	--	--	--	--	--	--	--	--	--	--	--	--	--	--	--	--	--	--	--	--	--	--	--	--	--	--	--	--	--	--	--	--	--	--	--	--	--	--	--	--	--	--	--	--	--	--	--	--	--	--	--	--	--	--	--	--	--	--	--	--	--	--	--	--	--	--	--	--	--	--	--	--	--	--	--	--	--	--	--	--	--	--	--	--	--	--	--	--	--	--	--	--	--	--	--	--	--	--	--	--	--	--	--	--	--	--	--	--	--	--	--	--	--	--	--	--	--	--	--	--	--	--	--	--	--	--	--	--	--	--	--	--	--	--	--	--	--	--	--	--	--	--	--	--	--	--	--	--	--	--	--	--	--	--	--	--	--	--	--	--	--	--	--	--	--	--	--	--	--	--	--	--	--	--	--	--	--	--	--	--	--	--	--	--	--	--	--	--	--	--	--	--	--	--	--	--	--	--	--	--	--	--	--	--	--	--	--	--	--	--	--	--	--	--	--	--	--	--	--	--	--	--	--	--	--	--	--	--	--	--	--	--	--	--	--	--	--	--	--	--	--	--	--	--	--	--	--	--	--	--	--	--	--	--	--	--	--	--	--	--	--	--	--	--	--	--	--	--	--	--	--	--	--	--	--	--	--	--	--	--	--	--	--	--	--	--	--	--	--	--	--	--	--	--	--	--	--	--	--	--	--	--	--	--	--	--	--	--	--	--	--	--	--	--	--	--	--	--	--	--	--	--	--	--	--	--	--	--	--	--	--	--	--	--	--	--	--	--	--	--	--	--	--	--	--	--	--	--	--	--	--	--	--	--	--	--	--	--	--	--	--	--	--	--	--	--	--	--	--	--	--	--	--	--	--	--	--	--	--	--	--	--	--	--	--	--	--	--	--	--	--	--	--	--	--	--	--	--	--	--	--	--	--	--	--	--	--	--	--	--	--	--	--	--	--	--	--	--	--	--	--	--	--	--	--	--	--	--	--	--	--	--	--	--	--	--	--	--	--	--	--	--	--	--	--	--	--	--	--	--	--	--	--	--	--	--	--	--	--	--	--	--	--	--	--	--	--	--	--	--	--	--	--	--	--	--	--	--	--	--	--	--	--	--	--	--	--	--	--	--	--	--	--	--	--	--	--	--	--	--	--	--	--	--	--	--	--	--	--	--	--	--	--	--	--	--	--	--	--	--	--	--	--	--	--	--	--	--	--	--	--	--	--	--	--	--	--	--	--	--	--	--	--	--	--	--	--	--	--	--	--	--	--	--	--	--	--	--	--	--	--	--	--	--	--	--	--	--	--	--	--	--	--	--	--	--	--	--	--	--	--	--	--	--	--	--	--	--	--	--	--	--	--	--	--	--	--	--	--	--	--	--	--	--	--	--	--	--	--	--	--	--	--	--	--	--	--	--	--	--	--	--	--	--	--	--	--	--	--	--	--	--	--	--	--	--	--	--	--	--	--	--	--	--	--	--	--	--	--	--	--	--	--	--	--	--	--	--	--	--	--	--	--	--	--	--	--	--	--	--	--	--	--	--	--	--	--	--	--	--	--	--	--	--	--	--	--	--	--	--	--	--	--	--	--	--	--	--	--	--	--	--	--	--	--	--	--	--	--	--	--	--	--	--	--	--	--	--	--	--	--	--	--	--	--	--	--	--	--	--	--	--	--	--	--	--	--	--	--	--	--	--	--	--	--	--	--	--	--	--	--	--	--	--	--	--	--	--	--	--	--	--	--	--	--	--	--	--	--	--	--	--	--	--	--	--	--	--	--	--	--	--	--	--	--	--	--	--	--	--	--	--	--	--	--	--	--	--	--	--	--	--	--	--	--	--	--	--	--	--	--	--	--	--	--	--	--	--	--	--	--	--	--	--	--	--	--	--	--	--	--	--	--	--	--	--	--	--	--	--	--	--	--	--	--	--	--	--	--	--	--	--	--	--	--	--	--	--	--	--	--	--	--	--	--	--	--	--	--	--	--	--	--	--	--	--	--	--	--	--	--	--	--	--	--	--	--	--	--	--	--	--	--	--	--	--	--	--	--	--	--	--	--	--	--	--	--	--	--	--	--	--	--	--	--	--	--	--	--	--	--	--	--	--	--	--	--	--	--	--	--	--	--	--	--	--	--	--	--	--	--	--	--	--	--	--	--	--	--	--	--	--	--	--	--	--	--	--	--	--	--	--	--	--	--	--	--	--	--	--	--	--	--	--	--	--	--	--	--	--	--	--	--	--	--	--	--	--	--	--	--	--	--	--	--	--	--	--	--	--	--	--	--	--	--	--	--	--	--	--	--	--	--	--	--	--	--	--	--	--	--	--	--	--	--	--	--	--	--	--	--	--	--	--	--	--	--	--	--	--	--	--	--	--	--	--	--	--	--	--	--	--	--	--	--	--	--	--	--	--	--	--	--	--	--	--	--	--	--	--	--	--	--	--	--	--	--	--	--	--	--	--	--	--	--	--	--	--	--	--	--	--	--	--	--	--	--	--	--	--	--	--	--	--	--	--	--	--	--	--	--	--	--	--	--	--	--	--	--	--	--	--	--	--	--	--	--	--	--	--	--	--	--	--	--	--	--	--	--	--	--	--	--	--	--	--	--	--	--	--	--	--	--	--	--	--	--	--	--	--	--	--	--	--	--	--	--	--	--	--	--	--	--	--	--	--	--	--	--	--	--	--	--	--	--	--	--	--	--	--	--	--	--	--	--	--	--	--	--	--	--	--	--	--	--	--	--	--	--	--	--	--	--	--	--	--	--	--	--	--	--	--	--	--	--	--	--	--	--	--	--	--	--	--	--	--	--	--	--	--	--	--	--	--	--	--	--	--	--	--	--	--	--	--	--	--	--	--	--	--	--	--	--	--	--	--	--	--	--	--	--	--	--	--	--	--	--	--	--	--	--	--	--	--	--	--	--	--	--	--	--	--	--	--	--	--	--	--	--	--	--	--	--	--	--	--	--	--	--	----



NOTES FOR WORK IN AMAFCA R/W OR EASEMENT:

1. AMAFCA FIELD ENGINEER SHALL BE NOTIFIED 48-HOURS PRIOR TO ANY WORK WITHIN THE AMAFCA R/W AT 884-2215.
2. NO WORK WILL BE PERFORMED IN THE AMAFCA R/W BETWEEN MAY 15 AND OCTOBER 15 WITHOUT WRITTEN PERMISSION FROM AMAFCA.
3. ALL SUBGRADE, BACKFILL AND EMBANKMENT SHALL BE COMPACTED TO 95% (MODIFIED PROCTOR) WITHIN THE AMAFCA R/W. TESTING REPORTS SHALL BE PROVIDED TO AMAFCA FIELD ENGINEER.
4. AMAFCA FIELD ENGINEER WILL BE NOTIFIED 48-HOURS PRIOR TO FINAL INSPECTION OF ANY FACILITIES WITHIN THE AMAFCA R/W.
5. ALL DISTURBED GROUND AREAS SHALL BE REVEGETATED IN ACCORDANCE WITH CITY OF ALBUQUERQUE STANDARD SPECIFICATIONS FOR PUBLIC WORKS CONSTRUCTION: SECTION 1012 NATIVE GRASS SEEDING, AS CURRENTLY UPDATED.
6. ANY EXISTING SURVEY CONTROL MONUMENTS THAT ARE MOVED OR DESTROYED AS A RESULT OF THE CONSTRUCTION SHALL BE REPLACED BY A REGISTERED SURVEYOR AT THE OWNER'S EXPENSE.
7. CARE AND DIVERSION OF STORM WATERS THROUGH THE AREA SHALL BE COORDINATED WITH AMAFCA.

APPROVED FOR CONSTRUCTION WITHIN AMAFCA RIGHT-OF-WAY / EASEMENT:

DATE 3/26/09

STORM DRAIN PLAN & PROFILE

ELEVATIONS ARE IN NGVD 29

RECORD DRAWING

MATCHLINE - STA 27+00

STORM DRAIN TO BE BUILT WITH SSCAFCA/CORR PROJECT

EXISTING 78" SD
EXISTING 18" WL
HCL (84")

PROPOSED GROUND

INSTALL 224.93LF 84" RCP CLASS IV
S = -4.49% (140.44LF)
Q = 839.00 CFS V = 27.05 FPS

INSTALL 140.44LF 78" RCP CLASS IV
S = -4.38% (140.44LF)
Q = 841.00 CFS V = 25.34 FPS

INSTALL 57.18LF 78" RCP CLASS IV
S = 0.58%
Q = 841.00 CFS V = 25.34 FPS

INSTALL 21.49LF 78" RCP CLASS IV
S = 0.58%
Q = 841.00 CFS V = 25.34 FPS

INSTALL 54.91LF 84" RCP CLASS IV
S = 0.68%
Q = 839.00 CFS V = 21.80 FPS

INSTALL 16.00LF 84" RCP CLASS IV
S = 0.68%
Q = 839.00 CFS V = 21.80 FPS

PROPOSED WEST BRANCH CHANNEL
PROJECT SEE SHEET 5

S = -0.20%
Q = 1680.00 CFS
V = 5.59 FPS

STA. 37+40.45
INV = 5180.12
END CHANNEL
CONNECT TO
WEST BRANCH CHANNEL
RELOCATION PROJECT

STA. 34+03.53
INV = 5180.80
END 84" SD
BEGIN CHANNEL PER
TYPICAL SECTION

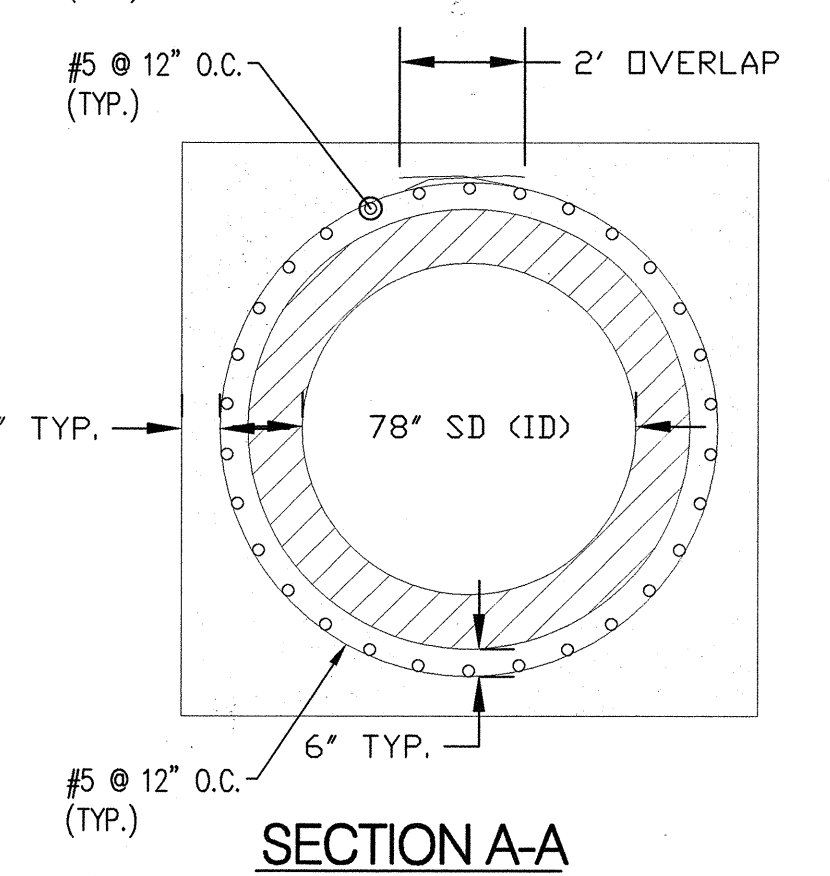
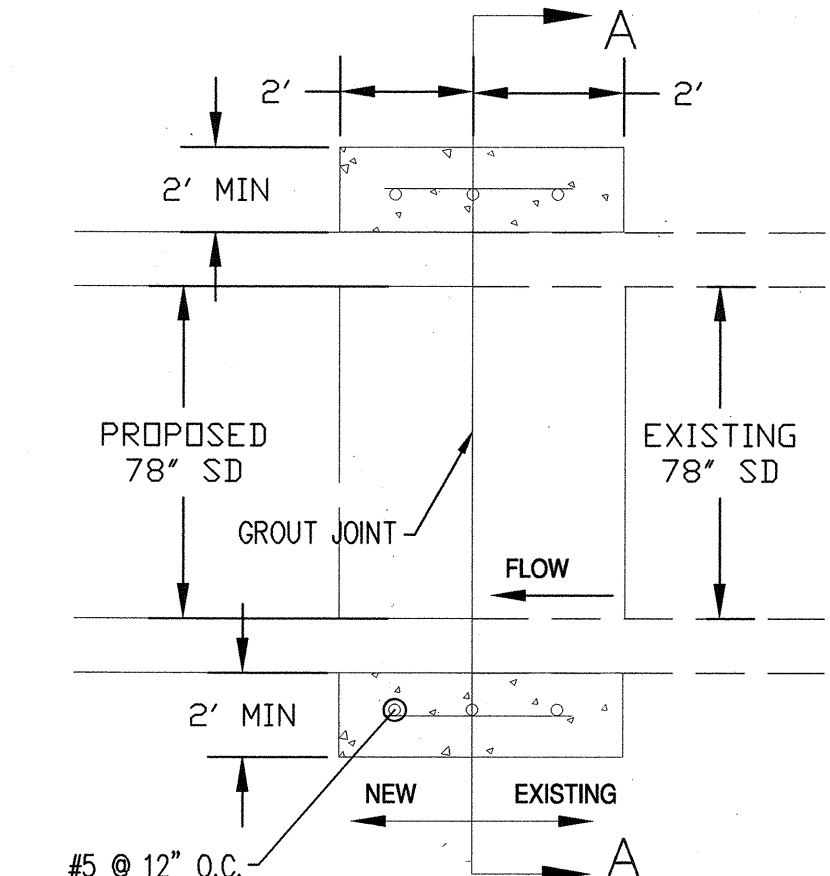
STA. 31+05.13
INV = 5181.28
END 18" WL
BEGIN CHANNEL PER
TYPICAL SECTION

STA. 33+84.98
INV = 5180.91
END 78" SD
BEGIN CHANNEL PER
TYPICAL SECTION

STA. 33+87.22
INV = 5180.93
END 78" SD
BEGIN CHANNEL PER
TYPICAL SECTION

GENERAL NOTES:

1. THE CONTRACTOR SHALL FIELD VERIFY ALL EXISTING UTILITY LOCATIONS AND NOTIFY THE ENGINEER IMMEDIATELY OF ANY DISCREPANCIES.
2. CONTRACTOR IS RESPONSIBLE FOR REPAIR AND/OR REPLACEMENT OF ALL UTILITY CONDUITS AND EXISTING LINES.
3. ANY DAMAGE TO THE EXISTING FACILITIES (CURB AND GUTTER, PAVEMENT, CONDUITS, LANDSCAPING, UTILITY LINES, ETC.) DURING CONSTRUCTION SHALL BE REPLACED AT THE CONTRACTOR'S EXPENSE.
4. FOR STORM DRAIN CONSTRUCTION, RCP PIPE JOINTS SHALL NOT BE GROUTED PRIOR TO FINAL INSPECTION. FINAL INSPECTION WILL DETERMINE JOINTS TO BE GROUTED FOR FINAL ACCEPTANCE OF THE CONSTRUCTION.
5. ALL EXCAVATION, TRENCHING, AND SHORING ACTIVITIES MUST BE CARRIED OUT IN ACCORDANCE WITH OSHA 29 CFR 1926.650 SUBPART P.
6. ALL PIPE BEDDING PER COA STD DWG 2315.



SECTION A-A
CONCRETE COLLAR DETAIL (TYP)

Bohannon & Huston
Courtney | 7000 Jefferson St. NE Albuquerque, NM 87109-4395
ENGINEERING • SPATIAL DATA • ADVANCED TECHNOLOGIES

CITY OF ALBUQUERQUE
DEPARTMENT OF
MUNICIPAL DEVELOPMENT

PRESBYTERIAN RIO RANCHO
STORM DRAIN PLAN & PROFILE
STA 27+00.00 TO STA 38+00.00

APPROVE
APR 23 2009
DESIGN REVIEW COMMITTEE

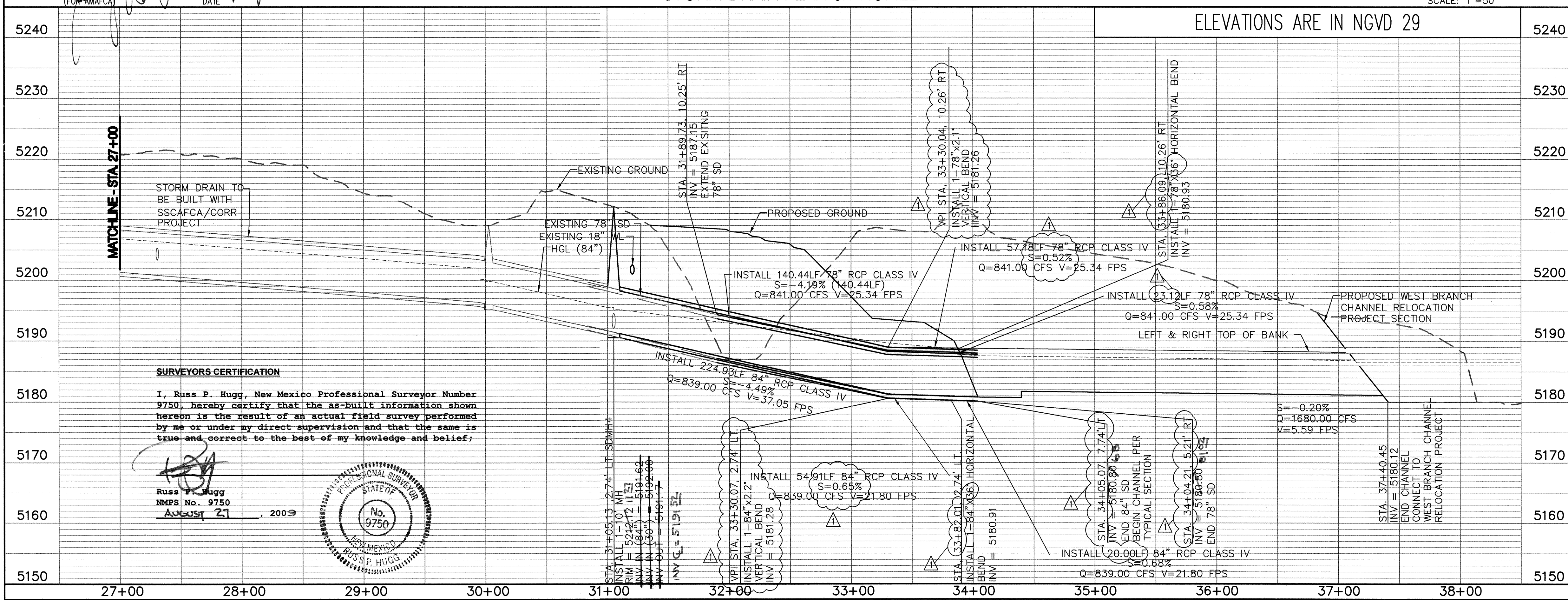
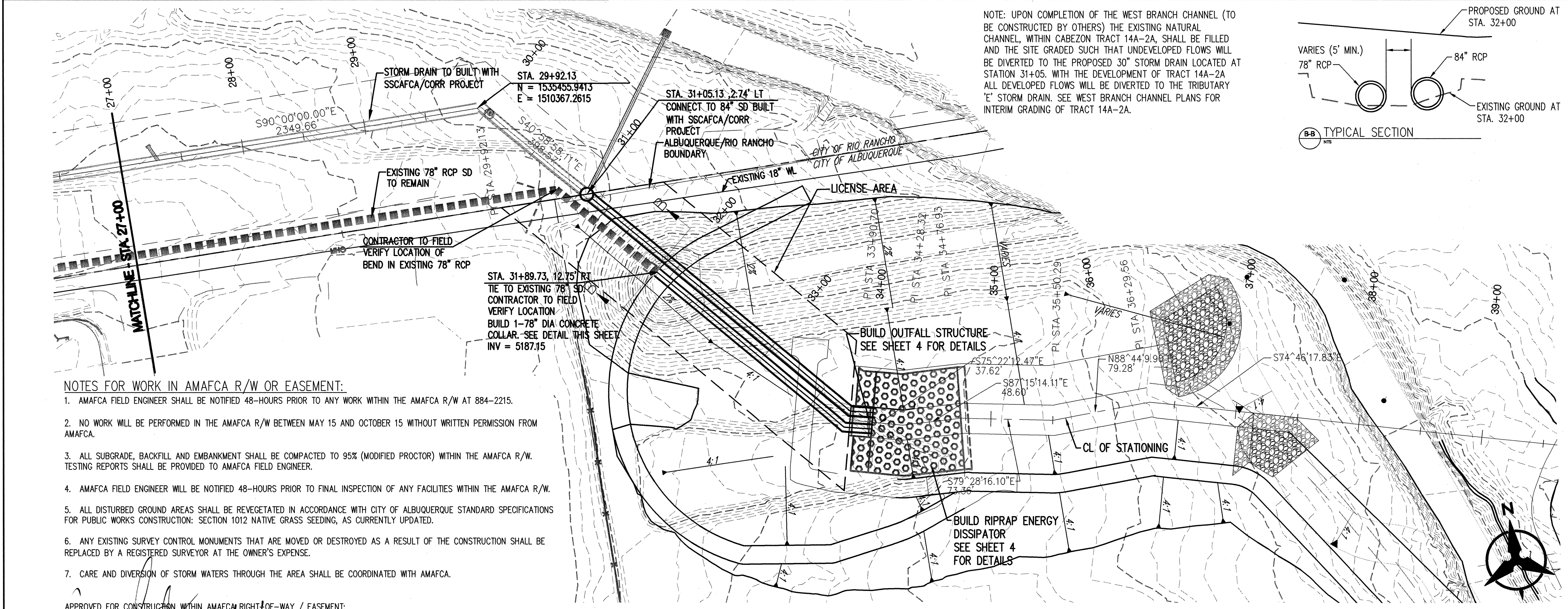
APPROVE
JUN 09 2009
CITY ENGINEER

CITY PROJECT NO. 6936.82

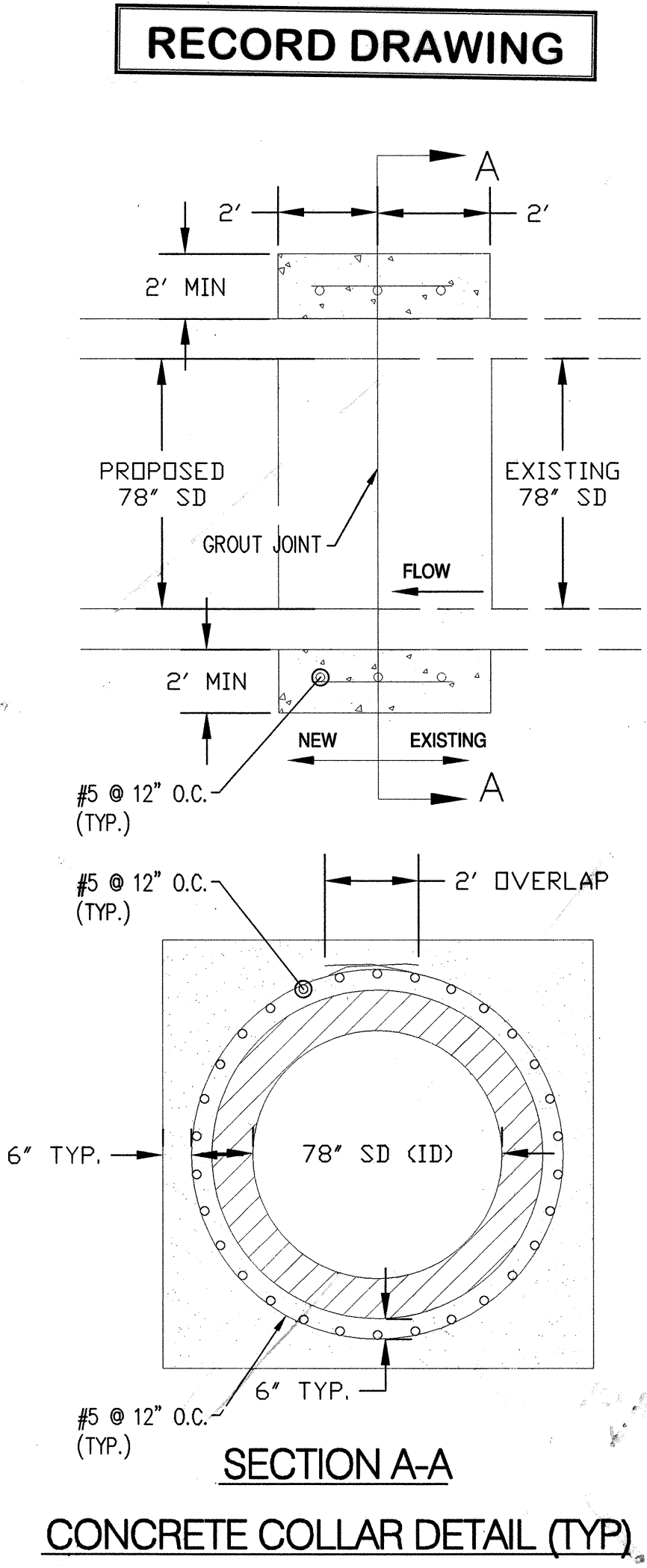
ZONE MAP NO. A12

SHEET 2 OF 4

AS-BUILT INFORMATION				BENCH MARKS				SURVEY INFORMATION				ENGINEER'S SEAL			
CONTRACTOR	SALES	DATE	07/04	N.G.S. CONTROL SURVEY MONUMENT	DATE	07/04	BY	NO.	DATE	BY	NO.	DATE	BY	NO.	DATE
WORKED BY	SALES	DATE	07/04	INSPECTOR'S ACCEPTANCE BY	DATE	07/04	BY	NO.	DATE	BY	NO.	DATE	BY	NO.	DATE
DRAWINGS	SALES	DATE	07/04	NEW MEXICO STATE PLANE COORDINATES	DATE	07/04	BY	NO.	DATE	BY	NO.	DATE	BY	NO.	DATE
CHECKED BY	SALES	DATE	07/04	CENTRAL ZONE (NAD 83) AS PUBLISHED	DATE	07/04	BY	NO.	DATE	BY	NO.	DATE	BY	NO.	DATE
RECORDED BY	SALES	DATE	07/04	Y = 1,530,466.034	DATE	07/04	BY	NO.	DATE	BY	NO.	DATE	BY	NO.	DATE
NO.	SALES	DATE	07/04	X = 1,505,019.995	DATE	07/04	BY	NO.	DATE	BY	NO.	DATE	BY	NO.	DATE
NO.	SALES	DATE	07/04	ELEVATION = 5,292.311 (NGVD 29)	DATE	07/04	BY	NO.	DATE	BY	NO.	DATE	BY	NO.	DATE



- GENERAL NOTES:
1. THE CONTRACTOR SHALL FIELD VERIFY ALL EXISTING UTILITY LOCATIONS AND NOTIFY THE ENGINEER IMMEDIATELY OF ANY DISCREPANCIES.
 2. CONTRACTOR IS RESPONSIBLE FOR REPAIR AND/OR REPLACEMENT OF ALL UTILITY CONDUITS AND EXISTING LINES.
 3. ANY DAMAGE TO THE EXISTING FACILITIES (CURB AND GUTTER, PAVEMENT, CONDUITS, LANDSCAPING, UTILITY LINES, ETC.) DURING CONSTRUCTION SHALL BE REPLACED AT THE CONTRACTORS' EXPENSE.
 4. FOR STORM DRAIN CONSTRUCTION, RCP PIPE JOINTS SHALL NOT BE GROUTED PRIOR TO FINAL INSPECTION. FINAL INSPECTION WILL DETERMINE JOINTS TO BE GROUTED FOR FINAL ACCEPTANCE OF THE CONSTRUCTION.
 5. ALL EXCAVATION, TRENCHING, AND SHORING ACTIVITIES MUST BE CARRIED OUT IN ACCORDANCE WITH OSHA 29 CFR 1926.650 SUBPART P.
 6. ALL PIPE BEDDING PER COA STD DWG 2315.

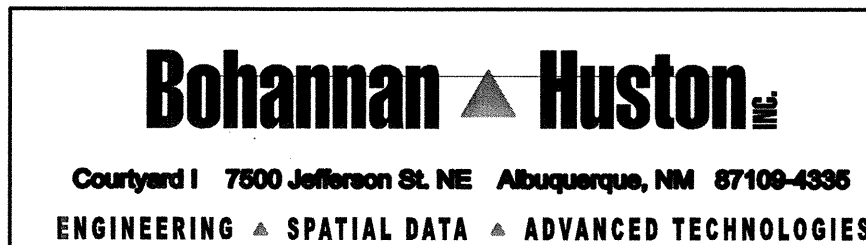


Bohannon & Huston
Courtney I 7600 Jefferson St. NE Albuquerque, NM 87109-4356
ENGINEERING • SPATIAL DATA • ADVANCED TECHNOLOGIES

CITY OF ALBUQUERQUE
DEPARTMENT OF MUNICIPAL DEVELOPMENT
PRESBYTERIAN RIO RANCHO
STORM DRAIN PLAN & PROFILE
STA 27+00.00 TO STA 38+00.00

DESIGN REVIEW COMMITTEE	CITY ENGINEER APPROVAL	MO./DAY/YR.	MO./DAY/YR.

AS-BUILT INFORMATION		BENCH MARKS		SURVEY INFORMATION		ENGINEER'S SEAL		REVISIONS		DESIGN	
CONTRACTOR	DATE	N.G.S. CONTROL SURVEY MONUMENT	DATE	NO.	BY		A.Q.C.	DESIGN REVISION NO. 3 (OR #) SSCAFCA JURISDICTION	BY	DATE	DATE
WORK SUBMITTED BY	DATE	"LESS-103"	DATE					REMARKS			
ACCEPTANCE BY	DATE	NEW MEXICO STATE PLANE COORDINATES	DATE					REVISIONS			
FIELD CHECKED BY	DATE	CENTRAL ZONE (NAD 83) AS PUBLISHED	DATE					DESIGN			
DRAWINGS CORRECTED BY	DATE	Y = 1,530,466.034	DATE					DESIGNED BY	AQC	DATE	03/2009
MICRO-FILM INFORMATION	DATE	X = 1,505,019.995	DATE					DRAWN BY	ROA/BO/NP	DATE	08/2009
		ELEVATION = 5,292.311 (NGVD 29)						CHECKED BY	CWH	DATE	03/2009

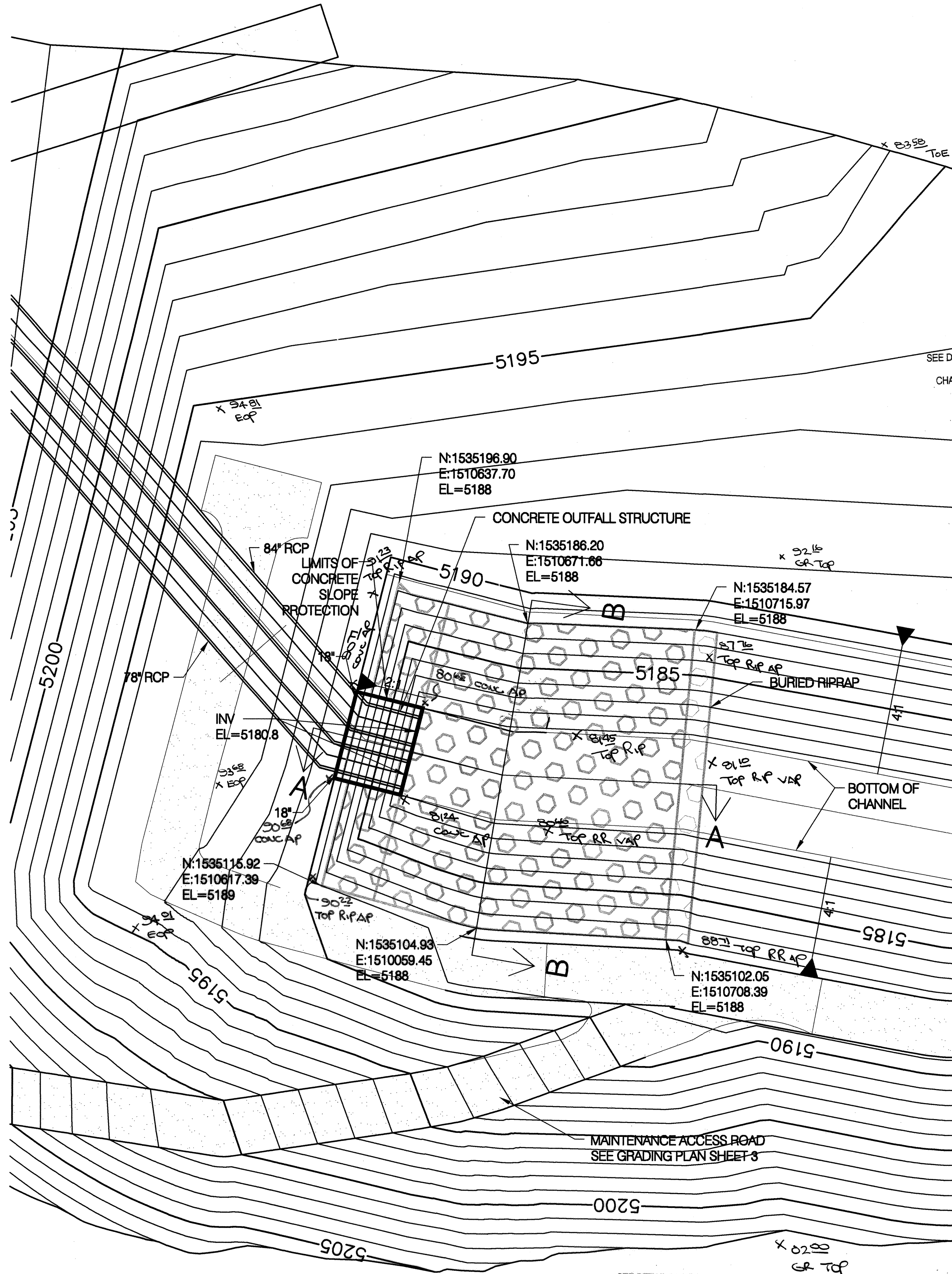


CITY OF ALBUQUERQUE
DEPARTMENT OF
MUNICIPAL DEVELOPMENT

PRESBYTERIAN RIO RANCH
CHANNEL GRADING PLAN

DESIGN REVIEW COMMITTEE	CITY ENGINEER APPROVAL	MO./DAY/YR.	MO./DAY/YR.
APPROVE	APPROVE		
APR 23 2009	JUN 09 2009		
DESIGN REVIEW COMMITTEE	CITY ENGINEER	LAST DESIGN UPDATE	

CITY PROJECT NO.	6936.82	ZONE MAP NO.	A12	SHEET	3	OF	4
------------------	---------	--------------	-----	-------	---	----	---



EL = TOP OF RIPRAP ELEVATION

OUTLET STRUCTURE PLAN
SCALE = 1" : 20"

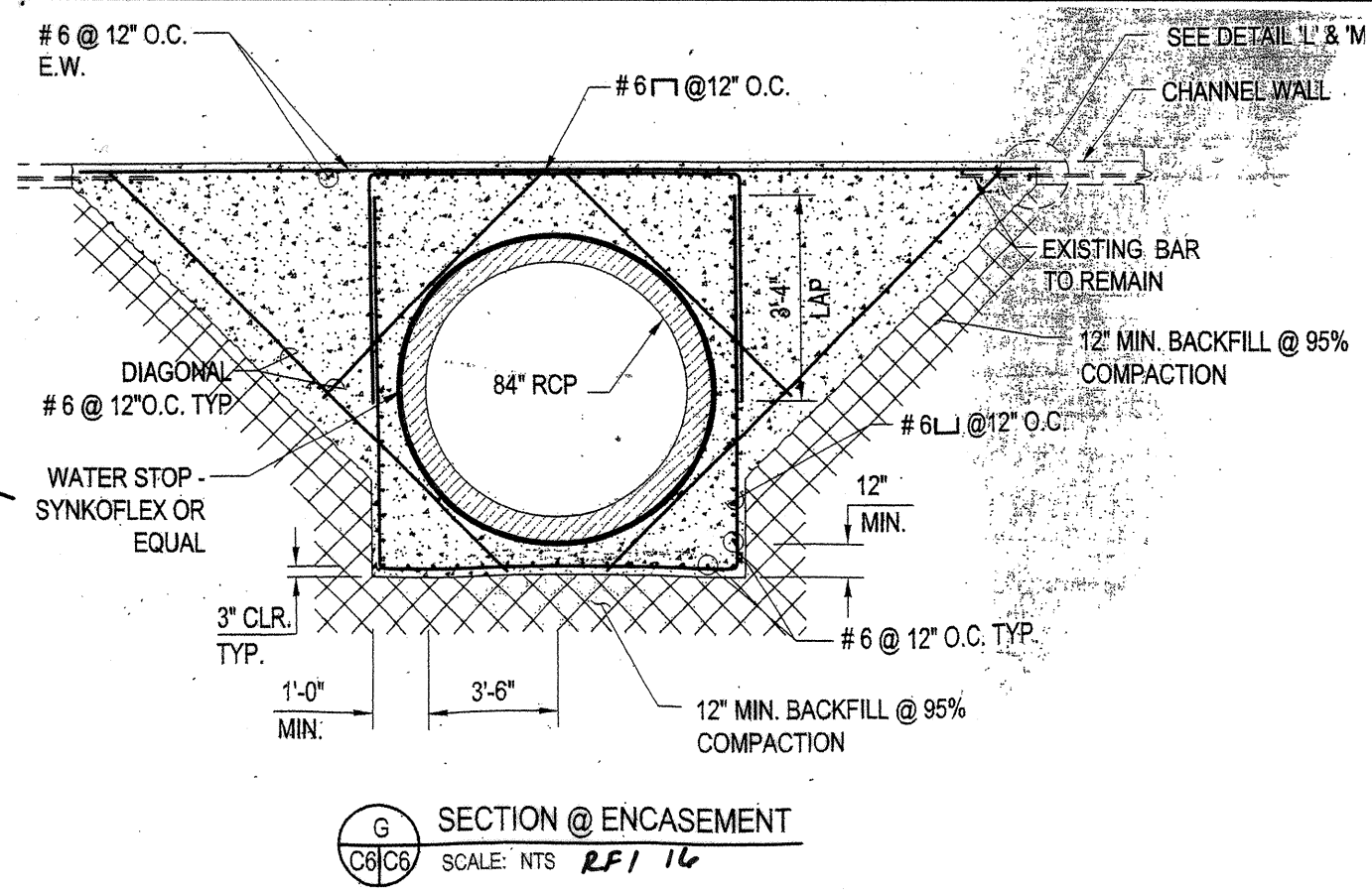
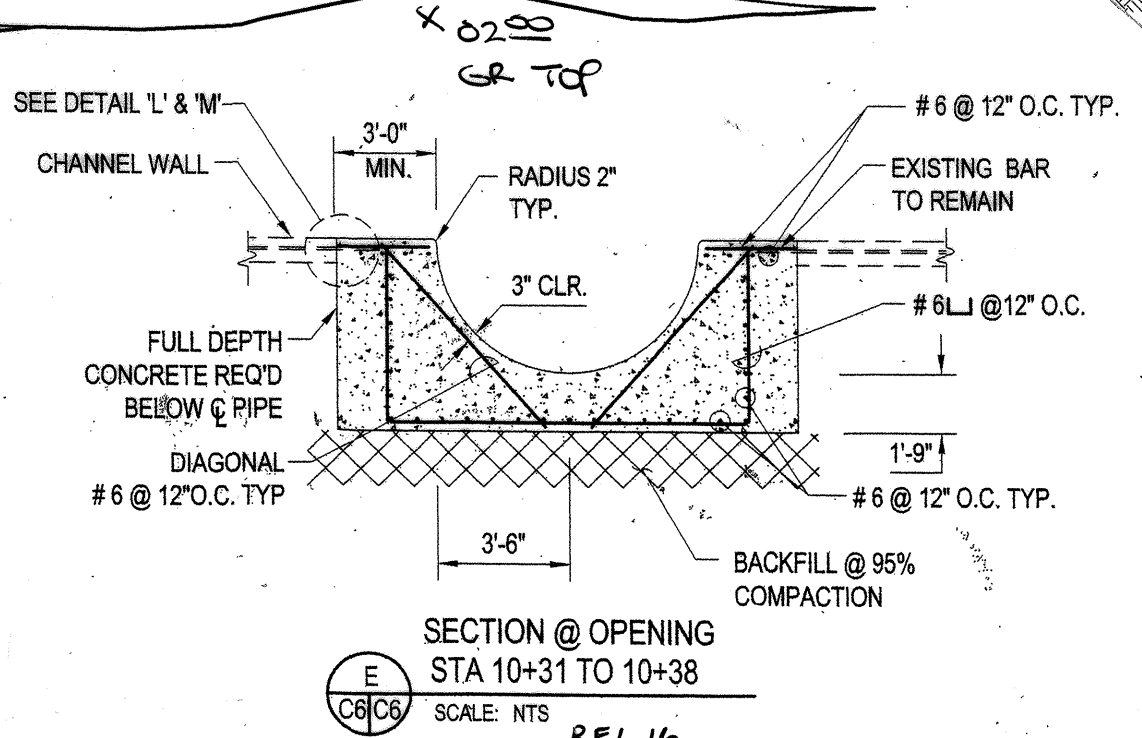
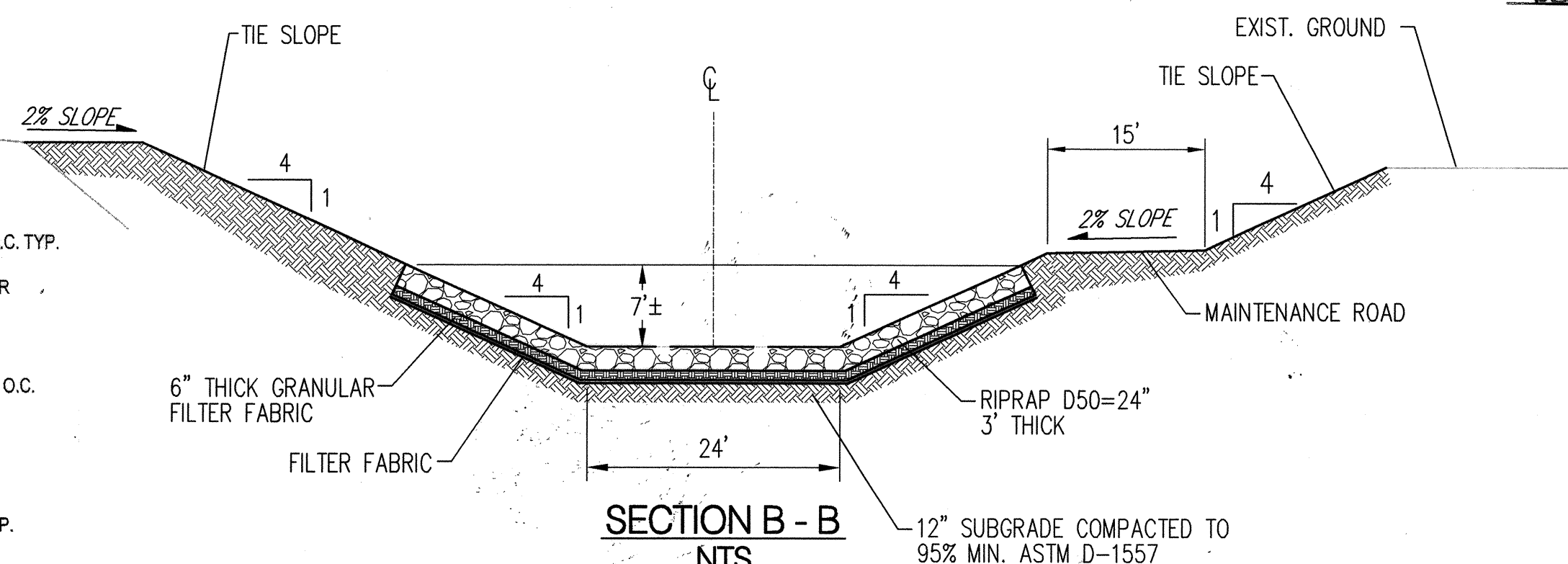
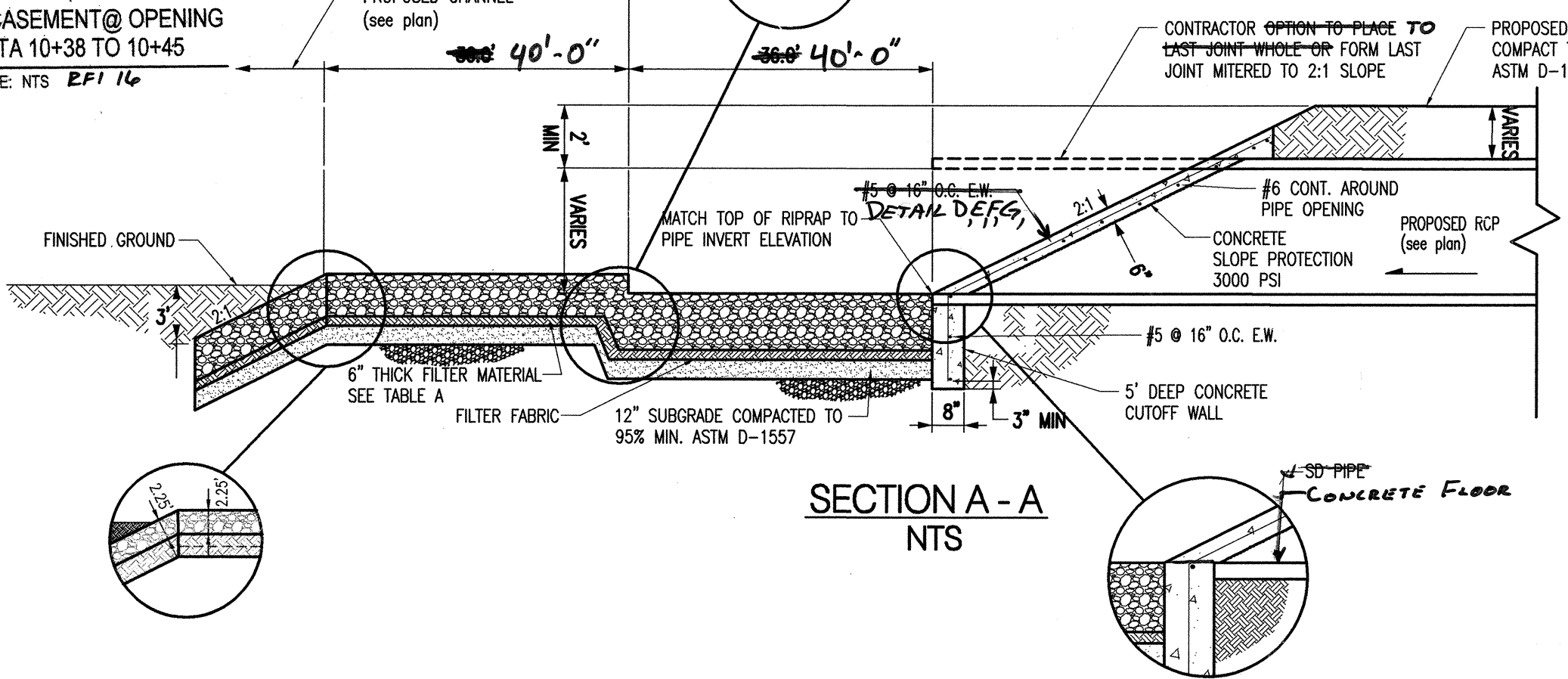
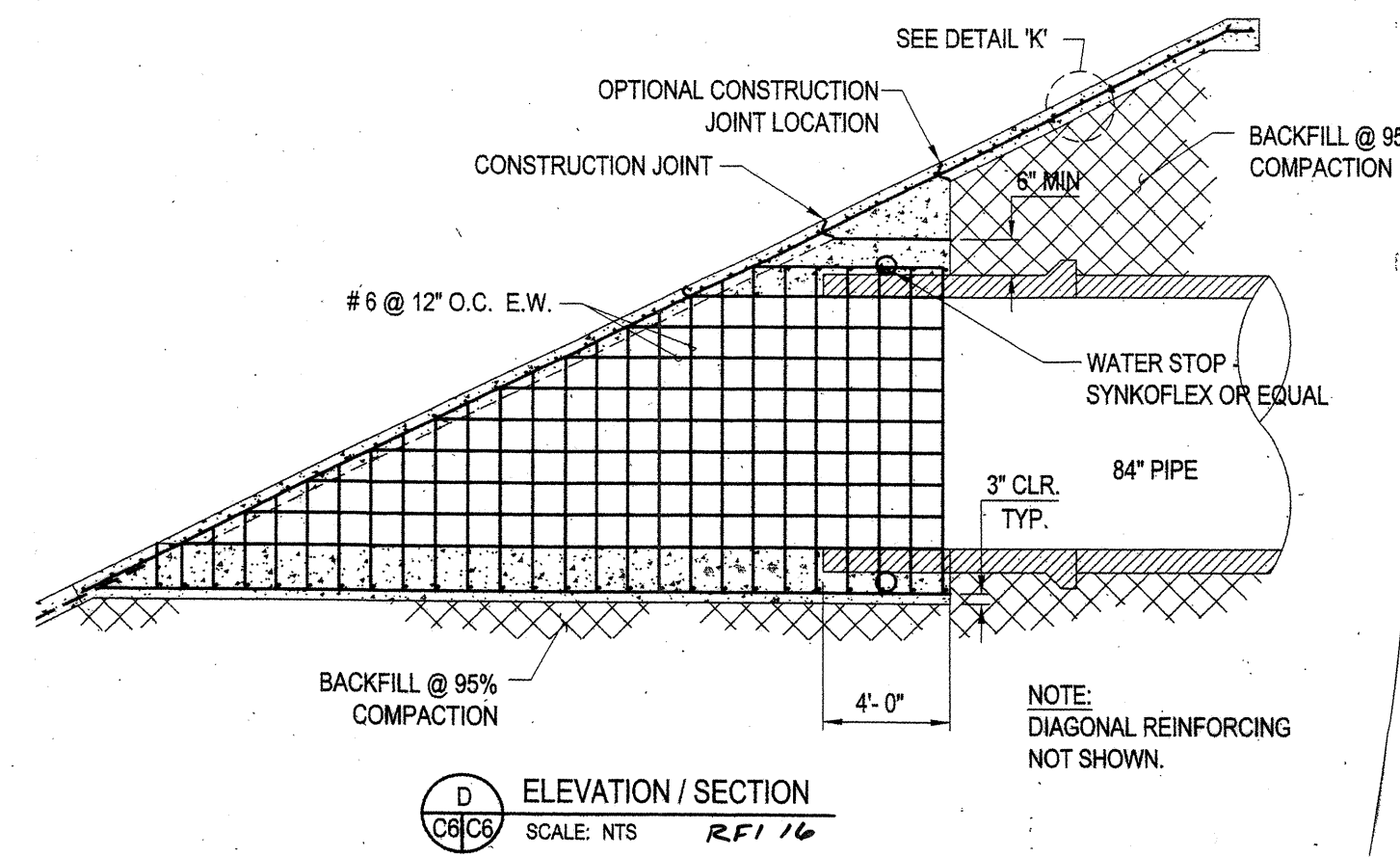
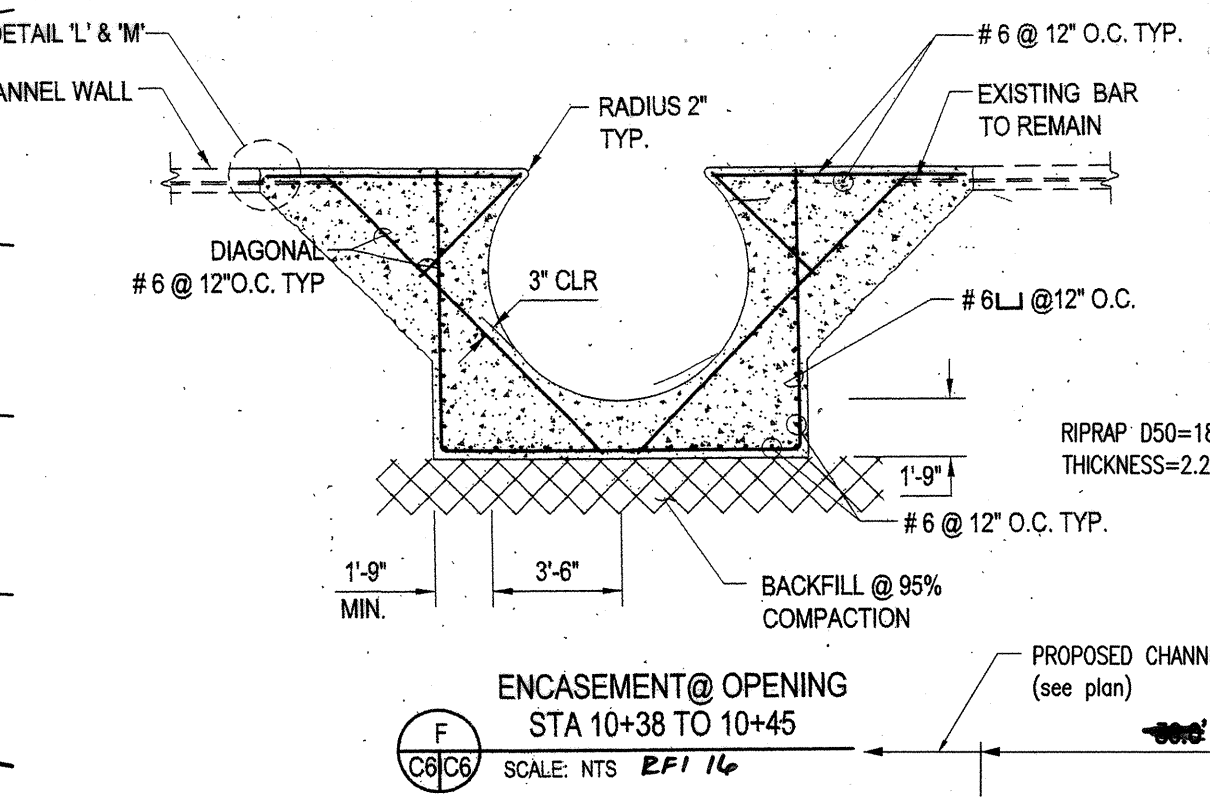


TABLE A
FILTER MATERIAL
GRANULAR BEDDING GRADATION

SIEVE SIZE	% PASSING BY WEIGHT
3/8"	100
#4	95-100
#16	45-90
#50	10-30
#100	20-10
#200	0-2



NOTE: UPON COMPLETION OF THE WEST BRANCH CHANNEL (TO BE CONSTRUCTED BY OTHERS) THE EXISTING NATURAL CHANNEL, WITHIN CABEZON TRACT 14A-2A, SHALL BE FILLED AND THE SITE GRADED SUCH THAT UNDEVELOPED FLOWS WILL BE DIVERTED TO THE PROPOSED 30" STORM DRAIN LOCATED AT STATION 31+05. WITH THE DEVELOPMENT OF TRACT 14A-2A ALL DEVELOPED FLOWS WILL BE DIVERTED TO THE TRIBUTARY 'E' STORM DRAIN. SEE WEST BRANCH CHANNEL PLANS FOR INTERIM GRADING OF TRACT 14A-2A.

RECORD DRAWING

SURVEYORS CERTIFICATION

I, Russ P. Hugg, New Mexico Professional Surveyor Number 9750, hereby certify that the as-built information shown hereon is the result of an actual field survey performed by me or under my direct supervision and that the same is true and correct to the best of my knowledge and belief;

Russ P. Hugg
NMPS No. 9750
August 27, 2009



Bohannon & Huston
Courtney I 7600 Jefferson St. NE Albuquerque, NM 87106-4385
ENGINEERING • SPATIAL DATA • ADVANCED TECHNOLOGIES

CITY OF ALBUQUERQUE
DEPARTMENT OF
MUNICIPAL DEVELOPMENT

PRESBYTERIAN RIO RANCHO
OUTLET STRUCTURE DETAILS

DESIGN REVIEW COMMITTEE APPROVE APR 23 2009 DESIGN REVIEW COMMITTEE	CITY ENGINEER APPROVAL APPROVE JUN 09 2009 CITY ENGINEER	MO./DAY/YR. LAST DESIGN UPDATE	MO./DAY/YR.
--	---	-----------------------------------	-------------

CITY PROJECT NO. 6936.82	ZONE MAP NO. A12	SHEET 4	OF 4
-----------------------------	---------------------	------------	---------