



Date of Record Drawings: 9/09/09
Parks & Recreation - Owner

RECORD DRAWINGS SEPTEMBER, 2009

This set of Record Documents consists of corrected plans showing the reported location of the work, conforming to the construction records provided by the Contractor. While the information submitted by the Contractor and incorporated by the Landscape Architect into the Record Documents is assumed to be reliable, the Landscape Architect has not verified the accuracy and/or completeness of the information and shall not be responsible for any errors or omissions which may be incorporated herein as a result. Those relying on these Record Documents are advised to obtain independent verification of their accuracy before applying it for any purpose.

Property Information

Property Address: 7440 Hanover Road NW
Albuquerque, NM 87120

Zone : R-D
Park Acres: 2.39

Legal Description

A parcel of land situated within El Rancho Atrisco Subdivision Phase III, within the Town of Atrisco Grant in the northwest 1/4 of Projected Section 15 Township 10 North, Range 2 East of the New Mexico Principal Meridian.

Index of Drawings

1. Cover Sheet
2. General Notes
3. Demolition Plan
4. Construction Plan
5. Construction Plan-Enlargements
6. Details
7. Grading/Dimension Plan
8. Project Information Form

UTILITY COMPANY CONTACTS

CITY OF ALBUQUERQUE
UTILITY DEVELOPMENT
P.O. Box 1293
Albuquerque, New Mexico 87103
(505) 768-2719

PNM-ELECTRIC
4201 Edith Boulevard NE
Albuquerque, New Mexico 87107
(505) 241-0525

PNM-GAS
4625 Edith Boulevard NE
Albuquerque, New Mexico 87107
(505) 241-7745

QWEST
201 Third Street NW Suite 700
Albuquerque, New Mexico 87103
(505) 245-8706

QWEST
201 Third Street NW Suite 700
Albuquerque, New Mexico 87103
(505) 245-8706



REV.	SHEETS	CITY ENGINEER	USER DEPARTMENT	DATE	USER DEPARTMENT	DATE
ENGINEER'S STAMP & SIGNATURE		APPROVED	ENGINEER	DATE		
		PROJECT # 694491			SHEET 1 OF 8	

DATE: APRIL 8, 2009

Laurelwood Park Improvements


PROJECT# 094491

RECORD DRAWINGS
DATE: 09/09/09
X

GENERAL NOTES

1. FIVE (5) WORKING DAYS PRIOR TO BEGINNING CONSTRUCTION, THE CONTRACTOR WILL SUBMIT A DETAILED CONSTRUCTION SCHEDULE TO THE CITY CONSTRUCTION COORDINATION DIVISION. TWO (2) DAYS PRIOR TO CONSTRUCTION, THE CONTRACTOR WILL OBTAIN A BARRICAADING PERMIT FROM THE CONSTRUCTION COORDINATION DIVISION. CONTRACTOR SHALL NOTIFY BARRICADE ENGINEER (924-3400) PRIOR TO OCCUPYING AN INTERSECTION. REFER TO SECTION 19 OF SPECIFICATIONS.
2. THE CONTRACTOR WILL NOTIFY THE FIELD ENGINEER NOT LESS THAN SEVEN (7) DAYS PRIOR TO STARTING WORK, IN ORDER THAT THE CITY SURVEY SECTION MAY TAKE NECESSARY MEASURES TO INSURE THE PRESERVATION OF SURVEY MONUMENTS. THE CONTRACTOR WILL NOTIFY THE ENGINEER IF A MONUMENT IS DISTURBED. REPLACEMENT WILL BE DONE ONLY BY THE CITY OF ALBUQUERQUE SURVEY SECTION AT THE CONTRACTOR'S EXPENSE. WHEN A CHANGE IS MADE IN THE FINISHED ELEV. OF THE PAVEMENT OF ANY ROADWAY IN WHICH A PERMANENT SURVEY MONUMENT IS LOCATED, CONTRACTOR WILL, AT HIS OWN EXPENSE, HAVE THE CITY SURVEY SECTION ADJUST THE MONUMENT COVER TO THE NEW GRADE UNLESS OTHERWISE SPECIFIED. REFER TO SECTION 4 OF SPECIFICATIONS.
3. THE SPECIFICATIONS USED FOR THIS PROJECT ARE THE CITY OF ALBUQUERQUE STANDARD SPECIFICATIONS FOR PUBLIC WORKS CONSTRUCTION, 1986 EDITION, UPDATE NO. 7.
4. ALL NEW MANHOLES SHALL BE TYPE "E" (COA DWG. 2102) UNLESS OTHERWISE NOTED ON THE PLANS.
5. THE CONTRACTOR WILL BE RESPONSIBLE FOR DISPOSING OF ALL DEBRIS, INCLUDING, BUT NOT LIMITED TO HAZARDOUS WASTE AT DISPOSAL SITES APPROVED BY GOVERNMENTAL AGENCIES REGULATING THE DISPOSAL OF SUCH MATERIALS.
6. ALL WATER VALVE BOXES AND MANHOLES IN THE STREET CONSTRUCTION ARE TO BE ADJUSTED TO FINISH GRADE AND WILL BE MEASURED AND PAID PER EACH.
7. SUBGRADE PREPARATION UNDER SIDEWALKS AND DRIVE PADS, AND SUBGRADE AND SUBBASE PREPARATION UNDER CURB AND GUTTER IS CONSIDERED INCIDENTAL TO THE CONSTRUCTION OF SUCH, AND NO DIRECT PAYMENT SHALL BE MADE FOR THOSE ITEMS OF WORK.
8. THE CONTRACTOR WILL REPLACE ANY STRIPING THAT HAS BEEN RUINED OR REMOVED IN THE COURSE OF CONSTRUCTION.
9. ALL EXCAVATION WILL BE GOVERNED BY FEDERAL, STATE AND LOCAL LAWS, RULES, AND REGULATIONS CONCERNING CONSTRUCTION SAFETY AND HEALTH.
10. ALL SIGNS AND CODING WILL BE IN ACCORDANCE WITH THE "MANUAL OF UNIFORM TRAFFIC CONTROL DEVICES FOR STREETS AND HIGHWAYS" CURRENT EDITION PUBLISHED BY THE U.S. DEPARTMENT OF TRANSPORTATION.
11. THE CONTRACTOR IS TO EXERCISE CARE TO AVOID DISTURBING ANY EXISTING UNDERGROUND UTILITIES. IT WILL BE HIS RESPONSIBILITY TO COORDINATE WITH THE UTILITY COMPANIES IN ORDER TO PREVENT ANY SERVICE DISRUPTION. SEE SECTION 18 "UTILITIES", CITY OF ALBUQUERQUE, STANDARD SPECIFICATIONS FOR CONTRACTOR REQUIREMENTS.
12. WHEN ABUTTING NEW PAVEMENT TO EXISTING INTERSECTING STREETS, SAW CUT EXISTING PAVEMENT TO A STRAIGHT LINE AND AT RIGHT ANGLES AND REMOVE ANY BROKEN OR CRACKED PAVEMENT. NO DIRECT PAYMENT WILL BE MADE FOR SAW CUTTING.
13. ALL GAS VALVES, GAS MANHOLES, ELECTRICAL MANHOLES, TELEPHONE MANHOLES, AND UTILITY POLES WILL BE ADJUSTED TO GRADE BY EACH UTILITY COMPANY.CONTRACTOR WILL COORDINATE THROUGH CITY UTILITY COORDINATOR.
14. WHEN REMOVAL OF EXISTING CURB AND GUTTER OR SIDEWALK IS REQUIRED, REMOVE BACK TO NEAREST SUITABLE JOINT UNLESS OTHERWISE DIRECTED BY THE CITY FIELD ENGINEER.
15. THE CONTRACTOR WILL NOTIFY THE NEW MEXICO ONE CALL SYSTEM 260-1990 TWO (2) WORKING DAYS PRIOR TO COMMENCING WORK IN NEW AREAS.
16. CONTRACTOR WILL MAKE ALL WATER VALVES AND MANHOLES ACCESSIBLE TO THE CITY AT ALL TIMES.
17. CONTRACTOR WILL PLACE BITUMINOUS MATERIAL WITH THE USE OF A LAYDOWN MACHINE WHERE PAVEMENT IS 8 FEET IN WIDTH OR WIDER.
18. ALL SUBGRADE AND SUBBASE MATERIAL ENCOUNTERED IN PAVEMENT REMOVAL AND REPLACEMENT THAT IS DETERMINED BY THE FIELD ENGINEER TO MEET THE SPECIFICATIONS, CAN BE REUSED. HOWEVER, THE MATERIAL WILL BE PROCESSED AND COMPACTED TO MEET MOISTURE CONTENT AND PERCENT COMPACTION REQUIRED BY THE SPECIFICATIONS.
19. CONTRACTOR WILL NOT PAVE OVER ANY SURFACE FEATURE, I.E., GAS VALVE, MANHOLE COVER, ETC. WITHOUT PRIOR APPROVAL FROM THE CITY FIELD ENGINEER.
20. CONTRACTOR WILL CONFINE HIS WORK WITHIN THE CONSTRUCTION EASEMENT LIMITS AND/OR RIGHT-OF-WAY, OR PROVIDE COPIES OF AGREEMENTS WITH ADJACENT LANDOWNERS TO THE CITY OF ALBUQUERQUE.
21. ALL WATER VALVES AND FIRE HYDRANTS REMOVED TO BE SALVAGED AND RETURNED TO THE C.O.A.
22. MINIMUM BOTTOM WIDTH OF TRENCHES FOR RIGID PIPE SHALL BE EQUAL TO THE OUTSIDE DIAMETER PLUS 16 INCHES. BEDDING MATERIAL SHALL BE CLASS II, III, OR IV UNLESS OTHERWISE SPECIFICALLY NOTED ON THE PLANS.
23. MINIMUM BOTTOM WIDTH OF TRENCHES FOR NON-RIGID PIPE SHALL BE EQUAL TO THE OUTSIDE DIAMETER PLUS 12 INCHES. BEDDING MATERIAL SHALL BE CLASS I, II, OR III.
24. THE CONTRACTOR AGREES TO TAKE NECESSARY SAFETY PRECAUTIONS AS REQUIRED BY FEDERAL, STATE AND LOCAL AUTHORITIES TO PROTECT PEDESTRIAN AND VEHICULAR TRAFFIC IN THE CONSTRUCTION AREA, WHICH INCLUDE BUT ARE NOT LIMITED TO: MAINTAINING ADEQUATE WARNING SIGNS, BARRICADES, LIGHTS, GUARD FENCES, WALKS AND BRIDGES.
25. ALL STRUCTURAL CONCRETE WILL BE 3000 PSI UNLESS OTHERWISE NOTED ON PLANS.
26. ALL REINFORCING STEEL WILL BE GRADE 60.
27. ALL EXPOSED EDGES ON CAST-IN-PLACE CONCRETE STRUCTURES WILL HAVE A 1" CHAMFER UNLESS OTHERWISE NOTED.
28. ALL SPLICES IN REINFORCING STEEL TO BE 2-FOOT 6-INCH MINIMUM UNLESS OTHERWISE NOTED.
29. PRIOR TO CONSTRUCTION, THE CONTRACTOR WILL EXCAVATE AND VERIFY THE HORIZONTAL AND VERTICAL LOCATIONS OF ALL POTENTIAL CONFLICTING UTILITIES. SHOULD A CONFLICT EXIST BETWEEN THE FIELD INFORMATION AND THE PLANS, THE CONTRACTOR WILL NOTIFY THE FIELD ENGINEER SO THE CONFLICT CAN BE RESOLVED WITH MINIMUM AMOUNT OF DELAY.
30. THE REPLACEMENT OF THE EXISTING UTILITIES AND THE INSTALLATION OF NEW UTILITY LINES WILL BE COMPLETED IN ADVANCE OF STARTING THE PAVEMENT WORK. TEMPORARY PAVEMENT WILL BE PLACED IN ALL TRENCHES REQUIRED FOR THE UTILITY REPLACEMENTS IN THOSE AREAS THAT MUST MAINTAIN TRAFFIC UNTIL THE FINAL PAVEMENT WORK STARTS IN EACH AREA. TEMPORARY STRIPING SHALL BE THE CONTRACTOR'S RESPONSIBILITY. MAINTENANCE OF THE TEMPORARY PAVING AND STRIPING WILL BE AT THE CONTRACTOR'S EXPENSE.
31. TACK COAT FOR SURFACE COURSE REQUIREMENTS WILL BE DETERMINED BY THE FIELD ENGINEER.
32. THE CONTRACTOR WILL CONTACT THE CITY OF ALBUQUERQUE TRAFFIC DIVISION 857-8025, ONE (1) WEEK IN ADVANCE OF ANY CHANGES REQUIRED IN THE TRAFFIC SIGNALIZATION OF THIS PROJECT. ALL WORK ASSOCIATED WITH NEW TRAFFIC SIGNALIZATION SHALL BE THE RESPONSIBILITY OF THE CONTRACTOR.
33. ALL NEW STREET PAVING, DRIVEWAYS, SIDEWALKS, AND CURB AND GUTTERS, ABUTTING EXISTING AREAS SHALL MATCH THE ELEVATION OF THOSE AREAS.
34. PERMANENT PAVEMENT STRIPING AND MARKINGS WILL BE PLACED BY THE CONTRACTOR. ROAD SHALL NOT BE OPENED TO TRAFFIC UNTIL IT IS STRIPED. ALL STRIPING, PAVEMENT MARKINGS INCLUDING CROSSWALKS, ARROWS AND LINE MARKINGS ARE TO BE CONSTRUCTED OF HOT PLASTIC OR COLD PLASTIC IN ACCORDANCE WITH THE MANUAL OF UNIFORM TRAFFIC CONTROL DEVICES.
35. ALL EXCAVATED MATERIAL THAT IS NOT REQUIRED TO BE REUSED MUST BE REMOVED FROM THE PROJECT AREA WITHIN FOUR DAYS OF EXCAVATION. SPOIL PILES WILL BE ALLOWED ONLY AS DIRECTED BY THE CITY FIELD ENGINEER.
36. THE CONTRACTOR WILL COORDINATE THE CONSTRUCTION ACTIVITIES WITH ALL OTHER CONTRACTORS AND UTILITY COMPANIES WORKING IN THE SAME AREA. THE CONTRACTOR MAY BE REQUIRED TO RESCHEDULE THEIR ACTIVITIES TO ALLOW UTILITY CREWS TO PERFORM THEIR REQUIRED WORK. NO ADDITIONAL COMPENSATION WILL BE ALLOWED FOR DELAYS OR INCONVENIENCE CAUSED BY UTILITY COMPANY WORK CREWS. A CONTRACT EXTENSION MAY BE ALLOWED AS DELINEATED IN CITY OF ALBUQUERQUE STANDARD SPECIFICATIONS.
37. ALL CONSTRUCTION EASEMENTS ON PRIVATE PROPERTY WILL BE OBTAINED BY THE CITY OF ALBUQUERQUE PRIOR TO THE BEGINNING OF CONSTRUCTION.
38. EXISTING MEDIAN CURB AND GUTTER AND STANDARD CURB AND GUTTER, NOT DISTURBED BY CONTRACTOR, BUT OUT OF ALIGNMENT, DISPLACED VERTICALLY, BADLY BROKEN AND/OR DETERIORATED, WILL BE REPLACED AS DIRECTED BY THE FIELD ENGINEER AND PAID FOR AT CONTRACT UNIT PRICES.
39. ALL TRAFFIC CONTROL DEVICES REQUIRED FOR DRIVEWAY CLOSURES, UTILITY CONSTRUCTION OR FOR OTHER REASONS AND NOT SHOWN ON THE SIGNING PLANS WILL BE FURNISHED BY THE CONTRACTOR AND WILL BE PAID AS SPECIFIED IN THE TECHNICAL SPECIFICATIONS AND BID PROPOSAL. PRIOR TO PLACING THE TRAFFIC CONTROL DEVICES, THE CONTRACTOR WILL NOTIFY THE AFFECTED OWNERS IN ACCORDANCE WITH THE SPECIFICATIONS. CONTRACTOR MUST MAKE PROVISIONS TO PROVIDE ACCESS TO PROPERTIES. REFER TO SECTION 19 OF THE SPECIFICATIONS.
40. ALL UTILITY LINES WHICH ARE NOT SPECIFICALLY DESIGNATED TO BE REMOVED AND REPLACED ON THE PLANS, WILL BE MAINTAINED IN SERVICE. SHORING, SHEETING AND OTHER MEANS OF SUPPORT SHALL BE EMPLOYED BY THE CONTRACTOR TO PREVENT DAMAGE OR LOSS OF THESE EXISTING UTILITIES AND THESE SHORING, SHEETING, AND SUPPORTS ARE CONSIDERED INCIDENTAL TO THIS PROJECT. BEAM AND CABLE OR OTHER ADEQUATE SUPPORTS WILL BE USED FOR TEMPORARY SUPPORT OF ALL UTILITY LINES WHICH CROSS THE TRENCH. ANY DAMAGE TO EXISTING UTILITIES WILL BE PROMPTLY BE REPAIRED AT THE CONTRACTOR'S EXPENSE. THE CONTRACTOR WILL NOTIFY THE ENGINEER IMMEDIATELY OF ANY SIGNIFICANT DEVIATION OF EXPOSED UTILITIES FROM THE LOCATIONS SHOWN ON THE PLANS SO THAT CONFLICTS CAN BE RESOLVED IN A TIMELY MANNER.

41. THE CONTRACTOR WILL ASSUME RESPONSIBILITY FOR ANY DAMAGE TO EXISTING COA INFRASTRUCTURE (C & G, PAVING, ETC.) DURING CONSTRUCTION, APART FROM THOSE SECTIONS INDICATED FOR REMOVAL ON THE PLANS, AND WILL REPAIR OR REPLACE SAME AT HIS OWN EXPENSE. HE WILL SUITABLY PROTECT THE CURB AND GUTTER FROM INCIDENTAL SPLASHING DURING THE TACK COAT APPLICATION AND WILL BE RESPONSIBLE FOR CLEANING SAME AT HIS OWN COST SHOULD SPLASHING OCCUR.
42. ALL INTERFERING PORTIONS OF ABANDONED UTILITY LINES WHICH ARE EXPOSED AS A RESULT OF CONSTRUCTION WILL BE REMOVED AND DISPOSED OF BY THE CONTRACTOR.
43. STATIONS OF STORM DRAIN INLETS ARE TO THE CENTER OF GRATE. ALL STORM DRAIN INLETS WILL BE TYPE "A" UNLESS OTHERWISE NOTED ON THE PLANS.
44. SHORING COSTS WILL BE CONSIDERED INCIDENTAL TO THE TRENCH AND BACKFILL COSTS.
45. THE CONTRACTOR WILL BE RESPONSIBLE FOR SECURING NPDES PERMITS REQUIRED BY APPLICABLE CITY, STATE, AND FEDERAL REGULATIONS.
46. ALL STORM DRAIN AND CONNECTOR PIPE WILL BE CLASS IV REINFORCED CONCRETE PIPE UNLESS OTHERWISE NOTED ON THE PLANS.
47. THE TERM REMOVE USED IN THIS PLAN SET INCLUDES THE DISPOSAL OF SAID MATERIAL IN ACCORDANCE WITH CITY OF ALBUQUERQUE SPECIFICATIONS, LATEST EDITION.
48. CONTRACTOR WILL SURVEY AND LOG EXISTING ELEVATIONS OF CURB-AND-GUTTER, SIDEWALK, AND PAVEMENT WHICH WILL BE REMOVED FOR CONSTRUCTION OF IMPROVEMENTS. CONTRACTOR WILL REPLACE REMOVED CURB-AND-GUTTER, SIDEWALK, DRIVE PADS, AND PAVEMENT TO ELEVATIONS PRIOR TO REMOVAL UNLESS OTHERWISE INDICATED ON THE PLANS.
49. CONTRACTOR WILL CONSTRUCT TEMPORARY ASPHALT PAVEMENT AS DIRECTED BY THE FIELD ENGINEER TO PROVIDE ACCESS TO LOCAL BUSINESS, ETC. TEMPORARY PAVEMENT SHALL BE REMOVED AND DISPOSED OF PRIOR TO PLACEMENT OF FULL WIDTH PAVEMENT SECTION. TEMPORARY PAVING SHALL BE PER COA STD. DWG. 2415 AND PAID FOR PER COA STD. SPECIFICATIONS.
50. ALL CLASSES OF SEEDING SHALL BE DRY LAND MIX PLACED AT 1.5 LBS/1000 S.F. WITH FERTILIZER 21-12-12 PLACED AT 5 LBS/1000 S.F.
51. ALL ASPHALTIC CONCRETE SHALL BE MINIMUM 1800 LB. STABILITY AND COMPACTED TO 95% MODIFIED MARSHALL DENSITY UNLESS OTHERWISE NOTED ON THE PLANS.
52. ANY WORK OCCURRING WITHIN AN ARTERIAL ROADWAY REQUIRES TWENTY-FOUR (24) HOUR CONSTRUCTION.
53. ALL EXCAVATION, TRENCHING AND SHORING ACTIVITIES MUST BE CARRIED-OUT IN ACCORDANCE WITH OSHA 29 CFR 1926.650 SUBPART P.
54. THE CONTRACTOR SHALL BE RESPONSIBLE FOR TIMING AND COORDINATION OF WATER SHUTOFF AT LEAST SEVEN (7) WORKING DAYS PRIOR TO CONSTRUCTION. CONTRACTOR SHALL CONTACT THE WATER SYSTEMS DIVISION, 857-8200, TO INITIATE IMPLEMENTATION OF THE NON-PRESSURIZED CONNECTION PLAN.
55. FOR STORM DRAIN CONSTRUCTION, RCP PIPE JOINTS SHALL NOT BE GROUTED PRIOR TO FINAL INSPECTION. FINAL INSPECTION WILL DETERMINE JOINTS TO BE GROUTED FOR FINAL ACCEPTANCE OF THE CONSTRUCTION.
56. CONTRACTOR SHALL MAINTAIN A GRAFFITI-FREE WORK SITE. CONTRACTOR SHALL PROMPTLY REMOVE ANY AND ALL GRAFFITI FROM EQUIPMENT, WHETHER PERMANENT OR TEMPORARY.
57. CONTRACTOR SHALL ERECT TEMPORARY CHAIN LINK CONSTRUCTION FENCE, SUCH FENCE SHALL BE MAINTAINED THROUGHOUT THE DURATION OF THE CONSTRUCTION PERIOD AND REMOVED ONLY UPON FINAL ACCEPTANCE OF THE PROJECT BY THE CITY.
58. QUANTITIES PROVIDED ON THE PLANS ARE FOR THE CONTRACTOR'S CONVENIENCE ONLY. PLANS SHALL TAKE PRECEDENCE IN ALL CASES.



**MORROW REARDON
WILKINSON MILLER, LTD.,
LANDSCAPE ARCHITECTS**
210 La Veta NE, Albuquerque, NM 87108
505.268.2266 FAX 505.265.9687
mrw@mrwml.com



CITY OF ALBUQUERQUE
PARK DESIGN AND CONSTRUCTION DIVISION
DEPARTMENT OF MUNICIPAL DEVELOPMENT

LAURELWOOD PARK IMPROVEMENTS

GENERAL NOTES

Design Review Committee	City Engineer Approval	Last Design Update	Mo./Day/Yr.	Mo./Day/Yr.

City Project No.	Zone Map No.	Sheet
694491	J-10	2 OF 8

RECORD DRAWINGS SEPTEMBER, 2009

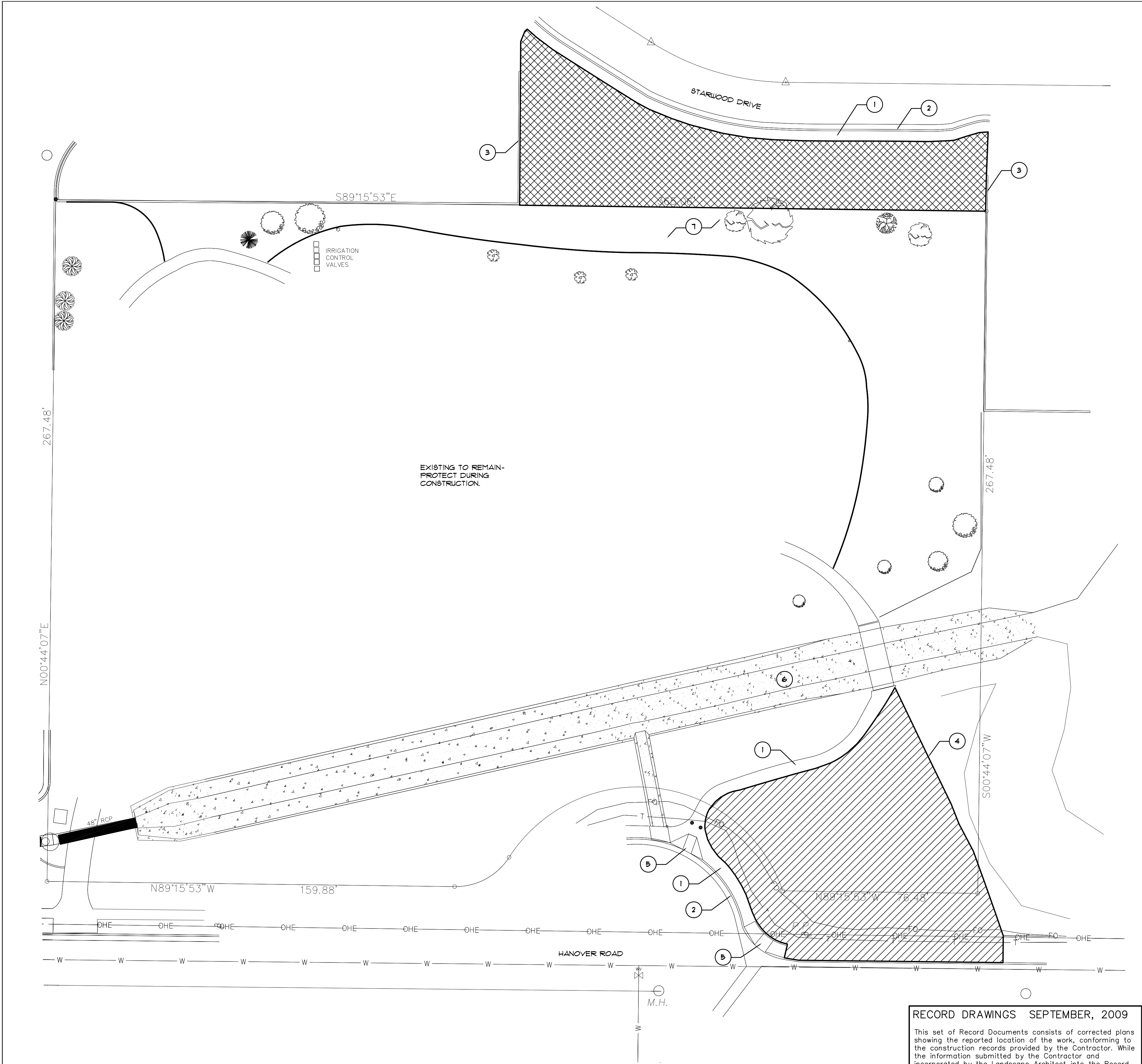
This set of Record Documents consists of corrected plans showing the reported location of the work, conforming to the construction records provided by the Contractor. While the information submitted by the Contractor and incorporated by the Landscape Architect into the Record Documents is assumed to be reliable, the Landscape Architect has not verified the accuracy and/or completeness of the information and shall not be responsible for any errors or omissions which may be incorporated herein as a result. Those relying on these Record Documents are advised to obtain independent verification of their accuracy before applying it for any purpose.

FINAL FOR CONSTRUCTION

Laurelwood Park Improvements

PROJECT# 694491

RECORD DRAWINGS
DATE: 09/09/09



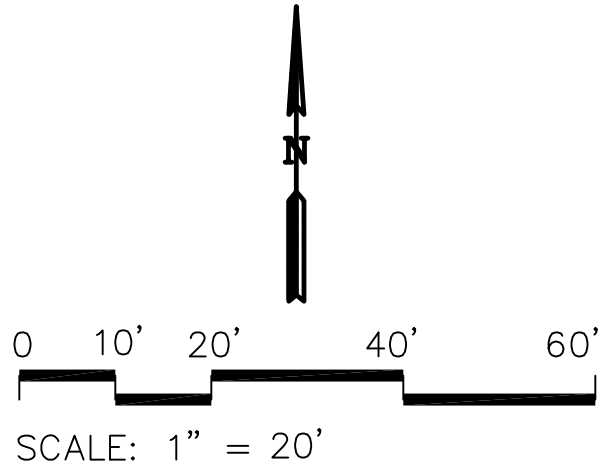
- DEMOLITION KEYED NOTES:**
- 1 EXISTING CONCRETE SIDEWALK TO REMAIN.
 - 2 EXISTING CURB AND GUTTER TO REMAIN.
 - 3 EXISTING BLOCK WALL TO REMAIN.
 - 4 EXISTING PIPE RAIL FENCE AT PROPERTY LINE TO REMAIN.
 - 5 EXISTING H/C RAMP TO REMAIN.
 - 6 EXISTING CONCRETE DRAINAGE CHANNEL TO REMAIN.
 - 7 EXISTING NATIVE LANDSCAPE TO REMAIN.

- DEMOLITION GENERAL NOTES**
- ALL EXISTING CONCRETE WALKS, CURBS, PIPE RAIL FENCING, DRAINAGE CHANNEL, AND FEDESTRIAN BRIDGE TO REMAIN. PROTECT DURING CONSTRUCTION.
 - ALL PLANT MATERIAL TO BE SAVED SHALL BE FLAGGED IN THE FIELD AND APPROVED BY THE LANDSCAPE ARCHITECT.

- DEMOLITION HATCH LEGEND**
- CLEAR AND GRUB, REMOVE SOIL TO 4\"/>

RECORD DRAWINGS SEPTEMBER, 2009


This set of Record Documents consists of corrected plans showing the reported location of the work, conforming to the construction records provided by the Contractor. While the information submitted by the Contractor and incorporated by the Landscape Architect into the Record Documents is assumed to be reliable, the Landscape Architect has not verified the accuracy and/or completeness of the information and shall not be responsible for any errors or omissions which may be incorporated herein as a result. Those relying on these Record Documents are advised to obtain independent verification of their accuracy before applying it for any purpose.

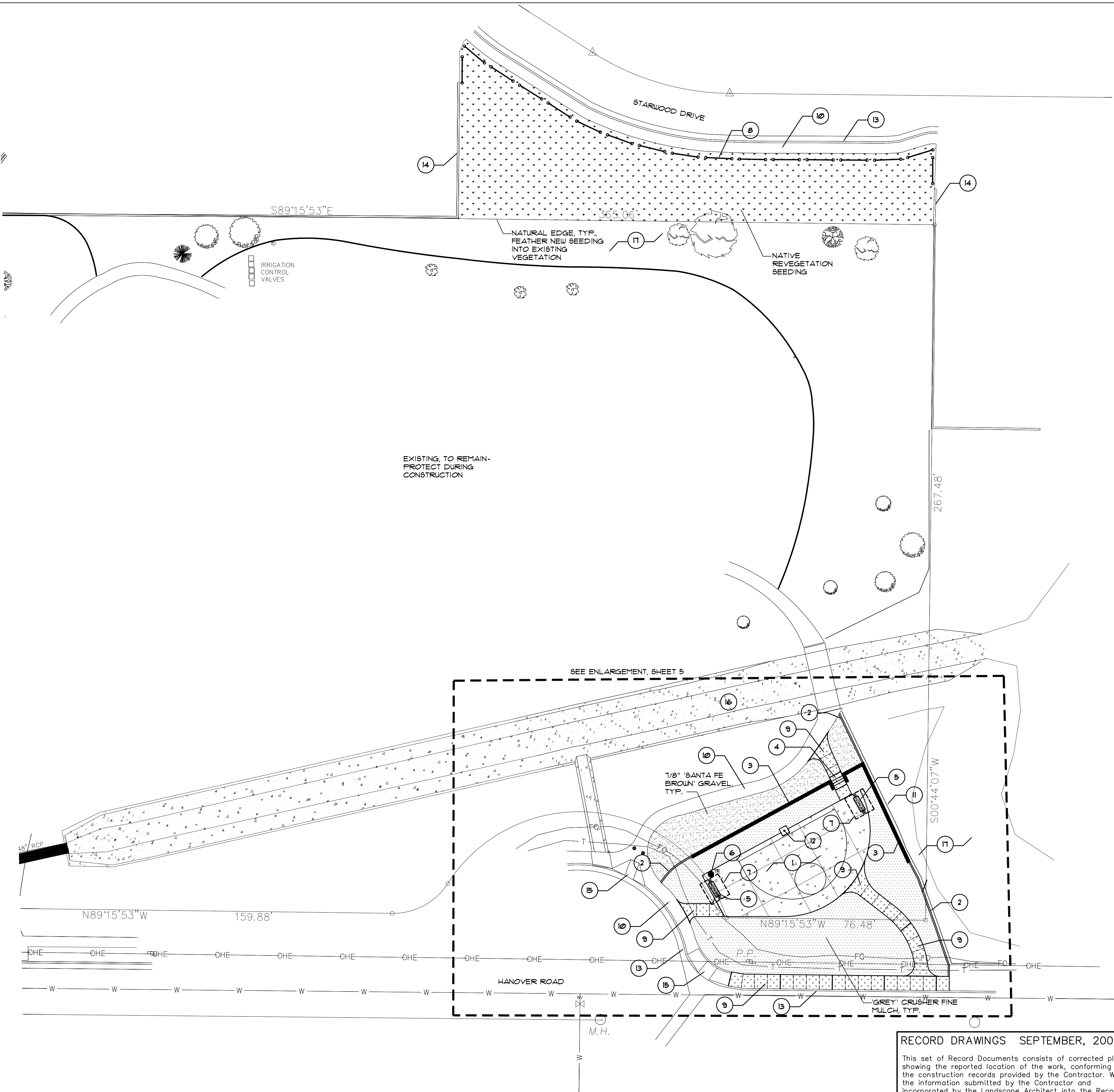




**MORROW REARDON
WILKINSON MILLER, LTD.,
LANDSCAPE ARCHITECTS**

210 La Veta NE, Albuquerque, NM 87108
505.268.2266 FAX 505.265.9637
mrw@mrwlm.com

		CITY OF ALBUQUERQUE	
		PARK DESIGN AND CONSTRUCTION DIVISION	
		DEPARTMENT OF MUNICIPAL DEVELOPMENT	
LAURELWOOD PARK IMPROVEMENTS			
DEMOLITION PLAN			
Design Review Committee	City Engineer Approval	Mo./Day/Yr.	Mo./Day/Yr.
City Project No.	Zone Map No.	Sheet	
694491	J-10	3 OF 8	



CONSTRUCTION KEYED NOTES:

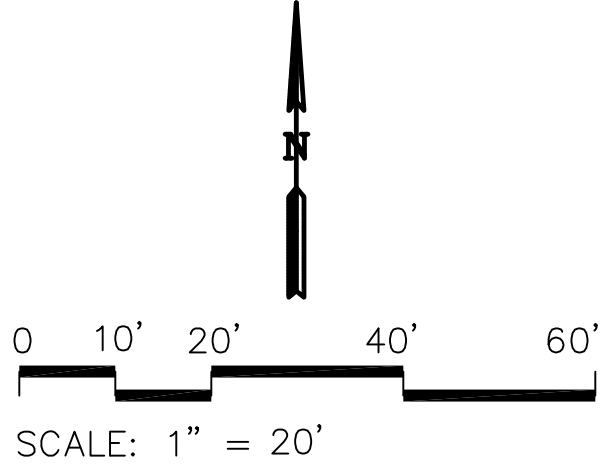
- 1. CONSTRUCT 5" THICK 3000PSI CONCRETE SLAB WITH FIBER MESH FOR BASKETBALL COURT. SEE ENLARGEMENT ON SHEET 5 AND DETAILS C/6 AND D/6.
- 2. CONSTRUCT 6" CONCRETE MOWCURB PER COA STD. DWG. 2126.
- 3. CONSTRUCT CAST-IN-PLACE CONCRETE RETAINING WALL WITH 4' STEEL FENCE. SEE DETAIL G E/6 AND F/6.
- 4. CONSTRUCT CONCRETE STEPS WITH HANDRAILS. SEE DETAIL B/6.
- 5. FURNISH AND INSTALL 6' BENCH PER MANUFACTURER'S INSTRUCTIONS. BENCH SHALL BE MODEL 3042 RECYCLED PLASTIC BENCH WITH SURFACE MOUNT, AS MANUFACTURED BY LITCHFIELD (OR APPROVED EQUAL), AS AVAILABLE FROM TRIPLE M RECREATION (1-800-235-2440).
- 6. FURNISH AND INSTALL TRASH RECEPTACLE PER MANUFACTURER'S INSTRUCTIONS. TRASH RECEPTACLE SHALL BE MODEL R50 25, 32 GAL. AS MANUFACTURED BY MCCLINTOCK/BEARSAVER (800-851-3881), OR APPROVED EQUAL.
- 7. FURNISH AND INSTALL CUSTOM 10'X10' PITTSBURGH MINI SHELTER, AS MANUFACTURED BY LITCHFIELD LANDSCAPE ELEMENTS (OR APPROVED EQUAL), AS AVAILABLE FROM TRIPLE M RECREATION (1-800-235-2440). INSTALL PER MANUFACTURER'S INSTRUCTIONS.
- 8. CONSTRUCT 3' HEIGHT PIPE RAIL BARRIER. SEE DETAIL A/6.
- 9. CONSTRUCT CONCRETE SIDEWALK PER COA STD. DWG. 2120.
- 10. EXISTING CONCRETE SIDEWALK TO REMAIN.
- 11. EXISTING PIPE RAIL FENCE AT PROPERTY LINE TO REMAIN.
- 12. FURNISH AND INSTALL BASKETBALL GOAL WITH BACKBOARD AND RIM PER MANUFACTURER'S INSTRUCTIONS. GOAL SHALL BE MODEL 813 ULTIMATE FRONT MOUNT GOAL WITH 460 CANTILEVERED POST WITH 48" EXTENSION AND 854 CAST ALUMINUM BACKBOARD, AS MANUFACTURED BY GAMETIME (OR APPROVED EQUAL), AS AVAILABLE FROM TRIPLE M RECREATION (1-800-235-2440).
- 13. EXISTING CURB AND GUTTER TO REMAIN.
- 14. EXISTING BLOCK WALL TO REMAIN.
- 15. EXISTING H/C RAMP TO REMAIN.
- 16. EXISTING CONCRETE DRAINAGE CHANNEL TO REMAIN.
- 17. EXISTING NATIVE LANDSCAPE TO REMAIN.

MULCH LEGEND

- 4" DEPTH 1/8" 'SANTA FE BROWN' GRAVEL OVER FILTER FABRIC.
- 4" DEPTH COMPACTED 'GREY' CRUSHER FINE MULCH OVER FILTER FABRIC.
- NATIVE REVEGETATION SEEDING- COA 'WESTSIDE MIX' AS AVAILABLE FROM CURTIS & CURTIS INC. (575) 162-4155, OR APPROVED EQUAL. DRILL SEED AND CRIMP WITH STRAW PER COA STANDARD SPECIFICATIONS FOR NATIVE GRASS SEEDING.

RECORD DRAWINGS SEPTEMBER, 2009

This set of Record Documents consists of corrected plans showing the reported location of the work, conforming to the construction records provided by the Contractor. While the information submitted by the Contractor and incorporated by the Landscape Architect into the Record Documents is assumed to be reliable, the Landscape Architect has not verified the accuracy and/or completeness of the information and shall not be responsible for any errors or omissions which may be incorporated herein as a result. Those relying on these Record Documents are advised to obtain independent verification of their accuracy before applying it for any purpose.



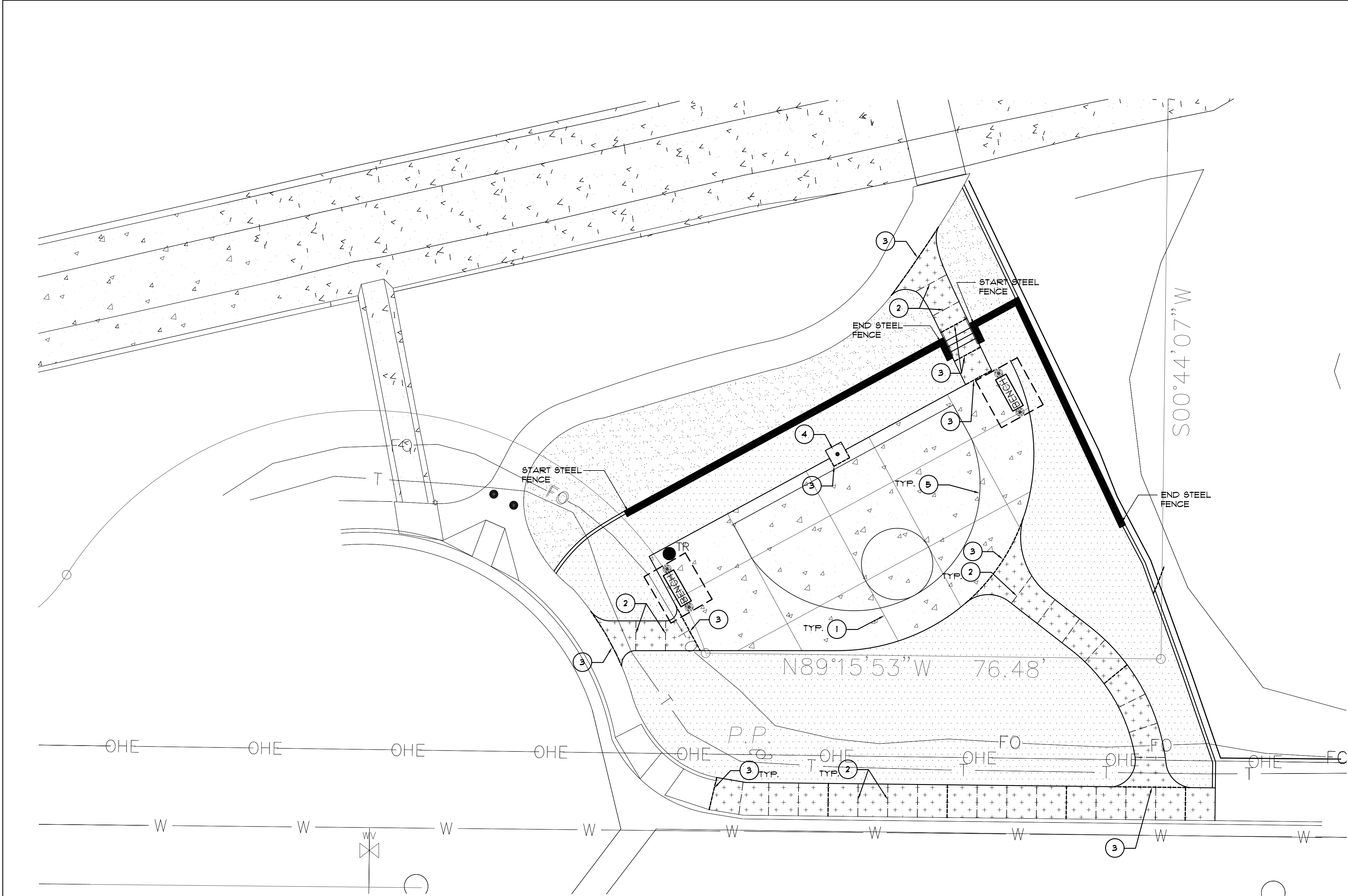
**MORROW REARDON
WILKINSON MILLER, LTD.,
LANDSCAPE ARCHITECTS**
210 La Veta NE, Albuquerque, NM 87108
505.268.2266 FAX 505.265.9637
mrw@mrwm.com

**CITY OF ALBUQUERQUE
PARK DESIGN AND CONSTRUCTION DIVISION
DEPARTMENT OF MUNICIPAL DEVELOPMENT**

**LAURELWOOD PARK IMPROVEMENTS
CONSTRUCTION PLAN**

Design Review Committee	City Engineer Approval	Last Design Update	Mo./Day/Yr.	Mo./Day/Yr.
City Project No.		Zone Map No.	Sheet	
694491		J-10	4 OF 8	

AS-BUILT INFORMATION		BENCH MARKS		SURVEY INFORMATION		ARCHITECTURAL SEAL		REVISIONS		REMARKS		NO. DATE		DESIGNED BY		DRAWN BY		CHECKED BY		MICRO-FILM INFORMATION	
CONTRACTOR	DATE	WORKED BY	DATE	NO.	BY																
INSPECTOR'S ACCEPTANCE BY	DATE																				
VERIFICATION BY	DATE																				
DRAWN BY	DATE																				
RECORDED BY	DATE																				
NO.																					



CONSTRUCTION KEYED NOTES:

- 1 SAWCUT JOINT.
- 2 TOOLED CONTROL JOINT.
- 3 EXPANSION JOINT.
- 4 BASKETBALL GOAL FOOTING, SEE GOAL MANUFACTURER'S INSTALLATION DETAILS FOR SIZE AND DEPTH.
- 5 PAINT STRIPING, SEE DETAIL E/6.

GENERAL NOTES

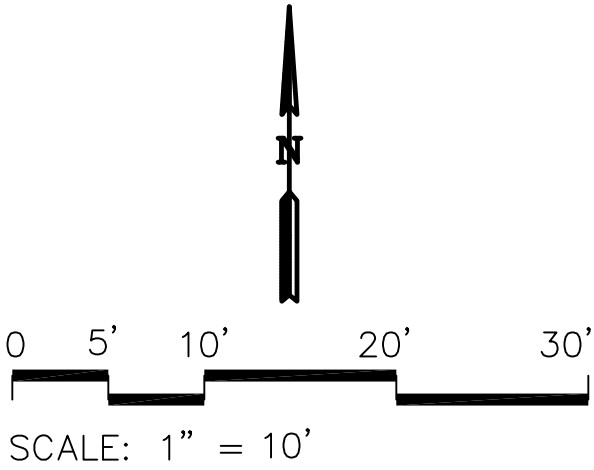
- 1. SEE SHEET T FOR LAYOUT AND DIMENSIONING OF BASKETBALL COURT

MULCH LEGEND

- 4" DEPTH 1/8" 'SANTA FE BROWN' GRAVEL OVER FILTER FABRIC.
- 4" DEPTH COMPACTED 'GREY' CRUSHER FINE MULCH OVER FILTER FABRIC.

RECORD DRAWINGS SEPTEMBER, 2009

This set of Record Documents consists of corrected plans showing the reported location of the work, conforming to the construction records provided by the Contractor. While the information submitted by the Contractor and incorporated by the Landscape Architect into the Record Documents is assumed to be reliable, the Landscape Architect has not verified the accuracy and/or completeness of the information and shall not be responsible for any errors or omissions which may be incorporated herein as a result. Those relying on these Record Documents are advised to obtain independent verification of their accuracy before applying it for any purpose.



MORROW REARDON
WILKINSON MILLER, LTD.,
LANDSCAPE ARCHITECTS
210 La Veta NE, Albuquerque, NM 87108
505.268.2266 FAX 505.265.9637
mrw@mrwlm.com

CITY OF ALBUQUERQUE
PARK DESIGN AND CONSTRUCTION DIVISION
DEPARTMENT OF MUNICIPAL DEVELOPMENT

LAURELWOOD PARK IMPROVEMENTS
CONSTRUCTION PLAN- ENLARGEMENTS

Design Review Committee	City Engineer Approval	Last Design Update	Mo./Day/Yr.	Mo./Day/Yr.
City Project No.		Zone Map No.	Sheet	
694491		J-10	5 OF 8	

SURVEY INFORMATION		BENCH MARKS		AS-BUILT INFORMATION	
NO.	FIELD NOTES	NO.	DATE	CONTRACTOR	DATE
	BY		BY		
				WORKED BY	DATE
				INSPECTOR'S	DATE
				ACCEPTANCE BY	DATE
				VERIFICATION BY	DATE
				DRAWN BY	DATE
				MICRO-FILM INFORMATION	
				RECORDED BY	DATE
				NO.	

RECORD DRAWINGS
DATE: 09/09/09

Laurelwood Park Improvements

PROJECT# 694491

FINAL FOR CONSTRUCTION

10'

2" - 90 DEGREE GALV. STEEL

2' GALV. STEEL

3'

FINISH GRADE (MATERIAL VARIES)

2'-6"

4"

95% COMPACTED SUBGRADE

3000 F81 CONC.
12" DIA. FOOTING

$$I''' = I' - \emptyset'$$
$$1'' = 1' - \emptyset'$$

VARIES (SEE PLAN)

SLOPE (SEE PLAN)

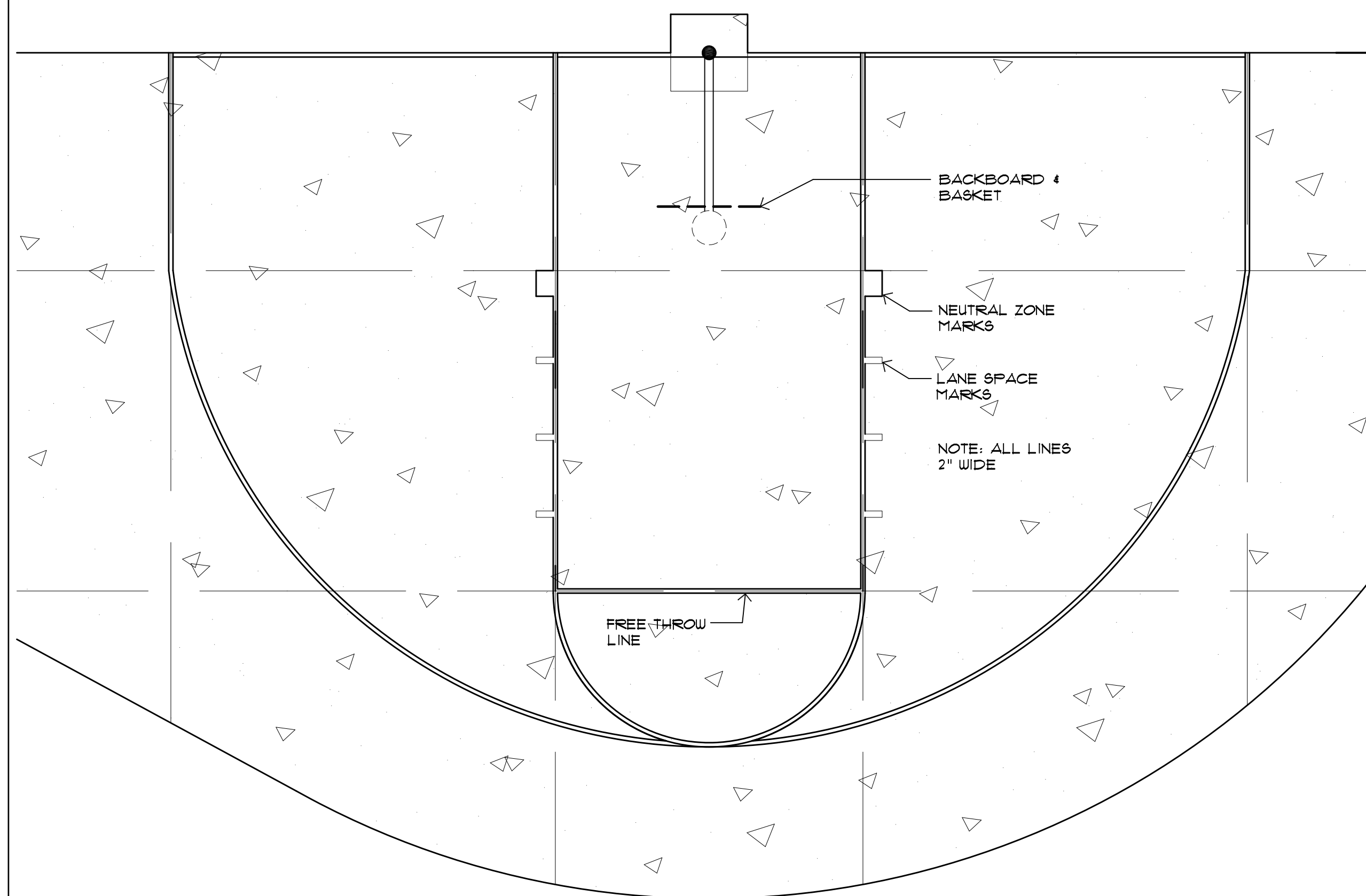
TOOLED EDGE (TYP.)

TOP OF MULCH

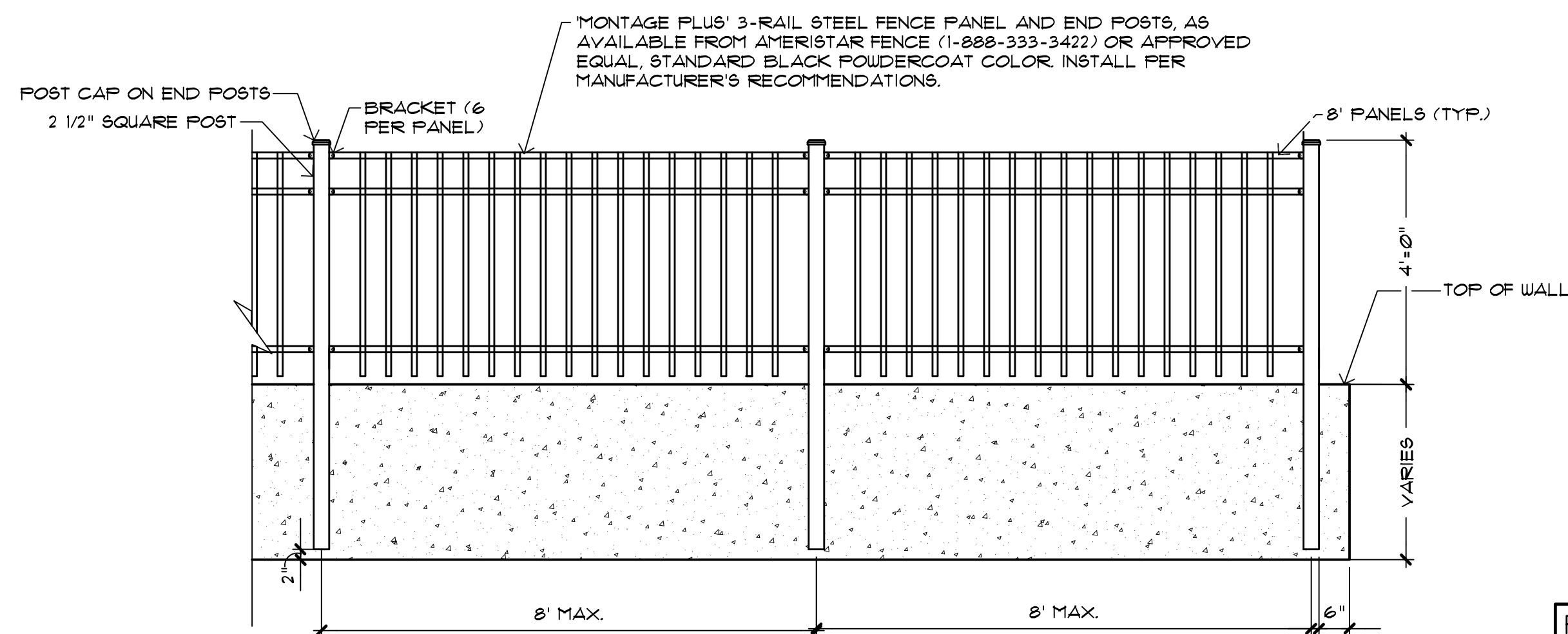
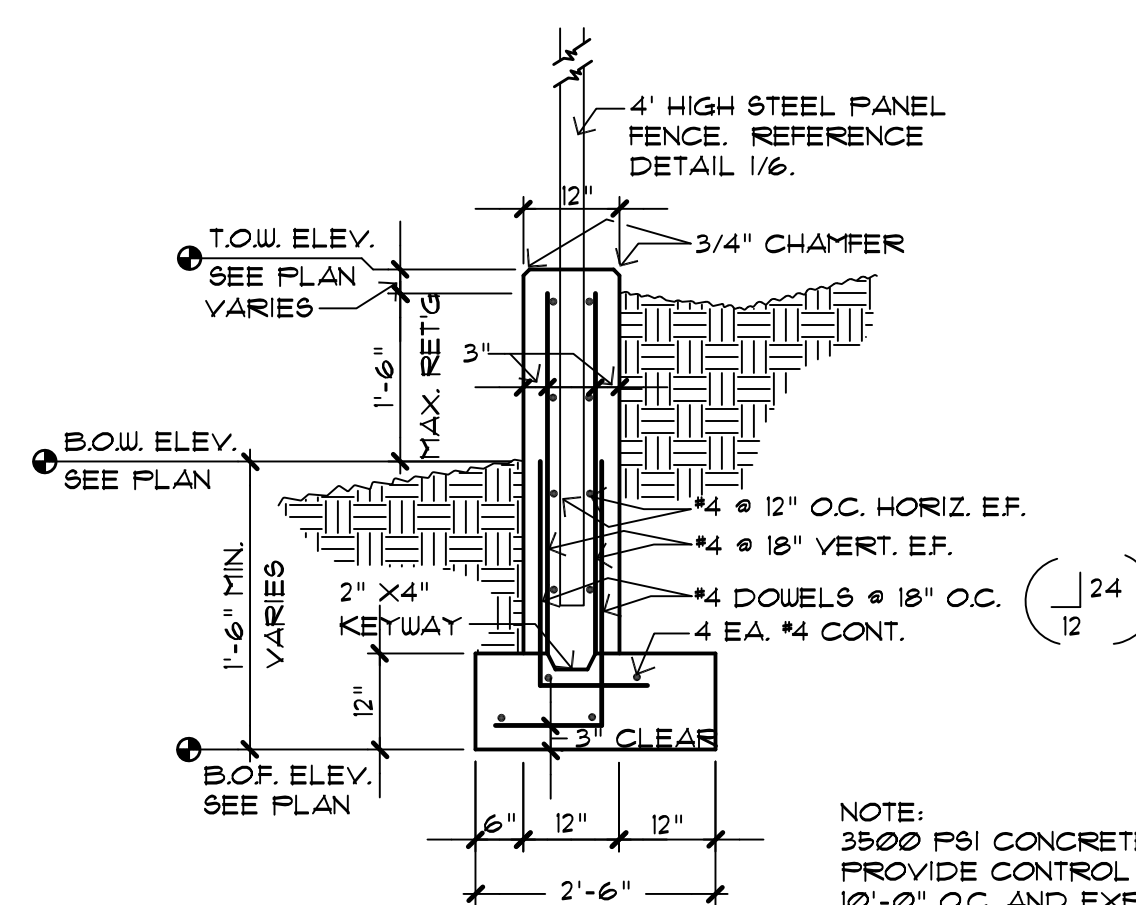
3000 PSI CONCRETE W/
FIBER MESH, MEDIUM
BRUSH FINISH

95% COMPACTED SUBGRADE

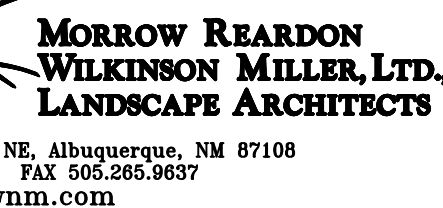
NOTE: SEE PLAN AND
ENLARGEMENTS FOR CONTROL
JOINT AND EXPANSION JOINT
LOCATIONS

$$I''' = I' - \emptyset$$


MCD-003

$$1/4'' = 1'-0''$$
 $1/2'' = 1' = \emptyset$ 
$$1/2'' = 1'-\emptyset'$$

This set of Record Documents consists of corrected plans showing the reported location of the work, conforming to the construction records provided by the Contractor. While the information submitted by the Contractor and incorporated by the Landscape Architect into the Record Documents is assumed to be reliable, the Landscape Architect has not verified the accuracy and/or completeness of the information and shall not be responsible for any errors or omissions which may be incorporated herein as a result. Those relying on these Record Documents are advised to obtain independent verification of their accuracy before applying it for any purpose.



CITY OF ALBUQUERQUE
PARK DESIGN AND CONSTRUCTION DIVISION
DEPARTMENT OF MUNICIPAL DEVELOPMENT

DETAILS

Last Design Update

Sheet 6 OF 8

SURVEY INFORMATION		BENCH MARKS	AS-BUILT INFORMATION
FIELD NOTES			
NO.	BY DATE	CONTRACTOR	
		WORKS BY	DATE
		INSPECTOR'S	DATE
		DEFECTANCE BY	
		FIELD	DATE
		VERIFICATION BY	
		DATE	DATE
		REWORKS	
		CORRECTED BY	
		MICRO-FILM INFORMATION	
		RECORDED BY	DATE
		NO.	

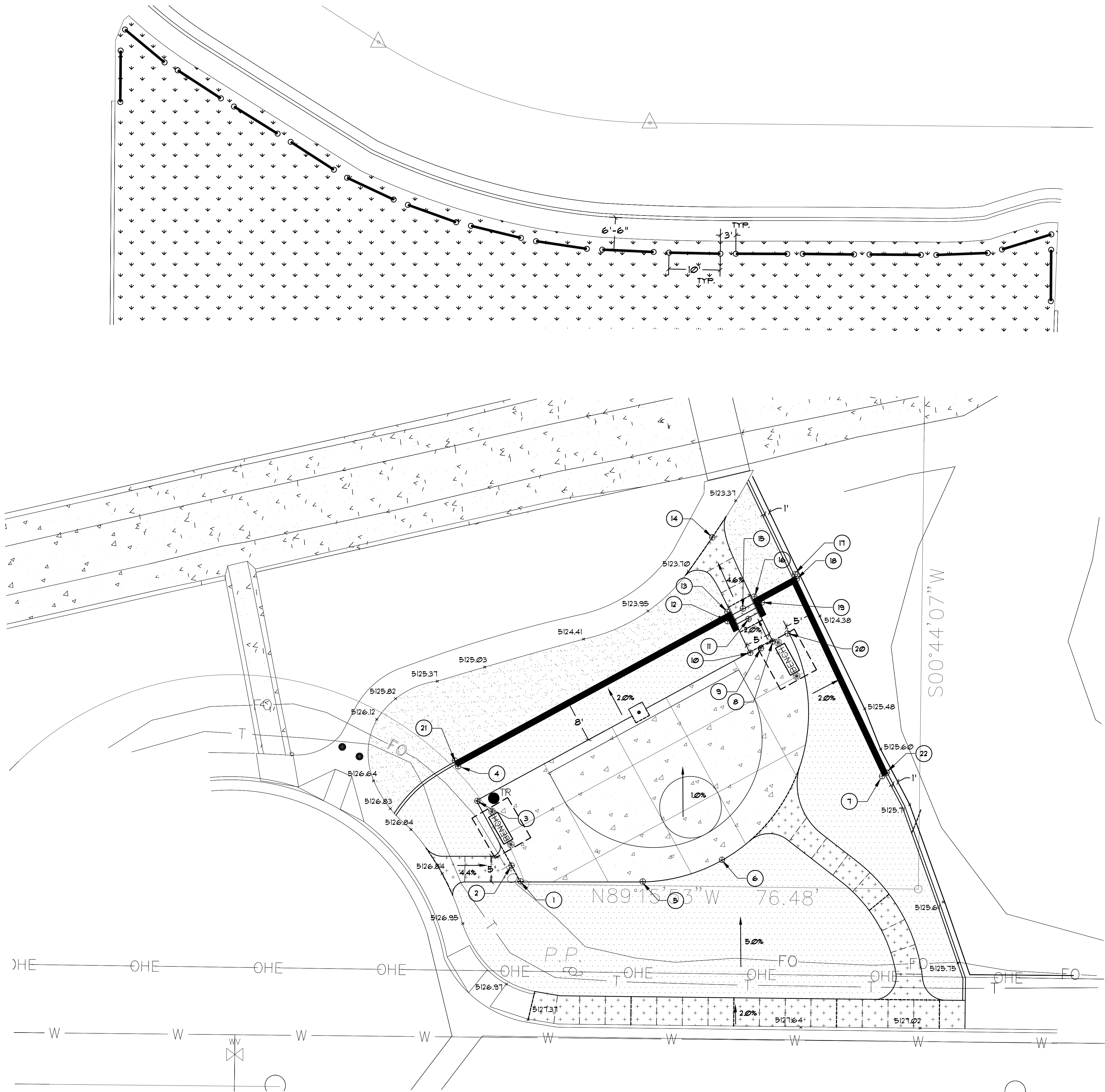
[illegible]

Laurelwood Park Improvements

PROJECT# 694491

RECORD DRAWINGS
DATE: 09/09/09

FINAL FOR CONSTRUCTION



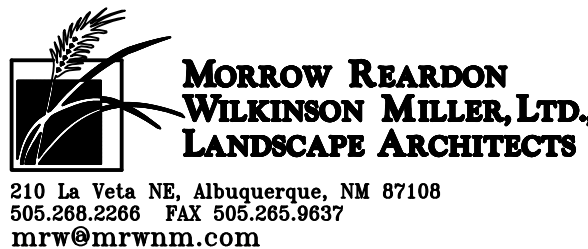
COORDINATE POINTS

	NORTHING	EASTING	ELEVATION
1	X=1499746.31	Y=1492232.98	TOC= 5126.36
2	X=1499744.58	Y=1492236.17	TOC= 5126.24
3	X=1499737.73	Y=1492248.20	TOC= 5126.20
4	X=1499734.07	Y=1492255.54	TOW= 5126.04
5	X=1499710.08	Y=1492232.98	TOC= 5126.36
6	X=1499785.51	Y=1492237.20	TOC= 5126.32
7	X=1499816.80	Y=1492253.68	TOW= 5125.65
8	X=1499795.26	Y=1492280.03	TOC= 5125.89
9	X=1499793.09	Y=1492278.60	TOC= 5125.90
10	X=1499790.87	Y=1492277.65	TOC= 5125.91
11	X=1499790.68	Y=1492284.37	TOC= 5125.78
12	X=1499786.69	Y=1492284.10	TOW= 5125.75
13	X=1499787.14	Y=1492285.49	BOW= 5124.25 BOF= 5121.75
14	X=1499783.62	Y=1492300.02	TOC= 5123.55
15	X=1499789.62	Y=1492286.08	TOC= 5124.24
16	X=1499791.53	Y=1492287.87	BOW= 5124.23 BOF= 5121.73
17	X=1499799.72	Y=1492292.32	BOW= 5124.20 BOF= 5121.85
18	X=1499799.30	Y=1492290.95	TOW= 5125.55
19	X=1499792.84	Y=1492287.44	TOW= 5125.73
20	X=1499798.37	Y=1492281.72	TOC= 5125.87
21	X=1499733.60	Y=1492256.42	BOW= 5125.54 BOF= 5124.04
22	X=1499817.68	Y=1492254.14	BOW= 5125.15 BOF= 5123.65

1.0% SLOPE, DIRECTION OF FLOW
5125.25 EXISTING SPOT ELEVATION
TOC- TOP OF CONCRETE
TOW- TOP OF WALL
BOW- BOTTOM OF WALL
BOF- BOTTOM OF FOOTING

RECORD DRAWINGS SEPTEMBER, 2009

This set of Record Documents consists of corrected plans showing the reported location of the work, conforming to the construction records provided by the Contractor. While the information submitted by the Contractor and incorporated by the Landscape Architect into the Record Documents is assumed to be reliable, the Landscape Architect has not verified the accuracy and/or completeness of the information and shall not be responsible for any errors or omissions which may be incorporated herein as a result. Those relying on these Record Documents are advised to obtain independent verification of their accuracy before applying it for any purpose.

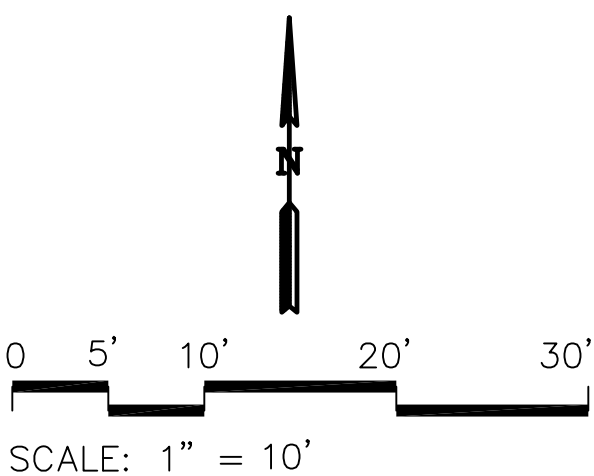


CITY OF ALBUQUERQUE
PARK DESIGN AND CONSTRUCTION DIVISION
DEPARTMENT OF MUNICIPAL DEVELOPMENT

LAURELWOOD PARK IMPROVEMENTS
GRADING / DIMENSION

Design Review Committee	City Engineer Approval	Mo./Day/Yr.	Mo./Day/Yr.

City Project No.	Zone Map No.	Sheet
694491	J-10	7 OF 8



AS-BUILT INFORMATION		BENCH MARKS		SURVEY INFORMATION		ARCHITECTURAL SEAL		REVISIONS		REMARKS		NO. DATE		BY		DESIGNED BY		DRAWN BY		CHECKED BY		DATE	
CONTRACTOR	DATE	NO.	DATE	NO.	DATE																		
INSPECTOR'S	DATE																						
ACCEPTANCE BY	DATE																						
VERIFICATION BY	DATE																						
DRAWINGS BY	DATE																						
MICRO-FILM INFORMATION																							
RECORDED BY	DATE																						
NO.																							

FINAL FOR CONSTRUCTION

Laurelwood Park Improvements

PROJECT# 694491

RECORD DRAWINGS
DATE: 09/09/09

