

CONSTRUCTION PLANS  
FOR  
FIESTA SUBARU PUBLIC INFRASTRUCTURE  
IMPROVEMENTS  
ALBUQUERQUE, NEW MEXICO

INDEX

SHEET NUMBER	DESCRIPTION
1	COVER SHEET
2	GENERAL NOTES
3	SURVEY
4	OVERALL DEMOLITION PLAN
5	ENLARGED DEMOLITION PLAN
6	ENLARGED DEMOLITION PLAN
7	ENLARGED DEMOLITION PLAN
8	OVERALL GRADING & PAVING PLAN
9	ENLARGED GRADING & PAVING PLAN
10	ENLARGED GRADING & PAVING PLAN
11	ENLARGED GRADING & PAVING PLAN
12	OVERALL STRIPING PLAN
13	ENLARGED STRIPING PLAN
14	ENLARGED STRIPING PLAN
15	OVERALL UTILITY PLAN
16	ENLARGED UTILITY PLAN
17	ENLARGED UTILITY PLAN
18	ENLARGED UTILITY PLAN
19	DETAIL SHEET

WATER AND SEWER AVAILABILITY  
STATEMENT #211122

CONSTRUCTION NOTES:

1. THE CONTRACTOR SHALL ABIDE BY ALL LOCAL, STATE, AND FEDERAL LAWS, RULES AND REGULATIONS WHICH APPLY TO THE CONSTRUCTION OF THESE IMPROVEMENTS.
2. PRIOR TO CONSTRUCTION, CONTRACTOR SHALL EXCAVATE AND VERIFY THE HORIZONTAL AND VERTICAL LOCATIONS OF ALL POTENTIAL OBSTRUCTIONS. SHOULD A CONFLICT EXIST, THE CONTRACTOR SHALL NOTIFY THE ENGINEER OR CONSTRUCTION OBSERVER SO THAT THE CONFLICT CAN BE RESOLVED WITH A MINIMUM AMOUNT OF DELAY.
3. ALL ELECTRICAL, TELEPHONE, CABLE TV, GAS AND OTHER UTILITY LINES, CABLES AND APPURTENANCES ENCOUNTERED DURING CONSTRUCTION THAT REQUIRE RELOCATION, SHALL BE COORDINATED WITH THAT UTILITY. THE CONTRACTOR SHALL BE RESPONSIBLE FOR COORDINATION OF ALL NECESSARY UTILITY ADJUSTMENTS. NO ADDITIONAL COMPENSATION WILL BE ALLOWED FOR DELAYS OR INCONVENIENCES CAUSED BY UTILITY COMPANY WORK CREWS. THE CONTRACTOR MAY BE REQUIRED TO RESCHEDULE HIS ACTIVITIES TO ALLOW UTILITY CREWS TO PERFORM THEIR REQUIRED WORK.
4. DISPOSAL SITE FOR ALL EXCESS EXCAVATION MATERIAL, AND UNSUITABLE MATERIAL SHALL BE OBTAINED BY THE CONTRACTOR IN COMPLIANCE WITH APPLICABLE ENVIRONMENTAL REGULATIONS AND APPROVED BY THE CONSTRUCTION OBSERVER. ALL COSTS INCURRED IN OBTAINING A DISPOSAL SITE AND HAUL THERETO SHALL BE CONSIDERED INCIDENTAL TO THE PROJECT AND NO SEPARATE MEASUREMENT OR PAYMENT SHALL BE MADE.

5. THE CONTRACTOR IS RESPONSIBLE FOR PROTECTING THE EXISTING UTILITY LINES WITHIN THE CONSTRUCTION AREA. ANY DAMAGE TO EXISTING FACILITIES CAUSED BY CONSTRUCTION ACTIVITY SHALL BE REPAIRED OR REPLACED AT THE CONTRACTOR'S EXPENSE AND APPROVED BY THE CONSTRUCTION OBSERVER.
6. CONSTRUCTION ACTIVITY SHALL BE LIMITED TO THE PROPERTY AND/OR PROJECT LIMITS. ANY DAMAGE TO ADJACENT PROPERTIES RESULTING FROM THE CONSTRUCTION PROCESS IS THE RESPONSIBILITY OF THE CONTRACTOR. ANY COSTS INCURRED FOR REPAIRS SHALL BE THE COST OF THE CONTRACTOR.
7. OVERNIGHT PARKING OF CONSTRUCTION EQUIPMENT SHALL NOT OBSTRUCT DRIVEWAYS OR DESIGNATED TRAFFIC LANES. THE CONTRACTOR SHALL NOT STORE ANY EQUIPMENT OR MATERIAL WITHIN THE PUBLIC RIGHT-OF-WAY.
8. THE CONTRACTOR SHALL OBTAIN ALL THE NECESSARY PERMITS FOR THE PROJECT PRIOR TO COMMENCING CONSTRUCTION (I.E. BARRICADING, SURFACE DISTURBANCE)
9. THE CONTRACTOR SHALL BE RESPONSIBLE TO REPLACE AT HIS EXPENSE ANY AND ALL PROPERTY CORNERS DESTROYED DURING CONSTRUCTION. ALL PROPERTY CORNERS MUST BE RESET BY A REGISTERED LAND SURVEYOR.
10. ALL PERMANENT PAVEMENT MARKING AND TRAFFIC SIGNING SHALL BE FURNISHED BY THE CONTRACTOR PER PLAN.

11. THE CONTRACTOR SHALL FOLLOW THE CONSTRUCTION TRAFFIC CONTROL AND SIGNING PLAN PROVIDED HEREIN. THE CONTRACTOR SHALL COORDINATE WITH THE CITY OF ALBUQUERQUE, TRAFFIC ENGINEERING DEPARTMENT, PRIOR TO BEGINNING ANY CONSTRUCTION WORK ON OR ADJACENT TO EXISTING STREETS.
12. ALL BARRICADES AND CONSTRUCTION SIGNING SHALL CONFORM TO APPLICABLE SECTIONS OF THE "MANUAL OF UNIFORM TRAFFIC CONTROL DEVICES" (MUTCD), U.S. DEPARTMENT OF TRANSPORTATION, LATEST EDITION.
13. THE CONTRACTOR SHALL MAINTAIN ALL CONSTRUCTION BARRICADES AND SIGNING AT ALL TIMES. THE CONTRACTOR SHALL VERIFY THE PROPER LOCATION OF ALL BARRICADING AT THE END AND BEGINNING OF EACH DAY.
14. ALL SAWCUT PAVEMENT SHALL HAVE A UNIFORM EDGE AND BE SPRAYED WITH TACK.
15. WHEN ABUTTING NEW CURB AND GUTTER TO EXISTING PAVEMENT, A 1' WIDE SECTION OF EXISTING PAVEMENT ADJACENT TO THE CURB AND GUTTER SHALL BE SAWCUT, REMOVED, AND REPLACED AS PER THE STANDARD SPECIFICATIONS.
16. THE CONTRACTOR SHALL ASSUME RESPONSIBILITY FOR ANY DAMAGE TO EXISTING PAVEMENTS, PAVEMENT MARKINGS, CURB & GUTTER, DRIVE PADS, WHEELCHAIR RAMPS, AND SIDEWALK DURING CONSTRUCTION, APART FROM THOSE SECTIONS INDICATED FOR REMOVAL ON THE PLANS AND SHALL REPAIR OR REPLACE PER COA STANDARDS, AT HIS OWN EXPENSE.

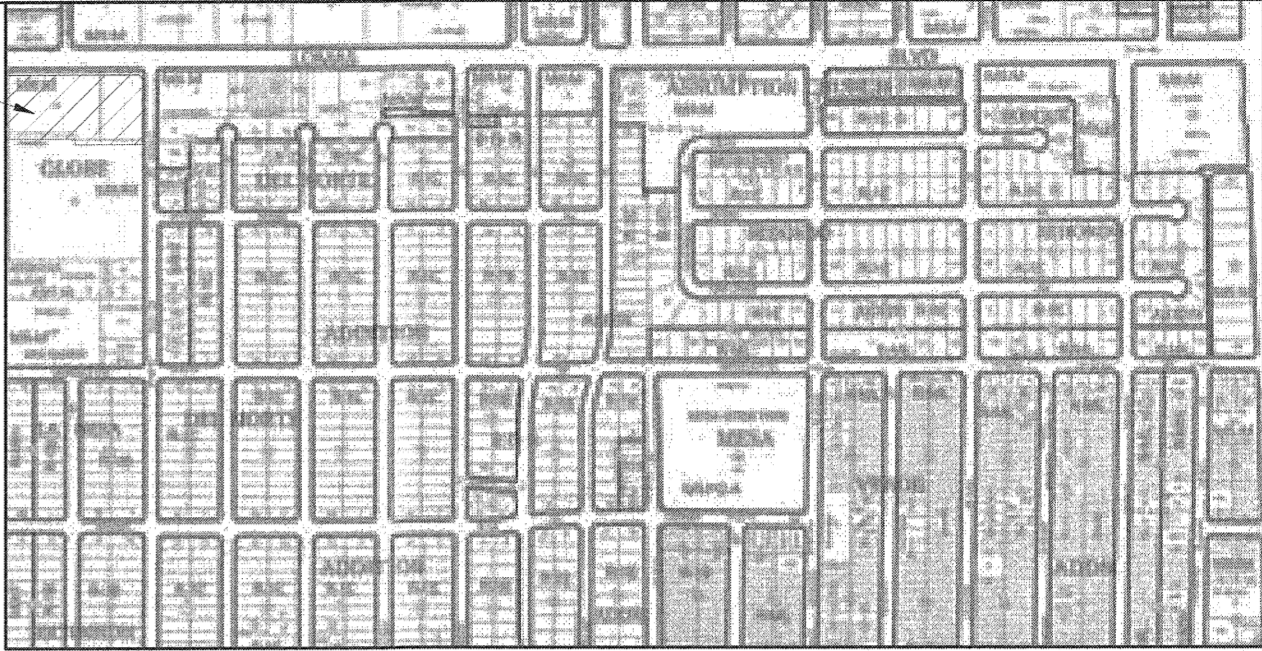
17. FOR STORM DRAIN CONSTRUCTION, RCP PIPE JOINTS SHALL NOT BE GROUTED PRIOR TO FINAL INSPECTION. FINAL INSPECTION WILL DETERMINE JOINTS TO BE GROUTED FOR FINAL ACCEPTANCE OF THE CONSTRUCTION.
18. ALL EXCAVATION, TRENCHING, AND SHORING ACTIVITIES MUST BE CARRIED-OUT IN ACCORDANCE WITH OSHA 29 CFR 1926.650 SUBPART P.
19. ALL ROADWAY FILLS SHALL BE IN ACCORDANCE WITH COA SPECIFICATION SECTION 204. COMPACTION TEST RESULTS SHALL BE PROVIDED TO THE CITY INSPECTOR PRIOR TO PROJECT CLOSEOUT FOR ALL ROADWAY FILL DEPTHS GREATER THAN TWO FEET.
- SURVEYOR'S CERTIFICATE**
- I, ANDREW S. MEDINA, A DULY QUALIFIED LICENSED PROFESSIONAL SURVEYOR UNDER THE LAWS OF THE STATE OF NEW MEXICO, DO HEREBY CERTIFY THAT THE AS-BUILT INFORMATION SHOWN ON THESE DRAWINGS WAS OBTAINED FROM FIELD CONSTRUCTION AND "AS-BUILT" SURVEY'S PERFORMED BY ME, OR UNDER MY SUPERVISION, THAT THE "AS-BUILT" INFORMATION SHOWN ON THESE DRAWINGS (UNLESS OTHERWISE NOTED) WAS ADDED BY ME, OR UNDER MY SUPERVISION AND THAT THIS "AS-BUILT" INFORMATION IS TRUE AND CORRECT TO THE BEST OF MY KNOWLEDGE AND BELIEF. COMMUNITY SCIENCES CORPORATION IS NOT RESPONSIBLE FOR ANY OF THE DESIGN CONCEPTS, CALCULATIONS, ENGINEERING AND/OR INTENT OF THE RECORD DRAWINGS.

ANDREW S. MEDINA  
NEW MEXICO PROFESSIONAL SURVEYOR  
P.O. BOX 1208  
CORRALES, NM 87408  
505.897.0000

4-11-2023

**Bohannon & Huston**  
www.bhinc.com 800.877.5332

PROJECT LOCATION



VICINITY MAP: N.T.S. ZONE MAP NO.: K-19-Z

NOTICE TO CONTRACTORS

1. AN EXCAVATION/CONSTRUCTION PERMIT WILL BE REQUIRED BEFORE BEGINNING ANY WORK WITHIN THE CITY RIGHT-OF-WAY.
2. ALL WORK DETAILED ON THESE PLANS TO BE PERFORMED UNDER CONTRACT SHALL, EXCEPT AS OTHERWISE STATED OR PROVIDED FOR HEREON, BE CONSTRUCTED IN ACCORDANCE WITH THE CITY OF ALBUQUERQUE STANDARD SPECIFICATIONS FOR PUBLIC WORKS CONSTRUCTION, 2020 EDITION.
3. TWO WORKING DAYS PRIOR TO ANY EXCAVATION, THE CONTRACTOR MUST CONTACT NEW MEXICO ONE CALL SYSTEM (260-1990) FOR LOCATION OF EXISTING UTILITIES.
4. PRIOR TO CONSTRUCTION, THE CONTRACTOR SHALL EXCAVATE AND VERIFY THE HORIZONTAL AND VERTICAL LOCATIONS OF ALL OBSTRUCTIONS. SHOULD A CONFLICT EXIST, THE CONTRACTOR SHALL NOTIFY THE ENGINEER OR SURVEYOR IMMEDIATELY SO THAT THE CONFLICT CAN BE RESOLVED WITH A MINIMUM AMOUNT OF DELAY.
5. FIVE (5) WORKING DAYS PRIOR TO BEGINNING CONSTRUCTION, THE CONTRACTOR SHALL SUBMIT, TO THE CONSTRUCTION COORDINATION DIVISION, A DETAILED CONSTRUCTION SCHEDULE. TWO (2) WORKING DAYS PRIOR TO CONSTRUCTION, THE CONTRACTOR SHALL OBTAIN A BARRICADING PERMIT FROM THE CONST. COORDINATION DIVISION. CONTRACTOR SHALL NOTIFY CONSTRUCTION COORDINATION ENGINEER (768-2551) PRIOR TO OCCUPYING AN INTERSECTION. REFER TO SECTION 19 OF THE GENERAL CONDITIONS OF THE STANDARD SPECIFICATIONS.
6. ALL WORK AFFECTING ARTERIAL ROADWAY MAY REQUIRE TWENTY-FOUR HOUR CONSTRUCTION.
7. ALL STREET STRIPING ALTERED OR DESTROYED SHALL BE REPLACED W/ PLASTIC REFLECTORIZED PAVEMENT MARKING BY CONTRACTOR TO THE SAME LOCATION AS EXISTING, OR AS INDICATED BY THIS PLAN SET.
8. CONTRACTOR SHALL NOTIFY THE ENGINEER NOT LESS THAN SEVEN (7) DAYS PRIOR TO STARTING WORK IN ORDER THAT THE CITY SURVEYOR MAY TAKE NECESSARY MEASURES TO ENSURE THE PRESERVATION OF SURVEY MONUMENTS. CONTRACTOR SHALL NOT DISTURB PERMANENT SURVEY MONUMENTS WITHOUT THE CONSENT OF THE CITY SURVEYOR AND SHALL NOTIFY THE CITY SURVEYOR AND BEAR THE EXPENSE OF REPLACING ANY THAT MAY BE DISTURBED WITHOUT PERMISSION. REPLACEMENT SHALL BE DONE ONLY BY THE CITY SURVEYOR. WHEN A CHANGE IS MADE IN THE FINISHED ELEVATIONS OF THE PAVEMENT OF ANY ROADWAY IN WHICH A PERMANENT SURVEY MONUMENT IS LOCATED, CONTRACTOR SHALL, AT HIS OWN EXPENSE, ADJUST THE MONUMENT COVER TO THE NEW GRADE UNLESS OTHERWISE SPECIFIED. REFER TO SECTION 4.4 OF THE GENERAL CONDITIONS OF THE STANDARD SPECIFICATIONS.
9. CONTRACTOR SHALL RECORD DATA ON ALL UTILITY LINES AND ACCESSORIES AS REQUIRED BY THE CITY OF ALBUQUERQUE FOR THE PREPARATION OF "AS CONSTRUCTED" DRAWINGS. CONTRACTOR SHALL NOT COVER UTILITY LINES AND ACCESSORIES UNTIL ALL DATA HAS BEEN RECORDED.
10. CONTRACTOR SHALL MAINTAIN A GRAFFITI-FREE WORK SITE. CONTRACTOR SHALL PROMPTLY REMOVE ANY GRAFFITI FROM ALL EQUIPMENT, WHETHER PERMANENT OR TEMPORARY.
11. CONTRACTOR SHALL COORDINATE WITH THE WATER AUTHORITY SEVEN (7) DAYS IN ADVANCE OF PERFORMING WORK THAT WILL AFFECT THE PUBLIC WATER OR SANITARY SEWER INFRASTRUCTURE. WORK REQUIRING SHUTOFF OF WELL COLLECTORS, TRANSMISSION LINES, OR FACILITIES DESIGNATED AS MASTER PLAN FACILITIES MUST BE COORDINATED WITH THE WATER AUTHORITY 14 DAYS IN ADVANCE OF PERFORMING SUCH WORK. ONLY WATER AUTHORITY CREWS ARE AUTHORIZED TO OPERATE PUBLIC VALVES. SHUTOFFS REQUESTS MUST BE MADE ONLINE AT [HTTPS://WWW.ABQWA.ORG/INFO-FOR-BUSINESS-WATER-SHUT-OFF-AND-TURN-ON-PROCEDURES/](https://www.abqwa.org/info-for-business-water-shut-off-and-turn-on-procedures/)

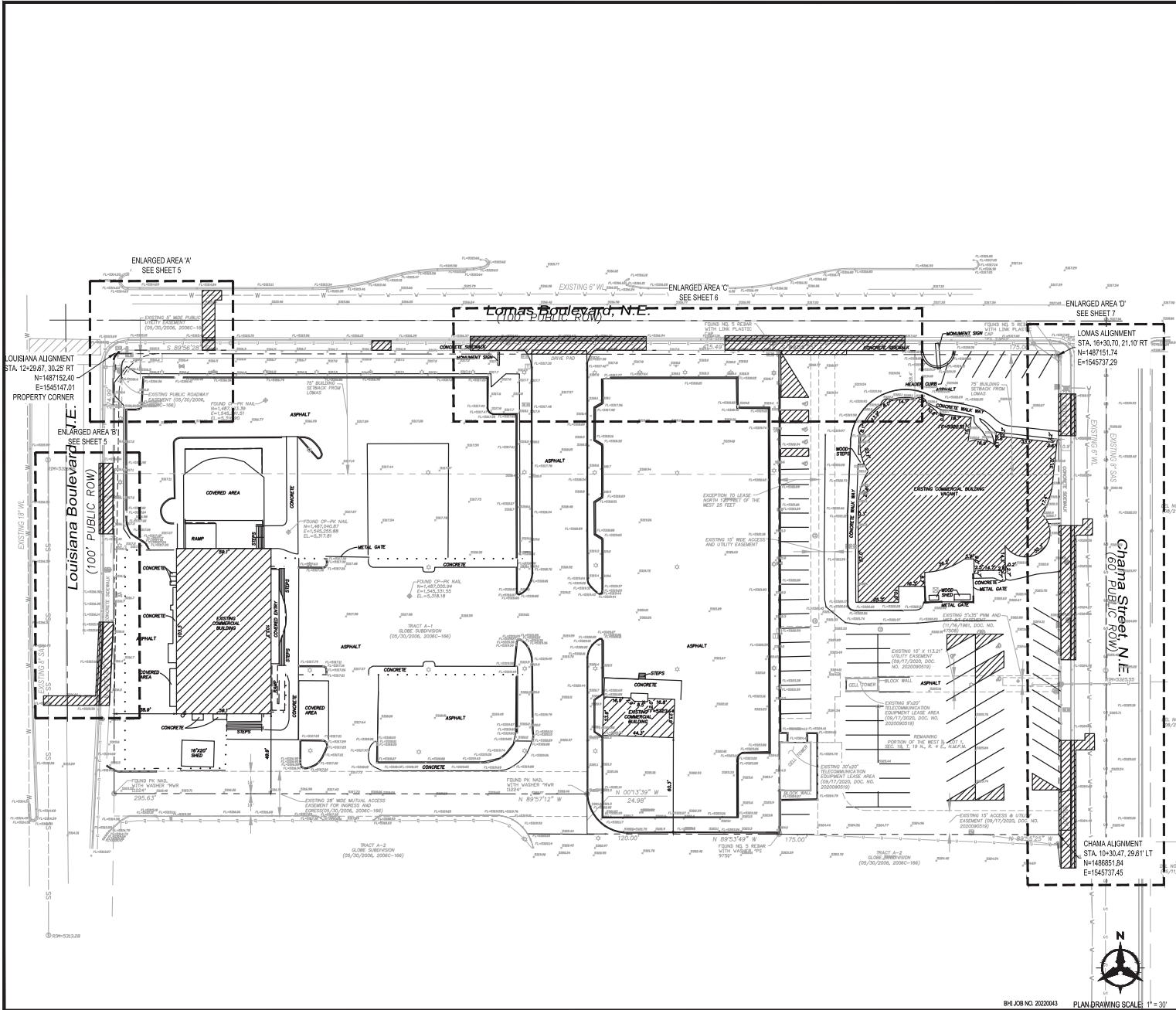
THE FOLLOWING NOTES ALSO APPLY WHEN CHECKED

- ☒ ALL UTILITIES AND UTILITY SERVICE LINES SHALL BE INSTALLED PRIOR TO PAVING.
- ☒ BACKFILL COMPACTION SHALL BE ACCORDING TO SPECIFIED STREET USE.
- ☒ TACK COAT REQUIREMENTS SHALL BE DETERMINED BY THE CITY ENGINEER.
- ☒ SIDEWALKS AND WHEELCHAIR RAMPS WITHIN THE CURB RETURNS SHALL BE CONSTRUCTED WHEREVER A NEW CURB RETURN IS CONSTRUCTED.
- ☒ IF CURB IS DEPRESSIONED FOR A DRIVEPAD, THE DRIVEPAD SHALL BE CONSTRUCTED PRIOR TO ACCEPTANCE OF CURB AND GUTTER.
- ☒ ALL STORM DRAINAGE FACILITIES SHALL BE COMPLETED PRIOR TO FINAL ACCEPTANCE.
- ☒ THE REQUESTOR OR DEVELOPER SHALL BE RESPONSIBLE FOR REPAIR OR REPLACEMENT OF ALL CURB AND GUTTER OR SIDEWALK DAMAGED AFTER APPROVAL BY THE CITY ENGINEER OF WORK COMPLETED BY THE CONTRACTOR.

REV.	SHEETS	CITY ENGINEER	DATE	USER DEPARTMENT	DATE	USER DEPARTMENT	DATE
ENGINEERS STAMP & SIGNATURE		APPROVALS	ENGINEER	DATE	*****		
		DRC Chairman	<i>Andrew S. Medina</i>	12/5/2022	APPROVED FOR CONSTRUCTION		
		Transportation	<i>Andrew S. Medina</i>	12/05/2022			
		Water/Wastewater	<i>Andrew S. Medina</i>	12/05/22			
		Hydrology	<i>Andrew S. Medina</i>	12/05/22			
		Parks	<i>Andrew S. Medina</i>				
		Const. Mngmt.	Approved by Albuquerque		CITY ENGINEER DATE		
		Const. Coord.	City Engineer and Design				
		NMUI	Review Committee, Jan. 31, 2023				
DRB CASE NUMBER		CITY PROJECT NO.		SHEET		OF	
N/A		700199		1		19	



[illegible]



CALL NM ONE-CALL SYSTEM  
SEVEN (7) DAYS PRIOR TO  
ANY EXCAVATION

CITY OF ALBUQUERQUE  
DEPARTMENT OF MUNICIPAL DEVELOPMENT  
ENGINEERING DIVISION

FIESTA SUBARU  
OVERALL DEMOLITION PLAN

DESIGN REVIEW COMMITTEE	CITY ENGINEER APPROVAL	ZONE MAP NO.
Approved by Albuquerque City Engineer and Design Review Committee, Jan. 31, 2023		K-19-Z
		CITY PROJECT NO.
		700199
		SHEET NO.
		4 OF 19

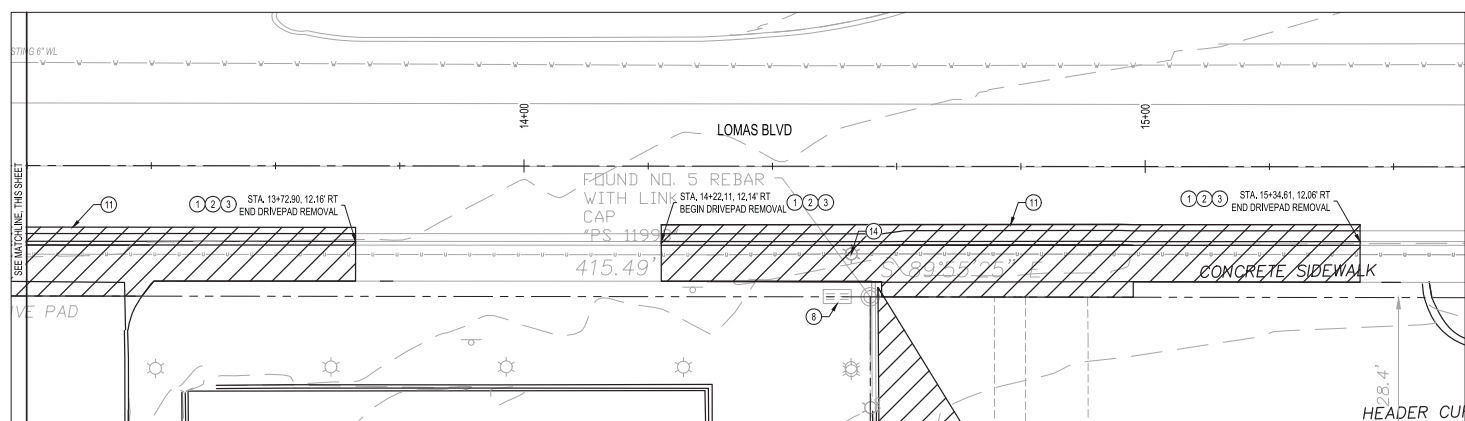
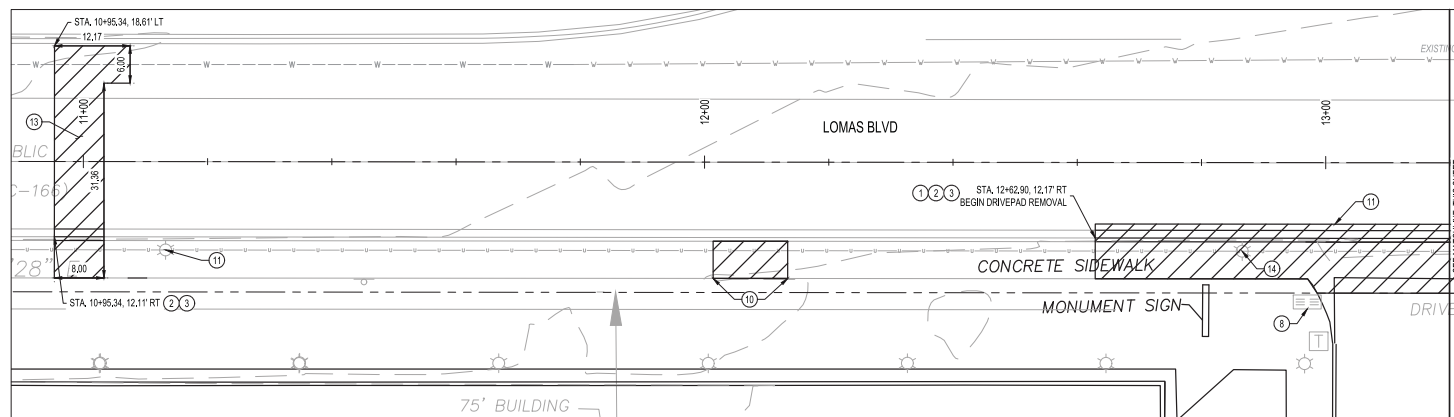
**Bohannon  
Huston**  
CONSULTANTS  
www.bhnc.com  
800.877.5332

AGS MONUMENT "12" x "6"
GEOGRAPHIC POSITION (NAD 83)
N.M. STATE PLANE COORDINATES
(CENTRAL ZONE)
GROUND TO GRID = 0.999657786
NAVD 1988 ELEVATION = 5344.389



DESIGNED BY: MS
DRAWN BY: HG
CHECKED BY: CHECKED BY
DATE: ###
INSPECTORS ACCEPTANCE BY:
DATE:
FIELD VERIFICATION BY:
DATE:
DRAWINGS CORRECTED BY:
DATE:
NO.
DATE
DESCRIPTION
CONTRACTOR
BY





ENLARGED AREA 'B'



☐ KEYED NOTES

1. REMOVE AND DISPOSE OF EXISTING ASPHALT PAVEMENT; ALL EXPOSED EDGES SHALL BE SAWCUT PARALLEL OR PERPENDICULAR TO DIRECTION OF CURVE TRAVEL.
2. REMOVE AND GUTTER TO BE REMOVED TO NEAREST JOINT.
3. REMOVE AND DISPOSE OF CONCRETE SIDEWALK TO NEAREST JOINT.
4. REMOVE AND DISPOSE OF CONCRETE HEADER CURB.
5. EXISTING SIGNAL MAST ARM TO REMAIN IN PLACE.
6. EXISTING TRAFFIC SIGNAL POLE TO REMAIN IN PLACE.
7. EXISTING UTILITY POLE TO REMAIN IN PLACE.
8. EXISTING ELECTRICAL PULLBOX TO REMAIN IN PLACE.
9. EXISTING LUMINARY TO REMAIN IN PLACE.
10. VERIFY LOCATION OF EXISTING SIDEWALK REMOVAL WITH COA. REMOVE IF NEEDED.
11. 1" SAWCUT EXISTING ASPHALT PAVEMENT (OR AS NEEDED) TO A STRAIGHT CLEAN EDGE.
12. REMOVE AND DISPOSE OF EXISTING DRIVEPAD.
13. REMOVE AND REPLACE EXISTING ASPHALT PAVEMENT PER COA STD DWG 2485.
14. REMOVE AND RELOCATE EXISTING LUMINARY.

CONSILI TANTS



RENCH MARKS

AGRS MONUMENT '17\_K'19"  
GEOGRAPHIC POSITION (NAD 83)  
N.M. STATE PLANE COORDINATES  
(CENTRAL ZONE)  
GROUND TO GRID = 0.9996567785  
NAVD 1988 ELEVATION = 5344.3589



541

NO.	DATE	DESCRIPTION	BY
		AS-BUILT INFORMATION	
		WORK STAKED BY:	DATE:
		INSPECTORS ACCEPTANCE BY:	DATE:

### LEGEND

- 
- EXISTING HARDSCAPE REMOVAL LIMITS  
 EXISTING CURB AND GUTTER TO BE REMOVED  
 EXISTING WATER LINE  
 EXISTING SANITARY SEWER



CALL NM ONE-CALL SYSTEM  
SEVEN (7) DAYS PRIOR TO  
ANY EXCAVATION

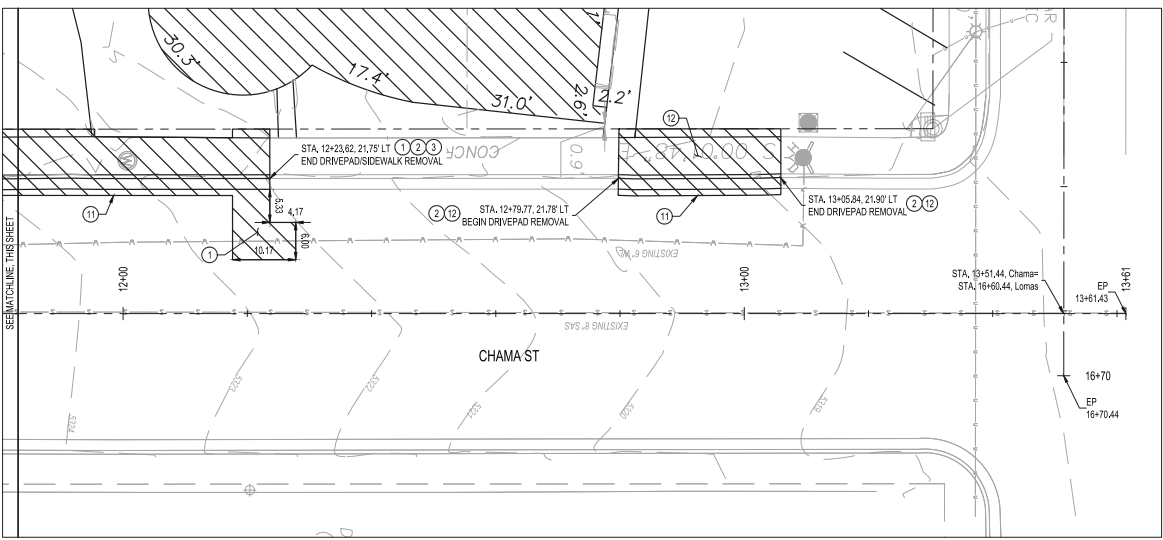
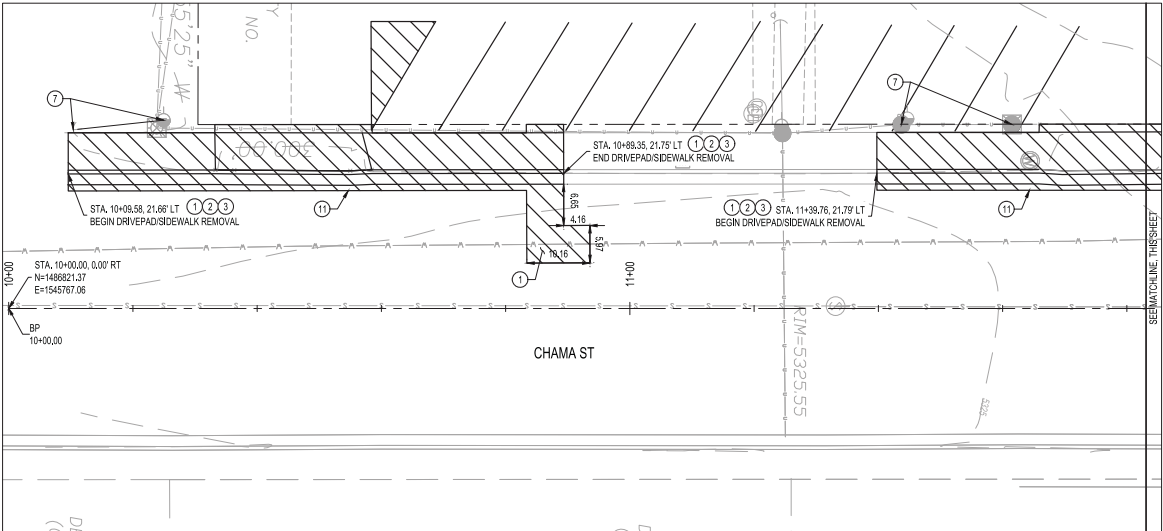
DESIGNED BY: MS
DRAWN BY: HG
CHECKED BY: CHECKED BY
DATE: 2000



CITY OF ALBUQUERQUE  
DEPARTMENT OF MUNICIPAL DEVELOPMENT  
ENGINEERING DIVISION

**FIESTA SUBARU  
ENLARGED DEMOLITION PLAN**

DESIGN REVIEW COMMITTEE	CITY ENGINEER APPROVAL	ZONE MAP NO.
Approved by Albuquerque City Engineer and Design Review Committee, Jan. 31, 2023		K-19-Z
		CITY PROJECT NO.
		700199
		SHEET NO.
		6 OF



ENLARGED AREA 'C'  
SCALE: 1" = 10'



BHJ08 NO. 2022043

KEYED NOTES

1. REMOVE AND DISPOSE OF EXISTING ASPHALT PAVEMENT. ALL EXPOSED EDGES SHALL BE SAWCUT PARALLEL OR PERPENDICULAR TO DIRECTION OF VEHICLE TRAVEL.
2. CURB AND GUTTER TO BE REMOVED TO NEAREST JOINT.
3. REMOVE AND DISPOSE OF CONCRETE SIDEWALK TO NEAREST JOINT.
4. REMOVE AND DISPOSE OF CONCRETE HEADER CURB.
5. EXISTING SIGNAL MAST ARM TO REMAIN IN PLACE.
6. EXISTING TRAFFIC SIGNAL BOX TO REMAIN IN PLACE.
7. EXISTING UTILITY POLE TO REMAIN IN PLACE.
8. EXISTING ELECTRICAL PULLBOX TO REMAIN IN PLACE.
9. EXISTING LUMINARY TO REMAIN IN PLACE.
10. VERIFY LOCATION OF EXISTING SIDEWALK REMOVAL WITH COA. REMOVE IF NEEDED.
11. 1" SAWCUT EXISTING ASPHALT PAVEMENT (OR AS NEEDED) TO A STRAIGHT CLEAN EDGE.
12. REMOVE AND DISPOSE OF EXISTING DRIVEPAD.
13. REMOVE AND REPLACE EXISTING ASPHALT PAVEMENT PER COA STD DWG 2465.
14. REMOVE AND RELOCATE EXISTING LUMINARY.

LEGEND

- EXISTING HARDSCAPE REMOVAL LIMITS
- EXISTING CURB AND GUTTER TO BE REMOVED
- EXISTING WATER LINE
- EXISTING SANITARY SEWER



CITY OF ALBUQUERQUE  
DEPARTMENT OF MUNICIPAL DEVELOPMENT  
ENGINEERING DIVISION  
  
FIESTA SUBARU  
ENLARGED DEMOLITION PLAN

DESIGN REVIEW COMMITTEE	CITY ENGINEER APPROVAL	ZONE MAP NO.
Approved by Albuquerque City Engineer and Design Review Committee, Jan. 31, 2023		K-19-Z
		CITY PROJECT NO. 700199
		SHEET NO. 7 OF 19

CONSULTANTS  
**Bohannon  
Huston**  
www.bhng.com  
800.877.5332

AGES MONUMENT "T", 4"X6"	
GEOGRAPHIC POSITION (NAD 83)	
N.M. STATE PLANE COORDINATES	
(CENTRAL ZONE)	
GROUND TO GRID = 0.999657786	
NAVD 1988 ELEVATION = 8344.389	



DESIGNED BY: MS	BY
DRAWN BY: HG	
CHECKED BY: CHECKED BY	
DATE: ###	
NO.	DATE
AS BUILT INFORMATION	CONTRACTOR
WORK STAGED BY:	DATE
INSPECTORS ACCEPTANCE BY:	DATE
FIELD VERIFICATION BY:	DATE
DRAWINGS CORRECTED BY:	DATE

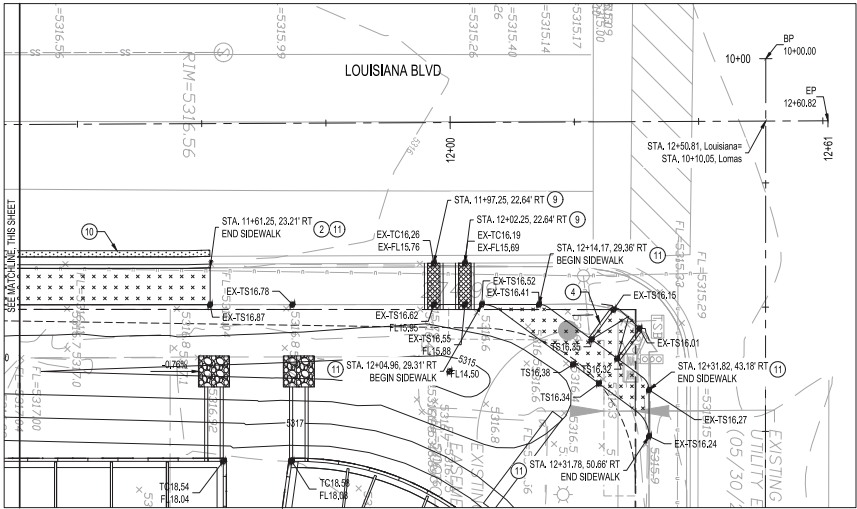
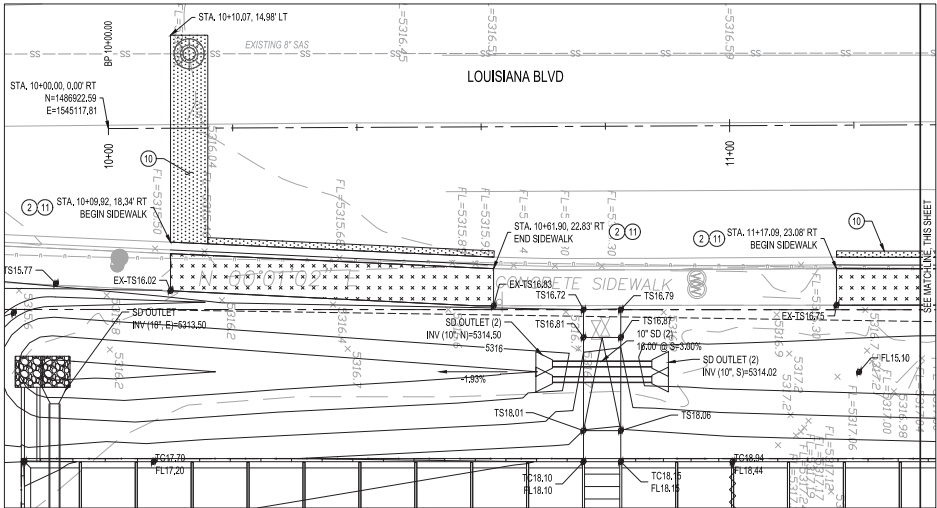


DESIGN REVIEW COMMITTEE	CITY ENGINEER
Approved by Albuquerque City Engineer and Design Review Committee, Jan. 31, 2023	

CITY OF ALBUQUERQUE  
DEPARTMENT OF MUNICIPAL DEVELOPMENT  
ENGINEERING DIVISION

**FIESTA SUBARU**  
**OVERALL GRADING & PAVING PLAN**

DESIGN REVIEW COMMITTEE	CITY ENGINEER APPROVAL	ZONE MAP NO.
Approved by Albuquerque City Engineer and Design Review Committee, Jan. 31, 2023		K-19-Z
		CITY PROJECT NO.
		700199
		SHEET NO.
		8 OF 19



ENLARGED AREA 'B'  
SCALE: 1" = 10'



KEYED NOTES

1. INSTALL PAVEMENT PER COA STD DWG 2407 (PRINCIPAL ARTERIAL). SEE DETAIL SHEET 19.
2. INSTALL STANDARD CURB & GUTTER PER COA STD DWG 2415B.
3. BUILD ACCESS RAMP PER DETAIL 'A', SHEET 19.
4. BUILD ACCESS RAMP PER DETAIL 'B', SHEET 19.
5. INSTALL 1-12" SIDEWALK CULVERT PER COA STD DWG 2236.
6. INSTALL 4" VALLEY GUTTER PER COA STD DWG 2420.
7. MATCH EXISTING.
8. INSTALL 1-24" SIDEWALK CULVERT PER COA STD DWG 2236.
9. INSTALL 2-24" SIDEWALK CULVERT PER COA STD DWG 2236.
10. REPLACE PAVEMENT PER COA STD DWG 2465.
11. INSTALL SIDEWALK PER COA STD DWG 2430.

LEGEND

- ASPHALT PAVEMENT
- CONCRETE DRIVEPAD
- CONCRETE SIDEWALK



CALL NM ONE-CALL SYSTEM  
SEVEN (7) DAYS PRIOR TO  
ANY EXCAVATION



CITY OF ALBUQUERQUE  
DEPARTMENT OF MUNICIPAL DEVELOPMENT  
ENGINEERING DIVISION

FIESTA SUBARU  
ENLARGED GRADING & PAVING PLAN

DESIGN REVIEW COMMITTEE CITY ENGINEER APPROVAL ZONE MAP NO.  
Approved by Albuquerque City Engineer and Design Review Committee, Jan. 31, 2023 K-19-Z  
CITY PROJECT NO.

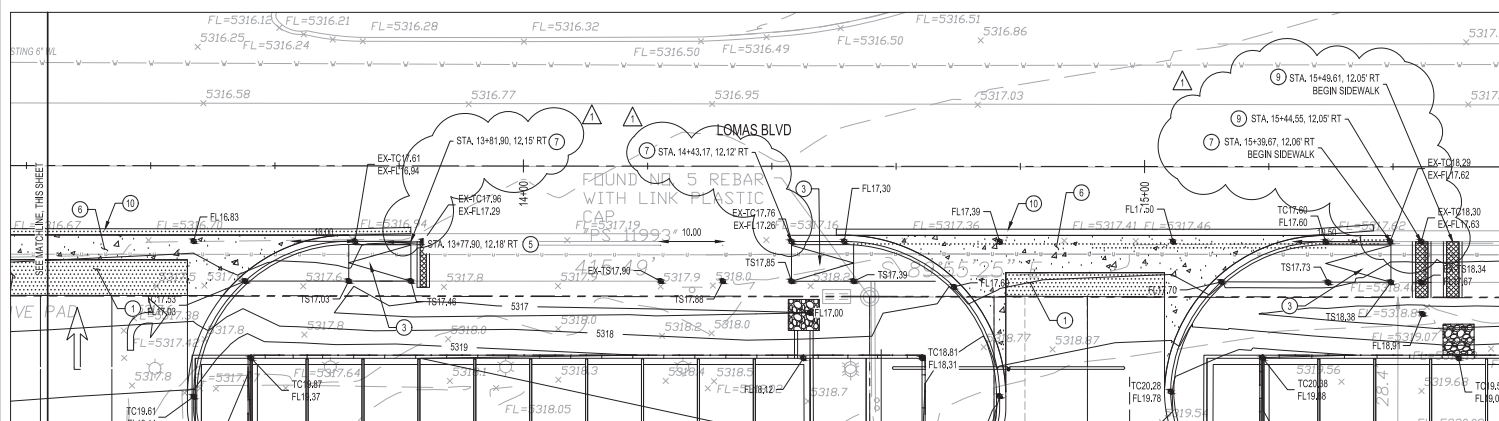
SHEET NO. 9 OF 19

Bohannon  
Huston  
CONSULTANTS  
www.bhnc.com  
800.877.5332

APR 15 2023  
PROJECT NO. 24572  
SHEET NO. 18/200  
PROJ 235-0001-0001  
AGS MONUMENT "17" 4"X6"  
GEOGRAPHIC POSITION (NAD 83)  
N.M. STATE PLANE COORDINATES  
(CENTRAL ZONE)  
GROUND TO GRID = 0.999657786  
NAVD 1988 ELEVATION = 5344.389



DESIGNED BY: MS		DRAWN BY: HG		CHECKED BY: CHECKED BY	
DATE		DATE		DATE	
NO.		DATE		DATE	
DESCRIPTION		CONTRACTOR		DATE	
BY		CONTRACTOR		DATE	
INSPECTORS ACCEPTANCE BY:		DATE		DATE	
FIELD VERIFICATION BY:		DATE		DATE	
DRAWINGS CORRECTED BY:		DATE		DATE	



1. INSTALL PAVEMENT PER COA STD DWG 2407 (PRINCIPAL ARTERIAL). SEE DETAIL SHEET 19.
2. INSTALL STANDARD CURB & GUTTER PER COA STD DWG 2415B.
3. BUILD ACCESS RAMP PER DETAIL "A". SHEET 19.
4. BUILD ACCESS RAMP PER DETAIL "B". SHEET 19.
5. INSTALL 1'-1/2" SIDEWALK CULVERT PER COA STD DWG 2236.
6. INSTALL 4" VALLEY GUTTER PER COA STD DWG 2420.
7. MATCH EXISTING.
8. INSTALL 1'-24" SIDEWALK CULVERT PER COA STD DWG 2236.
9. INSTALL 2'-24" SIDEWALK CULVERT PER COA STD DWG 2236.
10. REPLACE PAVEMENT PER COA STD DWG 2465.
11. INSTALL SIDEWALK PER COA STD DWG 2430.

 ASPHALT PAVEMENT  
 CONCRETE DRIVEWAY  
 CONCRETE SIDEWALK



CALL NM ONE-CALL SYSTEM  
SEVEN (7) DAYS PRIOR TO  
ANY EXCAVATION

DESIGNED BY: MS
DRAWN BY: HG
CHECKED BY: CHECKED BY
DATE: 2000



CITY OF ALBUQUERQUE  
DEPARTMENT OF MUNICIPAL DEVELOPMENT  
ENGINEERING DIVISION

**FIESTA SUBARU  
ENLARGED GRADING & PAVING PLAN**

DESIGN REVIEW COMMITTEE	CITY ENGINEER APPROVAL	ZONE MAP NO. K-19-Z
		CITY PROJECT NO. 700199
		SHEET NO. 10R OF 19

# KEYED NOTES

1. INSTALL PAVEMENT PER COA STD DWG 2407 (PRINCIPAL ARTERIAL). SEE DETAIL SHEET 19.
2. INSTALL STANDARD CURB & GUTTER PER COA STD DWG 2415B.
3. BUILD ACCESS RAMP PER DETAIL 'A', SHEET 19.
4. BUILD ACCESS RAMP PER DETAIL 'B', SHEET 19.
5. INSTALL 1-12" SIDEWALK CULVERT PER COA STD DWG 2236.
6. INSTALL 4" VALLEY GUTTER PER COA STD DWG 2420.
7. MATCH EXISTING.
8. INSTALL 1-24" SIDEWALK CULVERT PER COA STD DWG 2236.
9. INSTALL 2-36" SIDEWALK CULVERT PER COA STD DWG 2236.
10. REPLACE PAVEMENT PER COA STD DWG 2465.
11. INSTALL SIDEWALK PER COA STD DWG 2430.

# LEGEND

- ASPHALT PAVEMENT
- CONCRETE DRIVEPAD
- CONCRETE SIDEWALK



CALL NM ONE-CALL SYSTEM  
SEVEN (7) DAYS PRIOR TO  
ANY EXCAVATION



CITY OF ALBUQUERQUE  
DEPARTMENT OF MUNICIPAL DEVELOPMENT  
ENGINEERING DIVISION

FIESTA SUBARU  
ENLARGED GRADING & PAVING PLAN

DESIGN REVIEW COMMITTEE CITY ENGINEER APPROVAL

Approved by Albuquerque  
City Engineer and Design  
Review Committee, Jan. 31, 2023

ZONE MAP NO.

K-19-Z

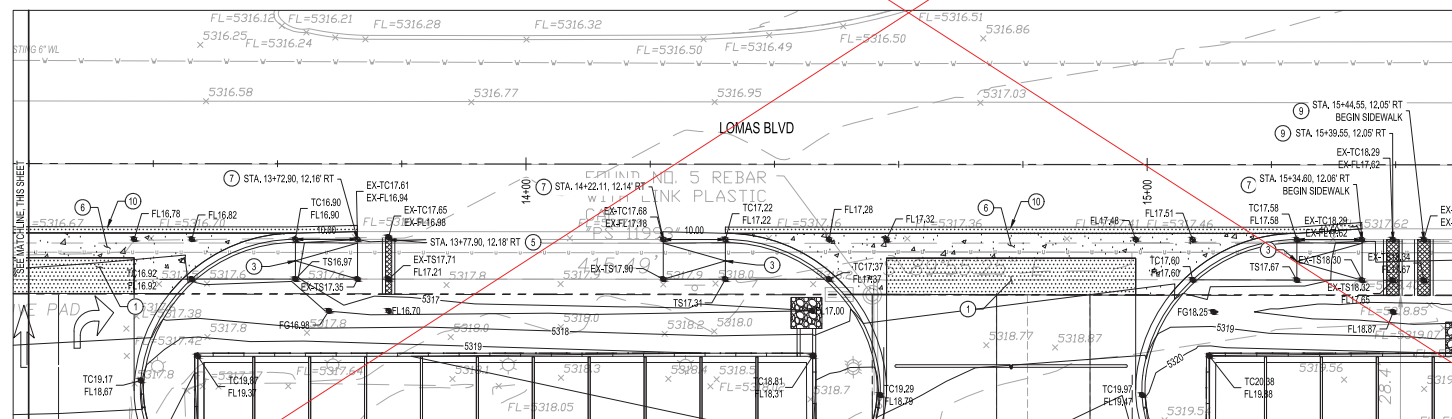
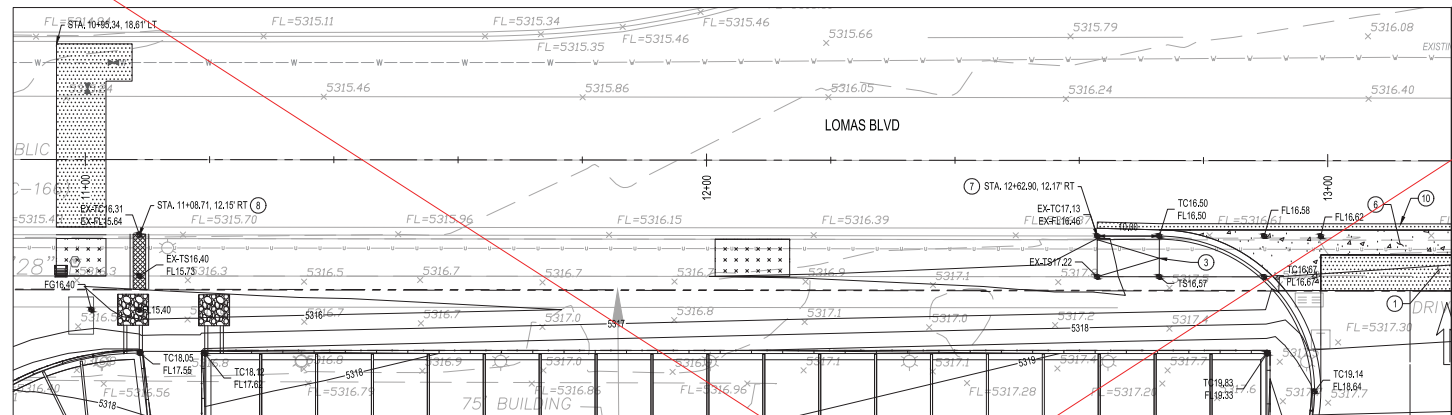
CITY PROJECT NO.

700199

SHEET NO.

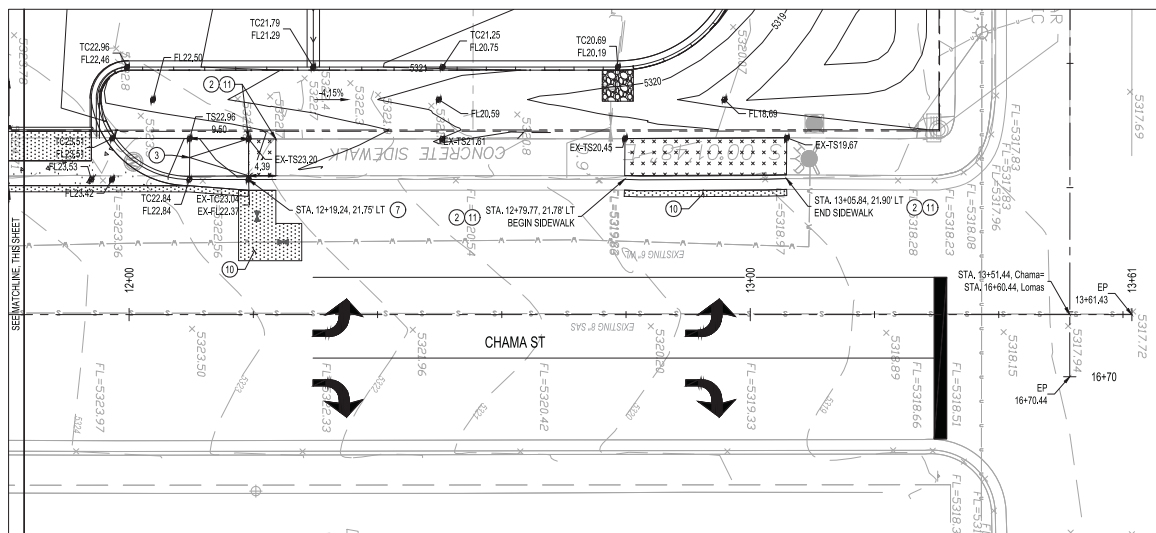
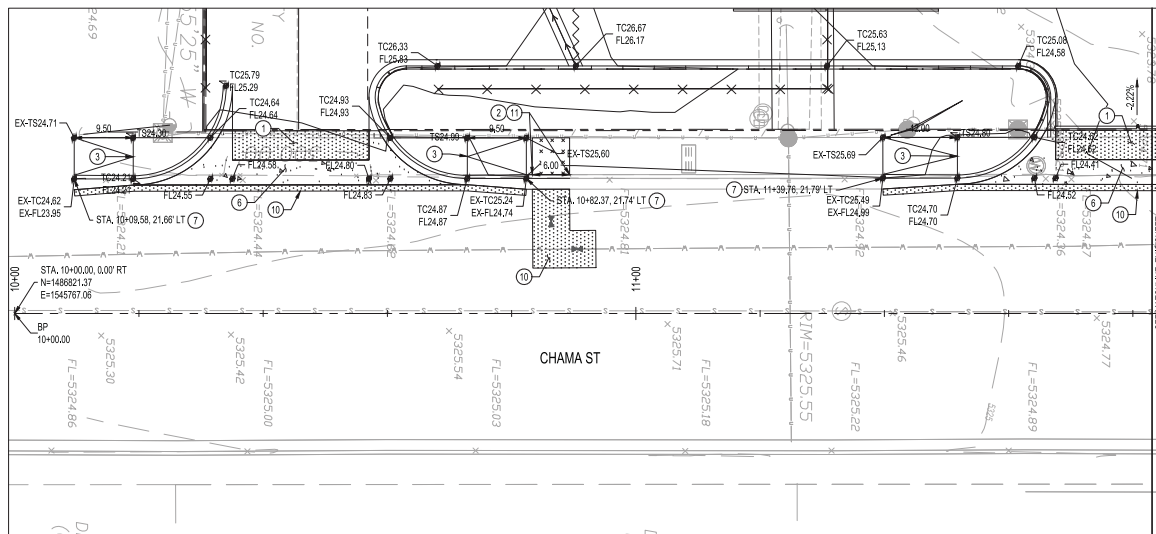
10 OF 19

BHJ JOB NO. 20220043



ENLARGED AREA 'B'  
SCALE: 1" = 10'





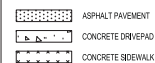
ENLARGED AREA 'C'



☐ KEYED NOTES

1. INSTALL PAVEMENT PER COA STD DWG 2407 (PNEUMATIC ARTERIAL). SEE DETAIL SHEET 19.
2. INSTALL STANDARD CURB & GUTTER PER COA STD DWG 2415B.
3. BUILD ACCESS RAMP PER DETAIL "A", SHEET 19.
4. BUILD ACCESS RAMP PER DETAIL "B", SHEET 19.
5. INSTALL 1-1/2" SIDEWALK CULVERT PER COA STD DWG 2236.
6. INSTALL 4" VALLEY GUTTER PER COA STD DWG 2420.
7. MATCH EXISTING.
8. INSTALL 1-2" SIDEWALK CULVERT PER COA STD DWG 2236.
9. INSTALL 2-3" SIDEWALK CULVERT PER COA STD DWG 2236.
10. REPLACE PAVEMENT PER COA STD DWG 2465.
11. INSTALL SIDEWALK PER COA STD DWG 2430.

### LEGEND

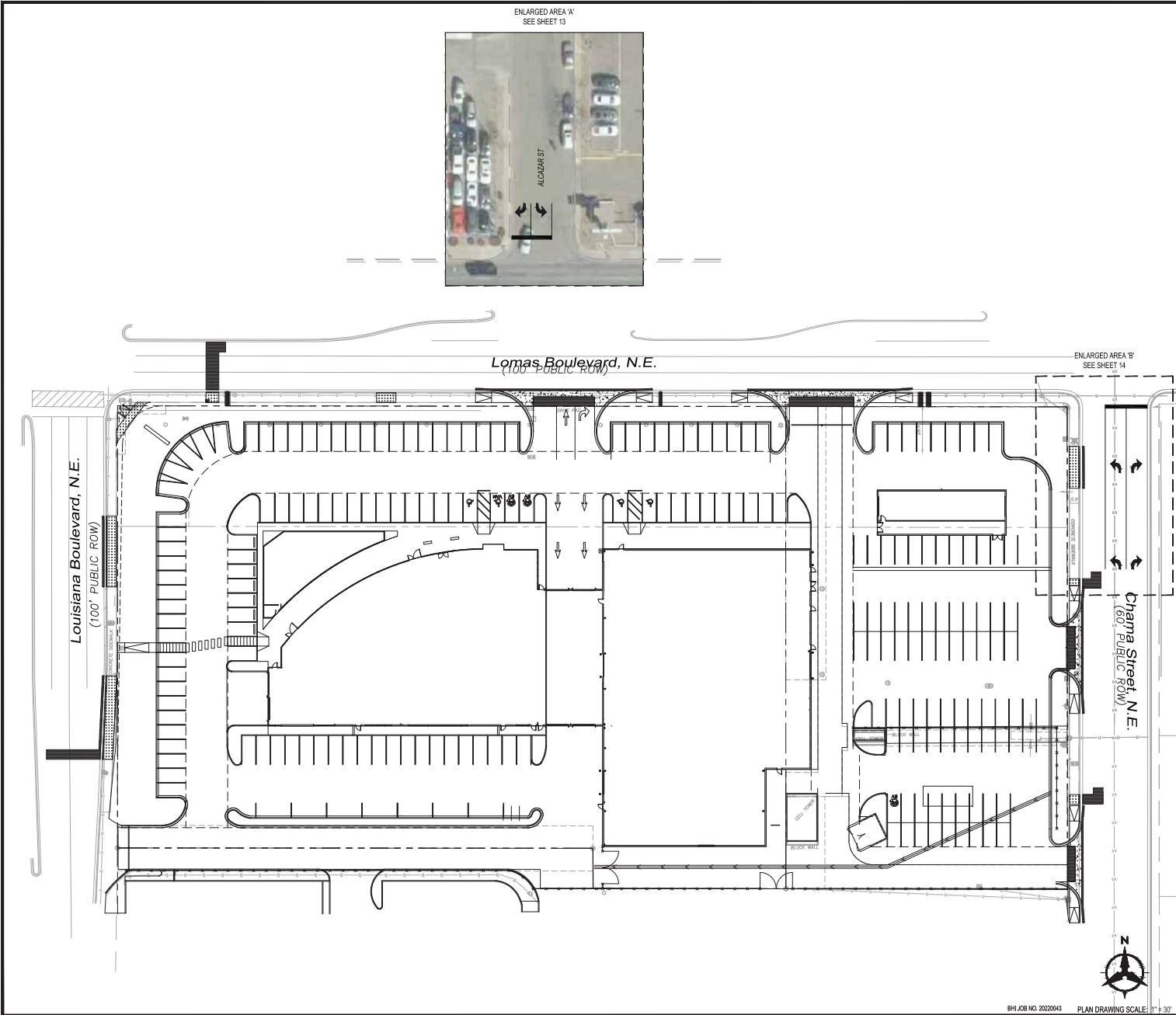



DESIGNED BY: MS
DRAWN BY: HG
CHECKED BY: CHECKED BY
DATE: ####

ALBUQUERQUE  
MUNICIPAL DEVELOPMENT  
PLANNING DIVISION


FIESTA SUBARU  
ENLARGED GRADING & PAVING PLAN

DESIGN REVIEW COMMITTEE	CITY ENGINEER APPROVAL	ZONE MAP NO.
Approved by Albuquerque City Engineer and Design Review Committee, Jan. 31, 2023		K-19-Z
		CITY PROJECT NO.
		700199
		SHEET NO.
		11 OF 19





CITY OF ALBUQUERQUE  
DEPARTMENT OF MUNICIPAL DEVELOPMENT  
ENGINEERING DIVISION



CALL NM ONE-CALL SYSTEM  
SEVEN (7) DAYS PRIOR TO  
ANY EXCAVATION

DESIGNED BY:	MS
DRAWN BY:	HG
CHECKED BY:	CHECKED BY
DATE:	###

NO.	DATE	DESCRIPTION	BY
AS-BUILT INFORMATION		CONTRACTOR	
WORK STAGED BY:		DATE:	
INSPECTORS ACCEPTANCE BY:		DATE:	
FIELD VERIFICATION BY:		DATE:	
DRAWINGS CORRECTED BY:		DATE:	

DESIGN REVIEW COMMITTEE	CITY ENGINEER APPROVAL	ZONE MAP NO.
Approved by Albuquerque City Engineer and Design Review Committee, Jan. 31, 2023		K-19-Z
		CITY PROJECT NO. 700199
		SHEET NO. 12 OF 19

CONSULTANTS

**Bohannon  
Huston**  
www.bhinc.com  
800.877.5332

AGS MONUMENT "12" 4"X"	REDCI MARKS
GEOGRAPHIC POSITION (NAD 83)	
NM STATE PLANE COORDINATES	
(CENTRAL ZONE)	
GROUND TO GRID = 0.9996567765	
NAVD 1988 ELEVATION = 5344.339	

SEAL

NEW H. SAEED  
2637  
10/16/2023  
PROFESSOR



ENLARGED AREA 'A'  
SCALE: 1" = 10'



- GENERAL NOTES**
1. ALL SIGNING AND STRIPING SHALL BE INSTALLED IN ACCORDANCE WITH MUTCD LATEST EDITION AND NMOT STANDARD SPECIFICATIONS.
  2. ALL SIGN AND POST MATERIAL SHALL CONFORM TO CITY OF ALBUQUERQUE TRAFFIC ENGINEERING REQUIREMENTS.
  3. CONTRACTOR SHALL REPLACE EXISTING PAVEMENT MARKINGS THAT ARE OBLITERATED FOR TRAFFIC CONTROL REASONS. THIS WORK SHALL BE CONSIDERED INCIDENTAL TO TRAFFIC CONTROL.
  4. ALL STRIPING ERADICATION SHALL BE ACCOMPLISHED BY WATER BLASTING OR SURFACE PLANING TO A MAXIMUM DEPTH OF 0.25 INCHES AND FOR WIDTH EQUAL TO TWO TIMES THE WIDTH OF MARKING TO BE REMOVED.
  5. ALL PAVEMENT WITHIN PROJECT LIMITS SHALL BE COVERED WITH ASPHALT SLURRY SEAL PRIOR TO FINAL STRIPING.

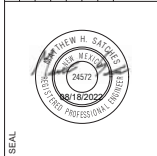
- ☐ **STRIPING KEYED NOTES**
1. REFLECTORIZED THERMOPLASTIC PAVEMENT MARKING - 4" SOLID WHITE STRIPE.
  2. REFLECTORIZED THERMOPLASTIC MARKING - 4" SOLID DOUBLE YELLOW STRIPE.
  3. INSTALL NEW RETROREFLECTIVE PREFORMED PATTERNED OR THERMOPLASTIC PAVEMENT MARKING, RIGHT ARROW.
  4. INSTALL NEW RETROREFLECTIVE PREFORMED PATTERNED OR THERMOPLASTIC PAVEMENT MARKING, LEFT ARROW.
  5. KEEP EXISTING SIGN IN PLACE.
  6. INSTALL NEW 24" WIDE SOLID WHITE REFLECTORIZED THERMOPLASTIC STOP BAR AT PC OF CURB RETURN.

CONSULTANTS

**Bohman  
Huston**

www.bhbc.com  
800.877.5332


AGES MONUMENT 17.4'x10'	RECORD MARKS
GEOGRAPHIC POSITION (NAD 83)	
N.M. STATE PLANE COORDINATES	
(CENTRAL ZONE)	
GROUND TO GRID = 0.9996567786	
NAVD 1988 ELEVATION = 6344.389	



DESIGNED BY: MS	BY
DRAWN BY: HG	
CHECKED BY: _____	
DATE: _____	
NO. _____	DATE
AS-BUILT INFORMATION	DESCRIPTION
WORK STAGED BY: _____	CONTRACTOR
INSPECTORS ACCEPTANCE BY: _____	DATE
FIELD VERIFICATION BY: _____	DATE
DRAWINGS CORRECTED BY: _____	DATE

**811**

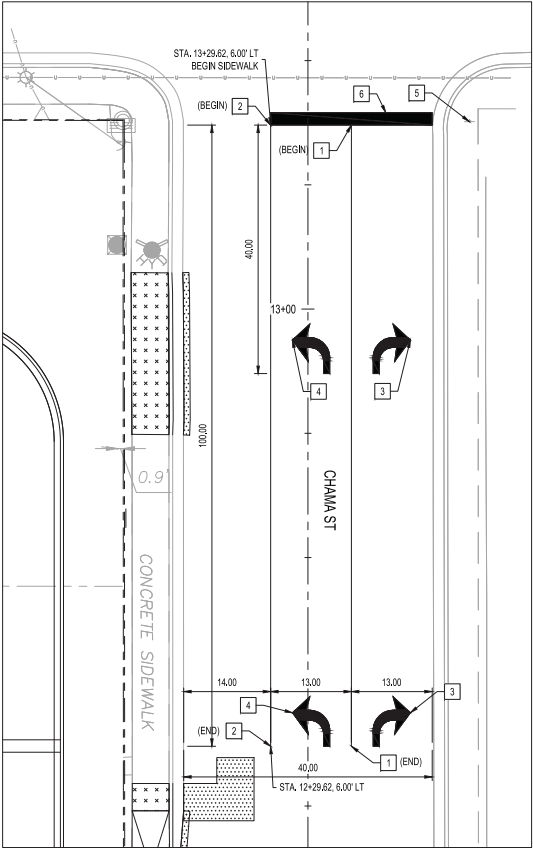
CALL NM ONE-CALL SYSTEM  
SEVEN (7) DAYS PRIOR TO  
ANY EXCAVATION



CITY OF ALBUQUERQUE  
DEPARTMENT OF MUNICIPAL DEVELOPMENT  
ENGINEERING DIVISION

**FIESTA SUBARU**  
**ENLARGED STRIPING PLAN**

DESIGN REVIEW COMMITTEE	CITY ENGINEER APPROVAL	ZONE MAP NO.
Approved by Albuquerque City Engineer and Design Review Committee, Jan. 31, 2023		K-19-Z
		CITY PROJECT NO. 700199
		SHEET NO. 13 OF 19



ENLARGED AREA 'B'  
SCALE: 1" = 10'



- GENERAL NOTES**
1. ALL SIGNING AND STRIPING SHALL BE INSTALLED IN ACCORDANCE WITH MUTCD LATEST EDITION AND NMDOT STANDARD SPECIFICATIONS.
  2. ALL SIGN AND POST MATERIAL SHALL CONFORM TO CITY OF ALBUQUERQUE TRAFFIC ENGINEERING REQUIREMENTS.
  3. CONTRACTOR SHALL REPLACE EXISTING PAVEMENT MARKINGS THAT ARE OBLITERATED FOR TRAFFIC CONTROL REASONS. THIS WORK SHALL BE CONSIDERED INCIDENTAL TO TRAFFIC CONTROL.
  4. ALL STRIPING ERADICATION SHALL BE ACCOMPLISHED BY WATER BLASTING OR SURFACE PLANING TO A MAXIMUM DEPTH OF 0.25 INCHES AND FOR WIDTH EQUAL TO TWO TIMES THE WIDTH OF MARKING TO BE REMOVED.
  5. ALL PAVEMENT WITHIN PROJECT LIMITS SHALL BE COVERED WITH ASPHALT SLURRY SEAL PRIOR TO FINAL STRIPING.

- ☐ **STRIPING KEYED NOTES**
1. REFLECTORIZED THERMOPLASTIC PAVEMENT MARKING - 4" SOLID WHITE STRIPE.
  2. REFLECTORIZED THERMOPLASTIC MARKING - 4" SOLID DOUBLE YELLOW STRIPE.
  3. INSTALL NEW RETROREFLECTIVE PREFORMED PATTERNED OR THERMOPLASTIC PAVEMENT MARKING, RIGHT ARROW.
  4. INSTALL NEW RETROREFLECTIVE PREFORMED PATTERNED OR THERMOPLASTIC PAVEMENT MARKING, LEFT ARROW.
  5. KEEP EXISTING SIGN IN PLACE.
  6. INSTALL NEW 24" WIDE SOLID WHITE REFLECTORIZED THERMOPLASTIC STOP BAR AT PC OF CURB RETURN.



AGS MONUMENT 17.4'x10'
GEOGRAPHIC POSITION (NAD 83)
N.M. STATE PLANE COORDINATES
(CENTRAL ZONE)
GROUND TO GRID = 0.9996567786
NAVD 1988 ELEVATION = 5344.389



DESIGNED BY: MS
DRAWN BY: HG
CHECKED BY: CHECKED BY
DATE: ###

NO.	DATE	DESCRIPTION
AS-BUILT INFORMATION		CONTRACTOR
WORK STAGED BY:	DATE:	
INSPECTORS ACCEPTANCE BY:	DATE:	
FIELD VERIFICATION BY:	DATE:	
DRAWINGS CORRECTED BY:	DATE:	

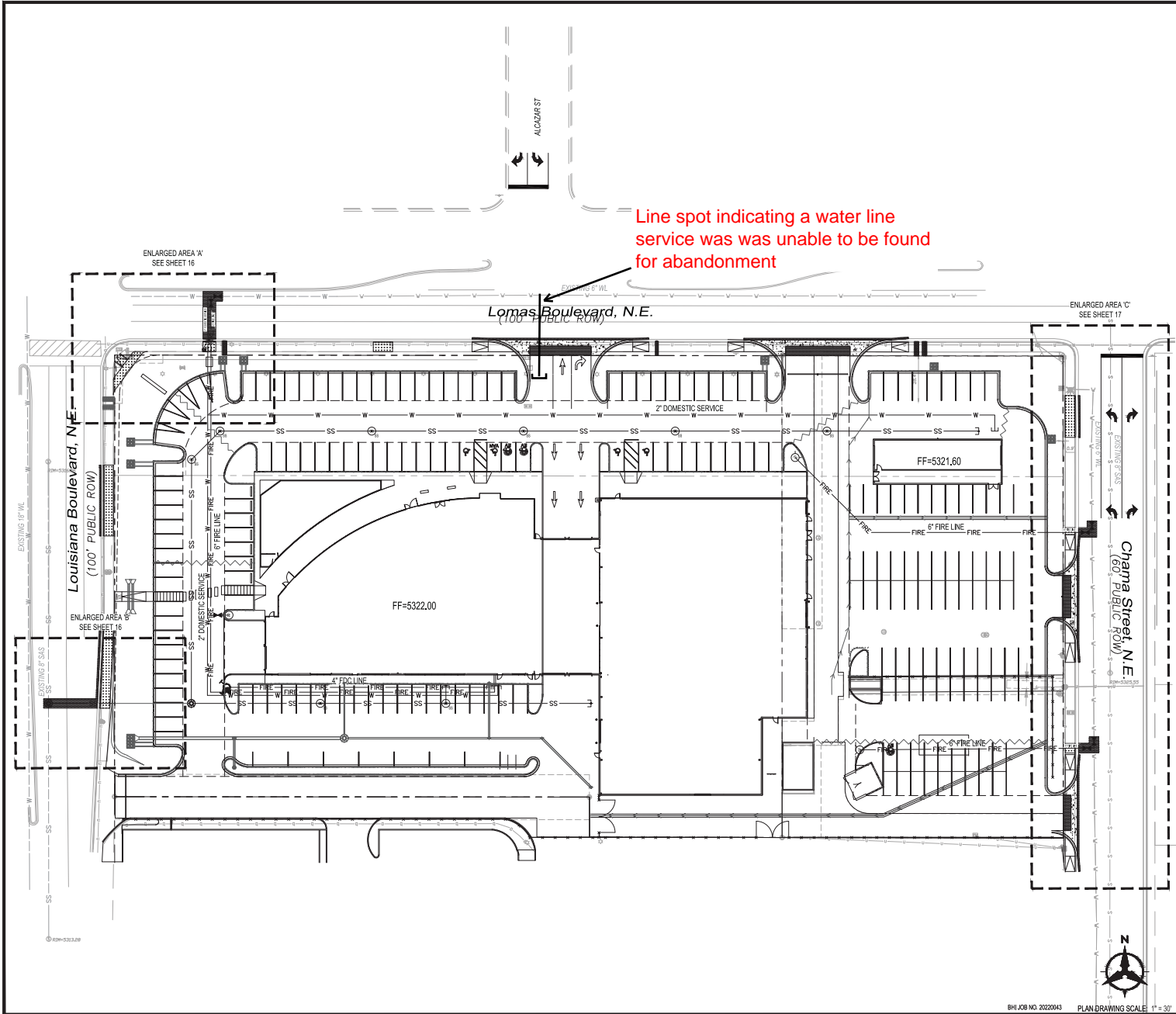


CITY OF ALBUQUERQUE  
DEPARTMENT OF MUNICIPAL DEVELOPMENT  
ENGINEERING DIVISION

**FIESTA SUBARU  
ENLARGED STRIPING PLAN**

DESIGN REVIEW COMMITTEE  
Approved by Albuquerque  
City Engineer and Design  
Review Committee, Jan. 31, 2023

ZONE MAP NO.  
K-19-Z  
CITY PROJECT NO.  
700199  
SHEET NO. 14 OF 19



**Bohannon  
Huston**  
www.bhhc.com  
800.877.5332

AGS MONUMENT "12" 4"X"
GEOGRAPHIC POSITION (NAD 83)
N.M. STATE PLANE COORDINATES
(CENTRAL ZONE)
GROUND TO GRID = 0.999657776
NAVD 1988 ELEVATION = 644.389



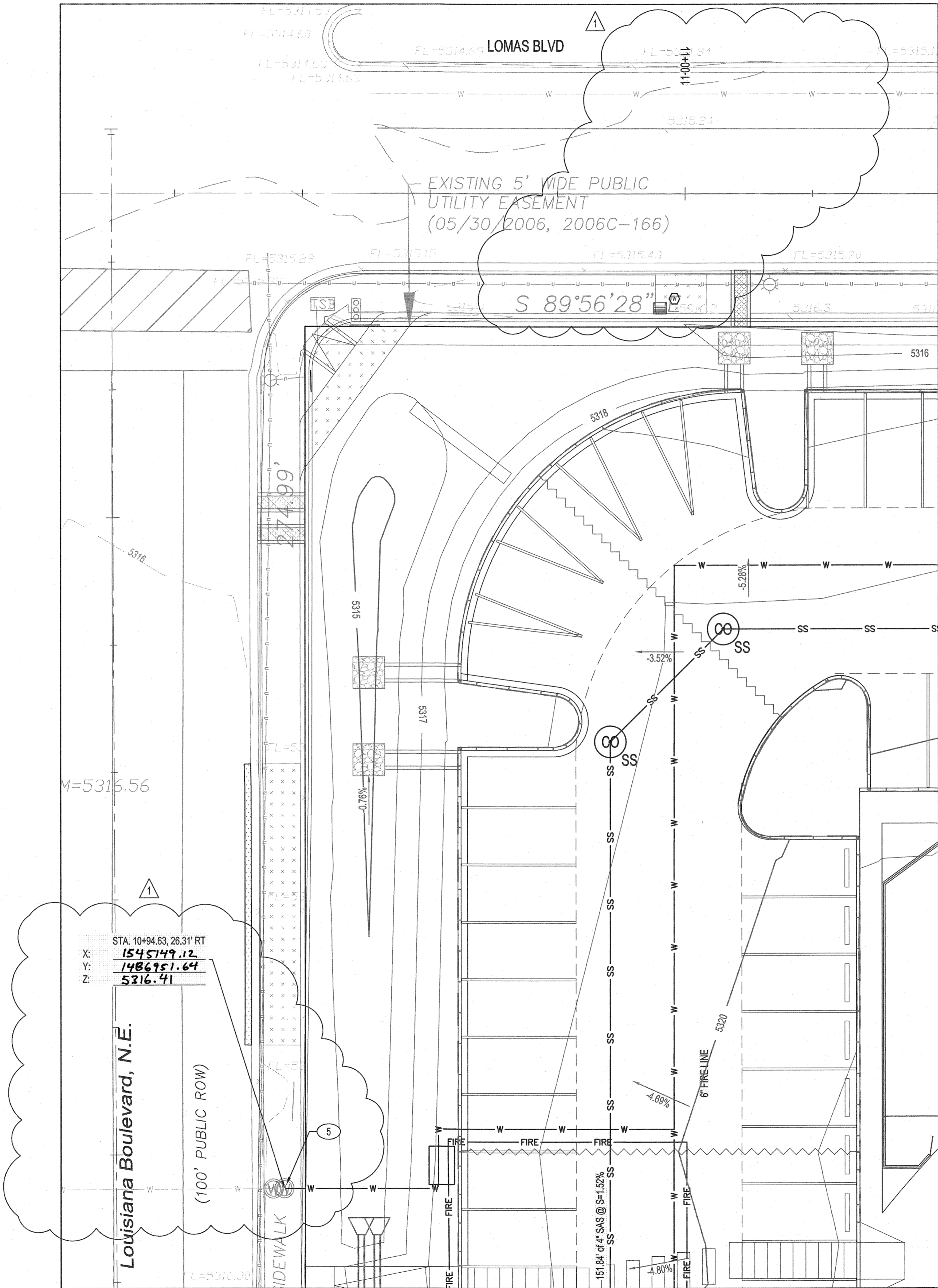
DESIGNED BY: MS	DATE
DRAWN BY: HG	DATE
CHECKED BY: ##	DATE
INSPECTORS ACCEPTANCE BY:	DATE
FIELD VERIFICATION BY:	DATE
DRAWINGS CORRECTED BY:	DATE



**CITY OF ALBUQUERQUE**  
DEPARTMENT OF MUNICIPAL DEVELOPMENT  
ENGINEERING DIVISION

**FIESTA SUBARU**  
OVERALL UTILITY PLAN

DESIGN REVIEW COMMITTEE	CITY ENGINEER APPROVAL	ZONE MAP NO.
Approved by Albuquerque City Engineer and Design Review Committee, Jan. 31, 2023		K-19-Z
		CITY PROJECT NO.
		700199
		SHEET NO.
		15 OF 19



**SURVEYOR'S CERTIFICATE**  
I, ANDREW S. MEDINA, A DULY QUALIFIED LICENSED PROFESSIONAL SURVEYOR UNDER THE LAWS OF THE STATE OF NEW MEXICO, DO HEREBY CERTIFY THAT THE AS-BUILT INFORMATION SHOWN ON THESE DRAWINGS WAS OBTAINED FROM FIELD CONSTRUCTION AND AS-BUILT SURVEYS PERFORMED BY ME, OR UNDER MY SUPERVISION, THAT THE "AS-BUILT" INFORMATION SHOWN ON THESE DRAWINGS (UNLESS OTHERWISE NOTED) WAS ADDED BY ME, OR UNDER MY SUPERVISION AND THAT THIS "AS-BUILT" INFORMATION IS TRUE AND CORRECT TO THE BEST OF MY KNOWLEDGE AND BELIEF. COMMUNITY SCIENCES CORPORATION IS NOT RESPONSIBLE FOR ANY OF THE DESIGN CONCEPTS, CALCULATIONS, ENGINEERING AND/OR INTENT OF THE RECORD DRAWINGS.

*Andrew S. Medina*  
ANDREW S. MEDINA  
NEW MEXICO PROFESSIONAL SURVEYOR  
P.O. BOX 1108  
CORRALES, NM 87408  
505-897-0000

4-11-2023  
DATE

ENLARGED AREA 'A'  
SCALE: 1" = 10'



○ WATERLINE KEYED NOTES

1. CONNECT TO EXISTING WATERLINE. INSTALL 6" X 6" TEE (W/ RESTRAINED JOINTS).
2. INSTALL 2" DOMESTIC SERVICE.
3. INSTALL 6" FIRE LINE.
4. CONNECT TO EXISTING 6" WATERLINE PER ABCWUA STD DWG 2363.
5. INSTALL 2" WATER METER AND BOX PER ABCWUA STD DWG 2363.
6. INSTALL 1 - 6" GATE VALVE WITH BOX AND LID PER ABCWUA STD DWG 2326.

□ SANITARY SEWER KEYED NOTES

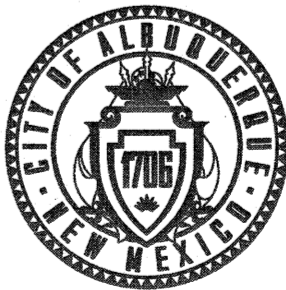
1. CONNECT TO EXISTING SANITARY SEWER. INSTALL 48" TYPE "E" SANITARY SEWER MANHOLE PER ABCWUA STD DWG 2102. CONTRACTOR TO VERIFY INVERT AND NOTIFY ENGINEER OF ANY DISCREPANCIES.

LEGEND

- W — W — EXISTING WATER LINE
- SAS - SAS - EXISTING SANITARY SEWER LINE
- W — PROPOSED WATER LINE
- SS - PROPOSED SANITARY SEWER LINE
- FIRE — PROPOSED FIRE LINE
- V — PROPOSED VALVE
- V — EXISTING VALVE
- M — PROPOSED SANITARY SEWER MANHOLE
- M — EXISTING SANITARY SEWER MANHOLE
- P — ASPHALT PAVEMENT
- D — CONCRETE DRIVEPAD
- S — CONCRETE SIDEWALK



CALL NM ONE-CALL SYSTEM  
SEVEN (7) DAYS PRIOR TO  
ANY EXCAVATION



CITY OF ALBUQUERQUE  
DEPARTMENT OF MUNICIPAL DEVELOPMENT  
ENGINEERING DIVISION

FIESTA SUBARU  
ENLARGED UTILITY PLAN

DESIGN REVIEW COMMITTEE

CITY ENGINEER APPROVAL

ZONE MAP NO.

K-19-Z

CITY PROJECT NO.

700199

SHEET NO.

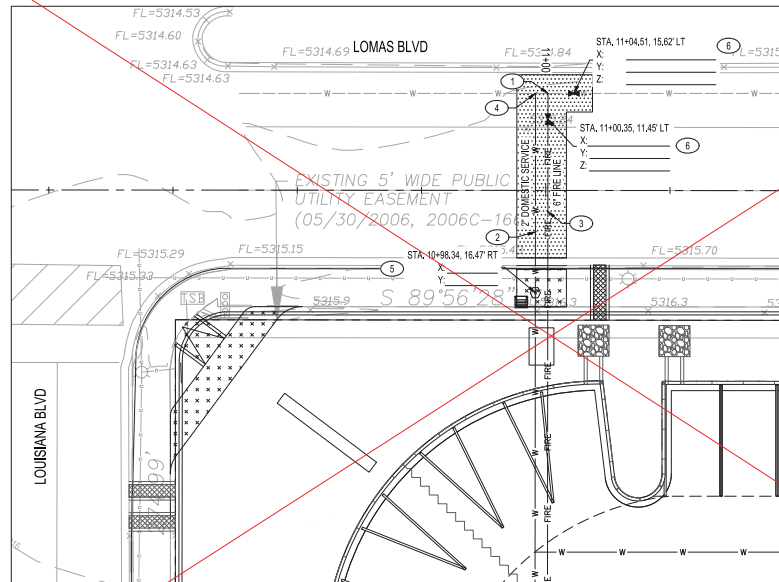
16R OF 19

**Bohannon  
Huston**  
CONSULTANTS  
www.bhinc.com  
800.877.5332

BENCH MARKS  
AGRS MONUMENT "17\_K19"  
GEOGRAPHIC POSITION (NAD 83)  
N.M. STATE PLANE COORDINATES  
(CENTRAL ZONE)  
GROUND TO GRID = 0.98955785  
NAVD 1988 ELEVATION = 5344.389

SEAL

DATE	BY	DESCRIPTION	CONTRACTOR
04-06-2023	JM	UTILIZE 6" FL & 2" SERVICE IN LOUISIANA	
04-06-2023	JM	AS-BUILT INFORMATION	
04-06-2023	JM	WORK STAKED BY:	DATE:
04-06-2023	JM	INSPECTOR'S ACCEPTANCE BY:	DATE:
04-06-2023	JM	FIELD VERIFICATION BY:	DATE:
04-06-2023	JM	DRAWINGS CORRECTED BY:	DATE:



ENLARGED AREA 'A'  
SCALE: 1" = 10'



### WATERLINE KEYED NOTES

1. CONNECT TO EXISTING WATERLINE. INSTALL 6" X 6" TEE (W/ RESTRAINED JOINTS).
2. INSTALL 2" DOMESTIC SERVICE.
3. INSTALL 6" FIRE LINE.
4. CONNECT TO EXISTING 6" WATERLINE PER ABCWUA STD DWG 2363.
5. INSTALL 2" WATER METER AND BOX PER ABCWUA STD DWG 2363.
6. INSTALL 1 - 6" GATE VALVE WITH BOX AND LID PER ABCWUA STD DWG 2326.

### SANITARY SEWER KEYED NOTES

1. CONNECT TO EXISTING SANITARY SEWER. INSTALL 48" TYPE "E" SANITARY SEWER MANHOLE PER ABCWUA STD DWG 2102. CONTRACTOR TO VERIFY INVERT AND NOTIFY ENGINEER OF ANY DISCREPANCIES.

### LEGEND

- EXISTING WATER LINE
- - - EXISTING SANITARY SEWER LINE
- - - PROPOSED WATER LINE
- - - PROPOSED SANITARY SEWER LINE
- - - PROPOSED FIRE LINE
- - - PROPOSED VALVE
- - - EXISTING VALVE
- - - PROPOSED SANITARY SEWER MANHOLE
- - - EXISTING SANITARY SEWER MANHOLE
- - - ASPHALT PAVEMENT
- - - CONCRETE DRIVEPAD
- - - CONCRETE SIDEWALK



CITY OF ALBUQUERQUE  
DEPARTMENT OF MUNICIPAL DEVELOPMENT  
ENGINEERING DIVISION

FIESTA SUBARU  
ENLARGED UTILITY PLAN

DESIGN REVIEW COMMITTEE: City Engineer and Design Review Committee, Jan. 31, 2023

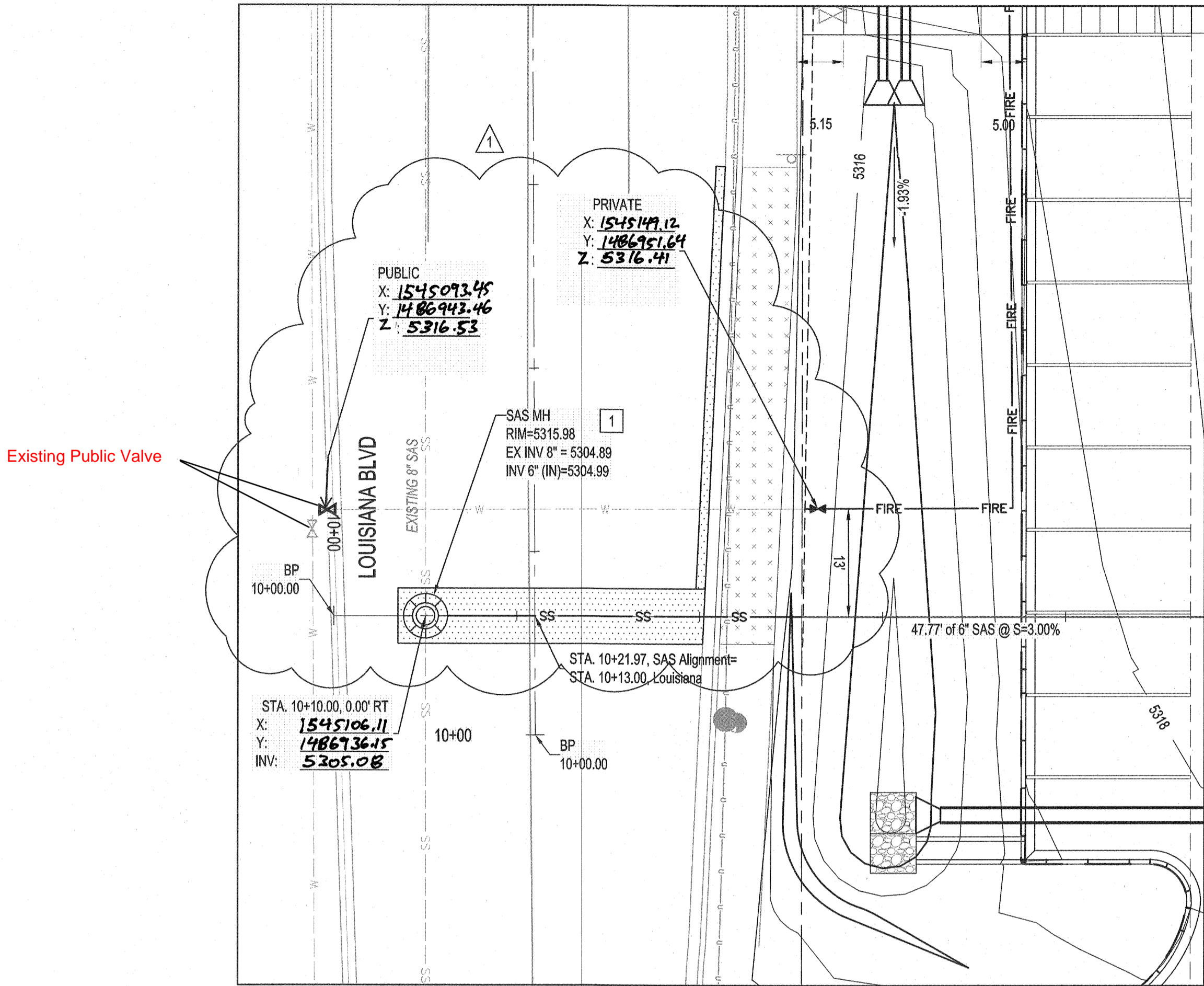
CITY ENGINEER APPROVAL: [Signature]  
ZONE MAP NO. K-19-Z  
CITY PROJECT NO. 700199  
SHEET NO. 16 OF 19

CONSULTANTS  
**Bohannon & Huston**  
www.bhinc.com  
800.877.5332

BENCH MARKS  
AGPS MONUMENT "T", 4"X4"  
GEOGRAPHIC POSITION (NAD 83)  
N.M. STATE PLANE COORDINATES  
(CENTRAL ZONE)  
GROUND TO GRID = 0.999657786  
NAVD 1988 ELEVATION = 5444.389

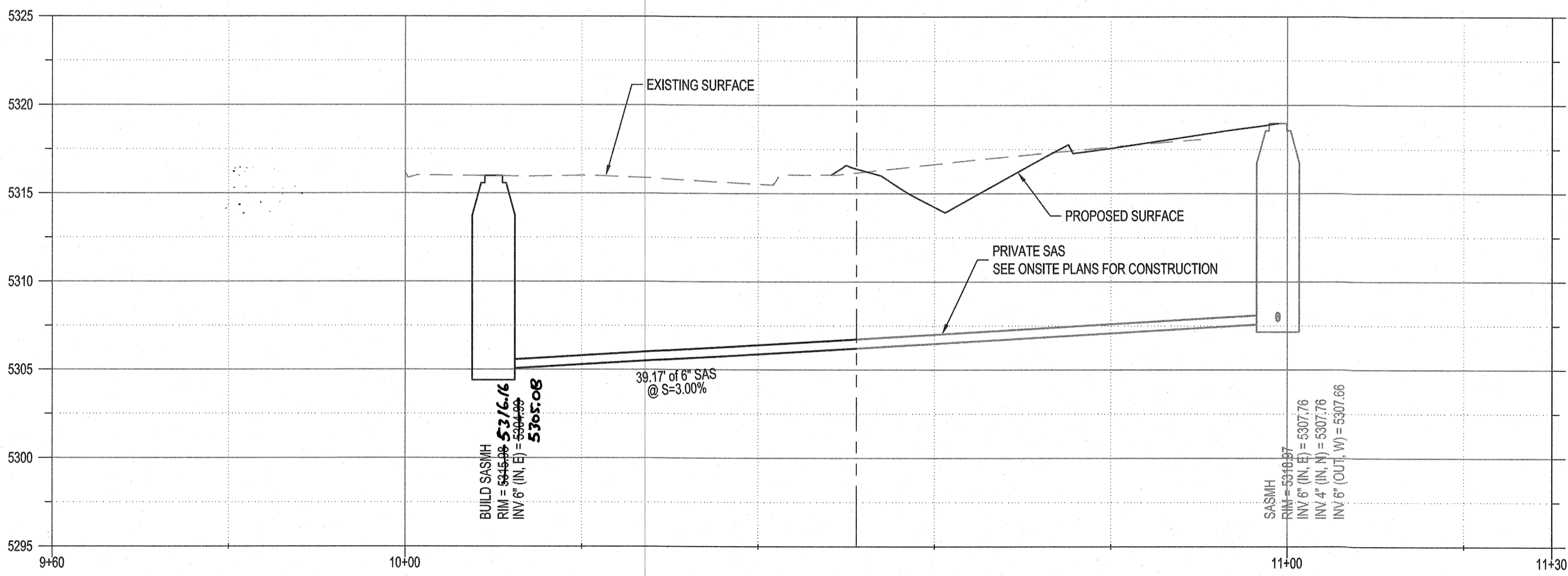


DESIGNED BY: MS  
DRAWN BY: HG  
CHECKED BY: [Signature]  
DATE: ###  
NO. DATE DESCRIPTION CONTRACTOR  
WORK STAGED BY: [Signature]  
INSPECTORS ACCEPTANCE BY: [Signature]  
FIELD VERIFICATION BY: [Signature]  
DRAWINGS CORRECTED BY: [Signature]



Existing Public Valve

ENLARGED AREA 'B'  
SCALE: 1" = 10'



**SURVEYOR'S CERTIFICATE**  
I, ANDREW S. MEDINA, A DULY QUALIFIED LICENSED PROFESSIONAL SURVEYOR UNDER THE LAWS OF THE STATE OF NEW MEXICO, DO HEREBY CERTIFY THAT THE AS-BUILT INFORMATION SHOWN ON THESE DRAWINGS WAS OBTAINED FROM FIELD CONSTRUCTION AND "AS-BUILT" SURVEYS PERFORMED BY ME, OR UNDER MY SUPERVISION, THAT THE "AS-BUILT" INFORMATION SHOWN ON THESE DRAWINGS (UNLESS OTHERWISE NOTED) WAS ADDED BY ME, OR UNDER MY SUPERVISION AND THAT THIS "AS-BUILT" INFORMATION IS TRUE AND CORRECT TO THE BEST OF MY KNOWLEDGE AND BELIEF. COMMUNITY SCIENCES CORPORATION IS NOT RESPONSIBLE FOR ANY OF THE DESIGN CONCEPTS, CALCULATIONS, ENGINEERING AND/OR INTENT OF THE RECORD DRAWINGS.

ANDREW S. MEDINA  
NEW MEXICO PROFESSIONAL SURVEYOR  
P.O. BOX 1320  
CORRALES, NM 87408  
505-897-0000

4-11-2023

WATERLINE KEYED NOTES

1. CONNECT TO EXISTING WATERLINE. INSTALL 6" X 6" TEE (W/ RESTRAINED JOINTS).
2. INSTALL 2" DOMESTIC SERVICE.
3. INSTALL 6" FIRE LINE.
4. CONNECT TO EXISTING 6" WATERLINE PER ABCWUA STD DWG 2363.
5. INSTALL 2" WATER METER AND BOX PER ABCWUA STD DWG 2363.
6. INSTALL 1 - 6" GATE VALVE WITH BOX AND LID PER ABCWUA STD DWG 2326.

SANITARY SEWER KEYED NOTES

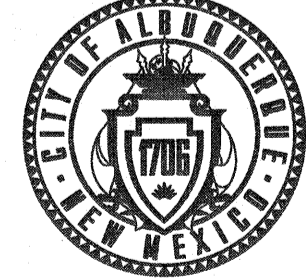
1. CONNECT TO EXISTING SANITARY SEWER. INSTALL 48" TYPE "E" SANITARY SEWER MANHOLE PER ABCWUA STD DWG 2102. CONTRACTOR TO VERIFY INVERT AND NOTIFY ENGINEER OF ANY DISCREPANCIES.

LEGEND

- EXISTING WATER LINE
- EXISTING SANITARY SEWER LINE
- PROPOSED WATER LINE
- PROPOSED SANITARY SEWER LINE
- PROPOSED FIRE LINE
- PROPOSED VALVE
- EXISTING VALVE
- PROPOSED SANITARY SEWER MANHOLE
- EXISTING SANITARY SEWER MANHOLE
- ASPHALT PAVEMENT
- CONCRETE DRIVEPAD
- CONCRETE SIDEWALK



CALL NM ONE-CALL SYSTEM  
SEVEN (7) DAYS PRIOR TO  
ANY EXCAVATION

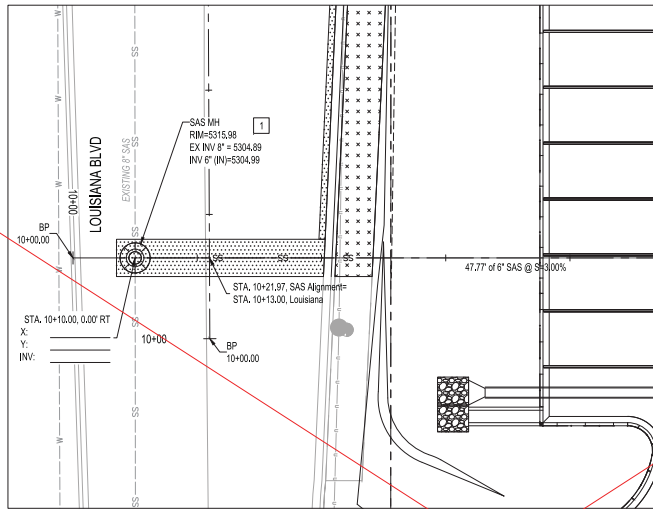


CITY OF ALBUQUERQUE  
DEPARTMENT OF MUNICIPAL DEVELOPMENT  
ENGINEERING DIVISION

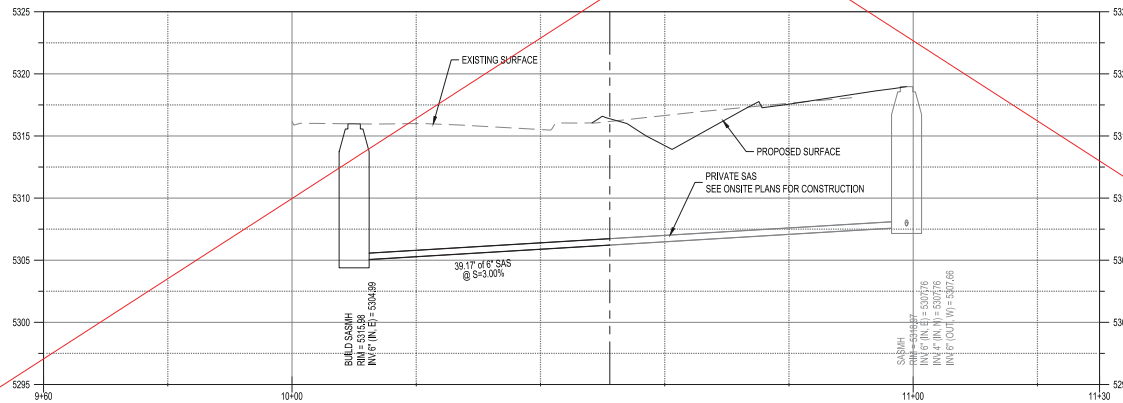
FIESTA SUBARU  
ENLARGED UTILITY PLAN

DESIGNED BY: MS  
DRAWN BY: HG  
CHECKED BY: CHECKED BY  
DATE: ###

ZONE MAP NO.  
K-19-Z  
CITY PROJECT NO.  
700199  
SHEET NO.  
17R OF 19



ENLARGED AREA 'B'  
SCALE: 1" = 10'



## WATERLINE KEYED NOTES

1. CONNECT TO EXISTING WATERLINE. INSTALL 6" X 6" TEE (W/ RESTRAINED JOINTS).
2. INSTALL 2" DOMESTIC SERVICE.
3. INSTALL 6" FIRE LINE.
4. CONNECT TO EXISTING 6" WATERLINE PER ABCWUA STD DWG 2363.
5. INSTALL 2" WATER METER AND BOX PER ABCWUA STD DWG 2363.
6. INSTALL 1 - 6" GATE VALVE WITH BOX AND LID PER ABCWUA STD DWG 2368.

## SANITARY SEWER KEYED NOTES

1. CONNECT TO EXISTING SANITARY SEWER. INSTALL 48" TYPE 'E' SANITARY SEWER MANHOLE PER ABCWUA STD DWG 2102. CONTRACTOR TO VERIFY INVERT AND NOTIFY ENGINEER OF ANY DISCREPANCIES.

**Bohannon  
Huston**  
CONSULTANTS  
www.bhnc.com  
800.877.5332

AGS MONUMENT "T" 4"X4"  
GEOGRAPHIC POSITION (NAD 83)  
N.M. STATE PLANE COORDINATES  
(CENTRAL ZONE)  
GROUND TO GRID = 0.999657786  
NAVD 1988 ELEVATION = 5344.389



SEAL

## LEGEND

—	EXISTING WATER LINE
—	EXISTING SANITARY SEWER LINE
W	PROPOSED WATER LINE
SS	PROPOSED SANITARY SEWER LINE
FIRE	PROPOSED FIRE LINE
⊗	PROPOSED VALVE
⊙	EXISTING VALVE
⊗	PROPOSED SANITARY SEWER MANHOLE
⊙	EXISTING SANITARY SEWER MANHOLE
▨	ASPHALT PAVEMENT
▩	CONCRETE DRIVEPAD
▩	CONCRETE SIDEWALK



CALL NM ONE-CALL SYSTEM  
SEVEN (7) DAYS PRIOR TO  
ANY EXCAVATION



CITY OF ALBUQUERQUE  
DEPARTMENT OF MUNICIPAL DEVELOPMENT  
ENGINEERING DIVISION

**FIESTA SUBARU  
ENLARGED UTILITY PLAN**

DESIGN REVIEW COMMITTEE CITY ENGINEER APPROVAL

Approved by Albuquerque  
City Engineer and Design  
Review Committee, Jan. 31, 2023

ZONE MAP NO.

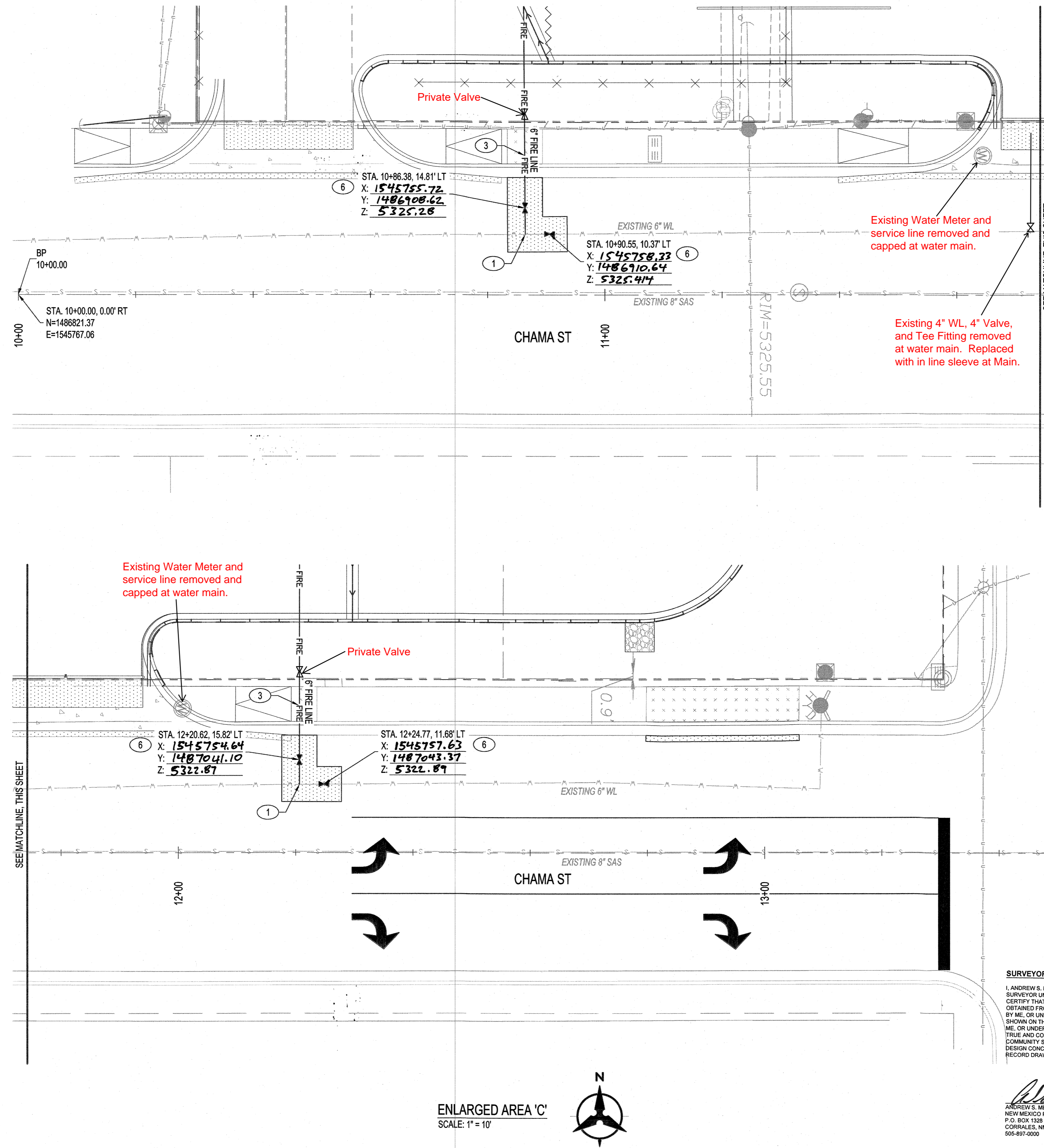
K-19-Z

CITY PROJECT NO.

700499

SHEET NO.

17 OF 19



**SURVEYOR'S CERTIFICATE**

ANDREW S. MEDINA, A DULY QUALIFIED LICENSED PROFESSIONAL SURVEYOR, UNDER THE LAWS OF THE STATE OF NEW MEXICO, DO HEREBY CERTIFY THAT THE AS-BUILT INFORMATION SHOWN ON THESE DRAWINGS WAS OBTAINED FROM FIELD CONSTRUCTION AND "AS-BUILT" SURVEYS PERFORMED BY ME, OR UNDER MY SUPERVISION, THAT THE "AS-BUILT" INFORMATION SHOWN ON THESE DRAWINGS (UNLESS OTHER WISE NOTED) WAS ADDED BY ME, OR UNDER MY SUPERVISION AND THAT THIS "AS-BUILT" INFORMATION IS CORRECT TO THE BEST OF MY KNOWLEDGE AND BELIEF. I AM NOT PROVIDING ANY WARRANTY OR LIABILITY FOR ANY OF THE DESIGN CONCEPTS, CALCULATIONS, ENGINEERING AND/OR INTENT OF THE RECORD DRAWINGS.

ANDREW S. MEDINA  
NEW MEXICO PROFESOR  
P.O. BOX 1328  
CORRALES, NM 87401  
505-897-0000

BHI JOB NO. 20220043













☐ WATERLINE KEYED NOTES

1. CONNECT TO EXISTING WATERLINE. INSTALL 6" X 6" TEE (W/ RESTRAINED JOINTS).
2. INSTALL 2" DOMESTIC SERVICE.
3. INSTALL 6" FIRE LINE.
4. CONNECT TO EXISTING 6" WATERLINE PER ABCWUA STD DWG 2363.
5. INSTALL 2" WATER METER AND BOX PER ABCWUA STD DWG 2363.
6. INSTALL 1" - 6" GATE VALVE WITH BOX AND LID PER ABCWUA STD DWG 2326.

☐ **SANITARY SEWER KEYED NOTES**

1. CONNECT TO EXISTING SANITARY SEWER. INSTALL 48" TYPE "E" SANITARY SEWER MANHOLE PER ABCWUA STD DWG 2102. CONTRACTOR TO VERIFY INVERT AND NOTIFY ENGINEER OF ANY DISCREPANCIES.

## LEGEND

	EXISTING WATER LINE
	EXISTING SANITARY SEWER LINE
	PROPOSED WATER LINE
	PROPOSED SANITARY SEWER LINE
	PROPOSED FIRE LINE
	PROPOSED VALVE
	EXISTING VALVE
	PROPOSED SANITARY SEWER MANHOLE
	EXISTING SANITARY SEWER MANHOLE
	ASPHALT PAVEMENT
	CONCRETE DRIVEPAD
	CONCRETE SIDEWALK



CALL NM ONE-CALL SYSTEM  
SEVEN (7) DAYS PRIOR TO  
ANY EXCAVATION

DESIGNED BY: MS
DRAWN BY: HG
CHECKED BY: CHECKED BY
DATE ####

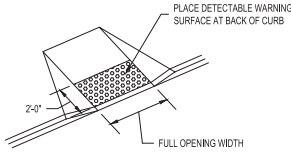
CITY OF ALBUQUERQUE  
DEPARTMENT OF MUNICIPAL DEVELOPMENT  
ENGINEERING DIVISION

**FIESTA SUBARU  
ENLARGED UTILITY PLAN**

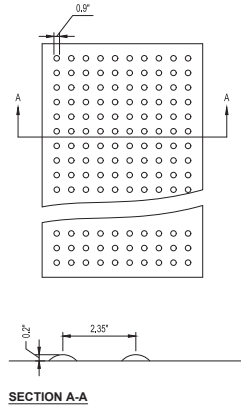
DESIGN REVIEW COMMITTEE	CITY ENGINEER APPROVAL
Approved by Albuquerque City Engineer and Design Review Committee, Jan. 31, 2023	

ZONE MAP NO.	K-19-Z
CITY PROJECT NO.	700199
SHEET NO.	18 OF 19

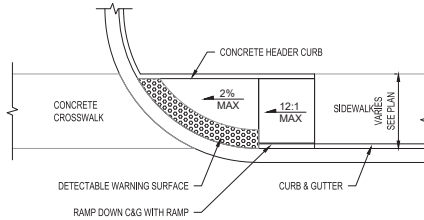
CONTRACTOR NOTE:  
CONTRACTOR SHALL INSTALL DETECTABLE WARNING SURFACE ON NEW CURB RAMPS. WARNING SURFACE SHALL BE CAST-IN-PLACE REPLACEABLE TRUNCATED DOME TACTILE CUES. COLOR MUST BE SAFETY YELLOW. CONTACT CITY OF ALBUQUERQUE ENGINEER FOR APPROVED LIST OF VENDORS & PRODUCTS. DESIGN PER ADA GUIDELINES. SUBMIT SPECIFICATIONS TO CONSTRUCTION ENGINEER FOR EVALUATION PRIOR TO CONSTRUCTION.



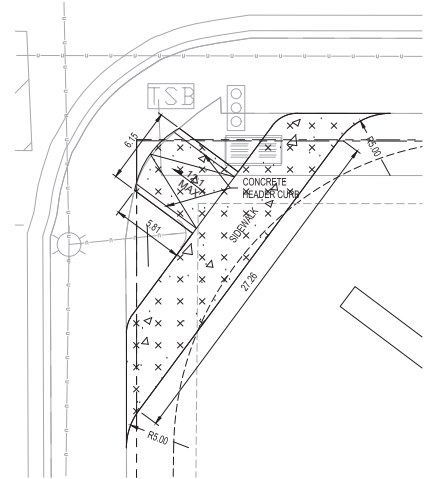
DETECTABLE WARNING SURFACE NOTE:  
DETECTABLE WARNING SURFACE SHALL CONSIST OF RAISED TRUNCATED DOMES WITH NOMINAL DIAMETER 23mm, (0.91"), NOMINAL HEIGHT 5mm, (0.2"), & NOMINAL CENTER TO CENTER SPACING 60mm, (2.35").



**DETECTABLE WARNING SURFACE**  
**NOT TO SCALE**



**WHEELCHAIR RAMP DETAIL "A"**  
**COA STD DWG 2441**  
**NOT TO SCALE**



**WHEELCHAIR RAMP DETAIL "B"**  
**NOT TO SCALE**

**RESTRAINED JOINT TABLE**

MECHANICAL JOINTS (C900-PVC)	LENGTH OF RESTRAINED JOINTS
6" GATE VALVE	55'
6" X 6" TEE	1'

**MATERIALS:**

SAS LINE: SDR-35 PVC  
WATER LINE: C900-PVC DR18

**NOTE:**

1. RESTRAINED JOINTS ANALYZED WITH TYPE SM SOIL, 1.5 SAFETY FACTOR,
2. 3 FT MIN BURY, TRENCH TYPE 4, AND WITH 150 PSIMAX PRESSURE.
3. ALL MECHANICAL JOINTS SHALL BE RESTRAINED AT THE FITTING.
4. ALL SERVICE FIRE LINES SHALL BE RESTRAINED THE ENTIRE DISTANCE FROM THE FITTING TO THE CAP.
5. THE CONTRACTOR SHALL RESTRAIN ALL FIRE HYDRANT JOINTS FROM THE TEE ON THE MAIN TO THE FIRE HYDRANT FLANGE.
6. THE CONTRACTOR SHALL PROVIDE A MINIMUM PIPE LENGTH OF 20 LF FROM ALL MECHANICAL JOINTS, UNLESS SPECIFIED DIFFERENTLY IN THE PLANS. ALL PIPE JOINTS WITHIN 20 LF OF A MJ SHALL BE RESTRAINED AT THE CONTRACTOR'S EXPENSE.
7. THE CONTRACTOR SHALL RESTRAIN ALL PIPE JOINTS TO THE SPECIFIED DISTANCE LISTED IN THE RESTRAINED JOINT TABLE (THIS SHEET).
8. THE CONTRACTOR SHALL TREAT CONNECTIONS TO EXISTING LINES AS A CAP WHEN DETERMINING RESTRAINING LENGTH.

**RESTRAINED JOINT TABLE**

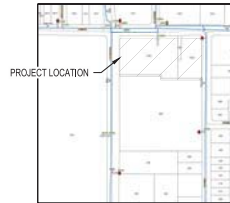
**WATER SHUT-OFF PLAN:**

FOR CONNECTION	VALVES CLOSED
CHAMA ST.	VALVE #12
	VALVE #62
LOMAS BLVD.	VALVE #1
	VALVE #2
	VALVE #651
	VALVE #652

CONTRACTOR WILL BE RESPONSIBLE FOR FLUSHING, DISINFECTING, AND TESTING THE LINES AS REQUIRED BY THE ABOQUA.

**WATER SHUT-OFF REQUIREMENTS:**

CONTRACTOR SHALL COORDINATE WITH THE WATER AUTHORITY SEVEN (7) DAYS IN ADVANCE OF PERFORMING WORK THAT WILL AFFECT THE PUBLIC WATER OR SANITARY SEWER INFRASTRUCTURE. WORK REQUIRING SHUTOFF OF WELL COLLECTORS, TRANSMISSION LINES, OR FACILITIES DESIGNATED AS MASTER PLAN FACILITIES MUST BE COORDINATED WITH THE WATER AUTHORITY 14 DAYS IN ADVANCE OF PERFORMING SUCH WORK. ONLY WATER AUTHORITY CREWS ARE AUTHORIZED TO OPERATE PUBLIC VALVES. SHUTOFFS REQUESTS MUST BE MADE ONLINE AT [HTTP://WWW.ABQUAWATER.GOV/WATER\\_SHUT\\_OFF\\_AND\\_TURN\\_ON\\_PROCESURES.ASPX](http://www.abquawater.gov/water_shut_off_and_turn_on_procedures.aspx)



**WATER SHUTOFF PLAN**  
**NOT TO SCALE**

**Bohman**  
**Huston**  
CONSULTANTS  
www.bhbc.com  
800.877.5332

AGS MONUMENT "T" 4"X"
GEOGRAPHIC POSITION (NAD 83)
N.M. STATE PLANE COORDINATES
(CENTRAL ZONE)
GROUND TO GRID = 0.999657786
NAVD 1988 ELEVATION = 6444.389



DESIGNED BY:	MS
DRAWN BY:	HG
CHECKED BY:	DATE
DATE	###
NO.	DATE
AS BUILT INFORMATION	CONTRACTOR
WORK STAGED BY:	DATE
INSPECTORS ACCEPTANCE BY:	DATE
FIELD VERIFICATION BY:	DATE
DRAWINGS CORRECTED BY:	DATE



CALL NM ONE-CALL SYSTEM  
SEVEN (7) DAYS PRIOR TO  
ANY EXCAVATION



**CITY OF ALBUQUERQUE**  
**DEPARTMENT OF MUNICIPAL DEVELOPMENT**  
**ENGINEERING DIVISION**

**FIESTA SUBARU**  
**DETAIL SHEET**

DESIGN REVIEW COMMITTEE	CITY ENGINEER APPROVAL	ZONE MAP NO.
Approved by Albuquerque City Engineer and Design Review Committee, Jan. 31, 2023		K-19-Z
		CITY PROJECT NO.
		700199
		SHEET NO.
		19 OF 19