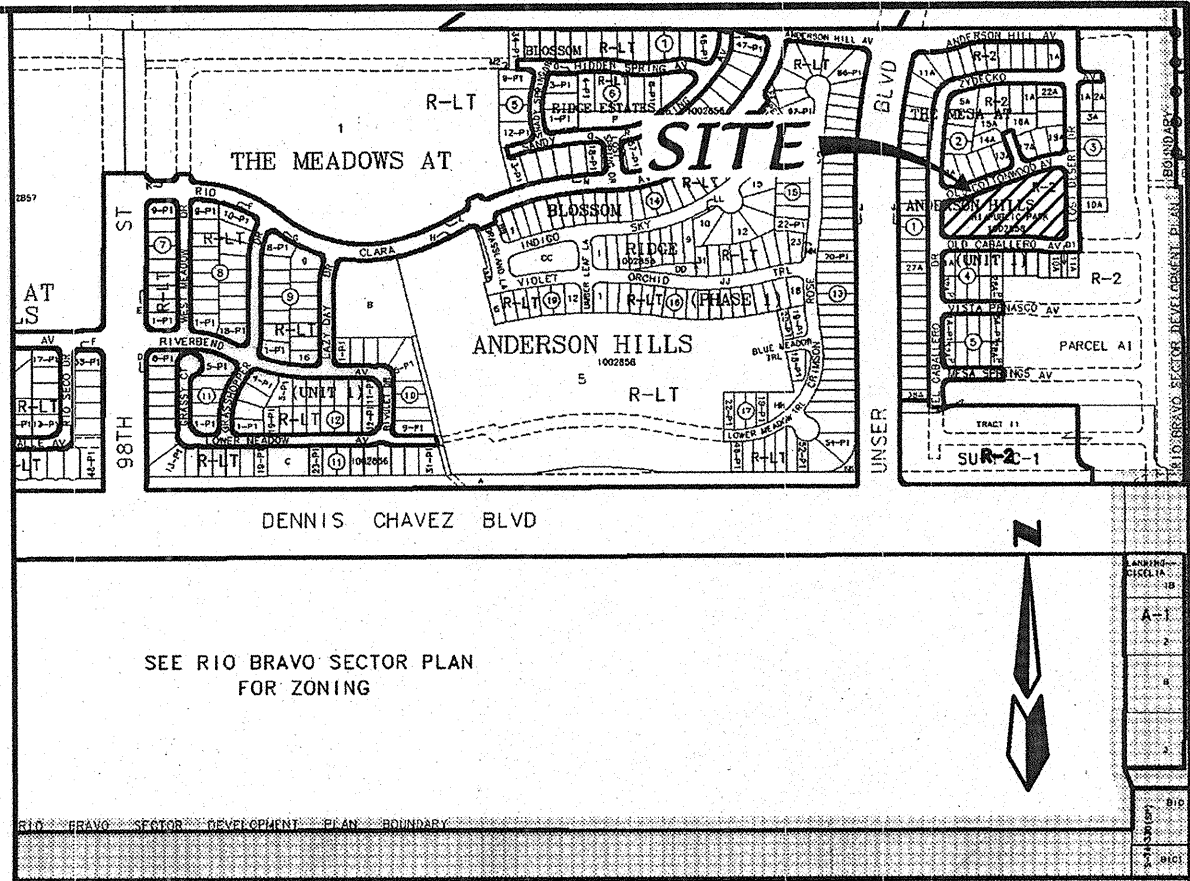


THE MESA @ ANDERSON HILLS
CITY DEDICATED PARK



VICINITY MAP: P-9-Z

CITY OF ALBUQUERQUE
DEPARTMENT OF MUNICIPAL DEVELOPMENT – Managing Department
Park Design and Construction Division

January , 2005
Parks and Recreation Department-Owner

Property Information

Meter Address: 8420A Old Caballero Ave. S.W.
Property Address: 8500 Old Cottonwood Ave. S.W.
Zone : R-2
City Dedicated Park
Total acres: 1.99 Acres

Legal Description

Tract "H-1", The Mesa At Anderson Hills, Unit 1,
within the Town of Atrisco Grant, Projected
Sections 9 and 10, Township 9 North, Range 2
East, NMPM, City of Albuquerque, Bernalillo
County, New Mexico

Index of Drawings

- 1. Cover Sheet
- 2. Grading Plan
- 3. Grading Plan For Subdivision
- 4. Construction And Layout Plan
- 5. Detail Sheet
- 6. Planting Plan
- 7. Irrigation Plan

7A. Project Information Form



RECORD DRAWINGS
THIS RECORD DRAWING HAS BEEN PREPARED, BASED
UPON INFORMATION FURNISHED BY THE CONTRACTOR.
THE DESIGN PROFESSIONAL HAS NOT INDEPENDENTLY
REVIEWED THE ACCURACY OF THE INFORMATION
PROVIDED. THESE RECORD DRAWINGS ACCURATELY
DEPICT THE FIELD CHANGES WHICH WERE REPORTED
BY THE CONTRACTOR.

UTILITY COMPANY CONTACTS

**CITY OF ALBUQUERQUE
UTILITY DEVELOPMENT**
P.O. Box 1293
Albuquerque, New Mexico 87103
(505) 768-2719

PNM-ELECTRIC
4201 Edith Boulevard NE
Albuquerque, New Mexico 87107
(505)-241-0525

PNM-GAS
4625 Edith Boulevard NE
Albuquerque, New Mexico 87107
(505)-241-7745

QWEST
201 Third Street NW Suite 700
Albuquerque, New Mexico 87103
(505) 245-8706

QWEST
201 Third Street NW Suite 700
Albuquerque, New Mexico 87103
(505) 245-8706

CALL BEFORE YOU DIG!

**STATEWIDE
1-800-321-ALERT
ALBUQUERQUE
260-1990**

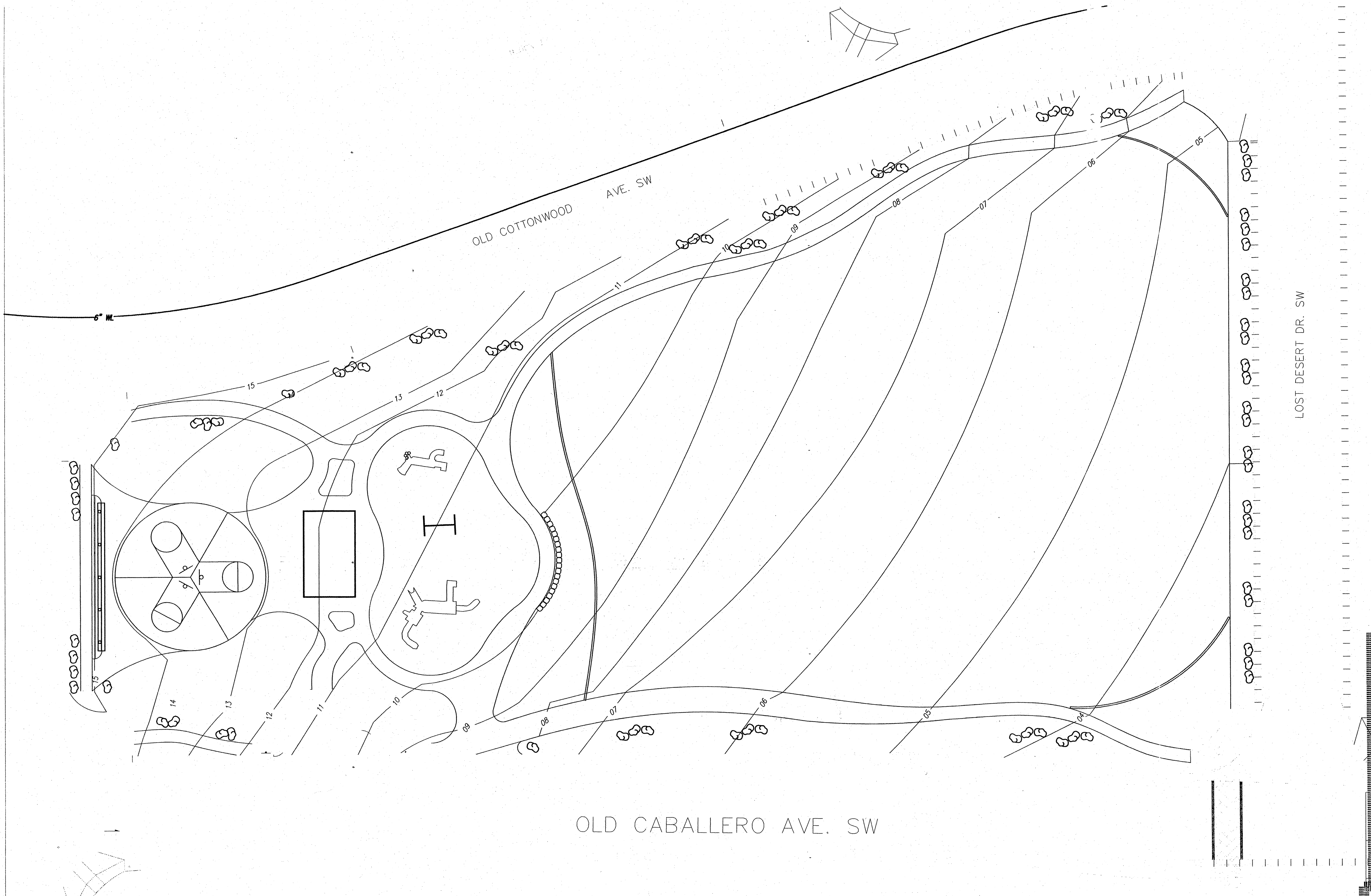
REV.	SHEETS	CITY ENGINEER	DATE	USER DEPARTMENT	DATE	USER DEPARTMENT	DATE
LANDSCAPE ARCHITECT STAMP AND SIGNATURE		APPROVED	ENGINEER	DATE			
FFC DATE:		PROJECT# 708187				SHEET 1 OF 7	

FINAL FOR CONSTRUCTION

MESA PARK

PROJECT # 708187

RECORD DRAWINGS
MARCH . 2008



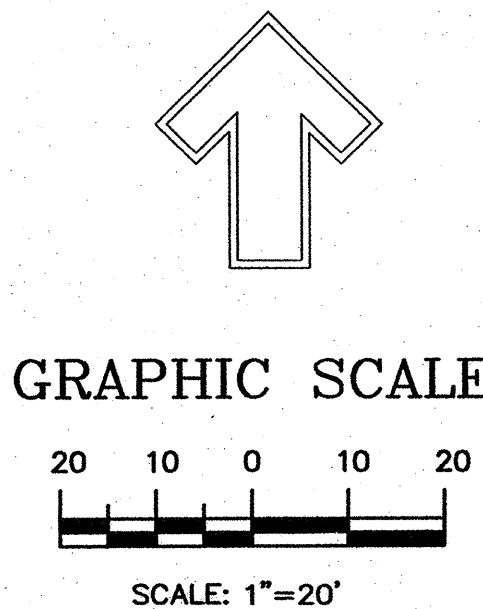
RECORD DRAWING
CERTIFICATE OF SUBSTANTIAL COMPLIANCE ON PLANS

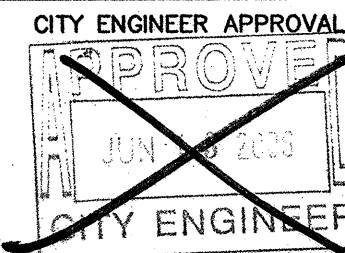
I, Mark Goodwin, NMPE 8948, of the firm Mark Goodwin & Associates, P.A., a Registered Professional Engineer in the State of New Mexico, do hereby certify, to the best of my knowledge and belief, that the infrastructure installed as part of this project has been inspected by me or by a qualified person under my direct supervision, and has been constructed in accordance with the plans and specifications approved by the City Engineer and that the original design intent of the approved plans has been met, except as noted by me on the as-built construction drawings. This Certification is based on site inspections by my personnel under my supervision, and survey information provided by Timothy Aldrich, NMPS number 7719.

Mark Goodwin
Mark Goodwin NMPE 8948

5/2/08

I, Mark Goodwin, certify that this electronic version is identical to the original reproducible APPROVED FOR CONSTRUCTION drawings signed by me as a Professional Engineer.



THE HILLTOP LANDSCAPE ARCHITECTS AND CONTRACTORS 7909 EDITH BLVD. N.E. ALBUQUERQUE, NEW MEXICO 87109 (505)898-9690			
CITY OF ALBUQUERQUE			
TITLE: THE MESA AT ANDERSON HILLS PARK GRADING AND DRAINAGE PLAN			
DESIGN REVIEW COMMITTEE	CITY ENGINEER APPROVAL  CITY ENGINEER	MO./DAY/YR. 4-3-06	MO./DAY/YR. CHANGE ORDER 5-2-06
CITY PROJECT NO. 708187	ZONE MAP NO. 0-0-0	SHEET 2 OF 7	

ENGINEER'S SEAL		FIELD NOTES		BENCH MARKS		AS BUILT INFORMATION	
NO.	BY	DATE	DATE	CONTRACTOR	DATE	CONTRACTOR	DATE
				ALBUQUERQUE TO REACH STATION FROM INT. OF COORS	6/6/07	Hilltop	6/6/07
				AND DENNIS CHAVEZ BLVD. (FORMERLY RIO BRAVO), GO N.	DATE	INSPECTED BY	DATE
				ON COORS 0.1 MI. TO FLORA VISTA AND GO WEST ON	DATE	STAMPED BY	DATE
				FLORA VISTA 0.5 MI. TO CONDERSHIRE, THEN GO S. ON	DATE	FIELD VERIFICATION BY	DATE
				CONDERSHIRE 0.4 MI. TO A POINT APPROX. 50 FT. W. OF	DATE	CORRECTED BY	DATE
				THE STATION. STATION MARK IS AN ACS 3 1/2" ALUM CAP	DATE	MICRO-FILM INFORMATION	DATE
				STAMPED: 2-PI0, 1987" RIVETED TO A PIPE PROJECTED	DATE	RECORDED BY	DATE
				0.25 FT ABOVE THE GROUND. X=35841.13, Y=1464349.24	DATE	NO.	DATE
				(NAD 27) Z=4991 (NGVD 29).			

SEE SHEET 7 OF 36

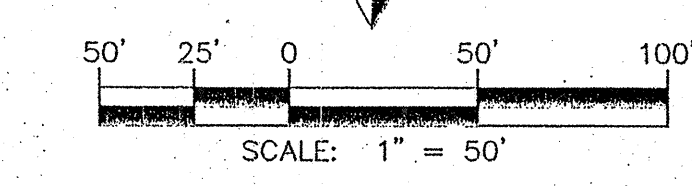
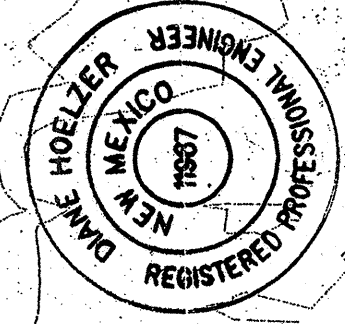
NOTES

1. SEE REAR YARD SLOPE DETAIL SHEET 3.
2. SEE SIDE YARD DETAIL SHEET 3.
3. SEE DOUBLE RETAINING WALL DETAIL SHEET 3.

SEE SHEET 5 OF 36

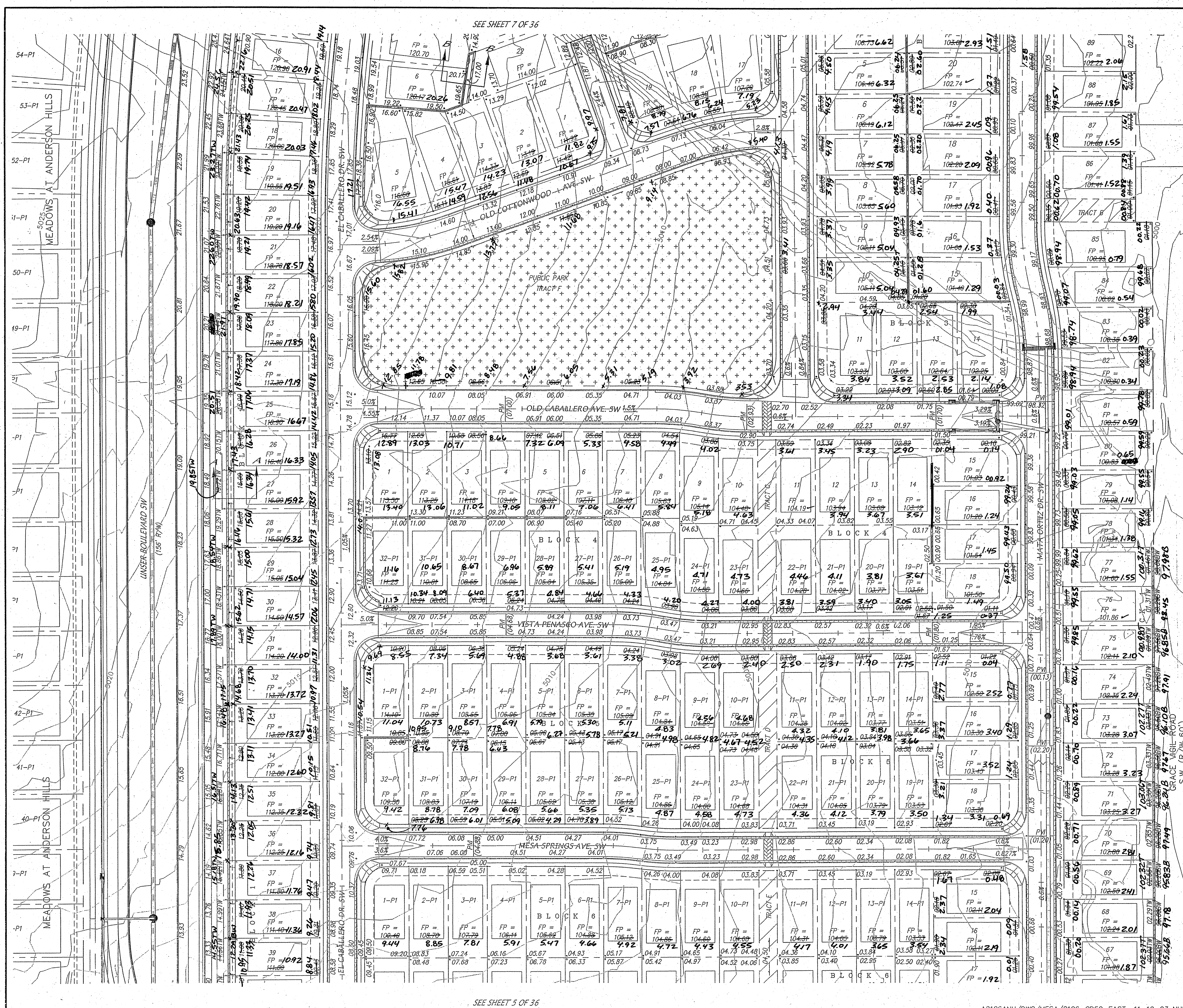
A2106ANH/DWG/MESA/2106-GD50-EAST 11-19-03 NHE

UNPLATTED LAND
BARBARA VISTA AVE.
S.W. (RW/60')



MARK GOODWIN & ASSOCIATES, P.A. CONSULTING ENGINEERS P.O. BOX 90606 ALBUQUERQUE, NEW MEXICO 87199 (505) 828-2200, FAX (505) 797-9539	
CITY OF ALBUQUERQUE PUBLIC WORKS DEPARTMENT	
TITLE: MESA AT ANDERSON HILLS GRADING & DRAINAGE PLAN	
DESIGN REVIEW COMMITTEE	CITY ENGINEER APPROVAL
CITY PROJECT NO. 708184	ZONE MAP NO. P-9
SHEET 3 OF 7	DATE 4/03

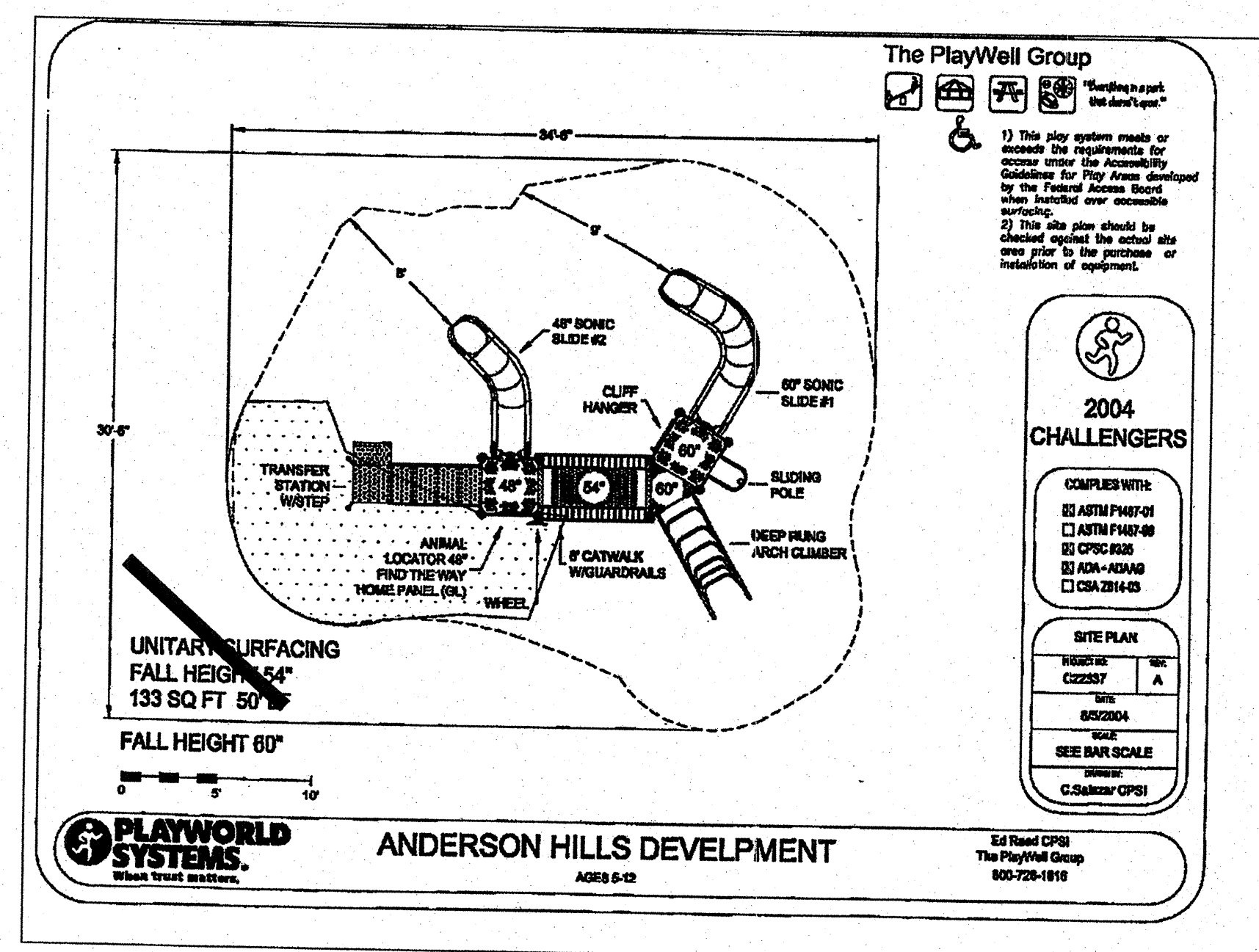
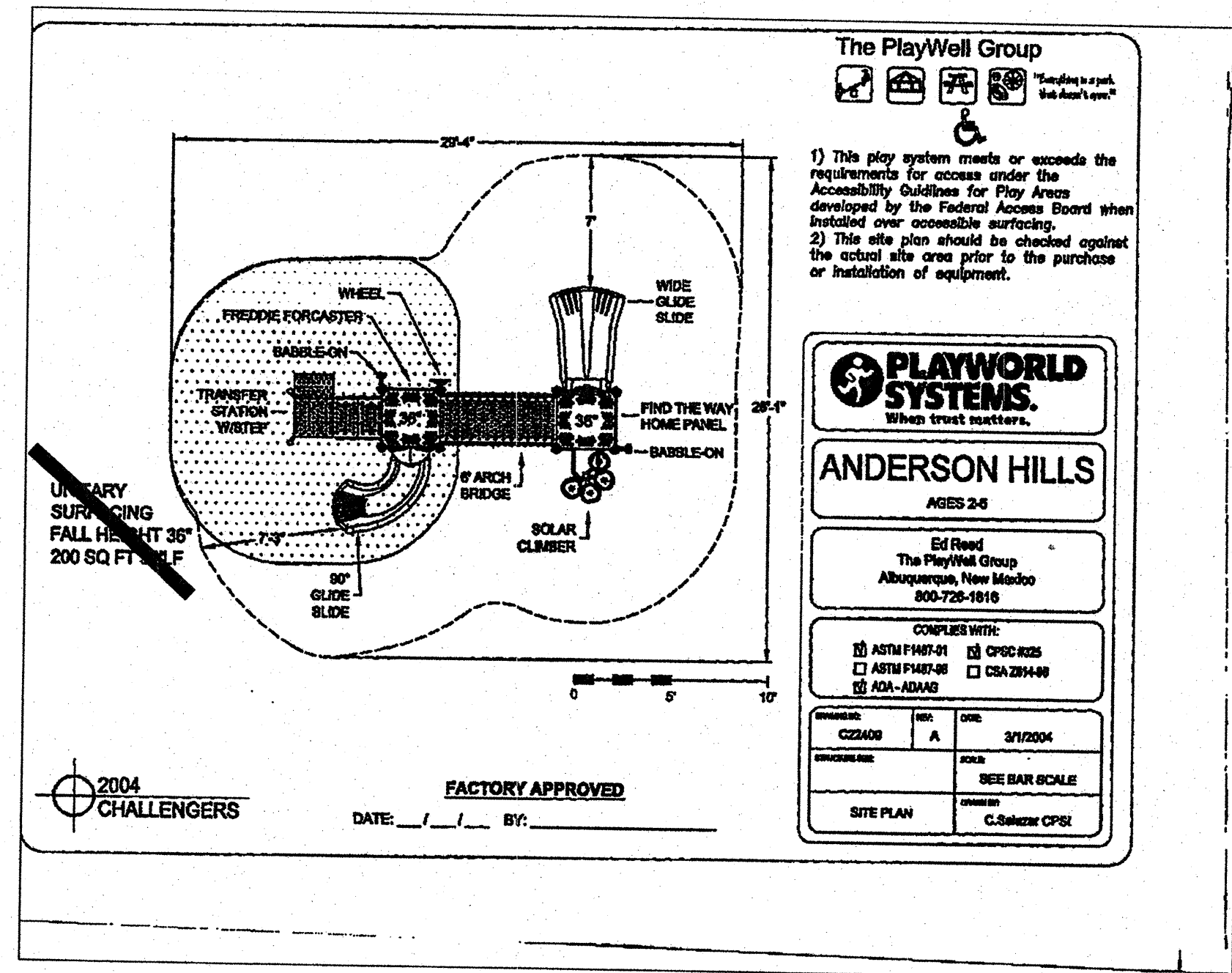
FOR INFO ONLY



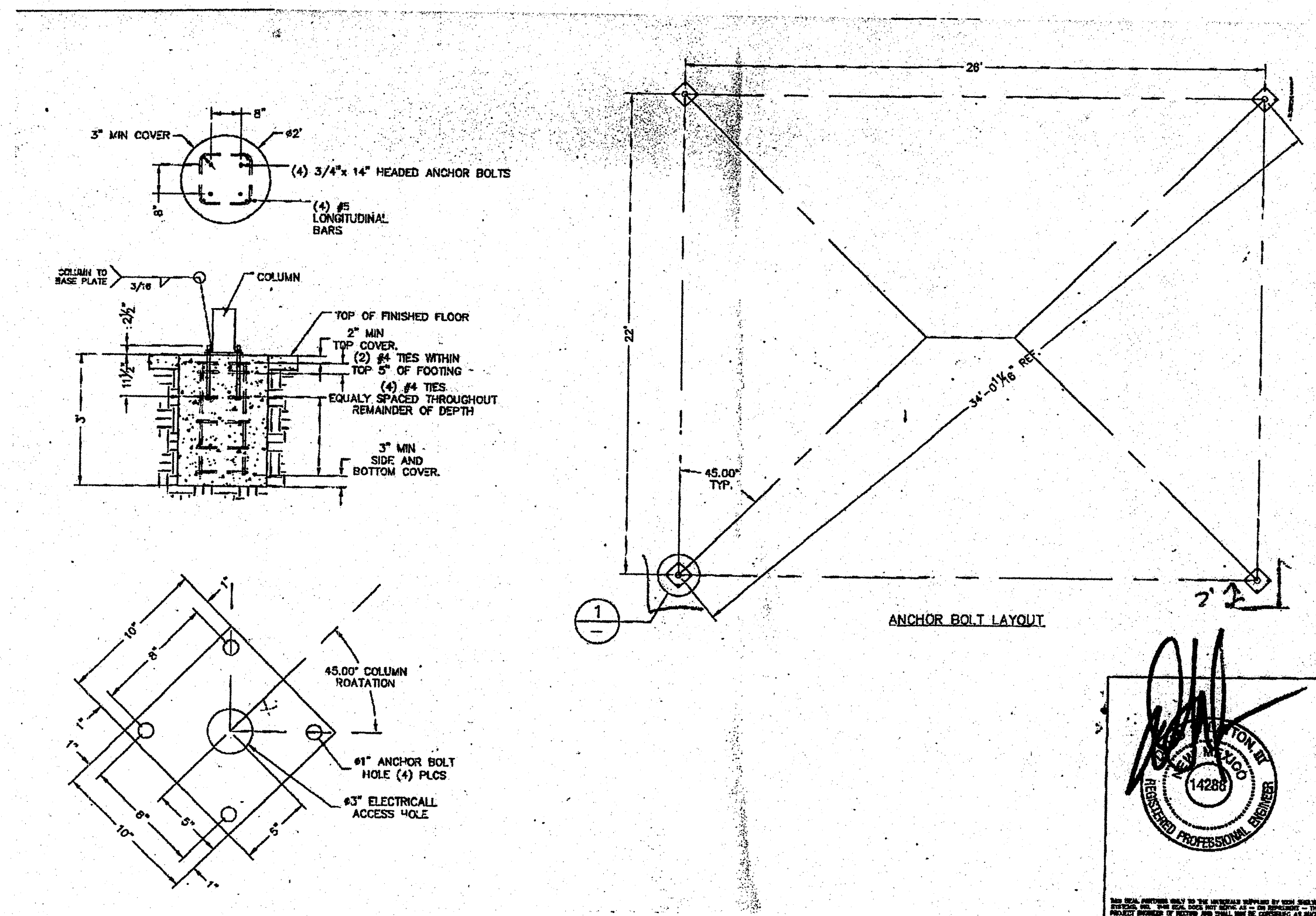
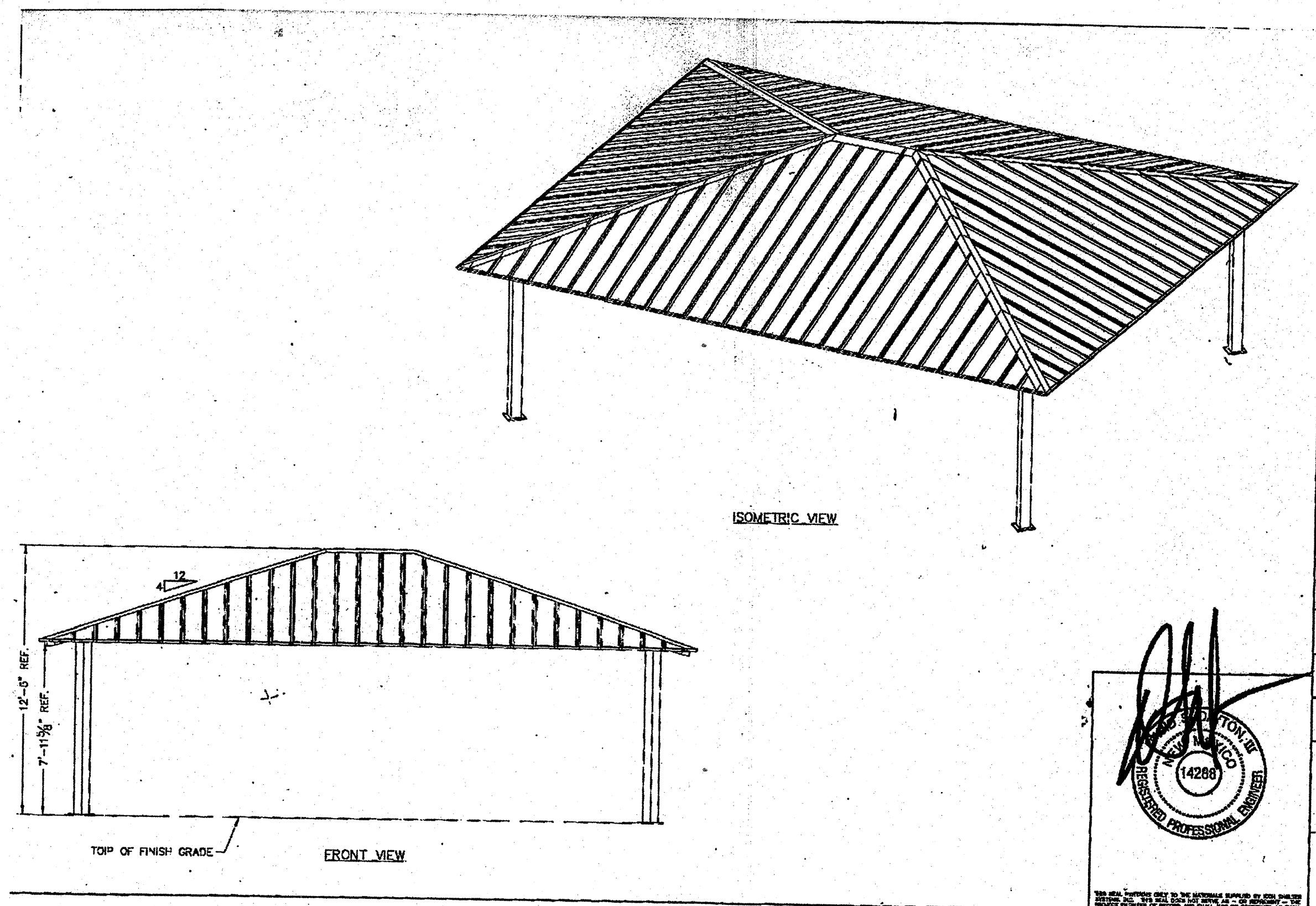
AS BUILT INFORMATION	
CONTRACTOR	DATE
INSPECTOR	DATE
FIELD VERIFICATION	DATE
CORRECTION	DATE
MICRO-FILM INFORMATION	
RECORDED BY	DATE
NO.	

SURVEY INFORMATION	
FIELD NOTES	DATE
BY	
NO.	

ENGINEER'S SEAL	
REMARKS	BY
DESIGN	
DATE	4/03
DRAWN BY	NHE
CHECKED BY	DWG
DATE	4/03



TRASH RECEPTICALS:
 PROVIDED BY DEPT. OF
 MUNICIPAL DEVELOPMENT

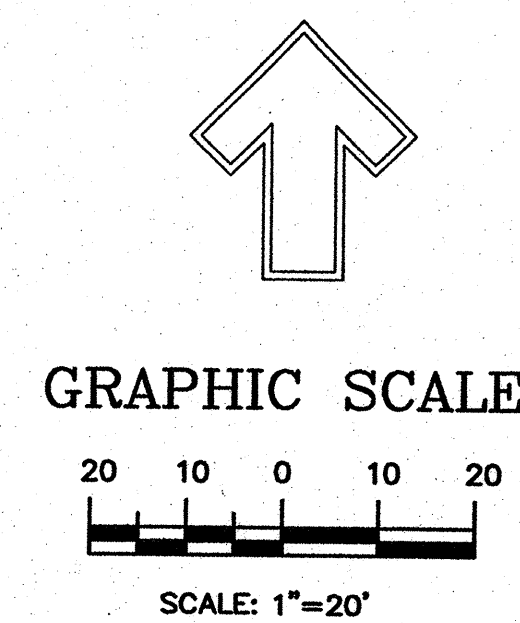


REPRODUCED DRAWING
 CERTIFICATE OF SUBSTANTIAL COMPLIANCE ON PLANS

I, Mark Goodwin, NMPE 8948, of the firm Mark Goodwin & Associates, P.A., a Registered Professional Engineer in the State of New Mexico, do hereby certify, to the best of my knowledge and belief, that the infrastructure installed as part of this project has been inspected by me or by a qualified person under my direct supervision, and has been constructed in accordance with the plans and specifications approved by the City Engineer and that the original design intent of the approved plans has been met, except as noted by me on the as-built construction drawings. This Certification is based on site inspections by me or personnel under my supervision, and survey information provided by Timothy Aldrich, NMPS number 7710.

Mark Goodwin, NMPE 8948

I, Mark Goodwin, certify that this electronic version is identical to the original reproducible APPROVED FOR CONSTRUCTION drawings signed by me on 3/22/06.



THE HILLTOP
 LANDSCAPE ARCHITECTS AND CONTRACTORS
 7909 EDITH BLVD. N.E.
 ALBUQUERQUE, NEW MEXICO 87109
 (505)898-9690

CITY OF ALBUQUERQUE

TITLE: THE MESA AT ANDERSON HILLS
 DETAIL SHEET

DESIGN REVIEW COMMITTEE
 APPROVED
 JUN 1 2 2006
 DESIGN REVIEW COMMITTEE

CITY ENGINEER APPROVAL
 JUN 1 2 2006
 CITY ENGINE

DESIGNED BY CMO
 DRAWN BY CMO
 CHECKED BY JD

DATE 3-22-06
 DATE 3-22-06
 DATE 3-22-06

CITY PROJECT NO. 708187
 ZONE MAP NO. 0-0-0
 SHEET 5 OF 7

BENCH MARKS		AS BUILT INFORMATION	
STATION .2-P10"	IS LOCATED 4.9 MI. SW OF DOWNTOWN ALBUQUERQUE TO REACH STATION FROM INT. OF COORS AND DENNIS CHAVEZ BLVD. (FORMERLY RIO BRAVO). GO N. ON COORS 0.1 MI. TO FLORA VISTA AND GO WEST ON FLORA VISTA 0.5 MI. TO CONDERSHIRE, THEN GO S. ON CONDERSHIRE 0.4 MI. TO A POINT APPROX. 50 FT. W. OF THE STATION. STATION MARK IS AN ACS 3" ALUM CAP STAMPED .2-P10, 1987" RIVETED TO A PIPE PROJECTED 0.25 FT ABOVE THE GROUND. X=35841.13, Y=1464349.24 (NAD 27) Z=4991 (NGVD 29).	CONTRACTOR	DATE
		WORK ORDER	DATE
		INSPECTOR'S	DATE
		ACCEPTANCE BY	DATE
		VERIFICATION BY	DATE
		DRAWINGS BY	DATE
		CHECKED BY	DATE
		RECORDED BY	DATE
		NO.	

Record Drawing
CERTIFICATE OF SUBSTANTIAL COMPLIANCE ON PLANS

I, Mark Goodwin, NMPE #8948, of the firm Mark Goodwin & Associates, P.A., a Registered Professional Engineer in the State of New Mexico, do hereby certify, to the best of my knowledge and belief, that the infrastructure installed as part of this project has been inspected by me or by a qualified person under my direct supervision, and has been constructed in accordance with the plans and specifications approved by the City Engineer and that the original design intent of the approved plans has been met, except as noted by me on the as-built construction drawings. This Certification is based on site inspections by me or personnel of the City Engineer, and survey information provided by Timothy Aldrich, NMPS number 7519.

Mark Goodwin
NMPE 8948

I, Mark Goodwin, certify that this electronic version is identical to the original reproducible APPROVED FOR CONSTRUCTION drawings signed by me.

IRRIGATION SCHEDULE

VALVE ID	CTRL STA.	SPK TYPE	FLOW	PRECIP RATE	RUNTIME
01	01	I-25 FC	108 GPM	46" hr	84 MIN
02	02	I-25 FC	79.2 GPM	46" hr	84 MIN
03	03	I-25 PC	72.4 GPM	91" hr	42 MIN
04	04	I-25 PC	86.4 GPM	91" hr	42 MIN
05	05	BUBBLER	100 GPM	25/75 GPM	12 MIN
MV	16	N/A	108 GPM	N/A	N/A
TOTAL RUNTIME: 4.4 hrs					

STATION RUNTIMES ARE CALCULATED TO APPLY .66" OF WATER ON ALL TURF AREAS, 3 GALLONS OF WATER PER SHRUB AND 9 GALLONS OF WATER PER TREE PER IRRIGATION CYCLE.

IRRIGATION FRICTION LOSSES

IRRIGATION COMPONENT @ 100 GPM	PRESSURE LOSS
2" WATER METER	1.5 PSI
2" (RP) BACKFLOW DEVICE	13.0 PSI
2" FLOW METER (MASTER METER)	1.4 PSI
2" MASTER VALVE	3.9 PSI
2" ZONE VALVE	3.9 PSI
LATERAL PIPE (ESTIMATE)	4.0 PSI
3" MAINLINE PIPE (277' / .79 PSI PER 100')	2.19 PSI
ELEVATION = DOWNHILL GAIN - 6.0'	+2.6 PSI
TOTAL PRESSURE LOSSES: -27.29	
EXPECTED WATER PRESSURE: +73.0	
SPRINKLER OPERATING PSI: 45.7	

THE EXPECTED WATER PRESSURE AT THIS SITE WAS REPORTED BY CITY OF ALBUQUERQUE'S WATER UTILITIES DEPARTMENT ON APRIL 19, 2006. THERE IS NO ESTIMATE FOR THE PRESSURE LOSSES THROUGH THE CITY WATER MAINLINE OR SERVICE LINE FEEDING METER. THE CONTRACTOR SHALL THOROUGHLY TEST THE CONDITIONS OF THE WATER AVAILABILITY PRIOR TO THE INSTALLATION OF THE IRRIGATION SYSTEM.

IRRIGATION NOTES

WATER PRESSURE: THE WATER PRESSURE AT THIS SITE WAS REPORTED TO BE 73 PSI BY CITY OF ALBUQUERQUE'S WATER UTILITIES DEPARTMENT ON APRIL 19, 2006. THE CONTRACTOR SHALL VERIFY THE DESIGN CRITERIA OF THIS SYSTEM BY COMPLETING A FLOW / PRESSURE TEST PRIOR TO THE INSTALLATION OF ANY IRRIGATION COMPONENTS. THE CONTRACTOR SHALL INSTALL A FLOW METER AND WATER METER GAUGE ON THE DOWNSTREAM SIDE OF THE WATER METER. THE CONTRACTOR SHALL MEASURE THE DYNAMIC WATER PRESSURE AT THE FLOW NOTED BELOW AND REPORT HIS FINDINGS IN WRITING TO THE IRRIGATION CONSULTANT. THE CONTRACTOR SHALL ADVISE A NOTICE TO PROCEED. THE CONTRACTOR SHALL ASSUME FULL RESPONSIBILITY FOR ANY DESIGN CHANGES AND/OR ADDITIONAL WORK IF HE DOES NOT POSSESS A NOTICE TO PROCEED FROM THE CONSULTANT.

WATER METER: THE EXISTING WATER METER IS REPORTED TO BE 2" BY THE CONTRACTOR. THIS IRRIGATION SYSTEM IS DESIGNED TO OPERATE PROPERLY UTILIZING THE METER PERFORMANCE SPECIFICATIONS FOR A 2" TURBINE LANDSCAPE USE WATER METER. BEFORE THE INSTALLATION OF ANY IRRIGATION COMPONENTS THE CONTRACTOR SHALL VERIFY THAT THE BRAND, MODEL AND SIZE OF WATER METER INSTALLED AT THIS SITE MATCHES THE FOLLOWING:
BADGER "RECORDALL" MODEL #170 OR #200 TURBO METER - 2".

SPRINKLER STAKING: THE SPRINKLER LOCATIONS SHALL BE PRECISELY LOCATED BY THE USE OF SURVEY GRADE GPS EQUIPMENT OR CONVENTIONAL SURVEY METHODS. THE FINAL STAKED SPRINKLER LOCATIONS SHALL BE BASED ON AS-BUILT SURVEY DATA OF THE HARDSCAPE SURROUNDING THE TURF AREAS. THE IRRIGATION CONSULTANT SHALL GPS SURVEY AND STAKE THE LOCATIONS OF THE ROTARY SPRINKLERS. THE COSTS OF THESE SERVICES SHALL BE THE RESPONSIBILITY OF THE CONTRACTOR.
OR
THE CONTRACTOR SHALL HIRE HIS OWN SURVEY FIRM TO PROVIDE AS-BUILT SURVEY DATA OF THE HARDSCAPE AREAS SURROUNDING THE TURF AREAS IN DIGITAL AUTOCAD FORMAT. THE DATA SHALL THEN BE FORWARDED TO THE IRRIGATION CONSULTANT, WHO WILL ADJUST SPRINKLER LOCATIONS ACCORDINGLY BASED ON THIS DATA. THE IRRIGATION CONSULTANT SHALL PROVIDE THE COORDINATE DATA OF EACH SPRINKLER LOCATION TO THE CONTRACTOR'S SURVEY FIRM TO FIELD LOCATE. THE COSTS OF THESE SERVICES SHALL BE THE RESPONSIBILITY OF THE CONTRACTOR.

CERTIFIED LANDSCAPE IRRIGATION AUDIT: PRIOR TO THE INSTALLATION OF SOD, SEED, TREES OR OTHER PLANT MATERIAL, THE CONTRACTOR SHALL BE RESPONSIBLE FOR PROVIDING A CERTIFIED LANDSCAPE WATER AUDIT TO DETERMINE THE DISTRIBUTION UNIFORMITY FOR ALL TURFGRASS AREAS. NO PLANT MATERIALS SHALL BE INSTALLED IN TURFGRASS AREAS UNTIL DISTRIBUTION UNIFORMITY RESULTS HAVE BEEN ACCEPTED BY THE CITY.
THE CONTRACTOR SHALL BE RESPONSIBLE FOR INSURING THAT THE SPRINKLER IRRIGATION SYSTEM IS IN FULL WORKING ORDER PRIOR TO AUDIT. THERE SHALL BE NO CLOGGED OR MISSING NOZZLES, NON-ROTATING SPRINKLERS MUST BE REPLACED OR REPAIRED. ALL DEBRIS OR DIRT MUST BE REMOVED OR DIRTED AND EACH SPRINKLER MUST BE PROPERLY SET AND LEVELED. THE CONTRACTOR SHALL ALSO SET ALL PRESSURE REGULATION DEVICES OR VALVE FLOW CONTROLS (IF APPLICABLE) TO THE DISCHARGE PRESSURE INDICATED IN THE LEGEND.

SPECIFICATIONS AND DETAIL DRAWINGS: THE CONTRACTOR SHALL REFER TO THE CITY OF ALBUQUERQUE'S STANDARD SPECIFICATIONS AND DETAIL DRAWINGS FOR IRRIGATION CONSTRUCTION. IN THE EVENT OF A CONFLICT BETWEEN SPECIFICATIONS AND IRRIGATION DESIGN, THE CONTRACTOR SHALL NOTIFY THE IRRIGATION CONSULTANT IN WRITING. THE CONTRACTOR SHALL NOT PROCEED WITH INSTALLATION OF CONFLICTING IRRIGATION COMPONENTS UNTIL HE RECEIVES CLARIFICATION IN WRITING FROM THE CONSULTANT.

TREE / SHRUB LOCATIONS: THE PIPE ROUTING SHOWN ON THESE PLANS IS SCHEMATIC. THE CONTRACTOR SHALL INSTALL ALL PIPING OUTSIDE OF THE ROOT ZONE OF TREES OR SHRUBS. THE SPRINKLER LOCATIONS SHOWN ON THESE PLANS ARE FIXED AND MUST BE FIELD LOCATED AS CLOSELY AS POSSIBLE TO LOCATIONS SHOWN ON PLANS TO MEET THE INTENDED DISTRIBUTION. THE CONTRACTOR SHALL FIELD ADJUST ANY TREE LOCATIONS THAT ARE SHOWN TO BE CLOSER THAN 12" FROM ANY SPRINKLER HEAD. IF SUBSTANTIAL TREE REARRANGEMENT IS REQUIRED, THE CONTRACTOR SHALL HAVE HIS PROPOSED LOCATIONS APPROVED BY THE LANDSCAPE ARCHITECT PRIOR TO PLANTING.

SPRINKLER NOZZLES: THE CONTRACTOR SHALL ADJUST THE THROWING RADIUS OF ALL PERTINENT SPRINKLER NOZZLES SO AS TO MINIMIZE THE OVERSPRAY ONTO HARDSCAPE OR OTHER UNINTENDED AREAS. THE CONTRACTOR SHALL ALSO INCLUDE IN HIS BID OR PRICING AN ALLOWANCE FOR ANY SPRINKLER NOZZLES THAT ARE DEEMED NECESSARY BY THE LANDSCAPE ARCHITECT OR IRRIGATION CONSULTANT TO CORRECT ISSUES OF OVERSPRAY, UNDERSPRAY OR DISTRIBUTION UNIFORMITY.

MAINLINE FITTINGS: THE CONTRACTOR SHALL USE TWO (2) 45 DEGREE ELBOWS FOR EACH 90 DEGREE MAINLINE BEND AS PER CITY OF ALBUQUERQUE'S REQUEST.

IRRIGATION LEGEND

- HUNTER #125-36SHS-8 HIGH SPEED, FULL CIRCLE ROTARY SPRINKLER WITH CHECK VALVE, STAINLESS STEEL RISER AND #8 NOZZLE (42" RADIUS, 7.2 GPM, 46" hr @ 40 PSI) (IF NOTED, THE CONTRACTOR SHALL ADJUST THE THROWING RADIUS OF THE SPRINKLER TO THE SPECIFIED DISTANCE)
- HUNTER #125-ADSHS-8 HIGH SPEED, PART CIRCLE ROTARY SPRINKLER WITH CHECK VALVE, STAINLESS STEEL RISER AND #8 NOZZLE (42" RADIUS, 7.2 GPM, 91" hr @ 40 PSI) (IF NOTED, THE CONTRACTOR SHALL ADJUST THE THROWING RADIUS OF THE SPRINKLER TO THE SPECIFIED DISTANCE)
- HUNTER #125-ADSHS-4 HIGH SPEED, PART CIRCLE ROTARY SPRINKLER WITH CHECK VALVE, STAINLESS STEEL RISER AND #4 NOZZLE (37" RADIUS, 3.9 GPM, 57" hr @ 40 PSI) (IF NOTED, THE CONTRACTOR SHALL ADJUST THE THROWING RADIUS OF THE SPRINKLER TO THE SPECIFIED DISTANCE)
- ⊙ RAINBIRD #1401 FULL CIRCLE, PRESSURE COMPENSATING, TRICKLE PATTERN BUBBLER (.25 GPM @ 30 PSI)
- ⊕ RAINBIRD #200-PEB 2" PLASTIC ELECTRIC VALVE WITH FLOW CONTROL (3.9 PSI LOSS @ 100 GPM)
- ⓑ FEBCO #825Y-2 2" REDUCED PRESSURE BACKFLOW PREVENTER ENCLOSED IN HOTBOX #H82 INSULATED ENCLOSURE (CONTRACTOR TO PROVIDE POSITIVE HEAT SOURCE TO BACKFLOW PREVENTER)
- ⓕ FLOW METER ASSEMBLY: MASTER METER WT SERIES 2" TURBINE METER WITH ELECTRICAL OUTPUT REGISTER (1 PULSE = 1 GALLON)
- Ⓐ CRISPEN #UL10.1 1" UNIVERSAL AIR RELEASE VALVE ASSEMBLY
- Ⓜ EXISTING WATER METER: VERIFY BADGER "RECORD ALL" MODEL #170 OR #200, 2" TURBO WATER METER (CONTRACTOR SHALL VERIFY 108 GPM @ 73 PSI DYNAMIC WATER PRESSURE)
- ⓐ MOTOROLA IRRINET IRRIGATION CONTROLLER TO BE INSTALLED IN INTERSPEC ENCLOSURE WITH 24 VOLT SURGE PROTECTION, STATION SWITCHES AND REMOTE READY WITH C.O.A. COMMUNICATION RADIO (16 STATION OUTPUT)
- MAINLINE PIPE - 3" CLASS 200 PVC GASKETED PIPE
- LATERAL PIPE - SCH 40 PVC PIPE (PIPE SIZE INDICATED ON PLAN)
- UNSIZED PIPE: SPRINKLERS = 1" UNSIZED PIPE: BUBBLERS = 3/4"
- SLEEVE PIPE - SCH 40 PVC (TWO SIZES LARGER THAN PIPE TO BE SLEEVED)

THE HILLTOP
LANDSCAPE ARCHITECTS AND CONTRACTORS
7909 EDITH BLVD. N.E.
ALBUQUERQUE, NEW MEXICO 87109
(505)898-9690

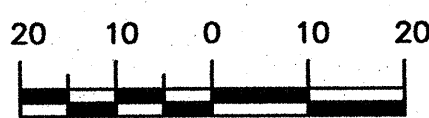
CITY OF ALBUQUERQUE

TITLE: THE MESA AT ANDERSON HILLS
IRRIGATION PLAN

DESIGN REVIEW COMMITTEE
CITY ENGINEER APPROVAL
CITY ENGINEER

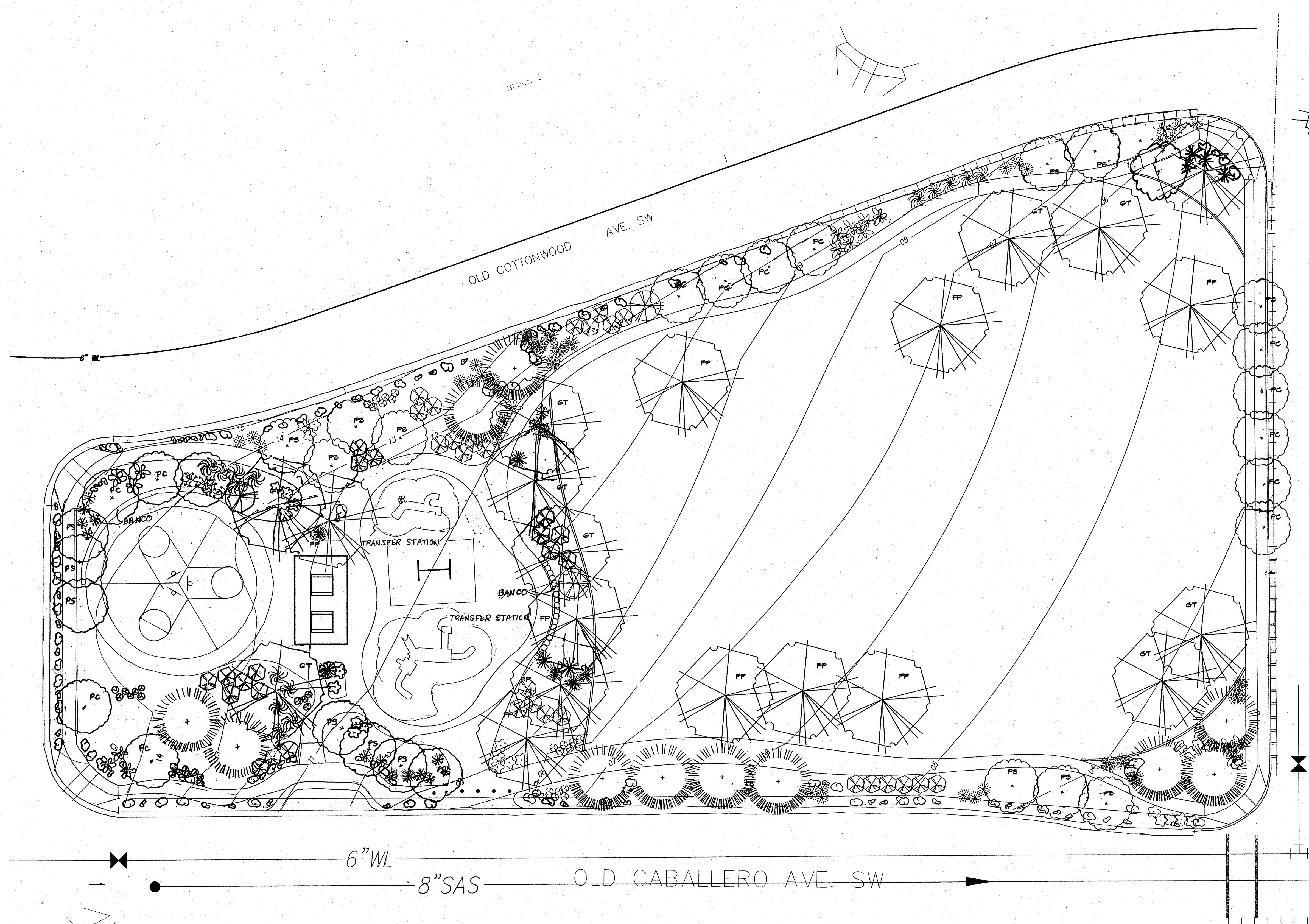
CITY PROJECT NO. 708187 ZONE MAP NO. 0-0-0 SHEET 7 OF 7

GRAPHIC SCALE



SCALE: 1" = 20'

FINAL, In-Place sprinkler locations
very slightly but meet intent



LANDSCAPE LEGEND

	QTY.	WATER	HEIGHT/ SPREAD
SHADE TREE -2" CAL. ASH (M) FRAXINUS PENNSYLVANICA VELANIE GT. SWEET LOCUST (M) GLYCYNIA REICHTANUS	12	M+	60'x60'
EVERGREEN TREE -6-8' AUSTRIAN PINE (M) PINUS MIREA	8	M+	80'x80'
ORNAMENTAL TREE -2" CAL. FLOWERING PEAR (M+) PYRUS CALLICORNIA PURPLE-LEAF PLUM (M) PRUNUS CERATIFERA	15	M+	25'x15'
LARGE SHRUB- 5 gal. BUTTERFLY BUSH (M) BUDDLEIA DAVIDA PHOTINIA (M) PHOTINIA FRANCES	41	M+	8'x8'
MEDIUM SHRUB- 2 gal. ARIZ. ROSEMARY (M) ROSMARINUS OFFICINALIS RUSSIAN SAGE (M) PEROVSKIA ATRICORNATA	10	L	5'x5'
SMALL SHRUB- 1 gal. LAVENDER (M) LAVANDULA ANGSTROFIA LAVENDER (M) LAVANDULA ANGSTROFIA	28	M	4'x4'
ORNAMENTAL GRASS- 1 gal. MAIDENGRASS (M) MISCANTHUS SINENSIS		M+	5'x5'
ACCENT- 5 gal. MULBERRY PINE (M) PINUS MYRTIS	2	M	5'x5'
GROUNDCOVER- 1 gal. CREEPING ROSEMARY (L) ROSMARINUS OFFICINALIS PROSTRATA HONEYSUCKLE (M) LONICERA SEMPERVIRENS		L+	2'x6'
		M	5'x5'

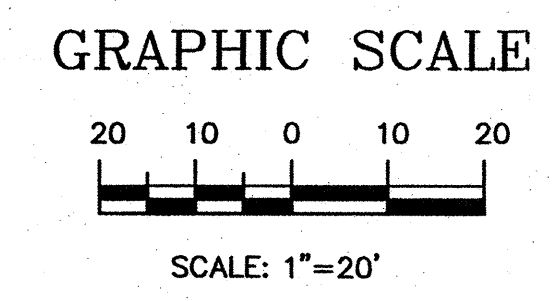
FINAL, IN-PLACE Tree and Shrub locations
Vary Slightly.

RECORD DRAWING
CERTIFICATE OF SUBSTANTIAL COMPLIANCE ON PLANS

I, Mark Goodwin, NMPE 8948, of the firm Mark Goodwin & Associates, P.A., a Registered Professional Engineer in the State of New Mexico, do hereby certify, to the best of my knowledge and belief, that the infrastructure installed as part of this project has been inspected by me or by a qualified person under my direct supervision, and has been constructed in accordance with the plans and specifications approved by the City Engineer and that the original design intent of the approved plans has been met, except as noted by me on the as-built construction drawings. This Certification is based on site inspections by my personnel, observation, and survey information provided by Timothy Aldrich, NMPS number 7719.

Mark Goodwin, NMPE 8948

I, Mark Goodwin, certify that this electronic version is identical to the original reproducible APPROVED FOR CONSTRUCTION drawings signed by me.



THE HILLTOP LANDSCAPE ARCHITECTS AND CONTRACTORS 7909 EDITH BLVD. N.E. ALBUQUERQUE, NEW MEXICO 87109 (505)898-9690	
CITY OF ALBUQUERQUE	
TITLE: THE MESA AT ANDERSON HILLS PLANTING PLAN	
DESIGN REVIEW COMMITTEE	CITY ENGINEER APPROVAL CITY ENGINEER
MO./DAY/YR. 4-3-06	MO./DAY/YR. change order/OMD
DESIGNED BY CND	DATE 3-22-06
DRAWN BY CND	DATE 3-22-06
CHECKED BY JD	DATE 3-22-06
CITY PROJECT NO. 708187	ZONE MAP NO. 0-0-0
SHEET 6 OF 7	

AS BUILT INFORMATION		BENCH MARKS	
CONTRACTOR	Hilltop	STATION: 2-P10" IS LOCATED 4.9 MI. SW OF DOWNTOWN	
DATE	4/6/06	ALBUQUERQUE TO REACH STATION FROM INT. OF COORS	
INSPECTED BY	ALS	AND DENNIS CHAVEZ BLVD. (FORMERLY RIO BRAVO), GO N.	
DATE	4/6/06	ON COORS 0.1 MI. TO FLORA VISTA AND GO WEST ON	
ACCEPTANCE BY	ALS	FLORA VISTA 0.5 MI. TO CONDERSHIRE, THEN GO S. ON	
DATE	4/6/06	CONDERSHIRE 0.4 MI. TO A POINT APPROX. 50 FT. W. OF	
INSPECTED BY	ALS	THE STATION. STATION MARK IS AN ACS 3" ALUM CAP	
DATE	4/6/06	STAMPED: 2-P10, 1987" RIVETED TO A PIPE PROJECTED	
RECORDED BY		0.25 FT ABOVE THE GROUND. X=35841.13, Y=1464349.24	
DATE		(NAD 27) Z=4991 (NGVD 29).	

