



# NORTH DOMINGO BACA PARK

## PHASE 7 - EAST PARKING LOT

CITY OF ALBUQUERQUE  
MANAGING DEPARTMENT  
DEPARTMENT OF MUNICIPAL DEVELOPMENT  
PARK DESIGN AND CONSTRUCTION DIVISION

OWNER  
PARKS AND RECREATION DEPARTMENT



CONSENSUS PLANNING, INC.  
PLANNING / LANDSCAPE ARCHITECTURE  
302 EIGHTH STREET NW ALBUQUERQUE, NM 87102 (505) 764-9801

### Property Information

Legal Description: North Domingo Baca Park, Tract 1  
Meter Address: 8441 Wyoming Boulevard NE  
Zoning: SU-1 Community Park & Related Facilities  
Total Site Area: 40.8 AC (1,777,170 SF)  
Phase 7 Site Area: .94 acres (41,124 SF)

### Consultants

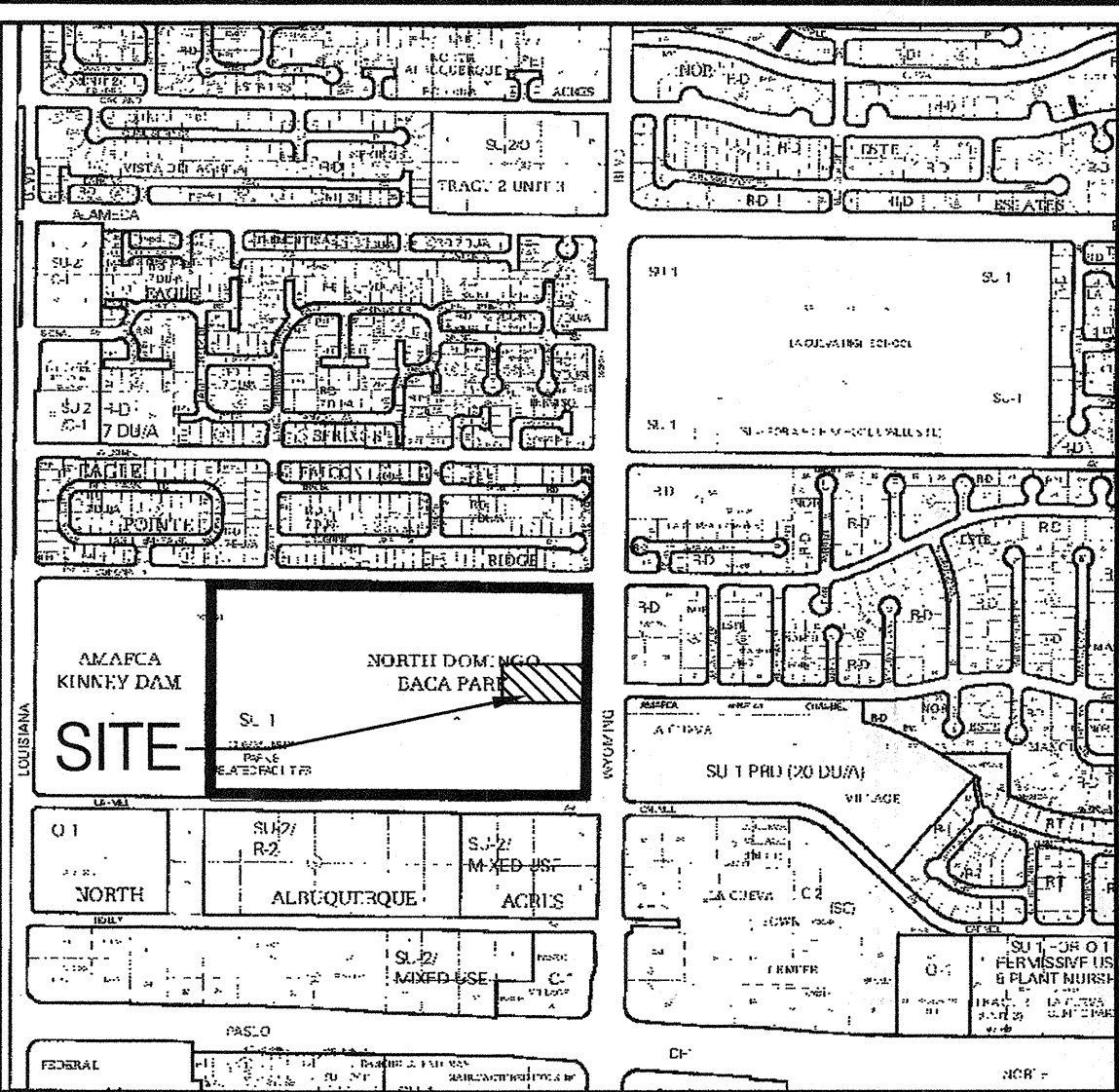
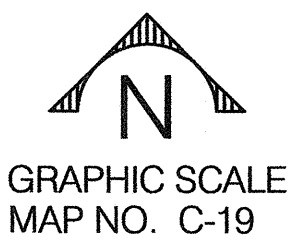
Civil Engineering  
Smith Engineering Company  
2201 San Pedro NE, Bldg. 4, Suite 200  
Albuquerque, NM 87110

Electrical Engineering  
The Response Group  
11930 Menaul Boulevard NE, Suite 214  
Albuquerque, NM 87112

### Index of Drawings

- 1 Cover Sheet
- 2 General Notes
- 3 Site Removals Plan
- 4 Site/Construction Plan
- 5 Grading / Layout Plan
- 6 Irrigation Plan
- 7 Planting Plan
- 8 Electrical Plan
- 9 Electrical Details and Schedules

VICINITY MAP



### UTILITY COMPANY CONTACTS

**CITY OF ALBUQUERQUE (WATER & SEWER)**  
NANCY MUSINSKI  
Engineer/Utility Development  
P.O. Box 1293  
Albuquerque, New Mexico 87103  
(505) 768-2729

**PNM-ELECTRIC**  
JIM HILL  
Engineering Representative  
4201 Edith Boulevard NE  
Albuquerque, New Mexico 87107  
(505) 241-3581

**PNM-GAS CO.**  
JOE DUNLAP  
Project Engineer  
4625 Edith Boulevard NE  
Albuquerque, New Mexico 87107  
(505) 241-7771

**QUEST/US WEST**  
DAVID MULLER  
Capacity Provisioning Specialist  
400 Tijeras Ave. NW, Suite 710  
Albuquerque, New Mexico 87102  
(505) 245-8706

**QUEST LONG DISTANCE**  
LARRY KELLY  
Senior Operations Tech  
400 Tijeras Ave. NW, Suite 710  
Albuquerque, New Mexico 87102  
(505) 246-0501

**AT&T**  
DAVID CROWL  
Albuquerque, New Mexico 87103  
P.O. Box 1293  
Albuquerque, New Mexico 87103  
(505) 842-2911

**MCI WORLDWIDE**  
ANDY DARNELL  
Operation Manager  
6001 Midway Park NE  
Albuquerque, New Mexico 87109  
(505) 346-4470

**COMCAST CABLE**  
RITA ERICKSON  
Planning and Design Supervisor  
4611 Montbel Pl. NE  
Albuquerque, New Mexico 87107  
(505) 761-6235

**UNIVERSE ACCESS**  
JAMIE MARTINEZ  
Resource Supervisor  
505 Marquette Ave. NW, #119A  
Albuquerque, New Mexico 87102  
(505) 328-2675

**E-SPIRE (ACS)**  
JOHN MARES  
505 Marquette Ave. NW, Suite 1605  
Albuquerque, New Mexico 87102  
(505) 998-2274

**McLEOD USA**  
RICK MUELLER  
Supervisor of Outside Techs.  
505 Marquette Ave. NW, Suite 1600  
Albuquerque, New Mexico 87102  
(505) 244-3161

**CITYNET TELECOMMUNICATIONS**  
JOSH NELSON  
Field Representative  
13500 Coronado freeway  
Albuquerque, New Mexico 87121  
(505) 991-2120

**TIME WARNER TELECOM**  
ROY HARRISON  
Plant Manager  
3830 Singer Blvd. NE, Suite 1000  
Albuquerque, New Mexico 87109  
(505) 938-7339

**LEVEL 3 COMMUNICATIONS, LLC**  
STEVE GILMAN  
Resource Supervisor  
1025 Eldorado Blvd.  
Broomfield, Colorado 80021  
(720) 888-5920

**XSPEDIUS MANAGEMENT CO.**  
STEVE BENJAMIN  
Operations Support Manager  
505 Marquette Ave. NW, Suite 1605  
Albuquerque, New Mexico 87102  
(505) 345-6555

**OSO GRANDE TECHNOLOGIES**  
BUD LENSING  
Resource Supervisor  
505 Marquette Ave. NW, #119A  
Albuquerque, New Mexico 87102  
(505) 328-2675



REV.	SHEETS	CITY ENGINEER	DATE	USER DEPARTMENT	DATE	USER DEPARTMENT	DATE
ENGINEERS STAMP & SIGNATURE		APPROVED	ENGINEER	DATE	APPROVED FOR CONSTRUCTION		
		DRC Chairman					
		Transportation					
		Water/Wastewater					
		Hydrology					
		CIP					
		Constr. Mngmt.			CITY ENGINEER DATE		
		Constr. Coord.					
		PROJECT NUMBER 713895				SHEET 1 OF 9	

FINAL FOR CONSTRUCTION

NORTH DOMINGO BACA PARK  
PHASE 7 EAST PARKING LOT

PROJECT #713895  
JANUARY 27, 2010

RECORD DRAWINGS

Date: 1/29/10 set #1 office copy



- 1 FIVE (5) WORKING DAYS PRIOR TO BEGINNING CONSTRUCTION, THE CONTRACTOR WILL SUBMIT A DETAILED CONSTRUCTION SCHEDULE TO THE CITY CONSTRUCTION COORDINATION DIVISION. TWO (2) DAYS PRIOR TO CONSTRUCTION, THE CONTRACTOR WILL OBTAIN A BARRICADING PERMIT FROM THE CONSTRUCTION COORDINATION DIVISION. CONTRACTOR SHALL NOTIFY BARRICADE ENGINEER (424-3400) PRIOR TO OCCUPYING AN INTERSECTION. REFER TO SECTION 14 OF SPECIFICATIONS.
- 2 THE CONTRACTOR WILL NOTIFY THE FIELD ENGINEER NOT LESS THAN SEVEN (7) DAYS PRIOR TO STARTING WORK, IN ORDER THAT THE CITY SURVEY SECTION MAY TAKE NECESSARY MEASURES TO INSURE THE PRESERVATION OF SURVEY MONUMENTS. THE CONTRACTOR WILL NOTIFY THE ENGINEER IF A MONUMENT IS DISTURBED. REPLACEMENT WILL BE DONE ONLY BY THE CITY OF ALBUQUERQUE SURVEY SECTION AT THE CONTRACTOR'S EXPENSE. WHEN A CHANGE IS MADE IN THE FINISHED ELEV. OF THE PAVEMENT OF ANY ROADWAY IN WHICH A PERMANENT SURVEY MONUMENT IS LOCATED, CONTRACTOR WILL, AT HIS OWN EXPENSE, HAVE THE CITY SURVEY SECTION ADJUST THE MONUMENT COVER TO THE NEW GRADE UNLESS OTHERWISE SPECIFIED. REFER TO SECTION 4 OF SPECIFICATIONS.
- 3 THE SPECIFICATIONS USED FOR THIS PROJECT ARE THE CITY OF ALBUQUERQUE STANDARD SPECIFICATIONS FOR PUBLIC WORKS CONSTRUCTION, 1986 EDITION, UPDATE NO. 7.
- 4 ALL NEW MANHOLES SHALL BE TYPE "E" (COA DWG. 2102) UNLESS OTHERWISE NOTED ON THE PLANS.
- 5 THE CONTRACTOR WILL BE RESPONSIBLE FOR DISPOSING OF ALL DEBRIS, INCLUDING, BUT NOT LIMITED TO HAZARDOUS WASTE AT DISPOSAL SITES APPROVED BY GOVERNMENTAL AGENCIES REGULATING THE DISPOSAL OF SUCH MATERIALS.
- 6 ALL WATER VALVE BOXES AND MANHOLES IN THE STREET CONSTRUCTION ARE TO BE ADJUSTED TO FINISH GRADE AND WILL BE MEASURED AND PAID PER EACH.
- 7 SUBGRADE PREPARATION UNDER SIDEWALKS AND DRIVE PADS, AND SUBGRADE AND SUBBASE PREPARATION UNDER CURB AND GUTTER IS CONSIDERED INCIDENTAL TO THE CONSTRUCTION OF SUCH, AND NO DIRECT PAYMENT SHALL BE MADE FOR THOSE ITEMS OF WORK.
- 8 THE CONTRACTOR WILL REPLACE ANY STRIPPING THAT HAS BEEN RUINED OR REMOVED IN THE COURSE OF CONSTRUCTION.
- 9 ALL EXCAVATION WILL BE GOVERNED BY FEDERAL, STATE AND LOCAL LAWS, RULES, AND REGULATIONS CONCERNING CONSTRUCTION SAFETY AND HEALTH.
- 10 ALL SIGNS AND CODING WILL BE IN ACCORDANCE WITH THE "MANUAL OF UNIFORM TRAFFIC CONTROL DEVICES FOR STREETS AND HIGHWAYS" CURRENT EDITION PUBLISHED BY THE U.S. DEPARTMENT OF TRANSPORTATION.
- 11 THE CONTRACTOR IS TO EXERCISE CARE TO AVOID DISTURBING ANY EXISTING UNDERGROUND UTILITIES. IT WILL BE HIS RESPONSIBILITY TO COORDINATE WITH THE UTILITY COMPANIES IN ORDER TO PREVENT ANY SERVICE DISRUPTION. SEE SECTION 18 "UTILITIES", CITY OF ALBUQUERQUE, STANDARD SPECIFICATIONS FOR CONTRACTOR REQUIREMENTS.
- 12 WHEN ABUTTING NEW PAVEMENT TO EXISTING INTERSECTING STREETS, SAW CUT EXISTING PAVEMENT TO A STRAIGHT LINE AND AT RIGHT ANGLES AND REMOVE ANY BROKEN OR CRACKED PAVEMENT. NO DIRECT PAYMENT WILL BE MADE FOR SAW CUTTING.
- 13 ALL GAS VALVES, GAS MANHOLES, ELECTRICAL MANHOLES, TELEPHONE MANHOLES, AND UTILITY POLES WILL BE ADJUSTED TO GRADE BY EACH UTILITY COMPANY. CONTRACTOR WILL COORDINATE THROUGH CITY UTILITY COORDINATOR.
- 14 WHEN REMOVAL OF EXISTING CURB AND GUTTER OR SIDEWALK IS REQUIRED, REMOVE BACK TO NEAREST SUITABLE JOINT UNLESS OTHERWISE DIRECTED BY THE CITY FIELD ENGINEER.
- 15 THE CONTRACTOR WILL NOTIFY THE NEW MEXICO ONE CALL SYSTEM 260-1990 TWO (2) WORKING DAYS PRIOR TO COMMENCING WORK IN NEW AREAS.
- 16 CONTRACTOR WILL MAKE ALL WATER VALVES AND MANHOLES ACCESSIBLE TO THE CITY AT ALL TIMES.
- 17 CONTRACTOR WILL PLACE BITUMINOUS MATERIAL WITH THE USE OF A LAYDOWN MACHINE WHERE PAVEMENT IS 8 FEET IN WIDTH OR WIDER.
- 18 ALL SUBGRADE AND SUBBASE MATERIAL ENCOUNTERED IN PAVEMENT REMOVAL AND REPLACEMENT THAT IS DETERMINED BY THE FIELD ENGINEER TO MEET THE SPECIFICATIONS, CAN BE REUSED. HOWEVER, THE MATERIAL WILL BE PROCESSED AND COMPACTED TO MEET MOISTURE CONTENT AND PERCENT COMPACTION REQUIRED BY THE SPECIFICATIONS.
- 19 CONTRACTOR WILL NOT PAVE OVER ANY SURFACE FEATURE, I.E. GAS VALVE, MANHOLE COVER, ETC. WITHOUT PRIOR APPROVAL FROM THE CITY FIELD ENGINEER.
- 20 CONTRACTOR WILL CONFINE HIS WORK WITHIN THE CONSTRUCTION EASEMENT LIMITS AND/OR RIGHT-OF-WAY, OR PROVIDE COPIES OF AGREEMENTS WITH ADJACENT LANDOWNERS TO THE CITY OF ALBUQUERQUE.
- 21 ALL WATER VALVES AND FIRE HYDRANTS REMOVED TO BE SALVAGED AND RETURNED TO THE C.O.A.
- 22 MINIMUM BOTTOM WIDTH OF TRENCHES FOR RIGID PIPE SHALL BE EQUAL TO THE OUTSIDE DIAMETER PLUS 16 INCHES. BEDDING MATERIAL SHALL BE CLASS II, III, OR IV UNLESS OTHERWISE SPECIFICALLY NOTED ON THE PLANS.
- 23 MINIMUM BOTTOM WIDTH OF TRENCHES FOR NON-RIGID PIPE SHALL BE EQUAL TO THE OUTSIDE DIAMETER PLUS 12 INCHES. BEDDING MATERIAL SHALL BE CLASS I, II, OR III.
- 24 THE CONTRACTOR AGREES TO TAKE NECESSARY SAFETY PRECAUTIONS AS REQUIRED BY FEDERAL, STATE AND LOCAL AUTHORITIES TO PROTECT PEDESTRIAN AND VEHICULAR TRAFFIC IN THE CONSTRUCTION AREA, WHICH INCLUDE BUT ARE NOT LIMITED TO: MAINTAINING ADEQUATE WARNING SIGNS, BARRICADES, LIGHTS, GUARD FENCES, WALKS AND BRIDGES.
- 25 ALL STRUCTURAL CONCRETE WILL BE 3000 PSI UNLESS OTHERWISE NOTED ON PLANS.
- 26 ALL REINFORCING STEEL WILL BE GRADE 60.
- 27 ALL EXPOSED EDGES ON CAST-IN-PLACE CONCRETE STRUCTURES WILL HAVE A 1" CHAMFER UNLESS OTHERWISE NOTED.
- 28 ALL SPLICES IN REINFORCING STEEL TO BE 2-FOOT 6-INCH MINIMUM UNLESS OTHERWISE NOTED.

- 29 PRIOR TO CONSTRUCTION, THE CONTRACTOR WILL EXCAVATE AND VERIFY THE HORIZONTAL AND VERTICAL LOCATIONS OF ALL POTENTIAL CONFLICTING UTILITIES. SHOULD A CONFLICT EXIST BETWEEN THE FIELD INFORMATION AND THE PLANS, THE CONTRACTOR WILL NOTIFY THE FIELD ENGINEER SO THE CONFLICT CAN BE RESOLVED WITH MINIMUM AMOUNT OF DELAY.
- 30 THE REPLACEMENT OF THE EXISTING UTILITIES AND THE INSTALLATION OF NEW UTILITY LINES WILL BE COMPLETED IN ADVANCE OF STARTING THE PAVEMENT WORK. TEMPORARY PAVEMENT WILL BE PLACED IN ALL TRENCHES REQUIRED FOR THE UTILITY REPLACEMENTS IN THOSE AREAS THAT MUST MAINTAIN TRAFFIC UNTIL THE FINAL PAVEMENT WORK STARTS IN EACH AREA. TEMPORARY STRIPING SHALL BE THE CONTRACTOR'S RESPONSIBILITY. MAINTENANCE OF THE TEMPORARY PAVING AND STRIPING WILL BE AT THE CONTRACTOR'S EXPENSE.
- 31 TACK COAT FOR SURFACE COURSE REQUIREMENTS WILL BE DETERMINED BY THE FIELD ENGINEER.
- 32 THE CONTRACTOR WILL CONTACT THE CITY OF ALBUQUERQUE TRAFFIC DIVISION 857-8025, ONE (1) WEEK IN ADVANCE OF ANY CHANGES REQUIRED IN THE TRAFFIC SIGNALIZATION OF THIS PROJECT. ALL WORK ASSOCIATED WITH NEW TRAFFIC SIGNALIZATION SHALL BE THE RESPONSIBILITY OF THE CONTRACTOR.
- 33 ALL NEW STREET PAVING, DRIVEWAYS, SIDEWALKS, AND CURB AND GUTTERS, ABUTTING EXISTING AREAS SHALL MATCH THE ELEVATION OF THOSE AREAS.
- 34 PERMANENT PAVEMENT STRIPING AND MARKINGS WILL BE PLACED BY THE CONTRACTOR. ROAD SHALL NOT BE OPENED TO TRAFFIC UNTIL IT IS STRIPED. ALL STRIPING, PAVEMENT MARKINGS INCLUDING CROSSEWALKS, ARROWS AND LINE MARKINGS ARE TO BE CONSTRUCTED OF HOT PLASTIC OR COLD PLASTIC IN ACCORDANCE WITH THE MANUAL OF UNIFORM TRAFFIC CONTROL DEVICES.
- 35 ALL EXCAVATED MATERIAL THAT IS NOT REQUIRED TO BE REUSED MUST BE REMOVED FROM THE PROJECT AREA WITHIN FOUR DAYS OF EXCAVATION. SPOIL PILES WILL BE ALLOWED ONLY AS DIRECTED BY THE CITY FIELD ENGINEER.
- 36 THE CONTRACTOR WILL COORDINATE THE CONSTRUCTION ACTIVITIES WITH ALL OTHER CONTRACTORS AND UTILITY COMPANIES WORKING IN THE SAME AREA. THE CONTRACTOR MAY BE REQUIRED TO RESCHEDULE THEIR ACTIVITIES TO ALLOW UTILITY CREWS TO PERFORM THEIR REQUIRED WORK. NO ADDITIONAL COMPENSATION WILL BE ALLOWED FOR DELAYS OR INCONVENIENCE CAUSED BY UTILITY COMPANY WORK CREWS. A CONTRACT EXTENSION MAY BE ALLOWED AS DELINEATED IN CITY OF ALBUQUERQUE STANDARD SPECIFICATIONS.
- 37 ALL CONSTRUCTION EASEMENTS ON PRIVATE PROPERTY WILL BE OBTAINED BY THE CITY OF ALBUQUERQUE PRIOR TO THE BEGINNING OF CONSTRUCTION.
- 38 EXISTING MEDIAN CURB AND GUTTER AND STANDARD CURB AND GUTTER, NOT DISTURBED BY CONTRACTOR, BUT OUT OF ALIGNMENT, DISPLACED VERTICALLY, BADLY BROKEN AND/OR DETERIORATED, WILL BE REPLACED AS DIRECTED BY THE FIELD ENGINEER AND PAID FOR AT CONTRACT UNIT PRICES.
- 39 ALL TRAFFIC CONTROL DEVICES REQUIRED FOR DRIVEWAY CLOSURES, UTILITY CONSTRUCTION OR FOR OTHER REASONS AND NOT SHOWN ON THE SIGNING PLANS WILL BE FURNISHED BY THE CONTRACTOR AND WILL BE PAID AS SPECIFIED IN THE TECHNICAL SPECIFICATIONS AND BID PROPOSAL. PRIOR TO PLACING THE TRAFFIC CONTROL DEVICES, THE CONTRACTOR WILL NOTIFY THE AFFECTED OWNERS IN ACCORDANCE WITH THE SPECIFICATIONS. CONTRACTOR MUST MAKE PROVISIONS TO PROVIDE ACCESS TO PROPERTIES. REFER TO SECTION 14 OF THE SPECIFICATIONS.
- 40 ALL UTILITY LINES WHICH ARE NOT SPECIFICALLY DESIGNATED TO BE REMOVED AND REPLACED ON THE PLANS, WILL BE MAINTAINED IN SERVICE. SHORING, SHEETING AND OTHER MEANS OF SUPPORT SHALL BE EMPLOYED BY THE CONTRACTOR TO PREVENT DAMAGE OR LOSS OF THESE EXISTING UTILITIES AND THESE SHORING, SHEETING, AND SUPPORTS ARE CONSIDERED INCIDENTAL TO THIS PROJECT. BEAM AND CABLE OR OTHER ADEQUATE SUPPORTS WILL BE USED FOR TEMPORARY SUPPORT OF ALL UTILITY LINES WHICH CROSS THE TRENCH. ANY DAMAGE TO EXISTING UTILITIES WILL PROMPTLY BE REPAIRED AT THE CONTRACTOR'S EXPENSE. THE CONTRACTOR WILL NOTIFY THE ENGINEER IMMEDIATELY OF ANY SIGNIFICANT DEVIATION OF EXPOSED UTILITIES FROM THE LOCATIONS SHOWN ON THE PLANS SO THAT CONFLICTS CAN BE RESOLVED IN A TIMELY MANNER.
- 41 THE CONTRACTOR WILL ASSUME RESPONSIBILITY FOR ANY DAMAGE TO EXISTING COA INFRASTRUCTURE (C & G, PAVING, ETC.) DURING CONSTRUCTION, APART FROM THOSE SECTIONS INDICATED FOR REMOVAL ON THE PLANS, AND WILL REPAIR OR REPLACE SAME AT HIS OWN EXPENSE. HE WILL SUITABLY PROTECT THE CURB AND GUTTER FROM INCIDENTAL SPLASHING DURING THE TACK COAT APPLICATION AND WILL BE RESPONSIBLE FOR CLEANING SAME AT HIS OWN COST SHOULD SPLASHING OCCUR.
- 42 ALL INTERFERING PORTIONS OF ABANDONED UTILITY LINES WHICH ARE EXPOSED AS A RESULT OF CONSTRUCTION WILL BE REMOVED AND DISPOSED OF BY THE CONTRACTOR.
- 43 STATIONS OF STORM DRAIN INLETS ARE TO THE CENTER OF GRATE. ALL STORM DRAIN INLETS WILL BE TYPE "A" UNLESS OTHERWISE NOTED ON THE PLANS.
- 44 SHORING COSTS WILL BE CONSIDERED INCIDENTAL TO THE TRENCH AND BACKFILL COSTS.
- 45 THE CONTRACTOR WILL BE RESPONSIBLE FOR SECURING NPDES PERMITS REQUIRED BY APPLICABLE CITY, STATE, AND FEDERAL REGULATIONS.
- 46 ALL STORM DRAIN AND CONNECTOR PIPE WILL BE CLASS IV REINFORCED CONCRETE PIPE UNLESS OTHERWISE NOTED ON THE PLANS.
- 47 THE TERM REMOVE USED IN THIS PLAN SET INCLUDES THE DISPOSAL OF SAID MATERIAL IN ACCORDANCE WITH CITY OF ALBUQUERQUE SPECIFICATIONS, LATEST EDITION.
- 48 CONTRACTOR WILL SURVEY AND LOG EXISTING ELEVATIONS OF CURB-AND-GUTTER, SIDEWALK, AND PAVEMENT WHICH WILL BE REMOVED FOR CONSTRUCTION OF IMPROVEMENTS. CONTRACTOR WILL REPLACE REMOVED CURB-AND-GUTTER, SIDEWALK, DRIVE PADS, AND PAVEMENT TO ELEVATIONS PRIOR TO REMOVAL UNLESS OTHERWISE INDICATED ON THE PLANS.
- 49 CONTRACTOR WILL CONSTRUCT TEMPORARY ASPHALT PAVEMENT AS DIRECTED BY THE FIELD ENGINEER TO PROVIDE ACCESS TO LOCAL BUSINESS, ETC. TEMPORARY PAVEMENT SHALL BE REMOVED AND DISPOSED OF PRIOR TO PLACEMENT OF FULL WIDTH PAVEMENT SECTION. TEMPORARY PAVING SHALL BE PER COA STD. DWG. 2415 AND PAID FOR PER COA STD. SPECIFICATIONS.

- 50 ALL CLASSES OF SEEDING SHALL BE DRY LAND MIX PLACED AT 1.5 LBS/1000 S.F. WITH FERTILIZER 21-12-12 PLACED AT 5 LBS/1000 S.F.
- 51 ALL ASPHALTIC CONCRETE SHALL BE MINIMUM 1800 LB. STABILITY AND COMPACTED TO 95% MODIFIED MARSHALL DENSITY UNLESS OTHERWISE NOTED ON THE PLANS.
- 52 ANY WORK OCCURRING WITHIN AN ARTERIAL ROADWAY REQUIRES TWENTY-FOUR (24) HOUR CONSTRUCTION.
- 53 ALL EXCAVATION, TRENCHING AND SHORING ACTIVITIES MUST BE CARRIED-OUT IN ACCORDANCE WITH OSHA 29 CFR 1926.650 SUBPART F.
- 54 THE CONTRACTOR SHALL BE RESPONSIBLE FOR TIMING AND COORDINATION OF WATER SHUTOFF AT LEAST SEVEN (7) WORKING DAYS PRIOR TO CONSTRUCTION. CONTRACTOR SHALL CONTACT THE WATER SYSTEMS DIVISION, 857-8200, TO INITIATE IMPLEMENTATION OF THE NON-PRESSURIZED CONNECTION PLAN.
- 55 FOR STORM DRAIN CONSTRUCTION, RCP PIPE JOINTS SHALL NOT BE GROUTED PRIOR TO FINAL INSPECTION. FINAL INSPECTION WILL DETERMINE JOINTS TO BE GROUTED FOR FINAL ACCEPTANCE OF THE CONSTRUCTION.
- 56 CONTRACTOR SHALL MAINTAIN A GRAFFITI-FREE WORK SITE. CONTRACTOR SHALL PROMPTLY REMOVE ANY AND ALL GRAFFITI FROM EQUIPMENT, WHETHER PERMANENT OR TEMPORARY.
- 57 CONTRACTOR SHALL ERECT TEMPORARY CHAIN LINK CONSTRUCTION FENCE. SUCH FENCE SHALL BE MAINTAINED THROUGHOUT THE DURATION OF THE CONSTRUCTION PERIOD AND REMOVED ONLY UPON FINAL ACCEPTANCE OF THE PROJECT BY THE CITY.
- 58 QUANTITIES PROVIDED ON THE PLANS ARE FOR THE CONTRACTOR'S CONVENIENCE ONLY. PLANS SHALL TAKE PRECEDENCE IN ALL CASES.

EXISTING FEATURES LEGEND:

- x — EXISTING T-POST/WIRE FENCE
- 2" HPG — EXISTING GAS LINE W/ VALVE
- 6" W — EXISTING WATERLINE W/ VALVE
- — EXISTING WATERLINE METER
- — EXISTING FIRE HYDRANT
- 6" SAS — EXISTING SANITARY SEWER LINE W/ MANHOLE
- 36" RCP — EXISTING STORM DRAIN
- — EXISTING OVERHEAD ELECTRIC W/POLE
- UE — EXISTING UNDERGROUND ELECTRIC
- 44 — EXISTING 1' CONTOUR
- 4945 — EXISTING 5' CONTOUR
- — EXISTING CURB & GUTTER
- — EXISTING CONCRETE
- — EXISTING BUILDING LINE
- — EXISTING EASEMENT LINE

NEW FEATURES LEGEND:

- — CONSTRUCTION CENTERLINE
- — NEW CHAIN-LINK FENCE
- 6" W — NEW WATERLINE W/ VALVE
- — NEW WATERLINE METER
- — NEW FIRE HYDRANT
- 6" SAS — NEW SANITARY SEWER LINE W/ MANHOLE
- — NEW STORM DRAIN W/ MH
- \* — NEW UTILITY POLE
- — NEW 1' CONTOUR
- 4945 — NEW 5' CONTOUR
- — NEW CURB & GUTTER
- — NEW CONCRETE

Scale: 1" = 20'

NORTH

10 0 20 40

CONSensus PLANNING, INC.  
Planning / Landscape Architecture  
302 Eighth Street NW  
Albuquerque, NM 87102  
(505) 764-9801 Fax 842-5495  
e-mail: cp@consensusplanning.com

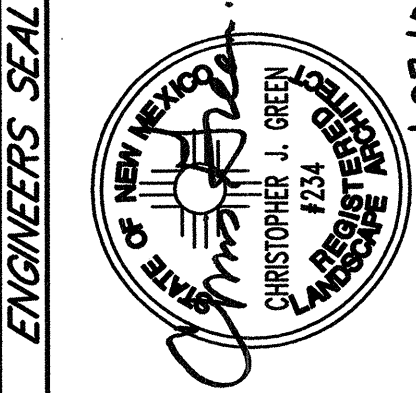
CITY OF ALBUQUERQUE  
DEPARTMENT OF MUNICIPAL DEVELOPMENT  
PARK DESIGN AND CONSTRUCTION DIVISION

TITLE: NORTH DOMINGO BACA PARK  
PHASE 7 EAST PARKING LOT

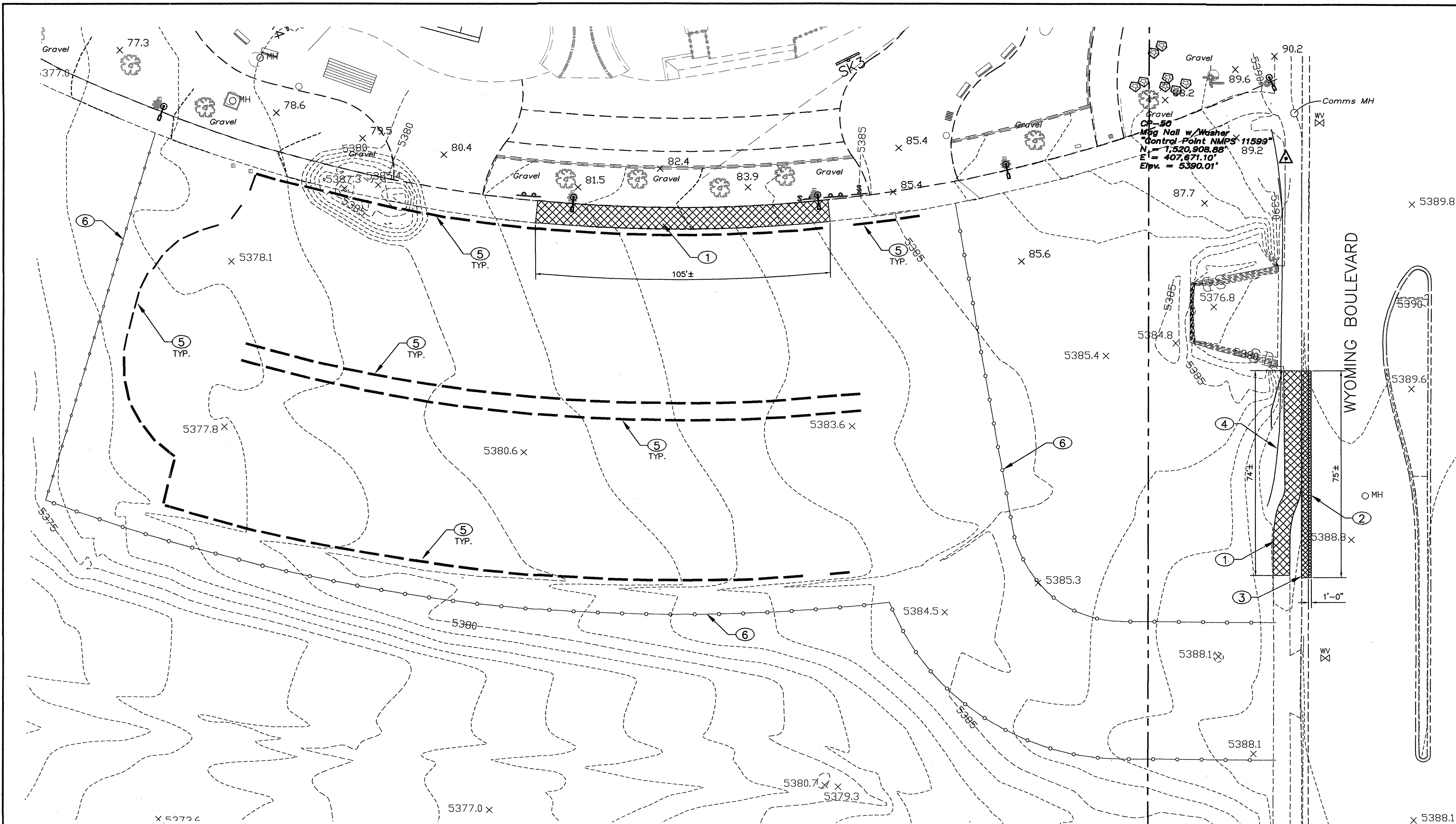
GENERAL NOTES

Design Review Committee	City Engineer Approval	Mo. / Day / Yr.	Mo. / Day / Yr.

City Project No.	713895	Zone Map No.	C-19	Sheet	2	of	9
------------------	--------	--------------	------	-------	---	----	---

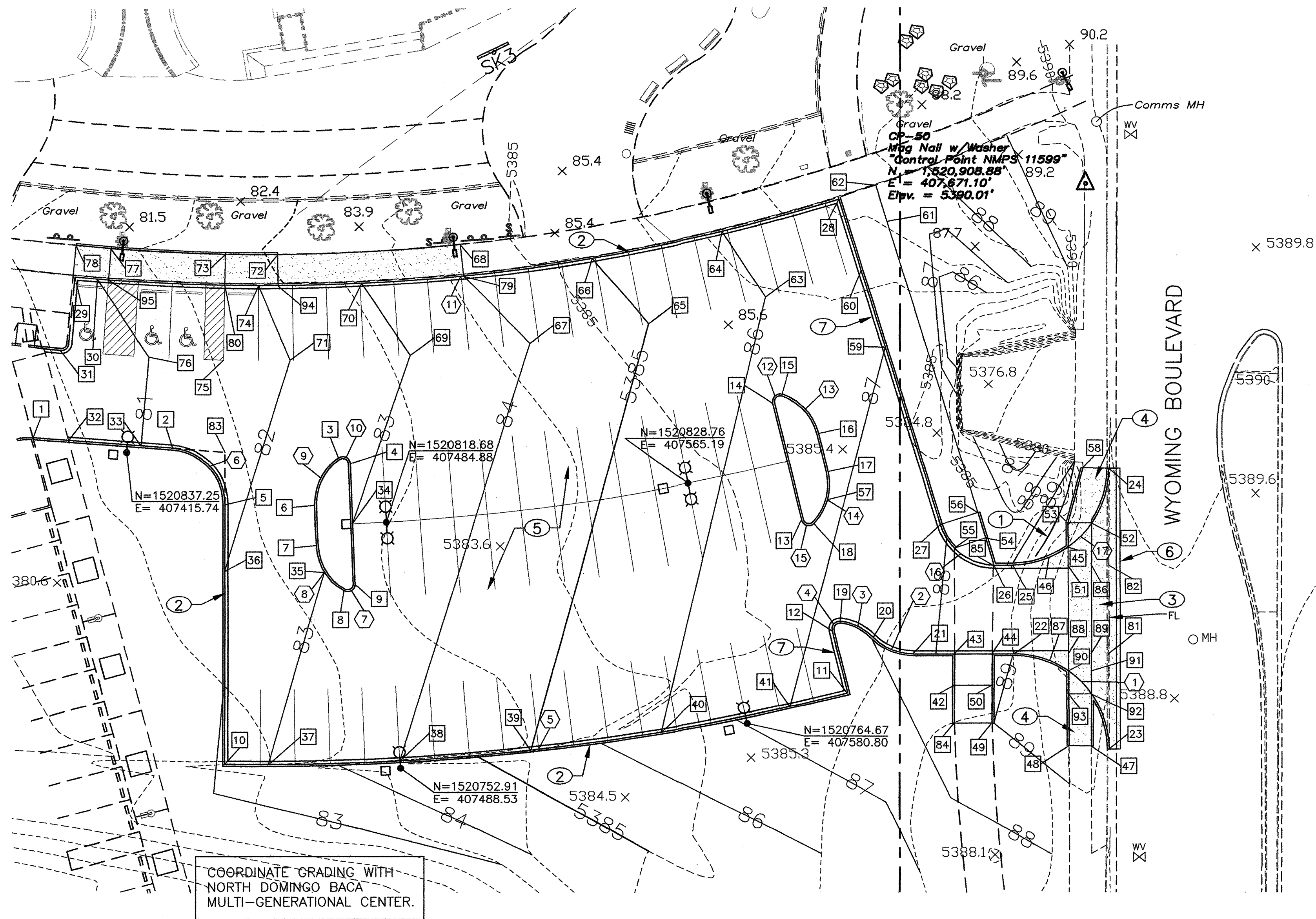










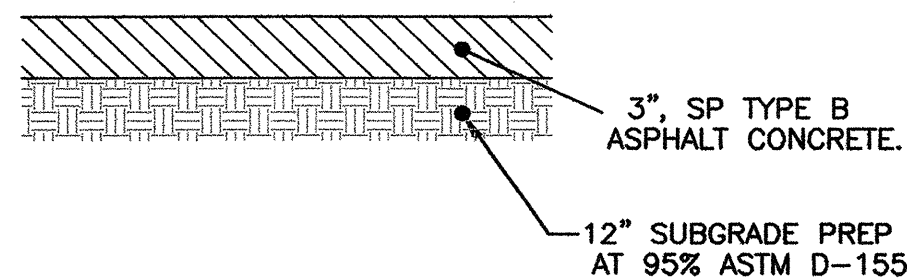


KEYED NOTES:

- INSTALL 25 LF OF METAL BARRIER WITH TYPE "C" END ANCHORAGE PER COA STD. DWG. 2636.
- CONSTRUCT 6" TALL MEDIAN CURB PER COA STD. DWG. 2415.
- CONSTRUCT VALLEY GUTTER PER COA STD. DWG. 2420 TO THE HORIZONTAL AND VERTICAL LAYOUT SHOWN ON THIS SHEET. SCORE 5 CONTROL JOINTS ALONG LENGTH OF SIDEWALK IN THE VALLEY GUTTER, EQUALLY SPACED.
- CONSTRUCT NEW SIDE WALK PER COA STD. DWG. 2430.
- CONSTRUCT NEW PAVEMENT PER DETAIL THIS SHEET.
- PATCH ASPHALT PAVING PER COA STD. DWG. 2465.
- CONSTRUCT 6" TALL DEPRESSED MEDIAN CURB PER COA STD. DWG. 2415 FROM POINT 28 TO POINT 27 AND FROM POINT 12 TO POINT 11.

ABBREVIATIONS:

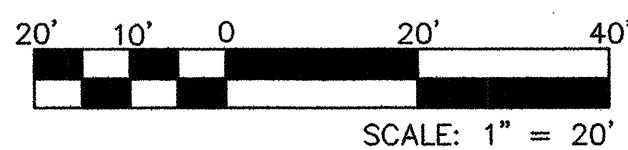
- FL FLOWLINE  
ME MATCH EXISTING  
PC POINT OF CURVATURE  
PCC POINT OF COMPOUND CURVATURE  
PI POINT OF INTERSECTION  
PRC POINT OF REVERSE CURVATURE  
PT POINT OF TANGENT  
TA TOP OF ASPHALT  
TC TOP OF CURB  
TFC TOP OF FINISHED CONCRETE  
TSW TOP OF SIDEWALK



CURVE DATA

NO.	DELTA	RADIUS	LEN.
1	89°28'44"	25.50	39.82
2	44°46'14"	15.00	11.72
3	38°03'09"	15.00	9.96
4	110°35'12"	2.00	3.86
5	14°51'01"	645.80	167.38
6	85°42'33"	15.00	22.44
7	121°17'56"	2.00	4.23
8	56°12'23"	15.00	14.71
9	56°12'23"	15.00	14.71
10	121°17'56"	2.00	4.23
11	22°46'19"	517.80	205.80
12	121°17'56"	2.00	4.23
13	56°12'23"	15.00	14.71
14	56°12'23"	15.00	14.71
15	121°17'56"	2.00	4.23
16	72°50'54"	15.00	19.07
17	89°55'05"	25.50	40.02

SITE LAYOUT AND GRADING PLAN

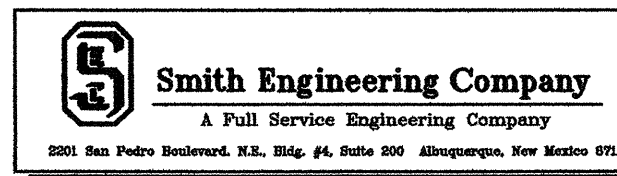


NODE DATA

NODE ID	NORTHING	EASTING	DESCRIPTION	ELEVATION
1	1520841.21	407390.79	PI	5380.40 ME TC/TSW
2	1520838.32	407428.04	PC	5381.24 FL
3	1520835.78	407472.18	PCC	5382.70 TA
4	1520834.19	407475.28	PT	5382.83 TA
5	1520823.33	407441.88	PT	5381.81 FL
6	1520823.18	407465.78	PC	5382.65 TA
7	1520812.56	407466.19	PT	5382.80 TA
8	1520800.49	407473.52	PCC	5383.18 TA
9	1520802.31	407476.49	PC	5383.25 TA
10	1520753.88	407441.71	PI	5382.68 FL
11	1520772.62	407607.57	PI	5387.38 FL
12	1520789.38	407603.44	PC	5387.13 FL
13	1520819.06	407595.36	PT	5386.67 TA
14	1520850.05	407587.75	PC	5386.24 TA
15	1520852.43	407590.29	PCC	5386.27 TA
16	1520842.08	407599.91	PT	5386.63 TA
17	1520831.76	407602.45	PC	5386.79 TA
18	1520818.13	407598.72	PCC	5386.77 TA
19	1520791.84	407605.61	PCC	5387.18 FL
20	1520787.60	407614.42	PRC	5387.49 FL
21	1520783.24	407624.99	PT	5387.81 FL
22	1520783.24	407651.79	PC	5388.52 FL 5389.02 TC
23	1520757.75	407677.07	PT	5388.17±ME FL 5388.84 TC
24	1520832.71	407677.12	PC	5388.75±ME FL 5389.42 TC
25	1520807.24	407651.62	PT	5388.52 FL 5389.02 TC
26	1520807.24	407646.62	PC	5388.29 FL 5388.79 TC
27	1520817.82	407632.29	PT	5387.85 FL 5388.35 TC
28	1520904.81	407605.44	PI	5386.97 FL 5387.47 TFC
29	1520884.28	407401.98	PI	5380.88 FL 5381.38±ME TC=TSW
30	1520883.73	407408.00		5381.00 FL
31	1520864.57	407398.11		5380.56 FL
32	1520840.47	407400.31		5380.60 FL
33	1520838.97	407419.63		5381.00 FL
34	1520818.25	407475.89		5383.00 TA
35	1520805.61	407468.34		5383.00 TA
36	1520805.88	407441.84		5382.00 FL
37	1520753.79	407453.36		5383.00 FL
38	1520754.77	407488.35		5384.00 FL
39	1520757.65	407523.23		5385.00 FL
40	1520762.41	407577.93		5386.00 FL
41	1520769.04	407592.27		5387.00 FL
42	1520774.74	407635.97		5388.29 TSW 5388.79 TC
43	1520783.24	407636.02		5388.12 FL/TSW 5388.62 TC
44	1520783.24	407646.02		5388.32 FL/TSW 5388.82 TC
45	1520811.87	407666.28	PI	5388.84 FL/TSW 5389.34 TC
46	1520809.15	407661.28	HIGH POINT	5389.01 FL 5389.51 TC
47	1520758.59	407672.36	PI	5389.12±ME TSW/TC
48	1520758.63	407666.42		5389.12±ME TSW/TC
49	1520764.74	407645.94		5389.00 TSW 5389.00 TC
50	1520774.74	407645.97		5388.49 TSW 5388.99 TC
51	1520807.24	407666.29	PI	5388.79 TSW
52	1520818.19	407672.56	PI	5388.80 FL/TSW 5389.30 TC
53	1520818.21	407666.25		5388.92 TSW 5389.42 TC
54	1520814.33	407644.36		5388.29 TSW 5388.43 TC

NODE DATA

NODE ID	NORTHING	EASTING	DESCRIPTION	ELEVATION
55	1520811.64	407636.02		5388.11 FL/TSW 5388.11 TC
56	1520821.02	407642.29		5388.55 TSW=TC
57	1520824.48	407602.29		5386.85 TA
58	1520832.73	407670.21	PI	5389.44±ME TSW/TC
59	1520865.16	407617.68		5387.00 FL
60	1520885.70	407611.34		5386.71 FL
61	1520898.93	407618.25		5387.54 TSW
62	1520908.49	407615.30		5387.81±ME TSW
63	1520878.54	407585.92		5386.00 TA
64	1520896.28	407574.41		5386.00 FL
65	1520871.54	407554.70		5385.00 TA
66	1520889.14	407539.72		5385.00 FL
67	1520866.41	407523.11		5384.00 TA
68	1520892.94	407504.67		5384.62±ME TSW
69	1520863.17	407491.28		5383.00 TA
70	1520882.43	407478.45		5383.00 FL 5383.50 TC
71	1520861.83	407459.31		5382.00 TA
72	1520890.30	407456.12		5382.84 TSW=TC
73	1520890.40	407442.13		5381.84 TSW 5382.34 TC
74	1520881.79	407450.95		5382.00 FL
75	1520861.91	407441.54		5381.38 TA
76	1520862.71	407421.66		5381.00 TA
77	1520891.95	407411.68		5381.22 TSW 5381.72 TC
78	1520892.79	407402.38		5381.47±ME TSW
79	1520884.49	407505.54		5384.00 FL 5384.55±ME TSW
80	1520881.90	407441.95		5381.68 FL=TC
81	1520783.24	407676.96	PI	5388.34 FL
82	1520807.25	407677.10	PI	5388.50 FL
83	1520837.25	407441.91		5381.65 TA
84	1520764.74	407635.94		5388.80 TSW 5388.80 TC
85	1520807.25	407646.38		5388.29 TSW 5388.79 TC
86	1520807.24	407672.53	PI	5388.67 TSW
87	1520781.29	407661.36	HIGH POINT	5388.83 FL 5389.33 TC
88	1520783.24	407666.35	PI	5388.65 TSW
89	1520783.24	407672.45	PI	5388.53 TSW
90	1520778.51	407666.37	PI	5388.62 FL/TSW 5389.12 TC
91	1520778.49	407672.43	PI	5388.50 TSW
92	1520772.44	407672.41	PI	5388.50 FL/TSW 5389.00 TC
93	1520772.46	407666.38	PI	5388.62 TSW 5389.12 TC
94	1520881.80	407456.17		5382.18 FL 5382.68 TC
95	1520883.47	407411.00		5381.06 FL=TC



CITY OF ALBUQUERQUE  
DEPARTMENT OF MUNICIPAL DEVELOPMENT

TITLE: NORTH DOMINGO BACA PARK PHASE 7 - EAST PARKING LOT

SITE LAYOUT AND GRADING PLAN

Design Review Committee	City Engineer Approval	No. / Day / Yr.	No. / Day / Yr.
Project No. 713895	Zone Map No. C-19-Z	Sheet No.	Drawing No. Of 5 9





- IRRIGATION LEGEND**
- RAINBIRD #401 TRICKLE PATTERN BUBBLER (25 GPM @ 30 PSI) INSTALL NON-POTABLE MODEL IF AVAILABLE
  - LATERAL PIPE (PURPLE) - SCH 40 PVC SOLVENT WELD (PIPE SIZE INDICATED ON PLAN) UNSIZED PIPE FOR BUBBLERS IS 3/4"
  - SLEEVE PIPE - CLASS 200 PVC TWO SIZES LARGER THAN PIPE TO BE SLEEVED

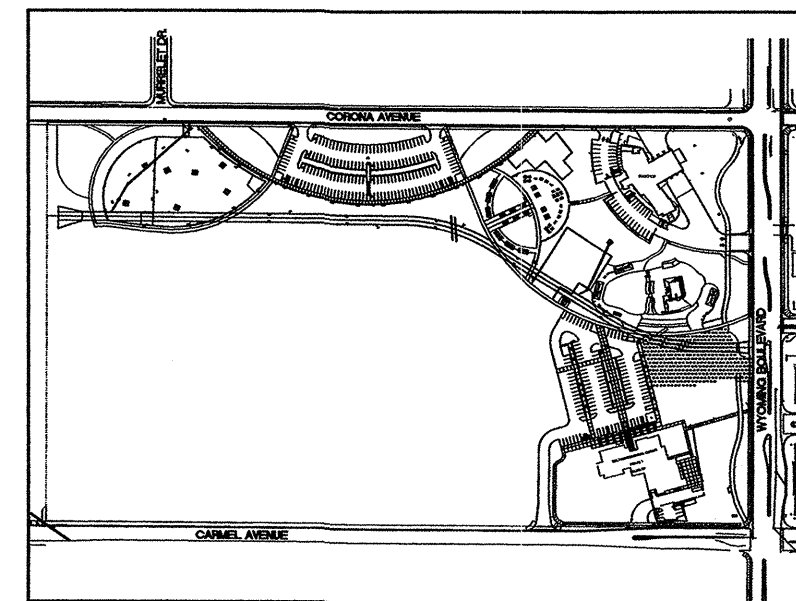
**IRRIGATION NOTES**

SPECIFICATIONS AND DETAIL DRAWINGS:  
THE CONTRACTOR SHALL REFER TO THE CITY OF ALBUQUERQUE'S STANDARD SPECIFICATIONS AND DETAIL DRAWINGS FOR IRRIGATION CONSTRUCTION. IN THE EVENT OF A CONFLICT BETWEEN SPECIFICATIONS AND IRRIGATION DESIGN, THE CONTRACTOR SHALL NOTIFY THE CITY PROJECT MANAGER IN WRITING. THE CONTRACTOR SHALL NOT PROCEED WITH INSTALLATION OF CONFLICTING IRRIGATION COMPONENTS UNTIL HE RECEIVES CLARIFICATION IN WRITING FROM THE PROJECT MANAGER.

PIPE TAP AND EXTENSION:  
CONTRACTOR SHALL TAKE CARE TO MINIMIZE DISTURBANCE OF EXISTING LANDSCAPE AREA DURING EXTENSION OF LATERAL LINE. CONTRACTOR SHALL REPLACE PLANT MATERIALS AND REPAIR IRRIGATION LINES AS NECESSARY. CONTRACTOR SHALL COORDINATE CONSTRUCTION WITH PARK MANAGEMENT STAFF.

SOLVENT WELD PIPE:  
ALL PIPING REGARDLESS OF SIZE SHALL BE SOLVENT WELD AS PER CITY OF ALBUQUERQUE'S REQUEST AND OR SPECIFICATIONS.

KEYED MAP

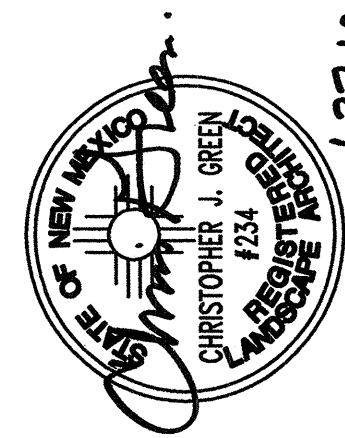


Scale: 1" = 20'

**CONSENSUS PLANNING, INC.**  
Planning / Landscape Architecture  
302 Eighth Street NW  
Albuquerque, NM 87102  
(505) 764-9801 Fax 842-5495  
e-mail: cp@consensusplanning.com

CITY OF ALBUQUERQUE DEPARTMENT OF MUNICIPAL DEVELOPMENT PARK DESIGN AND CONSTRUCTION DIVISION	
TITLE: NORTH DOMINGO BACA PARK PHASE 7 EAST PARKING LOT IRRIGATION PLAN	
Design Review Committee	City Engineer Approval
Last Design Update	
City Project No.	Zone Map No.
713895	C-19
Sheet	6 of 9

AS BUILT INFORMATION		BENCH MARKS		SURVEY INFORMATION		ENGINEERS SEAL	
CONTRACTOR				FIELD NOTES			
WORK BY	DATE			NO.	BY		
DESIGNED BY	DATE						
ACCEPTANCE BY	DATE						
VERIFICATION BY	DATE						
DRAWINGS	DATE						
CHECKED BY	DATE						
MICRO-FILM INFORMATION							
RECORDED BY	DATE						
NO.							



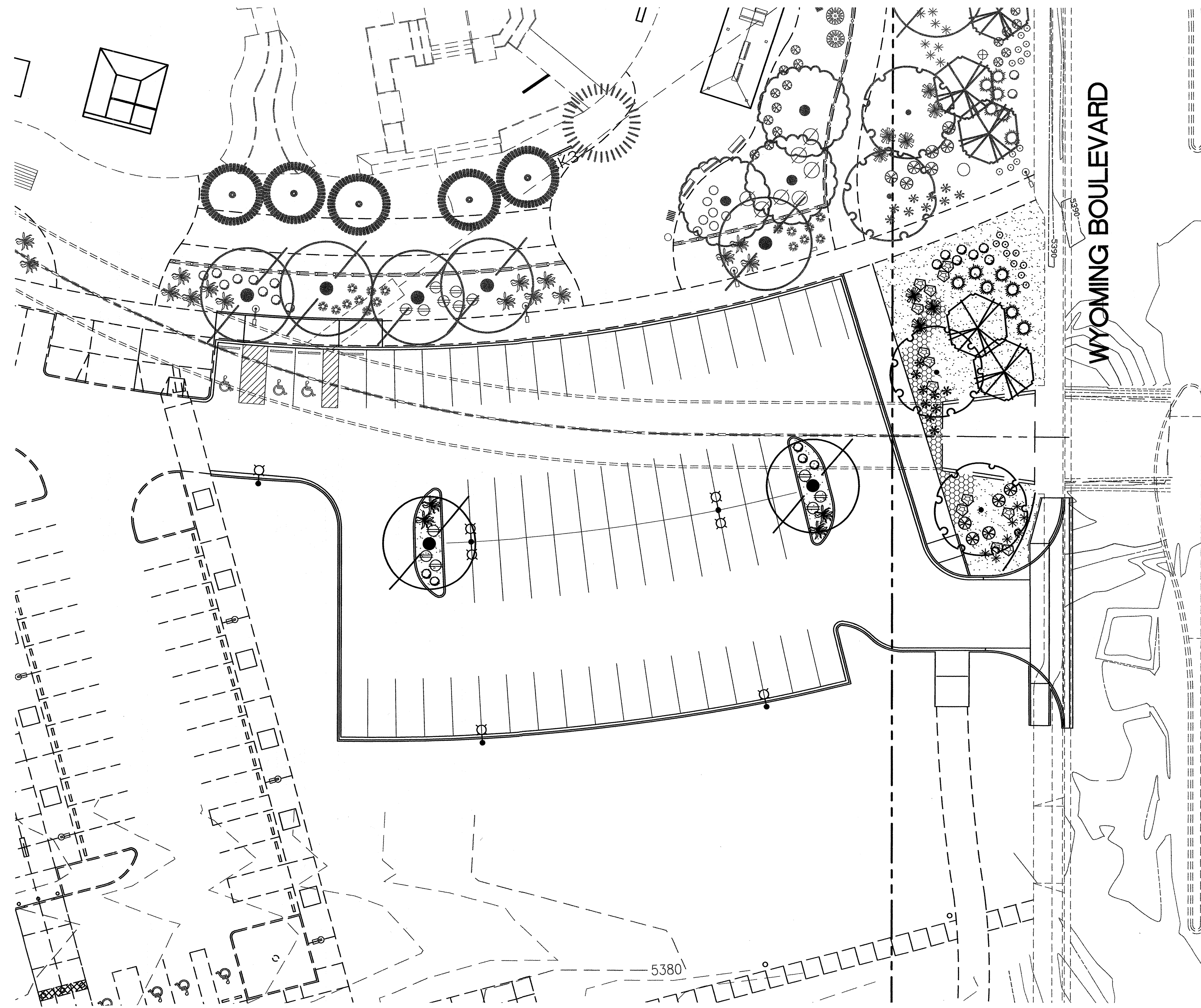
RECORD DRAWINGS

PROJECT #713895  
JANUARY 27, 2010

NORTH DOMINGO BACA PARK  
PHASE 7 EAST PARKING LOT

FINAL FOR CONSTRUCTION





WYOMING BOULEVARD

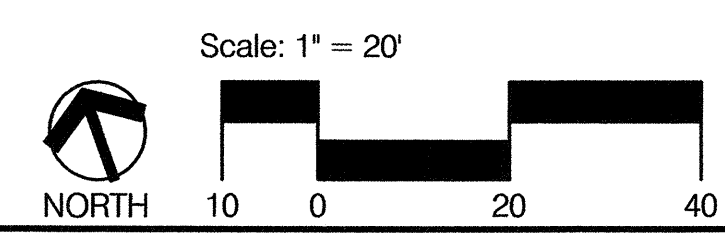
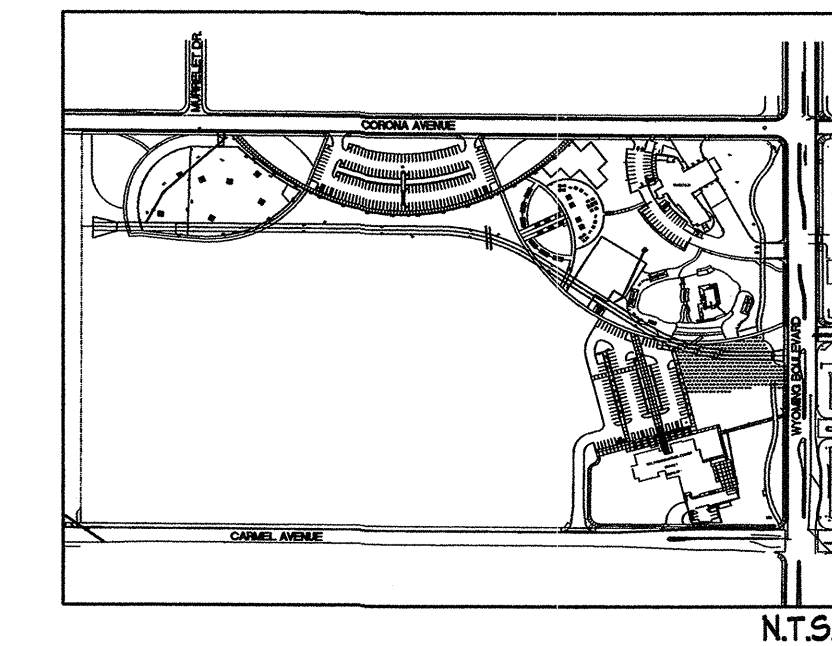
PLANT LEGEND

QTY.	SYMBOL	SCIENTIFIC NAME COMMON NAME	SIZE	INSTALLED SIZE MATURE SIZE	WATER USE
TREES					
2		CHILOPSIS LINEARIS 'LUC. HAM.' DESERT WILLOW	24" BOX	8' HT. X 6' SPR. 20' HT. X 25' SPR.	LOW +
2		FRAXINUS VELUTINA 'MODESTO' MODESTO ASH	2" B4B	14' HT. X 6' SPR. 40' HT. X 35' SPR.	MEDIUM +
2		ULMUS PARVIFOLIA 'ALLEE II' ALLEE LACEBARK ELM	2" B4B	14' HT. X 6' SPR. 40' HT. X 30' SPR.	MEDIUM
SHRUBS/GROUNDCOVERS					
5		ARTEMISIA FILIFOLIA SAND SAGE	1-GAL.	4' O.C. 4' HT. X 4' SPR.	LOW
9		ERICAMERIA LARICIFOLIA 'AGUIRREI'-GAL. TURPENTINE BUSH	2" O.C.	2' HT. X 2' SPR.	LOW
7		HESPERALOE PARVIFLORA RED YUCCA	1-GAL.	3' O.C. 3' HT. X 3' SPR.	MEDIUM
4		JUNIPERUS SABINA 'BUFFALO' BUFFALO JUNIPER (FEMALE)	5-GAL.	6' O.C. 2' HT. X 6' SPR.	LOW +
7		LAVENDULA ANGUSTIFOLIA ENGLISH LAVENDER	1-GAL.	4' O.C. 3' HT. X 3' SPR.	MEDIUM
6		RAPHIOLEPIS INDICA INDIA HAWTHORN	5-GAL.	3' O.C. 3' HT. X 3' SPR.	LOW +
7		ROSMARINUS OFFICINALIS ROSEMARY	5-GAL.	6' O.C. 6' HT. X 6' SPR.	LOW +
ORNAMENTAL GRASSES					
9		NASSELLA TENUISSIMA THREADGRASS	1-GAL.	3' O.C. 3' HT. X 3' SPR.	LOW +
3		NOLINA MICROCARPA BEARGRASS	5-GAL.	5' O.C. 4' HT. X 5' SPR.	LOW
LANDSCAPE BOULDERS (8" MIN. DIMENSION-MOSS ROCK)					
2"-4" SAN LAZARUS COBBLE (6" DEPTH OVER FILTER FABRIC ON FLAT GRADES - NO FABRIC ON SLOPE)					
1/8" PUEBLO ROSE ROCK MULCH (4" DEPTH OVER DE WITT PRO-5 WEED CONTROL FABRIC)					

GENERAL LANDSCAPE NOTES

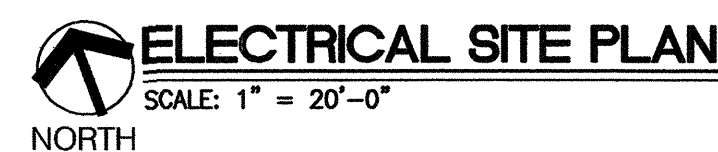
1. PRIOR TO BEGINNING WORK ON THE PROJECT, THE LANDSCAPE CONTRACTOR SHALL REVIEW THE PROJECT IN THE FIELD WITH THE OWNER'S REPRESENTATIVE.
2. IF DISCREPANCIES OCCUR BETWEEN THE DRAWINGS AND THE SITE, THE LANDSCAPE CONTRACTOR SHALL NOTIFY THE OWNER'S REPRESENTATIVE FOR CLARIFICATION PRIOR TO PROCEEDING ON THAT PORTION OF WORK.
3. ALL PLANTING AREAS ARE TO HAVE WEEDS AND COMPETITIVE VEGETATION REMOVED PRIOR TO PREPARATION FOR PLANTING.
4. ALL EXISTING PLANT MATERIALS SHALL BE PROTECTED DURING CONSTRUCTION. DAMAGED MATERIALS SHALL BE REPLACED IN KIND AT THE CONTRACTOR'S EXPENSE.
5. PLANT QUANTITIES ARE PROVIDED FOR CONTRACTOR'S CONVENIENCE ONLY, PLANS SHALL TAKE PRECEDENCE.
6. THE OWNER'S REPRESENTATIVE SHALL APPROVE ALL PLANT MATERIAL PRIOR TO PLANTING. IN ADDITION, THE OWNER REPRESENTATIVE RESERVES THE RIGHT TO REFUSE ANY PLANT MATERIAL DEEMED UNACCEPTABLE. THE OWNER'S REPRESENTATIVE IS TO APPROVE ANY AND ALL SUBSTITUTIONS.
7. IT IS THE LANDSCAPE CONTRACTOR'S RESPONSIBILITY TO LOCATE ALL UNDERGROUND UTILITIES PRIOR TO COMMENCEMENT OF PLANTING OPERATIONS.
8. PLANTING INSTALLATION SHALL BE IN ACCORDANCE WITH ALL CITY OF ALBUQUERQUE STANDARD SPECIFICATIONS (SECTION 1005 - PLANTING) AND DETAILS.

KEYED MAP



		<b>CONSENSUS PLANNING, INC.</b> Planning / Landscape Architecture 302 Eighth Street NW Albuquerque, NM 87102 (505) 764-9801 Fax 842-5495 e-mail: cp@consensusplanning.com	
CITY OF ALBUQUERQUE DEPARTMENT OF MUNICIPAL DEVELOPMENT PARK DESIGN AND CONSTRUCTION DIVISION			
TITLE: NORTH DOMINGO BACA PARK PHASE 7 EAST PARKING LOT PLANTING PLAN			
Design Review Committee	City Engineer Approval	Last Design Update	
City Project No.	Zone Map No.	Sheet	of
713895	C-19	7	9






1. THIS POLE FIXTURE SHALL BE CONNECTED TO THE PHOTOCELL ON/PHOTOCELL OFF CONTROL CIRCUIT. REFER TO LIGHTING CONTROL DIAGRAM ON SHEET E2.
2. THIS POLE FIXTURE SHALL BE CONNECTED TO THE PHOTOCELL ON/TIME CLOCK OFF CONTROL CIRCUIT. REFER TO LIGHTING CONTROL DIAGRAM ON SHEET E2.
3. 3 #8 CONDUCTORS IN A 1-1/4" CONDUIT
4. 6 #8 CONDUCTORS IN A 1-1/4" CONDUIT
5. EXTEND 6 # 8 CONDUCTORS IN EXISTING 1-1/2" CONDUIT THAT IS RUN BETWEEN THE EXISTING PULLBOX AND THE EXISTING LIGHTING CONTROL CABINET. IF CONDUIT IS ONLY STUB UP AT THE LIGHTING CONTROL CABINET THE CONTRACTOR SHALL EXTEND CONDUIT INTO THE CONTROL CABINET.
6. STUB NEW CONDUIT CALLED OUT IN NOTE 4 INTO EXISTING PULLBOX.
7. EXTEND NEW LIGHTING CIRCUIT TO RELAYS IN CONTROL CABINET. REFER TO LIGHTING CONTROL DIAGRAM ON SHEET E2

1. THE ELECTRICAL CONTRACTOR SHALL PROVIDE AND INSTALL ALL ELECTRICAL FACILITIES IN ACCORDANCE WITH THE FOLLOWING SPECIFICATIONS, PLANS AND ASSOCIATED NOTES. NATIONAL ELECTRICAL CODE, STATE & LOCAL CODES, AND IN A WORKMANLIKE MANNER.
2. CONTRACTOR SHALL BECOME FAMILIAR WITH EXISTING CONDITIONS AT JOB SITE.
3. THE ELECTRICAL CONTRACTOR SHALL INSTALL ALL CONTROLS AND MAKE REQUIRED CONNECTIONS TO EQUIPMENT FURNISHED BY OTHERS.
4. THE ELECTRICAL CONTRACTOR SHALL INCLUDE IN HIS BID THE COSTS OF ALL PERMITS, TESTS AND INSPECTIONS, AND VISIT THE SITE OF WORK BEFORE SUBMITTING BID.
5. THE ELECTRICAL CONTRACTOR SHALL COORDINATE HIS WORK WITH THE OTHER TRADES AND REFER TO GAZEDO MANUFACTURERS PLANS TO DETERMINE THE EXACT LOCATION OF OUTLETS.
6. THE ELECTRICAL CONTRACTOR SHALL GUARANTEE ALL WORK AND MATERIAL FOR A PERIOD OF ONE YEAR AFTER DATE OF ACCEPTANCE.
7. A SET OF MARKED UP PRINTS SHALL BE PREPARED SHOWING ALL CHANGES MADE DURING CONSTRUCTION AND TURN IT OVER TO THE OWNER AT THE END OF THE JOB. ALL CHANGES MUST HAVE THE OWNERS APPROVAL.
8. ANY DISCREPANCY BETWEEN MATERIAL DESCRIPTION AND CATALOG NO. SHALL BE BROUGHT TO THE ENGINEERS, OR OWNERS ATTENTION IMMEDIATELY.
9. CONTRACTOR SHALL SUBMIT SHOP DRAWINGS ON ALL LIGHTING FIXTURES.
10. INTERRUPTION OF ANY ELECTRICAL SERVICES SHALL BE COORDINATED WITH THE OWNER AT LEAST 7 DAYS PRIOR TO THE INTENDED OUTAGE AND SHALL BE REQUESTED IN WRITING WITH A COPY TO THE ENGINEER AND OWNER.
11. CONTRACTOR SHALL OBTAIN FROM THE ENGINEER PRIOR TO COMMENCEMENT OF WORK, THE EXISTING PLANS WHICH INDICATE THE APPROXIMATE ELECTRICAL LAYOUT OF LIGHTING FIXTURES, CONDUIT, WIRING, CIRCUITS, ETC.
12. ALL CONDUCTORS TO BE #12 AWG THWN EXCEPT WHERE OTHERWISE SHOWN OR NOTED. IT IS PERMISSIBLE FOR THE CONTRACTOR TO USE THWN WIRING IN EXISTING CONDUITS.
13. 120 VOLT BRANCH CIRCUIT RUNS WHICH EXCEED ONE HUNDRED FEET IN LENGTH SHALL BE #10 THWN.
14. CONDUIT SHALL BE ROUTED CONCEALED WHERE POSSIBLE IN FLOORS, WALLS OR CEILINGS IN A NEAT WORKMANLIKE MANNER.
15. CONDUIT BEING RUN EXPOSED ON CEILING OR WALL SHALL BE DONE IN A NEAT WORKMANLIKE MANNER, MAKING ALL RUNS AS STRAIGHT AS POSSIBLE.
16. ALL CONDUIT WHICH COMES IN CONTACT WITH EARTH SHALL BE WRAPPED IN SCOTCH WRAP #51 OR PLASTIC COATED OR SCHEDULE 80 PVC. ALL FEEDERS AND HOMERUNS SHALL BE 1" MINIMUM.
17. ALL PULLBOXES SHALL BE CODE GA. AND MEET THE MINIMUM SIZES AS RECOMMENDED BY N.E.C.

IF ANY UTILITY LINES, PIPELINES, OR UNDERGROUND UTILITY LINES ARE SHOWN ON THESE DRAWINGS, THEY ARE SHOWN IN AN APPROXIMATE MANNER ONLY, AND SUCH LINES MAY EXIST WHERE NONE ARE SHOWN. IF ANY SUCH EXISTING LINES ARE SHOWN, THE LOCATION IS BASED UPON INFORMATION PROVIDED BY THE UTILITY OR PIPELINE COMPANY, THE OWNER OR BY OTHERS, AND THE INFORMATION MAY BE INCOMPLETE, OR MAY BE OBSOLETE BY THE TIME CONSTRUCTION COMMENCES.

THE ENGINEER HAS UNDERTAKEN NO FIELD VERIFICATION OF THE LOCATION, DEPTH, SIZE OR TYPE OF EXISTING UTILITY LINES, PIPELINES, OR UNDERGROUND UTILITY LINES, MAKES NO REPRESENTATION PERTAINING THERETO, AND ASSUMES NO RESPONSIBILITY OR LIABILITY THEREFORE. THE CONTRACTOR SHALL INFORM ITSELF TO THE LOCATION OF ANY UTILITY LINE, PIPELINE, OR UNDERGROUND UTILITY LINE OR NEARBY OBSTACLE BEFORE THE WORKING BEGINS AND DURING EXCAVATION WORK. THE CONTRACTOR IS FULLY RESPONSIBLE FOR ANY AND ALL DAMAGE CAUSED BY ITS FAILURE TO LOCATE, IDENTIFY AND PRESERVE ANY AND ALL EXISTING UTILITIES, LINES, PIPELINES, OR UNDERGROUND UTILITY LINES. THE CONTRACTOR SHALL COMPLY WITH STATE STATUTES, MUNICIPAL AND LOCAL ORDINANCES, RULES, AND REGULATIONS, IF ANY, PERTAINING TO THE LOCATION OF EXISTING LINES AND FACILITIES IN PLANNING AND CONDUCTING EXCAVATION, WHETHER BY CALLING OR NOTIFYING THE UTILITIES, COMPLYING WITH "BLUE STAKES" PROCEDURES, OR OTHERWISE.

**PLANNING**  
  
**CONSENSUS**  
**PLANNING, INC.**  
*Planning / Landscape Architecture*  
 302 Eighth Street NW  
 Albuquerque, NM 87102  
 (505) 764-9801 Fax 842-5495  
 e-mail: [cp@consensusplanning.com](mailto:cp@consensusplanning.com)

CITY OF ALBUQUERQUE  
DEPARTMENT OF MUNICIPAL DEVELOPMENT  
PARK DESIGN AND CONSTRUCTION DIVISION

TITLE:	NORTH DOMINGO BACA PARK - PHASE 5 AREAS OF PLAY PARKING LOT
--------	--

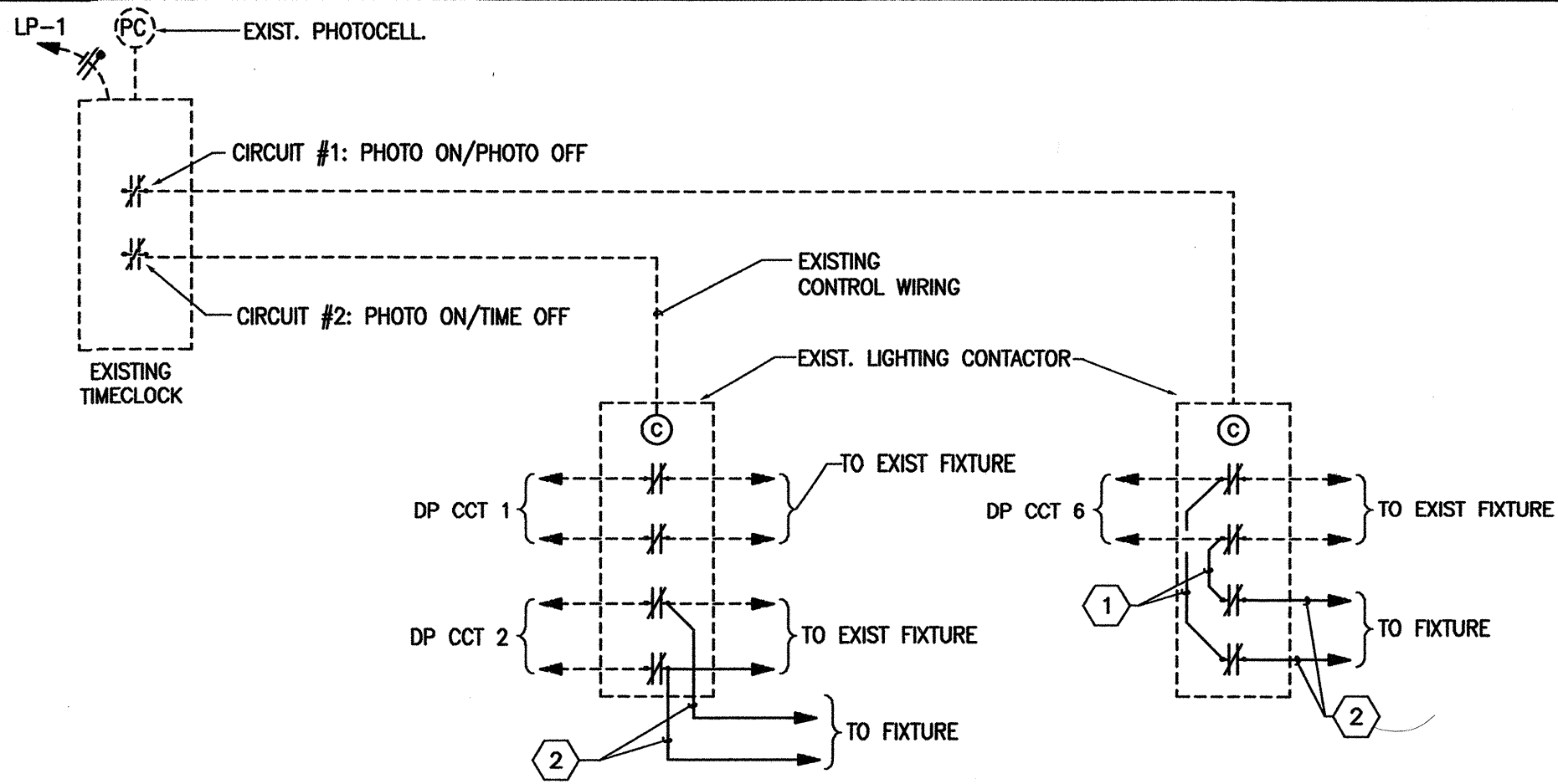
ELECTRICAL SITE PLAN

Design Review Committee	City Engineer Approval	Last Design Update	Mo. / Day / Yr.	

City Project No.	713894	Zone Map No.	C-19	Sheet	E1
------------------	--------	--------------	------	-------	----

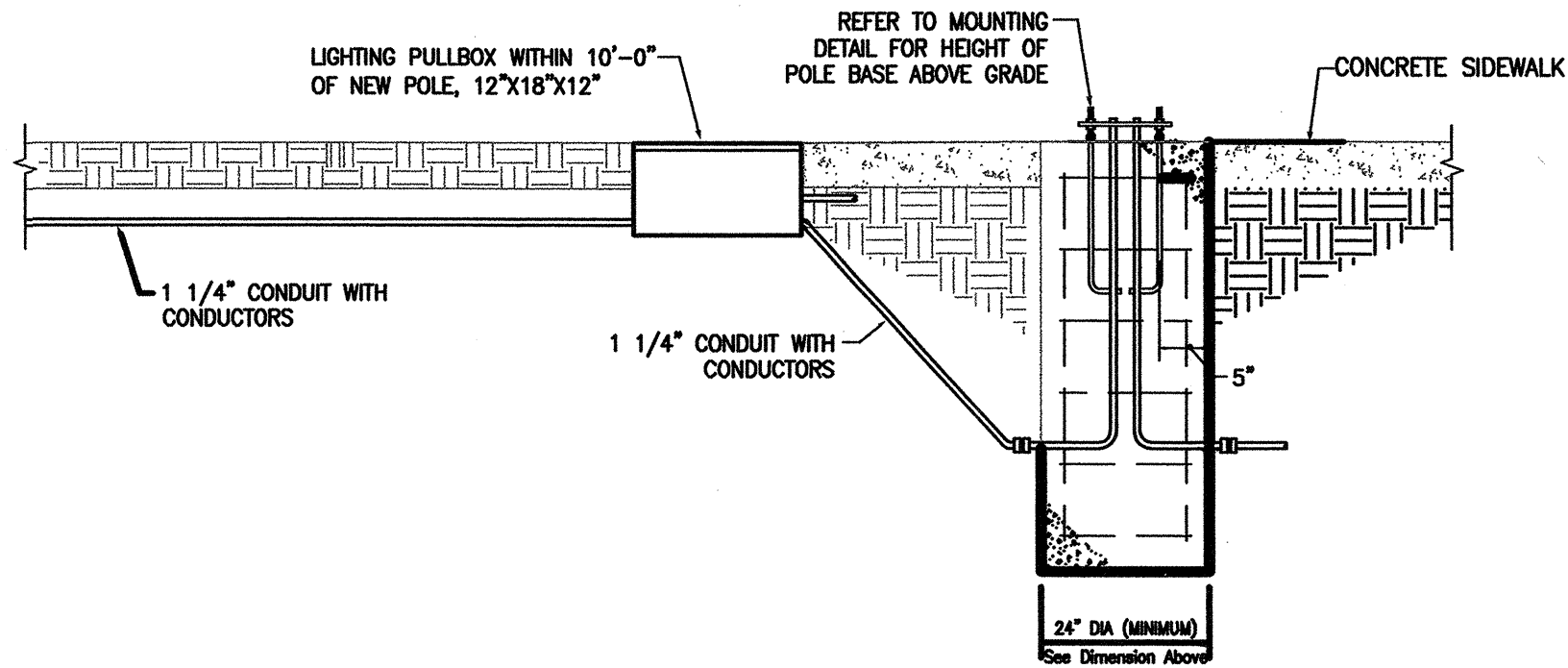
[illegible]





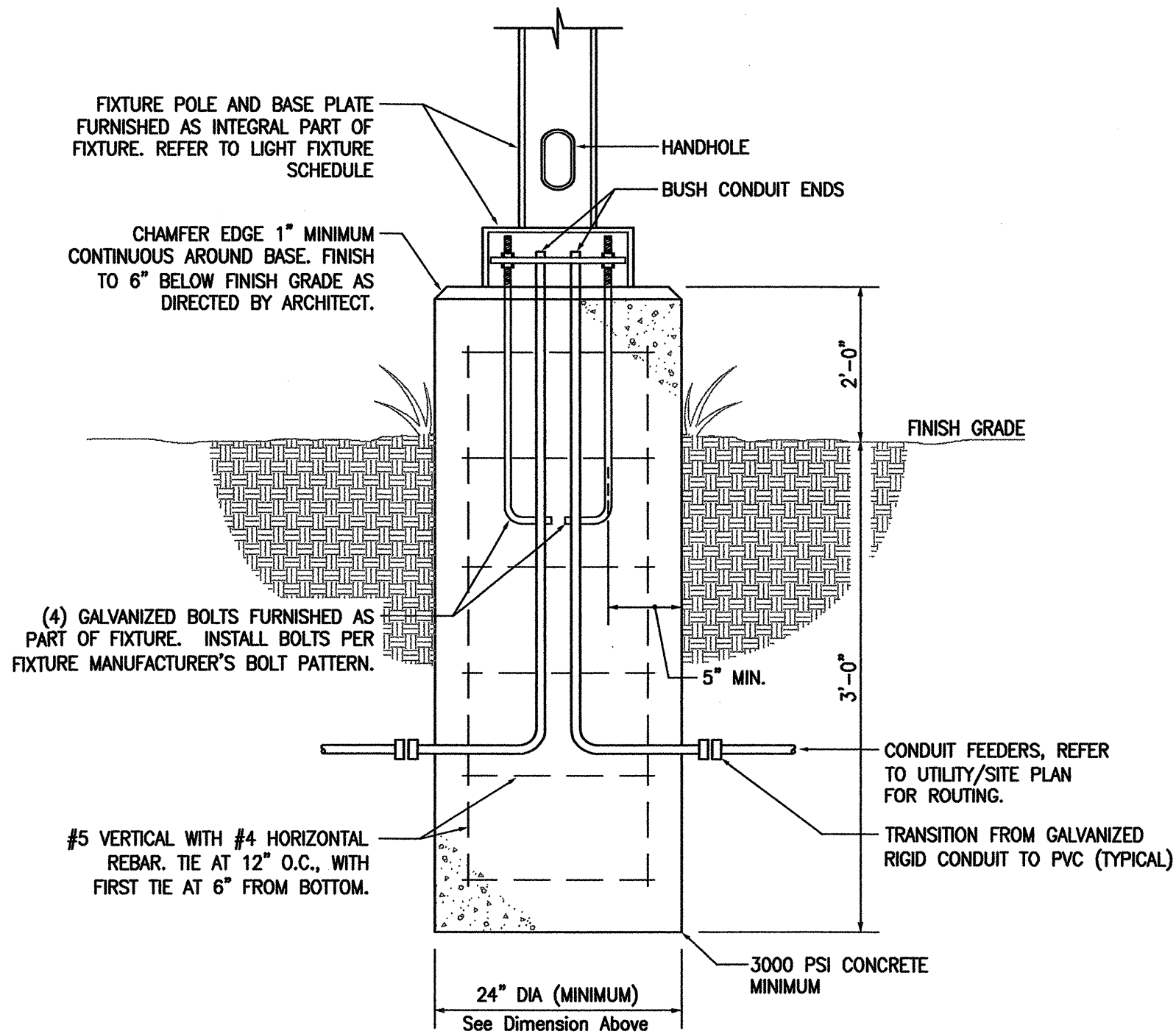
**EXTERIOR BUILDING LIGHTING CONTROL DIAGRAM**

TIME ON AND/OR TIME OFF SETTINGS SHALL BE SET TO OWNER'S REQUIREMENTS.



**POLE LIGHT MOUNTING DETAIL**

NO SCALE



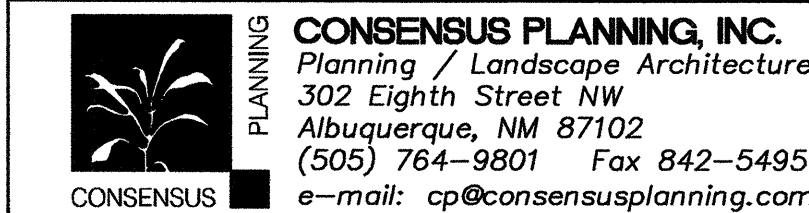
**FIXTURE TYPE "C" AND "D" MOUNTING DETAIL**

NOT TO SCALE

LIGHT FIXTURE SCHEDULE			
TYPE	FIXTURE DESCRIPTION	LAMPS	MOUNTING
C	POLE MOUNTED FIXTURE, 16'-0" POLE, 150 WATT HPS, DOUBLE HEAD BACK TO BACK. LUMARK HPHR-FT-150-MT-QA1062B2-SSS4A25	1-150 WATT HPS	REFER TO DETAIL
D	POLE MOUNTED FIXTURE, 16'-0" POLE, 150 WATT HPS, SINGLE HEAD. LUMARK HPHR-R2-150-MT-QA1062B2-SSS4A-25	1-150 WATT HPS	REFER TO DETAIL

**KEYED NOTES**

1. EXTEND CONDUCTORS BETWEEN CONTACTS.
2. LIGHTING CIRCUIT CONDUCTORS AS CALLED OUT ON SHEET E1



CITY OF ALBUQUERQUE  
DEPARTMENT OF MUNICIPAL DEVELOPMENT  
PARK DESIGN AND CONSTRUCTION DIVISION  
TITLE: NORTH DOMINGO BACA PARK - PHASE 5 AREAS OF PLAY  
PARKING LOT  
ELECTRICAL DETAILS AND SCHEDULES

Design Review Committee	City Engineer Approval	Update	Mo. / Day / Yr.	Mo. / Day / Yr.
		Last Design		
City Project No.	Zone Map No.	Sheet		
	C-19	E2		



NO.	DATE	REMARKS	BY
		DESIGN	
		REVISIONS	
		DESIGN	
		DESIGNED BY TRG	
		DRAWN BY TRG	
		CHECKED BY DDR	