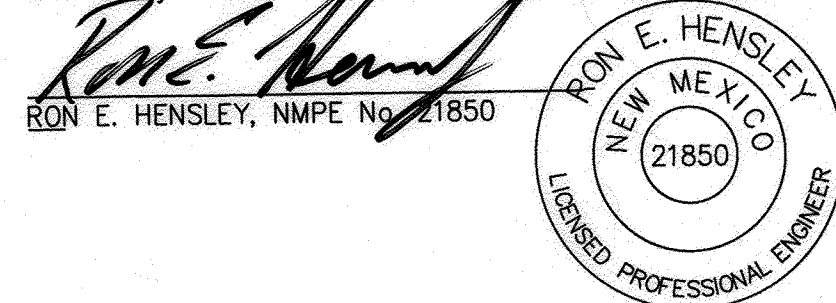


ABBREVIATIONS

A = AIR LINE  
AD = AREA DRAIN  
AIP = ABANDONED IN PLACE  
BLDG = BUILDING  
BM = BENCHMARK  
CATV = CABLE TELEVISION LINE  
CIP = CAST IRON PIPE  
CMP = CORRUGATED METAL PIPE  
CMPA = CORRUGATED METAL PIPE ARCH  
CO = CLEANOUT  
COA = CITY OF ALBUQUERQUE  
CONC = CONCRETE  
CL = CENTERLINE  
DIA = DIAMETER  
DIP = DUCTILE IRON PIPE  
DTL = DETAIL  
DWG = DRAWING  
EG = EXISTING GRADE  
ELEC. = ELECTRIC  
EL = ELEVATION  
EX = EXISTING  
FF = FINISHED FLOOR ELEVATION  
FG = FINISHED GRADE  
FH = FIRE HYDRANT  
FL = FLOW LINE  
G = GAS PIPE  
GM = GAS METER  
GV = GATE VALVE  
HP = HIGH POINT  
INV = INVERT ELEVATION  
LF = LINEAL FEET  
LP = LIGHT POLE  
L/S = LANDSCAPING  
MH = MANHOLE  
NG = NATURAL GROUND  
OE = OVERHEAD ELECTRIC LINE  
OT = OVERHEAD TELEPHONE LINE  
PB = ELECTRICAL PULL BOX  
PCC = PORTLAND CEMENT CONCRETE  
PP = POWER POLE  
PROP = PROPOSED  
PVC = POLYVINYL CHLORIDE PIPE  
RCP = REINFORCED CONCRETE PIPE  
ROW = RIGHT-OF-WAY  
S = SLOPE  
SAS = SANITARY SEWER  
SD = STORM DRAIN  
STA = STATION  
STD = STANDARD  
SW = SIDEWALK  
T = TELEPHONE  
TA = TOP OF ASPHALT PAVEMENT  
TAC = TOP OF ASPHALT CURB  
TC = TOP OF CONCRETE SLAB (PAVEMENT)  
TCC = TOP OF CONCRETE CURB  
TS = TOP OF SIDEWALK  
TW = TOP OF WALL  
TYP = TYPICAL  
UE = UNDERGROUND ELECTRIC  
UT = UNDERGROUND TELEPHONE  
W = WATER  
WM = WATER METER  
WV = WATER VALVE

ENGINEERS CERTIFICATION

I, Ron E. Hensley, NMPE 21850, of the firm THE Group, a Registered Professional Engineer in the State of New Mexico, do hereby certify, to the best of my knowledge and belief, that the infrastructure installed as part of this project has been inspected by me or by a qualified person under my direct supervision, and has been constructed in accordance with the plans and specifications approved by the City Engineer and that the original design intent of the approved plans has been met, except as noted by me on the as-built construction drawings. This Certification is based on site inspections by me or personnel under my direction, and survey information provided by Timothy Aldrich, NMPS number 7719.



4/12/17  
Date

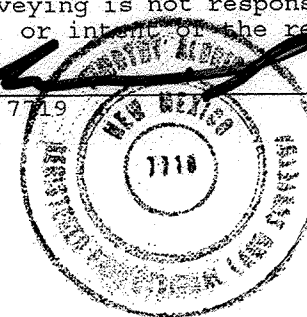
RECORD DRAWING



SURVEYOR'S CERTIFICATION

I, Timothy Aldrich, a duly qualified Registered Professional Land Surveyor under the laws of the State of New Mexico, do hereby certify that the 'as-built' information shown on these drawings was obtained from field construction and 'as-built' surveys performed by me or under my supervision, that the 'as-built' information shown on these drawings is true and correct to the best of my knowledge and belief. Aldrich Land Surveying is not responsible for any of the design concepts, calculations, engineering, or information on the record drawings.

Timothy Aldrich, P.S. No. 7719  
04/03/2017  
Date



APPROVED AS RECORD DRAWINGS  
DESIGN REVIEW SECTIONS  
CITY CONSTRUCTION ENGINEER  
DATE: 6-14-2017

# CITY OF ALBUQUERQUE, NEW MEXICO

## HOLLY ESTATES SUBDIVISION

### PAVING, SANITARY SEWER AND WATERLINE IMPROVEMENTS

INDEX TO DRAWINGS

SHEET No.	DESCRIPTION	SHEET No.	DESCRIPTION
1	COVER SHEET AND INDEX TO DRAWINGS	7	RONAN COURT PAVING PLAN AND PROFILE
2	PRELIMINARY PLAT	8	JENSON COURT PAVING PLAN AND PROFILE
3	GRADING AND DRAINAGE PLAN	9	HOLLY AVENUE STA. 9+60 - 13+60 UTILITY PLAN AND PROFILE
4	EROSION AND SEDIMENT CONTROL PLAN	10	HOLLY AVENUE STA. 13+60 - 17+00 UTILITY PLAN AND PROFILE
5	HOLLY AVENUE STA. 10+00 - 13+60 PAVING PLAN AND PROFILE	11	RONAN COURT UTILITY PLAN AND PROFILE
6	HOLLY AVENUE STA. 13+60 - 17+00 PAVING PLAN AND PROFILE	12	JENSON COURT UTILITY PLAN AND PROFILE

BERNALILLO COUNTY DRAWINGS

SHEET No.	DESCRIPTION
13	HOLLY AVENUE STA. 16+21.82 - 19+80 PAVING PLAN AND PROFILE

LEGEND

=====	NEW CURB AND GUTTER & SIDEWALK	⊙	EX SAS MANHOLE	—8" SAS—	PROPOSED SANITARY SEWER LINE
=====	EX CURB AND GUTTER & SIDEWALK	⊙	PROP SAS MANHOLE	—SAS—	EX SANITARY SEWER LINE
⊙	PROP FIRE HYDRANT	⊙	PROP WATER METER	—6" W—	PROPOSED WATER LINE
⊙	PROP WATER VALVE	—S—	PROPOSED SANITARY SEWER SERVICE	—8"W—	EX WATER LINE
—	PROPERTY LINE	(S 83°39'25" W)	RECORD BEARING AND DISTANCES	N 00°07'27" W	MEASURED BEARING AND DISTANCES

UTILITY COMPANY CONTACTS

ALBUQUERQUE BERNALILLO COUNTY  
WATER UTILITY AUTHORITY  
TIM CYNOWA  
City/County Government Center  
One Civic Plaza NW  
Albuquerque, New Mexico, 87102  
(505) 768-2588

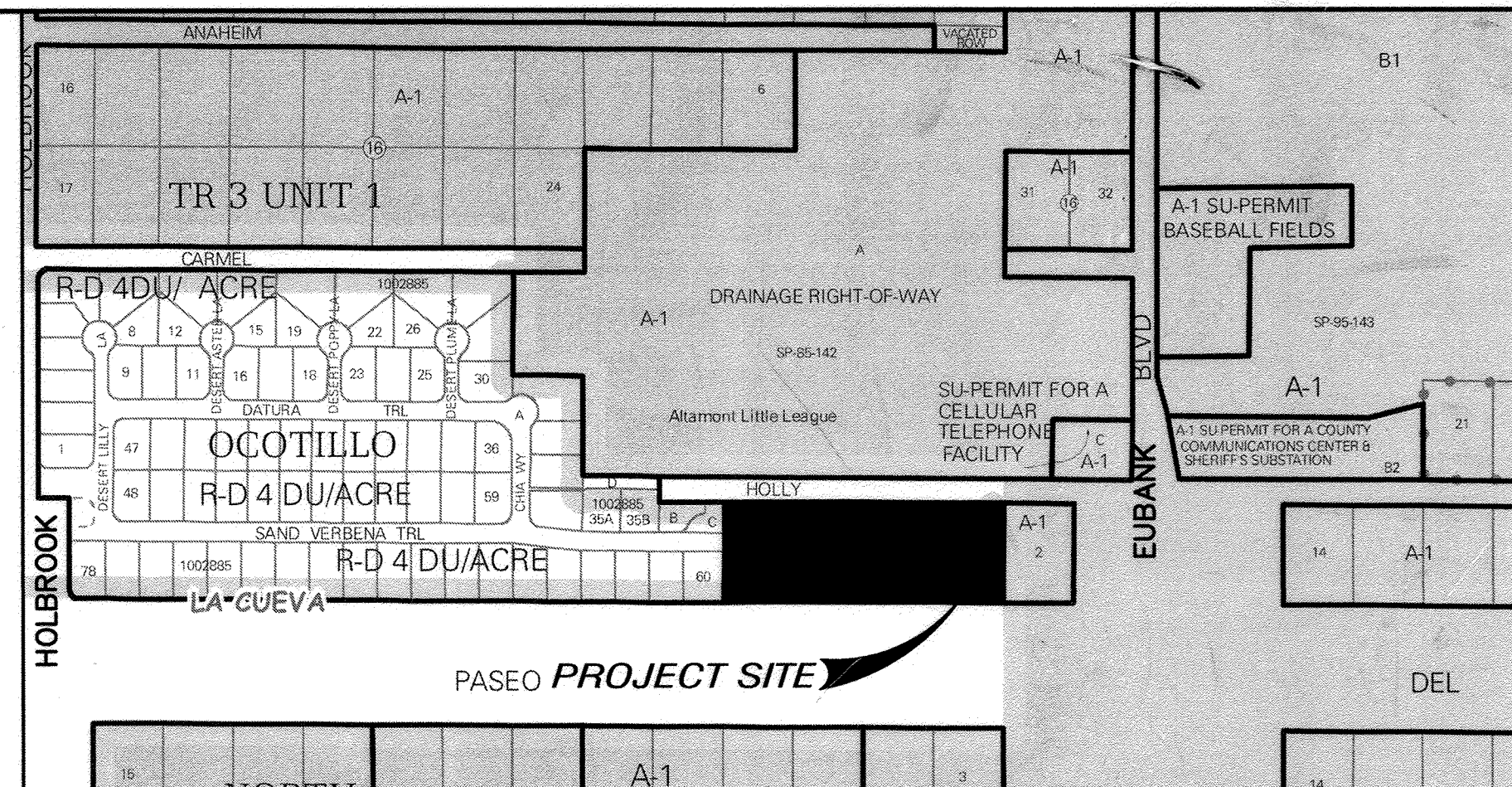
PNM  
Sheri Compton  
4201 Edith Blvd. NE  
Mail Stop E555  
Albuquerque, New Mexico 87107  
(505) 241-514

NEW MEXICO GAS CO.  
Earl Hoskins  
P.O. Box 97500  
Albuquerque, New Mexico 87199  
(505) 241-7759 / 401-7542  
Earl.Hoskins@nmgco.com

QWEST COMMUNICATIONS  
Don Davalos  
400 Tijeras Ave. NW, Suite 520  
Albuquerque, New Mexico 87107  
(505) 245-8967

AT&T  
N.N.  
111 Third St., NW  
Albuquerque, New Mexico 87103  
(505) 842-2806

COMCAST CABLE  
Robert Martinez  
4811 Montbel Pl. NE  
Albuquerque, NM 87107  
(505) 761-6221  
Robert\_Martinez@cable.comcast.com



VICINITY MAP ZONE ATLAS: C-21

GENERAL NOTES SCALE: NONE  
NOTICE TO CONTRACTORS

- ALL WORK DETAILED ON THESE PLANS TO BE PERFORMED UNDER THIS CONTRACT SHALL, EXCEPT AS OTHERWISE STATED OR PROVIDED HEREIN, BE CONSTRUCTED IN ACCORDANCE WITH THE CITY OF ALBUQUERQUE STANDARD SPECIFICATIONS FOR PUBLIC WORKS CONSTRUCTION, 1986 EDITION, UPDATE NO. 9.
- CONTRACTOR SHALL NOTIFY THE PROJECT ENGINEER NOT LESS THAN SEVEN (7) DAYS PRIOR TO STARTING WORK IN ORDER THAT THE CITY SURVEYOR MAY TAKE NECESSARY MEASURES TO INSURE THE PRESERVATION OF SURVEY MONUMENTS. CONTRACTOR SHALL NOT DISTURB PERMANENT SURVEY MONUMENTS WITHOUT THE CONSENT OF THE CITY SURVEYOR, AND SHALL BEAR THE EXPENSE OF REPLACING ANY THAT MAY BE DISTURBED WITHOUT PERMISSION. REPLACEMENT SHALL BE DONE ONLY BY THE CITY SURVEY SECTION. WHEN A CHANGE IS MADE IN ANY ROADWAY IN WHICH A PERMANENT SURVEY MONUMENT IS LOCATED, CONTRACTOR SHALL, AT HIS OWN EXPENSE, ADJUST THE MONUMENT COVER TO THE NEW GRADE UNLESS OTHERWISE SPECIFIED. REFER TO SECTION 4.4 OF THE GENERAL CONDITIONS OF THE CITY OF ALBUQUERQUE STANDARD SPECIFICATIONS FOR PUBLIC WORKS CONSTRUCTION.
- SEVEN (7) WORKING DAYS PRIOR TO BEGINNING CONSTRUCTION, THE CONTRACTOR SHALL SUBMIT TO THE CONSTRUCTION COORDINATION DIVISION A DETAILED CONSTRUCTION SCHEDULE. TWO (2) WORKING DAYS PRIOR TO CONSTRUCTION, THE CONTRACTOR SHALL OBTAIN A BARRICADE PERMIT FROM THE CONSTRUCTION COORDINATION DIVISION. CONTRACTOR SHALL NOTIFY BARRICADE ENGINEER (924-3400) PRIOR TO OCCUPYING AN INTERSECTION. SEE SECTION 19 OF THE SPECIFICATIONS.
- TWO (2) WORKING DAYS PRIOR TO ANY EXCAVATION, CONTRACTOR MUST CONTACT LINE LOCATING SERVICE, (260-1990) FOR LOCATION OF EXISTING UTILITIES.
- PRIOR TO CONSTRUCTION, THE CONTRACTOR SHALL EXCAVATE AND VERIFY THE HORIZONTAL AND VERTICAL LOCATIONS OF ALL OBSTRUCTIONS AND EXISTING PAVEMENT. SHOULD A CONFLICT EXIST, THE CONTRACTOR SHALL NOTIFY THE ENGINEER OR SURVEYOR SO THAT THE CONFLICT CAN BE RESOLVED WITH A MINIMUM OF DELAY.
- THE CONTRACTOR SHALL PROVIDE AND MAINTAIN ALL CONSTRUCTION SIGNAGE UNTIL THE PROJECT HAS BEEN ACCEPTED BY THE CITY.
- THE CONTRACTOR SHALL COORDINATE WITH THE WATER AUTHORITY SEVEN (7) DAYS IN ADVANCE OF PERFORMING WORK THAT WILL AFFECT THE PUBLIC WATER OR SANITARY SEWER INFRASTRUCTURE. WORK REQUIRING SHUTOFF OF FACILITIES DESIGNATED AS MASTER PLAN FACILITIES MUST BE COORDINATED WITH THE WATER AUTHORITY 14 DAYS IN ADVANCE OF PERFORMING SUCH WORK. ONLY WATER AUTHORITY CREWS ARE AUTHORIZED TO OPERATE PUBLIC VALVES. SHUTOFF REQUESTS MUST BE MADE ONLINE AT <http://abcwua.org/content/view/full/729/>.
- RESTRAINED JOINTS ARE REQUIRED AT ALL WATER LINE BENDS, TEES, CAPS AND GATE VALVES. RESTRAINED JOINTS SHALL BE CONSIDERED INCIDENTAL TO OTHER ITEMS AND NO SEPARATE MEASUREMENT OR PAYMENT SHALL BE MADE.
- ALL PUBLIC WATER LINES MUST BE A MINIMUM OF 18" ABOVE SANITARY SEWER LINES AT ALL CROSSINGS.
- THE CONTRACTOR SHALL FURNISH ELECTRONIC MARKER DEVICES ON ALL WATER LINE AND SANITARY SEWER LINE SERVICE STUBS, VALVES, CAPS, BENDS AND PLUGS WITH A MAXIMUM SPACING OF 100'.
- ALL UTILITIES AND UTILITY SERVICE LINES SHALL BE INSTALLED PRIOR TO PAVING.
- BACKFILL COMPACTION SHALL BE ACCORDING TO SPECIFIED STREET USE.
- TACK COAT REQUIREMENTS SHALL BE DETERMINED BY THE ENGINEER.
- SIDEWALKS AND WHEELCHAIR RAMPS WITHIN THE CURB RETURNS SHALL BE CONSTRUCTED WHEREVER A NEW CURB RETURN IS CONSTRUCTED.
- IF CURB IS DEPRESSED FOR A DRIVEPAD OR A HANDICAP RAMP, THE DRIVEPAD OR RAMP SHALL BE CONSTRUCTED PRIOR TO ACCEPTANCE OF THE CURB AND GUTTER.
- ALL STREET STRIPING ALTERED OR DESTROYED SHALL BE REPLACED BY CONTRACTOR WITH PLASTIC REFLECTORIZED PAVEMENT MARKINGS IN EXISTING STRIPING LOCATIONS UNLESS OTHERWISE INDICATED BY THIS PLAN SET.
- ANY WORK AFFECTING AN ARTERIAL ROADWAY MAY REQUIRE 24 HOUR CONSTRUCTION.
- THE CONTRACTOR SHALL BE RESPONSIBLE FOR REPAIR, OR REMOVAL AND REPLACEMENT, OF ANY PAVEMENT, PAVEMENT MARKINGS, CURB AND GUTTER, DRIVEPADS, SIDEWALK, WHEELCHAIR RAMP, SIGNAGE OR ANY OTHER EXISTING IMPROVEMENTS DAMAGED BY THE CONTRACTOR'S OPERATIONS.
- ALL EXCAVATION, TRENCHING, AND SHORING ACTIVITIES MUST BE CARRIED OUT IN ACCORDANCE WITH OSHA 29 CFR 1926.650 SUB-PART P.
- OVERNIGHT PARKING OF CONSTRUCTION EQUIPMENT SHALL NOT OBSTRUCT DRIVEWAYS OR DESIGNATED TRAFFIC LANES. THE CONTRACTOR SHALL NOT STORE ANY EQUIPMENT OR MATERIAL WITHIN THE PUBLIC RIGHT-OF-WAY.
- CURB AND GUTTER, SIDEWALKS, AND DRIVE PADS SHALL MATCH THE ELEVATIONS OF ADJUTING EXISTING AREAS AS SHOWN ON THE PLANS OR AS DIRECTED BY THE PROJECT ENGINEER.
- THE SUBGRADE PREP SHALL EXTEND ONE FOOT BEYOND THE FREE EDGE OF NEW CURB AND GUTTER AND SIDEWALK.

THE FOLLOWING NOTES ALSO APPLY WHEN CHECKED

- ☒ ALL UTILITIES AND UTILITY SERVICE LINES SHALL BE INSTALLED PRIOR TO PAVING.
- ☒ BACKFILL COMPACTION SHALL BE ACCORDING TO SPECIFIED STREET USE.
- ☐ TACK COAT REQUIREMENTS SHALL BE DETERMINED BY THE ENGINEER.
- ☒ SIDEWALK AND WHEELCHAIR RAMPS WITHIN THE CURB RETURNS SHALL BE CONSTRUCTED WHEREVER A NEW CURB RETURN IS CONSTRUCTED.
- ☐ IF CURB IS DEPRESSED FOR A DRIVEPAD, THE DRIVEPAD SHALL BE CONSTRUCTED PRIOR TO ACCEPTANCE OF CURB AND GUTTER.
- ☒ ALL STORM DRAINAGE FACILITIES SHALL BE COMPLETED PRIOR TO FINAL ACCEPTANCE.

**THE group**  
300 BRANDING IRON RD. SE  
RIO RANCHO, NEW MEXICO 87124  
Phone: (505) 514-0995

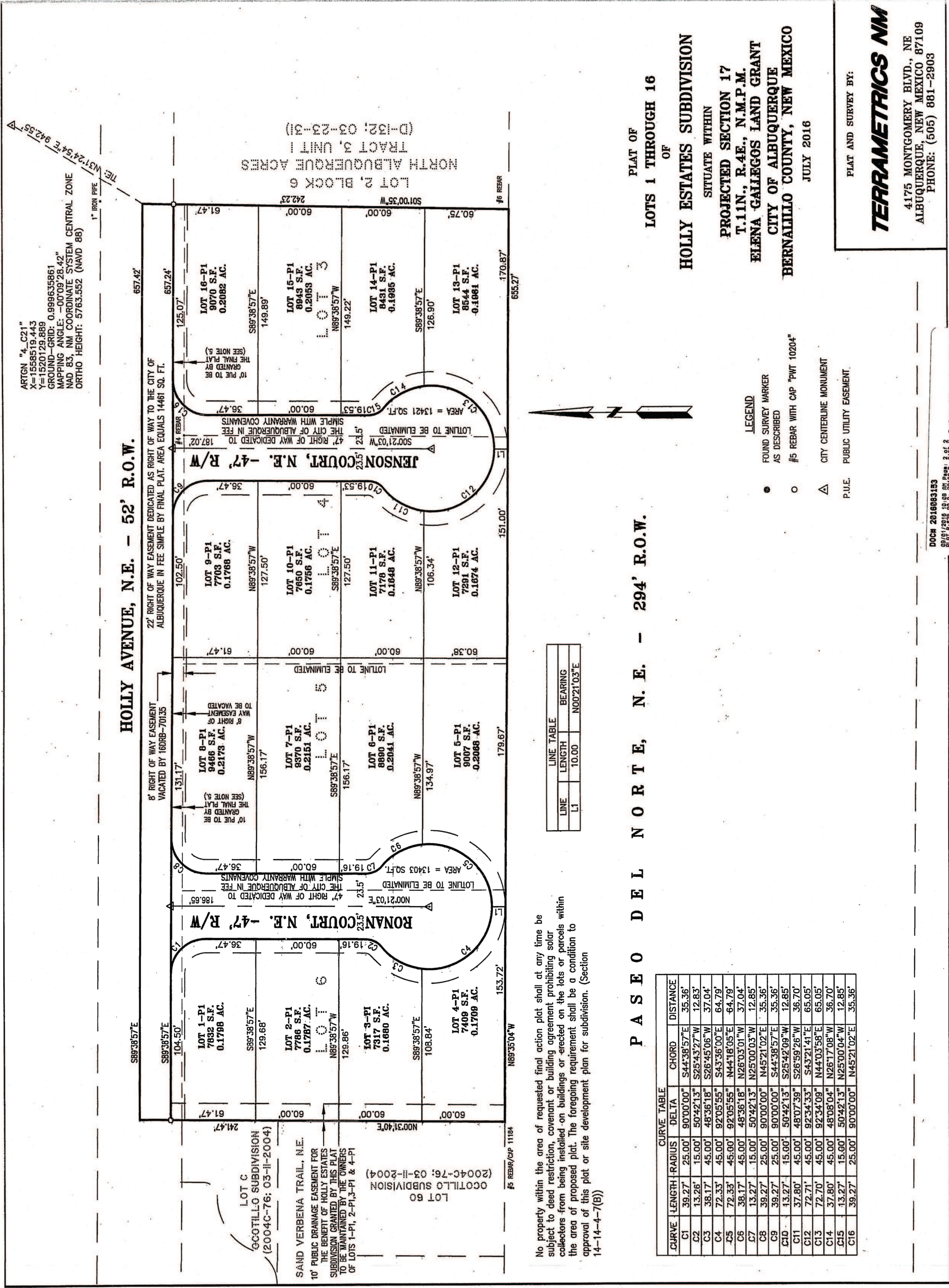
D.R.B. No. 1010576

REV.	SHEETS	CITY ENGINEER	DATE	USER DEPARTMENT	DATE	USER DEPARTMENT	DATE
ENGINEERS STAMP & SIGNATURE		APPROVALS		ENGINEER		DATE	
		DRC CHAIRMAN		[Signature]		10/13/16	
		TRANSPORTATION		[Signature]		10/13/16	
		WATER/WASTEWATER		[Signature]		10/13/16	
		HYDROLOGY		[Signature]		10/13/16	
		AMAFCA					
		CONSTR. MGMT.					
		CONSTR. COORD.					
		CITY PROJECT NO.		729183		SHEET OF	
						1 13	







[illegible]

CITY OF ALBUQUERQUE  
PUBLIC WORKS DEPARTMENT  
ENGINEERING DEVELOPMENT GROUP  
HOLLY ESTATES SUBDIVISION  
PLAT

CITY REVIEW COMMITTEE	CITY ENGINEER APPROVAL	Ms./DAY/YR.	LAST DESIGN UPDATE	SHEET 2A OF 13
CITY PROJECT No. 729183		ZONE MAP NO. C-21-Z		

FOR INFORMATION ONLY















# RECORD DRAWING

PAVING CONSTRUCTION NOTES	
I.D.#	DESCRIPTION
1	BUILD ASPHALT PAVING, PER TYPICAL SECTION ON SHEET 5
2	BUILD PCC STANDARD TYPE CURB & GUTTER, PER COA STD. DTL. 2415A
3	BUILD 4' PCC SIDEWALK, PER COA STD. DTL. 2430
4	SAW CUT AND REMOVE EXISTING ASPHALT
5	BUILD PCC CURB RETURN AND WHEELCHAIR RAMP, PER DETAIL SHEET 18 AND COA STD. DTL. 2426
6	BUILD PCC VALLEY GUTTER, PER COA STD. DTL. 2420

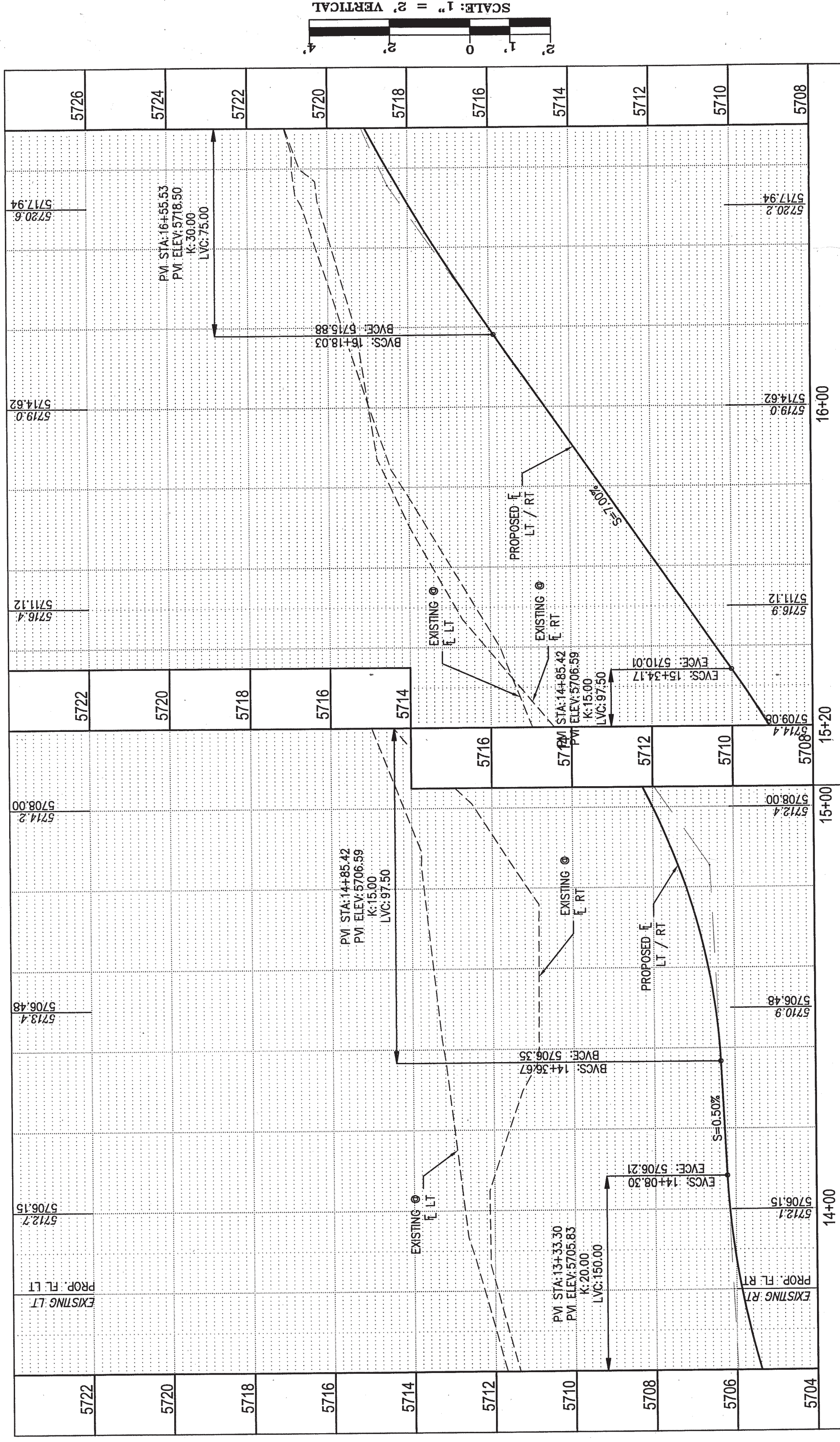
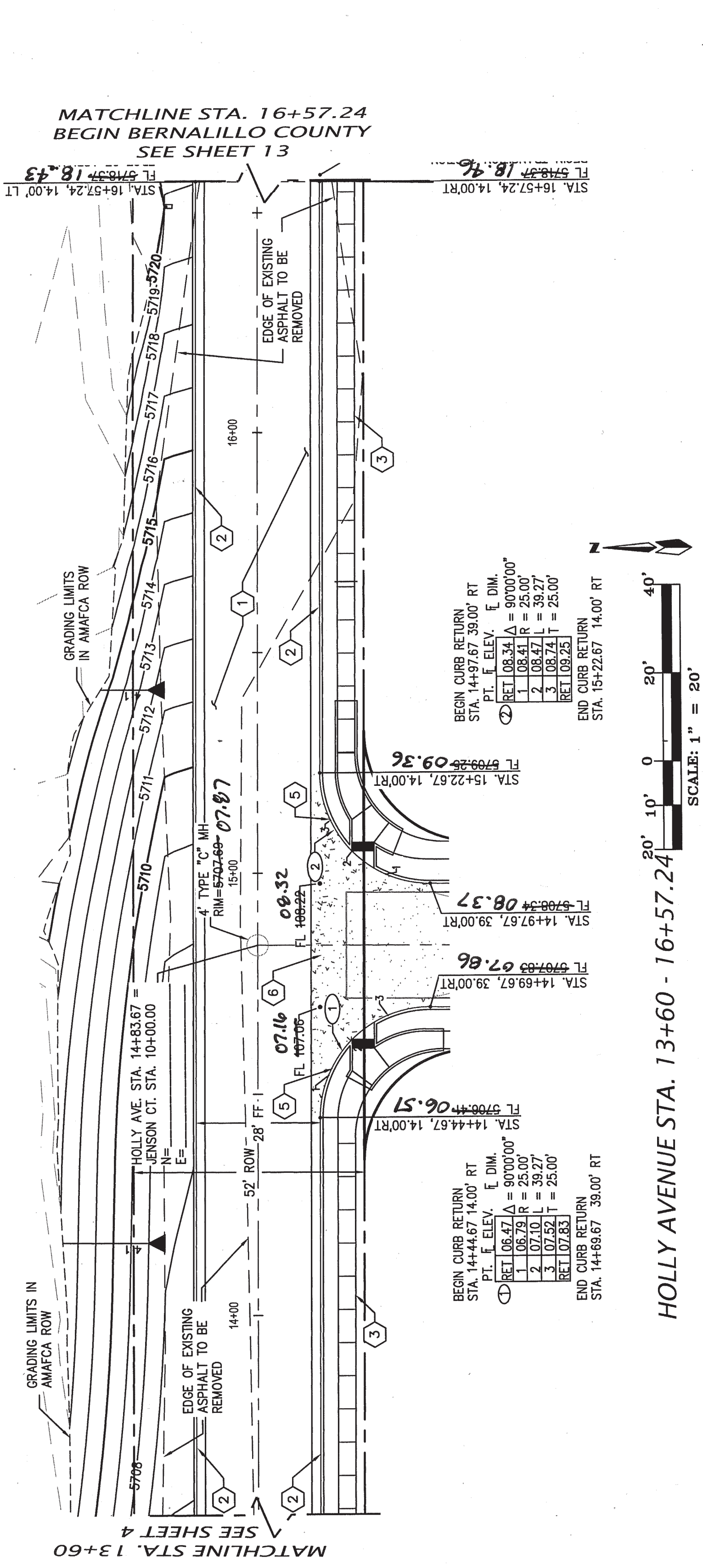
SURVEY INFORMATION		FIELD NOTES	
NO.	BY	DATE	

ENGINEER'S SEAL

[illegible]

CITY OF ALBUQUERQUE  
PUBLIC WORKS DEPARTMENT  
ENGINEERING DEVELOPMENT GROUP

HOLLY ESTATES SUBDIVISION  
HOLLY AVENUE STA. 13+60 - 16+57.24  
PAVING PLAN AND PROFILE

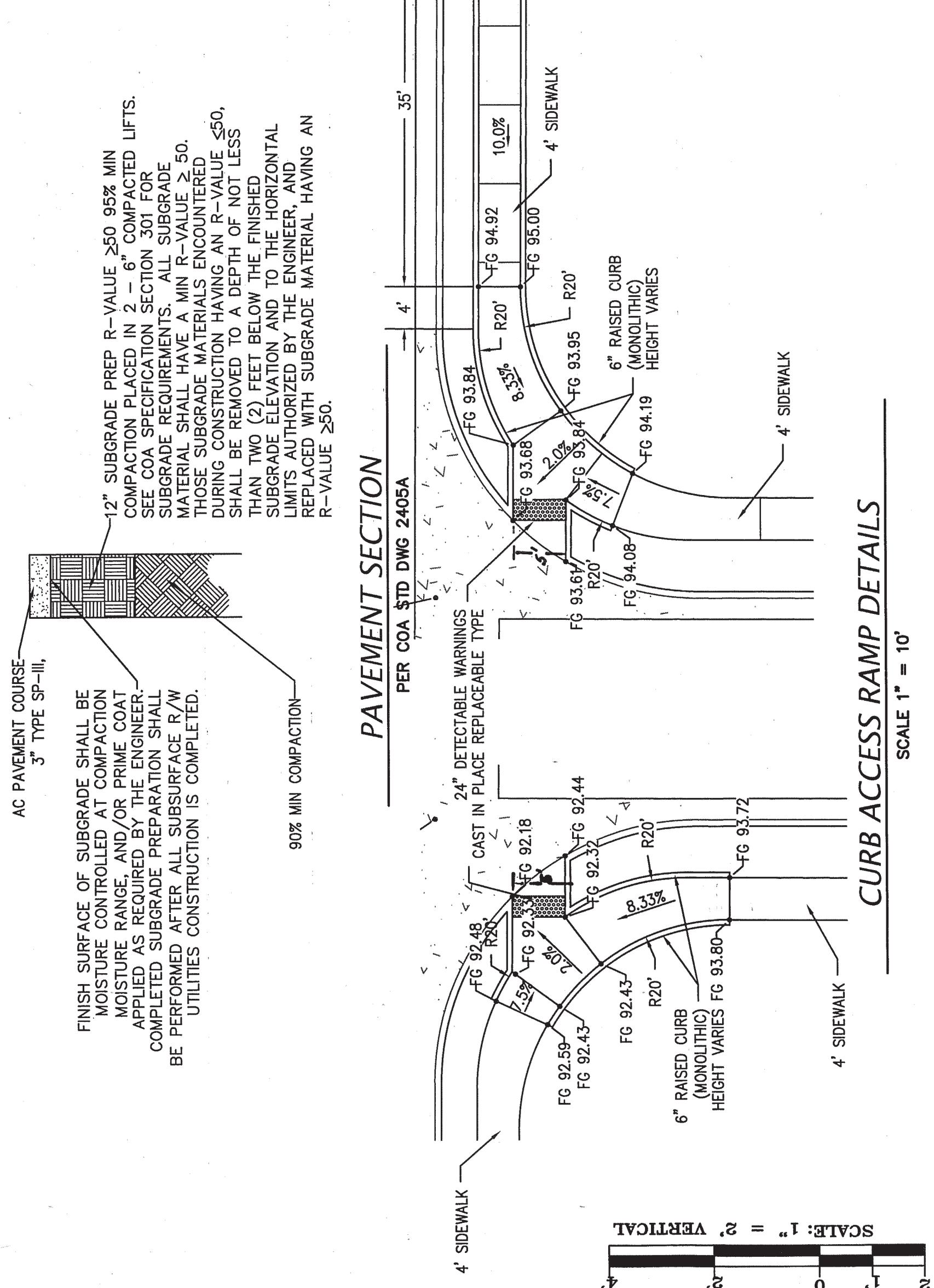
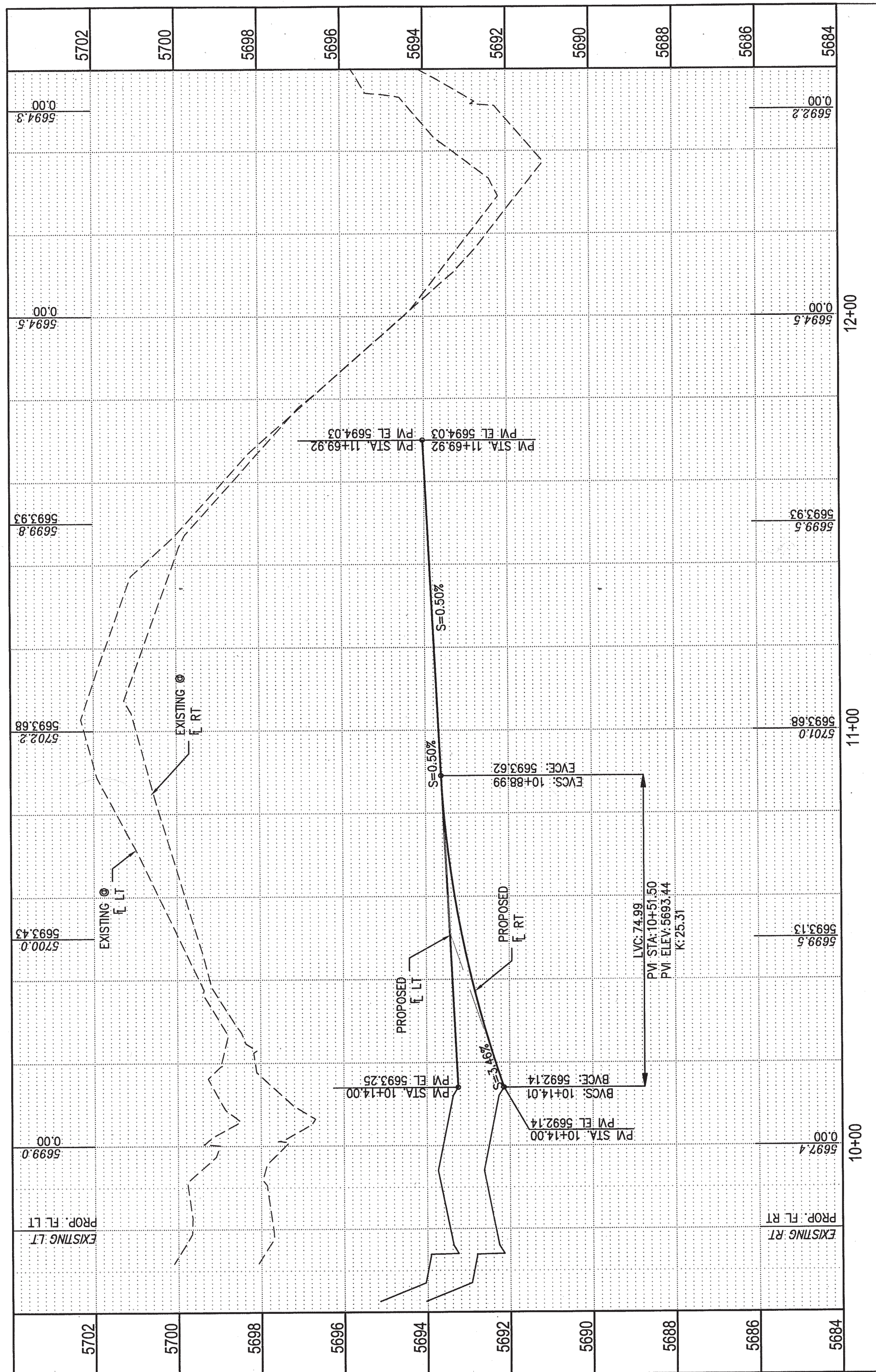
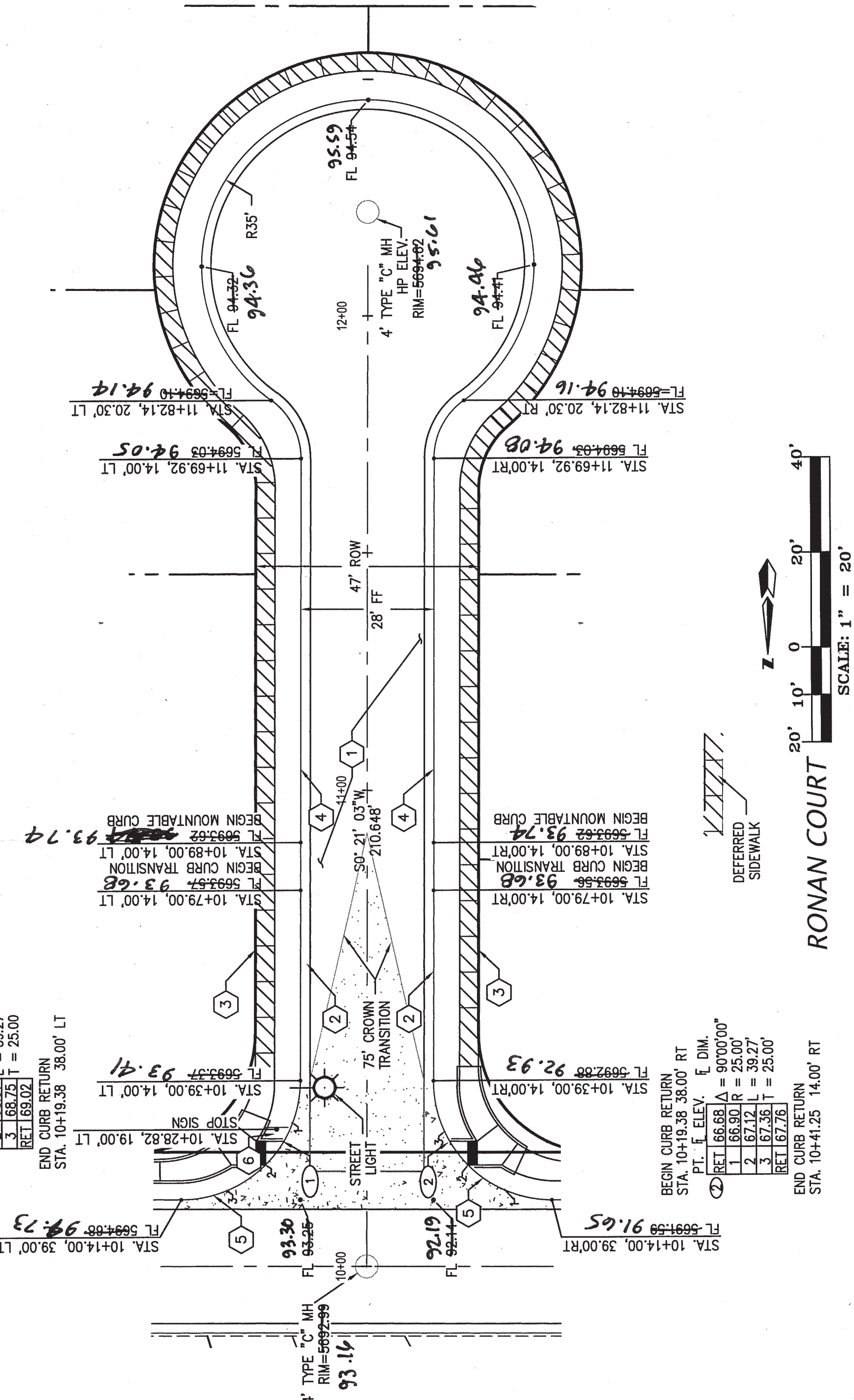
[illegible]



## RECORD DRAWING

I.D.#	DESCRIPTION
1	BUILD ASPHALT PAVING, PER TYPICAL SPECIFICATIONS
2	BUILD PCC STANDARD TYPE CURB & GUTTER, PER COA STD. DTL. 2415A
3	DEFERRED 4" PCC SIDEWALK, PER COA STD. DTL. 2415A
4	BUILD PCC MOUNTABLE TYPE CURB & GUTTER, PER COA STD. DTL. 2415A
5	BUILD PCC CURE RETURN AND WHEELCUTS, PER COA STD. DTL. 2415A
6	INSTALL RT-1-30 STOP SIGN W/ POSTING PLATE, PER COA STD. DTL. 2890-201, 2890-601 AND 2890-602

AS BUILT INFORMATION	
CONTRACTOR	SUNSHINE
DRAWN BY	ALS
DATE	10/1
REVISIONS	
DESCRIPTION BY	ALS
DATE	17
DATE	4/1
MICRO-FILM INFORMATION	
RECORDED BY	
DATE	

[illegible][illegible]



RECORD DRAWING

PAVING CONSTRUCTION NOTES	
I.D.#	DESCRIPTION
1	BUILD ASPHALT PAVING, PER TYPICAL SECTION SHEET 7
2	BUILD PCC STANDARD TYPE CURB & GUTTER, PER COA STD. DTL. 2415A
3	DEFERRED 4" PCC SIDEWALK, PER COA STD. DTL. 2430
4	BUILD PCC MOUNTABLE TYPE CURB & GUTTER, PER COA STD. DTL. 2415A
5	BUILD PCC CURB RETURN AND WHEELCHAIR RAMP, PER DETAIL THIS SHEET AND COA STD. DTL. 2426
6	INSTALL R1-1-30 STOP SIGN W/ POST, PER COA STD. DTLS. 2900-201, 2900-601 AND 2900-702

AS BUILT INFORMATION	
CONTRACTOR	SUNSHINE
STANDARD BY	ALS
DATE	10/17
APPROVED BY	ALS
DATE	11/17
RECORDED BY	ALS
DATE	4/17
MICRO-FILM INFORMATION	
NO.	

FIELD NOTES	
NO.	
DATE	
BENCH MARKS	
"ACS BM 4-C21" THE STATION IS LOCATED 152.3 FEET EAST ON THE SOUTH TOP OF THE NORTH DOMINGO BACA DAM. THE STATION MARK IS A CITY OF ALBUQUERQUE SURVEY CONTROL 3 1/4 INCH ALUMINUM DISC RIVETED TO A PIPE SET IN CONCRETE 0.3 FEET ABOVE GROUND AND IS STAMPED "4-C21 1995".	
X=1558519.443 Y=1520129.889 (NAD 83)	
ELEV=5763.55 (NAVD 1988)	
NO.	

ENGINEER'S SEAL

10/13/16

ABON E. HENSELY

REGISTERED PROFESSIONAL ENGINEER

NO. 1850

STATE OF NEW MEXICO

REMARKS	
NO.	DATE
DESIGNED BY	REH
DRAWN BY	REH
CHECKED BY	REH
DATE MAR. 2016	
DATE APR. 2016	
DATE OCT. 2016	
DESIGN REVISIONS	
DESIGN	

CITY OF ALBUQUERQUE  
PUBLIC WORKS DEPARTMENT  
ENGINEERING DEVELOPMENT GROUP

HOLLY ESTATES SUBDIVISION  
JENSON COURT  
PAVING PLAN AND PROFILE

DESIGN REVIEW COMMITTEE  
APPROVED  
OCT 21 2016  
DESIGN REVIEW COMMITTEE

CITY-ENGINEER APPROVAL  
APPROVED  
NOV 02 2016  
CITY ENGINEER

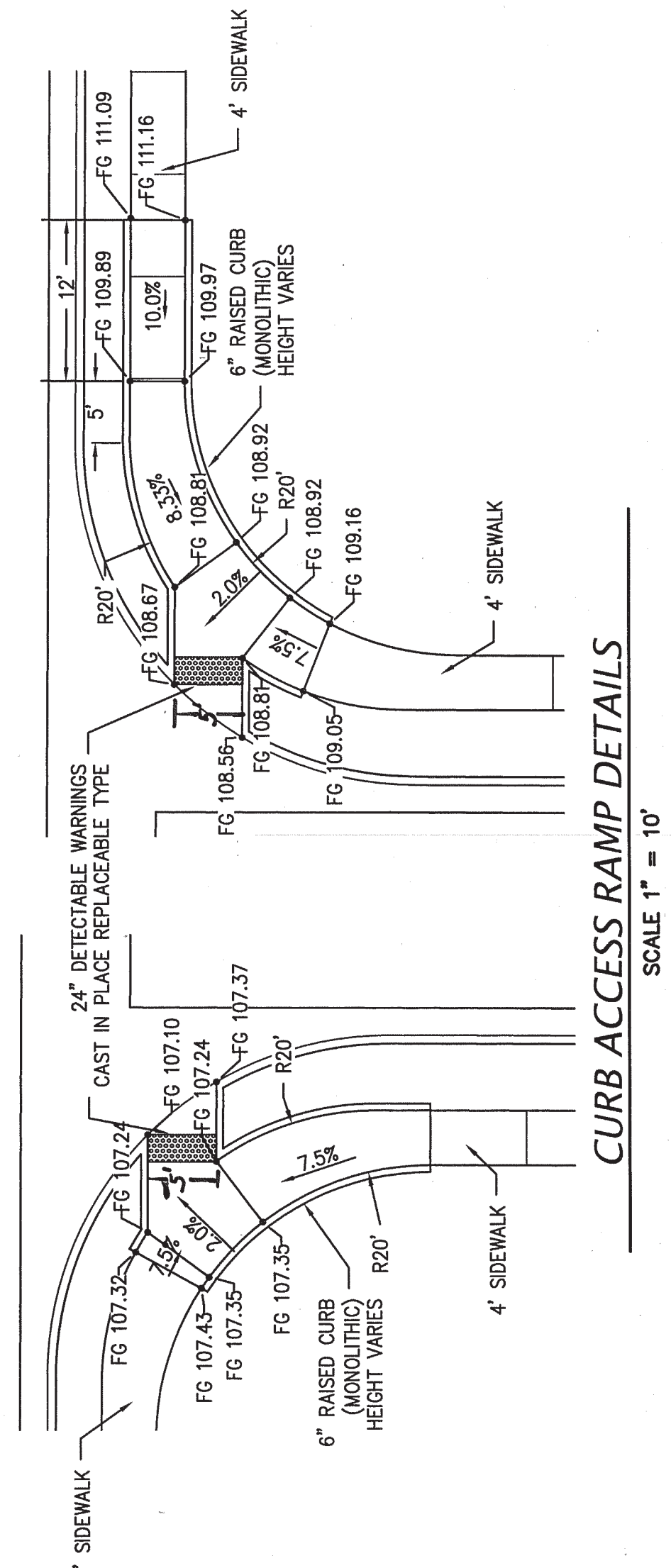
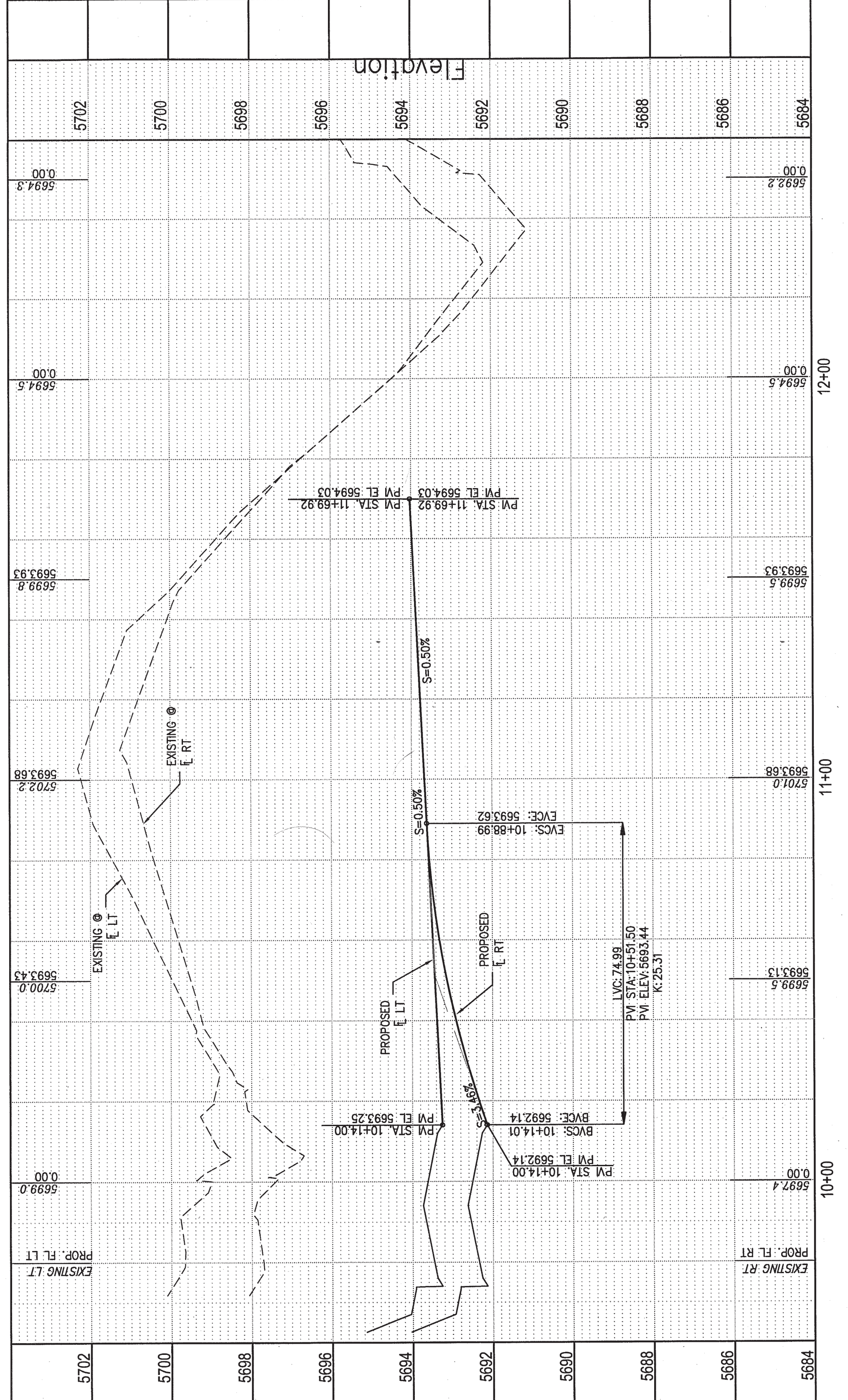
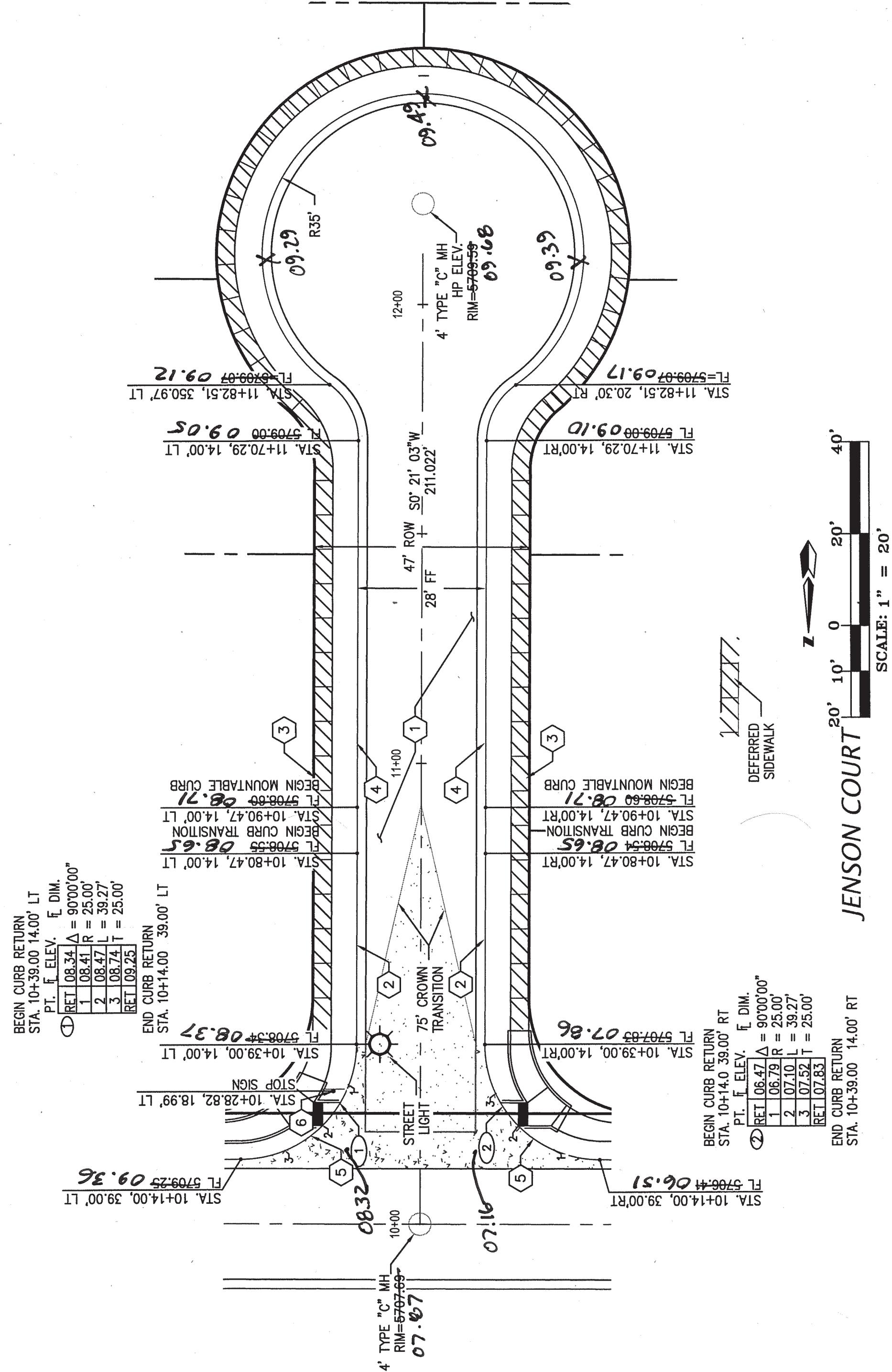
LAST DESIGN UPDATE

NO./DAY/YR.

CITY PROJECT NO. 729183

ZONE MAP NO. C-21

SHEET 8 OF 12





RECORD DRAWING

RESTRAINING JOINT TABLE / NOTES

RESTRAINED JOINT TABLE		
MECHANICAL JOINT TYPE	DISTANCE FROM FITTING OF JOINTS	
	PIPE SIZE	PIPE RESTRAINED
6"x8" TEE	6"	8"
	8"	8"
6"x8"x6" TEE	1	1
45° HORIZ. BEND	7	8
22.5° HORIZ. BEND	4	4
11.25° HORIZ. BEND	2	2
GATE VALVE/CAP	47	55
45° VERT. BEND (UPPER)	18	23
(LOWER)	6	7
22.5° VERT. BEND (UPPER)	9	7
(LOWER)	3	2

- NOTES:
- ALL MECHANICAL JOINTS SHALL BE RESTRAINED AT FITTING.
  - ALL JOINTS WITHIN DISTANCE FROM FITTING SHALL BE RESTRAINED.
  - THE CONTRACTOR SHALL PROVIDE A MINIMUM PIPE LENGTH OF 20 LF FROM ALL MECHANICAL JOINTS. ALL PIPE JOINTS WITHIN 20 LF OF MJ SHALL BE RESTRAINED AT THE CONTRACTORS EXPENSE.
  - THE CONTRACTOR SHALL RESTRAIN ALL PIPE JOINTS IN THE SPECIFIED DISTANCE LISTED IN THE TABLE AT LEFT (SEE NOTE 2 ABOVE).
  - THE CONTRACTOR SHALL RESTRAIN ALL FIRE HYDRANT JOINTS FROM THE TEE ON THE MAIN TO THE FIRE HYDRANT FLANGE.
  - ALL CAPS SHALL UTILIZE PCC BLOCKING, UNLESS OTHERWISE NOTED.
  - RESTRAINED LENGTH IS ON LARGE SIDE WHERE REDUCERS ARE USED.
  - RESTRAIN ALL JOINTS BETWEEN UPPER AND LOWER VERTICAL BENDS.
  - TRACE WIRE ON ALL ABOVEGRADE LINES AND FIRE HYDRANT LEGS

SEWER CONSTRUCTION NOTES	
ID.#	DESCRIPTION
①	INSTALL 4" DIA. TYPE "C" MANHOLE PER COA STD. DTL 2101
②	INSTALL 8" SEWER PIPE PER STD. SPEC. SEC. 901
③	SAW CUT REMOVE AND REPLACE ASPHALT, PER COA STD. DTL 2465, MAJOR LOCAL TYPE B

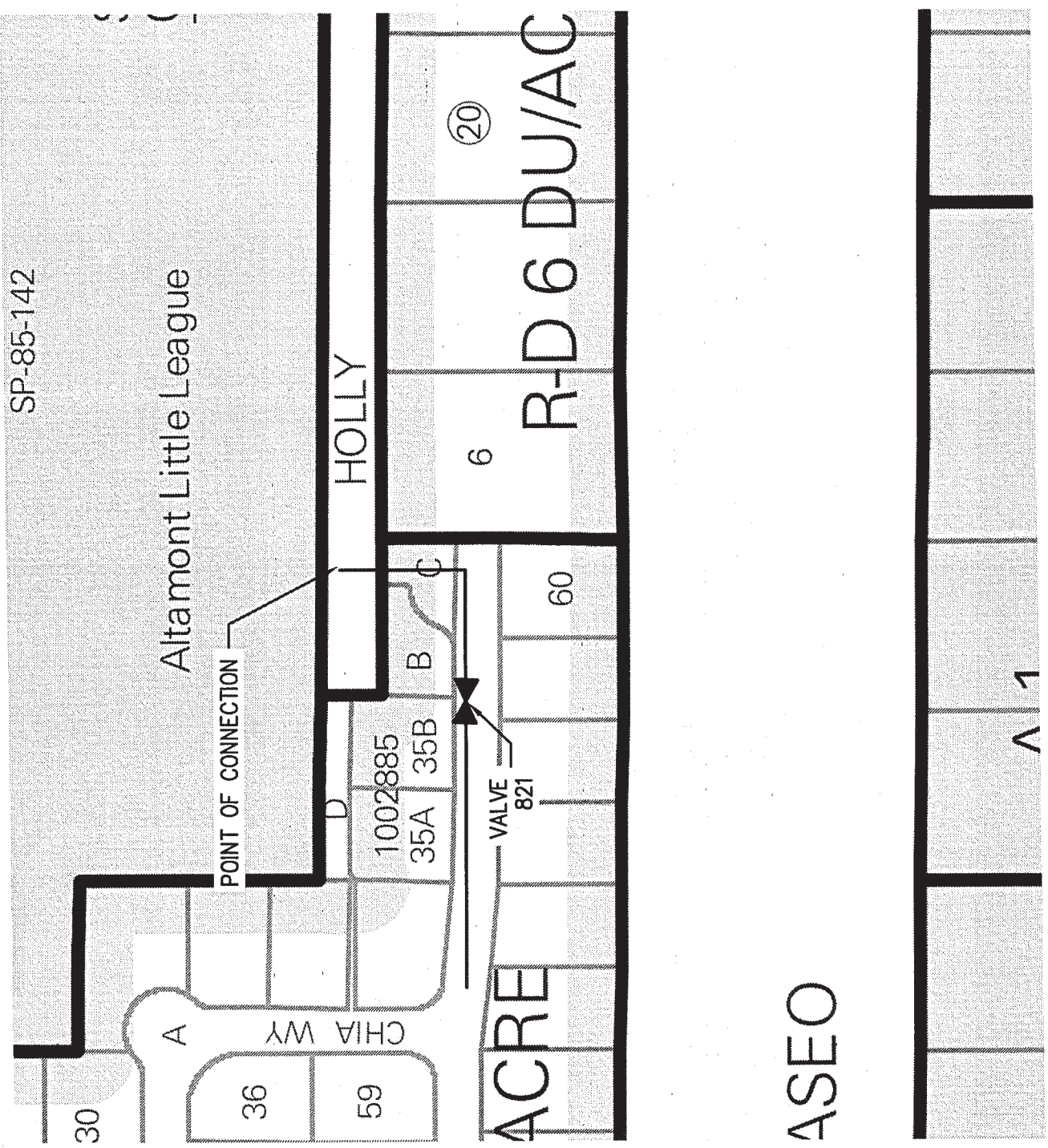
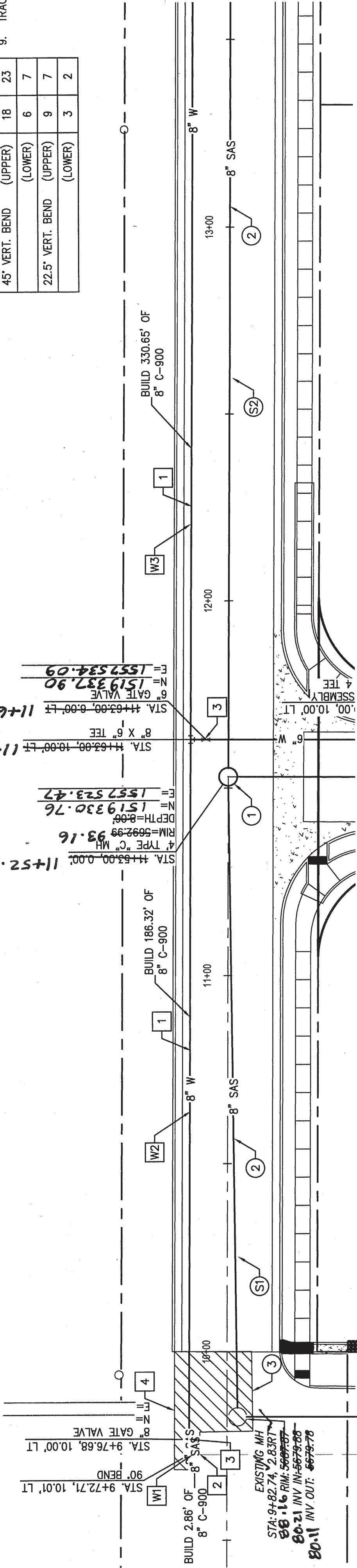
WATER CONSTRUCTION NOTES	
ID.#	DESCRIPTION
①	INSTALL WATERLINE PER STD. SPEC. SEC. 801
②	NON-PRESSURE CONNECTION OF NEW WATERLINE TO EXISTING WATERLINE PER COA STD. DTL 2301
③	INSTALL GATE VALVE AND VALVE BOX PER COA STD. DTL 2306, 2328
④	SAW CUT REMOVE AND REPLACE ASPHALT, PER COA STD. DTL 2465, MAJOR LOCAL TYPE B

AS BUILT INFORMATION	
CONTRACTOR	sunshine
WORK ORDER NO.	16/17
INSPECTED BY	Mrs
ACCEPTANCE BY	Mrs
VERIFICATION BY	Mrs
DATE	4/17
DATE	4/17
DATE	4/17
RECORDED BY	
NO.	

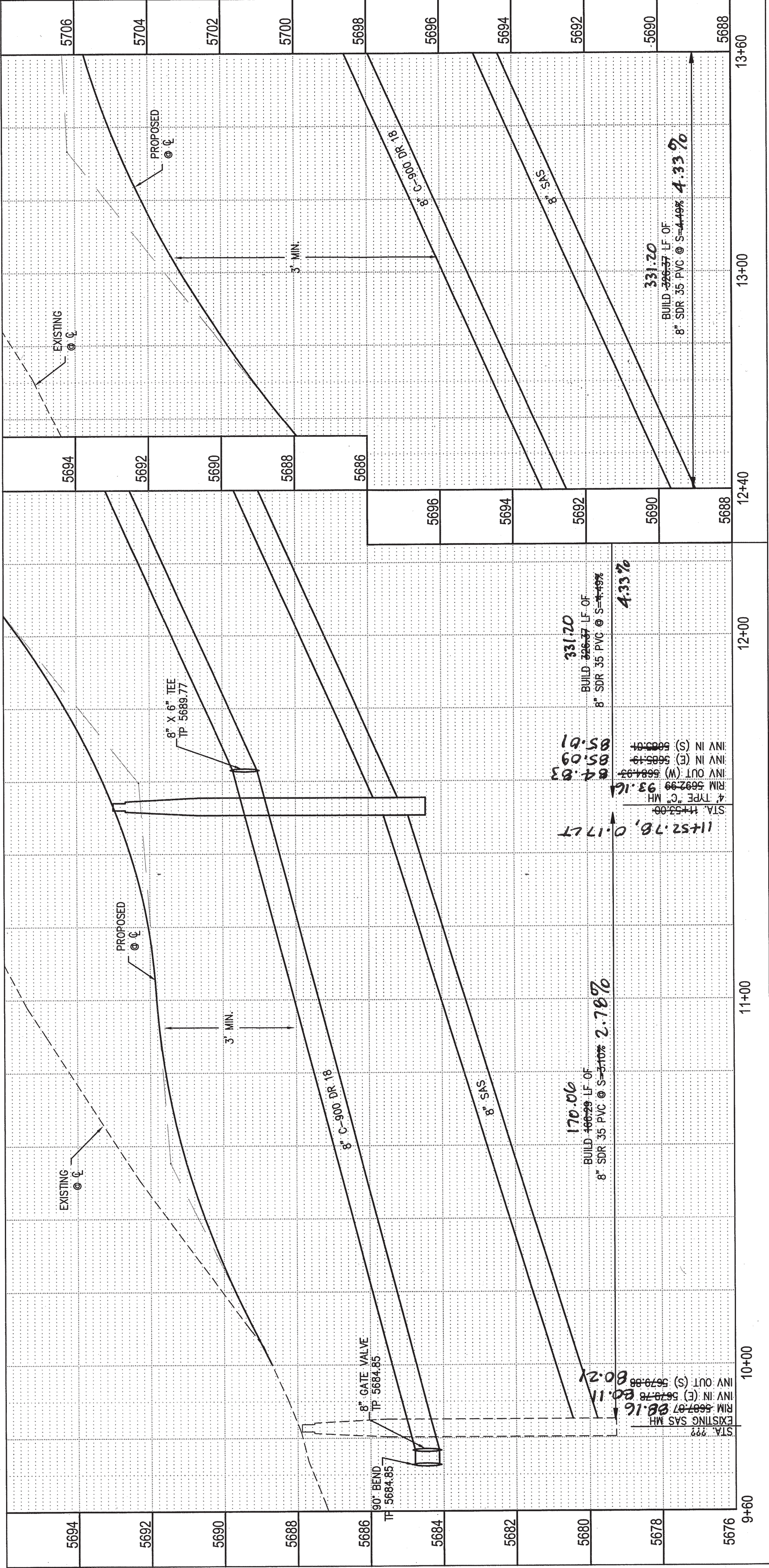
BENCH MARKS	
"ACS BM 4 C21" THE STATION IS LOCATED 152.3 FEET EAST ON THE SOUTH TOP OF THE NORTH DOMINGO	
BACA DAM, THE STATION MARK IS A CITY OF ALBUQUERQUE SURVEY CONTROL 3 1/4 INCH ALUMINUM DISC RIVETED TO A PIPE SET IN CONCRETE 0.3 FEET ABOVE GROUND AND IS STAMPED "4-C21 1995".	
X=1558519.443 Y=1520129.889 (NAD 83)	
ELEV=5763.55 (NAVD 1988)	

SAS LINE TABLE		
LINE	LENGTH	BEARING
W1	2.66	N 0°21'03" E
W2	186.32	S 89°38'57" E
W3	330.67	S 89°38'57" E

WATER LINE TABLE		
LINE	LENGTH	BEARING
W1	2.66	N 0°21'03" E
W2	186.32	S 89°38'57" E
W3	330.67	S 89°38'57" E



HOLLY AVENUE STA. 9+60 - 13+60



ENGINEER'S SEAL	
NO.	
DATE	
BY	
REMARKS	
DESIGN	
REVISIONS	
NO. DATE	
DESIGNED BY	REH
DRAWN BY	REH
CHECKED BY	REH
DATE MAR. 2016	
DATE APR. 2016	
DATE OCT. 2016	

CITY OF ALBUQUERQUE PUBLIC WORKS DEPARTMENT ENGINEERING DEVELOPMENT GROUP	
HOLLY ESTATES SUBDIVISION	
HOLLY AVENUE STA. 9+60 - 13+60	
UTILITY PLAN AND PROFILE	
DESIGN REVIEW COMMITTEE	DESIGN REVIEW COMMITTEE
APPROVAL	APPROVAL
NOV 02 2016	OCT 21 2015
REVIEW COMMITTEE	REVIEW COMMITTEE
CITY ENGINEER	CITY ENGINEER
NO. / DAY / YR.	NO. / DAY / YR.
LAST DESIGN UPDATE	LAST DESIGN UPDATE
SHEET 9 OF 13	SHEET 9 OF 13
CITY PROJECT NO. 729183	CITY PROJECT NO. 729183
ZONE MAP NO. C-21	ZONE MAP NO. C-21



RECORD DRAWING

RESTRAINING JOINT TABLE / NOTES

NOTES:

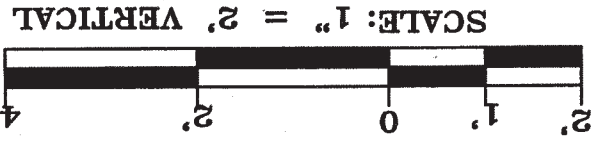
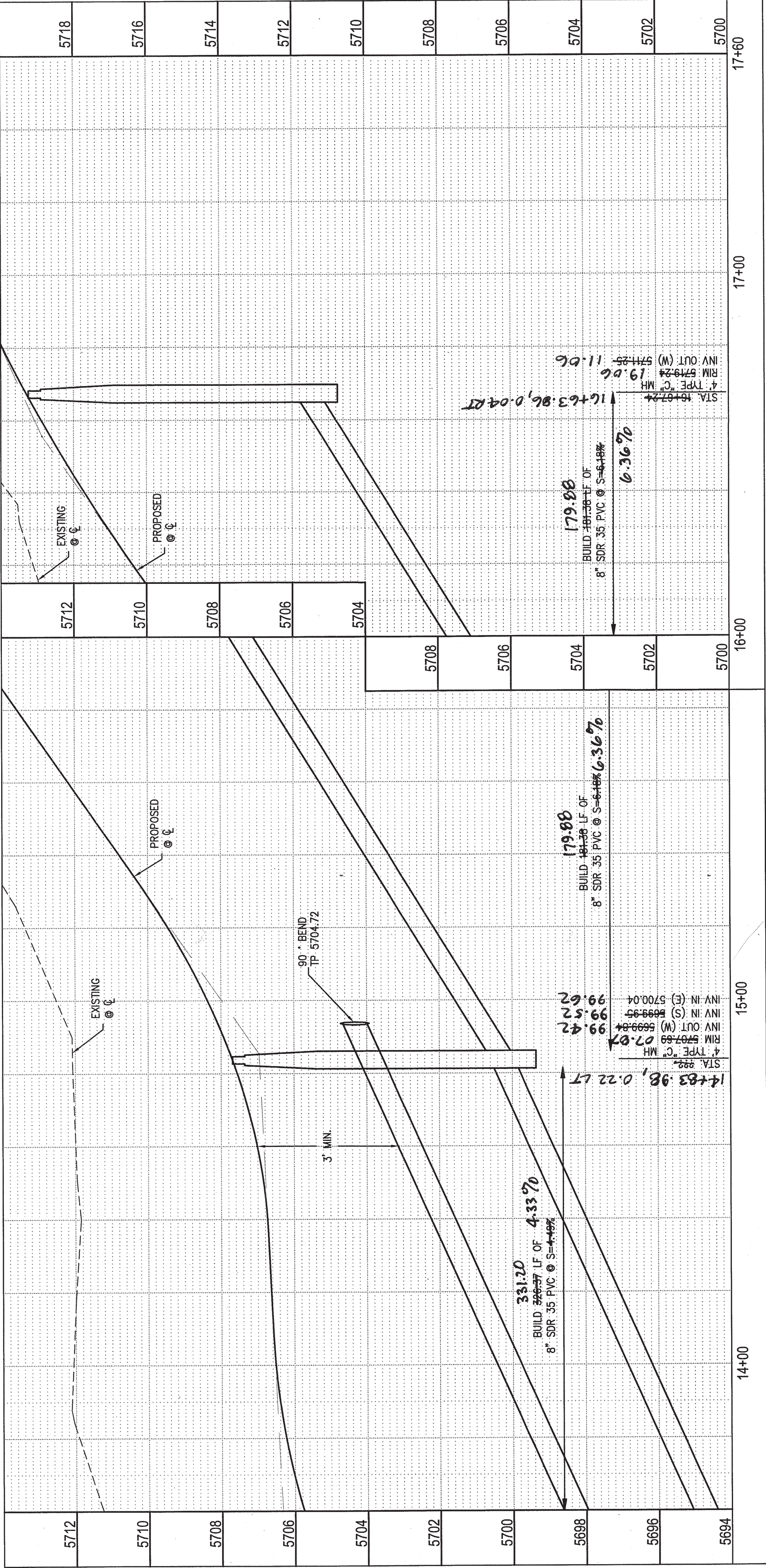
1. ALL MECHANICAL JOINTS SHALL BE RESTRAINED AT FITTING.
2. ALL JOINTS WITHIN DISTANCE FROM FITTING SHALL BE RESTRAINED.
3. THE CONTRACTOR SHALL PROVIDE A MINIMUM PIPE LENGTH OF 20 LF FROM ALL MECHANICAL JOINTS. ALL PIPE JOINTS WITHIN 20 LF OF MJ SHALL BE RESTRAINED AT THE CONTRACTORS EXPENSE.
4. THE CONTRACTOR SHALL RESTRAIN ALL PIPE JOINTS IN THE SPECIFIED DISTANCE LISTED IN THE TABLE AT LEFT (SEE NOTE 2 ABOVE).
5. THE CONTRACTOR SHALL RESTRAIN ALL FIRE HYDRANT JOINTS FROM THE TEE ON THE MAIN TO THE FIRE HYDRANT FLANGE.
6. ALL CAPS SHALL UTILIZE PCC BLOCKING, UNLESS OTHERWISE NOTED.
7. RESTRAINED LENGTH IS ON LARGE SIDE WHERE REDUCERS ARE USED.
8. RESTRAIN ALL JOINTS BETWEEN UPPER AND LOWER VERTICAL BENDS.
9. TRACE WIRE ON ALL ABOVEGROUNDS LINES AND FIRE HYDRANT LEGS

RESTRAINED JOINT TABLE	
MECHANICAL JOINT TYPE	DISTANCE FROM FITTING OF JOINTS RESTRAINED
	PIPE SIZE
6"x8" TEE	1
6"x6"x6" TEE	1
45° HORIZ. BEND	7
22.5° HORIZ. BEND	4
11.25° HORIZ. BEND	2
GATE VALVE/CAP	47
45° VERT. BEND (UPPER)	18
(LOWER)	23
22.5° VERT. BEND (UPPER)	9
(LOWER)	3
2	2

SAS LINE TABLE		
LINE	LENGTH	BEARING
S1	326.66	S 89°38'57" E
S2	181.39	S 89°38'57" E

WATER LINE TABLE		
LINE	LENGTH	BEARING
W1	330.67	S 89°38'57" E

HOLLY AVENUE STA. 13+60 - 17+00



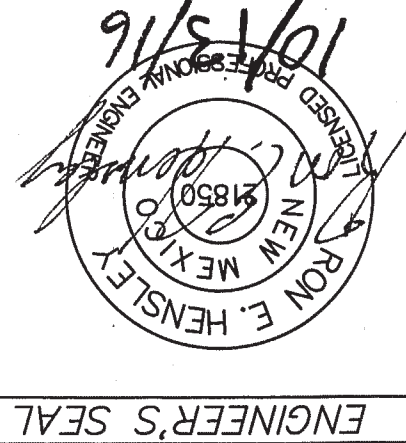
SEWER CONSTRUCTION NOTES	
ID.#	DESCRIPTION
1	INSTALL 4' DIA. TYPE "C" MANHOLE PER COA STD. DTL. 2101
2	INSTALL 8" SEWER PIPE PER STD. SPEC. SEC. 901

WATER CONSTRUCTION NOTES	
ID.#	DESCRIPTION
1	INSTALL WATERLINE PER STD. SPEC. SEC. 801
2	INSTALL 90° BEND

AS BUILT INFORMATION	
CONTRACTOR	STANMORSE
WORK ORDER NO.	16/17
INSPECTED BY	ALS
DATE	12/17
ACCEPTANCE BY	ALS
DATE	12/17
VERIFICATION BY	ALS
DATE	12/17
DRAWINGS	12/17
RECORDED BY	DATE
NO.	DATE

BENCH MARKS	
"ACS BM 4, C21" THE STATION IS LOCATED 152.3 FEET EAST ON THE SOUTH TOP OF THE NORTH DOMINGO BACK DAM. THE STATION MARK IS A CITY OF ALBUQUERQUE SURVEY CONTROL 3 1/4 INCH ALUMINUM DISC RIVETED TO A PIPE SET IN CONCRETE 0.3 FEET ABOVE GROUND AND IS STAMPED "4-C21 1995".	ELEV=5763.55 (NAVD 1988)
X=1558519.443 Y=1520129.889 (NAD 83)	
RECORDED BY	DATE
NO.	DATE

SURVEY INFORMATION	
FIELD NOTES	DATE
NO.	DATE



REVISIONS	
NO.	DATE
1	DATE MAR. 2016
2	DATE APR. 2016
3	DATE OCT. 2016

REMARKS	
BY	DATE

DESIGNED BY REH	CHECKED BY REH
DRAWN BY REH	
DATE MAR. 2016	
DATE APR. 2016	
DATE OCT. 2016	

CITY OF ALBUQUERQUE  
PUBLIC WORKS DEPARTMENT  
ENGINEERING DEVELOPMENT GROUP  
HOLLY ESTATES SUBDIVISION  
HOLLY AVENUE STA. 13+60 - 17+00  
UTILITY PLAN AND PROFILE

DESIGN REVIEW COMMITTEE  
APPROVAL  
OCT 21 2016  
CITY ENGINEER

CITY ENGINEER-APPROVAL  
APPROVAL  
NOV 02 2016  
CITY ENGINEER

LAST DESIGN UPDATE  
NOV 02 2016  
CITY ENGINEER

CITY PROJECT NO. 729183	ZONE MAP NO. C-21	SHEET 10 OF 13
-------------------------	-------------------	----------------

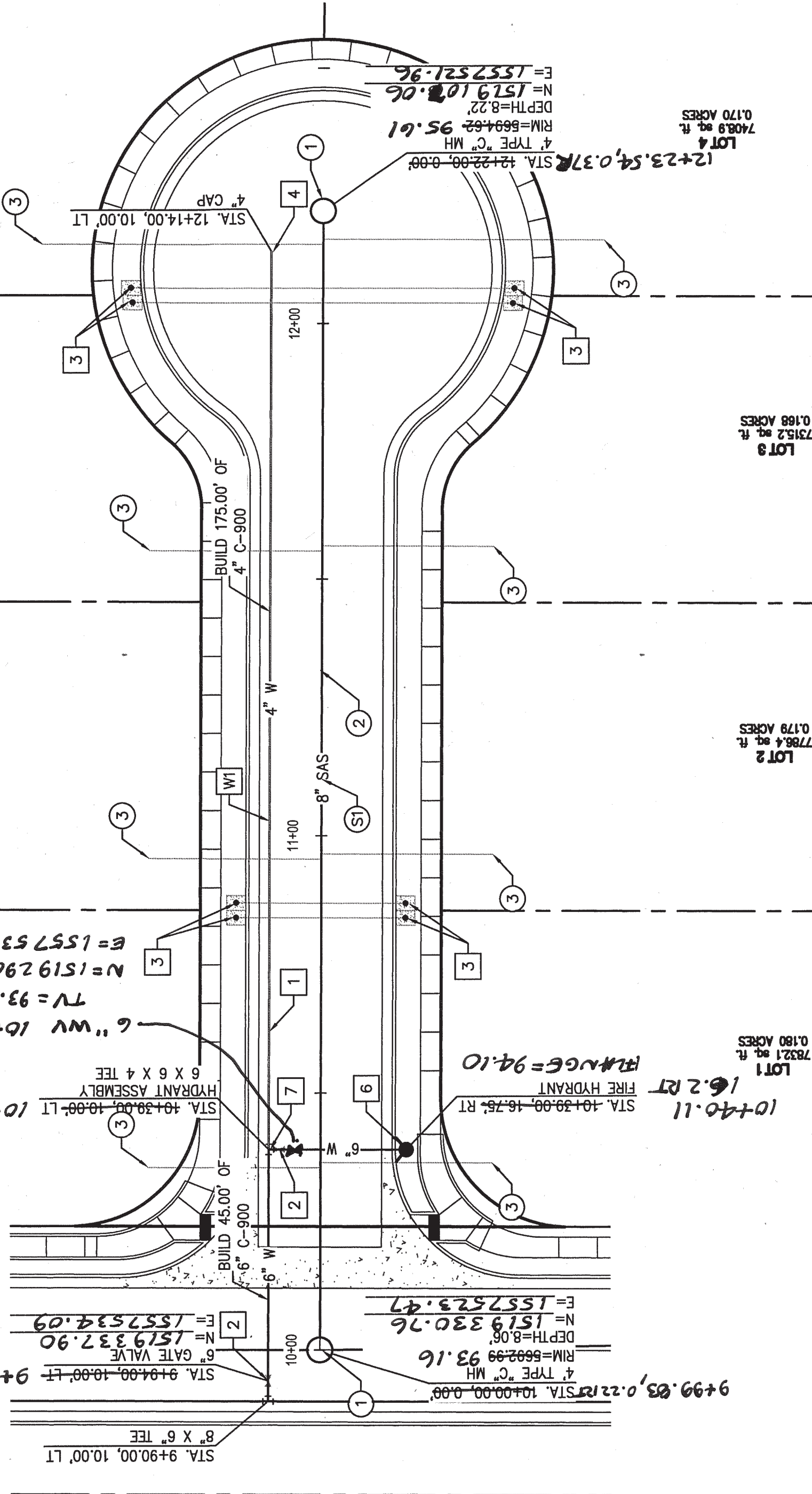


RESTRAINING JOINT TABLE / NOTES

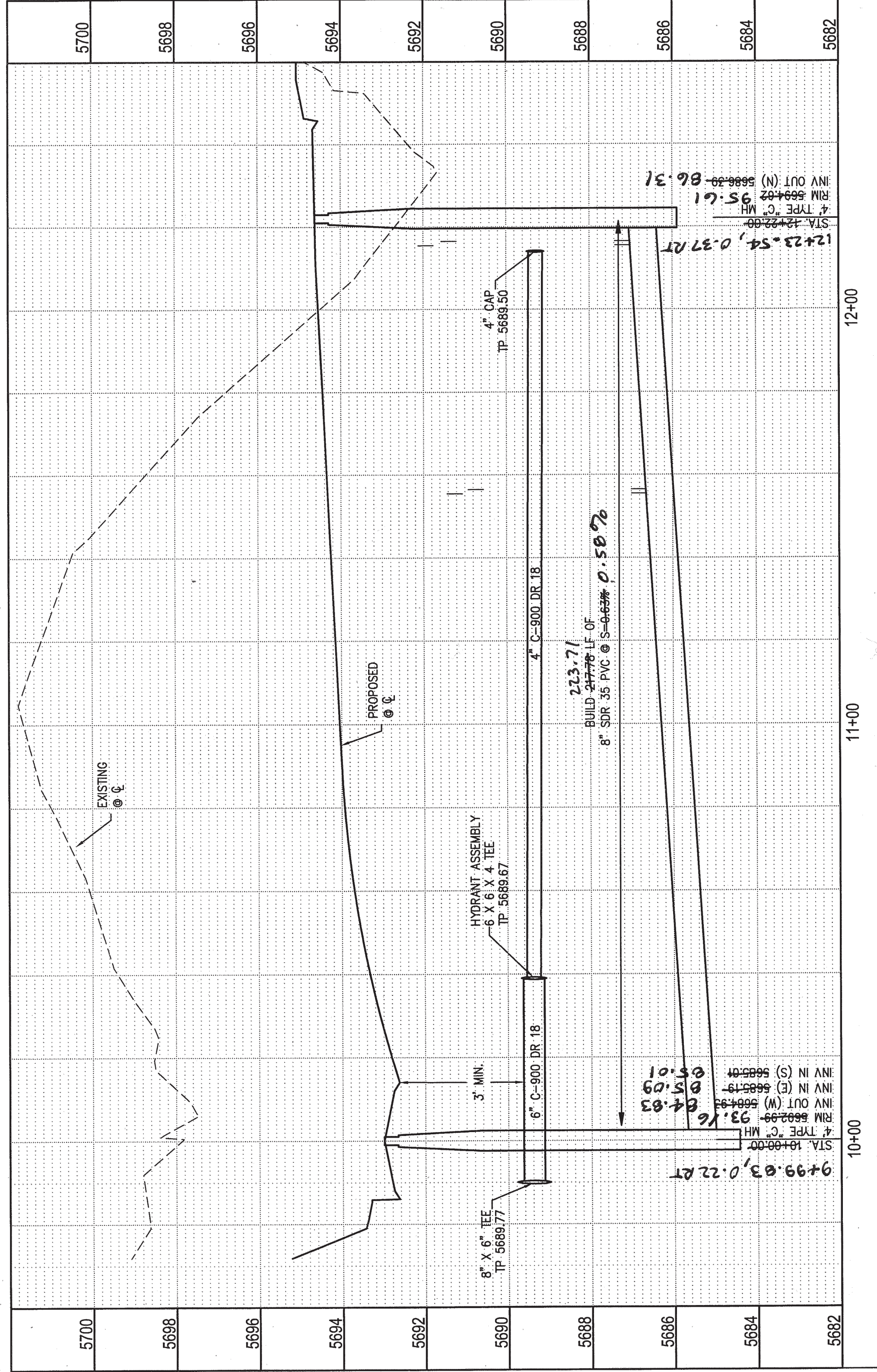
NOTES:

1. ALL MECHANICAL JOINTS SHALL BE RESTRAINED AT FITTING.
2. ALL JOINTS WITHIN DISTANCE FROM FITTING SHALL BE RESTRAINED.
3. THE CONTRACTOR SHALL PROVIDE A MINIMUM PIPE LENGTH OF 20 LF FROM ALL MECHANICAL JOINTS. ALL PIPE JOINTS WITHIN 20 LF OF MJ SHALL BE RESTRAINED AT THE CONTRACTORS EXPENSE.
4. THE CONTRACTOR SHALL RESTRAIN ALL PIPE JOINTS IN THE SPECIFIED DISTANCE LISTED IN THE TABLE AT LEFT (SEE NOTE 2 ABOVE).
5. THE CONTRACTOR SHALL RESTRAIN ALL FIRE HYDRANT JOINTS FROM THE TEE ON THE MAIN TO THE FIRE HYDRANT FLANGE.
6. ALL CAPS SHALL UTILIZE PCC BLOCKING, UNLESS OTHERWISE NOTED.
7. RESTRAINED LENGTH IS ON LARGE SIDE WHERE REDUCERS ARE USED.
8. RESTRAIN ALL JOINTS BETWEEN UPPER AND LOWER VERTICAL BENDS.
9. TRACE WIRE ON ALL ABOVEGROUNDS LINES AND FIRE HYDRANT LEGS

RESTRAINED JOINT TABLE			
MECHANICAL JOINT TYPE	DISTANCE FROM FITTING OF JOINTS RESTRAINED		
	PIPE SIZE	PIPE TYPE	RESTRAINED
6"x8" TEE	6"	8"	1
	6"x8"x6"	TEE	1
45° HORIZ. BEND	45°	HORIZ. BEND	7
	22.5°	HORIZ. BEND	4
GATE VALVE/CAP	47	55	2
	45° VERT. BEND	(UPPER)	18
22.5° VERT. BEND	(LOWER)	6	7
	(UPPER)	9	7
(LOWER)	3	2	



RONAN COURT



FIELD NOTES	
NO.	DATE
1	10/13/16
2	10/13/16
3	10/13/16
4	10/13/16
5	10/13/16
6	10/13/16
7	10/13/16
8	10/13/16
9	10/13/16
10	10/13/16
11	10/13/16
12	10/13/16
13	10/13/16
14	10/13/16
15	10/13/16
16	10/13/16
17	10/13/16
18	10/13/16
19	10/13/16
20	10/13/16
21	10/13/16
22	10/13/16
23	10/13/16
24	10/13/16
25	10/13/16
26	10/13/16
27	10/13/16
28	10/13/16
29	10/13/16
30	10/13/16
31	10/13/16
32	10/13/16
33	10/13/16
34	10/13/16
35	10/13/16
36	10/13/16
37	10/13/16
38	10/13/16
39	10/13/16
40	10/13/16
41	10/13/16
42	10/13/16
43	10/13/16
44	10/13/16
45	10/13/16
46	10/13/16
47	10/13/16
48	10/13/16
49	10/13/16
50	10/13/16
51	10/13/16
52	10/13/16
53	10/13/16
54	10/13/16
55	10/13/16
56	10/13/16
57	10/13/16
58	10/13/16
59	10/13/16
60	10/13/16
61	10/13/16
62	10/13/16
63	10/13/16
64	10/13/16
65	10/13/16
66	10/13/16
67	10/13/16
68	10/13/16
69	10/13/16
70	10/13/16
71	10/13/16
72	10/13/16
73	10/13/16
74	10/13/16
75	10/13/16
76	10/13/16
77	10/13/16
78	10/13/16
79	10/13/16
80	10/13/16
81	10/13/16
82	10/13/16
83	10/13/16
84	10/13/16
85	10/13/16
86	10/13/16
87	10/13/16
88	10/13/16
89	10/13/16
90	10/13/16
91	10/13/16
92	10/13/16
93	10/13/16
94	10/13/16
95	10/13/16
96	10/13/16
97	10/13/16
98	10/13/16
99	10/13/16
100	10/13/16

ENGINEER'S SEAL	
NO.	DATE
1	10/13/16
2	10/13/16
3	10/13/16
4	10/13/16
5	10/13/16
6	10/13/16
7	10/13/16
8	10/13/16
9	10/13/16
10	10/13/16
11	10/13/16
12	10/13/16
13	10/13/16
14	10/13/16
15	10/13/16
16	10/13/16
17	10/13/16
18	10/13/16
19	10/13/16
20	10/13/16
21	10/13/16
22	10/13/16
23	10/13/16
24	10/13/16
25	10/13/16
26	10/13/16
27	10/13/16
28	10/13/16
29	10/13/16
30	10/13/16
31	10/13/16
32	10/13/16
33	10/13/16
34	10/13/16
35	10/13/16
36	10/13/16
37	10/13/16
38	10/13/16
39	10/13/16
40	10/13/16
41	10/13/16
42	10/13/16
43	10/13/16
44	10/13/16
45	10/13/16
46	10/13/16
47	10/13/16
48	10/13/16
49	10/13/16
50	10/13/16
51	10/13/16
52	10/13/16
53	10/13/16
54	10/13/16
55	10/13/16
56	10/13/16
57	10/13/16
58	10/13/16
59	10/13/16
60	10/13/16
61	10/13/16
62	10/13/16
63	10/13/16
64	10/13/16
65	10/13/16
66	10/13/16
67	10/13/16
68	10/13/16
69	10/13/16
70	10/13/16
71	10/13/16
72	10/13/16
73	10/13/16
74	10/13/16
75	10/13/16
76	10/13/16
77	10/13/16
78	10/13/16
79	10/13/16
80	10/13/16
81	10/13/16
82	10/13/16
83	10/13/16
84	10/13/16
85	10/13/16
86	10/13/16
87	10/13/16
88	10/13/16
89	10/13/16
90	10/13/16
91	10/13/16
92	10/13/16
93	10/13/16
94	10/13/16
95	10/13/16
96	10/13/16
97	10/13/16
98	10/13/16
99	10/13/16
100	10/13/16

CITY OF ALBUQUERQUE	
DESIGNED BY	REH
DRAWN BY	REH
CHECKED BY	REH
DATE	OCT. 2016
DATE	APR. 2016
DATE	MAR. 2016
DESIGN	REVISIONS
REMARKS	BY
NO.	DATE
1	10/13/16
2	10/13/16
3	10/13/16
4	10/13/16
5	10/13/16
6	10/13/16
7	10/13/16
8	10/13/16
9	10/13/16
10	10/13/16
11	10/13/16
12	10/13/16
13	10/13/16
14	10/13/16
15	10/13/16
16	10/13/16
17	10/13/16
18	10/13/16
19	10/13/16
20	10/13/16
21	10/13/16
22	10/13/16
23	10/13/16
24	10/13/16
25	10/13/16
26	10/13/16
27	10/13/16
28	10/13/16
29	10/13/16
30	10/13/16
31	10/13/16
32	10/13/16
33	10/13/16
34	10/13/16
35	10/13/16
36	10/13/16
37	10/13/16
38	10/13/16
39	10/13/16
40	10/13/16
41	10/13/16
42	10/13/16
43	10/13/16
44	10/13/16
45	10/13/16
46	10/13/16
47	10/13/16
48	10/13/16
49	10/13/16
50	10/13/16
51	10/13/16
52	10/13/16
53	10/13/16
54	10/13/16
55	10/13/16
56	10/13/16
57	10/13/16
58	10/13/16
59	10/13/16
60	10/13/16
61	10/13/16
62	10/13/16
63	10/13/16
64	10/13/16
65	10/13/16
66	10/13/16
67	10/13/16
68	10/13/16
69	10/13/16
70	10/13/16
71	10/13/16
72	10/13/16
73	10/13/16
74	10/13/16
75	10/13/16
76	10/13/16
77	10/13/16
78	10/13/16
79	10/13/16
80	10/13/16
81	10/13/16
82	10/13/16
83	10/13/16
84	10/13/16
85	10/13/16
86	10/13/16
87	10/13/16
88	10/13/16
89	10/13/16
90	10/13/16
91	10/13/16
92	10/13/16
93	10/13/16
94	10/13/16
95	10/13/16
96	10/13/16
97	10/13/16
98	10/13/16
99	10/13/16
100	10/13/16

SEWER CONSTRUCTION NOTES

SEWER CONSTRUCTION NOTES	
DESCRIPTION	
1	INSTALL 4" DIA. TYPE "C" MANHOLE PER COA STD. DTL 2101
2	INSTALL 8" SEWER PIPE PER STD. SPEC. SEC. 901
3	INSTALL 4" SEWER SERVICE PER COA STD. DTL 2125

WATER CONSTRUCTION NOTES

WATER CONSTRUCTION NOTES	
DESCRIPTION	
1	INSTALL WATERLINE PER STD. SPEC. SEC. 801
2	INSTALL GATE VALVE AND VALVE BOX PER COA STD. DTL 2326, 2328
3	INSTALL 3/4" WATER SERVICE WITH METER BOX PER COA STD. DTL 2361 AND 2362
4	INSTALL 4" CAP
5	INSTALL FIRE HYDRANT PER COA STD. DTL 2340, 2347
6	INSTALL HYDRANT LEG W/ TRACE WIRE AND "MAG A LUG"
7	ALL FITTINGS AND JOINTS FROM TEE TO FIRE HYDRANT

SAS LINE TABLE		
LINE	LENGTH	BEARING
S1	219.80	S 07°10'3" W

RONAN COURT SANITARY SEWER SERVICES					
LOT	SAS	INV	TOP OF PIPE	STATION & OFFSET	LENGTH
1	10+38.47	33.50	5685.89	5690.95	5691.06
2	10+48.47	33.50	5686.27	5691.06	5691.06
3	11+48.47	33.50	5686.27	5691.06	5691.06
4	12+48.47	33.50	5686.27	5691.06	5691.06
5	13+48.47	33.50	5686.27	5691.06	5691.06
6	14+48.47	33.50	5686.27	5691.06	5691.06
7	15+48.47	33.50	5686.27	5691.06	5691.06
8	16+48.47	33.50	5686.27	5691.06	5691.06

WATER LINE TABLE		
LINE	LENGTH	BEARING
WT	224.00	S 07°10'3" W

RONAN COURT WATER SERVICES			
LOT	WM	STATION & OFFSET	SERVICE
1	10+84.03	16.48	RT
2	10+86.91	16.48	RT
3	12+04.04	37.11	RT
4	12+06.92	37.41	RT
5	12+08.80	37.41	LT
6	12+04.04	37.11	LT
7	10+86.91	16.48	LT
8	10+84.03	16.48	LT

NOTE: STATIONING IS AT METER

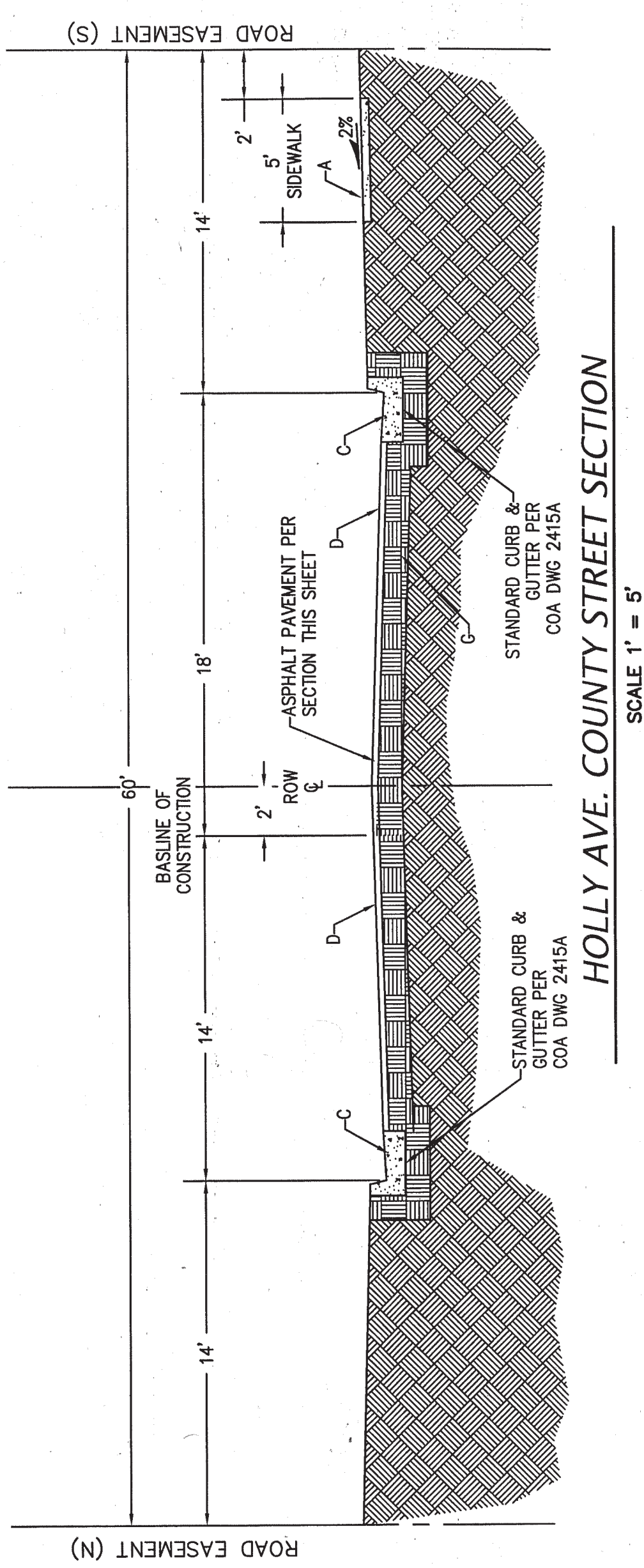
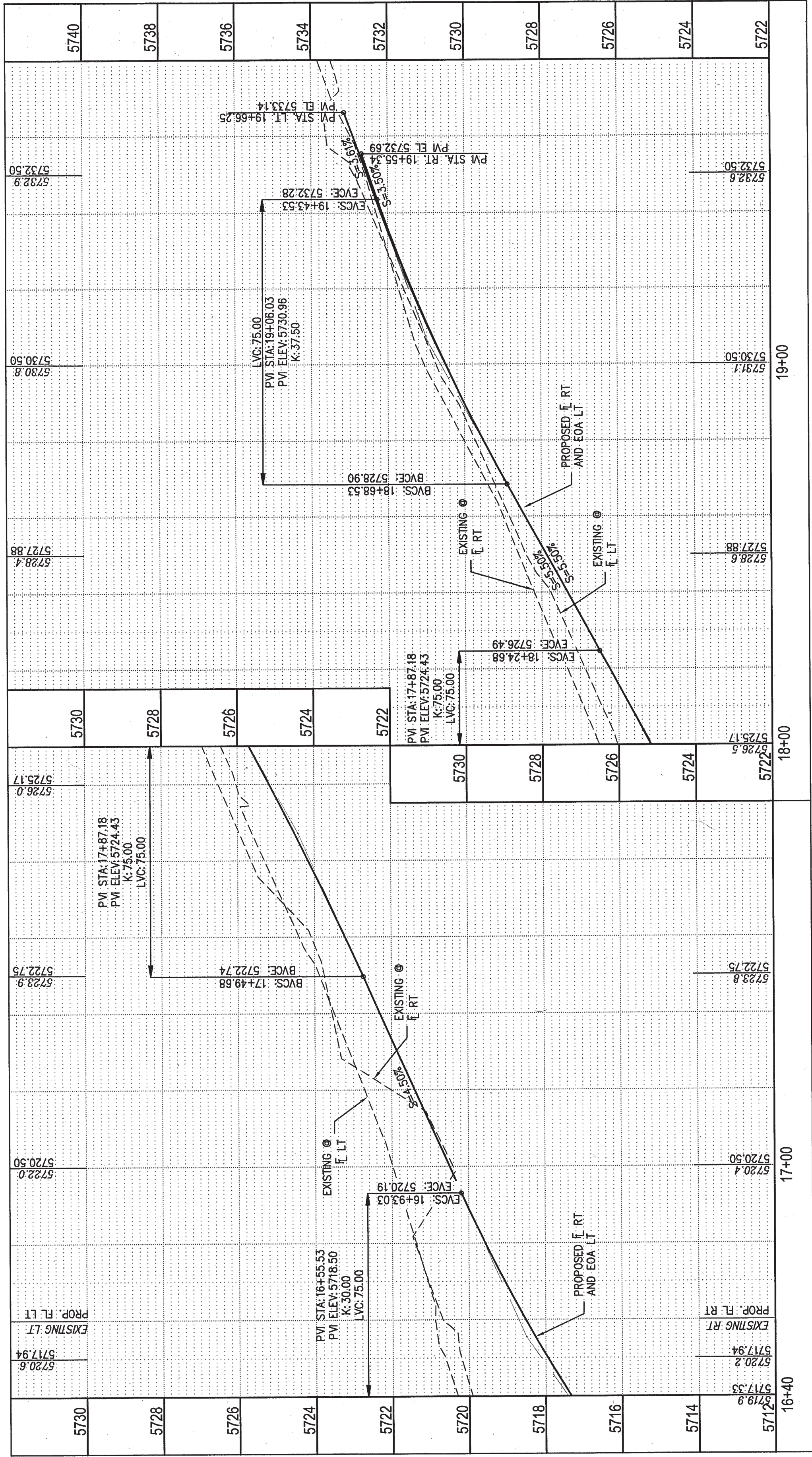
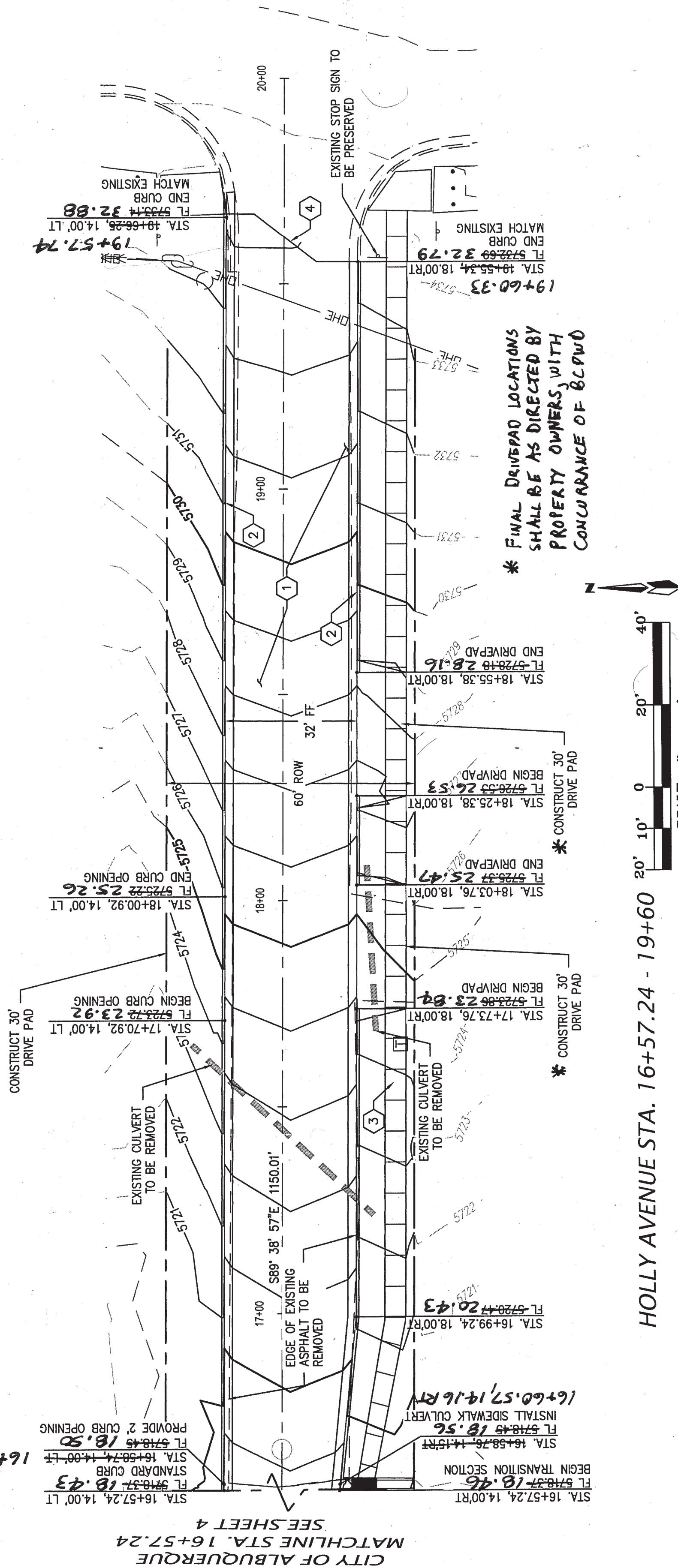






# RECORD DRAWING

PAVING CONSTRUCTION NOTES	
I.D.#	DESCRIPTION
①	BUILD ASPHALT PAVING PER TYPICAL SECTION THIS SHEET
②	BUILD PCC STANDARD TYPE CURB & GUTTER, PER COA STD. DTL. 2415A
③	5' PCC SIDEWALK, PER COA STD. DTL. 2430
④	SAW CUT AND REMOVE EXISTING ASPHALT



STREET ROW	PAVEMENT WIDTH	CROWN
50'	32'	4"

GENERAL NOTES:

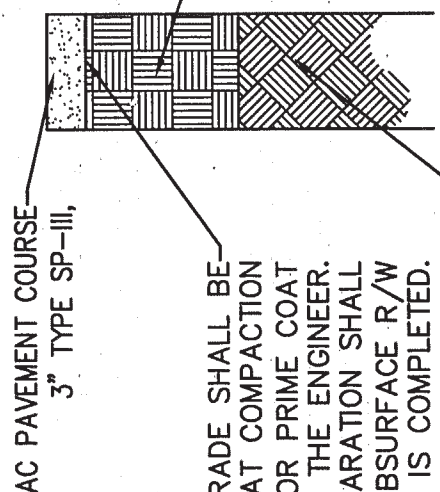
1. CROWN ON STREETS SHALL BE AS FOLLOWS:  
a. 32' STREET = 4" PAVEMENT SLOPE = 2%
2. ALL SUBGRADE COMPACTION FOR C. & G. WILL EXTEND 12" MIN. ON EITHER SIDE OF C. & G. OR CURB SECTION.
3. SUBGRADE PREPARATION UNDER SIDEWALK AND DRIVEPADS SHALL BE INCLUDED WITH THE PARTICULAR ITEM.

CONSTRUCTION NOTES:

- A. SIDEWALK  
B. SIDEWALK ADJACENT TO CURB. (NON-STANDARD,  
VARIANCE REQUIRED).  
C. STANDARD C. & G.  
D. A.C. OR P.C.C. PAVEMENT.  
E. PRIME COAT  
F. COMPACTED BASE-COURSE-  
G. COMPACTED SUBGRADE.


E. PRIME COAT N/A

3. COMPACTED SUBGRADE.



FINISH SURFACE OF SUBGRADE SHALL BE MOISTURE CONTROLLED AT COMPACTION MOISTURE RANGE, AND/OR PRIME COAT APPLIED AS REQUIRED BY THE ENGINEER. COMPLETED SUBGRADE PREPARATION SHALL BE PERFORMED AFTER ALL SUBSURFACE R/W UTILITIES CONSTRUCTION IS COMPLETED.

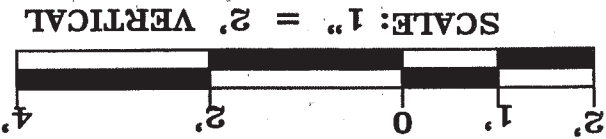
90% MIN COMPACTION



12" SUBGRADE PREP R-VALUE  $\geq 50$  95% MIN COMPACTION PLACED IN 2 - 6" COMPACTED LIFTS. SEE COA SPECIFICATION SECTION 301 FOR SUBGRADE REQUIREMENTS. ALL SUBGRADE MATERIAL SHALL HAVE A MIN R-VALUE  $\geq 50$ . THOSE SUBGRADE MATERIALS ENCOUNTERED DURING CONSTRUCTION HAVE AN R-VALUE  $\geq 50$ . THOSE SUBGRADE MATERIALS THAT ARE BEING REPLACED SHALL HAVE LESS THAN 12" OF FILL BELOW THE FINISHED SUBGRADE ELEVATION AND TO THE HORIZONTAL LIMITS AUTHORIZED BY THE ENGINEER, AND REPLACED WITH SUBGRADE MATERIAL HAVING AN R-VALUE  $\geq 50$ .

HOLLY AVE. PAVEMENT SECTION

PER COA STD DWG 2405A



ALL "NOTES" ON PAGES 1-12 OF THESE CONSTRUCTION PLANS, MODIFIED WHEN NECESSARY TO ACCOMMODATE UNIQUE COUNTY REQUIREMENTS, APPLY TO THE IMPROVEMENTS DETAILED ON THIS SHEET.

10/27/16

DATE \_\_\_\_\_

BCP WD



HOLLY ESTATES SUBDIVISION

## HOLLY AVENUE IMPROVEMENTS

HOLLY AVENUE STA. 16+57.24 - 19+60  
PAVING PLAN AND PROFILE

PROJECT NO. 20160060	DRAWN: REH	DATE: 10-6-16
	CHECKED: REH	SCALE: